

Data Path : Z:\svoasrv\HPCHEM1\BNA_N\Data\BN020924\
 Data File : BN029637.D
 Acq On : 10 Feb 2024 07:57
 Operator : MA/JU
 Sample : P1399-02
 Misc :
 ALS Vial : 29 Sample Multiplier: 1

Instrument :
 BNA_N
 ClientSampleId :
 COAH5

Quant Time: Feb 11 22:09:48 2024
 Quant Method : Z:\svoasrv\HPCHEM1\BNA_N\Methods\SFAM-EPA-BN020724.MA.M
 Quant Title : SVOA CALIBRATION
 QLast Update : Thu Feb 08 00:25:29 2024
 Response via : Initial Calibration

Compound	R.T.	QIon	Response	Conc	Units	Dev(Min)
Internal Standards						
1) 1,4-Dichlorobenzene-d4	0.000	152	0	0.000	ng/ul	-7.89
20) Naphthalene-d8	10.675	136	213	20.000	ng/ul	#-0.01
38) Acenaphthene-d10	14.510	164	280	20.000	ng/ul	#-0.02
64) Phenanthrene-d10	17.275	188	618	20.000	ng/ul	# 0.00
79) Chrysene-d12	21.475	240	866	20.000	ng/ul	# 0.00
88) Perylene-d12	23.833	264	530	20.000	ng/ul	#-0.02
System Monitoring Compounds						
3) 1,4-Dioxane-d8	3.323	96	29972	0.000	ng/uL	0.00
4) Pyridine-d5	3.740	84	117068	0.000	ng/ul	0.00
7) Phenol-d5	7.046	99	162209	0.000	ng/ul	0.00
9) Bis-(2-Chloroethyl)eth...	7.222	67	490371	0.000	ng/ul	0.00
11) 2-Chlorophenol-d4	7.405	132	438933	0.000	ng/ul	-0.01
15) 4-Methylphenol-d8	8.587	113	277290	0.000	ng/ul	-0.01
21) Nitrobenzene-d5	9.046	128	267337	161713.165	ng/ul	0.00
24) 2-Nitrophenol-d4	9.763	143	237260	164789.494	ng/ul	-0.01
28) 2,4-Dichlorophenol-d3	10.299	165	406722	143117.335	ng/ul	0.00
31) 4-Chloroaniline-d4	10.822	131	364999	75283.842	ng/ul	-0.01
46) Dimethylphthalate-d6	13.946	166	1180987	56652.238	ng/ul	0.00
49) Acenaphthylene-d8	14.216	160	1444407	58344.747	ng/ul	0.00
54) 4-Nitrophenol-d4	14.728	143	24124	6097.167	ng/ul	0.00
60) Fluorene-d10	15.516	176	1016089	57295.326	ng/ul	0.00
65) 4,6-Dinitro-2-methylph...	15.640	200	118159	39239.129	ng/ul	0.00
73) Anthracene-d10	17.369	188	1471756	50814.811	ng/ul	-0.01
81) Pyrene-d10	19.669	212	1560250	30022.495	ng/ul	-0.01
92) Benzo(a)pyrene-d12	23.686	264	1493568	56317.365	ng/ul	-0.02
Target Compounds						
22) Nitrobenzene	9.081	77	1052	224.592	ng/ul#	76
23) Isophorone	9.611	82	252	30.886	ng/ul#	68
25) 2-Nitrophenol	9.799	139	441	268.225	ng/ul#	43
27) Bis(2-Chloroethoxy)met...	10.111	93	178	34.329	ng/ul#	50
29) 2,4-Dichlorophenol	10.316	162	190	64.702	ng/ul#	1
30) Naphthalene	10.722	128	2723	223.659	ng/ul	97
32) 4-Chloroaniline	10.840	127	205	42.833	ng/ul#	1
34) Caprolactam	11.499	113	822	841.213	ng/ul#	21
36) 2-Methylnaphthalene	12.340	142	2097	280.979	ng/ul#	58
37) 1-Methylnaphthalene	12.569	142	1181	159.615	ng/ul#	86
39) 1,2,4,5-Tetrachloroben...	12.710	216	1460	175.912	ng/ul#	73
40) Hexachlorocyclopentadiene	12.687	237	122	22.488	ng/ul#	27
43) 1,1'-Biphenyl	13.357	154	1770	74.956	ng/ul	93
44) 2-Chloronaphthalene	13.404	162	1978	107.779	ng/ul#	89
45) 2-Nitroaniline	13.440	65	145	26.874	ng/ul#	10
47) Dimethylphthalate	13.993	163	257	12.044	ng/ul#	77
48) 2,6-Dinitrotoluene	13.946	165	7216	1889.781	ng/ul#	32
50) Acenaphthylene	14.240	152	1181	39.749	ng/ul#	77
52) Acenaphthene	14.587	153	687	35.004	ng/ul	92
56) Dibenzofuran	14.922	168	2414	93.144	ng/ul#	72
57) 2,4-Dinitrotoluene	14.934	165	131	24.368	ng/ul#	41
59) Diethylphthalate	15.363	149	480	21.898	ng/ul#	59
61) Fluorene	15.575	166	889	43.396	ng/ul#	95
62) 4-Chlorophenyl-phenyle...	15.569	204	410	44.747	ng/ul#	61

Data Path : Z:\svoasrv\HPCHEM1\BNA_N\Data\BN020924\
 Data File : BN029637.D
 Acq On : 10 Feb 2024 07:57
 Operator : MA/JU
 Sample : P1399-02
 Misc :
 ALS Vial : 29 Sample Multiplier: 1

Instrument :
 BNA_N
 ClientSampleId :
 C0AH5

Quant Time: Feb 11 22:09:48 2024
 Quant Method : Z:\svoasrv\HPCHEM1\BNA_N\Methods\SFAM-EPA-BN020724.MA.M
 Quant Title : SVOA CALIBRATION
 QLast Update : Thu Feb 08 00:25:29 2024
 Response via : Initial Calibration

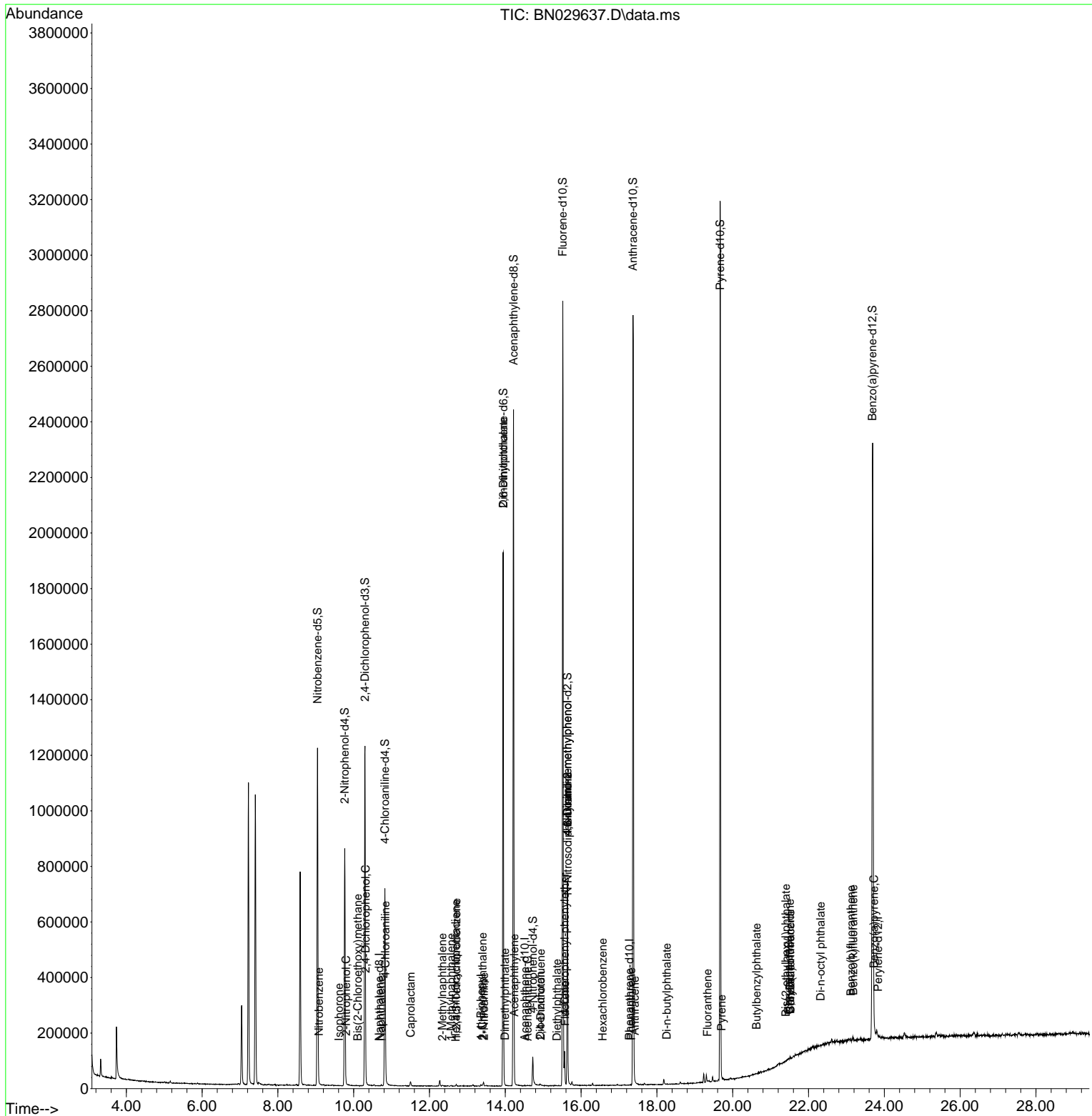
Compound	R.T.	QIon	Response	Conc	Units	Dev(Min)
63) 4-Nitroaniline	15.640	138	827	206.181	ng/ul#	1
66) 4,6-Dinitro-2-methylph...	15.640	198	465	140.068	ng/ul#	1
67) N-Nitrosodiphenylamine	15.646	169	845	43.878	ng/ul#	31
69) Hexachlorobenzene	16.569	284	217	32.913	ng/ul#	34
72) Phenanthrene	17.322	178	647	18.099	ng/ul#	60
74) Anthracene	17.416	178	721	20.096	ng/ul#	62
78) Di-n-butylphthalate	18.257	149	808	20.505	ng/ul#	78
80) Fluoranthene	19.334	202	279	4.419	ng/ul#	68
82) Pyrene	19.704	202	255	3.818	ng/ul#	30
83) Butylbenzylphthalate	20.628	149	90	3.307	ng/ul#	76
84) 3,3'-Dichlorobenzidine	21.510	252	135	8.048	ng/ul#	28
85) Benzo(a)anthracene	21.522	228	231	3.631	ng/ul#	53
86) Bis(2-ethylhexyl)phtha...	21.404	149	767	18.218	ng/ul#	54
87) Chrysene	21.522	228	231	3.875	ng/ul#	49
89) Di-n-octyl phthalate	22.322	149	281	6.840	ng/ul	100
90) Benzo(b)fluoranthene	23.122	252	356	10.664	ng/ul#	1
91) Benzo(k)fluoranthene	23.180	252	938	27.452	ng/ul#	1
93) Benzo(a)pyrene	23.727	252	454	14.181	ng/ul#	1

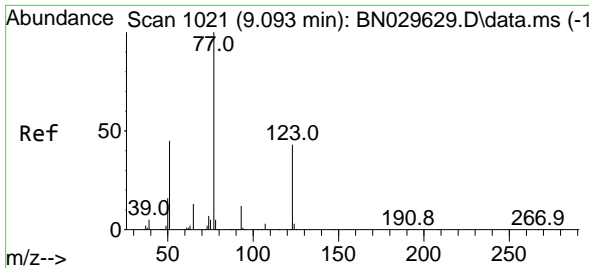
(#) = qualifier out of range (m) = manual integration (+) = signals summed

Data Path : Z:\svoasrv\HPCHEM1\BNA_N\Data\BN020924\
 Data File : BN029637.D
 Acq On : 10 Feb 2024 07:57
 Operator : MA/JU
 Sample : P1399-02
 Misc :
 ALS Vial : 29 Sample Multiplier: 1

Instrument :
 BNA_N
 ClientSampleId :
 COAH5

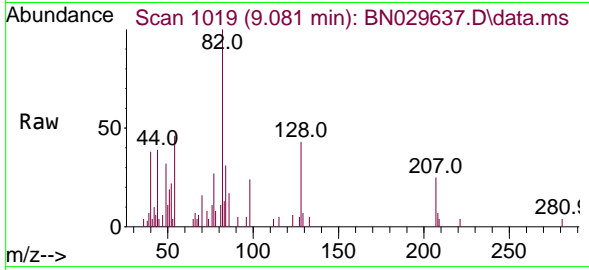
Quant Time: Feb 11 22:09:48 2024
 Quant Method : Z:\svoasrv\HPCHEM1\BNA_N\Methods\SFAM-EPA-BN020724.MA.M
 Quant Title : SVOA CALIBRATION
 QLast Update : Thu Feb 08 00:25:29 2024
 Response via : Initial Calibration



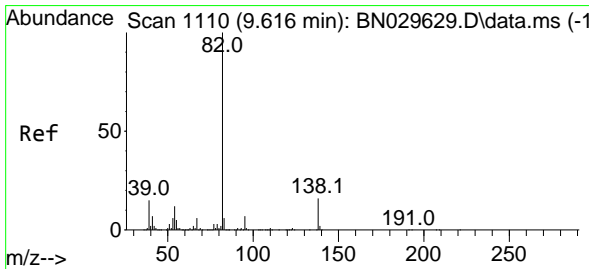
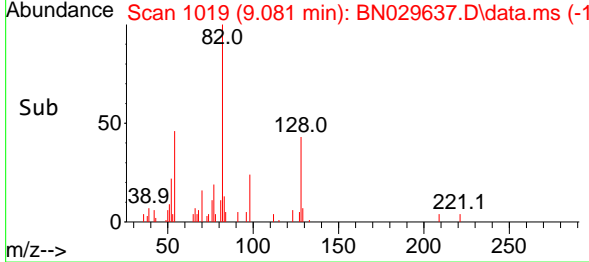
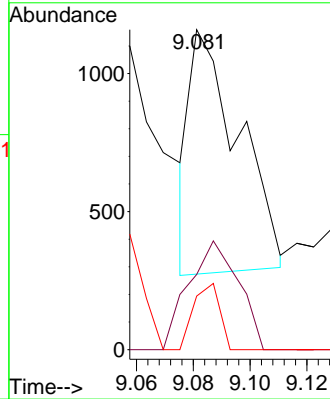


#22
 Nitrobenzene
 Concen: 224.592 ng/uI
 RT: 9.081 min Scan# 1109
 Delta R.T. -0.017 min
 Lab File: BN029637.D
 Acq: 10 Feb 2024 07:57

Instrument :
 BNA_N
 ClientSampleId :
 COAH5

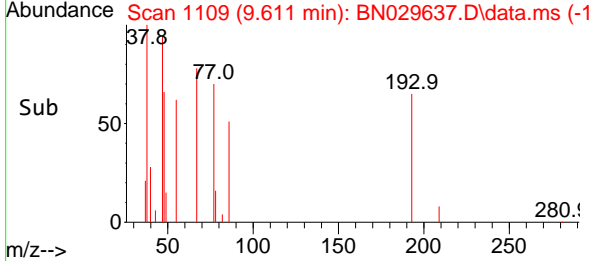
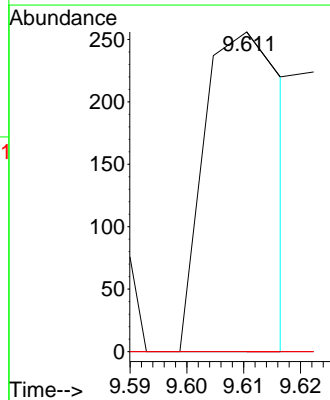
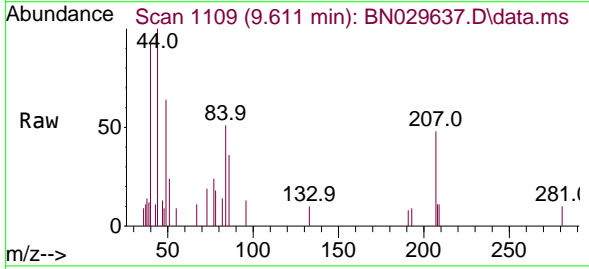


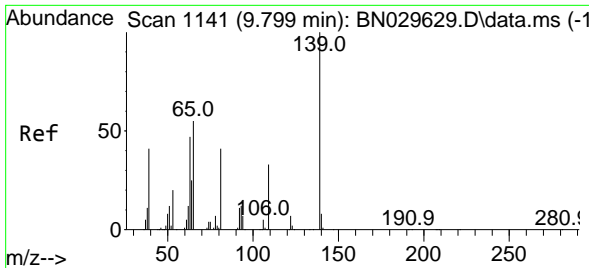
Tgt Ion: 77 Resp: 1052
 Ion Ratio Lower Upper
 77 100
 123 23.5 33.6 50.4#
 65 16.7 10.6 16.0#



#23
 Isophorone
 Concen: 30.886 ng/uI
 RT: 9.611 min Scan# 1109
 Delta R.T. -0.011 min
 Lab File: BN029637.D
 Acq: 10 Feb 2024 07:57

Tgt Ion: 82 Resp: 252
 Ion Ratio Lower Upper
 82 100
 95 0.0 5.8 8.6#
 138 0.0 12.6 19.0#

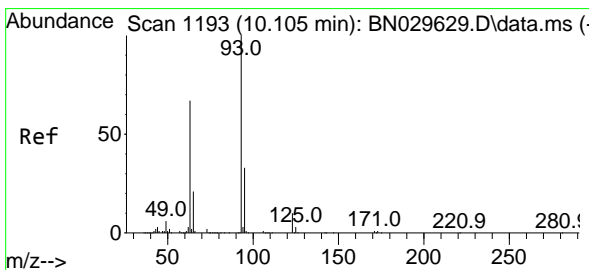
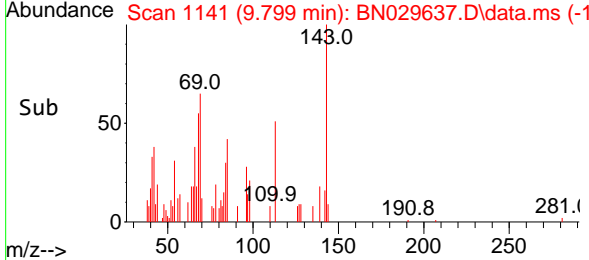
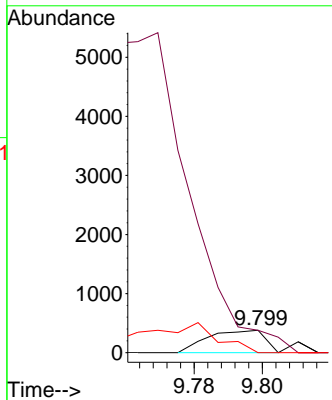
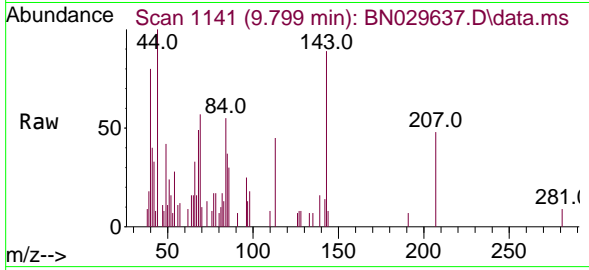




#25
 2-Nitrophenol
 Concen: 268.225 ng/ul
 RT: 9.799 min Scan# 1141
 Delta R.T. -0.006 min
 Lab File: BN029637.D
 Acq: 10 Feb 2024 07:57

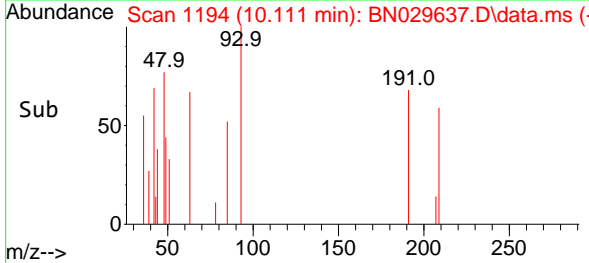
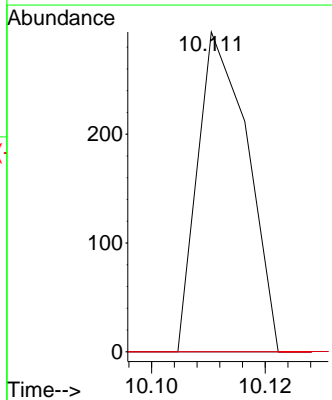
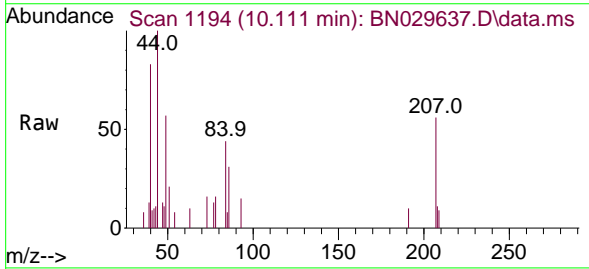
Instrument : BNA_N
 ClientSampleId : COAH5

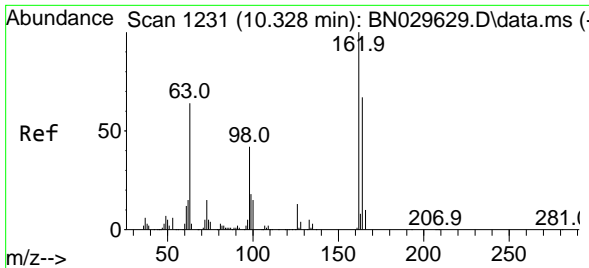
Tgt Ion	Resp	Lower	Upper
139	100		
65	100.3	46.6	70.0#
109	0.0	27.0	40.4#



#27
 Bis(2-Chloroethoxy)methane
 Concen: 34.329 ng/ul
 RT: 10.111 min Scan# 1194
 Delta R.T. 0.000 min
 Lab File: BN029637.D
 Acq: 10 Feb 2024 07:57

Tgt Ion	Resp	Lower	Upper
93	100		
95	0.0	25.7	38.5#
123	0.0	8.2	12.2#



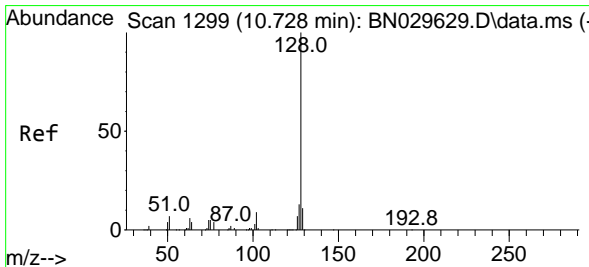
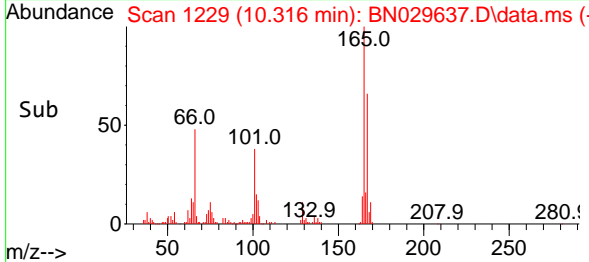
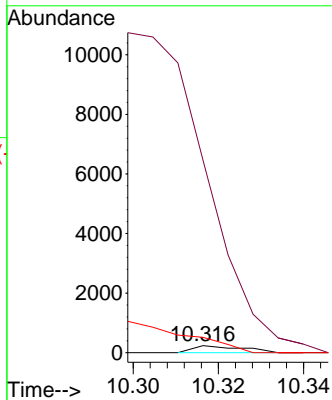
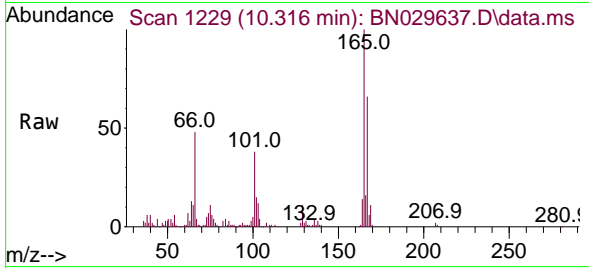


#29
 2,4-Dichlorophenol
 Concen: 64.702 ng/uI
 RT: 10.316 min Scan# 11
 Delta R.T. -0.017 min
 Lab File: BN029637.D
 Acq: 10 Feb 2024 07:57

Instrument :
 BNA_N
 ClientSampleId :
 COAH5

Tgt Ion:162 Resp: 190

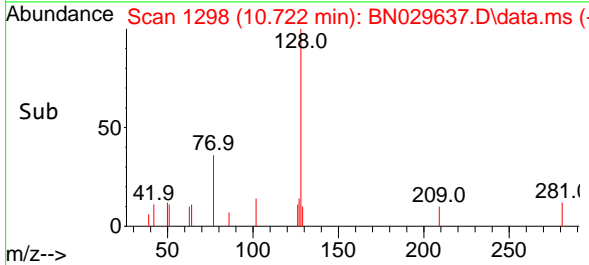
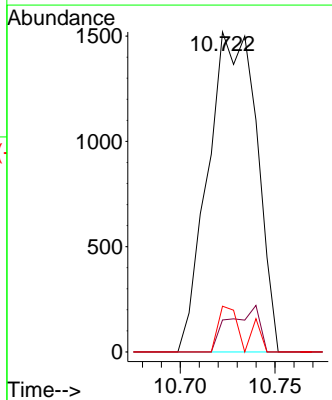
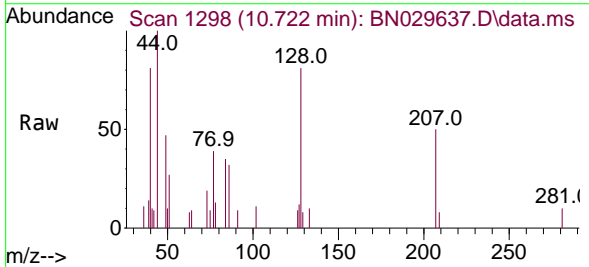
Ion	Ratio	Lower	Upper
162	100		
164	2748.9	53.3	79.9#
98	220.0	33.8	50.8#

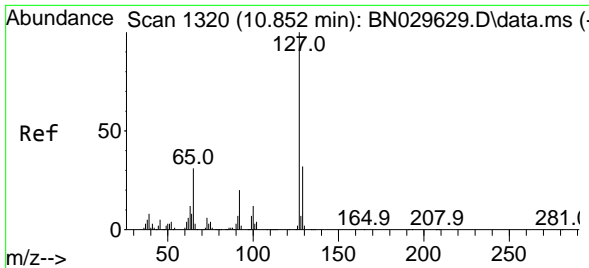


#30
 Naphthalene
 Concen: 223.659 ng/uI
 RT: 10.722 min Scan# 1298
 Delta R.T. -0.011 min
 Lab File: BN029637.D
 Acq: 10 Feb 2024 07:57

Tgt Ion:128 Resp: 2723

Ion	Ratio	Lower	Upper
128	100		
129	10.0	9.0	13.6
127	14.3	10.4	15.6

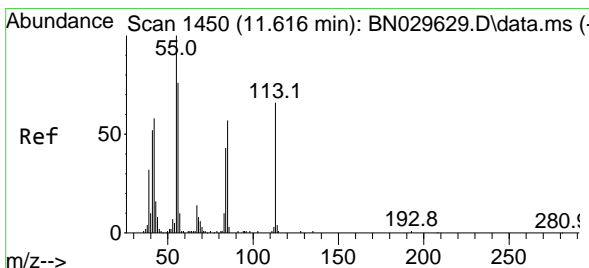
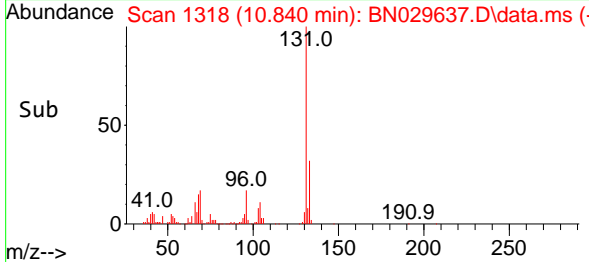
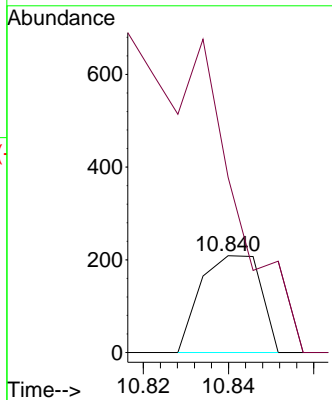
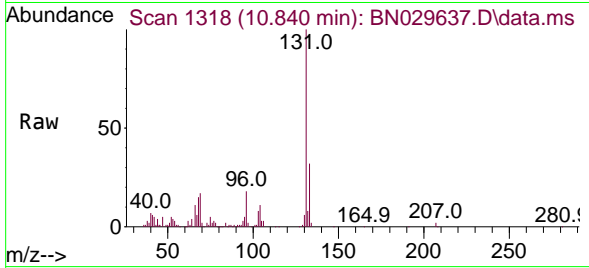




#32
 4-Chloroaniline
 Concen: 42.833 ng/uI
 RT: 10.840 min Scan# 11
 Delta R.T. -0.017 min
 Lab File: BN029637.D
 Acq: 10 Feb 2024 07:57

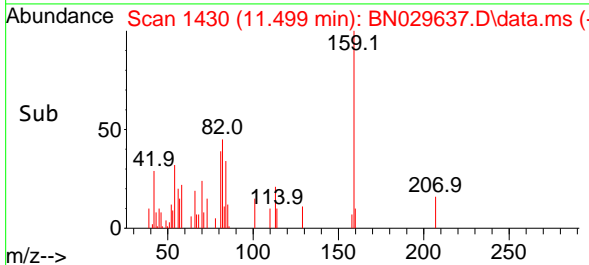
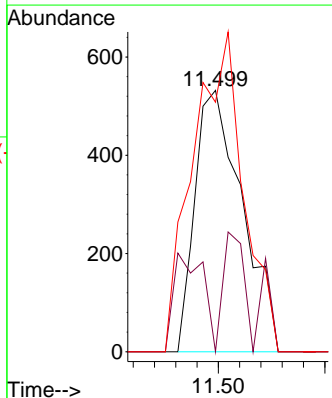
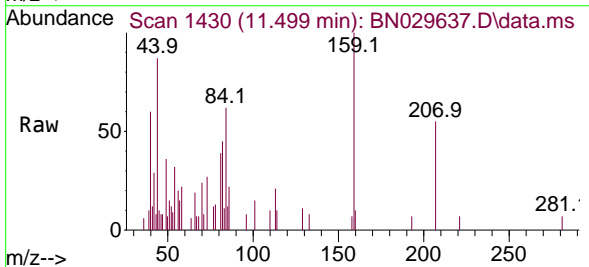
Instrument :
 BNA_N
 ClientSampleId :
 COAH5

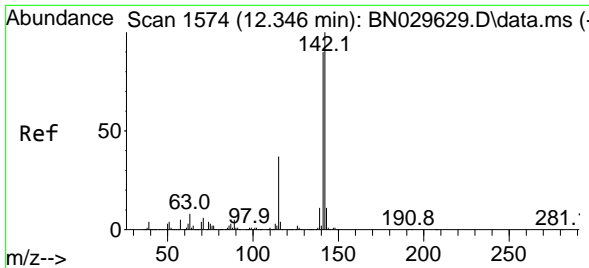
Tgt Ion:127 Resp: 205
 Ion Ratio Lower Upper
 127 100
 129 180.9 26.4 39.6#



#34
 Caprolactam
 Concen: 841.213 ng/uI
 RT: 11.499 min Scan# 1430
 Delta R.T. -0.123 min
 Lab File: BN029637.D
 Acq: 10 Feb 2024 07:57

Tgt Ion:113 Resp: 822
 Ion Ratio Lower Upper
 113 100
 55 0.0 125.3 187.9#
 56 95.5 103.4 155.0#

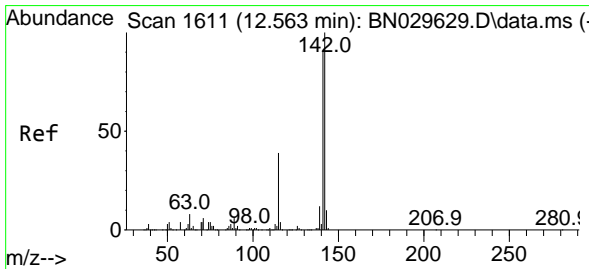
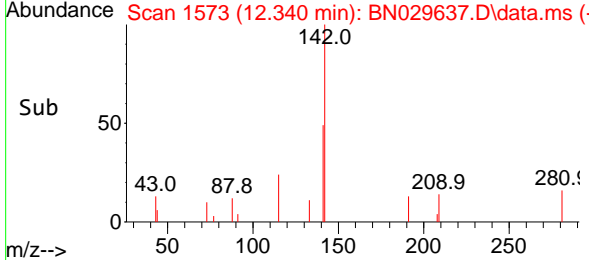
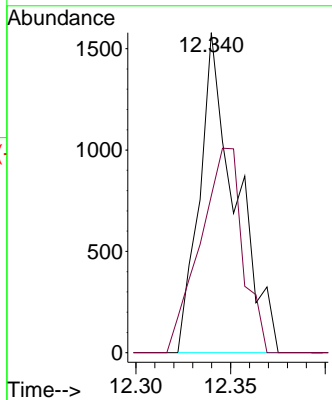
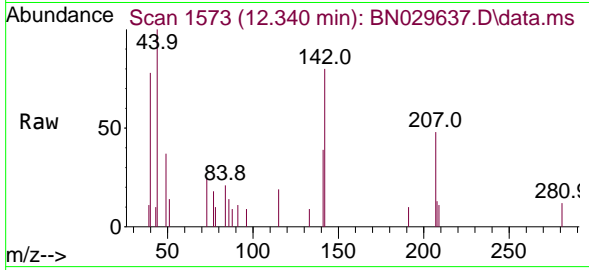




#36
 2-Methylnaphthalene
 Concen: 280.979 ng/ul
 RT: 12.340 min Scan# 11
 Delta R.T. -0.011 min
 Lab File: BN029637.D
 Acq: 10 Feb 2024 07:57

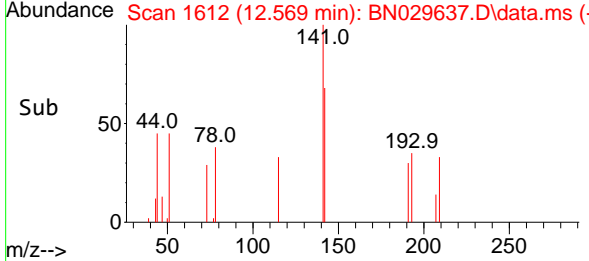
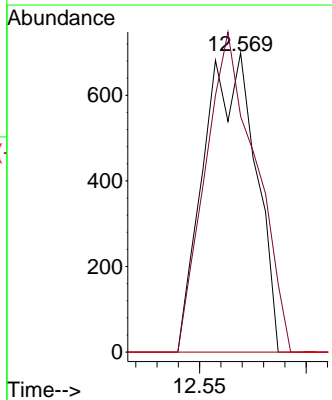
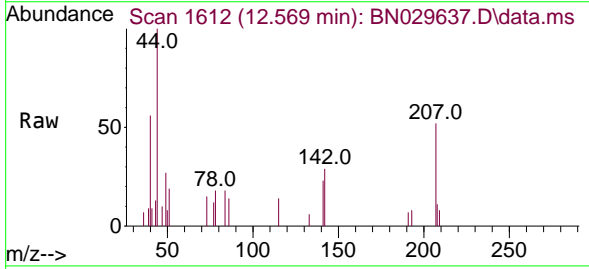
Instrument : BNA_N
 ClientSampleId : COAH5

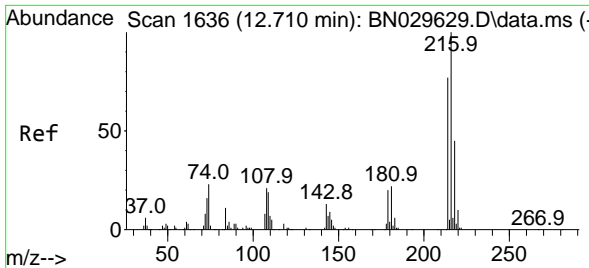
Tgt Ion:142 Resp: 2097
 Ion Ratio Lower Upper
 142 100
 141 49.1 70.4 105.6#



#37
 1-Methylnaphthalene
 Concen: 159.615 ng/ul
 RT: 12.569 min Scan# 1612
 Delta R.T. 0.000 min
 Lab File: BN029637.D
 Acq: 10 Feb 2024 07:57

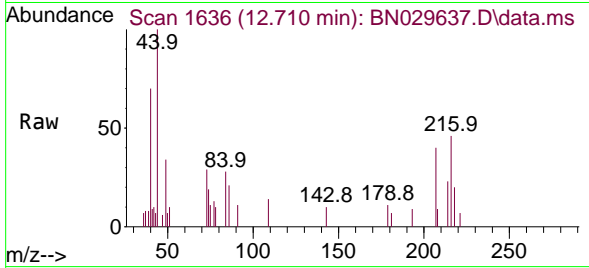
Tgt Ion:142 Resp: 1181
 Ion Ratio Lower Upper
 142 100
 141 78.8 73.8 110.8
 116 0.0 3.3 4.9#





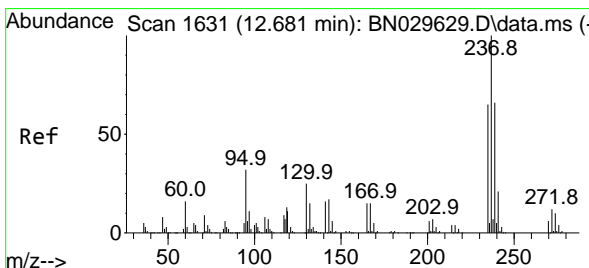
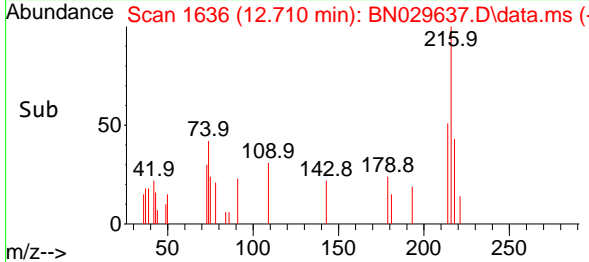
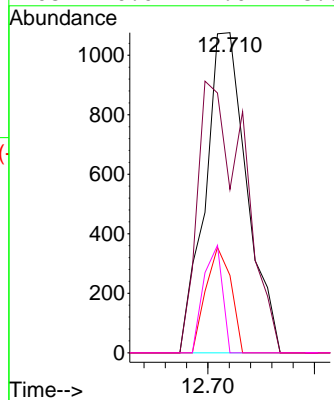
#39
 1,2,4,5-Tetrachlorobenzene
 Concen: 175.912 ng/ul
 RT: 12.710 min Scan# 1636
 Delta R.T. -0.006 min
 Lab File: BN029637.D
 Acq: 10 Feb 2024 07:57

Instrument :
 BNA_N
 ClientSampleId :
 COAH5

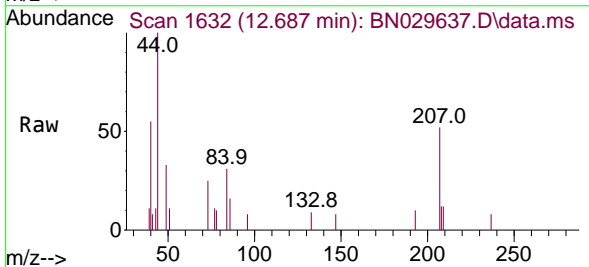


Tgt Ion:216 Resp: 1460

Ion	Ratio	Lower	Upper
216	100		
214	51.0	60.4	90.6#
179	24.2	18.6	28.0
108	0.0	19.0	28.6#

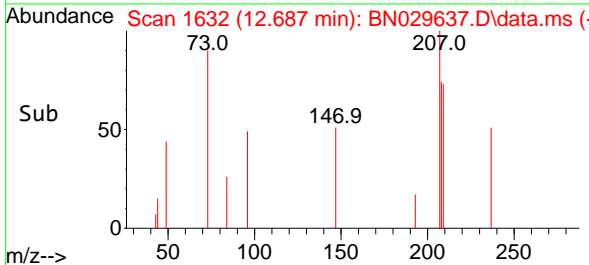
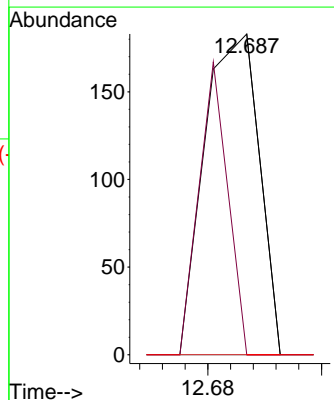


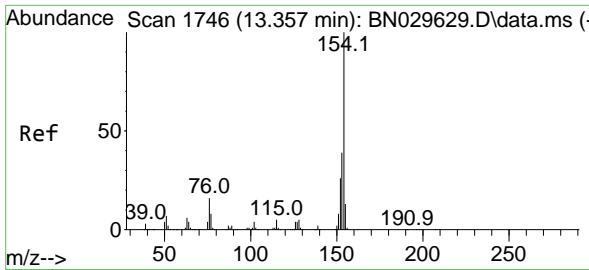
#40
 Hexachlorocyclopentadiene
 Concen: 22.488 ng/ul
 RT: 12.687 min Scan# 1632
 Delta R.T. 0.000 min
 Lab File: BN029637.D
 Acq: 10 Feb 2024 07:57



Tgt Ion:237 Resp: 122

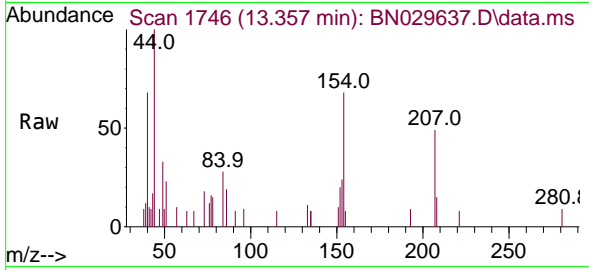
Ion	Ratio	Lower	Upper
237	100		
235	0.0	50.2	75.4#
272	0.0	9.5	14.3#



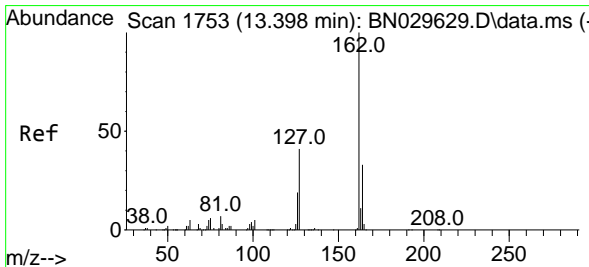
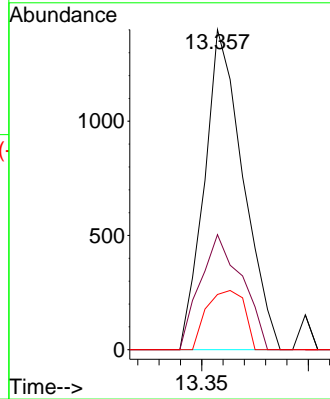
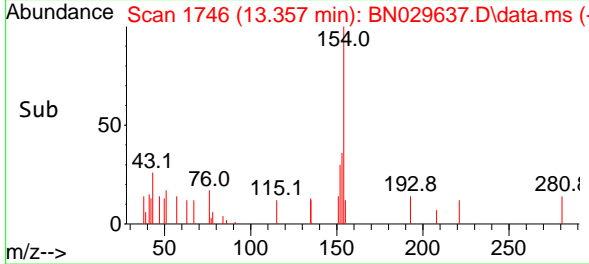


#43
 1,1'-Biphenyl
 Concen: 74.956 ng/uI
 RT: 13.357 min Scan# 1746
 Delta R.T. -0.006 min
 Lab File: BN029637.D
 Acq: 10 Feb 2024 07:57

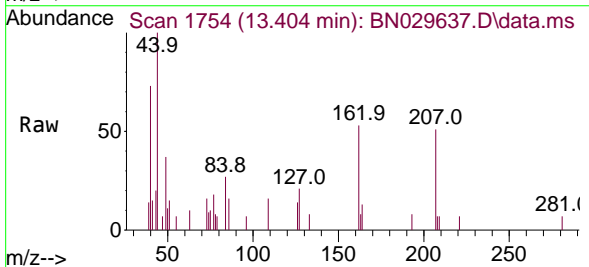
Instrument :
 BNA_N
 ClientSampleId :
 C0AH5



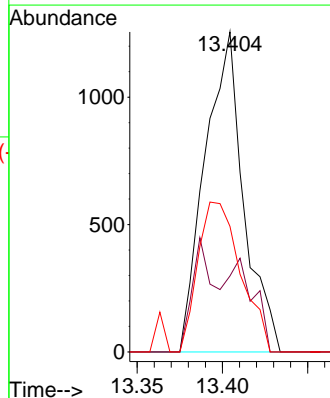
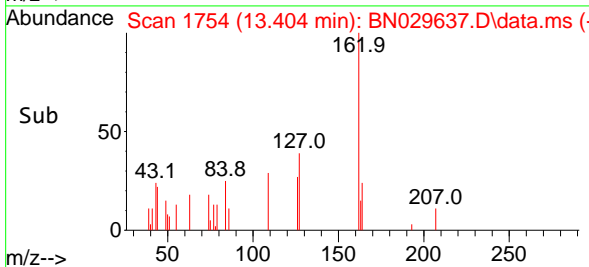
Tgt Ion	Resp	Lower	Upper
154	100		
153	36.0	32.8	49.2
76	17.3	12.9	19.3

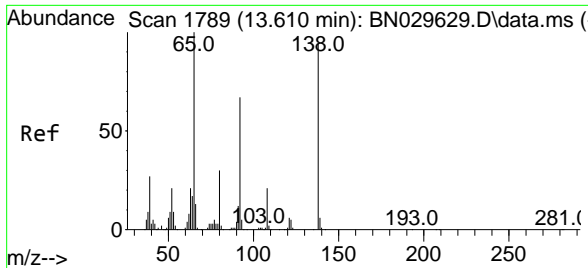


#44
 2-Chloronaphthalene
 Concen: 107.779 ng/uI
 RT: 13.404 min Scan# 1754
 Delta R.T. 0.000 min
 Lab File: BN029637.D
 Acq: 10 Feb 2024 07:57



Tgt Ion	Resp	Lower	Upper
162	100		
164	23.7	25.5	38.3#
127	39.3	35.7	53.5

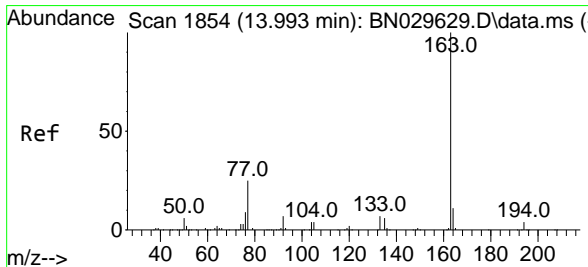
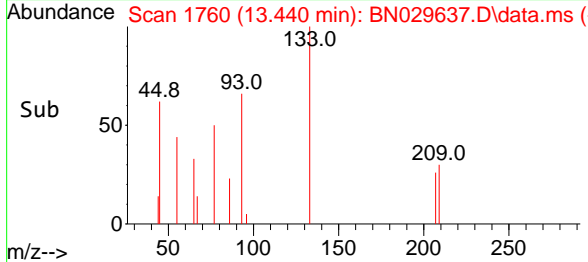
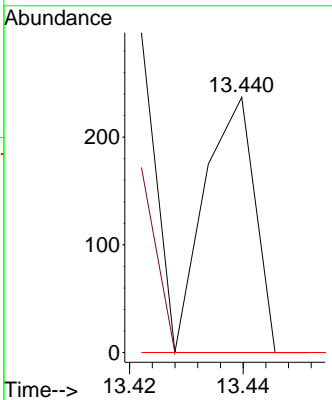
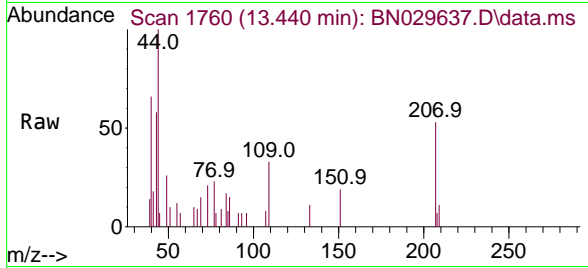




#45
 2-Nitroaniline
 Concen: 26.874 ng/ul
 RT: 13.440 min Scan# 11
 Delta R.T. -0.176 min
 Lab File: BN029637.D
 Acq: 10 Feb 2024 07:57

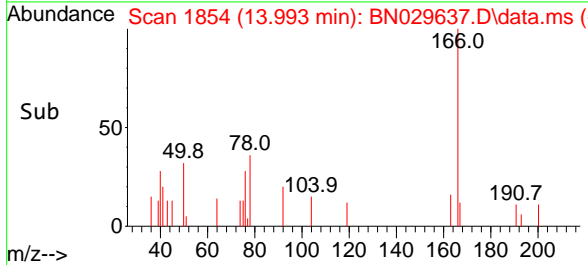
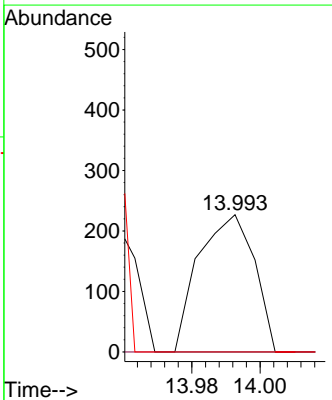
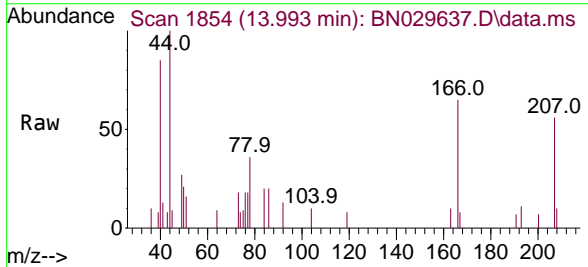
Instrument :
 BNA_N
 ClientSampleId :
 C0AH5

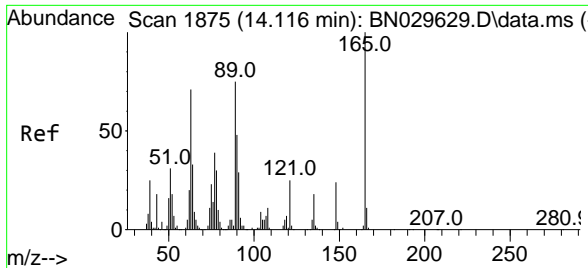
Tgt Ion	Resp	Lower	Upper
65	100		
92	0.0	54.3	81.5#
138	0.0	71.2	106.8#



#47
 Dimethylphthalate
 Concen: 12.044 ng/ul
 RT: 13.993 min Scan# 1854
 Delta R.T. -0.006 min
 Lab File: BN029637.D
 Acq: 10 Feb 2024 07:57

Tgt Ion	Resp	Lower	Upper
163	100		
194	0.0	2.7	4.1#
164	0.0	8.2	12.2#



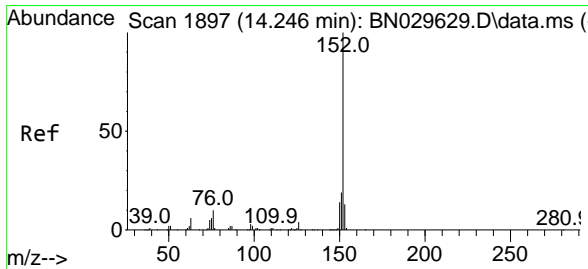
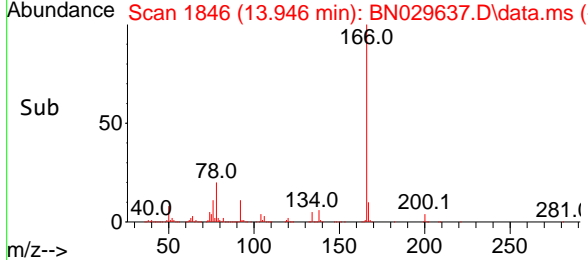
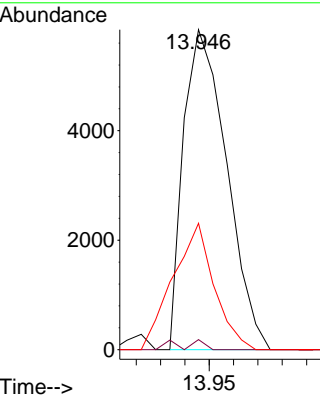
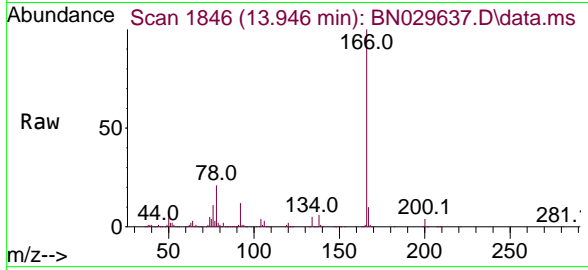


#48
 2,6-Dinitrotoluene
 Concen: 1889.781 ng/uI
 RT: 13.946 min Scan# 1846
 Delta R.T. -0.176 min
 Lab File: BN029637.D
 Acq: 10 Feb 2024 07:57

Instrument :
 BNA_N
 ClientSampleId :
 COAH5

Tgt Ion:165 Resp: 7216

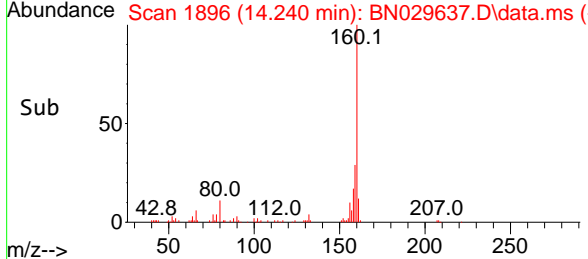
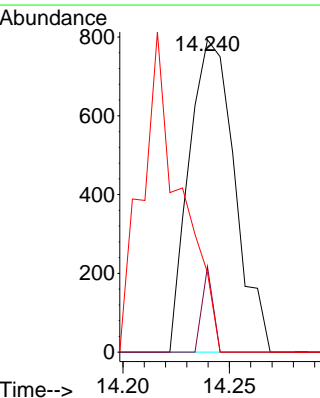
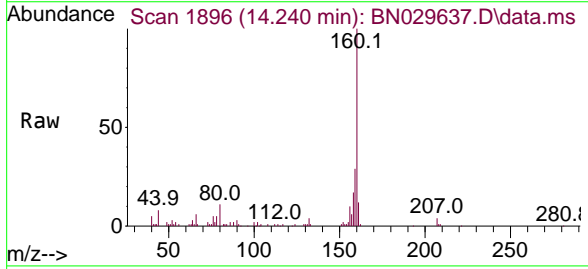
Ion	Ratio	Lower	Upper
165	100		
89	3.1	55.8	83.8#
121	39.5	19.8	29.6#

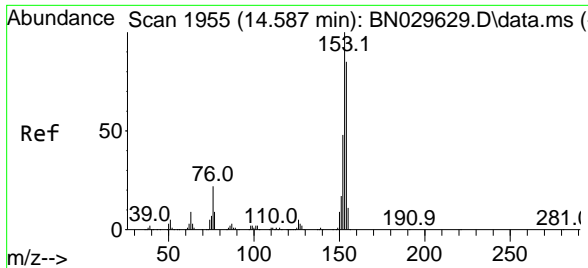


#50
 Acenaphthylene
 Concen: 39.749 ng/uI
 RT: 14.240 min Scan# 1896
 Delta R.T. -0.012 min
 Lab File: BN029637.D
 Acq: 10 Feb 2024 07:57

Tgt Ion:152 Resp: 1181

Ion	Ratio	Lower	Upper
152	100		
151	27.4	15.4	23.2#
153	25.5	10.5	15.7#

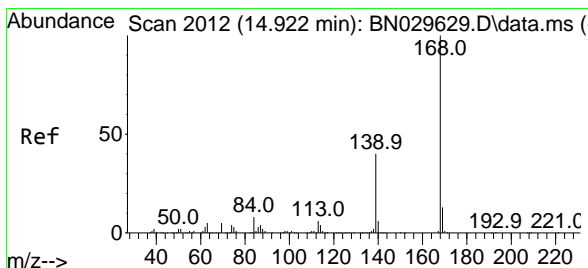
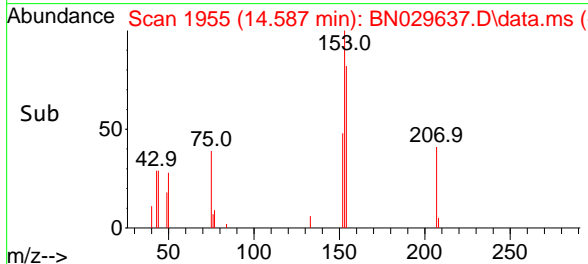
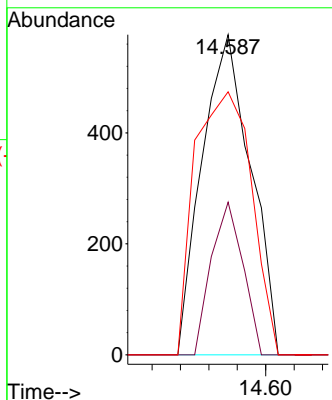
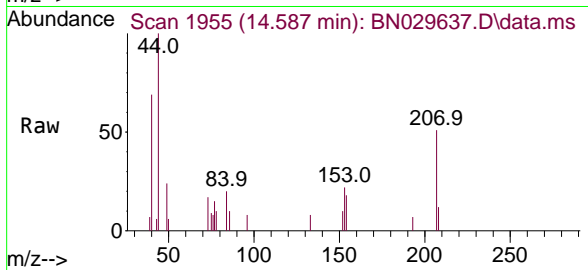




#52
 Acenaphthene
 Concen: 35.004 ng/u1
 RT: 14.587 min Scan# 1955
 Delta R.T. -0.006 min
 Lab File: BN029637.D
 Acq: 10 Feb 2024 07:57

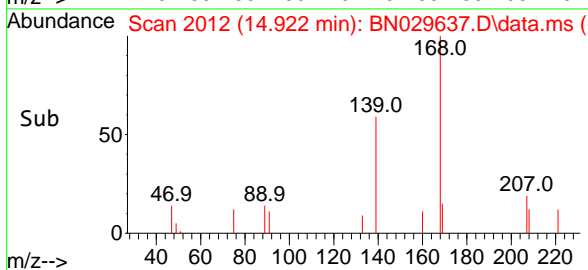
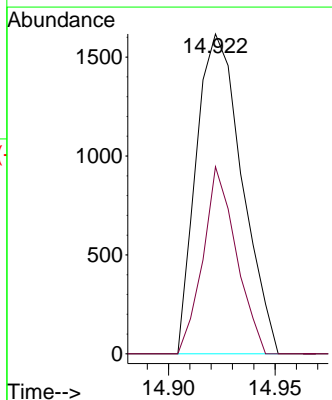
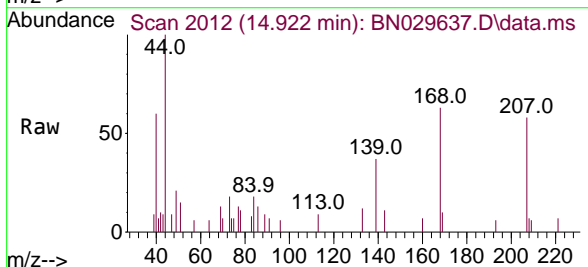
Instrument :
 BNA_N
 ClientSampleId :
 COAH5

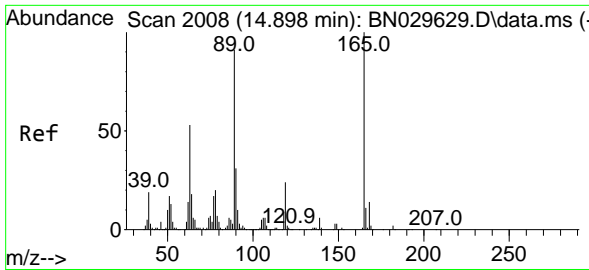
Tgt Ion	Resp	Lower	Upper
153	100		
152	47.7	39.2	58.8
154	82.1	74.6	111.8



#56
 Dibenzofuran
 Concen: 93.144 ng/u1
 RT: 14.922 min Scan# 2012
 Delta R.T. -0.006 min
 Lab File: BN029637.D
 Acq: 10 Feb 2024 07:57

Tgt Ion	Resp	Lower	Upper
168	100		
139	58.5	32.8	49.2#



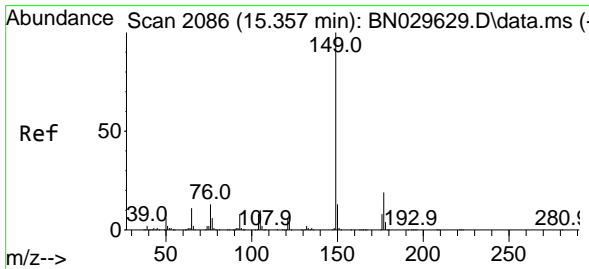
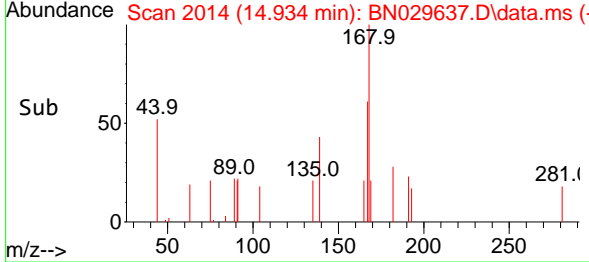
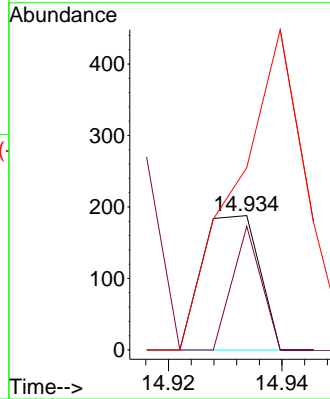
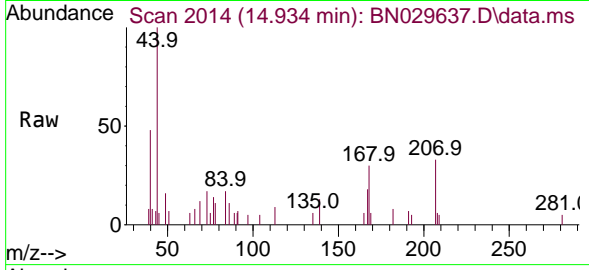


#57
 2,4-Dinitrotoluene
 Concen: 24.368 ng/ul
 RT: 14.934 min Scan# 2008
 Delta R.T. 0.030 min
 Lab File: BN029637.D
 Acq: 10 Feb 2024 07:57

Instrument :
 BNA_N
 ClientSampleId :
 COAH5

Tgt Ion:165 Resp: 131

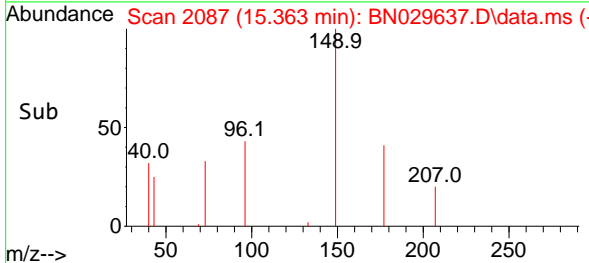
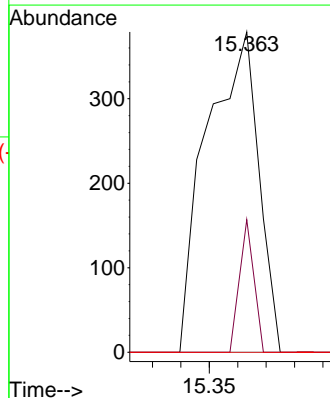
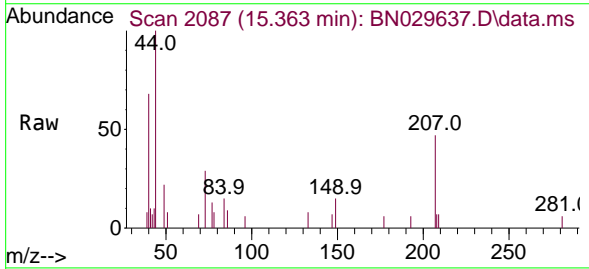
Ion	Ratio	Lower	Upper
165	100		
63	92.0	46.7	70.1#
182	135.6	1.9	2.9#

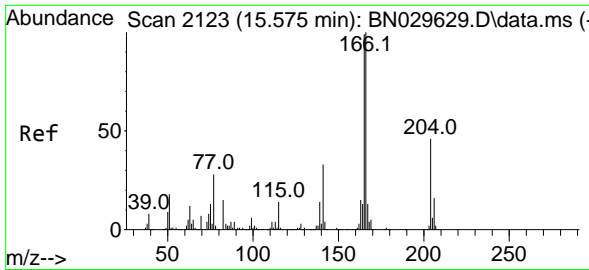


#59
 Diethylphthalate
 Concen: 21.898 ng/ul
 RT: 15.363 min Scan# 2087
 Delta R.T. -0.006 min
 Lab File: BN029637.D
 Acq: 10 Feb 2024 07:57

Tgt Ion:149 Resp: 480

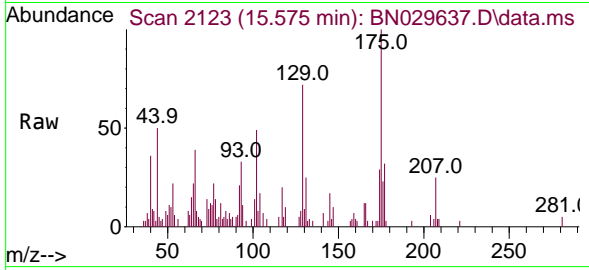
Ion	Ratio	Lower	Upper
149	100		
177	41.4	15.8	23.6#
150	0.0	9.6	14.4#



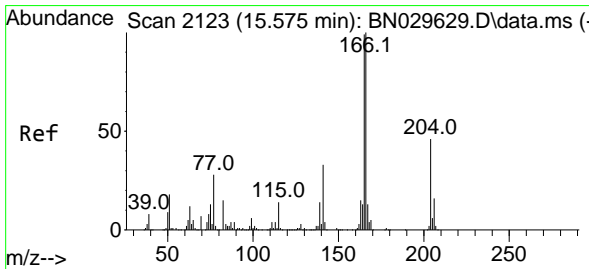
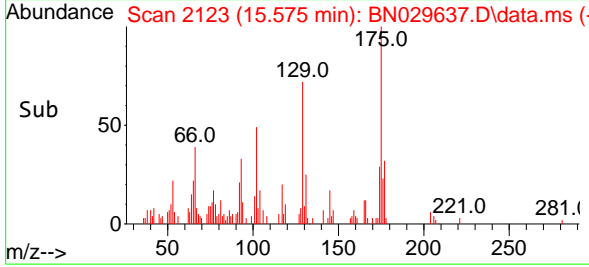
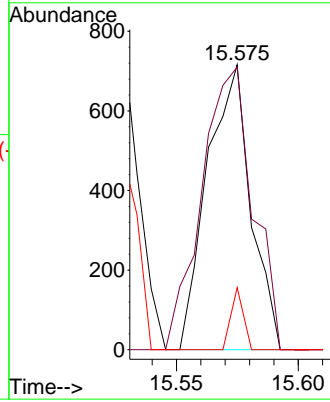


#61
 Fluorene
 Concen: 43.396 ng/u1
 RT: 15.575 min Scan# 2123
 Delta R.T. -0.006 min
 Lab File: BN029637.D
 Acq: 10 Feb 2024 07:57

Instrument :
 BNA_N
 ClientSampleId :
 COAH5

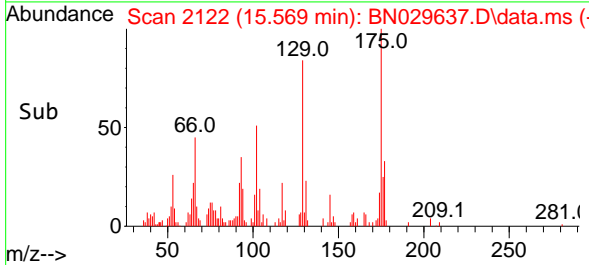
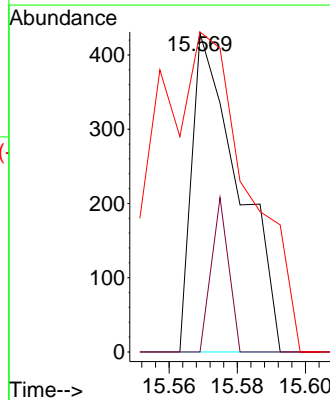
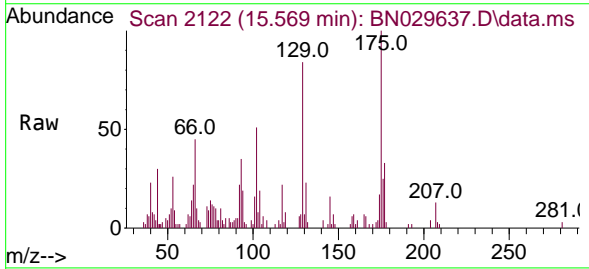


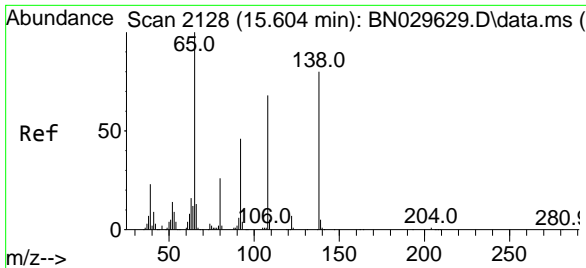
Tgt Ion:166 Resp: 889
 Ion Ratio Lower Upper
 166 100
 165 99.2 77.4 116.0
 167 21.8 10.9 16.3#



#62
 4-Chlorophenyl-phenylether
 Concen: 44.747 ng/u1
 RT: 15.569 min Scan# 2122
 Delta R.T. -0.011 min
 Lab File: BN029637.D
 Acq: 10 Feb 2024 07:57

Tgt Ion:204 Resp: 410
 Ion Ratio Lower Upper
 204 100
 206 0.0 27.5 41.3#
 141 100.5 60.5 90.7#

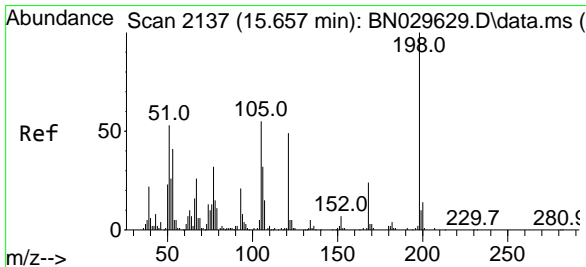
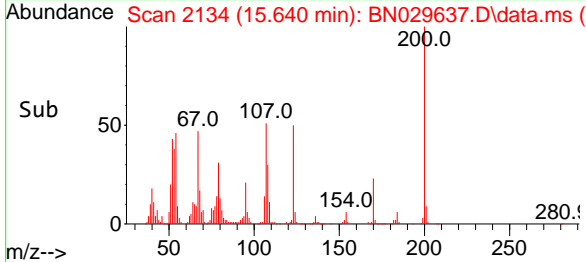
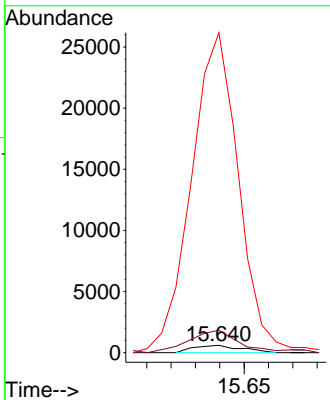
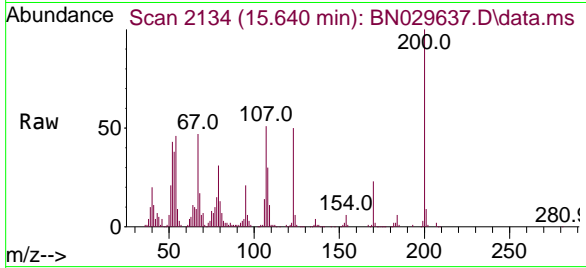




#63
 4-Nitroaniline
 Concen: 206.181 ng/ul
 RT: 15.640 min Scan# 2134
 Delta R.T. 0.030 min
 Lab File: BN029637.D
 Acq: 10 Feb 2024 07:57

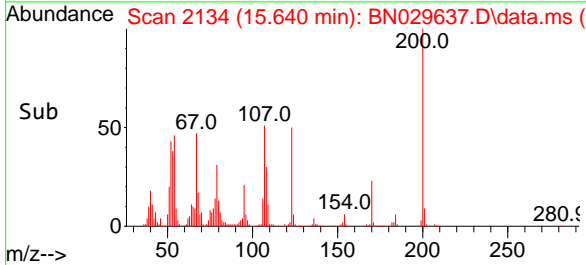
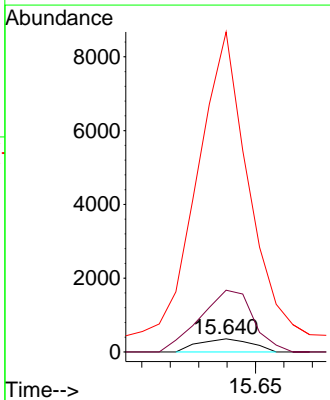
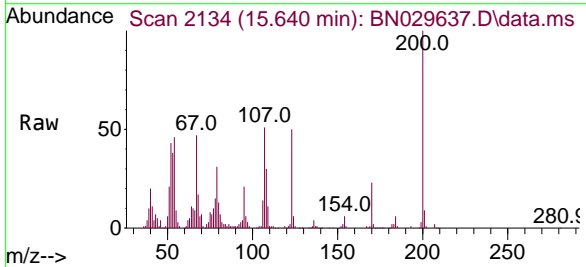
Instrument :
 BNA_N
 ClientSampleId :
 COAH5

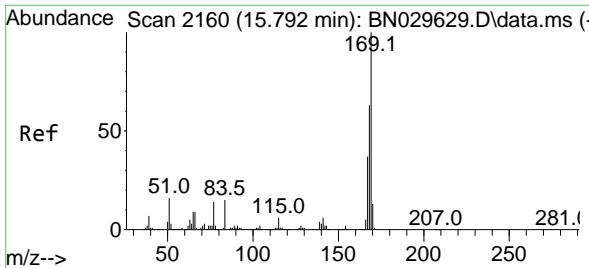
Tgt Ion:138 Resp: 827
 Ion Ratio Lower Upper
 138 100
 92 306.0 47.4 71.2#
 108 4377.3 70.9 106.3#



#66
 4,6-Dinitro-2-methylphenol
 Concen: 140.068 ng/ul
 RT: 15.640 min Scan# 2134
 Delta R.T. -0.023 min
 Lab File: BN029637.D
 Acq: 10 Feb 2024 07:57

Tgt Ion:198 Resp: 465
 Ion Ratio Lower Upper
 198 100
 182 467.6 3.9 5.9#
 77 2422.9 29.8 44.8#



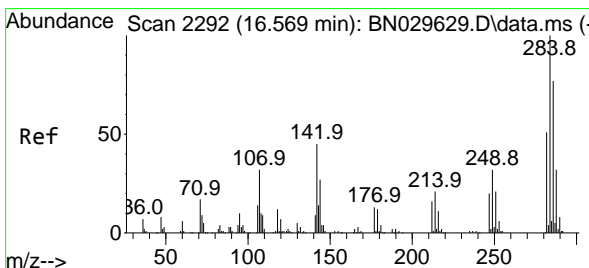
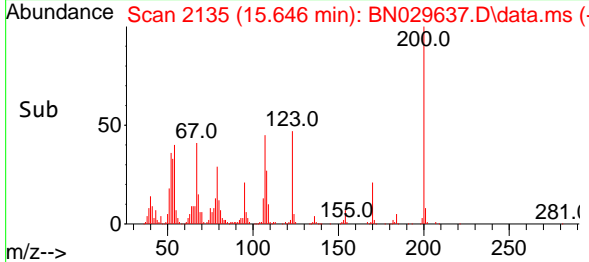
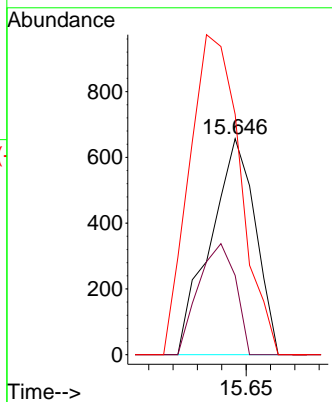
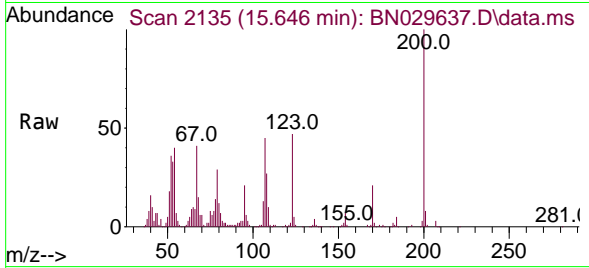


#67
 N-Nitrosodiphenylamine
 Concen: 43.878 ng/ul
 RT: 15.646 min Scan# 2160
 Delta R.T. -0.153 min
 Lab File: BN029637.D
 Acq: 10 Feb 2024 07:57

Instrument :
 BNA_N
 ClientSampleId :
 COAH5

Tgt Ion:169 Resp: 845

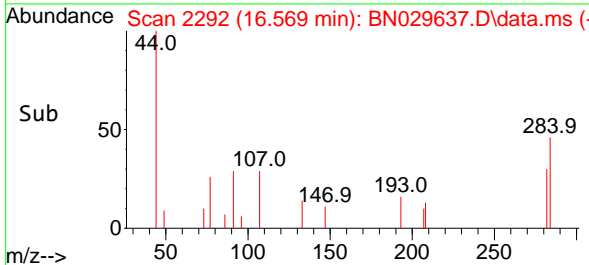
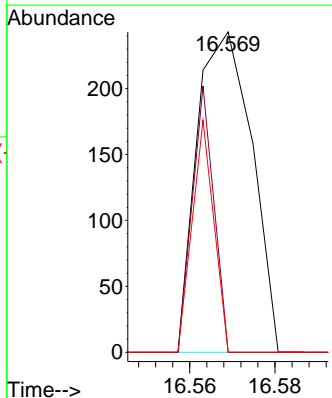
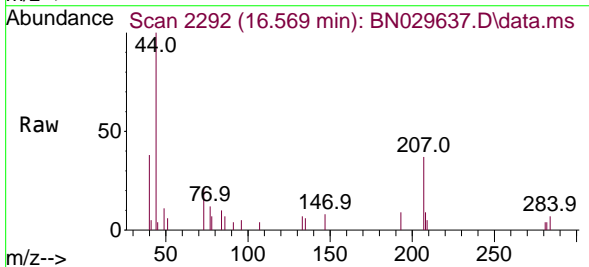
Ion	Ratio	Lower	Upper
169	100		
168	36.7	54.5	81.7#
167	111.3	29.8	44.6#

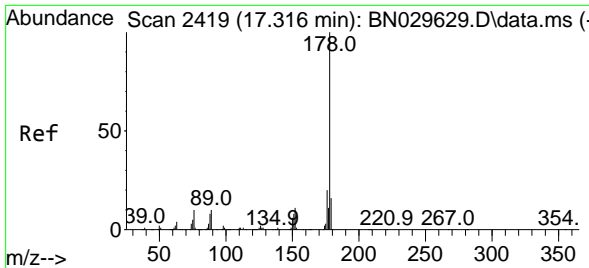


#69
 Hexachlorobenzene
 Concen: 32.913 ng/ul
 RT: 16.569 min Scan# 2292
 Delta R.T. -0.006 min
 Lab File: BN029637.D
 Acq: 10 Feb 2024 07:57

Tgt Ion:284 Resp: 217

Ion	Ratio	Lower	Upper
284	100		
142	0.0	39.2	58.8#
249	0.0	25.7	38.5#

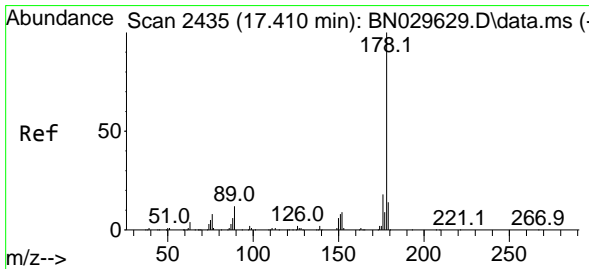
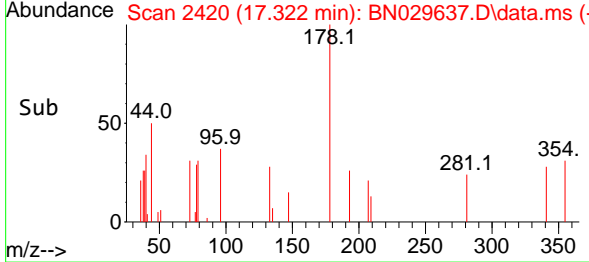
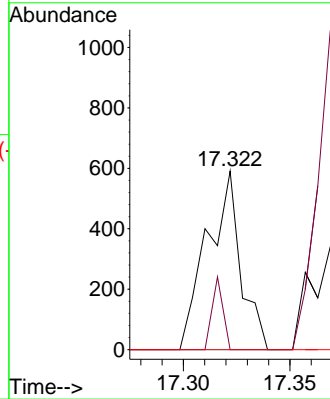
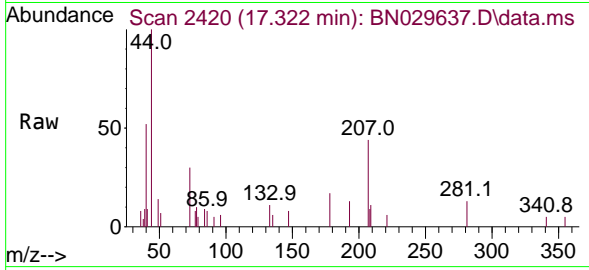




#72
 Phenanthrene
 Concen: 18.099 ng/u1
 RT: 17.322 min Scan# 2419
 Delta R.T. 0.000 min
 Lab File: BN029637.D
 Acq: 10 Feb 2024 07:57

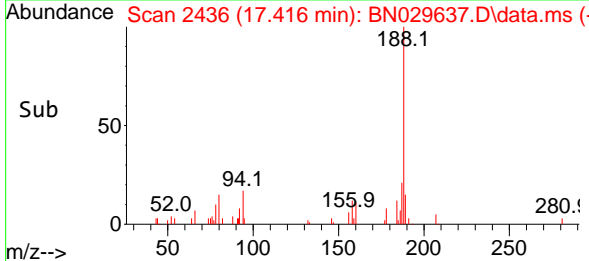
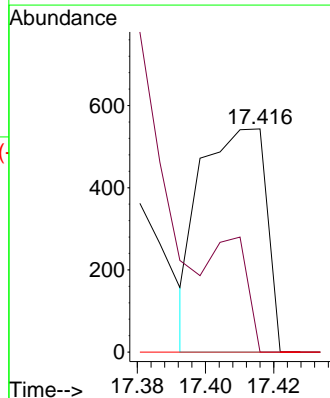
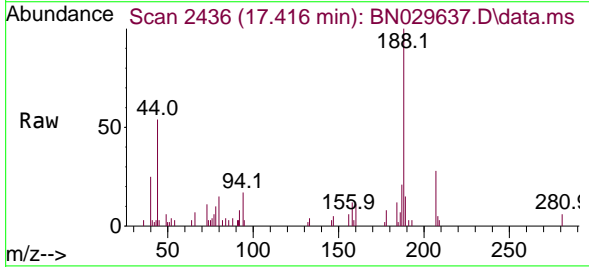
Instrument :
 BNA_N
 ClientSampleId :
 C0AH5

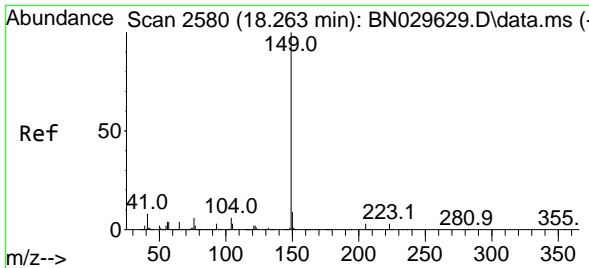
Tgt Ion	Resp	Lower	Upper
178	100		
179	0.0	12.5	18.7#
176	0.0	15.7	23.5#



#74
 Anthracene
 Concen: 20.096 ng/u1
 RT: 17.416 min Scan# 2436
 Delta R.T. 0.000 min
 Lab File: BN029637.D
 Acq: 10 Feb 2024 07:57

Tgt Ion	Resp	Lower	Upper
178	100		
179	0.0	11.6	17.4#
176	0.0	14.2	21.2#

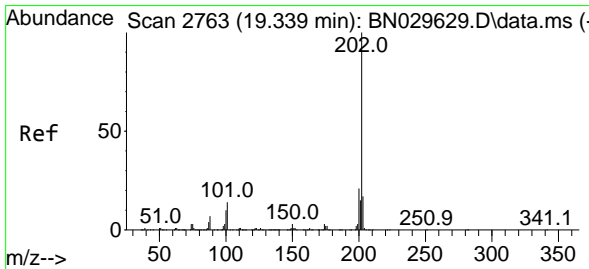
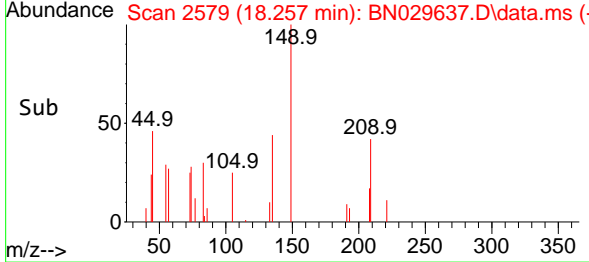
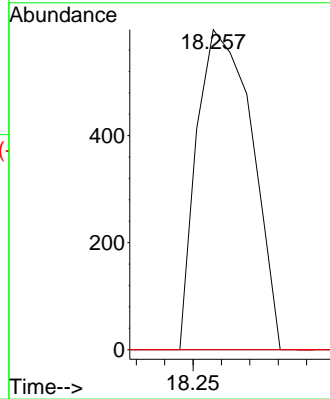
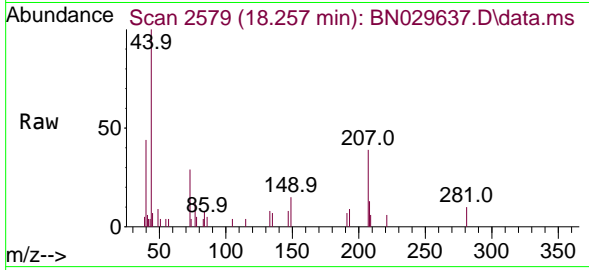




#78
 Di-n-butylphthalate
 Concen: 20.505 ng/u1
 RT: 18.257 min Scan# 21
 Delta R.T. -0.012 min
 Lab File: BN029637.D
 Acq: 10 Feb 2024 07:57

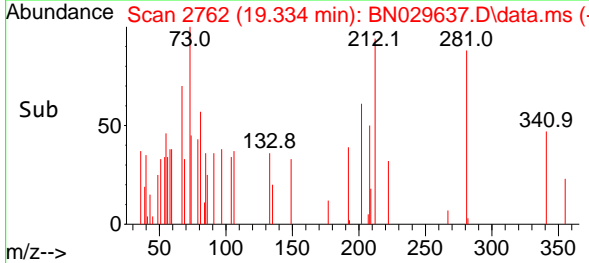
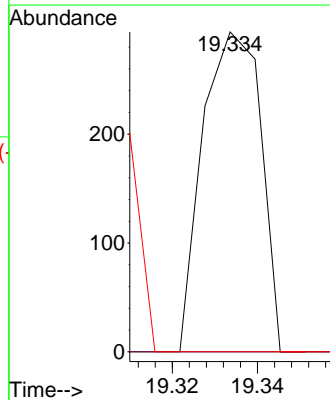
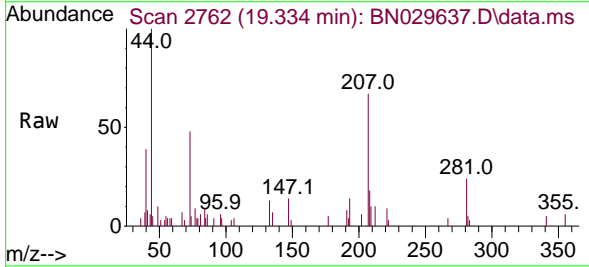
Instrument :
 BNA_N
 ClientSampleId :
 COAH5

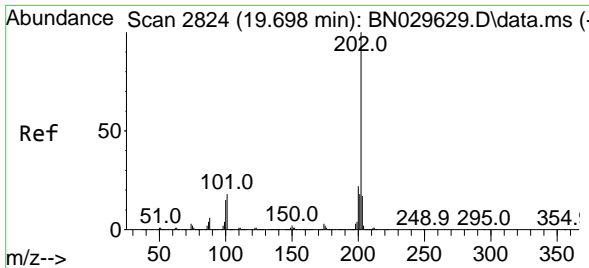
Tgt Ion	Resp	Lower	Upper
149	100		
150	0.0	7.0	10.4#
104	0.0	4.7	7.1#



#80
 Fluoranthene
 Concen: 4.419 ng/u1
 RT: 19.334 min Scan# 2762
 Delta R.T. -0.012 min
 Lab File: BN029637.D
 Acq: 10 Feb 2024 07:57

Tgt Ion	Resp	Lower	Upper
202	100		
101	0.0	11.1	16.7#
100	0.0	8.9	13.3#

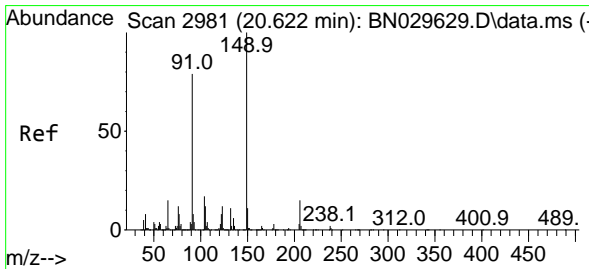
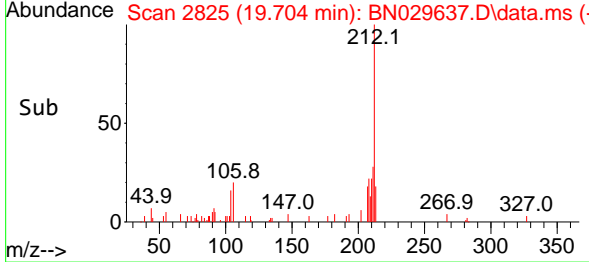
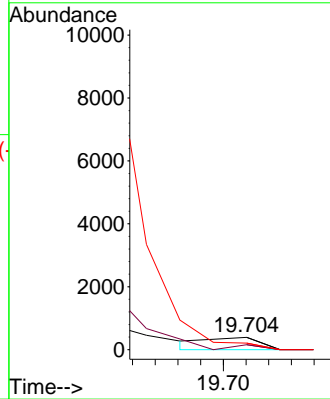
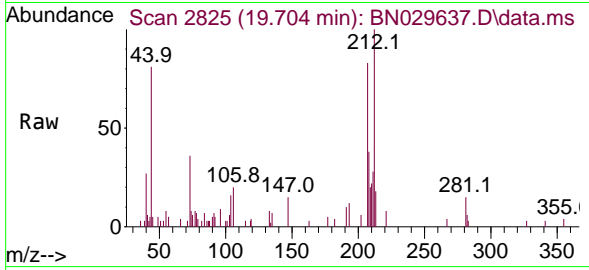




#82
 Pyrene
 Concen: 3.818 ng/u1
 RT: 19.704 min Scan# 21
 Delta R.T. 0.000 min
 Lab File: BN029637.D
 Acq: 10 Feb 2024 07:57

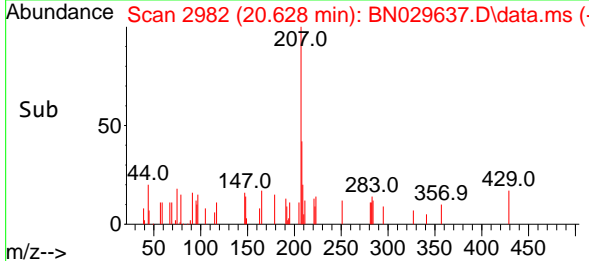
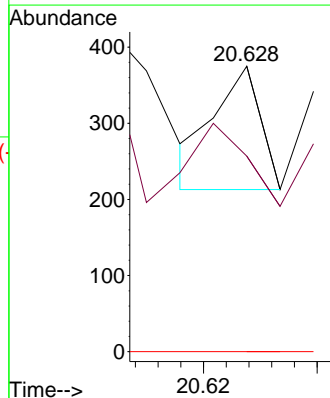
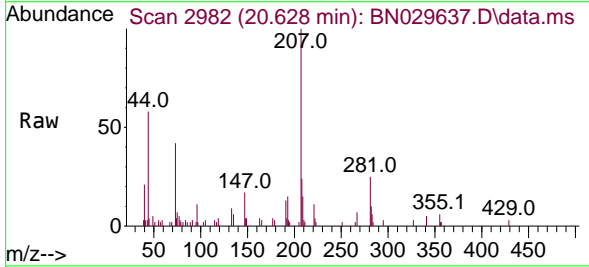
Instrument :
 BNA_N
 ClientSampleId :
 COAH5

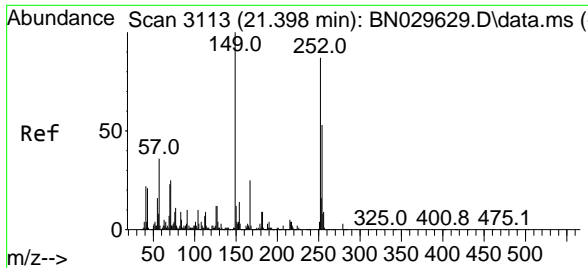
Tgt Ion:202 Resp: 255
 Ion Ratio Lower Upper
 202 100
 101 40.5 14.2 21.4#
 100 52.7 11.4 17.2#



#83
 Butylbenzylphthalate
 Concen: 3.307 ng/u1
 RT: 20.628 min Scan# 2982
 Delta R.T. 0.000 min
 Lab File: BN029637.D
 Acq: 10 Feb 2024 07:57

Tgt Ion:149 Resp: 90
 Ion Ratio Lower Upper
 149 100
 91 68.5 70.0 105.0#
 206 0.0 14.1 21.1#

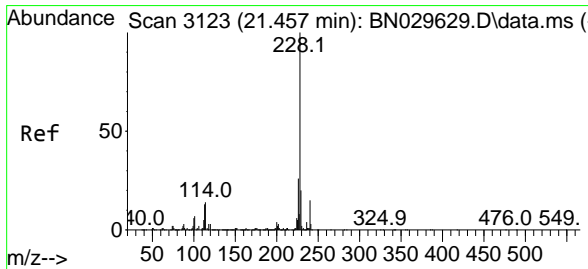
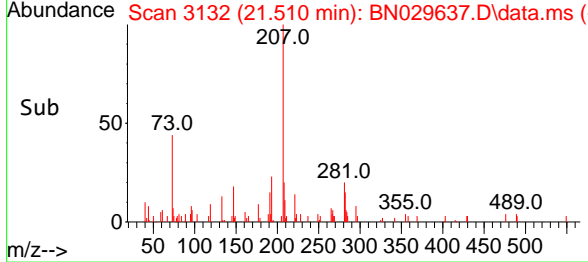
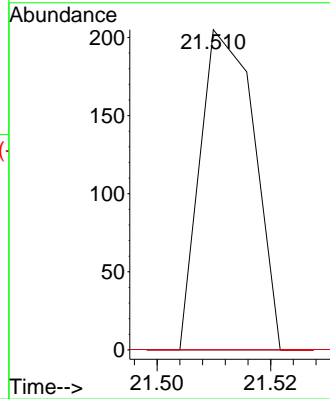
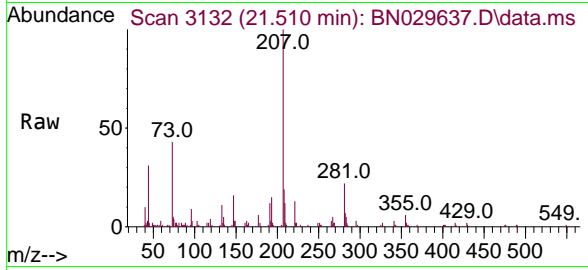




#84
 3,3'-Dichlorobenzidine
 Concen: 8.048 ng/ul
 RT: 21.510 min Scan# 3113
 Delta R.T. 0.106 min
 Lab File: BN029637.D
 Acq: 10 Feb 2024 07:57

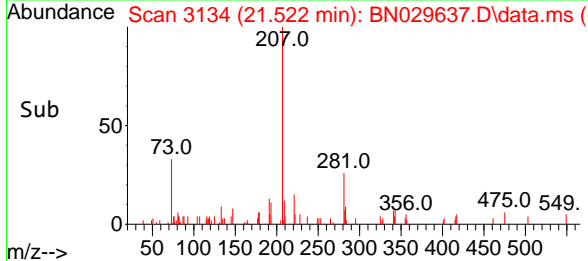
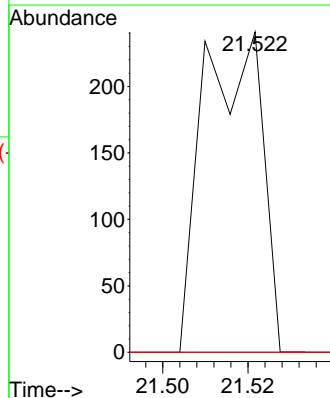
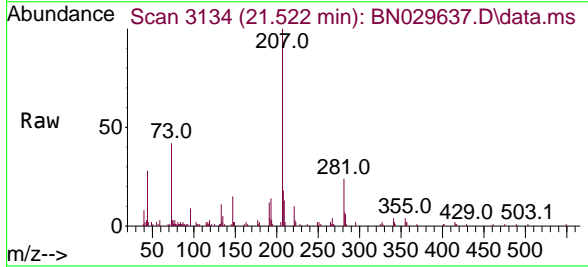
Instrument :
 BNA_N
 ClientSampleId :
 COAH5

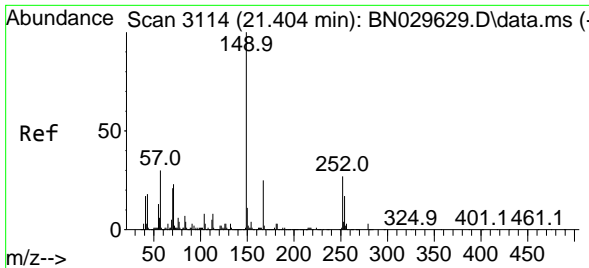
Tgt Ion	Resp	Lower	Upper
252	100		
254	0.0	49.8	74.6#
126	0.0	12.2	18.4#



#85
 Benzo(a)anthracene
 Concen: 3.631 ng/ul
 RT: 21.522 min Scan# 3134
 Delta R.T. 0.059 min
 Lab File: BN029637.D
 Acq: 10 Feb 2024 07:57

Tgt Ion	Resp	Lower	Upper
228	100		
229	0.0	15.0	22.6#
226	0.0	21.0	31.6#



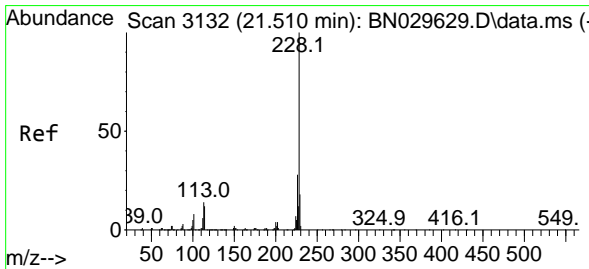
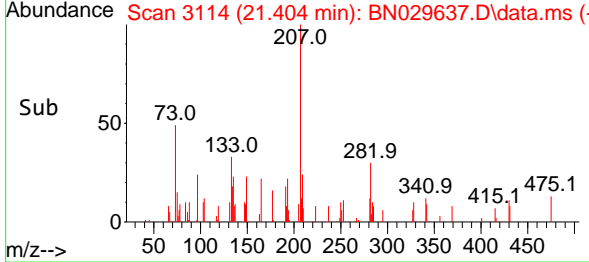
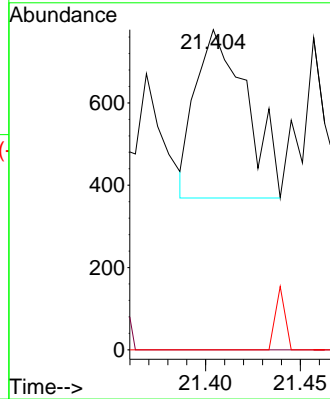
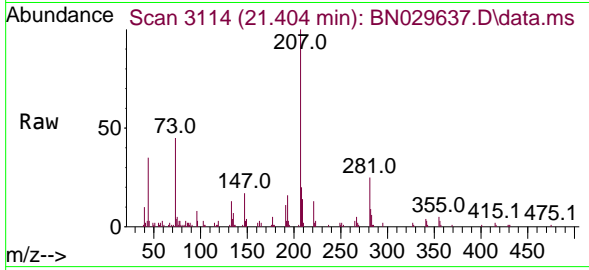


#86
 Bis(2-ethylhexyl)phthalate
 Concen: 18.218 ng/ul
 RT: 21.404 min Scan# 3114
 Delta R.T. -0.011 min
 Lab File: BN029637.D
 Acq: 10 Feb 2024 07:57

Instrument :
 BNA_N
 ClientSampleId :
 COAH5

Tgt Ion:149 Resp: 767

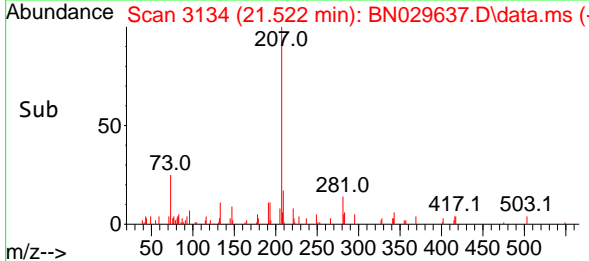
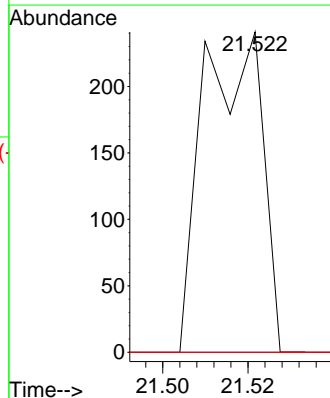
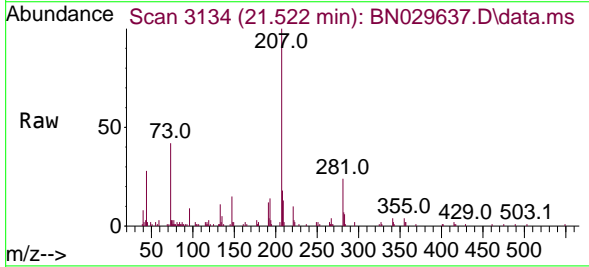
Ion	Ratio	Lower	Upper
149	100		
167	0.0	20.6	30.8#
279	0.0	2.7	4.1#

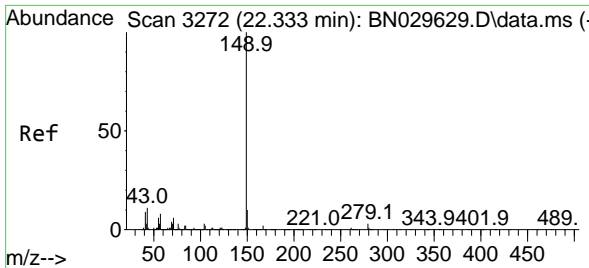


#87
 Chrysene
 Concen: 3.875 ng/ul
 RT: 21.522 min Scan# 3134
 Delta R.T. 0.006 min
 Lab File: BN029637.D
 Acq: 10 Feb 2024 07:57

Tgt Ion:228 Resp: 231

Ion	Ratio	Lower	Upper
228	100		
226	0.0	24.6	37.0#
229	0.0	16.2	24.4#

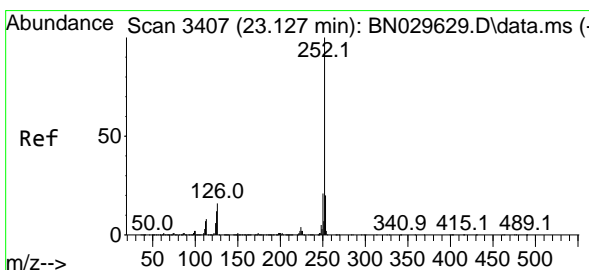
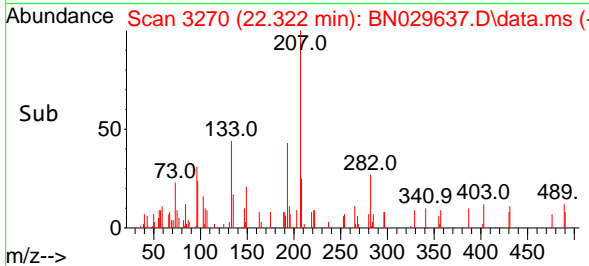
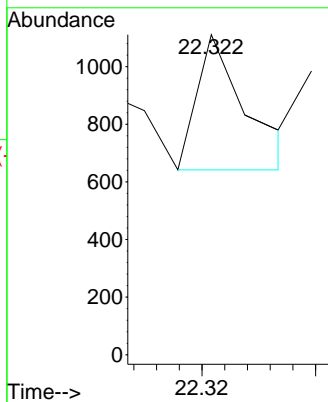
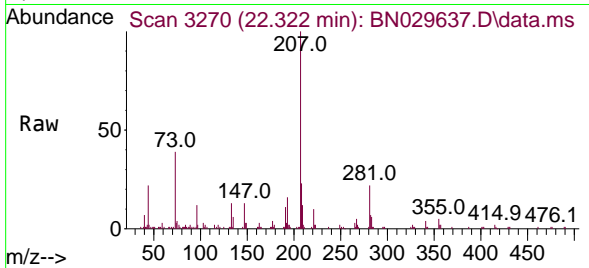




#89
 Di-n-octyl phthalate
 Concen: 6.840 ng/ul
 RT: 22.322 min Scan# 31
 Delta R.T. -0.023 min
 Lab File: BN029637.D
 Acq: 10 Feb 2024 07:57

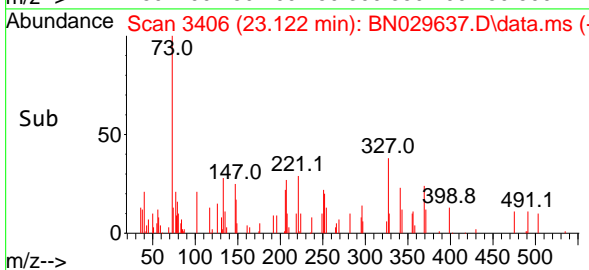
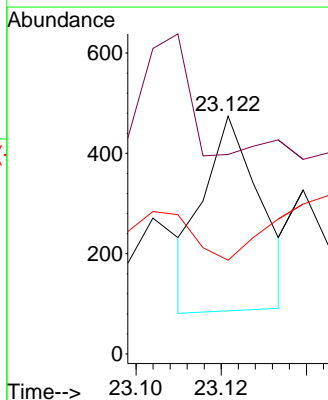
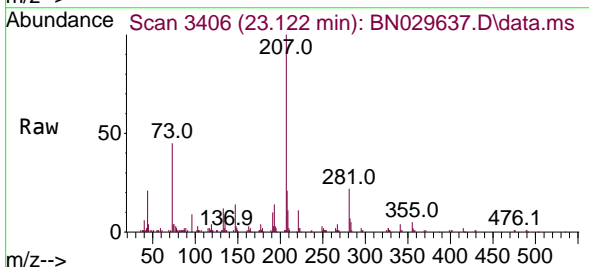
Instrument :
 BNA_N
 ClientSampleId :
 COAH5

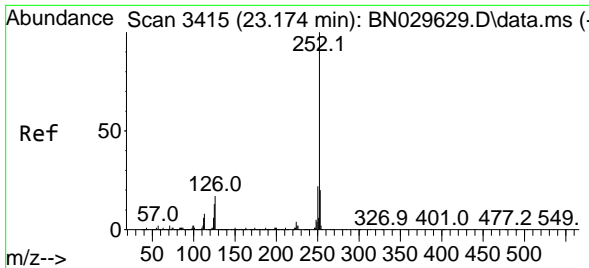
Tgt Ion:149 Resp: 281



#90
 Benzo(b)fluoranthene
 Concen: 10.664 ng/ul
 RT: 23.122 min Scan# 3406
 Delta R.T. -0.011 min
 Lab File: BN029637.D
 Acq: 10 Feb 2024 07:57

Tgt Ion:252 Resp: 356
 Ion Ratio Lower Upper
 252 100
 253 84.0 17.5 26.3#
 125 39.5 11.1 16.7#

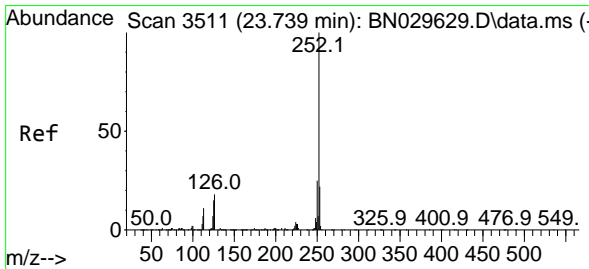
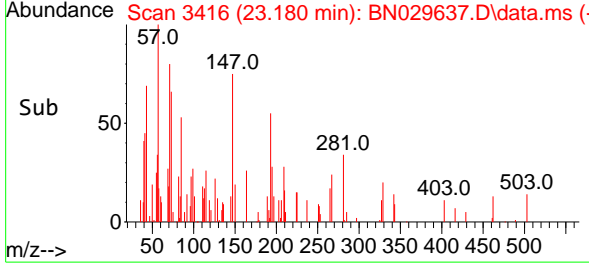
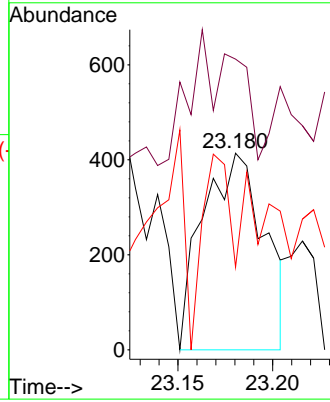
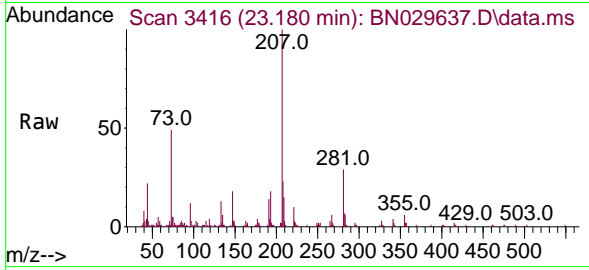




#91
 Benzo(k)fluoranthene
 Concen: 27.452 ng/u1
 RT: 23.180 min Scan# 3416
 Delta R.T. 0.000 min
 Lab File: BN029637.D
 Acq: 10 Feb 2024 07:57

Instrument :
 BNA_N
 ClientSampleId :
 COAH5

Tgt Ion:252 Resp: 938
 Ion Ratio Lower Upper
 252 100
 253 147.8 18.2 27.4#
 125 42.0 11.2 16.8#



#93
 Benzo(a)pyrene
 Concen: 14.181 ng/u1
 RT: 23.727 min Scan# 3509
 Delta R.T. -0.023 min
 Lab File: BN029637.D
 Acq: 10 Feb 2024 07:57

Tgt Ion:252 Resp: 454
 Ion Ratio Lower Upper
 252 100
 253 169.2 18.8 28.2#
 125 40.6 12.2 18.2#

