

Data Path : Z:\svoasrv\HPCHEM1\BNA\_N\Data\BN021424\  
 Data File : BN029794.D  
 Acq On : 15 Feb 2024 06:28  
 Operator : MA/JU  
 Sample : P1329-06  
 Misc :  
 ALS Vial : 73 Sample Multiplier: 1

Instrument :  
 BNA\_N  
 ClientSampleId :  
 COFL5

Integration Parameters: LSCINT.P

Integrator: RTE  
 Smoothing : OFF Filtering: 5  
 Sampling : 1 Min Area: 0.1 % of largest Peak  
 Start Thrs: 0.2 Max Peaks: 100  
 Stop Thrs : 0 Peak Location: TOP

If leading or trailing edge < 100 prefer < Baseline drop else tangent >  
 Peak separation: 5

Method : Z:\svoasrv\HPCHEM1\BNA\_N\Methods\SFAM-EPA-BN020724.MA.M  
 Title : SVOA CALIBRATION

Signal : TIC: BN029794.D\data.ms

peak #	R.T. min	first scan	max scan	last scan	PK TY	peak height	corr. area	corr. % max.	% of total
1	3.323	36	40	47	rVB	39014	50283	1.27%	0.101%
2	3.734	106	110	124	rBV	281672	501347	12.67%	1.009%
3	3.846	125	129	138	rVB	125054	158165	4.00%	0.318%
4	3.923	138	142	145	rBV	15301	20285	0.51%	0.041%
5	4.052	160	164	168	rBV2	17025	25641	0.65%	0.052%
6	4.393	218	222	225	rBV2	11865	16567	0.42%	0.033%
7	4.617	256	260	264	rVB2	23017	30475	0.77%	0.061%
8	4.993	316	324	331	rBV2	46364	93429	2.36%	0.188%
9	5.075	335	338	344	rVB3	15994	24433	0.62%	0.049%
10	7.040	664	672	686	rBV	619733	1046556	26.45%	2.105%
11	7.211	695	701	714	rBV	502864	786259	19.87%	1.582%
12	7.399	725	733	741	rBV	631648	1021298	25.81%	2.055%
13	7.493	743	749	758	rVV4	9942	23554	0.60%	0.047%
14	7.869	805	813	819	rBV	672295	1072017	27.09%	2.157%
15	7.934	819	824	831	rVB4	9760	20033	0.51%	0.040%
16	8.581	927	934	942	rBV	310725	515223	13.02%	1.037%
17	8.699	948	954	961	rBV	73087	119655	3.02%	0.241%
18	9.034	1003	1011	1025	rBV	598640	993566	25.11%	1.999%
19	9.199	1035	1039	1048	rVB6	11964	20218	0.51%	0.041%
20	9.428	1072	1078	1081	rBV3	8113	14573	0.37%	0.029%
21	9.752	1122	1133	1140	rBV	496657	860586	21.75%	1.731%
22	9.905	1151	1159	1166	rBV3	11035	24849	0.63%	0.050%
23	10.116	1190	1195	1200	rVB4	11175	20039	0.51%	0.040%
24	10.287	1216	1224	1234	rBV	713184	1190188	30.08%	2.394%
25	10.663	1280	1288	1296	rBV	864139	1468753	37.12%	2.955%
26	10.810	1306	1313	1331	rVB	493865	944067	23.86%	1.899%
27	11.205	1374	1380	1389	rBV	9329	23567	0.60%	0.047%
28	12.181	1538	1546	1551	rBV8	6810	14225	0.36%	0.029%
29	12.257	1551	1559	1564	rVV3	13331	24209	0.61%	0.049%
30	13.110	1697	1704	1706	rBV8	8713	18200	0.46%	0.037%
31	13.340	1739	1743	1750	rVB8	10195	18057	0.46%	0.036%
32	13.416	1750	1756	1762	rVV	66442	108285	2.74%	0.218%
33	13.934	1837	1844	1854	rVV	1304532	1799825	45.48%	3.621%
34	14.204	1880	1890	1902	rBV	1467633	2147083	54.26%	4.319%
35	14.510	1935	1942	1949	rVV	1162981	1727384	43.65%	3.475%
36	14.575	1949	1953	1959	rVB	20490	30965	0.78%	0.062%

Data Path : Z:\svoasrv\HPCHEM1\BNA\_N\Data\BN021424\  
 Data File : BN029794.D  
 Acq On : 15 Feb 2024 06:28  
 Operator : MA/JU  
 Sample : P1329-06  
 Misc :  
 ALS Vial : 73 Sample Multiplier: 1

Instrument :  
 BNA\_N  
 ClientSampleId :  
 COFL5

Integration Parameters: LSCINT.P

Integrator: RTE  
 Smoothing : OFF Filtering: 5  
 Sampling : 1 Min Area: 0.1 % of largest Peak  
 Start Thrs: 0.2 Max Peaks: 100  
 Stop Thrs : 0 Peak Location: TOP

If leading or trailing edge < 100 prefer < Baseline drop else tangent >  
 Peak separation: 5

Method : Z:\svoasrv\HPCHEM1\BNA\_N\Methods\SFAM-EPA-BN020724.MA.M  
 Title : SVOA CALIBRATION

37	14.722	1971	1978	1993	rBV	530833	875276	22.12%	1.761%
38	14.881	2000	2005	2008	rVV5	18552	33287	0.84%	0.067%
39	14.946	2012	2016	2020	rVB5	24839	38772	0.98%	0.078%
40	15.322	2073	2080	2083	rBV6	7042	15303	0.39%	0.031%
41	15.510	2105	2112	2118	rBV	1771658	2629545	66.45%	5.290%
42	15.575	2118	2123	2127	rVB2	65646	103693	2.62%	0.209%
43	15.634	2127	2133	2141	rBV	475681	661377	16.71%	1.331%
44	15.746	2150	2152	2160	rVB7	9648	18054	0.46%	0.036%
45	16.004	2193	2196	2203	rVB8	7940	15017	0.38%	0.030%
46	16.540	2281	2287	2289	rBV6	7424	15659	0.40%	0.032%
47	16.816	2325	2334	2337	rBV2	32575	55649	1.41%	0.112%
48	16.922	2348	2352	2357	rVB4	11454	18043	0.46%	0.036%
49	17.028	2360	2370	2375	rBV6	25391	66181	1.67%	0.133%
50	17.081	2375	2379	2383	rVB2	24537	34551	0.87%	0.070%
51	17.263	2404	2410	2414	rBV	1403061	2026106	51.20%	4.076%
52	17.304	2414	2417	2422	rVV	492895	698784	17.66%	1.406%
53	17.363	2422	2427	2439	rVV2	1828116	2760915	69.77%	5.554%
54	17.469	2439	2445	2450	rVB5	32370	55272	1.40%	0.111%
55	17.669	2469	2479	2489	rBV	69658	160784	4.06%	0.323%
56	17.787	2493	2499	2505	rBV6	12784	25668	0.65%	0.052%
57	17.957	2522	2528	2531	rBV3	24050	36730	0.93%	0.074%
58	18.057	2539	2545	2549	rBV7	6788	15492	0.39%	0.031%
59	18.145	2555	2560	2562	rBV	52631	81298	2.05%	0.164%
60	18.181	2562	2566	2575	rVB2	391665	621863	15.71%	1.251%
61	18.257	2575	2579	2580	rBV2	12569	16552	0.42%	0.033%
62	18.339	2587	2593	2597	rBV2	114768	189793	4.80%	0.382%
63	18.375	2597	2599	2603	rVB	40468	48541	1.23%	0.098%
64	18.498	2615	2620	2624	rBV2	52562	83566	2.11%	0.168%
65	18.610	2635	2639	2642	rBV	74109	87742	2.22%	0.177%
66	18.651	2642	2646	2649	rVV	73207	101678	2.57%	0.205%
67	18.692	2649	2653	2658	rVV	59515	90200	2.28%	0.181%
68	18.745	2660	2662	2672	rVB3	22264	42898	1.08%	0.086%
69	18.892	2684	2687	2692	rBV5	20597	31081	0.79%	0.063%
70	18.939	2693	2695	2699	rVV4	14905	18302	0.46%	0.037%
71	18.981	2699	2702	2707	rBV4	28994	39329	0.99%	0.079%
72	19.069	2712	2717	2722	rBV3	57077	100694	2.54%	0.203%
73	19.204	2736	2740	2742	rBV	67648	94218	2.38%	0.190%
74	19.328	2756	2761	2769	rVB	1340986	1818504	45.95%	3.658%
75	19.463	2780	2784	2790	rBV	144801	179066	4.53%	0.360%
76	19.610	2806	2809	2812	rVB3	28891	37702	0.95%	0.076%

Data Path : Z:\svoasrv\HPCHEM1\BNA\_N\Data\BN021424\  
 Data File : BN029794.D  
 Acq On : 15 Feb 2024 06:28  
 Operator : MA/JU  
 Sample : P1329-06  
 Misc :  
 ALS Vial : 73 Sample Multiplier: 1

Instrument :  
 BNA\_N  
 ClientSampleId :  
 COFL5

Integration Parameters: LSCINT.P

Integrator: RTE  
 Smoothing : OFF Filtering: 5  
 Sampling : 1 Min Area: 0.1 % of largest Peak  
 Start Thrs: 0.2 Max Peaks: 100  
 Stop Thrs : 0 Peak Location: TOP

If leading or trailing edge < 100 prefer < Baseline drop else tangent >  
 Peak separation: 5

Method : Z:\svoasrv\HPCHEM1\BNA\_N\Methods\SFAM-EPA-BN020724.MA.M  
 Title : SVOA CALIBRATION

77	19.663	2812	2818	2821	rVV	2719966	3957207	100.00%	7.961%
78	19.692	2821	2823	2828	rVV	1211809	1409020	35.61%	2.835%
79	19.763	2832	2835	2842	rVB2	51777	82848	2.09%	0.167%
80	19.875	2851	2854	2858	rVB	70974	86337	2.18%	0.174%
81	19.928	2860	2863	2869	rVB2	60615	95293	2.41%	0.192%
82	20.022	2873	2879	2880	rBV	65381	119036	3.01%	0.239%
83	20.192	2897	2908	2912	rBV2	156423	338354	8.55%	0.681%
84	20.233	2912	2915	2919	rVB	53249	61998	1.57%	0.125%
85	20.292	2921	2925	2929	rBV	100138	131868	3.33%	0.265%
86	20.345	2929	2934	2938	rVV3	99838	178190	4.50%	0.358%
87	20.392	2939	2942	2945	rVB2	48232	59770	1.51%	0.120%
88	20.492	2955	2959	2962	rBV2	55490	71520	1.81%	0.144%
89	20.533	2963	2966	2970	rVV	44238	71268	1.80%	0.143%
90	20.728	2997	2999	3004	rVB2	65686	74255	1.88%	0.149%
91	20.945	3032	3036	3042	rVB2	327536	440756	11.14%	0.887%
92	21.110	3059	3064	3067	rBV2	107499	191168	4.83%	0.385%
93	21.151	3067	3071	3073	rVV	126782	171356	4.33%	0.345%
94	21.192	3074	3078	3083	rVV4	709046	980643	24.78%	1.973%
95	21.463	3118	3124	3128	rBV3	1847780	3105748	78.48%	6.248%
96	21.504	3128	3131	3138	rVB	610641	813440	20.56%	1.636%
97	23.116	3400	3405	3409	rBV2	484765	1023654	25.87%	2.059%
98	23.627	3487	3492	3495	rBV	216342	396959	10.03%	0.799%
99	23.686	3495	3502	3507	rVV	1586414	2967021	74.98%	5.969%
100	23.839	3521	3528	3534	rVB	979571	1862621	47.07%	3.747%

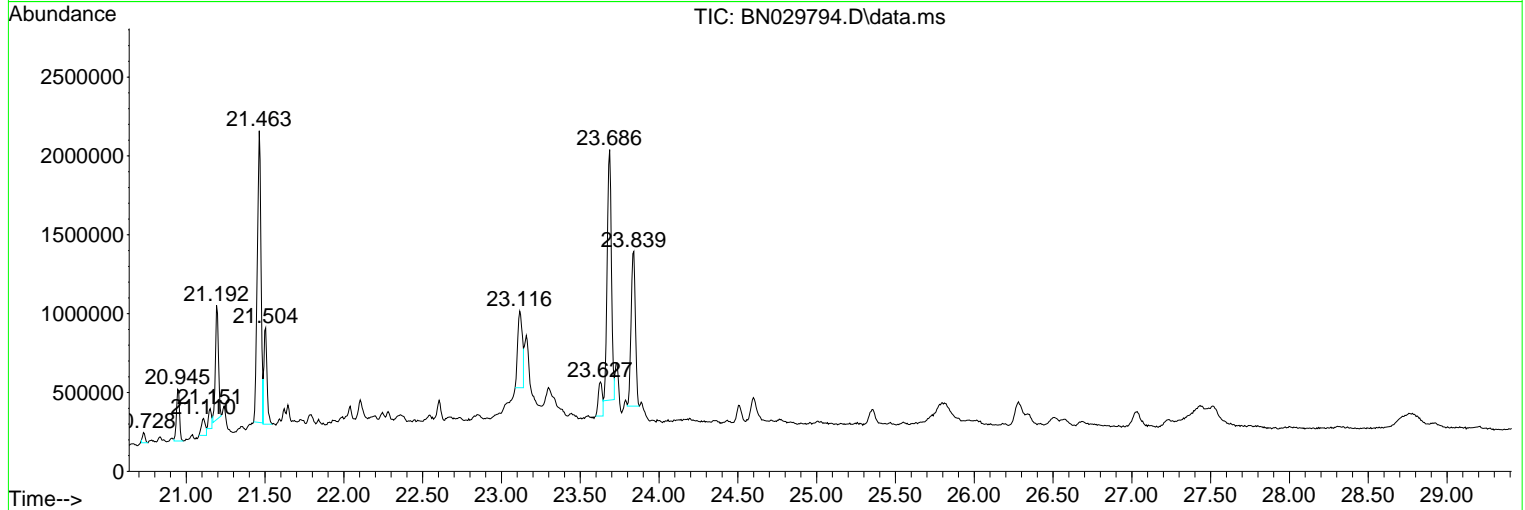
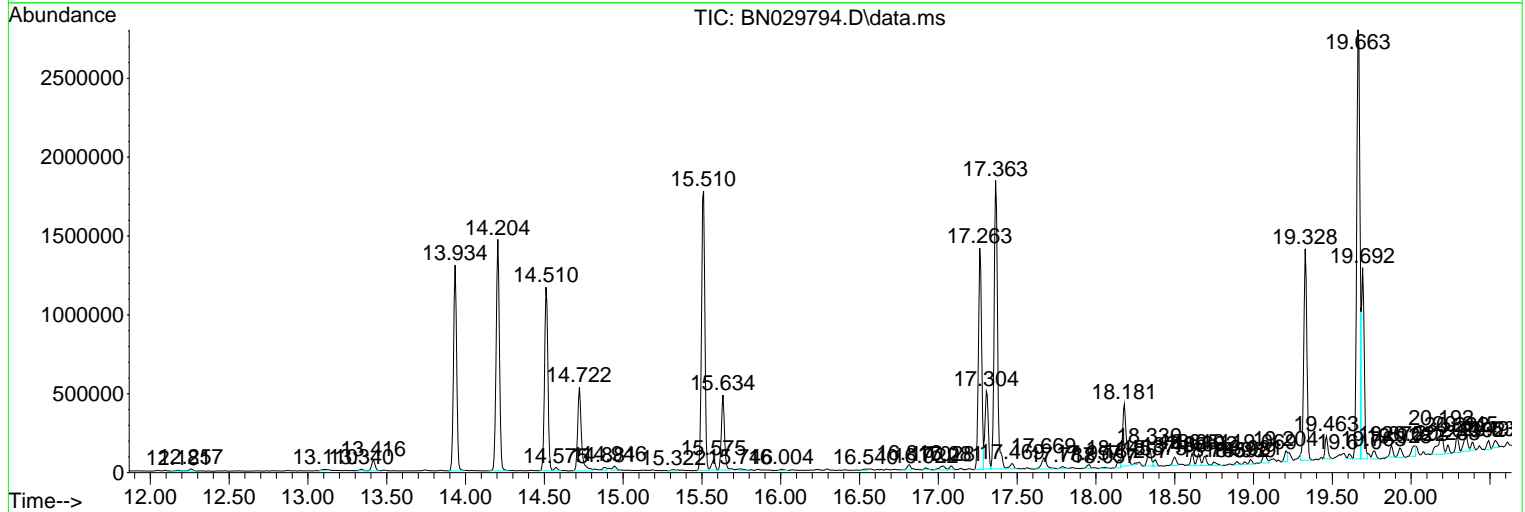
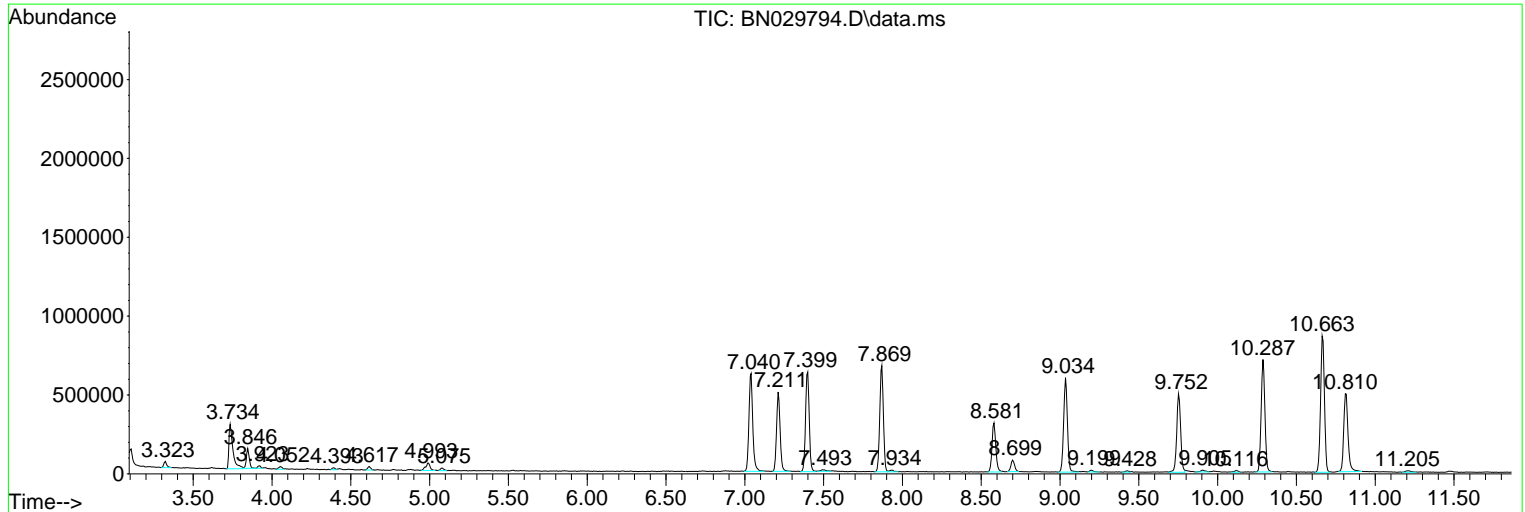
Sum of corrected areas: 49707374

Data Path : Z:\svoasrv\HPCHEM1\BNA\_N\Data\BN021424\  
 Data File : BN029794.D  
 Acq On : 15 Feb 2024 06:28  
 Operator : MA/JU  
 Sample : P1329-06  
 Misc :  
 ALS Vial : 73 Sample Multiplier: 1

**Instrument :**  
 BNA\_N  
**ClientSampleId :**  
 C0FL5

Quant Method : Z:\svoasrv\HPCHEM1\BNA\_N\Methods\SFAM-EPA-BN020724.MA.M  
 Quant Title : SVOA CALIBRATION

TIC Library : C:\Database\NIST20.L  
 TIC Integration Parameters: LSCINT.P



Data Path : Z:\svoasrv\HPCHEM1\BNA\_N\Data\BN021424\  
 Data File : BN029794.D  
 Acq On : 15 Feb 2024 06:28  
 Operator : MA/JU  
 Sample : P1329-06  
 Misc :  
 ALS Vial : 73 Sample Multiplier: 1

Instrument :  
 BNA\_N  
 ClientSampleId :  
 C0FL5

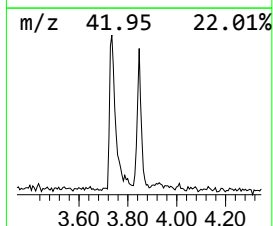
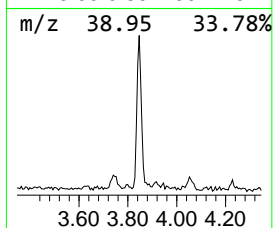
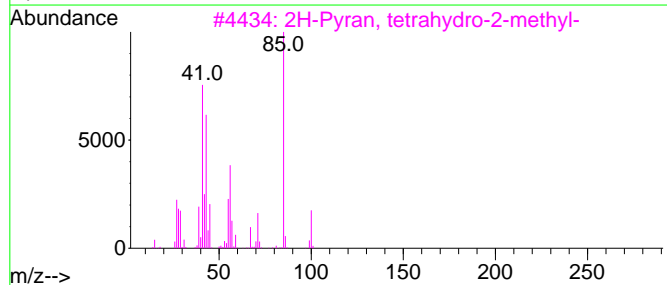
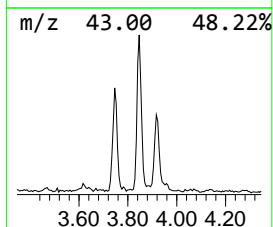
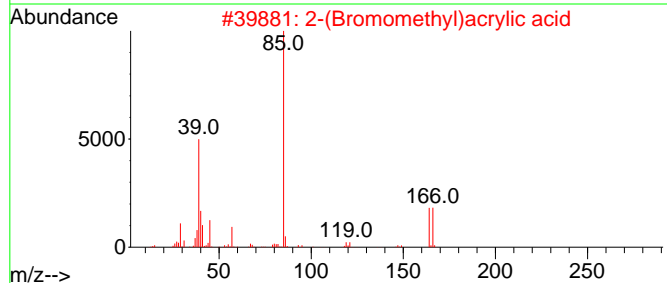
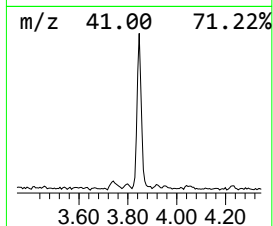
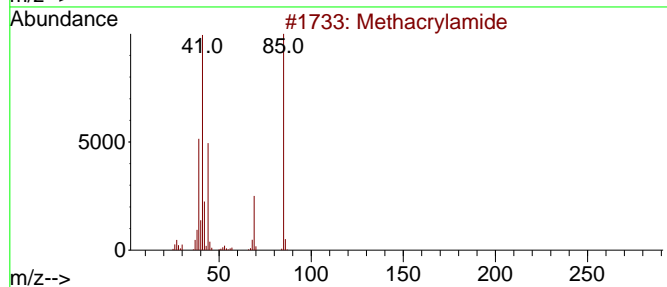
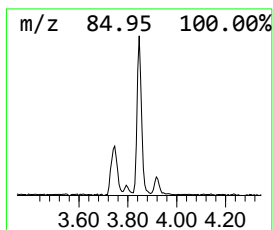
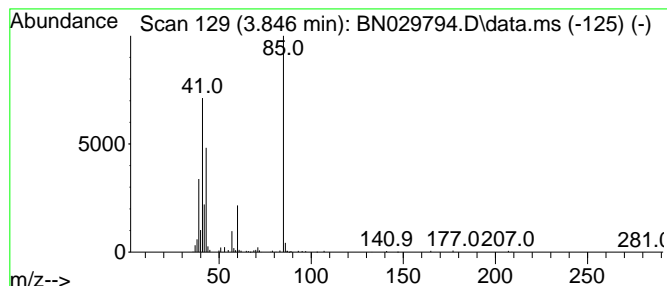
Quant Method : Z:\svoasrv\HPCHEM1\BNA\_N\Methods\SFAM-EPA-BN020724.MA.M  
 Quant Title : SVOA CALIBRATION

TIC Library : C:\Database\NIST20.L  
 TIC Integration Parameters: LSCINT.P

\*\*\*\*\*  
 Peak Number 1 unknown-01 Concentration Rank 4

R.T.	EstConc	Area	Relative to ISTD	R.T.
3.846	2.95 ng/ul	158165	1,4-Dichlorobenzene-d4	7.869

Hit#	of 5	Tentative ID	MW	MolForm	CAS#	Qual
1		Methacrylamide	85	C4H7NO	000079-39-0	47
2		2-(Bromomethyl)acrylic acid	164	C4H5BrO2	072707-66-5	38
3		2H-Pyran, tetrahydro-2-methyl-	100	C6H12O	010141-72-7	38
4		Methacrylamide	85	C4H7NO	000079-39-0	12
5		2-Pyrrolidinone	85	C4H7NO	000616-45-5	9



Data Path : Z:\svoasrv\HPCHEM1\BNA\_N\Data\BN021424\  
 Data File : BN029794.D  
 Acq On : 15 Feb 2024 06:28  
 Operator : MA/JU  
 Sample : P1329-06  
 Misc :  
 ALS Vial : 73 Sample Multiplier: 1

Instrument :  
 BNA\_N  
 ClientSampleId :  
 COFL5

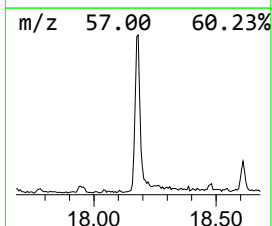
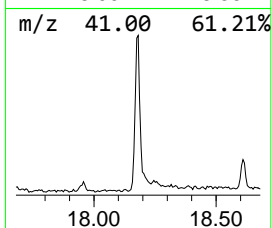
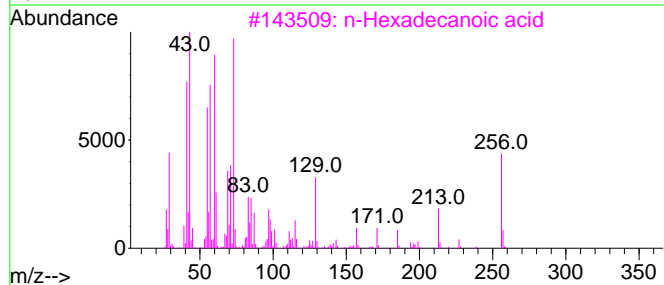
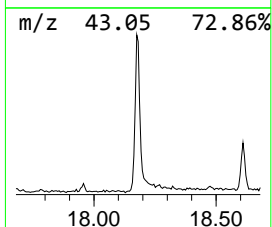
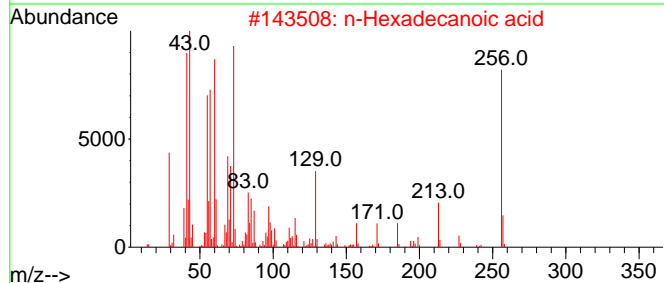
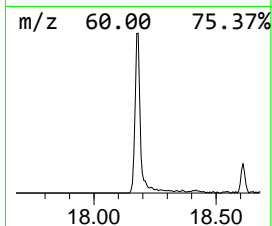
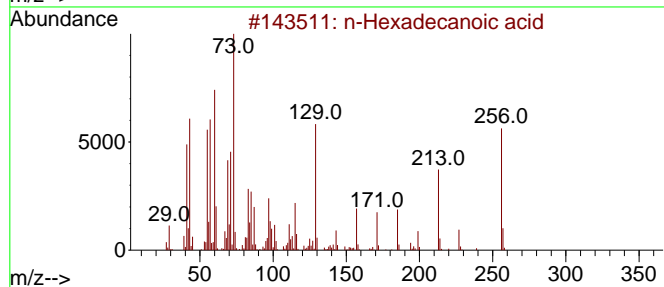
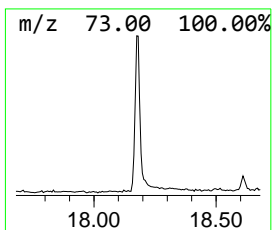
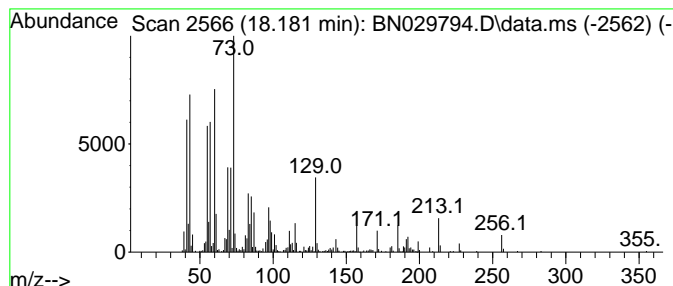
Quant Method : Z:\svoasrv\HPCHEM1\BNA\_N\Methods\SFAM-EPA-BN020724.MA.M  
 Quant Title : SVOA CALIBRATION

TIC Library : C:\Database\NIST20.L  
 TIC Integration Parameters: LSCINT.P

\*\*\*\*\*  
 Peak Number 2 n-Hexadecanoic acid Concentration Rank 2

R.T.	EstConc	Area	Relative to ISTD	R.T.
18.181	6.14 ng/ul	621863	Phenanthrene-d10	17.263

Hit#	of	5	Tentative ID	MW	MolForm	CAS#	Qual
1			n-Hexadecanoic acid	256	C16H32O2	000057-10-3	99
2			n-Hexadecanoic acid	256	C16H32O2	000057-10-3	99
3			n-Hexadecanoic acid	256	C16H32O2	000057-10-3	99
4			n-Hexadecanoic acid	256	C16H32O2	000057-10-3	98
5			n-Hexadecanoic acid	256	C16H32O2	000057-10-3	93



Data Path : Z:\svoasrv\HPCHEM1\BNA\_N\Data\BN021424\  
 Data File : BN029794.D  
 Acq On : 15 Feb 2024 06:28  
 Operator : MA/JU  
 Sample : P1329-06  
 Misc :  
 ALS Vial : 73 Sample Multiplier: 1

Instrument :  
 BNA\_N  
 ClientSampleId :  
 C0FL5

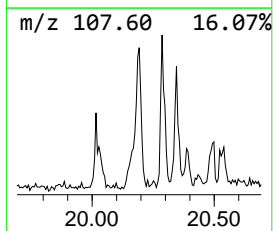
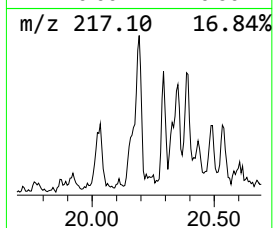
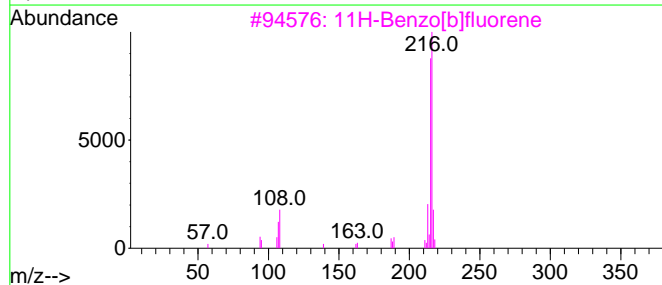
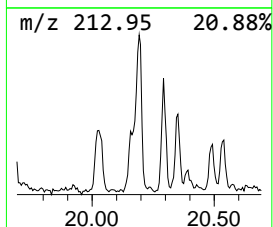
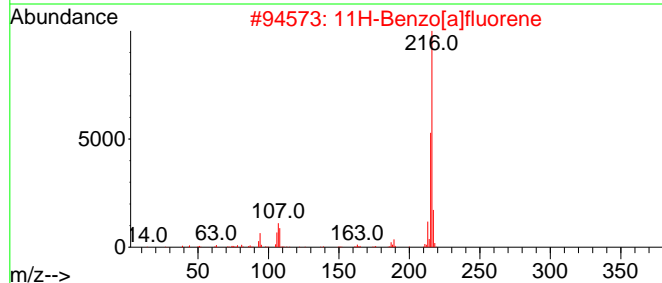
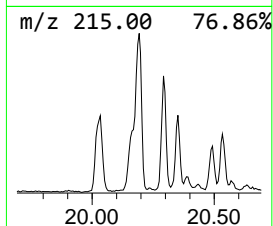
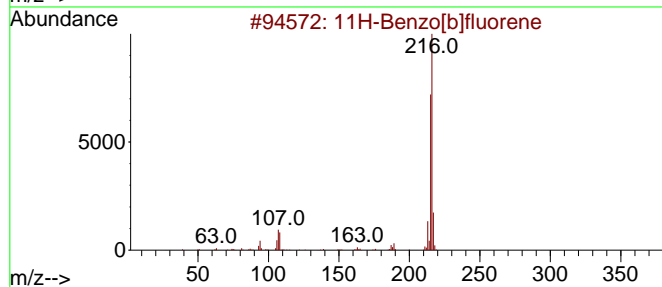
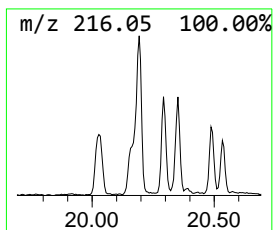
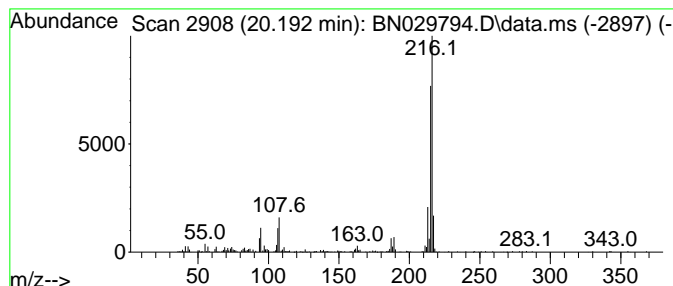
Quant Method : Z:\svoasrv\HPCHEM1\BNA\_N\Methods\SFAM-EPA-BN020724.MA.M  
 Quant Title : SVOA CALIBRATION

TIC Library : C:\Database\NIST20.L  
 TIC Integration Parameters: LSCINT.P

\*\*\*\*\*  
 Peak Number 3 11H-Benzo[b]fluorene Concentration Rank 6

R.T.	EstConc	Area	Relative to ISTD	R.T.
20.192	2.18 ng/ul	338354	Chrysene-d12	21.463

Hit#	of	5	Tentative ID	MW	MolForm	CAS#	Qual
1			11H-Benzo[b]fluorene	216	C17H12	000243-17-4	94
2			11H-Benzo[a]fluorene	216	C17H12	000238-84-6	94
3			11H-Benzo[b]fluorene	216	C17H12	000243-17-4	91
4			11H-Benzo[a]fluorene	216	C17H12	000238-84-6	91
5			Fluoranthene, 2-methyl-	216	C17H12	033543-31-6	90



Data Path : Z:\svoasrv\HPCHEM1\BNA\_N\Data\BN021424\  
 Data File : BN029794.D  
 Acq On : 15 Feb 2024 06:28  
 Operator : MA/JU  
 Sample : P1329-06  
 Misc :  
 ALS Vial : 73 Sample Multiplier: 1

Instrument :  
 BNA\_N  
 ClientSampleId :  
 C0FL5

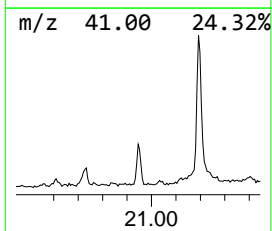
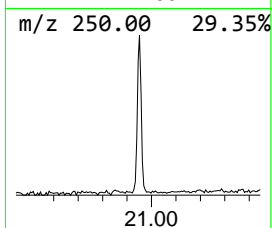
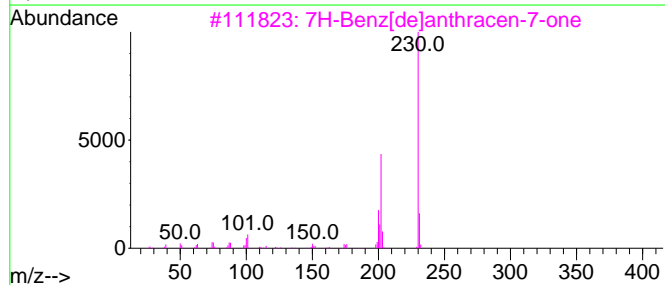
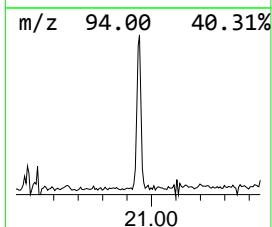
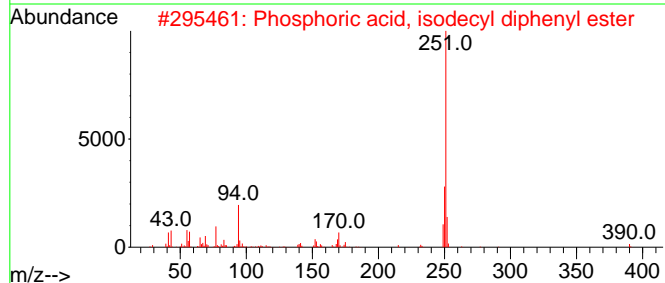
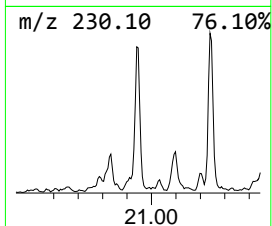
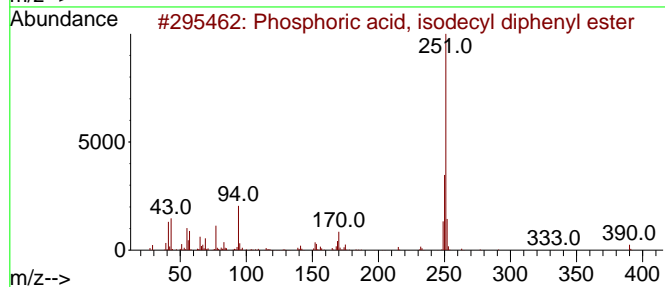
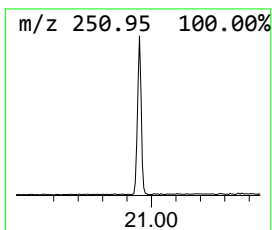
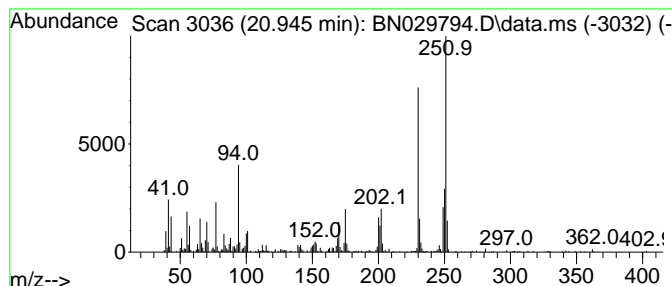
Quant Method : Z:\svoasrv\HPCHEM1\BNA\_N\Methods\SFAM-EPA-BN020724.MA.M  
 Quant Title : SVOA CALIBRATION

TIC Library : C:\Database\NIST20.L  
 TIC Integration Parameters: LSCINT.P

\*\*\*\*\*  
 Peak Number 4 unknown-02 Concentration Rank 5

R.T.	EstConc	Area	Relative to ISTD	R.T.
20.945	2.84 ng/ul	440756	Chrysene-d12	21.463

Hit#	of	5	Tentative ID	MW	MolForm	CAS#	Qual
1			Phosphoric acid, isodecyl diphen...	390	C22H31O4P	1346599-15-2	49
2			Phosphoric acid, isodecyl diphen...	390	C22H31O4P	1346599-15-2	38
3			7H-Benz[de]anthracen-7-one	230	C17H10O	000082-05-3	25
4			Octicizer	362	C20H27O4P	001241-94-7	22
5			trans-4-(Dimethylamino)chalcone	251	C17H17NO	022965-98-6	22





Data Path : Z:\svoasrv\HPCHEM1\BNA\_N\Data\BN021424\  
 Data File : BN029794.D  
 Acq On : 15 Feb 2024 06:28  
 Operator : MA/JU  
 Sample : P1329-06  
 Misc :  
 ALS Vial : 73 Sample Multiplier: 1

Instrument :  
 BNA\_N  
 ClientSampleId :  
 C0FL5

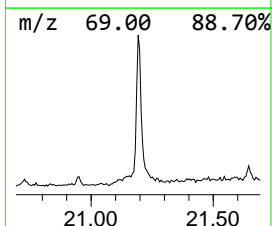
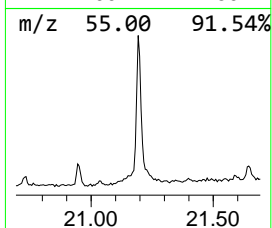
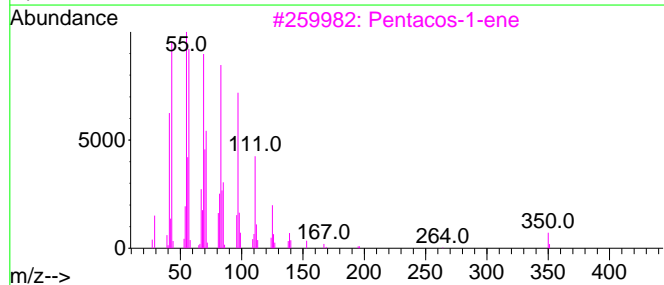
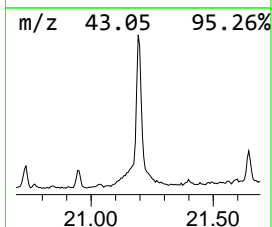
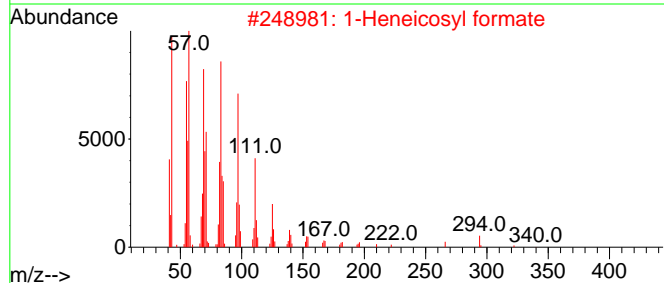
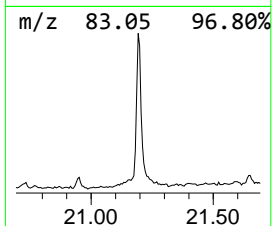
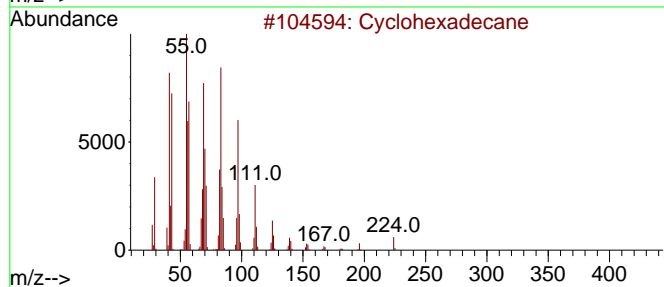
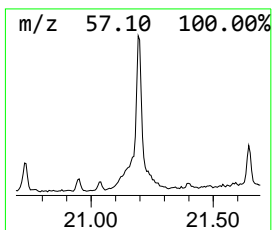
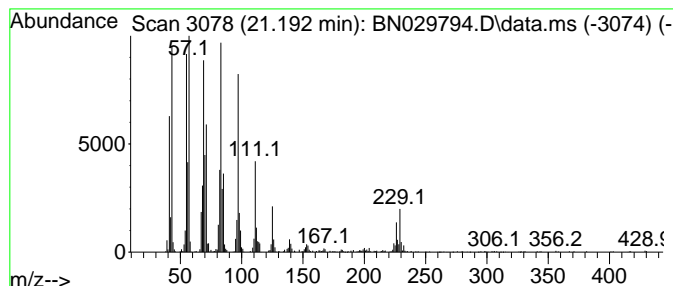
Quant Method : Z:\svoasrv\HPCHEM1\BNA\_N\Methods\SFAM-EPA-BN020724.MA.M  
 Quant Title : SVOA CALIBRATION

TIC Library : C:\Database\NIST20.L  
 TIC Integration Parameters: LSCINT.P

\*\*\*\*\*  
 Peak Number 5 (DEL) Alkane: Cyclic21.192 Concentration Rank 1

R.T.	EstConc	Area	Relative to ISTD	R.T.
21.192	6.32 ng/ul	980643	Chrysene-d12	21.463

Hit#	of 5	Tentative ID	MW	MolForm	CAS#	Qual
1		Cyclohexadecane	224	C16H32	000295-65-8	94
2		1-Heneicosyl formate	340	C22H44O2	077899-03-7	94
3		Pentacos-1-ene	350	C25H50	016980-85-1	93
4		Nonacos-1-ene	406	C29H58	018835-35-3	90
5		1-Tetracosene	336	C24H48	010192-32-2	90



Data Path : Z:\svoasrv\HPCHEM1\BNA\_N\Data\BN021424\  
 Data File : BN029794.D  
 Acq On : 15 Feb 2024 06:28  
 Operator : MA/JU  
 Sample : P1329-06  
 Misc :  
 ALS Vial : 73 Sample Multiplier: 1

Instrument :  
 BNA\_N  
 ClientSampleId :  
 COFL5

Quant Method : Z:\svoasrv\HPCHEM1\BNA\_N\Methods\SFAM-EPA-BN020724.MA.M  
 Quant Title : SVOA CALIBRATION

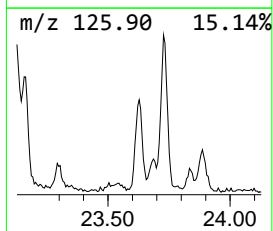
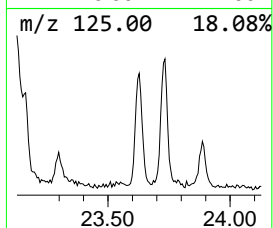
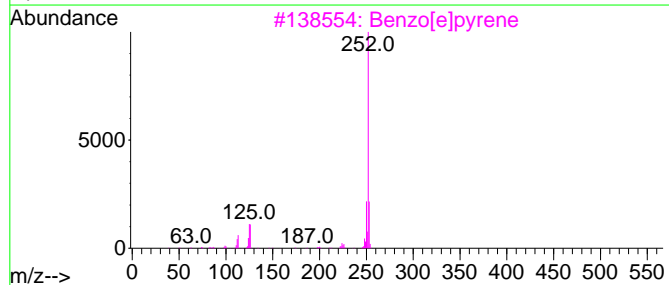
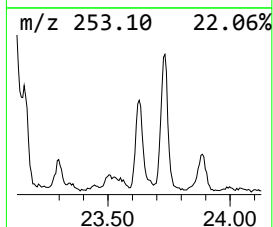
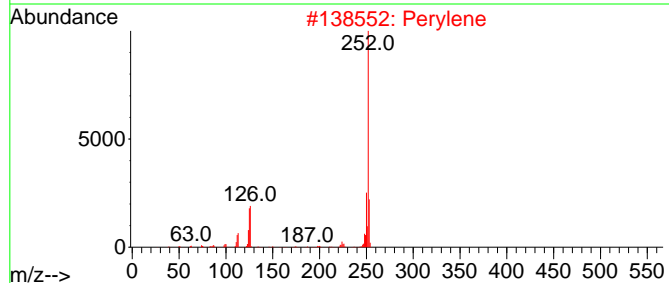
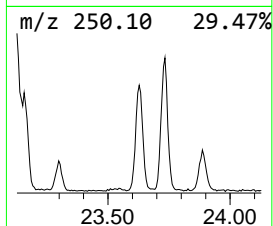
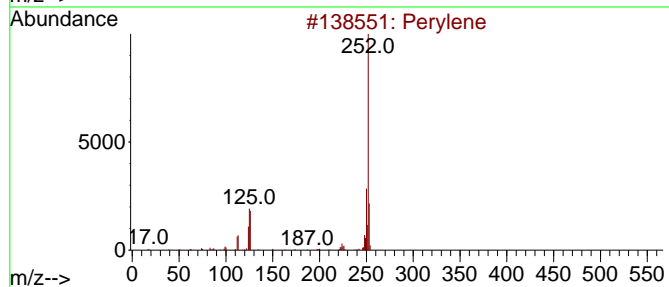
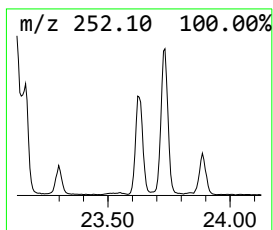
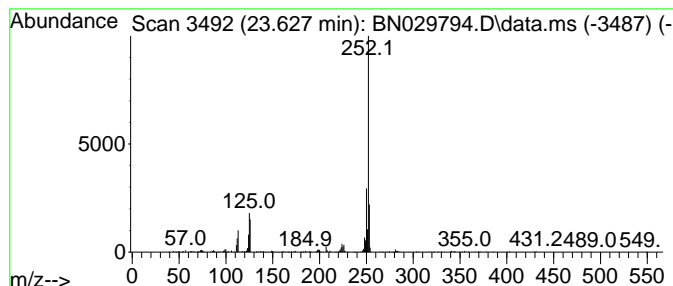
TIC Library : C:\Database\NIST20.L  
 TIC Integration Parameters: LSCINT.P

\*\*\*\*\*  
 Peak Number 6 Perylene Concentration Rank 3

R.T.	EstConc	Area	Relative to ISTD	R.T.
23.628	4.26 ng/ul	396959	Perylene-d12	23.839

Hit#	of 5	Tentative ID	MW	MolForm	CAS#	Qual
1		Perylene	252	C20H12	000198-55-0	98
2		Perylene	252	C20H12	000198-55-0	98
3		Benzo[e]pyrene	252	C20H12	000192-97-2	98
4		Benzo[e]pyrene	252	C20H12	000192-97-2	97
5		Benzo[b]fluoranthene	252	C20H12	000205-99-2	96



Data Path : Z:\svoasrv\HPCHEM1\BNA\_N\Data\BN021424\  
 Data File : BN029794.D  
 Acq On : 15 Feb 2024 06:28  
 Operator : MA/JU  
 Sample : P1329-06  
 Misc :  
 ALS Vial : 73 Sample Multiplier: 1

Instrument :  
 BNA\_N  
 ClientSampleId :  
 C0FL5

Quant Method : Z:\svoasrv\HPCHEM1\BNA\_N\Methods\SFAM-EPA-BN020724.MA.M  
 Quant Title : SVOA CALIBRATION

TIC Library : C:\Database\NIST20.L  
 TIC Integration Parameters: LSCINT.P

TIC Top Hit name	RT	EstConc	Units	Response	--Internal Standard--			
					#	RT	Resp	Conc
unknown-01	3.846	3.0	ng/u1	158165	1	7.869	1072020	20.0
n-Hexadecanoic ...	18.181	6.1	ng/u1	621863	4	17.263	2026110	20.0
11H-Benzo[b]flu...	20.192	2.2	ng/u1	338354	5	21.463	3105750	20.0
unknown-02	20.945	2.8	ng/u1	440756	5	21.463	3105750	20.0
(DEL) Alkane: C...	21.192	6.3	ng/u1	980643	5	21.463	3105750	20.0
Perylene	23.628	4.3	ng/u1	396959	6	23.839	1862620	20.0