

Data Path : Z:\HPCHEM1\BNA N\DATA\BN021918\
 Data File : BN000121.D
 Acq On : 19 Feb 2018 21:38
 Operator : JU/SJ
 Sample : J1577-01
 Misc :
 ALS Vial : 11 Sample Multiplier: 1

Instrument :
 BNA_N
 ClientSampleId :
 COMPOSITE-A-TOTAL

Integration Parameters: rteint.p
 Integrator: RTE
 Smoothing : ON Filtering: 5
 Sampling : 1 Min Area: 3 % of largest Peak
 Start Thrs: 0.2 Max Peaks: 100
 Stop Thrs : 0 Peak Location: TOP

If leading or trailing edge < 100 prefer < Baseline drop else tangent >
 Peak separation: 5

Method : Z:\HPCHEM1\BNA N\METHODS\8270-BN020718.M
 Title : ASP BNA STANDARDS FOR 5 POINT CALIBRATION

Signal : TIC

peak #	R.T. min	first scan	max scan	last scan	PK TY	peak height	corr. area	corr. % max.	% of total
1	3.234	36	42	51	rBV	406721	812161	2.73%	0.513%
2	3.316	51	56	76	rVB	2682898	4472106	15.01%	2.827%
3	5.934	493	501	517	rBV	3709537	5951233	19.98%	3.762%
4	7.581	770	781	798	rBV	2941376	4868492	16.34%	3.077%
5	7.975	839	848	859	rBV	6944805	11473903	38.51%	7.253%
6	8.457	923	930	941	rVB	1805018	2939408	9.87%	1.858%
7	8.787	978	986	1000	rVB	6026972	10125679	33.99%	6.400%
8	9.634	1122	1130	1138	rBV	4963979	8414984	28.24%	5.319%
9	11.298	1404	1413	1428	rVB	2795026	4765541	16.00%	3.012%
10	13.698	1811	1821	1828	rBV	14382581	21352870	71.67%	13.497%
11	14.504	1952	1958	1964	rBV	351079	559253	1.88%	0.354%
12	14.927	2025	2030	2038	rVB	277594	353176	1.19%	0.223%
13	15.069	2047	2054	2062	rBV2	4324574	6572292	22.06%	4.154%
14	15.845	2179	2186	2188	rBV	339557	497080	1.67%	0.314%
15	15.869	2188	2190	2194	rVB	352635	352627	1.18%	0.223%
16	16.533	2297	2303	2313	rBV	9852239	14627380	49.10%	9.246%
17	16.721	2330	2335	2346	rVB	304058	477979	1.60%	0.302%
18	17.786	2510	2516	2528	rBV	5738450	8056313	27.04%	5.092%
19	18.621	2654	2658	2669	rBV	637626	1069759	3.59%	0.676%
20	19.874	2866	2871	2879	rBV	417699	623274	2.09%	0.394%
21	20.345	2945	2951	2962	rBV	23502866	29792966	100.00%	18.832%
22	21.562	3154	3158	3170	rBV	424424	830364	2.79%	0.525%
23	21.898	3209	3215	3224	rBV2	6846833	9376479	31.47%	5.927%
24	24.380	3628	3637	3649	rBV2	4686093	9837664	33.02%	6.218%

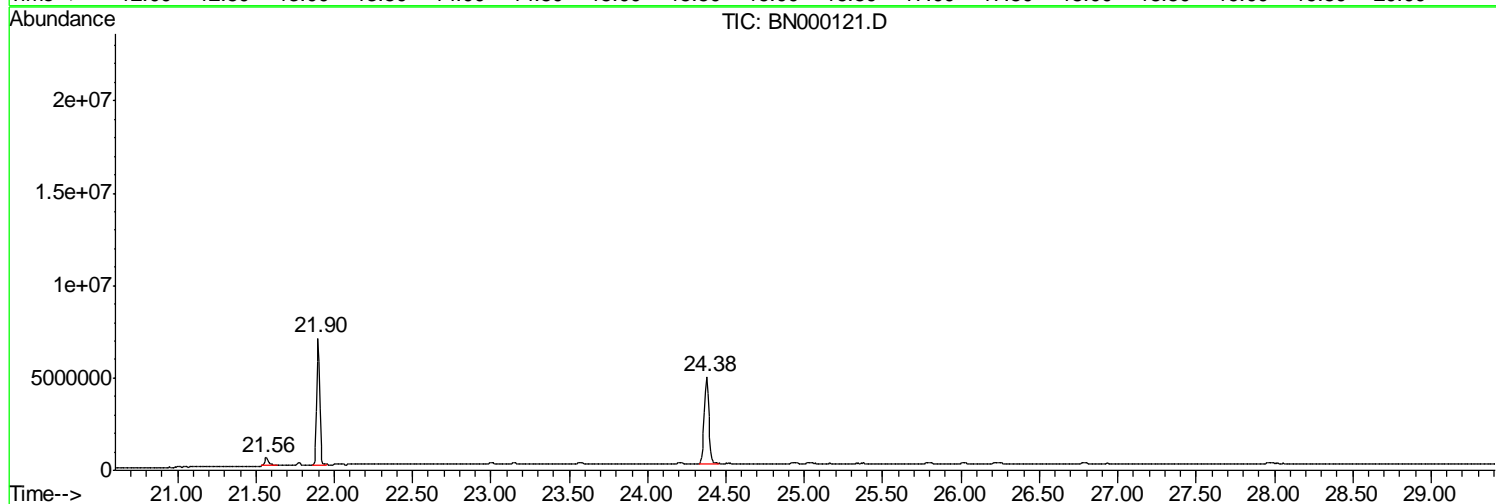
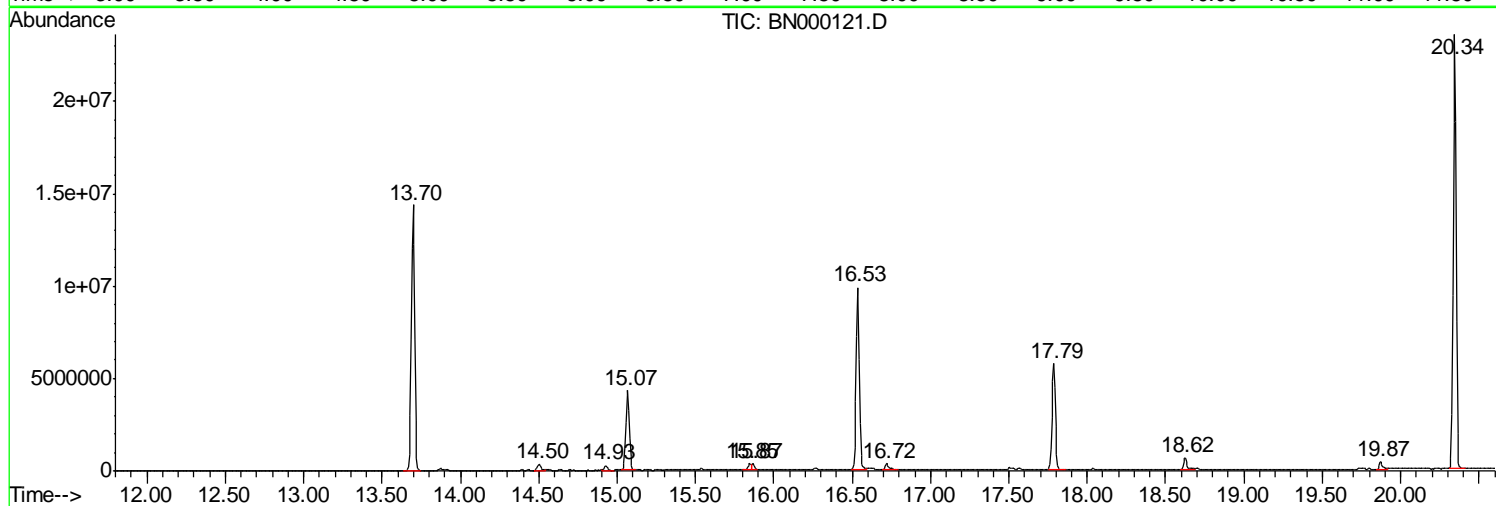
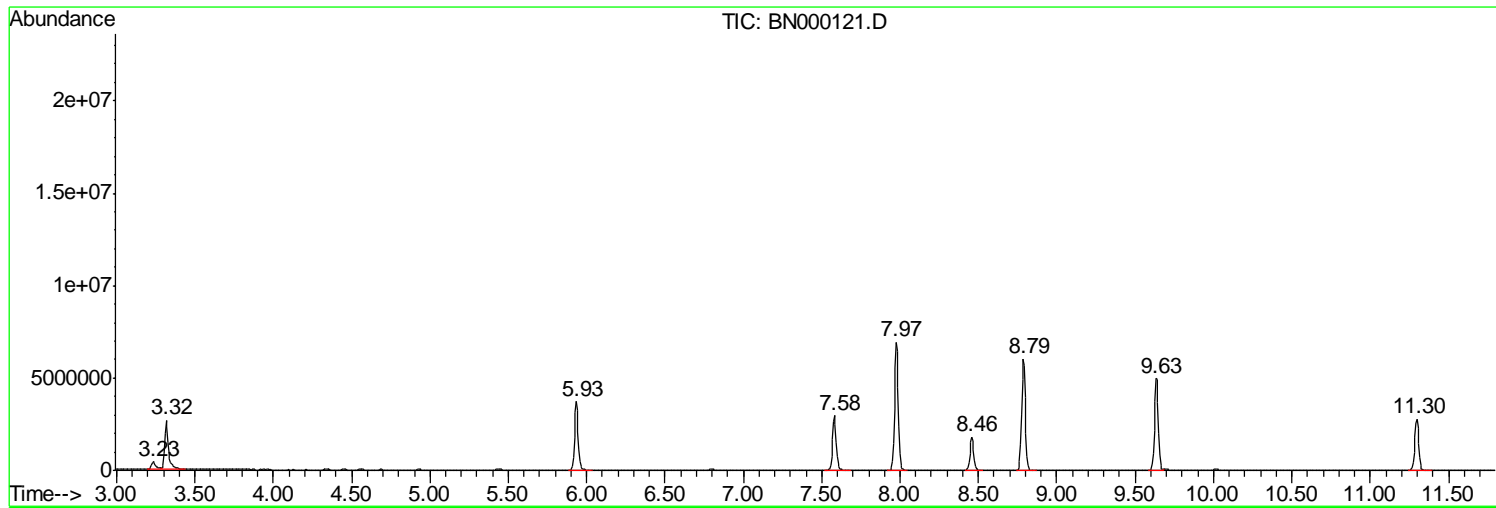
Sum of corrected areas: 158202983

Data Path : Z:\HPCHEM1\BNA N\DATA\BN021918\
Data File : BN000121.D
Acq On : 19 Feb 2018 21:38
Operator : JU/SJ
Sample : J1577-01
Misc :
ALS Vial : 11 Sample Multiplier: 1

Instrument :
BNA_N
ClientSampleId :
COMPOSITE-A-TOTAL

Quant Method : Z:\HPCHEM1\BNA N\METHODS\8270-BN020718.M
Quant Title : ASP BNA STANDARDS FOR 5 POINT CALIBRATION

TIC Library : C:\Database\NIST11.L
TIC Integration Parameters: LSCINT.P



Data Path : Z:\HPCHEM1\BNA N\DATA\BN021918\
 Data File : BN000121.D
 Acq On : 19 Feb 2018 21:38
 Operator : JU/SJ
 Sample : J1577-01
 Misc :
 ALS Vial : 11 Sample Multiplier: 1

Instrument :
 BNA_N
 ClientSampleId :
 COMPOSITE-A-TOTAL

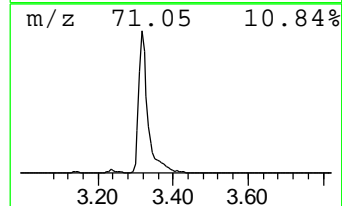
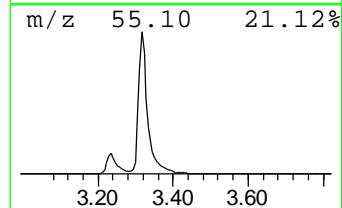
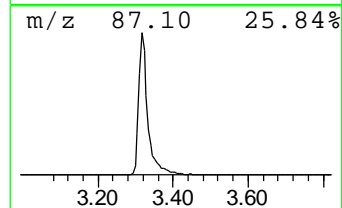
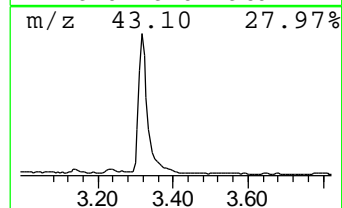
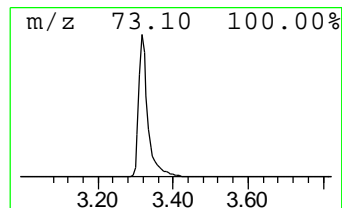
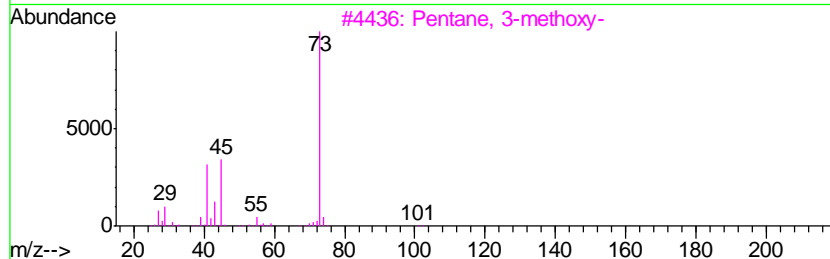
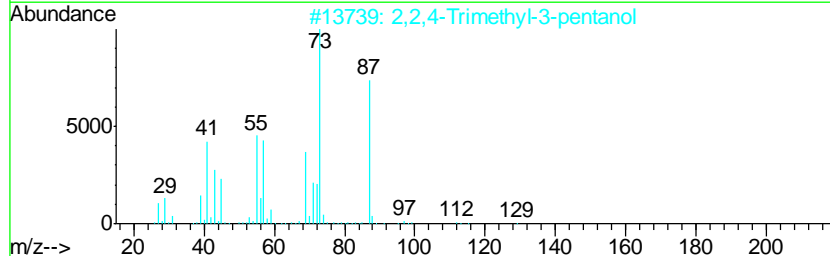
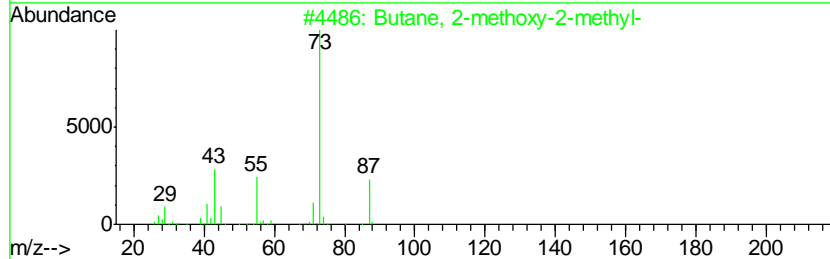
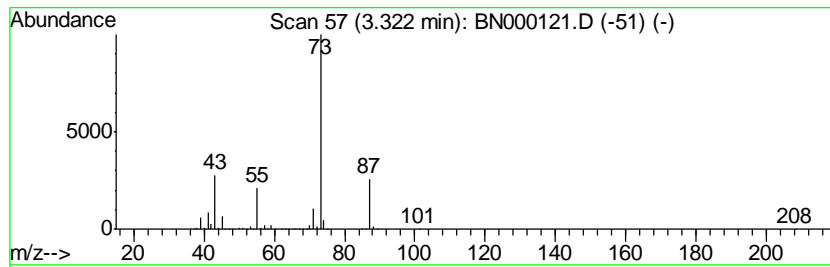
Quant Method : Z:\HPCHEM1\BNA N\METHODS\8270-BN020718.M
 Quant Title : ASP BNA STANDARDS FOR 5 POINT CALIBRATION

TIC Library : C:\Database\NIST11.L
 TIC Integration Parameters: LSCINT.P

 Peak Number 2 Butane, 2-methoxy-2-methyl- Concentration Rank 3

R.T.	EstConc	Area	Relative to ISTD	R.T.
3.32	30.43 ng	4472110	1,4-Dichlorobenzene-d4	8.46

Hit#	of	Tentative ID	MW	MolForm	CAS#	Qual
1	5	Butane, 2-methoxy-2-methyl-	102	C6H14O	000994-05-8	83
2		2,2,4-Trimethyl-3-pentanol	130	C8H18O	005162-48-1	43
3		Pentane, 3-methoxy-	102	C6H14O	036839-67-5	23
4		N-Ethylformamide	73	C3H7NO	000627-45-2	9
5		Acetamide, N-ethyl-	87	C4H9NO	000625-50-3	9



Data Path : Z:\HPCHEM1\BNA N\DATA\BN021918\
 Data File : BN000121.D
 Acq On : 19 Feb 2018 21:38
 Operator : JU/SJ
 Sample : J1577-01
 Misc :
 ALS Vial : 11 Sample Multiplier: 1

Instrument :
 BNA_N
 ClientSampleId :
 COMPOSITE-A-TOTAL

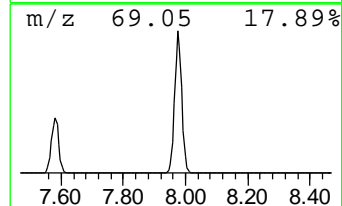
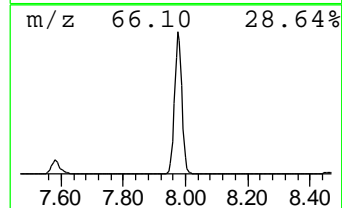
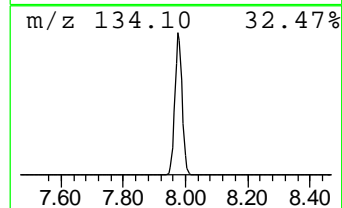
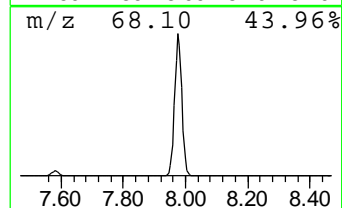
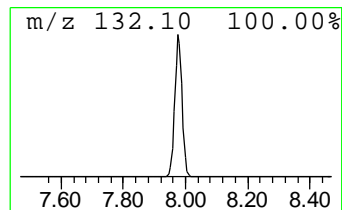
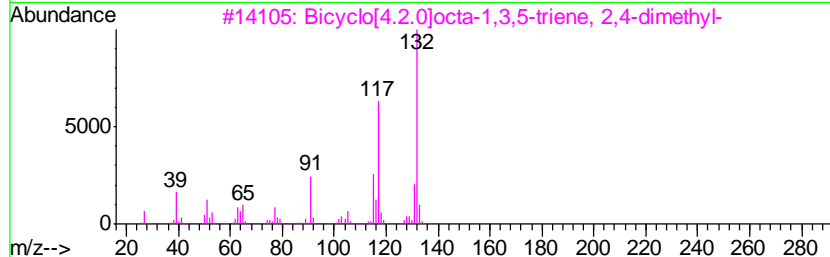
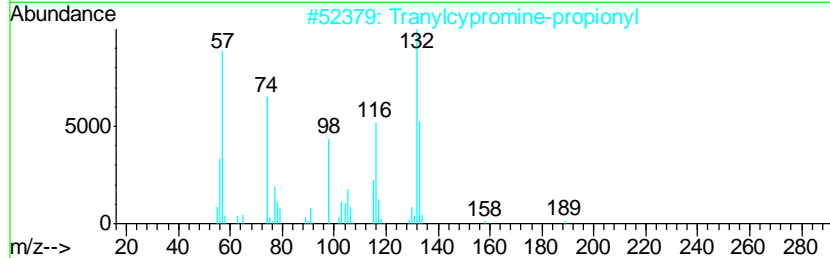
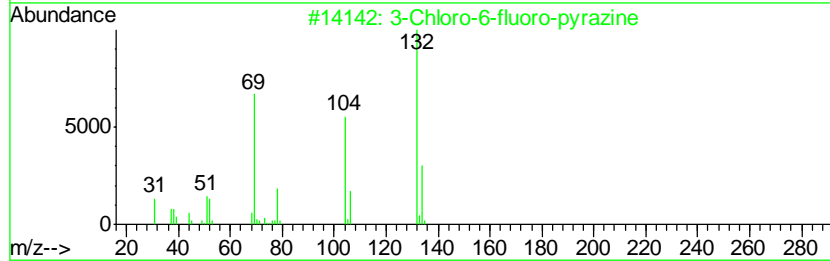
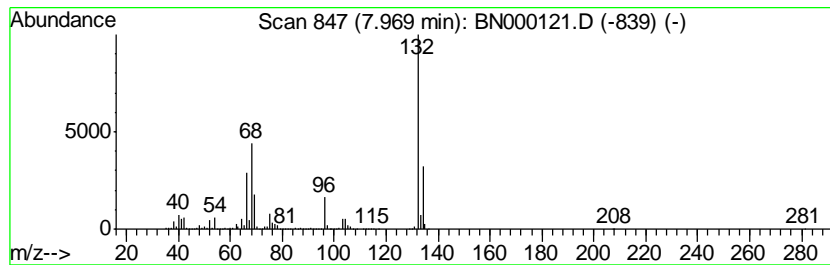
Quant Method : Z:\HPCHEM1\BNA N\METHODS\8270-BN020718.M
 Quant Title : ASP BNA STANDARDS FOR 5 POINT CALIBRATION

TIC Library : C:\Database\NIST11.L
 TIC Integration Parameters: LSCINT.P

 Peak Number 3 unknown7.97 Concentration Rank 1

R.T.	EstConc	Area	Relative to ISTD	R.T.
7.97	78.07 ng	11473900	1,4-Dichlorobenzene-d4	8.46

Hit#	of	Tentative ID	MW	MolForm	CAS#	Qual
1	5	3-Chloro-6-fluoro-pyrazine	132	C4H2ClFN2	1000146-10-7	35
2		Tranlycypromine-propionyl	189	C12H15NO	1000123-86-3	10
3		Bicyclo[4.2.0]octa-1,3,5-triene,...	132	C10H12	028749-81-7	9
4		Benzene, 1-ethenyl-3,5-dimethyl-	132	C10H12	005379-20-4	9
5		4-Chloro-6-fluoro-pyrimidine	132	C4H2ClFN2	051422-01-6	9



Data Path : Z:\HPCHEM1\BNA N\DATA\BN021918\
 Data File : BN000121.D
 Acq On : 19 Feb 2018 21:38
 Operator : JU/SJ
 Sample : J1577-01
 Misc :
 ALS Vial : 11 Sample Multiplier: 1

Instrument :
 BNA_N
 ClientSampleId :
 COMPOSITE-A-TOTAL

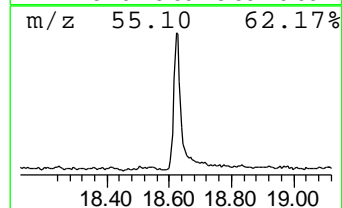
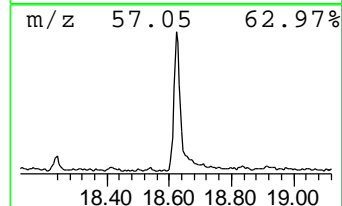
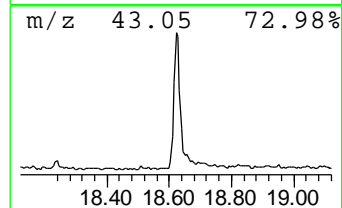
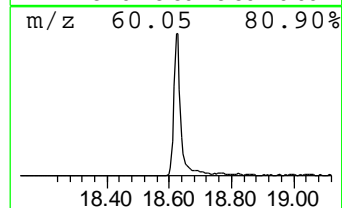
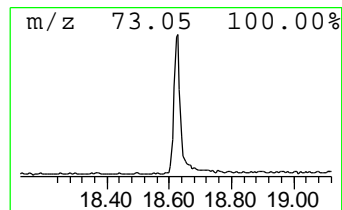
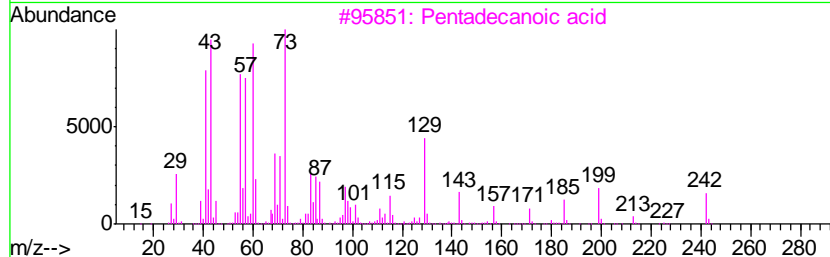
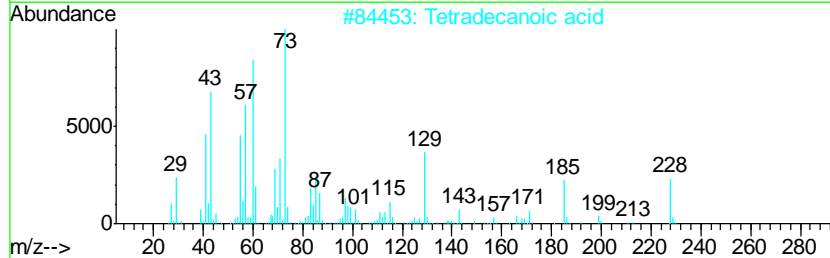
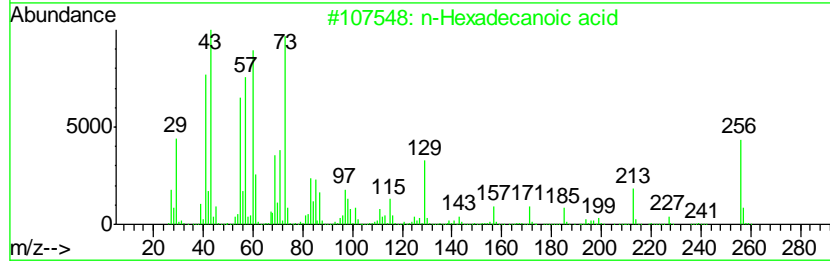
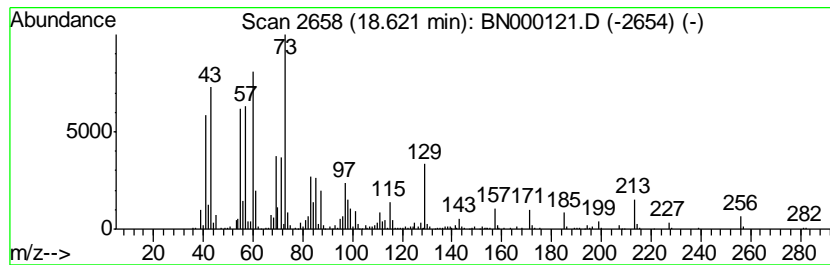
Quant Method : Z:\HPCHEM1\BNA N\METHODS\8270-BN020718.M
 Quant Title : ASP BNA STANDARDS FOR 5 POINT CALIBRATION

TIC Library : C:\Database\NIST11.L
 TIC Integration Parameters: LSCINT.P

 Peak Number 5 n-Hexadecanoic acid Concentration Rank 5

R.T.	EstConc	Area	Relative to ISTD	R.T.
18.62	2.66 ng	1069760	Phenanthrene-d10	17.79

Hit#	of	Tentative ID	MW	MolForm	CAS#	Qual
1	5	n-Hexadecanoic acid	256	C16H32O2	000057-10-3	99
2		Tetradecanoic acid	228	C14H28O2	000544-63-8	80
3		Pentadecanoic acid	242	C15H30O2	001002-84-2	74
4		Dodecanoic acid	200	C12H24O2	000143-07-7	64
5		Tridecanoic acid	214	C13H26O2	000638-53-9	59



Data Path : Z:\HPCHEM1\BNA_N\DATA\BN021918\
Data File : BN000121.D
Acq On : 19 Feb 2018 21:38
Operator : JU/SJ
Sample : J1577-01
Misc :
ALS Vial : 11 Sample Multiplier: 1

Instrument :
BNA_N
ClientSampleId :
COMPOSITE-A-TOTAL

Quant Method : Z:\HPCHEM1\BNA_N\METHODS\8270-BN020718.M
Quant Title : ASP BNA STANDARDS FOR 5 POINT CALIBRATION

TIC Library : C:\Database\NIST11.L
TIC Integration Parameters: LSCINT.P

TIC Top Hit name	RT	EstConc	Units	Response	--Internal Standard--			
					#	RT	Resp	Conc
Butane, 2-methoxy...	3.32	30.4	ng	4472110	1	8.46	2939410	20.0
unknown7.97	7.97	78.1	ng	11473900	1	8.46	2939410	20.0
n-Hexadecanoic acid	18.62	2.7	ng	1069760	4	17.79	8056310	20.0