

Data Path : Z:\svoasrv\HPCHEM1\BNA_N\Data\BN022124\
 Data File : BN029932.D
 Acq On : 22 Feb 2024 18:03
 Operator : MA/JU
 Sample : SSTDCC020
 Misc :
 ALS Vial : 53 Sample Multiplier: 1

Instrument :
 BNA_N
 ClientSampleId :
 SSTD020319

Quant Time: Feb 22 22:41:58 2024
 Quant Method : Z:\svoasrv\HPCHEM1\BNA_N\Methods\SFAM-EPA-BN020724.MA.M
 Quant Title : SVOA CALIBRATION
 QLast Update : Wed Feb 21 22:34:54 2024
 Response via : Initial Calibration

Compound	R.T.	QIon	Response	Conc	Units	Dev(Min)
Internal Standards						
1) 1,4-Dichlorobenzene-d4	7.857	152	196290	20.000	ng/ul	0.00
20) Naphthalene-d8	10.651	136	793264	20.000	ng/ul	0.00
38) Acenaphthene-d10	14.498	164	424627	20.000	ng/ul	0.00
64) Phenanthrene-d10	17.251	188	879941	20.000	ng/ul	0.00
79) Chrysene-d12	21.457	240	803278	20.000	ng/ul	0.00
88) Perylene-d12	23.821	264	893425	20.000	ng/ul	0.00
System Monitoring Compounds						
3) 1,4-Dioxane-d8	3.317	96	44187	7.404	ng/uL	0.00
4) Pyridine-d5	3.728	84	292727	18.393	ng/ul	0.00
7) Phenol-d5	7.028	99	350716	19.102	ng/ul	0.00
9) Bis-(2-Chloroethyl)eth...	7.205	67	231323	18.878	ng/ul	0.00
11) 2-Chlorophenol-d4	7.387	132	273574	20.562	ng/ul	0.00
15) 4-Methylphenol-d8	8.569	113	266559	19.467	ng/ul	0.00
21) Nitrobenzene-d5	9.022	128	126018	20.468	ng/ul	0.00
24) 2-Nitrophenol-d4	9.746	143	125082	23.327	ng/ul	0.00
28) 2,4-Dichlorophenol-d3	10.275	165	232693	21.986	ng/ul	0.00
31) 4-Chloroaniline-d4	10.804	131	348820	19.318	ng/ul	0.00
46) Dimethylphthalate-d6	13.922	166	643307	20.349	ng/ul	0.00
49) Acenaphthylene-d8	14.192	160	761873	20.293	ng/ul	0.00
54) 4-Nitrophenol-d4	14.710	143	112921	18.819	ng/ul	0.00
60) Fluorene-d10	15.498	176	544584	20.249	ng/ul	0.00
65) 4,6-Dinitro-2-methylph...	15.622	200	81730	19.062	ng/ul	0.00
73) Anthracene-d10	17.351	188	845462	20.501	ng/ul	0.00
81) Pyrene-d10	19.651	212	938503	19.469	ng/ul	0.00
92) Benzo(a)pyrene-d12	23.668	264	875281	19.579	ng/ul	0.00
Target Compounds						
2) 1,4-Dioxane	3.352	88	45055	7.289	ng/uL	95
5) Pyridine	3.746	79	301533	18.314	ng/ul	97
6) Benzaldehyde	7.005	77	208842	25.376	ng/ul	98
8) Phenol	7.052	94	362720	19.276	ng/ul	99
10) Bis(2-Chloroethyl)ether	7.293	93	296043	18.710	ng/ul	99
12) 2-Chlorophenol	7.416	128	285114	20.425	ng/ul	99
13) 2-Methylphenol	8.305	108	259596	19.118	ng/ul	98
14) 2,2'-oxybis(1-Chloropr...	8.387	45	392002	18.969	ng/ul	99
16) Acetophenone	8.687	105	437118	20.058	ng/ul	98
17) N-Nitroso-di-n-propyla...	8.675	70	230497	20.487	ng/ul	98
18) 4-Methylphenol	8.634	108	278760	19.428	ng/ul	97
19) Hexachloroethane	8.922	117	124261	19.183	ng/ul	96
22) Nitrobenzene	9.069	77	355349	20.370	ng/ul	97
23) Isophorone	9.593	82	601483	19.795	ng/ul	100
25) 2-Nitrophenol	9.775	139	139479	22.779	ng/ul	98
26) 2,4-Dimethylphenol	9.834	107	295644	20.146	ng/ul	98
27) Bis(2-Chloroethoxy)met...	10.081	93	373313	19.332	ng/ul	98
29) 2,4-Dichlorophenol	10.304	162	232704	21.278	ng/ul	94
30) Naphthalene	10.704	128	896209	19.766	ng/ul	99
32) 4-Chloroaniline	10.828	127	339327	19.037	ng/ul	98
33) Hexachlorobutadiene	10.975	225	140200	20.772	ng/ul	99
34) Caprolactam	11.604	113	50540	13.888	ng/ul	94
35) 4-Chloro-3-methylphenol	11.945	107	266976	21.135	ng/ul	97
36) 2-Methylnaphthalene	12.316	142	567071	20.402	ng/ul	100

Data Path : Z:\svoasrv\HPCHEM1\BNA_N\Data\BN022124\
 Data File : BN029932.D
 Acq On : 22 Feb 2024 18:03
 Operator : MA/JU
 Sample : SSTDCCC020
 Misc :
 ALS Vial : 53 Sample Multiplier: 1

Instrument :
 BNA_N
 ClientSampleId :
 SSTD020319

Quant Time: Feb 22 22:41:58 2024
 Quant Method : Z:\svoasrv\HPCHEM1\BNA_N\Methods\SFAM-EPA-BN020724.MA.M
 Quant Title : SVOA CALIBRATION
 QLast Update : Wed Feb 21 22:34:54 2024
 Response via : Initial Calibration

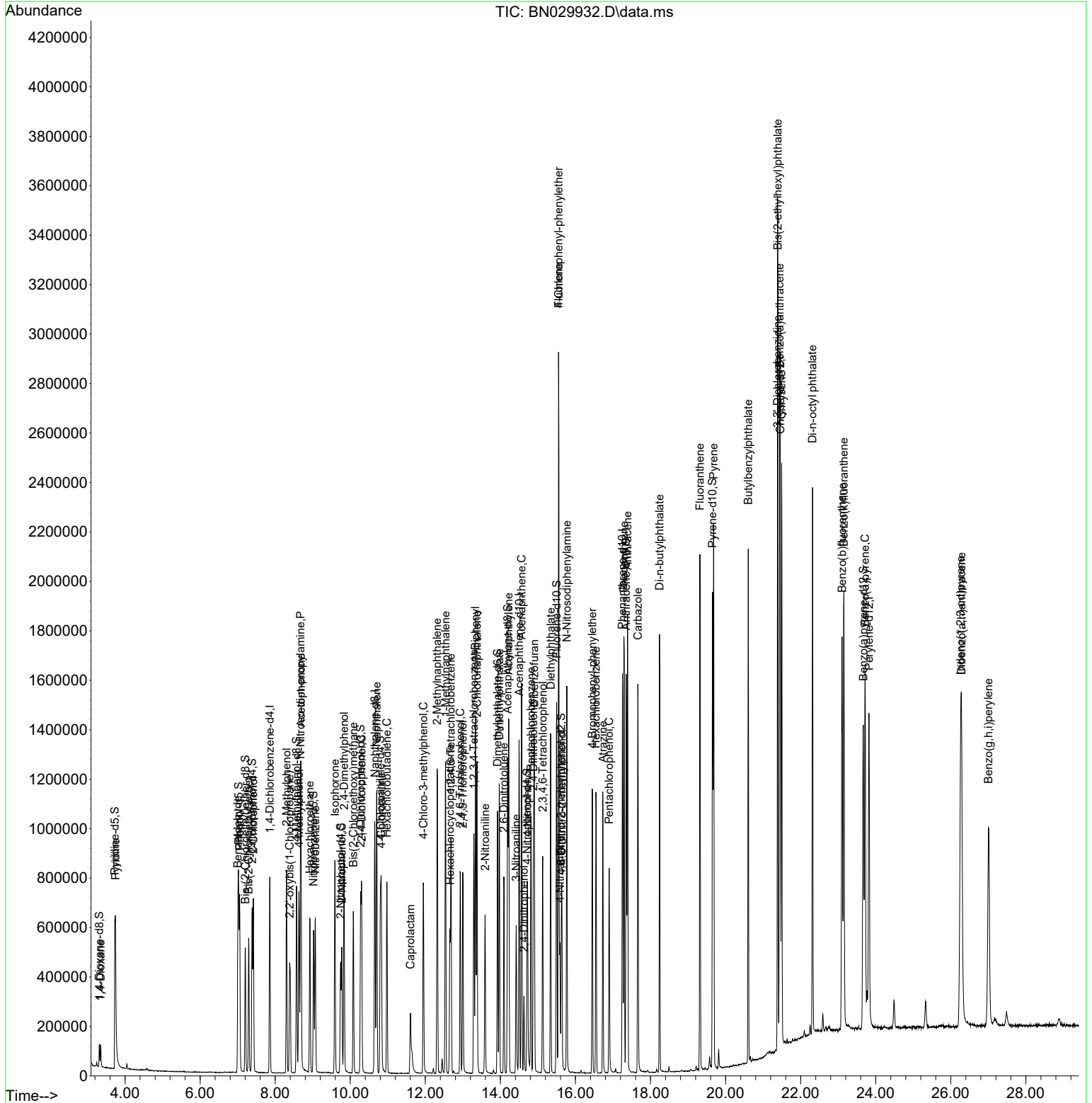
Compound	R.T.	QIon	Response	Conc	Units	Dev(Min)
37) 1-Methylnaphthalene	12.540	142	556707	20.203	ng/ul	97
39) 1,2,4,5-Tetrachloroben...	12.681	216	263143	20.907	ng/ul	97
40) Hexachlorocyclopentadiene	12.657	237	138735	16.863	ng/ul	99
41) 2,4,6-Trichlorophenol	12.928	196	160584	22.135	ng/ul	97
42) 2,4,5-Trichlorophenol	12.998	196	182052	22.333	ng/ul	97
43) 1,1'-Biphenyl	13.334	154	707611	19.760	ng/ul	99
44) 2-Chloronaphthalene	13.375	162	548477	19.707	ng/ul	98
45) 2-Nitroaniline	13.592	65	176405	21.559	ng/ul	96
47) Dimethylphthalate	13.969	163	669363	20.684	ng/ul	99
48) 2,6-Dinitrotoluene	14.092	165	128668	22.220	ng/ul	97
50) Acenaphthylene	14.222	152	909857	20.193	ng/ul	98
51) 3-Nitroaniline	14.422	138	136000	20.179	ng/ul	100
52) Acenaphthene	14.563	153	596797	20.051	ng/ul	93
53) 2,4-Dinitrophenol	14.628	184	49303	16.777	ng/ul	97
55) 4-Nitrophenol	14.722	109	108419	19.761	ng/ul	96
56) Dibenzofuran	14.904	168	782720	19.915	ng/ul	98
57) 2,4-Dinitrotoluene	14.881	165	184563	22.638	ng/ul	100
58) 2,3,4,6-Tetrachlorophenol	15.128	232	138846	23.999	ng/ul	98
59) Diethylphthalate	15.339	149	690809	20.781	ng/ul	99
61) Fluorene	15.551	166	639401	20.581	ng/ul	97
62) 4-Chlorophenyl-phenyle...	15.551	204	296389	21.330	ng/ul	94
63) 4-Nitroaniline	15.586	138	138538	22.775	ng/ul	96
66) 4,6-Dinitro-2-methylph...	15.639	198	91533	19.364	ng/ul	94
67) N-Nitrosodiphenylamine	15.769	169	547323	19.960	ng/ul	97
68) 4-Bromophenyl-phenylether	16.451	248	176760	21.223	ng/ul	89
69) Hexachlorobenzene	16.545	284	201032	21.414	ng/ul	95
70) Atrazine	16.733	200	171910	20.067	ng/ul	94
71) Pentachlorophenol	16.898	266	117411	21.536	ng/ul	96
72) Phenanthrene	17.292	178	1005427	19.753	ng/ul	99
74) Anthracene	17.386	178	1037662	20.313	ng/ul	99
75) 1,2,3,4-Tetrachloroben...	13.292	216	250549	19.404	ng/ul	94
76) Pentachlorobenzene	14.816	250	229898	19.884	ng/ul	99
77) Carbazole	17.663	167	933904	20.016	ng/ul	98
78) Di-n-butylphthalate	18.239	149	1181901	21.065	ng/ul	99
80) Fluoranthene	19.316	202	1146497	19.579	ng/ul	99
82) Pyrene	19.680	202	1200518	19.379	ng/ul	96
83) Butylbenzylphthalate	20.604	149	539025	21.350	ng/ul	95
84) 3,3'-Dichlorobenzidine	21.380	252	298047	19.156	ng/ul	92
85) Benzo(a)anthracene	21.439	228	1159337	19.647	ng/ul	99
86) Bis(2-ethylhexyl)phtha...	21.392	149	844102	21.615	ng/ul	99
87) Chrysene	21.492	228	1080567	19.540	ng/ul	100
89) Di-n-octyl phthalate	22.316	149	1381194	19.944	ng/ul	100
90) Benzo(b)fluoranthene	23.104	252	1122329	19.944	ng/ul	97
91) Benzo(k)fluoranthene	23.151	252	1119461	19.435	ng/ul	98
93) Benzo(a)pyrene	23.715	252	1043954	19.344	ng/ul	97
94) Indeno(1,2,3-cd)pyrene	26.262	276	1209752	18.409	ng/ul	100
95) Dibenzo(a,h)anthracene	26.286	278	1008293	18.794	ng/ul	95
96) Benzo(g,h,i)perylene	27.004	276	979050	17.812	ng/ul	95

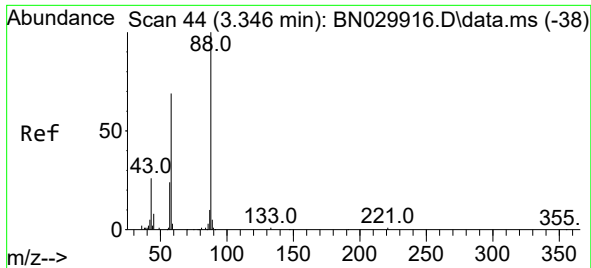
(#) = qualifier out of range (m) = manual integration (+) = signals summed

Data Path : Z:\svoasrv\HPCHEM1\BNA_N\Data\BN022124\
 Data File : BN029932.D
 Acq On : 22 Feb 2024 18:03
 Operator : MA/JU
 Sample : SSTDCCC020
 Misc :
 ALS Vial : 53 Sample Multiplier: 1

Instrument :
 BNA_N
 ClientSampleId :
 SSTD020319

Quant Time: Feb 22 22:41:58 2024
 Quant Method : Z:\svoasrv\HPCHEM1\BNA_N\Methods\SFAM-EPA-BN020724.MA.M
 Quant Title : SVOA CALIBRATION
 QLast Update : Wed Feb 21 22:34:54 2024
 Response via : Initial Calibration

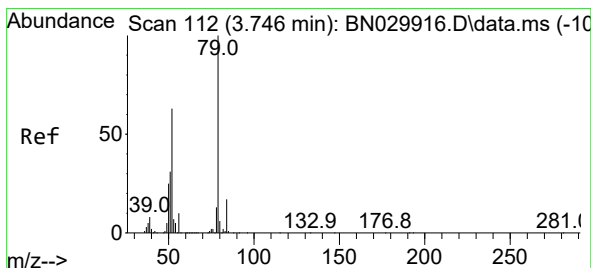
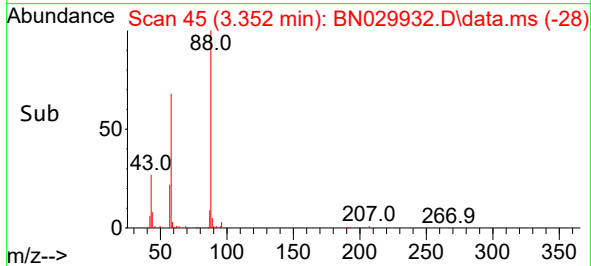
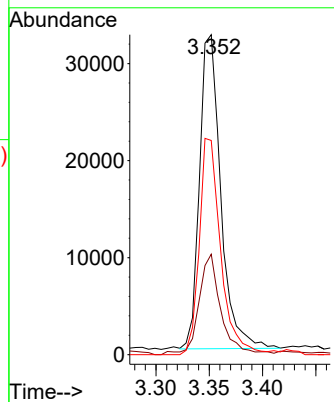
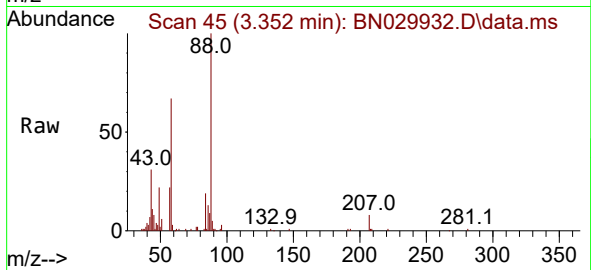




#2
 1,4-Dioxane
 Concen: 7.289 ng/uL
 RT: 3.352 min Scan# 41
 Delta R.T. 0.000 min
 Lab File: BN029932.D
 Acq: 22 Feb 2024 18:03

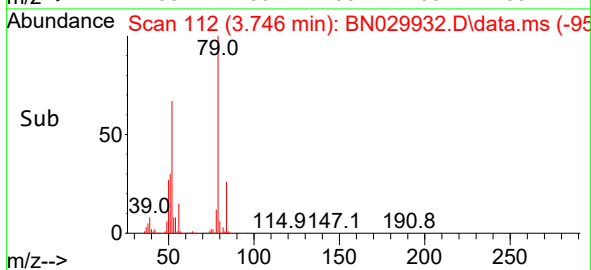
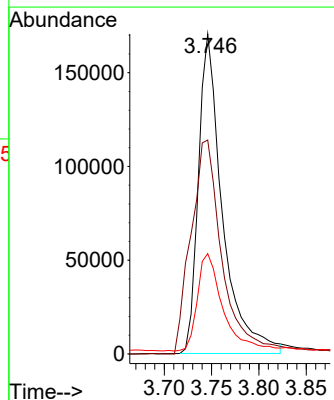
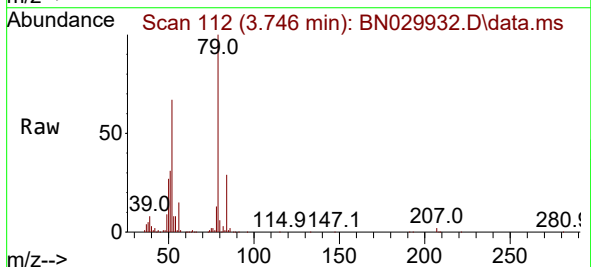
Instrument :
 BNA_N
 ClientSampleId :
 SSTD020319

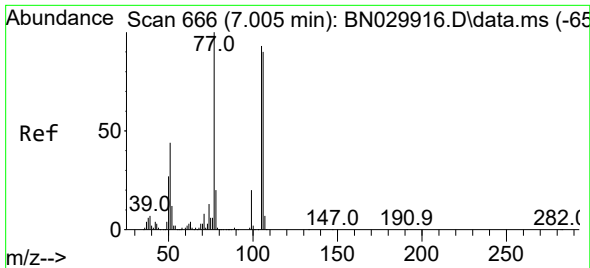
Tgt Ion: 88 Resp: 45055
 Ion Ratio Lower Upper
 88 100
 43 31.4 22.1 33.1
 58 66.9 56.5 84.7



#5
 Pyridine
 Concen: 18.314 ng/uL
 RT: 3.746 min Scan# 112
 Delta R.T. 0.000 min
 Lab File: BN029932.D
 Acq: 22 Feb 2024 18:03

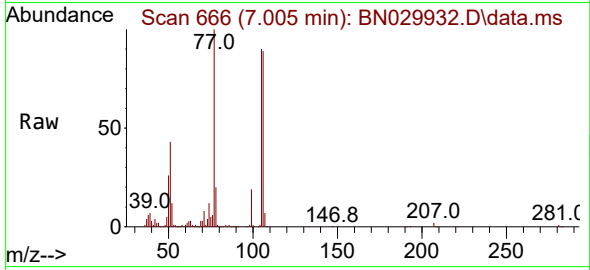
Tgt Ion: 79 Resp: 301533
 Ion Ratio Lower Upper
 79 100
 52 66.9 55.4 83.0
 51 31.4 26.9 40.3





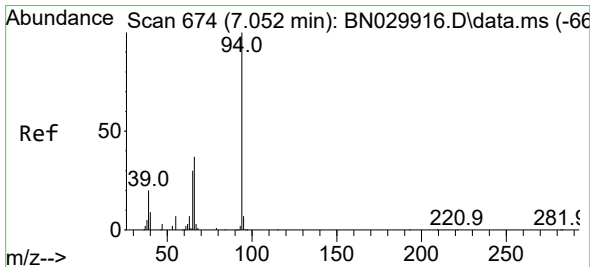
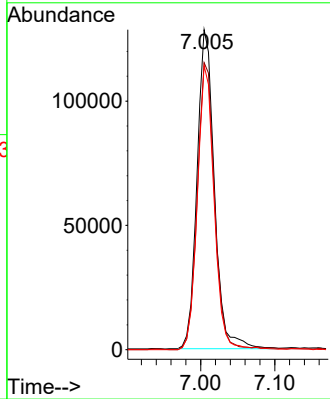
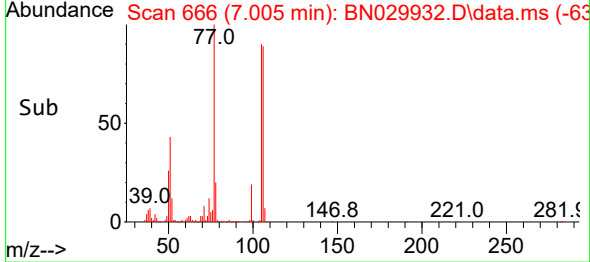
#6
Benzaldehyde
Concen: 25.376 ng/u1
RT: 7.005 min Scan# 600
Delta R.T. 0.000 min
Lab File: BN029932.D
Acq: 22 Feb 2024 18:03

Instrument : BNA_N
ClientSampleId : SSTD020319

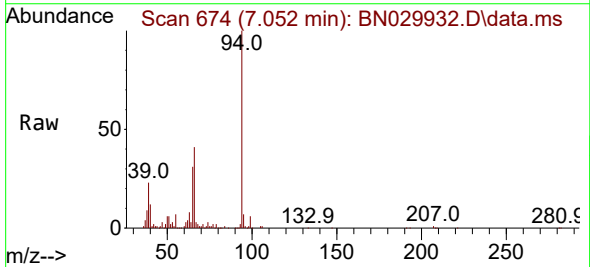


Tgt Ion: 77 Resp: 208842

Ion	Ratio	Lower	Upper
77	100		
105	89.7	71.0	106.4
106	88.7	69.4	104.0

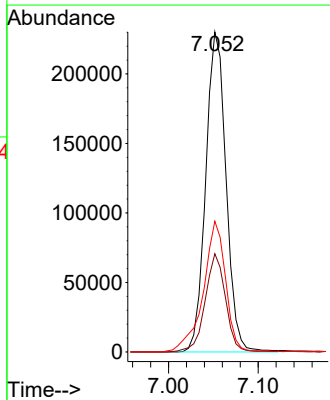
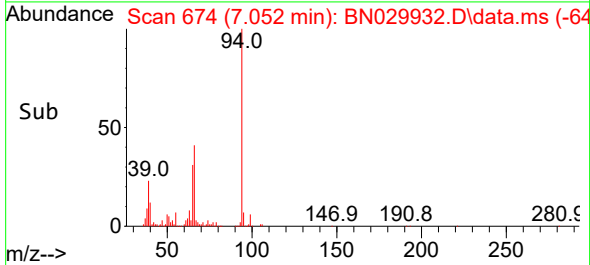


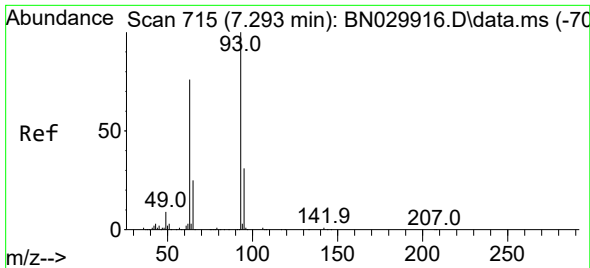
#8
Phenol
Concen: 19.276 ng/u1
RT: 7.052 min Scan# 674
Delta R.T. 0.000 min
Lab File: BN029932.D
Acq: 22 Feb 2024 18:03



Tgt Ion: 94 Resp: 362720

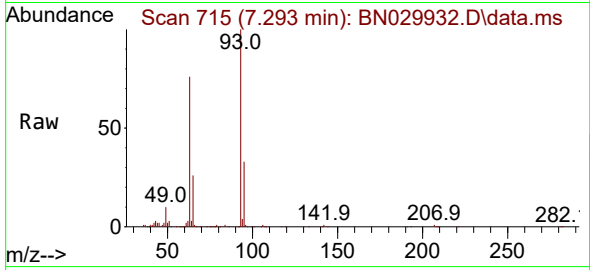
Ion	Ratio	Lower	Upper
94	100		
65	30.7	23.9	35.9
66	40.9	32.2	48.2



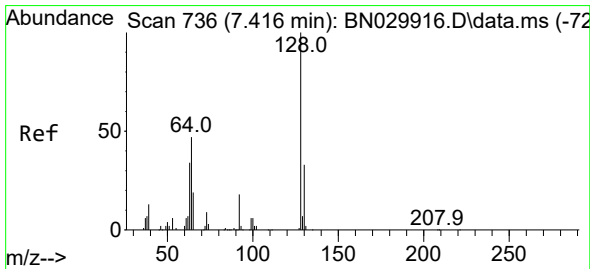
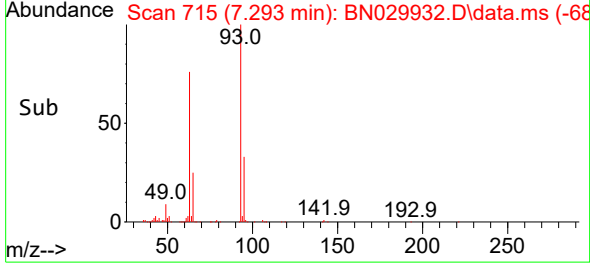
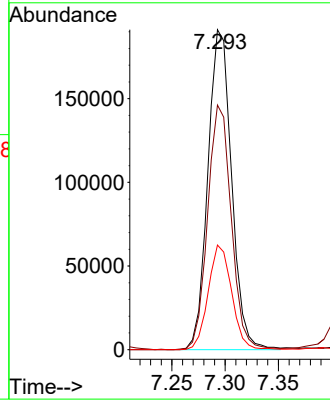


#10
 Bis(2-Chloroethyl)ether
 Concen: 18.710 ng/ul
 RT: 7.293 min Scan# 715
 Delta R.T. -0.006 min
 Lab File: BN029932.D
 Acq: 22 Feb 2024 18:03

Instrument :
 BNA_N
 ClientSampleId :
 SSTD020319

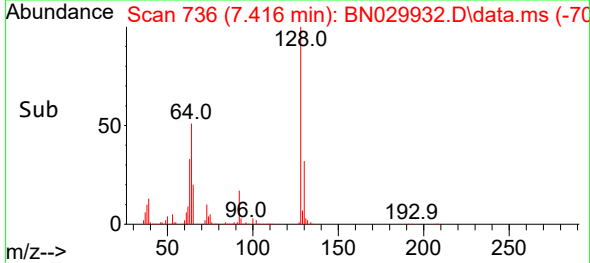
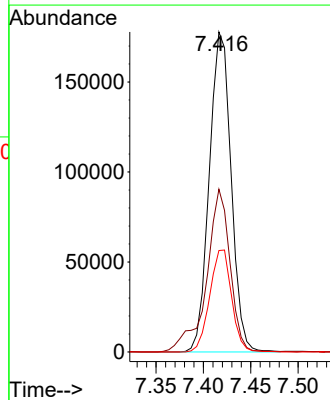
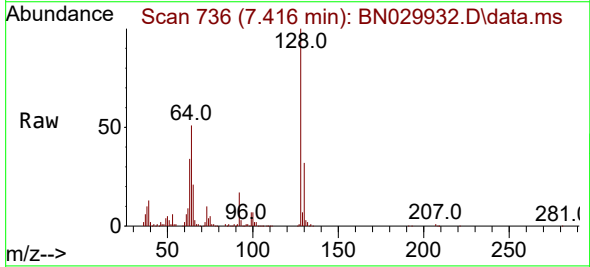


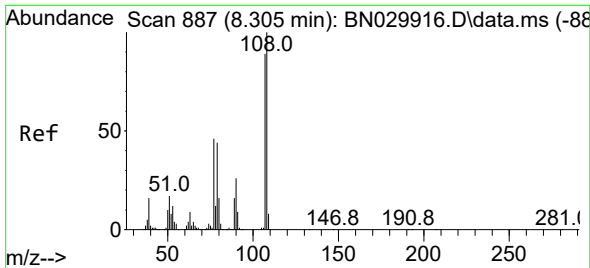
Tgt Ion: 93 Resp: 296043
 Ion Ratio Lower Upper
 93 100
 63 76.4 61.4 92.2
 95 32.7 24.9 37.3



#12
 2-Chlorophenol
 Concen: 20.425 ng/ul
 RT: 7.416 min Scan# 736
 Delta R.T. 0.000 min
 Lab File: BN029932.D
 Acq: 22 Feb 2024 18:03

Tgt Ion: 128 Resp: 285114
 Ion Ratio Lower Upper
 128 100
 64 50.8 39.8 59.6
 130 31.7 25.6 38.4

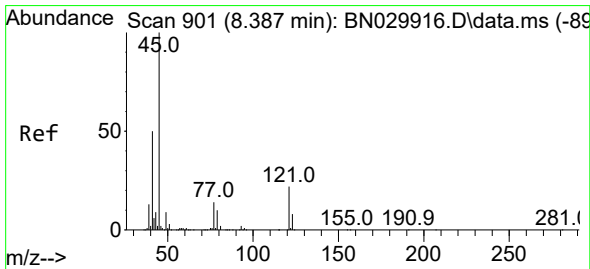
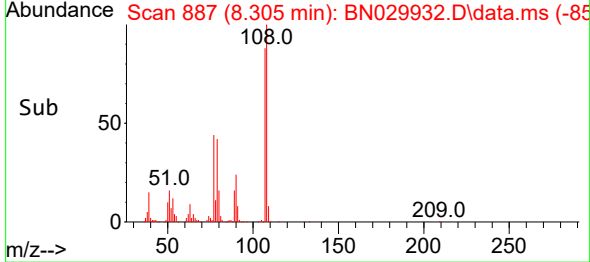
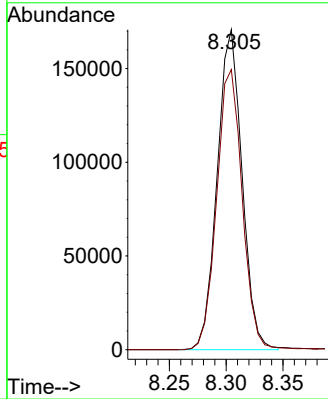
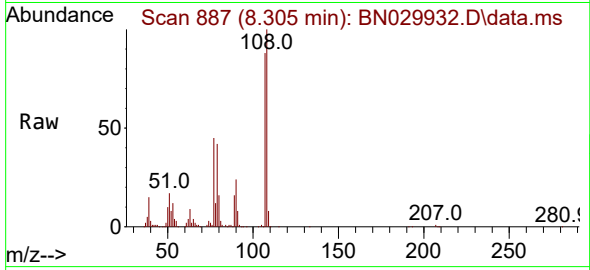




#13
 2-Methylphenol
 Concen: 19.118 ng/ul
 RT: 8.305 min Scan# 887
 Delta R.T. 0.000 min
 Lab File: BN029932.D
 Acq: 22 Feb 2024 18:03

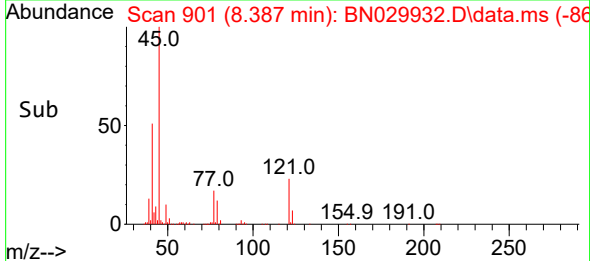
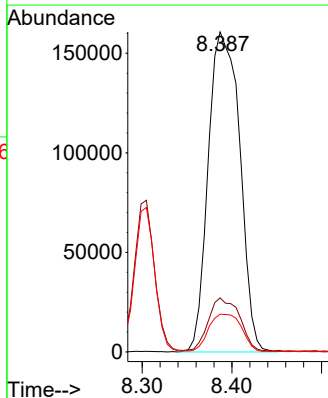
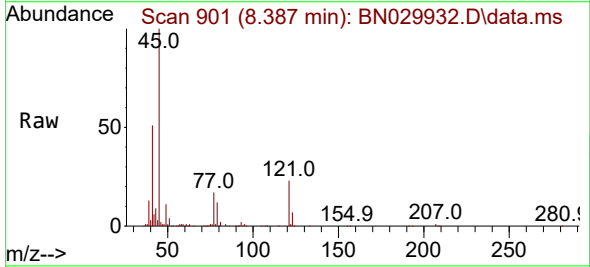
Instrument :
 BNA_N
 ClientSampleId :
 SSTD020319

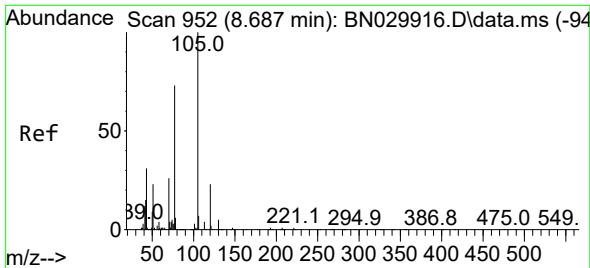
Tgt Ion:108 Resp: 259596
 Ion Ratio Lower Upper
 108 100
 107 87.6 71.2 106.8



#14
 2,2'-oxybis(1-Chloropropane)
 Concen: 18.969 ng/ul
 RT: 8.387 min Scan# 901
 Delta R.T. 0.000 min
 Lab File: BN029932.D
 Acq: 22 Feb 2024 18:03

Tgt Ion: 45 Resp: 392002
 Ion Ratio Lower Upper
 45 100
 77 16.9 12.7 19.1
 79 11.8 9.4 14.2



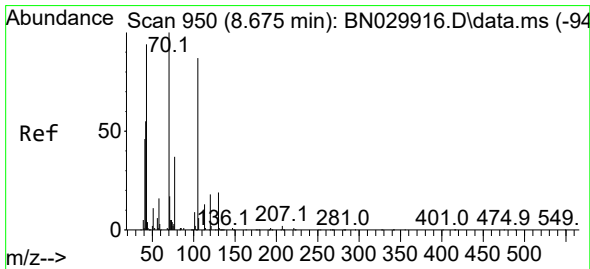
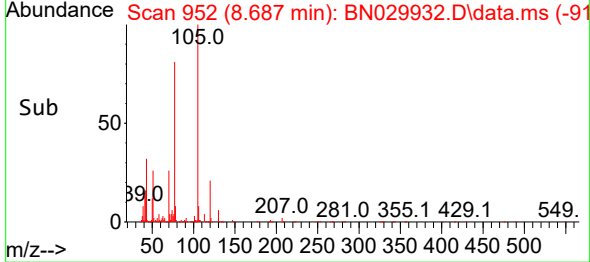
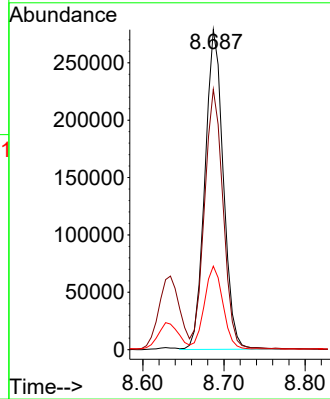
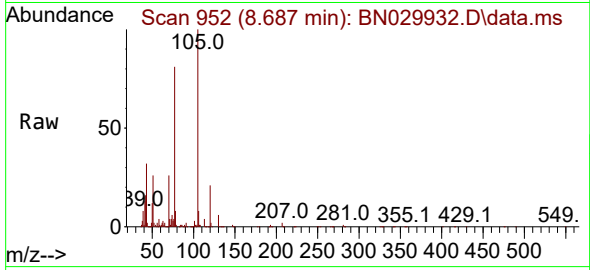


#16
 Acetophenone
 Concen: 20.058 ng/ul
 RT: 8.687 min Scan# 91
 Delta R.T. 0.000 min
 Lab File: BN029932.D
 Acq: 22 Feb 2024 18:03

Instrument :
 BNA_N
 ClientSampleId :
 SSTD020319

Tgt Ion: 105 Resp: 437118

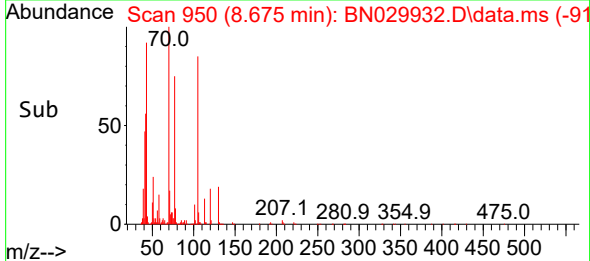
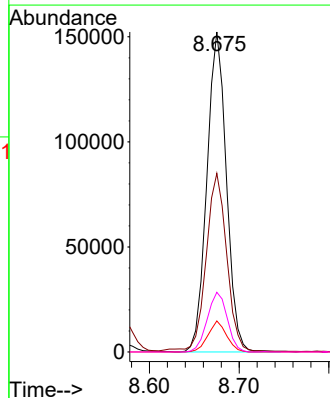
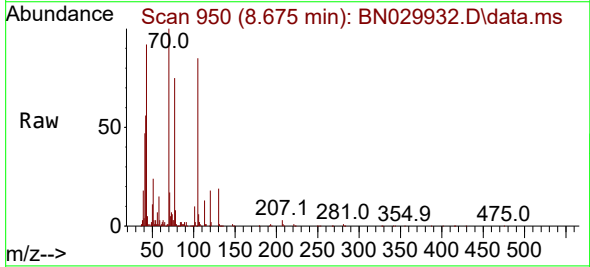
Ion	Ratio	Lower	Upper
105	100		
77	81.4	67.4	101.0
51	26.1	20.7	31.1

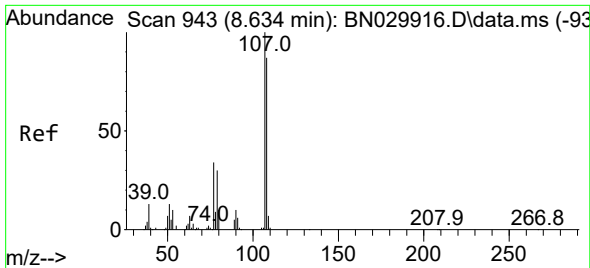


#17
 N-Nitroso-di-n-propylamine
 Concen: 20.487 ng/ul
 RT: 8.675 min Scan# 950
 Delta R.T. 0.000 min
 Lab File: BN029932.D
 Acq: 22 Feb 2024 18:03

Tgt Ion: 70 Resp: 230497

Ion	Ratio	Lower	Upper
70	100		
42	55.8	43.0	64.4
101	9.7	7.4	11.2
130	18.7	15.1	22.7

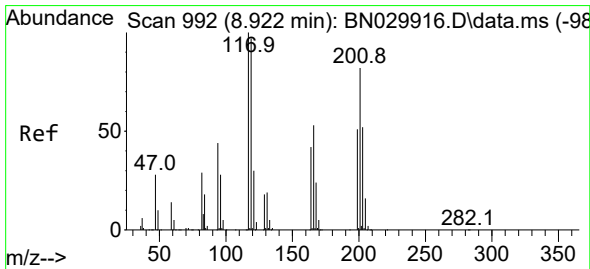
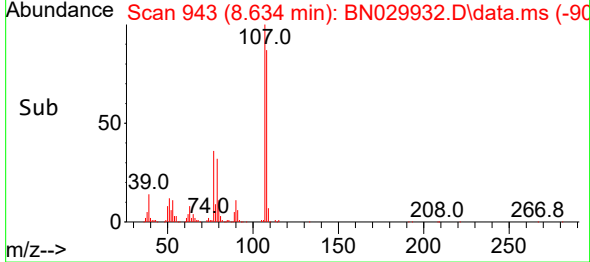
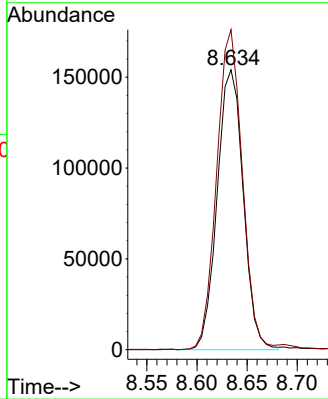
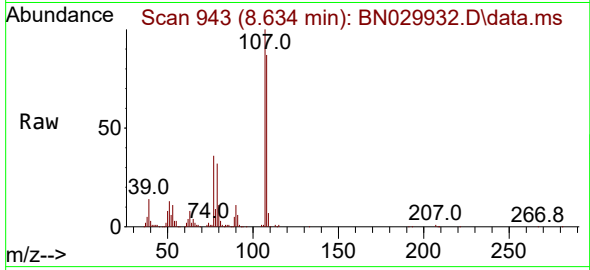




#18
 4-Methylphenol
 Concen: 19.428 ng/u1
 RT: 8.634 min Scan# 943
 Delta R.T. 0.000 min
 Lab File: BN029932.D
 Acq: 22 Feb 2024 18:03

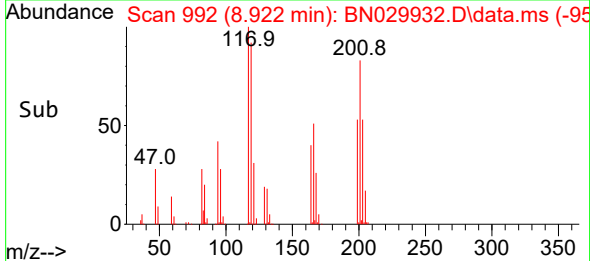
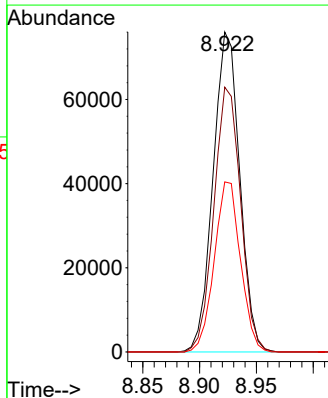
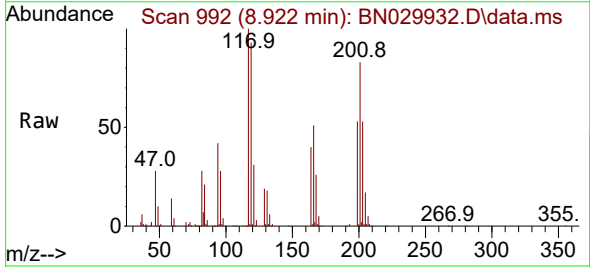
Instrument : BNA_N
 ClientSampleId : SSTD020319

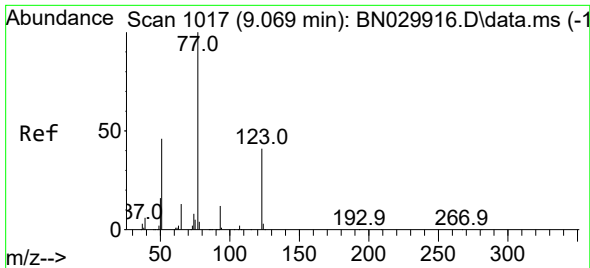
Tgt Ion:108 Resp: 278760
 Ion Ratio Lower Upper
 108 100
 107 114.4 88.7 133.1



#19
 Hexachloroethane
 Concen: 19.183 ng/u1
 RT: 8.922 min Scan# 992
 Delta R.T. -0.006 min
 Lab File: BN029932.D
 Acq: 22 Feb 2024 18:03

Tgt Ion:117 Resp: 124261
 Ion Ratio Lower Upper
 117 100
 201 82.7 64.4 96.6
 199 53.1 38.3 57.5





#22
 Nitrobenzene
 Concen: 20.370 ng/u1
 RT: 9.069 min Scan# 1017
 Delta R.T. 0.000 min
 Lab File: BN029932.D
 Acq: 22 Feb 2024 18:03

Instrument :

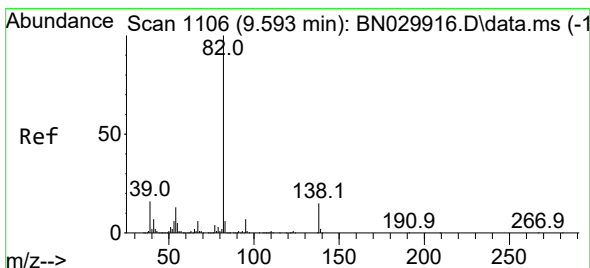
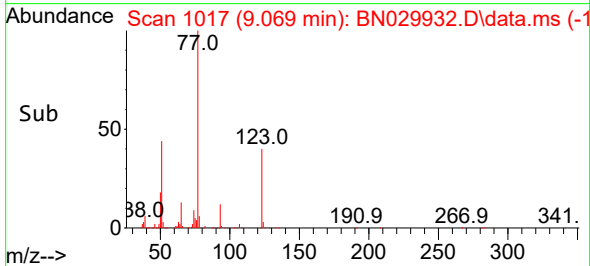
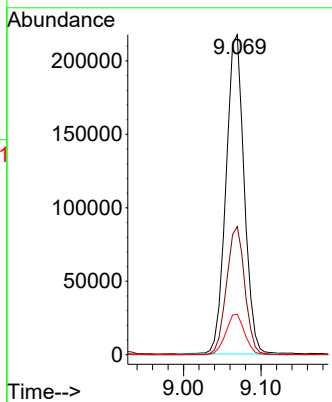
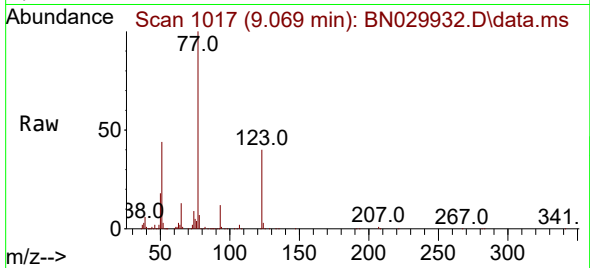
BNA_N

ClientSampleId :

SSTD020319

Tgt Ion: 77 Resp: 355349

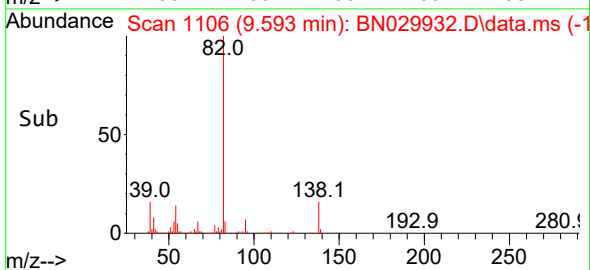
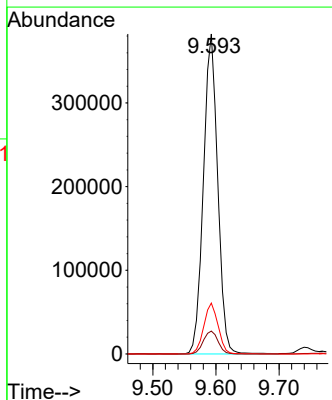
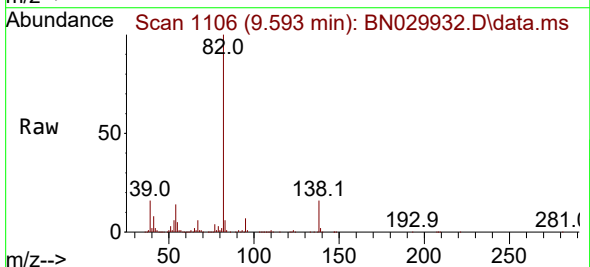
Ion	Ratio	Lower	Upper
77	100		
123	40.1	33.6	50.4
65	12.7	10.6	16.0

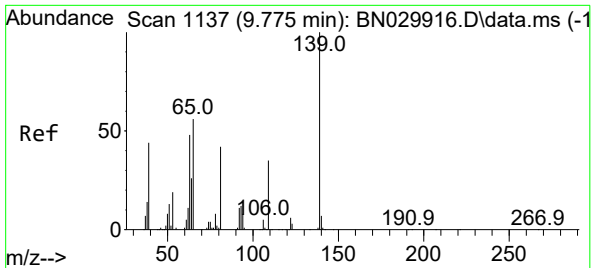


#23
 Isophorone
 Concen: 19.795 ng/u1
 RT: 9.593 min Scan# 1106
 Delta R.T. 0.000 min
 Lab File: BN029932.D
 Acq: 22 Feb 2024 18:03

Tgt Ion: 82 Resp: 601483

Ion	Ratio	Lower	Upper
82	100		
95	7.1	5.8	8.6
138	15.9	12.6	19.0



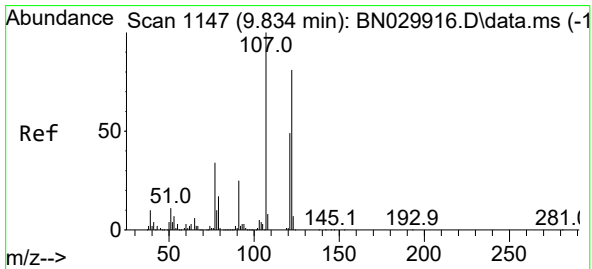
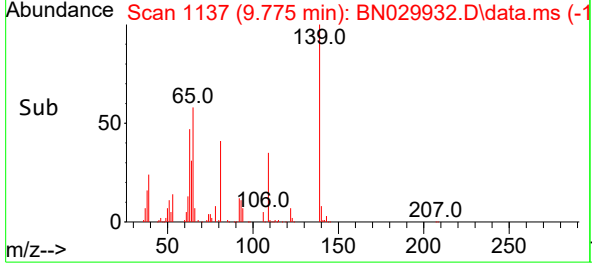
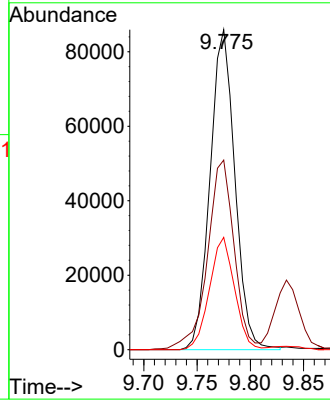
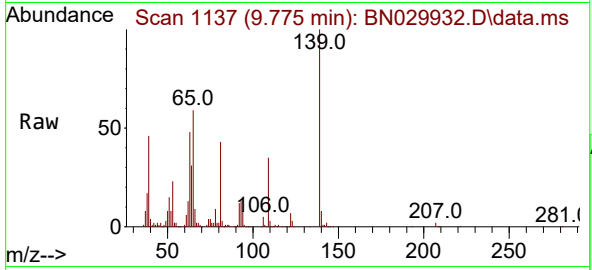


#25
 2-Nitrophenol
 Concen: 22.779 ng/ul
 RT: 9.775 min Scan# 1137
 Delta R.T. 0.000 min
 Lab File: BN029932.D
 Acq: 22 Feb 2024 18:03

Instrument :
 BNA_N
 ClientSampleId :
 SSTD020319

Tgt Ion:139 Resp: 139479

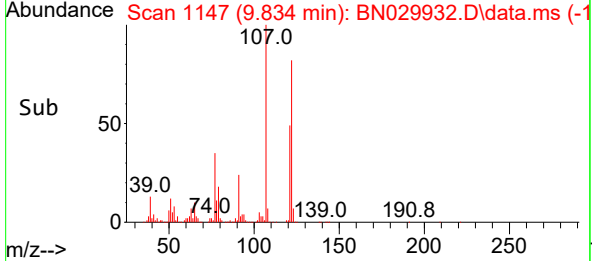
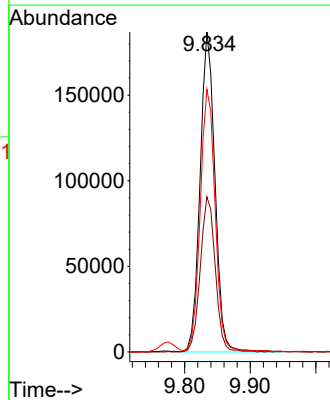
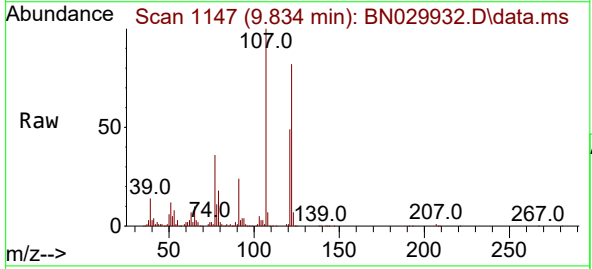
Ion	Ratio	Lower	Upper
139	100		
65	59.3	46.6	70.0
109	35.1	27.0	40.4

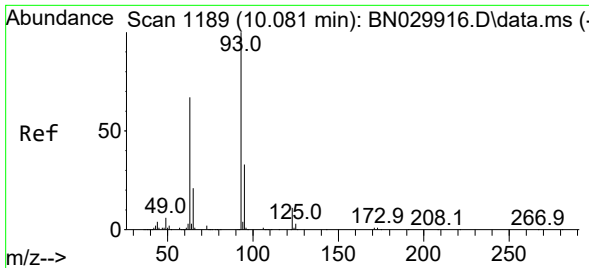


#26
 2,4-Dimethylphenol
 Concen: 20.146 ng/ul
 RT: 9.834 min Scan# 1147
 Delta R.T. 0.000 min
 Lab File: BN029932.D
 Acq: 22 Feb 2024 18:03

Tgt Ion:107 Resp: 295644

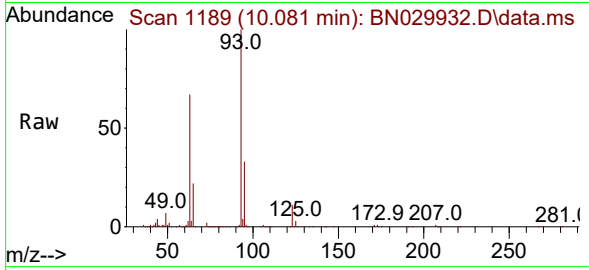
Ion	Ratio	Lower	Upper
107	100		
121	48.5	40.0	60.0
122	82.1	67.6	101.4



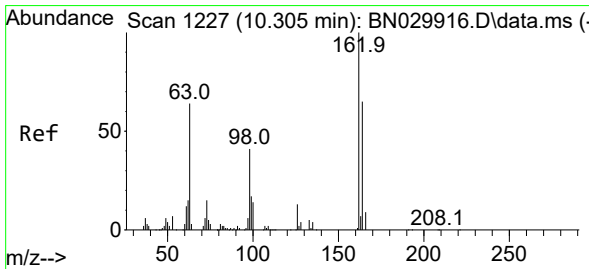
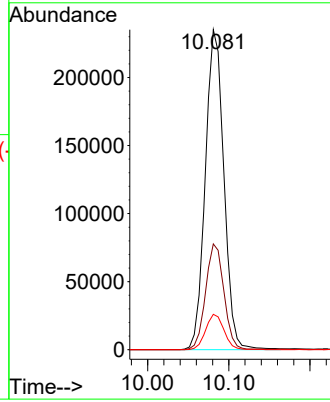
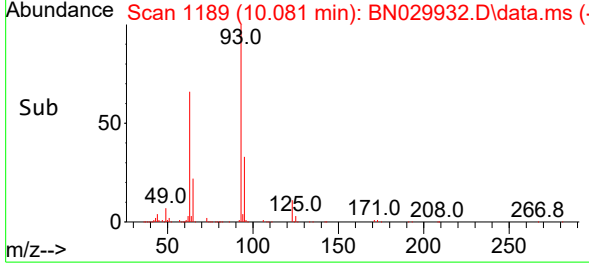


#27
 Bis(2-Chloroethoxy)methane
 Concen: 19.332 ng/ul
 RT: 10.081 min Scan# 1189
 Delta R.T. 0.000 min
 Lab File: BN029932.D
 Acq: 22 Feb 2024 18:03

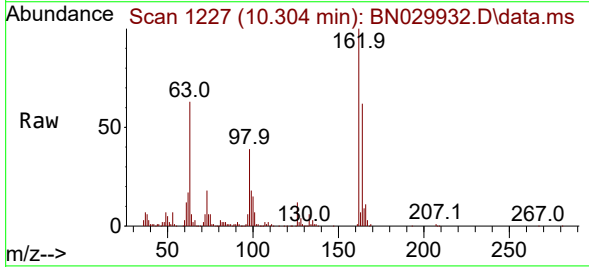
Instrument :
 BNA_N
 ClientSampleId :
 SSTD020319



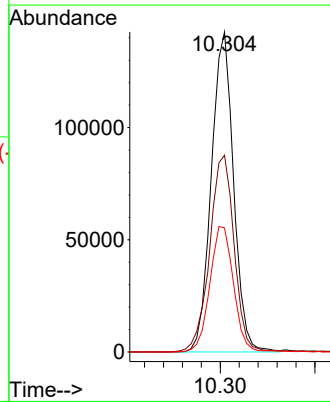
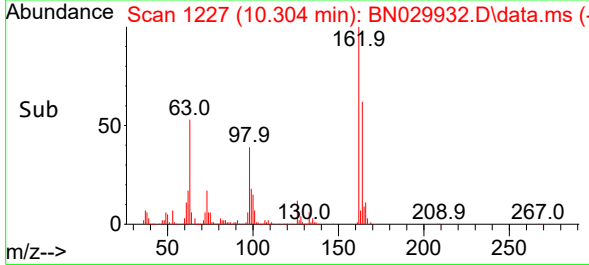
Tgt Ion: 93 Resp: 373313
 Ion Ratio Lower Upper
 93 100
 95 33.1 25.7 38.5
 123 11.1 8.2 12.2

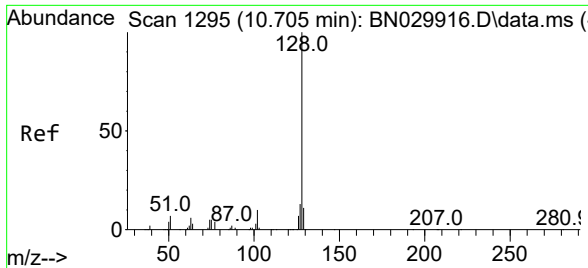


#29
 2,4-Dichlorophenol
 Concen: 21.278 ng/ul
 RT: 10.304 min Scan# 1227
 Delta R.T. 0.000 min
 Lab File: BN029932.D
 Acq: 22 Feb 2024 18:03



Tgt Ion:162 Resp: 232704
 Ion Ratio Lower Upper
 162 100
 164 61.5 53.3 79.9
 98 38.8 33.8 50.8



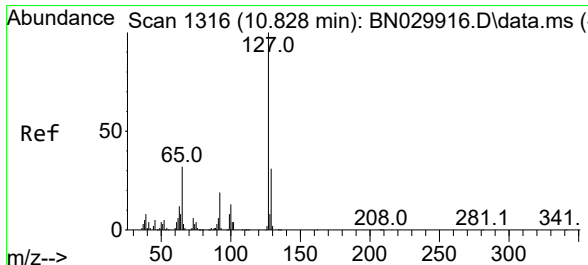
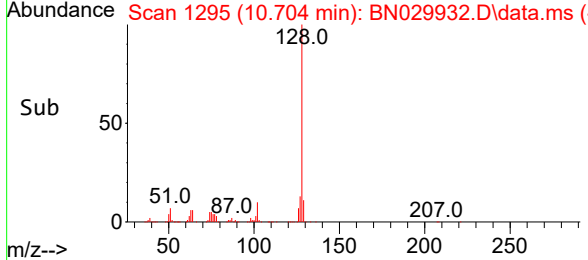
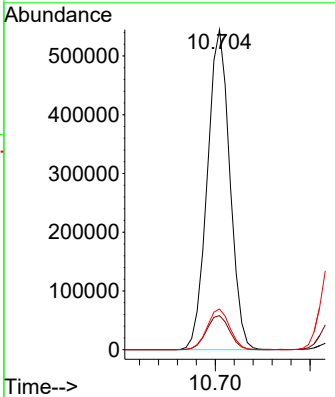
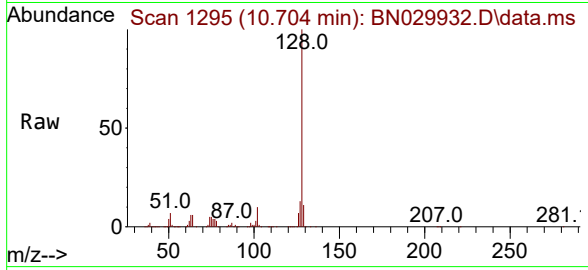


#30
 Naphthalene
 Concen: 19.766 ng/u1
 RT: 10.704 min Scan# 11
 Delta R.T. 0.000 min
 Lab File: BN029932.D
 Acq: 22 Feb 2024 18:03

Instrument : BNA_N
 ClientSampleId : SSTD020319

Tgt Ion:128 Resp: 896209

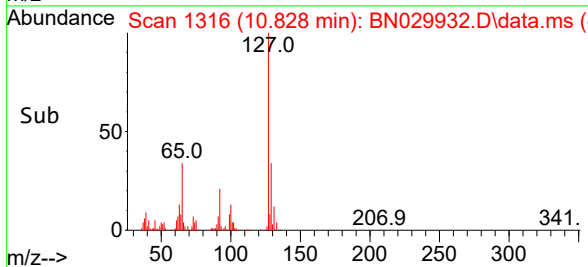
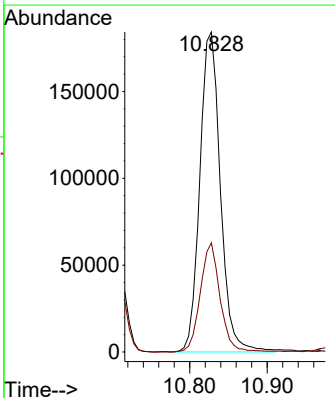
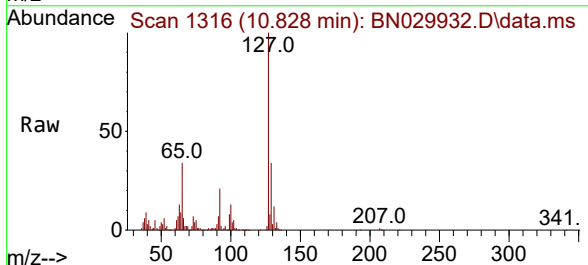
Ion	Ratio	Lower	Upper
128	100		
129	10.7	9.0	13.6
127	12.7	10.4	15.6

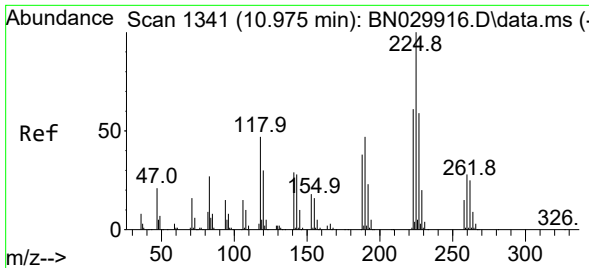


#32
 4-Chloroaniline
 Concen: 19.037 ng/u1
 RT: 10.828 min Scan# 1316
 Delta R.T. 0.000 min
 Lab File: BN029932.D
 Acq: 22 Feb 2024 18:03

Tgt Ion:127 Resp: 339327

Ion	Ratio	Lower	Upper
127	100		
129	34.1	26.4	39.6





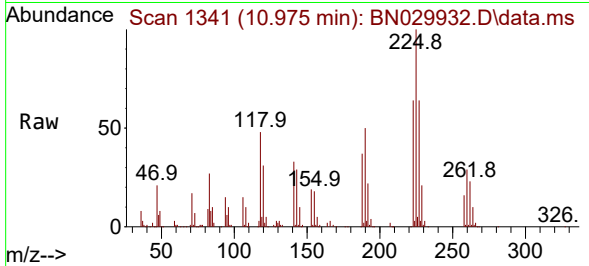
#33
 Hexachlorobutadiene
 Concen: 20.772 ng/u1
 RT: 10.975 min Scan# 11
 Delta R.T. -0.006 min
 Lab File: BN029932.D
 Acq: 22 Feb 2024 18:03

Instrument :

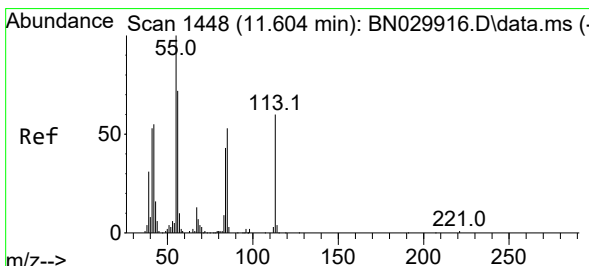
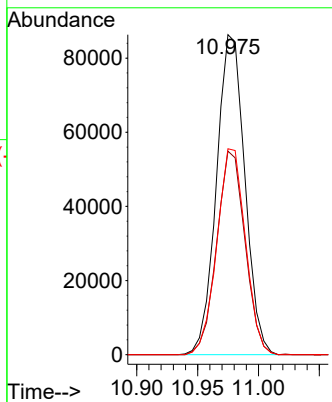
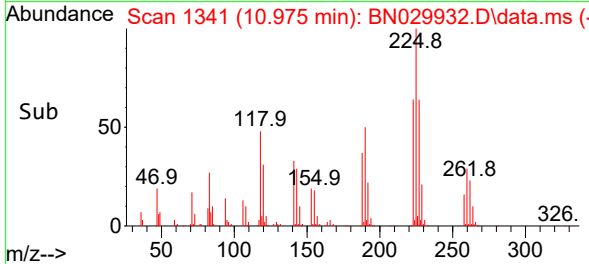
BNA_N

ClientSampleId :

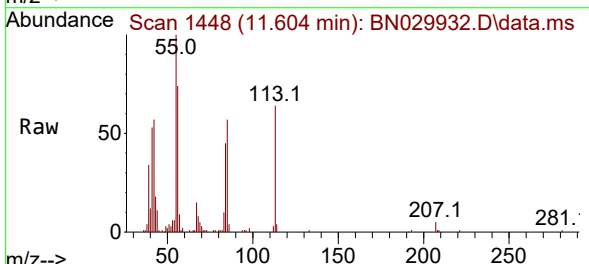
SSTD020319



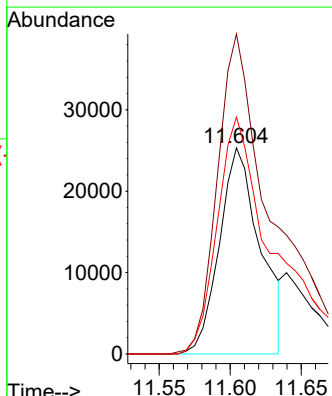
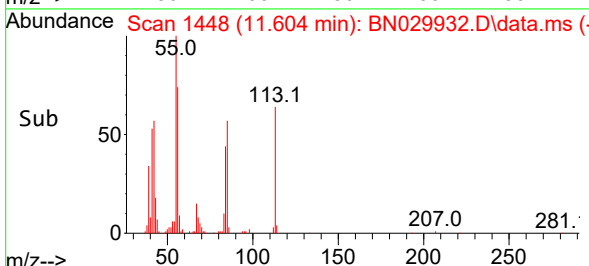
Tgt Ion:225 Resp: 140200
 Ion Ratio Lower Upper
 225 100
 223 63.6 51.6 77.4
 227 64.3 52.2 78.2

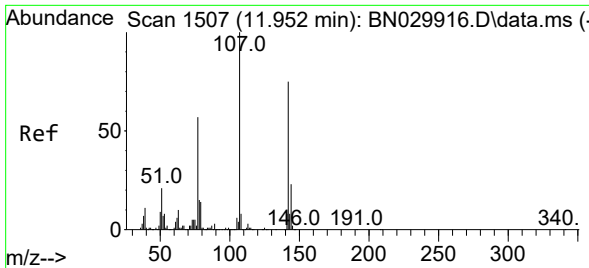


#34
 Caprolactam
 Concen: 13.888 ng/u1
 RT: 11.604 min Scan# 1448
 Delta R.T. 0.000 min
 Lab File: BN029932.D
 Acq: 22 Feb 2024 18:03



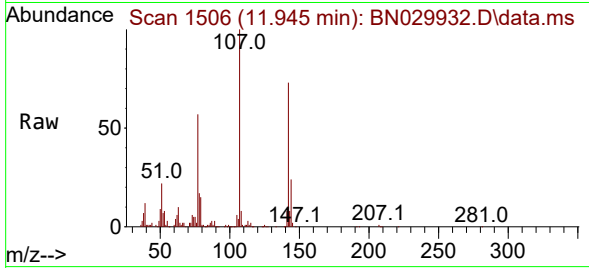
Tgt Ion:113 Resp: 50540
 Ion Ratio Lower Upper
 113 100
 55 155.3 125.3 187.9
 56 115.0 103.4 155.0



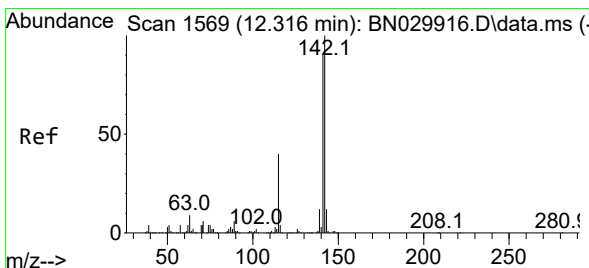
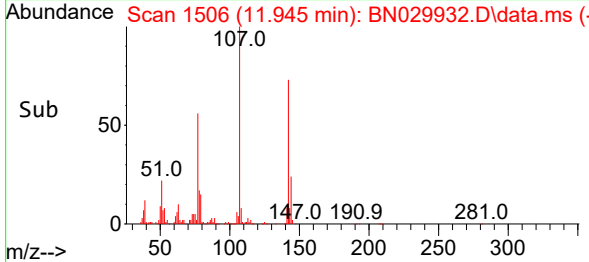
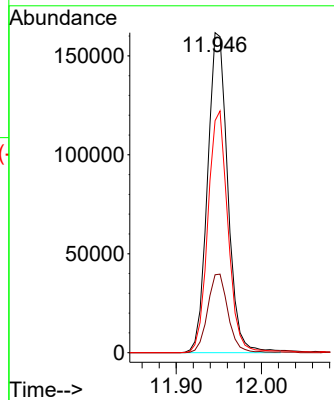


#35
 4-Chloro-3-methylphenol
 Concen: 21.135 ng/ul
 RT: 11.945 min Scan# 1506
 Delta R.T. -0.006 min
 Lab File: BN029932.D
 Acq: 22 Feb 2024 18:03

Instrument :
 BNA_N
 ClientSampleId :
 SSTD020319

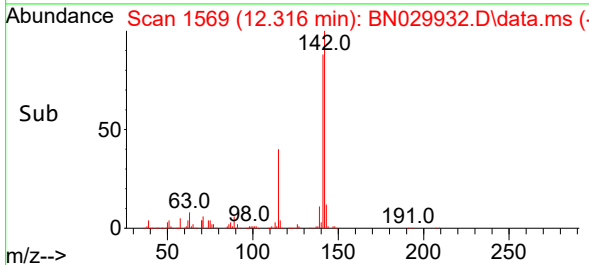
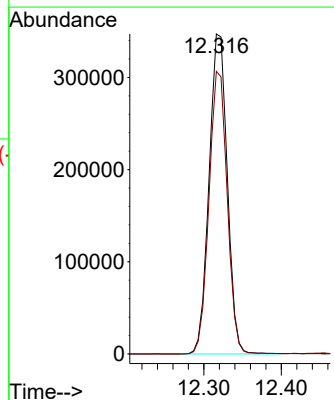
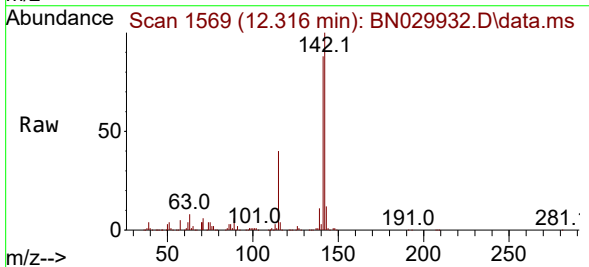


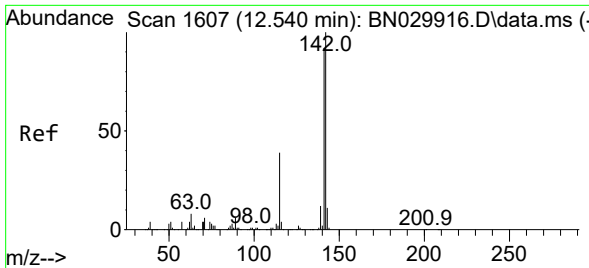
Tgt Ion:107 Resp: 266976
 Ion Ratio Lower Upper
 107 100
 144 24.3 18.8 28.2
 142 72.5 60.6 90.8



#36
 2-Methylnaphthalene
 Concen: 20.402 ng/ul
 RT: 12.316 min Scan# 1569
 Delta R.T. -0.006 min
 Lab File: BN029932.D
 Acq: 22 Feb 2024 18:03

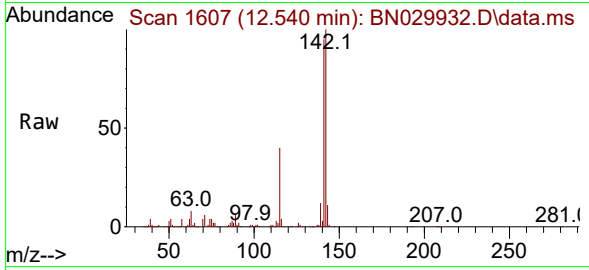
Tgt Ion:142 Resp: 567071
 Ion Ratio Lower Upper
 142 100
 141 88.3 70.4 105.6



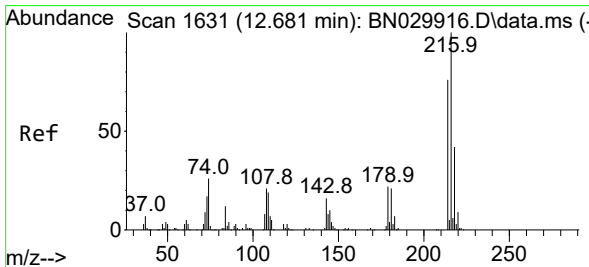
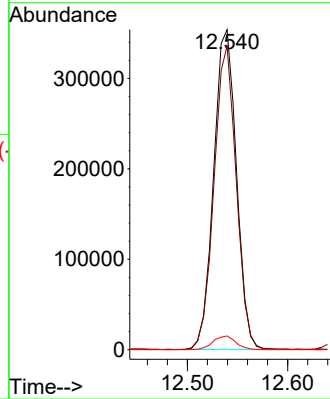
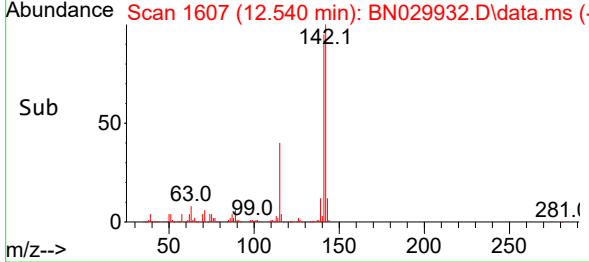


#37
 1-Methylnaphthalene
 Concen: 20.203 ng/uI
 RT: 12.540 min Scan# 1607
 Delta R.T. 0.000 min
 Lab File: BN029932.D
 Acq: 22 Feb 2024 18:03

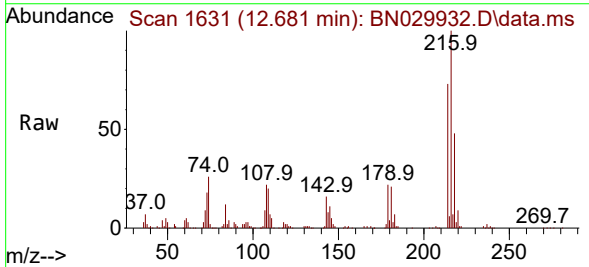
Instrument : BNA_N
 ClientSampleId : SSTD020319



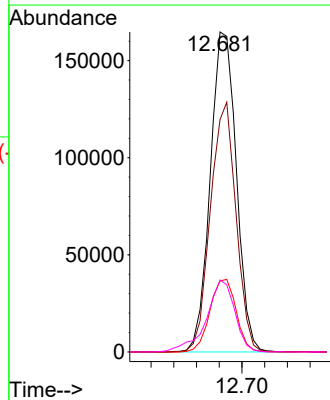
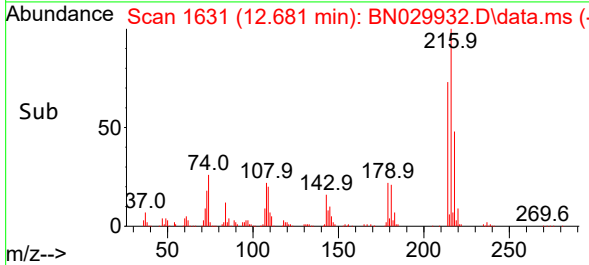
Tgt Ion:142 Resp: 556707
 Ion Ratio Lower Upper
 142 100
 141 94.9 73.8 110.8
 116 4.3 3.3 4.9

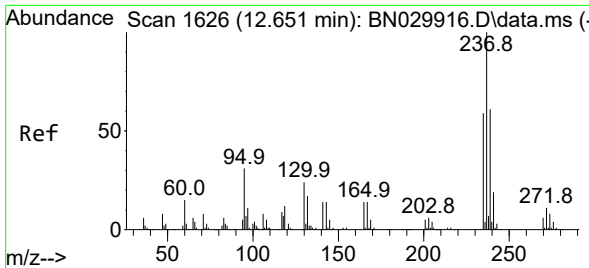


#39
 1,2,4,5-Tetrachlorobenzene
 Concen: 20.907 ng/uI
 RT: 12.681 min Scan# 1631
 Delta R.T. -0.006 min
 Lab File: BN029932.D
 Acq: 22 Feb 2024 18:03



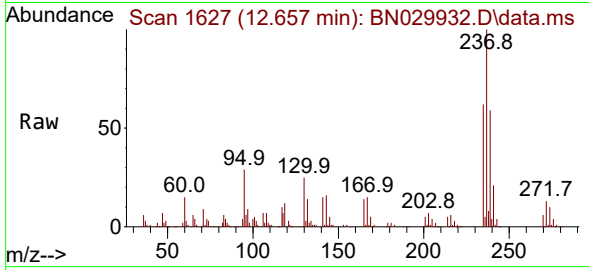
Tgt Ion:216 Resp: 263143
 Ion Ratio Lower Upper
 216 100
 214 72.6 60.4 90.6
 179 22.2 18.6 28.0
 108 22.5 19.0 28.6



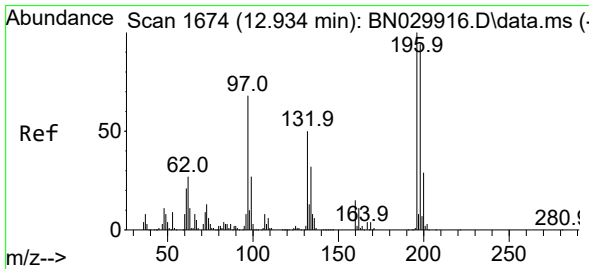
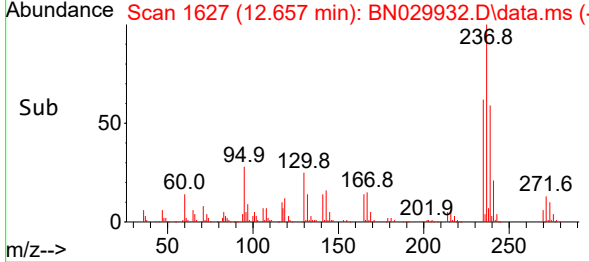
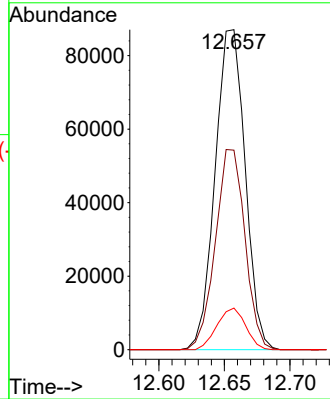


#40
 Hexachlorocyclopentadiene
 Concen: 16.863 ng/ul
 RT: 12.657 min Scan# 1627
 Delta R.T. 0.000 min
 Lab File: BN029932.D
 Acq: 22 Feb 2024 18:03

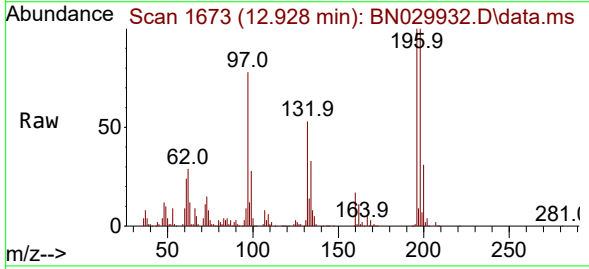
Instrument :
 BNA_N
 ClientSampleId :
 SSTD020319



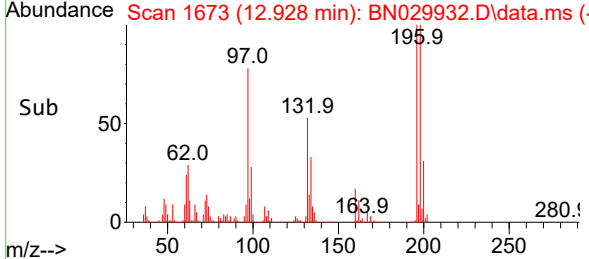
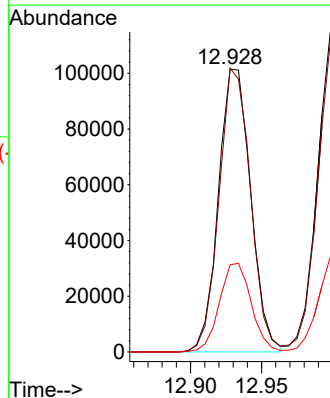
Tgt Ion:237 Resp: 138735
 Ion Ratio Lower Upper
 237 100
 235 62.3 50.2 75.4
 272 13.0 9.5 14.3

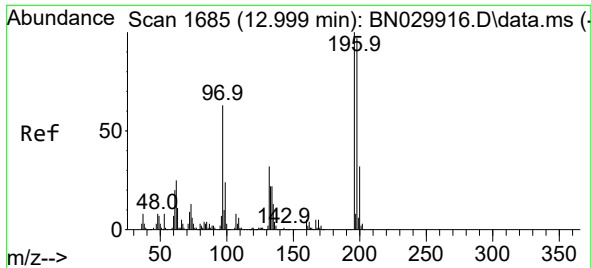


#41
 2,4,6-Trichlorophenol
 Concen: 22.135 ng/ul
 RT: 12.928 min Scan# 1673
 Delta R.T. -0.006 min
 Lab File: BN029932.D
 Acq: 22 Feb 2024 18:03



Tgt Ion:196 Resp: 160584
 Ion Ratio Lower Upper
 196 100
 198 100.4 76.8 115.2
 200 30.9 24.6 37.0





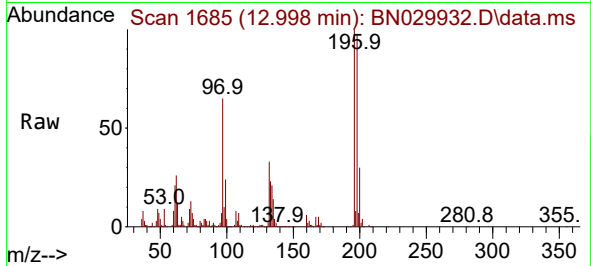
#42
 2,4,5-Trichlorophenol
 Concen: 22.333 ng/ul
 RT: 12.998 min Scan# 1
 Delta R.T. -0.006 min
 Lab File: BN029932.D
 Acq: 22 Feb 2024 18:03

Instrument :

BNA_N

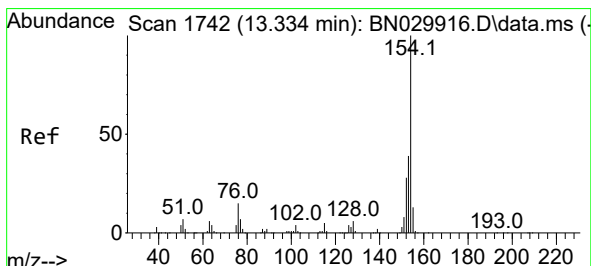
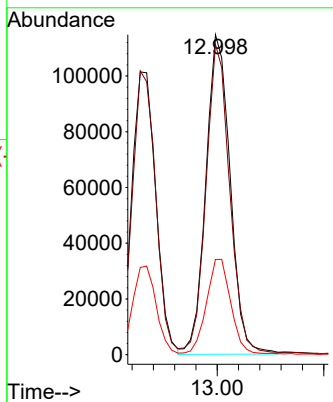
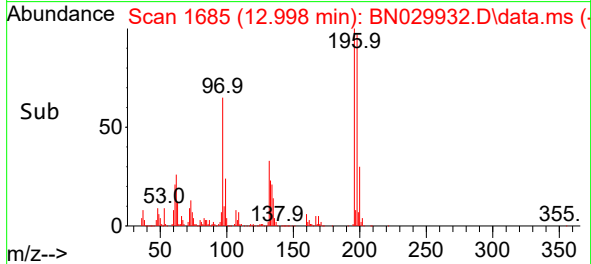
ClientSampleId :

SSTD020319

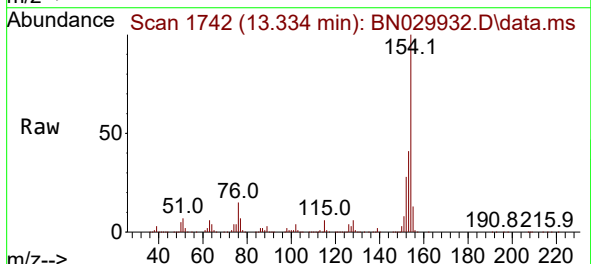


Tgt Ion:196 Resp: 182052

Ion	Ratio	Lower	Upper
196	100		
198	97.0	75.3	112.9
200	29.8	24.7	37.1

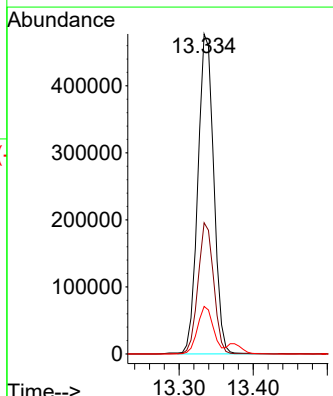
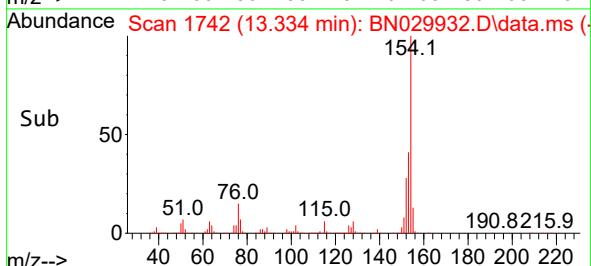


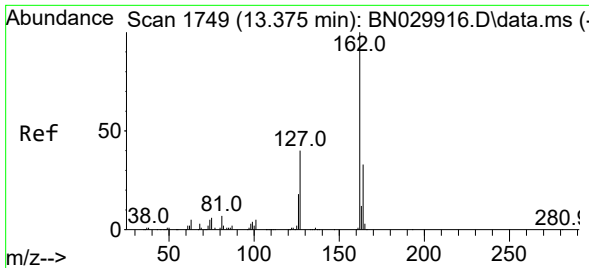
#43
 1,1'-Biphenyl
 Concen: 19.760 ng/ul
 RT: 13.334 min Scan# 1742
 Delta R.T. -0.006 min
 Lab File: BN029932.D
 Acq: 22 Feb 2024 18:03



Tgt Ion:154 Resp: 707611

Ion	Ratio	Lower	Upper
154	100		
153	41.0	32.8	49.2
76	14.9	12.9	19.3



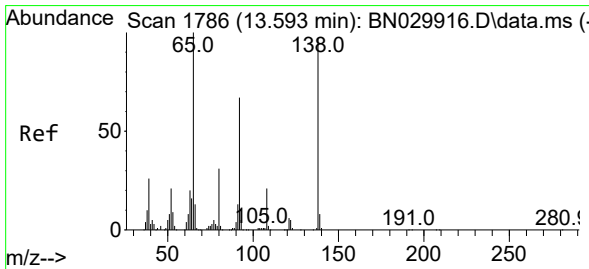
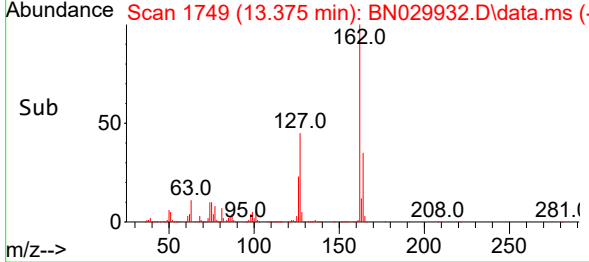
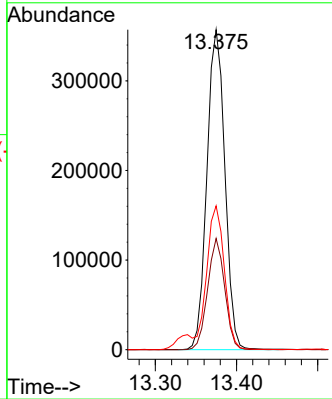
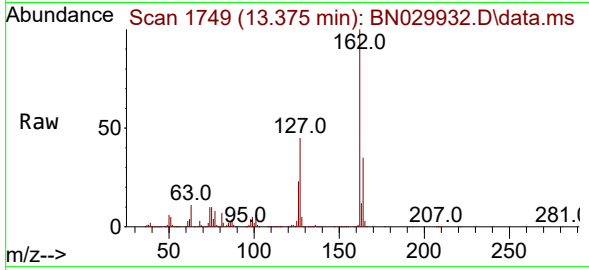


#44
 2-Chloronaphthalene
 Concen: 19.707 ng/ul
 RT: 13.375 min Scan# 1749
 Delta R.T. 0.000 min
 Lab File: BN029932.D
 Acq: 22 Feb 2024 18:03

Instrument : BNA_N
 ClientSampleId : SSTD020319

Tgt Ion:162 Resp: 548477

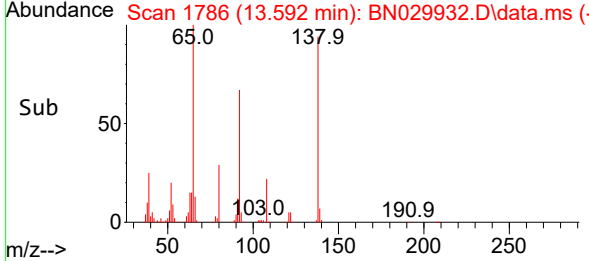
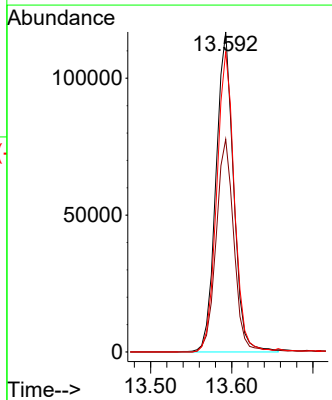
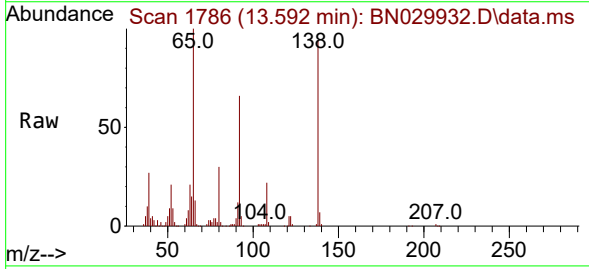
Ion	Ratio	Lower	Upper
162	100		
164	34.8	25.5	38.3
127	45.0	35.7	53.5

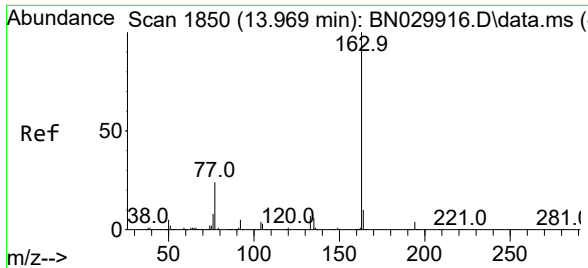


#45
 2-Nitroaniline
 Concen: 21.559 ng/ul
 RT: 13.592 min Scan# 1786
 Delta R.T. 0.000 min
 Lab File: BN029932.D
 Acq: 22 Feb 2024 18:03

Tgt Ion: 65 Resp: 176405

Ion	Ratio	Lower	Upper
65	100		
92	66.5	54.3	81.5
138	93.9	71.2	106.8



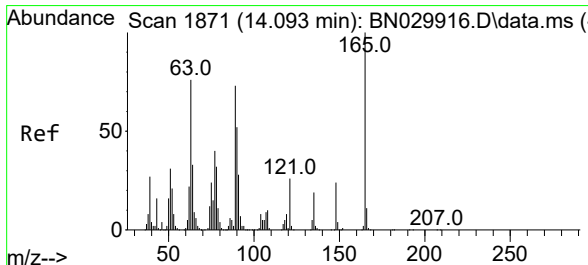
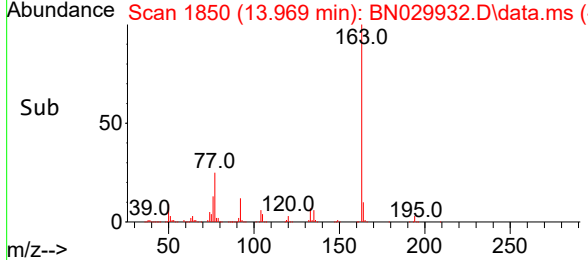
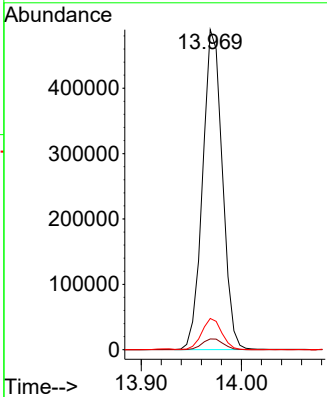
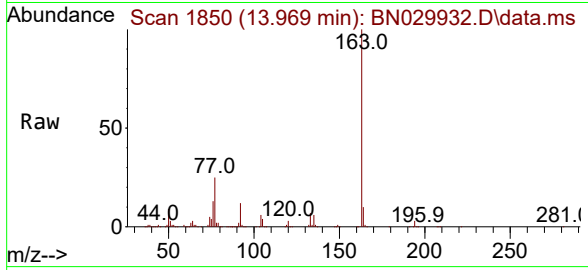


#47
 Dimethylphthalate
 Concen: 20.684 ng/ul
 RT: 13.969 min Scan# 1850
 Delta R.T. -0.006 min
 Lab File: BN029932.D
 Acq: 22 Feb 2024 18:03

Instrument : BNA_N
 ClientSampleId : SSTD020319

Tgt Ion:163 Resp: 669363

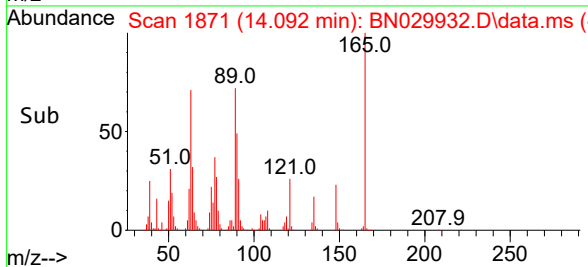
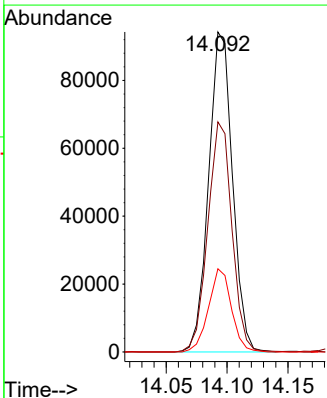
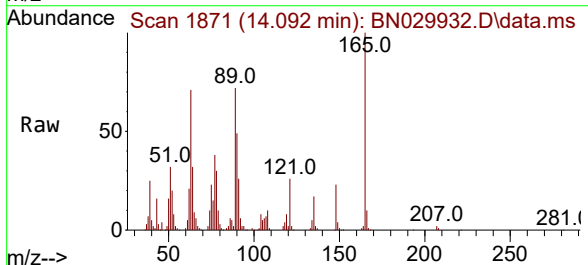
Ion	Ratio	Lower	Upper
163	100		
194	3.3	2.7	4.1
164	9.8	8.2	12.2

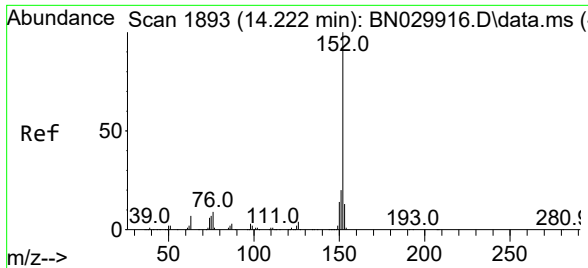


#48
 2,6-Dinitrotoluene
 Concen: 22.220 ng/ul
 RT: 14.092 min Scan# 1871
 Delta R.T. -0.006 min
 Lab File: BN029932.D
 Acq: 22 Feb 2024 18:03

Tgt Ion:165 Resp: 128668

Ion	Ratio	Lower	Upper
165	100		
89	71.9	55.8	83.8
121	26.0	19.8	29.6



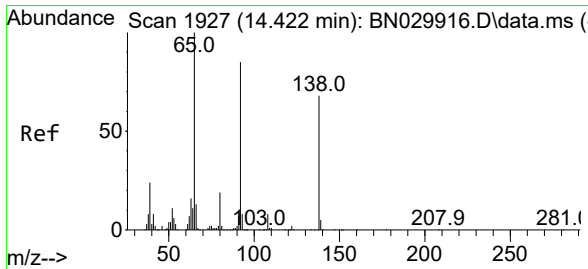
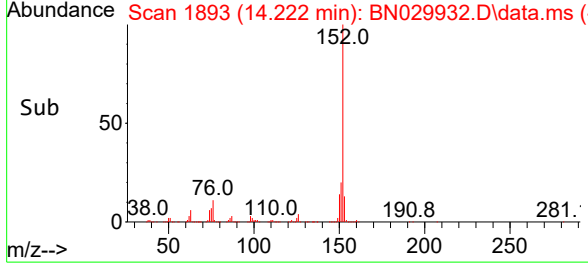
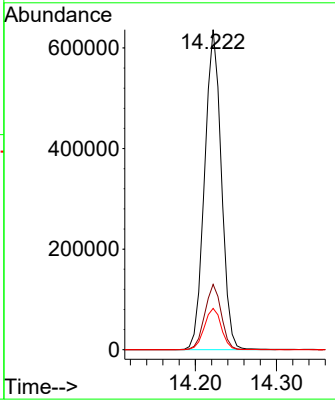
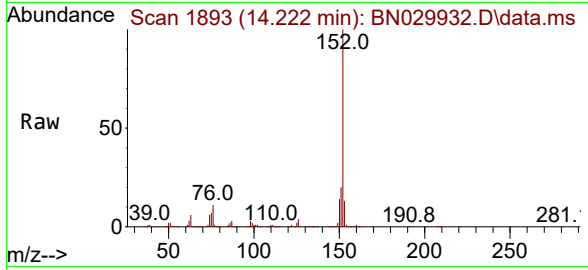


#50
 Acenaphthylene
 Concen: 20.193 ng/ul
 RT: 14.222 min Scan# 1893
 Delta R.T. 0.000 min
 Lab File: BN029932.D
 Acq: 22 Feb 2024 18:03

Instrument : BNA_N
 ClientSampleId : SSTD020319

Tgt Ion:152 Resp: 909857

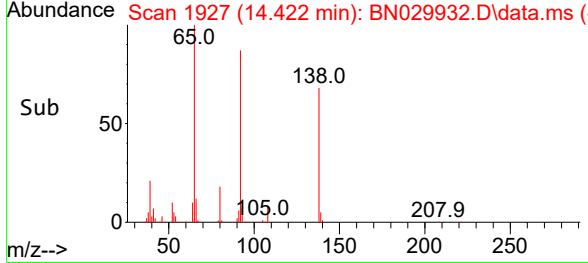
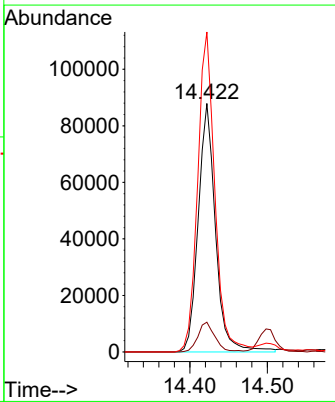
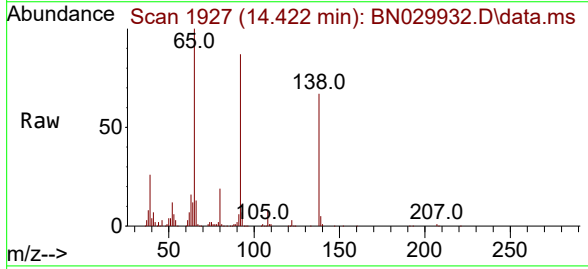
Ion	Ratio	Lower	Upper
152	100		
151	20.4	15.4	23.2
153	12.9	10.5	15.7

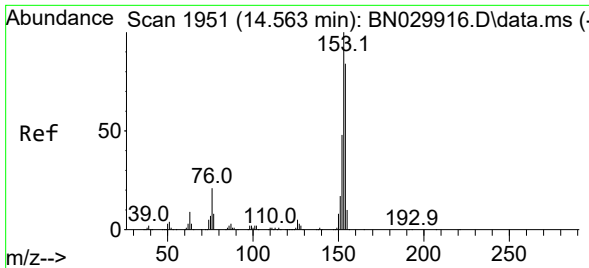


#51
 3-Nitroaniline
 Concen: 20.179 ng/ul
 RT: 14.422 min Scan# 1927
 Delta R.T. 0.000 min
 Lab File: BN029932.D
 Acq: 22 Feb 2024 18:03

Tgt Ion:138 Resp: 136000

Ion	Ratio	Lower	Upper
138	100		
108	12.0	9.4	14.2
92	128.8	102.7	154.1



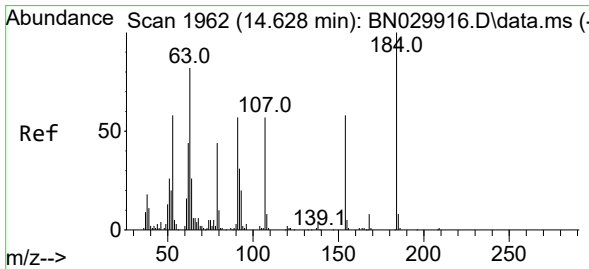
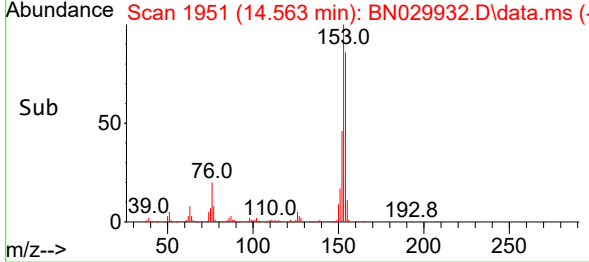
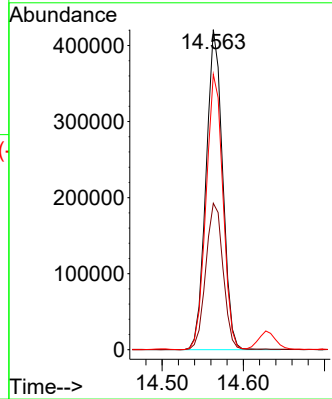
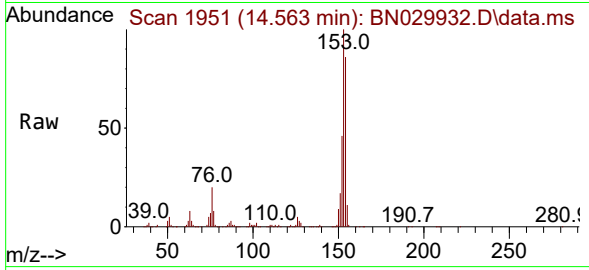


#52
 Acenaphthene
 Concen: 20.051 ng/u1
 RT: 14.563 min Scan# 1951
 Delta R.T. -0.006 min
 Lab File: BN029932.D
 Acq: 22 Feb 2024 18:03

Instrument : BNA_N
 ClientSampleId : SSTD020319

Tgt Ion:153 Resp: 596797

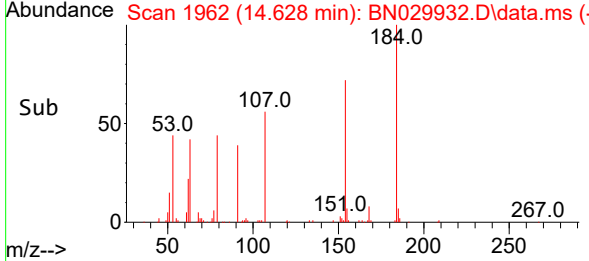
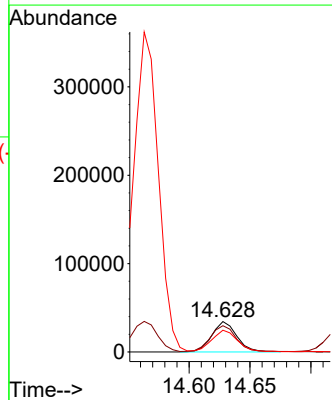
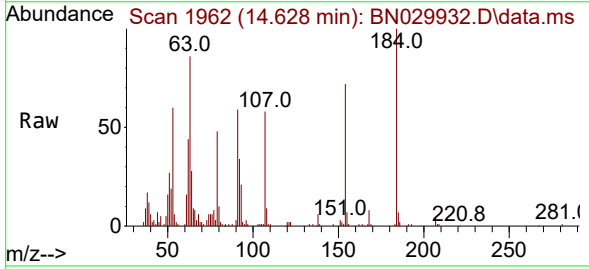
Ion	Ratio	Lower	Upper
153	100		
152	45.8	39.2	58.8
154	86.1	74.6	111.8

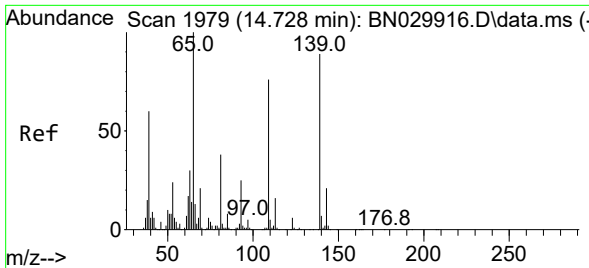


#53
 2,4-Dinitrophenol
 Concen: 16.777 ng/u1
 RT: 14.628 min Scan# 1962
 Delta R.T. 0.000 min
 Lab File: BN029932.D
 Acq: 22 Feb 2024 18:03

Tgt Ion:184 Resp: 49303

Ion	Ratio	Lower	Upper
184	100		
63	86.1	71.2	106.8
154	71.7	58.8	88.2

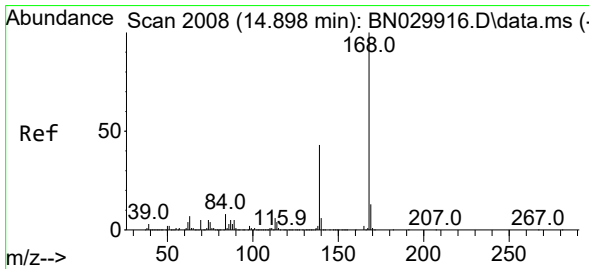
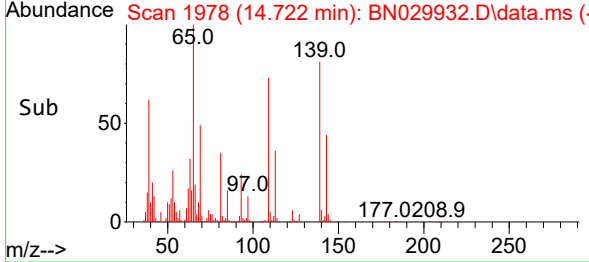
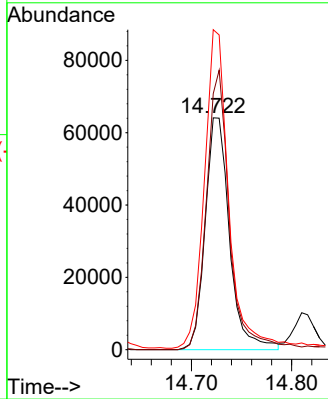
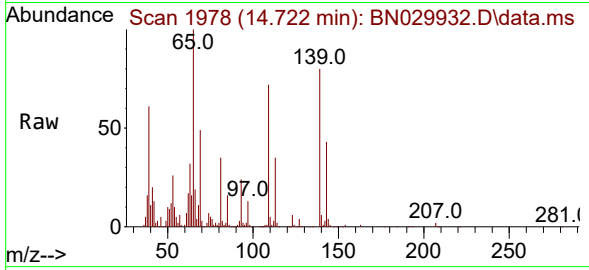




#55
 4-Nitrophenol
 Concen: 19.761 ng/u1
 RT: 14.722 min Scan# 1979
 Delta R.T. -0.006 min
 Lab File: BN029932.D
 Acq: 22 Feb 2024 18:03

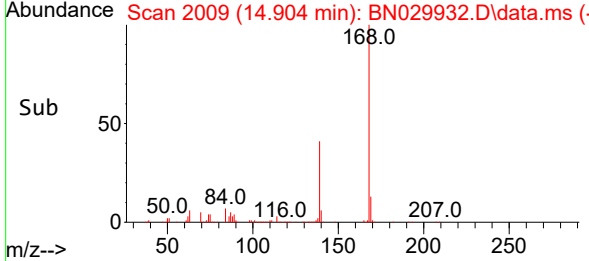
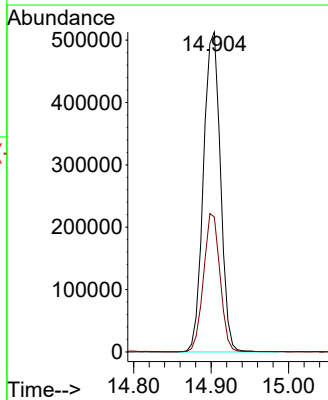
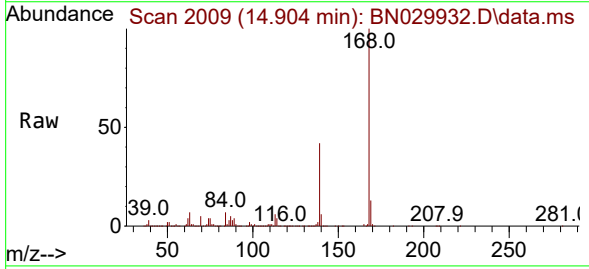
Instrument : BNA_N
 ClientSampleId : SSTD020319

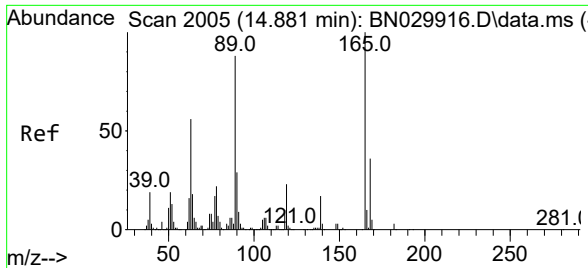
Tgt Ion	Resp	Lower	Upper
109	108419		
109	100		
139	110.4	94.6	142.0
65	138.0	108.5	162.7



#56
 Dibenzofuran
 Concen: 19.915 ng/u1
 RT: 14.904 min Scan# 2009
 Delta R.T. 0.000 min
 Lab File: BN029932.D
 Acq: 22 Feb 2024 18:03

Tgt Ion	Resp	Lower	Upper
168	782720		
168	100		
139	42.2	32.8	49.2

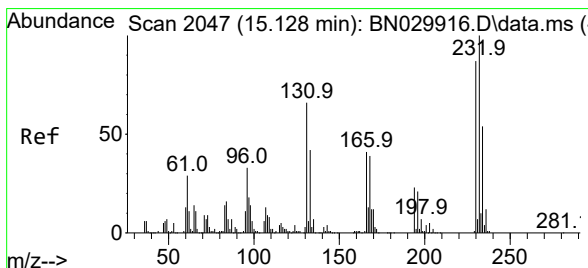
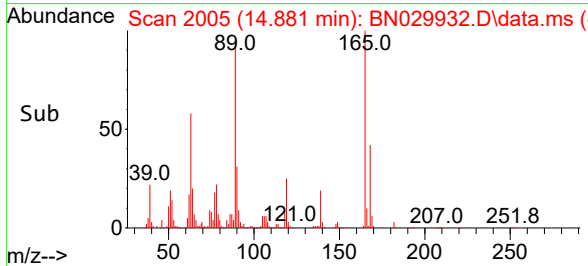
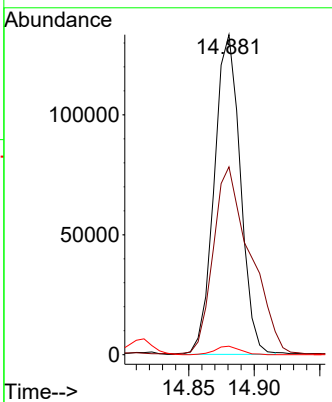
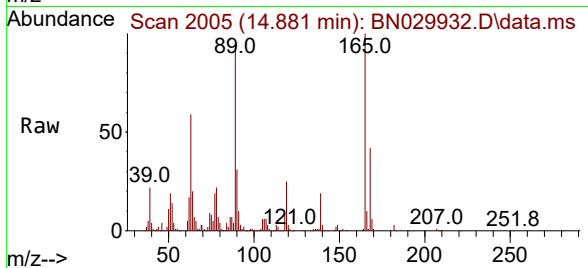




#57
 2,4-Dinitrotoluene
 Concen: 22.638 ng/ul
 RT: 14.881 min Scan# 2005
 Delta R.T. 0.000 min
 Lab File: BN029932.D
 Acq: 22 Feb 2024 18:03

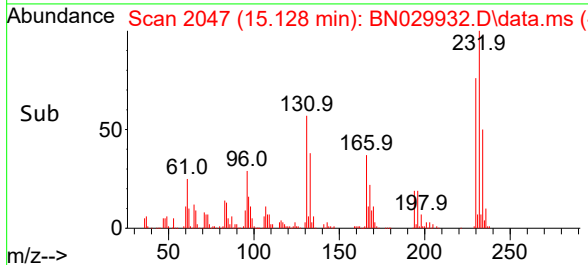
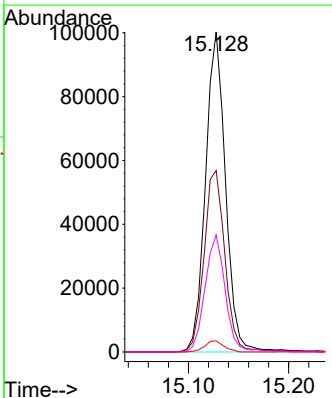
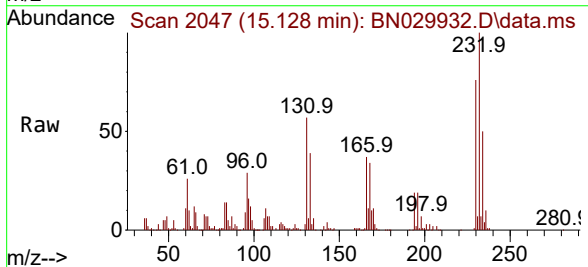
Instrument : BNA_N
 ClientSampleId : SSTD020319

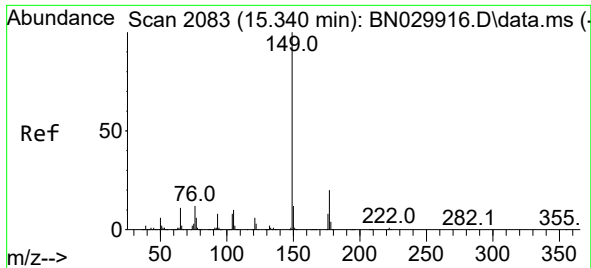
Tgt Ion	Resp	Lower	Upper
165	184563	100	100
63	58.7	46.7	70.1
182	2.6	1.9	2.9



#58
 2,3,4,6-Tetrachlorophenol
 Concen: 23.999 ng/ul
 RT: 15.128 min Scan# 2047
 Delta R.T. 0.000 min
 Lab File: BN029932.D
 Acq: 22 Feb 2024 18:03

Tgt Ion	Resp	Lower	Upper
232	138846	100	100
131	56.7	46.9	70.3
130	3.4	2.6	4.0
166	36.6	29.4	44.2





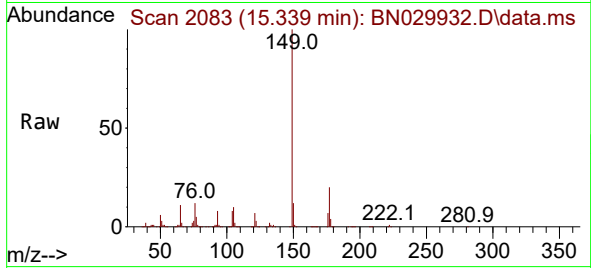
#59
 Diethylphthalate
 Concen: 20.781 ng/ul
 RT: 15.339 min Scan# 2083
 Delta R.T. 0.000 min
 Lab File: BN029932.D
 Acq: 22 Feb 2024 18:03

Instrument :

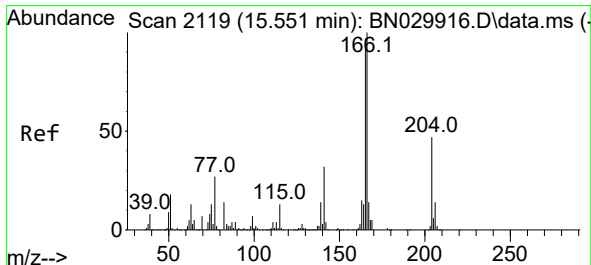
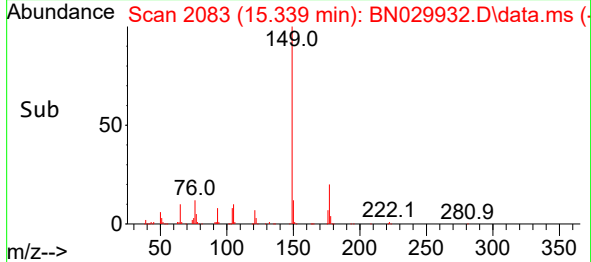
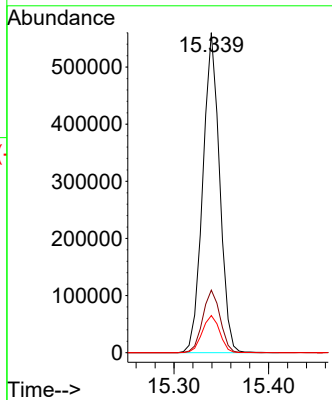
BNA_N

ClientSampleId :

SSTD020319

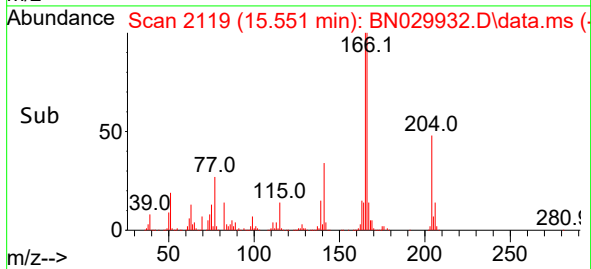
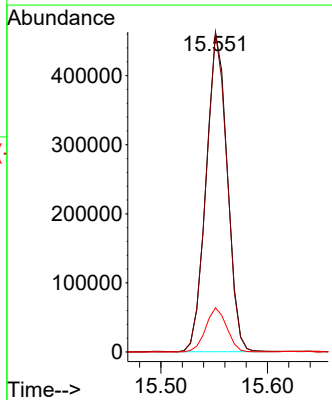
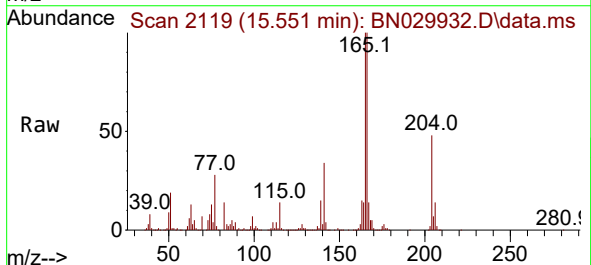


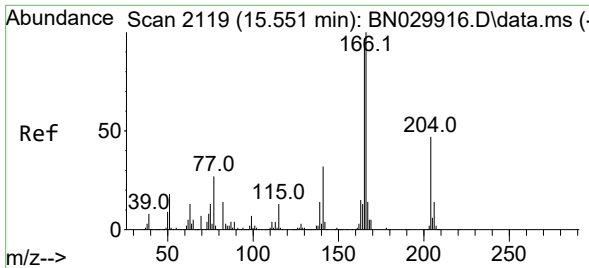
Tgt Ion:149 Resp: 690809
 Ion Ratio Lower Upper
 149 100
 177 19.5 15.8 23.6
 150 11.6 9.6 14.4



#61
 Fluorene
 Concen: 20.581 ng/ul
 RT: 15.551 min Scan# 2119
 Delta R.T. -0.006 min
 Lab File: BN029932.D
 Acq: 22 Feb 2024 18:03

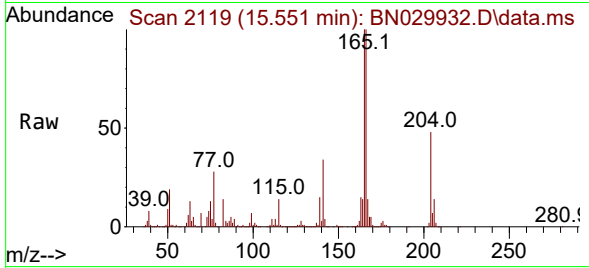
Tgt Ion:166 Resp: 639401
 Ion Ratio Lower Upper
 166 100
 165 99.9 77.4 116.0
 167 13.8 10.9 16.3



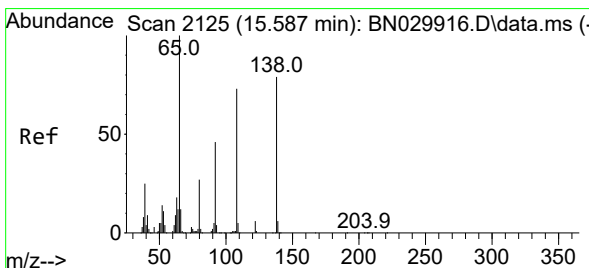
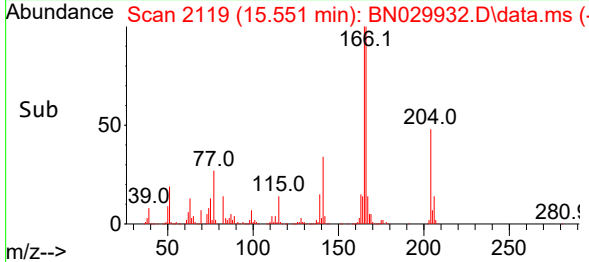
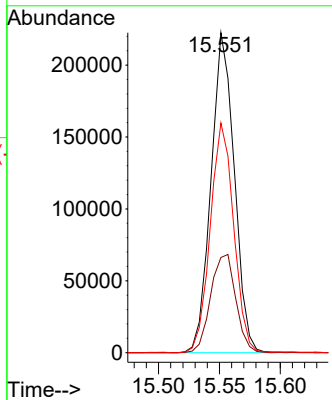


#62
 4-Chlorophenyl-phenylether
 Concen: 21.330 ng/ul
 RT: 15.551 min Scan# 2119
 Delta R.T. -0.006 min
 Lab File: BN029932.D
 Acq: 22 Feb 2024 18:03

Instrument :
 BNA_N
 ClientSampleId :
 SSTD020319

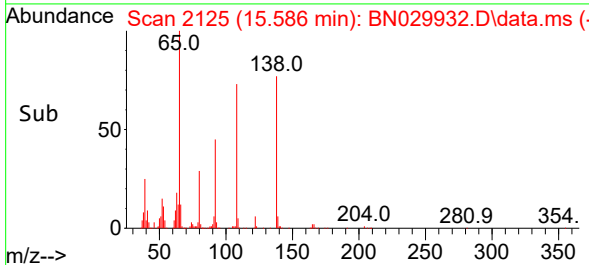
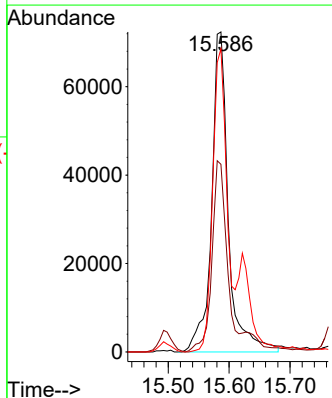
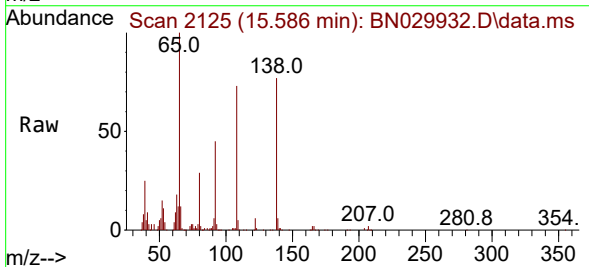


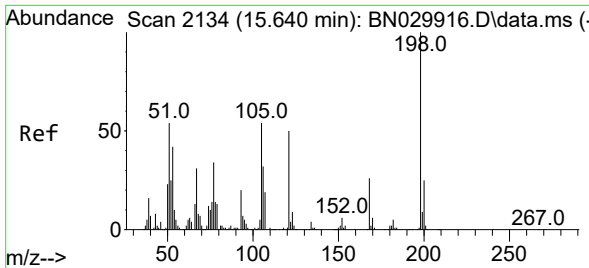
Tgt Ion:204 Resp: 296389
 Ion Ratio Lower Upper
 204 100
 206 29.8 27.5 41.3
 141 71.8 60.5 90.7



#63
 4-Nitroaniline
 Concen: 22.775 ng/ul
 RT: 15.586 min Scan# 2125
 Delta R.T. 0.000 min
 Lab File: BN029932.D
 Acq: 22 Feb 2024 18:03

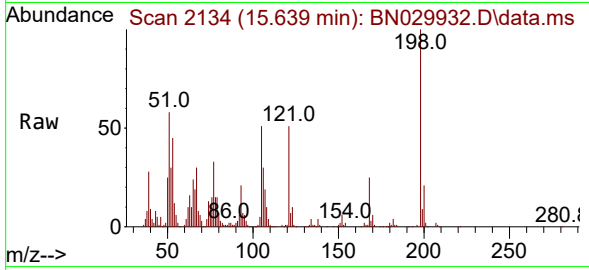
Tgt Ion:138 Resp: 138538
 Ion Ratio Lower Upper
 138 100
 92 58.6 47.4 71.2
 108 94.8 70.9 106.3



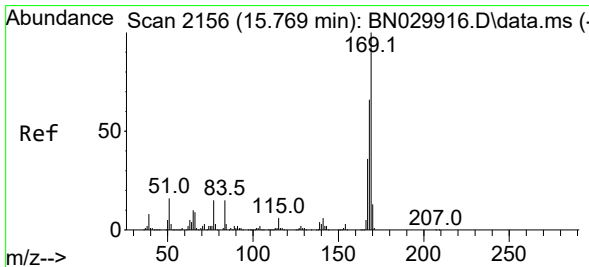
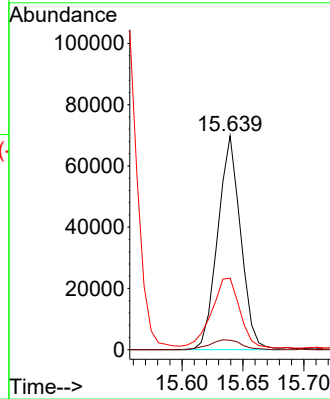
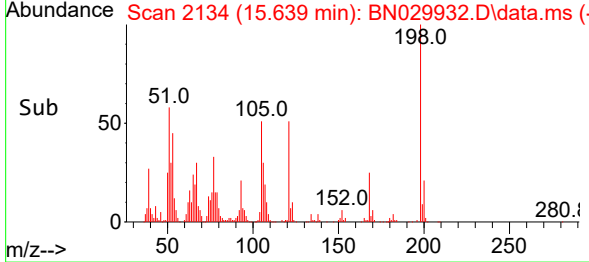


#66
 4,6-Dinitro-2-methylphenol
 Concen: 19.364 ng/ul
 RT: 15.639 min Scan# 2134
 Delta R.T. 0.000 min
 Lab File: BN029932.D
 Acq: 22 Feb 2024 18:03

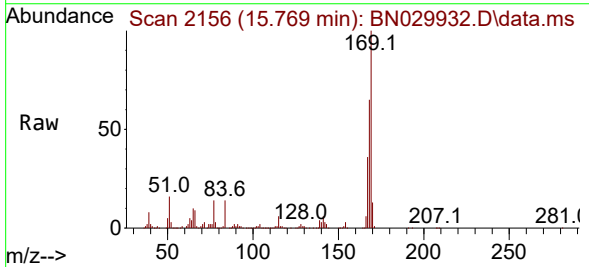
Instrument :
 BNA_N
 ClientSampleId :
 SSTD020319



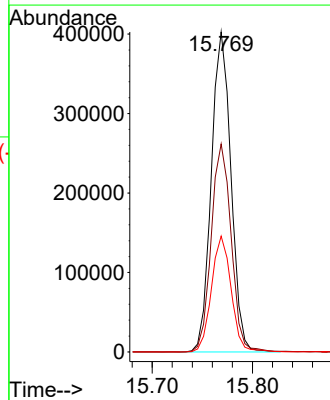
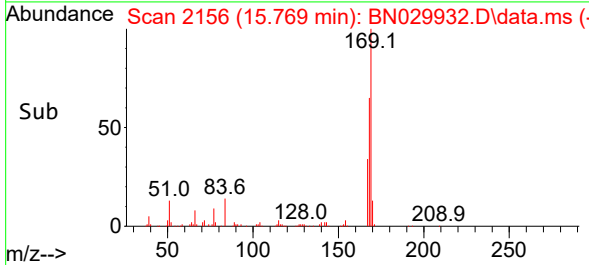
Tgt Ion:198 Resp: 91533
 Ion Ratio Lower Upper
 198 100
 182 4.4 3.9 5.9
 77 33.4 29.8 44.8

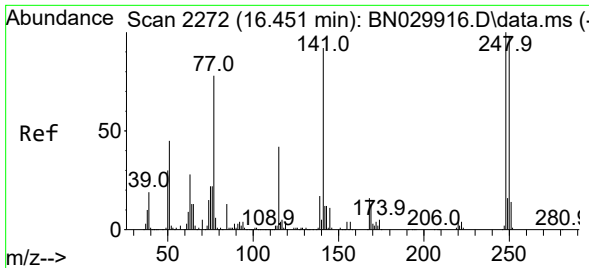


#67
 N-Nitrosodiphenylamine
 Concen: 19.960 ng/ul
 RT: 15.769 min Scan# 2156
 Delta R.T. 0.000 min
 Lab File: BN029932.D
 Acq: 22 Feb 2024 18:03



Tgt Ion:169 Resp: 547323
 Ion Ratio Lower Upper
 169 100
 168 65.0 54.5 81.7
 167 36.2 29.8 44.6



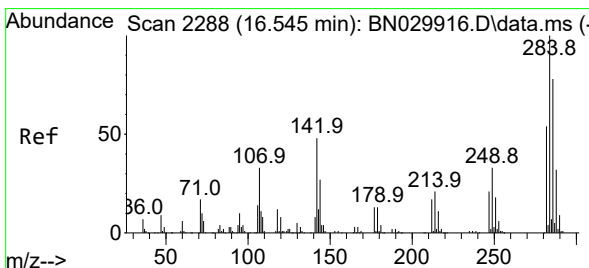
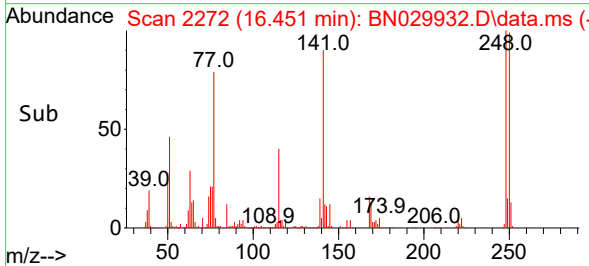
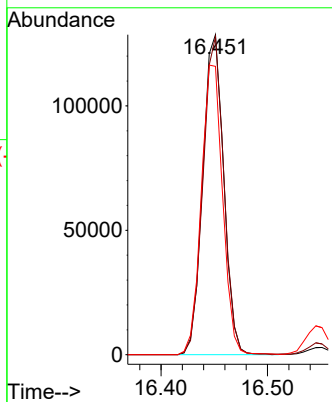
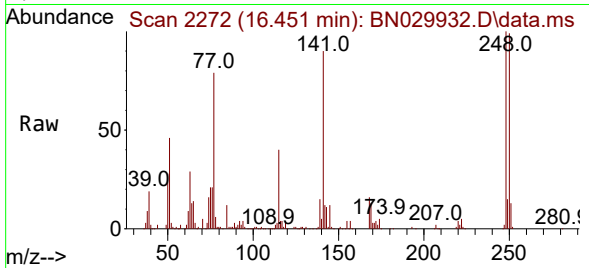


#68
 4-Bromophenyl-phenylether
 Concen: 21.223 ng/ul
 RT: 16.451 min Scan# 21
 Delta R.T. 0.000 min
 Lab File: BN029932.D
 Acq: 22 Feb 2024 18:03

Instrument :
 BNA_N
 ClientSampleId :
 SSTD020319

Tgt Ion:248 Resp: 176760

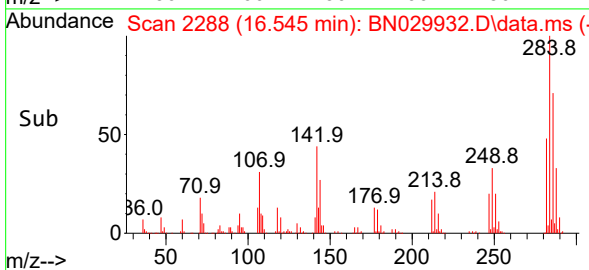
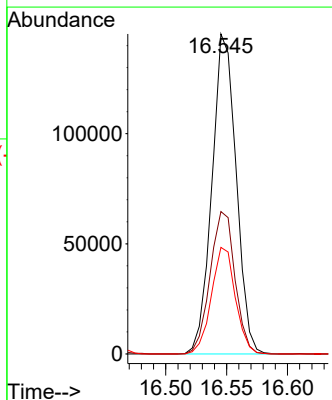
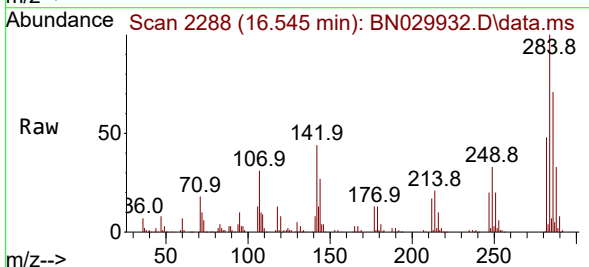
Ion	Ratio	Lower	Upper
248	100		
250	99.4	85.6	128.4
141	90.1	84.6	126.8

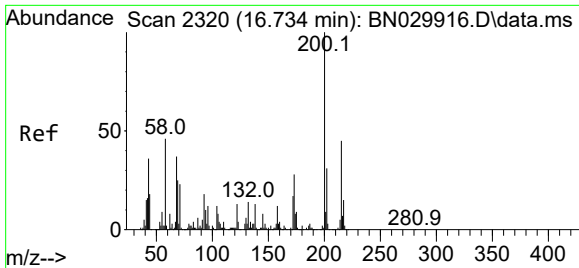


#69
 Hexachlorobenzene
 Concen: 21.414 ng/ul
 RT: 16.545 min Scan# 2288
 Delta R.T. -0.006 min
 Lab File: BN029932.D
 Acq: 22 Feb 2024 18:03

Tgt Ion:284 Resp: 201032

Ion	Ratio	Lower	Upper
284	100		
142	44.5	39.2	58.8
249	33.3	25.7	38.5



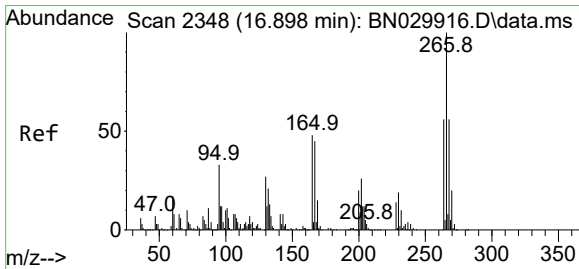
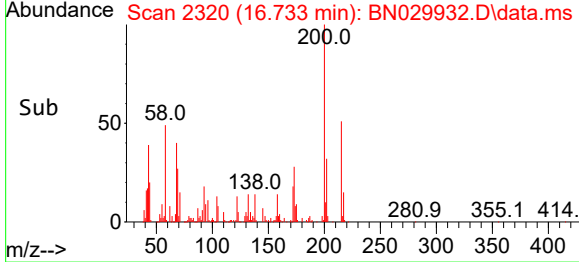
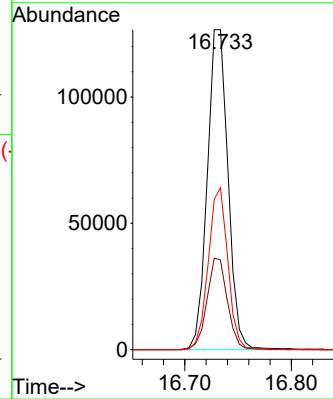
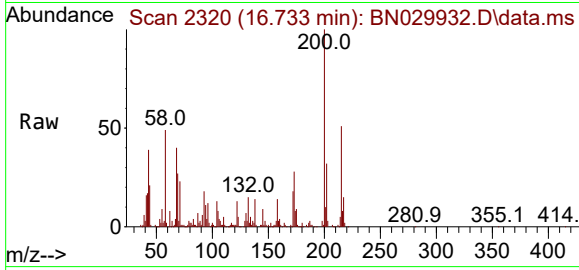


#70
 Atrazine
 Concen: 20.067 ng/uI
 RT: 16.733 min Scan# 21
 Delta R.T. 0.000 min
 Lab File: BN029932.D
 Acq: 22 Feb 2024 18:03

Instrument : BNA_N
 ClientSampleId : SSTD020319

Tgt Ion:200 Resp: 171910

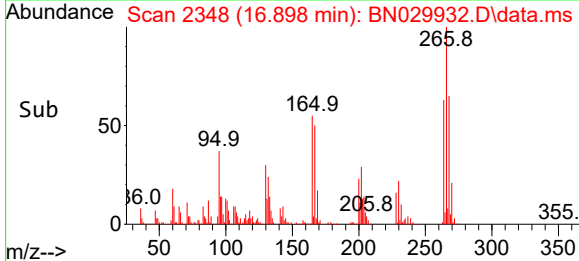
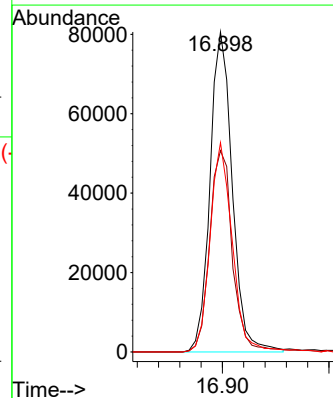
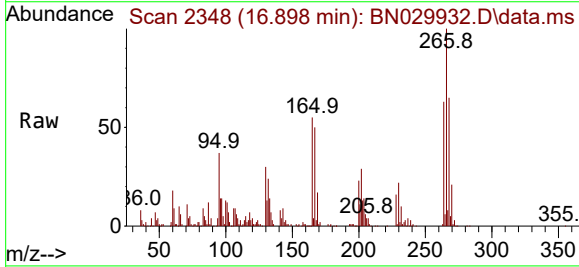
Ion	Ratio	Lower	Upper
200	100		
173	28.1	22.0	33.0
215	50.6	36.1	54.1

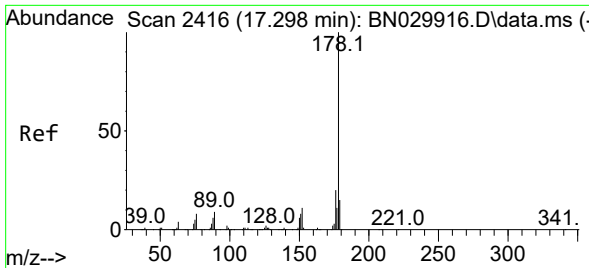


#71
 Pentachlorophenol
 Concen: 21.536 ng/uI
 RT: 16.898 min Scan# 2348
 Delta R.T. 0.000 min
 Lab File: BN029932.D
 Acq: 22 Feb 2024 18:03

Tgt Ion:266 Resp: 117411

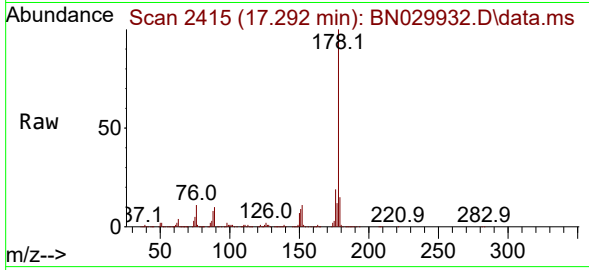
Ion	Ratio	Lower	Upper
266	100		
264	62.9	45.8	68.6
268	65.4	51.6	77.4



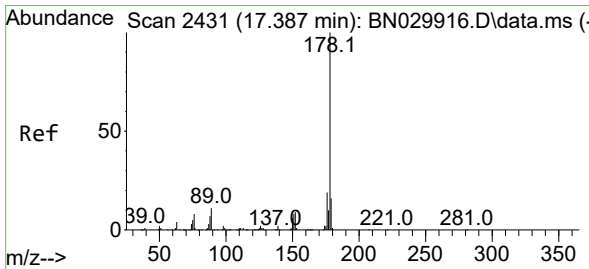
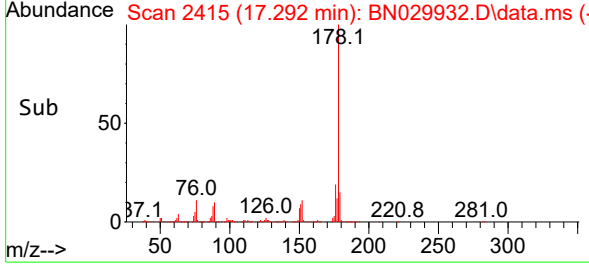
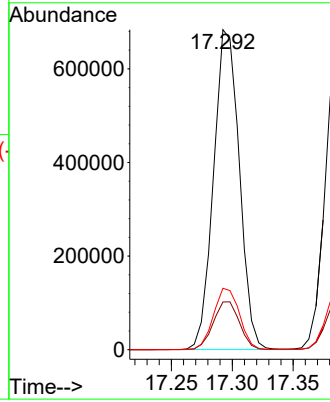


#72
 Phenanthrene
 Concen: 19.753 ng/u1
 RT: 17.292 min Scan# 2415
 Delta R.T. -0.006 min
 Lab File: BN029932.D
 Acq: 22 Feb 2024 18:03

Instrument :
 BNA_N
 ClientSampleId :
 SSTD020319

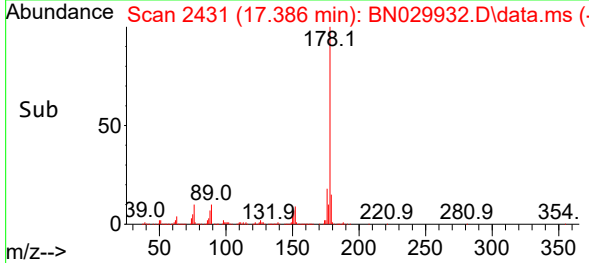
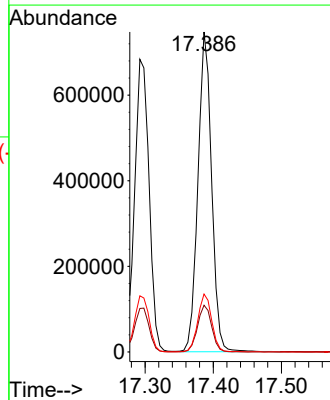
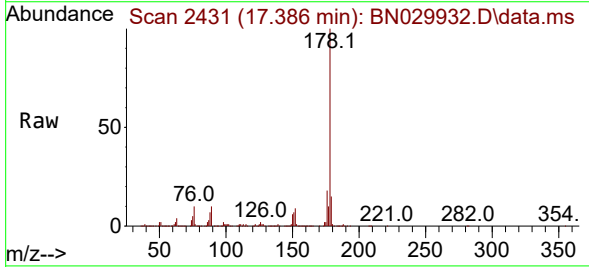


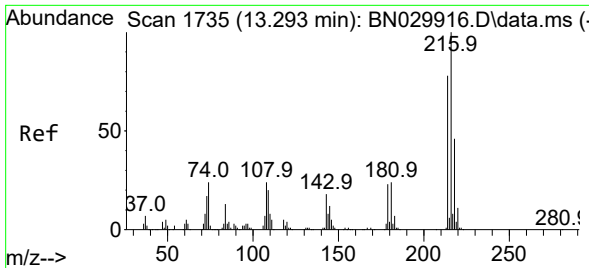
Tgt Ion:178 Resp: 1005427
 Ion Ratio Lower Upper
 178 100
 179 14.9 12.5 18.7
 176 19.2 15.7 23.5



#74
 Anthracene
 Concen: 20.313 ng/u1
 RT: 17.386 min Scan# 2431
 Delta R.T. 0.000 min
 Lab File: BN029932.D
 Acq: 22 Feb 2024 18:03

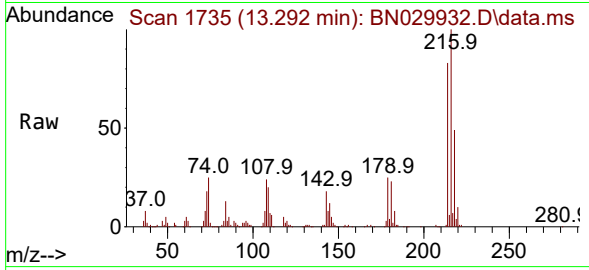
Tgt Ion:178 Resp: 1037662
 Ion Ratio Lower Upper
 178 100
 179 14.6 11.6 17.4
 176 18.1 14.2 21.2



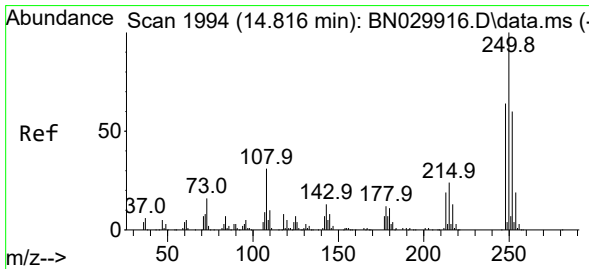
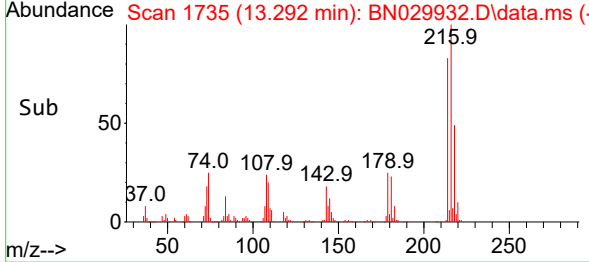
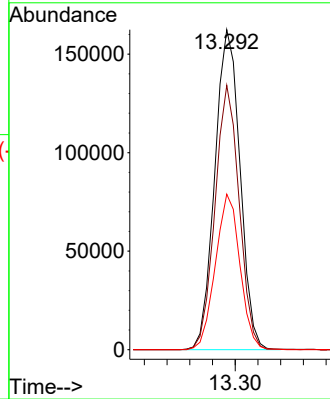


#75
 1,2,3,4-Tetrachlorobenzene
 Concen: 19.404 ng/uL
 RT: 13.292 min Scan# 1735
 Delta R.T. 0.000 min
 Lab File: BN029932.D
 Acq: 22 Feb 2024 18:03

Instrument : BNA_N
 ClientSampleId : SSTD020319

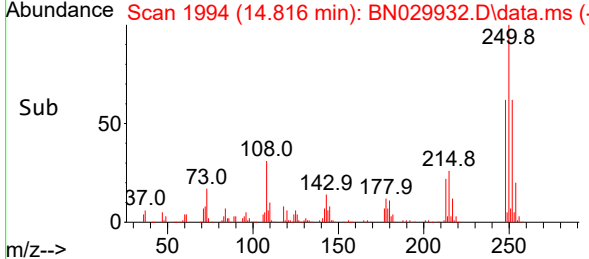
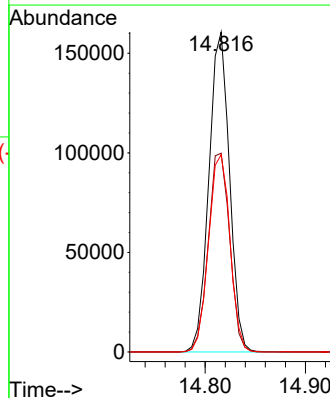
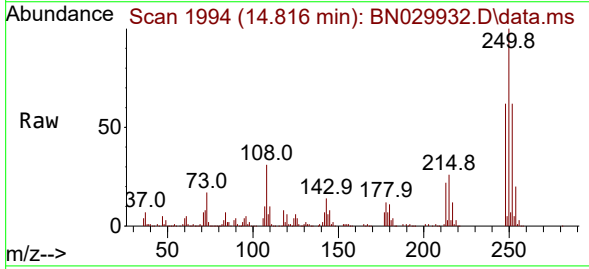


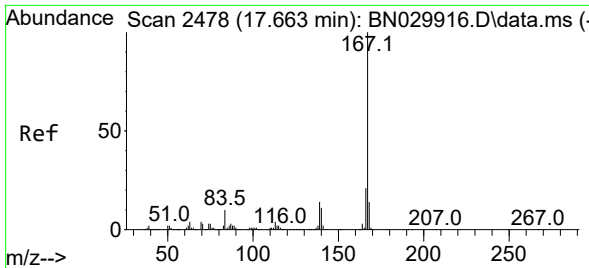
Tgt Ion:216 Resp: 250549
 Ion Ratio Lower Upper
 216 100
 214 82.6 60.1 90.1
 218 48.6 38.5 57.7



#76
 Pentachlorobenzene
 Concen: 19.884 ng/uL
 RT: 14.816 min Scan# 1994
 Delta R.T. 0.000 min
 Lab File: BN029932.D
 Acq: 22 Feb 2024 18:03

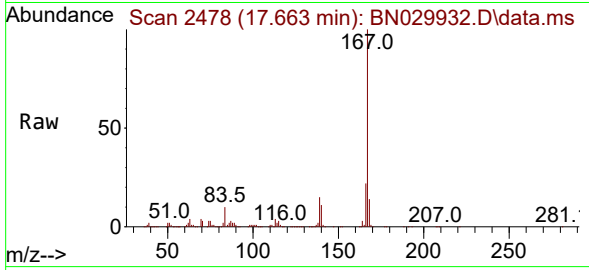
Tgt Ion:250 Resp: 229898
 Ion Ratio Lower Upper
 250 100
 248 62.1 49.8 74.8
 252 61.7 50.5 75.7



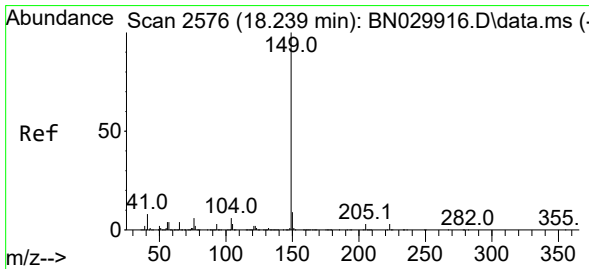
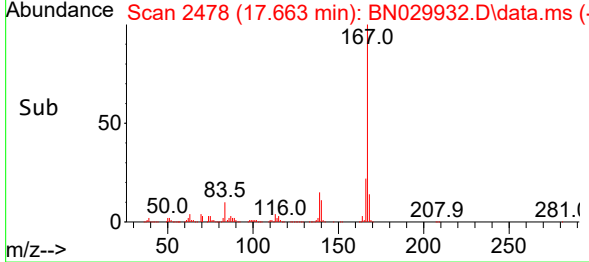
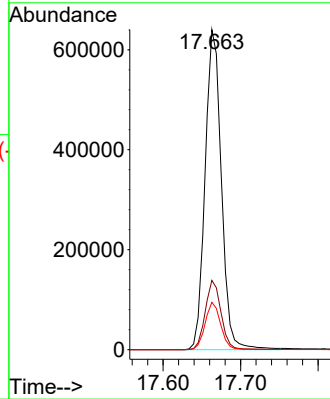


#77
 Carbazole
 Concen: 20.016 ng/u1
 RT: 17.663 min Scan# 24
 Delta R.T. -0.006 min
 Lab File: BN029932.D
 Acq: 22 Feb 2024 18:03

Instrument :
 BNA_N
 ClientSampleId :
 SSTD020319

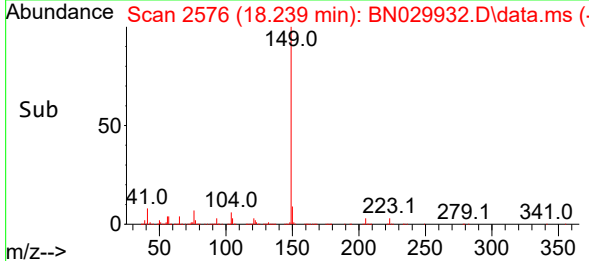
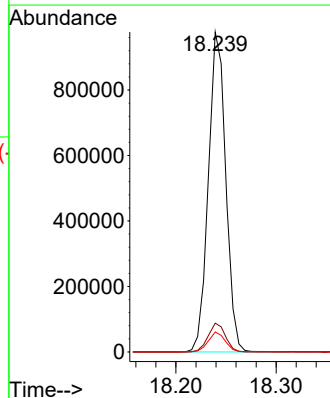
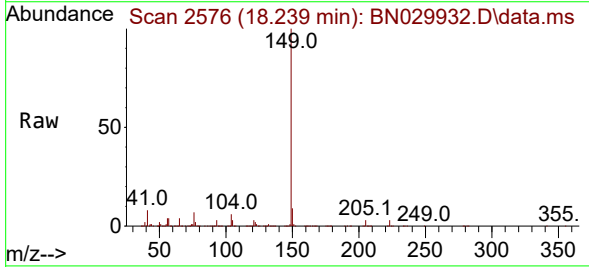


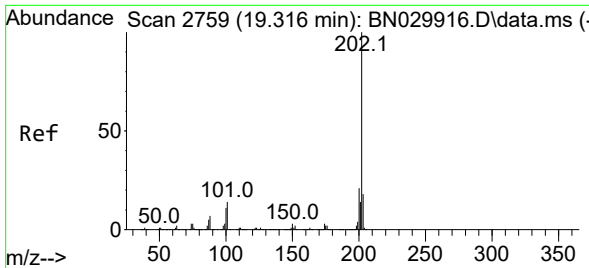
Tgt Ion:167 Resp: 933904
 Ion Ratio Lower Upper
 167 100
 166 21.7 16.6 25.0
 139 14.8 11.4 17.0



#78
 Di-n-butylphthalate
 Concen: 21.065 ng/u1
 RT: 18.239 min Scan# 2576
 Delta R.T. 0.000 min
 Lab File: BN029932.D
 Acq: 22 Feb 2024 18:03

Tgt Ion:149 Resp: 1181901
 Ion Ratio Lower Upper
 149 100
 150 9.0 7.0 10.4
 104 6.3 4.7 7.1



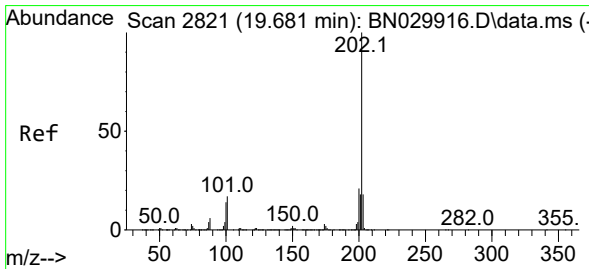
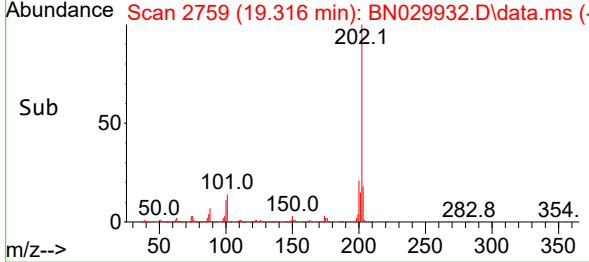
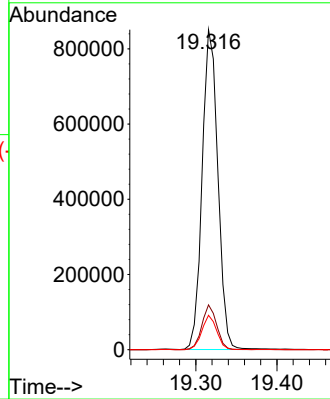
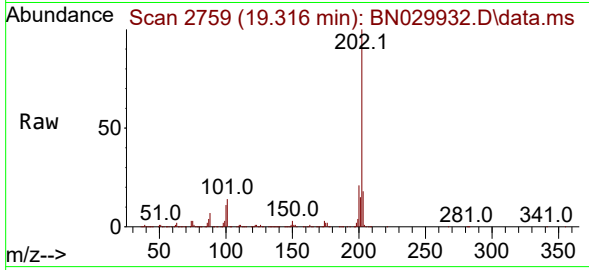


#80
 Fluoranthene
 Concen: 19.579 ng/u1
 RT: 19.316 min Scan# 21
 Delta R.T. -0.006 min
 Lab File: BN029932.D
 Acq: 22 Feb 2024 18:03

Instrument :
 BNA_N
 ClientSampleId :
 SSTD020319

Tgt Ion:202 Resp: 1146497

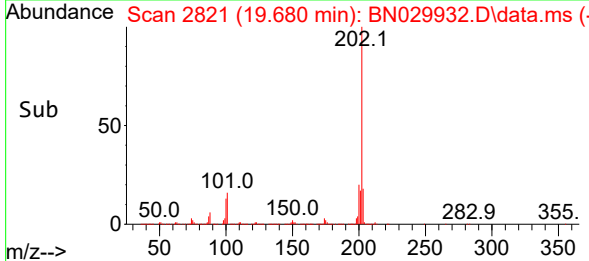
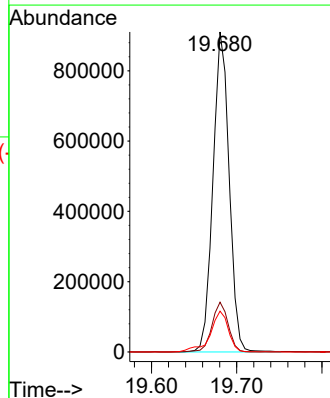
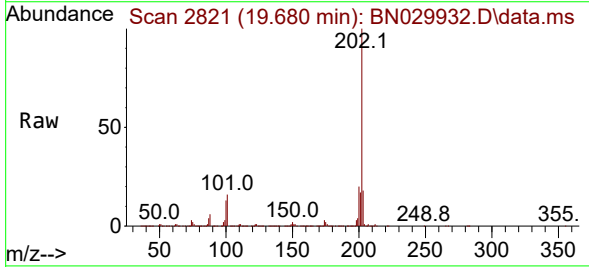
Ion	Ratio	Lower	Upper
202	100		
101	14.0	11.1	16.7
100	10.8	8.9	13.3

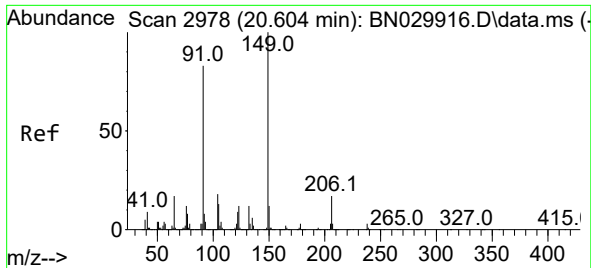


#82
 Pyrene
 Concen: 19.379 ng/u1
 RT: 19.680 min Scan# 2821
 Delta R.T. -0.006 min
 Lab File: BN029932.D
 Acq: 22 Feb 2024 18:03

Tgt Ion:202 Resp: 1200518

Ion	Ratio	Lower	Upper
202	100		
101	15.6	14.2	21.4
100	12.8	11.4	17.2





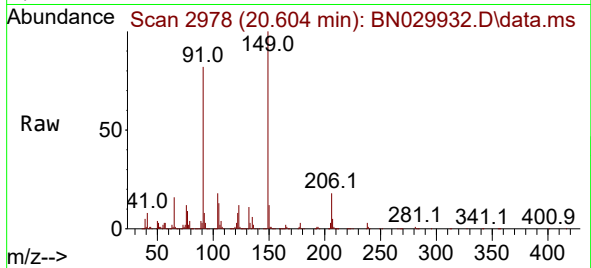
#83
 Butylbenzylphthalate
 Concen: 21.350 ng/ul
 RT: 20.604 min Scan# 2978
 Delta R.T. 0.000 min
 Lab File: BN029932.D
 Acq: 22 Feb 2024 18:03

Instrument :

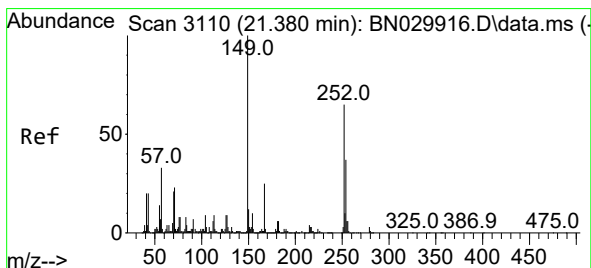
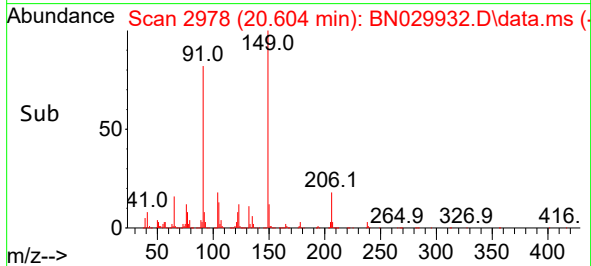
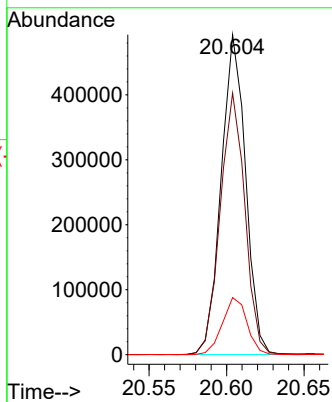
BNA_N

ClientSampleId :

SSTD020319

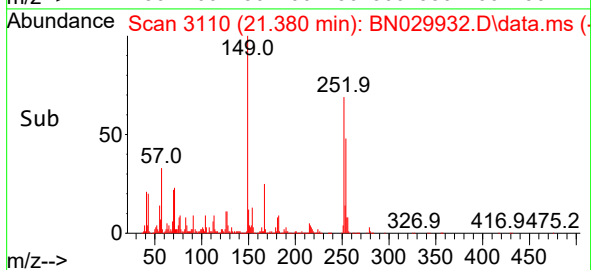
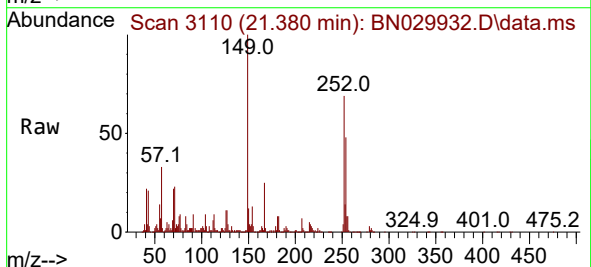
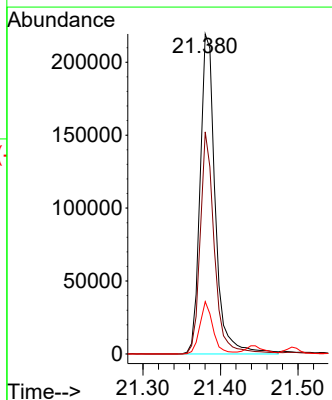


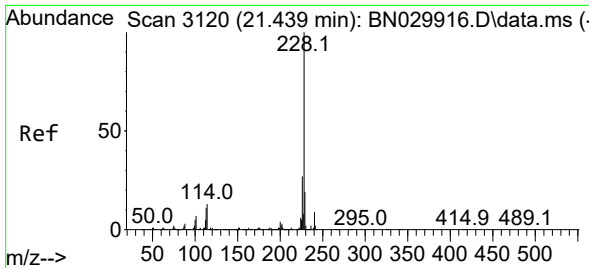
Tgt Ion:149 Resp: 539025
 Ion Ratio Lower Upper
 149 100
 91 81.8 70.0 105.0
 206 17.9 14.1 21.1



#84
 3,3'-Dichlorobenzidine
 Concen: 19.156 ng/ul
 RT: 21.380 min Scan# 3110
 Delta R.T. -0.006 min
 Lab File: BN029932.D
 Acq: 22 Feb 2024 18:03

Tgt Ion:252 Resp: 298047
 Ion Ratio Lower Upper
 252 100
 254 69.4 49.8 74.6
 126 16.4 12.2 18.4



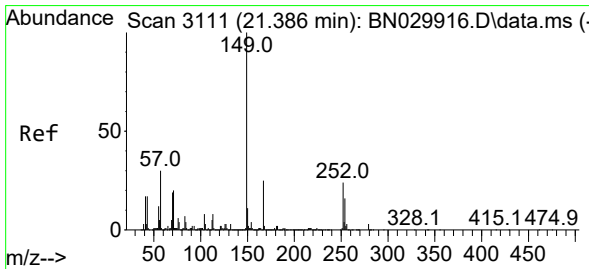
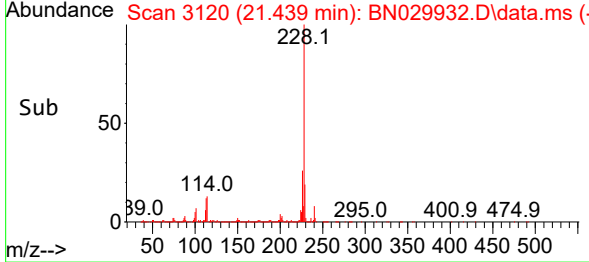
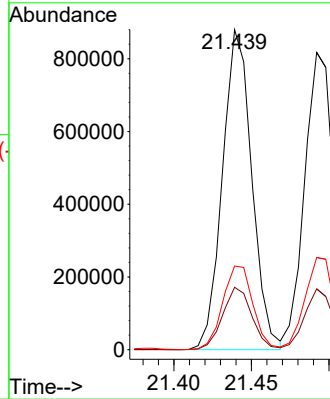
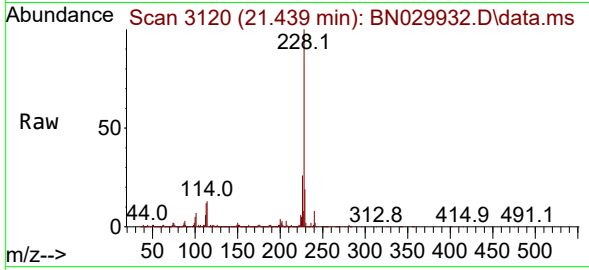


#85
 Benzo(a)anthracene
 Concen: 19.647 ng/ul
 RT: 21.439 min Scan# 3120
 Delta R.T. -0.006 min
 Lab File: BN029932.D
 Acq: 22 Feb 2024 18:03

Instrument :
 BNA_N
 ClientSampleId :
 SSTD020319

Tgt Ion:228 Resp: 1159337

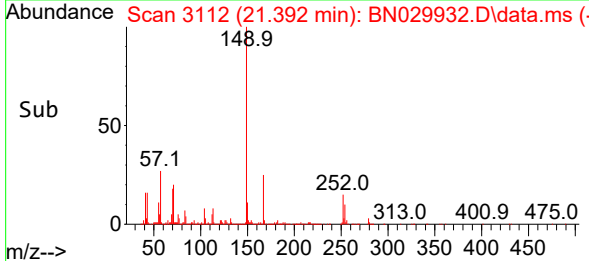
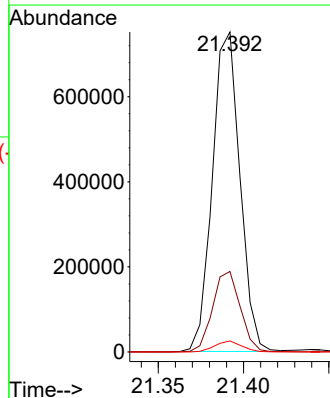
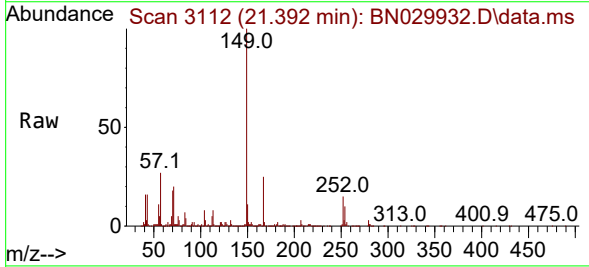
Ion	Ratio	Lower	Upper
228	100		
229	19.5	15.0	22.6
226	26.1	21.0	31.6

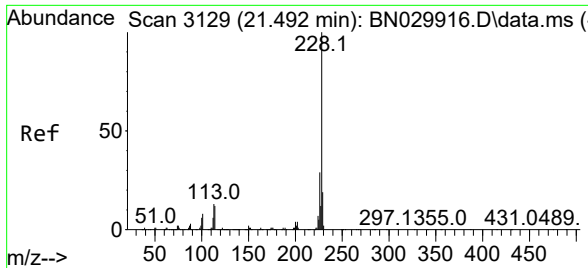


#86
 Bis(2-ethylhexyl)phthalate
 Concen: 21.615 ng/ul
 RT: 21.392 min Scan# 3112
 Delta R.T. 0.000 min
 Lab File: BN029932.D
 Acq: 22 Feb 2024 18:03

Tgt Ion:149 Resp: 844102

Ion	Ratio	Lower	Upper
149	100		
167	25.2	20.6	30.8
279	3.5	2.7	4.1



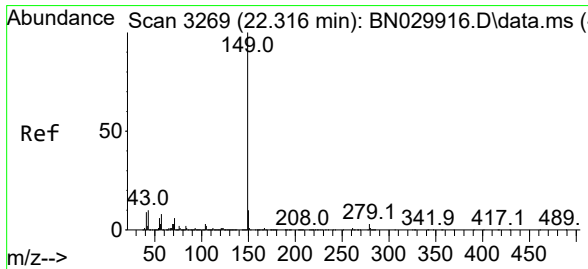
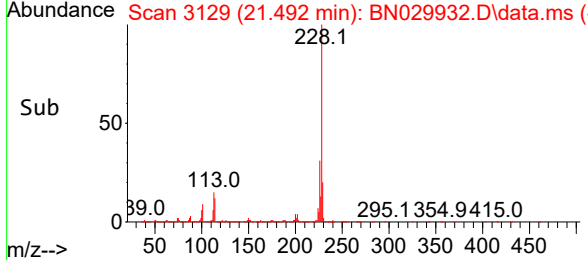
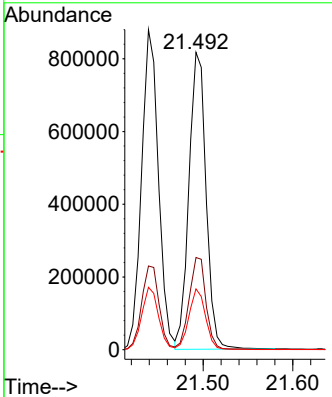
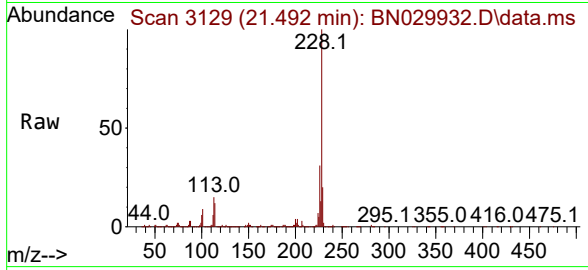


#87
 Chrysene
 Concen: 19.540 ng/u1
 RT: 21.492 min Scan# 3129
 Delta R.T. 0.000 min
 Lab File: BN029932.D
 Acq: 22 Feb 2024 18:03

Instrument : BNA_N
 ClientSampleId : SSTD020319

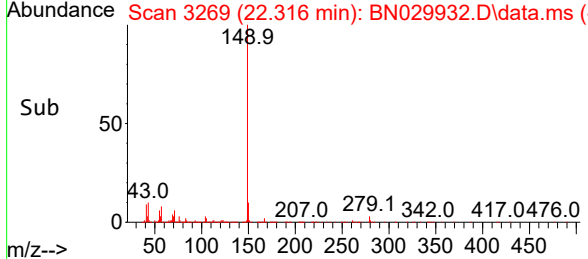
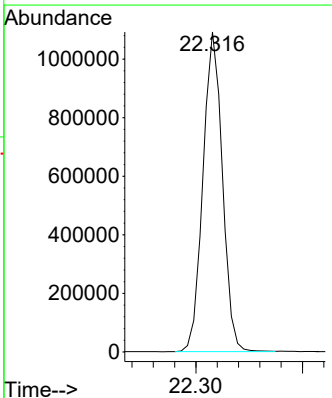
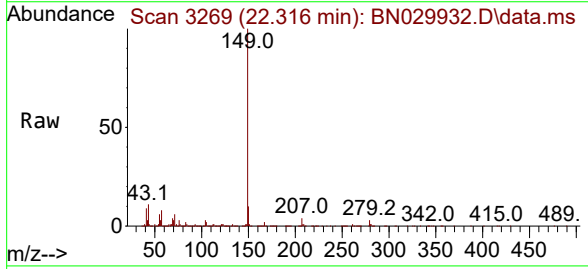
Tgt Ion:228 Resp: 1080567

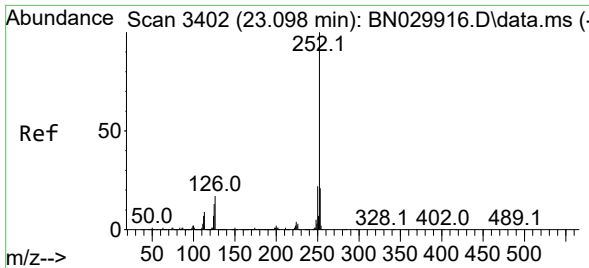
Ion	Ratio	Lower	Upper
228	100		
226	31.0	24.6	37.0
229	20.5	16.2	24.4



#89
 Di-n-octyl phthalate
 Concen: 19.944 ng/u1
 RT: 22.316 min Scan# 3269
 Delta R.T. 0.000 min
 Lab File: BN029932.D
 Acq: 22 Feb 2024 18:03

Tgt Ion:149 Resp: 1381194



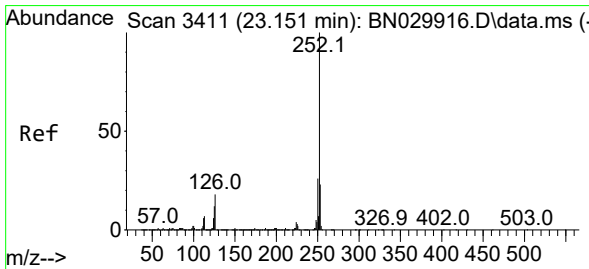
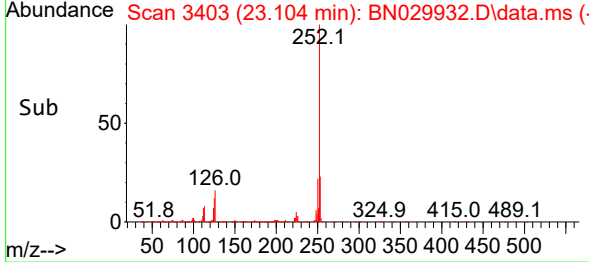
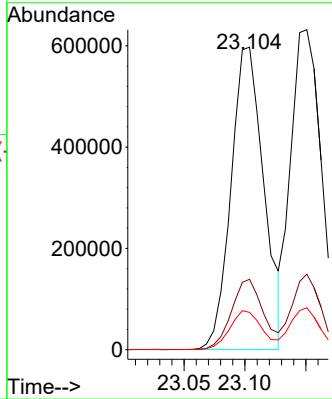
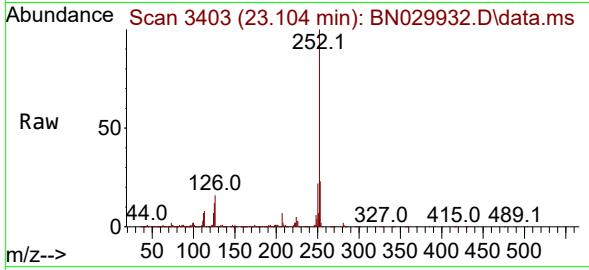


#90
 Benzo(b)fluoranthene
 Concen: 19.944 ng/ul
 RT: 23.104 min Scan# 3403
 Delta R.T. 0.000 min
 Lab File: BN029932.D
 Acq: 22 Feb 2024 18:03

Instrument : BNA_N
 ClientSampleId : SSTD020319

Tgt Ion:252 Resp: 1122329

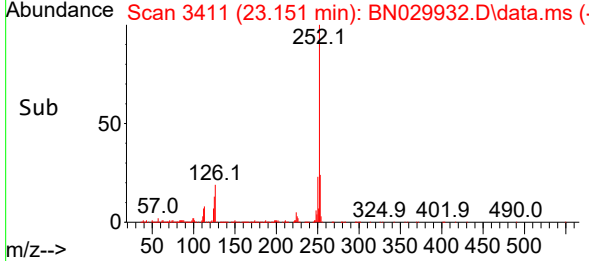
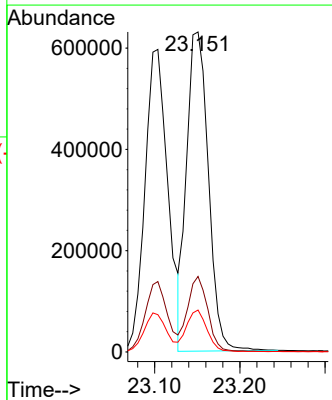
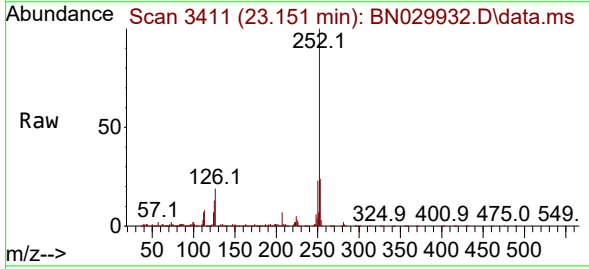
Ion	Ratio	Lower	Upper
252	100		
253	23.3	17.5	26.3
125	12.3	11.1	16.7

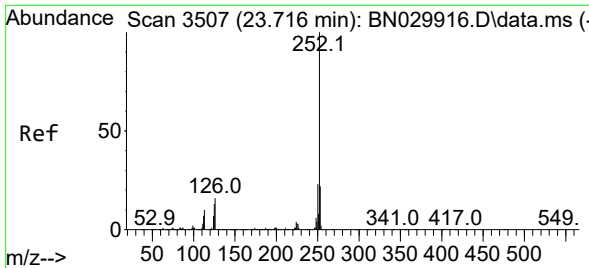


#91
 Benzo(k)fluoranthene
 Concen: 19.435 ng/ul
 RT: 23.151 min Scan# 3411
 Delta R.T. 0.000 min
 Lab File: BN029932.D
 Acq: 22 Feb 2024 18:03

Tgt Ion:252 Resp: 1119461

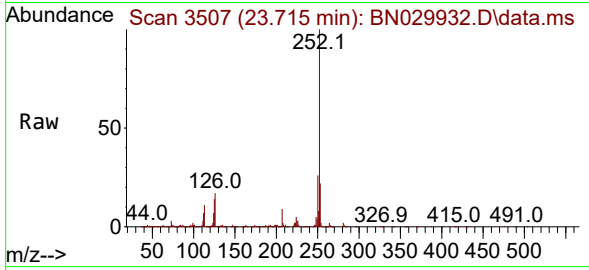
Ion	Ratio	Lower	Upper
252	100		
253	23.6	18.2	27.4
125	13.1	11.2	16.8



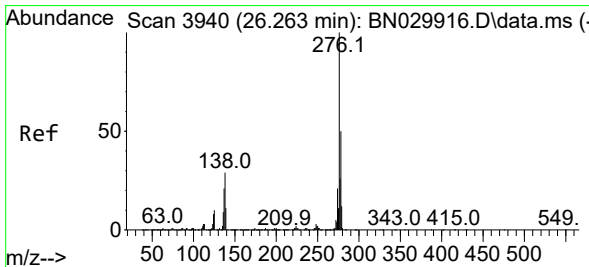
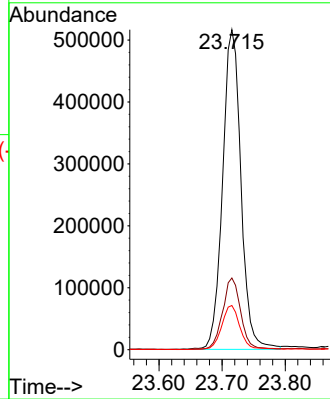
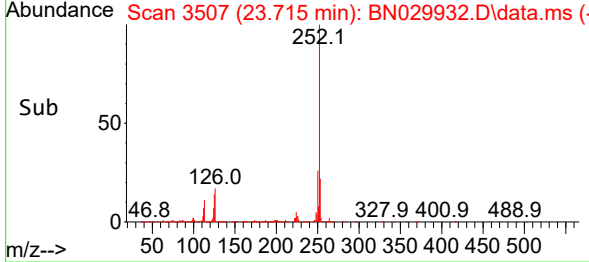


#93
 Benzo(a)pyrene
 Concen: 19.344 ng/u1
 RT: 23.715 min Scan# 31
 Delta R.T. 0.000 min
 Lab File: BN029932.D
 Acq: 22 Feb 2024 18:03

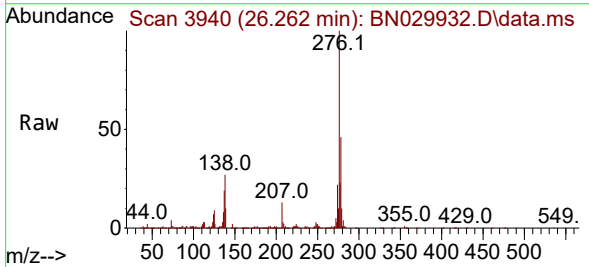
Instrument :
 BNA_N
 ClientSampleId :
 SSTD020319



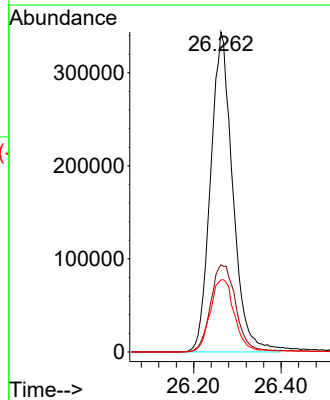
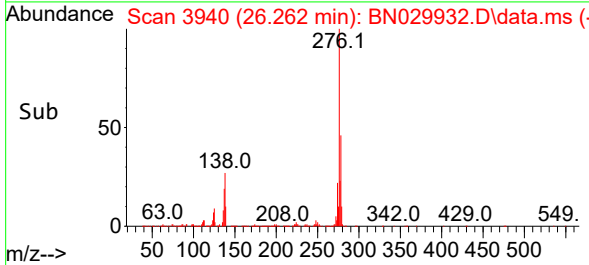
Tgt Ion:252 Resp: 1043954
 Ion Ratio Lower Upper
 252 100
 253 22.4 18.8 28.2
 125 13.8 12.2 18.2

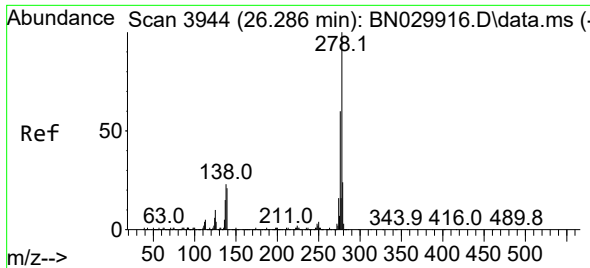


#94
 Indeno(1,2,3-cd)pyrene
 Concen: 18.409 ng/u1
 RT: 26.262 min Scan# 3940
 Delta R.T. 0.000 min
 Lab File: BN029932.D
 Acq: 22 Feb 2024 18:03



Tgt Ion:276 Resp: 1209752
 Ion Ratio Lower Upper
 276 100
 138 27.2 21.7 32.5
 277 22.5 17.8 26.8



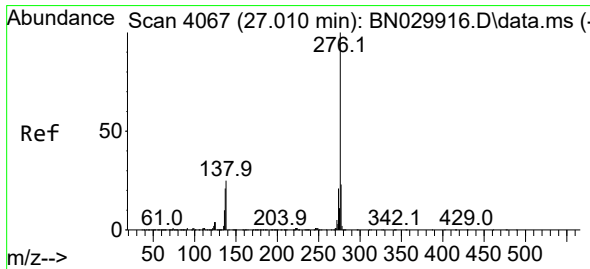
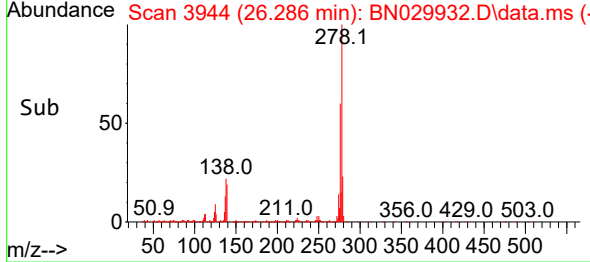
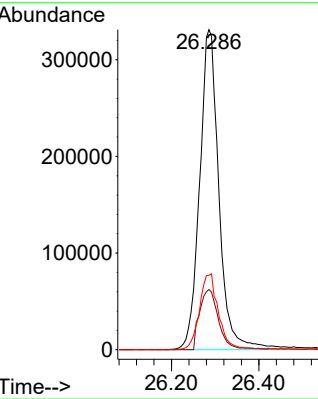
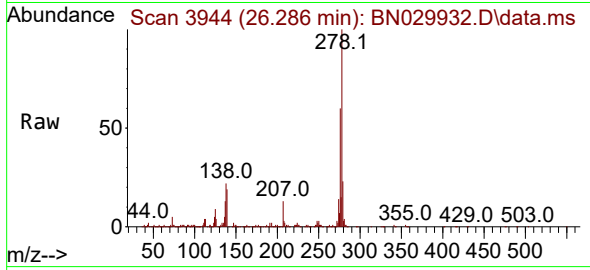


#95
 Dibenzo(a,h)anthracene
 Concen: 18.794 ng/ul
 RT: 26.286 min Scan# 3944
 Delta R.T. 0.006 min
 Lab File: BN029932.D
 Acq: 22 Feb 2024 18:03

Instrument :
 BNA_N
 ClientSampleId :
 SSTD020319

Tgt Ion:278 Resp: 1008293

Ion	Ratio	Lower	Upper
278	100		
139	18.8	17.8	26.6
279	23.3	19.4	29.2



#96
 Benzo(g,h,i)perylene
 Concen: 17.812 ng/ul
 RT: 27.004 min Scan# 4066
 Delta R.T. -0.006 min
 Lab File: BN029932.D
 Acq: 22 Feb 2024 18:03

Tgt Ion:276 Resp: 979050

Ion	Ratio	Lower	Upper
276	100		
138	24.9	23.9	35.9
277	23.0	18.6	28.0

