

Data Path : Z:\svoasrv\HPCHEM1\BNA\_N\Data\BN022324\  
 Data File : BN029991.D  
 Acq On : 24 Feb 2024 13:43  
 Operator : MA/JU  
 Sample : SSTDCCC0.4  
 Misc :  
 ALS Vial : 39 Sample Multiplier: 1

Instrument :  
 BNA\_N  
 ClientSampleId :  
 SSTDCCC0.4EC

Quant Time: Feb 26 02:16:38 2024  
 Quant Method : Z:\svoasrv\HPCHEM1\BNA\_N\Methods\8270-SIM-BN012924.M  
 Quant Title : ASP BNA STANDARDS FOR 5 POINT CALIBRATION  
 QLast Update : Fri Feb 16 23:52:05 2024  
 Response via : Initial Calibration

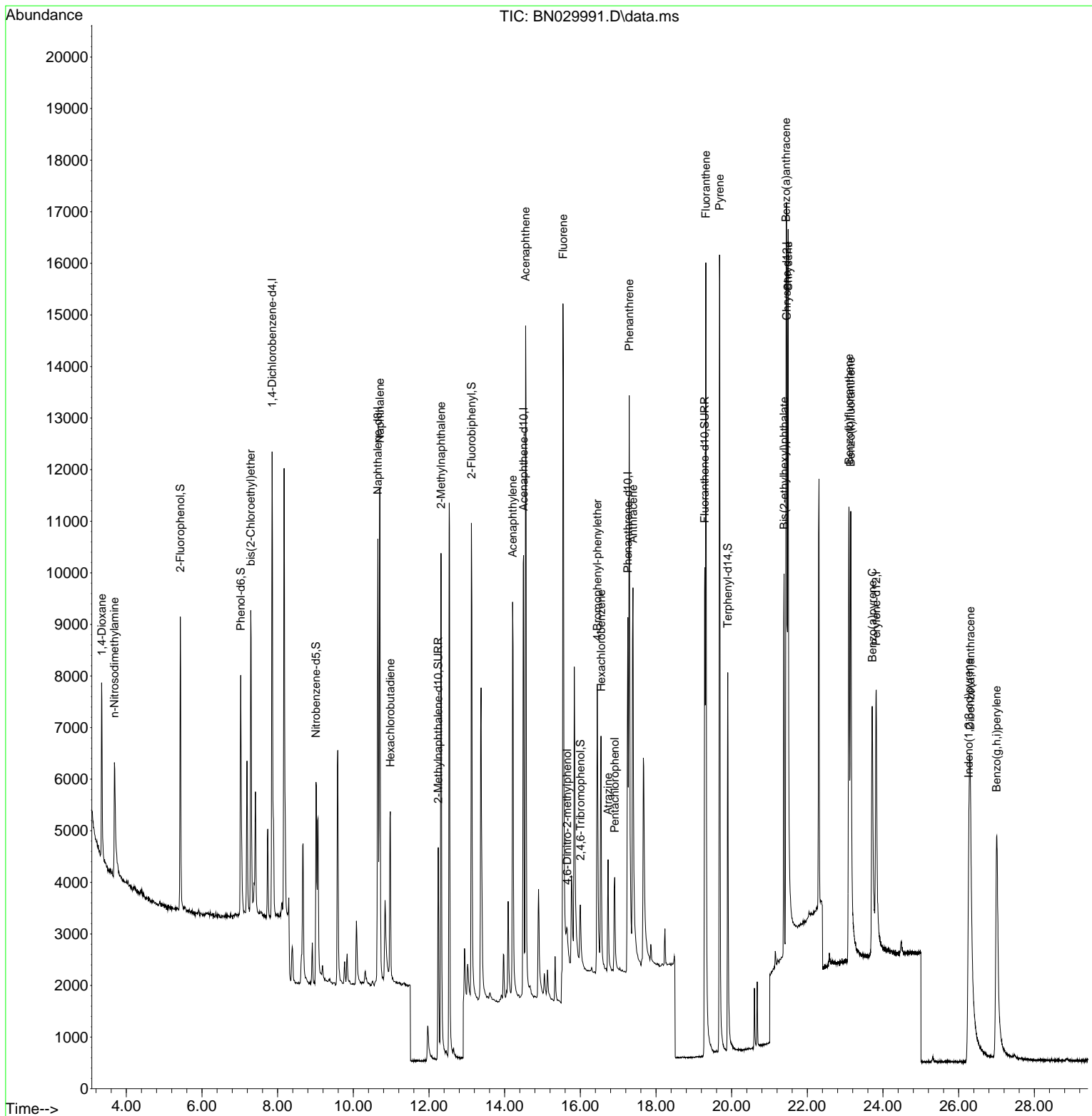
Compound	R.T.	QIon	Response	Conc	Units	Dev(Min)	
Internal Standards							
1) 1,4-Dichlorobenzene-d4	7.854	152	4498	0.400	ng	-0.01	
7) Naphthalene-d8	10.648	136	12018	0.400	ng	-0.02	
13) Acenaphthene-d10	14.500	164	6001	0.400	ng	-0.01	
19) Phenanthrene-d10	17.256	188	12478	0.400	ng	0.00	
29) Chrysene-d12	21.456	240	9433	0.400	ng	# 0.00	
35) Perylene-d12	23.821	264	8956	0.400	ng	-0.01	
System Monitoring Compounds							
4) 2-Fluorophenol	5.428	112	4629	0.428	ng	-0.01	
5) Phenol-d6	7.024	99	5054	0.405	ng	-0.01	
8) Nitrobenzene-d5	9.014	82	4088	0.409	ng	-0.02	
11) 2-Methylnaphthalene-d10	12.246	152	6670	0.408	ng	-0.01	
14) 2,4,6-Tribromophenol	16.002	330	878	0.456	ng	0.00	
15) 2-Fluorobiphenyl	13.121	172	9525	0.370	ng	-0.01	
27) Fluoranthene-d10	19.290	212	12752	0.422	ng	0.00	
31) Terphenyl-d14	19.898	244	9292	0.397	ng	0.00	
Target Compounds							
2) 1,4-Dioxane	3.355	88	2352	0.371	ng		95
3) n-Nitrosodimethylamine	3.687	42	2232	0.433	ng	#	95
6) bis(2-Chloroethyl)ether	7.291	93	4799	0.403	ng		99
9) Naphthalene	10.701	128	13415	0.392	ng		100
10) Hexachlorobutadiene	10.979	225	2669	0.411	ng	#	100
12) 2-Methylnaphthalene	12.318	142	8026	0.399	ng		98
16) Acenaphthylene	14.212	152	10290	0.361	ng		99
17) Acenaphthene	14.554	154	7351	0.384	ng		99
18) Fluorene	15.543	166	9333	0.389	ng		100
20) 4,6-Dinitro-2-methylph...	15.654	198	615	0.336	ng		96
21) 4-Bromophenyl-phenylether	16.449	248	2795	0.376	ng	#	87
22) Hexachlorobenzene	16.548	284	3581	0.393	ng		94
23) Atrazine	16.734	200	2188	0.414	ng		98
24) Pentachlorophenol	16.908	266	1233	0.427	ng		98
25) Phenanthrene	17.293	178	13725	0.372	ng		99
26) Anthracene	17.392	178	11674	0.371	ng		99
28) Fluoranthene	19.317	202	16483	0.397	ng		99
30) Pyrene	19.680	202	16694	0.384	ng		100
32) Benzo(a)anthracene	21.438	228	11791	0.366	ng		99
33) Chrysene	21.492	228	14484	0.396	ng		98
34) Bis(2-ethylhexyl)phtha...	21.385	149	7425	0.338	ng		100
36) Indeno(1,2,3-cd)pyrene	26.268	276	13598	0.378	ng		93
37) Benzo(b)fluoranthene	23.101	252	12747	0.398	ng		99
38) Benzo(k)fluoranthene	23.148	252	13367	0.399	ng		99
39) Benzo(a)pyrene	23.715	252	10935	0.392	ng		98
40) Dibenzo(a,h)anthracene	26.309	278	11355	0.396	ng		98
41) Benzo(g,h,i)perylene	27.005	276	12995	0.372	ng		98

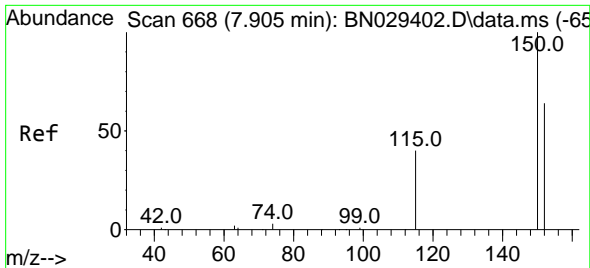
(#) = qualifier out of range (m) = manual integration (+) = signals summed

Data Path : Z:\svoasrv\HPCHEM1\BNA\_N\Data\BN022324\  
 Data File : BN029991.D  
 Acq On : 24 Feb 2024 13:43  
 Operator : MA/JU  
 Sample : SSTDCCC0.4  
 Misc :  
 ALS Vial : 39 Sample Multiplier: 1

Instrument :  
 BNA\_N  
 ClientSampleId :  
 SSTDCCC0.4EC

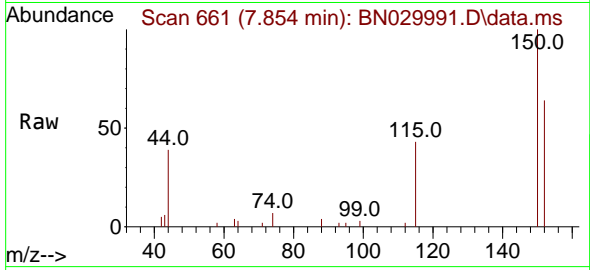
Quant Time: Feb 26 02:16:38 2024  
 Quant Method : Z:\svoasrv\HPCHEM1\BNA\_N\Methods\8270-SIM-BN012924.M  
 Quant Title : ASP BNA STANDARDS FOR 5 POINT CALIBRATION  
 QLast Update : Fri Feb 16 23:52:05 2024  
 Response via : Initial Calibration



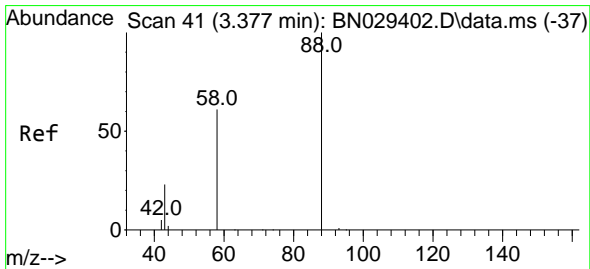
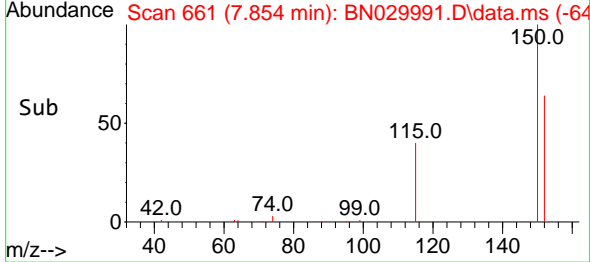
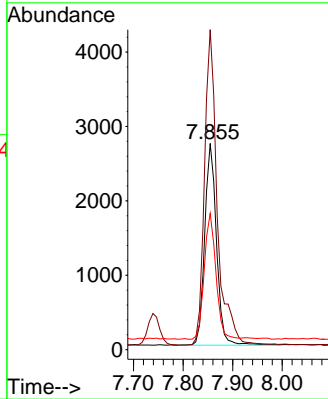


#1  
 1,4-Dichlorobenzene-d4  
 Concen: 0.400 ng  
 RT: 7.854 min Scan# 60  
 Delta R.T. -0.014 min  
 Lab File: BN029991.D  
 Acq: 24 Feb 2024 13:43

Instrument :  
 BNA\_N  
 ClientSampleId :  
 SSTDCCC0.4EC

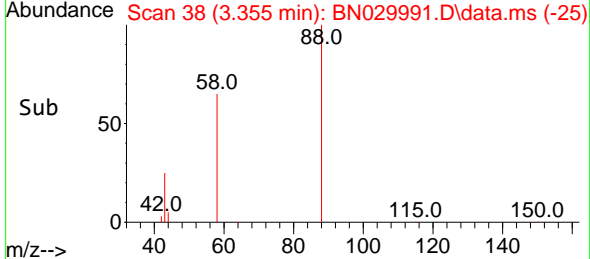
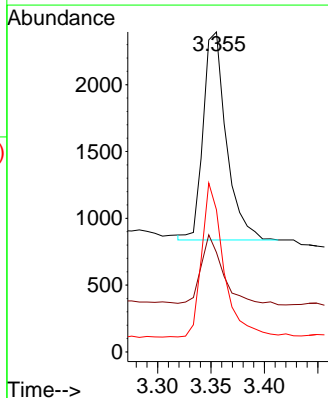
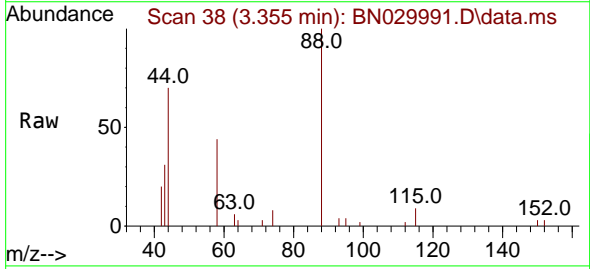


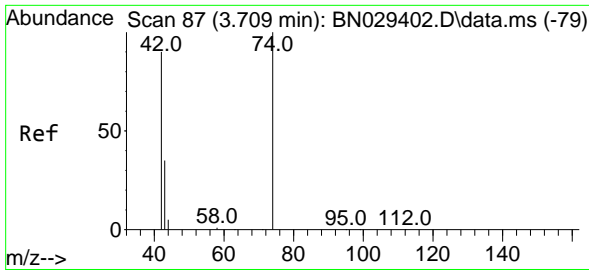
Tgt Ion:152 Resp: 4498  
 Ion Ratio Lower Upper  
 152 100  
 150 155.2 123.0 184.4  
 115 66.1 51.4 77.0



#2  
 1,4-Dioxane  
 Concen: 0.371 ng  
 RT: 3.355 min Scan# 38  
 Delta R.T. -0.007 min  
 Lab File: BN029991.D  
 Acq: 24 Feb 2024 13:43

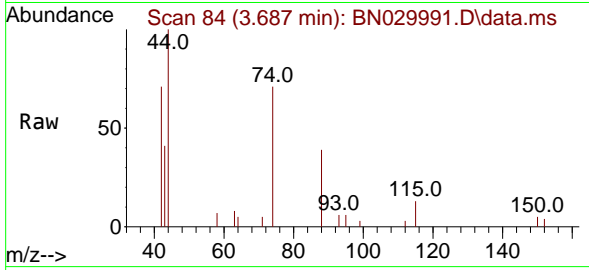
Tgt Ion: 88 Resp: 2352  
 Ion Ratio Lower Upper  
 88 100  
 43 32.2 23.3 34.9  
 58 70.8 53.8 80.6



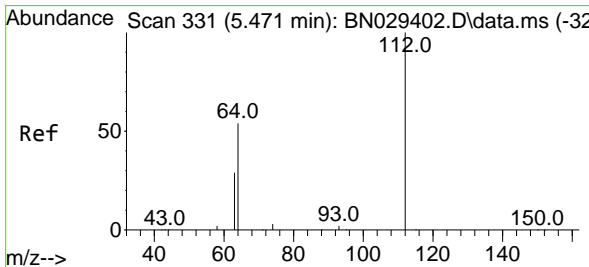
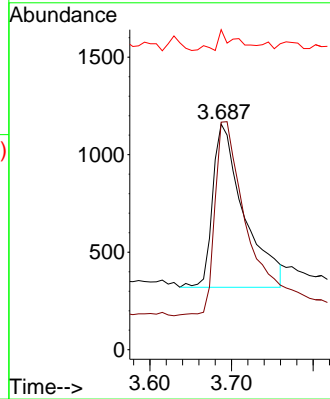
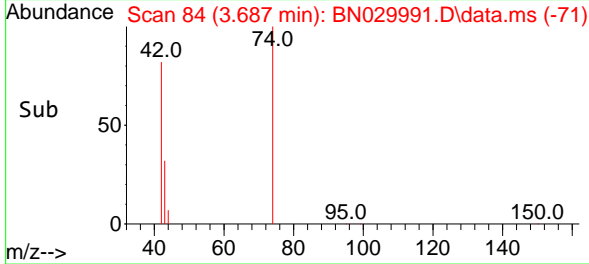


#3  
 n-Nitrosodimethylamine  
 Concen: 0.433 ng  
 RT: 3.687 min Scan# 84  
 Delta R.T. -0.007 min  
 Lab File: BN029991.D  
 Acq: 24 Feb 2024 13:43

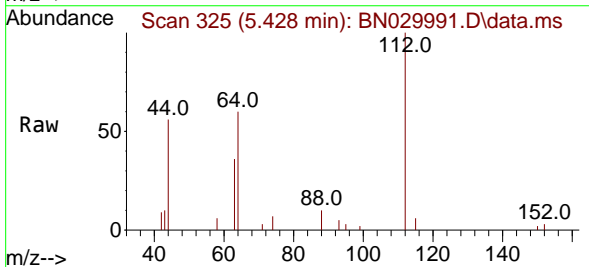
Instrument :  
 BNA\_N  
 ClientSampleId :  
 SSTDCCC0.4EC



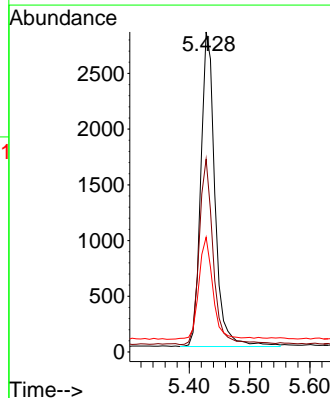
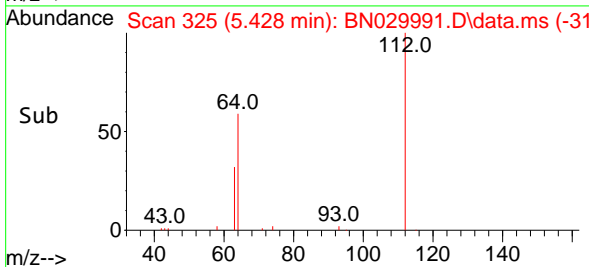
Tgt Ion: 42 Resp: 2232  
 Ion Ratio Lower Upper  
 42 100  
 74 120.9 93.7 140.5  
 44 7.6 13.0 19.4#

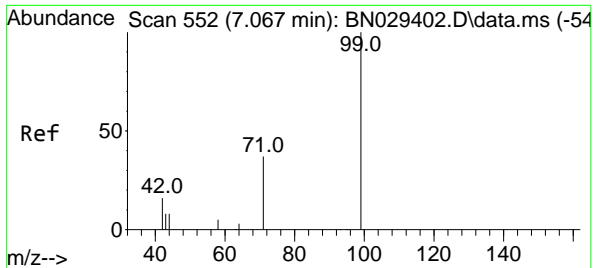


#4  
 2-Fluorophenol  
 Concen: 0.428 ng  
 RT: 5.428 min Scan# 325  
 Delta R.T. -0.014 min  
 Lab File: BN029991.D  
 Acq: 24 Feb 2024 13:43



Tgt Ion: 112 Resp: 4629  
 Ion Ratio Lower Upper  
 112 100  
 64 58.6 47.2 70.8  
 63 32.0 25.8 38.6

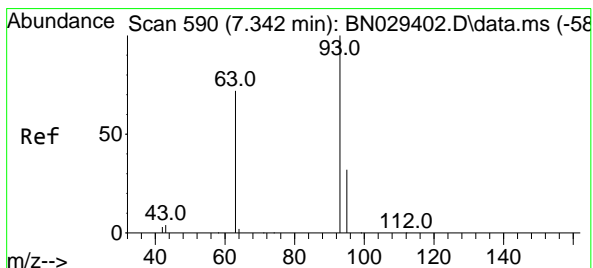
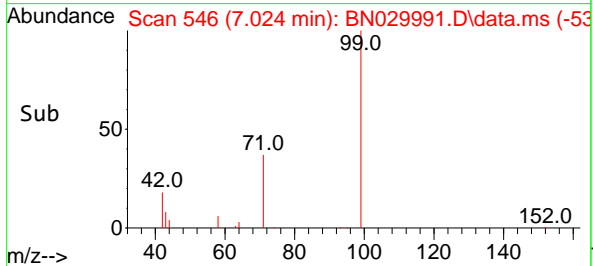
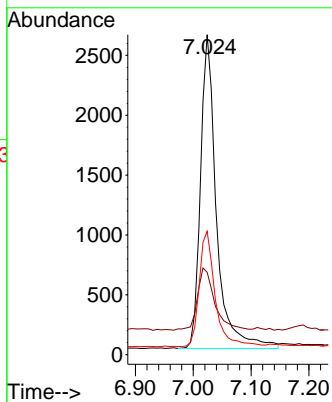
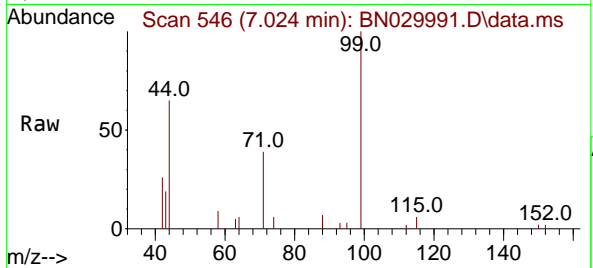




#5  
 Phenol-d6  
 Concen: 0.405 ng  
 RT: 7.024 min Scan# 54  
 Delta R.T. -0.014 min  
 Lab File: BN029991.D  
 Acq: 24 Feb 2024 13:43

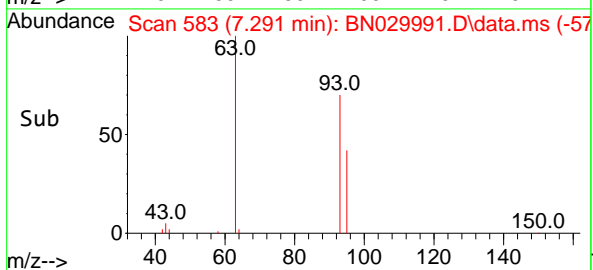
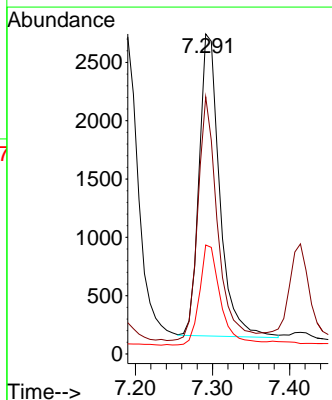
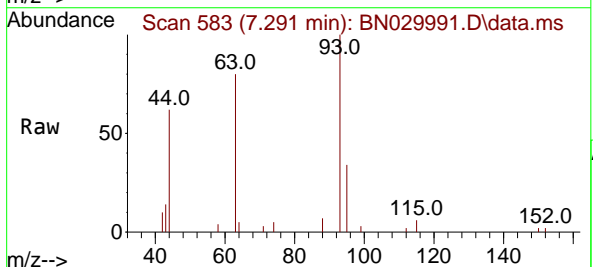
Instrument :  
 BNA\_N  
 ClientSampleId :  
 SSTDCCC0.4EC

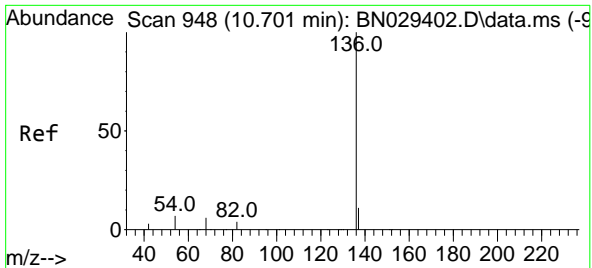
Tgt Ion	Resp	Lower	Upper
99	5054		
99	100		
42	21.3	16.9	25.3
71	36.4	30.0	45.0



#6  
 bis(2-Chloroethyl)ether  
 Concen: 0.403 ng  
 RT: 7.291 min Scan# 583  
 Delta R.T. -0.014 min  
 Lab File: BN029991.D  
 Acq: 24 Feb 2024 13:43

Tgt Ion	Resp	Lower	Upper
93	4799		
93	100		
63	77.2	63.1	94.7
95	34.2	27.1	40.7



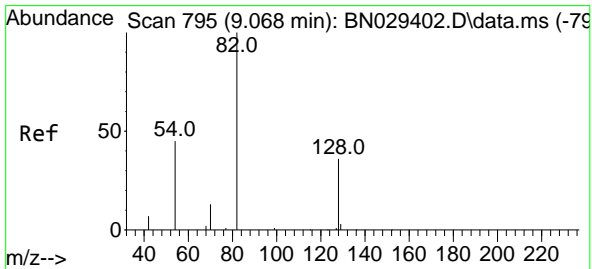
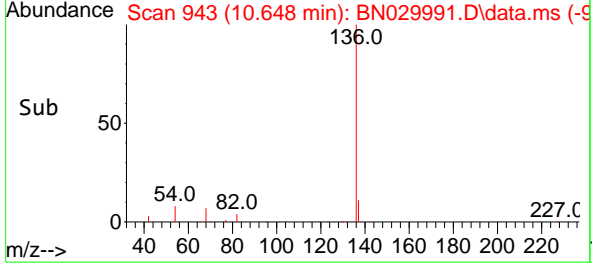
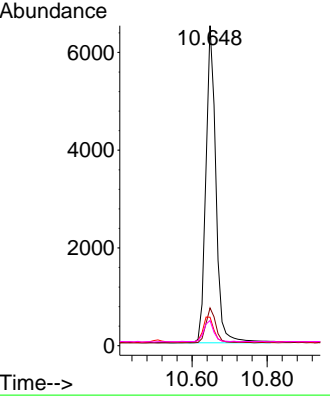
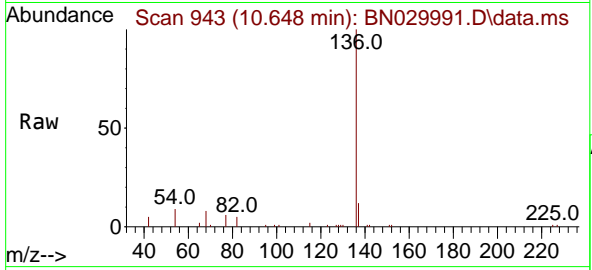


#7  
 Naphthalene-d8  
 Concen: 0.400 ng  
 RT: 10.648 min Scan# 94  
 Delta R.T. -0.021 min  
 Lab File: BN029991.D  
 Acq: 24 Feb 2024 13:43

Instrument : BNA\_N  
 ClientSampleId : SSTDCCC0.4EC

Tgt Ion:136 Resp: 12018

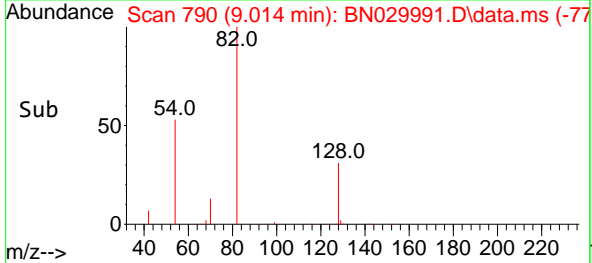
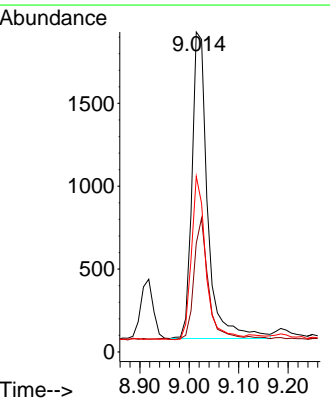
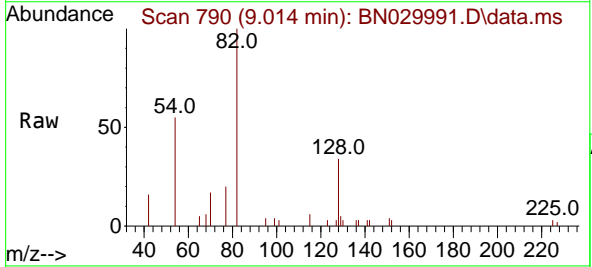
Ion	Ratio	Lower	Upper
136	100		
137	11.8	9.7	14.5
54	8.9	6.6	10.0
68	7.8	5.7	8.5

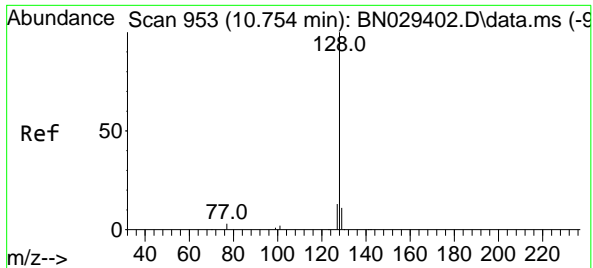


#8  
 Nitrobenzene-d5  
 Concen: 0.409 ng  
 RT: 9.014 min Scan# 790  
 Delta R.T. -0.021 min  
 Lab File: BN029991.D  
 Acq: 24 Feb 2024 13:43

Tgt Ion: 82 Resp: 4088

Ion	Ratio	Lower	Upper
82	100		
128	34.0	31.6	47.4
54	54.9	38.2	57.4



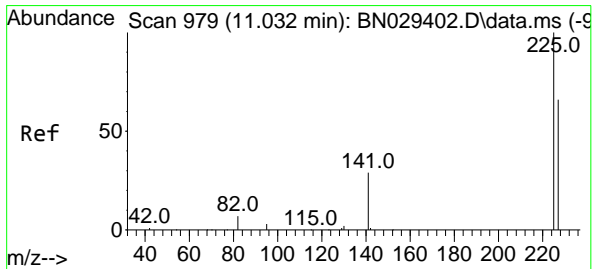
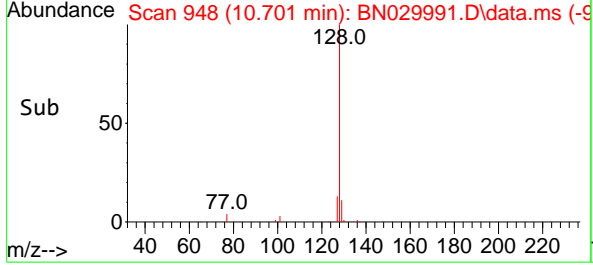
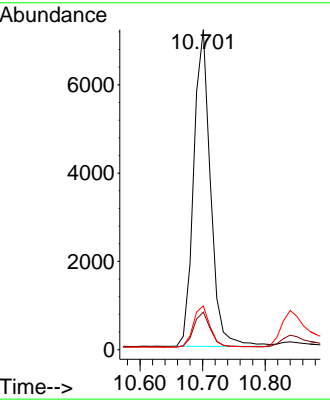
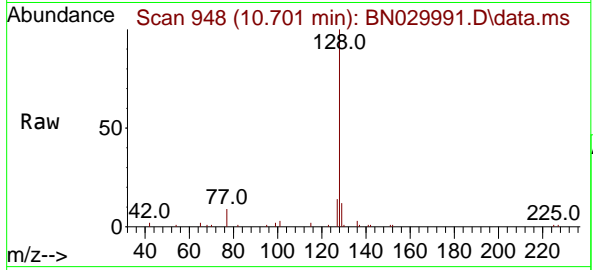


#9  
 Naphthalene  
 Concen: 0.392 ng  
 RT: 10.701 min Scan# 94  
 Delta R.T. -0.011 min  
 Lab File: BN029991.D  
 Acq: 24 Feb 2024 13:43

Instrument : BNA\_N  
 ClientSampleId : SSTDCCC0.4EC

Tgt Ion:128 Resp: 13415

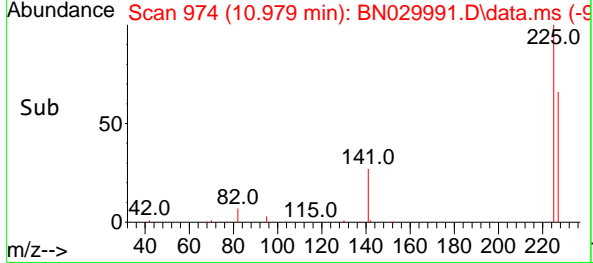
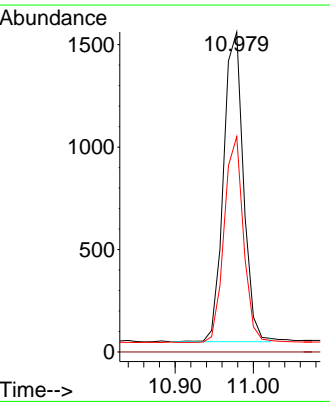
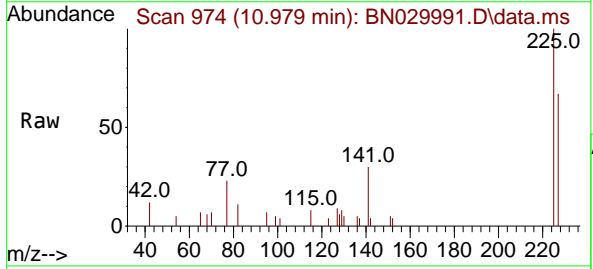
Ion	Ratio	Lower	Upper
128	100		
129	11.8	9.5	14.3
127	13.7	10.8	16.2

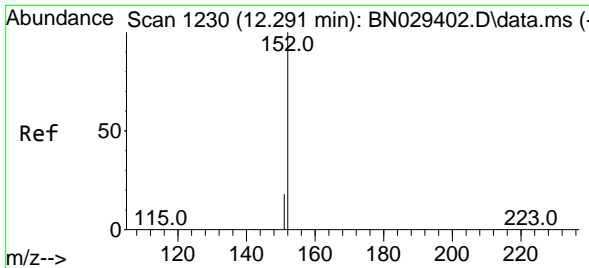


#10  
 Hexachlorobutadiene  
 Concen: 0.411 ng  
 RT: 10.979 min Scan# 974  
 Delta R.T. -0.011 min  
 Lab File: BN029991.D  
 Acq: 24 Feb 2024 13:43

Tgt Ion:225 Resp: 2669

Ion	Ratio	Lower	Upper
225	100		
223	0.0	0.0	0.0
227	64.2	51.1	76.7

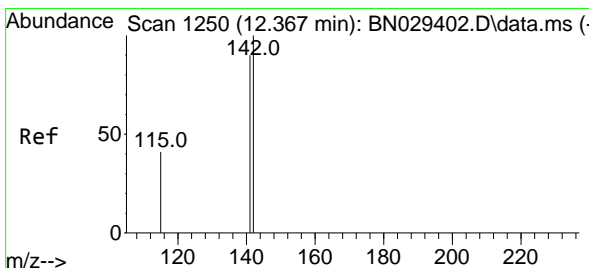
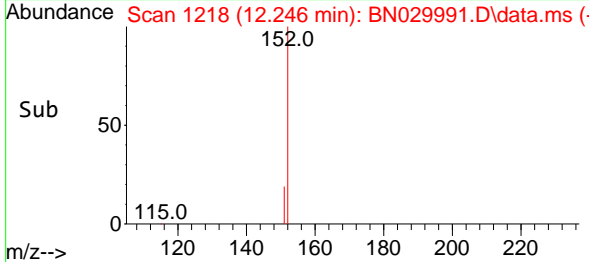
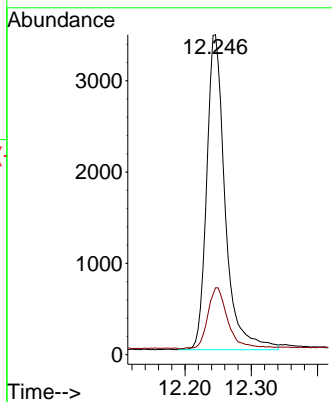
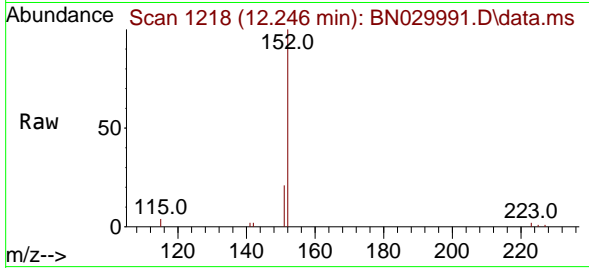




#11  
 2-Methylnaphthalene-d10  
 Concen: 0.408 ng  
 RT: 12.246 min Scan# 11  
 Delta R.T. -0.011 min  
 Lab File: BN029991.D  
 Acq: 24 Feb 2024 13:43

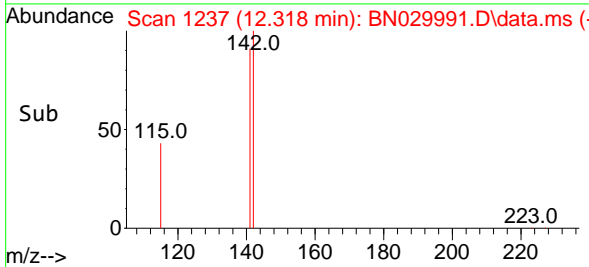
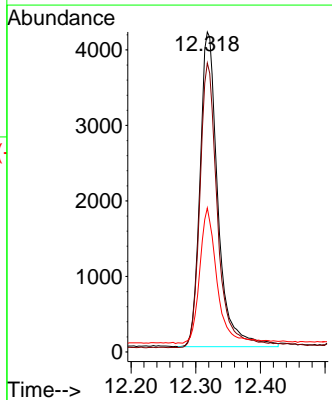
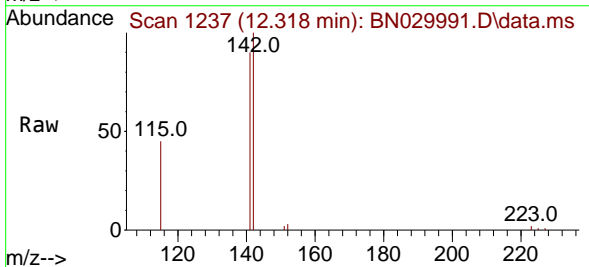
Instrument :  
 BNA\_N  
 ClientSampleId :  
 SSTDCCC0.4EC

Tgt Ion:152 Resp: 6670  
 Ion Ratio Lower Upper  
 152 100  
 151 21.1 17.1 25.7

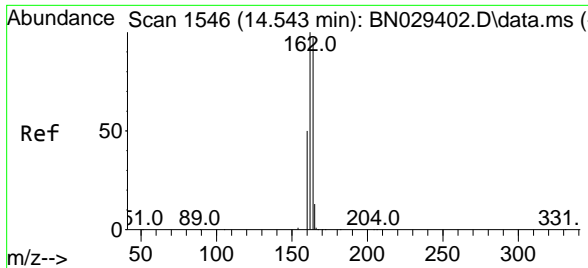


#12  
 2-Methylnaphthalene  
 Concen: 0.399 ng  
 RT: 12.318 min Scan# 1237  
 Delta R.T. -0.015 min  
 Lab File: BN029991.D  
 Acq: 24 Feb 2024 13:43

Tgt Ion:142 Resp: 8026  
 Ion Ratio Lower Upper  
 142 100  
 141 90.3 71.9 107.9  
 115 45.0 33.9 50.9





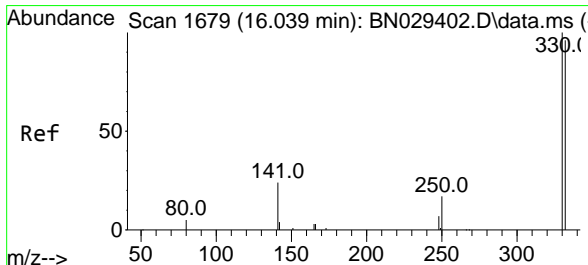
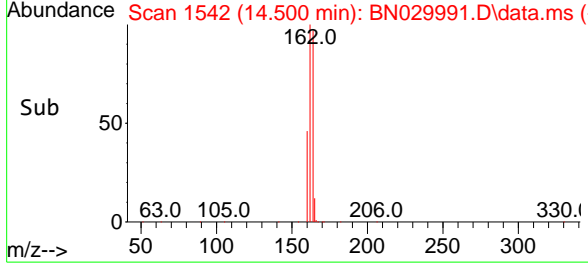
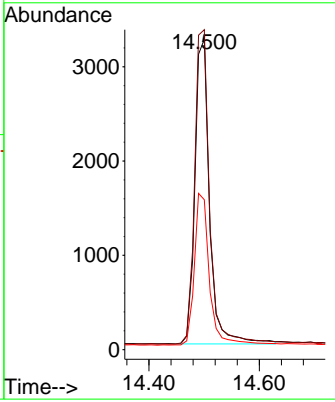
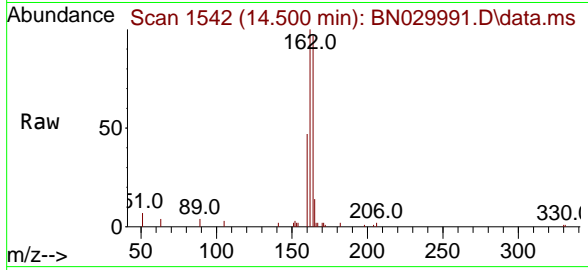


#13  
 Acenaphthene-d10  
 Concen: 0.400 ng  
 RT: 14.500 min Scan# 11  
 Delta R.T. -0.011 min  
 Lab File: BN029991.D  
 Acq: 24 Feb 2024 13:43

Instrument : BNA\_N  
 ClientSampleId : SSTDCCC0.4EC

Tgt Ion:164 Resp: 6001

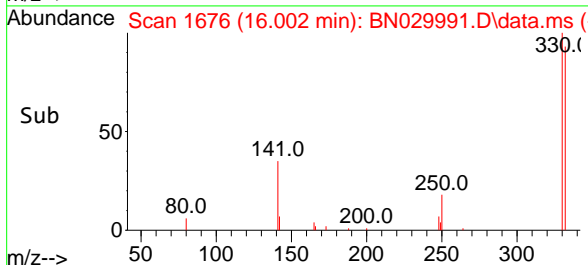
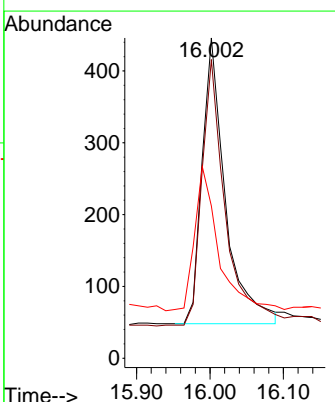
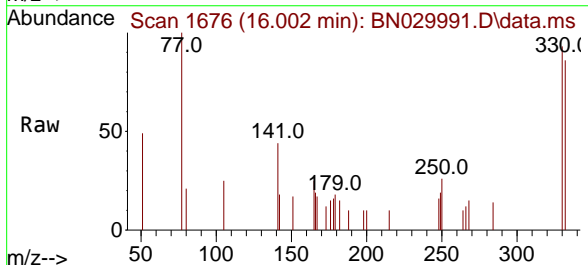
Ion	Ratio	Lower	Upper
164	100		
162	103.1	82.6	123.8
160	48.3	41.5	62.3

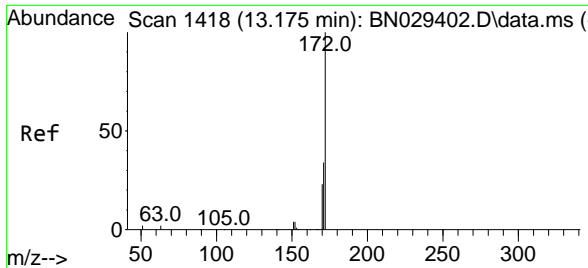


#14  
 2,4,6-Tribromophenol  
 Concen: 0.456 ng  
 RT: 16.002 min Scan# 1676  
 Delta R.T. 0.000 min  
 Lab File: BN029991.D  
 Acq: 24 Feb 2024 13:43

Tgt Ion:330 Resp: 878

Ion	Ratio	Lower	Upper
330	100		
332	94.4	76.0	114.0
141	51.8	43.4	65.2



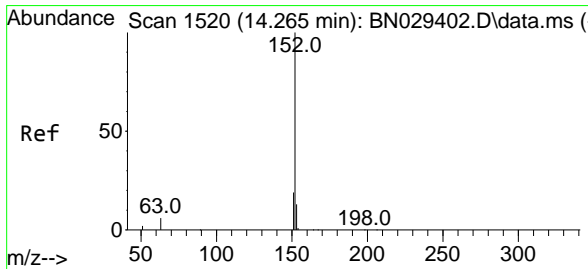
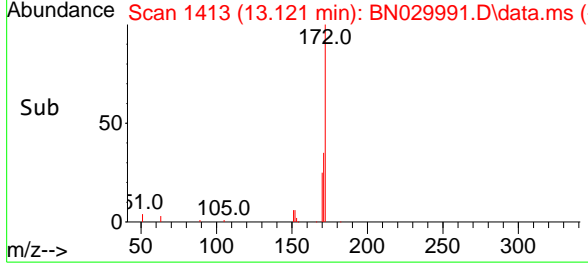
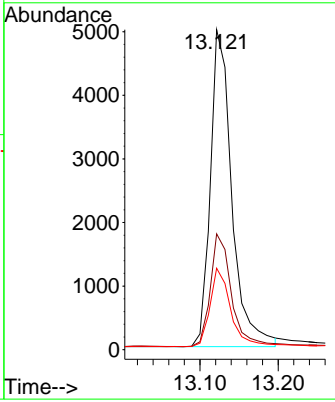
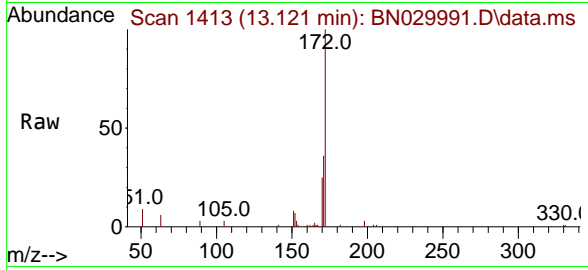


#15  
 2-Fluorobiphenyl  
 Concen: 0.370 ng  
 RT: 13.121 min Scan# 14  
 Delta R.T. -0.011 min  
 Lab File: BN029991.D  
 Acq: 24 Feb 2024 13:43

Instrument : BNA\_N  
 ClientSampleId : SSTDCCC0.4EC

Tgt Ion:172 Resp: 9525

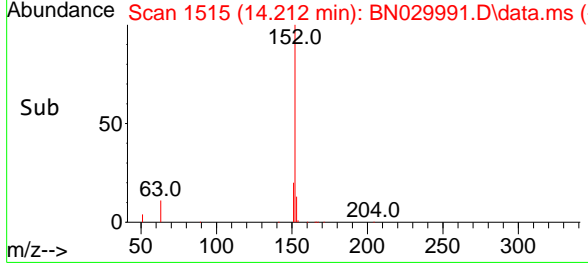
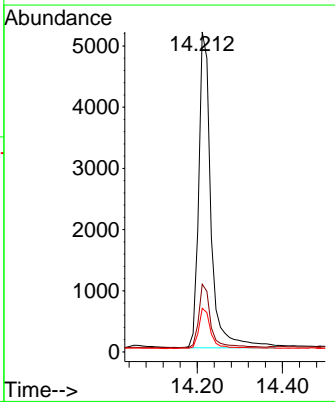
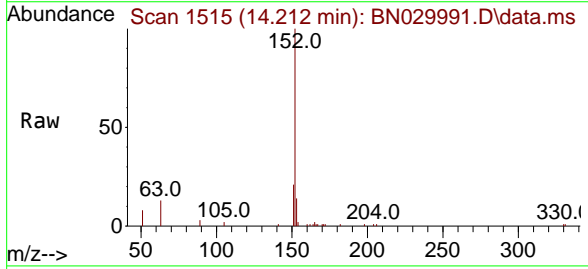
Ion	Ratio	Lower	Upper
172	100		
171	36.2	28.0	42.0
170	25.4	18.7	28.1

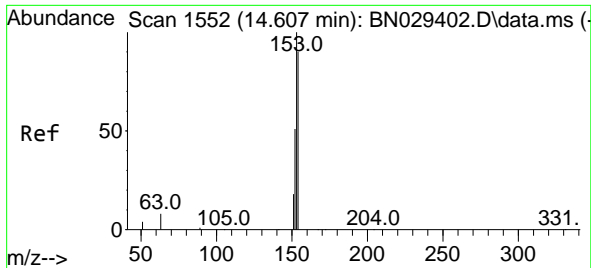


#16  
 Acenaphthylene  
 Concen: 0.361 ng  
 RT: 14.212 min Scan# 1515  
 Delta R.T. -0.021 min  
 Lab File: BN029991.D  
 Acq: 24 Feb 2024 13:43

Tgt Ion:152 Resp: 10290

Ion	Ratio	Lower	Upper
152	100		
151	19.6	15.9	23.9
153	12.8	10.5	15.7

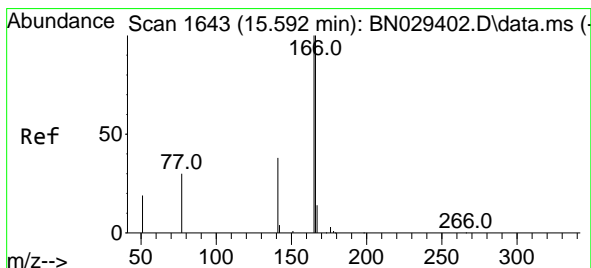
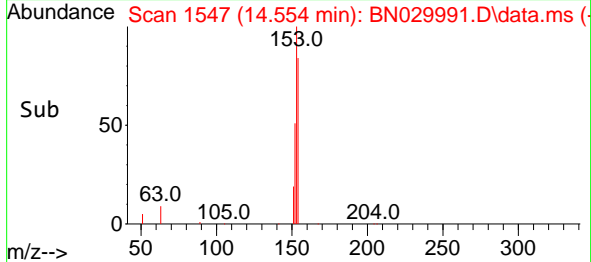
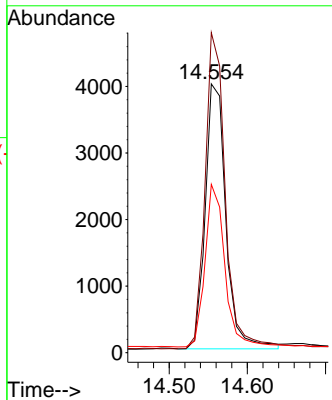
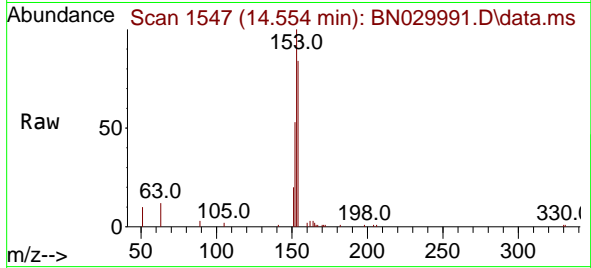




#17  
 Acenaphthene  
 Concen: 0.384 ng  
 RT: 14.554 min Scan# 111  
 Delta R.T. -0.021 min  
 Lab File: BN029991.D  
 Acq: 24 Feb 2024 13:43

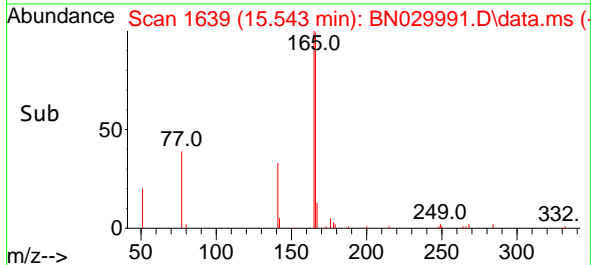
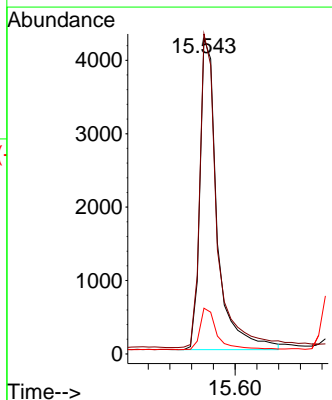
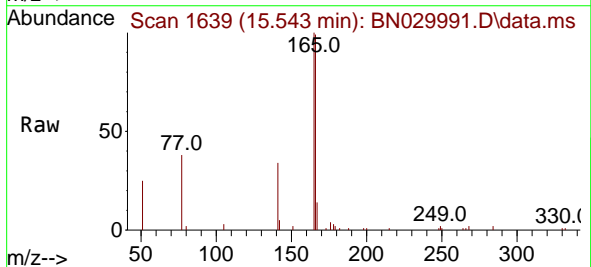
Instrument : BNA\_N  
 ClientSampleId : SSTDCCC0.4EC

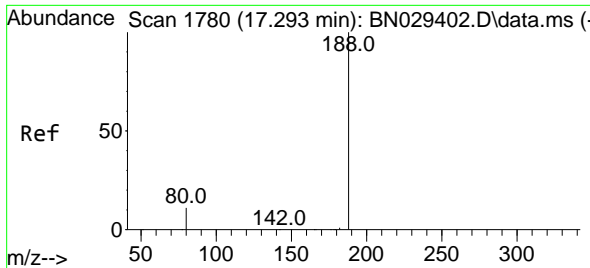
Tgt Ion	Resp	Lower	Upper
154	100		
153	118.2	93.6	140.4
152	59.7	48.6	73.0



#18  
 Fluorene  
 Concen: 0.389 ng  
 RT: 15.543 min Scan# 1639  
 Delta R.T. -0.012 min  
 Lab File: BN029991.D  
 Acq: 24 Feb 2024 13:43

Tgt Ion	Resp	Lower	Upper
166	100		
165	99.8	79.9	119.9
167	13.3	11.3	16.9

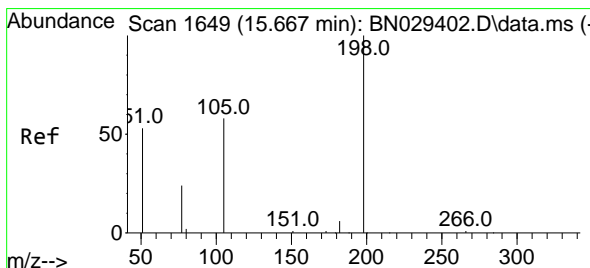
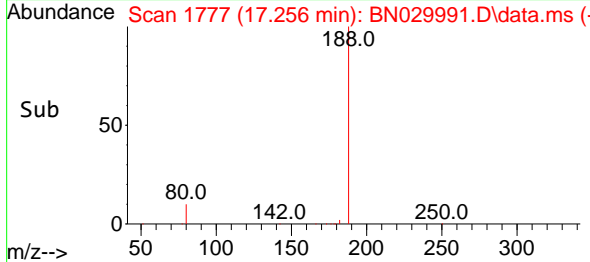
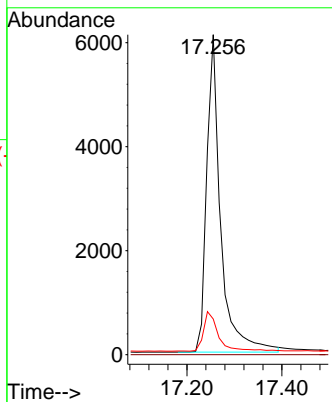
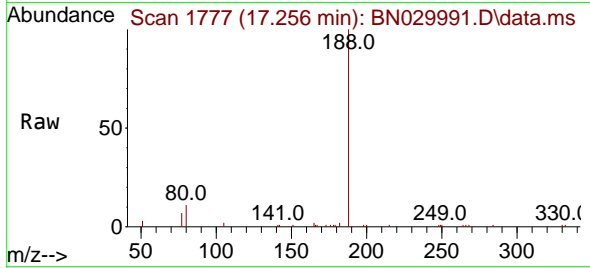




#19  
 Phenanthrene-d10  
 Concen: 0.400 ng  
 RT: 17.256 min Scan# 11  
 Delta R.T. 0.000 min  
 Lab File: BN029991.D  
 Acq: 24 Feb 2024 13:43

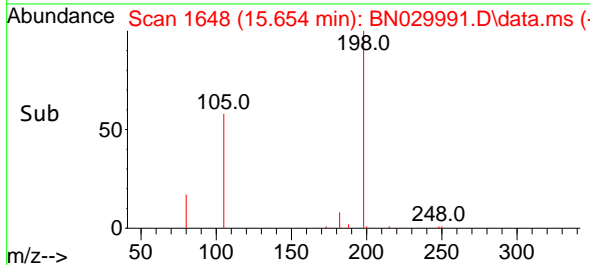
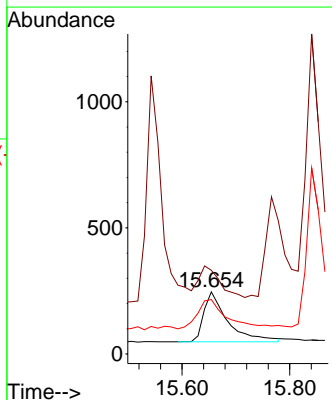
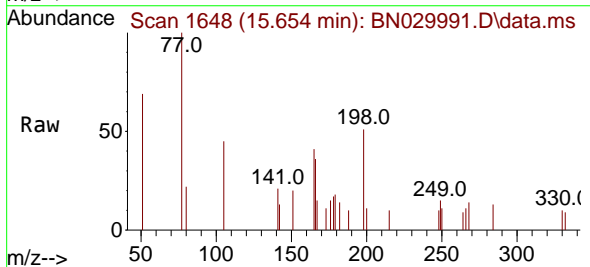
Instrument :  
 BNA\_N  
 ClientSampleId :  
 SSTDCCC0.4EC

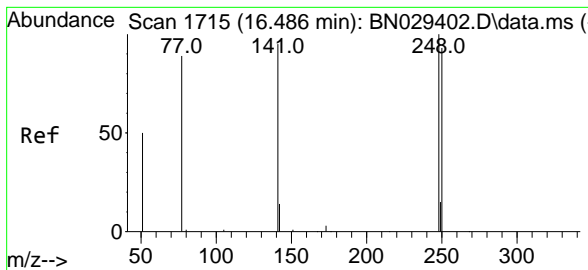
Tgt Ion:188 Resp: 12478  
 Ion Ratio Lower Upper  
 188 100  
 94 0.0 0.0 0.0  
 80 11.2 10.0 15.0



#20  
 4,6-Dinitro-2-methylphenol  
 Concen: 0.336 ng  
 RT: 15.654 min Scan# 1648  
 Delta R.T. 0.000 min  
 Lab File: BN029991.D  
 Acq: 24 Feb 2024 13:43

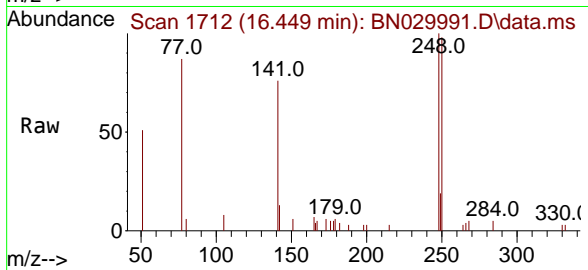
Tgt Ion:198 Resp: 615  
 Ion Ratio Lower Upper  
 198 100  
 51 135.0 111.0 166.6  
 105 87.8 67.0 100.6



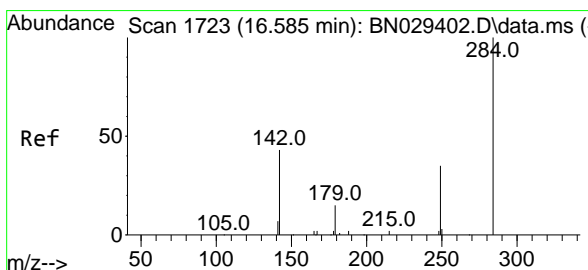
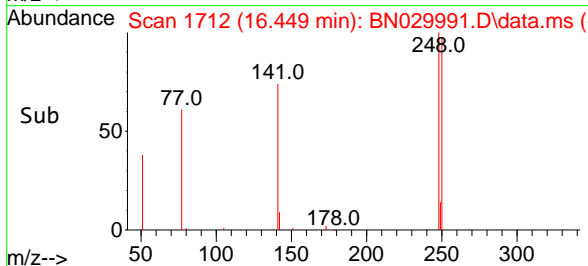
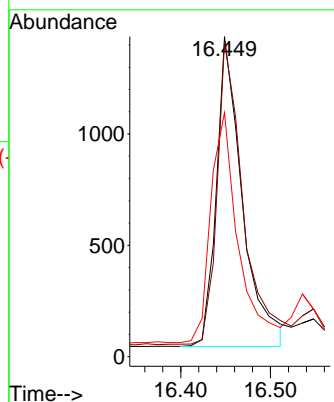


#21  
 4-Bromophenyl-phenylether  
 Concen: 0.376 ng  
 RT: 16.449 min Scan# 1712  
 Delta R.T. -0.012 min  
 Lab File: BN029991.D  
 Acq: 24 Feb 2024 13:43

Instrument :  
 BNA\_N  
 ClientSampleId :  
 SSTDCCC0.4EC

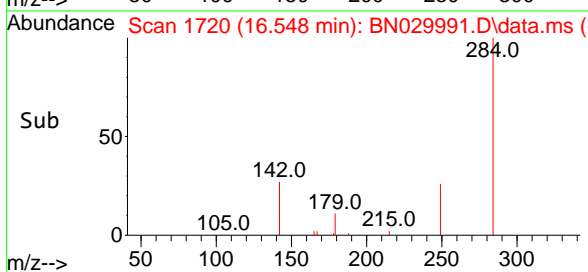
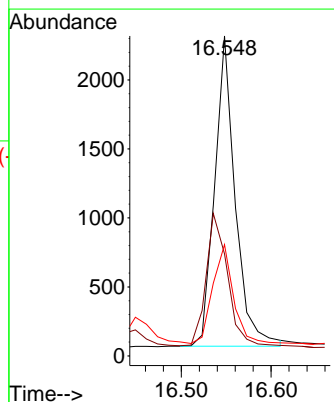
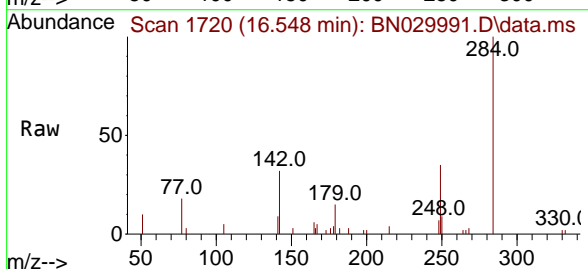


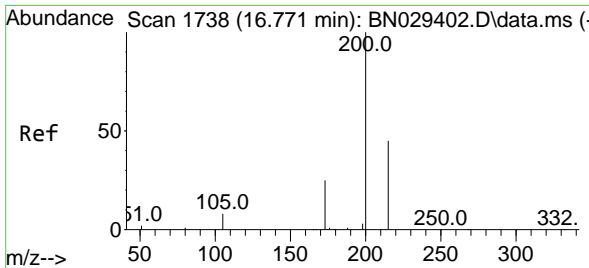
Tgt Ion:248 Resp: 2795  
 Ion Ratio Lower Upper  
 248 100  
 250 98.3 75.0 112.4  
 141 76.3 77.0 115.6#



#22  
 Hexachlorobenzene  
 Concen: 0.393 ng  
 RT: 16.548 min Scan# 1720  
 Delta R.T. -0.012 min  
 Lab File: BN029991.D  
 Acq: 24 Feb 2024 13:43

Tgt Ion:284 Resp: 3581  
 Ion Ratio Lower Upper  
 284 100  
 142 43.8 39.4 59.2  
 249 32.0 26.9 40.3



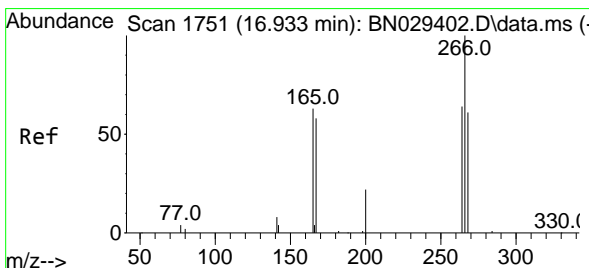
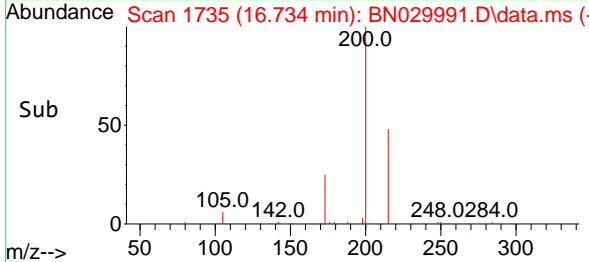
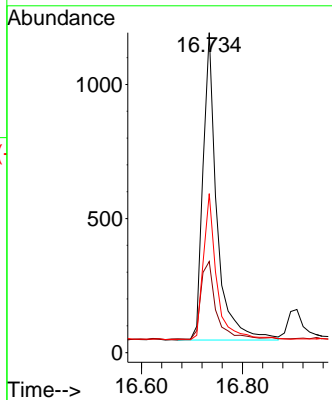
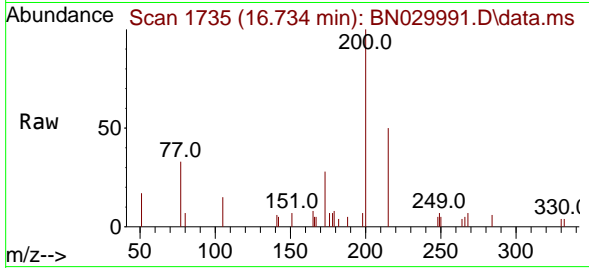


#23  
 Atrazine  
 Concen: 0.414 ng  
 RT: 16.734 min Scan# 11  
 Delta R.T. 0.000 min  
 Lab File: BN029991.D  
 Acq: 24 Feb 2024 13:43

Instrument : BNA\_N  
 ClientSampleId : SSTDCCC0.4EC

Tgt Ion:200 Resp: 2188

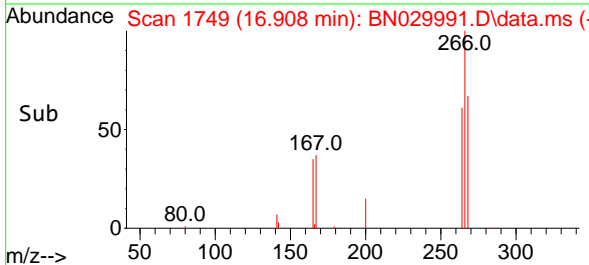
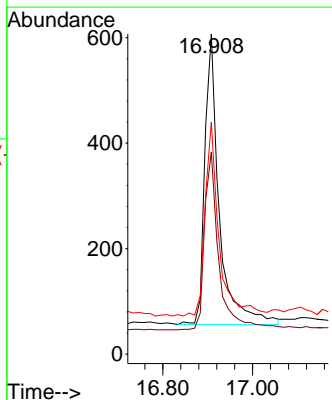
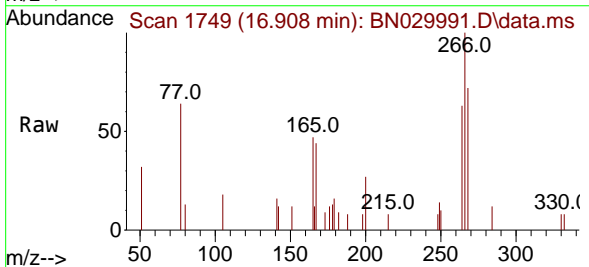
Ion	Ratio	Lower	Upper
200	100		
173	28.5	23.4	35.0
215	49.7	38.4	57.6

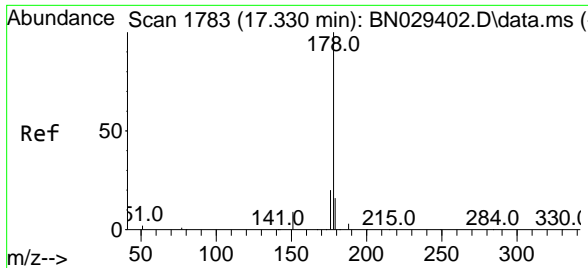


#24  
 Pentachlorophenol  
 Concen: 0.427 ng  
 RT: 16.908 min Scan# 1749  
 Delta R.T. 0.000 min  
 Lab File: BN029991.D  
 Acq: 24 Feb 2024 13:43

Tgt Ion:266 Resp: 1233

Ion	Ratio	Lower	Upper
266	100		
264	60.7	50.8	76.2
268	64.7	51.5	77.3

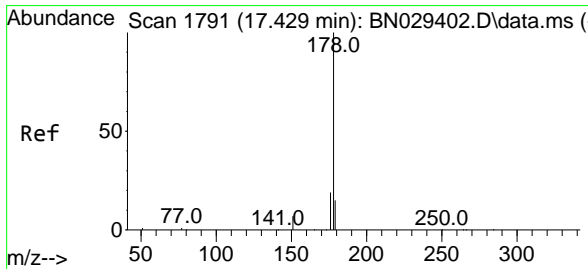
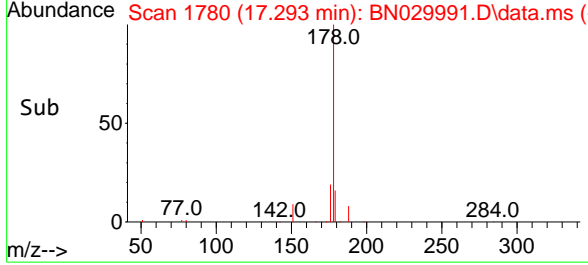
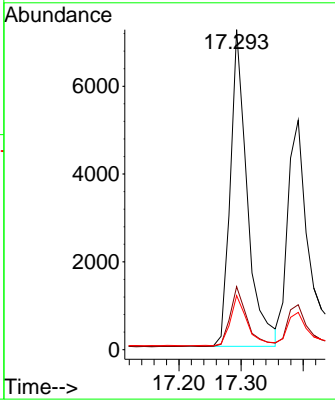
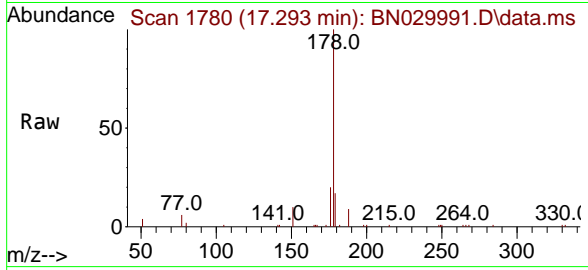




#25  
 Phenanthrene  
 Concen: 0.372 ng  
 RT: 17.293 min Scan# 1780  
 Delta R.T. -0.012 min  
 Lab File: BN029991.D  
 Acq: 24 Feb 2024 13:43

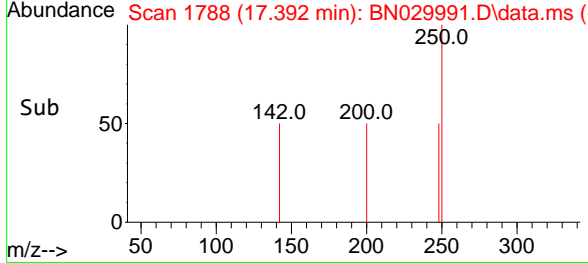
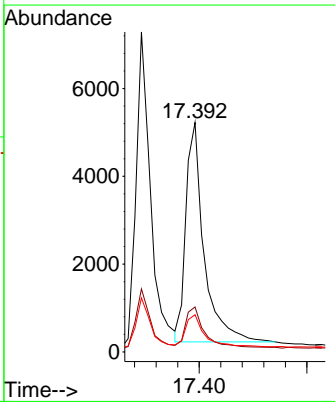
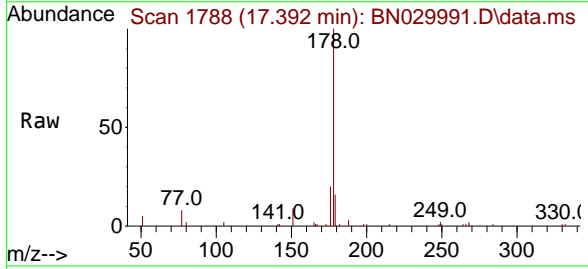
Instrument : BNA\_N  
 ClientSampleId : SSTDCCC0.4EC

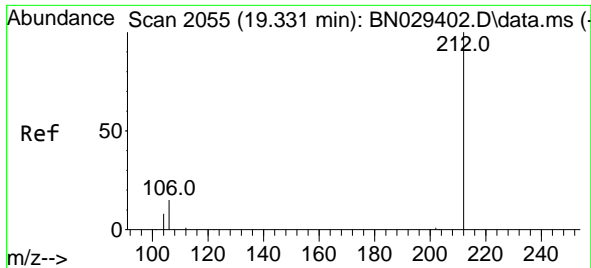
Tgt Ion	Resp	Lower	Upper
178	13725		
176	19.1	15.8	23.6
179	15.9	12.6	19.0



#26  
 Anthracene  
 Concen: 0.371 ng  
 RT: 17.392 min Scan# 1788  
 Delta R.T. 0.000 min  
 Lab File: BN029991.D  
 Acq: 24 Feb 2024 13:43

Tgt Ion	Resp	Lower	Upper
178	11674		
176	18.4	15.0	22.4
179	15.0	12.3	18.5

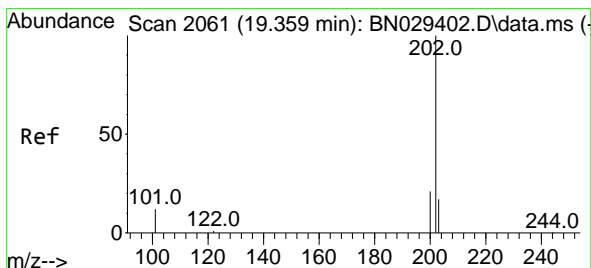
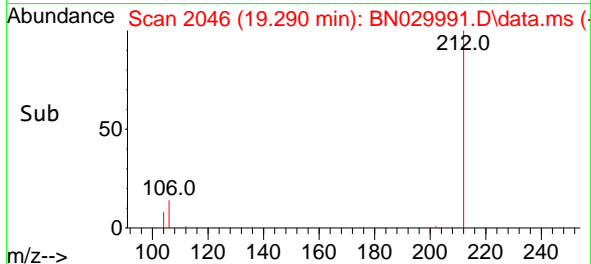
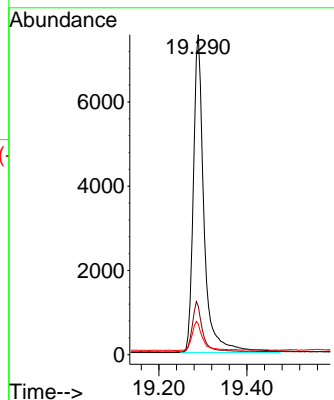
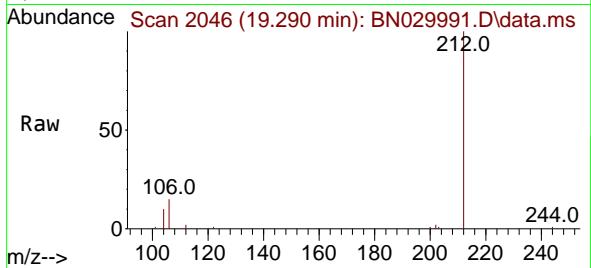




#27  
 Fluoranthene-d10  
 Concen: 0.422 ng  
 RT: 19.290 min Scan# 2046  
 Delta R.T. -0.009 min  
 Lab File: BN029991.D  
 Acq: 24 Feb 2024 13:43

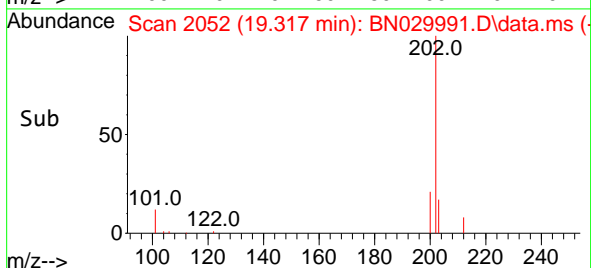
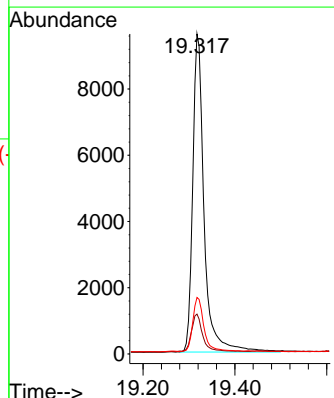
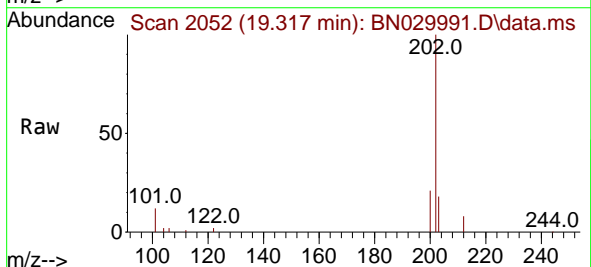
Instrument :  
 BNA\_N  
 ClientSampleId :  
 SSTDCCC0.4EC

Tgt Ion:212 Resp: 12752  
 Ion Ratio Lower Upper  
 212 100  
 106 15.0 13.2 19.8  
 104 9.0 7.7 11.5

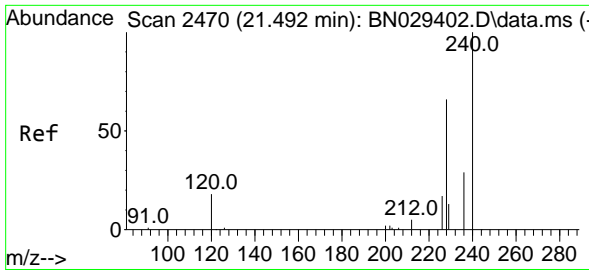


#28  
 Fluoranthene  
 Concen: 0.397 ng  
 RT: 19.317 min Scan# 2052  
 Delta R.T. -0.009 min  
 Lab File: BN029991.D  
 Acq: 24 Feb 2024 13:43

Tgt Ion:202 Resp: 16483  
 Ion Ratio Lower Upper  
 202 100  
 101 12.0 10.5 15.7  
 203 16.7 13.5 20.3

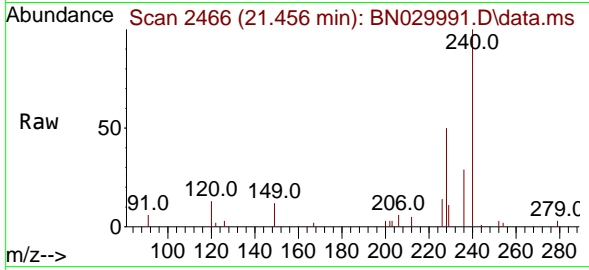




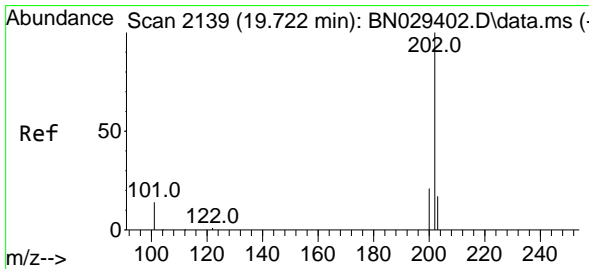
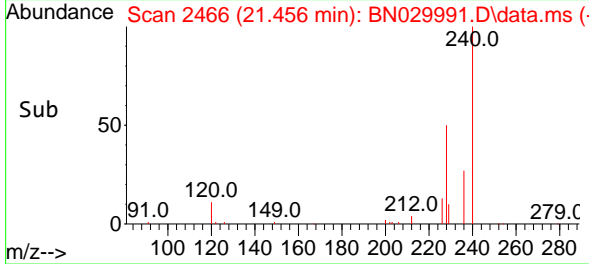
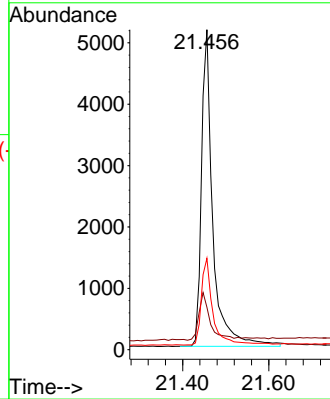


#29  
 Chrysene-d12  
 Concen: 0.400 ng  
 RT: 21.456 min Scan# 24  
 Delta R.T. -0.009 min  
 Lab File: BN029991.D  
 Acq: 24 Feb 2024 13:43

Instrument :  
 BNA\_N  
 ClientSampleId :  
 SSTDCCC0.4EC

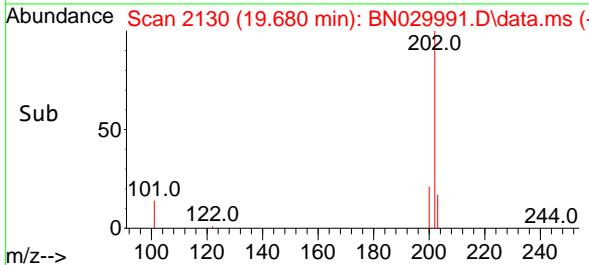
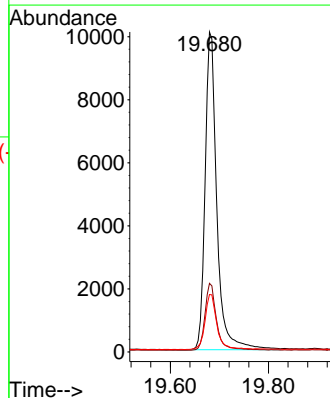
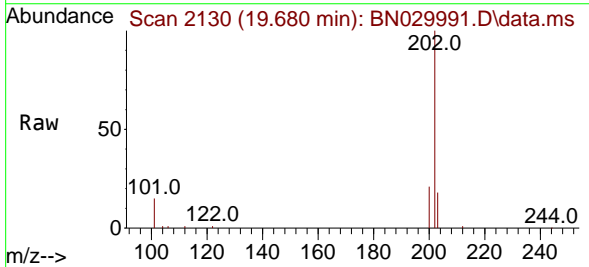


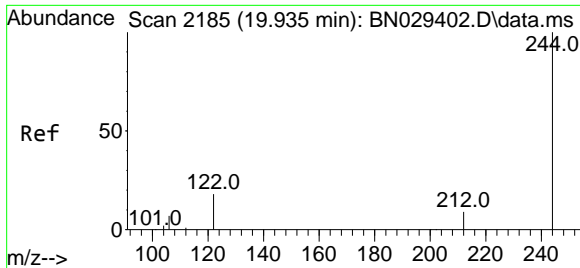
Tgt Ion:240 Resp: 9433  
 Ion Ratio Lower Upper  
 240 100  
 120 13.3 16.7 25.1#  
 236 28.5 23.9 35.9



#30  
 Pyrene  
 Concen: 0.384 ng  
 RT: 19.680 min Scan# 2130  
 Delta R.T. -0.009 min  
 Lab File: BN029991.D  
 Acq: 24 Feb 2024 13:43

Tgt Ion:202 Resp: 16694  
 Ion Ratio Lower Upper  
 202 100  
 200 20.8 16.6 25.0  
 203 17.7 14.2 21.4

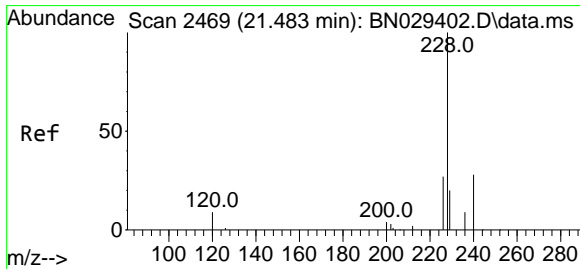
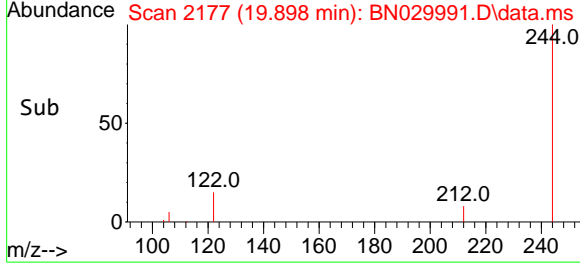
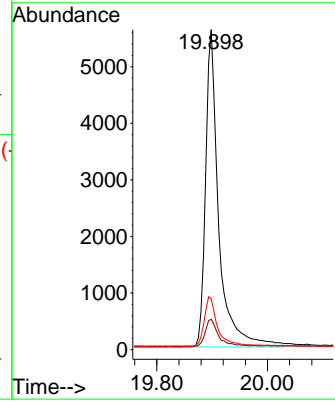
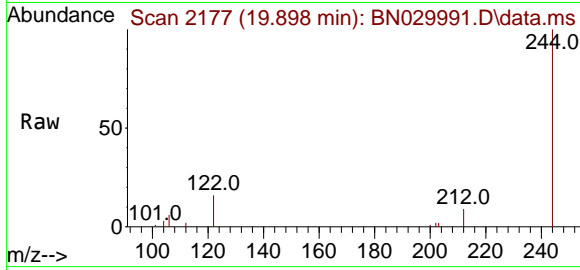




#31  
 Terphenyl-d14  
 Concen: 0.397 ng  
 RT: 19.898 min Scan# 2177  
 Delta R.T. -0.009 min  
 Lab File: BN029991.D  
 Acq: 24 Feb 2024 13:43

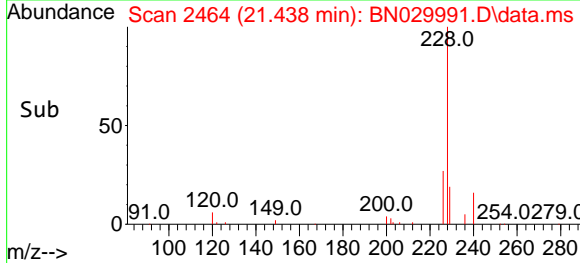
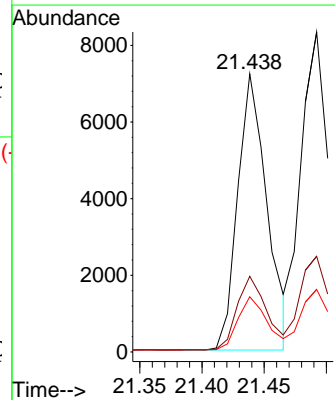
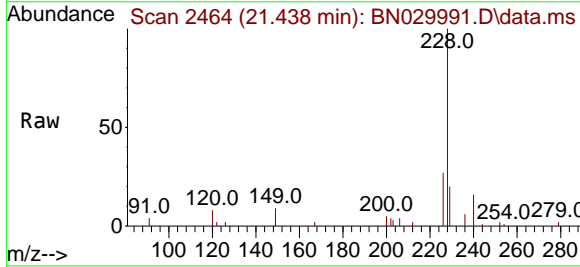
Instrument : BNA\_N  
 ClientSampleId : SSTDCCC0.4EC

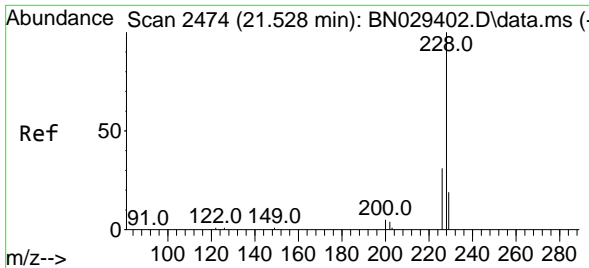
Tgt Ion	Resp	Ion Ratio	Lower	Upper
244	9292	100		
212		9.5	8.2	12.4
122		15.9	15.6	23.4



#32  
 Benzo(a)anthracene  
 Concen: 0.366 ng  
 RT: 21.438 min Scan# 2464  
 Delta R.T. -0.009 min  
 Lab File: BN029991.D  
 Acq: 24 Feb 2024 13:43

Tgt Ion	Resp	Ion Ratio	Lower	Upper
228	11791	100		
226		27.2	22.2	33.4
229		19.8	16.5	24.7

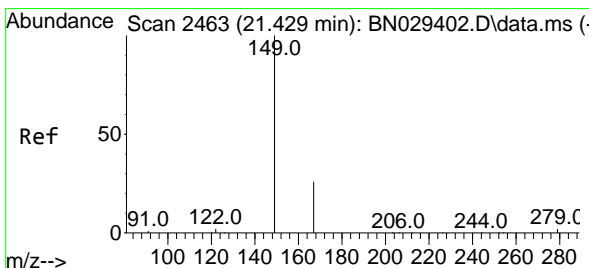
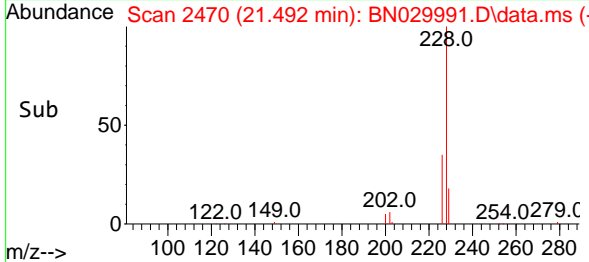
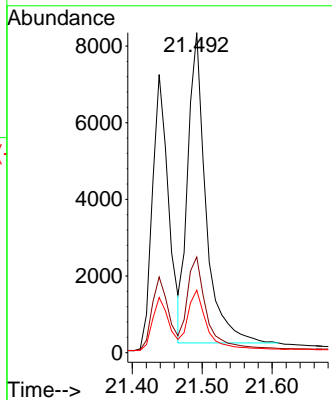
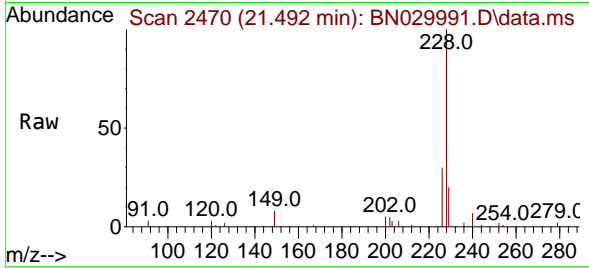




#33  
 Chrysene  
 Concen: 0.396 ng  
 RT: 21.492 min Scan# 24  
 Delta R.T. -0.009 min  
 Lab File: BN029991.D  
 Acq: 24 Feb 2024 13:43

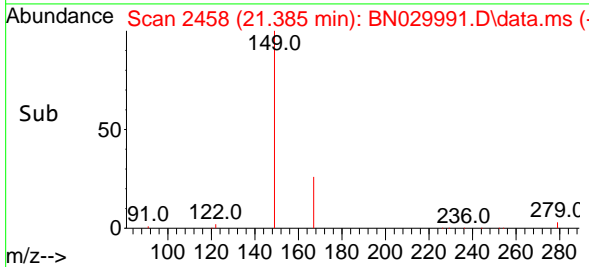
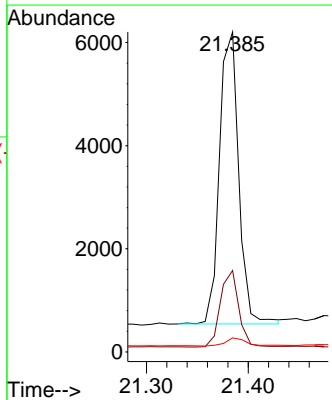
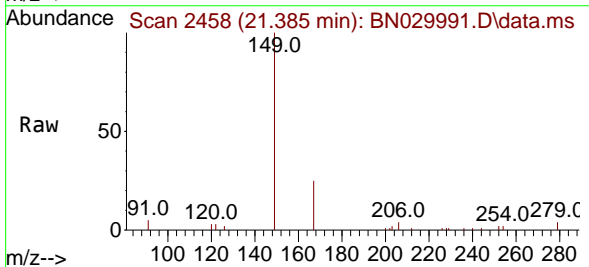
Instrument :  
 BNA\_N  
 ClientSampleId :  
 SSTDCCC0.4EC

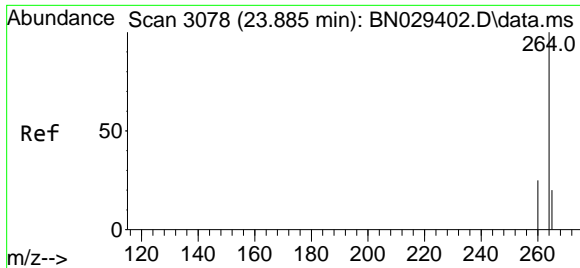
Tgt Ion	Resp	Lower	Upper
228	14484		
226	29.9	24.9	37.3
229	19.6	15.9	23.9



#34  
 Bis(2-ethylhexyl)phthalate  
 Concen: 0.338 ng  
 RT: 21.385 min Scan# 2458  
 Delta R.T. -0.009 min  
 Lab File: BN029991.D  
 Acq: 24 Feb 2024 13:43

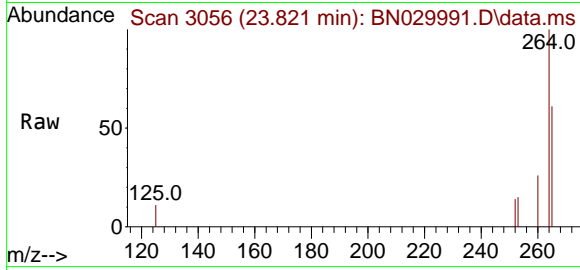
Tgt Ion	Resp	Lower	Upper
149	7425		
167	25.1	20.1	30.1
279	3.2	2.5	3.7





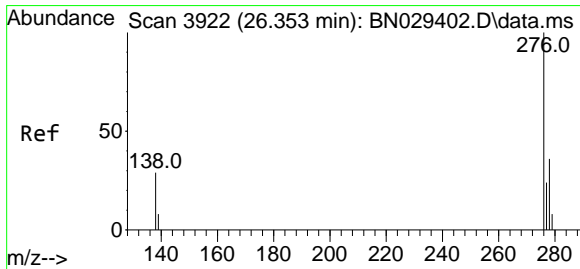
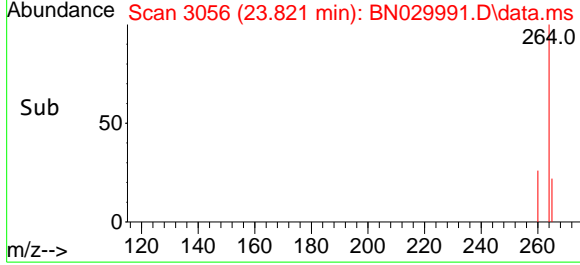
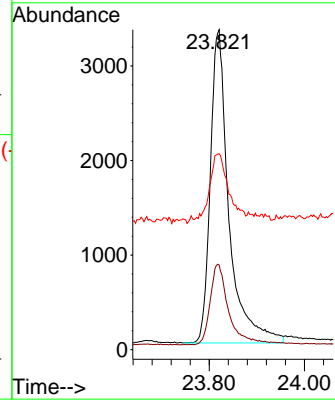
#35  
 Perylene-d12  
 Concen: 0.400 ng  
 RT: 23.821 min Scan# 3078  
 Delta R.T. -0.012 min  
 Lab File: BN029991.D  
 Acq: 24 Feb 2024 13:43

Instrument : BNA\_N  
 ClientSampleId : SSTDCCC0.4EC



Tgt Ion:264 Resp: 8956

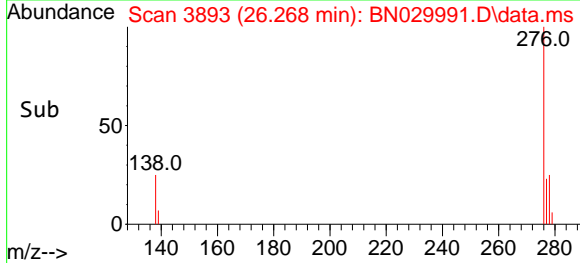
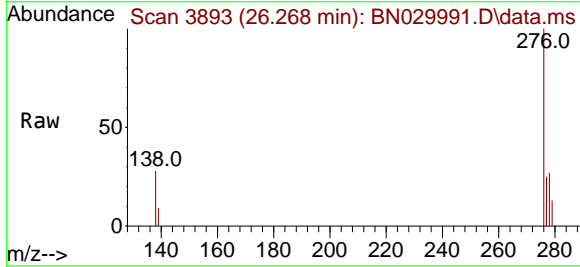
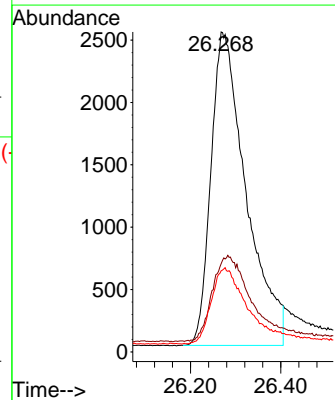
Ion	Ratio	Lower	Upper
264	100		
260	26.4	21.2	31.8
265	61.3	41.5	62.3

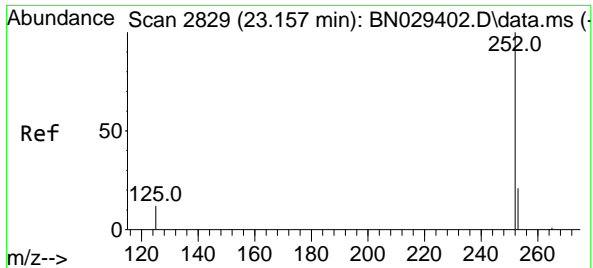


#36  
 Indeno(1,2,3-cd)pyrene  
 Concen: 0.378 ng  
 RT: 26.268 min Scan# 3893  
 Delta R.T. -0.012 min  
 Lab File: BN029991.D  
 Acq: 24 Feb 2024 13:43

Tgt Ion:276 Resp: 13598

Ion	Ratio	Lower	Upper
276	100		
138	29.4	20.5	30.7
277	23.9	17.0	25.4



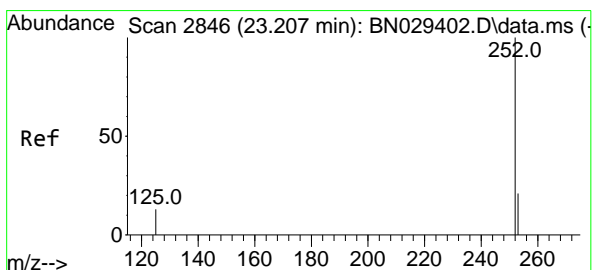
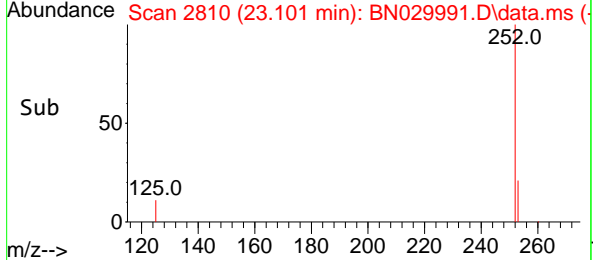
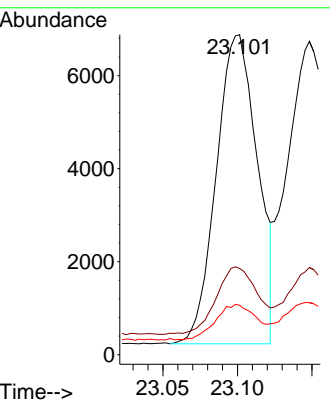
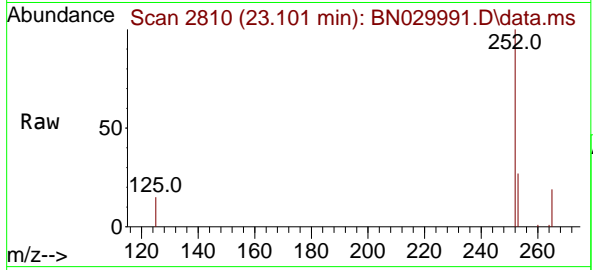


#37  
 Benzo(b)fluoranthene  
 Concen: 0.398 ng  
 RT: 23.101 min Scan# 2810  
 Delta R.T. -0.009 min  
 Lab File: BN029991.D  
 Acq: 24 Feb 2024 13:43

Instrument : BNA\_N  
 ClientSampleId : SSTDCCC0.4EC

Tgt Ion:252 Resp: 12747

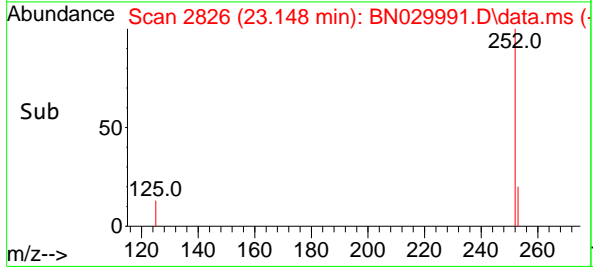
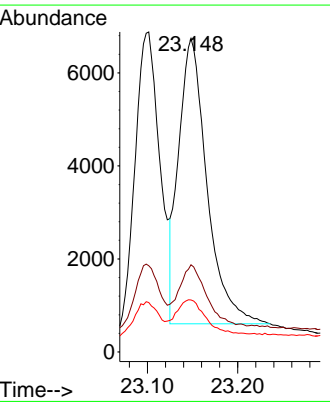
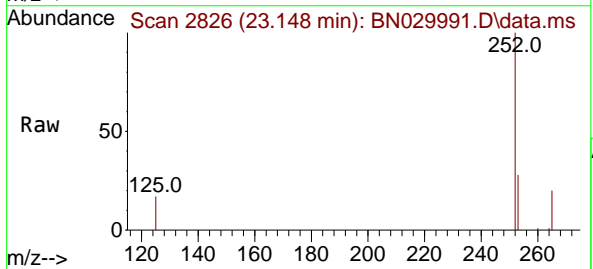
Ion	Ratio	Lower	Upper
252	100		
253	26.9	21.7	32.5
125	15.5	13.3	19.9

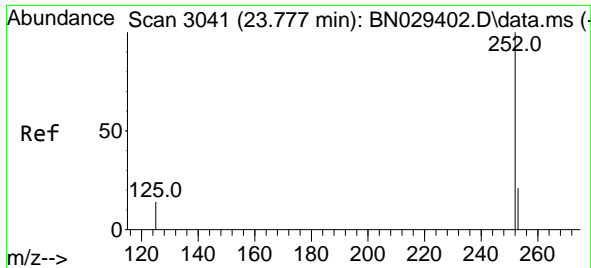


#38  
 Benzo(k)fluoranthene  
 Concen: 0.399 ng  
 RT: 23.148 min Scan# 2826  
 Delta R.T. -0.012 min  
 Lab File: BN029991.D  
 Acq: 24 Feb 2024 13:43

Tgt Ion:252 Resp: 13367

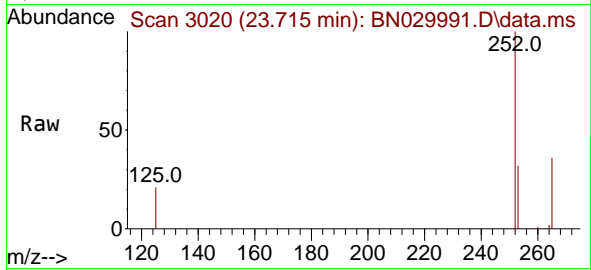
Ion	Ratio	Lower	Upper
252	100		
253	27.8	21.8	32.8
125	16.6	13.9	20.9



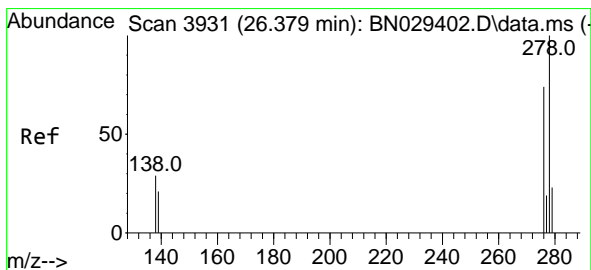
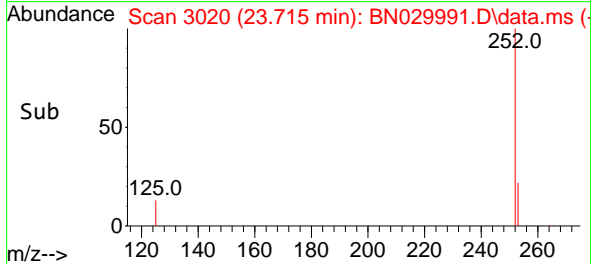
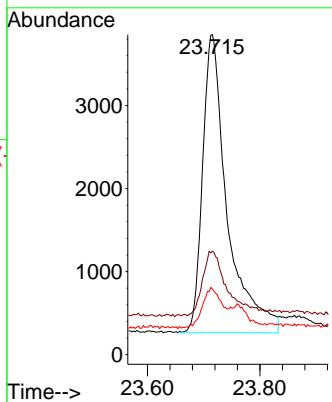


#39  
 Benzo(a)pyrene  
 Concen: 0.392 ng  
 RT: 23.715 min Scan# 30  
 Delta R.T. -0.012 min  
 Lab File: BN029991.D  
 Acq: 24 Feb 2024 13:43

Instrument :  
 BNA\_N  
 ClientSampleId :  
 SSTDCCC0.4EC

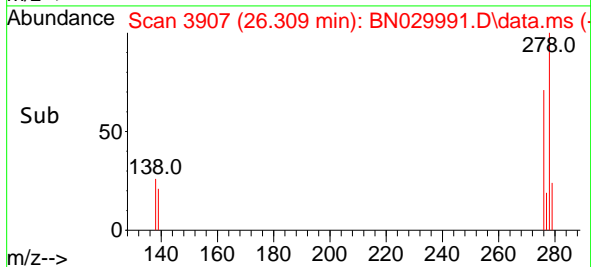
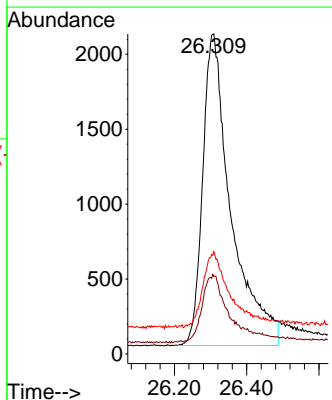
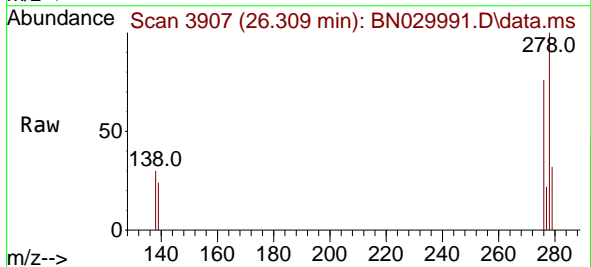


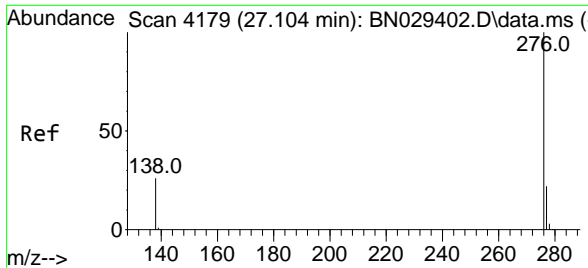
Tgt Ion:252 Resp: 10935  
 Ion Ratio Lower Upper  
 252 100  
 253 32.3 24.9 37.3  
 125 20.5 16.6 25.0



#40  
 Dibenzo(a,h)anthracene  
 Concen: 0.396 ng  
 RT: 26.309 min Scan# 3907  
 Delta R.T. -0.003 min  
 Lab File: BN029991.D  
 Acq: 24 Feb 2024 13:43

Tgt Ion:278 Resp: 11355  
 Ion Ratio Lower Upper  
 278 100  
 139 24.2 20.4 30.6  
 279 32.0 25.0 37.6





#41  
 Benzo(g,h,i)perylene  
 Concen: 0.372 ng  
 RT: 27.005 min Scan# 41  
 Delta R.T. -0.023 min  
 Lab File: BN029991.D  
 Acq: 24 Feb 2024 13:43

Instrument :  
 BNA\_N  
 ClientSampleId :  
 SSTDCCC0.4EC

Tgt Ion:276 Resp: 12995

Ion	Ratio	Lower	Upper
276	100		
277	25.0	19.4	29.2
138	27.6	23.5	35.3

