

Data Path : Z:\SVOASRV\HPCHEM1\BNA\_N\DATA\BN022620\  
 Data File : BN009934.D  
 Acq On : 26 Feb 2020 18:42  
 Operator : CG/JU  
 Sample : L1615-06  
 Misc :  
 ALS Vial : 15 Sample Multiplier: 1

Instrument :  
 BNA\_N  
 ClientSampleId :  
 DBDN0

Integration Parameters: LSCINT.P

Integrator: RTE  
 Smoothing : OFF Filtering: 5  
 Sampling : 1 Min Area: 0.1 % of largest Peak  
 Start Thrs: 0.2 Max Peaks: 100  
 Stop Thrs : 0 Peak Location: TOP

If leading or trailing edge < 100 prefer < Baseline drop else tangent >  
 Peak separation: 5

Method : Z:\SVOASRV\HPCHEM1\BNA\_N\METHODS\SOM-EPA-BN021220MA.M  
 Title : SVOA CALIBRATION

Signal : TIC

peak #	R.T. min	first scan	max scan	last scan	PK TY	peak height	corr. area	corr. % max.	% of total
1	3.034	4	8	14	rBV5	10437	16877	1.07%	0.102%
2	3.116	20	22	25	rBV3	3468	4102	0.26%	0.025%
3	3.452	78	79	81	rBV2	3334	2784	0.18%	0.017%
4	3.634	106	110	114	rVB5	6449	8539	0.54%	0.052%
5	3.704	119	122	123	rBV3	3544	3386	0.22%	0.020%
6	3.928	158	160	163	rVB4	3083	3083	0.20%	0.019%
7	4.181	202	203	205	rBV2	2809	2332	0.15%	0.014%
8	4.199	205	206	210	rVV3	3491	3035	0.19%	0.018%
9	4.240	210	213	218	rVV4	4069	6405	0.41%	0.039%
10	4.416	240	243	245	rBV3	1959	2052	0.13%	0.012%
11	4.487	252	255	257	rBV3	3141	2581	0.16%	0.016%
12	4.587	268	272	278	rVV	17675	26293	1.67%	0.159%
13	5.187	372	374	376	rVB2	2685	2066	0.13%	0.013%
14	6.593	608	613	625	rBV	115548	234705	14.92%	1.420%
15	6.746	633	639	652	rBV	94479	168132	10.69%	1.017%
16	6.928	665	670	683	rBV	131893	232409	14.78%	1.406%
17	7.028	683	687	689	rVB5	2631	3840	0.24%	0.023%
18	7.381	741	747	760	rBV	358359	609759	38.77%	3.690%
19	8.034	855	858	860	rBV4	1720	2124	0.14%	0.013%
20	8.110	865	871	883	rBV2	128172	254459	16.18%	1.540%
21	8.222	887	890	896	rVB3	8953	14627	0.93%	0.089%
22	8.534	936	943	963	rBV	120142	236870	15.06%	1.433%
23	8.963	1013	1016	1021	rVB4	2520	4008	0.25%	0.024%
24	9.245	1056	1064	1081	rBV	89824	178406	11.34%	1.080%
25	9.557	1114	1117	1120	rBV2	1466	2467	0.16%	0.015%
26	9.792	1150	1157	1168	rBV2	97685	231288	14.71%	1.400%
27	9.922	1178	1179	1185	rVB4	2912	2659	0.17%	0.016%
28	9.969	1185	1187	1192	rVB3	2131	2890	0.18%	0.017%
29	10.128	1207	1214	1228	rBV	536092	894932	56.90%	5.415%
30	10.222	1228	1230	1235	rVB4	1445	2428	0.15%	0.015%
31	10.304	1238	1244	1262	rBV2	80506	235989	15.01%	1.428%
32	10.498	1273	1277	1281	rVB4	1797	2220	0.14%	0.013%
33	10.628	1293	1299	1300	rBV3	1590	2339	0.15%	0.014%
34	11.286	1407	1411	1413	rBV3	1800	2590	0.16%	0.016%

Data Path : Z:\SVOASRV\HPCHEM1\BNA\_N\DATA\BN022620\  
 Data File : BN009934.D  
 Acq On : 26 Feb 2020 18:42  
 Operator : CG/JU  
 Sample : L1615-06  
 Misc :  
 ALS Vial : 15 Sample Multiplier: 1

Instrument :  
 BNA\_N  
 ClientSampleId :  
 DBDN0

## Integration Parameters: LSCINT.P

Integrator: RTE  
 Smoothing : OFF  
 Sampling : 1  
 Start Thrs: 0.2  
 Stop Thrs : 0

Filtering: 5  
 Min Area: 0.1 % of largest Peak  
 Max Peaks: 100  
 Peak Location: TOP

If leading or trailing edge < 100 prefer < Baseline drop else tangent >  
 Peak separation: 5

Method : Z:\SVOASRV\HPCHEM1\BNA\_N\METHODS\SOM-EPA-BN021220MA.M  
 Title : SVOA CALIBRATION

35	11.786	1491	1496	1498	rBV4	1778	3213	0.20%	0.019%
36	12.939	1685	1692	1703	rVV	281166	456816	29.05%	2.764%
37	13.022	1703	1706	1711	rVB5	6494	8679	0.55%	0.053%
38	13.275	1744	1749	1754	rBV2	98219	137376	8.73%	0.831%
39	13.328	1754	1758	1762	rVB3	19469	27919	1.78%	0.169%
40	13.457	1774	1780	1785	rBV	276616	426172	27.10%	2.579%
41	13.504	1785	1788	1792	rVB2	28648	42394	2.70%	0.257%
42	13.710	1817	1823	1835	rBV	313534	463383	29.46%	2.804%
43	13.851	1845	1847	1850	rBV2	4126	3566	0.23%	0.022%
44	13.922	1855	1859	1862	rBV3	9059	8981	0.57%	0.054%
45	14.022	1870	1876	1888	rBV	780875	1169980	74.39%	7.080%
46	14.304	1916	1924	1932	rBV5	30036	90275	5.74%	0.546%
47	14.504	1954	1958	1961	rVV4	12621	17134	1.09%	0.104%
48	14.816	2008	2011	2013	rBV3	1853	2736	0.17%	0.017%
49	14.922	2027	2029	2034	rBV4	1878	3697	0.24%	0.022%
50	15.033	2042	2048	2058	rBV	422017	615570	39.14%	3.725%
51	15.098	2058	2059	2064	rVB3	2118	2899	0.18%	0.018%
52	15.186	2069	2074	2088	rBV3	157110	341779	21.73%	2.068%
53	15.316	2092	2096	2103	rVV2	111761	156630	9.96%	0.948%
54	16.574	2307	2310	2313	rBV2	3889	4069	0.26%	0.025%
55	16.780	2339	2345	2357	rVB	1010088	1400002	89.02%	8.471%
56	16.886	2357	2363	2376	rBV2	407859	666994	42.41%	4.036%
57	17.121	2398	2403	2407	rVB2	14693	21567	1.37%	0.131%
58	17.198	2412	2416	2425	rVV2	66870	101009	6.42%	0.611%
59	17.310	2433	2435	2439	rVB2	2534	2872	0.18%	0.017%
60	17.492	2463	2466	2469	rBV4	3461	4596	0.29%	0.028%
61	17.657	2491	2494	2499	rBV4	2608	3811	0.24%	0.023%
62	17.710	2499	2503	2512	rBV3	26317	45051	2.86%	0.273%
63	17.874	2528	2531	2533	rVB3	3186	2574	0.16%	0.016%
64	17.904	2533	2536	2540	rVB3	2455	3464	0.22%	0.021%
65	18.010	2552	2554	2557	rVB3	4210	4150	0.26%	0.025%
66	18.145	2572	2577	2580	rBV2	20621	24040	1.53%	0.145%
67	18.239	2588	2593	2594	rBV3	1997	2704	0.17%	0.016%
68	18.515	2638	2640	2643	rBV3	3173	2919	0.19%	0.018%
69	18.580	2646	2651	2659	rVV3	87501	128201	8.15%	0.776%
70	18.657	2662	2664	2669	rVV4	12417	17368	1.10%	0.105%
71	18.698	2669	2671	2674	rVB3	3225	3596	0.23%	0.022%

Data Path : Z:\SVOASRV\HPCHEM1\BNA\_N\DATA\BN022620\  
 Data File : BN009934.D  
 Acq On : 26 Feb 2020 18:42  
 Operator : CG/JU  
 Sample : L1615-06  
 Misc :  
 ALS Vial : 15 Sample Multiplier: 1

Instrument :  
 BNA\_N  
 ClientSampleId :  
 DBDN0

## Integration Parameters: LSCINT.P

Integrator: RTE  
 Smoothing : OFF Filtering: 5  
 Sampling : 1 Min Area: 0.1 % of largest Peak  
 Start Thrs: 0.2 Max Peaks: 100  
 Stop Thrs : 0 Peak Location: TOP

If leading or trailing edge < 100 prefer < Baseline drop else tangent >  
 Peak separation: 5

Method : Z:\SVOASRV\HPCHEM1\BNA\_N\METHODS\SOM-EPA-BN021220MA.M  
 Title : SVOA CALIBRATION

72	18.721	2674	2675	2678	rBV3	3727	2601	0.17%	0.016%
73	18.751	2678	2680	2682	rBV3	2780	2819	0.18%	0.017%
74	18.833	2689	2694	2696	rVB6	4129	5711	0.36%	0.035%
75	18.910	2702	2707	2710	rVB	35281	38170	2.43%	0.231%
76	19.010	2721	2724	2730	rBV8	7154	12927	0.82%	0.078%
77	19.074	2734	2735	2736	rBV	3835	2134	0.14%	0.013%
78	19.192	2749	2755	2761	rBV	601403	825296	52.48%	4.994%
79	19.357	2781	2783	2788	rBV5	3984	7072	0.45%	0.043%
80	19.504	2806	2808	2810	rBV3	6463	5982	0.38%	0.036%
81	19.639	2829	2831	2832	rBV2	3658	2548	0.16%	0.015%
82	19.751	2847	2850	2852	rBV2	9812	10769	0.68%	0.065%
83	19.780	2852	2855	2859	rVB5	14111	19207	1.22%	0.116%
84	19.921	2876	2879	2883	rBV6	8769	10715	0.68%	0.065%
85	20.092	2901	2908	2913	rBV	182218	227909	14.49%	1.379%
86	20.133	2913	2915	2917	rBV4	8812	8661	0.55%	0.052%
87	20.286	2937	2941	2943	rBV4	15790	18445	1.17%	0.112%
88	20.745	3015	3019	3025	rBV2	137118	188705	12.00%	1.142%
89	20.809	3028	3030	3039	rVB4	23402	38460	2.45%	0.233%
90	21.004	3058	3063	3078	rBV2	1171462	1572709	100.00%	9.516%
91	21.192	3092	3095	3097	rBV	39516	41332	2.63%	0.250%
92	21.604	3162	3165	3171	rVB2	67599	91386	5.81%	0.553%
93	22.039	3235	3239	3242	rBV2	103313	118900	7.56%	0.719%
94	22.503	3314	3318	3323	rBV	130640	180867	11.50%	1.094%
95	22.974	3392	3398	3402	rBV2	458321	767413	48.80%	4.644%
96	23.021	3403	3406	3412	rVB	159900	212290	13.50%	1.285%
97	23.103	3414	3420	3429	rVB	838374	1485461	94.45%	8.988%
98	23.603	3501	3505	3511	rVB2	124529	192104	12.21%	1.162%
99	24.268	3614	3618	3627	rVB2	97538	175739	11.17%	1.063%
100	25.297	3788	3793	3802	rVB6	183437	439113	27.92%	2.657%

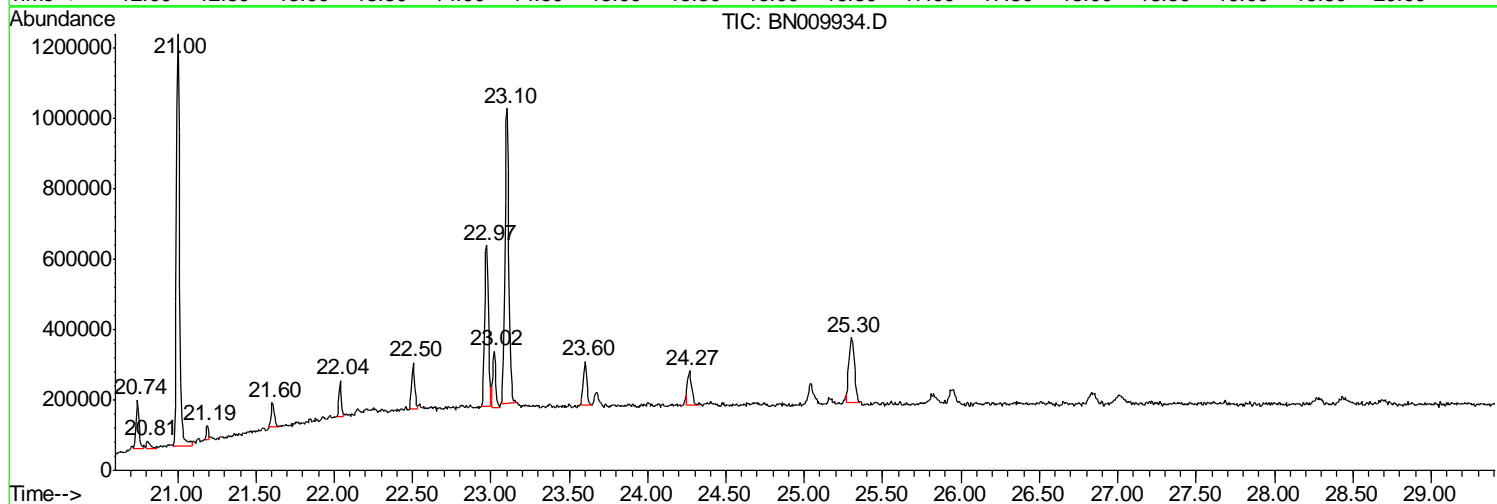
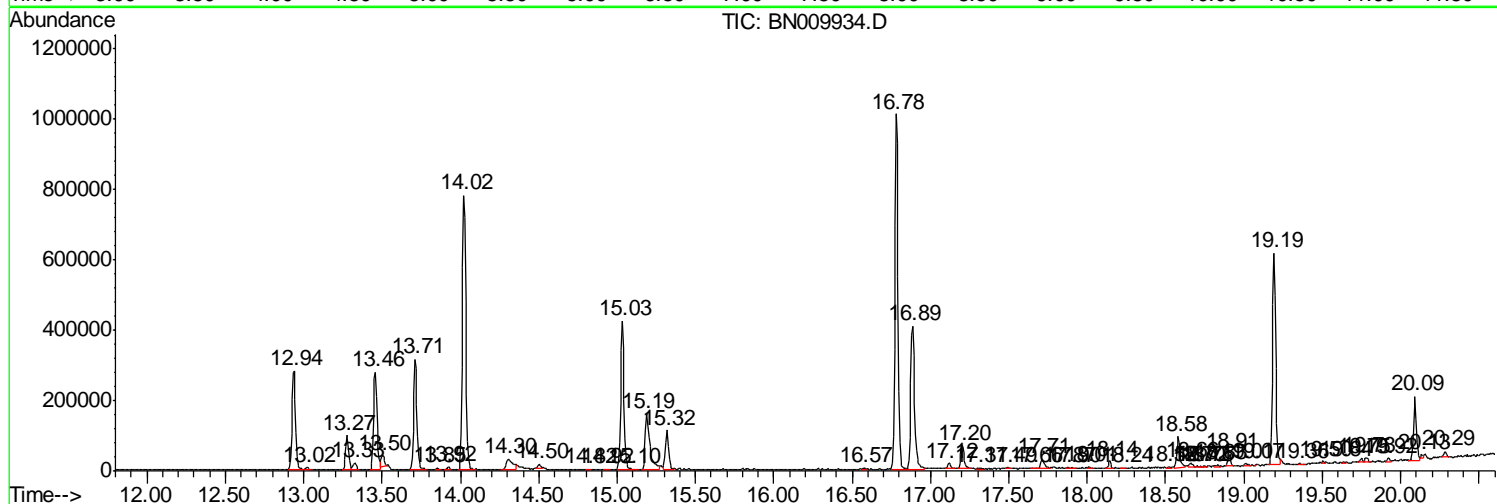
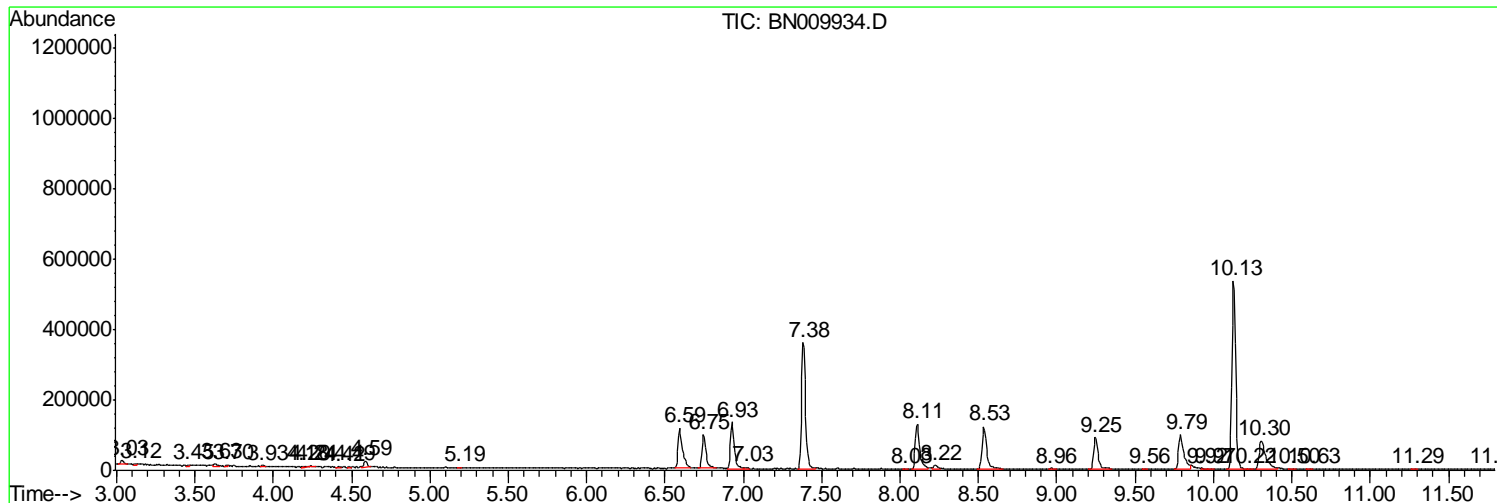
Sum of corrected areas: 16526307

Data Path : Z:\SVOASRV\HPCHEM1\BNA N\DATA\BN022620\  
 Data File : BN009934.D  
 Acq On : 26 Feb 2020 18:42  
 Operator : CG/JU  
 Sample : L1615-06  
 Misc :  
 ALS Vial : 15 Sample Multiplier: 1

Instrument :  
 BNA\_N  
 ClientSampleId :  
 DBDN0

Quant Method : Z:\SVOASRV\HPCHEM1\BNA\_N\METHODS\SOM-EPA-BN021220MA.M  
 Quant Title : SVOA CALIBRATION

TIC Library : C:\DATABASE\NIST11.L  
 TIC Integration Parameters: LSCINT.P



Data Path : Z:\SVOASRV\HPCHEM1\BNA N\DATA\BN022620\  
 Data File : BN009934.D  
 Acq On : 26 Feb 2020 18:42  
 Operator : CG/JU  
 Sample : L1615-06  
 Misc :  
 ALS Vial : 15 Sample Multiplier: 1

Instrument :  
 BNA\_N  
 ClientSampleID :  
 DBDN0

Quant Method : Z:\SVOASRV\HPCHEM1\BNA\_N\METHODS\SOM-EPA-BN021220MA.M  
 Quant Title : SVOA CALIBRATION

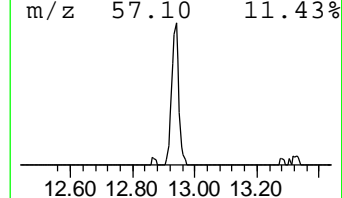
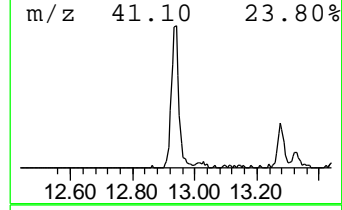
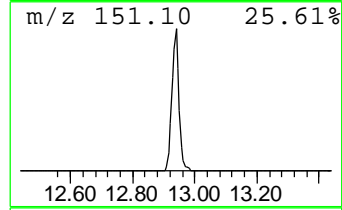
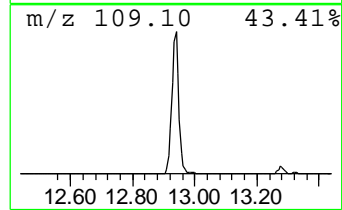
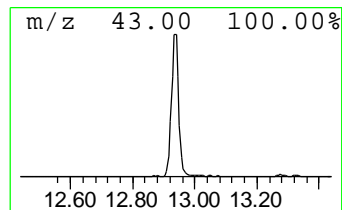
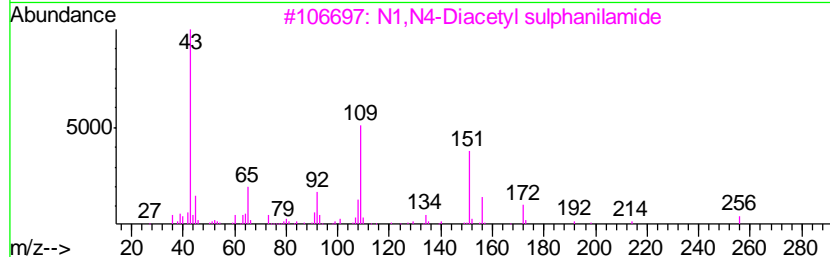
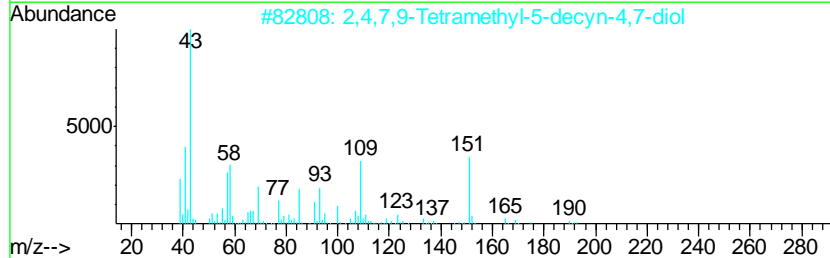
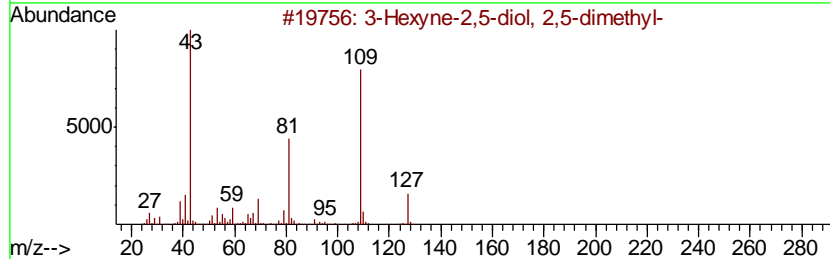
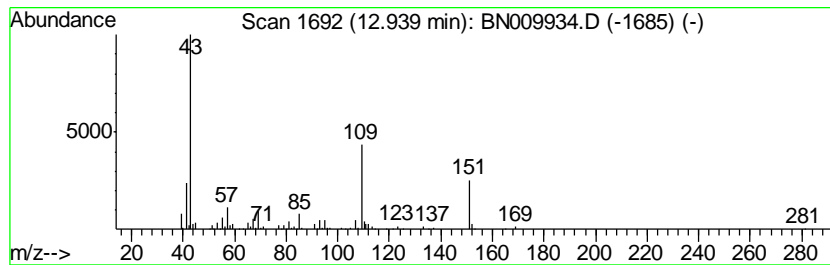
TIC Library : C:\DATABASE\NIST11.L  
 TIC Integration Parameters: LSCINT.P

\*\*\*\*\*  
 Peak Number 1 unknown-01 Concentration Rank 1

R.T.	EstConc	Area	Relative to ISTD	R.T.
12.94	7.81 ng/ul	456816	Acenaphthene-d10	14.02

Hit#	of	Tentative ID	MW	MolForm	CAS#	Qual
1	5	3-Hexyne-2,5-diol, 2,5-dimethyl-	142	C8H14O2	000142-30-3	38
2		2,4,7,9-Tetramethyl-5-decyn-4,7-...	226	C14H26O2	000126-86-3	37
3		N1,N4-Diacetyl sulphaniamide	256	C10H12N2O4S	005626-90-4	36
4		2,4,7,9-Tetramethyl-5-decyn-4,7-...	226	C14H26O2	000126-86-3	35
5		(2-Fluorophenyl)acetone	152	C9H9FO	002836-82-0	28



Data Path : Z:\SVOASRV\HPCHEM1\BNA N\DATA\BN022620\  
 Data File : BN009934.D  
 Acq On : 26 Feb 2020 18:42  
 Operator : CG/JU  
 Sample : L1615-06  
 Misc :  
 ALS Vial : 15 Sample Multiplier: 1

Instrument :  
 BNA\_N  
 ClientSampled :  
 DBDN0

Quant Method : Z:\SVOASRV\HPCHEM1\BNA\_N\METHODS\SOM-EPA-BN021220MA.M  
 Quant Title : SVOA CALIBRATION

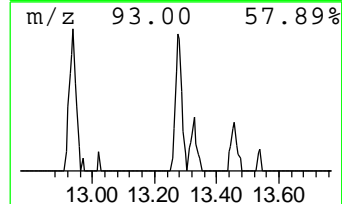
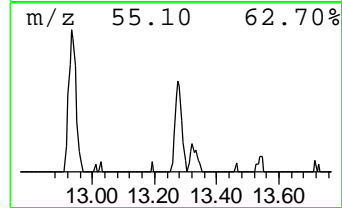
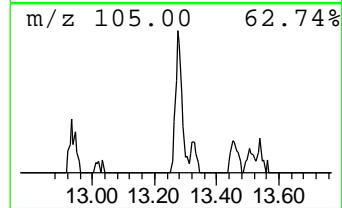
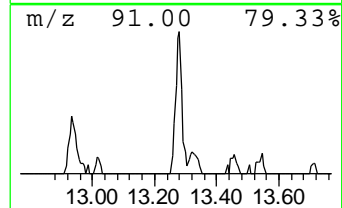
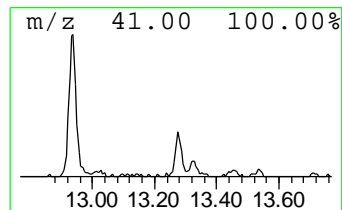
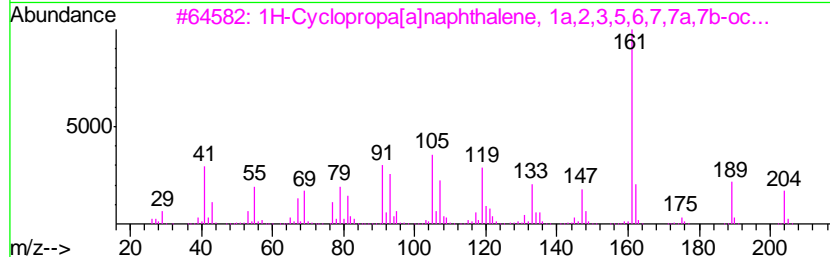
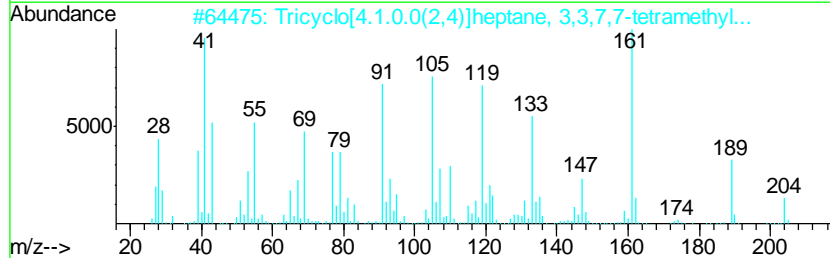
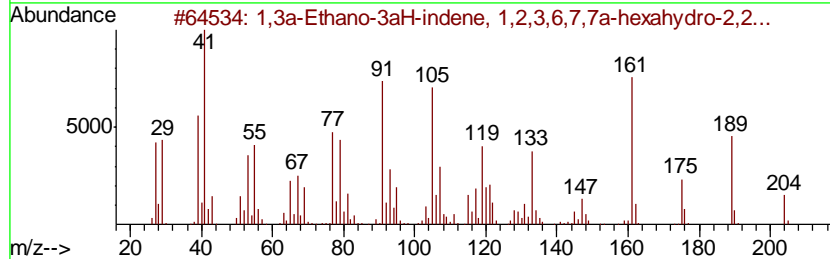
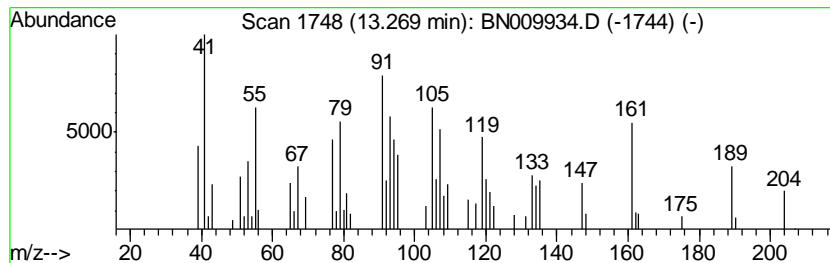
TIC Library : C:\DATABASE\NIST11.L  
 TIC Integration Parameters: LSCINT.P

\*\*\*\*\*  
 Peak Number 2 1,3a-Ethano-3aH-indene, 1,2... Concentration Rank 9

R.T.	EstConc	Area	Relative to ISTD	R.T.
13.27	2.35 ng/ul	137376	Acenaphthene-d10	14.02

Hit#	of	Tentative ID	MW	MolForm	CAS#	Qual
1	5	1,3a-Ethano-3aH-indene, 1,2,3,6...	204	C15H24	004545-68-0	86
2		Tricyclo[4.1.0.0(2,4)]heptane, 3...	204	C15H24	056348-21-1	64
3		1H-Cyclopropa[alnaphthalene, 1a...	204	C15H24	017334-55-3	60
4		Aromandendrene	204	C15H24	000489-39-4	60
5		1,6-Cyclododecadiene, 1-methyl-5-m...	204	C15H24	023986-74-5	52



Data Path : Z:\SVOASRV\HPCHEM1\BNA N\DATA\BN022620\  
 Data File : BN009934.D  
 Acq On : 26 Feb 2020 18:42  
 Operator : CG/JU  
 Sample : L1615-06  
 Misc :  
 ALS Vial : 15 Sample Multiplier: 1

Instrument :  
 BNA\_N  
 ClientSampleId :  
 DBDN0

Quant Method : Z:\SVOASRV\HPCHEM1\BNA\_N\METHODS\SOM-EPA-BN021220MA.M  
 Quant Title : SVOA CALIBRATION

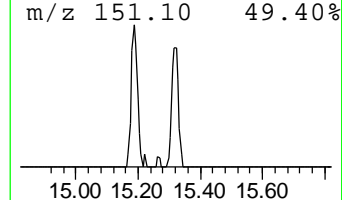
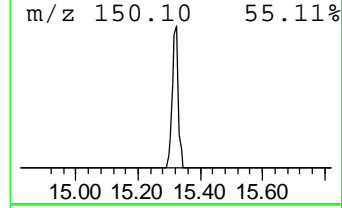
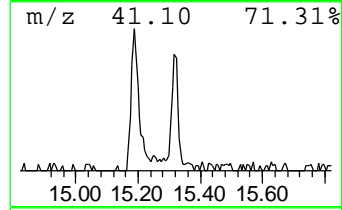
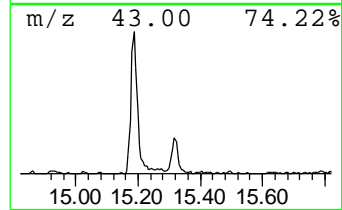
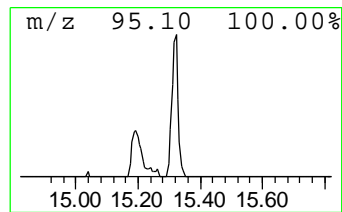
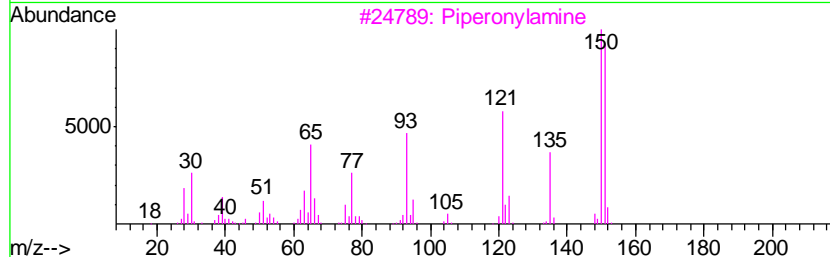
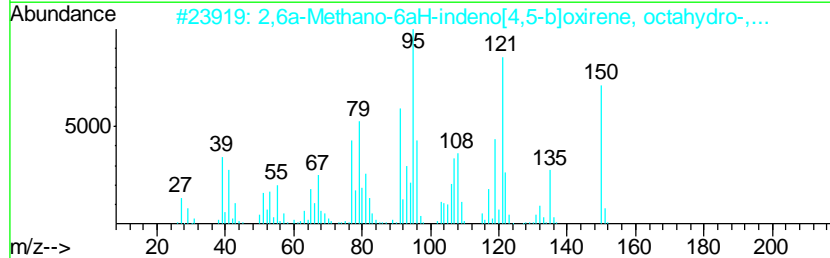
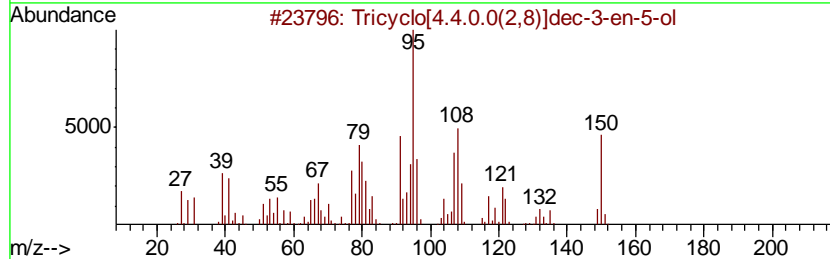
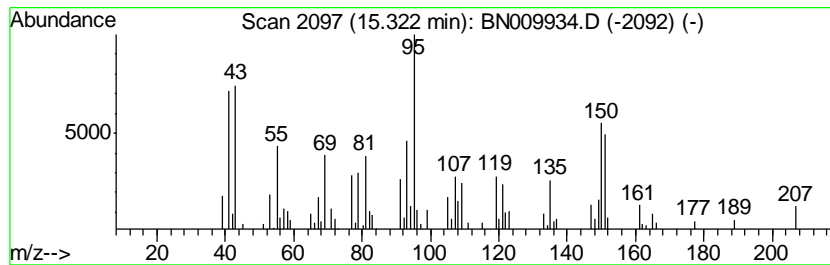
TIC Library : C:\DATABASE\NIST11.L  
 TIC Integration Parameters: LSCINT.P

\*\*\*\*\*  
 Peak Number 3 unknown-02 Concentration Rank 4

R.T.	EstConc	Area	Relative to ISTD	R.T.
15.32	2.68 ng/ul	156630	Acenaphthene-d10	14.02

Hit#	of	Tentative ID	MW	MolForm	CAS#	Qual
1	5	Tricyclo[4.4.0.0(2,8)]dec-3-en-5-ol	150	C10H14O	1000193-38-7	41
2		2,6a-Methano-6aH-indeno[4,5-b]ox...	150	C10H14O	016489-32-0	38
3		Piperonylamine	151	C8H9NO2	002620-50-0	30
4		Piperonylamine	151	C8H9NO2	002620-50-0	30
5		Piperonylamine	151	C8H9NO2	002620-50-0	25



Data Path : Z:\SVOASRV\HPCHEM1\BNA N\DATA\BN022620\  
 Data File : BN009934.D  
 Acq On : 26 Feb 2020 18:42  
 Operator : CG/JU  
 Sample : L1615-06  
 Misc :  
 ALS Vial : 15 Sample Multiplier: 1

Instrument :  
 BNA\_N  
 ClientSampled :  
 DBDN0

Quant Method : Z:\SVOASRV\HPCHEM1\BNA\_N\METHODS\SOM-EPA-BN021220MA.M  
 Quant Title : SVOA CALIBRATION

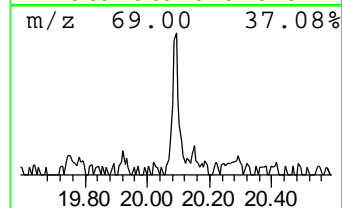
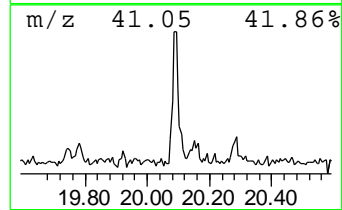
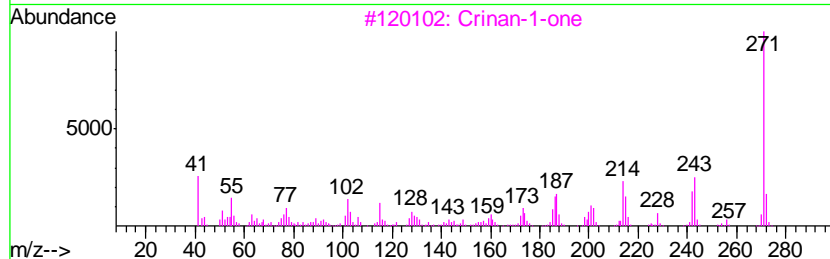
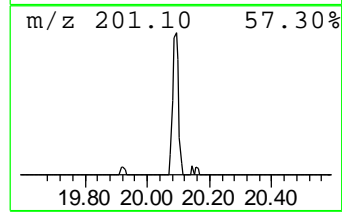
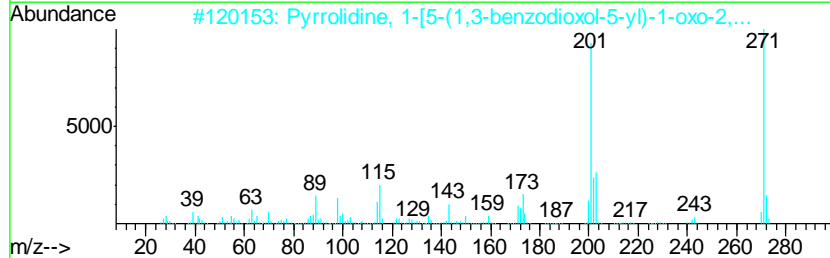
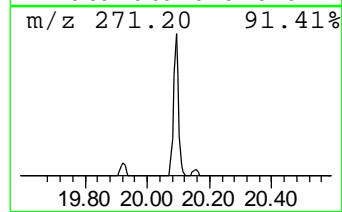
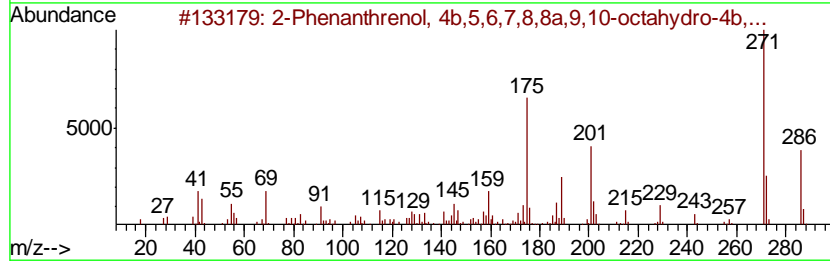
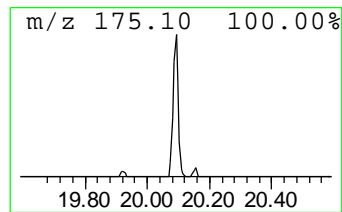
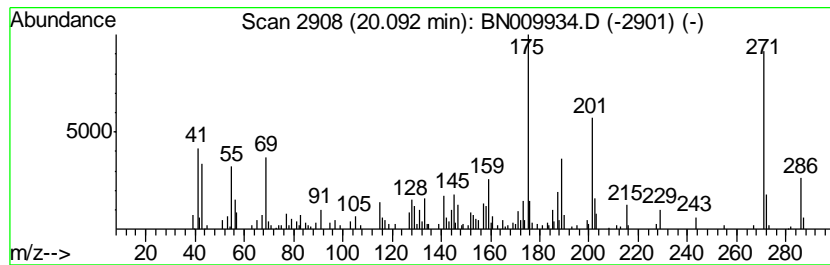
TIC Library : C:\DATABASE\NIST11.L  
 TIC Integration Parameters: LSCINT.P

\*\*\*\*\*  
 Peak Number 4 2-Phenanthrenol, 4b,5,6,7,8... Concentration Rank 3

R.T.	EstConc	Area	Relative to ISTD	R.T.
20.09	2.90 ng/ul	227909	Chrysene-d12	21.00

Hit#	of	Tentative ID	MW	MolForm	CAS#	Qual
1	5	2-Phenanthrenol, 4b,5,6,7,8,8a,9...	286	C20H30O	000511-15-9	99
2		Pyrrolidine, 1-[5-(1,3-benzodiox...	271	C16H17NO3	025924-78-1	42
3		Crinan-1-one	271	C16H17NO3	098301-98-5	38
4		Crinan-1-ol, 2,3-didehydro-, (1.a...	271	C16H17NO3	1000111-31-3	25
5		Oxazole, 2-(1-naphthalenyl)-5-ph...	271	C19H13NO	000846-63-9	20





Data Path : Z:\SVOASRV\HPCHEM1\BNA N\DATA\BN022620\  
 Data File : BN009934.D  
 Acq On : 26 Feb 2020 18:42  
 Operator : CG/JU  
 Sample : L1615-06  
 Misc :  
 ALS Vial : 15 Sample Multiplier: 1

Instrument :  
 BNA\_N  
 ClientSampleId :  
 DBDN0

Quant Method : Z:\SVOASRV\HPCHEM1\BNA\_N\METHODS\SOM-EPA-BN021220MA.M  
 Quant Title : SVOA CALIBRATION

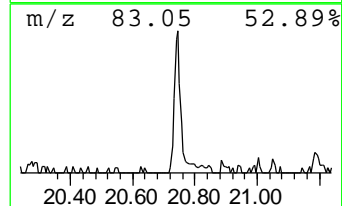
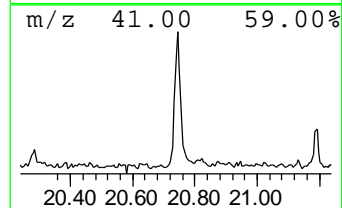
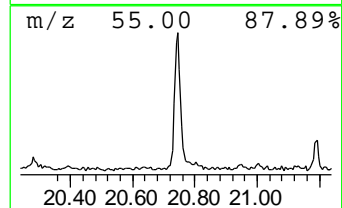
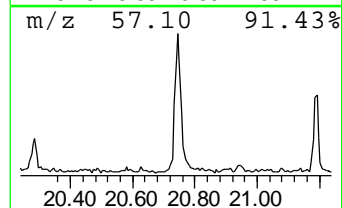
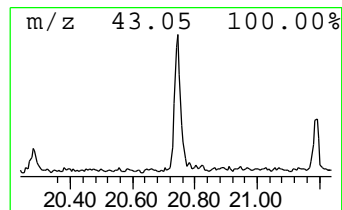
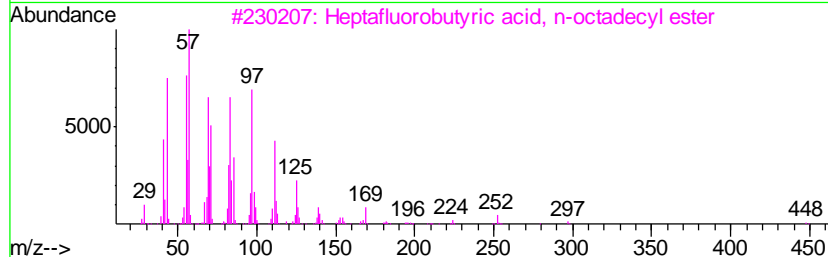
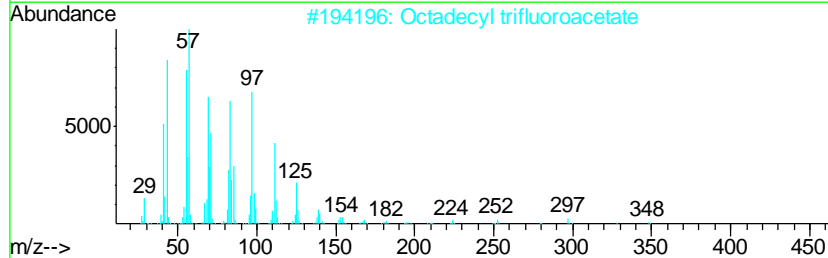
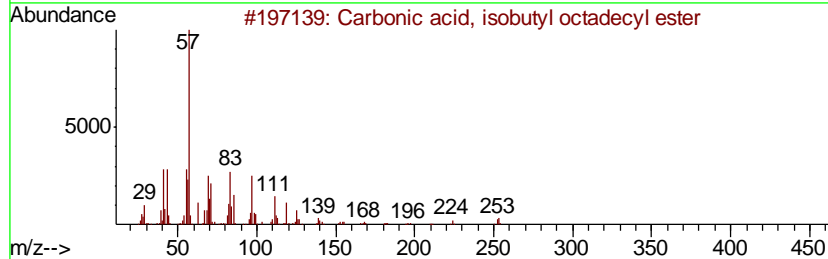
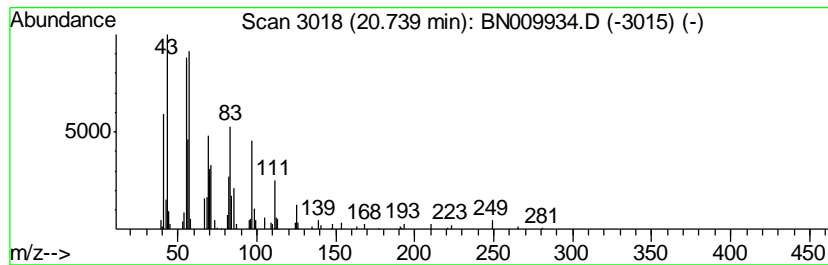
TIC Library : C:\DATABASE\NIST11.L  
 TIC Integration Parameters: LSCINT.P

\*\*\*\*\*  
 Peak Number 5 Carbonic acid, isobutyl oct... Concentration Rank 7

R.T.	EstConc	Area	Relative to ISTD	R.T.
20.74	2.40 ng/ul	188705	Chrysene-d12	21.00

Hit#	of	Tentative ID	MW	MolForm	CAS#	Qual
1	5	Carbonic acid, isobutyl octadecy...	370	C23H46O3	1000314-61-5	91
2		Octadecyl trifluoroacetate	366	C20H37F3O2	079392-43-1	91
3		Heptafluorobutyric acid, n-octad...	466	C22H37F7O2	000400-57-7	90
4		Heptadecyl heptafluorobutyrate	452	C21H35F7O2	959085-66-6	90
5		Trifluoroacetoxy hexadecane	338	C18H33F3O2	006222-03-3	90



Data Path : Z:\SVOASRV\HPCHEM1\BNA N\DATA\BN022620\  
 Data File : BN009934.D  
 Acq On : 26 Feb 2020 18:42  
 Operator : CG/JU  
 Sample : L1615-06  
 Misc :  
 ALS Vial : 15 Sample Multiplier: 1

Instrument :  
 BNA\_N  
 ClientSampleId :  
 DBDN0

Quant Method : Z:\SVOASRV\HPCHEM1\BNA\_N\METHODS\SOM-EPA-BN021220MA.M  
 Quant Title : SVOA CALIBRATION

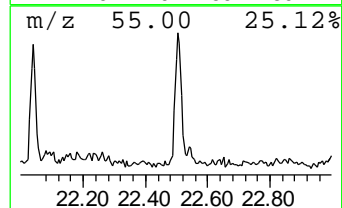
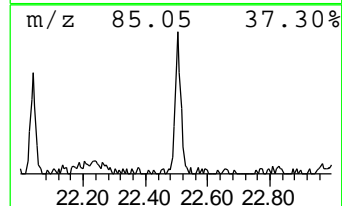
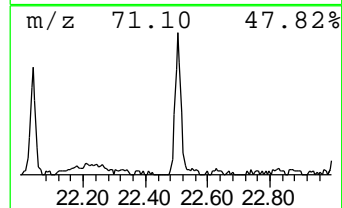
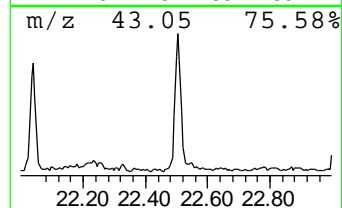
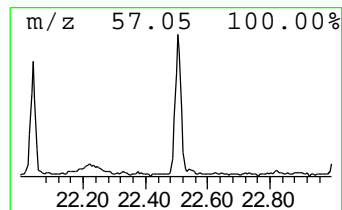
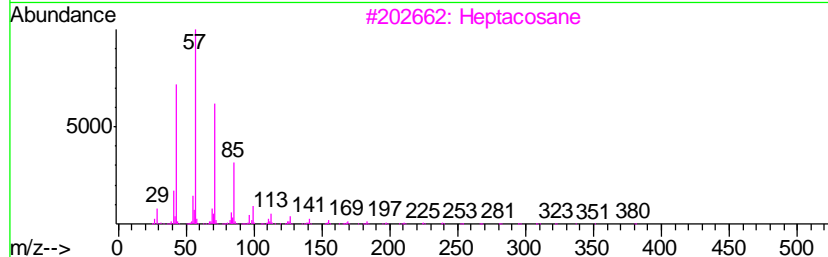
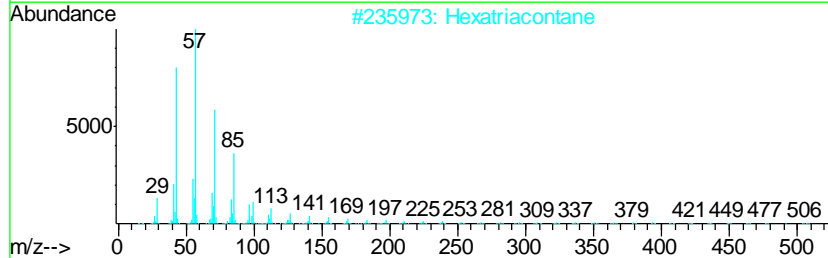
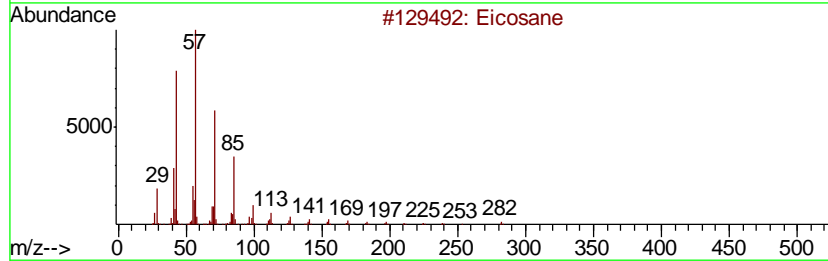
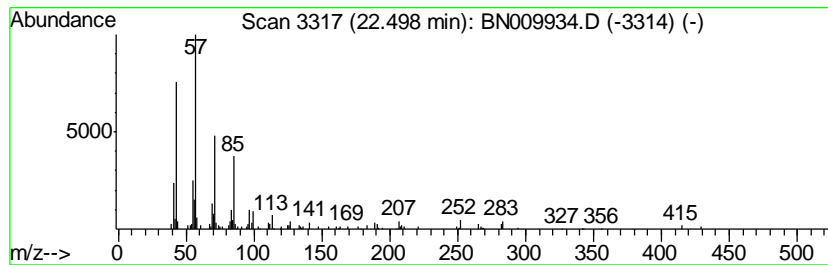
TIC Library : C:\DATABASE\NIST11.L  
 TIC Integration Parameters: LSCINT.P

\*\*\*\*\*  
 Peak Number 6 (DEL) Alkane: Straight-Chai... Concentration Rank 6

R.T.	EstConc	Area	Relative to ISTD	R.T.
22.50	2.44 ng/ul	180867	Perylene-d12	23.10

Hit#	of	Tentative ID	MW	MolForm	CAS#	Qual
1	5	Eicosane	282	C20H42	000112-95-8	97
2		Hexatriacontane	507	C36H74	000630-06-8	74
3		Heptacosane	380	C27H56	000593-49-7	74
4		Sulfurous acid, butyl decyl ester	278	C14H30O3S	1000309-17-7	72
5		Tricosane, 2-methyl-	338	C24H50	001928-30-9	72



Data Path : Z:\SVOASRV\HPCHEM1\BNA N\DATA\BN022620\  
 Data File : BN009934.D  
 Acq On : 26 Feb 2020 18:42  
 Operator : CG/JU  
 Sample : L1615-06  
 Misc :  
 ALS Vial : 15 Sample Multiplier: 1

Instrument :  
 BNA\_N  
 ClientSampled :  
 DBDN0

Quant Method : Z:\SVOASRV\HPCHEM1\BNA\_N\METHODS\SOM-EPA-BN021220MA.M  
 Quant Title : SVOA CALIBRATION

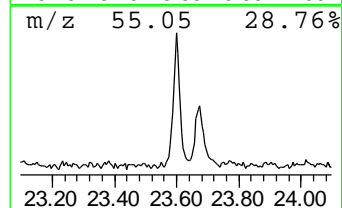
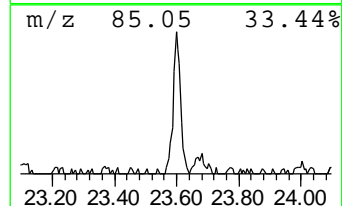
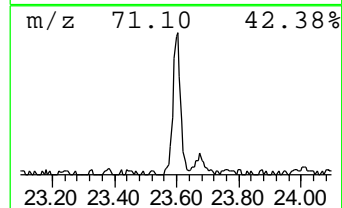
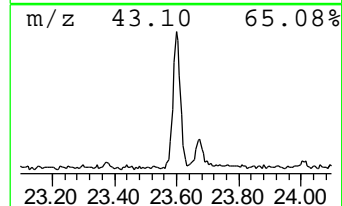
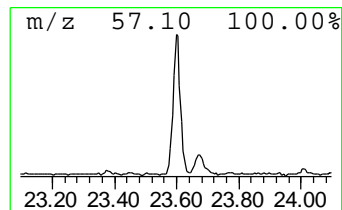
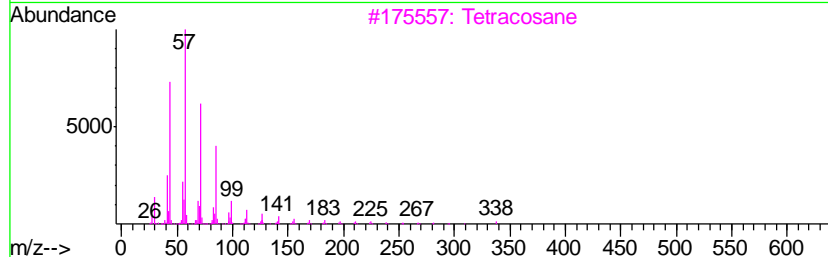
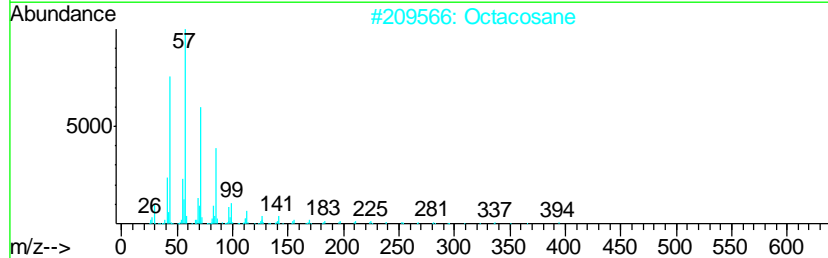
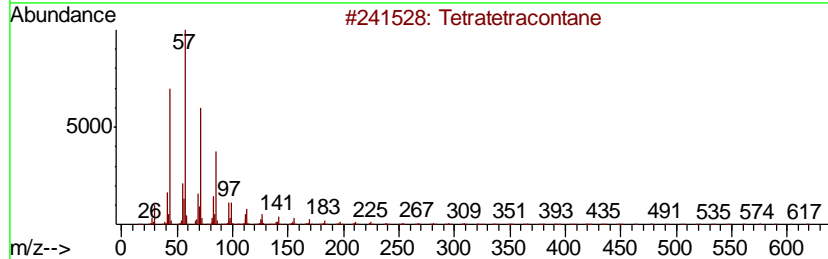
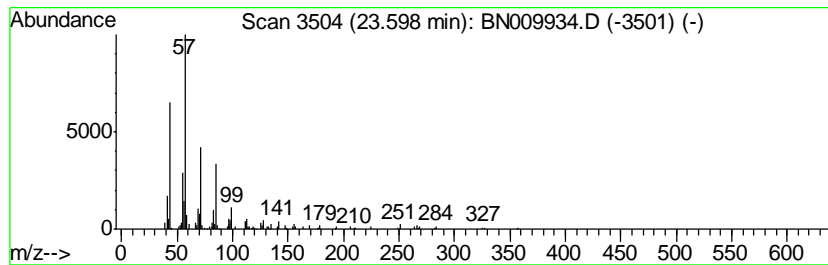
TIC Library : C:\DATABASE\NIST11.L  
 TIC Integration Parameters: LSCINT.P

\*\*\*\*\*  
 Peak Number 7 (DEL) Alkane: Straight-Chai... Concentration Rank 5

R.T.	EstConc	Area	Relative to ISTD	R.T.
23.60	2.59 ng/ul	192104	Perylene-d12	23.10

Hit#	of	Tentative ID	MW	MolForm	CAS#	Qual
1	5	Tetratetracontane	619	C44H90	007098-22-8	81
2		Octacosane	394	C28H58	000630-02-4	81
3		Tetracosane	338	C24H50	000646-31-1	81
4		Hexatriacontane	507	C36H74	000630-06-8	74
5		Docosane	310	C22H46	000629-97-0	74



Data Path : Z:\SVOASRV\HPCHEM1\BNA N\DATA\BN022620\  
 Data File : BN009934.D  
 Acq On : 26 Feb 2020 18:42  
 Operator : CG/JU  
 Sample : L1615-06  
 Misc :  
 ALS Vial : 15 Sample Multiplier: 1

Instrument :  
 BNA\_N  
 ClientSampled :  
 DBDN0

Quant Method : Z:\SVOASRV\HPCHEM1\BNA\_N\METHODS\SOM-EPA-BN021220MA.M  
 Quant Title : SVOA CALIBRATION

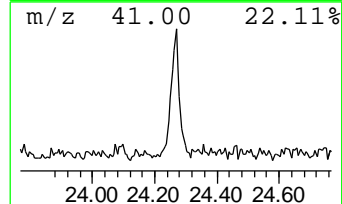
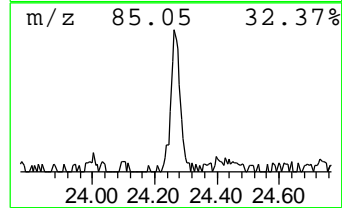
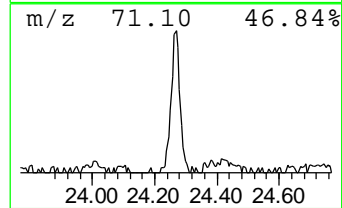
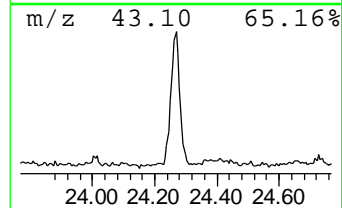
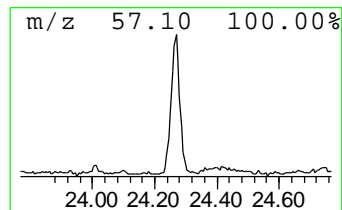
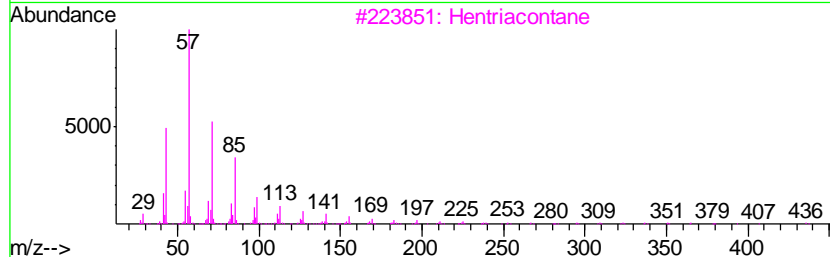
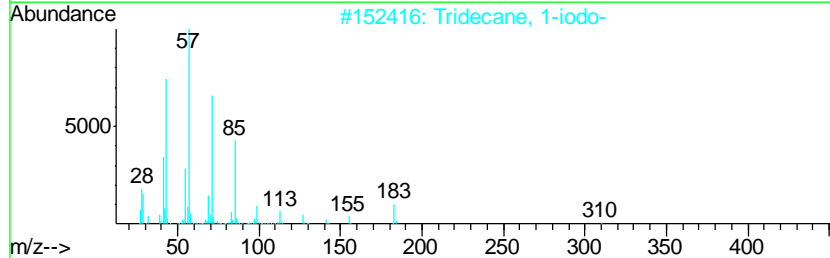
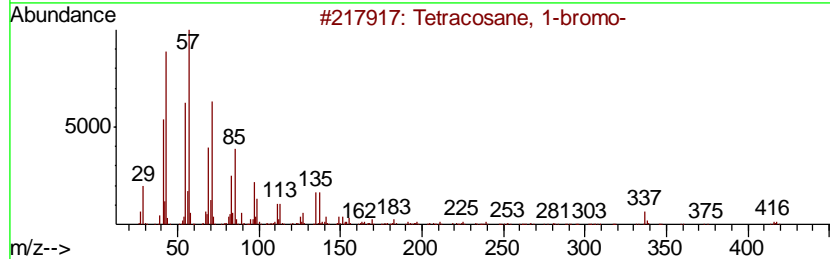
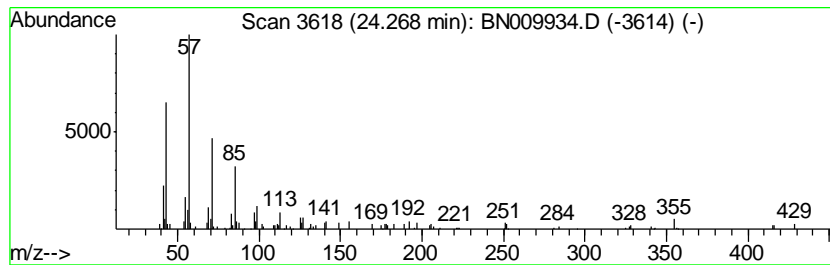
TIC Library : C:\DATABASE\NIST11.L  
 TIC Integration Parameters: LSCINT.P

\*\*\*\*\*  
 Peak Number 8 Tetracosane, 1-bromo- Concentration Rank 8

R.T.	EstConc	Area	Relative to ISTD	R.T.
24.27	2.37 ng/ul	175739	Perylene-d12	23.10

Hit#	of	Tentative ID	MW	MolForm	CAS#	Qual
1	5	Tetracosane, 1-bromo-	416	C24H49Br	006946-24-3	91
2		Tridecane, 1-iodo-	310	C13H27I	035599-77-0	74
3		Hentriacontane	437	C31H64	000630-04-6	72
4		Octadecane	254	C18H38	000593-45-3	72
5		Eicosane	282	C20H42	000112-95-8	72



Data Path : Z:\SVOASRV\HPCHEM1\BNA N\DATA\BN022620\  
 Data File : BN009934.D  
 Acq On : 26 Feb 2020 18:42  
 Operator : CG/JU  
 Sample : L1615-06  
 Misc :  
 ALS Vial : 15 Sample Multiplier: 1

Instrument :  
 BNA\_N  
 ClientSampleId :  
 DBDN0

Quant Method : Z:\SVOASRV\HPCHEM1\BNA\_N\METHODS\SOM-EPA-BN021220MA.M  
 Quant Title : SVOA CALIBRATION

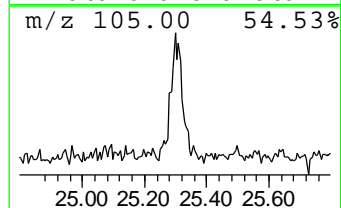
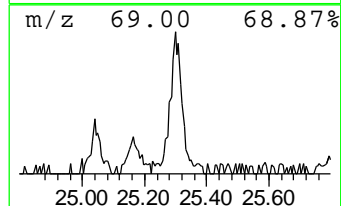
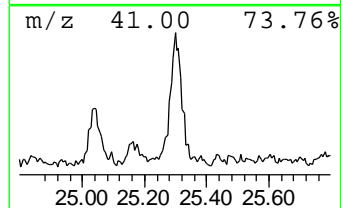
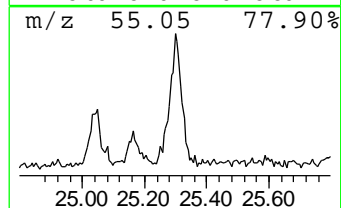
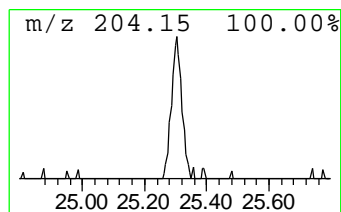
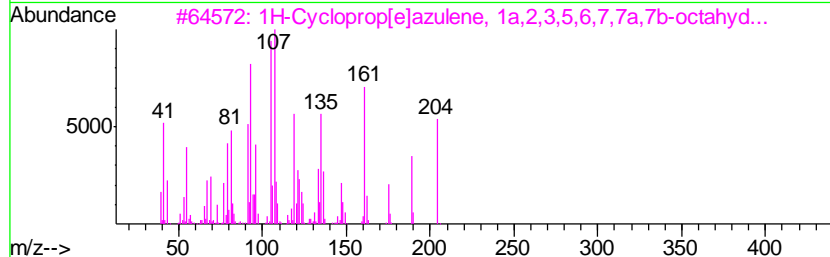
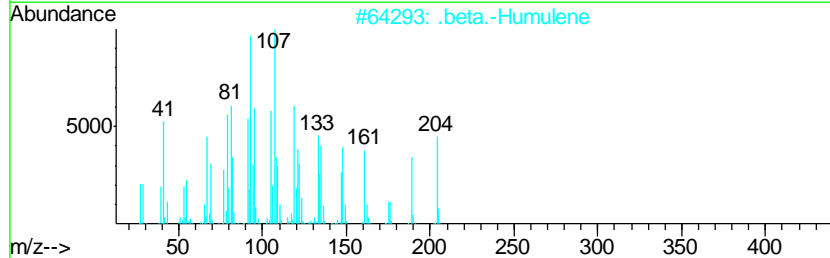
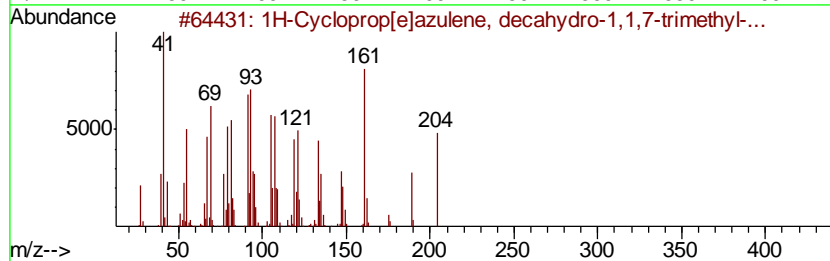
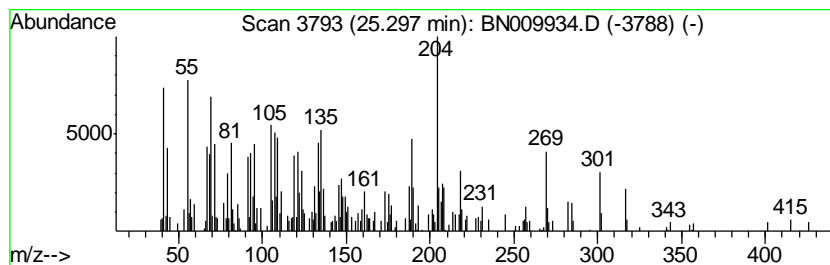
TIC Library : C:\DATABASE\NIST11.L  
 TIC Integration Parameters: LSCINT.P

\*\*\*\*\*  
 Peak Number 9 1H-Cycloprop[e]azulene, dec... Concentration Rank 2

R.T.	EstConc	Area	Relative to ISTD	R.T.
25.30	5.91 ng/ul	439113	Perylene-d12	23.10

Hit#	of	Tentative ID	MW	MolForm	CAS#	Qual
1	5	1H-Cycloprop[e]azulene, decahydr...	204	C15H24	072747-25-2	90
2		.beta.-Humulene	204	C15H24	000116-04-1	55
3		1H-Cycloprop[e]azulene, 1a,2,3,5...	204	C15H24	021747-46-6	49
4		Farnesyl bromide	284	C15H25Br	006874-67-5	49
5		Naphthalene, 1,2,3,5,6,7,8,8a-oc...	204	C15H24	004630-07-3	49



Data Path : Z:\SVOASRV\HPCHEM1\BNA\_N\DATA\BN022620\  
 Data File : BN009934.D  
 Acq On : 26 Feb 2020 18:42  
 Operator : CG/JU  
 Sample : L1615-06  
 Misc :  
 ALS Vial : 15 Sample Multiplier: 1

Instrument :  
 BNA\_N  
 ClientSampleId :  
 DBDN0

Quant Method : Z:\SVOASRV\HPCHEM1\BNA\_N\METHODS\SOM-EPA-BN021220MA.M  
 Quant Title : SVOA CALIBRATION

TIC Library : C:\DATABASE\NIST11.L  
 TIC Integration Parameters: LSCINT.P

TIC Top Hit name	RT	EstConc	Units	Response	--Internal Standard--			
					#	RT	Resp	Conc
unknown-01	12.94	7.8	ng/ul	456816	3	14.02	1169980	20.0
1,3a-Ethano-3aH-i...	13.27	2.4	ng/ul	137376	3	14.02	1169980	20.0
unknown-02	15.32	2.7	ng/ul	156630	3	14.02	1169980	20.0
2-Phenanthrenol, ...	20.09	2.9	ng/ul	227909	5	21.00	1572710	20.0
Carbonic acid, is...	20.74	2.4	ng/ul	188705	5	21.00	1572710	20.0
(DEL) Alkane: Str...	22.50	2.4	ng/ul	180867	6	23.10	1485460	20.0
(DEL) Alkane: Str...	23.60	2.6	ng/ul	192104	6	23.10	1485460	20.0
Tetracosane, 1-br...	24.27	2.4	ng/ul	175739	6	23.10	1485460	20.0
1H-Cycloprop[elaz...	25.30	5.9	ng/ul	439113	6	23.10	1485460	20.0