

Data Path : Z:\svoasrv\HPCHEM1\BNA_N\Data\BN022624\
 Data File : BN030073.D
 Acq On : 27 Feb 2024 01:26
 Operator : MA/JU
 Sample : P1578-03MSD
 Misc :
 ALS Vial : 27 Sample Multiplier: 1

Instrument :
 BNA_N
 ClientSampleId :
 TT161S1-20240221MSD

Quant Time: Feb 27 02:47:06 2024
 Quant Method : Z:\svoasrv\HPCHEM1\BNA_N\Methods\8270-SIM-BN012924.M
 Quant Title : ASP BNA STANDARDS FOR 5 POINT CALIBRATION
 QLast Update : Mon Feb 26 02:39:45 2024
 Response via : Initial Calibration

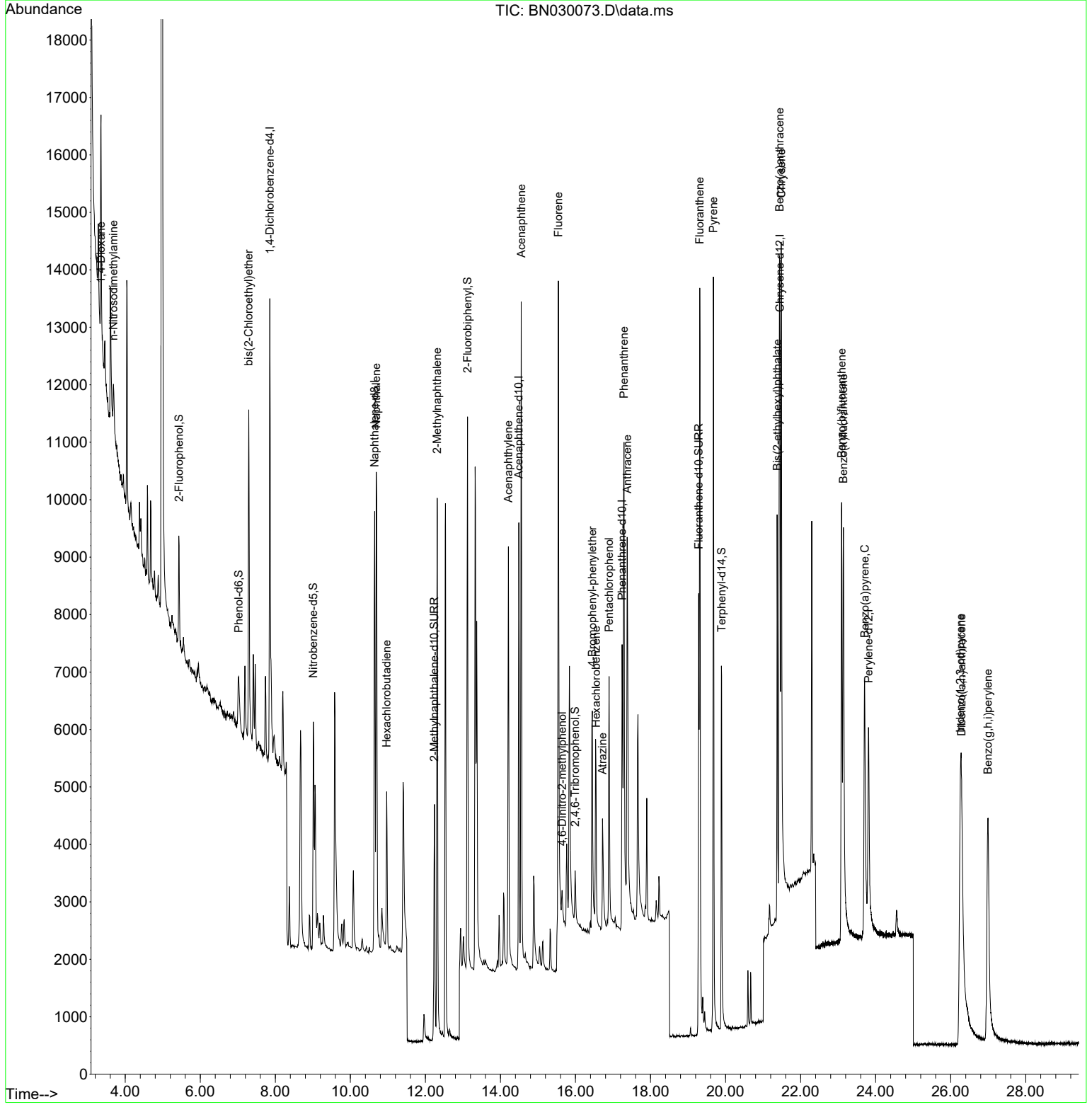
Compound	R.T.	QIon	Response	Conc	Units	Dev(Min)	
Internal Standards							
1) 1,4-Dichlorobenzene-d4	7.854	152	3927	0.400	ng	0.00	
7) Naphthalene-d8	10.648	136	10638	0.400	ng	0.00	
13) Acenaphthene-d10	14.490	164	4603	0.400	ng	0.00	
19) Phenanthrene-d10	17.243	188	8816	0.400	ng	#-0.01	
29) Chrysene-d12	21.447	240	6216	0.400	ng	0.00	
35) Perylene-d12	23.809	264	6327	0.400	ng	#-0.01	
System Monitoring Compounds							
4) 2-Fluorophenol	5.435	112	1558	0.165	ng	0.00	
5) Phenol-d6	7.024	99	995	0.091	ng	0.00	
8) Nitrobenzene-d5	9.014	82	3960	0.447	ng	0.00	
11) 2-Methylnaphthalene-d10	12.238	152	7065	0.488	ng	0.00	
14) 2,4,6-Tribromophenol	15.989	330	637	0.431	ng	-0.01	
15) 2-Fluorobiphenyl	13.121	172	8816	0.446	ng	0.00	
27) Fluoranthene-d10	19.285	212	9941	0.466	ng	0.00	
31) Terphenyl-d14	19.893	244	7442	0.482	ng	0.00	
Target Compounds							
2) 1,4-Dioxane	3.355	88	2345	0.424	ng	#	60
3) n-Nitrosodimethylamine	3.687	42	810	0.180	ng	#	93
6) bis(2-Chloroethyl)ether	7.291	93	4494	0.433	ng		98
9) Naphthalene	10.690	128	12069	0.398	ng		99
10) Hexachlorobutadiene	10.968	225	2065	0.359	ng	#	99
12) 2-Methylnaphthalene	12.314	142	7146	0.402	ng		98
16) Acenaphthylene	14.212	152	8896	0.407	ng		99
17) Acenaphthene	14.554	154	5740	0.391	ng		97
18) Fluorene	15.542	166	7065	0.384	ng		98
20) 4,6-Dinitro-2-methylph...	15.642	198	432	0.334	ng	#	66
21) 4-Bromophenyl-phenylether	16.449	248	1936	0.369	ng	#	78
22) Hexachlorobenzene	16.548	284	2662	0.414	ng		93
23) Atrazine	16.722	200	1690	0.453	ng		95
24) Pentachlorophenol	16.895	266	2361	1.157	ng		100
25) Phenanthrene	17.293	178	11156	0.428	ng		100
26) Anthracene	17.380	178	9416	0.424	ng		99
28) Fluoranthene	19.313	202	12734	0.434	ng		100
30) Pyrene	19.675	202	12981	0.454	ng		99
32) Benzo(a)anthracene	21.438	228	9992	0.470	ng		98
33) Chrysene	21.483	228	11261	0.467	ng		99
34) Bis(2-ethylhexyl)phtha...	21.376	149	6055	0.418	ng		99
36) Indeno(1,2,3-cd)pyrene	26.256	276	12097	0.476	ng		93
37) Benzo(b)fluoranthene	23.093	252	10843	0.479	ng		99
38) Benzo(k)fluoranthene	23.139	252	11107	0.469	ng		98
39) Benzo(a)pyrene	23.707	252	9840	0.499	ng		97
40) Dibenzo(a,h)anthracene	26.291	278	9298	0.459	ng		98
41) Benzo(g,h,i)perylene	26.996	276	11309	0.459	ng		98

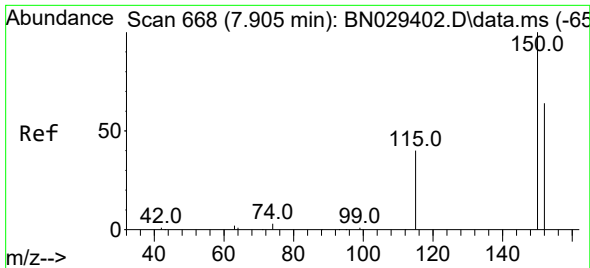
(#) = qualifier out of range (m) = manual integration (+) = signals summed

Data Path : Z:\svoasrv\HPCHEM1\BNA_N\Data\BN022624\
 Data File : BN030073.D
 Acq On : 27 Feb 2024 01:26
 Operator : MA/JU
 Sample : P1578-03MSD
 Misc :
 ALS Vial : 27 Sample Multiplier: 1

Instrument :
 BNA_N
 ClientSampleId :
 TT161S1-20240221MSD

Quant Time: Feb 27 02:47:06 2024
 Quant Method : Z:\svoasrv\HPCHEM1\BNA_N\Methods\8270-SIM-BN012924.M
 Quant Title : ASP BNA STANDARDS FOR 5 POINT CALIBRATION
 QLast Update : Mon Feb 26 02:39:45 2024
 Response via : Initial Calibration

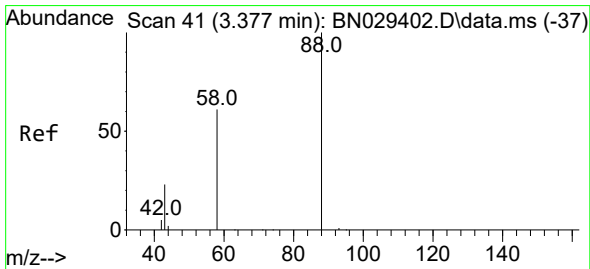
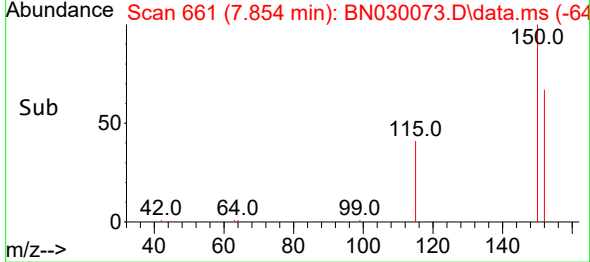
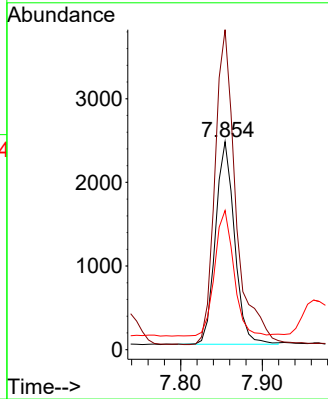
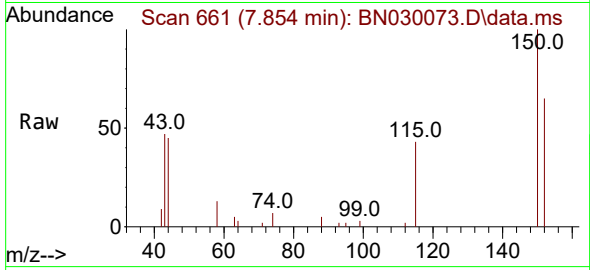




#1
 1,4-Dichlorobenzene-d4
 Concen: 0.400 ng
 RT: 7.854 min Scan# 60
 Delta R.T. 0.000 min
 Lab File: BN030073.D
 Acq: 27 Feb 2024 01:26

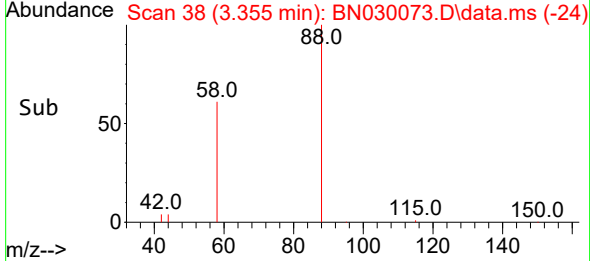
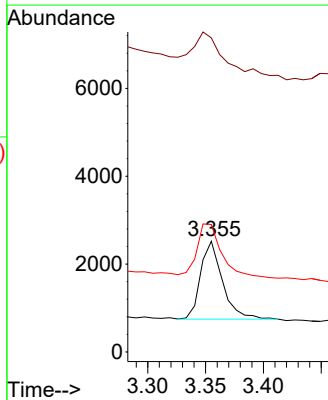
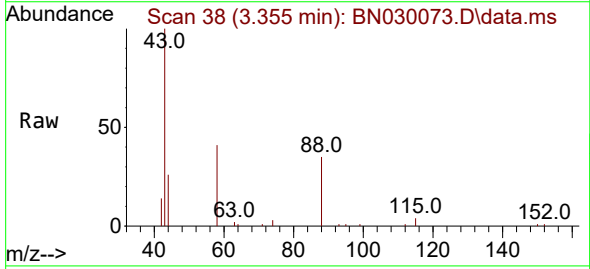
Instrument :
 BNA_N
 ClientSampleId :
 TT161S1-20240221MSD

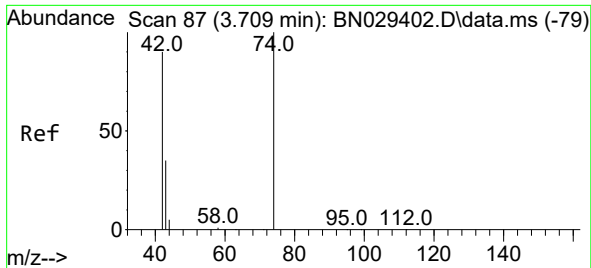
Tgt Ion:152 Resp: 3927
 Ion Ratio Lower Upper
 152 100
 150 153.9 123.0 184.4
 115 66.9 51.4 77.0



#2
 1,4-Dioxane
 Concen: 0.424 ng
 RT: 3.355 min Scan# 38
 Delta R.T. 0.000 min
 Lab File: BN030073.D
 Acq: 27 Feb 2024 01:26

Tgt Ion: 88 Resp: 2345
 Ion Ratio Lower Upper
 88 100
 43 78.2 23.3 34.9#
 58 80.8 53.8 80.6#

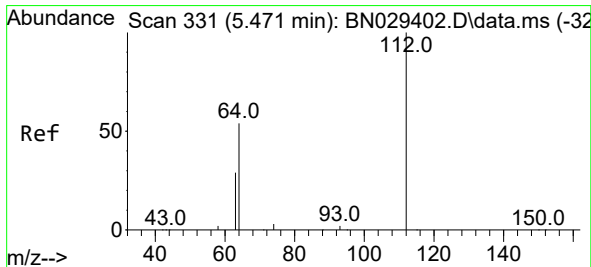
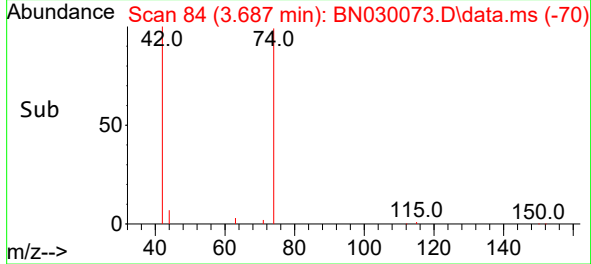
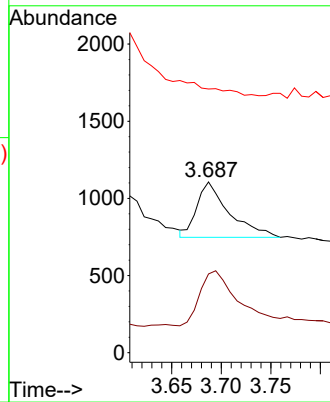
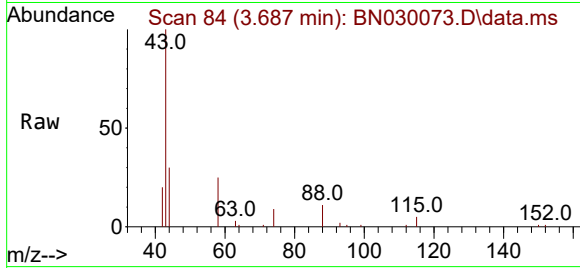




#3
 n-Nitrosodimethylamine
 Concen: 0.180 ng
 RT: 3.687 min Scan# 84
 Delta R.T. 0.000 min
 Lab File: BN030073.D
 Acq: 27 Feb 2024 01:26

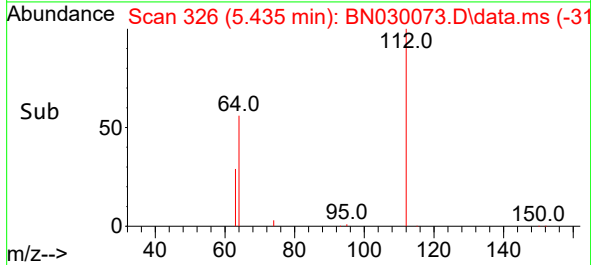
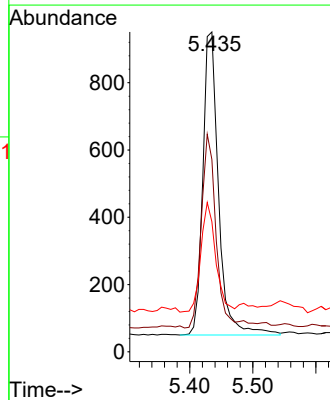
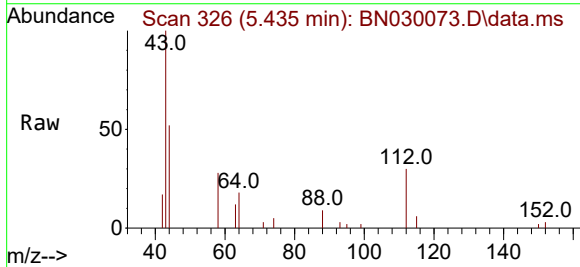
Instrument :
 BNA_N
 ClientSampleId :
 TT161S1-20240221MSD

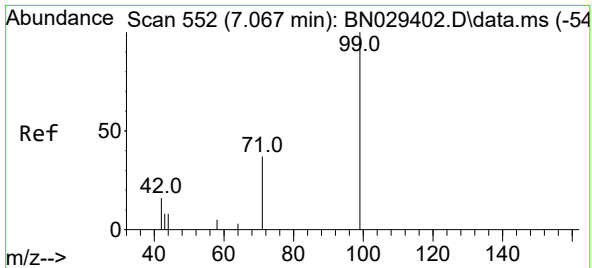
Tgt Ion: 42 Resp: 810
 Ion Ratio Lower Upper
 42 100
 74 120.2 93.7 140.5
 44 0.0 13.0 19.4#



#4
 2-Fluorophenol
 Concen: 0.165 ng
 RT: 5.435 min Scan# 326
 Delta R.T. 0.007 min
 Lab File: BN030073.D
 Acq: 27 Feb 2024 01:26

Tgt Ion: 112 Resp: 1558
 Ion Ratio Lower Upper
 112 100
 64 61.0 47.2 70.8
 63 34.0 25.8 38.6

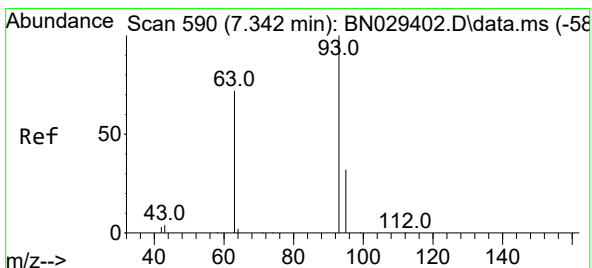
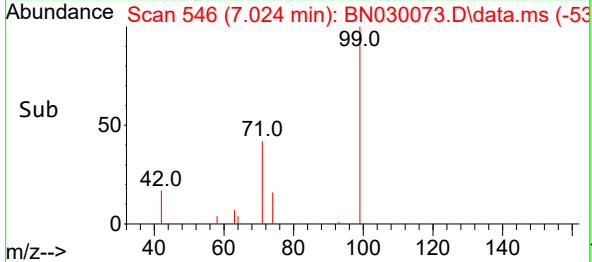
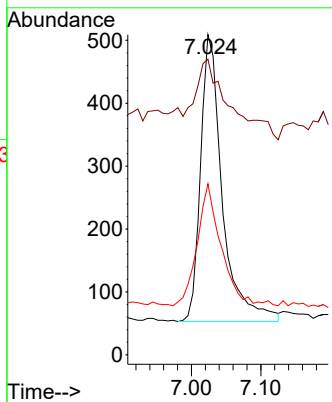
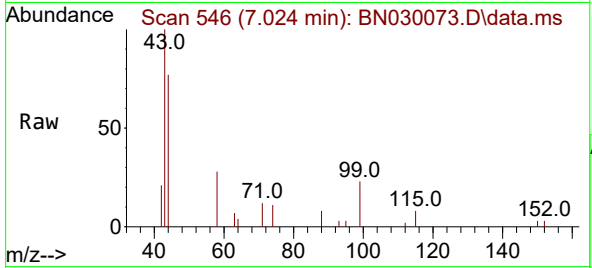




#5
 Phenol-d6
 Concen: 0.091 ng
 RT: 7.024 min Scan# 54
 Delta R.T. 0.000 min
 Lab File: BN030073.D
 Acq: 27 Feb 2024 01:26

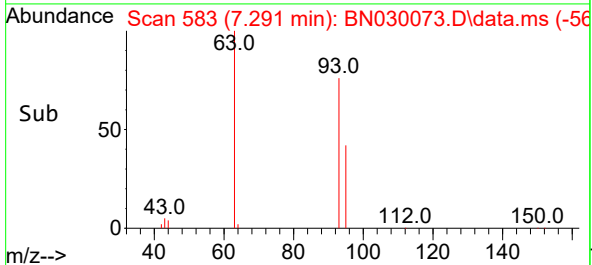
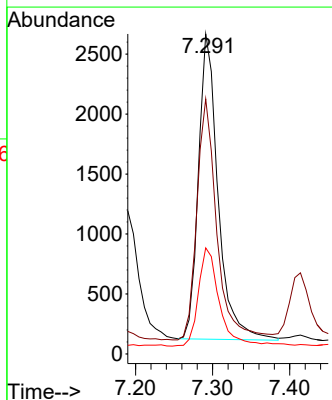
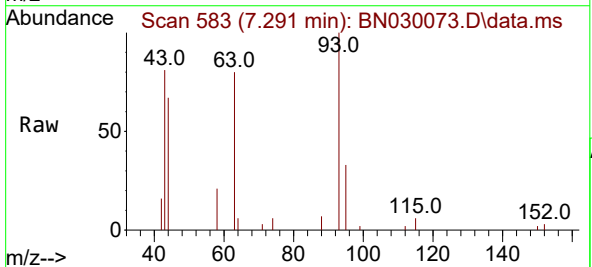
Instrument :
 BNA_N
 ClientSampleId :
 TT161S1-20240221MSD

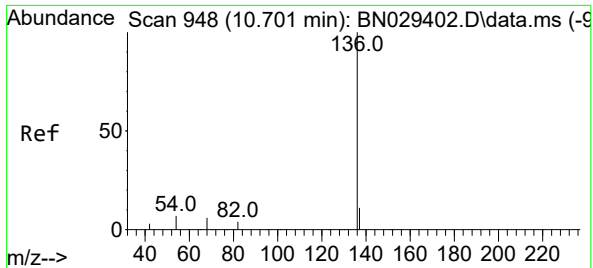
Tgt Ion	Resp	Lower	Upper
99	100		
42	44.9	16.9	25.3#
71	46.5	30.0	45.0#



#6
 bis(2-Chloroethyl)ether
 Concen: 0.433 ng
 RT: 7.291 min Scan# 583
 Delta R.T. 0.000 min
 Lab File: BN030073.D
 Acq: 27 Feb 2024 01:26

Tgt Ion	Resp	Lower	Upper
93	100		
63	80.7	63.1	94.7
95	34.8	27.1	40.7



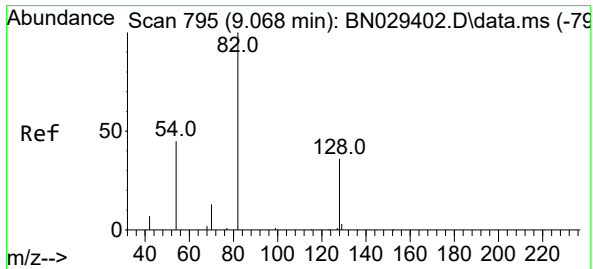
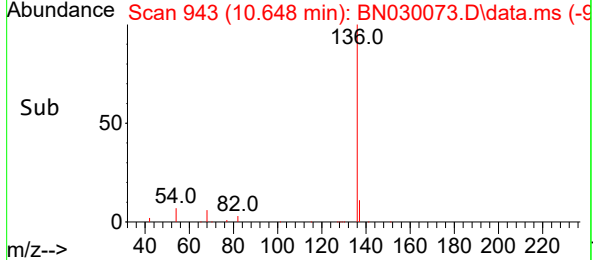
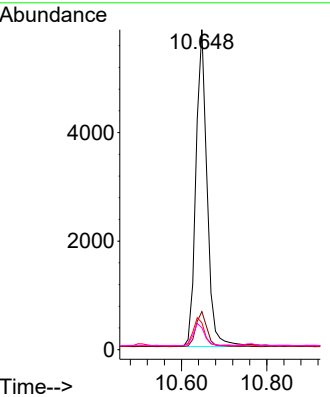
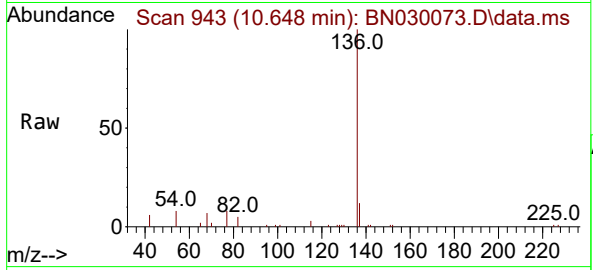


#7
 Naphthalene-d8
 Concen: 0.400 ng
 RT: 10.648 min Scan# 94
 Delta R.T. 0.000 min
 Lab File: BN030073.D
 Acq: 27 Feb 2024 01:26

Instrument :
 BNA_N
 ClientSampleId :
 TT161S1-20240221MSD

Tgt Ion:136 Resp: 10638

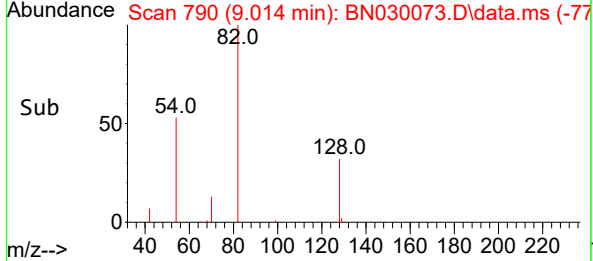
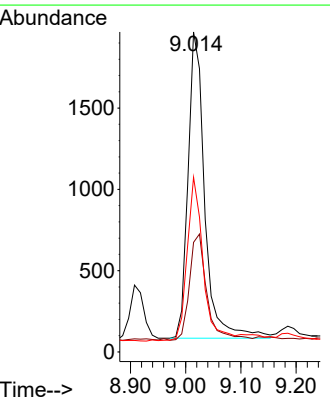
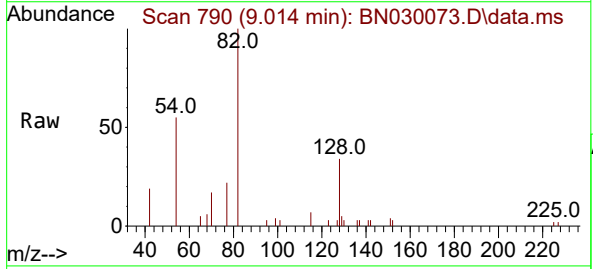
Ion	Ratio	Lower	Upper
136	100		
137	11.9	9.7	14.5
54	8.4	6.6	10.0
68	6.9	5.7	8.5

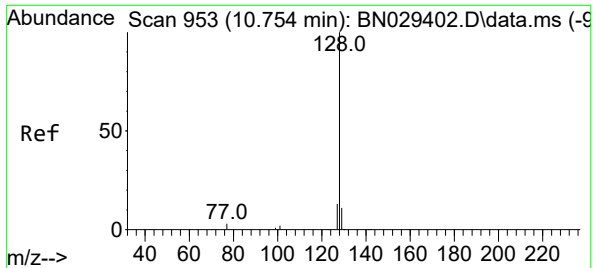


#8
 Nitrobenzene-d5
 Concen: 0.447 ng
 RT: 9.014 min Scan# 790
 Delta R.T. 0.000 min
 Lab File: BN030073.D
 Acq: 27 Feb 2024 01:26

Tgt Ion: 82 Resp: 3960

Ion	Ratio	Lower	Upper
82	100		
128	34.2	31.6	47.4
54	54.6	38.2	57.4



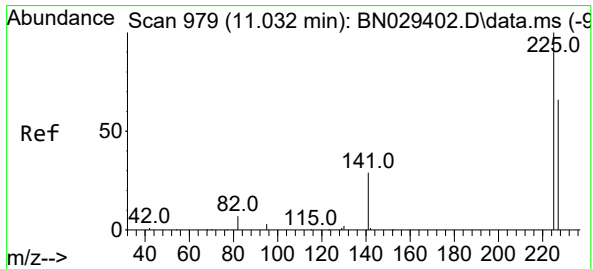
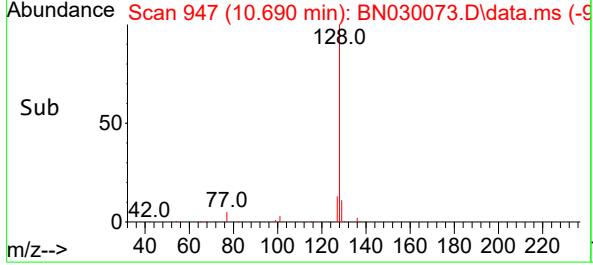
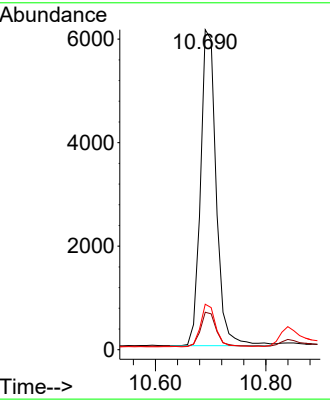
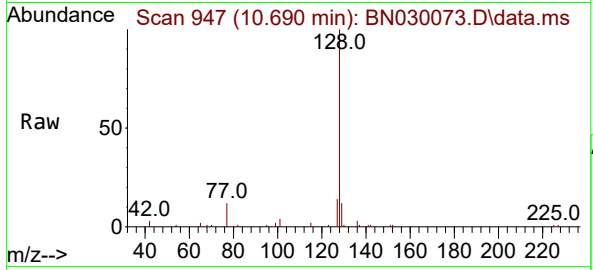


#9
 Naphthalene
 Concen: 0.398 ng
 RT: 10.690 min Scan# 947
 Delta R.T. -0.011 min
 Lab File: BN030073.D
 Acq: 27 Feb 2024 01:26

Instrument : BNA_N
 ClientSampleId : TT161S1-20240221MSD

Tgt Ion:128 Resp: 12069

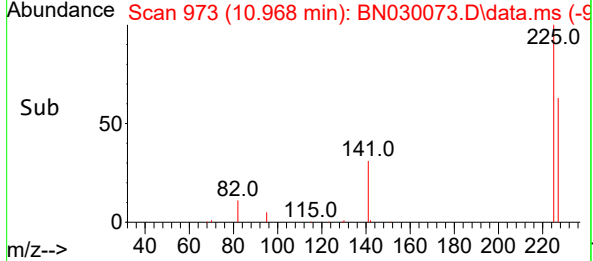
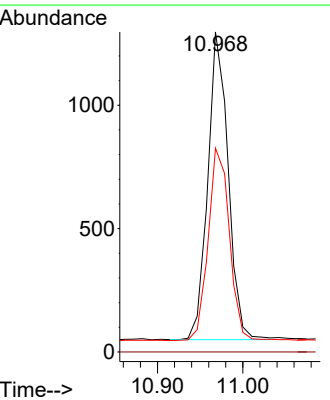
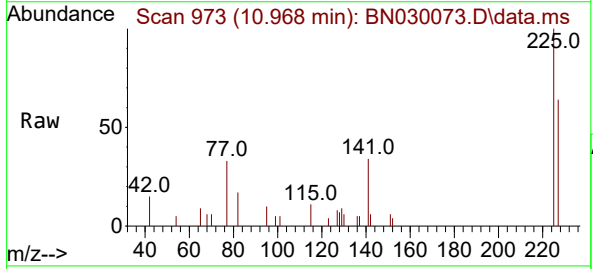
Ion	Ratio	Lower	Upper
128	100		
129	11.7	9.5	14.3
127	14.2	10.8	16.2

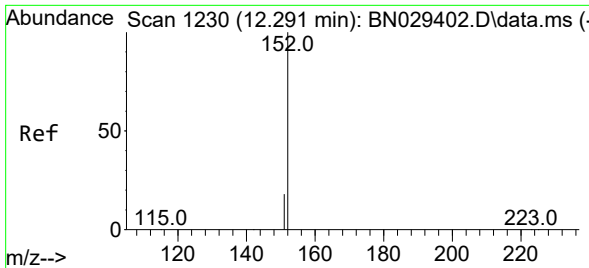


#10
 Hexachlorobutadiene
 Concen: 0.359 ng
 RT: 10.968 min Scan# 973
 Delta R.T. -0.011 min
 Lab File: BN030073.D
 Acq: 27 Feb 2024 01:26

Tgt Ion:225 Resp: 2065

Ion	Ratio	Lower	Upper
225	100		
223	0.0	0.0	0.0
227	64.9	51.1	76.7

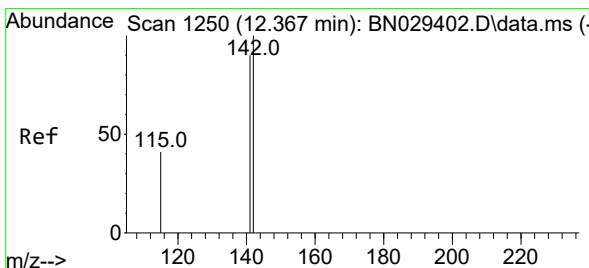
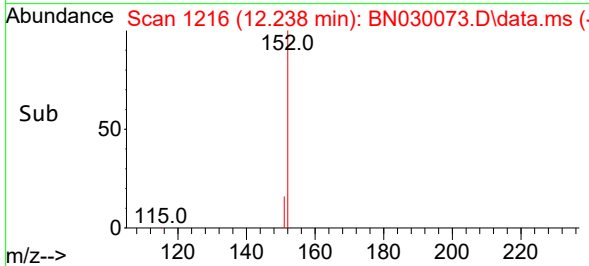
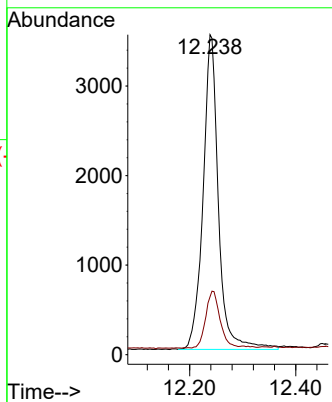
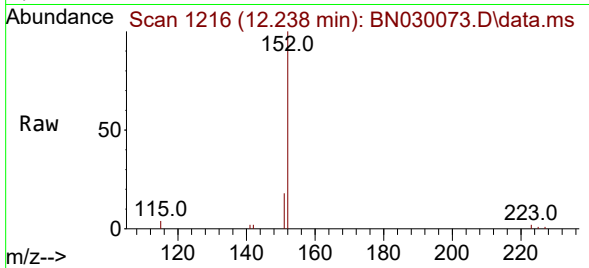




#11
 2-Methylnaphthalene-d10
 Concen: 0.488 ng
 RT: 12.238 min Scan# 11
 Delta R.T. -0.007 min
 Lab File: BN030073.D
 Acq: 27 Feb 2024 01:26

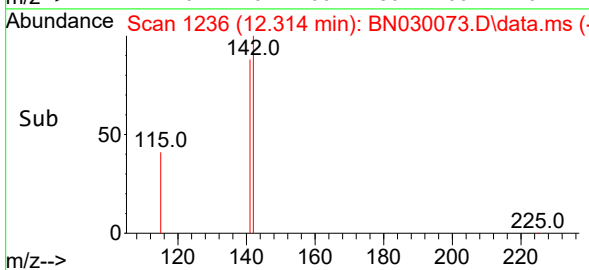
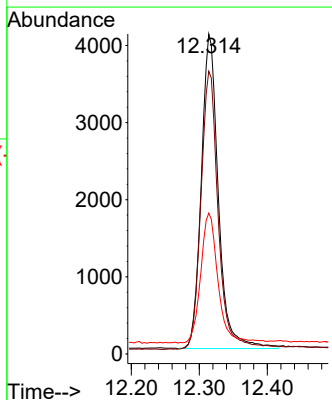
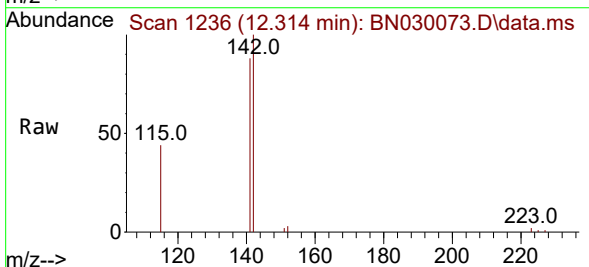
Instrument :
 BNA_N
 ClientSampleId :
 TT161S1-20240221MSD

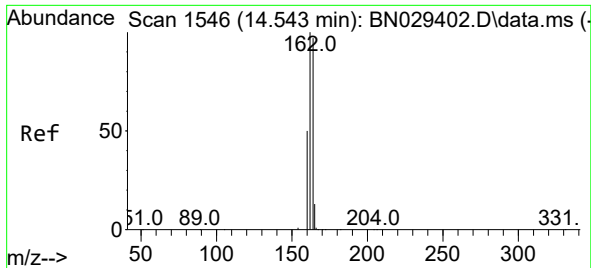
Tgt Ion:152 Resp: 7065
 Ion Ratio Lower Upper
 152 100
 151 17.0 17.1 25.7#



#12
 2-Methylnaphthalene
 Concen: 0.402 ng
 RT: 12.314 min Scan# 1236
 Delta R.T. -0.004 min
 Lab File: BN030073.D
 Acq: 27 Feb 2024 01:26

Tgt Ion:142 Resp: 7146
 Ion Ratio Lower Upper
 142 100
 141 88.3 71.9 107.9
 115 44.0 33.9 50.9



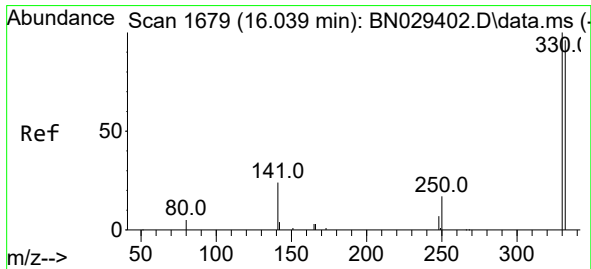
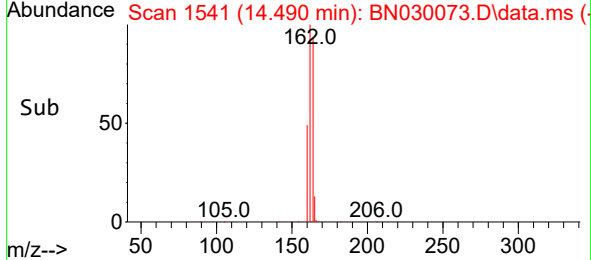
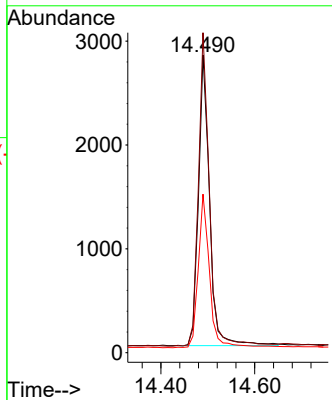
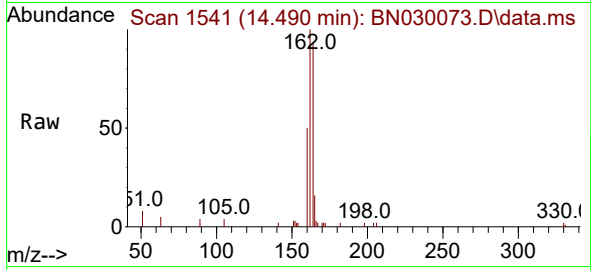


#13
 Acenaphthene-d10
 Concen: 0.400 ng
 RT: 14.490 min Scan# 11
 Delta R.T. 0.000 min
 Lab File: BN030073.D
 Acq: 27 Feb 2024 01:26

Instrument : BNA_N
 ClientSampleId : TT161S1-20240221MSD

Tgt Ion:164 Resp: 4603

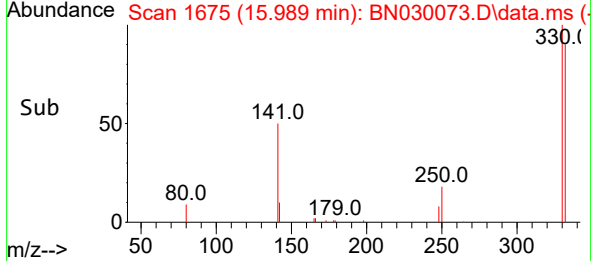
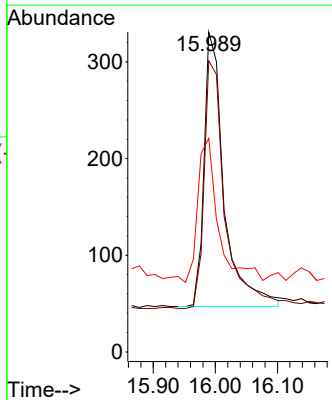
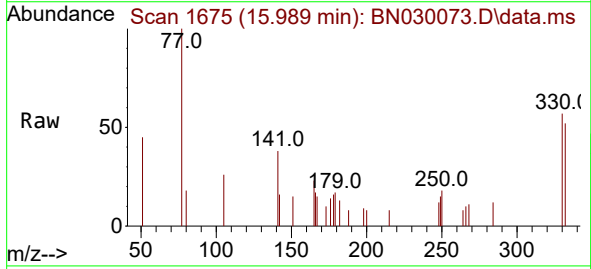
Ion	Ratio	Lower	Upper
164	100		
162	107.5	82.6	123.8
160	53.3	41.5	62.3

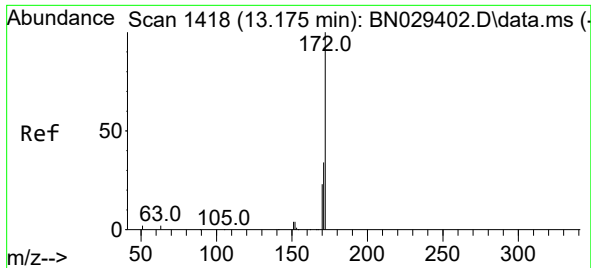


#14
 2,4,6-Tribromophenol
 Concen: 0.431 ng
 RT: 15.989 min Scan# 1675
 Delta R.T. -0.012 min
 Lab File: BN030073.D
 Acq: 27 Feb 2024 01:26

Tgt Ion:330 Resp: 637

Ion	Ratio	Lower	Upper
330	100		
332	94.5	76.0	114.0
141	47.6	43.4	65.2

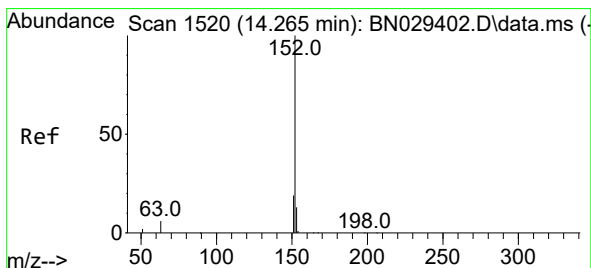
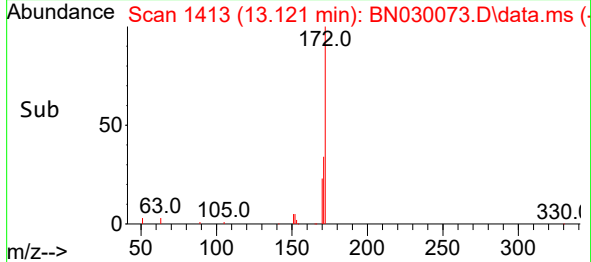
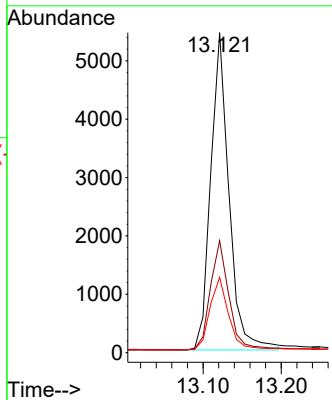
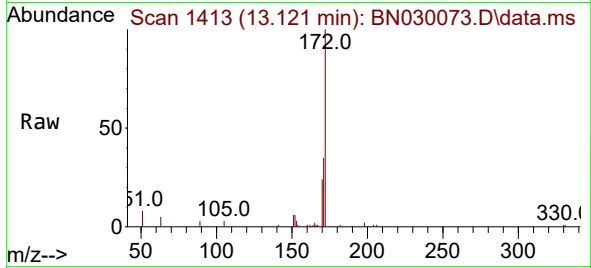




#15
 2-Fluorobiphenyl
 Concen: 0.446 ng
 RT: 13.121 min Scan# 14
 Delta R.T. 0.000 min
 Lab File: BN030073.D
 Acq: 27 Feb 2024 01:26

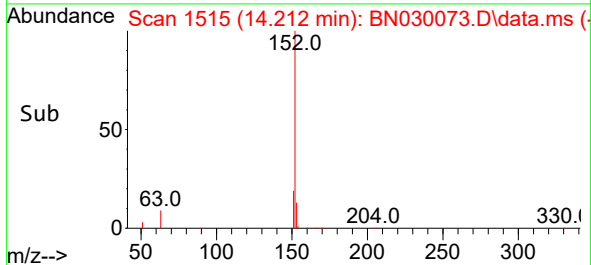
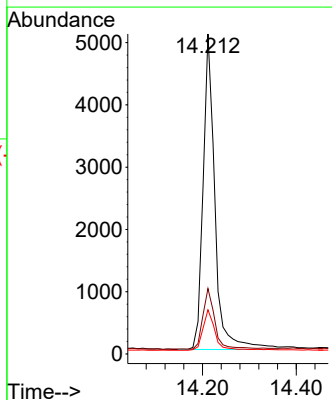
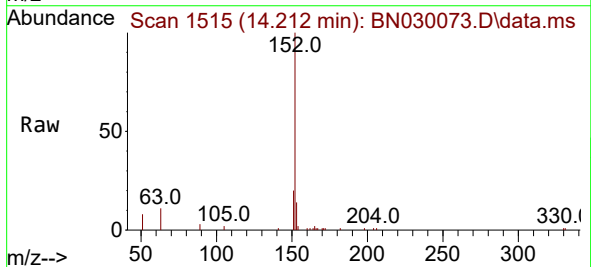
Instrument :
 BNA_N
 ClientSampleId :
 TT161S1-20240221MSD

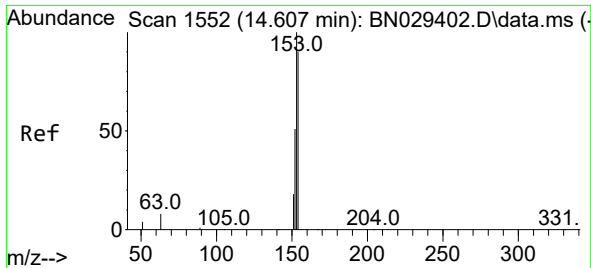
Tgt Ion	Resp	Lower	Upper
172	100		
171	35.0	28.0	42.0
170	23.6	18.7	28.1



#16
 Acenaphthylene
 Concen: 0.407 ng
 RT: 14.212 min Scan# 1515
 Delta R.T. 0.000 min
 Lab File: BN030073.D
 Acq: 27 Feb 2024 01:26

Tgt Ion	Resp	Lower	Upper
152	100		
151	19.5	15.9	23.9
153	13.3	10.5	15.7



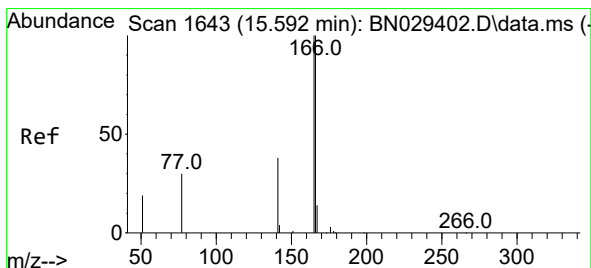
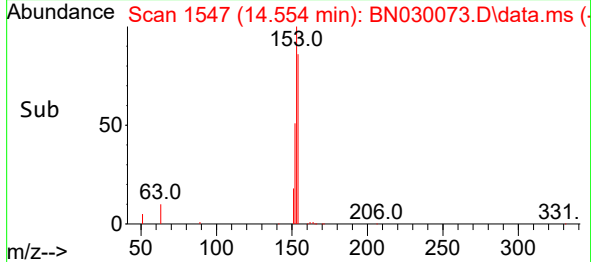
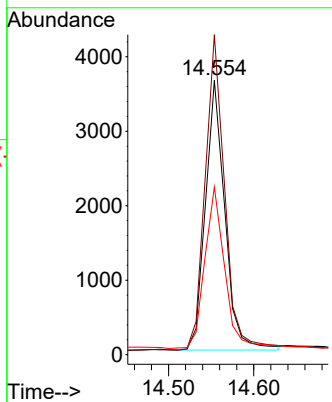
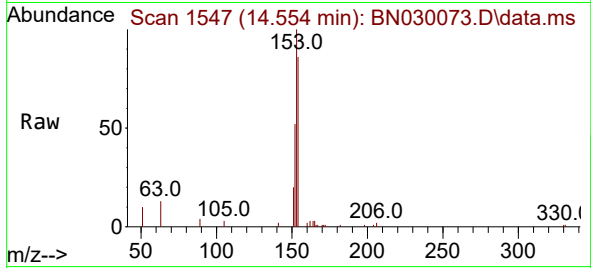


#17
 Acenaphthene
 Concen: 0.391 ng
 RT: 14.554 min Scan# 11
 Delta R.T. 0.000 min
 Lab File: BN030073.D
 Acq: 27 Feb 2024 01:26

Instrument :
 BNA_N
 ClientSampleId :
 TT161S1-20240221MSD

Tgt Ion:154 Resp: 5740

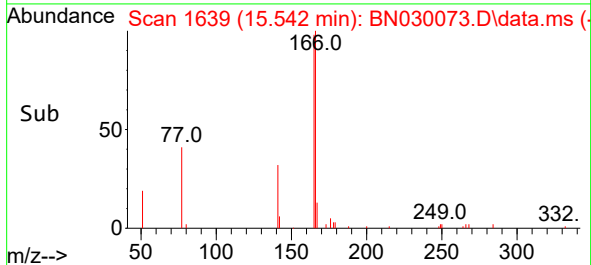
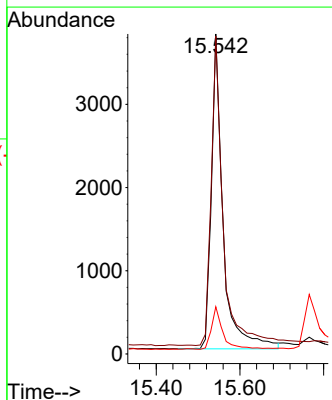
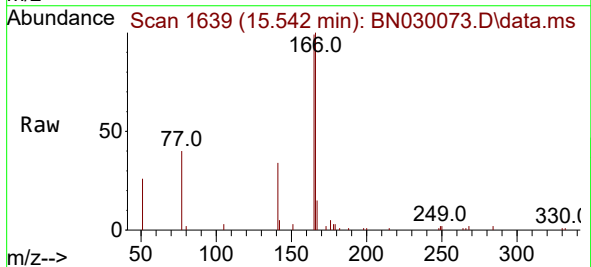
Ion	Ratio	Lower	Upper
154	100		
153	120.9	93.6	140.4
152	62.4	48.6	73.0

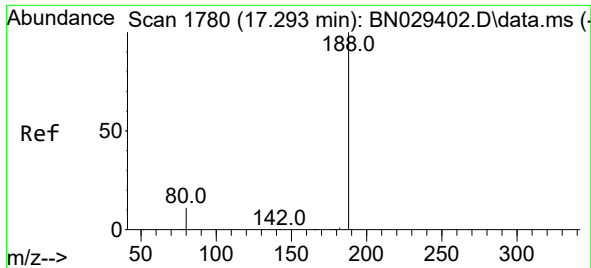


#18
 Fluorene
 Concen: 0.384 ng
 RT: 15.542 min Scan# 1639
 Delta R.T. 0.000 min
 Lab File: BN030073.D
 Acq: 27 Feb 2024 01:26

Tgt Ion:166 Resp: 7065

Ion	Ratio	Lower	Upper
166	100		
165	102.4	79.9	119.9
167	14.0	11.3	16.9



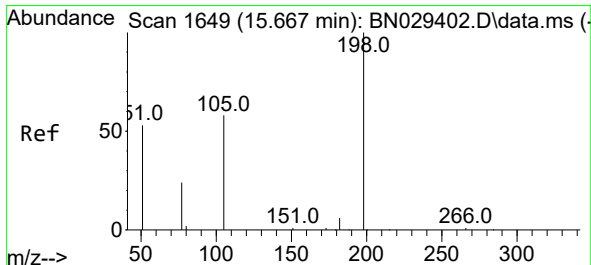
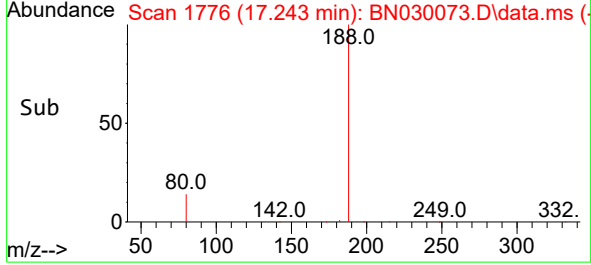
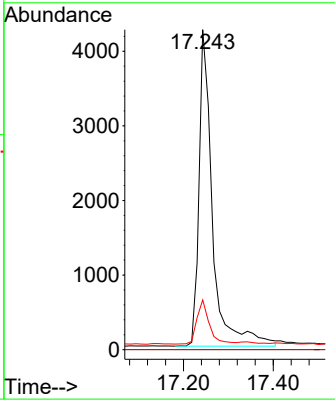
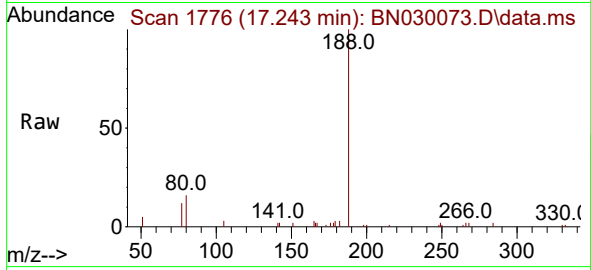


#19
 Phenanthrene-d10
 Concen: 0.400 ng
 RT: 17.243 min Scan# 1776
 Delta R.T. -0.012 min
 Lab File: BN030073.D
 Acq: 27 Feb 2024 01:26

Instrument : BNA_N
 ClientSampleId : TT161S1-20240221MSD

Tgt Ion:188 Resp: 8816

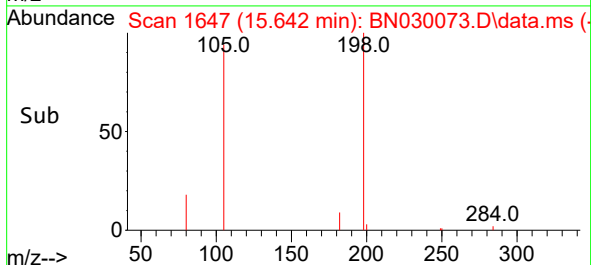
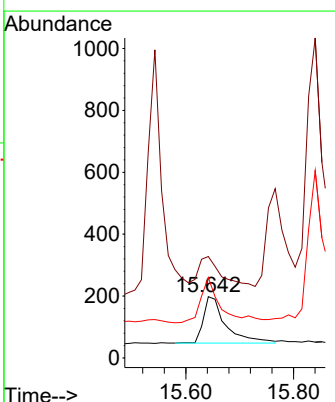
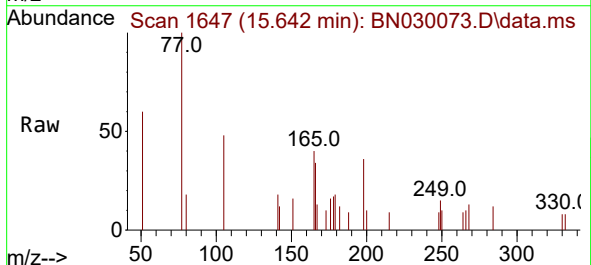
Ion	Ratio	Lower	Upper
188	100		
94	0.0	0.0	0.0
80	15.5	10.0	15.0

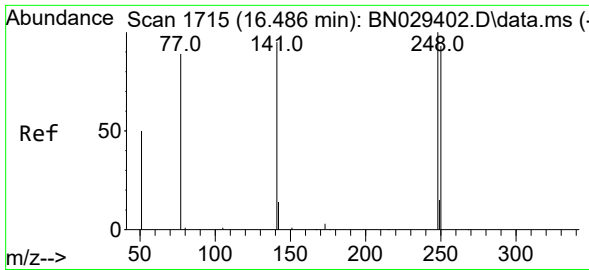


#20
 4,6-Dinitro-2-methylphenol
 Concen: 0.334 ng
 RT: 15.642 min Scan# 1647
 Delta R.T. -0.012 min
 Lab File: BN030073.D
 Acq: 27 Feb 2024 01:26

Tgt Ion:198 Resp: 432

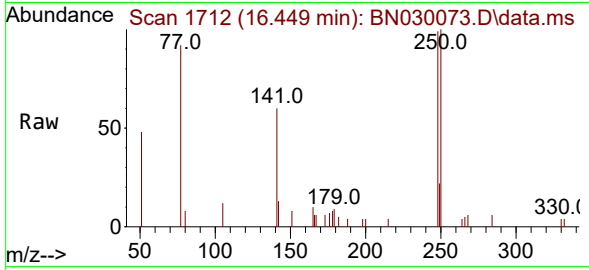
Ion	Ratio	Lower	Upper
198	100		
51	165.7	111.0	166.6
105	131.3	67.0	100.6



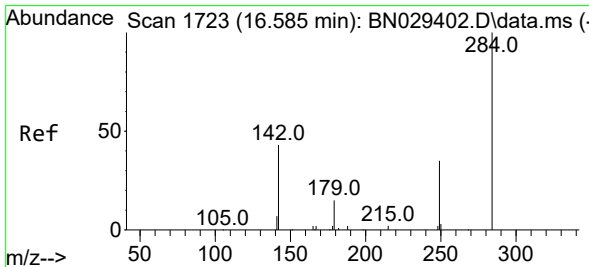
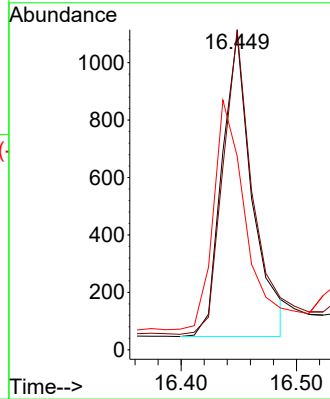
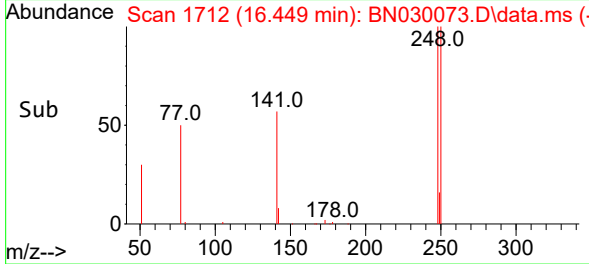


#21
 4-Bromophenyl-phenylether
 Concen: 0.369 ng
 RT: 16.449 min Scan# 1711
 Delta R.T. 0.000 min
 Lab File: BN030073.D
 Acq: 27 Feb 2024 01:26

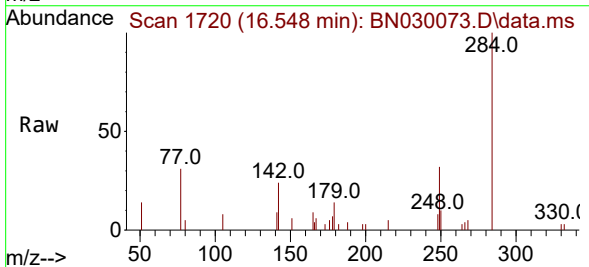
Instrument :
 BNA_N
 ClientSampleId :
 TT161S1-20240221MSD



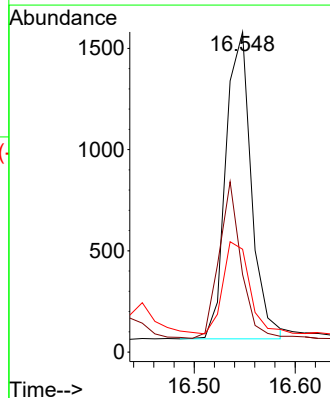
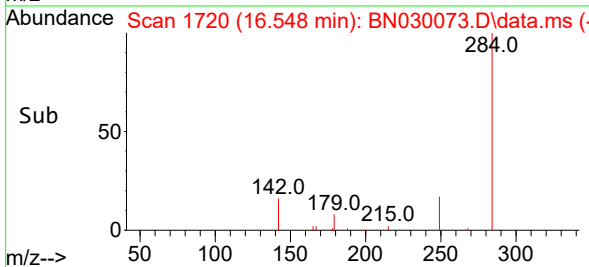
Tgt Ion:248 Resp: 1936
 Ion Ratio Lower Upper
 248 100
 250 101.4 75.0 112.4
 141 61.3 77.0 115.6#

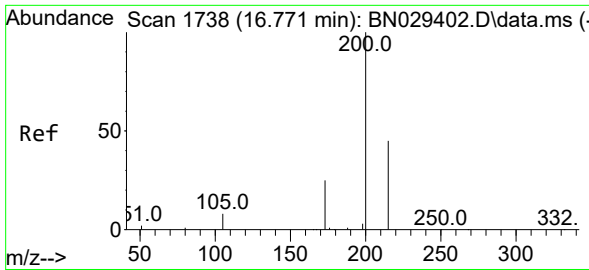


#22
 Hexachlorobenzene
 Concen: 0.414 ng
 RT: 16.548 min Scan# 1720
 Delta R.T. 0.000 min
 Lab File: BN030073.D
 Acq: 27 Feb 2024 01:26



Tgt Ion:284 Resp: 2662
 Ion Ratio Lower Upper
 284 100
 142 44.0 39.4 59.2
 249 30.1 26.9 40.3



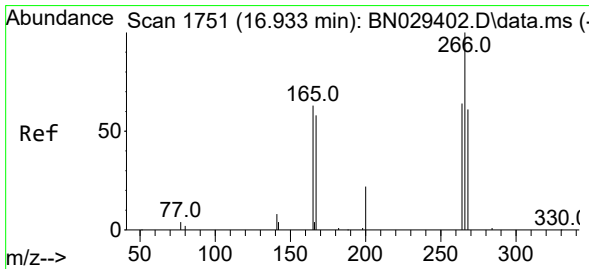
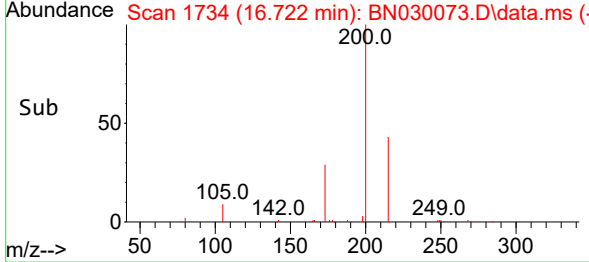
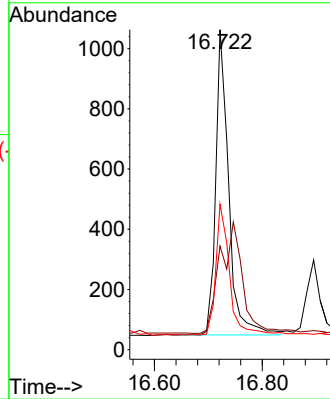
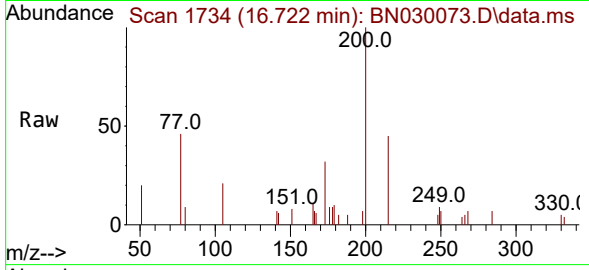


#23
 Atrazine
 Concen: 0.453 ng
 RT: 16.722 min Scan# 11
 Delta R.T. -0.012 min
 Lab File: BN030073.D
 Acq: 27 Feb 2024 01:26

Instrument :
 BNA_N
 ClientSampleId :
 TT161S1-20240221MSD

Tgt Ion:200 Resp: 1690

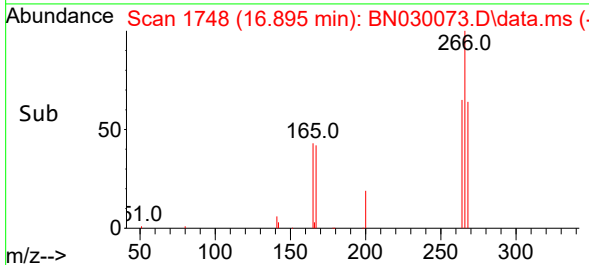
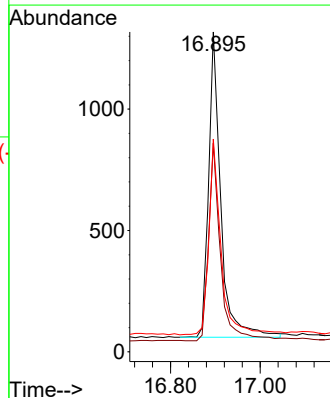
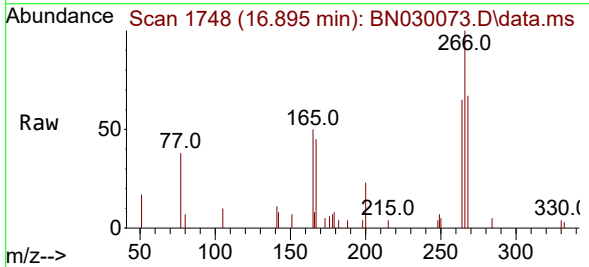
Ion	Ratio	Lower	Upper
200	100		
173	32.4	23.4	35.0
215	45.4	38.4	57.6

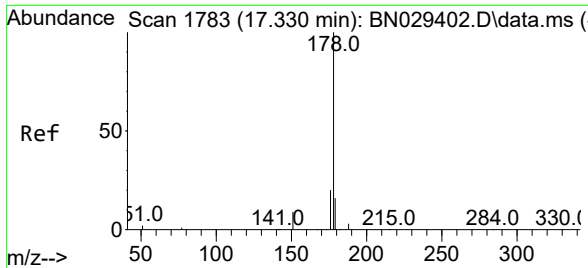


#24
 Pentachlorophenol
 Concen: 1.157 ng
 RT: 16.895 min Scan# 1748
 Delta R.T. -0.012 min
 Lab File: BN030073.D
 Acq: 27 Feb 2024 01:26

Tgt Ion:266 Resp: 2361

Ion	Ratio	Lower	Upper
266	100		
264	63.1	50.8	76.2
268	64.0	51.5	77.3

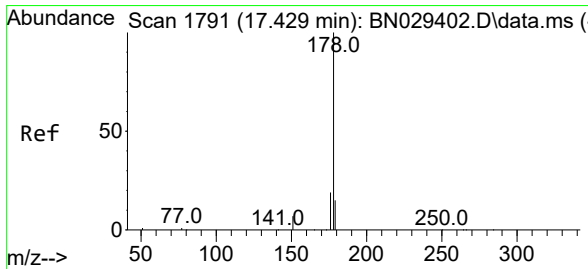
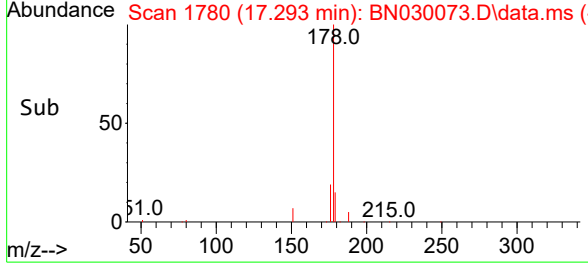
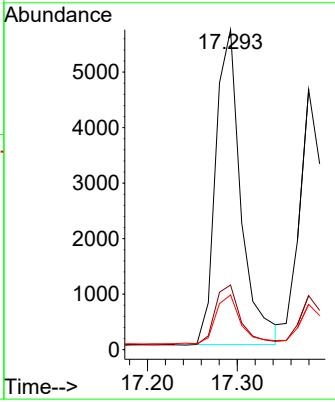
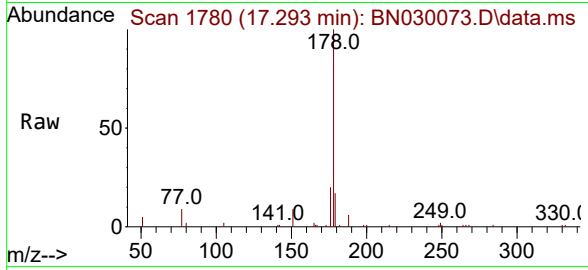




#25
 Phenanthrene
 Concen: 0.428 ng
 RT: 17.293 min Scan# 11
 Delta R.T. 0.000 min
 Lab File: BN030073.D
 Acq: 27 Feb 2024 01:26

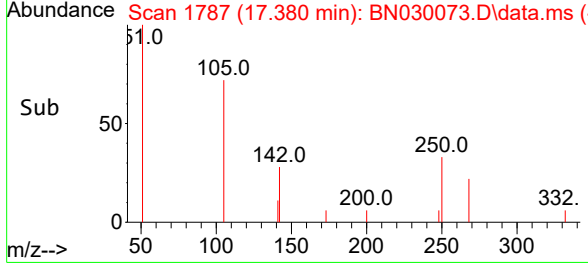
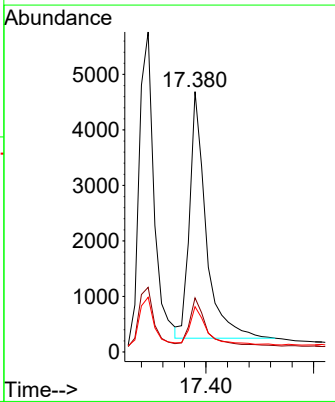
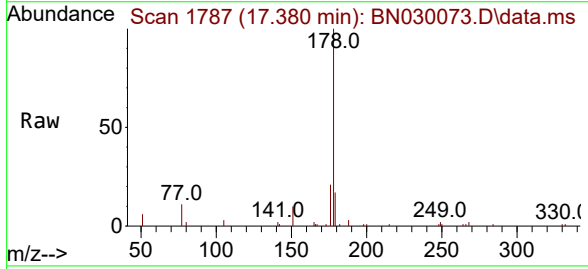
Instrument : BNA_N
 ClientSampleId : TT161S1-20240221MSD

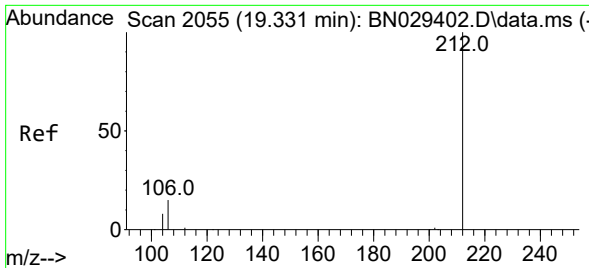
Tgt Ion	Resp	Lower	Upper
178	11156		
176	19.7	15.8	23.6
179	15.9	12.6	19.0



#26
 Anthracene
 Concen: 0.424 ng
 RT: 17.380 min Scan# 1787
 Delta R.T. -0.012 min
 Lab File: BN030073.D
 Acq: 27 Feb 2024 01:26

Tgt Ion	Resp	Lower	Upper
178	9416		
176	19.0	15.0	22.4
179	16.0	12.3	18.5



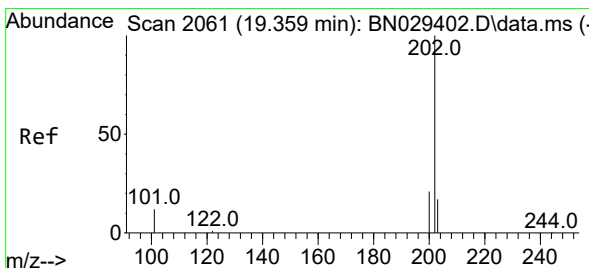
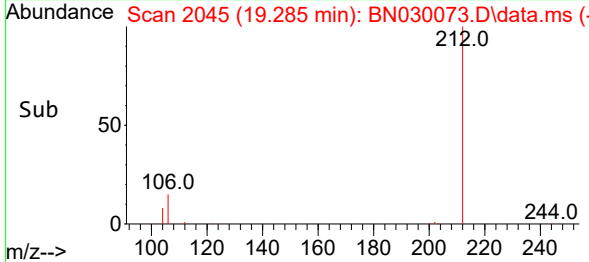
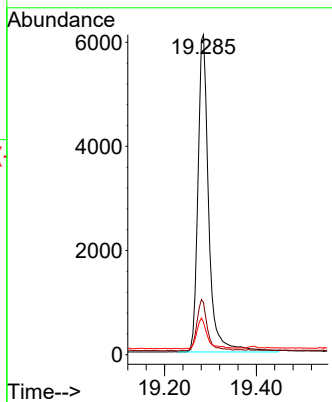
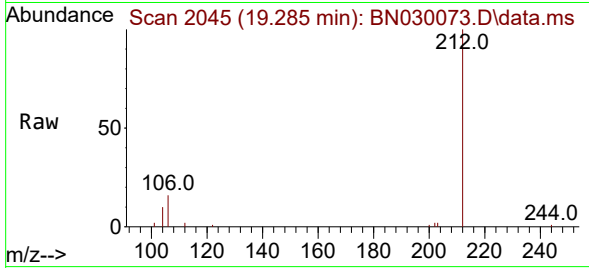


#27
 Fluoranthene-d10
 Concen: 0.466 ng
 RT: 19.285 min Scan# 2051
 Delta R.T. -0.005 min
 Lab File: BN030073.D
 Acq: 27 Feb 2024 01:26

Instrument :
 BNA_N
 ClientSampleId :
 TT161S1-20240221MSD

Tgt Ion:212 Resp: 9941

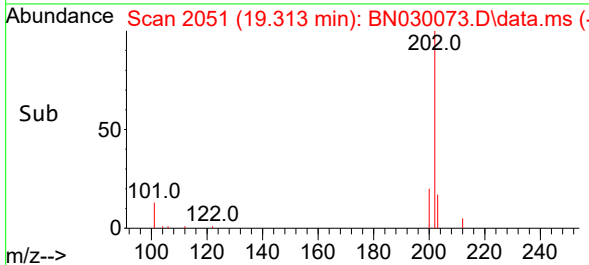
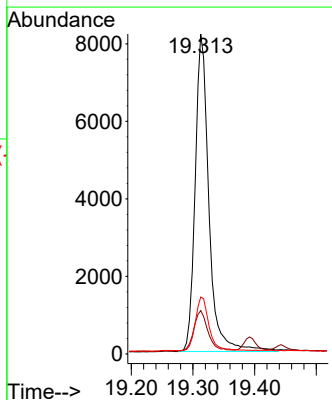
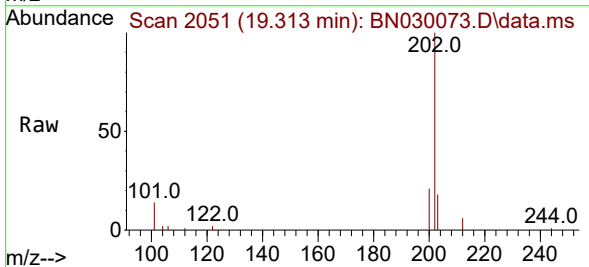
Ion	Ratio	Lower	Upper
212	100		
106	15.7	13.2	19.8
104	9.5	7.7	11.5

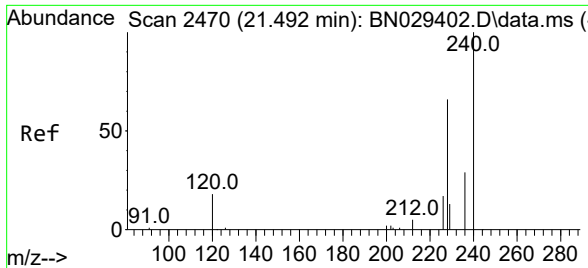


#28
 Fluoranthene
 Concen: 0.434 ng
 RT: 19.313 min Scan# 2051
 Delta R.T. -0.005 min
 Lab File: BN030073.D
 Acq: 27 Feb 2024 01:26

Tgt Ion:202 Resp: 12734

Ion	Ratio	Lower	Upper
202	100		
101	13.2	10.5	15.7
203	17.0	13.5	20.3



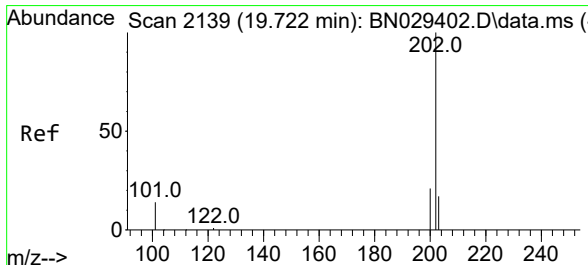
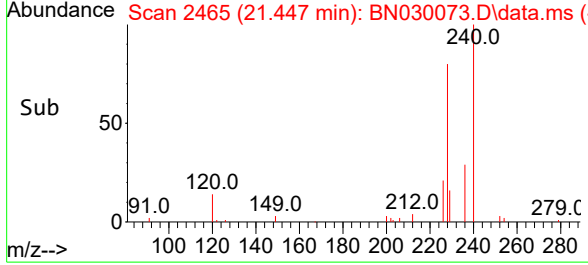
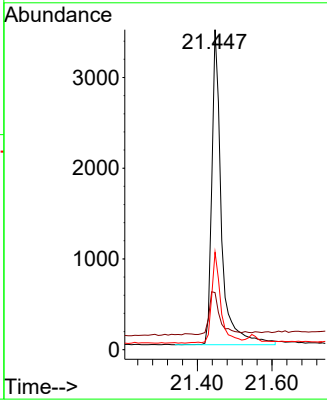
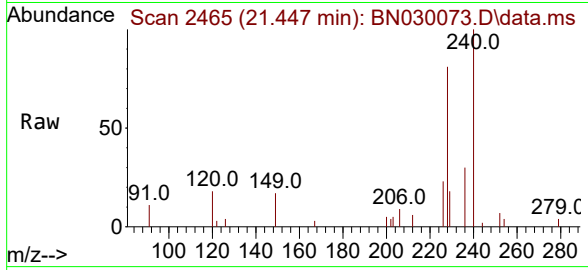


#29
 Chrysene-d12
 Concen: 0.400 ng
 RT: 21.447 min Scan# 24
 Delta R.T. -0.009 min
 Lab File: BN030073.D
 Acq: 27 Feb 2024 01:26

Instrument :
 BNA_N
 ClientSampleId :
 TT161S1-20240221MSD

Tgt Ion:240 Resp: 6216

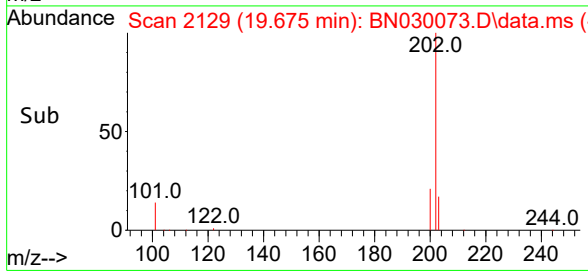
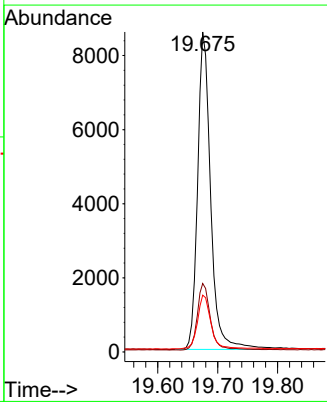
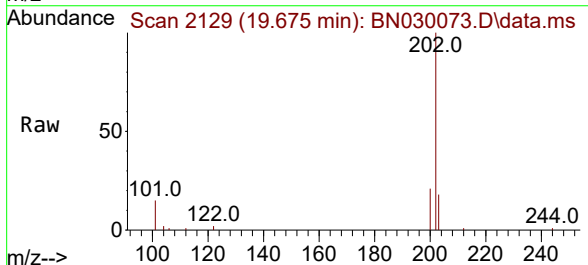
Ion	Ratio	Lower	Upper
240	100		
120	17.8	16.7	25.1
236	30.5	23.9	35.9

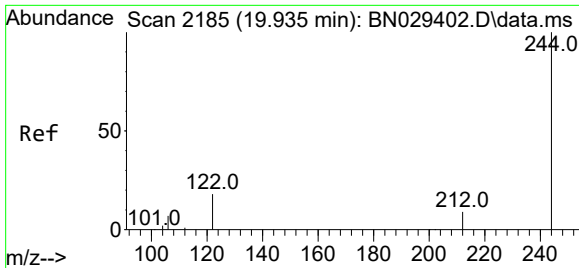


#30
 Pyrene
 Concen: 0.454 ng
 RT: 19.675 min Scan# 2129
 Delta R.T. -0.009 min
 Lab File: BN030073.D
 Acq: 27 Feb 2024 01:26

Tgt Ion:202 Resp: 12981

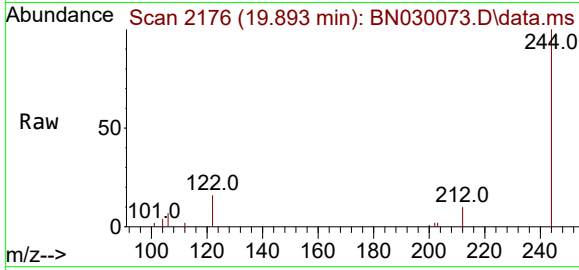
Ion	Ratio	Lower	Upper
202	100		
200	21.1	16.6	25.0
203	17.3	14.2	21.4



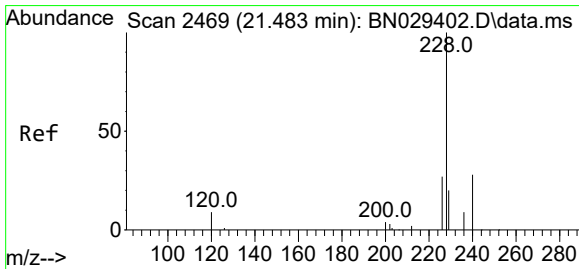
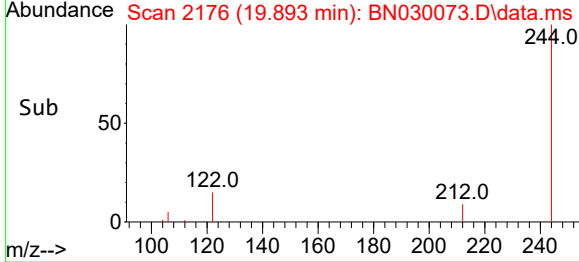
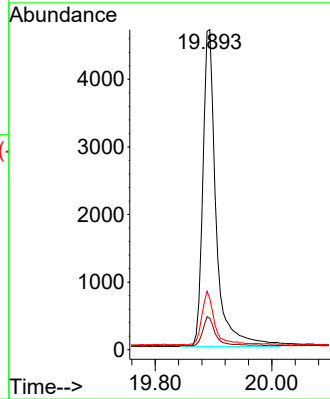


#31
 Terphenyl-d14
 Concen: 0.482 ng
 RT: 19.893 min Scan# 2185
 Delta R.T. -0.005 min
 Lab File: BN030073.D
 Acq: 27 Feb 2024 01:26

Instrument : BNA_N
 ClientSampleId : TT161S1-20240221MSD

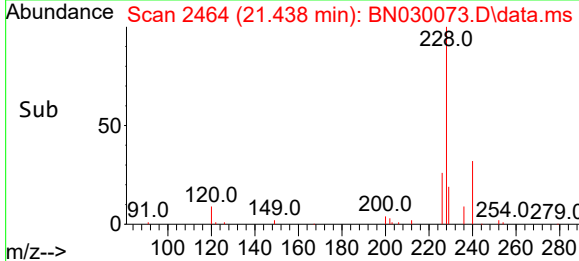
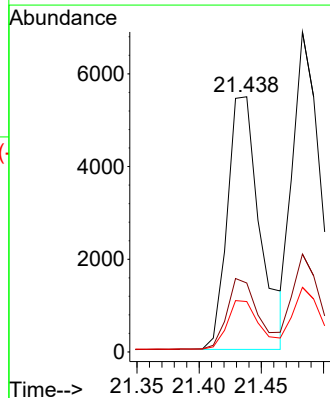
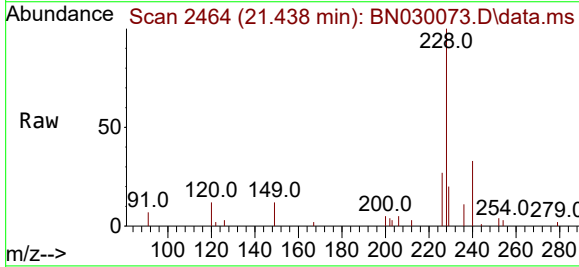


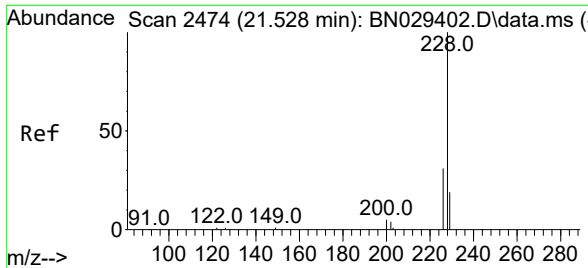
Tgt Ion:244 Resp: 7442
 Ion Ratio Lower Upper
 244 100
 212 9.8 8.2 12.4
 122 16.0 15.6 23.4



#32
 Benzo(a)anthracene
 Concen: 0.470 ng
 RT: 21.438 min Scan# 2464
 Delta R.T. 0.000 min
 Lab File: BN030073.D
 Acq: 27 Feb 2024 01:26

Tgt Ion:228 Resp: 9992
 Ion Ratio Lower Upper
 228 100
 226 27.0 22.2 33.4
 229 19.7 16.5 24.7

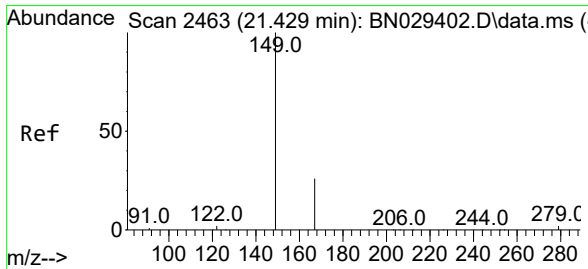
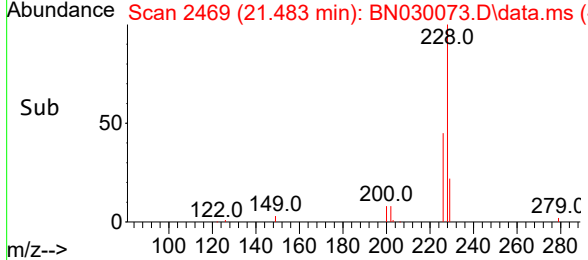
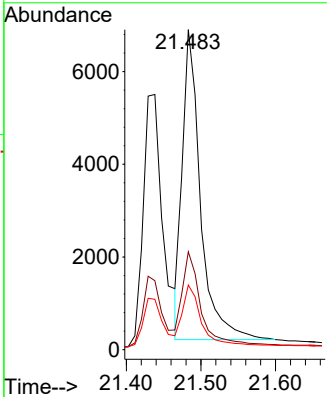
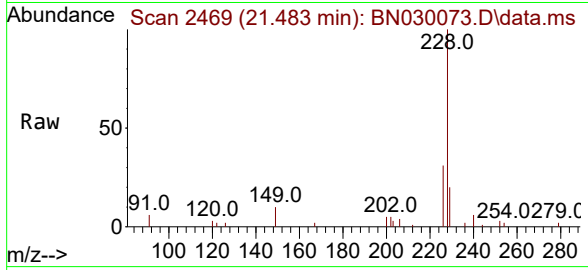




#33
 Chrysene
 Concen: 0.467 ng
 RT: 21.483 min Scan# 2457
 Delta R.T. -0.009 min
 Lab File: BN030073.D
 Acq: 27 Feb 2024 01:26

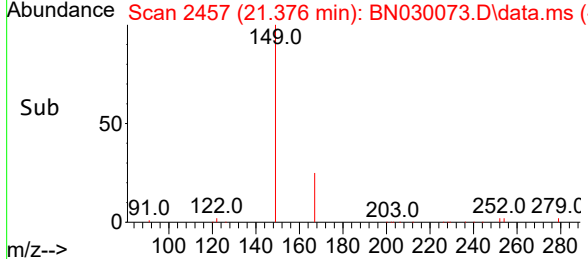
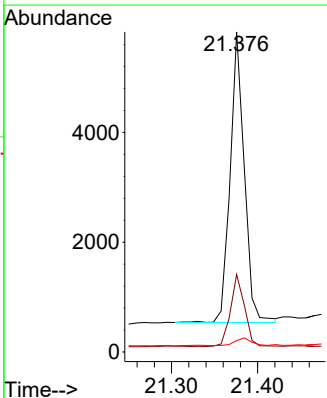
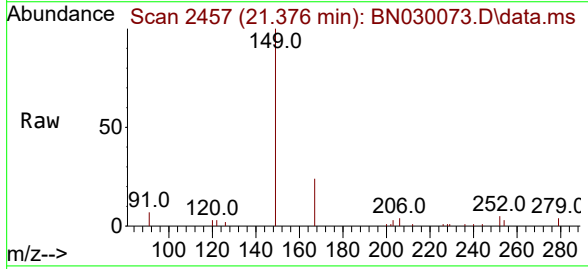
Instrument : BNA_N
 ClientSampleId : TT161S1-20240221MSD

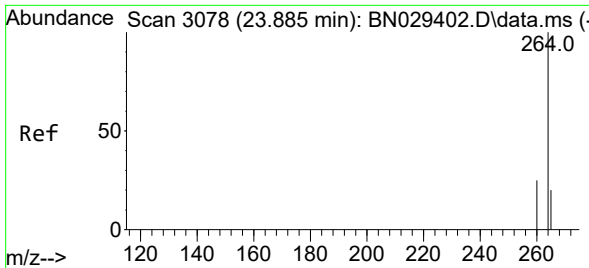
Tgt Ion	Resp	Lower	Upper
228	11261		
226	30.6	24.9	37.3
229	20.2	15.9	23.9



#34
 Bis(2-ethylhexyl)phthalate
 Concen: 0.418 ng
 RT: 21.376 min Scan# 2457
 Delta R.T. -0.009 min
 Lab File: BN030073.D
 Acq: 27 Feb 2024 01:26

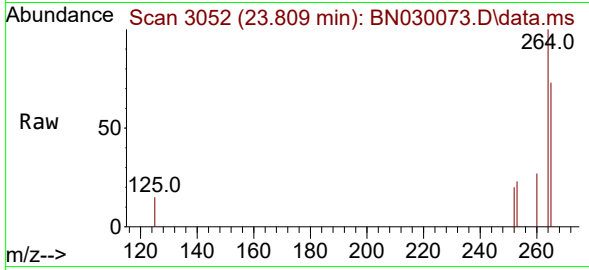
Tgt Ion	Resp	Lower	Upper
149	6055		
167	24.7	20.1	30.1
279	2.9	2.5	3.7



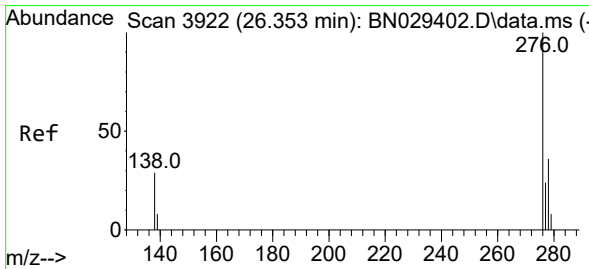
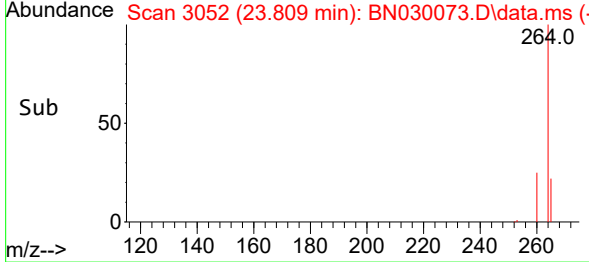
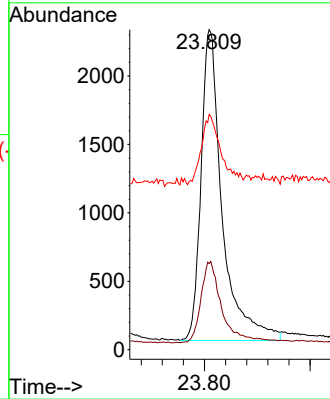


#35
 Perylene-d12
 Concen: 0.400 ng
 RT: 23.809 min Scan# 3078
 Delta R.T. -0.012 min
 Lab File: BN030073.D
 Acq: 27 Feb 2024 01:26

Instrument : BNA_N
 ClientSampleId : TT161S1-20240221MSD

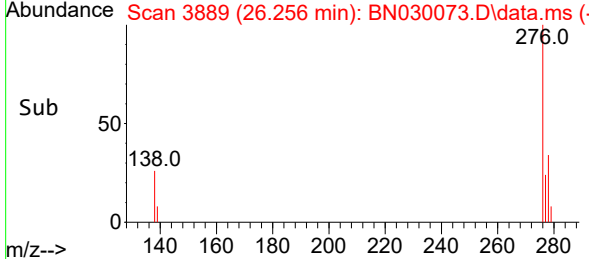
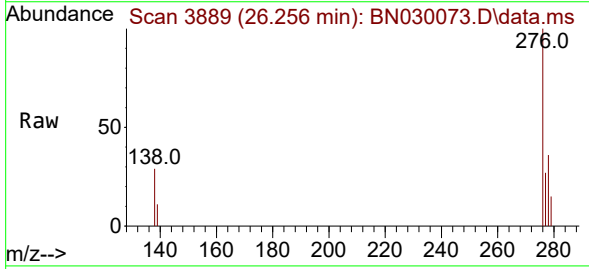
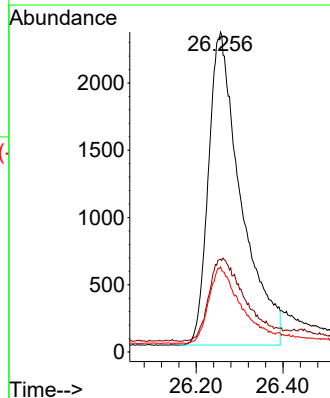


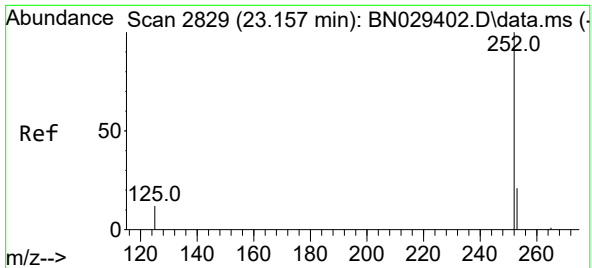
Tgt Ion:264 Resp: 6327
 Ion Ratio Lower Upper
 264 100
 260 26.9 21.2 31.8
 265 73.5 41.5 62.3#



#36
 Indeno(1,2,3-cd)pyrene
 Concen: 0.476 ng
 RT: 26.256 min Scan# 3889
 Delta R.T. -0.012 min
 Lab File: BN030073.D
 Acq: 27 Feb 2024 01:26

Tgt Ion:276 Resp: 12097
 Ion Ratio Lower Upper
 276 100
 138 29.4 20.5 30.7
 277 24.5 17.0 25.4



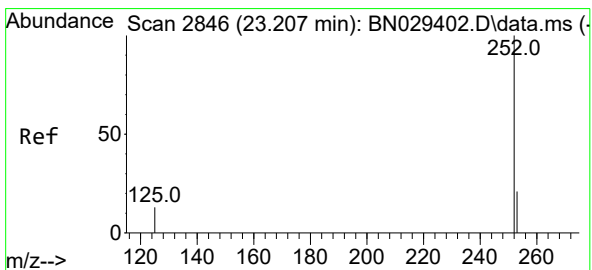
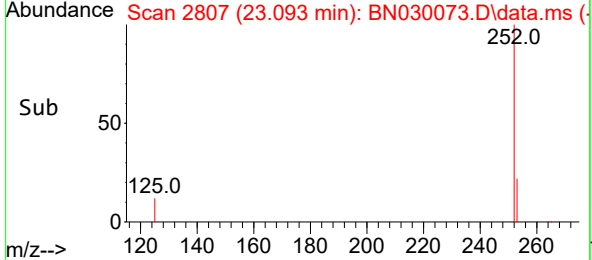
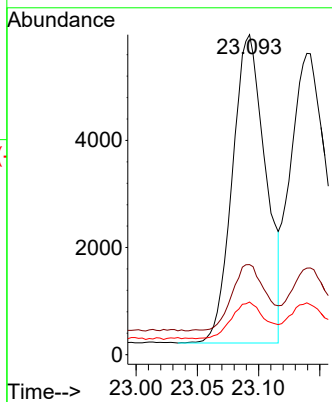
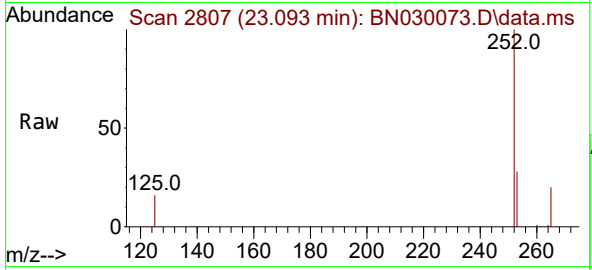


#37
 Benzo(b)fluoranthene
 Concen: 0.479 ng
 RT: 23.093 min Scan# 2807
 Delta R.T. -0.006 min
 Lab File: BN030073.D
 Acq: 27 Feb 2024 01:26

Instrument : BNA_N
 ClientSampleId : TT161S1-20240221MSD

Tgt Ion:252 Resp: 10843

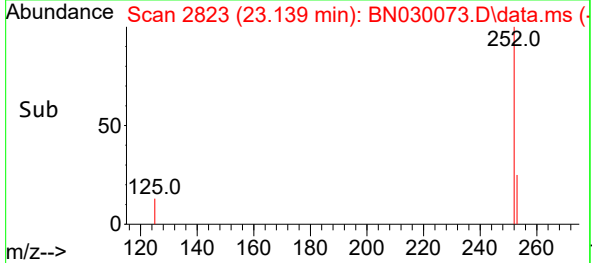
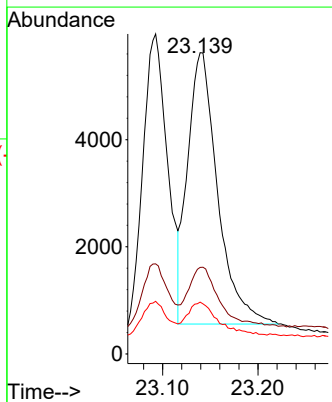
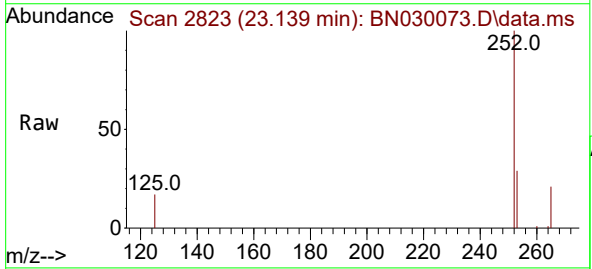
Ion	Ratio	Lower	Upper
252	100		
253	28.2	21.7	32.5
125	16.5	13.3	19.9

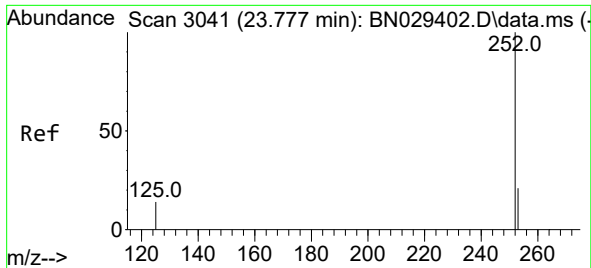


#38
 Benzo(k)fluoranthene
 Concen: 0.469 ng
 RT: 23.139 min Scan# 2823
 Delta R.T. -0.009 min
 Lab File: BN030073.D
 Acq: 27 Feb 2024 01:26

Tgt Ion:252 Resp: 11107

Ion	Ratio	Lower	Upper
252	100		
253	28.8	21.8	32.8
125	17.2	13.9	20.9



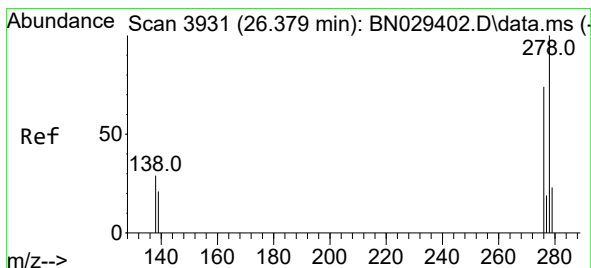
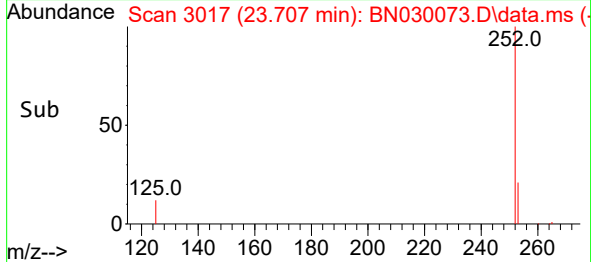
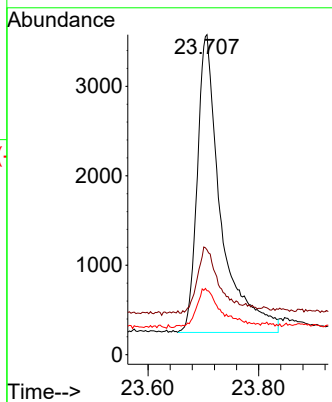
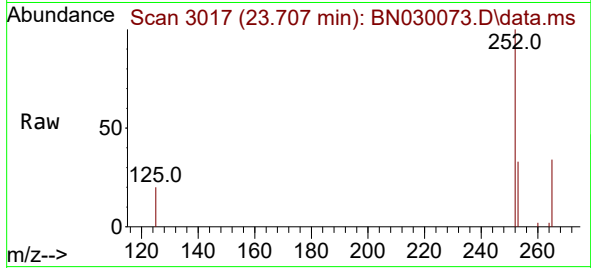


#39
 Benzo(a)pyrene
 Concen: 0.499 ng
 RT: 23.707 min Scan# 3041
 Delta R.T. -0.009 min
 Lab File: BN030073.D
 Acq: 27 Feb 2024 01:26

Instrument :
 BNA_N
 ClientSampleId :
 TT161S1-20240221MSD

Tgt Ion:252 Resp: 9840

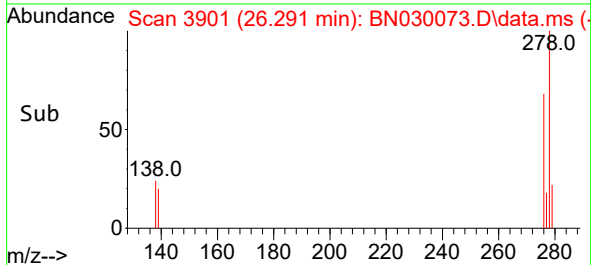
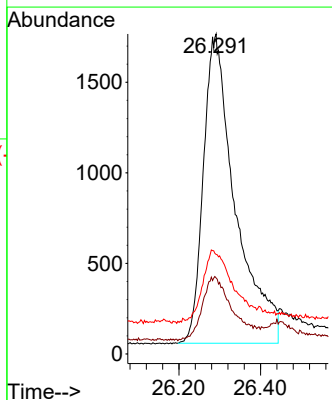
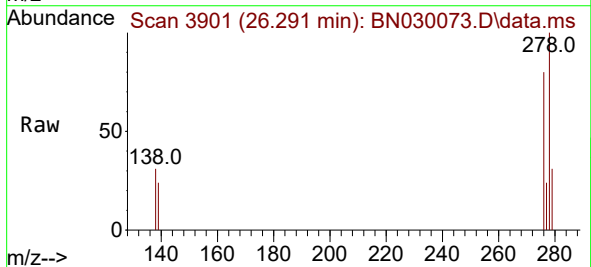
Ion	Ratio	Lower	Upper
252	100		
253	32.8	24.9	37.3
125	20.0	16.6	25.0

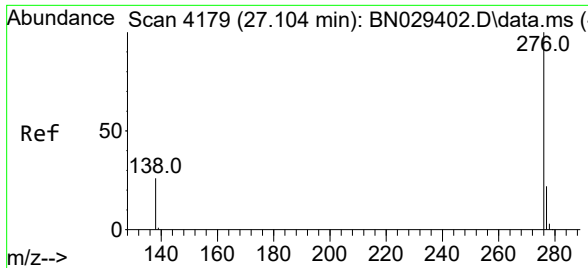


#40
 Dibenzo(a,h)anthracene
 Concen: 0.459 ng
 RT: 26.291 min Scan# 3901
 Delta R.T. -0.012 min
 Lab File: BN030073.D
 Acq: 27 Feb 2024 01:26

Tgt Ion:278 Resp: 9298

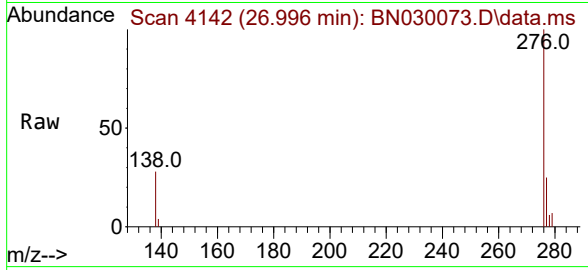
Ion	Ratio	Lower	Upper
278	100		
139	23.8	20.4	30.6
279	31.1	25.0	37.6





#41
 Benzo(g,h,i)perylene
 Concen: 0.459 ng
 RT: 26.996 min Scan# 41
 Delta R.T. -0.012 min
 Lab File: BN030073.D
 Acq: 27 Feb 2024 01:26

Instrument :
 BNA_N
 ClientSampleId :
 TT161S1-20240221MSD



Tgt Ion: 276 Resp: 11309

Ion	Ratio	Lower	Upper
276	100		
277	25.4	19.4	29.2
138	28.0	23.5	35.3

