

Data Path : Z:\svoasrv\HPCHEM1\BNA_N\Data\BN022625\
 Data File : BN036508.D
 Acq On : 26 Feb 2025 13:43
 Operator : RC/JU
 Sample : SSTDCCC0.4
 Misc :
 ALS Vial : 2 Sample Multiplier: 1

Instrument :
 BNA_N
ClientSampleId :
 SSTDCCC0.4

Manual Integrations
APPROVED
 Reviewed By :Rahul
 Chavli

Quant Time: Feb 26 14:09:37 2025
 Quant Method : Z:\svoasrv\HPCHEM1\BNA_N\Methods\8270-SIM-BN021025.M
 Quant Title : ASP BNA STANDARDS FOR 5 POINT CALIBRATION
 QLast Update : Tue Feb 11 01:17:14 2025
 Response via : Initial Calibration

Compound	R.T.	QIon	Response	Conc	Units	Dev(Min)
----------	------	------	----------	------	-------	----------

Internal Standards

1) 1,4-Dichlorobenzene-d4	7.739	152	2772	0.400	ng	-0.01
7) Naphthalene-d8	10.530	136	6909	0.400	ng	#-0.01
13) Acenaphthene-d10	14.377	164	4680	0.400	ng	-0.01
19) Phenanthrene-d10	17.124	188	9092	0.400	ng	-0.01
29) Chrysene-d12	21.313	240	6639	0.400	ng	0.00
35) Perylene-d12	23.581	264	6000	0.400	ng	-0.01

02/27/2025
 Supervised By :mohammad
 Ahmed

System Monitoring Compounds

4) 2-Fluorophenol	5.334	112	2377	0.363	ng	-0.01
5) Phenol-d6	6.915	99	2776	0.361	ng	-0.02
8) Nitrobenzene-d5	8.886	82	2668	0.391	ng	-0.02
11) 2-Methylnaphthalene-d10	12.126	152	4099	0.386	ng	-0.02
14) 2,4,6-Tribromophenol	15.870	330	719	0.310	ng	-0.01
15) 2-Fluorobiphenyl	13.003	172	7811	0.444	ng	-0.02
27) Fluoranthene-d10	19.160	212	9278	0.367	ng	0.00
31) Terphenyl-d14	19.764	244	6045	0.427	ng	0.00

02/28/2025

Target Compounds

Compound	R.T.	QIon	Response	Conc	Units	Qvalue
2) 1,4-Dioxane	3.261	88	1294	0.427	ng	97
3) n-Nitrosodimethylamine	3.564	42	2267	0.430	ng	92
6) bis(2-Chloroethyl)ether	7.161	93	3244	0.404	ng	98
9) Naphthalene	10.573	128	7777	0.390	ng	99
10) Hexachlorobutadiene	10.872	225	1886	0.389	ng	# 98
12) 2-Methylnaphthalene	12.197	142	5047	0.386	ng	99
16) Acenaphthylene	14.099	152	7894	0.382	ng	99
17) Acenaphthene	14.441	154	5057	0.366	ng	99
18) Fluorene	15.425	166	7106	0.362	ng	100
20) 4,6-Dinitro-2-methylph...	15.510	198	548	0.307	ng	92
21) 4-Bromophenyl-phenylether	16.317	248	2189	0.404	ng	98
22) Hexachlorobenzene	16.441	284	2720	0.406	ng	95
23) Atrazine	16.602	200	1700	0.375	ng	98
24) Pentachlorophenol	16.789	266	1101	0.346	ng	98
25) Phenanthrene	17.161	178	10441	0.397	ng	99
26) Anthracene	17.260	178	9164	0.395	ng	99
28) Fluoranthene	19.188	202	11838	0.367	ng	99
30) Pyrene	19.550	202	11970	0.468	ng	100
32) Benzo(a)anthracene	21.295	228	8384	0.384	ng	98
33) Chrysene	21.349	228	9942	0.420	ng	99
34) Bis(2-ethylhexyl)phtha...	21.232	149	6526	0.479	ng	100
36) Indeno(1,2,3-cd)pyrene	25.879	276	7809	0.372	ng	98
37) Benzo(b)fluoranthene	22.897	252	8294m	0.420	ng	
38) Benzo(k)fluoranthene	22.943	252	8277	0.407	ng	100
39) Benzo(a)pyrene	23.481	252	7264	0.421	ng	# 90
40) Dibenzo(a,h)anthracene	25.896	278	5914	0.357	ng	98
41) Benzo(g,h,i)perylene	26.572	276	6890	0.367	ng	98

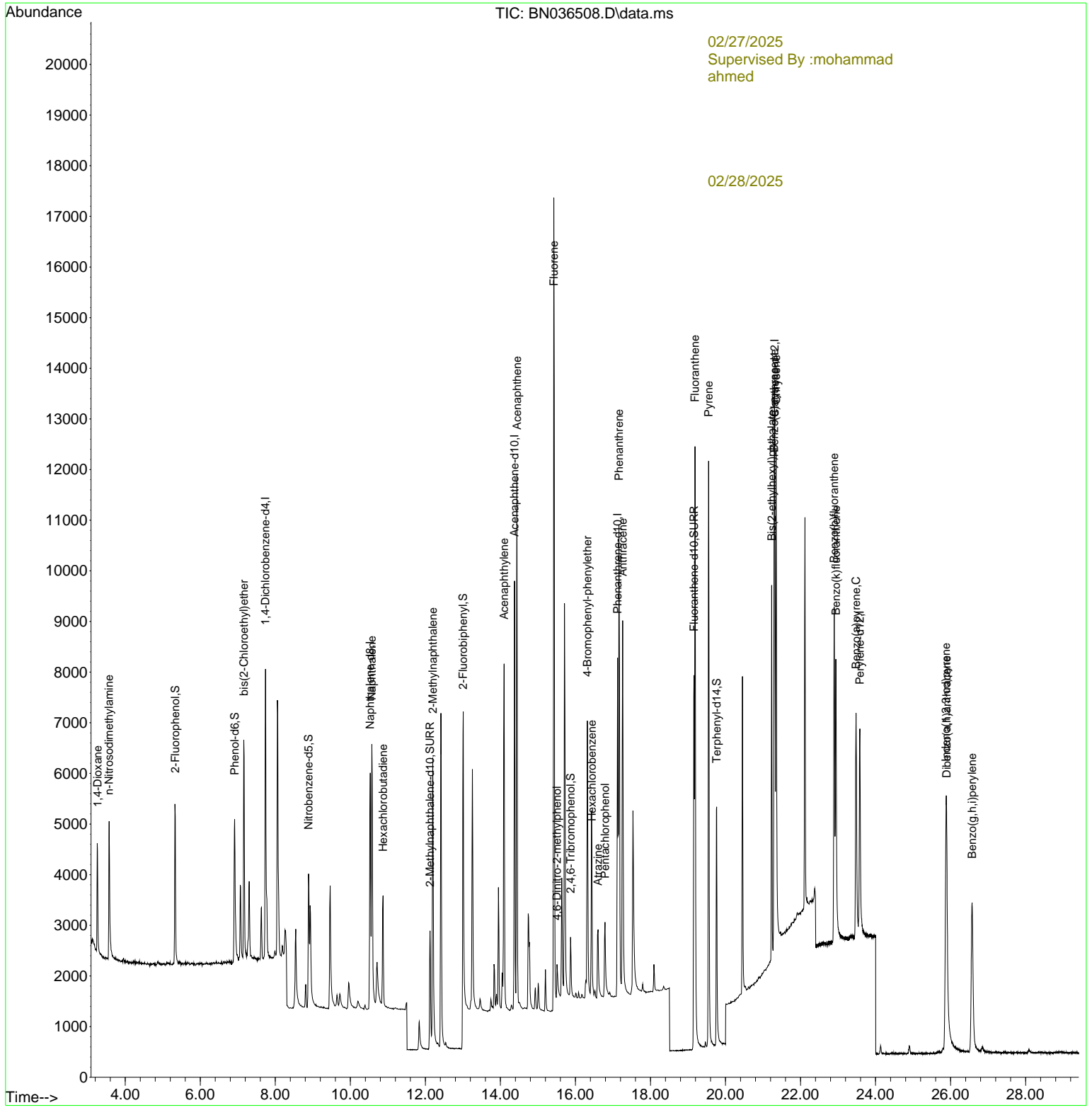
(#) = qualifier out of range (m) = manual integration (+) = signals summed

Data Path : Z:\svoasrv\HPCHEM1\BNA_N\Data\BN022625\
 Data File : BN036508.D
 Acq On : 26 Feb 2025 13:43
 Operator : RC/JU
 Sample : SSTDCCC0.4
 Misc :
 ALS Vial : 2 Sample Multiplier: 1

Instrument :
 BNA_N
ClientSampleId :
 SSTDCCC0.4

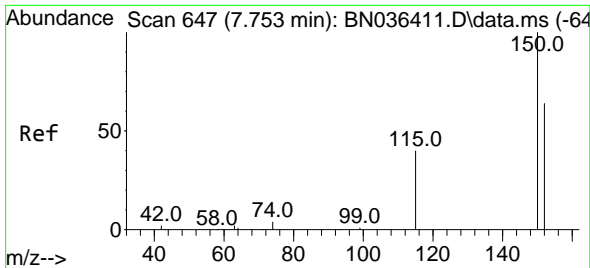
Quant Time: Feb 26 14:09:37 2025
 Quant Method : Z:\svoasrv\HPCHEM1\BNA_N\Methods\8270-SIM-BN021025.M
 Quant Title : ASP BNA STANDARDS FOR 5 POINT CALIBRATION
 QLast Update : Tue Feb 11 01:17:14 2025
 Response via : Initial Calibration

Manual Integrations
APPROVED
 Reviewed By :Rahul Chavli



02/27/2025
 Supervised By :mohammad ahmed

02/28/2025



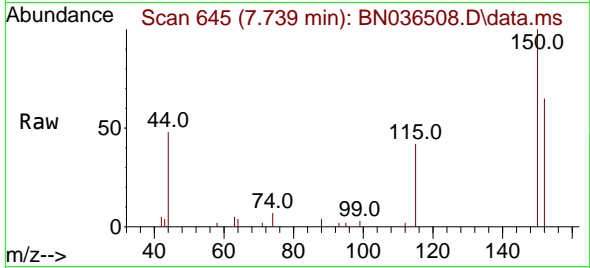
#1
 1,4-Dichlorobenzene-d4
 Concen: 0.400 ng
 RT: 7.739 min Scan# 64
 Delta R.T. -0.014 min
 Lab File: BN036508.D
 Acq: 26 Feb 2025 13:43

Instrument :

BNA_N

ClientSampleId :

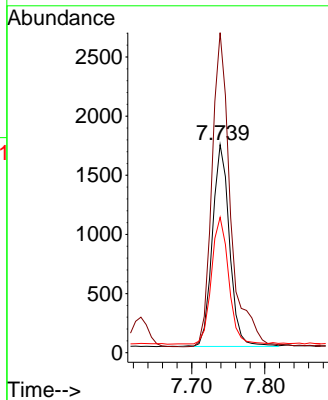
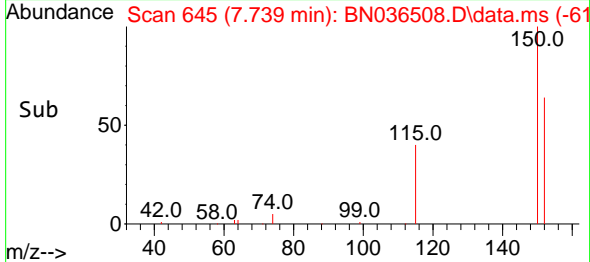
SSTDCCC0.4



Tgt Ion: 152 Resp: 277
 Ion Ratio Lower Upper
 152 100
 150 153.8 123.7 185.5
 115 65.1 52.5 78.7

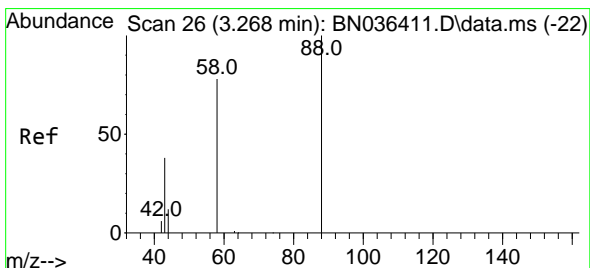
Manual Integrations
 APPROVED

Reviewed By :Rahul
 Chavli

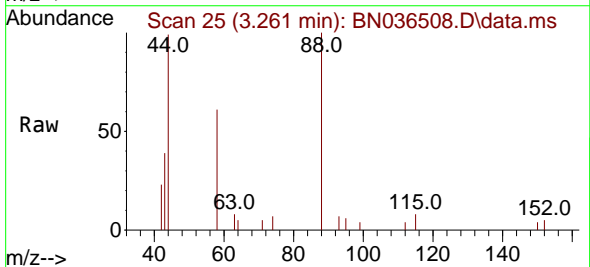


02/27/2025
 Supervised By :mohammad
 ahmed

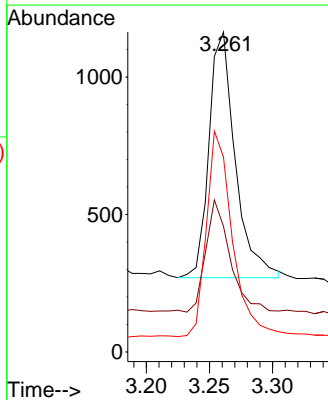
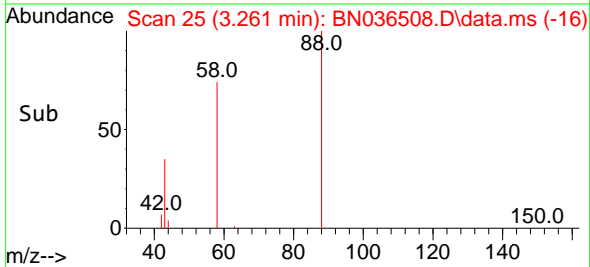
02/28/2025

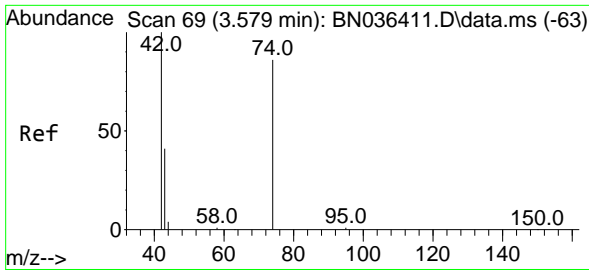


#2
 1,4-Dioxane
 Concen: 0.427 ng
 RT: 3.261 min Scan# 25
 Delta R.T. -0.007 min
 Lab File: BN036508.D
 Acq: 26 Feb 2025 13:43



Tgt Ion: 88 Resp: 1294
 Ion Ratio Lower Upper
 88 100
 43 40.8 33.7 50.5
 58 82.4 68.9 103.3





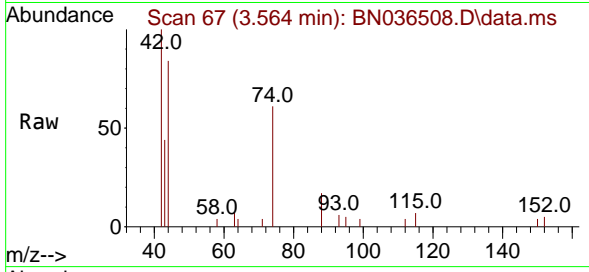
#3
 n-Nitrosodimethylamine
 Concen: 0.430 ng
 RT: 3.564 min Scan# 61
 Delta R.T. -0.014 min
 Lab File: BN036508.D
 Acq: 26 Feb 2025 13:43

Instrument :

BNA_N

ClientSampleId :

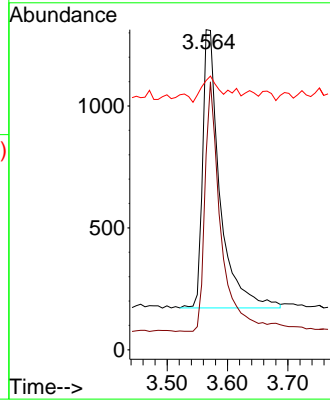
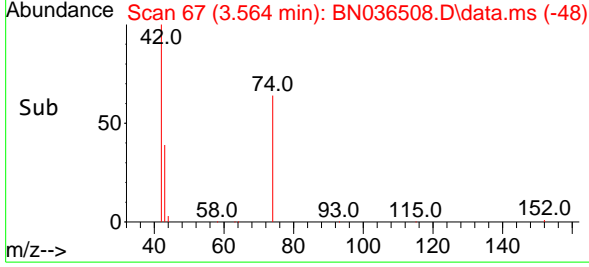
SSTDCCC0.4



Tgt Ion: 42 Resp: 226
 Ion Ratio Lower Upper
 42 100
 74 81.6 71.8 107.6
 44 8.6 7.8 11.6

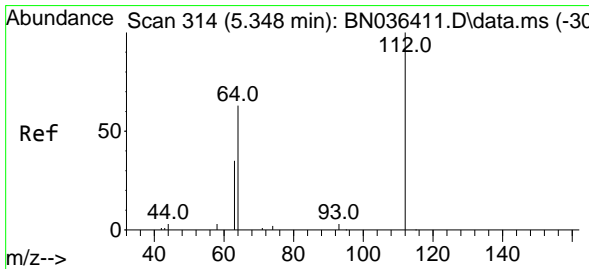
Manual Integrations
 APPROVED

Reviewed By :Rahul
 Chavli



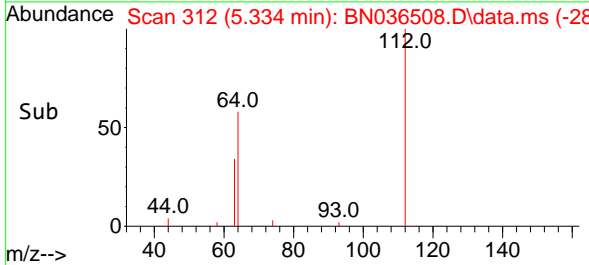
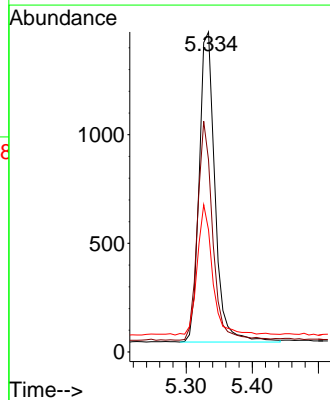
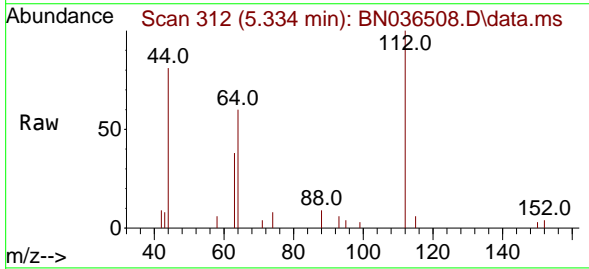
02/27/2025
 Supervised By :mohammad
 ahmed

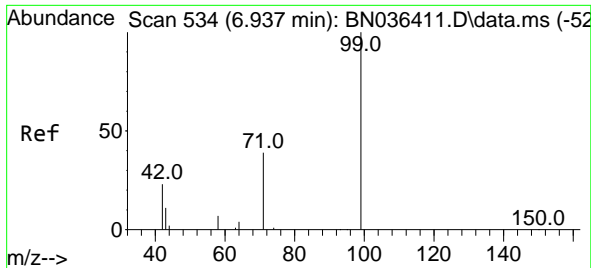
02/28/2025



#4
 2-Fluorophenol
 Concen: 0.363 ng
 RT: 5.334 min Scan# 312
 Delta R.T. -0.014 min
 Lab File: BN036508.D
 Acq: 26 Feb 2025 13:43

Tgt Ion:112 Resp: 2377
 Ion Ratio Lower Upper
 112 100
 64 67.5 53.4 80.0
 63 40.8 30.3 45.5





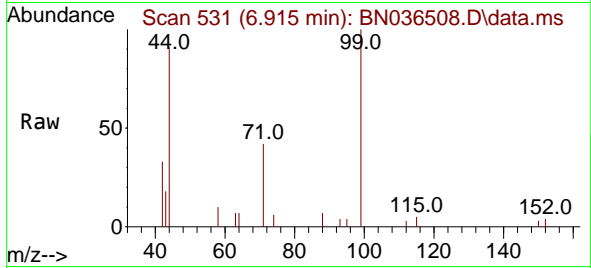
#5
 Phenol-d6
 Concen: 0.361 ng
 RT: 6.915 min Scan# 51
 Delta R.T. -0.022 min
 Lab File: BN036508.D
 Acq: 26 Feb 2025 13:43

Instrument :

BNA_N

ClientSampleId :

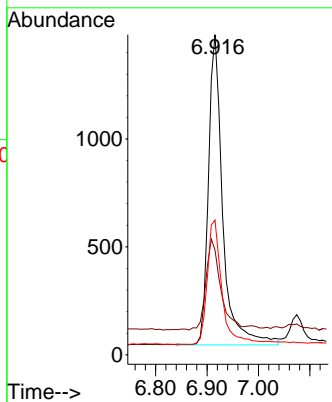
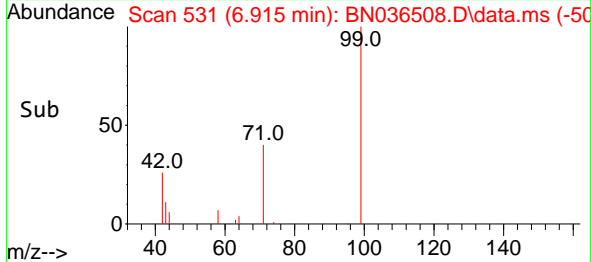
SSTDCCC0.4



Tgt Ion: 99 Resp: 2770
 Ion Ratio Lower Upper
 99 100
 42 30.0 21.7 32.5
 71 40.6 32.6 49.0

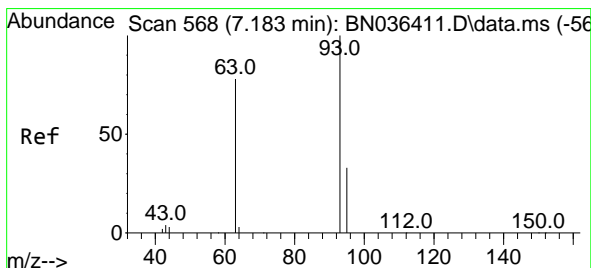
Manual Integrations
APPROVED

Reviewed By :Rahul
 Chavli



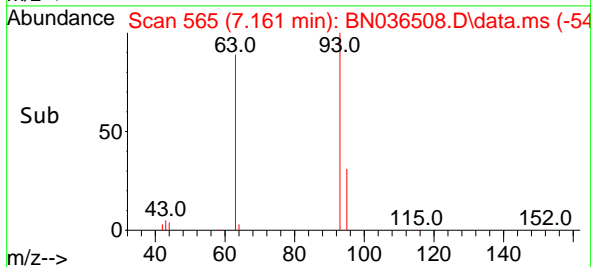
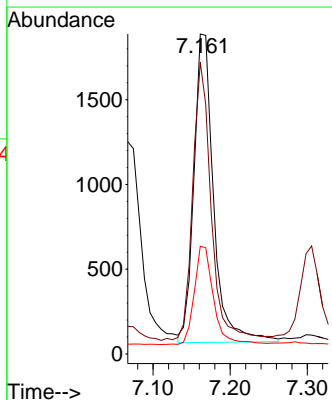
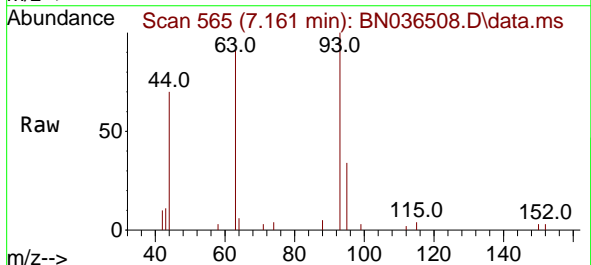
02/27/2025
 Supervised By :mohammad
 ahmed

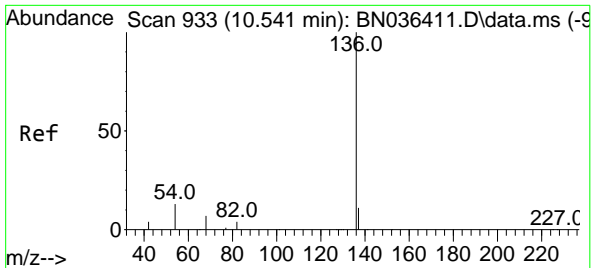
02/28/2025



#6
 bis(2-Chloroethyl)ether
 Concen: 0.404 ng
 RT: 7.161 min Scan# 565
 Delta R.T. -0.022 min
 Lab File: BN036508.D
 Acq: 26 Feb 2025 13:43

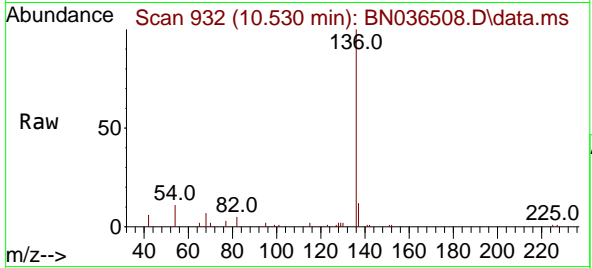
Tgt Ion: 93 Resp: 3244
 Ion Ratio Lower Upper
 93 100
 63 83.8 66.3 99.5
 95 31.1 26.2 39.4





#7
 Naphthalene-d8
 Concen: 0.400 ng
 RT: 10.530 min Scan# 911
 Delta R.T. -0.011 min
 Lab File: BN036508.D
 Acq: 26 Feb 2025 13:43

Instrument :
 BNA_N
 ClientSampleId :
 SSTDCCC0.4

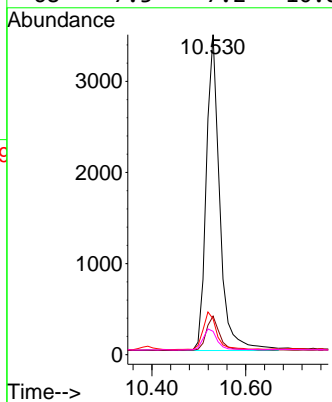


Tgt Ion: 136 Resp: 690

Ion	Ratio	Lower	Upper
136	100		
137	12.1	10.1	15.1
54	11.2	11.8	17.6
68	7.3	7.2	10.8

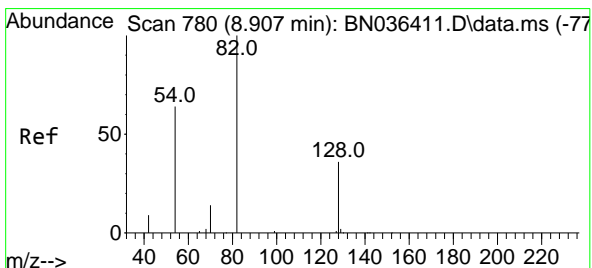
Manual Integrations
 APPROVED

Reviewed By :Rahul
 Chavli



02/27/2025
 Supervised By :mohammad
 ahmed

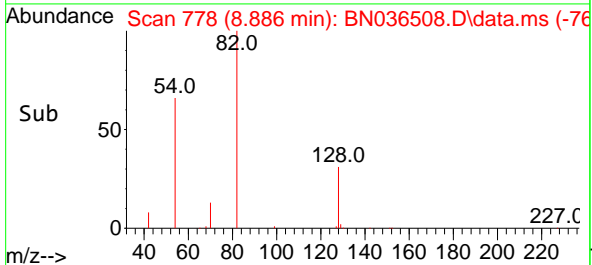
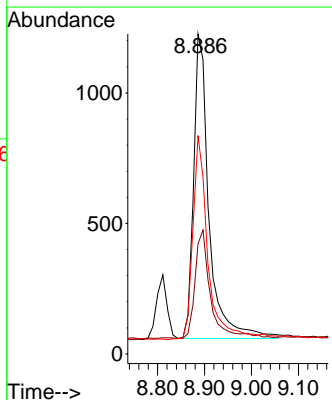
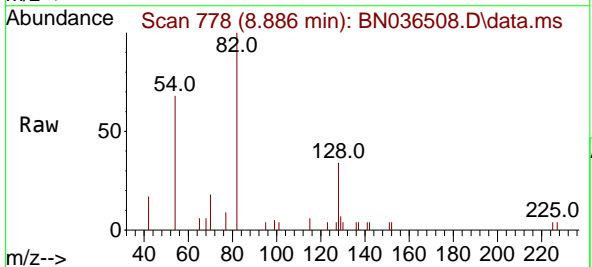
02/28/2025

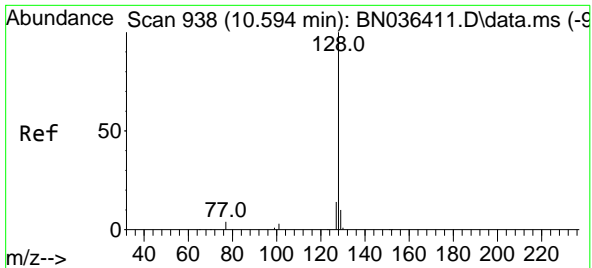


#8
 Nitrobenzene-d5
 Concen: 0.391 ng
 RT: 8.886 min Scan# 778
 Delta R.T. -0.021 min
 Lab File: BN036508.D
 Acq: 26 Feb 2025 13:43

Tgt Ion: 82 Resp: 2668

Ion	Ratio	Lower	Upper
82	100		
128	34.4	31.9	47.9
54	68.3	53.1	79.7





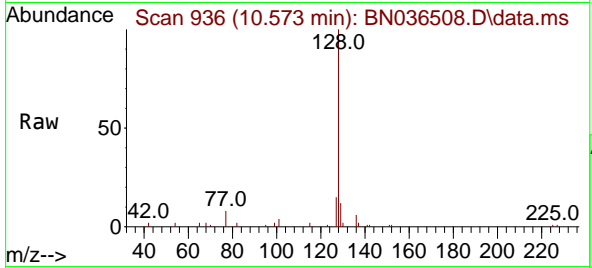
#9
 Naphthalene
 Concen: 0.390 ng
 RT: 10.573 min Scan# 911
 Delta R.T. -0.021 min
 Lab File: BN036508.D
 Acq: 26 Feb 2025 13:43

Instrument :

BNA_N

ClientSampleId :

SSTDCCC0.4

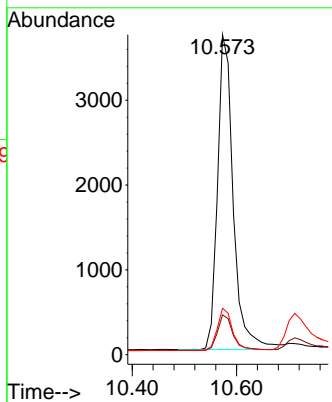
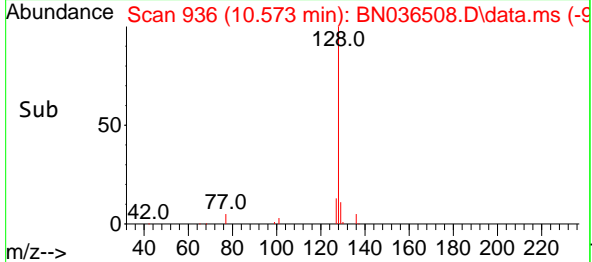


Tgt Ion:128 Resp: 777

Ion	Ratio	Lower	Upper
128	100		
129	12.5	9.6	14.4
127	14.5	12.0	18.0

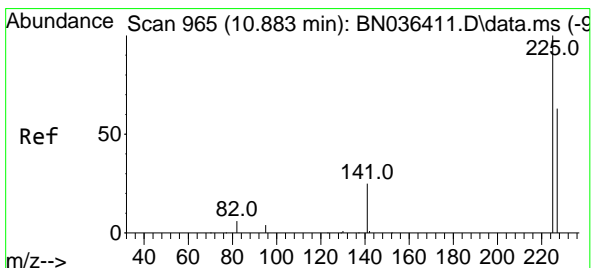
Manual Integrations
 APPROVED

Reviewed By :Rahul
 Chavli

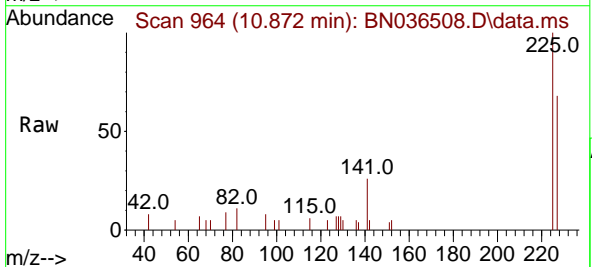


02/27/2025
 Supervised By :mohammad
 ahmed

02/28/2025

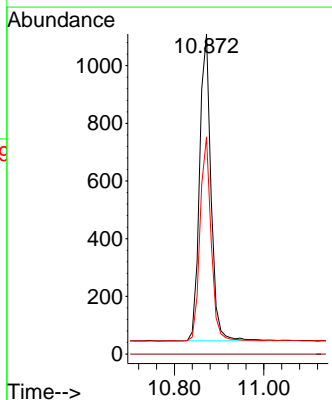
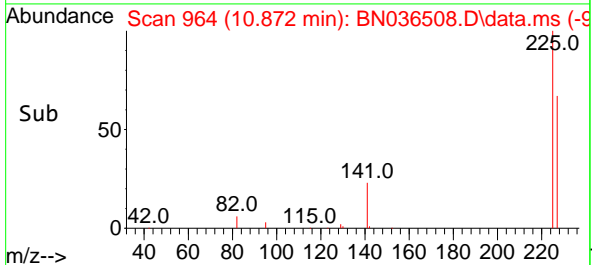


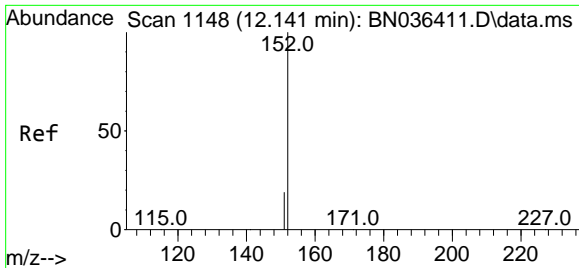
#10
 Hexachlorobutadiene
 Concen: 0.389 ng
 RT: 10.872 min Scan# 964
 Delta R.T. -0.011 min
 Lab File: BN036508.D
 Acq: 26 Feb 2025 13:43



Tgt Ion:225 Resp: 1886

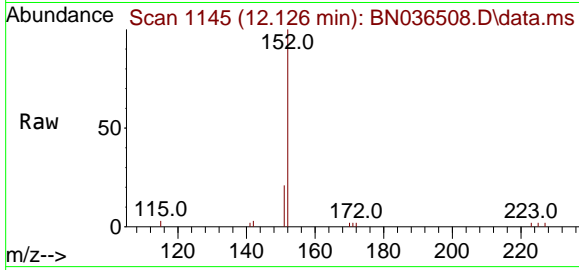
Ion	Ratio	Lower	Upper
225	100		
223	0.0	0.0	0.0
227	64.9	50.9	76.3





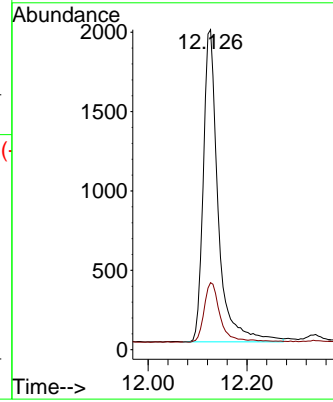
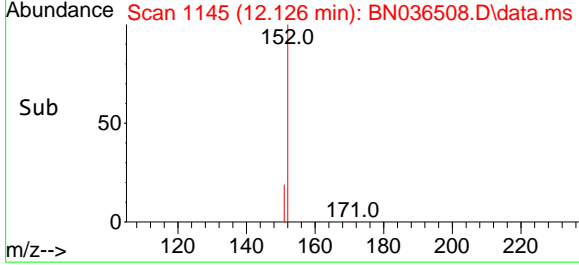
#11
 2-Methylnaphthalene-d10
 Concen: 0.386 ng
 RT: 12.126 min Scan# 1145
 Delta R.T. -0.015 min
 Lab File: BN036508.D
 Acq: 26 Feb 2025 13:43

Instrument : BNA_N
 ClientSampleId : SSTDCCC0.4



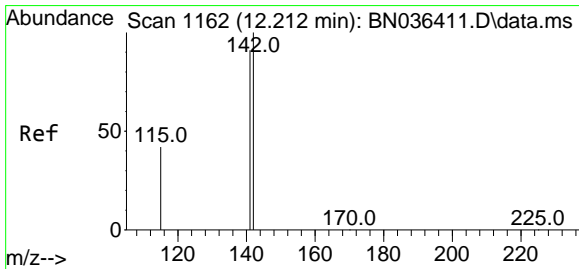
Tgt Ion:152 Resp: 4099
 Ion Ratio Lower Upper
 152 100
 151 20.2 16.6 25.0

Manual Integrations
APPROVED
 Reviewed By :Rahul Chavli

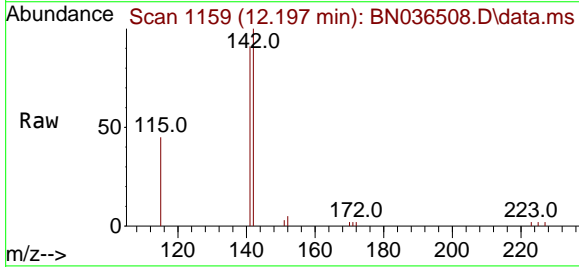


02/27/2025
 Supervised By :mohammad ahmed

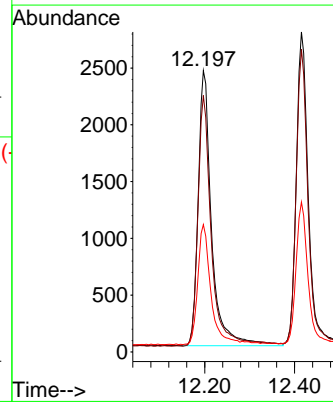
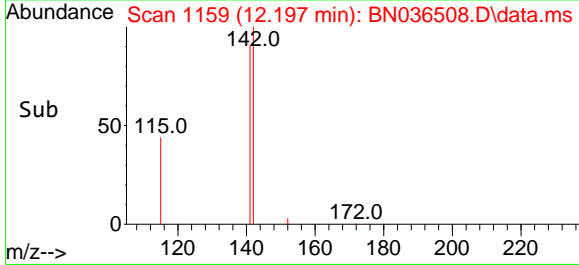
02/28/2025

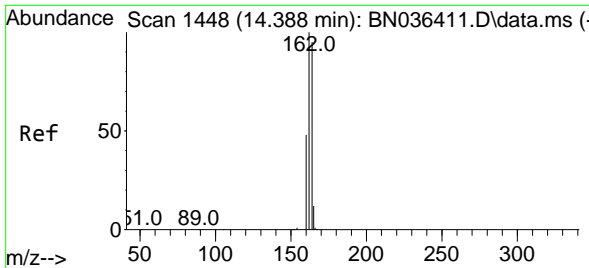


#12
 2-Methylnaphthalene
 Concen: 0.386 ng
 RT: 12.197 min Scan# 1159
 Delta R.T. -0.015 min
 Lab File: BN036508.D
 Acq: 26 Feb 2025 13:43



Tgt Ion:142 Resp: 5047
 Ion Ratio Lower Upper
 142 100
 141 91.2 72.8 109.2
 115 45.3 35.5 53.3





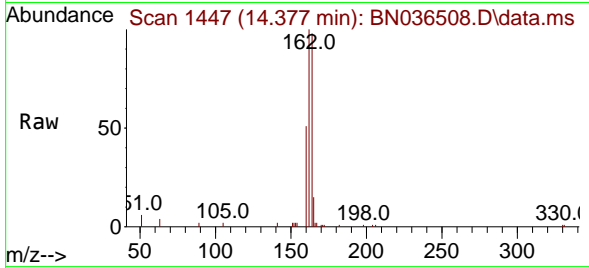
#13
 Acenaphthene-d10
 Concen: 0.400 ng
 RT: 14.377 min Scan# 1447
 Delta R.T. -0.011 min
 Lab File: BN036508.D
 Acq: 26 Feb 2025 13:43

Instrument :

BNA_N

Client Sample Id :

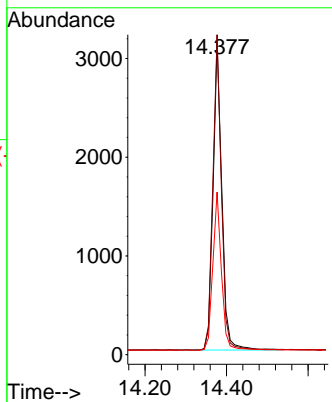
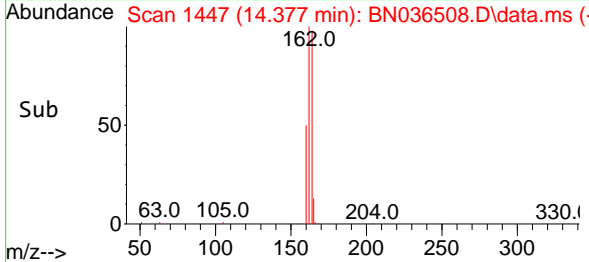
SSTDCCC0.4



Tgt Ion:164 Resp: 4680
 Ion Ratio Lower Upper
 164 100
 162 102.2 84.1 126.1
 160 51.9 41.4 62.0

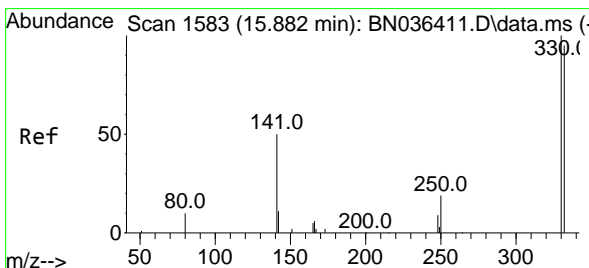
Manual Integrations
 APPROVED

Reviewed By :Rahul
 Chavli

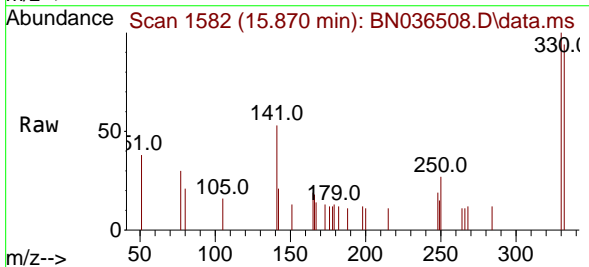


02/27/2025
 Supervised By :mohammad
 ahmed

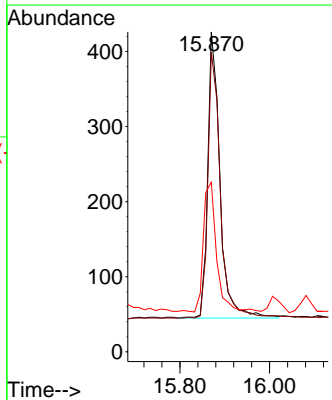
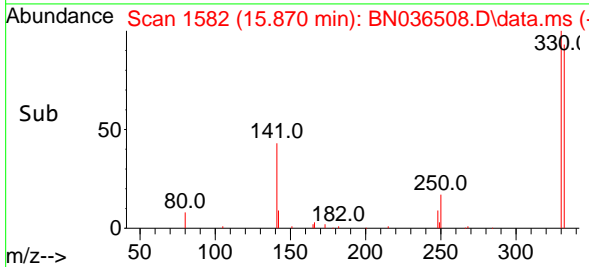
02/28/2025

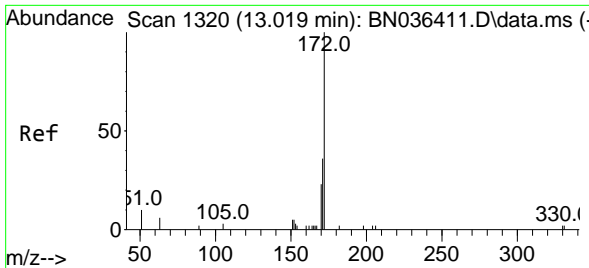


#14
 2,4,6-Tribromophenol
 Concen: 0.310 ng
 RT: 15.870 min Scan# 1582
 Delta R.T. -0.012 min
 Lab File: BN036508.D
 Acq: 26 Feb 2025 13:43



Tgt Ion:330 Resp: 719
 Ion Ratio Lower Upper
 330 100
 332 95.0 76.6 114.8
 141 47.8 37.8 56.8





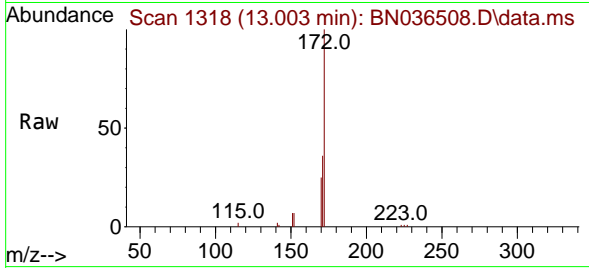
#15
 2-Fluorobiphenyl
 Concen: 0.444 ng
 RT: 13.003 min Scan# 11
 Delta R.T. -0.016 min
 Lab File: BN036508.D
 Acq: 26 Feb 2025 13:43

Instrument :

BNA_N

ClientSampleId :

SSTDCCC0.4

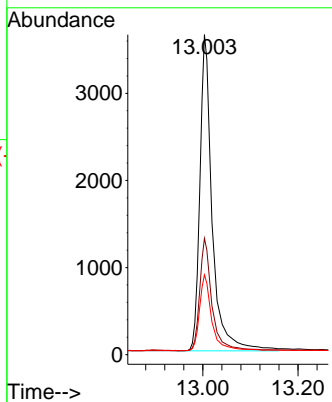


Tgt Ion:172 Resp: 781

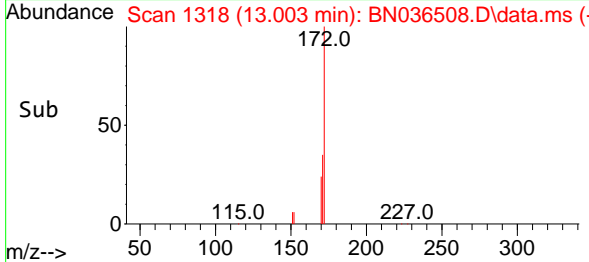
Ion	Ratio	Lower	Upper
172	100		
171	36.3	29.6	44.4
170	25.0	19.8	29.6

Manual Integrations
 APPROVED

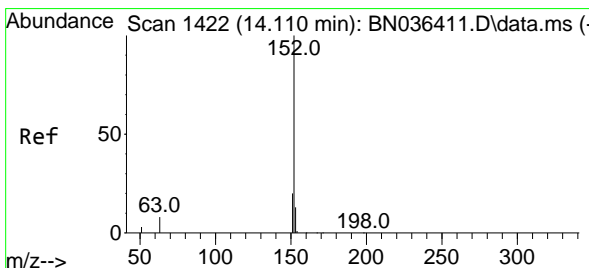
Reviewed By :Rahul
 Chavli



02/27/2025
 Supervised By :mohammad
 ahmed



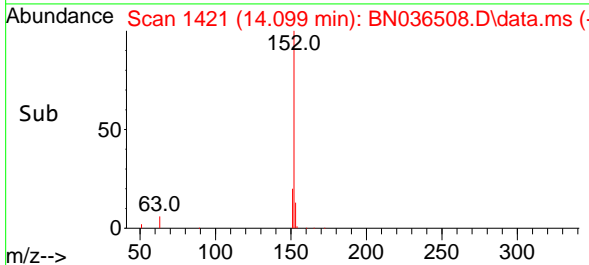
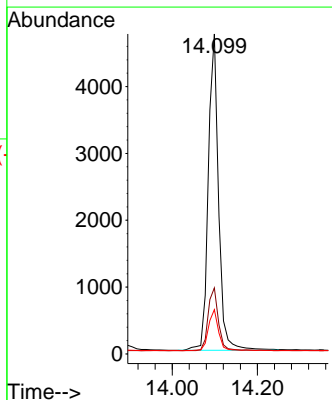
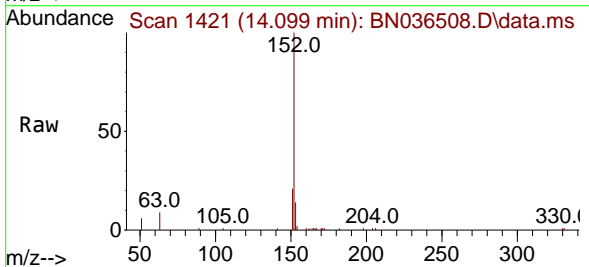
02/28/2025

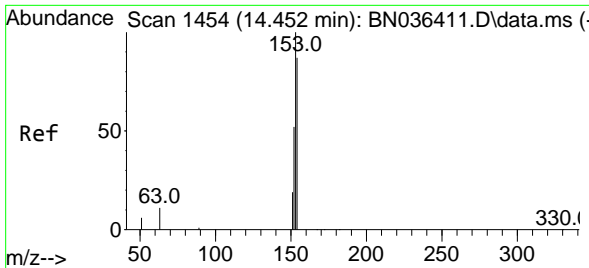


#16
 Acenaphthylene
 Concen: 0.382 ng
 RT: 14.099 min Scan# 1421
 Delta R.T. -0.011 min
 Lab File: BN036508.D
 Acq: 26 Feb 2025 13:43

Tgt Ion:152 Resp: 7894

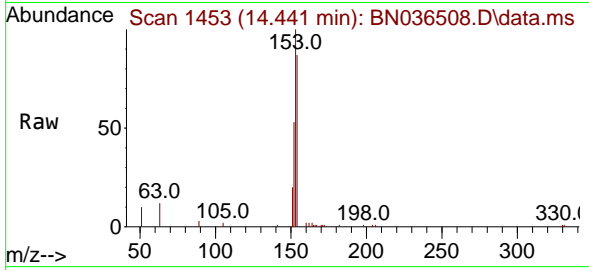
Ion	Ratio	Lower	Upper
152	100		
151	20.1	15.8	23.8
153	12.8	10.2	15.2





#17
 Acenaphthene
 Concen: 0.366 ng
 RT: 14.441 min Scan# 14
 Delta R.T. -0.011 min
 Lab File: BN036508.D
 Acq: 26 Feb 2025 13:43

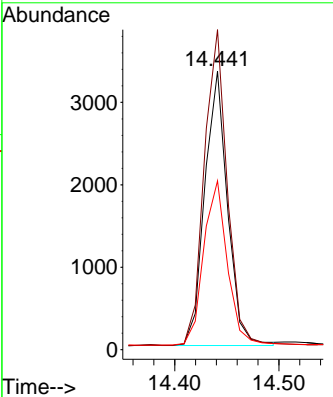
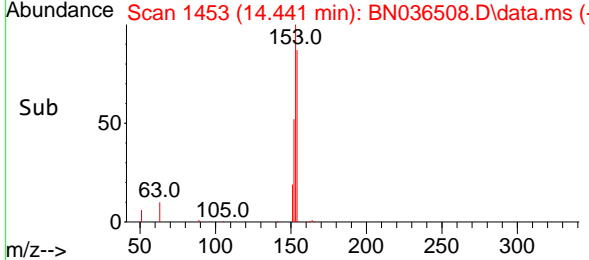
Instrument : BNA_N
 Client Sample Id : SSTDCCC0.4



Tgt Ion:154 Resp: 505

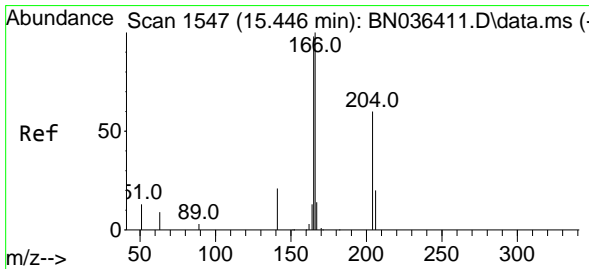
Ion	Ratio	Lower	Upper
154	100		
153	117.0	93.3	139.9
152	63.2	48.8	73.2

Manual Integrations
APPROVED
 Reviewed By :Rahul Chavli

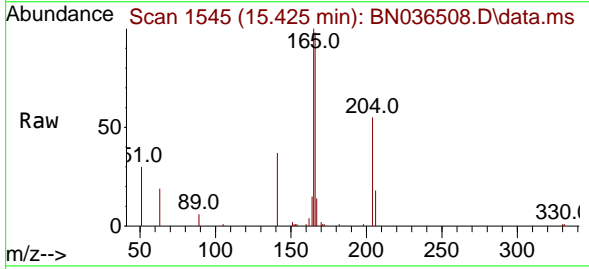


02/27/2025
 Supervised By :mohammad ahmed

02/28/2025

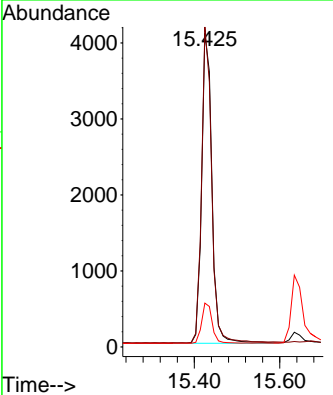
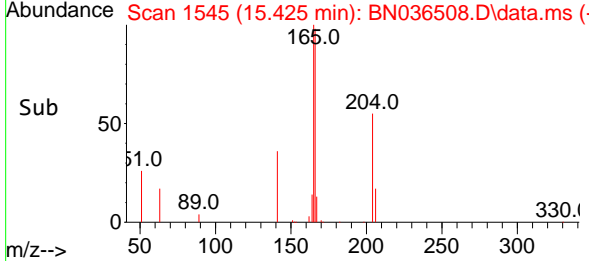


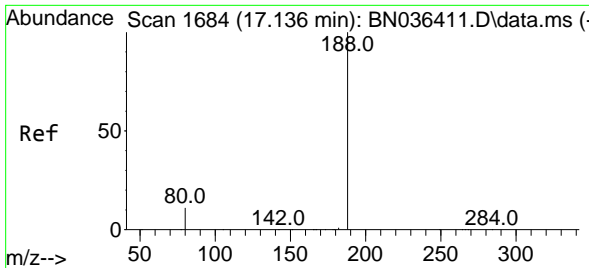
#18
 Fluorene
 Concen: 0.362 ng
 RT: 15.425 min Scan# 1545
 Delta R.T. -0.021 min
 Lab File: BN036508.D
 Acq: 26 Feb 2025 13:43



Tgt Ion:166 Resp: 7106

Ion	Ratio	Lower	Upper
166	100		
165	99.3	79.5	119.3
167	12.7	10.4	15.6





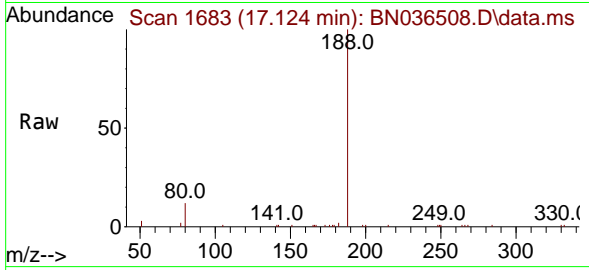
#19
 Phenanthrene-d10
 Concen: 0.400 ng
 RT: 17.124 min Scan# 10
 Delta R.T. -0.012 min
 Lab File: BN036508.D
 Acq: 26 Feb 2025 13:43

Instrument :

BNA_N

ClientSampleId :

SSTDCCC0.4

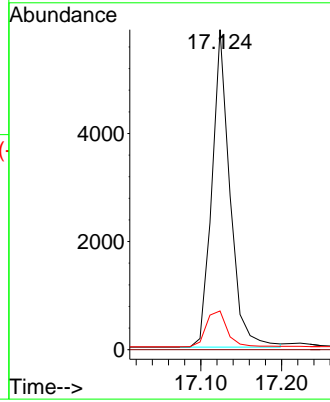
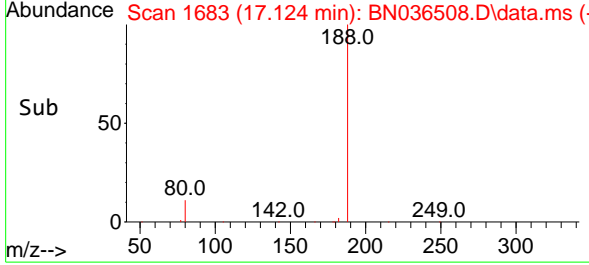


Tgt Ion:188 Resp: 909
 Ion Ratio Lower Upper
 188 100
 94 0.0 0.0 0.0
 80 12.1 9.8 14.6

Manual Integrations

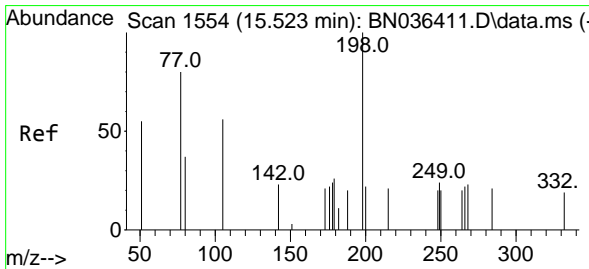
APPROVED

Reviewed By :Rahul
 Chavli

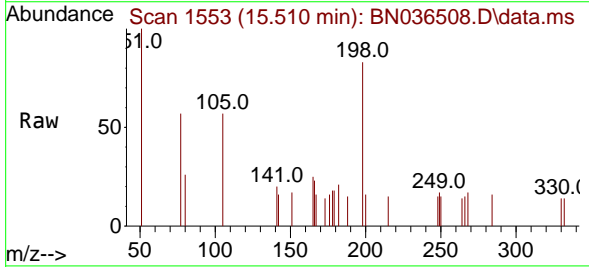


02/27/2025
 Supervised By :mohammad
 ahmed

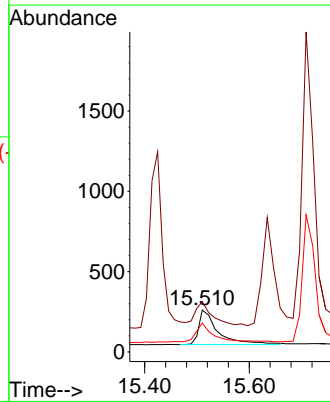
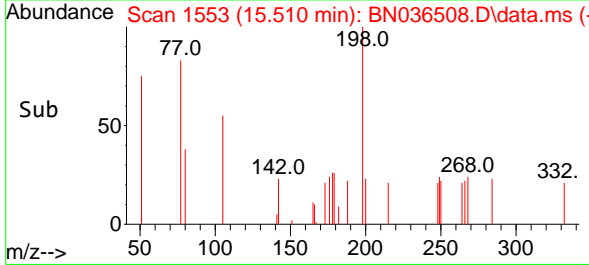
02/28/2025

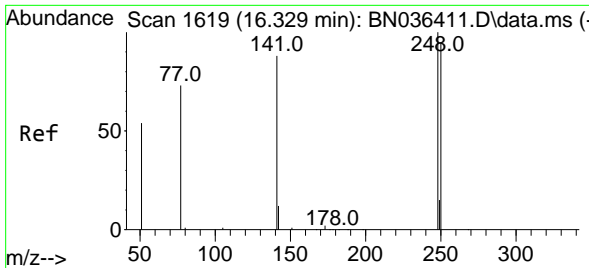


#20
 4,6-Dinitro-2-methylphenol
 Concen: 0.307 ng
 RT: 15.510 min Scan# 1553
 Delta R.T. -0.013 min
 Lab File: BN036508.D
 Acq: 26 Feb 2025 13:43



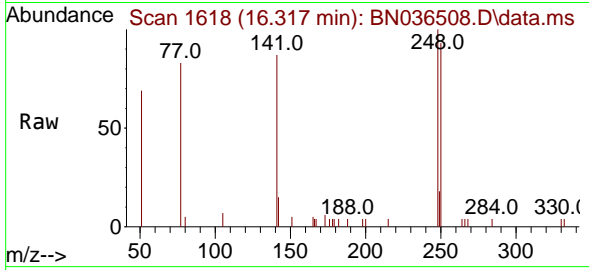
Tgt Ion:198 Resp: 548
 Ion Ratio Lower Upper
 198 100
 51 120.3 86.6 129.8
 105 69.0 57.5 86.3





#21
 4-Bromophenyl-phenylether
 Concen: 0.404 ng
 RT: 16.317 min Scan# 1618
 Delta R.T. -0.012 min
 Lab File: BN036508.D
 Acq: 26 Feb 2025 13:43

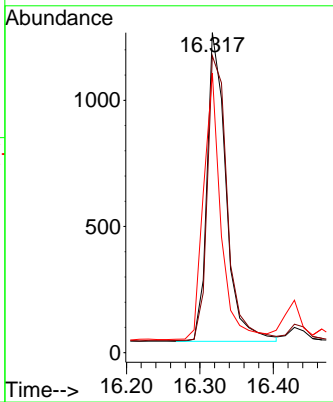
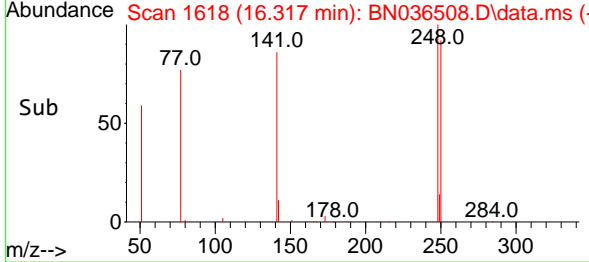
Instrument : BNA_N
 Client Sample Id : SSTDCCC0.4



Tgt Ion: 248 Resp: 2189

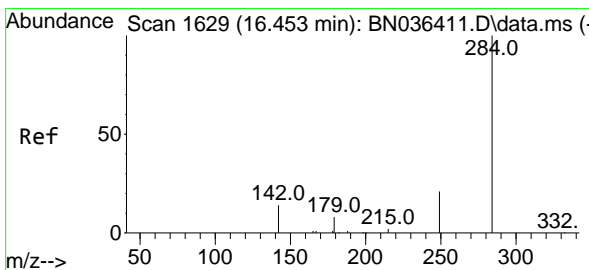
Ion	Ratio	Lower	Upper
248	100		
250	92.7	76.1	114.1
141	87.4	71.7	107.5

Manual Integrations
APPROVED
 Reviewed By :Rahul Chavli

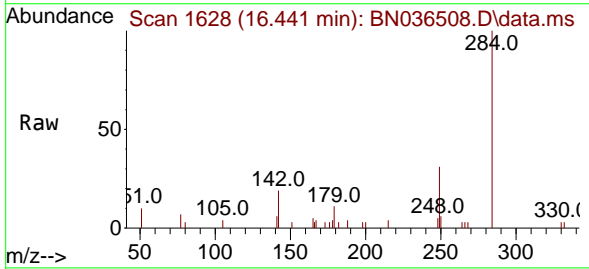


02/27/2025
 Supervised By :mohammad ahmed

02/28/2025

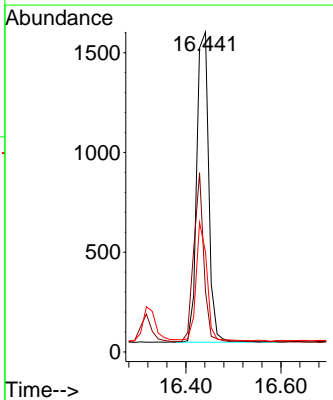
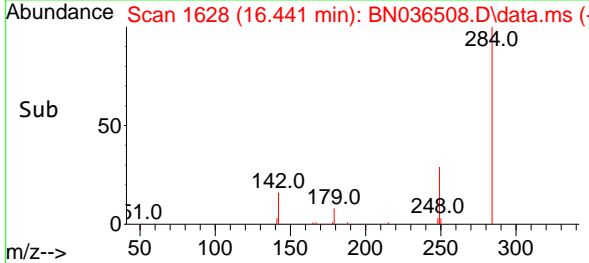


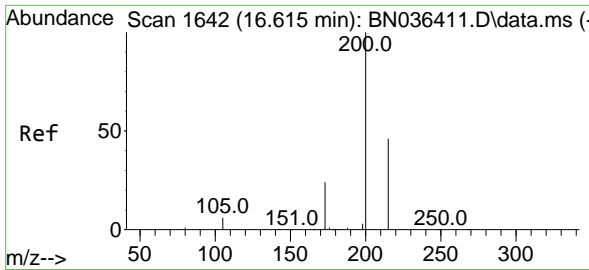
#22
 Hexachlorobenzene
 Concen: 0.406 ng
 RT: 16.441 min Scan# 1628
 Delta R.T. -0.012 min
 Lab File: BN036508.D
 Acq: 26 Feb 2025 13:43



Tgt Ion: 284 Resp: 2720

Ion	Ratio	Lower	Upper
284	100		
142	46.4	33.4	50.0
249	34.2	28.6	43.0





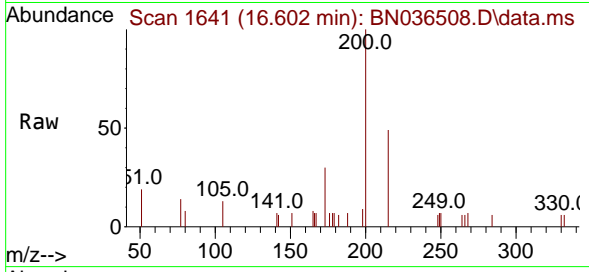
#23
 Atrazine
 Concen: 0.375 ng
 RT: 16.602 min Scan# 1641
 Delta R.T. -0.012 min
 Lab File: BN036508.D
 Acq: 26 Feb 2025 13:43

Instrument :

BNA_N

ClientSampleId :

SSTDCCC0.4

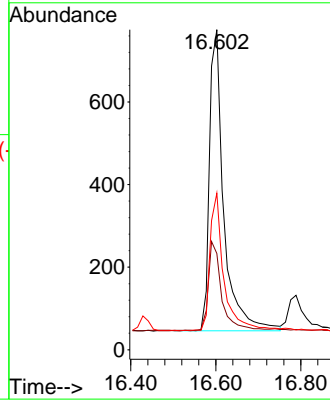
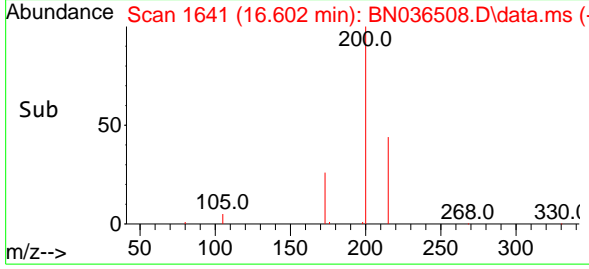


Tgt Ion:200 Resp: 1700
 Ion Ratio Lower Upper
 200 100
 173 30.1 23.2 34.8
 215 48.9 40.0 60.0

Manual Integrations

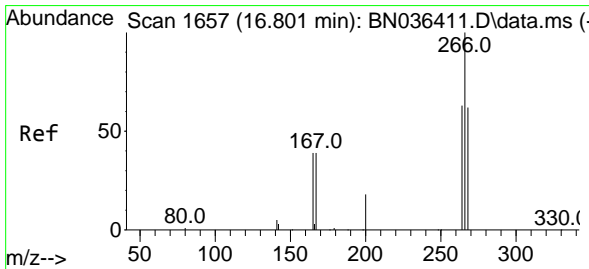
APPROVED

Reviewed By :Rahul
 Chavli

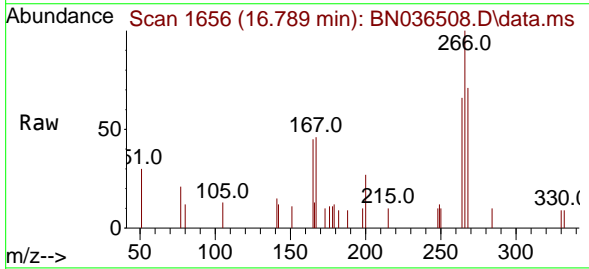


02/27/2025
 Supervised By :mohammad
 ahmed

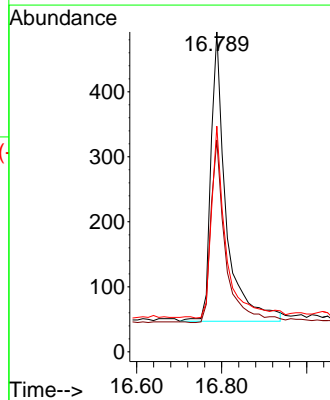
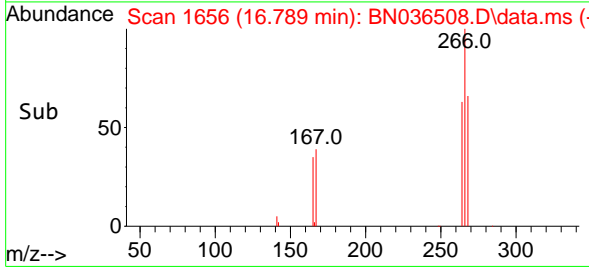
02/28/2025

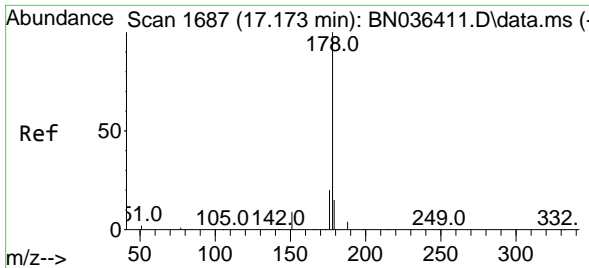


#24
 Pentachlorophenol
 Concen: 0.346 ng
 RT: 16.789 min Scan# 1656
 Delta R.T. -0.012 min
 Lab File: BN036508.D
 Acq: 26 Feb 2025 13:43



Tgt Ion:266 Resp: 1101
 Ion Ratio Lower Upper
 266 100
 264 61.3 50.6 76.0
 268 63.4 51.9 77.9





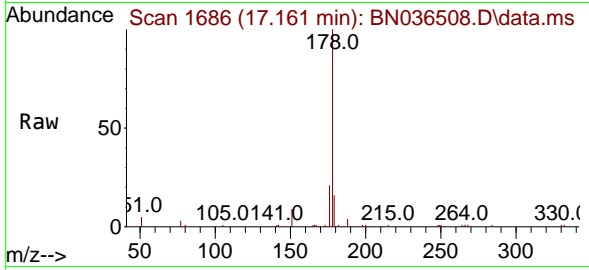
#25
 Phenanthrene
 Concen: 0.397 ng
 RT: 17.161 min Scan# 1686
 Delta R.T. -0.012 min
 Lab File: BN036508.D
 Acq: 26 Feb 2025 13:43

Instrument :

BNA_N

Client Sample Id :

SSTDCCC0.4

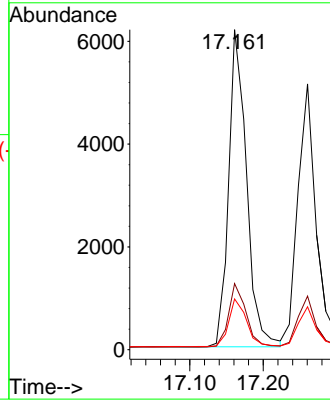
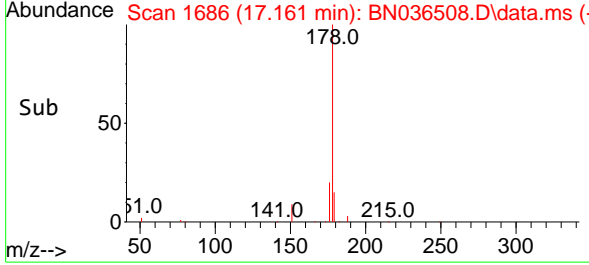


Tgt Ion:178 Resp: 1044
 Ion Ratio Lower Upper
 178 100
 176 19.8 15.7 23.5
 179 15.2 12.4 18.6

Manual Integrations

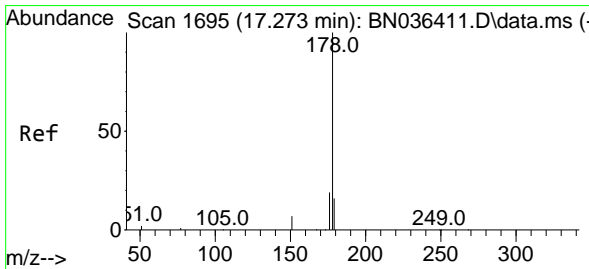
APPROVED

Reviewed By :Rahul
 Chavli

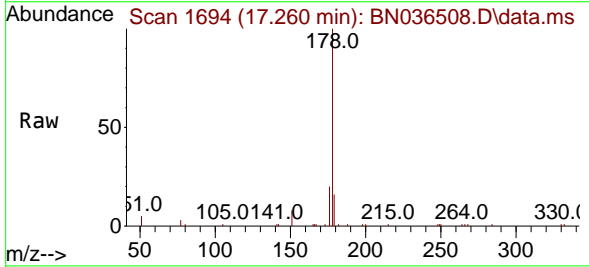


02/27/2025
 Supervised By :mohammad
 ahmed

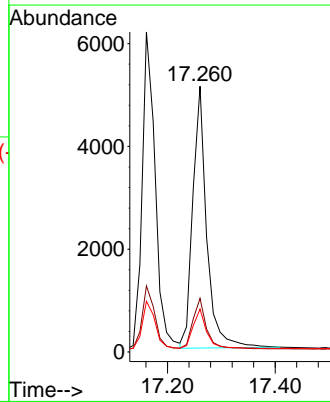
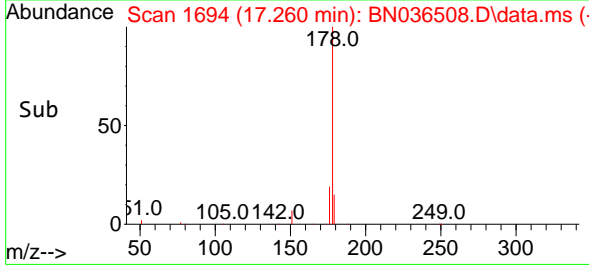
02/28/2025

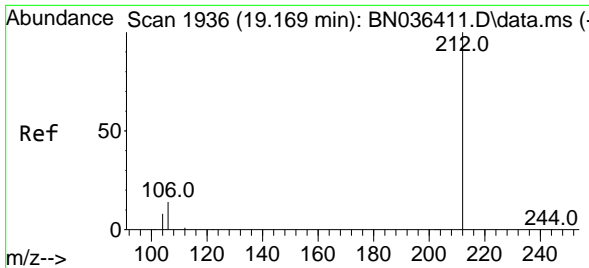


#26
 Anthracene
 Concen: 0.395 ng
 RT: 17.260 min Scan# 1694
 Delta R.T. -0.012 min
 Lab File: BN036508.D
 Acq: 26 Feb 2025 13:43



Tgt Ion:178 Resp: 9164
 Ion Ratio Lower Upper
 178 100
 176 18.9 14.9 22.3
 179 15.0 12.4 18.6





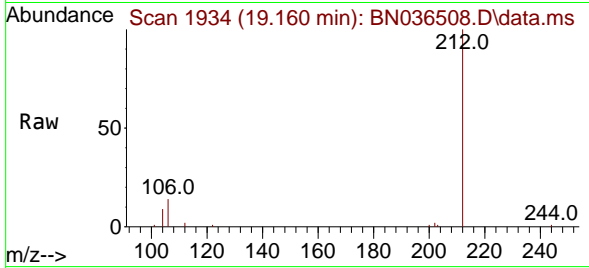
#27
 Fluoranthene-d10
 Concen: 0.367 ng
 RT: 19.160 min Scan# 1934
 Delta R.T. -0.009 min
 Lab File: BN036508.D
 Acq: 26 Feb 2025 13:43

Instrument :

BNA_N

ClientSampleId :

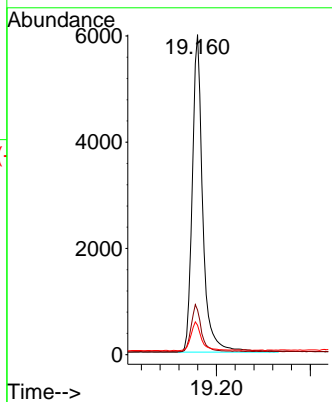
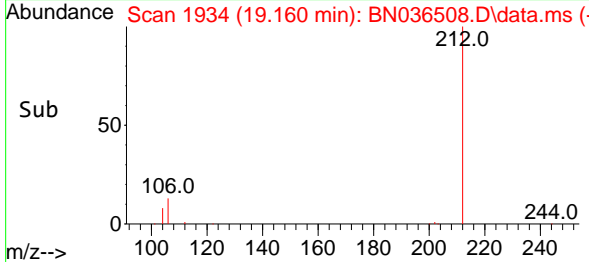
SSTDCCC0.4



Tgt Ion:212 Resp: 9278
 Ion Ratio Lower Upper
 212 100
 106 14.5 11.5 17.3
 104 9.0 7.1 10.7

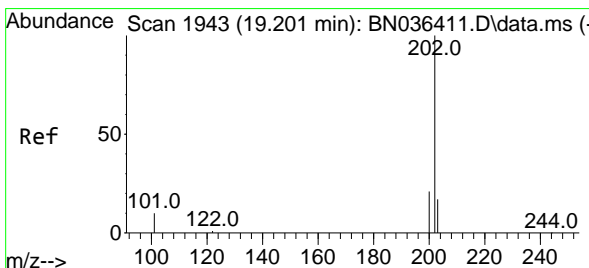
Manual Integrations
 APPROVED

Reviewed By :Rahul
 Chavli

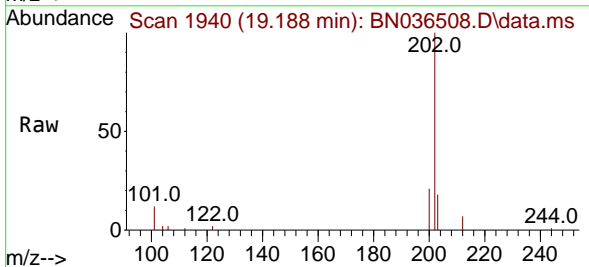


02/27/2025
 Supervised By :mohammad
 ahmed

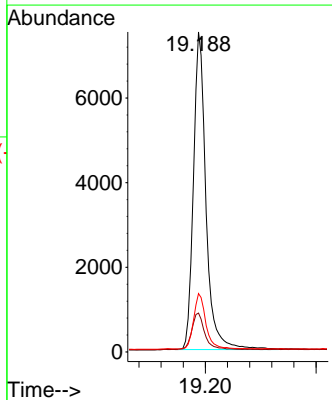
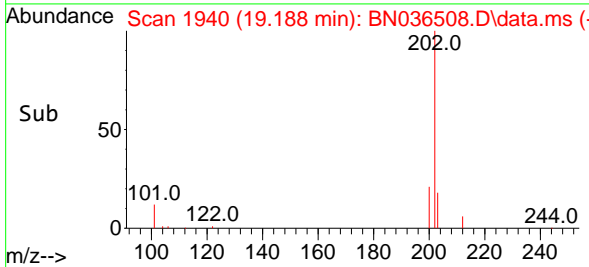
02/28/2025

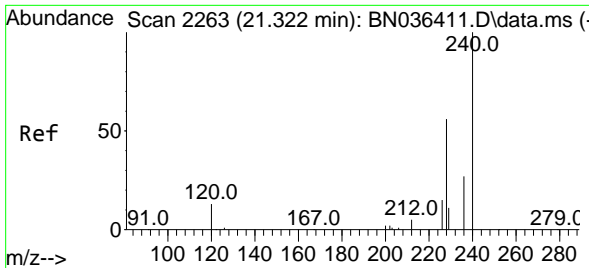


#28
 Fluoranthene
 Concen: 0.367 ng
 RT: 19.188 min Scan# 1940
 Delta R.T. -0.014 min
 Lab File: BN036508.D
 Acq: 26 Feb 2025 13:43



Tgt Ion:202 Resp: 11838
 Ion Ratio Lower Upper
 202 100
 101 11.8 9.2 13.8
 203 17.1 13.4 20.0





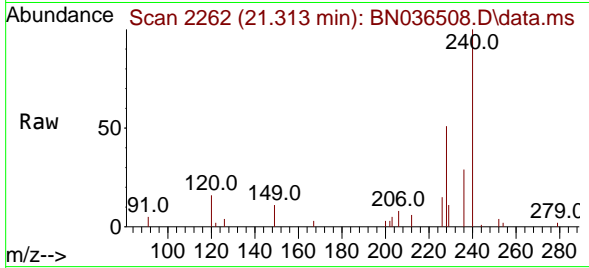
#29
 Chrysene-d12
 Concen: 0.400 ng
 RT: 21.313 min Scan# 21
 Delta R.T. -0.009 min
 Lab File: BN036508.D
 Acq: 26 Feb 2025 13:43

Instrument :

BNA_N

ClientSampleId :

SSTDCCC0.4

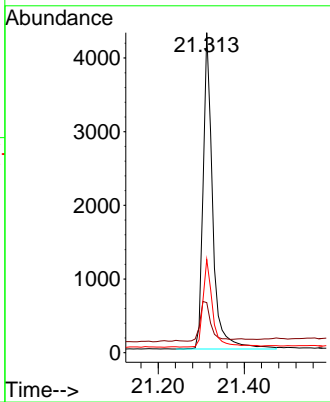
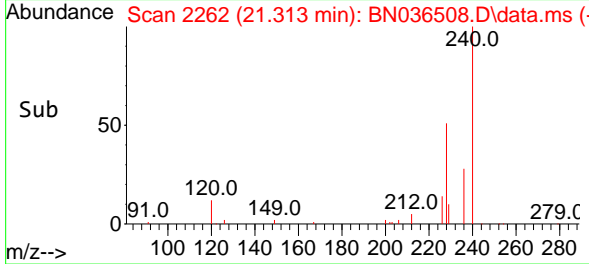


Tgt Ion:240 Resp: 6639
 Ion Ratio Lower Upper
 240 100
 120 15.7 13.3 19.9
 236 29.1 23.0 34.6

Manual Integrations

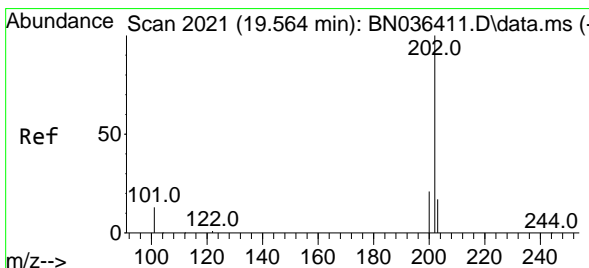
APPROVED

Reviewed By :Rahul
 Chavli



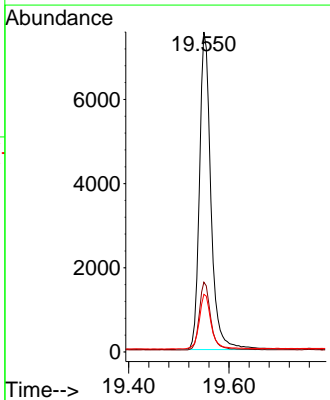
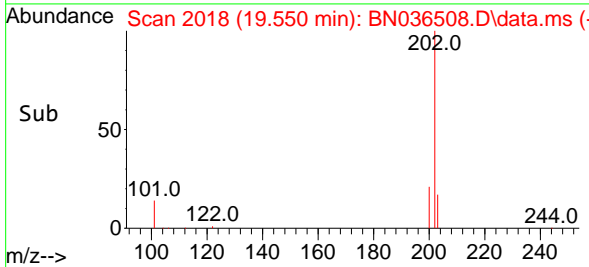
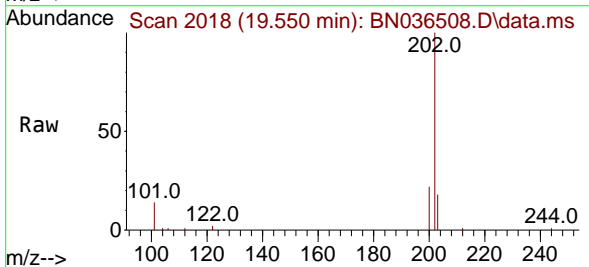
02/27/2025
 Supervised By :mohammad
 ahmed

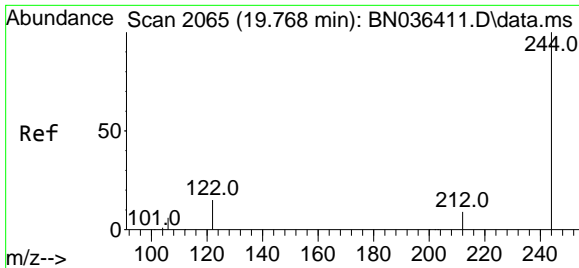
02/28/2025



#30
 Pyrene
 Concen: 0.468 ng
 RT: 19.550 min Scan# 2018
 Delta R.T. -0.014 min
 Lab File: BN036508.D
 Acq: 26 Feb 2025 13:43

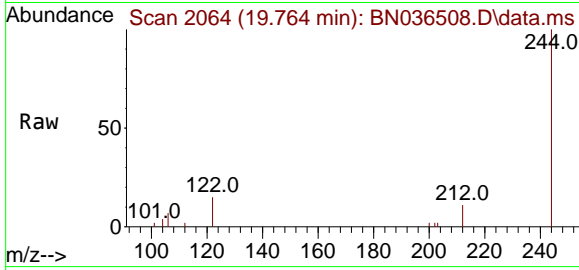
Tgt Ion:202 Resp: 11970
 Ion Ratio Lower Upper
 202 100
 200 21.3 16.9 25.3
 203 17.7 13.9 20.9





#31
 Terphenyl-d14
 Concen: 0.427 ng
 RT: 19.764 min Scan# 2064
 Delta R.T. -0.005 min
 Lab File: BN036508.D
 Acq: 26 Feb 2025 13:43

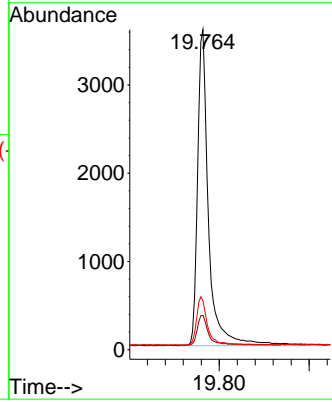
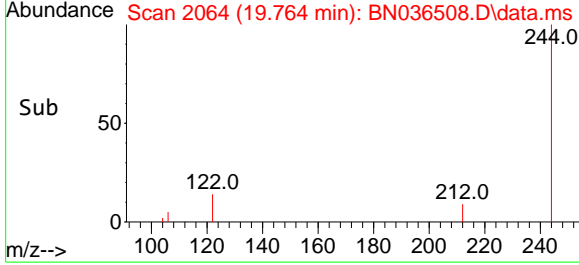
Instrument : BNA_N
 Client Sample Id : SSTDCCC0.4



Tgt Ion: 244 Resp: 604

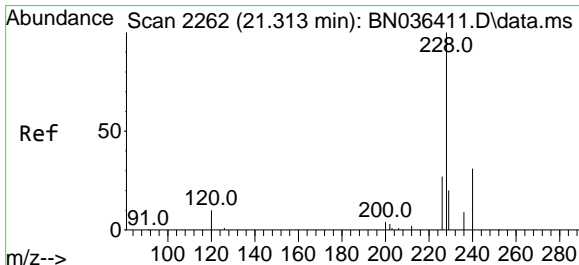
Ion	Ratio	Lower	Upper
244	100		
212	10.8	8.1	12.1
122	15.4	12.8	19.2

Manual Integrations
APPROVED
 Reviewed By :Rahul Chavli

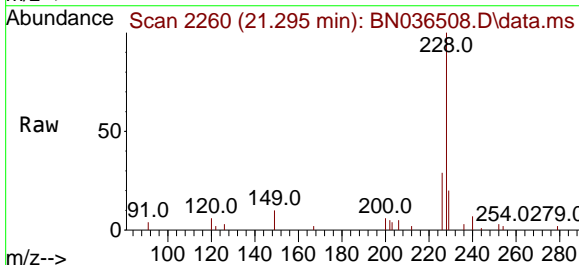


02/27/2025
 Supervised By :mohammad ahmed

02/28/2025

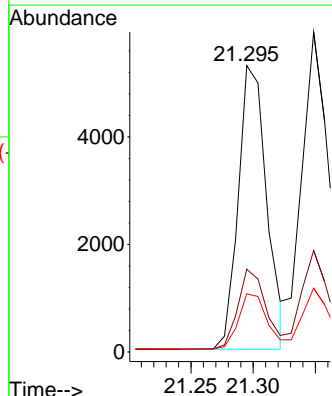
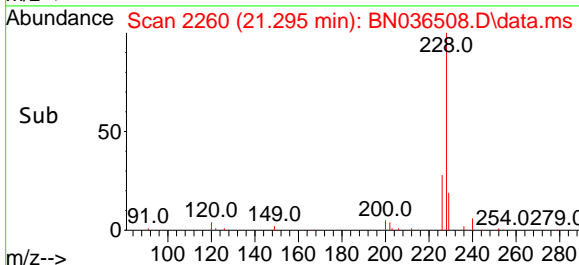


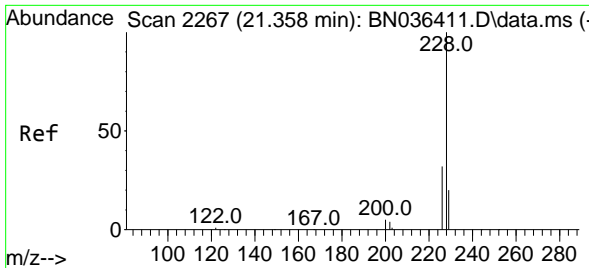
#32
 Benzo(a)anthracene
 Concen: 0.384 ng
 RT: 21.295 min Scan# 2260
 Delta R.T. -0.018 min
 Lab File: BN036508.D
 Acq: 26 Feb 2025 13:43



Tgt Ion: 228 Resp: 8384

Ion	Ratio	Lower	Upper
228	100		
226	28.9	22.2	33.2
229	20.3	16.5	24.7





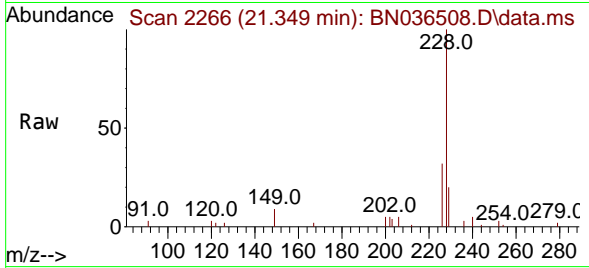
#33
 Chrysene
 Concen: 0.420 ng
 RT: 21.349 min Scan# 21
 Delta R.T. -0.009 min
 Lab File: BN036508.D
 Acq: 26 Feb 2025 13:43

Instrument :

BNA_N

Client SampleId :

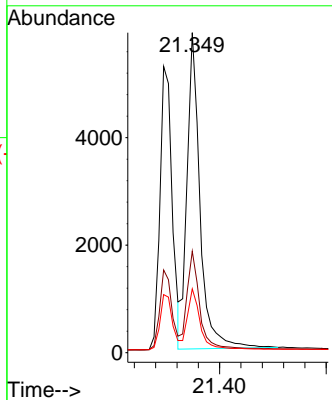
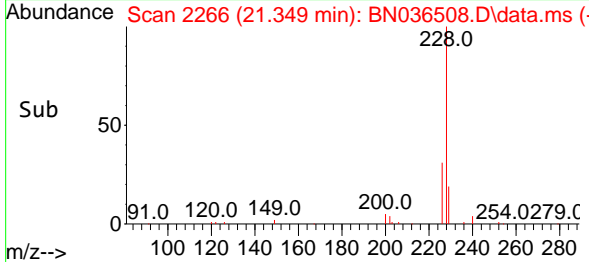
SSTDCCC0.4



Tgt Ion: 228 Resp: 994
 Ion Ratio Lower Upper
 228 100
 226 31.7 25.5 38.3
 229 19.9 16.4 24.6

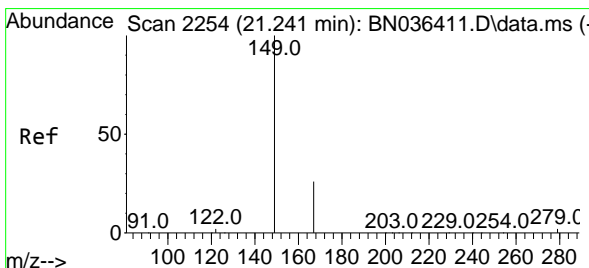
Manual Integrations
 APPROVED

Reviewed By :Rahul
 Chavli

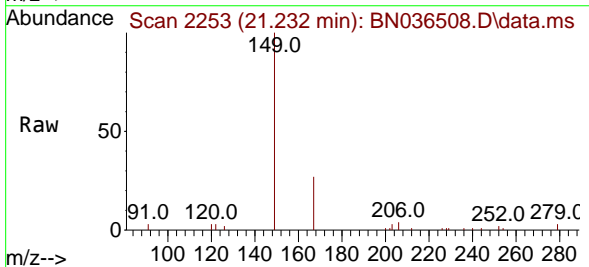


02/27/2025
 Supervised By :mohammad
 ahmed

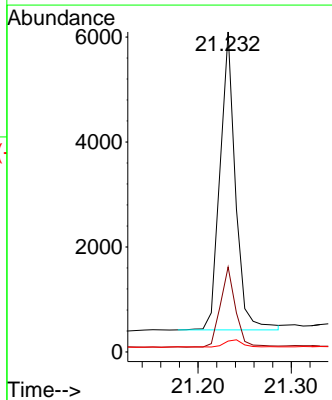
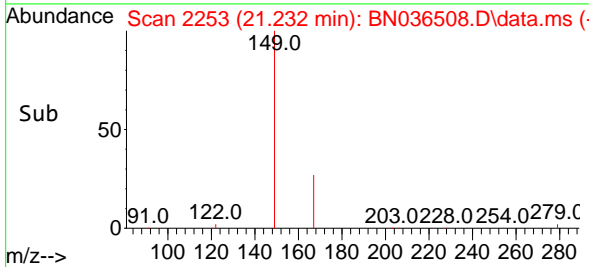
02/28/2025

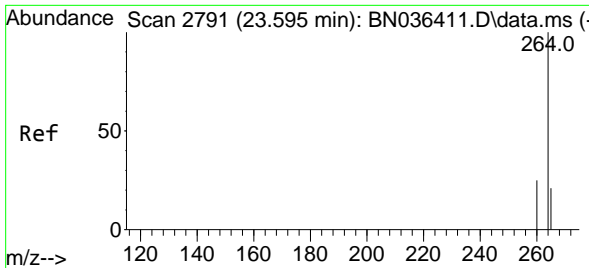


#34
 Bis(2-ethylhexyl)phthalate
 Concen: 0.479 ng
 RT: 21.232 min Scan# 2253
 Delta R.T. -0.009 min
 Lab File: BN036508.D
 Acq: 26 Feb 2025 13:43



Tgt Ion: 149 Resp: 6526
 Ion Ratio Lower Upper
 149 100
 167 26.6 21.2 31.8
 279 2.7 2.7 4.1





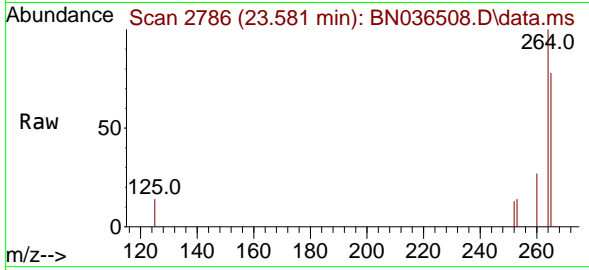
#35
 Perylene-d12
 Concen: 0.400 ng
 RT: 23.581 min Scan# 21
 Delta R.T. -0.015 min
 Lab File: BN036508.D
 Acq: 26 Feb 2025 13:43

Instrument :

BNA_N

ClientSampleId :

SSTDCCC0.4

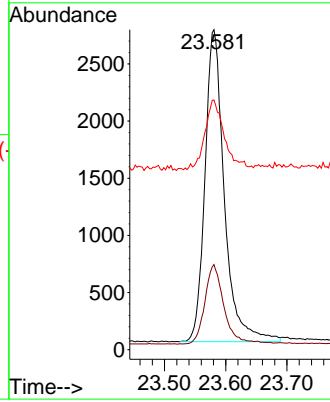
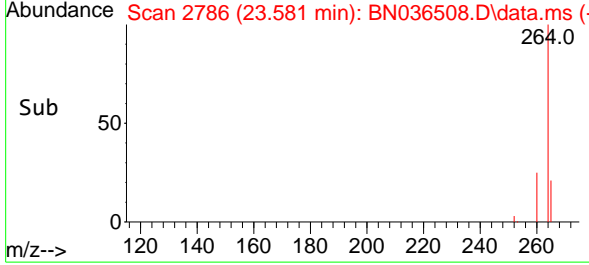


Tgt Ion:264 Resp: 6000
 Ion Ratio Lower Upper
 264 100
 260 26.6 20.9 31.3
 265 78.1 60.7 91.1

Manual Integrations

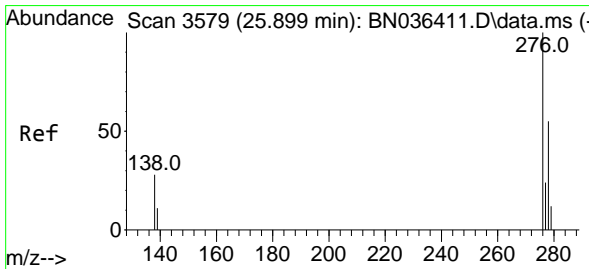
APPROVED

Reviewed By :Rahul
 Chavli

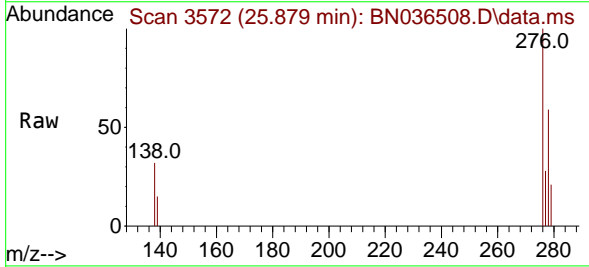


02/27/2025
 Supervised By :mohammad
 ahmed

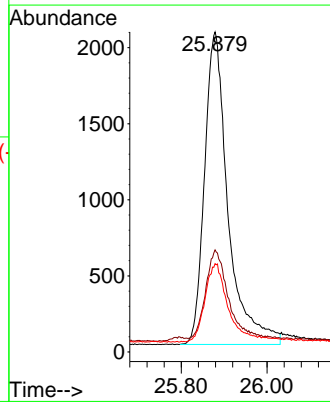
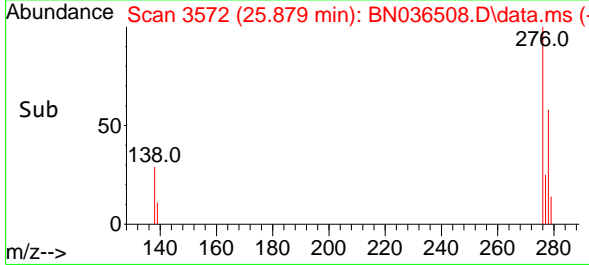
02/28/2025

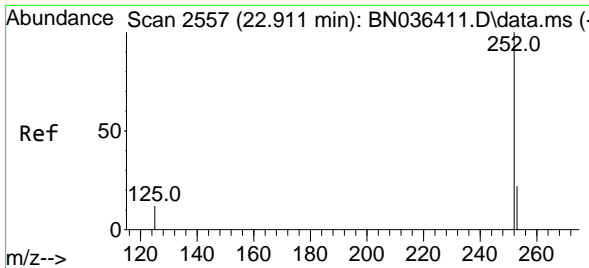


#36
 Indeno(1,2,3-cd)pyrene
 Concen: 0.372 ng
 RT: 25.879 min Scan# 3572
 Delta R.T. -0.020 min
 Lab File: BN036508.D
 Acq: 26 Feb 2025 13:43



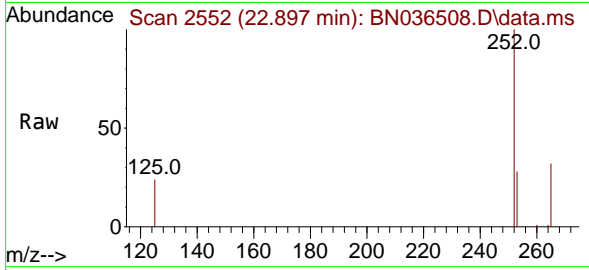
Tgt Ion:276 Resp: 7809
 Ion Ratio Lower Upper
 276 100
 138 26.5 22.2 33.2
 277 24.2 19.8 29.6





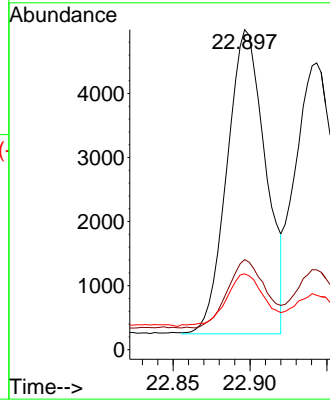
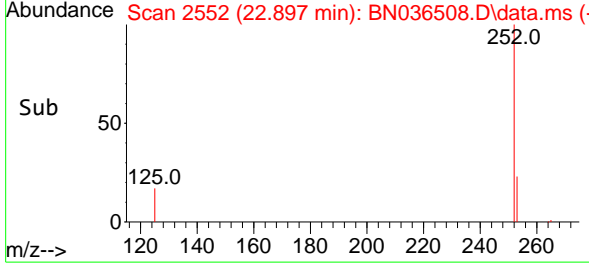
#37
 Benzo(b)fluoranthene
 Concen: 0.420 ng m
 RT: 22.897 min Scan# 21
 Delta R.T. -0.015 min
 Lab File: BN036508.D
 Acq: 26 Feb 2025 13:43

Instrument : BNA_N
 ClientSampleId : SSTDCCC0.4



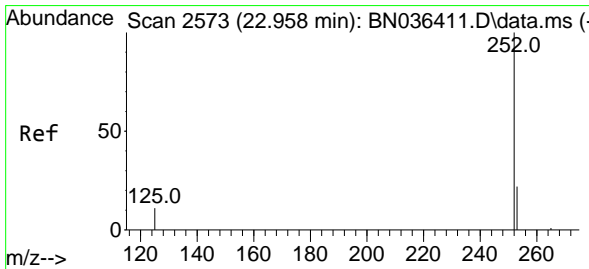
Tgt Ion:252 Resp: 8294
 Ion Ratio Lower Upper
 252 100
 253 28.1 21.9 32.9
 125 23.7 15.0 22.6

Manual Integrations
APPROVED
 Reviewed By :Rahul Chavli

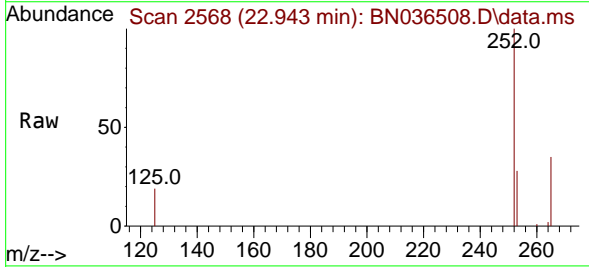


02/27/2025
 Supervised By :mohammad ahmed

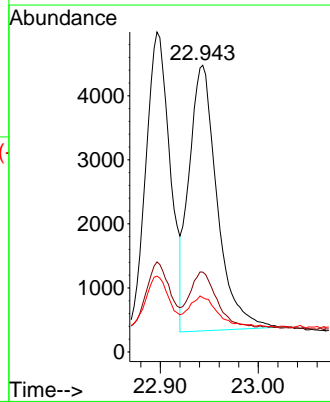
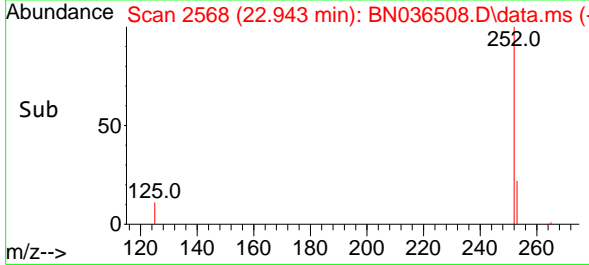
02/28/2025

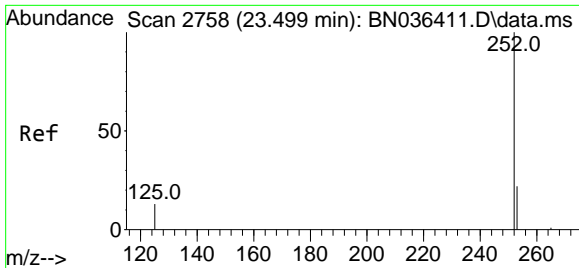


#38
 Benzo(k)fluoranthene
 Concen: 0.407 ng
 RT: 22.943 min Scan# 2568
 Delta R.T. -0.015 min
 Lab File: BN036508.D
 Acq: 26 Feb 2025 13:43



Tgt Ion:252 Resp: 8277
 Ion Ratio Lower Upper
 252 100
 253 27.9 22.2 33.4
 125 19.0 15.0 22.4





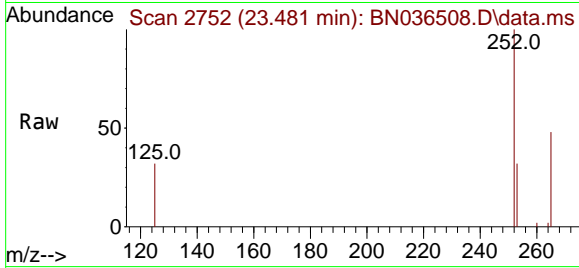
#39
 Benzo(a)pyrene
 Concen: 0.421 ng
 RT: 23.481 min Scan# 21
 Delta R.T. -0.018 min
 Lab File: BN036508.D
 Acq: 26 Feb 2025 13:43

Instrument :

BNA_N

ClientSampleId :

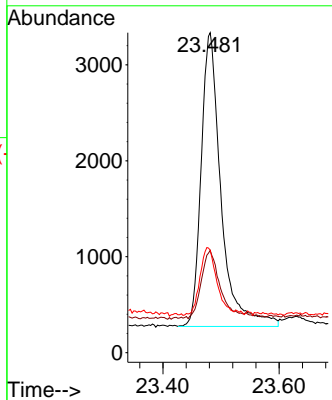
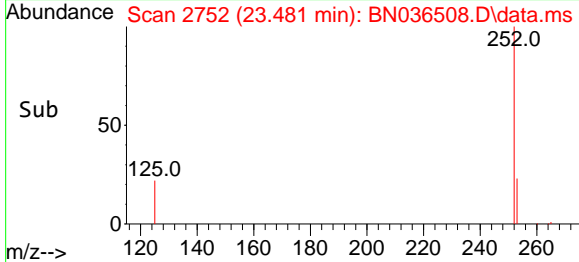
SSTDCCC0.4



Tgt Ion:252 Resp: 7264
 Ion Ratio Lower Upper
 252 100
 253 32.0 24.4 36.6
 125 32.1 18.2 27.2

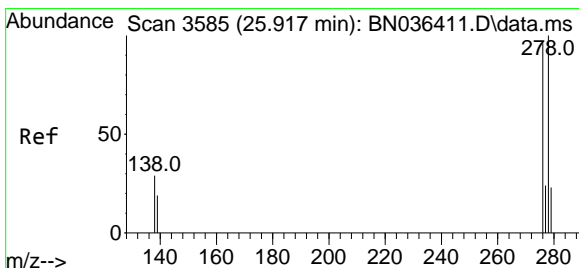
Manual Integrations
 APPROVED

Reviewed By :Rahul
 Chavli

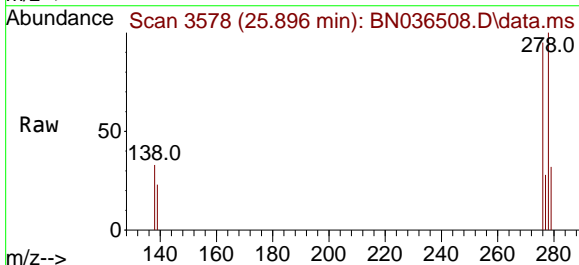


02/27/2025
 Supervised By :mohammad
 ahmed

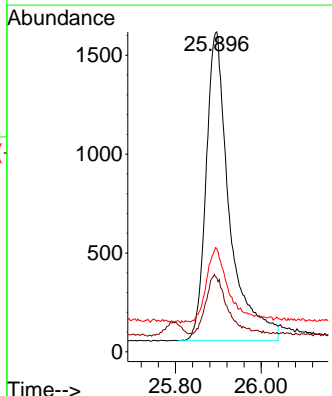
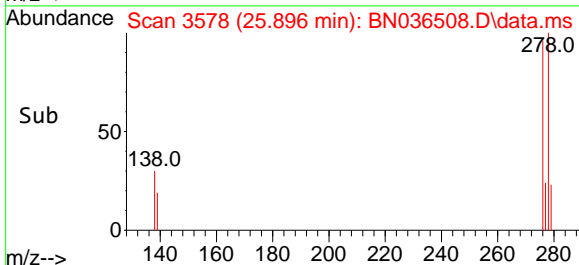
02/28/2025

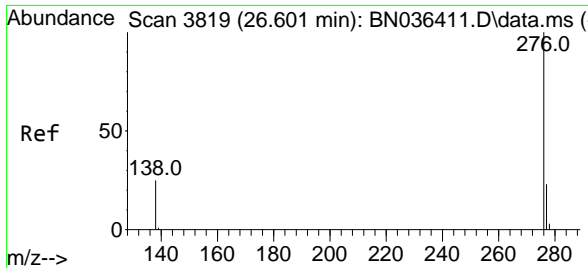


#40
 Dibenzo(a,h)anthracene
 Concen: 0.357 ng
 RT: 25.896 min Scan# 3578
 Delta R.T. -0.020 min
 Lab File: BN036508.D
 Acq: 26 Feb 2025 13:43



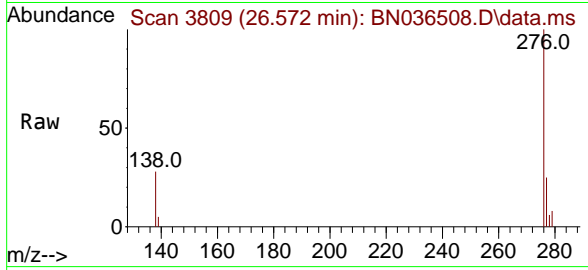
Tgt Ion:278 Resp: 5914
 Ion Ratio Lower Upper
 278 100
 139 23.2 18.5 27.7
 279 32.3 24.8 37.2





#41
 Benzo(g,h,i)perylene
 Concen: 0.367 ng
 RT: 26.572 min Scan# 3809
 Delta R.T. -0.029 min
 Lab File: BN036508.D
 Acq: 26 Feb 2025 13:43

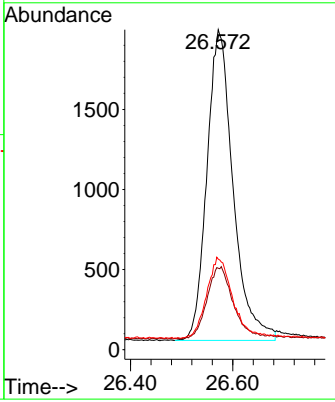
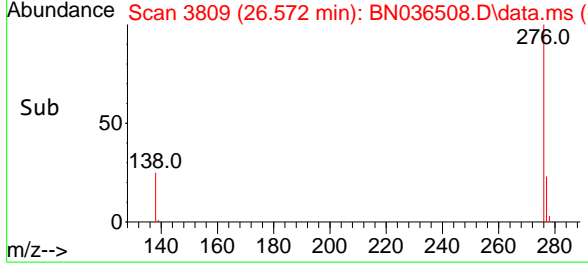
Instrument : BNA_N
 ClientSampleId : SSTDCCC0.4



Tgt Ion: 276 Resp: 6890

Ion	Ratio	Lower	Upper
276	100		
277	25.4	20.7	31.1
138	28.3	21.8	32.6

Manual Integrations
APPROVED
 Reviewed By :Rahul Chavli



02/27/2025
 Supervised By :mohammad ahmed

02/28/2025