

Data Path : Z:\svoasrv\HPCHEM1\BNA_N\Data\BN030621\
 Data File : BN013860.D
 Acq On : 05 Mar 2021 15:27
 Operator : CG/JU
 Sample : PB135002BSD
 Misc :
 ALS Vial : 5 Sample Multiplier: 1

Instrument :
 BNA_N
 ClientSampled :

Quant Time: Mar 05 15:56:35 2021
 Quant Method : Z:\SVOASRV\HPCHEM1\BNA_N\METHODS\8270-SIM-BN022421.M
 Quant Title : ASP BNA STANDARDS FOR 5 POINT CALIBRATION
 QLast Update : Fri Mar 05 13:34:35 2021
 Response via : Initial Calibration

Compound	R. T.	QI on	Response	Conc	Units	Dev(Min)

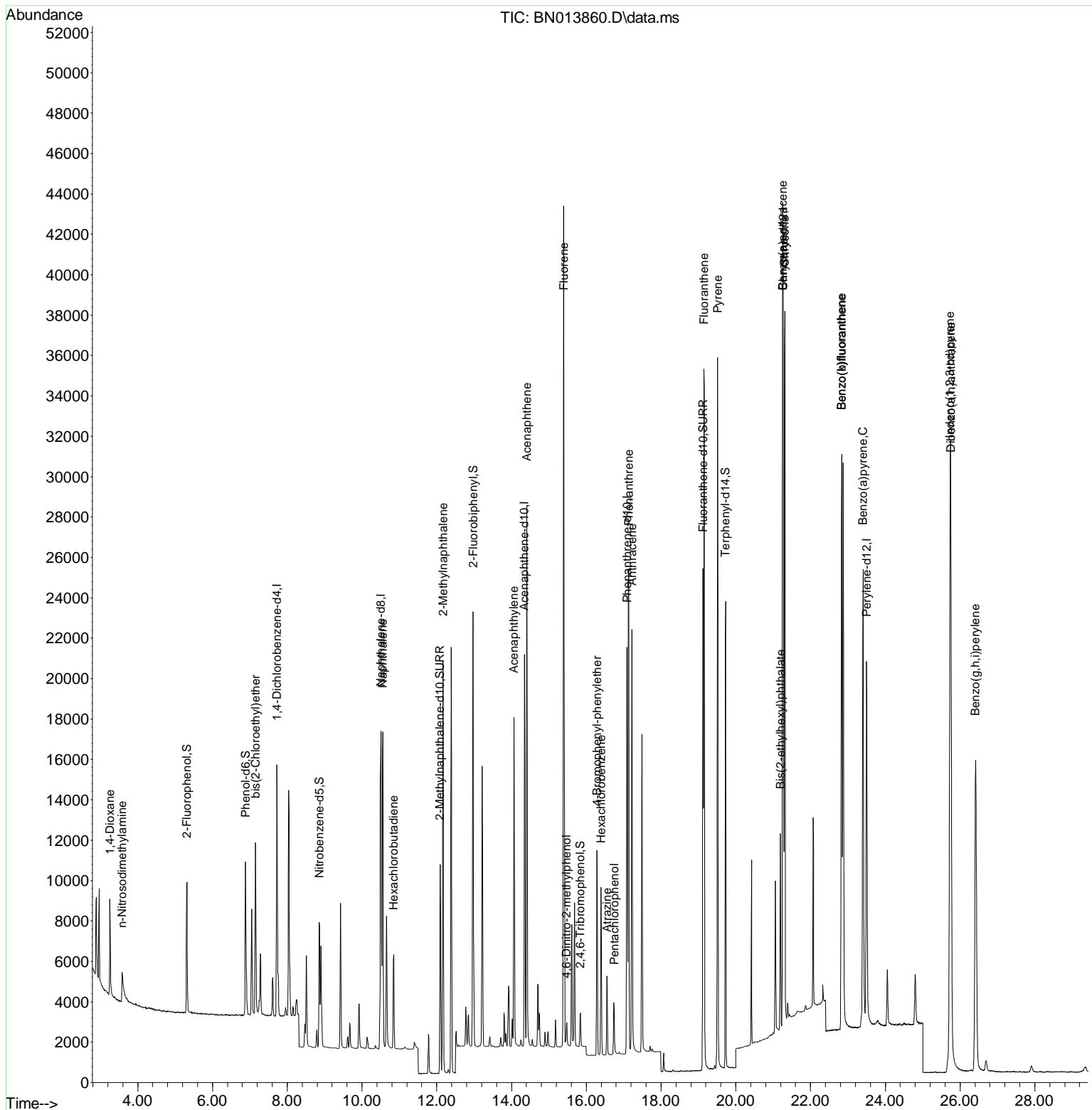
Internal Standards						
1) 1,4-Dichlorobenzene-d4	7.725	152	5752	0.40	ng	0.00
7) Naphthalene-d8	10.505	136	21587	0.40	ng	# 0.00
13) Acenaphthene-d10	14.346	164	11727	0.40	ng	0.00
19) Phenanthrene-d10	17.091	188	25587	0.40	ng	0.00
29) Chrysene-d12	21.269	240	27543	0.40	ng	0.00
36) Perylene-d12	23.500	264	24586	0.40	ng	# 0.00
System Monitoring Compounds						
4) 2-Fluorophenol	5.317	112	5274	0.34	ng	0.00
5) Phenol-d6	6.887	99	6902	0.34	ng	0.00
8) Nitrobenzene-d5	8.857	82	5479	0.40	ng	-0.01
11) 2-Methylnaphthalene-d10	12.093	152	13652	0.39	ng	0.00
14) 2,4,6-Tribromophenol	15.843	330	1377	0.29	ng	0.00
15) 2-Fluorobiphenyl	12.976	172	18318	0.44	ng	0.00
27) Fluoranthene-d10	19.126	212	28119	0.37	ng	0.00
31) Terphenyl-d14	19.727	244	22427	0.37	ng	0.00
Target Compounds						
						Qvalue
2) 1,4-Dioxane	3.255	88	2897	0.42	ng	99
3) n-Nitrosodimethylamine	3.585	42	1990	0.37	ng	91
6) bis(2-Chloroethyl)ether	7.153	93	6339	0.44	ng	95
9) Naphthalene	10.556	128	22142	0.42	ng	100
10) Hexachlorobutadiene	10.847	225	4151	0.41	ng	# 99
12) 2-Methylnaphthalene	12.169	142	14787	0.40	ng	99
16) Acenaphthylene	14.067	152	17685	0.34	ng	100
17) Acenaphthene	14.410	154	13380	0.41	ng	100
18) Fluorene	15.399	166	16452	0.39	ng	99
20) 4,6-Dinitro-2-methylph...	15.475	198	974	0.55	ng	# 87
21) 4-Bromophenyl-phenyl ether	16.288	248	5404	0.39	ng	91
22) Hexachlorobenzene	16.398	284	6510	0.45	ng	98
23) Atrazine	16.556	200	3199	0.25	ng	# 92
24) Pentachlorophenol	16.751	266	1441	0.30	ng	98
25) Phenanthrene	17.140	178	28410	0.43	ng	100
26) Anthracene	17.225	178	22266	0.34	ng	100
28) Fluoranthene	19.151	202	31262	0.39	ng	99
30) Pyrene	19.513	202	31739	0.37	ng	100
32) Benzo(a)anthracene	21.258	228	27928	0.33	ng	99
33) Chrysene	21.311	228	33770	0.41	ng	97
34) Bis(2-ethylhexyl)phtha...	21.194	149	7902	0.20	ng	100
35) Indeno(1,2,3-cd)pyrene	25.735	276	38652	0.39	ng	99
37) Benzo(b)fluoranthene	22.833	252	34864	0.44	ng	97
38) Benzo(k)fluoranthene	22.833	252	34864	0.46	ng	96
39) Benzo(a)pyrene	23.404	252	31242	0.44	ng	# 92
40) Di benzo(a,h)anthracene	25.752	278	31808	0.42	ng	97
41) Benzo(g,h,i)perylene	26.417	276	32897	0.43	ng	98

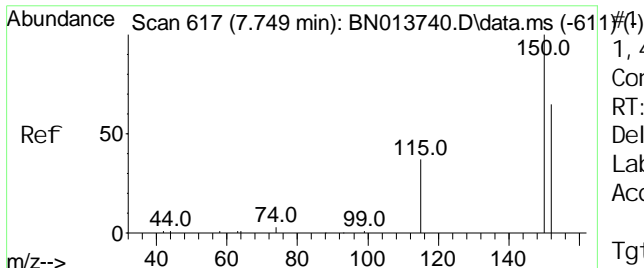
(#) = qualifier out of range (m) = manual integration (+) = signals summed

Data Path : Z:\svoasrv\HPCHEM1\BNA_N\Data\BN030621\
 Data File : BN013860.D
 Acq On : 05 Mar 2021 15:27
 Operator : CG/JU
 Sample : PB135002BSD
 Misc :
 ALS Vial : 5 Sample Multiplier: 1

Instrument :
 BNA_N
 Client Sampled :

Quant Time: Mar 05 15:56:35 2021
 Quant Method : Z:\SVOASRV\HPCHEM1\BNA_N\METHODS\8270-SIM-BN022421.M
 Quant Title : ASP BNA STANDARDS FOR 5 POINT CALIBRATION
 QLast Update : Fri Mar 05 13:34:35 2021
 Response via : Initial Calibration

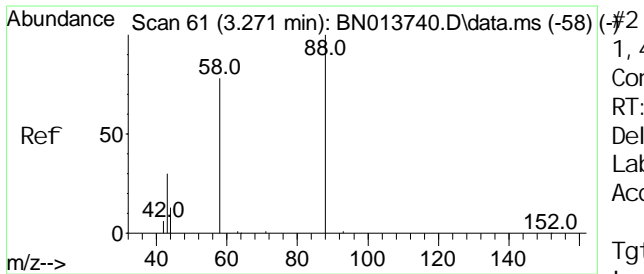
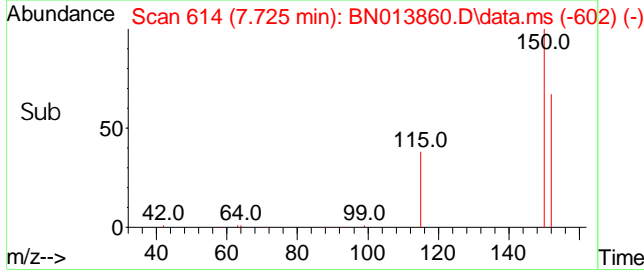
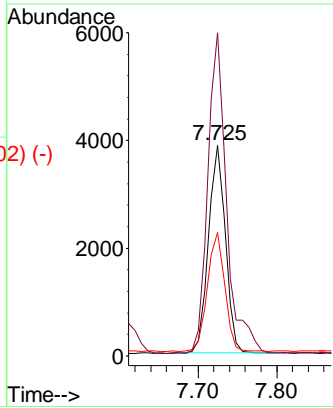
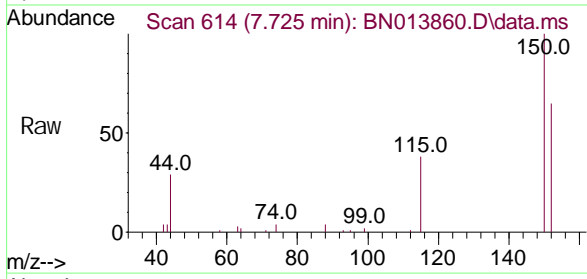




1, 4-Di chl oro benzene-d4
 Concen: 0.40 ng
 RT: 7.725 mi n Scan# 614
 Del ta R. T. 0.001 mi n
 Lab Fi le: BN013860. D
 Acq: 05 Mar 2021 15: 27

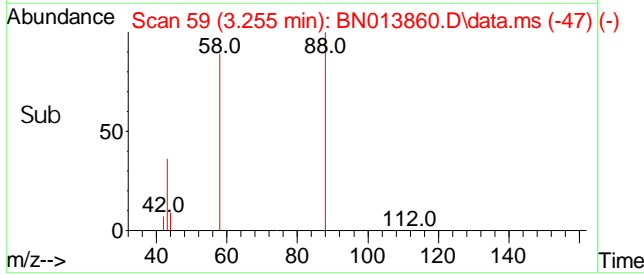
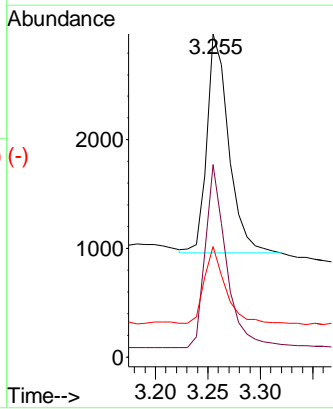
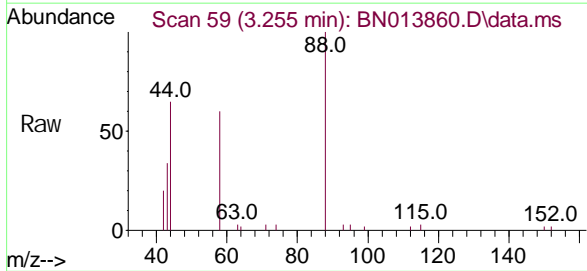
Instrument :
 BNA_N
ClientSampled :

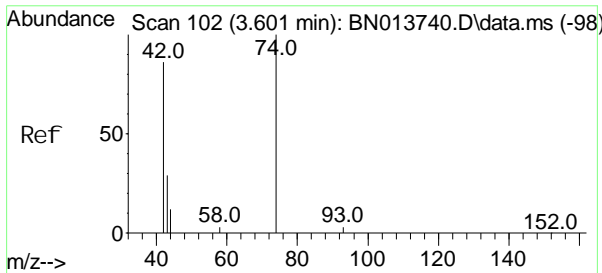
Tgt Ion	Resp	Lower	Upper
152	100		
150	153.5	121.8	182.8
115	58.8	46.6	69.8



1, 4-Di oxane
 Concen: 0.42 ng
 RT: 3.255 mi n Scan# 59
 Del ta R. T. 0.000 mi n
 Lab Fi le: BN013860. D
 Acq: 05 Mar 2021 15: 27

Tgt Ion	Resp	Lower	Upper
88	100		
58	81.7	64.6	96.8
43	33.9	26.6	40.0



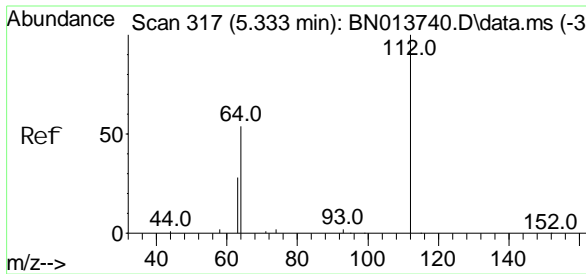
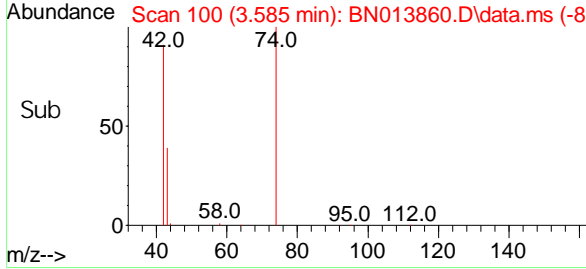
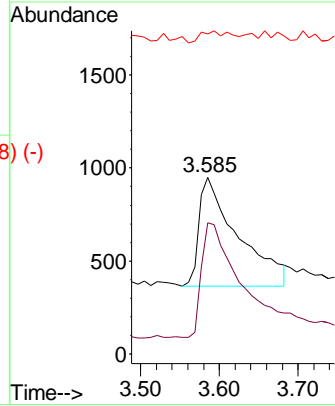
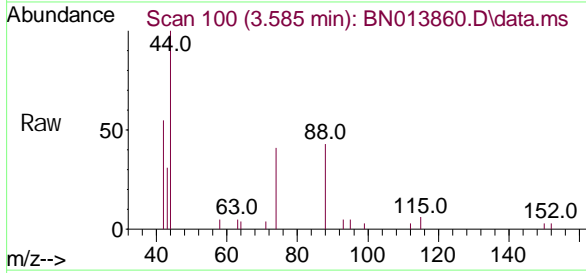


Scan 102 (3.601 min): BN013740.D\data.ms (-98) #3
 n-Nitrosodimethylamine
 Concn: 0.37 ng
 RT: 3.585 min Scan# 100
 Delta R.T. 0.000 min
 Lab File: BN013860.D
 Acq: 05 Mar 2021 15:27

Instrument :
 BNA_N
ClientSampled :

Tgt Ion: 42 Resp: 1990

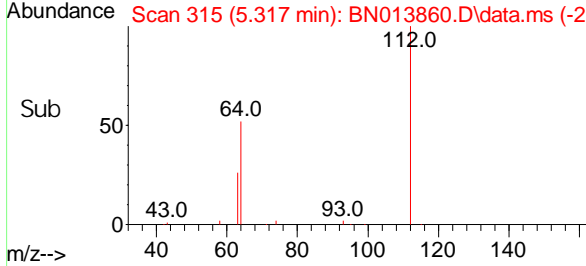
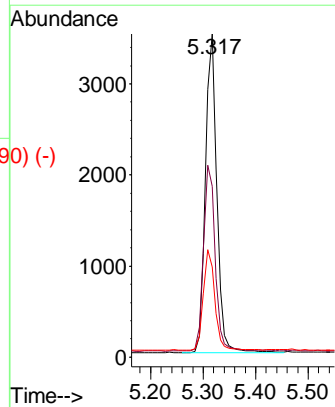
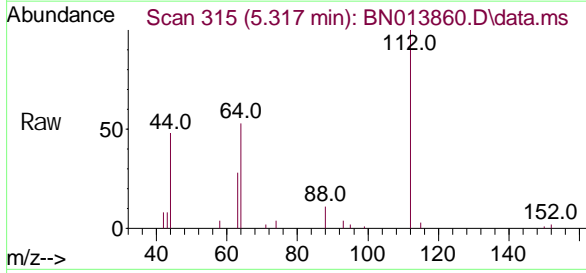
Ion	Ratio	Lower	Upper
42	100		
74	108.5	95.0	142.6
44	8.4	5.8	8.8

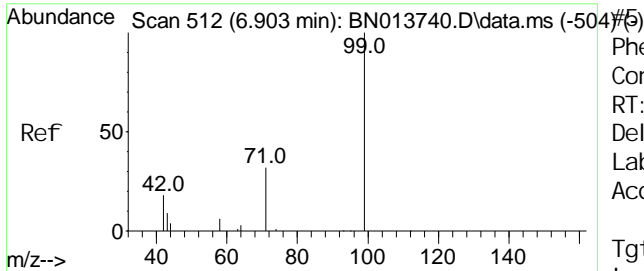


Scan 317 (5.333 min): BN013740.D\data.ms (-311) #4
 2-Fluorophenol
 Concn: 0.34 ng
 RT: 5.317 min Scan# 315
 Delta R.T. 0.000 min
 Lab File: BN013860.D
 Acq: 05 Mar 2021 15:27

Tgt Ion: 112 Resp: 5274

Ion	Ratio	Lower	Upper
112	100		
64	59.7	44.3	66.5
63	31.5	23.0	34.6

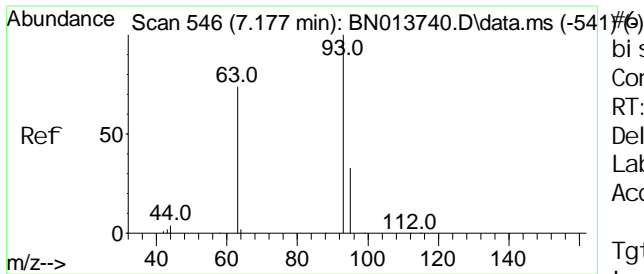
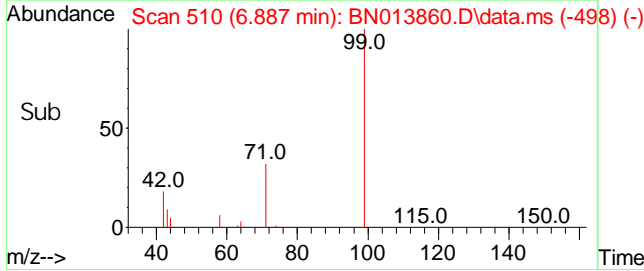
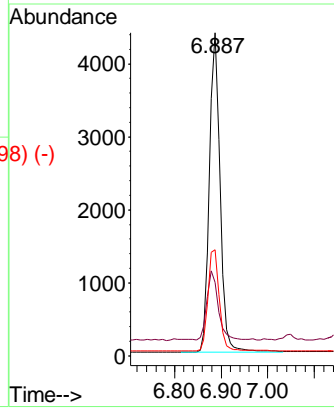
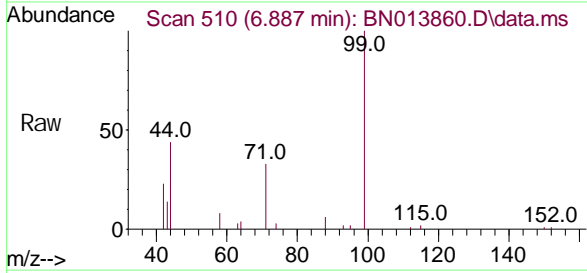




Phenol -d6
 Concen: 0.34 ng
 RT: 6.887 min Scan# 510
 Delta R.T. 0.000 min
 Lab File: BN013860.D
 Acq: 05 Mar 2021 15:27

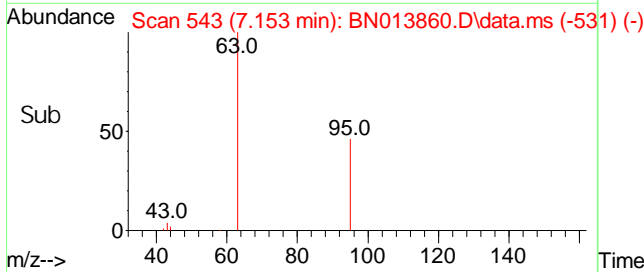
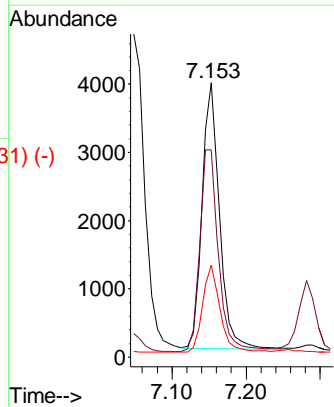
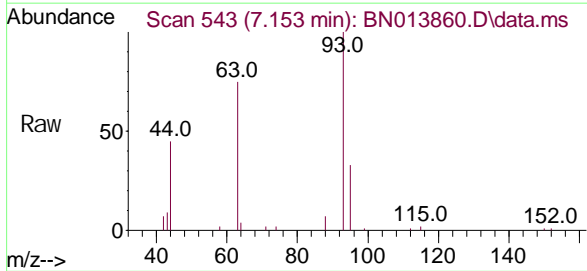
Instrument :
 BNA_N
ClientSampled :

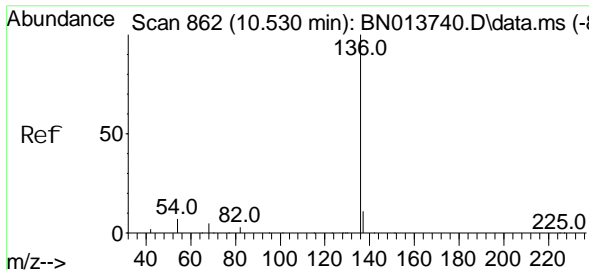
Tgt Ion	Resp	Lower	Upper
99	6902		
42	22.9	15.2	22.8#
71	33.6	26.1	39.1



bis(2-Chloroethyl)ether
 Concen: 0.44 ng
 RT: 7.153 min Scan# 543
 Delta R.T. 0.000 min
 Lab File: BN013860.D
 Acq: 05 Mar 2021 15:27

Tgt Ion	Resp	Lower	Upper
93	6339		
63	81.5	60.8	91.2
95	33.2	26.0	39.0

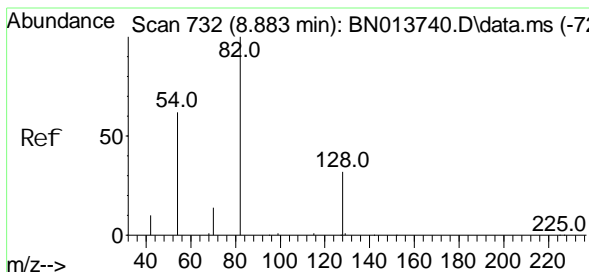
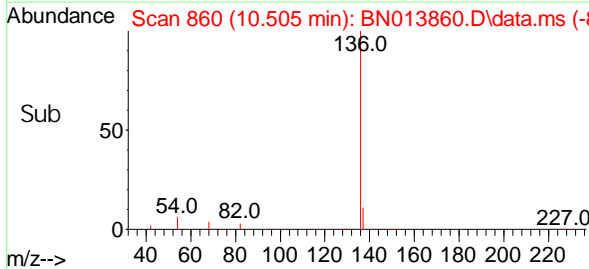
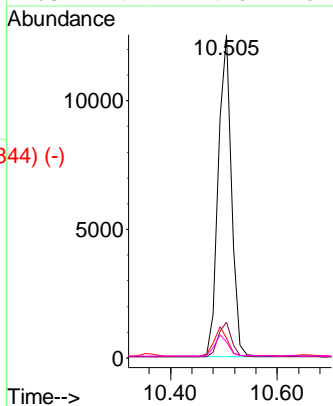
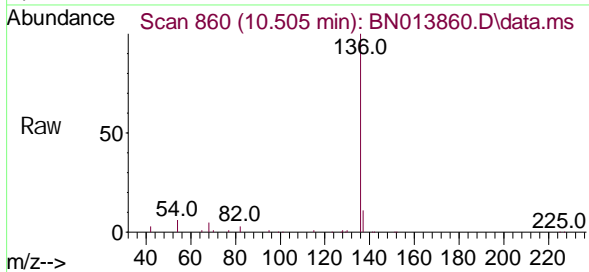




Naphthalene-d8
 Concen: 0.40 ng
 RT: 10.505 min Scan# 860
 Delta R.T. 0.000 min
 Lab File: BN013860.D
 Acq: 05 Mar 2021 15:27

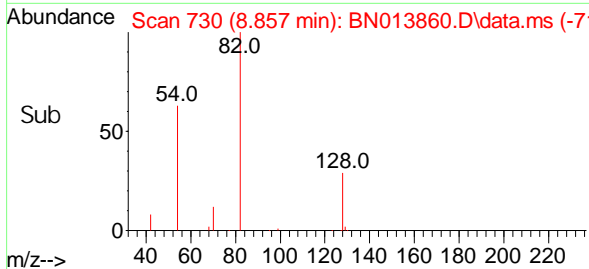
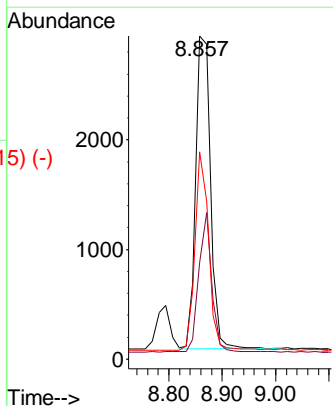
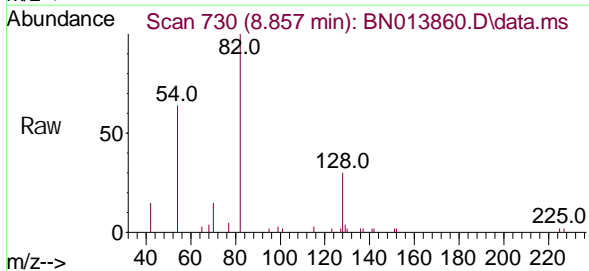
Instrument :
 BNA_N
 ClientSampled :

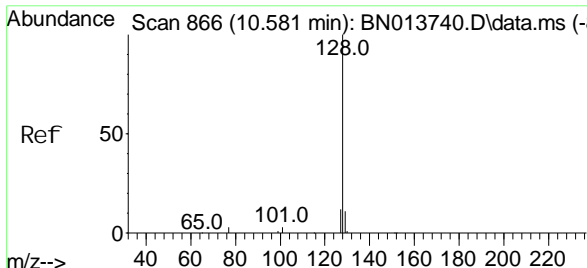
Tgt Ion	Resp	Lower	Upper
136	100		
137	11.0	9.0	13.6
54	6.1	6.4	9.6#
68	4.9	4.5	6.7



Nitrobenzene-d5
 Concen: 0.40 ng
 RT: 8.857 min Scan# 730
 Delta R.T. -0.012 min
 Lab File: BN013860.D
 Acq: 05 Mar 2021 15:27

Tgt Ion	Resp	Lower	Upper
82	100		
128	29.9	39.2	58.8#
54	64.1	40.1	60.1#

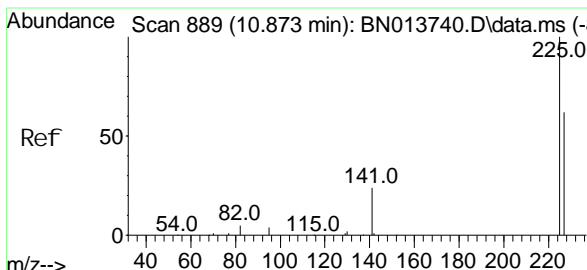
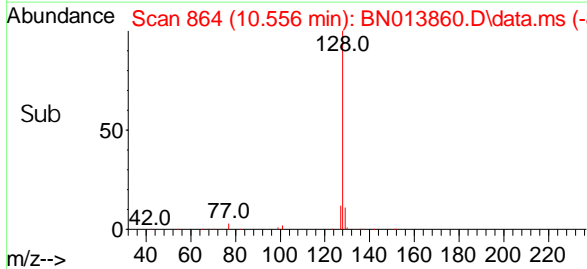
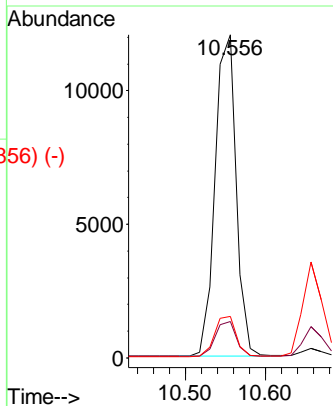
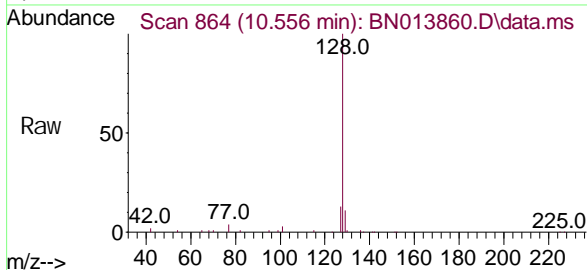




Scan 866 (10.581 min): BN013740.D\data.ms (-866) (-)
 Naphthalene
 Concen: 0.42 ng
 RT: 10.556 min Scan# 864
 Delta R.T. 0.000 min
 Lab File: BN013860.D
 Acq: 05 Mar 2021 15:27

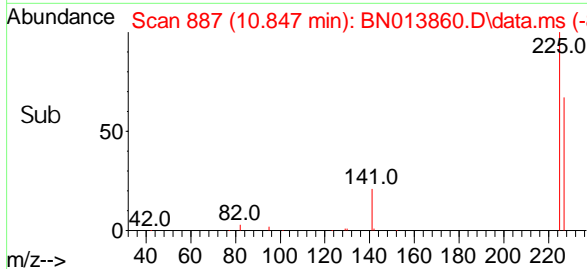
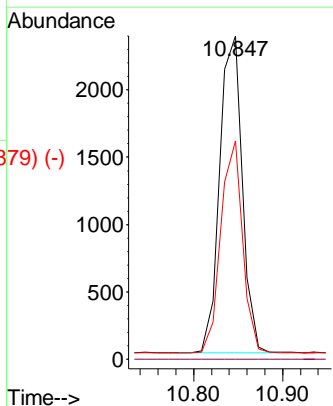
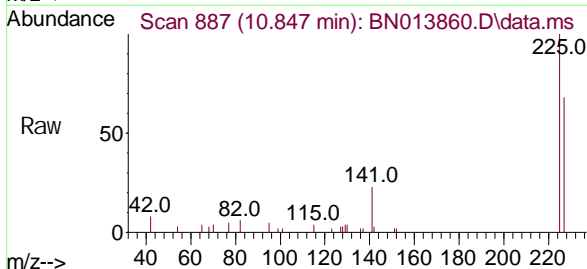
Instrument :
 BNA_N
 ClientSampled :

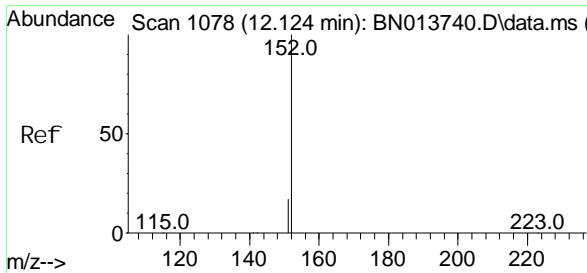
Tgt Ion	Resp	Lower	Upper
128	100		
129	11.3	9.0	13.4
127	12.8	10.4	15.6



Scan 889 (10.873 min): BN013740.D\data.ms (-889) (-)
 Hexachlorobutadiene
 Concen: 0.41 ng
 RT: 10.847 min Scan# 887
 Delta R.T. 0.000 min
 Lab File: BN013860.D
 Acq: 05 Mar 2021 15:27

Tgt Ion	Resp	Lower	Upper
225	100		
223	0.0	0.0	0.0
227	64.5	51.2	76.8

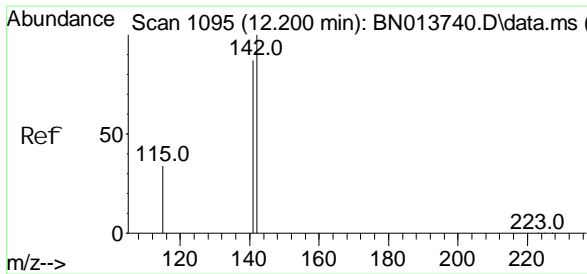
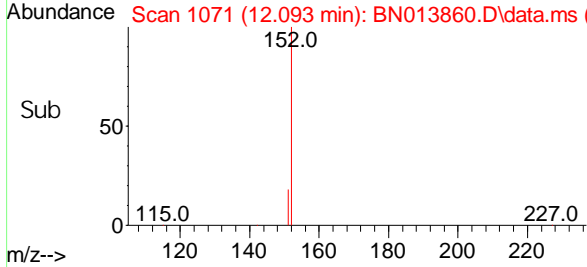
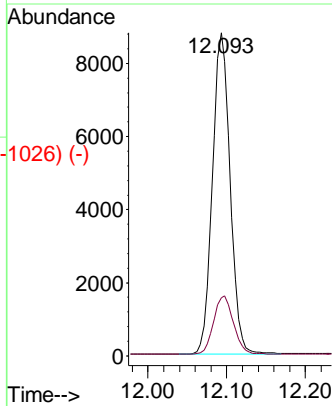
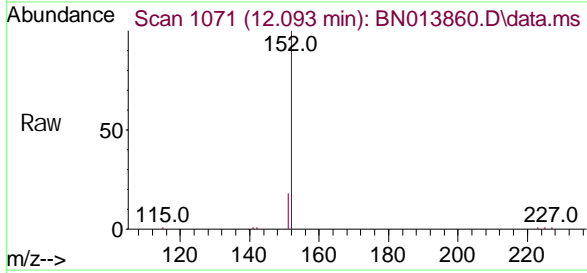




Scan 1078 (12.124 min): BN013740.D\data.ms (-1067) (-)
 2-Methyl naphthal ene-d10
 Concen: 0.39 ng
 RT: 12.093 min Scan# 1071
 Del ta R. T. 0.000 min
 Lab Fi le: BN013860. D
 Acq: 05 Mar 2021 15:27

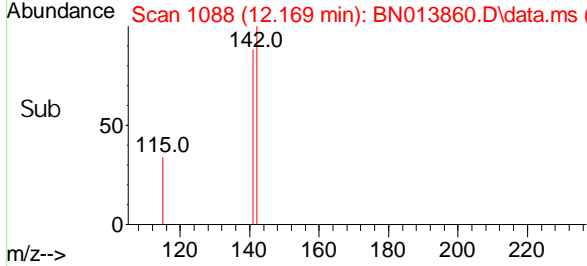
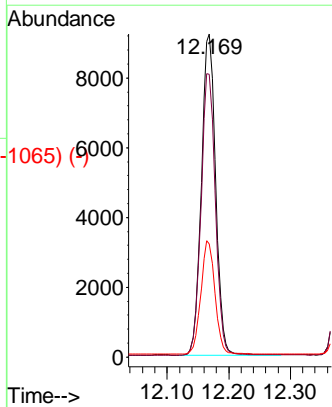
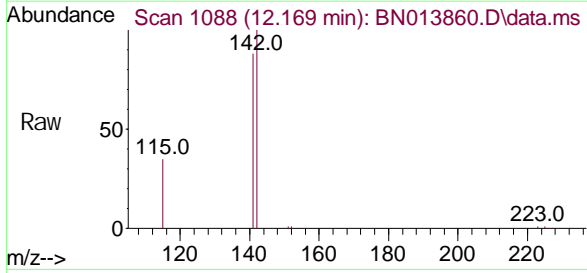
Instrument :
 BNA_N
ClientSampled :

Tgt Ion: 152 Resp: 13652
 Ion Ratio Lower Upper
 152 100
 151 20.2 16.2 24.2

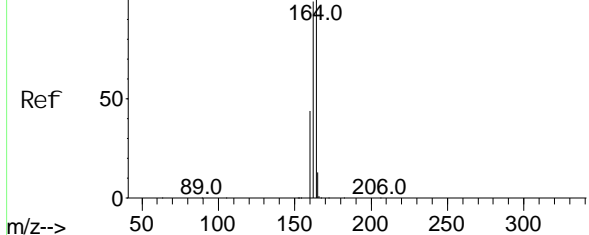


Scan 1095 (12.200 min): BN013740.D\data.ms (-1065) (-)
 2-Methyl naphthal ene
 Concen: 0.40 ng
 RT: 12.169 min Scan# 1088
 Del ta R. T. 0.000 min
 Lab Fi le: BN013860. D
 Acq: 05 Mar 2021 15:27

Tgt Ion: 142 Resp: 14787
 Ion Ratio Lower Upper
 142 100
 141 87.6 70.5 105.7
 115 35.0 27.4 41.0

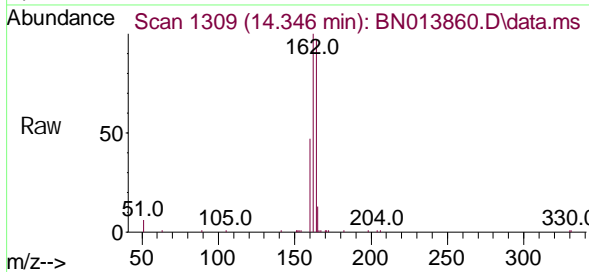


Abundance Scan 1312 (14.384 min): BN013740.D\data.ms (-1307) (-)



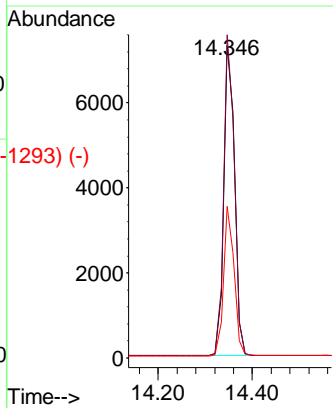
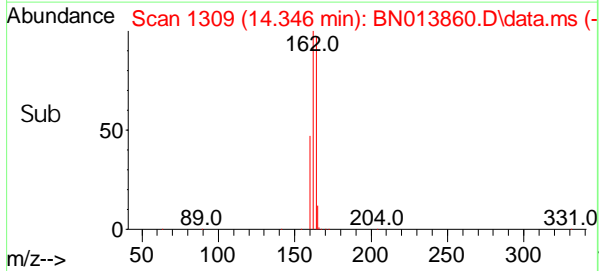
Acenaphthene-d10
Concen: 0.40 ng
RT: 14.346 min Scan# 1309
Delta R.T. 0.000 min
Lab File: BN013860.D
Acq: 05 Mar 2021 15:27

Instrument :
BNA_N
ClientSampled :

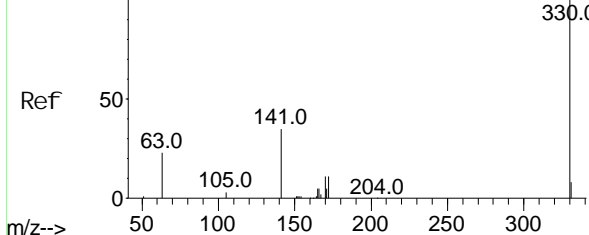


Tgt Ion: 164 Resp: 11727

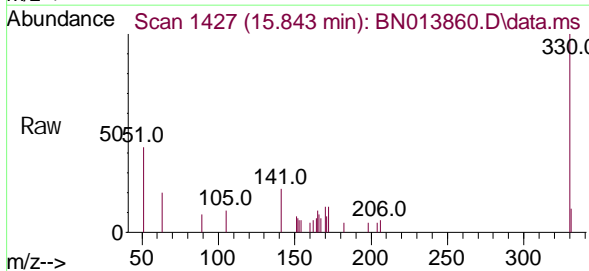
Ion	Ratio	Lower	Upper
164	100		
162	103.6	79.6	119.4
160	48.6	36.0	54.0



Abundance Scan 1429 (15.869 min): BN013740.D\data.ms (-1416) (-)

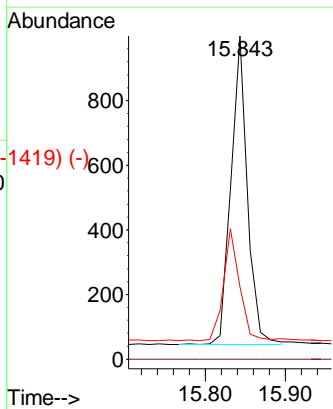
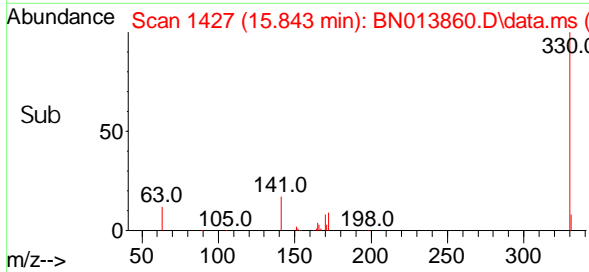


2,4,6-Tri bromophenol
Concen: 0.29 ng
RT: 15.843 min Scan# 1427
Delta R.T. 0.000 min
Lab File: BN013860.D
Acq: 05 Mar 2021 15:27

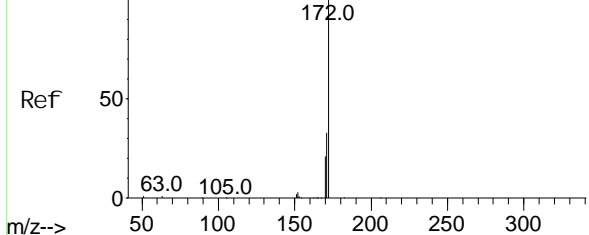


Tgt Ion: 330 Resp: 1377

Ion	Ratio	Lower	Upper
330	100		
332	0.0	0.0	0.0
141	35.8	26.8	40.2



Abundance Scan 1204 (13.014 min): BN013740.D\data.ms (-1204) (-)



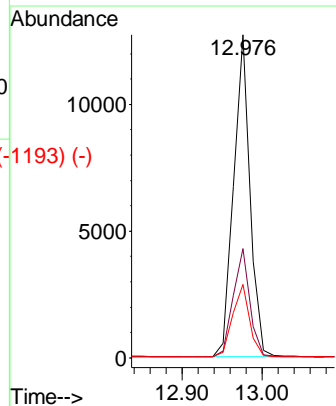
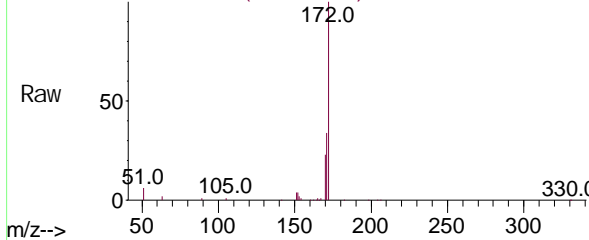
2-Fluorophenyl
Concn: 0.44 ng
RT: 12.976 min Scan# 1201
Delta R.T. 0.000 min
Lab File: BN013860.D
Acq: 05 Mar 2021 15:27

Instrument :
BNA_N
ClientSampled :

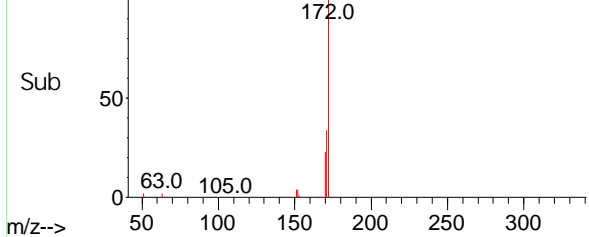
Tgt Ion: 172 Resp: 18318

Ion	Ratio	Lower	Upper
172	100		
171	33.8	28.6	42.8
170	22.8	18.9	28.3

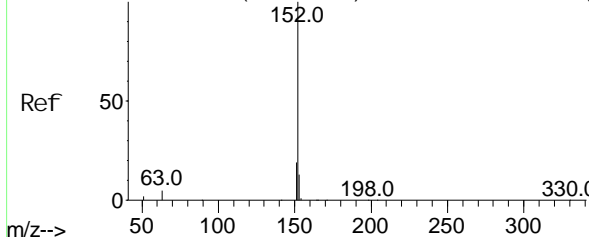
Abundance Scan 1201 (12.976 min): BN013860.D\data.ms



Abundance Scan 1201 (12.976 min): BN013860.D\data.ms (-1193) (-)



Abundance Scan 1290 (14.105 min): BN013740.D\data.ms (-1290) (-)

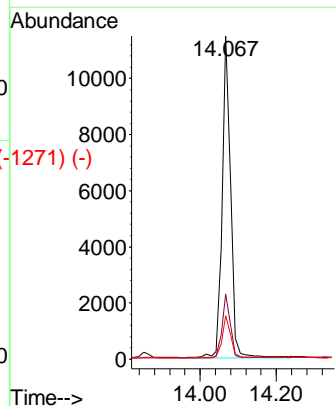
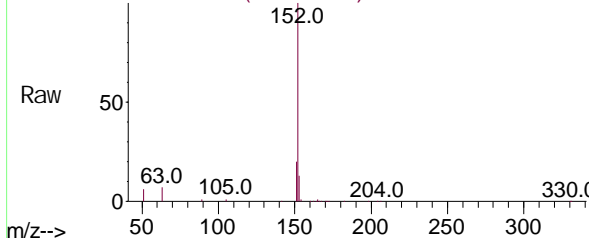


Acenaphthylene
Concn: 0.34 ng
RT: 14.067 min Scan# 1287
Delta R.T. 0.000 min
Lab File: BN013860.D
Acq: 05 Mar 2021 15:27

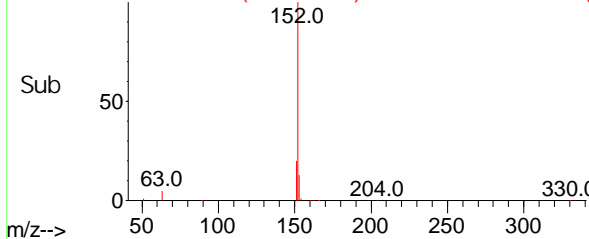
Tgt Ion: 152 Resp: 17685

Ion	Ratio	Lower	Upper
152	100		
151	19.4	15.7	23.5
153	13.0	10.5	15.7

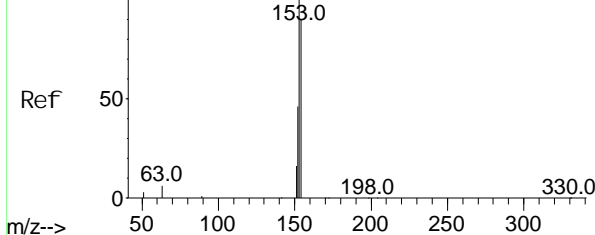
Abundance Scan 1287 (14.067 min): BN013860.D\data.ms



Abundance Scan 1287 (14.067 min): BN013860.D\data.ms (-1271) (-)



Abundance Scan 1317 (14.448 min): BN013740.D\data.ms (-1317) (-)

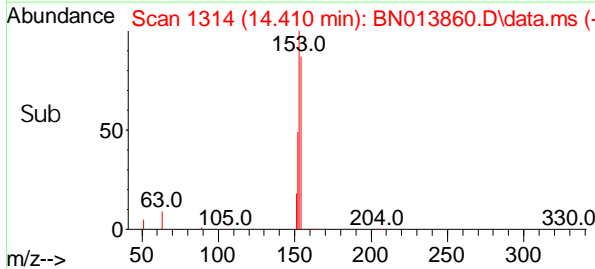
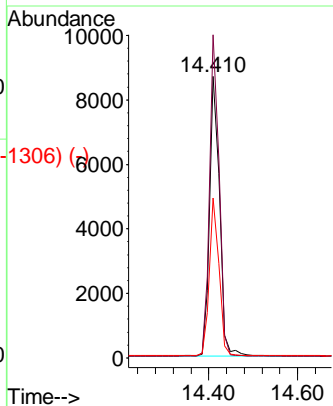
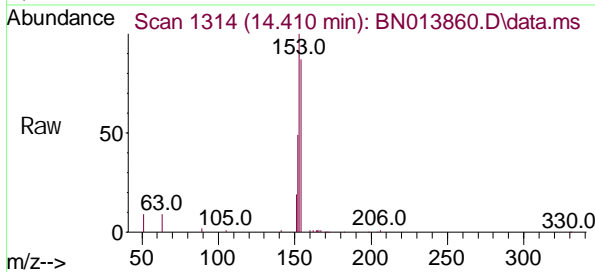


Acenaphthene
Concen: 0.41 ng
RT: 14.410 min Scan# 1314
Delta R.T. 0.000 min
Lab File: BN013860.D
Acq: 05 Mar 2021 15:27

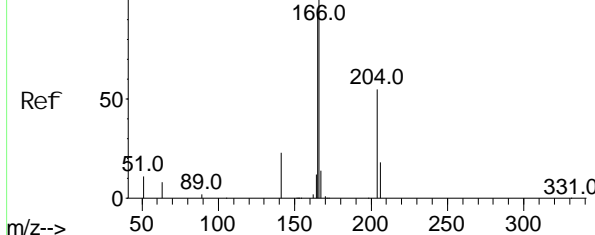
Instrument :
BNA_N
ClientSampled :

Tgt Ion: 154 Resp: 13380

Ion	Ratio	Lower	Upper
154	100		
153	110.5	88.4	132.6
152	54.4	43.0	64.4



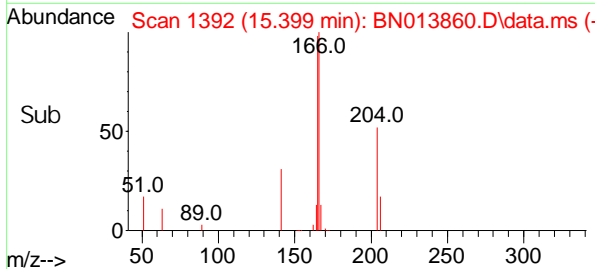
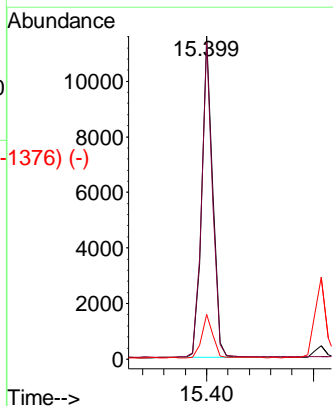
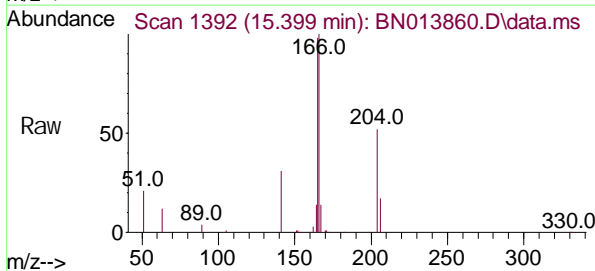
Abundance Scan 1395 (15.437 min): BN013740.D\data.ms (-1395) (-)

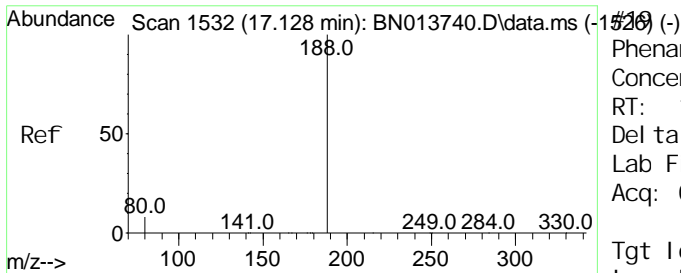


Fluorene
Concen: 0.39 ng
RT: 15.399 min Scan# 1392
Delta R.T. 0.000 min
Lab File: BN013860.D
Acq: 05 Mar 2021 15:27

Tgt Ion: 166 Resp: 16452

Ion	Ratio	Lower	Upper
166	100		
165	97.9	77.8	116.8
167	13.5	10.6	16.0

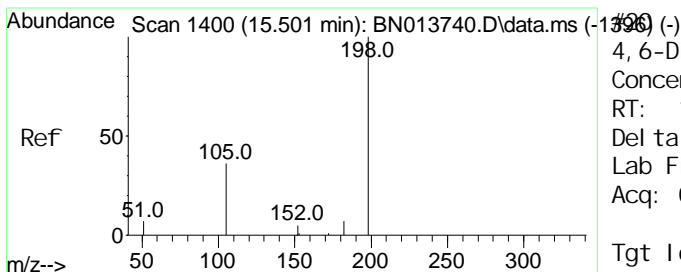
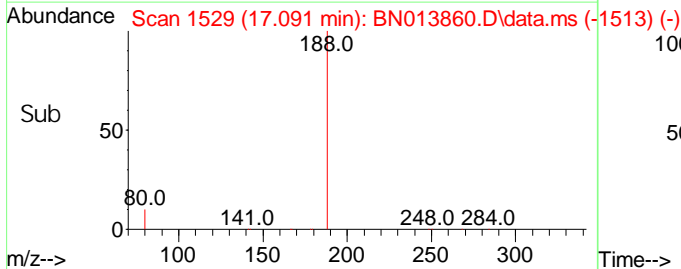
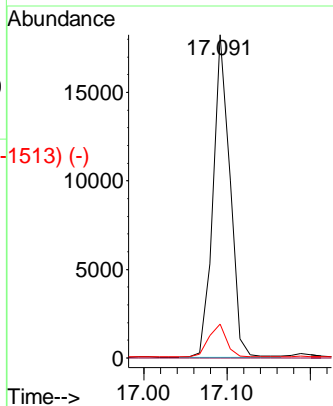
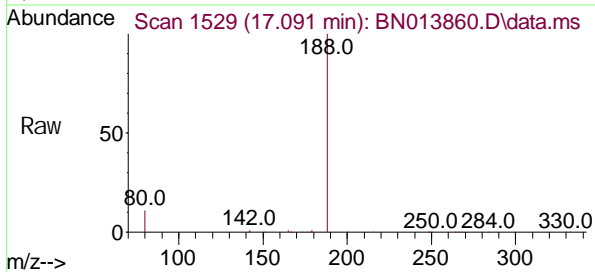




#1396 (-)
 Phenanthrene-d10
 Concen: 0.40 ng
 RT: 17.091 min Scan# 1529
 Delta R.T. -0.000 min
 Lab File: BNO13860.D
 Acq: 05 Mar 2021 15:27

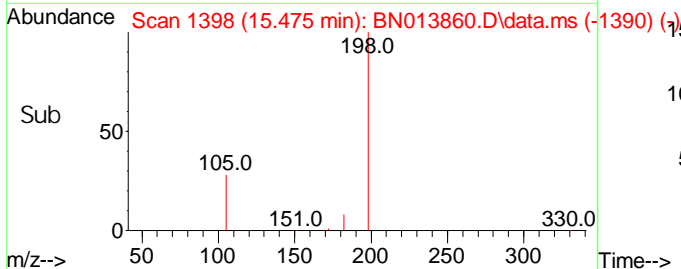
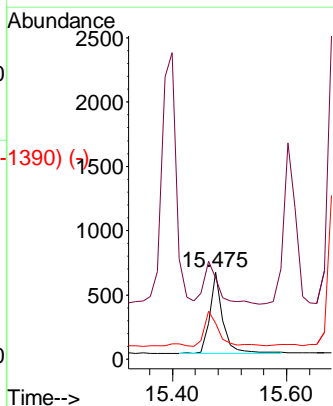
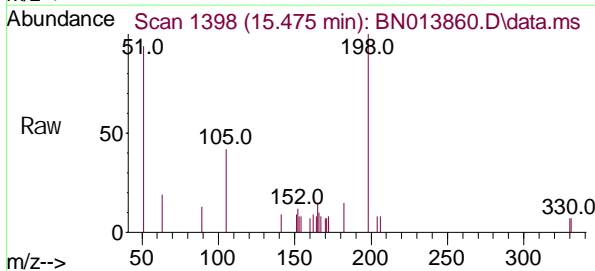
Instrument :
 BNA_N
ClientSampled :

Tgt Ion	Ratio	Lower	Upper
188	100		
94	0.0	0.0	0.0
80	10.5	9.0	13.6

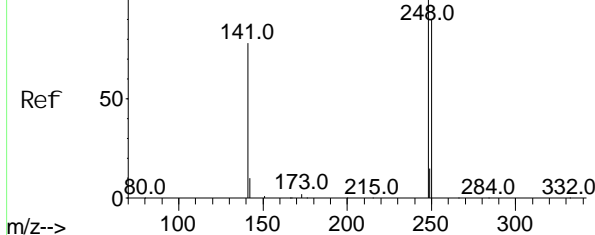


#1396 (-)
 4,6-Dinitro-2-methyl phenol
 Concen: 0.55 ng
 RT: 15.475 min Scan# 1398
 Delta R.T. 0.000 min
 Lab File: BNO13860.D
 Acq: 05 Mar 2021 15:27

Tgt Ion	Ratio	Lower	Upper
198	100		
51	93.6	61.7	92.5#
105	41.5	33.0	49.6



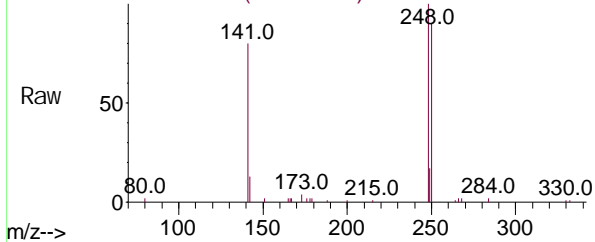
Abundance Scan 1466 (16.325 min): BN013740.D\data.ms (-1459) (-)



4-Bromophenyl -phenyl ether
Concen: 0.39 ng
RT: 16.288 min Scan# 1463
Delta R.T. -0.012 min
Lab File: BN013860.D
Acq: 05 Mar 2021 15:27

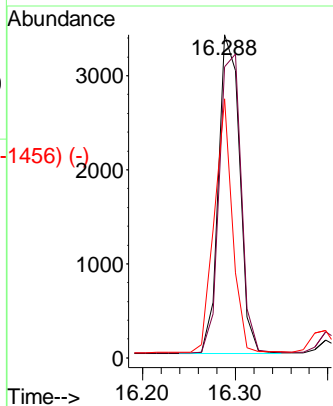
Instrument :
BNA_N
ClientSampled :

Abundance Scan 1463 (16.288 min): BN013860.D\data.ms

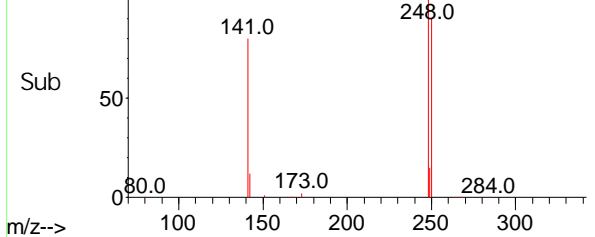


Tgt Ion: 248 Resp: 5404

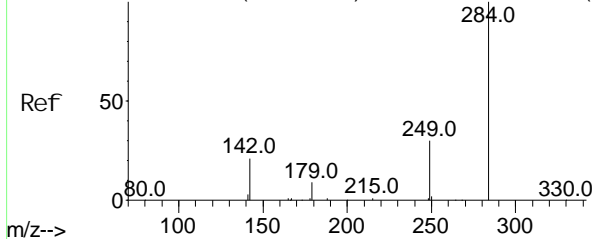
Ion	Ratio	Lower	Upper
248	100		
250	90.2	75.5	113.3
141	80.3	53.8	80.8



Abundance Scan 1463 (16.288 min): BN013860.D\data.ms (-1456) (-)

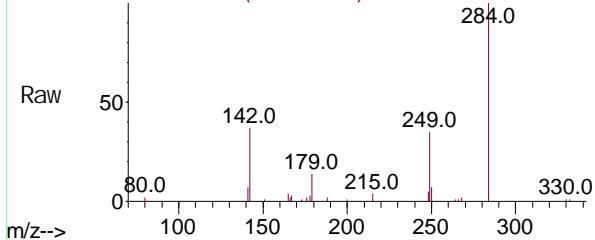


Abundance Scan 1475 (16.435 min): BN013740.D\data.ms (-1469) (-)



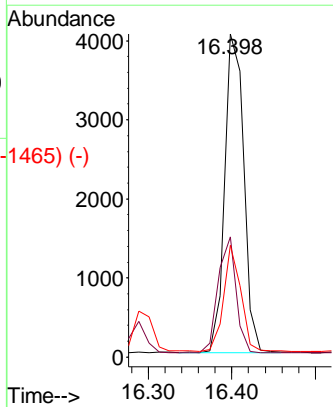
Hexachlorobenzene
Concen: 0.45 ng
RT: 16.398 min Scan# 1472
Delta R.T. -0.012 min
Lab File: BN013860.D
Acq: 05 Mar 2021 15:27

Abundance Scan 1472 (16.398 min): BN013860.D\data.ms

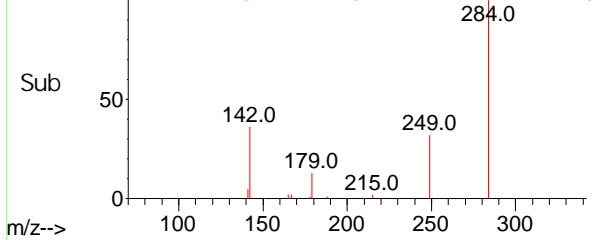


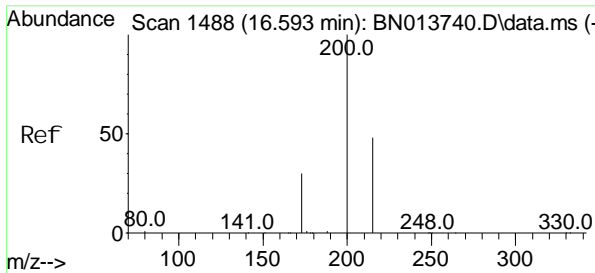
Tgt Ion: 284 Resp: 6510

Ion	Ratio	Lower	Upper
284	100		
142	34.0	27.9	41.9
249	29.3	24.2	36.2



Abundance Scan 1472 (16.398 min): BN013860.D\data.ms (-1465) (-)

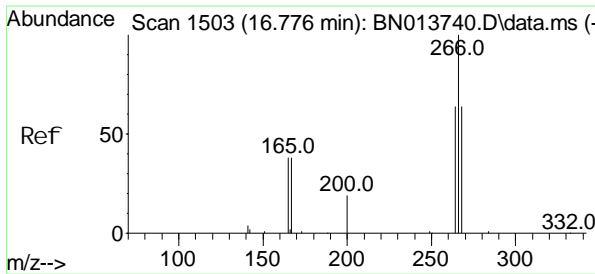
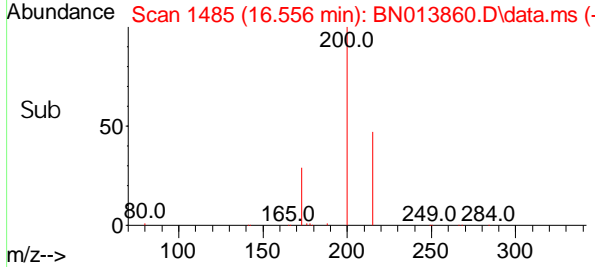
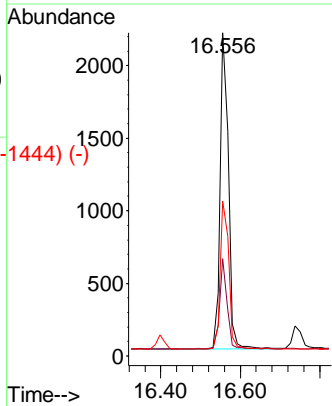
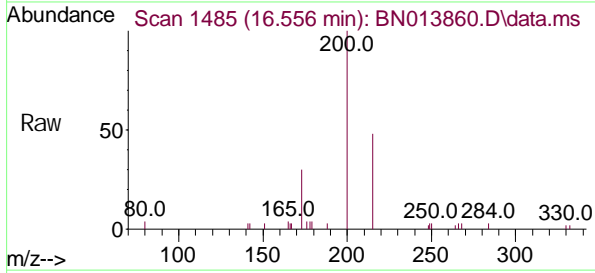




Scan 1488 (16.593 min): BN013740.D\data.ms (-1482) (-)
 Atrazine
 Concen: 0.25 ng
 RT: 16.556 min Scan# 1485
 Delta R.T. -0.000 min
 Lab File: BN013860.D
 Acq: 05 Mar 2021 15:27

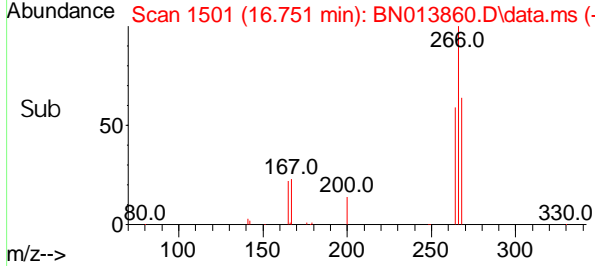
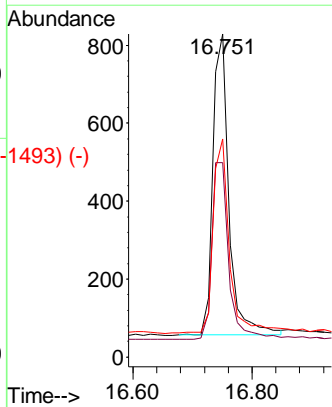
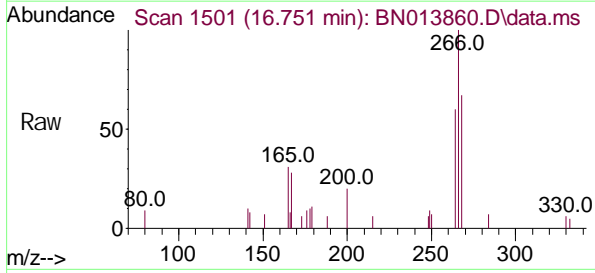
Instrument :
 BNA_N
 ClientSampled :

Tgt Ion	Ratio	Lower	Upper
200	100		
173	30.1	18.6	28.0#
215	47.9	41.0	61.6

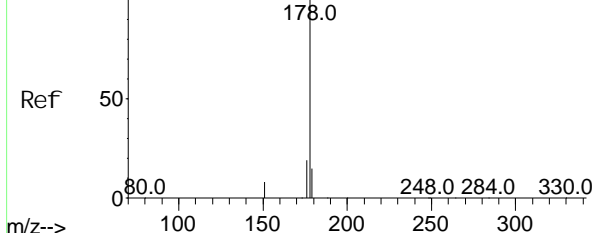


Scan 1503 (16.776 min): BN013740.D\data.ms (-1504) (-)
 Pentachlorophenol
 Concen: 0.30 ng
 RT: 16.751 min Scan# 1501
 Delta R.T. -0.000 min
 Lab File: BN013860.D
 Acq: 05 Mar 2021 15:27

Tgt Ion	Ratio	Lower	Upper
266	100		
264	63.1	51.6	77.4
268	66.6	54.6	82.0

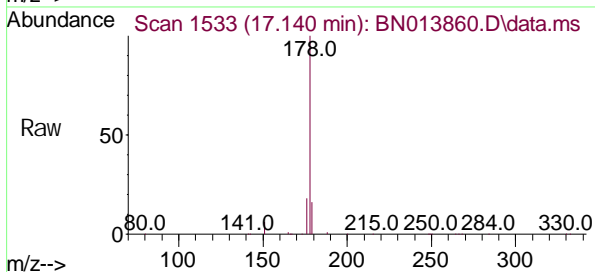


Abundance Scan 1535 (17.165 min): BN013740.D\data.ms (-1525) (-)



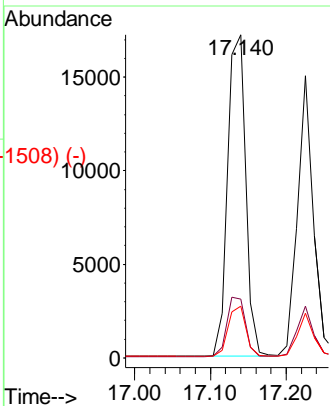
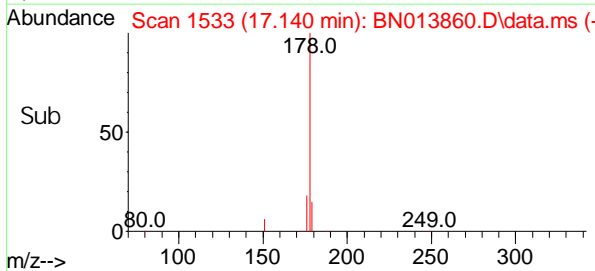
Phenanthrene
Concen: 0.43 ng
RT: 17.140 min Scan# 1533
Delta R.T. -0.000 min
Lab File: BN013860.D
Acq: 05 Mar 2021 15:27

Instrument :
BNA_N
ClientSampled :

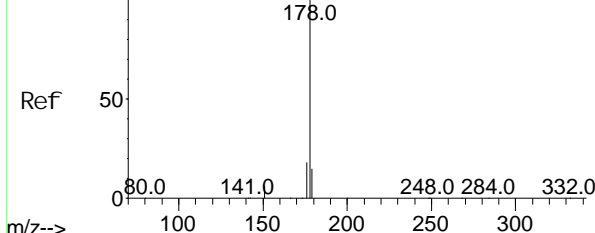


Tgt Ion: 178 Resp: 28410

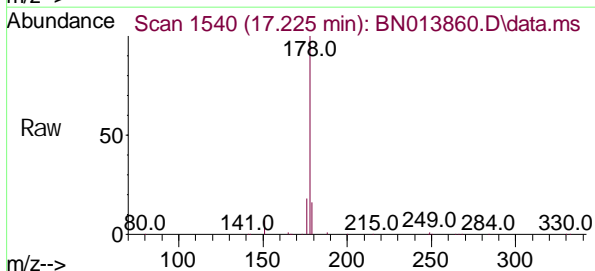
Ion	Ratio	Lower	Upper
178	100		
176	18.9	15.0	22.4
179	15.4	12.3	18.5



Abundance Scan 1543 (17.262 min): BN013740.D\data.ms (-1526) (-)

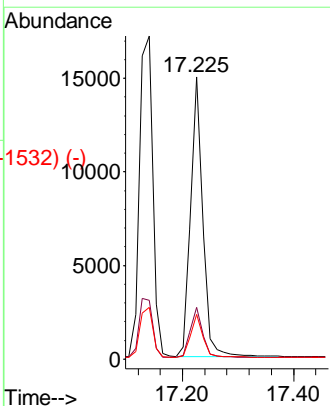
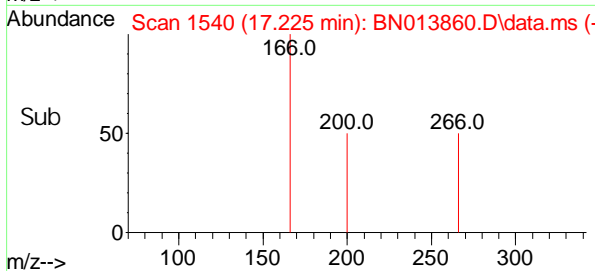


Anthracene
Concen: 0.34 ng
RT: 17.225 min Scan# 1540
Delta R.T. -0.000 min
Lab File: BN013860.D
Acq: 05 Mar 2021 15:27

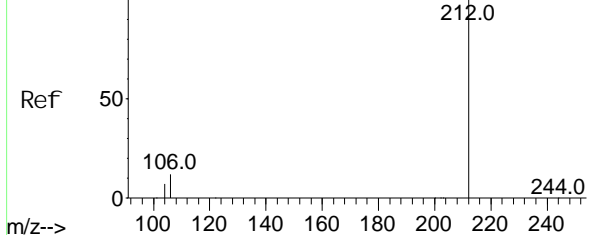


Tgt Ion: 178 Resp: 22266

Ion	Ratio	Lower	Upper
178	100		
176	18.2	14.6	21.8
179	15.3	12.2	18.2



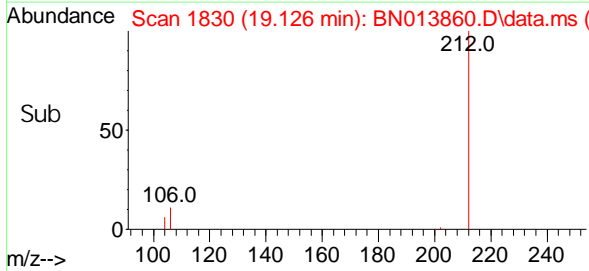
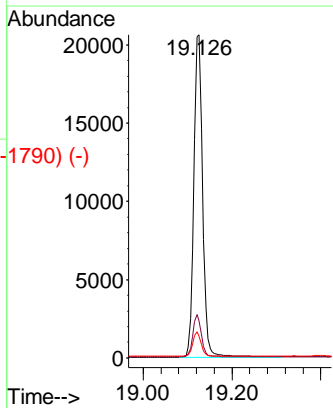
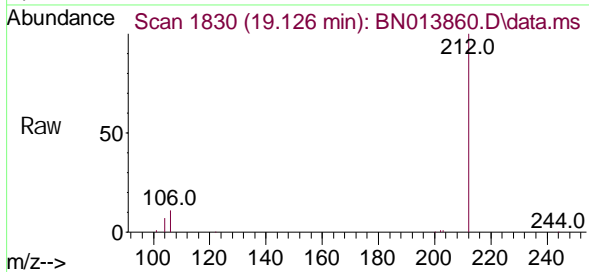
Abundance Scan 1835 (19.159 min): BN013740.D\data.ms (-1795) (-)



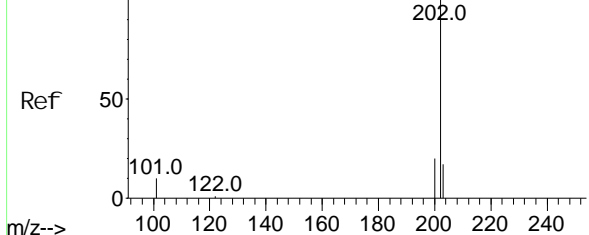
Fluoranthene-d10
Concen: 0.37 ng
RT: 19.126 min Scan# 1830
Delta R.T. -0.002 min
Lab File: BN013860.D
Acq: 05 Mar 2021 15:27

Instrument :
BNA_N
ClientSampled :

Tgt Ion: 212 Resp: 28119
Ion Ratio Lower Upper
212 100
106 12.6 9.7 14.5
104 7.2 5.5 8.3

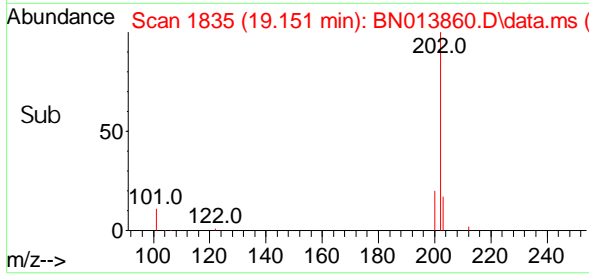
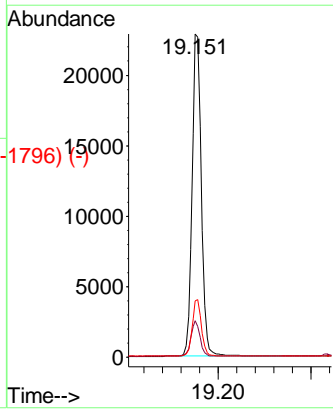
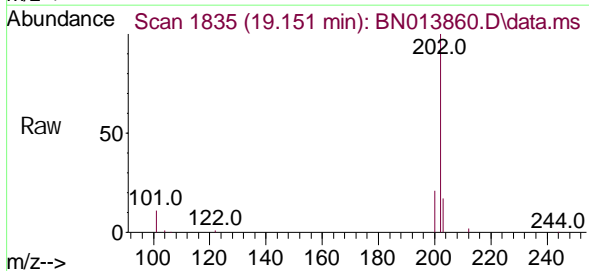


Abundance Scan 1841 (19.188 min): BN013740.D\data.ms (-1793) (-)

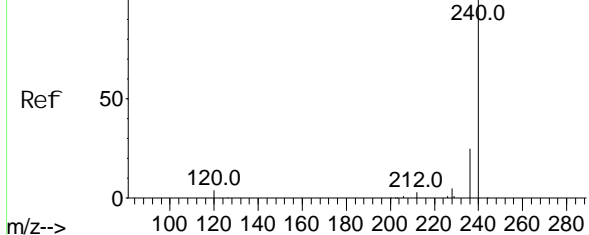


Fluoranthene
Concen: 0.39 ng
RT: 19.151 min Scan# 1835
Delta R.T. -0.007 min
Lab File: BN013860.D
Acq: 05 Mar 2021 15:27

Tgt Ion: 202 Resp: 31262
Ion Ratio Lower Upper
202 100
101 10.9 8.1 12.1
203 17.2 13.9 20.9



Abundance Scan 2129 (21.314 min): BN013740.D\data.ms (-2129) (-)

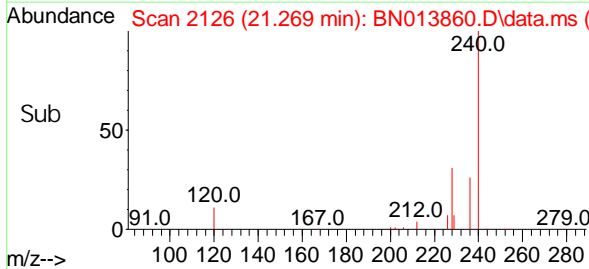
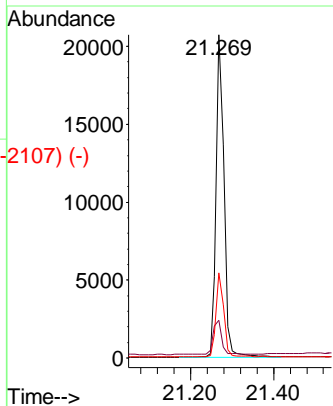
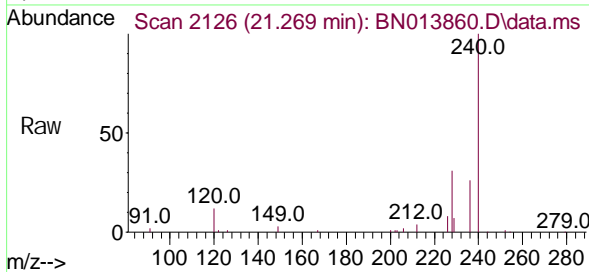


Chrysene-d12
Concen: 0.40 ng
RT: 21.269 min Scan# 2126
Delta R.T. -0.002 min
Lab File: BN013860.D
Acq: 05 Mar 2021 15:27

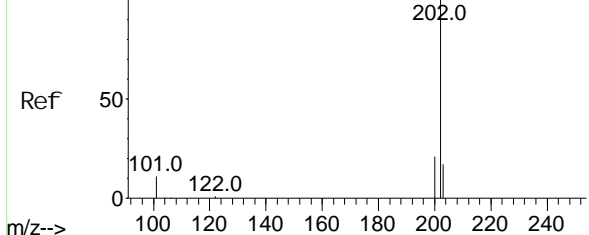
Instrument :
BNA_N
ClientSampled :

Tgt Ion: 240 Resp: 27543

Ion	Ratio	Lower	Upper
240	100		
120	11.6	10.2	15.4
236	26.4	21.3	31.9



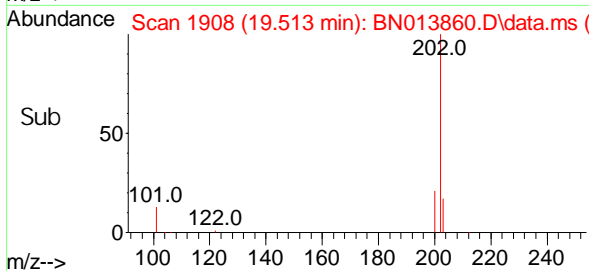
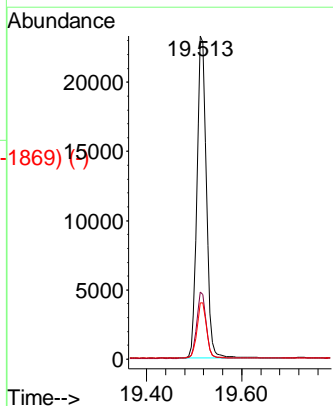
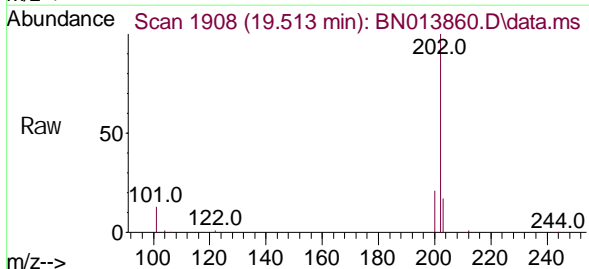
Abundance Scan 1914 (19.551 min): BN013740.D\data.ms (-1908) (-)



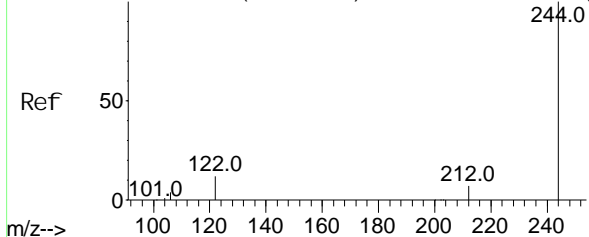
Pyrene
Concen: 0.37 ng
RT: 19.513 min Scan# 1908
Delta R.T. -0.007 min
Lab File: BN013860.D
Acq: 05 Mar 2021 15:27

Tgt Ion: 202 Resp: 31739

Ion	Ratio	Lower	Upper
202	100		
200	20.4	16.3	24.5
203	17.5	14.0	21.0



Abundance Scan 1957 (19.764 min): BN013740.D\data.ms (-1948) (-)

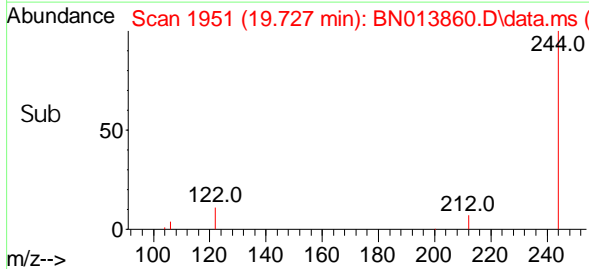
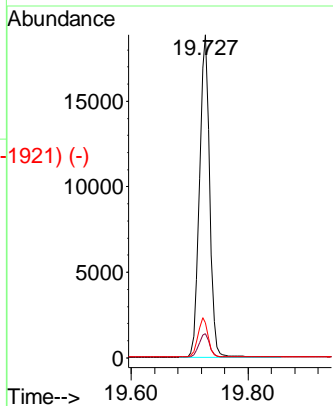
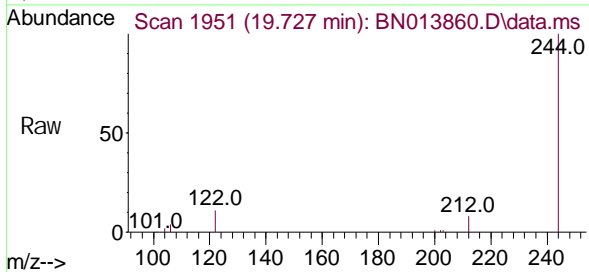


Terphenyl -d14
Concen: 0.37 ng
RT: 19.727 min Scan# 1951
Delta R.T. -0.002 min
Lab File: BN013860.D
Acq: 05 Mar 2021 15:27

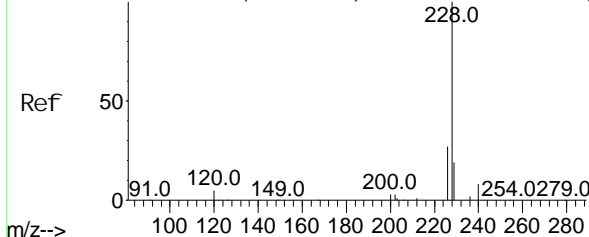
Instrument :
BNA_N
ClientSampled :

Tgt Ion: 244 Resp: 22427

Ion	Ratio	Lower	Upper
244	100		
212	7.6	6.1	9.1
122	10.9	9.8	14.8



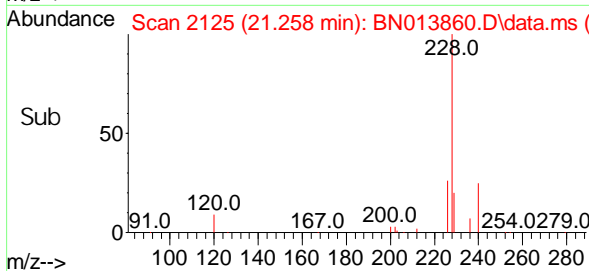
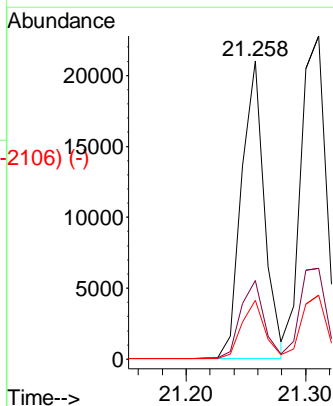
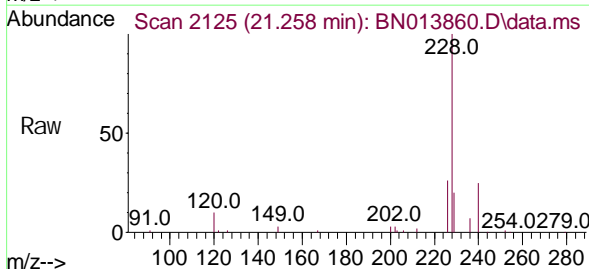
Abundance Scan 2127 (21.293 min): BN013740.D\data.ms (-2120) (-)

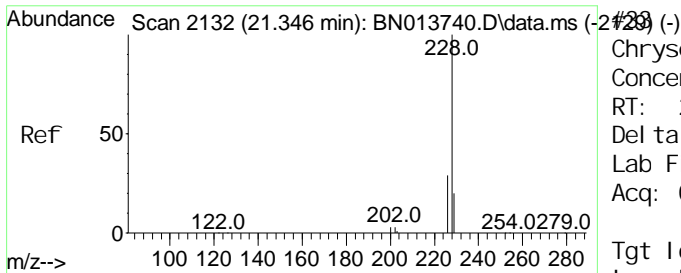


Benzo(a)anthracene
Concen: 0.33 ng
RT: 21.258 min Scan# 2125
Delta R.T. -0.002 min
Lab File: BN013860.D
Acq: 05 Mar 2021 15:27

Tgt Ion: 228 Resp: 27928

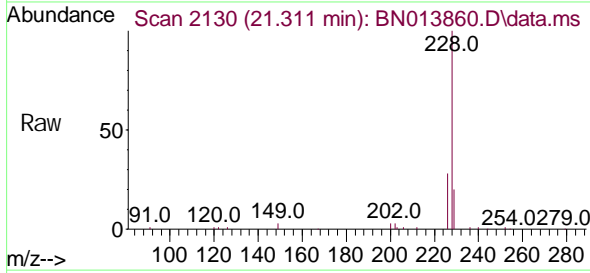
Ion	Ratio	Lower	Upper
228	100		
226	26.4	20.5	30.7
229	19.7	16.2	24.4





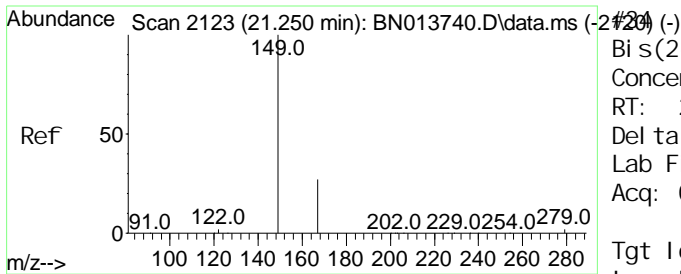
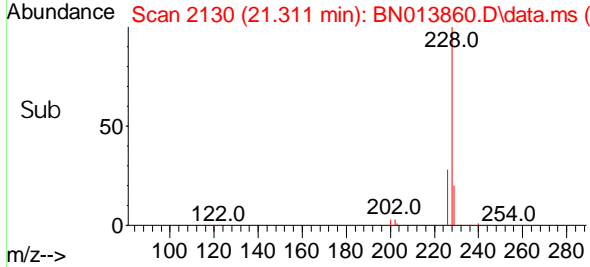
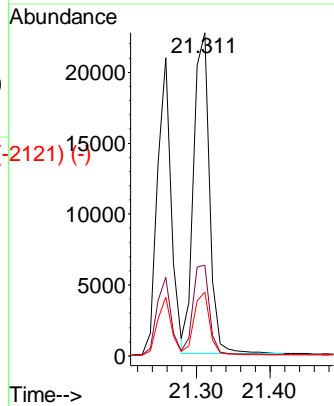
Chrysene
 Concen: 0.41 ng
 RT: 21.311 min Scan# 2130
 Delta R.T. -0.002 min
 Lab File: BN013860.D
 Acq: 05 Mar 2021 15:27

Instrument :
 BNA_N
 ClientSampled :



Tgt Ion: 228 Resp: 33770

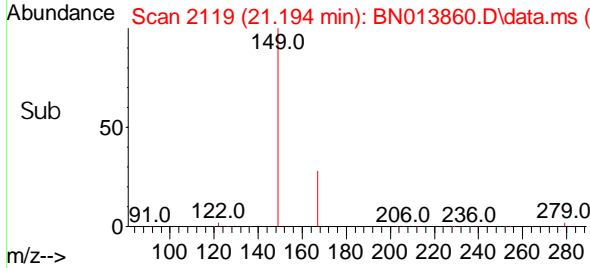
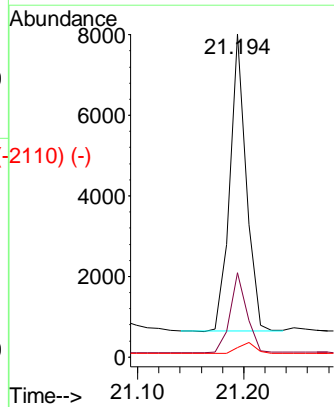
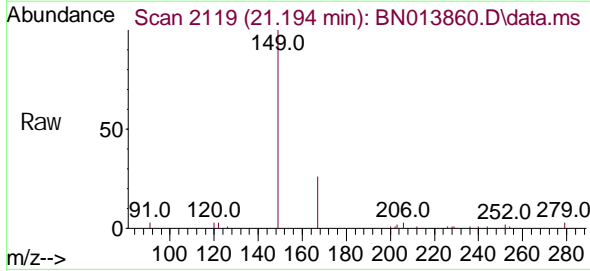
Ion	Ratio	Lower	Upper
228	100		
226	28.1	24.3	36.5
229	19.9	15.1	22.7



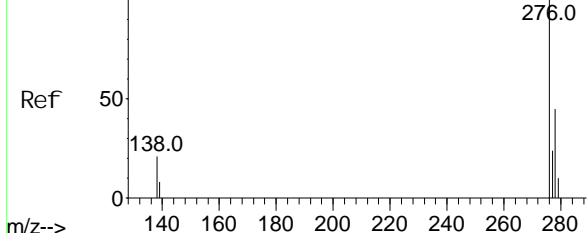
Bis(2-ethyl hexyl)phthalate
 Concen: 0.20 ng
 RT: 21.194 min Scan# 2119
 Delta R.T. -0.003 min
 Lab File: BN013860.D
 Acq: 05 Mar 2021 15:27

Tgt Ion: 149 Resp: 7902

Ion	Ratio	Lower	Upper
149	100		
167	27.4	22.1	33.1
279	4.1	3.5	5.3



Abundance Scan 3232 (25.831 min): BN013740.D\data.ms (-3205) (-)

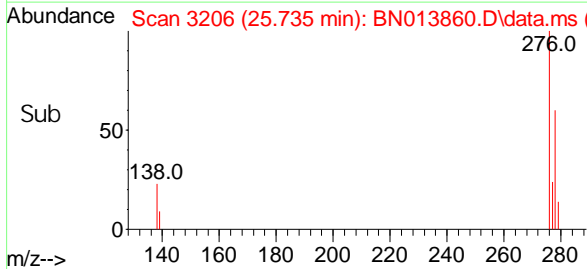
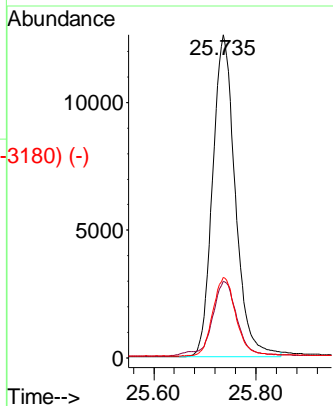
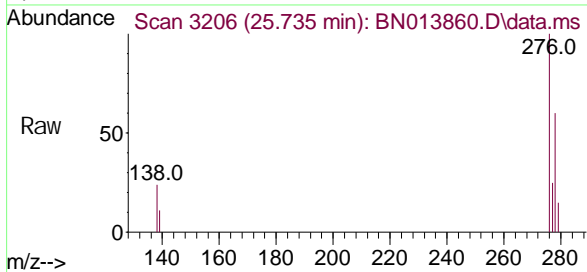


Indeno(1, 2, 3-cd)pyrene
Concen: 0.39 ng
RT: 25.735 min Scan# 3206
Delta R.T. -0.009 min
Lab File: BN013860.D
Acq: 05 Mar 2021 15:27

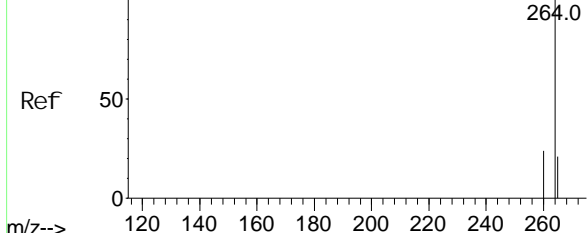
Instrument :
BNA_N
ClientSampled :

Tgt Ion: 276 Resp: 38652

Ion	Ratio	Lower	Upper
276	100		
138	23.8	19.8	29.6
277	25.0	19.9	29.9



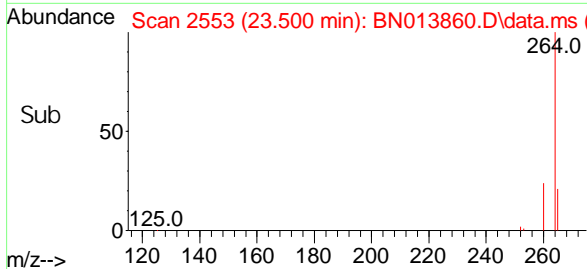
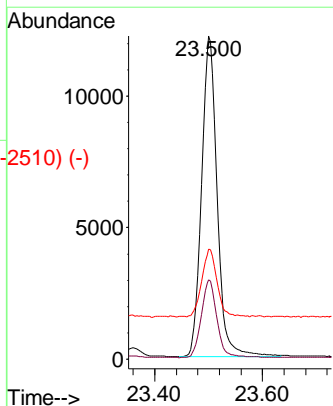
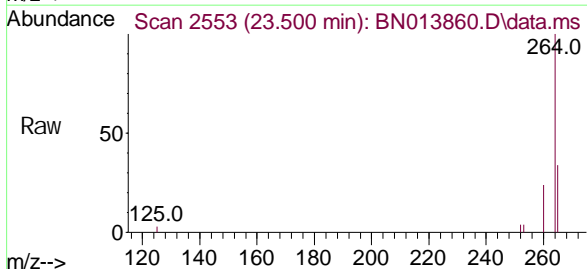
Abundance Scan 2568 (23.558 min): BN013740.D\data.ms (-2532) (-)



Perylene-d12
Concen: 0.40 ng
RT: 23.500 min Scan# 2553
Delta R.T. -0.003 min
Lab File: BN013860.D
Acq: 05 Mar 2021 15:27

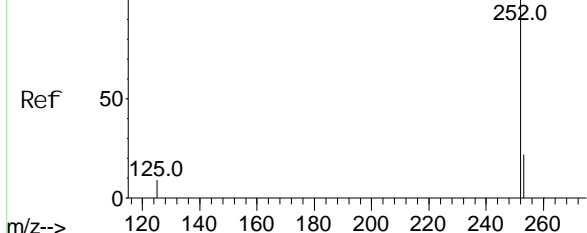
Tgt Ion: 264 Resp: 24586

Ion	Ratio	Lower	Upper
264	100		
260	24.5	19.3	28.9
265	34.0	66.2	99.4#



Instrument :
 BNA_N
 ClientSampled :

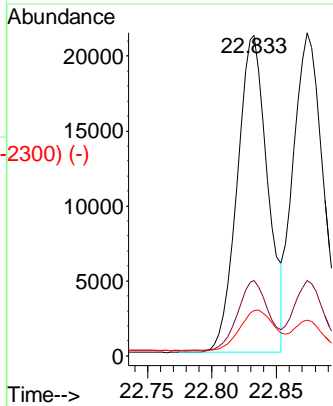
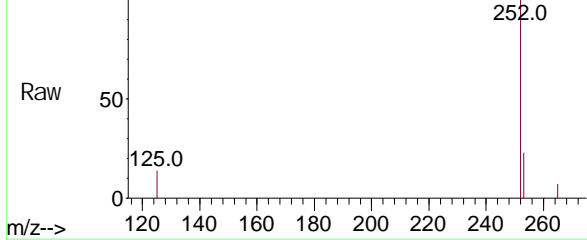
Abundance Scan 2371 (22.883 min): BN013740.D\data.ms (-2371) (-)



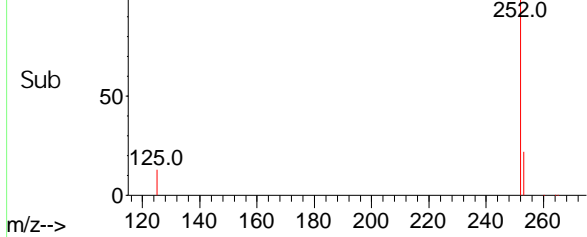
Benzo(b) fluoranthene
 Concen: 0.44 ng
 RT: 22.833 min Scan# 2358
 Delta R.T. -0.002 min
 Lab File: BN013860.D
 Acq: 05 Mar 2021 15:27

Tgt Ion	Resp	Lower	Upper
252	100		
253	23.5	20.4	30.6
125	14.2	11.6	17.4

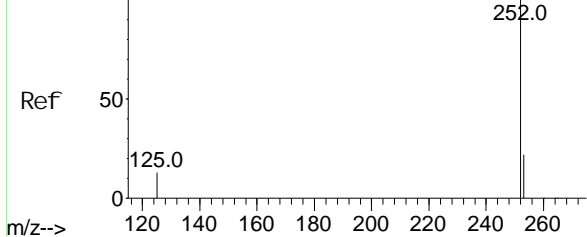
Abundance Scan 2358 (22.833 min): BN013860.D\data.ms



Abundance Scan 2358 (22.833 min): BN013860.D\data.ms (-2300) (-)



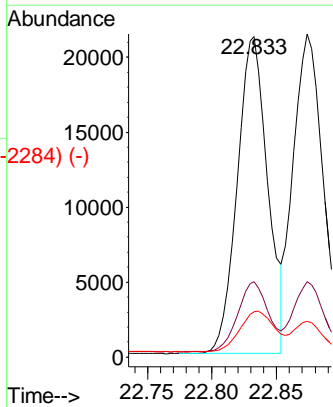
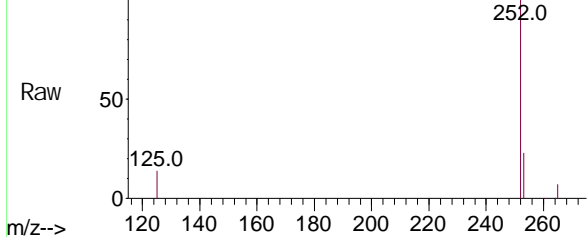
Abundance Scan 2384 (22.928 min): BN013740.D\data.ms (-2378) (-)



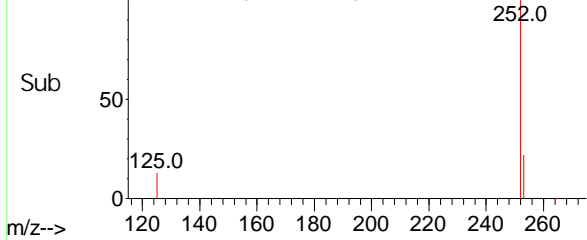
Benzo(k) fluoranthene
 Concen: 0.46 ng
 RT: 22.833 min Scan# 2358
 Delta R.T. -0.047 min
 Lab File: BN013860.D
 Acq: 05 Mar 2021 15:27

Tgt Ion	Resp	Lower	Upper
252	100		
253	23.5	20.5	30.7
125	14.2	12.3	18.5

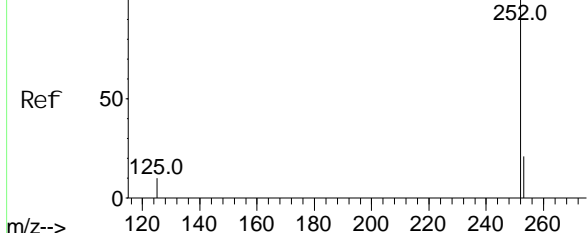
Abundance Scan 2358 (22.833 min): BN013860.D\data.ms



Abundance Scan 2358 (22.833 min): BN013860.D\data.ms (-2284) (-)



Abundance Scan 2539 (23.458 min): BN013740.D\data.ms (-2529) (-)

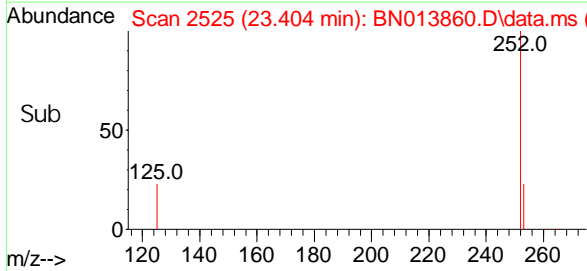
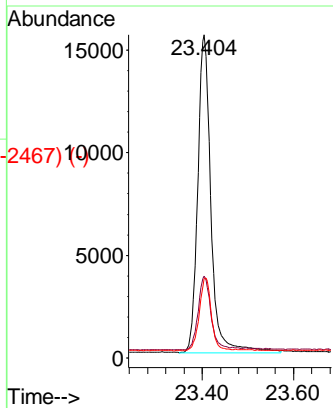
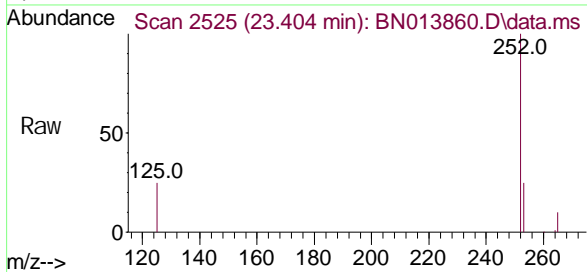


Benzo(a)pyrene
Concen: 0.44 ng
RT: 23.404 min Scan# 2525
Delta R.T. -0.003 min
Lab File: BN013860.D
Acq: 05 Mar 2021 15:27

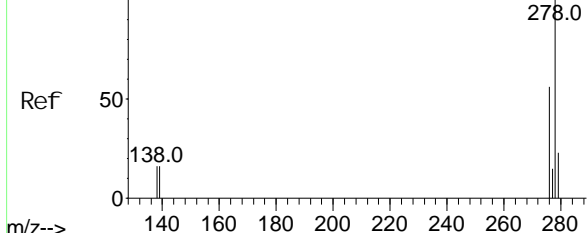
Instrument :
BNA_N
ClientSampled :

Tgt Ion: 252 Resp: 31242

Ion	Ratio	Lower	Upper
252	100		
253	25.4	21.8	32.6
125	24.5	14.6	21.8#



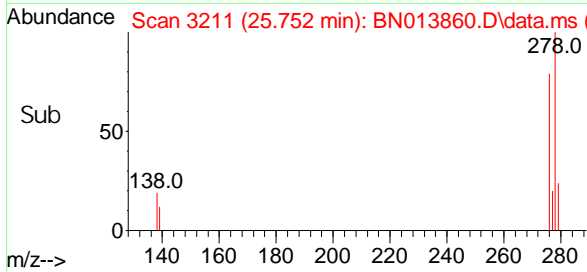
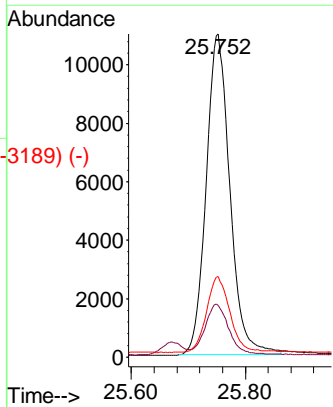
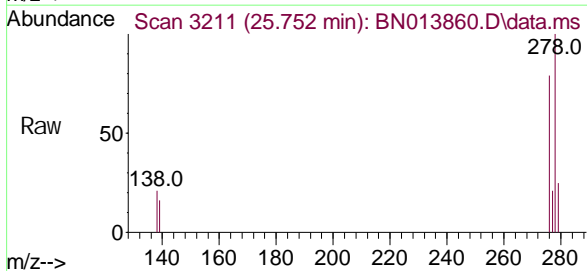
Abundance Scan 3239 (25.854 min): BN013740.D\data.ms (-3211) (-)



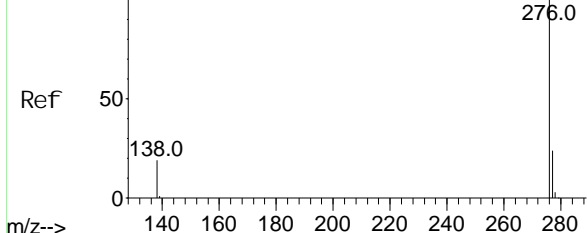
Di benzo(a, h)anthracene
Concen: 0.42 ng
RT: 25.752 min Scan# 3211
Delta R.T. -0.006 min
Lab File: BN013860.D
Acq: 05 Mar 2021 15:27

Tgt Ion: 278 Resp: 31808

Ion	Ratio	Lower	Upper
278	100		
139	15.9	13.1	19.7
279	24.9	21.4	32.0

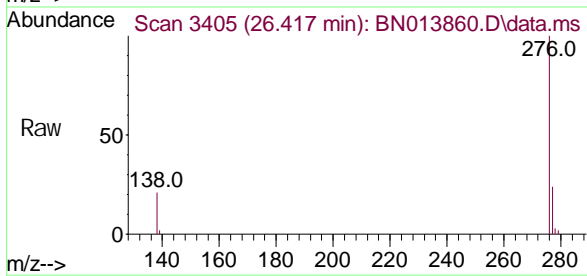


Abundance Scan 3434 (26.522 min): BN013740.D\data.ms (-3434) (-)



Benzo(g, h, i)perylene
 Concen: 0.43 ng
 RT: 26.417 min Scan# 3405
 Delta R.T. -0.009 min
 Lab File: BN013860.D
 Acq: 05 Mar 2021 15:27

Instrument :
 BNA_N
ClientSampled :



Tgt Ion: 276 Resp: 32897

Ion	Ratio	Lower	Upper
276	100		
277	24.2	20.0	30.0
138	21.3	17.8	26.8

