

Data Path : Z:\svoasrv\HPCHEM1\BNA_N\Data\BN031425\
 Data File : BN036636.D
 Acq On : 15 Mar 2025 10:23
 Operator : RC/JU
 Sample : Q1559-07
 Misc :
 ALS Vial : 30 Sample Multiplier: 1

Instrument :
 BNA_N
 ClientSampleId :
 RE125D3-20250310

Quant Time: Mar 17 00:35:00 2025
 Quant Method : Z:\svoasrv\HPCHEM1\BNA_N\Methods\8270-SIM-BN031025.M
 Quant Title : ASP BNA STANDARDS FOR 5 POINT CALIBRATION
 QLast Update : Mon Mar 10 16:06:28 2025
 Response via : Initial Calibration

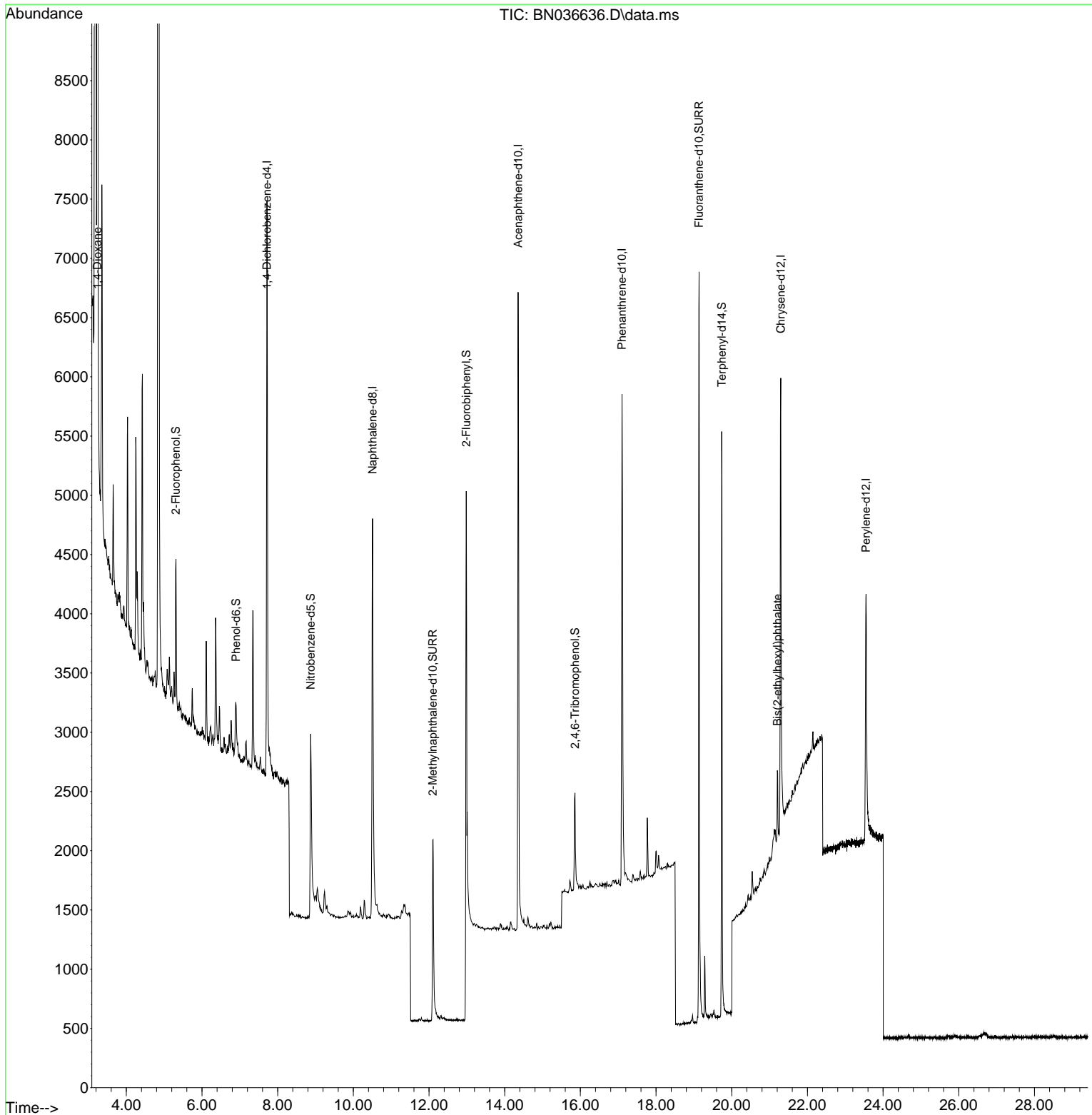
Compound	R.T.	QIon	Response	Conc	Units	Dev(Min)	
Internal Standards							
1) 1,4-Dichlorobenzene-d4	7.717	152	2449	0.400	ng	0.00	
7) Naphthalene-d8	10.509	136	5685	0.400	ng	0.00	
13) Acenaphthene-d10	14.356	164	3421	0.400	ng	-0.01	
19) Phenanthrene-d10	17.099	188	6919	0.400	ng	#-0.01	
29) Chrysene-d12	21.295	240	4660	0.400	ng	0.00	
35) Perylene-d12	23.546	264	3624	0.400	ng	0.00	
System Monitoring Compounds							
4) 2-Fluorophenol	5.312	112	938	0.164	ng	0.00	
5) Phenol-d6	6.901	99	562	0.080	ng	0.00	
8) Nitrobenzene-d5	8.875	82	1997	0.323	ng	0.00	
11) 2-Methylnaphthalene-d10	12.101	152	2939	0.348	ng	0.00	
14) 2,4,6-Tribromophenol	15.858	330	611	0.394	ng	0.00	
15) 2-Fluorobiphenyl	12.983	172	7085	0.356	ng	0.00	
27) Fluoranthene-d10	19.137	212	7540	0.425	ng	0.00	
31) Terphenyl-d14	19.736	244	5146	0.461	ng	0.00	
Target Compounds							
2) 1,4-Dioxane	3.232	88	7445	2.740	ng		96
34) Bis(2-ethylhexyl)phtha...	21.205	149	645	0.056	ng	#	97

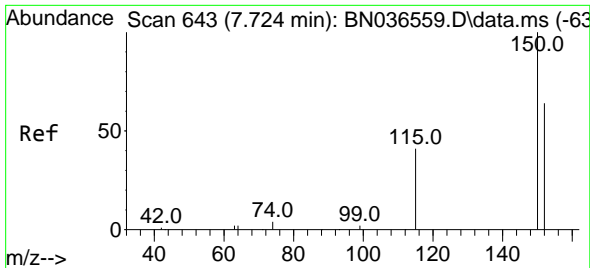
(#) = qualifier out of range (m) = manual integration (+) = signals summed

Data Path : Z:\svoasrv\HPCHEM1\BNA_N\Data\BN031425\
 Data File : BN036636.D
 Acq On : 15 Mar 2025 10:23
 Operator : RC/JU
 Sample : Q1559-07
 Misc :
 ALS Vial : 30 Sample Multiplier: 1

Instrument :
 BNA_N
 ClientSampleId :
 RE125D3-20250310

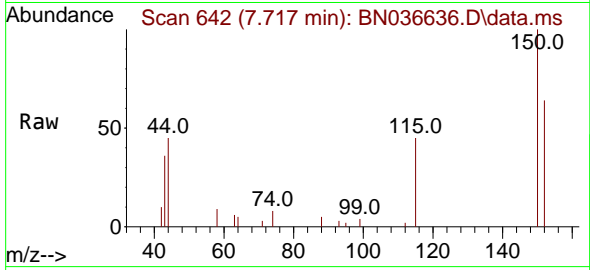
Quant Time: Mar 17 00:35:00 2025
 Quant Method : Z:\svoasrv\HPCHEM1\BNA_N\Methods\8270-SIM-BN031025.M
 Quant Title : ASP BNA STANDARDS FOR 5 POINT CALIBRATION
 QLast Update : Mon Mar 10 16:06:28 2025
 Response via : Initial Calibration



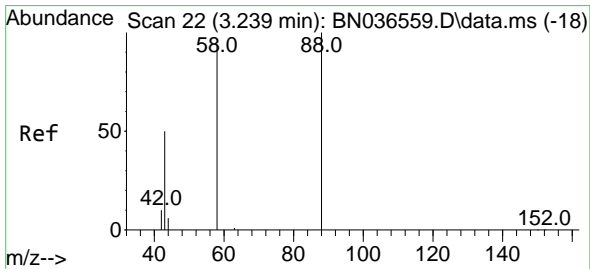
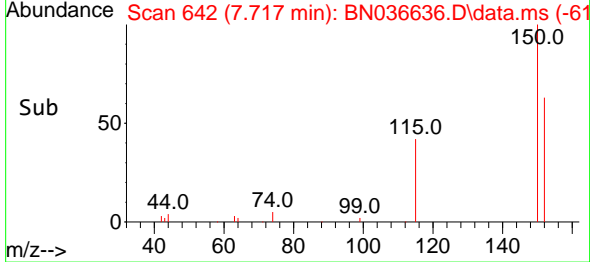
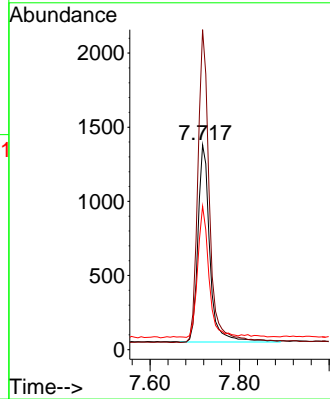


#1
 1,4-Dichlorobenzene-d4
 Concen: 0.400 ng
 RT: 7.717 min Scan# 64
 Delta R.T. -0.007 min
 Lab File: BN036636.D
 Acq: 15 Mar 2025 10:23

Instrument :
 BNA_N
 ClientSampleId :
 RE125D3-20250310

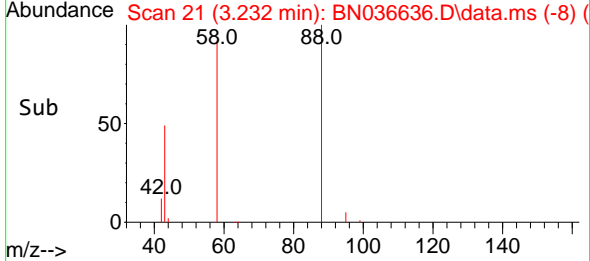
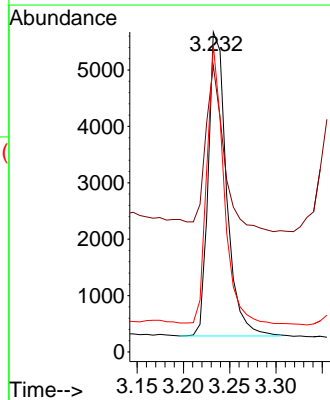
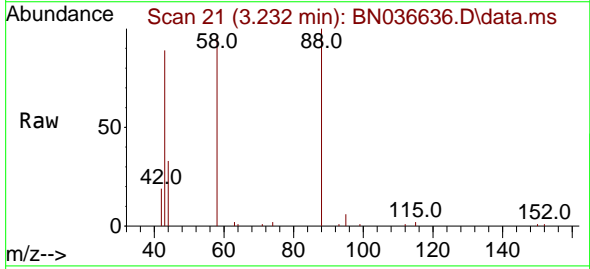


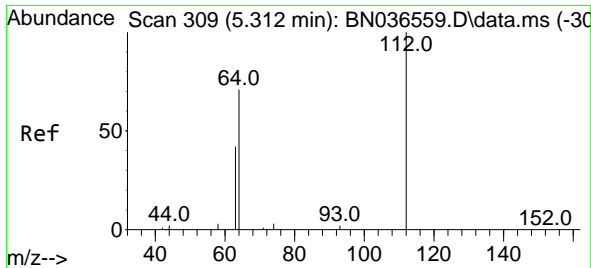
Tgt Ion:152 Resp: 2449
 Ion Ratio Lower Upper
 152 100
 150 156.3 123.7 185.5
 115 70.1 54.3 81.5



#2
 1,4-Dioxane
 Concen: 2.740 ng
 RT: 3.232 min Scan# 21
 Delta R.T. -0.007 min
 Lab File: BN036636.D
 Acq: 15 Mar 2025 10:23

Tgt Ion: 88 Resp: 7445
 Ion Ratio Lower Upper
 88 100
 43 54.9 37.8 56.8
 58 84.7 67.4 101.2

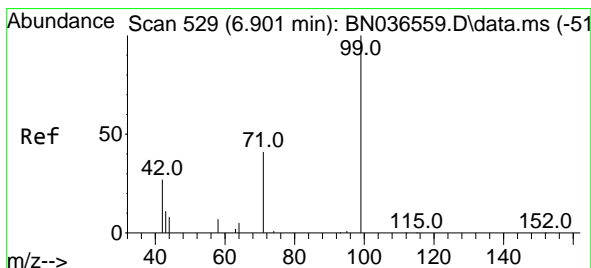
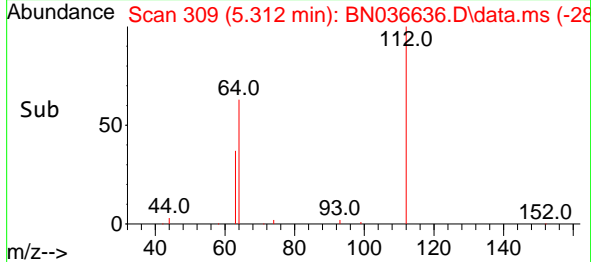
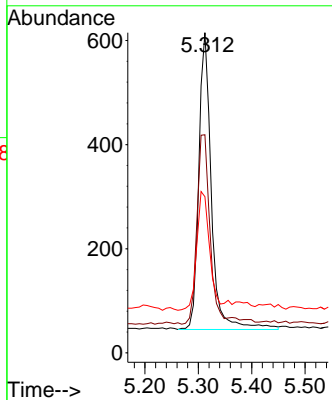
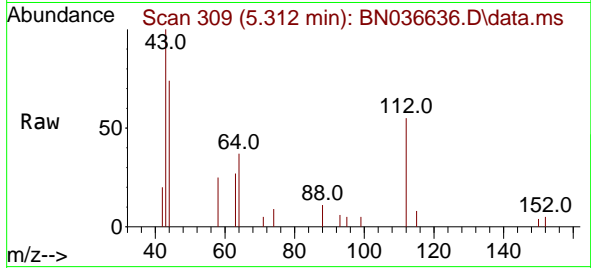




#4
 2-Fluorophenol
 Concen: 0.164 ng
 RT: 5.312 min Scan# 309
 Delta R.T. 0.000 min
 Lab File: BN036636.D
 Acq: 15 Mar 2025 10:23

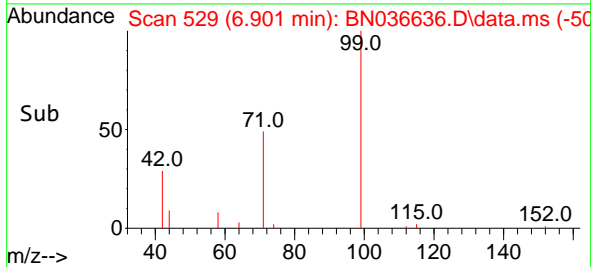
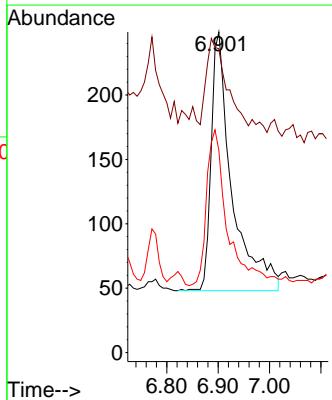
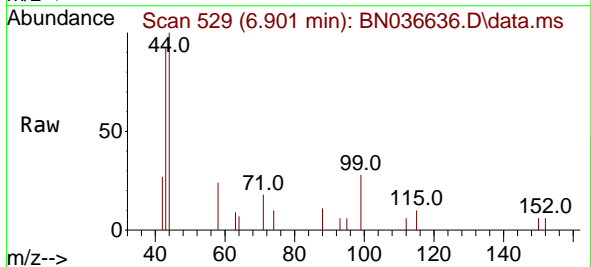
Instrument : BNA_N
 ClientSampleId : RE125D3-20250310

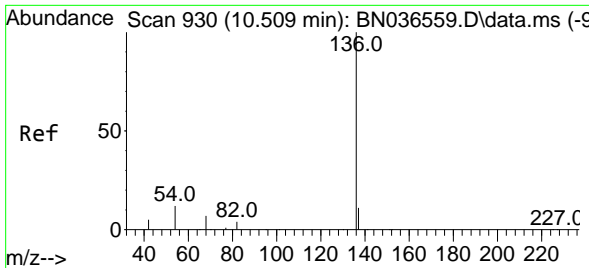
Tgt Ion	Resp	Lower	Upper
112	100		
64	68.6	53.1	79.7
63	40.9	31.8	47.8



#5
 Phenol-d6
 Concen: 0.080 ng
 RT: 6.901 min Scan# 529
 Delta R.T. 0.000 min
 Lab File: BN036636.D
 Acq: 15 Mar 2025 10:23

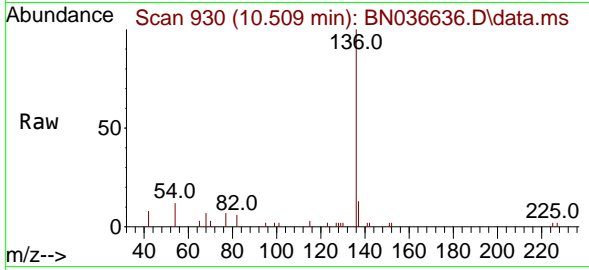
Tgt Ion	Resp	Lower	Upper
99	100		
42	31.5	26.5	39.7
71	62.6	34.1	51.1





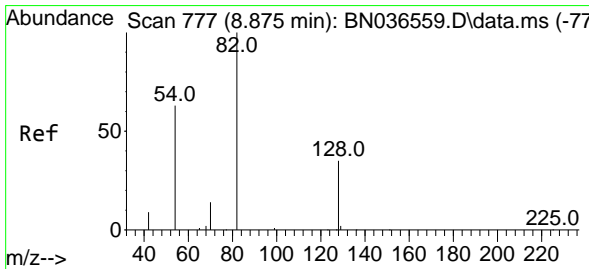
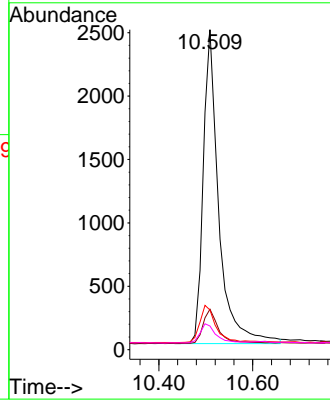
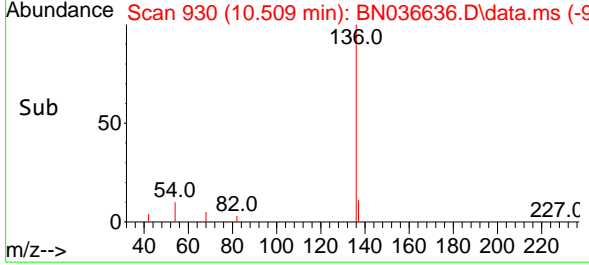
#7
 Naphthalene-d8
 Concen: 0.400 ng
 RT: 10.509 min Scan# 911
 Delta R.T. 0.000 min
 Lab File: BN036636.D
 Acq: 15 Mar 2025 10:23

Instrument :
 BNA_N
 ClientSampleId :
 RE125D3-20250310

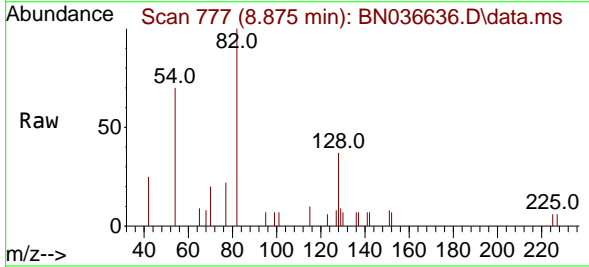


Tgt Ion: 136 Resp: 5685

Ion	Ratio	Lower	Upper
136	100		
137	12.6	10.3	15.5
54	12.4	11.5	17.3
68	7.4	7.0	10.4

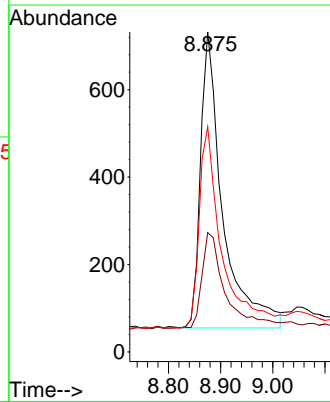
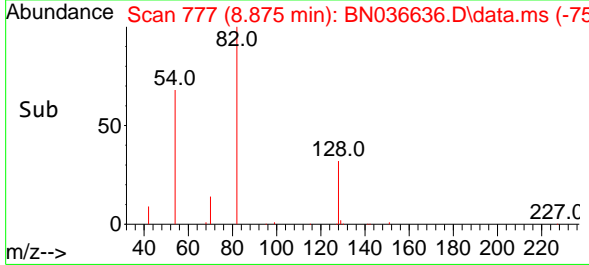


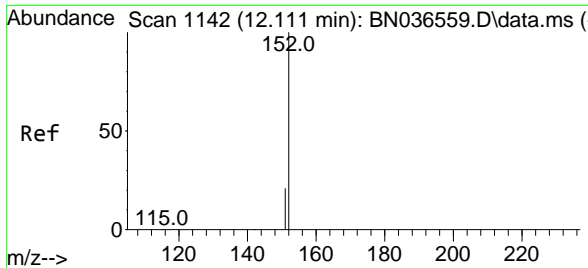
#8
 Nitrobenzene-d5
 Concen: 0.323 ng
 RT: 8.875 min Scan# 777
 Delta R.T. 0.000 min
 Lab File: BN036636.D
 Acq: 15 Mar 2025 10:23



Tgt Ion: 82 Resp: 1997

Ion	Ratio	Lower	Upper
82	100		
128	37.3	30.6	45.8
54	70.4	52.2	78.4

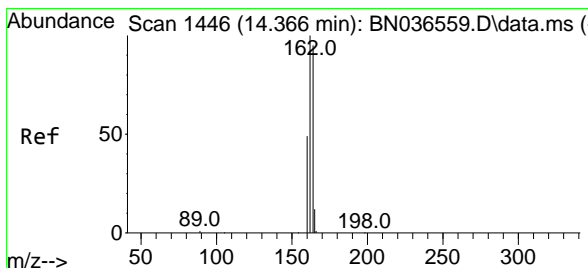
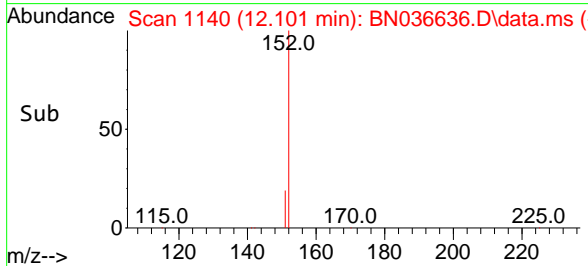
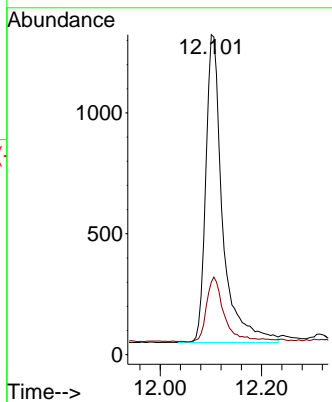
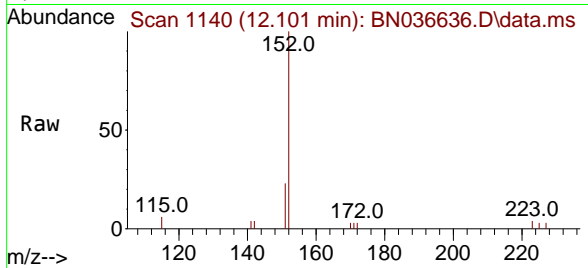




#11
 2-Methylnaphthalene-d10
 Concen: 0.348 ng
 RT: 12.101 min Scan# 1140
 Delta R.T. -0.010 min
 Lab File: BN036636.D
 Acq: 15 Mar 2025 10:23

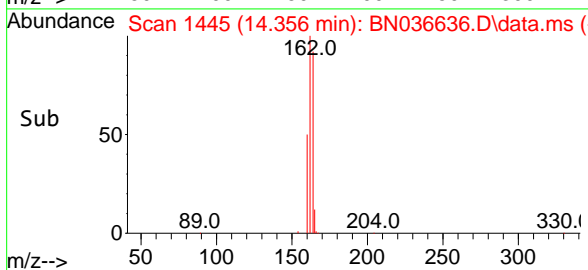
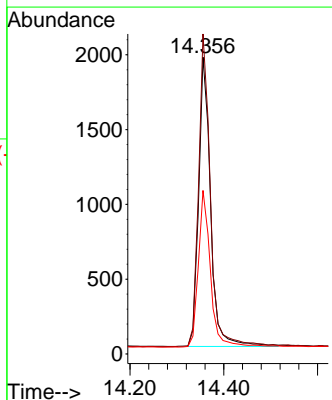
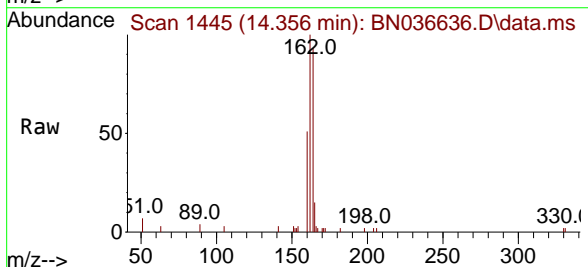
Instrument :
 BNA_N
 ClientSampleId :
 RE125D3-20250310

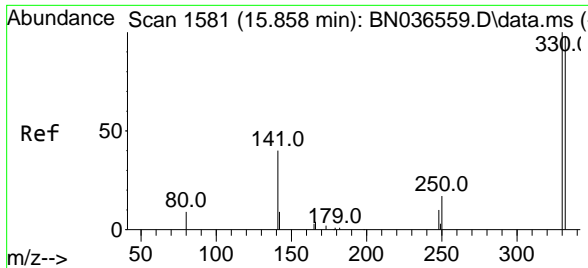
Tgt Ion:152 Resp: 2939
 Ion Ratio Lower Upper
 152 100
 151 21.8 17.0 25.6



#13
 Acenaphthene-d10
 Concen: 0.400 ng
 RT: 14.356 min Scan# 1445
 Delta R.T. -0.010 min
 Lab File: BN036636.D
 Acq: 15 Mar 2025 10:23

Tgt Ion:164 Resp: 3421
 Ion Ratio Lower Upper
 164 100
 162 107.8 84.2 126.2
 160 55.1 42.2 63.2

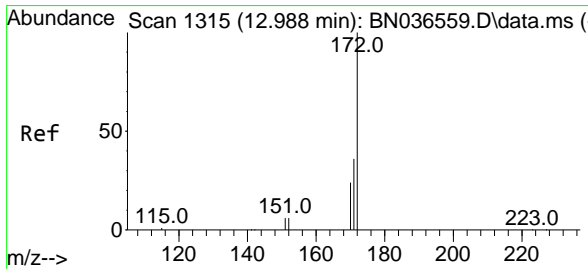
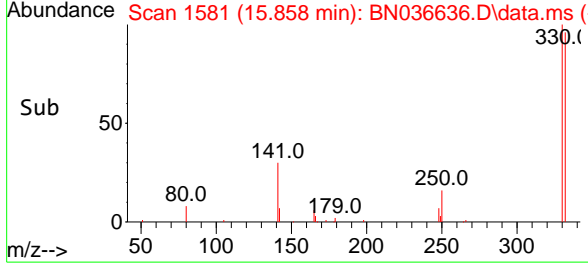
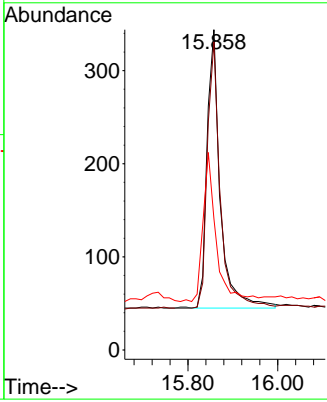
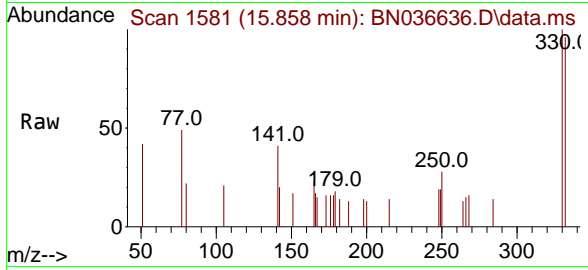




#14
 2,4,6-Tribromophenol
 Concen: 0.394 ng
 RT: 15.858 min Scan# 11
 Delta R.T. 0.000 min
 Lab File: BN036636.D
 Acq: 15 Mar 2025 10:23

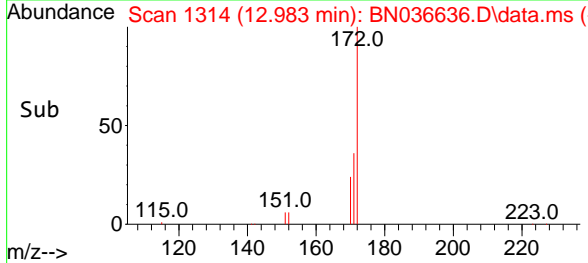
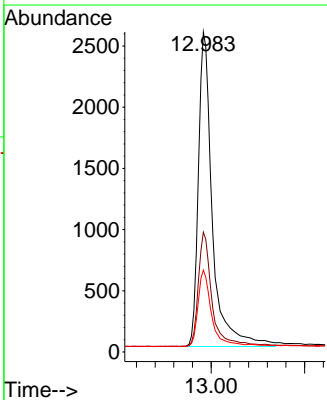
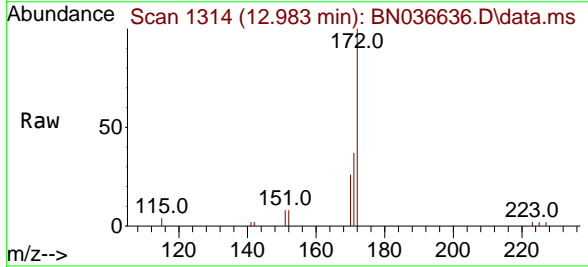
Instrument : BNA_N
 ClientSampleId : RE125D3-20250310

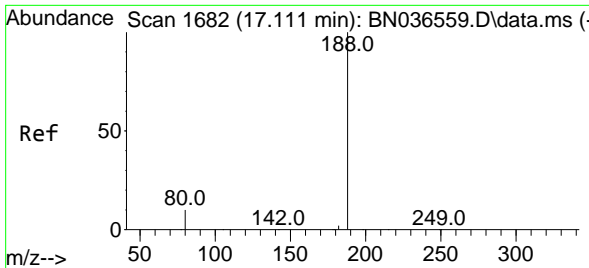
Tgt Ion	Resp	Lower	Upper
330	100		
332	94.1	75.2	112.8
141	52.7	43.4	65.2



#15
 2-Fluorobiphenyl
 Concen: 0.356 ng
 RT: 12.983 min Scan# 1314
 Delta R.T. -0.005 min
 Lab File: BN036636.D
 Acq: 15 Mar 2025 10:23

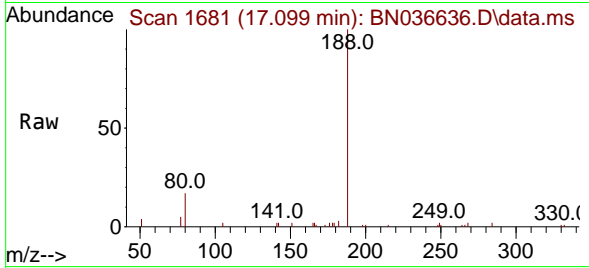
Tgt Ion	Resp	Lower	Upper
172	100		
171	37.4	29.5	44.3
170	25.6	20.2	30.4



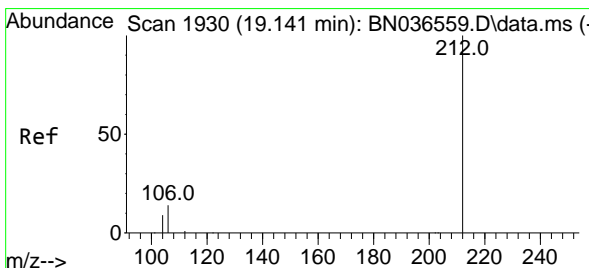
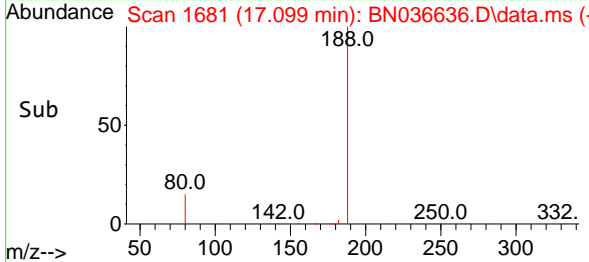
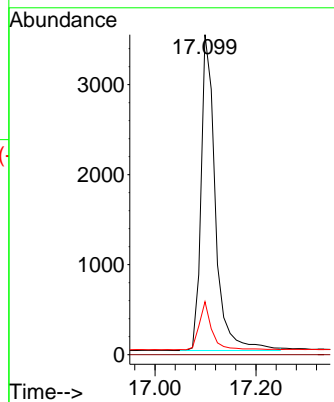


#19
 Phenanthrene-d10
 Concen: 0.400 ng
 RT: 17.099 min Scan# 10
 Delta R.T. -0.012 min
 Lab File: BN036636.D
 Acq: 15 Mar 2025 10:23

Instrument :
 BNA_N
 ClientSampleId :
 RE125D3-20250310

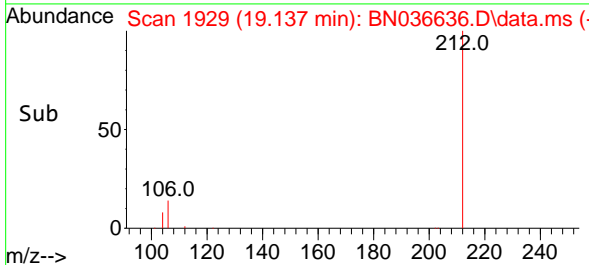
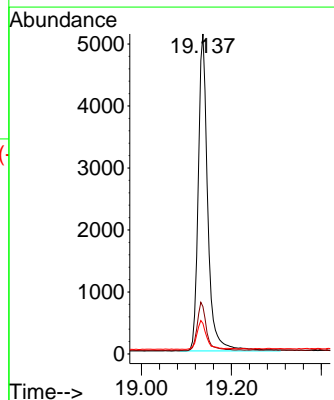
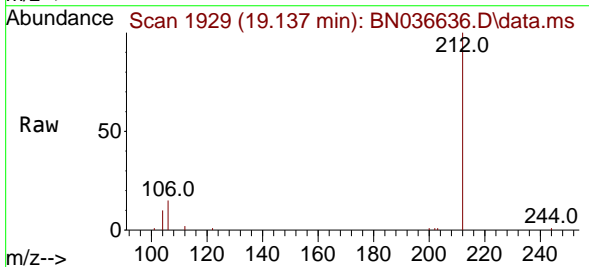


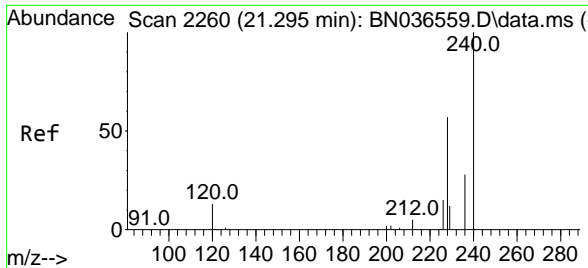
Tgt Ion:188 Resp: 6919
 Ion Ratio Lower Upper
 188 100
 94 0.0 0.0 0.0
 80 16.5 8.8 13.2#



#27
 Fluoranthene-d10
 Concen: 0.425 ng
 RT: 19.137 min Scan# 1929
 Delta R.T. -0.004 min
 Lab File: BN036636.D
 Acq: 15 Mar 2025 10:23

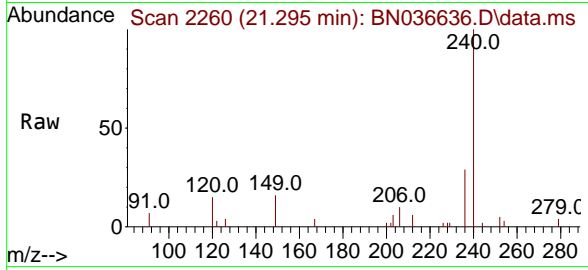
Tgt Ion:212 Resp: 7540
 Ion Ratio Lower Upper
 212 100
 106 14.8 11.8 17.6
 104 8.9 7.3 10.9



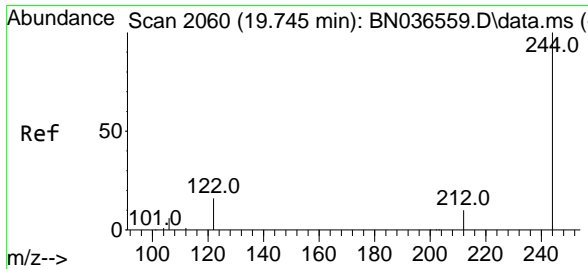
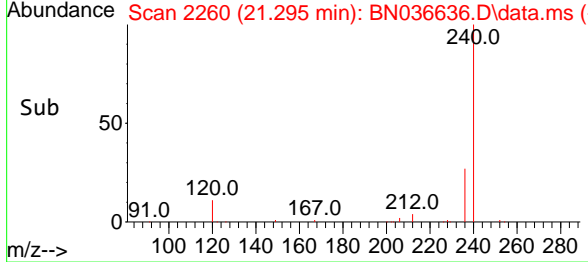
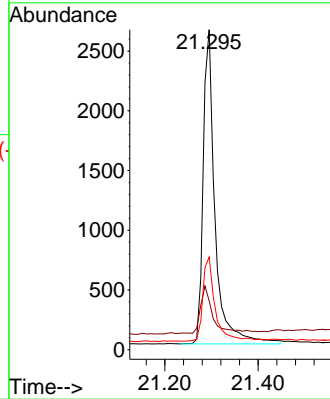


#29
 Chrysene-d12
 Concen: 0.400 ng
 RT: 21.295 min Scan# 21
 Delta R.T. 0.000 min
 Lab File: BN036636.D
 Acq: 15 Mar 2025 10:23

Instrument :
 BNA_N
 ClientSampleId :
 RE125D3-20250310

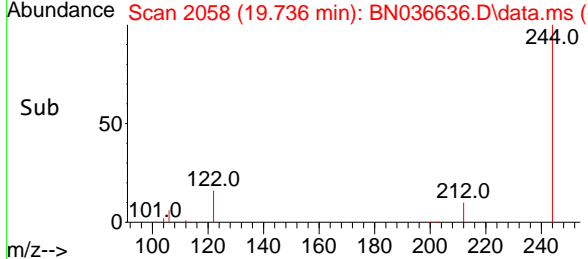
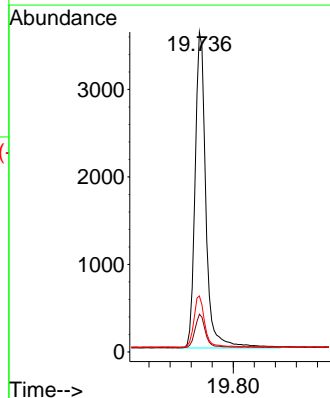
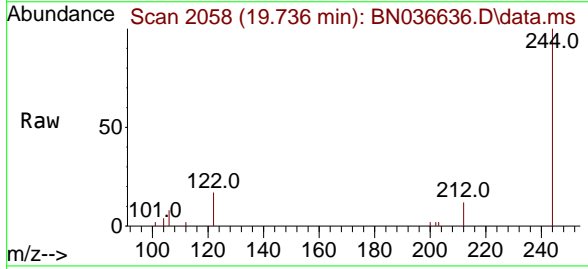


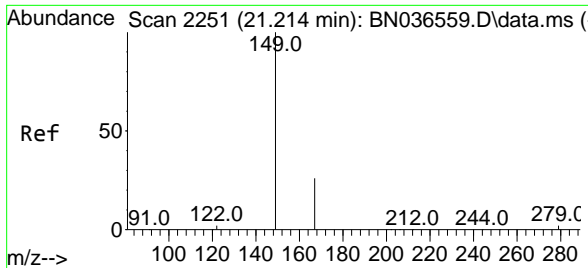
Tgt Ion:240 Resp: 4660
 Ion Ratio Lower Upper
 240 100
 120 15.3 14.6 22.0
 236 29.0 24.1 36.1



#31
 Terphenyl-d14
 Concen: 0.461 ng
 RT: 19.736 min Scan# 2058
 Delta R.T. -0.009 min
 Lab File: BN036636.D
 Acq: 15 Mar 2025 10:23

Tgt Ion:244 Resp: 5146
 Ion Ratio Lower Upper
 244 100
 212 11.8 9.6 14.4
 122 17.5 13.9 20.9

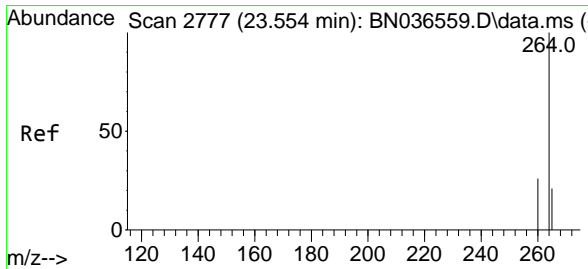
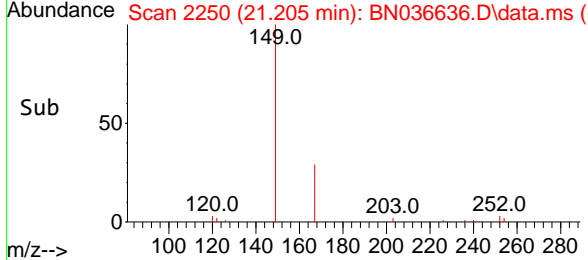
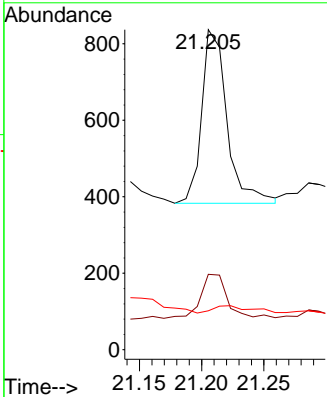
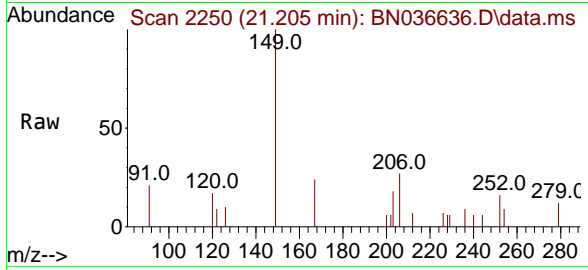




#34
 Bis(2-ethylhexyl)phthalate
 Concen: 0.056 ng
 RT: 21.205 min Scan# 21
 Delta R.T. -0.009 min
 Lab File: BN036636.D
 Acq: 15 Mar 2025 10:23

Instrument :
 BNA_N
 ClientSampleId :
 RE125D3-20250310

Tgt Ion	Resp	Lower	Upper
149	100		
167	27.0	20.7	31.1
279	6.2	3.6	5.4



#35
 Perylene-d12
 Concen: 0.400 ng
 RT: 23.546 min Scan# 2774
 Delta R.T. -0.009 min
 Lab File: BN036636.D
 Acq: 15 Mar 2025 10:23

Tgt Ion	Resp	Lower	Upper
264	100		
260	28.0	22.6	33.8
265	100.1	88.1	132.1

