

Data Path : Z:\SVOASRV\HPCHEM1\BNA N\DATA\BN031820\  
 Data File : BN010265.D  
 Acq On : 18 Mar 2020 16:08  
 Operator : CG/JU  
 Sample : SSTDCCC0.4  
 Misc :  
 ALS Vial : 2 Sample Multiplier: 1

Instrument :  
 BNA\_N  
 ClientSampleId :  
 SSTDCCC0.4

Quant Time: Mar 19 01:12:53 2020  
 Quant Method : Z:\SVOASRV\HPCHEM1\BNA N\METHODS\8270-SIM-BN031320.M  
 Quant Title : ASP BNA STANDARDS FOR 5 POINT CALIBRATION  
 QLast Update : Mon Mar 16 02:17:23 2020  
 Response via : Initial Calibration

Internal Standards	R.T.	QIon	Response	Conc	Units	Dev(Min)
1) 1,4-Dichlorobenzene-d4	7.63	152	3604	0.40	ng	0.00
7) Naphthalene-d8	10.38	136	12547	0.40	ng	-0.01
13) Acenaphthene-d10	14.24	164	7728	0.40	ng	-0.02
19) Phenanthrene-d10	16.98	188	18482	0.40	ng	-0.01
27) Chrysene-d12	21.19	240	18691	0.40	ng	0.00
34) Perylene-d12	23.36	264	20210	0.40	ng	-0.02

System Monitoring Compounds	R.T.	QIon	Response	Conc	Units	Dev(Min)
4) 2-Fluorophenol	5.26	112	2848	0.34	ng	0.00
5) Phenol-d6	6.81	99	3550	0.34	ng	0.00
8) Nitrobenzene-d5	8.76	82	3057	0.41	ng	-0.01
11) 2-Methylnaphthalene-d10	11.98	152	7963	0.38	ng	-0.01
14) 2,4,6-Tribromophenol	15.74	330	1012	0.37	ng	-0.02
15) 2-Fluorobiphenyl	12.87	172	12011	0.44	ng	0.00
25) Fluoranthene-d10	19.02	212	21269	0.37	ng	-0.01
29) Terphenyl-d14	19.63	244	16868	0.40	ng	-0.02

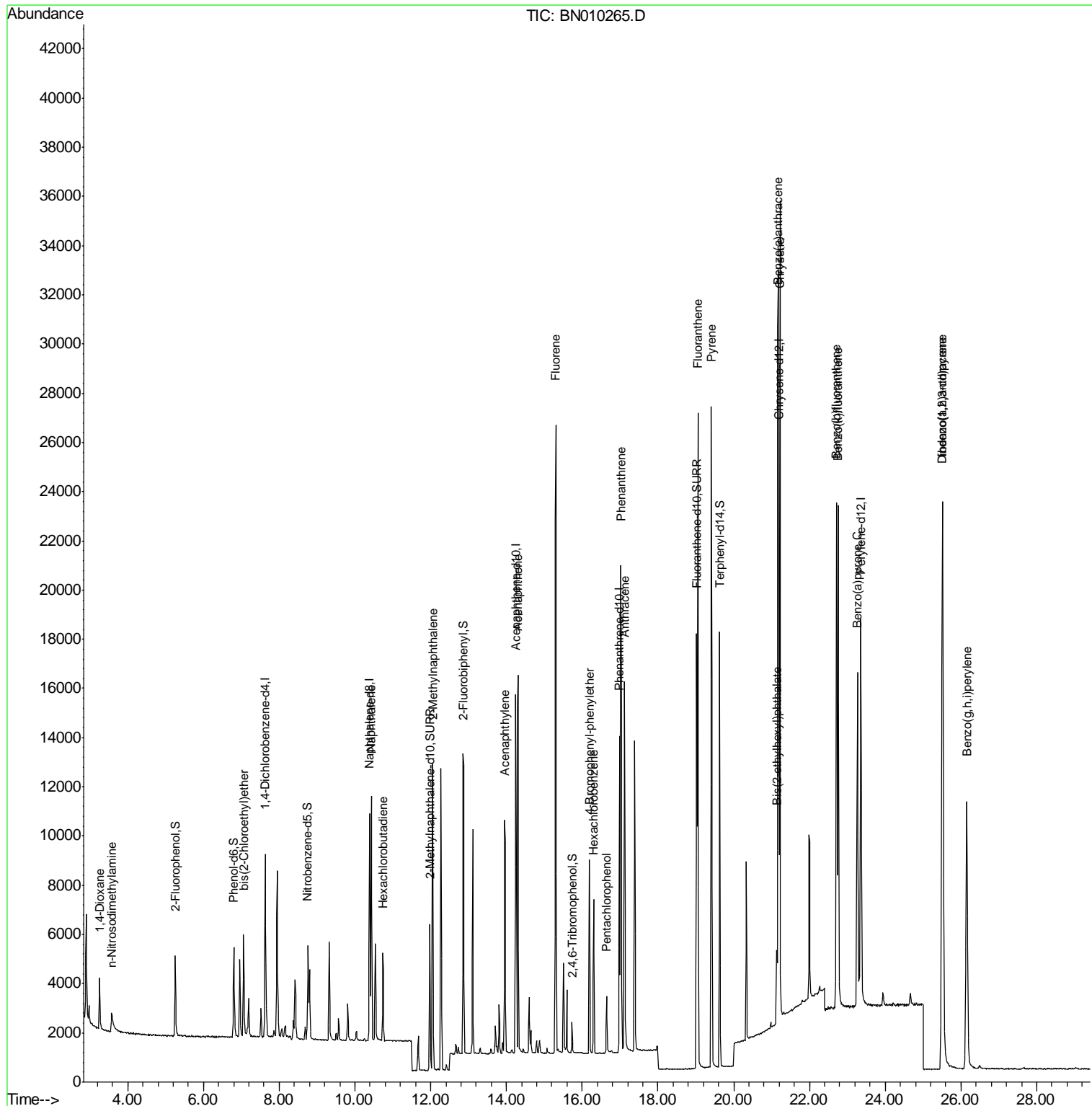
Target Compounds	R.T.	QIon	Response	Conc	Units	Qvalue
2) 1,4-Dioxane	3.26	88	1388	0.395	ng	# 54
3) n-Nitrosodimethylamine	3.58	42	976	0.313	ng	# 31
6) bis(2-Chloroethyl)ether	7.06	93	3533	0.400	ng	97
9) Naphthalene	10.43	128	12429	0.395	ng	97
10) Hexachlorobutadiene	10.73	225	3084	0.426	ng	# 96
12) 2-Methylnaphthalene	12.05	142	8722	0.386	ng	96
16) Acenaphthylene	13.95	152	11483	0.322	ng	99
17) Acenaphthene	14.31	154	8529	0.394	ng	98
18) Fluorene	15.30	166	11282	0.382	ng	99
20) 4-Bromophenyl-phenylether	16.20	248	4343	0.409	ng	95
21) Hexachlorobenzene	16.30	284	4687	0.452	ng	98
22) Pentachlorophenol	16.64	266	1246	0.389	ng	92
23) Phenanthrene	17.02	178	20039	0.409	ng	100
24) Anthracene	17.12	178	16301	0.334	ng	99
26) Fluoranthene	19.05	202	23977	0.386	ng	99
28) Pyrene	19.41	202	23940	0.383	ng	100
30) Benzo(a)anthracene	21.17	228	22752	0.358	ng	98
31) Chrysene	21.22	228	25589	0.409	ng	98
32) Bis(2-ethylhexyl)phthalate	21.13	149	5627	0.208	ng	# 95
33) Indeno(1,2,3-cd)pyrene	25.51	276	28752	0.387	ng	98
35) Benzo(b)fluoranthene	22.71	252	24588	0.396	ng	99
36) Benzo(k)fluoranthene	22.76	252	26285	0.419	ng	100
37) Benzo(a)pyrene	23.26	252	20625	0.352	ng	98
38) Dibenzo(a,h)anthracene	25.52	278	23834	0.405	ng	98
39) Benzo(g,h,i)perylene	26.15	276	23279	0.396	ng	98

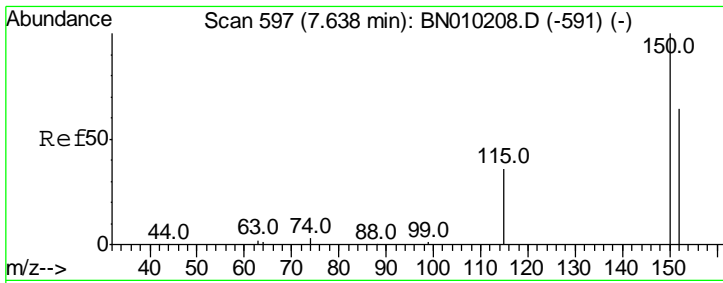
(#) = qualifier out of range (m) = manual integration (+) = signals summed

Data Path : Z:\SVOASRV\HPCHEM1\BNA N\DATA\BN031820\  
 Data File : BN010265.D  
 Acq On : 18 Mar 2020 16:08  
 Operator : CG/JU  
 Sample : SSTDCCC0.4  
 Misc :  
 ALS Vial : 2 Sample Multiplier: 1

Instrument :  
 BNA\_N  
 Client Sample ID :  
 SSTDCCC0.4

Quant Time: Mar 19 01:12:53 2020  
 Quant Method : Z:\SVOASRV\HPCHEM1\BNA N\METHODS\8270-SIM-BN031320.M  
 Quant Title : ASP BNA STANDARDS FOR 5 POINT CALIBRATION  
 QLast Update : Mon Mar 16 02:17:23 2020  
 Response via : Initial Calibration

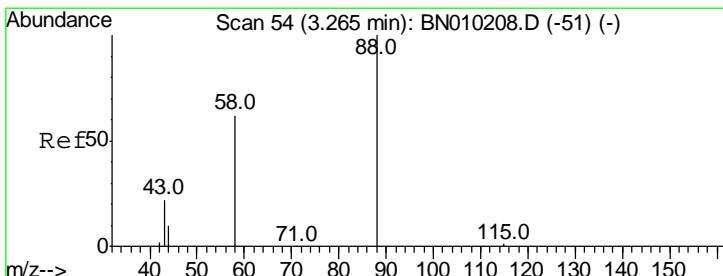
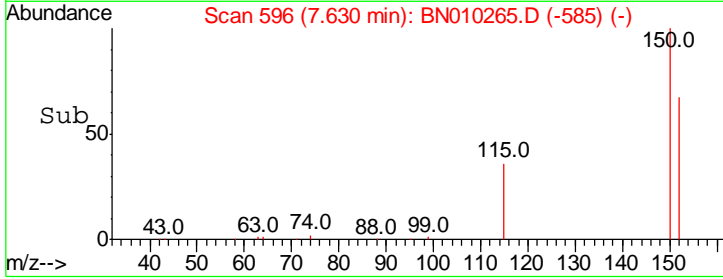
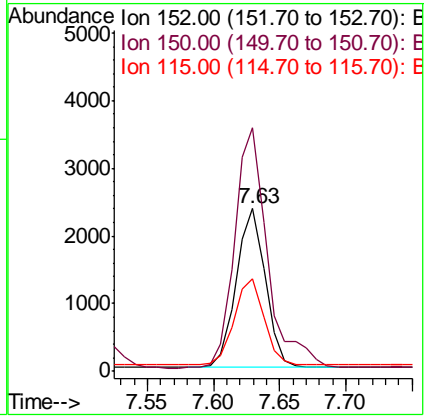
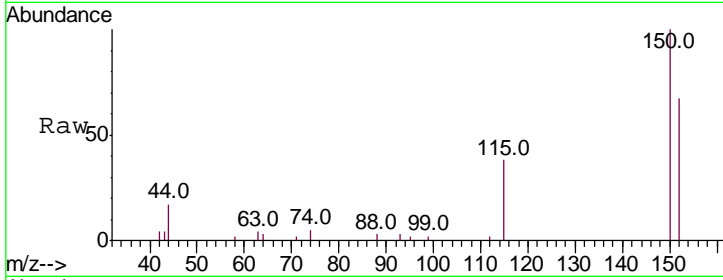




#1  
 1,4-Dichlorobenzene-d4  
 Concen: 0.400 ng  
 RT: 7.63 min Scan# 596  
 Delta R.T. -0.01 min  
 Lab File: BN010265.D  
 Acq: 18 Mar 2020 16:08

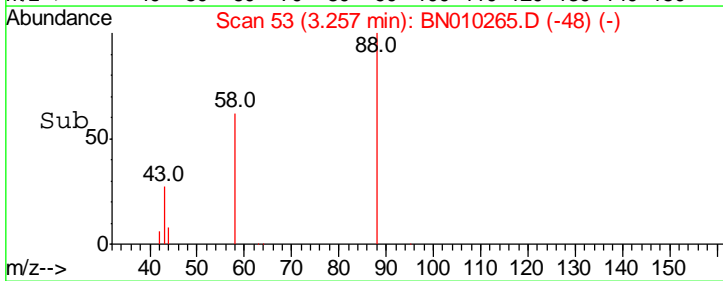
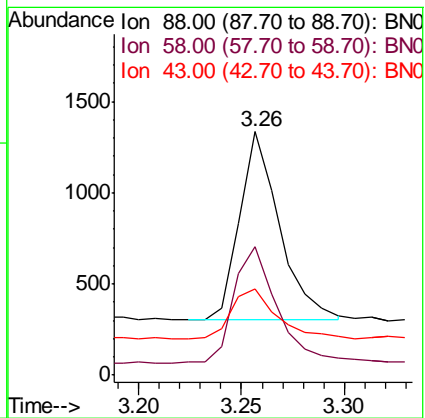
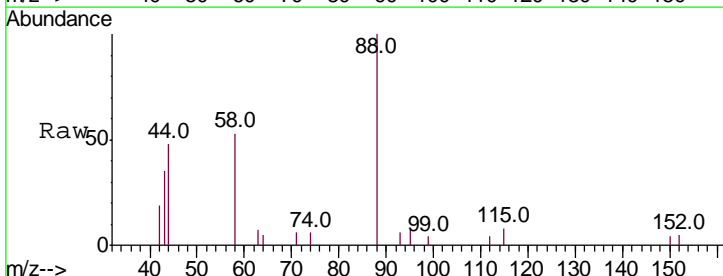
**Instrument :**  
 BNA\_N  
**ClientSampleId :**  
 SSTDCCC0.4

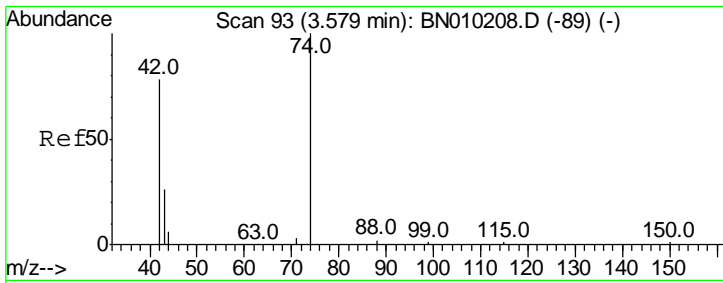
Tgt Ion	Resp	Lower	Upper
152	3604		
152	100		
150	149.9	119.5	179.3
115	56.9	50.9	76.3



#2  
 1,4-Dioxane  
 Concen: 0.395 ng  
 RT: 3.26 min Scan# 53  
 Delta R.T. -0.01 min  
 Lab File: BN010265.D  
 Acq: 18 Mar 2020 16:08

Tgt Ion	Resp	Lower	Upper
88	1388		
88	100		
58	65.6	97.8	146.8#
43	29.8	45.1	67.7#

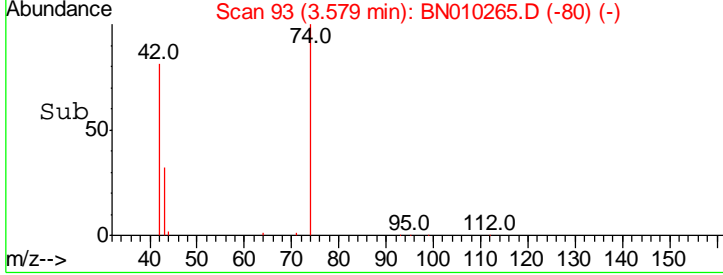
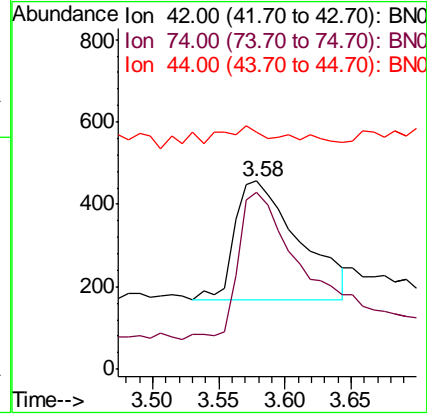
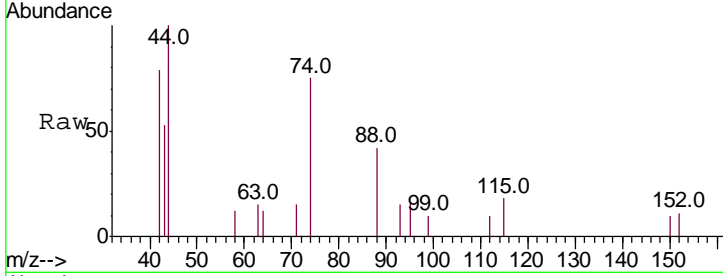




#3  
 n-Nitrosodimethylamine  
 Concen: 0.313 ng  
 RT: 3.58 min Scan# 93  
 Delta R.T. 0.00 min  
 Lab File: BN010265.D  
 Acq: 18 Mar 2020 16:08

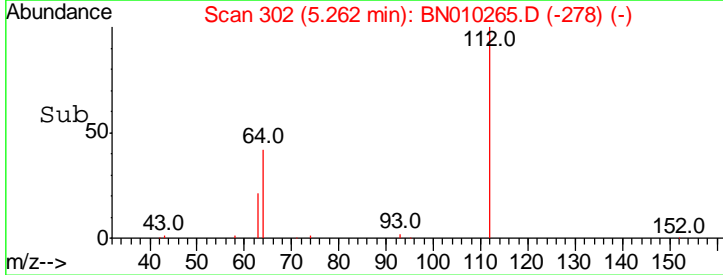
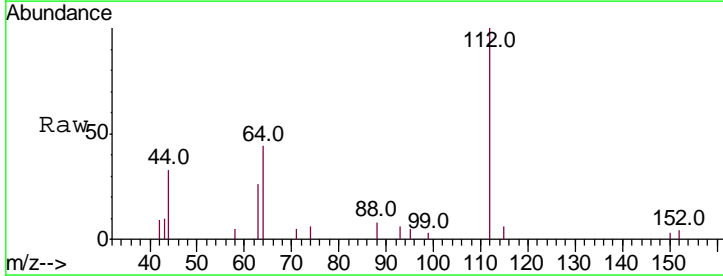
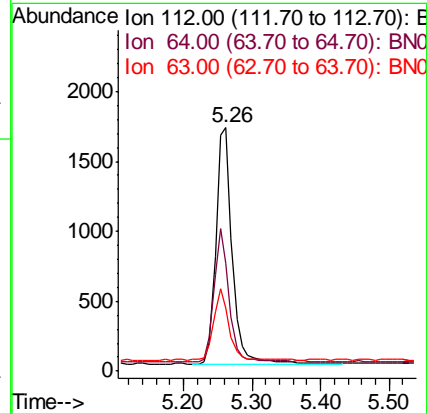
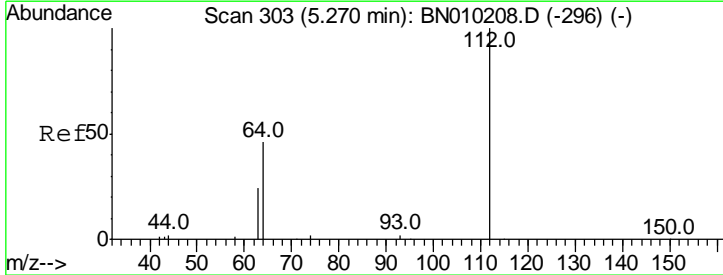
Instrument :  
 BNA\_N  
 ClientSampled :  
 SSTDCCC0.4

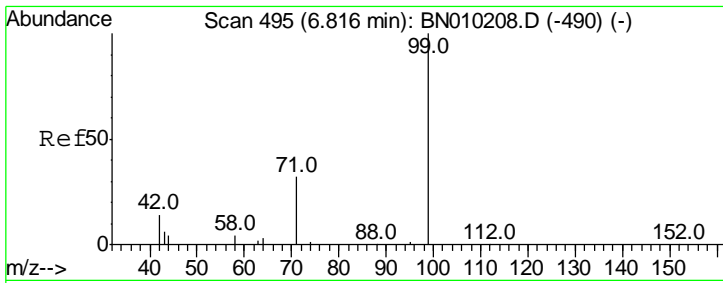
Tgt Ion	Resp	Lower	Upper
42	976		
42	100		
74	119.3	51.2	76.8#
44	18.5	2.6	4.0#



#4  
 2-Fluorophenol  
 Concen: 0.337 ng  
 RT: 5.26 min Scan# 302  
 Delta R.T. -0.01 min  
 Lab File: BN010265.D  
 Acq: 18 Mar 2020 16:08

Tgt Ion	Resp	Lower	Upper
112	2848		
112	100		
64	52.0	42.6	63.8
63	30.0	23.6	35.4

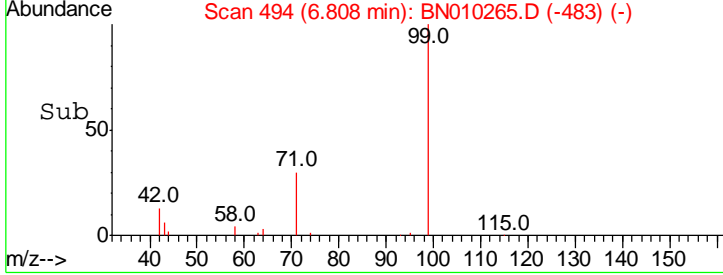
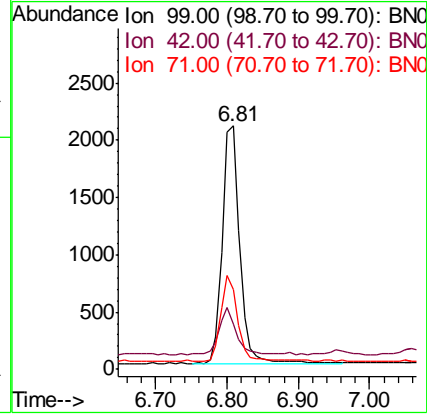
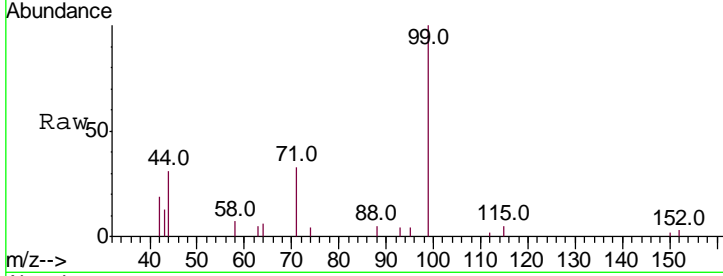




#5  
 Phenol-d6  
 Concen: 0.336 ng  
 RT: 6.81 min Scan# 494  
 Delta R.T. -0.01 min  
 Lab File: BN010265.D  
 Acq: 18 Mar 2020 16:08

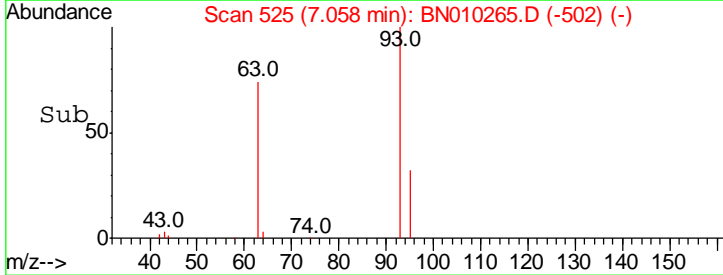
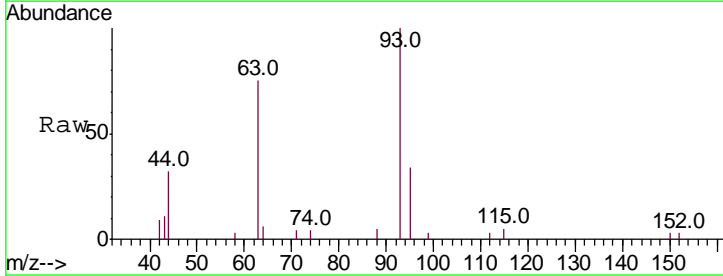
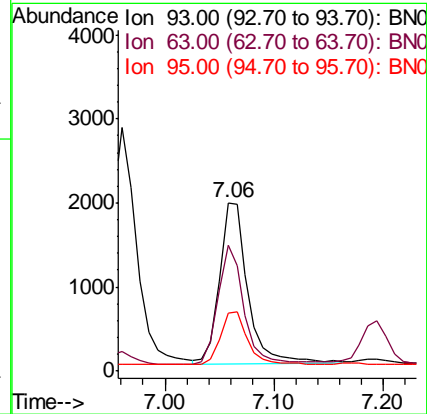
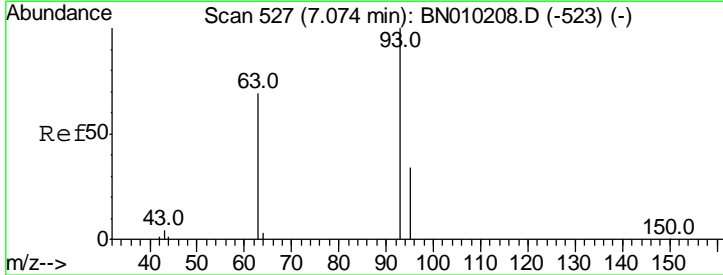
Instrument :  
 BNA\_N  
 ClientSampleId :  
 SSTDCCC0.4

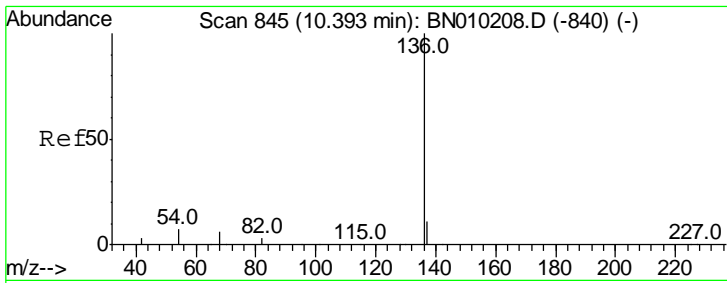
Tgt Ion	Resp	Lower	Upper
99	100		
42	19.2	12.0	18.0#
71	33.9	22.6	33.8#



#6  
 bis(2-Chloroethyl)ether  
 Concen: 0.400 ng  
 RT: 7.06 min Scan# 525  
 Delta R.T. -0.02 min  
 Lab File: BN010265.D  
 Acq: 18 Mar 2020 16:08

Tgt Ion	Resp	Lower	Upper
93	100		
63	67.1	53.4	80.0
95	31.6	28.6	42.8

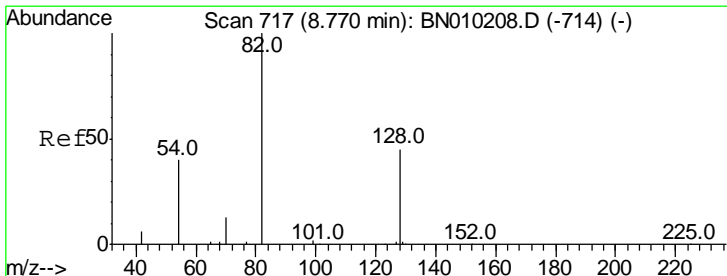
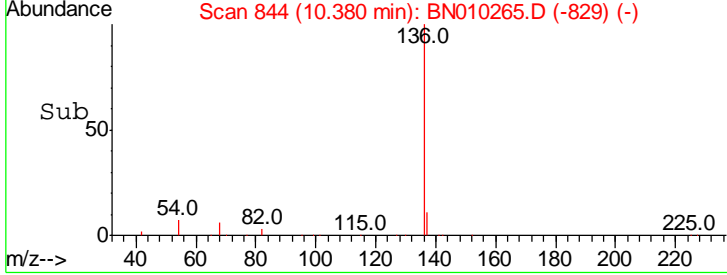
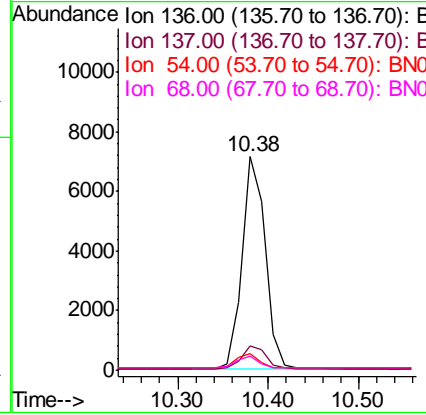
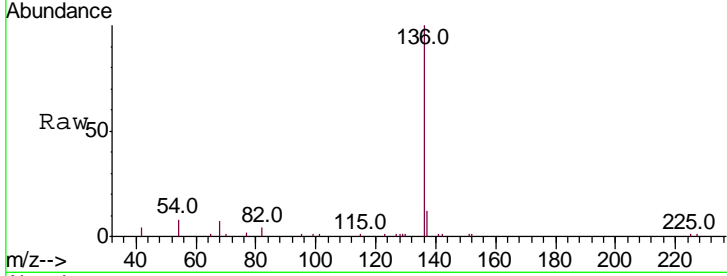




#7  
 Naphthalene-d8  
 Concen: 0.400 ng  
 RT: 10.38 min Scan# 844  
 Delta R.T. -0.01 min  
 Lab File: BN010265.D  
 Acq: 18 Mar 2020 16:08

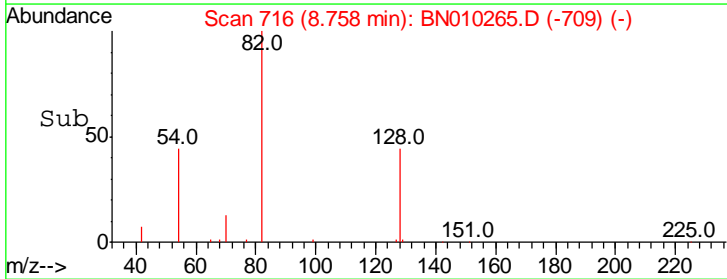
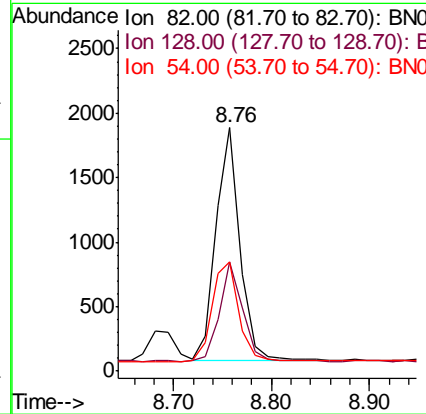
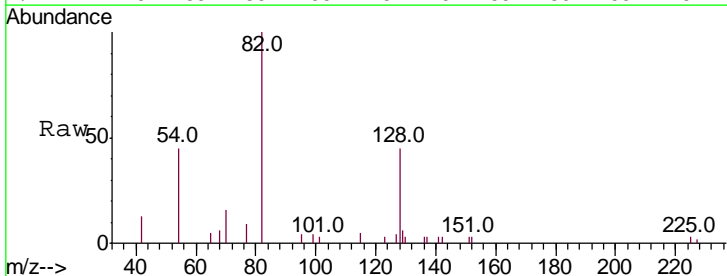
**Instrument :**  
 BNA\_N  
**ClientSampled :**  
 SSTDCCC0.4

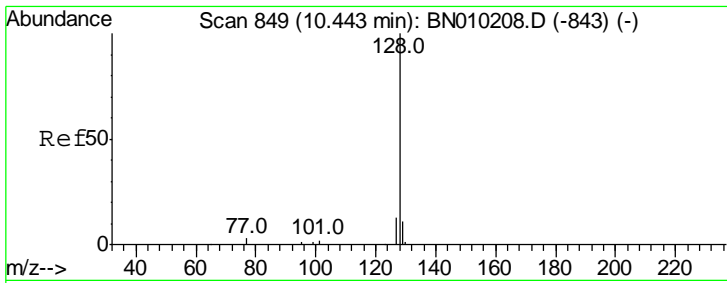
Tgt Ion	Resp	Lower	Upper
136	100		
137	11.7	10.6	15.8
54	7.5	9.5	14.3#
68	6.6	9.7	14.5#



#8  
 Nitrobenzene-d5  
 Concen: 0.406 ng  
 RT: 8.76 min Scan# 716  
 Delta R.T. -0.01 min  
 Lab File: BN010265.D  
 Acq: 18 Mar 2020 16:08

Tgt Ion	Resp	Lower	Upper
82	100		
128	44.8	35.0	52.6
54	44.9	37.0	55.4

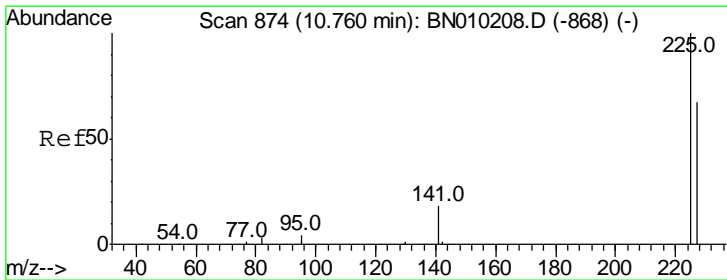
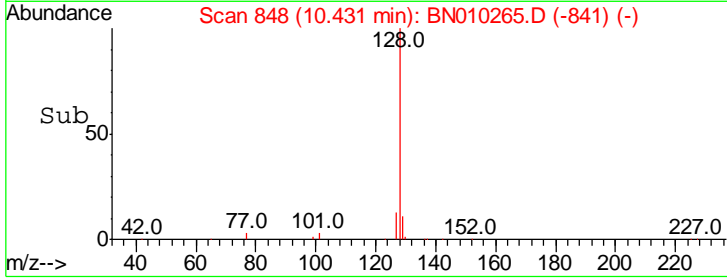
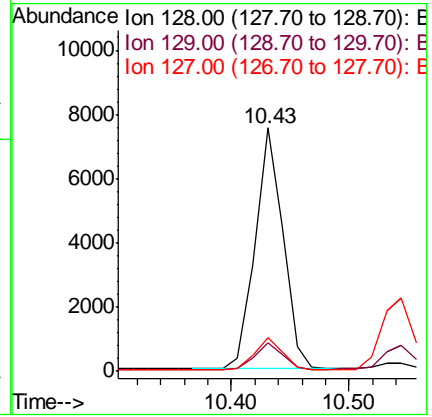
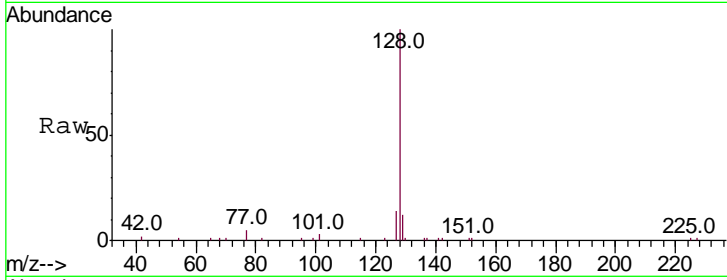




#9  
 Naphthalene  
 Concen: 0.395 ng  
 RT: 10.43 min Scan# 848  
 Delta R.T. -0.01 min  
 Lab File: BN010265.D  
 Acq: 18 Mar 2020 16:08

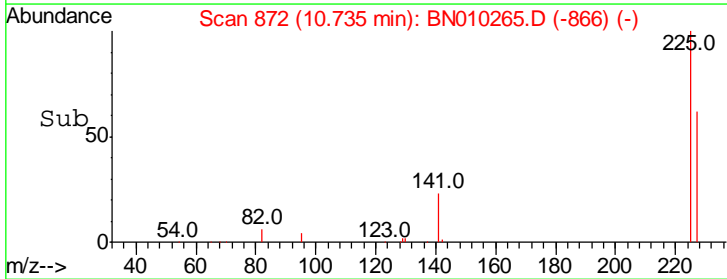
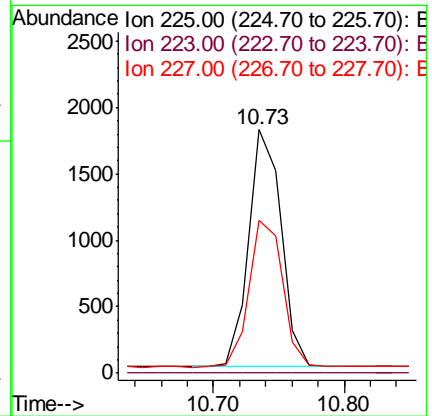
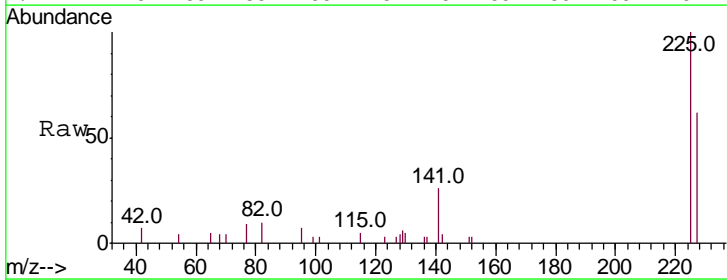
Instrument :  
 BNA\_N  
 ClientSampleId :  
 SSTDCCC0.4

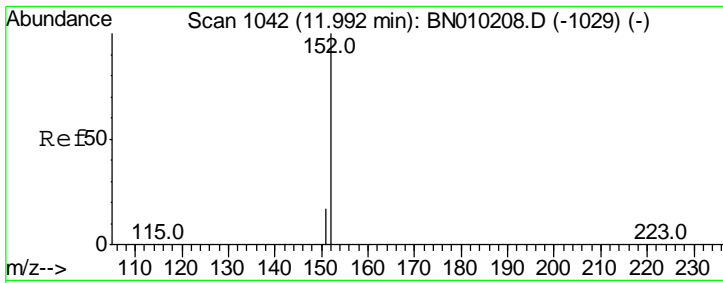
Tgt Ion	Resp	Lower	Upper
128	12429		
129	11.9	10.5	15.7
127	13.6	12.1	18.1



#10  
 Hexachlorobutadiene  
 Concen: 0.426 ng  
 RT: 10.73 min Scan# 872  
 Delta R.T. -0.03 min  
 Lab File: BN010265.D  
 Acq: 18 Mar 2020 16:08

Tgt Ion	Resp	Lower	Upper
225	3084		
223	0.0	0.0	0.0
227	63.4	53.4	80.2

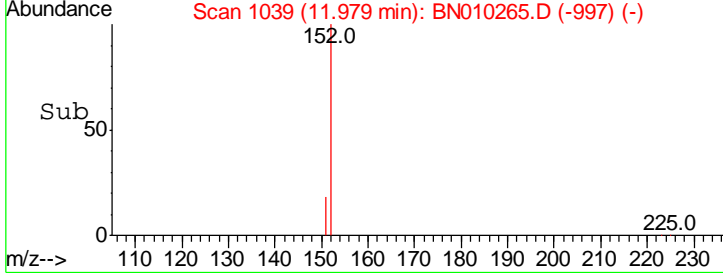
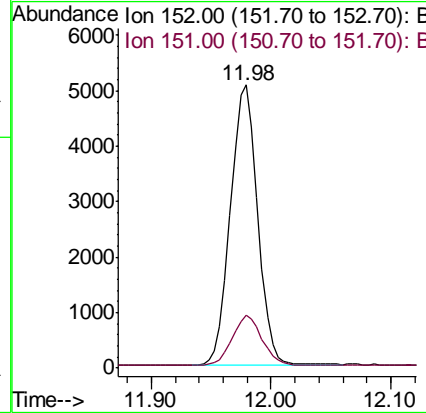
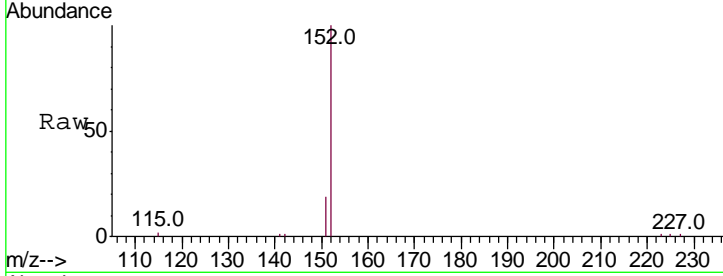




#11  
 2-Methylnaphthalene-d10  
 Concen: 0.384 ng  
 RT: 11.98 min Scan# 1039  
 Delta R.T. -0.01 min  
 Lab File: BN010265.D  
 Acq: 18 Mar 2020 16:08

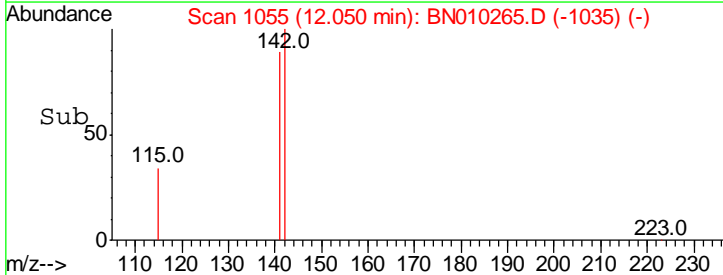
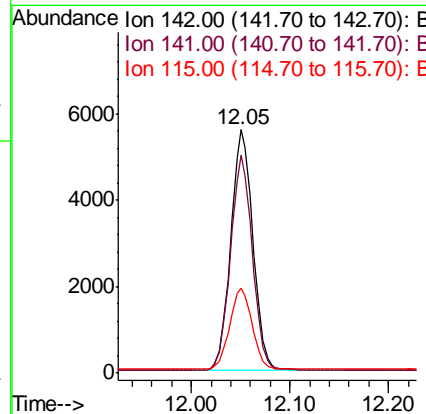
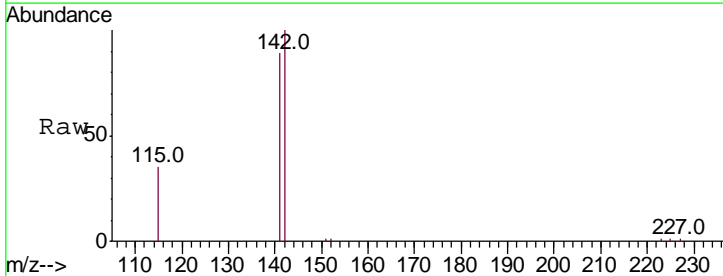
Instrument :  
 BNA\_N  
 ClientSampleId :  
 SSTDCCC0.4

Tgt Ion	Resp	Lower	Upper
152	100		
151	19.1	15.0	22.6

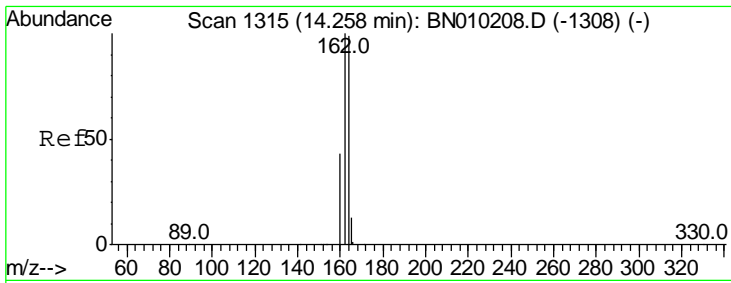


#12  
 2-Methylnaphthalene  
 Concen: 0.386 ng  
 RT: 12.05 min Scan# 1055  
 Delta R.T. -0.01 min  
 Lab File: BN010265.D  
 Acq: 18 Mar 2020 16:08

Tgt Ion	Resp	Lower	Upper
142	100		
141	89.5	73.7	110.5
115	34.8	31.2	46.8





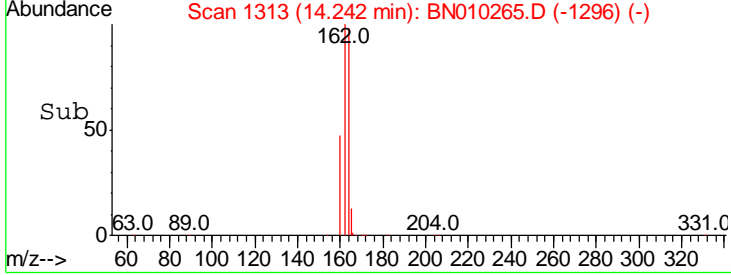
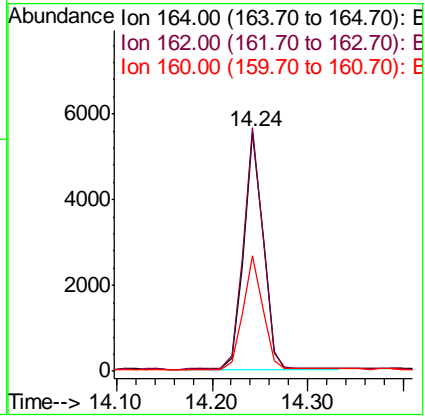
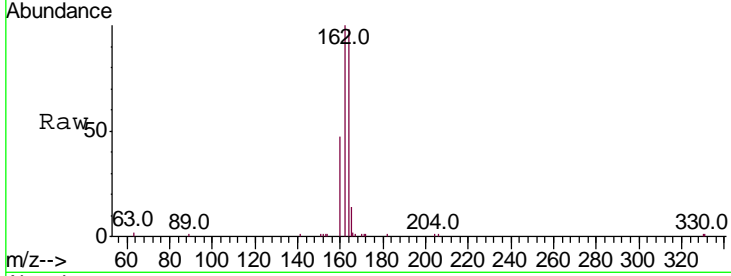


#13  
 Acenaphthene-d10  
 Concen: 0.400 ng  
 RT: 14.24 min Scan# 1313  
 Delta R.T. -0.02 min  
 Lab File: BN010265.D  
 Acq: 18 Mar 2020 16:08

Instrument :  
 BNA\_N  
 ClientSampled :  
 SSTDCCC0.4

Tgt Ion: 164 Resp: 7728

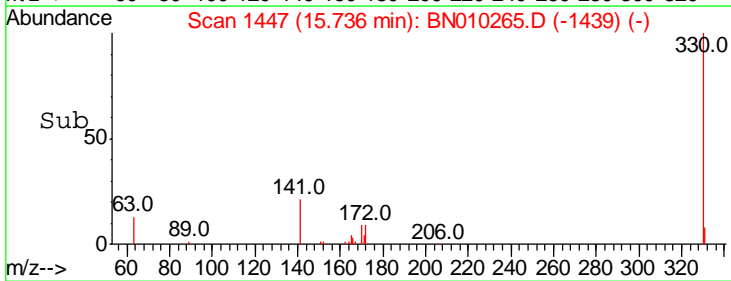
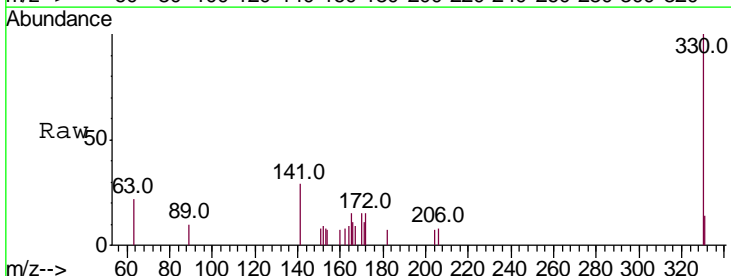
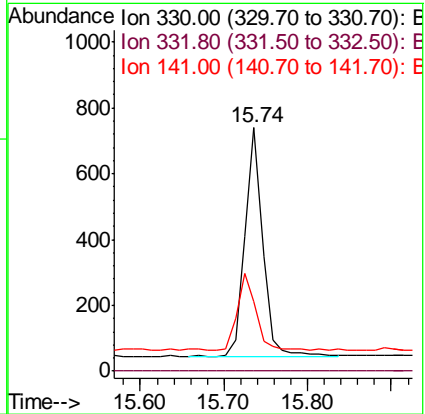
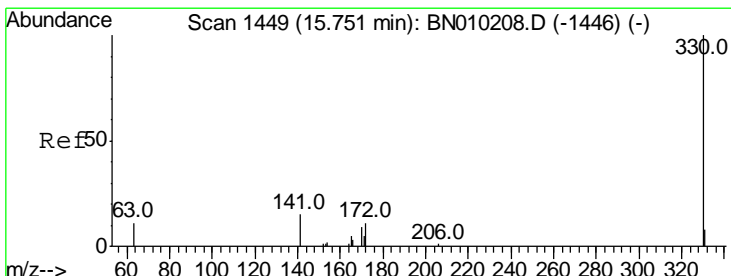
Ion	Ratio	Lower	Upper
164	100		
162	102.0	81.0	121.4
160	48.2	35.6	53.4

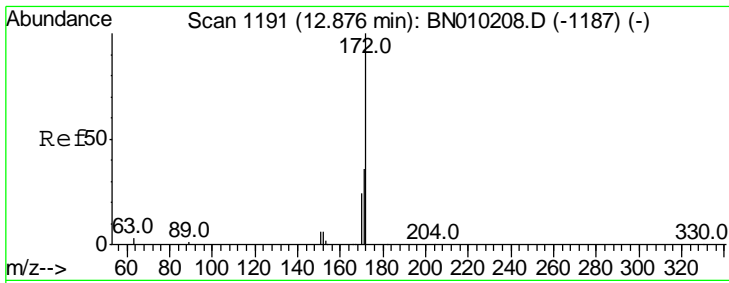


#14  
 2,4,6-Tribromophenol  
 Concen: 0.366 ng  
 RT: 15.74 min Scan# 1447  
 Delta R.T. -0.02 min  
 Lab File: BN010265.D  
 Acq: 18 Mar 2020 16:08

Tgt Ion: 330 Resp: 1012

Ion	Ratio	Lower	Upper
330	100		
332	0.0	0.0	0.0
141	36.2	25.1	37.7

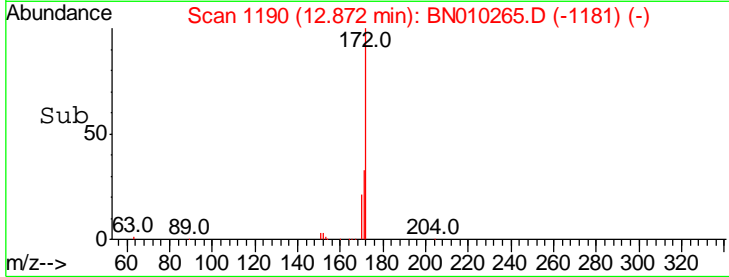
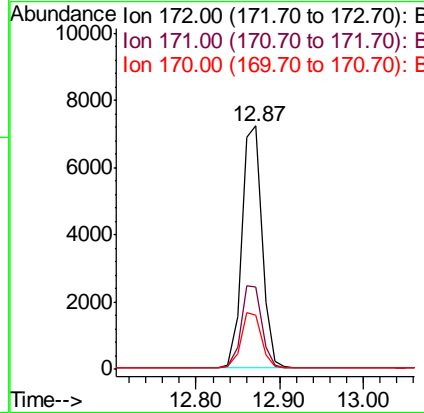
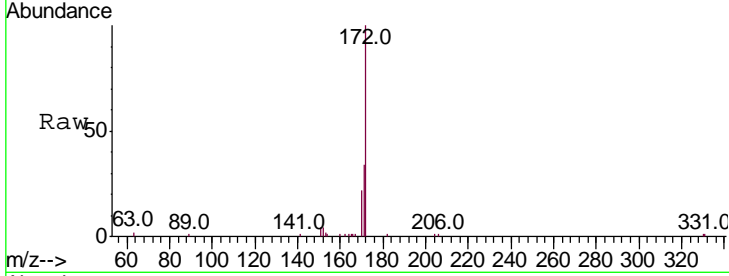




#15  
 2-Fluorobiphenyl  
 Concen: 0.437 ng  
 RT: 12.87 min Scan# 1190  
 Delta R.T. -0.00 min  
 Lab File: BN010265.D  
 Acq: 18 Mar 2020 16:08

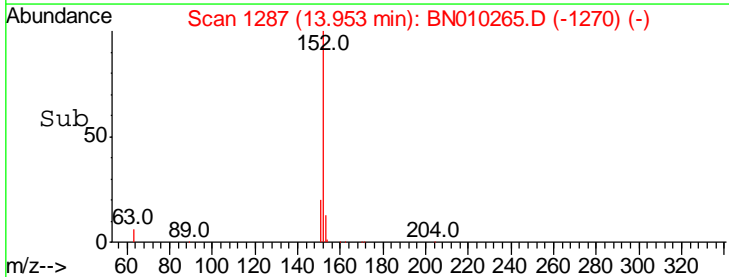
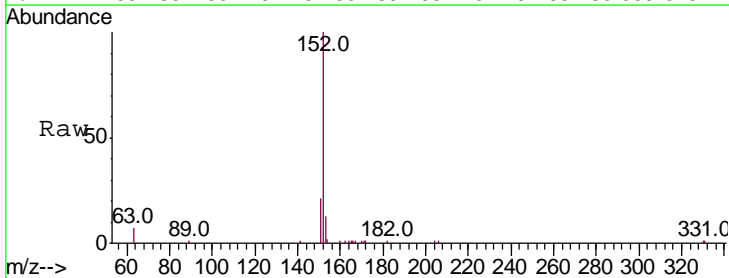
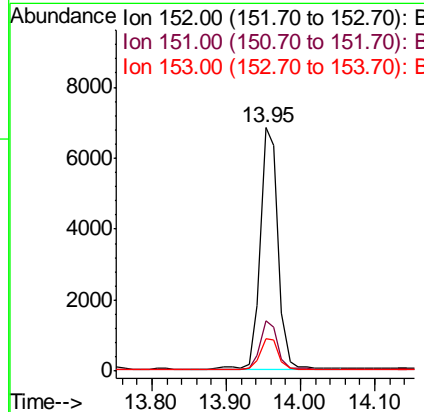
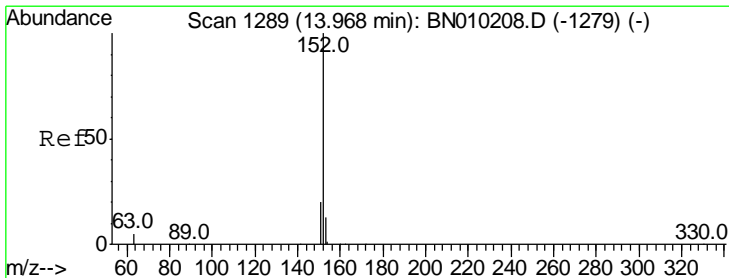
Instrument :  
 BNA\_N  
 ClientSampleId :  
 SSTDCCC0.4

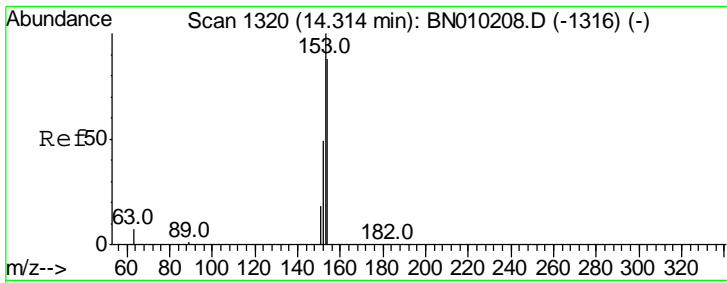
Tgt Ion	Resp	Lower	Upper
172	12011		
171	33.7	29.4	44.2
170	22.0	20.2	30.4



#16  
 Acenaphthylene  
 Concen: 0.322 ng  
 RT: 13.95 min Scan# 1287  
 Delta R.T. -0.02 min  
 Lab File: BN010265.D  
 Acq: 18 Mar 2020 16:08

Tgt Ion	Resp	Lower	Upper
152	11483		
151	19.5	15.8	23.6
153	12.8	10.6	16.0

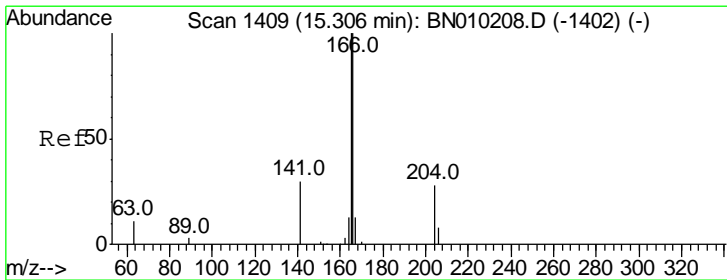
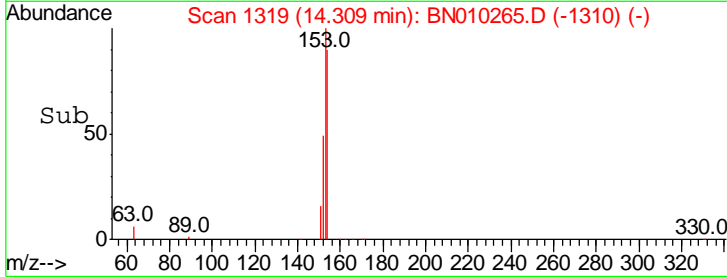
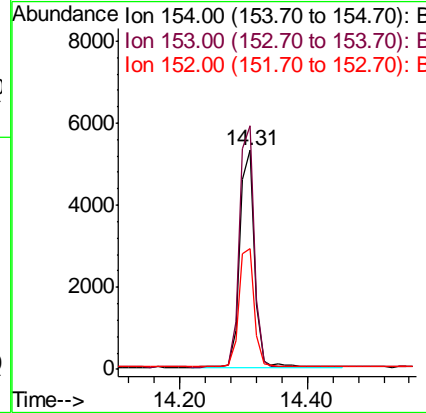
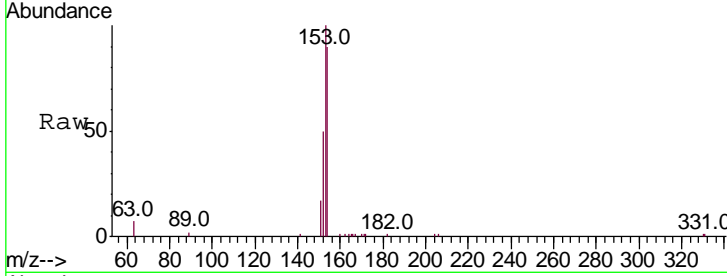




#17  
 Acenaphthene  
 Concen: 0.394 ng  
 RT: 14.31 min Scan# 1319  
 Delta R.T. -0.00 min  
 Lab File: BN010265.D  
 Acq: 18 Mar 2020 16:08

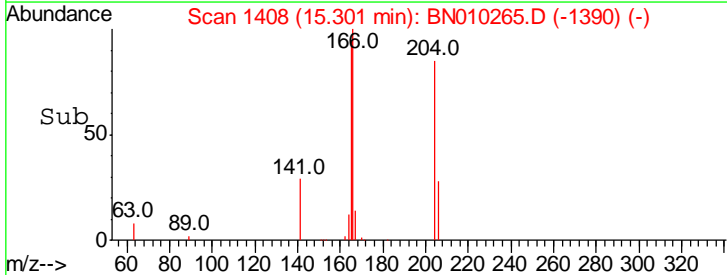
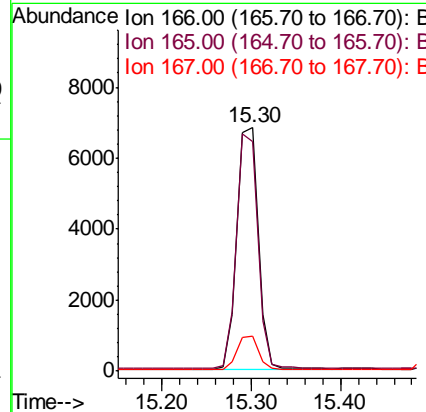
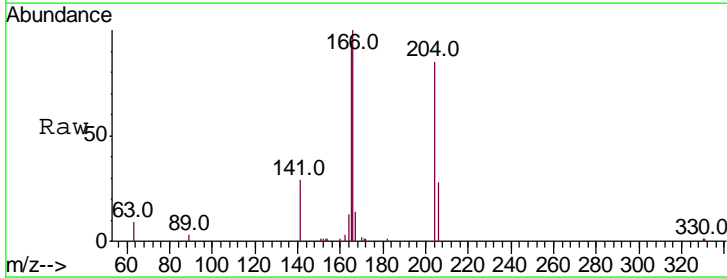
Instrument :  
 BNA\_N  
 ClientSampleID :  
 SSTDCCC0.4

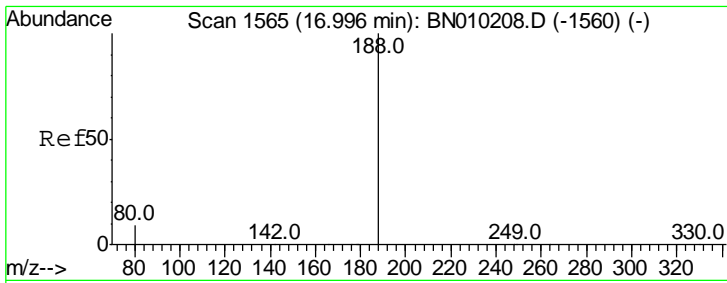
Tgt Ion	Resp	Lower	Upper
154	100		
153	111.6	90.3	135.5
152	57.0	42.9	64.3



#18  
 Fluorene  
 Concen: 0.382 ng  
 RT: 15.30 min Scan# 1408  
 Delta R.T. -0.00 min  
 Lab File: BN010265.D  
 Acq: 18 Mar 2020 16:08

Tgt Ion	Resp	Lower	Upper
166	100		
165	97.2	78.3	117.5
167	13.6	10.7	16.1

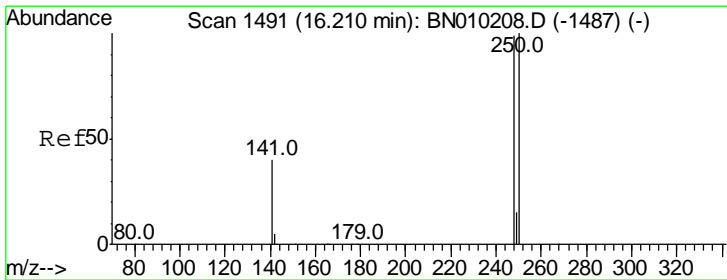
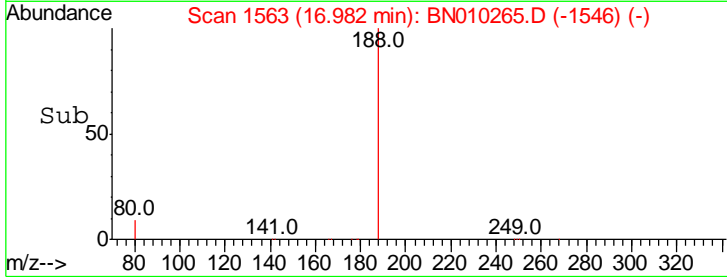
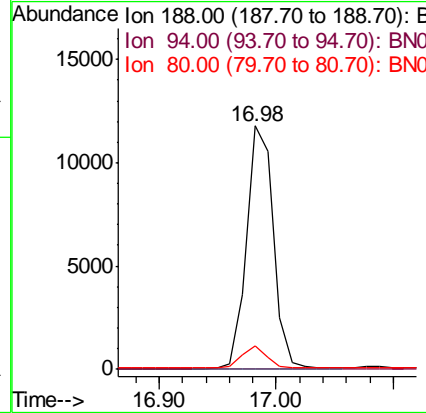
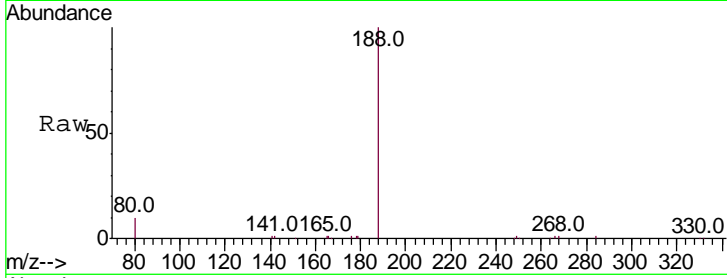




#19  
 Phenanthrene-d10  
 Concen: 0.400 ng  
 RT: 16.98 min Scan# 1563  
 Delta R.T. -0.01 min  
 Lab File: BN010265.D  
 Acq: 18 Mar 2020 16:08

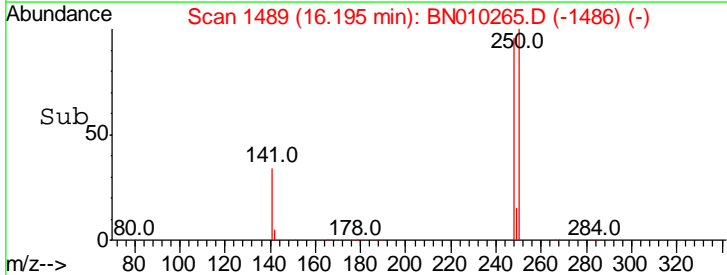
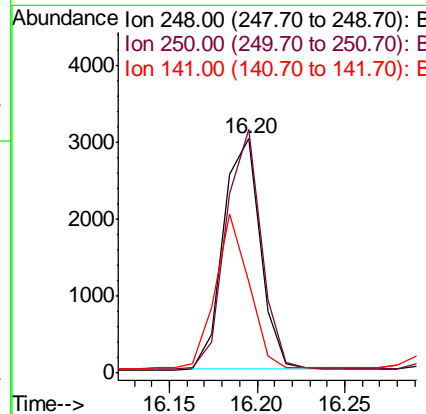
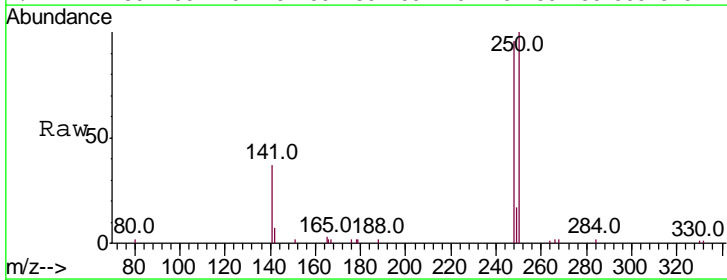
Instrument :  
 BNA\_N  
 ClientSampleId :  
 SSTDCCC0.4

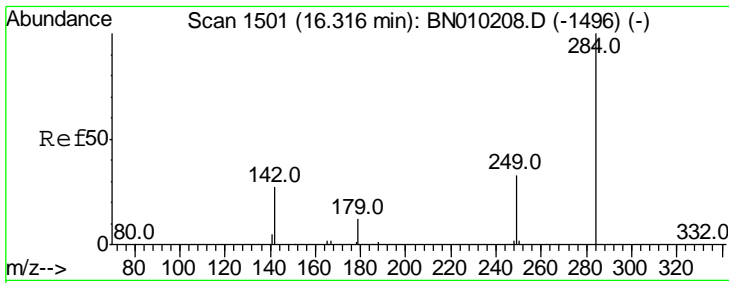
Tgt Ion	Resp	Lower	Upper
188	100		
94	0.0	0.0	0.0
80	9.8	8.6	12.8



#20  
 4-Bromophenyl-phenylether  
 Concen: 0.409 ng  
 RT: 16.20 min Scan# 1489  
 Delta R.T. -0.01 min  
 Lab File: BN010265.D  
 Acq: 18 Mar 2020 16:08

Tgt Ion	Resp	Lower	Upper
248	100		
250	104.0	81.2	121.8
141	39.0	36.7	55.1

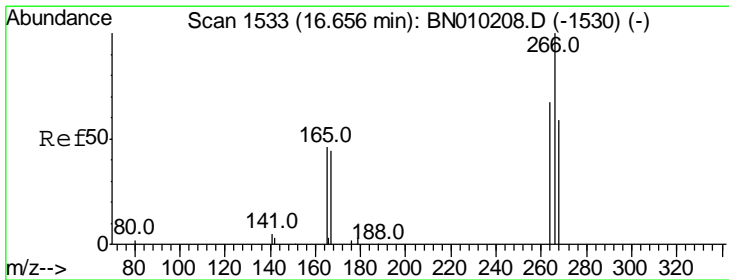
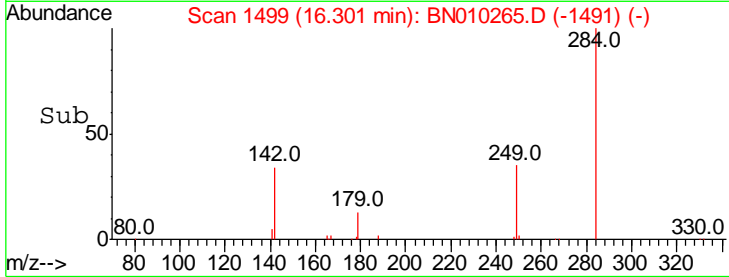
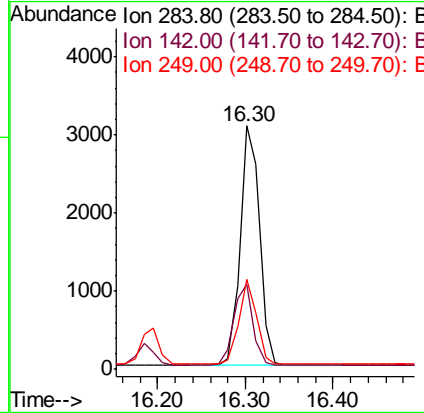
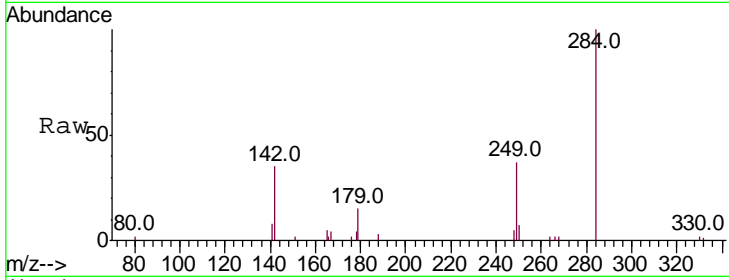




#21  
 Hexachlorobenzene  
 Concen: 0.452 ng  
 RT: 16.30 min Scan# 1499  
 Delta R.T. -0.01 min  
 Lab File: BN010265.D  
 Acq: 18 Mar 2020 16:08

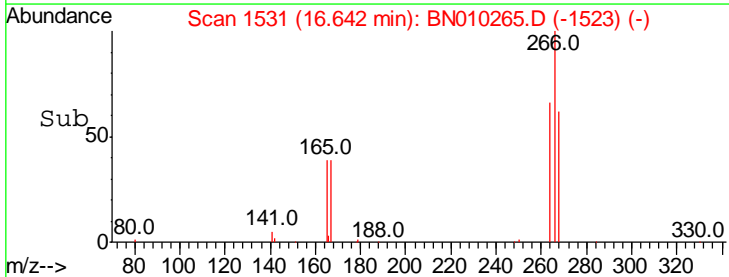
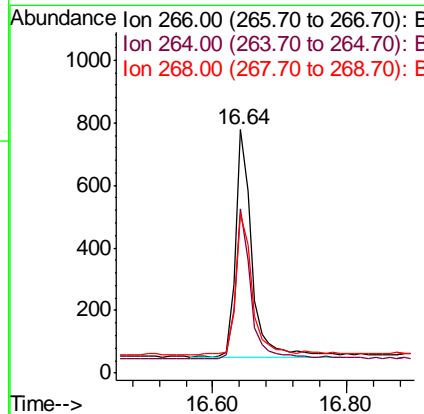
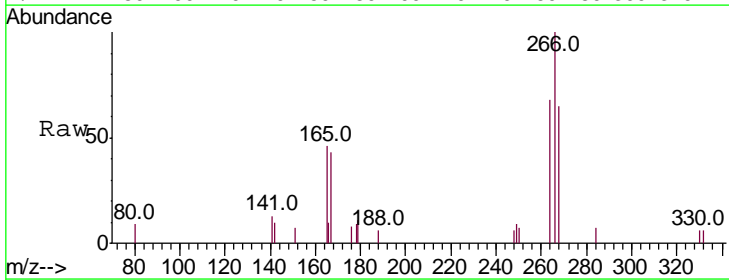
Instrument :  
 BNA\_N  
 ClientSampleId :  
 SSTDCCC0.4

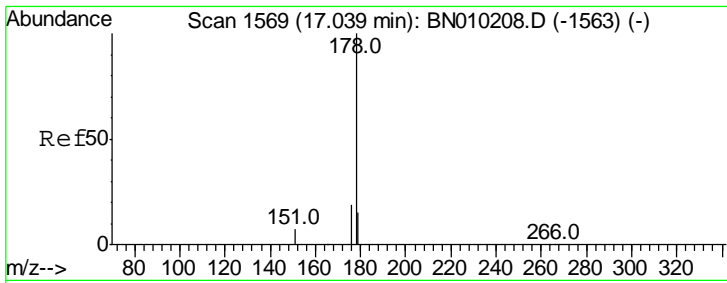
Tgt Ion	Resp	Lower	Upper
284	100		
142	33.0	27.8	41.6
249	32.4	26.6	39.8



#22  
 Pentachlorophenol  
 Concen: 0.389 ng  
 RT: 16.64 min Scan# 1531  
 Delta R.T. -0.01 min  
 Lab File: BN010265.D  
 Acq: 18 Mar 2020 16:08

Tgt Ion	Resp	Lower	Upper
266	100		
264	67.6	56.2	84.2
268	65.4	61.4	92.2

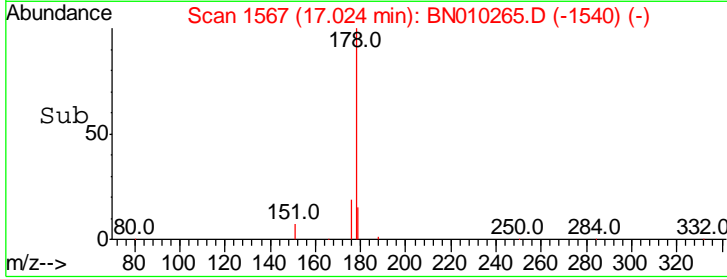
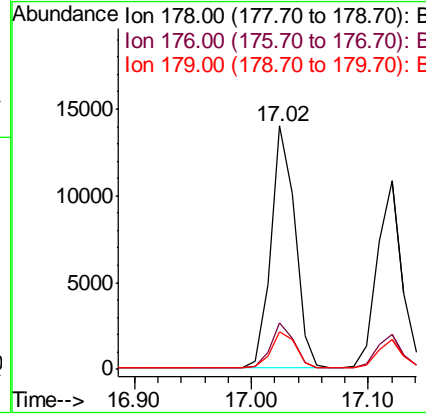
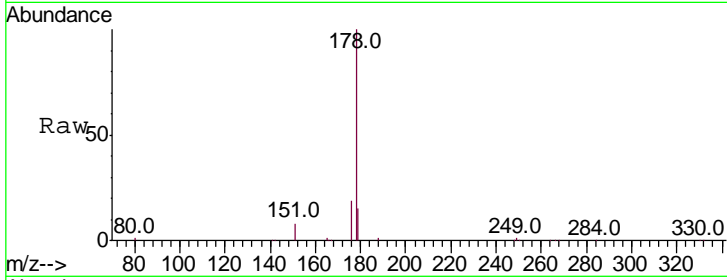




#23  
 Phenanthrene  
 Concen: 0.409 ng  
 RT: 17.02 min Scan# 1567  
 Delta R.T. -0.01 min  
 Lab File: BN010265.D  
 Acq: 18 Mar 2020 16:08

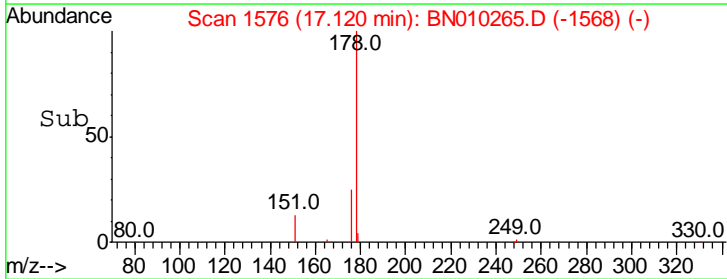
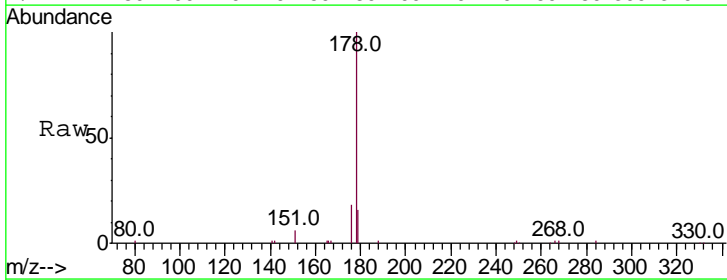
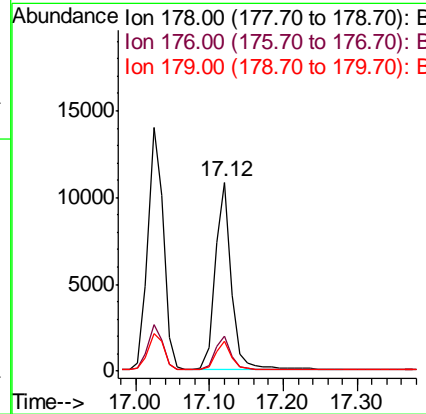
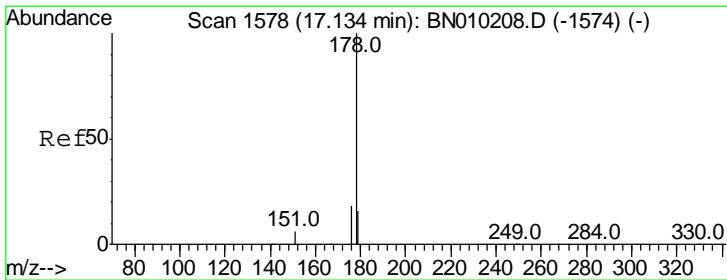
Instrument :  
 BNA\_N  
 ClientSampled :  
 SSTDCCC0.4

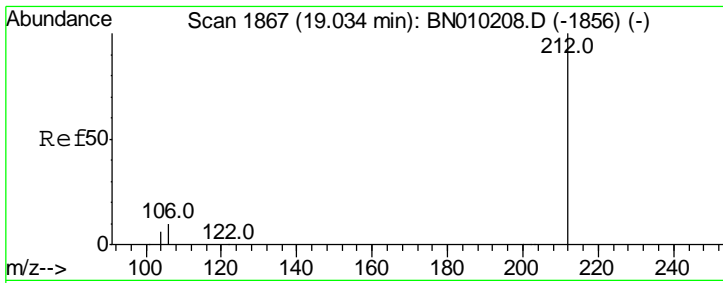
Tgt Ion	Resp	Lower	Upper
178	100		
176	18.5	15.0	22.4
179	15.5	12.5	18.7



#24  
 Anthracene  
 Concen: 0.334 ng  
 RT: 17.12 min Scan# 1576  
 Delta R.T. -0.01 min  
 Lab File: BN010265.D  
 Acq: 18 Mar 2020 16:08

Tgt Ion	Resp	Lower	Upper
178	100		
176	18.5	14.6	22.0
179	15.2	12.5	18.7



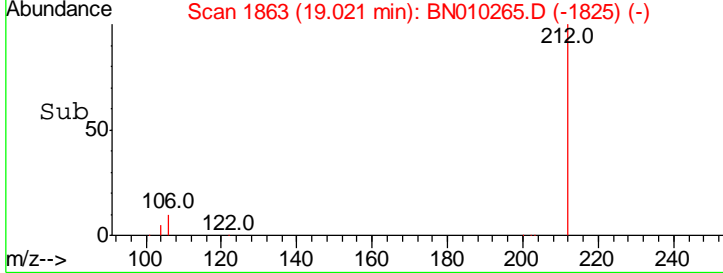
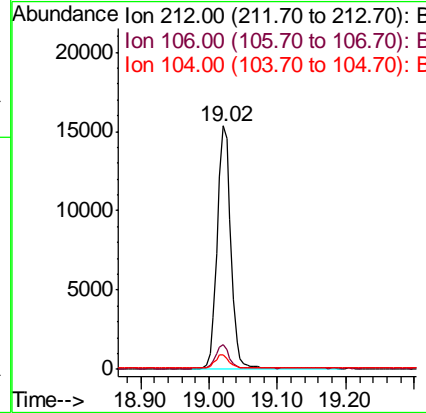
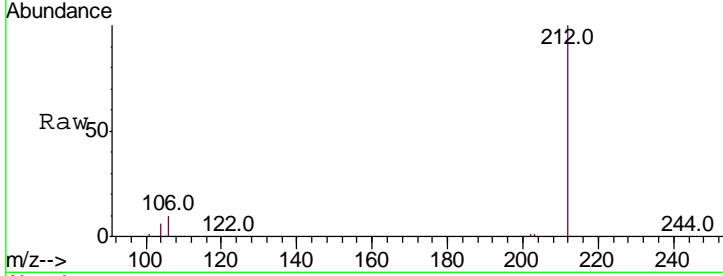


#25  
 Fluoranthene-d10  
 Concen: 0.373 ng  
 RT: 19.02 min Scan# 1863  
 Delta R.T. -0.01 min  
 Lab File: BN010265.D  
 Acq: 18 Mar 2020 16:08

**Instrument :**  
 BNA\_N  
**ClientSampled :**  
 SSTDCCC0.4

Tgt Ion: 212 Resp: 21269

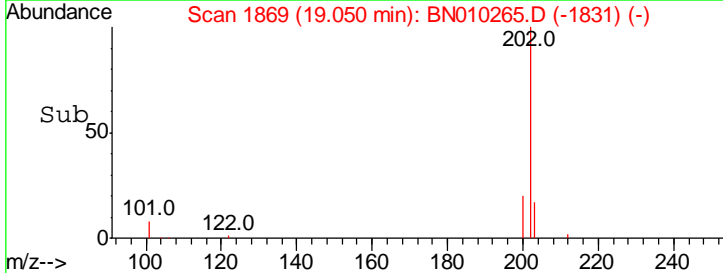
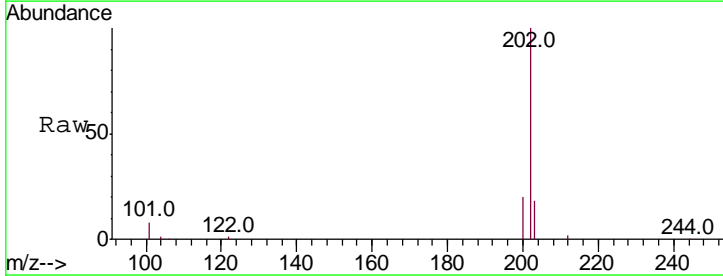
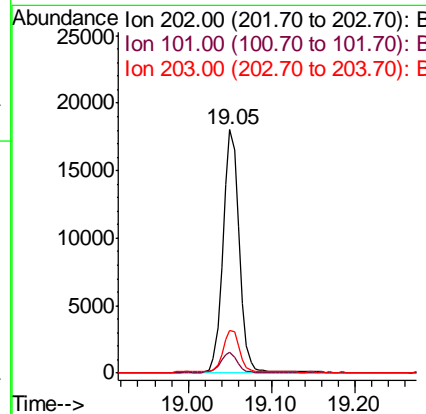
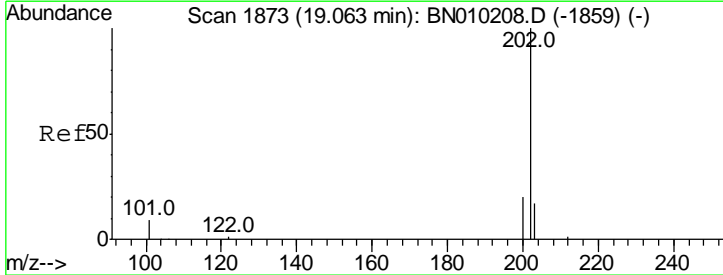
Ion	Ratio	Lower	Upper
212	100		
106	9.5	8.1	12.1
104	5.4	4.7	7.1

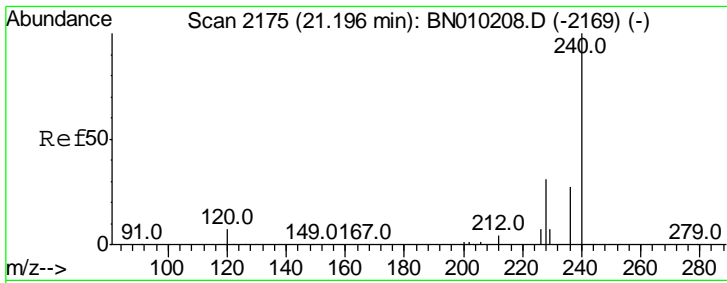


#26  
 Fluoranthene  
 Concen: 0.386 ng  
 RT: 19.05 min Scan# 1869  
 Delta R.T. -0.01 min  
 Lab File: BN010265.D  
 Acq: 18 Mar 2020 16:08

Tgt Ion: 202 Resp: 23977

Ion	Ratio	Lower	Upper
202	100		
101	8.2	7.0	10.6
203	17.3	13.9	20.9

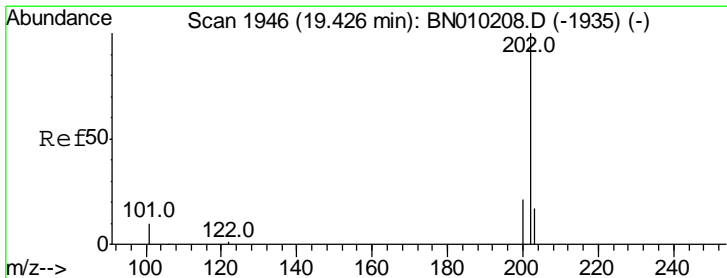
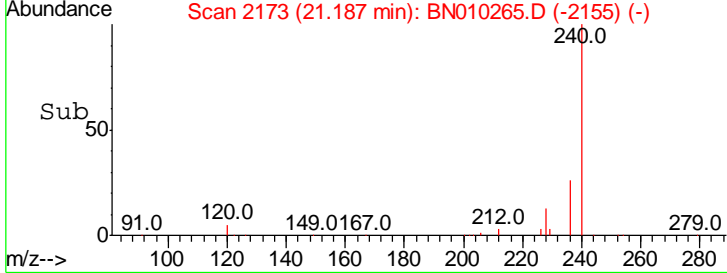
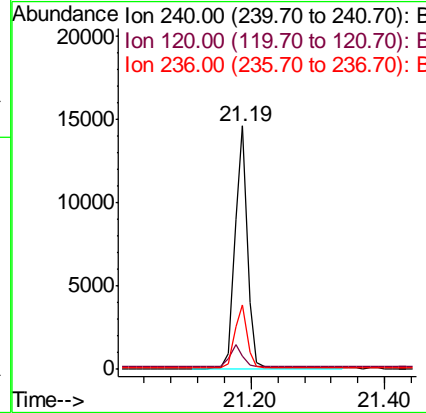
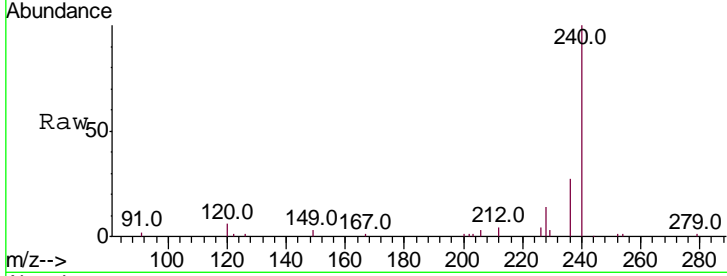




#27  
 Chrysene-d12  
 Concen: 0.400 ng  
 RT: 21.19 min Scan# 2173  
 Delta R.T. -0.01 min  
 Lab File: BN010265.D  
 Acq: 18 Mar 2020 16:08

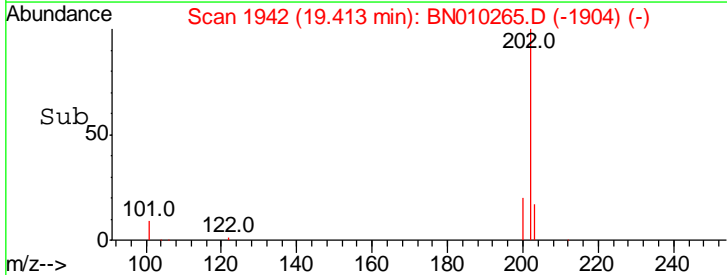
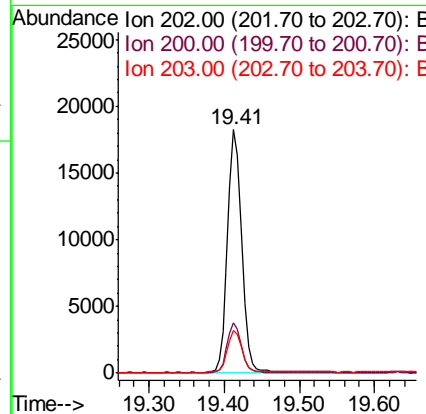
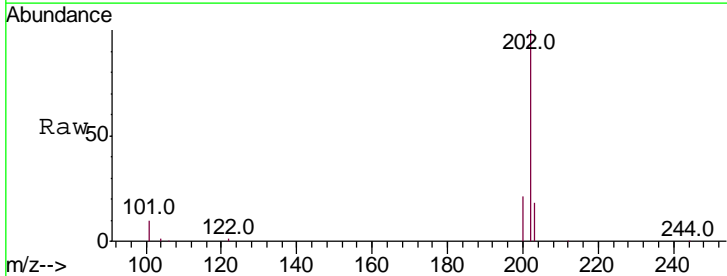
Instrument :  
 BNA\_N  
 ClientSampleId :  
 SSTDCCC0.4

Tgt Ion	Resp	Lower	Upper
240	18691		
120	5.6	7.7	11.5#
236	26.7	21.8	32.6

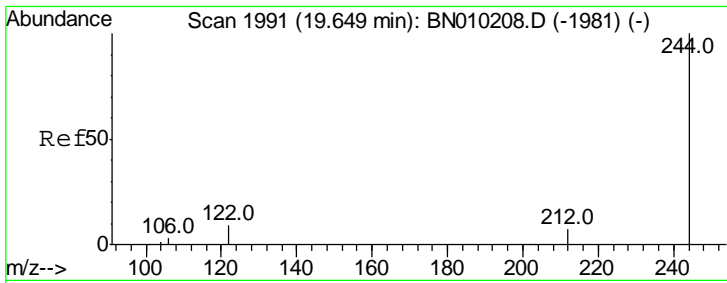


#28  
 Pyrene  
 Concen: 0.383 ng  
 RT: 19.41 min Scan# 1942  
 Delta R.T. -0.01 min  
 Lab File: BN010265.D  
 Acq: 18 Mar 2020 16:08

Tgt Ion	Resp	Lower	Upper
202	23940		
200	20.4	16.6	24.8
203	17.6	14.1	21.1



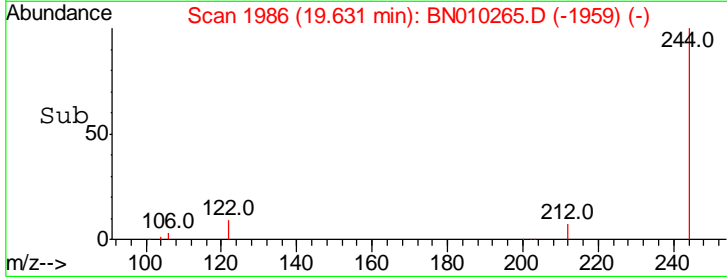
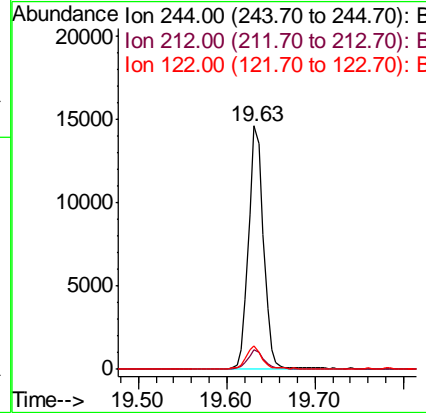
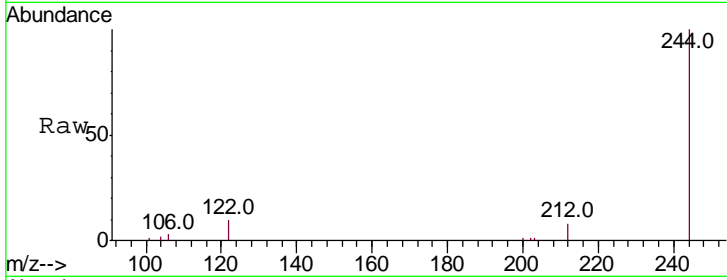




#29  
 Terphenyl-d14  
 Concen: 0.396 ng  
 RT: 19.63 min Scan# 1986  
 Delta R.T. -0.02 min  
 Lab File: BN010265.D  
 Acq: 18 Mar 2020 16:08

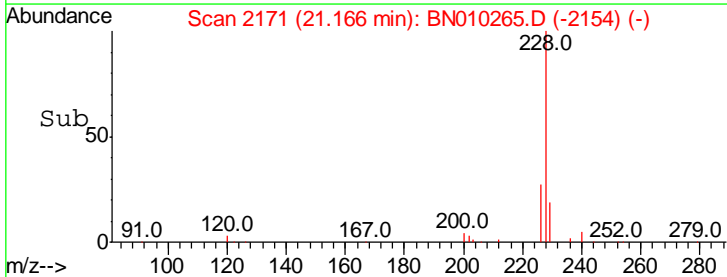
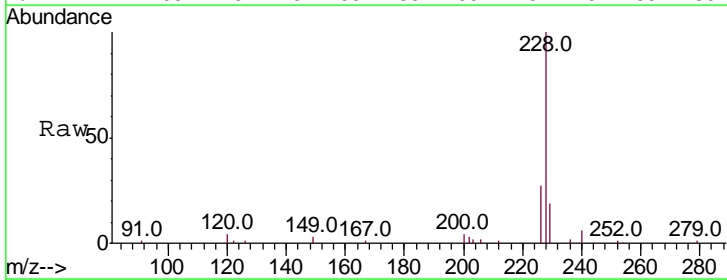
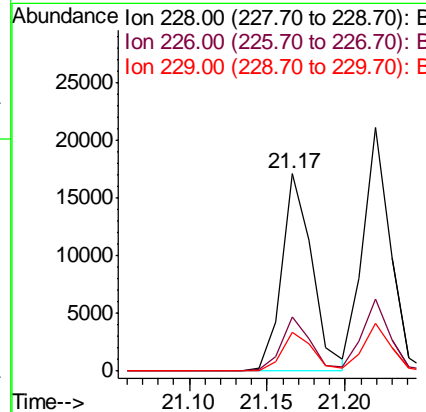
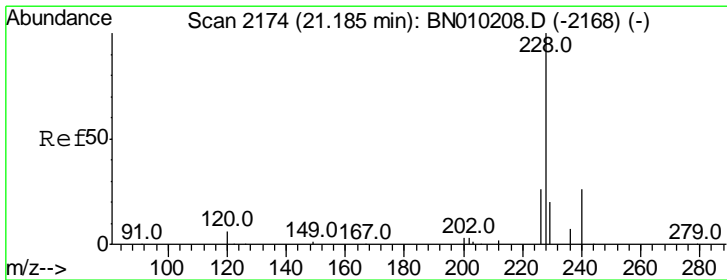
Instrument :  
 BNA\_N  
 ClientSampled :  
 SSTDCCC0.4

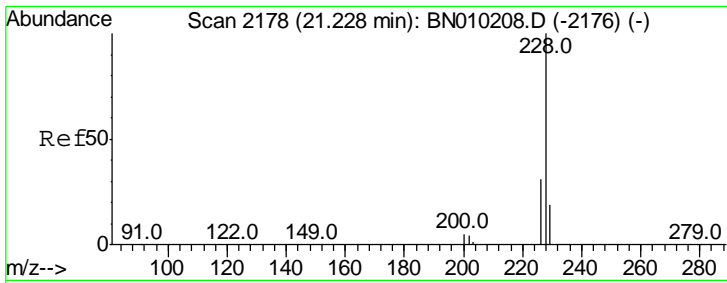
Tgt Ion	Resp	Lower	Upper
244	100		
212	7.8	6.4	9.6
122	9.7	8.1	12.1



#30  
 Benzo(a)anthracene  
 Concen: 0.358 ng  
 RT: 21.17 min Scan# 2171  
 Delta R.T. -0.02 min  
 Lab File: BN010265.D  
 Acq: 18 Mar 2020 16:08

Tgt Ion	Resp	Lower	Upper
228	100		
226	27.4	21.1	31.7
229	19.4	16.2	24.4

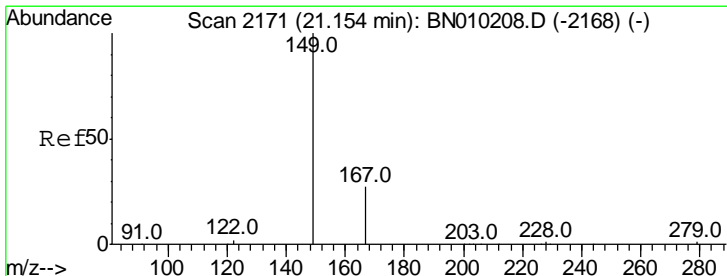
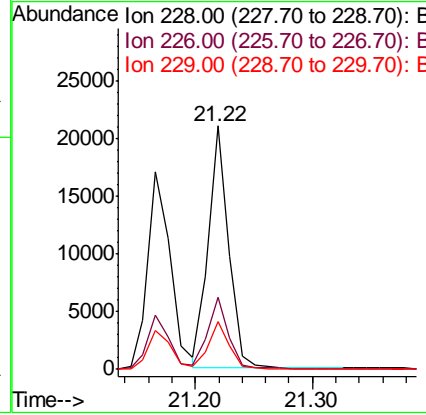
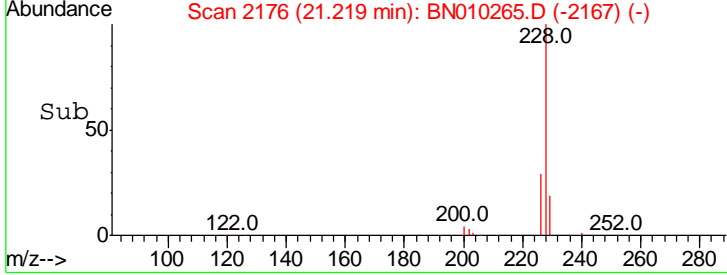
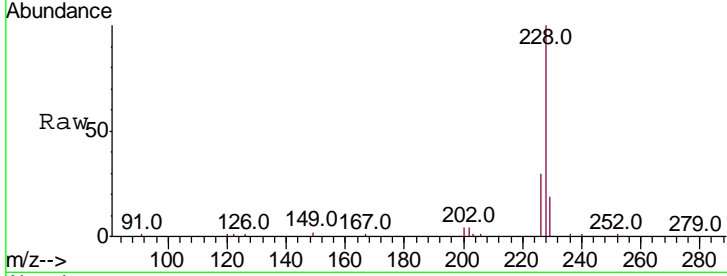




#31  
 Chrysene  
 Concen: 0.409 ng  
 RT: 21.22 min Scan# 2176  
 Delta R.T. -0.01 min  
 Lab File: BN010265.D  
 Acq: 18 Mar 2020 16:08

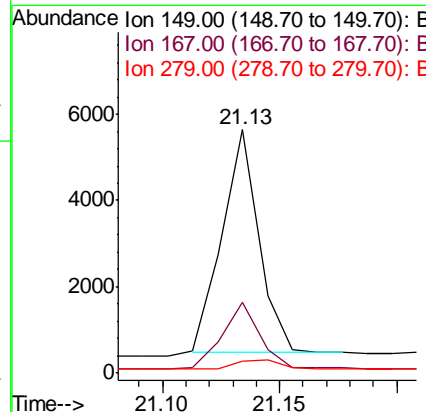
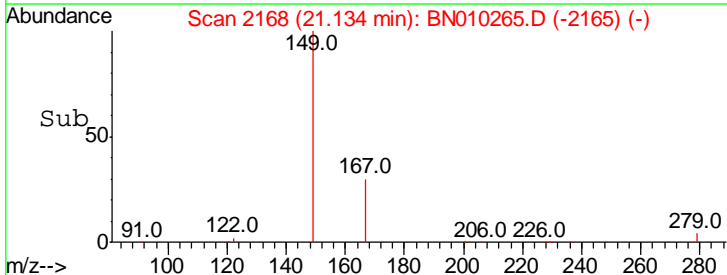
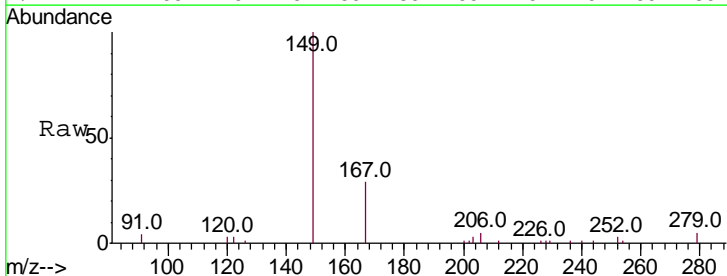
Instrument :  
 BNA\_N  
 ClientSampled :  
 SSTDCCC0.4

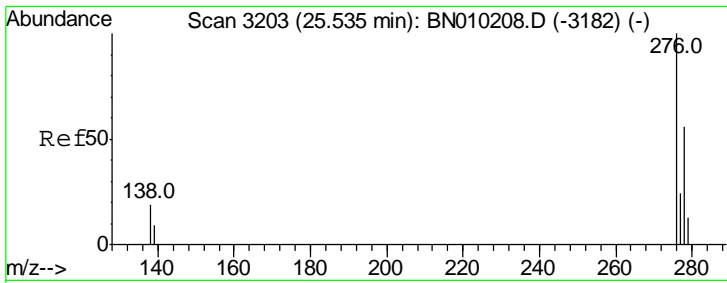
Tgt Ion	Resp	Lower	Upper
228	100		
226	29.6	25.0	37.4
229	19.4	15.7	23.5



#32  
 Bis(2-ethylhexyl)phthalate  
 Concen: 0.208 ng  
 RT: 21.13 min Scan# 2168  
 Delta R.T. -0.02 min  
 Lab File: BN010265.D  
 Acq: 18 Mar 2020 16:08

Tgt Ion	Resp	Lower	Upper
149	100		
167	29.1	21.0	31.4
279	5.1	3.1	4.7#

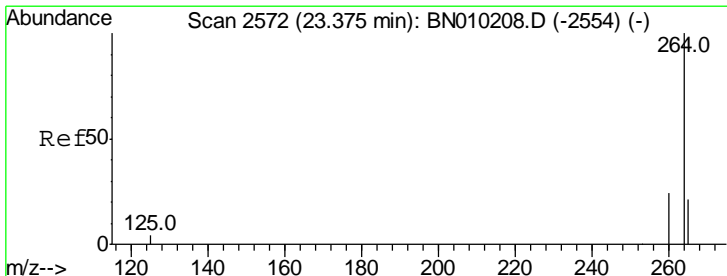
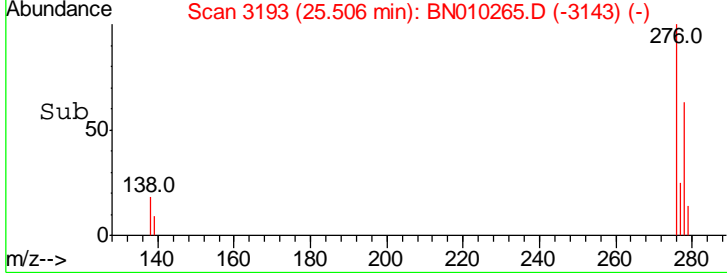
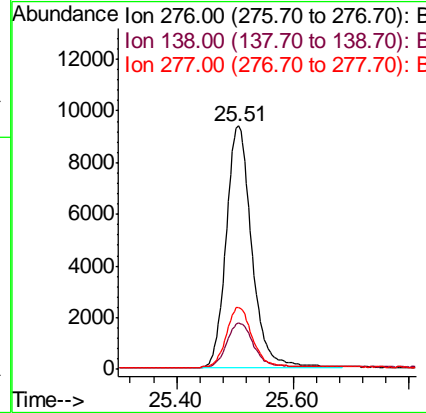
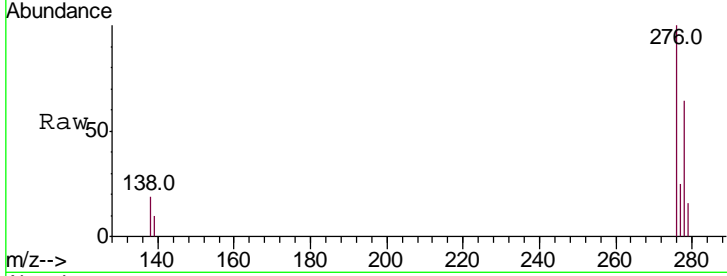




#33  
 Indeno(1,2,3-cd)pyrene  
 Concen: 0.387 ng  
 RT: 25.51 min Scan# 3193  
 Delta R.T. -0.03 min  
 Lab File: BN010265.D  
 Acq: 18 Mar 2020 16:08

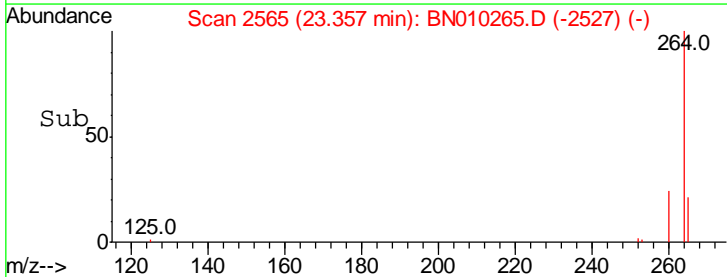
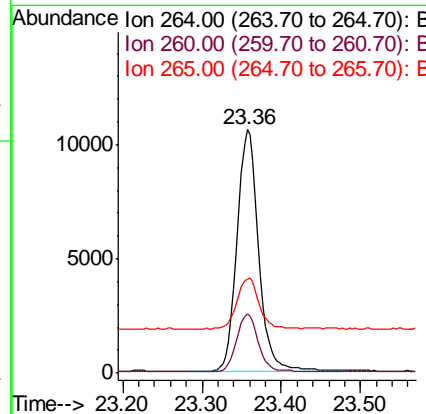
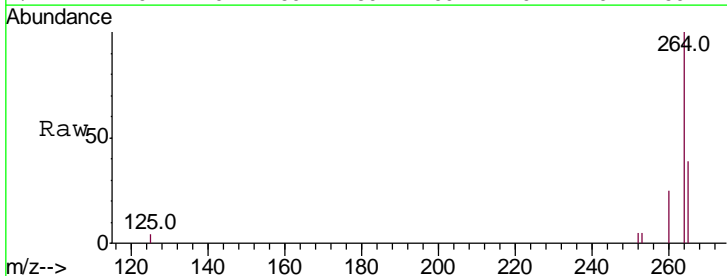
Instrument :  
 BNA\_N  
 ClientSampled :  
 SSTDCCC0.4

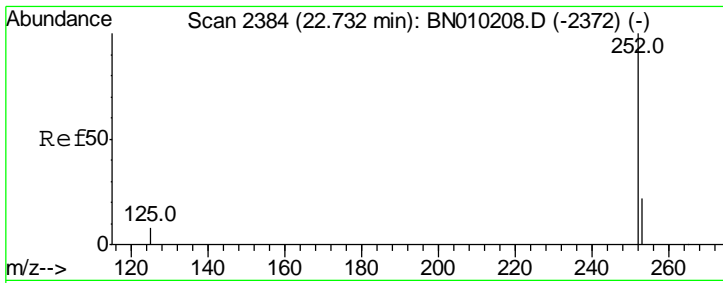
Tgt Ion	Resp	Lower	Upper
276	100		
138	19.2	15.8	23.6
277	25.1	19.3	28.9



#34  
 Perylene-d12  
 Concen: 0.400 ng  
 RT: 23.36 min Scan# 2565  
 Delta R.T. -0.02 min  
 Lab File: BN010265.D  
 Acq: 18 Mar 2020 16:08

Tgt Ion	Resp	Lower	Upper
264	100		
260	24.5	19.7	29.5
265	38.8	25.8	38.6#



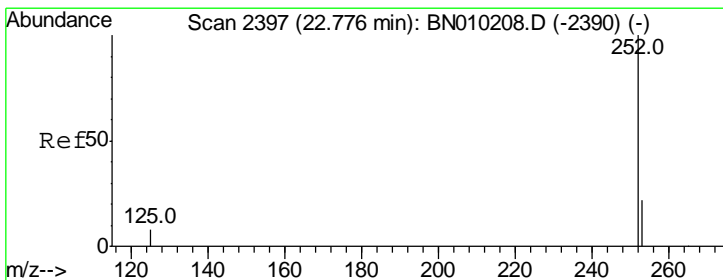
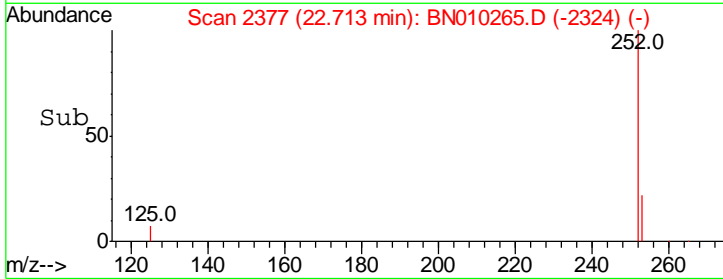
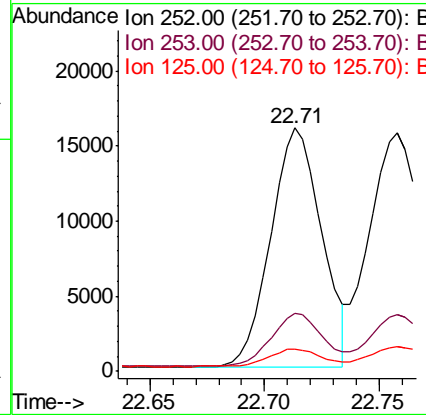
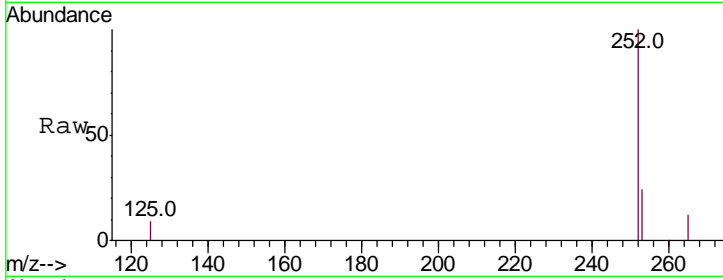


#35  
 Benzo(b)fluoranthene  
 Concen: 0.396 ng  
 RT: 22.71 min Scan# 2377  
 Delta R.T. -0.02 min  
 Lab File: BN010265.D  
 Acq: 18 Mar 2020 16:08

Instrument :  
 BNA\_N  
 ClientSampled :  
 SSTDCCC0.4

Tgt Ion: 252 Resp: 24588

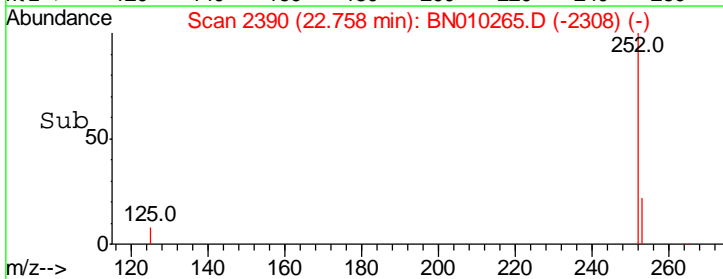
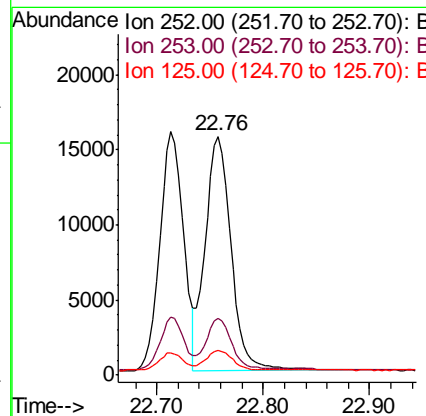
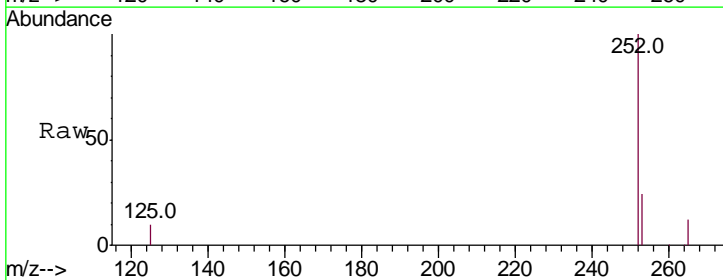
Ion	Ratio	Lower	Upper
252	100		
253	23.7	18.6	28.0
125	8.9	7.9	11.9

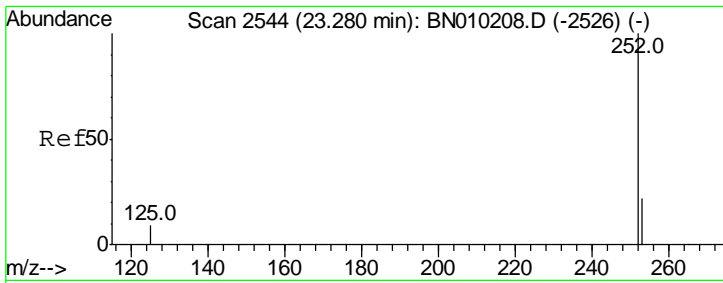


#36  
 Benzo(k)fluoranthene  
 Concen: 0.419 ng  
 RT: 22.76 min Scan# 2390  
 Delta R.T. -0.02 min  
 Lab File: BN010265.D  
 Acq: 18 Mar 2020 16:08

Tgt Ion: 252 Resp: 26285

Ion	Ratio	Lower	Upper
252	100		
253	23.7	18.8	28.2
125	10.4	8.2	12.4

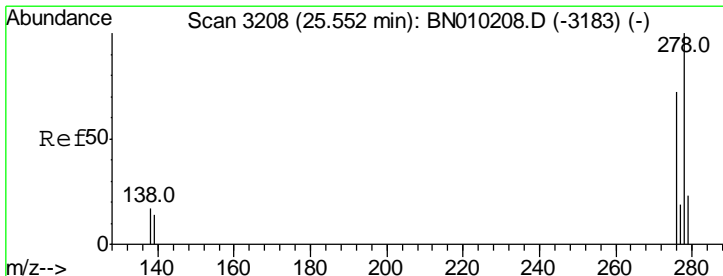
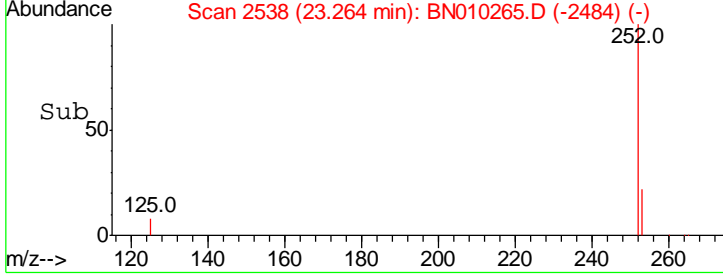
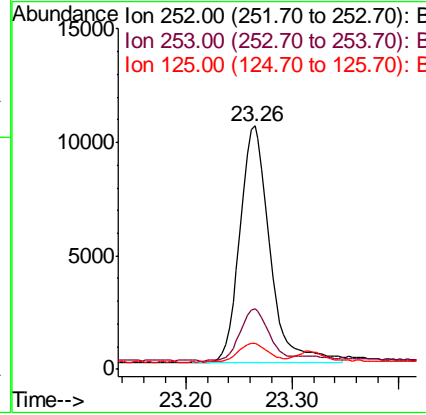
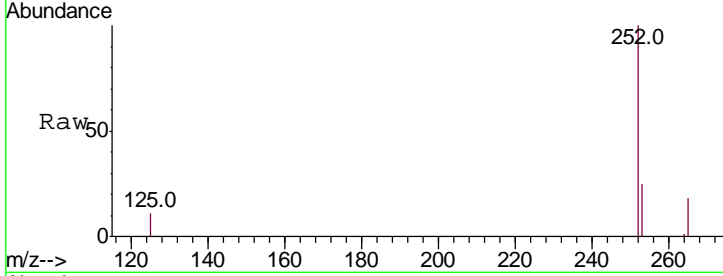




#37  
 Benzo(a)pyrene  
 Concen: 0.352 ng  
 RT: 23.26 min Scan# 2538  
 Delta R.T. -0.02 min  
 Lab File: BN010265.D  
 Acq: 18 Mar 2020 16:08

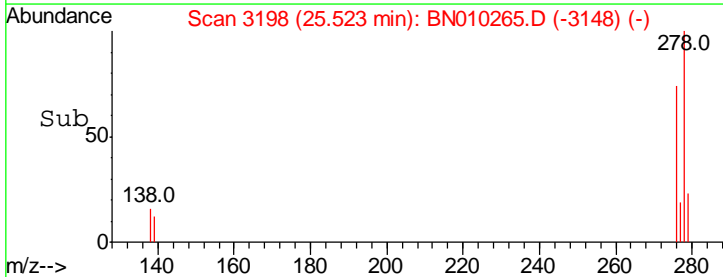
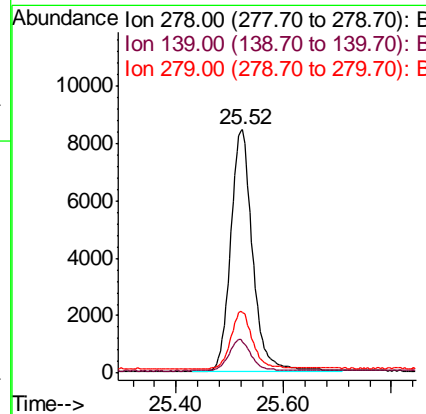
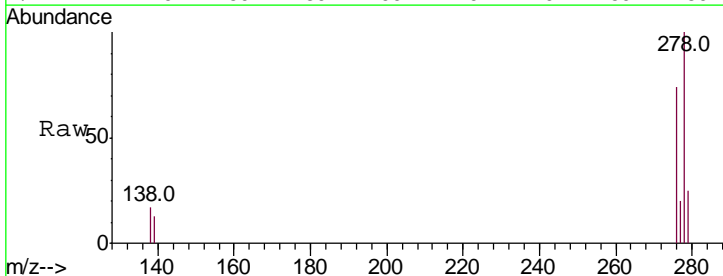
Instrument :  
 BNA\_N  
 ClientSampled :  
 SSTDCCC0.4

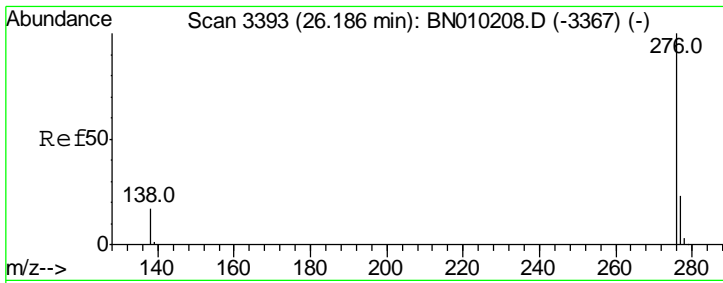
Tgt Ion	Resp	Lower	Upper
252	20625		
253	25.0	19.1	28.7
125	10.8	9.2	13.8



#38  
 Dibenzo(a,h)anthracene  
 Concen: 0.405 ng  
 RT: 25.52 min Scan# 3198  
 Delta R.T. -0.03 min  
 Lab File: BN010265.D  
 Acq: 18 Mar 2020 16:08

Tgt Ion	Resp	Lower	Upper
278	23834		
139	13.0	12.4	18.6
279	25.0	20.2	30.2





#39  
 Benzo(a,h,i)perylene  
 Concen: 0.396 ng  
 RT: 26.15 min Scan# 3382  
 Delta R.T. -0.03 min  
 Lab File: BN010265.D  
 Acq: 18 Mar 2020 16:08

Instrument :  
 BNA\_N  
 ClientSampleId :  
 SSTDCCC0.4

Tot Ion: 276 Resp: 23279

Ion	Ratio	Lower	Upper
276	100		
277	24.2	19.4	29.2
138	17.5	15.4	23.2

