

Data Path : Z:\SVOASRV\HPCHEM1\BNA N\DATA\BN031820\  
 Data File : BN010269.D  
 Acq On : 18 Mar 2020 18:32  
 Operator : CG/JU  
 Sample : L1903-17DL 2X  
 Misc :  
 ALS Vial : 6 Sample Multiplier: 1

Instrument :  
 BNA\_N  
 ClientSampleId :

Quant Time: Mar 19 01:13:35 2020  
 Quant Method : Z:\SVOASRV\HPCHEM1\BNA N\METHODS\8270-SIM-BN031320.M  
 Quant Title : ASP BNA STANDARDS FOR 5 POINT CALIBRATION  
 QLast Update : Mon Mar 16 02:17:23 2020  
 Response via : Initial Calibration

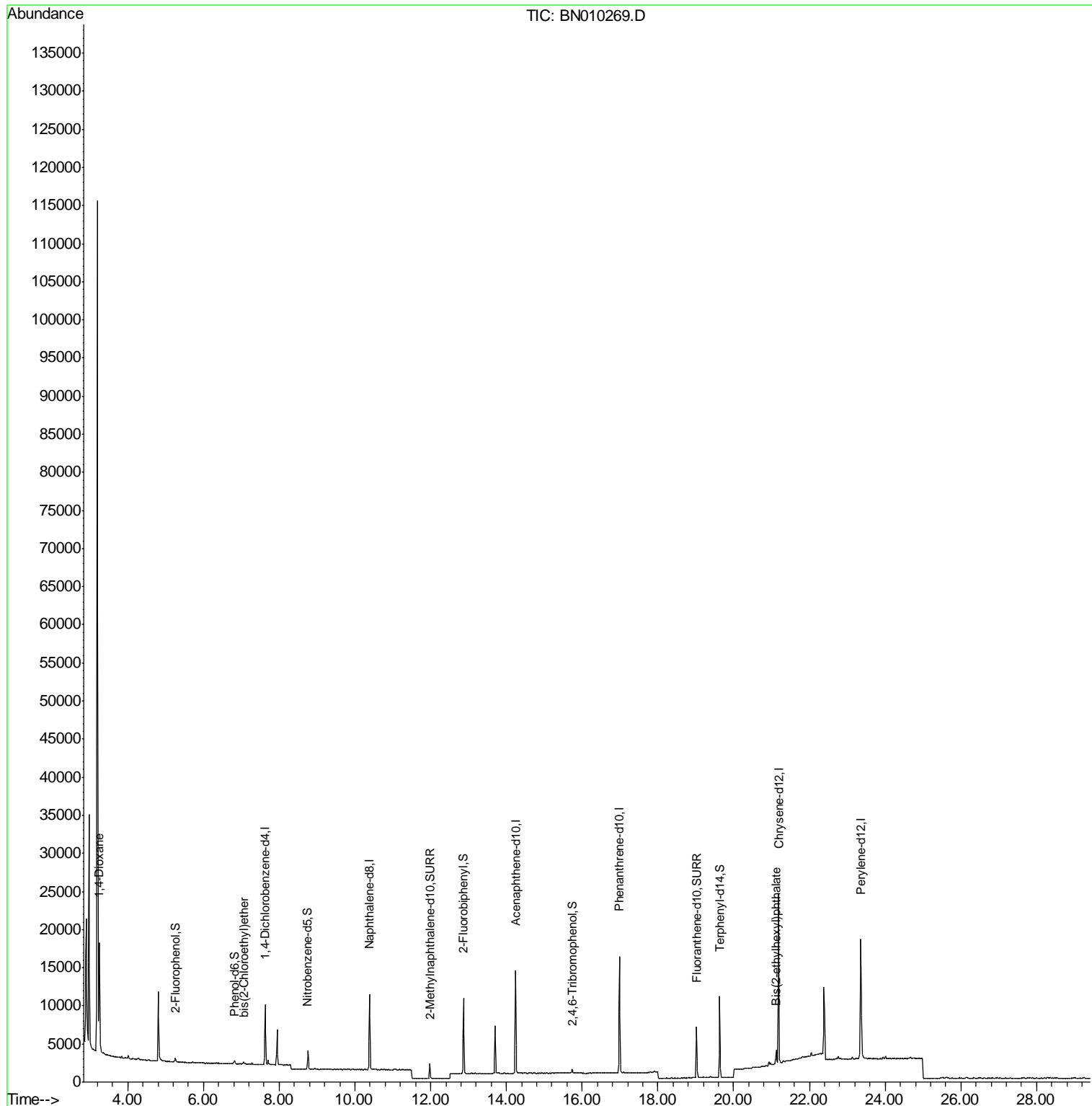
Internal Standards	R.T.	QIon	Response	Conc	Units	Dev(Min)
1) 1,4-Dichlorobenzene-d4	7.63	152	3868	0.40	ng	0.00
7) Naphthalene-d8	10.38	136	13441	0.40	ng	-0.01
13) Acenaphthene-d10	14.25	164	8152	0.40	ng	-0.01
19) Phenanthrene-d10	16.99	188	19764	0.40	ng	-0.01
27) Chrysene-d12	21.19	240	20204	0.40	ng	-0.01
34) Perylene-d12	23.36	264	21031	0.40	ng	-0.02
System Monitoring Compounds						
4) 2-Fluorophenol	5.26	112	444	0.05	ng	0.00
5) Phenol-d6	6.81	99	354	0.03	ng	0.00
8) Nitrobenzene-d5	8.76	82	2049	0.25	ng	-0.01
11) 2-Methylnaphthalene-d10	11.97	152	2773	0.12	ng	-0.02
14) 2,4,6-Tribromophenol	15.74	330	401	0.14	ng	-0.01
15) 2-Fluorobiphenyl	12.86	172	8269	0.28	ng	-0.01
25) Fluoranthene-d10	19.02	212	8014	0.13	ng	-0.01
29) Terphenyl-d14	19.63	244	10992	0.24	ng	-0.01
Target Compounds						
2) 1,4-Dioxane	3.26	88	9183	2.433	ng	# 53
6) bis(2-Chloroethyl)ether	7.07	93	292	0.031	ng	97
32) Bis(2-ethylhexyl)phthalate	21.13	149	1729	0.059	ng	# 92

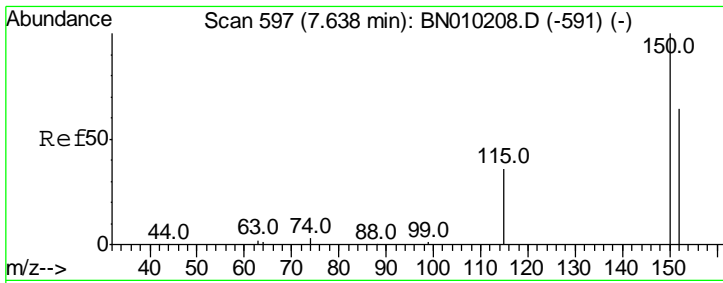
(#) = qualifier out of range (m) = manual integration (+) = signals summed

Data Path : Z:\SVOASRV\HPCHEM1\BNA N\DATA\BN031820\  
 Data File : BN010269.D  
 Acq On : 18 Mar 2020 18:32  
 Operator : CG/JU  
 Sample : L1903-17DL 2X  
 Misc :  
 ALS Vial : 6 Sample Multiplier: 1

Instrument :  
 BNA\_N  
 ClientSampleId :

Quant Time: Mar 19 01:13:35 2020  
 Quant Method : Z:\SVOASRV\HPCHEM1\BNA N\METHODS\8270-SIM-BN031320.M  
 Quant Title : ASP BNA STANDARDS FOR 5 POINT CALIBRATION  
 QLast Update : Mon Mar 16 02:17:23 2020  
 Response via : Initial Calibration

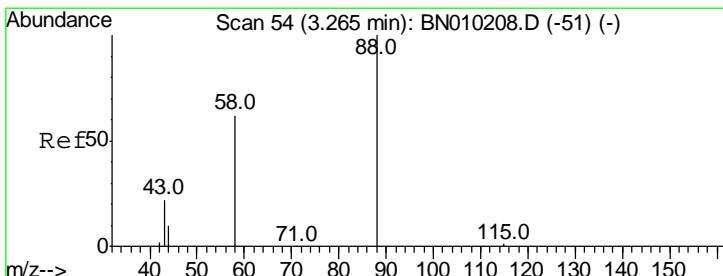
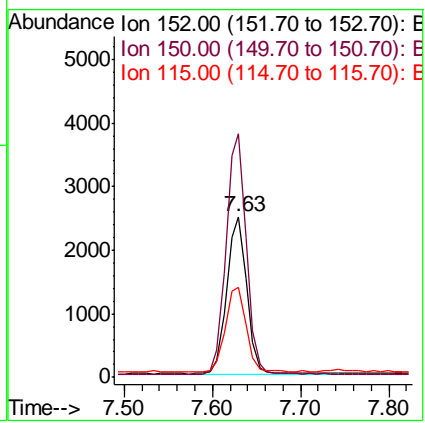
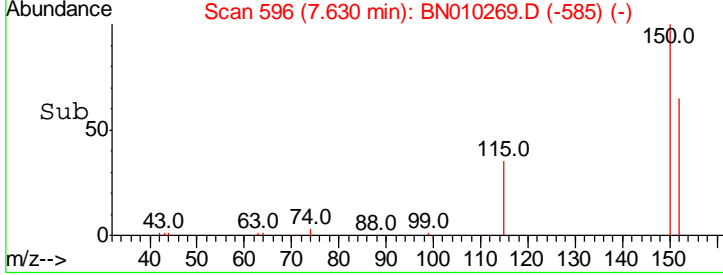
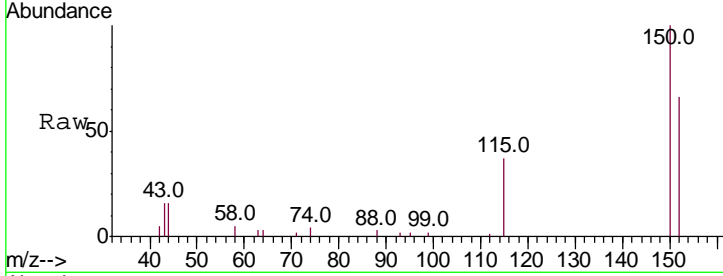




#1  
 1,4-Dichlorobenzene-d4  
 Concen: 0.400 ng  
 RT: 7.63 min Scan# 596  
 Delta R.T. -0.01 min  
 Lab File: BN010269.D  
 Acq: 18 Mar 2020 18:32

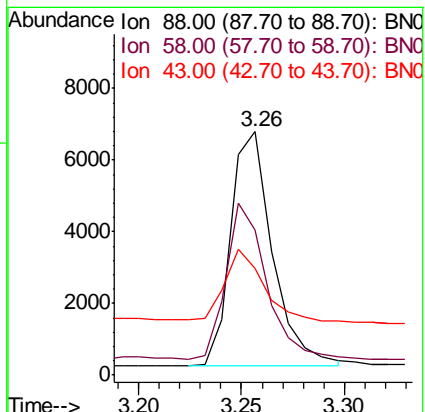
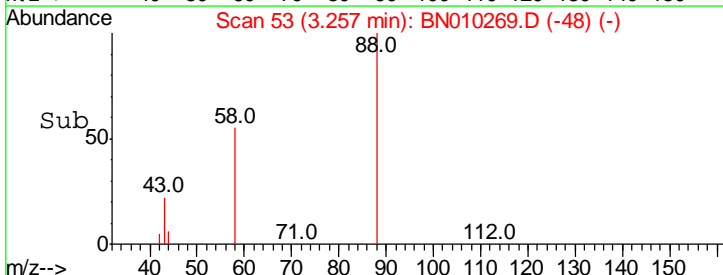
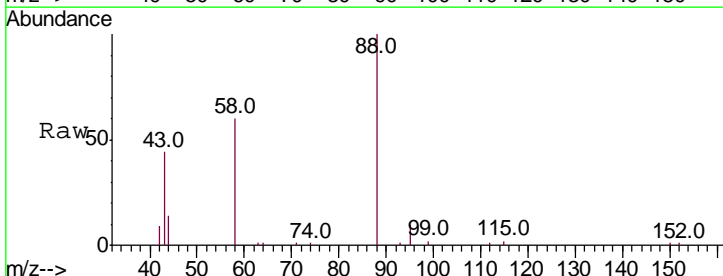
Instrument :  
 BNA\_N  
 ClientSampled :

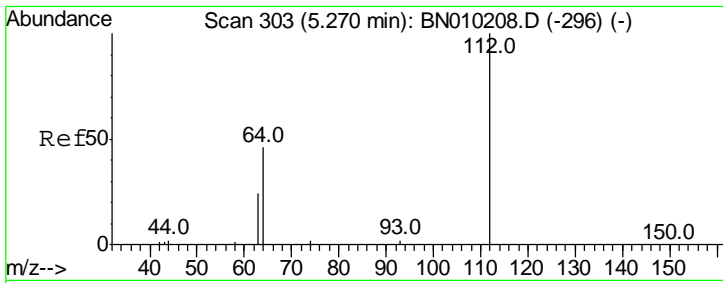
Tgt Ion	Resp	Lower	Upper
152	3868		
152	100		
150	151.5	119.5	179.3
115	55.8	50.9	76.3



#2  
 1,4-Dioxane  
 Concen: 2.433 ng  
 RT: 3.26 min Scan# 53  
 Delta R.T. -0.01 min  
 Lab File: BN010269.D  
 Acq: 18 Mar 2020 18:32

Tgt Ion	Resp	Lower	Upper
88	9183		
88	100		
58	64.4	97.8	146.8#
43	28.4	45.1	67.7#

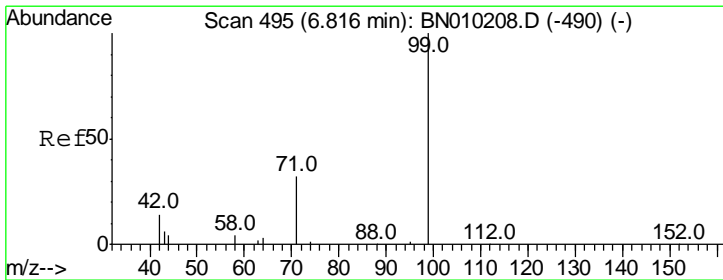
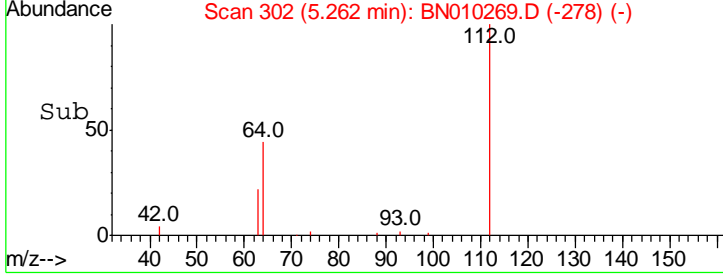
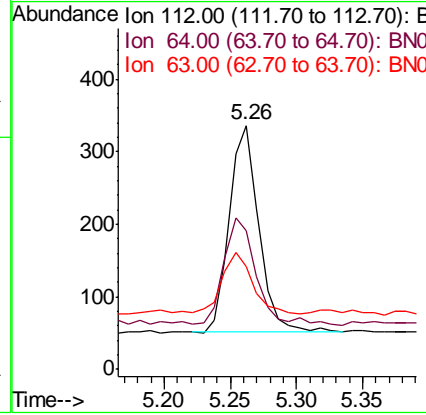
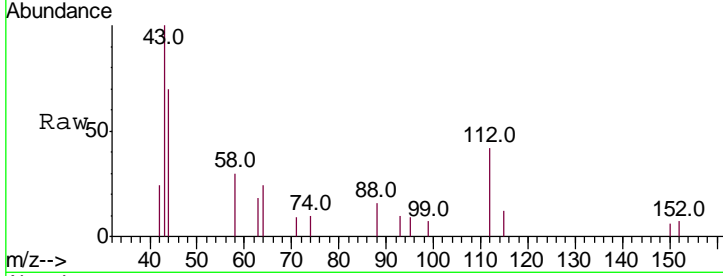




#4  
 2-Fluorophenol  
 Concen: 0.049 ng  
 RT: 5.26 min Scan# 302  
 Delta R.T. -0.01 min  
 Lab File: BN010269.D  
 Acq: 18 Mar 2020 18:32

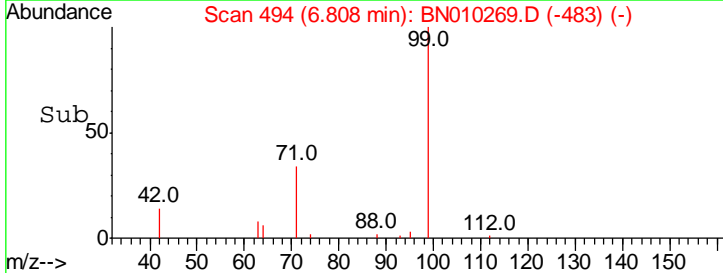
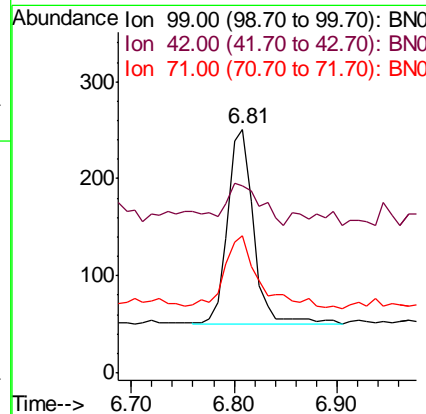
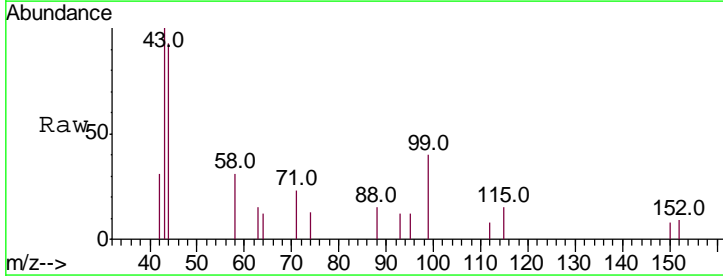
Instrument :  
 BNA\_N  
 ClientSampled :

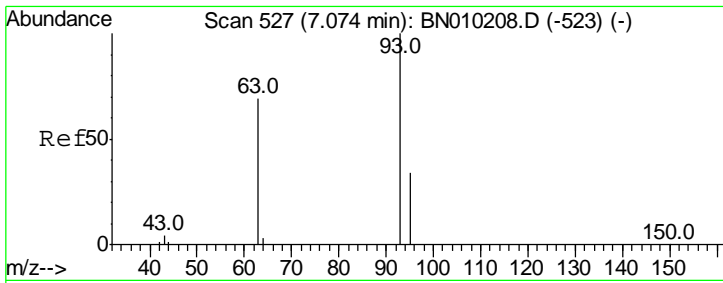
Tgt Ion	Ratio	Lower	Upper
112	100		
64	58.3	42.6	63.8
63	31.3	23.6	35.4



#5  
 Phenol-d6  
 Concen: 0.031 ng  
 RT: 6.81 min Scan# 494  
 Delta R.T. -0.01 min  
 Lab File: BN010269.D  
 Acq: 18 Mar 2020 18:32

Tgt Ion	Ratio	Lower	Upper
99	100		
42	26.0	12.0	18.0#
71	50.6	22.6	33.8#

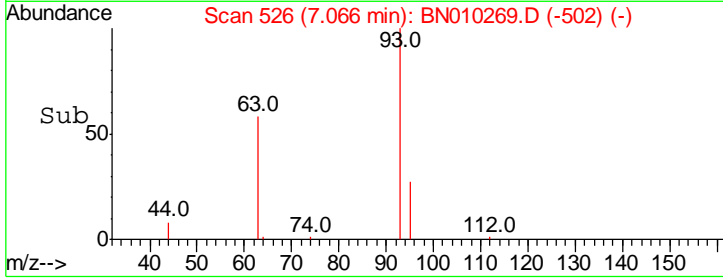
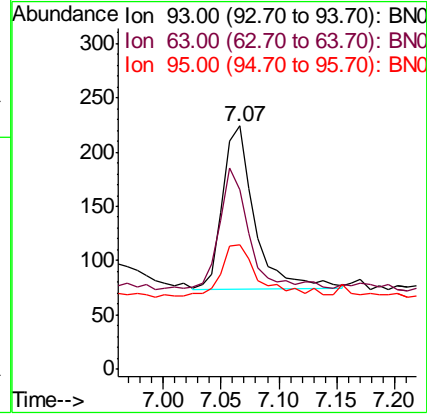
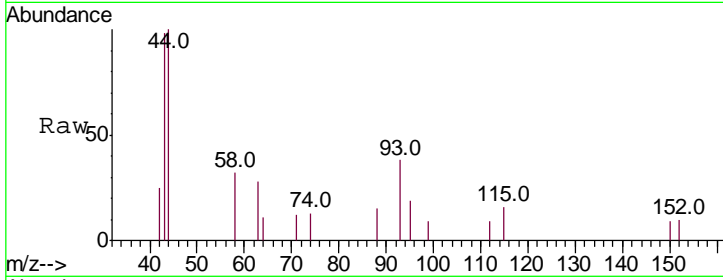




#6  
 bis(2-Chloroethyl)ether  
 Concen: 0.031 ng  
 RT: 7.07 min Scan# 526  
 Delta R.T. -0.01 min  
 Lab File: BN010269.D  
 Acq: 18 Mar 2020 18:32

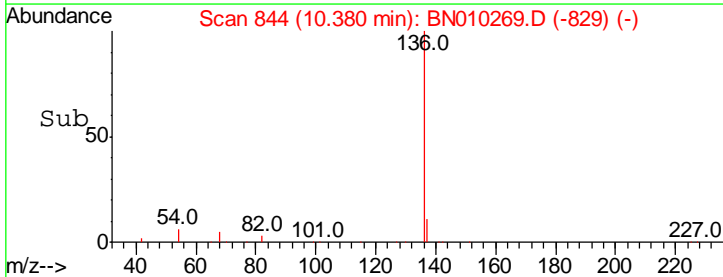
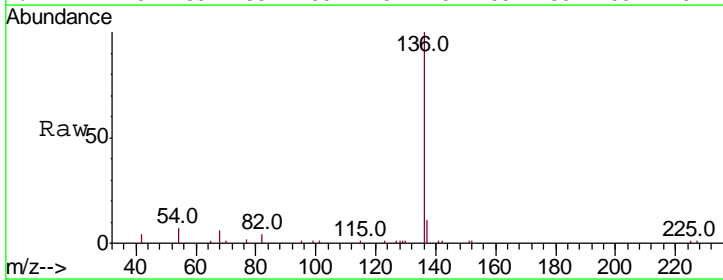
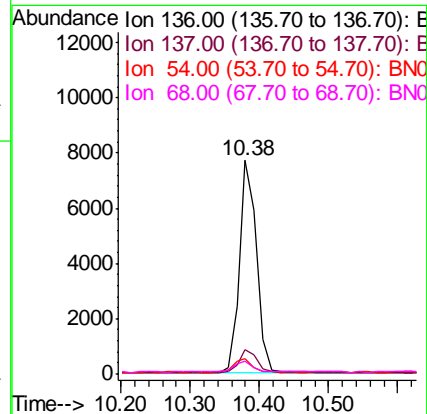
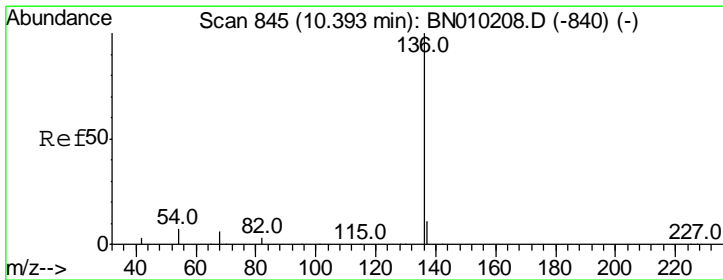
Instrument :  
 BNA\_N  
 ClientSampled :

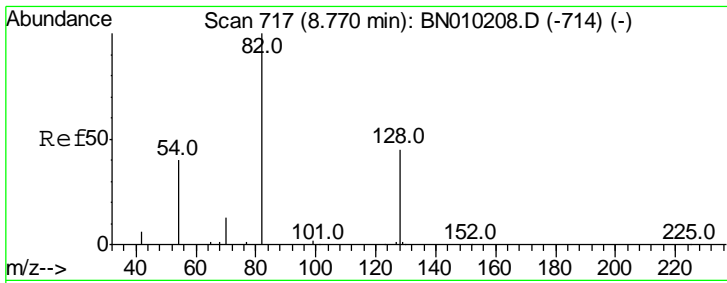
Tgt Ion	Resp	Lower	Upper
93	100		
63	66.4	53.4	80.0
95	39.7	28.6	42.8



#7  
 Naphthalene-d8  
 Concen: 0.400 ng  
 RT: 10.38 min Scan# 844  
 Delta R.T. -0.01 min  
 Lab File: BN010269.D  
 Acq: 18 Mar 2020 18:32

Tgt Ion	Resp	Lower	Upper
136	100		
137	11.5	10.6	15.8
54	7.3	9.5	14.3#
68	5.9	9.7	14.5#

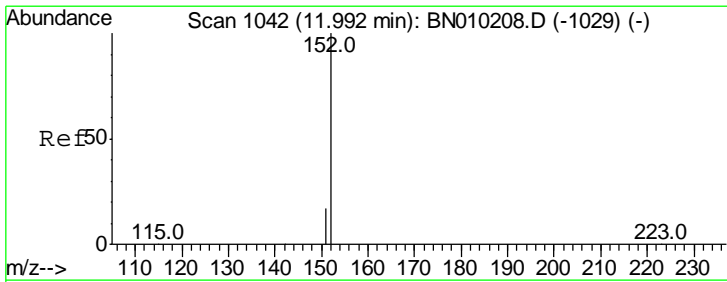
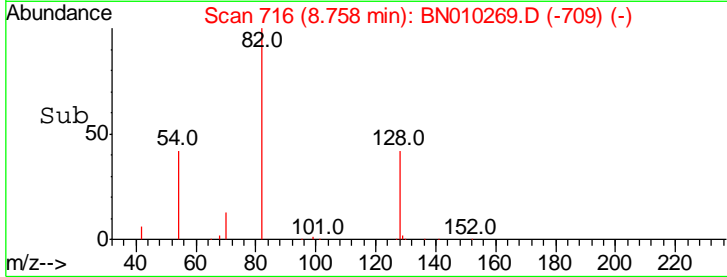
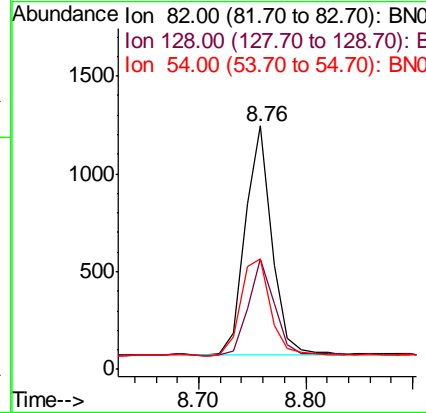
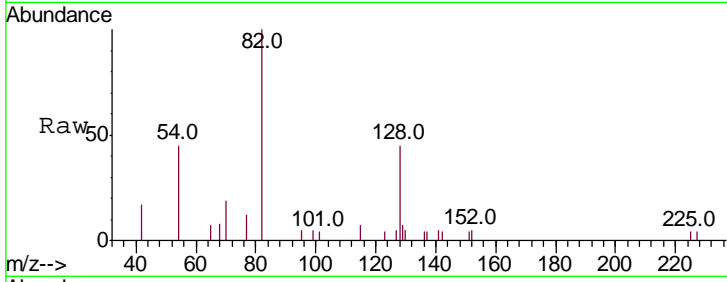




#8  
 Nitrobenzene-d5  
 Concen: 0.254 ng  
 RT: 8.76 min Scan# 716  
 Delta R.T. -0.01 min  
 Lab File: BN010269.D  
 Acq: 18 Mar 2020 18:32

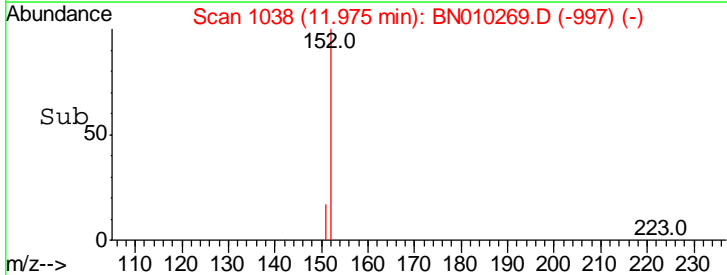
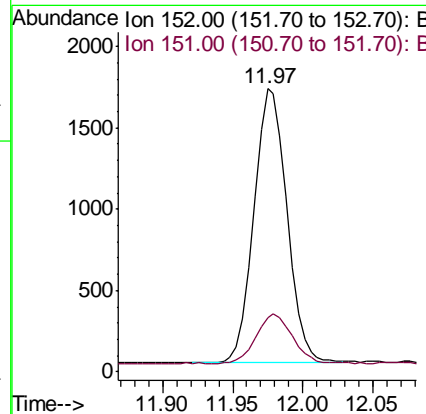
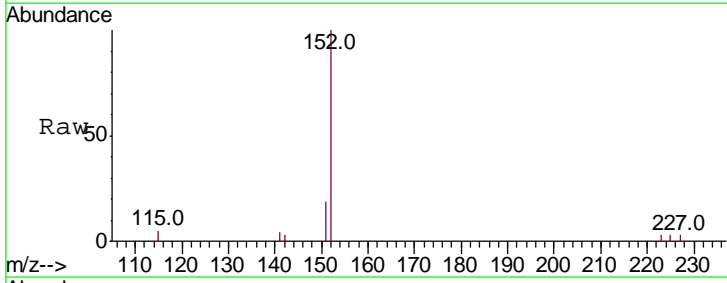
Instrument :  
 BNA\_N  
 ClientSampled :

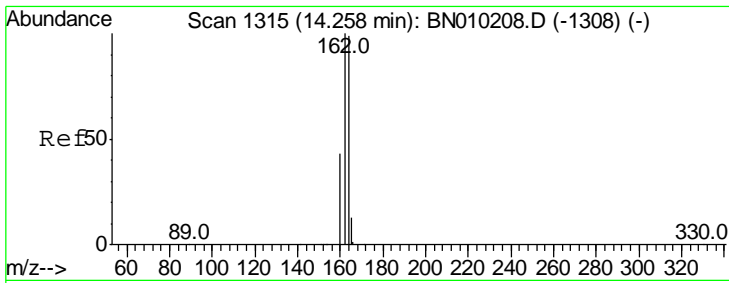
Tgt Ion	Resp	Lower	Upper
82	100		
128	45.5	35.0	52.6
54	45.5	37.0	55.4



#11  
 2-Methylnaphthalene-d10  
 Concen: 0.125 ng  
 RT: 11.97 min Scan# 1038  
 Delta R.T. -0.02 min  
 Lab File: BN010269.D  
 Acq: 18 Mar 2020 18:32

Tgt Ion	Resp	Lower	Upper
152	100		
151	19.6	15.0	22.6

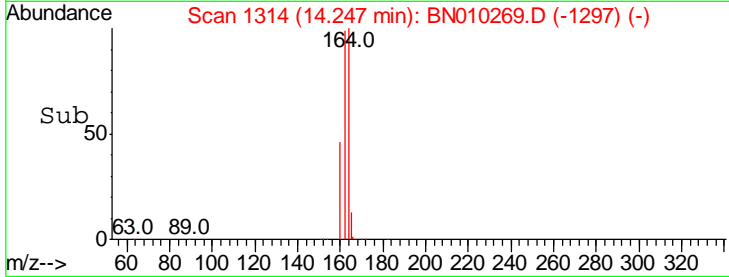
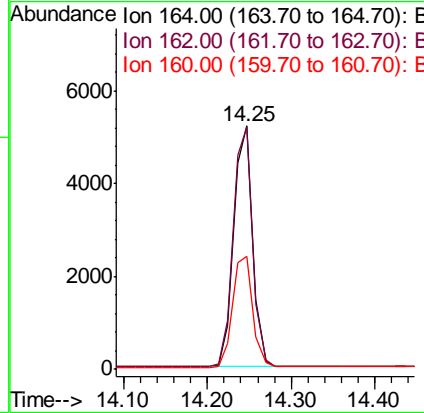
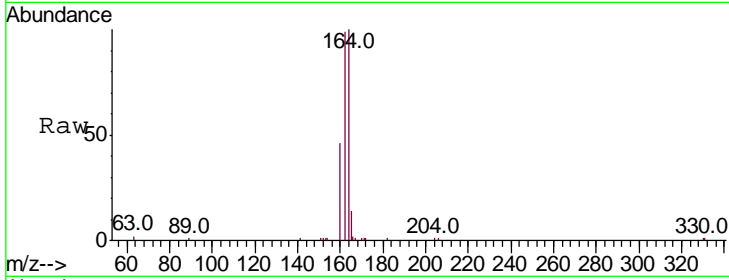




#13  
 Acenaphthene-d10  
 Concen: 0.400 ng  
 RT: 14.25 min Scan# 1314  
 Delta R.T. -0.01 min  
 Lab File: BN010269.D  
 Acq: 18 Mar 2020 18:32

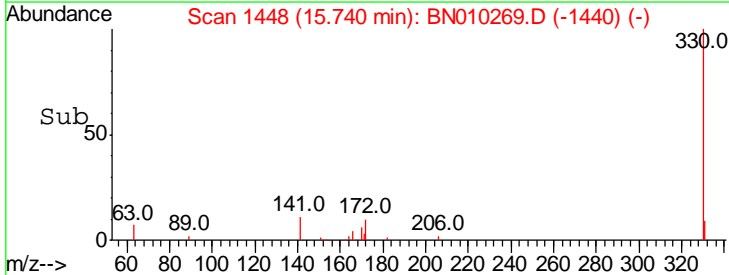
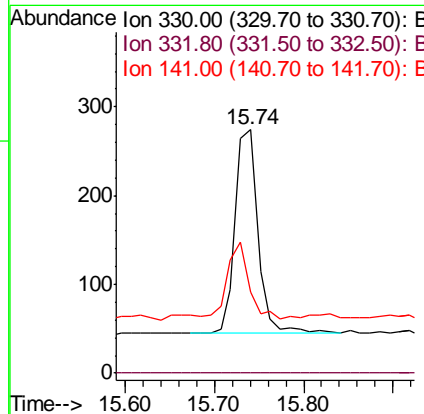
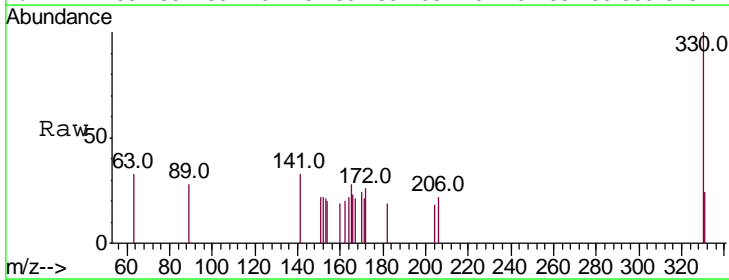
Instrument :  
 BNA\_N  
 ClientSampled :

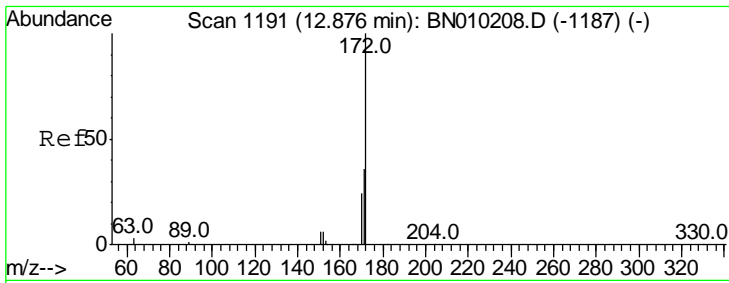
Tgt Ion	Resp	Lower	Upper
164	100		
162	99.3	81.0	121.4
160	46.3	35.6	53.4



#14  
 2,4,6-Tribromophenol  
 Concen: 0.137 ng  
 RT: 15.74 min Scan# 1448  
 Delta R.T. -0.01 min  
 Lab File: BN010269.D  
 Acq: 18 Mar 2020 18:32

Tgt Ion	Resp	Lower	Upper
330	100		
332	0.0	0.0	0.0
141	33.4	25.1	37.7

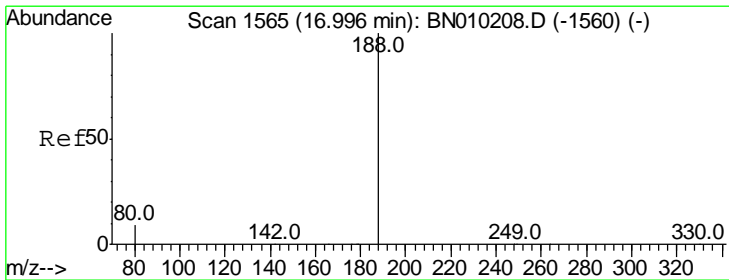
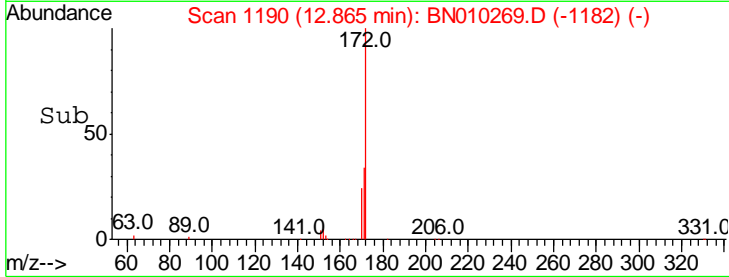
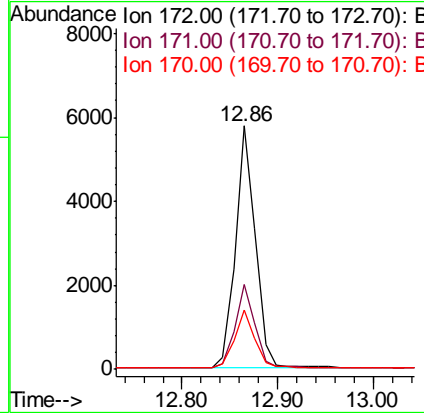
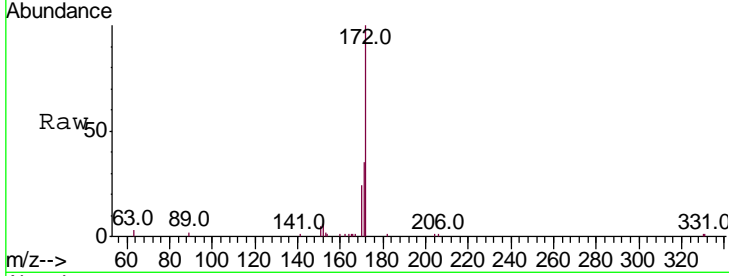




#15  
 2-Fluorobiphenyl  
 Concen: 0.285 ng  
 RT: 12.86 min Scan# 1190  
 Delta R.T. -0.01 min  
 Lab File: BN010269.D  
 Acq: 18 Mar 2020 18:32

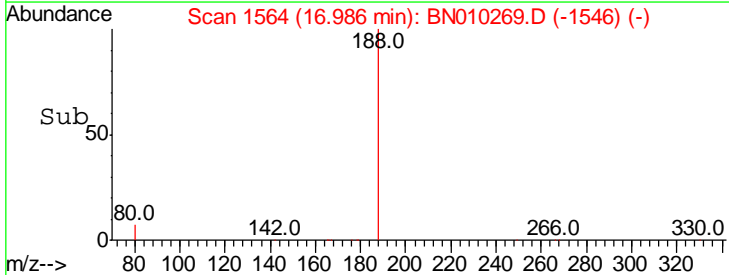
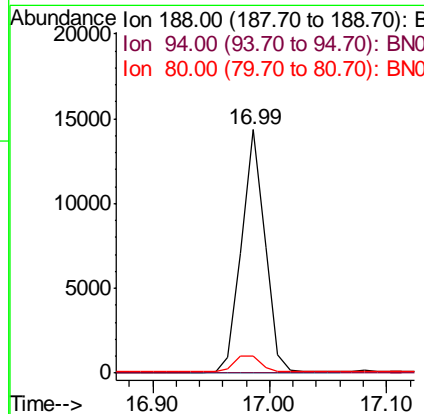
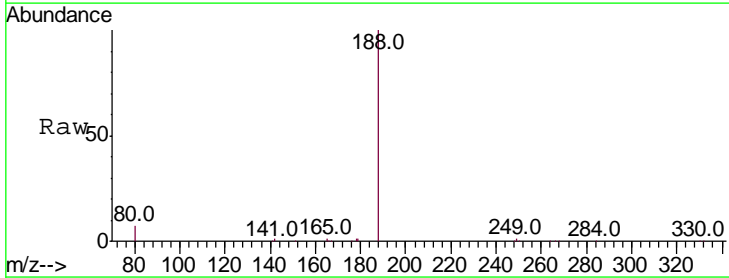
Instrument :  
 BNA\_N  
 ClientSampled :

Tgt Ion	Resp	Lower	Upper
172	100		
171	35.0	29.4	44.2
170	24.2	20.2	30.4

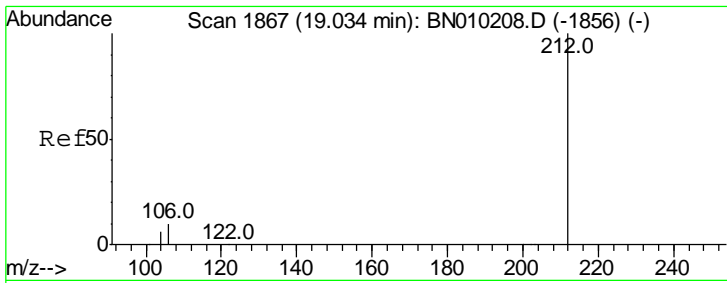


#19  
 Phenanthrene-d10  
 Concen: 0.400 ng  
 RT: 16.99 min Scan# 1564  
 Delta R.T. -0.01 min  
 Lab File: BN010269.D  
 Acq: 18 Mar 2020 18:32

Tgt Ion	Resp	Lower	Upper
188	100		
94	0.0	0.0	0.0
80	7.1	8.6	12.8#



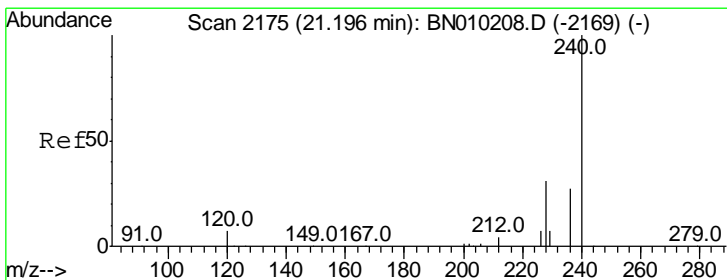
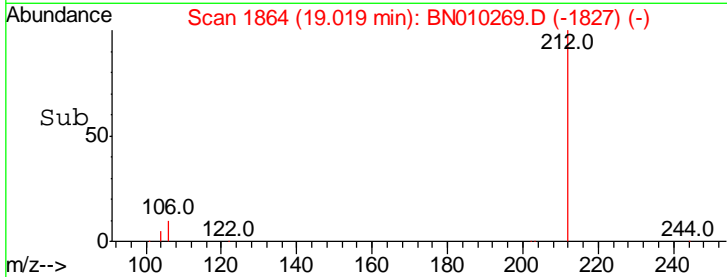
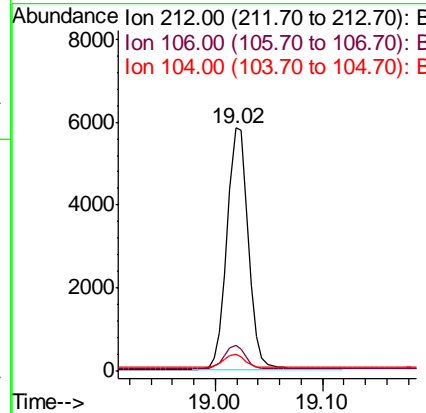
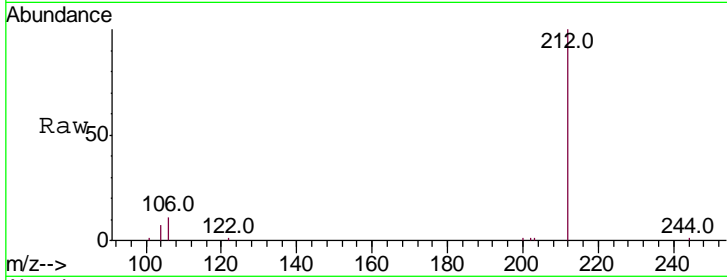




#25  
 Fluoranthene-d10  
 Concen: 0.131 ng  
 RT: 19.02 min Scan# 1864  
 Delta R.T. -0.01 min  
 Lab File: BN010269.D  
 Acq: 18 Mar 2020 18:32

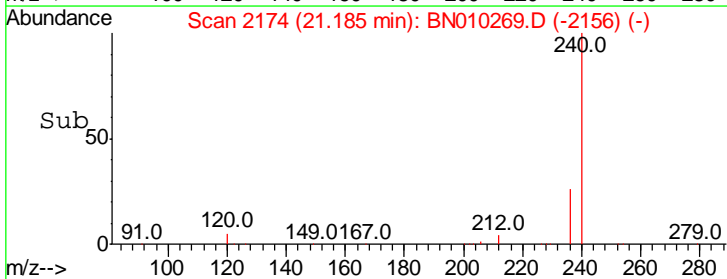
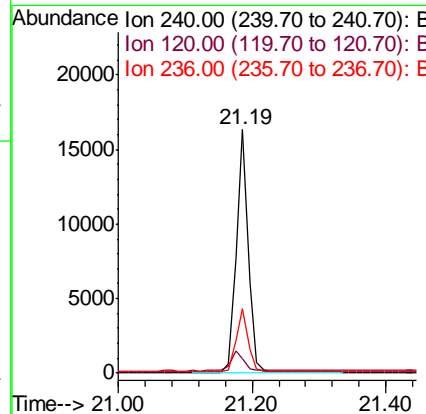
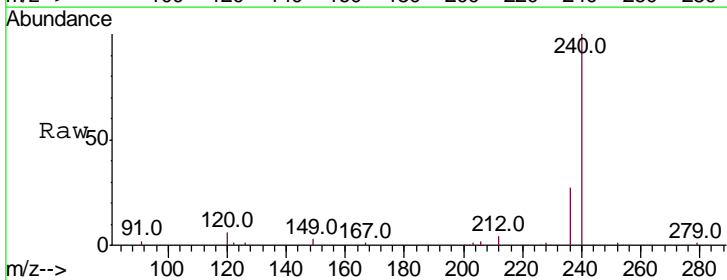
Instrument :  
 BNA\_N  
 ClientSampled :

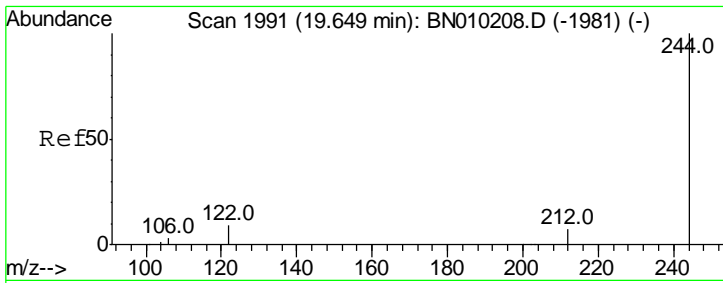
Tgt Ion	Resp	Lower	Upper
212	100		
106	9.5	8.1	12.1
104	5.5	4.7	7.1



#27  
 Chrysene-d12  
 Concen: 0.400 ng  
 RT: 21.19 min Scan# 2174  
 Delta R.T. -0.01 min  
 Lab File: BN010269.D  
 Acq: 18 Mar 2020 18:32

Tgt Ion	Resp	Lower	Upper
240	100		
120	6.2	7.7	11.5#
236	26.6	21.8	32.6

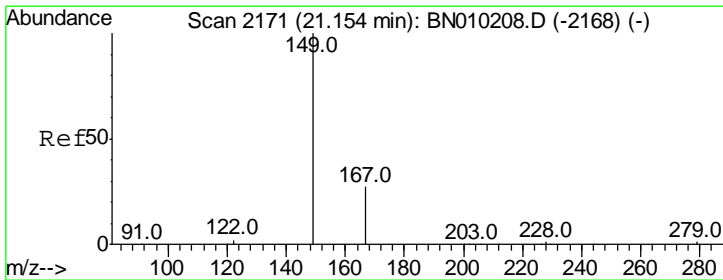
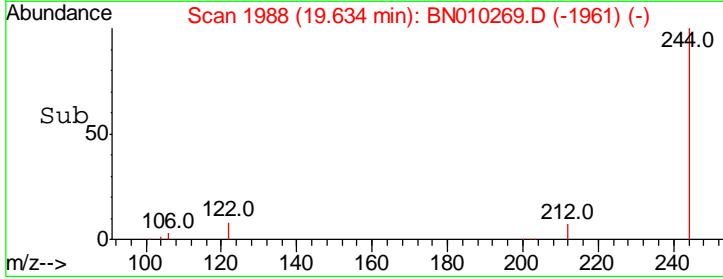
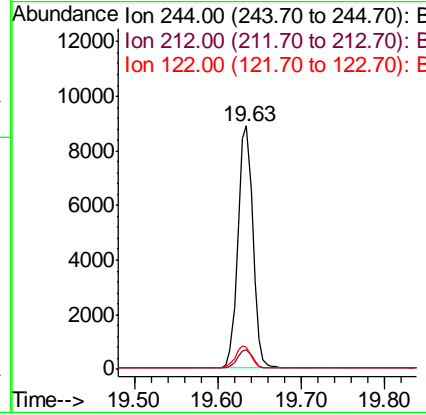
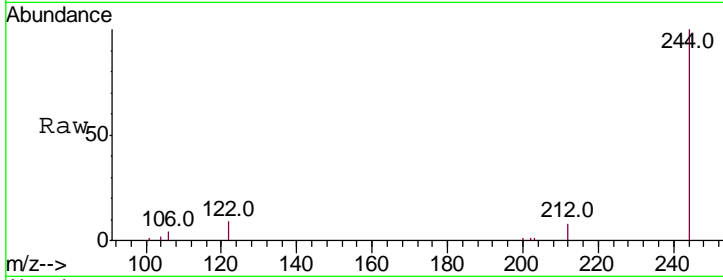




#29  
 Terphenyl-d14  
 Concen: 0.239 ng  
 RT: 19.63 min Scan# 1988  
 Delta R.T. -0.01 min  
 Lab File: BN010269.D  
 Acq: 18 Mar 2020 18:32

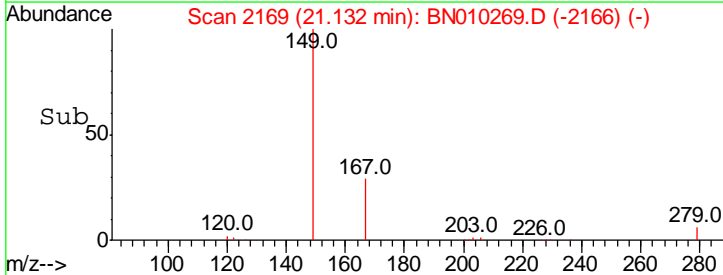
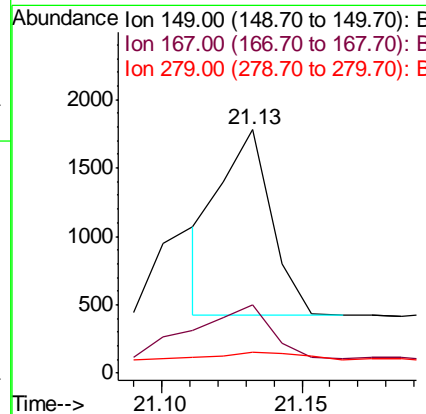
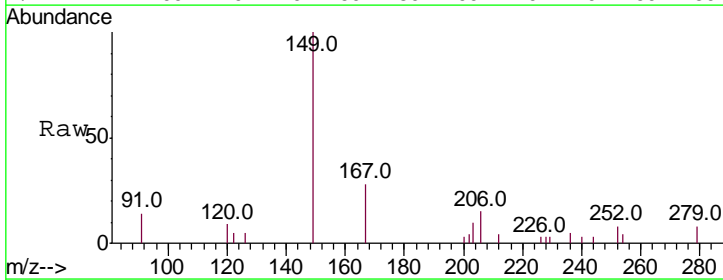
Instrument :  
 BNA\_N  
 ClientSampled :

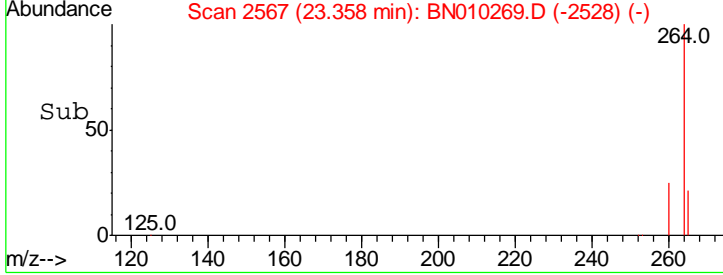
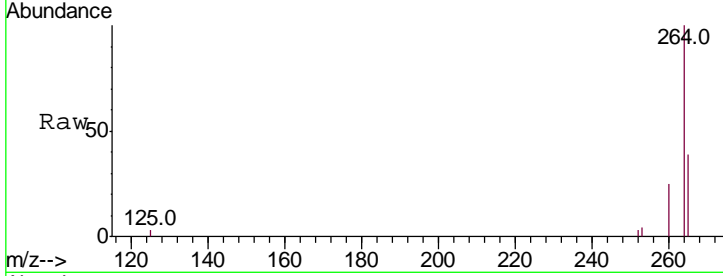
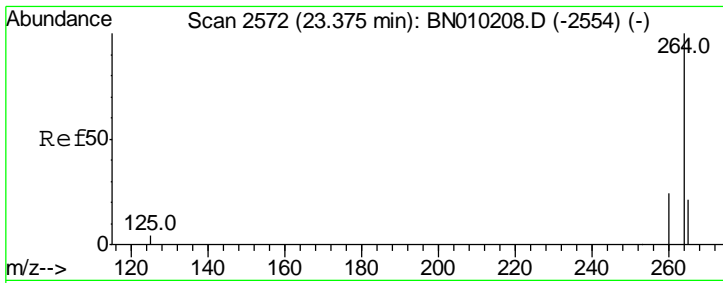
Tgt Ion	Resp	Lower	Upper
244	10992		
212	7.9	6.4	9.6
122	8.9	8.1	12.1



#32  
 Bis(2-ethylhexyl)phthalate  
 Concen: 0.059 ng  
 RT: 21.13 min Scan# 2169  
 Delta R.T. -0.02 min  
 Lab File: BN010269.D  
 Acq: 18 Mar 2020 18:32

Tgt Ion	Resp	Lower	Upper
149	1729		
167	30.4	21.0	31.4
279	5.3	3.1	4.7#





#34  
 Perylene-d12  
 Concen: 0.400 ng  
 RT: 23.36 min Scan# 2567  
 Delta R.T. -0.02 min  
 Lab File: BN010269.D  
 Acq: 18 Mar 2020 18:32

Instrument :  
 BNA\_N  
 ClientSampled :

Tot Ion: 264 Resp: 21031

Ion	Ratio	Lower	Upper
264	100		
260	25.0	19.7	29.5
265	38.6	25.8	38.6

