

Data Path : Z:\svoasrv\HPCHEM1\BNA_N\Data\BN032321\
 Data File : BN014046.D
 Acq On : 23 Mar 2021 17:18
 Operator : CG/JU
 Sample : M1735-10
 Misc :
 ALS Vial : 12 Sample Multiplier: 1

Instrument :
 BNA_N
 ClientSampleId :
 RE132D6-20210315

Quant Time: Mar 23 17:56:45 2021
 Quant Method : Z:\SVOASRV\HPCHEM1\BNA_N\METHODS\8270-SIM-BN032021.M
 Quant Title : ASP BNA STANDARDS FOR 5 POINT CALIBRATION
 QLast Update : Tue Mar 23 11:06:27 2021
 Response via : Initial Calibration

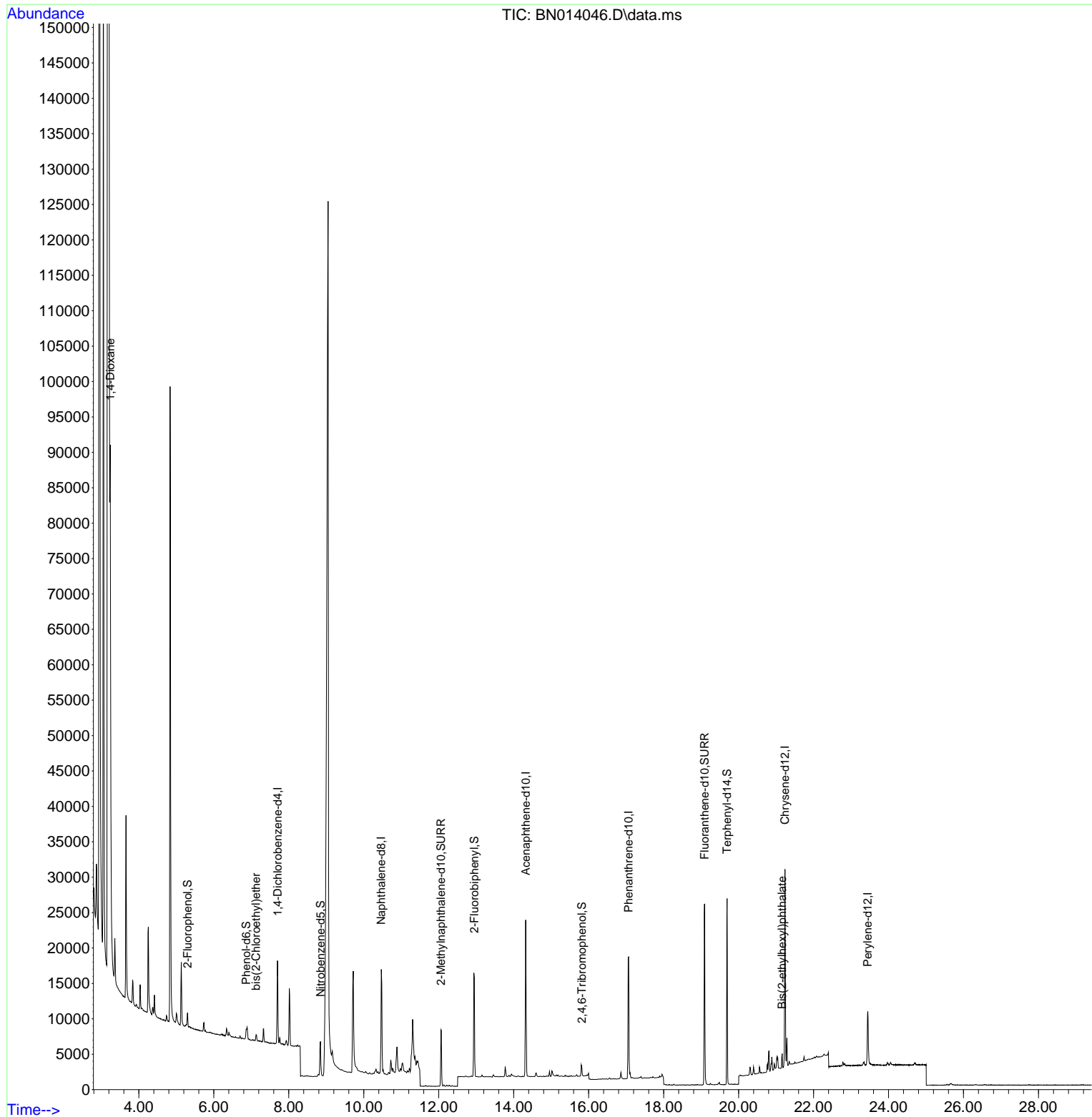
Compound	R.T.	QIon	Response	Conc	Units	Dev(Min)
Internal Standards						
1) 1,4-Dichlorobenzene-d4	7.700	152	5374	0.40	ng	0.00
7) Naphthalene-d8	10.467	136	20779	0.40	ng	#-0.01
13) Acenaphthene-d10	14.321	164	11980	0.40	ng	0.00
19) Phenanthrene-d10	17.067	188	26646	0.40	ng	# 0.00
29) Chrysene-d12	21.237	240	25108	0.40	ng	0.00
36) Perylene-d12	23.445	264	10135	0.40	ng	# 0.00
System Monitoring Compounds						
4) 2-Fluorophenol	5.300	112	1663	0.13	ng	0.00
5) Phenol-d6	6.863	99	1164	0.07	ng	0.00
8) Nitrobenzene-d5	8.845	82	4197	0.31	ng	0.00
11) 2-Methylnaphthalene-d10	12.062	152	10653	0.33	ng	0.00
14) 2,4,6-Tribromophenol	15.818	330	1198	0.31	ng	0.00
15) 2-Fluorobiphenyl	12.950	172	14598	0.33	ng	0.00
27) Fluoranthene-d10	19.091	212	28930	0.39	ng	0.00
31) Terphenyl-d14	19.692	244	25320	0.46	ng	0.00
Target Compounds						
2) 1,4-Dioxane	3.239	88	29059	4.10	ng	# 88
6) bis(2-Chloroethyl)ether	7.128	93	597	0.04	ng	90
34) Bis(2-ethylhexyl)phtha...	21.162	149	2048	0.08	ng	# 98

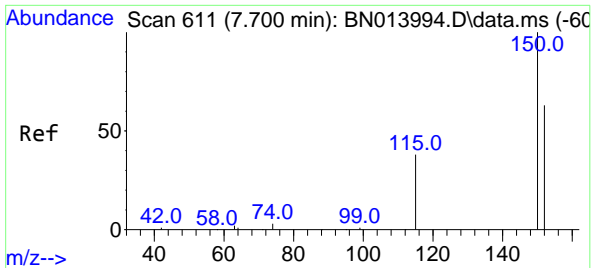
(#) = qualifier out of range (m) = manual integration (+) = signals summed

Data Path : Z:\svoasrv\HPCHEM1\BNA_N\Data\BN032321\
Data File : BN014046.D
Acq On : 23 Mar 2021 17:18
Operator : CG/JU
Sample : M1735-10
Misc :
ALS Vial : 12 Sample Multiplier: 1

Instrument :
BNA_N
ClientSampleId :
RE132D6-20210315

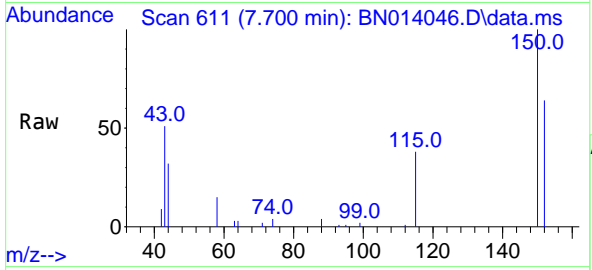
Quant Time: Mar 23 17:56:45 2021
Quant Method : Z:\SVOASRV\HPCHEM1\BNA_N\METHODS\8270-SIM-BN032021.M
Quant Title : ASP BNA STANDARDS FOR 5 POINT CALIBRATION
QLast Update : Tue Mar 23 11:06:27 2021
Response via : Initial Calibration



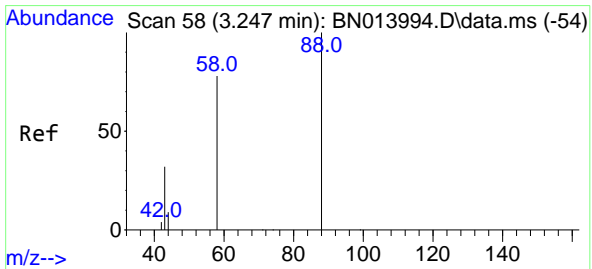
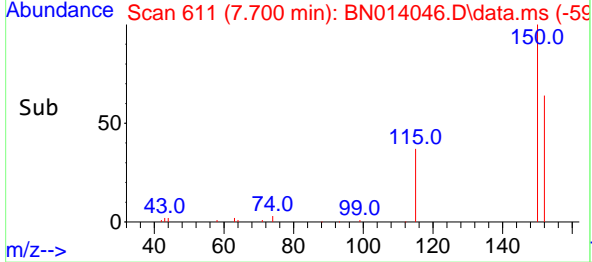
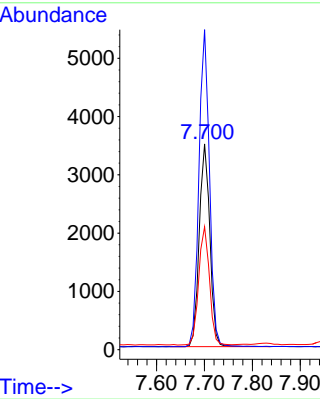


#1
 1,4-Dichlorobenzene-d4
 Concen: 0.40 ng
 RT: 7.700 min Scan# 611
 Delta R.T. 0.000 min
 Lab File: BN014046.D
 Acq: 23 Mar 2021 17:18

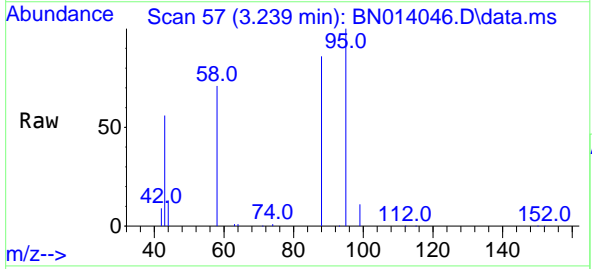
Instrument :
 BNA_N
ClientSampled :
 RE132D6-20210315



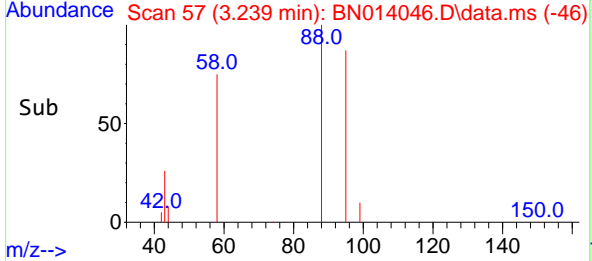
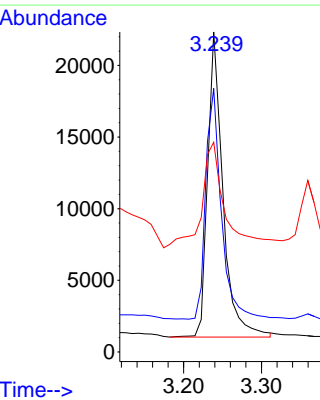
Tgt Ion:152 Resp: 5374
 Ion Ratio Lower Upper
 152 100
 150 155.5 121.8 182.8
 115 59.7 46.6 69.8

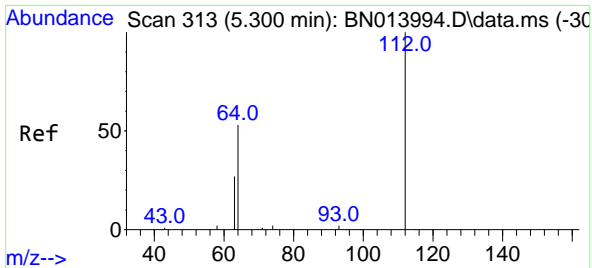


#2
 1,4-Dioxane
 Concen: 4.10 ng
 RT: 3.239 min Scan# 57
 Delta R.T. -0.008 min
 Lab File: BN014046.D
 Acq: 23 Mar 2021 17:18



Tgt Ion: 88 Resp: 29059
 Ion Ratio Lower Upper
 88 100
 58 77.1 64.6 96.8
 43 51.6 26.6 40.0#



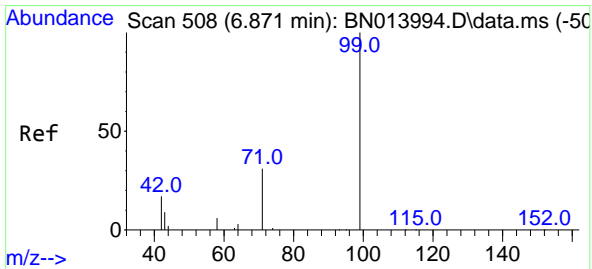
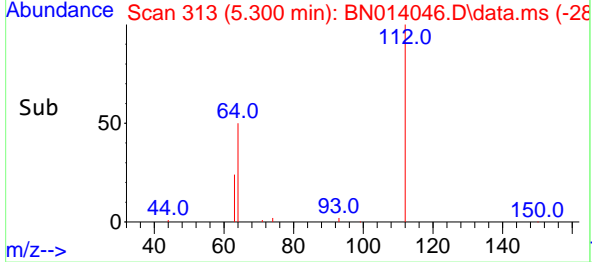
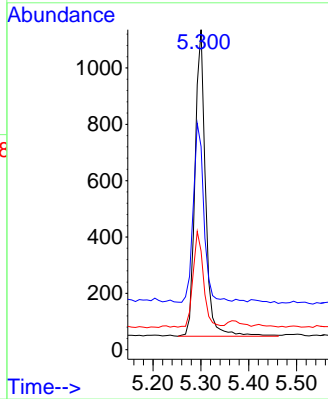
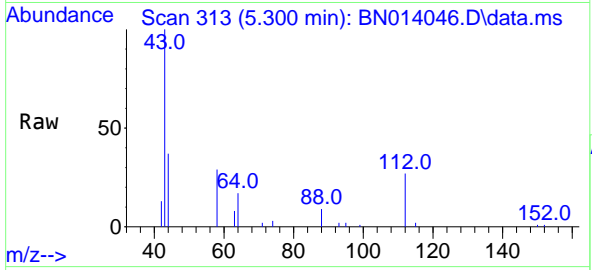


#4
 2-Fluorophenol
 Concen: 0.13 ng
 RT: 5.300 min Scan# 313
 Delta R.T. 0.008 min
 Lab File: BN014046.D
 Acq: 23 Mar 2021 17:18

Instrument :
 BNA_N
 ClientSampled :
 RE132D6-20210315

Tgt Ion:112 Resp: 1663

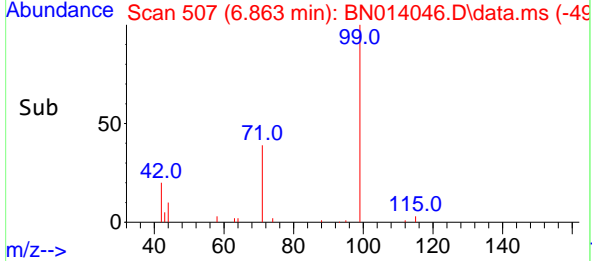
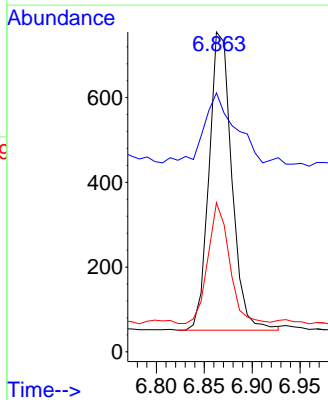
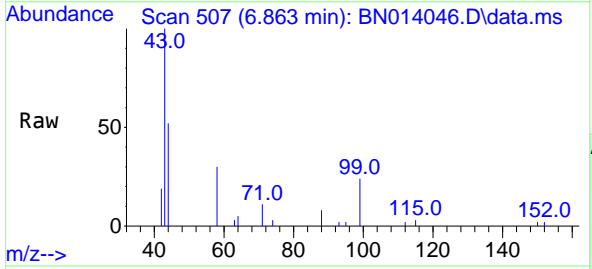
Ion	Ratio	Lower	Upper
112	100		
64	59.5	44.3	66.5
63	31.1	23.0	34.6

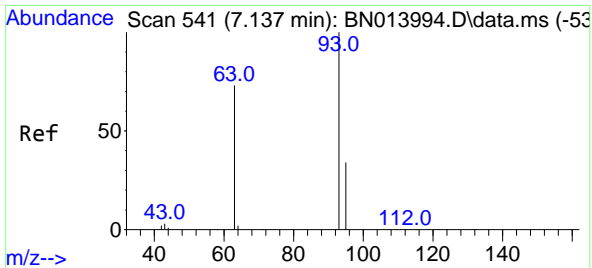


#5
 Phenol-d6
 Concen: 0.07 ng
 RT: 6.863 min Scan# 507
 Delta R.T. 0.000 min
 Lab File: BN014046.D
 Acq: 23 Mar 2021 17:18

Tgt Ion: 99 Resp: 1164

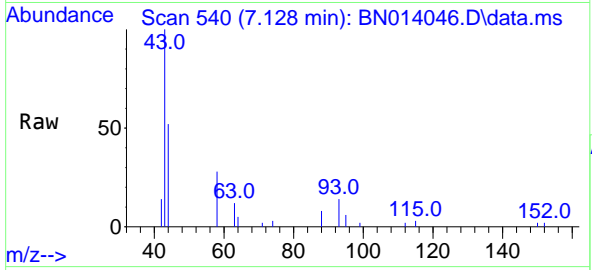
Ion	Ratio	Lower	Upper
99	100		
42	42.9	15.2	22.8#
71	38.7	26.1	39.1





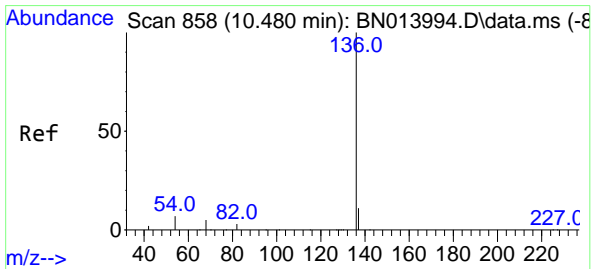
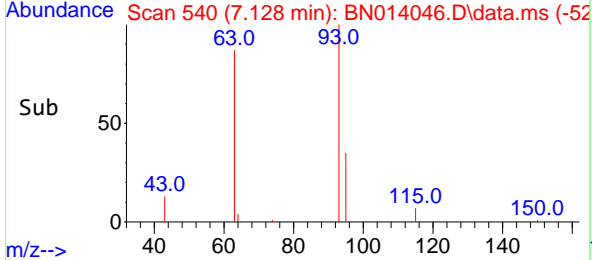
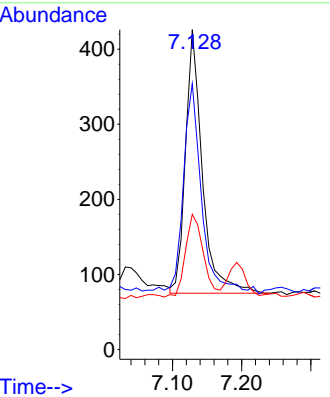
#6
 bis(2-Chloroethyl)ether
 Concen: 0.04 ng
 RT: 7.128 min Scan# 540
 Delta R.T. 0.000 min
 Lab File: BN014046.D
 Acq: 23 Mar 2021 17:18

Instrument :
 BNA_N
 ClientSampled :
 RE132D6-20210315

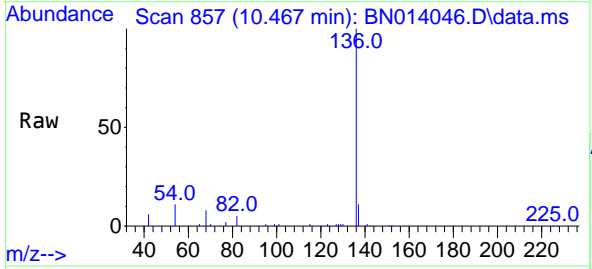


Tgt Ion: 93 Resp: 597

Ion	Ratio	Lower	Upper
93	100		
63	87.9	60.8	91.2
95	33.3	26.0	39.0

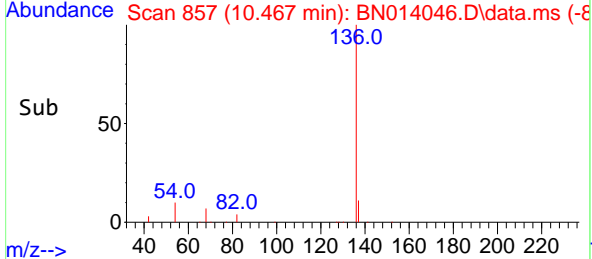
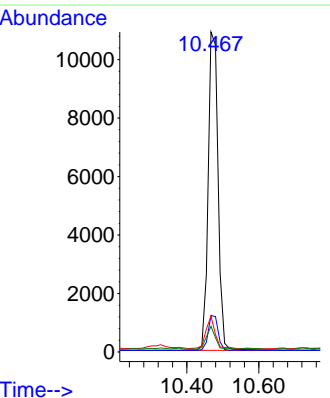


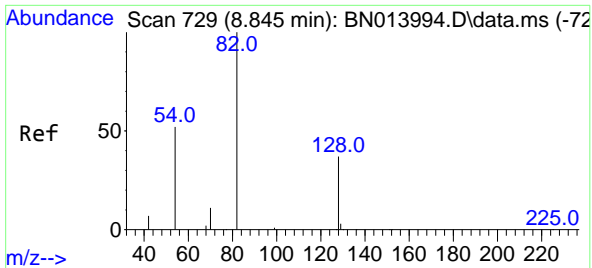
#7
 Naphthalene-d8
 Concen: 0.40 ng
 RT: 10.467 min Scan# 857
 Delta R.T. -0.012 min
 Lab File: BN014046.D
 Acq: 23 Mar 2021 17:18



Tgt Ion: 136 Resp: 20779

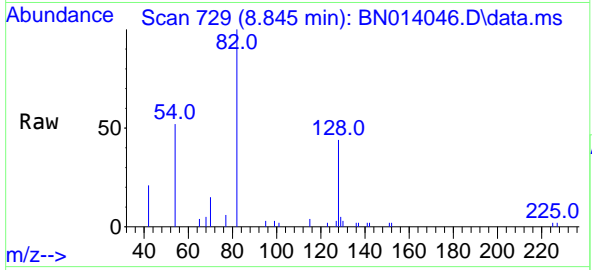
Ion	Ratio	Lower	Upper
136	100		
137	11.4	9.0	13.6
54	11.2	6.4	9.6#
68	8.0	4.5	6.7#





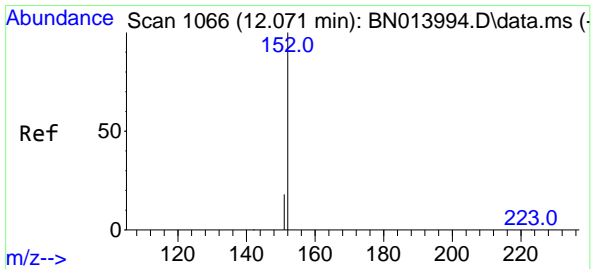
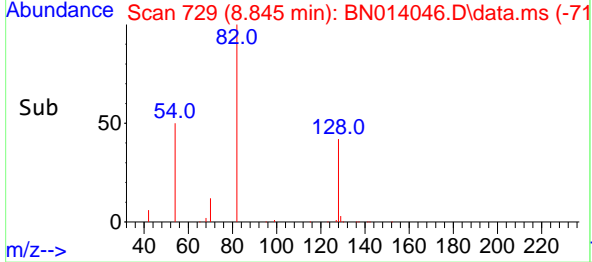
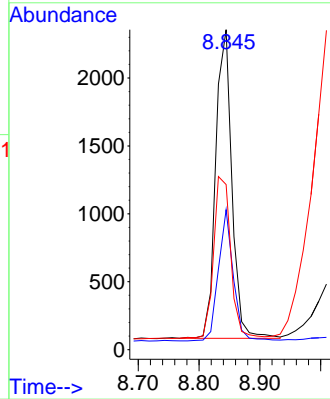
#8
 Nitrobenzene-d5
 Concen: 0.31 ng
 RT: 8.845 min Scan# 729
 Delta R.T. 0.000 min
 Lab File: BN014046.D
 Acq: 23 Mar 2021 17:18

Instrument :
 BNA_N
ClientSampleId :
 RE132D6-20210315



Tgt Ion: 82 Resp: 4197

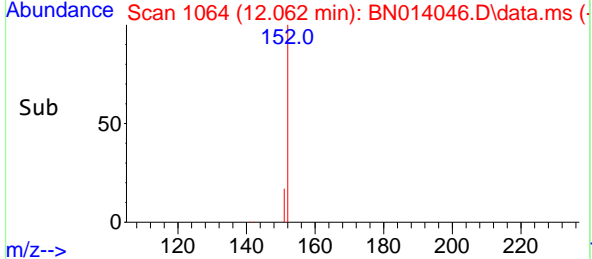
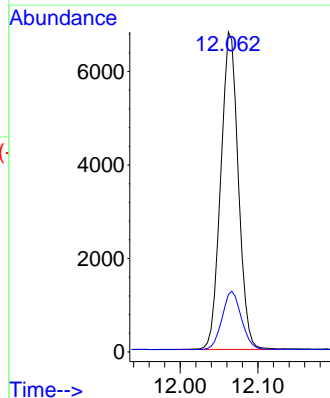
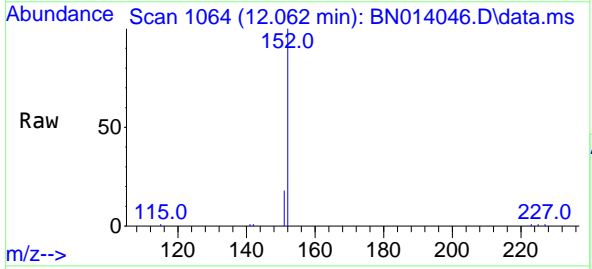
Ion	Ratio	Lower	Upper
82	100		
128	43.8	39.2	58.8
54	51.6	40.1	60.1

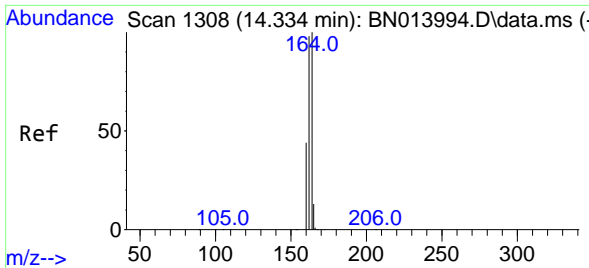


#11
 2-Methylnaphthalene-d10
 Concen: 0.33 ng
 RT: 12.062 min Scan# 1064
 Delta R.T. -0.004 min
 Lab File: BN014046.D
 Acq: 23 Mar 2021 17:18

Tgt Ion: 152 Resp: 10653

Ion	Ratio	Lower	Upper
152	100		
151	20.2	16.2	24.2



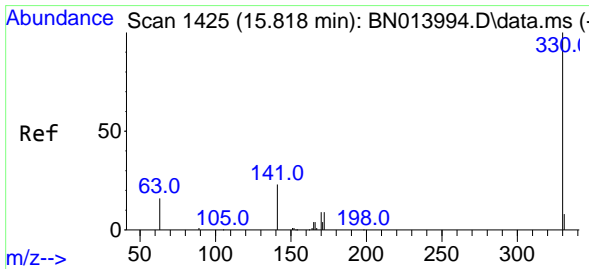
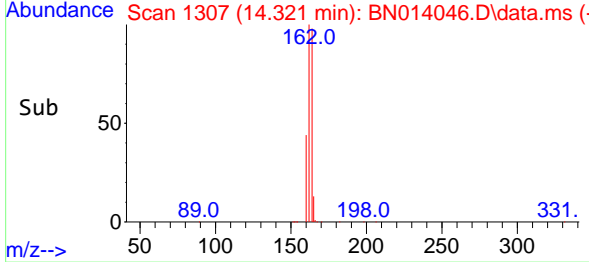
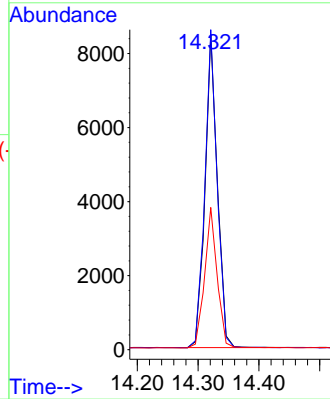
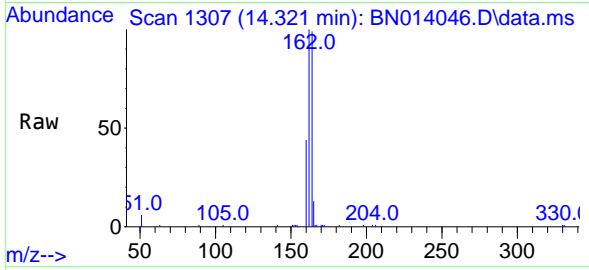


#13
 Acenaphthene-d10
 Concen: 0.40 ng
 RT: 14.321 min Scan# 1307
 Delta R.T. 0.000 min
 Lab File: BN014046.D
 Acq: 23 Mar 2021 17:18

Instrument :
 BNA_N
 ClientSampleId :
 RE132D6-20210315

Tgt Ion:164 Resp: 11980

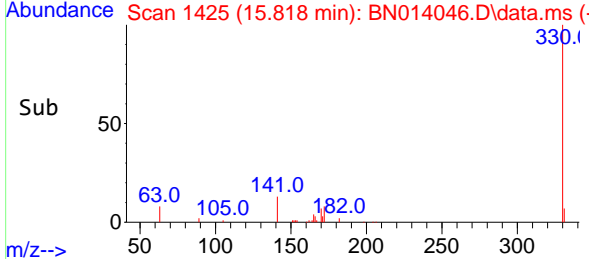
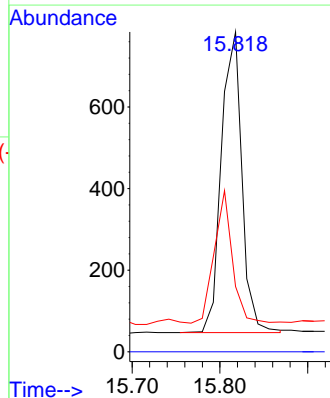
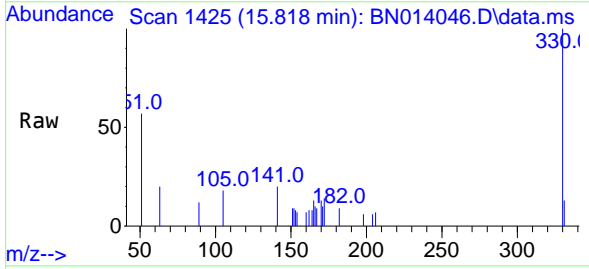
Ion	Ratio	Lower	Upper
164	100		
162	101.4	79.6	119.4
160	45.1	36.0	54.0

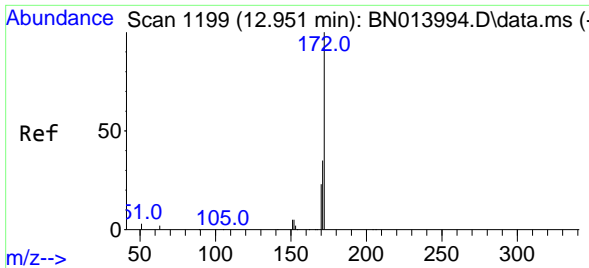


#14
 2,4,6-Tribromophenol
 Concen: 0.31 ng
 RT: 15.818 min Scan# 1425
 Delta R.T. 0.000 min
 Lab File: BN014046.D
 Acq: 23 Mar 2021 17:18

Tgt Ion:330 Resp: 1198

Ion	Ratio	Lower	Upper
330	100		
332	0.0	0.0	0.0
141	38.9	26.8	40.2



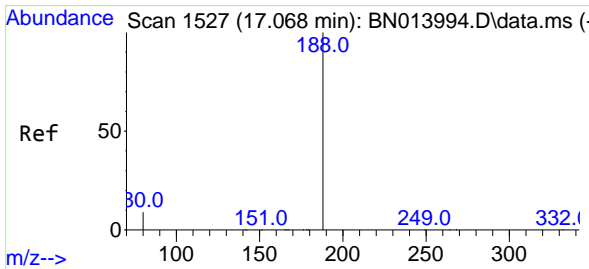
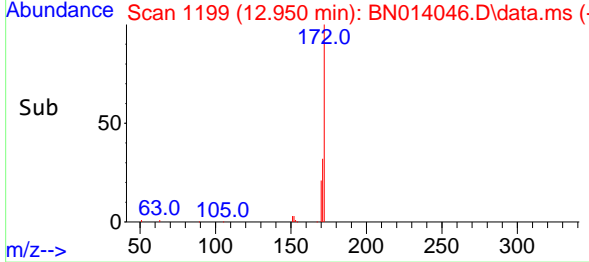
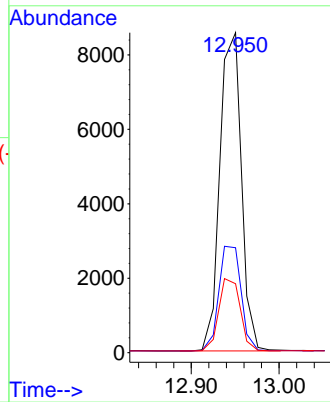
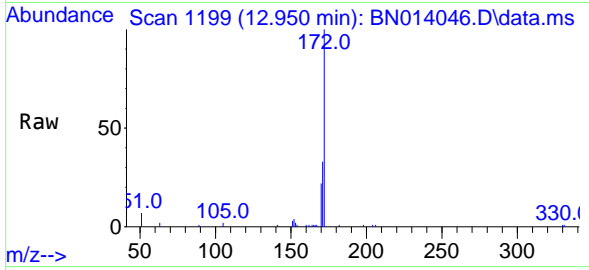


#15
 2-Fluorobiphenyl
 Concen: 0.33 ng
 RT: 12.950 min Scan# 1199
 Delta R.T. 0.000 min
 Lab File: BN014046.D
 Acq: 23 Mar 2021 17:18

Instrument :
 BNA_N
ClientSampled :
 RE132D6-20210315

Tgt Ion:172 Resp: 14598

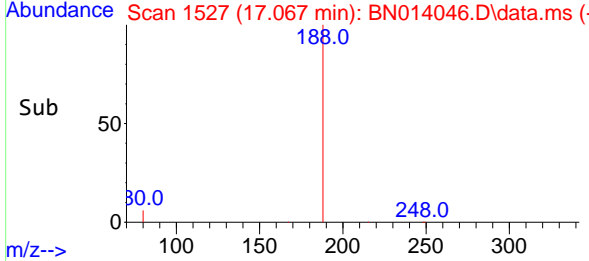
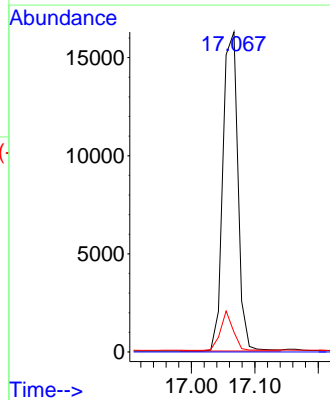
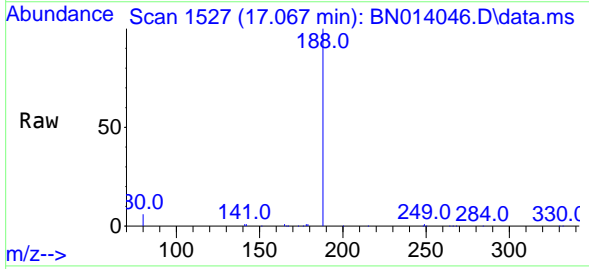
Ion	Ratio	Lower	Upper
172	100		
171	32.8	28.6	42.8
170	21.6	18.9	28.3

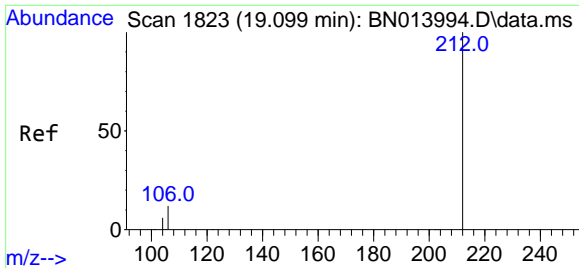


#19
 Phenanthrene-d10
 Concen: 0.40 ng
 RT: 17.067 min Scan# 1527
 Delta R.T. -0.000 min
 Lab File: BN014046.D
 Acq: 23 Mar 2021 17:18

Tgt Ion:188 Resp: 26646

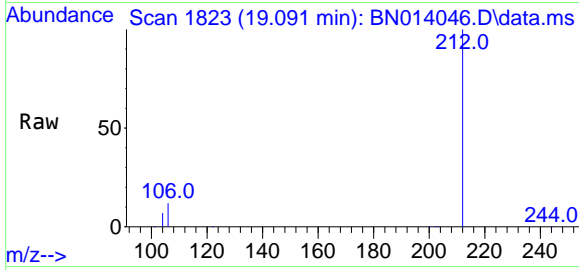
Ion	Ratio	Lower	Upper
188	100		
94	0.0	0.0	0.0
80	6.2	9.0	13.6#





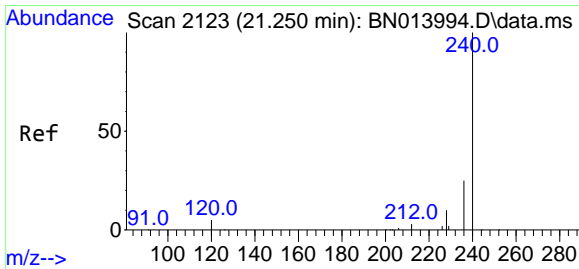
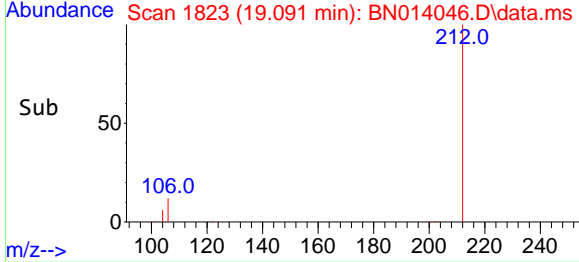
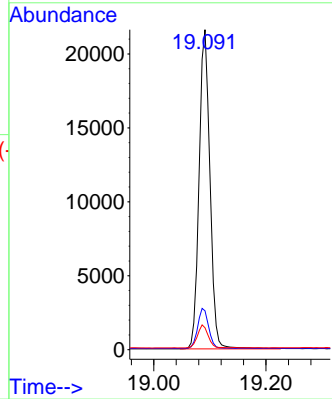
#27
 Fluoranthene-d10
 Concen: 0.39 ng
 RT: 19.091 min Scan# 1823
 Delta R.T. 0.003 min
 Lab File: BN014046.D
 Acq: 23 Mar 2021 17:18

Instrument :
 BNA_N
ClientSampled :
 RE132D6-20210315



Tgt Ion:212 Resp: 28930

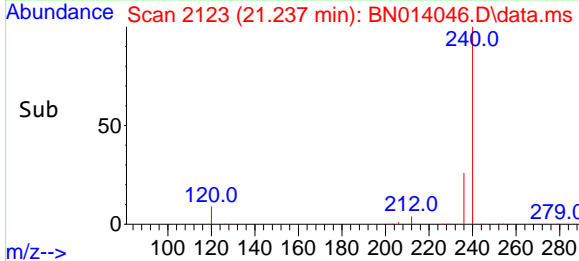
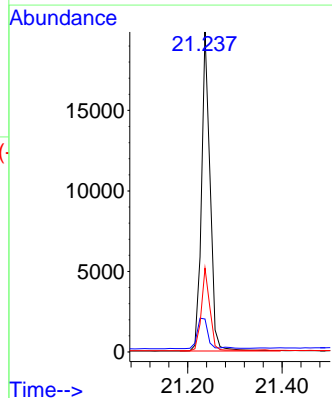
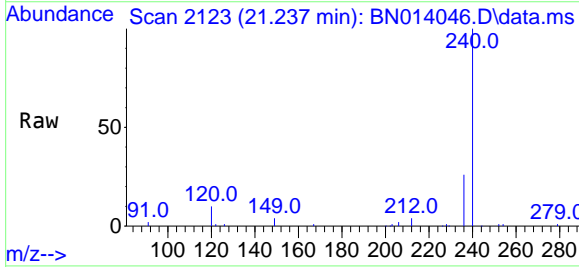
Ion	Ratio	Lower	Upper
212	100		
106	12.7	9.7	14.5
104	7.1	5.5	8.3

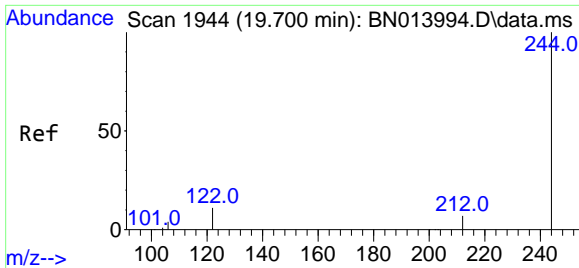


#29
 Chrysene-d12
 Concen: 0.40 ng
 RT: 21.237 min Scan# 2123
 Delta R.T. -0.002 min
 Lab File: BN014046.D
 Acq: 23 Mar 2021 17:18

Tgt Ion:240 Resp: 25108

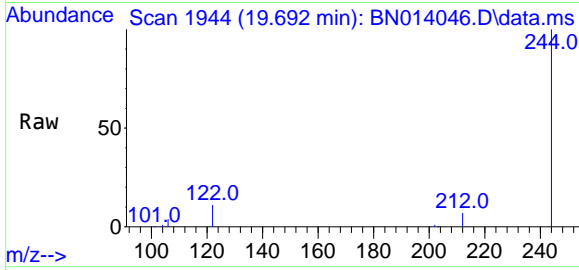
Ion	Ratio	Lower	Upper
240	100		
120	10.3	10.2	15.4
236	26.2	21.3	31.9





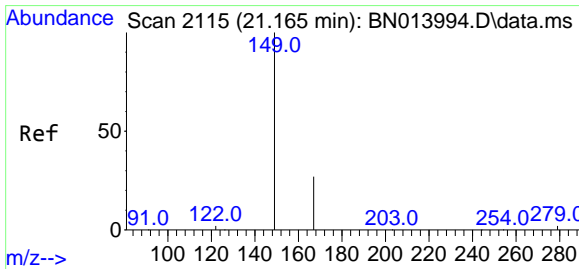
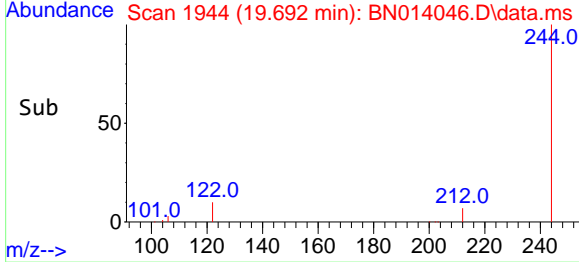
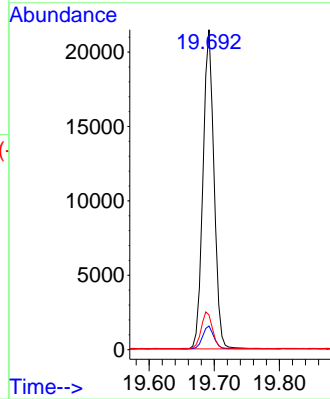
#31
 Terphenyl-d14
 Concen: 0.46 ng
 RT: 19.692 min Scan# 1944
 Delta R.T. 0.003 min
 Lab File: BN014046.D
 Acq: 23 Mar 2021 17:18

Instrument :
 BNA_N
ClientSampled :
 RE132D6-20210315

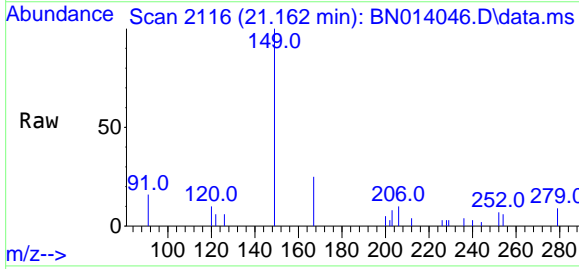


Tgt Ion: 244 Resp: 25320

Ion	Ratio	Lower	Upper
244	100		
212	7.4	6.1	9.1
122	10.8	9.8	14.8

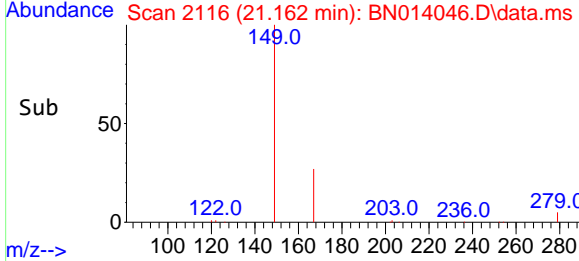
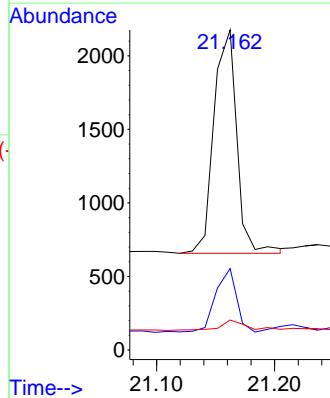


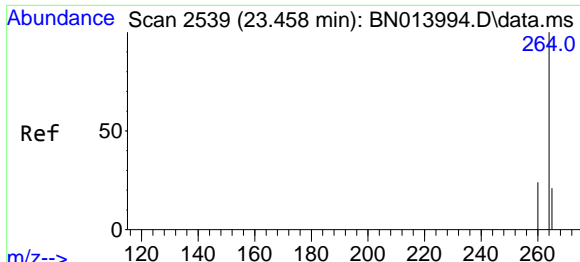
#34
 Bis(2-ethylhexyl)phthalate
 Concen: 0.08 ng
 RT: 21.162 min Scan# 2116
 Delta R.T. 0.008 min
 Lab File: BN014046.D
 Acq: 23 Mar 2021 17:18



Tgt Ion: 149 Resp: 2048

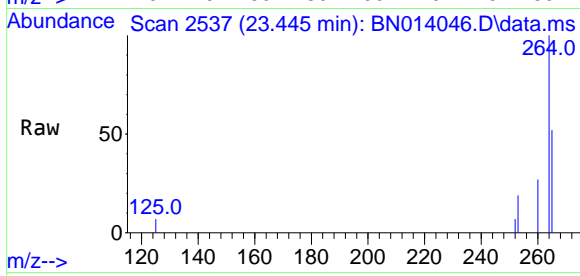
Ion	Ratio	Lower	Upper
149	100		
167	26.4	22.1	33.1
279	5.5	3.5	5.3#





#36
 Perylene-d12
 Concen: 0.40 ng
 RT: 23.445 min Scan# 2537
 Delta R.T. -0.002 min
 Lab File: BN014046.D
 Acq: 23 Mar 2021 17:18

Instrument :
 BNA_N
ClientSampleId :
 RE132D6-20210315



Tgt Ion:264 Resp: 10135

Ion	Ratio	Lower	Upper
264	100		
260	26.9	19.3	28.9
265	52.1	66.2	99.4#

