

Data Path : Z:\svoasrv\HPCHEM1\BNA_N\Data\BN032522\
 Data File : BN019177.D
 Acq On : 26 Mar 2022 05:33
 Operator : CG/JU
 Sample : PB1436615BSD
 Misc :
 ALS Vial : 23 Sample Multiplier: 1

Instrument :
 BNA_N
 ClientSampleId :
 PB143615BSD

Quant Time: Mar 26 07:59:40 2022
 Quant Method : Z:\SVOASRV\HPCHEM1\BNA_N\METHODS\8270-SIM-BN032522.M
 Quant Title : ASP BNA STANDARDS FOR 5 POINT CALIBRATION
 QLast Update : Fri Mar 25 19:03:12 2022
 Response via : Initial Calibration

Compound	R.T.	QIon	Response	Conc	Units	Dev(Min)	

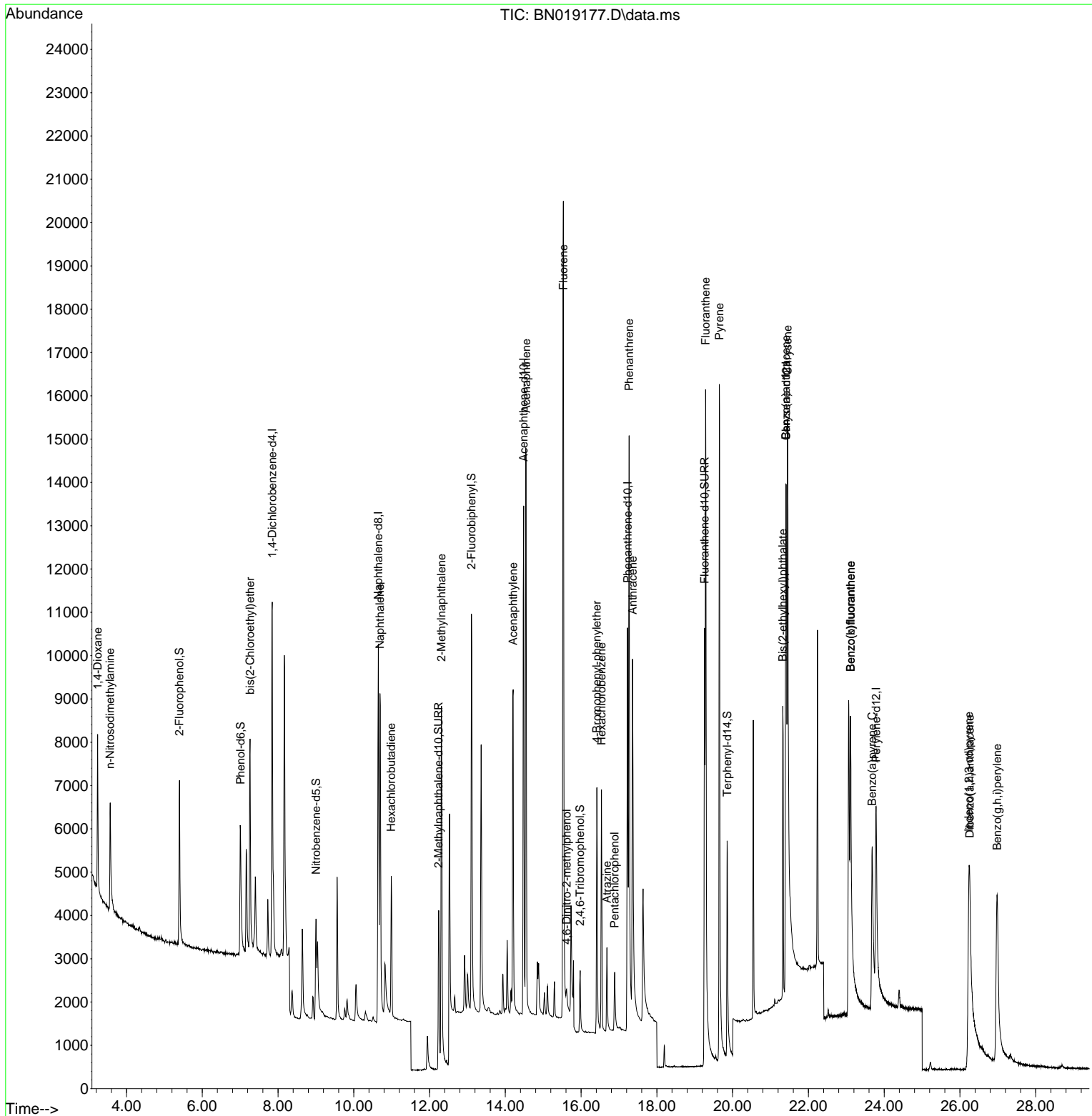
Internal Standards							
1) 1,4-Dichlorobenzene-d4	7.847	152	4670	0.400	ng	0.00	
7) Naphthalene-d8	10.647	136	12459	0.400	ng	# 0.00	
13) Acenaphthene-d10	14.484	164	7226	0.400	ng	0.00	
19) Phenanthrene-d10	17.225	188	14959	0.400	ng	0.00	
29) Chrysene-d12	21.413	240	10840	0.400	ng	# 0.00	
35) Perylene-d12	23.784	264	9221	0.400	ng	# 0.00	
System Monitoring Compounds							
4) 2-Fluorophenol	5.399	112	3510	0.318	ng	0.00	
5) Phenol-d6	7.009	99	3545	0.281	ng	0.00	
8) Nitrobenzene-d5	9.003	82	2593	0.269	ng	0.01	
11) 2-Methylnaphthalene-d10	12.238	152	6392	0.321	ng	0.00	
14) 2,4,6-Tribromophenol	15.974	330	940	0.268	ng	0.00	
15) 2-Fluorobiphenyl	13.105	172	9751	0.321	ng	0.00	
27) Fluoranthene-d10	19.257	212	14377	0.328	ng	0.00	
31) Terphenyl-d14	19.855	244	8225	0.340	ng	0.00	
Target Compounds							
							Qvalue
2) 1,4-Dioxane	3.239	88	2040	0.328	ng		98
3) n-Nitrosodimethylamine	3.564	42	1986	0.286	ng		97
6) bis(2-Chloroethyl)ether	7.262	93	4168	0.306	ng		97
9) Naphthalene	10.690	128	11599	0.331	ng		99
10) Hexachlorobutadiene	10.989	225	2728	0.347	ng	#	99
12) 2-Methylnaphthalene	12.314	142	7451	0.323	ng		99
16) Acenaphthylene	14.206	152	10101	0.306	ng		100
17) Acenaphthene	14.548	154	7508	0.321	ng		99
18) Fluorene	15.532	166	9500	0.319	ng		100
20) 4,6-Dinitro-2-methylph...	15.618	198	470	0.193	ng	#	71
21) 4-Bromophenyl-phenylether	16.415	248	3097	0.319	ng	#	83
22) Hexachlorobenzene	16.538	284	4007	0.348	ng		99
23) Atrazine	16.682	200	1837	0.273	ng		98
24) Pentachlorophenol	16.887	266	961	0.233	ng		96
25) Phenanthrene	17.266	178	15582	0.325	ng		100
26) Anthracene	17.359	178	11918	0.300	ng		99
28) Fluoranthene	19.286	202	17760	0.328	ng		99
30) Pyrene	19.649	202	18151	0.354	ng		99
32) Benzo(a)anthracene	21.404	228	10628	0.305	ng		100
33) Chrysene	21.449	228	14975	0.335	ng		98
34) Bis(2-ethylhexyl)phtha...	21.324	149	6651	0.314	ng	#	99
36) Indeno(1,2,3-cd)pyrene	26.234	276	10562	0.287	ng		95
37) Benzo(b)fluoranthene	23.112	252	14652	0.418	ng		94
38) Benzo(k)fluoranthene	23.112	252	14490	0.326	ng		92
39) Benzo(a)pyrene	23.679	252	9444	0.315	ng	#	78
40) Dibenzo(a,h)anthracene	26.261	278	7839	0.282	ng	#	91
41) Benzo(g,h,i)perylene	26.980	276	11867	0.313	ng		97

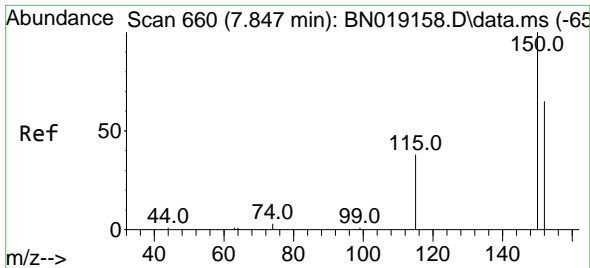
(#) = qualifier out of range (m) = manual integration (+) = signals summed

Data Path : Z:\svoasrv\HPCHEM1\BNA_N\Data\BN032522\
 Data File : BN019177.D
 Acq On : 26 Mar 2022 05:33
 Operator : CG/JU
 Sample : PB1436615BSD
 Misc :
 ALS Vial : 23 Sample Multiplier: 1

Instrument :
 BNA_N
 ClientSampleId :
 PB143615BSD

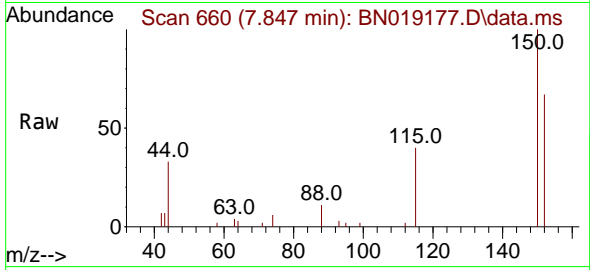
Quant Time: Mar 26 07:59:40 2022
 Quant Method : Z:\SVOASRV\HPCHEM1\BNA_N\METHODS\8270-SIM-BN032522.M
 Quant Title : ASP BNA STANDARDS FOR 5 POINT CALIBRATION
 QLast Update : Fri Mar 25 19:03:12 2022
 Response via : Initial Calibration



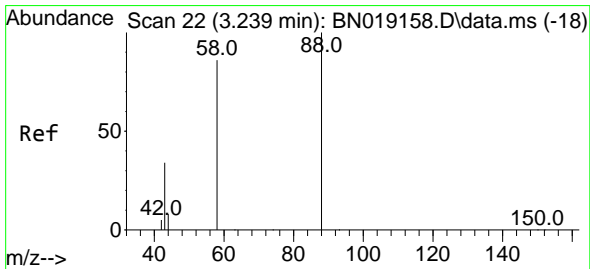
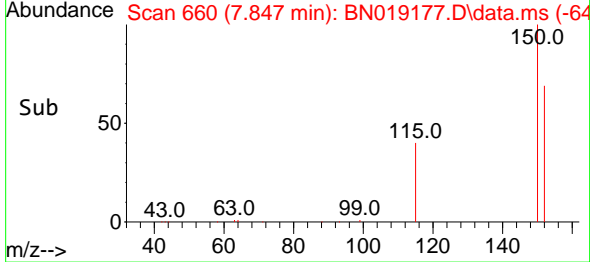
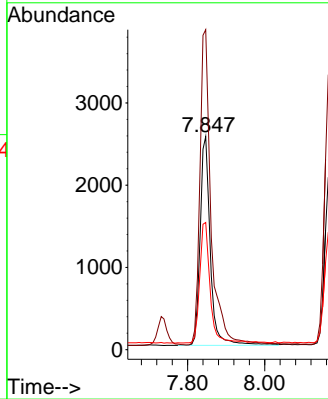


#1
 1,4-Dichlorobenzene-d4
 Concen: 0.400 ng
 RT: 7.847 min Scan# 60
 Delta R.T. 0.000 min
 Lab File: BN019177.D
 Acq: 26 Mar 2022 05:33

Instrument :
 BNA_N
 ClientSampleId :
 PB143615BSD

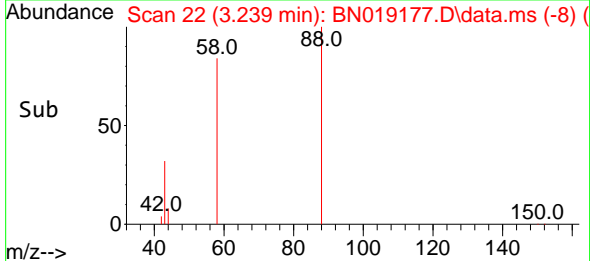
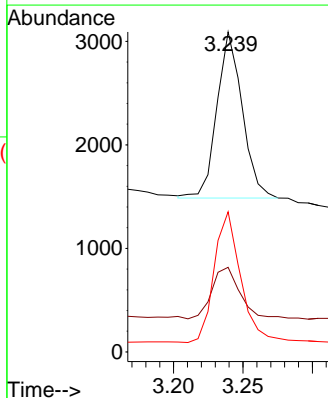
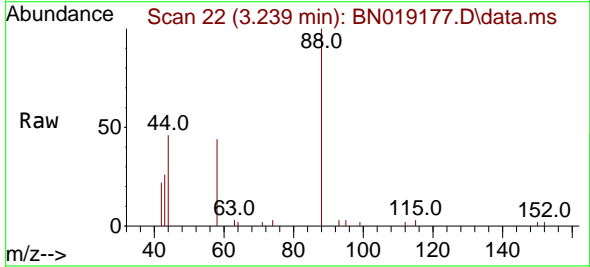


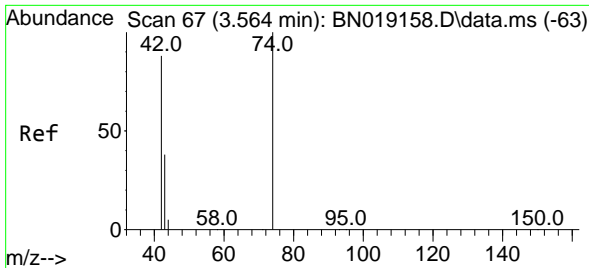
Tgt Ion:152 Resp: 4670
 Ion Ratio Lower Upper
 152 100
 150 150.1 123.9 185.9
 115 59.7 48.2 72.4



#2
 1,4-Dioxane
 Concen: 0.328 ng
 RT: 3.239 min Scan# 22
 Delta R.T. -0.000 min
 Lab File: BN019177.D
 Acq: 26 Mar 2022 05:33

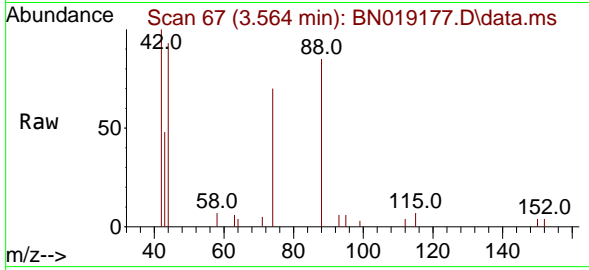
Tgt Ion: 88 Resp: 2040
 Ion Ratio Lower Upper
 88 100
 43 34.1 24.6 37.0
 58 81.2 65.4 98.2





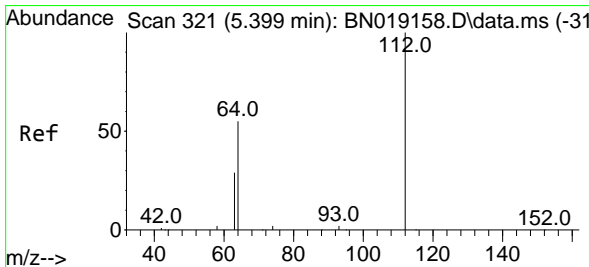
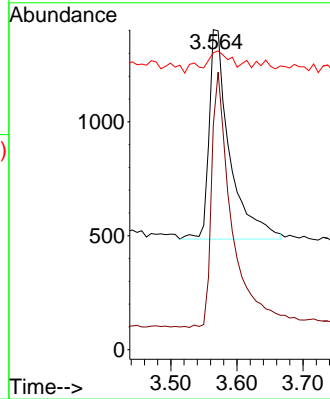
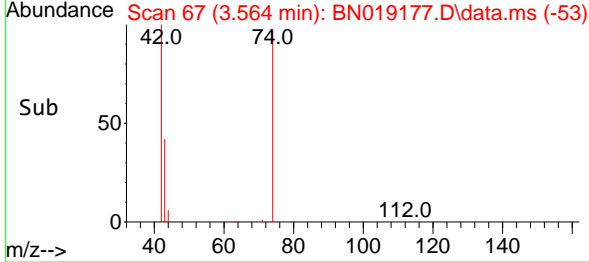
#3
 n-Nitrosodimethylamine
 Concen: 0.286 ng
 RT: 3.564 min Scan# 61
 Delta R.T. -0.000 min
 Lab File: BN019177.D
 Acq: 26 Mar 2022 05:33

Instrument :
 BNA_N
 ClientSampleId :
 PB143615BSD

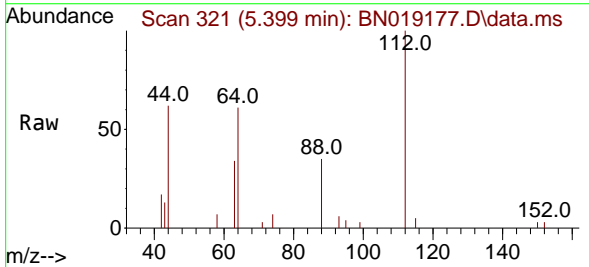


Tgt Ion: 42 Resp: 1986

Ion	Ratio	Lower	Upper
42	100		
74	118.2	96.9	145.3
44	7.5	7.3	10.9

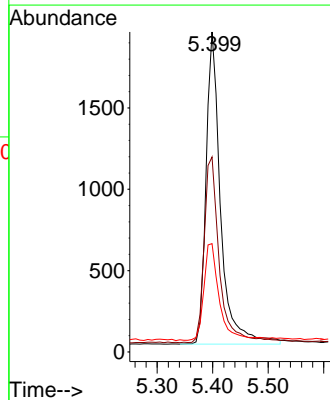
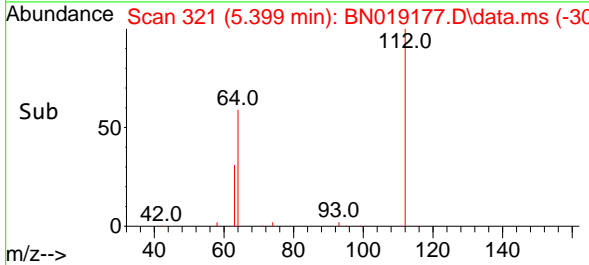


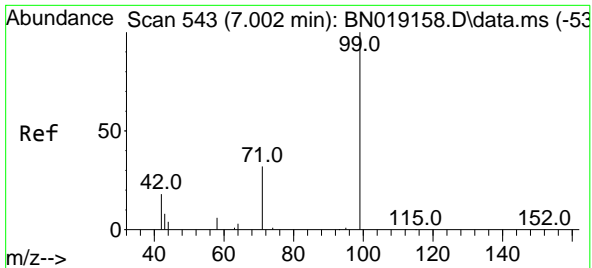
#4
 2-Fluorophenol
 Concen: 0.318 ng
 RT: 5.399 min Scan# 321
 Delta R.T. -0.000 min
 Lab File: BN019177.D
 Acq: 26 Mar 2022 05:33



Tgt Ion: 112 Resp: 3510

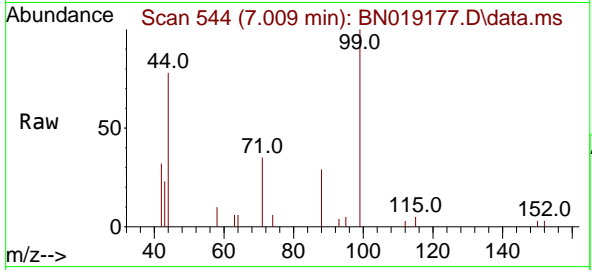
Ion	Ratio	Lower	Upper
112	100		
64	62.4	47.8	71.8
63	32.9	25.7	38.5





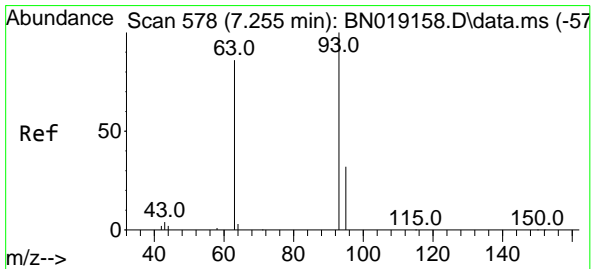
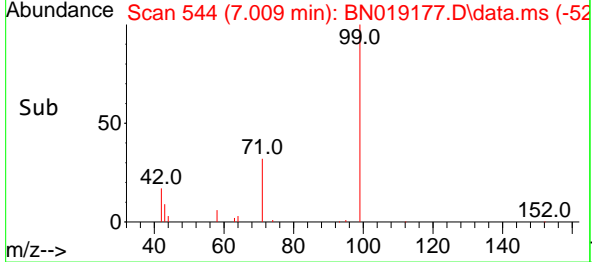
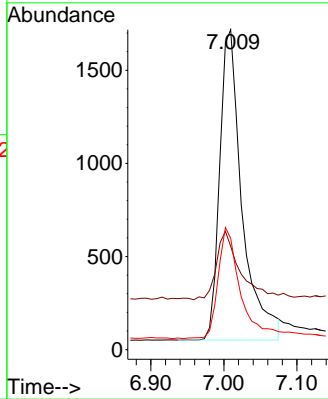
#5
 Phenol-d6
 Concen: 0.281 ng
 RT: 7.009 min Scan# 544
 Delta R.T. 0.007 min
 Lab File: BN019177.D
 Acq: 26 Mar 2022 05:33

Instrument :
 BNA_N
 ClientSampleId :
 PB143615BSD



Tgt Ion: 99 Resp: 3545

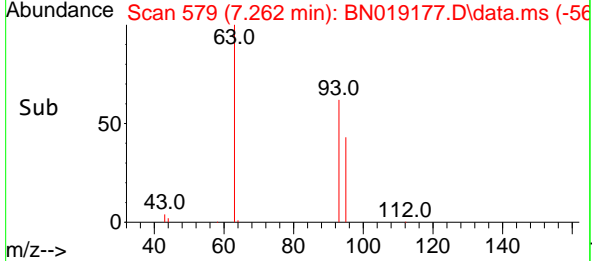
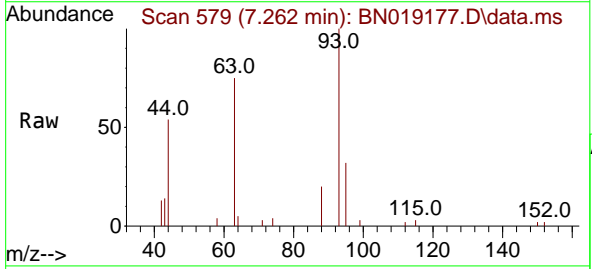
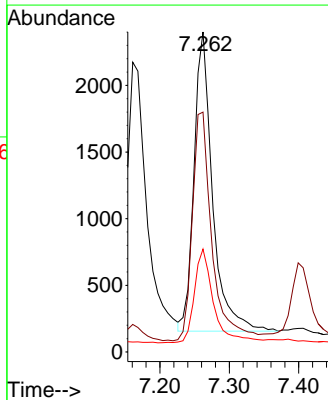
Ion	Ratio	Lower	Upper
99	100		
42	23.2	16.2	24.4
71	35.4	27.7	41.5

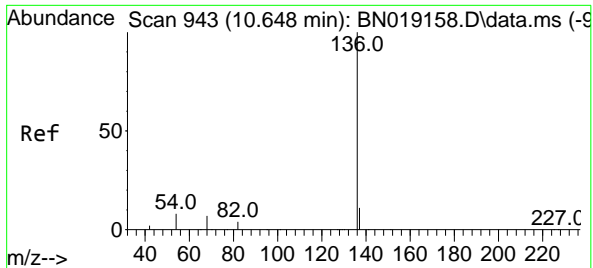


#6
 bis(2-Chloroethyl)ether
 Concen: 0.306 ng
 RT: 7.262 min Scan# 579
 Delta R.T. 0.007 min
 Lab File: BN019177.D
 Acq: 26 Mar 2022 05:33

Tgt Ion: 93 Resp: 4168

Ion	Ratio	Lower	Upper
93	100		
63	81.5	62.8	94.2
95	32.3	26.2	39.4



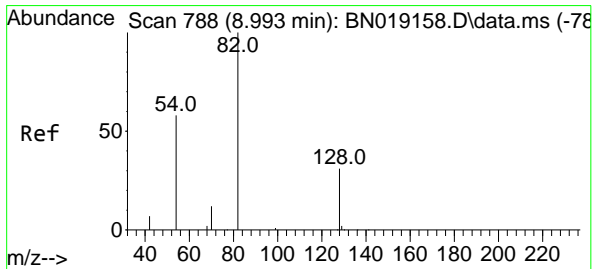
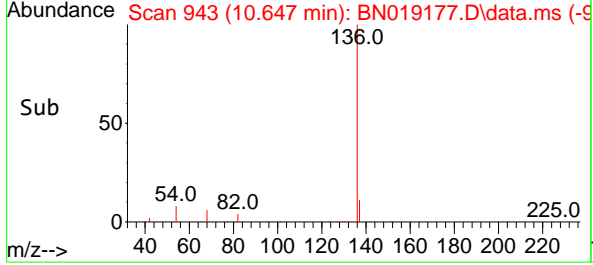
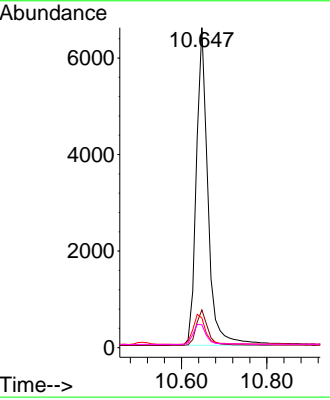
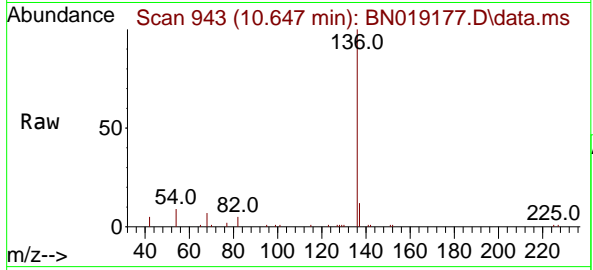


#7
 Naphthalene-d8
 Concen: 0.400 ng
 RT: 10.647 min Scan# 94
 Delta R.T. -0.000 min
 Lab File: BN019177.D
 Acq: 26 Mar 2022 05:33

Instrument : BNA_N
 ClientSampleId : PB143615BSD

Tgt Ion:136 Resp: 12459

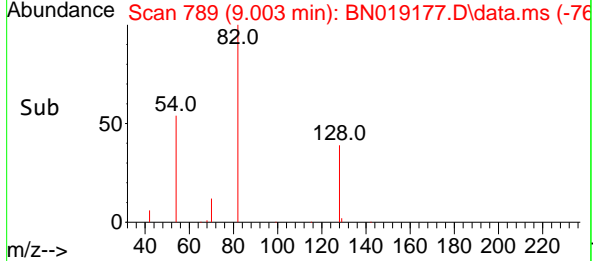
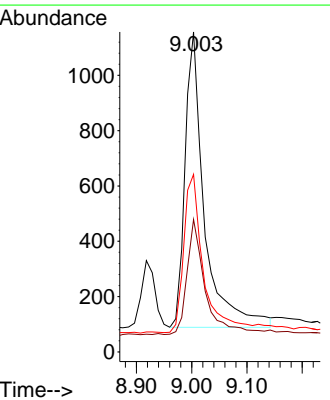
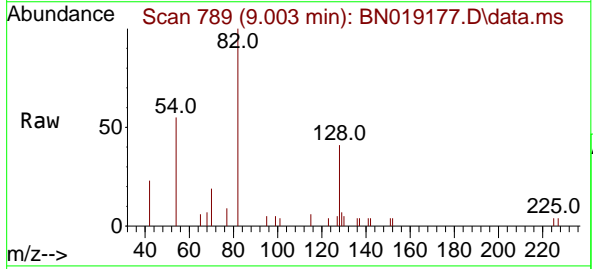
Ion	Ratio	Lower	Upper
136	100		
137	11.8	9.0	13.4
54	9.3	5.8	8.6#
68	7.2	4.6	7.0#

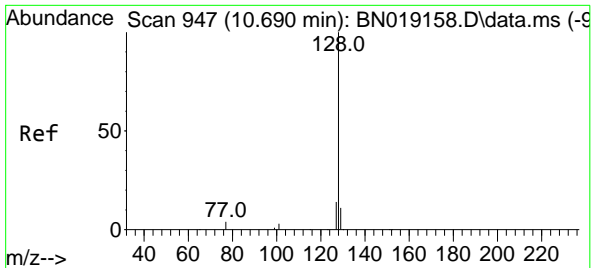


#8
 Nitrobenzene-d5
 Concen: 0.269 ng
 RT: 9.003 min Scan# 789
 Delta R.T. 0.010 min
 Lab File: BN019177.D
 Acq: 26 Mar 2022 05:33

Tgt Ion: 82 Resp: 2593

Ion	Ratio	Lower	Upper
82	100		
128	41.4	33.0	49.6
54	55.5	42.5	63.7



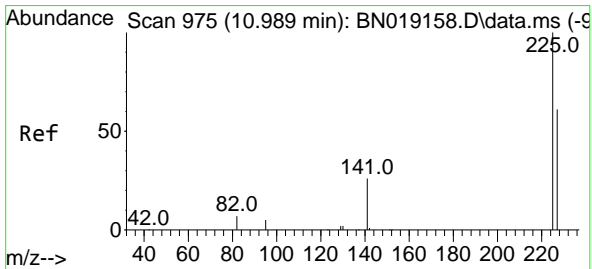
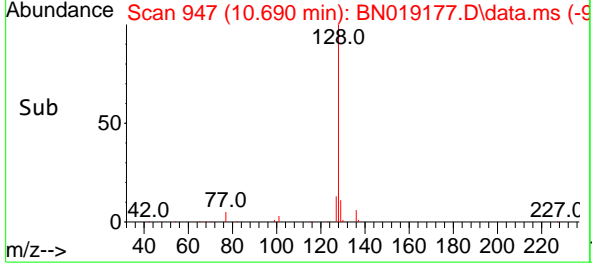
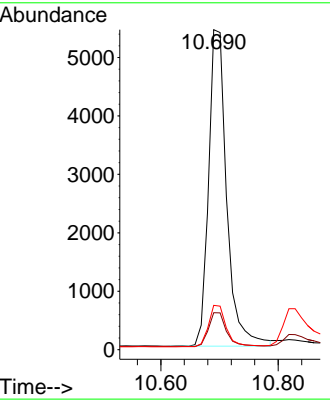
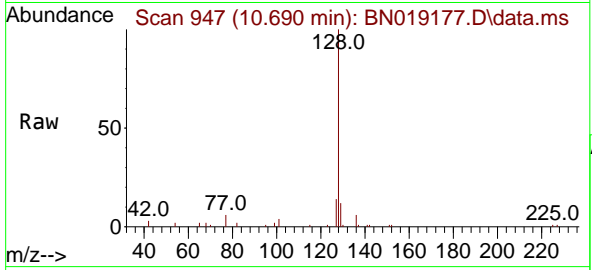


#9
 Naphthalene
 Concen: 0.331 ng
 RT: 10.690 min Scan# 947
 Delta R.T. -0.000 min
 Lab File: BN019177.D
 Acq: 26 Mar 2022 05:33

Instrument : BNA_N
 ClientSampleId : PB143615BSD

Tgt Ion:128 Resp: 11599

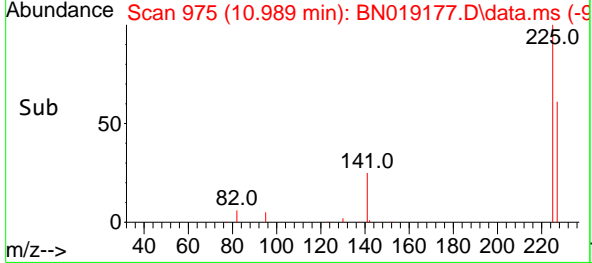
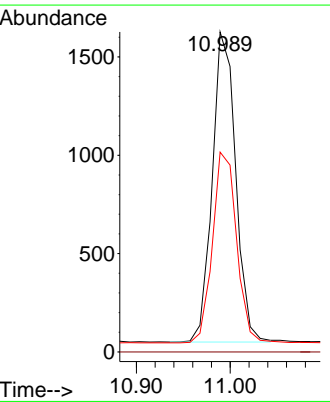
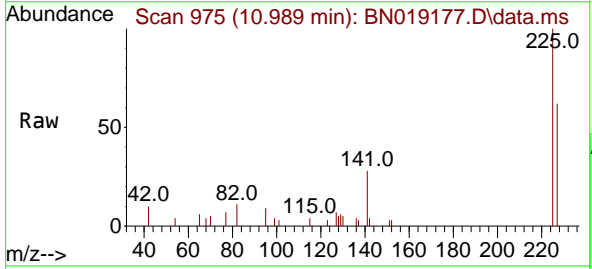
Ion	Ratio	Lower	Upper
128	100		
129	11.6	9.0	13.4
127	13.9	10.7	16.1

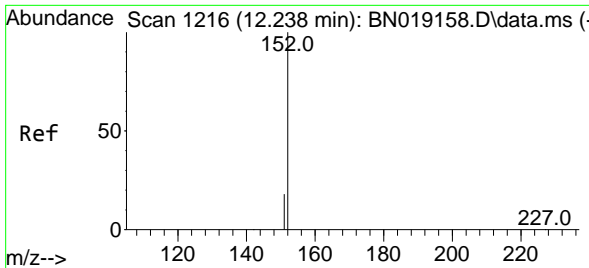


#10
 Hexachlorobutadiene
 Concen: 0.347 ng
 RT: 10.989 min Scan# 975
 Delta R.T. -0.000 min
 Lab File: BN019177.D
 Acq: 26 Mar 2022 05:33

Tgt Ion:225 Resp: 2728

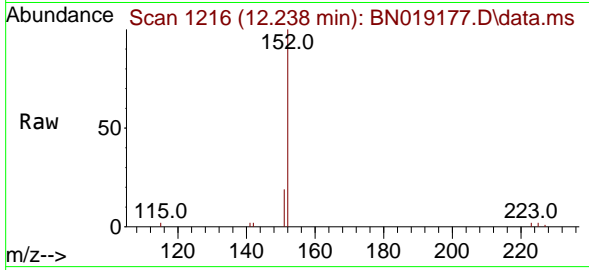
Ion	Ratio	Lower	Upper
225	100		
223	0.0	0.0	0.0
227	63.2	51.0	76.6



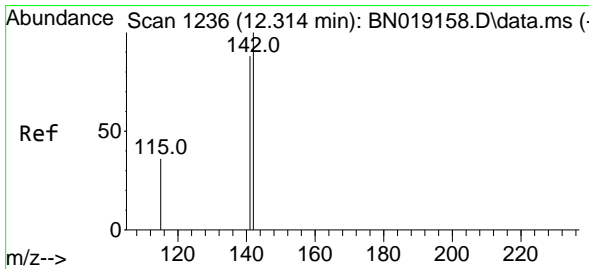
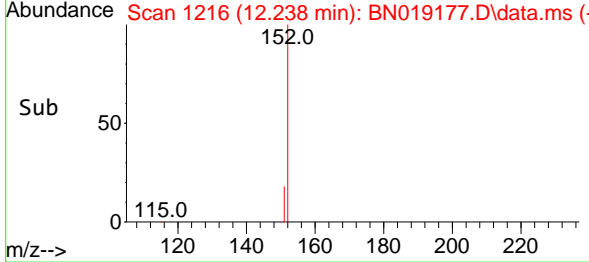
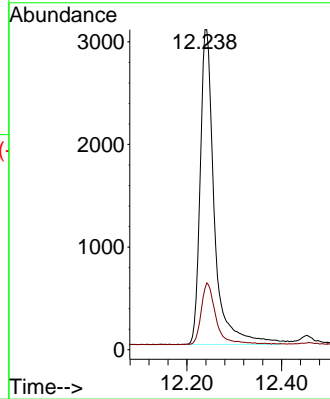


#11
 2-Methylnaphthalene-d10
 Concen: 0.321 ng
 RT: 12.238 min Scan# 11
 Delta R.T. -0.000 min
 Lab File: BN019177.D
 Acq: 26 Mar 2022 05:33

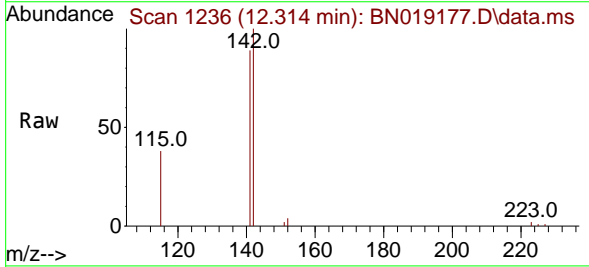
Instrument :
 BNA_N
 ClientSampleId :
 PB143615BSD



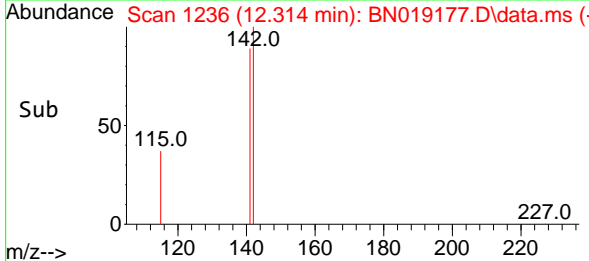
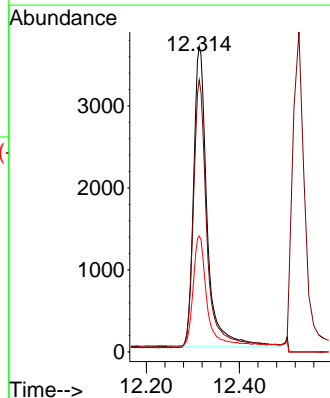
Tgt Ion:152 Resp: 6392
 Ion Ratio Lower Upper
 152 100
 151 20.4 16.5 24.7

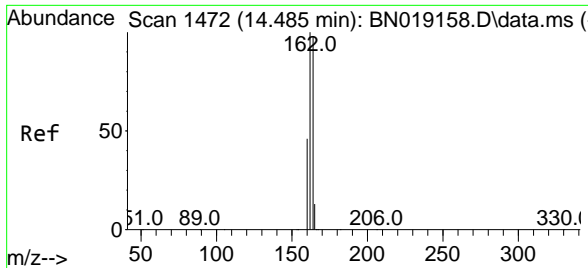


#12
 2-Methylnaphthalene
 Concen: 0.323 ng
 RT: 12.314 min Scan# 1236
 Delta R.T. -0.000 min
 Lab File: BN019177.D
 Acq: 26 Mar 2022 05:33



Tgt Ion:142 Resp: 7451
 Ion Ratio Lower Upper
 142 100
 141 89.0 70.0 105.0
 115 37.9 29.8 44.8

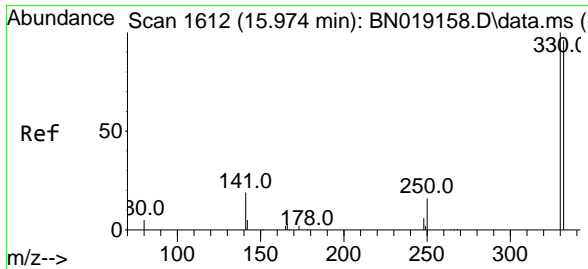
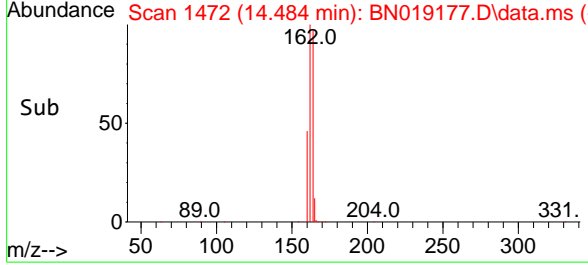
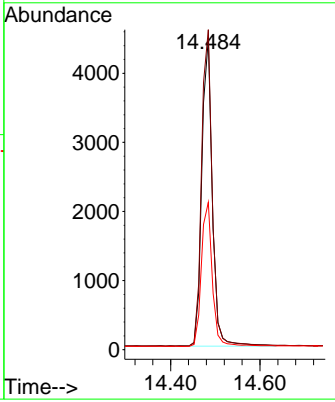
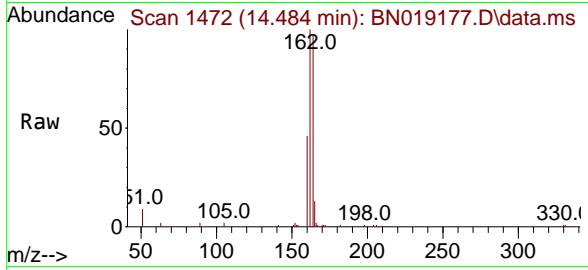




#13
 Acenaphthene-d10
 Concen: 0.400 ng
 RT: 14.484 min Scan# 14
 Delta R.T. -0.000 min
 Lab File: BN019177.D
 Acq: 26 Mar 2022 05:33

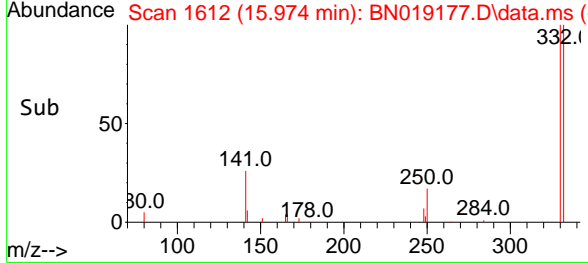
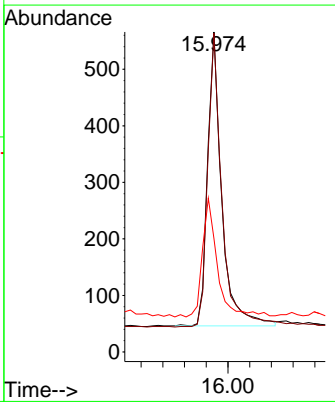
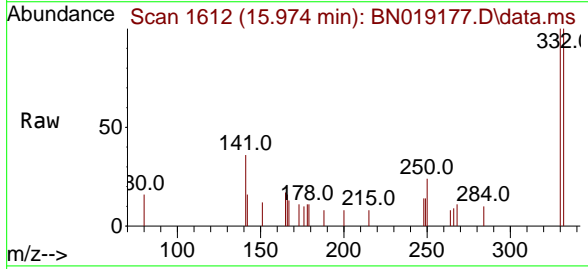
Instrument : BNA_N
 ClientSampleId : PB143615BSD

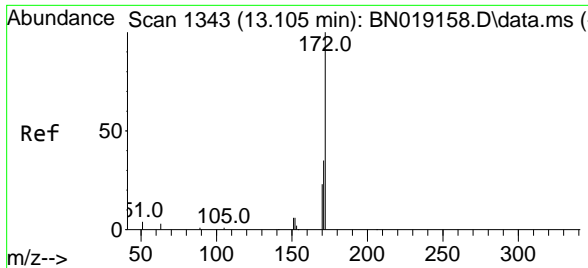
Tgt Ion	Resp	Lower	Upper
164	7226		
162	100	85.2	127.8
160	102.8	41.5	62.3



#14
 2,4,6-Tribromophenol
 Concen: 0.268 ng
 RT: 15.974 min Scan# 1612
 Delta R.T. -0.000 min
 Lab File: BN019177.D
 Acq: 26 Mar 2022 05:33

Tgt Ion	Resp	Lower	Upper
330	940		
332	100	76.8	115.2
141	100.9	32.2	48.2

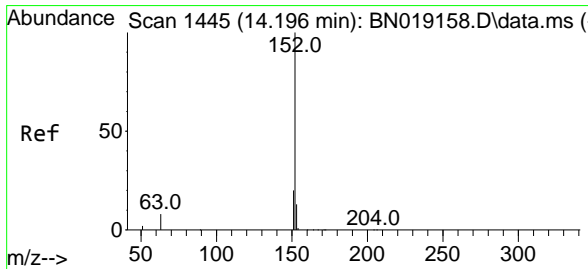
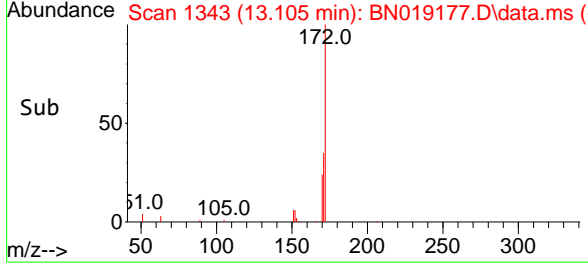
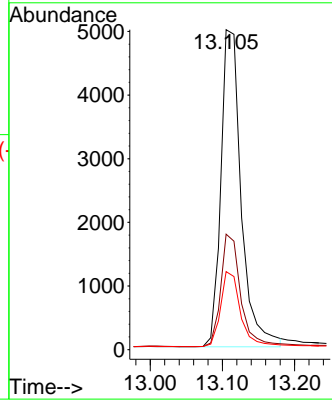
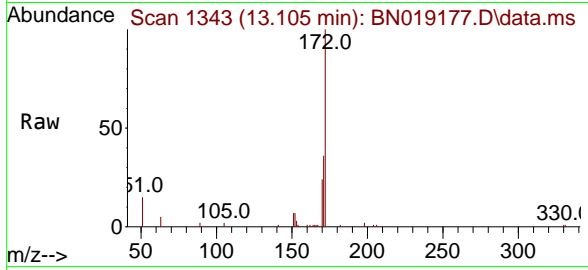




#15
 2-Fluorobiphenyl
 Concen: 0.321 ng
 RT: 13.105 min Scan# 11
 Delta R.T. -0.000 min
 Lab File: BN019177.D
 Acq: 26 Mar 2022 05:33

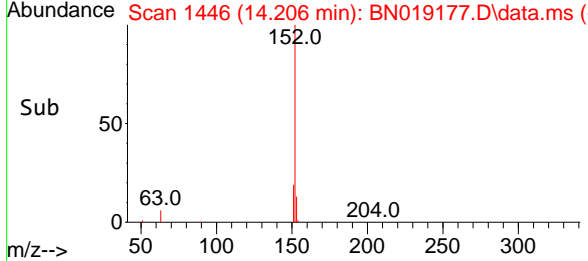
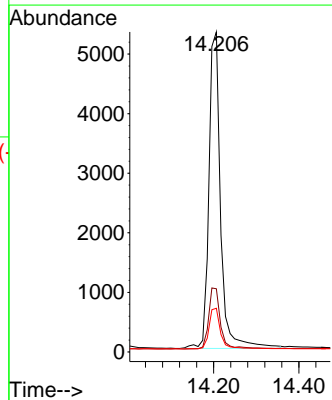
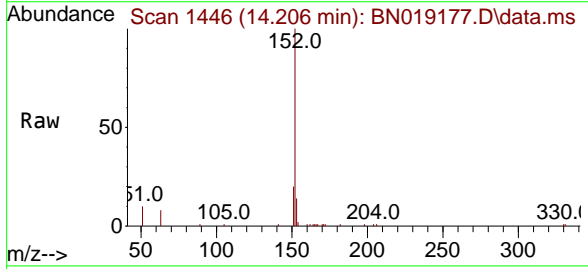
Instrument : BNA_N
 ClientSampleId : PB143615BSD

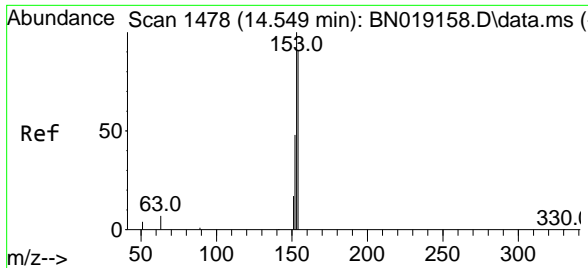
Tgt Ion	Resp	Lower	Upper
172	100		
171	36.1	28.2	42.2
170	24.4	18.7	28.1



#16
 Acenaphthylene
 Concen: 0.306 ng
 RT: 14.206 min Scan# 1446
 Delta R.T. 0.010 min
 Lab File: BN019177.D
 Acq: 26 Mar 2022 05:33

Tgt Ion	Resp	Lower	Upper
152	100		
151	19.8	15.9	23.9
153	12.9	10.6	15.8



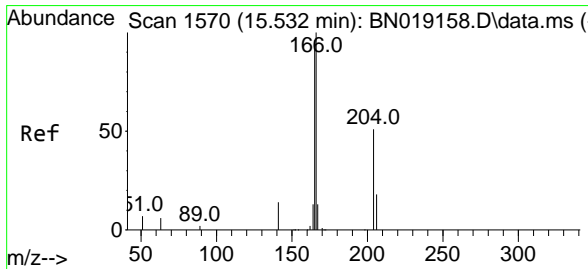
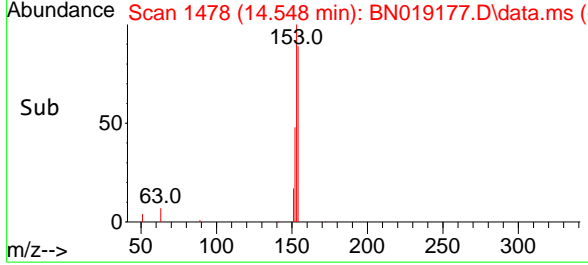
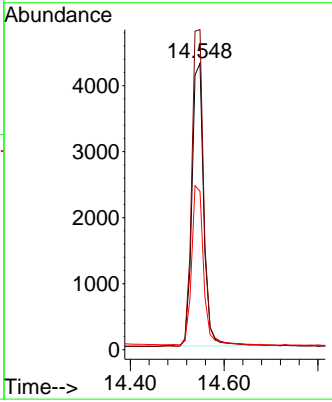
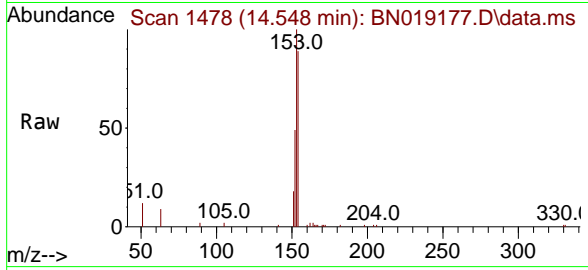


#17
 Acenaphthene
 Concen: 0.321 ng
 RT: 14.548 min Scan# 1478
 Delta R.T. -0.000 min
 Lab File: BN019177.D
 Acq: 26 Mar 2022 05:33

Instrument : BNA_N
 ClientSampleId : PB143615BSD

Tgt Ion:154 Resp: 7508

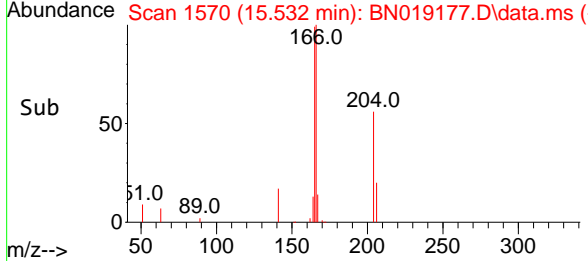
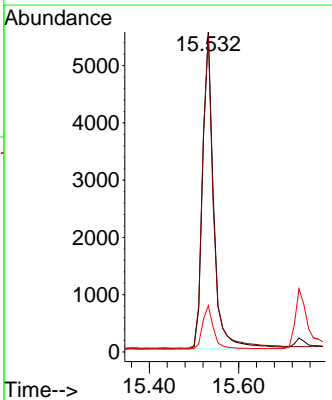
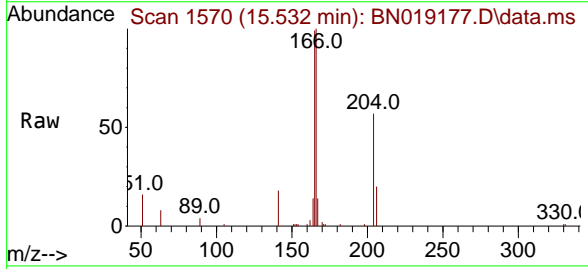
Ion	Ratio	Lower	Upper
154	100		
153	113.7	89.7	134.5
152	56.9	44.7	67.1

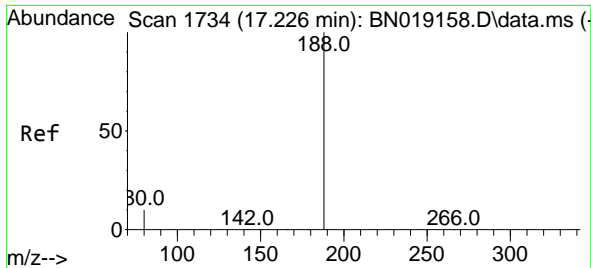


#18
 Fluorene
 Concen: 0.319 ng
 RT: 15.532 min Scan# 1570
 Delta R.T. -0.000 min
 Lab File: BN019177.D
 Acq: 26 Mar 2022 05:33

Tgt Ion:166 Resp: 9500

Ion	Ratio	Lower	Upper
166	100		
165	99.0	79.2	118.8
167	13.5	10.7	16.1



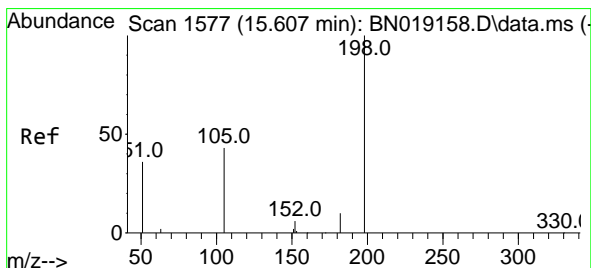
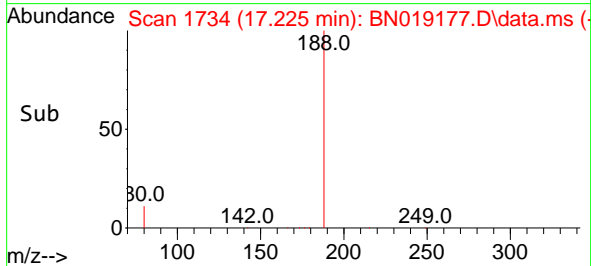
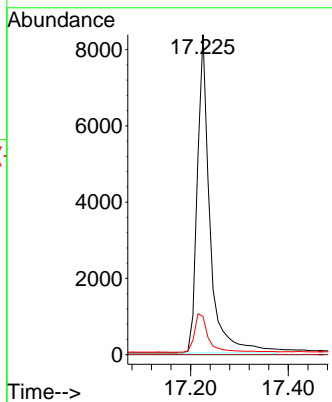
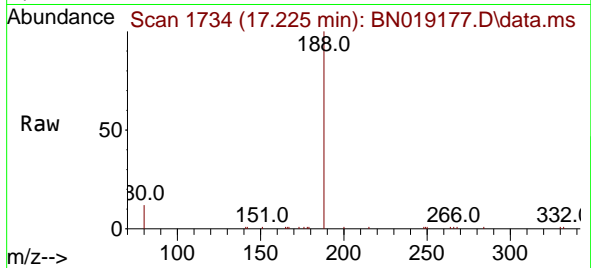


#19
 Phenanthrene-d10
 Concen: 0.400 ng
 RT: 17.225 min Scan# 11
 Delta R.T. -0.000 min
 Lab File: BN019177.D
 Acq: 26 Mar 2022 05:33

Instrument :
 BNA_N
 ClientSampleId :
 PB143615BSD

Tgt Ion:188 Resp: 14959

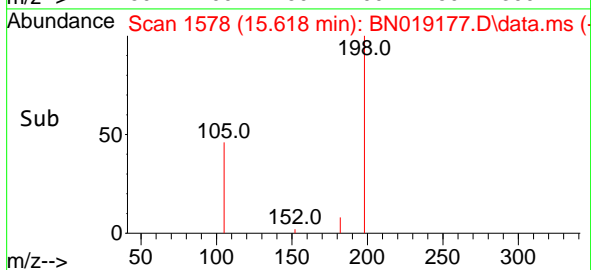
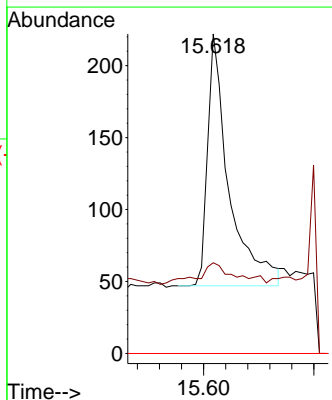
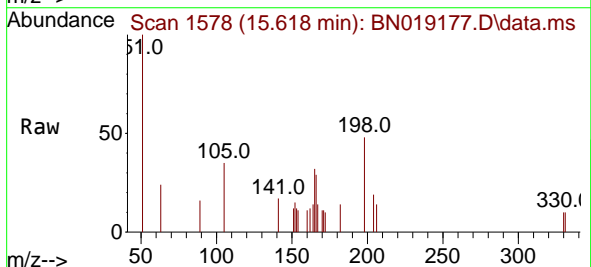
Ion	Ratio	Lower	Upper
188	100		
94	0.0	0.0	0.0
80	12.0	11.8	17.8

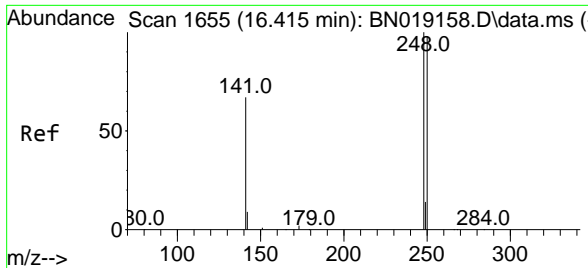


#20
 4,6-Dinitro-2-methylphenol
 Concen: 0.193 ng
 RT: 15.618 min Scan# 1578
 Delta R.T. 0.010 min
 Lab File: BN019177.D
 Acq: 26 Mar 2022 05:33

Tgt Ion:198 Resp: 470

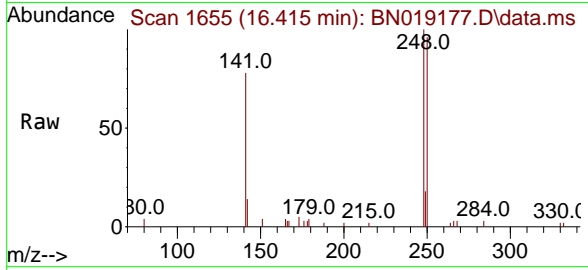
Ion	Ratio	Lower	Upper
198	100		
182	28.4	13.0	19.4#
77	0.0	0.0	0.0



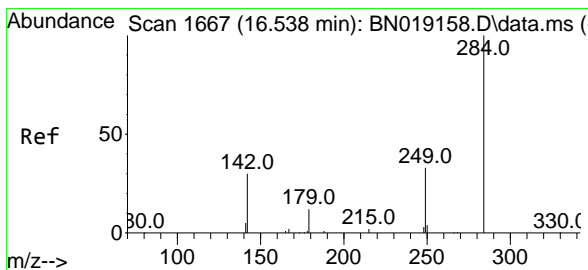
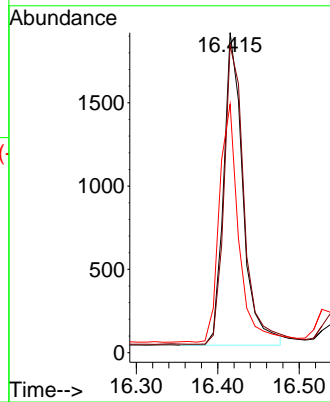
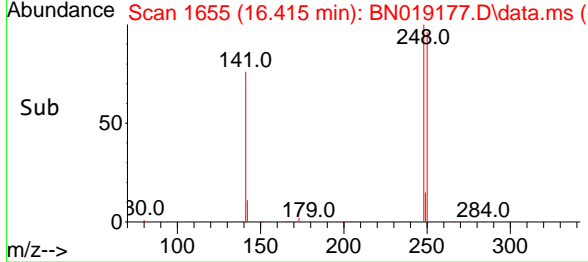


#21
 4-Bromophenyl-phenylether
 Concen: 0.319 ng
 RT: 16.415 min Scan# 1655
 Delta R.T. -0.000 min
 Lab File: BN019177.D
 Acq: 26 Mar 2022 05:33

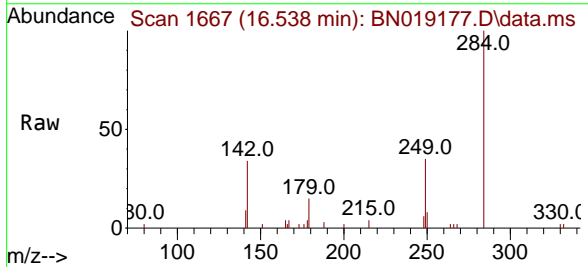
Instrument : BNA_N
 ClientSampleId : PB143615BSD



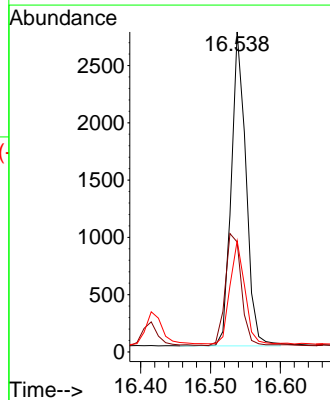
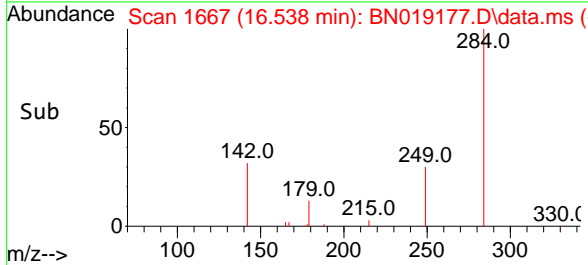
Tgt Ion:248 Resp: 3097
 Ion Ratio Lower Upper
 248 100
 250 96.0 80.7 121.1
 141 77.7 39.6 59.4#

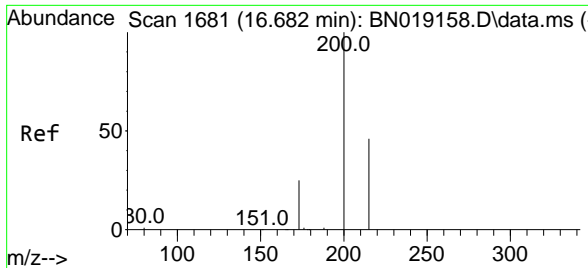


#22
 Hexachlorobenzene
 Concen: 0.348 ng
 RT: 16.538 min Scan# 1667
 Delta R.T. -0.000 min
 Lab File: BN019177.D
 Acq: 26 Mar 2022 05:33



Tgt Ion:284 Resp: 4007
 Ion Ratio Lower Upper
 284 100
 142 38.9 29.8 44.8
 249 32.6 26.2 39.2



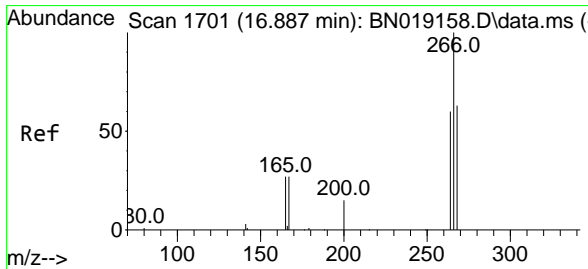
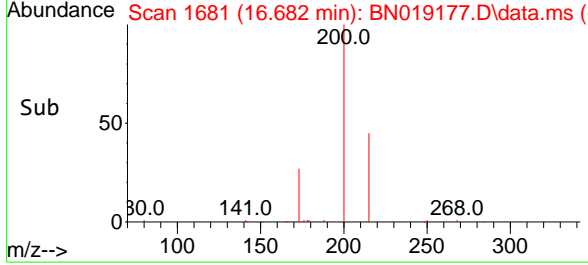
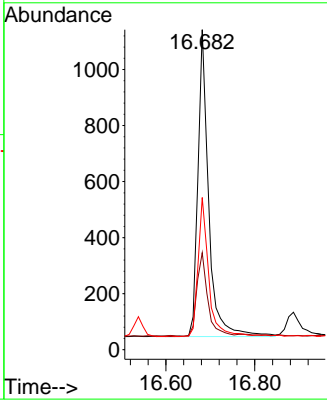
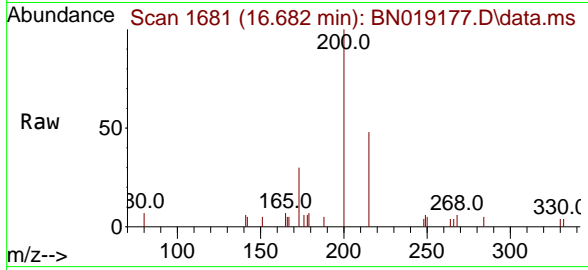


#23
 Atrazine
 Concen: 0.273 ng
 RT: 16.682 min Scan# 11
 Delta R.T. -0.000 min
 Lab File: BN019177.D
 Acq: 26 Mar 2022 05:33

Instrument : BNA_N
 ClientSampleId : PB143615BSD

Tgt Ion:200 Resp: 1837

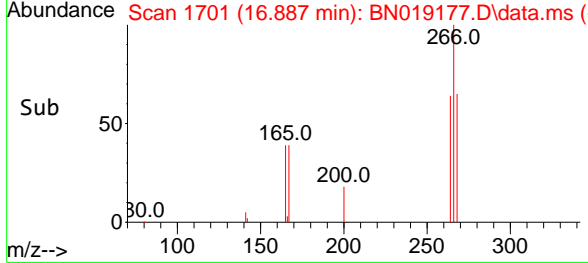
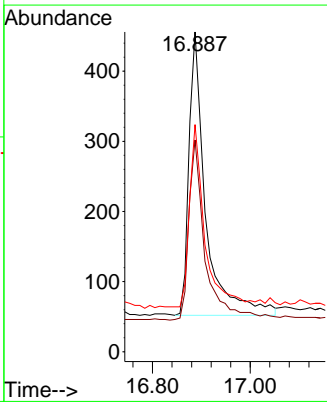
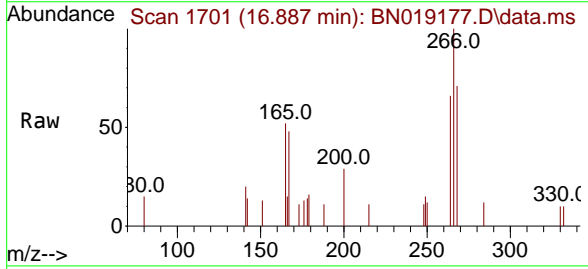
Ion	Ratio	Lower	Upper
200	100		
173	30.3	23.9	35.9
215	47.5	36.6	54.8

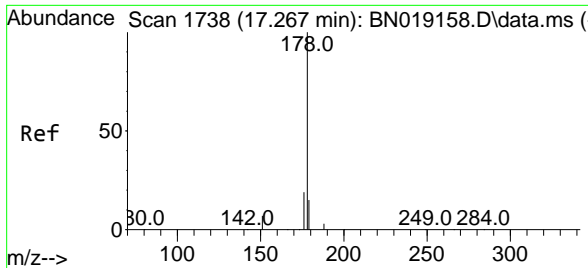


#24
 Pentachlorophenol
 Concen: 0.233 ng
 RT: 16.887 min Scan# 1701
 Delta R.T. -0.000 min
 Lab File: BN019177.D
 Acq: 26 Mar 2022 05:33

Tgt Ion:266 Resp: 961

Ion	Ratio	Lower	Upper
266	100		
264	62.6	50.2	75.4
268	58.9	51.9	77.9

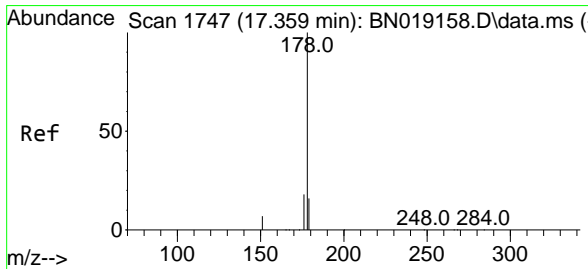
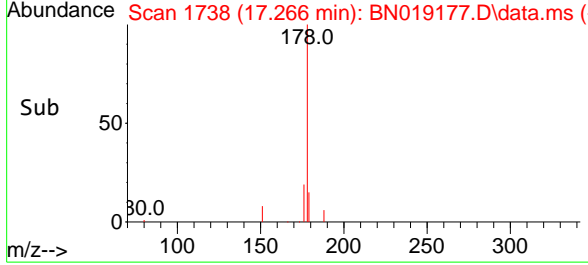
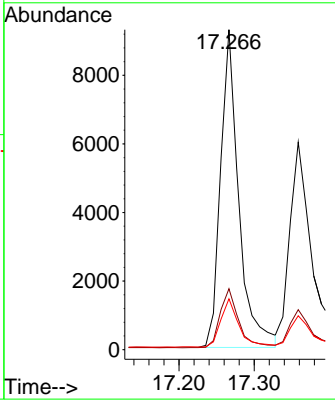
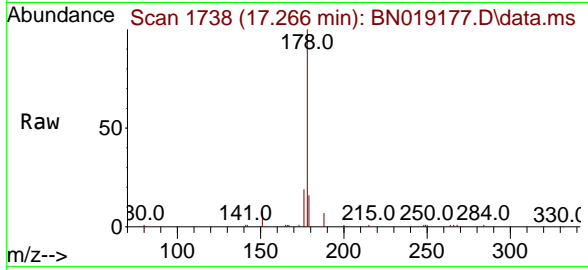




#25
 Phenanthrene
 Concen: 0.325 ng
 RT: 17.266 min Scan# 11
 Delta R.T. -0.000 min
 Lab File: BN019177.D
 Acq: 26 Mar 2022 05:33

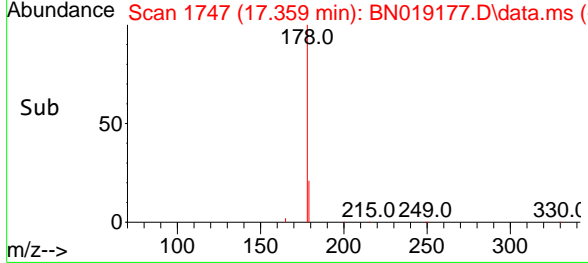
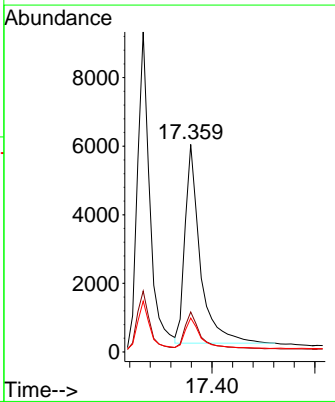
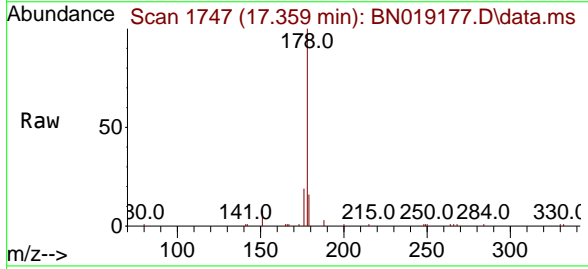
Instrument : BNA_N
 ClientSampleId : PB143615BSD

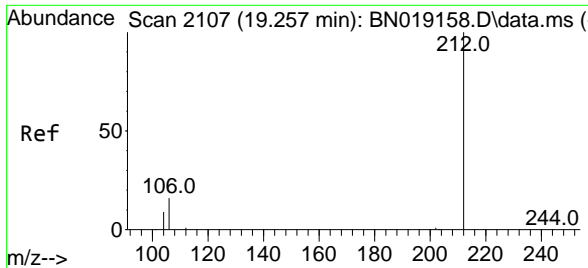
Tgt Ion	Resp	Lower	Upper
178	100		
176	19.0	15.4	23.0
179	15.3	12.2	18.2



#26
 Anthracene
 Concen: 0.300 ng
 RT: 17.359 min Scan# 1747
 Delta R.T. -0.000 min
 Lab File: BN019177.D
 Acq: 26 Mar 2022 05:33

Tgt Ion	Resp	Lower	Upper
178	100		
176	18.4	14.8	22.2
179	15.7	12.2	18.4



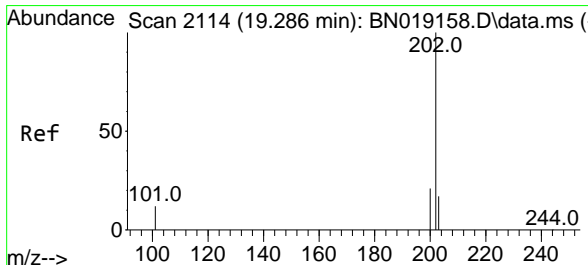
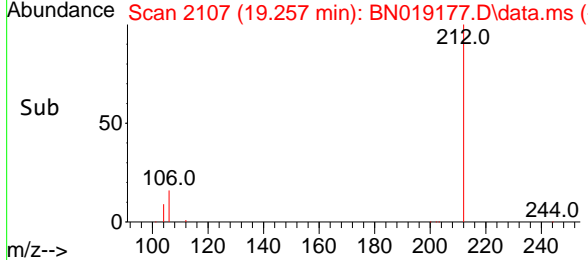
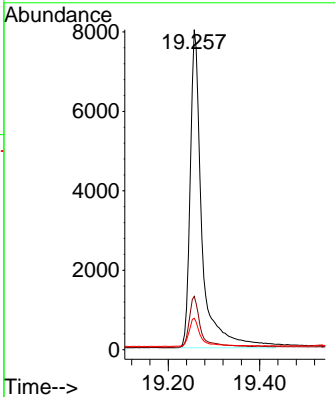
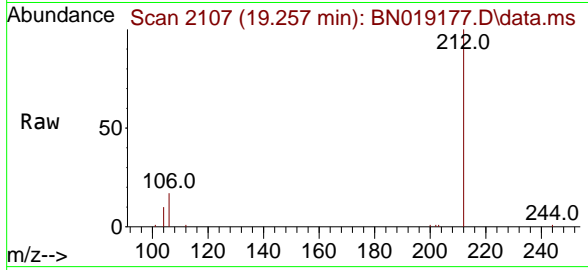


#27
 Fluoranthene-d10
 Concen: 0.328 ng
 RT: 19.257 min Scan# 2107
 Delta R.T. -0.000 min
 Lab File: BN019177.D
 Acq: 26 Mar 2022 05:33

Instrument : BNA_N
 ClientSampleId : PB143615BSD

Tgt Ion:212 Resp: 14377

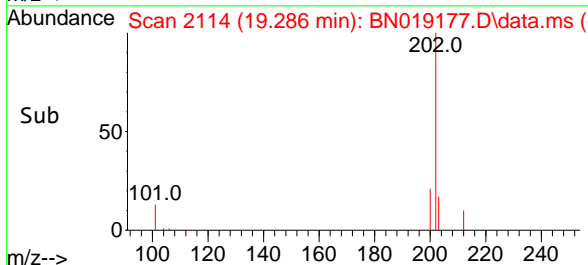
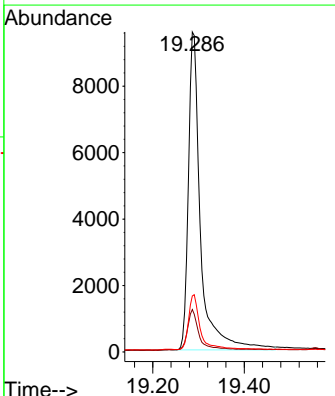
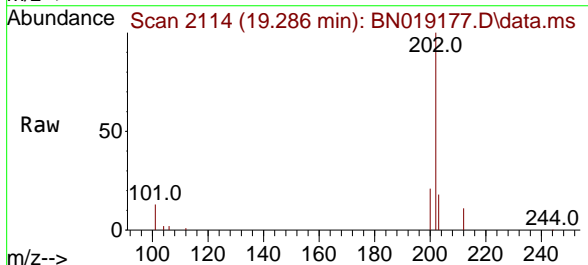
Ion	Ratio	Lower	Upper
212	100		
106	15.8	12.7	19.1
104	8.8	7.1	10.7

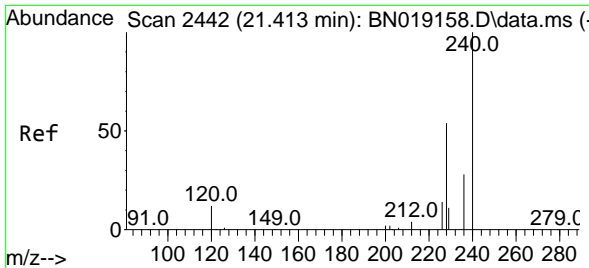


#28
 Fluoranthene
 Concen: 0.328 ng
 RT: 19.286 min Scan# 2114
 Delta R.T. -0.000 min
 Lab File: BN019177.D
 Acq: 26 Mar 2022 05:33

Tgt Ion:202 Resp: 17760

Ion	Ratio	Lower	Upper
202	100		
101	11.8	9.8	14.6
203	16.7	13.7	20.5



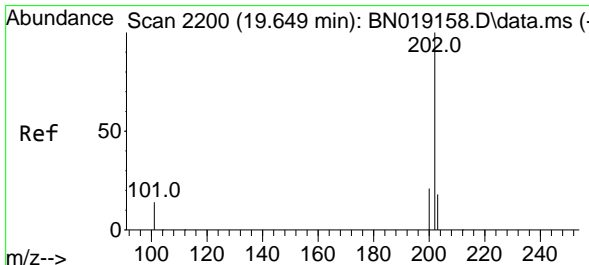
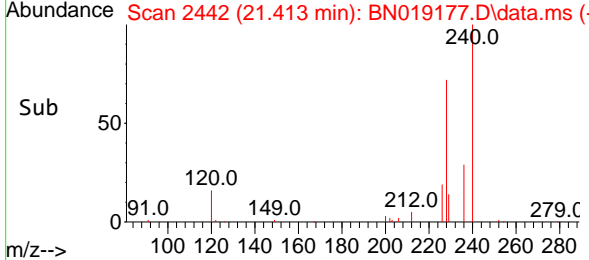
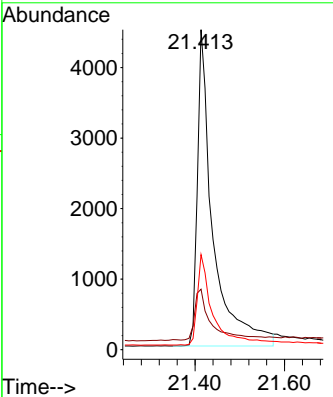
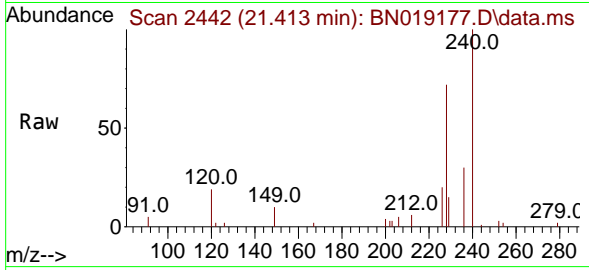


#29
 Chrysene-d12
 Concen: 0.400 ng
 RT: 21.413 min Scan# 24
 Delta R.T. -0.000 min
 Lab File: BN019177.D
 Acq: 26 Mar 2022 05:33

Instrument : BNA_N
 ClientSampleId : PB143615BSD

Tgt Ion:240 Resp: 10840

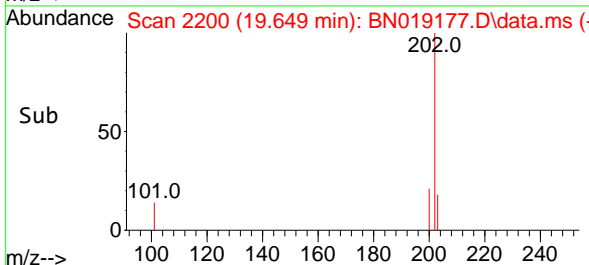
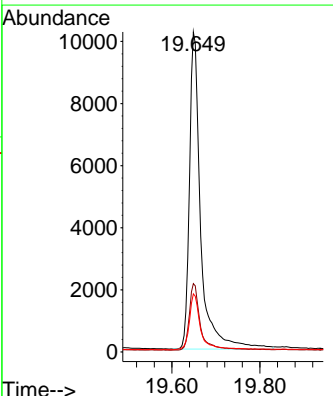
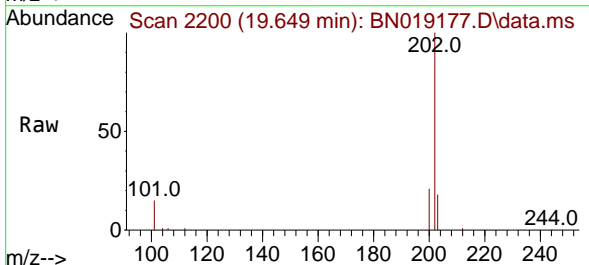
Ion	Ratio	Lower	Upper
240	100		
120	18.9	8.5	12.7#
236	29.7	22.4	33.6

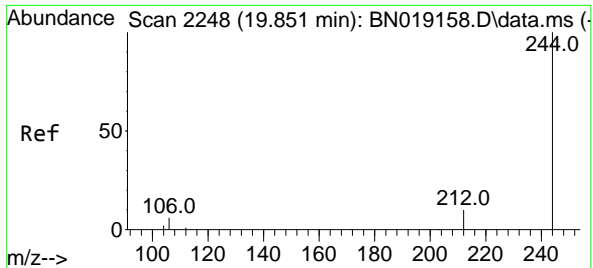


#30
 Pyrene
 Concen: 0.354 ng
 RT: 19.649 min Scan# 2200
 Delta R.T. -0.000 min
 Lab File: BN019177.D
 Acq: 26 Mar 2022 05:33

Tgt Ion:202 Resp: 18151

Ion	Ratio	Lower	Upper
202	100		
200	20.7	16.9	25.3
203	17.8	14.2	21.2



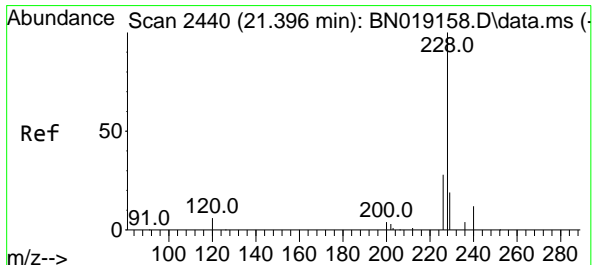
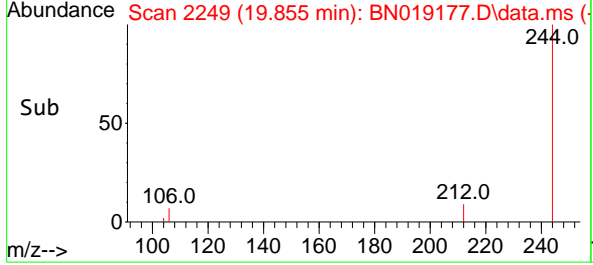
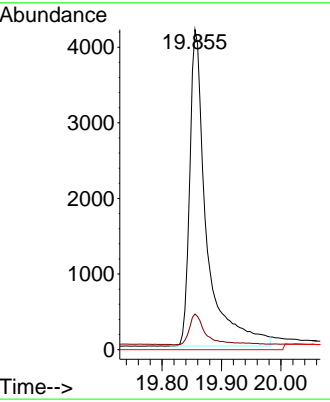
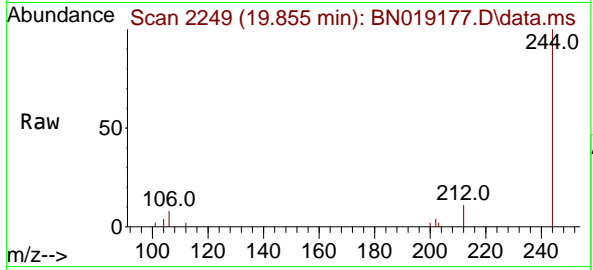


#31
 Terphenyl-d14
 Concen: 0.340 ng
 RT: 19.855 min Scan# 21
 Delta R.T. 0.004 min
 Lab File: BN019177.D
 Acq: 26 Mar 2022 05:33

Instrument : BNA_N
 ClientSampleId : PB143615BSD

Tgt Ion:244 Resp: 8225

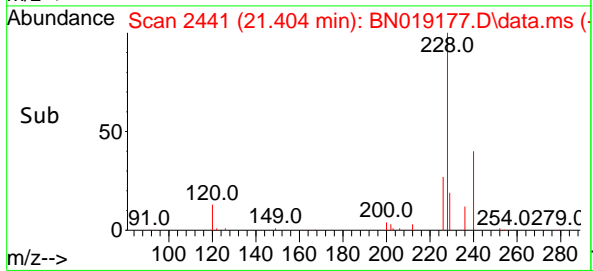
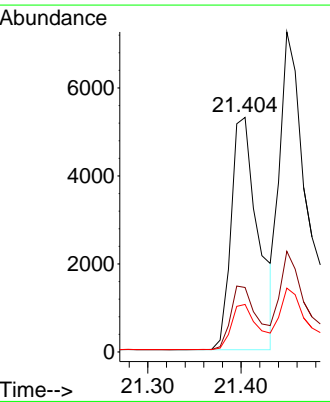
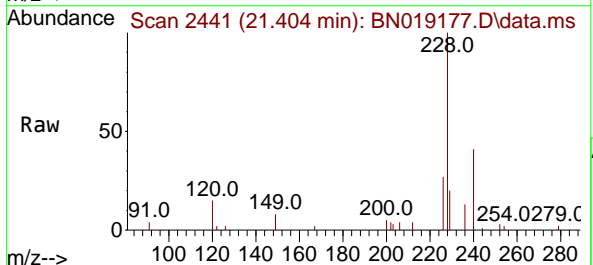
Ion	Ratio	Lower	Upper
244	100		
212	11.1	8.2	12.4
122	0.0	0.0	0.0

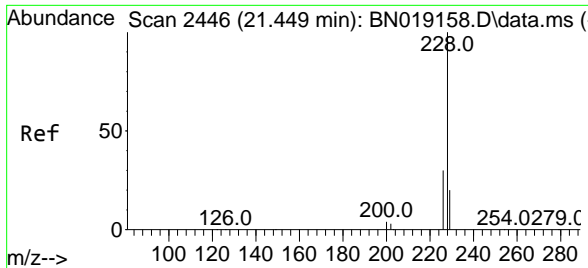


#32
 Benzo(a)anthracene
 Concen: 0.305 ng
 RT: 21.404 min Scan# 2441
 Delta R.T. 0.009 min
 Lab File: BN019177.D
 Acq: 26 Mar 2022 05:33

Tgt Ion:228 Resp: 10628

Ion	Ratio	Lower	Upper
228	100		
226	27.5	21.9	32.9
229	20.2	16.0	24.0

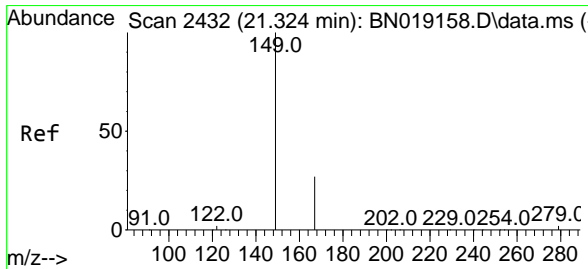
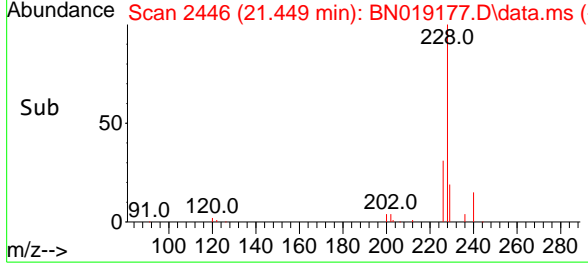
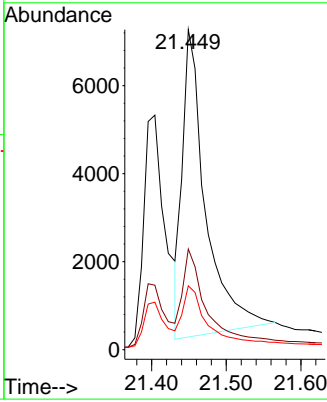
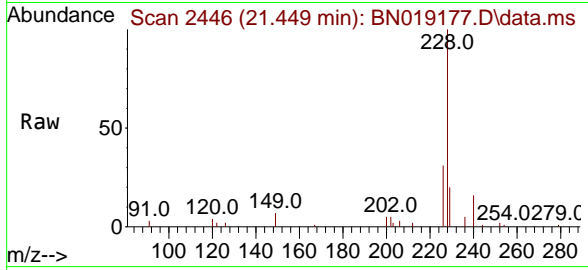




#33
 Chrysene
 Concen: 0.335 ng
 RT: 21.449 min Scan# 2446
 Delta R.T. -0.000 min
 Lab File: BN019177.D
 Acq: 26 Mar 2022 05:33

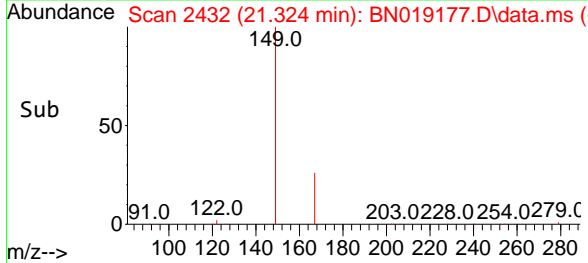
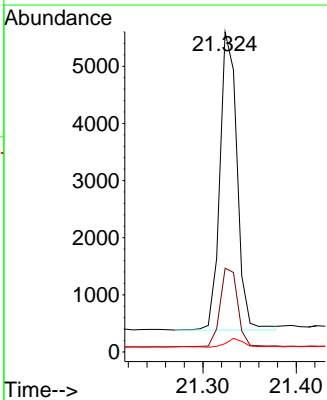
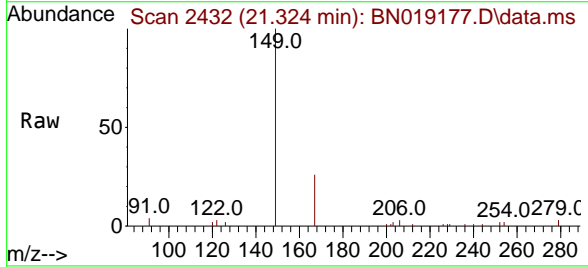
Instrument : BNA_N
 ClientSampleId : PB143615BSD

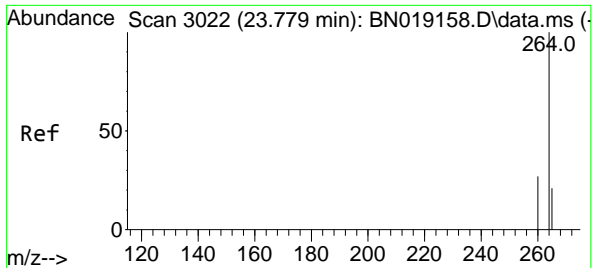
Tgt Ion	Resp	Lower	Upper
228	14975		
226	31.5	24.0	36.0
229	20.0	15.9	23.9



#34
 Bis(2-ethylhexyl)phthalate
 Concen: 0.314 ng
 RT: 21.324 min Scan# 2432
 Delta R.T. -0.000 min
 Lab File: BN019177.D
 Acq: 26 Mar 2022 05:33

Tgt Ion	Resp	Lower	Upper
149	6651		
167	27.5	21.8	32.8
279	3.1	2.0	3.0



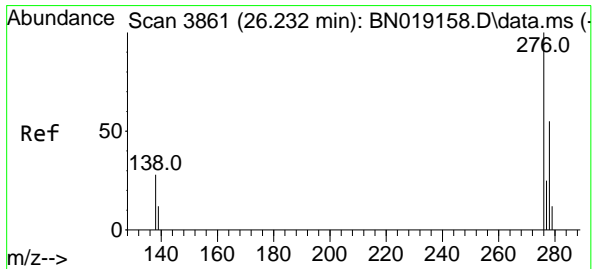
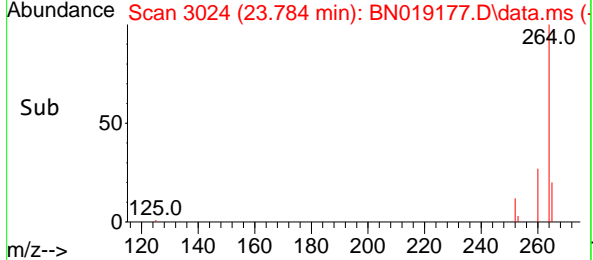
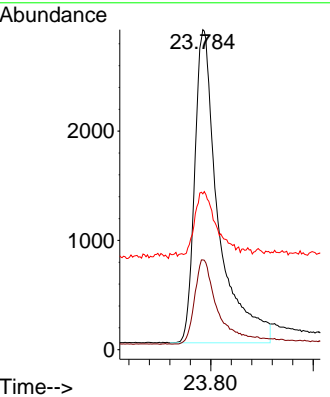
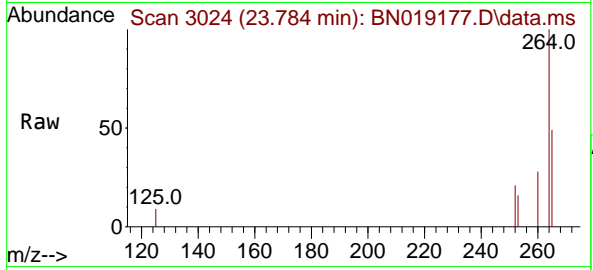


#35
 Perylene-d12
 Concen: 0.400 ng
 RT: 23.784 min Scan# 3022
 Delta R.T. 0.006 min
 Lab File: BN019177.D
 Acq: 26 Mar 2022 05:33

Instrument : BNA_N
 ClientSampleId : PB143615BSD

Tgt Ion:264 Resp: 9221

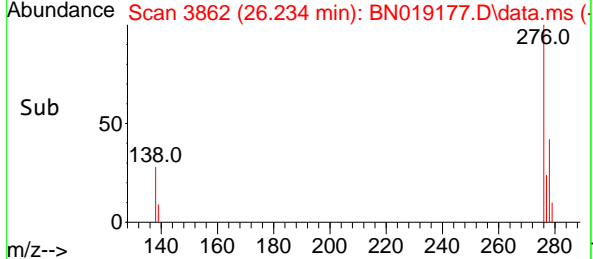
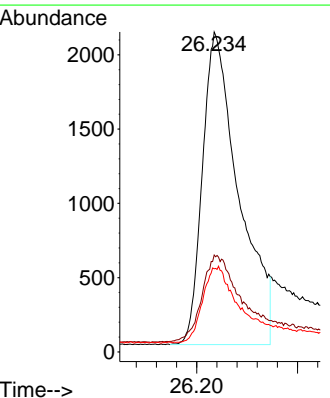
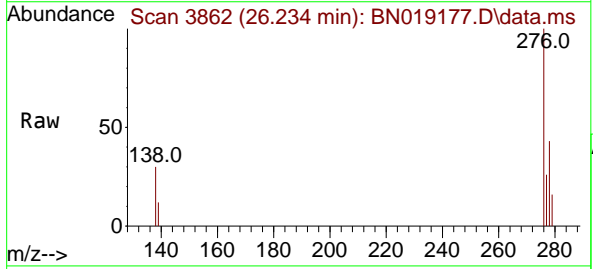
Ion	Ratio	Lower	Upper
264	100		
260	28.1	22.4	33.6
265	48.7	25.3	37.9

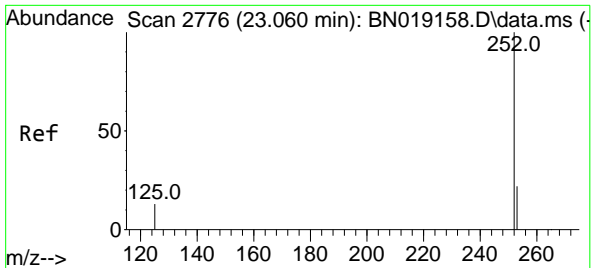


#36
 Indeno(1,2,3-cd)pyrene
 Concen: 0.287 ng
 RT: 26.234 min Scan# 3862
 Delta R.T. 0.003 min
 Lab File: BN019177.D
 Acq: 26 Mar 2022 05:33

Tgt Ion:276 Resp: 10562

Ion	Ratio	Lower	Upper
276	100		
138	28.1	24.5	36.7
277	22.1	19.8	29.8



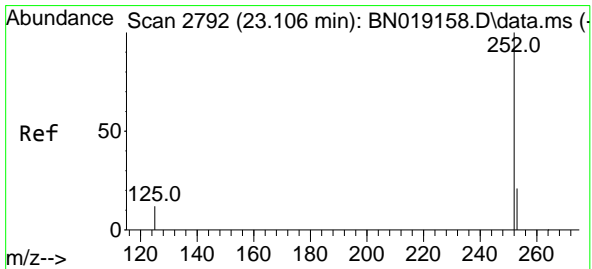
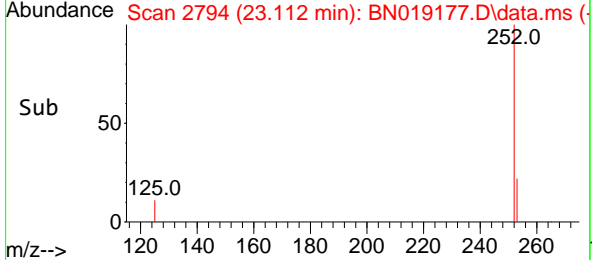
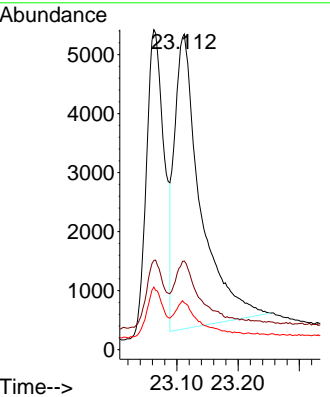
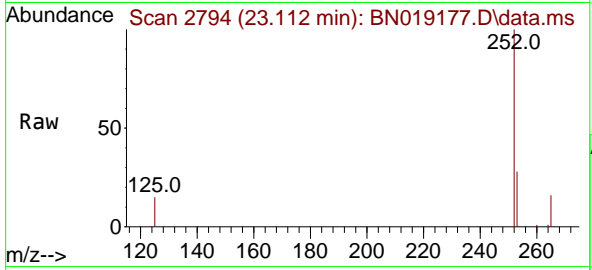


#37
 Benzo(b)fluoranthene
 Concen: 0.418 ng
 RT: 23.112 min Scan# 2794
 Delta R.T. 0.052 min
 Lab File: BN019177.D
 Acq: 26 Mar 2022 05:33

Instrument : BNA_N
 ClientSampleId : PB143615BSD

Tgt Ion:252 Resp: 14652

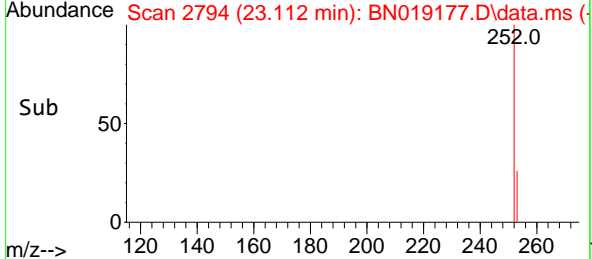
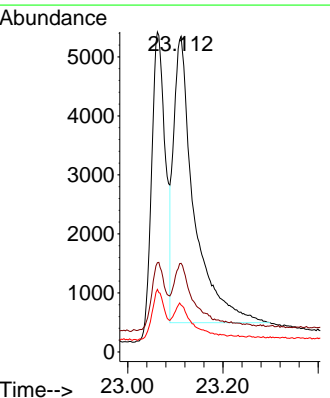
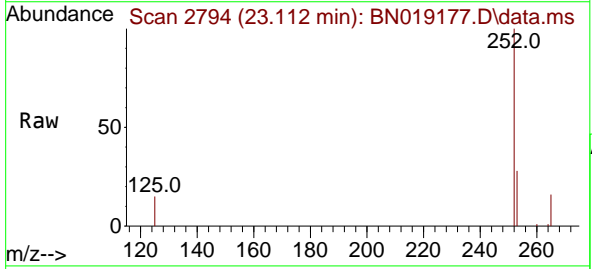
Ion	Ratio	Lower	Upper
252	100		
253	28.1	18.9	28.3
125	14.9	12.1	18.1

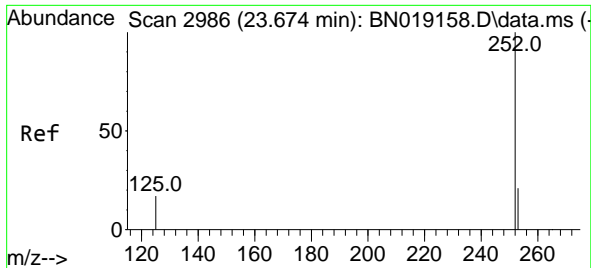


#38
 Benzo(k)fluoranthene
 Concen: 0.326 ng
 RT: 23.112 min Scan# 2794
 Delta R.T. 0.006 min
 Lab File: BN019177.D
 Acq: 26 Mar 2022 05:33

Tgt Ion:252 Resp: 14490

Ion	Ratio	Lower	Upper
252	100		
253	28.1	18.9	28.3
125	14.9	10.3	15.5

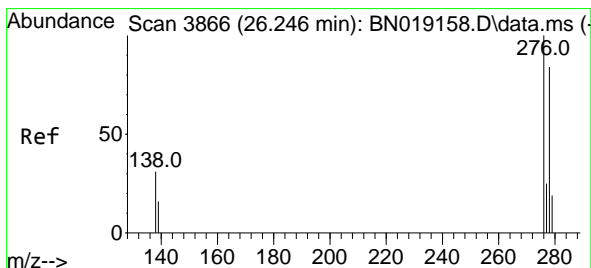
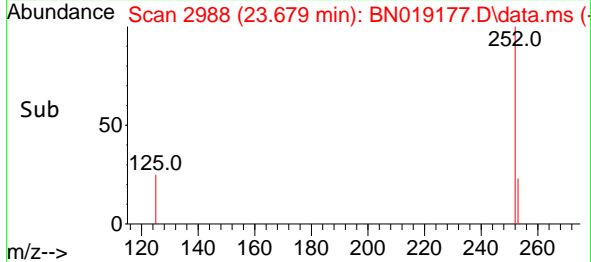
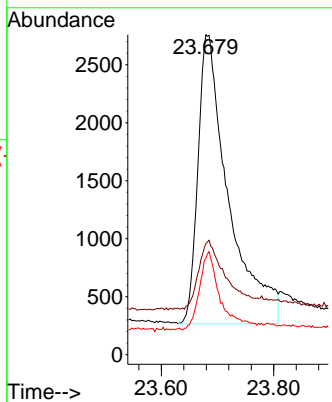
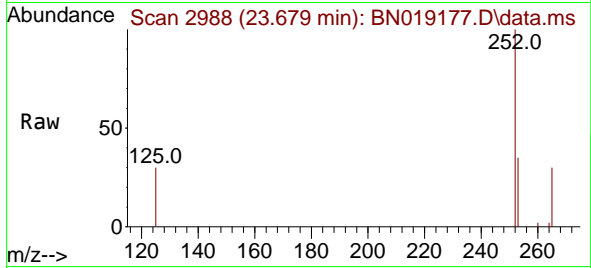




#39
 Benzo(a)pyrene
 Concen: 0.315 ng
 RT: 23.679 min Scan# 2988
 Delta R.T. 0.006 min
 Lab File: BN019177.D
 Acq: 26 Mar 2022 05:33

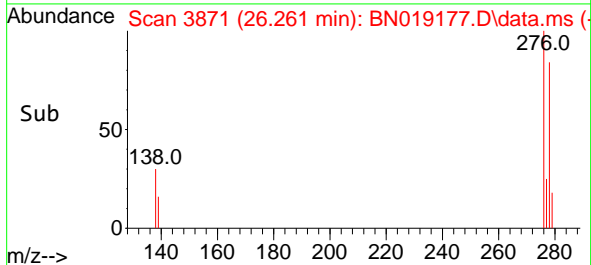
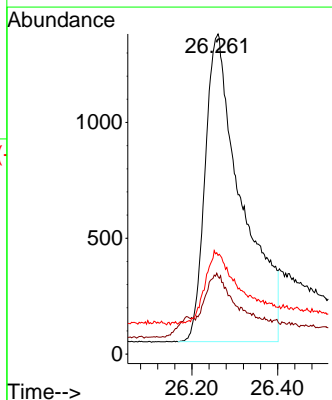
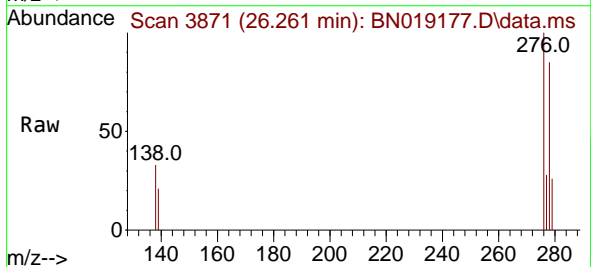
Instrument :
 BNA_N
 ClientSampleId :
 PB143615BSD

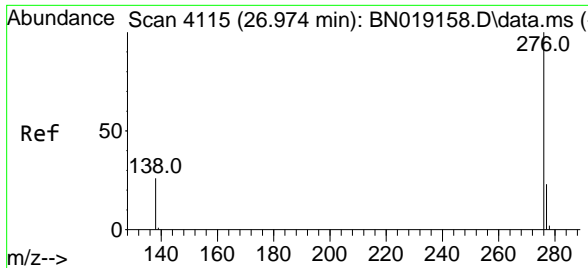
Tgt Ion:252 Resp: 9444
 Ion Ratio Lower Upper
 252 100
 253 34.7 20.1 30.1#
 125 30.1 15.2 22.8#



#40
 Dibenzo(a,h)anthracene
 Concen: 0.282 ng
 RT: 26.261 min Scan# 3871
 Delta R.T. 0.014 min
 Lab File: BN019177.D
 Acq: 26 Mar 2022 05:33

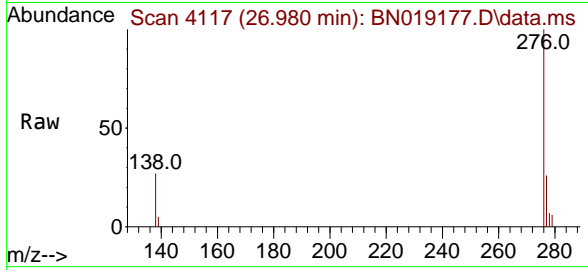
Tgt Ion:278 Resp: 7839
 Ion Ratio Lower Upper
 278 100
 139 24.2 17.2 25.8
 279 30.8 19.9 29.9#





#41
 Benzo(g,h,i)perylene
 Concen: 0.313 ng
 RT: 26.980 min Scan# 41
 Delta R.T. 0.006 min
 Lab File: BN019177.D
 Acq: 26 Mar 2022 05:33

Instrument :
 BNA_N
 ClientSampleId :
 PB143615BSD



Tgt Ion: 276 Resp: 11867

Ion	Ratio	Lower	Upper
276	100		
277	26.0	19.4	29.0
138	27.4	21.0	31.6

