

Data Path : Z:\HPCHEM1\BNA N\DATA\BN032618\  
 Data File : BN000629.D  
 Acq On : 26 Mar 2018 20:28  
 Operator : JU/SJ  
 Sample : J1986-16  
 Misc :  
 ALS Vial : 15 Sample Multiplier: 1

Instrument :  
 BNA\_N  
 ClientSampleId :

Quant Time: Mar 27 04:07:12 2018  
 Quant Method : Z:\HPCHEM1\BNA N\METHODS\SOM-EPA-BN031918.M  
 Quant Title : SVOA CALIBRATION  
 QLast Update : Tue Mar 27 03:53:32 2018  
 Response via : Initial Calibration

Internal Standards	R.T.	QIon	Response	Conc	Units	Dev(Min)
1) 1,4-Dichlorobenzene-d4	8.41	152	121847	20.00	ng/ul	0.00
18) Naphthalene-d8	11.25	136	552122	20.00	ng/ul	0.00
35) Acenaphthene-d10	15.03	164	314462	20.00	ng/ul	0.00
61) Phenanthrene-d10	17.75	188	668188	20.00	ng/ul	0.00
75) Chrysene-d12	21.88	240	711176	20.00	ng/ul	0.00
83) Perylene-d12	24.35	264	765200	20.00	ng/ul	0.00

## System Monitoring Compounds

3) 1,4-Dioxane-d8	3.58	96	22233	6.52	ng/uL	0.00
5) Phenol-d5	7.55	99	470164	41.36	ng/ul	0.00
7) Bis-(2-Chloroethyl)ether-d	7.71	67	281612	42.95	ng/ul	0.00
9) 2-Chlorophenol-d4	7.94	132	349720	40.69	ng/ul	0.00
13) 4-Methylphenol-d8	9.12	113	364836	41.20	ng/ul	0.00
19) Nitrobenzene-d5	9.60	128	189446	42.25	ng/ul	0.00
22) 2-Nitrophenol-d4	10.32	143	209199	45.03	ng/ul	0.00
26) 2,4-Dichlorophenol-d3	10.87	165	348922	41.90	ng/ul	0.00
29) 4-Chloroaniline-d4	11.38	131	520096	60.85	ng/ul	0.00
43) Dimethylphthalate-d6	14.42	166	1192818	48.01	ng/ul	0.00
46) Acenaphthylene-d8	14.73	160	1479003	45.13	ng/ul	0.00
51) 4-Nitrophenol-d4	15.22	143	207746	45.04	ng/ul	0.00
57) Fluorene-d10	16.01	176	979586	46.27	ng/ul	0.00
62) 4,6-Dinitro-2-methylphenol	16.13	200	150240	39.26	ng/ul	0.00
70) Anthracene-d10	17.85	188	1502449	46.78	ng/ul	0.00
76) Pyrene-d10	20.11	212	1630863	41.54	ng/ul	0.00
87) Benzo(a)pyrene-d12	24.20	264	1712219	47.41	ng/ul	0.00

## Target Compounds

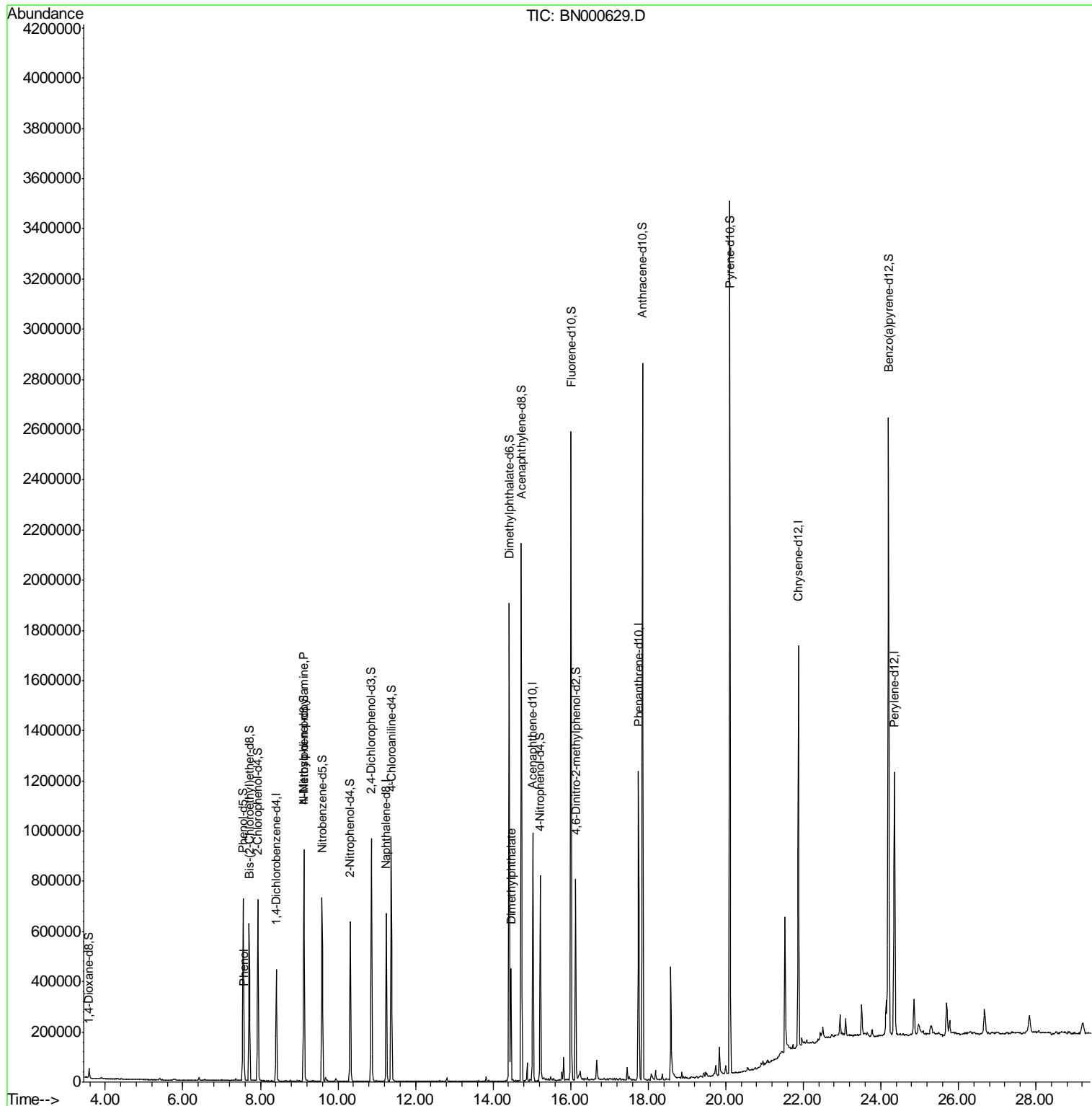
Target Compounds	R.T.	QIon	Response	Conc	Units	Ovalue
6) Phenol	7.58	94	30564	2.635	ng/ul	96
15) N-Nitroso-di-n-propylamine	9.12	70	8927	1.297	ng/ul#	1
44) Dimethylphthalate	14.47	163	265007	10.784	ng/ul#	98

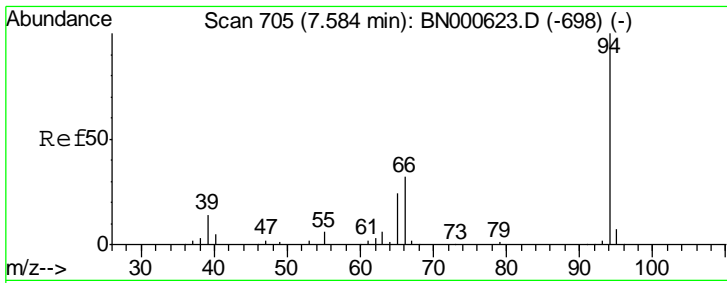
(#) = qualifier out of range (m) = manual integration (+) = signals summed

Data Path : Z:\HPCHEM1\BNA N\DATA\BN032618\  
 Data File : BN000629.D  
 Acq On : 26 Mar 2018 20:28  
 Operator : JU/SJ  
 Sample : J1986-16  
 Misc :  
 ALS Vial : 15 Sample Multiplier: 1

Instrument :  
 BNA\_N  
 ClientSampled :

Quant Time: Mar 27 04:07:12 2018  
 Quant Method : Z:\HPCHEM1\BNA N\METHODS\SOM-EPA-BN031918.M  
 Quant Title : SVOA CALIBRATION  
 QLast Update : Tue Mar 27 03:53:32 2018  
 Response via : Initial Calibration

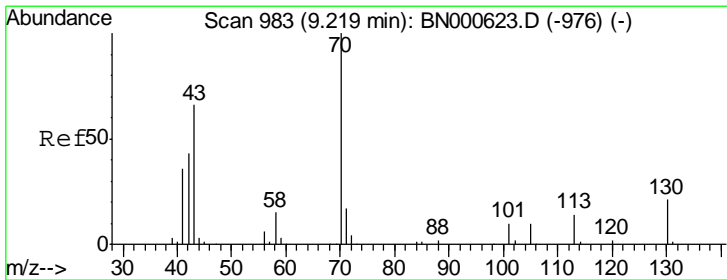
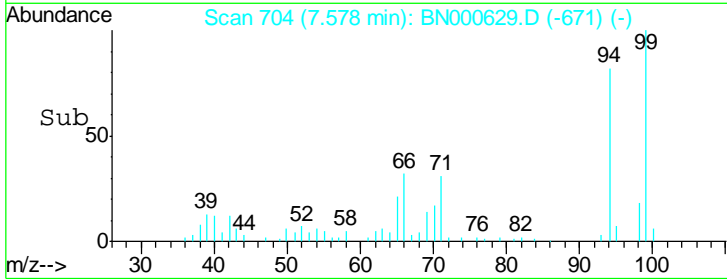
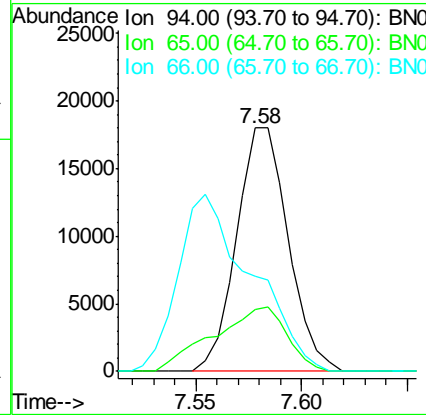
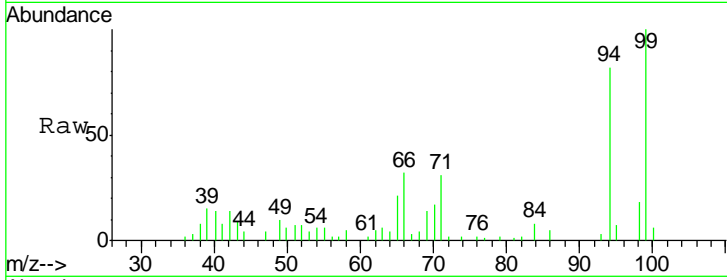




#6  
 Phenol  
 Concen: 2.635 ng/ul  
 RT: 7.58 min Scan# 704  
 Delta R.T. -0.01 min  
 Lab File: BN000629.D  
 Acq: 26 Mar 2018 20:28

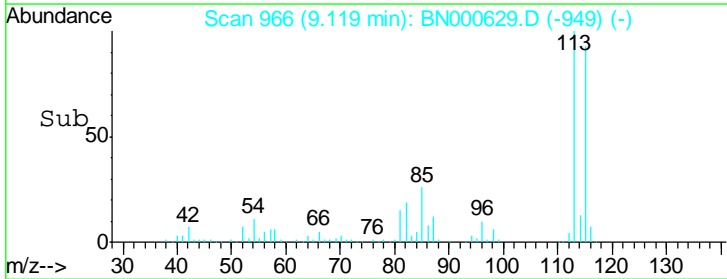
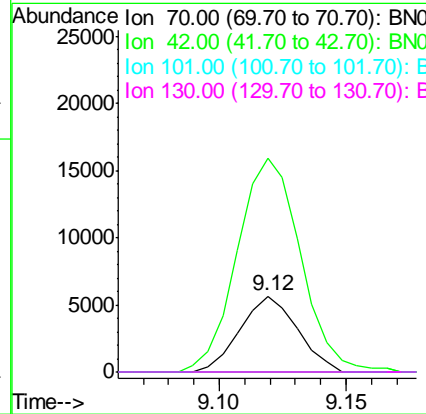
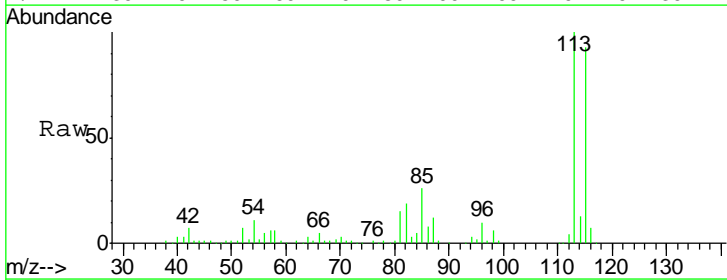
Instrument :  
 BNA\_N  
 ClientSampled :

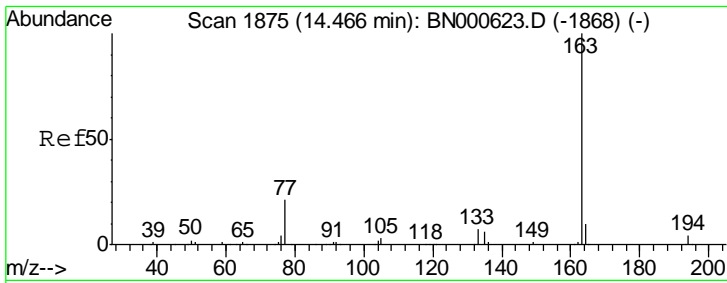
Tgt Ion	Resp	Lower	Upper
94	100		
65	25.4	23.0	34.6
66	39.1	30.4	45.6



#15  
 N-Nitroso-di-n-propylamine  
 Concen: 1.297 ng/ul  
 RT: 9.12 min Scan# 966  
 Delta R.T. -0.10 min  
 Lab File: BN000629.D  
 Acq: 26 Mar 2018 20:28

Tgt Ion	Resp	Lower	Upper
70	100		
42	282.2	40.2	60.4#
101	0.0	7.7	11.5#
130	0.0	17.8	26.6#





#44  
 Dimethylphthalate  
 Concen: 10.784 ng/ul  
 RT: 14.47 min Scan# 1875  
 Delta R.T. -0.00 min  
 Lab File: BN000629.D  
 Acq: 26 Mar 2018 20:28

Instrument :  
 BNA\_N  
 ClientSampled :

Tot Ion:163 Resp: 265007

Ion	Ratio	Lower	Upper
163	100		
194	3.9	4.0	6.0#
164	10.0	8.4	12.6

