

Data Path : Z:\svoasrv\HPCHEM1\BNA\_N\Data\BN032621\  
 Data File : BN014122.D  
 Acq On : 26 Mar 2021 13:40  
 Operator : CG/JU  
 Sample : SSTDICC1.6  
 Misc :  
 ALS Vial : 6 Sample Multiplier: 1

Instrument :  
 BNA\_N  
 ClientSampleId :  
 SSTDICC1.6

Quant Time: Mar 26 14:10:29 2021  
 Quant Method : Z:\SVOASRV\HPCHEM1\BNA\_N\METHODS\8270-SIM-BN032621.M  
 Quant Title : ASP BNA STANDARDS FOR 5 POINT CALIBRATION  
 QLast Update : Fri Mar 26 13:01:59 2021  
 Response via : Initial Calibration

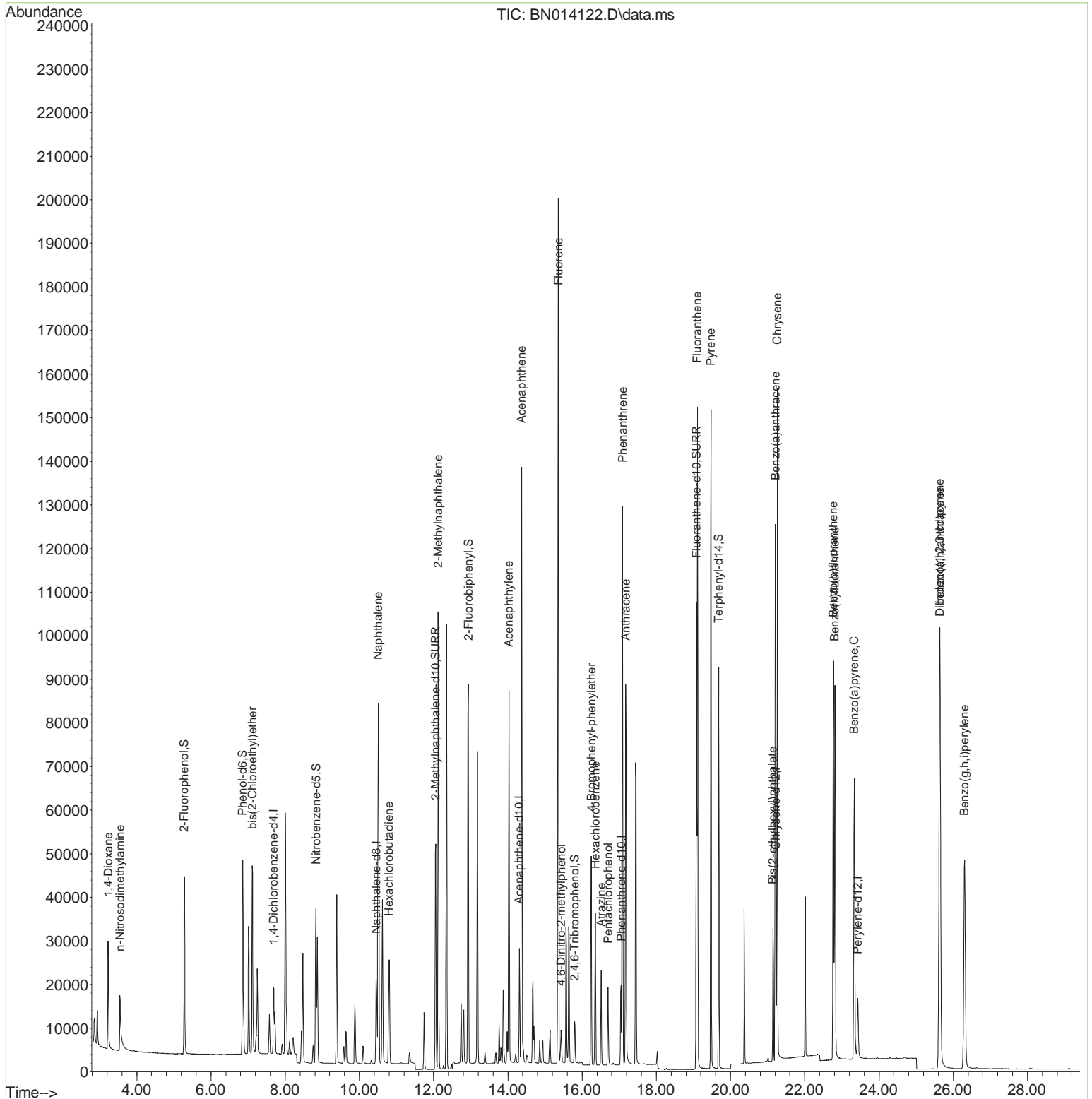
Compound	R.T.	QIon	Response	Conc	Units	Dev(Min)	
-----							
Internal Standards							
1) 1,4-Dichlorobenzene-d4	7.692	152	7514	0.40	ng	0.00	
7) Naphthalene-d8	10.454	136	26896	0.40	ng	#-0.01	
13) Acenaphthene-d10	14.308	164	14318	0.40	ng	0.00	
19) Phenanthrene-d10	17.055	188	27650	0.40	ng	0.00	
29) Chrysene-d12	21.229	240	23416	0.40	ng	# 0.00	
36) Perylene-d12	23.431	264	18719	0.40	ng	0.00	
System Monitoring Compounds							
4) 2-Fluorophenol	5.284	112	30688	1.77	ng	0.00	
5) Phenol-d6	6.855	99	39132	1.78	ng	0.00	
8) Nitrobenzene-d5	8.832	82	29079	1.63	ng	0.00	
11) 2-Methylnaphthalene-d10	12.053	152	67280	1.61	ng	0.00	
14) 2,4,6-Tribromophenol	15.805	330	7698	1.65	ng	0.00	
15) 2-Fluorobiphenyl	12.938	172	85300	1.60	ng	0.00	
27) Fluoranthene-d10	19.079	212	118429	1.54	ng	0.00	
31) Terphenyl-d14	19.680	244	88370	1.72	ng	0.00	
Target Compounds							
							Qvalue
2) 1,4-Dioxane	3.231	88	15268	1.54	ng		97
3) n-Nitrosodimethylamine	3.545	42	12819	1.93	ng		94
6) bis(2-Chloroethyl)ether	7.120	93	31889	1.65	ng		100
9) Naphthalene	10.505	128	107953	1.61	ng		99
10) Hexachlorobutadiene	10.796	225	19402	1.55	ng	#	99
12) 2-Methylnaphthalene	12.124	142	72083	1.61	ng		99
16) Acenaphthylene	14.029	152	91324	1.66	ng		100
17) Acenaphthene	14.372	154	65513	1.62	ng		98
18) Fluorene	15.361	166	79034	1.56	ng		99
20) 4,6-Dinitro-2-methylph...	15.437	198	5908	1.90	ng	#	76
21) 4-Bromophenyl-phenylether	16.252	248	23312	1.65	ng		94
22) Hexachlorobenzene	16.362	284	25752	1.57	ng		99
23) Atrazine	16.520	200	15892	1.64	ng		97
24) Pentachlorophenol	16.702	266	8208	2.12	ng		98
25) Phenanthrene	17.092	178	122088	1.61	ng		100
26) Anthracene	17.177	178	103807	1.67	ng		100
28) Fluoranthene	19.109	202	130426	1.55	ng		100
30) Pyrene	19.471	202	127714	1.78	ng		100
32) Benzo(a)anthracene	21.208	228	106226	1.59	ng		97
33) Chrysene	21.261	228	117487	1.63	ng		99
34) Bis(2-ethylhexyl)phtha...	21.144	149	28893	1.16	ng		100
35) Indeno(1,2,3-cd)pyrene	25.632	276	111818	1.43	ng		99
37) Benzo(b)fluoranthene	22.770	252	109021	1.60	ng		94
38) Benzo(k)fluoranthene	22.811	252	108464	1.62	ng		94
39) Benzo(a)pyrene	23.332	252	92988	1.60	ng		93
40) Dibenzo(a,h)anthracene	25.646	278	94361	1.52	ng		96
41) Benzo(g,h,i)perylene	26.306	276	98524	1.52	ng		98

(#) = qualifier out of range (m) = manual integration (+) = signals summed

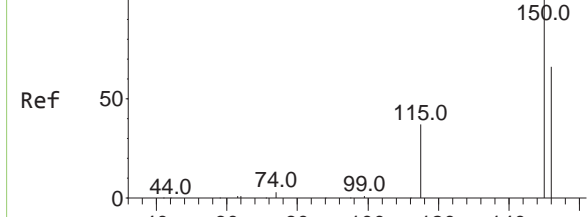
Data Path : Z:\svoasrv\HPCHEM1\BNA\_N\Data\BN032621\  
 Data File : BN014122.D  
 Acq On : 26 Mar 2021 13:40  
 Operator : CG/JU  
 Sample : SSTDICC1.6  
 Misc :  
 ALS Vial : 6 Sample Multiplier: 1

Instrument :  
 BNA\_N  
 Client Sampled :  
 SSTDICC1.6

Quant Time: Mar 26 14:10:29 2021  
 Quant Method : Z:\SVOASRV\HPCHEM1\BNA\_N\METHODS\8270-SIM-BN032621.M  
 Quant Title : ASP BNA STANDARDS FOR 5 POINT CALIBRATION  
 QLast Update : Fri Mar 26 13:01:59 2021  
 Response via : Initial Calibration

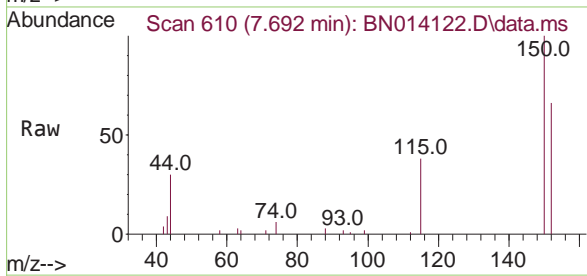


Abundance Scan 610 (7.692 min): BN014120.D\data.ms (-602) (#1)



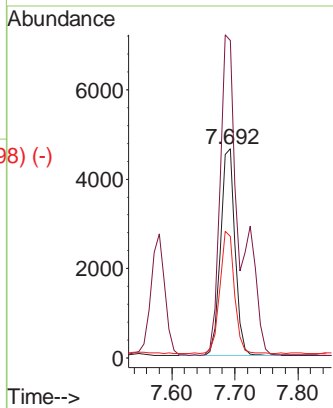
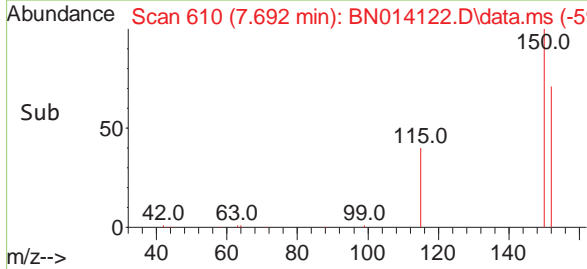
1,4-Dichlorobenzene-d4  
Concen: 0.40 ng  
RT: 7.692 min Scan# 610  
Delta R.T. 0.000 min  
Lab File: BN014122.D  
Acq: 26 Mar 2021 13:40

Instrument :  
BNA\_N  
ClientSampleId :  
SSTDICC1.6

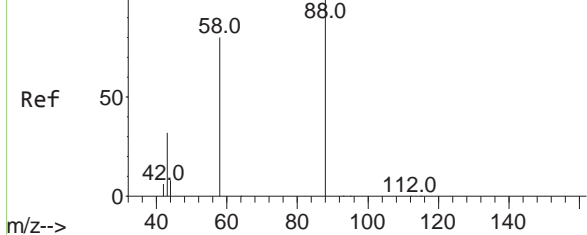


Tgt Ion:152 Resp: 7514

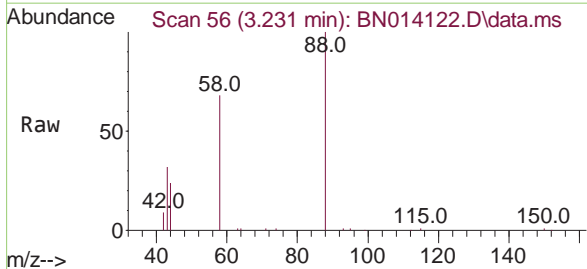
Ion	Ratio	Lower	Upper
152	100		
150	152.1	121.2	181.8
115	58.1	46.2	69.2



Abundance Scan 56 (3.231 min): BN014120.D\data.ms (-52) (#2)

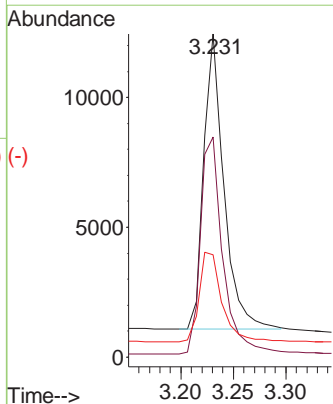
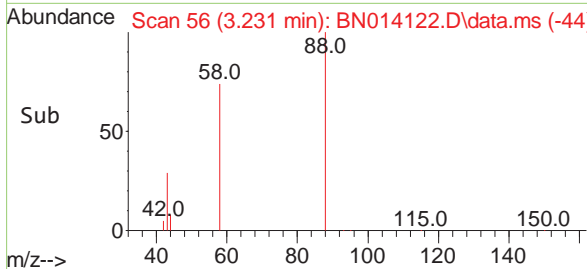


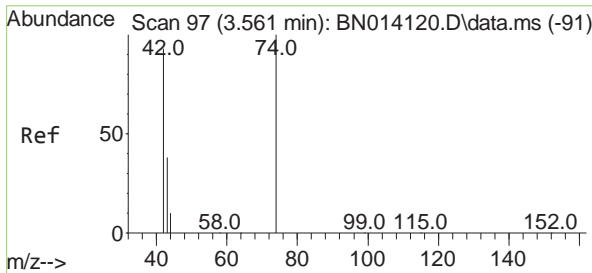
1,4-Dioxane  
Concen: 1.54 ng  
RT: 3.231 min Scan# 56  
Delta R.T. 0.000 min  
Lab File: BN014122.D  
Acq: 26 Mar 2021 13:40



Tgt Ion: 88 Resp: 15268

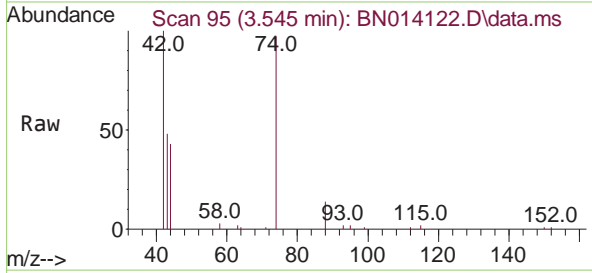
Ion	Ratio	Lower	Upper
88	100		
58	81.1	63.1	94.7
43	34.2	26.2	39.2





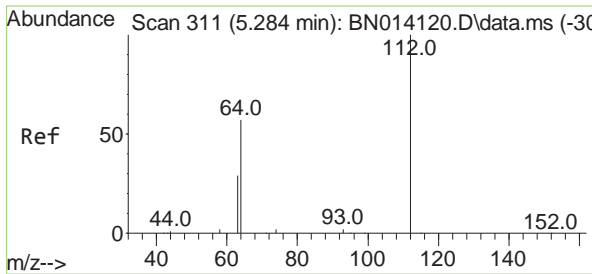
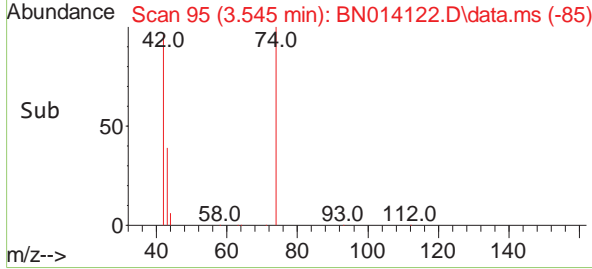
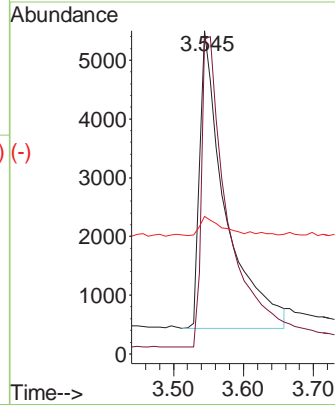
n-Nitrosodimethylamine  
 Concen: 1.93 ng  
 RT: 3.545 min Scan# 95  
 Delta R.T. -0.016 min  
 Lab File: BN014122.D  
 Acq: 26 Mar 2021 13:40

Instrument :  
 BNA\_N  
 ClientSampleId :  
 SSTDICC1.6



Tgt Ion: 42 Resp: 12819

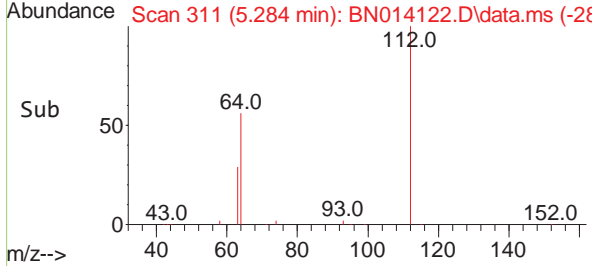
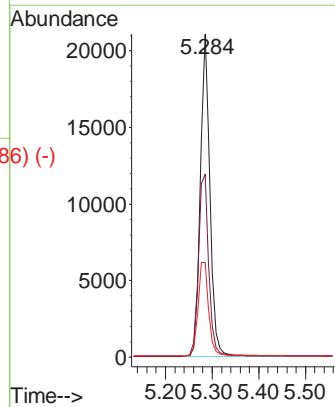
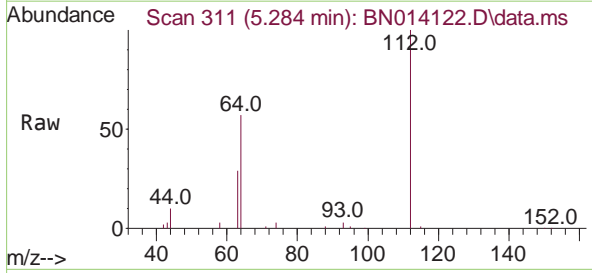
Ion	Ratio	Lower	Upper
42	100		
74	111.5	94.6	141.8
44	5.4	4.2	6.2

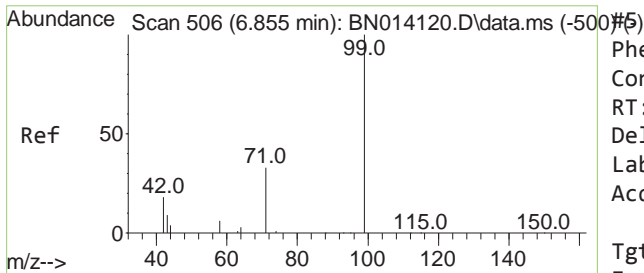


2-Fluorophenol  
 Concen: 1.77 ng  
 RT: 5.284 min Scan# 311  
 Delta R.T. 0.000 min  
 Lab File: BN014122.D  
 Acq: 26 Mar 2021 13:40

Tgt Ion: 112 Resp: 30688

Ion	Ratio	Lower	Upper
112	100		
64	60.2	48.3	72.5
63	32.0	25.4	38.0

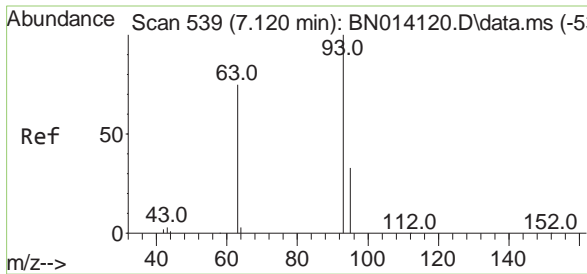
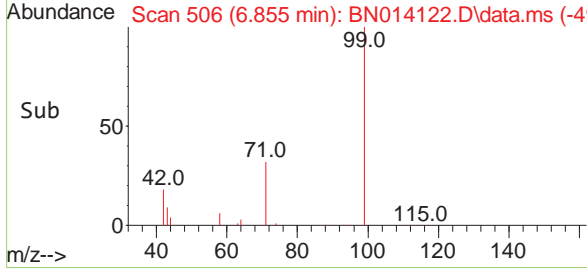
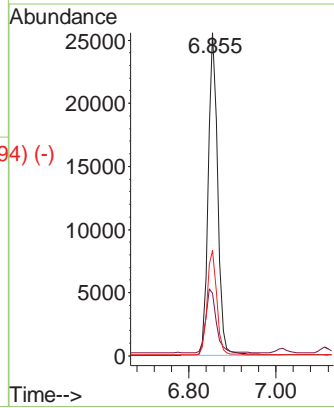
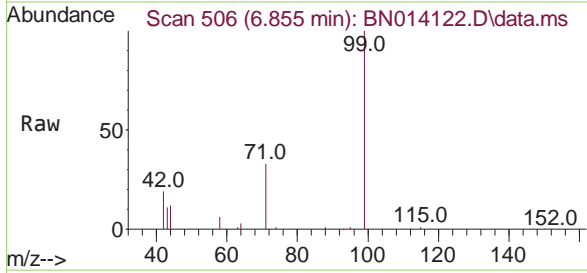




Phenol-d6  
 Concen: 1.78 ng  
 RT: 6.855 min Scan# 506  
 Delta R.T. 0.000 min  
 Lab File: BN014122.D  
 Acq: 26 Mar 2021 13:40

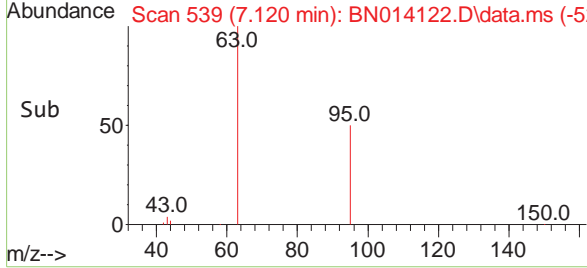
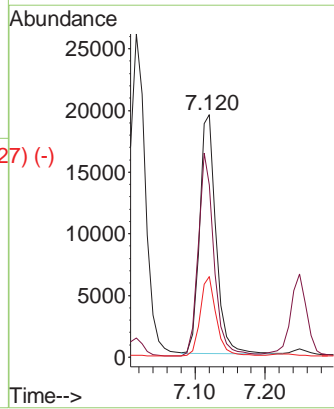
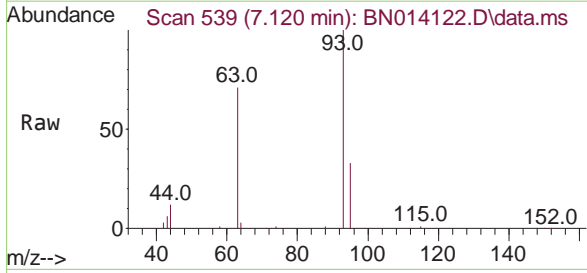
**Instrument :**  
 BNA\_N  
**ClientSampled :**  
 SSTDICC1.6

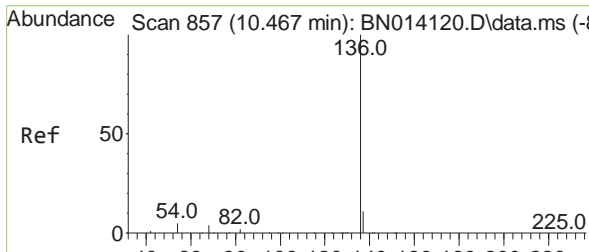
Tgt Ion	Resp	Lower	Upper
99	39132		
42	22.1	18.2	27.4
71	33.4	26.7	40.1



bis(2-Chloroethyl)ether  
 Concen: 1.65 ng  
 RT: 7.120 min Scan# 539  
 Delta R.T. 0.000 min  
 Lab File: BN014122.D  
 Acq: 26 Mar 2021 13:40

Tgt Ion	Resp	Lower	Upper
93	31889		
63	81.1	65.1	97.7
95	32.7	26.6	39.8

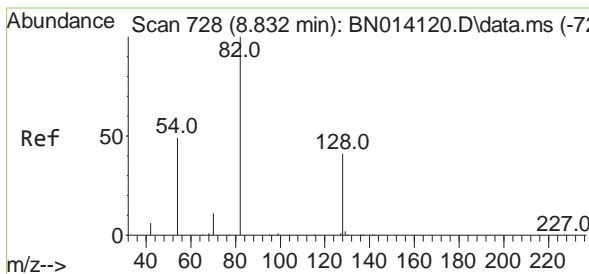
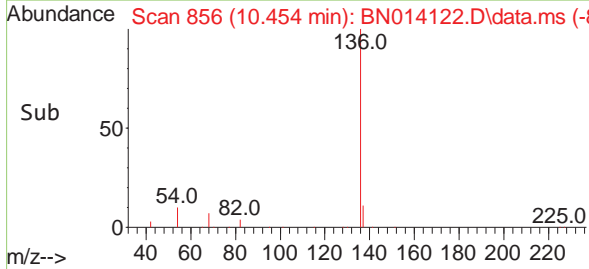
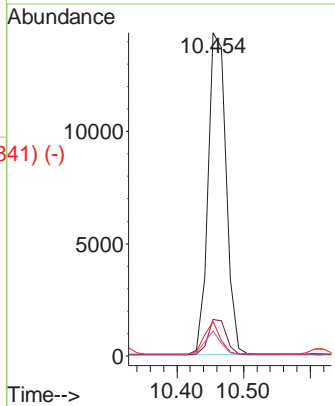
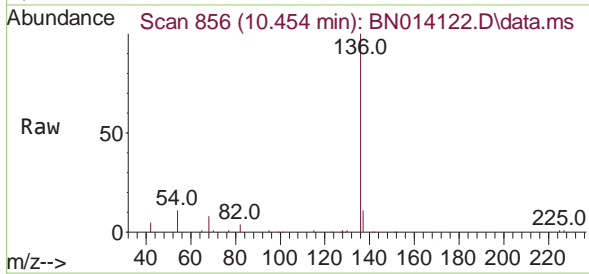




Naphthalene-d8  
 Concen: 0.40 ng  
 RT: 10.454 min Scan# 856  
 Delta R.T. -0.013 min  
 Lab File: BN014122.D  
 Acq: 26 Mar 2021 13:40

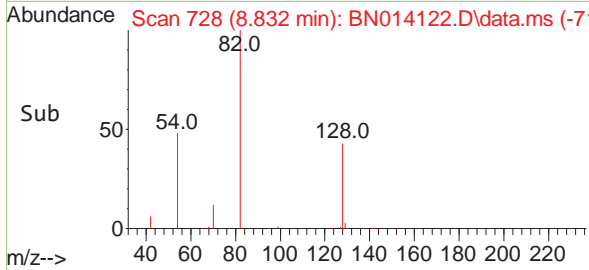
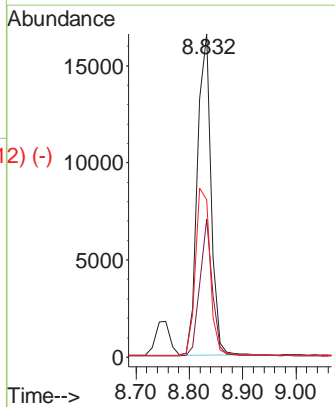
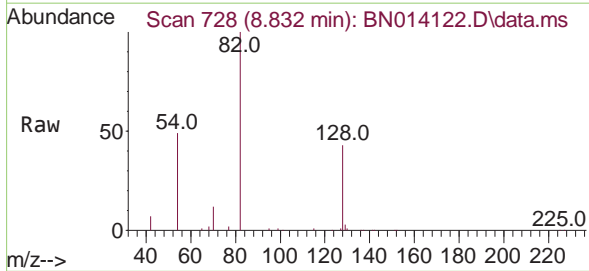
**Instrument :**  
 BNA\_N  
**ClientSampled :**  
 SSTDICC1.6

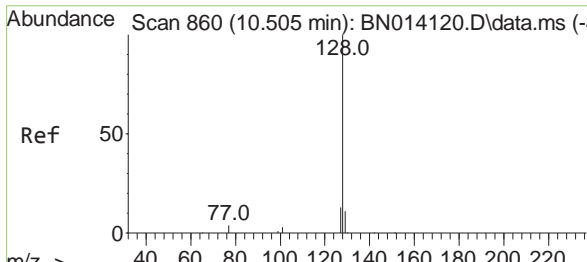
Tgt Ion	Resp	Lower	Upper
136	26896		
137	11.2	9.1	13.7
54	10.8	4.3	6.5#
68	7.8	3.4	5.2#



Nitrobenzene-d5  
 Concen: 1.63 ng  
 RT: 8.832 min Scan# 728  
 Delta R.T. 0.000 min  
 Lab File: BN014122.D  
 Acq: 26 Mar 2021 13:40

Tgt Ion	Resp	Lower	Upper
82	29079		
128	42.8	33.5	50.3
54	48.6	40.3	60.5

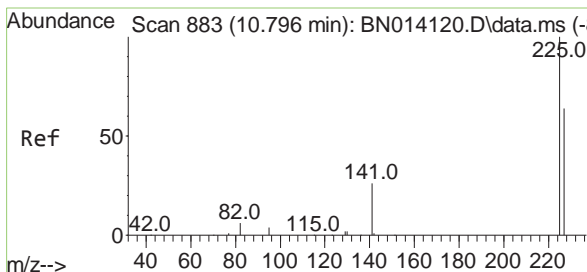
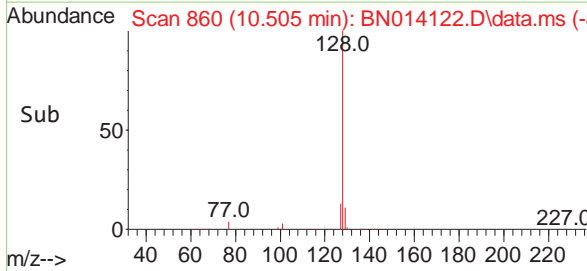
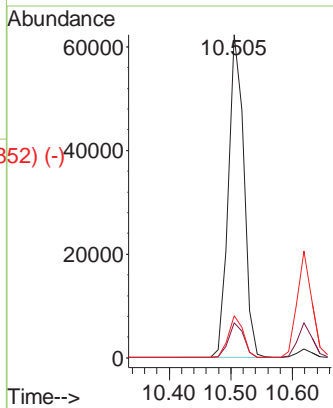
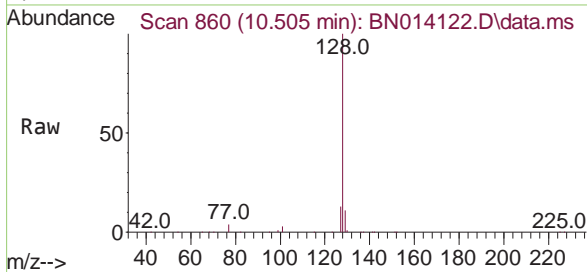




Scan 860 (10.505 min): BN014120.D\data.ms (-859) (-)  
 Naphthalene  
 Concen: 1.61 ng  
 RT: 10.505 min Scan# 860  
 Delta R.T. 0.000 min  
 Lab File: BN014122.D  
 Acq: 26 Mar 2021 13:40

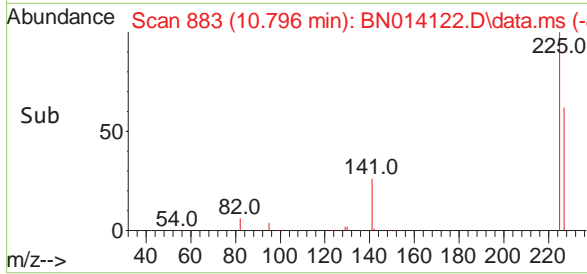
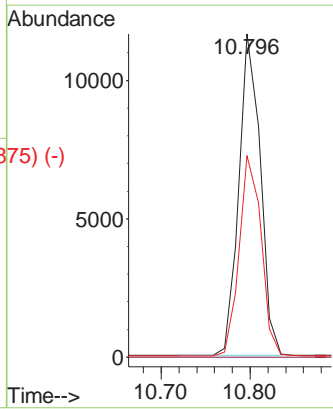
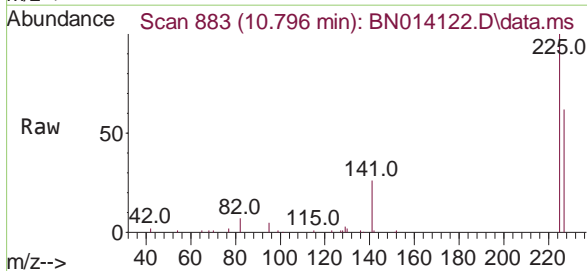
**Instrument :**  
 BNA\_N  
**ClientSampleId :**  
 SSTDICC1.6

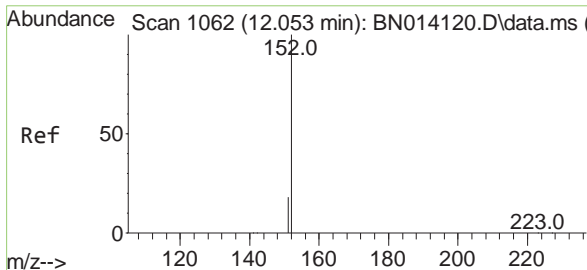
Tgt Ion	Resp	Lower	Upper
128	107953		
129	10.9	9.2	13.8
127	13.1	10.8	16.2



Scan 883 (10.796 min): BN014120.D\data.ms (-879) (-)  
 Hexachlorobutadiene  
 Concen: 1.55 ng  
 RT: 10.796 min Scan# 883  
 Delta R.T. 0.000 min  
 Lab File: BN014122.D  
 Acq: 26 Mar 2021 13:40

Tgt Ion	Resp	Lower	Upper
225	19402		
223	0.0	0.0	0.0
227	63.6	51.6	77.4

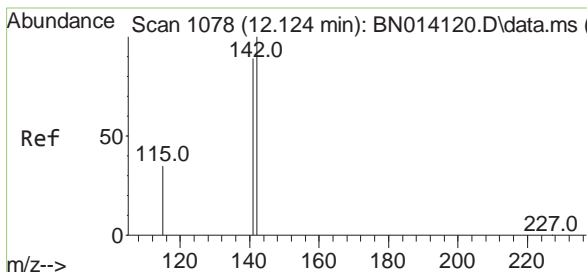
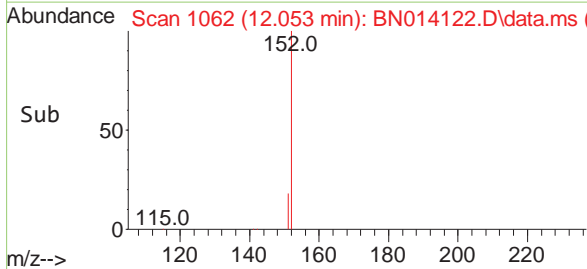
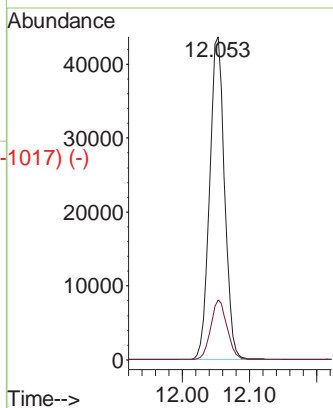
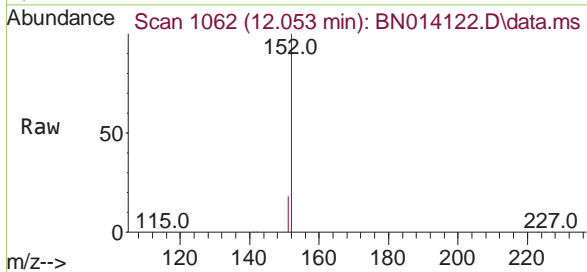




Scan 1062 (12.053 min): BN014120.D\data.ms (-1019) (-)  
 2-Methylnaphthalene-d10  
 Concen: 1.61 ng  
 RT: 12.053 min Scan# 1062  
 Delta R.T. 0.000 min  
 Lab File: BN014122.D  
 Acq: 26 Mar 2021 13:40

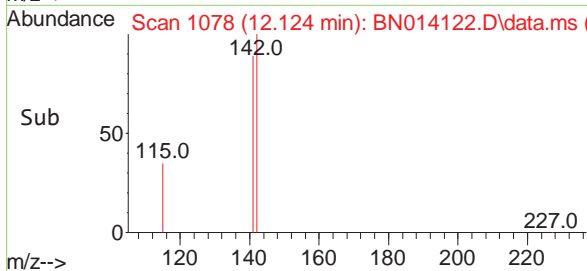
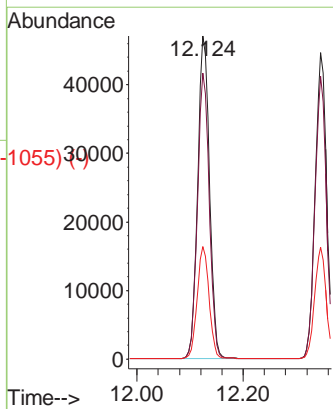
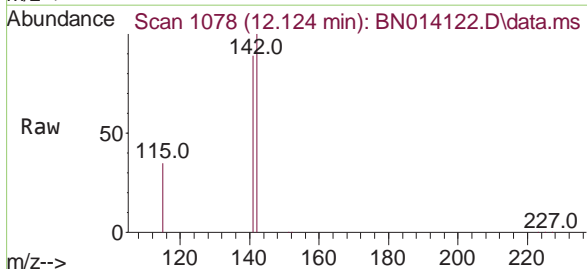
**Instrument :**  
 BNA\_N  
**ClientSampled :**  
 SSTDICC1.6

Tgt Ion:152 Resp: 67280  
 Ion Ratio Lower Upper  
 152 100  
 151 20.1 16.1 24.1



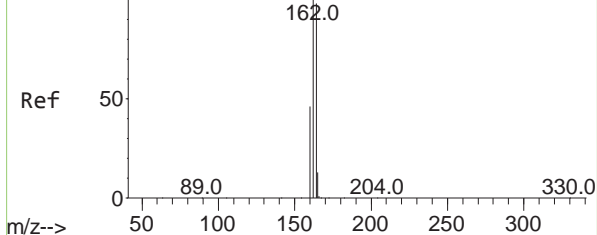
Scan 1078 (12.124 min): BN014120.D\data.ms (-1017) (-)  
 2-Methylnaphthalene  
 Concen: 1.61 ng  
 RT: 12.124 min Scan# 1078  
 Delta R.T. 0.000 min  
 Lab File: BN014122.D  
 Acq: 26 Mar 2021 13:40

Tgt Ion:142 Resp: 72083  
 Ion Ratio Lower Upper  
 142 100  
 141 88.6 71.1 106.7  
 115 34.7 29.0 43.6



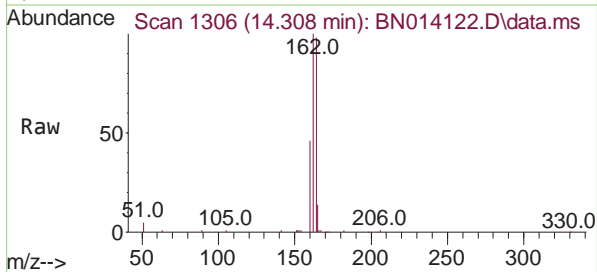


Abundance Scan 1306 (14.308 min): BN014120.D\data.ms (-1302) (-)



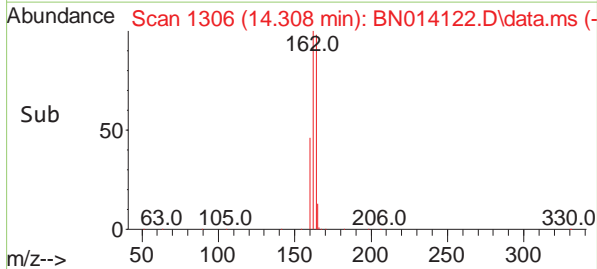
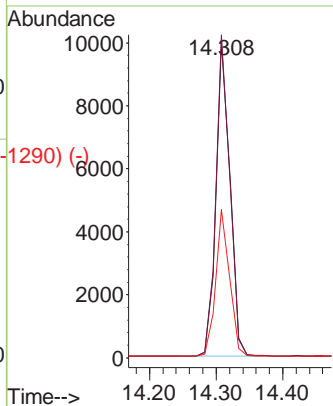
Acenaphthene-d10  
Concen: 0.40 ng  
RT: 14.308 min Scan# 1306  
Delta R.T. 0.000 min  
Lab File: BN014122.D  
Acq: 26 Mar 2021 13:40

Instrument :  
BNA\_N  
ClientSampled :  
SSTDICC1.6

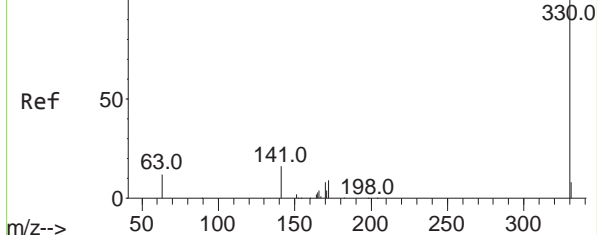


Tgt Ion:164 Resp: 14318

Ion	Ratio	Lower	Upper
164	100		
162	102.2	81.4	122.2
160	47.0	37.5	56.3



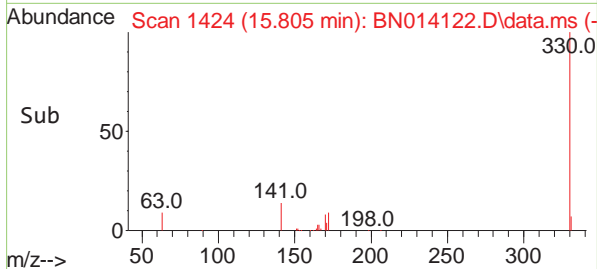
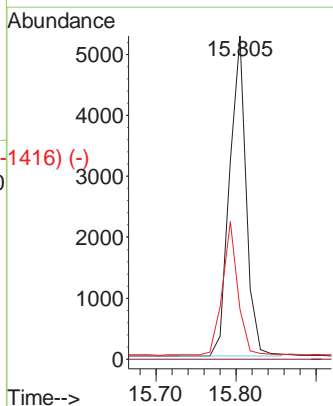
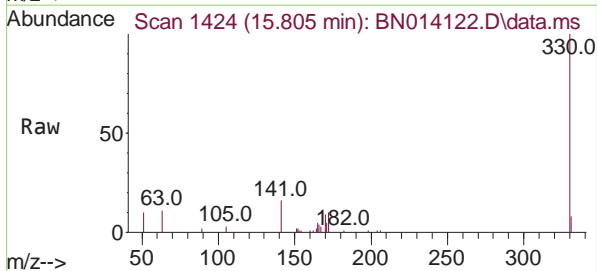
Abundance Scan 1424 (15.805 min): BN014120.D\data.ms (-1418) (-)



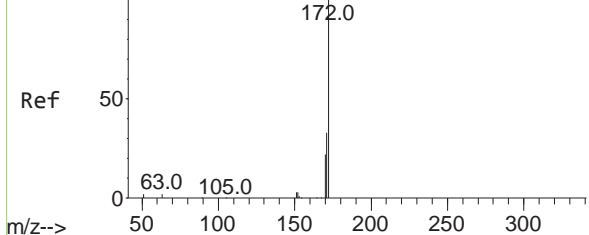
2,4,6-Tribromophenol  
Concen: 1.65 ng  
RT: 15.805 min Scan# 1424  
Delta R.T. 0.000 min  
Lab File: BN014122.D  
Acq: 26 Mar 2021 13:40

Tgt Ion:330 Resp: 7698

Ion	Ratio	Lower	Upper
330	100		
332	0.0	0.0	0.0
141	38.6	31.2	46.8



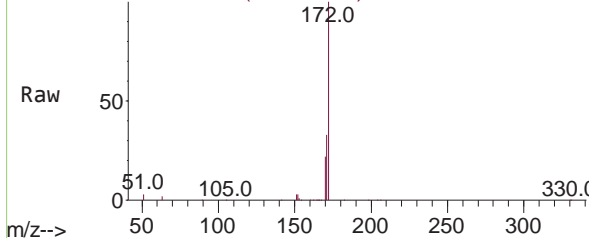
Abundance Scan 1198 (12.938 min): BN014120.D\data.ms (-1191) (-)



2-Fluorobiphenyl  
Concen: 1.60 ng  
RT: 12.938 min Scan# 1198  
Delta R.T. 0.000 min  
Lab File: BN014122.D  
Acq: 26 Mar 2021 13:40

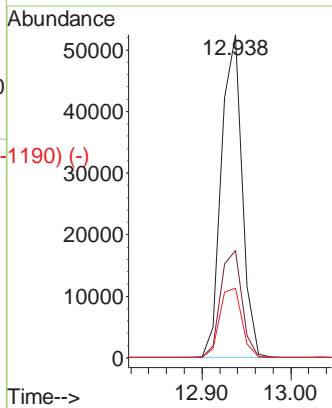
Instrument :  
BNA\_N  
ClientSampleId :  
SSTDICC1.6

Abundance Scan 1198 (12.938 min): BN014122.D\data.ms

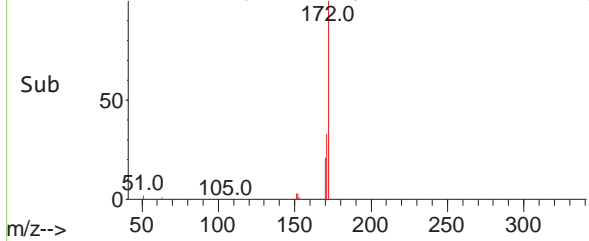


Tgt Ion:172 Resp: 85300

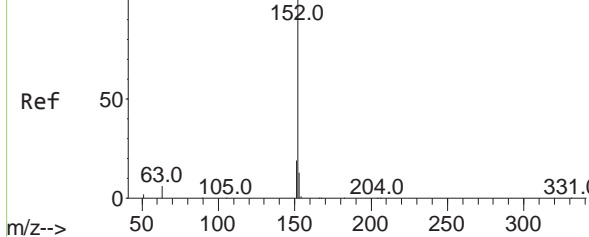
Ion	Ratio	Lower	Upper
172	100		
171	33.3	26.9	40.3
170	21.5	17.8	26.8



Abundance Scan 1198 (12.938 min): BN014122.D\data.ms (-1190) (-)

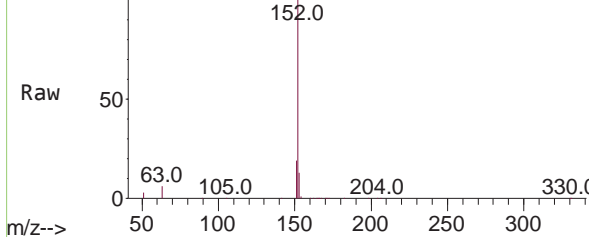


Abundance Scan 1284 (14.029 min): BN014120.D\data.ms (-1215) (-)



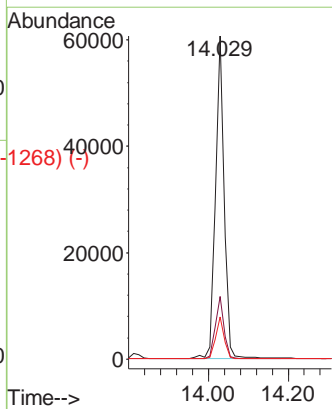
Acenaphthylene  
Concen: 1.66 ng  
RT: 14.029 min Scan# 1284  
Delta R.T. 0.000 min  
Lab File: BN014122.D  
Acq: 26 Mar 2021 13:40

Abundance Scan 1284 (14.029 min): BN014122.D\data.ms

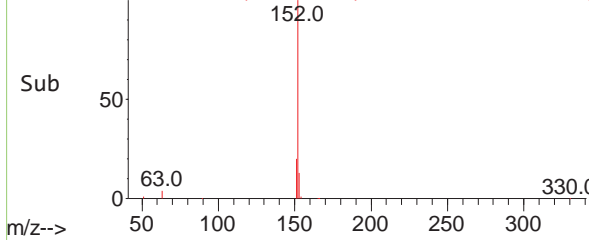


Tgt Ion:152 Resp: 91324

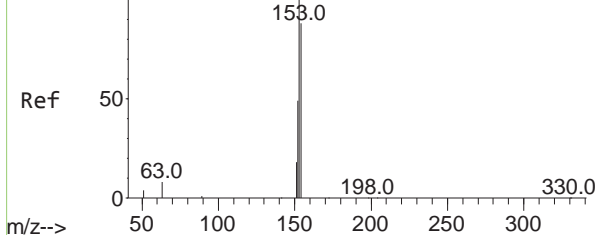
Ion	Ratio	Lower	Upper
152	100		
151	19.2	15.4	23.2
153	12.9	10.3	15.5



Abundance Scan 1284 (14.029 min): BN014122.D\data.ms (-1268) (-)



Abundance Scan 1311 (14.371 min): BN014120.D\data.ms (-1305) (-)

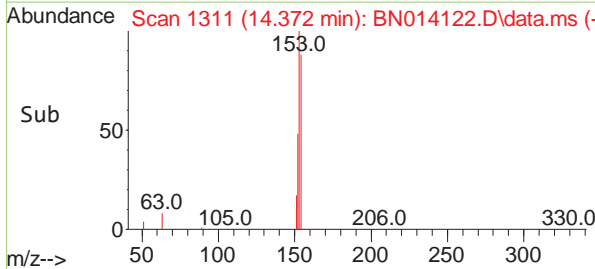
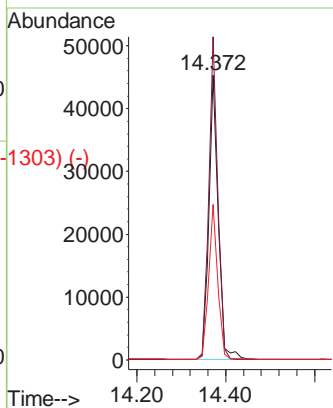
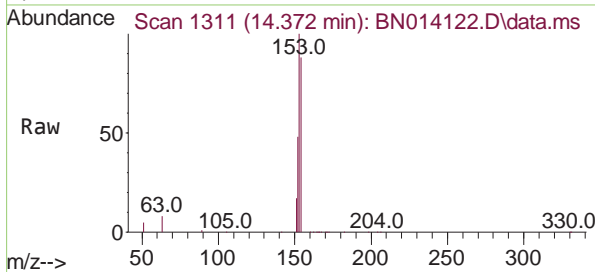


Acenaphthene  
Concen: 1.62 ng  
RT: 14.372 min Scan# 1311  
Delta R.T. 0.000 min  
Lab File: BN014122.D  
Acq: 26 Mar 2021 13:40

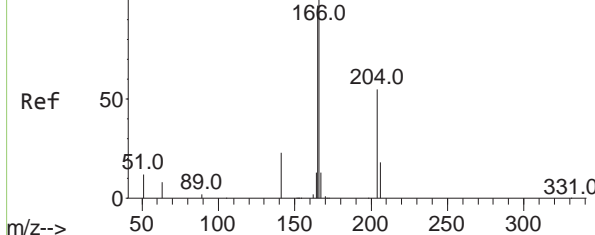
Instrument :  
BNA\_N  
ClientSampled :  
SSTDICC1.6

Tgt Ion:154 Resp: 65513

Ion	Ratio	Lower	Upper
154	100		
153	109.4	89.0	133.4
152	52.7	43.1	64.7



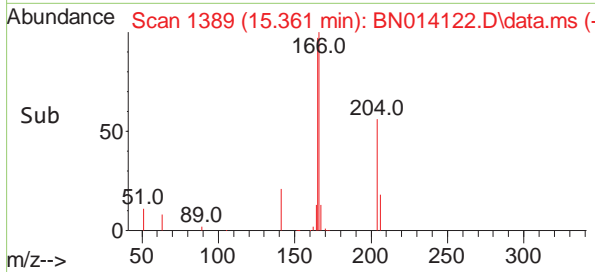
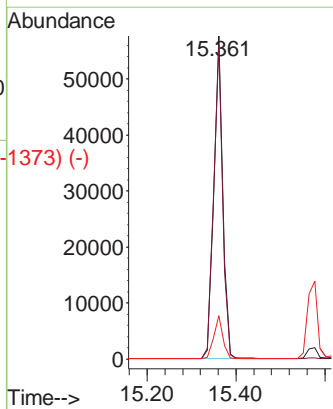
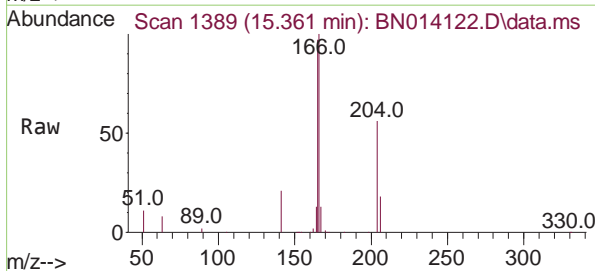
Abundance Scan 1389 (15.361 min): BN014120.D\data.ms (-1314) (-)



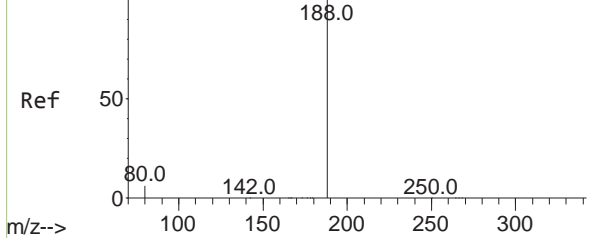
Fluorene  
Concen: 1.56 ng  
RT: 15.361 min Scan# 1389  
Delta R.T. 0.000 min  
Lab File: BN014122.D  
Acq: 26 Mar 2021 13:40

Tgt Ion:166 Resp: 79034

Ion	Ratio	Lower	Upper
166	100		
165	98.0	77.9	116.9
167	13.5	10.6	16.0

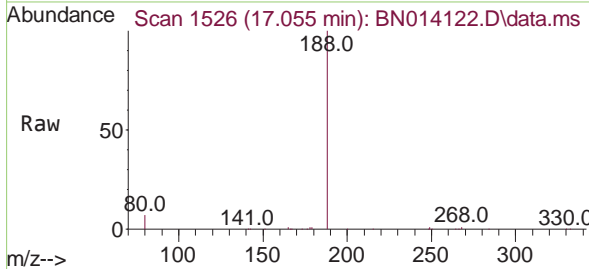


Abundance Scan 1526 (17.055 min): BN014120.D\data.ms (-1510) (-)



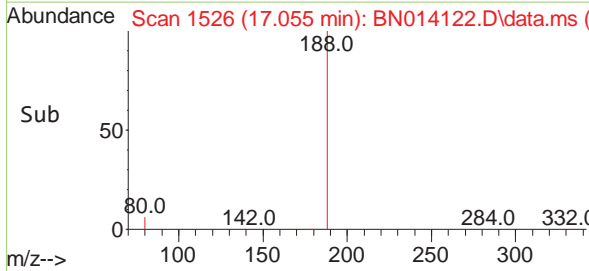
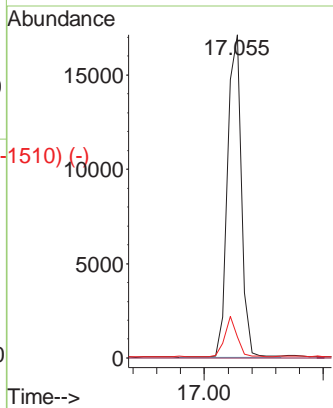
Phenanthrene-d10  
Concen: 0.40 ng  
RT: 17.055 min Scan# 1526  
Delta R.T. 0.001 min  
Lab File: BN014122.D  
Acq: 26 Mar 2021 13:40

Instrument :  
BNA\_N  
ClientSampleId :  
SSTDICC1.6

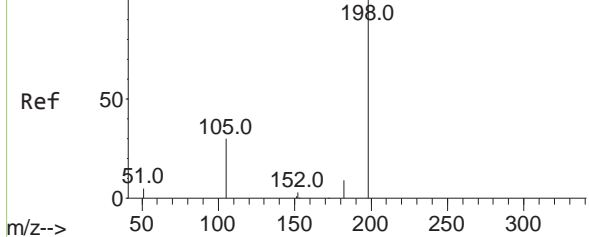


Tgt Ion:188 Resp: 27650

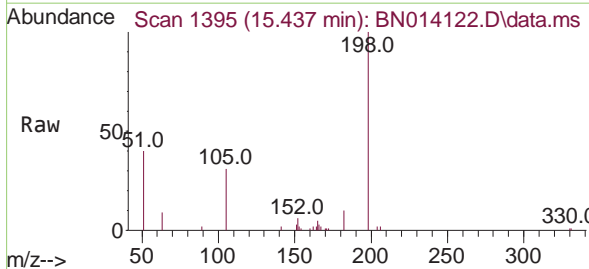
Ion	Ratio	Lower	Upper
188	100		
94	0.0	0.0	0.0
80	6.5	5.2	7.8



Abundance Scan 1395 (15.437 min): BN014120.D\data.ms (-1320) (-)

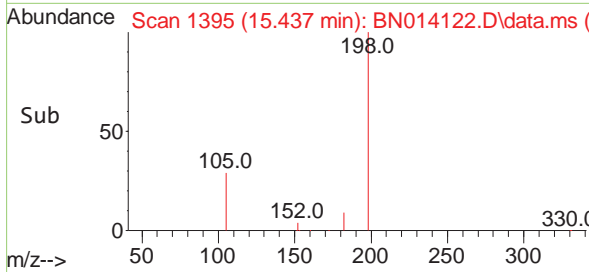
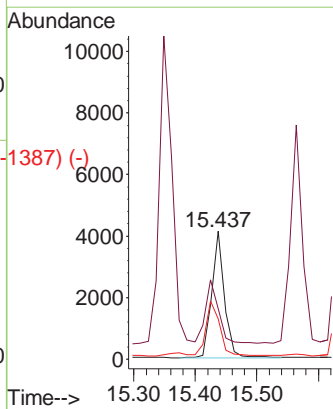


4,6-Dinitro-2-methylphenol  
Concen: 1.90 ng  
RT: 15.437 min Scan# 1395  
Delta R.T. 0.000 min  
Lab File: BN014122.D  
Acq: 26 Mar 2021 13:40

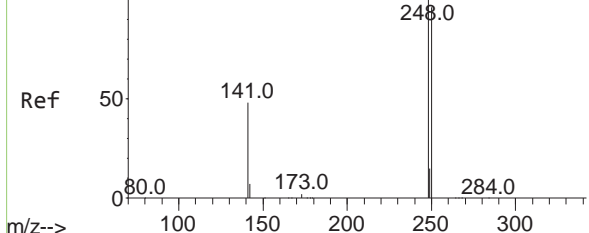


Tgt Ion:198 Resp: 5908

Ion	Ratio	Lower	Upper
198	100		
51	39.7	47.8	71.6#
105	31.4	35.4	53.2#



Abundance Scan 1460 (16.252 min): BN014120.D\data.ms (-1425) (-)



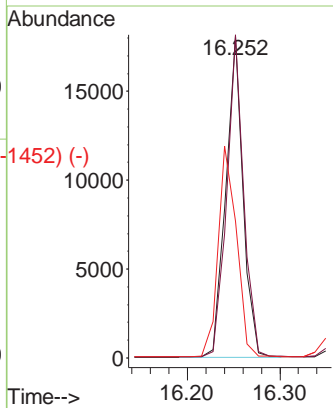
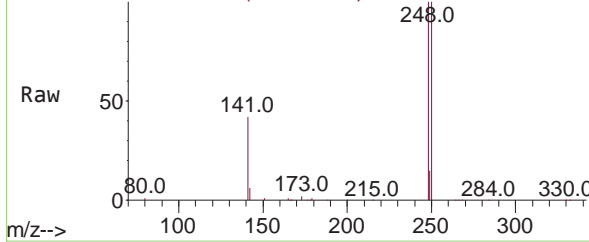
4-Bromophenyl-phenylether  
Concen: 1.65 ng  
RT: 16.252 min Scan# 1460  
Delta R.T. 0.001 min  
Lab File: BN014122.D  
Acq: 26 Mar 2021 13:40

Instrument :  
BNA\_N  
ClientSampleId :  
SSTDICC1.6

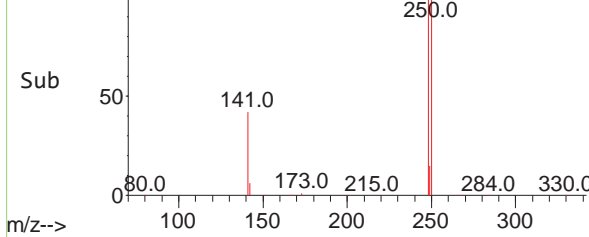
Tgt Ion:248 Resp: 23312

Ion	Ratio	Lower	Upper
248	100		
250	100.4	77.0	115.6
141	42.5	39.7	59.5

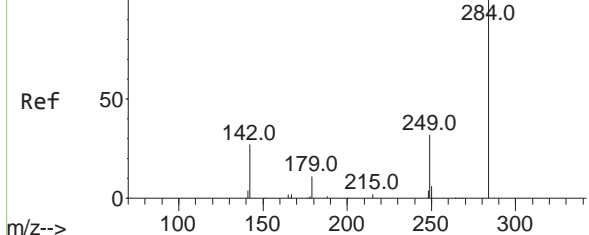
Abundance Scan 1460 (16.252 min): BN014122.D\data.ms



Abundance Scan 1460 (16.252 min): BN014122.D\data.ms (-1452) (-)



Abundance Scan 1469 (16.362 min): BN014120.D\data.ms (-1423) (-)

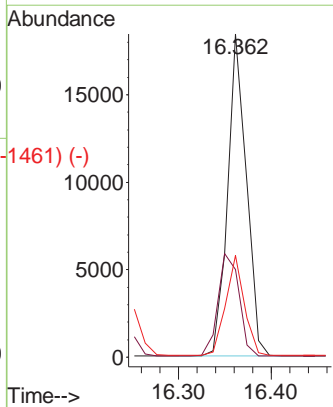
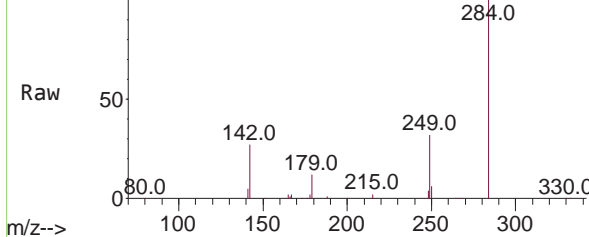


Hexachlorobenzene  
Concen: 1.57 ng  
RT: 16.362 min Scan# 1469  
Delta R.T. 0.001 min  
Lab File: BN014122.D  
Acq: 26 Mar 2021 13:40

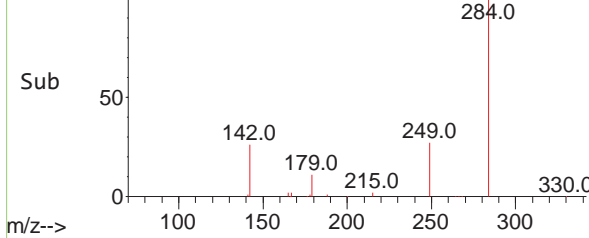
Tgt Ion:284 Resp: 25752

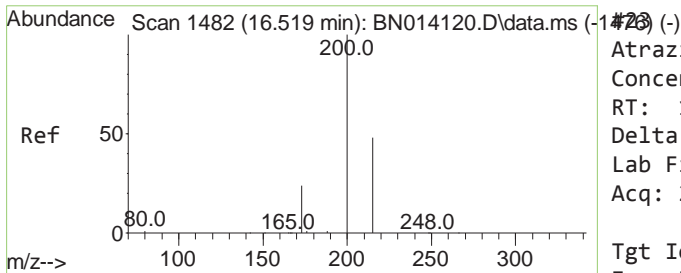
Ion	Ratio	Lower	Upper
284	100		
142	36.0	29.2	43.8
249	30.8	24.7	37.1

Abundance Scan 1469 (16.362 min): BN014122.D\data.ms



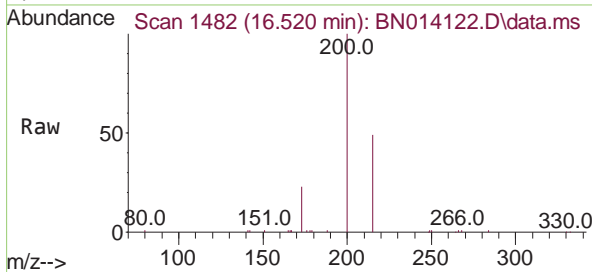
Abundance Scan 1469 (16.362 min): BN014122.D\data.ms (-1461) (-)



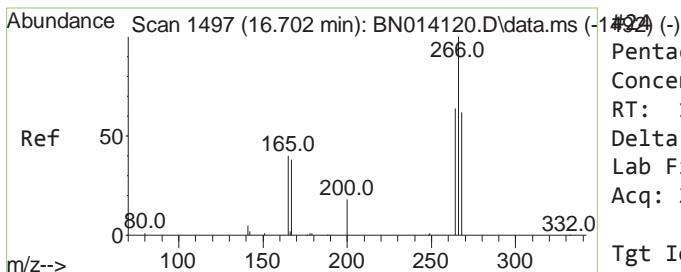
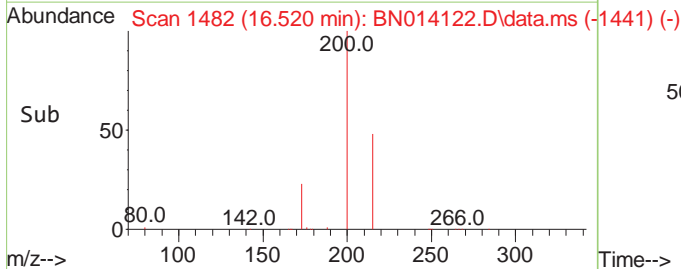
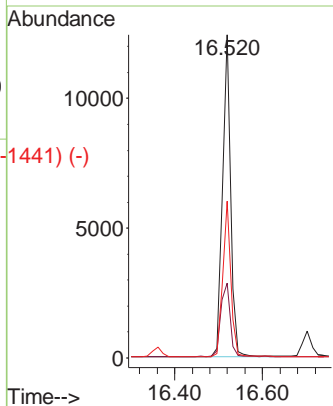


Atrazine  
 Concen: 1.64 ng  
 RT: 16.520 min Scan# 1482  
 Delta R.T. 0.001 min  
 Lab File: BN014122.D  
 Acq: 26 Mar 2021 13:40

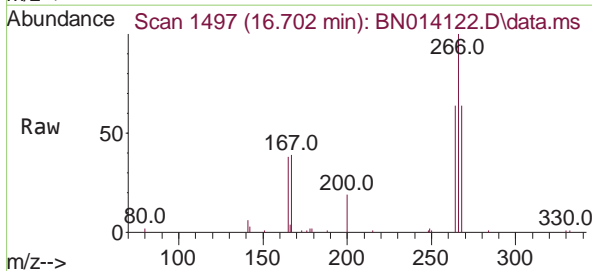
Instrument :  
 BNA\_N  
 ClientSampled :  
 SSTDICC1.6



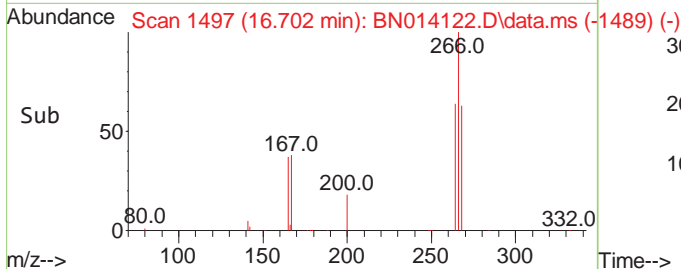
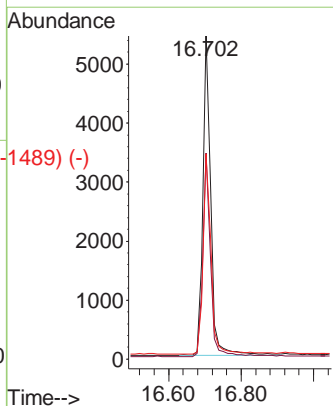
Tgt Ion:200 Resp: 15892  
 Ion Ratio Lower Upper  
 200 100  
 173 23.1 20.9 31.3  
 215 48.6 39.5 59.3



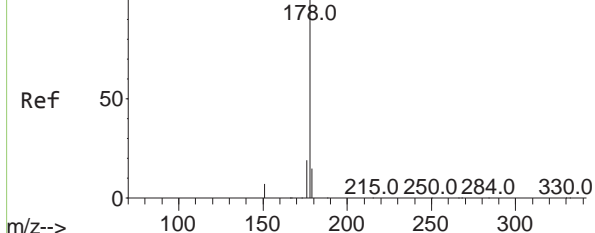
Pentachlorophenol  
 Concen: 2.12 ng  
 RT: 16.702 min Scan# 1497  
 Delta R.T. 0.001 min  
 Lab File: BN014122.D  
 Acq: 26 Mar 2021 13:40



Tgt Ion:266 Resp: 8208  
 Ion Ratio Lower Upper  
 266 100  
 264 62.4 50.2 75.2  
 268 63.1 52.5 78.7

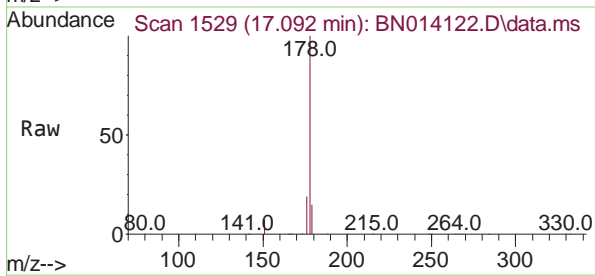


Abundance Scan 1529 (17.091 min): BN014120.D\data.ms (-1525) (-)



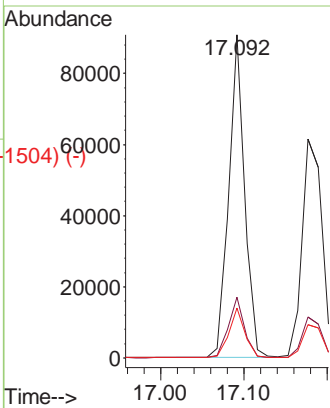
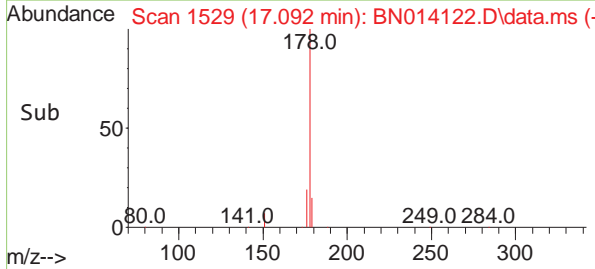
Phenanthrene  
Concen: 1.61 ng  
RT: 17.092 min Scan# 1529  
Delta R.T. 0.001 min  
Lab File: BN014122.D  
Acq: 26 Mar 2021 13:40

Instrument :  
BNA\_N  
ClientSampled :  
SSTDICC1.6

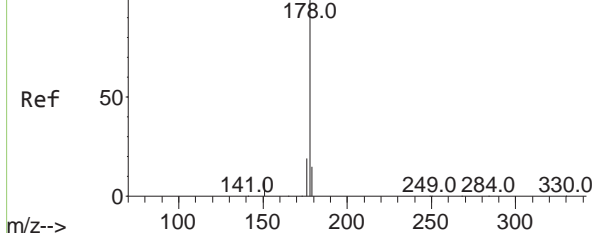


Tgt Ion:178 Resp: 122088

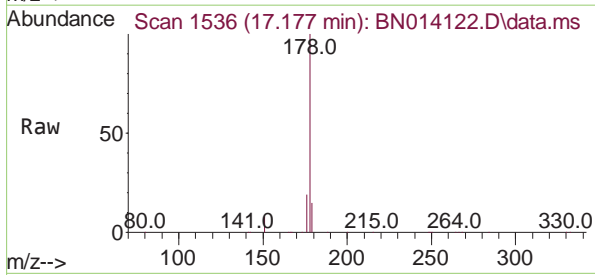
Ion	Ratio	Lower	Upper
178	100		
176	18.8	15.0	22.6
179	15.3	12.4	18.6



Abundance Scan 1536 (17.177 min): BN014120.D\data.ms (-1526) (-)

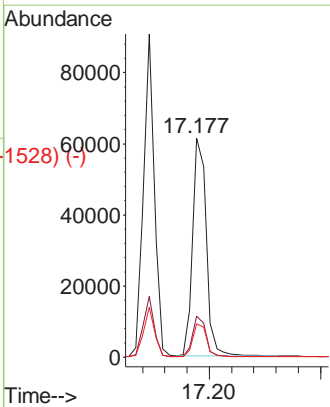
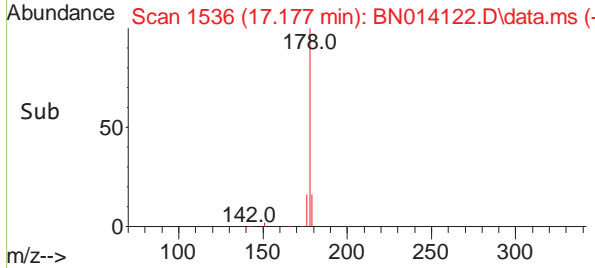


Anthracene  
Concen: 1.67 ng  
RT: 17.177 min Scan# 1536  
Delta R.T. 0.001 min  
Lab File: BN014122.D  
Acq: 26 Mar 2021 13:40

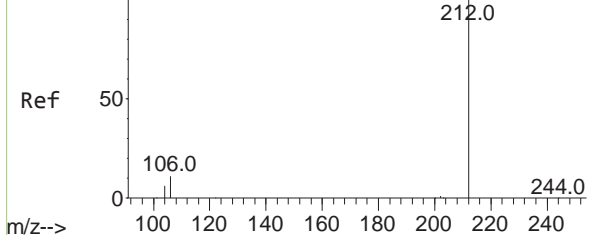


Tgt Ion:178 Resp: 103807

Ion	Ratio	Lower	Upper
178	100		
176	18.2	14.7	22.1
179	15.4	12.3	18.5



Abundance Scan 1821 (19.081 min): BN014120.D\data.ms (-1821) (-)

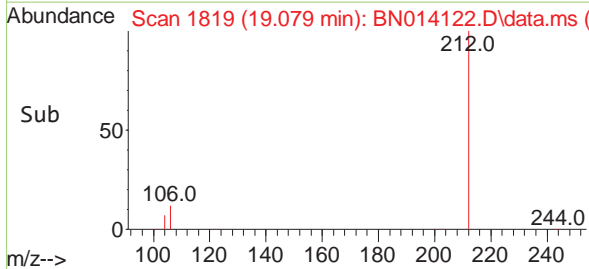
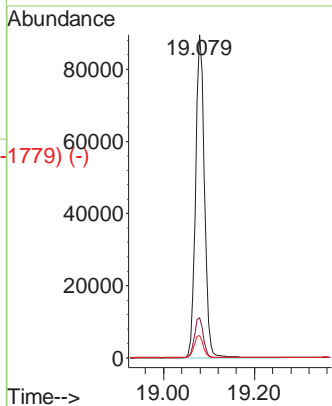
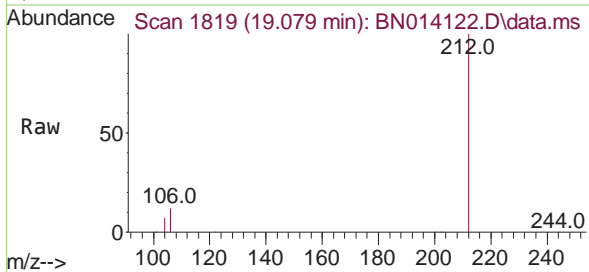


Fluoranthene-d10  
Concen: 1.54 ng  
RT: 19.079 min Scan# 1819  
Delta R.T. -0.002 min  
Lab File: BN014122.D  
Acq: 26 Mar 2021 13:40

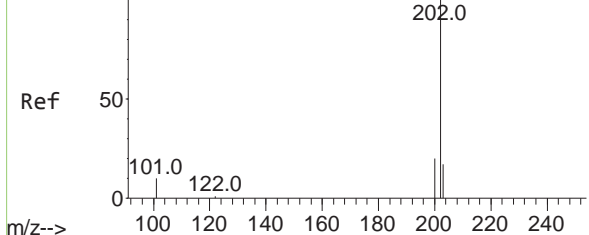
Instrument :  
BNA\_N  
ClientSampled :  
SSTDICC1.6

Tgt Ion:212 Resp: 118429

Ion	Ratio	Lower	Upper
212	100		
106	12.5	10.1	15.1
104	7.0	5.5	8.3



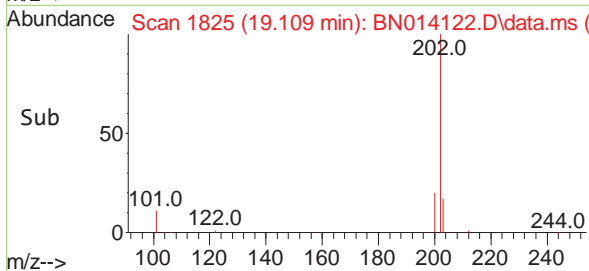
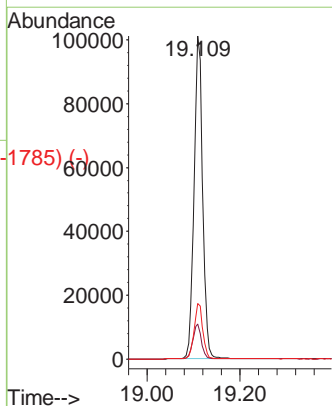
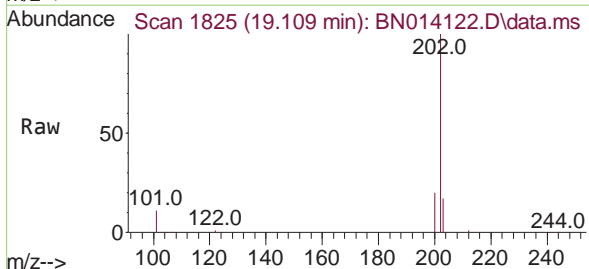
Abundance Scan 1827 (19.111 min): BN014120.D\data.ms (-1827) (-)



Fluoranthene  
Concen: 1.55 ng  
RT: 19.109 min Scan# 1825  
Delta R.T. -0.002 min  
Lab File: BN014122.D  
Acq: 26 Mar 2021 13:40

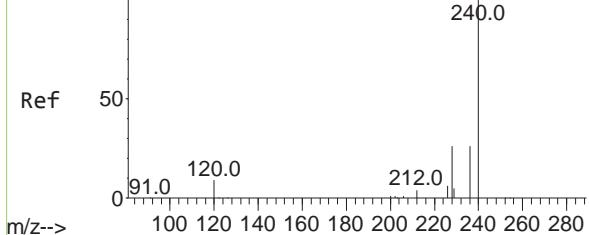
Tgt Ion:202 Resp: 130426

Ion	Ratio	Lower	Upper
202	100		
101	10.9	8.8	13.2
203	17.2	13.8	20.6





Abundance Scan 2122 (21.226 min): BN014120.D\data.ms (-2102) (-)

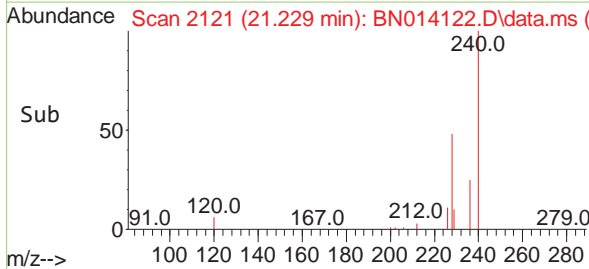
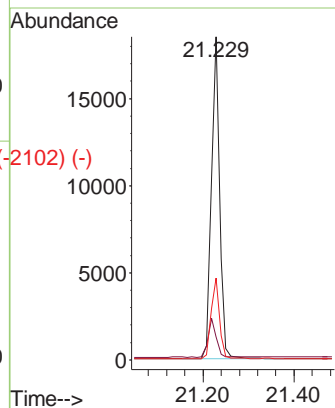
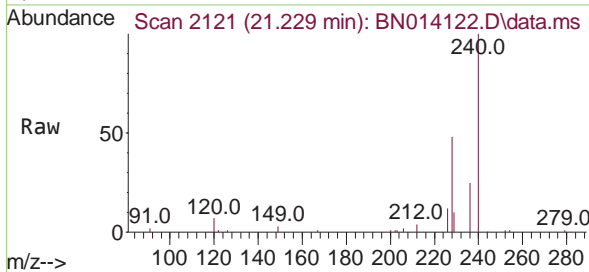


Chrysene-d12  
Concen: 0.40 ng  
RT: 21.229 min Scan# 2121  
Delta R.T. 0.003 min  
Lab File: BN014122.D  
Acq: 26 Mar 2021 13:40

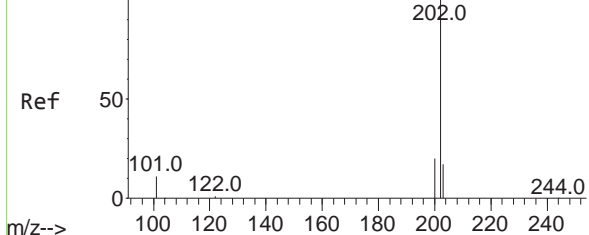
Instrument :  
BNA\_N  
ClientSampled :  
SSTDICC1.6

Tgt Ion:240 Resp: 23416

Ion	Ratio	Lower	Upper
240	100		
120	7.1	8.4	12.6#
236	25.4	21.0	31.6



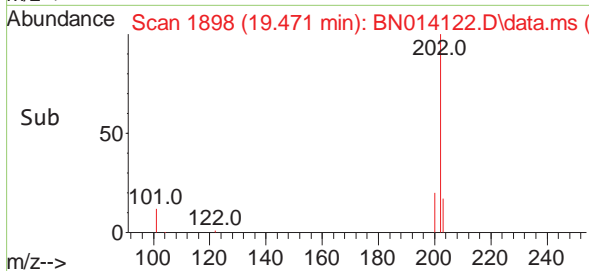
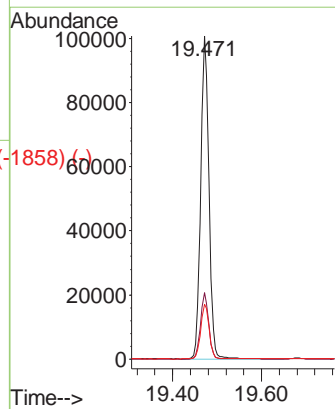
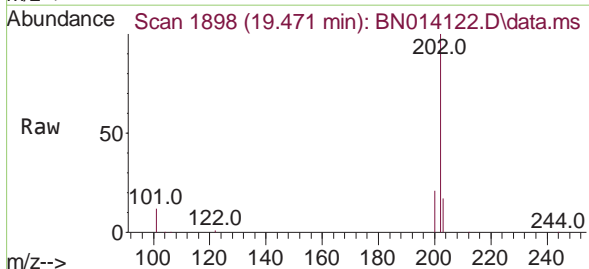
Abundance Scan 1900 (19.473 min): BN014120.D\data.ms (-1890) (-)



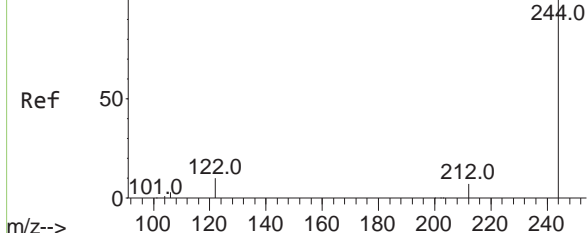
Pyrene  
Concen: 1.78 ng  
RT: 19.471 min Scan# 1898  
Delta R.T. -0.002 min  
Lab File: BN014122.D  
Acq: 26 Mar 2021 13:40

Tgt Ion:202 Resp: 127714

Ion	Ratio	Lower	Upper
202	100		
200	20.4	16.2	24.4
203	17.4	13.9	20.9

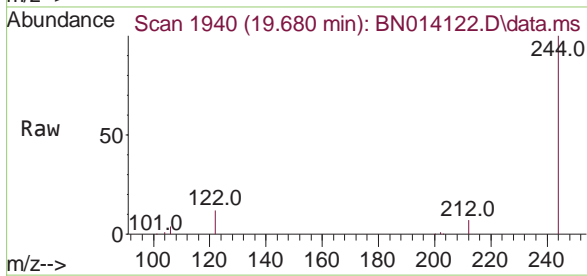


Abundance Scan 1942 (19.682 min): BN014120.D\data.ms (-1934) (-)



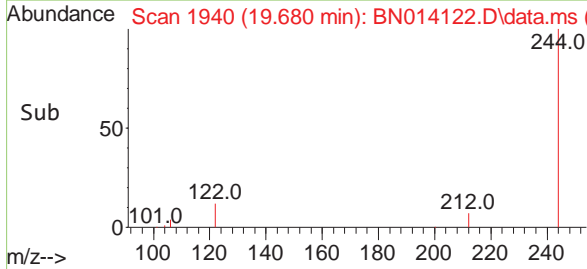
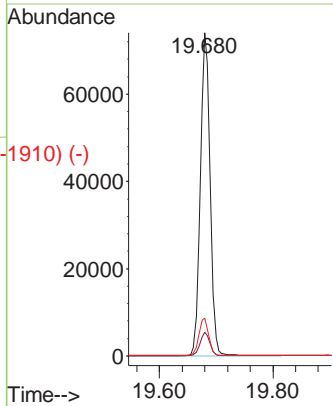
Terphenyl-d14  
Concen: 1.72 ng  
RT: 19.680 min Scan# 1940  
Delta R.T. -0.002 min  
Lab File: BN014122.D  
Acq: 26 Mar 2021 13:40

Instrument :  
BNA\_N  
ClientSampled :  
SSTDICC1.6

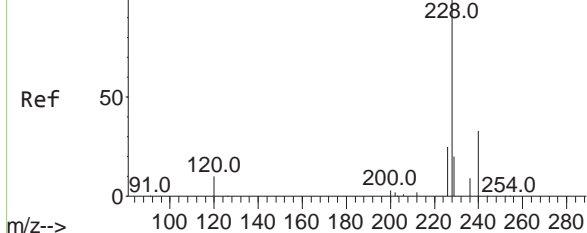


Tgt Ion:244 Resp: 88370

Ion	Ratio	Lower	Upper
244	100		
212	7.3	6.0	9.0
122	11.7	8.6	13.0



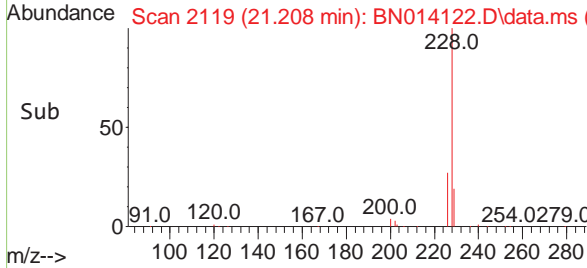
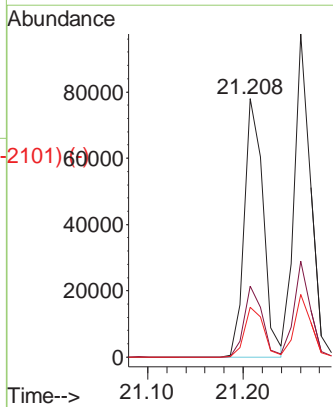
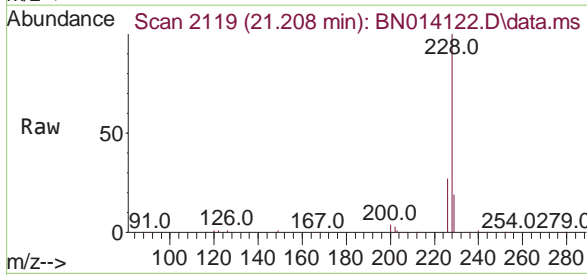
Abundance Scan 2121 (21.215 min): BN014120.D\data.ms (-2119) (-)

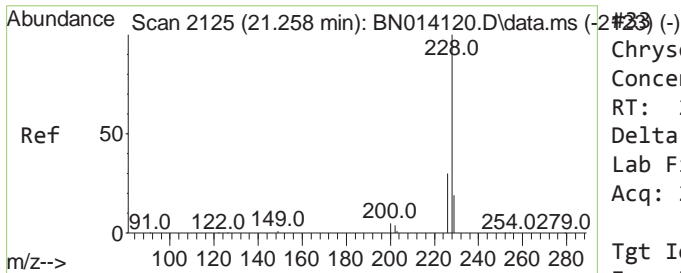


Benzo(a)anthracene  
Concen: 1.59 ng  
RT: 21.208 min Scan# 2119  
Delta R.T. -0.008 min  
Lab File: BN014122.D  
Acq: 26 Mar 2021 13:40

Tgt Ion:228 Resp: 106226

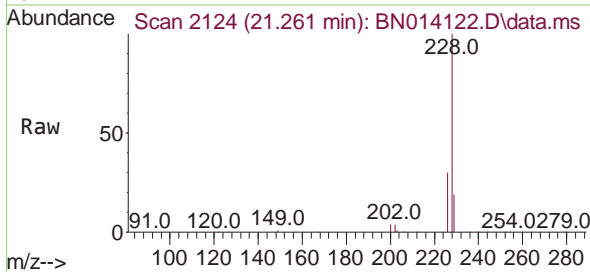
Ion	Ratio	Lower	Upper
228	100		
226	27.4	20.6	31.0
229	19.2	16.2	24.2



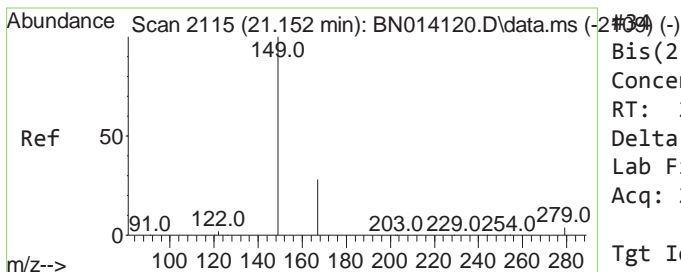
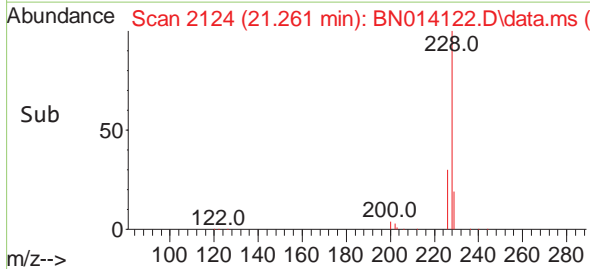
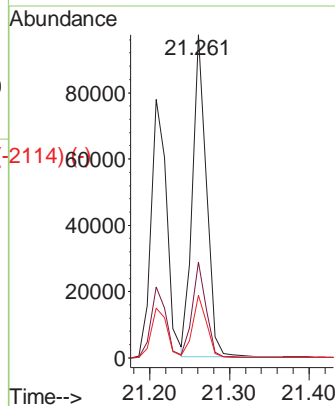


Chrysene  
 Concen: 1.63 ng  
 RT: 21.261 min Scan# 2124  
 Delta R.T. 0.003 min  
 Lab File: BN014122.D  
 Acq: 26 Mar 2021 13:40

Instrument :  
 BNA\_N  
 ClientSampled :  
 SSTDICC1.6

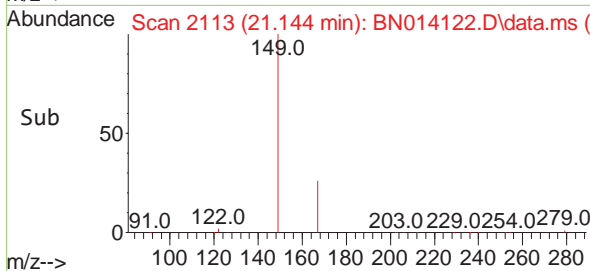
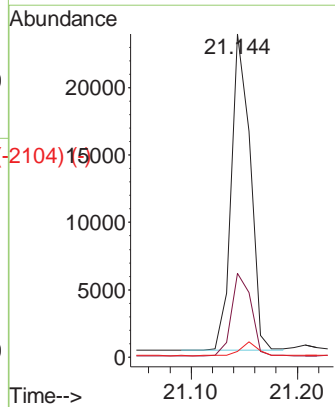
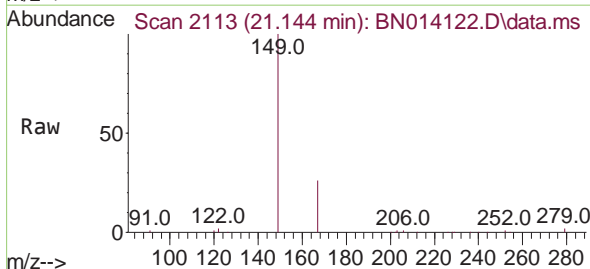


Tgt Ion: 228 Resp: 117487  
 Ion Ratio Lower Upper  
 228 100  
 226 29.7 24.4 36.6  
 229 19.3 15.5 23.3

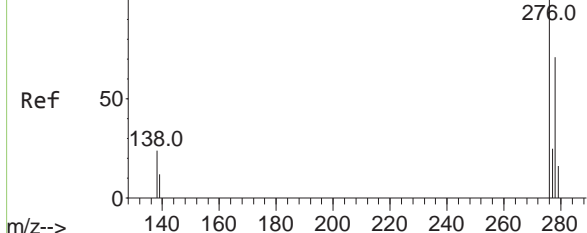


Bis(2-ethylhexyl)phthalate  
 Concen: 1.16 ng  
 RT: 21.144 min Scan# 2113  
 Delta R.T. -0.008 min  
 Lab File: BN014122.D  
 Acq: 26 Mar 2021 13:40

Tgt Ion: 149 Resp: 28893  
 Ion Ratio Lower Upper  
 149 100  
 167 27.0 21.4 32.2  
 279 4.0 3.5 5.3

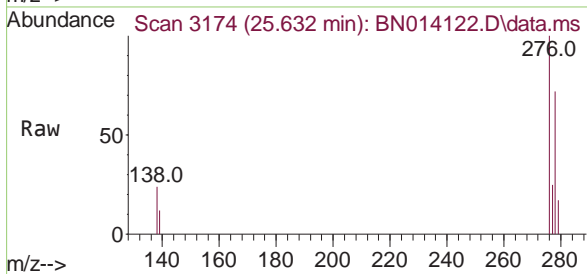


Abundance Scan 3176 (25.633 min): BN014120.D\data.ms (-3135) (-)



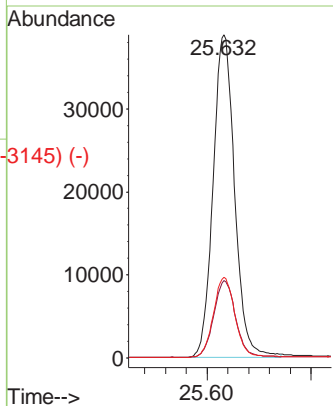
Indeno(1,2,3-cd)pyrene  
Concen: 1.43 ng  
RT: 25.632 min Scan# 3174  
Delta R.T. -0.001 min  
Lab File: BN014122.D  
Acq: 26 Mar 2021 13:40

Instrument :  
BNA\_N  
ClientSampled :  
SSTDICC1.6

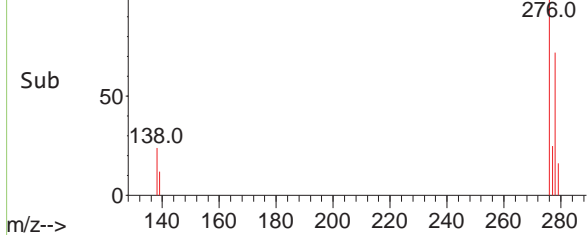


Tgt Ion:276 Resp: 111818

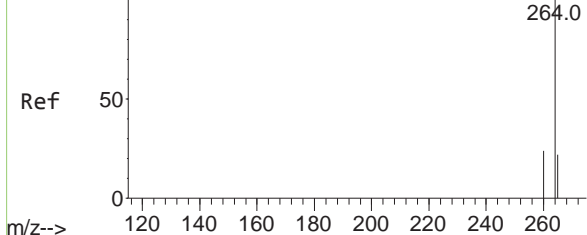
Ion	Ratio	Lower	Upper
276	100		
138	23.9	19.4	29.2
277	24.9	19.8	29.6



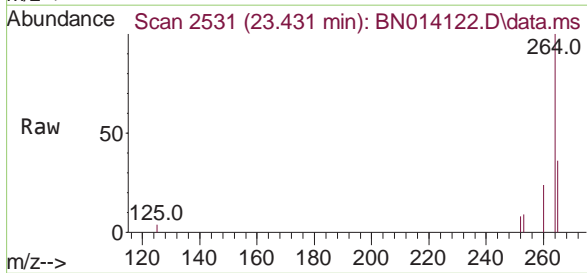
Abundance Scan 3174 (25.632 min): BN014122.D\data.ms (-3145) (-)



Abundance Scan 2533 (23.432 min): BN014120.D\data.ms (-2526) (-)

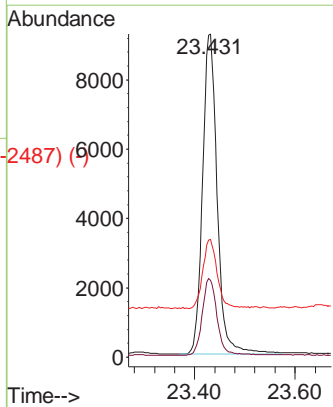


Perylene-d12  
Concen: 0.40 ng  
RT: 23.431 min Scan# 2531  
Delta R.T. -0.001 min  
Lab File: BN014122.D  
Acq: 26 Mar 2021 13:40

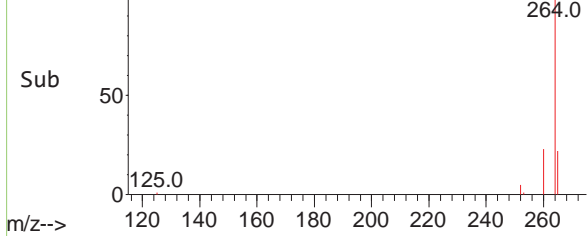


Tgt Ion:264 Resp: 18719

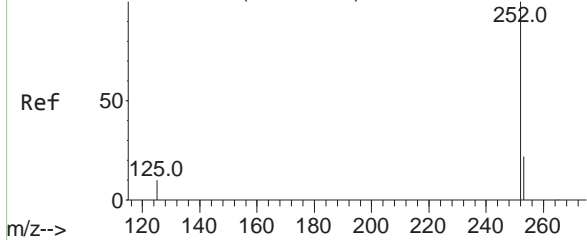
Ion	Ratio	Lower	Upper
264	100		
260	23.8	19.8	29.8
265	36.4	30.7	46.1



Abundance Scan 2531 (23.431 min): BN014122.D\data.ms (-2487) (-)



Abundance Scan 2340 (22.771 min): BN014120.D\data.ms (-228) (-)



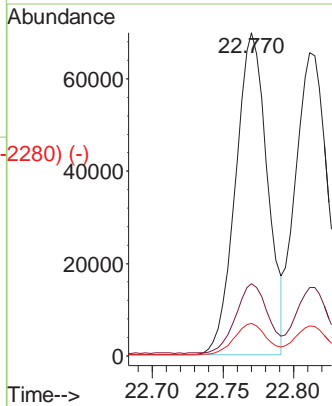
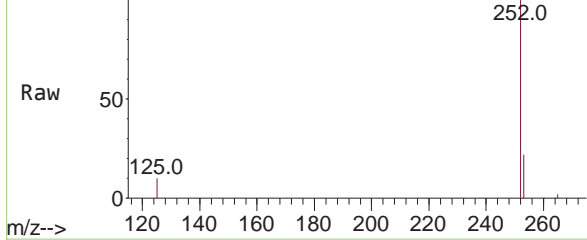
Benzo(b)fluoranthene  
Concen: 1.60 ng  
RT: 22.770 min Scan# 2338  
Delta R.T. -0.001 min  
Lab File: BN014122.D  
Acq: 26 Mar 2021 13:40

Instrument :  
BNA\_N  
ClientSampled :  
SSTDICC1.6

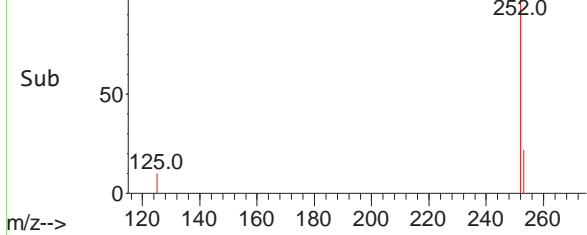
Tgt Ion:252 Resp: 109021

Ion	Ratio	Lower	Upper
252	100		
253	22.4	20.6	30.8
125	10.1	9.4	14.2

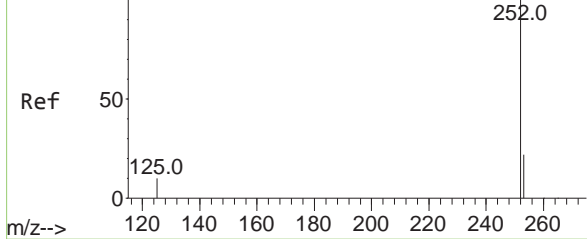
Abundance Scan 2338 (22.770 min): BN014122.D\data.ms



Abundance Scan 2338 (22.770 min): BN014122.D\data.ms (-2280) (-)



Abundance Scan 2352 (22.812 min): BN014120.D\data.ms (-228) (-)

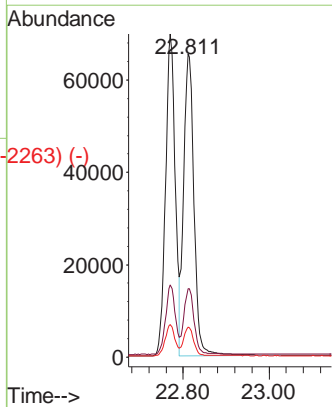
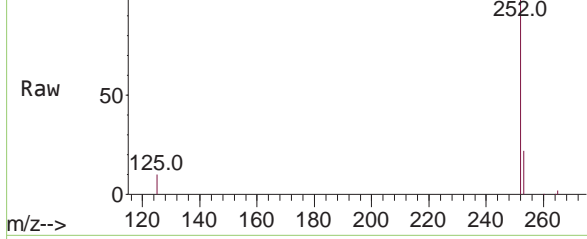


Benzo(k)fluoranthene  
Concen: 1.62 ng  
RT: 22.811 min Scan# 2350  
Delta R.T. -0.001 min  
Lab File: BN014122.D  
Acq: 26 Mar 2021 13:40

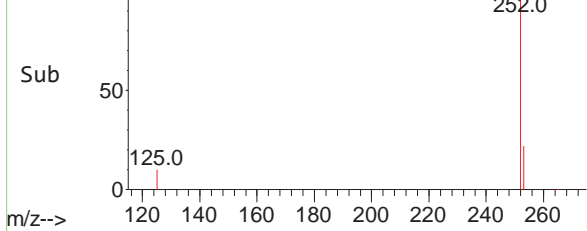
Tgt Ion:252 Resp: 108464

Ion	Ratio	Lower	Upper
252	100		
253	22.5	20.6	30.8
125	10.0	9.5	14.3

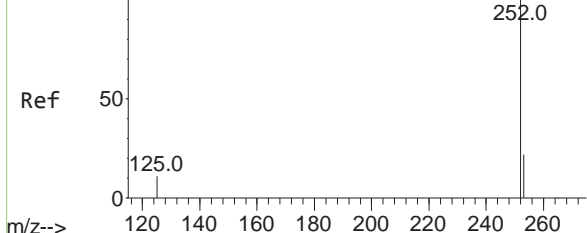
Abundance Scan 2350 (22.811 min): BN014122.D\data.ms



Abundance Scan 2350 (22.811 min): BN014122.D\data.ms (-2263) (-)



Abundance Scan 2505 (23.336 min): BN014120.D\data.ms (-2439) (-)

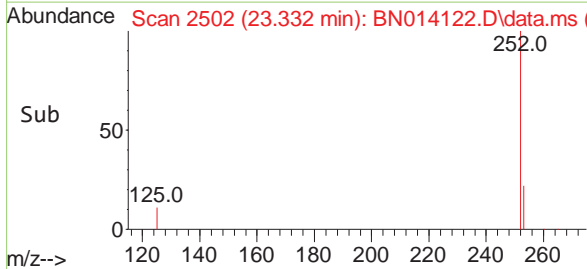
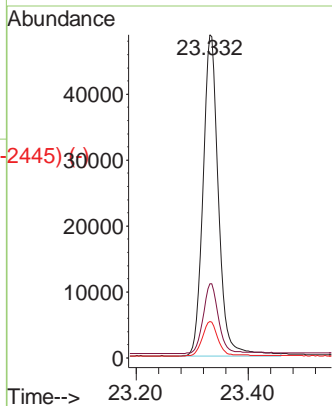
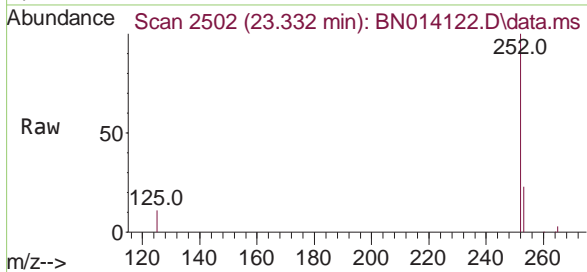


Benzo(a)pyrene  
Concen: 1.60 ng  
RT: 23.332 min Scan# 2502  
Delta R.T. -0.004 min  
Lab File: BN014122.D  
Acq: 26 Mar 2021 13:40

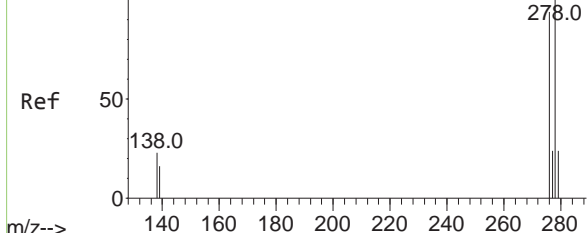
Instrument :  
BNA\_N  
ClientSampled :  
SSTDICC1.6

Tgt Ion:252 Resp: 92988

Ion	Ratio	Lower	Upper
252	100		
253	23.0	21.9	32.9
125	11.3	10.8	16.2



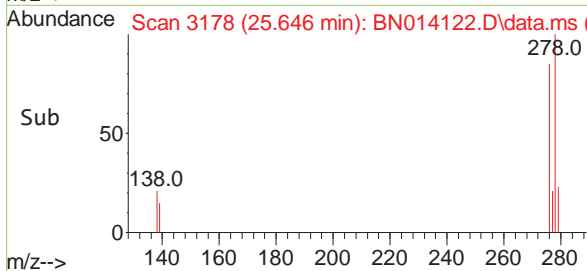
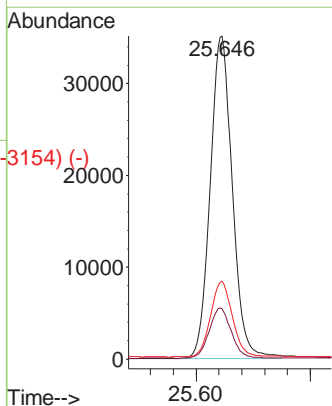
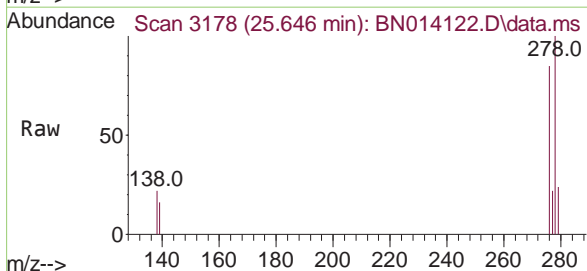
Abundance Scan 3179 (25.643 min): BN014120.D\data.ms (-3140) (-)



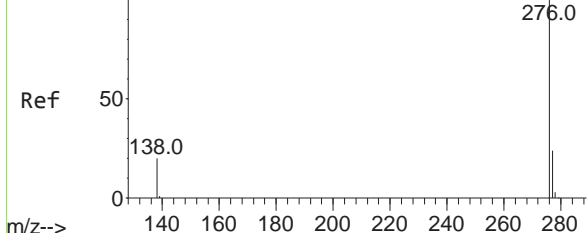
Dibenzo(a,h)anthracene  
Concen: 1.52 ng  
RT: 25.646 min Scan# 3178  
Delta R.T. 0.003 min  
Lab File: BN014122.D  
Acq: 26 Mar 2021 13:40

Tgt Ion:278 Resp: 94361

Ion	Ratio	Lower	Upper
278	100		
139	15.6	13.4	20.0
279	24.1	21.3	31.9

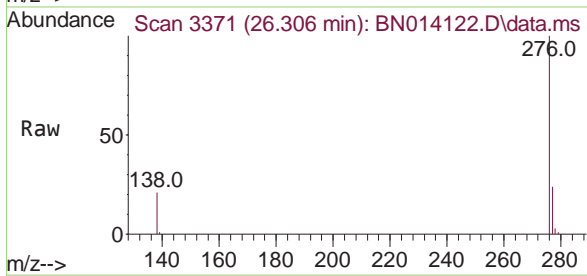


Abundance Scan 3372 (26.303 min): BN014120.D\data.ms (-3372) (-)



Benzo(g,h,i)perylene  
 Concen: 1.52 ng  
 RT: 26.306 min Scan# 3371  
 Delta R.T. 0.003 min  
 Lab File: BN014122.D  
 Acq: 26 Mar 2021 13:40

**Instrument :**  
 BNA\_N  
**ClientSampleId :**  
 SSTDICC1.6



Tgt Ion: 276 Resp: 98524

Ion	Ratio	Lower	Upper
276	100		
277	23.7	20.1	30.1
138	20.7	17.0	25.4

