

Data Path : Z:\svoasrv\HPCHEM1\BNA_N\Data\BN032621\
 Data File : BN014119.D
 Acq On : 26 Mar 2021 11:51
 Operator : CG/JU
 Sample : SSTDICC0.2
 Misc :
 ALS Vial : 3 Sample Multiplier: 1

Instrument :
 BNA_N
 ClientSampled :
 SSTDICC0.2

Manual Integrations
 APPROVED

mohammad
 3/29/2021 3:28:39 PM

Quant Time: Mar 26 13:03:36 2021
 Quant Method : Z:\SVOASRV\HPCHEM1\BNA_N\METHODS\8270-SIM-BN032621.M
 Quant Title : ASP BNA STANDARDS FOR 5 POINT CALIBRATION
 QLast Update : Fri Mar 26 13:01:59 2021
 Response via : Initial Calibration

Compound	R.T.	QIon	Response	Conc	Units	Dev(Min)	
Internal Standards							
1) 1,4-Dichlorobenzene-d4	7.692	152	6890	0.40	ng	0.00	
7) Naphthalene-d8	10.467	136	25101	0.40	ng	0.00	
13) Acenaphthene-d10	14.308	164	12499	0.40	ng	0.00	
19) Phenanthrene-d10	17.055	188	23920	0.40	ng	0.00	
29) Chrysene-d12	21.229	240	18990	0.40	ng	0.00	#
36) Perylene-d12	23.431	264	17560	0.40	ng	0.00	
System Monitoring Compounds							
4) 2-Fluorophenol	5.284	112	3615	0.23	ng	0.00	
5) Phenol-d6	6.855	99	4572	0.23	ng	0.00	
8) Nitrobenzene-d5	8.832	82	3264	0.20	ng	0.00	
11) 2-Methylnaphthalene-d10	12.053	152	7451	0.19	ng	0.00	
14) 2,4,6-Tribromophenol	15.805	330	738	0.18	ng	0.00	
15) 2-Fluorobiphenyl	12.938	172	9264	0.20	ng	0.00	
27) Fluoranthene-d10	19.079	212	11633	0.18	ng	0.00	
31) Terphenyl-d14	19.680	244	8659	0.21	ng	0.00	
							Qvalue
2) 1,4-Dioxane	3.231	88	1798	0.20	ng		98
3) n-Nitrosodimethylamine	3.561	42	1200	0.20	ng	#	95
6) bis(2-Chloroethyl)ether	7.121	93	3572	0.20	ng		100
9) Naphthalene	10.505	128	11975	0.19	ng		99
10) Hexachlorobutadiene	10.796	225	2236	0.19	ng	#	99
12) 2-Methylnaphthalene	12.124	142	7785	0.19	ng		99
16) Acenaphthylene	14.029	152	8734	0.18	ng		99
17) Acenaphthene	14.372	154	6588	0.19	ng		100
18) Fluorene	15.361	166	8037	0.18	ng		100
20) 4,6-Dinitro-2-methylph...	15.437	198	477	0.18	ng	#	50
21) 4-Bromophenyl-phenylether	16.252	248	2336	0.19	ng		99
22) Hexachlorobenzene	16.362	284	2671	0.19	ng		99
23) Atrazine	16.520	200	1489	0.18	ng		98
24) Pentachlorophenol	16.703	266	727	0.22	ng		95
25) Phenanthrene	17.092	178	12301	0.19	ng		100
26) Anthracene	17.177	178	9829	0.18	ng		100
28) Fluoranthene	19.109	202	12112	0.17	ng		99
30) Pyrene	19.471	202	12443	0.21	ng		100
32) Benzo(a)anthracene	21.208	228	10237	0.19	ng		97
33) Chrysene	21.261	228	11258	0.19	ng		99
34) Bis(2-ethylhexyl)phtha...	21.144	149	3243	0.16	ng		100
35) Indeno(1,2,3-cd)pyrene	25.629	276	12416	0.20	ng		99
37) Benzo(b)fluoranthene	22.770	252	11995m	0.19	ng		
38) Benzo(k)fluoranthene	22.815	252	11520	0.18	ng		93
39) Benzo(a)pyrene	23.335	252	10150	0.19	ng	#	84
40) Dibenzo(a,h)anthracene	25.646	278	10418	0.18	ng		95
41) Benzo(g,h,i)perylene	26.310	276	11230	0.18	ng		99

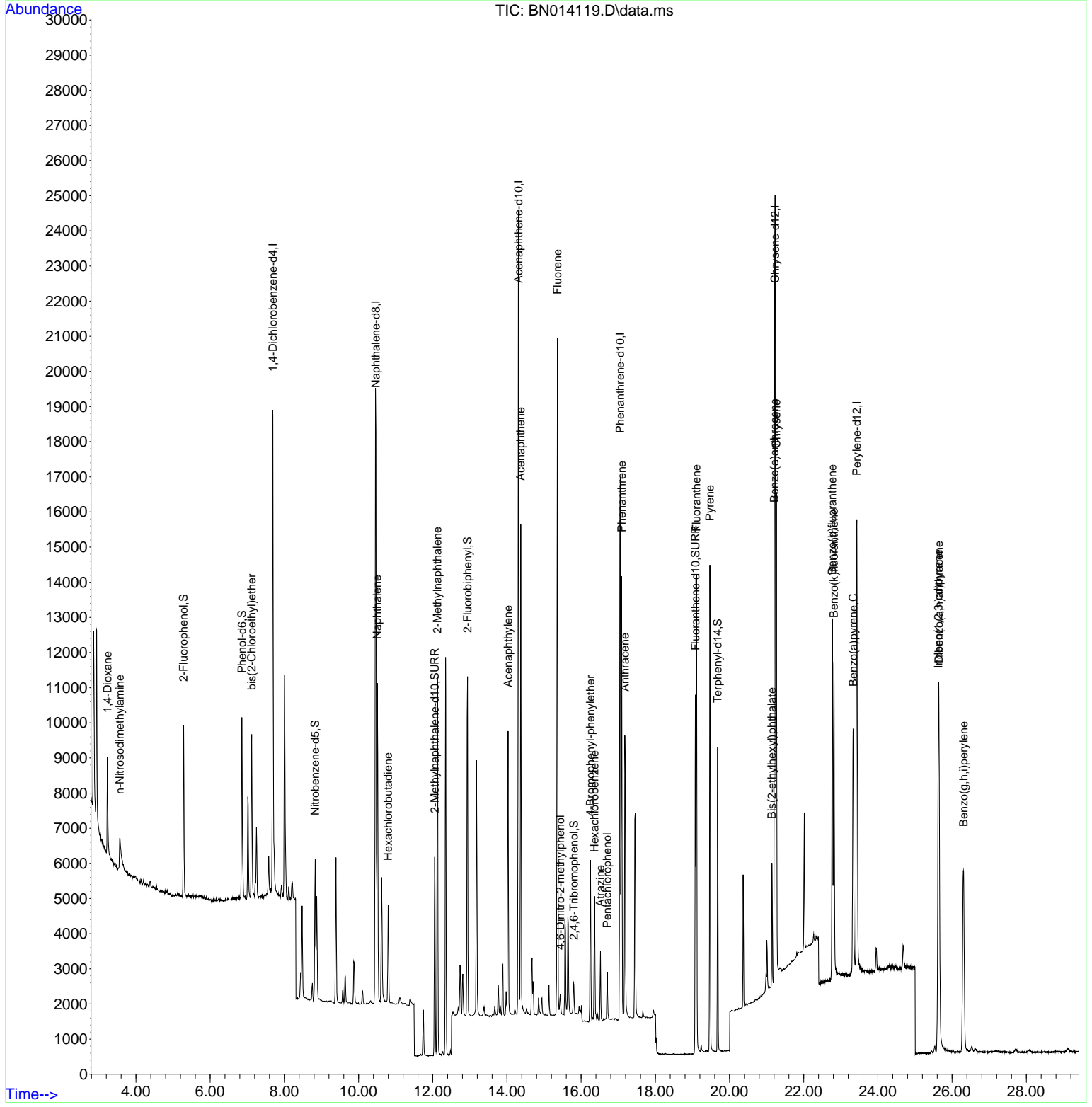
(#) = qualifier out of range (m) = manual integration (+) = signals summed

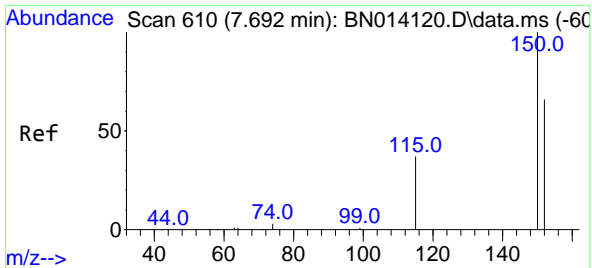
Data Path : Z:\svoasrv\HPCHEM1\BNA_N\Data\BN032621\
 Data File : BN014119.D
 Acq On : 26 Mar 2021 11:51
 Operator : CG/JU
 Sample : SSTDIC0.2
 Misc :
 ALS Vial : 3 Sample Multiplier: 1

Instrument :
 BNA_N
 Client Sampled :
 SSTDIC0.2

Manual Integrations
APPROVED
 mohammad
 3/29/2021 3:28:39 PM

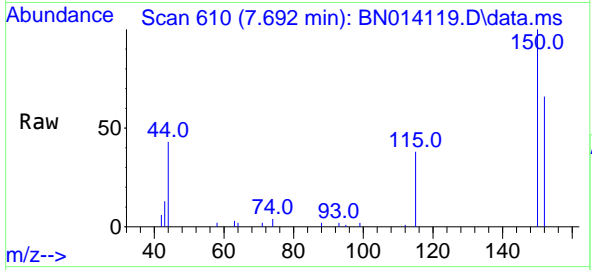
Quant Time: Mar 26 13:03:36 2021
 Quant Method : Z:\SVOASRV\HPCHEM1\BNA_N\METHODS\8270-SIM-BN032621.M
 Quant Title : ASP BNA STANDARDS FOR 5 POINT CALIBRATION
 QLast Update : Fri Mar 26 13:01:59 2021
 Response via : Initial Calibration





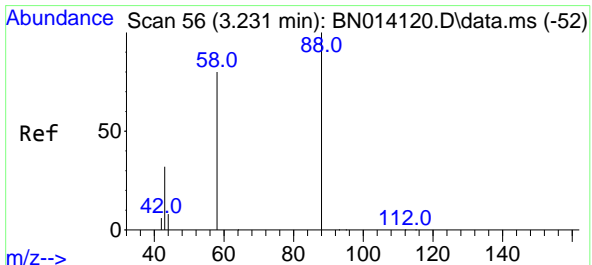
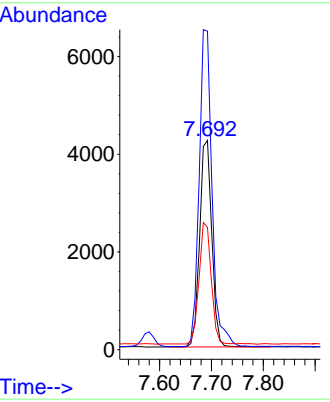
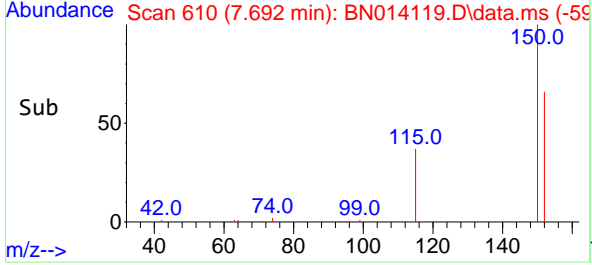
#1
 1,4-Dichlorobenzene-d4
 Concen: 0.40 ng
 RT: 7.692 min Scan# 610
 Delta R.T. 0.000 min
 Lab File: BN014119.D
 Acq: 26 Mar 2021 11:51

Instrument :
 BNA_N
ClientSampled :
 SSTDICC0.2

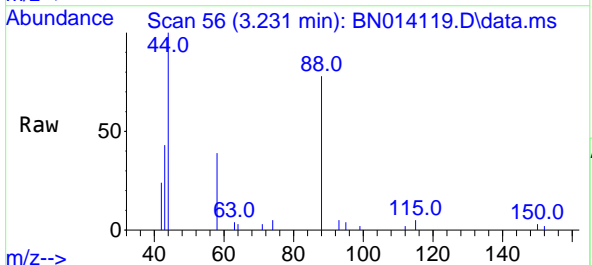


Tgt Ion:152 Resp: 6890
 Ion Ratio Lower Upper
 152 100
 150 152.3 121.2 181.8
 115 58.5 46.2 69.2

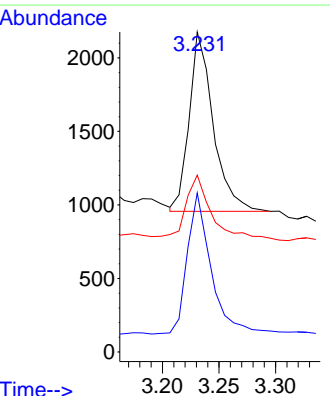
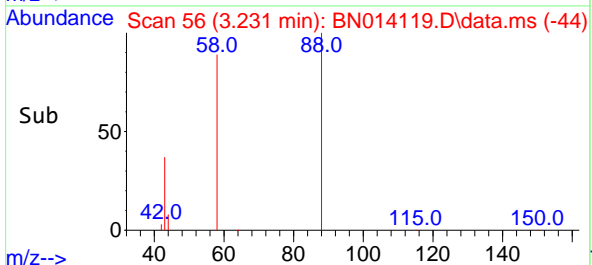
Manual Integrations
APPROVED
 mohammad
 3/29/2021 3:28:39 PM

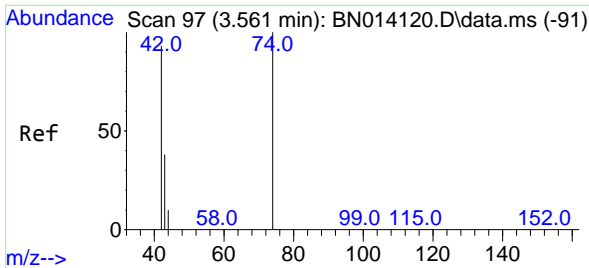


#2
 1,4-Dioxane
 Concen: 0.20 ng
 RT: 3.231 min Scan# 56
 Delta R.T. 0.000 min
 Lab File: BN014119.D
 Acq: 26 Mar 2021 11:51



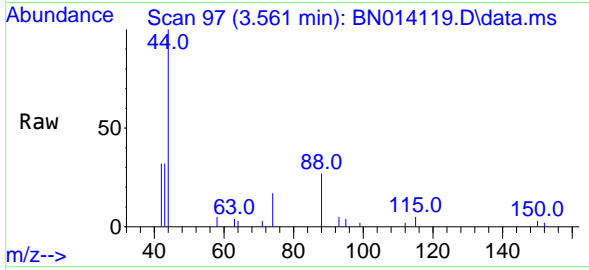
Tgt Ion: 88 Resp: 1798
 Ion Ratio Lower Upper
 88 100
 58 78.1 63.1 94.7
 43 35.3 26.2 39.2





#3
 n-Nitrosodimethylamine
 Concen: 0.20 ng
 RT: 3.561 min Scan# 97
 Delta R.T. 0.000 min
 Lab File: BN014119.D
 Acq: 26 Mar 2021 11:51

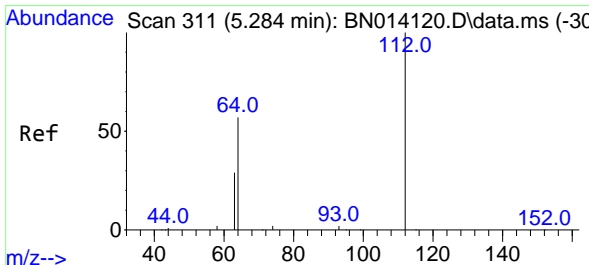
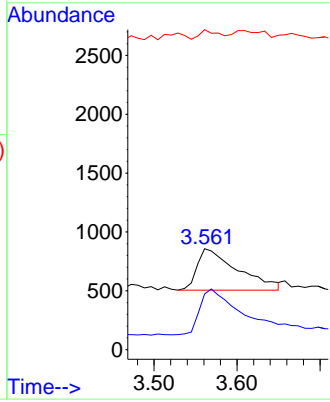
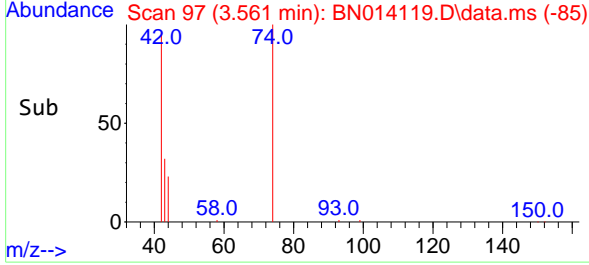
Instrument :
 BNA_N
ClientSampled :
 SSTDICC0.2



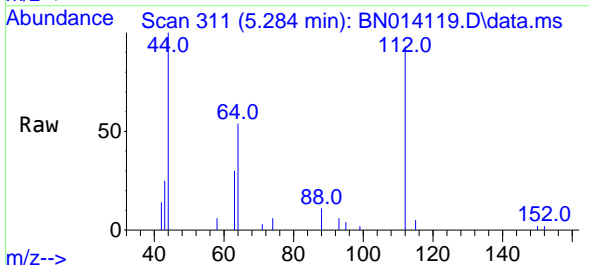
Tgt Ion: 42 Resp: 1200

Ion	Ratio	Lower	Upper
42	100		
74	112.9	94.6	141.8
44	9.8	4.2	6.2#

Manual Integrations
APPROVED
 mohammad
 3/29/2021 3:28:39 PM

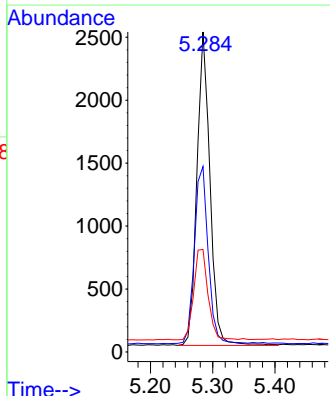
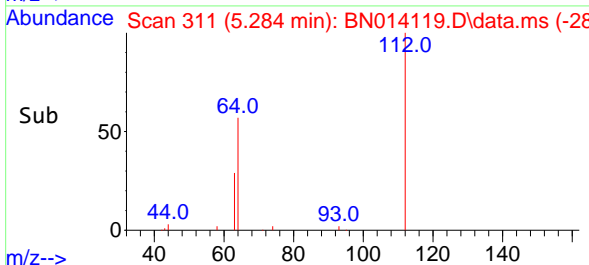


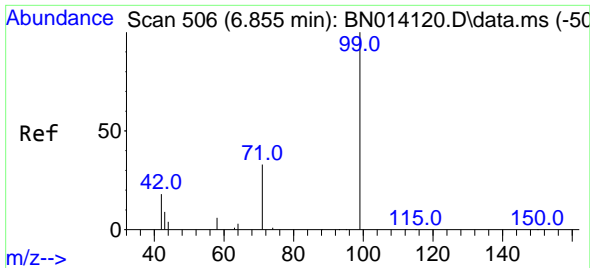
#4
 2-Fluorophenol
 Concen: 0.23 ng
 RT: 5.284 min Scan# 311
 Delta R.T. 0.000 min
 Lab File: BN014119.D
 Acq: 26 Mar 2021 11:51



Tgt Ion: 112 Resp: 3615

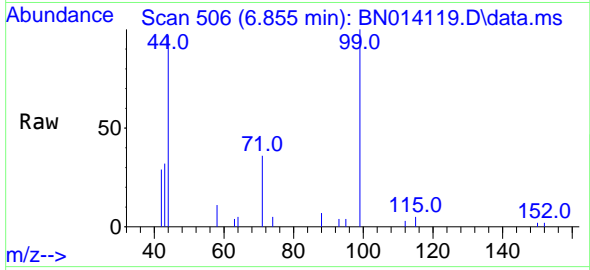
Ion	Ratio	Lower	Upper
112	100		
64	60.1	48.3	72.5
63	31.5	25.4	38.0





#5
Phenol-d6
Concen: 0.23 ng
RT: 6.855 min Scan# 506
Delta R.T. 0.000 min
Lab File: BN014119.D
Acq: 26 Mar 2021 11:51

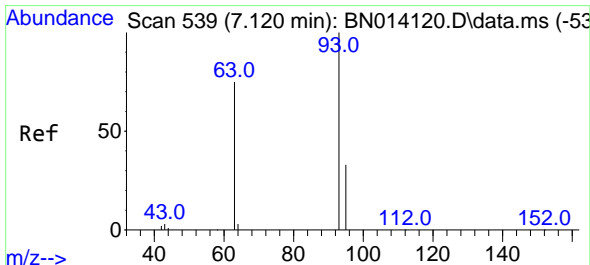
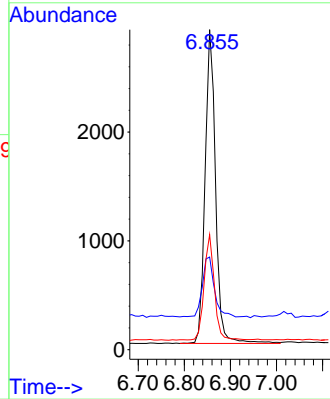
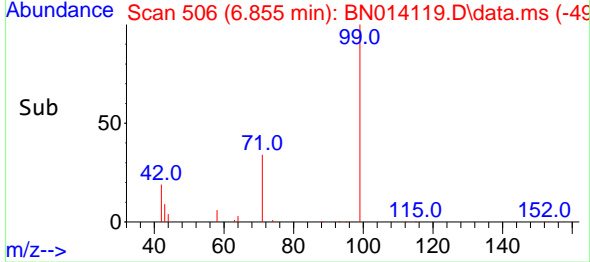
Instrument :
BNA_N
ClientSampled :
SSTDICC0.2



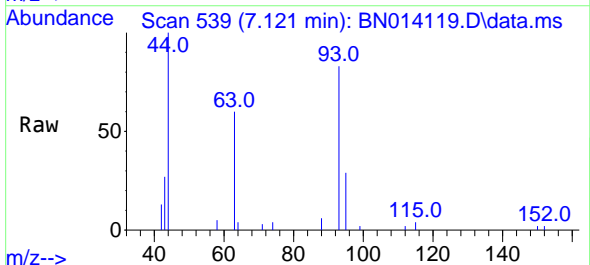
Tgt Ion: 99 Resp: 4572
Ion Ratio Lower Upper
99 100
42 21.6 18.2 27.4
71 32.9 26.7 40.1

Manual Integrations
APPROVED

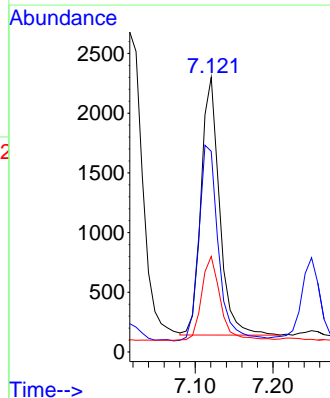
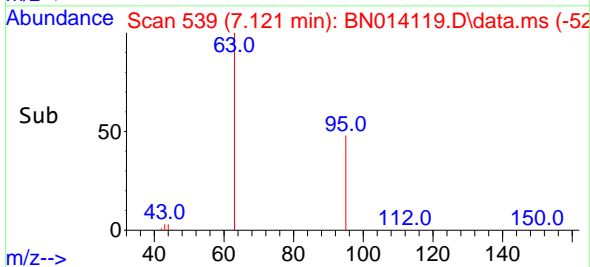
mohammad
3/29/2021 3:28:39 PM

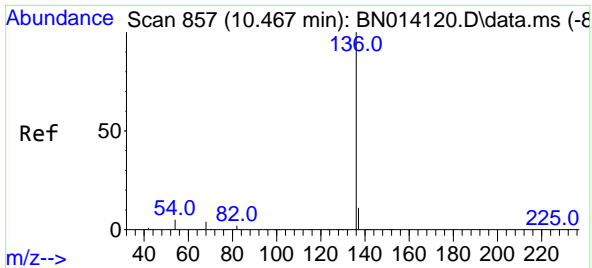


#6
bis(2-Chloroethyl)ether
Concen: 0.20 ng
RT: 7.121 min Scan# 539
Delta R.T. 0.000 min
Lab File: BN014119.D
Acq: 26 Mar 2021 11:51



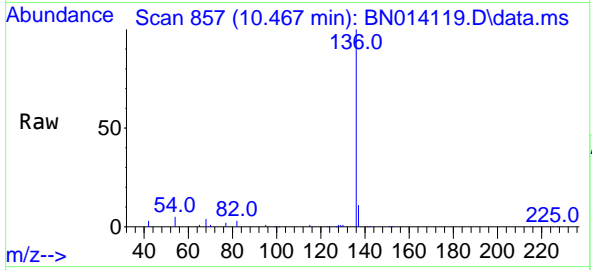
Tgt Ion: 93 Resp: 3572
Ion Ratio Lower Upper
93 100
63 81.2 65.1 97.7
95 33.3 26.6 39.8





#7
 Naphthalene-d8
 Concen: 0.40 ng
 RT: 10.467 min Scan# 857
 Delta R.T. 0.000 min
 Lab File: BN014119.D
 Acq: 26 Mar 2021 11:51

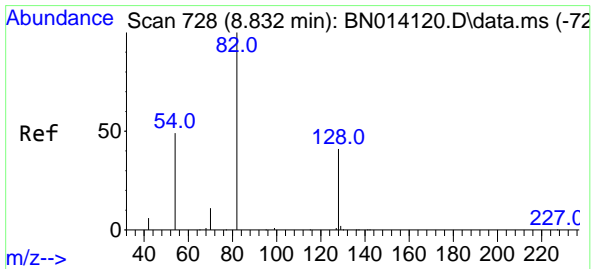
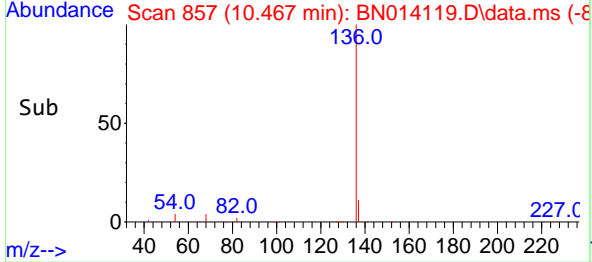
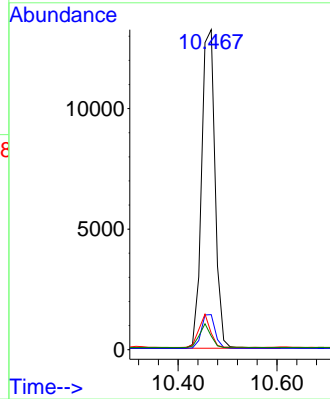
Instrument :
 BNA_N
ClientSampleId :
 SSTDICC0.2



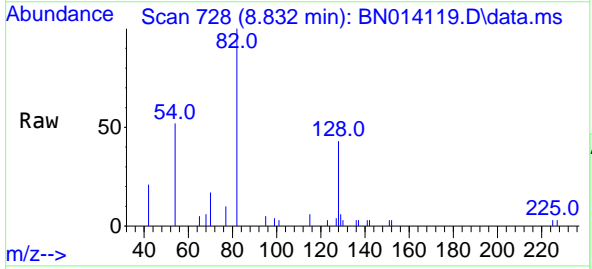
Tgt Ion:136 Resp: 25101

Ion	Ratio	Lower	Upper
136	100		
137	11.0	9.1	13.7
54	5.1	4.3	6.5
68	4.3	3.4	5.2

Manual Integrations
APPROVED
 mohammad
 3/29/2021 3:28:39 PM

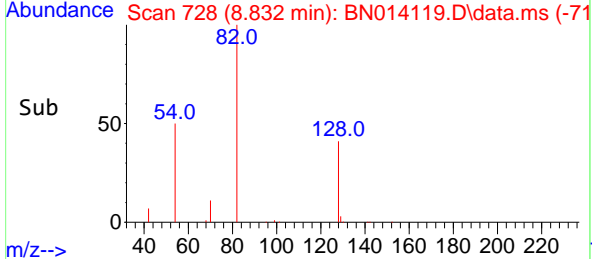
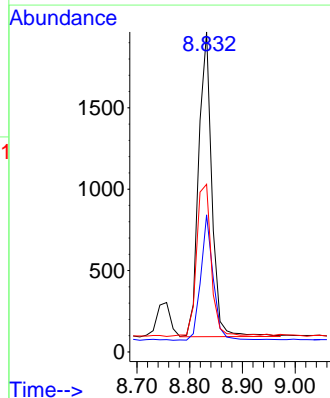


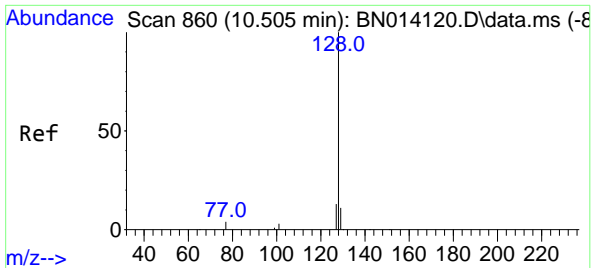
#8
 Nitrobenzene-d5
 Concen: 0.20 ng
 RT: 8.832 min Scan# 728
 Delta R.T. 0.000 min
 Lab File: BN014119.D
 Acq: 26 Mar 2021 11:51



Tgt Ion: 82 Resp: 3264

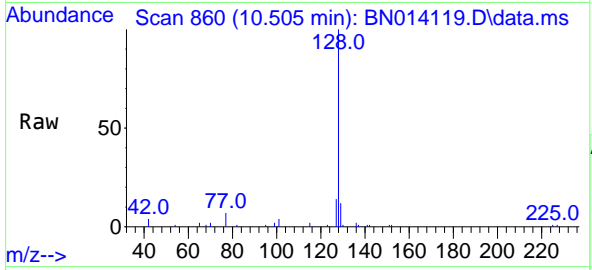
Ion	Ratio	Lower	Upper
82	100		
128	42.8	33.5	50.3
54	52.4	40.3	60.5





#9
 Naphthalene
 Concen: 0.19 ng
 RT: 10.505 min Scan# 860
 Delta R.T. 0.000 min
 Lab File: BN014119.D
 Acq: 26 Mar 2021 11:51

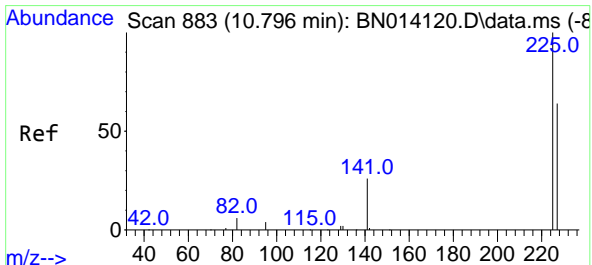
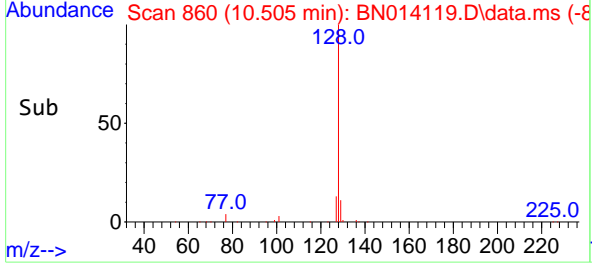
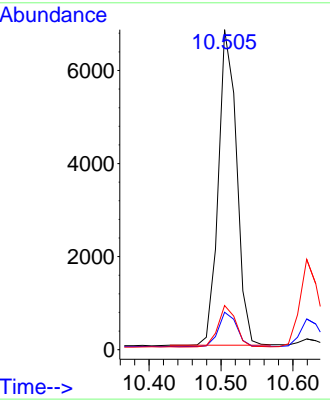
Instrument :
 BNA_N
ClientSampled :
 SSTDICC0.2



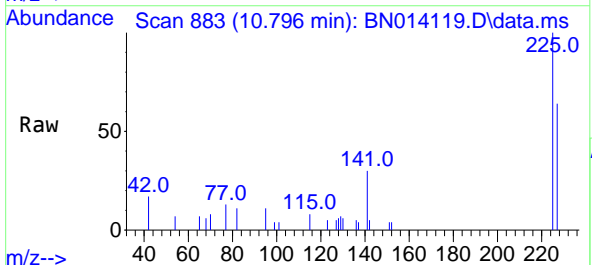
Tgt Ion:128 Resp: 11975

Ion	Ratio	Lower	Upper
128	100		
129	11.7	9.2	13.8
127	13.8	10.8	16.2

Manual Integrations
APPROVED
 mohammad
 3/29/2021 3:28:39 PM

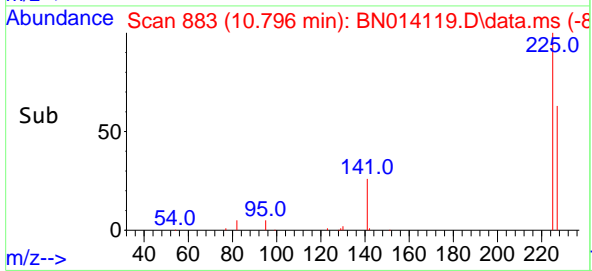
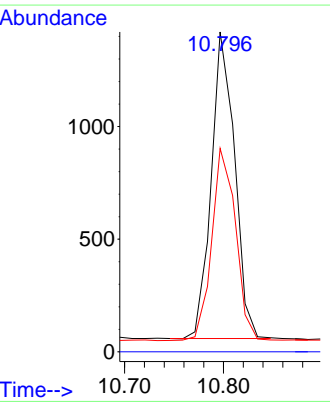


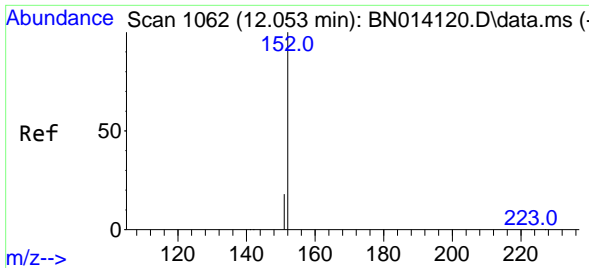
#10
 Hexachlorobutadiene
 Concen: 0.19 ng
 RT: 10.796 min Scan# 883
 Delta R.T. 0.000 min
 Lab File: BN014119.D
 Acq: 26 Mar 2021 11:51



Tgt Ion:225 Resp: 2236

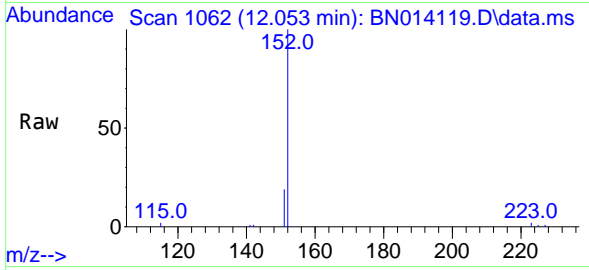
Ion	Ratio	Lower	Upper
225	100		
223	0.0	0.0	0.0
227	64.0	51.6	77.4





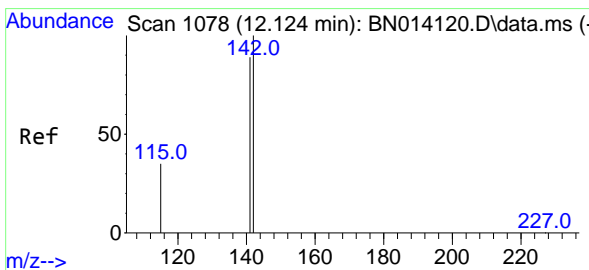
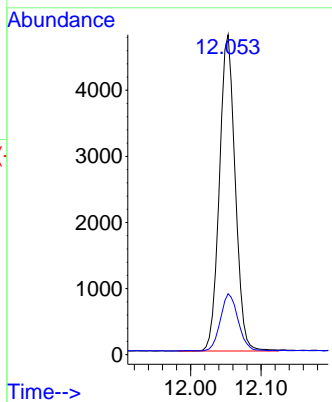
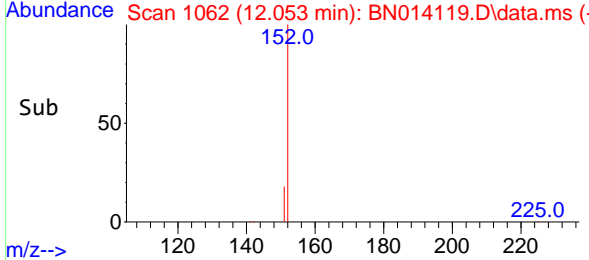
#11
 2-Methylnaphthalene-d10
 Concen: 0.19 ng
 RT: 12.053 min Scan# 1062
 Delta R.T. 0.000 min
 Lab File: BN014119.D
 Acq: 26 Mar 2021 11:51

Instrument :
 BNA_N
ClientSampled :
 SSTDICC0.2

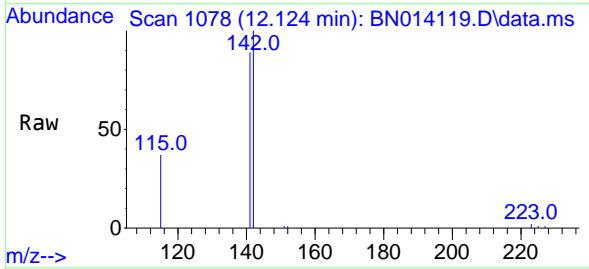


Tgt Ion:152 Resp: 7451
 Ion Ratio Lower Upper
 152 100
 151 20.1 16.1 24.1

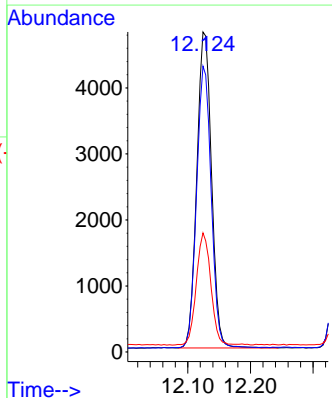
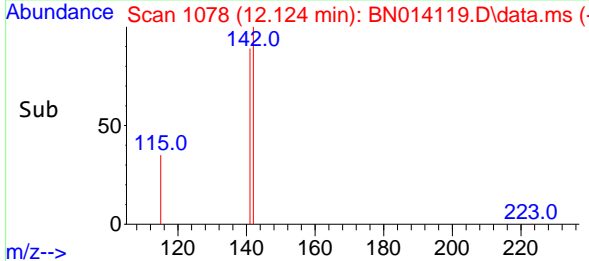
Manual Integrations
APPROVED
 mohammad
 3/29/2021 3:28:39 PM

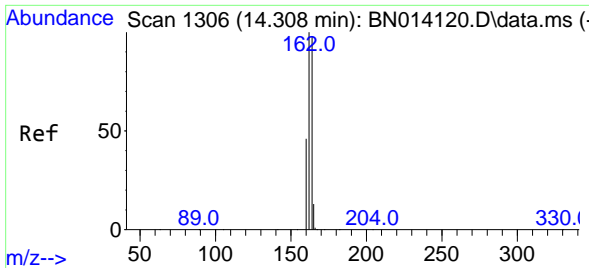


#12
 2-Methylnaphthalene
 Concen: 0.19 ng
 RT: 12.124 min Scan# 1078
 Delta R.T. 0.000 min
 Lab File: BN014119.D
 Acq: 26 Mar 2021 11:51



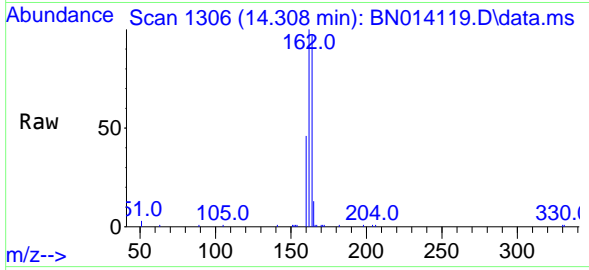
Tgt Ion:142 Resp: 7785
 Ion Ratio Lower Upper
 142 100
 141 89.3 71.1 106.7
 115 37.2 29.0 43.6





#13
 Acenaphthene-d10
 Concen: 0.40 ng
 RT: 14.308 min Scan# 1306
 Delta R.T. 0.000 min
 Lab File: BN014119.D
 Acq: 26 Mar 2021 11:51

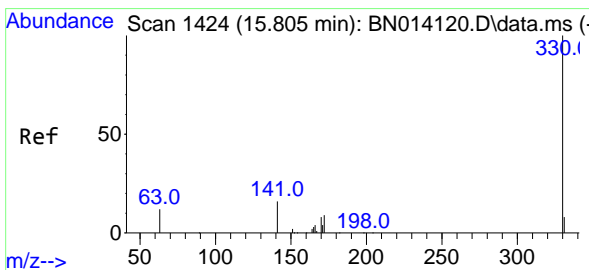
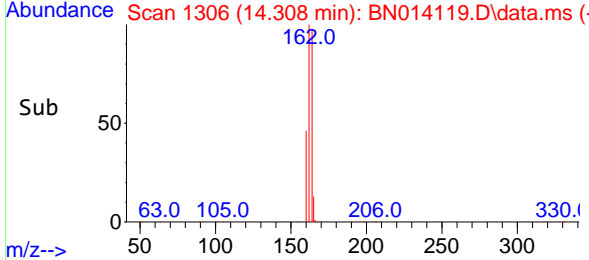
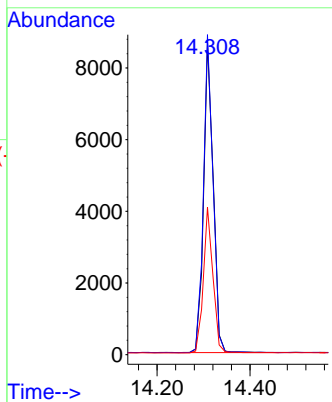
Instrument :
 BNA_N
ClientSampled :
 SSTDICC0.2



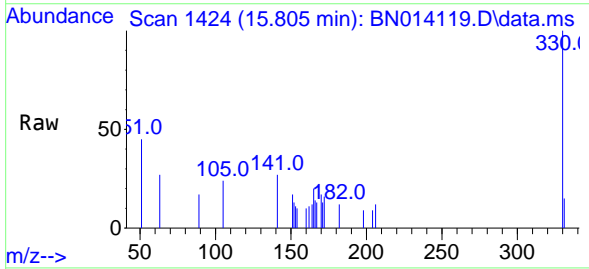
Tgt Ion:164 Resp: 12499

Ion	Ratio	Lower	Upper
164	100		
162	102.6	81.4	122.2
160	47.3	37.5	56.3

Manual Integrations
APPROVED
 mohammad
 3/29/2021 3:28:39 PM

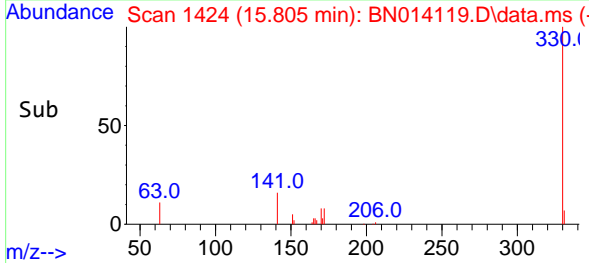
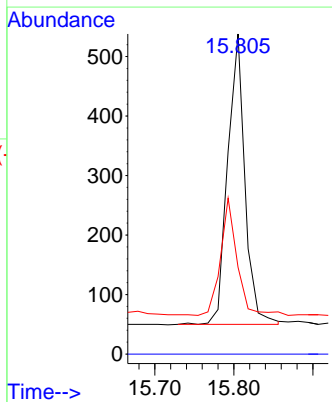


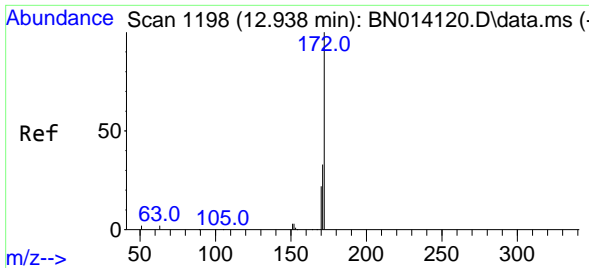
#14
 2,4,6-Tribromophenol
 Concen: 0.18 ng
 RT: 15.805 min Scan# 1424
 Delta R.T. 0.000 min
 Lab File: BN014119.D
 Acq: 26 Mar 2021 11:51



Tgt Ion:330 Resp: 738

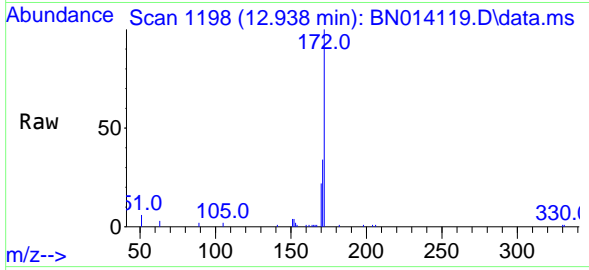
Ion	Ratio	Lower	Upper
330	100		
332	0.0	0.0	0.0
141	37.4	31.2	46.8





#15
 2-Fluorobiphenyl
 Concen: 0.20 ng
 RT: 12.938 min Scan# 1198
 Delta R.T. 0.000 min
 Lab File: BN014119.D
 Acq: 26 Mar 2021 11:51

Instrument :
 BNA_N
 ClientSampled :
 SSTDICC0.2

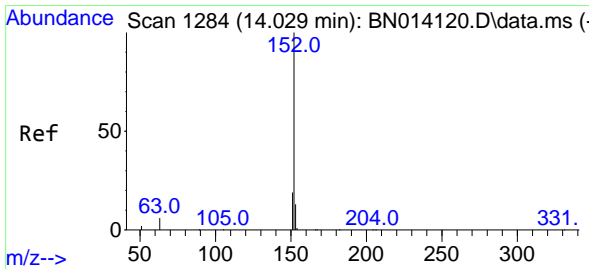
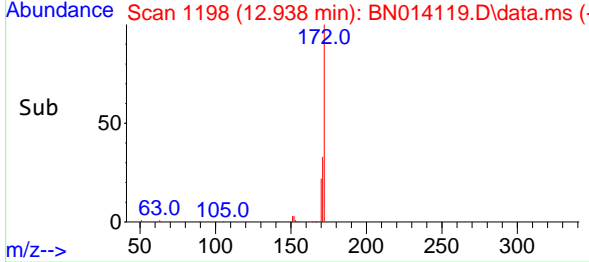
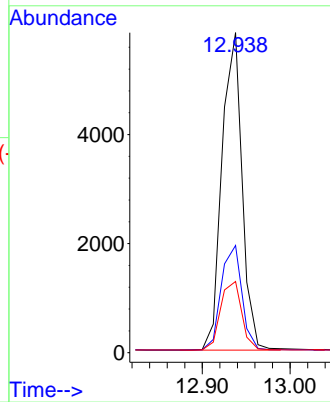


Tgt Ion:172 Resp: 9264

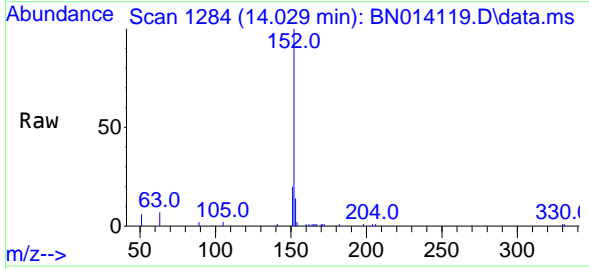
Ion	Ratio	Lower	Upper
172	100		
171	33.5	26.9	40.3
170	22.3	17.8	26.8

Manual Integrations
 APPROVED

mohammad
 3/29/2021 3:28:39 PM

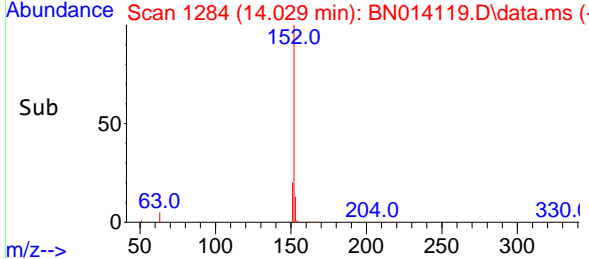
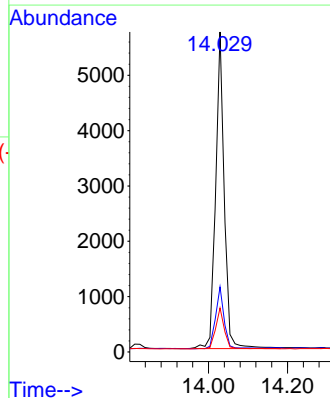


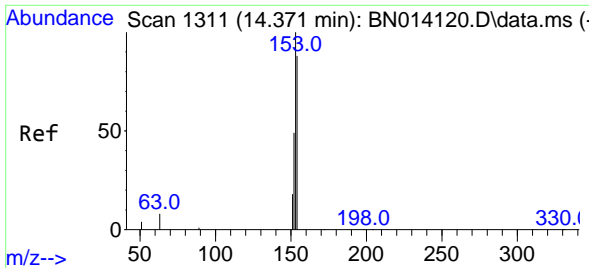
#16
 Acenaphthylene
 Concen: 0.18 ng
 RT: 14.029 min Scan# 1284
 Delta R.T. 0.000 min
 Lab File: BN014119.D
 Acq: 26 Mar 2021 11:51



Tgt Ion:152 Resp: 8734

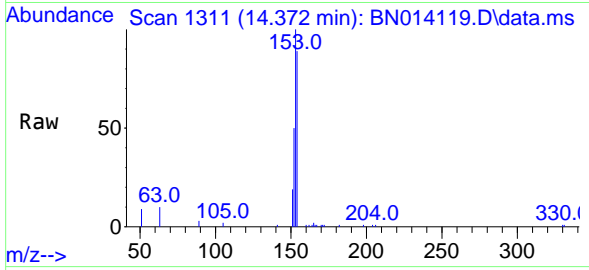
Ion	Ratio	Lower	Upper
152	100		
151	19.7	15.4	23.2
153	13.2	10.3	15.5





#17
 Acenaphthene
 Concen: 0.19 ng
 RT: 14.372 min Scan# 1311
 Delta R.T. 0.000 min
 Lab File: BN014119.D
 Acq: 26 Mar 2021 11:51

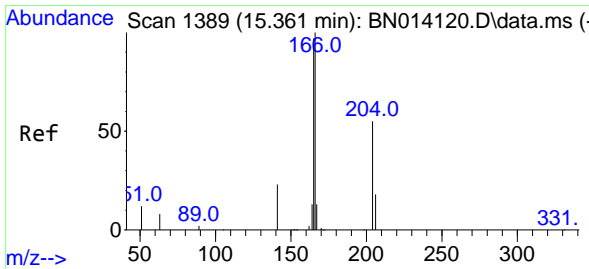
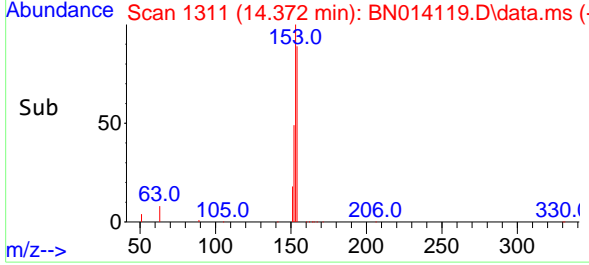
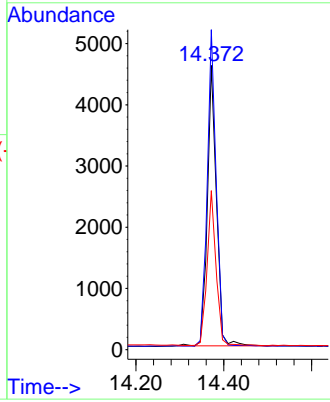
Instrument :
 BNA_N
ClientSampled :
 SSTDICC0.2



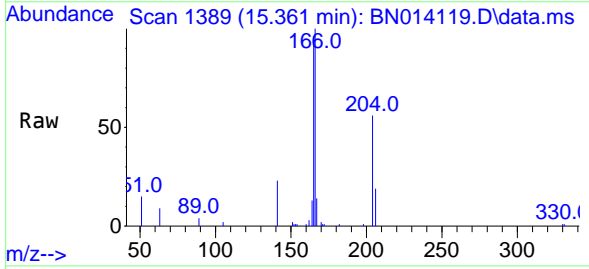
Tgt Ion:154 Resp: 6588

Ion	Ratio	Lower	Upper
154	100		
153	111.1	89.0	133.4
152	54.5	43.1	64.7

Manual Integrations
APPROVED
 mohammad
 3/29/2021 3:28:39 PM

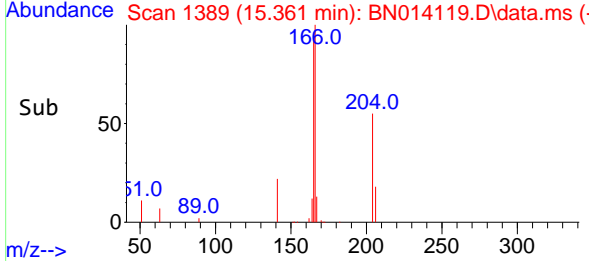
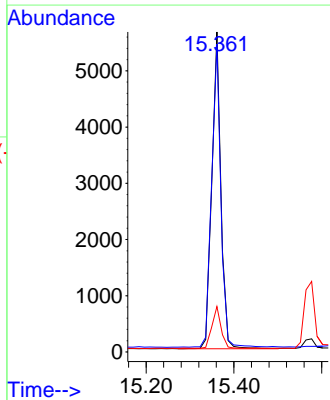


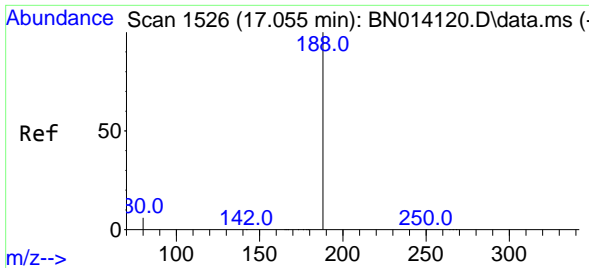
#18
 Fluorene
 Concen: 0.18 ng
 RT: 15.361 min Scan# 1389
 Delta R.T. 0.000 min
 Lab File: BN014119.D
 Acq: 26 Mar 2021 11:51



Tgt Ion:166 Resp: 8037

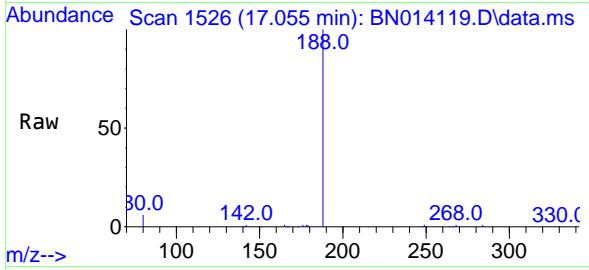
Ion	Ratio	Lower	Upper
166	100		
165	97.5	77.9	116.9
167	13.4	10.6	16.0





#19
 Phenanthrene-d10
 Concen: 0.40 ng
 RT: 17.055 min Scan# 1526
 Delta R.T. 0.001 min
 Lab File: BN014119.D
 Acq: 26 Mar 2021 11:51

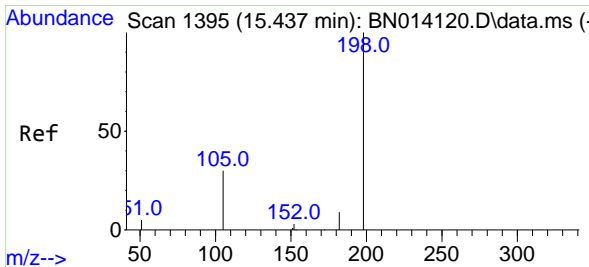
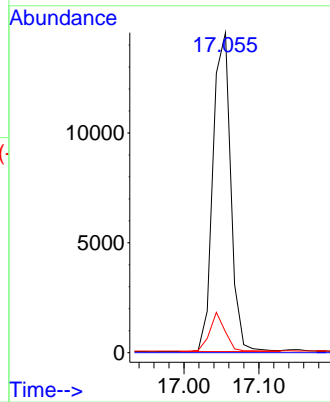
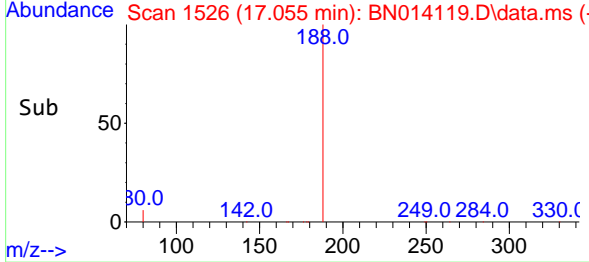
Instrument :
 BNA_N
ClientSampled :
 SSTDICC0.2



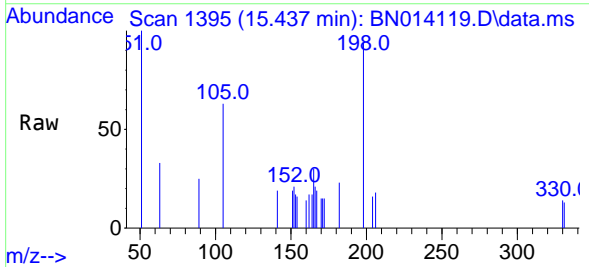
Tgt Ion:188 Resp: 23920

Ion	Ratio	Lower	Upper
188	100		
94	0.0	0.0	0.0
80	6.5	5.2	7.8

Manual Integrations
APPROVED
 mohammad
 3/29/2021 3:28:39 PM

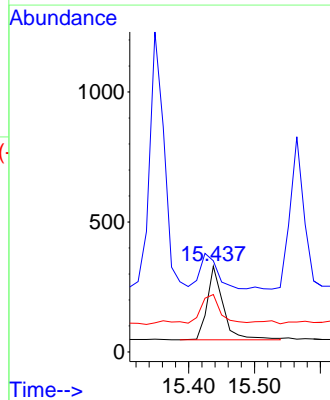
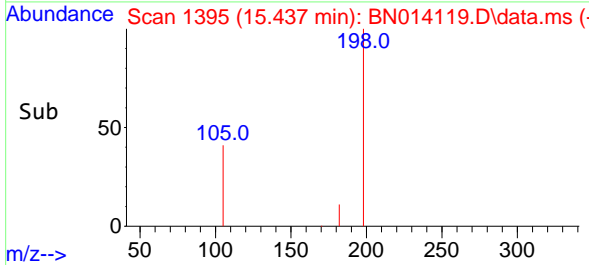


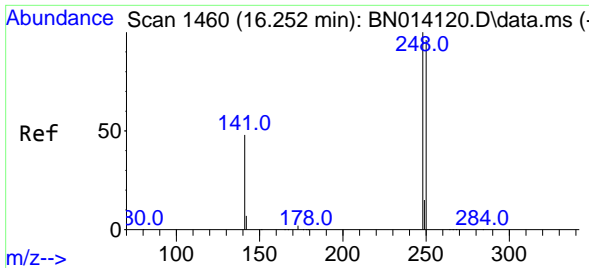
#20
 4,6-Dinitro-2-methylphenol
 Concen: 0.18 ng
 RT: 15.437 min Scan# 1395
 Delta R.T. 0.000 min
 Lab File: BN014119.D
 Acq: 26 Mar 2021 11:51



Tgt Ion:198 Resp: 477

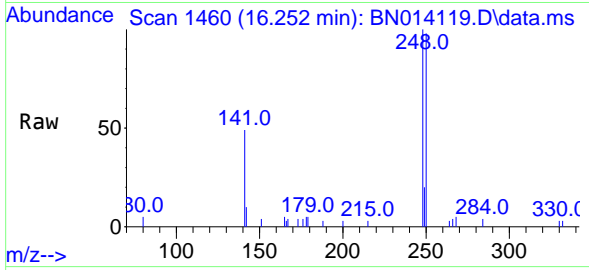
Ion	Ratio	Lower	Upper
198	100		
51	106.4	47.8	71.6#
105	67.0	35.4	53.2#





#21
 4-Bromophenyl-phenylether
 Concen: 0.19 ng
 RT: 16.252 min Scan# 1460
 Delta R.T. 0.001 min
 Lab File: BN014119.D
 Acq: 26 Mar 2021 11:51

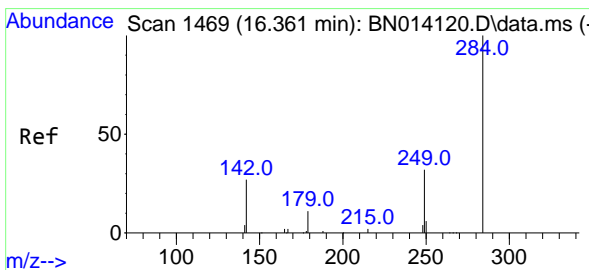
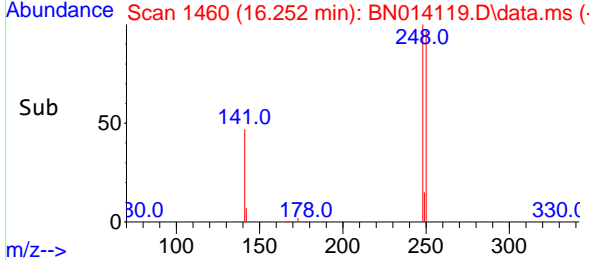
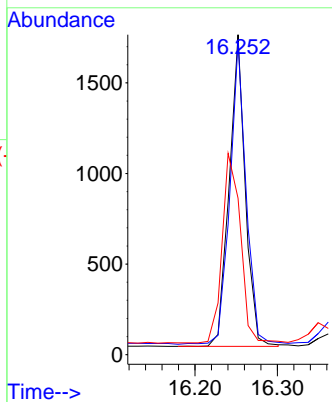
Instrument :
 BNA_N
ClientSampled :
 SSTDICC0.2



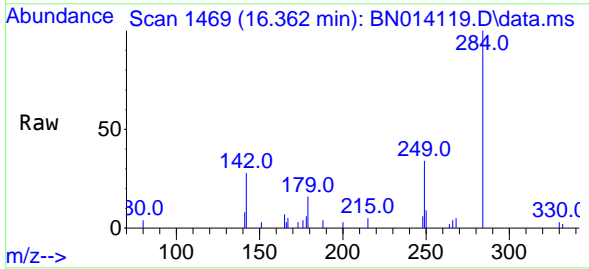
Tgt Ion:248 Resp: 2336

Ion	Ratio	Lower	Upper
248	100		
250	97.7	77.0	115.6
141	48.9	39.7	59.5

Manual Integrations
APPROVED
 mohammad
 3/29/2021 3:28:39 PM

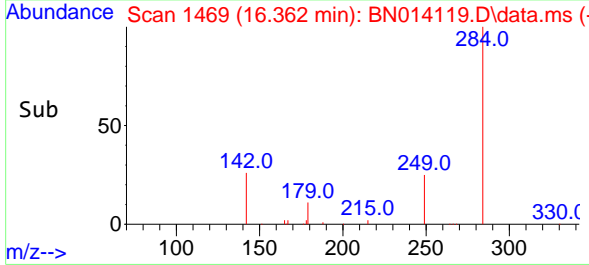
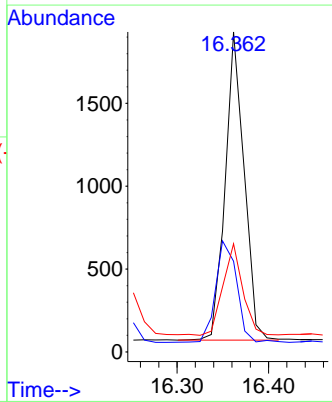


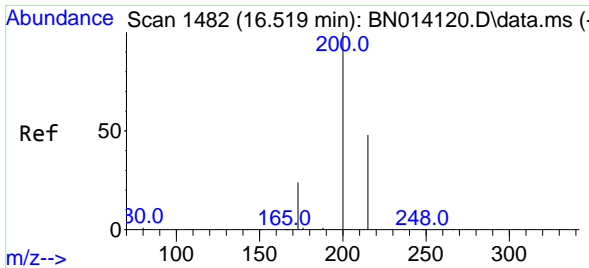
#22
 Hexachlorobenzene
 Concen: 0.19 ng
 RT: 16.362 min Scan# 1469
 Delta R.T. 0.001 min
 Lab File: BN014119.D
 Acq: 26 Mar 2021 11:51



Tgt Ion:284 Resp: 2671

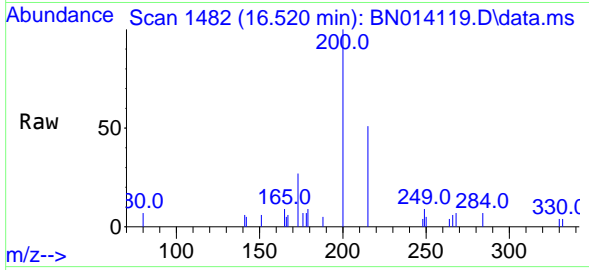
Ion	Ratio	Lower	Upper
284	100		
142	36.8	29.2	43.8
249	30.4	24.7	37.1





#23
 Atrazine
 Concen: 0.18 ng
 RT: 16.520 min Scan# 1482
 Delta R.T. 0.001 min
 Lab File: BN014119.D
 Acq: 26 Mar 2021 11:51

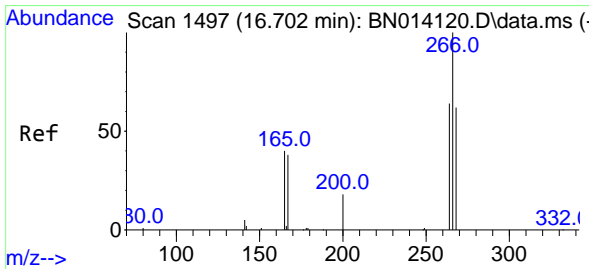
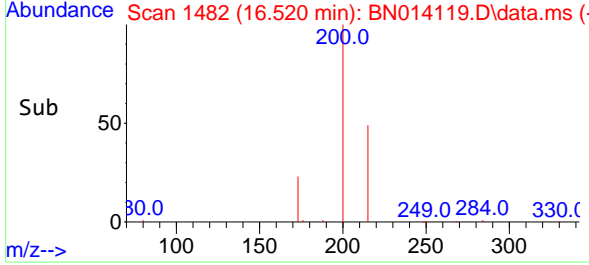
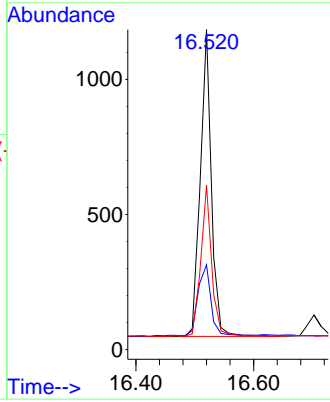
Instrument :
 BNA_N
ClientSampled :
 SSTDICC0.2



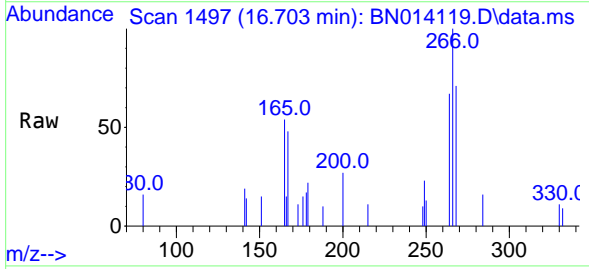
Tgt Ion:200 Resp: 1489

Ion	Ratio	Lower	Upper
200	100		
173	26.5	20.9	31.3
215	51.4	39.5	59.3

Manual Integrations
APPROVED
 mohammad
 3/29/2021 3:28:39 PM

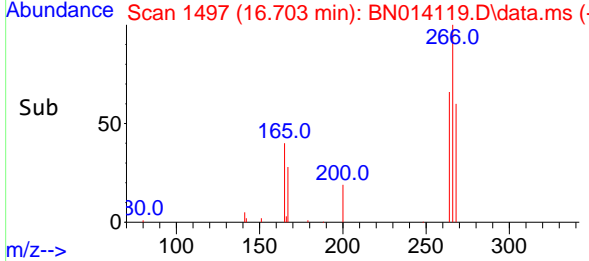
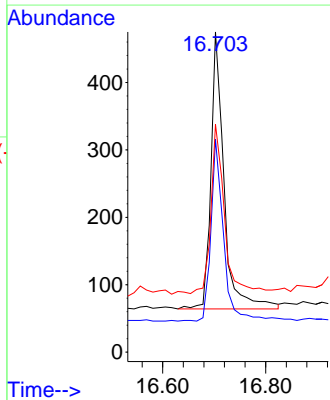


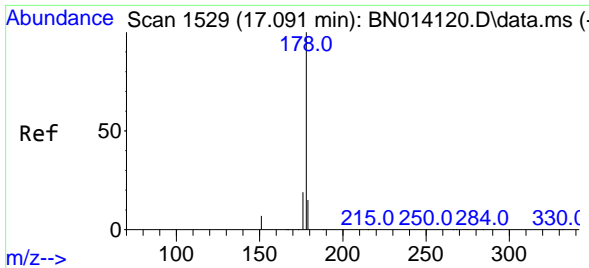
#24
 Pentachlorophenol
 Concen: 0.22 ng
 RT: 16.703 min Scan# 1497
 Delta R.T. 0.001 min
 Lab File: BN014119.D
 Acq: 26 Mar 2021 11:51



Tgt Ion:266 Resp: 727

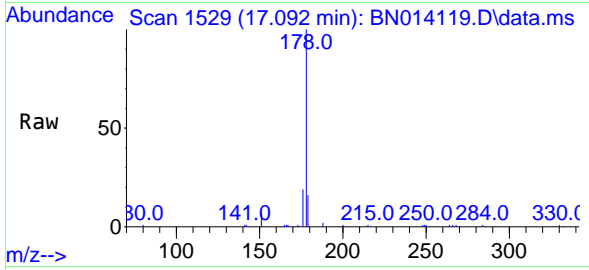
Ion	Ratio	Lower	Upper
266	100		
264	64.1	50.2	75.2
268	59.7	52.5	78.7





#25
 Phenanthrene
 Concen: 0.19 ng
 RT: 17.092 min Scan# 1529
 Delta R.T. 0.001 min
 Lab File: BN014119.D
 Acq: 26 Mar 2021 11:51

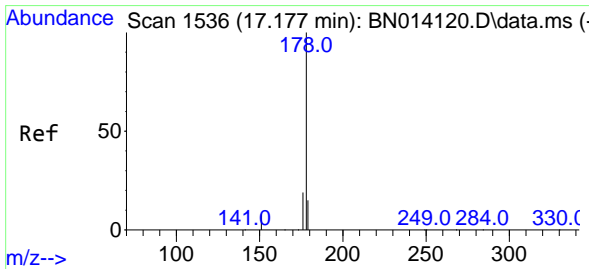
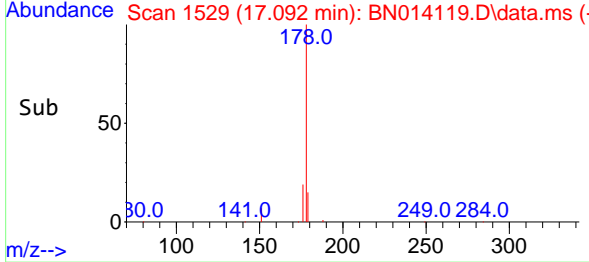
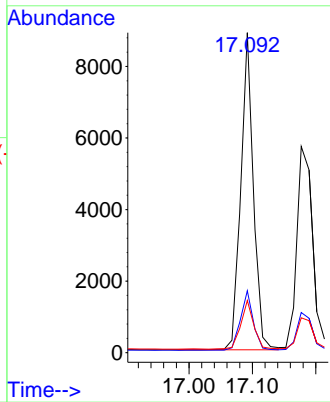
Instrument :
 BNA_N
ClientSampled :
 SSTDICC0.2



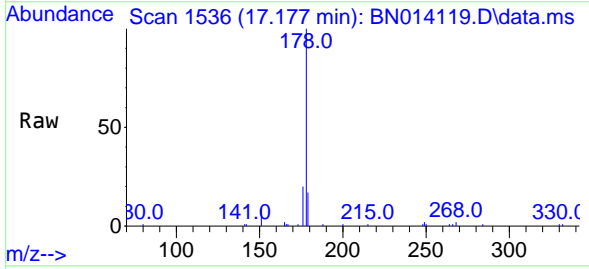
Tgt Ion:178 Resp: 12301

Ion	Ratio	Lower	Upper
178	100		
176	18.9	15.0	22.6
179	15.6	12.4	18.6

Manual Integrations
APPROVED
 mohammad
 3/29/2021 3:28:39 PM

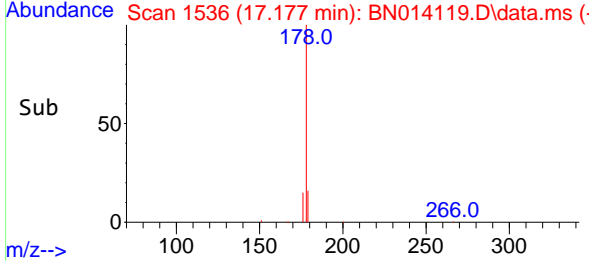
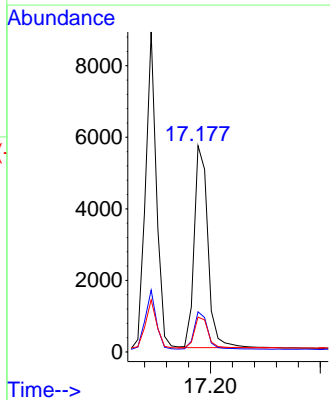


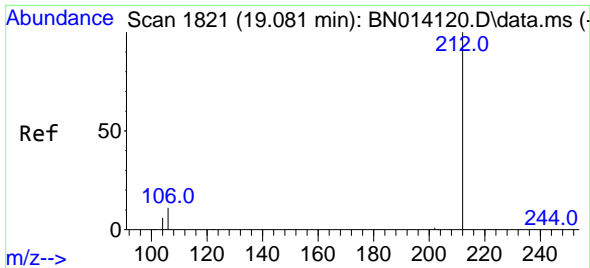
#26
 Anthracene
 Concen: 0.18 ng
 RT: 17.177 min Scan# 1536
 Delta R.T. 0.001 min
 Lab File: BN014119.D
 Acq: 26 Mar 2021 11:51



Tgt Ion:178 Resp: 9829

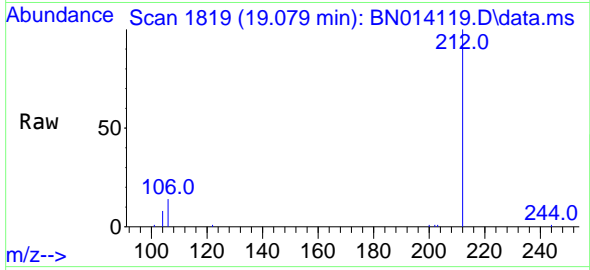
Ion	Ratio	Lower	Upper
178	100		
176	18.4	14.7	22.1
179	15.6	12.3	18.5





#27
 Fluoranthene-d10
 Concen: 0.18 ng
 RT: 19.079 min Scan# 1819
 Delta R.T. -0.002 min
 Lab File: BN014119.D
 Acq: 26 Mar 2021 11:51

Instrument :
 BNA_N
 ClientSampled :
 SSTDICC0.2

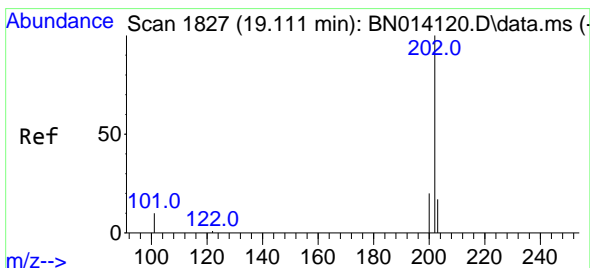
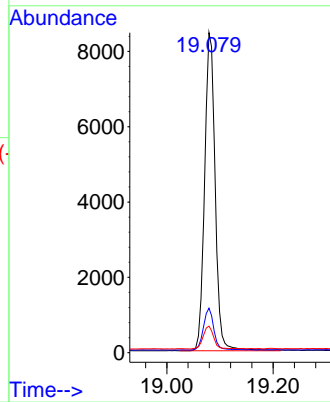
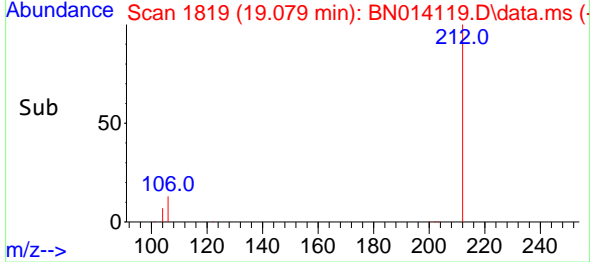


Tgt Ion:212 Resp: 11633

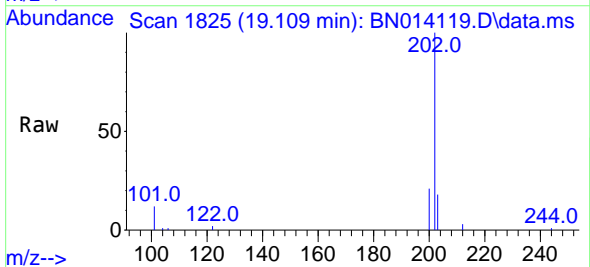
Ion	Ratio	Lower	Upper
212	100		
106	12.9	10.1	15.1
104	7.3	5.5	8.3

Manual Integrations
 APPROVED

mohammad
 3/29/2021 3:28:39 PM

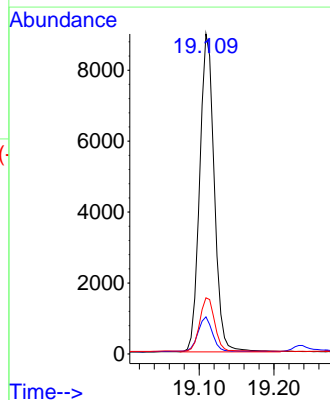
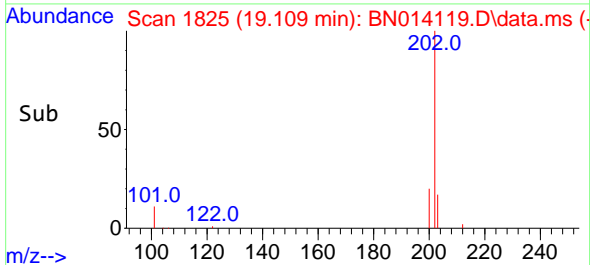


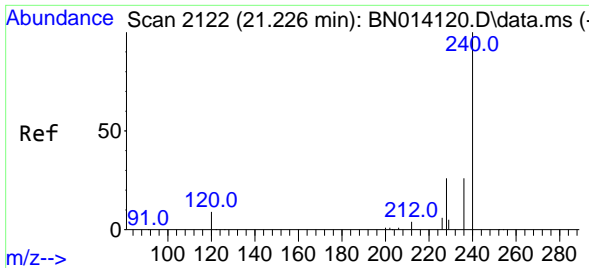
#28
 Fluoranthene
 Concen: 0.17 ng
 RT: 19.109 min Scan# 1825
 Delta R.T. -0.002 min
 Lab File: BN014119.D
 Acq: 26 Mar 2021 11:51



Tgt Ion:202 Resp: 12112

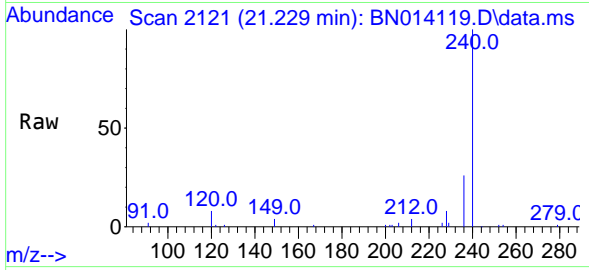
Ion	Ratio	Lower	Upper
202	100		
101	11.5	8.8	13.2
203	17.2	13.8	20.6





#29
 Chrysene-d12
 Concen: 0.40 ng
 RT: 21.229 min Scan# 2121
 Delta R.T. 0.003 min
 Lab File: BN014119.D
 Acq: 26 Mar 2021 11:51

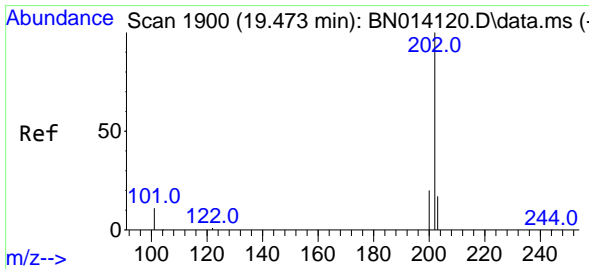
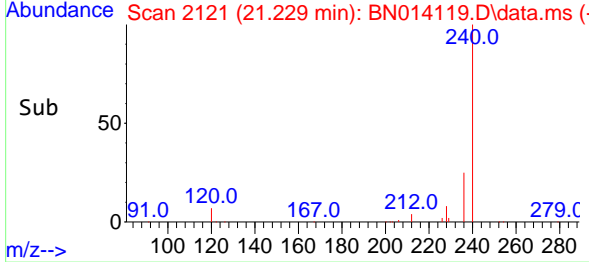
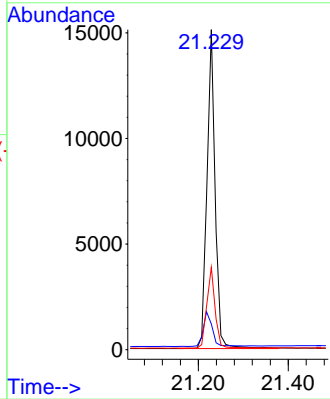
Instrument :
 BNA_N
ClientSampled :
 SSTDICC0.2



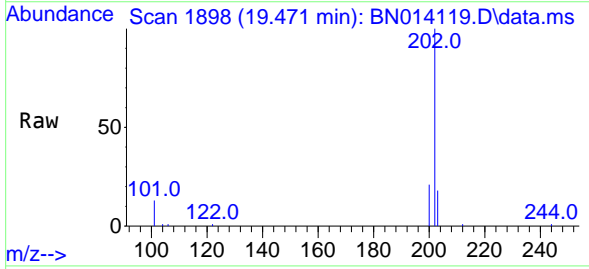
Tgt Ion:240 Resp: 18990

Ion	Ratio	Lower	Upper
240	100		
120	8.0	8.4	12.6#
236	25.8	21.0	31.6

Manual Integrations
APPROVED
 mohammad
 3/29/2021 3:28:39 PM

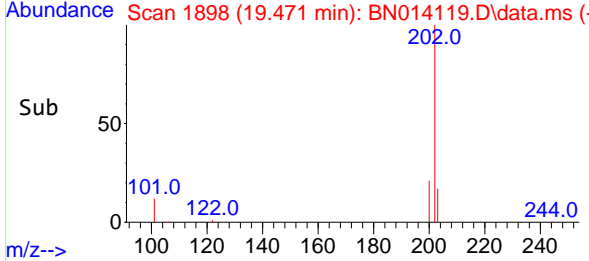
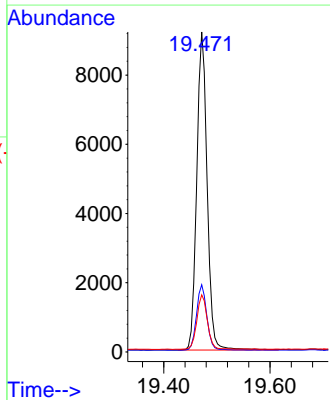


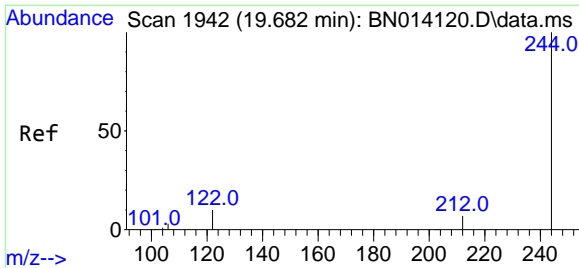
#30
 Pyrene
 Concen: 0.21 ng
 RT: 19.471 min Scan# 1898
 Delta R.T. -0.002 min
 Lab File: BN014119.D
 Acq: 26 Mar 2021 11:51



Tgt Ion:202 Resp: 12443

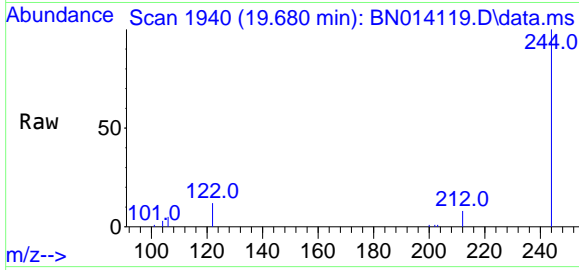
Ion	Ratio	Lower	Upper
202	100		
200	20.4	16.2	24.4
203	17.4	13.9	20.9





#31
 Terphenyl-d14
 Concen: 0.21 ng
 RT: 19.680 min Scan# 1940
 Delta R.T. -0.002 min
 Lab File: BN014119.D
 Acq: 26 Mar 2021 11:51

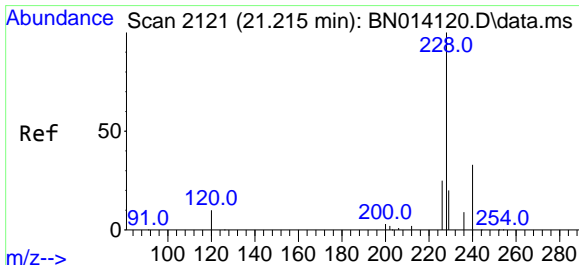
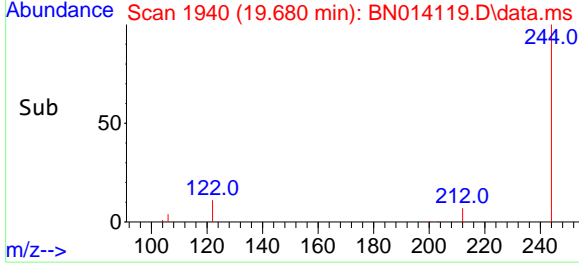
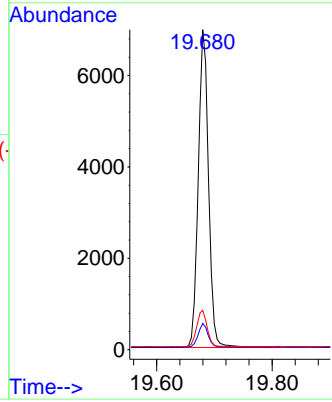
Instrument :
 BNA_N
ClientSampled :
 SSTDICC0.2



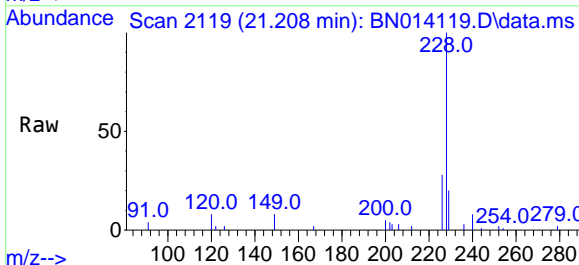
Tgt Ion:244 Resp: 8659

Ion	Ratio	Lower	Upper
244	100		
212	8.2	6.0	9.0
122	12.3	8.6	13.0

Manual Integrations
APPROVED
 mohammad
 3/29/2021 3:28:39 PM

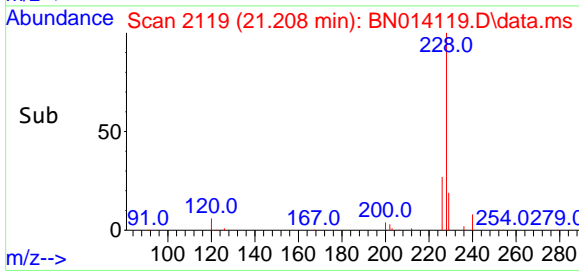
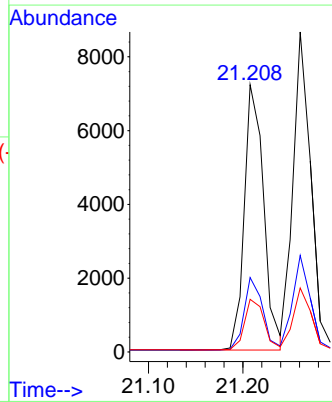


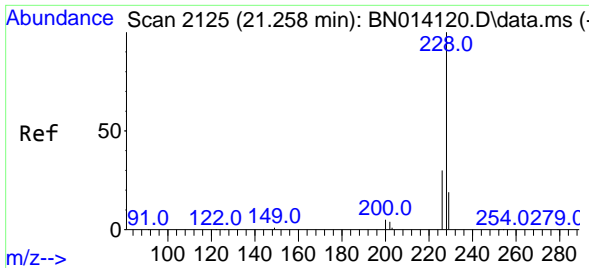
#32
 Benzo(a)anthracene
 Concen: 0.19 ng
 RT: 21.208 min Scan# 2119
 Delta R.T. -0.008 min
 Lab File: BN014119.D
 Acq: 26 Mar 2021 11:51



Tgt Ion:228 Resp: 10237

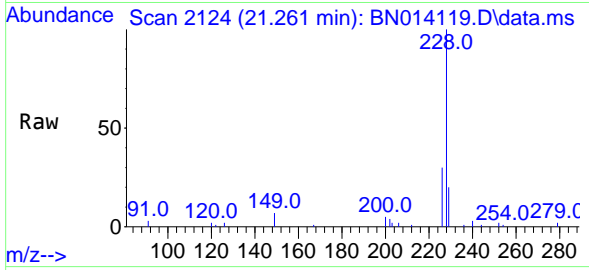
Ion	Ratio	Lower	Upper
228	100		
226	27.9	20.6	31.0
229	19.7	16.2	24.2





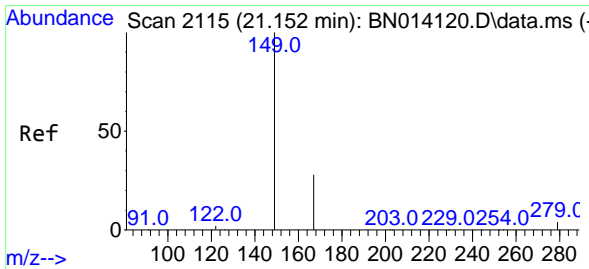
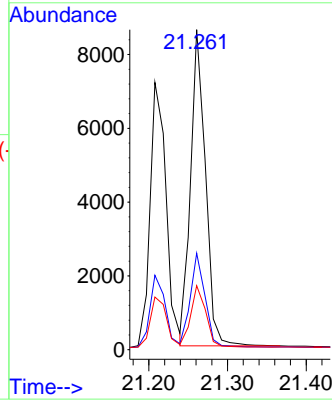
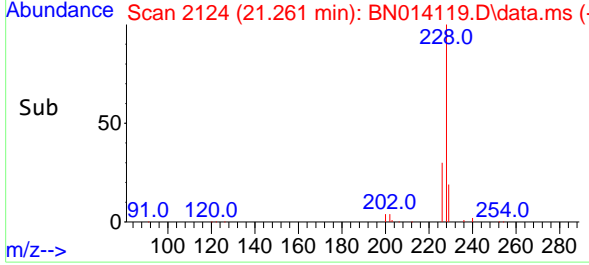
#33
 Chrysene
 Concen: 0.19 ng
 RT: 21.261 min Scan# 2124
 Delta R.T. 0.003 min
 Lab File: BN014119.D
 Acq: 26 Mar 2021 11:51

Instrument :
 BNA_N
Client Sampled :
 SSTDICC0.2

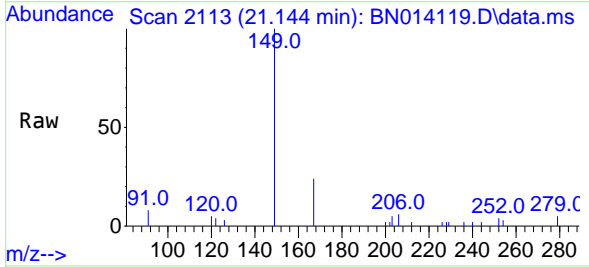


Tgt Ion: 228 Resp: 11258
 Ion Ratio Lower Upper
 228 100
 226 30.2 24.4 36.6
 229 20.0 15.5 23.3

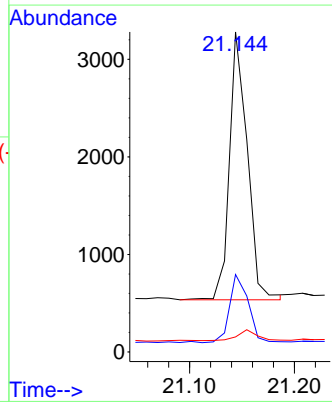
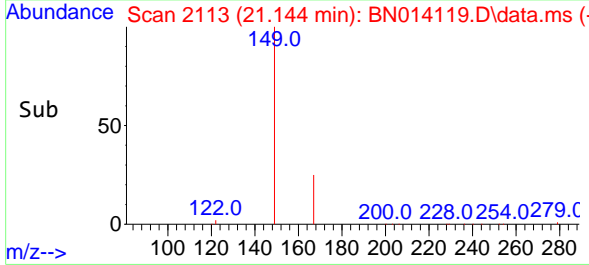
Manual Integrations
APPROVED
 mohammad
 3/29/2021 3:28:39 PM

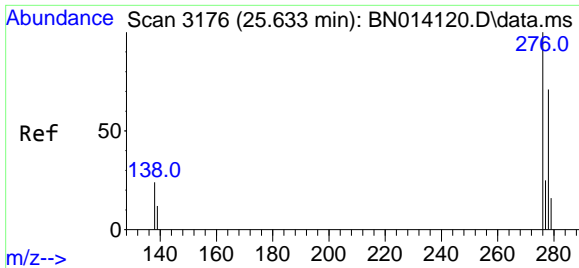


#34
 Bis(2-ethylhexyl)phthalate
 Concen: 0.16 ng
 RT: 21.144 min Scan# 2113
 Delta R.T. -0.008 min
 Lab File: BN014119.D
 Acq: 26 Mar 2021 11:51



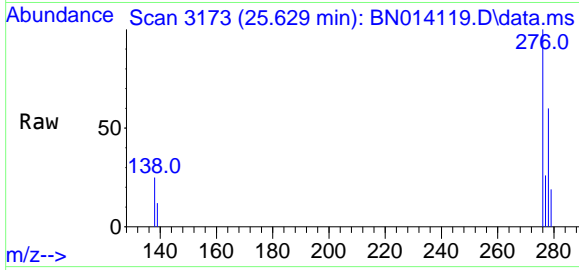
Tgt Ion: 149 Resp: 3243
 Ion Ratio Lower Upper
 149 100
 167 26.9 21.4 32.2
 279 4.4 3.5 5.3





#35
 Indeno(1,2,3-cd)pyrene
 Concen: 0.20 ng
 RT: 25.629 min Scan# 3173
 Delta R.T. -0.004 min
 Lab File: BN014119.D
 Acq: 26 Mar 2021 11:51

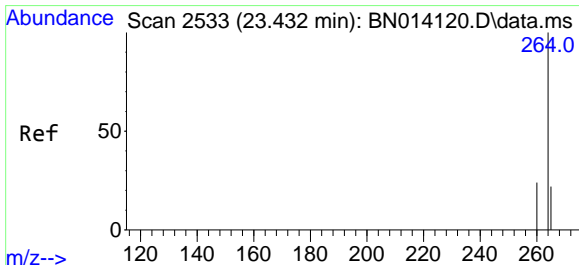
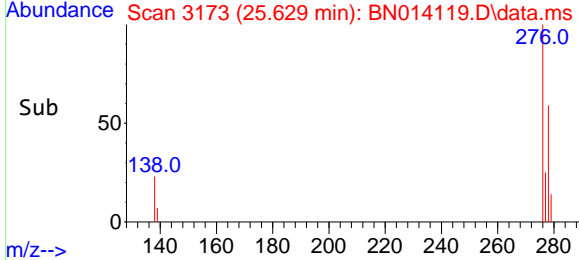
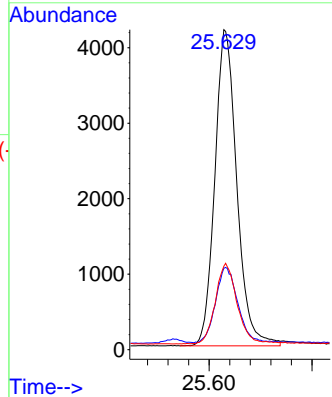
Instrument :
 BNA_N
ClientSampled :
 SSTDICC0.2



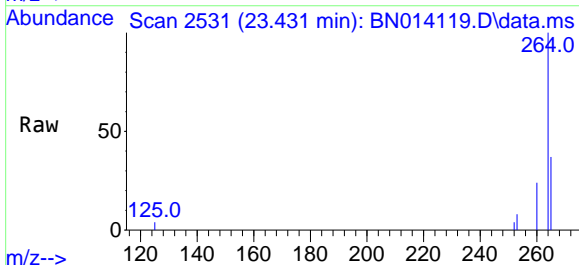
Tgt Ion: 276 Resp: 12416

Ion	Ratio	Lower	Upper
276	100		
138	24.0	19.4	29.2
277	25.0	19.8	29.6

Manual Integrations
APPROVED
 mohammad
 3/29/2021 3:28:39 PM

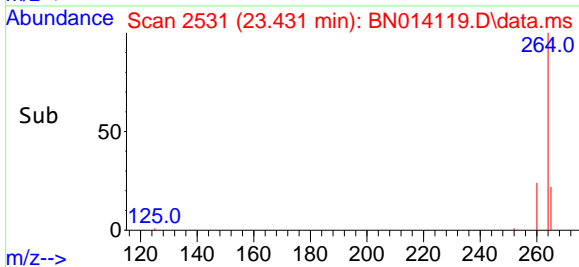
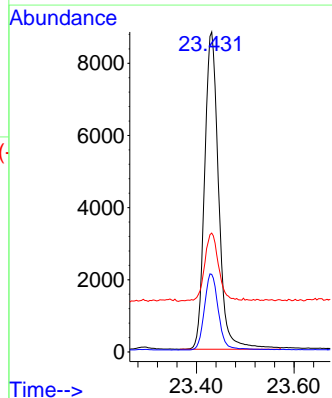


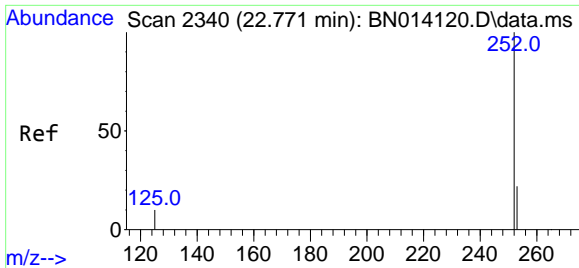
#36
 Perylene-d12
 Concen: 0.40 ng
 RT: 23.431 min Scan# 2531
 Delta R.T. -0.001 min
 Lab File: BN014119.D
 Acq: 26 Mar 2021 11:51



Tgt Ion: 264 Resp: 17560

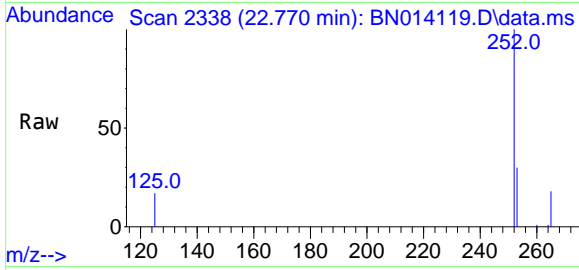
Ion	Ratio	Lower	Upper
264	100		
260	24.2	19.8	29.8
265	37.1	30.7	46.1





#37
 Benzo(b)fluoranthene
 Concen: 0.19 ng m
 RT: 22.770 min Scan# 2338
 Delta R.T. -0.001 min
 Lab File: BN014119.D
 Acq: 26 Mar 2021 11:51

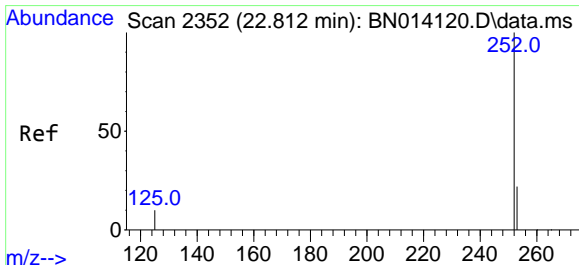
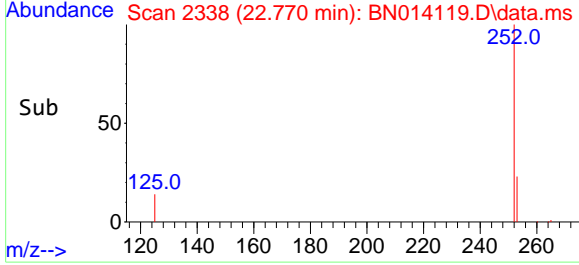
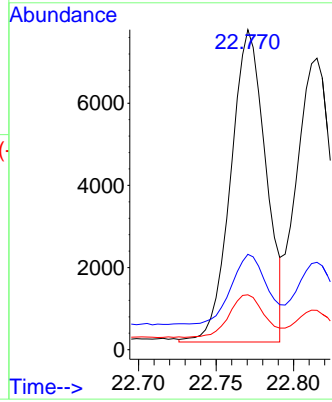
Instrument :
 BNA_N
ClientSampled :
 SSTDICC0.2



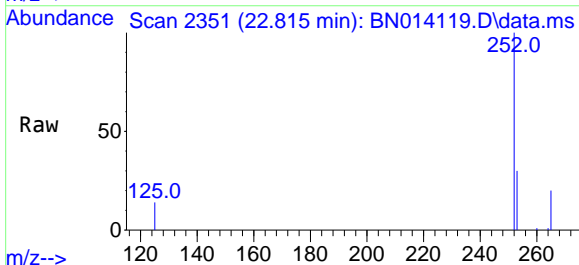
Tgt Ion:252 Resp: 11995

Ion	Ratio	Lower	Upper
252	100		
253	29.8	20.6	30.8
125	17.2	9.4	14.2#

Manual Integrations
APPROVED
 mohammad
 3/29/2021 3:28:39 PM

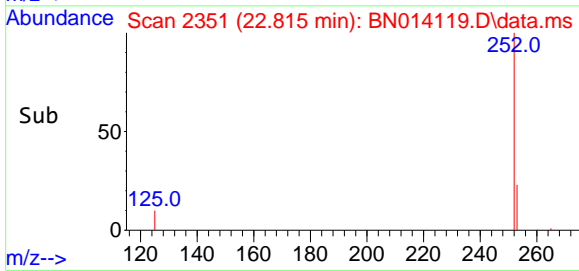
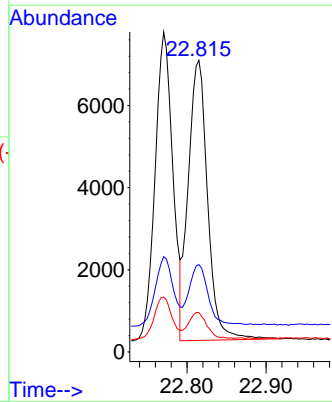


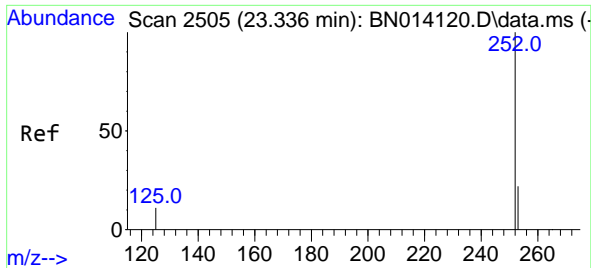
#38
 Benzo(k)fluoranthene
 Concen: 0.18 ng
 RT: 22.815 min Scan# 2351
 Delta R.T. 0.003 min
 Lab File: BN014119.D
 Acq: 26 Mar 2021 11:51



Tgt Ion:252 Resp: 11520

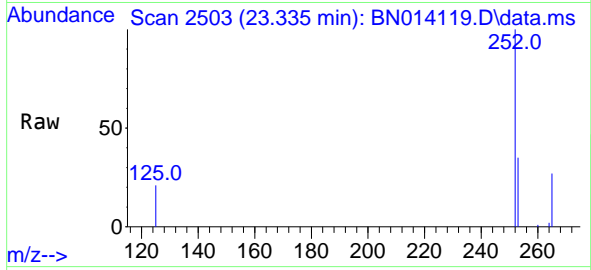
Ion	Ratio	Lower	Upper
252	100		
253	30.0	20.6	30.8
125	13.5	9.5	14.3





#39
 Benzo(a)pyrene
 Concen: 0.19 ng
 RT: 23.335 min Scan# 2503
 Delta R.T. -0.001 min
 Lab File: BN014119.D
 Acq: 26 Mar 2021 11:51

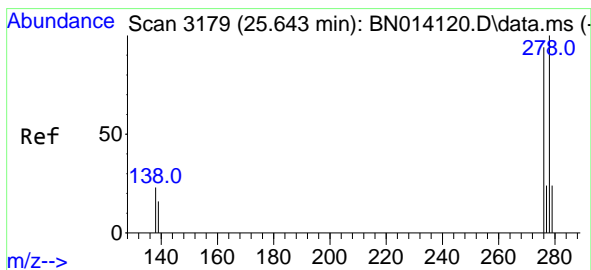
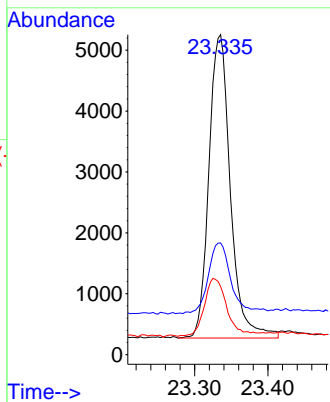
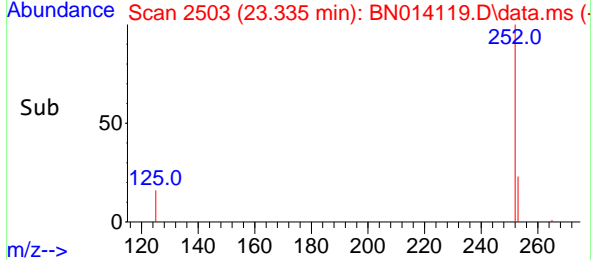
Instrument :
 BNA_N
 ClientSampled :
 SSTDICC0.2



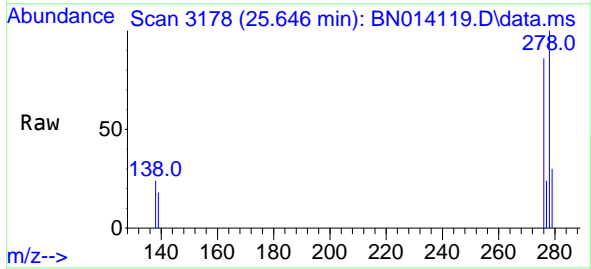
Tgt Ion:252 Resp: 10150
 Ion Ratio Lower Upper
 252 100
 253 34.9 21.9 32.9#
 125 21.3 10.8 16.2#

Manual Integrations
 APPROVED

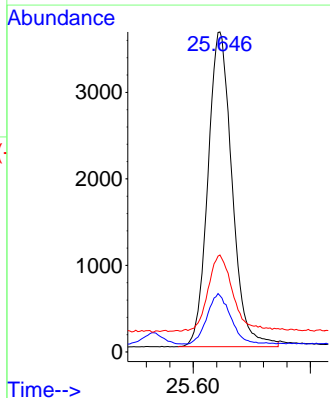
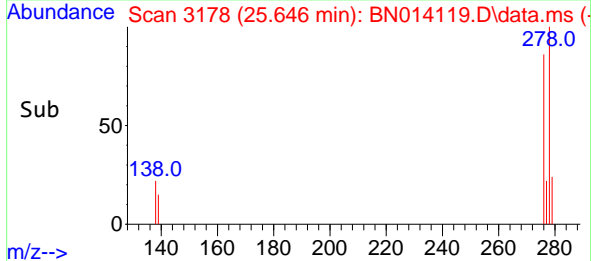
mohammad
 3/29/2021 3:28:39 PM

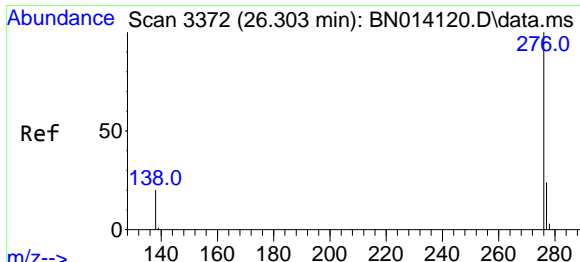


#40
 Dibenzo(a,h)anthracene
 Concen: 0.18 ng
 RT: 25.646 min Scan# 3178
 Delta R.T. 0.003 min
 Lab File: BN014119.D
 Acq: 26 Mar 2021 11:51



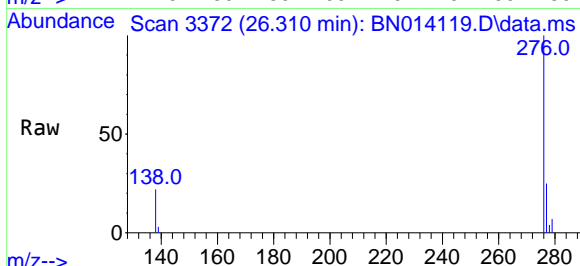
Tgt Ion:278 Resp: 10418
 Ion Ratio Lower Upper
 278 100
 139 17.6 13.4 20.0
 279 30.3 21.3 31.9





#41
 Benzo(g,h,i)perylene
 Concen: 0.18 ng
 RT: 26.310 min Scan# 3372
 Delta R.T. 0.006 min
 Lab File: BN014119.D
 Acq: 26 Mar 2021 11:51

Instrument :
 BNA_N
ClientSampled :
 SSTDICC0.2



Tgt Ion: 276 Resp: 11230

Ion	Ratio	Lower	Upper
276	100		
277	25.3	20.1	30.1
138	22.4	17.0	25.4

Manual Integrations
APPROVED
 mohammad
 3/29/2021 3:28:39 PM

