

Data Path : Z:\svoasrv\HPCHEM1\BNA_N\Data\BN032725\
 Data File : BN036768.D
 Acq On : 28 Mar 2025 11:34
 Operator : RC/JU
 Sample : Q1629-03
 Misc :
 ALS Vial : 33 Sample Multiplier: 1

Instrument :
 BNA_N
 ClientSampleId :
 TT188S1-20250320

Quant Time: Mar 28 12:21:28 2025
 Quant Method : Z:\svoasrv\HPCHEM1\BNA_N\Methods\8270-SIM-BN031025.M
 Quant Title : ASP BNA STANDARDS FOR 5 POINT CALIBRATION
 QLast Update : Mon Mar 10 16:06:28 2025
 Response via : Initial Calibration

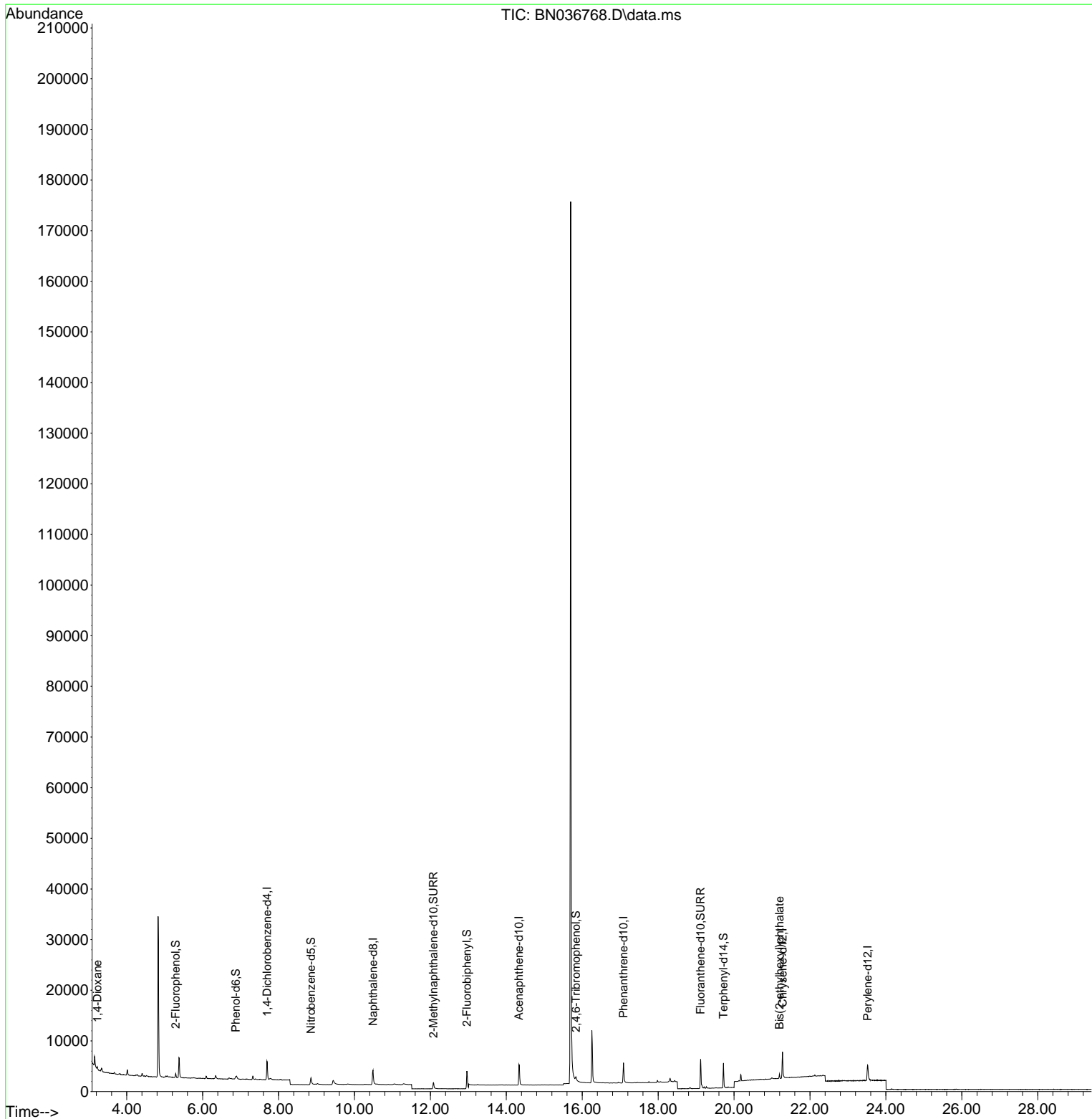
Compound	R.T.	QIon	Response	Conc	Units	Dev(Min)	
Internal Standards							
1) 1,4-Dichlorobenzene-d4	7.696	152	1850	0.400	ng	-0.03	
7) Naphthalene-d8	10.488	136	4438	0.400	ng	-0.02	
13) Acenaphthene-d10	14.334	164	2727	0.400	ng	-0.03	
19) Phenanthrene-d10	17.087	188	6125	0.400	ng	-0.02	
29) Chrysene-d12	21.277	240	5473	0.400	ng	-0.02	
35) Perylene-d12	23.519	264	4747	0.400	ng	#-0.03	
System Monitoring Compounds							
4) 2-Fluorophenol	5.291	112	575	0.133	ng	-0.02	
5) Phenol-d6	6.872	99	399	0.075	ng	-0.03	
8) Nitrobenzene-d5	8.854	82	1429	0.296	ng	-0.02	
11) 2-Methylnaphthalene-d10	12.081	152	2118	0.321	ng	-0.03	
14) 2,4,6-Tribromophenol	15.833	330	439	0.355	ng	-0.02	
15) 2-Fluorobiphenyl	12.963	172	5133	0.324	ng	-0.03	
27) Fluoranthene-d10	19.118	212	6928	0.441	ng	-0.02	
31) Terphenyl-d14	19.722	244	4946	0.377	ng	-0.02	
Target Compounds							
2) 1,4-Dioxane	3.225	88	302	0.147	ng	#	35
34) Bis(2-ethylhexyl)phtha...	21.196	149	813	0.060	ng		99

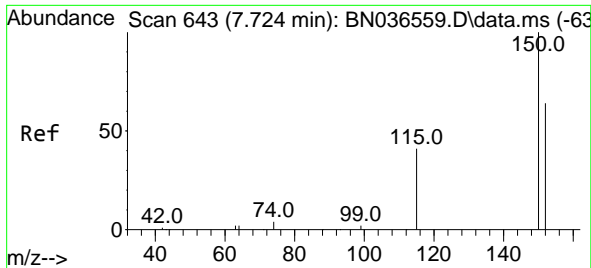
(#) = qualifier out of range (m) = manual integration (+) = signals summed

Data Path : Z:\svoasrv\HPCHEM1\BNA_N\Data\BN032725\
 Data File : BN036768.D
 Acq On : 28 Mar 2025 11:34
 Operator : RC/JU
 Sample : Q1629-03
 Misc :
 ALS Vial : 33 Sample Multiplier: 1

Instrument :
 BNA_N
 ClientSampleId :
 TT188S1-20250320

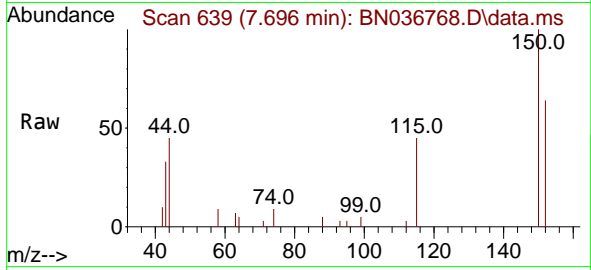
Quant Time: Mar 28 12:21:28 2025
 Quant Method : Z:\svoasrv\HPCHEM1\BNA_N\Methods\8270-SIM-BN031025.M
 Quant Title : ASP BNA STANDARDS FOR 5 POINT CALIBRATION
 QLast Update : Mon Mar 10 16:06:28 2025
 Response via : Initial Calibration



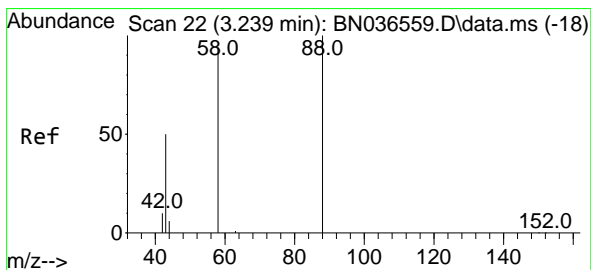
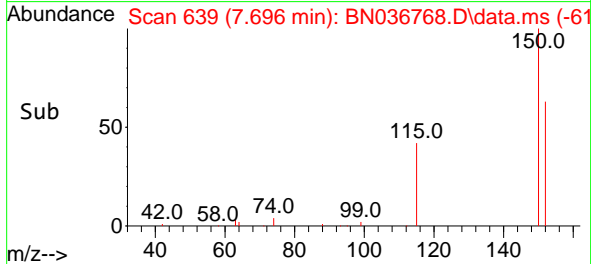
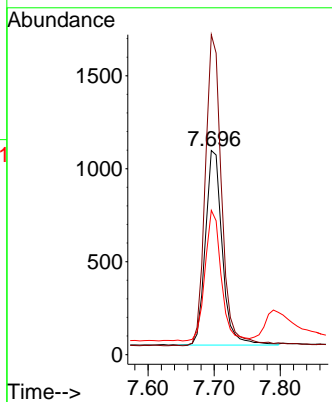


#1
 1,4-Dichlorobenzene-d4
 Concen: 0.400 ng
 RT: 7.696 min Scan# 61
 Delta R.T. -0.028 min
 Lab File: BN036768.D
 Acq: 28 Mar 2025 11:34

Instrument :
 BNA_N
 ClientSampleId :
 TT188S1-20250320

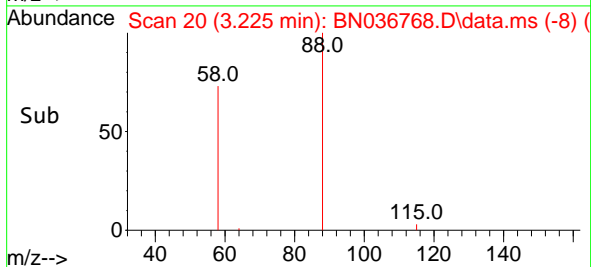
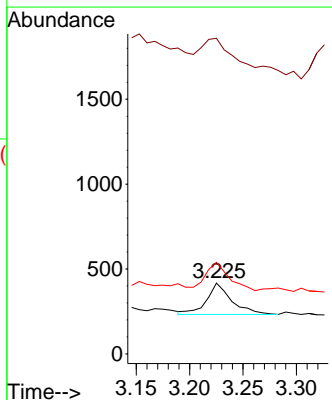
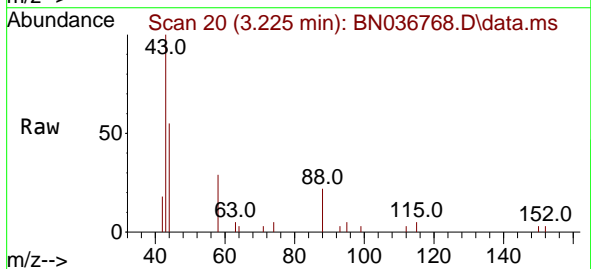


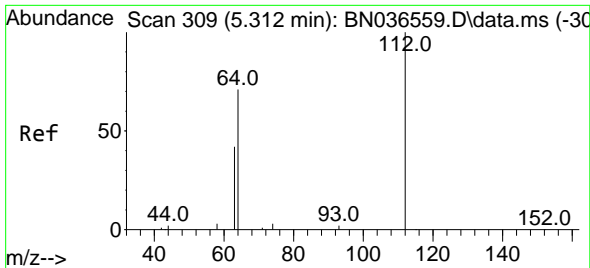
Tgt Ion: 152 Resp: 1850
 Ion Ratio Lower Upper
 152 100
 150 156.7 123.7 185.5
 115 70.7 54.3 81.5



#2
 1,4-Dioxane
 Concen: 0.147 ng
 RT: 3.225 min Scan# 20
 Delta R.T. -0.014 min
 Lab File: BN036768.D
 Acq: 28 Mar 2025 11:34

Tgt Ion: 88 Resp: 302
 Ion Ratio Lower Upper
 88 100
 43 164.6 37.8 56.8#
 58 81.8 67.4 101.2

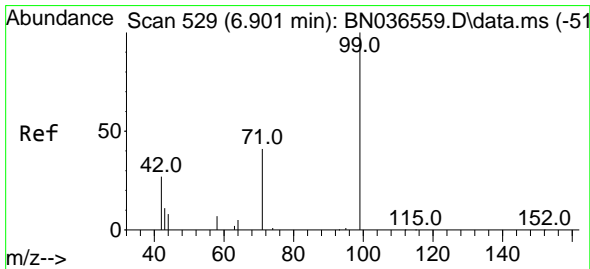
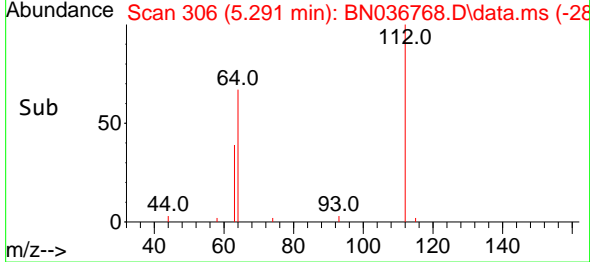
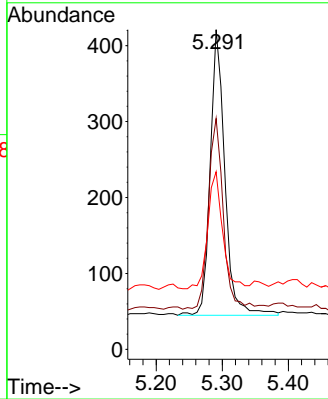
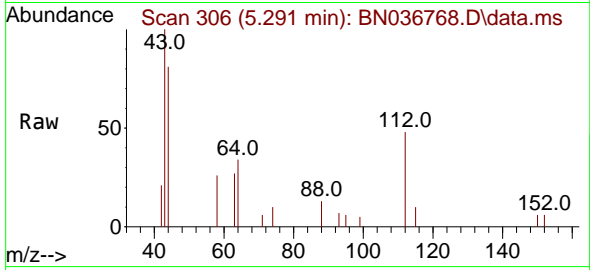




#4
 2-Fluorophenol
 Concen: 0.133 ng
 RT: 5.291 min Scan# 306
 Delta R.T. -0.021 min
 Lab File: BN036768.D
 Acq: 28 Mar 2025 11:34

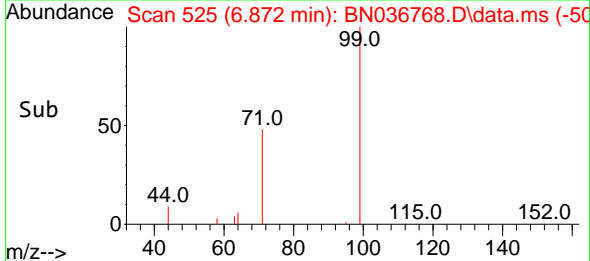
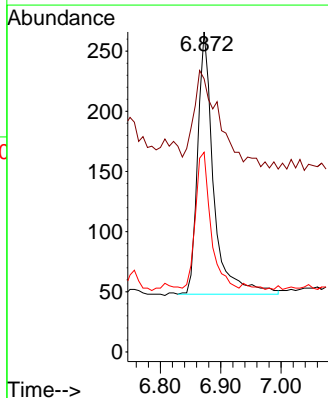
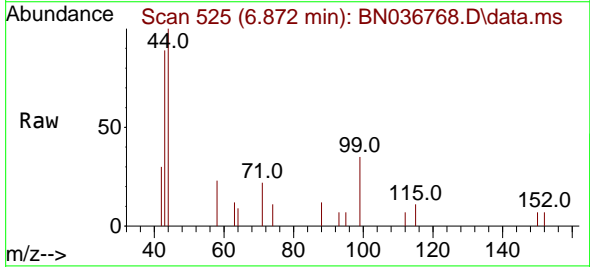
Instrument :
 BNA_N
 ClientSampleId :
 TT188S1-20250320

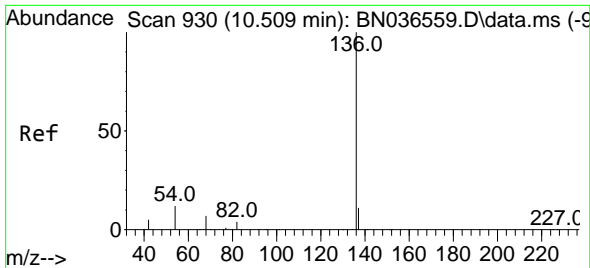
Tgt Ion	Resp	Lower	Upper
112	100		
64	68.0	53.1	79.7
63	41.2	31.8	47.8



#5
 Phenol-d6
 Concen: 0.075 ng
 RT: 6.872 min Scan# 525
 Delta R.T. -0.029 min
 Lab File: BN036768.D
 Acq: 28 Mar 2025 11:34

Tgt Ion	Resp	Lower	Upper
99	100		
42	60.9	26.5	39.7#
71	51.4	34.1	51.1#



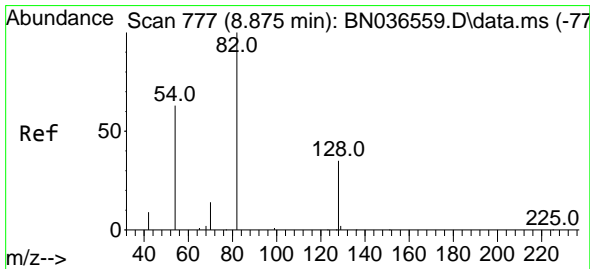
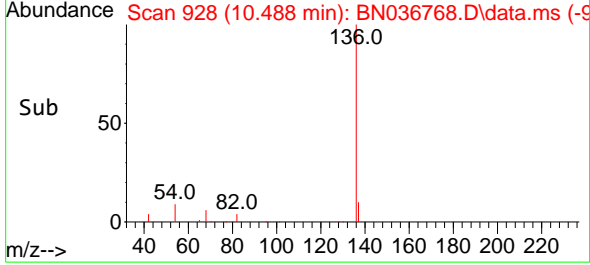
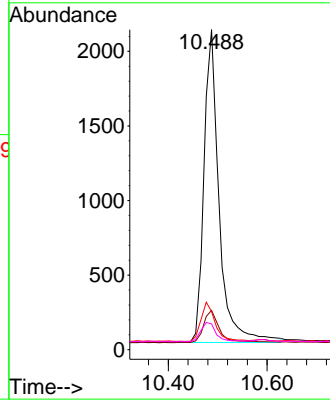
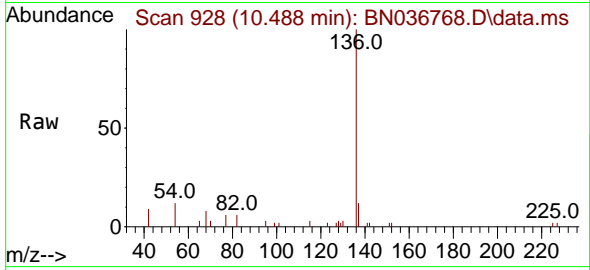


#7
 Naphthalene-d8
 Concen: 0.400 ng
 RT: 10.488 min Scan# 911
 Delta R.T. -0.021 min
 Lab File: BN036768.D
 Acq: 28 Mar 2025 11:34

Instrument :
 BNA_N
 ClientSampleId :
 TT188S1-20250320

Tgt Ion: 136 Resp: 4438

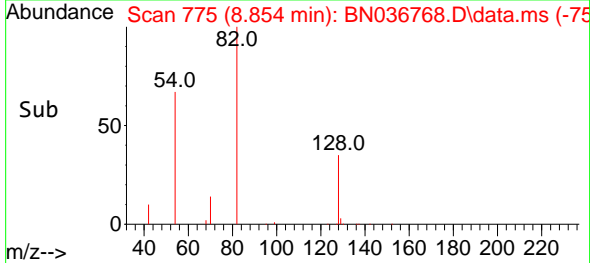
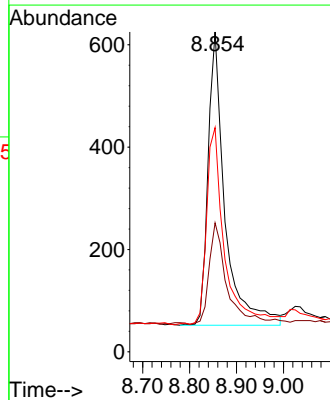
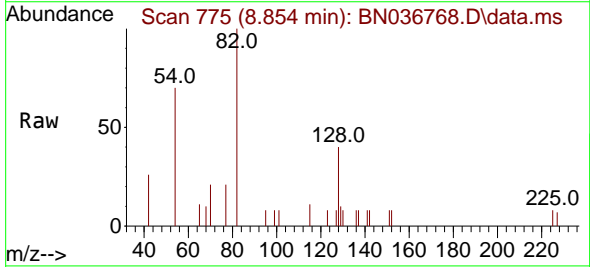
Ion	Ratio	Lower	Upper
136	100		
137	12.3	10.3	15.5
54	11.9	11.5	17.3
68	8.1	7.0	10.4

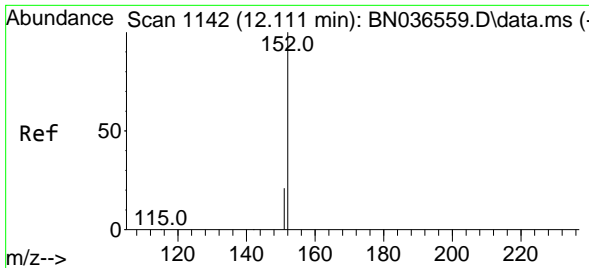


#8
 Nitrobenzene-d5
 Concen: 0.296 ng
 RT: 8.854 min Scan# 775
 Delta R.T. -0.021 min
 Lab File: BN036768.D
 Acq: 28 Mar 2025 11:34

Tgt Ion: 82 Resp: 1429

Ion	Ratio	Lower	Upper
82	100		
128	40.3	30.6	45.8
54	70.1	52.2	78.4

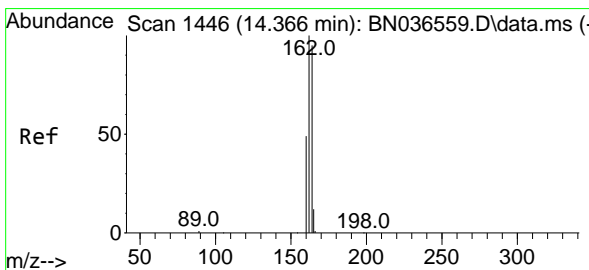
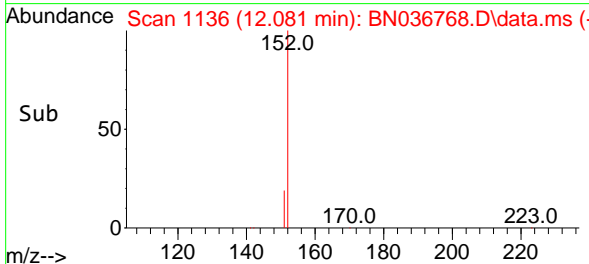
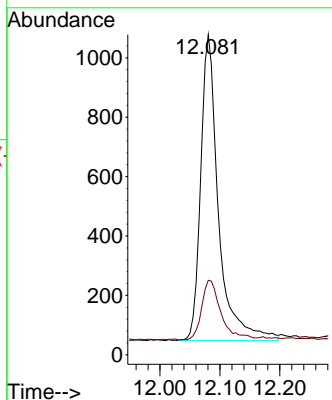
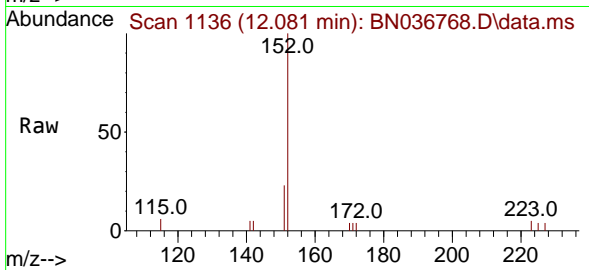




#11
 2-Methylnaphthalene-d10
 Concen: 0.321 ng
 RT: 12.081 min Scan# 1142
 Delta R.T. -0.030 min
 Lab File: BN036768.D
 Acq: 28 Mar 2025 11:34

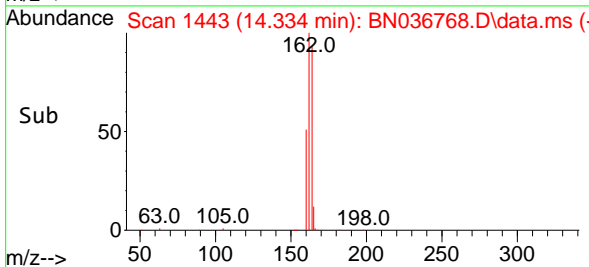
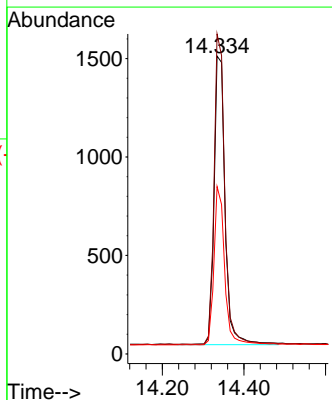
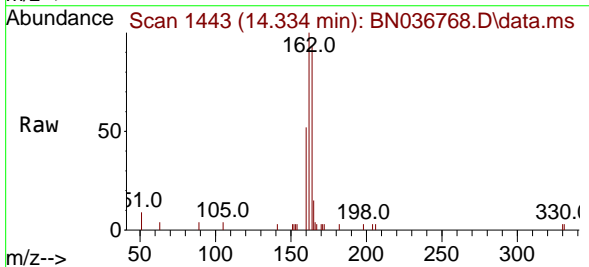
Instrument :
 BNA_N
 ClientSampleId :
 TT188S1-20250320

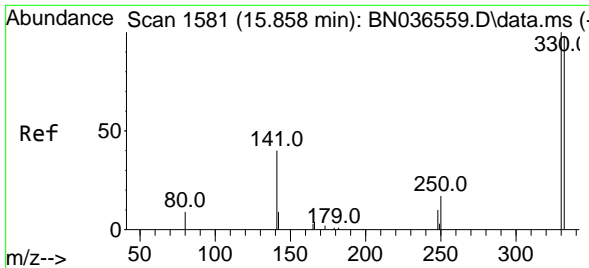
Tgt Ion:152 Resp: 2118
 Ion Ratio Lower Upper
 152 100
 151 21.2 17.0 25.6



#13
 Acenaphthene-d10
 Concen: 0.400 ng
 RT: 14.334 min Scan# 1443
 Delta R.T. -0.032 min
 Lab File: BN036768.D
 Acq: 28 Mar 2025 11:34

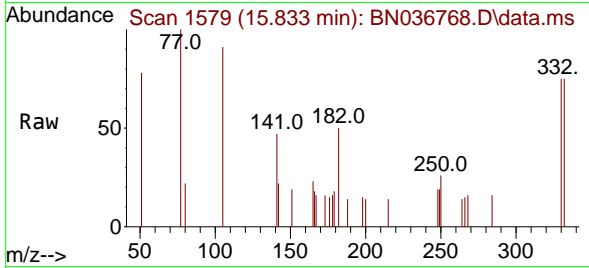
Tgt Ion:164 Resp: 2727
 Ion Ratio Lower Upper
 164 100
 162 107.4 84.2 126.2
 160 56.2 42.2 63.2



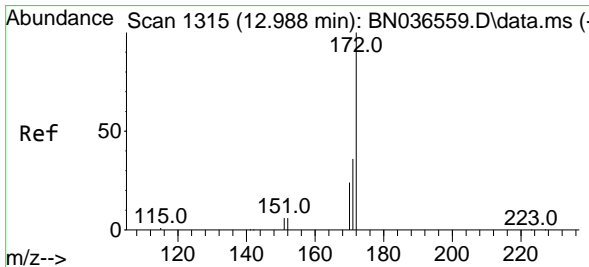
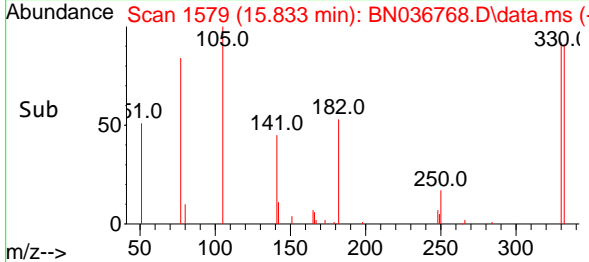
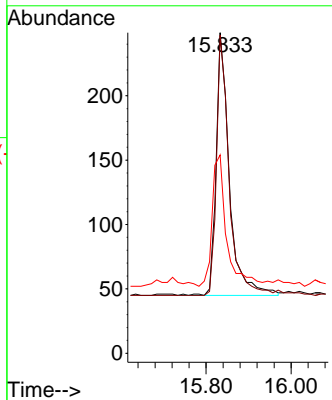


#14
 2,4,6-Tribromophenol
 Concen: 0.355 ng
 RT: 15.833 min Scan# 11
 Delta R.T. -0.025 min
 Lab File: BN036768.D
 Acq: 28 Mar 2025 11:34

Instrument :
 BNA_N
 ClientSampleId :
 TT188S1-20250320

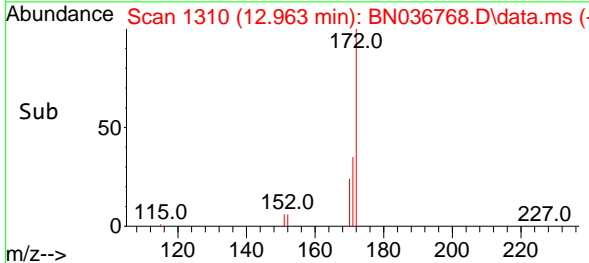
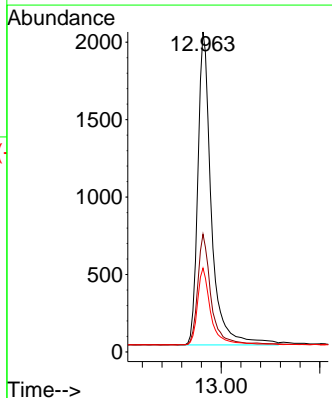
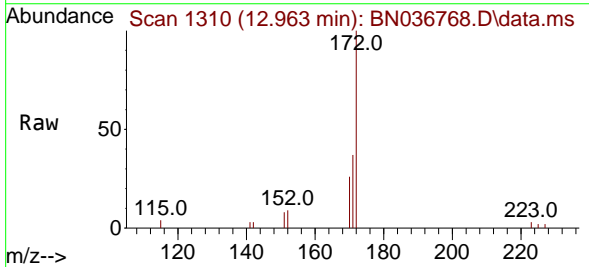


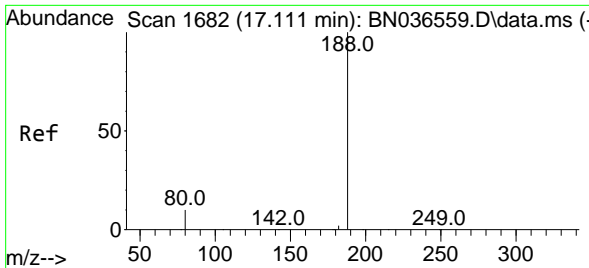
Tgt Ion:330 Resp: 439
 Ion Ratio Lower Upper
 330 100
 332 94.8 75.2 112.8
 141 54.2 43.4 65.2



#15
 2-Fluorobiphenyl
 Concen: 0.324 ng
 RT: 12.963 min Scan# 1310
 Delta R.T. -0.025 min
 Lab File: BN036768.D
 Acq: 28 Mar 2025 11:34

Tgt Ion:172 Resp: 5133
 Ion Ratio Lower Upper
 172 100
 171 36.8 29.5 44.3
 170 26.2 20.2 30.4

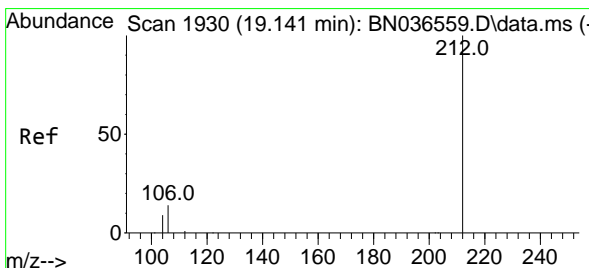
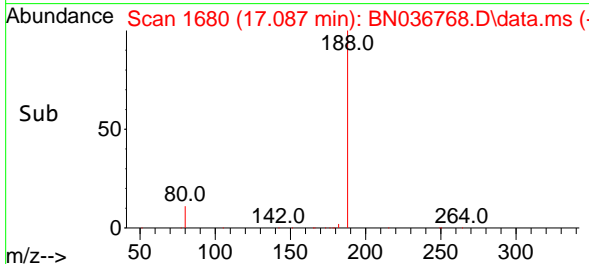
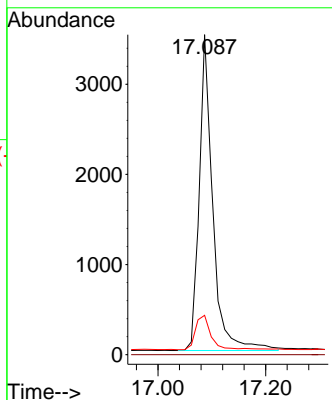
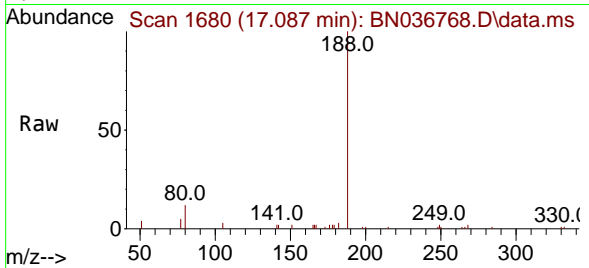




#19
 Phenanthrene-d10
 Concen: 0.400 ng
 RT: 17.087 min Scan# 1100
 Delta R.T. -0.025 min
 Lab File: BN036768.D
 Acq: 28 Mar 2025 11:34

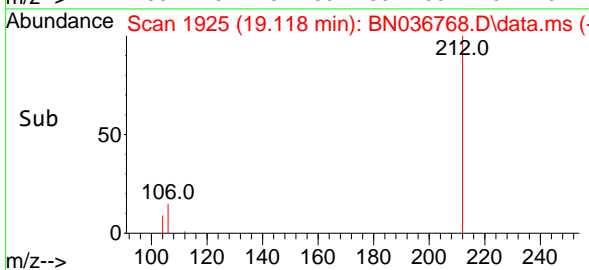
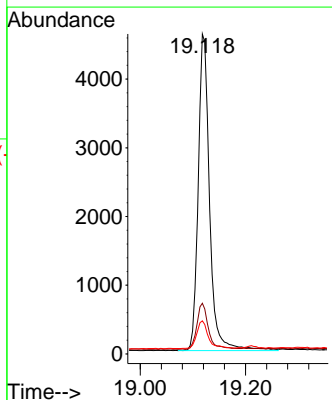
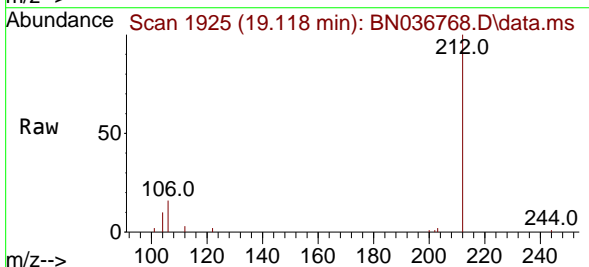
Instrument :
 BNA_N
 ClientSampleId :
 TT188S1-20250320

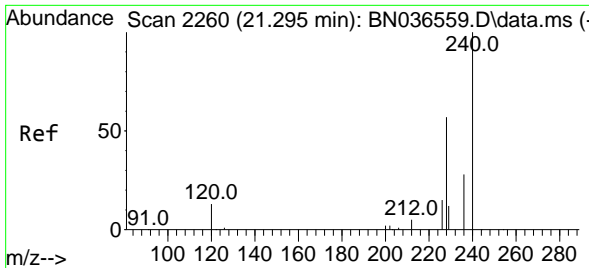
Tgt Ion	Resp	Lower	Upper
188	6125		
188	100		
94	0.0	0.0	0.0
80	12.3	8.8	13.2



#27
 Fluoranthene-d10
 Concen: 0.441 ng
 RT: 19.118 min Scan# 1925
 Delta R.T. -0.023 min
 Lab File: BN036768.D
 Acq: 28 Mar 2025 11:34

Tgt Ion	Resp	Lower	Upper
212	6928		
212	100		
106	14.6	11.8	17.6
104	8.9	7.3	10.9



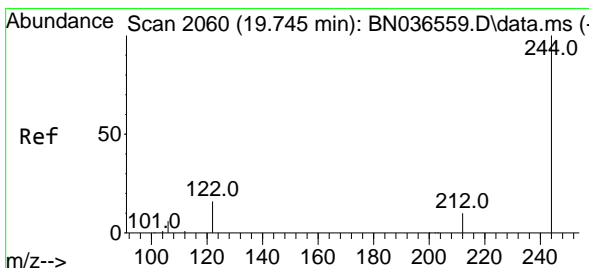
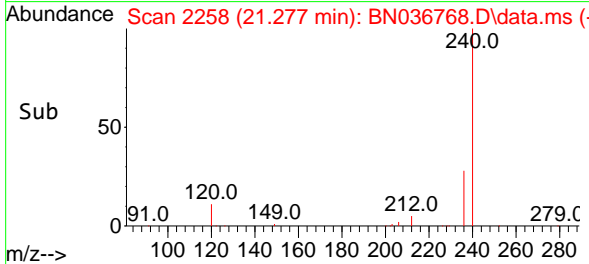
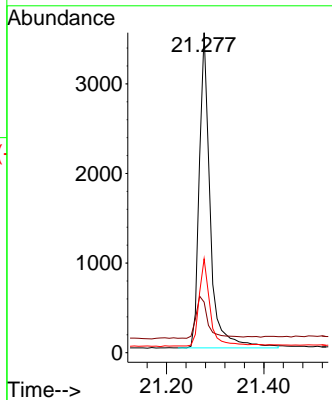
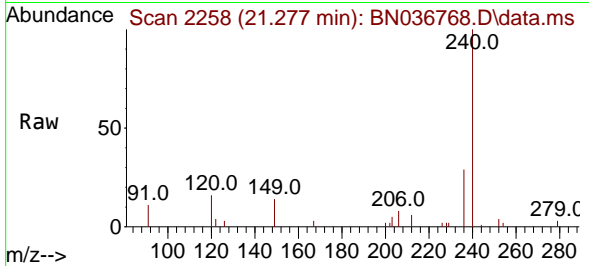


#29
 Chrysene-d12
 Concen: 0.400 ng
 RT: 21.277 min Scan# 21
 Delta R.T. -0.018 min
 Lab File: BN036768.D
 Acq: 28 Mar 2025 11:34

Instrument :
 BNA_N
 ClientSampleId :
 TT188S1-20250320

Tgt Ion:240 Resp: 5473

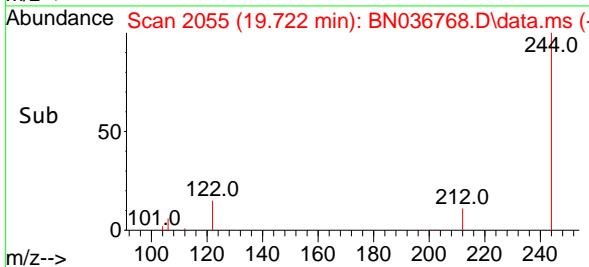
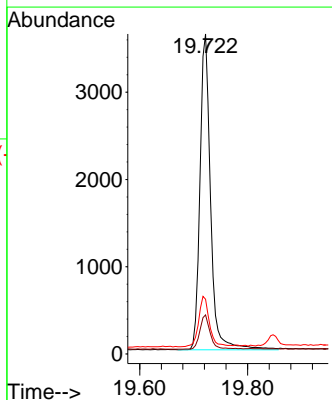
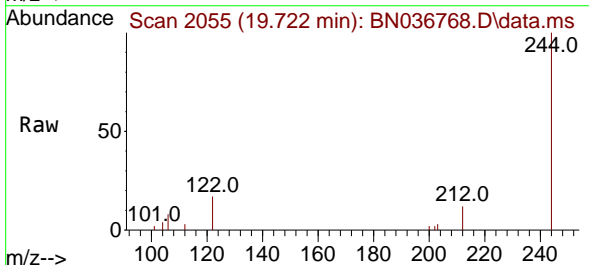
Ion	Ratio	Lower	Upper
240	100		
120	15.8	14.6	22.0
236	29.4	24.1	36.1

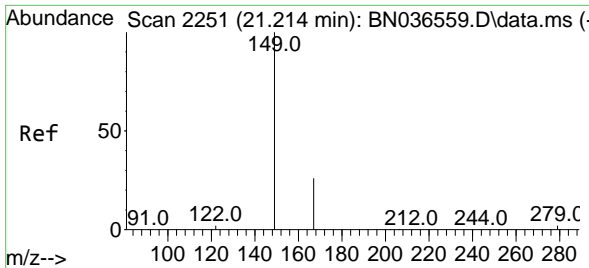


#31
 Terphenyl-d14
 Concen: 0.377 ng
 RT: 19.722 min Scan# 2055
 Delta R.T. -0.023 min
 Lab File: BN036768.D
 Acq: 28 Mar 2025 11:34

Tgt Ion:244 Resp: 4946

Ion	Ratio	Lower	Upper
244	100		
212	12.2	9.6	14.4
122	17.1	13.9	20.9

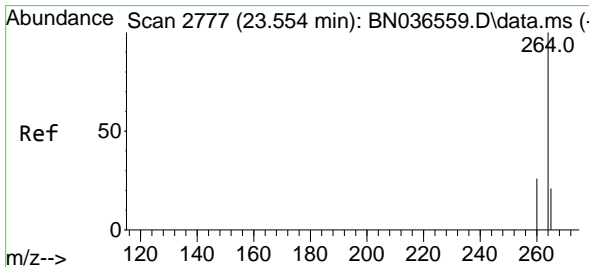
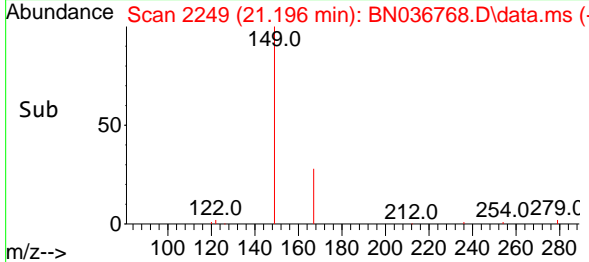
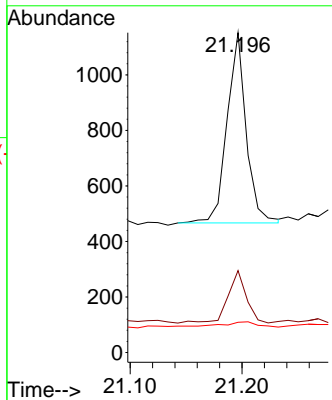
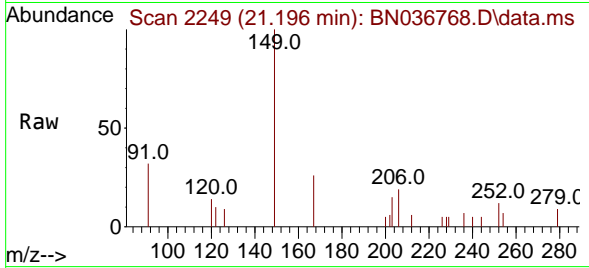




#34
 Bis(2-ethylhexyl)phthalate
 Concen: 0.060 ng
 RT: 21.196 min Scan# 21
 Delta R.T. -0.018 min
 Lab File: BN036768.D
 Acq: 28 Mar 2025 11:34

Instrument :
 BNA_N
 ClientSampleId :
 TT188S1-20250320

Tgt Ion	Resp	Lower	Upper
149	100		
167	26.7	20.7	31.1
279	4.7	3.6	5.4



#35
 Perylene-d12
 Concen: 0.400 ng
 RT: 23.519 min Scan# 2765
 Delta R.T. -0.035 min
 Lab File: BN036768.D
 Acq: 28 Mar 2025 11:34

Tgt Ion	Resp	Lower	Upper
264	100		
260	27.2	22.6	33.8
265	76.0	88.1	132.1#

