

Data Path : Z:\svoasrv\HPCHEM1\BNA_N\Data\BN032825\
 Data File : BN036807.D
 Acq On : 29 Mar 2025 12:21
 Operator : RC/JU
 Sample : SSTDCCC0.4
 Misc :
 ALS Vial : 38 Sample Multiplier: 1

Instrument :
 BNA_N
 ClientSampleId :
 SSTDCCC0.4EC

Manual Integrations
 APPROVED

Reviewed By :Anahy Claudio 03/31/2025
 Supervised By :Jagrut Upadhyay 03/31/2025

Quant Time: Mar 31 02:01:08 2025
 Quant Method : Z:\svoasrv\HPCHEM1\BNA_N\Methods\8270-SIM-BN031025.M
 Quant Title : ASP BNA STANDARDS FOR 5 POINT CALIBRATION
 QLast Update : Mon Mar 10 16:06:28 2025
 Response via : Initial Calibration

Compound	R.T.	QIon	Response	Conc Units	Dev(Min)	
Internal Standards						
1) 1,4-Dichlorobenzene-d4	7.695	152	1976	0.400 ng	-0.03	
7) Naphthalene-d8	10.477	136	4956	0.400 ng	-0.03	
13) Acenaphthene-d10	14.334	164	3044	0.400 ng	-0.03	
19) Phenanthrene-d10	17.086	188	6169	0.400 ng	#-0.02	
29) Chrysene-d12	21.268	240	4366	0.400 ng	-0.03	
35) Perylene-d12	23.516	264	3818	0.400 ng	#-0.04	
System Monitoring Compounds						
4) 2-Fluorophenol	5.290	112	1649	0.358 ng	-0.02	
5) Phenol-d6	6.865	99	1932	0.340 ng	-0.04	
8) Nitrobenzene-d5	8.843	82	1802	0.334 ng	-0.03	
11) 2-Methylnaphthalene-d10	12.075	152	2608	0.354 ng	-0.04	
14) 2,4,6-Tribromophenol	15.833	330	513	0.371 ng	-0.02	
15) 2-Fluorobiphenyl	12.958	172	5830	0.329 ng	-0.03	
27) Fluoranthene-d10	19.118	212	6077	0.384 ng	-0.02	
31) Terphenyl-d14	19.722	244	3821	0.365 ng	-0.02	
Target Compounds						
2) 1,4-Dioxane	3.225	88	902	0.411 ng		Qvalue 97
3) n-Nitrosodimethylamine	3.535	42	1839	0.415 ng		92
6) bis(2-Chloroethyl)ether	7.125	93	1990	0.338 ng		99
9) Naphthalene	10.530	128	5183	0.356 ng		99
10) Hexachlorobutadiene	10.818	225	1228	0.358 ng	#	100
12) 2-Methylnaphthalene	12.151	142	3312	0.357 ng		98
16) Acenaphthylene	14.056	152	5001	0.348 ng		99
17) Acenaphthene	14.398	154	3395	0.361 ng		99
18) Fluorene	15.382	166	4624	0.364 ng		100
20) 4,6-Dinitro-2-methylph...	15.478	198	475	0.447 ng	#	73
21) 4-Bromophenyl-phenylether	16.280	248	1424	0.368 ng		93
22) Hexachlorobenzene	16.391	284	1729	0.371 ng		97
23) Atrazine	16.553	200	1168	0.377 ng		96
24) Pentachlorophenol	16.739	266	792	0.372 ng		99
25) Phenanthrene	17.124	178	6985	0.377 ng		100
26) Anthracene	17.211	178	6251	0.374 ng		98
28) Fluoranthene	19.146	202	8157	0.392 ng		98
30) Pyrene	19.508	202	8270	0.387 ng		100
32) Benzo(a)anthracene	21.259	228	5377	0.354 ng		100
33) Chrysene	21.304	228	6263	0.378 ng		99
34) Bis(2-ethylhexyl)phtha...	21.196	149	4162	0.385 ng	#	99
36) Indeno(1,2,3-cd)pyrene	25.779	276	5188	0.376 ng		93
37) Benzo(b)fluoranthene	22.841	252	5191	0.374 ng		98
38) Benzo(k)fluoranthene	22.885	252	5835m	0.400 ng		
39) Benzo(a)pyrene	23.417	252	4547	0.389 ng		96
40) Dibenzo(a,h)anthracene	25.800	278	4113m	0.383 ng		
41) Benzo(g,h,i)perylene	26.472	276	4558	0.371 ng		95

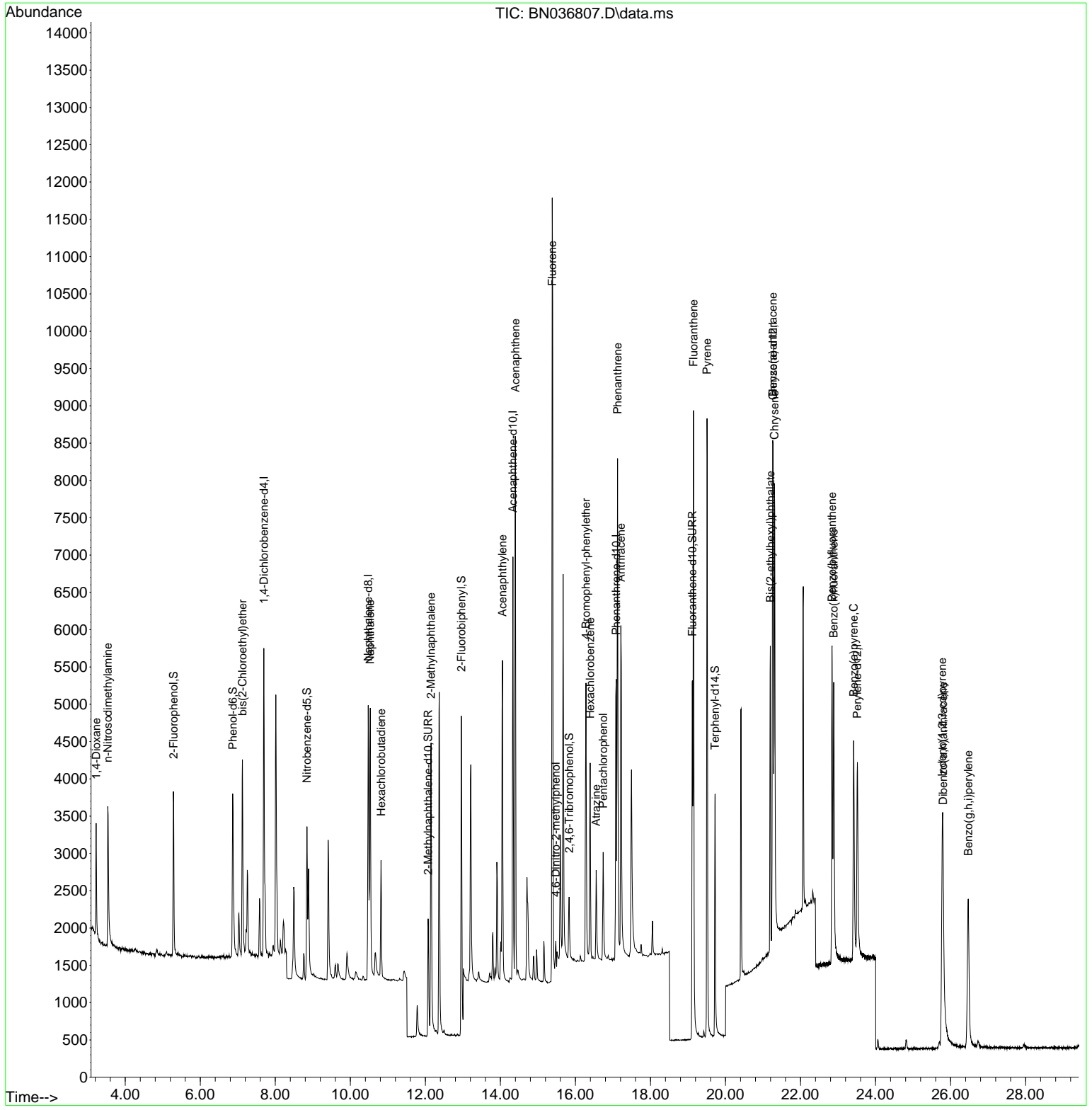
(#) = qualifier out of range (m) = manual integration (+) = signals summed

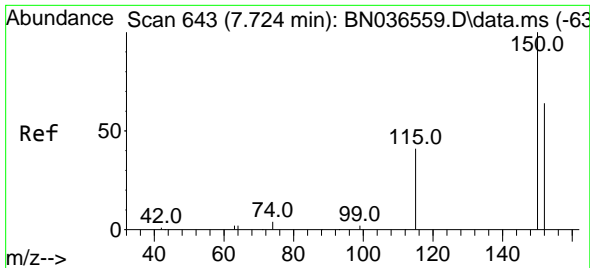
Data Path : Z:\svoasrv\HPCHEM1\BNA_N\Data\BN032825\
 Data File : BN036807.D
 Acq On : 29 Mar 2025 12:21
 Operator : RC/JU
 Sample : SSTDCCC0.4
 Misc :
 ALS Vial : 38 Sample Multiplier: 1

Instrument :
 BNA_N
ClientSampleId :
 SSTDCCC0.4EC

Quant Time: Mar 31 02:01:08 2025
 Quant Method : Z:\svoasrv\HPCHEM1\BNA_N\Methods\8270-SIM-BN031025.M
 Quant Title : ASP BNA STANDARDS FOR 5 POINT CALIBRATION
 QLast Update : Mon Mar 10 16:06:28 2025
 Response via : Initial Calibration

Manual Integrations
APPROVED
 Reviewed By :Anahy Claudio 03/31/2025
 Supervised By :Jagrut Upadhyay 03/31/2025





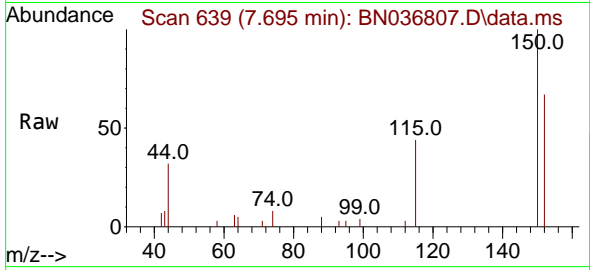
#1
 1,4-Dichlorobenzene-d4
 Concen: 0.400 ng
 RT: 7.695 min Scan# 61
 Delta R.T. -0.029 min
 Lab File: BN036807.D
 Acq: 29 Mar 2025 12:21

Instrument :

BNA_N

ClientSampleId :

SSTDCCC0.4EC



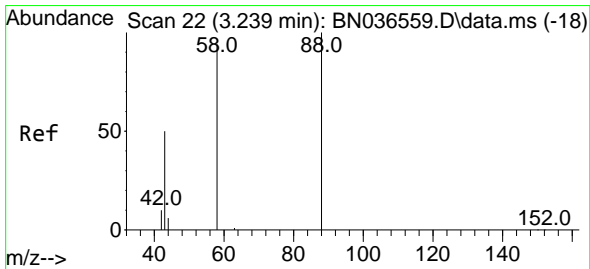
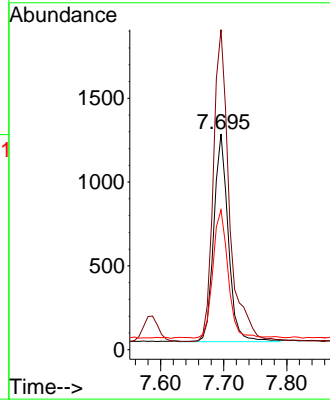
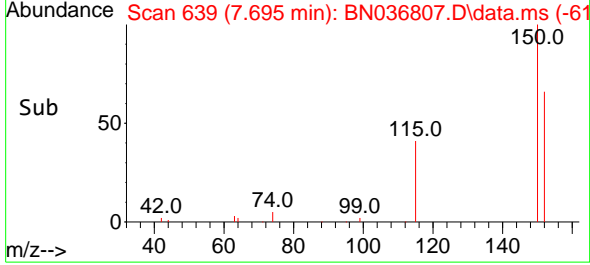
Tgt Ion:152 Resp: 1970
 Ion Ratio Lower Upper
 152 100
 150 148.3 123.7 185.5
 115 64.8 54.3 81.5

Manual Integrations

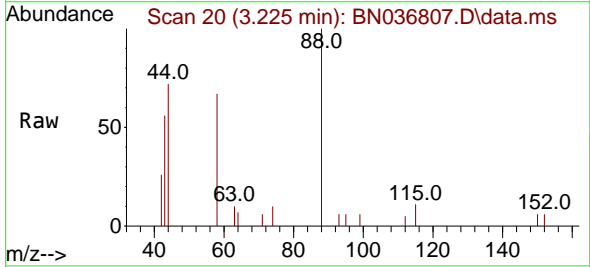
APPROVED

Reviewed By :Anahy Claudio 03/31/2025

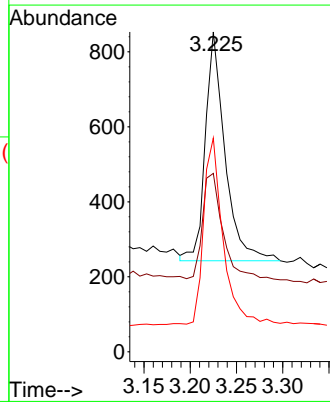
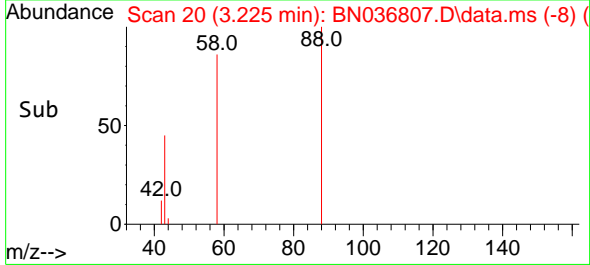
Supervised By :Jagrut Upadhyay 03/31/2025

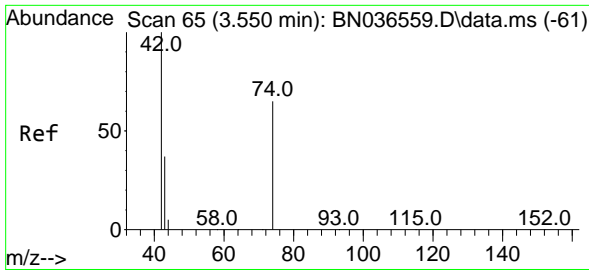


#2
 1,4-Dioxane
 Concen: 0.411 ng
 RT: 3.225 min Scan# 20
 Delta R.T. -0.014 min
 Lab File: BN036807.D
 Acq: 29 Mar 2025 12:21



Tgt Ion: 88 Resp: 902
 Ion Ratio Lower Upper
 88 100
 43 48.6 37.8 56.8
 58 81.3 67.4 101.2





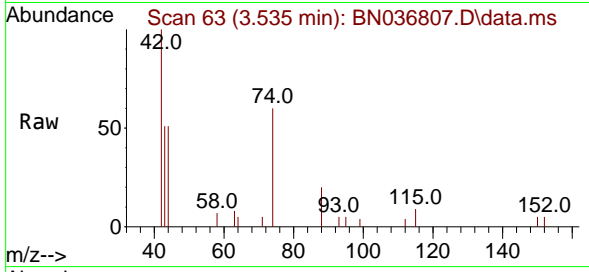
#3
 n-Nitrosodimethylamine
 Concen: 0.415 ng
 RT: 3.535 min Scan# 61
 Delta R.T. -0.014 min
 Lab File: BN036807.D
 Acq: 29 Mar 2025 12:21

Instrument :

BNA_N

ClientSampleId :

SSTDCCC0.4EC



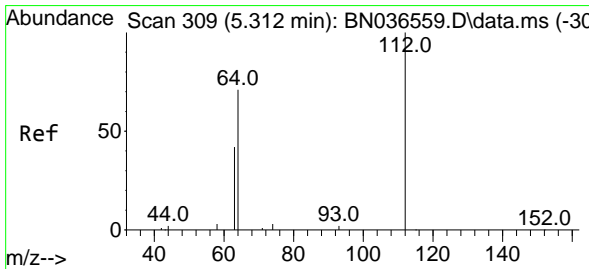
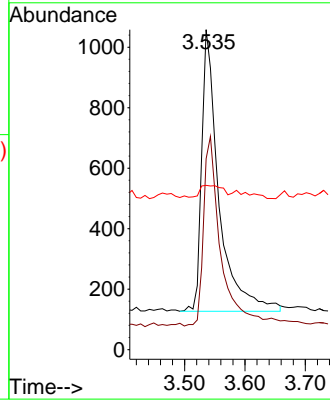
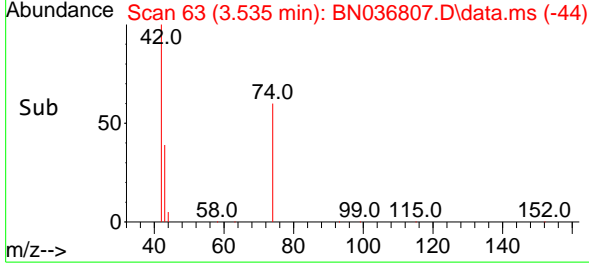
Tgt Ion: 42 Resp: 1839
 Ion Ratio Lower Upper
 42 100
 74 68.4 60.6 90.8
 44 6.7 6.3 9.5

Manual Integrations

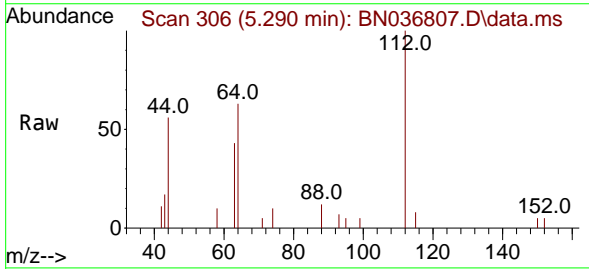
APPROVED

Reviewed By :Anahy Claudio 03/31/2025

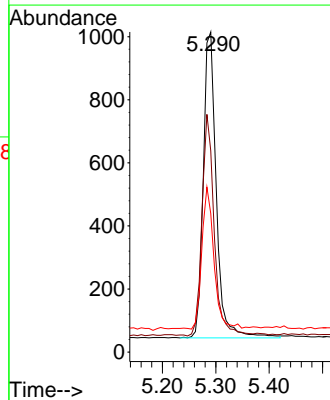
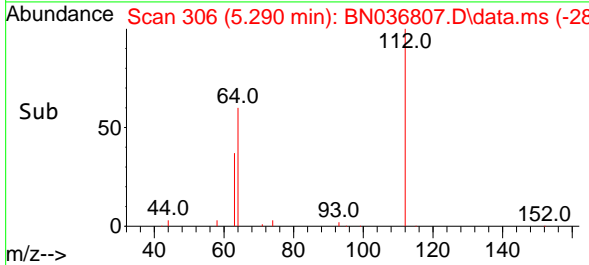
Supervised By :Jagrut Upadhyay 03/31/2025

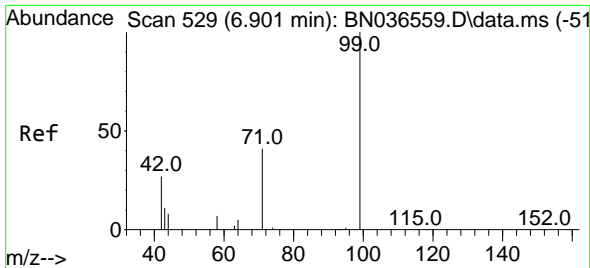


#4
 2-Fluorophenol
 Concen: 0.358 ng
 RT: 5.290 min Scan# 306
 Delta R.T. -0.022 min
 Lab File: BN036807.D
 Acq: 29 Mar 2025 12:21



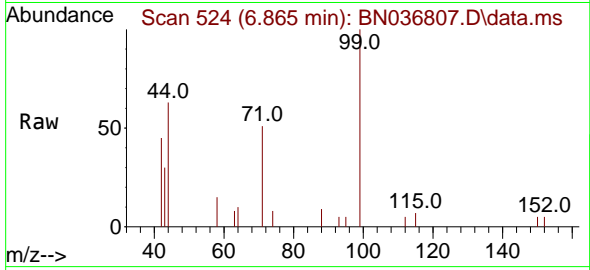
Tgt Ion:112 Resp: 1649
 Ion Ratio Lower Upper
 112 100
 64 68.3 53.1 79.7
 63 42.4 31.8 47.8





#5
 Phenol-d6
 Concen: 0.340 ng
 RT: 6.865 min Scan# 51
 Delta R.T. -0.036 min
 Lab File: BN036807.D
 Acq: 29 Mar 2025 12:21

Instrument :
 BNA_N
 ClientSampleId :
 SSTDCCC0.4EC

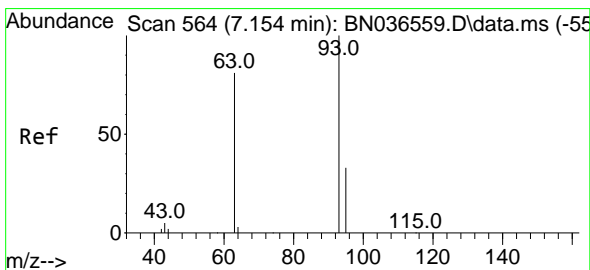
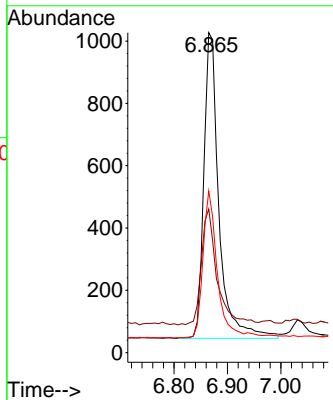
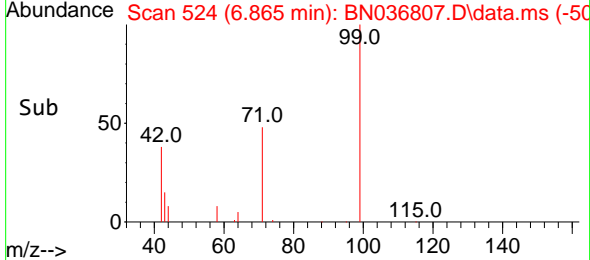


Tgt Ion: 99 Resp: 193

Ion	Ratio	Lower	Upper
99	100		
42	39.4	26.5	39.7
71	46.4	34.1	51.1

Manual Integrations
 APPROVED

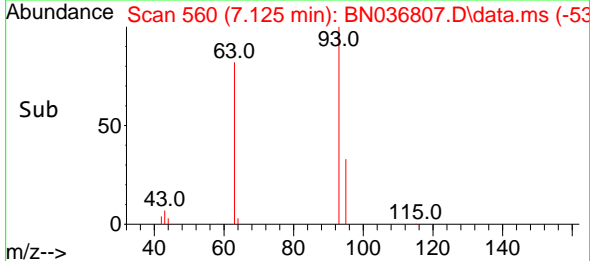
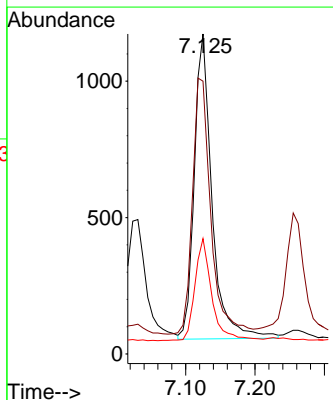
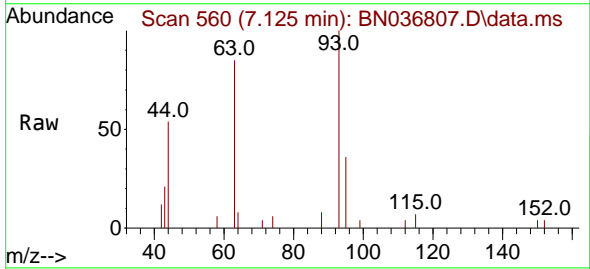
Reviewed By :Anahy Claudio 03/31/2025
 Supervised By :Jagrut Upadhyay 03/31/2025

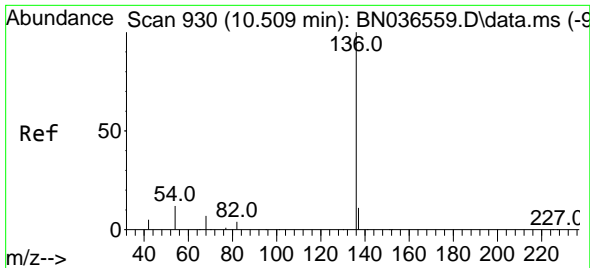


#6
 bis(2-Chloroethyl)ether
 Concen: 0.338 ng
 RT: 7.125 min Scan# 560
 Delta R.T. -0.029 min
 Lab File: BN036807.D
 Acq: 29 Mar 2025 12:21

Tgt Ion: 93 Resp: 1990

Ion	Ratio	Lower	Upper
93	100		
63	86.3	67.7	101.5
95	31.9	25.6	38.4





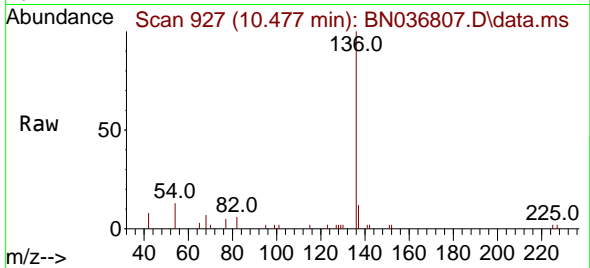
#7
 Naphthalene-d8
 Concen: 0.400 ng
 RT: 10.477 min Scan# 91
 Delta R.T. -0.032 min
 Lab File: BN036807.D
 Acq: 29 Mar 2025 12:21

Instrument :

BNA_N

ClientSampleId :

SSTDCCC0.4EC



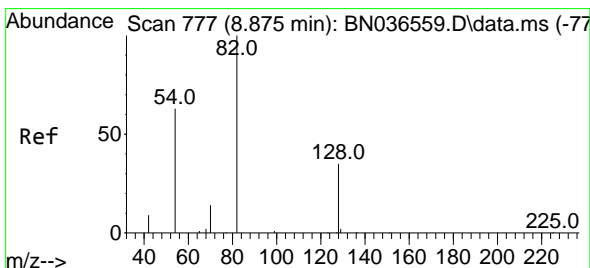
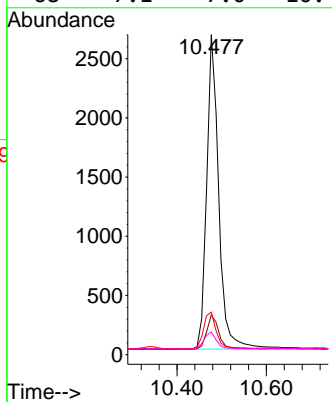
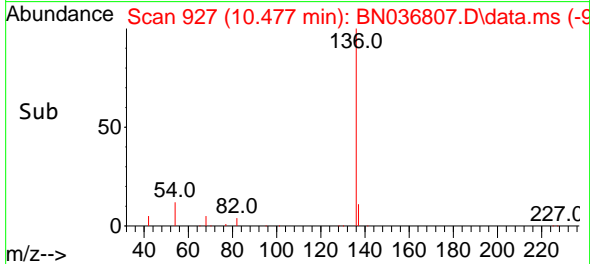
Tgt Ion: 136 Resp: 4950

Ion	Ratio	Lower	Upper
136	100		
137	12.4	10.3	15.5
54	13.3	11.5	17.3
68	7.1	7.0	10.4

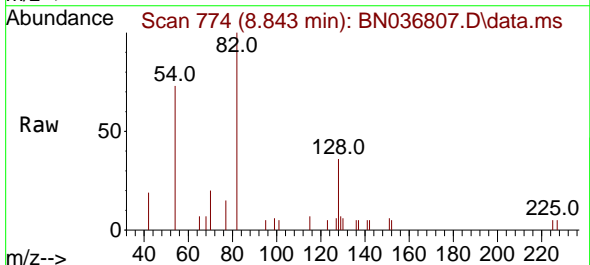
Manual Integrations

APPROVED

Reviewed By :Anahy Claudio 03/31/2025
 Supervised By :Jagrut Upadhyay 03/31/2025

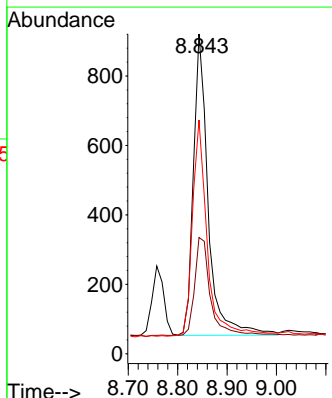
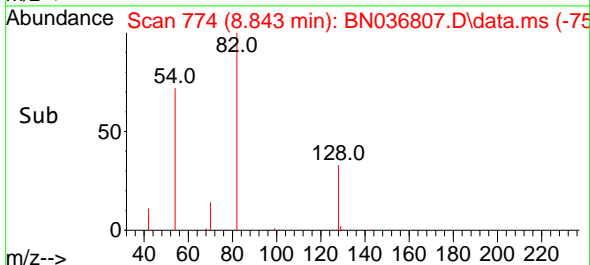


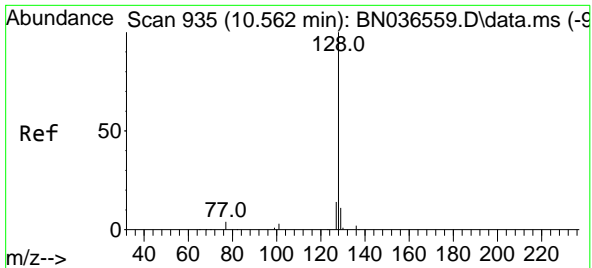
#8
 Nitrobenzene-d5
 Concen: 0.334 ng
 RT: 8.843 min Scan# 774
 Delta R.T. -0.032 min
 Lab File: BN036807.D
 Acq: 29 Mar 2025 12:21



Tgt Ion: 82 Resp: 1802

Ion	Ratio	Lower	Upper
82	100		
128	36.4	30.6	45.8
54	73.1	52.2	78.4





#9
 Naphthalene
 Concen: 0.356 ng
 RT: 10.530 min Scan# 911
 Delta R.T. -0.032 min
 Lab File: BN036807.D
 Acq: 29 Mar 2025 12:21

Instrument :

BNA_N

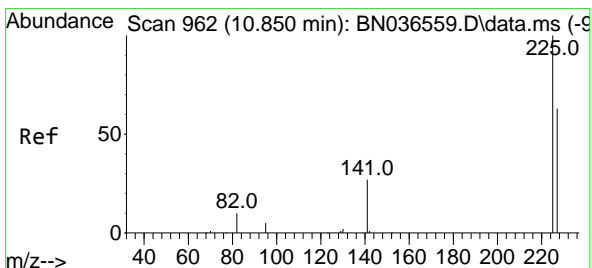
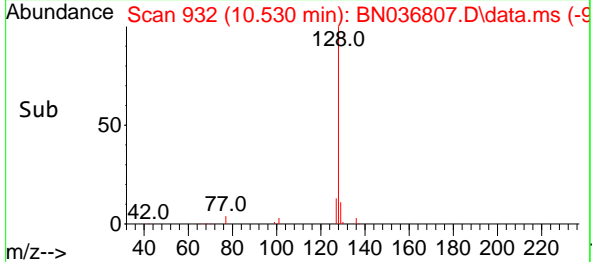
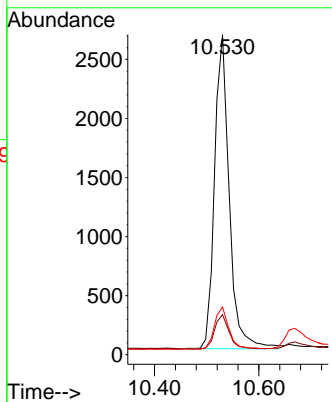
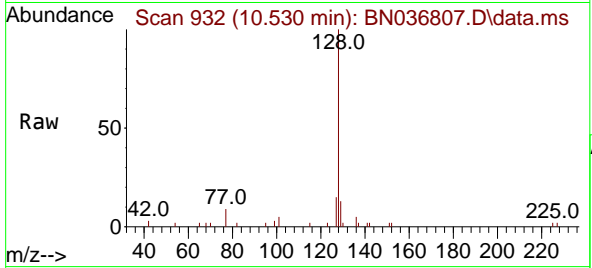
ClientSampleId :

SSTDCCC0.4EC

Tgt Ion:128 Resp: 518
 Ion Ratio Lower Upper
 128 100
 129 12.5 9.8 14.6
 127 14.9 11.8 17.8

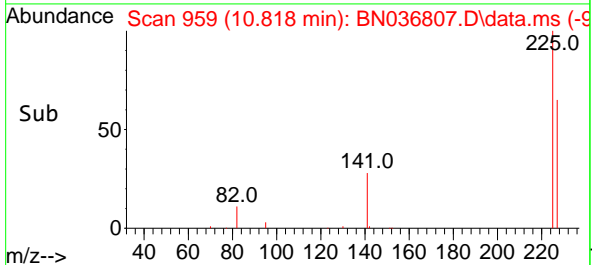
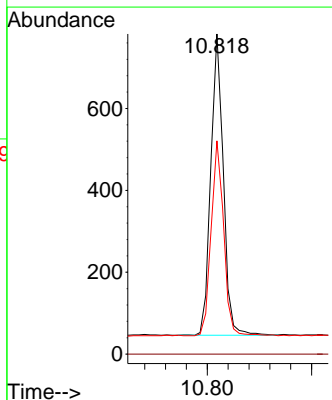
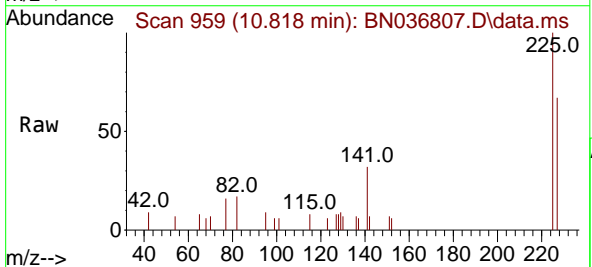
Manual Integrations
 APPROVED

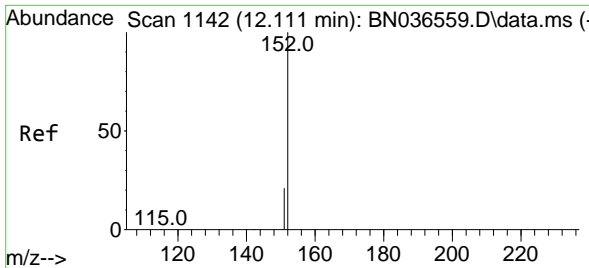
Reviewed By :Anahy Claudio 03/31/2025
 Supervised By :Jagrut Upadhyay 03/31/2025



#10
 Hexachlorobutadiene
 Concen: 0.358 ng
 RT: 10.818 min Scan# 959
 Delta R.T. -0.032 min
 Lab File: BN036807.D
 Acq: 29 Mar 2025 12:21

Tgt Ion:225 Resp: 1228
 Ion Ratio Lower Upper
 225 100
 223 0.0 0.0 0.0
 227 64.7 51.8 77.8





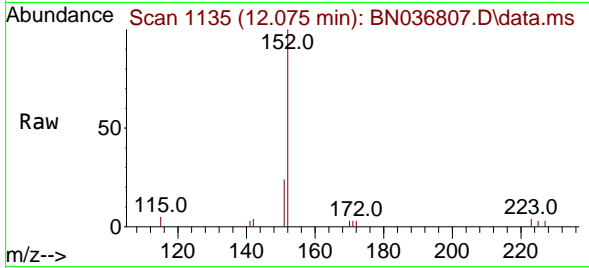
#11
 2-Methylnaphthalene-d10
 Concen: 0.354 ng
 RT: 12.075 min Scan# 1135
 Delta R.T. -0.035 min
 Lab File: BN036807.D
 Acq: 29 Mar 2025 12:21

Instrument :

BNA_N

ClientSampleId :

SSTDCCC0.4EC



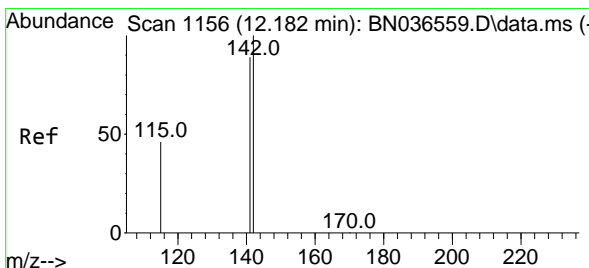
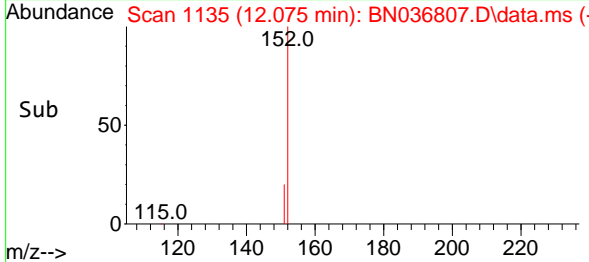
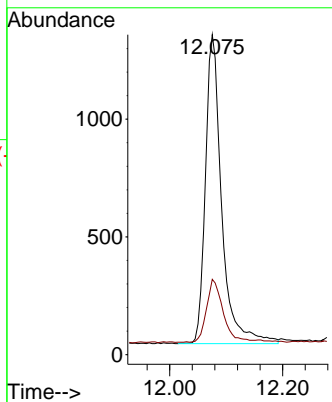
Tgt Ion:152 Resp: 2608
 Ion Ratio Lower Upper
 152 100
 151 20.6 17.0 25.6

Manual Integrations

APPROVED

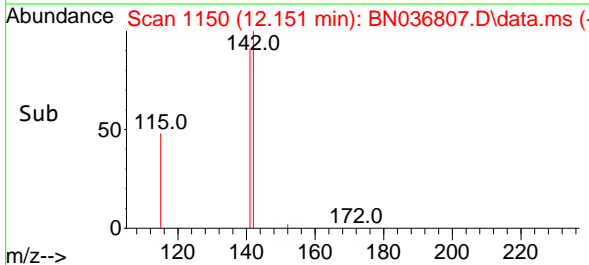
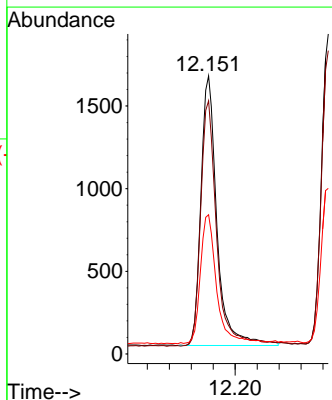
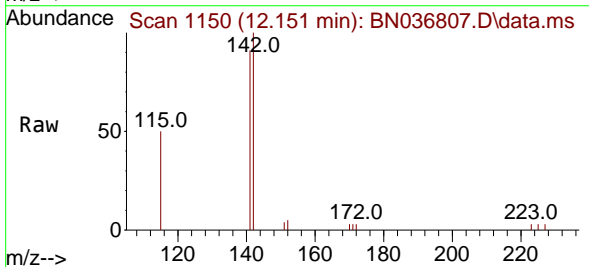
Reviewed By :Anahy Claudio 03/31/2025

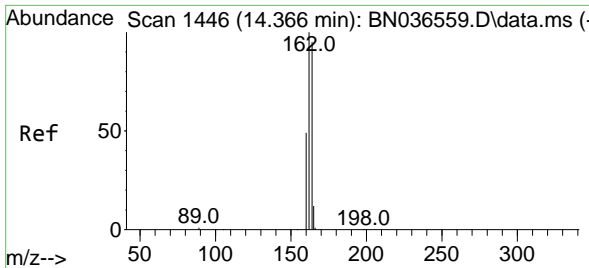
Supervised By :Jagrut Upadhyay 03/31/2025



#12
 2-Methylnaphthalene
 Concen: 0.357 ng
 RT: 12.151 min Scan# 1150
 Delta R.T. -0.030 min
 Lab File: BN036807.D
 Acq: 29 Mar 2025 12:21

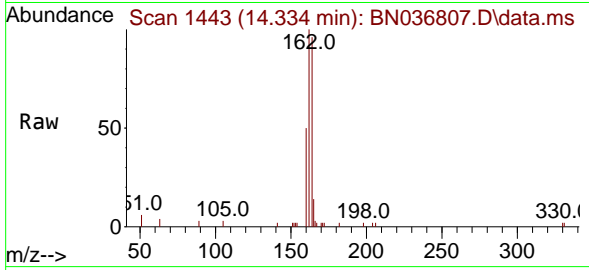
Tgt Ion:142 Resp: 3312
 Ion Ratio Lower Upper
 142 100
 141 91.0 71.7 107.5
 115 50.1 38.3 57.5





#13
 Acenaphthene-d10
 Concen: 0.400 ng
 RT: 14.334 min Scan# 14
 Delta R.T. -0.032 min
 Lab File: BN036807.D
 Acq: 29 Mar 2025 12:21

Instrument :
 BNA_N
ClientSampleId :
 SSTDCCC0.4EC

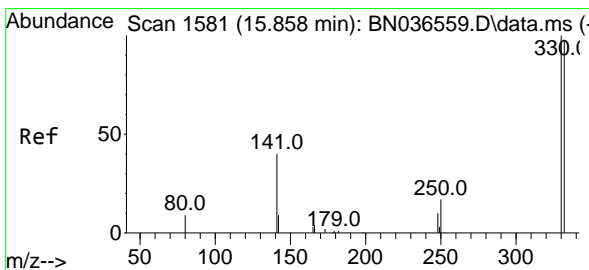
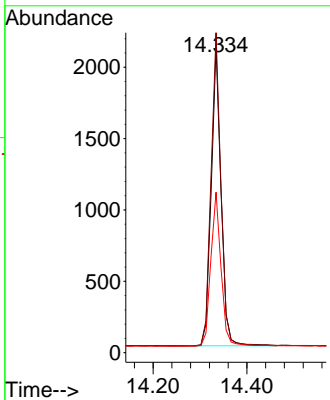
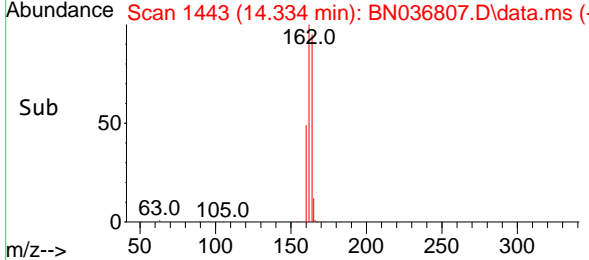


Tgt Ion:164 Resp: 304

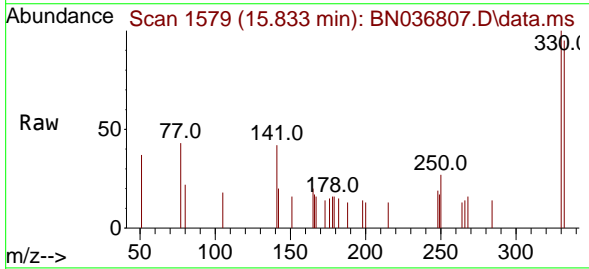
Ion	Ratio	Lower	Upper
164	100		
162	104.5	84.2	126.2
160	52.4	42.2	63.2

Manual Integrations
APPROVED

Reviewed By :Anahy Claudio 03/31/2025
 Supervised By :Jagrut Upadhyay 03/31/2025

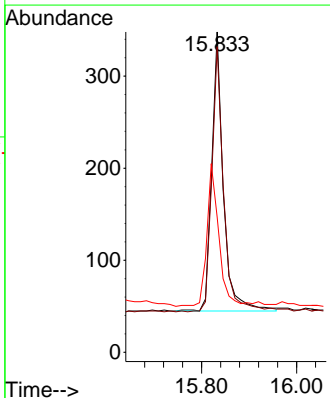
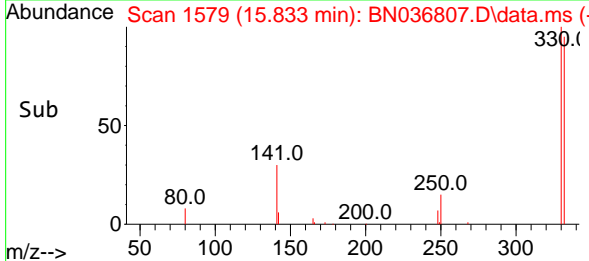


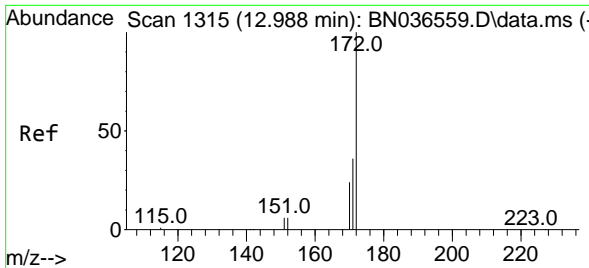
#14
 2,4,6-Tribromophenol
 Concen: 0.371 ng
 RT: 15.833 min Scan# 1579
 Delta R.T. -0.025 min
 Lab File: BN036807.D
 Acq: 29 Mar 2025 12:21



Tgt Ion:330 Resp: 513

Ion	Ratio	Lower	Upper
330	100		
332	96.9	75.2	112.8
141	52.4	43.4	65.2





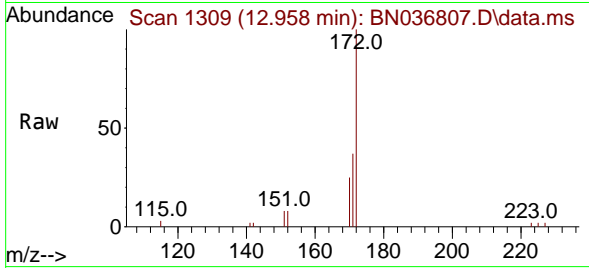
#15
 2-Fluorobiphenyl
 Concen: 0.329 ng
 RT: 12.958 min Scan# 11
 Delta R.T. -0.030 min
 Lab File: BN036807.D
 Acq: 29 Mar 2025 12:21

Instrument :

BNA_N

ClientSampleId :

SSTDCCC0.4EC



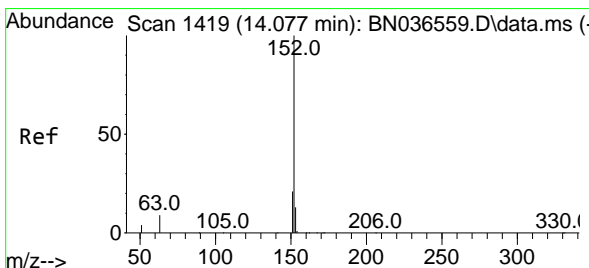
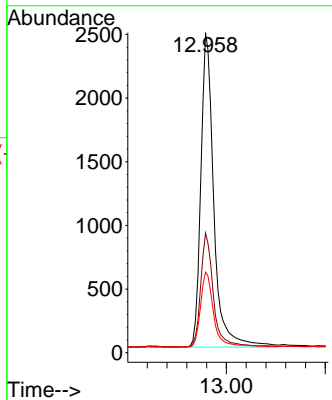
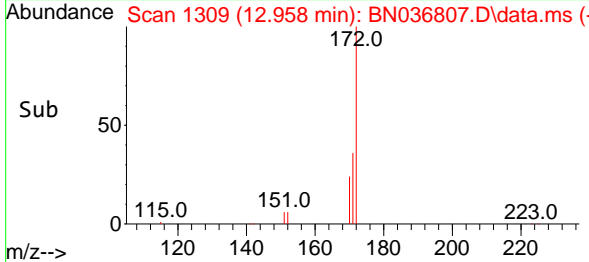
Tgt Ion:172 Resp: 5830
 Ion Ratio Lower Upper
 172 100
 171 37.4 29.5 44.3
 170 25.2 20.2 30.4

Manual Integrations

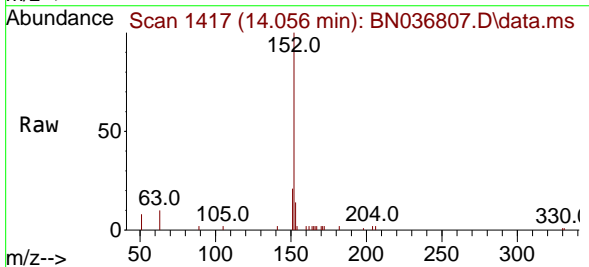
APPROVED

Reviewed By :Anahy Claudio 03/31/2025

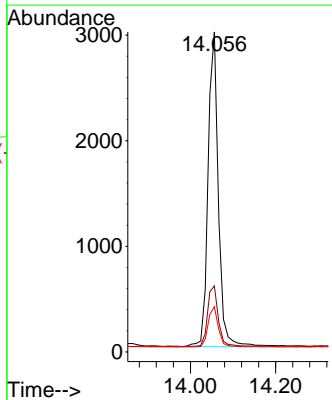
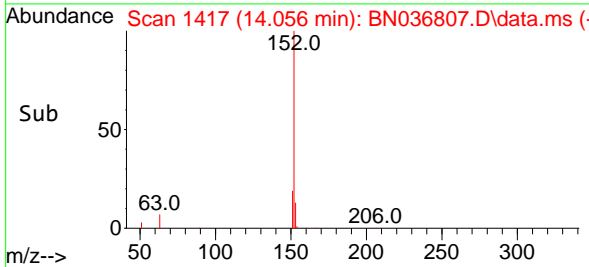
Supervised By :Jagrut Upadhyay 03/31/2025

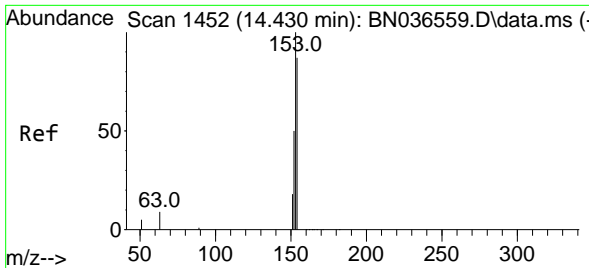


#16
 Acenaphthylene
 Concen: 0.348 ng
 RT: 14.056 min Scan# 1417
 Delta R.T. -0.021 min
 Lab File: BN036807.D
 Acq: 29 Mar 2025 12:21



Tgt Ion:152 Resp: 5001
 Ion Ratio Lower Upper
 152 100
 151 19.7 16.2 24.4
 153 12.6 10.6 15.8





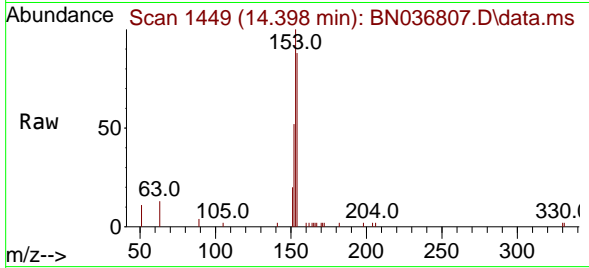
#17
 Acenaphthene
 Concen: 0.361 ng
 RT: 14.398 min Scan# 1449
 Delta R.T. -0.032 min
 Lab File: BN036807.D
 Acq: 29 Mar 2025 12:21

Instrument :

BNA_N

ClientSampleId :

SSTDCCC0.4EC



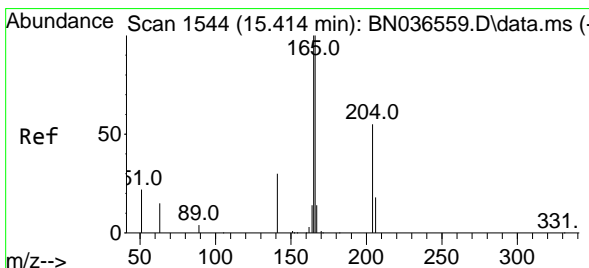
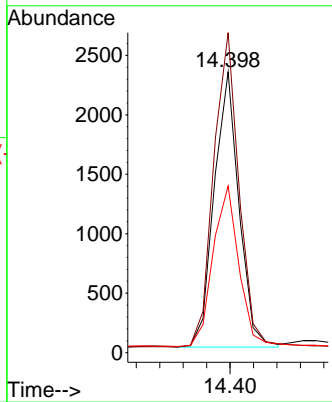
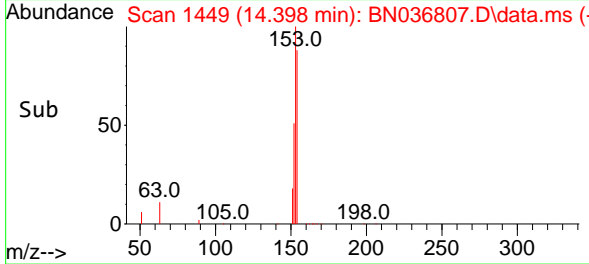
Tgt Ion:154 Resp: 339
 Ion Ratio Lower Upper
 154 100
 153 116.8 94.1 141.1
 152 61.6 49.8 74.6

Manual Integrations

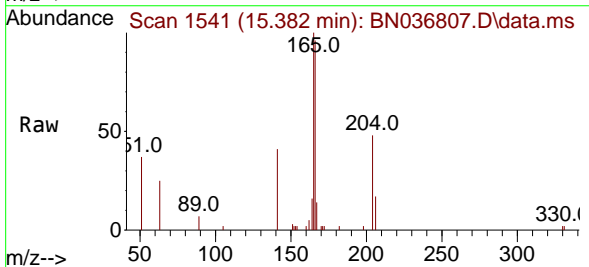
APPROVED

Reviewed By :Anahy Claudio 03/31/2025

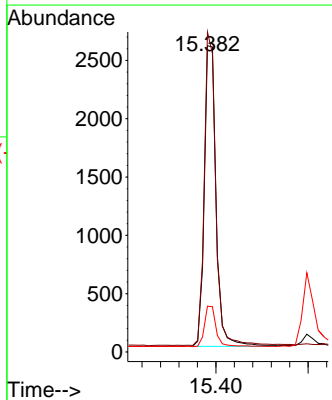
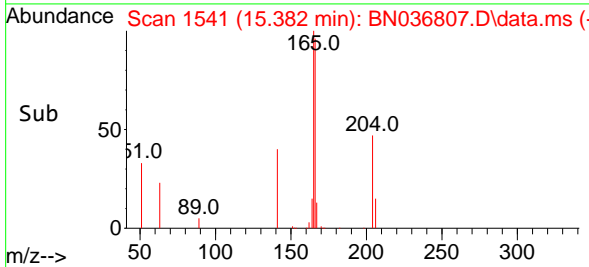
Supervised By :Jagrut Upadhyay 03/31/2025

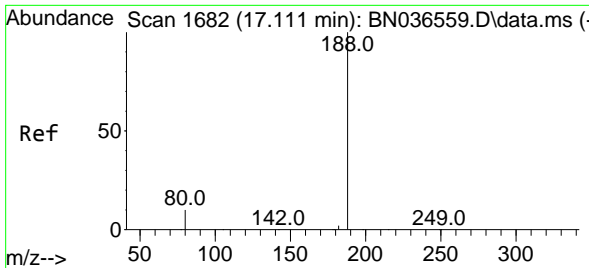


#18
 Fluorene
 Concen: 0.364 ng
 RT: 15.382 min Scan# 1541
 Delta R.T. -0.032 min
 Lab File: BN036807.D
 Acq: 29 Mar 2025 12:21



Tgt Ion:166 Resp: 4624
 Ion Ratio Lower Upper
 166 100
 165 99.9 79.8 119.8
 167 13.3 10.6 15.8





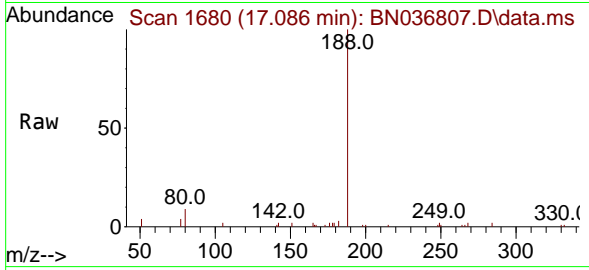
#19
 Phenanthrene-d10
 Concen: 0.400 ng
 RT: 17.086 min Scan# 10
 Delta R.T. -0.025 min
 Lab File: BN036807.D
 Acq: 29 Mar 2025 12:21

Instrument :

BNA_N

ClientSampleId :

SSTDCCC0.4EC



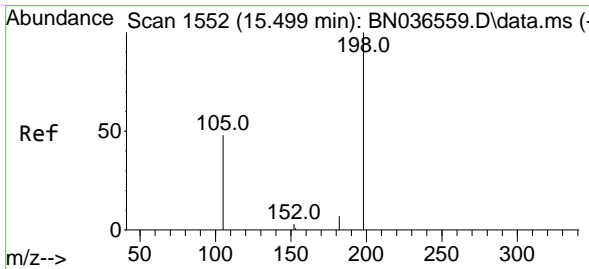
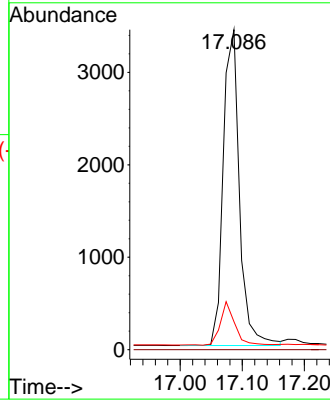
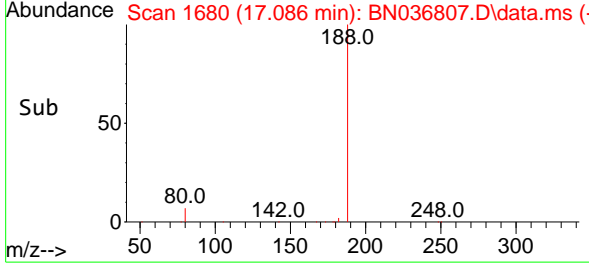
Tgt Ion:188 Resp: 6169
 Ion Ratio Lower Upper
 188 100
 94 0.0 0.0 0.0
 80 8.7 8.8 13.2

Manual Integrations

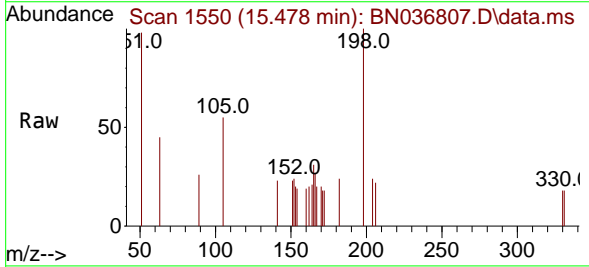
APPROVED

Reviewed By :Anahy Claudio 03/31/2025

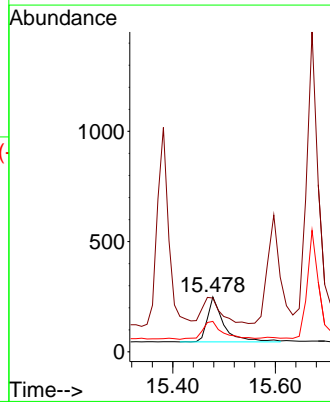
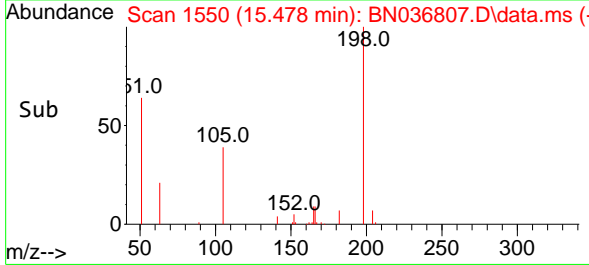
Supervised By :Jagrut Upadhyay 03/31/2025

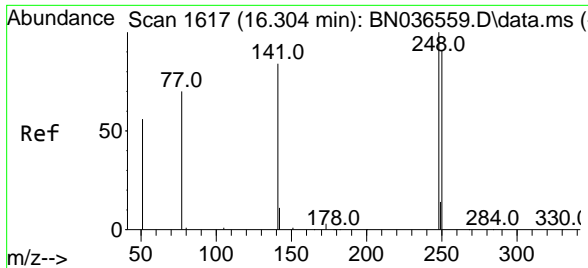


#20
 4,6-Dinitro-2-methylphenol
 Concen: 0.447 ng
 RT: 15.478 min Scan# 1550
 Delta R.T. -0.021 min
 Lab File: BN036807.D
 Acq: 29 Mar 2025 12:21



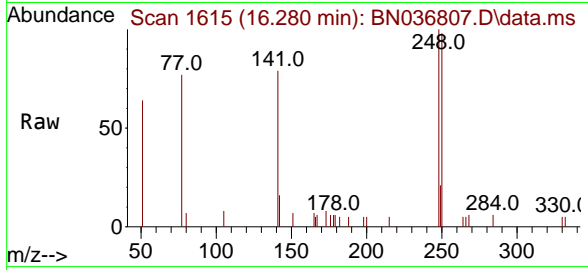
Tgt Ion:198 Resp: 475
 Ion Ratio Lower Upper
 198 100
 51 98.0 107.9 161.9#
 105 55.4 56.2 84.2#





#21
 4-Bromophenyl-phenylether
 Concen: 0.368 ng
 RT: 16.280 min Scan# 1615
 Delta R.T. -0.025 min
 Lab File: BN036807.D
 Acq: 29 Mar 2025 12:21

Instrument : BNA_N
 ClientSampleId : SSTDCCC0.4EC

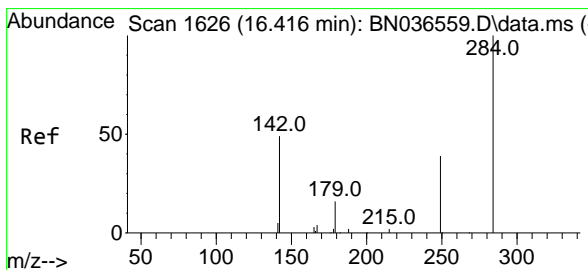
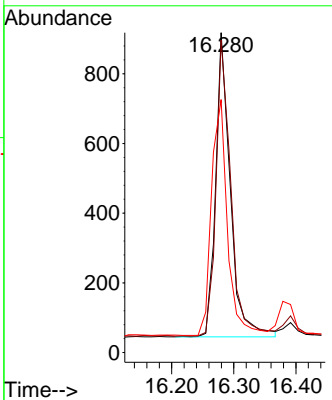
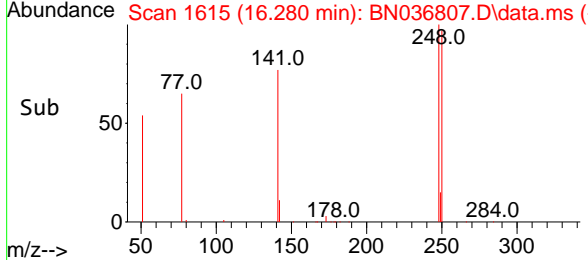


Tgt Ion: 248 Resp: 1424

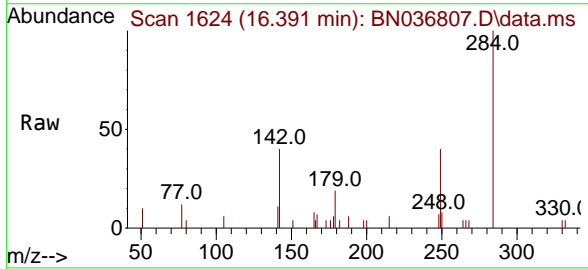
Ion	Ratio	Lower	Upper
248	100		
250	97.7	73.0	109.6
141	79.1	68.6	103.0

Manual Integrations
APPROVED

Reviewed By :Anahy Claudio 03/31/2025
 Supervised By :Jagrut Upadhyay 03/31/2025

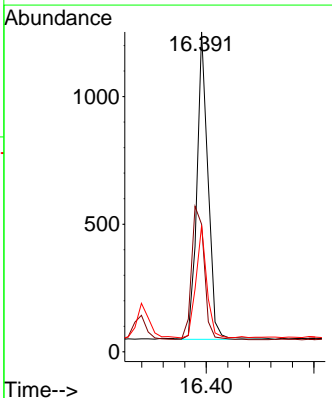
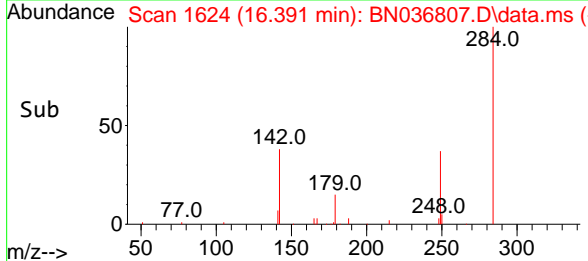


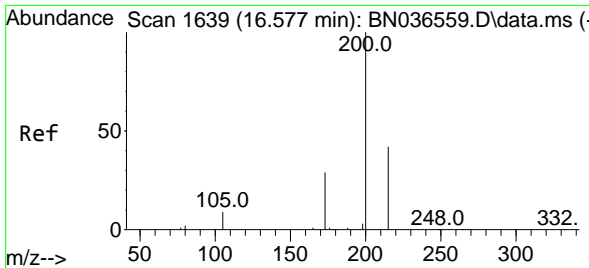
#22
 Hexachlorobenzene
 Concen: 0.371 ng
 RT: 16.391 min Scan# 1624
 Delta R.T. -0.025 min
 Lab File: BN036807.D
 Acq: 29 Mar 2025 12:21



Tgt Ion: 284 Resp: 1729

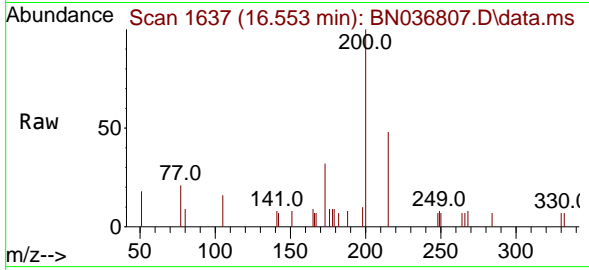
Ion	Ratio	Lower	Upper
284	100		
142	49.7	37.0	55.4
249	35.3	28.1	42.1





#23
 Atrazine
 Concen: 0.377 ng
 RT: 16.553 min Scan# 1637
 Delta R.T. -0.025 min
 Lab File: BN036807.D
 Acq: 29 Mar 2025 12:21

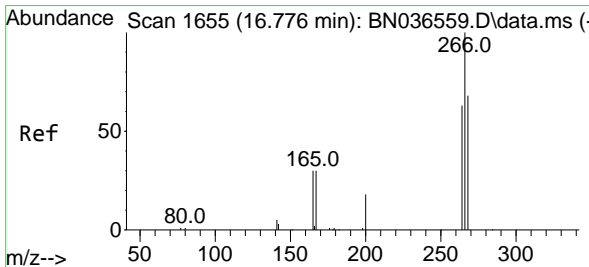
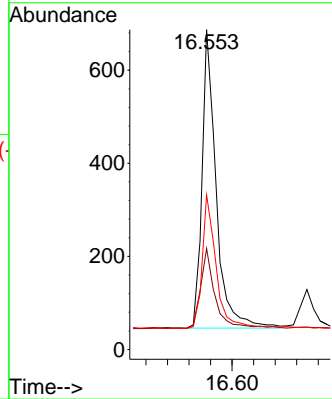
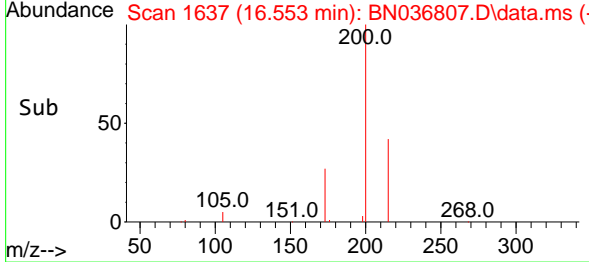
Instrument : BNA_N
 ClientSampleId : SSTDCCC0.4EC



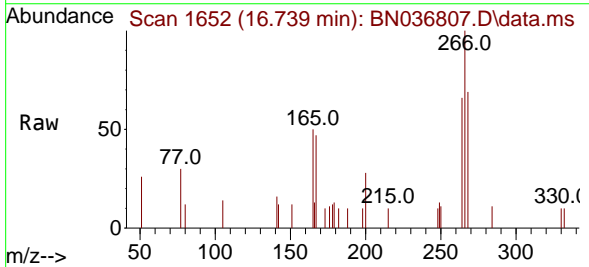
Tgt Ion:200 Resp: 116
 Ion Ratio Lower Upper
 200 100
 173 31.6 27.3 40.9
 215 48.3 36.8 55.2

Manual Integrations
 APPROVED

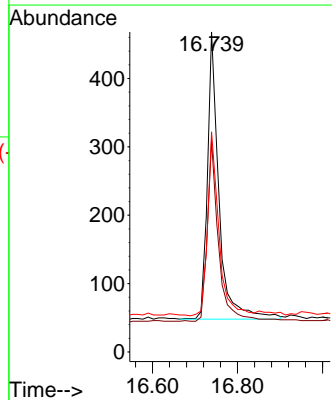
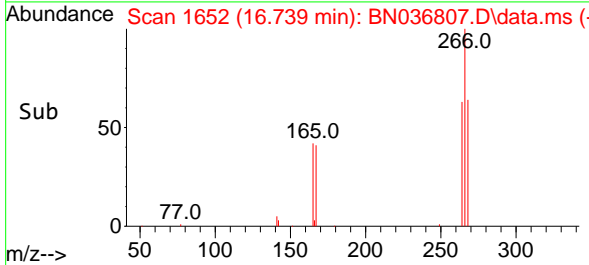
Reviewed By :Anahy Claudio 03/31/2025
 Supervised By :Jagrut Upadhyay 03/31/2025

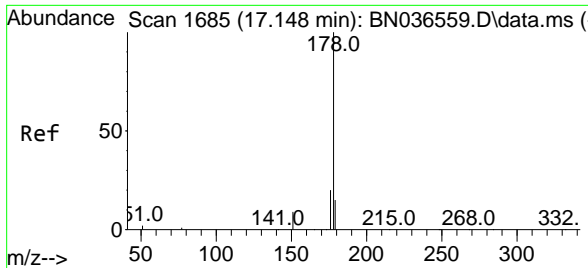


#24
 Pentachlorophenol
 Concen: 0.372 ng
 RT: 16.739 min Scan# 1652
 Delta R.T. -0.037 min
 Lab File: BN036807.D
 Acq: 29 Mar 2025 12:21



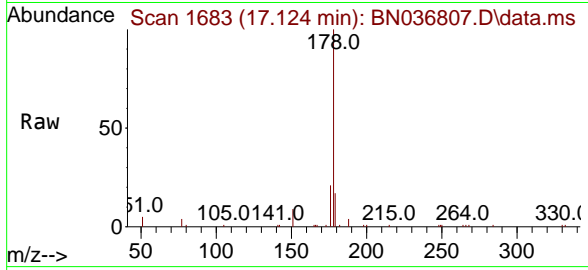
Tgt Ion:266 Resp: 792
 Ion Ratio Lower Upper
 266 100
 264 61.1 49.6 74.4
 268 62.4 50.9 76.3





#25
 Phenanthrene
 Concen: 0.377 ng
 RT: 17.124 min Scan# 1683
 Delta R.T. -0.025 min
 Lab File: BN036807.D
 Acq: 29 Mar 2025 12:21

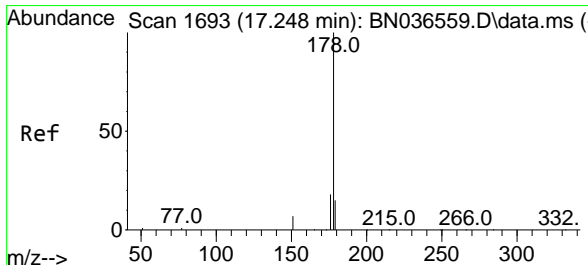
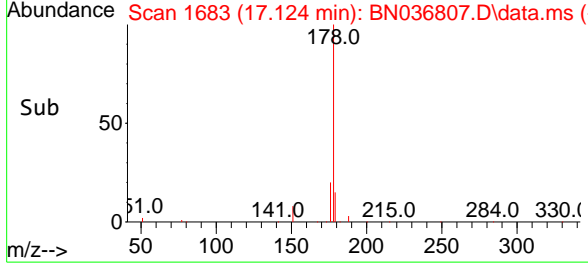
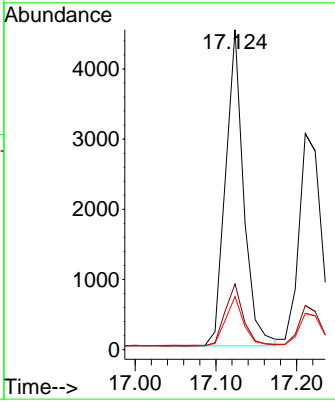
Instrument : BNA_N
 Client Sample Id : SSTDCCC0.4EC



Tgt Ion: 178 Resp: 698

Ion	Ratio	Lower	Upper
178	100		
176	19.9	15.9	23.9
179	15.3	12.2	18.4

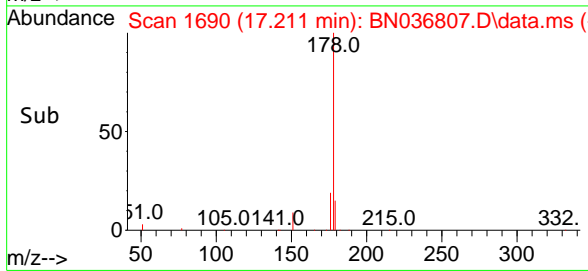
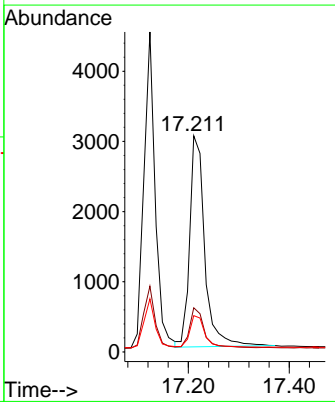
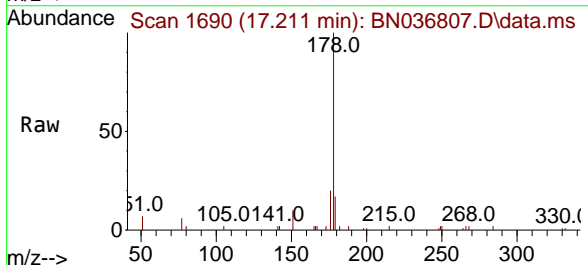
Manual Integrations
APPROVED
 Reviewed By : Anahy Claudio 03/31/2025
 Supervised By : Jagrut Upadhyay 03/31/2025

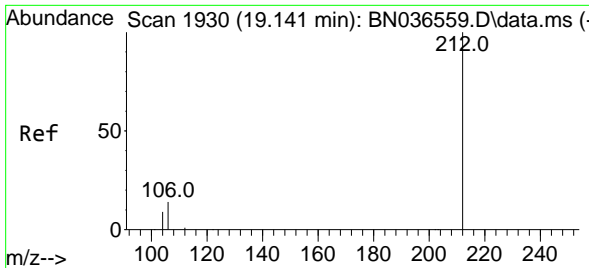


#26
 Anthracene
 Concen: 0.374 ng
 RT: 17.211 min Scan# 1690
 Delta R.T. -0.037 min
 Lab File: BN036807.D
 Acq: 29 Mar 2025 12:21

Tgt Ion: 178 Resp: 6251

Ion	Ratio	Lower	Upper
178	100		
176	18.3	15.4	23.2
179	15.1	12.6	18.8





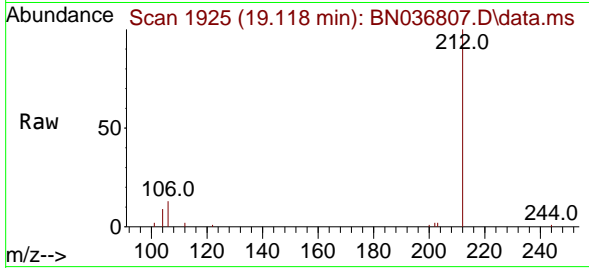
#27
 Fluoranthene-d10
 Concen: 0.384 ng
 RT: 19.118 min Scan# 1931
 Delta R.T. -0.023 min
 Lab File: BN036807.D
 Acq: 29 Mar 2025 12:21

Instrument :

BNA_N

ClientSampleId :

SSTDCCC0.4EC

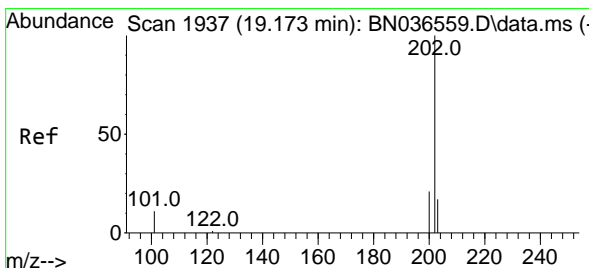
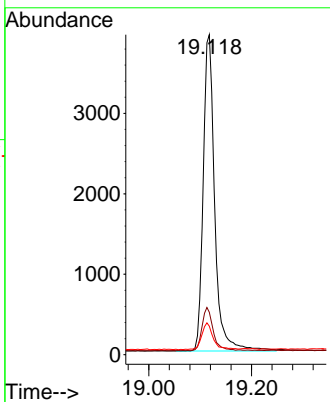
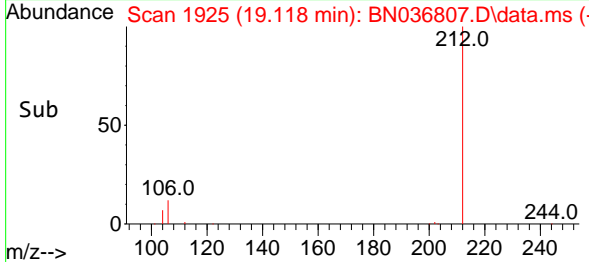


Tgt Ion:212 Resp: 6077
 Ion Ratio Lower Upper
 212 100
 106 13.2 11.8 17.6
 104 8.4 7.3 10.9

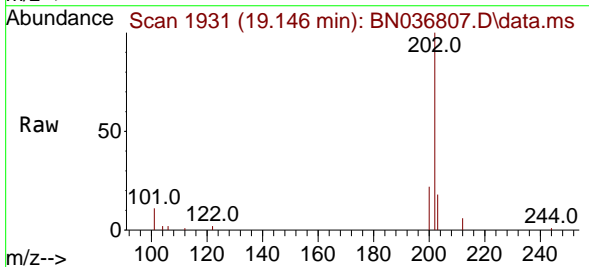
Manual Integrations

APPROVED

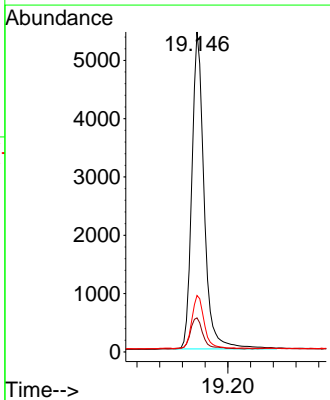
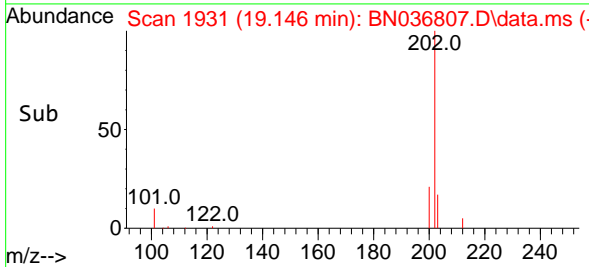
Reviewed By :Anahy Claudio 03/31/2025
 Supervised By :Jagrut Upadhyay 03/31/2025

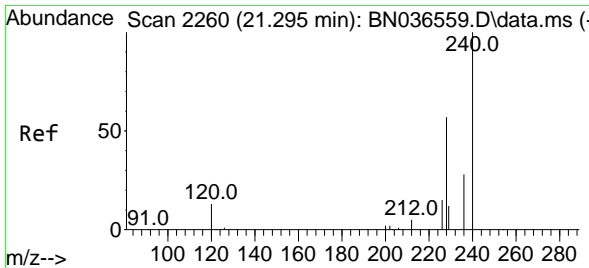


#28
 Fluoranthene
 Concen: 0.392 ng
 RT: 19.146 min Scan# 1931
 Delta R.T. -0.028 min
 Lab File: BN036807.D
 Acq: 29 Mar 2025 12:21



Tgt Ion:202 Resp: 8157
 Ion Ratio Lower Upper
 202 100
 101 10.2 9.4 14.0
 203 16.8 13.5 20.3





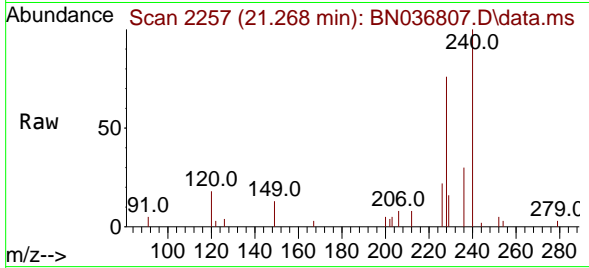
#29
 Chrysene-d12
 Concen: 0.400 ng
 RT: 21.268 min Scan# 21
 Delta R.T. -0.027 min
 Lab File: BN036807.D
 Acq: 29 Mar 2025 12:21

Instrument :

BNA_N

ClientSampleId :

SSTDCCC0.4EC

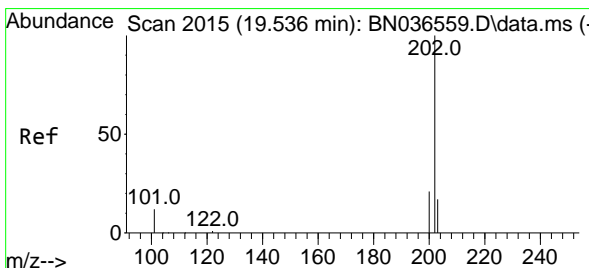
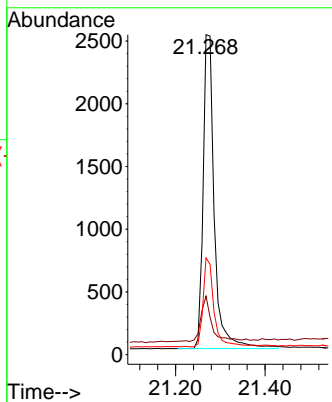
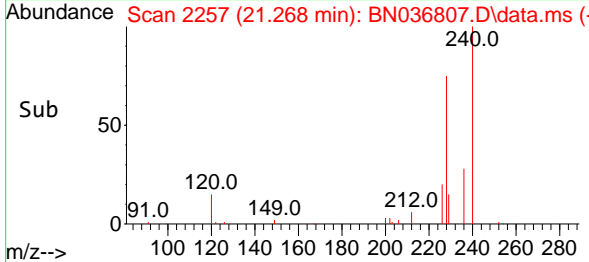


Tgt Ion:240 Resp: 4360
 Ion Ratio Lower Upper
 240 100
 120 18.3 14.6 22.0
 236 30.3 24.1 36.1

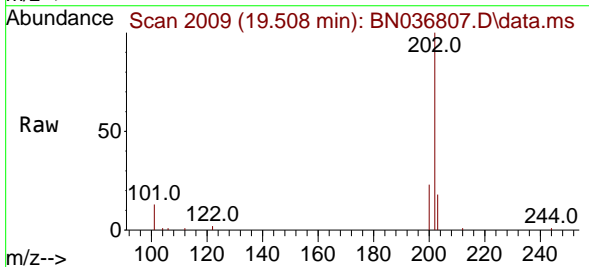
Manual Integrations

APPROVED

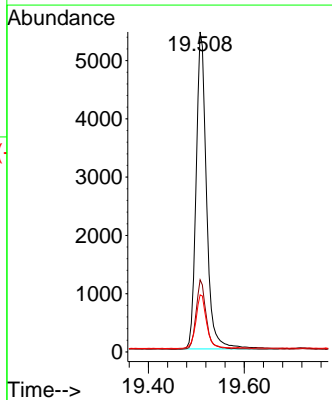
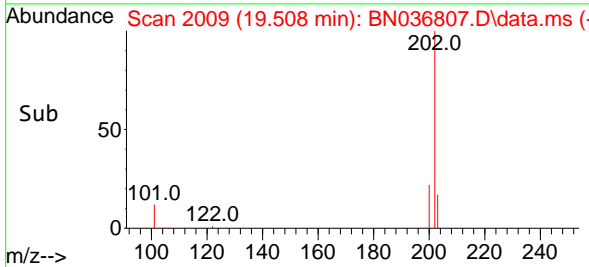
Reviewed By :Anahy Claudio 03/31/2025
 Supervised By :Jagrut Upadhyay 03/31/2025

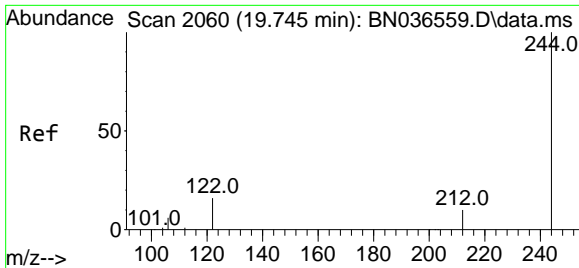


#30
 Pyrene
 Concen: 0.387 ng
 RT: 19.508 min Scan# 2009
 Delta R.T. -0.028 min
 Lab File: BN036807.D
 Acq: 29 Mar 2025 12:21



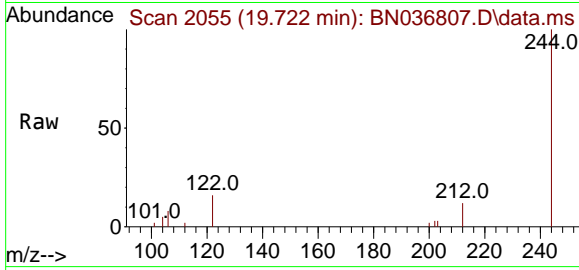
Tgt Ion:202 Resp: 8270
 Ion Ratio Lower Upper
 202 100
 200 21.2 17.1 25.7
 203 17.4 14.1 21.1





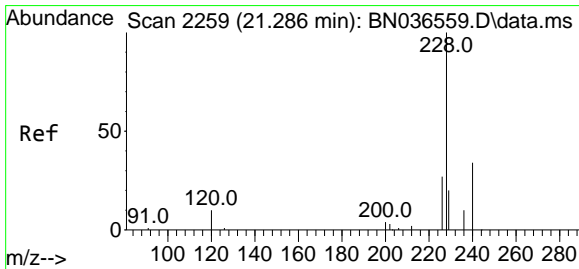
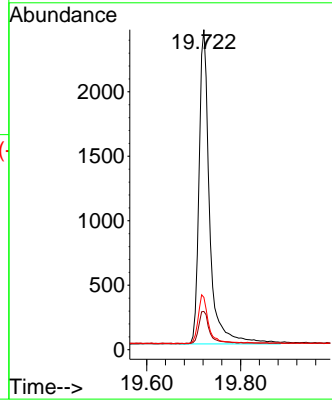
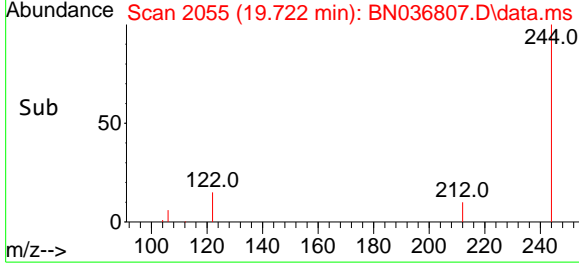
#31
 Terphenyl-d14
 Concen: 0.365 ng
 RT: 19.722 min Scan# 2060
 Delta R.T. -0.023 min
 Lab File: BN036807.D
 Acq: 29 Mar 2025 12:21

Instrument : BNA_N
 ClientSampleId : SSTDCCC0.4EC

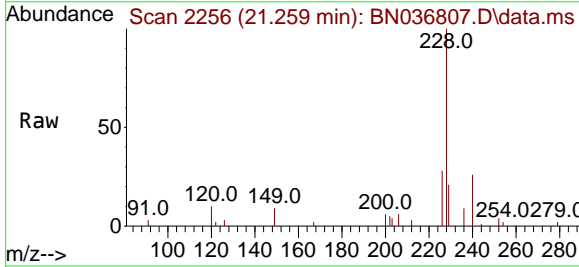


Tgt Ion:244 Resp: 382
 Ion Ratio Lower Upper
 244 100
 212 12.0 9.6 14.4
 122 16.4 13.9 20.9

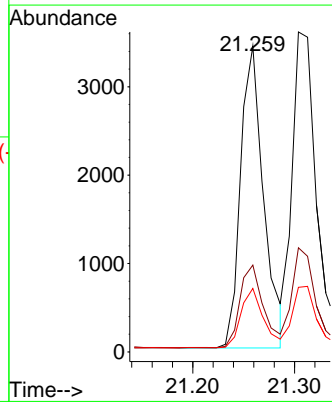
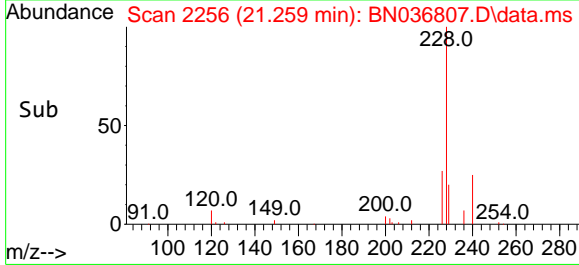
Manual Integrations
APPROVED
 Reviewed By :Anahy Claudio 03/31/2025
 Supervised By :Jagrut Upadhyay 03/31/2025

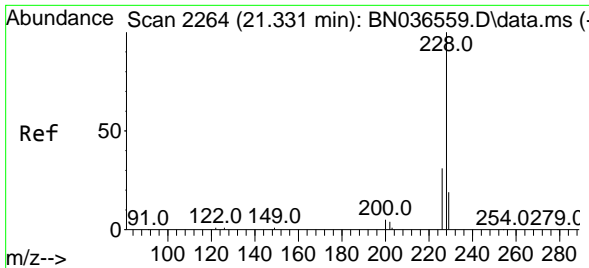


#32
 Benzo(a)anthracene
 Concen: 0.354 ng
 RT: 21.259 min Scan# 2256
 Delta R.T. -0.027 min
 Lab File: BN036807.D
 Acq: 29 Mar 2025 12:21



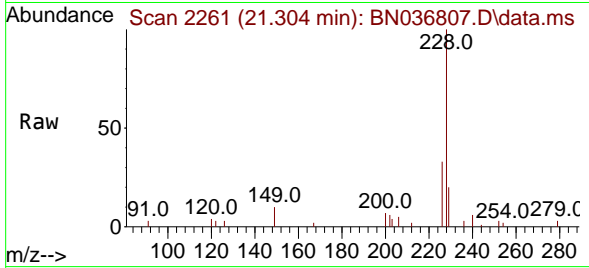
Tgt Ion:228 Resp: 5377
 Ion Ratio Lower Upper
 228 100
 226 28.4 22.5 33.7
 229 20.8 16.6 25.0





#33
 Chrysene
 Concen: 0.378 ng
 RT: 21.304 min Scan# 2129
 Delta R.T. -0.027 min
 Lab File: BN036807.D
 Acq: 29 Mar 2025 12:21

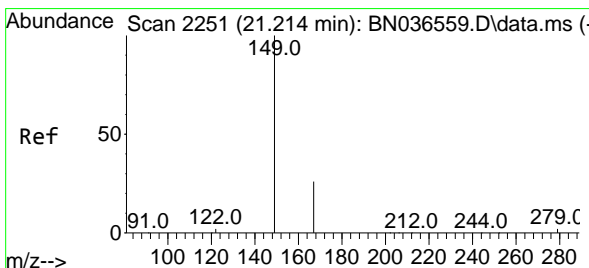
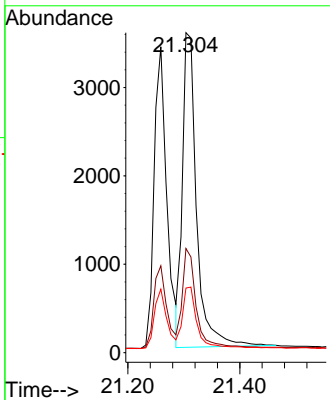
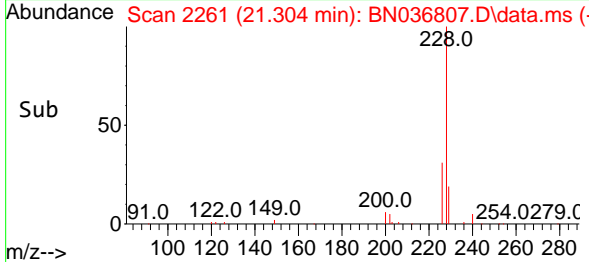
Instrument : BNA_N
 Client Sample Id : SSTDCCC0.4EC



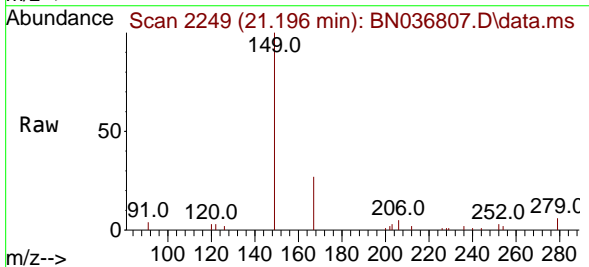
Tgt Ion: 228 Resp: 626
 Ion Ratio Lower Upper
 228 100
 226 32.6 25.3 37.9
 229 20.2 15.8 23.8

Manual Integrations
 APPROVED

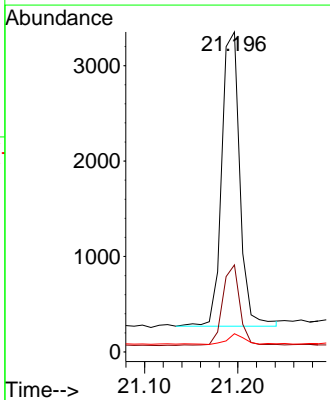
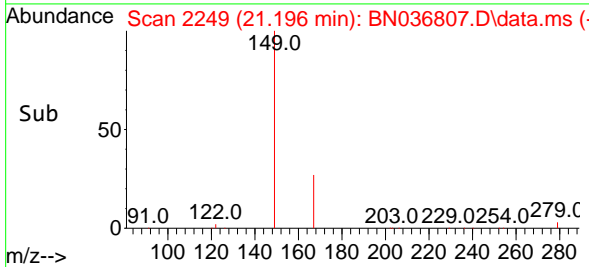
Reviewed By : Anahy Claudio 03/31/2025
 Supervised By : Jagrut Upadhyay 03/31/2025

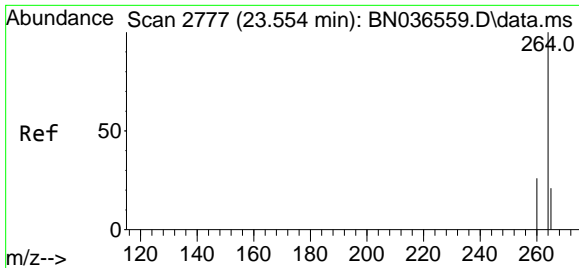


#34
 Bis(2-ethylhexyl)phthalate
 Concen: 0.385 ng
 RT: 21.196 min Scan# 2249
 Delta R.T. -0.018 min
 Lab File: BN036807.D
 Acq: 29 Mar 2025 12:21



Tgt Ion: 149 Resp: 4162
 Ion Ratio Lower Upper
 149 100
 167 26.1 20.7 31.1
 279 3.6 3.6 5.4#





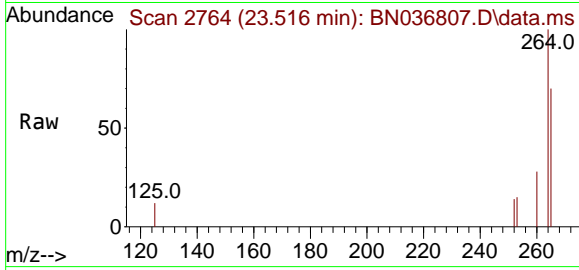
#35
 Perylene-d12
 Concen: 0.400 ng
 RT: 23.516 min Scan# 21
 Delta R.T. -0.038 min
 Lab File: BN036807.D
 Acq: 29 Mar 2025 12:21

Instrument :

BNA_N

ClientSampleId :

SSTDCCC0.4EC



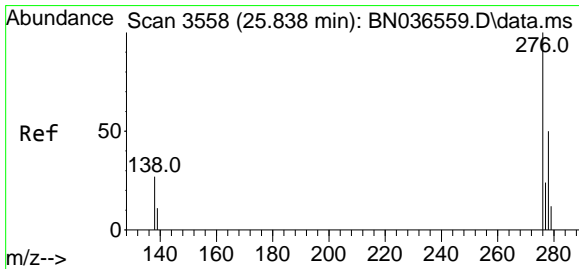
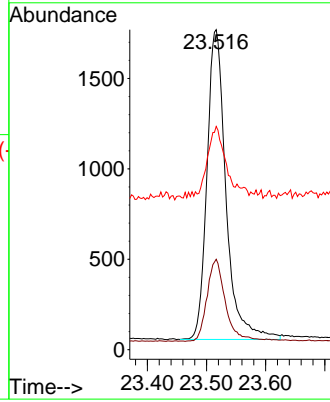
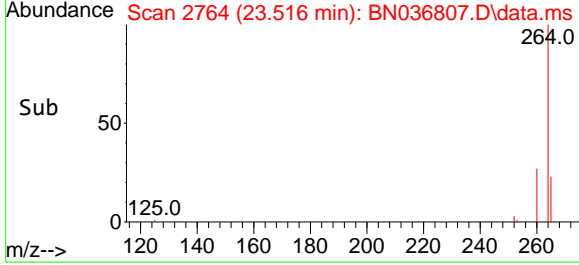
Tgt Ion:264 Resp: 3818
 Ion Ratio Lower Upper
 264 100
 260 28.2 22.6 33.8
 265 69.8 88.1 132.1

Manual Integrations

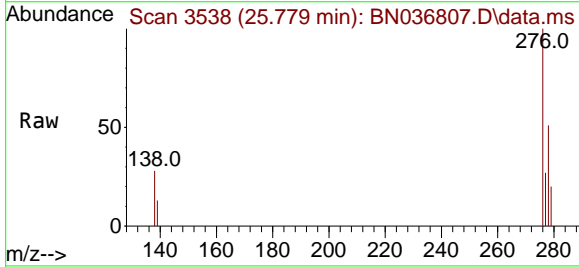
APPROVED

Reviewed By :Anahy Claudio 03/31/2025

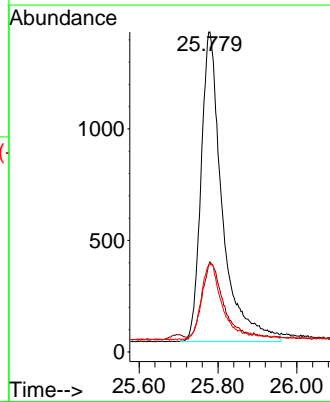
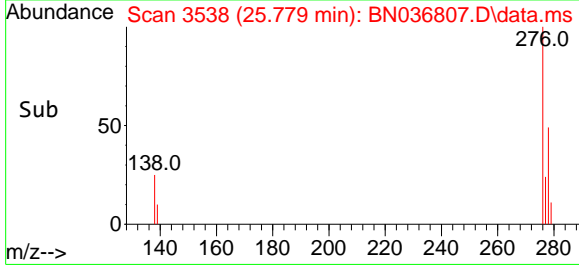
Supervised By :Jagrut Upadhyay 03/31/2025

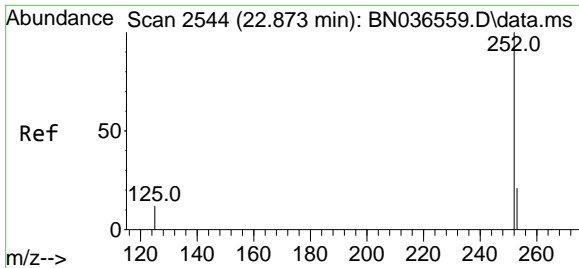


#36
 Indeno(1,2,3-cd)pyrene
 Concen: 0.376 ng
 RT: 25.779 min Scan# 3538
 Delta R.T. -0.058 min
 Lab File: BN036807.D
 Acq: 29 Mar 2025 12:21



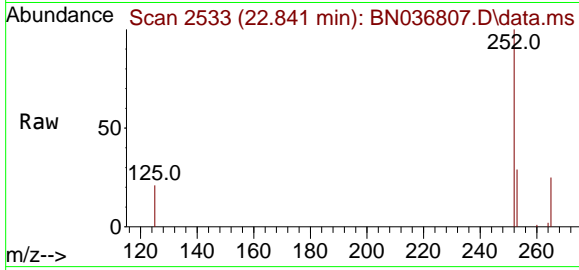
Tgt Ion:276 Resp: 5188
 Ion Ratio Lower Upper
 276 100
 138 24.1 23.4 35.2
 277 23.0 20.0 30.0





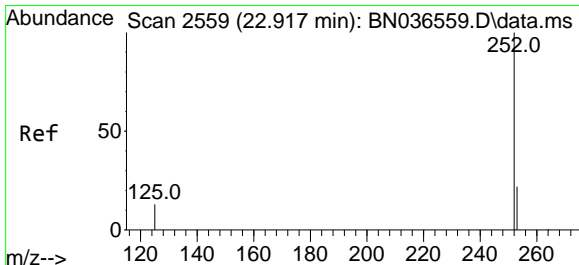
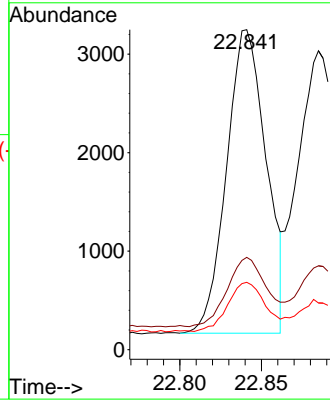
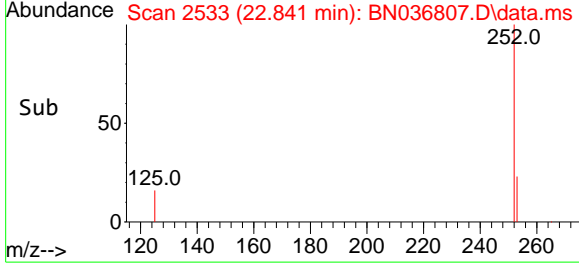
#37
 Benzo(b)fluoranthene
 Concen: 0.374 ng
 RT: 22.841 min Scan# 21
 Delta R.T. -0.032 min
 Lab File: BN036807.D
 Acq: 29 Mar 2025 12:21

Instrument :
 BNA_N
 ClientSampleId :
 SSTDCCC0.4EC

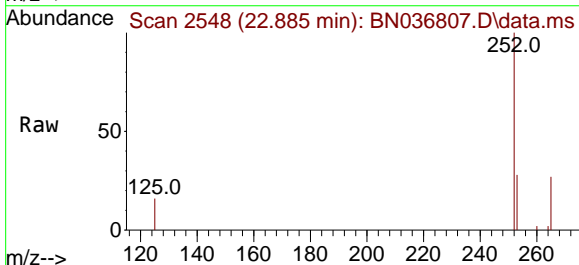


Tgt Ion:252 Resp: 519
 Ion Ratio Lower Upper
 252 100
 253 28.9 23.9 35.9
 125 21.1 17.4 26.2

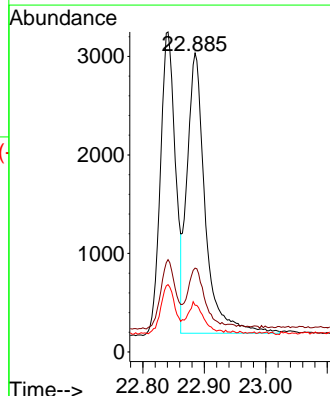
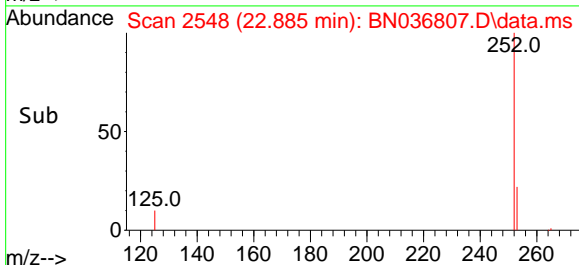
Manual Integrations
APPROVED
 Reviewed By :Anahy Claudio 03/31/2025
 Supervised By :Jagrut Upadhyay 03/31/2025

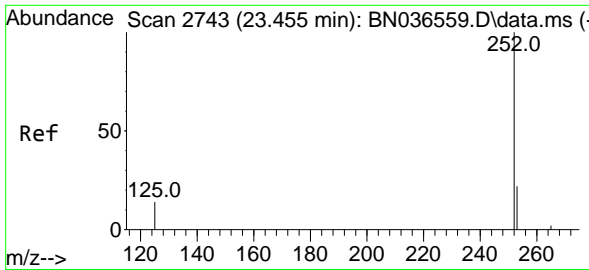


#38
 Benzo(k)fluoranthene
 Concen: 0.400 ng m
 RT: 22.885 min Scan# 2548
 Delta R.T. -0.032 min
 Lab File: BN036807.D
 Acq: 29 Mar 2025 12:21



Tgt Ion:252 Resp: 5835
 Ion Ratio Lower Upper
 252 100
 253 28.1 24.6 36.8
 125 15.7 17.8 26.8#





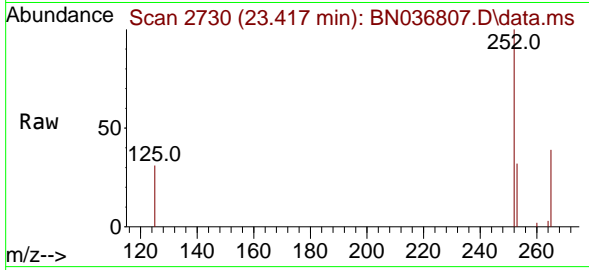
#39
 Benzo(a)pyrene
 Concen: 0.389 ng
 RT: 23.417 min Scan# 21
 Delta R.T. -0.038 min
 Lab File: BN036807.D
 Acq: 29 Mar 2025 12:21

Instrument :

BNA_N

ClientSampleId :

SSTDCCC0.4EC

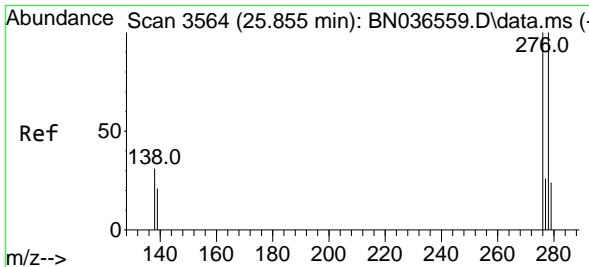
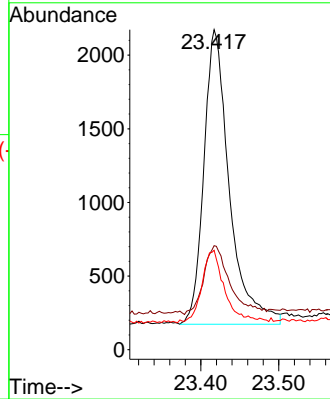
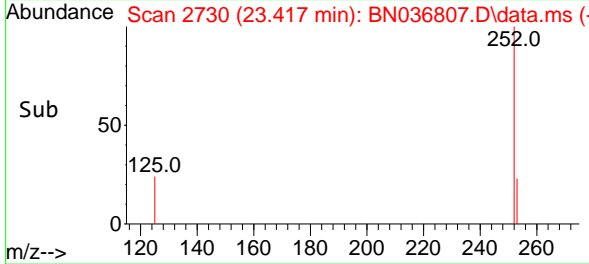


Tgt Ion:252 Resp: 454
 Ion Ratio Lower Upper
 252 100
 253 32.5 27.8 41.8
 125 31.1 22.7 34.1

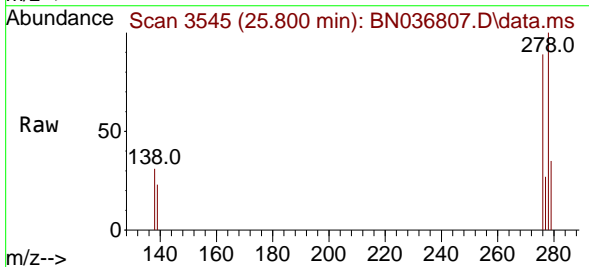
Manual Integrations

APPROVED

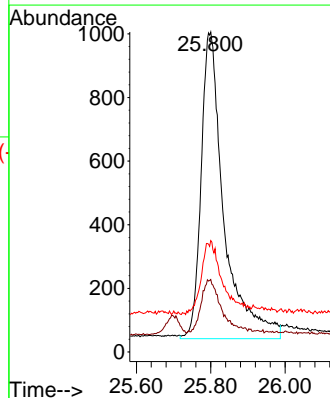
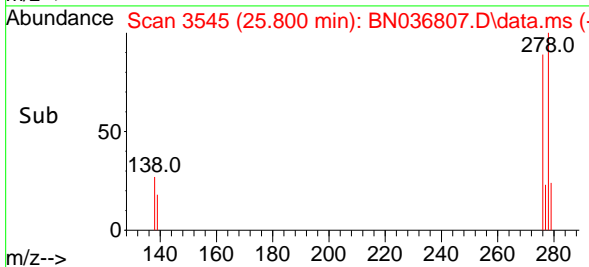
Reviewed By :Anahy Claudio 03/31/2025
 Supervised By :Jagrut Upadhyay 03/31/2025

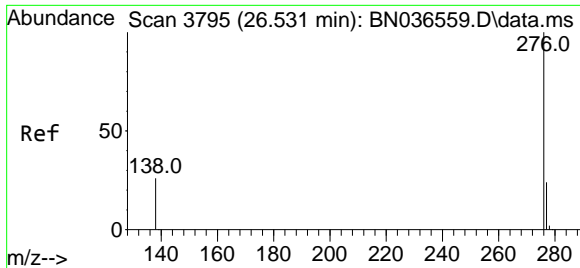


#40
 Dibenzo(a,h)anthracene
 Concen: 0.383 ng m
 RT: 25.800 min Scan# 3545
 Delta R.T. -0.055 min
 Lab File: BN036807.D
 Acq: 29 Mar 2025 12:21



Tgt Ion:278 Resp: 4113
 Ion Ratio Lower Upper
 278 100
 139 22.7 20.8 31.2
 279 34.8 28.8 43.2





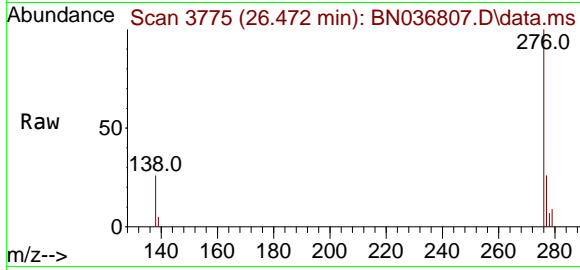
#41
 Benzo(g,h,i)perylene
 Concen: 0.371 ng
 RT: 26.472 min Scan# 31
 Delta R.T. -0.058 min
 Lab File: BN036807.D
 Acq: 29 Mar 2025 12:21

Instrument :

BNA_N

ClientSampleId :

SSTDCCC0.4EC



Tgt Ion: 276 Resp: 4558

Ion	Ratio	Lower	Upper
276	100		
277	26.4	22.2	33.4
138	25.8	24.1	36.1

Manual Integrations

APPROVED

Reviewed By :Anahy Claudio 03/31/2025
 Supervised By :Jagrut Upadhyay 03/31/2025

