

Data Path : Z:\svoasrv\HPCHEM1\BNA\_N\Data\BN040425\  
 Data File : BN036837.D  
 Acq On : 04 Apr 2025 13:42  
 Operator : RC/JU  
 Sample : SSTDCCC0.4  
 Misc :  
 ALS Vial : 2 Sample Multiplier: 1

Instrument :  
 BNA\_N  
 ClientSampleId :  
 SSTDCCC0.4

Quant Time: Apr 04 17:31:11 2025  
 Quant Method : Z:\svoasrv\HPCHEM1\BNA\_N\Methods\8270-SIM-BN031025.M  
 Quant Title : ASP BNA STANDARDS FOR 5 POINT CALIBRATION  
 QLast Update : Fri Apr 04 17:30:43 2025  
 Response via : Initial Calibration

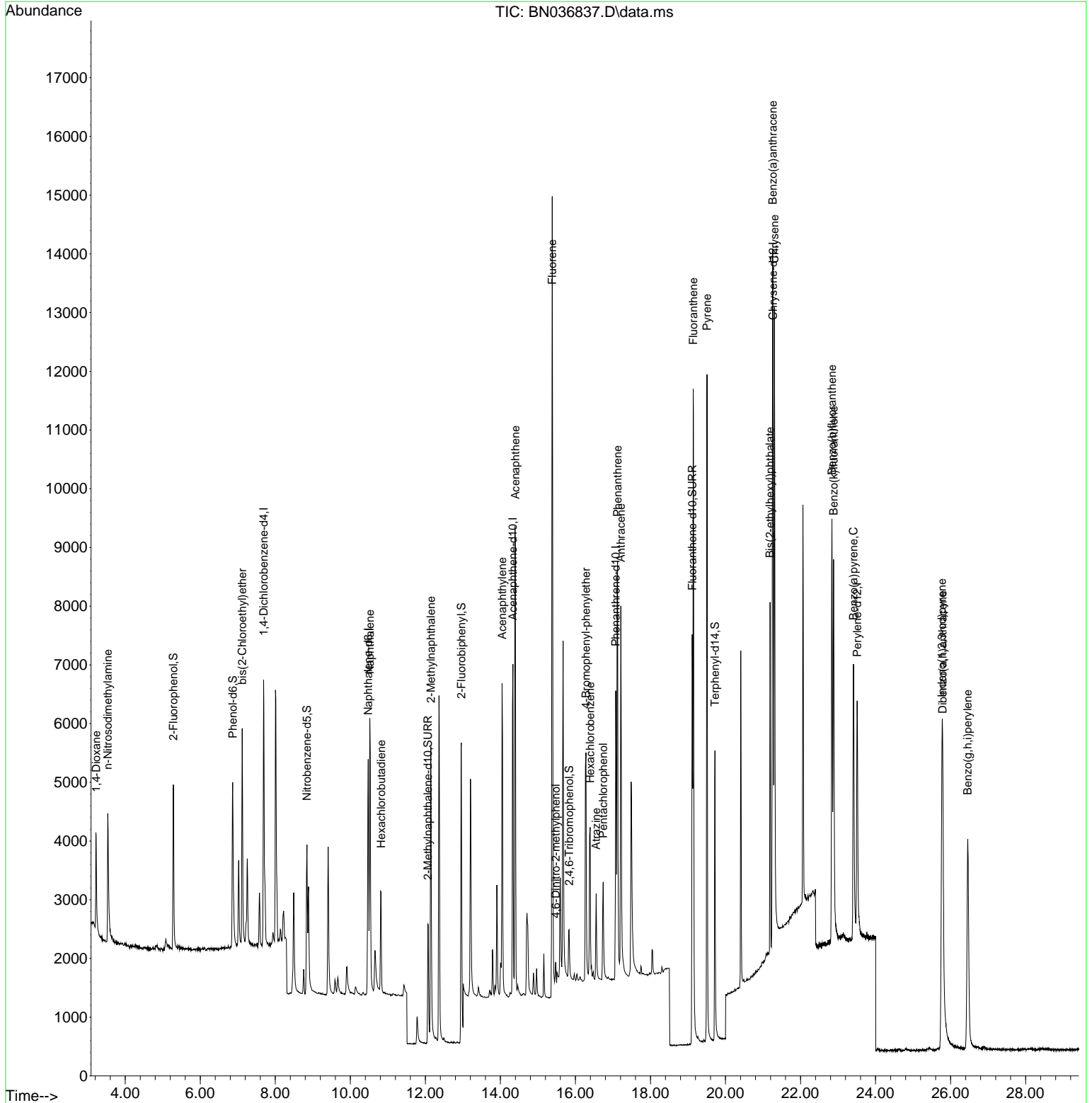
Compound	R.T.	QIon	Response	Conc	Units	Dev(Min)	
Internal Standards							
1) 1,4-Dichlorobenzene-d4	7.688	152	2261	0.400	ng	0.00	
7) Naphthalene-d8	10.477	136	5761	0.400	ng	# 0.00	
13) Acenaphthene-d10	14.334	164	3391	0.400	ng	0.00	
19) Phenanthrene-d10	17.074	188	7218	0.400	ng	# 0.00	
29) Chrysene-d12	21.268	240	6202	0.400	ng	0.00	
35) Perylene-d12	23.511	264	5846	0.400	ng	# 0.00	
System Monitoring Compounds							
4) 2-Fluorophenol	5.283	112	2154	0.409	ng	0.00	
5) Phenol-d6	6.865	99	2624	0.403	ng	0.00	
8) Nitrobenzene-d5	8.843	82	2357	0.376	ng	0.00	
11) 2-Methylnaphthalene-d10	12.070	152	3408	0.398	ng	0.00	
14) 2,4,6-Tribromophenol	15.833	330	572	0.372	ng	0.00	
15) 2-Fluorobiphenyl	12.958	172	7286	0.369	ng	0.00	
27) Fluoranthene-d10	19.113	212	8227	0.445	ng	0.00	
31) Terphenyl-d14	19.717	244	5434	0.366	ng	0.00	
Target Compounds							
2) 1,4-Dioxane	3.225	88	1125	0.449	ng	99	Qvalue
3) n-Nitrosodimethylamine	3.536	42	2154	0.425	ng	# 98	
6) bis(2-Chloroethyl)ether	7.118	93	2771	0.412	ng	99	
9) Naphthalene	10.520	128	6735	0.397	ng	99	
10) Hexachlorobutadiene	10.819	225	1531	0.384	ng	# 99	
12) 2-Methylnaphthalene	12.146	142	4180	0.388	ng	98	
16) Acenaphthylene	14.046	152	6192	0.387	ng	99	
17) Acenaphthene	14.398	154	4201	0.401	ng	98	
18) Fluorene	15.382	166	5768	0.407	ng	99	
20) 4,6-Dinitro-2-methylph...	15.478	198	509	0.422	ng	# 81	
21) 4-Bromophenyl-phenylether	16.280	248	1746	0.386	ng	# 83	
22) Hexachlorobenzene	16.391	284	2067	0.379	ng	96	
23) Atrazine	16.553	200	1430	0.394	ng	97	
24) Pentachlorophenol	16.739	266	1008	0.405	ng	98	
25) Phenanthrene	17.124	178	8982	0.415	ng	99	
26) Anthracene	17.211	178	7861	0.402	ng	98	
28) Fluoranthene	19.141	202	10677	0.439	ng	100	
30) Pyrene	19.508	202	10985	0.362	ng	100	
32) Benzo(a)anthracene	21.259	228	8968	0.416	ng	99	
33) Chrysene	21.304	228	10083	0.428	ng	99	
34) Bis(2-ethylhexyl)phtha...	21.187	149	5324	0.347	ng	# 99	
36) Indeno(1,2,3-cd)pyrene	25.771	276	8691	0.412	ng	98	
37) Benzo(b)fluoranthene	22.838	252	9008	0.423	ng	92	
38) Benzo(k)fluoranthene	22.879	252	9694	0.434	ng	# 91	
39) Benzo(a)pyrene	23.411	252	7658	0.427	ng	# 90	
40) Dibenzo(a,h)anthracene	25.791	278	6556	0.399	ng	91	
41) Benzo(g,h,i)perylene	26.458	276	7891	0.420	ng	96	

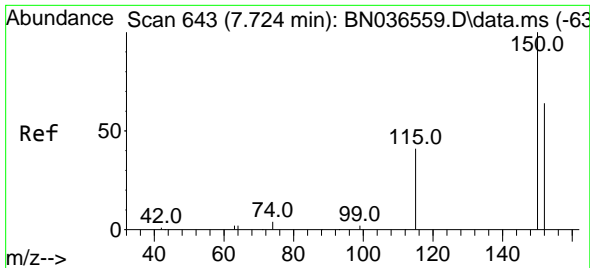
(#) = qualifier out of range (m) = manual integration (+) = signals summed

Data Path : Z:\svoasrv\HPCHEM1\BNA\_N\Data\BN040425\  
 Data File : BN036837.D  
 Acq On : 04 Apr 2025 13:42  
 Operator : RC/JU  
 Sample : SSTDCCC0.4  
 Misc :  
 ALS Vial : 2 Sample Multiplier: 1

Instrument :  
 BNA\_N  
 ClientSampleId :  
 SSTDCCC0.4

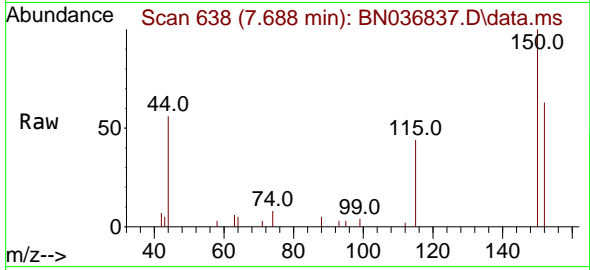
Quant Time: Apr 04 17:31:11 2025  
 Quant Method : Z:\svoasrv\HPCHEM1\BNA\_N\Methods\8270-SIM-BN031025.M  
 Quant Title : ASP BNA STANDARDS FOR 5 POINT CALIBRATION  
 QLast Update : Fri Apr 04 17:30:43 2025  
 Response via : Initial Calibration



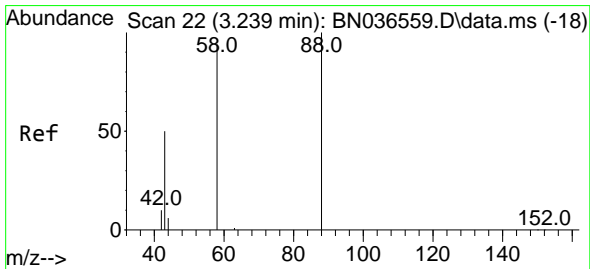
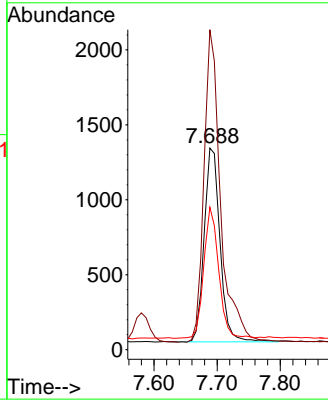
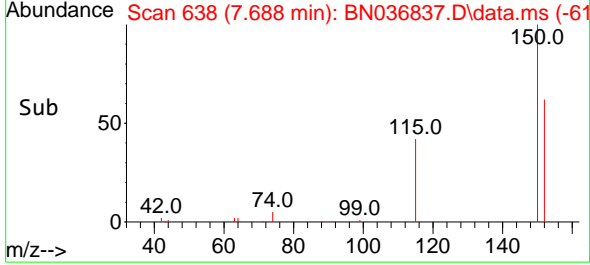


#1  
 1,4-Dichlorobenzene-d4  
 Concen: 0.400 ng  
 RT: 7.688 min Scan# 61  
 Delta R.T. 0.000 min  
 Lab File: BN036837.D  
 Acq: 04 Apr 2025 13:42

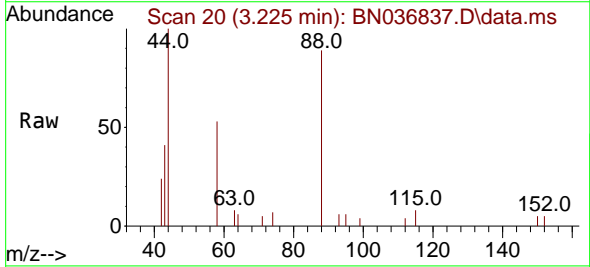
Instrument :  
 BNA\_N  
 ClientSampleId :  
 SSTDCCC0.4



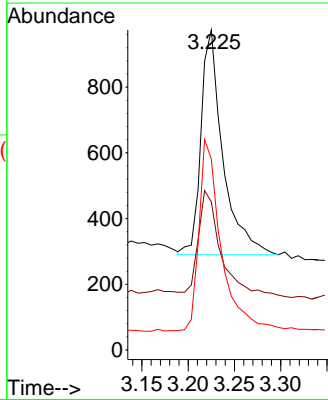
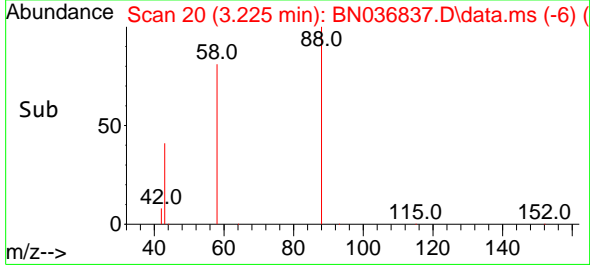
Tgt Ion:152 Resp: 2261  
 Ion Ratio Lower Upper  
 152 100  
 150 158.7 123.7 185.5  
 115 70.6 54.3 81.5

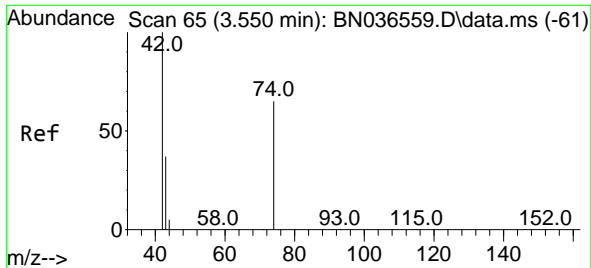


#2  
 1,4-Dioxane  
 Concen: 0.449 ng  
 RT: 3.225 min Scan# 20  
 Delta R.T. 0.000 min  
 Lab File: BN036837.D  
 Acq: 04 Apr 2025 13:42



Tgt Ion: 88 Resp: 1125  
 Ion Ratio Lower Upper  
 88 100  
 43 47.0 37.8 56.8  
 58 85.5 67.4 101.2



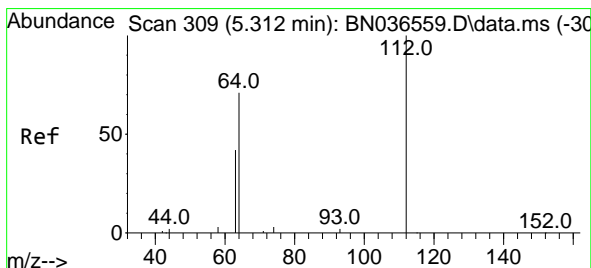
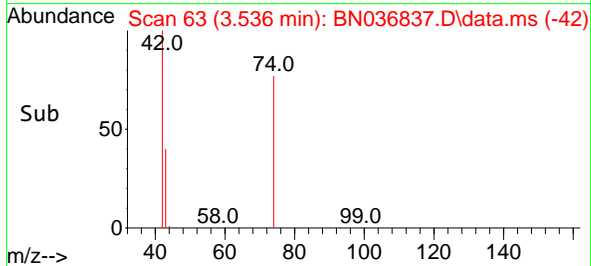
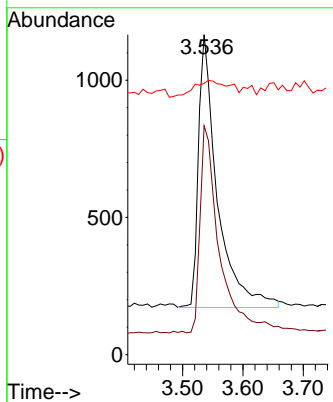
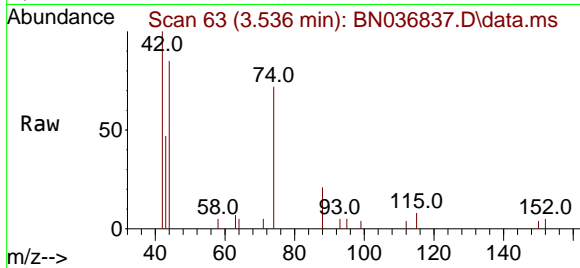


#3  
 n-Nitrosodimethylamine  
 Concen: 0.425 ng  
 RT: 3.536 min Scan# 61  
 Delta R.T. 0.000 min  
 Lab File: BN036837.D  
 Acq: 04 Apr 2025 13:42

Instrument :  
 BNA\_N  
 ClientSampleId :  
 SSTDCCC0.4

Tgt Ion: 42 Resp: 2154

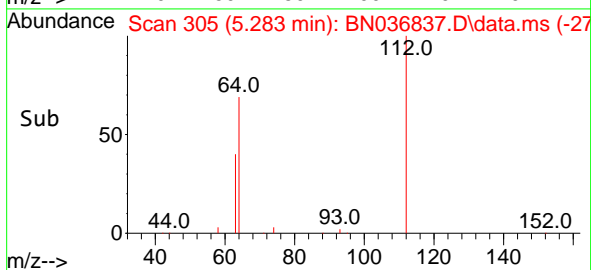
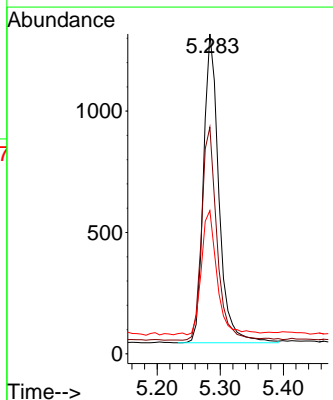
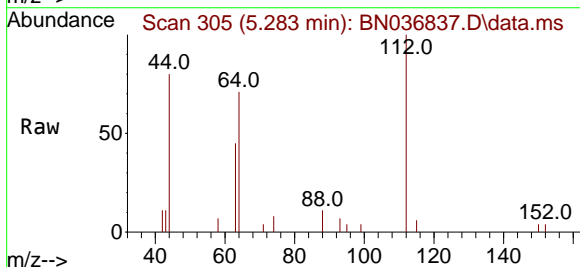
Ion	Ratio	Lower	Upper
42	100		
74	76.7	60.6	90.8
44	10.5	6.3	9.5

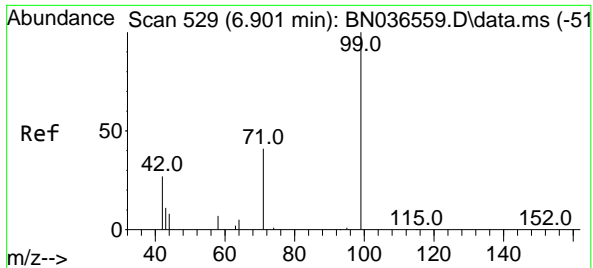


#4  
 2-Fluorophenol  
 Concen: 0.409 ng  
 RT: 5.283 min Scan# 305  
 Delta R.T. 0.000 min  
 Lab File: BN036837.D  
 Acq: 04 Apr 2025 13:42

Tgt Ion: 112 Resp: 2154

Ion	Ratio	Lower	Upper
112	100		
64	69.0	53.1	79.7
63	41.0	31.8	47.8

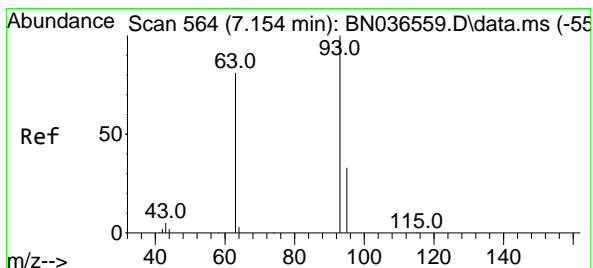
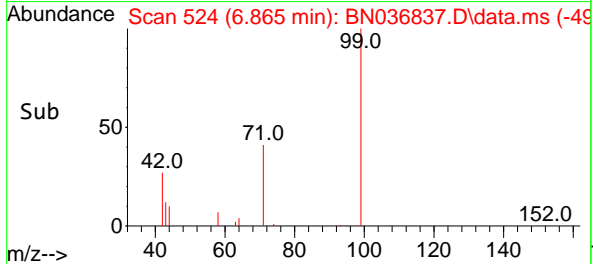
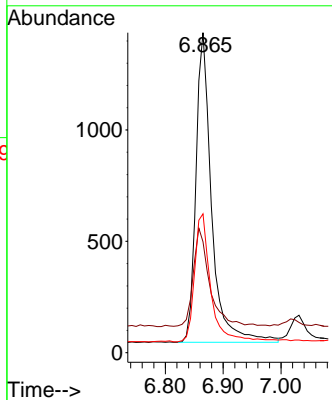
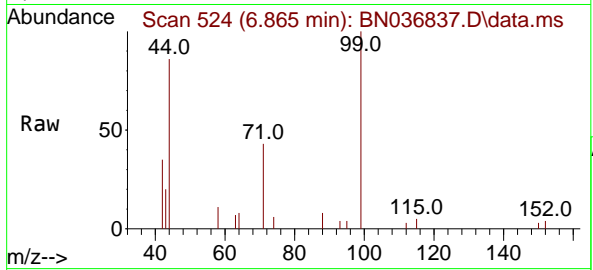




#5  
 Phenol-d6  
 Concen: 0.403 ng  
 RT: 6.865 min Scan# 511  
 Delta R.T. 0.000 min  
 Lab File: BN036837.D  
 Acq: 04 Apr 2025 13:42

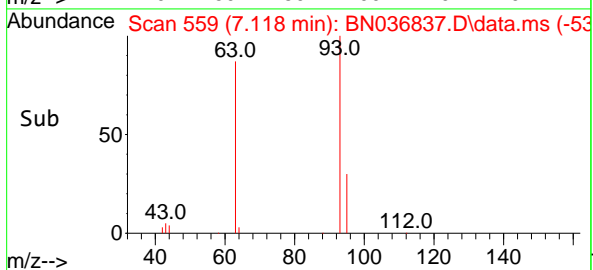
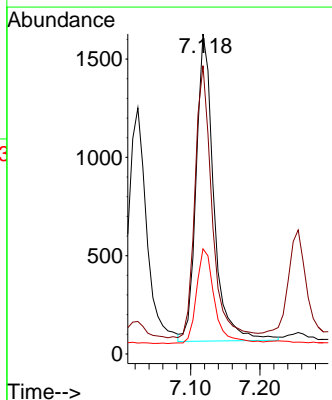
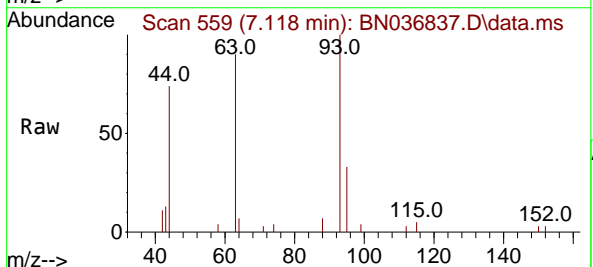
Instrument :  
 BNA\_N  
 ClientSampleId :  
 SSTDCCC0.4

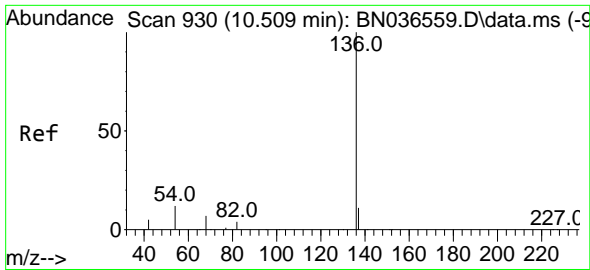
Tgt Ion	Resp	Ion Ratio	Lower	Upper
99	2624	100		
42		33.0	26.5	39.7
71		43.3	34.1	51.1



#6  
 bis(2-Chloroethyl)ether  
 Concen: 0.412 ng  
 RT: 7.118 min Scan# 559  
 Delta R.T. 0.000 min  
 Lab File: BN036837.D  
 Acq: 04 Apr 2025 13:42

Tgt Ion	Resp	Ion Ratio	Lower	Upper
93	2771	100		
63		85.7	67.7	101.5
95		31.5	25.6	38.4



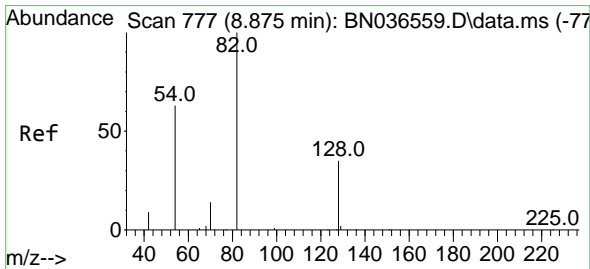
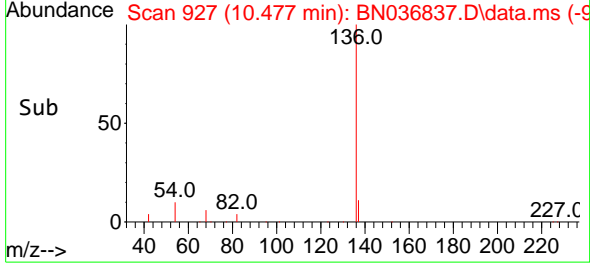
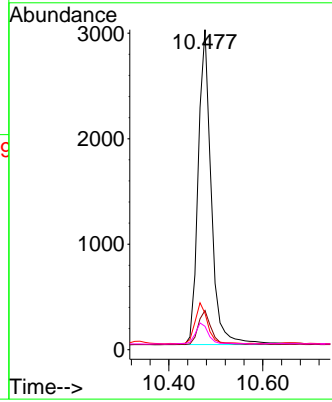
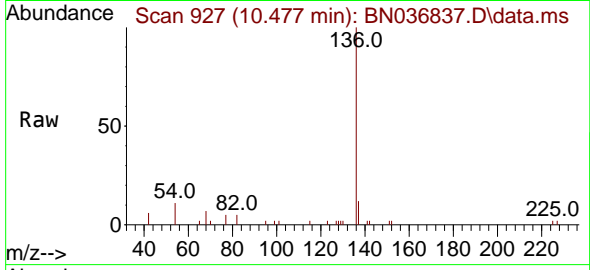


#7  
 Naphthalene-d8  
 Concen: 0.400 ng  
 RT: 10.477 min Scan# 911  
 Delta R.T. 0.000 min  
 Lab File: BN036837.D  
 Acq: 04 Apr 2025 13:42

Instrument :  
 BNA\_N  
 ClientSampleId :  
 SSTDCCC0.4

Tgt Ion: 136 Resp: 5761

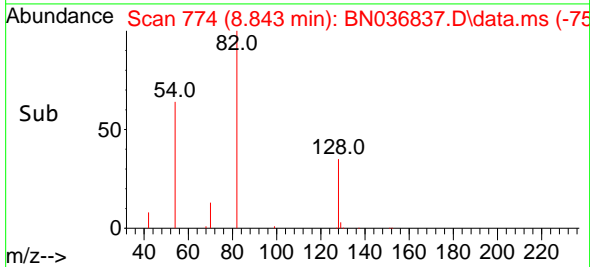
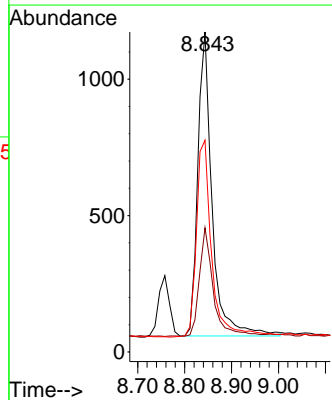
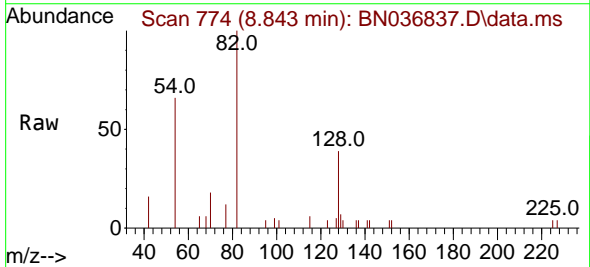
Ion	Ratio	Lower	Upper
136	100		
137	12.2	10.3	15.5
54	11.3	11.5	17.3#
68	7.3	7.0	10.4

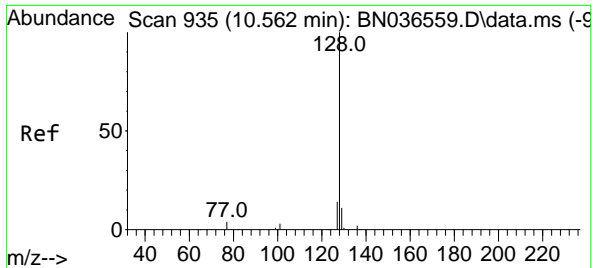


#8  
 Nitrobenzene-d5  
 Concen: 0.376 ng  
 RT: 8.843 min Scan# 774  
 Delta R.T. 0.000 min  
 Lab File: BN036837.D  
 Acq: 04 Apr 2025 13:42

Tgt Ion: 82 Resp: 2357

Ion	Ratio	Lower	Upper
82	100		
128	38.8	30.6	45.8
54	66.2	52.2	78.4



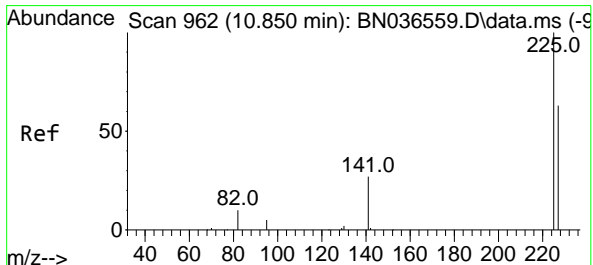
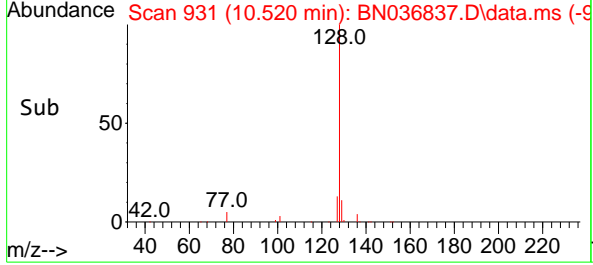
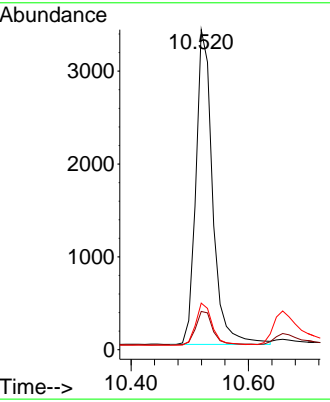
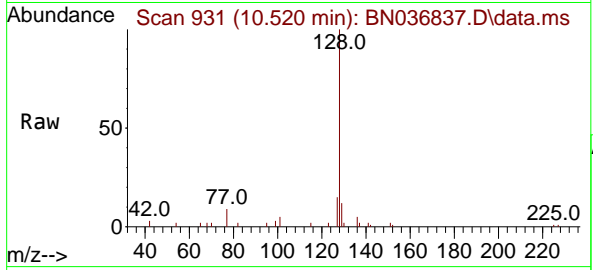


#9  
 Naphthalene  
 Concen: 0.397 ng  
 RT: 10.520 min Scan# 911  
 Delta R.T. 0.000 min  
 Lab File: BN036837.D  
 Acq: 04 Apr 2025 13:42

Instrument : BNA\_N  
 ClientSampleId : SSTDCCC0.4

Tgt Ion:128 Resp: 6735

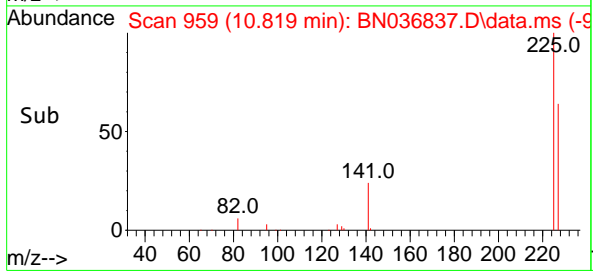
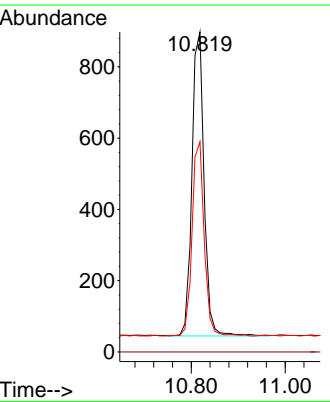
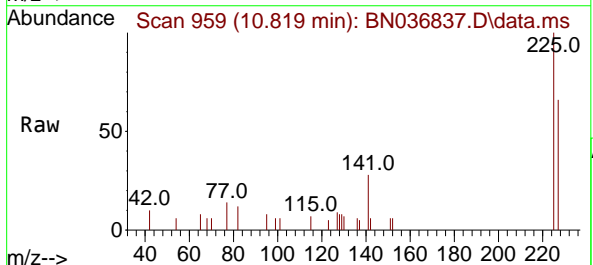
Ion	Ratio	Lower	Upper
128	100		
129	12.0	9.8	14.6
127	14.6	11.8	17.8

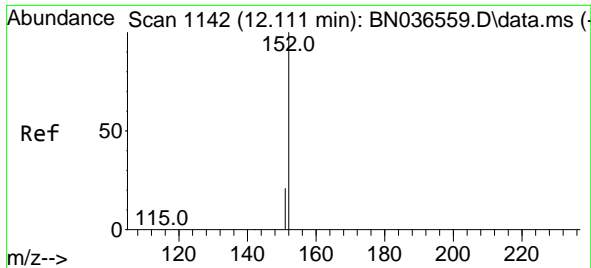


#10  
 Hexachlorobutadiene  
 Concen: 0.384 ng  
 RT: 10.819 min Scan# 959  
 Delta R.T. 0.000 min  
 Lab File: BN036837.D  
 Acq: 04 Apr 2025 13:42

Tgt Ion:225 Resp: 1531

Ion	Ratio	Lower	Upper
225	100		
223	0.0	0.0	0.0
227	63.7	51.8	77.8

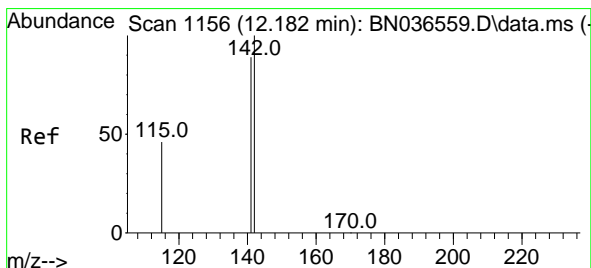
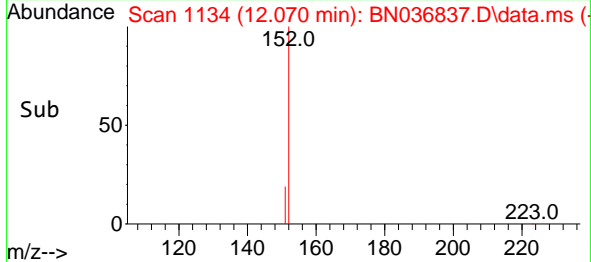
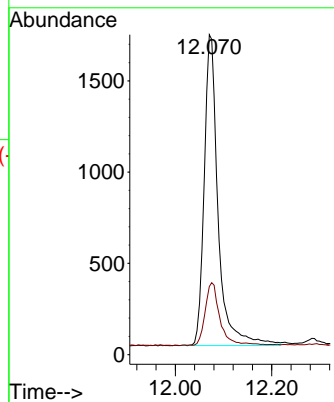
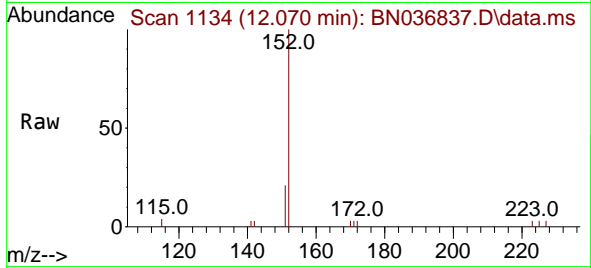




#11  
 2-Methylnaphthalene-d10  
 Concen: 0.398 ng  
 RT: 12.070 min Scan# 1114  
 Delta R.T. 0.000 min  
 Lab File: BN036837.D  
 Acq: 04 Apr 2025 13:42

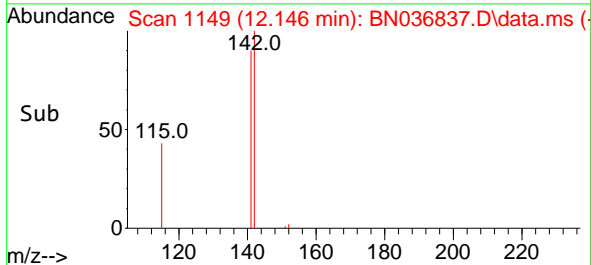
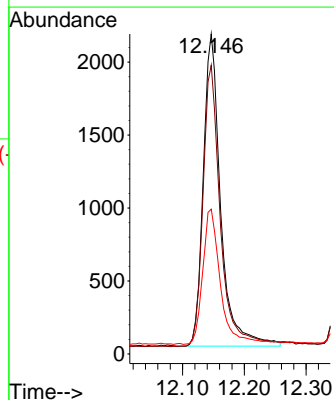
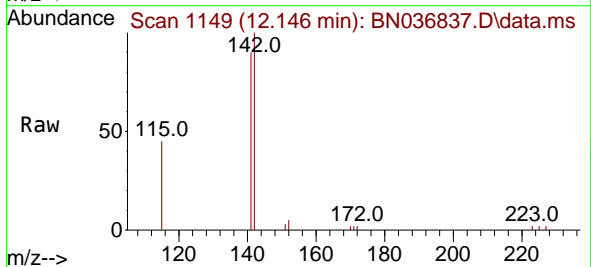
Instrument :  
 BNA\_N  
 ClientSampleId :  
 SSTDCCC0.4

Tgt Ion:152 Resp: 3408  
 Ion Ratio Lower Upper  
 152 100  
 151 21.9 17.0 25.6

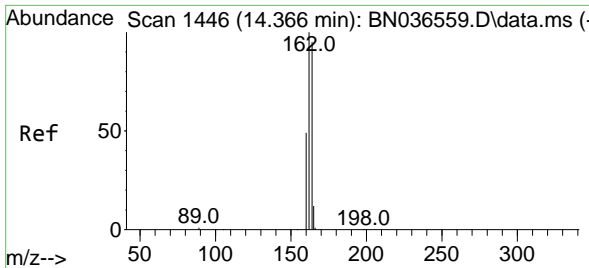


#12  
 2-Methylnaphthalene  
 Concen: 0.388 ng  
 RT: 12.146 min Scan# 1149  
 Delta R.T. 0.000 min  
 Lab File: BN036837.D  
 Acq: 04 Apr 2025 13:42

Tgt Ion:142 Resp: 4180  
 Ion Ratio Lower Upper  
 142 100  
 141 90.2 71.7 107.5  
 115 45.2 38.3 57.5



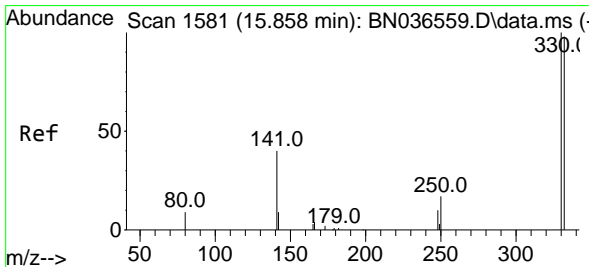
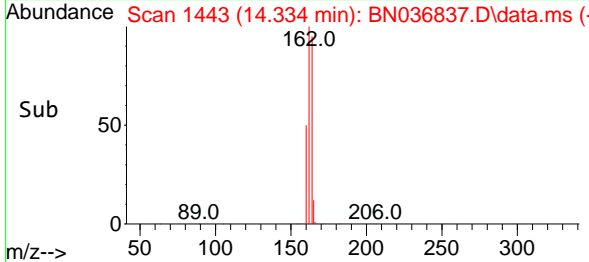
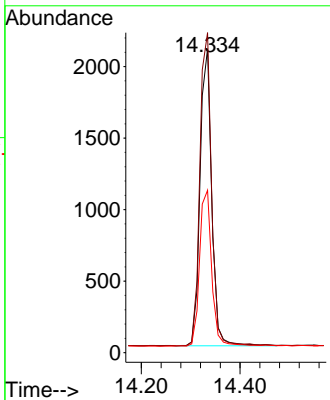
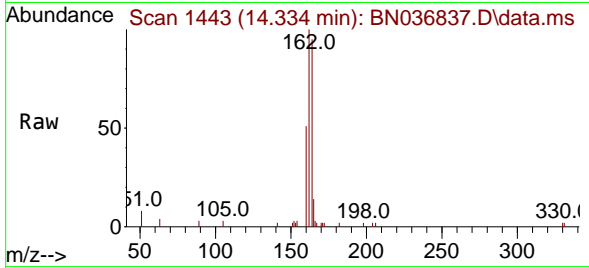




#13  
 Acenaphthene-d10  
 Concen: 0.400 ng  
 RT: 14.334 min Scan# 14  
 Delta R.T. 0.000 min  
 Lab File: BN036837.D  
 Acq: 04 Apr 2025 13:42

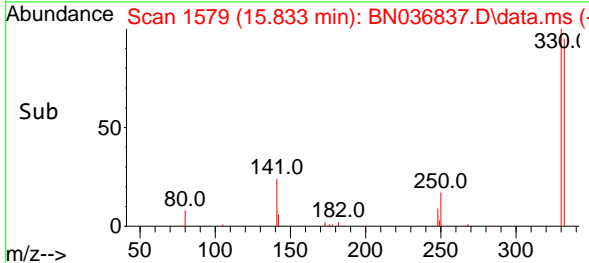
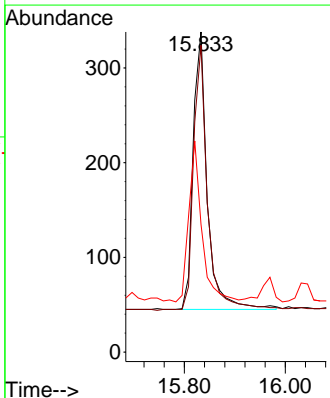
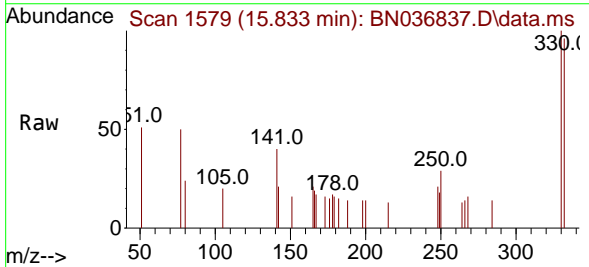
Instrument : BNA\_N  
 ClientSampleId : SSTDCCC0.4

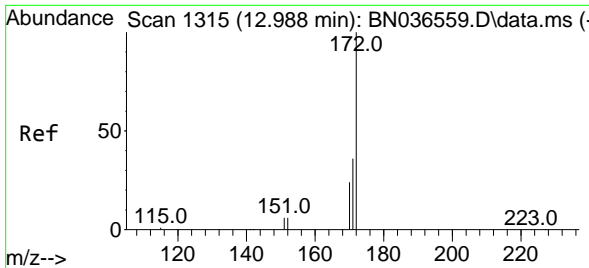
Tgt Ion	Resp	Ion Ratio	Lower	Upper
164	3391	100		
162	105.3	84.2	126.2	
160	53.4	42.2	63.2	



#14  
 2,4,6-Tribromophenol  
 Concen: 0.372 ng  
 RT: 15.833 min Scan# 1579  
 Delta R.T. 0.000 min  
 Lab File: BN036837.D  
 Acq: 04 Apr 2025 13:42

Tgt Ion	Resp	Ion Ratio	Lower	Upper
330	572	100		
332	94.9	75.2	112.8	
141	53.5	43.4	65.2	



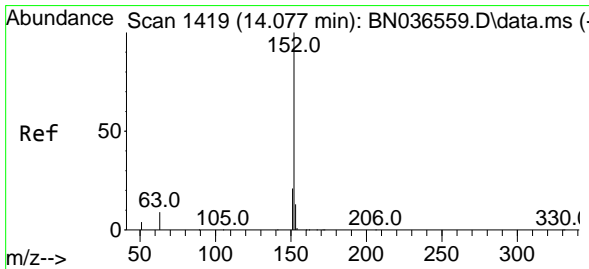
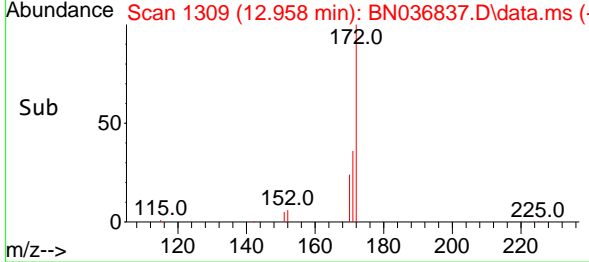
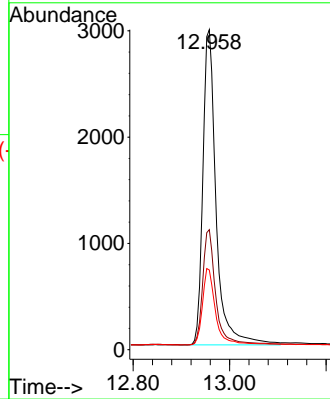
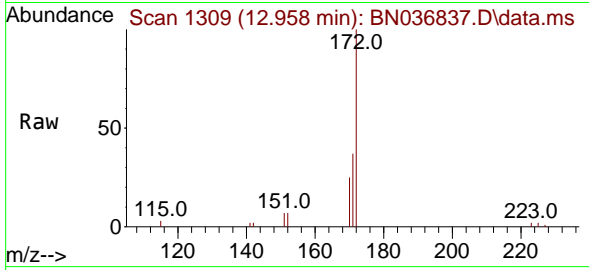


#15  
 2-Fluorobiphenyl  
 Concen: 0.369 ng  
 RT: 12.958 min Scan# 11  
 Delta R.T. 0.000 min  
 Lab File: BN036837.D  
 Acq: 04 Apr 2025 13:42

Instrument :  
 BNA\_N  
 ClientSampleId :  
 SSTDCCC0.4

Tgt Ion:172 Resp: 7286

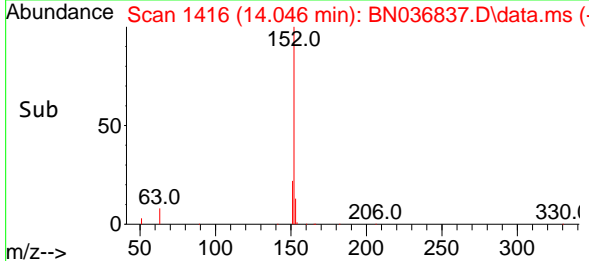
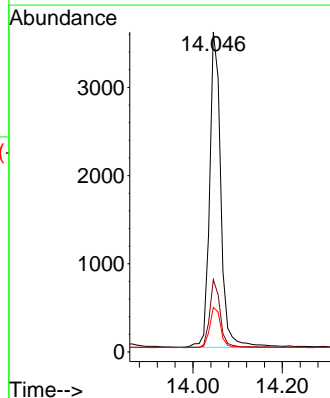
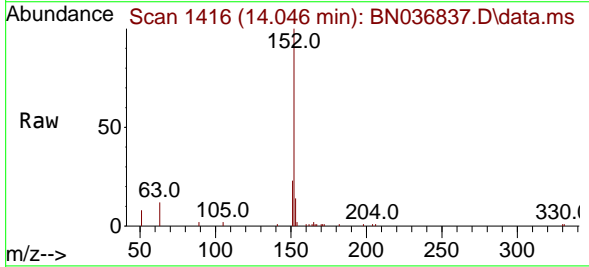
Ion	Ratio	Lower	Upper
172	100		
171	37.5	29.5	44.3
170	24.9	20.2	30.4

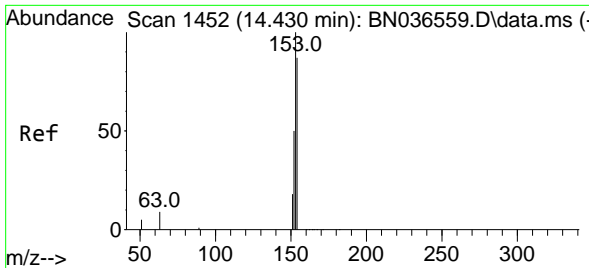


#16  
 Acenaphthylene  
 Concen: 0.387 ng  
 RT: 14.046 min Scan# 1416  
 Delta R.T. 0.000 min  
 Lab File: BN036837.D  
 Acq: 04 Apr 2025 13:42

Tgt Ion:152 Resp: 6192

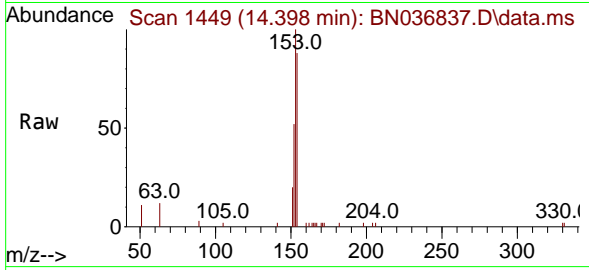
Ion	Ratio	Lower	Upper
152	100		
151	20.3	16.2	24.4
153	12.7	10.6	15.8



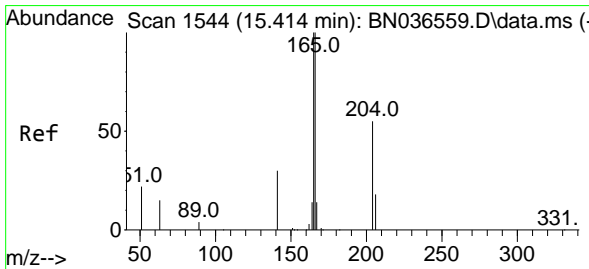
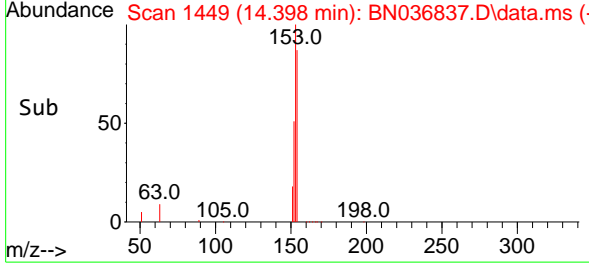
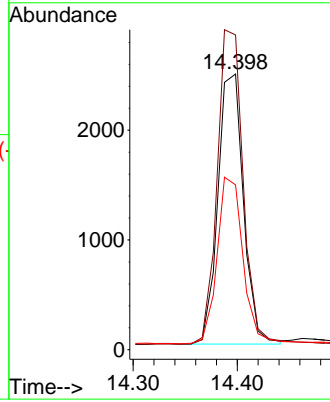


#17  
 Acenaphthene  
 Concen: 0.401 ng  
 RT: 14.398 min Scan# 1449  
 Delta R.T. 0.000 min  
 Lab File: BN036837.D  
 Acq: 04 Apr 2025 13:42

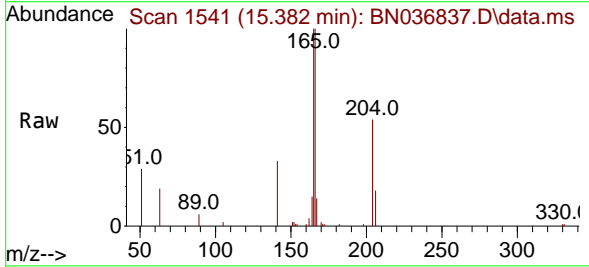
Instrument :  
 BNA\_N  
 ClientSampleId :  
 SSTDCCC0.4



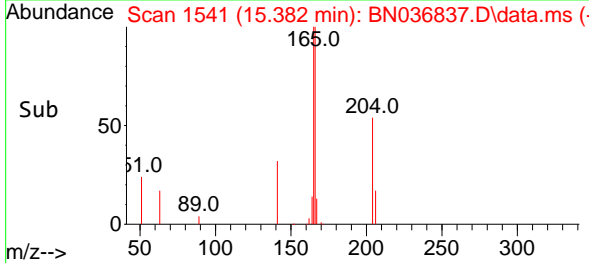
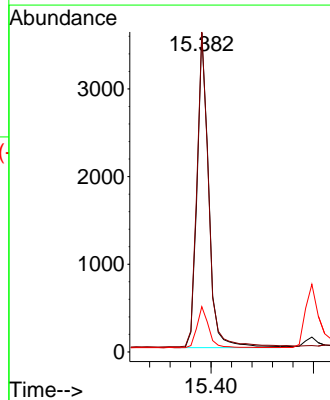
Tgt Ion:154 Resp: 4201  
 Ion Ratio Lower Upper  
 154 100  
 153 119.4 94.1 141.1  
 152 63.8 49.8 74.6

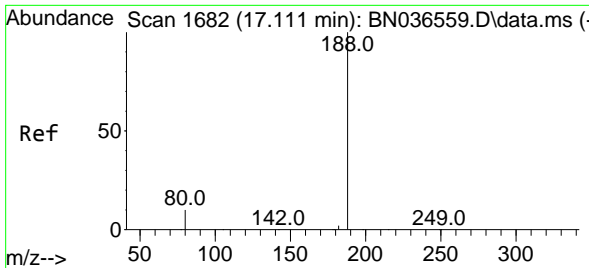


#18  
 Fluorene  
 Concen: 0.407 ng  
 RT: 15.382 min Scan# 1541  
 Delta R.T. 0.000 min  
 Lab File: BN036837.D  
 Acq: 04 Apr 2025 13:42



Tgt Ion:166 Resp: 5768  
 Ion Ratio Lower Upper  
 166 100  
 165 100.3 79.8 119.8  
 167 13.0 10.6 15.8



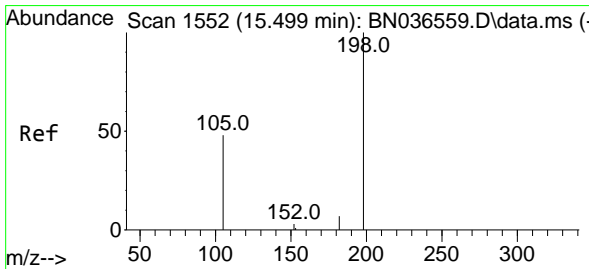
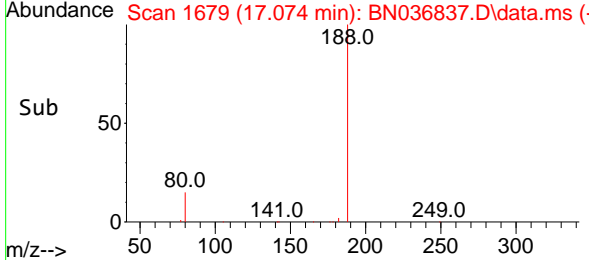
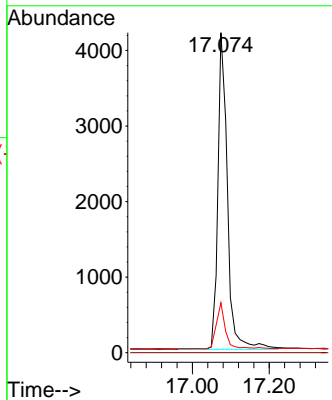
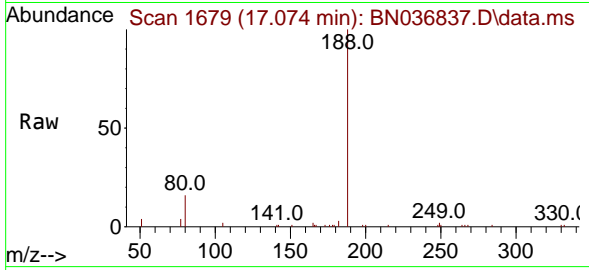


#19  
 Phenanthrene-d10  
 Concen: 0.400 ng  
 RT: 17.074 min Scan# 1  
 Delta R.T. 0.000 min  
 Lab File: BN036837.D  
 Acq: 04 Apr 2025 13:42

Instrument : BNA\_N  
 ClientSampleId : SSTDCCC0.4

Tgt Ion:188 Resp: 7218

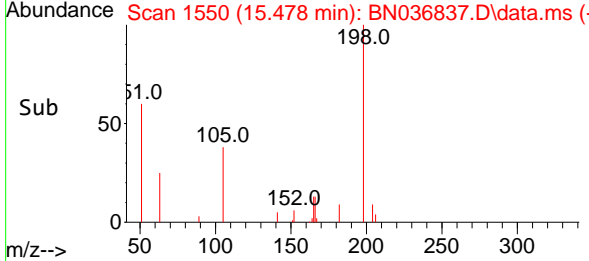
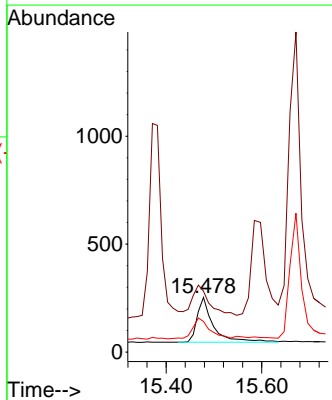
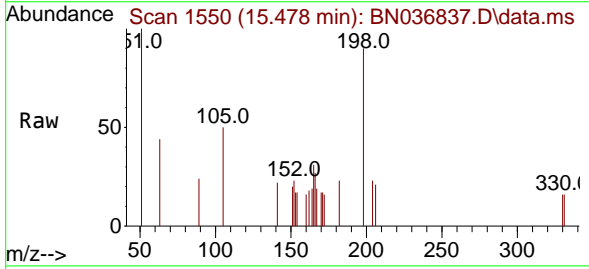
Ion	Ratio	Lower	Upper
188	100		
94	0.0	0.0	0.0
80	15.6	8.8	13.2#

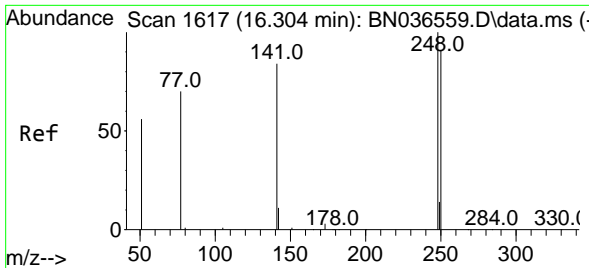


#20  
 4,6-Dinitro-2-methylphenol  
 Concen: 0.422 ng  
 RT: 15.478 min Scan# 1550  
 Delta R.T. 0.000 min  
 Lab File: BN036837.D  
 Acq: 04 Apr 2025 13:42

Tgt Ion:198 Resp: 509

Ion	Ratio	Lower	Upper
198	100		
51	111.5	107.9	161.9
105	56.1	56.2	84.2#



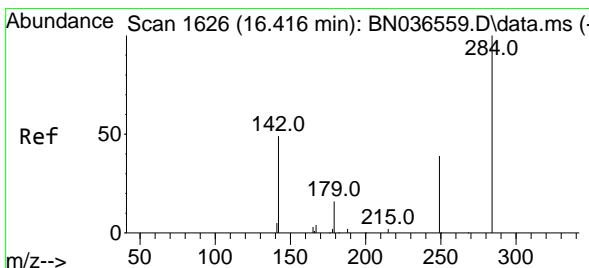
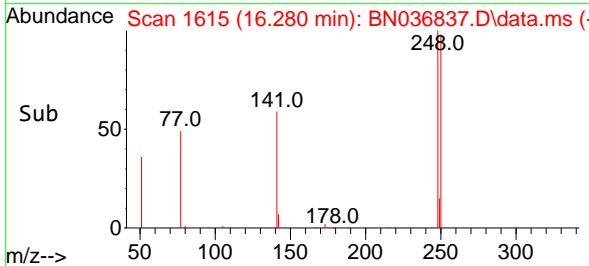
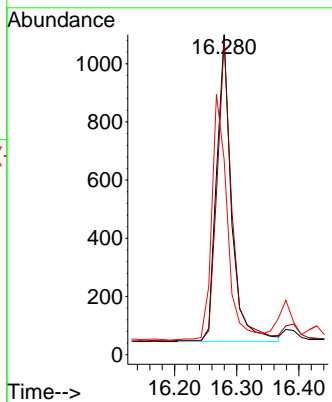
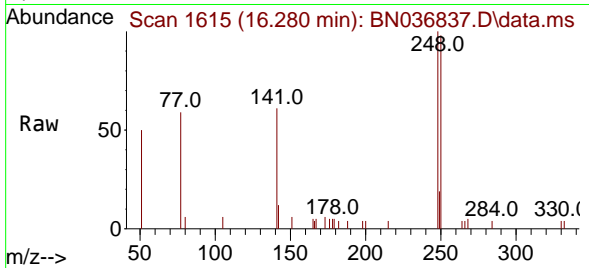


#21  
 4-Bromophenyl-phenylether  
 Concen: 0.386 ng  
 RT: 16.280 min Scan# 1615  
 Delta R.T. 0.000 min  
 Lab File: BN036837.D  
 Acq: 04 Apr 2025 13:42

Instrument : BNA\_N  
 ClientSampleId : SSTDCCC0.4

Tgt Ion: 248 Resp: 1746

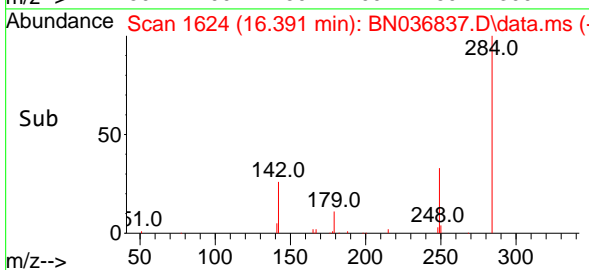
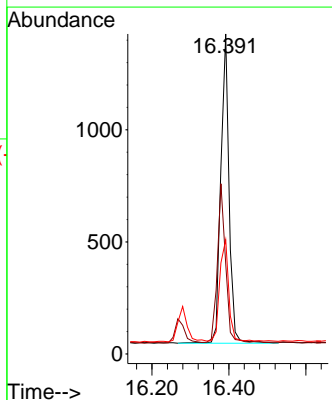
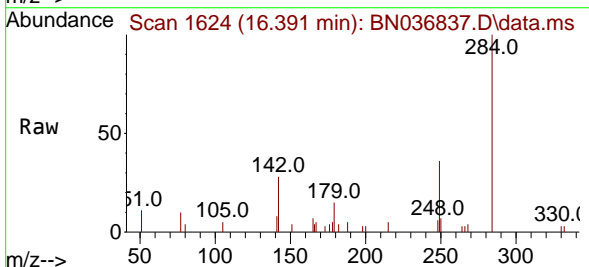
Ion	Ratio	Lower	Upper
248	100		
250	98.2	73.0	109.6
141	61.0	68.6	103.0

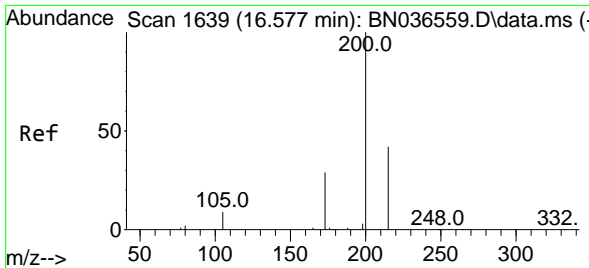


#22  
 Hexachlorobenzene  
 Concen: 0.379 ng  
 RT: 16.391 min Scan# 1624  
 Delta R.T. 0.000 min  
 Lab File: BN036837.D  
 Acq: 04 Apr 2025 13:42

Tgt Ion: 284 Resp: 2067

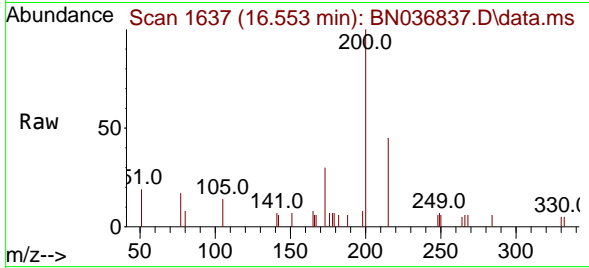
Ion	Ratio	Lower	Upper
284	100		
142	49.9	37.0	55.4
249	36.1	28.1	42.1



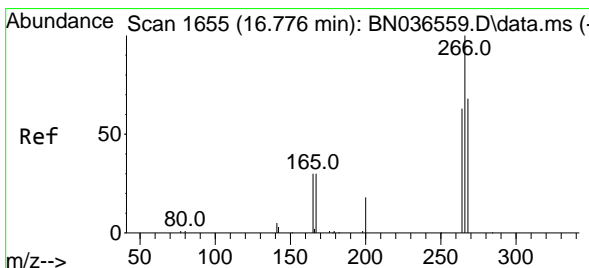
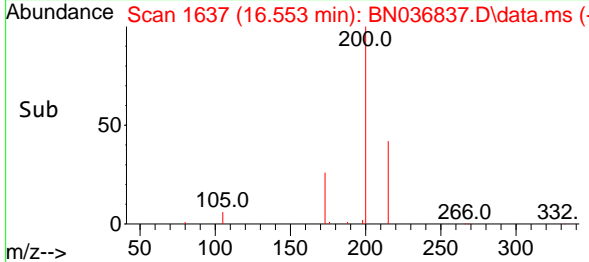
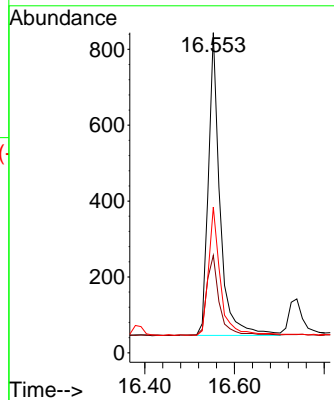


#23  
 Atrazine  
 Concen: 0.394 ng  
 RT: 16.553 min Scan# 1637  
 Delta R.T. 0.000 min  
 Lab File: BN036837.D  
 Acq: 04 Apr 2025 13:42

Instrument :  
 BNA\_N  
 ClientSampleId :  
 SSTDCCC0.4

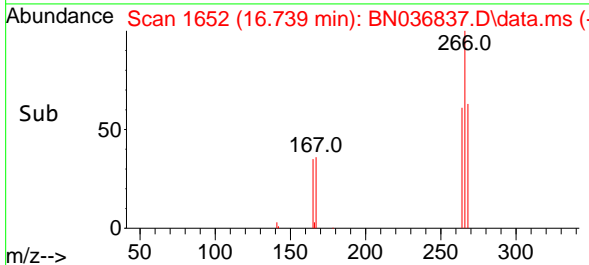
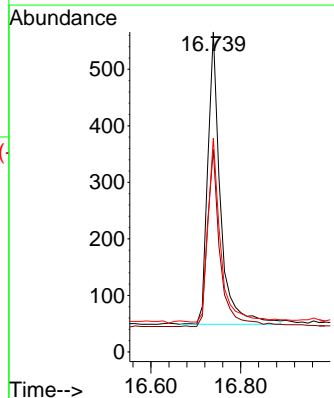
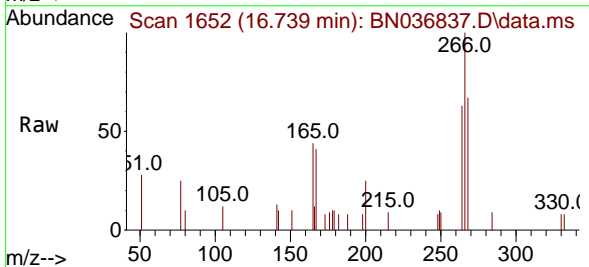


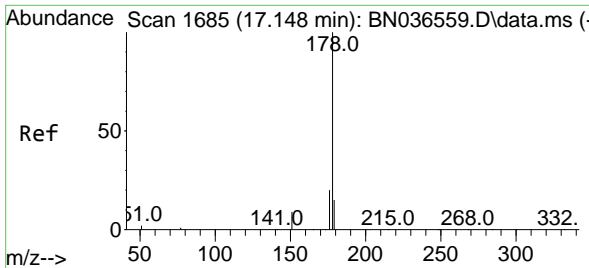
Tgt Ion:200 Resp: 1430  
 Ion Ratio Lower Upper  
 200 100  
 173 30.5 27.3 40.9  
 215 45.5 36.8 55.2



#24  
 Pentachlorophenol  
 Concen: 0.405 ng  
 RT: 16.739 min Scan# 1652  
 Delta R.T. 0.000 min  
 Lab File: BN036837.D  
 Acq: 04 Apr 2025 13:42

Tgt Ion:266 Resp: 1008  
 Ion Ratio Lower Upper  
 266 100  
 264 60.3 49.6 74.4  
 268 62.3 50.9 76.3



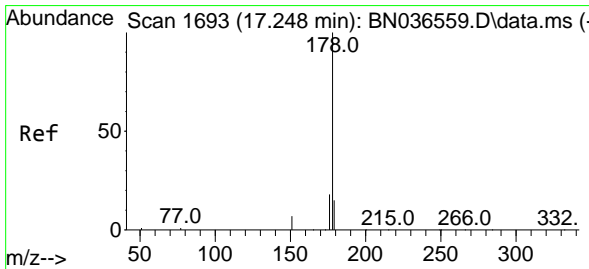
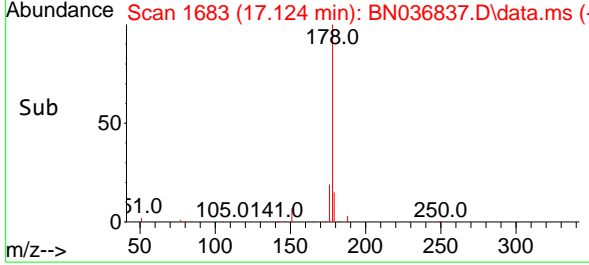
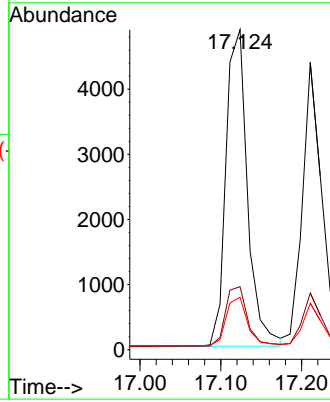
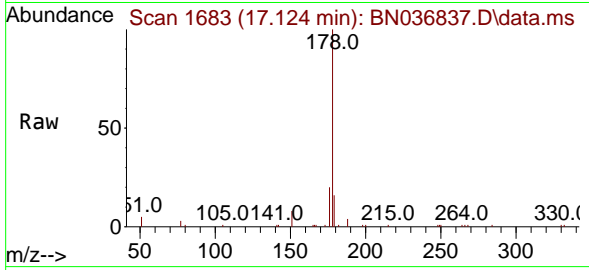


#25  
 Phenanthrene  
 Concen: 0.415 ng  
 RT: 17.124 min Scan# 1683  
 Delta R.T. 0.000 min  
 Lab File: BN036837.D  
 Acq: 04 Apr 2025 13:42

Instrument : BNA\_N  
 ClientSampleId : SSTDCCC0.4

Tgt Ion:178 Resp: 8982

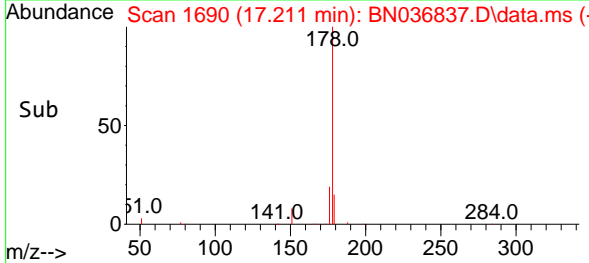
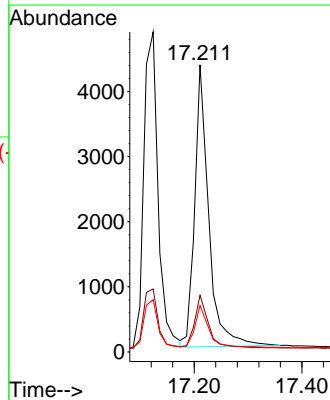
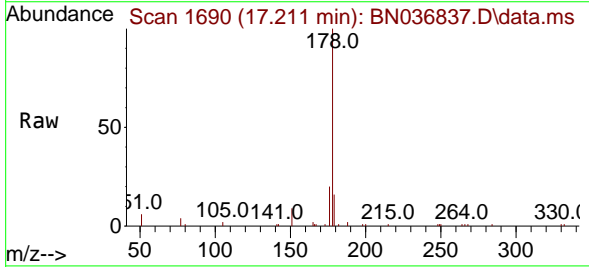
Ion	Ratio	Lower	Upper
178	100		
176	19.2	15.9	23.9
179	15.3	12.2	18.4

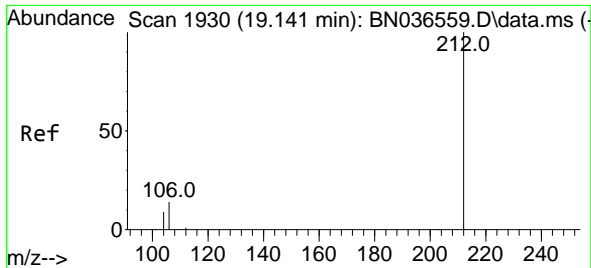


#26  
 Anthracene  
 Concen: 0.402 ng  
 RT: 17.211 min Scan# 1690  
 Delta R.T. 0.000 min  
 Lab File: BN036837.D  
 Acq: 04 Apr 2025 13:42

Tgt Ion:178 Resp: 7861

Ion	Ratio	Lower	Upper
178	100		
176	18.6	15.4	23.2
179	14.9	12.6	18.8



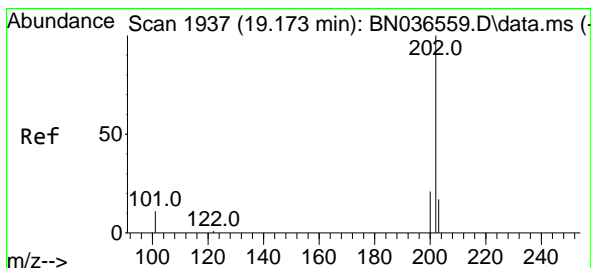
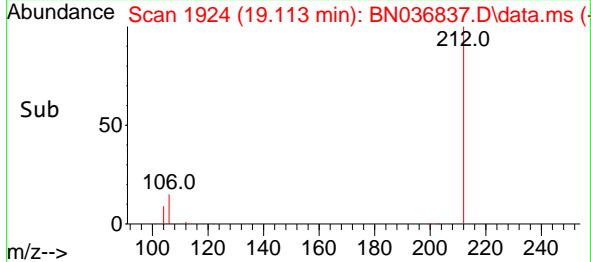
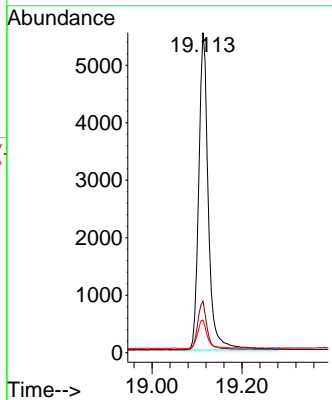
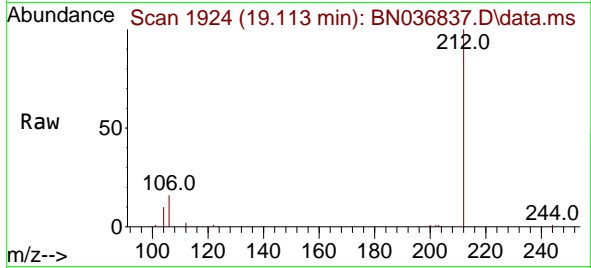


#27  
 Fluoranthene-d10  
 Concen: 0.445 ng  
 RT: 19.113 min Scan# 1913  
 Delta R.T. 0.000 min  
 Lab File: BN036837.D  
 Acq: 04 Apr 2025 13:42

Instrument : BNA\_N  
 ClientSampleId : SSTDCCC0.4

Tgt Ion:212 Resp: 8227

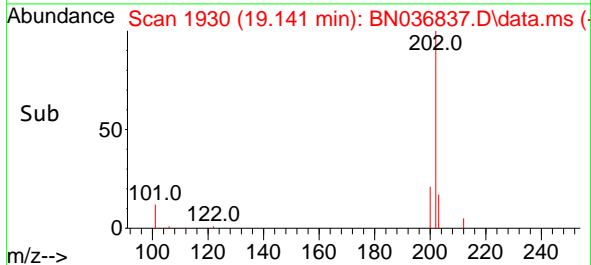
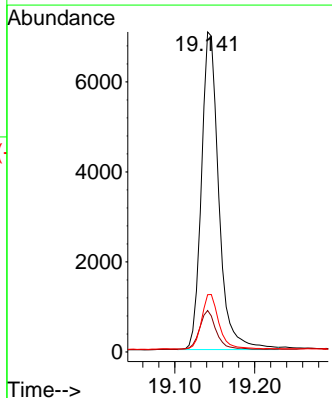
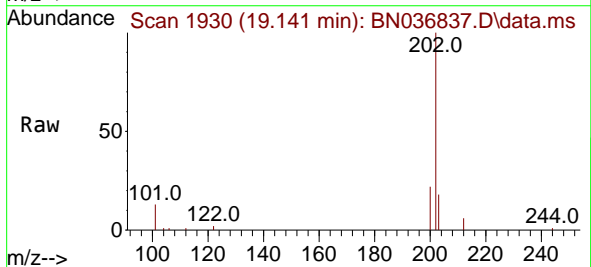
Ion	Ratio	Lower	Upper
212	100		
106	14.9	11.8	17.6
104	9.2	7.3	10.9



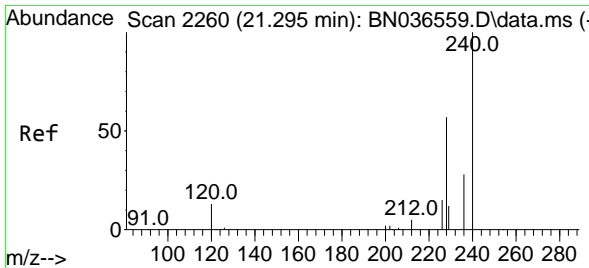
#28  
 Fluoranthene  
 Concen: 0.439 ng  
 RT: 19.141 min Scan# 1930  
 Delta R.T. 0.000 min  
 Lab File: BN036837.D  
 Acq: 04 Apr 2025 13:42

Tgt Ion:202 Resp: 10677

Ion	Ratio	Lower	Upper
202	100		
101	11.8	9.4	14.0
203	17.0	13.5	20.3



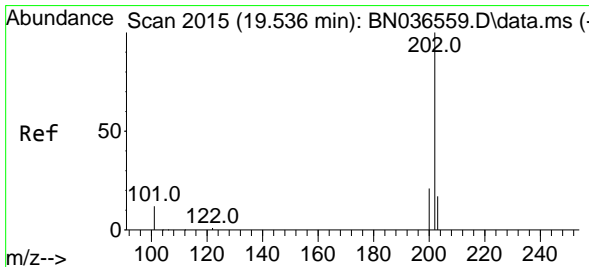
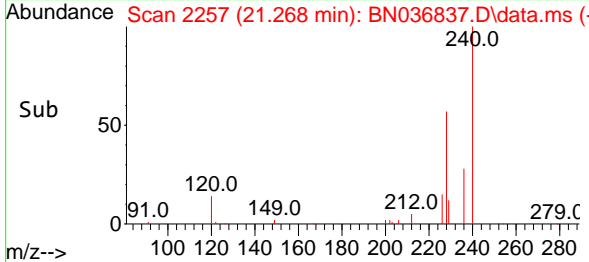
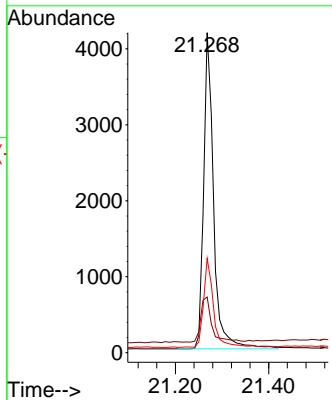
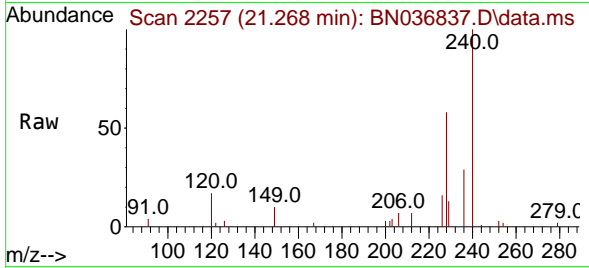




#29  
 Chrysene-d12  
 Concen: 0.400 ng  
 RT: 21.268 min Scan# 21  
 Delta R.T. 0.000 min  
 Lab File: BN036837.D  
 Acq: 04 Apr 2025 13:42

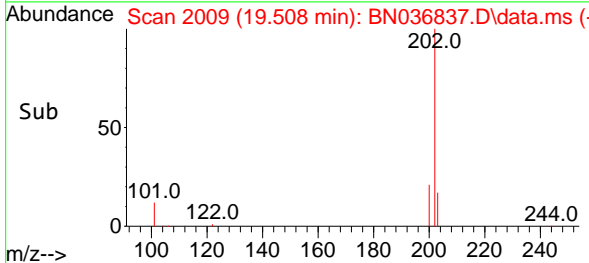
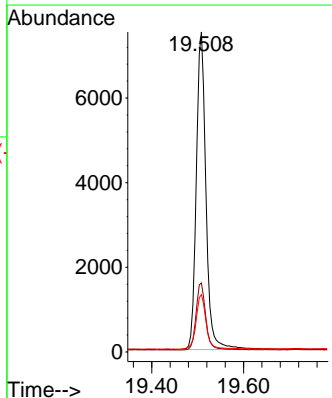
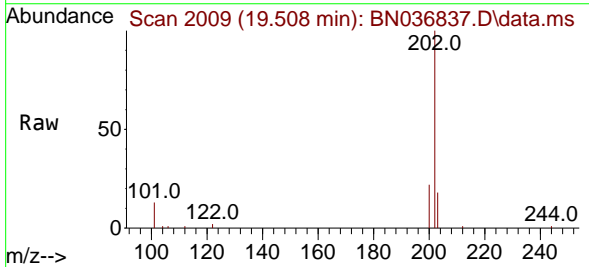
Instrument :  
 BNA\_N  
 ClientSampleId :  
 SSTDCCC0.4

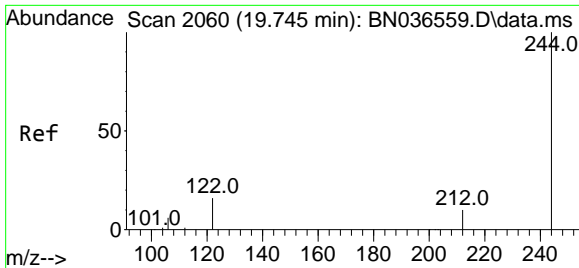
Tgt Ion:240 Resp: 6202  
 Ion Ratio Lower Upper  
 240 100  
 120 17.4 14.6 22.0  
 236 29.5 24.1 36.1



#30  
 Pyrene  
 Concen: 0.362 ng  
 RT: 19.508 min Scan# 2009  
 Delta R.T. 0.000 min  
 Lab File: BN036837.D  
 Acq: 04 Apr 2025 13:42

Tgt Ion:202 Resp: 10985  
 Ion Ratio Lower Upper  
 202 100  
 200 21.2 17.1 25.7  
 203 17.8 14.1 21.1



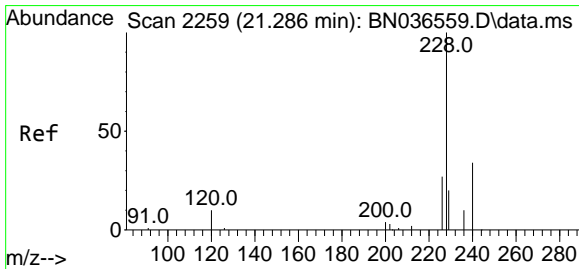
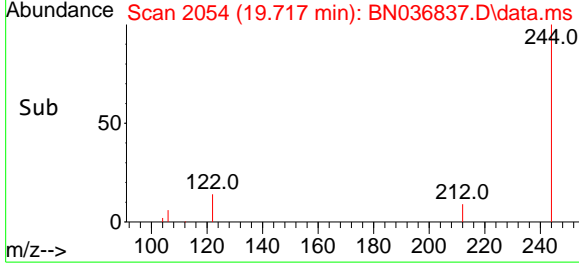
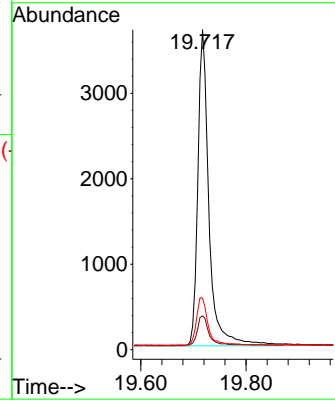
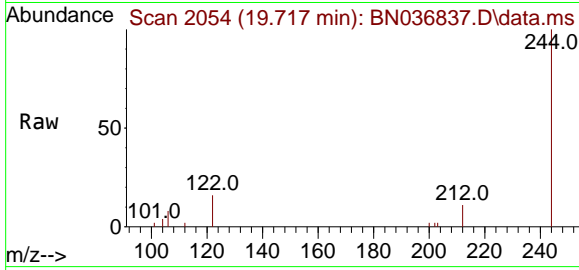


#31  
 Terphenyl-d14  
 Concen: 0.366 ng  
 RT: 19.717 min Scan# 2060  
 Delta R.T. 0.000 min  
 Lab File: BN036837.D  
 Acq: 04 Apr 2025 13:42

Instrument : BNA\_N  
 ClientSampleId : SSTDCCC0.4

Tgt Ion:244 Resp: 5434

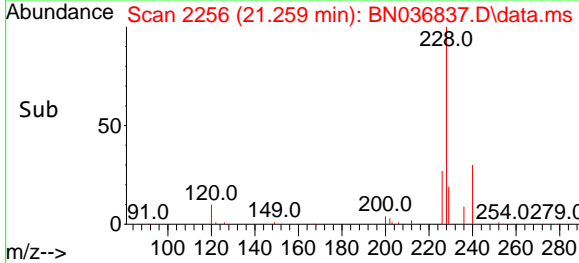
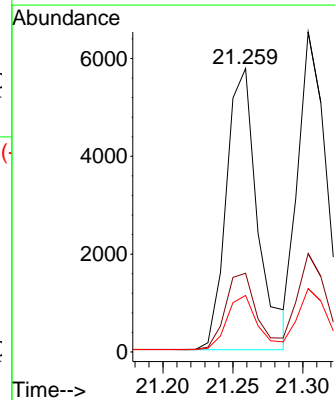
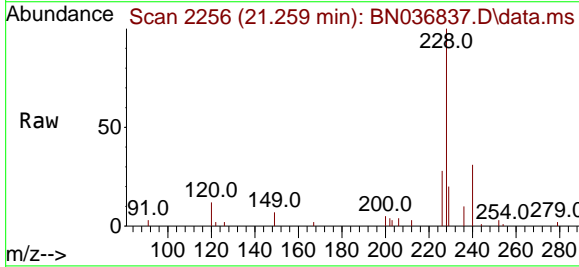
Ion	Ratio	Lower	Upper
244	100		
212	10.6	9.6	14.4
122	16.1	13.9	20.9

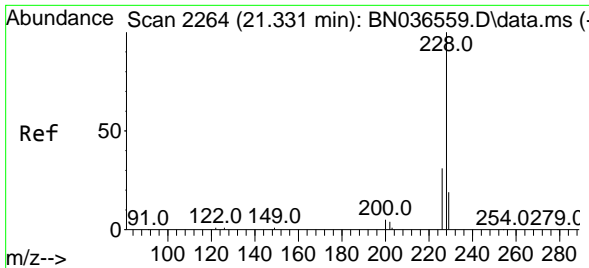


#32  
 Benzo(a)anthracene  
 Concen: 0.416 ng  
 RT: 21.259 min Scan# 2256  
 Delta R.T. 0.000 min  
 Lab File: BN036837.D  
 Acq: 04 Apr 2025 13:42

Tgt Ion:228 Resp: 8968

Ion	Ratio	Lower	Upper
228	100		
226	27.8	22.5	33.7
229	19.9	16.6	25.0



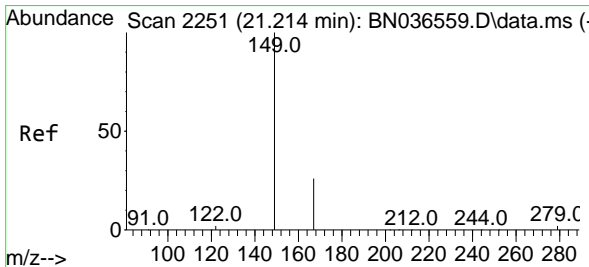
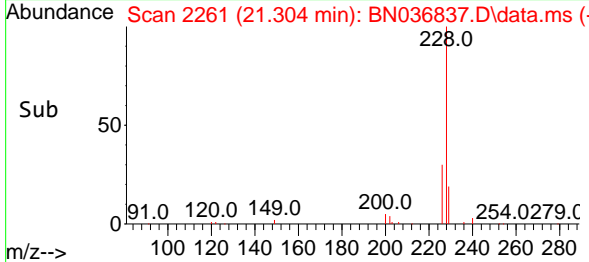
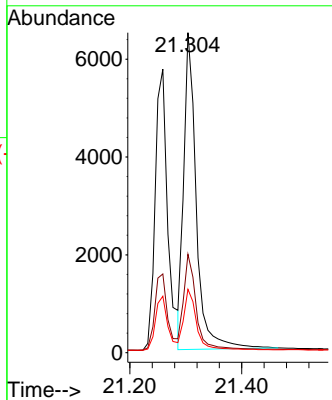
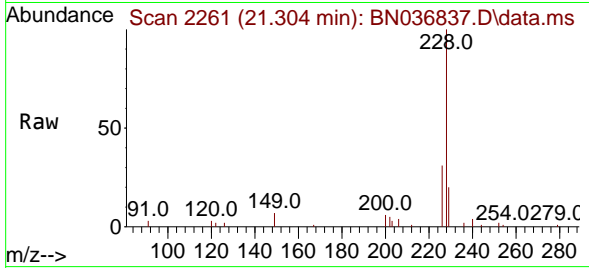


#33  
 Chrysene  
 Concen: 0.428 ng  
 RT: 21.304 min Scan# 21  
 Delta R.T. 0.000 min  
 Lab File: BN036837.D  
 Acq: 04 Apr 2025 13:42

Instrument :  
 BNA\_N  
 ClientSampleId :  
 SSTDCCC0.4

Tgt Ion: 228 Resp: 10083

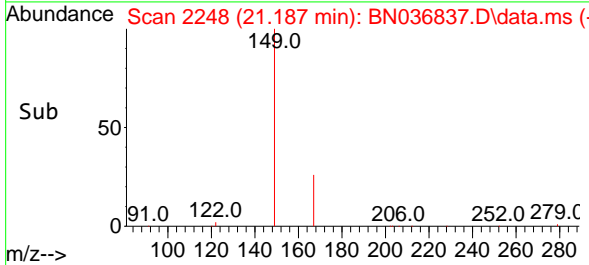
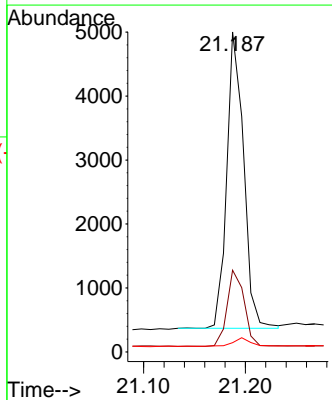
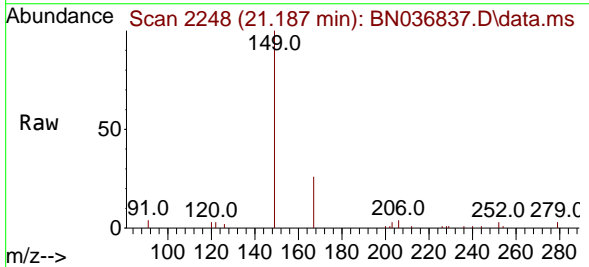
Ion	Ratio	Lower	Upper
228	100		
226	30.7	25.3	37.9
229	19.8	15.8	23.8

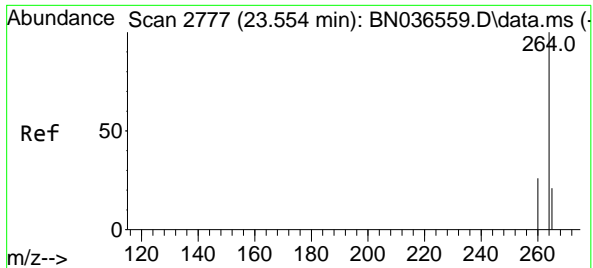


#34  
 Bis(2-ethylhexyl)phthalate  
 Concen: 0.347 ng  
 RT: 21.187 min Scan# 2248  
 Delta R.T. 0.000 min  
 Lab File: BN036837.D  
 Acq: 04 Apr 2025 13:42

Tgt Ion: 149 Resp: 5324

Ion	Ratio	Lower	Upper
149	100		
167	26.0	20.7	31.1
279	3.0	3.6	5.4



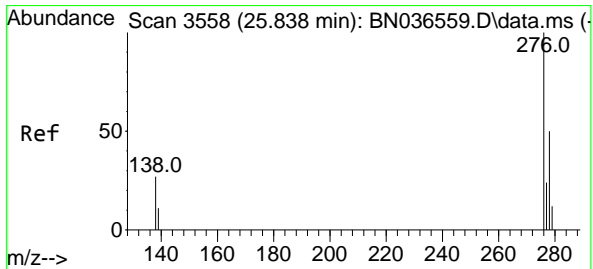
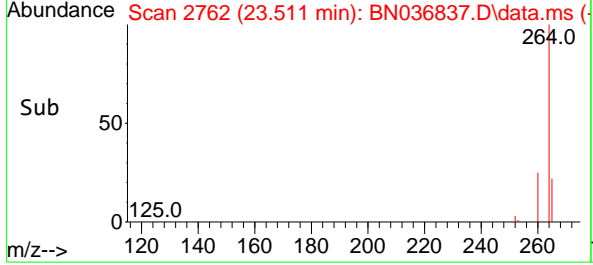
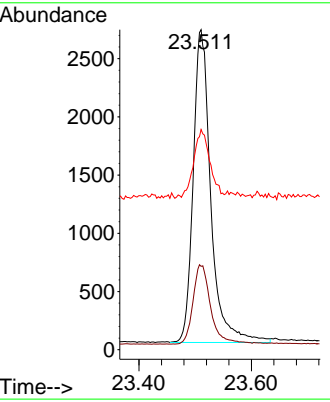
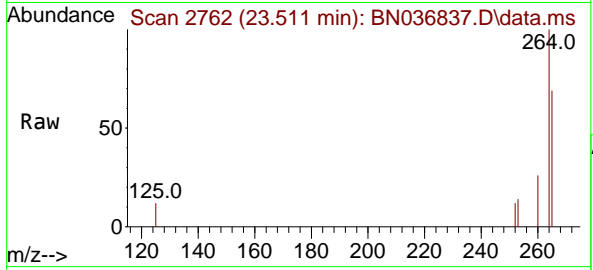


#35  
 Perylene-d12  
 Concen: 0.400 ng  
 RT: 23.511 min Scan# 21  
 Delta R.T. 0.000 min  
 Lab File: BN036837.D  
 Acq: 04 Apr 2025 13:42

Instrument : BNA\_N  
 ClientSampleId : SSTDCCC0.4

Tgt Ion:264 Resp: 5846

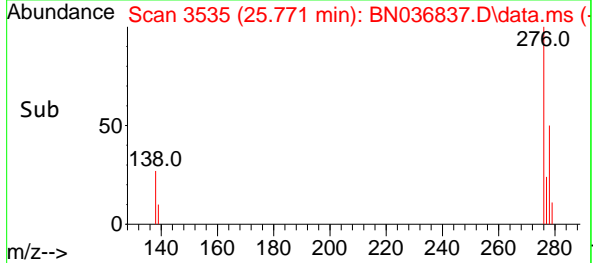
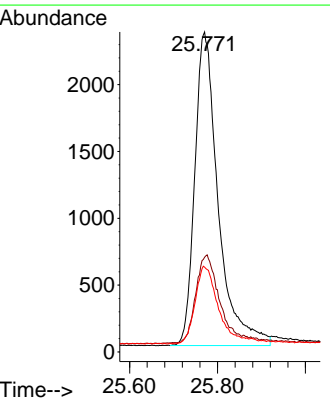
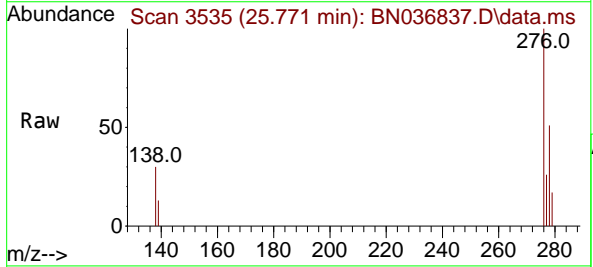
Ion	Ratio	Lower	Upper
264	100		
260	26.0	22.6	33.8
265	68.8	88.1	132.1#

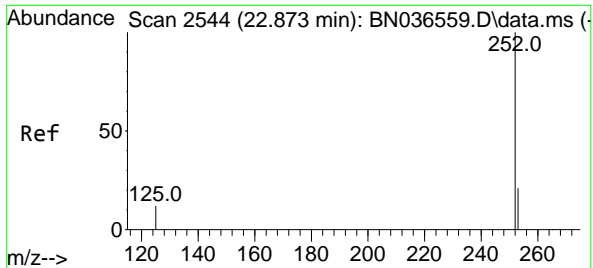


#36  
 Indeno(1,2,3-cd)pyrene  
 Concen: 0.412 ng  
 RT: 25.771 min Scan# 3535  
 Delta R.T. 0.000 min  
 Lab File: BN036837.D  
 Acq: 04 Apr 2025 13:42

Tgt Ion:276 Resp: 8691

Ion	Ratio	Lower	Upper
276	100		
138	27.6	23.4	35.2
277	24.5	20.0	30.0



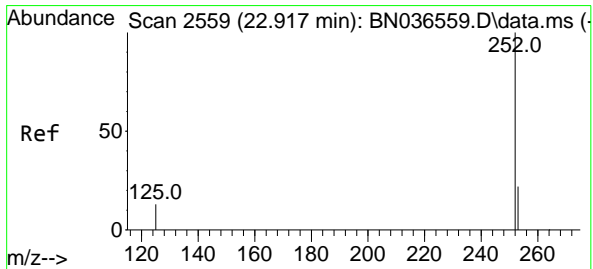
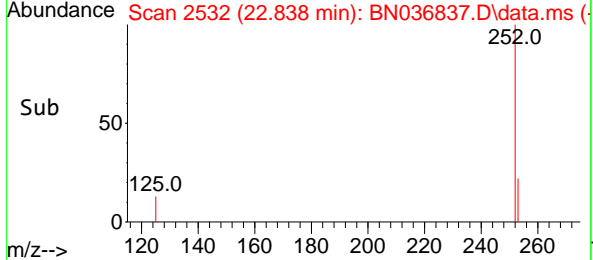
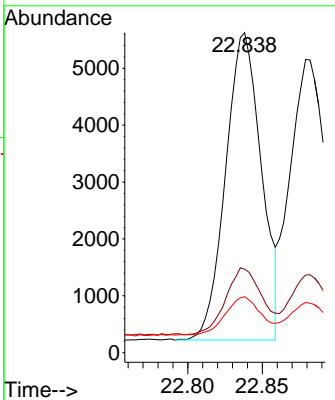
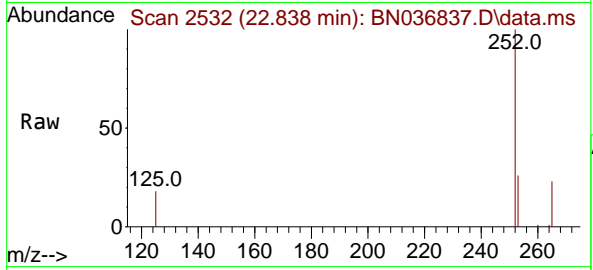


#37  
 Benzo(b)fluoranthene  
 Concen: 0.423 ng  
 RT: 22.838 min Scan# 21  
 Delta R.T. 0.000 min  
 Lab File: BN036837.D  
 Acq: 04 Apr 2025 13:42

Instrument : BNA\_N  
 ClientSampleId : SSTDCCC0.4

Tgt Ion:252 Resp: 9008

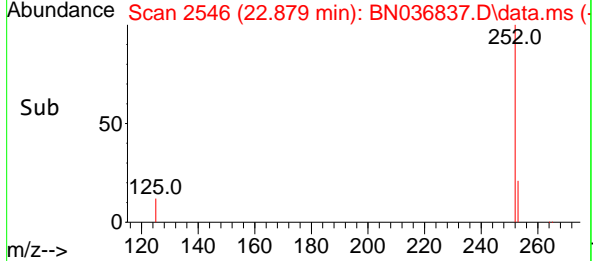
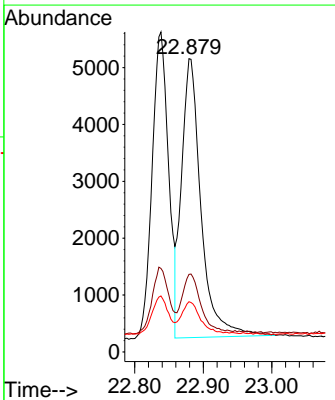
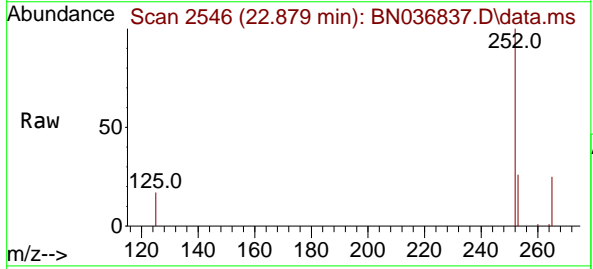
Ion	Ratio	Lower	Upper
252	100		
253	26.1	23.9	35.9
125	17.5	17.4	26.2

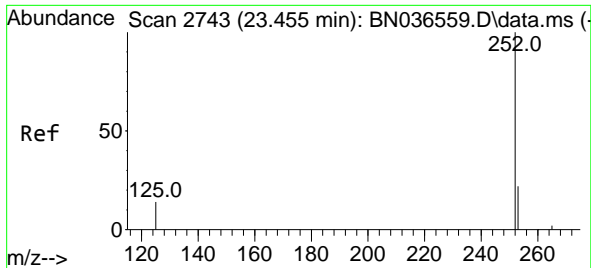


#38  
 Benzo(k)fluoranthene  
 Concen: 0.434 ng  
 RT: 22.879 min Scan# 2546  
 Delta R.T. 0.000 min  
 Lab File: BN036837.D  
 Acq: 04 Apr 2025 13:42

Tgt Ion:252 Resp: 9694

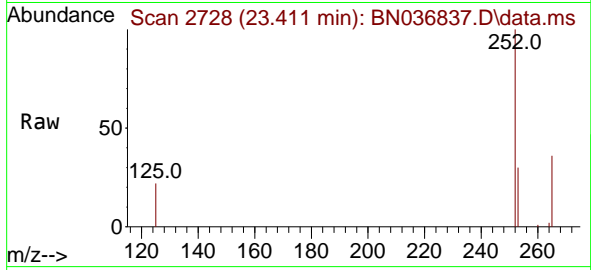
Ion	Ratio	Lower	Upper
252	100		
253	26.5	24.6	36.8
125	17.1	17.8	26.8



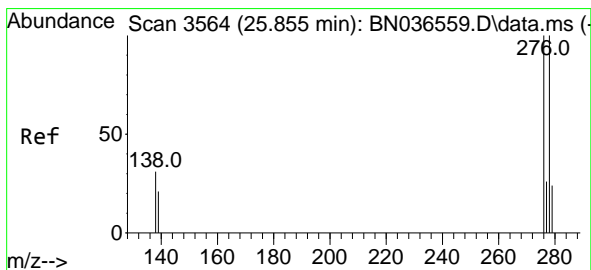
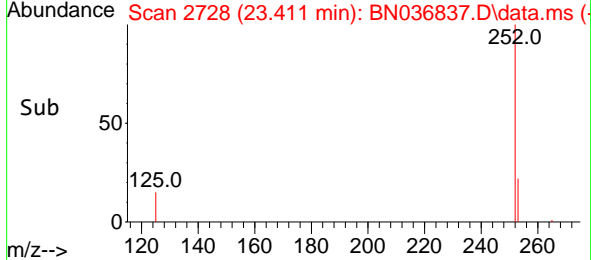
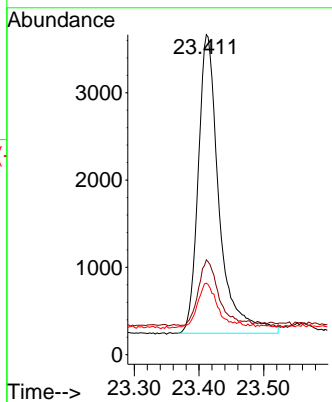


#39  
 Benzo(a)pyrene  
 Concen: 0.427 ng  
 RT: 23.411 min Scan# 21  
 Delta R.T. 0.000 min  
 Lab File: BN036837.D  
 Acq: 04 Apr 2025 13:42

Instrument :  
 BNA\_N  
 ClientSampleId :  
 SSTDCCC0.4

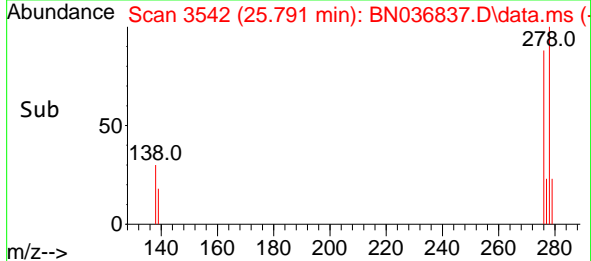
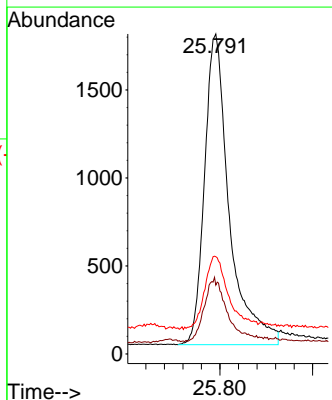
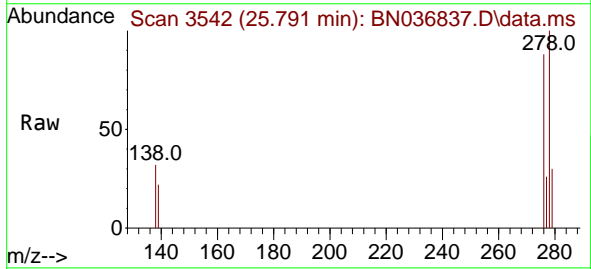


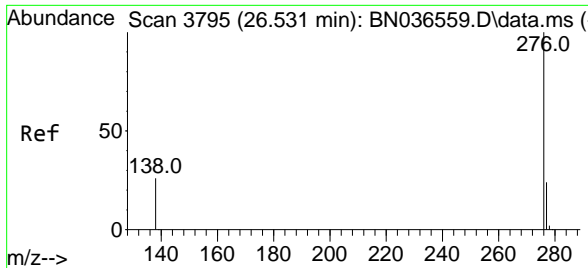
Tgt Ion:252 Resp: 7658  
 Ion Ratio Lower Upper  
 252 100  
 253 29.6 27.8 41.8  
 125 22.3 22.7 34.1#



#40  
 Dibenzo(a,h)anthracene  
 Concen: 0.399 ng  
 RT: 25.791 min Scan# 3542  
 Delta R.T. 0.000 min  
 Lab File: BN036837.D  
 Acq: 04 Apr 2025 13:42

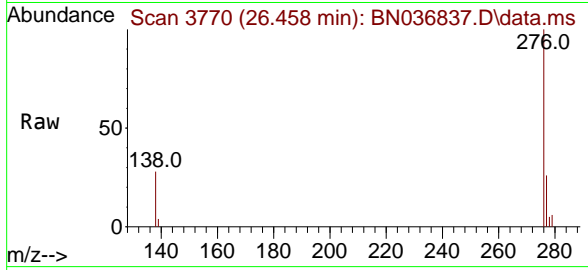
Tgt Ion:278 Resp: 6556  
 Ion Ratio Lower Upper  
 278 100  
 139 21.5 20.8 31.2  
 279 30.4 28.8 43.2





#41  
 Benzo(g,h,i)perylene  
 Concen: 0.420 ng  
 RT: 26.458 min Scan# 31  
 Delta R.T. 0.000 min  
 Lab File: BN036837.D  
 Acq: 04 Apr 2025 13:42

Instrument :  
 BNA\_N  
 ClientSampleId :  
 SSTDCCC0.4



Tgt Ion: 276 Resp: 7891

Ion	Ratio	Lower	Upper
276	100		
277	25.9	22.2	33.4
138	27.7	24.1	36.1

