

Data Path : Z:\svoasrv\HPCHEM1\BNA_N\Data\BN040921\
 Data File : BN014257.D
 Acq On : 09 Apr 2021 19:25
 Operator : CG/JU
 Sample : SSTDCCC0.4
 Misc :
 ALS Vial : 2 Sample Multiplier: 1

Instrument :
 BNA_N
 ClientSampleId :
 SSTDCCC0.4EC

Quant Time: Apr 10 00:34:43 2021
 Quant Method : Z:\SVOASRV\HPCHEM1\BNA_N\METHODS\8270-SIM-BN040921.M
 Quant Title : ASP BNA STANDARDS FOR 5 POINT CALIBRATION
 QLast Update : Fri Apr 09 15:06:44 2021
 Response via : Initial Calibration

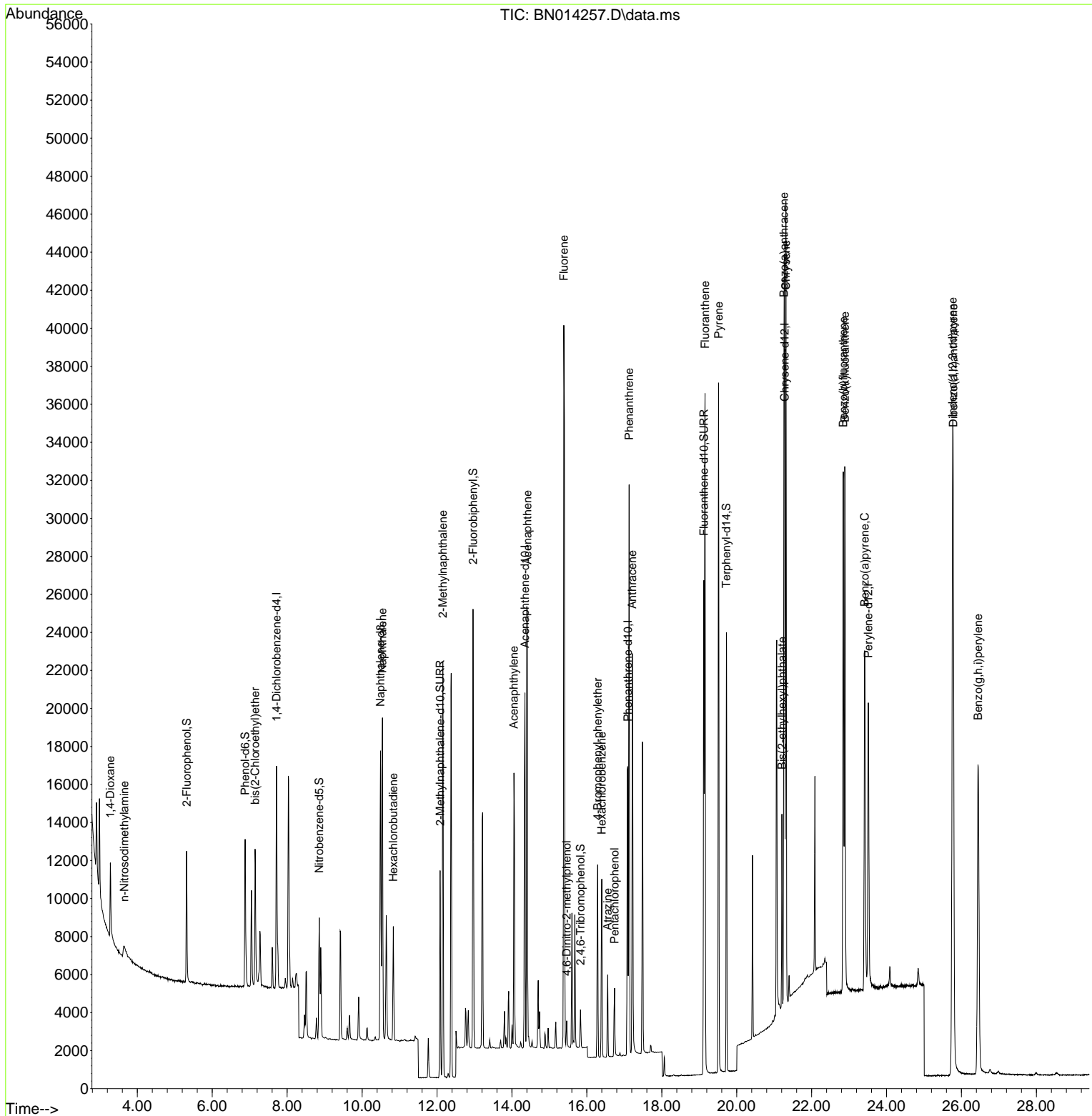
Compound	R.T.	QIon	Response	Conc	Units	Dev(Min)	
Internal Standards							
1) 1,4-Dichlorobenzene-d4	7.716	152	5675	0.40	ng	0.00	
7) Naphthalene-d8	10.492	136	20541	0.40	ng	0.00	
13) Acenaphthene-d10	14.346	164	11290	0.40	ng	0.00	
19) Phenanthrene-d10	17.092	188	24182	0.40	ng	0.00	
29) Chrysene-d12	21.282	240	23410	0.40	ng	0.00	#
36) Perylene-d12	23.513	264	21274	0.40	ng	0.00	#
System Monitoring Compounds							
4) 2-Fluorophenol	5.316	112	5891	0.44	ng	0.00	
5) Phenol-d6	6.879	99	7385	0.44	ng	0.00	
8) Nitrobenzene-d5	8.857	82	5394	0.41	ng	0.00	
11) 2-Methylnaphthalene-d10	12.084	152	14422	0.45	ng	0.00	
14) 2,4,6-Tribromophenol	15.830	330	1636	0.37	ng	0.00	
15) 2-Fluorobiphenyl	12.963	172	19193	0.46	ng	0.00	
27) Fluoranthene-d10	19.124	212	30383	0.43	ng	0.00	
31) Terphenyl-d14	19.724	244	24398	0.47	ng	0.00	
							Qvalue
2) 1,4-Dioxane	3.279	88	3398	0.47	ng		93
3) n-Nitrosodimethylamine	3.649	42	1067	0.32	ng	#	92
6) bis(2-Chloroethyl)ether	7.144	93	6091	0.44	ng		98
9) Naphthalene	10.543	128	23458	0.46	ng		100
10) Hexachlorobutadiene	10.834	225	4696	0.46	ng	#	99
12) 2-Methylnaphthalene	12.155	142	15406	0.45	ng		97
16) Acenaphthylene	14.054	152	17815	0.41	ng		99
17) Acenaphthene	14.409	154	13967	0.44	ng		98
18) Fluorene	15.386	166	17608	0.44	ng		100
20) 4,6-Dinitro-2-methylph...	15.463	198	1064	0.37	ng		96
21) 4-Bromophenyl-phenylether	16.289	248	5446	0.44	ng		90
22) Hexachlorobenzene	16.398	284	7461	0.47	ng		100
23) Atrazine	16.556	200	3482	0.38	ng		97
24) Pentachlorophenol	16.739	266	1731	0.36	ng		100
25) Phenanthrene	17.128	178	30188	0.45	ng		100
26) Anthracene	17.213	178	23629	0.43	ng		100
28) Fluoranthene	19.153	202	33094	0.43	ng		100
30) Pyrene	19.516	202	33148	0.45	ng		100
32) Benzo(a)anthracene	21.260	228	29514	0.44	ng		98
33) Chrysene	21.314	228	33649	0.47	ng		98
34) Bis(2-ethylhexyl)phtha...	21.207	149	8311	0.43	ng		99
35) Indeno(1,2,3-cd)pyrene	25.762	276	41104	0.48	ng		99
37) Benzo(b)fluoranthene	22.846	252	34426	0.45	ng		98
38) Benzo(k)fluoranthene	22.887	252	34771	0.46	ng		99
39) Benzo(a)pyrene	23.417	252	28317	0.44	ng		97
40) Dibenzo(a,h)anthracene	25.779	278	34347	0.47	ng		100
41) Benzo(g,h,i)perylene	26.443	276	34690	0.47	ng		99

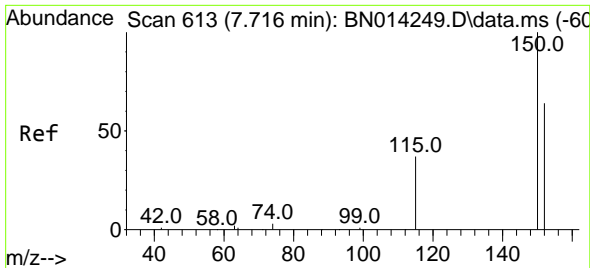
(#) = qualifier out of range (m) = manual integration (+) = signals summed

Data Path : Z:\svoasrv\HPCHEM1\BNA_N\Data\BN040921\
 Data File : BN014257.D
 Acq On : 09 Apr 2021 19:25
 Operator : CG/JU
 Sample : SSTDCCC0.4
 Misc :
 ALS Vial : 2 Sample Multiplier: 1

Instrument :
 BNA_N
 Client Sample Id :
 SSTDCCC0.4EC

Quant Time: Apr 10 00:34:43 2021
 Quant Method : Z:\SVOASRV\HPCHEM1\BNA_N\METHODS\8270-SIM-BN040921.M
 Quant Title : ASP BNA STANDARDS FOR 5 POINT CALIBRATION
 QLast Update : Fri Apr 09 15:06:44 2021
 Response via : Initial Calibration

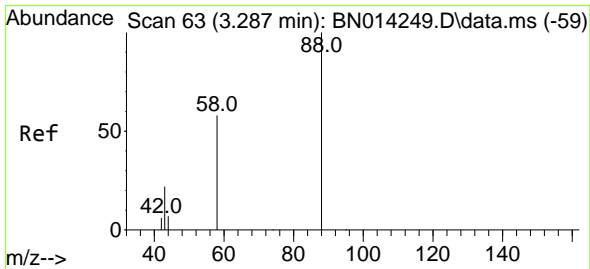
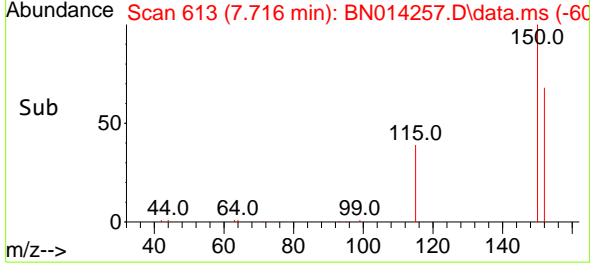
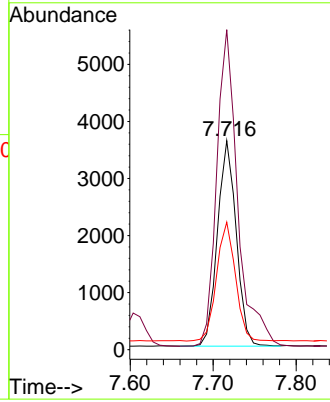
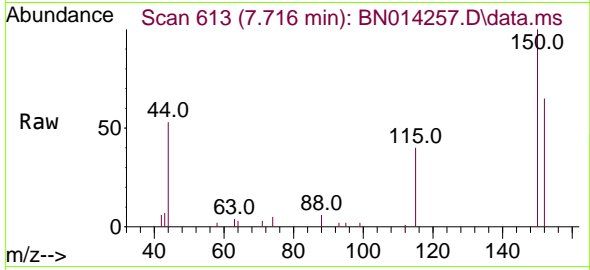




#1
 1,4-Dichlorobenzene-d4
 Concen: 0.40 ng
 RT: 7.716 min Scan# 613
 Delta R.T. 0.000 min
 Lab File: BN014257.D
 Acq: 09 Apr 2021 19:25

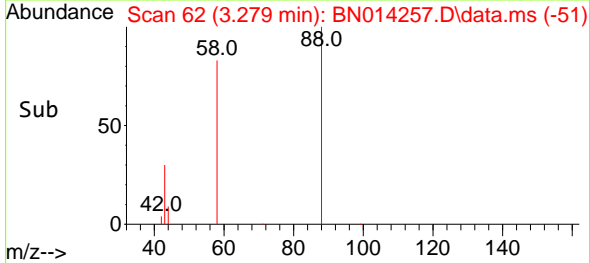
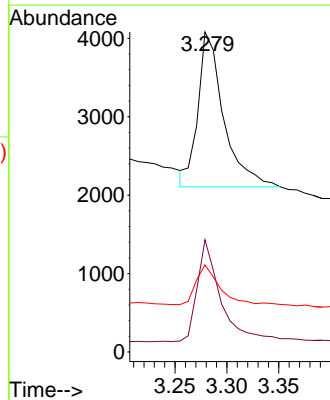
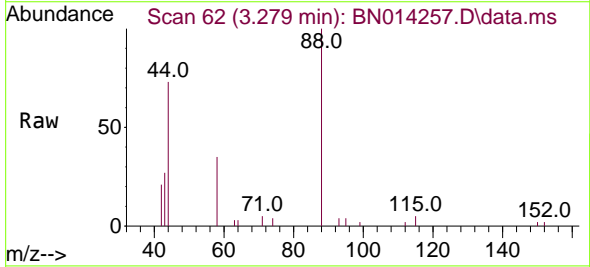
Instrument :
 BNA_N
 ClientSampled :
 SSTDCCC0.4EC

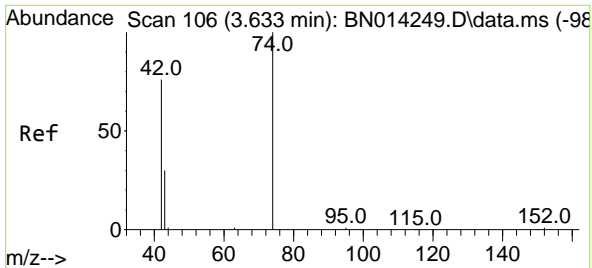
Tgt Ion:152 Resp: 5675
 Ion Ratio Lower Upper
 152 100
 150 153.1 124.8 187.2
 115 61.0 48.6 73.0



#2
 1,4-Dioxane
 Concen: 0.47 ng
 RT: 3.279 min Scan# 62
 Delta R.T. -0.008 min
 Lab File: BN014257.D
 Acq: 09 Apr 2021 19:25

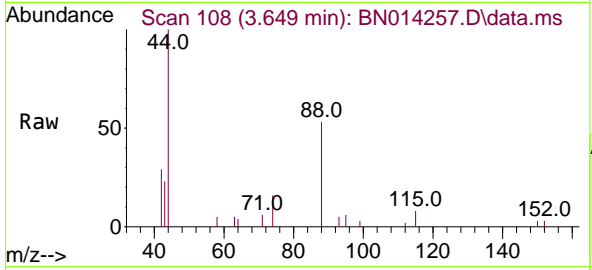
Tgt Ion: 88 Resp: 3398
 Ion Ratio Lower Upper
 88 100
 58 60.5 52.5 78.7
 43 23.3 21.8 32.8





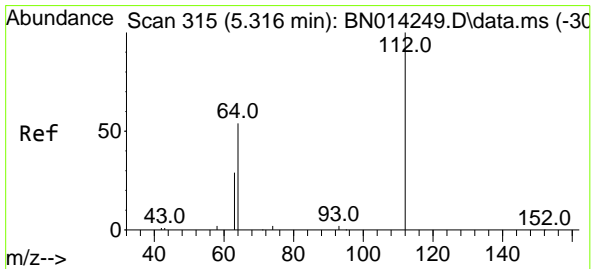
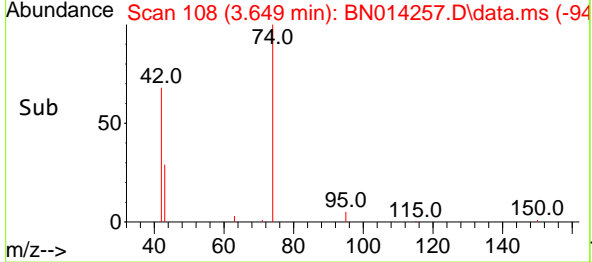
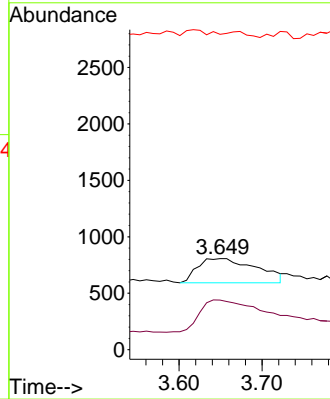
#3
 n-Nitrosodimethylamine
 Concen: 0.32 ng
 RT: 3.649 min Scan# 108
 Delta R.T. 0.016 min
 Lab File: BN014257.D
 Acq: 09 Apr 2021 19:25

Instrument :
 BNA_N
 ClientSampled :
 SSTDCCC0.4EC



Tgt Ion: 42 Resp: 1067

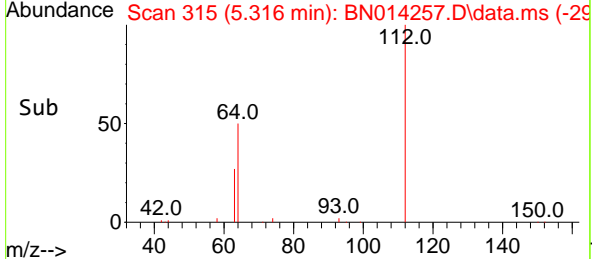
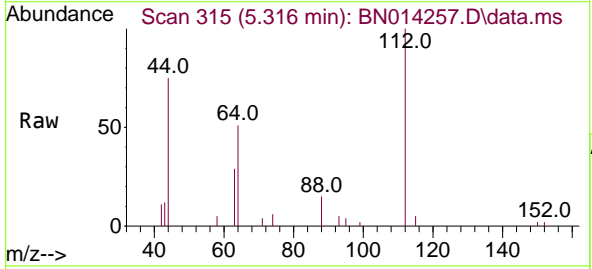
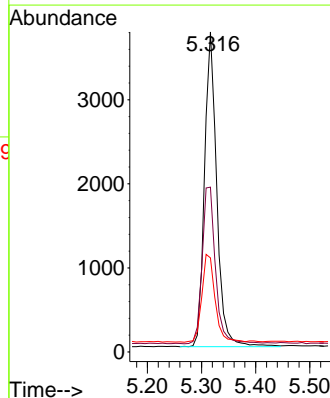
Ion	Ratio	Lower	Upper
42	100		
74	144.7	111.2	166.8
44	0.0	12.5	18.7#

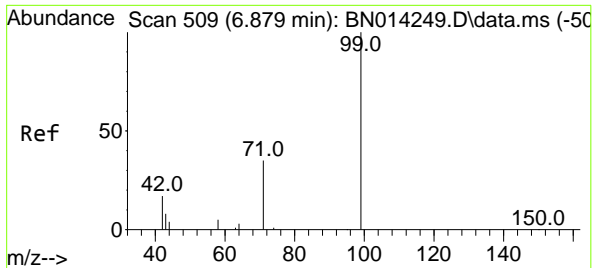


#4
 2-Fluorophenol
 Concen: 0.44 ng
 RT: 5.316 min Scan# 315
 Delta R.T. -0.000 min
 Lab File: BN014257.D
 Acq: 09 Apr 2021 19:25

Tgt Ion: 112 Resp: 5891

Ion	Ratio	Lower	Upper
112	100		
64	54.4	43.4	65.0
63	30.0	23.5	35.3



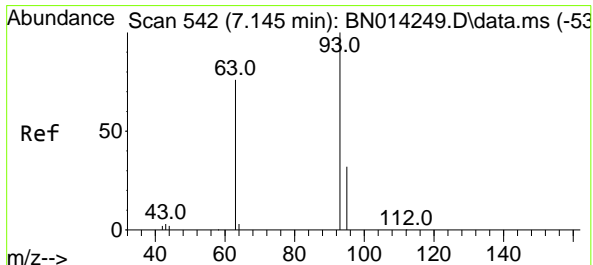
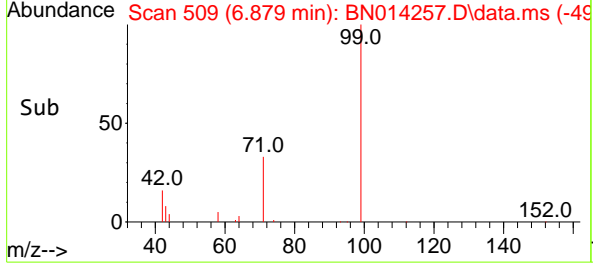
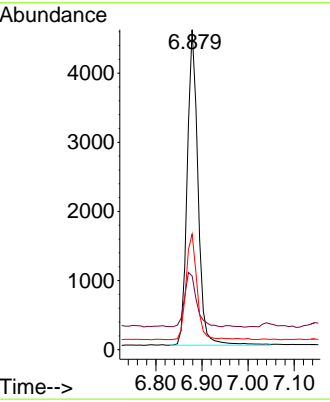
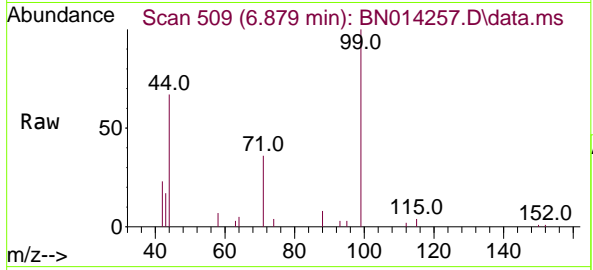


#5
 Phenol-d6
 Concen: 0.44 ng
 RT: 6.879 min Scan# 509
 Delta R.T. -0.000 min
 Lab File: BN014257.D
 Acq: 09 Apr 2021 19:25

Instrument :
 BNA_N
 ClientSampled :
 SSTDCCC0.4EC

Tgt Ion: 99 Resp: 7385

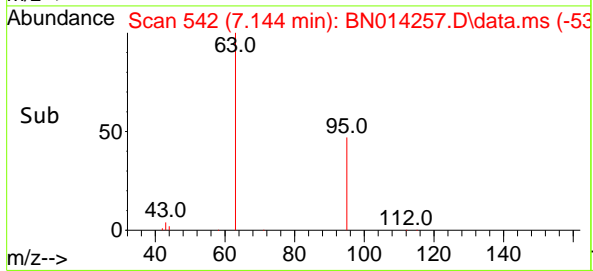
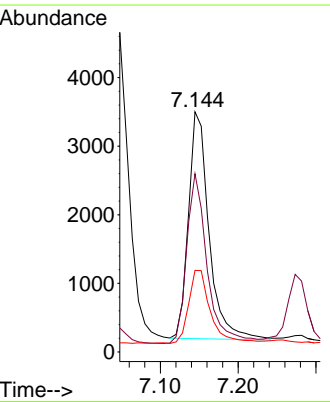
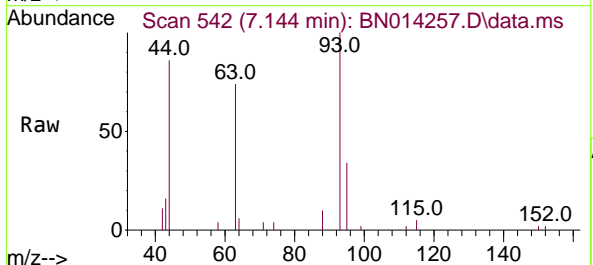
Ion	Ratio	Lower	Upper
99	100		
42	18.9	15.3	22.9
71	34.0	27.5	41.3

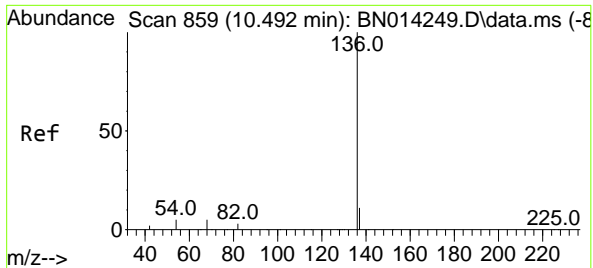


#6
 bis(2-Chloroethyl)ether
 Concen: 0.44 ng
 RT: 7.144 min Scan# 542
 Delta R.T. -0.000 min
 Lab File: BN014257.D
 Acq: 09 Apr 2021 19:25

Tgt Ion: 93 Resp: 6091

Ion	Ratio	Lower	Upper
93	100		
63	74.7	58.3	87.5
95	34.1	27.0	40.4



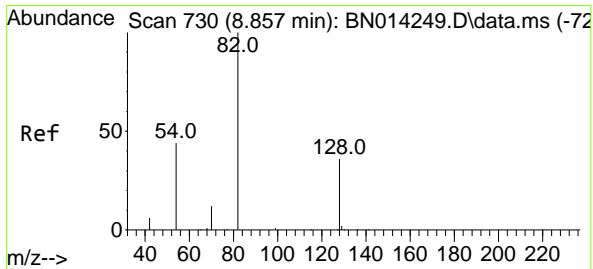
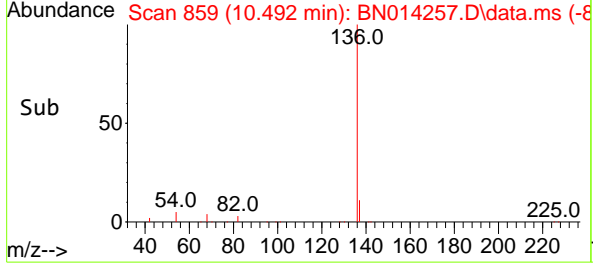
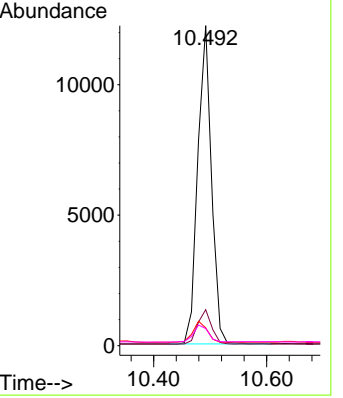
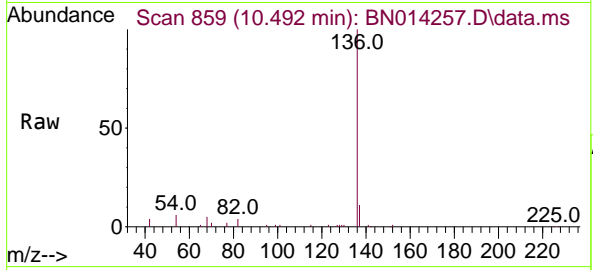


#7
 Naphthalene-d8
 Concen: 0.40 ng
 RT: 10.492 min Scan# 859
 Delta R.T. -0.000 min
 Lab File: BN014257.D
 Acq: 09 Apr 2021 19:25

Instrument :
 BNA_N
 ClientSampleId :
 SSTDCCC0.4EC

Tgt Ion:136 Resp: 20541

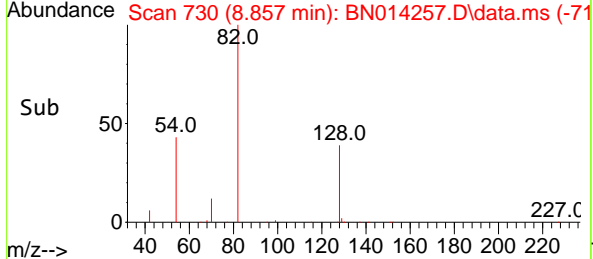
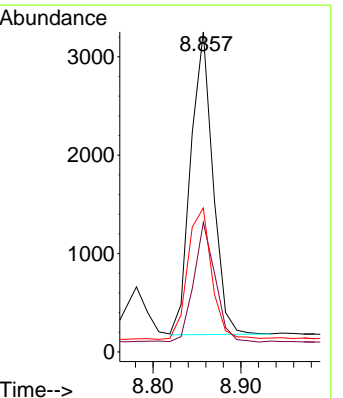
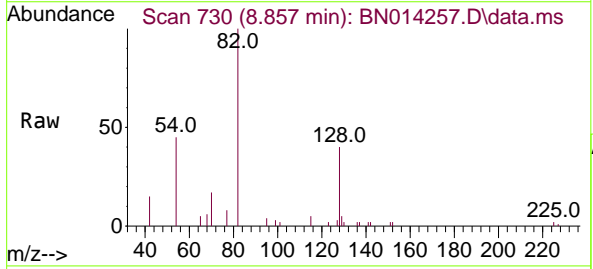
Ion	Ratio	Lower	Upper
136	100		
137	11.2	9.0	13.4
54	5.6	4.8	7.2
68	5.3	4.4	6.6

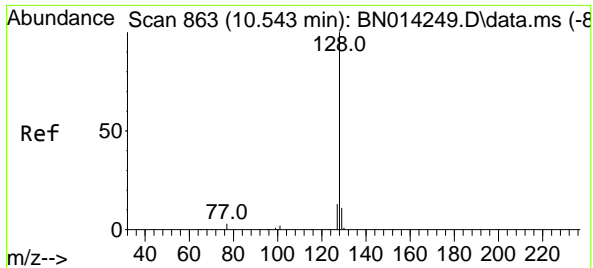


#8
 Nitrobenzene-d5
 Concen: 0.41 ng
 RT: 8.857 min Scan# 730
 Delta R.T. -0.000 min
 Lab File: BN014257.D
 Acq: 09 Apr 2021 19:25

Tgt Ion: 82 Resp: 5394

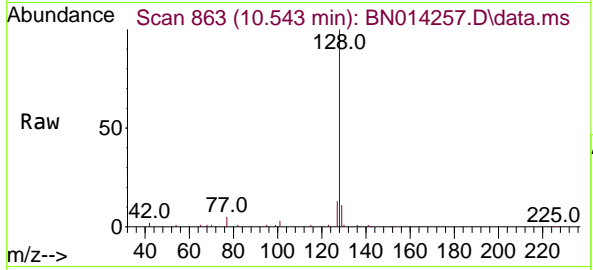
Ion	Ratio	Lower	Upper
82	100		
128	40.5	29.7	44.5
54	45.0	36.5	54.7





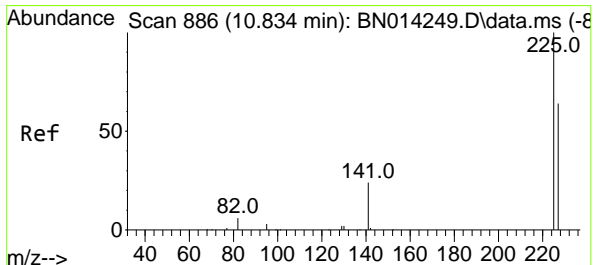
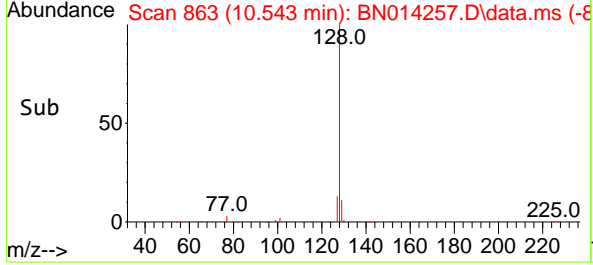
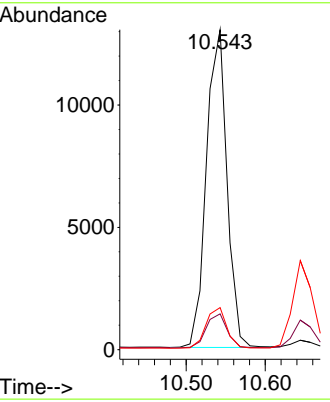
#9
 Naphthalene
 Concen: 0.46 ng
 RT: 10.543 min Scan# 863
 Delta R.T. -0.000 min
 Lab File: BN014257.D
 Acq: 09 Apr 2021 19:25

Instrument :
 BNA_N
ClientSampled :
 SSTDCCC0.4EC

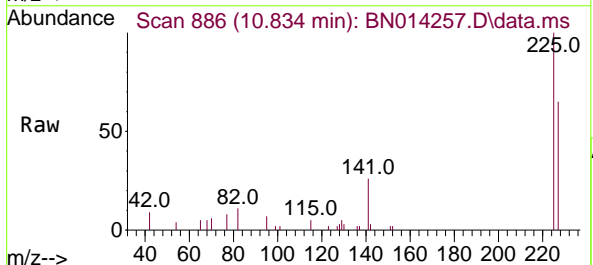


Tgt Ion:128 Resp: 23458

Ion	Ratio	Lower	Upper
128	100		
129	11.2	9.0	13.6
127	13.2	10.5	15.7

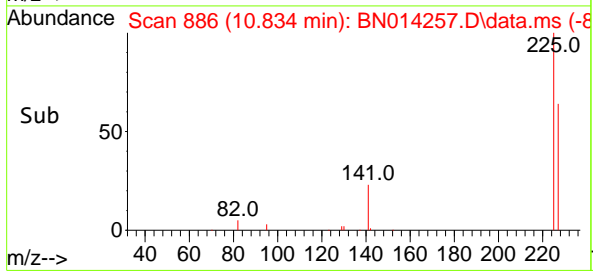
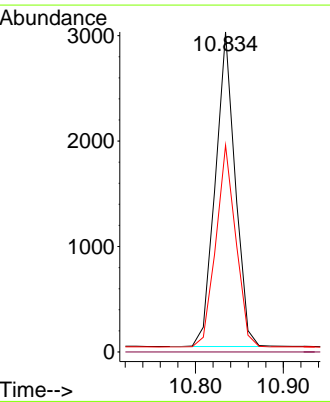


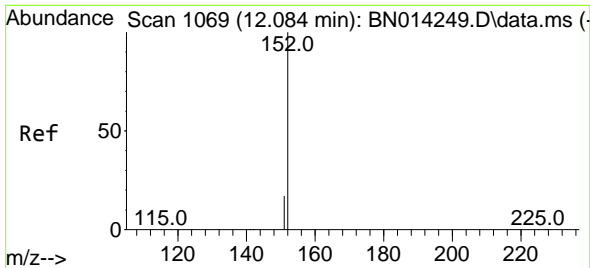
#10
 Hexachlorobutadiene
 Concen: 0.46 ng
 RT: 10.834 min Scan# 886
 Delta R.T. -0.000 min
 Lab File: BN014257.D
 Acq: 09 Apr 2021 19:25



Tgt Ion:225 Resp: 4696

Ion	Ratio	Lower	Upper
225	100		
223	0.0	0.0	0.0
227	64.2	51.9	77.9

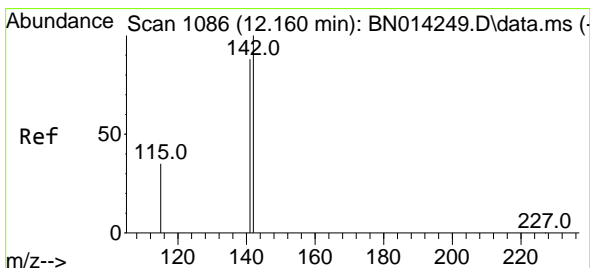
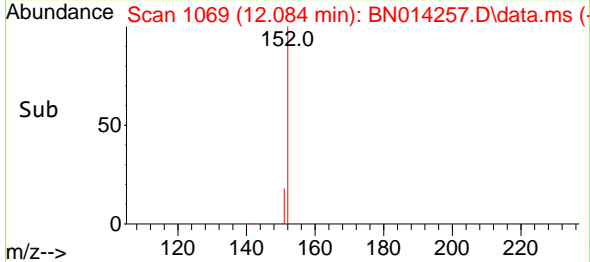
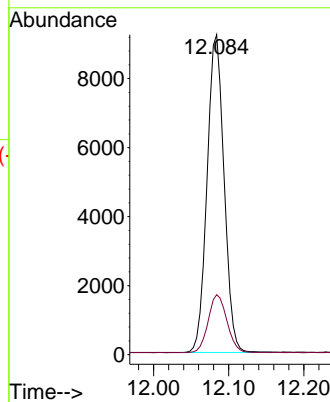
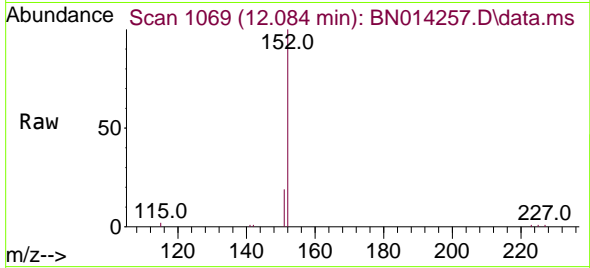




#11
 2-Methylnaphthalene-d10
 Concen: 0.45 ng
 RT: 12.084 min Scan# 1069
 Delta R.T. -0.000 min
 Lab File: BN014257.D
 Acq: 09 Apr 2021 19:25

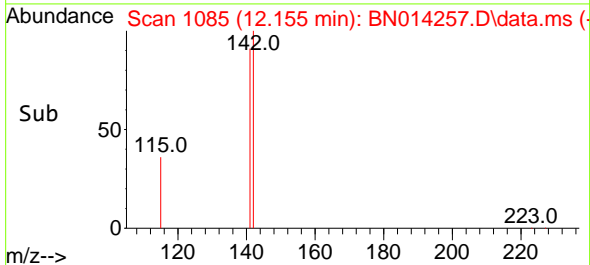
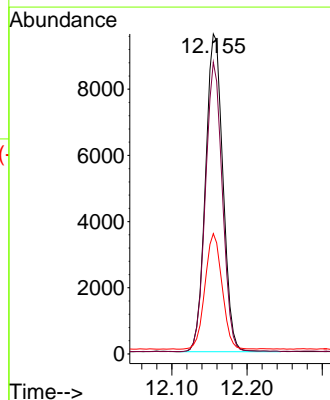
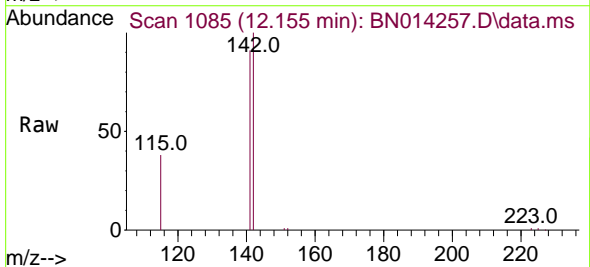
Instrument :
 BNA_N
 ClientSampled :
 SSTDCCC0.4EC

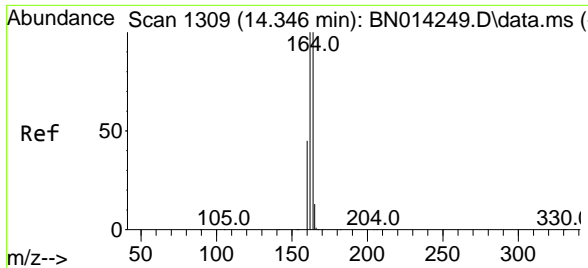
Tgt Ion:152 Resp: 14422
 Ion Ratio Lower Upper
 152 100
 151 20.1 16.1 24.1



#12
 2-Methylnaphthalene
 Concen: 0.45 ng
 RT: 12.155 min Scan# 1085
 Delta R.T. -0.005 min
 Lab File: BN014257.D
 Acq: 09 Apr 2021 19:25

Tgt Ion:142 Resp: 15406
 Ion Ratio Lower Upper
 142 100
 141 91.2 70.6 106.0
 115 37.6 28.6 42.8



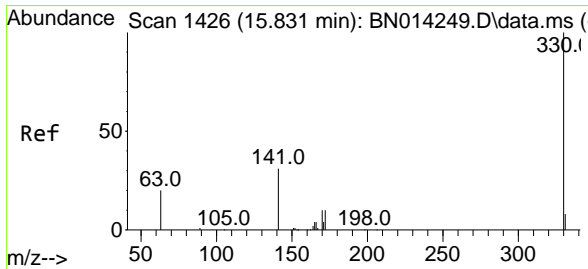
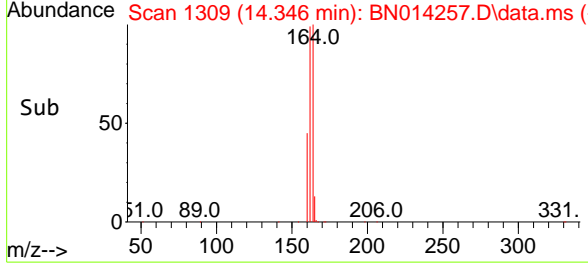
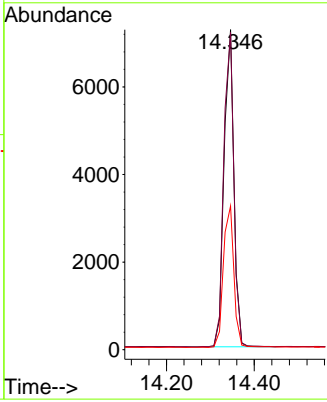
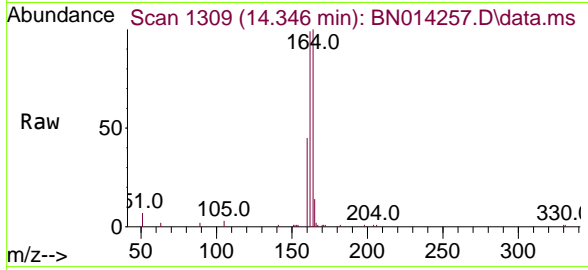


#13
 Acenaphthene-d10
 Concen: 0.40 ng
 RT: 14.346 min Scan# 1309
 Delta R.T. -0.000 min
 Lab File: BN014257.D
 Acq: 09 Apr 2021 19:25

Instrument :
 BNA_N
 ClientSampleId :
 SSTDCCC0.4EC

Tgt Ion:164 Resp: 11290

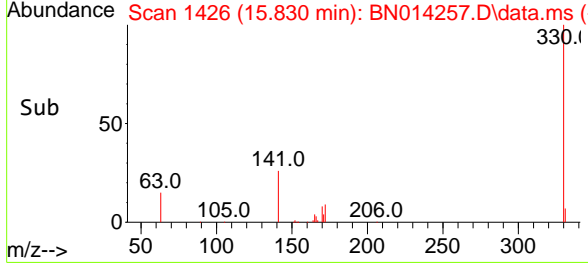
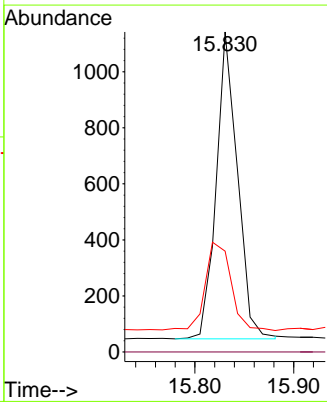
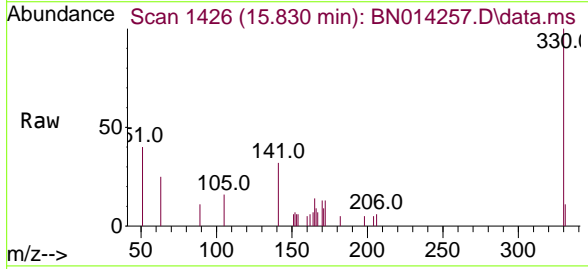
Ion	Ratio	Lower	Upper
164	100		
162	99.1	79.8	119.8
160	44.9	36.6	54.8

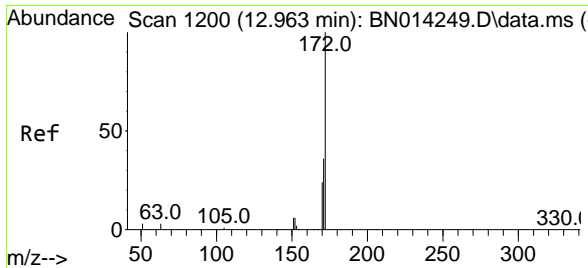


#14
 2,4,6-Tribromophenol
 Concen: 0.37 ng
 RT: 15.830 min Scan# 1426
 Delta R.T. -0.000 min
 Lab File: BN014257.D
 Acq: 09 Apr 2021 19:25

Tgt Ion:330 Resp: 1636

Ion	Ratio	Lower	Upper
330	100		
332	0.0	0.0	0.0
141	34.8	25.4	38.0

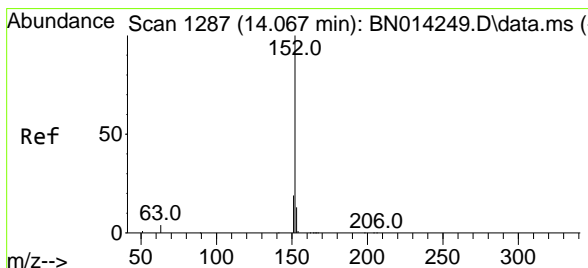
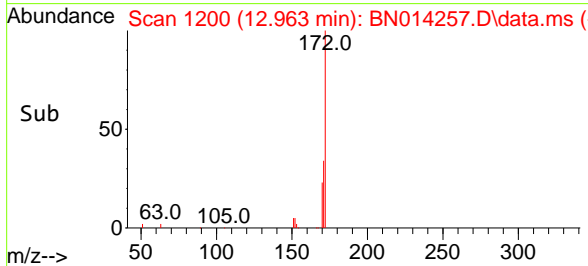
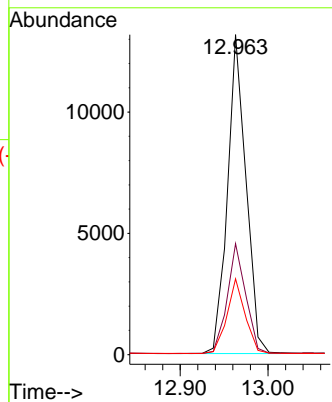
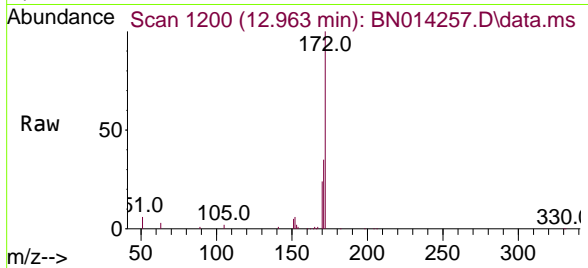




#15
 2-Fluorobiphenyl
 Concen: 0.46 ng
 RT: 12.963 min Scan# 1200
 Delta R.T. -0.000 min
 Lab File: BN014257.D
 Acq: 09 Apr 2021 19:25

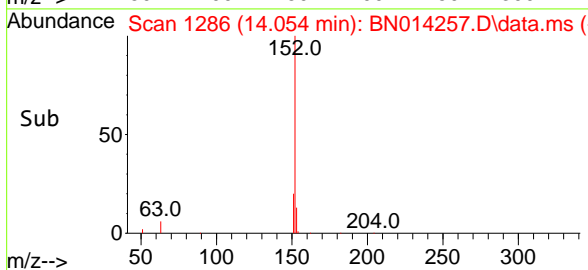
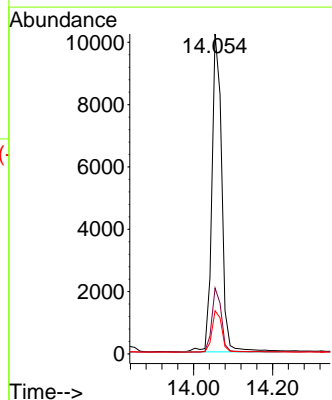
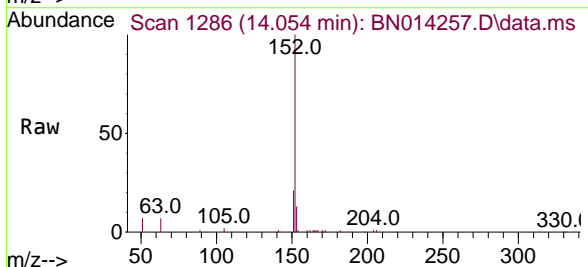
Instrument :
 BNA_N
 ClientSampleId :
 SSTDCCC0.4EC

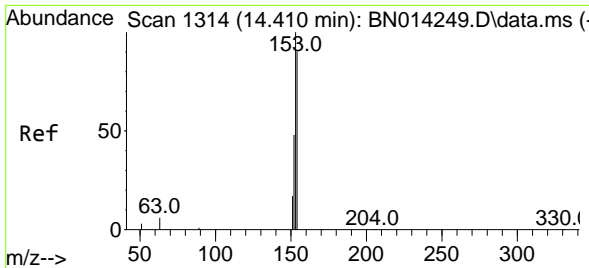
Tgt Ion	Resp	Lower	Upper
172	19193		
171	34.7	28.6	42.8
170	23.7	19.7	29.5



#16
 Acenaphthylene
 Concen: 0.41 ng
 RT: 14.054 min Scan# 1286
 Delta R.T. -0.013 min
 Lab File: BN014257.D
 Acq: 09 Apr 2021 19:25

Tgt Ion	Resp	Lower	Upper
152	17815		
151	19.3	15.7	23.5
153	12.9	10.6	16.0



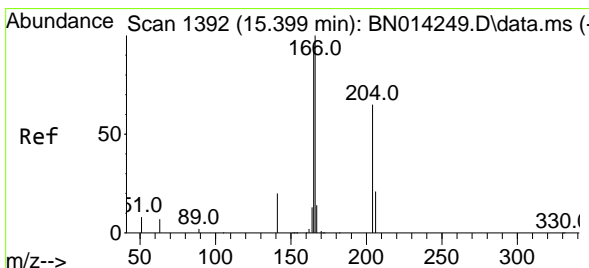
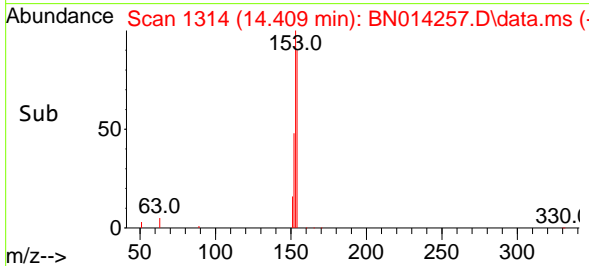
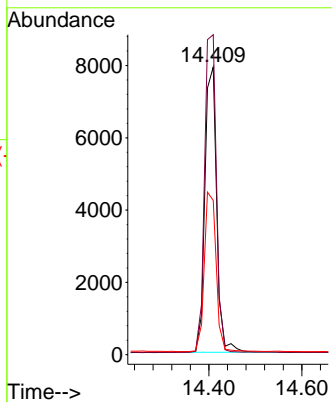
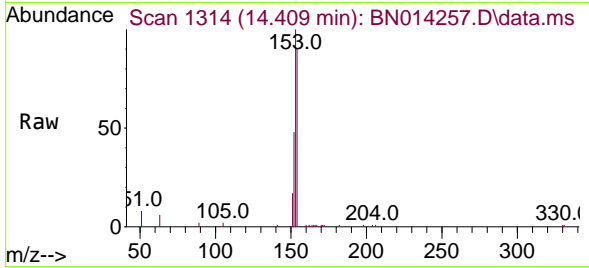


#17
 Acenaphthene
 Concen: 0.44 ng
 RT: 14.409 min Scan# 1314
 Delta R.T. -0.000 min
 Lab File: BN014257.D
 Acq: 09 Apr 2021 19:25

Instrument :
 BNA_N
 ClientSampleId :
 SSTDCCC0.4EC

Tgt Ion:154 Resp: 13967

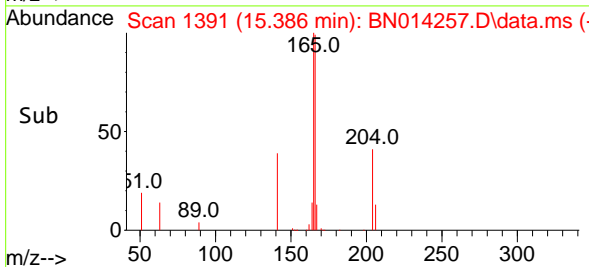
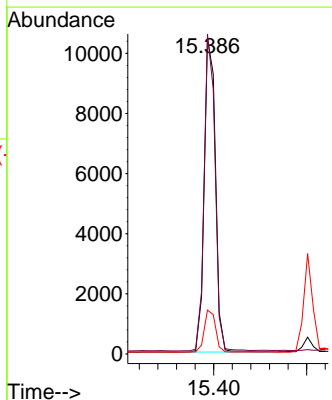
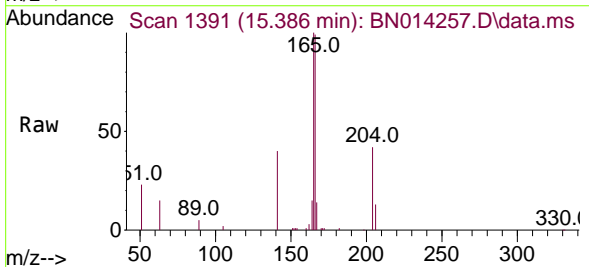
Ion	Ratio	Lower	Upper
154	100		
153	111.9	88.1	132.1
152	56.1	43.8	65.6

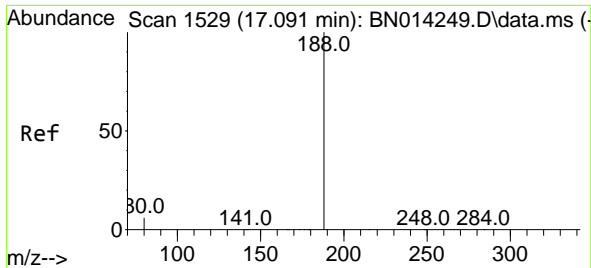


#18
 Fluorene
 Concen: 0.44 ng
 RT: 15.386 min Scan# 1391
 Delta R.T. -0.013 min
 Lab File: BN014257.D
 Acq: 09 Apr 2021 19:25

Tgt Ion:166 Resp: 17608

Ion	Ratio	Lower	Upper
166	100		
165	97.7	78.0	117.0
167	13.6	10.6	16.0

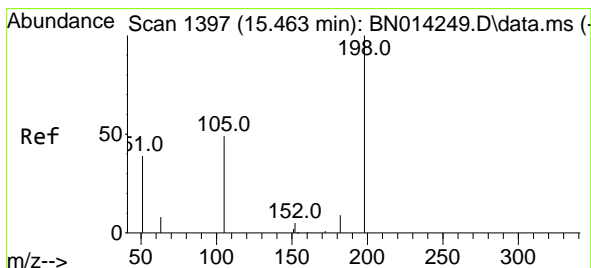
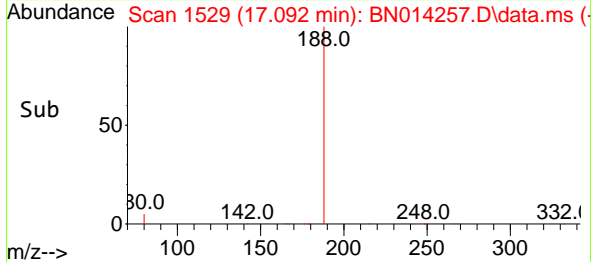
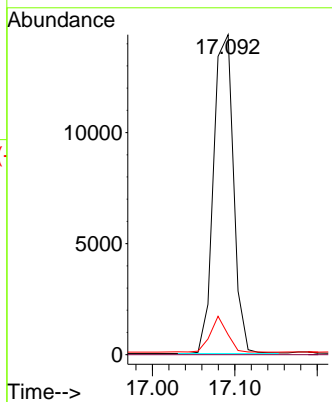
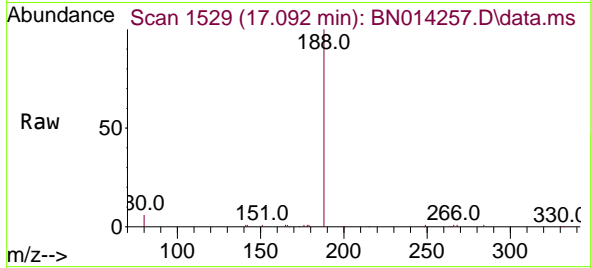




#19
 Phenanthrene-d10
 Concen: 0.40 ng
 RT: 17.092 min Scan# 1529
 Delta R.T. 0.000 min
 Lab File: BN014257.D
 Acq: 09 Apr 2021 19:25

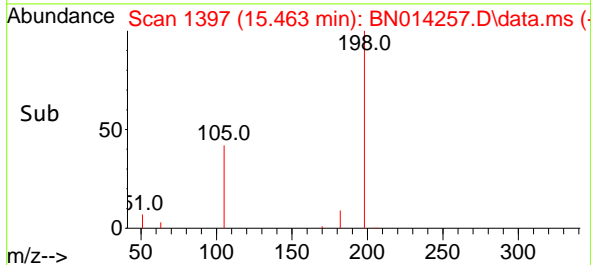
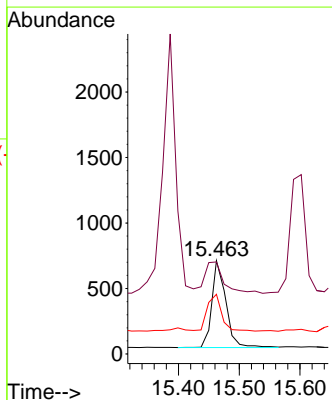
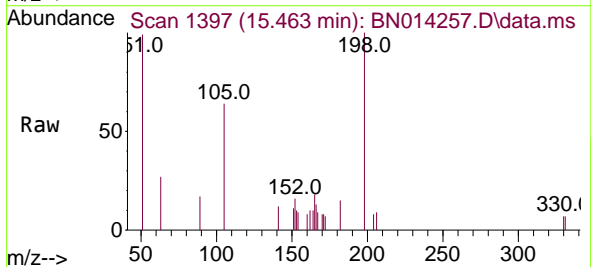
Instrument :
 BNA_N
 ClientSampleId :
 SSTDCCC0.4EC

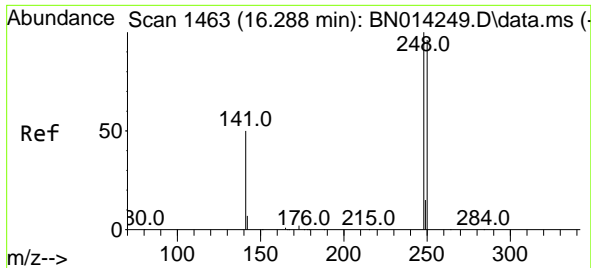
Tgt Ion	Resp	Lower	Upper
188	100		
94	0.0	0.0	0.0
80	6.3	5.5	8.3



#20
 4,6-Dinitro-2-methylphenol
 Concen: 0.37 ng
 RT: 15.463 min Scan# 1397
 Delta R.T. -0.000 min
 Lab File: BN014257.D
 Acq: 09 Apr 2021 19:25

Tgt Ion	Resp	Lower	Upper
198	100		
51	98.6	76.0	114.0
105	64.0	53.5	80.3

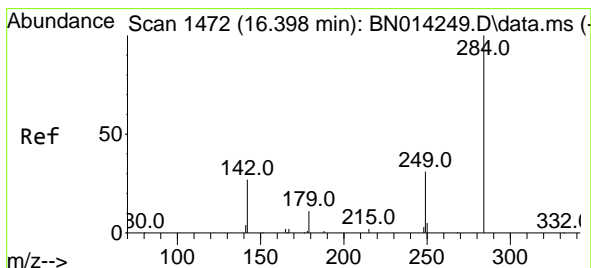
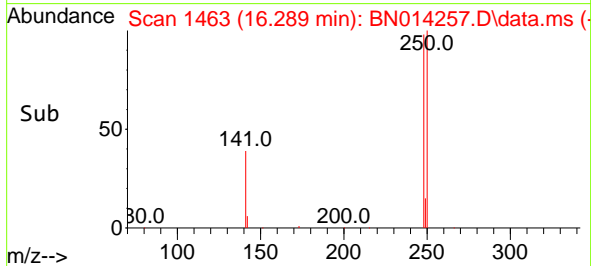
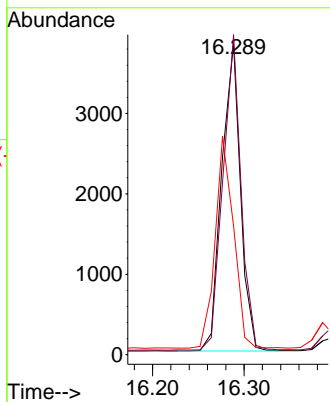
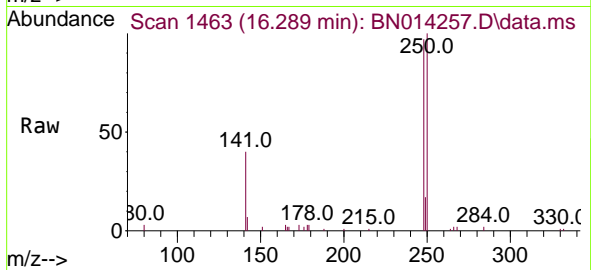




#21
 4-Bromophenyl-phenylether
 Concen: 0.44 ng
 RT: 16.289 min Scan# 1463
 Delta R.T. 0.000 min
 Lab File: BN014257.D
 Acq: 09 Apr 2021 19:25

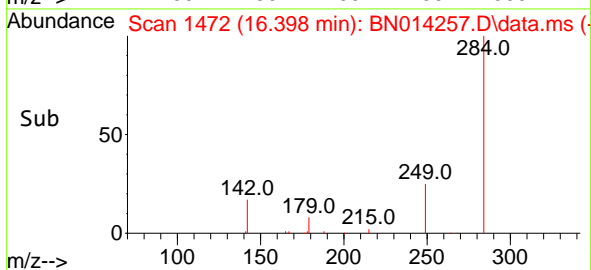
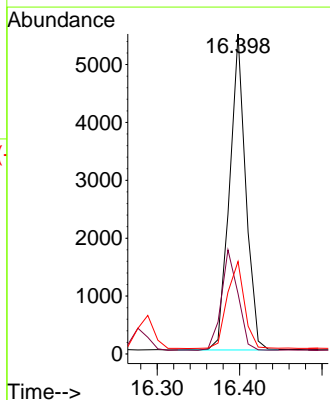
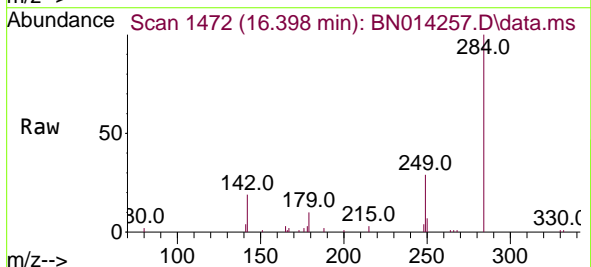
Instrument :
 BNA_N
 ClientSampleId :
 SSTDCCC0.4EC

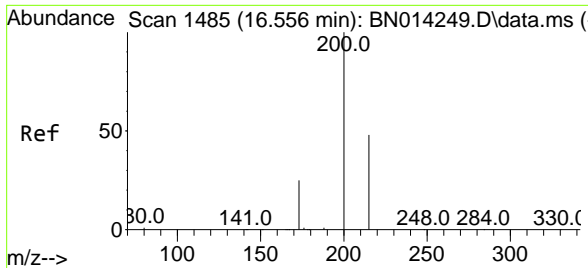
Tgt Ion	Resp	Lower	Upper
248	100		
250	102.8	76.9	115.3
141	41.4	41.4	62.0



#22
 Hexachlorobenzene
 Concen: 0.47 ng
 RT: 16.398 min Scan# 1472
 Delta R.T. 0.000 min
 Lab File: BN014257.D
 Acq: 09 Apr 2021 19:25

Tgt Ion	Resp	Lower	Upper
284	100		
142	32.7	26.2	39.4
249	29.5	23.8	35.8

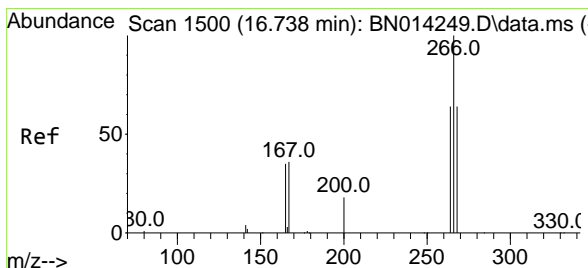
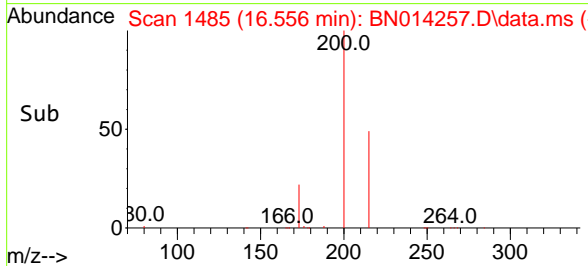
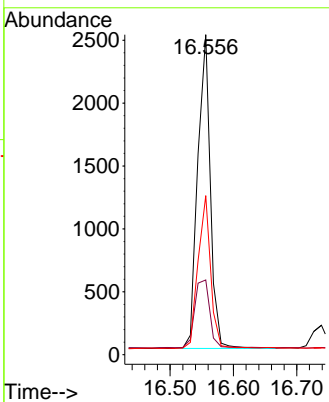
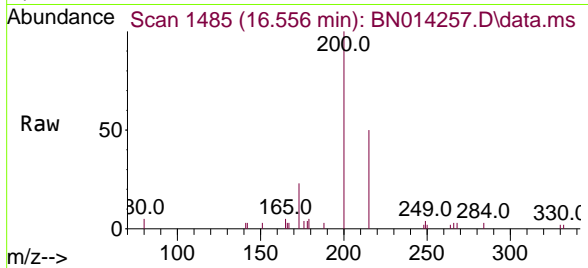




#23
 Atrazine
 Concen: 0.38 ng
 RT: 16.556 min Scan# 1485
 Delta R.T. 0.000 min
 Lab File: BN014257.D
 Acq: 09 Apr 2021 19:25

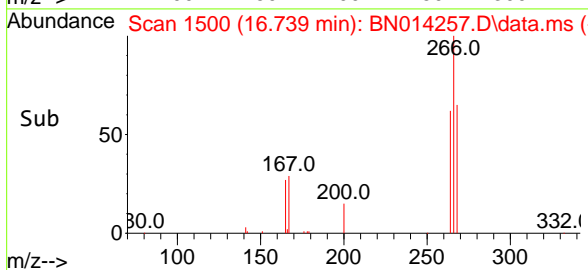
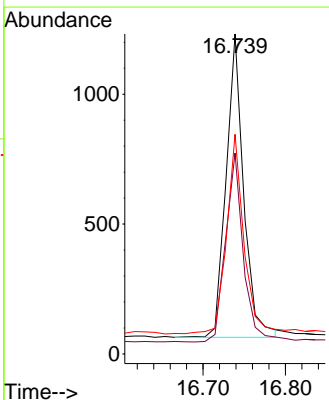
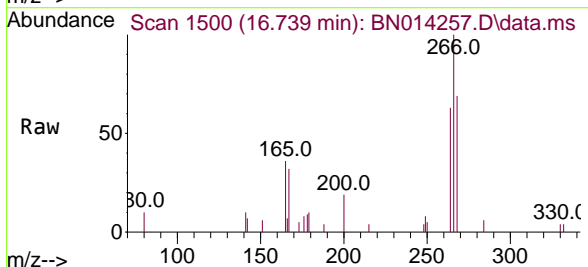
Instrument :
 BNA_N
ClientSampled :
 SSTDCCC0.4EC

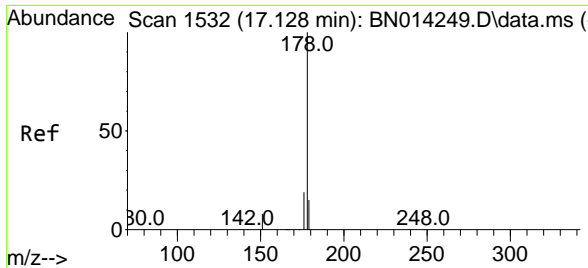
Tgt Ion	Resp	Lower	Upper
200	3482	100	100
173	23.3	20.9	31.3
215	49.7	39.2	58.8



#24
 Pentachlorophenol
 Concen: 0.36 ng
 RT: 16.739 min Scan# 1500
 Delta R.T. 0.000 min
 Lab File: BN014257.D
 Acq: 09 Apr 2021 19:25

Tgt Ion	Resp	Lower	Upper
266	1731	100	100
264	62.8	50.3	75.5
268	64.2	51.8	77.8

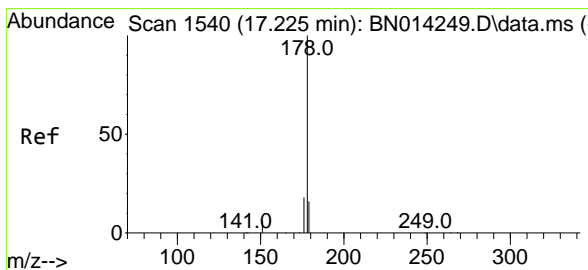
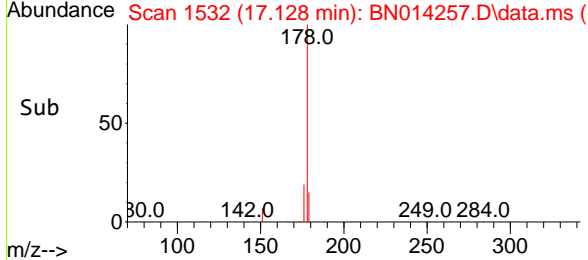
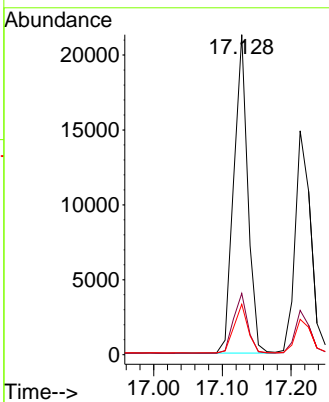
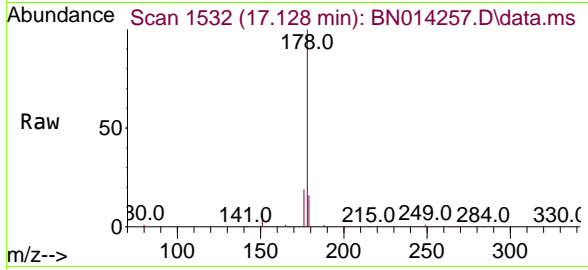




#25
 Phenanthrene
 Concen: 0.45 ng
 RT: 17.128 min Scan# 1532
 Delta R.T. 0.000 min
 Lab File: BN014257.D
 Acq: 09 Apr 2021 19:25

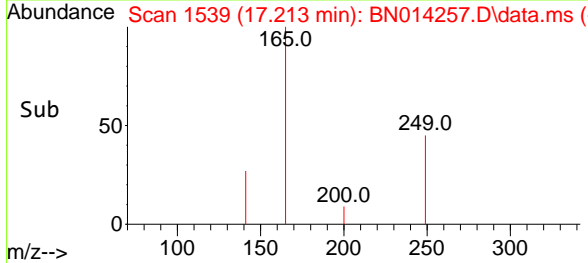
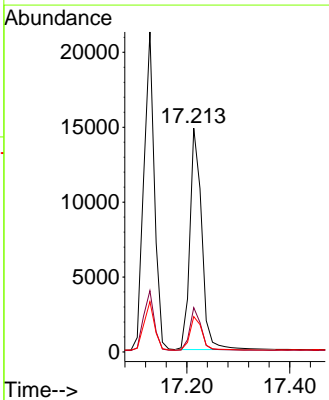
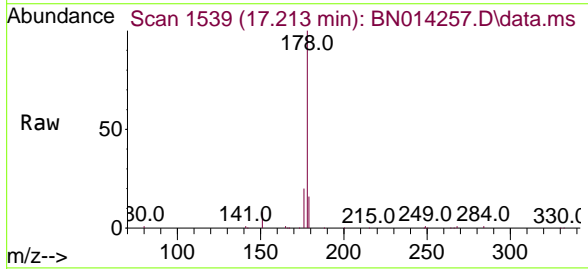
Instrument :
 BNA_N
ClientSampleId :
 SSTDCCC0.4EC

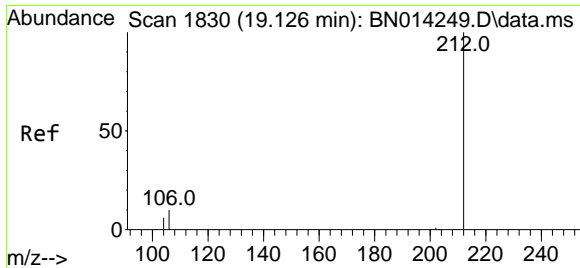
Tgt Ion	Resp	Lower	Upper
178	30188		
176	19.0	15.3	22.9
179	15.4	12.3	18.5



#26
 Anthracene
 Concen: 0.43 ng
 RT: 17.213 min Scan# 1539
 Delta R.T. -0.012 min
 Lab File: BN014257.D
 Acq: 09 Apr 2021 19:25

Tgt Ion	Resp	Lower	Upper
178	23629		
176	18.9	15.0	22.4
179	15.6	12.3	18.5

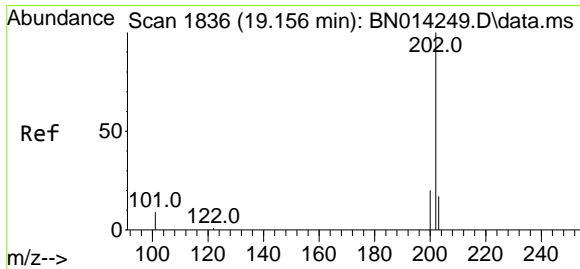
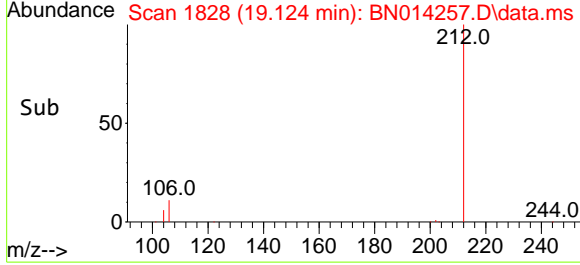
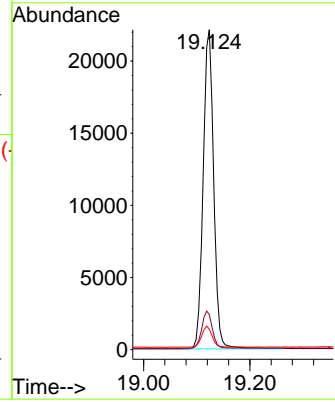
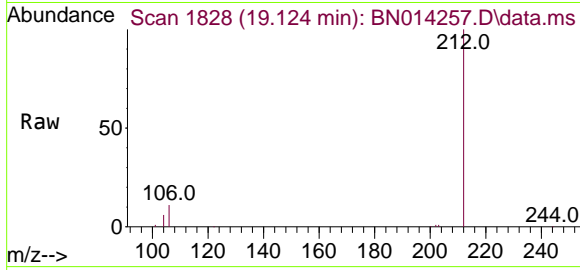




#27
 Fluoranthene-d10
 Concen: 0.43 ng
 RT: 19.124 min Scan# 1828
 Delta R.T. -0.002 min
 Lab File: BN014257.D
 Acq: 09 Apr 2021 19:25

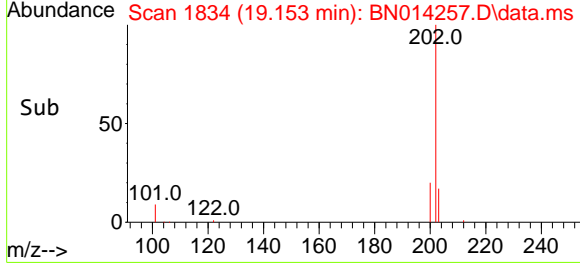
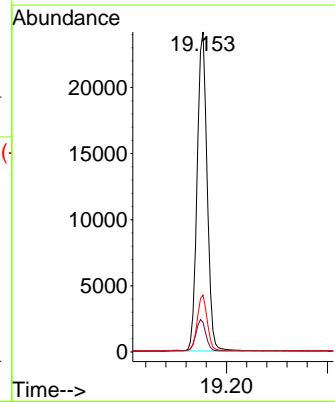
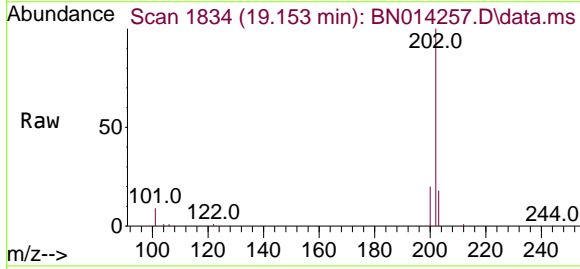
Instrument :
 BNA_N
ClientSampled :
 SSTDCCC0.4EC

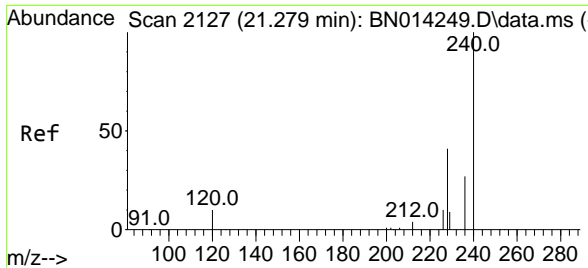
Tgt Ion	Resp	Lower	Upper
212	30383		
106	11.7	9.1	13.7
104	6.5	5.1	7.7



#28
 Fluoranthene
 Concen: 0.43 ng
 RT: 19.153 min Scan# 1834
 Delta R.T. -0.002 min
 Lab File: BN014257.D
 Acq: 09 Apr 2021 19:25

Tgt Ion	Resp	Lower	Upper
202	33094		
101	9.9	7.8	11.8
203	17.2	13.8	20.6

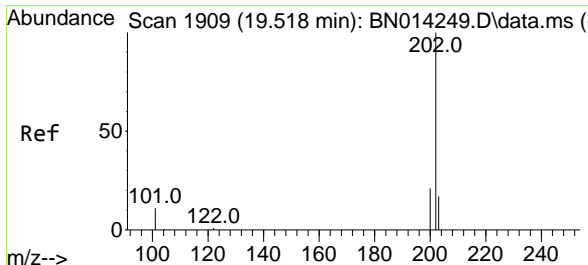
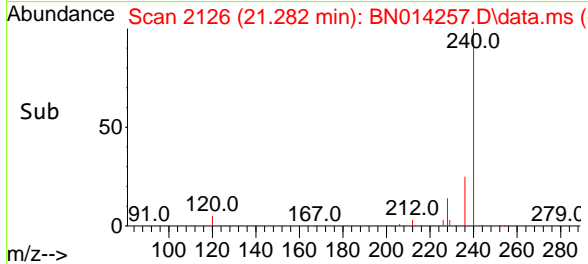
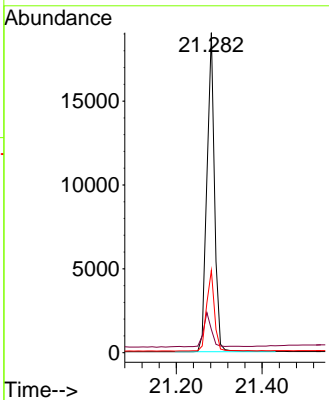
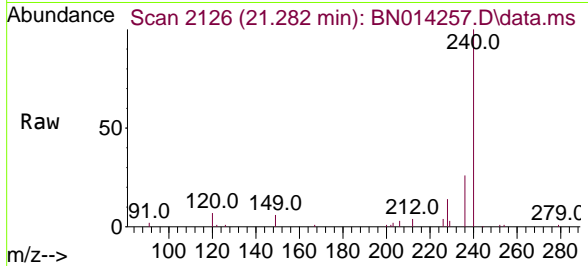




#29
 Chrysene-d12
 Concen: 0.40 ng
 RT: 21.282 min Scan# 2126
 Delta R.T. 0.003 min
 Lab File: BN014257.D
 Acq: 09 Apr 2021 19:25

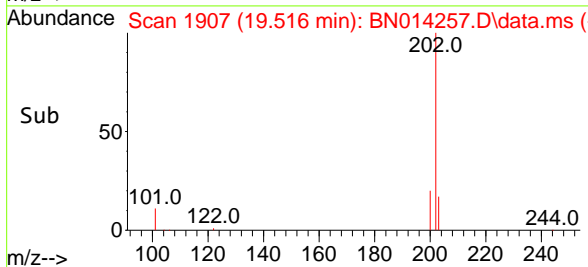
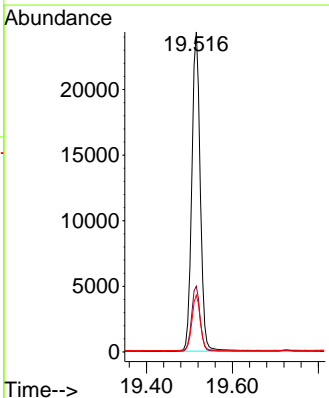
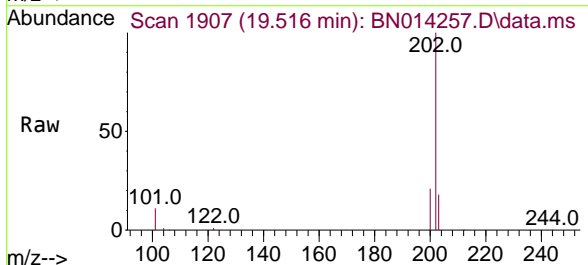
Instrument :
 BNA_N
ClientSampled :
 SSTDCCC0.4EC

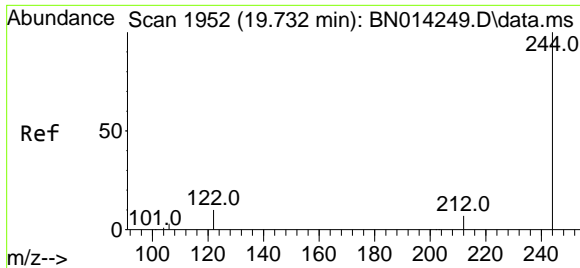
Tgt Ion	Resp	Lower	Upper
240	100		
120	7.3	9.4	14.2#
236	25.7	21.7	32.5



#30
 Pyrene
 Concen: 0.45 ng
 RT: 19.516 min Scan# 1907
 Delta R.T. -0.002 min
 Lab File: BN014257.D
 Acq: 09 Apr 2021 19:25

Tgt Ion	Resp	Lower	Upper
202	100		
200	20.4	16.5	24.7
203	17.5	13.9	20.9

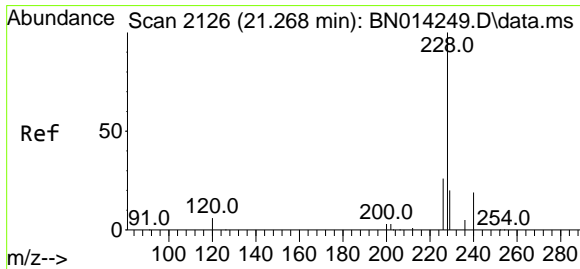
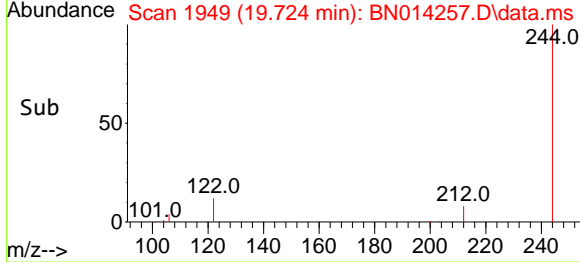
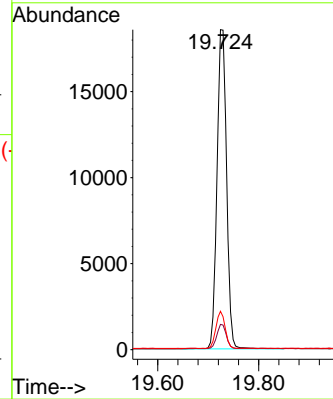
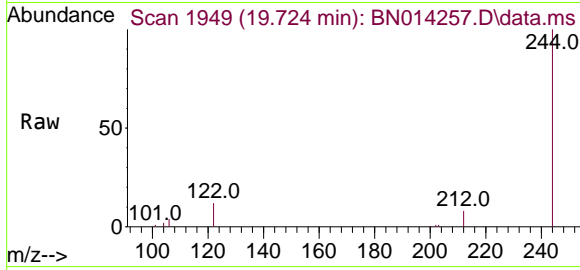




#31
 Terphenyl-d14
 Concen: 0.47 ng
 RT: 19.724 min Scan# 1949
 Delta R.T. -0.007 min
 Lab File: BN014257.D
 Acq: 09 Apr 2021 19:25

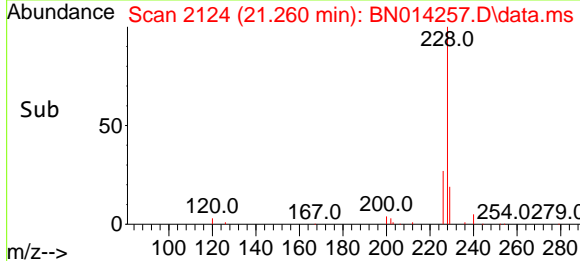
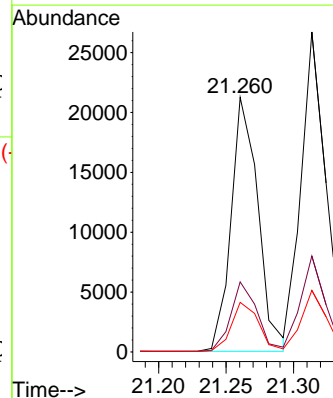
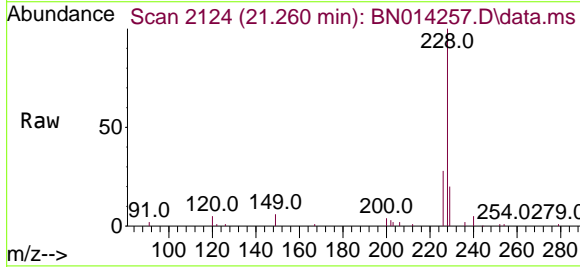
Instrument :
 BNA_N
 ClientSampleId :
 SSTDCCC0.4EC

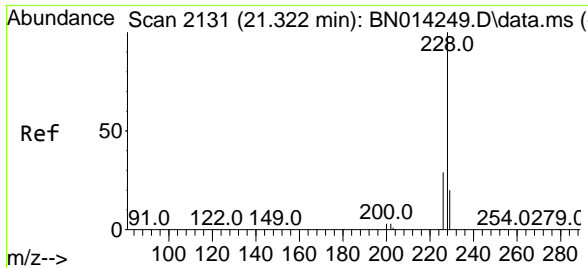
Tgt Ion	Resp	Lower	Upper
244	100		
212	7.9	6.1	9.1
122	12.0	8.2	12.4



#32
 Benzo(a)anthracene
 Concen: 0.44 ng
 RT: 21.260 min Scan# 2124
 Delta R.T. -0.008 min
 Lab File: BN014257.D
 Acq: 09 Apr 2021 19:25

Tgt Ion	Resp	Lower	Upper
228	100		
226	27.5	21.0	31.6
229	19.5	16.0	24.0

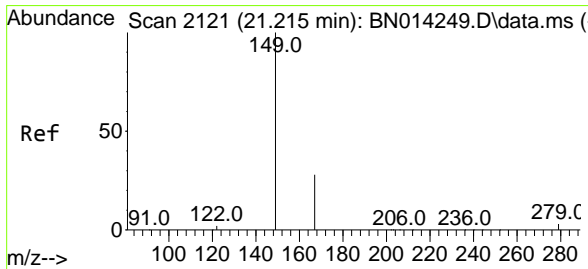
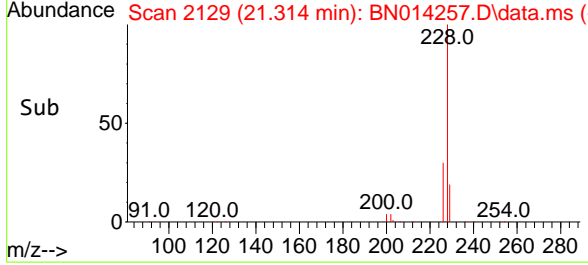
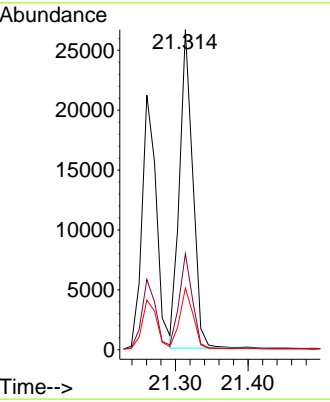
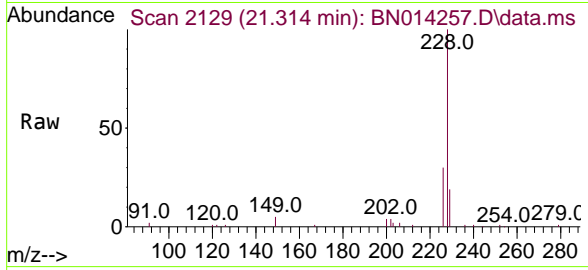




#33
 Chrysene
 Concen: 0.47 ng
 RT: 21.314 min Scan# 2129
 Delta R.T. -0.008 min
 Lab File: BN014257.D
 Acq: 09 Apr 2021 19:25

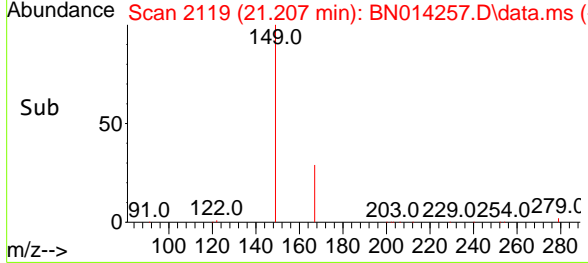
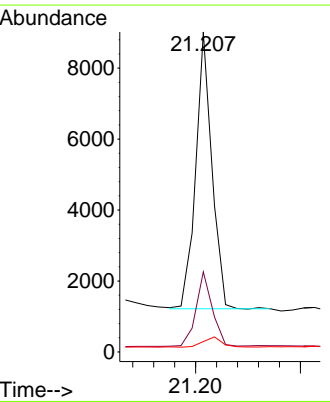
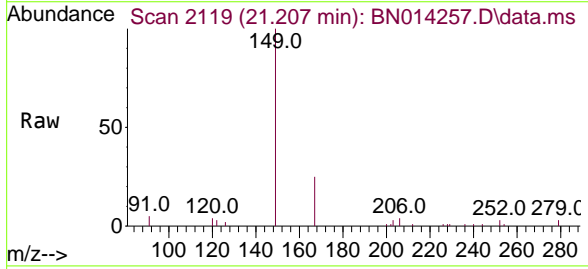
Instrument :
 BNA_N
ClientSampled :
 SSTDCCC0.4EC

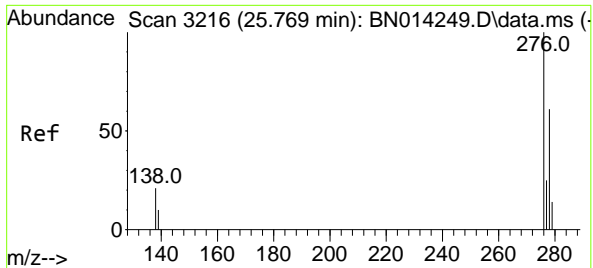
Tgt Ion	Resp	Lower	Upper
228	100		
226	30.0	23.0	34.4
229	19.2	16.0	24.0



#34
 Bis(2-ethylhexyl)phthalate
 Concen: 0.43 ng
 RT: 21.207 min Scan# 2119
 Delta R.T. -0.008 min
 Lab File: BN014257.D
 Acq: 09 Apr 2021 19:25

Tgt Ion	Resp	Lower	Upper
149	100		
167	27.2	22.3	33.5
279	4.4	4.0	6.0

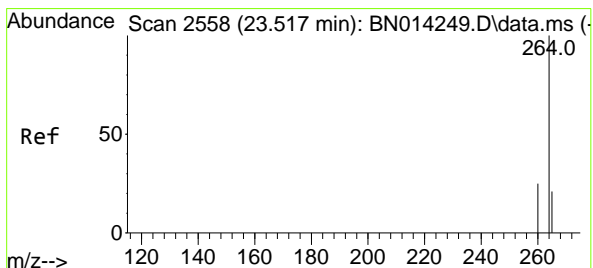
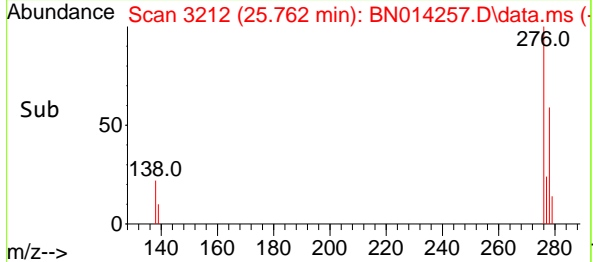
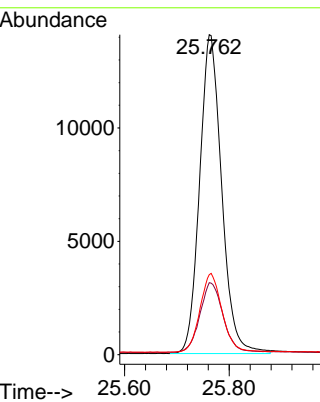
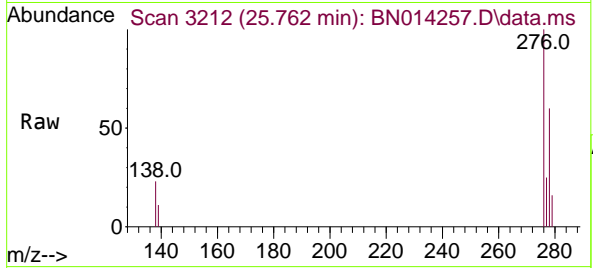




#35
 Indeno(1,2,3-cd)pyrene
 Concen: 0.48 ng
 RT: 25.762 min Scan# 3212
 Delta R.T. -0.008 min
 Lab File: BN014257.D
 Acq: 09 Apr 2021 19:25

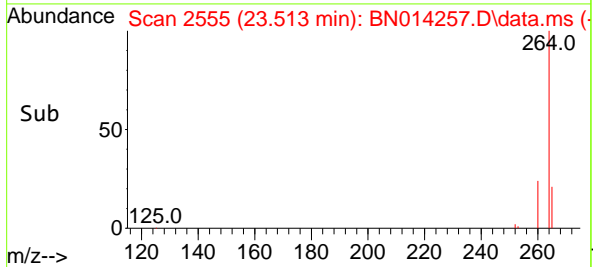
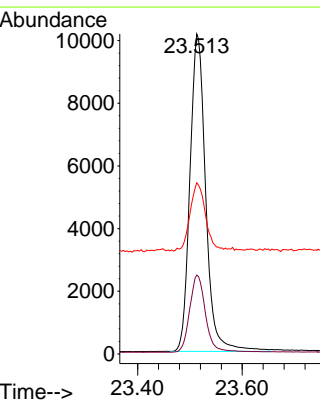
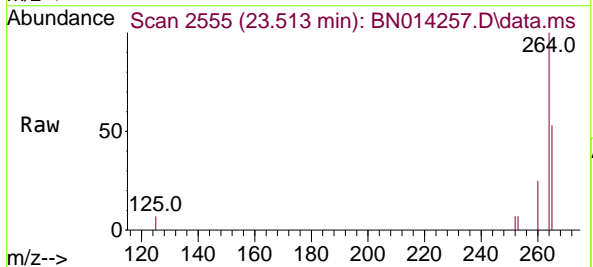
Instrument :
 BNA_N
 ClientSampleId :
 SSTDCCC0.4EC

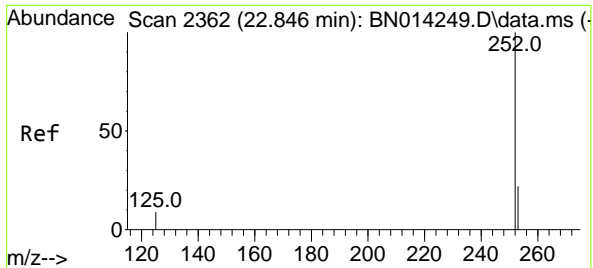
Tgt Ion	Resp	Lower	Upper
276	41104		
138	23.0	17.9	26.9
277	24.7	19.9	29.9



#36
 Perylene-d12
 Concen: 0.40 ng
 RT: 23.513 min Scan# 2555
 Delta R.T. -0.004 min
 Lab File: BN014257.D
 Acq: 09 Apr 2021 19:25

Tgt Ion	Resp	Lower	Upper
264	21274		
260	24.7	19.8	29.8
265	53.5	35.3	52.9#

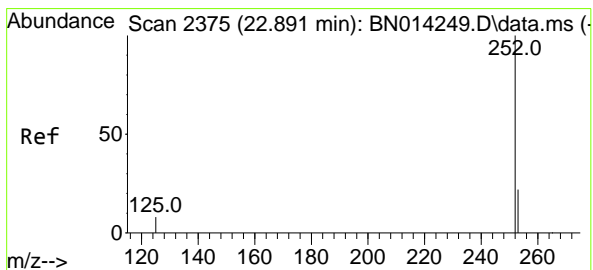
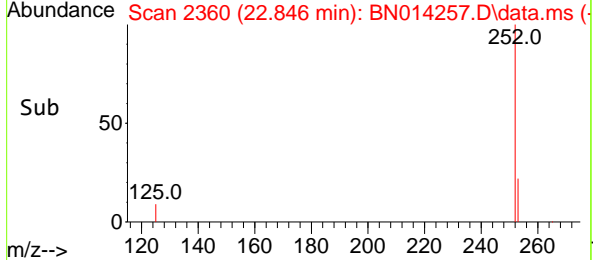
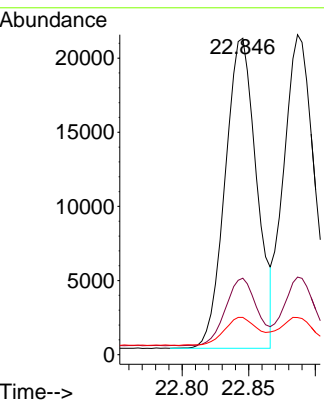
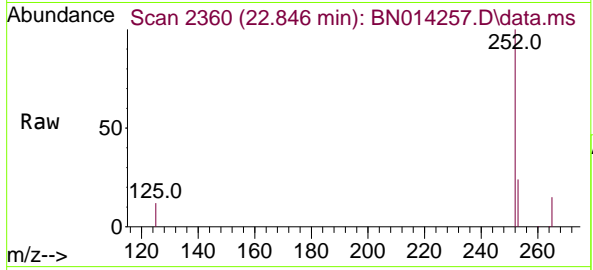




#37
 Benzo(b)fluoranthene
 Concen: 0.45 ng
 RT: 22.846 min Scan# 2360
 Delta R.T. -0.001 min
 Lab File: BN014257.D
 Acq: 09 Apr 2021 19:25

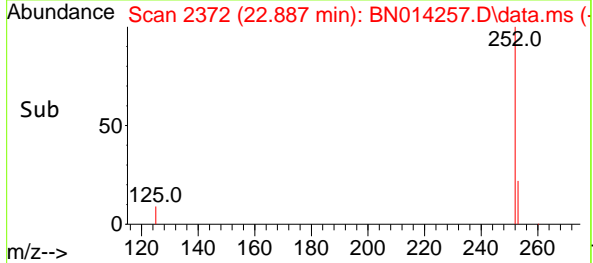
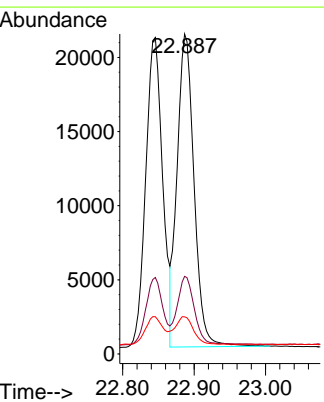
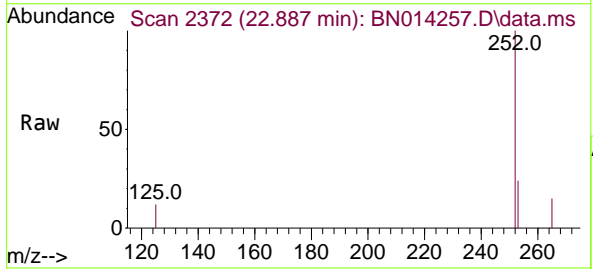
Instrument :
 BNA_N
ClientSampled :
 SSTDCCC0.4EC

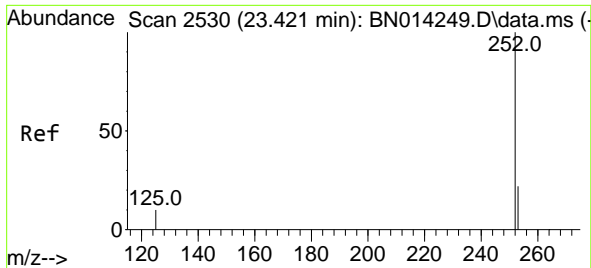
Tgt Ion	Resp	Lower	Upper
252	100		
253	24.2	18.8	28.2
125	11.8	8.6	13.0



#38
 Benzo(k)fluoranthene
 Concen: 0.46 ng
 RT: 22.887 min Scan# 2372
 Delta R.T. -0.004 min
 Lab File: BN014257.D
 Acq: 09 Apr 2021 19:25

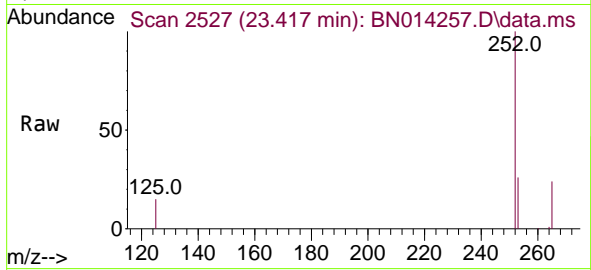
Tgt Ion	Resp	Lower	Upper
252	100		
253	24.3	19.0	28.4
125	11.6	8.8	13.2



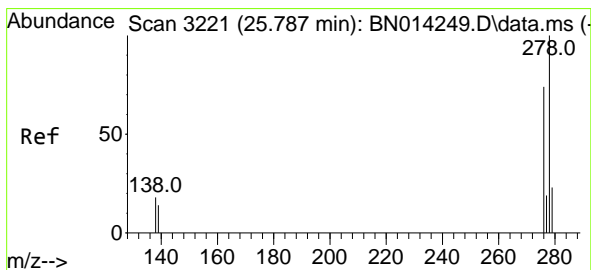
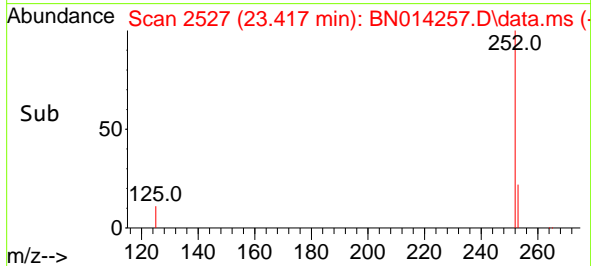
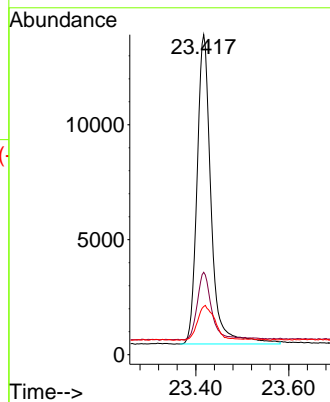


#39
 Benzo(a)pyrene
 Concen: 0.44 ng
 RT: 23.417 min Scan# 2527
 Delta R.T. -0.004 min
 Lab File: BN014257.D
 Acq: 09 Apr 2021 19:25

Instrument :
 BNA_N
ClientSampled :
 SSTDCCC0.4EC

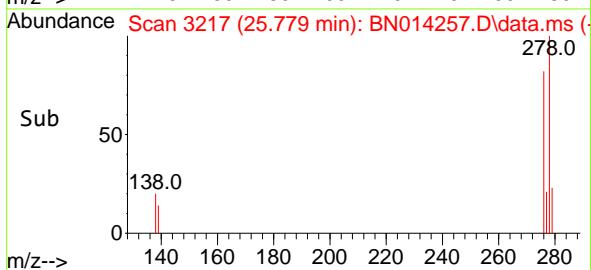
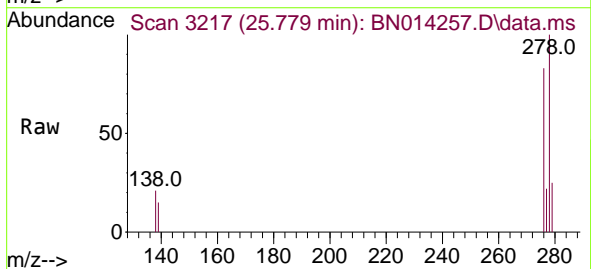
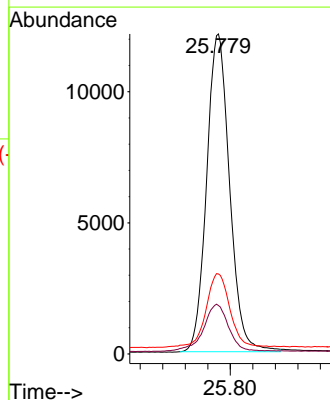


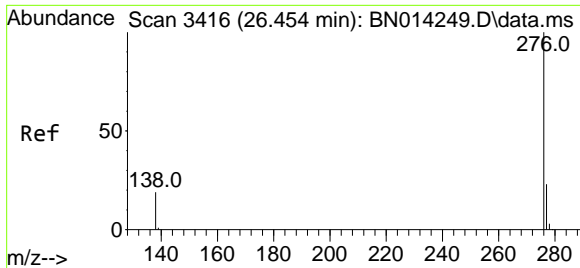
Tgt Ion:252 Resp: 28317
 Ion Ratio Lower Upper
 252 100
 253 25.7 19.9 29.9
 125 15.1 10.4 15.6



#40
 Dibenzo(a,h)anthracene
 Concen: 0.47 ng
 RT: 25.779 min Scan# 3217
 Delta R.T. -0.008 min
 Lab File: BN014257.D
 Acq: 09 Apr 2021 19:25

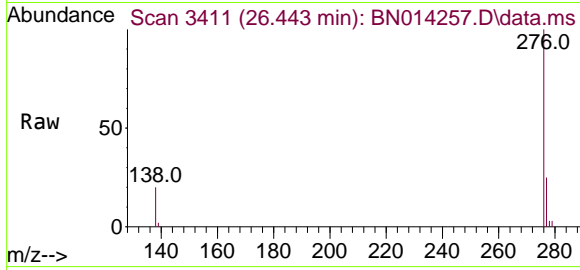
Tgt Ion:278 Resp: 34347
 Ion Ratio Lower Upper
 278 100
 139 15.2 11.9 17.9
 279 25.0 19.9 29.9





#41
 Benzo(g,h,i)perylene
 Concen: 0.47 ng
 RT: 26.443 min Scan# 3411
 Delta R.T. -0.011 min
 Lab File: BN014257.D
 Acq: 09 Apr 2021 19:25

Instrument :
 BNA_N
 ClientSampleId :
 SSTDCCC0.4EC



Tgt Ion	Resp	Lower	Upper
276	100		
277	24.6	19.3	28.9
138	20.1	15.7	23.5

