

Data Path : Z:\svoasrv\HPCHEM1\BNA\_N\Data\BN041122\  
 Data File : BN019413.D  
 Acq On : 11 Apr 2022 15:35  
 Operator : CG/JU  
 Sample : N2334-10  
 Misc :  
 ALS Vial : 10 Sample Multiplier: 1

Instrument :  
 BNA\_N  
 ClientSampleId :  
 MW-25

Quant Time: Apr 12 07:32:25 2022  
 Quant Method : Z:\SVOASRV\HPCHEM1\BNA\_N\METHODS\8270-SIM-BN040422.M  
 Quant Title : ASP BNA STANDARDS FOR 5 POINT CALIBRATION  
 QLast Update : Mon Apr 04 17:40:00 2022  
 Response via : Initial Calibration

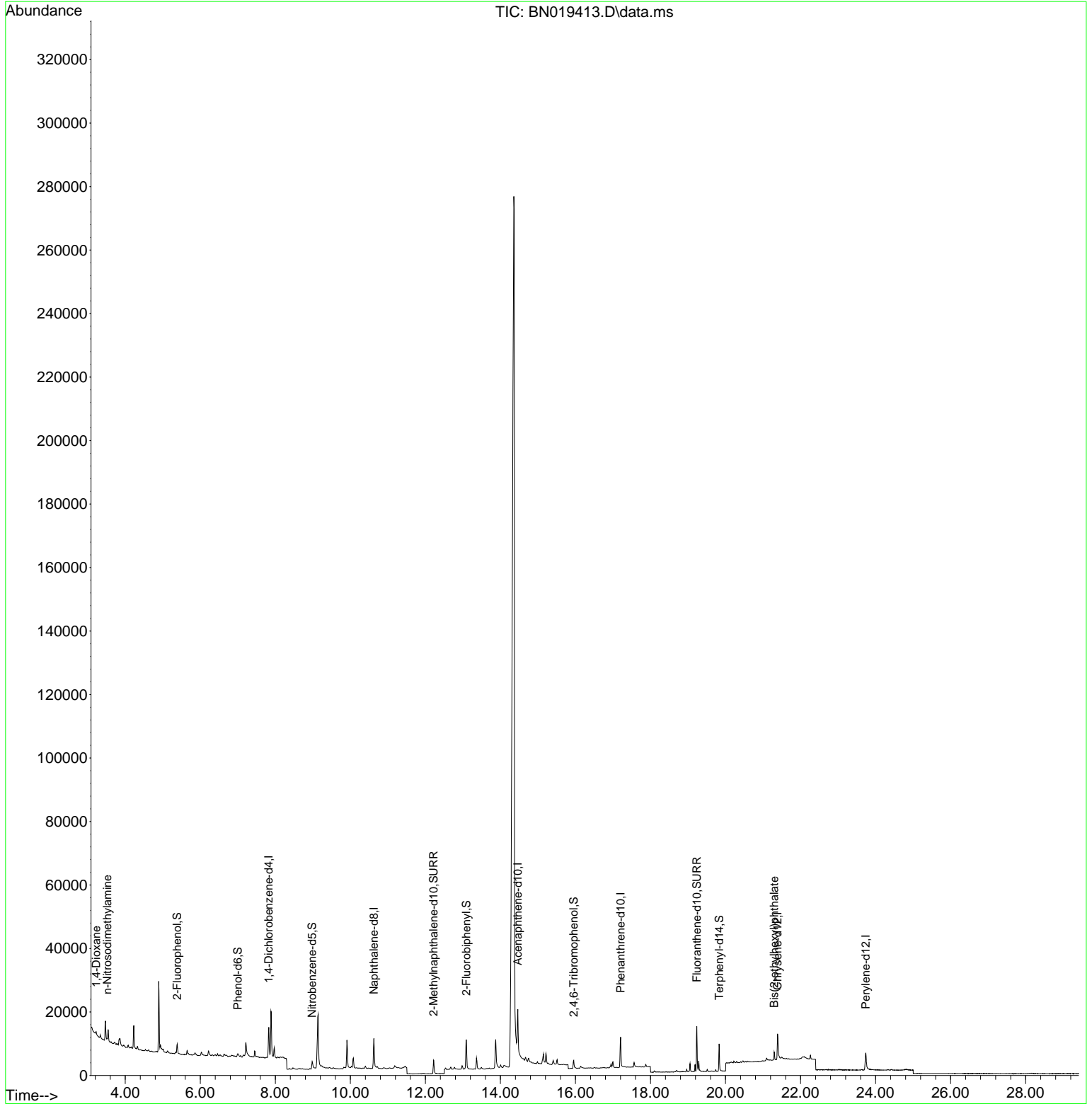
| Compound                      | R.T.   | QIon | Response | Conc Units | Dev(Min) |
|-------------------------------|--------|------|----------|------------|----------|
| Internal Standards            |        |      |          |            |          |
| 1) 1,4-Dichlorobenzene-d4     | 7.826  | 152  | 5090     | 0.400 ng   | 0.00     |
| 7) Naphthalene-d8             | 10.626 | 136  | 13655    | 0.400 ng   | # 0.00   |
| 13) Acenaphthene-d10          | 14.463 | 164  | 12857    | 0.400 ng   | # 0.00   |
| 19) Phenanthrene-d10          | 17.205 | 188  | 14118    | 0.400 ng   | # 0.00   |
| 29) Chrysene-d12              | 21.387 | 240  | 10517    | 0.400 ng   | # 0.00   |
| 35) Perylene-d12              | 23.738 | 264  | 9544     | 0.400 ng   | #-0.01   |
| System Monitoring Compounds   |        |      |          |            |          |
| 4) 2-Fluorophenol             | 5.384  | 112  | 1842     | 0.135 ng   | 0.00     |
| 5) Phenol-d6                  | 7.002  | 99   | 1086     | 0.066 ng   | 0.01     |
| 8) Nitrobenzene-d5            | 8.982  | 82   | 2864     | 0.231 ng   | 0.00     |
| 11) 2-Methylnaphthalene-d10   | 12.219 | 152  | 6691     | 0.279 ng   | 0.00     |
| 14) 2,4,6-Tribromophenol      | 15.954 | 330  | 1534     | 0.196 ng   | 0.00     |
| 15) 2-Fluorobiphenyl          | 13.095 | 172  | 9774     | 0.183 ng   | 0.00     |
| 27) Fluoranthene-d10          | 19.236 | 212  | 16010    | 0.352 ng   | 0.00     |
| 31) Terphenyl-d14             | 19.830 | 244  | 10057    | 0.440 ng   | 0.00     |
| Target Compounds              |        |      |          |            |          |
| 2) 1,4-Dioxane                | 3.225  | 88   | 532      | 0.087 ng   | # 79     |
| 3) n-Nitrosodimethylamine     | 3.521  | 42   | 1062     | 0.132 ng   | # 1      |
| 34) Bis(2-ethylhexyl)phtha... | 21.297 | 149  | 2641     | 0.091 ng   | # 99     |

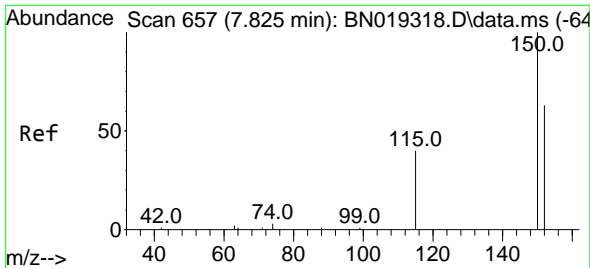
(#) = qualifier out of range (m) = manual integration (+) = signals summed

Data Path : Z:\svoasrv\HPCHEM1\BNA\_N\Data\BN041122\  
 Data File : BN019413.D  
 Acq On : 11 Apr 2022 15:35  
 Operator : CG/JU  
 Sample : N2334-10  
 Misc :  
 ALS Vial : 10 Sample Multiplier: 1

Instrument :  
 BNA\_N  
 ClientSampleId :  
 MW-25

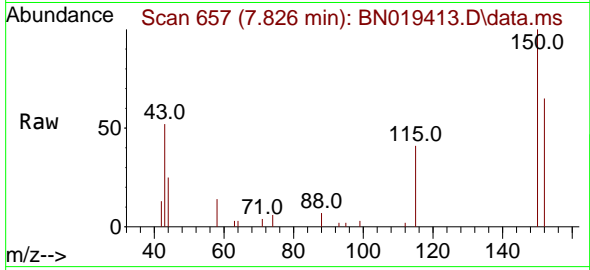
Quant Time: Apr 12 07:32:25 2022  
 Quant Method : Z:\SVOASRV\HPCHEM1\BNA\_N\METHODS\8270-SIM-BN040422.M  
 Quant Title : ASP BNA STANDARDS FOR 5 POINT CALIBRATION  
 QLast Update : Mon Apr 04 17:40:00 2022  
 Response via : Initial Calibration



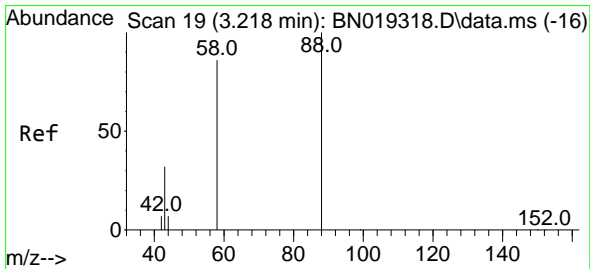
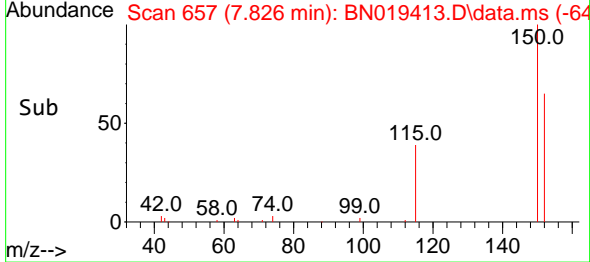
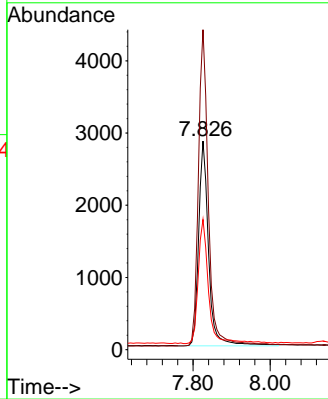


#1  
 1,4-Dichlorobenzene-d4  
 Concen: 0.400 ng  
 RT: 7.826 min Scan# 61  
 Delta R.T. 0.001 min  
 Lab File: BN019413.D  
 Acq: 11 Apr 2022 15:35

Instrument :  
 BNA\_N  
 ClientSampleId :  
 MW-25

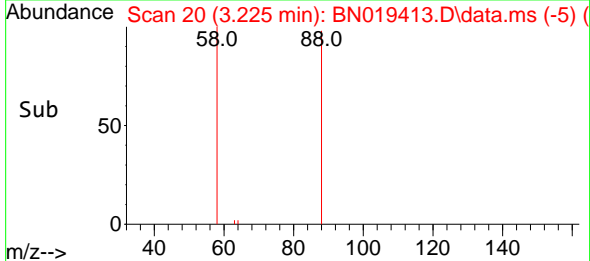
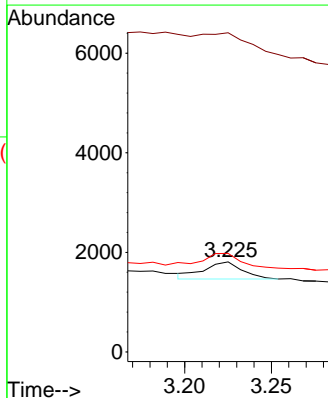
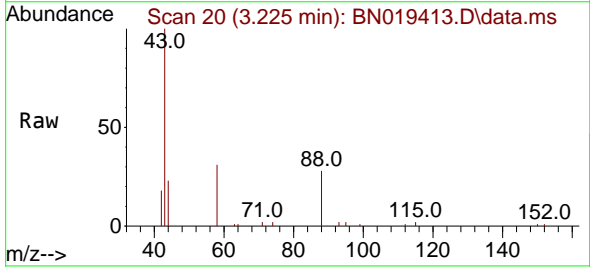


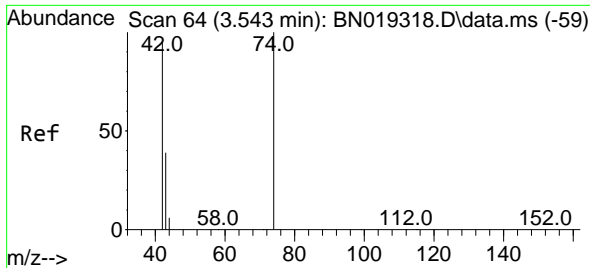
Tgt Ion:152 Resp: 5090  
 Ion Ratio Lower Upper  
 152 100  
 150 153.4 123.9 185.9  
 115 62.4 48.2 72.4



#2  
 1,4-Dioxane  
 Concen: 0.087 ng  
 RT: 3.225 min Scan# 20  
 Delta R.T. 0.007 min  
 Lab File: BN019413.D  
 Acq: 11 Apr 2022 15:35

Tgt Ion: 88 Resp: 532  
 Ion Ratio Lower Upper  
 88 100  
 43 0.0 24.6 37.0#  
 58 75.4 65.4 98.2

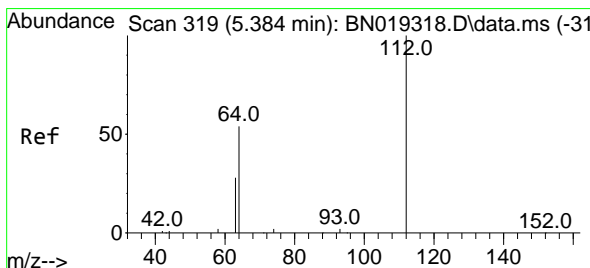
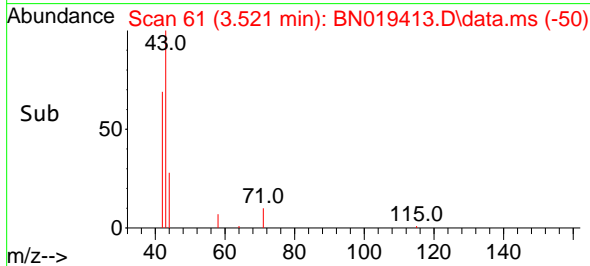
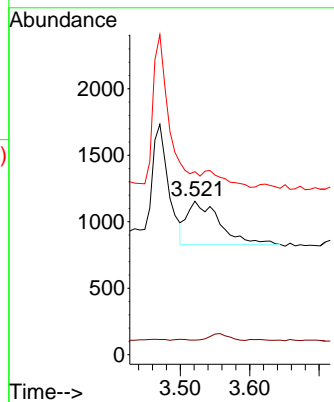
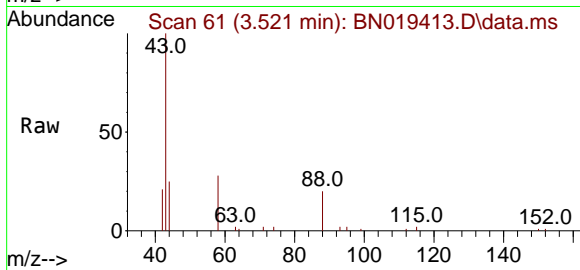




#3  
 n-Nitrosodimethylamine  
 Concen: 0.132 ng  
 RT: 3.521 min Scan# 61  
 Delta R.T. -0.022 min  
 Lab File: BN019413.D  
 Acq: 11 Apr 2022 15:35

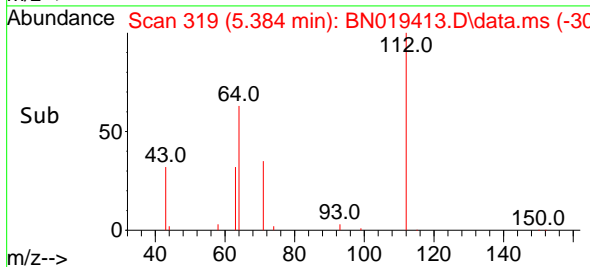
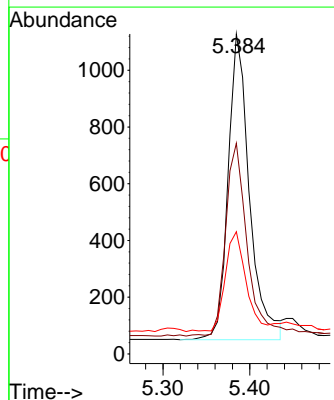
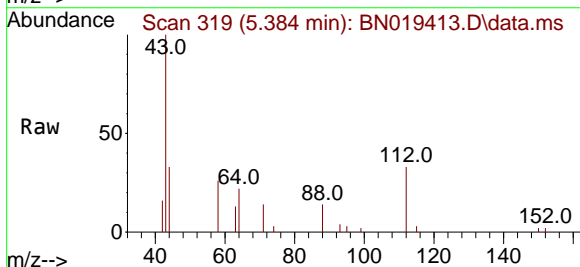
Instrument :  
 BNA\_N  
 ClientSampleId :  
 MW-25

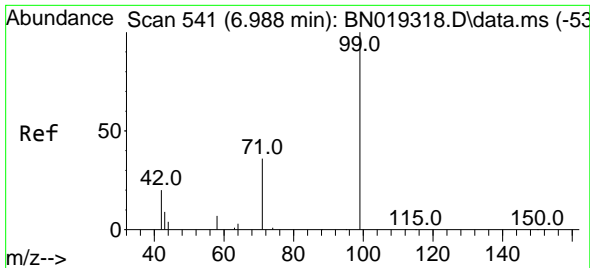
Tgt Ion: 42 Resp: 1062  
 Ion Ratio Lower Upper  
 42 100  
 74 0.0 96.9 145.3#  
 44 0.0 7.3 10.9#



#4  
 2-Fluorophenol  
 Concen: 0.135 ng  
 RT: 5.384 min Scan# 319  
 Delta R.T. 0.000 min  
 Lab File: BN019413.D  
 Acq: 11 Apr 2022 15:35

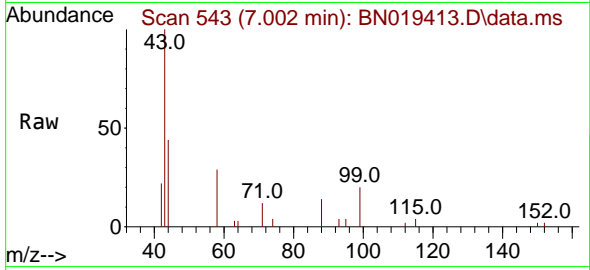
Tgt Ion: 112 Resp: 1842  
 Ion Ratio Lower Upper  
 112 100  
 64 66.3 47.8 71.8  
 63 31.2 25.7 38.5





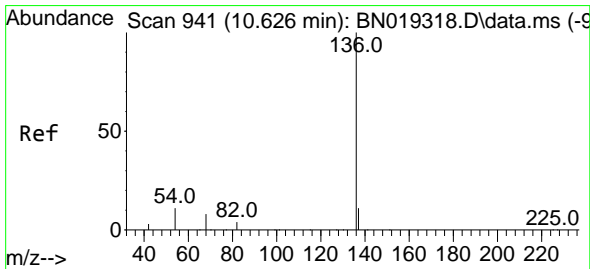
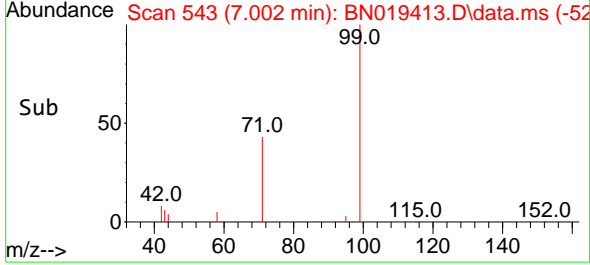
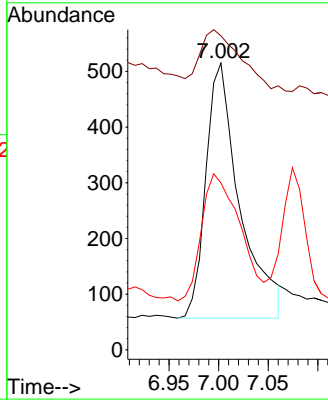
#5  
 Phenol-d6  
 Concen: 0.066 ng  
 RT: 7.002 min Scan# 541  
 Delta R.T. 0.015 min  
 Lab File: BN019413.D  
 Acq: 11 Apr 2022 15:35

Instrument :  
 BNA\_N  
 ClientSampleId :  
 MW-25



Tgt Ion: 99 Resp: 1086

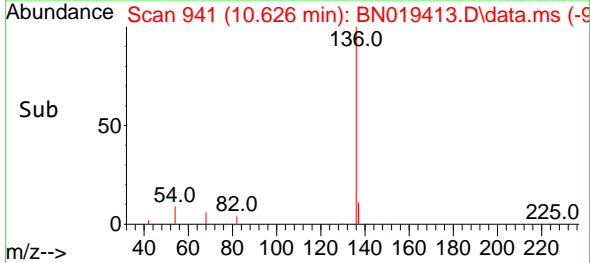
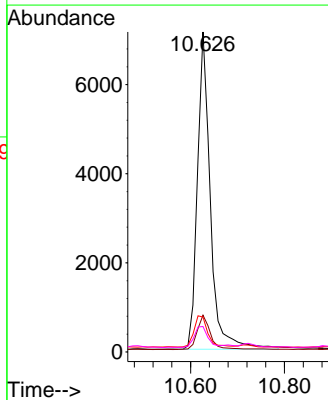
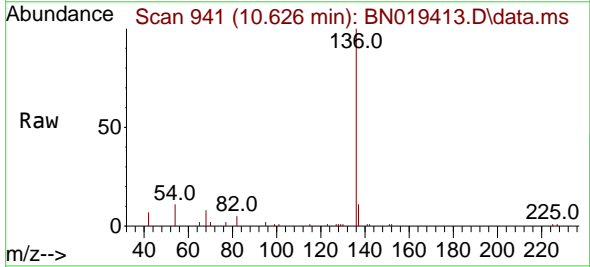
| Ion | Ratio | Lower | Upper |
|-----|-------|-------|-------|
| 99  | 100   |       |       |
| 42  | 26.6  | 16.2  | 24.4# |
| 71  | 56.5  | 27.7  | 41.5# |

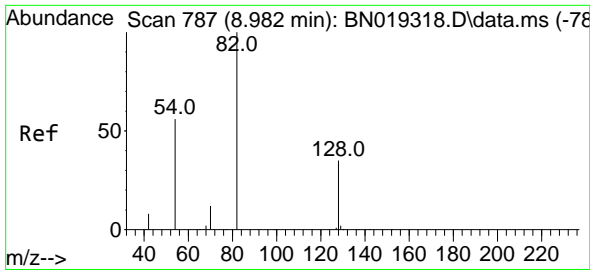


#7  
 Naphthalene-d8  
 Concen: 0.400 ng  
 RT: 10.626 min Scan# 941  
 Delta R.T. 0.000 min  
 Lab File: BN019413.D  
 Acq: 11 Apr 2022 15:35

Tgt Ion: 136 Resp: 13655

| Ion | Ratio | Lower | Upper |
|-----|-------|-------|-------|
| 136 | 100   |       |       |
| 137 | 11.5  | 9.0   | 13.4  |
| 54  | 10.9  | 5.8   | 8.6#  |
| 68  | 7.9   | 4.6   | 7.0#  |



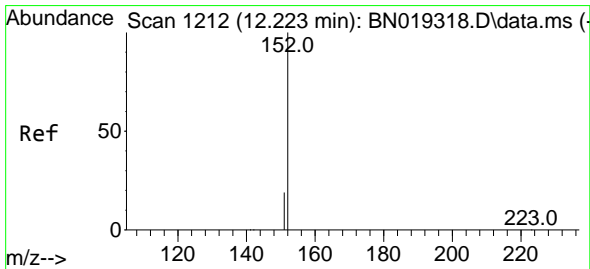
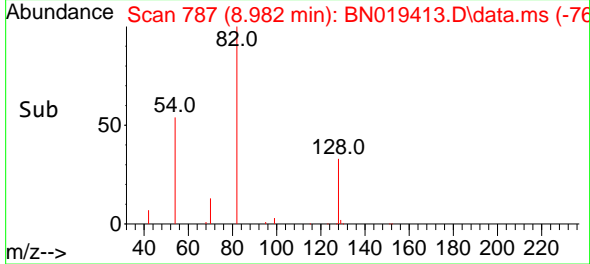
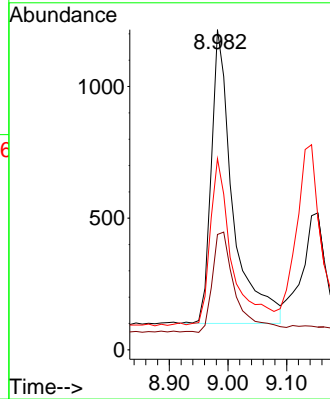
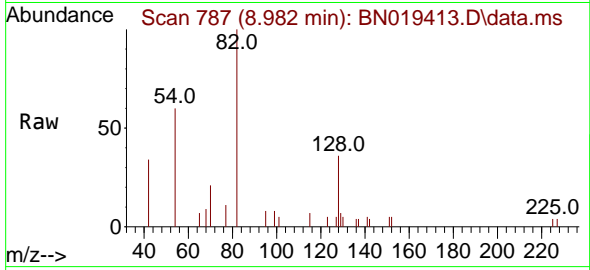


#8  
 Nitrobenzene-d5  
 Concen: 0.231 ng  
 RT: 8.982 min Scan# 787  
 Delta R.T. 0.000 min  
 Lab File: BN019413.D  
 Acq: 11 Apr 2022 15:35

Instrument :  
 BNA\_N  
 ClientSampleId :  
 MW-25

Tgt Ion: 82 Resp: 2864

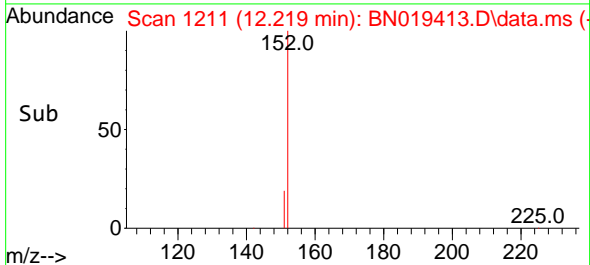
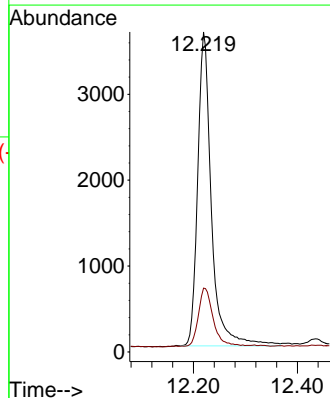
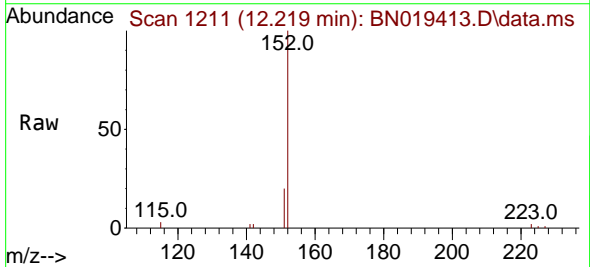
| Ion | Ratio | Lower | Upper |
|-----|-------|-------|-------|
| 82  | 100   |       |       |
| 128 | 36.0  | 33.0  | 49.6  |
| 54  | 59.7  | 42.5  | 63.7  |

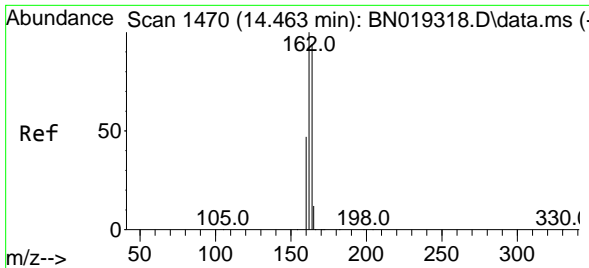


#11  
 2-Methylnaphthalene-d10  
 Concen: 0.279 ng  
 RT: 12.219 min Scan# 1211  
 Delta R.T. -0.004 min  
 Lab File: BN019413.D  
 Acq: 11 Apr 2022 15:35

Tgt Ion: 152 Resp: 6691

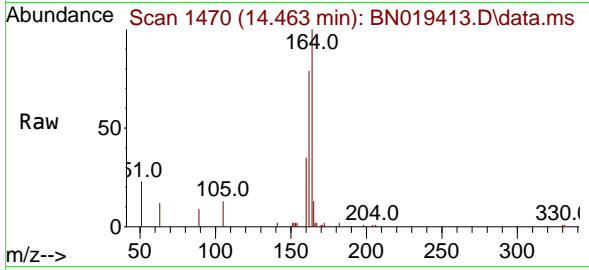
| Ion | Ratio | Lower | Upper |
|-----|-------|-------|-------|
| 152 | 100   |       |       |
| 151 | 20.0  | 16.5  | 24.7  |



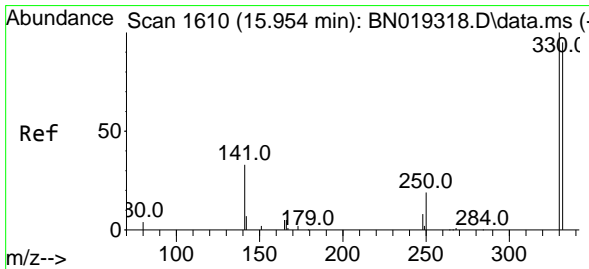
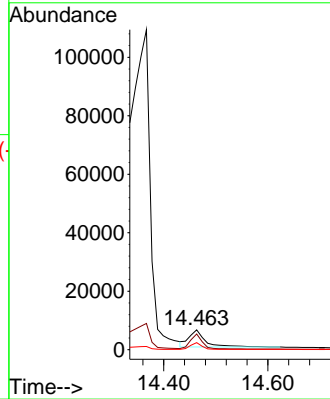
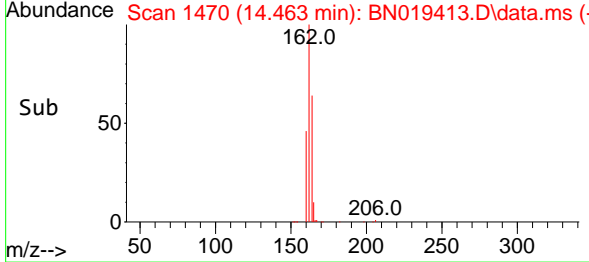


#13  
 Acenaphthene-d10  
 Concen: 0.400 ng  
 RT: 14.463 min Scan# 14  
 Delta R.T. 0.000 min  
 Lab File: BN019413.D  
 Acq: 11 Apr 2022 15:35

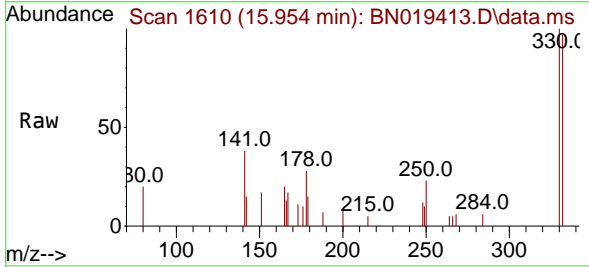
Instrument :  
 BNA\_N  
 ClientSampleId :  
 MW-25



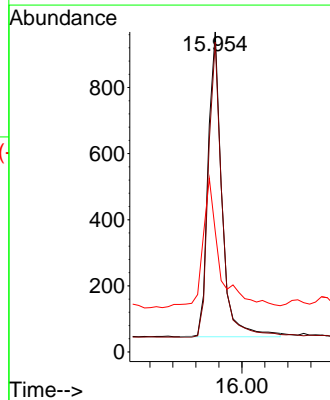
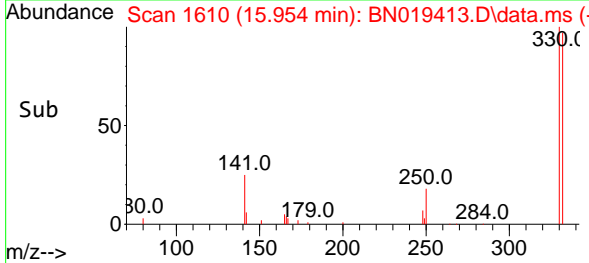
Tgt Ion:164 Resp: 12857  
 Ion Ratio Lower Upper  
 164 100  
 162 79.3 85.2 127.8#  
 160 35.4 41.5 62.3#

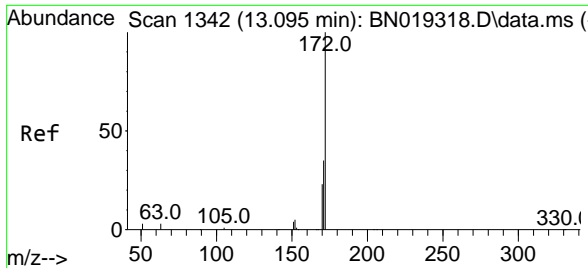


#14  
 2,4,6-Tribromophenol  
 Concen: 0.196 ng  
 RT: 15.954 min Scan# 1610  
 Delta R.T. 0.000 min  
 Lab File: BN019413.D  
 Acq: 11 Apr 2022 15:35



Tgt Ion:330 Resp: 1534  
 Ion Ratio Lower Upper  
 330 100  
 332 95.8 76.8 115.2  
 141 49.9 32.2 48.2#



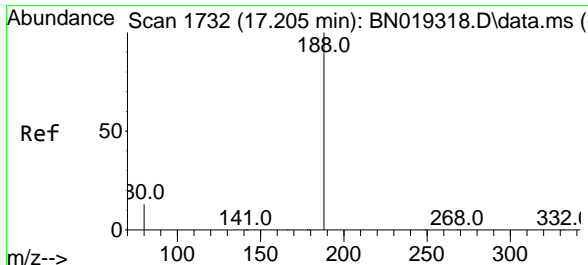
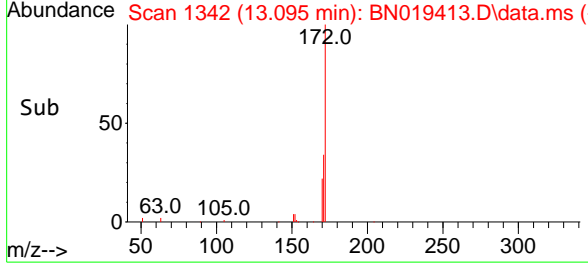
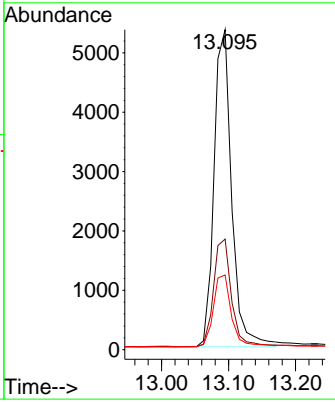
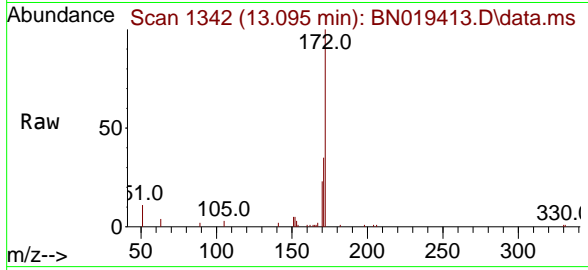


#15  
 2-Fluorobiphenyl  
 Concen: 0.183 ng  
 RT: 13.095 min Scan# 11  
 Delta R.T. 0.000 min  
 Lab File: BN019413.D  
 Acq: 11 Apr 2022 15:35

Instrument : BNA\_N  
 ClientSampleId : MW-25

Tgt Ion:172 Resp: 9774

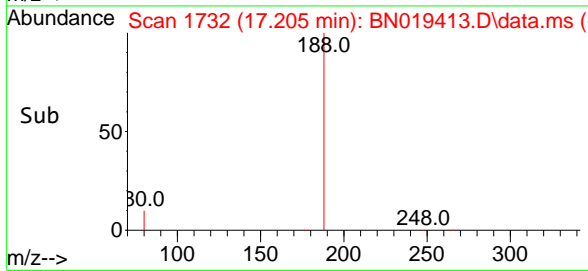
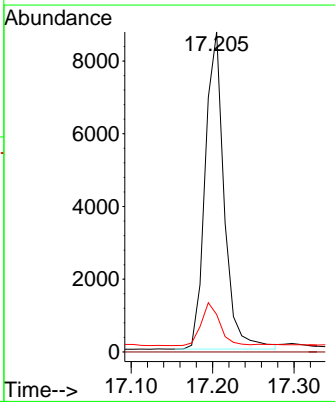
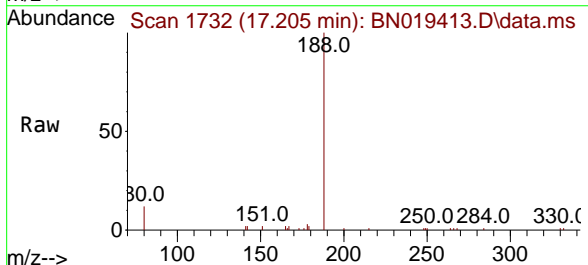
| Ion | Ratio | Lower | Upper |
|-----|-------|-------|-------|
| 172 | 100   |       |       |
| 171 | 34.5  | 28.2  | 42.2  |
| 170 | 23.3  | 18.7  | 28.1  |



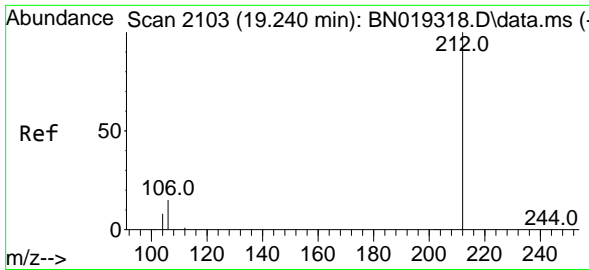
#19  
 Phenanthrene-d10  
 Concen: 0.400 ng  
 RT: 17.205 min Scan# 1732  
 Delta R.T. 0.000 min  
 Lab File: BN019413.D  
 Acq: 11 Apr 2022 15:35

Tgt Ion:188 Resp: 14118

| Ion | Ratio | Lower | Upper |
|-----|-------|-------|-------|
| 188 | 100   |       |       |
| 94  | 0.0   | 0.0   | 0.0   |
| 80  | 11.7  | 11.8  | 17.8# |

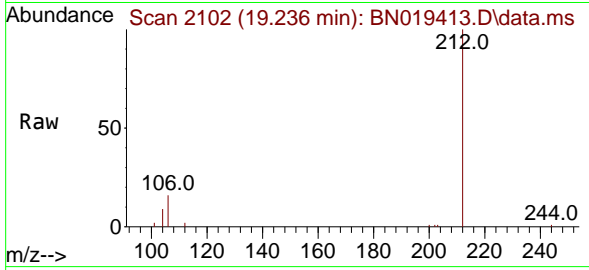




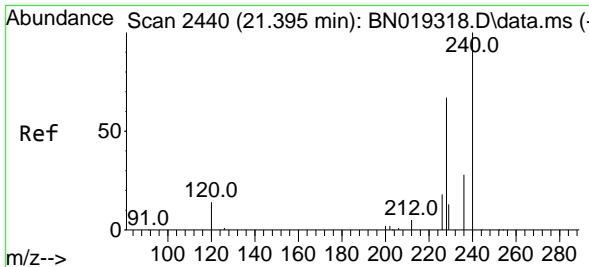
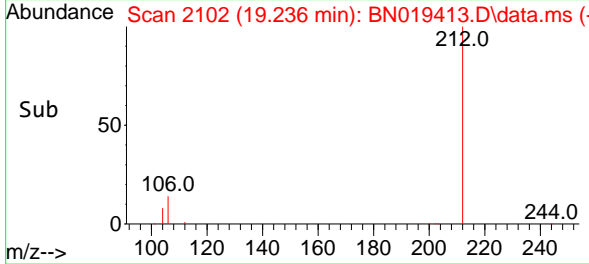
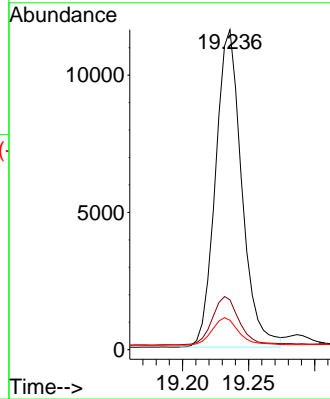


#27  
 Fluoranthene-d10  
 Concen: 0.352 ng  
 RT: 19.236 min Scan# 2102  
 Delta R.T. -0.004 min  
 Lab File: BN019413.D  
 Acq: 11 Apr 2022 15:35

Instrument :  
 BNA\_N  
 Client Sample Id :  
 MW-25

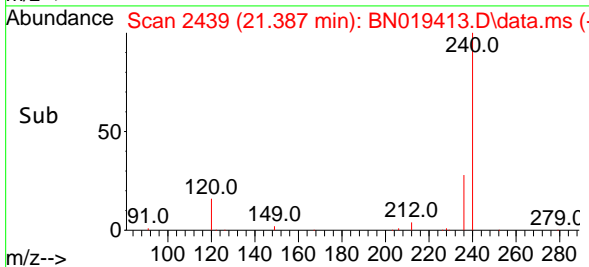
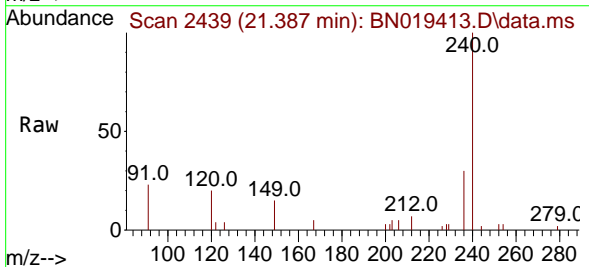
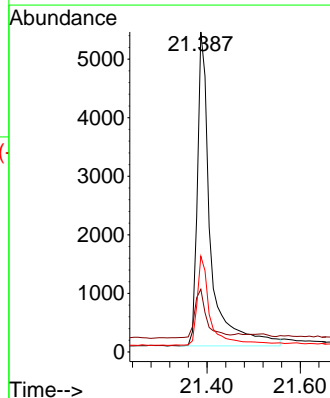


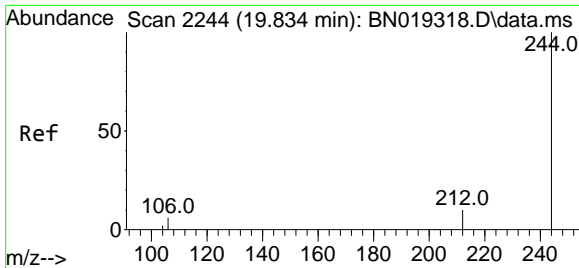
Tgt Ion: 212 Resp: 16010  
 Ion Ratio Lower Upper  
 212 100  
 106 16.5 12.7 19.1  
 104 8.9 7.1 10.7



#29  
 Chrysene-d12  
 Concen: 0.400 ng  
 RT: 21.387 min Scan# 2439  
 Delta R.T. -0.009 min  
 Lab File: BN019413.D  
 Acq: 11 Apr 2022 15:35

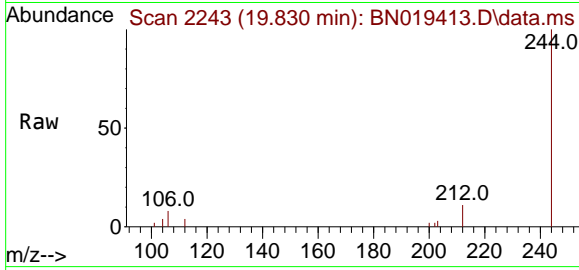
Tgt Ion: 240 Resp: 10517  
 Ion Ratio Lower Upper  
 240 100  
 120 19.6 8.5 12.7#  
 236 29.9 22.4 33.6



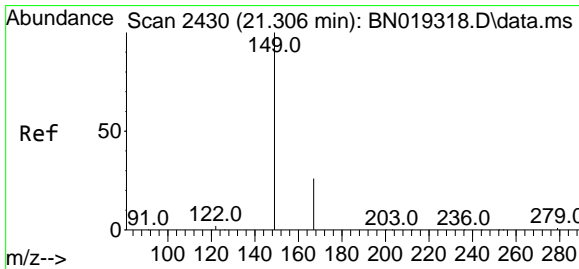
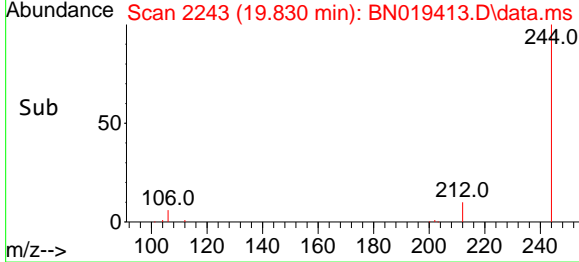
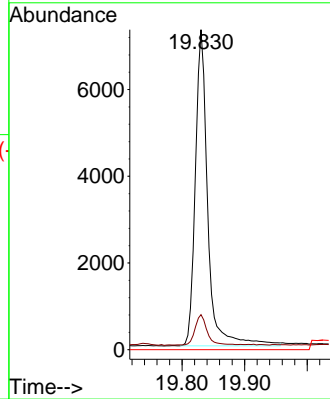


#31  
 Terphenyl-d14  
 Concen: 0.440 ng  
 RT: 19.830 min Scan# 21  
 Delta R.T. -0.004 min  
 Lab File: BN019413.D  
 Acq: 11 Apr 2022 15:35

Instrument : BNA\_N  
 ClientSampleId : MW-25

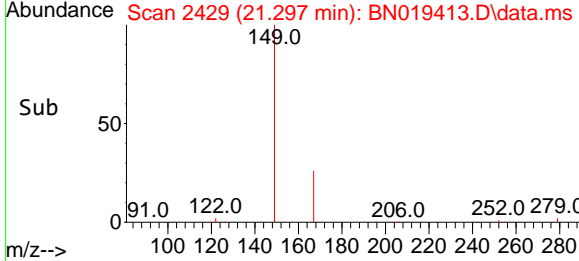
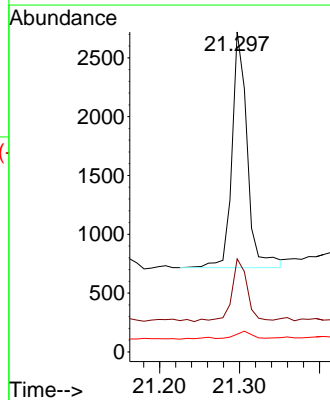
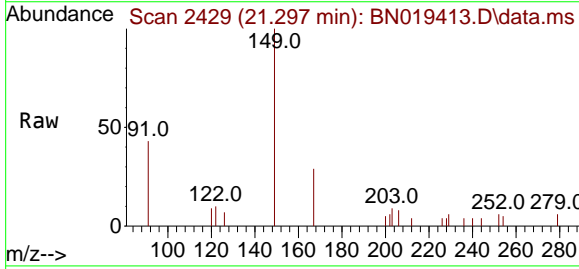


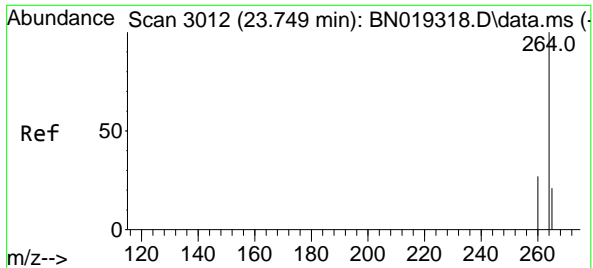
Tgt Ion:244 Resp: 10057  
 Ion Ratio Lower Upper  
 244 100  
 212 11.0 8.2 12.4  
 122 0.0 0.0 0.0



#34  
 Bis(2-ethylhexyl)phthalate  
 Concen: 0.091 ng  
 RT: 21.297 min Scan# 2429  
 Delta R.T. -0.009 min  
 Lab File: BN019413.D  
 Acq: 11 Apr 2022 15:35

Tgt Ion:149 Resp: 2641  
 Ion Ratio Lower Upper  
 149 100  
 167 27.6 21.8 32.8  
 279 3.3 2.0 3.0#





#35  
 Perylene-d12  
 Concen: 0.400 ng  
 RT: 23.738 min Scan# 30  
 Delta R.T. -0.012 min  
 Lab File: BN019413.D  
 Acq: 11 Apr 2022 15:35

Instrument :  
 BNA\_N  
 ClientSampleId :  
 MW-25

Tgt Ion:264 Resp: 9544

| Ion | Ratio | Lower | Upper |
|-----|-------|-------|-------|
| 264 | 100   |       |       |
| 260 | 28.8  | 22.4  | 33.6  |
| 265 | 39.3  | 25.3  | 37.9# |

