

Data Path : Z:\svoasrv\HPCHEM1\BNA_N\Data\BN041724\
 Data File : BN030974.D
 Acq On : 17 Apr 2024 12:50
 Operator : MA/JU
 Sample : P2006-03
 Misc :
 ALS Vial : 6 Sample Multiplier: 1

Instrument :
 BNA_N
 ClientSampleId :
 MCOR56

Quant Time: Apr 17 22:30:05 2024
 Quant Method : Z:\svoasrv\HPCHEM1\BNA_N\Methods\SFAM-EPA-BN032824.MA.M
 Quant Title : SVOA CALIBRATION
 QLast Update : Wed Apr 17 22:24:16 2024
 Response via : Initial Calibration

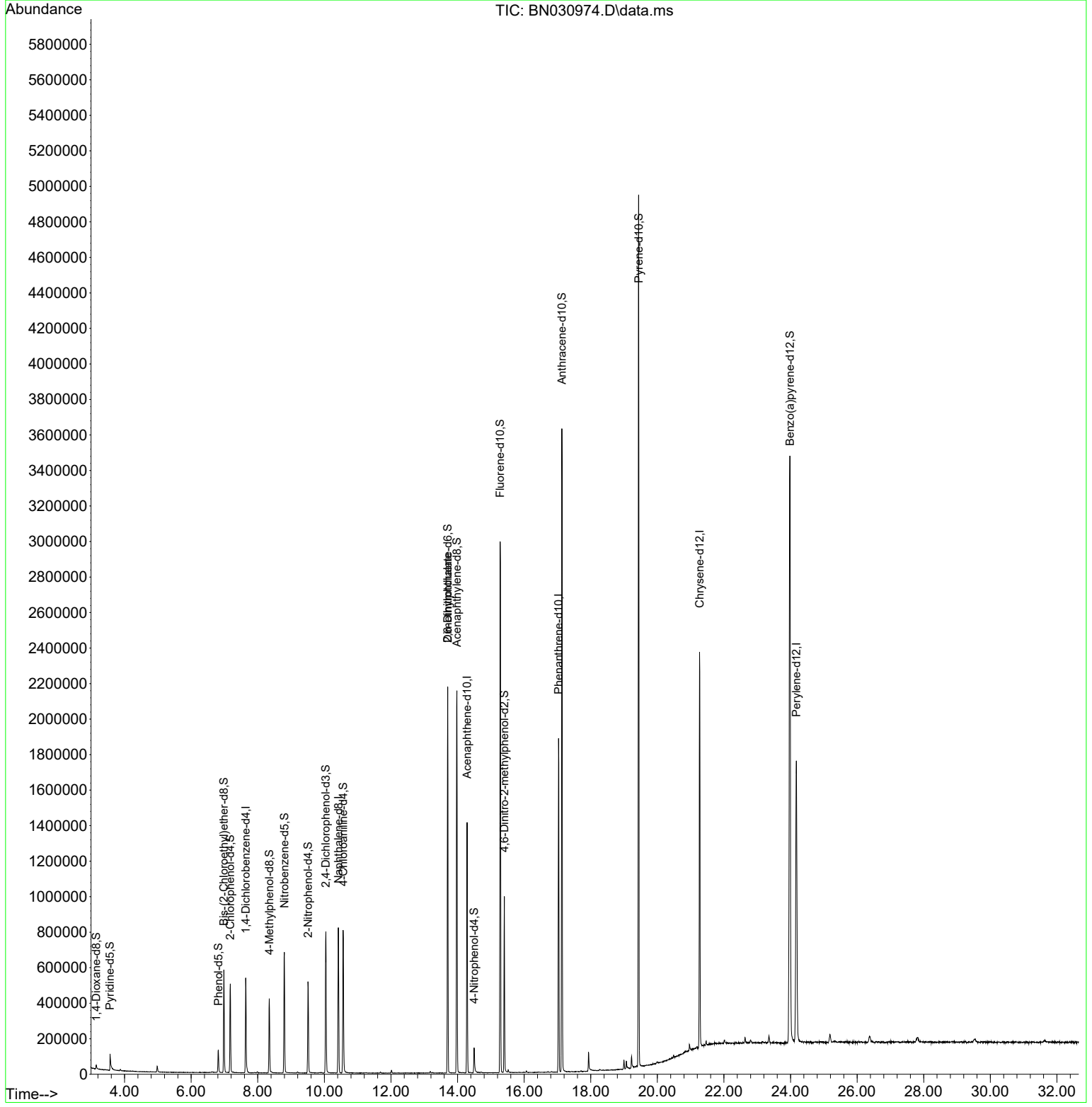
Compound	R.T.	QIon	Response	Conc	Units	Dev(Min)
Internal Standards						
1) 1,4-Dichlorobenzene-d4	7.640	152	141968	20.000	ng/ul	0.00
20) Naphthalene-d8	10.422	136	665080	20.000	ng/ul	0.00
38) Acenaphthene-d10	14.287	164	468070	20.000	ng/ul	0.00
64) Phenanthrene-d10	17.033	188	1054926	20.000	ng/ul	0.00
79) Chrysene-d12	21.269	240	1108019	20.000	ng/ul	0.00
88) Perylene-d12	24.174	264	1357860	20.000	ng/ul	0.00
System Monitoring Compounds						
3) 1,4-Dioxane-d8	3.152	96	13709	4.527	ng/uL	0.00
4) Pyridine-d5	3.564	84	56419	6.214	ng/ul	0.00
7) Phenol-d5	6.816	99	73317	6.384	ng/ul	0.00
9) Bis-(2-Chloroethyl)eth...	6.981	67	249068	35.113	ng/ul	0.00
11) 2-Chlorophenol-d4	7.175	132	233580	26.811	ng/ul	0.00
15) 4-Methylphenol-d8	8.346	113	153363	15.934	ng/ul	0.00
21) Nitrobenzene-d5	8.799	128	165109	35.787	ng/ul	0.00
24) 2-Nitrophenol-d4	9.510	143	159708	37.840	ng/ul	0.00
28) 2,4-Dichlorophenol-d3	10.046	165	282403	30.563	ng/ul	0.00
31) 4-Chloroaniline-d4	10.563	131	435657	28.640	ng/ul	0.00
46) Dimethylphthalate-d6	13.704	166	1350338	43.209	ng/ul	0.00
49) Acenaphthylene-d8	13.981	160	1393179	38.773	ng/ul	0.00
54) 4-Nitrophenol-d4	14.498	143	37486	6.271	ng/ul	0.00
60) Fluorene-d10	15.281	176	1147752	41.970	ng/ul	0.00
65) 4,6-Dinitro-2-methylph...	15.404	200	177264	38.069	ng/ul	0.00
73) Anthracene-d10	17.133	188	1993819	43.866	ng/ul	0.00
81) Pyrene-d10	19.439	212	2509916	42.133	ng/ul	0.00
92) Benzo(a)pyrene-d12	23.986	264	2873731	45.930	ng/ul	0.01
Target Compounds						
48) 2,6-Dinitrotoluene	13.704	165	7354	1.229	ng/ul#	37

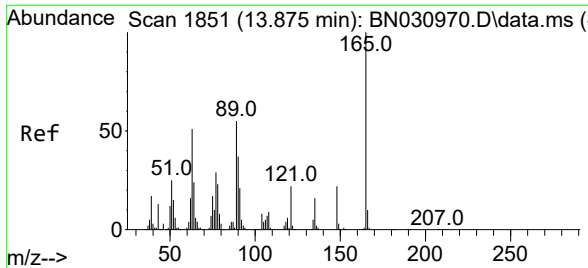
(#) = qualifier out of range (m) = manual integration (+) = signals summed

Data Path : Z:\svoasrv\HPCHEM1\BNA_N\Data\BN041724\
 Data File : BN030974.D
 Acq On : 17 Apr 2024 12:50
 Operator : MA/JU
 Sample : P2006-03
 Misc :
 ALS Vial : 6 Sample Multiplier: 1

Instrument :
 BNA_N
 ClientSampleId :
 MCR56

Quant Time: Apr 17 22:30:05 2024
 Quant Method : Z:\svoasrv\HPCHEM1\BNA_N\Methods\SFAM-EPA-BN032824.MA.M
 Quant Title : SVOA CALIBRATION
 QLast Update : Wed Apr 17 22:24:16 2024
 Response via : Initial Calibration





#48
 2,6-Dinitrotoluene
 Concen: 1.229 ng/ul
 RT: 13.704 min Scan# 11
 Delta R.T. -0.171 min
 Lab File: BN030974.D
 Acq: 17 Apr 2024 12:50

Instrument : BNA_N
 ClientSampleId : MCOR56

Tgt Ion:165 Resp: 7354

Ion	Ratio	Lower	Upper
165	100		
89	2.4	43.5	65.3#
121	37.4	15.7	23.5#

