

Data Path : Z:\SVOASRV\HPCHEM1\BNA\_N\DATA\BN042619\  
 Data File : BN005327.D  
 Acq On : 26 Apr 2019 21:38  
 Operator : JU/SJ  
 Sample : K2455-05ME  
 Misc :  
 ALS Vial : 11 Sample Multiplier: 1

Instrument :  
 BNA\_N  
 ClientSampleId :  
 GAHQ7ME

Integration Parameters: LSCINT.P

Integrator: RTE  
 Smoothing : OFF  
 Sampling : 1  
 Start Thrs: 0.2  
 Stop Thrs : 0

Filtering: 5  
 Min Area: 0.1 % of largest Peak  
 Max Peaks: 100  
 Peak Location: TOP

If leading or trailing edge < 100 prefer < Baseline drop else tangent >  
 Peak separation: 5

Method : Z:\SVOASRV\HPCHEM1\BNA\_N\METHODS\SOM-EPA-BN041919MA.M  
 Title : SVOA CALIBRATION

Signal : TIC

peak #	R.T. min	first scan	max scan	last scan	PK TY	peak height	corr. area	corr. % max.	% of total
1	5.652	443	453	468	rBV2	1840630	4833095	2.60%	0.268%
2	6.834	649	654	665	rVB	2190169	3419262	1.84%	0.190%
3	7.257	719	726	735	rVV2	12514761	22771330	12.26%	1.265%
4	7.340	735	740	749	rVB	2676191	4133922	2.23%	0.230%
5	7.710	794	803	809	rVV	2624830	4235826	2.28%	0.235%
6	8.122	863	873	881	rVV	11682945	20242006	10.90%	1.124%
7	8.687	963	969	973	rBV	2642352	4077929	2.20%	0.226%
8	8.851	993	997	1006	rVV	3414211	6456068	3.48%	0.359%
9	9.263	1062	1067	1075	rVB	2694978	4542118	2.45%	0.252%
10	9.346	1075	1081	1086	rBV	2520515	3966553	2.14%	0.220%
11	9.799	1148	1158	1164	rBV3	5914357	14808269	7.97%	0.822%
12	9.869	1164	1170	1174	rBV	6280038	12533214	6.75%	0.696%
13	9.987	1185	1190	1197	rVB2	1985539	3869707	2.08%	0.215%
14	10.357	1248	1253	1257	rBV2	5316527	9352855	5.04%	0.519%
15	10.451	1257	1269	1273	rVV2	43580333	133015443	71.61%	7.388%
16	10.534	1280	1283	1288	rVV2	2322692	3565900	1.92%	0.198%
17	11.404	1425	1431	1435	rBV2	2037163	3470408	1.87%	0.193%
18	11.769	1486	1493	1498	rBV	3705391	6890251	3.71%	0.383%
19	11.828	1498	1503	1509	rVB	4962361	7188930	3.87%	0.399%
20	11.922	1515	1519	1530	rVB2	2138093	4828320	2.60%	0.268%
21	12.087	1530	1547	1551	rBV3	54103285	185755407	100.00%	10.317%
22	12.292	1566	1582	1587	rVV2	46433577	117494909	63.25%	6.526%
23	13.063	1706	1713	1722	rBV2	12312434	23697762	12.76%	1.316%
24	13.257	1740	1746	1759	rVB	10521826	23360126	12.58%	1.297%
25	13.404	1762	1771	1772	rBV	24938673	41113290	22.13%	2.284%
26	13.569	1789	1799	1804	rBV	29178942	67714664	36.45%	3.761%
27	13.622	1804	1808	1812	rVV	21974126	29546841	15.91%	1.641%
28	13.692	1816	1820	1825	rVB	15898916	23227642	12.50%	1.290%
29	13.798	1831	1838	1842	rBV	16383146	29434331	15.85%	1.635%
30	13.969	1855	1867	1873	rBV2	33673237	61423233	33.07%	3.412%
31	14.157	1895	1899	1903	rBV	2741133	3419864	1.84%	0.190%
32	14.216	1903	1909	1917	rVV2	11794096	21675370	11.67%	1.204%
33	14.298	1917	1923	1926	rVV2	6416978	11134438	5.99%	0.618%
34	14.328	1926	1928	1932	rVB	5218684	5539753	2.98%	0.308%

Data Path : Z:\SVOASRV\HPCHEM1\BNA\_N\DATA\BN042619\  
 Data File : BN005327.D  
 Acq On : 26 Apr 2019 21:38  
 Operator : JU/SJ  
 Sample : K2455-05ME  
 Misc :  
 ALS Vial : 11 Sample Multiplier: 1

Instrument :  
 BNA\_N  
 ClientSampleId :  
 GAHQ7ME

## Integration Parameters: LSCINT.P

Integrator: RTE  
 Smoothing : OFF Filtering: 5  
 Sampling : 1 Min Area: 0.1 % of largest Peak  
 Start Thrs: 0.2 Max Peaks: 100  
 Stop Thrs : 0 Peak Location: TOP

If leading or trailing edge < 100 prefer < Baseline drop else tangent >  
 Peak separation: 5

Method : Z:\SVOASRV\HPCHEM1\BNA\_N\METHODS\SOM-EPA-BN041919MA.M  
 Title : SVOA CALIBRATION

35	14.445	1942	1948	1957	rVB2	5853541	13029766	7.01%	0.724%
36	14.639	1971	1981	1988	rBV3	9896290	19664497	10.59%	1.092%
37	14.716	1988	1994	1999	rVB	7542732	11109446	5.98%	0.617%
38	14.845	2010	2016	2022	rBV2	8486786	18109235	9.75%	1.006%
39	14.916	2024	2028	2031	rVB	5743314	7174525	3.86%	0.398%
40	15.010	2038	2044	2046	rBV	3158573	5181131	2.79%	0.288%
41	15.110	2057	2061	2066	rVB2	7469345	10388730	5.59%	0.577%
42	15.181	2067	2073	2075	rBV2	2763400	4145815	2.23%	0.230%
43	15.233	2076	2082	2087	rVB2	10774520	17980334	9.68%	0.999%
44	15.298	2087	2093	2104	rBV	24183679	46541182	25.06%	2.585%
45	15.416	2109	2113	2116	rVB2	3212016	4156651	2.24%	0.231%
46	15.504	2123	2128	2136	rVB8	2074221	4450963	2.40%	0.247%
47	15.581	2136	2141	2148	rBV2	4013708	6936343	3.73%	0.385%
48	15.733	2163	2167	2175	rVB2	2865989	6004086	3.23%	0.333%
49	15.975	2201	2208	2212	rBV3	2469149	4672690	2.52%	0.260%
50	16.292	2255	2262	2267	rVV	7225653	17533610	9.44%	0.974%
51	16.345	2267	2271	2276	rVB	8077522	10686814	5.75%	0.594%
52	16.445	2283	2288	2293	rVB3	4113485	6542608	3.52%	0.363%
53	16.645	2318	2322	2329	rVB2	3144977	4781105	2.57%	0.266%
54	16.804	2341	2349	2354	rBV	6143300	9320442	5.02%	0.518%
55	16.992	2375	2381	2383	rBV	3657841	6255721	3.37%	0.347%
56	17.063	2383	2393	2396	rVV2	47686345	113050742	60.86%	6.279%
57	17.098	2396	2399	2401	rVV	5586892	7320107	3.94%	0.407%
58	17.128	2401	2404	2409	rVV	12660292	16133129	8.69%	0.896%
59	17.180	2409	2413	2418	rVB3	2321421	4108433	2.21%	0.228%
60	17.510	2465	2469	2473	rBV	3266214	4131414	2.22%	0.229%
61	17.569	2474	2479	2486	rVB3	4082254	6669296	3.59%	0.370%
62	17.875	2524	2531	2535	rVV	21627646	35258382	18.98%	1.958%
63	17.927	2535	2540	2544	rVV	23728159	35950927	19.35%	1.997%
64	17.998	2548	2552	2557	rVV	3912179	5553205	2.99%	0.308%
65	18.063	2557	2563	2567	rVV2	19758118	35999455	19.38%	1.999%
66	18.104	2567	2570	2575	rVB	13397855	17027571	9.17%	0.946%
67	18.380	2611	2617	2620	rVV	10517865	15661087	8.43%	0.870%
68	18.422	2620	2624	2629	rVB2	6924168	9508442	5.12%	0.528%
69	18.622	2654	2658	2663	rVV3	3381796	5922119	3.19%	0.329%
70	18.674	2663	2667	2670	rVV	3907233	5521102	2.97%	0.307%
71	18.804	2683	2689	2693	rBV3	7466303	13857511	7.46%	0.770%

Data Path : Z:\SVOASRV\HPCHEM1\BNA\_N\DATA\BN042619\  
 Data File : BN005327.D  
 Acq On : 26 Apr 2019 21:38  
 Operator : JU/SJ  
 Sample : K2455-05ME  
 Misc :  
 ALS Vial : 11 Sample Multiplier: 1

Instrument :  
 BNA\_N  
 ClientSampleId :  
 GAHQ7ME

## Integration Parameters: LSCINT.P

Integrator: RTE  
 Smoothing : OFF  
 Sampling : 1  
 Start Thrs: 0.2  
 Stop Thrs : 0

Filtering: 5  
 Min Area: 0.1 % of largest Peak  
 Max Peaks: 100  
 Peak Location: TOP

If leading or trailing edge < 100 prefer < Baseline drop else tangent >  
 Peak separation: 5

Method : Z:\SVOASRV\HPCHEM1\BNA\_N\METHODS\SOM-EPA-BN041919MA.M  
 Title : SVOA CALIBRATION

72	18.857	2693	2698	2701	rBV3	3615767	6299994	3.39%	0.350%
73	18.892	2701	2704	2708	rVB	4162852	5158276	2.78%	0.287%
74	18.939	2708	2712	2714	rBV	2791748	3868935	2.08%	0.215%
75	19.069	2726	2734	2739	rBV	25254953	37759686	20.33%	2.097%
76	19.139	2741	2746	2749	rBV	2677882	3772917	2.03%	0.210%
77	19.216	2755	2759	2764	rVB	9678438	12821503	6.90%	0.712%
78	19.274	2764	2769	2773	rBV2	2822469	3756424	2.02%	0.209%
79	19.445	2786	2798	2804	rBV3	30474365	61048797	32.87%	3.391%
80	19.763	2847	2852	2862	rBV2	4138735	8335747	4.49%	0.463%
81	19.898	2870	2875	2878	rVV2	4013784	7851523	4.23%	0.436%
82	19.933	2878	2881	2886	rVB	8510479	11409386	6.14%	0.634%
83	20.039	2894	2899	2904	rBV	6299367	8550234	4.60%	0.475%
84	20.092	2904	2908	2912	rVB	5551486	6863253	3.69%	0.381%
85	20.233	2928	2932	2936	rBV	3914954	5323126	2.87%	0.296%
86	20.280	2936	2940	2949	rVB2	5759656	7768026	4.18%	0.431%
87	20.898	3041	3045	3048	rVB	3815933	4103232	2.21%	0.228%
88	20.992	3058	3061	3068	rVB	2583856	3479247	1.87%	0.193%
89	21.210	3092	3098	3103	rBV2	15838055	31234246	16.81%	1.735%
90	21.257	3103	3106	3112	rVB	13324820	17729428	9.54%	0.985%
91	21.421	3131	3134	3140	rVB	3450817	4555969	2.45%	0.253%
92	21.774	3190	3194	3198	rVV	4109421	6093067	3.28%	0.338%
93	21.821	3198	3202	3207	rVB	2441076	3493032	1.88%	0.194%
94	21.992	3228	3231	3236	rVB2	3060008	4058670	2.18%	0.225%
95	22.774	3358	3364	3375	rVB2	4721331	14951318	8.05%	0.830%
96	23.233	3437	3442	3446	rBV	2875092	4957223	2.67%	0.275%
97	23.286	3446	3451	3454	rVV2	3803408	6704174	3.61%	0.372%
98	23.327	3454	3458	3466	rVB	5085684	9116724	4.91%	0.506%
99	23.421	3469	3474	3479	rVB	3182100	5269534	2.84%	0.293%
100	25.598	3838	3844	3855	rVB2	1772672	5028928	2.71%	0.279%

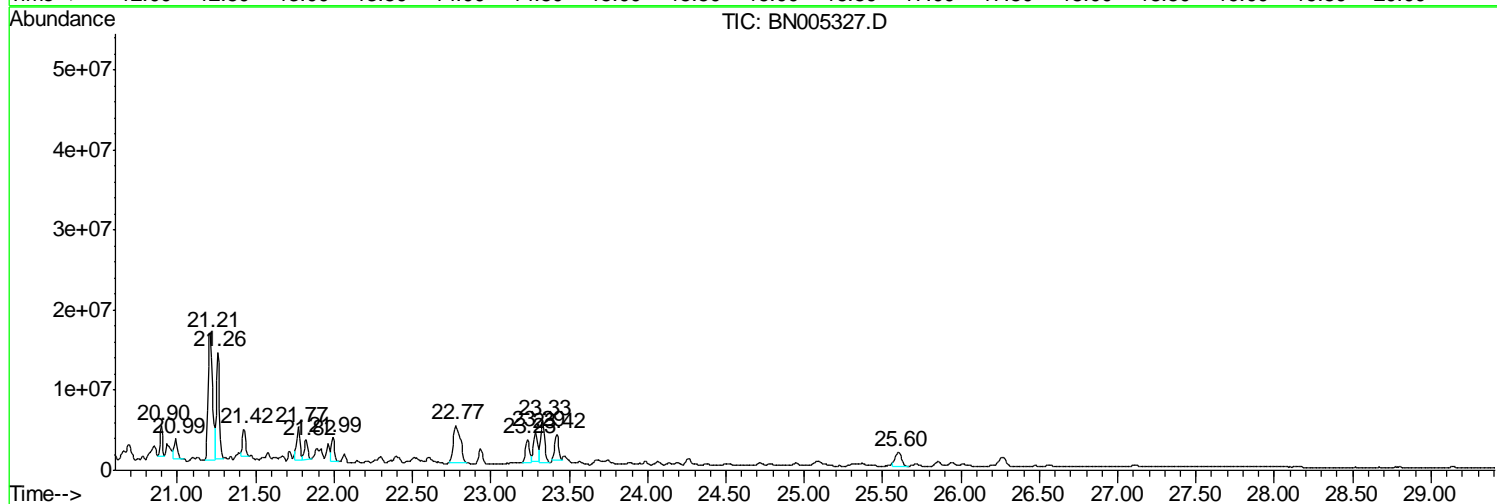
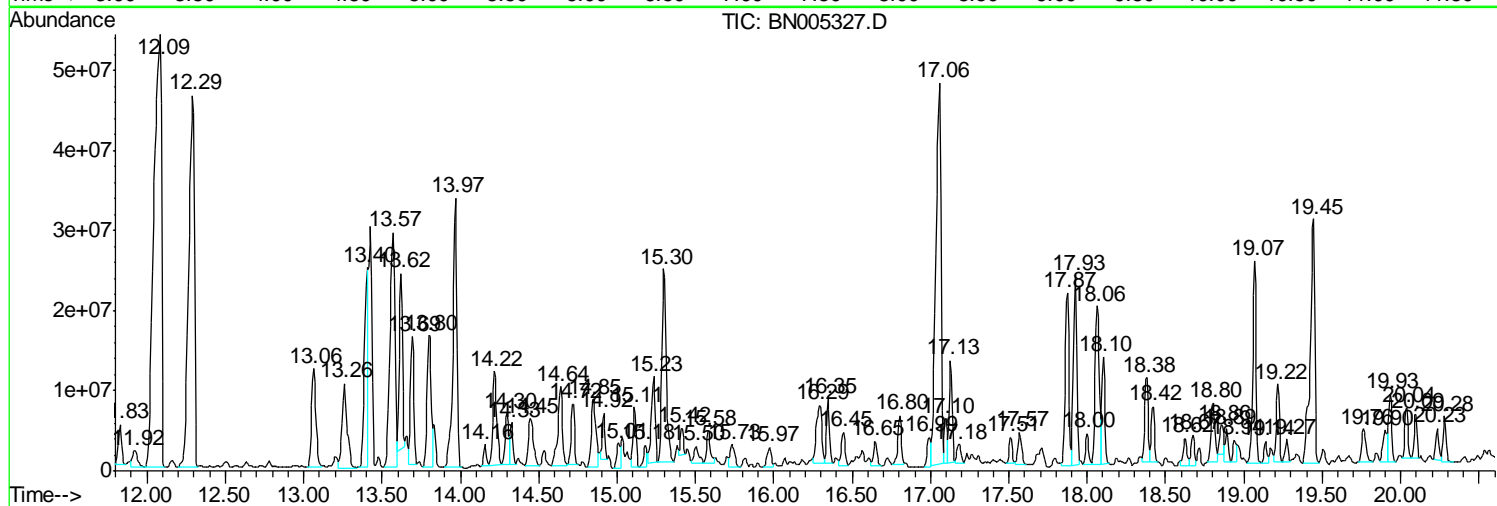
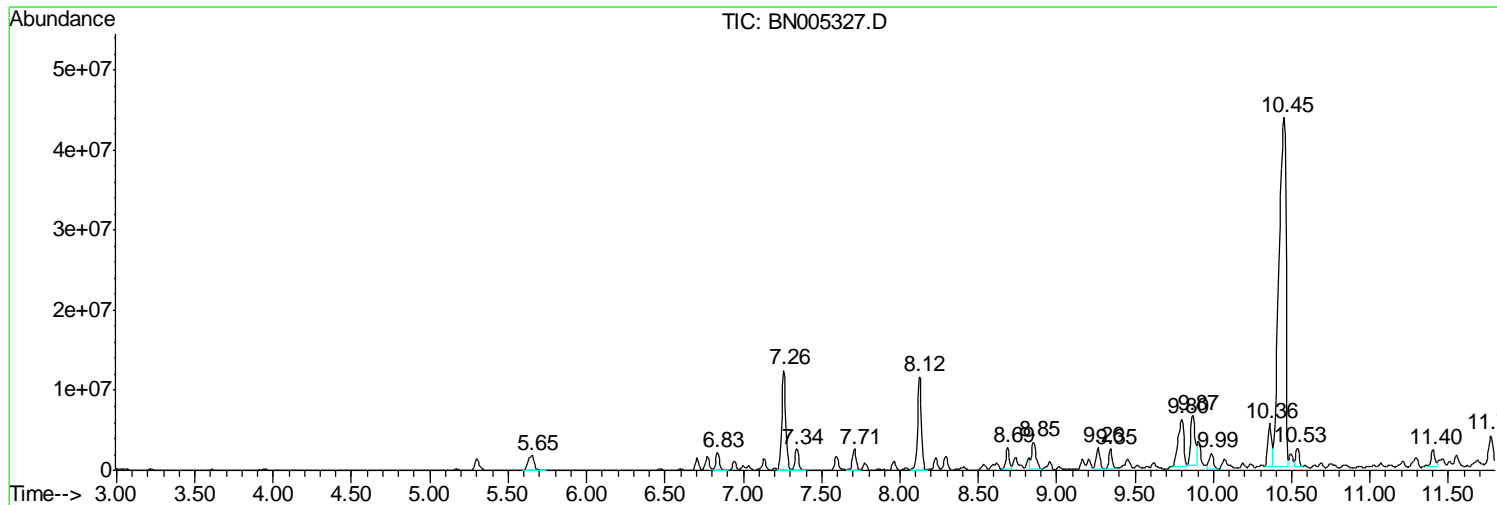
Sum of corrected areas: 1800440271

Data Path : Z:\SVOASRV\HPCHEM1\BNA N\DATA\BN042619\  
 Data File : BN005327.D  
 Acq On : 26 Apr 2019 21:38  
 Operator : JU/SJ  
 Sample : K2455-05ME  
 Misc :  
 ALS Vial : 11 Sample Multiplier: 1

Instrument :  
 BNA\_N  
 Client Sampled :  
 GAHQ7ME

Quant Method : Z:\SVOASRV\HPCHEM1\BNA\_N\METHODS\SOM-EPA-BN041919MA.M  
 Quant Title : SVOA CALIBRATION

TIC Library : C:\DATABASE\NIST02.L  
 TIC Integration Parameters: LSCINT.P



Data Path : Z:\SVOASRV\HPCHEM1\BNA N\DATA\BN042619\  
 Data File : BN005327.D  
 Acq On : 26 Apr 2019 21:38  
 Operator : JU/SJ  
 Sample : K2455-05ME  
 Misc :  
 ALS Vial : 11 Sample Multiplier: 1

Instrument :  
 BNA\_N  
 ClientSampleID :  
 GAHQ7ME

Quant Method : Z:\SVOASRV\HPCHEM1\BNA\_N\METHODS\SOM-EPA-BN041919MA.M  
 Quant Title : SVOA CALIBRATION

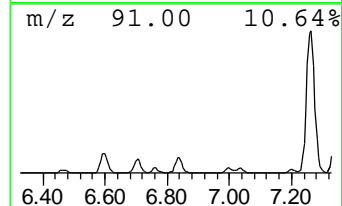
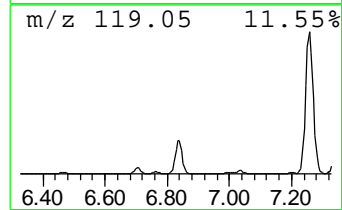
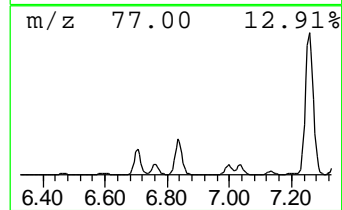
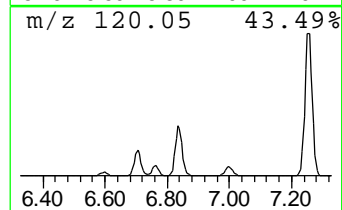
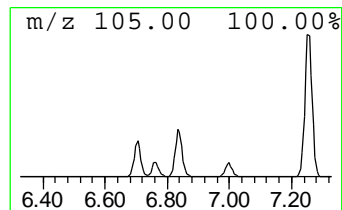
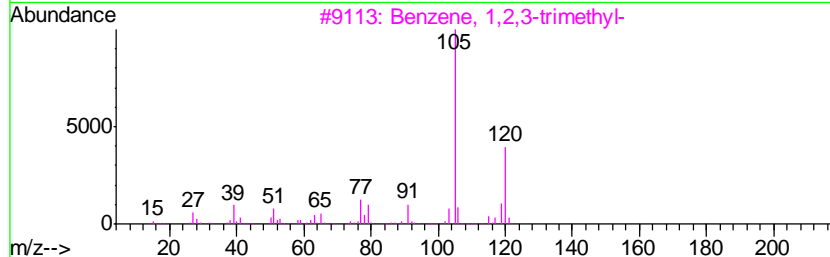
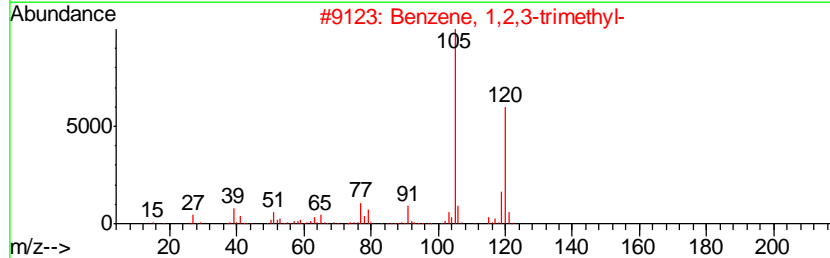
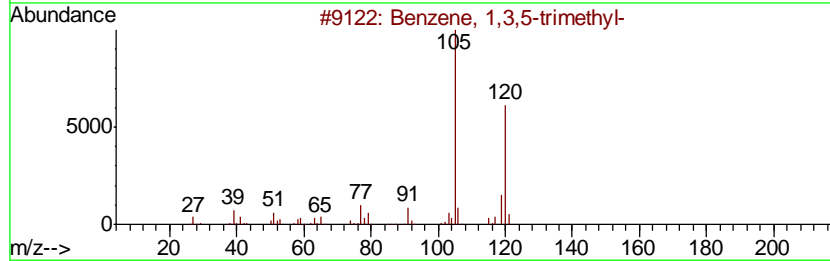
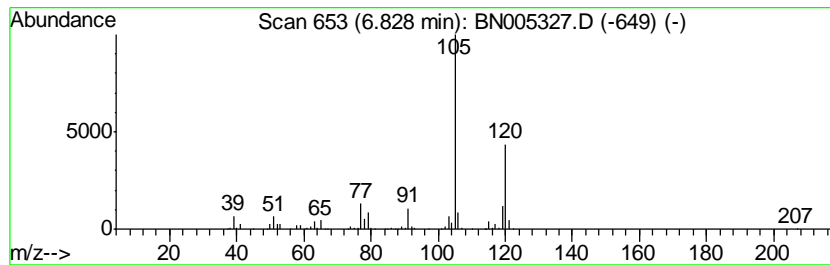
TIC Library : C:\DATABASE\NIST02.L  
 TIC Integration Parameters: LSCINT.P

\*\*\*\*\*  
 Peak Number 2 Benzene, 1,3,5-trimethyl- Concentration Rank 35

R.T.	EstConc	Area	Relative to ISTD	R.T.
6.83	16.14 ng/ul	3419260	1,4-Dichlorobenzene-d4	7.59

Hit#	of	Tentative ID	MW	MolForm	CAS#	Qual
1	5	Benzene, 1,3,5-trimethyl-	120	C9H12	000108-67-8	97
2		Benzene, 1,2,3-trimethyl-	120	C9H12	000526-73-8	97
3		Benzene, 1,2,3-trimethyl-	120	C9H12	000526-73-8	95
4		Benzene, 1,3,5-trimethyl-	120	C9H12	000108-67-8	94
5		Benzene, 1,2,4-trimethyl-	120	C9H12	000095-63-6	94



Data Path : Z:\SVOASRV\HPCHEM1\BNA N\DATA\BN042619\  
 Data File : BN005327.D  
 Acq On : 26 Apr 2019 21:38  
 Operator : JU/SJ  
 Sample : K2455-05ME  
 Misc :  
 ALS Vial : 11 Sample Multiplier: 1

Instrument :  
 BNA\_N  
 ClientSampleId :  
 GAHQ7ME

Quant Method : Z:\SVOASRV\HPCHEM1\BNA\_N\METHODS\SOM-EPA-BN041919MA.M  
 Quant Title : SVOA CALIBRATION

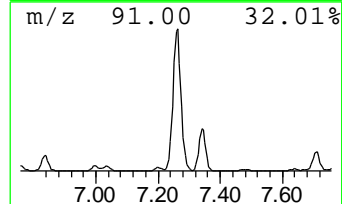
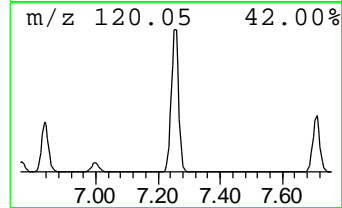
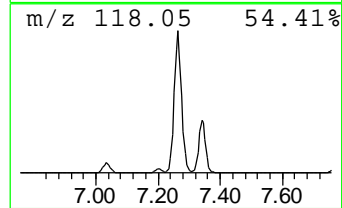
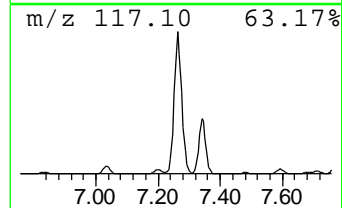
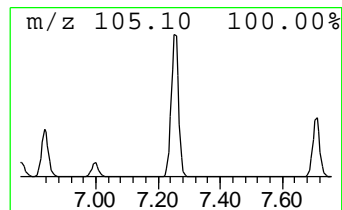
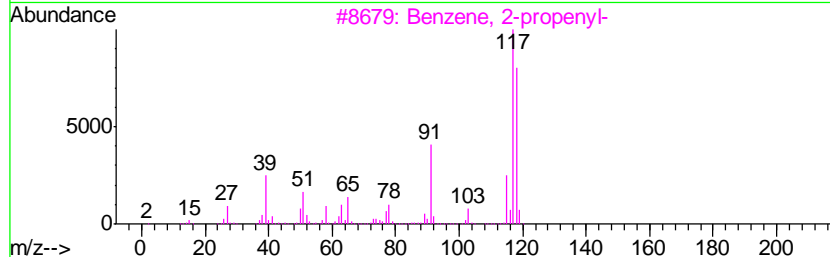
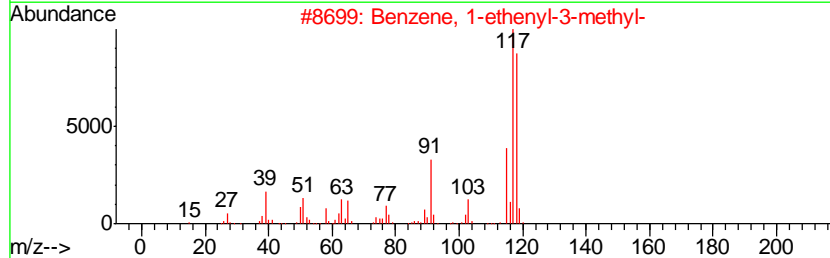
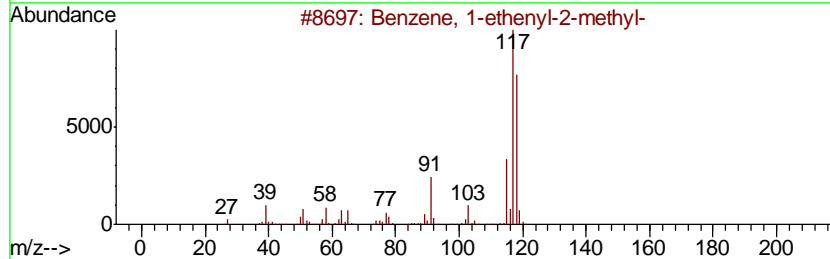
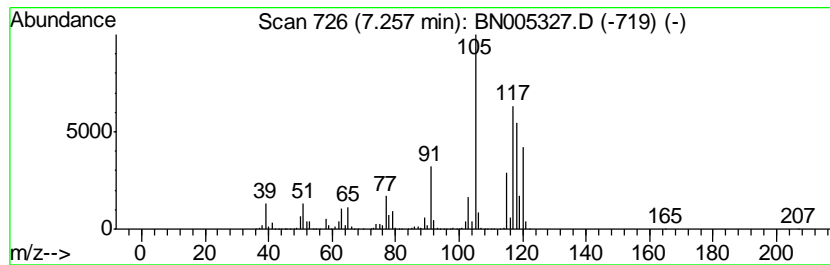
TIC Library : C:\DATABASE\NIST02.L  
 TIC Integration Parameters: LSCINT.P

\*\*\*\*\*  
 Peak Number 3 Benzene, 1-ethenyl-2-methyl- Concentration Rank 5

R.T.	EstConc	Area	Relative to ISTD	R.T.
7.26	107.52 ng/ul	22771300	1,4-Dichlorobenzene-d4	7.59

Hit#	of	Tentative ID	MW	MolForm	CAS#	Qual
1	5	Benzene, 1-ethenyl-2-methyl-	118	C9H10	000611-15-4	89
2		Benzene, 1-ethenyl-3-methyl-	118	C9H10	000100-80-1	87
3		Benzene, 2-propenyl-	118	C9H10	000300-57-2	83
4		Benzene, 1-ethenyl-2-methyl-	118	C9H10	000611-15-4	50
5		Benzene, 1-propenyl-	118	C9H10	000637-50-3	50



Data Path : Z:\SVOASRV\HPCHEM1\BNA N\DATA\BN042619\  
 Data File : BN005327.D  
 Acq On : 26 Apr 2019 21:38  
 Operator : JU/SJ  
 Sample : K2455-05ME  
 Misc :  
 ALS Vial : 11 Sample Multiplier: 1

Instrument :  
 BNA\_N  
 ClientSampleID :  
 GAHQ7ME

Quant Method : Z:\SVOASRV\HPCHEM1\BNA\_N\METHODS\SOM-EPA-BN041919MA.M  
 Quant Title : SVOA CALIBRATION

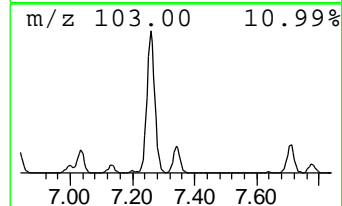
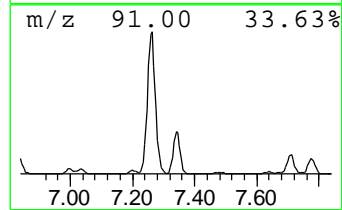
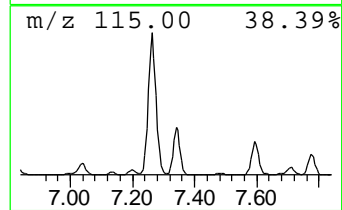
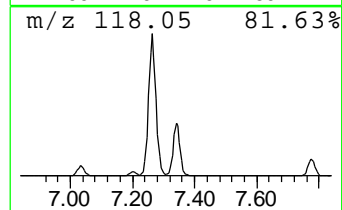
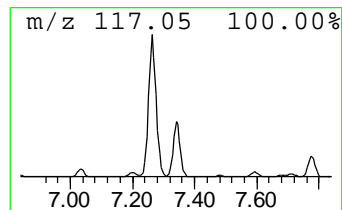
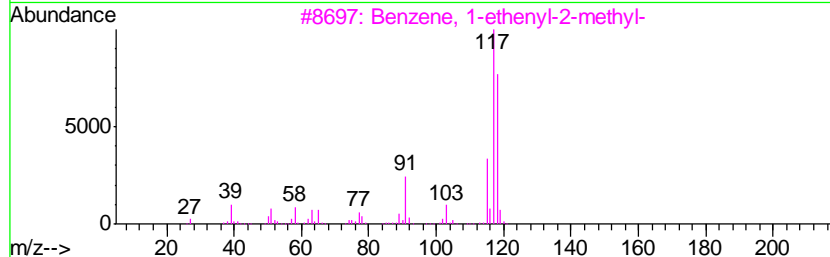
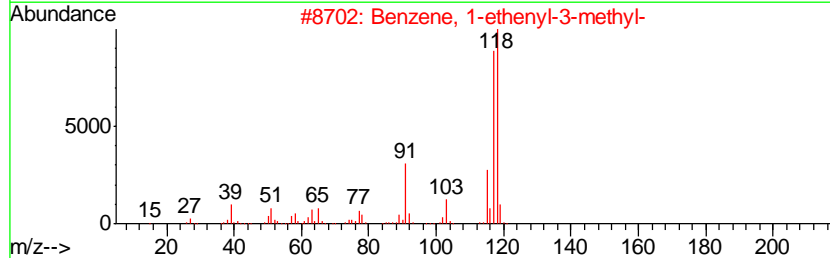
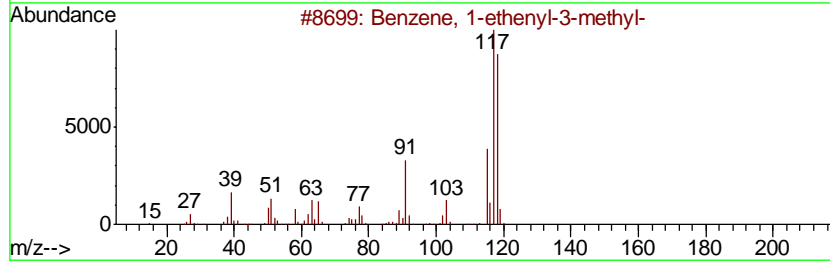
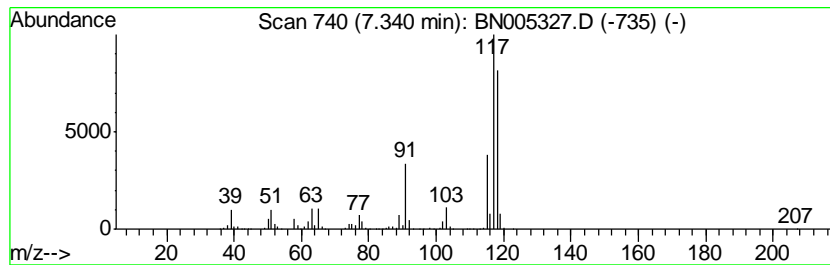
TIC Library : C:\DATABASE\NIST02.L  
 TIC Integration Parameters: LSCINT.P

\*\*\*\*\*  
 Peak Number 4 Benzene, 1-ethenyl-3-methyl- Concentration Rank 26

R.T.	EstConc	Area	Relative to ISTD	R.T.
7.34	19.52 ng/ul	4133920	1,4-Dichlorobenzene-d4	7.59

Hit#	of	Tentative ID	MW	MolForm	CAS#	Qual
1	5	Benzene, 1-ethenyl-3-methyl-	118	C9H10	000100-80-1	96
2		Benzene, 1-ethenyl-3-methyl-	118	C9H10	000100-80-1	96
3		Benzene, 1-ethenyl-2-methyl-	118	C9H10	000611-15-4	94
4		Benzene, 1-ethenyl-3-methyl-	118	C9H10	000100-80-1	94
5		Benzene, cyclopropyl-	118	C9H10	000873-49-4	94



Data Path : Z:\SVOASRV\HPCHEM1\BNA N\DATA\BN042619\  
 Data File : BN005327.D  
 Acq On : 26 Apr 2019 21:38  
 Operator : JU/SJ  
 Sample : K2455-05ME  
 Misc :  
 ALS Vial : 11 Sample Multiplier: 1

Instrument :  
 BNA\_N  
 ClientSampleID :  
 GAHQ7ME

Quant Method : Z:\SVOASRV\HPCHEM1\BNA\_N\METHODS\SOM-EPA-BN041919MA.M  
 Quant Title : SVOA CALIBRATION

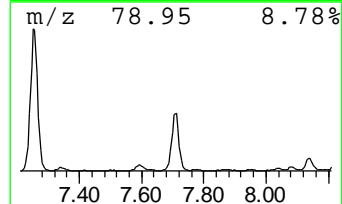
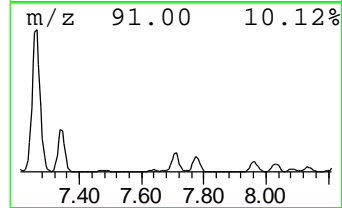
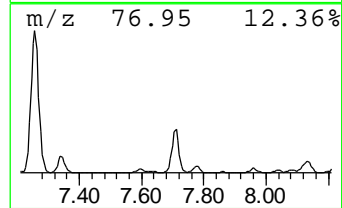
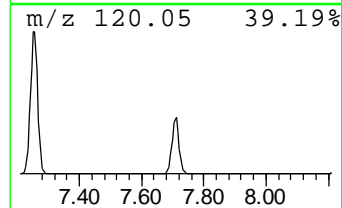
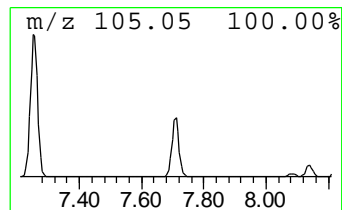
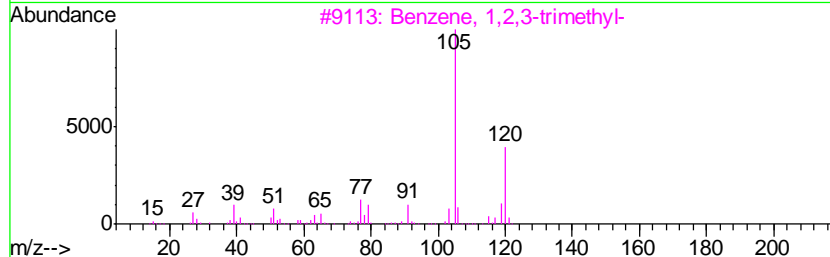
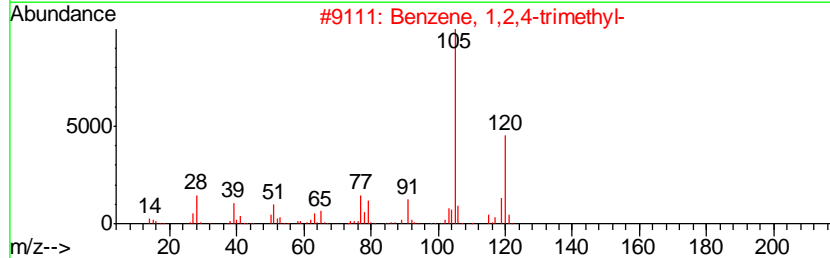
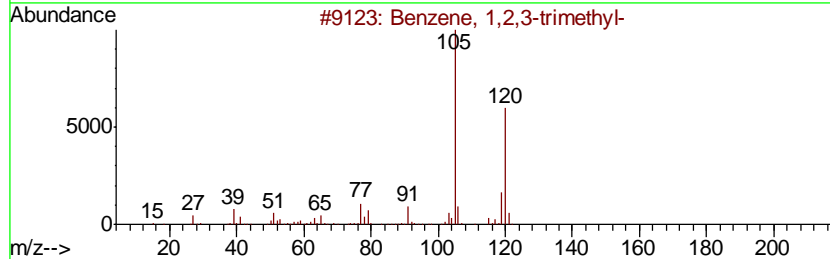
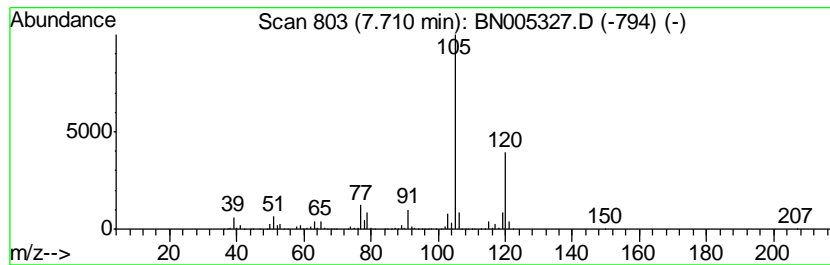
TIC Library : C:\DATABASE\NIST02.L  
 TIC Integration Parameters: LSCINT.P

\*\*\*\*\*  
 Peak Number 5 Benzene, 1,2,3-trimethyl- Concentration Rank 25

R.T.	EstConc	Area	Relative to ISTD	R.T.
7.71	20.00 ng/ul	4235830	1,4-Dichlorobenzene-d4	7.59

Hit#	of	Tentative ID	MW	MolForm	CAS#	Qual
1	5	Benzene, 1,2,3-trimethyl-	120	C9H12	000526-73-8	95
2		Benzene, 1,2,4-trimethyl-	120	C9H12	000095-63-6	93
3		Benzene, 1,2,3-trimethyl-	120	C9H12	000526-73-8	93
4		Benzene, 1-ethyl-4-methyl-	120	C9H12	000622-96-8	91
5		Benzene, 1,2,4-trimethyl-	120	C9H12	000095-63-6	91





Data Path : Z:\SVOASRV\HPCHEM1\BNA N\DATA\BN042619\  
 Data File : BN005327.D  
 Acq On : 26 Apr 2019 21:38  
 Operator : JU/SJ  
 Sample : K2455-05ME  
 Misc :  
 ALS Vial : 11 Sample Multiplier: 1

Instrument :  
 BNA\_N  
 ClientSampleID :  
 GAHQ7ME

Quant Method : Z:\SVOASRV\HPCHEM1\BNA\_N\METHODS\SOM-EPA-BN041919MA.M  
 Quant Title : SVOA CALIBRATION

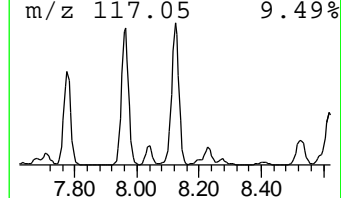
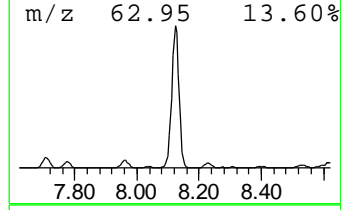
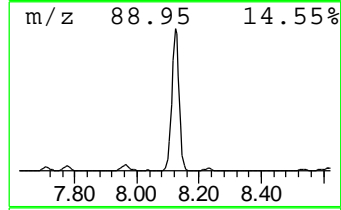
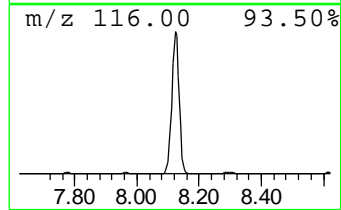
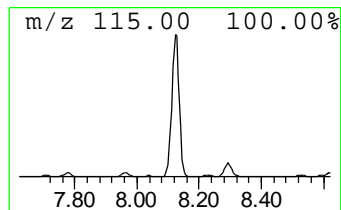
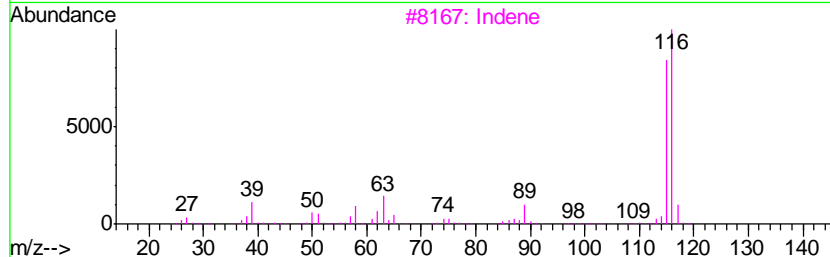
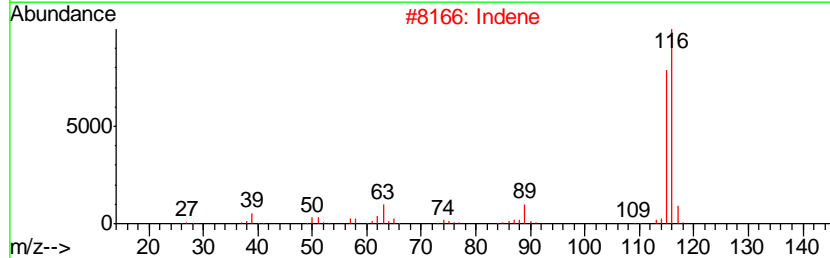
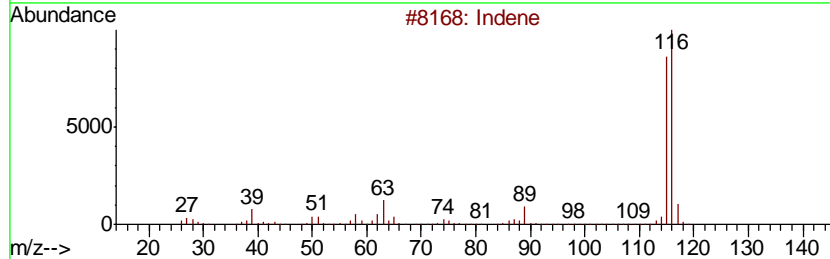
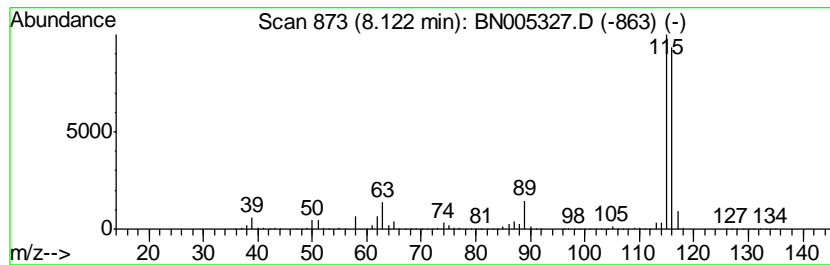
TIC Library : C:\DATABASE\NIST02.L  
 TIC Integration Parameters: LSCINT.P

\*\*\*\*\*  
 Peak Number 6 Indene Concentration Rank 6

R.T.	EstConc	Area	Relative to ISTD	R.T.
8.12	95.58 ng/ul	20242000	1,4-Dichlorobenzene-d4	7.59

Hit#	of	Tentative ID	MW	MolForm	CAS#	Qual
1	5	Indene	116	C9H8	000095-13-6	95
2		Indene	116	C9H8	000095-13-6	95
3		Indene	116	C9H8	000095-13-6	94
4		Benzene, 1,2-propadienyl-	116	C9H8	002327-99-3	91
5		Benzene, 1-ethynyl-4-methyl-	116	C9H8	000766-97-2	91



Data Path : Z:\SVOASRV\HPCHEM1\BNA N\DATA\BN042619\  
 Data File : BN005327.D  
 Acq On : 26 Apr 2019 21:38  
 Operator : JU/SJ  
 Sample : K2455-05ME  
 Misc :  
 ALS Vial : 11 Sample Multiplier: 1

Instrument :  
 BNA\_N  
 ClientSampleID :  
 GAHQ7ME

Quant Method : Z:\SVOASRV\HPCHEM1\BNA\_N\METHODS\SOM-EPA-BN041919MA.M  
 Quant Title : SVOA CALIBRATION

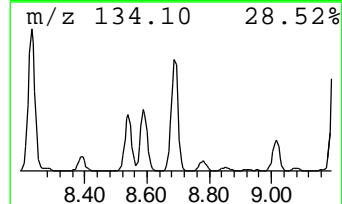
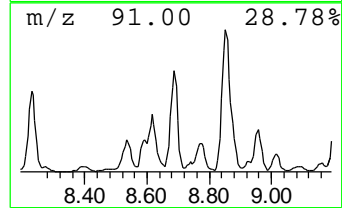
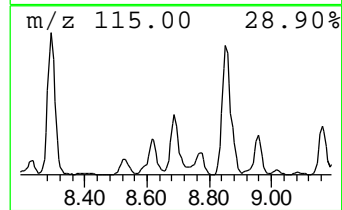
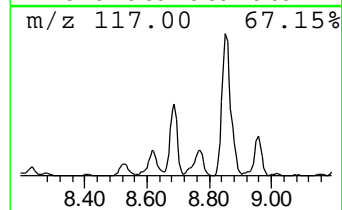
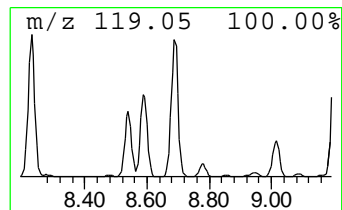
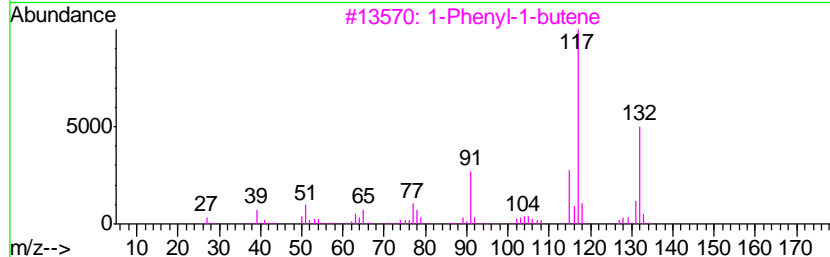
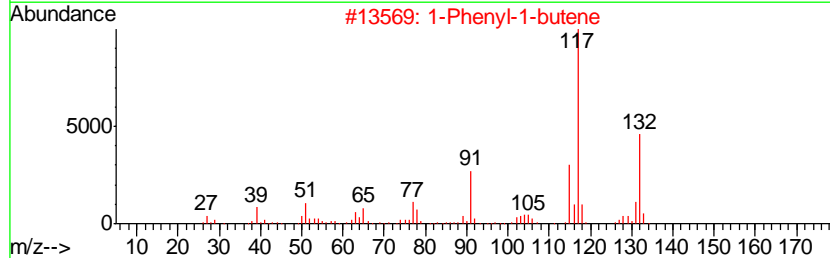
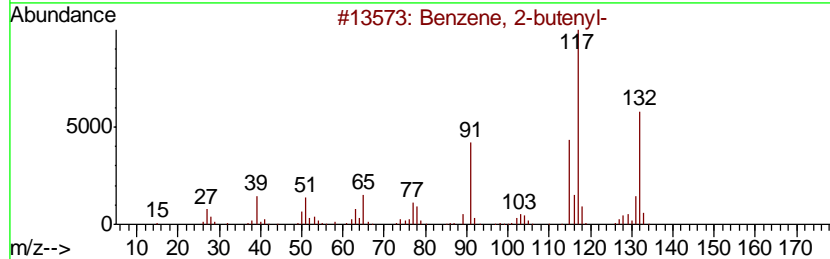
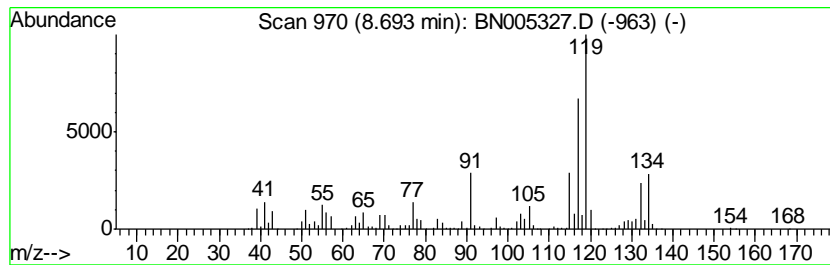
TIC Library : C:\DATABASE\NIST02.L  
 TIC Integration Parameters: LSCINT.P

\*\*\*\*\*  
 Peak Number 7 Benzene, 2-butenyl- Concentration Rank 27

R.T.	EstConc	Area	Relative to ISTD	R.T.
8.69	19.25 ng/ul	4077930	1,4-Dichlorobenzene-d4	7.59

Hit#	of	Tentative ID	MW	MolForm	CAS#	Qual
1	5	Benzene, 2-butenyl-	132	C10H12	001560-06-1	86
2		1-Phenyl-1-butene	132	C10H12	000824-90-8	55
3		1-Phenyl-1-butene	132	C10H12	000824-90-8	55
4		Benzene, 1-ethyl-2,4-dimethyl-	134	C10H14	000874-41-9	50
5		3-Phenylbut-1-ene	132	C10H12	000934-10-1	50



Data Path : Z:\SVOASRV\HPCHEM1\BNA N\DATA\BN042619\  
 Data File : BN005327.D  
 Acq On : 26 Apr 2019 21:38  
 Operator : JU/SJ  
 Sample : K2455-05ME  
 Misc :  
 ALS Vial : 11 Sample Multiplier: 1

Instrument :  
 BNA\_N  
 ClientSampled :  
 GAHQ7ME

Quant Method : Z:\SVOASRV\HPCHEM1\BNA\_N\METHODS\SOM-EPA-BN041919MA.M  
 Quant Title : SVOA CALIBRATION

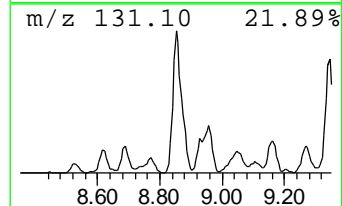
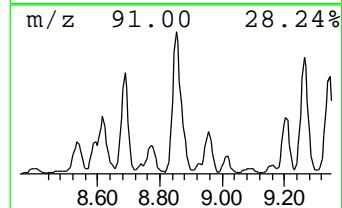
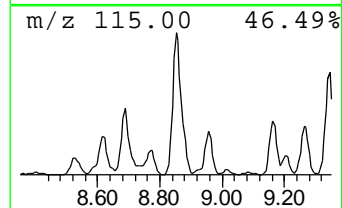
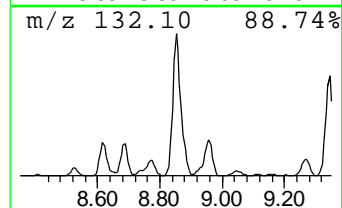
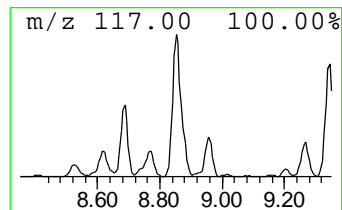
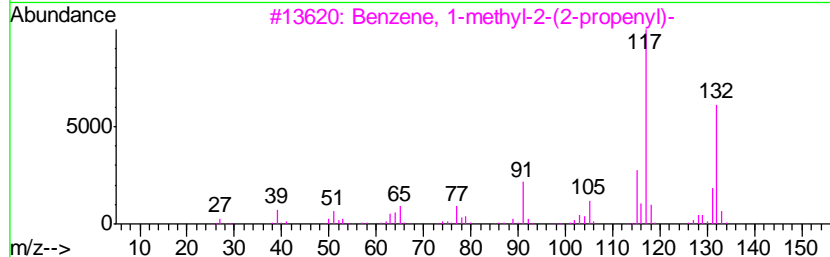
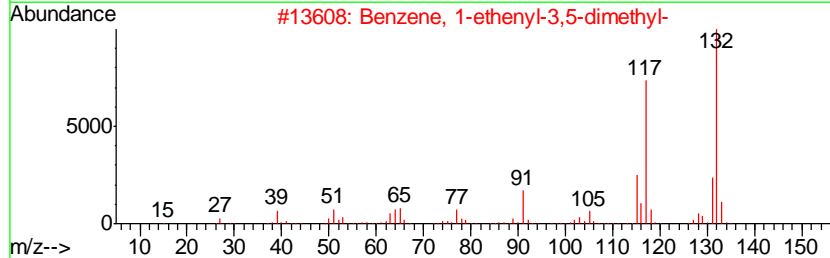
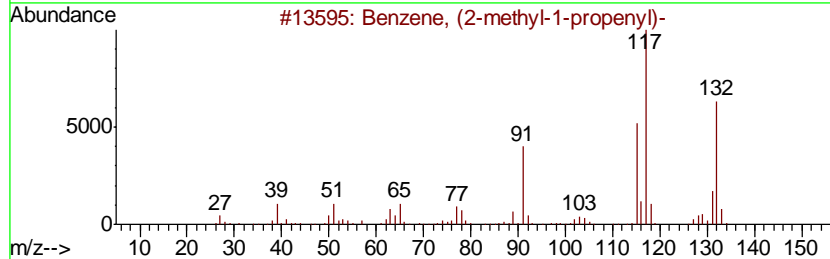
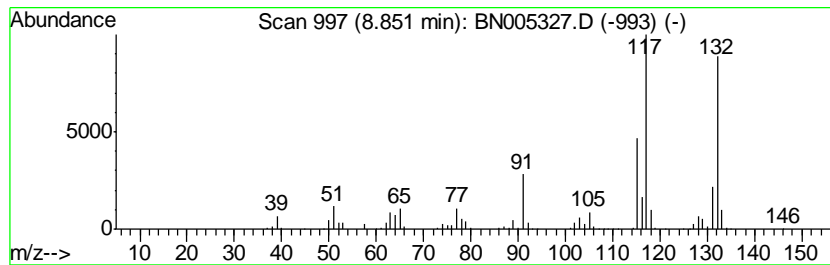
TIC Library : C:\DATABASE\NIST02.L  
 TIC Integration Parameters: LSCINT.P

\*\*\*\*\*  
 Peak Number 8 Benzene, (2-methyl-1-propen... Concentration Rank 15

R.T.	EstConc	Area	Relative to ISTD	R.T.
8.85	30.48 ng/ul	6456070	1,4-Dichlorobenzene-d4	7.59

Hit#	of	Tentative ID	MW	MolForm	CAS#	Qual
1	5	Benzene, (2-methyl-1-propenyl)-	132	C10H12	000768-49-0	95
2		Benzene, 1-ethenyl-3,5-dimethyl-	132	C10H12	005379-20-4	95
3		Benzene, 1-methyl-2-(2-propenyl)-	132	C10H12	001587-04-8	95
4		Benzene, (2-methyl-1-propenyl)-	132	C10H12	000768-49-0	94
5		Benzene, 1-methyl-4-(1-methyleth...	132	C10H12	001195-32-0	94



Data Path : Z:\SVOASRV\HPCHEM1\BNA N\DATA\BN042619\  
 Data File : BN005327.D  
 Acq On : 26 Apr 2019 21:38  
 Operator : JU/SJ  
 Sample : K2455-05ME  
 Misc :  
 ALS Vial : 11 Sample Multiplier: 1

Instrument :  
 BNA\_N  
 ClientSampled :  
 GAHQ7ME

Quant Method : Z:\SVOASRV\HPCHEM1\BNA\_N\METHODS\SOM-EPA-BN041919MA.M  
 Quant Title : SVOA CALIBRATION

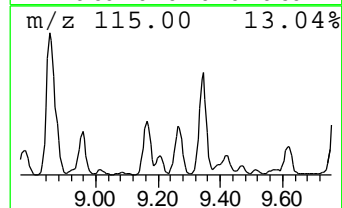
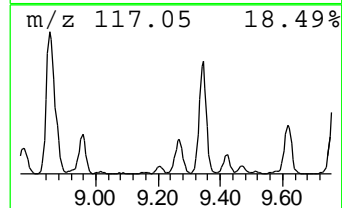
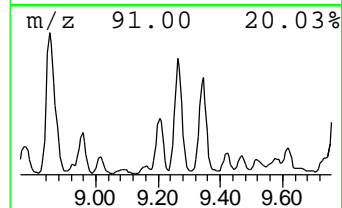
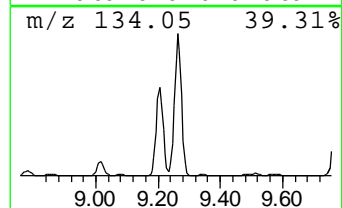
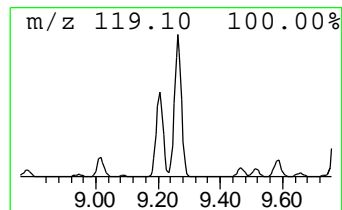
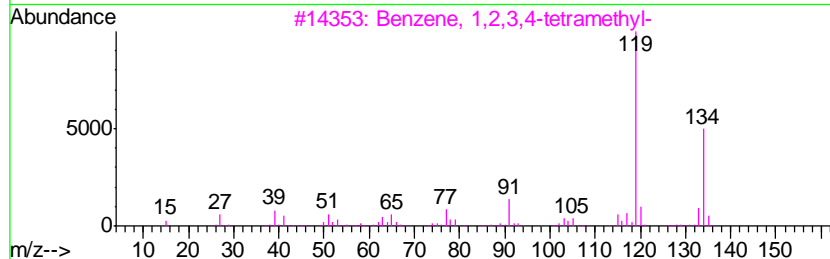
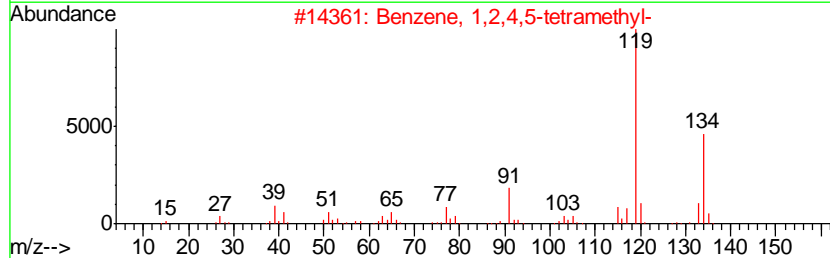
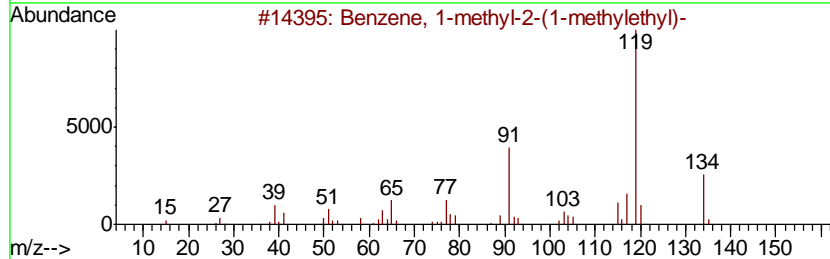
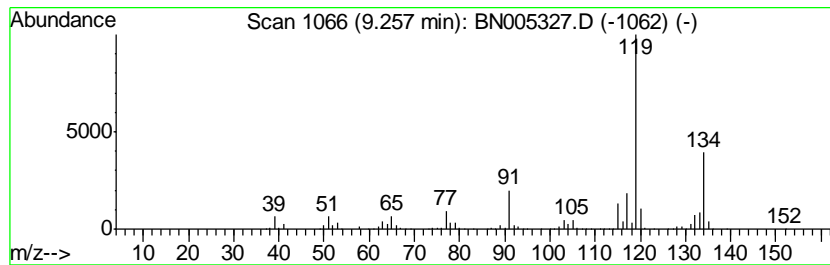
TIC Library : C:\DATABASE\NIST02.L  
 TIC Integration Parameters: LSCINT.P

\*\*\*\*\*  
 Peak Number 9 Benzene, 1-methyl-2-(1-meth... Concentration Rank 45

R.T.	EstConc	Area	Relative to ISTD	R.T.
9.26	9.71 ng/ul	4542120	Napthalene-d8	10.37

Hit#	of	Tentative ID	MW	MolForm	CAS#	Qual
1	5	Benzene, 1-methyl-2-(1-methyleth...	134	C10H14	000527-84-4	90
2		Benzene, 1,2,4,5-tetramethyl-	134	C10H14	000095-93-2	87
3		Benzene, 1,2,3,4-tetramethyl-	134	C10H14	000488-23-3	87
4		1,3-Cyclopentadiene, 1,2,3,4-tet...	134	C10H14	076089-59-3	87
5		Benzene, 1,2,3,4-tetramethyl-	134	C10H14	000488-23-3	87



Data Path : Z:\SVOASRV\HPCHEM1\BNA N\DATA\BN042619\  
 Data File : BN005327.D  
 Acq On : 26 Apr 2019 21:38  
 Operator : JU/SJ  
 Sample : K2455-05ME  
 Misc :  
 ALS Vial : 11 Sample Multiplier: 1

Instrument :  
 BNA\_N  
 ClientSampleId :  
 GAHQ7ME

Quant Method : Z:\SVOASRV\HPCHEM1\BNA\_N\METHODS\SOM-EPA-BN041919MA.M  
 Quant Title : SVOA CALIBRATION

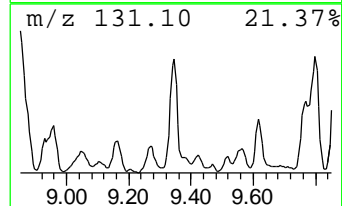
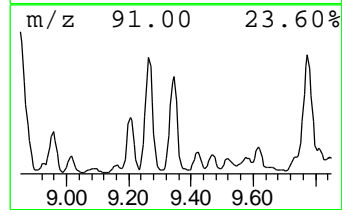
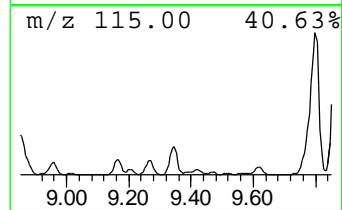
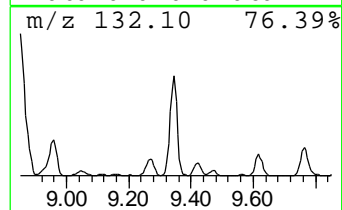
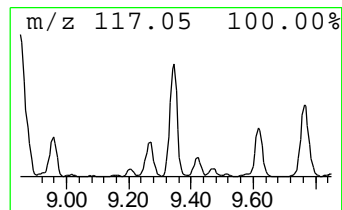
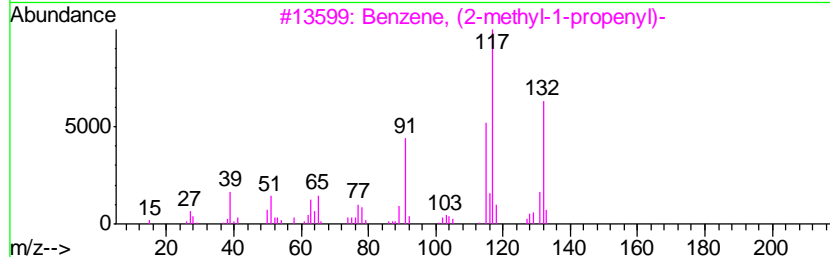
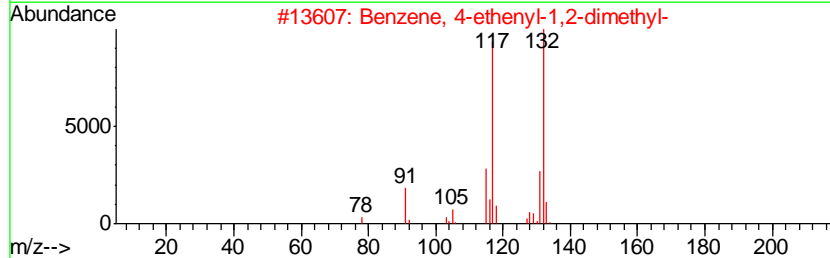
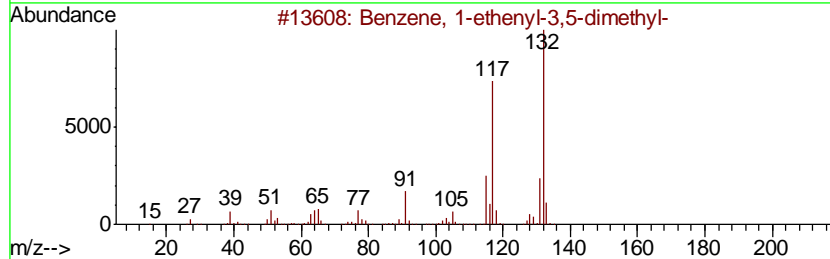
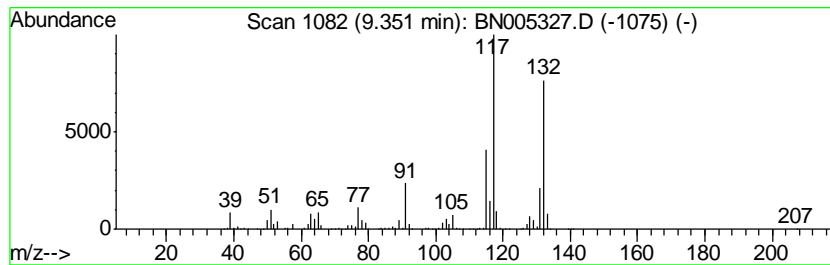
TIC Library : C:\DATABASE\NIST02.L  
 TIC Integration Parameters: LSCINT.P

\*\*\*\*\*  
 Peak Number 10 Benzene, 1-ethenyl-3,5-dime... Concentration Rank 47

R.T.	EstConc	Area	Relative to ISTD	R.T.
9.35	8.48 ng/ul	3966550	Naphthalene-d8	10.37

Hit#	of	Tentative ID	MW	MolForm	CAS#	Qual
1	5	Benzene, 1-ethenyl-3,5-dimethyl-	132	C10H12	005379-20-4	97
2		Benzene, 4-ethenyl-1,2-dimethyl-	132	C10H12	027831-13-6	97
3		Benzene, (2-methyl-1-propenyl)-	132	C10H12	000768-49-0	95
4		Benzene, (2-methyl-1-propenyl)-	132	C10H12	000768-49-0	94
5		Benzene, (2-methyl-2-propenyl)-	132	C10H12	003290-53-7	94



Data Path : Z:\SVOASRV\HPCHEM1\BNA N\DATA\BN042619\  
 Data File : BN005327.D  
 Acq On : 26 Apr 2019 21:38  
 Operator : JU/SJ  
 Sample : K2455-05ME  
 Misc :  
 ALS Vial : 11 Sample Multiplier: 1

Instrument :  
 BNA\_N  
 ClientSampleID :  
 GAHQ7ME

Quant Method : Z:\SVOASRV\HPCHEM1\BNA\_N\METHODS\SOM-EPA-BN041919MA.M  
 Quant Title : SVOA CALIBRATION

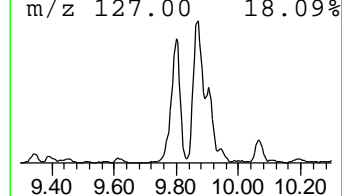
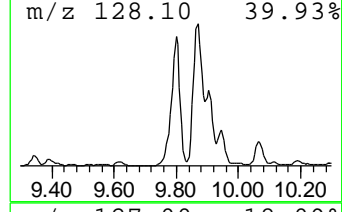
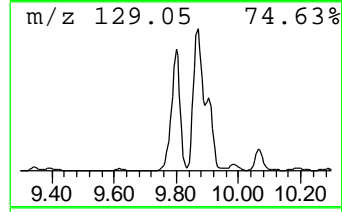
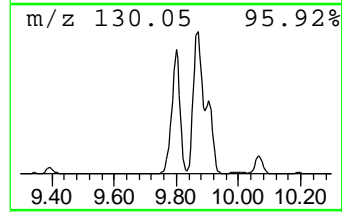
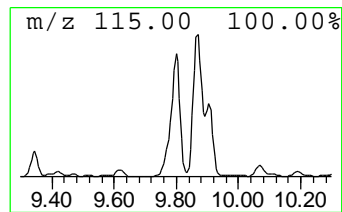
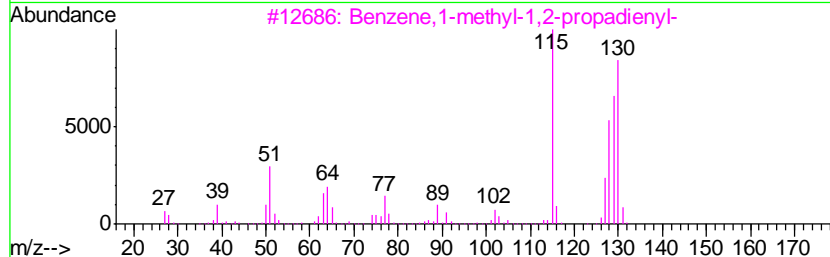
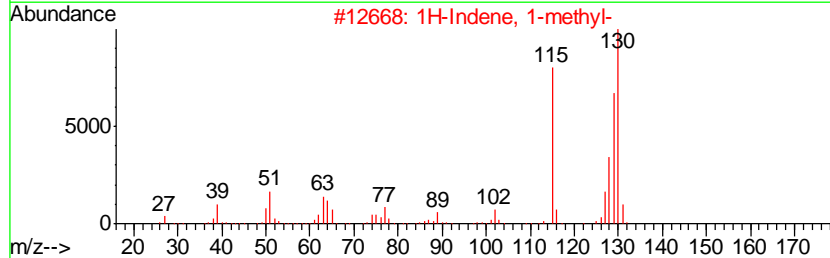
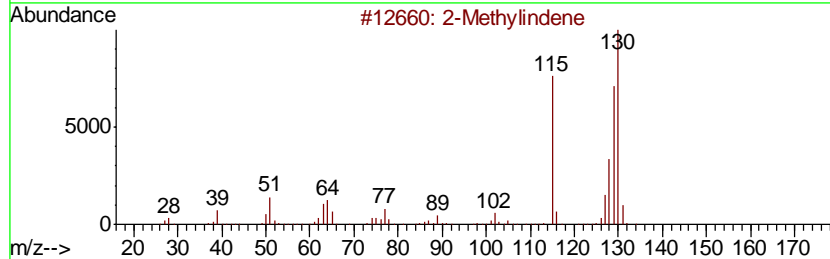
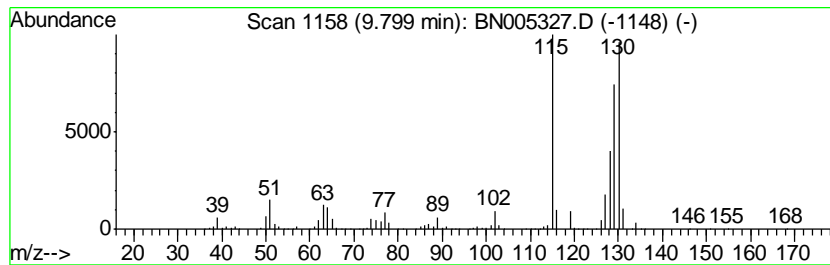
TIC Library : C:\DATABASE\NIST02.L  
 TIC Integration Parameters: LSCINT.P

\*\*\*\*\*  
 Peak Number 11 2-Methylindene Concentration Rank 14

R.T.	EstConc	Area	Relative to ISTD	R.T.
9.80	31.67 ng/ul	14808300	Naphthalene-d8	10.37

Hit#	of	Tentative ID	MW	MolForm	CAS#	Qual
1	5	2-Methylindene	130	C10H10	002177-47-1	97
2		1H-Indene, 1-methyl-	130	C10H10	000767-59-9	96
3		Benzene, 1-methyl-1,2-propadienyl-	130	C10H10	022433-39-2	96
4		Benzene, (1-methyl-2-cyclopropen...	130	C10H10	065051-83-4	95
5		1,4-Dihydronaphthalene	130	C10H10	000612-17-9	93



Data Path : Z:\SVOASRV\HPCHEM1\BNA N\DATA\BN042619\  
 Data File : BN005327.D  
 Acq On : 26 Apr 2019 21:38  
 Operator : JU/SJ  
 Sample : K2455-05ME  
 Misc :  
 ALS Vial : 11 Sample Multiplier: 1

Instrument :  
 BNA\_N  
 ClientSampled :  
 GAHQ7ME

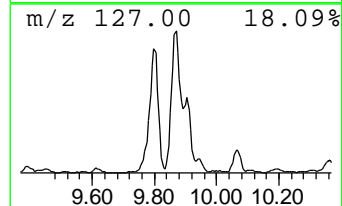
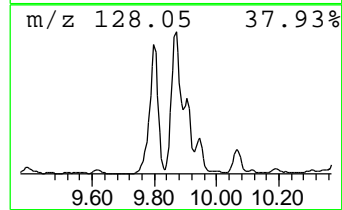
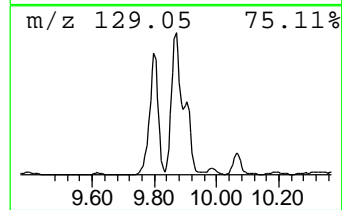
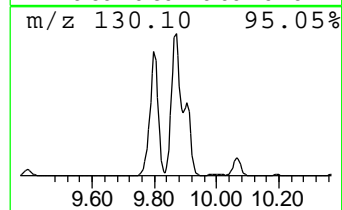
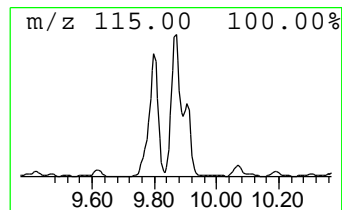
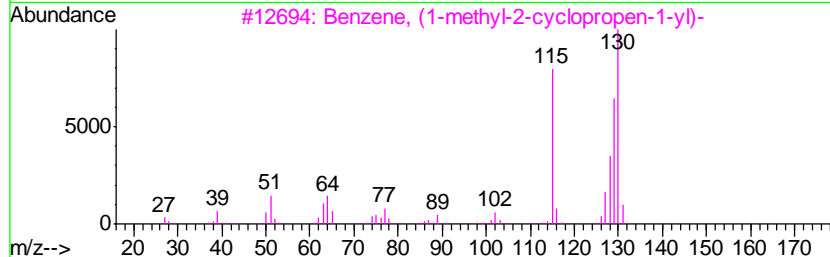
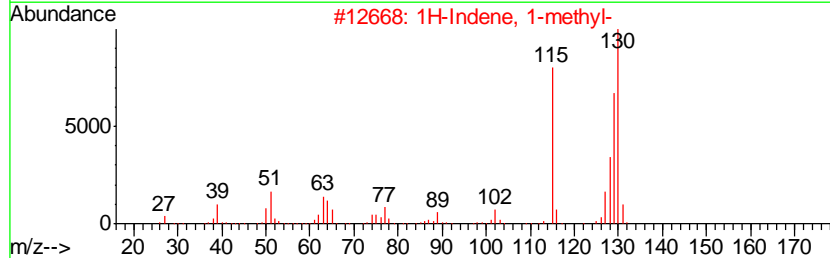
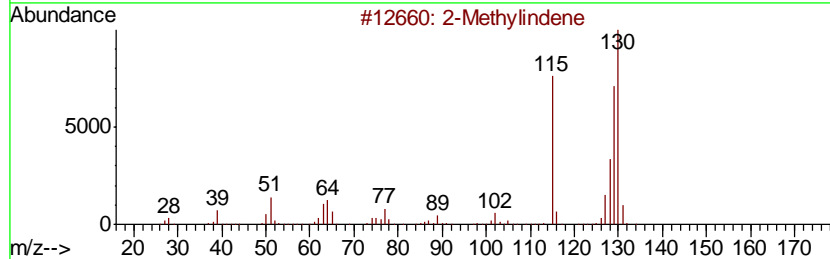
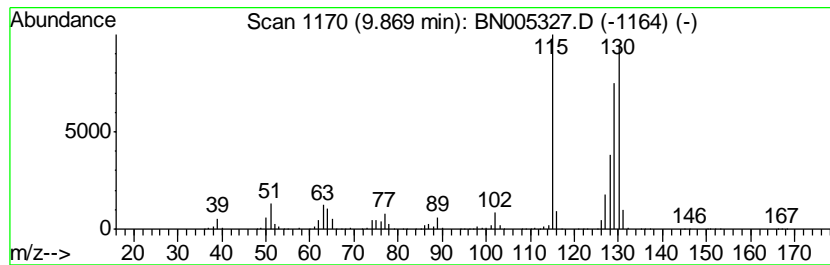
Quant Method : Z:\SVOASRV\HPCHEM1\BNA\_N\METHODS\SOM-EPA-BN041919MA.M  
 Quant Title : SVOA CALIBRATION

TIC Library : C:\DATABASE\NIST02.L  
 TIC Integration Parameters: LSCINT.P

\*\*\*\*\*  
 Peak Number 12 1H-Indene, 1-methyl- Concentration Rank 19

R.T.	EstConc	Area	Relative to ISTD	R.T.
9.87	26.80 ng/ul	12533200	Naphthalene-d8	10.37

Hit#	of	Tentative ID	MW	MolForm	CAS#	Qual
1	5	2-Methylindene	130	C10H10	002177-47-1	97
2		1H-Indene, 1-methyl-	130	C10H10	000767-59-9	95
3		Benzene, (1-methyl-2-cyclopropen...	130	C10H10	065051-83-4	94
4		Benzene, 1-butynyl-	130	C10H10	000622-76-4	94
5		1H-Indene, 3-methyl-	130	C10H10	000767-60-2	93



Data Path : Z:\SVOASRV\HPCHEM1\BNA N\DATA\BN042619\  
 Data File : BN005327.D  
 Acq On : 26 Apr 2019 21:38  
 Operator : JU/SJ  
 Sample : K2455-05ME  
 Misc :  
 ALS Vial : 11 Sample Multiplier: 1

Instrument :  
 BNA\_N  
 ClientSampled :  
 GAHQ7ME

Quant Method : Z:\SVOASRV\HPCHEM1\BNA\_N\METHODS\SOM-EPA-BN041919MA.M  
 Quant Title : SVOA CALIBRATION

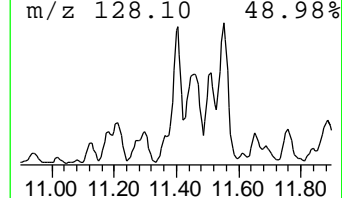
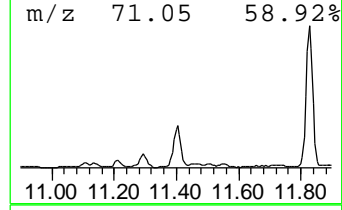
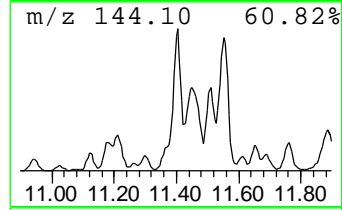
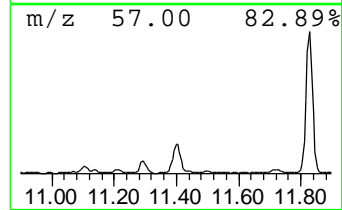
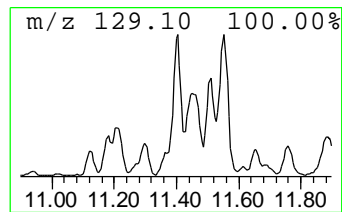
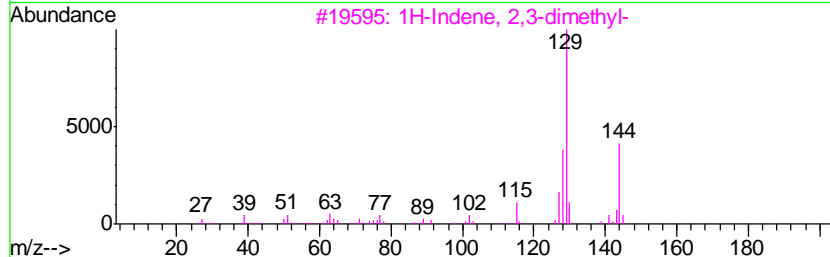
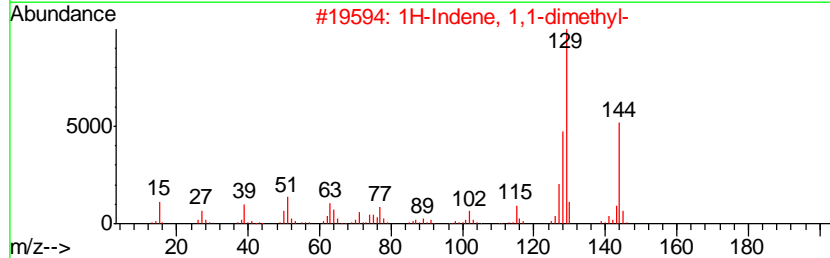
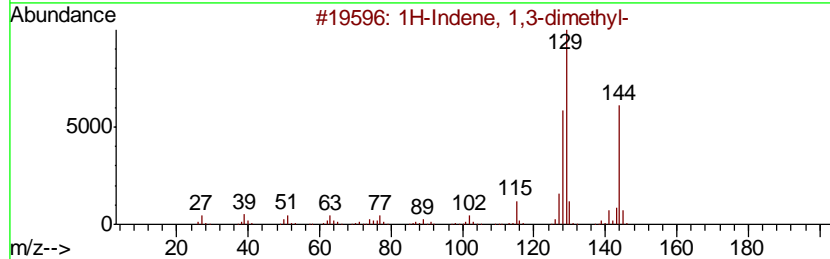
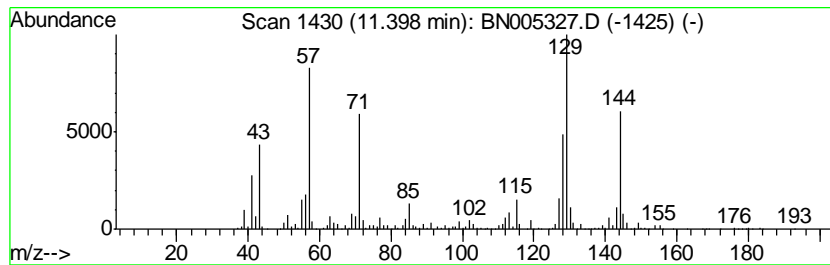
TIC Library : C:\DATABASE\NIST02.L  
 TIC Integration Parameters: LSCINT.P

\*\*\*\*\*  
 Peak Number 13 1H-Indene, 1,3-dimethyl- Concentration Rank 49

R.T.	EstConc	Area	Relative to ISTD	R.T.
11.40	7.42 ng/ul	3470410	Naphthalene-d8	10.37

Hit#	of	Tentative ID	MW	MolForm	CAS#	Qual
1	5	1H-Indene, 1,3-dimethyl-	144	C11H12	002177-48-2	95
2		1H-Indene, 1,1-dimethyl-	144	C11H12	018636-55-0	93
3		1H-Indene, 2,3-dimethyl-	144	C11H12	004773-82-4	78
4		Naphthalene, 1,2-dihydro-4-methyl-	144	C11H12	004373-13-1	70
5		1H-Indene, 1,1-dimethyl-	144	C11H12	018636-55-0	64





Data Path : Z:\SVOASRV\HPCHEM1\BNA N\DATA\BN042619\  
 Data File : BN005327.D  
 Acq On : 26 Apr 2019 21:38  
 Operator : JU/SJ  
 Sample : K2455-05ME  
 Misc :  
 ALS Vial : 11 Sample Multiplier: 1

Instrument :  
 BNA\_N  
 ClientSampleID :  
 GAHQ7ME

Quant Method : Z:\SVOASRV\HPCHEM1\BNA\_N\METHODS\SOM-EPA-BN041919MA.M  
 Quant Title : SVOA CALIBRATION

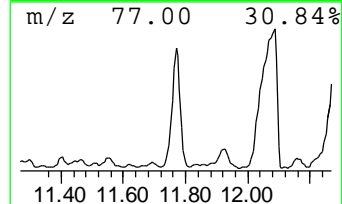
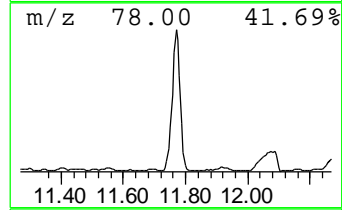
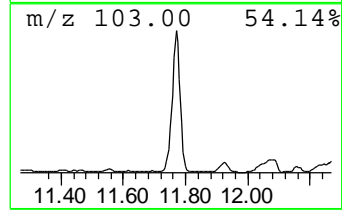
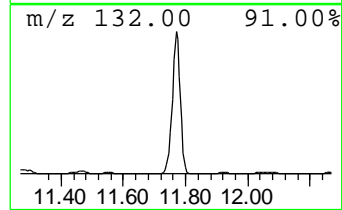
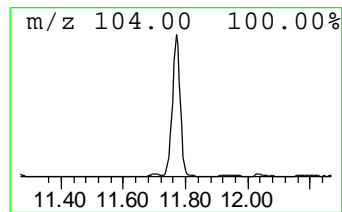
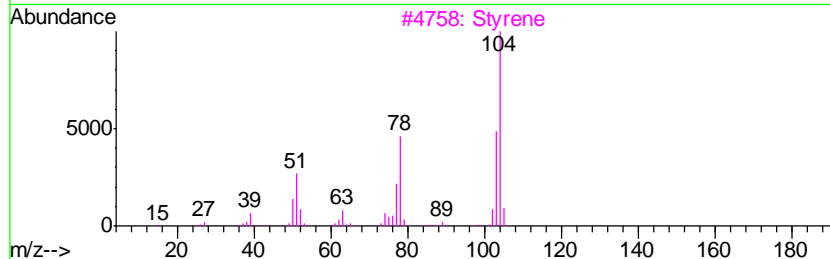
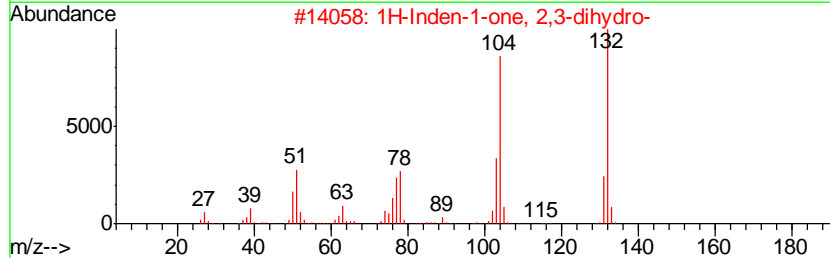
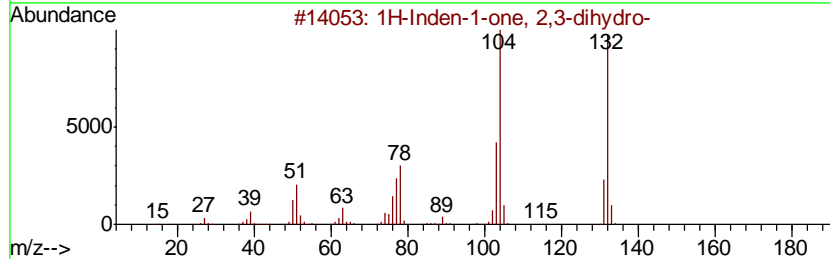
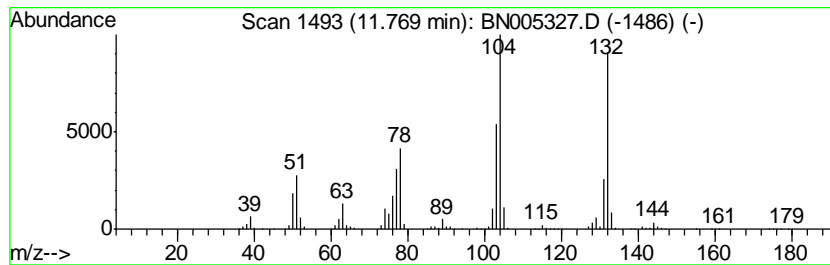
TIC Library : C:\DATABASE\NIST02.L  
 TIC Integration Parameters: LSCINT.P

\*\*\*\*\*  
 Peak Number 14 1H-Inden-1-one, 2,3-dihydro- Concentration Rank 39

R.T.	EstConc	Area	Relative to ISTD	R.T.
11.77	14.73 ng/ul	6890250	Napthalene-d8	10.37

Hit#	of	Tentative ID	MW	MolForm	CAS#	Qual
1	5	1H-Inden-1-one, 2,3-dihydro-	132	C9H8O	000083-33-0	96
2		1H-Inden-1-one, 2,3-dihydro-	132	C9H8O	000083-33-0	96
3		Styrene	104	C8H8	000100-42-5	91
4		1H-Inden-1-one, 2,3-dihydro-	132	C9H8O	000083-33-0	90
5		2H-Inden-2-one, 1,3-dihydro-	132	C9H8O	000615-13-4	68



Data Path : Z:\SVOASRV\HPCHEM1\BNA N\DATA\BN042619\  
 Data File : BN005327.D  
 Acq On : 26 Apr 2019 21:38  
 Operator : JU/SJ  
 Sample : K2455-05ME  
 Misc :  
 ALS Vial : 11 Sample Multiplier: 1

Instrument :  
 BNA\_N  
 ClientSampleID :  
 GAHQ7ME

Quant Method : Z:\SVOASRV\HPCHEM1\BNA\_N\METHODS\SOM-EPA-BN041919MA.M  
 Quant Title : SVOA CALIBRATION

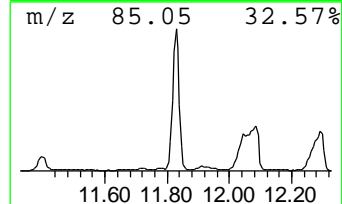
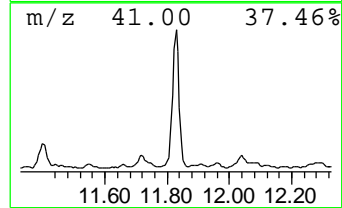
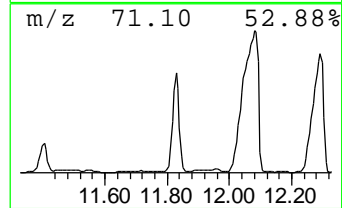
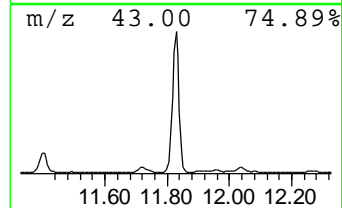
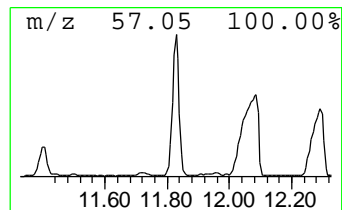
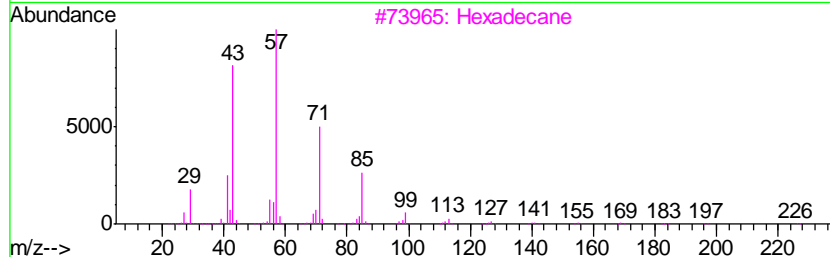
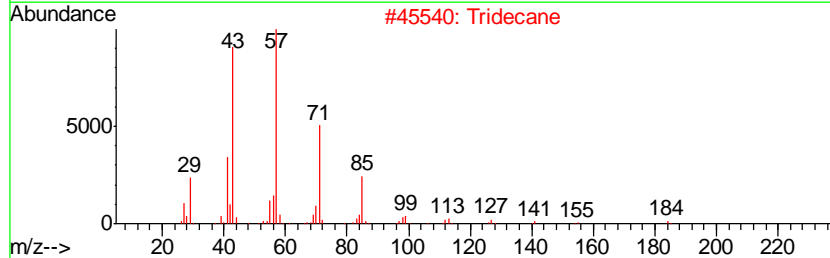
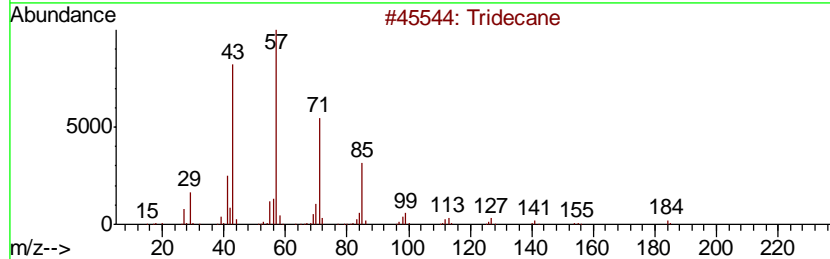
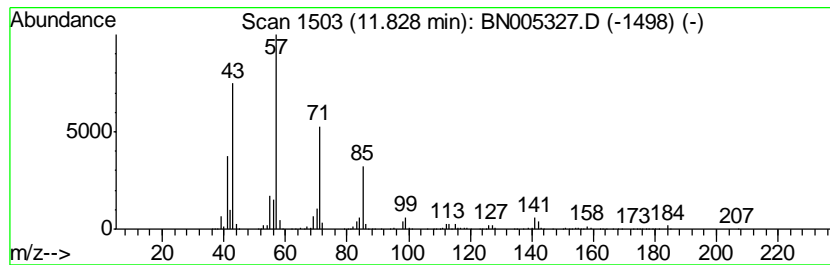
TIC Library : C:\DATABASE\NIST02.L  
 TIC Integration Parameters: LSCINT.P

\*\*\*\*\*  
 Peak Number 15 (DEL) Alkane: Straight-Chai... Concentration Rank 36

R.T.	EstConc	Area	Relative to ISTD	R.T.
11.83	15.37 ng/ul	7188930	Naphthalene-d8	10.37

Hit#	of	Tentative ID	MW	MolForm	CAS#	Qual
1	5	Tridecane	184	C13H28	000629-50-5	94
2		Tridecane	184	C13H28	000629-50-5	87
3		Hexadecane	226	C16H34	000544-76-3	87
4		Hexadecane	226	C16H34	000544-76-3	86
5		Tetradecane	198	C14H30	000629-59-4	86



Data Path : Z:\SVOASRV\HPCHEM1\BNA N\DATA\BN042619\  
 Data File : BN005327.D  
 Acq On : 26 Apr 2019 21:38  
 Operator : JU/SJ  
 Sample : K2455-05ME  
 Misc :  
 ALS Vial : 11 Sample Multiplier: 1

Instrument :  
 BNA\_N  
 ClientSampleID :  
 GAHQ7ME

Quant Method : Z:\SVOASRV\HPCHEM1\BNA\_N\METHODS\SOM-EPA-BN041919MA.M  
 Quant Title : SVOA CALIBRATION

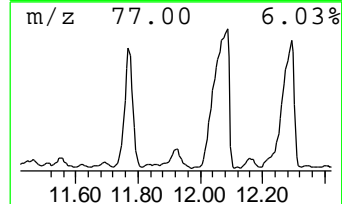
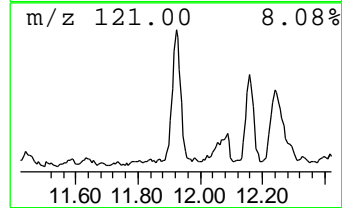
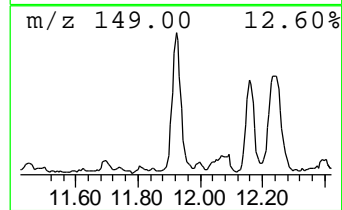
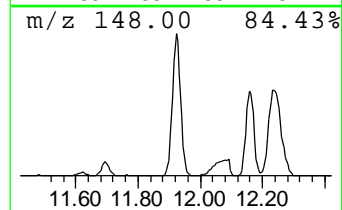
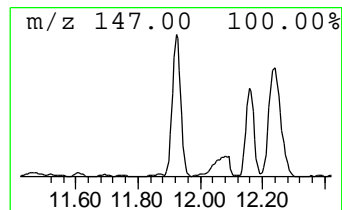
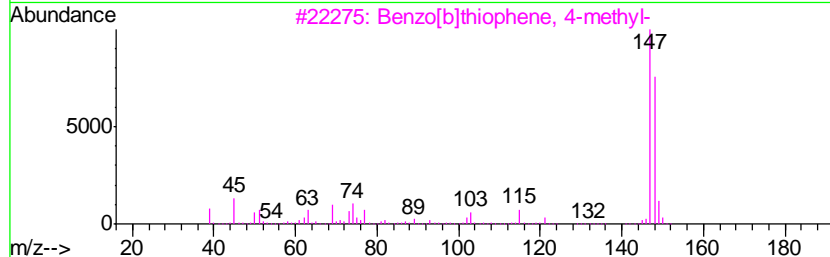
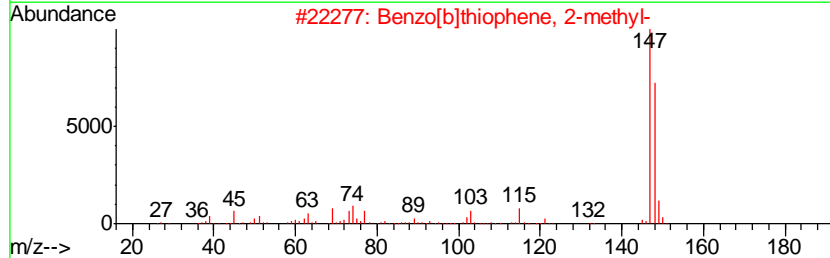
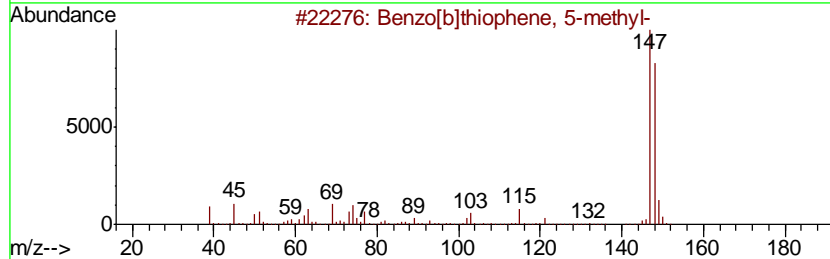
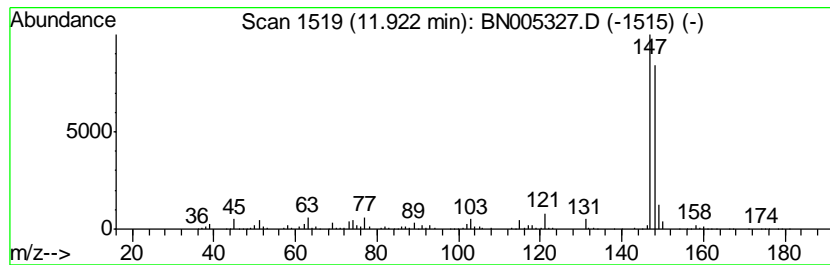
TIC Library : C:\DATABASE\NIST02.L  
 TIC Integration Parameters: LSCINT.P

\*\*\*\*\*  
 Peak Number 16 Benzo[b]thiophene, 5-methyl- Concentration Rank 43

R.T.	EstConc	Area	Relative to ISTD	R.T.
11.92	10.32 ng/ul	4828320	Napthalene-d8	10.37

Hit#	of	Tentative ID	MW	MolForm	CAS#	Qual
1	5	Benzo[b]thiophene, 5-methyl-	148	C9H8S	014315-14-1	90
2		Benzo[b]thiophene, 2-methyl-	148	C9H8S	001195-14-8	90
3		Benzo[b]thiophene, 4-methyl-	148	C9H8S	014315-11-8	90
4		3-Methylbenzothiophene	148	C9H8S	001455-18-1	87
5		Benzo[b]thiophene, 2-methyl-	148	C9H8S	001195-14-8	87



Data Path : Z:\SVOASRV\HPCHEM1\BNA N\DATA\BN042619\  
 Data File : BN005327.D  
 Acq On : 26 Apr 2019 21:38  
 Operator : JU/SJ  
 Sample : K2455-05ME  
 Misc :  
 ALS Vial : 11 Sample Multiplier: 1

Instrument :  
 BNA\_N  
 ClientSampled :  
 GAHQ7ME

Quant Method : Z:\SVOASRV\HPCHEM1\BNA\_N\METHODS\SOM-EPA-BN041919MA.M  
 Quant Title : SVOA CALIBRATION

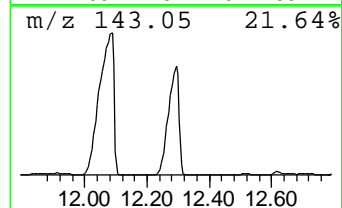
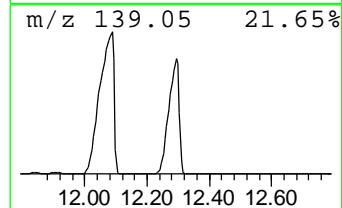
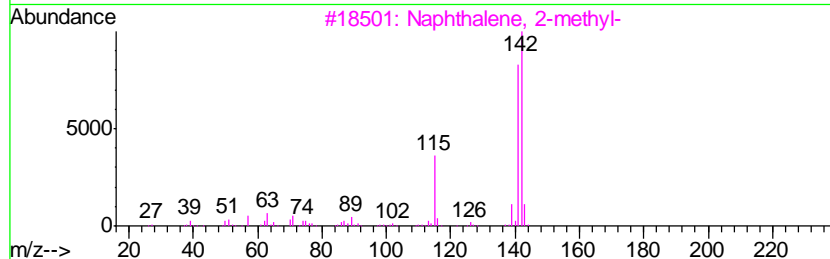
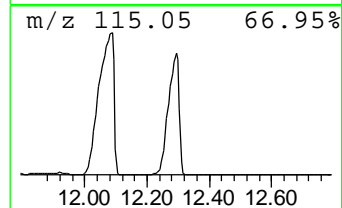
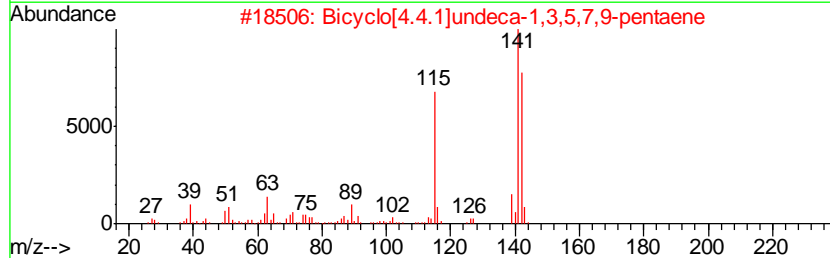
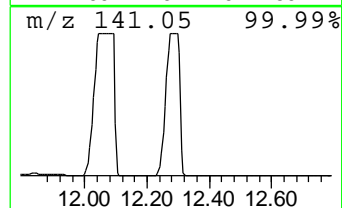
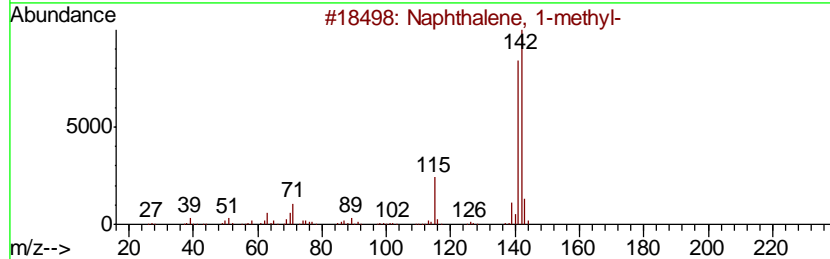
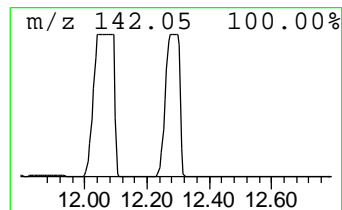
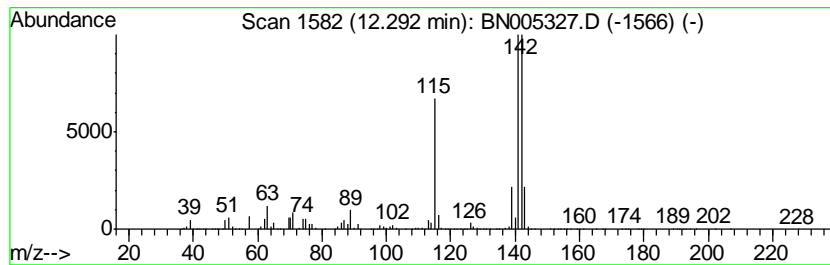
TIC Library : C:\DATABASE\NIST02.L  
 TIC Integration Parameters: LSCINT.P

\*\*\*\*\*  
 Peak Number 17 Naphthalene, 1-methyl- Concentration Rank 1

R.T.	EstConc	Area	Relative to ISTD	R.T.
12.29	251.25 ng/ul	117495000	Naphthalene-d8	10.37

Hit#	of	Tentative ID	MW	MolForm	CAS#	Qual
1	5	Naphthalene, 1-methyl-	142	C11H10	000090-12-0	95
2		Bicyclo[4.4.1]undeca-1,3,5,7,9-p...	142	C11H10	002443-46-1	93
3		Naphthalene, 2-methyl-	142	C11H10	000091-57-6	93
4		Naphthalene, 2-methyl-	142	C11H10	000091-57-6	90
5		Benzocycloheptatriene	142	C11H10	000264-09-5	90



Data Path : Z:\SVOASRV\HPCHEM1\BNA N\DATA\BN042619\  
 Data File : BN005327.D  
 Acq On : 26 Apr 2019 21:38  
 Operator : JU/SJ  
 Sample : K2455-05ME  
 Misc :  
 ALS Vial : 11 Sample Multiplier: 1

Instrument :  
 BNA\_N  
 ClientSampled :  
 GAHQ7ME

Quant Method : Z:\SVOASRV\HPCHEM1\BNA\_N\METHODS\SOM-EPA-BN041919MA.M  
 Quant Title : SVOA CALIBRATION

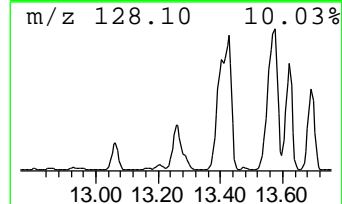
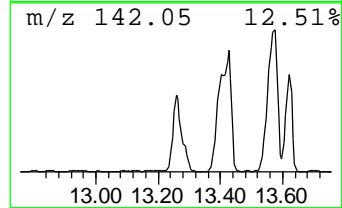
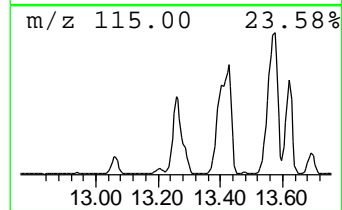
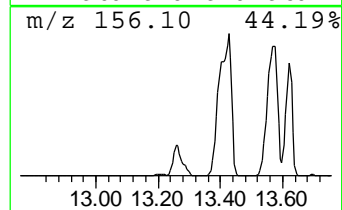
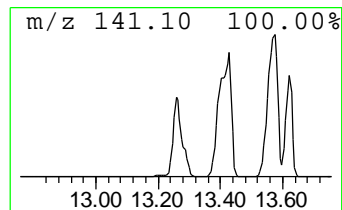
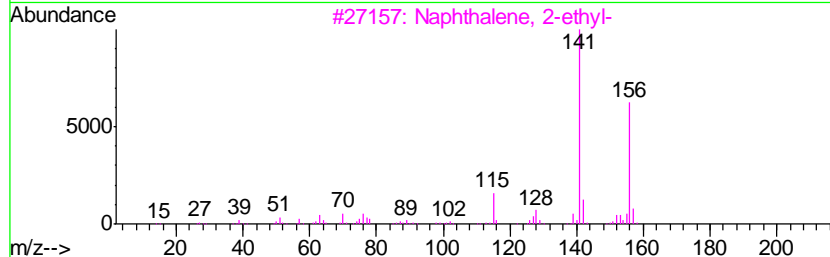
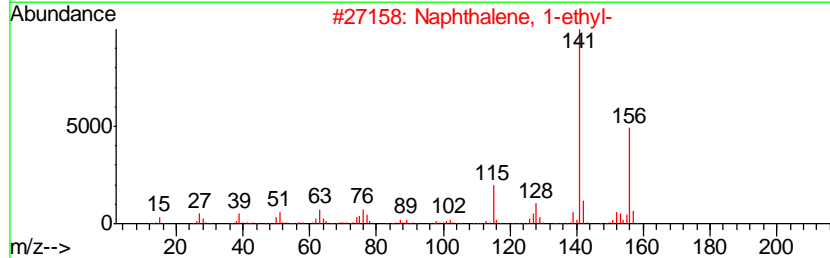
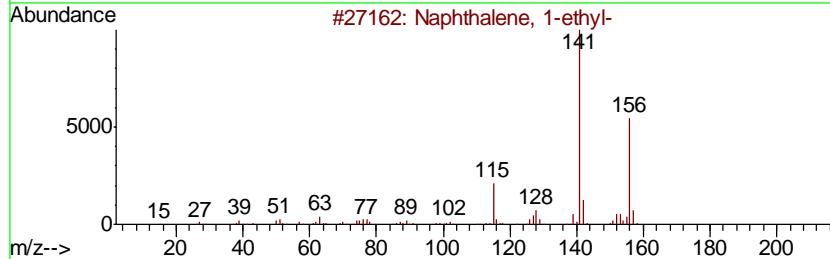
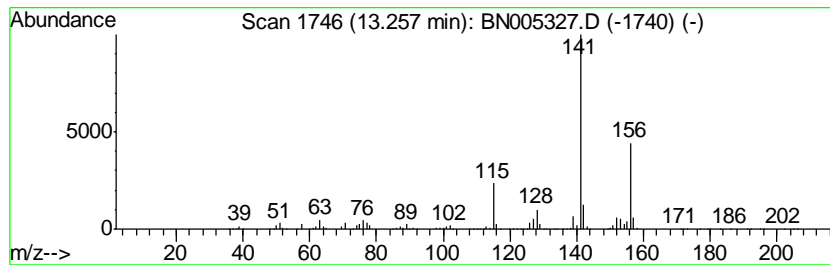
TIC Library : C:\DATABASE\NIST02.L  
 TIC Integration Parameters: LSCINT.P

\*\*\*\*\*  
 Peak Number 18 Naphthalene, 1-ethyl- Concentration Rank 21

R.T.	EstConc	Area	Relative to ISTD	R.T.
13.26	21.55 ng/ul	23360100	Acenaphthene-d10	14.23

Hit#	of	Tentative ID	MW	MolForm	CAS#	Qual
1	5	Naphthalene, 1-ethyl-	156	C12H12	001127-76-0	96
2		Naphthalene, 1-ethyl-	156	C12H12	001127-76-0	95
3		Naphthalene, 2-ethyl-	156	C12H12	000939-27-5	95
4		Naphthalene, 1-ethyl-	156	C12H12	001127-76-0	95
5		Naphthalene, 2-ethyl-	156	C12H12	000939-27-5	95



Data Path : Z:\SVOASRV\HPCHEM1\BNA N\DATA\BN042619\  
 Data File : BN005327.D  
 Acq On : 26 Apr 2019 21:38  
 Operator : JU/SJ  
 Sample : K2455-05ME  
 Misc :  
 ALS Vial : 11 Sample Multiplier: 1

Instrument :  
 BNA\_N  
 ClientSampled :  
 GAHQ7ME

Quant Method : Z:\SVOASRV\HPCHEM1\BNA\_N\METHODS\SOM-EPA-BN041919MA.M  
 Quant Title : SVOA CALIBRATION

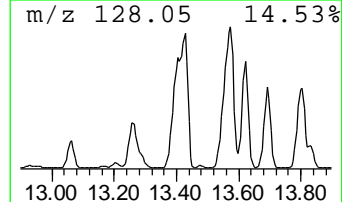
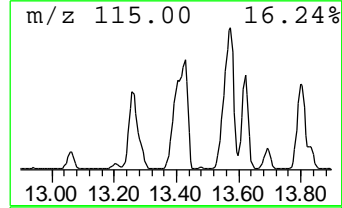
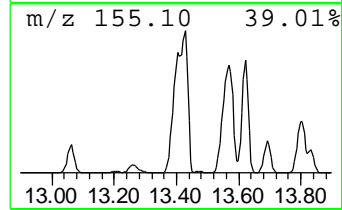
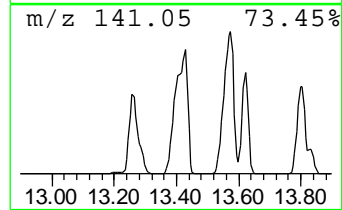
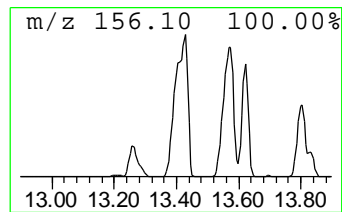
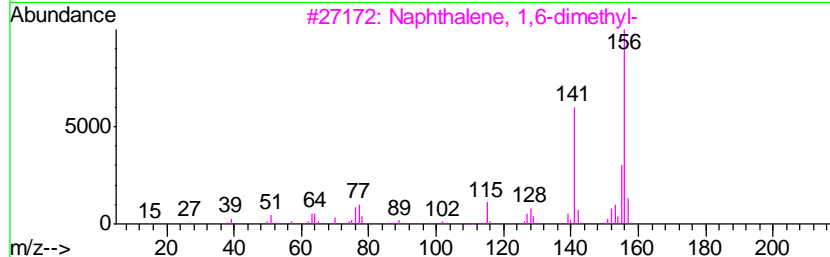
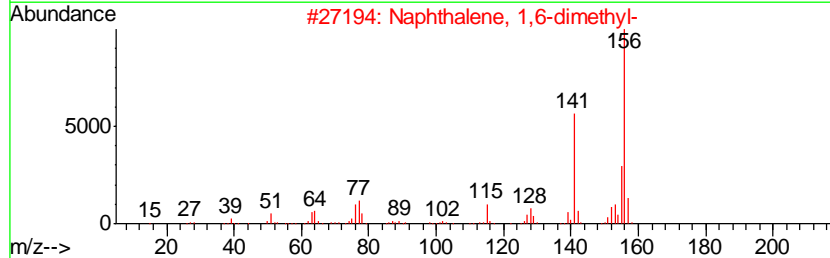
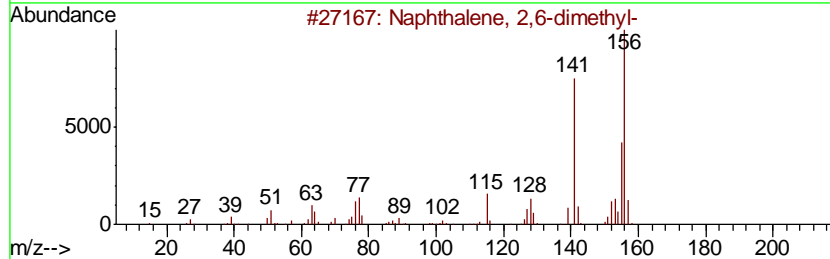
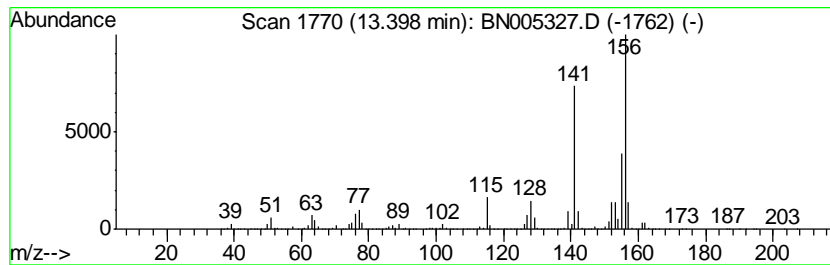
TIC Library : C:\DATABASE\NIST02.L  
 TIC Integration Parameters: LSCINT.P

\*\*\*\*\*  
 Peak Number 19 Naphthalene, 2,6-dimethyl- Concentration Rank 12

R.T.	EstConc	Area	Relative to ISTD	R.T.
13.40	37.94 ng/ul	41113300	Acenaphthene-d10	14.23

Hit#	of	Tentative ID	MW	MolForm	CAS#	Qual
1	5	Naphthalene, 2,6-dimethyl-	156	C12H12	000581-42-0	97
2		Naphthalene, 1,6-dimethyl-	156	C12H12	000575-43-9	97
3		Naphthalene, 1,6-dimethyl-	156	C12H12	000575-43-9	97
4		Naphthalene, 2,7-dimethyl-	156	C12H12	000582-16-1	97
5		Naphthalene, 2,6-dimethyl-	156	C12H12	000581-42-0	97



Data Path : Z:\SVOASRV\HPCHEM1\BNA N\DATA\BN042619\  
 Data File : BN005327.D  
 Acq On : 26 Apr 2019 21:38  
 Operator : JU/SJ  
 Sample : K2455-05ME  
 Misc :  
 ALS Vial : 11 Sample Multiplier: 1

Instrument :  
 BNA\_N  
 ClientSampled :  
 GAHQ7ME

Quant Method : Z:\SVOASRV\HPCHEM1\BNA\_N\METHODS\SOM-EPA-BN041919MA.M  
 Quant Title : SVOA CALIBRATION

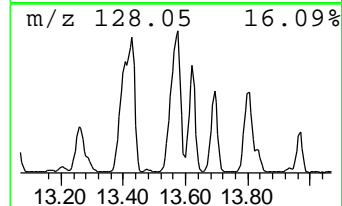
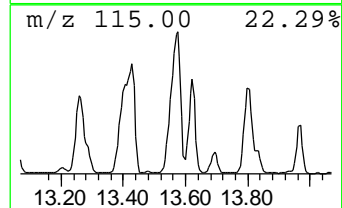
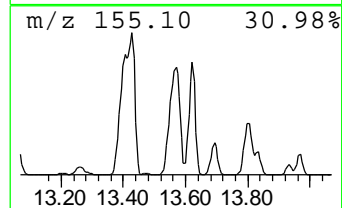
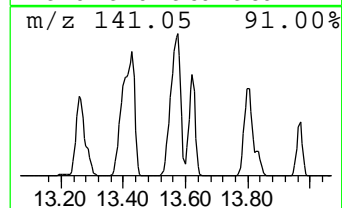
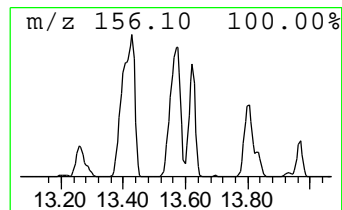
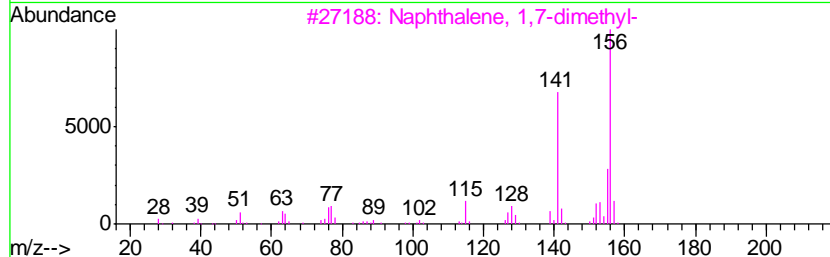
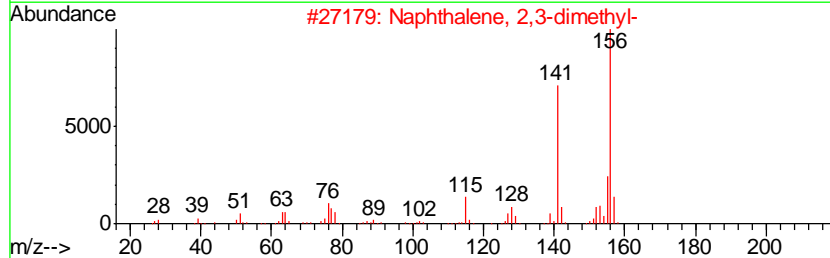
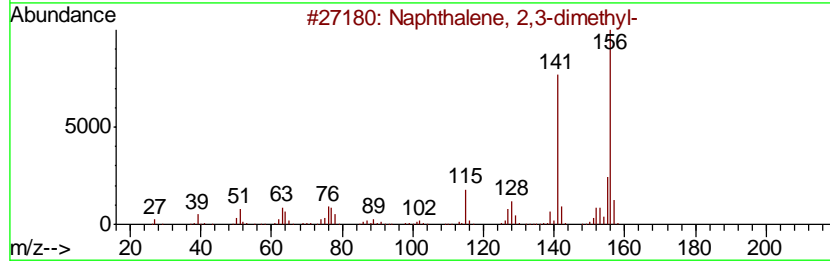
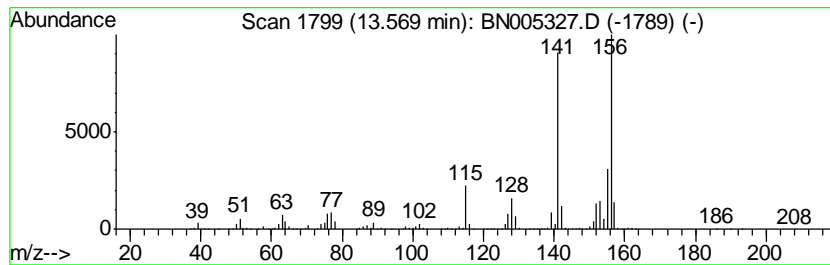
TIC Library : C:\DATABASE\NIST02.L  
 TIC Integration Parameters: LSCINT.P

\*\*\*\*\*  
 Peak Number 20 Naphthalene, 2,3-dimethyl- Concentration Rank 7

R.T.	EstConc	Area	Relative to ISTD	R.T.
13.57	62.48 ng/ul	67714700	Acenaphthene-d10	14.23

Hit#	of	Tentative ID	MW	MolForm	CAS#	Qual
1	5	Naphthalene, 2,3-dimethyl-	156	C12H12	000581-40-8	97
2		Naphthalene, 2,3-dimethyl-	156	C12H12	000581-40-8	97
3		Naphthalene, 1,7-dimethyl-	156	C12H12	000575-37-1	97
4		Naphthalene, 1,7-dimethyl-	156	C12H12	000575-37-1	96
5		Naphthalene, 2,3-dimethyl-	156	C12H12	000581-40-8	96



Data Path : Z:\SVOASRV\HPCHEM1\BNA N\DATA\BN042619\  
 Data File : BN005327.D  
 Acq On : 26 Apr 2019 21:38  
 Operator : JU/SJ  
 Sample : K2455-05ME  
 Misc :  
 ALS Vial : 11 Sample Multiplier: 1

Instrument :  
 BNA\_N  
 ClientSampleID :  
 GAHQ7ME

Quant Method : Z:\SVOASRV\HPCHEM1\BNA\_N\METHODS\SOM-EPA-BN041919MA.M  
 Quant Title : SVOA CALIBRATION

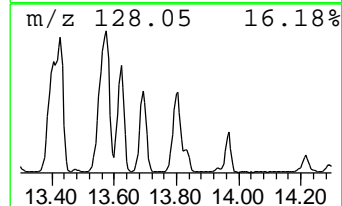
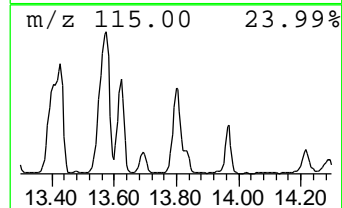
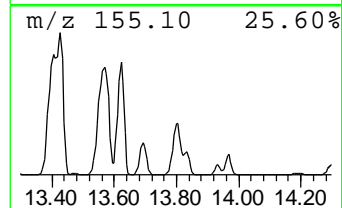
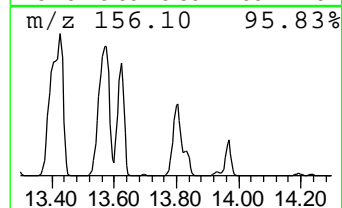
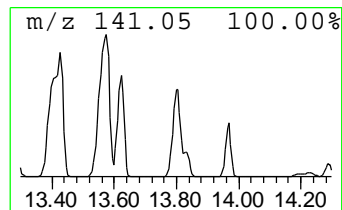
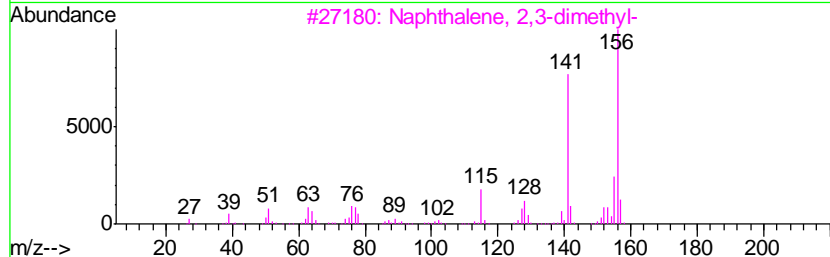
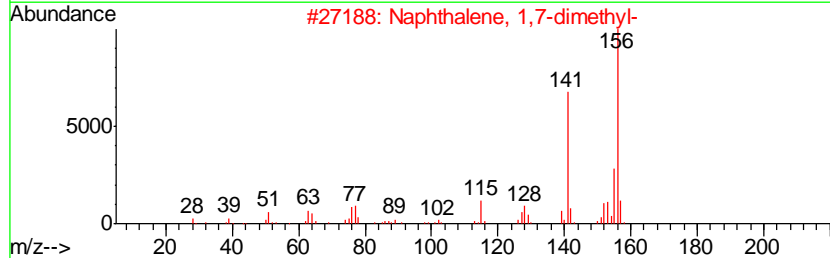
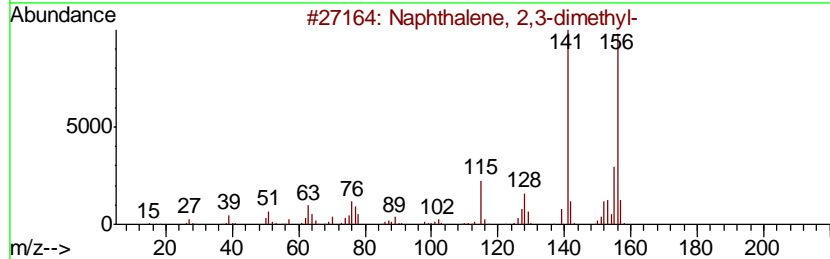
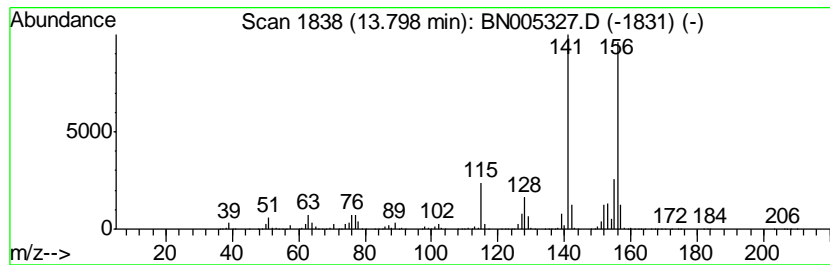
TIC Library : C:\DATABASE\NIST02.L  
 TIC Integration Parameters: LSCINT.P

\*\*\*\*\*  
 Peak Number 21 Naphthalene, 1,7-dimethyl- Concentration Rank 18

R.T.	EstConc	Area	Relative to ISTD	R.T.
13.80	27.16 ng/ul	29434300	Acenaphthene-d10	14.23

Hit#	of	Tentative ID	MW	MolForm	CAS#	Qual
1	5	Naphthalene, 2,3-dimethyl-	156	C12H12	000581-40-8	97
2		Naphthalene, 1,7-dimethyl-	156	C12H12	000575-37-1	97
3		Naphthalene, 2,3-dimethyl-	156	C12H12	000581-40-8	97
4		Naphthalene, 1,5-dimethyl-	156	C12H12	000571-61-9	97
5		Naphthalene, 1,6-dimethyl-	156	C12H12	000575-43-9	97





Data Path : Z:\SVOASRV\HPCHEM1\BNA N\DATA\BN042619\  
 Data File : BN005327.D  
 Acq On : 26 Apr 2019 21:38  
 Operator : JU/SJ  
 Sample : K2455-05ME  
 Misc :  
 ALS Vial : 11 Sample Multiplier: 1

Instrument :  
 BNA\_N  
 ClientSampleID :  
 GAHQ7ME

Quant Method : Z:\SVOASRV\HPCHEM1\BNA\_N\METHODS\SOM-EPA-BN041919MA.M  
 Quant Title : SVOA CALIBRATION

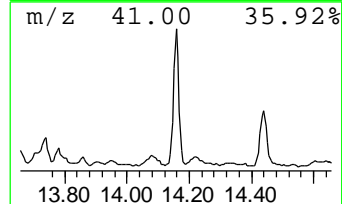
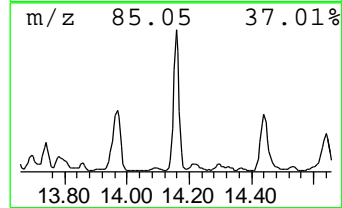
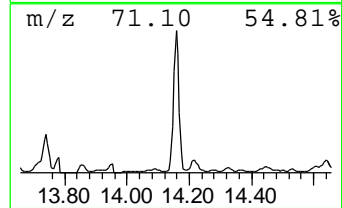
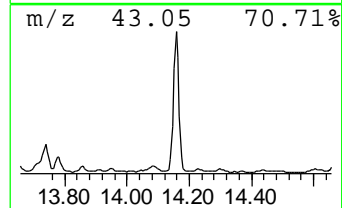
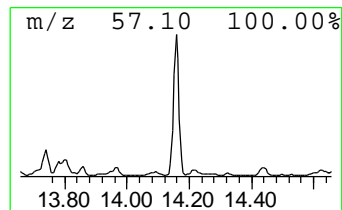
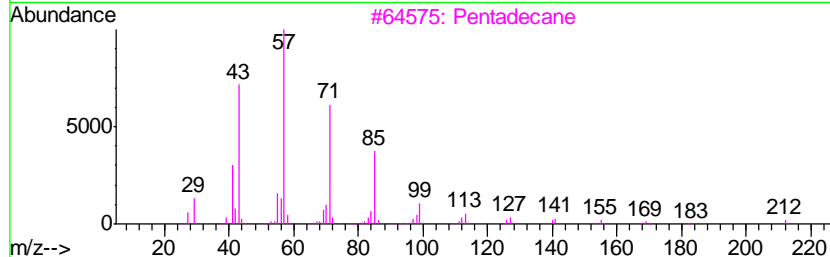
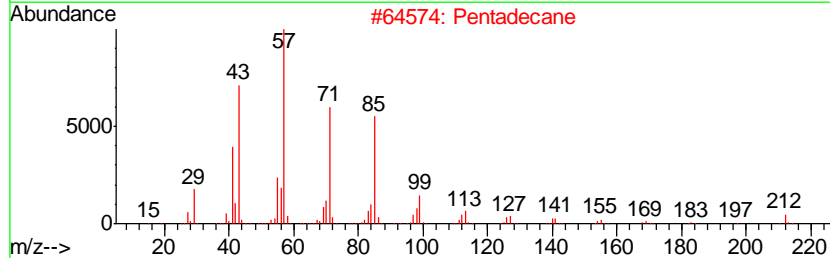
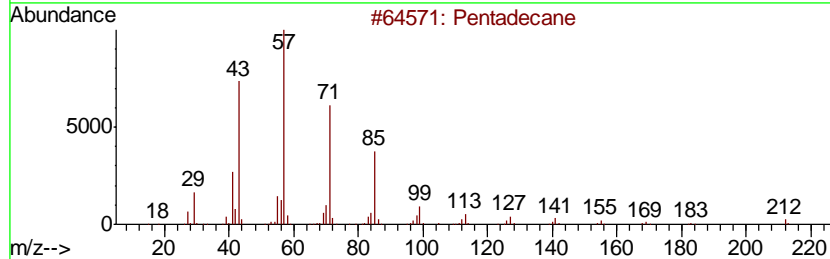
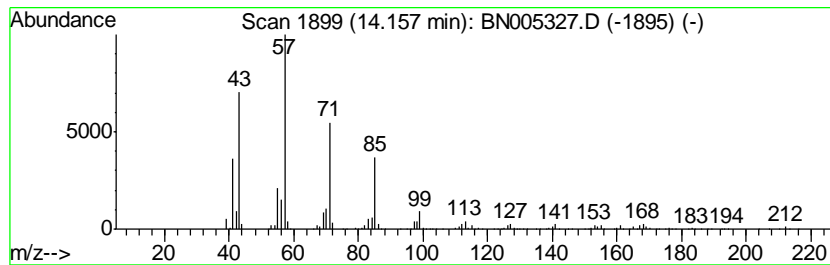
TIC Library : C:\DATABASE\NIST02.L  
 TIC Integration Parameters: LSCINT.P

\*\*\*\*\*  
 Peak Number 22 (DEL) Alkane: Straight-Chai... Concentration Rank 63

R.T.	EstConc	Area	Relative to ISTD	R.T.
14.16	3.16 ng/ul	3419860	Acenaphthene-d10	14.23

Hit#	of	Tentative ID	MW	MolForm	CAS#	Qual
1	5	Pentadecane	212	C15H32	000629-62-9	96
2		Pentadecane	212	C15H32	000629-62-9	95
3		Pentadecane	212	C15H32	000629-62-9	95
4		Eicosane	282	C20H42	000112-95-8	91
5		Tridecane	184	C13H28	000629-50-5	90



Data Path : Z:\SVOASRV\HPCHEM1\BNA N\DATA\BN042619\  
 Data File : BN005327.D  
 Acq On : 26 Apr 2019 21:38  
 Operator : JU/SJ  
 Sample : K2455-05ME  
 Misc :  
 ALS Vial : 11 Sample Multiplier: 1

Instrument :  
 BNA\_N  
 ClientSampleID :  
 GAHQ7ME

Quant Method : Z:\SVOASRV\HPCHEM1\BNA\_N\METHODS\SOM-EPA-BN041919MA.M  
 Quant Title : SVOA CALIBRATION

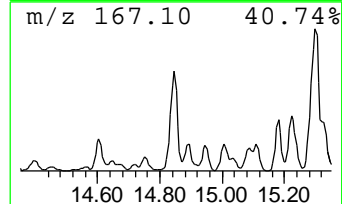
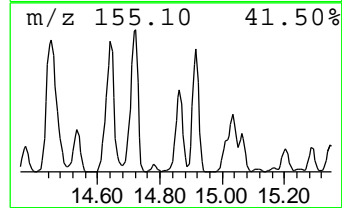
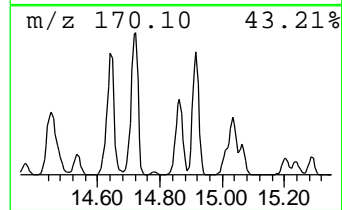
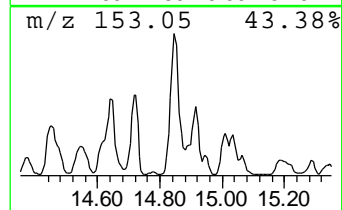
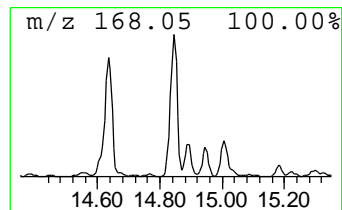
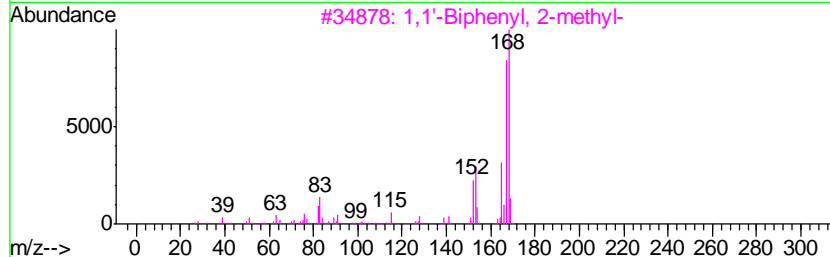
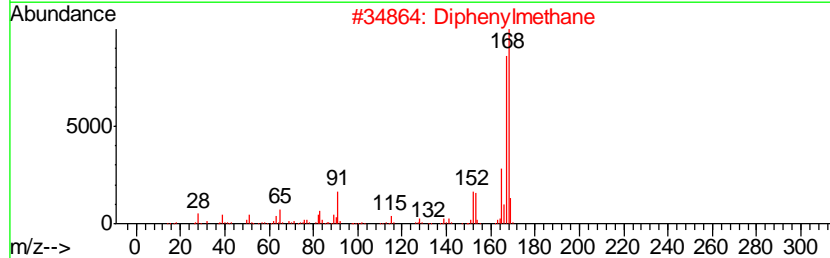
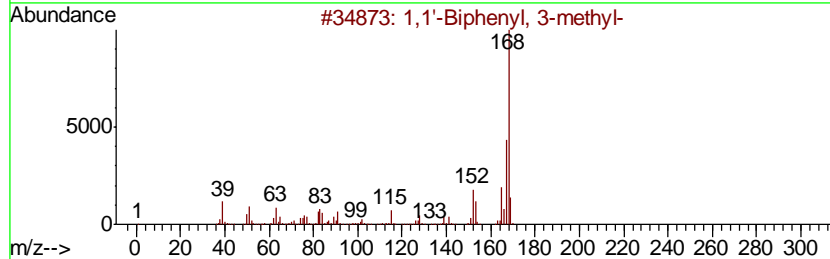
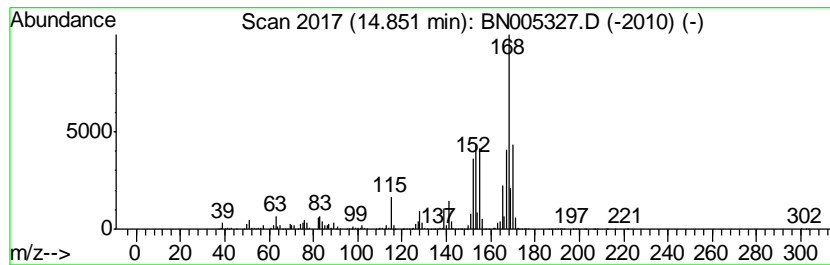
TIC Library : C:\DATABASE\NIST02.L  
 TIC Integration Parameters: LSCINT.P

\*\*\*\*\*  
 Peak Number 24 1,1'-Biphenyl, 3-methyl- Concentration Rank 33

R.T.	EstConc	Area	Relative to ISTD	R.T.
14.85	16.71 ng/ul	18109200	Acenaphthene-d10	14.23

Hit#	of	Tentative ID	MW	MolForm	CAS#	Qual
1	5	1,1'-Biphenyl, 3-methyl-	168	C13H12	000643-93-6	53
2		Diphenylmethane	168	C13H12	000101-81-5	50
3		1,1'-Biphenyl, 2-methyl-	168	C13H12	000643-58-3	49
4		Naphthalene, 1-(2-propenyl)-	168	C13H12	002489-86-3	47
5		1,1'-Biphenyl, 3-methyl-	168	C13H12	000643-93-6	47



Data Path : Z:\SVOASRV\HPCHEM1\BNA N\DATA\BN042619\  
 Data File : BN005327.D  
 Acq On : 26 Apr 2019 21:38  
 Operator : JU/SJ  
 Sample : K2455-05ME  
 Misc :  
 ALS Vial : 11 Sample Multiplier: 1

Instrument :  
 BNA\_N  
 ClientSampled :  
 GAHQ7ME

Quant Method : Z:\SVOASRV\HPCHEM1\BNA\_N\METHODS\SOM-EPA-BN041919MA.M  
 Quant Title : SVOA CALIBRATION

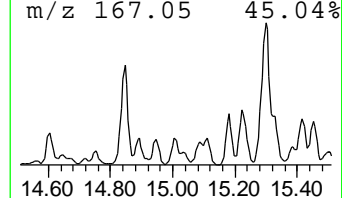
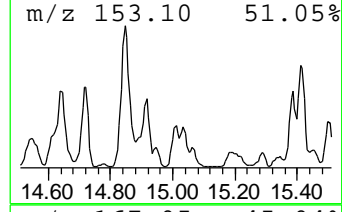
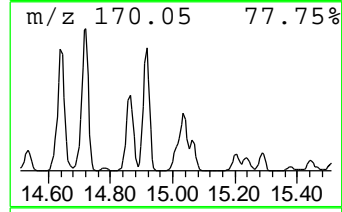
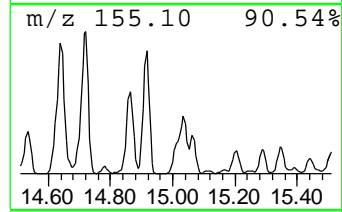
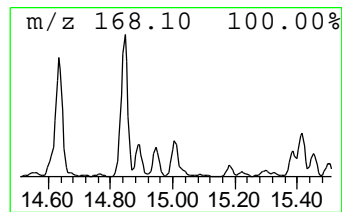
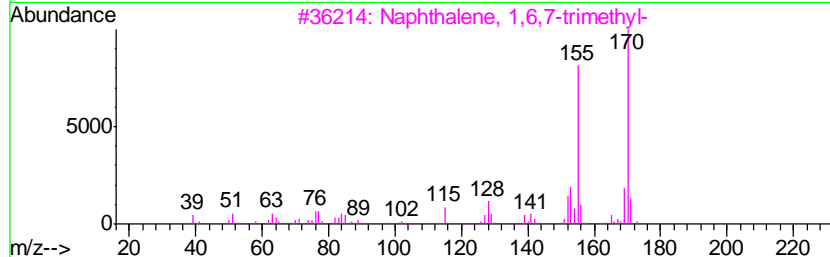
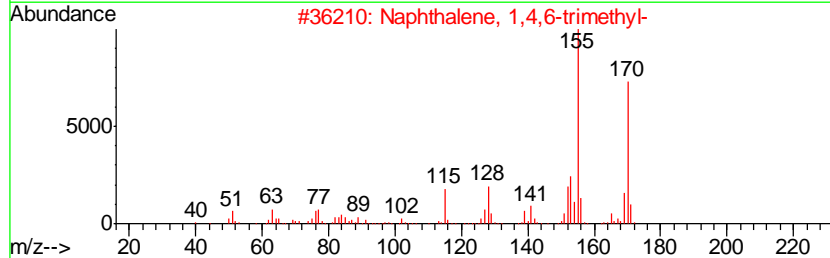
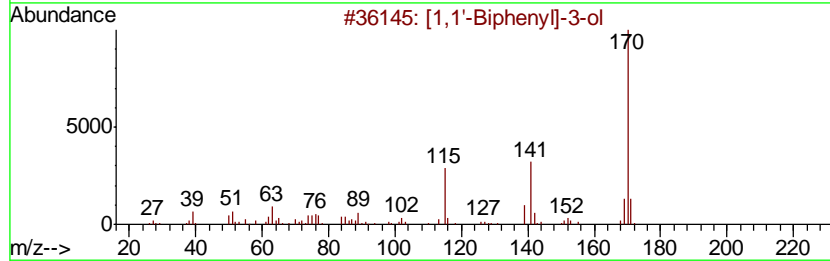
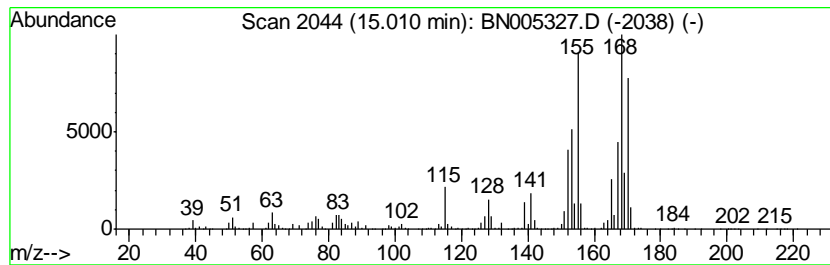
TIC Library : C:\DATABASE\NIST02.L  
 TIC Integration Parameters: LSCINT.P

\*\*\*\*\*  
 Peak Number 26 [1,1'-Biphenyl]-3-ol Concentration Rank 57

R.T.	EstConc	Area	Relative to ISTD	R.T.
15.01	4.78 ng/ul	5181130	Acenaphthene-d10	14.23

Hit#	of	Tentative ID	MW	MolForm	CAS#	Qual
1	5	[1,1'-Biphenyl]-3-ol	170	C12H10O	000580-51-8	53
2		Naphthalene, 1,4,6-trimethyl-	170	C13H14	002131-42-2	50
3		Naphthalene, 1,6,7-trimethyl-	170	C13H14	002245-38-7	50
4		Naphthalene, 1,6,7-trimethyl-	170	C13H14	002245-38-7	46
5		3-(2-Methyl-propenyl)-1H-indene	170	C13H14	1000187-78-5	46



Data Path : Z:\SVOASRV\HPCHEM1\BNA N\DATA\BN042619\  
 Data File : BN005327.D  
 Acq On : 26 Apr 2019 21:38  
 Operator : JU/SJ  
 Sample : K2455-05ME  
 Misc :  
 ALS Vial : 11 Sample Multiplier: 1

Instrument :  
 BNA\_N  
 ClientSampleID :  
 GAHQ7ME

Quant Method : Z:\SVOASRV\HPCHEM1\BNA\_N\METHODS\SOM-EPA-BN041919MA.M  
 Quant Title : SVOA CALIBRATION

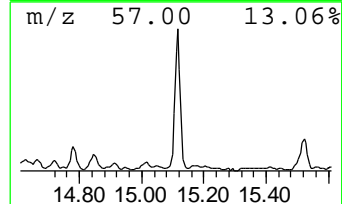
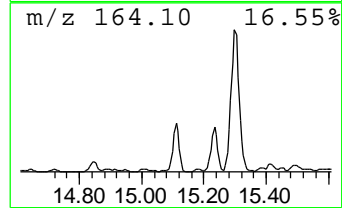
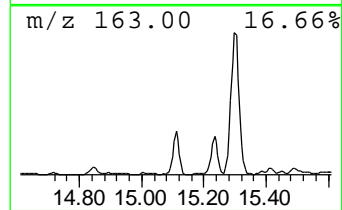
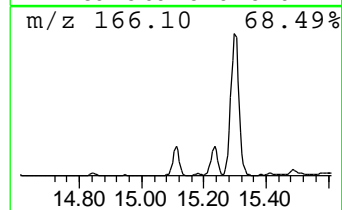
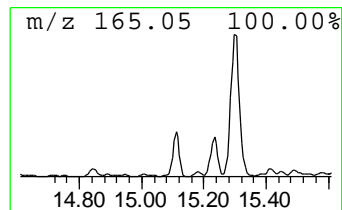
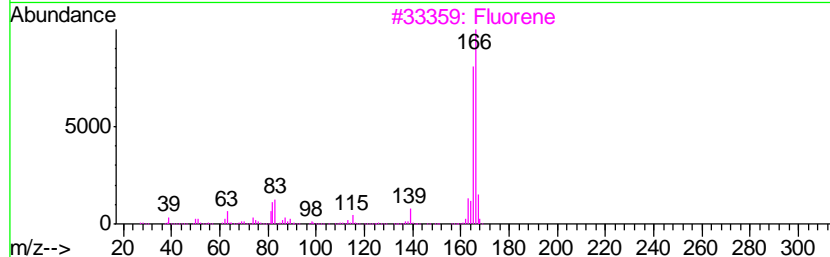
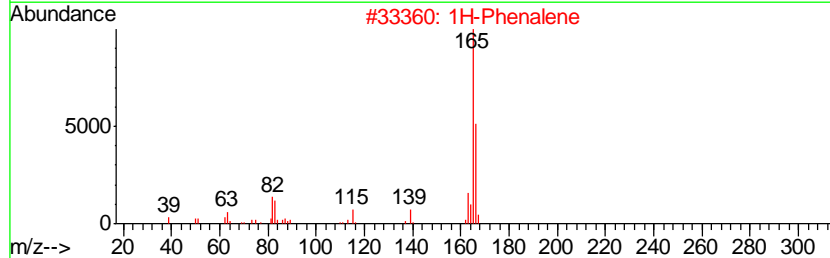
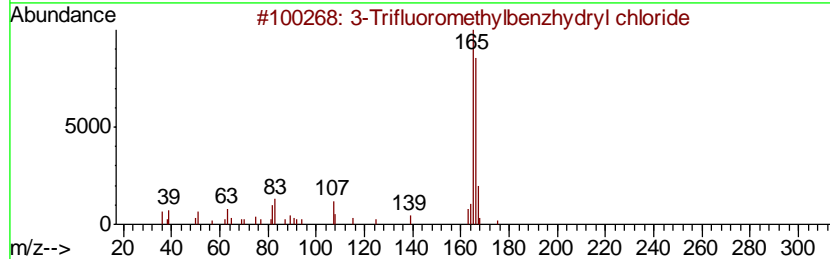
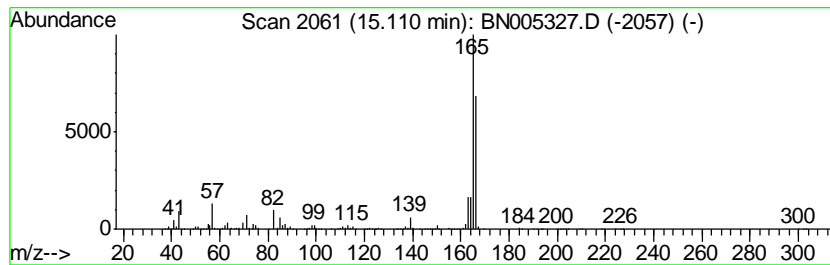
TIC Library : C:\DATABASE\NIST02.L  
 TIC Integration Parameters: LSCINT.P

\*\*\*\*\*  
 Peak Number 27 3-Trifluoromethylbenzhydryl... Concentration Rank 46

R.T.	EstConc	Area	Relative to ISTD	R.T.
15.11	9.59 ng/ul	10388700	Acenaphthene-d10	14.23

Hit#	of	Tentative ID	MW	MolForm	CAS#	Qual
1	5	3-Trifluoromethylbenzhydryl chlo...	270	C14H10ClF3	067240-79-3	72
2		1H-Phenylene	166	C13H10	000203-80-5	64
3		Fluorene	166	C13H10	000086-73-7	52
4		Fluorene	166	C13H10	000086-73-7	49
5		9H-Fluorene, 9-bromo-	244	C13H9Br	001940-57-4	42



Data Path : Z:\SVOASRV\HPCHEM1\BNA N\DATA\BN042619\  
 Data File : BN005327.D  
 Acq On : 26 Apr 2019 21:38  
 Operator : JU/SJ  
 Sample : K2455-05ME  
 Misc :  
 ALS Vial : 11 Sample Multiplier: 1

Instrument :  
 BNA\_N  
 ClientSampled :  
 GAHQ7ME

Quant Method : Z:\SVOASRV\HPCHEM1\BNA\_N\METHODS\SOM-EPA-BN041919MA.M  
 Quant Title : SVOA CALIBRATION

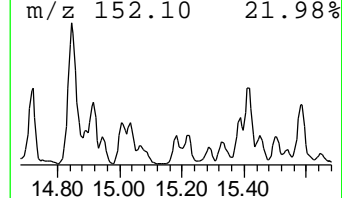
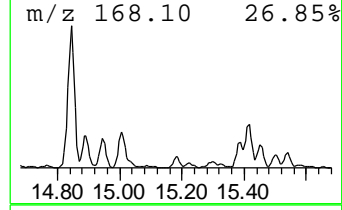
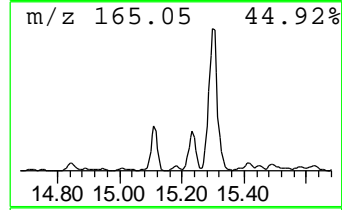
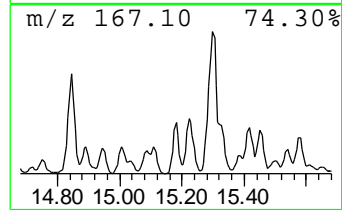
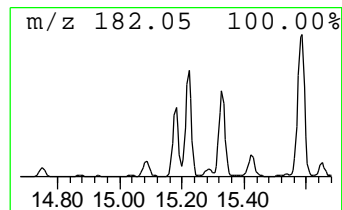
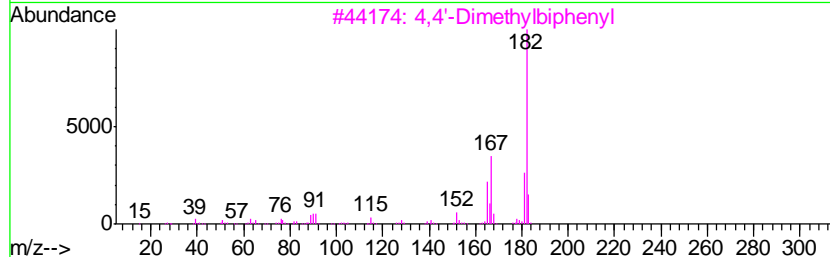
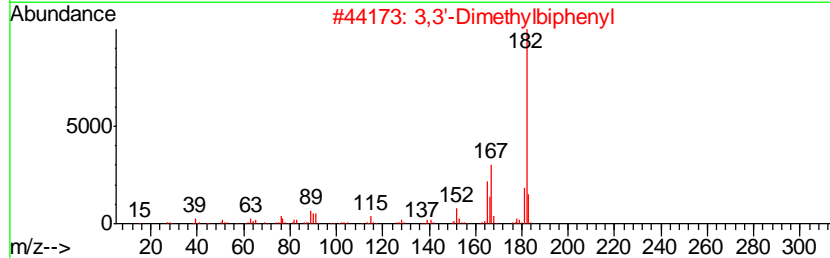
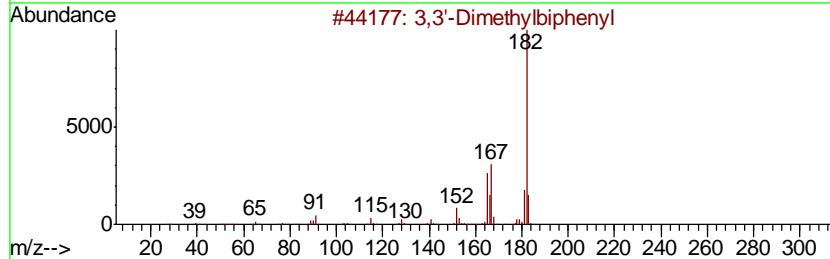
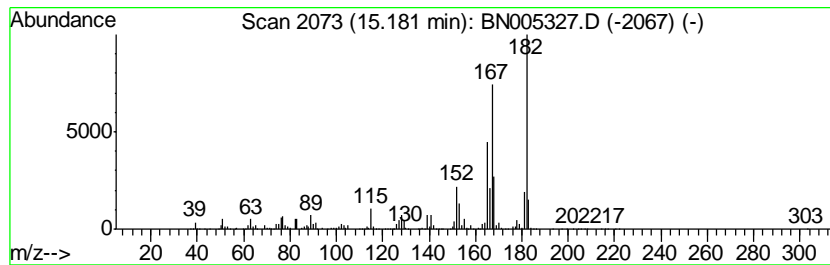
TIC Library : C:\DATABASE\NIST02.L  
 TIC Integration Parameters: LSCINT.P

\*\*\*\*\*  
 Peak Number 28 3,3'-Dimethylbiphenyl Concentration Rank 61

R.T.	EstConc	Area	Relative to ISTD	R.T.
15.18	3.83 ng/ul	4145820	Acenaphthene-d10	14.23

Hit#	of	Tentative ID	MW	MolForm	CAS#	Qual
1	5	3,3'-Dimethylbiphenyl	182	C14H14	000612-75-9	93
2		3,3'-Dimethylbiphenyl	182	C14H14	000612-75-9	93
3		4,4'-Dimethylbiphenyl	182	C14H14	000613-33-2	93
4		1,1'-Biphenyl, 3,4'-dimethyl-	182	C14H14	007383-90-6	90
5		1,1'-Biphenyl, 3,4'-dimethyl-	182	C14H14	007383-90-6	90



Data Path : Z:\SVOASRV\HPCHEM1\BNA N\DATA\BN042619\  
 Data File : BN005327.D  
 Acq On : 26 Apr 2019 21:38  
 Operator : JU/SJ  
 Sample : K2455-05ME  
 Misc :  
 ALS Vial : 11 Sample Multiplier: 1

Instrument :  
 BNA\_N  
 ClientSampleID :  
 GAHQ7ME

Quant Method : Z:\SVOASRV\HPCHEM1\BNA\_N\METHODS\SOM-EPA-BN041919MA.M  
 Quant Title : SVOA CALIBRATION

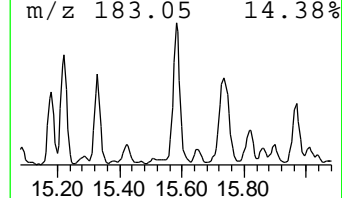
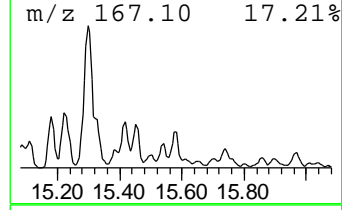
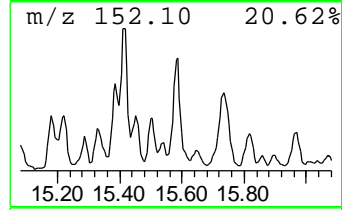
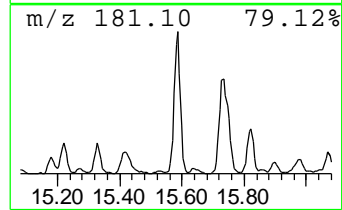
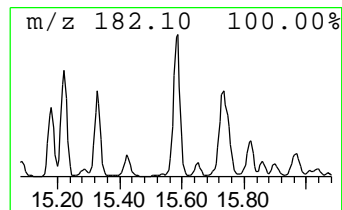
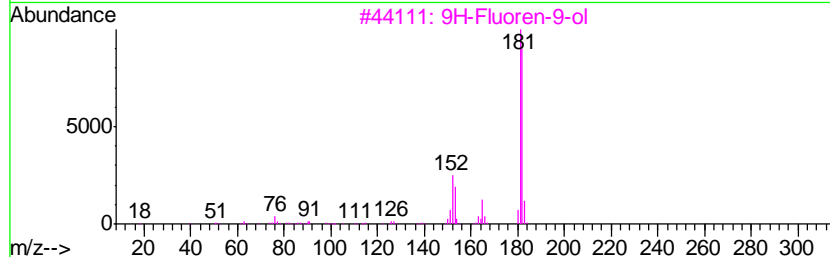
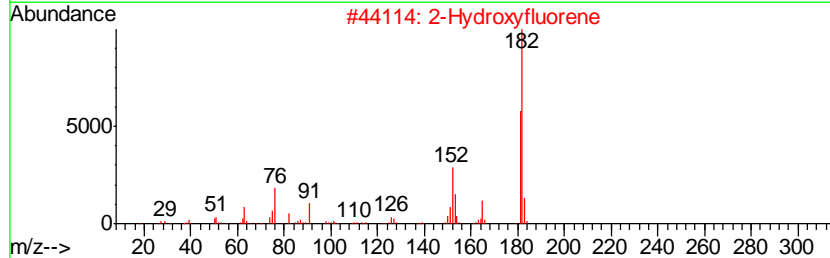
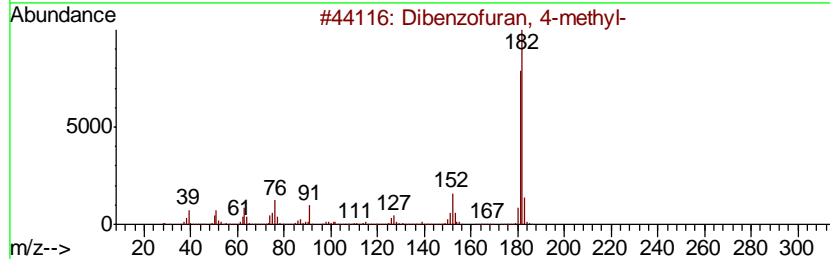
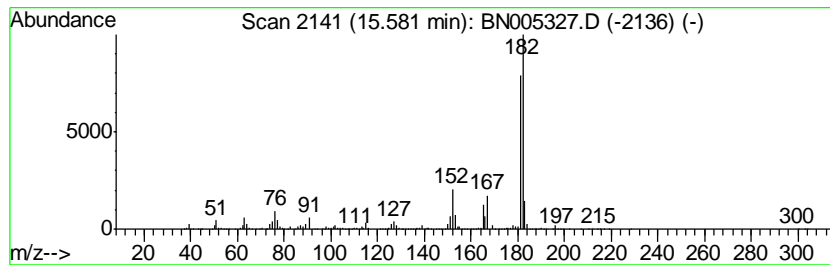
TIC Library : C:\DATABASE\NIST02.L  
 TIC Integration Parameters: LSCINT.P

\*\*\*\*\*  
 Peak Number 30 Dibenzofuran, 4-methyl- Concentration Rank 52

R.T.	EstConc	Area	Relative to ISTD	R.T.
15.58	6.40 ng/ul	6936340	Acenaphthene-d10	14.23

Hit#	of	Tentative ID	MW	MolForm	CAS#	Qual
1	5	Dibenzofuran, 4-methyl-	182	C13H10O	007320-53-8	87
2		2-Hydroxyfluorene	182	C13H10O	002443-58-5	87
3		9H-Fluoren-9-ol	182	C13H10O	001689-64-1	72
4		3-(2-Naphthyl)acrylaldehyde	182	C13H10O	020884-05-3	72
5		Benzaldehyde, 4-hydroxy-3,5-dime...	182	C9H10O4	000134-96-3	59



Data Path : Z:\SVOASRV\HPCHEM1\BNA N\DATA\BN042619\  
 Data File : BN005327.D  
 Acq On : 26 Apr 2019 21:38  
 Operator : JU/SJ  
 Sample : K2455-05ME  
 Misc :  
 ALS Vial : 11 Sample Multiplier: 1

Instrument :  
 BNA\_N  
 ClientSampled :  
 GAHQ7ME

Quant Method : Z:\SVOASRV\HPCHEM1\BNA\_N\METHODS\SOM-EPA-BN041919MA.M  
 Quant Title : SVOA CALIBRATION

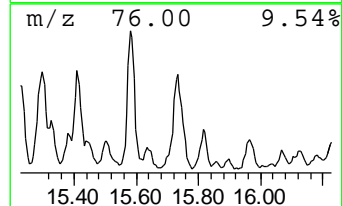
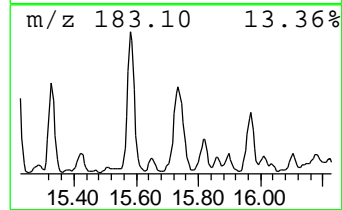
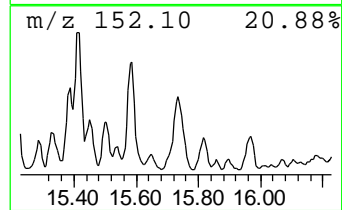
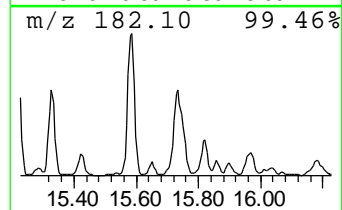
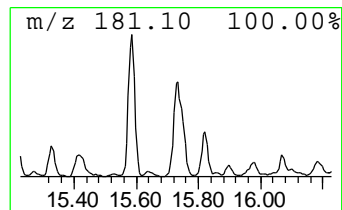
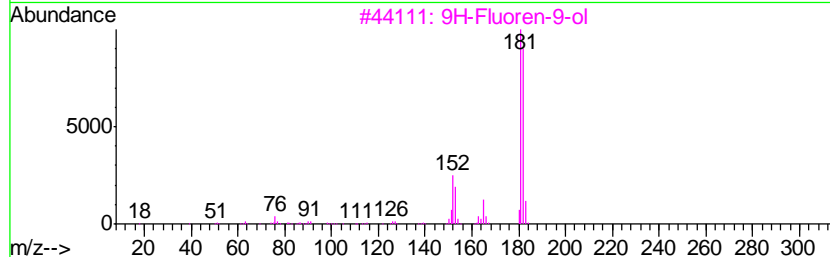
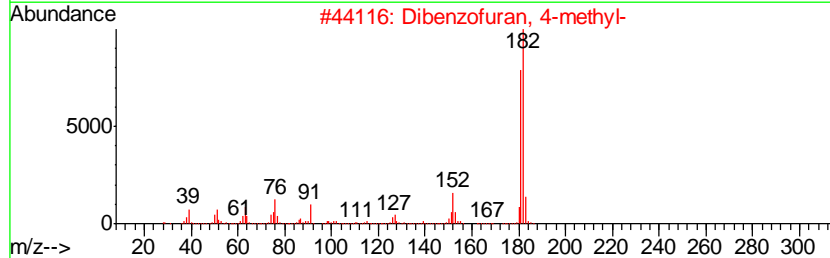
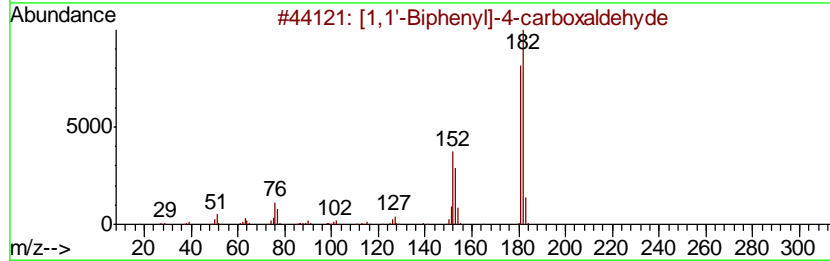
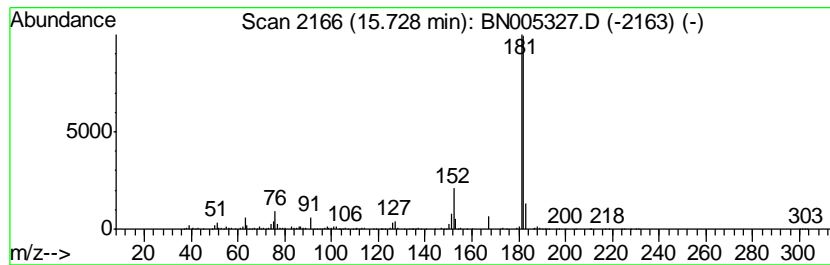
TIC Library : C:\DATABASE\NIST02.L  
 TIC Integration Parameters: LSCINT.P

\*\*\*\*\*  
 Peak Number 31 [1,1'-Biphenyl]-4-carboxald... Concentration Rank 28

R.T.	EstConc	Area	Relative to ISTD	R.T.
15.73	19.20 ng/ul	6004090	Phenanthrene-d10	16.99

Hit#	of	Tentative ID	MW	MolForm	CAS#	Qual
1	5	[1,1'-Biphenyl]-4-carboxaldehyde	182	C13H10O	003218-36-8	90
2		Dibenzofuran, 4-methyl-	182	C13H10O	007320-53-8	83
3		9H-Fluoren-9-ol	182	C13H10O	001689-64-1	72
4		2,4,6-Cycloheptatrien-1-one, 2-p...	182	C13H10O	014562-09-5	72
5		3-(2-Naphthyl)acrylaldehyde	182	C13H10O	020884-05-3	64



Data Path : Z:\SVOASRV\HPCHEM1\BNA N\DATA\BN042619\  
 Data File : BN005327.D  
 Acq On : 26 Apr 2019 21:38  
 Operator : JU/SJ  
 Sample : K2455-05ME  
 Misc :  
 ALS Vial : 11 Sample Multiplier: 1

Instrument :  
 BNA\_N  
 ClientSampleID :  
 GAHQ7ME

Quant Method : Z:\SVOASRV\HPCHEM1\BNA\_N\METHODS\SOM-EPA-BN041919MA.M  
 Quant Title : SVOA CALIBRATION

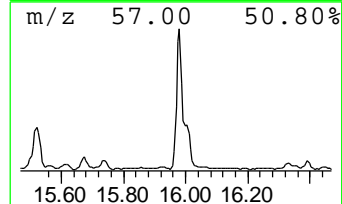
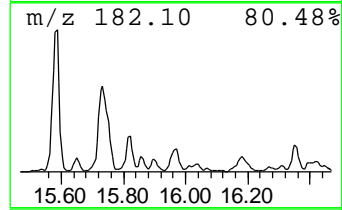
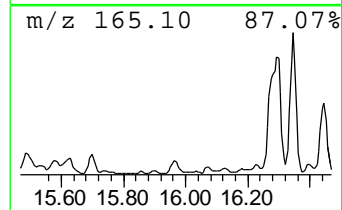
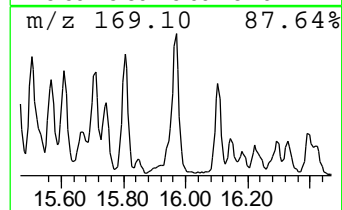
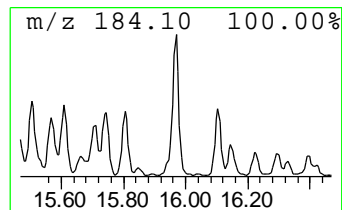
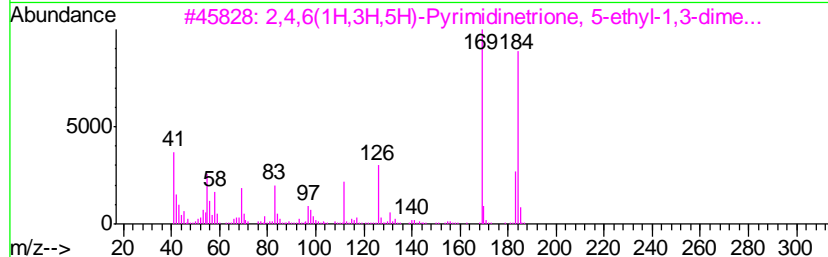
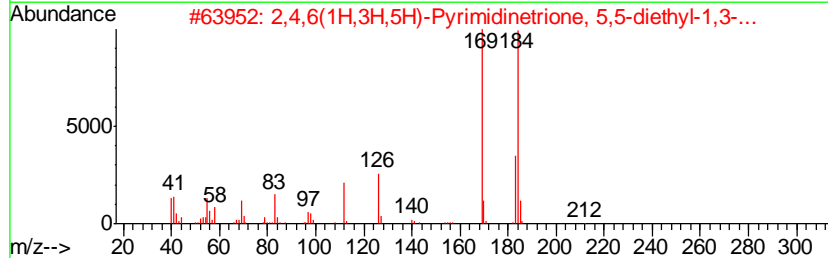
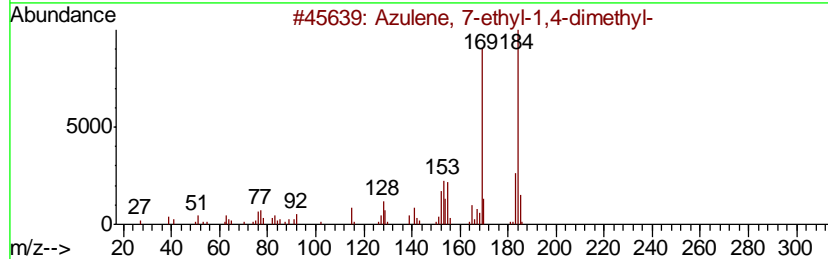
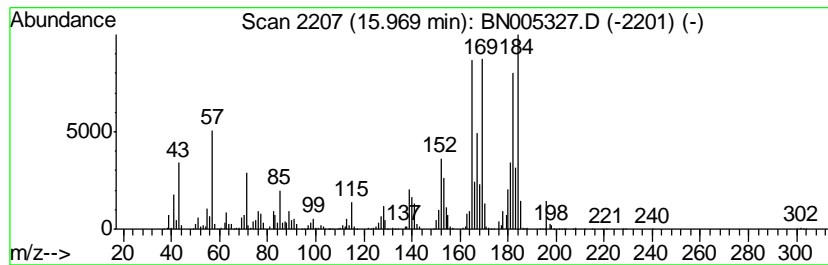
TIC Library : C:\DATABASE\NIST02.L  
 TIC Integration Parameters: LSCINT.P

\*\*\*\*\*  
 Peak Number 32 Azulene, 7-ethyl-1,4-dimethyl- Concentration Rank 38

R.T.	EstConc	Area	Relative to ISTD	R.T.
15.97	14.94 ng/ul	4672690	Phenanthrene-d10	16.99

Hit#	of	Tentative ID	MW	MolForm	CAS#	Qual
1	5	Azulene, 7-ethyl-1,4-dimethyl-	184	C14H16	000529-05-5	51
2		2,4,6(1H,3H,5H)-Pyrimidinetrione...	212	C10H16N2O3	000714-59-0	35
3		2,4,6(1H,3H,5H)-Pyrimidinetrione...	184	C8H12N2O3	007391-61-9	35
4		cis-4-Chlorocinnamic acid	182	C9H7ClO2	005676-62-0	30
5		[1,1'-Biphenyl]-4-methanol	184	C13H12O	003597-91-9	25





Data Path : Z:\SVOASRV\HPCHEM1\BNA\_N\DATA\BN042619\  
 Data File : BN005327.D  
 Acq On : 26 Apr 2019 21:38  
 Operator : JU/SJ  
 Sample : K2455-05ME  
 Misc :  
 ALS Vial : 11 Sample Multiplier: 1

Instrument :  
 BNA\_N  
 ClientSampleId :  
 GAHQ7ME

Quant Method : Z:\SVOASRV\HPCHEM1\BNA\_N\METHODS\SOM-EPA-BN041919MA.M  
 Quant Title : SVOA CALIBRATION

TIC Library : C:\DATABASE\NIST02.L  
 TIC Integration Parameters: LSCINT.P

TIC Top Hit name	RT	EstConc	Units	Response	--Internal Standard--			
					#	RT	Resp	Conc
Benzene, 1,3,5-tr...	6.83	16.1	ng/ul	3419260	1	7.59	4235830	20.0
Benzene, 1-etheny...	7.26	107.5	ng/ul	22771300	1	7.59	4235830	20.0
Benzene, 1-etheny...	7.34	19.5	ng/ul	4133920	1	7.59	4235830	20.0
Benzene, 1,2,3-tr...	7.71	20.0	ng/ul	4235830	1	7.59	4235830	20.0
Indene	8.12	95.6	ng/ul	20242000	1	7.59	4235830	20.0
Benzene, 2-butenyl-	8.69	19.3	ng/ul	4077930	1	7.59	4235830	20.0
Benzene, (2-methy...	8.85	30.5	ng/ul	6456070	1	7.59	4235830	20.0
Benzene, 1-methyl...	9.26	9.7	ng/ul	4542120	2	10.37	9352860	20.0
Benzene, 1-etheny...	9.35	8.5	ng/ul	3966550	2	10.37	9352860	20.0
2-Methylindene	9.80	31.7	ng/ul	14808300	2	10.37	9352860	20.0
1H-Indene, 1-methyl-	9.87	26.8	ng/ul	12533200	2	10.37	9352860	20.0
1H-Indene, 1,3-di...	11.40	7.4	ng/ul	3470410	2	10.37	9352860	20.0
1H-Inden-1-one, 2...	11.77	14.7	ng/ul	6890250	2	10.37	9352860	20.0
(DEL) Alkane: Str...	11.83	15.4	ng/ul	7188930	2	10.37	9352860	20.0
Benzo[b]thiophene...	11.92	10.3	ng/ul	4828320	2	10.37	9352860	20.0
Naphthalene, 1-me...	12.29	251.3	ng/ul	117495000	2	10.37	9352860	20.0
Naphthalene, 1-et...	13.26	21.6	ng/ul	23360100	3	14.23	21675400	20.0
Naphthalene, 2,6-...	13.40	37.9	ng/ul	41113300	3	14.23	21675400	20.0
Naphthalene, 2,3-...	13.57	62.5	ng/ul	67714700	3	14.23	21675400	20.0
Naphthalene, 1,7-...	13.80	27.2	ng/ul	29434300	3	14.23	21675400	20.0
(DEL) Alkane: Str...	14.16	3.2	ng/ul	3419860	3	14.23	21675400	20.0
1,1'-Biphenyl, 3-...	14.85	16.7	ng/ul	18109200	3	14.23	21675400	20.0
[1,1'-Biphenyl]-3-ol	15.01	4.8	ng/ul	5181130	3	14.23	21675400	20.0
3-Trifluoromethyl...	15.11	9.6	ng/ul	10388700	3	14.23	21675400	20.0
3,3'-Dimethylbiph...	15.18	3.8	ng/ul	4145820	3	14.23	21675400	20.0
Dibenzofuran, 4-m...	15.58	6.4	ng/ul	6936340	3	14.23	21675400	20.0
[1,1'-Biphenyl]-4...	15.73	19.2	ng/ul	6004090	4	16.99	6255720	20.0
Azulene, 7-ethyl-...	15.97	14.9	ng/ul	4672690	4	16.99	6255720	20.0