

Data Path : Z:\svoasrv\HPCHEM1\BNA_N\Data\BN042724\
 Data File : BN031291.D
 Acq On : 28 Apr 2024 04:37
 Operator : MA/JU
 Sample : PB160492BS
 Misc :
 ALS Vial : 26 Sample Multiplier: 1

Instrument :
 BNA_N
ClientSampleId :
 SLCS492

Quant Time: Apr 28 22:09:01 2024
 Quant Method : Z:\svoasrv\HPCHEM1\BNA_N\Methods\SFAM-EPA-BN041924.MA.M
 Quant Title : SVOA CALIBRATION
 QLast Update : Fri Apr 26 22:57:25 2024
 Response via : Initial Calibration

Manual Integrations
APPROVED
 Reviewed By :Yogesh Patel 04/29/2024
 Supervised By :mohammad ahmed 04/29/2024

Compound	R.T.	QI on	Response	Conc	Units	Dev(Min)
Internal Standards						
1) 1,4-Dichlorobenzene-d4	7.616	152	186793	20.000	ng/ul	0.00
20) Naphthalene-d8	10.398	136	909538	20.000	ng/ul	0.00
38) Acenaphthene-d10	14.269	164	628470	20.000	ng/ul	0.00
64) Phenanthrene-d10	17.016	188	1392564	20.000	ng/ul	0.00
79) Chrysene-d12	21.257	240	1268673	20.000	ng/ul	0.00
88) Perylene-d12	24.145	264	1400176	20.000	ng/ul	0.00
System Monitoring Compounds						
3) 1,4-Dioxane-d8	3.134	96	29880	7.473	ng/uL	0.00
4) Pyridine-d5	3.540	84	363331	31.555	ng/ul	0.00
7) Phenol-d5	6.799	99	532079	33.767	ng/ul	0.00
9) Bis-(2-Chloroethyl)eth...	6.963	67	312219	34.056	ng/ul	0.00
11) 2-Chlorophenol-d4	7.152	132	427971	34.883	ng/ul	0.00
15) 4-Methylphenol-d8	8.328	113	440321	33.228	ng/ul	0.00
21) Nitrobenzene-d5	8.775	128	223363	34.180	ng/ul	0.00
24) 2-Nitrophenol-d4	9.493	143	247280	36.403	ng/ul	0.00
28) 2,4-Dichlorophenol-d3	10.022	165	455665	34.015	ng/ul	0.00
31) 4-Chloroaniline-d4	10.545	131	635708	30.367	ng/ul	0.00
46) Dimethylphthalate-d6	13.686	166	1455668	33.285	ng/ul	0.00
49) Acenaphthylene-d8	13.957	160	1655432	33.404	ng/ul	0.00
54) 4-Nitrophenol-d4	14.486	143	305745	33.495	ng/ul	0.00
60) Fluorene-d10	15.263	176	1241047	32.598	ng/ul	0.00
65) 4,6-Dinitro-2-methylph...	15.398	200	253249	36.046	ng/ul	0.00
73) Anthracene-d10	17.116	188	1918790	31.790	ng/ul	0.00
81) Pyrene-d10	19.421	212	2301335	36.915	ng/ul	0.00
92) Benzo(a)pyrene-d12	23.945	264	2235572	33.670	ng/ul	-0.01
Target Compounds						
2) 1,4-Dioxane	3.169	88	45099	10.644	ng/uL	97
5) Pyridine	3.558	79	359894	30.974	ng/ul	98
6) Benzaldehyde	6.769	77	280729	36.284	ng/ul	99
8) Phenol	6.822	94	544462	33.515	ng/ul	99
10) Bis(2-Chloroethyl)ether	7.057	93	417988	32.609	ng/ul	99
12) 2-Chlorophenol	7.187	128	430822	33.783	ng/ul	99
13) 2-Methylphenol	8.063	108	417530	33.165	ng/ul	99
14) 2,2'-oxybis(1-Chloropr...	8.140	45	564231	33.763	ng/ul	98
16) Acetophenone	8.446	105	671511	32.706	ng/ul	98
17) N-Nitrosodimethylpropyl a...	8.428	70	338457	33.072	ng/ul	100
18) 4-Methylphenol	8.393	108	468879	33.249	ng/ul	98
19) Hexachloroethane	8.681	117	168976	31.931	ng/ul	96
22) Nitrobenzene	8.816	77	489640	31.746	ng/ul	100
23) Isophorone	9.340	82	997351	31.686	ng/ul	99
25) 2-Nitrophenol	9.522	139	263491	35.059	ng/ul	94
26) 2,4-Dimethylphenol	9.587	107	402801	26.280	ng/ul	98
27) Bis(2-Chloroethoxy)met...	9.822	93	602674	31.523	ng/ul	99
29) 2,4-Dichlorophenol	10.051	162	447224	33.425	ng/ul	98
30) Naphthalene	10.445	128	1453003	30.825	ng/ul	100
32) 4-Chloroaniline	10.569	127	561134	27.587	ng/ul	99
33) Hexachlorobutadiene	10.722	225	249068	30.536	ng/ul	98
34) Caprolactam	11.357	113	174931m	33.183	ng/ul	
35) 4-Chloro-3-methylphenol	11.698	107	524703	33.823	ng/ul	96
36) 2-Methylnaphthalene	12.069	142	1039847	31.282	ng/ul	96

Data Path : Z:\svoasrv\HPCHEM1\BNA_N\Data\BN042724\
 Data File : BN031291.D
 Acq On : 28 Apr 2024 04:37
 Operator : MA/JU
 Sample : PB160492BS
 Misc :
 ALS Vial : 26 Sample Multiplier: 1

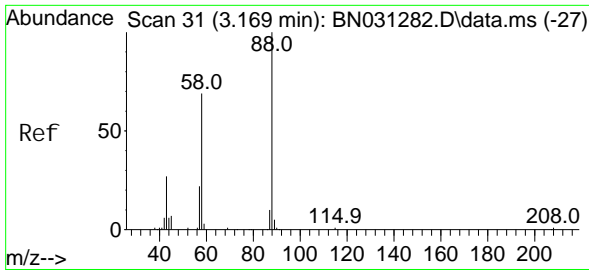
Instrument :
 BNA_N
ClientSampleId :
 SLCS492

Manual Integrations
APPROVED
 Reviewed By :Yogesh Patel 04/29/2024
 Supervised By :mohammad ahmed 04/29/2024

Quant Time: Apr 28 22:09:01 2024
 Quant Method : Z:\svoasrv\HPCHEM1\BNA_N\Methods\SFAM-EPA-BN041924.MA.M
 Quant Title : SVOA CALIBRATION
 QLast Update : Fri Apr 26 22:57:25 2024
 Response via : Initial Calibration

Compound	R. T.	QI on	Response	Conc	Units	Dev(Min)
37) 1-Methyl naphthal ene	12.287	142	1049977	31.216	ng/ul	96
39) 1, 2, 4, 5-Tetrachl oroben. . .	12.439	216	527049	32.049	ng/ul	99
40) Hexachl orocycl opentadi ene	12.410	237	228044	25.244	ng/ul	94
41) 2, 4, 6-Tri chl orophenol	12.687	196	374992	34.258	ng/ul	94
42) 2, 4, 5-Tri chl orophenol	12.763	196	407517	33.579	ng/ul	98
43) 1, 1' -Bi phenyl	13.092	154	1370770	31.714	ng/ul	99
44) 2-Chl oronaphthal ene	13.134	162	1075138	31.128	ng/ul	98
45) 2-Ni troani line	13.351	65	339421	35.597	ng/ul	99
47) Di methyl phthal ate	13.734	163	1435693	31.821	ng/ul	100
48) 2, 6-Di ni trotol uene	13.857	165	300258	35.453	ng/ul	98
50) Acenaphthyl ene	13.986	152	1762685	30.449	ng/ul	100
51) 3-Ni troani line	14.186	138	334173	34.370	ng/ul	94
52) Acenaphthene	14.334	153	1148829	29.936	ng/ul	98
53) 2, 4-Di ni trophenol	14.392	184	169600	35.411	ng/ul	94
55) 4-Ni trophenol	14.504	109	239542	32.336	ng/ul	98
56) Di benzofuran	14.669	168	1654259	31.178	ng/ul	99
57) 2, 4-Di ni trotol uene	14.645	165	450668	35.021	ng/ul	99
58) 2, 3, 4, 6-Tetrachl orophenol	14.898	232	353364	33.691	ng/ul	95
59) Di ethyl phthal ate	15.104	149	1494468	32.209	ng/ul	99
61) Fl uorene	15.322	166	1309935	30.000	ng/ul	95
62) 4-Chl orophenyl -phenyl e. . .	15.322	204	629278	30.257	ng/ul	97
63) 4-Ni troani line	15.357	138	361207m	34.457	ng/ul	
66) 4, 6-Di ni tro-2-methyl ph. . .	15.410	198	269362	35.705	ng/ul #	96
67) N-Ni trosodi phenyl ami ne	15.539	169	1201719	32.196	ng/ul	99
68) 4-Bromophenyl -phenyl ether	16.216	248	428178	32.513	ng/ul	91
69) Hexachl orobenzene	16.316	284	486831	32.066	ng/ul	97
70) Atrazi ne	16.498	200	411543	31.405	ng/ul	95
71) Pentachl orophenol	16.669	266	320810	32.523	ng/ul	99
72) Phenanthrene	17.063	178	2253519	30.595	ng/ul	99
74) Anthracene	17.151	178	2209886	29.647	ng/ul	100
75) 1, 2, 3, 4-Tetrachl oroben. . .	13.051	216	522804	32.007	ng/uL	98
76) Pentachl orobenzene	14.581	250	538490	31.925	ng/uL	98
77) Carbazol e	17.427	167	2184536	32.084	ng/ul	99
78) Di -n-butyl phthal ate	17.992	149	2695767	32.482	ng/ul	99
80) Fl uoranthene	19.086	202	2743653	37.185	ng/ul	100
82) Pyrene	19.451	202	2821644	36.397	ng/ul	100
83) Butyl benzyl phthal ate	20.363	149	1290188	37.717	ng/ul	98
84) 3, 3' -Di chl orobenzi di ne	21.174	252	843176	31.896	ng/ul	97
85) Benzo(a)anthracene	21.239	228	2780972	32.280	ng/ul	99
86) Bi s(2-ethyl hexyl)phtha. . .	21.163	149	1811437	35.269	ng/ul	98
87) Chrysene	21.298	228	2614617	31.973	ng/ul	98
89) Di -n-octyl phthal ate	22.262	149	3218241	39.875	ng/ul	100
90) Benzo(b)fl uoranthene	23.239	252	2707663	34.369	ng/ul	97
91) Benzo(k)fl uoranthene	23.292	252	2705286	34.142	ng/ul	97
93) Benzo(a)pyrene	24.015	252	2251303	28.645	ng/ul	99
94) I ndeno(1, 2, 3-cd)pyrene	27.403	276	2759249	28.292	ng/ul	99
95) Di benzo(a, h)anthracene	27.445	278	2294988	28.670	ng/ul	97
96) Benzo(g, h, i)peryl ene	28.403	276	2135421	27.190	ng/ul	97

(#) = qual ifier out of range (m) = manual i ntegrati on (+) = signal s summed



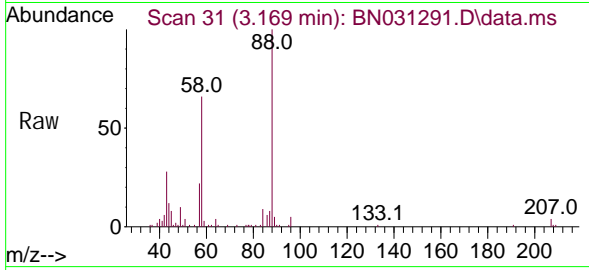
#2
 1,4-Dioxane
 Concen: 10.644 ng/uL
 RT: 3.169 min Scan# 31
 Delta R.T. -0.006 min
 Lab File: BN031291.D
 Acq: 28 Apr 2024 04:37

Instrument :

BNA_N

ClientSampleId :

SLCS492



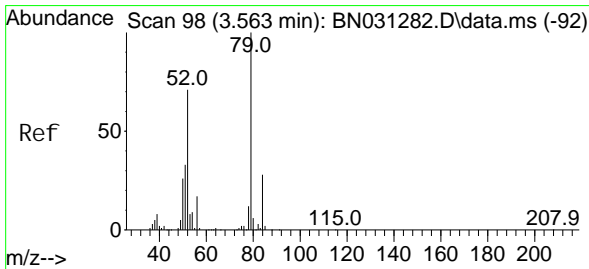
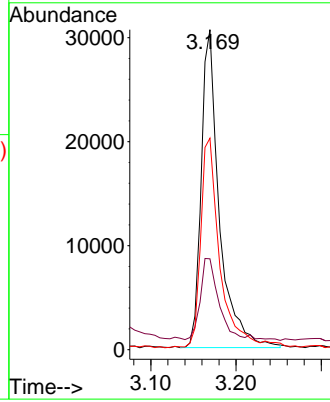
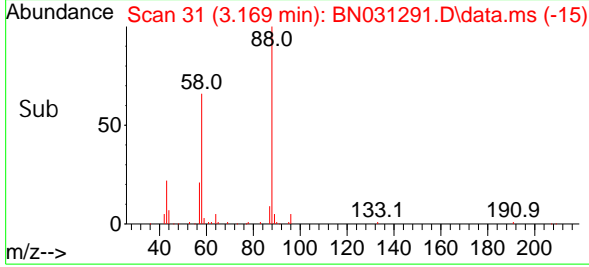
Tgt Ion: 88 Resp: 45096
 Ion Ratio Lower Upper
 88 100
 43 28.4 22.2 33.2
 58 66.1 50.2 75.2

Manual Integrations

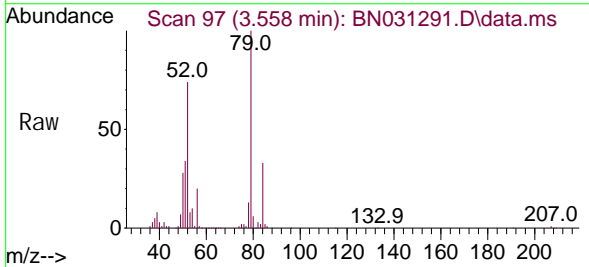
APPROVED

Reviewed By :Yogesh Patel 04/29/2024

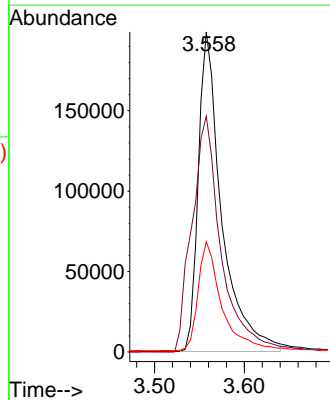
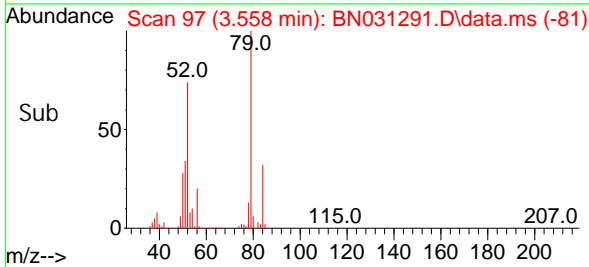
Supervised By :mohammad ahmed 04/29/2024

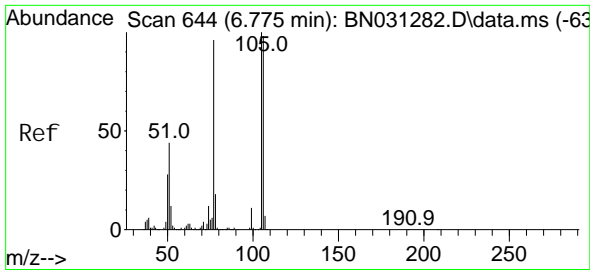


#5
 Pyridine
 Concen: 30.974 ng/ul
 RT: 3.558 min Scan# 97
 Delta R.T. -0.006 min
 Lab File: BN031291.D
 Acq: 28 Apr 2024 04:37



Tgt Ion: 79 Resp: 359894
 Ion Ratio Lower Upper
 79 100
 52 73.7 59.9 89.9
 51 34.4 29.0 43.6





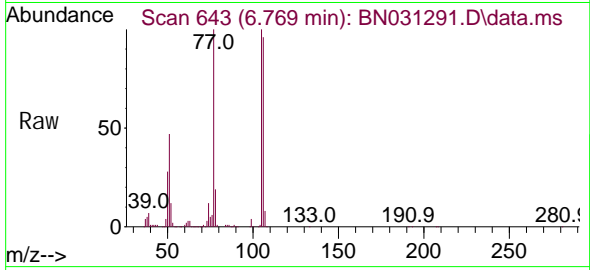
#6
Benzaldehyde
Concen: 36.284 ng/ul
RT: 6.769 min Scan# 643
Delta R.T. -0.006 min
Lab File: BN031291.D
Acq: 28 Apr 2024 04:37

Instrument :

BNA_N

ClientSampleId :

SLCS492



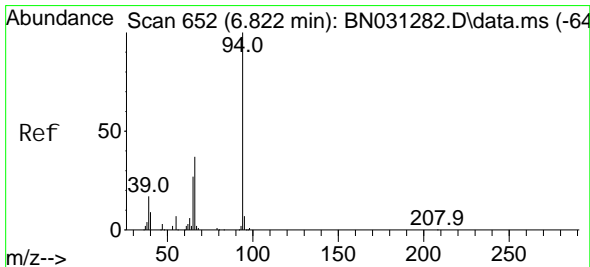
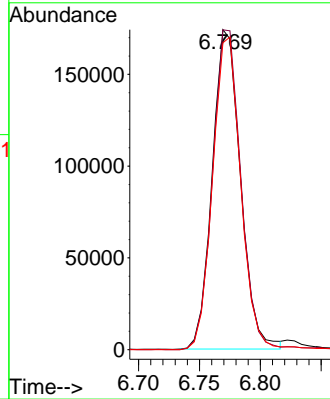
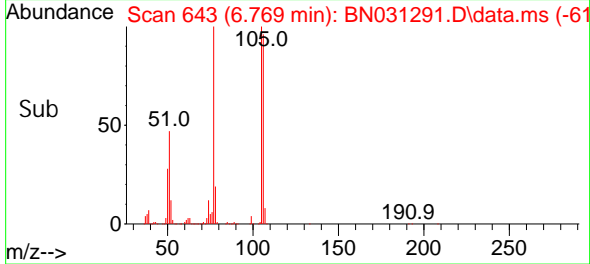
Tgt Ion: 77 Resp: 280729
Ion Ratio Lower Upper
77 100
105 100.0 80.0 120.0
106 95.9 75.0 112.6

Manual Integrations

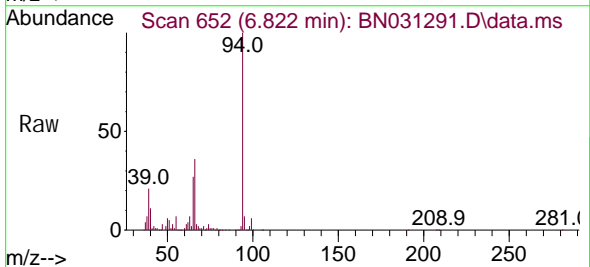
APPROVED

Reviewed By :Yogesh Patel 04/29/2024

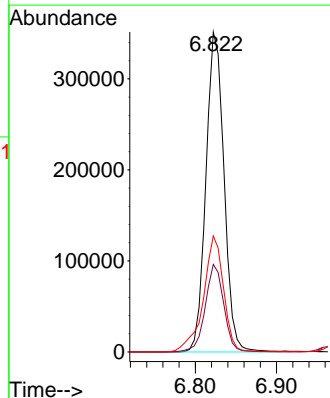
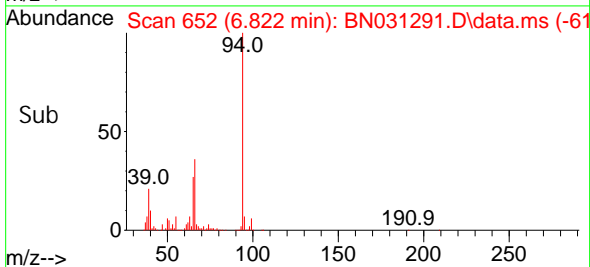
Supervised By :mohammad ahmed 04/29/2024

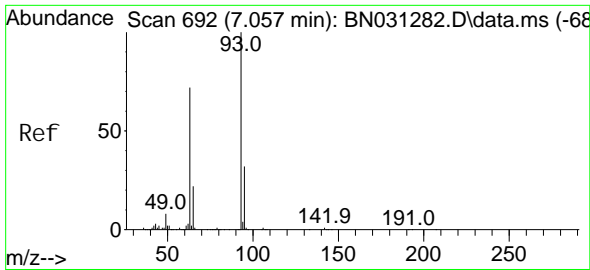


#8
Phenol
Concen: 33.515 ng/ul
RT: 6.822 min Scan# 652
Delta R.T. -0.006 min
Lab File: BN031291.D
Acq: 28 Apr 2024 04:37



Tgt Ion: 94 Resp: 544462
Ion Ratio Lower Upper
94 100
65 27.4 22.0 33.0
66 36.3 29.8 44.6





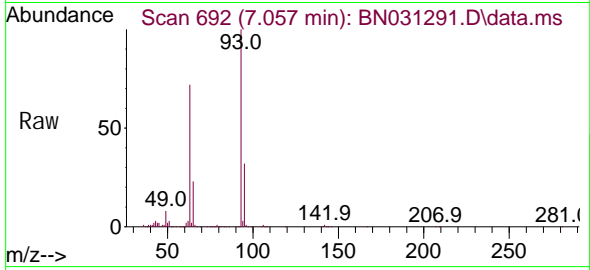
#10
 Bis(2-Chloroethyl) ether
 Concen: 32.609 ng/ul
 RT: 7.057 min Scan# 692
 Delta R.T. -0.000 min
 Lab File: BN031291.D
 Acq: 28 Apr 2024 04:37

Instrument :

BNA_N

ClientSampleId :

SLCS492



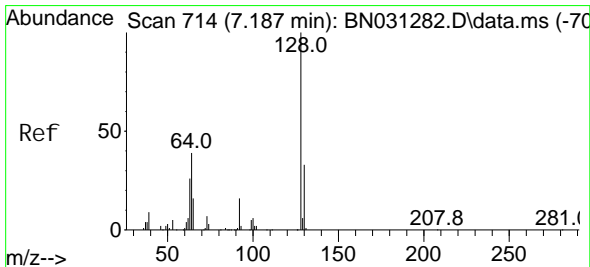
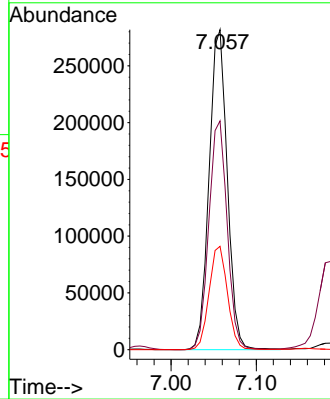
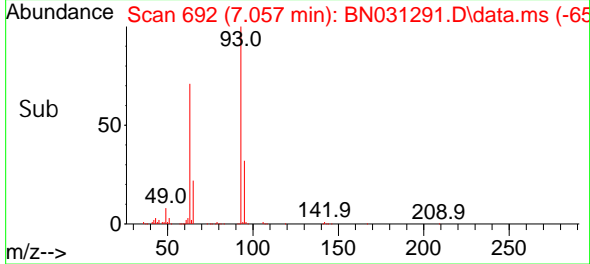
Tgt Ion: 93 Resp: 417988
 Ion Ratio Lower Upper
 93 100
 63 71.5 57.1 85.7
 95 32.3 24.9 37.3

Manual Integrations

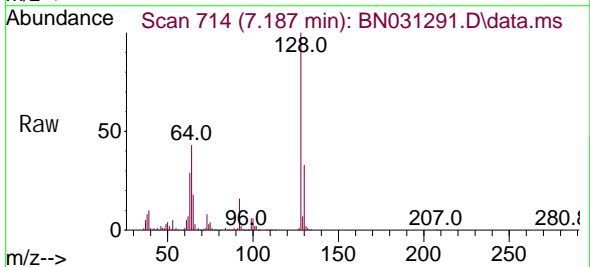
APPROVED

Reviewed By :Yogesh Patel 04/29/2024

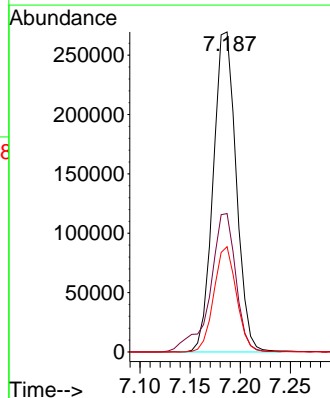
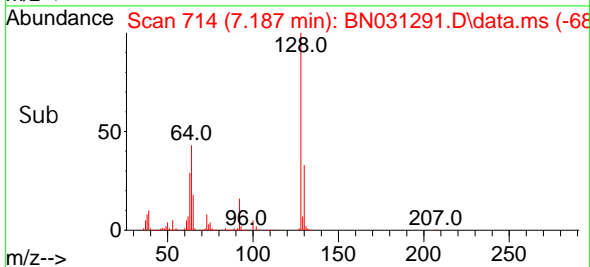
Supervised By :mohammad ahmed 04/29/2024

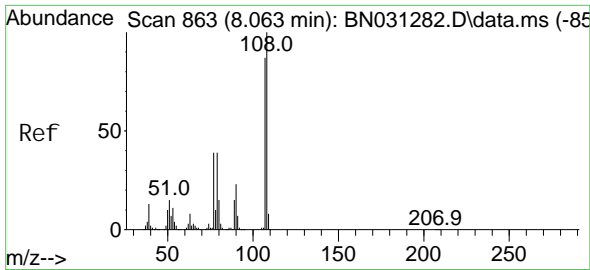


#12
 2-Chlorophenol
 Concen: 33.783 ng/ul
 RT: 7.187 min Scan# 714
 Delta R.T. -0.000 min
 Lab File: BN031291.D
 Acq: 28 Apr 2024 04:37



Tgt Ion: 128 Resp: 430822
 Ion Ratio Lower Upper
 128 100
 64 43.3 34.9 52.3
 130 32.9 27.0 40.4





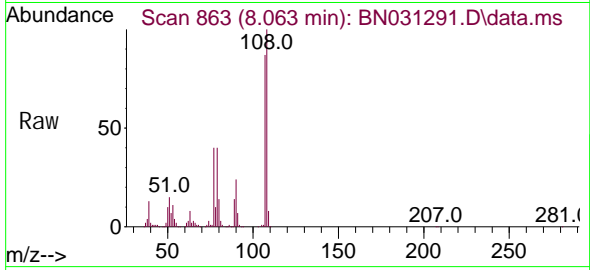
#13
 2-Methyl phenol
 Concen: 33.165 ng/ul
 RT: 8.063 min Scan# 80
 Delta R.T. -0.006 min
 Lab File: BN031291.D
 Acq: 28 Apr 2024 04:37

Instrument :

BNA_N

ClientSampleId :

SLCS492



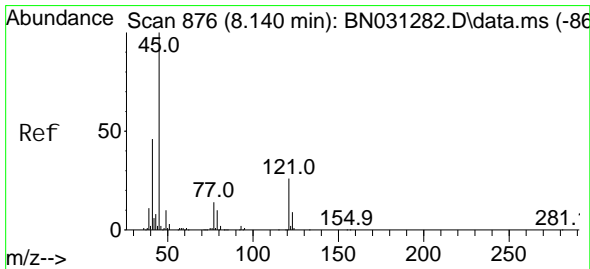
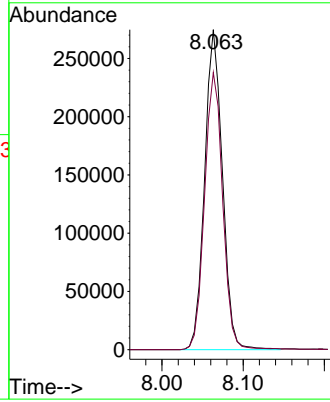
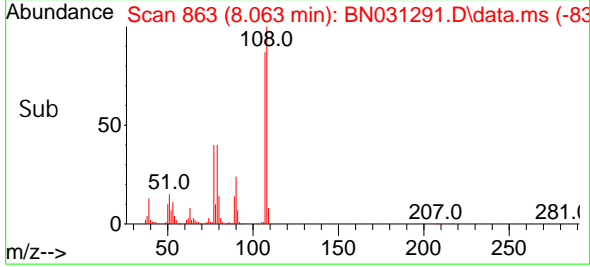
Tgt Ion: 108 Resp: 417530
 Ion Ratio Lower Upper
 108 100
 107 86.6 70.1 105.1

Manual Integrations

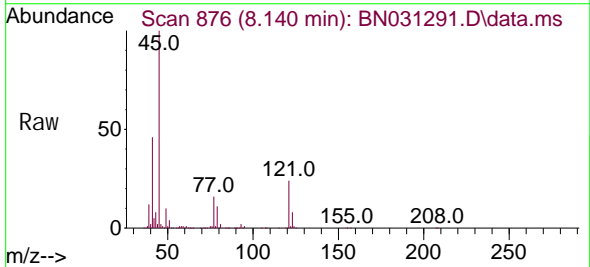
APPROVED

Reviewed By :Yogesh Patel 04/29/2024

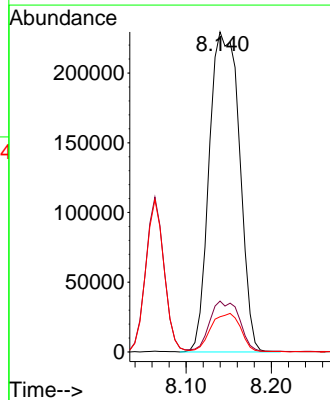
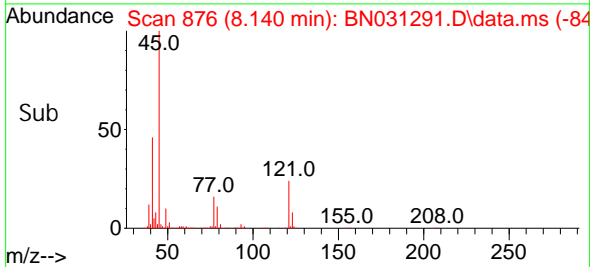
Supervised By :mohammad ahmed 04/29/2024

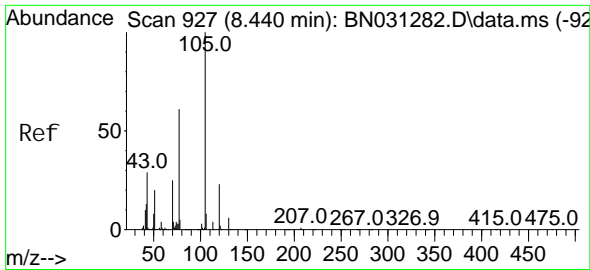


#14
 2, 2' -oxybis(1-Chloropropane)
 Concen: 33.763 ng/ul
 RT: 8.140 min Scan# 876
 Delta R.T. -0.006 min
 Lab File: BN031291.D
 Acq: 28 Apr 2024 04:37



Tgt Ion: 45 Resp: 564231
 Ion Ratio Lower Upper
 45 100
 77 15.9 12.5 18.7
 79 11.0 9.6 14.4





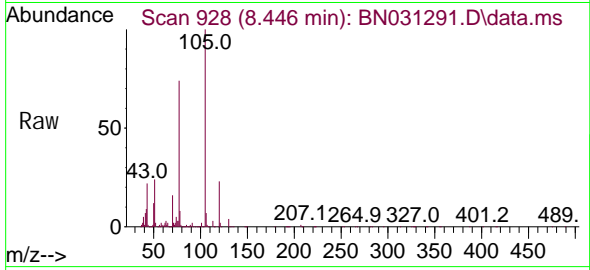
#16
 Acetophenone
 Concen: 32.706 ng/ul
 RT: 8.446 min Scan# 911
 Delta R.T. -0.000 min
 Lab File: BN031291.D
 Acq: 28 Apr 2024 04:37

Instrument :

BNA_N

ClientSampleId :

SLCS492



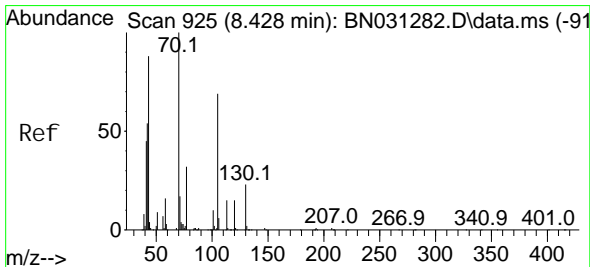
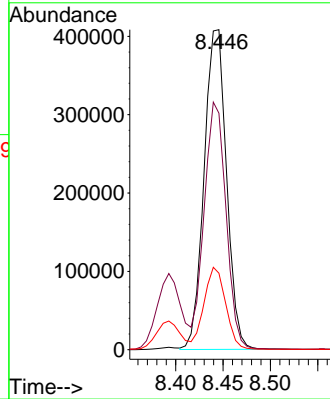
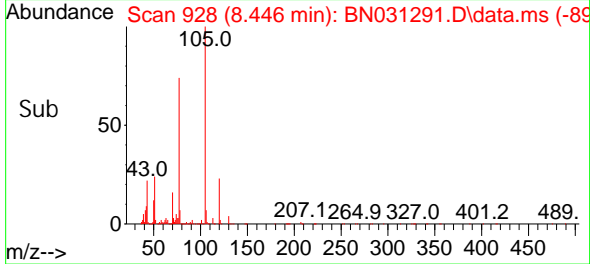
Tgt Ion: 105 Resp: 67151
 Ion Ratio Lower Upper
 105 100
 77 73.9 60.2 90.4
 51 23.9 20.6 31.0

Manual Integrations

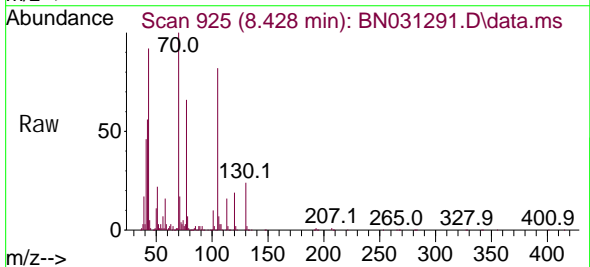
APPROVED

Reviewed By :Yogesh Patel 04/29/2024

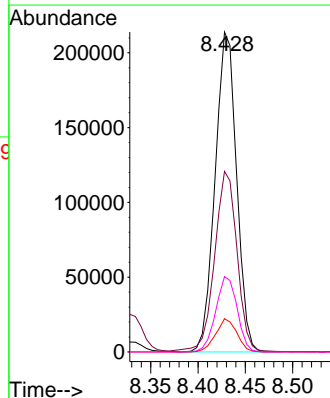
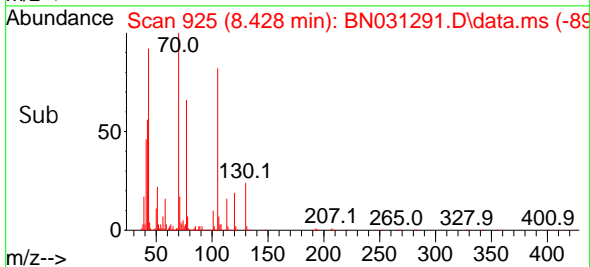
Supervised By :mohammad ahmed 04/29/2024

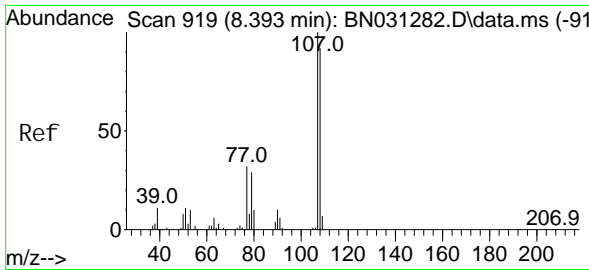


#17
 N-Ni troso-di -n-propyl ami ne
 Concen: 33.072 ng/ul
 RT: 8.428 min Scan# 925
 Delta R.T. -0.006 min
 Lab File: BN031291.D
 Acq: 28 Apr 2024 04:37



Tgt Ion: 70 Resp: 338457
 Ion Ratio Lower Upper
 70 100
 42 56.4 45.0 67.6
 101 10.4 8.1 12.1
 130 23.6 19.2 28.8





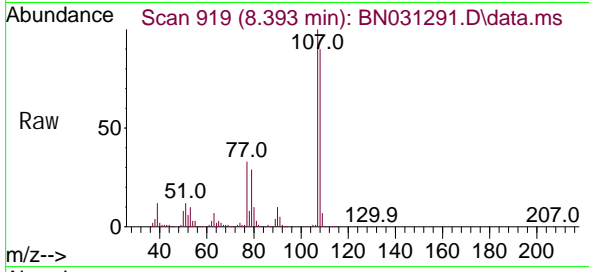
#18
 4-Methyl phenol
 Concen: 33.249 ng/ul
 RT: 8.393 min Scan# 919
 Delta R.T. -0.006 min
 Lab File: BN031291.D
 Acq: 28 Apr 2024 04:37

Instrument :

BNA_N

ClientSampleId :

SLCS492



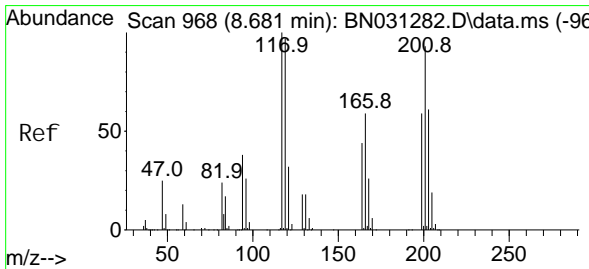
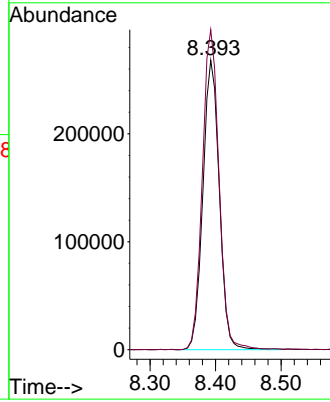
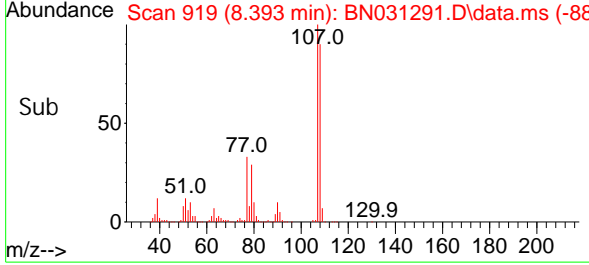
Tgt Ion: 108 Resp: 468876
 Ion Ratio Lower Upper
 108 100
 107 110.5 89.8 134.8

Manual Integrations

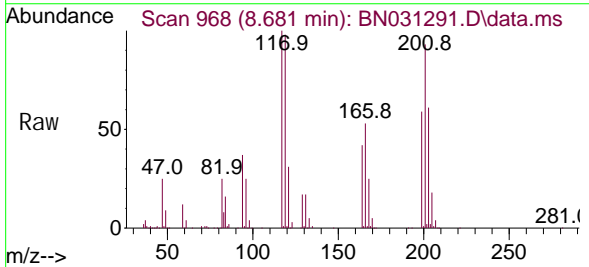
APPROVED

Reviewed By :Yogesh Patel 04/29/2024

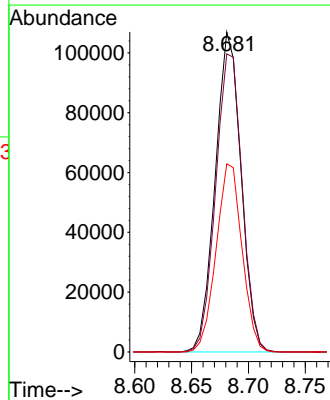
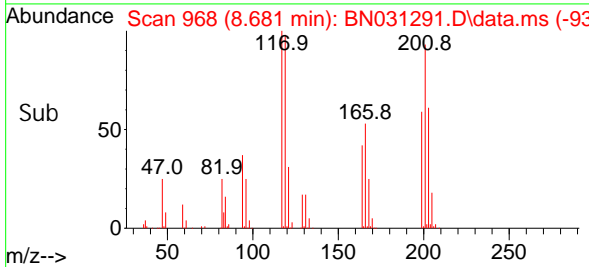
Supervised By :mohammad ahmed 04/29/2024

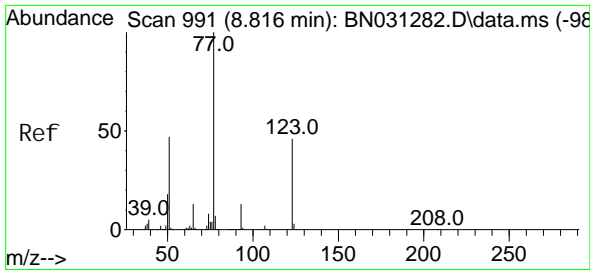


#19
 Hexachloroethane
 Concen: 31.931 ng/ul
 RT: 8.681 min Scan# 968
 Delta R.T. -0.006 min
 Lab File: BN031291.D
 Acq: 28 Apr 2024 04:37



Tgt Ion: 117 Resp: 168976
 Ion Ratio Lower Upper
 117 100
 201 93.2 77.4 116.0
 199 58.8 49.6 74.4





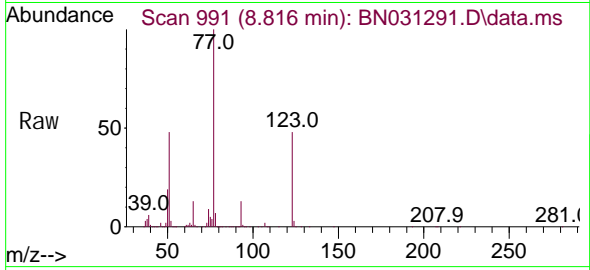
#22
 Ni trobenzene
 Concen: 31.746 ng/ul
 RT: 8.816 min Scan# 91
 Delta R.T. -0.006 min
 Lab File: BN031291.D
 Acq: 28 Apr 2024 04:37

Instrument :

BNA_N

ClientSampleId :

SLCS492



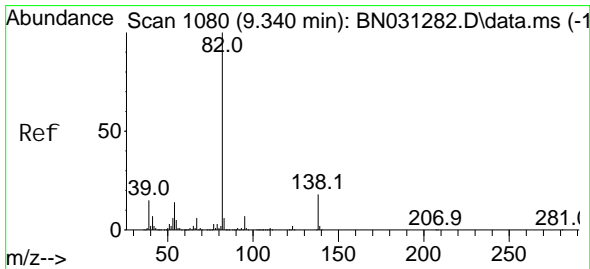
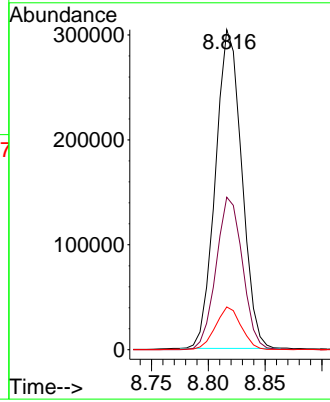
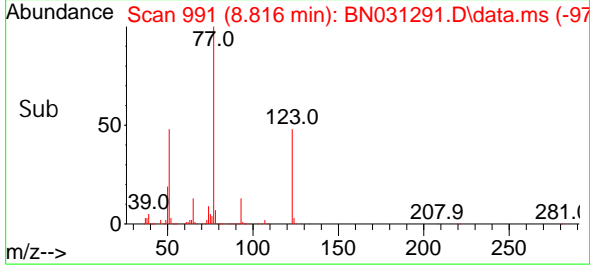
Tgt Ion: 77 Resp: 489640
 Ion Ratio Lower Upper
 77 100
 123 47.6 38.2 57.2
 65 13.3 10.7 16.1

Manual Integrations

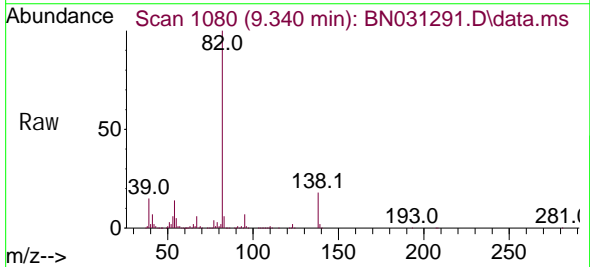
APPROVED

Reviewed By :Yogesh Patel 04/29/2024

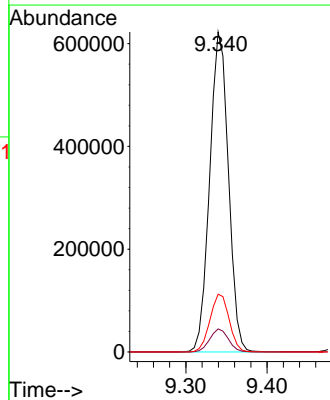
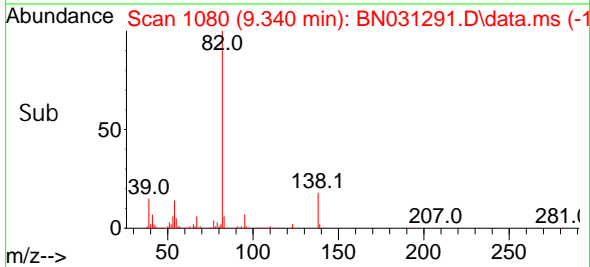
Supervised By :mohammad ahmed 04/29/2024

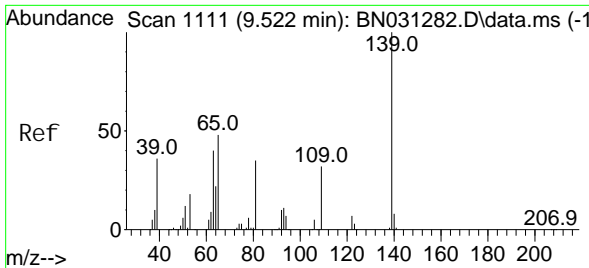


#23
 Isophorone
 Concen: 31.686 ng/ul
 RT: 9.340 min Scan# 1080
 Delta R.T. -0.006 min
 Lab File: BN031291.D
 Acq: 28 Apr 2024 04:37



Tgt Ion: 82 Resp: 997351
 Ion Ratio Lower Upper
 82 100
 95 7.2 5.9 8.9
 138 18.0 14.7 22.1





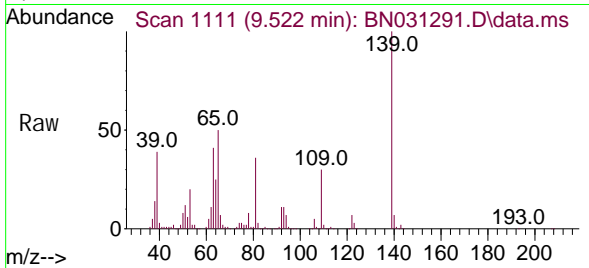
#25
 2-Nitrophenol
 Concen: 35.059 ng/ul
 RT: 9.522 min Scan# 1111
 Delta R.T. -0.006 min
 Lab File: BN031291.D
 Acq: 28 Apr 2024 04:37

Instrument :

BNA_N

ClientSampleId :

SLCS492



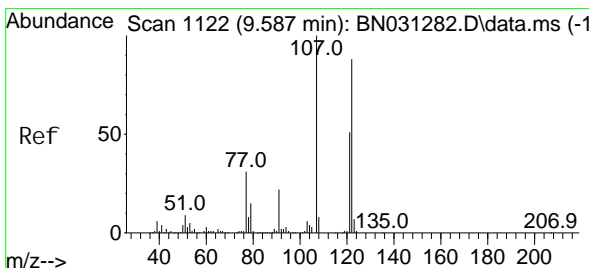
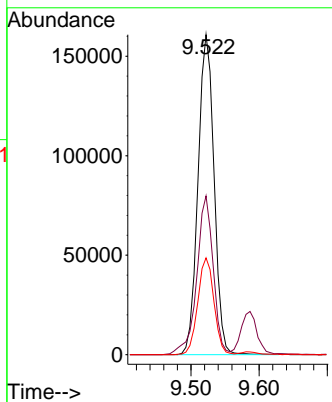
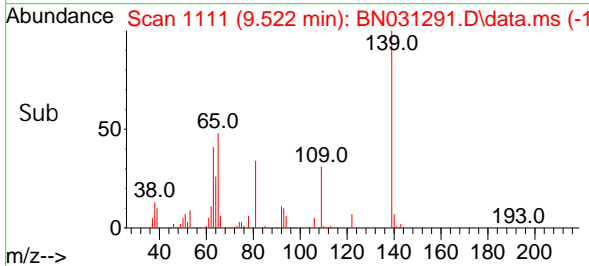
Tgt Ion: 139 Resp: 26349
 Ion Ratio Lower Upper
 139 100
 65 49.6 35.2 52.8
 109 30.3 25.4 38.0

Manual Integrations

APPROVED

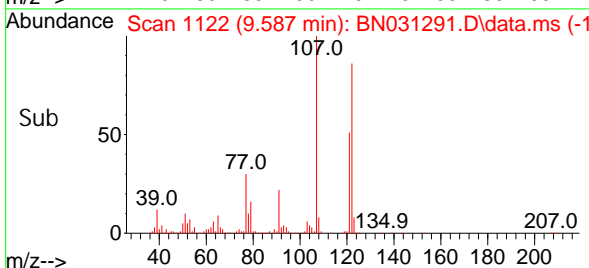
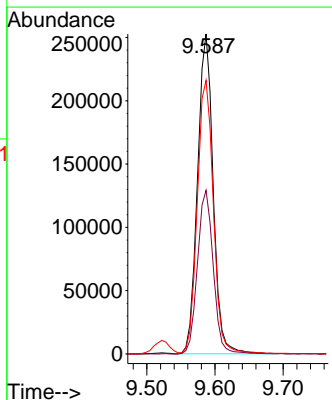
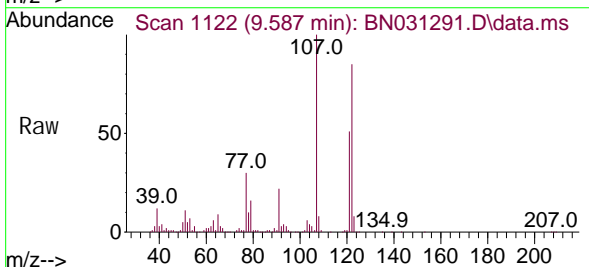
Reviewed By :Yogesh Patel 04/29/2024

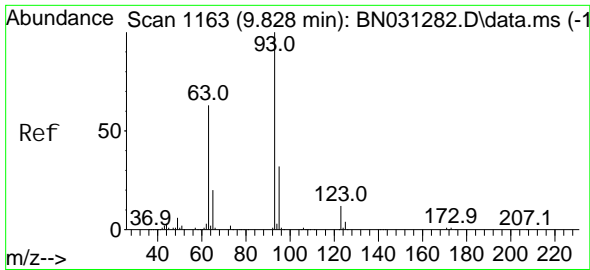
Supervised By :mohammad ahmed 04/29/2024



#26
 2,4-Dimethyl phenol
 Concen: 26.280 ng/ul
 RT: 9.587 min Scan# 1122
 Delta R.T. -0.000 min
 Lab File: BN031291.D
 Acq: 28 Apr 2024 04:37

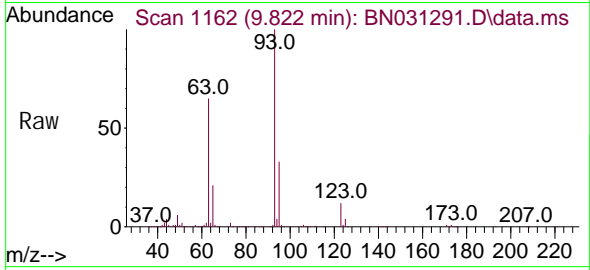
Tgt Ion: 107 Resp: 402801
 Ion Ratio Lower Upper
 107 100
 121 51.1 40.3 60.5
 122 85.5 69.8 104.8





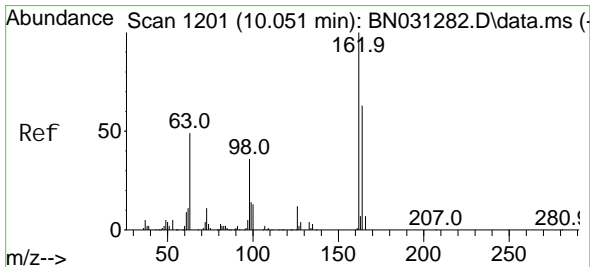
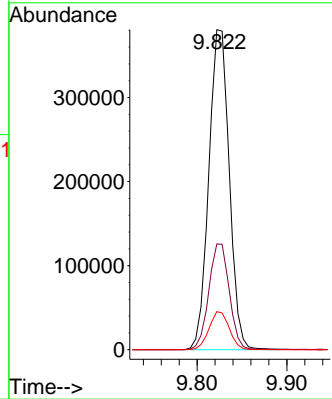
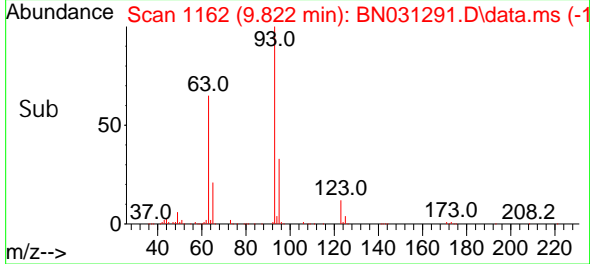
#27
 Bis(2-Chloroethoxy)methane
 Concen: 31.523 ng/ul
 RT: 9.822 min Scan# 1163
 Delta R.T. -0.006 min
 Lab File: BN031291.D
 Acq: 28 Apr 2024 04:37

Instrument :
 BNA_N
ClientSampleId :
 SLCS492

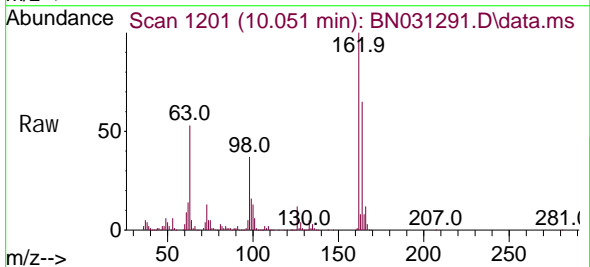


Tgt Ion: 93 Resp: 602674
 Ion Ratio Lower Upper
 93 100
 95 33.1 25.8 38.6
 123 11.9 9.8 14.6

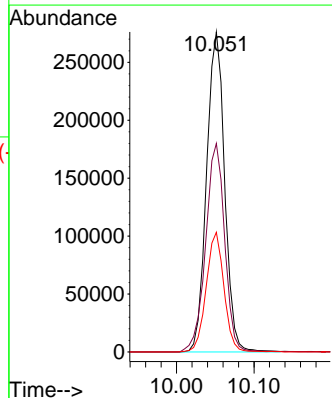
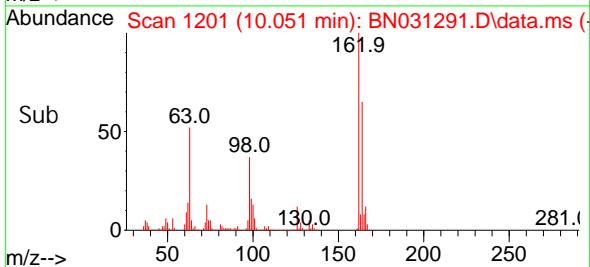
Manual Integrations
APPROVED
 Reviewed By :Yogesh Patel 04/29/2024
 Supervised By :mohammad ahmed 04/29/2024

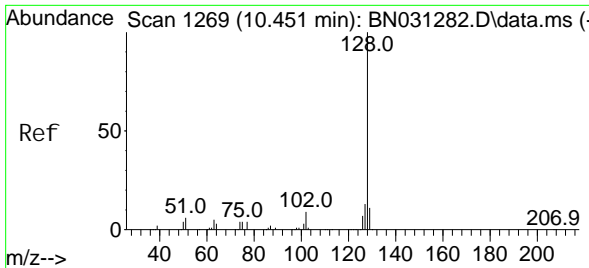


#29
 2,4-Dichlorophenol
 Concen: 33.425 ng/ul
 RT: 10.051 min Scan# 1201
 Delta R.T. -0.006 min
 Lab File: BN031291.D
 Acq: 28 Apr 2024 04:37



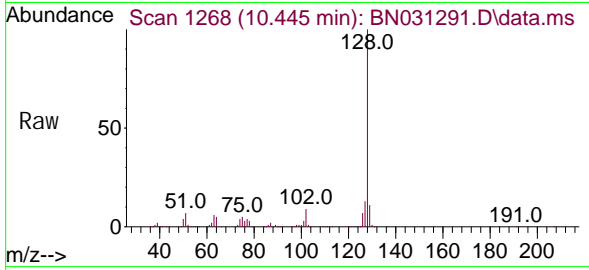
Tgt Ion: 162 Resp: 447224
 Ion Ratio Lower Upper
 162 100
 164 65.1 51.0 76.6
 98 37.4 28.6 42.8





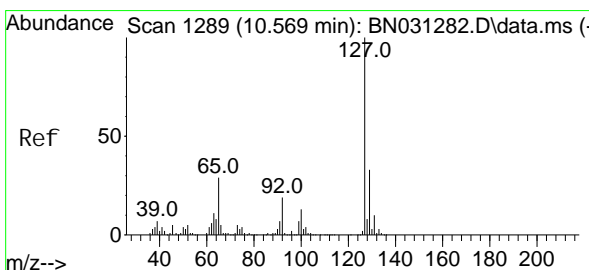
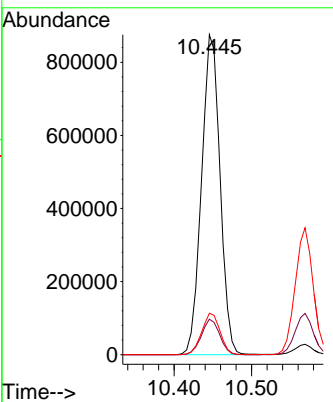
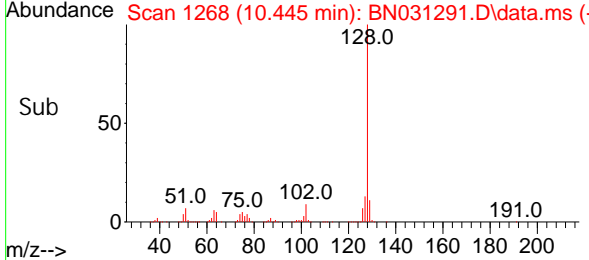
#30
 Naphthalene
 Concen: 30.825 ng/ul
 RT: 10.445 min Scan# 1268
 Delta R.T. -0.006 min
 Lab File: BN031291.D
 Acq: 28 Apr 2024 04:37

Instrument :
 BNA_N
ClientSampleId :
 SLCS492



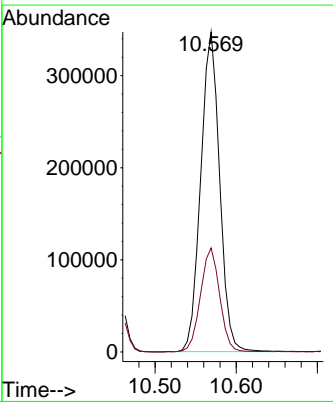
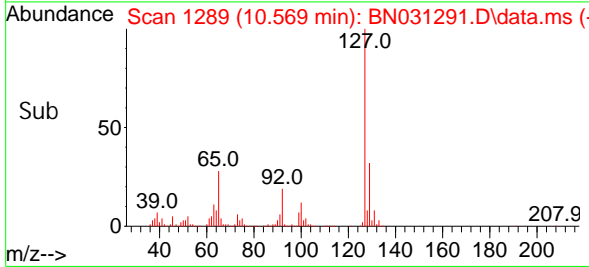
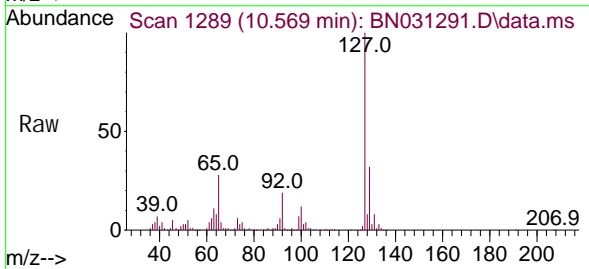
Tgt Ion: 128 Resp: 145300
 Ion Ratio Lower Upper
 128 100
 129 11.1 9.0 13.4
 127 13.0 10.5 15.7

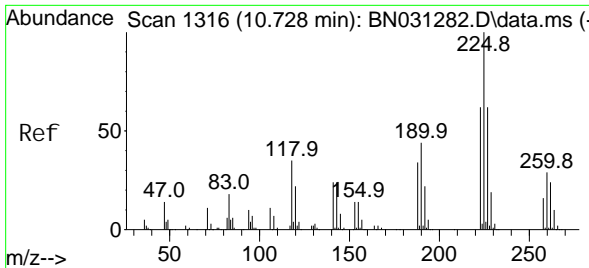
Manual Integrations
APPROVED
 Reviewed By :Yogesh Patel 04/29/2024
 Supervised By :mohammad ahmed 04/29/2024



#32
 4-Chloroaniline
 Concen: 27.587 ng/ul
 RT: 10.569 min Scan# 1289
 Delta R.T. -0.000 min
 Lab File: BN031291.D
 Acq: 28 Apr 2024 04:37

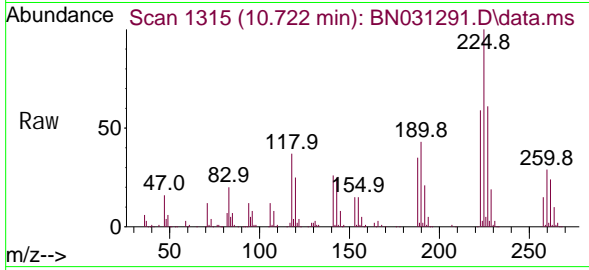
Tgt Ion: 127 Resp: 561134
 Ion Ratio Lower Upper
 127 100
 129 32.5 25.4 38.2





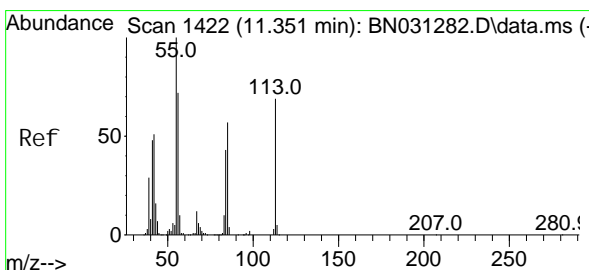
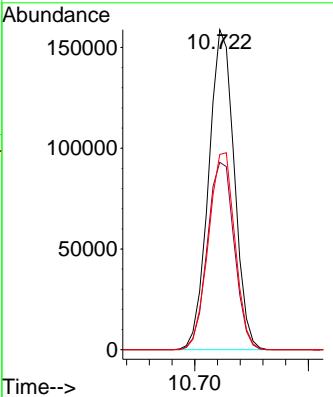
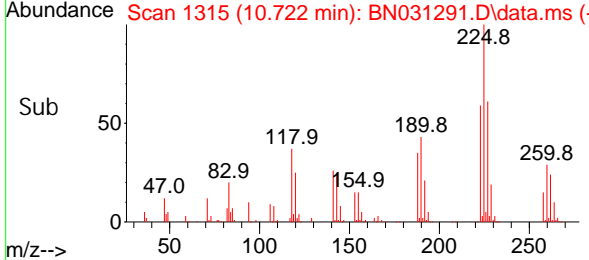
#33
 Hexachlorobutadiene
 Concen: 30.536 ng/ul
 RT: 10.722 min Scan# 1316
 Delta R.T. -0.006 min
 Lab File: BN031291.D
 Acq: 28 Apr 2024 04:37

Instrument :
 BNA_N
ClientSampleId :
 SLCS492

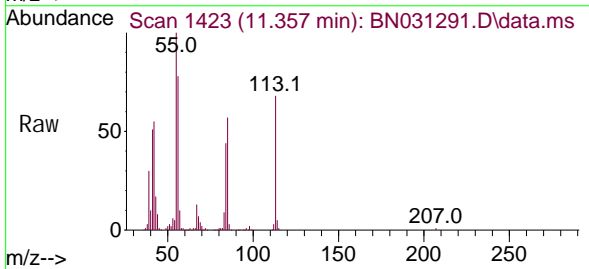


Tgt Ion: 225 Resp: 249068
 Ion Ratio Lower Upper
 225 100
 223 58.6 49.8 74.6
 227 61.0 48.8 73.2

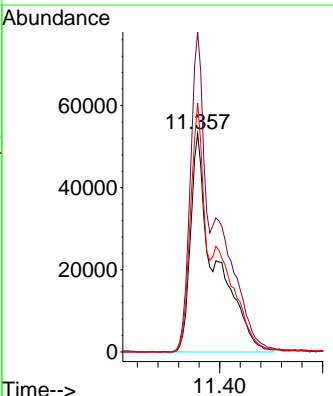
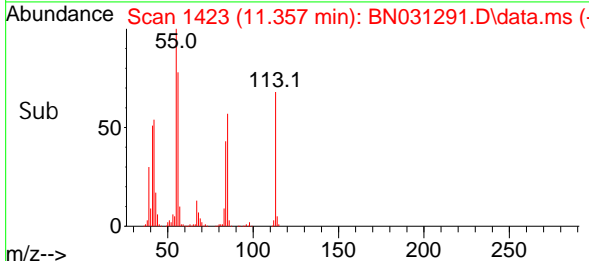
Manual Integrations
APPROVED
 Reviewed By :Yogesh Patel 04/29/2024
 Supervised By :mohammad ahmed 04/29/2024

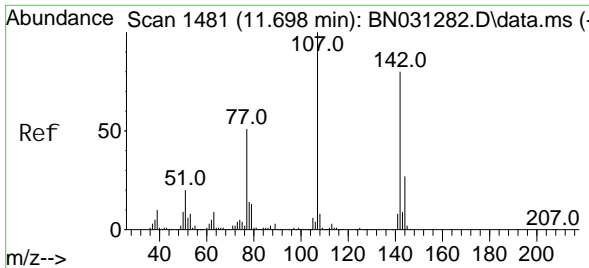


#34
 Caprolactam
 Concen: 33.183 ng/ul m
 RT: 11.357 min Scan# 1423
 Delta R.T. 0.006 min
 Lab File: BN031291.D
 Acq: 28 Apr 2024 04:37



Tgt Ion: 113 Resp: 174931
 Ion Ratio Lower Upper
 113 100
 55 146.6 112.4 168.6
 56 114.1 88.0 132.0





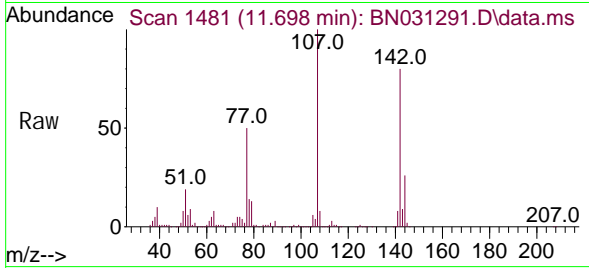
#35
 4-Chloro-3-methyl phenol
 Concen: 33.823 ng/ul
 RT: 11.698 min Scan# 1481
 Delta R.T. -0.006 min
 Lab File: BN031291.D
 Acq: 28 Apr 2024 04:37

Instrument :

BNA_N

ClientSampleId :

SLCS492

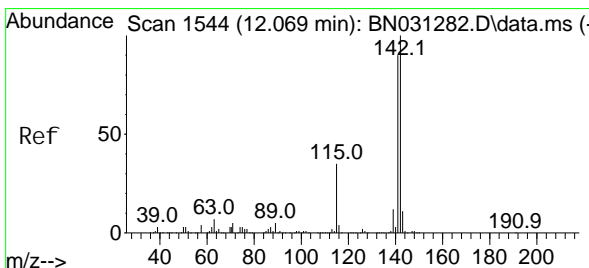
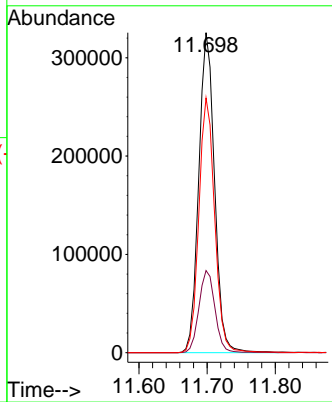
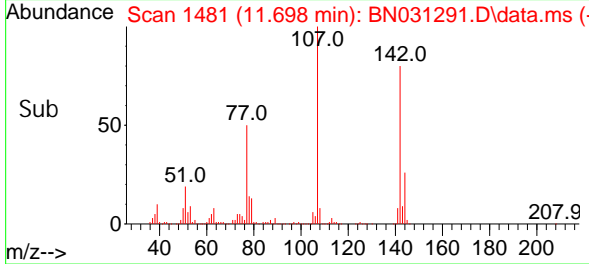


Tgt Ion: 107 Resp: 52470
 Ion Ratio Lower Upper
 107 100
 144 25.7 20.6 31.0
 142 79.6 67.4 101.2

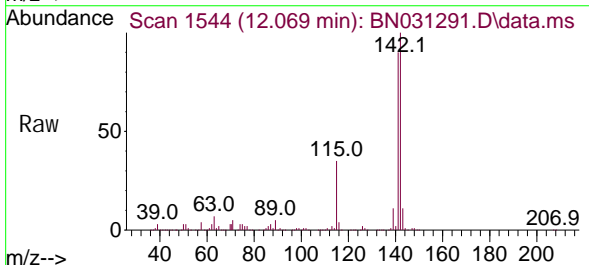
Manual Integrations

APPROVED

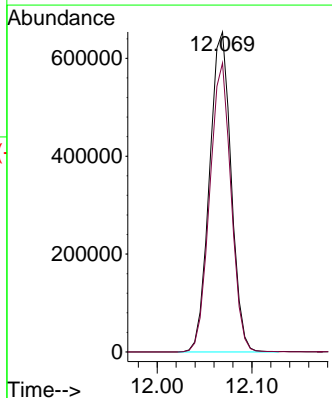
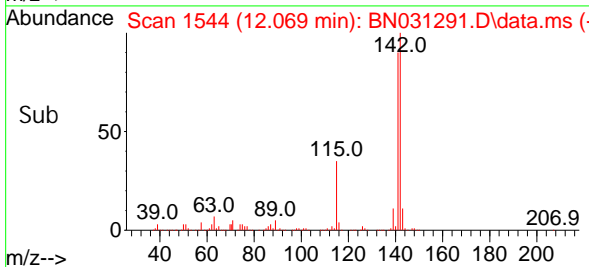
Reviewed By :Yogesh Patel 04/29/2024
 Supervised By :mohammad ahmed 04/29/2024

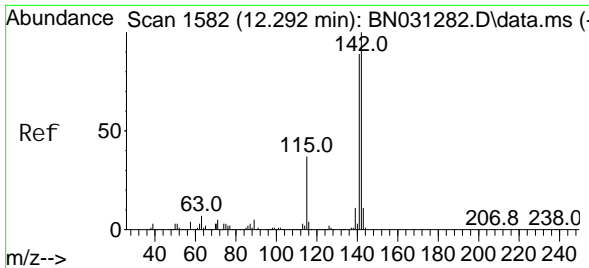


#36
 2-Methyl naphthal ene
 Concen: 31.282 ng/ul
 RT: 12.069 min Scan# 1544
 Delta R.T. -0.000 min
 Lab File: BN031291.D
 Acq: 28 Apr 2024 04:37



Tgt Ion: 142 Resp: 1039847
 Ion Ratio Lower Upper
 142 100
 141 90.3 69.6 104.4





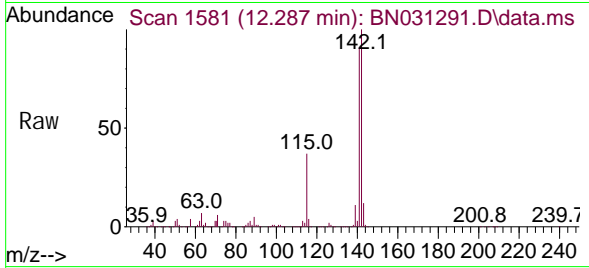
#37
 1-Methyl naphthalene
 Concen: 31.216 ng/ul
 RT: 12.287 min Scan# 110
 Delta R.T. -0.006 min
 Lab File: BN031291.D
 Acq: 28 Apr 2024 04:37

Instrument :

BNA_N

ClientSampleId :

SLCS492



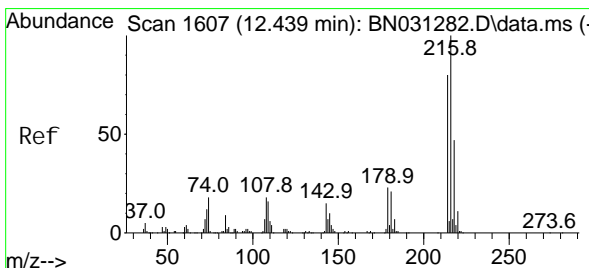
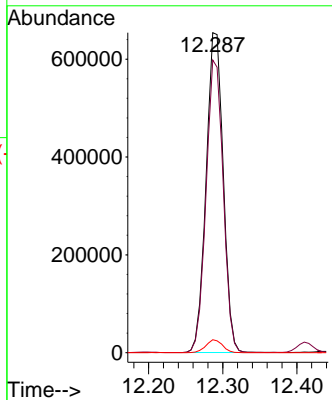
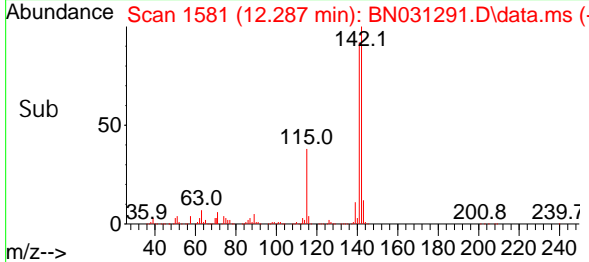
Tgt Ion: 142 Resp: 104997
 Ion Ratio Lower Upper
 142 100
 141 91.4 70.2 105.4
 116 4.1 3.1 4.7

Manual Integrations

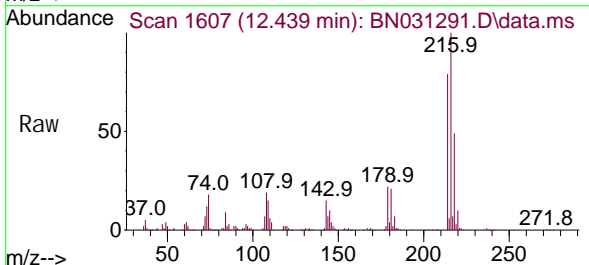
APPROVED

Reviewed By :Yogesh Patel 04/29/2024

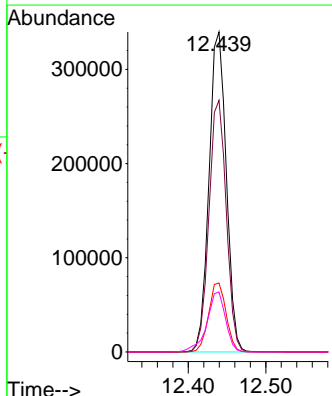
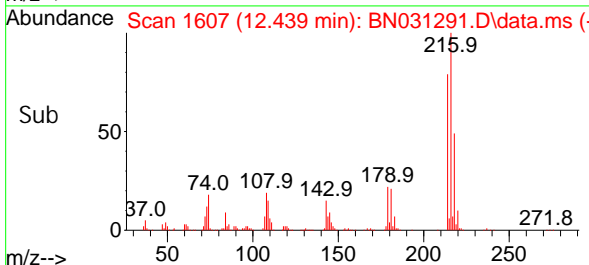
Supervised By :mohammad ahmed 04/29/2024

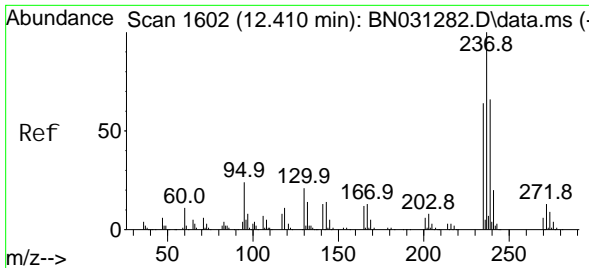


#39
 1,2,4,5-Tetrachlorobenzene
 Concen: 32.049 ng/ul
 RT: 12.439 min Scan# 1607
 Delta R.T. -0.000 min
 Lab File: BN031291.D
 Acq: 28 Apr 2024 04:37



Tgt Ion: 216 Resp: 527049
 Ion Ratio Lower Upper
 216 100
 214 78.6 63.1 94.7
 179 21.6 17.0 25.6
 108 18.8 14.2 21.4





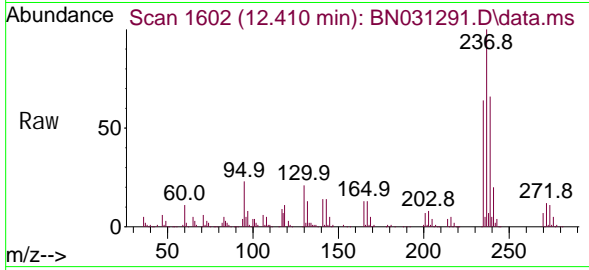
#40
 Hexachlorocyclopentadiene
 Concen: 25.244 ng/ul
 RT: 12.410 min Scan# 1602
 Delta R.T. -0.006 min
 Lab File: BN031291.D
 Acq: 28 Apr 2024 04:37

Instrument :

BNA_N

ClientSampleId :

SLCS492



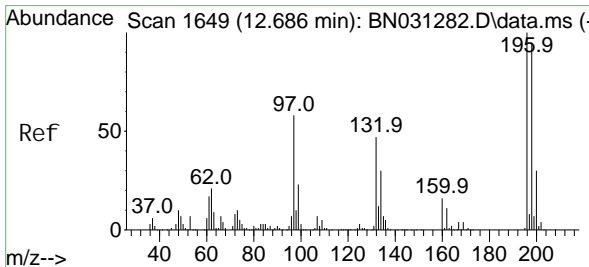
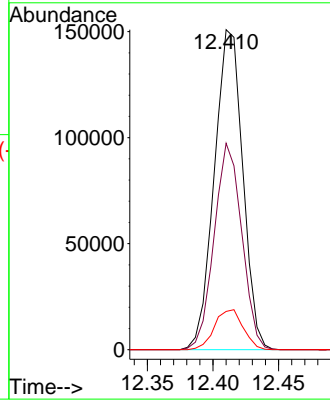
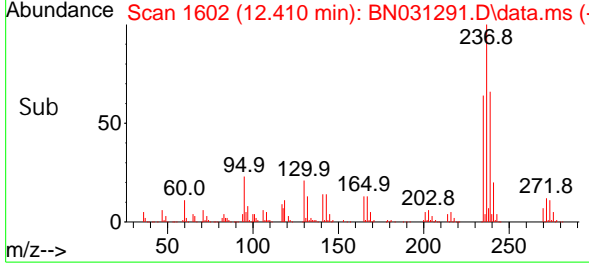
Tgt Ion: 237 Resp: 22804
 Ion Ratio Lower Upper
 237 100
 235 64.5 47.6 71.4
 272 11.9 10.8 16.2

Manual Integrations

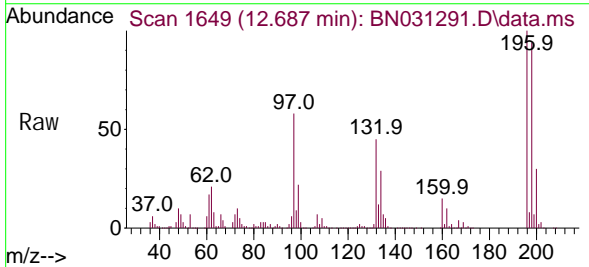
APPROVED

Reviewed By :Yogesh Patel 04/29/2024

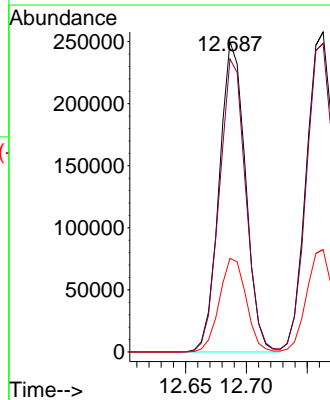
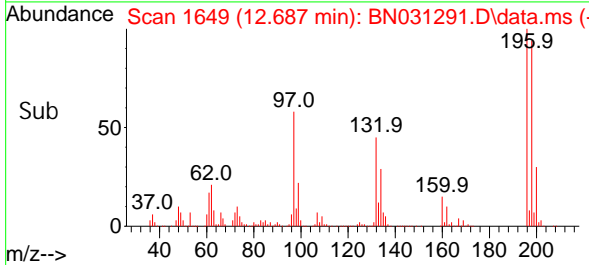
Supervised By :mohammad ahmed 04/29/2024

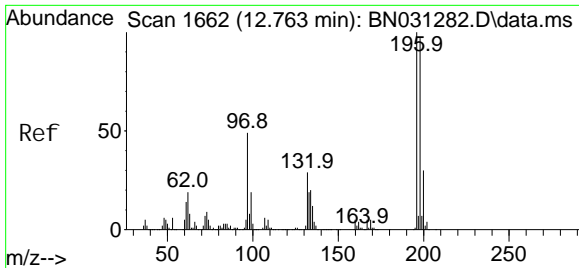


#41
 2,4,6-Trichlorophenol
 Concen: 34.258 ng/ul
 RT: 12.687 min Scan# 1649
 Delta R.T. -0.006 min
 Lab File: BN031291.D
 Acq: 28 Apr 2024 04:37



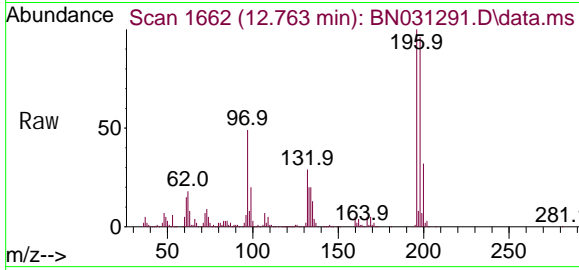
Tgt Ion: 196 Resp: 374992
 Ion Ratio Lower Upper
 196 100
 198 94.4 69.9 104.9
 200 30.2 23.4 35.2





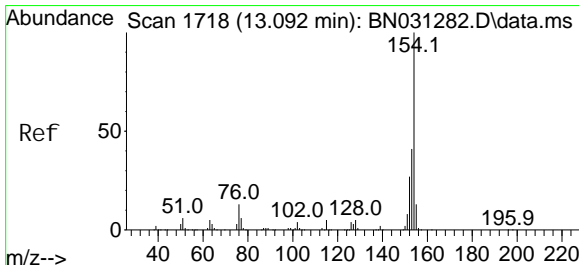
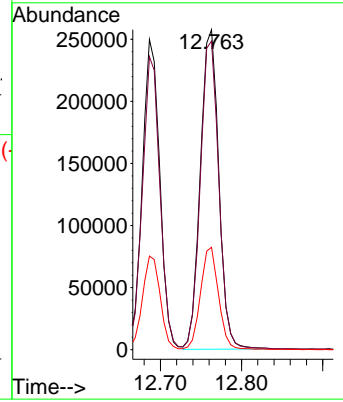
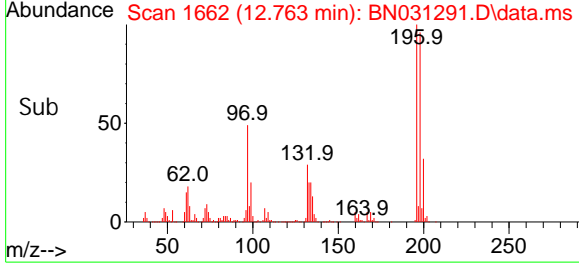
#42
 2, 4, 5-Tri chlorophenol
 Concen: 33.579 ng/ul
 RT: 12.763 min Scan# 1662
 Delta R.T. -0.000 min
 Lab File: BN031291.D
 Acq: 28 Apr 2024 04:37

Instrument :
 BNA_N
ClientSampleId :
 SLCS492

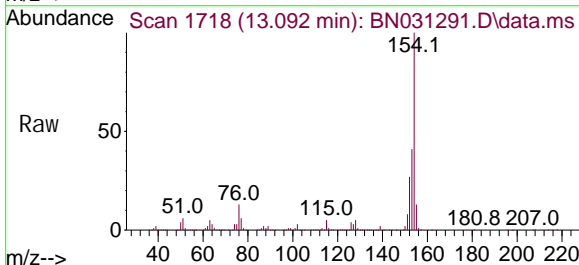


Tgt Ion: 196 Resp: 40751
 Ion Ratio Lower Upper
 196 100
 198 96.5 75.9 113.9
 200 32.0 24.7 37.1

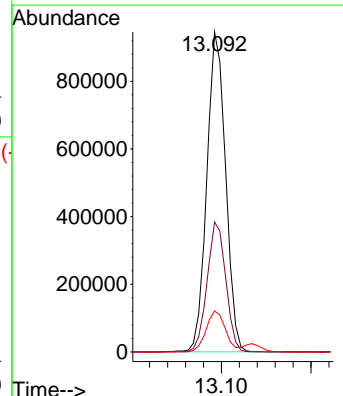
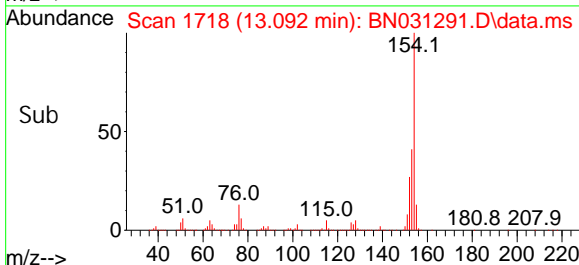
Manual Integrations
APPROVED
 Reviewed By :Yogesh Patel 04/29/2024
 Supervised By :mohammad ahmed 04/29/2024

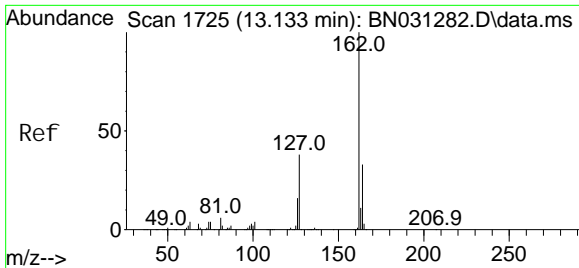


#43
 1, 1' -Bi phenyl
 Concen: 31.714 ng/ul
 RT: 13.092 min Scan# 1718
 Delta R.T. -0.006 min
 Lab File: BN031291.D
 Acq: 28 Apr 2024 04:37



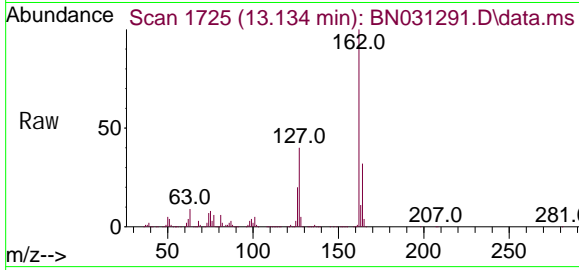
Tgt Ion: 154 Resp: 1370770
 Ion Ratio Lower Upper
 154 100
 153 40.6 31.8 47.8
 76 12.8 10.6 15.8





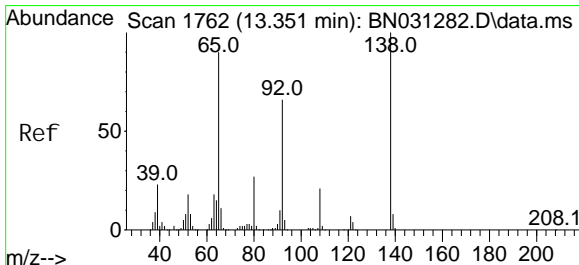
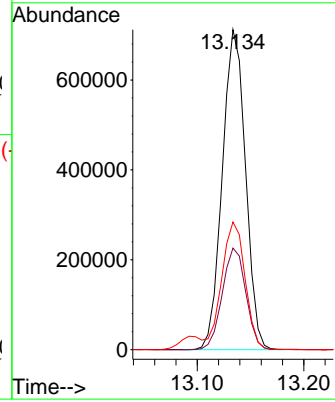
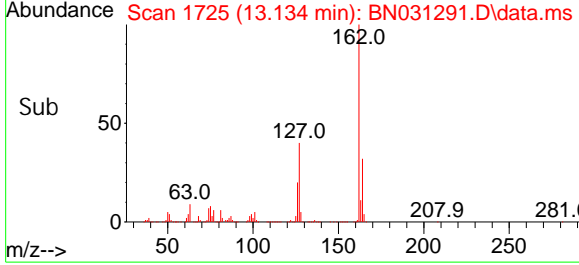
#44
 2-Chloronaphthalene
 Concen: 31.128 ng/ul
 RT: 13.134 min Scan# 1725
 Delta R.T. -0.006 min
 Lab File: BN031291.D
 Acq: 28 Apr 2024 04:37

Instrument :
 BNA_N
ClientSampleId :
 SLCS492

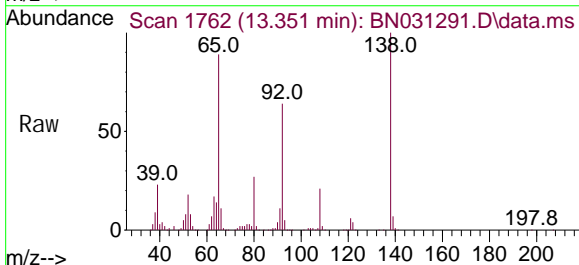


Tgt Ion: 162 Resp: 1075138
 Ion Ratio Lower Upper
 162 100
 164 31.7 25.8 38.8
 127 39.9 33.7 50.5

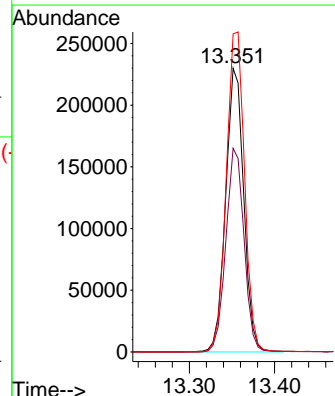
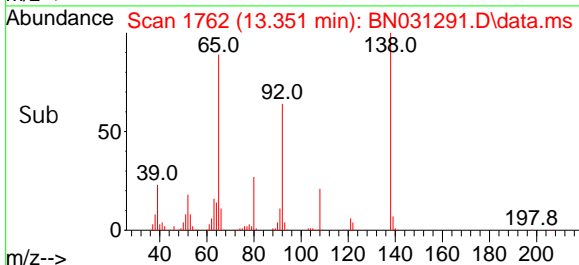
Manual Integrations
APPROVED
 Reviewed By :Yogesh Patel 04/29/2024
 Supervised By :mohammad ahmed 04/29/2024

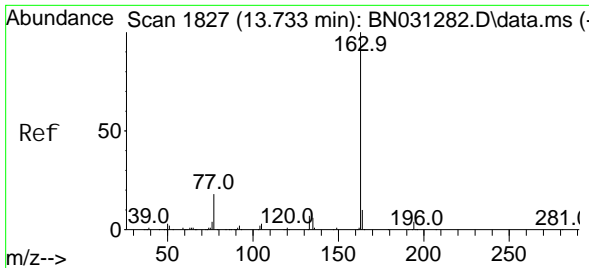


#45
 2-Nitroaniline
 Concen: 35.597 ng/ul
 RT: 13.351 min Scan# 1762
 Delta R.T. -0.006 min
 Lab File: BN031291.D
 Acq: 28 Apr 2024 04:37



Tgt Ion: 65 Resp: 339421
 Ion Ratio Lower Upper
 65 100
 92 71.8 57.4 86.2
 138 112.1 91.6 137.4





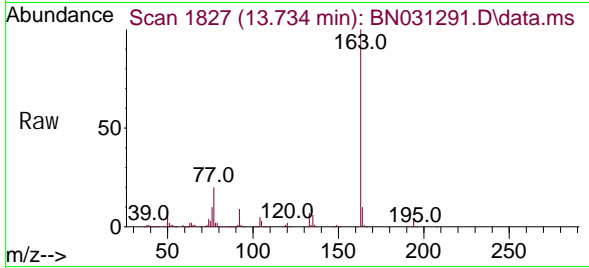
#47
 Di methyl phthal ate
 Concen: 31.821 ng/ul
 RT: 13.734 min Scan# 1827
 Delta R.T. -0.000 min
 Lab File: BN031291.D
 Acq: 28 Apr 2024 04:37

Instrument :

BNA_N

ClientSampleId :

SLCS492



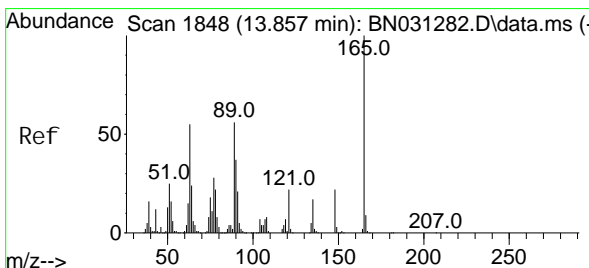
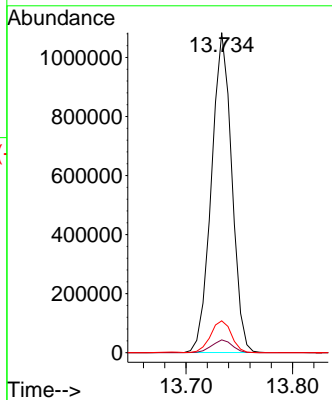
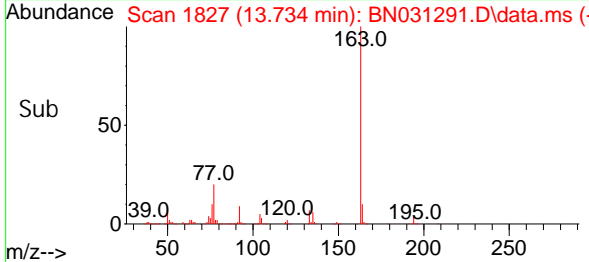
Tgt Ion: 163 Resp: 143569
 Ion Ratio Lower Upper
 163 100
 194 4.0 3.0 4.6
 164 10.0 8.0 12.0

Manual Integrations

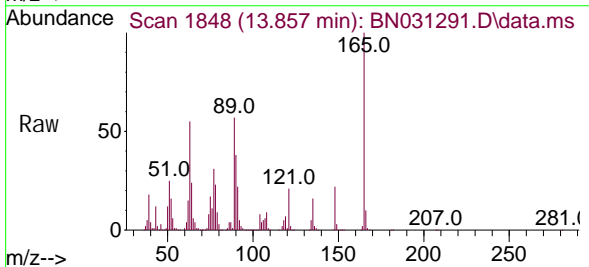
APPROVED

Reviewed By :Yogesh Patel 04/29/2024

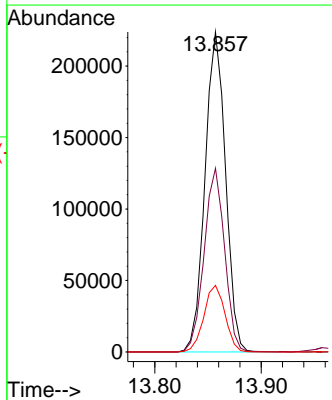
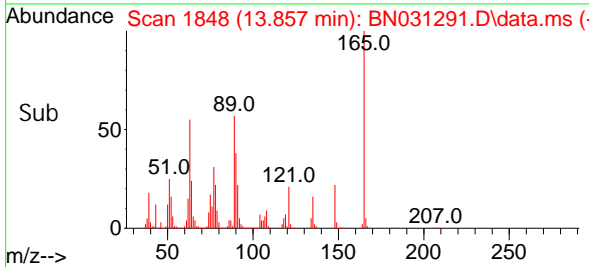
Supervised By :mohammad ahmed 04/29/2024

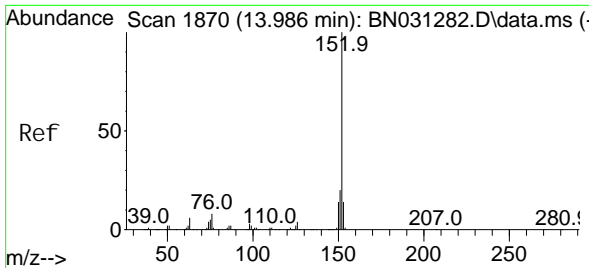


#48
 2,6-Dinitrotoluene
 Concen: 35.453 ng/ul
 RT: 13.857 min Scan# 1848
 Delta R.T. -0.000 min
 Lab File: BN031291.D
 Acq: 28 Apr 2024 04:37



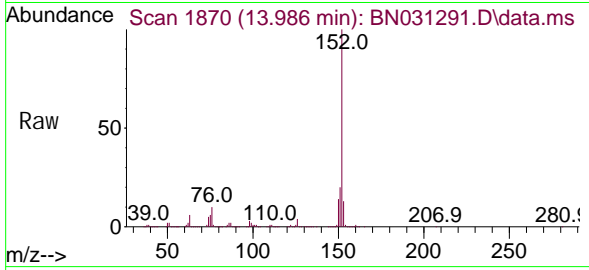
Tgt Ion: 165 Resp: 300258
 Ion Ratio Lower Upper
 165 100
 89 57.4 44.7 67.1
 121 20.8 17.0 25.4





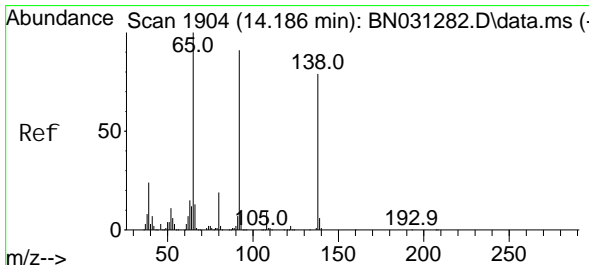
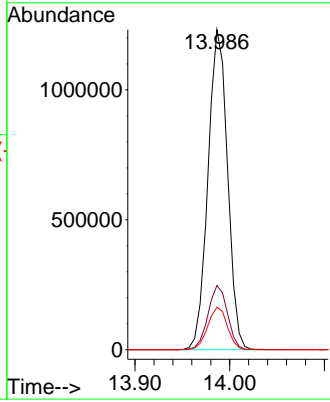
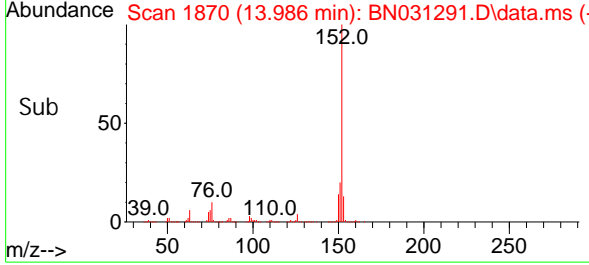
#50
 Acenaphthyl ene
 Concen: 30.449 ng/ul
 RT: 13.986 min Scan# 1870
 Delta R.T. -0.006 min
 Lab File: BN031291.D
 Acq: 28 Apr 2024 04:37

Instrument :
 BNA_N
ClientSampleId :
 SLCS492

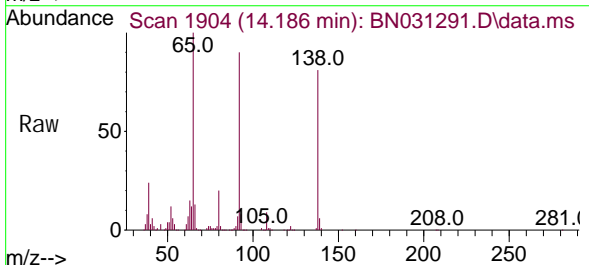


Tgt Ion: 152 Resp: 176268
 Ion Ratio Lower Upper
 152 100
 151 20.0 15.8 23.8
 153 13.2 10.5 15.7

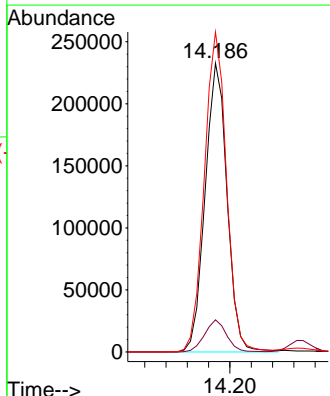
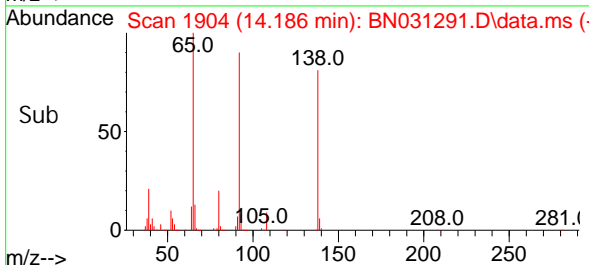
Manual Integrations
APPROVED
 Reviewed By :Yogesh Patel 04/29/2024
 Supervised By :mohammad ahmed 04/29/2024

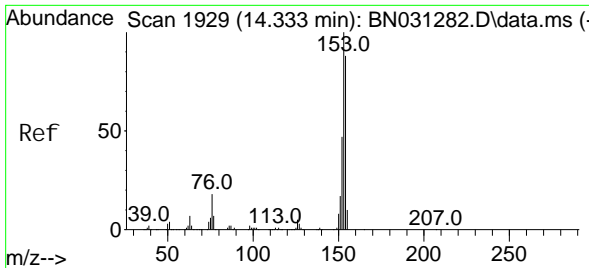


#51
 3-Nitroaniline
 Concen: 34.370 ng/ul
 RT: 14.186 min Scan# 1904
 Delta R.T. -0.006 min
 Lab File: BN031291.D
 Acq: 28 Apr 2024 04:37



Tgt Ion: 138 Resp: 334173
 Ion Ratio Lower Upper
 138 100
 108 11.1 11.1 16.7
 92 110.8 93.9 140.9





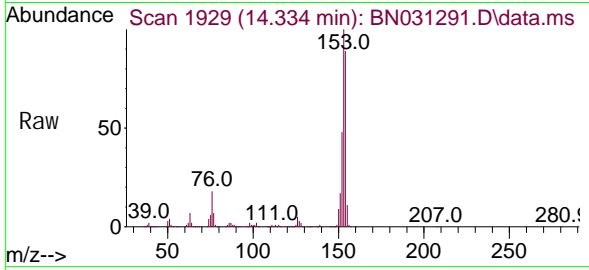
#52
 Acenaphthene
 Concen: 29.936 ng/ul
 RT: 14.334 min Scan# 1929
 Delta R.T. -0.000 min
 Lab File: BN031291.D
 Acq: 28 Apr 2024 04:37

Instrument :

BNA_N

ClientSampleId :

SLCS492



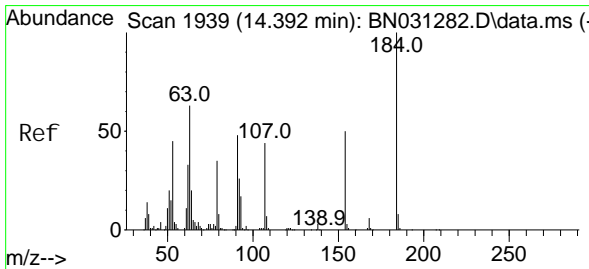
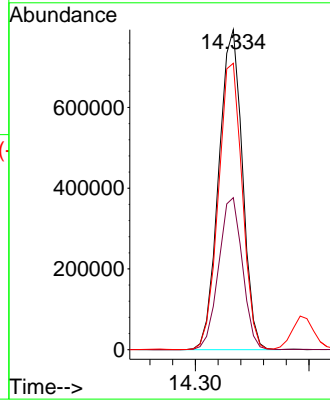
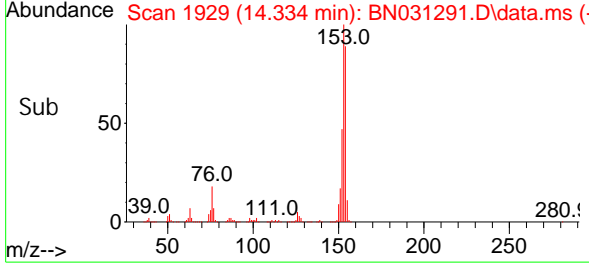
Tgt Ion: 153 Resp: 1148829
 Ion Ratio Lower Upper
 153 100
 152 47.5 36.3 54.5
 154 89.5 72.4 108.6

Manual Integrations

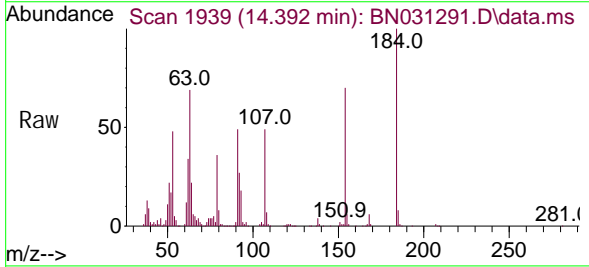
APPROVED

Reviewed By :Yogesh Patel 04/29/2024

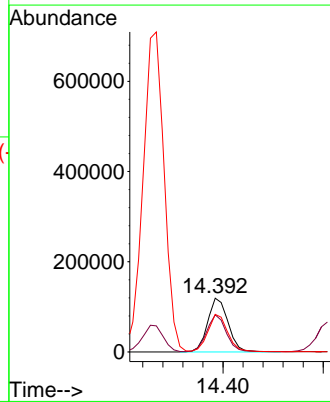
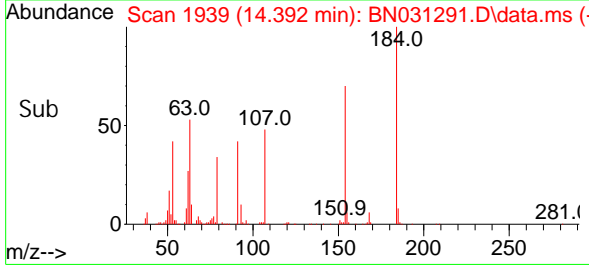
Supervised By :mohammad ahmed 04/29/2024

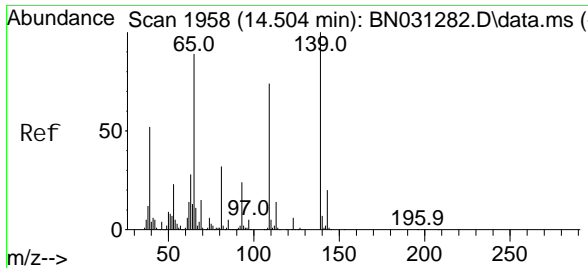


#53
 2,4-Dinitrophenol
 Concen: 35.411 ng/ul
 RT: 14.392 min Scan# 1939
 Delta R.T. -0.006 min
 Lab File: BN031291.D
 Acq: 28 Apr 2024 04:37



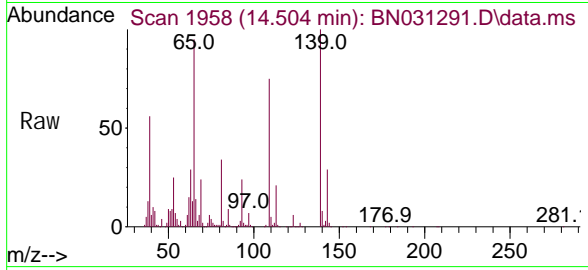
Tgt Ion: 184 Resp: 169600
 Ion Ratio Lower Upper
 184 100
 63 69.1 50.4 75.6
 154 69.8 53.0 79.6





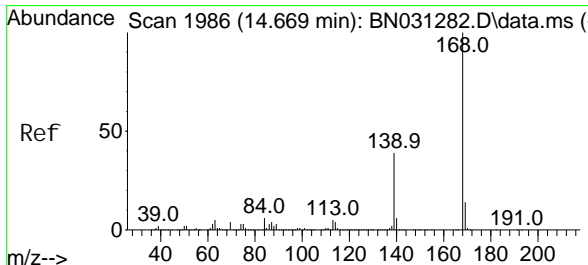
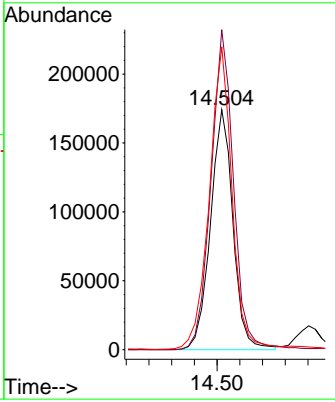
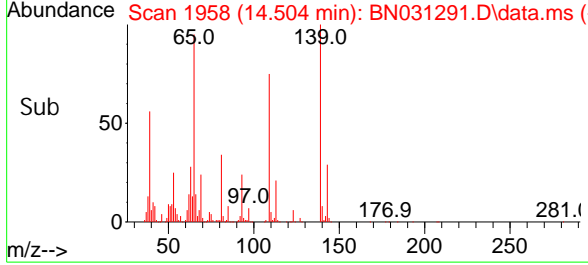
#55
 4-Nitrophenol
 Concen: 32.336 ng/ul
 RT: 14.504 min Scan# 1958
 Delta R.T. -0.000 min
 Lab File: BN031291.D
 Acq: 28 Apr 2024 04:37

Instrument :
 BNA_N
ClientSampleId :
 SLCS492

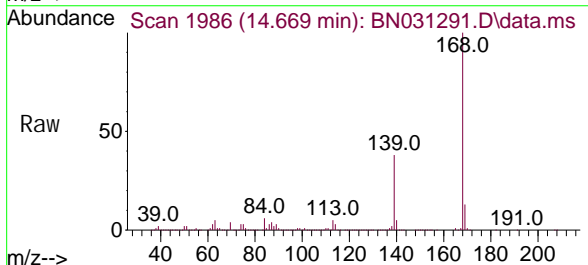


Tgt Ion: 109 Resp: 23954
 Ion Ratio Lower Upper
 109 100
 139 133.3 105.6 158.4
 65 126.2 98.2 147.2

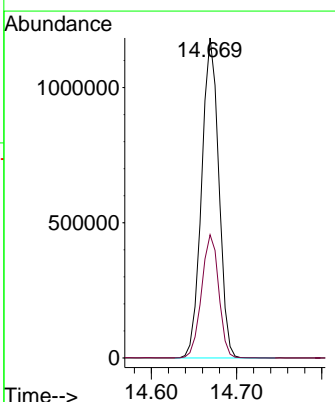
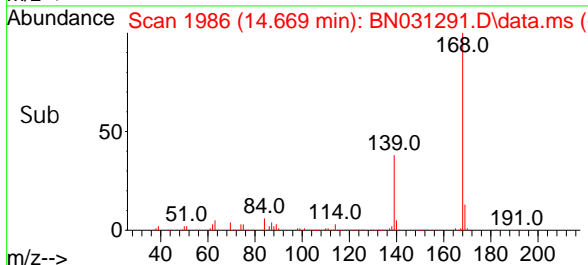
Manual Integrations
APPROVED
 Reviewed By :Yogesh Patel 04/29/2024
 Supervised By :mohammad ahmed 04/29/2024

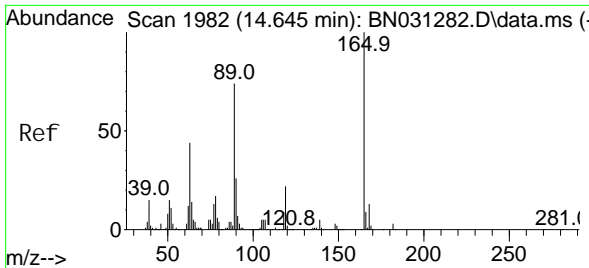


#56
 Di benzofuran
 Concen: 31.178 ng/ul
 RT: 14.669 min Scan# 1986
 Delta R.T. -0.006 min
 Lab File: BN031291.D
 Acq: 28 Apr 2024 04:37



Tgt Ion: 168 Resp: 1654259
 Ion Ratio Lower Upper
 168 100
 139 38.5 31.0 46.6





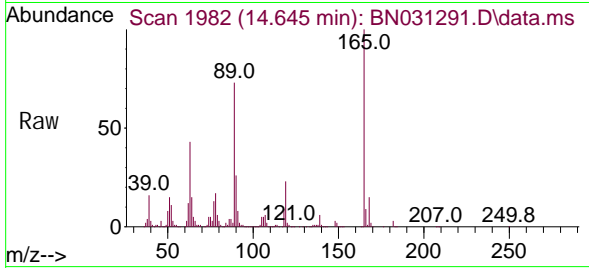
#57
 2, 4-Dinitrotoluene
 Concen: 35.021 ng/ul
 RT: 14.645 min Scan# 1982
 Delta R.T. -0.006 min
 Lab File: BN031291.D
 Acq: 28 Apr 2024 04:37

Instrument :

BNA_N

ClientSampleId :

SLCS492

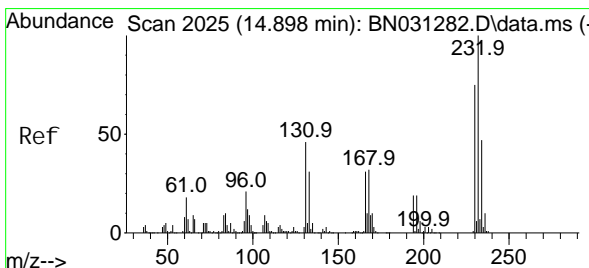
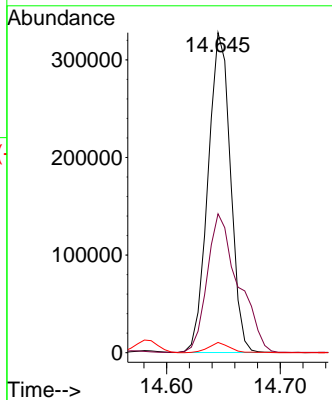
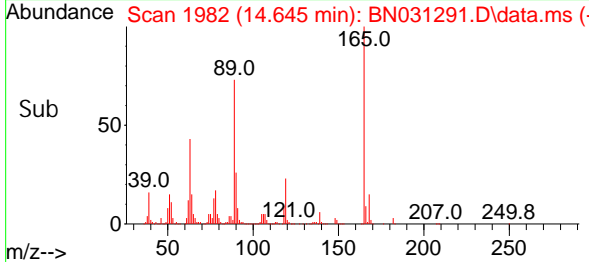


Tgt Ion: 165 Resp: 450668
 Ion Ratio Lower Upper
 165 100
 63 43.4 33.9 50.9
 182 3.2 2.6 4.0

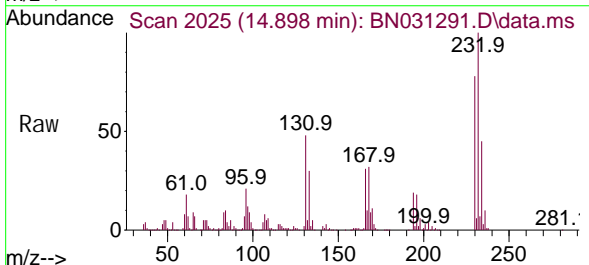
Manual Integrations

APPROVED

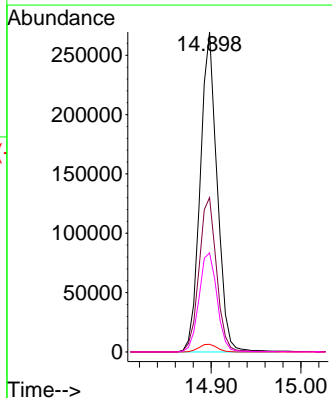
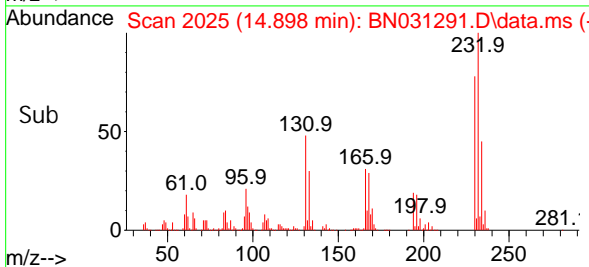
Reviewed By :Yogesh Patel 04/29/2024
 Supervised By :mohammad ahmed 04/29/2024

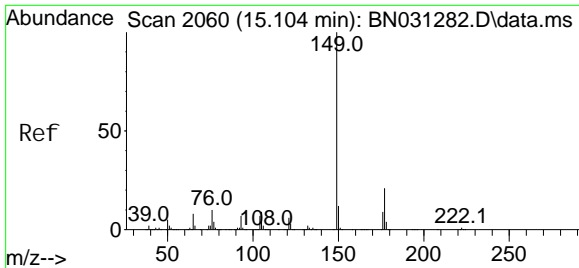


#58
 2, 3, 4, 6-Tetrachlorophenol
 Concen: 33.691 ng/ul
 RT: 14.898 min Scan# 2025
 Delta R.T. -0.000 min
 Lab File: BN031291.D
 Acq: 28 Apr 2024 04:37



Tgt Ion: 232 Resp: 353364
 Ion Ratio Lower Upper
 232 100
 131 48.3 41.2 61.8
 130 2.4 2.2 3.2
 166 30.9 27.3 40.9





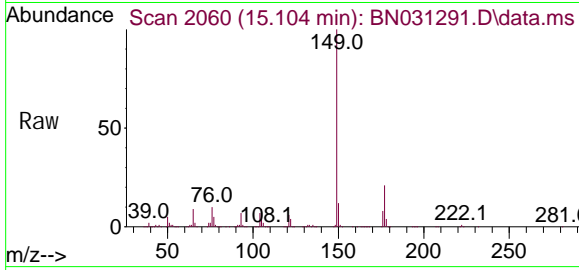
#59
 Di ethyl phthal ate
 Concen: 32.209 ng/ul
 RT: 15.104 min Scan# 2060
 Delta R.T. -0.006 min
 Lab File: BN031291.D
 Acq: 28 Apr 2024 04:37

Instrument :

BNA_N

ClientSampleId :

SLCS492



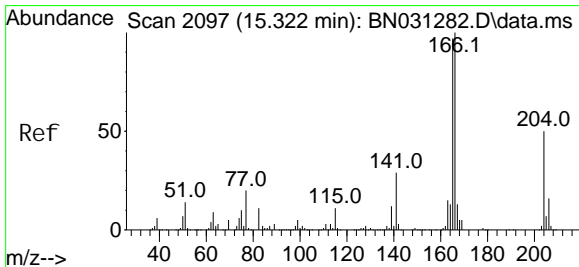
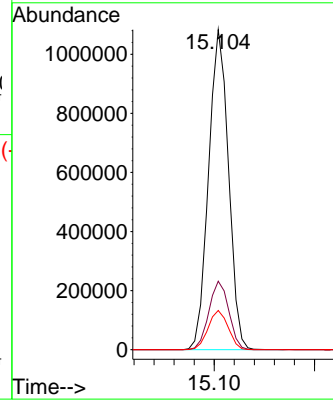
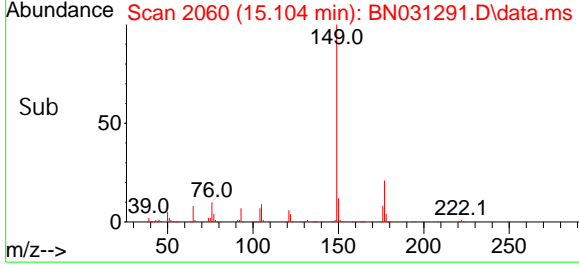
Tgt Ion: 149 Resp: 1494468
 Ion Ratio Lower Upper
 149 100
 177 21.4 16.8 25.2
 150 12.3 10.1 15.1

Manual Integrations

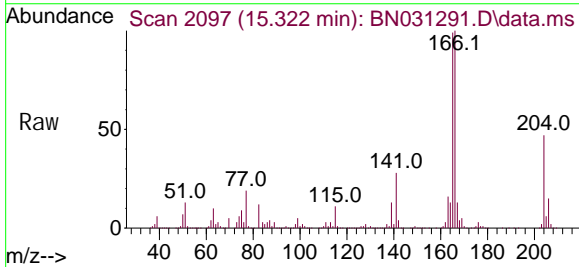
APPROVED

Reviewed By :Yogesh Patel 04/29/2024

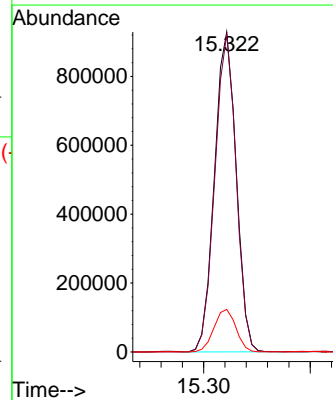
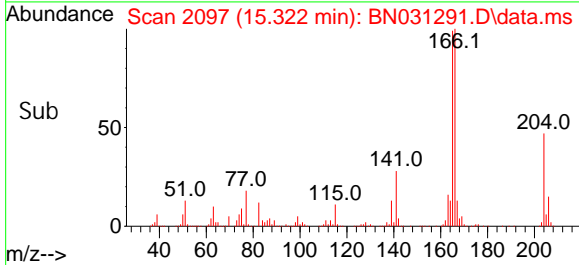
Supervised By :mohammad ahmed 04/29/2024

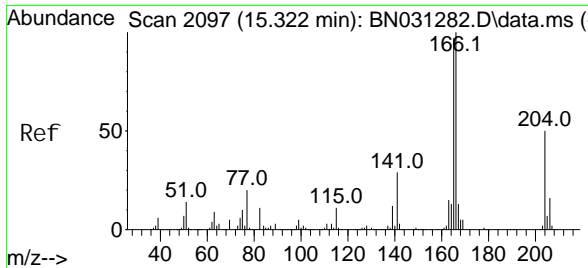


#61
 Fluorene
 Concen: 30.000 ng/ul
 RT: 15.322 min Scan# 2097
 Delta R.T. -0.000 min
 Lab File: BN031291.D
 Acq: 28 Apr 2024 04:37



Tgt Ion: 166 Resp: 1309935
 Ion Ratio Lower Upper
 166 100
 165 99.2 74.6 112.0
 167 13.3 10.6 16.0





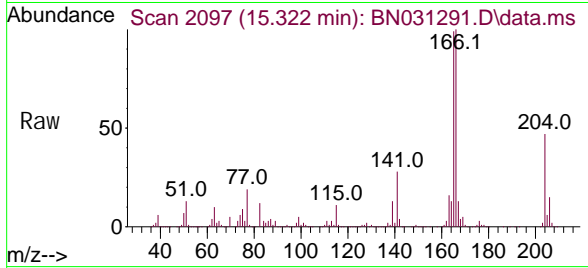
#62
 4-Chlorophenyl-phenyl ether
 Concen: 30.257 ng/ul
 RT: 15.322 min Scan# 2097
 Delta R.T. -0.000 min
 Lab File: BN031291.D
 Acq: 28 Apr 2024 04:37

Instrument :

BNA_N

ClientSampleId :

SLCS492

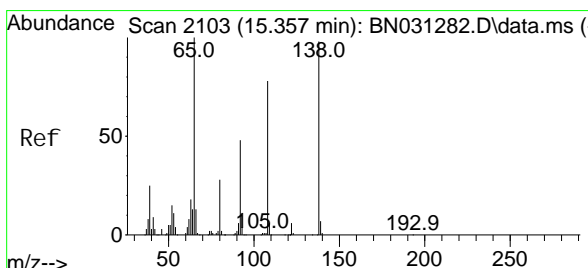
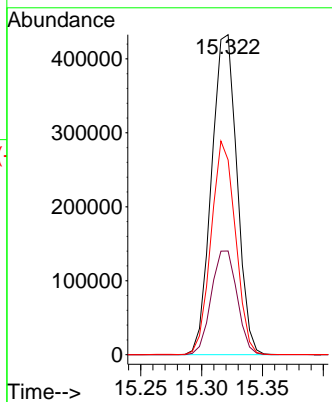
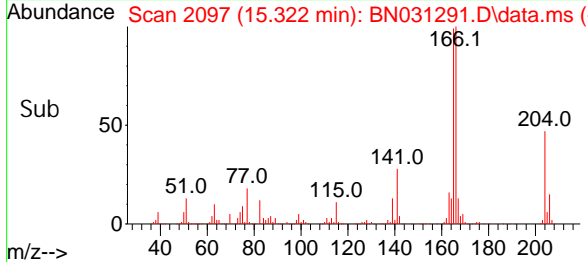


Tgt Ion: 204 Resp: 629278
 Ion Ratio Lower Upper
 204 100
 206 32.4 26.4 39.6
 141 60.8 50.7 76.1

Manual Integrations

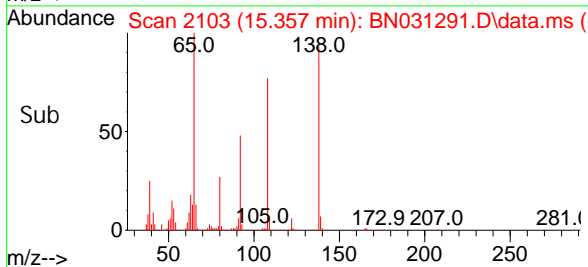
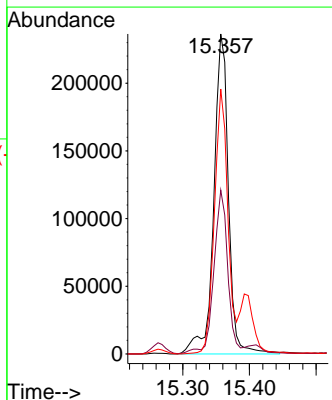
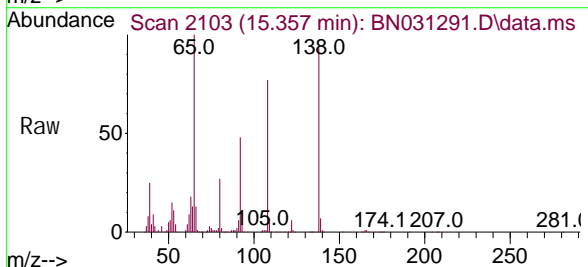
APPROVED

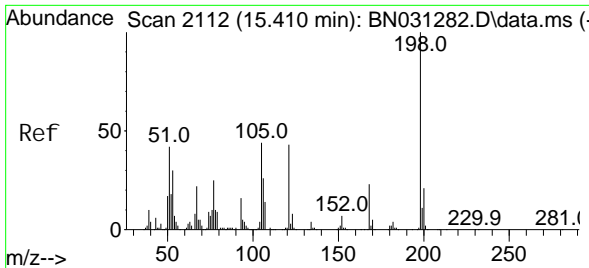
Reviewed By :Yogesh Patel 04/29/2024
 Supervised By :mohammad ahmed 04/29/2024



#63
 4-Nitroaniline
 Concen: 34.457 ng/ul m
 RT: 15.357 min Scan# 2103
 Delta R.T. -0.000 min
 Lab File: BN031291.D
 Acq: 28 Apr 2024 04:37

Tgt Ion: 138 Resp: 361207
 Ion Ratio Lower Upper
 138 100
 92 51.2 38.4 57.6
 108 82.8 63.8 95.8





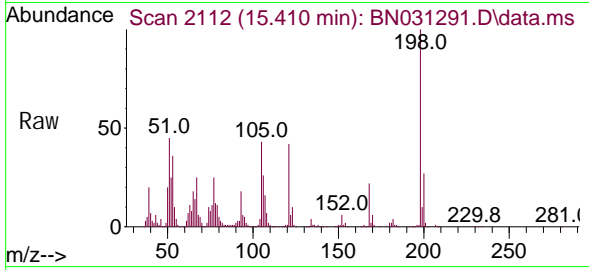
#66
 4,6-Di ni tro-2-methyl phenol
 Concen: 35.705 ng/ul
 RT: 15.410 min Scan# 2112
 Del ta R. T. -0.000 min
 Lab File: BN031291.D
 Acq: 28 Apr 2024 04:37

Instrument :

BNA_N

ClientSampleId :

SLCS492



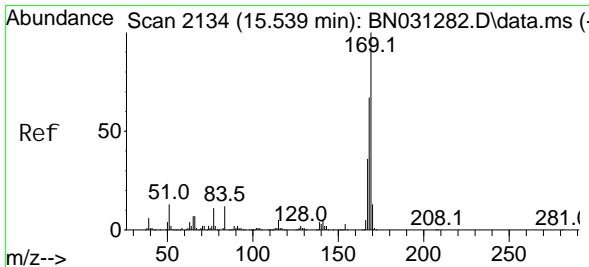
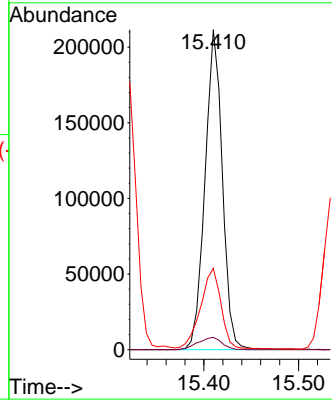
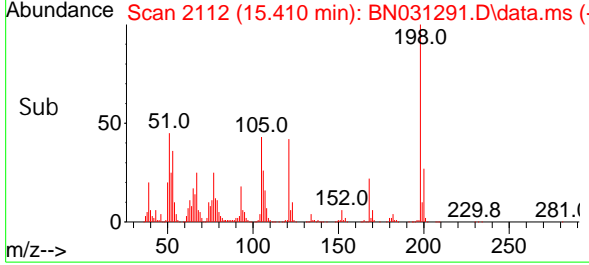
Tgt Ion: 198 Resp: 269362
 Ion Ratio Lower Upper
 198 100
 182 3.8 4.0 6.0
 77 25.4 22.2 33.4

Manual Integrations

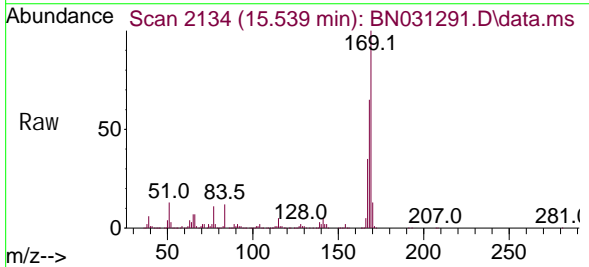
APPROVED

Reviewed By :Yogesh Patel 04/29/2024

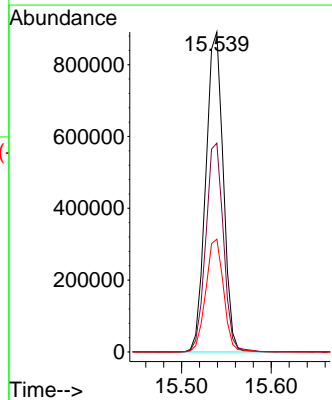
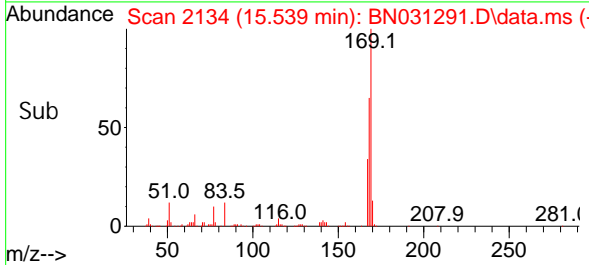
Supervised By :mohammad ahmed 04/29/2024

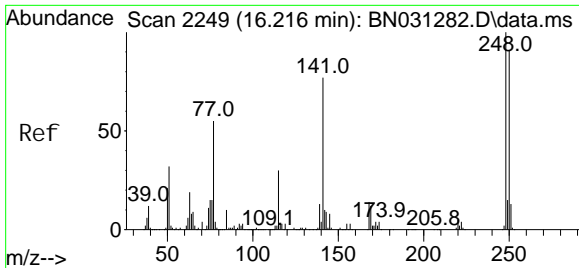


#67
 N-Ni trosodi phenyl ami ne
 Concen: 32.196 ng/ul
 RT: 15.539 min Scan# 2134
 Del ta R. T. -0.000 min
 Lab File: BN031291.D
 Acq: 28 Apr 2024 04:37



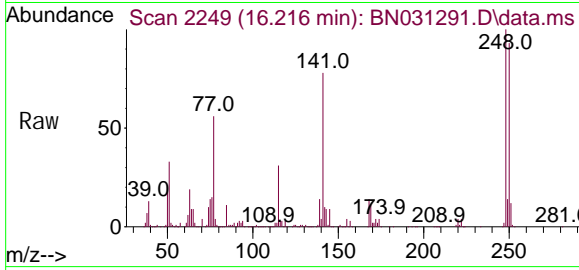
Tgt Ion: 169 Resp: 1201719
 Ion Ratio Lower Upper
 169 100
 168 65.3 52.6 79.0
 167 35.2 27.8 41.6





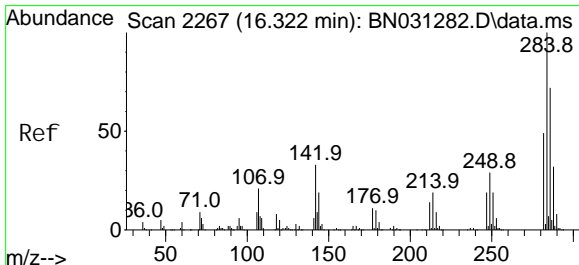
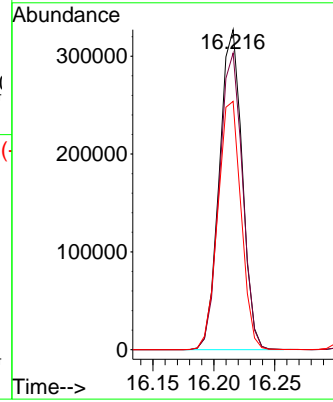
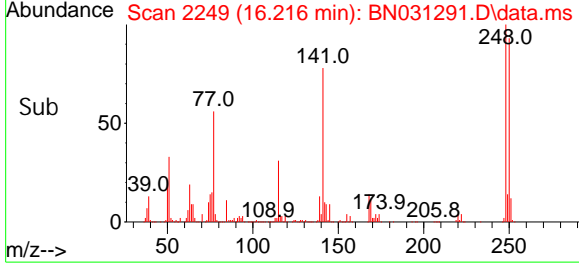
#68
 4-Bromophenyl -phenyl ether
 Concen: 32.513 ng/ul
 RT: 16.216 min Scan# 2249
 Delta R.T. -0.000 min
 Lab File: BN031291.D
 Acq: 28 Apr 2024 04:37

Instrument : BNA_N
 ClientSampleId : SLCS492

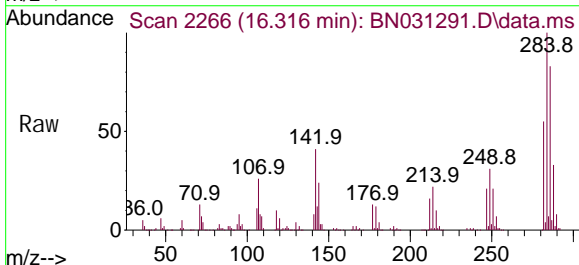


Tgt Ion: 248 Resp: 428178
 Ion Ratio Lower Upper
 248 100
 250 92.7 78.2 117.2
 141 77.6 71.4 107.0

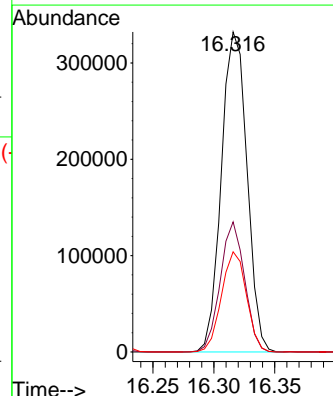
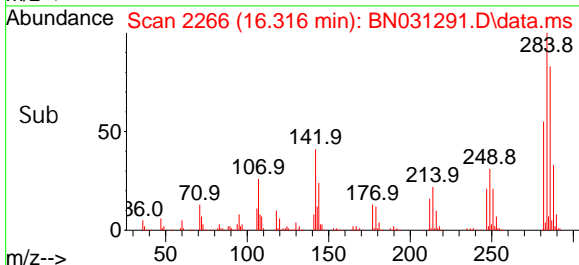
Manual Integrations
APPROVED
 Reviewed By :Yogesh Patel 04/29/2024
 Supervised By :mohammad ahmed 04/29/2024

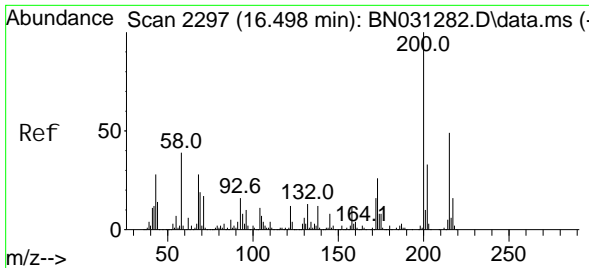


#69
 Hexachl orobenzene
 Concen: 32.066 ng/ul
 RT: 16.316 min Scan# 2266
 Delta R.T. -0.006 min
 Lab File: BN031291.D
 Acq: 28 Apr 2024 04:37



Tgt Ion: 284 Resp: 486831
 Ion Ratio Lower Upper
 284 100
 142 40.7 30.0 45.0
 249 31.3 25.5 38.3





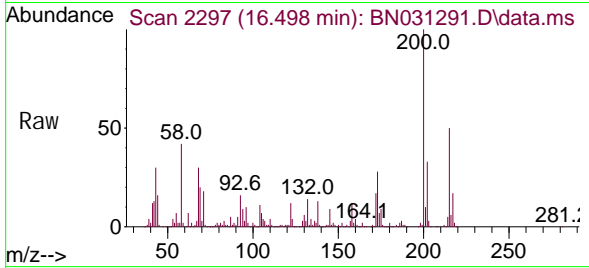
#70
 Atrazine
 Concen: 31.405 ng/ul
 RT: 16.498 min Scan# 21
 Delta R.T. -0.000 min
 Lab File: BN031291.D
 Acq: 28 Apr 2024 04:37

Instrument :

BNA_N

ClientSampleId :

SLCS492



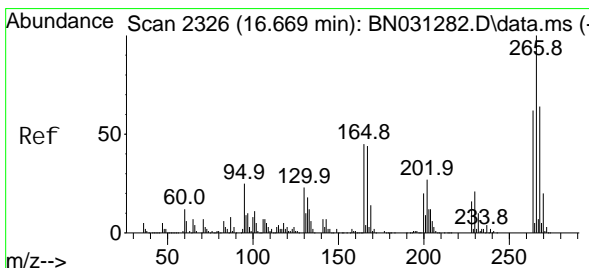
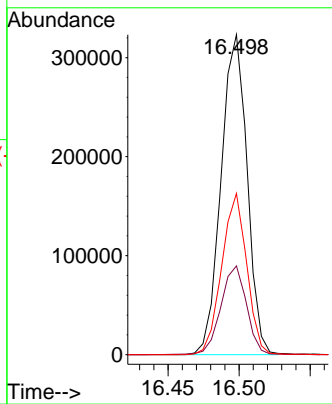
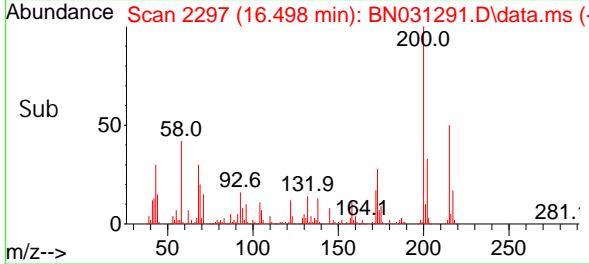
Tgt Ion: 200 Resp: 41154
 Ion Ratio Lower Upper
 200 100
 173 27.7 20.6 31.0
 215 50.4 37.6 56.4

Manual Integrations

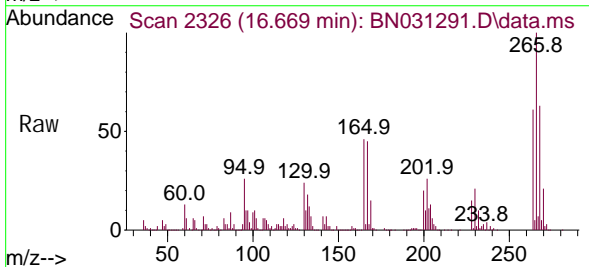
APPROVED

Reviewed By :Yogesh Patel 04/29/2024

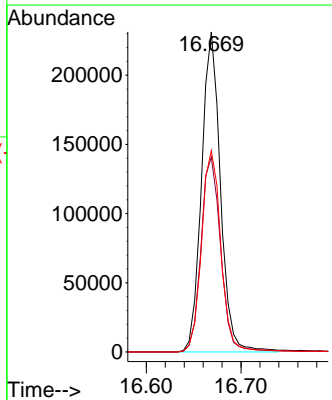
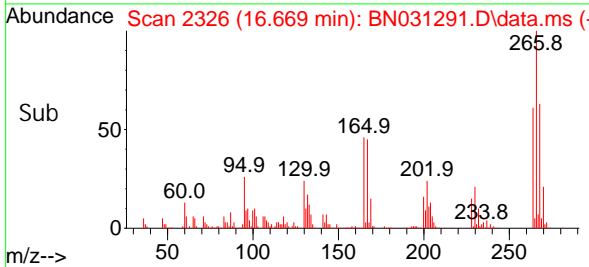
Supervised By :mohammad ahmed 04/29/2024

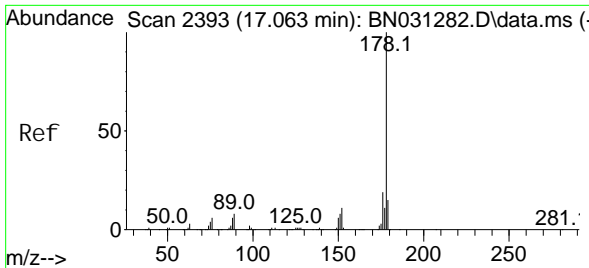


#71
 Pentachlorophenol
 Concen: 32.523 ng/ul
 RT: 16.669 min Scan# 2326
 Delta R.T. -0.006 min
 Lab File: BN031291.D
 Acq: 28 Apr 2024 04:37



Tgt Ion: 266 Resp: 320810
 Ion Ratio Lower Upper
 266 100
 264 60.9 49.1 73.7
 268 62.9 49.2 73.8





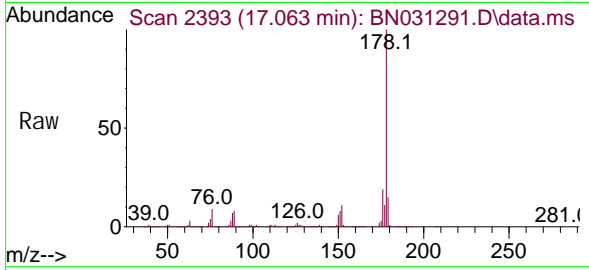
#72
 Phenanthrene
 Concen: 30.595 ng/ul
 RT: 17.063 min Scan# 2393
 Delta R.T. -0.000 min
 Lab File: BN031291.D
 Acq: 28 Apr 2024 04:37

Instrument :

BNA_N

ClientSampleId :

SLCS492



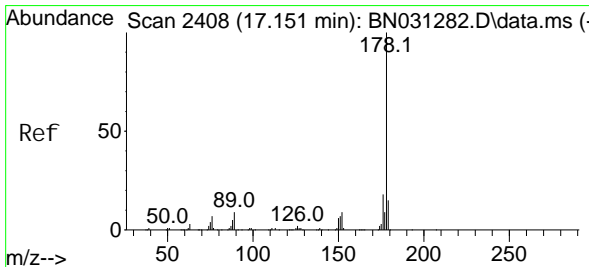
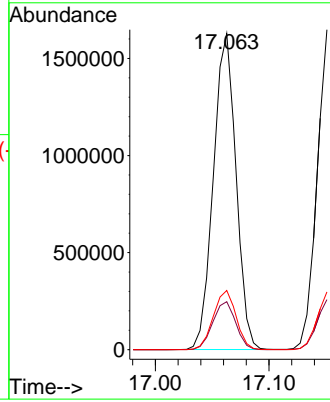
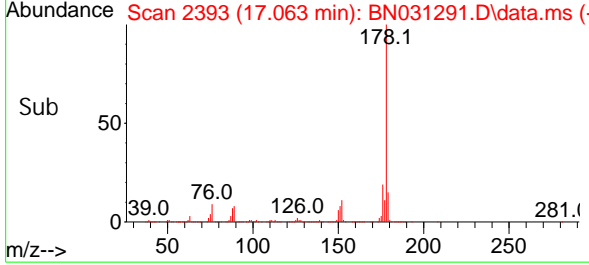
Tgt Ion: 178 Resp: 2253519
 Ion Ratio Lower Upper
 178 100
 179 15.2 12.4 18.6
 176 18.7 14.6 21.8

Manual Integrations

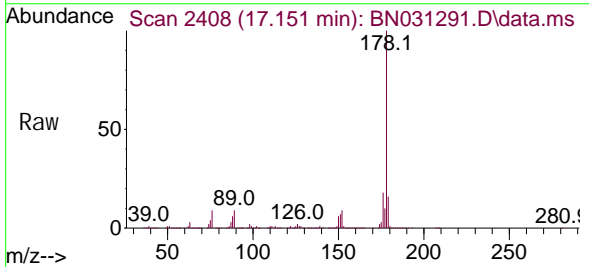
APPROVED

Reviewed By :Yogesh Patel 04/29/2024

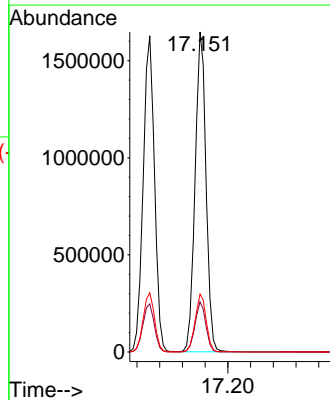
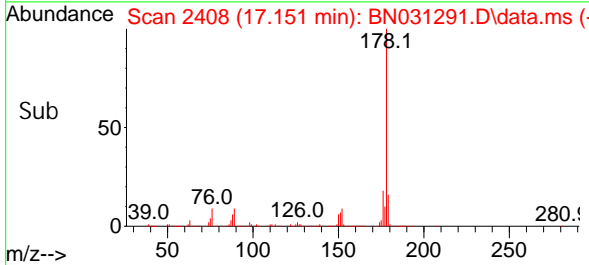
Supervised By :mohammad ahmed 04/29/2024

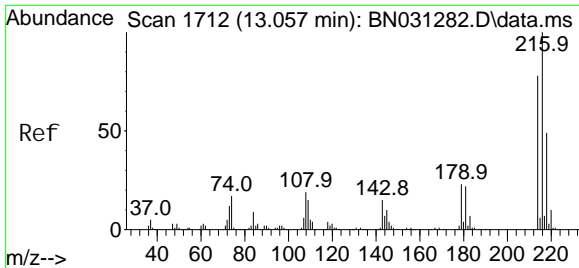


#74
 Anthracene
 Concen: 29.647 ng/ul
 RT: 17.151 min Scan# 2408
 Delta R.T. -0.006 min
 Lab File: BN031291.D
 Acq: 28 Apr 2024 04:37



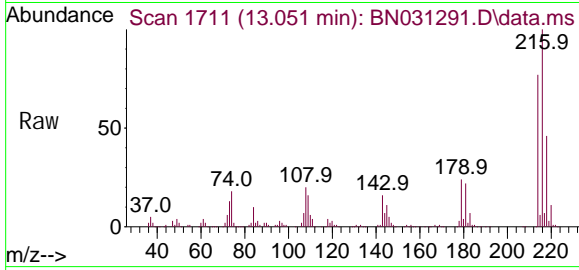
Tgt Ion: 178 Resp: 2209886
 Ion Ratio Lower Upper
 178 100
 179 15.6 12.2 18.4
 176 18.0 14.4 21.6





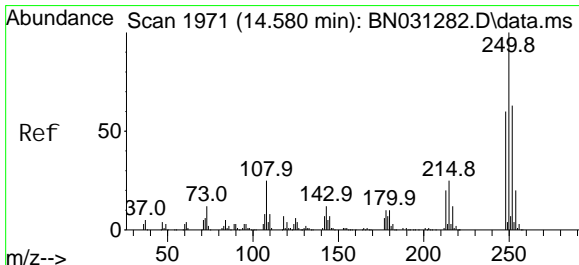
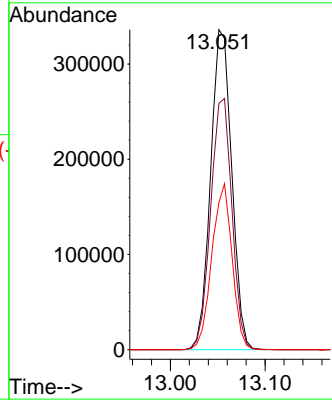
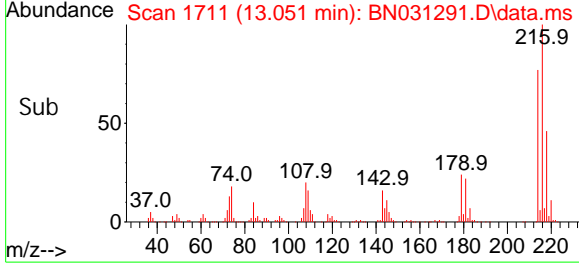
#75
 1, 2, 3, 4-Tetrachlorobenzene
 Concen: 32.007 ng/uL
 RT: 13.051 min Scan# 1711
 Delta R.T. -0.006 min
 Lab File: BN031291.D
 Acq: 28 Apr 2024 04:37

Instrument :
 BNA_N
ClientSampleId :
 SLCS492

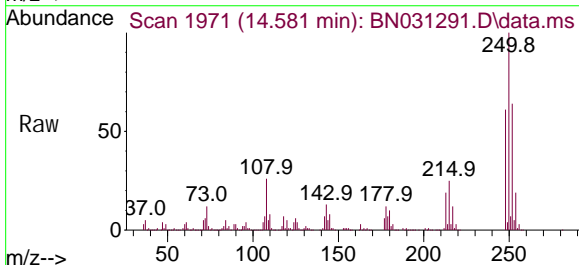


Tgt Ion: 216 Resp: 52280
 Ion Ratio Lower Upper
 216 100
 214 77.0 63.0 94.6
 218 45.9 38.3 57.5

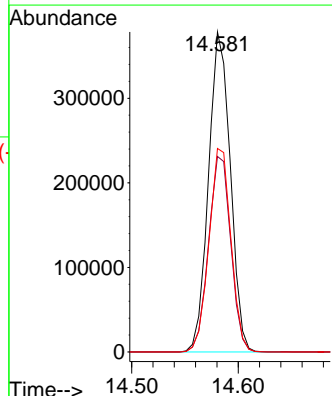
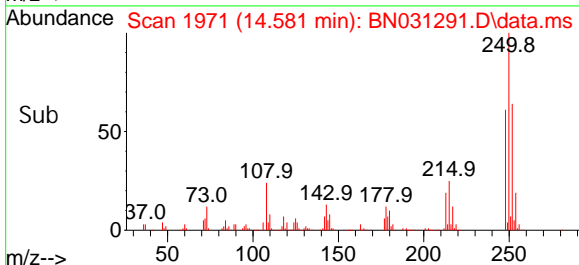
Manual Integrations
APPROVED
 Reviewed By :Yogesh Patel 04/29/2024
 Supervised By :mohammad ahmed 04/29/2024

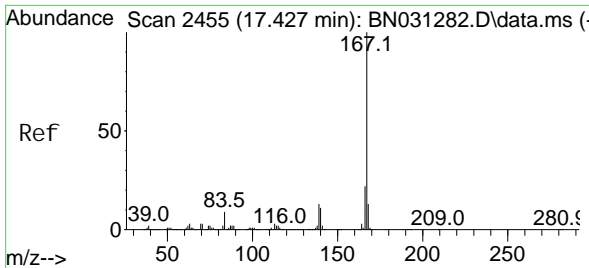


#76
 Pentachlorobenzene
 Concen: 31.925 ng/uL
 RT: 14.581 min Scan# 1971
 Delta R.T. -0.006 min
 Lab File: BN031291.D
 Acq: 28 Apr 2024 04:37



Tgt Ion: 250 Resp: 538490
 Ion Ratio Lower Upper
 250 100
 248 61.1 49.3 73.9
 252 63.6 52.9 79.3





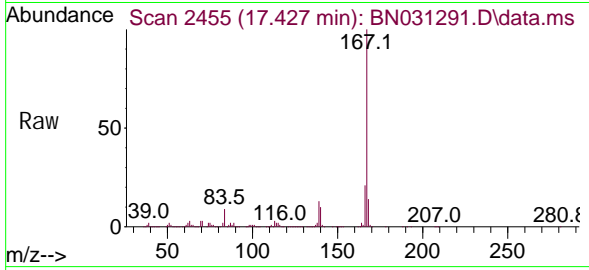
#77
 Carbazole
 Concen: 32.084 ng/ul
 RT: 17.427 min Scan# 2455
 Delta R.T. -0.006 min
 Lab File: BN031291.D
 Acq: 28 Apr 2024 04:37

Instrument :

BNA_N

ClientSampleId :

SLCS492



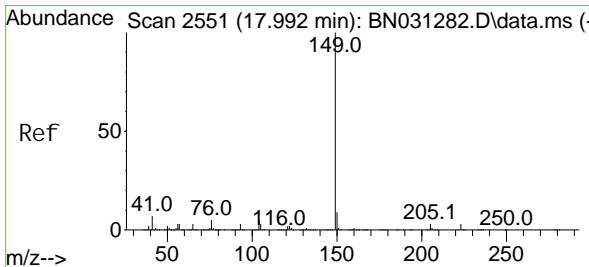
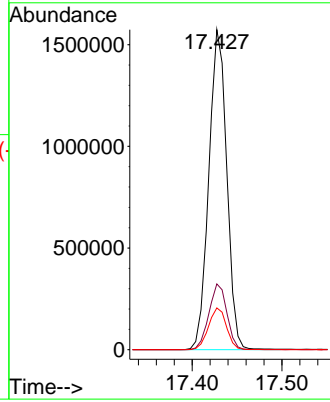
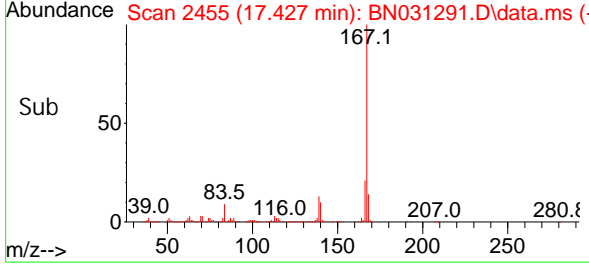
Tgt Ion: 167 Resp: 2184536
 Ion Ratio Lower Upper
 167 100
 166 20.6 16.2 24.2
 139 13.1 10.6 15.8

Manual Integrations

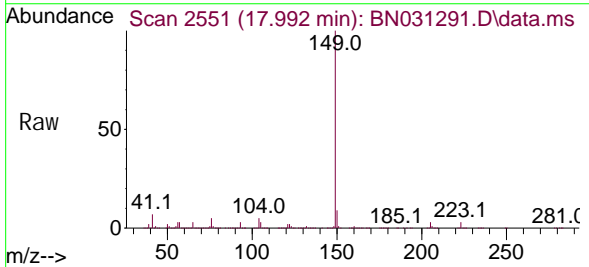
APPROVED

Reviewed By :Yogesh Patel 04/29/2024

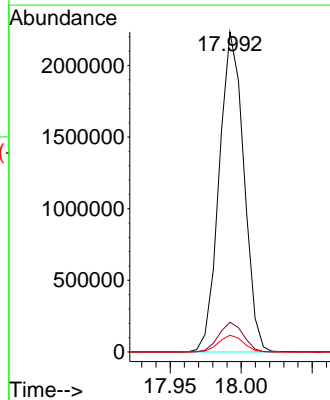
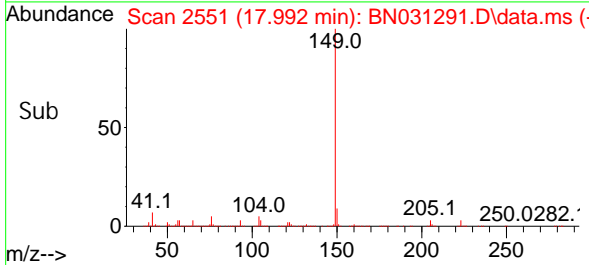
Supervised By :mohammad ahmed 04/29/2024

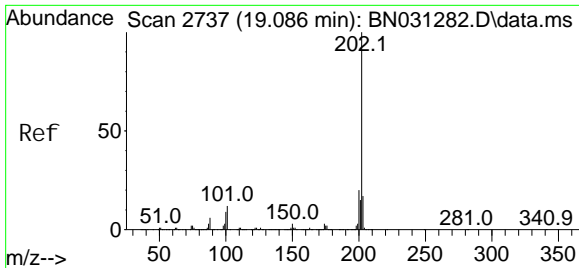


#78
 Di-n-butyl phthalate
 Concen: 32.482 ng/ul
 RT: 17.992 min Scan# 2551
 Delta R.T. -0.006 min
 Lab File: BN031291.D
 Acq: 28 Apr 2024 04:37



Tgt Ion: 149 Resp: 2695767
 Ion Ratio Lower Upper
 149 100
 150 9.3 7.1 10.7
 104 5.2 3.9 5.9





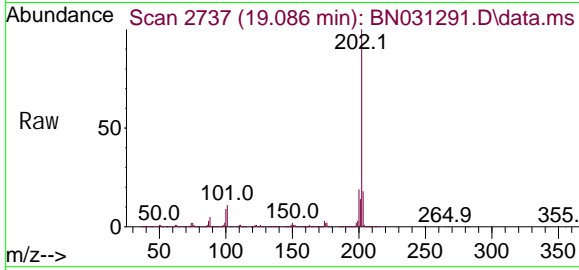
#80
 Fluoranthene
 Concen: 37.185 ng/ul
 RT: 19.086 min Scan# 2737
 Delta R.T. -0.000 min
 Lab File: BN031291.D
 Acq: 28 Apr 2024 04:37

Instrument :

BNA_N

ClientSampleId :

SLCS492



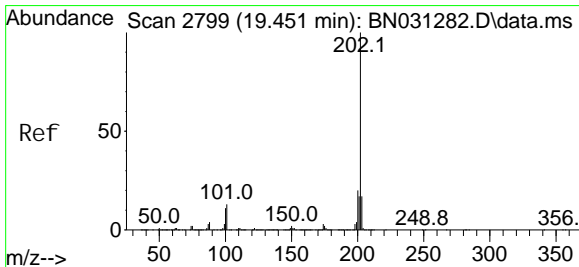
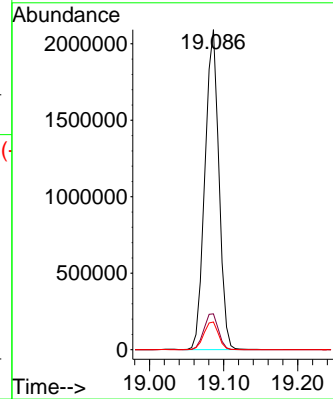
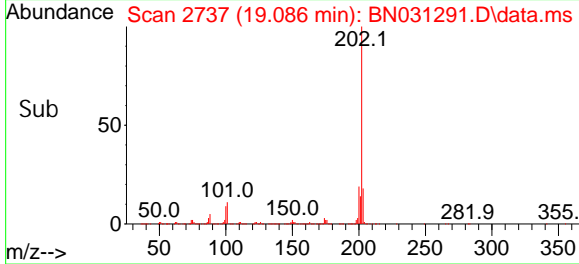
Tgt Ion: 202 Resp: 274365
 Ion Ratio Lower Upper
 202 100
 101 11.2 9.0 13.6
 100 8.6 6.9 10.3

Manual Integrations

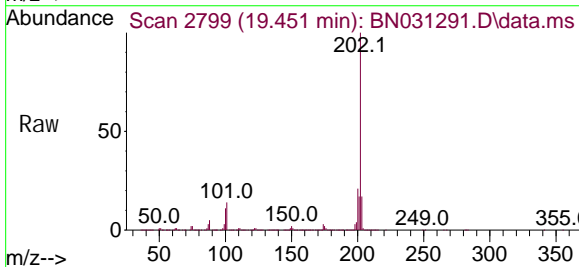
APPROVED

Reviewed By :Yogesh Patel 04/29/2024

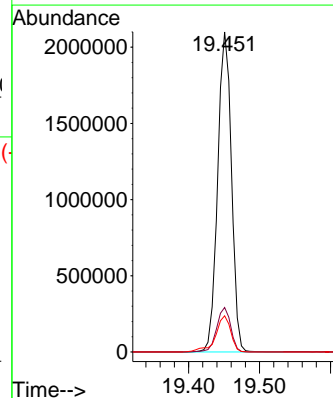
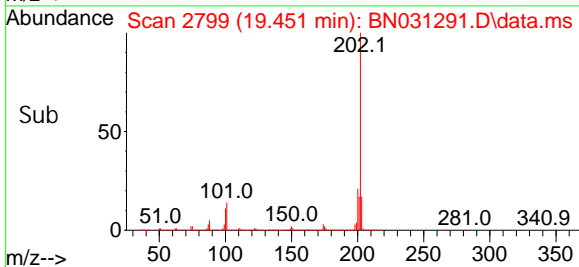
Supervised By :mohammad ahmed 04/29/2024

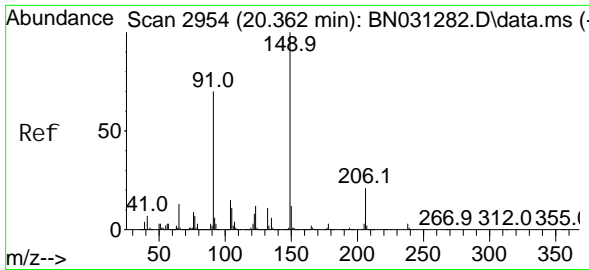


#82
 Pyrene
 Concen: 36.397 ng/ul
 RT: 19.451 min Scan# 2799
 Delta R.T. -0.000 min
 Lab File: BN031291.D
 Acq: 28 Apr 2024 04:37



Tgt Ion: 202 Resp: 2821644
 Ion Ratio Lower Upper
 202 100
 101 13.9 11.1 16.7
 100 11.3 9.3 13.9





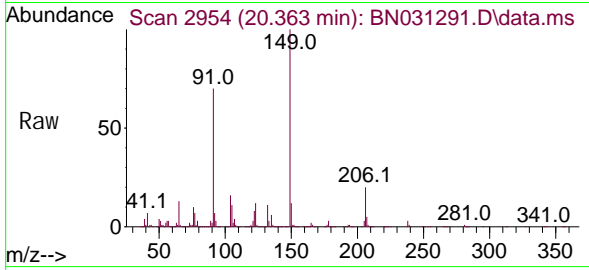
#83
 Butyl benzyl phthal ate
 Concen: 37.717 ng/ul
 RT: 20.363 min Scan# 2954
 Delta R.T. -0.000 min
 Lab File: BN031291.D
 Acq: 28 Apr 2024 04:37

Instrument :

BNA_N

ClientSampleId :

SLCS492



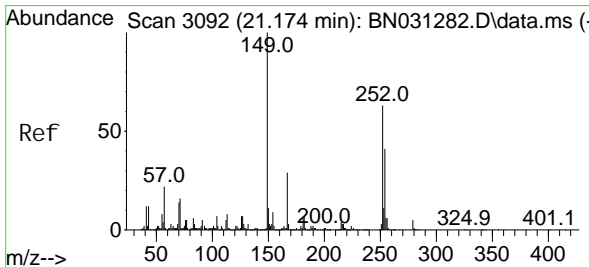
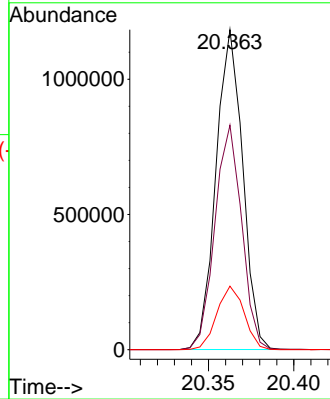
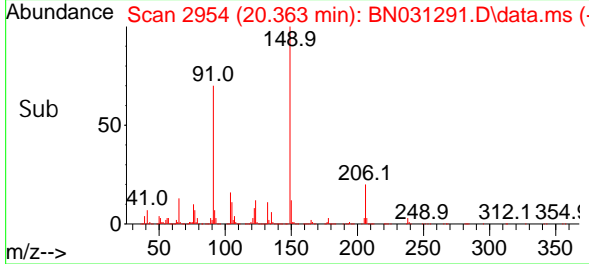
Tgt Ion: 149 Resp: 1290186
 Ion Ratio Lower Upper
 149 100
 91 70.2 57.3 85.9
 206 19.8 16.2 24.4

Manual Integrations

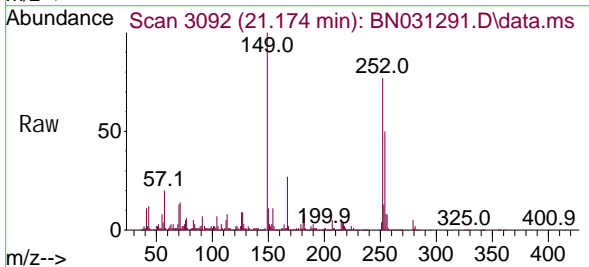
APPROVED

Reviewed By :Yogesh Patel 04/29/2024

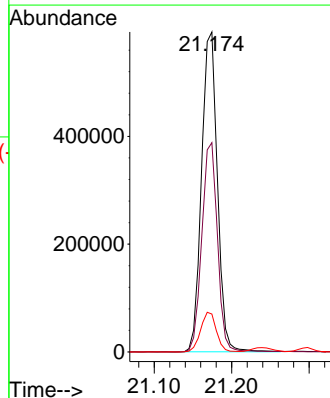
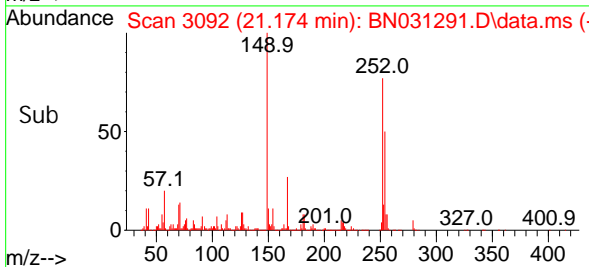
Supervised By :mohammad ahmed 04/29/2024

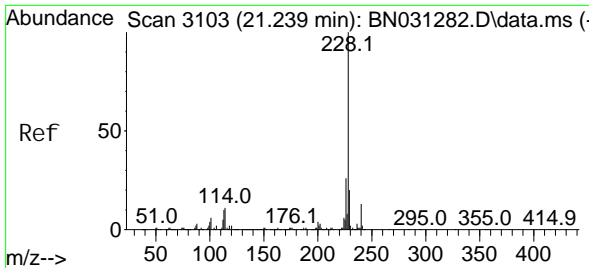


#84
 3,3'-Di chl orobenzi di ne
 Concen: 31.896 ng/ul
 RT: 21.174 min Scan# 3092
 Delta R.T. -0.000 min
 Lab File: BN031291.D
 Acq: 28 Apr 2024 04:37



Tgt Ion: 252 Resp: 843176
 Ion Ratio Lower Upper
 252 100
 254 65.4 54.5 81.7
 126 11.8 9.8 14.6





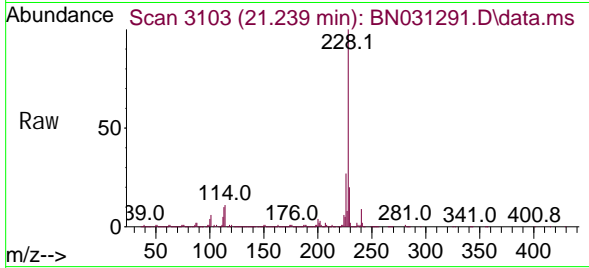
#85
 Benzo(a)anthracene
 Concen: 32.280 ng/ul
 RT: 21.239 min Scan# 3103
 Delta R.T. -0.000 min
 Lab File: BN031291.D
 Acq: 28 Apr 2024 04:37

Instrument :

BNA_N

ClientSampleId :

SLCS492



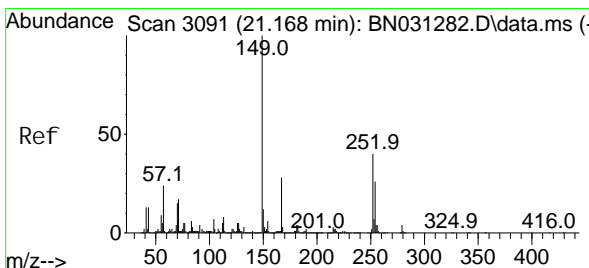
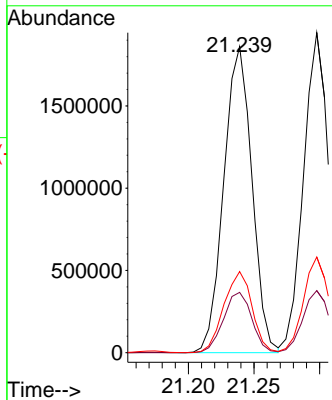
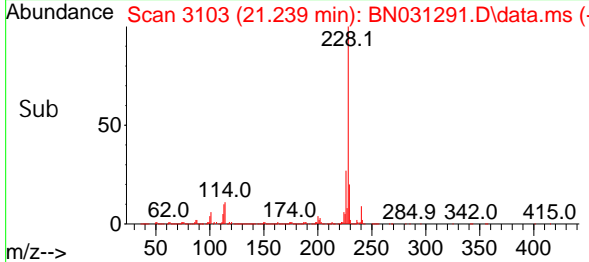
Tgt Ion: 228 Resp: 2780972
 Ion Ratio Lower Upper
 228 100
 229 19.7 16.7 25.1
 226 26.5 21.2 31.8

Manual Integrations

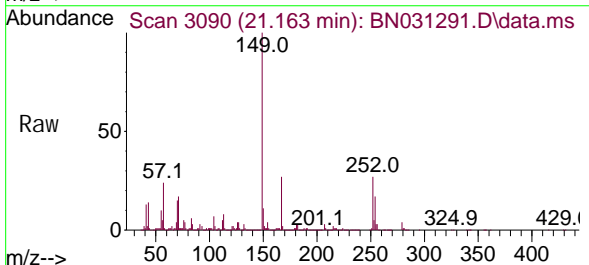
APPROVED

Reviewed By :Yogesh Patel 04/29/2024

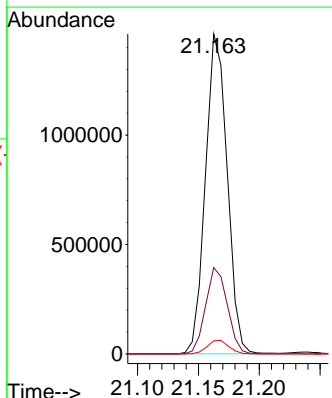
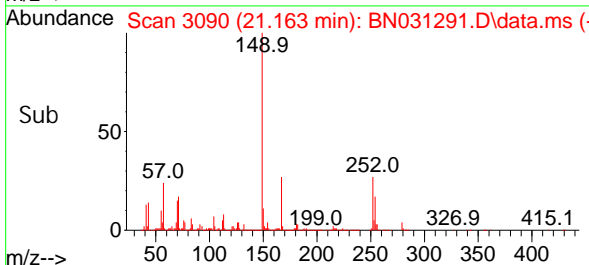
Supervised By :mohammad ahmed 04/29/2024

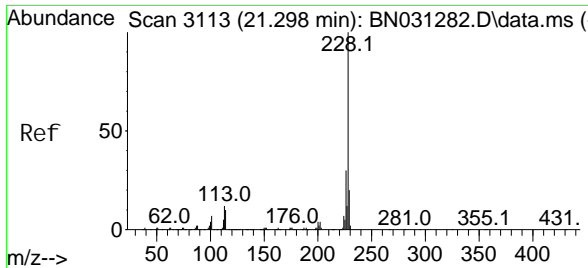


#86
 Bis(2-ethyl hexyl)phthalate
 Concen: 35.269 ng/ul
 RT: 21.163 min Scan# 3090
 Delta R.T. -0.006 min
 Lab File: BN031291.D
 Acq: 28 Apr 2024 04:37



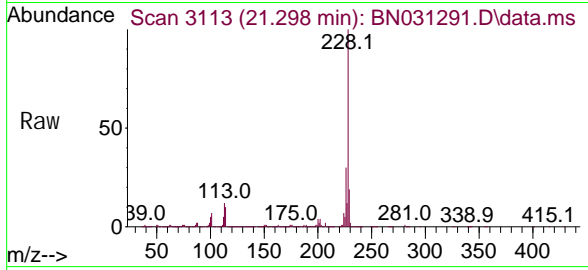
Tgt Ion: 149 Resp: 1811437
 Ion Ratio Lower Upper
 149 100
 167 27.0 22.3 33.5
 279 4.1 3.0 4.6





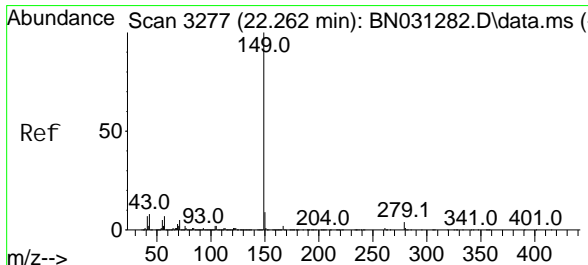
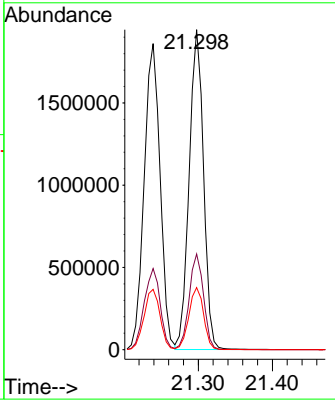
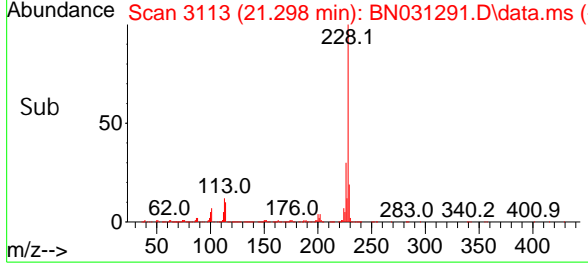
#87
 Chrysene
 Concen: 31.973 ng/ul
 RT: 21.298 min Scan# 3113
 Delta R.T. -0.000 min
 Lab File: BN031291.D
 Acq: 28 Apr 2024 04:37

Instrument :
 BNA_N
ClientSampleId :
 SLCS492



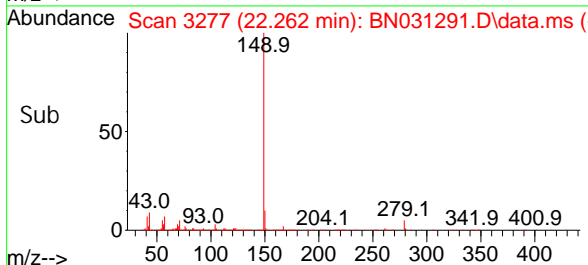
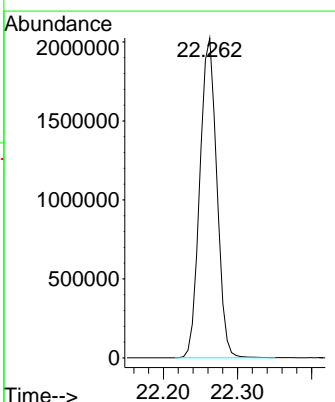
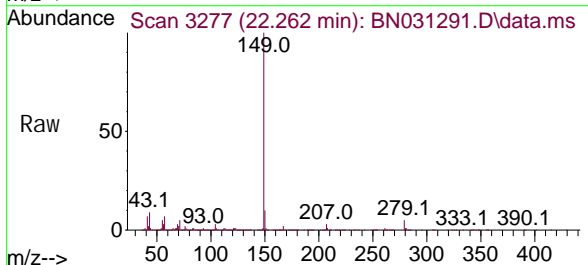
Tgt Ion: 228 Resp: 261461
 Ion Ratio Lower Upper
 228 100
 226 29.9 22.6 34.0
 229 19.4 15.8 23.8

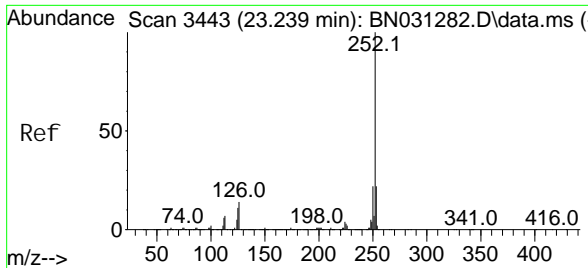
Manual Integrations
APPROVED
 Reviewed By :Yogesh Patel 04/29/2024
 Supervised By :mohammad ahmed 04/29/2024



#89
 Di-n-octyl phthalate
 Concen: 39.875 ng/ul
 RT: 22.262 min Scan# 3277
 Delta R.T. -0.000 min
 Lab File: BN031291.D
 Acq: 28 Apr 2024 04:37

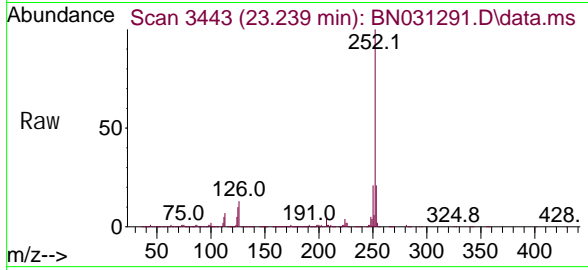
Tgt Ion: 149 Resp: 3218241





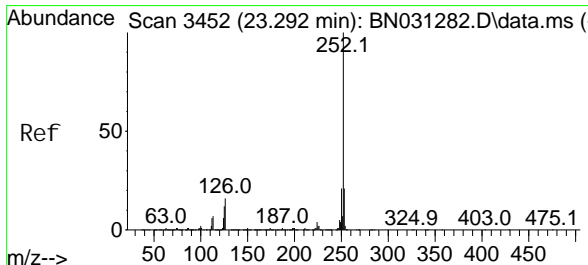
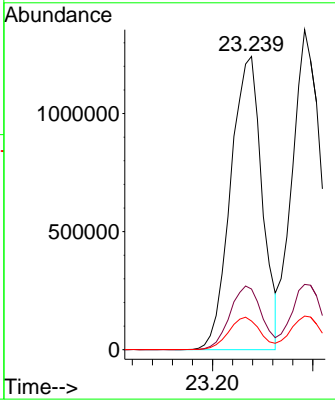
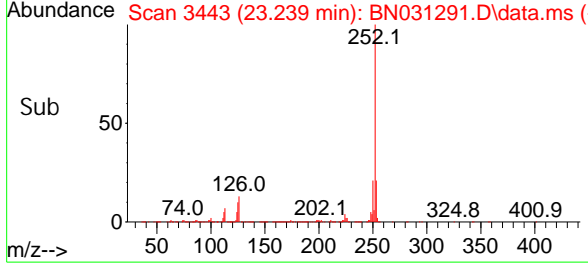
#90
 Benzo(b)fl uoranthene
 Concen: 34.369 ng/ul
 RT: 23.239 min Scan# 3443
 Delta R.T. 0.006 min
 Lab File: BN031291.D
 Acq: 28 Apr 2024 04:37

Instrument :
 BNA_N
ClientSampleId :
 SLCS492

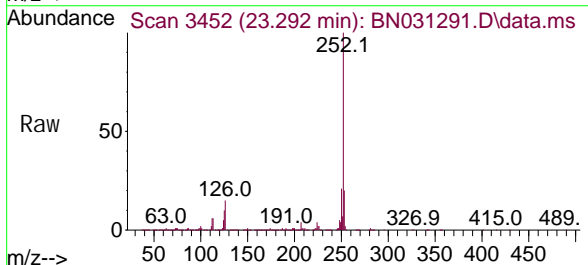


Tgt Ion: 252 Resp: 270766
 Ion Ratio Lower Upper
 252 100
 253 20.7 17.6 26.4
 125 9.8 8.6 12.8

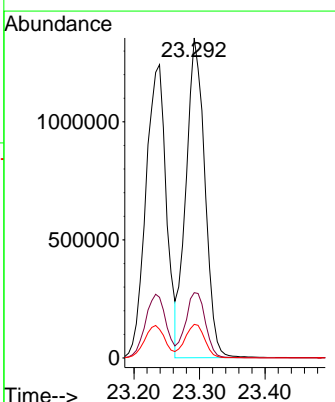
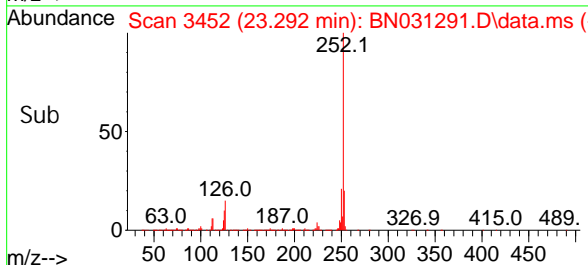
Manual Integrations
APPROVED
 Reviewed By :Yogesh Patel 04/29/2024
 Supervised By :mohammad ahmed 04/29/2024

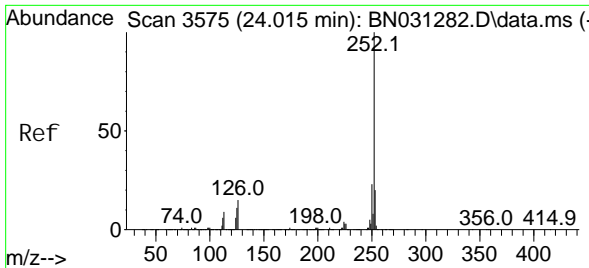


#91
 Benzo(k)fl uoranthene
 Concen: 34.142 ng/ul
 RT: 23.292 min Scan# 3452
 Delta R.T. -0.006 min
 Lab File: BN031291.D
 Acq: 28 Apr 2024 04:37



Tgt Ion: 252 Resp: 2705286
 Ion Ratio Lower Upper
 252 100
 253 20.4 17.4 26.0
 125 10.5 9.4 14.2





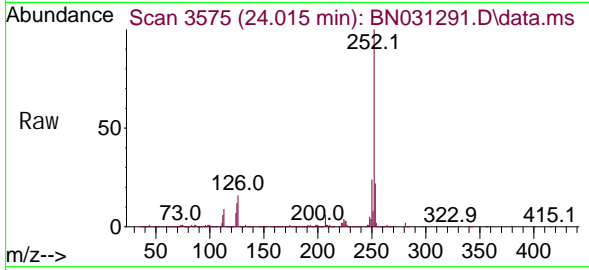
#93
 Benzo(a)pyrene
 Concen: 28.645 ng/ul
 RT: 24.015 min Scan# 30
 Delta R.T. -0.006 min
 Lab File: BN031291.D
 Acq: 28 Apr 2024 04:37

Instrument :

BNA_N

ClientSampleId :

SLCS492



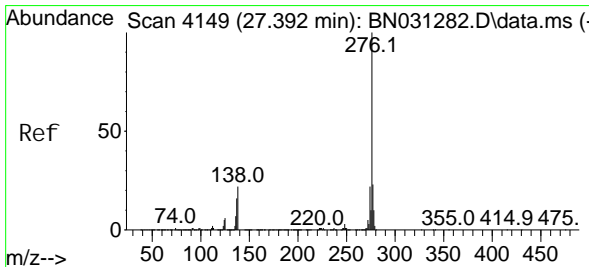
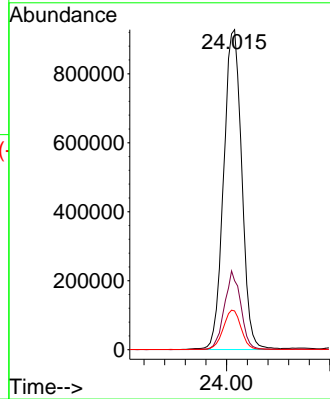
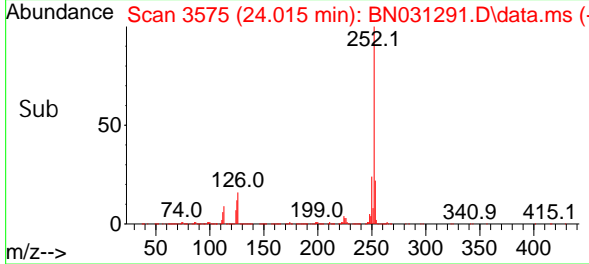
Tgt Ion: 252 Resp: 225130
 Ion Ratio Lower Upper
 252 100
 253 21.5 17.7 26.5
 125 12.1 9.9 14.9

Manual Integrations

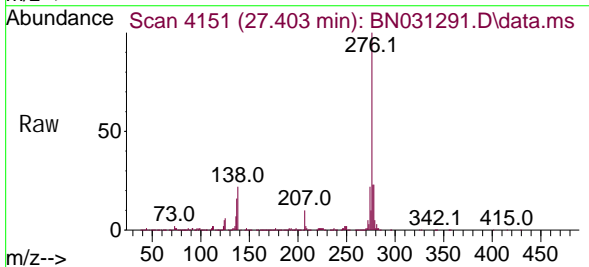
APPROVED

Reviewed By :Yogesh Patel 04/29/2024

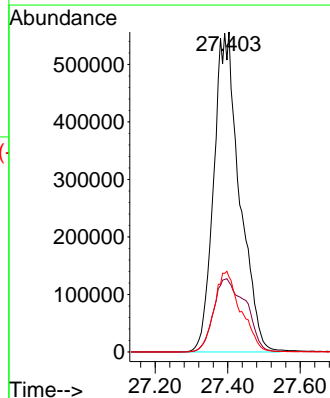
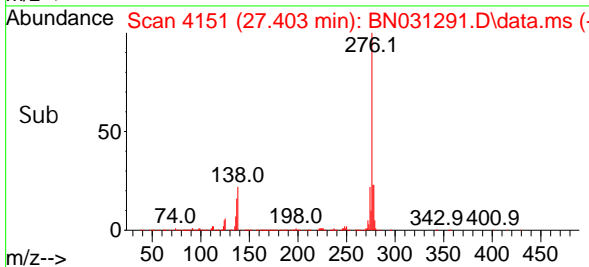
Supervised By :mohammad ahmed 04/29/2024

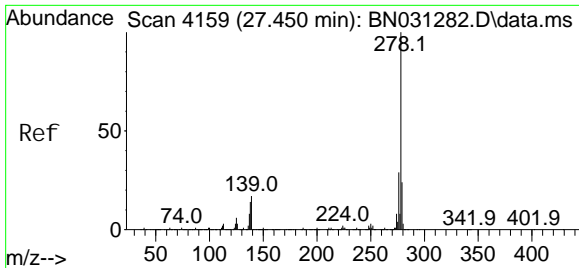


#94
 Indeno(1,2,3-cd)pyrene
 Concen: 28.292 ng/ul
 RT: 27.403 min Scan# 4151
 Delta R.T. 0.006 min
 Lab File: BN031291.D
 Acq: 28 Apr 2024 04:37



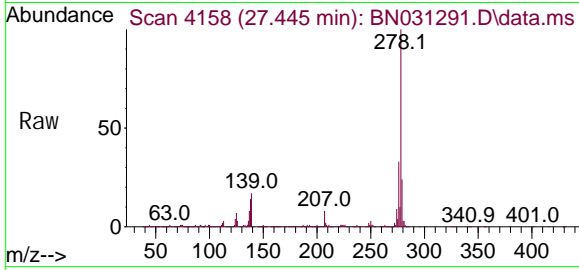
Tgt Ion: 276 Resp: 2759249
 Ion Ratio Lower Upper
 276 100
 138 21.8 17.4 26.2
 277 23.5 18.3 27.5





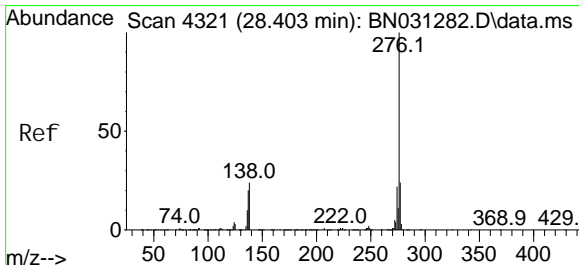
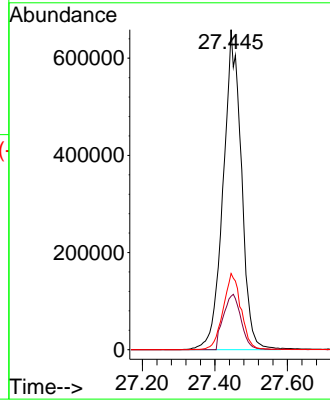
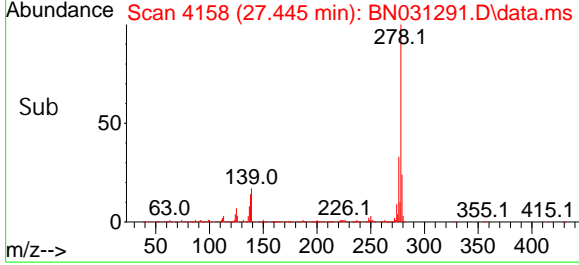
#95
 Di benzo(a, h)anthracene
 Concen: 28.670 ng/ul
 RT: 27.445 min Scan# 4158
 Delta R.T. -0.012 min
 Lab File: BN031291.D
 Acq: 28 Apr 2024 04:37

Instrument :
 BNA_N
ClientSampleId :
 SLCS492

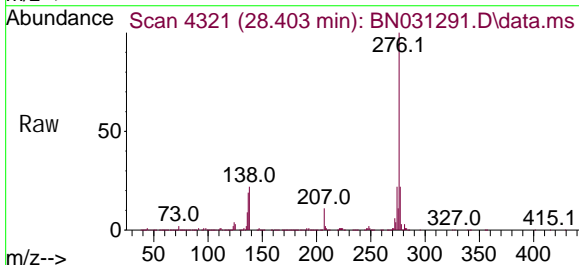


Tgt Ion: 278 Resp: 2294988
 Ion Ratio Lower Upper
 278 100
 139 16.7 13.3 19.9
 279 23.8 17.0 25.6

Manual Integrations
APPROVED
 Reviewed By :Yogesh Patel 04/29/2024
 Supervised By :mohammad ahmed 04/29/2024



#96
 Benzo(g, h, i)peryl ene
 Concen: 27.190 ng/ul
 RT: 28.403 min Scan# 4321
 Delta R.T. -0.006 min
 Lab File: BN031291.D
 Acq: 28 Apr 2024 04:37



Tgt Ion: 276 Resp: 2135421
 Ion Ratio Lower Upper
 276 100
 138 22.3 19.0 28.6
 277 22.3 19.3 28.9

