

Data Path : Z:\svoasrv\HPCHEM1\BNA_N\Data\BN042724\
 Data File : BN031290.D
 Acq On : 28 Apr 2024 03:57
 Operator : MA/JU
 Sample : P2251-01
 Misc :
 ALS Vial : 25 Sample Multiplier: 1

Instrument :
 BNA_N
 ClientSampleId :
 COAP6

Integration Parameters: LSCINT.P

Integrator: RTE
 Smoothing : OFF
 Sampling : 1
 Start Thrs: 0.2
 Stop Thrs : 0

Filtering: 5
 Min Area: 0.1 % of Largest Peak
 Max Peaks: 100
 Peak Location: TOP

If leading or trailing edge < 100 prefer < Baseline drop else tangent >
 Peak separation: 5

Method : Z:\svoasrv\HPCHEM1\BNA_N\Methods\SFAM-EPA-BN041924.MA.M
 Title : SVOA CALIBRATION

Signal : TIC: BN031290.D\data.ms

peak #	R.T. min	first scan	max scan	last scan	PK TY	peak height	corr. area	corr. % max.	% of total
1	3.105	14	20	40	rBV	1790967	3191861	44.95%	4.686%
2	3.546	93	95	112	rBV	167667	311654	4.39%	0.458%
3	3.852	144	147	154	rVB2	12933	17757	0.25%	0.026%
4	4.369	229	235	248	rVB	444859	714688	10.07%	1.049%
5	5.010	340	344	349	rVB5	5129	7670	0.11%	0.011%
6	6.799	642	648	660	rVB	159529	251496	3.54%	0.369%
7	6.963	668	676	688	rBV	694799	1081868	15.24%	1.588%
8	7.151	699	708	719	rBV	636418	1000509	14.09%	1.469%
9	7.616	780	787	797	rBV	753366	1227457	17.29%	1.802%
10	8.328	901	908	921	rBV	510680	821063	11.56%	1.205%
11	8.775	977	984	998	rBV	881229	1402408	19.75%	2.059%
12	9.169	1045	1051	1056	rBV3	8303	13039	0.18%	0.019%
13	9.492	1097	1106	1116	rBV	698130	1127493	15.88%	1.655%
14	10.022	1189	1196	1209	rBV	1024059	1697749	23.91%	2.492%
15	10.398	1252	1260	1268	rBV	1274346	2093716	29.49%	3.074%
16	10.545	1276	1285	1303	rBV	978162	1672123	23.55%	2.455%
17	11.651	1470	1473	1481	rVB4	5616	9790	0.14%	0.014%
18	11.939	1517	1522	1526	rBV3	5732	9594	0.14%	0.014%
19	11.992	1526	1531	1539	rVB2	17783	31024	0.44%	0.046%
20	13.157	1724	1729	1735	rBV2	24415	37816	0.53%	0.056%
21	13.681	1812	1818	1829	rBV	2369854	3386498	47.69%	4.972%
22	13.957	1857	1865	1876	rBV	2646175	3885869	54.73%	5.705%
23	14.269	1909	1918	1928	rBV	2157885	3230184	45.49%	4.742%
24	14.486	1949	1955	1968	rBV	170949	318740	4.49%	0.468%
25	15.263	2078	2087	2095	rBV	3583856	5065783	71.35%	7.437%
26	15.386	2102	2108	2122	rBV	1200306	1681523	23.68%	2.469%
27	15.504	2122	2128	2133	rVB	19627	29280	0.41%	0.043%
28	16.045	2217	2220	2225	rBV4	9230	13382	0.19%	0.020%
29	16.786	2342	2346	2352	rBV3	8870	19093	0.27%	0.028%
30	16.945	2370	2373	2377	rVB6	6200	7755	0.11%	0.011%
31	17.016	2377	2385	2395	rBV	2870792	4087499	57.57%	6.001%
32	17.116	2395	2402	2413	rBV	4260133	5937595	83.62%	8.717%
33	17.416	2448	2453	2460	rBV10	8419	20556	0.29%	0.030%
34	17.686	2496	2499	2504	rVB7	7389	7515	0.11%	0.011%
35	17.916	2533	2538	2546	rBV2	87578	132480	1.87%	0.194%
36	18.351	2608	2612	2617	rVB6	19146	22844	0.32%	0.034%

Data Path : Z:\svoasrv\HPCHEM1\BNA_N\Data\BN042724\
 Data File : BN031290.D
 Acq On : 28 Apr 2024 03:57
 Operator : MA/JU
 Sample : P2251-01
 Misc :
 ALS Vial : 25 Sample Multiplier: 1

Instrument :
 BNA_N
 ClientSampleId :
 C0AP6

Integration Parameters: LSCINT.P

Integrator: RTE
 Smoothing : OFF Filtering: 5
 Sampling : 1 Min Area: 0.1 % of Largest Peak
 Start Thrs: 0.2 Max Peaks: 100
 Stop Thrs : 0 Peak Location: TOP

If leading or trailing edge < 100 prefer < Baseline drop else tangent >
 Peak separation: 5

Method : Z:\svoasrv\HPCHEM1\BNA_N\Methods\SFAM-EPA-BN041924.MA.M
 Title : SVOA CALIBRATION

37	18.404	2617	2621	2628	rBV9	6870	13411	0.19%	0.020%
38	18.816	2685	2691	2695	rBV7	7277	16871	0.24%	0.025%
39	18.980	2714	2719	2725	rBV2	62374	89633	1.26%	0.132%
40	19.051	2727	2731	2735	rBV	55553	75917	1.07%	0.111%
41	19.204	2753	2757	2765	rBV2	74677	111771	1.57%	0.164%
42	19.357	2780	2783	2787	rBV3	31352	37731	0.53%	0.055%
43	19.421	2788	2794	2801	rBV	5191434	7100344	100.00%	10.424%
44	21.251	3099	3105	3112	rBV	3018089	4404867	62.04%	6.467%
45	23.945	3554	3563	3575	rBV3	2836692	7049939	99.29%	10.350%
46	24.145	3588	3597	3615	rVB	1924287	4648139	65.46%	6.824%

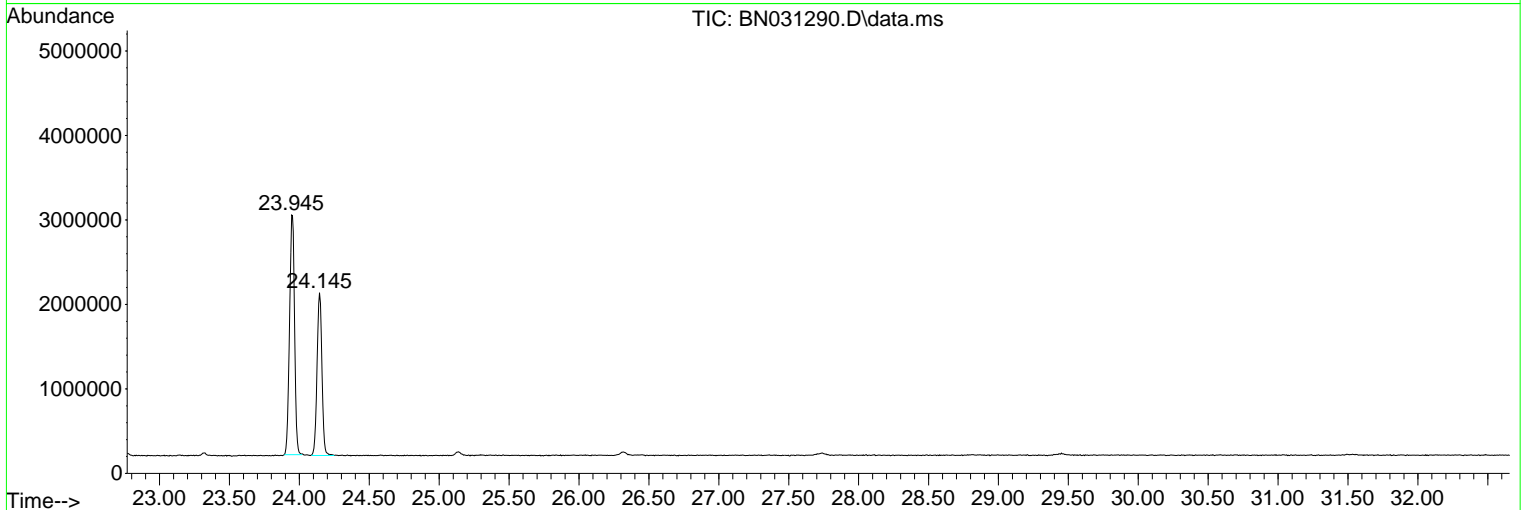
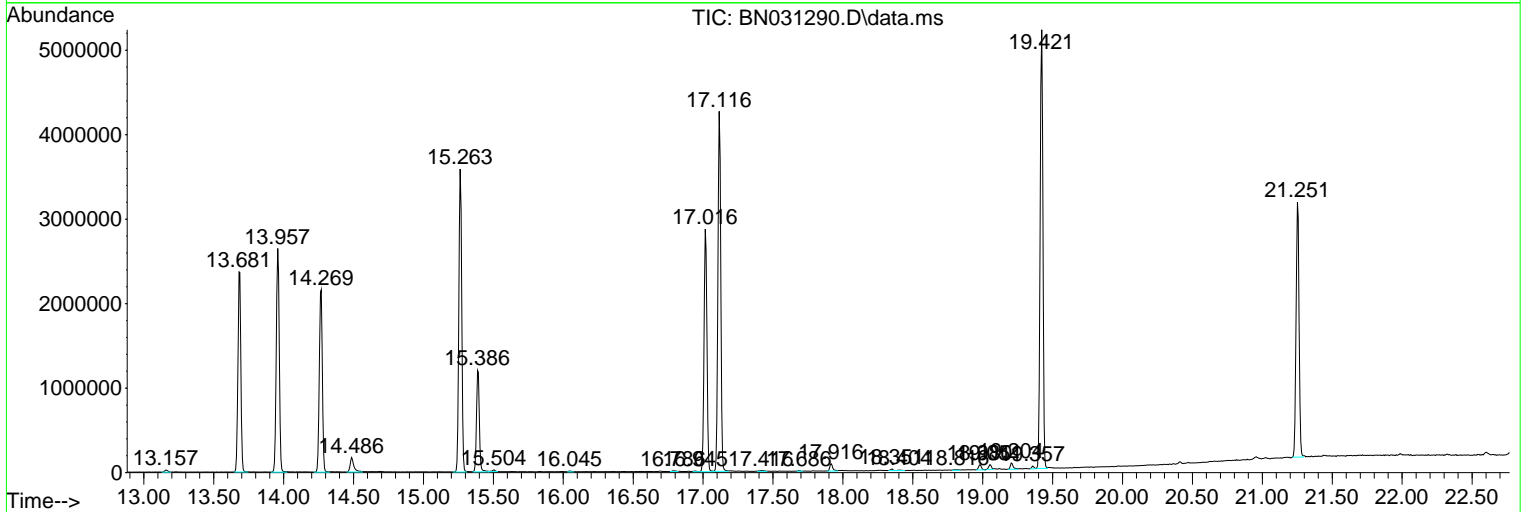
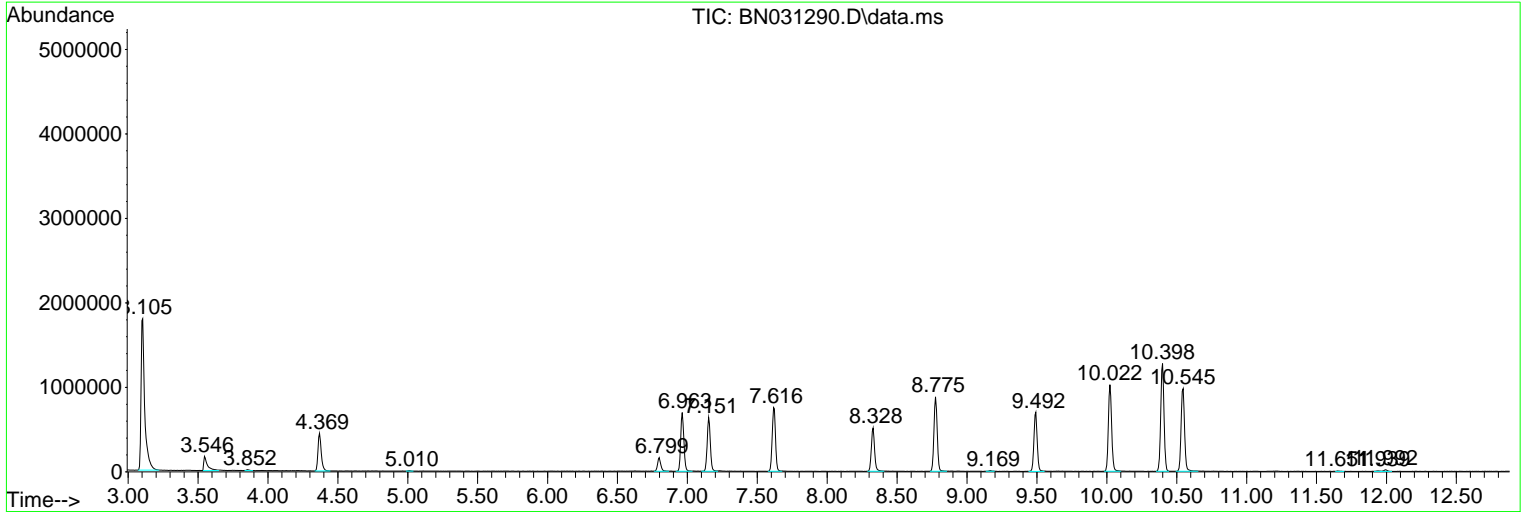
Sum of corrected areas: 68115994

Data Path : Z:\svoasrv\HPCHEM1\BNA_N\Data\BN042724\
 Data File : BN031290.D
 Acq On : 28 Apr 2024 03:57
 Operator : MA/JU
 Sample : P2251-01
 Misc :
 ALS Vial : 25 Sample Multiplier: 1

Instrument :
 BNA_N
ClientSampleId :
 C0AP6

Quant Method : Z:\svoasrv\HPCHEM1\BNA_N\Methods\SFAM-EPA-BN041924.MA.M
 Quant Title : SVOA CALIBRATION

TIC Library : C:\Database\NI ST20.L
 TIC Integration Parameters: LSCINT.P



Data Path : Z:\svoasrv\HPCHEM1\BNA_N\Data\BN042724\
Data File : BN031290.D
Acq On : 28 Apr 2024 03:57
Operator : MA/JU
Sample : P2251-01
Misc :
ALS Vial : 25 Sample Multiplier: 1

Instrument :
BNA_N
ClientSampleId :
C0AP6

Quant Method : Z:\svoasrv\HPCHEM1\BNA_N\Methods\SFAM-EPA-BN041924.MA.M
Quant Title : SVOA CALIBRATION

TIC Library : C:\Database\NI ST20.L
TIC Integration Parameters: LSCINT.P

No Library Search Compounds Detected

Data Path : Z:\svoasrv\HPCHEM1\BNA_N\Data\BN042724\
Data File : BN031290.D
Acq On : 28 Apr 2024 03:57
Operator : MA/JU
Sample : P2251-01
Misc :
ALS Vial : 25 Sample Multiplier: 1

Instrument :
BNA_N
ClientSampleId :
C0AP6

Quant Method : Z:\svoasrv\HPCHEM1\BNA_N\Methods\SFAM-EPA-BN041924.MA.M
Quant Title : SVOA CALIBRATION

TIC Library : C:\Database\NIST20.L
TIC Integration Parameters: LSCINT.P

TIC Top Hit name	RT	EstConc	Units	Response	--Internal Standard--			
					#	RT	Resp	Conc
