

Data Path : Z:\HPCHEM1\BNA N\DATA\BN043018\  
 Data File : BN001023.D  
 Acq On : 01 May 2018 08:35  
 Operator : JU/SJ  
 Sample : J2602-14  
 Misc :  
 ALS Vial : 31 Sample Multiplier: 1

Instrument :  
 BNA\_N  
 ClientSampleID :  
 DAT76

Manual Integrations  
 APPROVED

Sohil  
 5/1/2018 7:08:44 PM

Quant Time: May 01 11:58:00 2018  
 Quant Method : Z:\HPCHEM1\BNA N\METHODS\SOM-EPA-BN042418MA.M  
 Quant Title : SVOA CALIBRATION  
 QLast Update : Tue May 01 01:47:00 2018  
 Response via : Initial Calibration

Internal Standards	R.T.	QIon	Response	Conc	Units	Dev(Min)
1) 1,4-Dichlorobenzene-d4	7.62	152	147442	20.00	ng/ul	0.00
2) Naphthalene-d8	10.39	136	620750	20.00	ng/ul	0.00
6) Acenaphthene-d10	14.25	164	303712	20.00	ng/ul	0.00
12) Phenanthrene-d10	17.00	188	544564	20.00	ng/ul	0.00
17) Chrysene-d12	21.20	240	447926	20.00	ng/ul	0.00
22) Perylene-d12	23.40	264	469030	20.00	ng/ul	0.00
System Monitoring Compounds						
7) Acenaphthylene-d8	13.94	160	672870	23.07	ng/ul	0.00
10) Fluorene-d10	15.25	176	449378	23.08	ng/ul	0.00
14) Anthracene-d10	17.10	188	599283	24.06	ng/ul	0.00
18) Pyrene-d10	19.40	212	574005	25.01	ng/ul	0.00
25) Benzo(a)pyrene-d12	23.26	264	589368	26.60	ng/ul	0.00
Target Compounds						
16) Fluoranthene	19.06	202	54858	1.820	ng/ul#	93
19) Pyrene	19.43	202	46594	1.619	ng/ul#	89
21) Chrysene	21.25	228	26439	1.051	ng/ul	96
23) Benzo(b)fluoranthene	22.75	252	41977m	1.575	ng/ul	

(#) = qualifier out of range (m) = manual integration (+) = signals summed

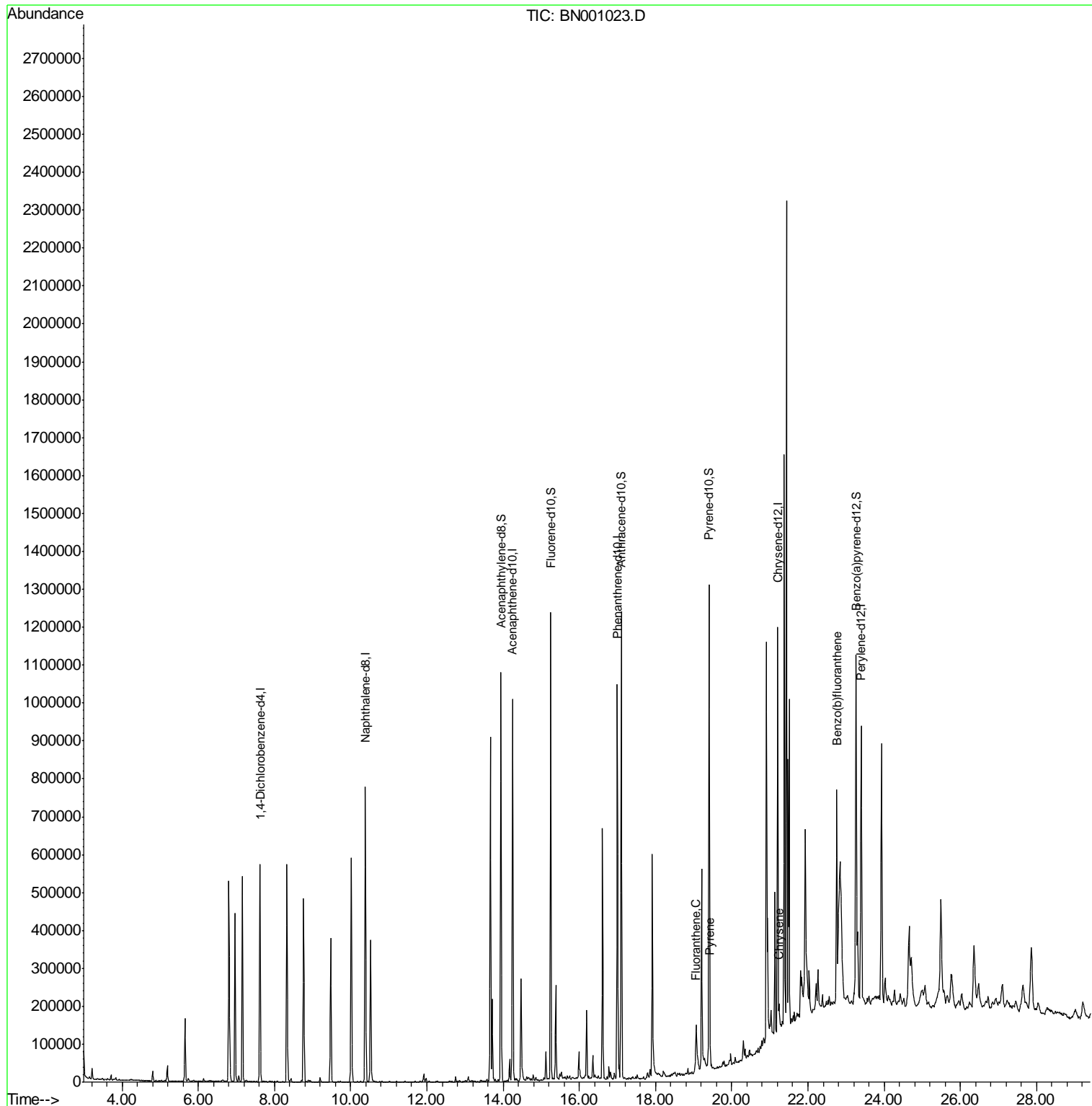
Data Path : Z:\HPCHEM1\BNA N\DATA\BN043018\  
 Data File : BN001023.D  
 Acq On : 01 May 2018 08:35  
 Operator : JU/SJ  
 Sample : J2602-14  
 Misc :  
 ALS Vial : 31 Sample Multiplier: 1

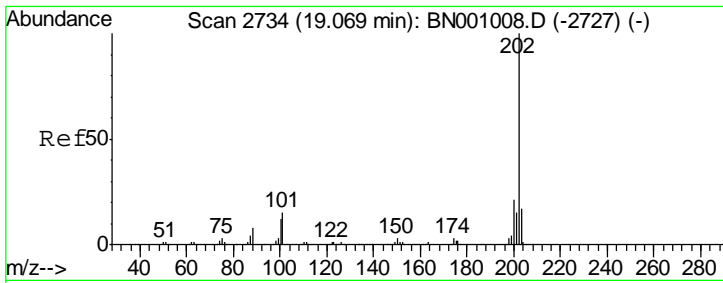
Instrument :  
 BNA\_N  
 ClientSampled :  
 DAT76

Manual Integrations  
 APPROVED

Sohil  
 5/1/2018 7:08:44 PM

Quant Time: May 01 11:58:00 2018  
 Quant Method : Z:\HPCHEM1\BNA N\METHODS\SOM-EPA-BN042418MA.M  
 Quant Title : SVOA CALIBRATION  
 QLast Update : Tue May 01 01:47:00 2018  
 Response via : Initial Calibration



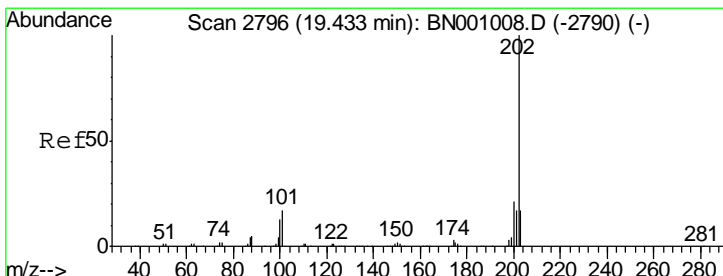
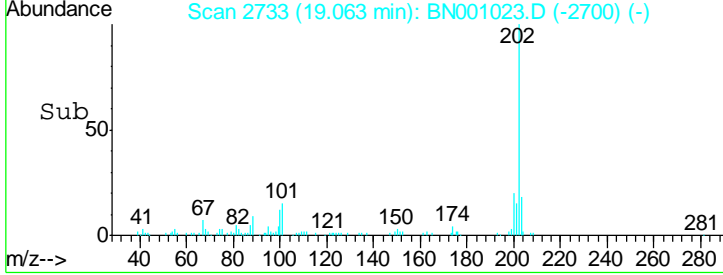
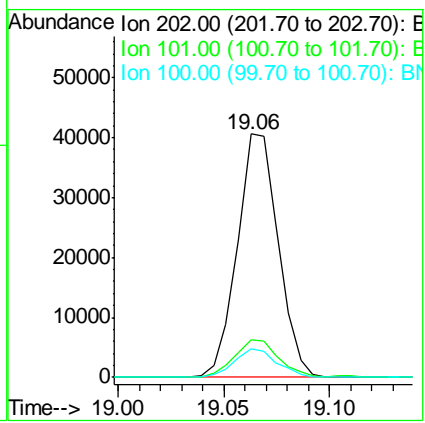
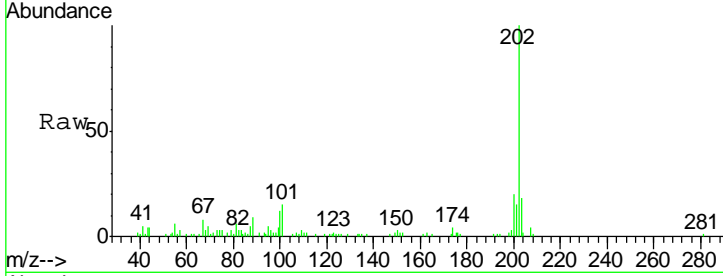


#16  
 Fluoranthene  
 Concen: 1.820 ng/ul  
 RT: 19.06 min Scan# 2733  
 Delta R.T. -0.01 min  
 Lab File: BN001023.D  
 Acq: 01 May 2018 08:35

**Instrument :**  
 BNA\_N  
**ClientSampled :**  
 DAT76

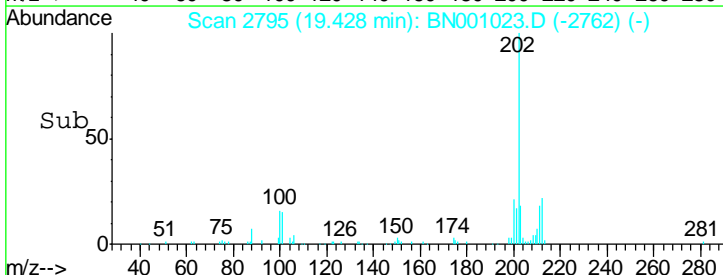
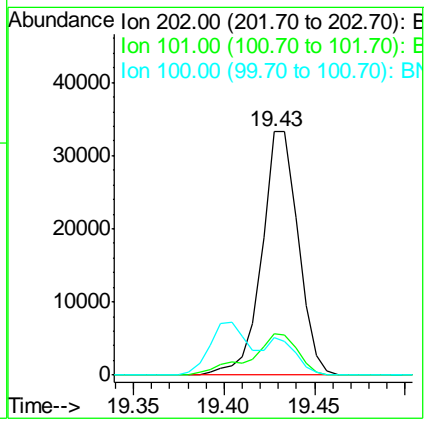
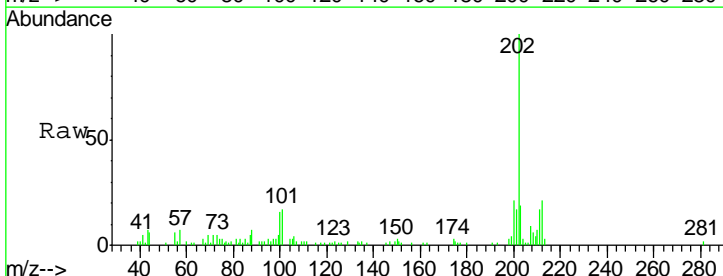
Tgt Ion	Resp	Lower	Upper
202	100		
101	15.3	9.9	14.9#
100	12.0	7.4	11.0#

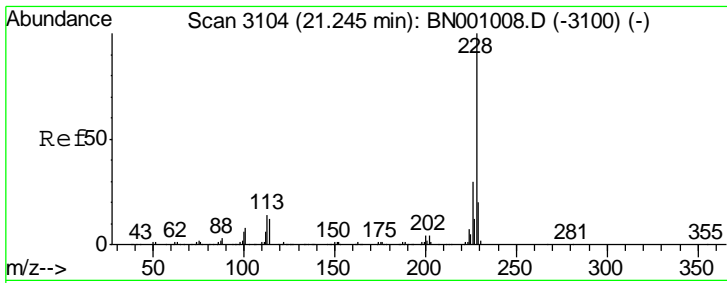
**Manual Integrations**  
**APPROVED**  
 Sohil  
 5/1/2018 7:08:44 PM



#19  
 Pyrene  
 Concen: 1.619 ng/ul  
 RT: 19.43 min Scan# 2795  
 Delta R.T. -0.01 min  
 Lab File: BN001023.D  
 Acq: 01 May 2018 08:35

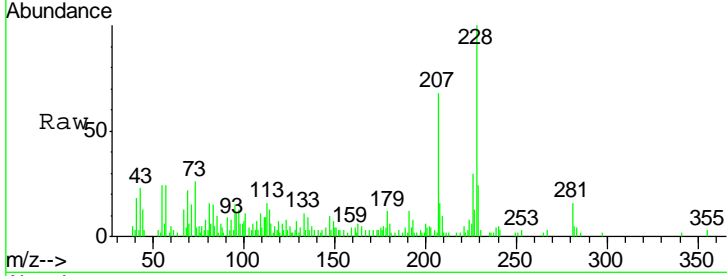
Tgt Ion	Resp	Lower	Upper
202	100		
101	17.0	11.0	16.4#
100	15.6	8.1	12.1#





#21  
 Chrysene  
 Concen: 1.051 ng/ul  
 RT: 21.25 min Scan# 3104  
 Delta R.T. 0.00 min  
 Lab File: BN001023.D  
 Acq: 01 May 2018 08:35

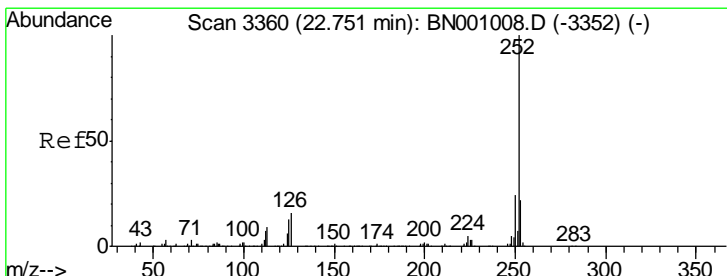
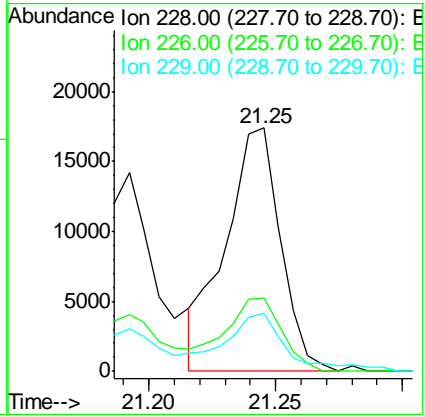
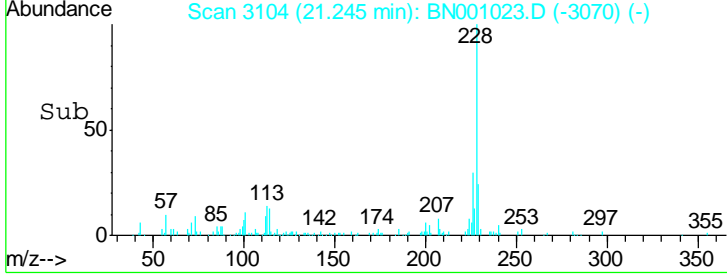
Instrument :  
 BNA\_N  
 ClientSampled :  
 DAT76



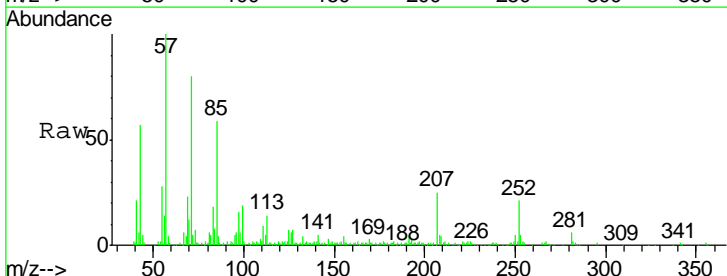
Tgt Ion: 228 Resp: 26439

Ion	Ratio	Lower	Upper
228	100		
226	29.9	24.5	36.7
229	23.7	15.8	23.8

Manual Integrations  
 APPROVED  
 Sohil  
 5/1/2018 7:08:44 PM



#23  
 Benzo(b)fluoranthene  
 Concen: 1.575 ng/ul m  
 RT: 22.75 min Scan# 3360  
 Delta R.T. 0.00 min  
 Lab File: BN001023.D  
 Acq: 01 May 2018 08:35



Tgt Ion: 252 Resp: 41977

Ion	Ratio	Lower	Upper
252	100		
253	25.5	18.0	27.0
125	32.3	8.0	12.0#

