

Data Path : Z:\HPCHEM1\BNA N\DATA\BN050218\
 Data File : BN001086.D
 Acq On : 03 May 2018 00:14
 Operator : JU/SJ
 Sample : J2601-01
 Misc :
 ALS Vial : 26 Sample Multiplier: 1

Instrument :
 BNA_N
 ClientSampleId :

Quant Time: May 03 08:27:46 2018
 Quant Method : Z:\HPCHEM1\BNA N\METHODS\SOM-EPA-BN042418MA.M
 Quant Title : SVOA CALIBRATION
 QLast Update : Thu May 03 08:25:51 2018
 Response via : Initial Calibration

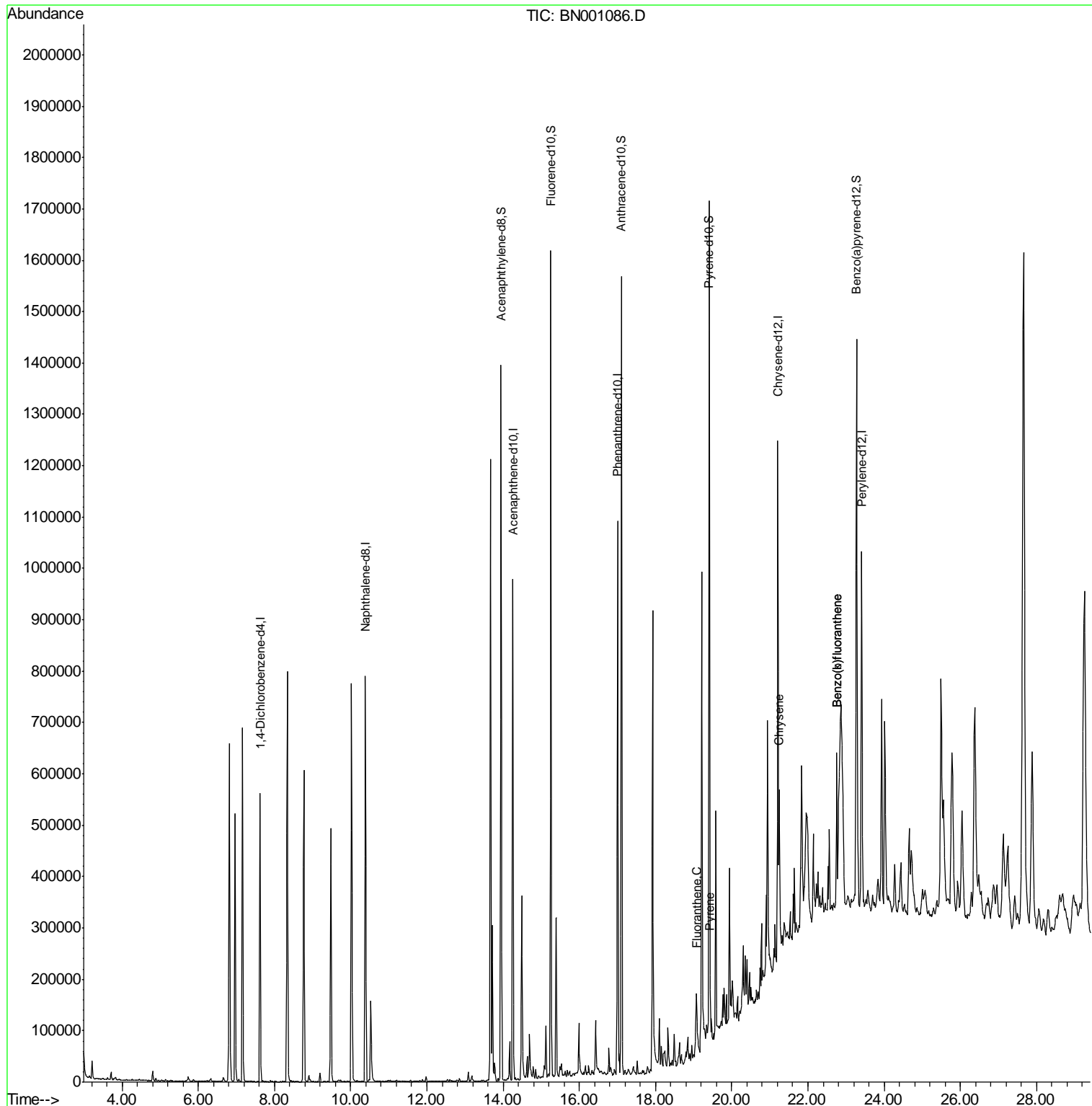
Internal Standards	R.T.	QIon	Response	Conc	Units	Dev(Min)
1) 1,4-Dichlorobenzene-d4	7.62	152	138323	20.00	ng/ul	0.00
2) Naphthalene-d8	10.39	136	600982	20.00	ng/ul	0.00
6) Acenaphthene-d10	14.26	164	302484	20.00	ng/ul	0.00
12) Phenanthrene-d10	17.00	188	552274	20.00	ng/ul	0.00
17) Chrysene-d12	21.21	240	429274	20.00	ng/ul	0.00
22) Perylene-d12	23.41	264	453764	20.00	ng/ul	0.00
System Monitoring Compounds						
7) Acenaphthylene-d8	13.95	160	865453	29.79	ng/ul	0.00
10) Fluorene-d10	15.25	176	586921	30.27	ng/ul	0.00
14) Anthracene-d10	17.10	188	774078	30.65	ng/ul	0.00
18) Pyrene-d10	19.41	212	728504	33.12	ng/ul	0.00
25) Benzo(a)pyrene-d12	23.27	264	715601	33.38	ng/ul	0.00
Target Compounds						
16) Fluoranthene	19.07	202	42898	1.404	ng/ul#	89
19) Pyrene	19.44	202	36083	1.309	ng/ul#	90
21) Chrysene	21.25	228	24171	1.002	ng/ul#	94
23) Benzo(b)fluoranthene	22.76	252	40655	1.577	ng/ul#	74
24) Benzo(k)fluoranthene	22.76	252	34107	1.352	ng/ul#	74

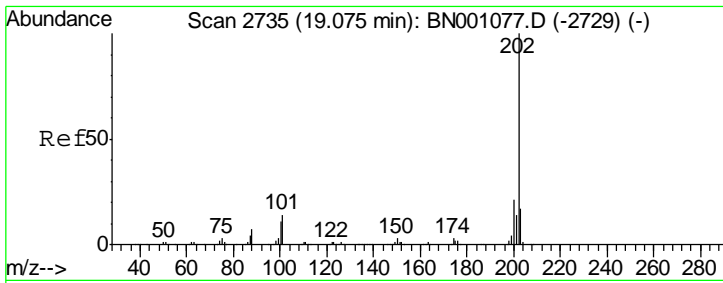
(#) = qualifier out of range (m) = manual integration (+) = signals summed

Data Path : Z:\HPCHEM1\BNA N\DATA\BN050218\
 Data File : BN001086.D
 Acq On : 03 May 2018 00:14
 Operator : JU/SJ
 Sample : J2601-01
 Misc :
 ALS Vial : 26 Sample Multiplier: 1

Instrument :
 BNA_N
 ClientSampled :

Quant Time: May 03 08:27:46 2018
 Quant Method : Z:\HPCHEM1\BNA N\METHODS\SOM-EPA-BN042418MA.M
 Quant Title : SVOA CALIBRATION
 QLast Update : Thu May 03 08:25:51 2018
 Response via : Initial Calibration

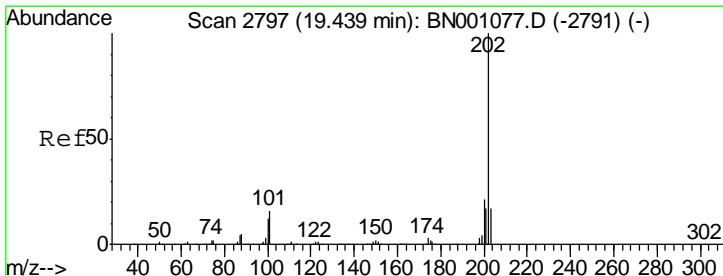
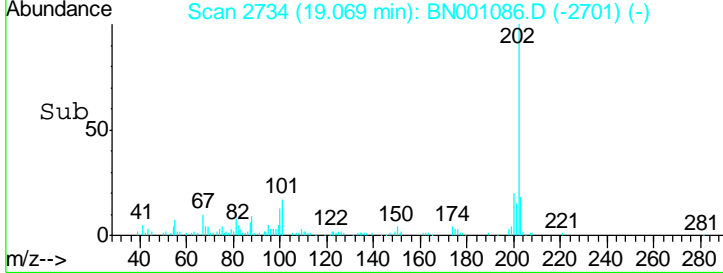
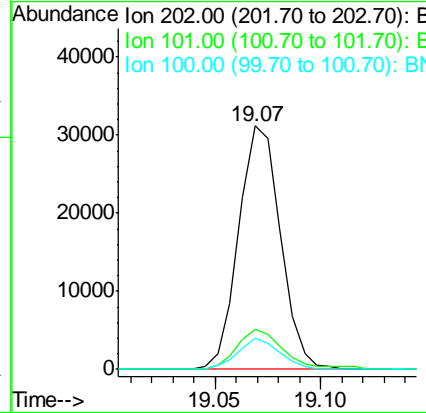
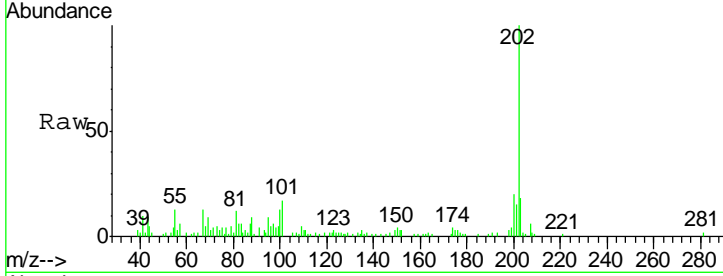




#16
 Fluoranthene
 Concen: 1.404 ng/ul
 RT: 19.07 min Scan# 2734
 Delta R.T. -0.01 min
 Lab File: BN001086.D
 Acq: 03 May 2018 00:14

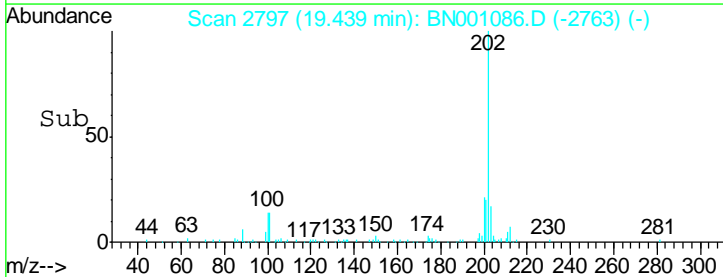
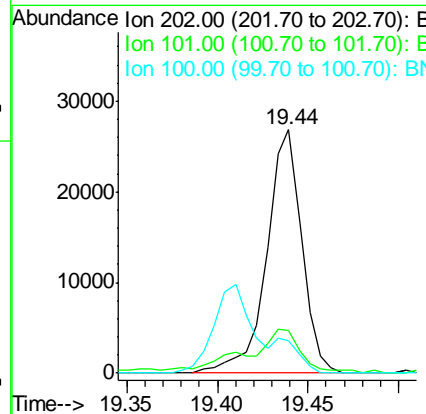
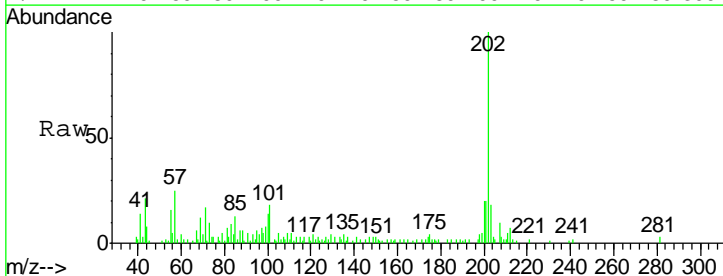
Instrument :
 BNA_N
 ClientSampled :

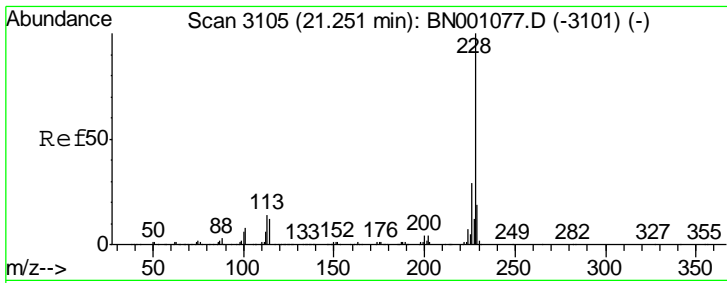
Tgt Ion	Resp	Lower	Upper
202	42898		
101	16.7	9.9	14.9#
100	12.9	7.4	11.0#



#19
 Pyrene
 Concen: 1.309 ng/ul
 RT: 19.44 min Scan# 2797
 Delta R.T. 0.00 min
 Lab File: BN001086.D
 Acq: 03 May 2018 00:14

Tgt Ion	Resp	Lower	Upper
202	36083		
101	17.7	11.0	16.4#
100	13.6	8.1	12.1#

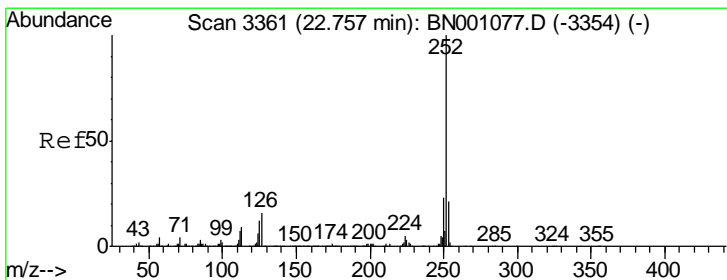
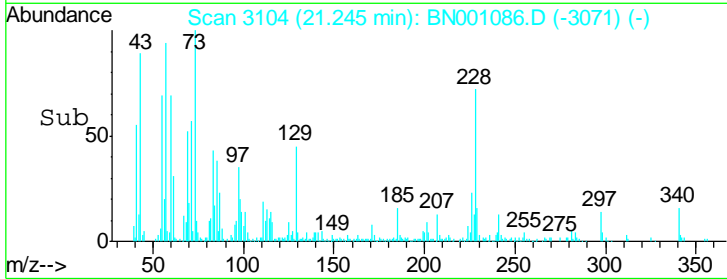
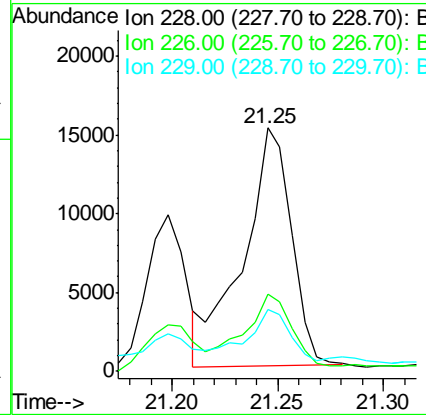
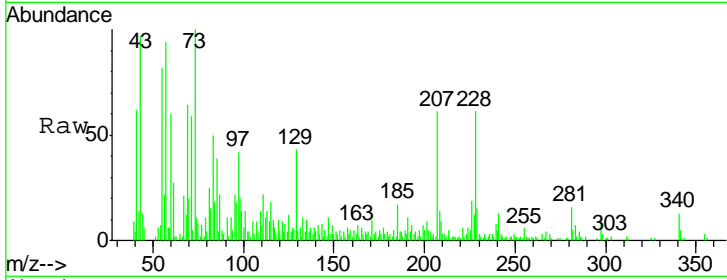




#21
 Chrysene
 Concen: 1.002 ng/ul
 RT: 21.25 min Scan# 3104
 Delta R.T. -0.01 min
 Lab File: BN001086.D
 Acq: 03 May 2018 00:14

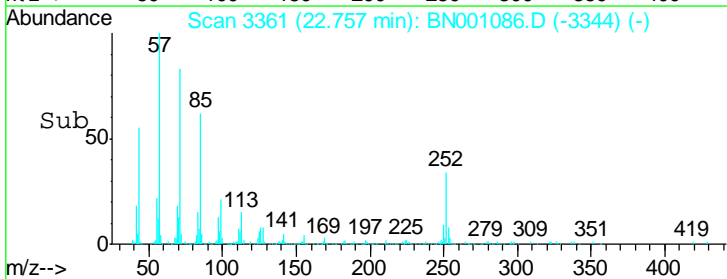
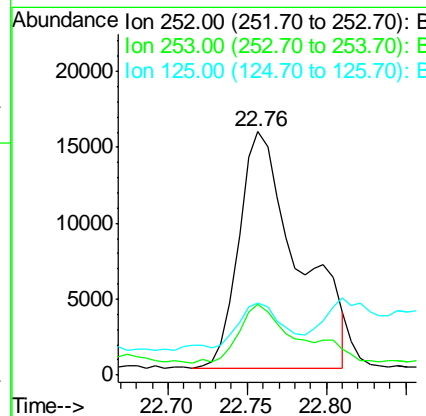
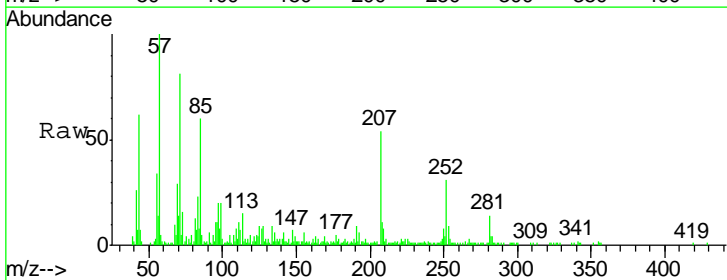
Instrument :
 BNA_N
 ClientSampled :

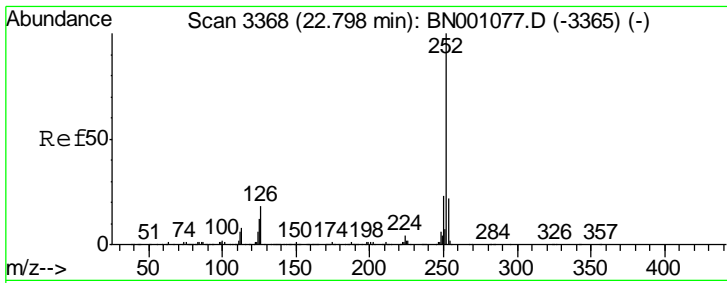
Tgt Ion	Resp	Lower	Upper
228	24171		
226	31.8	24.5	36.7
229	25.2	15.8	23.8#



#23
 Benzo(b)fluoranthene
 Concen: 1.577 ng/ul
 RT: 22.76 min Scan# 3361
 Delta R.T. 0.00 min
 Lab File: BN001086.D
 Acq: 03 May 2018 00:14

Tgt Ion	Resp	Lower	Upper
252	40655		
253	29.3	18.0	27.0#
125	29.7	8.0	12.0#





#24
 Benzo(k)fluoranthene
 Concen: 1.352 ng/ul
 RT: 22.76 min Scan# 3361
 Delta R.T. -0.04 min
 Lab File: BN001086.D
 Acq: 03 May 2018 00:14

Instrument :
 BNA_N
 ClientSampled :

Tot Ion	Ion	Ratio	Lower	Upper
34107	252	100		
	253	29.3	18.0	27.0#
	125	29.7	8.1	12.1#

