

Data Path : Z:\svoasrv\HPCHEM1\BNA_N\Data\BN050523\
 Data File : BN025282.D
 Acq On : 05 May 2023 16:24
 Operator : CG/JU
 Sample : PB152588BS
 Misc :
 ALS Vial : 13 Sample Multiplier: 1

Instrument :
 BNA_N
 ClientSampleId :
 SLCS588

Quant Time: May 06 04:07:31 2023
 Quant Method : Z:\SVOASRV\HPCHEM1\BNA_N\METHODS\SFAM-EPA-SIM-BN042023.M
 Quant Title : ASP BNA STANDARDS FOR 5 POINT CALIBRATION
 QLast Update : Fri May 05 11:29:16 2023
 Response via : Initial Calibration

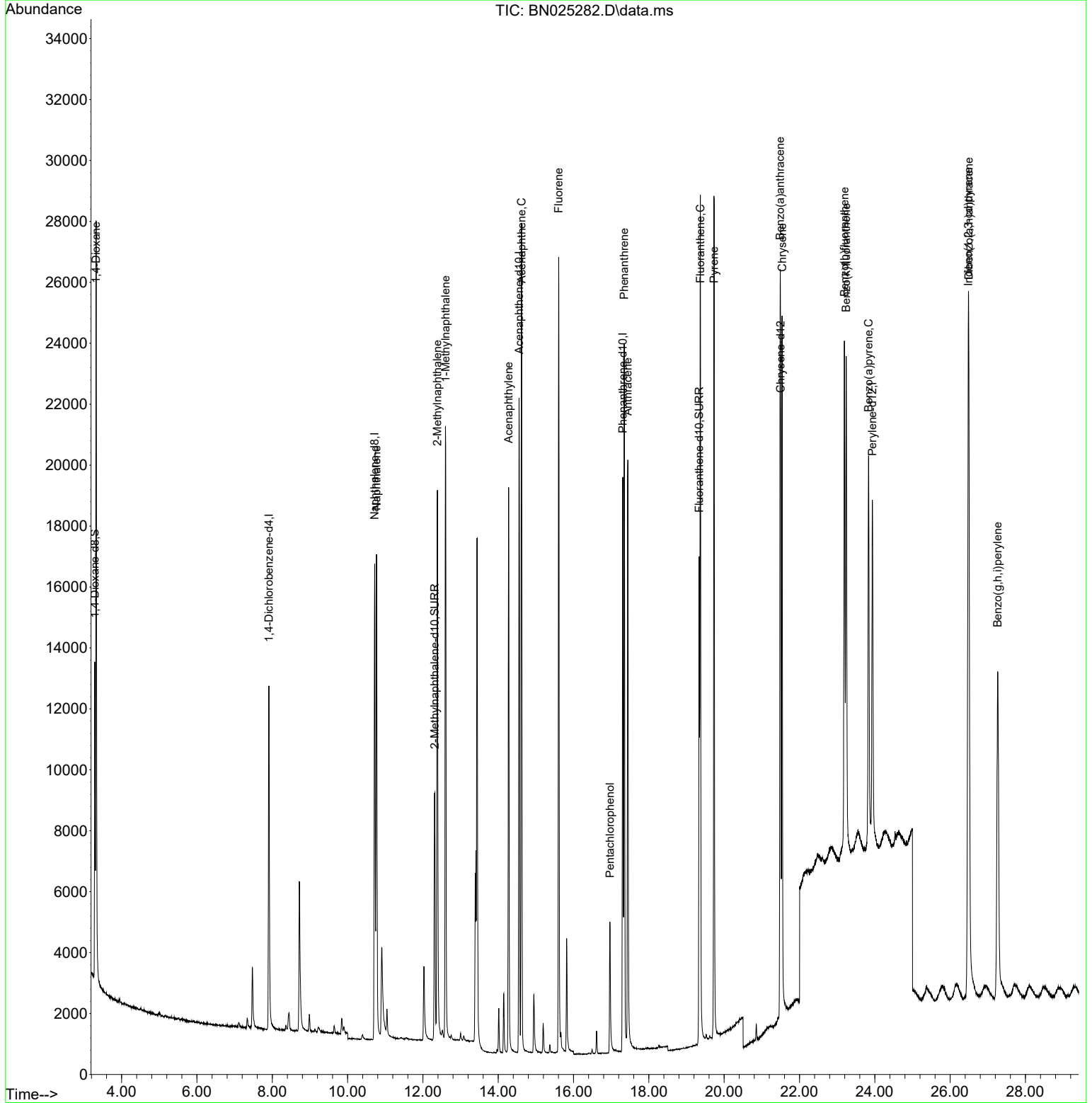
Compound	R.T.	QIon	Response	Conc	Units	Dev(Min)
Internal Standards						
1) 1,4-Dichlorobenzene-d4	7.912	152	6851	0.400	ng/ul	0.00
4) Naphthalene-d8	10.719	136	21780	0.400	ng/ul	0.00
9) Acenaphthene-d10	14.555	164	12056	0.400	ng/ul	0.00
13) Phenanthrene-d10	17.308	188	22253	0.400	ng/ul	0.00
17) Chrysene-d12	21.501	240	13316	0.400	ng/ul	0.00
23) Perylene-d12	23.936	264	15140	0.400	ng/ul	# 0.00
System Monitoring Compounds						
3) 1,4-Dioxane-d8	3.288	96	5541	0.781	ng/ul	0.00
6) 2-Methylnaphthalene-d10	12.314	152	11927	0.426	ng/ul	0.00
18) Fluoranthene-d10	19.339	212	18311	0.521	ng/ul	0.00
Target Compounds						
						Qvalue
2) 1,4-Dioxane	3.322	88	14681	1.922	ng/ul	88
5) Naphthalene	10.768	128	22773	0.408	ng/ul	99
7) 2-Methylnaphthalene	12.385	142	14123	0.413	ng/ul	100
8) 1-Methylnaphthalene	12.600	142	14588	0.400	ng/ul	100
10) Acenaphthylene	14.278	152	22096	0.492	ng/ul	100
11) Acenaphthene	14.620	153	16012	0.423	ng/ul	98
12) Fluorene	15.606	166	17243	0.407	ng/ul	98
14) Pentachlorophenol	16.966	266	3484	0.797	ng/ul	99
15) Phenanthrene	17.346	178	25091	0.399	ng/ul	100
16) Anthracene	17.443	178	23166	0.451	ng/ul	99
19) Fluoranthene	19.367	202	24602	0.511	ng/ul	99
20) Pyrene	19.734	202	24824	0.502	ng/ul	99
21) Benzo(a)anthracene	21.487	228	19772	0.493	ng/ul	96
22) Chrysene	21.539	228	19785	0.452	ng/ul	97
24) Benzo(b)fluoranthene	23.194	252	22197	0.361	ng/ul	90
25) Benzo(k)fluoranthene	23.240	252	22578	0.382	ng/ul#	89
26) Benzo(a)pyrene	23.837	252	20259	0.399	ng/ul#	89
27) Indeno(1,2,3-cd)pyrene	26.482	276	27964	0.478	ng/ul#	97
28) Dibenzo(a,h)anthracene	26.496	278	22011	0.481	ng/ul	95
29) Benzo(g,h,i)perylene	27.264	276	23620	0.474	ng/ul	95

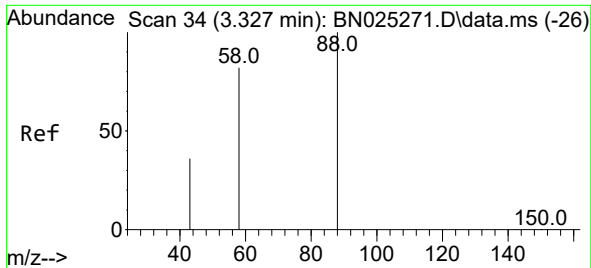
(#) = qualifier out of range (m) = manual integration (+) = signals summed

Data Path : Z:\svoasrv\HPCHEM1\BNA_N\Data\BN050523\
 Data File : BN025282.D
 Acq On : 05 May 2023 16:24
 Operator : CG/JU
 Sample : PB152588BS
 Misc :
 ALS Vial : 13 Sample Multiplier: 1

Instrument :
 BNA_N
 ClientSampleId :
 SLCS588

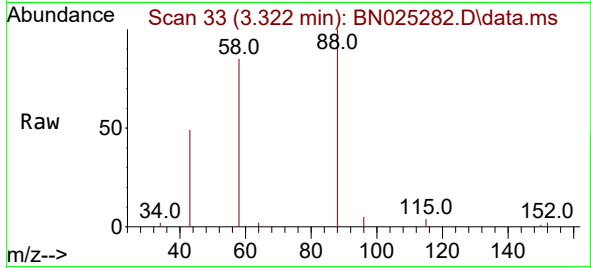
Quant Time: May 06 04:07:31 2023
 Quant Method : Z:\SVOASRV\HPCHEM1\BNA_N\METHODS\SFAM-EPA-SIM-BN042023.M
 Quant Title : ASP BNA STANDARDS FOR 5 POINT CALIBRATION
 QLast Update : Fri May 05 11:29:16 2023
 Response via : Initial Calibration





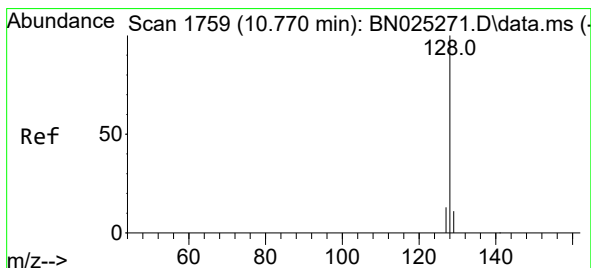
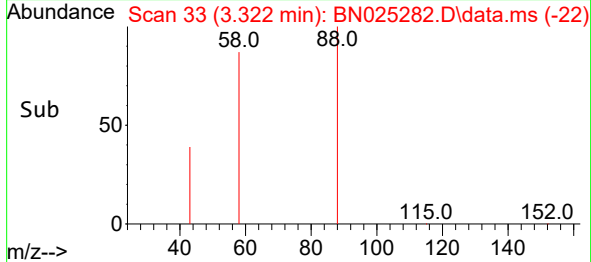
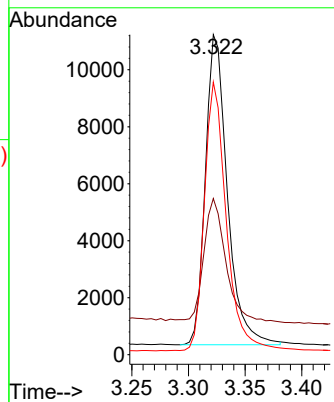
#2
 1,4-Dioxane
 Concen: 1.922 ng/uI
 RT: 3.322 min Scan# 31
 Delta R.T. -0.005 min
 Lab File: BN025282.D
 Acq: 05 May 2023 16:24

Instrument :
 BNA_N
 ClientSampleId :
 SLCS588



Tgt Ion: 88 Resp: 14681

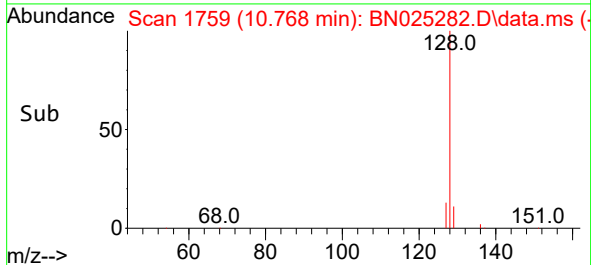
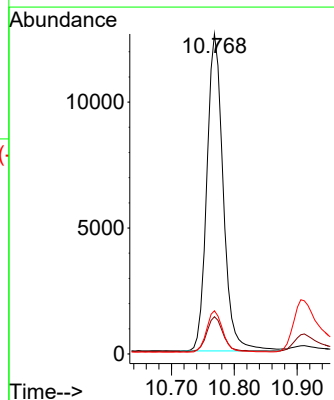
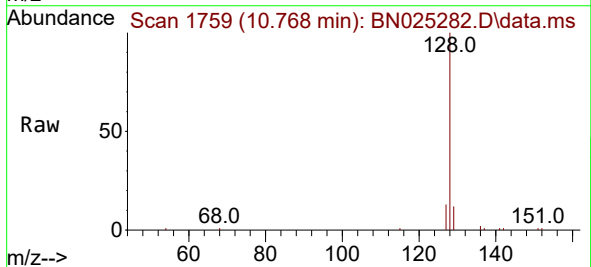
Ion	Ratio	Lower	Upper
88	100		
43	48.8	37.0	55.4
58	85.2	56.9	85.3

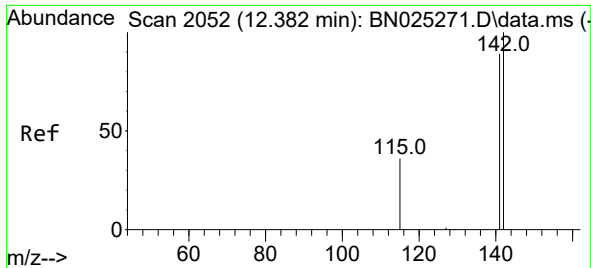


#5
 Naphthalene
 Concen: 0.408 ng/uI
 RT: 10.768 min Scan# 1759
 Delta R.T. -0.002 min
 Lab File: BN025282.D
 Acq: 05 May 2023 16:24

Tgt Ion: 128 Resp: 22773

Ion	Ratio	Lower	Upper
128	100		
129	11.7	9.0	13.6
127	13.5	10.7	16.1

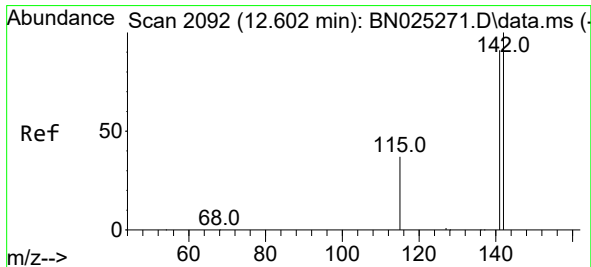
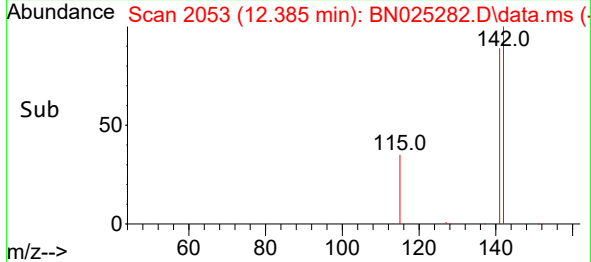
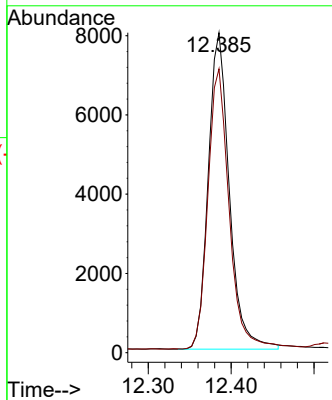
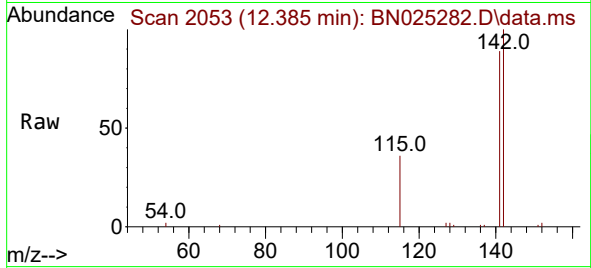




#7
 2-Methylnaphthalene
 Concen: 0.413 ng/ul
 RT: 12.385 min Scan# 2053
 Delta R.T. 0.004 min
 Lab File: BN025282.D
 Acq: 05 May 2023 16:24

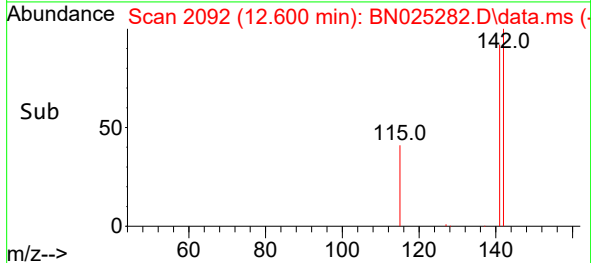
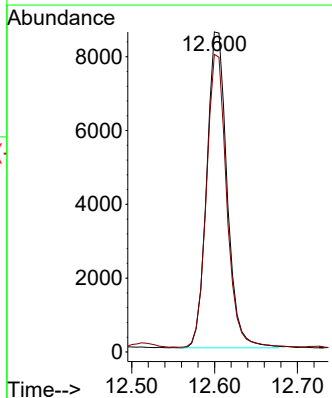
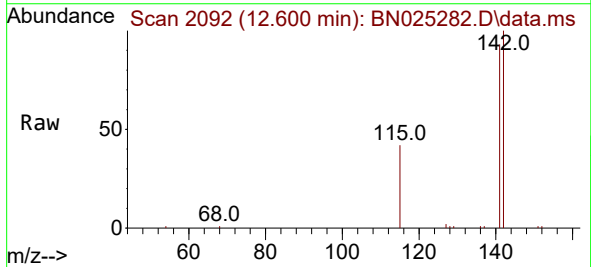
Instrument :
 BNA_N
 ClientSampleId :
 SLCS588

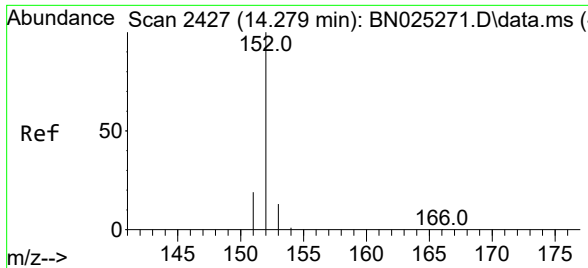
Tgt Ion:142 Resp: 14123
 Ion Ratio Lower Upper
 142 100
 141 89.2 71.4 107.0



#8
 1-Methylnaphthalene
 Concen: 0.400 ng/ul
 RT: 12.600 min Scan# 2092
 Delta R.T. -0.002 min
 Lab File: BN025282.D
 Acq: 05 May 2023 16:24

Tgt Ion:142 Resp: 14588
 Ion Ratio Lower Upper
 142 100
 141 92.1 73.8 110.6

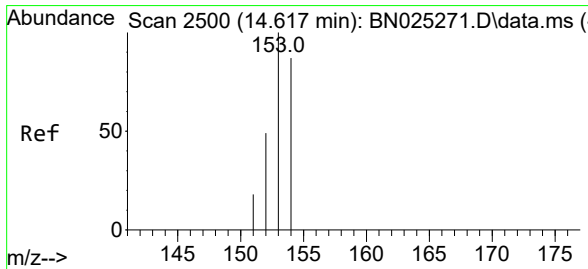
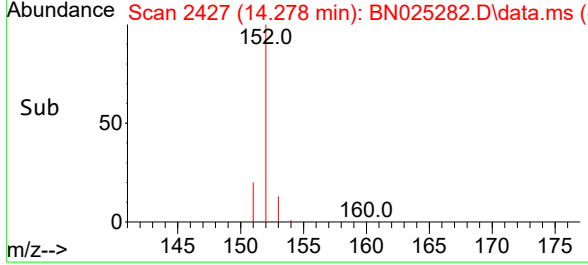
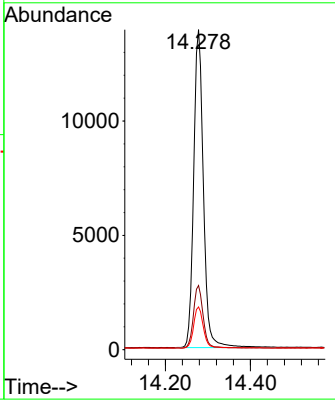
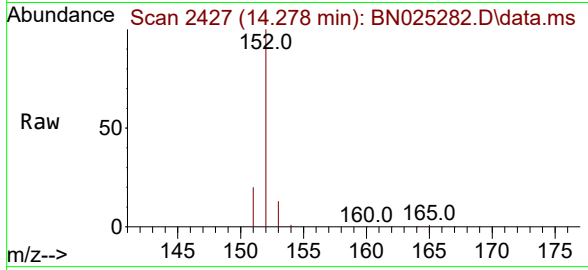




#10
 Acenaphthylene
 Concen: 0.492 ng/u1
 RT: 14.278 min Scan# 2427
 Delta R.T. -0.001 min
 Lab File: BN025282.D
 Acq: 05 May 2023 16:24

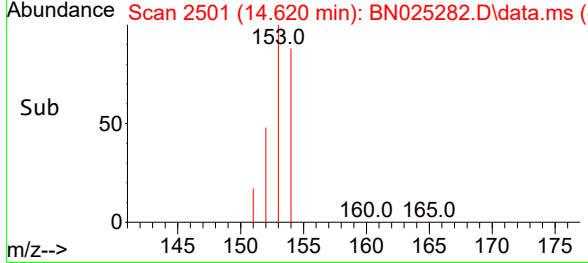
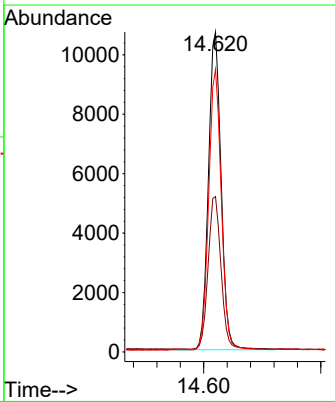
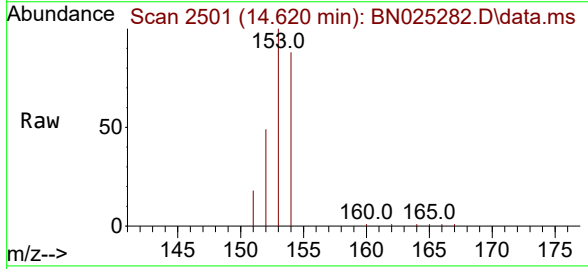
Instrument : BNA_N
 ClientSampleId : SLCS588

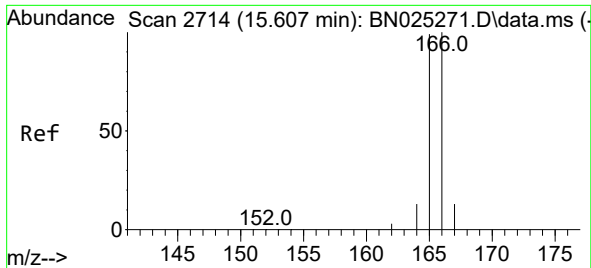
Tgt Ion	Resp	Lower	Upper
152	22096		
151	20.1	16.0	24.0
153	13.4	10.8	16.2



#11
 Acenaphthene
 Concen: 0.423 ng/u1
 RT: 14.620 min Scan# 2501
 Delta R.T. 0.004 min
 Lab File: BN025282.D
 Acq: 05 May 2023 16:24

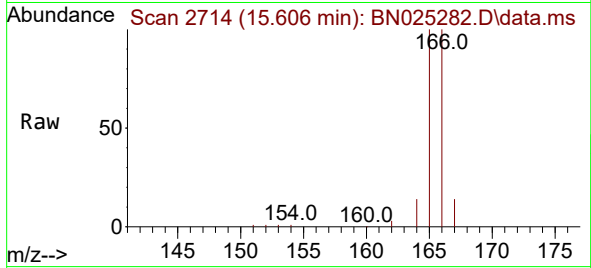
Tgt Ion	Resp	Lower	Upper
153	16012		
152	48.5	40.2	60.4
154	88.3	69.4	104.2



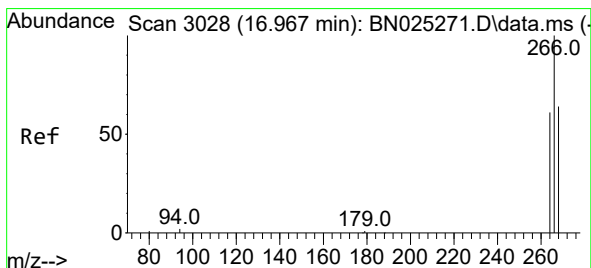
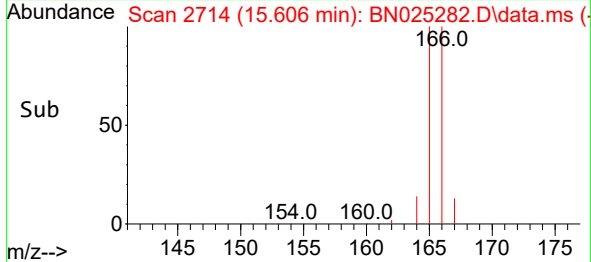
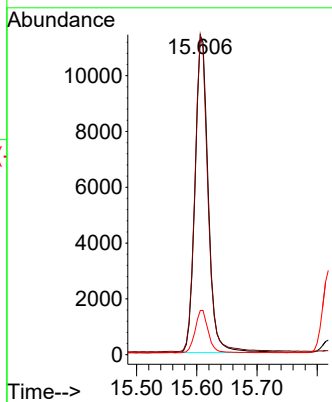


#12
 Fluorene
 Concen: 0.407 ng/uI
 RT: 15.606 min Scan# 2714
 Delta R.T. -0.001 min
 Lab File: BN025282.D
 Acq: 05 May 2023 16:24

Instrument : BNA_N
 ClientSampleId : SLCS588

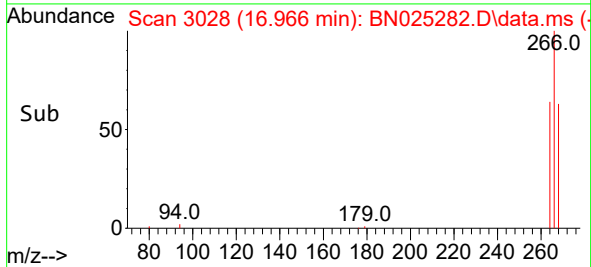
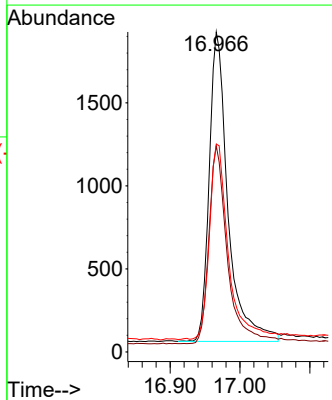
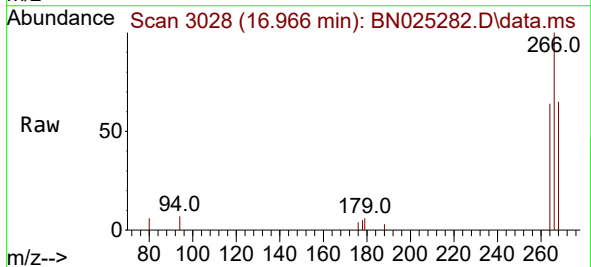


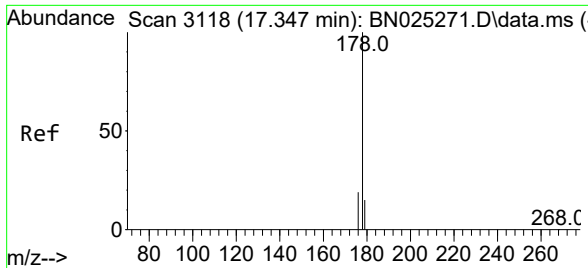
Tgt Ion:166 Resp: 17243
 Ion Ratio Lower Upper
 166 100
 165 100.3 78.1 117.1
 167 13.8 11.0 16.6



#14
 Pentachlorophenol
 Concen: 0.797 ng/uI
 RT: 16.966 min Scan# 3028
 Delta R.T. -0.001 min
 Lab File: BN025282.D
 Acq: 05 May 2023 16:24

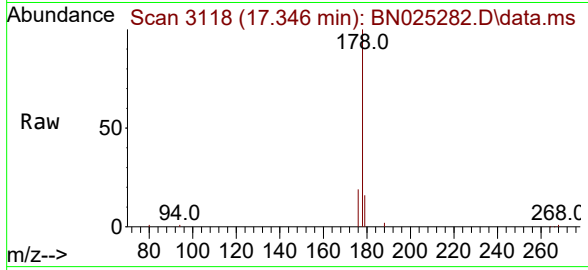
Tgt Ion:266 Resp: 3484
 Ion Ratio Lower Upper
 266 100
 264 62.9 49.6 74.4
 268 64.1 51.3 76.9





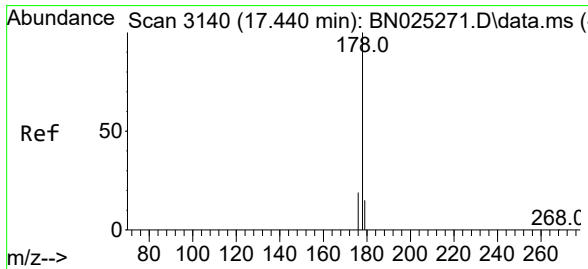
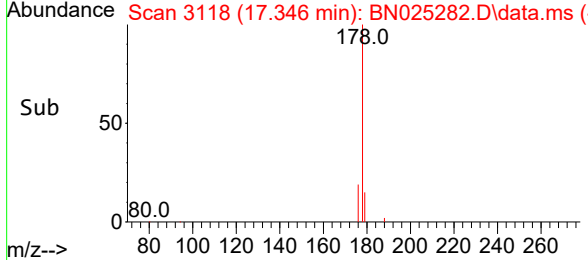
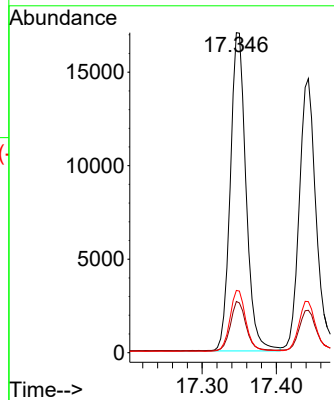
#15
 Phenanthrene
 Concen: 0.399 ng/u1
 RT: 17.346 min Scan# 3118
 Delta R.T. -0.001 min
 Lab File: BN025282.D
 Acq: 05 May 2023 16:24

Instrument :
 BNA_N
 ClientSampleId :
 SLCS588



Tgt Ion:178 Resp: 25091

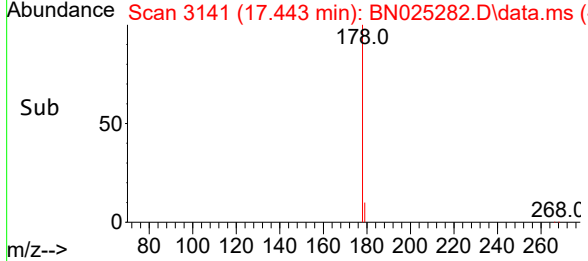
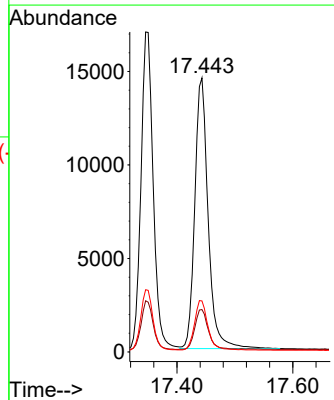
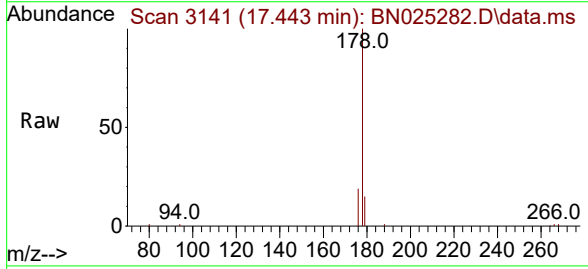
Ion	Ratio	Lower	Upper
178	100		
179	16.0	12.5	18.7
176	19.5	15.6	23.4

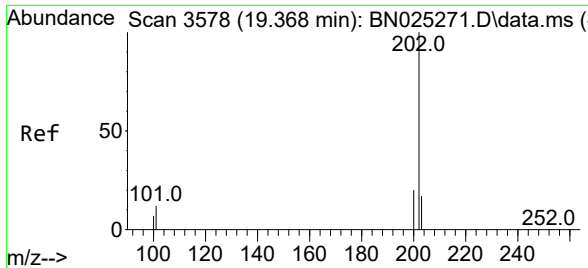


#16
 Anthracene
 Concen: 0.451 ng/u1
 RT: 17.443 min Scan# 3141
 Delta R.T. 0.003 min
 Lab File: BN025282.D
 Acq: 05 May 2023 16:24

Tgt Ion:178 Resp: 23166

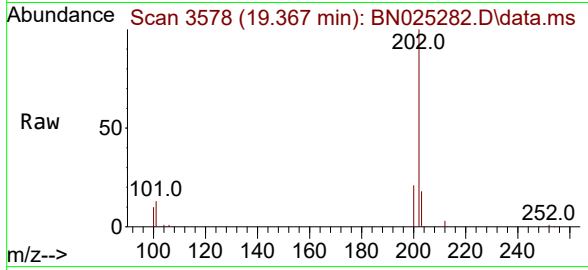
Ion	Ratio	Lower	Upper
178	100		
179	15.5	12.7	19.1
176	18.6	15.3	22.9





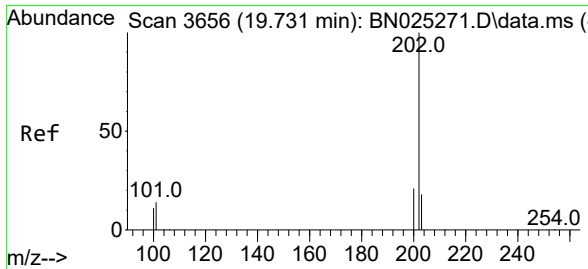
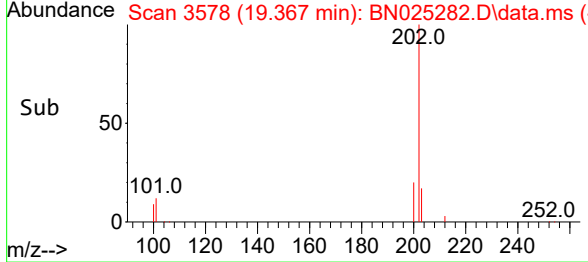
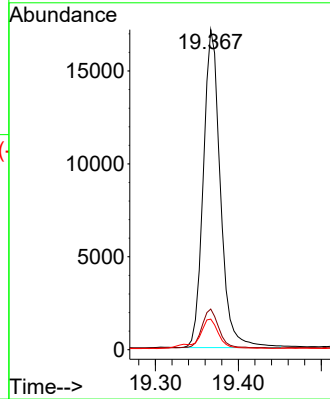
#19
 Fluoranthene
 Concen: 0.511 ng/u1
 RT: 19.367 min Scan# 31
 Delta R.T. -0.001 min
 Lab File: BN025282.D
 Acq: 05 May 2023 16:24

Instrument :
 BNA_N
 ClientSampleId :
 SLCS588



Tgt Ion:202 Resp: 24602

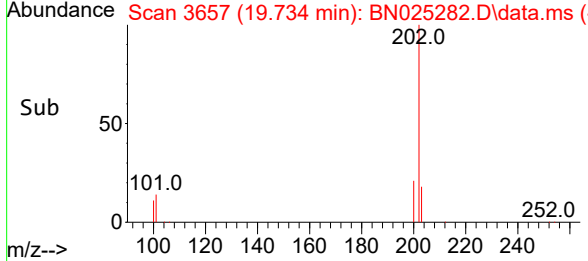
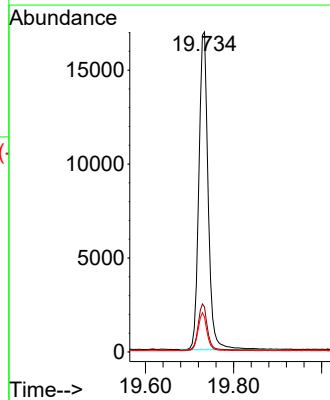
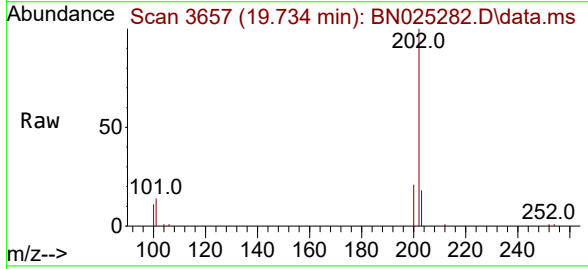
Ion	Ratio	Lower	Upper
202	100		
101	12.7	9.7	14.5
100	9.5	7.3	10.9

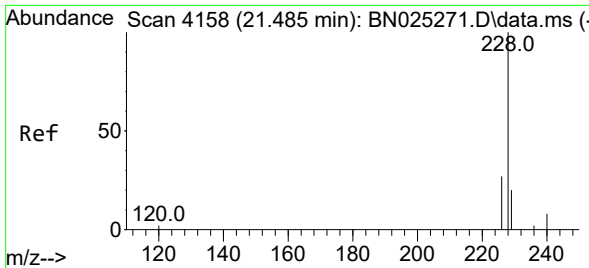


#20
 Pyrene
 Concen: 0.502 ng/u1
 RT: 19.734 min Scan# 3657
 Delta R.T. 0.003 min
 Lab File: BN025282.D
 Acq: 05 May 2023 16:24

Tgt Ion:202 Resp: 24824

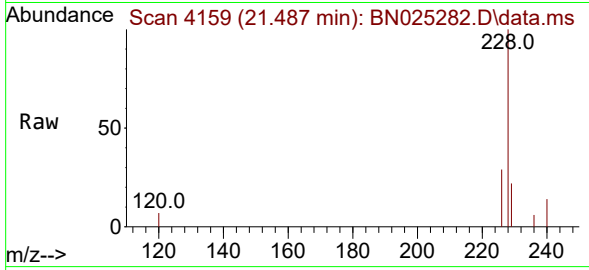
Ion	Ratio	Lower	Upper
202	100		
101	14.1	11.3	16.9
100	10.9	9.2	13.8



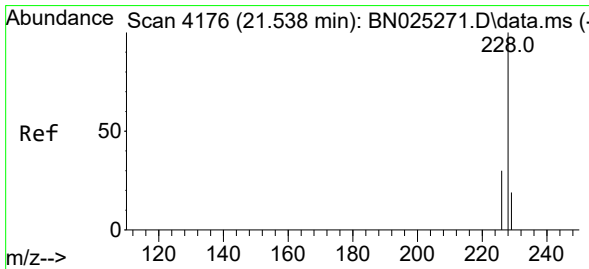
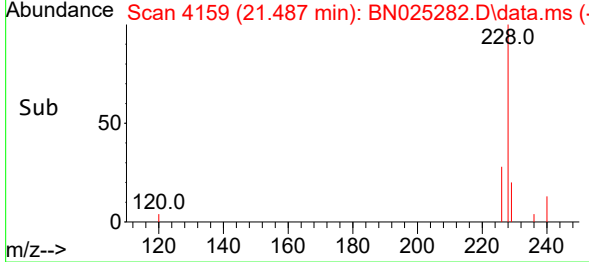
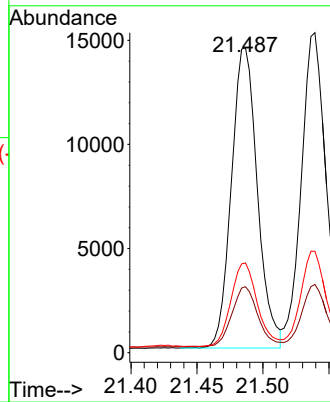


#21
 Benzo(a)anthracene
 Concen: 0.493 ng/u1
 RT: 21.487 min Scan# 4159
 Delta R.T. 0.002 min
 Lab File: BN025282.D
 Acq: 05 May 2023 16:24

Instrument :
 BNA_N
 ClientSampleId :
 SLCS588

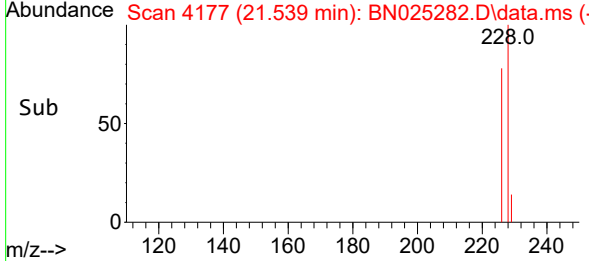
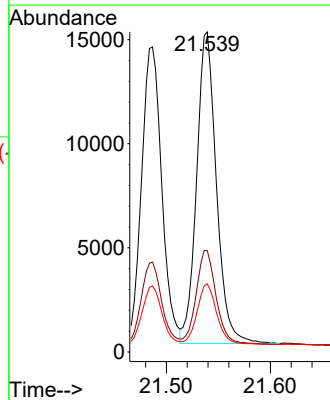
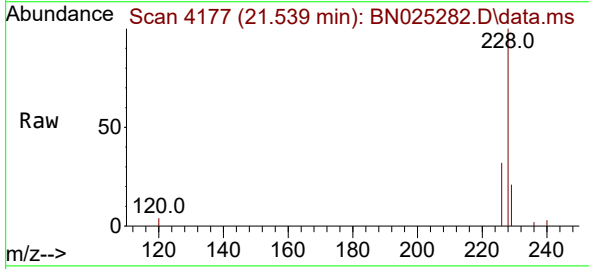


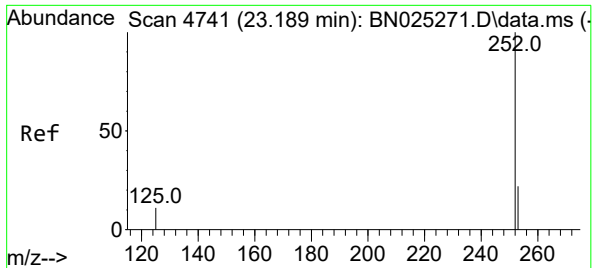
Tgt Ion:228 Resp: 19772
 Ion Ratio Lower Upper
 228 100
 229 21.6 15.6 23.4
 226 29.4 22.1 33.1



#22
 Chrysene
 Concen: 0.452 ng/u1
 RT: 21.539 min Scan# 4177
 Delta R.T. 0.002 min
 Lab File: BN025282.D
 Acq: 05 May 2023 16:24

Tgt Ion:228 Resp: 19785
 Ion Ratio Lower Upper
 228 100
 226 31.7 24.5 36.7
 229 21.3 15.8 23.6

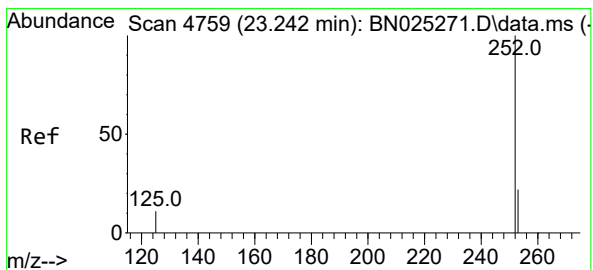
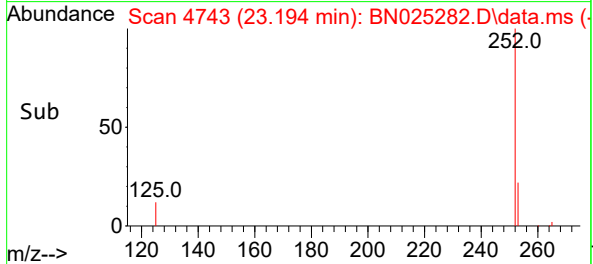
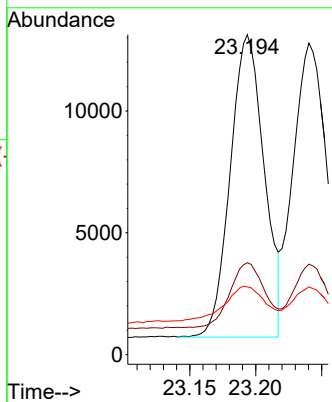
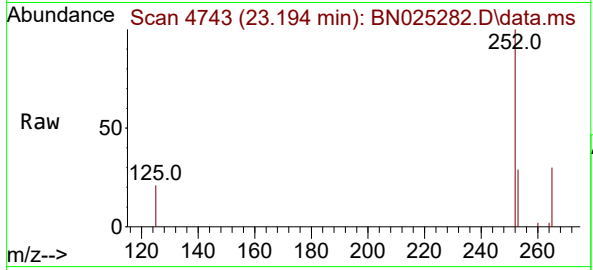




#24
 Benzo(b)fluoranthene
 Concen: 0.361 ng/u1
 RT: 23.194 min Scan# 4743
 Delta R.T. 0.004 min
 Lab File: BN025282.D
 Acq: 05 May 2023 16:24

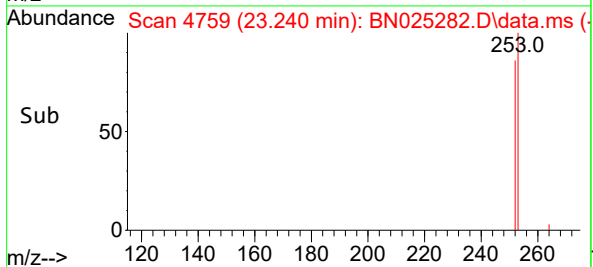
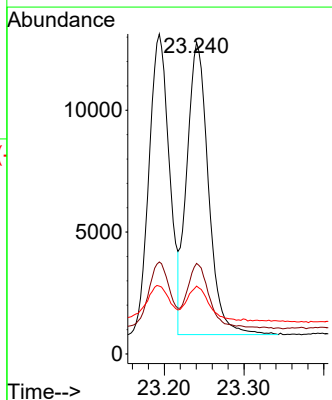
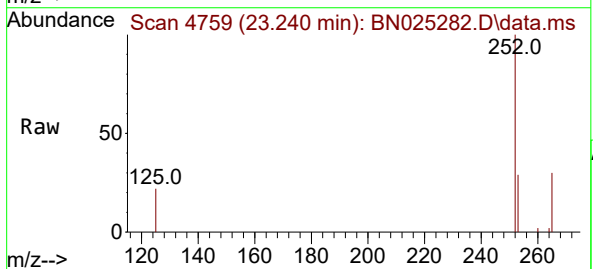
Instrument : BNA_N
 ClientSampleId : SLCS588

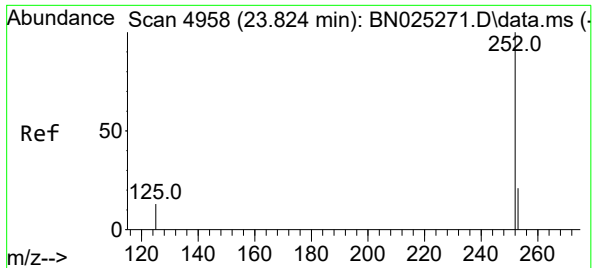
Tgt Ion	Resp	Lower	Upper
252	100		
253	28.7	0.0	50.2
125	21.2	0.0	30.4



#25
 Benzo(k)fluoranthene
 Concen: 0.382 ng/u1
 RT: 23.240 min Scan# 4759
 Delta R.T. -0.001 min
 Lab File: BN025282.D
 Acq: 05 May 2023 16:24

Tgt Ion	Resp	Lower	Upper
252	100		
253	29.0	20.2	30.4
125	21.8	11.8	17.8



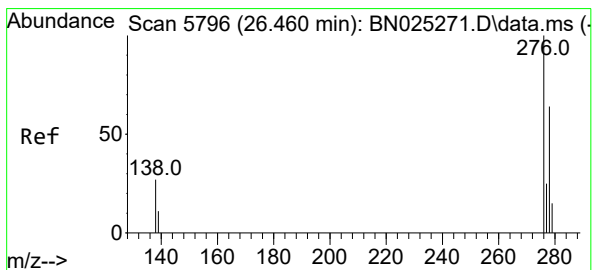
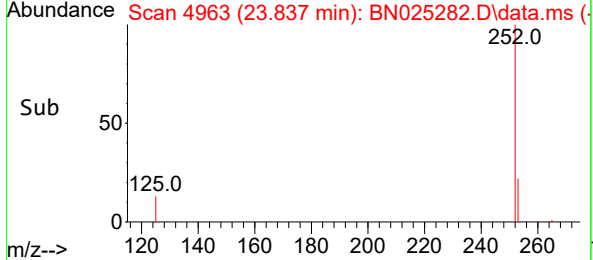
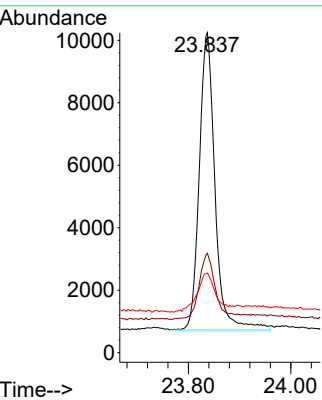
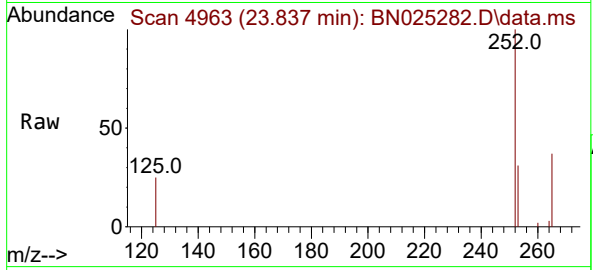


#26
 Benzo(a)pyrene
 Concen: 0.399 ng/u1
 RT: 23.837 min Scan# 4958
 Delta R.T. 0.013 min
 Lab File: BN025282.D
 Acq: 05 May 2023 16:24

Instrument : BNA_N
 ClientSampleId : SLCS588

Tgt Ion:252 Resp: 20259

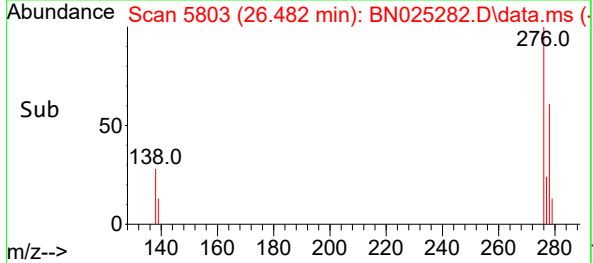
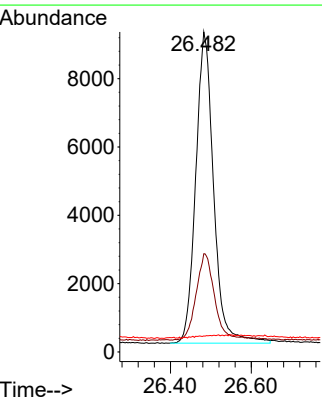
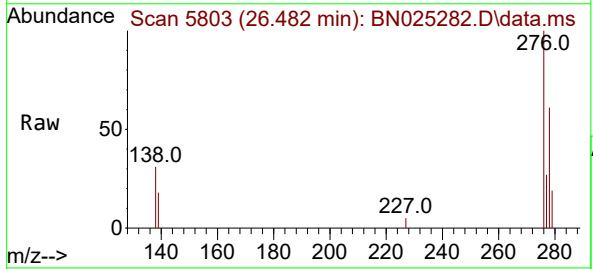
Ion	Ratio	Lower	Upper
252	100		
253	31.1	21.4	32.2
125	24.9	14.6	22.0

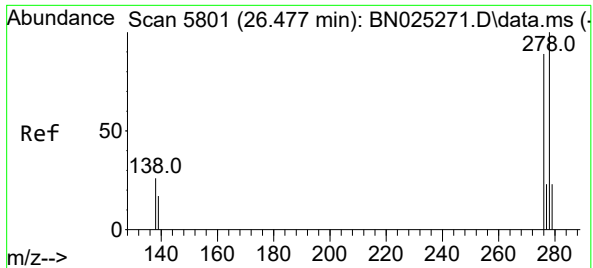


#27
 Indeno(1,2,3-cd)pyrene
 Concen: 0.478 ng/u1
 RT: 26.482 min Scan# 5803
 Delta R.T. 0.022 min
 Lab File: BN025282.D
 Acq: 05 May 2023 16:24

Tgt Ion:276 Resp: 27964

Ion	Ratio	Lower	Upper
276	100		
138	29.2	21.9	32.9
227	0.1	0.1	0.1



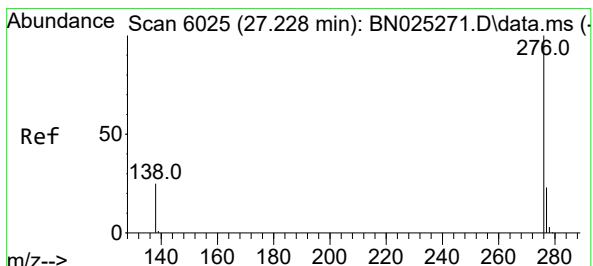
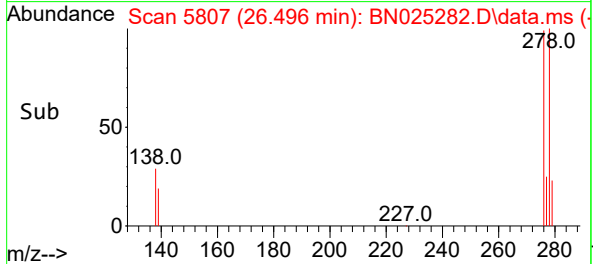
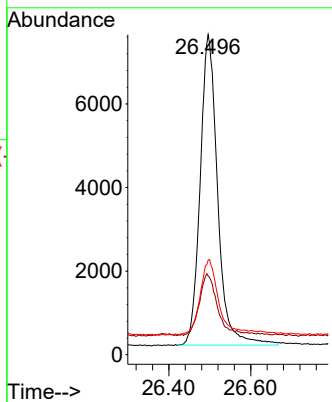
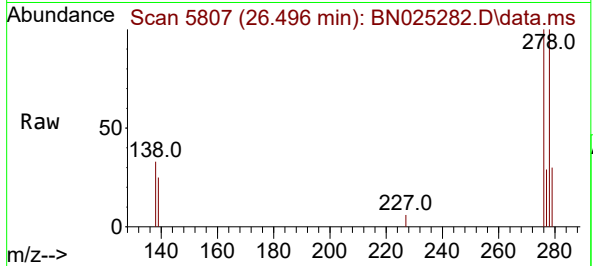


#28
 Dibenzo(a,h)anthracene
 Concen: 0.481 ng/ul
 RT: 26.496 min Scan# 51
 Delta R.T. 0.019 min
 Lab File: BN025282.D
 Acq: 05 May 2023 16:24

Instrument :
 BNA_N
 ClientSampleId :
 SLCS588

Tgt Ion:278 Resp: 22011

Ion	Ratio	Lower	Upper
278	100		
139	24.6	17.0	25.6
279	29.5	21.8	32.8



#29
 Benzo(g,h,i)perylene
 Concen: 0.474 ng/ul
 RT: 27.264 min Scan# 6036
 Delta R.T. 0.036 min
 Lab File: BN025282.D
 Acq: 05 May 2023 16:24

Tgt Ion:276 Resp: 23620

Ion	Ratio	Lower	Upper
276	100		
138	28.3	20.3	30.5
277	26.9	19.8	29.6

