

Data Path : Z:\svoasrv\HPCHEM1\BNA\_N\Data\BN050725\  
 Data File : BN036970.D  
 Acq On : 07 May 2025 19:22  
 Operator : RC/JU  
 Sample : SSTDCCC0.4  
 Misc :  
 ALS Vial : 2 Sample Multiplier: 1

Instrument :  
 BNA\_N  
 ClientSampleId :  
 SSTDCCC0.4EC

Quant Time: May 07 22:49:00 2025  
 Quant Method : Z:\svoasrv\HPCHEM1\BNA\_N\Methods\8270-SIM-BN042825.M  
 Quant Title : ASP BNA STANDARDS FOR 5 POINT CALIBRATION  
 QLast Update : Mon Apr 28 15:35:03 2025  
 Response via : Initial Calibration

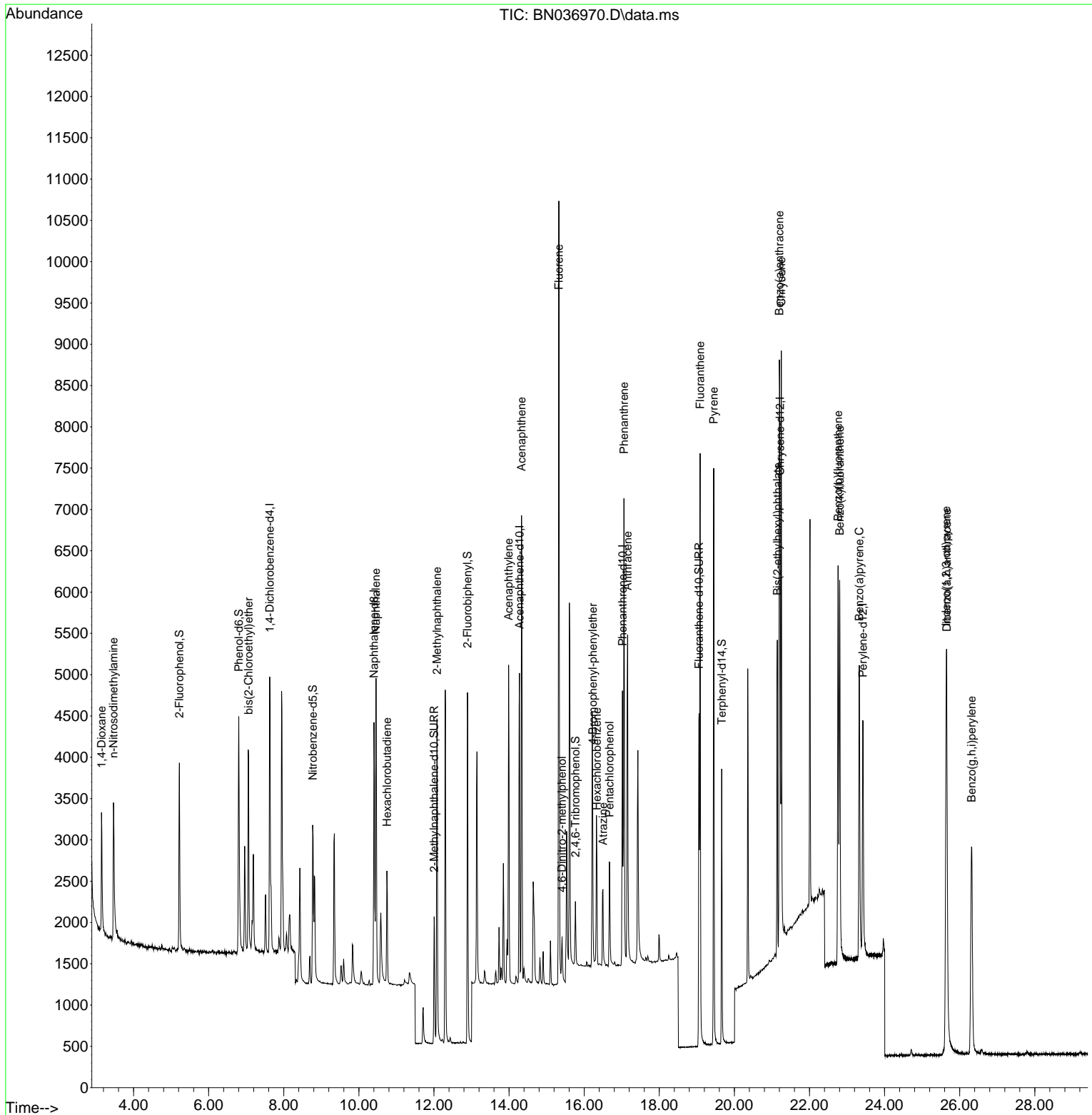
Compound	R.T.	QIon	Response	Conc	Units	Dev(Min)	
Internal Standards							
1) 1,4-Dichlorobenzene-d4	7.625	152	1589	0.400	ng	0.00	
7) Naphthalene-d8	10.404	136	4028	0.400	ng	#-0.01	
13) Acenaphthene-d10	14.277	164	2162	0.400	ng	0.00	
19) Phenanthrene-d10	17.021	188	4294	0.400	ng	0.00	
29) Chrysene-d12	21.215	240	3797	0.400	ng	# 0.00	
35) Perylene-d12	23.424	264	3723	0.400	ng	# 0.00	
System Monitoring Compounds							
4) 2-Fluorophenol	5.220	112	1695	0.417	ng	0.00	
5) Phenol-d6	6.802	99	2346	0.469	ng	0.00	
8) Nitrobenzene-d5	8.771	82	1681	0.399	ng	-0.01	
11) 2-Methylnaphthalene-d10	12.006	152	2211	0.392	ng	0.00	
14) 2,4,6-Tribromophenol	15.767	330	412	0.428	ng	0.00	
15) 2-Fluorobiphenyl	12.893	172	4032	0.386	ng	0.00	
27) Fluoranthene-d10	19.059	212	4572	0.411	ng	0.00	
31) Terphenyl-d14	19.663	244	3314	0.370	ng	0.00	
Target Compounds							
2) 1,4-Dioxane	3.148	88	841	0.425	ng		Qvalue 91
3) n-Nitrosodimethylamine	3.465	42	1622	0.422	ng		96
6) bis(2-Chloroethyl)ether	7.062	93	1814	0.391	ng		98
9) Naphthalene	10.458	128	4644	0.396	ng		98
10) Hexachlorobutadiene	10.746	225	1042	0.411	ng	#	98
12) 2-Methylnaphthalene	12.082	142	2931	0.387	ng		99
16) Acenaphthylene	13.989	152	4123	0.390	ng		100
17) Acenaphthene	14.331	154	2731	0.393	ng		98
18) Fluorene	15.325	166	3587	0.395	ng		100
20) 4,6-Dinitro-2-methylph...	15.410	198	432	0.380	ng		83
21) 4-Bromophenyl-phenylether	16.227	248	1116	0.389	ng		94
22) Hexachlorobenzene	16.338	284	1206	0.384	ng		95
23) Atrazine	16.500	200	965	0.417	ng		96
24) Pentachlorophenol	16.673	266	629	0.374	ng		98
25) Phenanthrene	17.058	178	5581	0.394	ng		100
26) Anthracene	17.157	178	5017	0.391	ng		99
28) Fluoranthene	19.086	202	6464	0.407	ng		99
30) Pyrene	19.449	202	6576	0.360	ng		99
32) Benzo(a)anthracene	21.197	228	5432	0.388	ng		99
33) Chrysene	21.251	228	6312	0.419	ng		98
34) Bis(2-ethylhexyl)phtha...	21.144	149	3536	0.445	ng		99
36) Indeno(1,2,3-cd)pyrene	25.640	276	6235	0.410	ng		95
37) Benzo(b)fluoranthene	22.760	252	5851	0.374	ng		98
38) Benzo(k)fluoranthene	22.804	252	5990	0.380	ng		96
39) Benzo(a)pyrene	23.327	252	5125	0.398	ng		96
40) Dibenzo(a,h)anthracene	25.655	278	4770	0.399	ng		99
41) Benzo(g,h,i)perylene	26.315	276	5445	0.410	ng		98

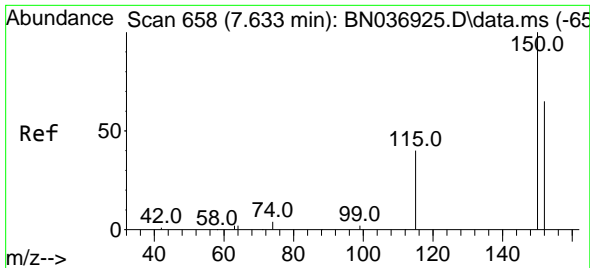
(#) = qualifier out of range (m) = manual integration (+) = signals summed

Data Path : Z:\svoasrv\HPCHEM1\BNA\_N\Data\BN050725\  
 Data File : BN036970.D  
 Acq On : 07 May 2025 19:22  
 Operator : RC/JU  
 Sample : SSTDCCC0.4  
 Misc :  
 ALS Vial : 2 Sample Multiplier: 1

Instrument :  
 BNA\_N  
 ClientSampleId :  
 SSTDCCC0.4EC

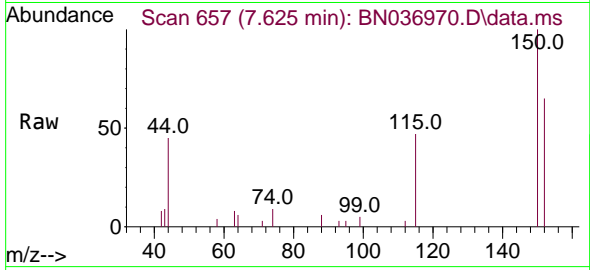
Quant Time: May 07 22:49:00 2025  
 Quant Method : Z:\svoasrv\HPCHEM1\BNA\_N\Methods\8270-SIM-BN042825.M  
 Quant Title : ASP BNA STANDARDS FOR 5 POINT CALIBRATION  
 QLast Update : Mon Apr 28 15:35:03 2025  
 Response via : Initial Calibration



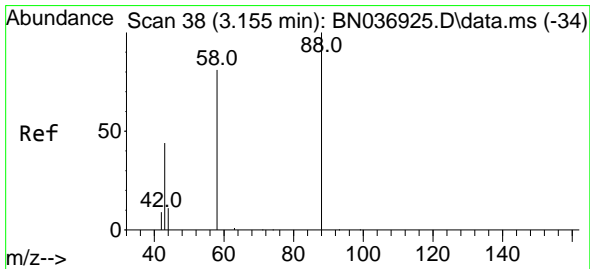
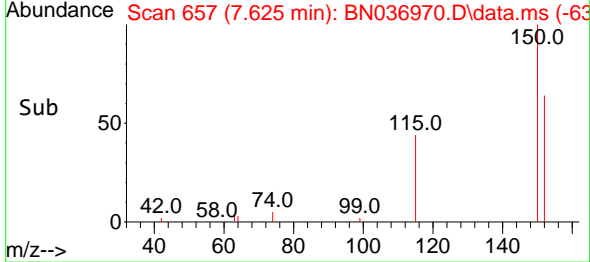
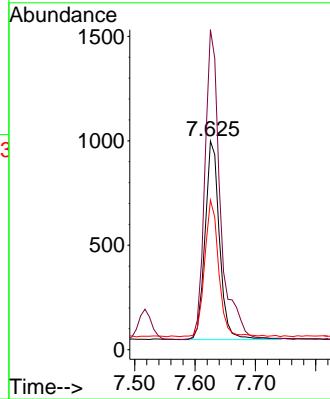


#1  
 1,4-Dichlorobenzene-d4  
 Concen: 0.400 ng  
 RT: 7.625 min Scan# 61  
 Delta R.T. -0.008 min  
 Lab File: BN036970.D  
 Acq: 07 May 2025 19:22

Instrument :  
 BNA\_N  
 ClientSampleId :  
 SSTDCCC0.4EC

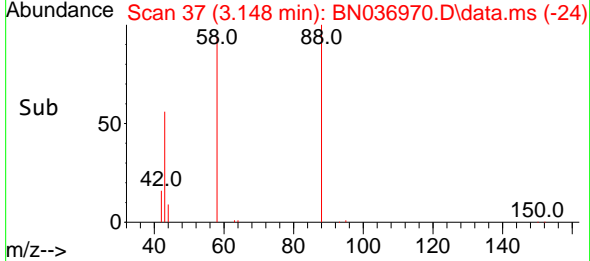
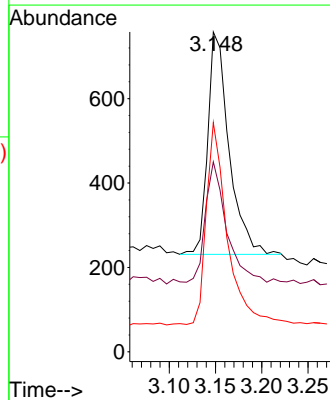
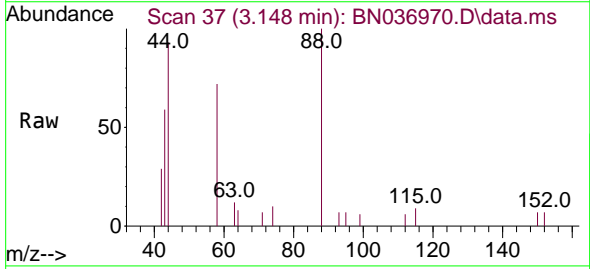


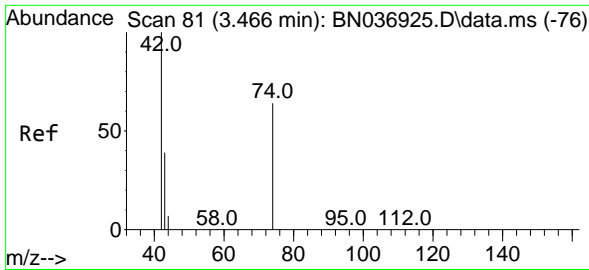
Tgt Ion:152 Resp: 1589  
 Ion Ratio Lower Upper  
 152 100  
 150 153.4 121.1 181.7  
 115 71.7 51.8 77.6



#2  
 1,4-Dioxane  
 Concen: 0.425 ng  
 RT: 3.148 min Scan# 37  
 Delta R.T. -0.007 min  
 Lab File: BN036970.D  
 Acq: 07 May 2025 19:22

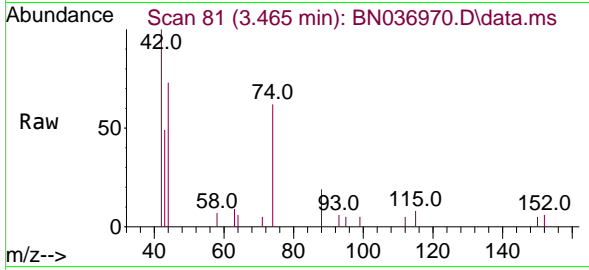
Tgt Ion: 88 Resp: 841  
 Ion Ratio Lower Upper  
 88 100  
 43 54.0 37.9 56.9  
 58 90.0 65.8 98.6



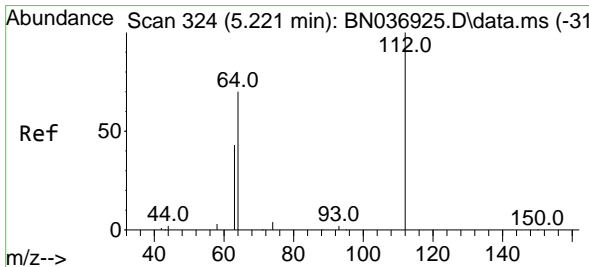
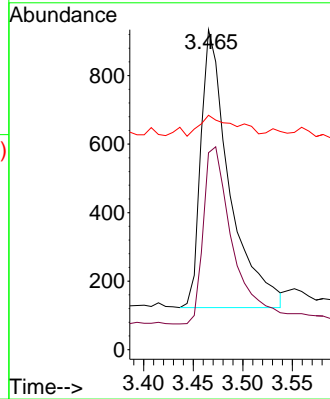
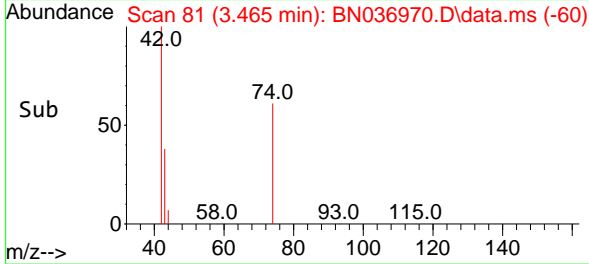


#3  
 n-Nitrosodimethylamine  
 Concen: 0.422 ng  
 RT: 3.465 min Scan# 81  
 Delta R.T. -0.000 min  
 Lab File: BN036970.D  
 Acq: 07 May 2025 19:22

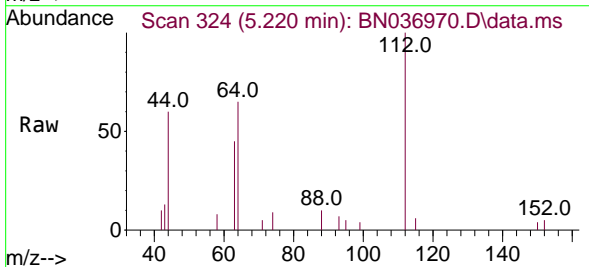
Instrument :  
 BNA\_N  
 ClientSampleId :  
 SSTDCCC0.4EC



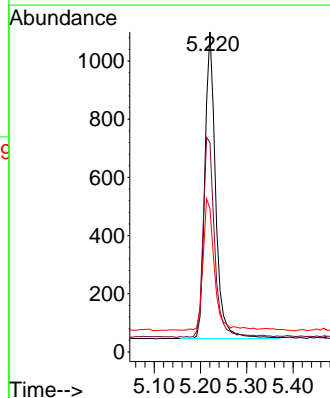
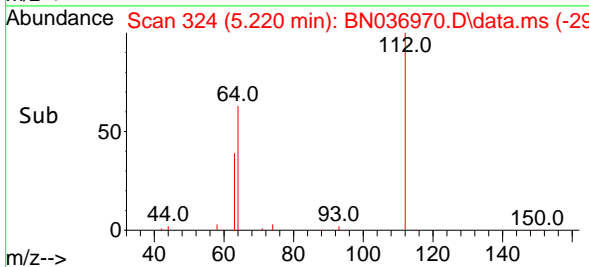
Tgt Ion: 42 Resp: 1622  
 Ion Ratio Lower Upper  
 42 100  
 74 70.8 59.9 89.9  
 44 9.4 7.5 11.3

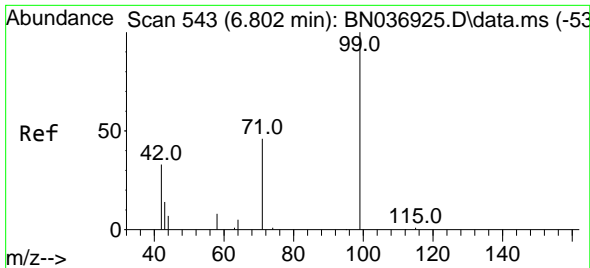


#4  
 2-Fluorophenol  
 Concen: 0.417 ng  
 RT: 5.220 min Scan# 324  
 Delta R.T. -0.000 min  
 Lab File: BN036970.D  
 Acq: 07 May 2025 19:22



Tgt Ion: 112 Resp: 1695  
 Ion Ratio Lower Upper  
 112 100  
 64 70.4 55.7 83.5  
 63 44.8 33.9 50.9

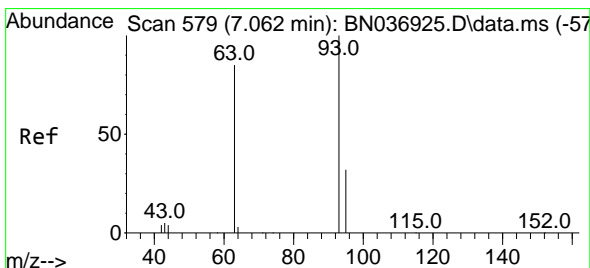
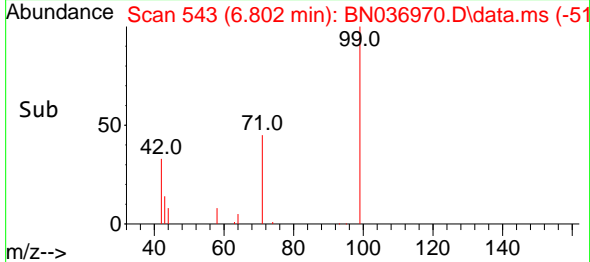
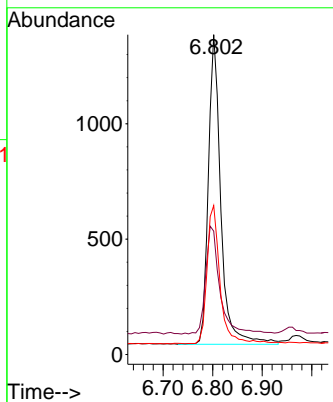
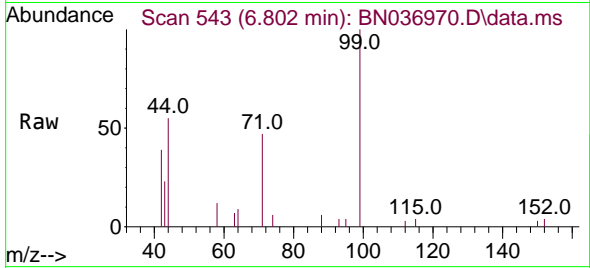




#5  
 Phenol-d6  
 Concen: 0.469 ng  
 RT: 6.802 min Scan# 543  
 Delta R.T. -0.000 min  
 Lab File: BN036970.D  
 Acq: 07 May 2025 19:22

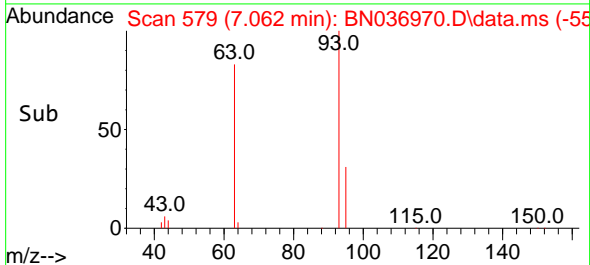
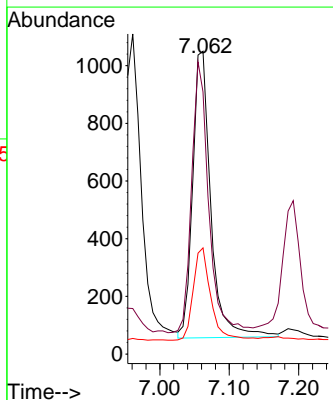
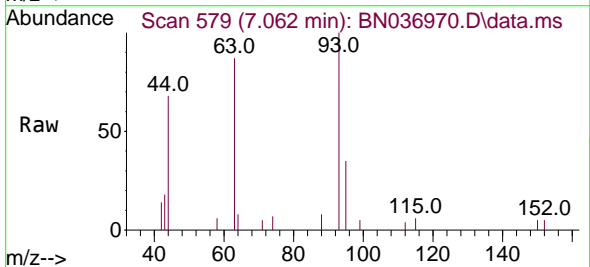
Instrument : BNA\_N  
 ClientSampleId : SSTDCCC0.4EC

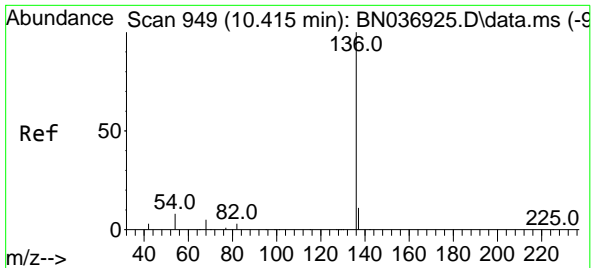
Tgt Ion	Resp	Lower	Upper
99	2346		
42	39.9	29.6	44.4
71	47.0	36.0	54.0



#6  
 bis(2-Chloroethyl)ether  
 Concen: 0.391 ng  
 RT: 7.062 min Scan# 579  
 Delta R.T. -0.000 min  
 Lab File: BN036970.D  
 Acq: 07 May 2025 19:22

Tgt Ion	Resp	Lower	Upper
93	1814		
63	88.6	69.0	103.6
95	30.9	25.4	38.0



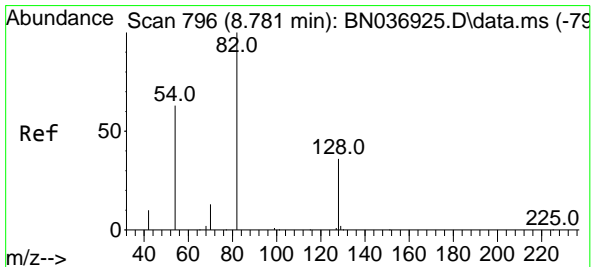
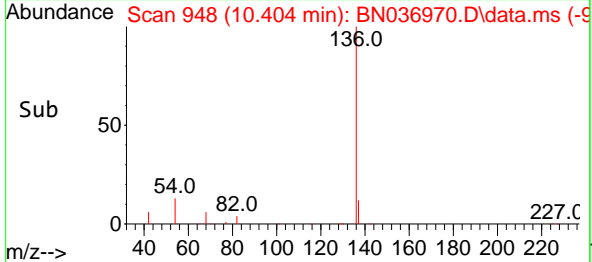
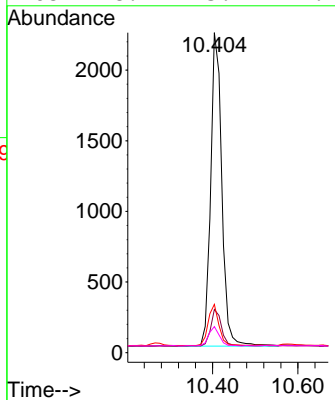
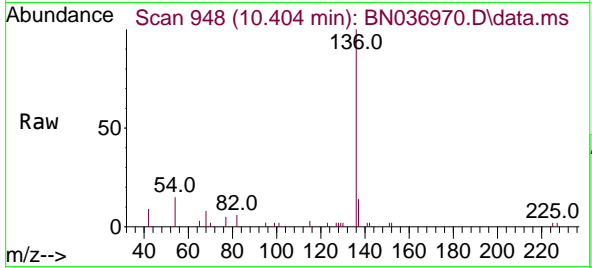


#7  
 Naphthalene-d8  
 Concen: 0.400 ng  
 RT: 10.404 min Scan# 949  
 Delta R.T. -0.011 min  
 Lab File: BN036970.D  
 Acq: 07 May 2025 19:22

Instrument :  
 BNA\_N  
 ClientSampleId :  
 SSTDCCC0.4EC

Tgt Ion:136 Resp: 4028

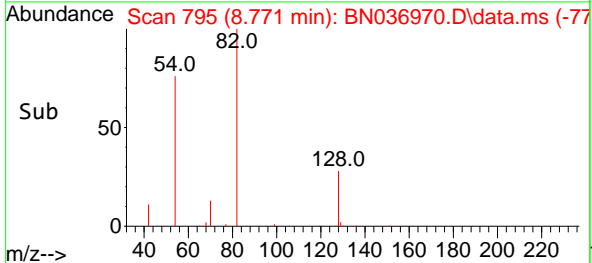
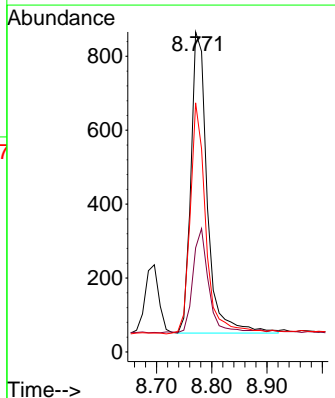
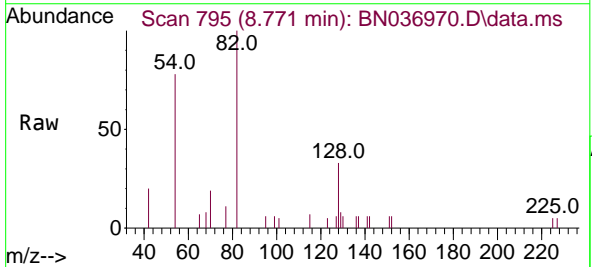
Ion	Ratio	Lower	Upper
136	100		
137	13.5	9.7	14.5
54	15.1	8.0	12.0#
68	8.2	5.1	7.7#

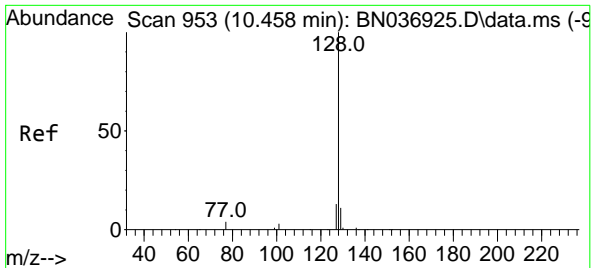


#8  
 Nitrobenzene-d5  
 Concen: 0.399 ng  
 RT: 8.771 min Scan# 795  
 Delta R.T. -0.011 min  
 Lab File: BN036970.D  
 Acq: 07 May 2025 19:22

Tgt Ion: 82 Resp: 1681

Ion	Ratio	Lower	Upper
82	100		
128	32.6	30.7	46.1
54	77.8	52.1	78.1



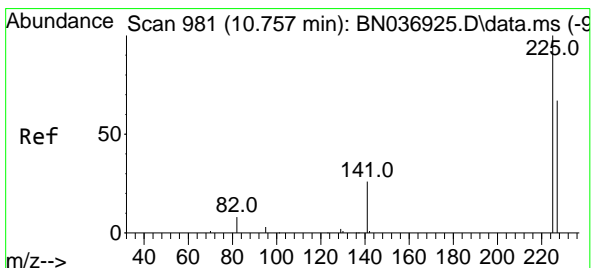
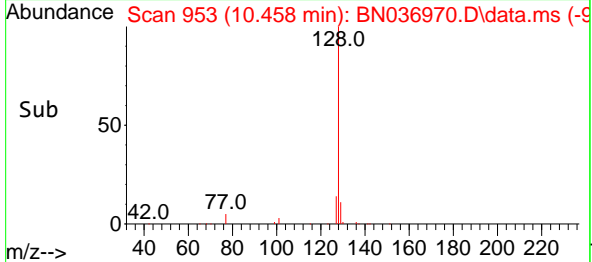
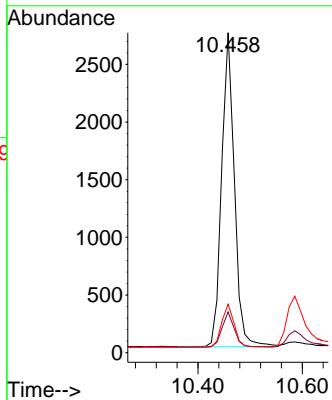
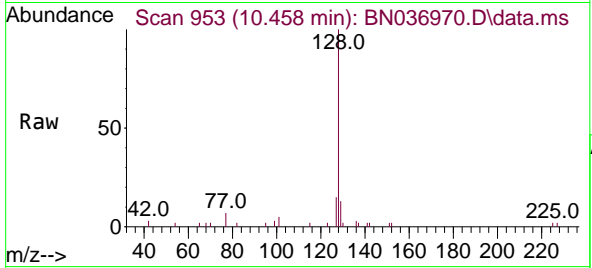


#9  
 Naphthalene  
 Concen: 0.396 ng  
 RT: 10.458 min Scan# 91  
 Delta R.T. -0.000 min  
 Lab File: BN036970.D  
 Acq: 07 May 2025 19:22

Instrument :  
 BNA\_N  
 ClientSampleId :  
 SSTDCCC0.4EC

Tgt Ion:128 Resp: 4644

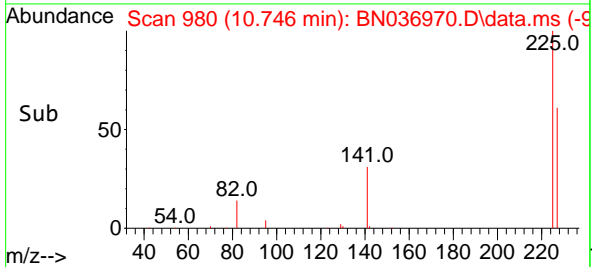
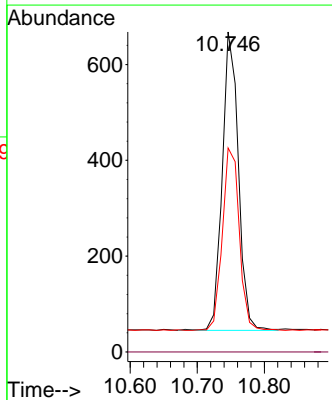
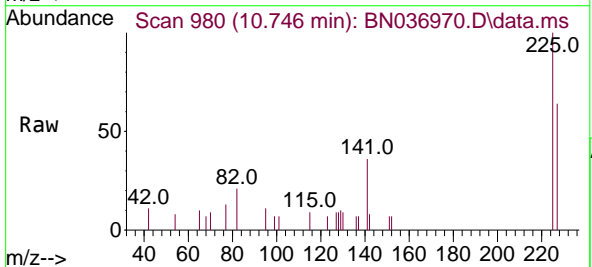
Ion	Ratio	Lower	Upper
128	100		
129	12.8	9.8	14.6
127	15.1	11.4	17.2

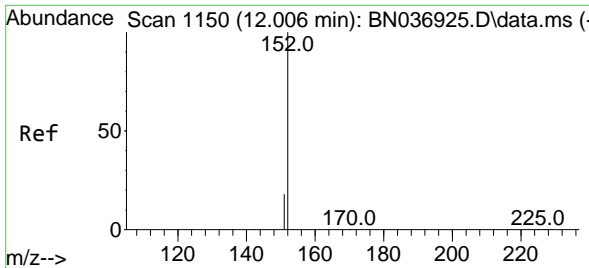


#10  
 Hexachlorobutadiene  
 Concen: 0.411 ng  
 RT: 10.746 min Scan# 980  
 Delta R.T. -0.011 min  
 Lab File: BN036970.D  
 Acq: 07 May 2025 19:22

Tgt Ion:225 Resp: 1042

Ion	Ratio	Lower	Upper
225	100		
223	0.0	0.0	0.0
227	64.1	52.2	78.4

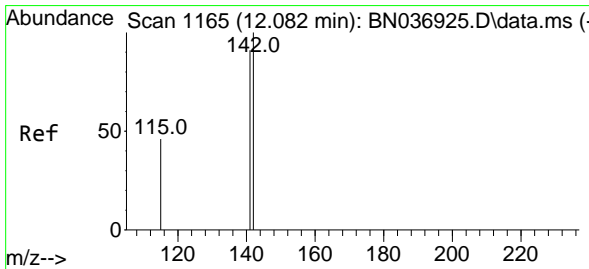
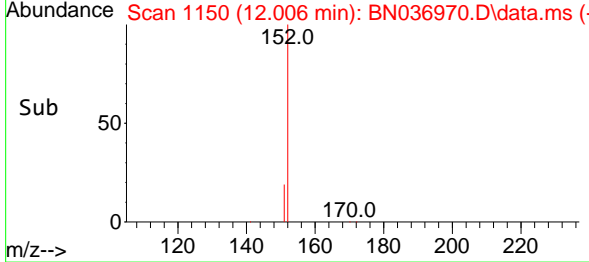
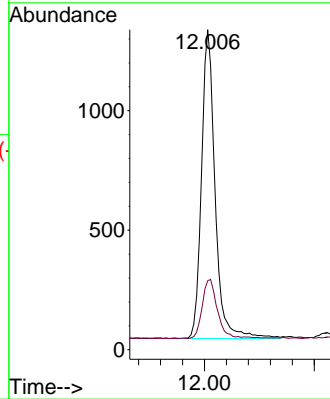
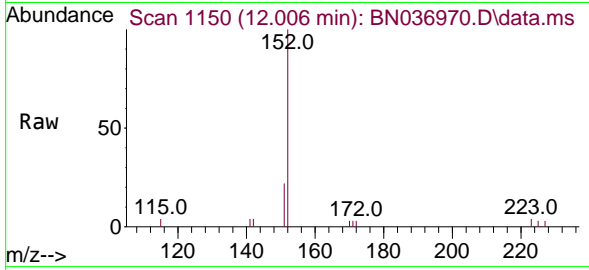




#11  
 2-Methylnaphthalene-d10  
 Concen: 0.392 ng  
 RT: 12.006 min Scan# 1150  
 Delta R.T. -0.000 min  
 Lab File: BN036970.D  
 Acq: 07 May 2025 19:22

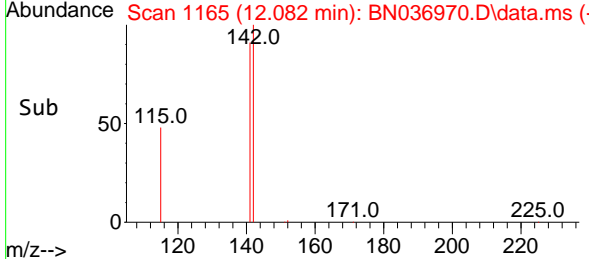
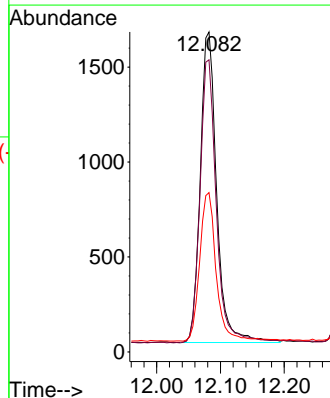
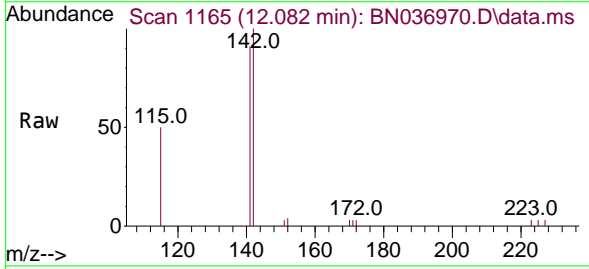
Instrument : BNA\_N  
 ClientSampleId : SSTDCCC0.4EC

Tgt Ion:152 Resp: 2211  
 Ion Ratio Lower Upper  
 152 100  
 151 21.1 16.9 25.3

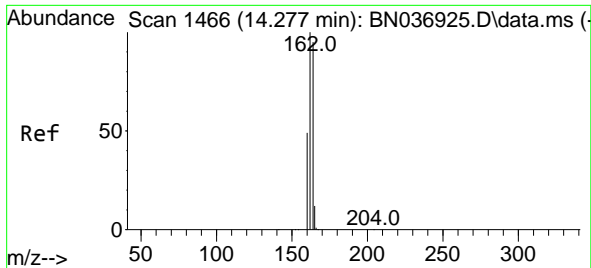


#12  
 2-Methylnaphthalene  
 Concen: 0.387 ng  
 RT: 12.082 min Scan# 1165  
 Delta R.T. -0.000 min  
 Lab File: BN036970.D  
 Acq: 07 May 2025 19:22

Tgt Ion:142 Resp: 2931  
 Ion Ratio Lower Upper  
 142 100  
 141 91.3 72.8 109.2  
 115 49.8 38.2 57.4





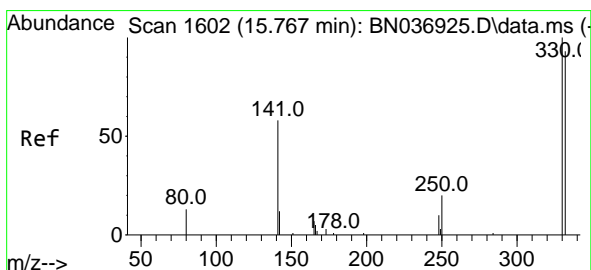
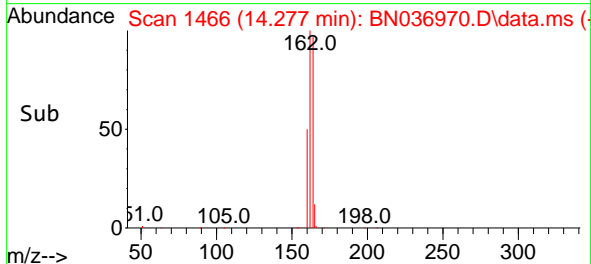
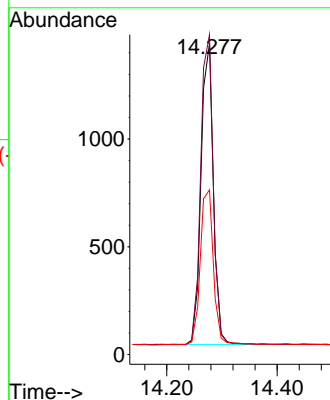
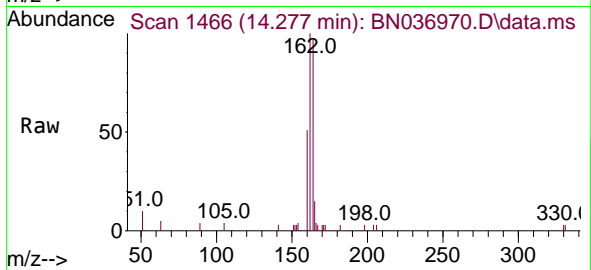


#13  
 Acenaphthene-d10  
 Concen: 0.400 ng  
 RT: 14.277 min Scan# 14  
 Delta R.T. -0.000 min  
 Lab File: BN036970.D  
 Acq: 07 May 2025 19:22

Instrument :  
 BNA\_N  
 ClientSampleId :  
 SSTDCCC0.4EC

Tgt Ion:164 Resp: 2162

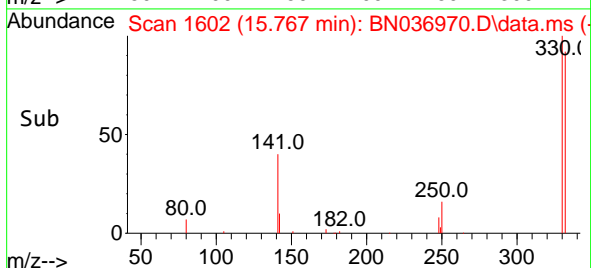
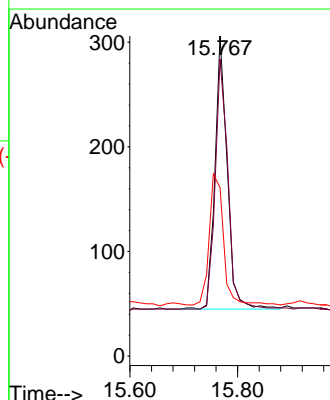
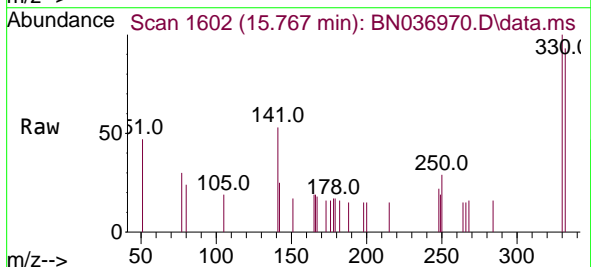
Ion	Ratio	Lower	Upper
164	100		
162	102.8	83.8	125.8
160	52.9	42.0	63.0

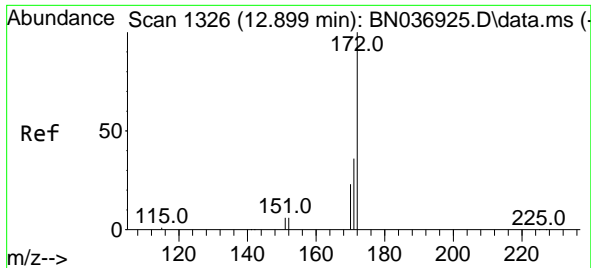


#14  
 2,4,6-Tribromophenol  
 Concen: 0.428 ng  
 RT: 15.767 min Scan# 1602  
 Delta R.T. -0.000 min  
 Lab File: BN036970.D  
 Acq: 07 May 2025 19:22

Tgt Ion:330 Resp: 412

Ion	Ratio	Lower	Upper
330	100		
332	94.9	76.3	114.5
141	56.6	45.4	68.2

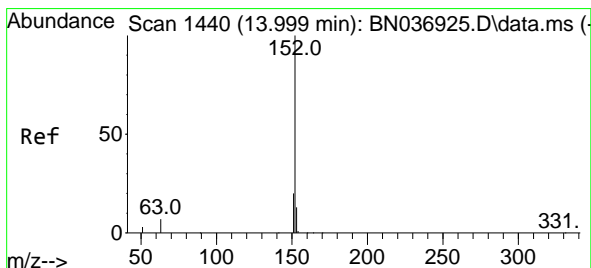
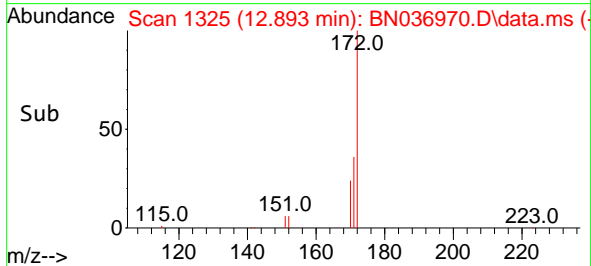
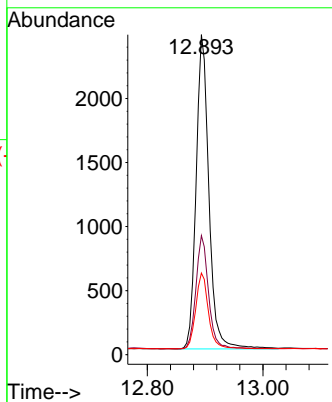
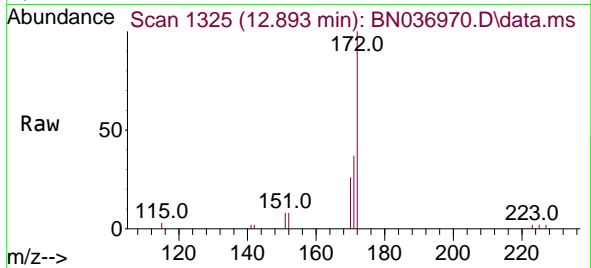




#15  
 2-Fluorobiphenyl  
 Concen: 0.386 ng  
 RT: 12.893 min Scan# 11  
 Delta R.T. -0.005 min  
 Lab File: BN036970.D  
 Acq: 07 May 2025 19:22

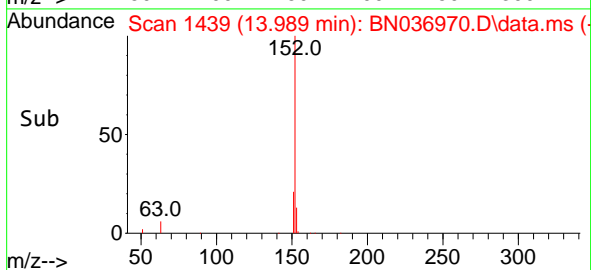
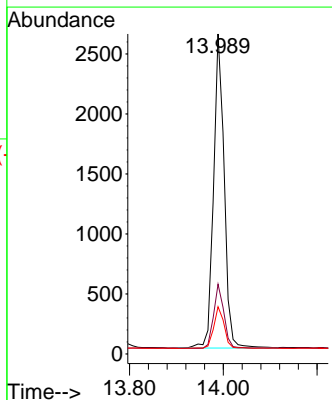
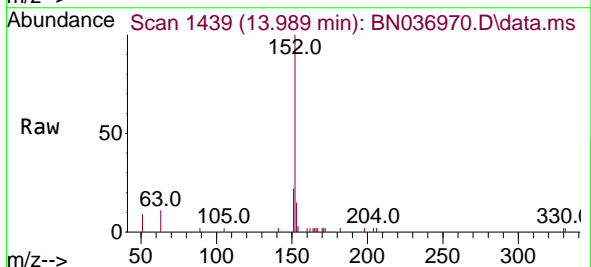
Instrument :  
 BNA\_N  
 ClientSampleId :  
 SSTDCCC0.4EC

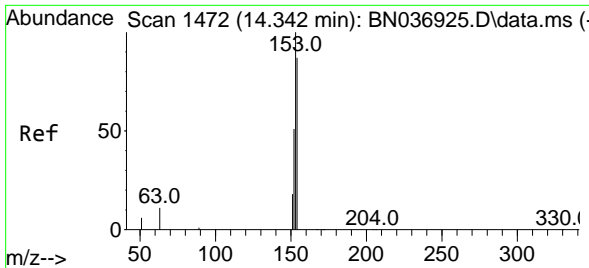
Tgt Ion	Resp	Lower	Upper
172	4032		
171	37.2	29.4	44.0
170	25.5	19.4	29.0



#16  
 Acenaphthylene  
 Concen: 0.390 ng  
 RT: 13.989 min Scan# 1439  
 Delta R.T. -0.011 min  
 Lab File: BN036970.D  
 Acq: 07 May 2025 19:22

Tgt Ion	Resp	Lower	Upper
152	4123		
151	20.1	16.0	24.0
153	13.1	10.2	15.2



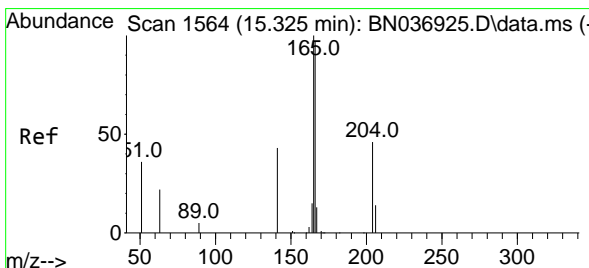
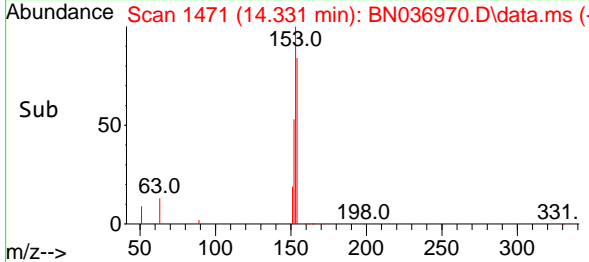
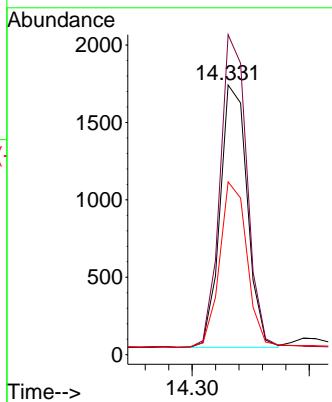
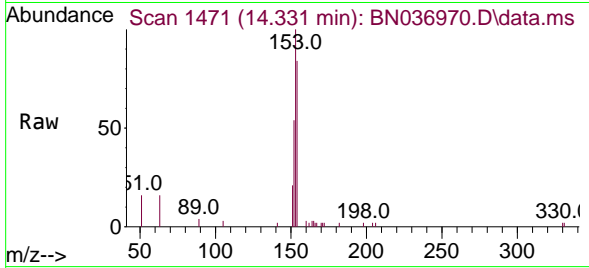


#17  
 Acenaphthene  
 Concen: 0.393 ng  
 RT: 14.331 min Scan# 1471  
 Delta R.T. -0.011 min  
 Lab File: BN036970.D  
 Acq: 07 May 2025 19:22

Instrument :  
 BNA\_N  
 ClientSampleId :  
 SSTDCCC0.4EC

Tgt Ion:154 Resp: 2731

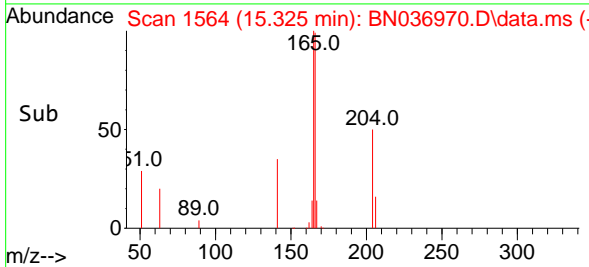
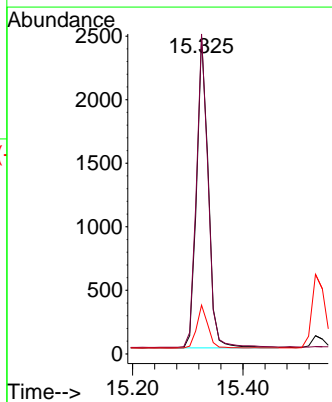
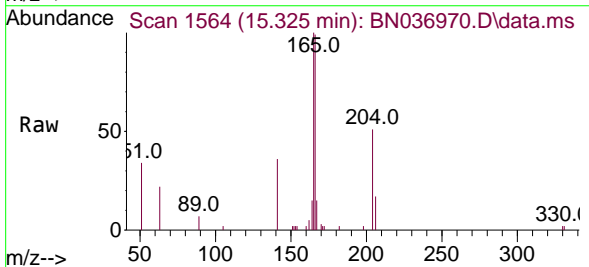
Ion	Ratio	Lower	Upper
154	100		
153	118.9	93.4	140.2
152	64.2	49.5	74.3

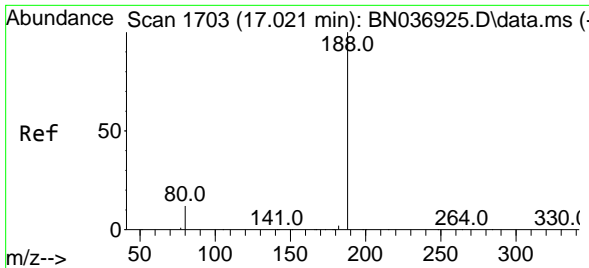


#18  
 Fluorene  
 Concen: 0.395 ng  
 RT: 15.325 min Scan# 1564  
 Delta R.T. -0.000 min  
 Lab File: BN036970.D  
 Acq: 07 May 2025 19:22

Tgt Ion:166 Resp: 3587

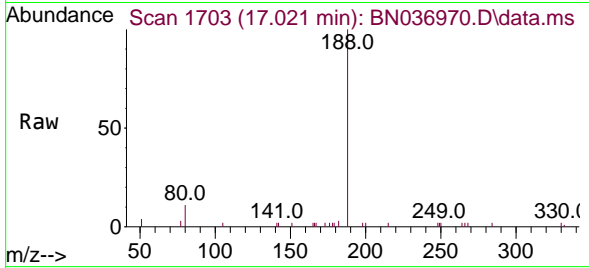
Ion	Ratio	Lower	Upper
166	100		
165	101.1	80.8	121.2
167	13.4	10.8	16.2



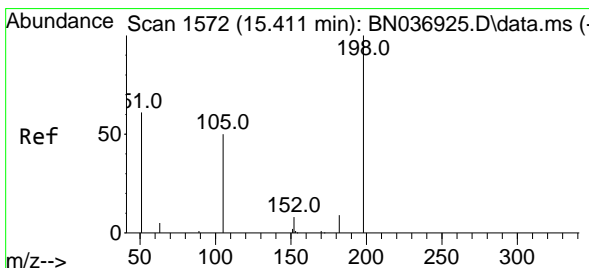
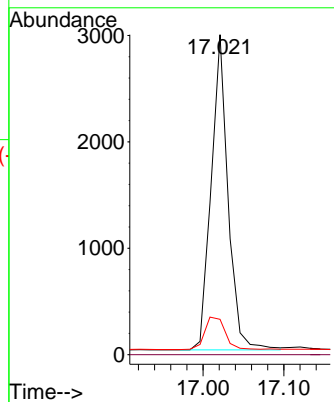
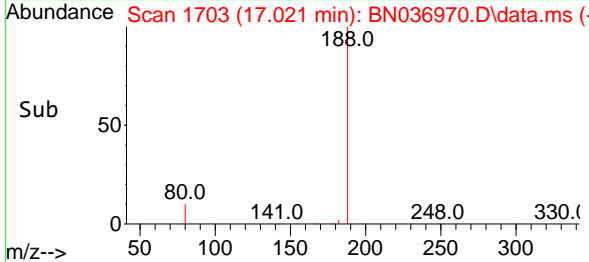


#19  
 Phenanthrene-d10  
 Concen: 0.400 ng  
 RT: 17.021 min Scan# 11  
 Delta R.T. -0.000 min  
 Lab File: BN036970.D  
 Acq: 07 May 2025 19:22

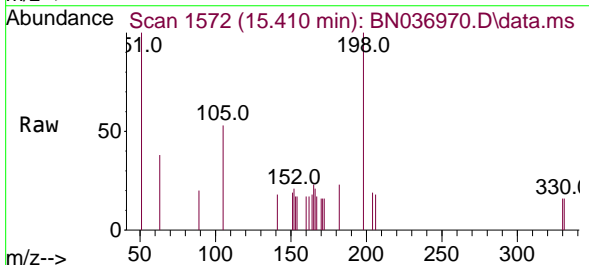
Instrument :  
 BNA\_N  
 ClientSampleId :  
 SSTDCCC0.4EC



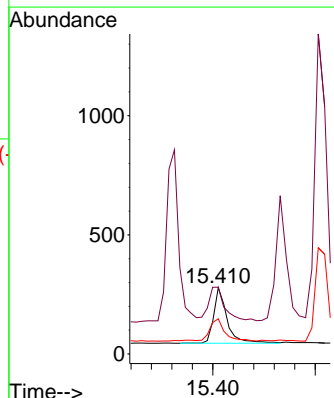
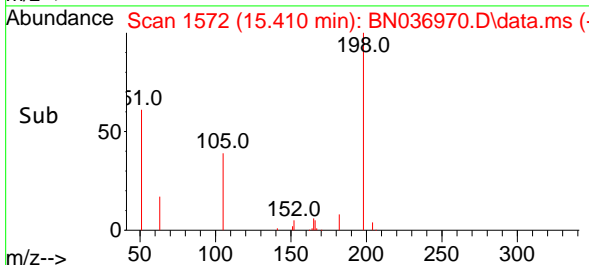
Tgt Ion:188 Resp: 4294  
 Ion Ratio Lower Upper  
 188 100  
 94 0.0 0.0 0.0  
 80 11.0 10.7 16.1

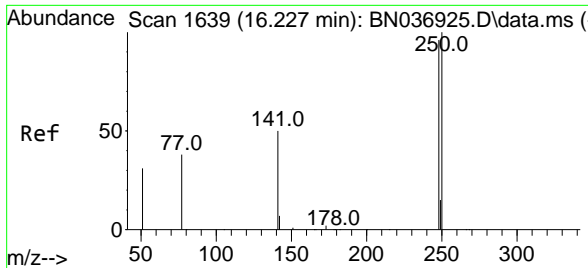


#20  
 4,6-Dinitro-2-methylphenol  
 Concen: 0.380 ng  
 RT: 15.410 min Scan# 1572  
 Delta R.T. -0.001 min  
 Lab File: BN036970.D  
 Acq: 07 May 2025 19:22



Tgt Ion:198 Resp: 432  
 Ion Ratio Lower Upper  
 198 100  
 51 100.4 97.9 146.9  
 105 53.0 50.0 75.0



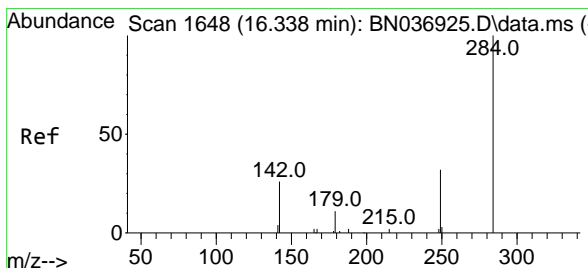
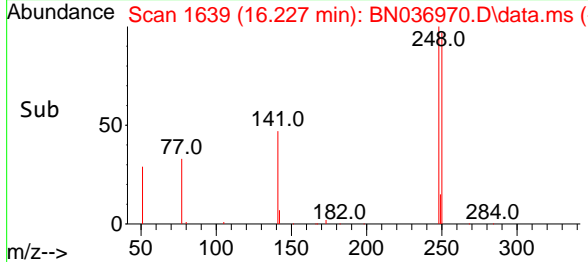
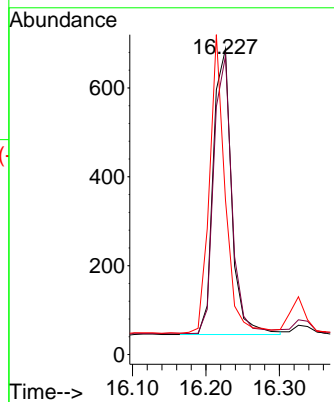
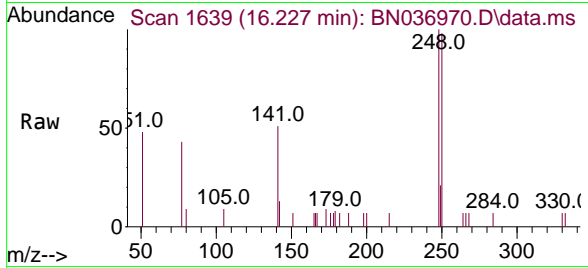


#21  
 4-Bromophenyl-phenylether  
 Concen: 0.389 ng  
 RT: 16.227 min Scan# 1639  
 Delta R.T. -0.000 min  
 Lab File: BN036970.D  
 Acq: 07 May 2025 19:22

Instrument :  
 BNA\_N  
 ClientSampleId :  
 SSTDCCC0.4EC

Tgt Ion:248 Resp: 1116

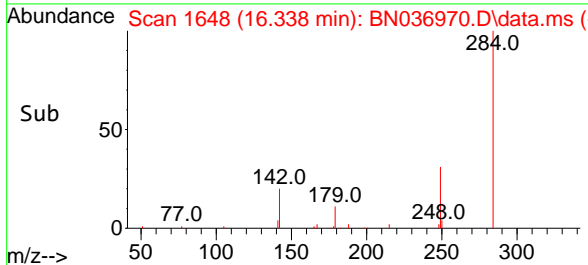
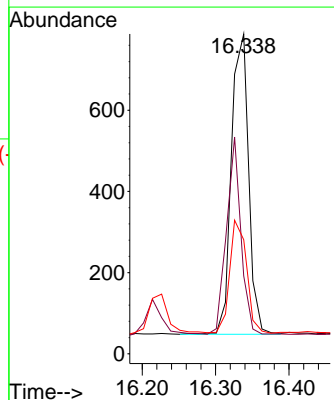
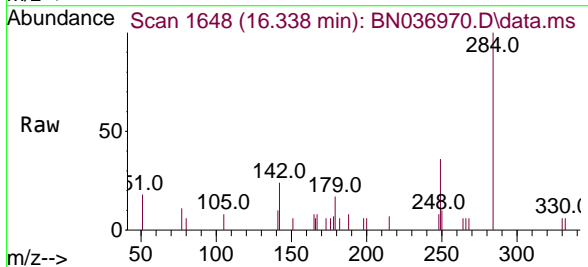
Ion	Ratio	Lower	Upper
248	100		
250	97.7	83.7	125.5
141	50.6	43.8	65.8

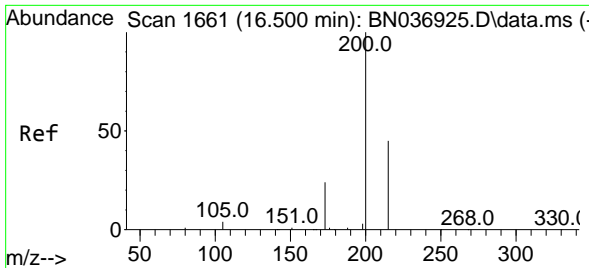


#22  
 Hexachlorobenzene  
 Concen: 0.384 ng  
 RT: 16.338 min Scan# 1648  
 Delta R.T. -0.000 min  
 Lab File: BN036970.D  
 Acq: 07 May 2025 19:22

Tgt Ion:284 Resp: 1206

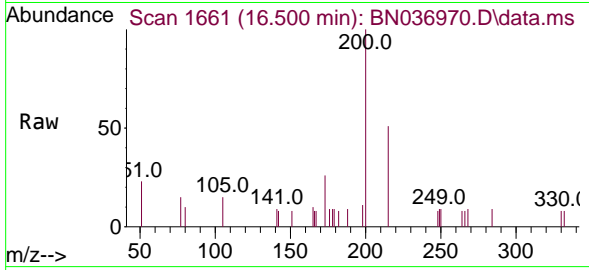
Ion	Ratio	Lower	Upper
284	100		
142	55.3	40.0	60.0
249	36.6	28.2	42.2





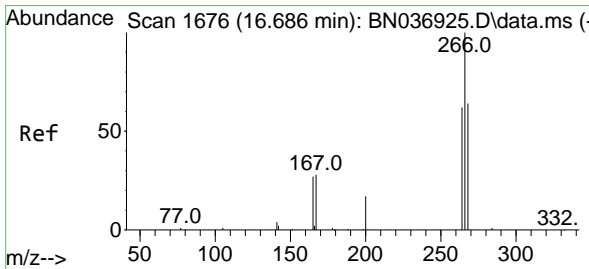
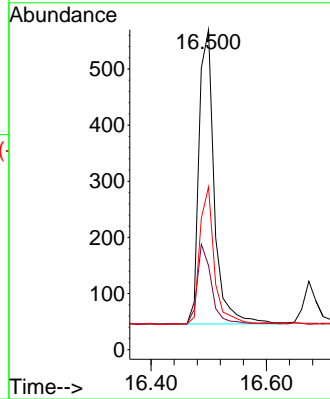
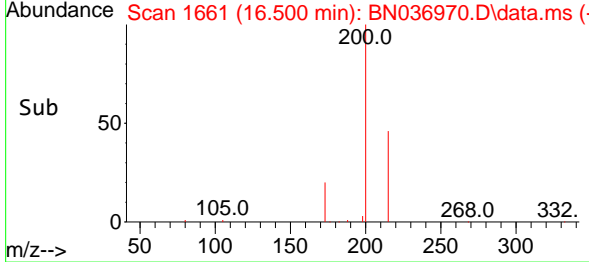
#23  
 Atrazine  
 Concen: 0.417 ng  
 RT: 16.500 min Scan# 1661  
 Delta R.T. -0.000 min  
 Lab File: BN036970.D  
 Acq: 07 May 2025 19:22

Instrument : BNA\_N  
 ClientSampleId : BN036970.D  
 SSTDCCC0.4EC

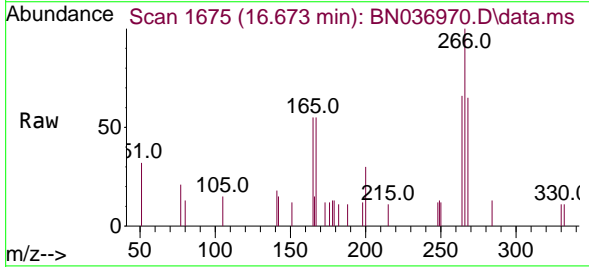


Tgt Ion: 200 Resp: 965

Ion	Ratio	Lower	Upper
200	100		
173	26.3	22.4	33.6
215	50.9	38.6	57.8

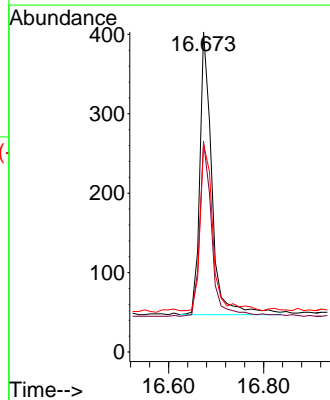
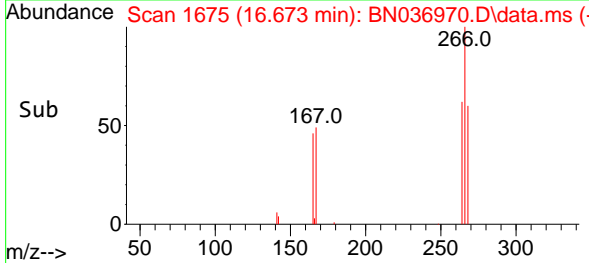


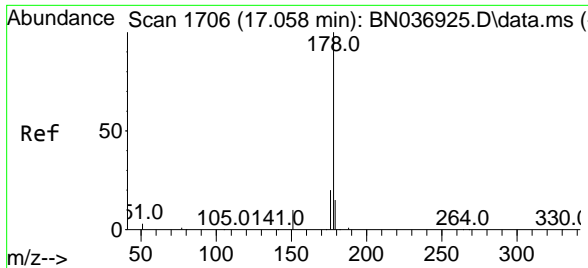
#24  
 Pentachlorophenol  
 Concen: 0.374 ng  
 RT: 16.673 min Scan# 1675  
 Delta R.T. -0.013 min  
 Lab File: BN036970.D  
 Acq: 07 May 2025 19:22



Tgt Ion: 266 Resp: 629

Ion	Ratio	Lower	Upper
266	100		
264	62.2	49.9	74.9
268	62.6	52.2	78.4

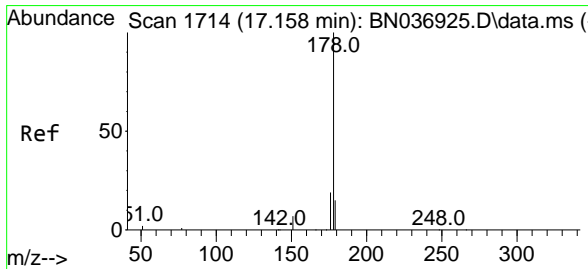
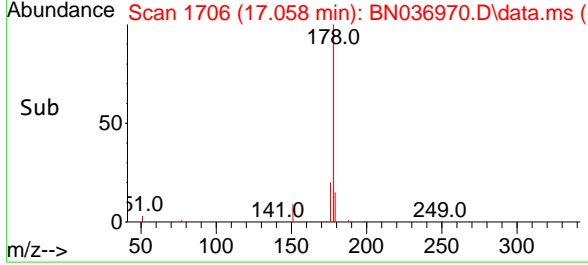
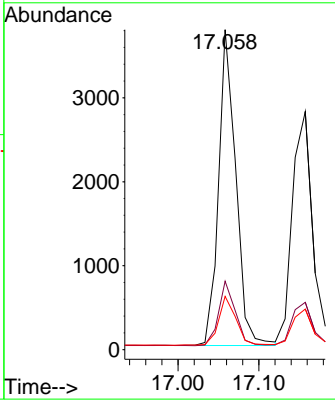
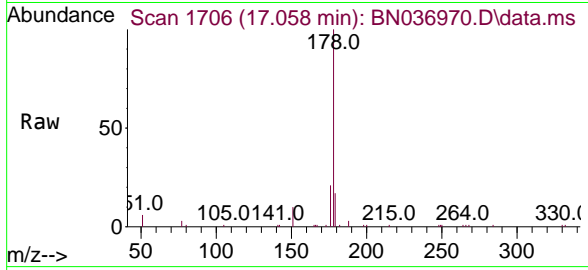




#25  
 Phenanthrene  
 Concen: 0.394 ng  
 RT: 17.058 min Scan# 1706  
 Delta R.T. -0.000 min  
 Lab File: BN036970.D  
 Acq: 07 May 2025 19:22

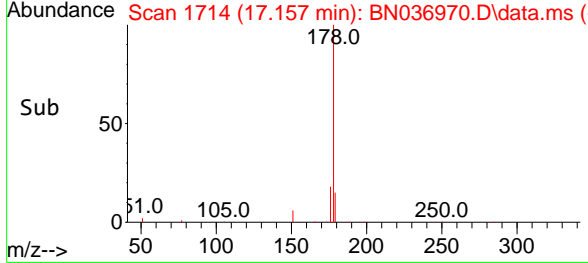
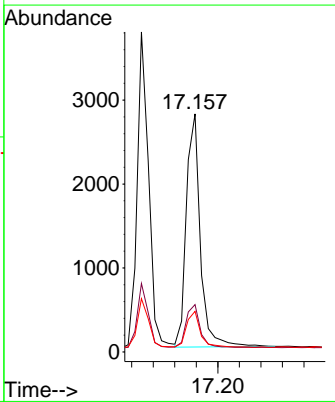
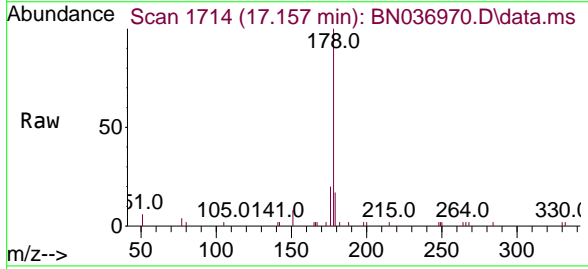
Instrument : BNA\_N  
 ClientSampleId : SSTDCCC0.4EC

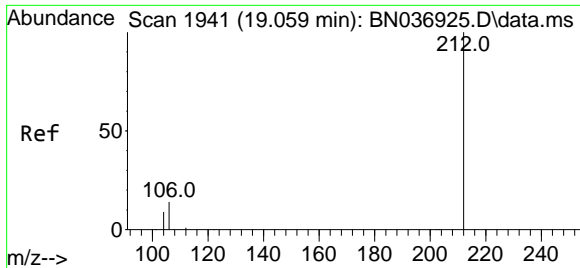
Tgt Ion	Resp	Lower	Upper
178	5581		
176	19.8	15.7	23.5
179	15.7	12.4	18.6



#26  
 Anthracene  
 Concen: 0.391 ng  
 RT: 17.157 min Scan# 1714  
 Delta R.T. -0.000 min  
 Lab File: BN036970.D  
 Acq: 07 May 2025 19:22

Tgt Ion	Resp	Lower	Upper
178	5017		
176	18.8	15.3	22.9
179	15.3	12.1	18.1



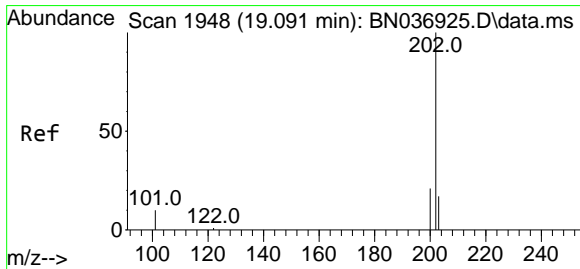
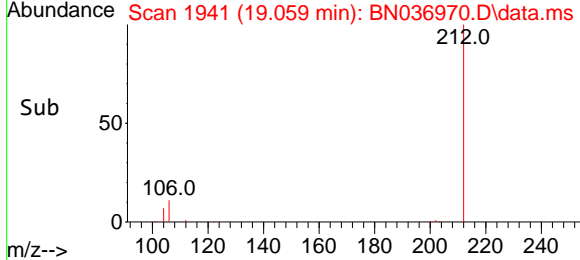
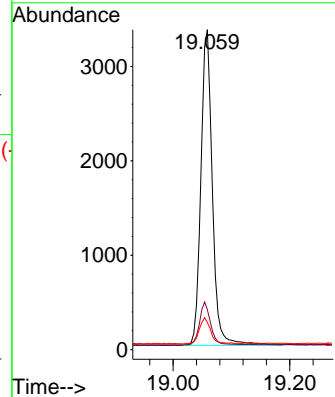
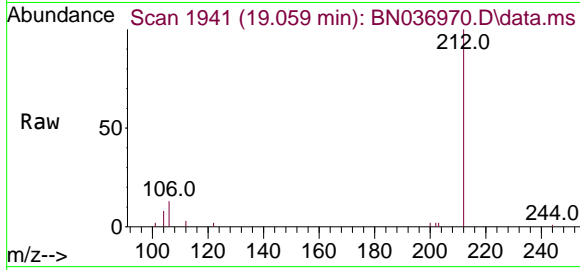


#27  
 Fluoranthene-d10  
 Concen: 0.411 ng  
 RT: 19.059 min Scan# 1941  
 Delta R.T. -0.000 min  
 Lab File: BN036970.D  
 Acq: 07 May 2025 19:22

Instrument : BNA\_N  
 ClientSampleId : SSTDCCC0.4EC

Tgt Ion:212 Resp: 4572

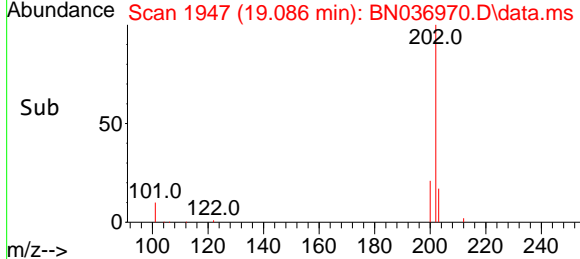
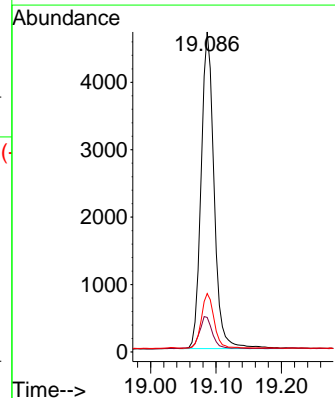
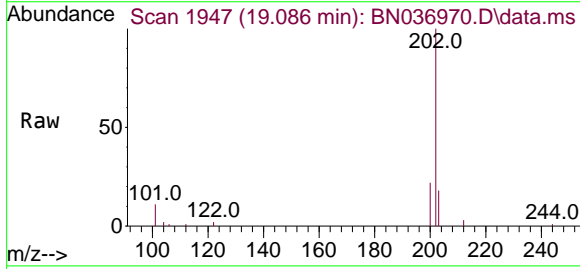
Ion	Ratio	Lower	Upper
212	100		
106	13.0	11.6	17.4
104	8.4	7.0	10.4



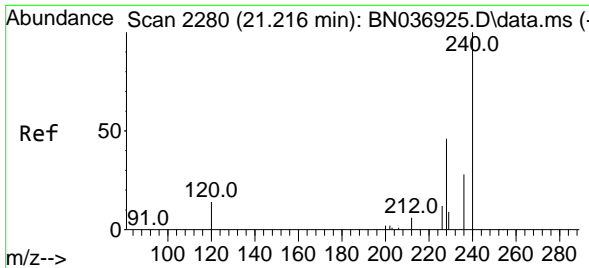
#28  
 Fluoranthene  
 Concen: 0.407 ng  
 RT: 19.086 min Scan# 1947  
 Delta R.T. -0.005 min  
 Lab File: BN036970.D  
 Acq: 07 May 2025 19:22

Tgt Ion:202 Resp: 6464

Ion	Ratio	Lower	Upper
202	100		
101	10.1	8.5	12.7
203	16.9	13.7	20.5

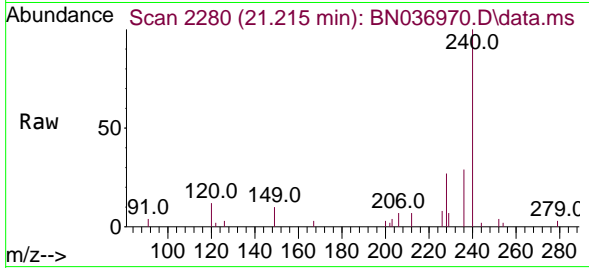




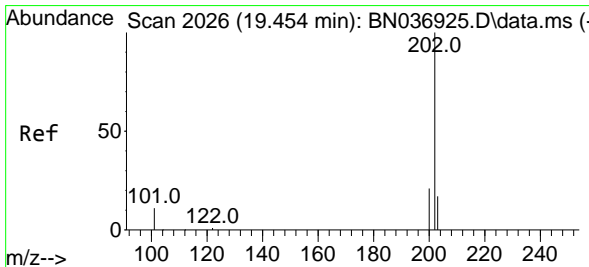
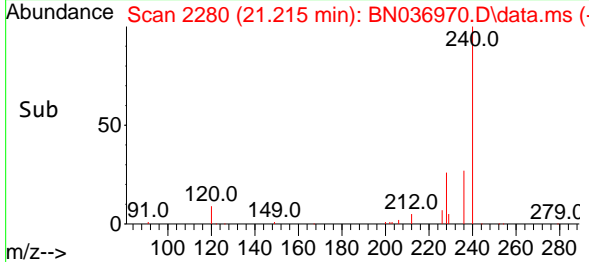
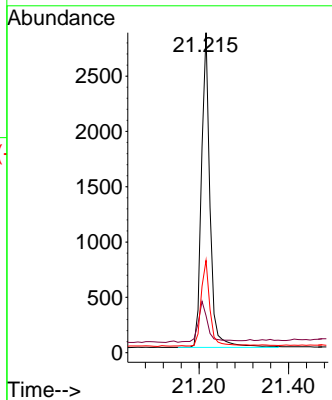


#29  
 Chrysene-d12  
 Concen: 0.400 ng  
 RT: 21.215 min Scan# 21  
 Delta R.T. -0.000 min  
 Lab File: BN036970.D  
 Acq: 07 May 2025 19:22

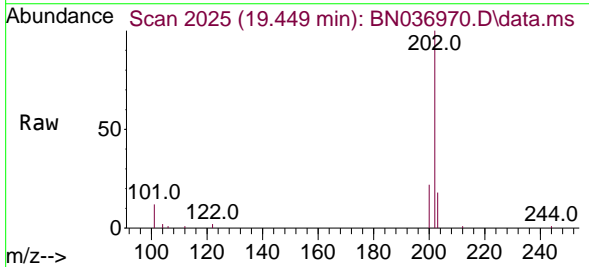
Instrument :  
 BNA\_N  
 ClientSampleId :  
 SSTDCCC0.4EC



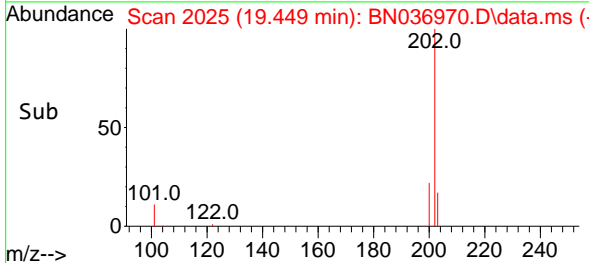
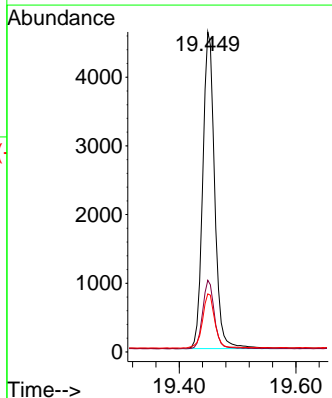
Tgt Ion:240 Resp: 3797  
 Ion Ratio Lower Upper  
 240 100  
 120 11.5 14.1 21.1#  
 236 28.8 23.8 35.8

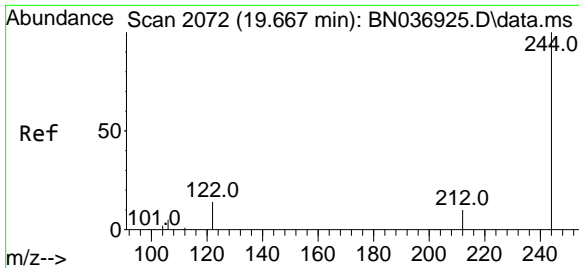


#30  
 Pyrene  
 Concen: 0.360 ng  
 RT: 19.449 min Scan# 2025  
 Delta R.T. -0.005 min  
 Lab File: BN036970.D  
 Acq: 07 May 2025 19:22



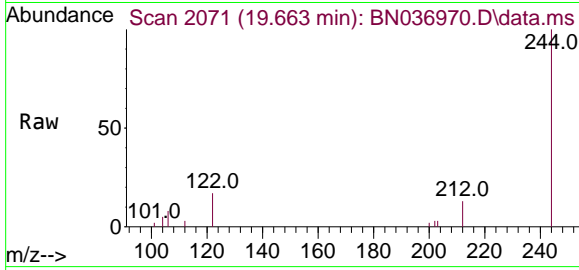
Tgt Ion:202 Resp: 6576  
 Ion Ratio Lower Upper  
 202 100  
 200 21.4 17.0 25.6  
 203 17.9 14.0 21.0





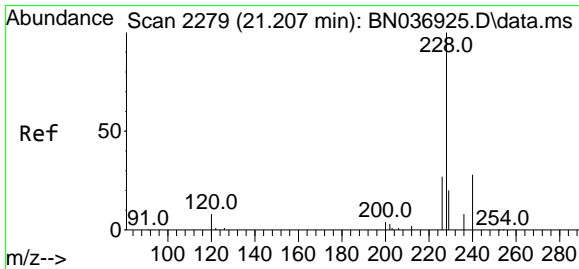
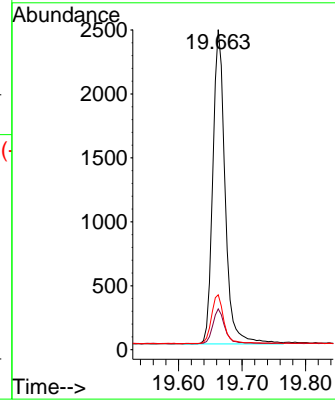
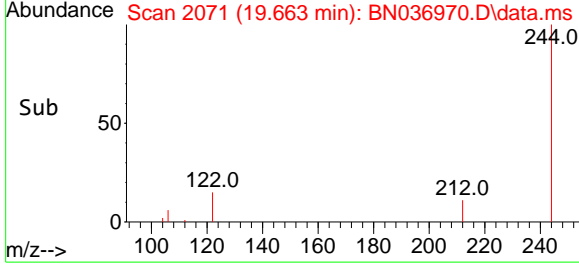
#31  
 Terphenyl-d14  
 Concen: 0.370 ng  
 RT: 19.663 min Scan# 2071  
 Delta R.T. -0.005 min  
 Lab File: BN036970.D  
 Acq: 07 May 2025 19:22

Instrument : BNA\_N  
 ClientSampleId : SSTDCCC0.4EC

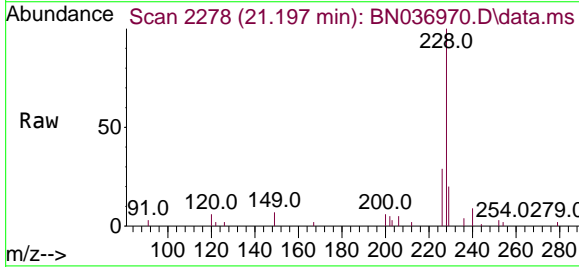


Tgt Ion:244 Resp: 3314

Ion	Ratio	Lower	Upper
244	100		
212	12.7	9.6	14.4
122	17.2	12.7	19.1

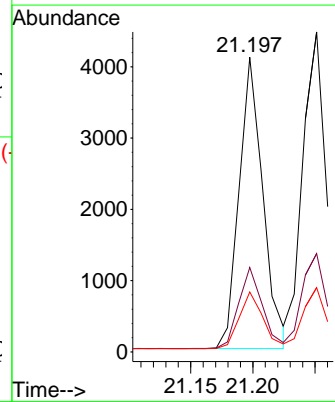
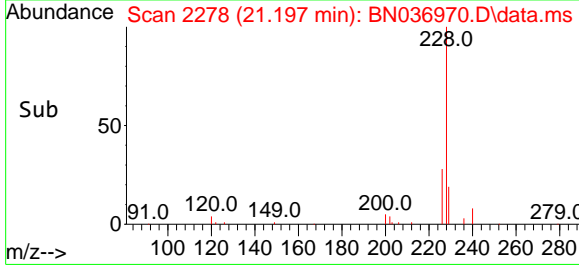


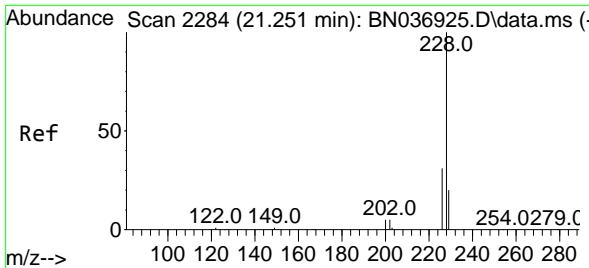
#32  
 Benzo(a)anthracene  
 Concen: 0.388 ng  
 RT: 21.197 min Scan# 2278  
 Delta R.T. -0.009 min  
 Lab File: BN036970.D  
 Acq: 07 May 2025 19:22



Tgt Ion:228 Resp: 5432

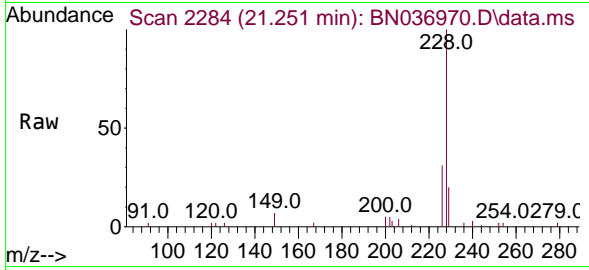
Ion	Ratio	Lower	Upper
228	100		
226	28.7	22.2	33.4
229	20.3	16.4	24.6



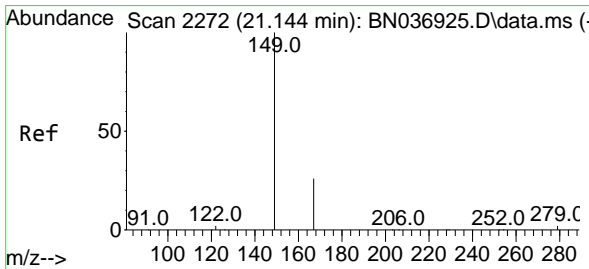
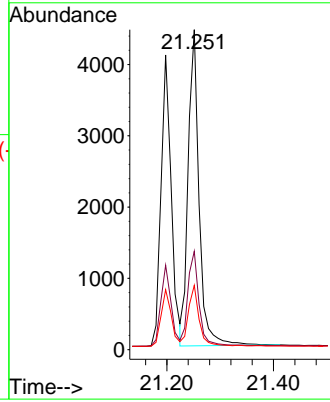
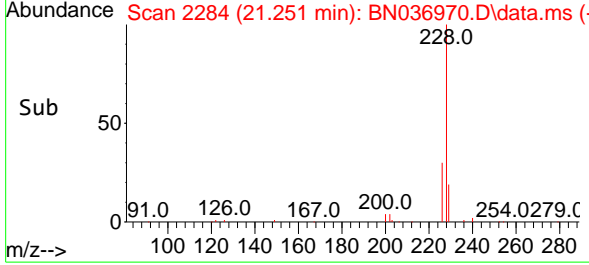


#33  
 Chrysene  
 Concen: 0.419 ng  
 RT: 21.251 min Scan# 21  
 Delta R.T. -0.000 min  
 Lab File: BN036970.D  
 Acq: 07 May 2025 19:22

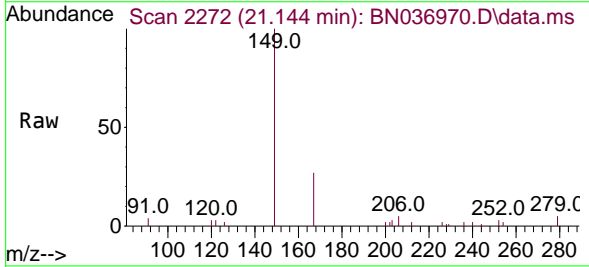
Instrument :  
 BNA\_N  
 ClientSampleId :  
 SSTDCCC0.4EC



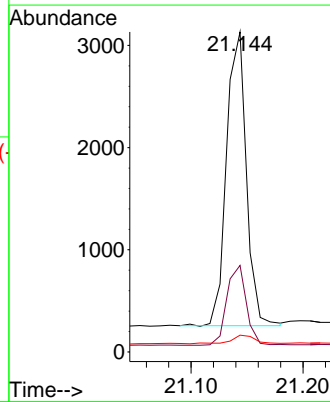
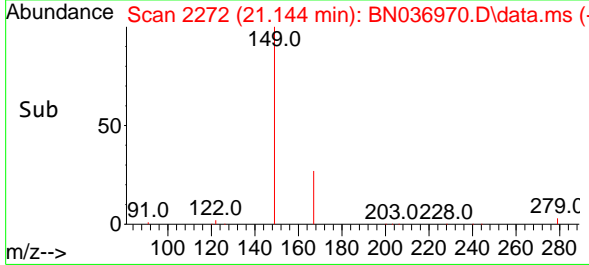
Tgt Ion:228 Resp: 6312  
 Ion Ratio Lower Upper  
 228 100  
 226 30.7 25.5 38.3  
 229 20.1 16.5 24.7

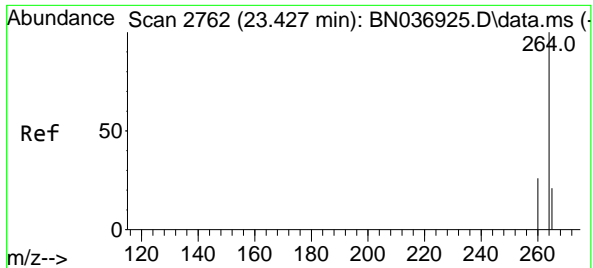


#34  
 Bis(2-ethylhexyl)phthalate  
 Concen: 0.445 ng  
 RT: 21.144 min Scan# 2272  
 Delta R.T. -0.000 min  
 Lab File: BN036970.D  
 Acq: 07 May 2025 19:22



Tgt Ion:149 Resp: 3536  
 Ion Ratio Lower Upper  
 149 100  
 167 27.0 21.0 31.6  
 279 3.5 2.7 4.1



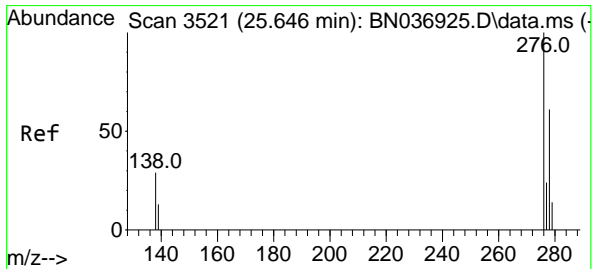
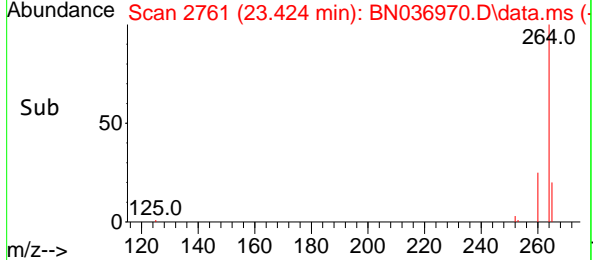
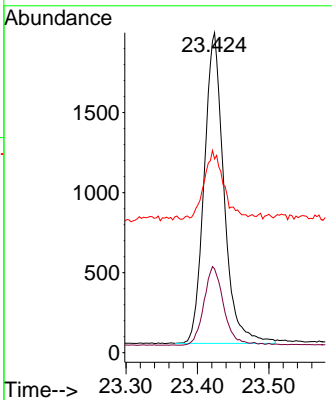
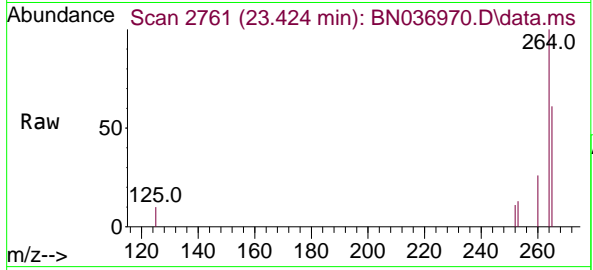


#35  
 Perylene-d12  
 Concen: 0.400 ng  
 RT: 23.424 min Scan# 21  
 Delta R.T. -0.003 min  
 Lab File: BN036970.D  
 Acq: 07 May 2025 19:22

Instrument : BNA\_N  
 ClientSampleId : SSTDCCC0.4EC

Tgt Ion:264 Resp: 3723

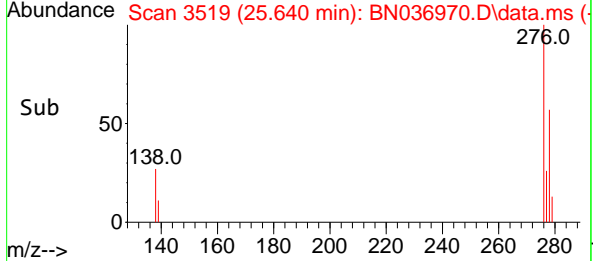
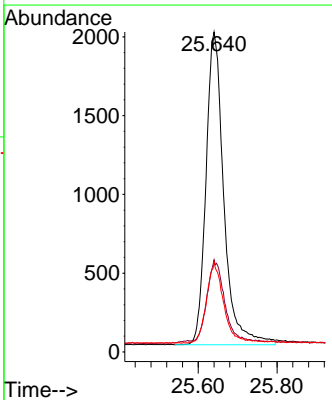
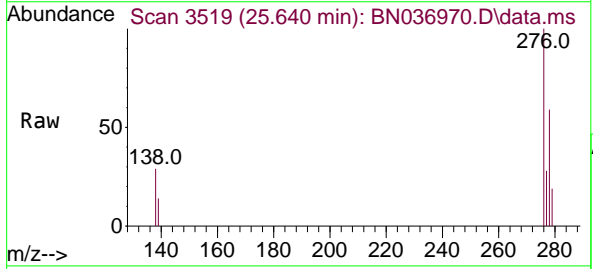
Ion	Ratio	Lower	Upper
264	100		
260	26.2	22.2	33.2
265	60.5	65.8	98.6

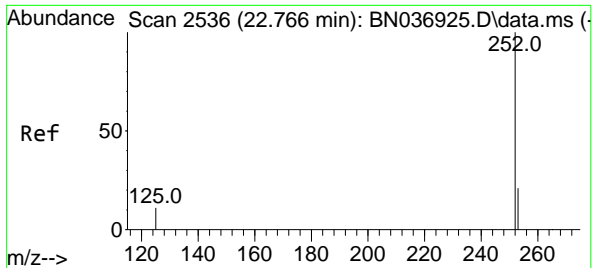


#36  
 Indeno(1,2,3-cd)pyrene  
 Concen: 0.410 ng  
 RT: 25.640 min Scan# 3519  
 Delta R.T. -0.006 min  
 Lab File: BN036970.D  
 Acq: 07 May 2025 19:22

Tgt Ion:276 Resp: 6235

Ion	Ratio	Lower	Upper
276	100		
138	24.7	23.0	34.6
277	24.1	20.0	30.0



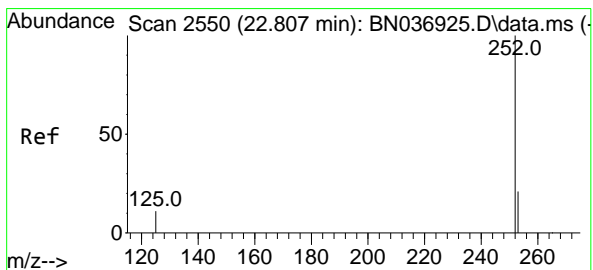
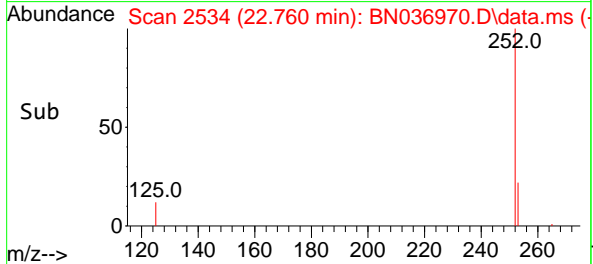
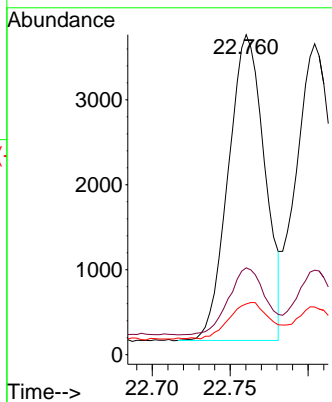
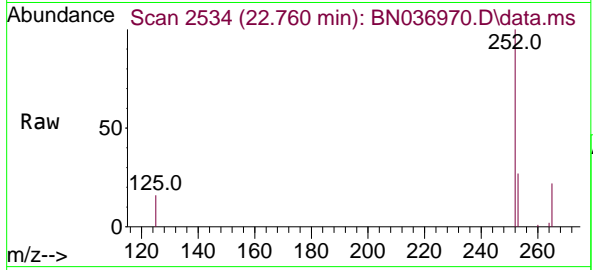


#37  
 Benzo(b)fluoranthene  
 Concen: 0.374 ng  
 RT: 22.760 min Scan# 21  
 Delta R.T. -0.006 min  
 Lab File: BN036970.D  
 Acq: 07 May 2025 19:22

Instrument : BNA\_N  
 ClientSampleId : SSTDCCC0.4EC

Tgt Ion:252 Resp: 5851

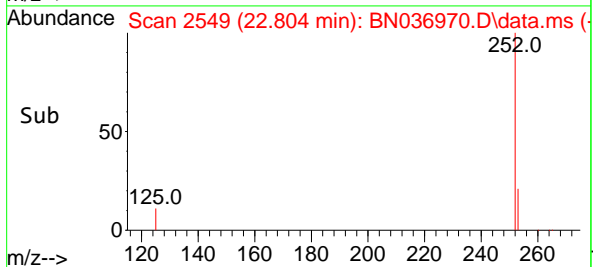
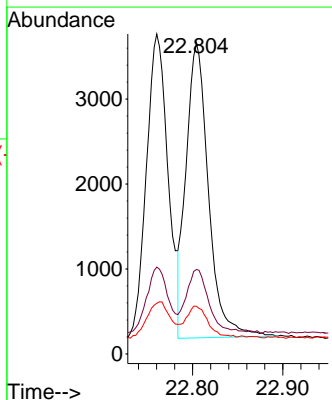
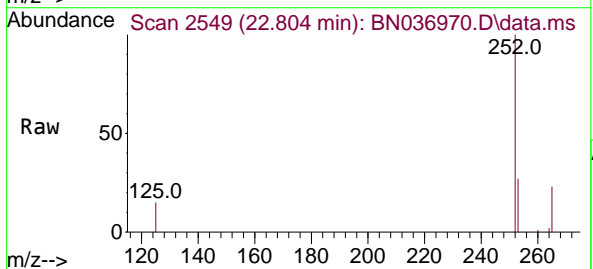
Ion	Ratio	Lower	Upper
252	100		
253	27.2	22.1	33.1
125	15.9	14.2	21.2

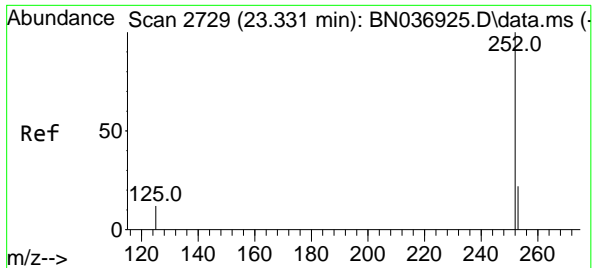


#38  
 Benzo(k)fluoranthene  
 Concen: 0.380 ng  
 RT: 22.804 min Scan# 2549  
 Delta R.T. -0.003 min  
 Lab File: BN036970.D  
 Acq: 07 May 2025 19:22

Tgt Ion:252 Resp: 5990

Ion	Ratio	Lower	Upper
252	100		
253	27.2	22.8	34.2
125	15.3	14.2	21.2



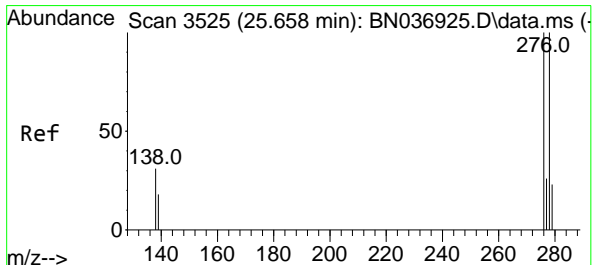
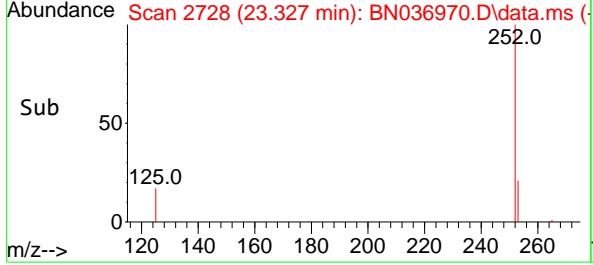
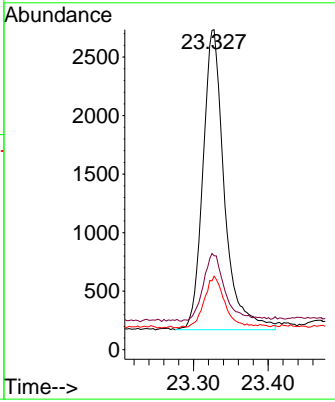
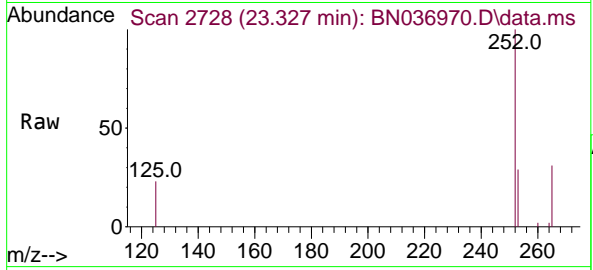


#39  
 Benzo(a)pyrene  
 Concen: 0.398 ng  
 RT: 23.327 min Scan# 21  
 Delta R.T. -0.003 min  
 Lab File: BN036970.D  
 Acq: 07 May 2025 19:22

Instrument : BNA\_N  
 ClientSampleId : SSTDCCC0.4EC

Tgt Ion:252 Resp: 5125

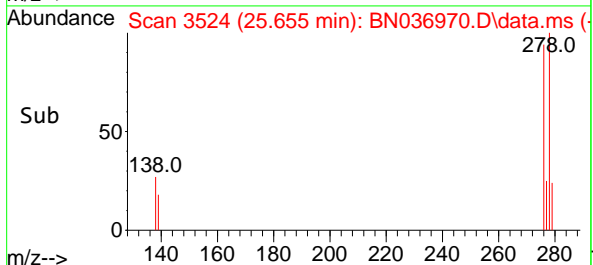
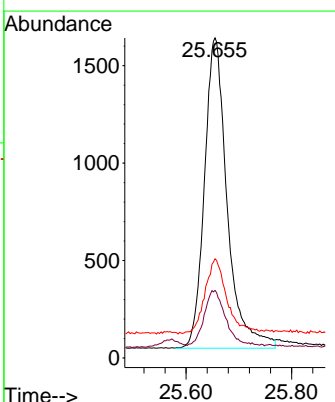
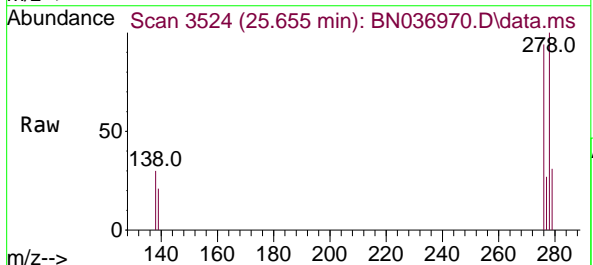
Ion	Ratio	Lower	Upper
252	100		
253	29.4	25.9	38.9
125	23.0	17.4	26.0

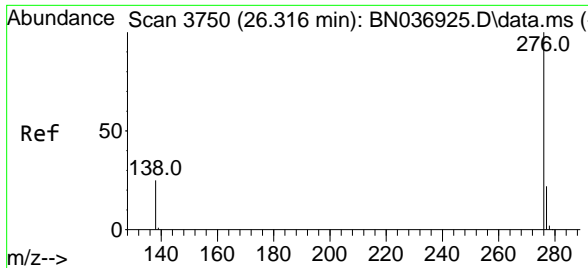


#40  
 Dibenzo(a,h)anthracene  
 Concen: 0.399 ng  
 RT: 25.655 min Scan# 3524  
 Delta R.T. -0.003 min  
 Lab File: BN036970.D  
 Acq: 07 May 2025 19:22

Tgt Ion:278 Resp: 4770

Ion	Ratio	Lower	Upper
278	100		
139	21.1	17.4	26.2
279	31.0	24.9	37.3





#41  
 Benzo(g,h,i)perylene  
 Concen: 0.410 ng  
 RT: 26.315 min Scan# 31  
 Delta R.T. -0.000 min  
 Lab File: BN036970.D  
 Acq: 07 May 2025 19:22

Instrument :  
 BNA\_N  
 ClientSampleId :  
 SSTDCCC0.4EC

Tgt Ion: 276 Resp: 5445

Ion	Ratio	Lower	Upper
276	100		
277	26.0	20.2	30.2
138	25.9	21.9	32.9

