

Data Path : Z:\svoasrv\HPCHEM1\BNA\_N\Data\BN050825\  
 Data File : BN036974.D  
 Acq On : 08 May 2025 15:40  
 Operator : RC/JU  
 Sample : Q1939-04  
 Misc :  
 ALS Vial : 4 Sample Multiplier: 1

Instrument :  
 BNA\_N  
 ClientSampleId :  
 GB2B

Quant Time: May 08 16:42:33 2025  
 Quant Method : Z:\svoasrv\HPCHEM1\BNA\_N\Methods\8270-SIM-BN042825.M  
 Quant Title : ASP BNA STANDARDS FOR 5 POINT CALIBRATION  
 QLast Update : Mon Apr 28 15:35:03 2025  
 Response via : Initial Calibration

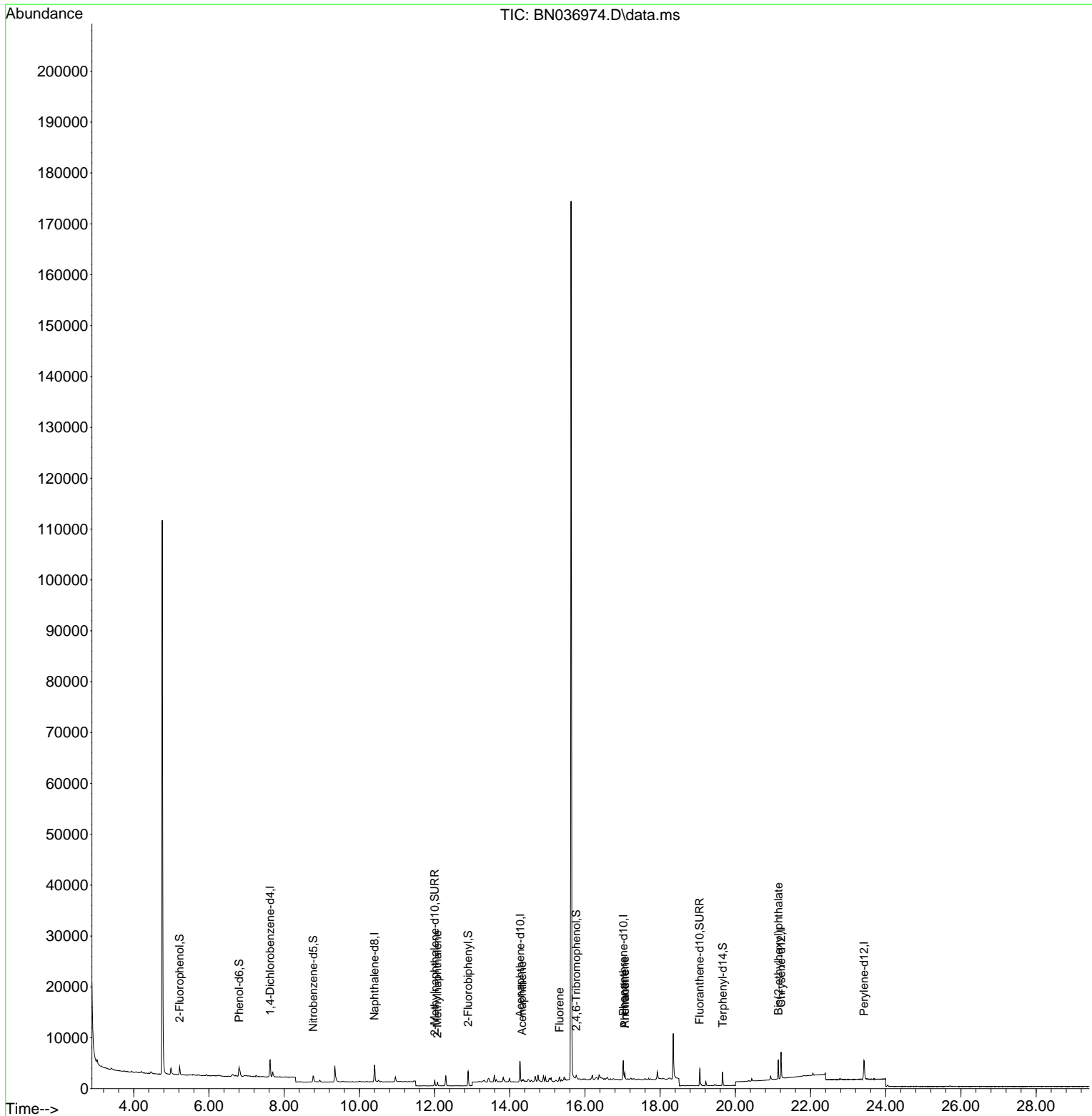
Compound	R.T.	QIon	Response	Conc	Units	Dev(Min)
Internal Standards						
1) 1,4-Dichlorobenzene-d4	7.626	152	1602	0.400	ng	0.00
7) Naphthalene-d8	10.404	136	4100	0.400	ng	#-0.01
13) Acenaphthene-d10	14.277	164	2293	0.400	ng	0.00
19) Phenanthrene-d10	17.021	188	4908	0.400	ng	# 0.00
29) Chrysene-d12	21.216	240	4614	0.400	ng	# 0.00
35) Perylene-d12	23.421	264	4836	0.400	ng	# 0.00
System Monitoring Compounds						
4) 2-Fluorophenol	5.221	112	1131	0.276	ng	0.00
5) Phenol-d6	6.802	99	1419	0.281	ng	0.00
8) Nitrobenzene-d5	8.771	82	1102	0.257	ng	-0.01
11) 2-Methylnaphthalene-d10	12.006	152	1490	0.260	ng	0.00
14) 2,4,6-Tribromophenol	15.768	330	257	0.251	ng	0.00
15) 2-Fluorobiphenyl	12.894	172	2873	0.259	ng	0.00
27) Fluoranthene-d10	19.054	212	3646	0.287	ng	0.00
31) Terphenyl-d14	19.663	244	2536	0.233	ng	0.00
Target Compounds						
12) 2-Methylnaphthalene	12.077	142	470	0.061	ng	# 91
17) Acenaphthene	14.331	154	148	0.020	ng	# 45
18) Fluorene	15.325	166	398	0.041	ng	# 86
25) Phenanthrene	17.058	178	1352	0.083	ng	# 95
26) Anthracene	17.058	178	1322	0.090	ng	96
34) Bis(2-ethylhexyl)phtha...	21.144	149	3585	0.371	ng	99

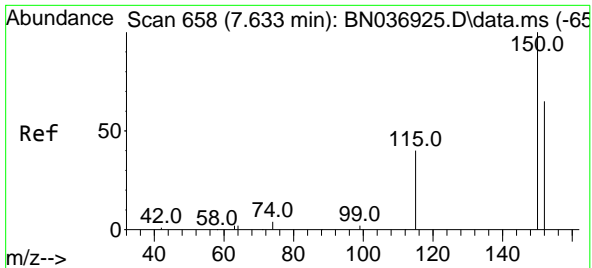
(#) = qualifier out of range (m) = manual integration (+) = signals summed

Data Path : Z:\svoasrv\HPCHEM1\BNA\_N\Data\BN050825\  
 Data File : BN036974.D  
 Acq On : 08 May 2025 15:40  
 Operator : RC/JU  
 Sample : Q1939-04  
 Misc :  
 ALS Vial : 4 Sample Multiplier: 1

Instrument :  
 BNA\_N  
 ClientSampleId :  
 GB2B

Quant Time: May 08 16:42:33 2025  
 Quant Method : Z:\svoasrv\HPCHEM1\BNA\_N\Methods\8270-SIM-BN042825.M  
 Quant Title : ASP BNA STANDARDS FOR 5 POINT CALIBRATION  
 QLast Update : Mon Apr 28 15:35:03 2025  
 Response via : Initial Calibration

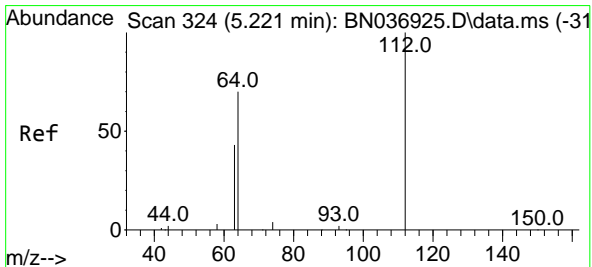
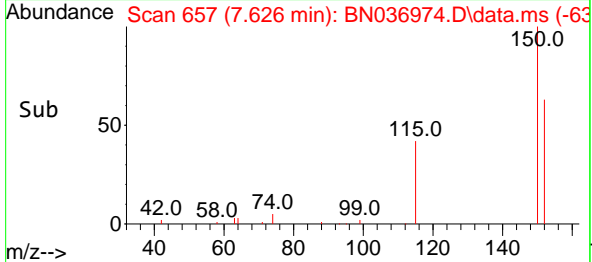
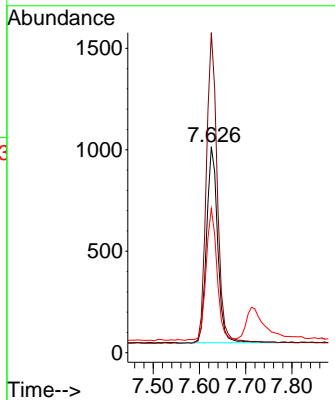
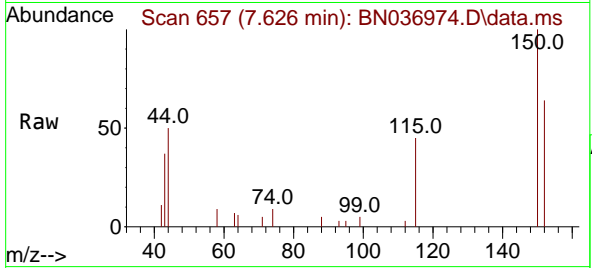




#1  
 1,4-Dichlorobenzene-d4  
 Concen: 0.400 ng  
 RT: 7.626 min Scan# 61  
 Delta R.T. -0.007 min  
 Lab File: BN036974.D  
 Acq: 08 May 2025 15:40

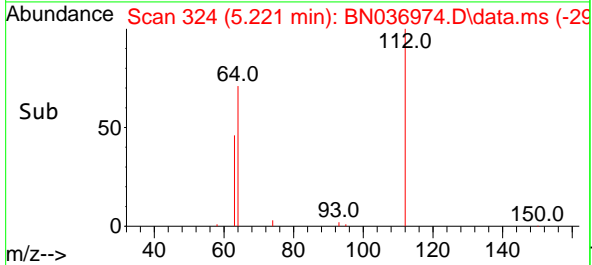
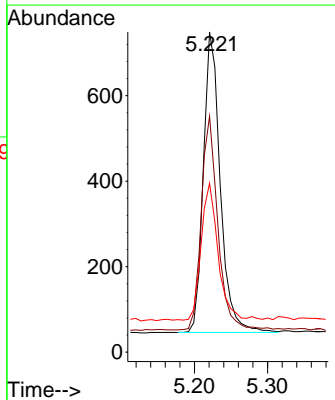
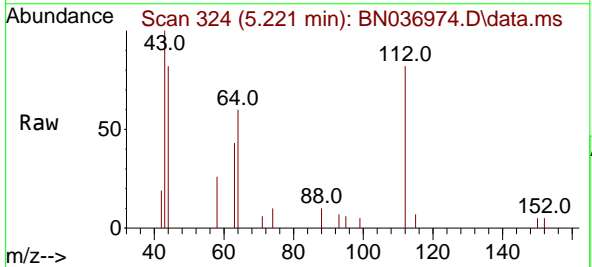
Instrument :  
 BNA\_N  
 ClientSampleId :  
 GB2B

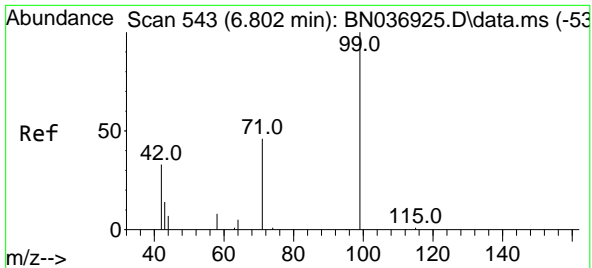
Tgt Ion:152 Resp: 1602  
 Ion Ratio Lower Upper  
 152 100  
 150 155.4 121.1 181.7  
 115 70.0 51.8 77.6



#4  
 2-Fluorophenol  
 Concen: 0.276 ng  
 RT: 5.221 min Scan# 324  
 Delta R.T. 0.000 min  
 Lab File: BN036974.D  
 Acq: 08 May 2025 15:40

Tgt Ion:112 Resp: 1131  
 Ion Ratio Lower Upper  
 112 100  
 64 69.8 55.7 83.5  
 63 45.1 33.9 50.9



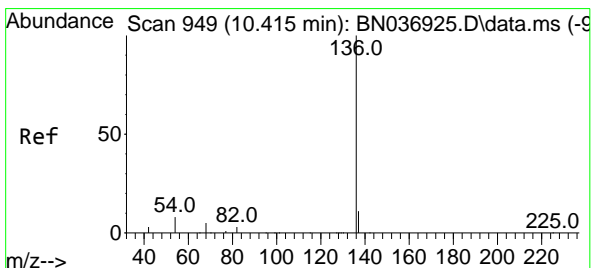
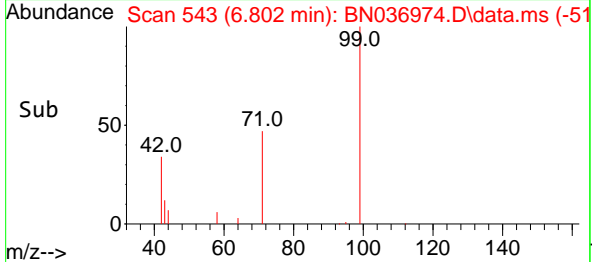
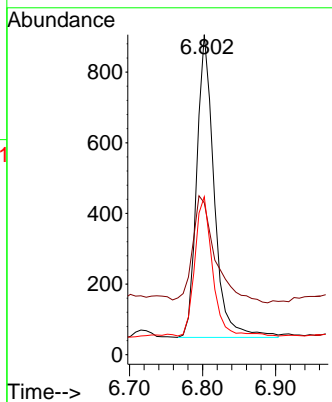
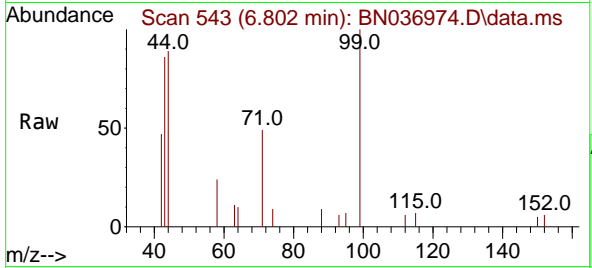


#5  
 Phenol-d6  
 Concen: 0.281 ng  
 RT: 6.802 min Scan# 54  
 Delta R.T. 0.000 min  
 Lab File: BN036974.D  
 Acq: 08 May 2025 15:40

Instrument :  
 BNA\_N  
 ClientSampleId :  
 GB2B

Tgt Ion: 99 Resp: 1419

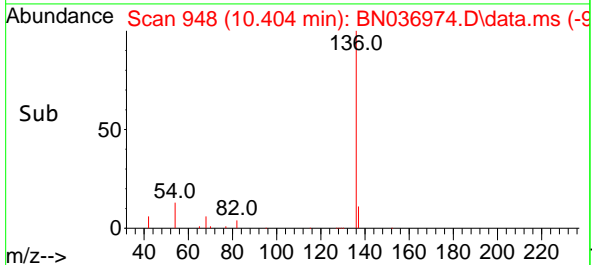
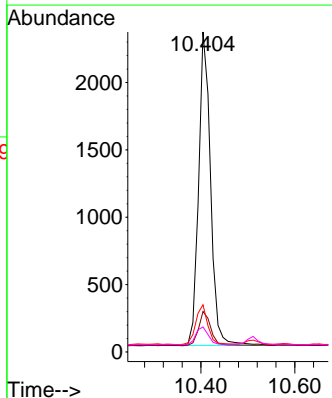
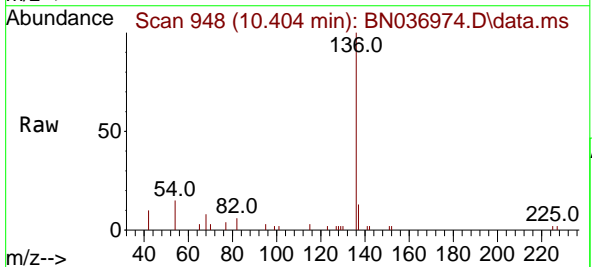
Ion	Ratio	Lower	Upper
99	100		
42	46.0	29.6	44.4#
71	46.9	36.0	54.0

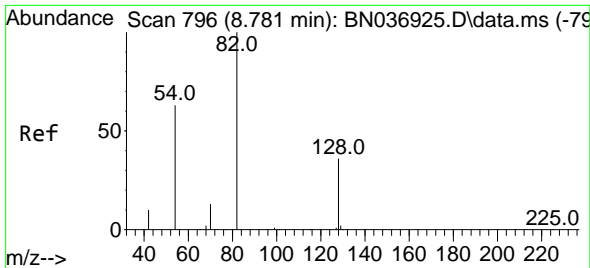


#7  
 Naphthalene-d8  
 Concen: 0.400 ng  
 RT: 10.404 min Scan# 948  
 Delta R.T. -0.011 min  
 Lab File: BN036974.D  
 Acq: 08 May 2025 15:40

Tgt Ion: 136 Resp: 4100

Ion	Ratio	Lower	Upper
136	100		
137	12.7	9.7	14.5
54	14.8	8.0	12.0#
68	7.8	5.1	7.7#

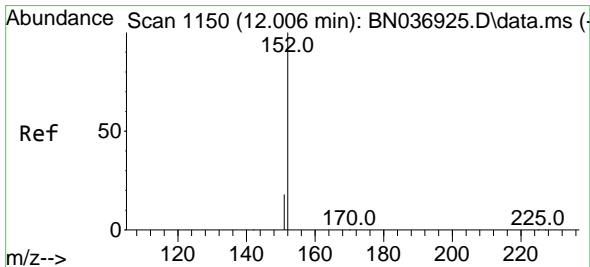
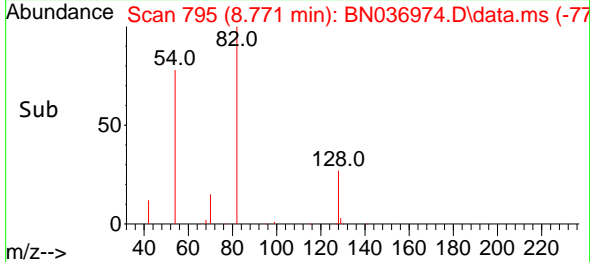
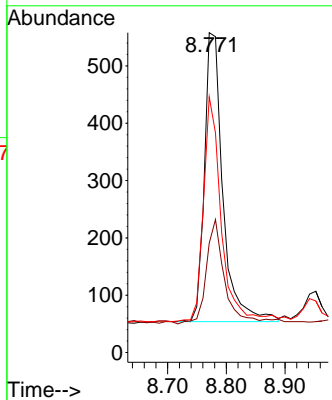
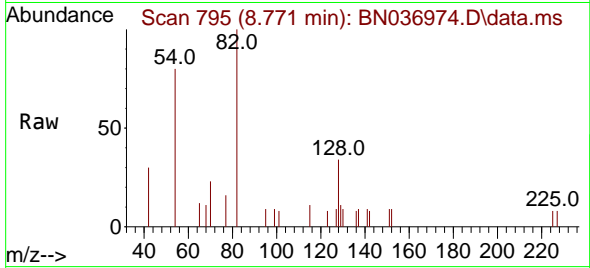




#8  
 Nitrobenzene-d5  
 Concen: 0.257 ng  
 RT: 8.771 min Scan# 795  
 Delta R.T. -0.011 min  
 Lab File: BN036974.D  
 Acq: 08 May 2025 15:40

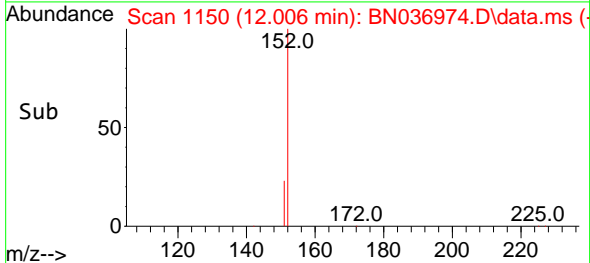
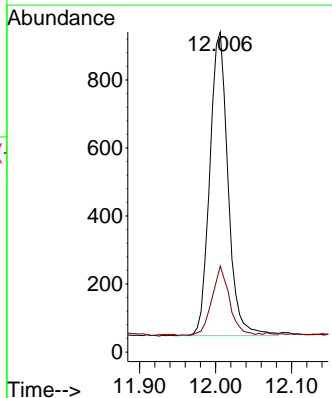
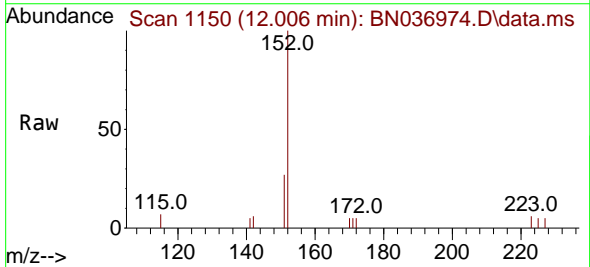
Instrument : BNA\_N  
 ClientSampleId : GB2B

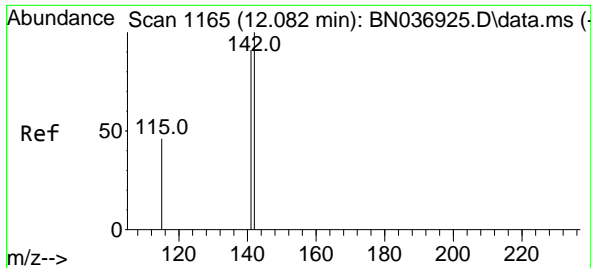
Tgt Ion	Resp	Lower	Upper
82	1102		
128	34.2	30.7	46.1
54	79.9	52.1	78.1



#11  
 2-Methylnaphthalene-d10  
 Concen: 0.260 ng  
 RT: 12.006 min Scan# 1150  
 Delta R.T. 0.000 min  
 Lab File: BN036974.D  
 Acq: 08 May 2025 15:40

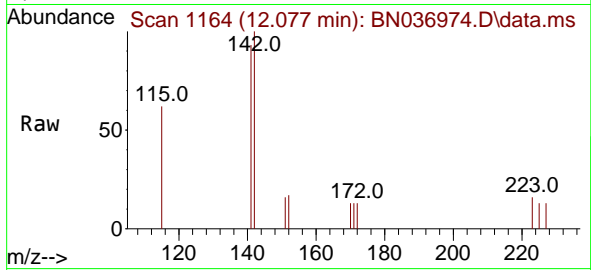
Tgt Ion	Resp	Lower	Upper
152	1490		
151	21.5	16.9	25.3



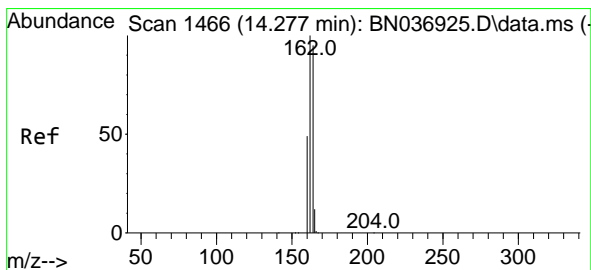
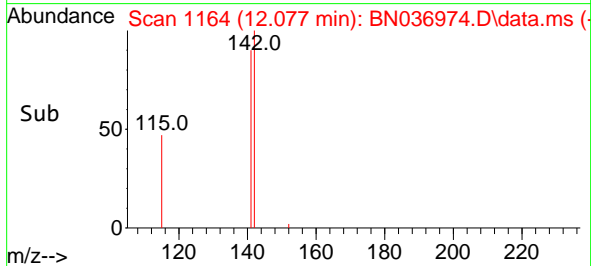
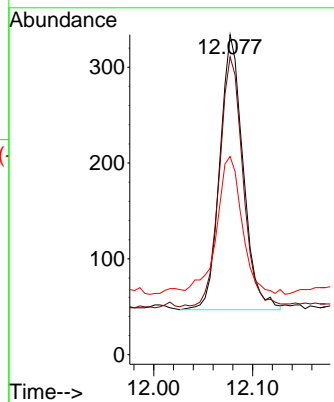


#12  
 2-Methylnaphthalene  
 Concen: 0.061 ng  
 RT: 12.077 min Scan# 1164  
 Delta R.T. -0.005 min  
 Lab File: BN036974.D  
 Acq: 08 May 2025 15:40

Instrument :  
 BNA\_N  
 ClientSampleId :  
 GB2B

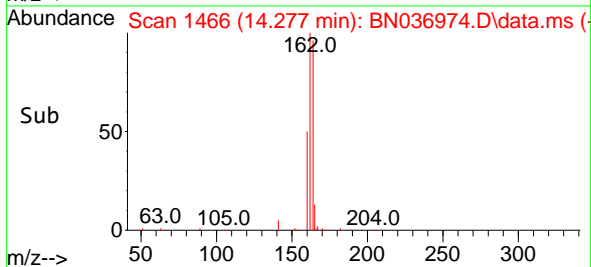
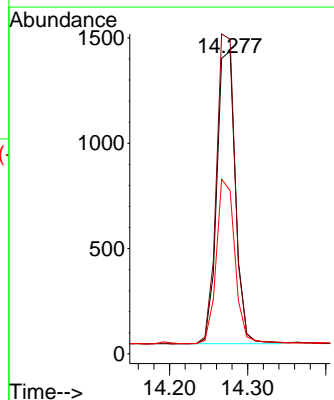
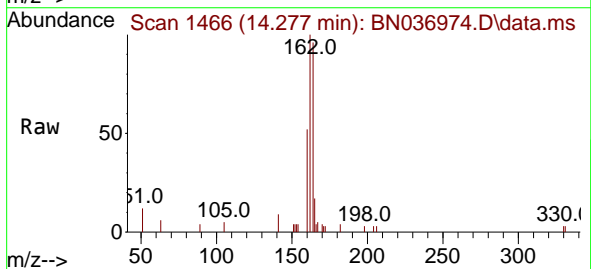


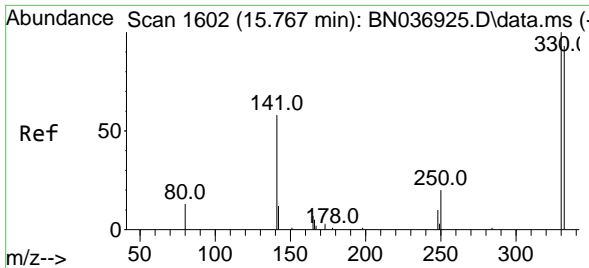
Tgt Ion:142 Resp: 470  
 Ion Ratio Lower Upper  
 142 100  
 141 93.1 72.8 109.2  
 115 62.0 38.2 57.4#



#13  
 Acenaphthene-d10  
 Concen: 0.400 ng  
 RT: 14.277 min Scan# 1466  
 Delta R.T. 0.000 min  
 Lab File: BN036974.D  
 Acq: 08 May 2025 15:40

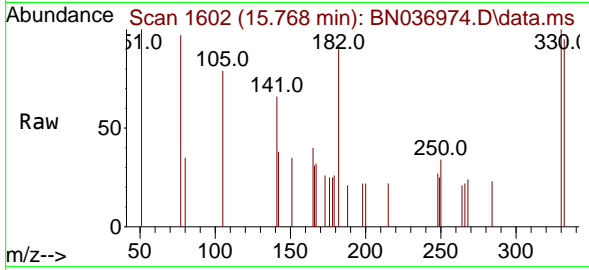
Tgt Ion:164 Resp: 2293  
 Ion Ratio Lower Upper  
 164 100  
 162 103.9 83.8 125.8  
 160 54.0 42.0 63.0



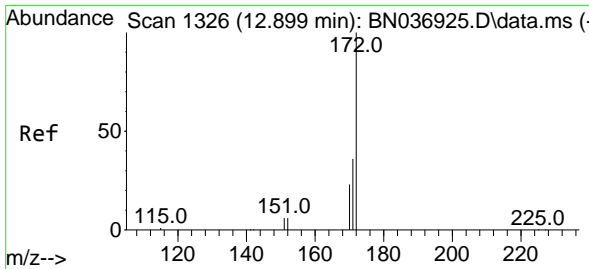
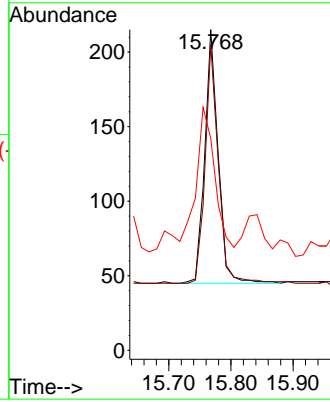
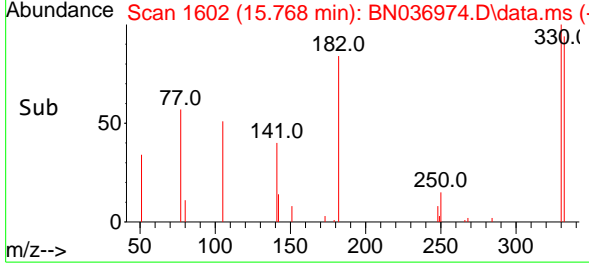


#14  
 2,4,6-Tribromophenol  
 Concen: 0.251 ng  
 RT: 15.768 min Scan# 11  
 Delta R.T. 0.000 min  
 Lab File: BN036974.D  
 Acq: 08 May 2025 15:40

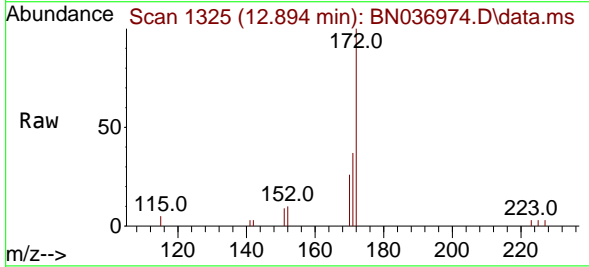
Instrument :  
 BNA\_N  
 ClientSampleId :  
 GB2B



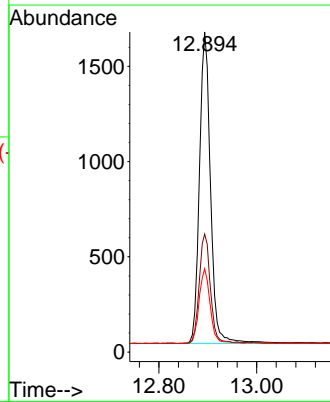
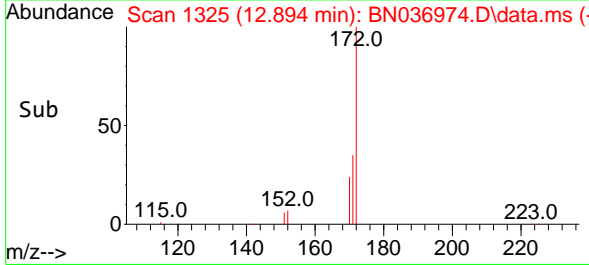
Tgt Ion: 330 Resp: 257  
 Ion Ratio Lower Upper  
 330 100  
 332 92.6 76.3 114.5  
 141 93.8 45.4 68.2#

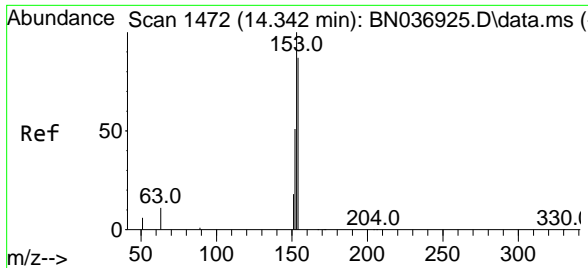


#15  
 2-Fluorobiphenyl  
 Concen: 0.259 ng  
 RT: 12.894 min Scan# 1325  
 Delta R.T. -0.005 min  
 Lab File: BN036974.D  
 Acq: 08 May 2025 15:40



Tgt Ion: 172 Resp: 2873  
 Ion Ratio Lower Upper  
 172 100  
 171 36.9 29.4 44.0  
 170 26.0 19.4 29.0



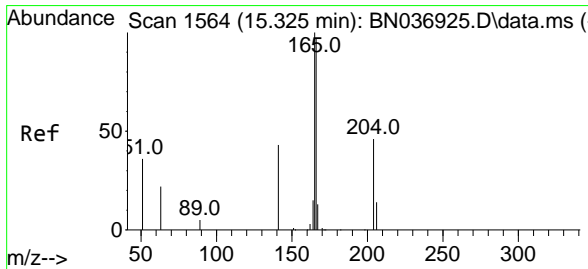
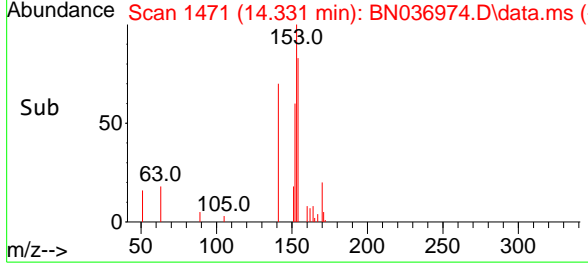
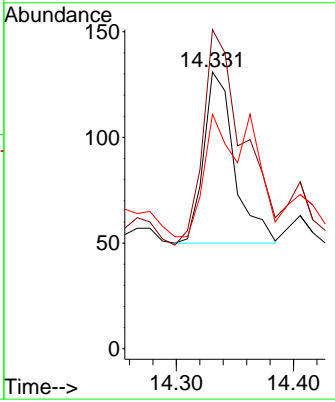
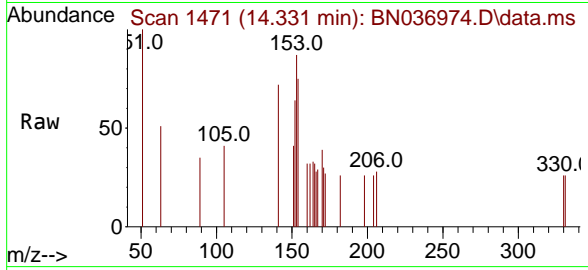


#17  
 Acenaphthene  
 Concen: 0.020 ng  
 RT: 14.331 min Scan# 1472  
 Delta R.T. -0.011 min  
 Lab File: BN036974.D  
 Acq: 08 May 2025 15:40

Instrument : BNA\_N  
 ClientSampleId : GB2B

Tgt Ion:154 Resp: 148

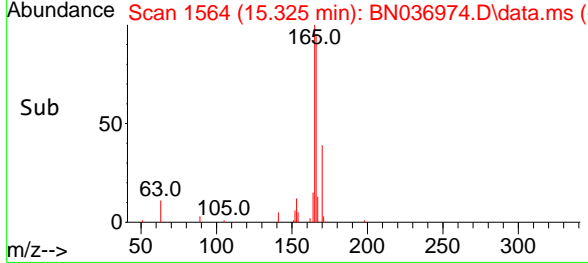
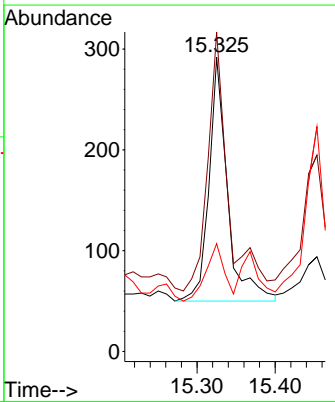
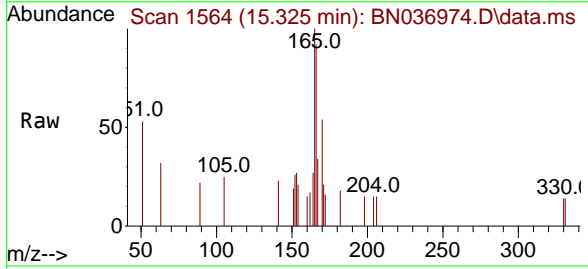
Ion	Ratio	Lower	Upper
154	100		
153	173.0	93.4	140.2#
152	108.8	49.5	74.3#



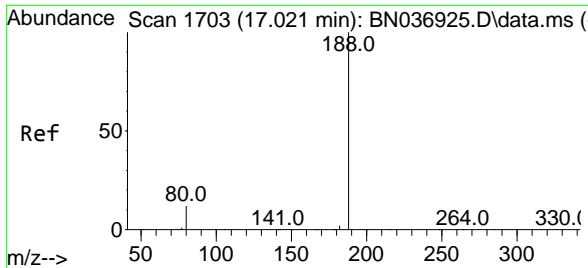
#18  
 Fluorene  
 Concen: 0.041 ng  
 RT: 15.325 min Scan# 1564  
 Delta R.T. 0.000 min  
 Lab File: BN036974.D  
 Acq: 08 May 2025 15:40

Tgt Ion:166 Resp: 398

Ion	Ratio	Lower	Upper
166	100		
165	113.6	80.8	121.2
167	23.4	10.8	16.2#



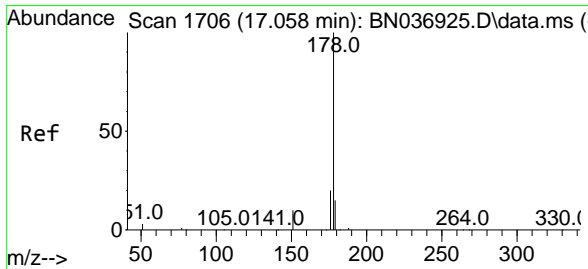
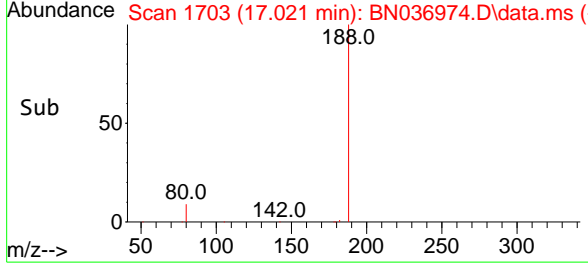
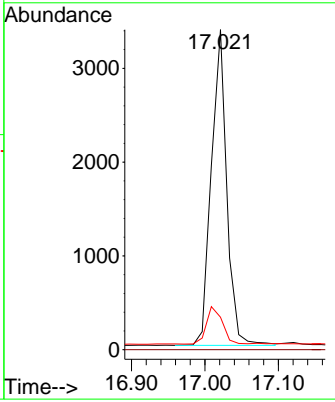
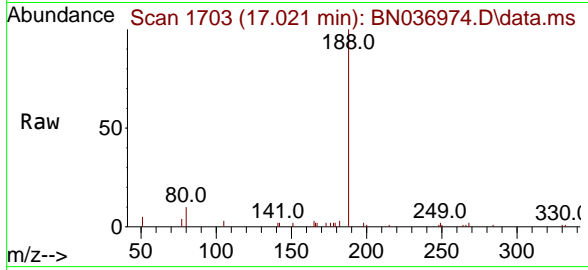




#19  
 Phenanthrene-d10  
 Concen: 0.400 ng  
 RT: 17.021 min Scan# 1703  
 Delta R.T. 0.000 min  
 Lab File: BN036974.D  
 Acq: 08 May 2025 15:40

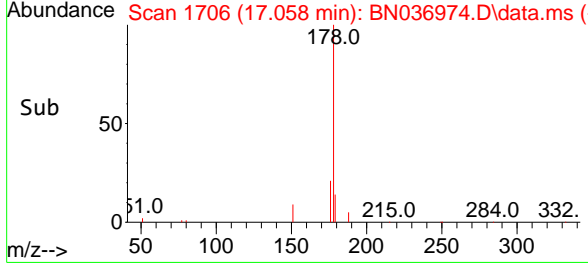
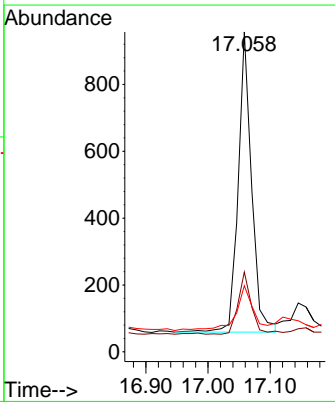
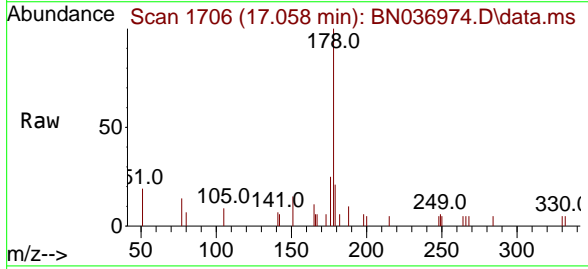
Instrument : BNA\_N  
 ClientSampleId : GB2B

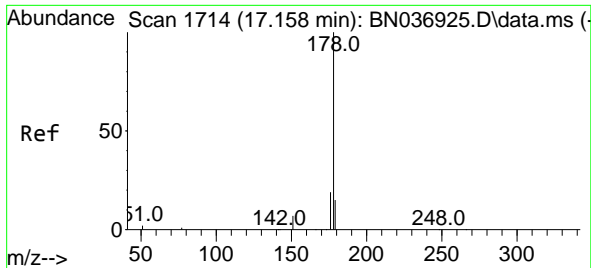
Tgt Ion	Resp	Lower	Upper
188	100		
94	0.0	0.0	0.0
80	10.1	10.7	16.1



#25  
 Phenanthrene  
 Concen: 0.083 ng  
 RT: 17.058 min Scan# 1706  
 Delta R.T. 0.000 min  
 Lab File: BN036974.D  
 Acq: 08 May 2025 15:40

Tgt Ion	Resp	Lower	Upper
178	100		
176	20.6	15.7	23.5
179	19.1	12.4	18.6

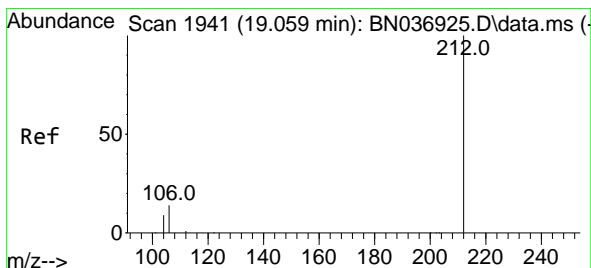
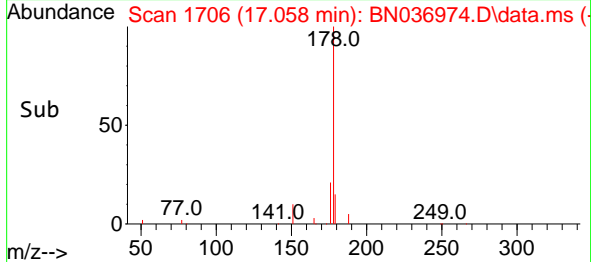
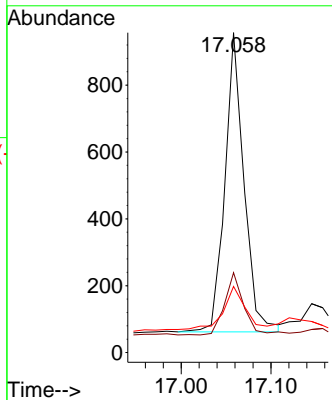
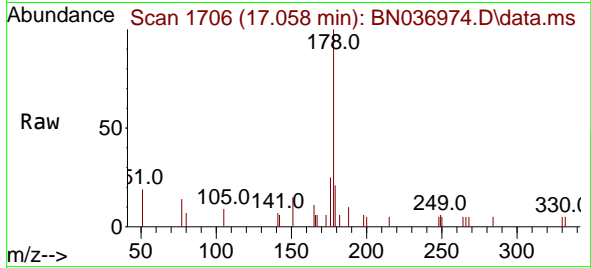




#26  
 Anthracene  
 Concen: 0.090 ng  
 RT: 17.058 min Scan# 11  
 Delta R.T. -0.099 min  
 Lab File: BN036974.D  
 Acq: 08 May 2025 15:40

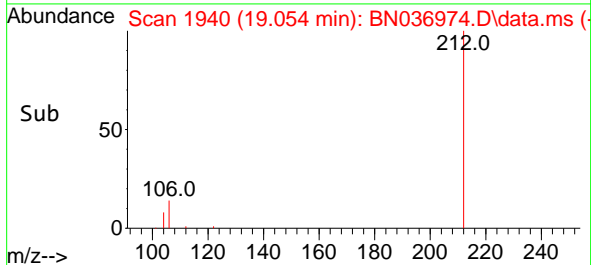
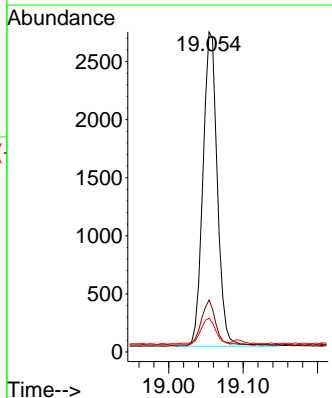
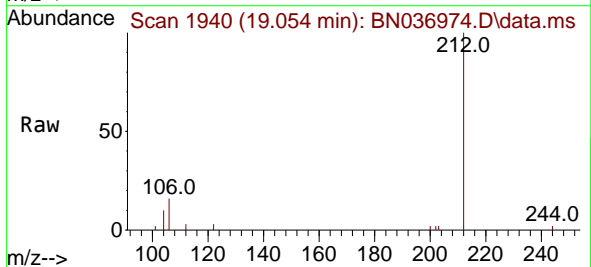
Instrument : BNA\_N  
 ClientSampleId : GB2B

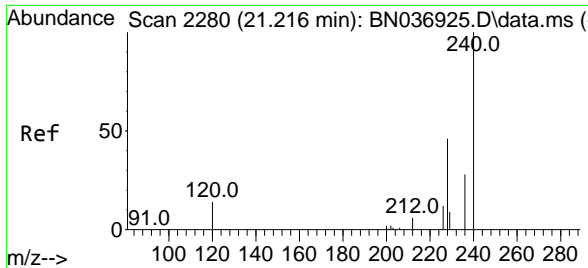
Tgt Ion	Resp	Lower	Upper
178	100		
176	21.0	15.3	22.9
179	16.3	12.1	18.1



#27  
 Fluoranthene-d10  
 Concen: 0.287 ng  
 RT: 19.054 min Scan# 1940  
 Delta R.T. -0.005 min  
 Lab File: BN036974.D  
 Acq: 08 May 2025 15:40

Tgt Ion	Resp	Lower	Upper
212	100		
106	14.1	11.6	17.4
104	8.7	7.0	10.4

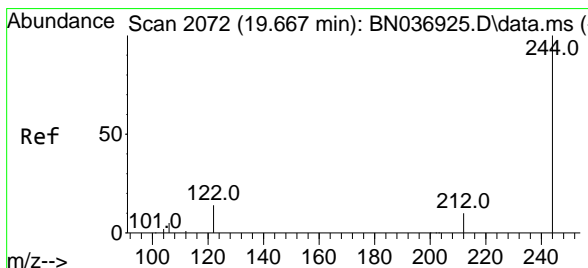
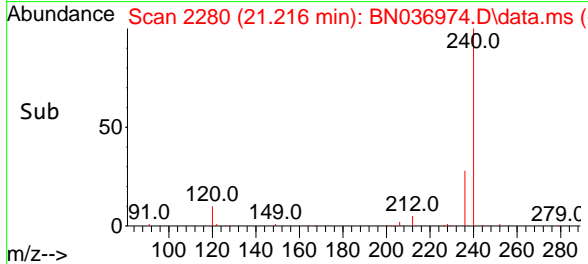
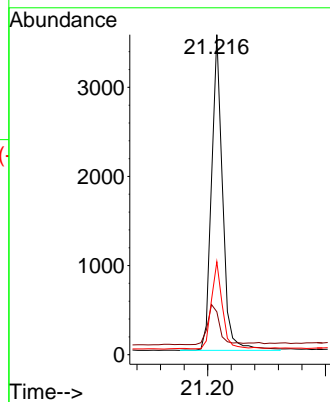
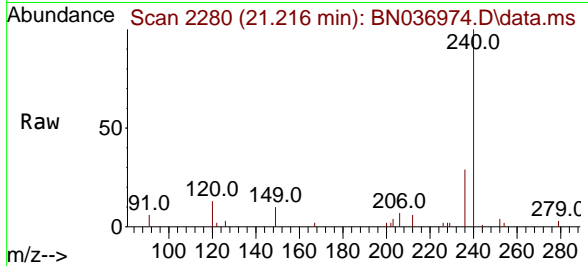




#29  
 Chrysene-d12  
 Concen: 0.400 ng  
 RT: 21.216 min Scan# 21  
 Delta R.T. 0.000 min  
 Lab File: BN036974.D  
 Acq: 08 May 2025 15:40

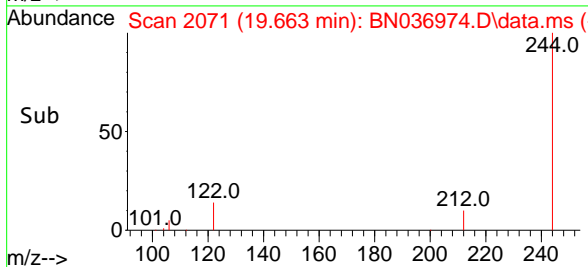
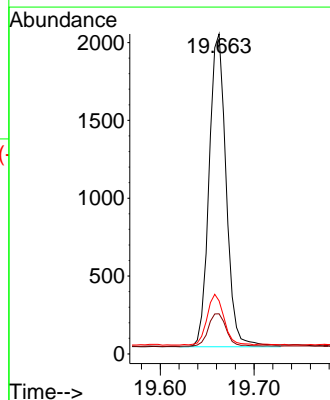
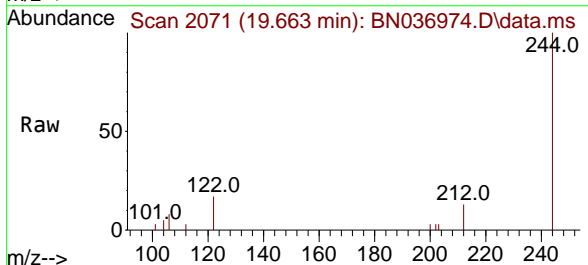
Instrument :  
 BNA\_N  
 ClientSampleId :  
 GB2B

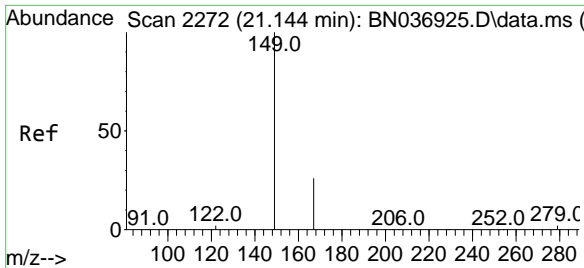
Tgt Ion	Resp	Lower	Upper
240	4614		
120	13.4	14.1	21.1#
236	29.0	23.8	35.8



#31  
 Terphenyl-d14  
 Concen: 0.233 ng  
 RT: 19.663 min Scan# 2071  
 Delta R.T. -0.005 min  
 Lab File: BN036974.D  
 Acq: 08 May 2025 15:40

Tgt Ion	Resp	Lower	Upper
244	2536		
212	12.6	9.6	14.4
122	16.6	12.7	19.1



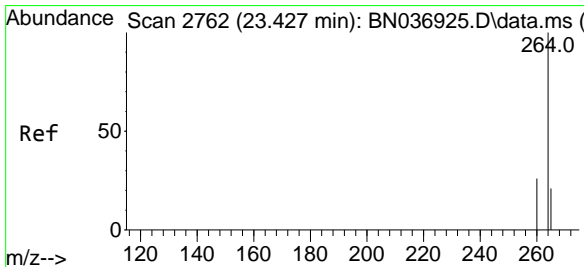
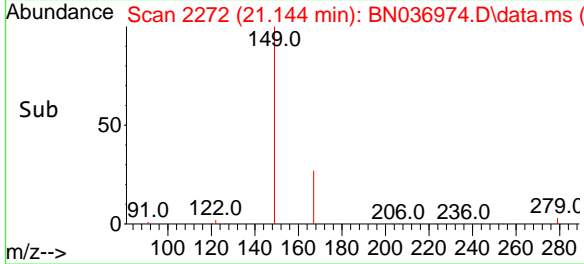
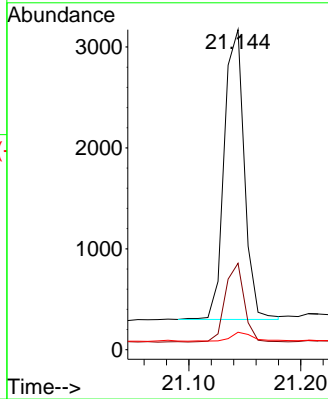
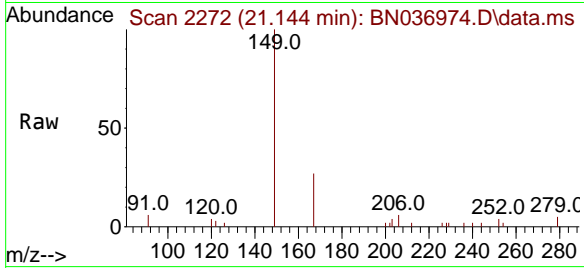


#34  
 Bis(2-ethylhexyl)phthalate  
 Concen: 0.371 ng  
 RT: 21.144 min Scan# 2114  
 Delta R.T. 0.000 min  
 Lab File: BN036974.D  
 Acq: 08 May 2025 15:40

Instrument :  
 BNA\_N  
 ClientSampleId :  
 GB2B

Tgt Ion:149 Resp: 3585

Ion	Ratio	Lower	Upper
149	100		
167	25.6	21.0	31.6
279	3.4	2.7	4.1



#35  
 Perylene-d12  
 Concen: 0.400 ng  
 RT: 23.421 min Scan# 2760  
 Delta R.T. -0.006 min  
 Lab File: BN036974.D  
 Acq: 08 May 2025 15:40

Tgt Ion:264 Resp: 4836

Ion	Ratio	Lower	Upper
264	100		
260	27.7	22.2	33.2
265	58.3	65.8	98.6#

