

Data Path : Z:\svoasrv\HPCHEM1\BNA_N\Data\BN051122\
 Data File : BN019722.D
 Acq On : 11 May 2022 11:19
 Operator : CG/JU
 Sample : PB144707BL
 Misc :
 ALS Vial : 3 Sample Multiplier: 1

Instrument :
 BNA_N
 ClientSampleId :
 PB144707BL

Quant Time: May 12 05:51:43 2022
 Quant Method : Z:\SVOASRV\HPCHEM1\BNA_N\METHODS\8270-SIM-BN050922.M
 Quant Title : ASP BNA STANDARDS FOR 5 POINT CALIBRATION
 QLast Update : Tue May 10 01:35:26 2022
 Response via : Initial Calibration

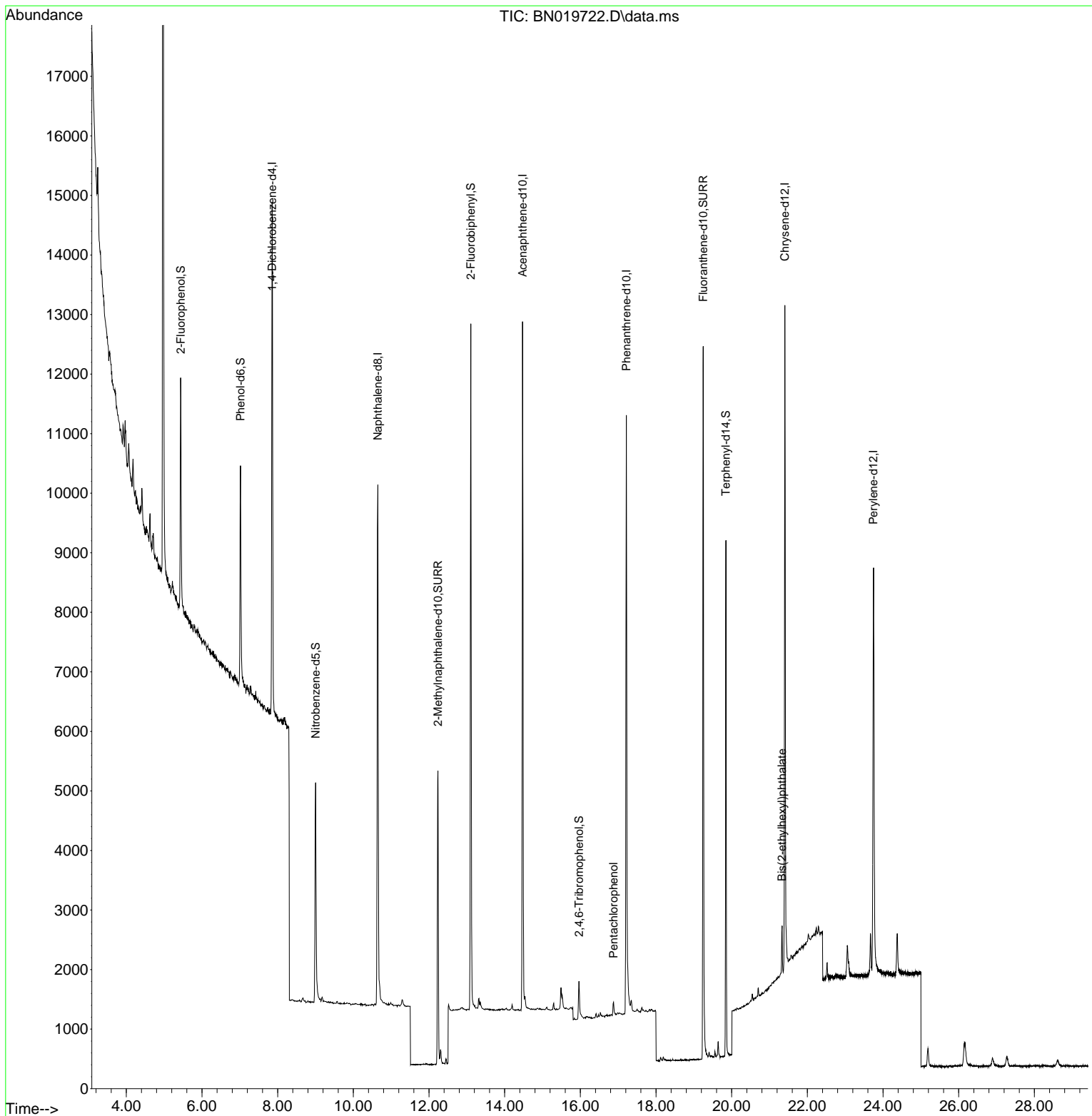
Compound	R.T.	QIon	Response	Conc	Units	Dev(Min)	
Internal Standards							
1) 1,4-Dichlorobenzene-d4	7.854	152	4563	0.400	ng	0.00	
7) Naphthalene-d8	10.648	136	12980	0.400	ng	0.00	
13) Acenaphthene-d10	14.474	164	6730	0.400	ng	0.00	
19) Phenanthrene-d10	17.215	188	15107	0.400	ng	0.00	
29) Chrysene-d12	21.404	240	10783	0.400	ng	0.00	#
35) Perylene-d12	23.746	264	10514	0.400	ng	0.00	
System Monitoring Compounds							
4) 2-Fluorophenol	5.442	112	3324	0.322	ng	0.00	
5) Phenol-d6	7.017	99	3706	0.285	ng	0.00	
8) Nitrobenzene-d5	9.003	82	3430	0.316	ng	0.00	
11) 2-Methylnaphthalene-d10	12.234	152	7186	0.323	ng	0.00	
14) 2,4,6-Tribromophenol	15.964	330	462	0.189	ng	0.00	
15) 2-Fluorobiphenyl	13.105	172	10206	0.336	ng	0.00	
27) Fluoranthene-d10	19.248	212	14201	0.326	ng	0.00	
31) Terphenyl-d14	19.847	244	9480	0.378	ng	0.00	
Target Compounds							
24) Pentachlorophenol	16.877	266	182	0.054	ng	90	Qvalue
34) Bis(2-ethylhexyl)phtha...	21.333	149	922	0.053	ng	98	

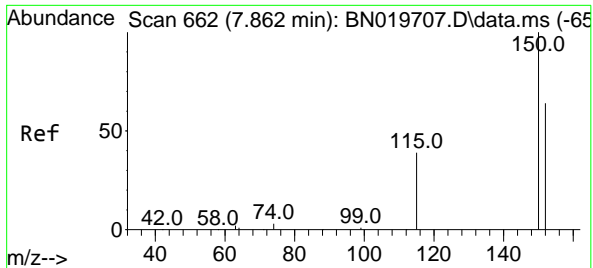
(#) = qualifier out of range (m) = manual integration (+) = signals summed

Data Path : Z:\svoasrv\HPCHEM1\BNA_N\Data\BN051122\
 Data File : BN019722.D
 Acq On : 11 May 2022 11:19
 Operator : CG/JU
 Sample : PB144707BL
 Misc :
 ALS Vial : 3 Sample Multiplier: 1

Instrument :
 BNA_N
 ClientSampleId :
 PB144707BL

Quant Time: May 12 05:51:43 2022
 Quant Method : Z:\SVOASRV\HPCHEM1\BNA_N\METHODS\8270-SIM-BN050922.M
 Quant Title : ASP BNA STANDARDS FOR 5 POINT CALIBRATION
 QLast Update : Tue May 10 01:35:26 2022
 Response via : Initial Calibration

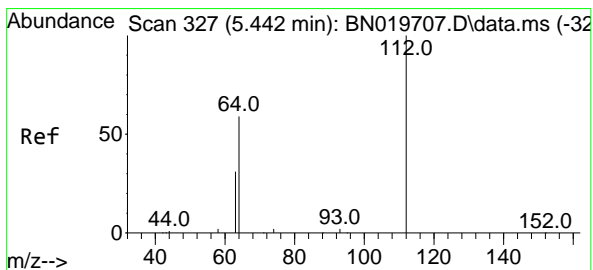
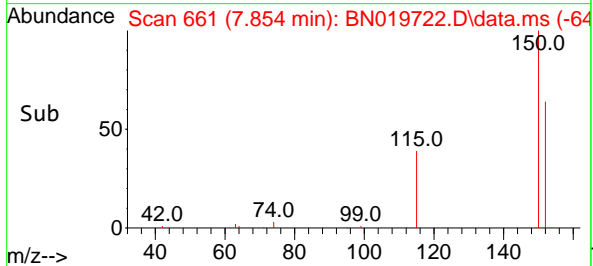
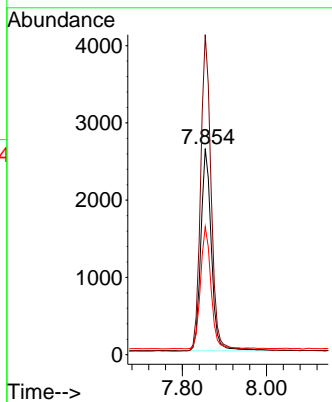
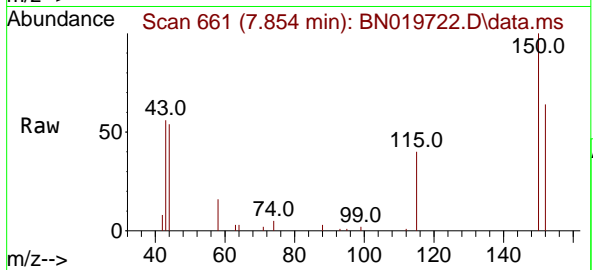




#1
 1,4-Dichlorobenzene-d4
 Concen: 0.400 ng
 RT: 7.854 min Scan# 661
 Delta R.T. -0.008 min
 Lab File: BN019722.D
 Acq: 11 May 2022 11:19

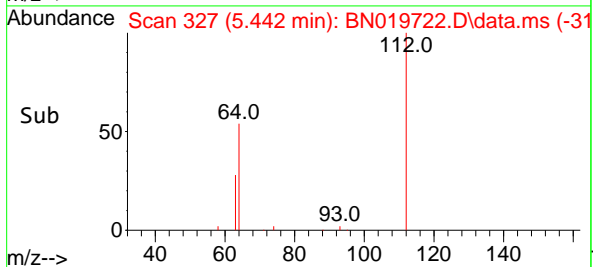
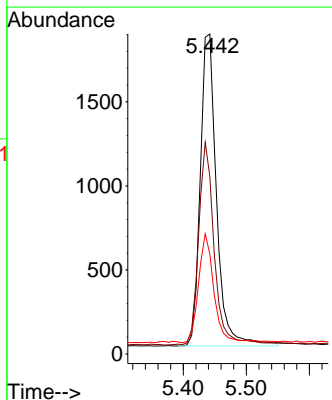
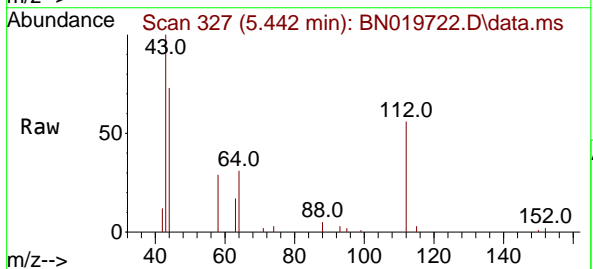
Instrument :
 BNA_N
 ClientSampleId :
 PB144707BL

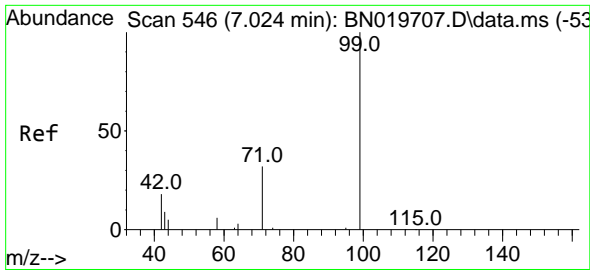
Tgt Ion:152 Resp: 4563
 Ion Ratio Lower Upper
 152 100
 150 155.3 125.0 187.4
 115 62.1 50.6 76.0



#4
 2-Fluorophenol
 Concen: 0.322 ng
 RT: 5.442 min Scan# 327
 Delta R.T. -0.000 min
 Lab File: BN019722.D
 Acq: 11 May 2022 11:19

Tgt Ion:112 Resp: 3324
 Ion Ratio Lower Upper
 112 100
 64 62.2 49.1 73.7
 63 33.4 26.4 39.6



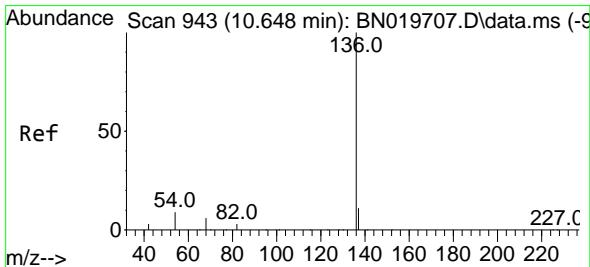
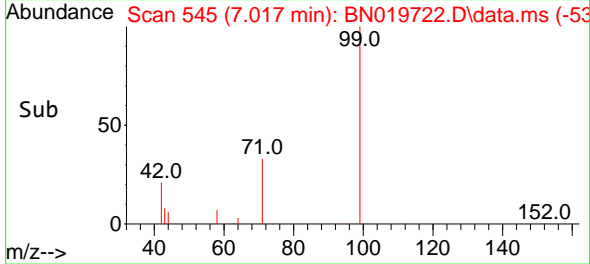
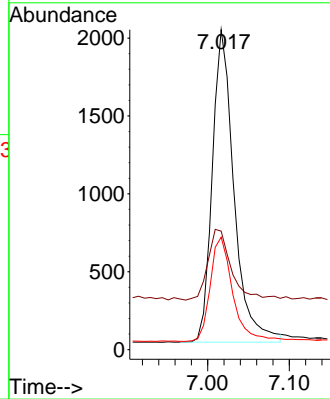
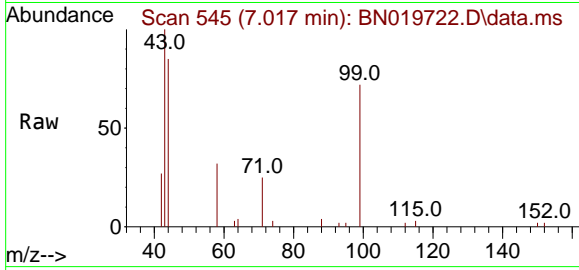


#5
 Phenol-d6
 Concen: 0.285 ng
 RT: 7.017 min Scan# 545
 Delta R.T. -0.007 min
 Lab File: BN019722.D
 Acq: 11 May 2022 11:19

Instrument :
 BNA_N
 ClientSampleId :
 PB144707BL

Tgt Ion: 99 Resp: 3706

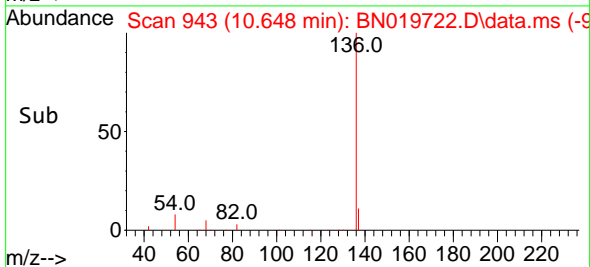
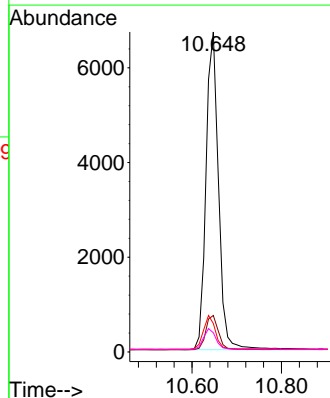
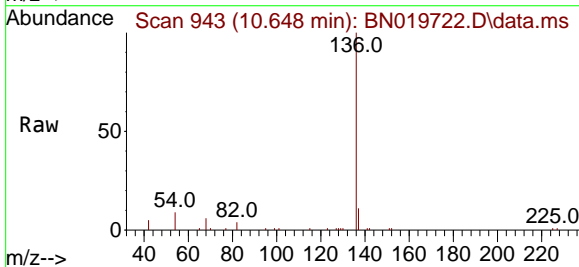
Ion	Ratio	Lower	Upper
99	100		
42	24.4	19.6	29.4
71	34.5	27.3	40.9

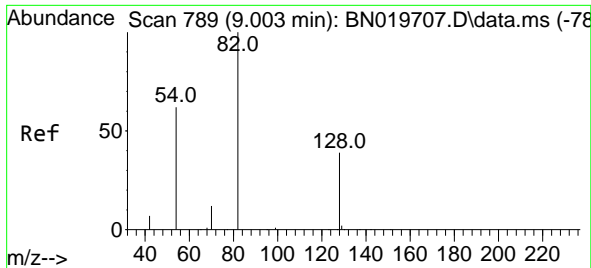


#7
 Naphthalene-d8
 Concen: 0.400 ng
 RT: 10.648 min Scan# 943
 Delta R.T. -0.000 min
 Lab File: BN019722.D
 Acq: 11 May 2022 11:19

Tgt Ion: 136 Resp: 12980

Ion	Ratio	Lower	Upper
136	100		
137	11.4	9.1	13.7
54	8.9	8.2	12.4
68	6.0	5.5	8.3



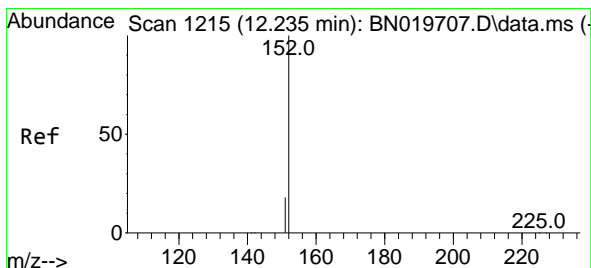
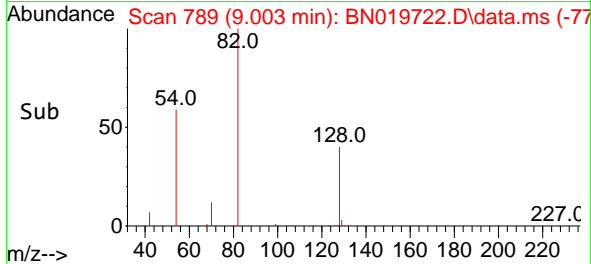
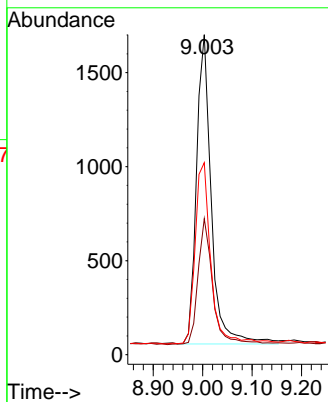
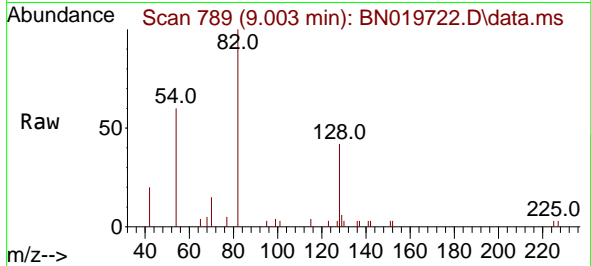


#8
 Nitrobenzene-d5
 Concen: 0.316 ng
 RT: 9.003 min Scan# 789
 Delta R.T. -0.000 min
 Lab File: BN019722.D
 Acq: 11 May 2022 11:19

Instrument :
 BNA_N
 ClientSampleId :
 PB144707BL

Tgt Ion: 82 Resp: 3430

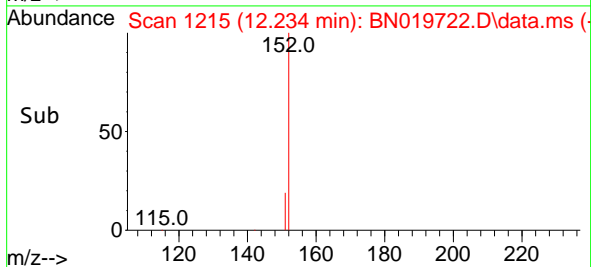
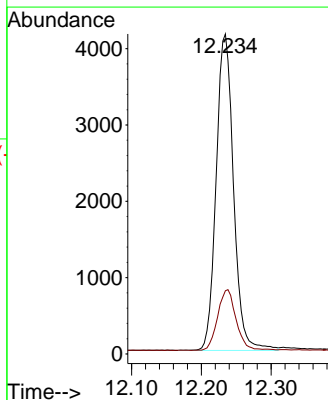
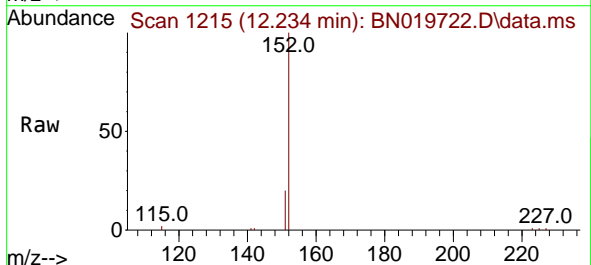
Ion	Ratio	Lower	Upper
82	100		
128	42.5	32.4	48.6
54	60.0	50.7	76.1

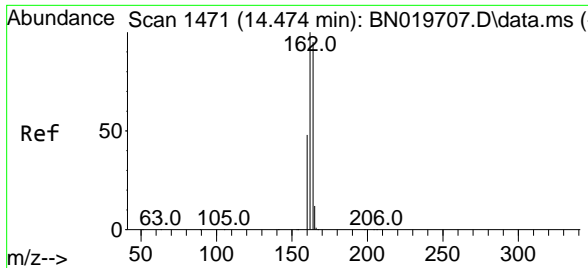


#11
 2-Methylnaphthalene-d10
 Concen: 0.323 ng
 RT: 12.234 min Scan# 1215
 Delta R.T. -0.000 min
 Lab File: BN019722.D
 Acq: 11 May 2022 11:19

Tgt Ion: 152 Resp: 7186

Ion	Ratio	Lower	Upper
152	100		
151	20.5	16.4	24.6



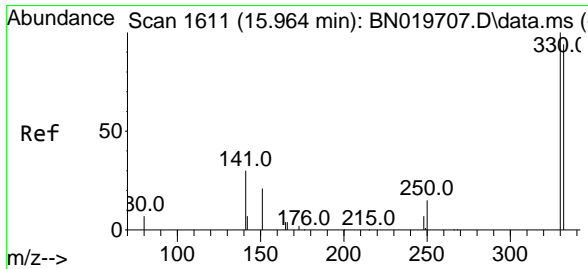
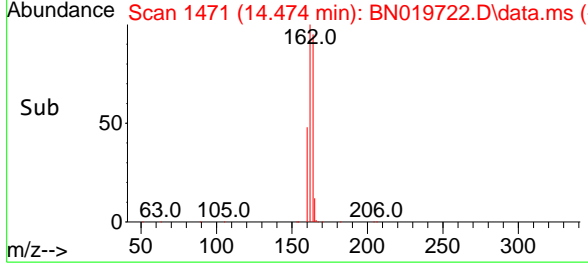
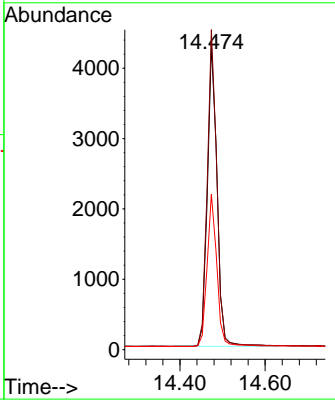
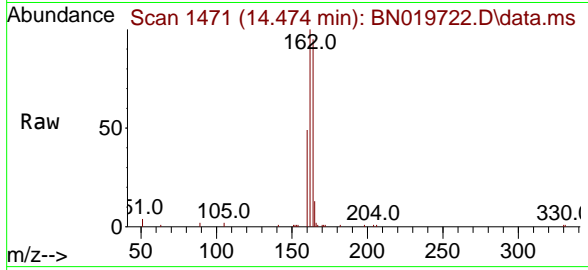


#13
 Acenaphthene-d10
 Concen: 0.400 ng
 RT: 14.474 min Scan# 14
 Delta R.T. -0.000 min
 Lab File: BN019722.D
 Acq: 11 May 2022 11:19

Instrument : BNA_N
 ClientSampleId : PB144707BL

Tgt Ion:164 Resp: 6730

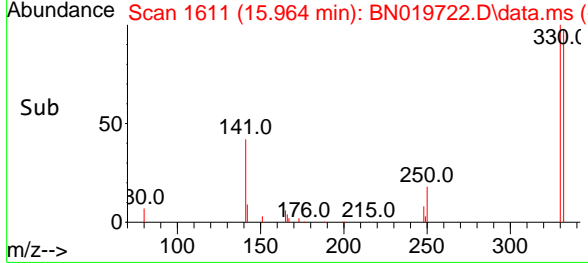
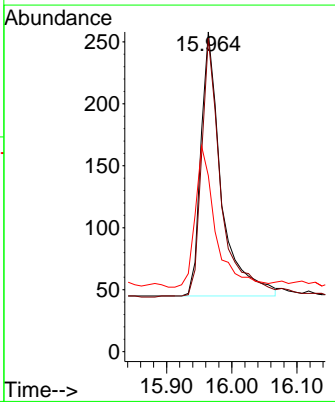
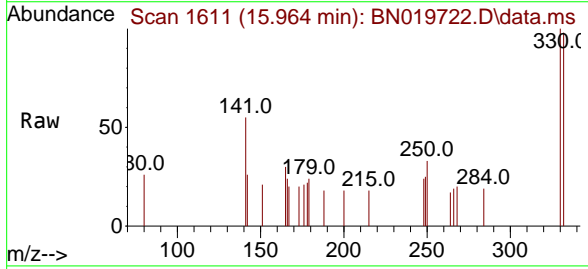
Ion	Ratio	Lower	Upper
164	100		
162	105.0	84.0	126.0
160	51.1	41.1	61.7

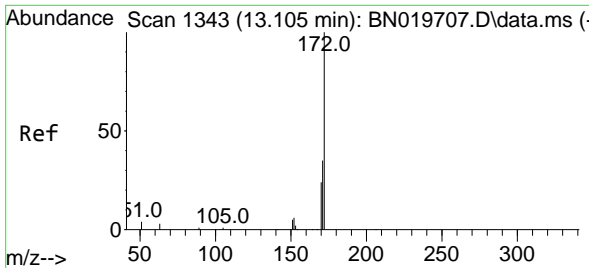


#14
 2,4,6-Tribromophenol
 Concen: 0.189 ng
 RT: 15.964 min Scan# 1611
 Delta R.T. -0.000 min
 Lab File: BN019722.D
 Acq: 11 May 2022 11:19

Tgt Ion:330 Resp: 462

Ion	Ratio	Lower	Upper
330	100		
332	95.9	75.7	113.5
141	53.5	40.2	60.2

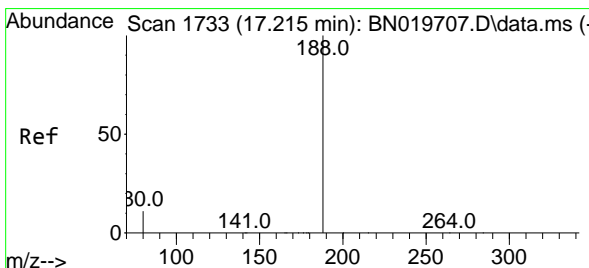
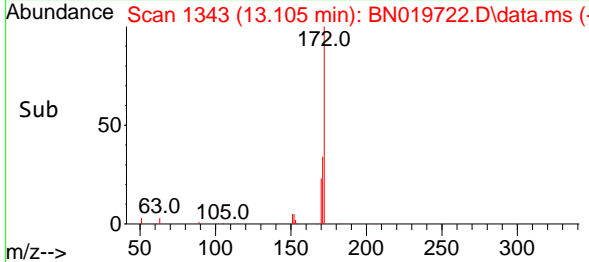
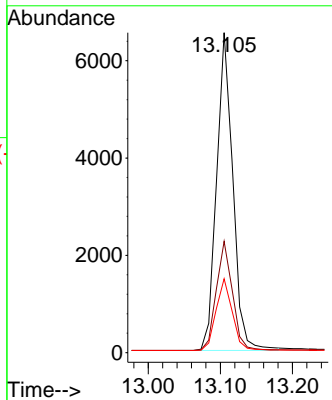
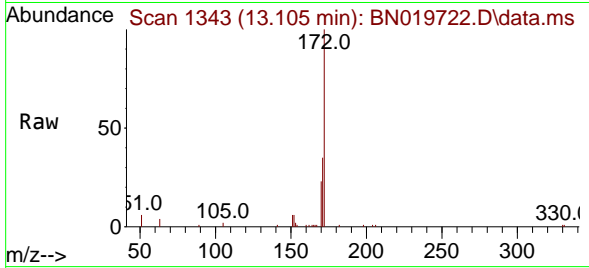




#15
 2-Fluorobiphenyl
 Concen: 0.336 ng
 RT: 13.105 min Scan# 11
 Delta R.T. -0.000 min
 Lab File: BN019722.D
 Acq: 11 May 2022 11:19

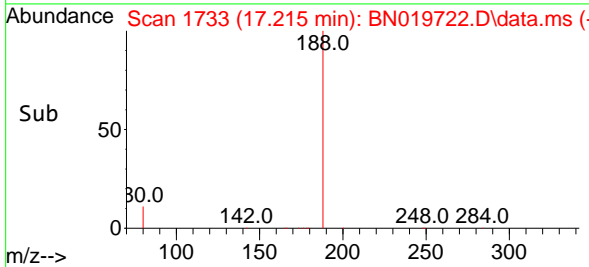
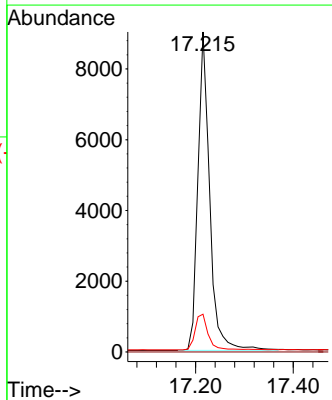
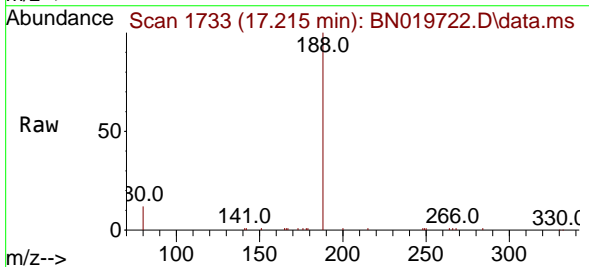
Instrument :
 BNA_N
 ClientSampleId :
 PB144707BL

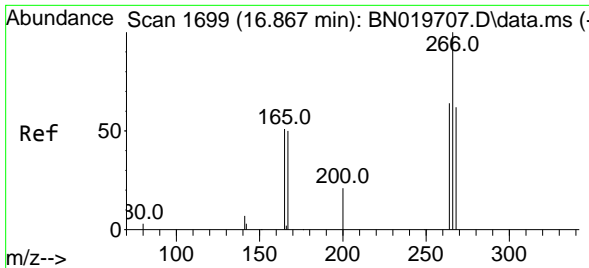
Tgt Ion	Resp	Lower	Upper
172	10206		
171	34.8	28.5	42.7
170	23.1	19.4	29.2



#19
 Phenanthrene-d10
 Concen: 0.400 ng
 RT: 17.215 min Scan# 1733
 Delta R.T. -0.000 min
 Lab File: BN019722.D
 Acq: 11 May 2022 11:19

Tgt Ion	Resp	Lower	Upper
188	15107		
94	0.0	0.0	0.0
80	11.8	9.6	14.4



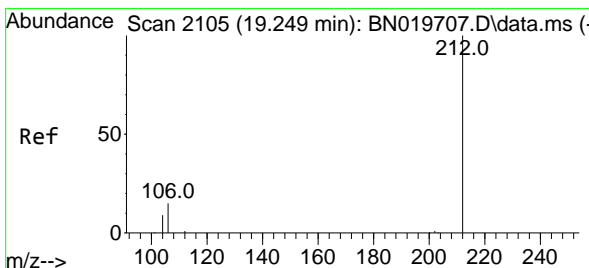
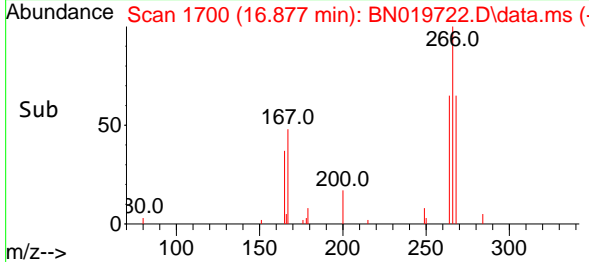
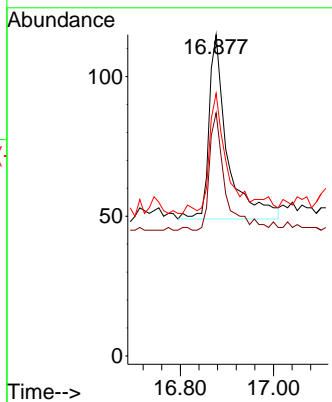
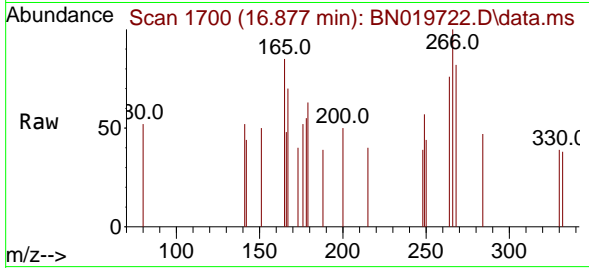


#24
 Pentachlorophenol
 Concen: 0.054 ng
 RT: 16.877 min Scan# 11
 Delta R.T. 0.010 min
 Lab File: BN019722.D
 Acq: 11 May 2022 11:19

Instrument :
 BNA_N
 ClientSampleId :
 PB144707BL

Tgt Ion:266 Resp: 182

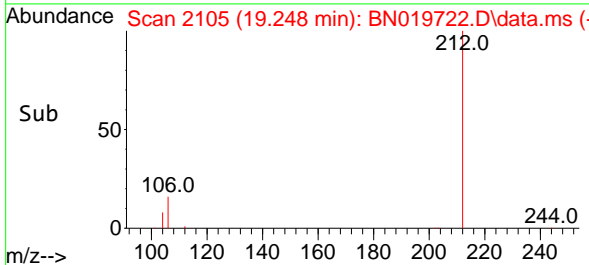
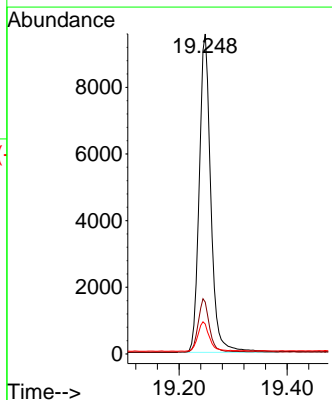
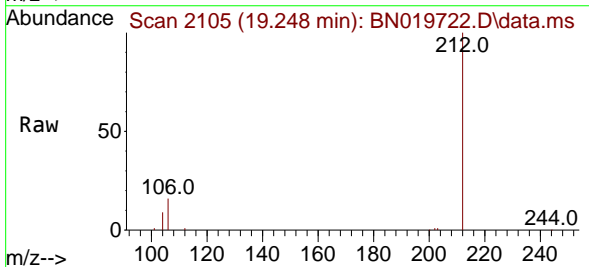
Ion	Ratio	Lower	Upper
266	100		
264	53.8	49.3	73.9
268	56.6	51.3	76.9

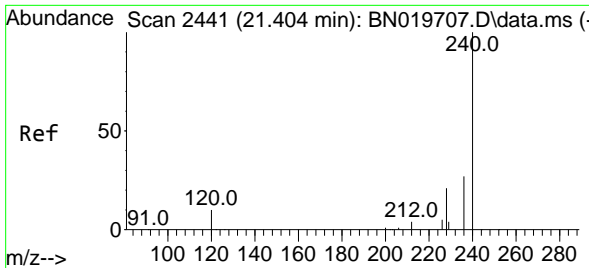


#27
 Fluoranthene-d10
 Concen: 0.326 ng
 RT: 19.248 min Scan# 2105
 Delta R.T. -0.000 min
 Lab File: BN019722.D
 Acq: 11 May 2022 11:19

Tgt Ion:212 Resp: 14201

Ion	Ratio	Lower	Upper
212	100		
106	16.4	13.0	19.4
104	9.1	7.3	10.9



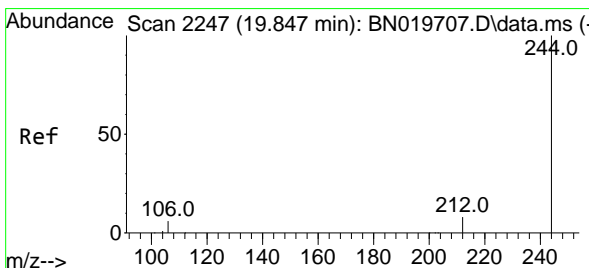
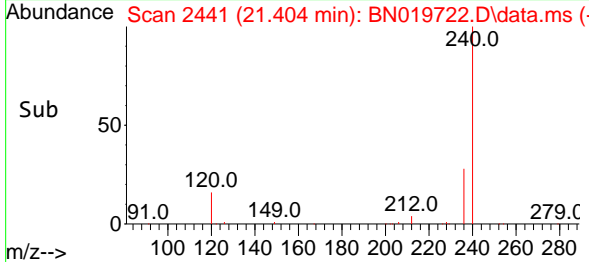
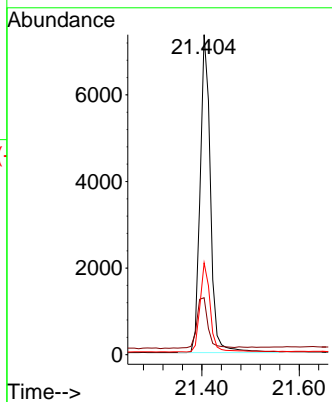
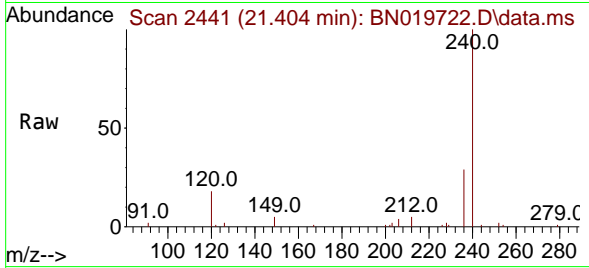


#29
 Chrysene-d12
 Concen: 0.400 ng
 RT: 21.404 min Scan# 2441
 Delta R.T. -0.000 min
 Lab File: BN019722.D
 Acq: 11 May 2022 11:19

Instrument :
 BNA_N
 ClientSampleId :
 PB144707BL

Tgt Ion:240 Resp: 10783

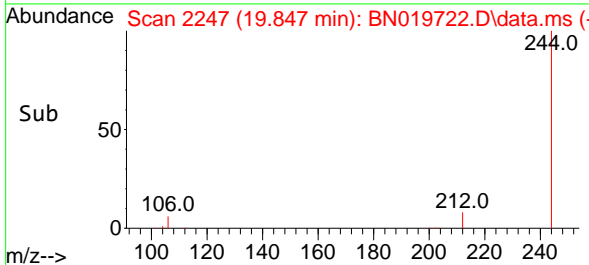
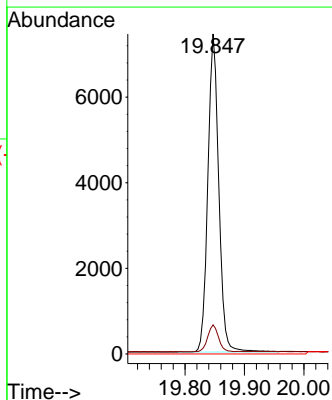
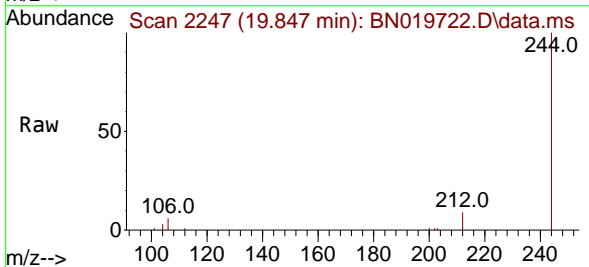
Ion	Ratio	Lower	Upper
240	100		
120	17.8	9.0	13.6
236	28.7	22.0	33.0

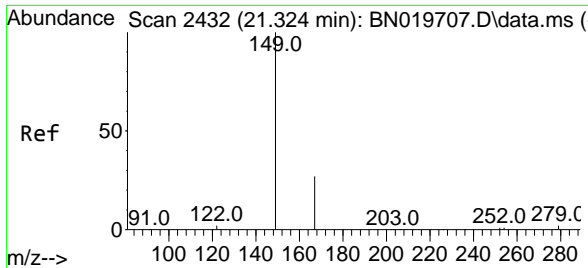


#31
 Terphenyl-d14
 Concen: 0.378 ng
 RT: 19.847 min Scan# 2247
 Delta R.T. -0.000 min
 Lab File: BN019722.D
 Acq: 11 May 2022 11:19

Tgt Ion:244 Resp: 9480

Ion	Ratio	Lower	Upper
244	100		
212	9.1	7.0	10.6
122	0.0	0.0	0.0

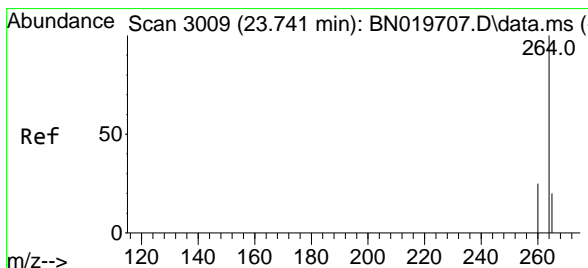
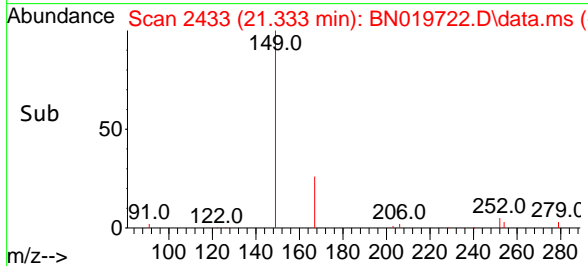
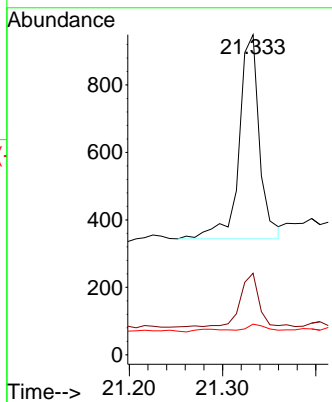
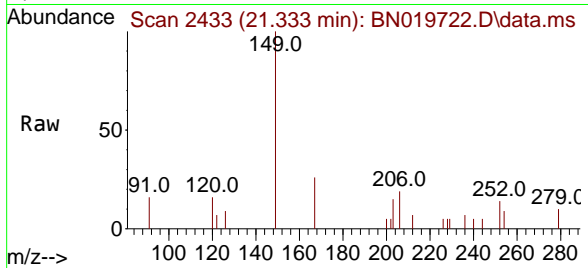




#34
 Bis(2-ethylhexyl)phthalate
 Concen: 0.053 ng
 RT: 21.333 min Scan# 2433
 Delta R.T. 0.009 min
 Lab File: BN019722.D
 Acq: 11 May 2022 11:19

Instrument : BNA_N
 ClientSampleId : PB144707BL

Tgt Ion	Resp	Lower	Upper
149	100		
167	25.1	21.0	31.6
279	2.6	2.2	3.2



#35
 Perylene-d12
 Concen: 0.400 ng
 RT: 23.746 min Scan# 3011
 Delta R.T. 0.006 min
 Lab File: BN019722.D
 Acq: 11 May 2022 11:19

Tgt Ion	Resp	Lower	Upper
264	100		
260	26.8	20.8	31.2
265	44.3	35.6	53.4

