

Data Path : Z:\SVOASRV\HPCHEM1\BNA N\DATA\BN051420\  
 Data File : BN010720.D  
 Acq On : 14 May 2020 19:56  
 Operator : CG/JU  
 Sample : PB128768BL  
 Misc :  
 ALS Vial : 8 Sample Multiplier: 1

Instrument :  
 BNA\_N  
 ClientSampleId :

Quant Time: May 15 01:52:46 2020  
 Quant Method : Z:\SVOASRV\HPCHEM1\BNA N\METHODS\8270-SIM-BN051320.M  
 Quant Title : ASP BNA STANDARDS FOR 5 POINT CALIBRATION  
 QLast Update : Wed May 13 14:18:48 2020  
 Response via : Initial Calibration

Internal Standards	R.T.	QIon	Response	Conc	Units	Dev(Min)
1) 1,4-Dichlorobenzene-d4	7.58	152	4399	0.40	ng	0.00
7) Naphthalene-d8	10.33	136	16533	0.40	ng	0.00
13) Acenaphthene-d10	14.21	164	10020	0.40	ng	0.01
19) Phenanthrene-d10	16.96	188	20449	0.40	ng	0.01
27) Chrysene-d12	21.15	240	16833	0.40	ng	0.00
34) Perylene-d12	23.32	264	15929	0.40	ng	0.00

System Monitoring Compounds	R.T.	QIon	Response	Conc	Units	Dev(Min)
4) 2-Fluorophenol	5.22	112	2297	0.27	ng	0.00
5) Phenol-d6	6.78	99	2481	0.24	ng	0.00
8) Nitrobenzene-d5	8.72	82	2770	0.24	ng	0.01
11) 2-Methylnaphthalene-d10	11.94	152	6119	0.23	ng	0.02
14) 2,4,6-Tribromophenol	15.73	330	720	0.20	ng	0.02
15) 2-Fluorobiphenyl	12.84	172	8298	0.23	ng	0.02
25) Fluoranthene-d10	18.99	212	12905	0.23	ng	0.00
29) Terphenyl-d14	19.60	244	9980	0.25	ng	0.00

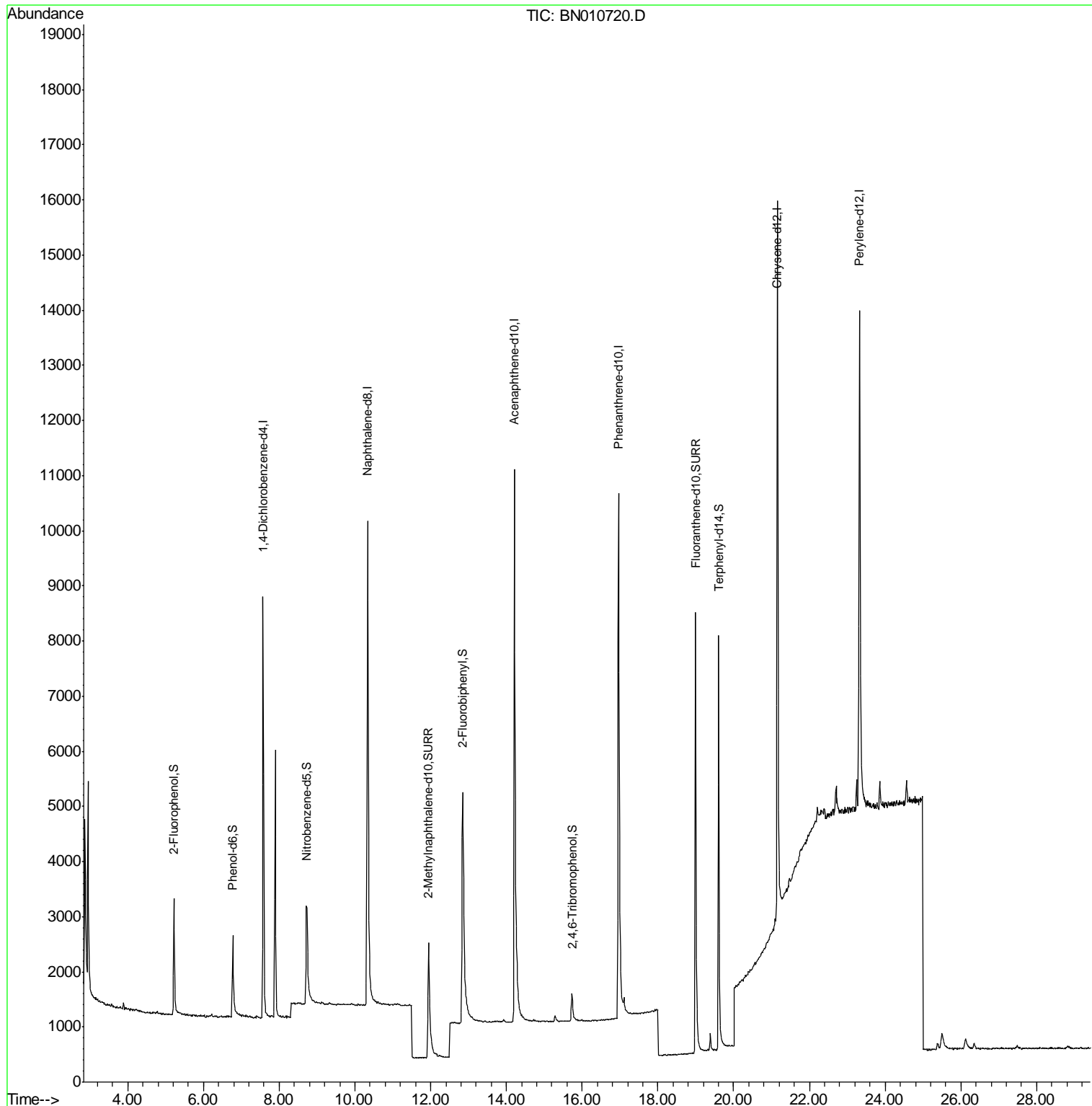
Target Compounds	Qvalue
-----	-----

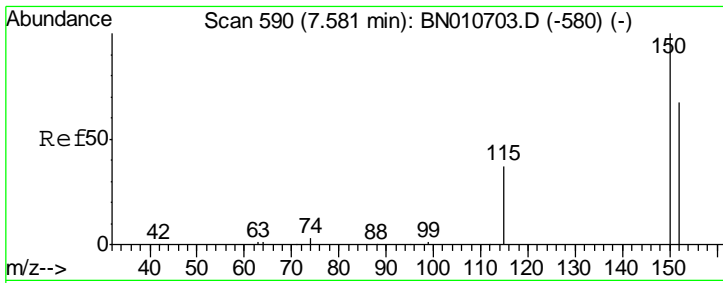
(#) = qualifier out of range (m) = manual integration (+) = signals summed

Data Path : Z:\SVOASRV\HPCHEM1\BNA N\DATA\BN051420\  
 Data File : BN010720.D  
 Acq On : 14 May 2020 19:56  
 Operator : CG/JU  
 Sample : PB128768BL  
 Misc :  
 ALS Vial : 8 Sample Multiplier: 1

Instrument :  
 BNA\_N  
 ClientSampled :

Quant Time: May 15 01:52:46 2020  
 Quant Method : Z:\SVOASRV\HPCHEM1\BNA N\METHODS\8270-SIM-BN051320.M  
 Quant Title : ASP BNA STANDARDS FOR 5 POINT CALIBRATION  
 QLast Update : Wed May 13 14:18:48 2020  
 Response via : Initial Calibration

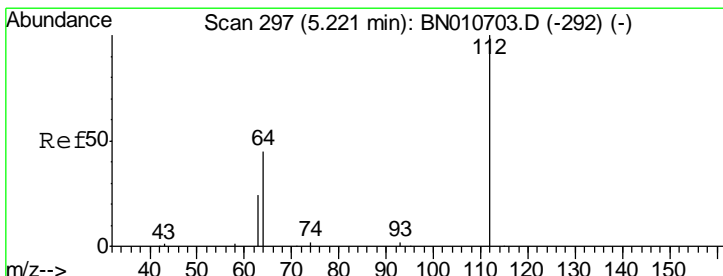
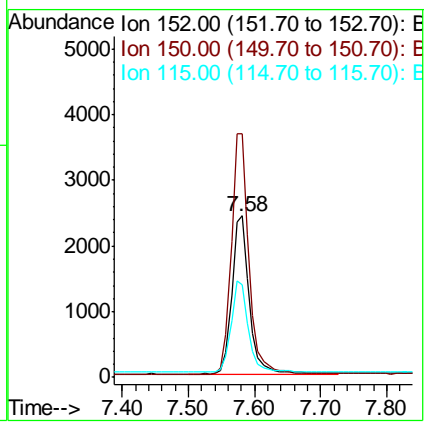
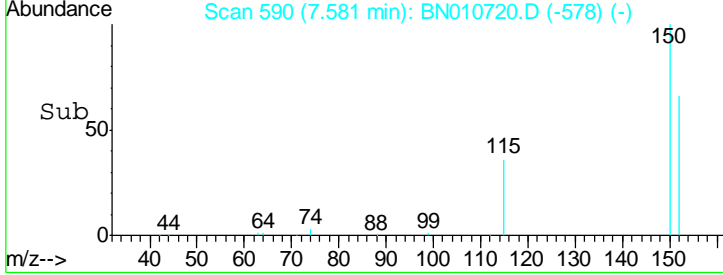
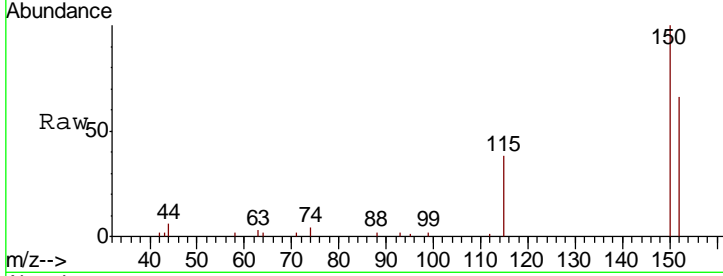




#1  
 1,4-Dichlorobenzene-d4  
 Concen: 0.400 ng  
 RT: 7.58 min Scan# 590  
 Delta R.T. -0.00 min  
 Lab File: BN010720.D  
 Acq: 14 May 2020 19:56

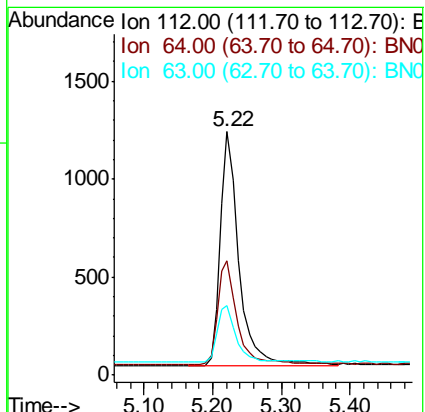
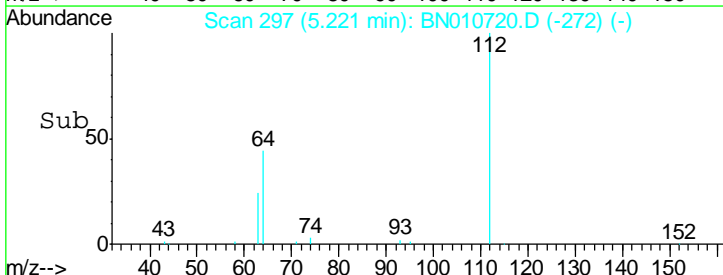
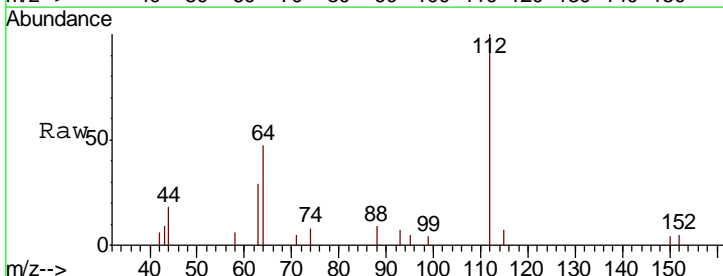
Instrument :  
 BNA\_N  
 ClientSampled :

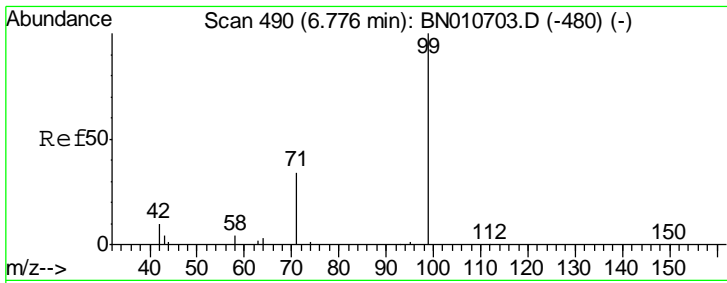
Tgt Ion	Resp	Lower	Upper
152	100		
150	150.9	119.4	179.0
115	57.0	45.9	68.9



#4  
 2-Fluorophenol  
 Concen: 0.267 ng  
 RT: 5.22 min Scan# 297  
 Delta R.T. -0.00 min  
 Lab File: BN010720.D  
 Acq: 14 May 2020 19:56

Tgt Ion	Resp	Lower	Upper
112	100		
64	45.1	36.2	54.4
63	24.5	19.8	29.8

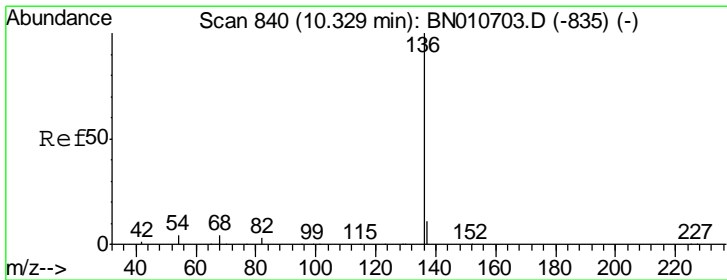
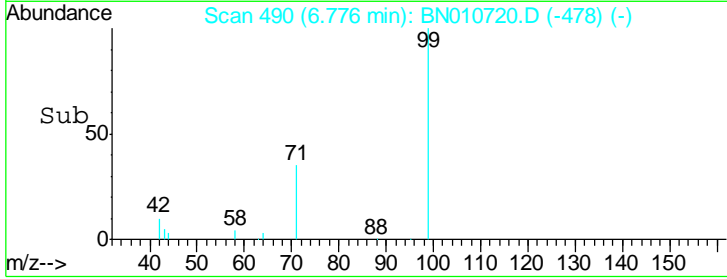
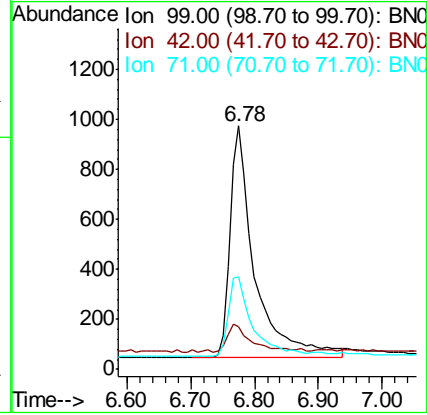
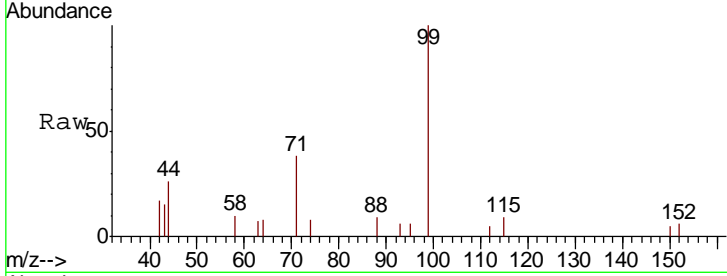




#5  
 Phenol-d6  
 Concen: 0.236 ng  
 RT: 6.78 min Scan# 490  
 Delta R.T. -0.00 min  
 Lab File: BN010720.D  
 Acq: 14 May 2020 19:56

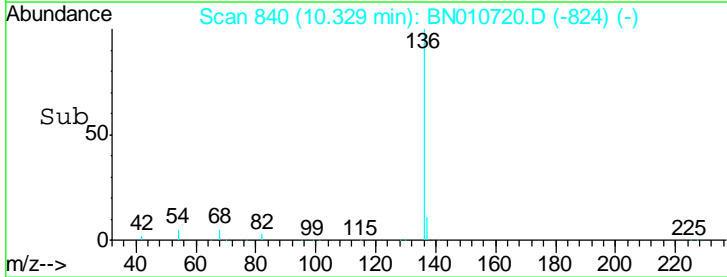
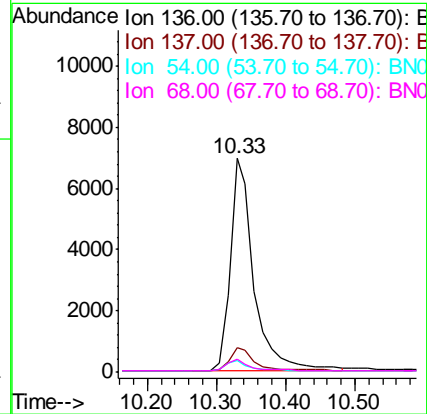
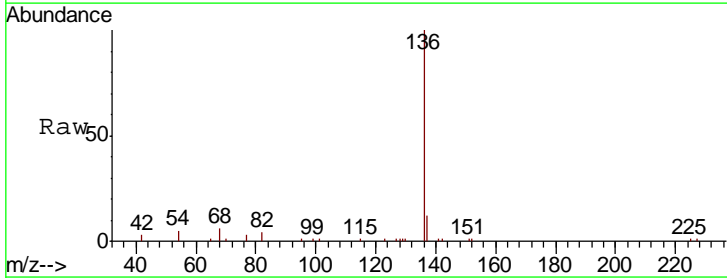
Instrument :  
 BNA\_N  
 ClientSampled :

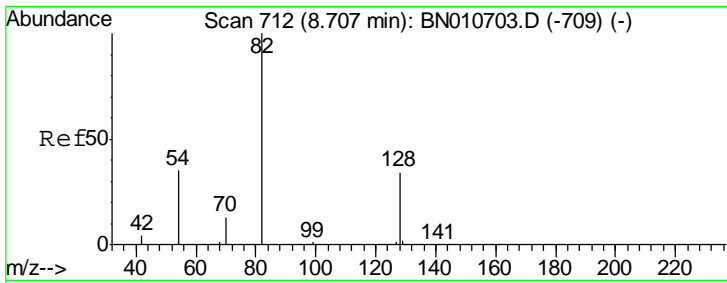
Tgt Ion	Resp	Lower	Upper
99	2481		
42	11.4	9.8	14.8
71	34.0	28.6	42.8



#7  
 Naphthalene-d8  
 Concen: 0.400 ng  
 RT: 10.33 min Scan# 840  
 Delta R.T. -0.00 min  
 Lab File: BN010720.D  
 Acq: 14 May 2020 19:56

Tgt Ion	Resp	Lower	Upper
136	16533		
137	11.6	9.2	13.8
54	5.2	3.6	5.4
68	6.0	4.1	6.1

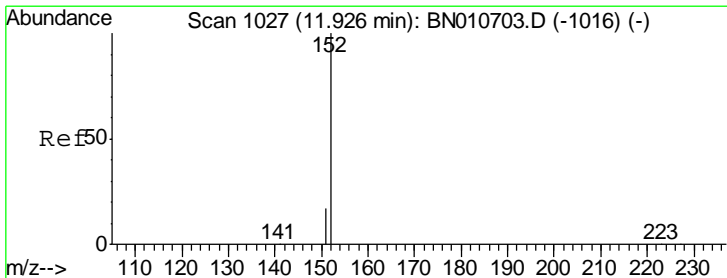
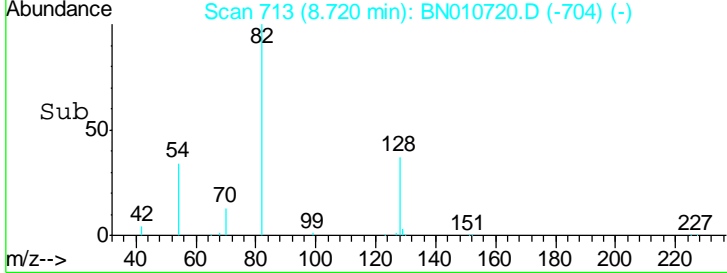
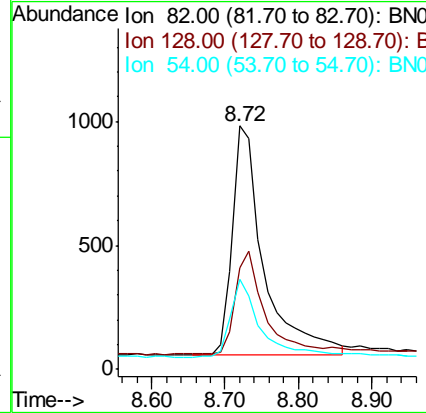
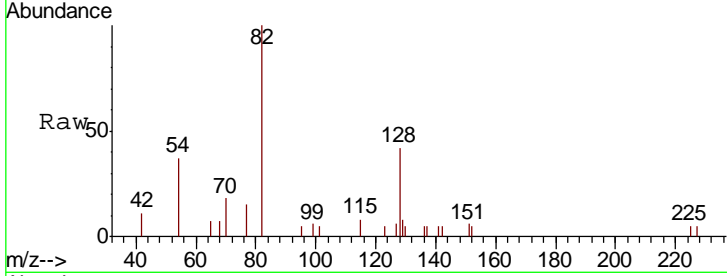




#8  
 Nitrobenzene-d5  
 Concen: 0.241 ng  
 RT: 8.72 min Scan# 713  
 Delta R.T. 0.01 min  
 Lab File: BN010720.D  
 Acq: 14 May 2020 19:56

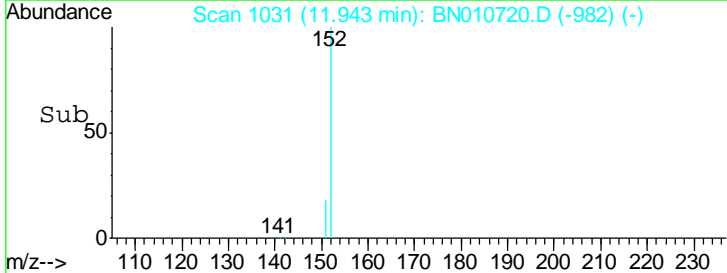
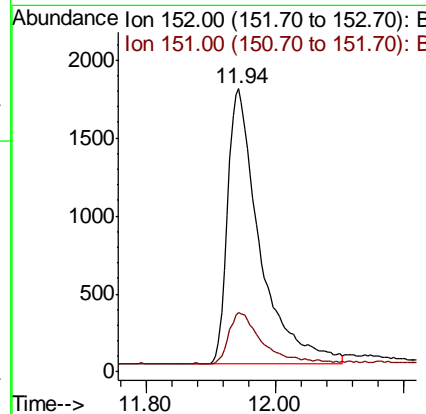
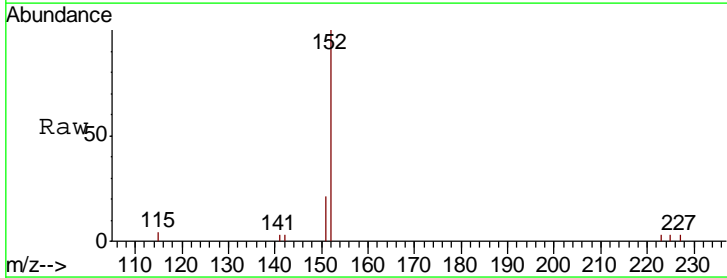
Instrument :  
 BNA\_N  
 ClientSampled :

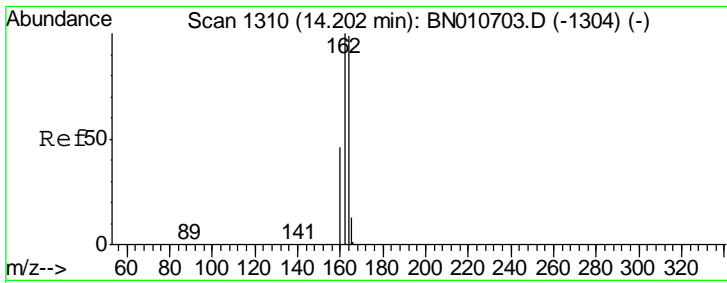
Tgt Ion	Resp	Lower	Upper
82	2770		
128	41.6	29.0	43.4
54	37.2	29.3	43.9



#11  
 2-Methylnaphthalene-d10  
 Concen: 0.227 ng  
 RT: 11.94 min Scan# 1031  
 Delta R.T. 0.02 min  
 Lab File: BN010720.D  
 Acq: 14 May 2020 19:56

Tgt Ion	Resp	Lower	Upper
152	6119		
151	18.7	15.0	22.6

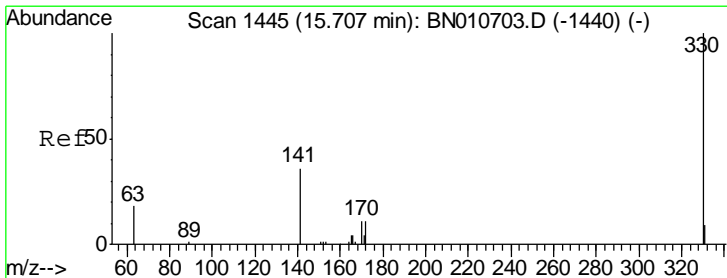
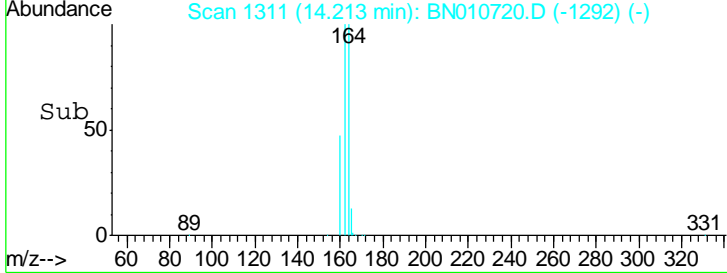
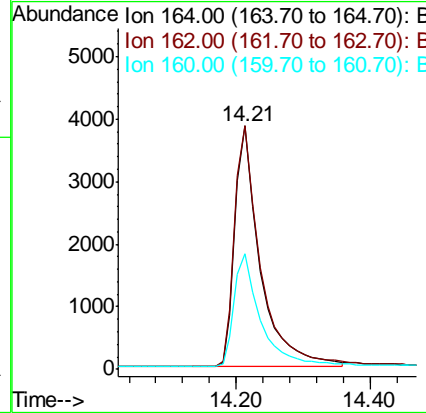
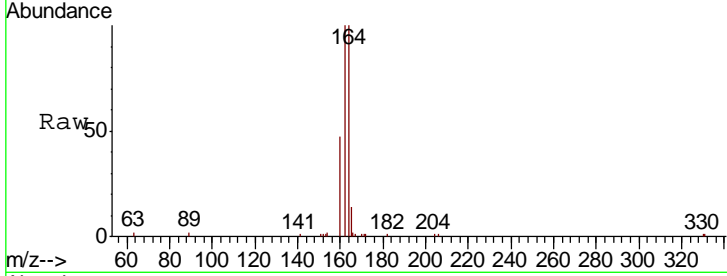




#13  
 Acenaphthene-d10  
 Concen: 0.400 ng  
 RT: 14.21 min Scan# 1311  
 Delta R.T. 0.01 min  
 Lab File: BN010720.D  
 Acq: 14 May 2020 19:56

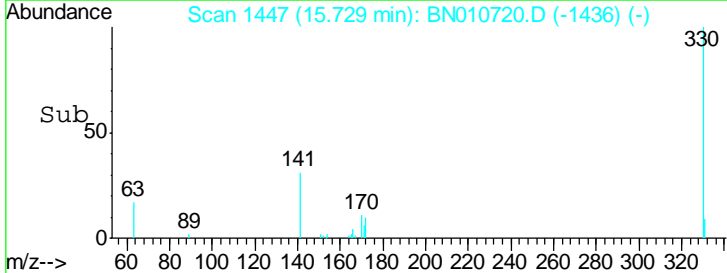
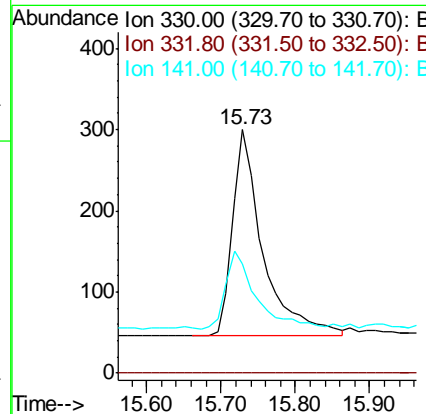
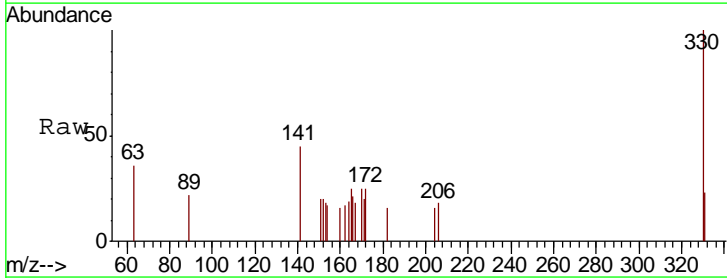
Instrument :  
 BNA\_N  
 ClientSampled :

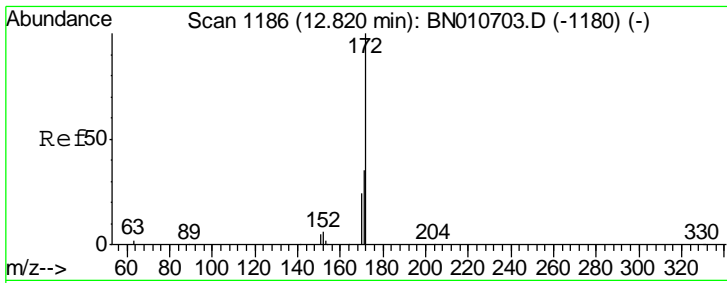
Tgt Ion	Resp	Lower	Upper
164	100		
162	100.0	81.1	121.7
160	47.2	37.9	56.9



#14  
 2,4,6-Tribromophenol  
 Concen: 0.198 ng  
 RT: 15.73 min Scan# 1447  
 Delta R.T. 0.02 min  
 Lab File: BN010720.D  
 Acq: 14 May 2020 19:56

Tgt Ion	Resp	Lower	Upper
330	100		
332	0.0	0.0	0.0
141	38.9	28.8	43.2

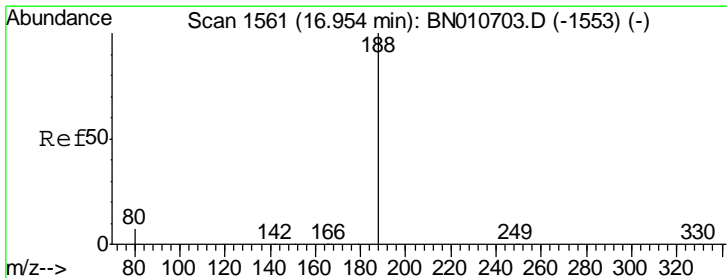
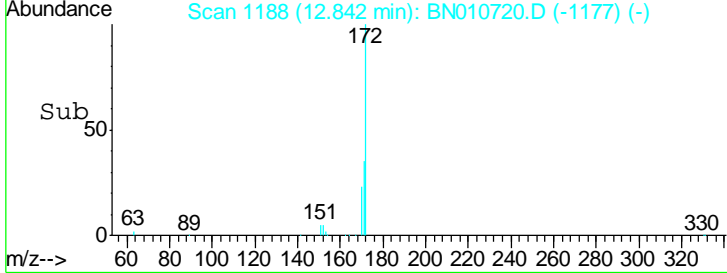
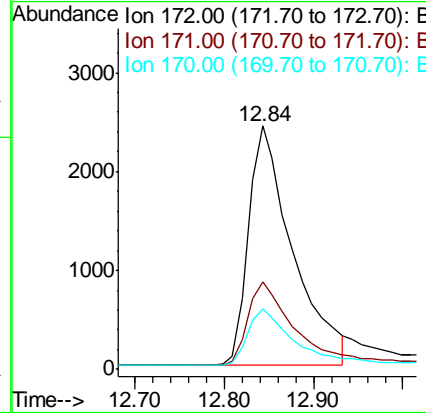
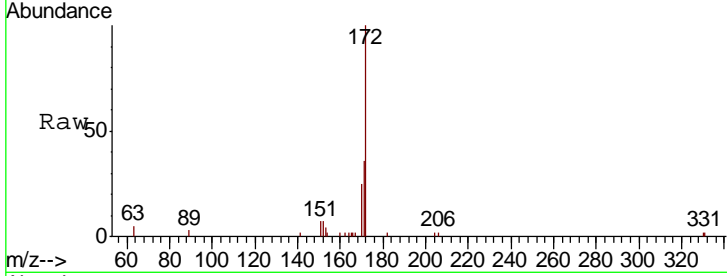




#15  
 2-Fluorobiphenyl  
 Concen: 0.226 ng  
 RT: 12.84 min Scan# 1188  
 Delta R.T. 0.02 min  
 Lab File: BN010720.D  
 Acq: 14 May 2020 19:56

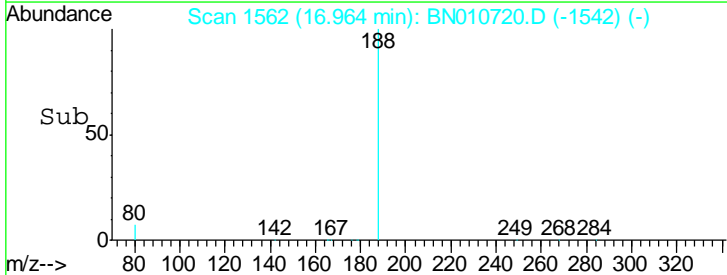
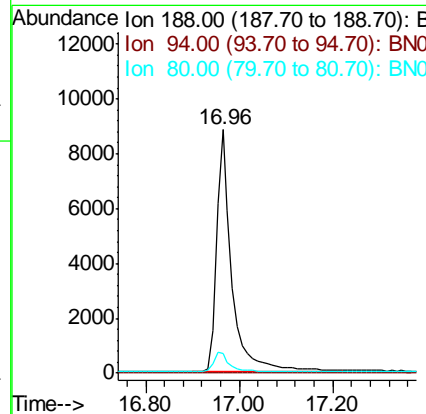
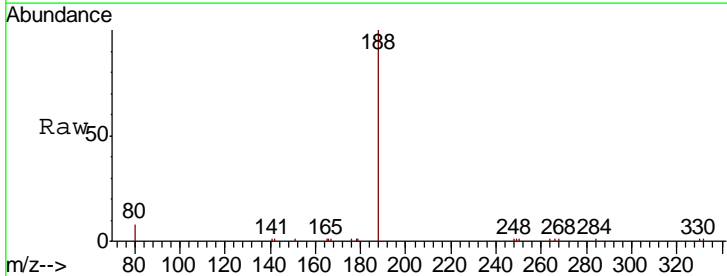
Instrument :  
 BNA\_N  
 ClientSampled :

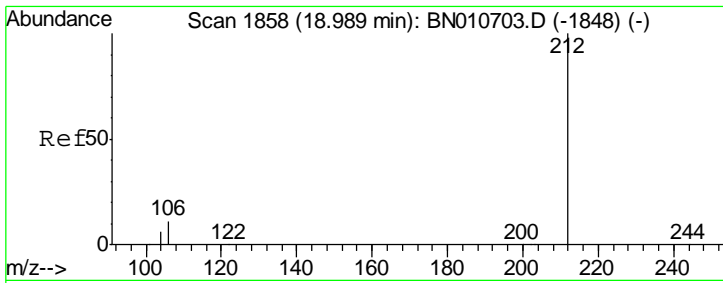
Tgt Ion	Resp	Lower	Upper
172	100		
171	36.1	28.6	42.8
170	24.9	19.8	29.8



#19  
 Phenanthrene-d10  
 Concen: 0.400 ng  
 RT: 16.96 min Scan# 1562  
 Delta R.T. 0.01 min  
 Lab File: BN010720.D  
 Acq: 14 May 2020 19:56

Tgt Ion	Resp	Lower	Upper
188	100		
94	0.0	0.0	0.0
80	8.0	6.3	9.5

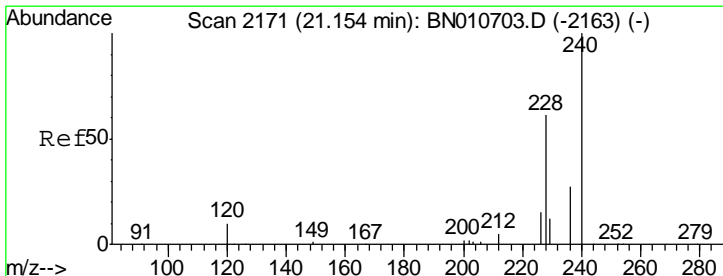
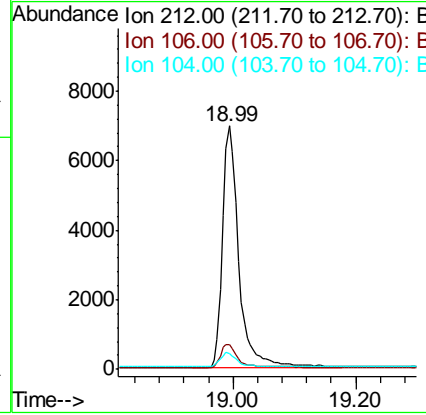
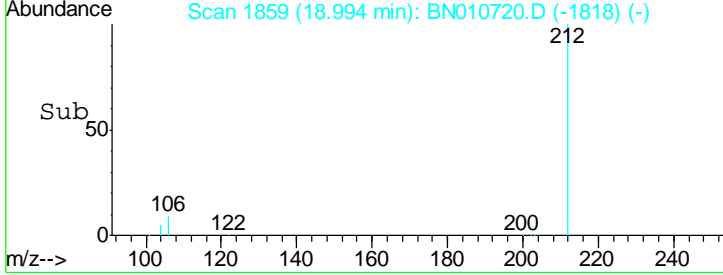
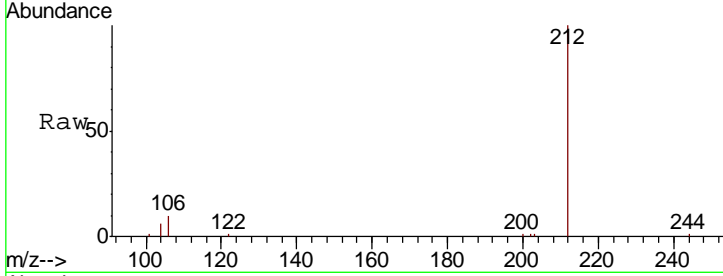




#25  
 Fluoranthene-d10  
 Concen: 0.233 ng  
 RT: 18.99 min Scan# 1859  
 Delta R.T. 0.00 min  
 Lab File: BN010720.D  
 Acq: 14 May 2020 19:56

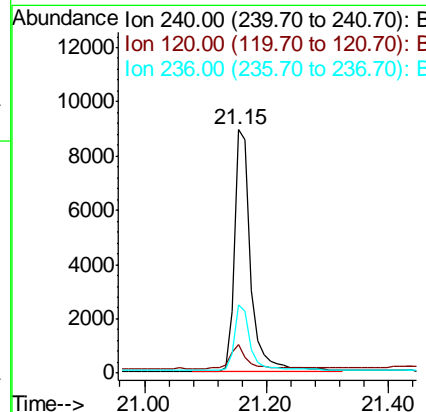
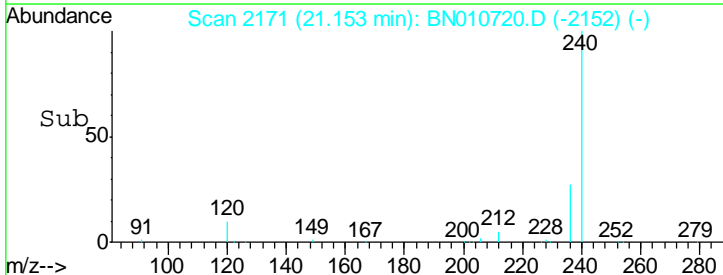
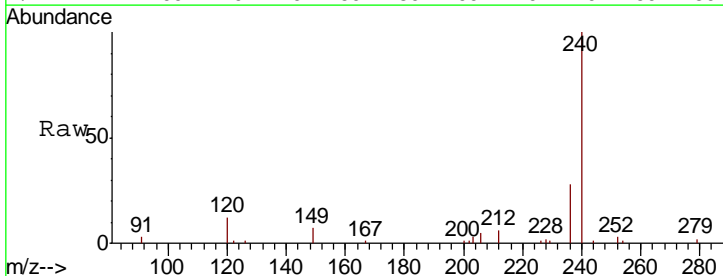
Instrument :  
 BNA\_N  
 ClientSampled :

Tgt Ion	Resp	Lower	Upper
212	12905		
106	9.8	8.2	12.2
104	5.8	4.7	7.1

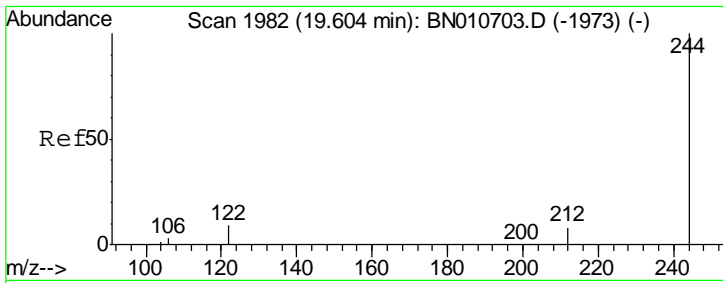


#27  
 Chrysene-d12  
 Concen: 0.400 ng  
 RT: 21.15 min Scan# 2171  
 Delta R.T. -0.00 min  
 Lab File: BN010720.D  
 Acq: 14 May 2020 19:56

Tgt Ion	Resp	Lower	Upper
240	16833		
120	12.0	9.5	14.3
236	28.2	22.5	33.7



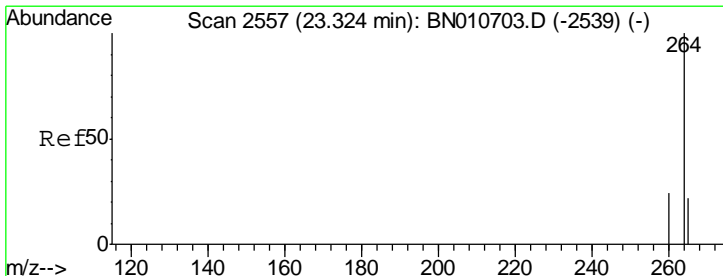
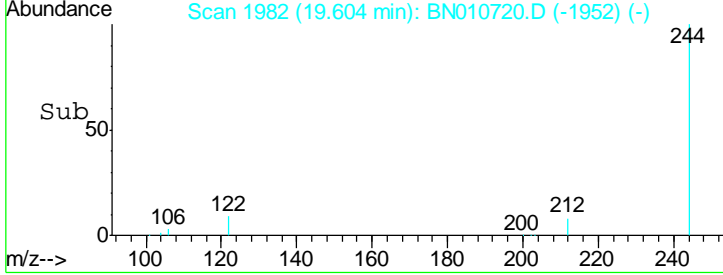
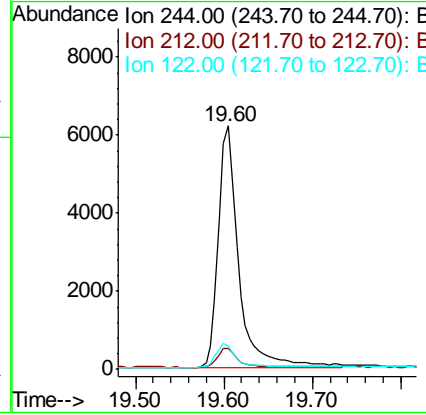
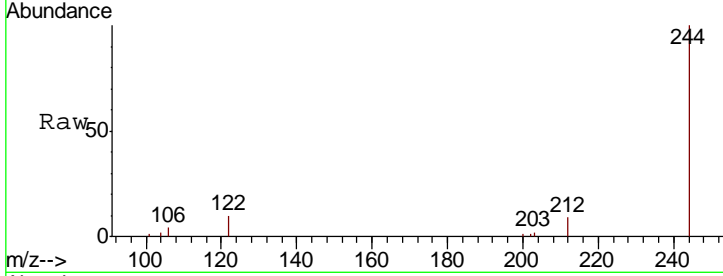




#29  
 Terphenyl-d14  
 Concen: 0.250 ng  
 RT: 19.60 min Scan# 1982  
 Delta R.T. -0.00 min  
 Lab File: BN010720.D  
 Acq: 14 May 2020 19:56

Instrument :  
 BNA\_N  
 ClientSampled :

Tgt Ion	Resp	Lower	Upper
244	100		
212	8.6	6.8	10.2
122	9.7	8.1	12.1



#34  
 Perylene-d12  
 Concen: 0.400 ng  
 RT: 23.32 min Scan# 2557  
 Delta R.T. -0.00 min  
 Lab File: BN010720.D  
 Acq: 14 May 2020 19:56

Tgt Ion	Resp	Lower	Upper
264	100		
260	24.3	19.6	29.4
265	72.0	70.1	105.1

