

Data Path : Z:\svoasrv\HPCHEM1\BNA_N\Data\BN051723\
 Data File : BN025461.D
 Acq On : 17 May 2023 19:54
 Operator : CG/JU
 Sample : 02816-02
 Misc :
 ALS Vial : 8 Sample Multiplier: 1

Instrument :
 BNA_N
 ClientSampleId :
 CB-22-K2-SO-8-051623

Quant Time: May 18 03:41:33 2023
 Quant Method : Z:\svoasrv\HPCHEM1\BNA_N\Methods\8270-SIM-BN051623.M
 Quant Title : ASP BNA STANDARDS FOR 5 POINT CALIBRATION
 QLast Update : Thu May 18 03:36:39 2023
 Response via : Initial Calibration

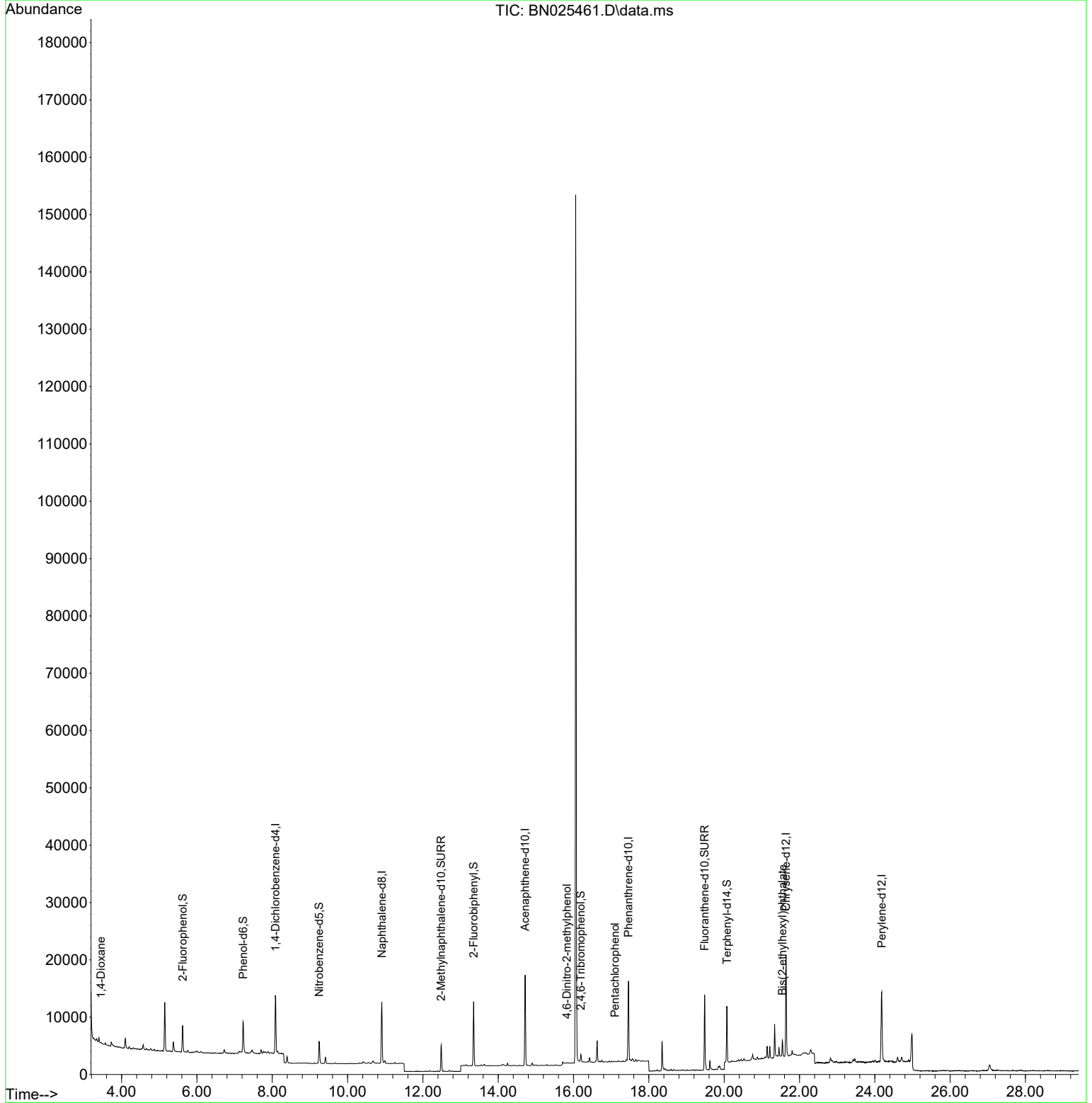
| Compound | R.T. | QIon | Response | Conc | Units | Dev(Min) | |
|-------------------------------|--------|------|----------|-----------|-------|----------|------|
| Internal Standards | | | | | | | |
| 1) 1,4-Dichlorobenzene-d4 | 8.084 | 152 | 5088 | 0.400 | ng | 0.00 | |
| 7) Naphthalene-d8 | 10.910 | 136 | 14545 | 0.400 | ng | 0.00 | |
| 13) Acenaphthene-d10 | 14.715 | 164 | 8451 | 0.400 | ng | 0.00 | |
| 19) Phenanthrene-d10 | 17.460 | 188 | 19142 | 0.400 | ng | 0.00 | # |
| 29) Chrysene-d12 | 21.643 | 240 | 16481 | 0.400 | ng | 0.00 | |
| 35) Perylene-d12 | 24.182 | 264 | 17911 | 0.400 | ng | 0.00 | |
| System Monitoring Compounds | | | | | | | |
| 4) 2-Fluorophenol | 5.622 | 112 | 3845 | 0.352 | ng | 0.00 | |
| 5) Phenol-d6 | 7.232 | 99 | 5206 | 0.355 | ng | 0.00 | |
| 8) Nitrobenzene-d5 | 9.244 | 82 | 3186 | 0.321 | ng | 0.00 | |
| 11) 2-Methylnaphthalene-d10 | 12.487 | 152 | 6136 | 0.302 | ng | 0.00 | |
| 14) 2,4,6-Tribromophenol | 16.194 | 330 | 671 | 0.234 | ng | 0.00 | |
| 15) 2-Fluorobiphenyl | 13.347 | 172 | 9406 | 0.304 | ng | 0.00 | |
| 27) Fluoranthene-d10 | 19.481 | 212 | 13856 | 0.304 | ng | 0.00 | |
| 31) Terphenyl-d14 | 20.076 | 244 | 9223 | 0.308 | ng | 0.00 | |
| Target Compounds | | | | | | | |
| 2) 1,4-Dioxane | 3.455 | 88 | 128 | 0.027 | ng | | # 1 |
| 3) n-Nitrosodimethylamine | 3.809 | 42 | 44 | Below Cal | | | # 1 |
| 6) bis(2-Chloroethyl)ether | 7.434 | 93 | 269 | Below Cal | | | # 32 |
| 20) 4,6-Dinitro-2-methylph... | 15.821 | 198 | 11 | 0.136 | ng | | # 1 |
| 24) Pentachlorophenol | 17.100 | 266 | 19 | 0.209 | ng | | # 79 |
| 34) Bis(2-ethylhexyl)phtha... | 21.544 | 149 | 2940 | 0.087 | ng | | 97 |

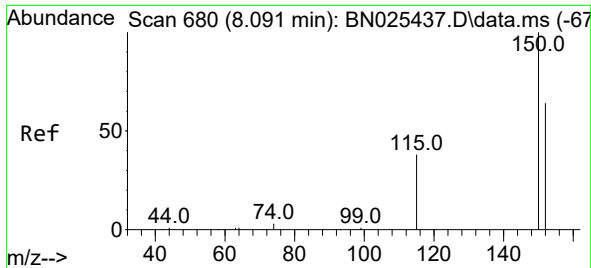
(#) = qualifier out of range (m) = manual integration (+) = signals summed

Data Path : Z:\svoasrv\HPCHEM1\BNA_N\Data\BN051723\
 Data File : BN025461.D
 Acq On : 17 May 2023 19:54
 Operator : CG/JU
 Sample : 02816-02
 Misc :
 ALS Vial : 8 Sample Multiplier: 1

Instrument :
 BNA_N
 ClientSampleId :
 CB-22-K2-SO-8-051623

Quant Time: May 18 03:41:33 2023
 Quant Method : Z:\svoasrv\HPCHEM1\BNA_N\Methods\8270-SIM-BN051623.M
 Quant Title : ASP BNA STANDARDS FOR 5 POINT CALIBRATION
 QLast Update : Thu May 18 03:36:39 2023
 Response via : Initial Calibration



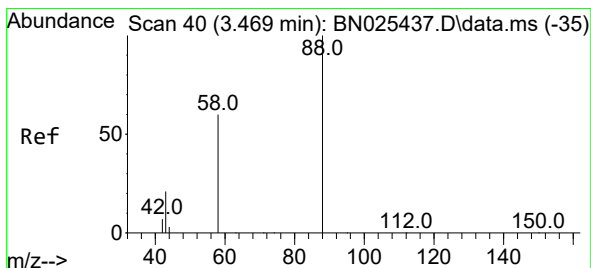
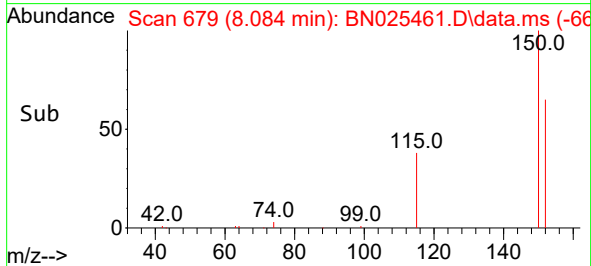
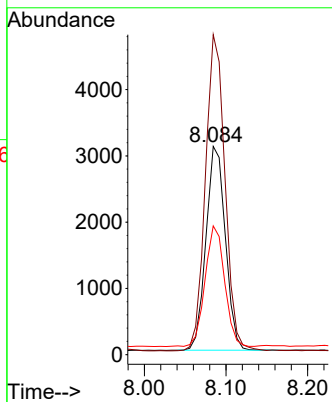
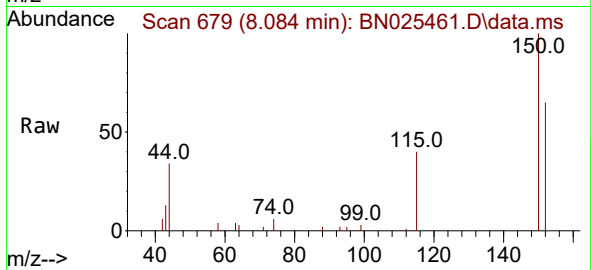


#1
 1,4-Dichlorobenzene-d4
 Concen: 0.400 ng
 RT: 8.084 min Scan# 61
 Delta R.T. 0.000 min
 Lab File: BN025461.D
 Acq: 17 May 2023 19:54

Instrument :
 BNA_N
 ClientSampleId :
 CB-22-K2-SO-8-051623

Tgt Ion: 152 Resp: 5088

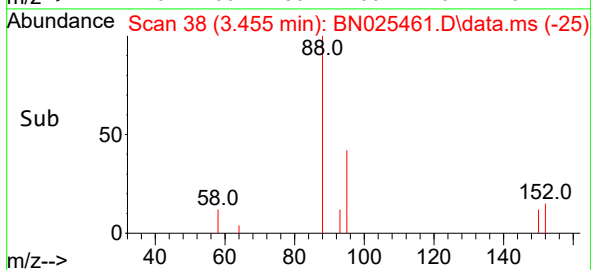
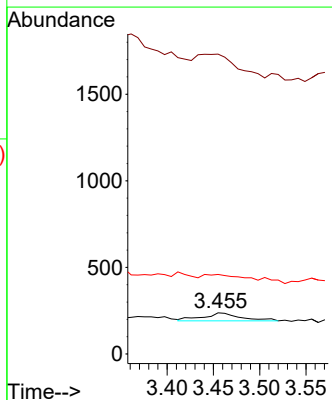
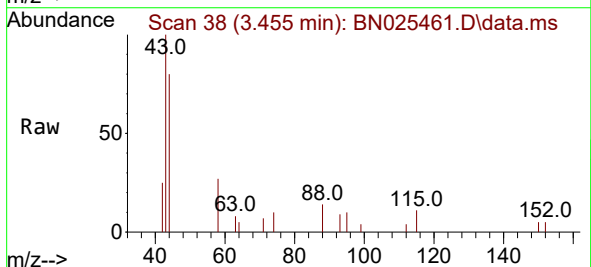
| Ion | Ratio | Lower | Upper |
|-----|-------|-------|-------|
| 152 | 100 | | |
| 150 | 153.6 | 123.7 | 185.5 |
| 115 | 61.9 | 50.0 | 75.0 |

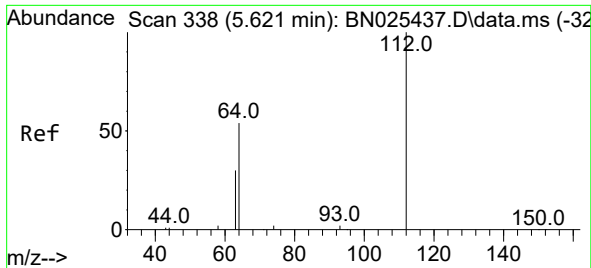


#2
 1,4-Dioxane
 Concen: 0.027 ng
 RT: 3.455 min Scan# 38
 Delta R.T. -0.007 min
 Lab File: BN025461.D
 Acq: 17 May 2023 19:54

Tgt Ion: 88 Resp: 128

| Ion | Ratio | Lower | Upper |
|-----|-------|-------|-------|
| 88 | 100 | | |
| 43 | 307.8 | 25.1 | 37.7# |
| 58 | 66.4 | 55.5 | 83.3 |

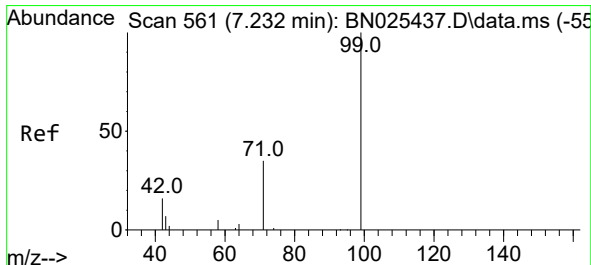
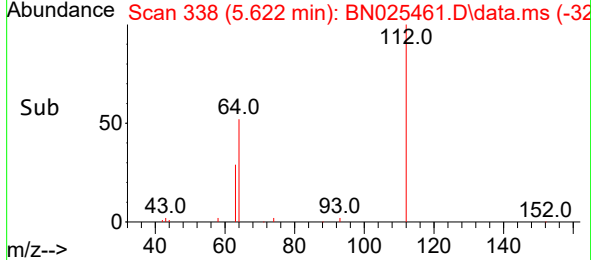
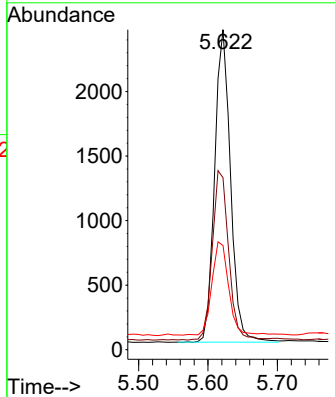
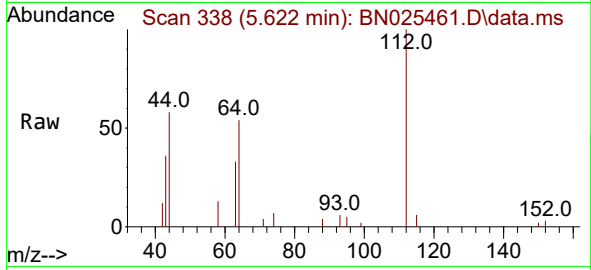




#4
 2-Fluorophenol
 Concen: 0.352 ng
 RT: 5.622 min Scan# 311
 Delta R.T. 0.007 min
 Lab File: BN025461.D
 Acq: 17 May 2023 19:54

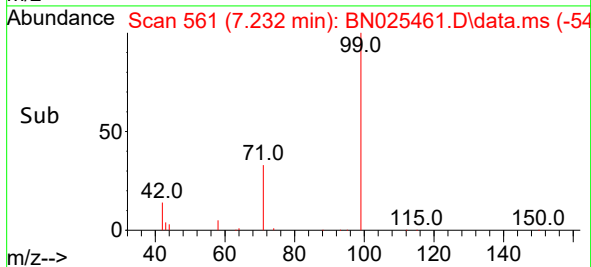
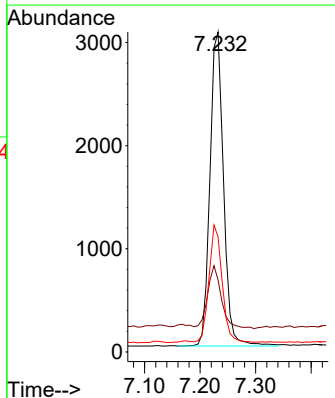
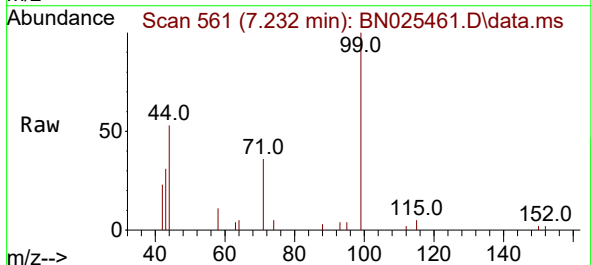
Instrument : BNA_N
 ClientSampleId : CB-22-K2-SO-8-051623

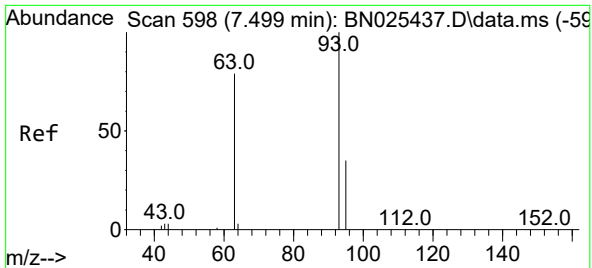
| Tgt Ion | Resp | Lower | Upper |
|---------|------|-------|-------|
| 112 | 3845 | | |
| 112 | 100 | | |
| 64 | 55.6 | 43.9 | 65.9 |
| 63 | 31.9 | 25.0 | 37.4 |



#5
 Phenol-d6
 Concen: 0.355 ng
 RT: 7.232 min Scan# 561
 Delta R.T. 0.007 min
 Lab File: BN025461.D
 Acq: 17 May 2023 19:54

| Tgt Ion | Resp | Lower | Upper |
|---------|------|-------|-------|
| 99 | 5206 | | |
| 99 | 100 | | |
| 42 | 20.2 | 16.4 | 24.6 |
| 71 | 35.7 | 29.4 | 44.0 |



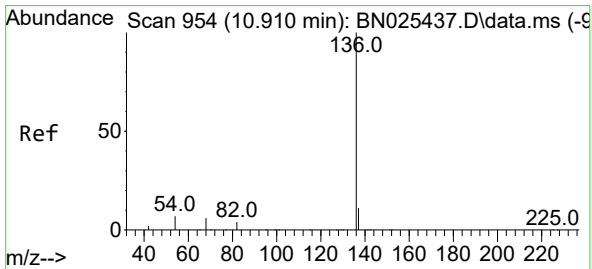
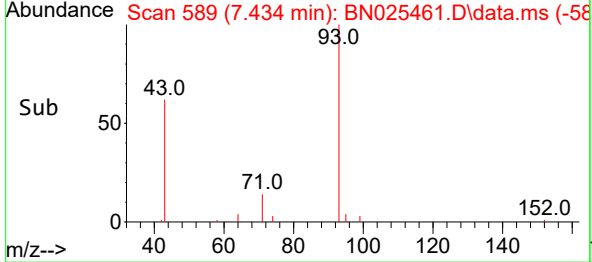
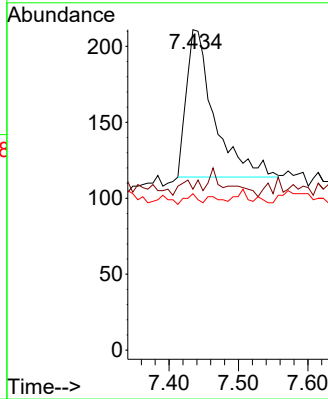
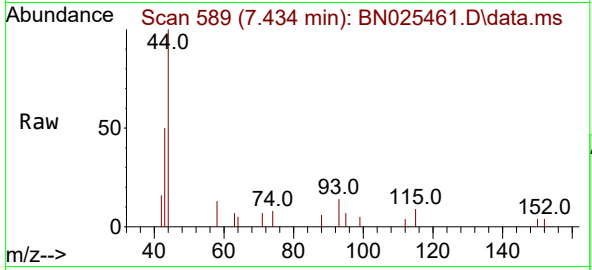


#6
 bis(2-Chloroethyl)ether
 Concen: Below Cal
 RT: 7.434 min Scan# 589
 Delta R.T. -0.065 min
 Lab File: BN025461.D
 Acq: 17 May 2023 19:54

Instrument : BNA_N
 ClientSampleId : CB-22-K2-SO-8-051623

Tgt Ion: 93 Resp: 269

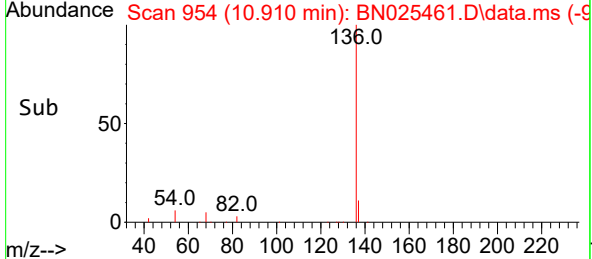
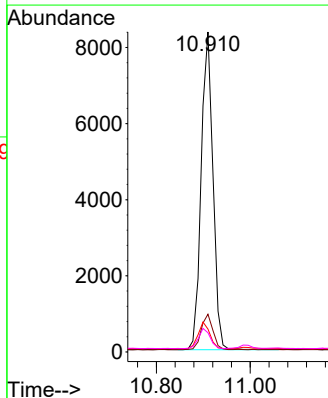
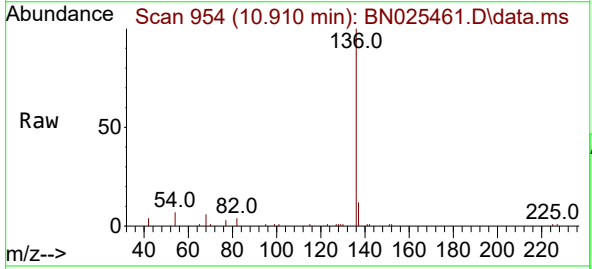
| Ion | Ratio | Lower | Upper |
|-----|-------|-------|-------|
| 93 | 100 | | |
| 63 | 1.5 | 48.5 | 72.7# |
| 95 | 3.0 | 22.0 | 33.0# |

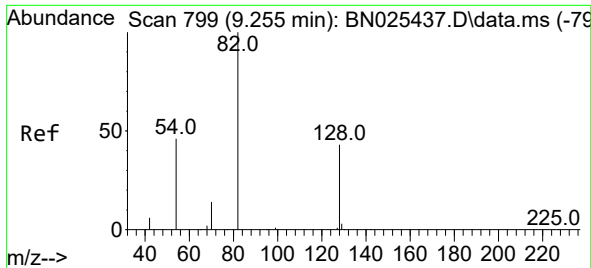


#7
 Naphthalene-d8
 Concen: 0.400 ng
 RT: 10.910 min Scan# 954
 Delta R.T. 0.000 min
 Lab File: BN025461.D
 Acq: 17 May 2023 19:54

Tgt Ion: 136 Resp: 14545

| Ion | Ratio | Lower | Upper |
|-----|-------|-------|-------|
| 136 | 100 | | |
| 137 | 11.8 | 9.4 | 14.0 |
| 54 | 7.2 | 7.0 | 10.4 |
| 68 | 6.0 | 5.8 | 8.6 |

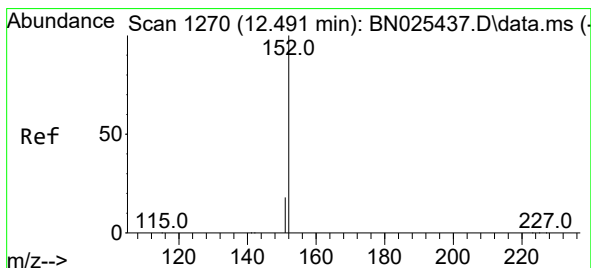
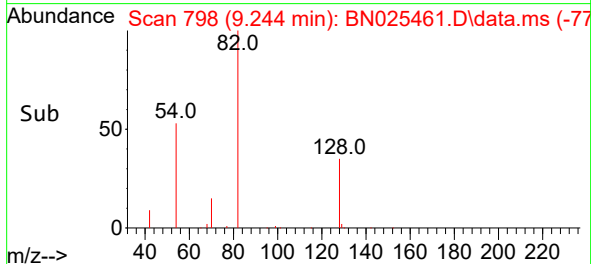
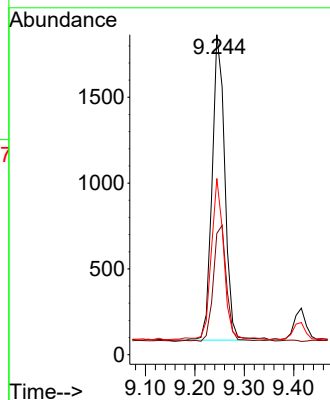
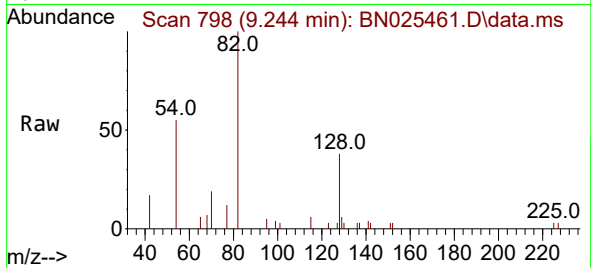




#8
 Nitrobenzene-d5
 Concen: 0.321 ng
 RT: 9.244 min Scan# 799
 Delta R.T. 0.000 min
 Lab File: BN025461.D
 Acq: 17 May 2023 19:54

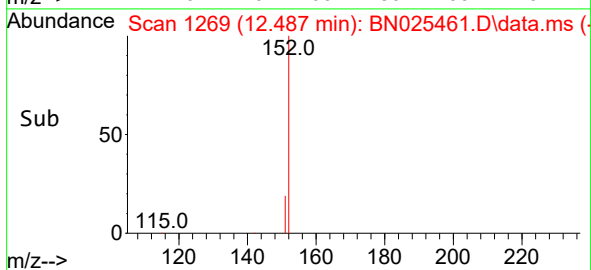
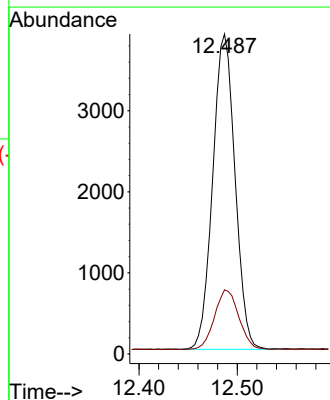
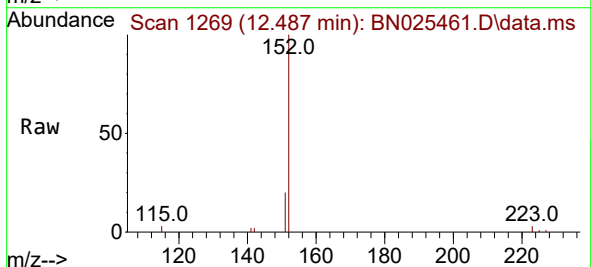
Instrument :
 BNA_N
 ClientSampleId :
 CB-22-K2-SO-8-051623

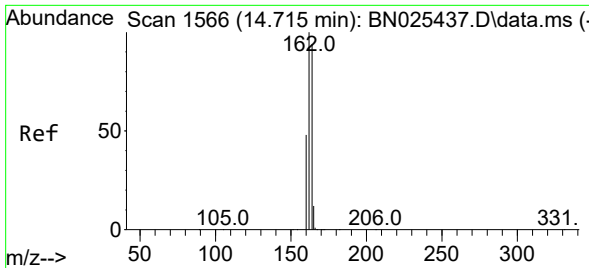
Tgt Ion: 82 Resp: 3186
 Ion Ratio Lower Upper
 82 100
 128 37.9 35.7 53.5
 54 55.1 38.6 57.8



#11
 2-Methylnaphthalene-d10
 Concen: 0.302 ng
 RT: 12.487 min Scan# 1269
 Delta R.T. 0.000 min
 Lab File: BN025461.D
 Acq: 17 May 2023 19:54

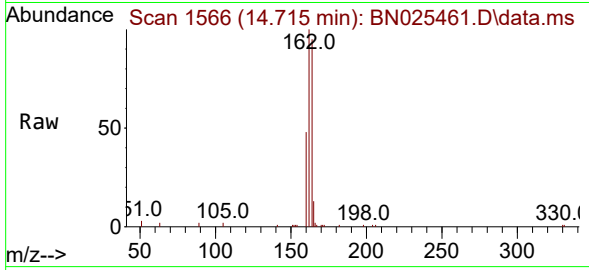
Tgt Ion: 152 Resp: 6136
 Ion Ratio Lower Upper
 152 100
 151 20.6 16.5 24.7





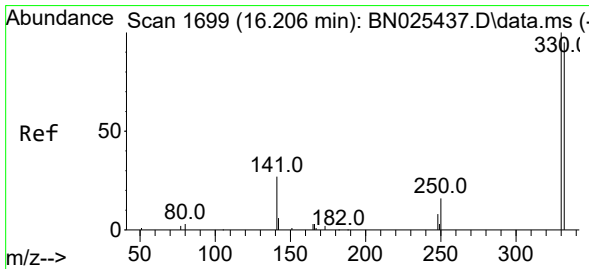
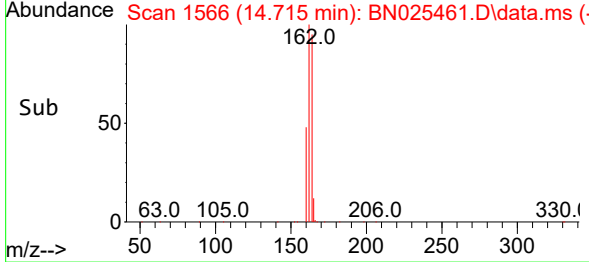
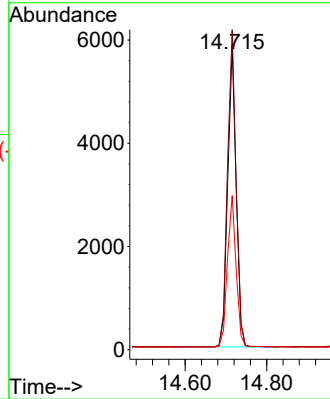
#13
 Acenaphthene-d10
 Concen: 0.400 ng
 RT: 14.715 min Scan# 11
 Delta R.T. 0.000 min
 Lab File: BN025461.D
 Acq: 17 May 2023 19:54

Instrument :
 BNA_N
 ClientSampleId :
 CB-22-K2-SO-8-051623

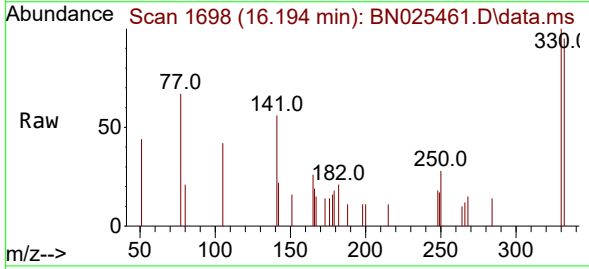


Tgt Ion:164 Resp: 8451

| Ion | Ratio | Lower | Upper |
|-----|-------|-------|-------|
| 164 | 100 | | |
| 162 | 105.3 | 84.8 | 127.2 |
| 160 | 50.7 | 40.6 | 61.0 |

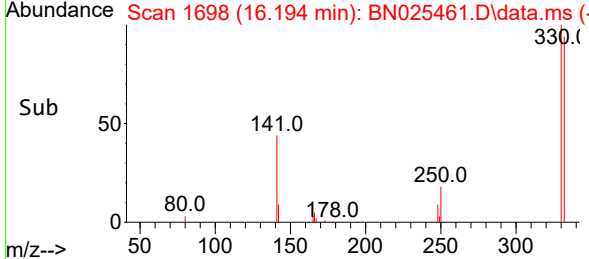
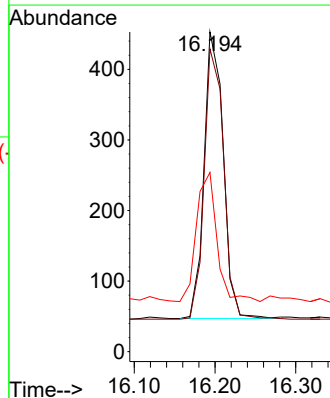


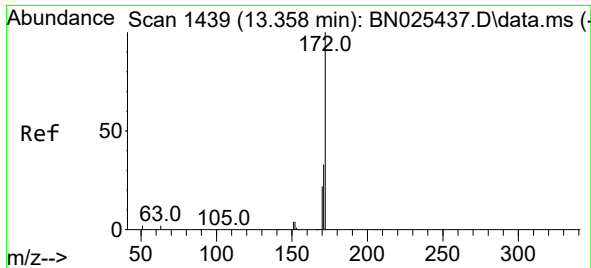
#14
 2,4,6-Tribromophenol
 Concen: 0.234 ng
 RT: 16.194 min Scan# 1698
 Delta R.T. 0.000 min
 Lab File: BN025461.D
 Acq: 17 May 2023 19:54



Tgt Ion:330 Resp: 671

| Ion | Ratio | Lower | Upper |
|-----|-------|-------|-------|
| 330 | 100 | | |
| 332 | 96.3 | 75.5 | 113.3 |
| 141 | 47.7 | 35.3 | 52.9 |

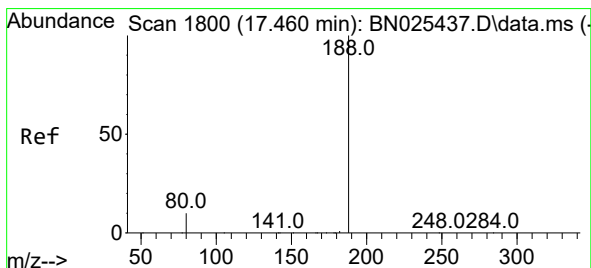
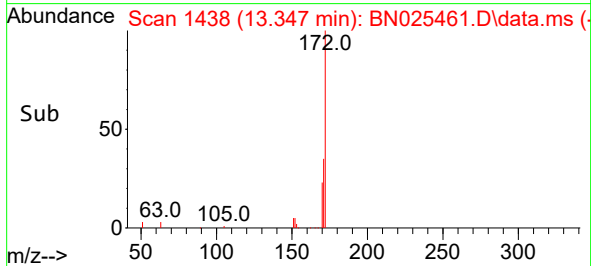
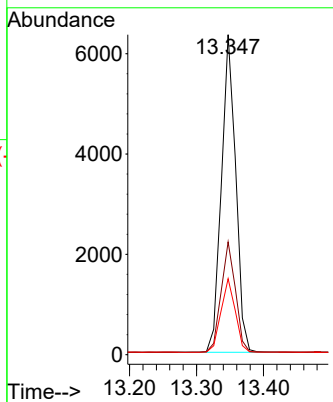
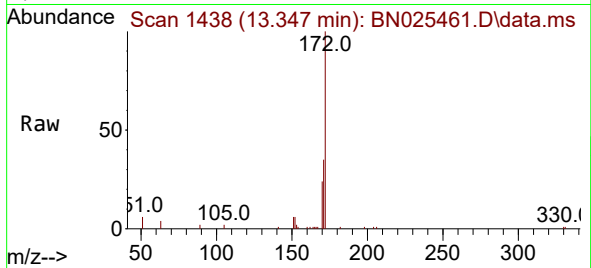




#15
 2-Fluorobiphenyl
 Concen: 0.304 ng
 RT: 13.347 min Scan# 1438
 Delta R.T. 0.000 min
 Lab File: BN025461.D
 Acq: 17 May 2023 19:54

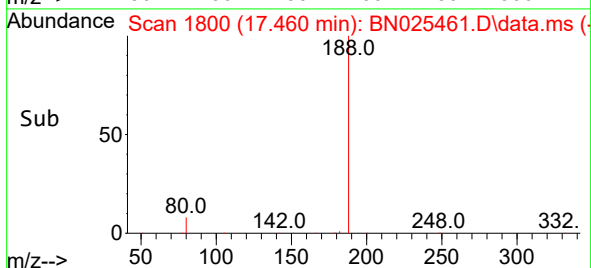
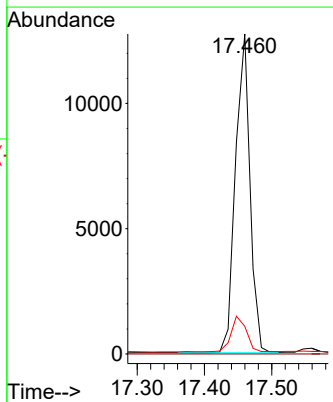
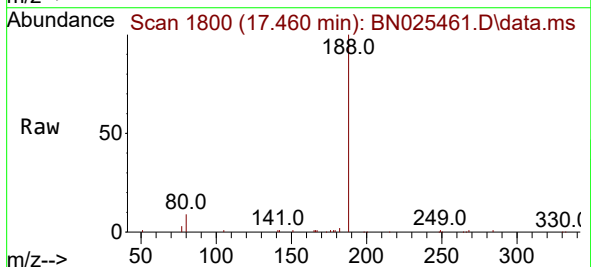
Instrument : BNA_N
 ClientSampleId : CB-22-K2-SO-8-051623

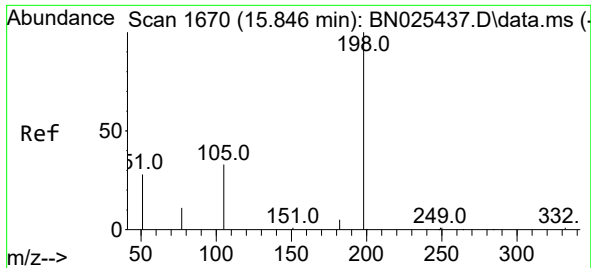
| Tgt Ion | Resp | Lower | Upper |
|---------|------|-------|-------|
| 172 | 9406 | | |
| 171 | 35.2 | 27.0 | 40.6 |
| 170 | 23.7 | 18.2 | 27.2 |



#19
 Phenanthrene-d10
 Concen: 0.400 ng
 RT: 17.460 min Scan# 1800
 Delta R.T. 0.000 min
 Lab File: BN025461.D
 Acq: 17 May 2023 19:54

| Tgt Ion | Resp | Lower | Upper |
|---------|-------|-------|-------|
| 188 | 19142 | | |
| 94 | 0.0 | 0.0 | 0.0 |
| 80 | 8.6 | 8.7 | 13.1# |

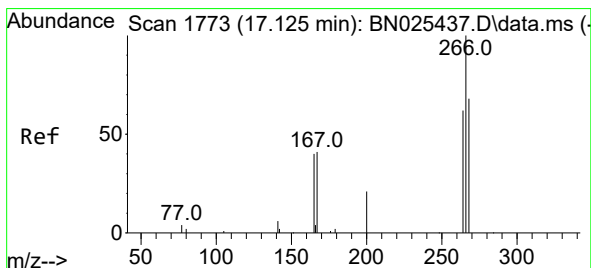
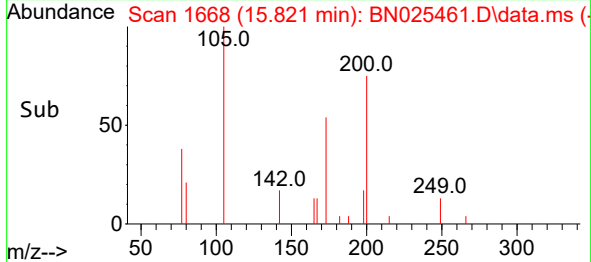
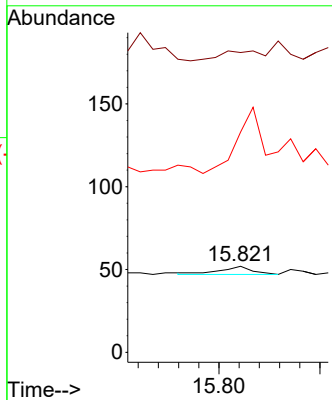
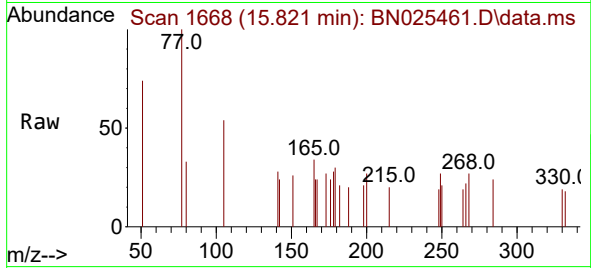




#20
 4,6-Dinitro-2-methylphenol
 Concen: 0.136 ng
 RT: 15.821 min Scan# 1668
 Delta R.T. 0.000 min
 Lab File: BN025461.D
 Acq: 17 May 2023 19:54

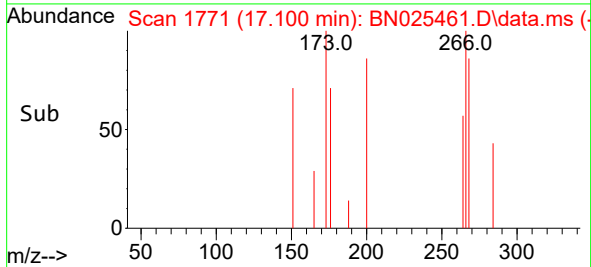
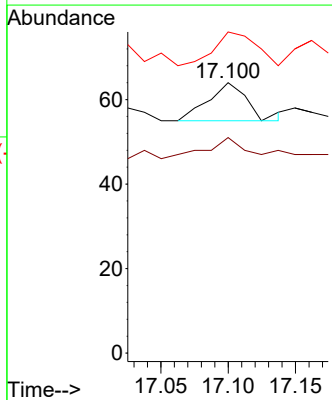
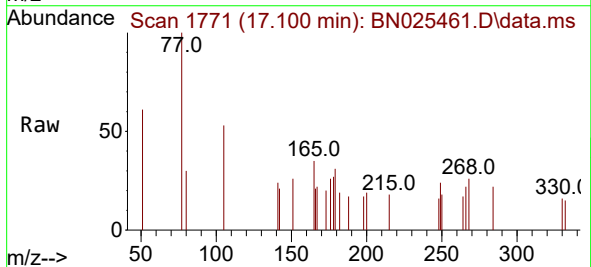
Instrument : BNA_N
 ClientSampleId : CB-22-K2-SO-8-051623

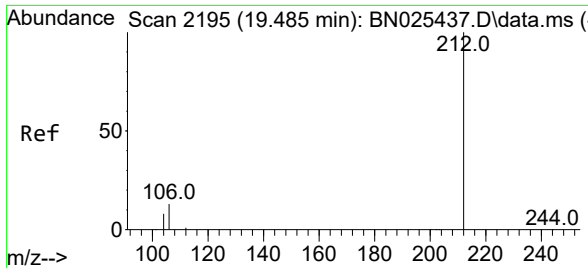
Tgt Ion:198 Resp: 11
 Ion Ratio Lower Upper
 198 100
 51 348.1 68.5 102.7#
 105 255.8 57.6 86.4#



#24
 Pentachlorophenol
 Concen: 0.209 ng
 RT: 17.100 min Scan# 1771
 Delta R.T. -0.012 min
 Lab File: BN025461.D
 Acq: 17 May 2023 19:54

Tgt Ion:266 Resp: 19
 Ion Ratio Lower Upper
 266 100
 264 68.4 49.5 74.3
 268 89.5 51.0 76.4#



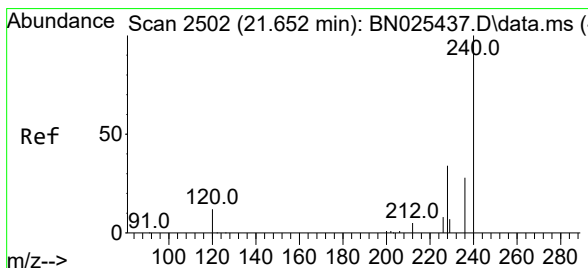
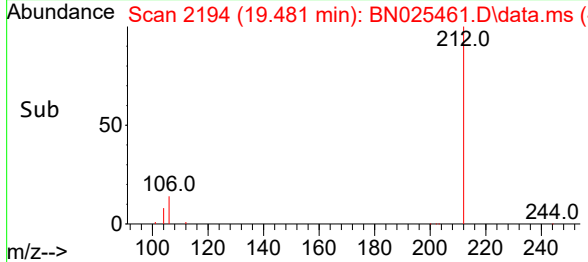
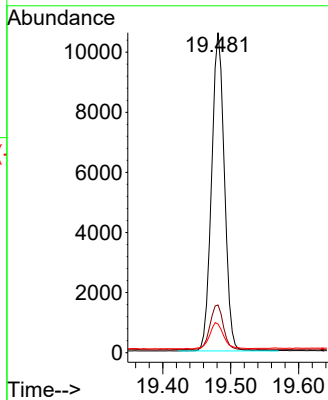
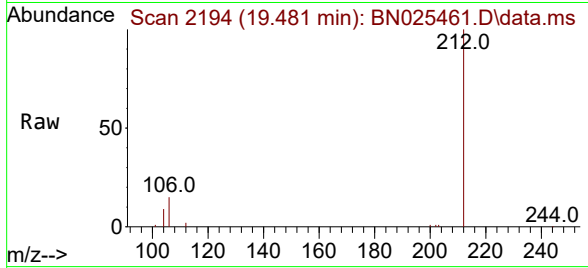


#27
 Fluoranthene-d10
 Concen: 0.304 ng
 RT: 19.481 min Scan# 2194
 Delta R.T. 0.000 min
 Lab File: BN025461.D
 Acq: 17 May 2023 19:54

Instrument : BNA_N
 ClientSampleId : CB-22-K2-SO-8-051623

Tgt Ion:212 Resp: 13856

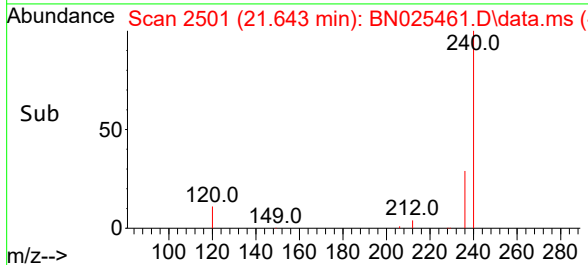
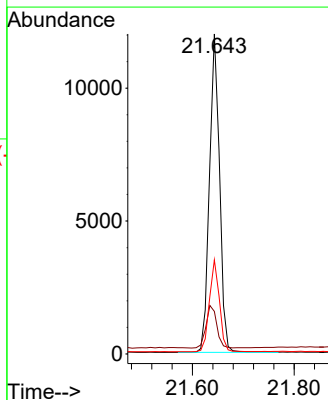
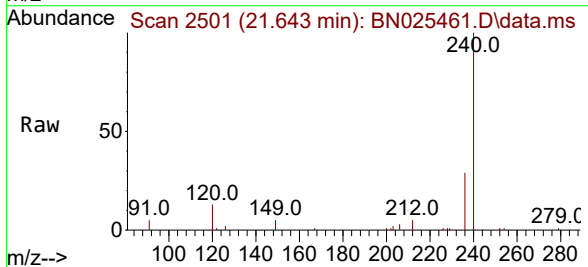
| Ion | Ratio | Lower | Upper |
|-----|-------|-------|-------|
| 212 | 100 | | |
| 106 | 14.7 | 11.1 | 16.7 |
| 104 | 8.9 | 6.6 | 10.0 |

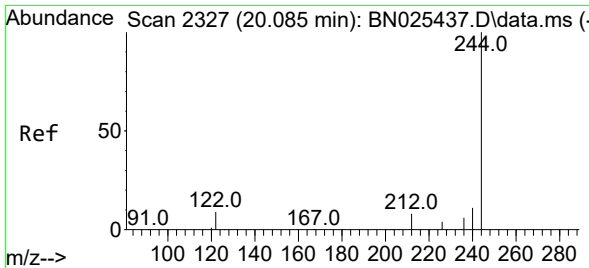


#29
 Chrysene-d12
 Concen: 0.400 ng
 RT: 21.643 min Scan# 2501
 Delta R.T. 0.000 min
 Lab File: BN025461.D
 Acq: 17 May 2023 19:54

Tgt Ion:240 Resp: 16481

| Ion | Ratio | Lower | Upper |
|-----|-------|-------|-------|
| 240 | 100 | | |
| 120 | 13.3 | 11.6 | 17.4 |
| 236 | 29.4 | 22.9 | 34.3 |

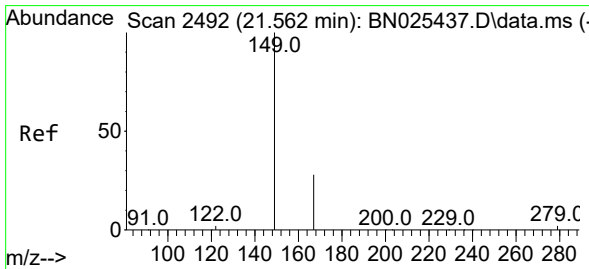
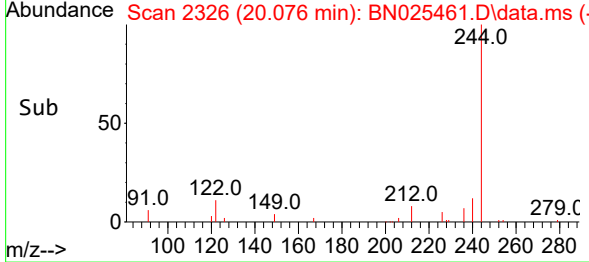
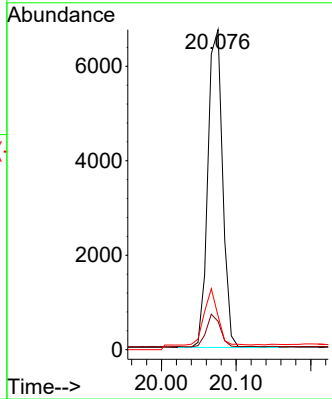
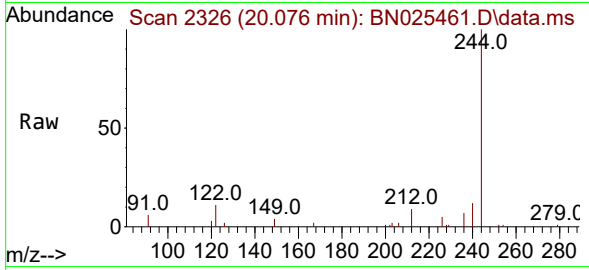




#31
 Terphenyl-d14
 Concen: 0.308 ng
 RT: 20.076 min Scan# 21
 Delta R.T. 0.000 min
 Lab File: BN025461.D
 Acq: 17 May 2023 19:54

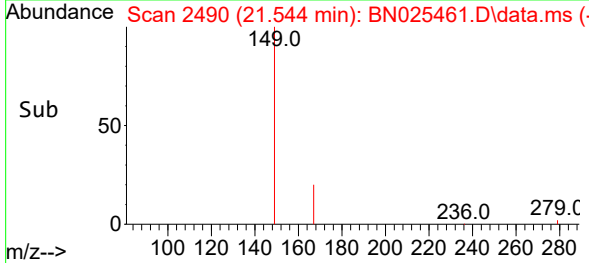
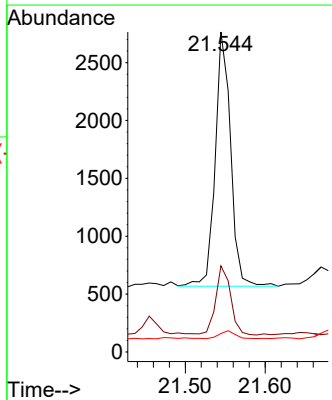
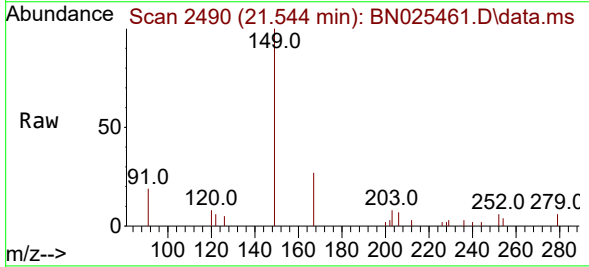
Instrument : BNA_N
 ClientSampleId : CB-22-K2-SO-8-051623

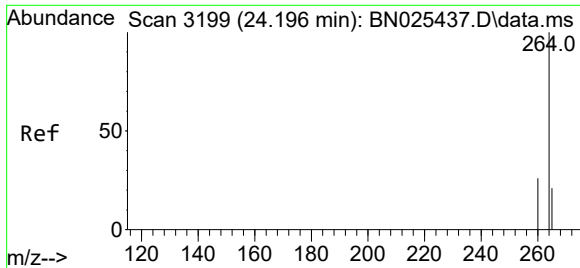
| Tgt Ion | Resp | Ion Ratio | Lower | Upper |
|---------|------|-----------|-------|-------|
| 244 | 9223 | 100 | | |
| 212 | | 8.8 | 6.9 | 10.3 |
| 122 | | 10.5 | 7.4 | 11.2 |



#34
 Bis(2-ethylhexyl)phthalate
 Concen: 0.087 ng
 RT: 21.544 min Scan# 2490
 Delta R.T. -0.009 min
 Lab File: BN025461.D
 Acq: 17 May 2023 19:54

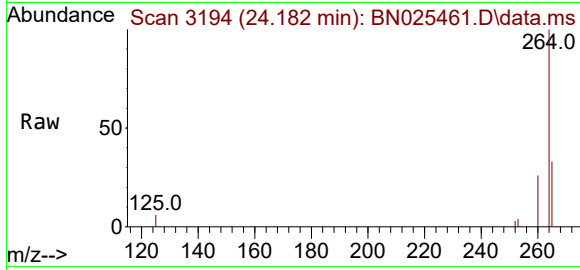
| Tgt Ion | Resp | Ion Ratio | Lower | Upper |
|---------|------|-----------|-------|-------|
| 149 | 2940 | 100 | | |
| 167 | | 26.3 | 22.2 | 33.4 |
| 279 | | 3.1 | 2.5 | 3.7 |





#35
 Perylene-d12
 Concen: 0.400 ng
 RT: 24.182 min Scan# 31
 Delta R.T. 0.003 min
 Lab File: BN025461.D
 Acq: 17 May 2023 19:54

Instrument :
 BNA_N
 ClientSampleId :
 CB-22-K2-SO-8-051623



Tgt Ion:264 Resp: 17911

| Ion | Ratio | Lower | Upper |
|-----|-------|-------|-------|
| 264 | 100 | | |
| 260 | 26.5 | 21.0 | 31.6 |
| 265 | 33.5 | 25.5 | 38.3 |

