

Data Path : Z:\svoasrv\HPCHEM1\BNA\_N\Data\BN051925\  
 Data File : BN037048.D  
 Acq On : 19 May 2025 16:51  
 Operator : RC/JU  
 Sample : Q2050-02  
 Misc :  
 ALS Vial : 12 Sample Multiplier: 1

Instrument :  
 BNA\_N  
 ClientSampleId :  
 BP-VPB-182-GW-60-62

Quant Time: May 19 17:24:47 2025  
 Quant Method : Z:\svoasrv\HPCHEM1\BNA\_N\Methods\8270-SIM-BN051425.M  
 Quant Title : ASP BNA STANDARDS FOR 5 POINT CALIBRATION  
 QLast Update : Wed May 14 11:26:32 2025  
 Response via : Initial Calibration

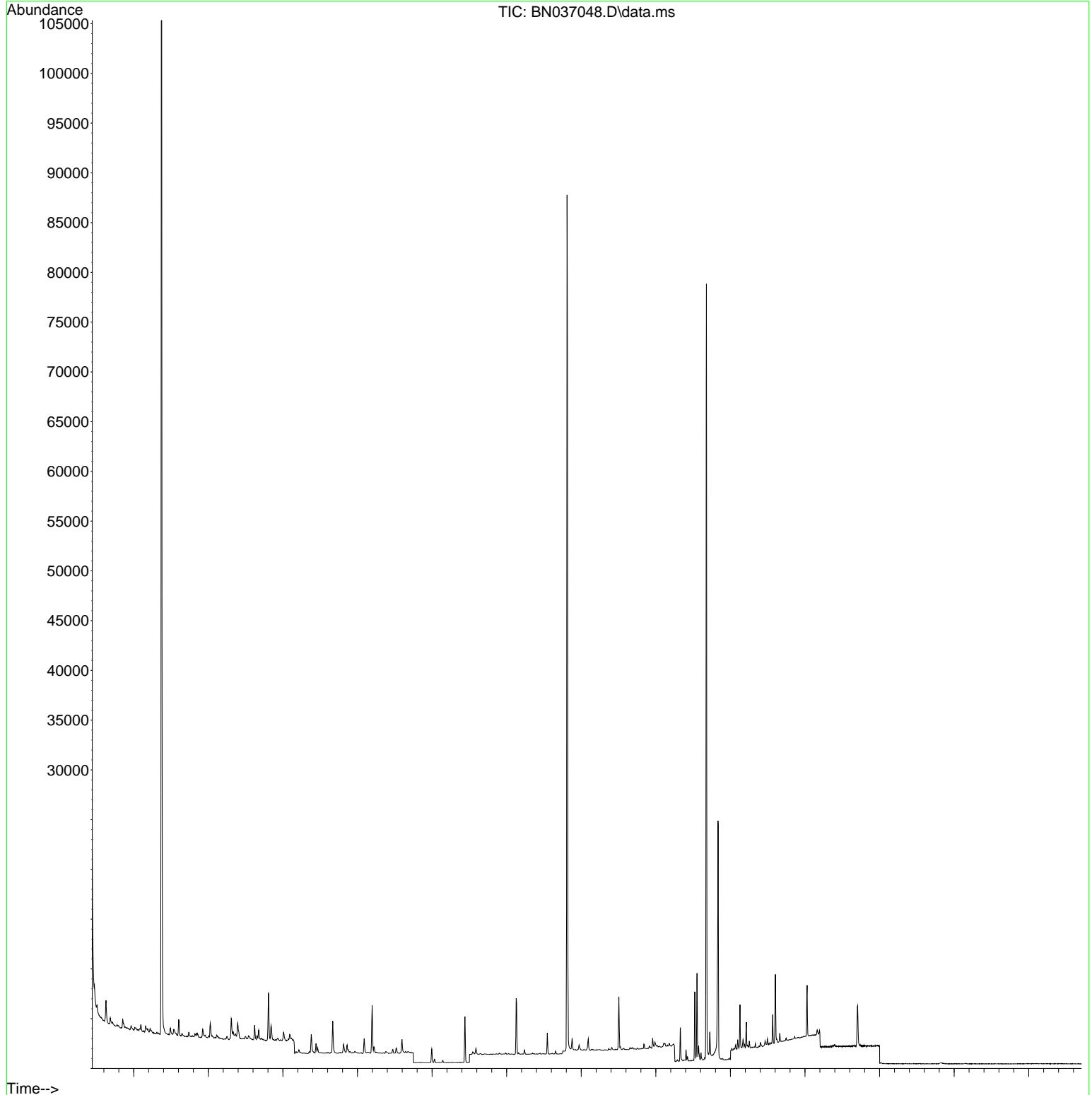
Compound	R.T.	QIon	Response	Conc	Units	Dev(Min)
Internal Standards						
1) 1,4-Dichlorobenzene-d4	7.611	152	2086	0.400	ng	0.00
7) Naphthalene-d8	10.394	136	5701	0.400	ng	#-0.01
13) Acenaphthene-d10	14.256	164	3309	0.400	ng	-0.01
19) Phenanthrene-d10	17.009	188	6655	0.400	ng	# 0.00
29) Chrysene-d12	21.206	240	6097	0.400	ng	# 0.00
35) Perylene-d12	23.409	264	5198	0.400	ng	0.00
System Monitoring Compounds						
4) 2-Fluorophenol	5.206	112	1063	0.195	ng	0.00
5) Phenol-d6	6.788	99	1077	0.157	ng	0.00
8) Nitrobenzene-d5	8.760	82	1607	0.259	ng	-0.01
11) 2-Methylnaphthalene-d10	11.991	152	1917	0.239	ng	0.00
14) 2,4,6-Tribromophenol	15.755	330	561	0.386	ng	-0.01
15) 2-Fluorobiphenyl	12.883	172	4299	0.284	ng	0.00
27) Fluoranthene-d10	19.045	212	7142	0.391	ng	0.00
31) Terphenyl-d14	19.653	244	6748	0.517	ng	0.00
Target Compounds						
9) Naphthalene	10.447	128	749	0.044	ng	# 80
12) 2-Methylnaphthalene	12.067	142	251	0.023	ng	# 87
34) Bis(2-ethylhexyl)phtha...	21.135	149	2653	0.188	ng	99

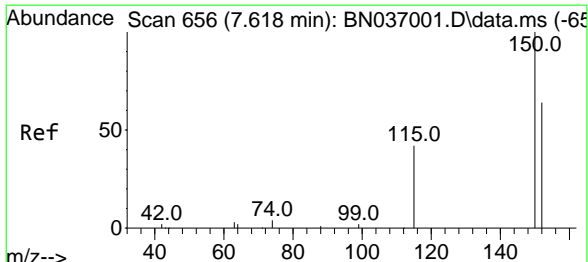
(#) = qualifier out of range (m) = manual integration (+) = signals summed

Data Path : Z:\svoasrv\HPCHEM1\BNA\_N\Data\BN051925\  
 Data File : BN037048.D  
 Acq On : 19 May 2025 16:51  
 Operator : RC/JU  
 Sample : Q2050-02  
 Misc :  
 ALS Vial : 12 Sample Multiplier: 1

**Instrument :**  
 BNA\_N  
**ClientSampleId :**  
 BP-VPB-182-GW-60-62

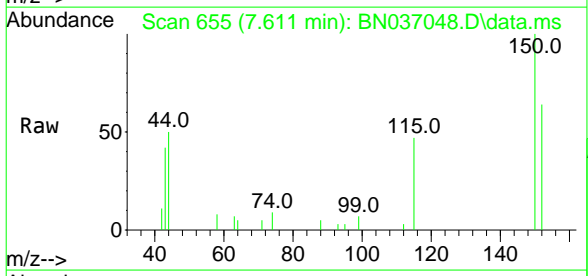
Quant Time: May 19 17:24:47 2025  
 Quant Method : Z:\svoasrv\HPCHEM1\BNA\_N\Methods\8270-SIM-BN051425.M  
 Quant Title : ASP BNA STANDARDS FOR 5 POINT CALIBRATION  
 QLast Update : Wed May 14 11:26:32 2025  
 Response via : Initial Calibration





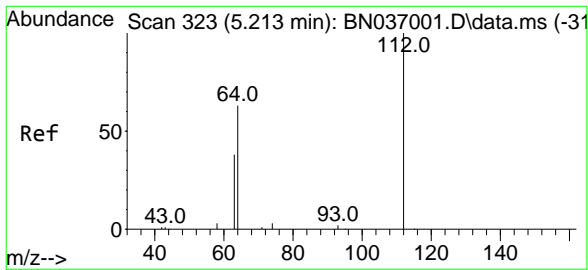
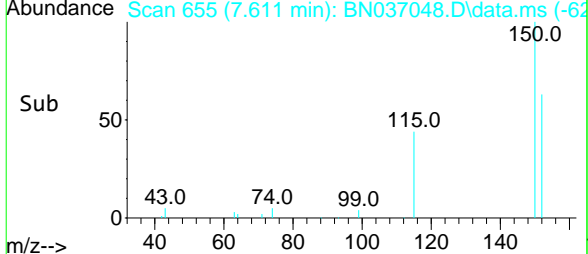
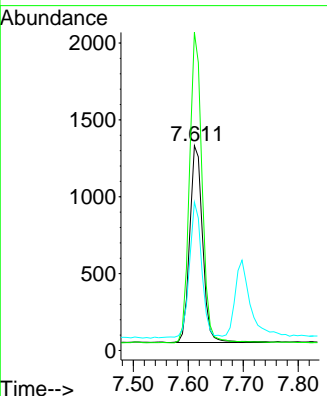
#1  
 1,4-Dichlorobenzene-d4  
 Concen: 0.400 ng  
 RT: 7.611 min Scan# 65  
 Delta R.T. -0.007 min  
 Lab File: BN037048.D  
 Acq: 19 May 2025 16:51

Instrument : BNA\_N  
 ClientSampleId : BP-VPB-182-GW-60-62



Tgt Ion: 152 Resp: 2086

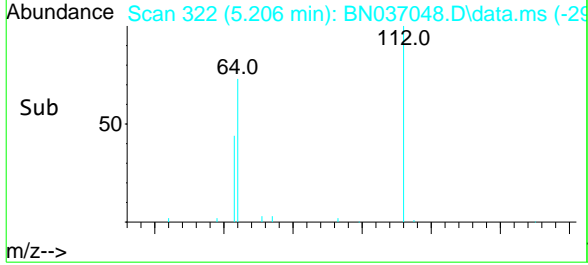
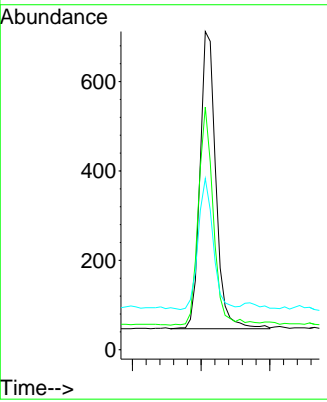
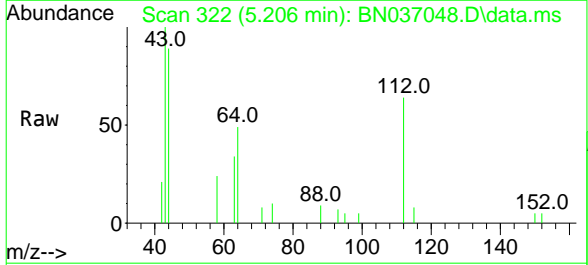
Ion	Ratio	Lower	Upper
152	100		
150	155.3	123.9	185.9
115	72.4	55.8	83.8

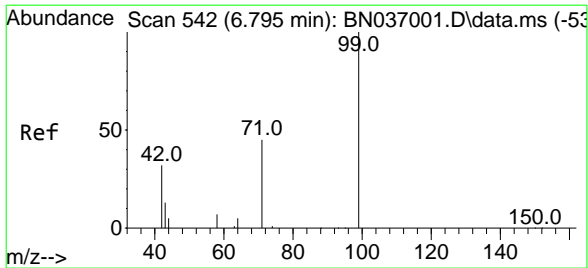


#4  
 2-Fluorophenol  
 Concen: 0.195 ng  
 RT: 5.206 min Scan# 322  
 Delta R.T. -0.007 min  
 Lab File: BN037048.D  
 Acq: 19 May 2025 16:51

Tgt Ion: 112 Resp: 1063

Ion	Ratio	Lower	Upper
112	100		
64	69.4	55.7	83.5
63	41.8	34.6	51.8

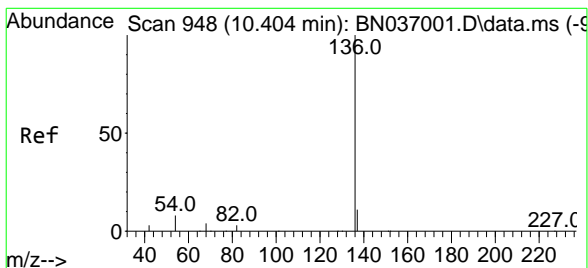
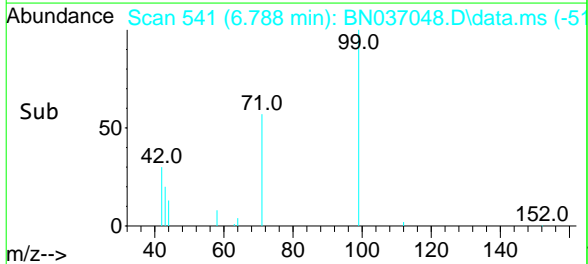
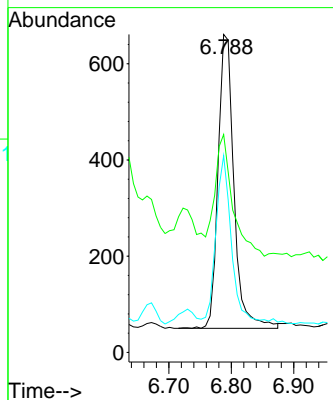
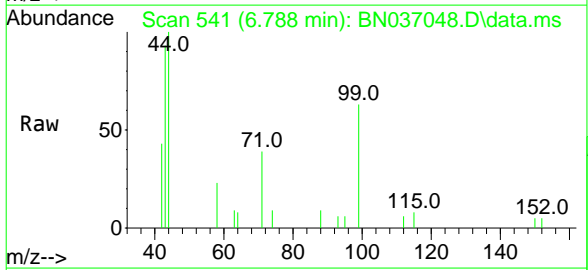




#5  
 Phenol-d6  
 Concen: 0.157 ng  
 RT: 6.788 min Scan# 54  
 Delta R.T. -0.007 min  
 Lab File: BN037048.D  
 Acq: 19 May 2025 16:51

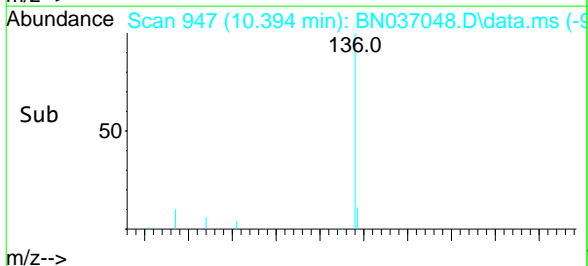
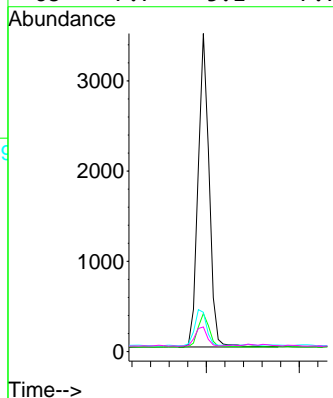
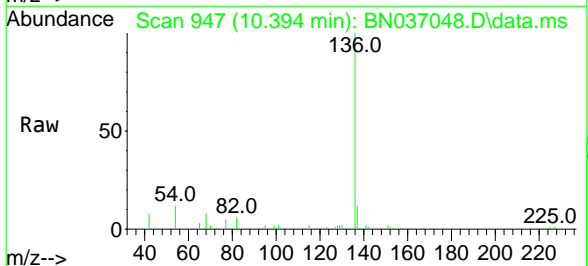
Instrument :  
 BNA\_N  
 ClientSampleId :  
 BP-VPB-182-GW-60-62

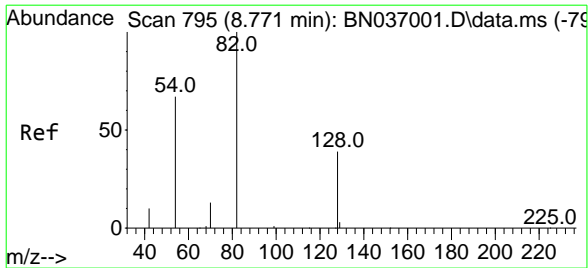
Tgt Ion	Resp	Lower	Upper
99	1077		
42	46.4	29.3	43.9#
71	56.6	35.7	53.5#



#7  
 Naphthalene-d8  
 Concen: 0.400 ng  
 RT: 10.394 min Scan# 947  
 Delta R.T. -0.011 min  
 Lab File: BN037048.D  
 Acq: 19 May 2025 16:51

Tgt Ion	Resp	Lower	Upper
136	5701		
137	12.0	10.4	15.6
54	12.3	8.5	12.7
68	7.7	5.1	7.7#

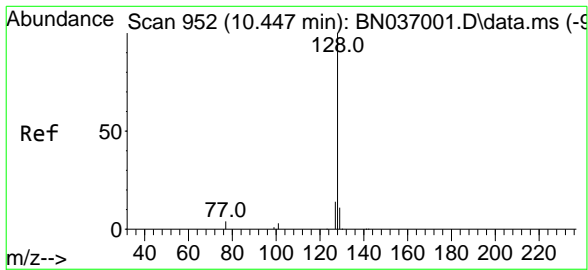
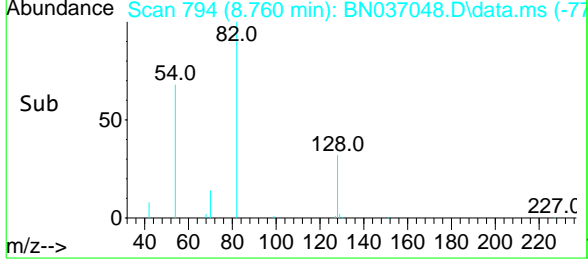
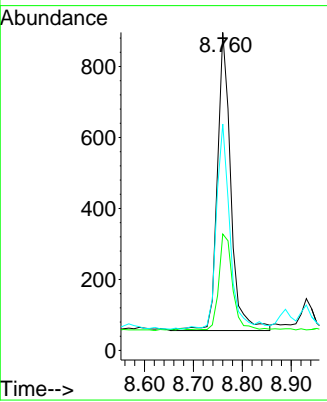
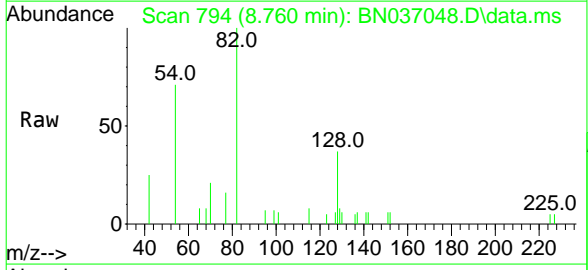




#8  
 Nitrobenzene-d5  
 Concen: 0.259 ng  
 RT: 8.760 min Scan# 795  
 Delta R.T. -0.011 min  
 Lab File: BN037048.D  
 Acq: 19 May 2025 16:51

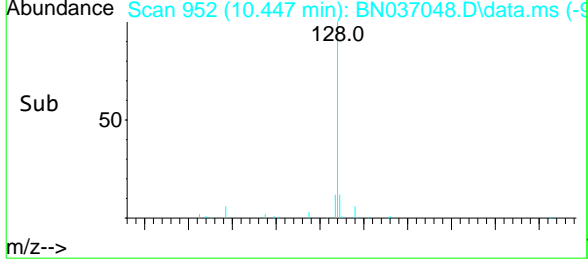
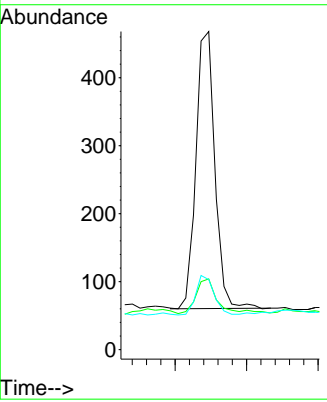
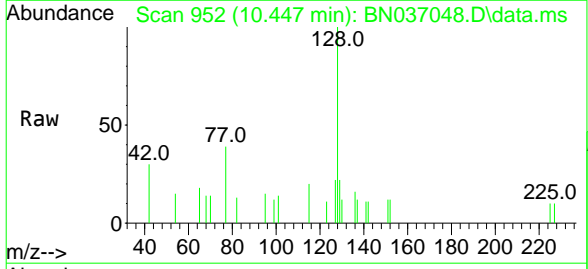
Instrument : BNA\_N  
 ClientSampleId : BP-VPB-182-GW-60-62

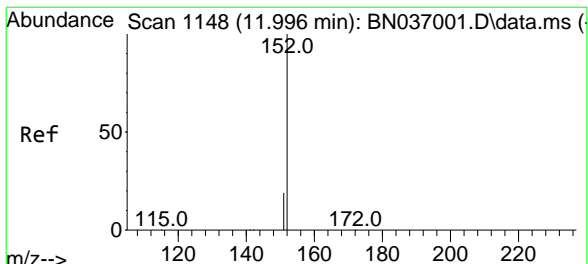
Tgt Ion	Ratio	Lower	Upper
82	100		
128	36.6	34.0	51.0
54	71.2	55.0	82.4



#9  
 Naphthalene  
 Concen: 0.044 ng  
 RT: 10.447 min Scan# 952  
 Delta R.T. 0.000 min  
 Lab File: BN037048.D  
 Acq: 19 May 2025 16:51

Tgt Ion	Ratio	Lower	Upper
128	100		
129	22.2	9.7	14.5#
127	22.0	12.4	18.6#

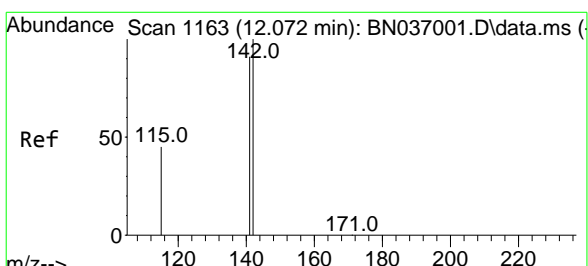
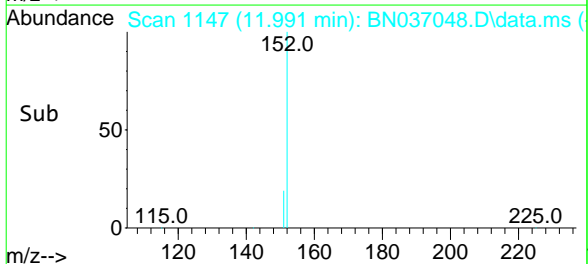
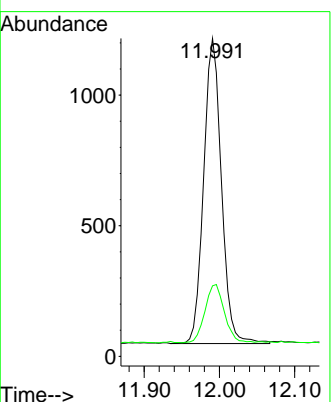
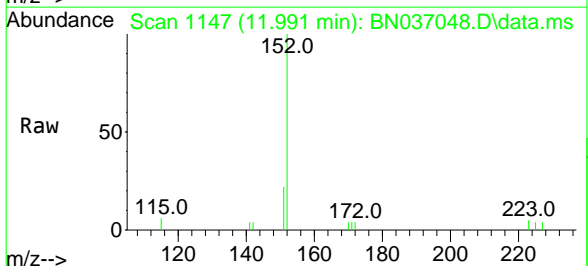




#11  
 2-Methylnaphthalene-d10  
 Concen: 0.239 ng  
 RT: 11.991 min Scan# 1147  
 Delta R.T. -0.005 min  
 Lab File: BN037048.D  
 Acq: 19 May 2025 16:51

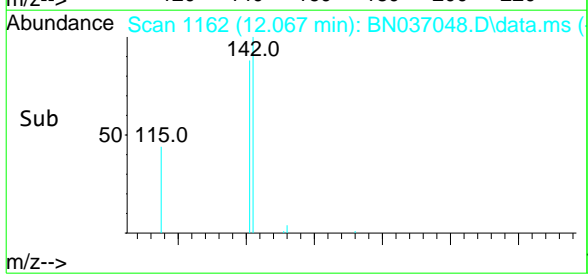
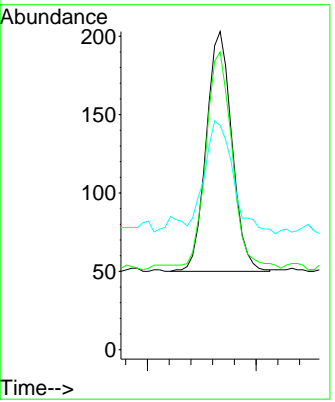
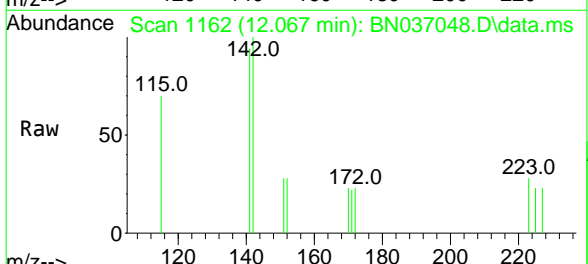
Instrument : BNA\_N  
 ClientSampleId : BP-VPB-182-GW-60-62

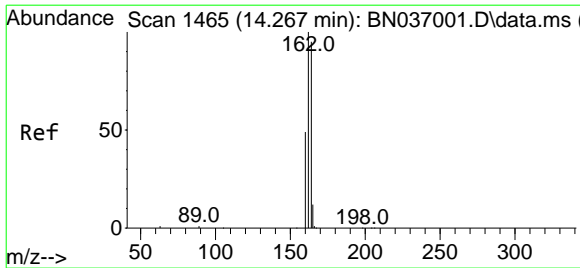
Tgt Ion: 152 Resp: 1917  
 Ion Ratio Lower Upper  
 152 100  
 151 20.9 17.5 26.3



#12  
 2-Methylnaphthalene  
 Concen: 0.023 ng  
 RT: 12.067 min Scan# 1162  
 Delta R.T. -0.005 min  
 Lab File: BN037048.D  
 Acq: 19 May 2025 16:51

Tgt Ion: 142 Resp: 251  
 Ion Ratio Lower Upper  
 142 100  
 141 93.6 73.3 109.9  
 115 70.4 38.4 57.6#

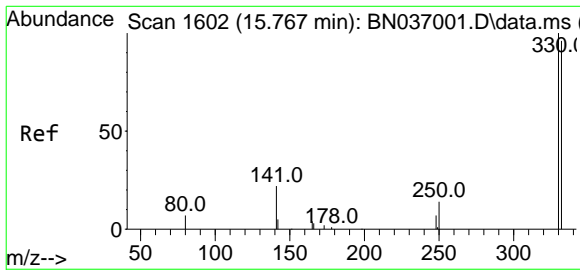
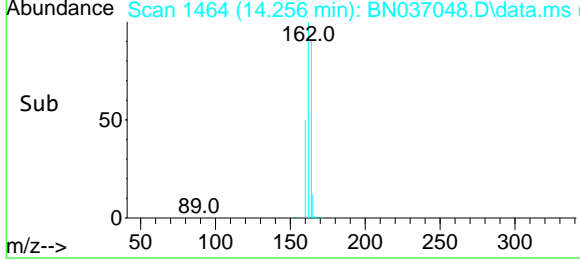
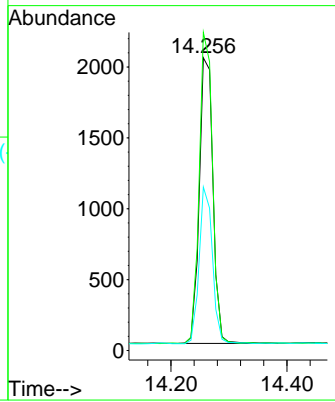
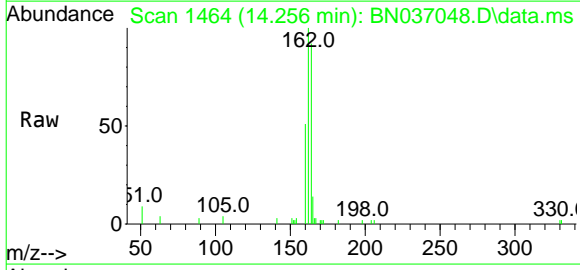




#13  
 Acenaphthene-d10  
 Concen: 0.400 ng  
 RT: 14.256 min Scan# 14  
 Delta R.T. -0.011 min  
 Lab File: BN037048.D  
 Acq: 19 May 2025 16:51

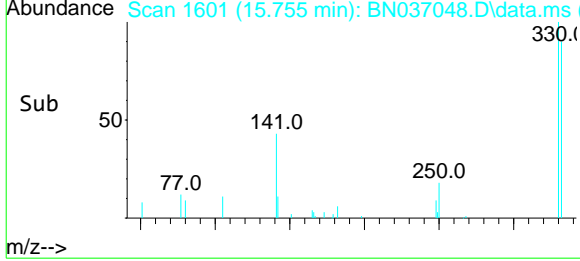
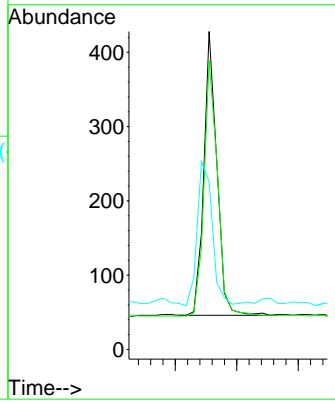
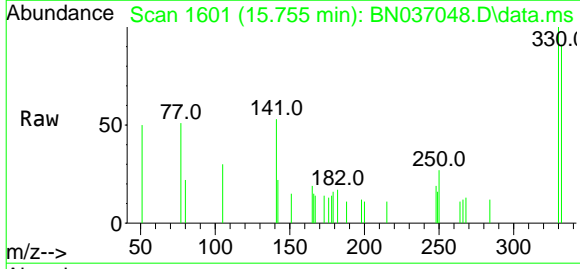
Instrument : BNA\_N  
 ClientSampleId : BP-VPB-182-GW-60-62

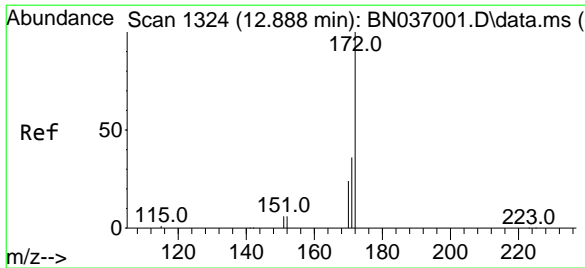
Tgt Ion	Resp	Lower	Upper
164	100		
162	108.7	84.2	126.4
160	55.8	42.6	63.8



#14  
 2,4,6-Tribromophenol  
 Concen: 0.386 ng  
 RT: 15.755 min Scan# 1601  
 Delta R.T. -0.012 min  
 Lab File: BN037048.D  
 Acq: 19 May 2025 16:51

Tgt Ion	Resp	Lower	Upper
330	100		
332	93.9	73.8	110.8
141	56.9	43.9	65.9

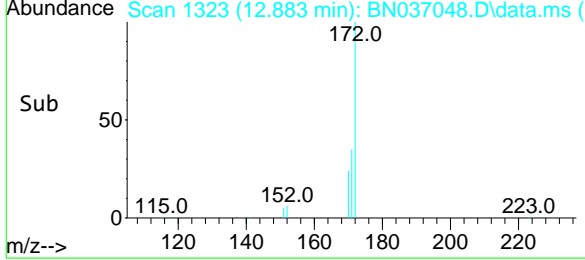
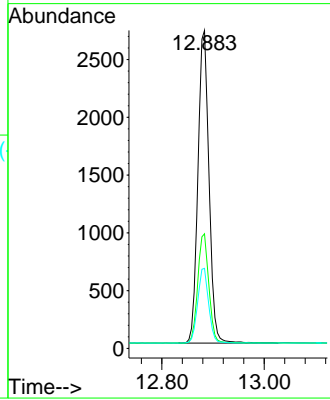
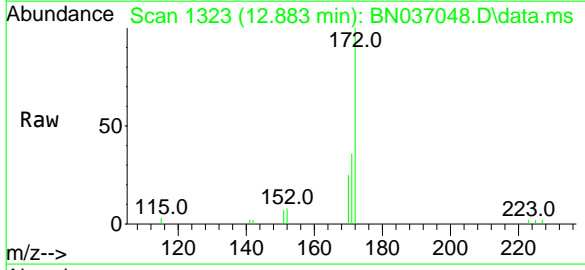




#15  
 2-Fluorobiphenyl  
 Concen: 0.284 ng  
 RT: 12.883 min Scan# 13  
 Delta R.T. -0.005 min  
 Lab File: BN037048.D  
 Acq: 19 May 2025 16:51

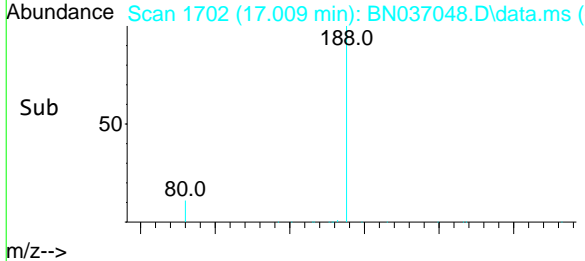
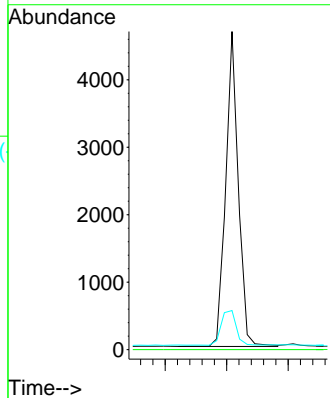
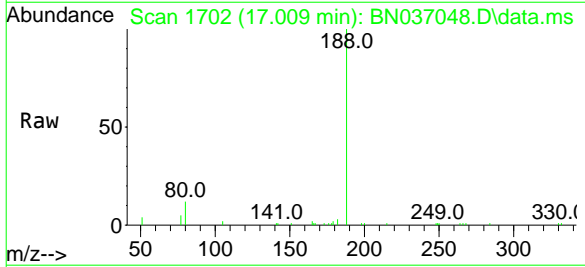
Instrument :  
 BNA\_N  
 ClientSampleId :  
 BP-VPB-182-GW-60-62

Tgt Ion	Resp	Lower	Upper
172	100		
171	36.0	29.2	43.8
170	25.2	20.5	30.7

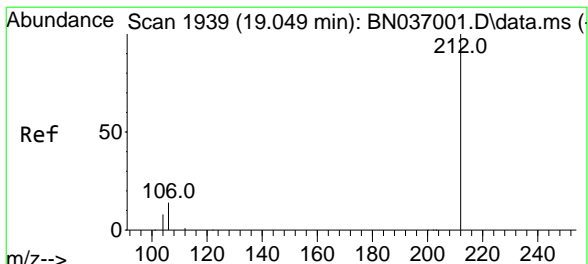


#19  
 Phenanthrene-d10  
 Concen: 0.400 ng  
 RT: 17.009 min Scan# 1702  
 Delta R.T. 0.000 min  
 Lab File: BN037048.D  
 Acq: 19 May 2025 16:51

Tgt Ion	Resp	Lower	Upper
188	100		
94	0.0	0.0	0.0
80	12.3	13.4	20.0#



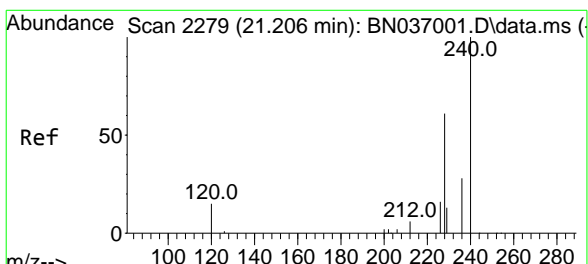
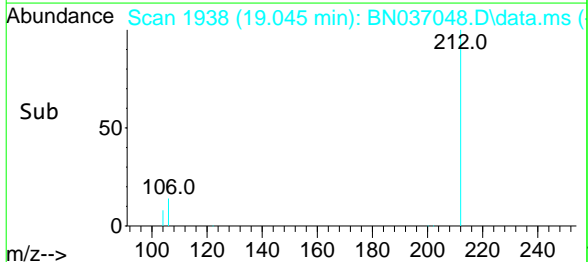
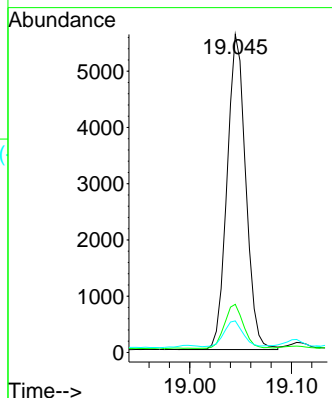
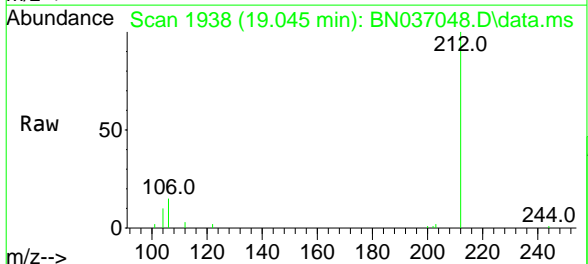




#27  
 Fluoranthene-d10  
 Concen: 0.391 ng  
 RT: 19.045 min Scan# 1939  
 Delta R.T. -0.005 min  
 Lab File: BN037048.D  
 Acq: 19 May 2025 16:51

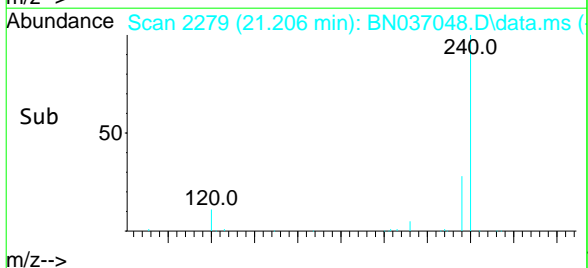
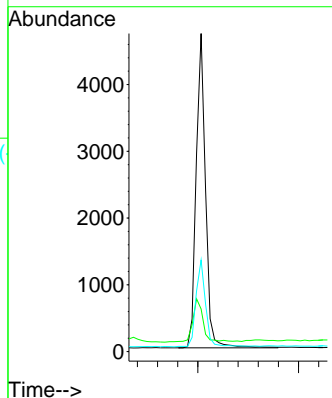
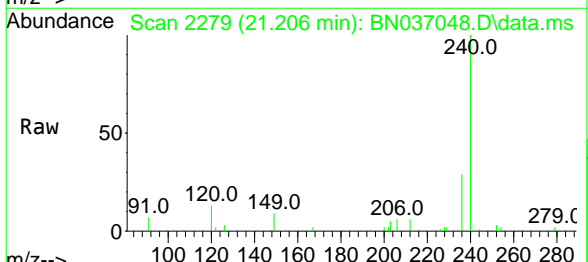
Instrument : BNA\_N  
 ClientSampleId : BP-VPB-182-GW-60-62

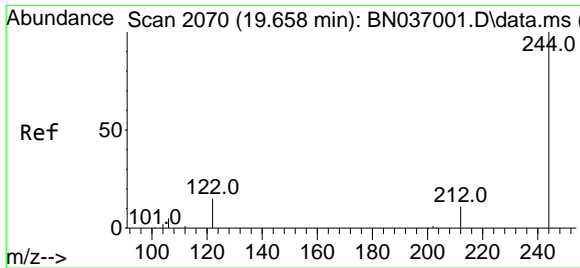
Tgt Ion	Ratio	Lower	Upper
212	100		
106	14.2	11.3	16.9
104	8.8	6.7	10.1



#29  
 Chrysene-d12  
 Concen: 0.400 ng  
 RT: 21.206 min Scan# 2279  
 Delta R.T. 0.000 min  
 Lab File: BN037048.D  
 Acq: 19 May 2025 16:51

Tgt Ion	Ratio	Lower	Upper
240	100		
120	13.4	15.1	22.7#
236	28.8	24.0	36.0

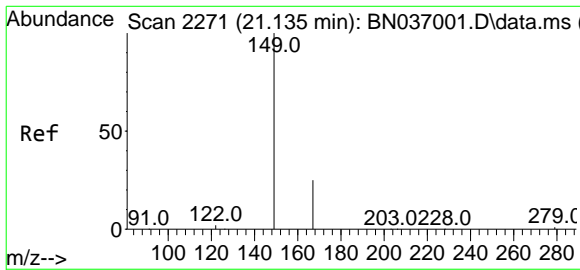
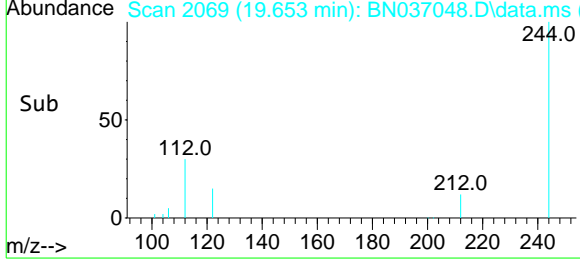
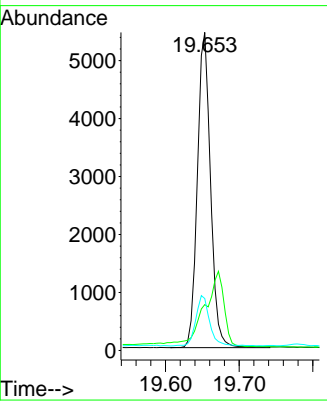
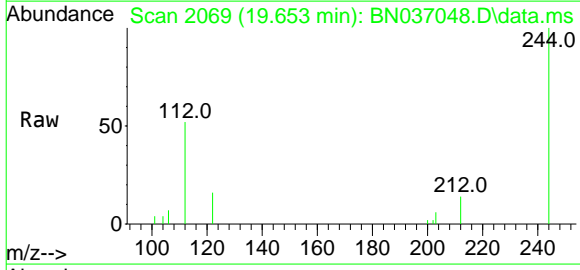




#31  
 Terphenyl-d14  
 Concen: 0.517 ng  
 RT: 19.653 min Scan# 2070  
 Delta R.T. -0.005 min  
 Lab File: BN037048.D  
 Acq: 19 May 2025 16:51

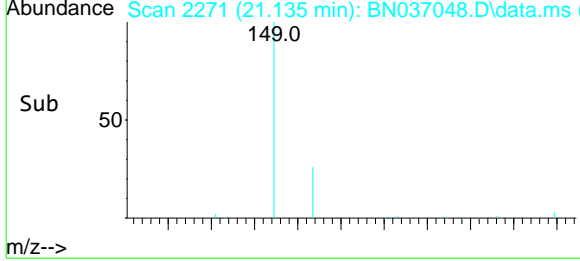
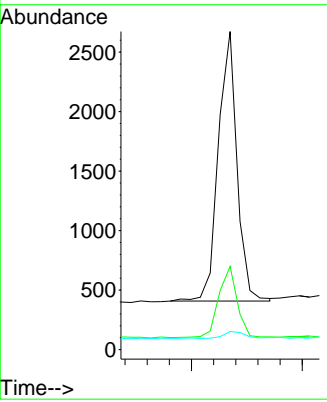
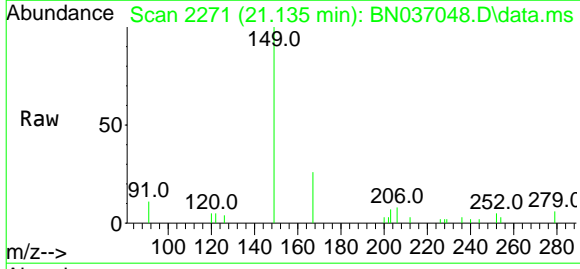
Instrument : BNA\_N  
 ClientSampleId : BP-VPB-182-GW-60-62

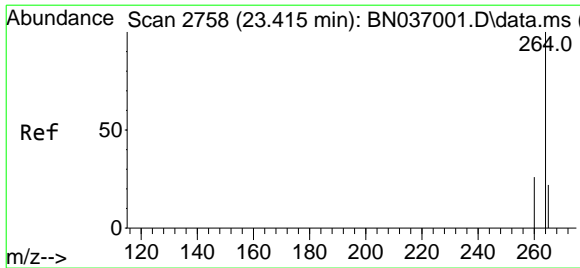
Tgt Ion	Ratio	Lower	Upper
244	100		
212	14.4	9.7	14.5
122	16.3	13.4	20.0



#34  
 Bis(2-ethylhexyl)phthalate  
 Concen: 0.188 ng  
 RT: 21.135 min Scan# 2271  
 Delta R.T. 0.000 min  
 Lab File: BN037048.D  
 Acq: 19 May 2025 16:51

Tgt Ion	Ratio	Lower	Upper
149	100		
167	26.2	20.6	30.8
279	3.4	2.6	3.8





#35  
 Perylene-d12  
 Concen: 0.400 ng  
 RT: 23.409 min Scan# 27  
 Delta R.T. -0.006 min  
 Lab File: BN037048.D  
 Acq: 19 May 2025 16:51

**Instrument :**  
 BNA\_N  
**ClientSampleId :**  
 BP-VPB-182-GW-60-62

Tgt Ion	Resp	Lower	Upper
264	100		
260	26.5	21.9	32.9
265	63.5	51.6	77.4

