

Data Path : Z:\svoasrv\HPCHEM1\BNA\_N\Data\BN052121\  
 Data File : BN014708.D  
 Acq On : 22 May 2021 01:45  
 Operator : CG/JU  
 Sample : M2472-02  
 Misc :  
 ALS Vial : 20 Sample Multiplier: 1

Instrument :  
 BNA\_N  
 ClientSampleId :  
 BP-VPB-RW8-GW-888-890

Manual Integrations  
 APPROVED

mohammad  
 5/24/2021 2:37:19 PM

Quant Time: May 22 04:03:55 2021  
 Quant Method : Z:\SVOASRV\HPCHEM1\BNA\_N\METHODS\8270-SIM-BN051121.M  
 Quant Title : ASP BNA STANDARDS FOR 5 POINT CALIBRATION  
 QLast Update : Fri May 21 11:30:28 2021  
 Response via : Initial Calibration

Compound	R.T.	QIon	Response	Conc	Units	Dev(Min)
Internal Standards						
1) 1,4-Dichlorobenzene-d4	7.724	152	1017	0.40	ng	# 0.00
7) Naphthalene-d8	10.505	136	3901	0.40	ng	# 0.00
13) Acenaphthene-d10	14.371	164	3060	0.40	ng	0.00
19) Phenanthrene-d10	17.116	188	6280	0.40	ng	# 0.00
29) Chrysene-d12	21.314	240	7118	0.40	ng	# 0.00
35) Perylene-d12	23.585	264	6474	0.40	ng	0.00
System Monitoring Compounds						
4) 2-Fluorophenol	5.324	112	426	0.16	ng	0.00
5) Phenol-d6	6.903	99	700	0.20	ng	0.00
8) Nitrobenzene-d5	8.870	82	719	0.21	ng	0.00
11) 2-Methylnaphthalene-d10	12.102	152	1663	0.18	ng	0.00
14) 2,4,6-Tribromophenol	15.869	330	324	0.23	ng	0.00
15) 2-Fluorobiphenyl	12.988	172	2550	0.23	ng	0.00
27) Fluoranthene-d10	19.158	212	4327	0.15	ng	0.00
31) Terphenyl-d14	19.759	244	4648	0.28	ng	0.00
Target Compounds						
9) Naphthalene	10.555	128	736	0.07	ng	# 66
12) 2-Methylnaphthalene	12.177	142	354	0.05	ng	# 72
25) Phenanthrene	17.165	178	939	0.05	ng	# 71
28) Fluoranthene	19.188	202	598	0.03	ng	# 74
30) Pyrene	19.551	202	800	0.04	ng	# 91
32) Benzo(a)anthracene	21.303	228	537	0.03	ng	# 30
34) Bis(2-ethylhexyl)phtha...	21.239	149	8714	1.52	ng	# 75
37) Benzo(b)fluoranthene	22.904	252	1197	0.05	ng	# 1
39) Benzo(a)pyrene	23.482	252	1028m	0.06	ng	

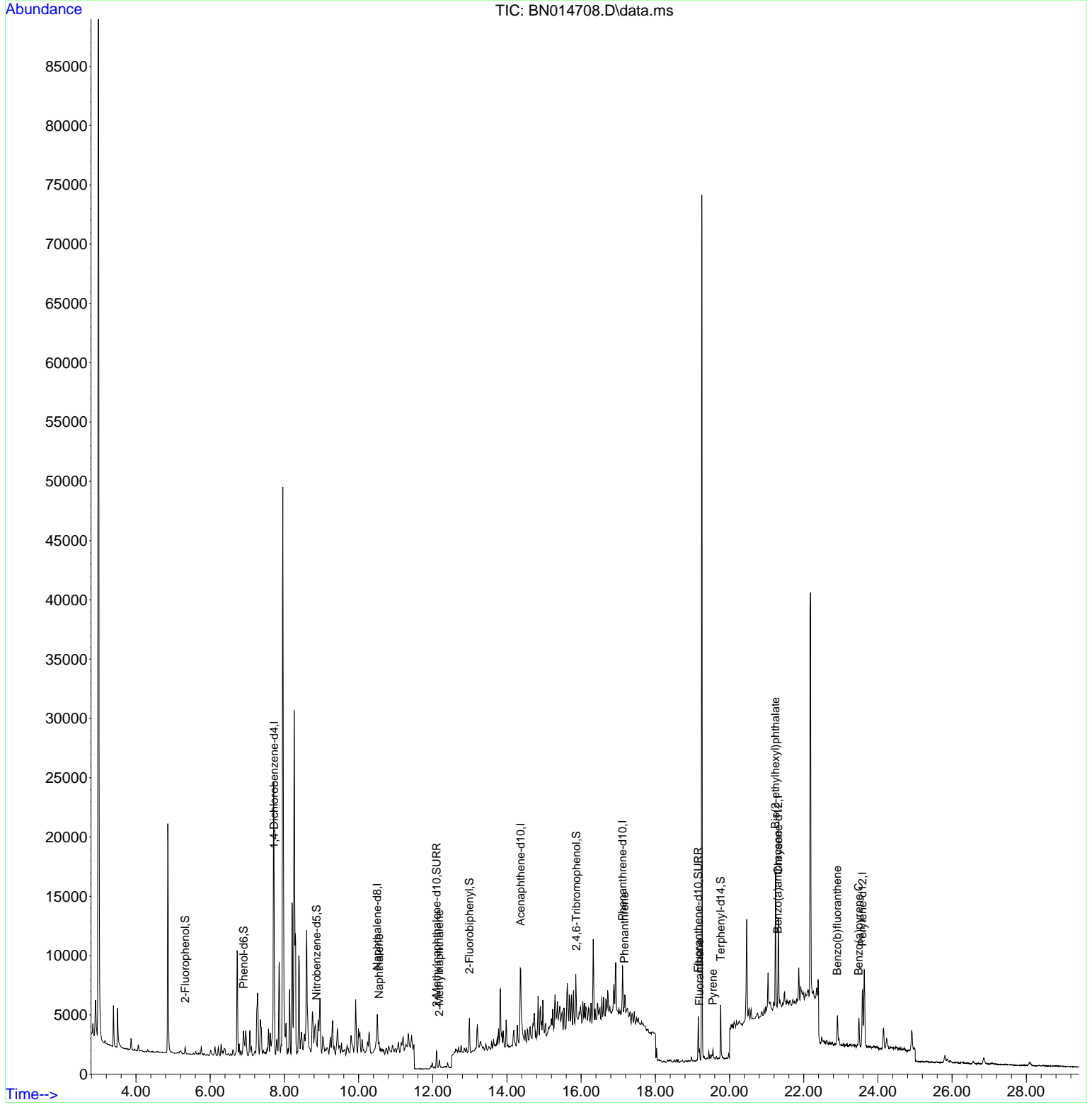
(#) = qualifier out of range (m) = manual integration (+) = signals summed

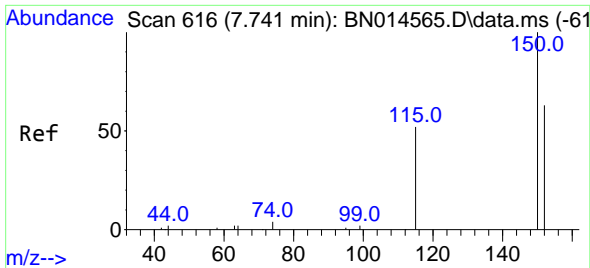
Data Path : Z:\svoasrv\HPCHEM1\BNA\_N\Data\BN052121\  
 Data File : BN014708.D  
 Acq On : 22 May 2021 01:45  
 Operator : CG/JU  
 Sample : M2472-02  
 Misc :  
 ALS Vial : 20 Sample Multiplier: 1

**Instrument :**  
 BNA\_N  
**ClientSampled :**  
 BP-VPB-RW8-GW-888-890

**Manual Integrations**  
**APPROVED**  
 mohammad  
 5/24/2021 2:37:19 PM

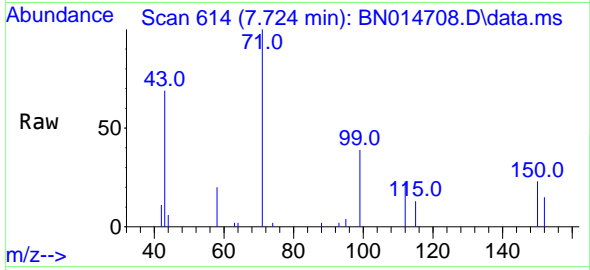
Quant Time: May 22 04:03:55 2021  
 Quant Method : Z:\SVOASRV\HPCHEM1\BNA\_N\METHODS\8270-SIM-BN051121.M  
 Quant Title : ASP BNA STANDARDS FOR 5 POINT CALIBRATION  
 QLast Update : Fri May 21 11:30:28 2021  
 Response via : Initial Calibration





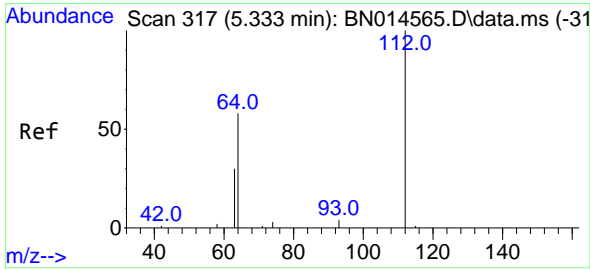
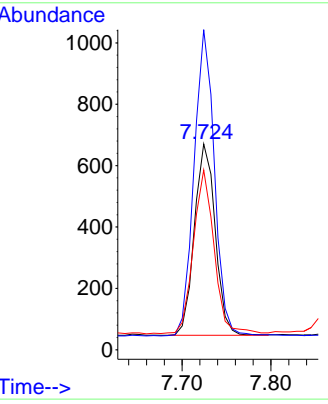
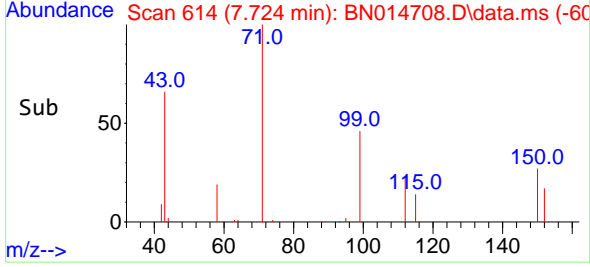
#1  
 1,4-Dichlorobenzene-d4  
 Concen: 0.40 ng  
 RT: 7.724 min Scan# 614  
 Delta R.T. -0.001 min  
 Lab File: BN014708.D  
 Acq: 22 May 2021 01:45

**Instrument :**  
 BNA\_N  
**ClientSampleId :**  
 BP-VPB-RW8-GW-888-890

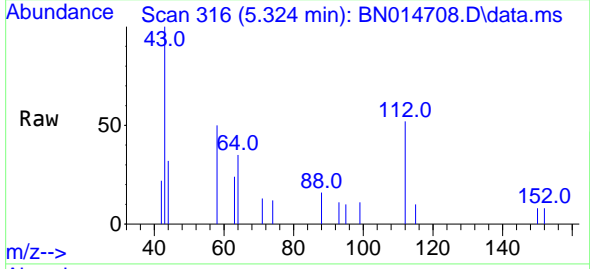


Tgt Ion:152 Resp: 1017  
 Ion Ratio Lower Upper  
 152 100  
 150 155.4 123.8 185.8  
 115 87.3 47.0 70.4#

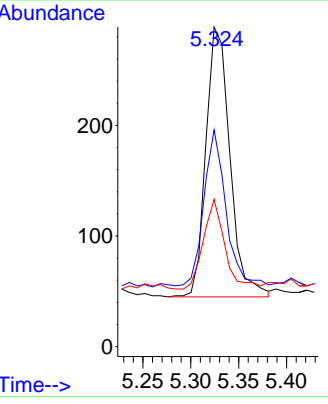
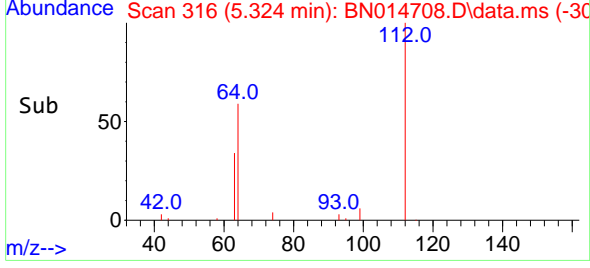
**Manual Integrations**  
**APPROVED**  
 mohammad  
 5/24/2021 2:37:19 PM

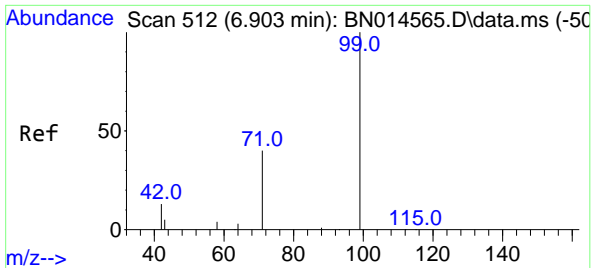


#4  
 2-Fluorophenol  
 Concen: 0.16 ng  
 RT: 5.324 min Scan# 316  
 Delta R.T. -0.000 min  
 Lab File: BN014708.D  
 Acq: 22 May 2021 01:45



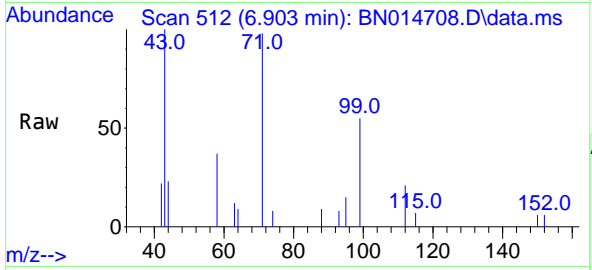
Tgt Ion:112 Resp: 426  
 Ion Ratio Lower Upper  
 112 100  
 64 52.3 41.8 62.6  
 63 29.8 22.0 33.0





#5  
 Phenol-d6  
 Concen: 0.20 ng  
 RT: 6.903 min Scan# 512  
 Delta R.T. 0.008 min  
 Lab File: BN014708.D  
 Acq: 22 May 2021 01:45

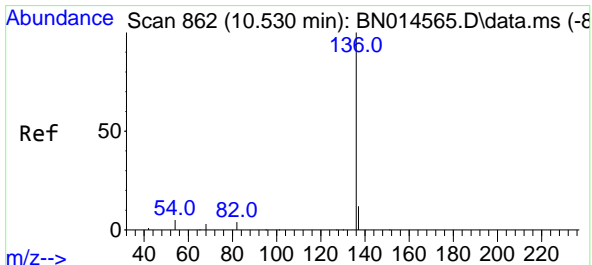
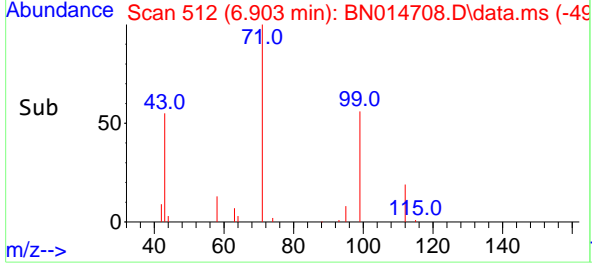
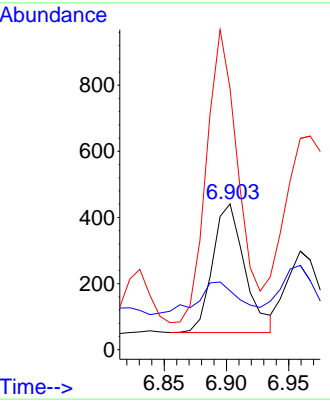
**Instrument :**  
 BNA\_N  
**ClientSampled :**  
 BP-VPB-RW8-GW-888-890



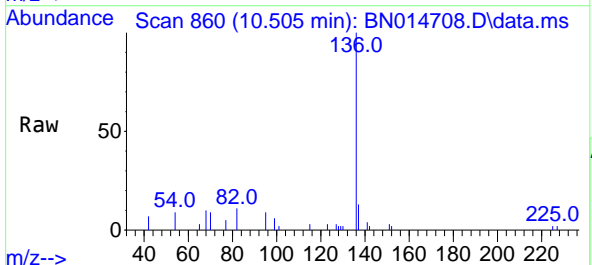
Tgt Ion: 99 Resp: 700

Ion	Ratio	Lower	Upper
99	100		
42	32.6	13.2	19.8#
71	220.6	26.2	39.2#

**Manual Integrations**  
**APPROVED**  
 mohammad  
 5/24/2021 2:37:19 PM

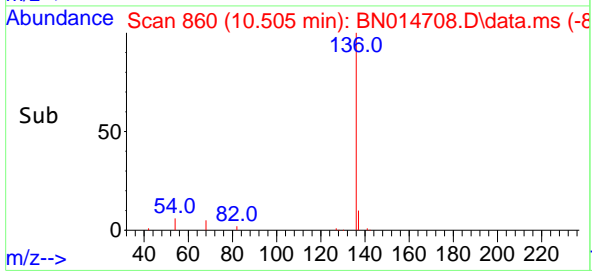
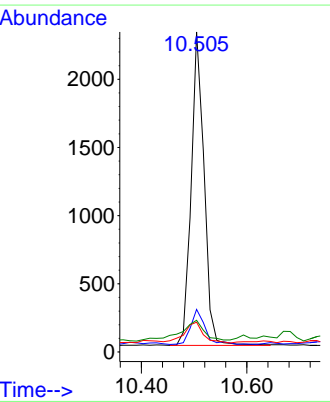


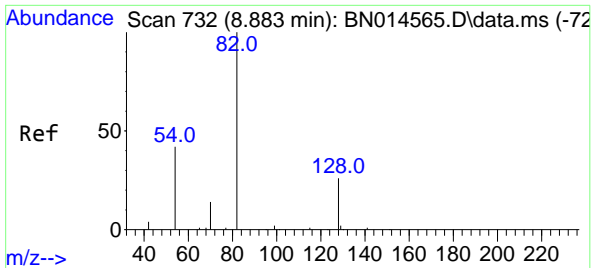
#7  
 Naphthalene-d8  
 Concen: 0.40 ng  
 RT: 10.505 min Scan# 860  
 Delta R.T. -0.000 min  
 Lab File: BN014708.D  
 Acq: 22 May 2021 01:45



Tgt Ion: 136 Resp: 3901

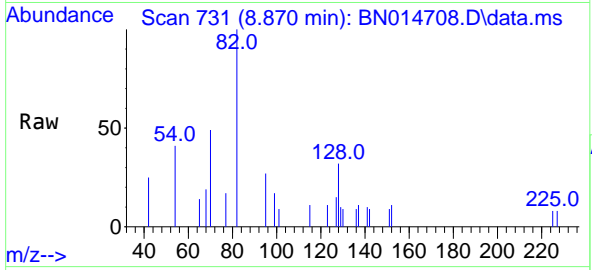
Ion	Ratio	Lower	Upper
136	100		
137	13.3	8.9	13.3
54	9.3	3.8	5.8#
68	9.9	3.8	5.6#





#8  
 Nitrobenzene-d5  
 Concen: 0.21 ng  
 RT: 8.870 min Scan# 731  
 Delta R.T. -0.000 min  
 Lab File: BN014708.D  
 Acq: 22 May 2021 01:45

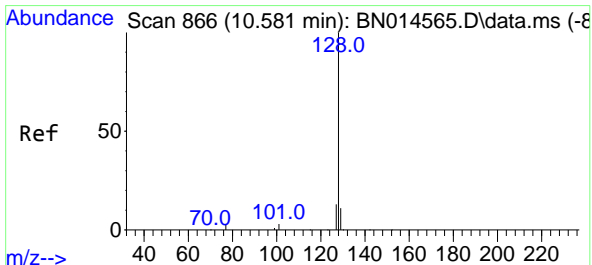
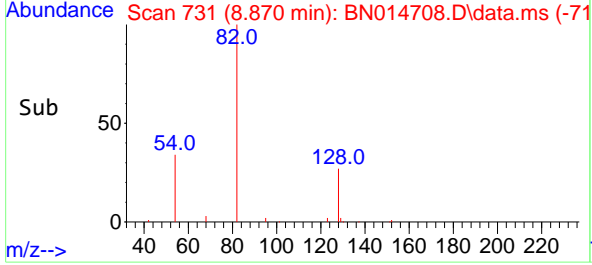
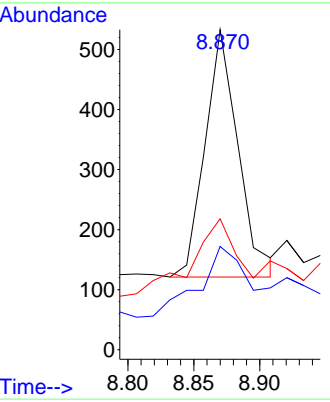
**Instrument :**  
 BNA\_N  
**ClientSampled :**  
 BP-VPB-RW8-GW-888-890



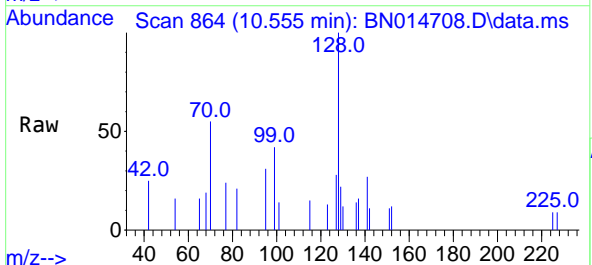
Tgt Ion: 82 Resp: 719

Ion	Ratio	Lower	Upper
82	100		
128	32.3	29.5	44.3
54	40.9	36.9	55.3

**Manual Integrations**  
**APPROVED**  
 mohammad  
 5/24/2021 2:37:19 PM

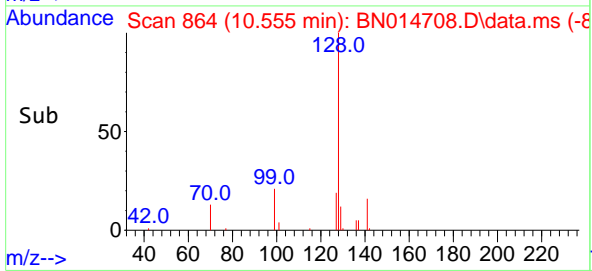
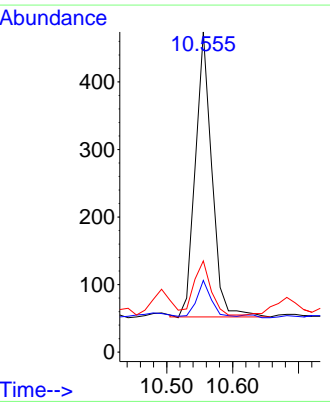


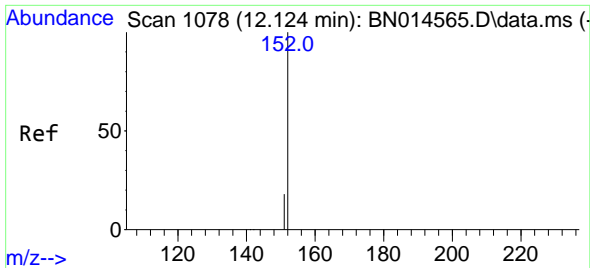
#9  
 Naphthalene  
 Concen: 0.07 ng  
 RT: 10.555 min Scan# 864  
 Delta R.T. -0.000 min  
 Lab File: BN014708.D  
 Acq: 22 May 2021 01:45



Tgt Ion: 128 Resp: 736

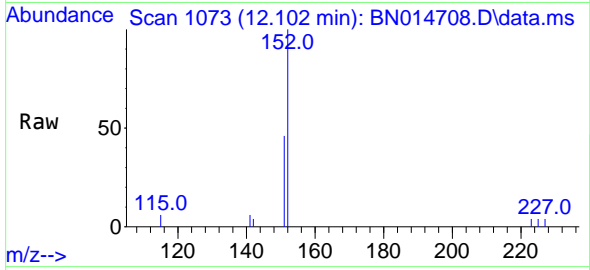
Ion	Ratio	Lower	Upper
128	100		
129	22.4	9.0	13.4#
127	28.5	10.4	15.6#





#11  
 2-Methylnaphthalene-d10  
 Concen: 0.18 ng  
 RT: 12.102 min Scan# 1073  
 Delta R.T. -0.000 min  
 Lab File: BN014708.D  
 Acq: 22 May 2021 01:45

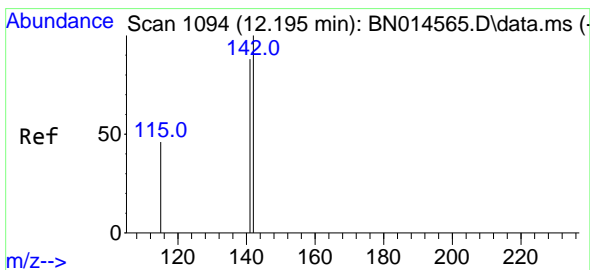
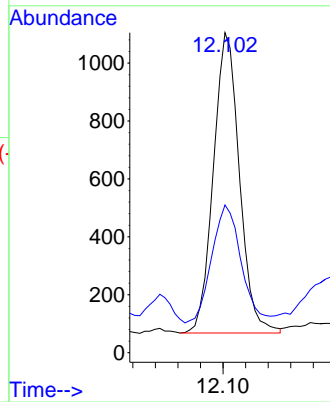
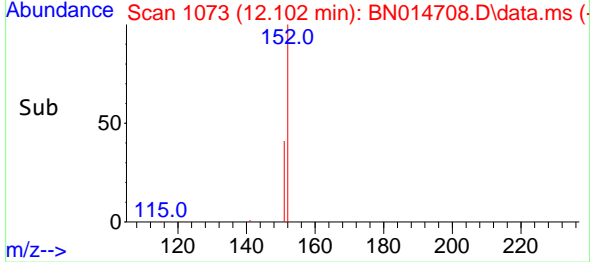
**Instrument :**  
 BNA\_N  
**ClientSampled :**  
 BP-VPB-RW8-GW-888-890



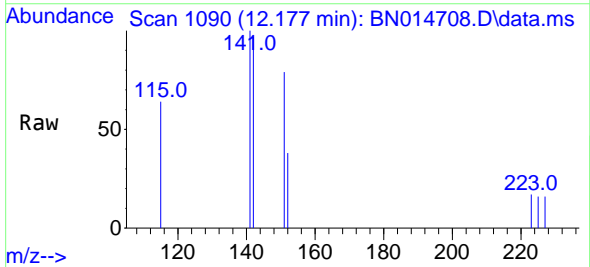
Tgt Ion:152 Resp: 1663  
 Ion Ratio Lower Upper  
 152 100  
 151 44.1 16.2 24.2#

**Manual Integrations**  
**APPROVED**

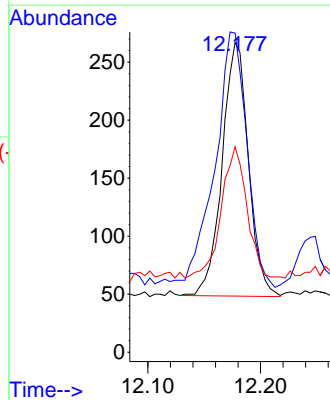
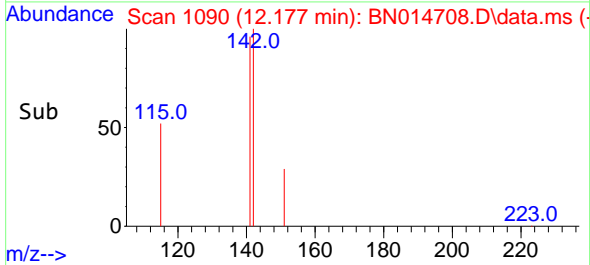
mohammad  
 5/24/2021 2:37:19 PM

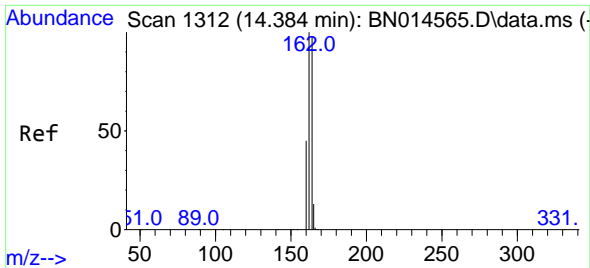


#12  
 2-Methylnaphthalene  
 Concen: 0.05 ng  
 RT: 12.177 min Scan# 1090  
 Delta R.T. -0.000 min  
 Lab File: BN014708.D  
 Acq: 22 May 2021 01:45



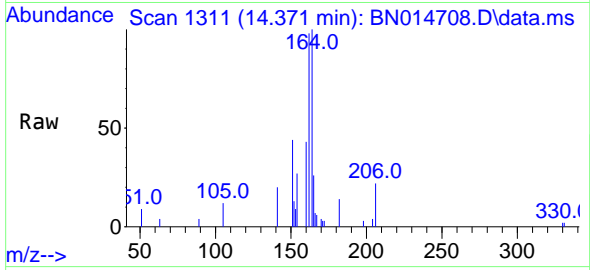
Tgt Ion:142 Resp: 354  
 Ion Ratio Lower Upper  
 142 100  
 141 103.0 70.2 105.4  
 115 66.3 26.7 40.1#





#13  
 Acenaphthene-d10  
 Concen: 0.40 ng  
 RT: 14.371 min Scan# 1311  
 Delta R.T. -0.000 min  
 Lab File: BN014708.D  
 Acq: 22 May 2021 01:45

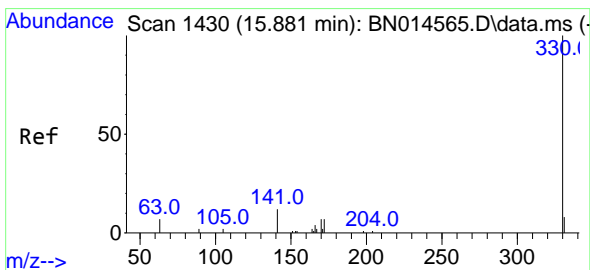
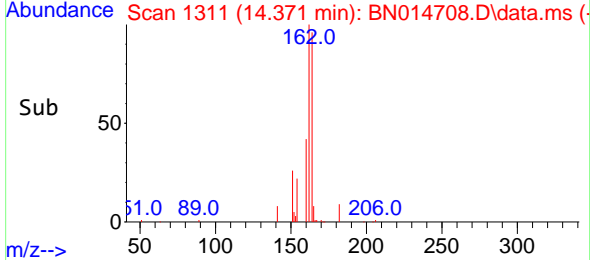
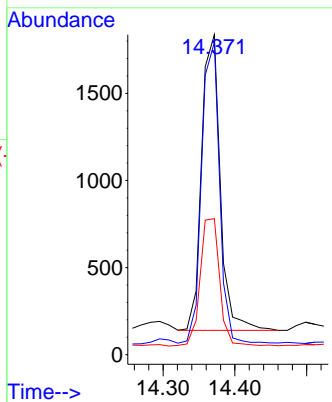
**Instrument :**  
 BNA\_N  
**ClientSampleId :**  
 BP-VPB-RW8-GW-888-890



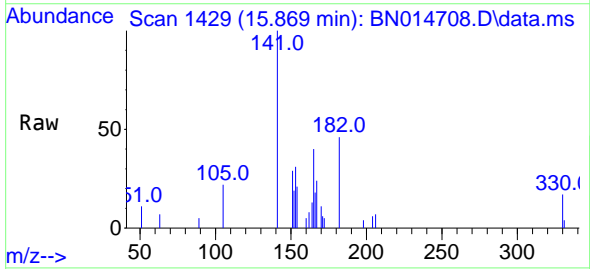
Tgt Ion:164 Resp: 3060

Ion	Ratio	Lower	Upper
164	100		
162	97.6	78.6	118.0
160	42.5	35.8	53.8

**Manual Integrations**  
**APPROVED**  
 mohammad  
 5/24/2021 2:37:19 PM

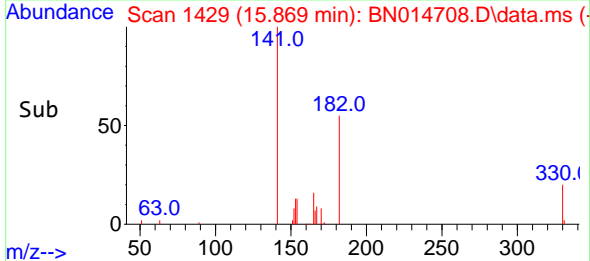
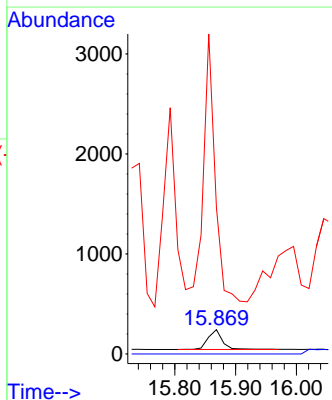


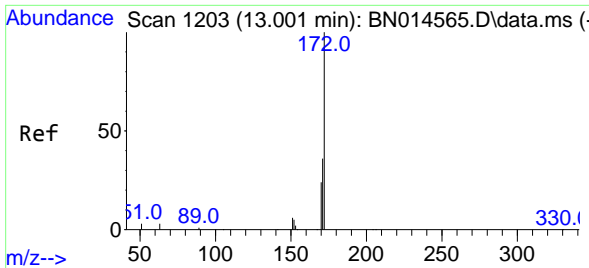
#14  
 2,4,6-Tribromophenol  
 Concen: 0.23 ng  
 RT: 15.869 min Scan# 1429  
 Delta R.T. -0.000 min  
 Lab File: BN014708.D  
 Acq: 22 May 2021 01:45



Tgt Ion:330 Resp: 324

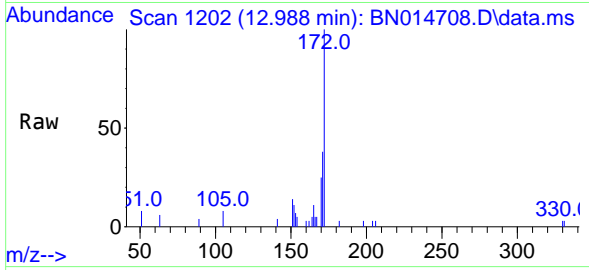
Ion	Ratio	Lower	Upper
330	100		
332	0.0	0.0	0.0
141	1089.8	27.0	40.4#





#15  
 2-Fluorobiphenyl  
 Concen: 0.23 ng  
 RT: 12.988 min Scan# 1202  
 Delta R.T. -0.000 min  
 Lab File: BN014708.D  
 Acq: 22 May 2021 01:45

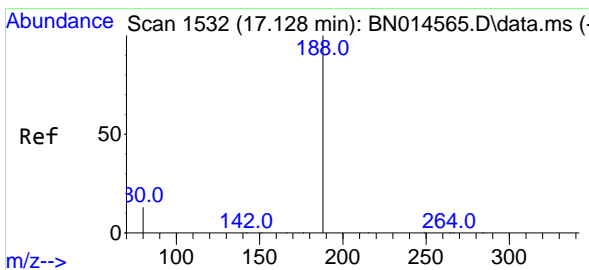
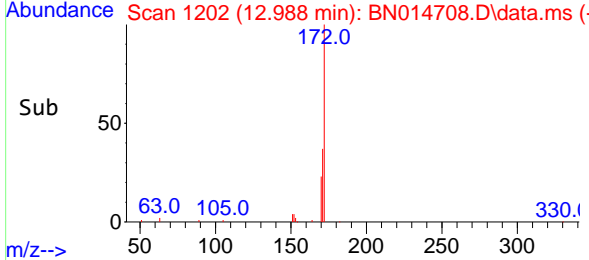
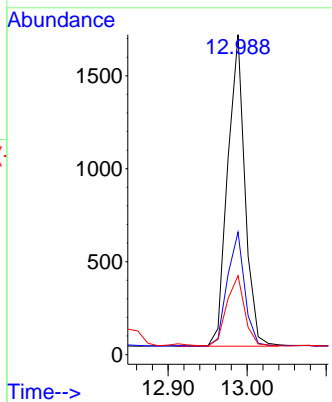
**Instrument :**  
 BNA\_N  
**ClientSampleId :**  
 BP-VPB-RW8-GW-888-890



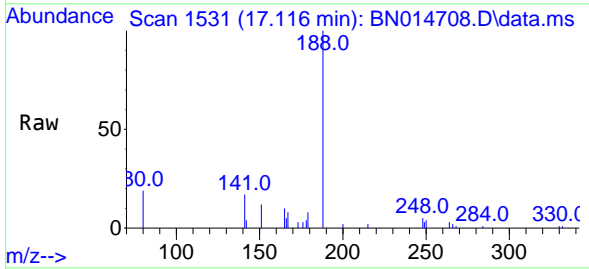
Tgt Ion:172 Resp: 2550

Ion	Ratio	Lower	Upper
172	100		
171	38.3	27.1	40.7
170	24.7	18.3	27.5

**Manual Integrations**  
**APPROVED**  
 mohammad  
 5/24/2021 2:37:19 PM

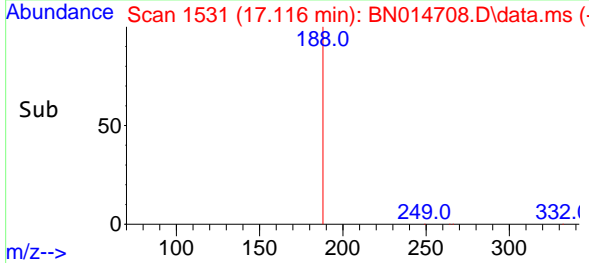
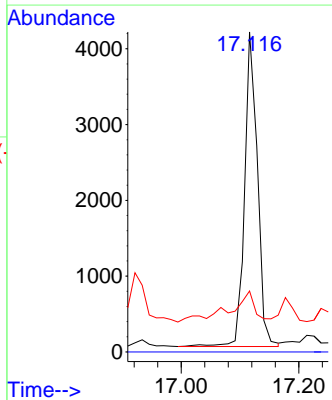


#19  
 Phenanthrene-d10  
 Concen: 0.40 ng  
 RT: 17.116 min Scan# 1531  
 Delta R.T. -0.000 min  
 Lab File: BN014708.D  
 Acq: 22 May 2021 01:45

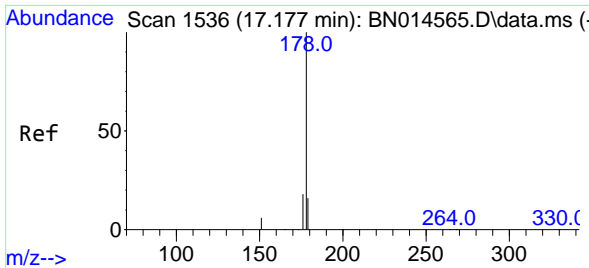


Tgt Ion:188 Resp: 6280

Ion	Ratio	Lower	Upper
188	100		
94	0.0	0.0	0.0
80	19.0	5.2	7.8#

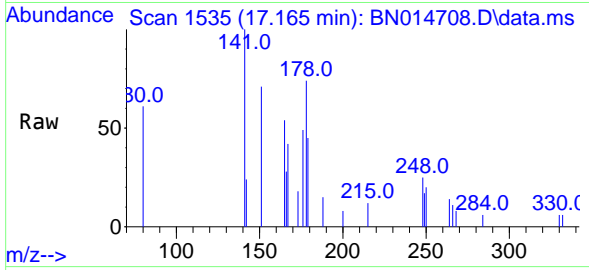






#25  
 Phenanthrene  
 Concen: 0.05 ng  
 RT: 17.165 min Scan# 1535  
 Delta R.T. -0.000 min  
 Lab File: BN014708.D  
 Acq: 22 May 2021 01:45

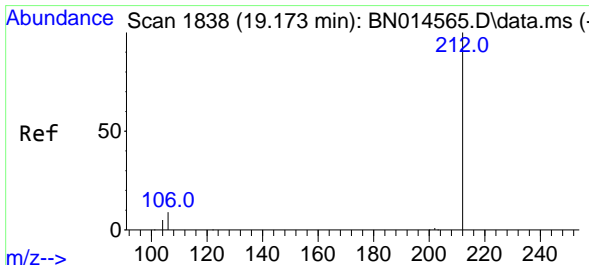
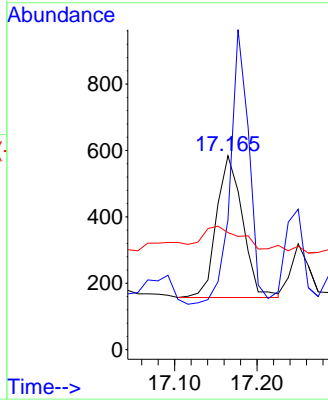
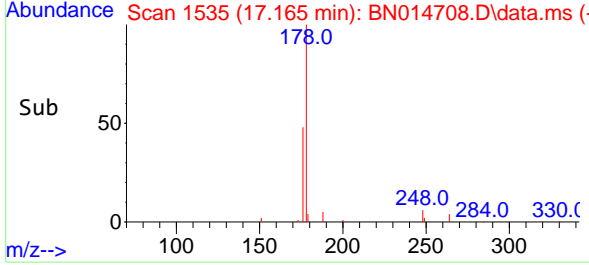
**Instrument :**  
 BNA\_N  
**ClientSampled :**  
 BP-VPB-RW8-GW-888-890



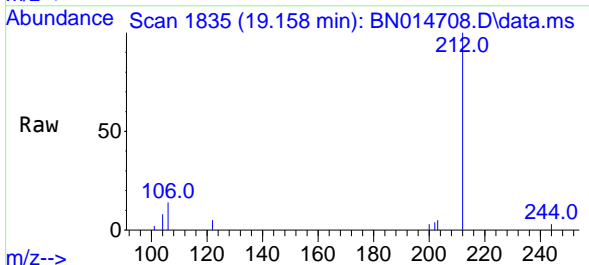
Tgt Ion:178 Resp: 939

Ion	Ratio	Lower	Upper
178	100		
176	0.0	15.2	22.8#
179	21.2	12.4	18.6#

**Manual Integrations**  
**APPROVED**  
 mohammad  
 5/24/2021 2:37:19 PM

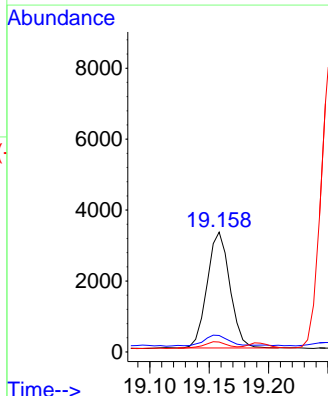
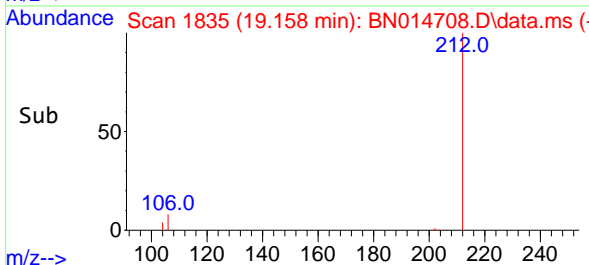


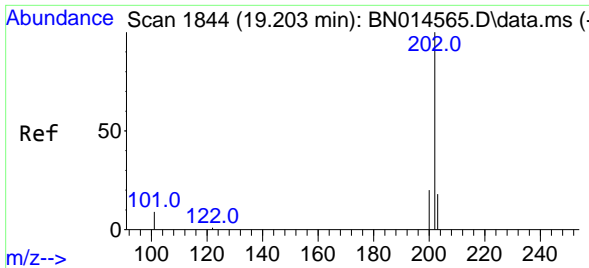
#27  
 Fluoranthene-d10  
 Concen: 0.15 ng  
 RT: 19.158 min Scan# 1835  
 Delta R.T. -0.000 min  
 Lab File: BN014708.D  
 Acq: 22 May 2021 01:45



Tgt Ion:212 Resp: 4327

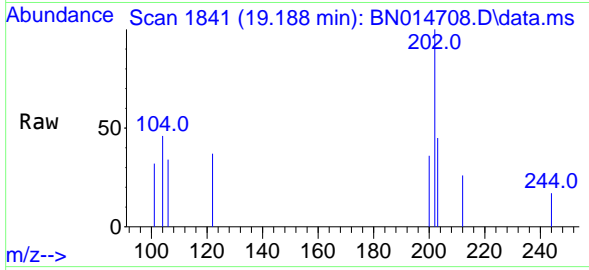
Ion	Ratio	Lower	Upper
212	100		
106	11.9	10.1	15.1
104	0.0	5.4	8.2#





#28  
Fluoranthene  
Concen: 0.03 ng  
RT: 19.188 min Scan# 1841  
Delta R.T. -0.000 min  
Lab File: BN014708.D  
Acq: 22 May 2021 01:45

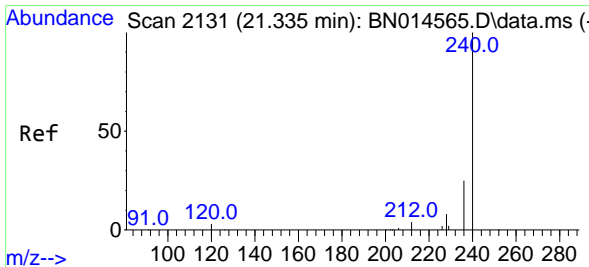
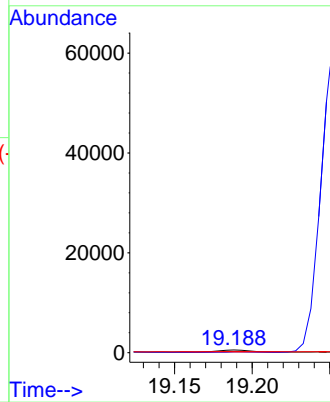
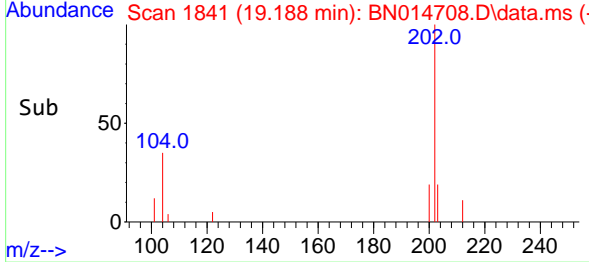
Instrument :  
BNA\_N  
ClientSampleId :  
BP-VPB-RW8-GW-888-890



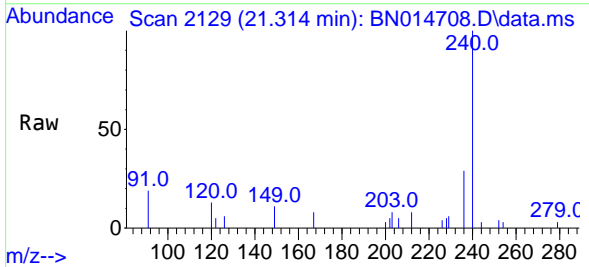
Tgt Ion:202 Resp: 598  
Ion Ratio Lower Upper  
202 100  
101 0.0 8.4 12.6#  
203 27.9 13.5 20.3#

Manual Integrations  
APPROVED

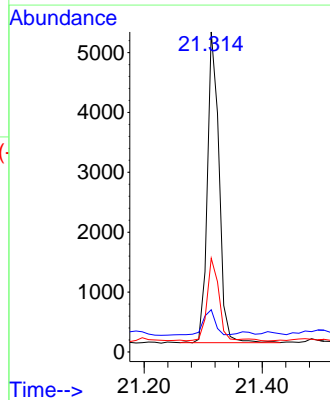
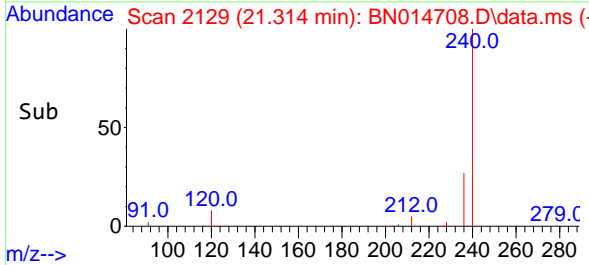
mohammad  
5/24/2021 2:37:19 PM

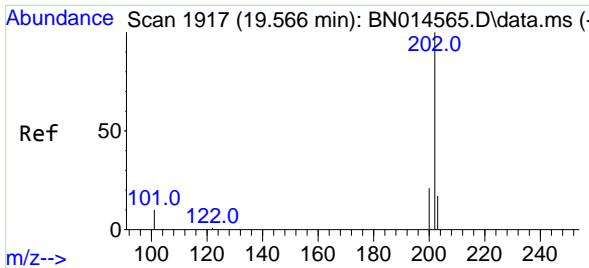


#29  
Chrysene-d12  
Concen: 0.40 ng  
RT: 21.314 min Scan# 2129  
Delta R.T. -0.000 min  
Lab File: BN014708.D  
Acq: 22 May 2021 01:45



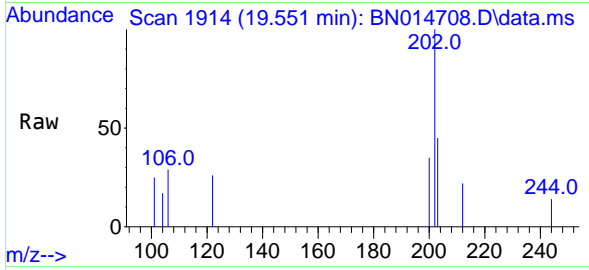
Tgt Ion:240 Resp: 7118  
Ion Ratio Lower Upper  
240 100  
120 13.2 5.8 8.8#  
236 29.3 20.6 30.8





#30  
 Pyrene  
 Concen: 0.04 ng  
 RT: 19.551 min Scan# 1914  
 Delta R.T. -0.000 min  
 Lab File: BN014708.D  
 Acq: 22 May 2021 01:45

**Instrument :**  
 BNA\_N  
**ClientSampleId :**  
 BP-VPB-RW8-GW-888-890

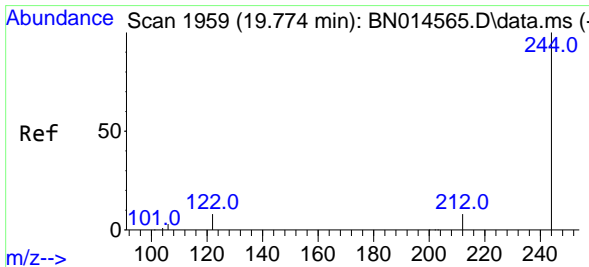
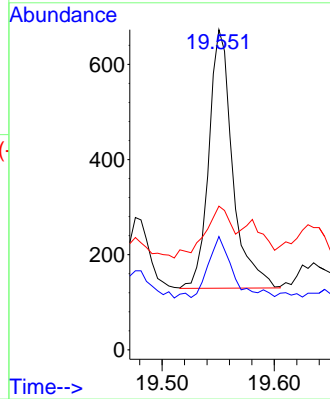
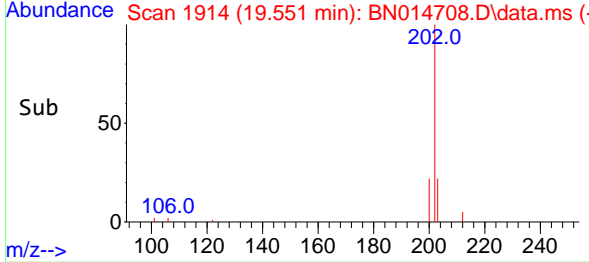


Tgt Ion:202 Resp: 800

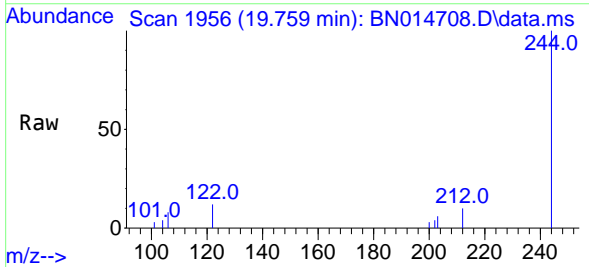
Ion	Ratio	Lower	Upper
202	100		
200	23.5	16.3	24.5
203	22.3	14.0	21.0#

**Manual Integrations**  
**APPROVED**

mohammad  
 5/24/2021 2:37:19 PM

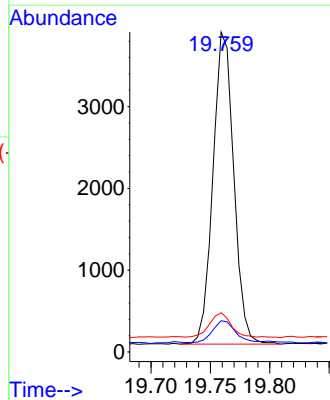
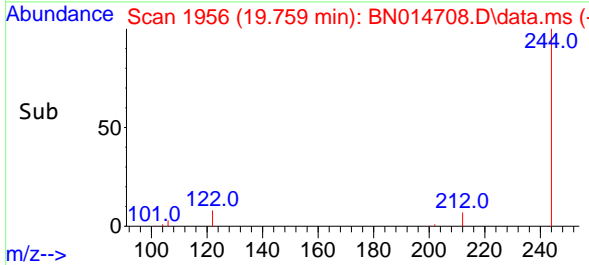


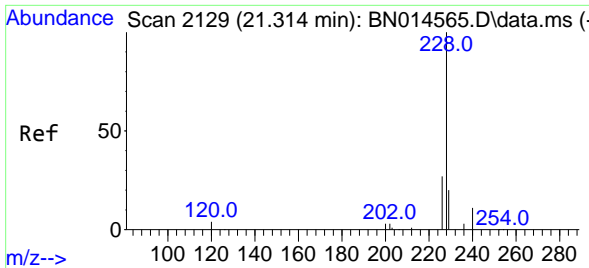
#31  
 Terphenyl-d14  
 Concen: 0.28 ng  
 RT: 19.759 min Scan# 1956  
 Delta R.T. -0.000 min  
 Lab File: BN014708.D  
 Acq: 22 May 2021 01:45



Tgt Ion:244 Resp: 4648

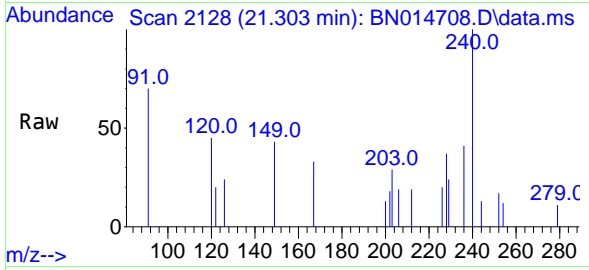
Ion	Ratio	Lower	Upper
244	100		
212	9.7	6.0	9.0#
122	12.2	9.3	13.9





#32  
 Benzo(a)anthracene  
 Concen: 0.03 ng  
 RT: 21.303 min Scan# 2128  
 Delta R.T. -0.000 min  
 Lab File: BN014708.D  
 Acq: 22 May 2021 01:45

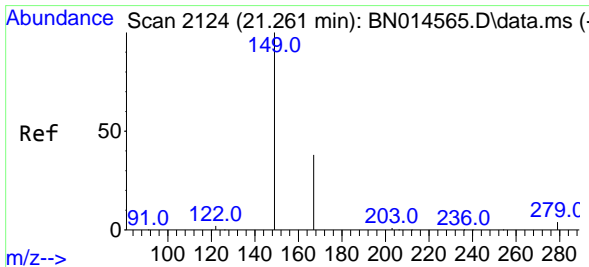
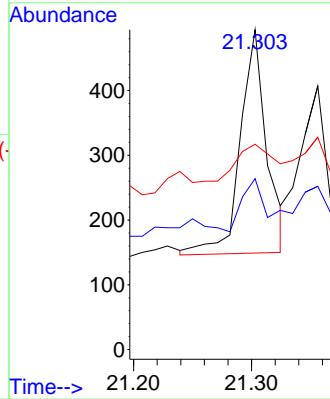
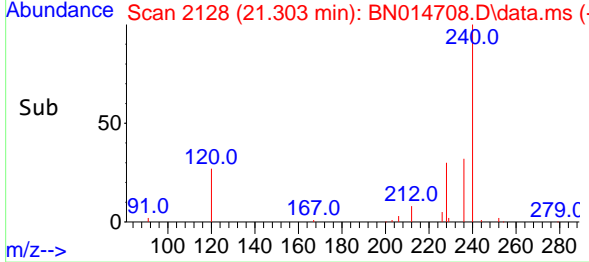
Instrument :  
 BNA\_N  
 ClientSampleID :  
 BP-VPB-RW8-GW-888-890



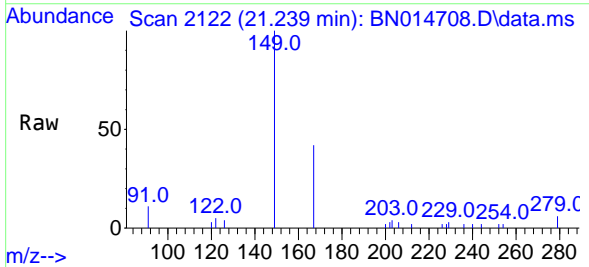
Tgt Ion:228 Resp: 537  
 Ion Ratio Lower Upper  
 228 100  
 226 53.4 21.7 32.5#  
 229 64.2 15.7 23.5#

Manual Integrations  
 APPROVED

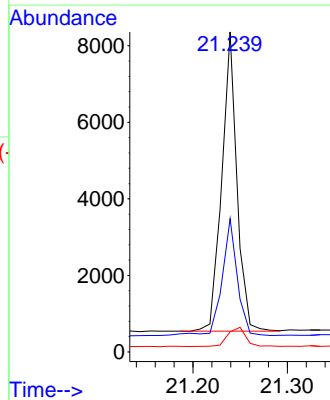
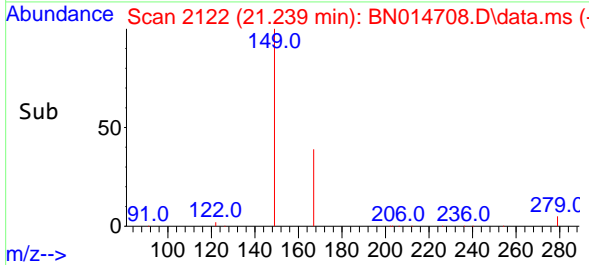
mohammad  
 5/24/2021 2:37:19 PM

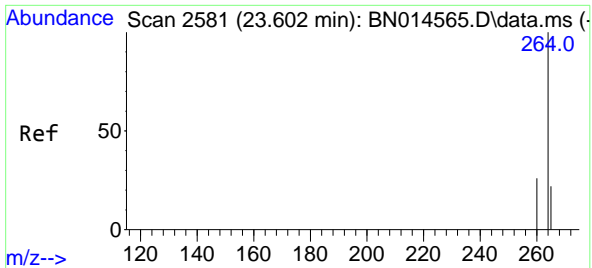


#34  
 Bis(2-ethylhexyl)phthalate  
 Concen: 1.52 ng  
 RT: 21.239 min Scan# 2122  
 Delta R.T. -0.000 min  
 Lab File: BN014708.D  
 Acq: 22 May 2021 01:45



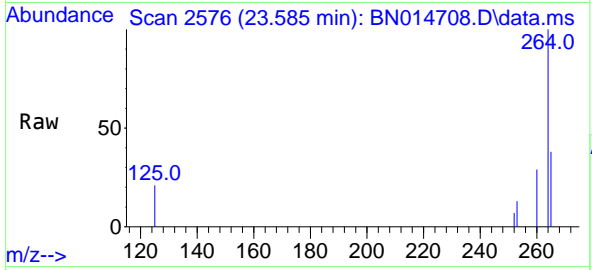
Tgt Ion:149 Resp: 8714  
 Ion Ratio Lower Upper  
 149 100  
 167 39.3 20.5 30.7#  
 279 7.7 2.9 4.3#





#35  
 Perylene-d12  
 Concen: 0.40 ng  
 RT: 23.585 min Scan# 2576  
 Delta R.T. -0.000 min  
 Lab File: BN014708.D  
 Acq: 22 May 2021 01:45

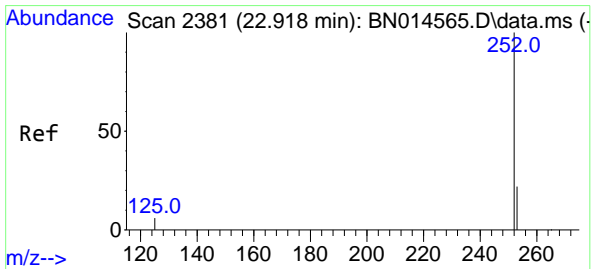
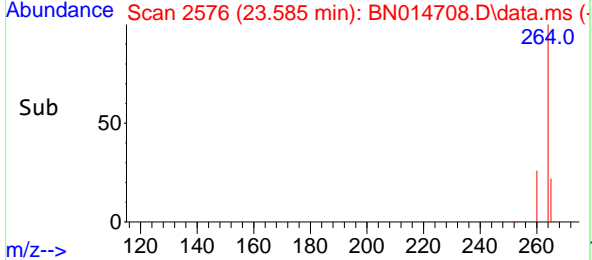
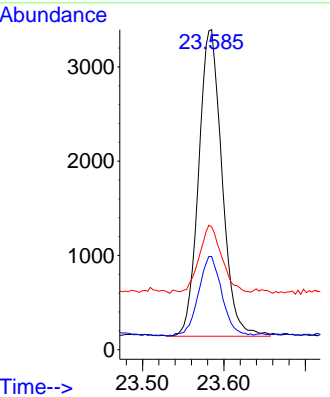
**Instrument :**  
 BNA\_N  
**ClientSampled :**  
 BP-VPB-RW8-GW-888-890



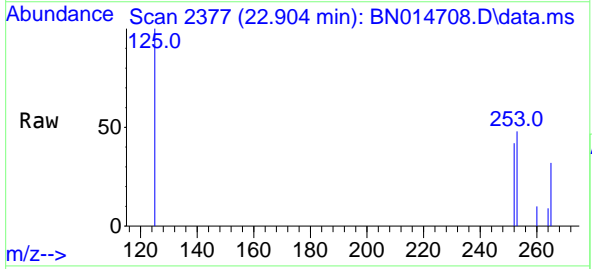
Tgt Ion: 264 Resp: 6474

Ion	Ratio	Lower	Upper
264	100		
260	29.1	19.5	29.3
265	38.4	35.4	53.0

**Manual Integrations**  
**APPROVED**  
 mohammad  
 5/24/2021 2:37:19 PM

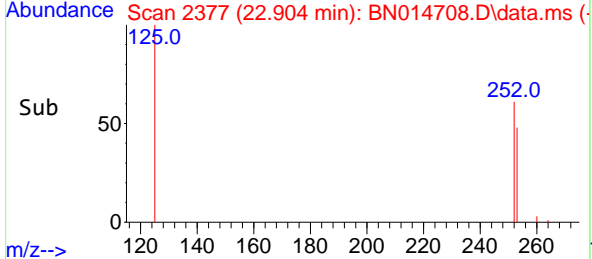
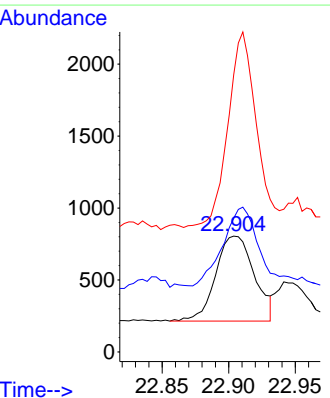


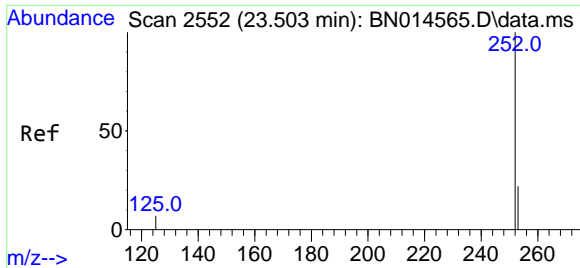
#37  
 Benzo(b)fluoranthene  
 Concen: 0.05 ng  
 RT: 22.904 min Scan# 2377  
 Delta R.T. 0.003 min  
 Lab File: BN014708.D  
 Acq: 22 May 2021 01:45



Tgt Ion: 252 Resp: 1197

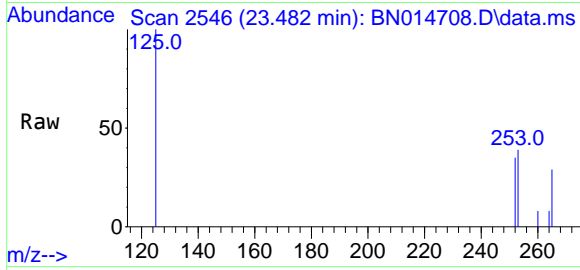
Ion	Ratio	Lower	Upper
252	100		
253	115.4	19.6	29.4#
125	239.4	10.3	15.5#





#39  
 Benzo(a)pyrene  
 Concen: 0.06 ng m  
 RT: 23.482 min Scan# 2546  
 Delta R.T. -0.000 min  
 Lab File: BN014708.D  
 Acq: 22 May 2021 01:45

**Instrument :**  
 BNA\_N  
**ClientSampled :**  
 BP-VPB-RW8-GW-888-890



Tgt Ion: 252 Resp: 1028

Ion	Ratio	Lower	Upper
252	100		
253	113.7	21.8	32.6#
125	288.2	14.9	22.3#

**Manual Integrations**  
**APPROVED**

mohammad  
 5/24/2021 2:37:19 PM

