

Data Path : Z:\svoasrv\HPCHEM1\BNA_N\Data\BN052125\
 Data File : BN037080.D
 Acq On : 20 May 2025 18:47
 Operator : RC/JU
 Sample : PB168032BS
 Misc :
 ALS Vial : 8 Sample Multiplier: 1

Instrument :
 BNA_N
 ClientSampleId :

Quant Time: May 21 01:38:49 2025
 Quant Method : Z:\svoasrv\HPCHEM1\BNA_N\Methods\8270-SIM-BN051425.M
 Quant Title : ASP BNA STANDARDS FOR 5 POINT CALIBRATION
 QLast Update : Wed May 14 11:26:32 2025
 Response via : Initial Calibration

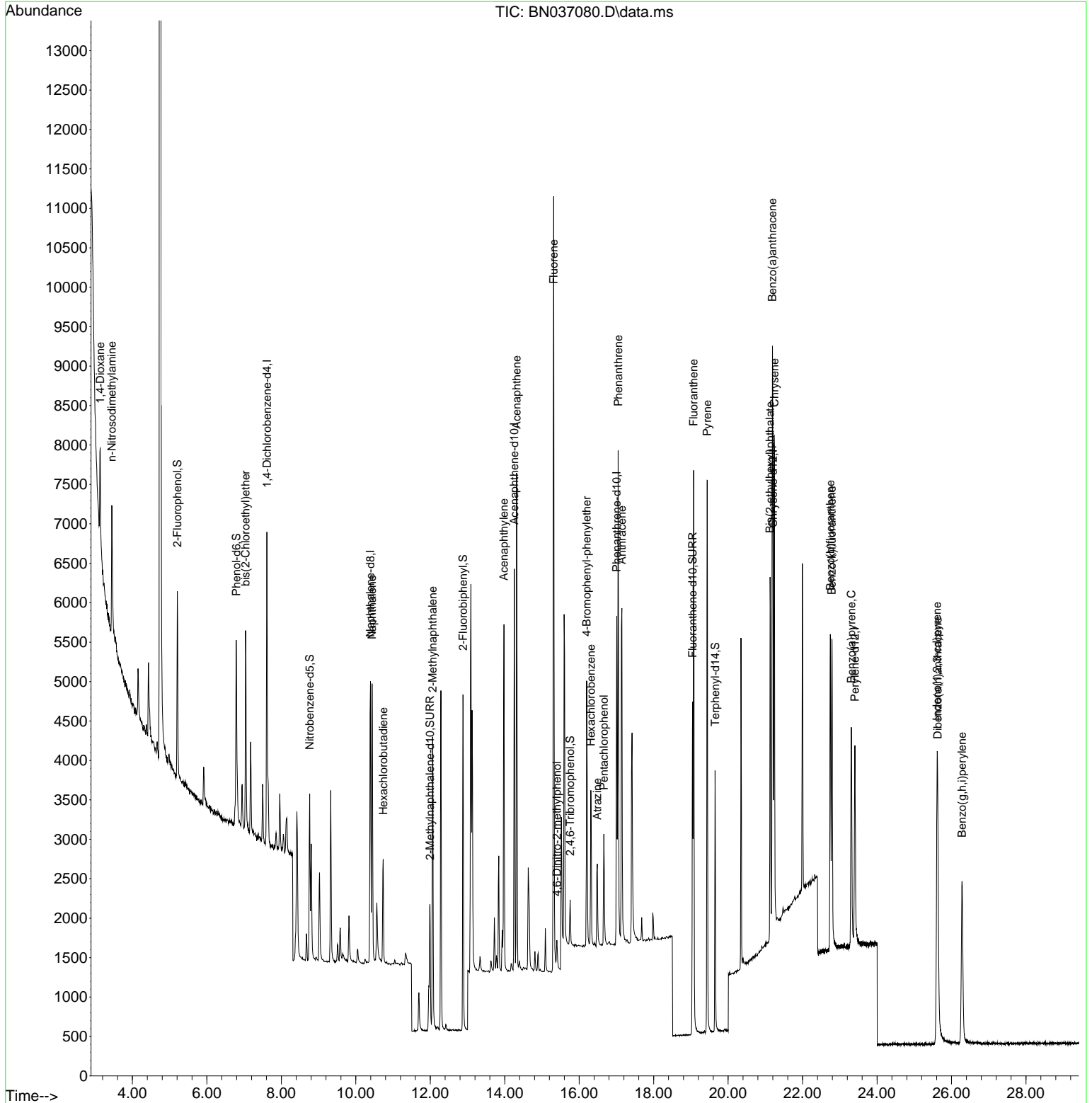
Compound	R.T.	QIon	Response	Conc	Units	Dev(Min)	
Internal Standards							
1) 1,4-Dichlorobenzene-d4	7.611	152	1842	0.400	ng	0.00	
7) Naphthalene-d8	10.394	136	4702	0.400	ng	-0.01	
13) Acenaphthene-d10	14.256	164	2635	0.400	ng	-0.01	
19) Phenanthrene-d10	17.009	188	5352	0.400	ng	# 0.00	
29) Chrysene-d12	21.206	240	4047	0.400	ng	# 0.00	
35) Perylene-d12	23.404	264	3455	0.400	ng	-0.01	
System Monitoring Compounds							
4) 2-Fluorophenol	5.206	112	1594	0.330	ng	0.00	
5) Phenol-d6	6.788	99	1941	0.321	ng	0.00	
8) Nitrobenzene-d5	8.760	82	1652	0.323	ng	-0.01	
11) 2-Methylnaphthalene-d10	11.991	152	3219	0.486	ng	0.00	
14) 2,4,6-Tribromophenol	15.755	330	317	0.274	ng	-0.01	
15) 2-Fluorobiphenyl	12.878	172	4016	0.333	ng	-0.01	
27) Fluoranthene-d10	19.045	212	4775	0.325	ng	0.00	
31) Terphenyl-d14	19.649	244	3340	0.386	ng	0.00	
Target Compounds							
2) 1,4-Dioxane	3.133	88	695	0.307	ng	# 27	Qvalue
3) n-Nitrosodimethylamine	3.444	42	1538	0.317	ng	# 95	
6) bis(2-Chloroethyl)ether	7.040	93	1788	0.322	ng	98	
9) Naphthalene	10.436	128	4588	0.330	ng	99	
10) Hexachlorobutadiene	10.735	225	1049	0.360	ng	# 98	
12) 2-Methylnaphthalene	12.062	142	2706	0.303	ng	98	
16) Acenaphthylene	13.978	152	4675	0.365	ng	100	
17) Acenaphthene	14.320	154	2783	0.332	ng	99	
18) Fluorene	15.314	166	3819	0.347	ng	99	
20) 4,6-Dinitro-2-methylph...	15.400	198	316	0.314	ng	# 92	
21) 4-Bromophenyl-phenylether	16.202	248	1177	0.348	ng	# 79	
22) Hexachlorobenzene	16.313	284	1258	0.348	ng	95	
23) Atrazine	16.487	200	1058	0.359	ng	97	
24) Pentachlorophenol	16.661	266	697	0.349	ng	98	
25) Phenanthrene	17.046	178	6039	0.345	ng	100	
26) Anthracene	17.145	178	5549	0.349	ng	100	
28) Fluoranthene	19.073	202	6623	0.317	ng	99	
30) Pyrene	19.440	202	6692	0.387	ng	100	
32) Benzo(a)anthracene	21.189	228	5361	0.352	ng	99	
33) Chrysene	21.242	228	5814	0.361	ng	97	
34) Bis(2-ethylhexyl)phtha...	21.126	149	3282	0.350	ng	99	
36) Indeno(1,2,3-cd)pyrene	25.611	276	4926	0.349	ng	98	
37) Benzo(b)fluoranthene	22.746	252	4963	0.346	ng	99	
38) Benzo(k)fluoranthene	22.787	252	5215	0.368	ng	97	
39) Benzo(a)pyrene	23.307	252	4345	0.357	ng	# 92	
40) Dibenzo(a,h)anthracene	25.628	278	3843	0.350	ng	99	
41) Benzo(g,h,i)perylene	26.280	276	4175	0.350	ng	98	

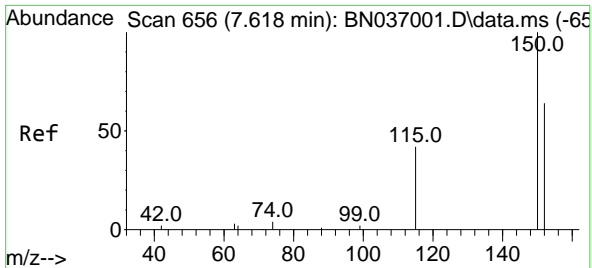
(#) = qualifier out of range (m) = manual integration (+) = signals summed

Data Path : Z:\svoasrv\HPCHEM1\BNA_N\Data\BN052125\
 Data File : BN037080.D
 Acq On : 20 May 2025 18:47
 Operator : RC/JU
 Sample : PB168032BS
 Misc :
 ALS Vial : 8 Sample Multiplier: 1

Instrument :
 BNA_N
 ClientSampleId :

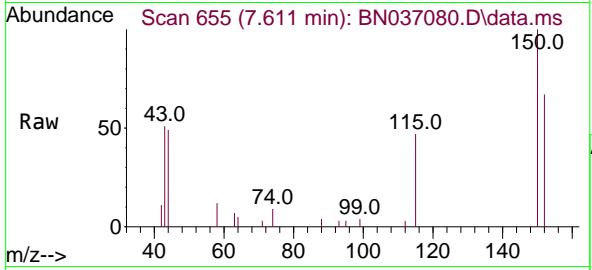
Quant Time: May 21 01:38:49 2025
 Quant Method : Z:\svoasrv\HPCHEM1\BNA_N\Methods\8270-SIM-BN051425.M
 Quant Title : ASP BNA STANDARDS FOR 5 POINT CALIBRATION
 QLast Update : Wed May 14 11:26:32 2025
 Response via : Initial Calibration



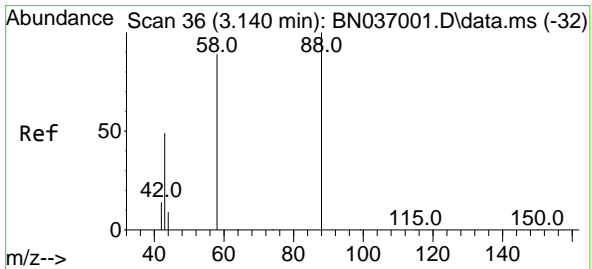
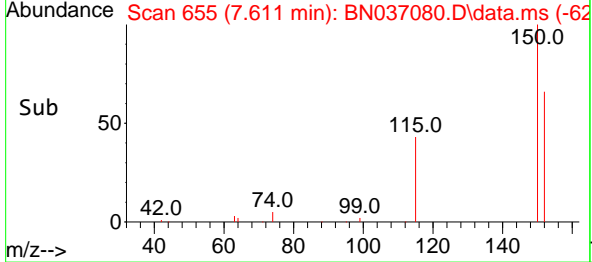
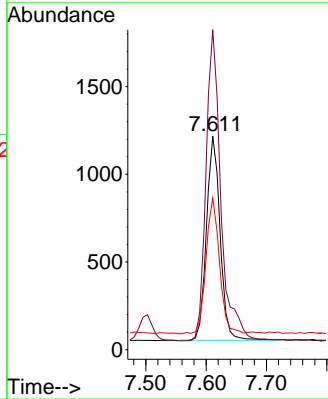


#1
 1,4-Dichlorobenzene-d4
 Concen: 0.400 ng
 RT: 7.611 min Scan# 61
 Delta R.T. -0.007 min
 Lab File: BN037080.D
 Acq: 20 May 2025 18:47

Instrument :
 BNA_N
 ClientSampleId :

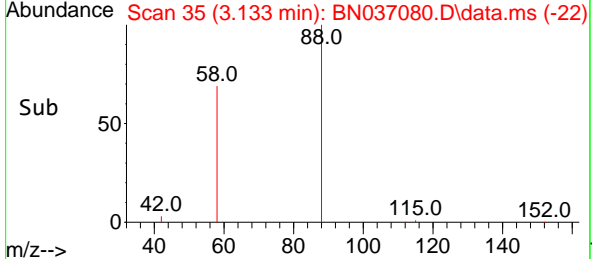
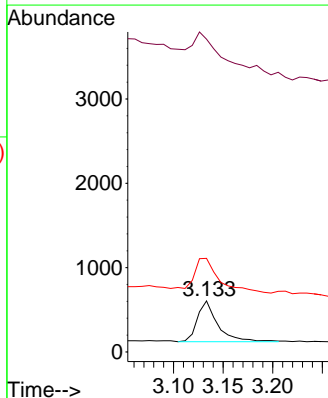
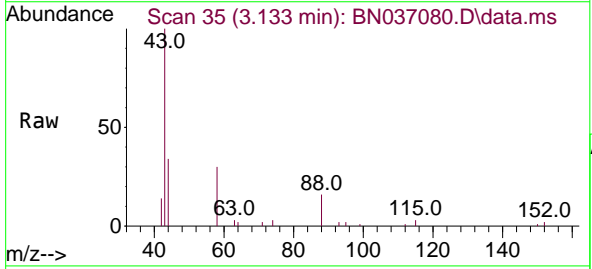


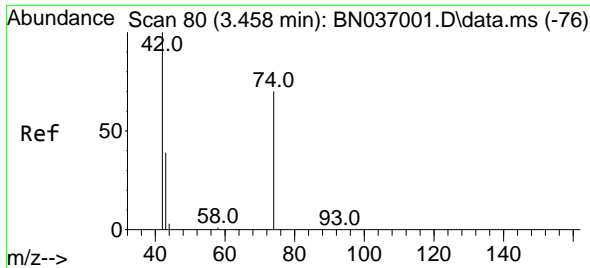
Tgt Ion:152 Resp: 1842
 Ion Ratio Lower Upper
 152 100
 150 150.0 123.9 185.9
 115 71.0 55.8 83.8



#2
 1,4-Dioxane
 Concen: 0.307 ng
 RT: 3.133 min Scan# 35
 Delta R.T. -0.007 min
 Lab File: BN037080.D
 Acq: 20 May 2025 18:47

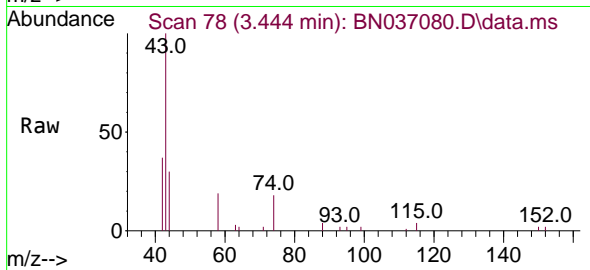
Tgt Ion: 88 Resp: 695
 Ion Ratio Lower Upper
 88 100
 43 152.9 37.4 56.0#
 58 109.8 68.8 103.2#



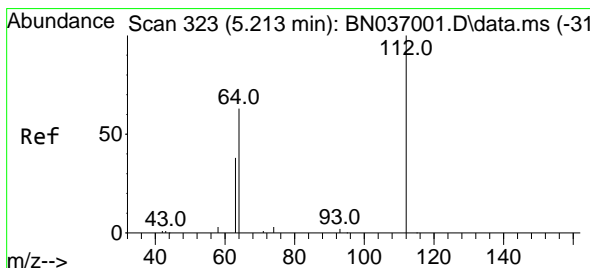
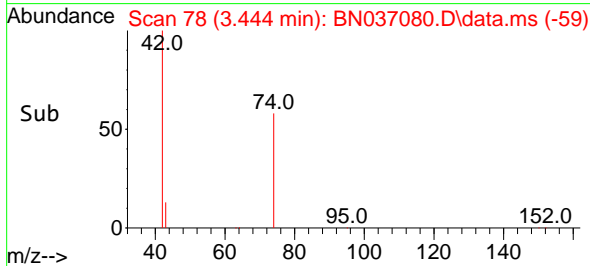
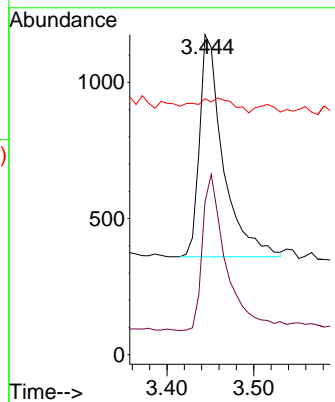


#3
 n-Nitrosodimethylamine
 Concen: 0.317 ng
 RT: 3.444 min Scan# 71
 Delta R.T. -0.014 min
 Lab File: BN037080.D
 Acq: 20 May 2025 18:47

Instrument :
 BNA_N
 ClientSampleId :

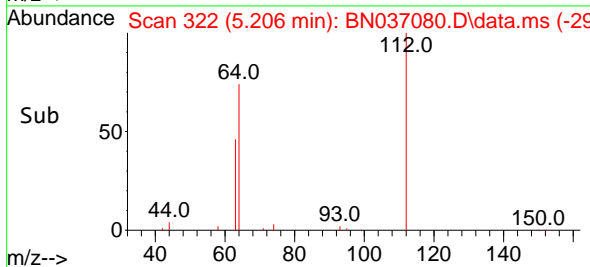
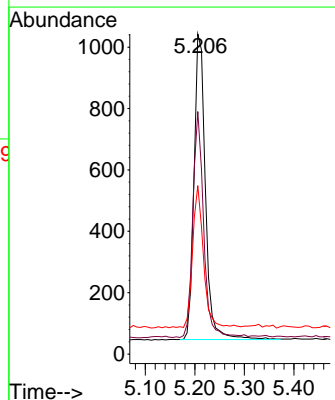
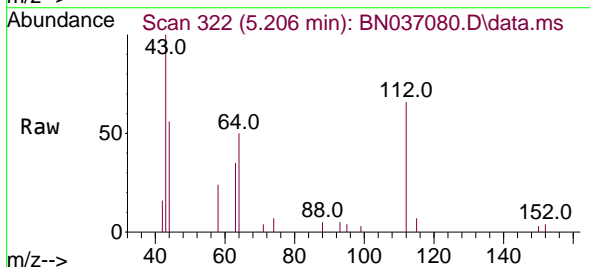


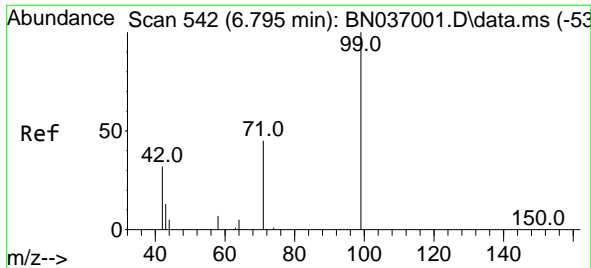
Tgt Ion: 42 Resp: 1538
 Ion Ratio Lower Upper
 42 100
 74 72.7 59.8 89.6
 44 7.8 11.9 17.9#



#4
 2-Fluorophenol
 Concen: 0.330 ng
 RT: 5.206 min Scan# 322
 Delta R.T. -0.007 min
 Lab File: BN037080.D
 Acq: 20 May 2025 18:47

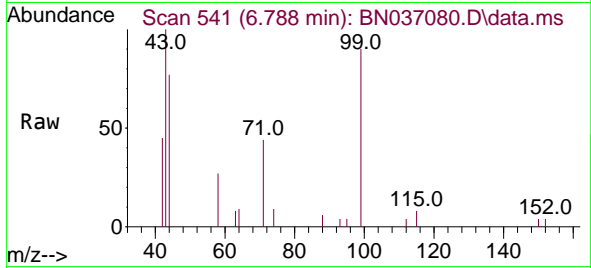
Tgt Ion: 112 Resp: 1594
 Ion Ratio Lower Upper
 112 100
 64 70.5 55.7 83.5
 63 44.2 34.6 51.8



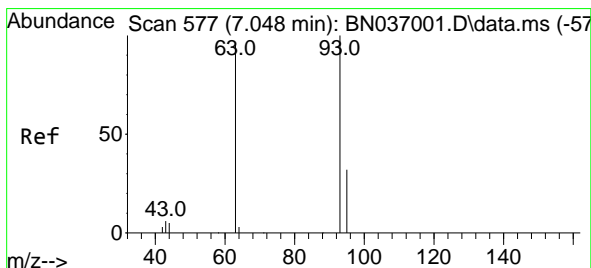
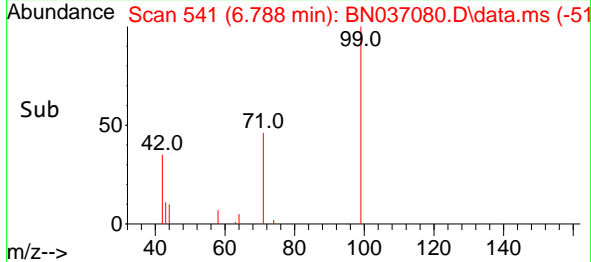
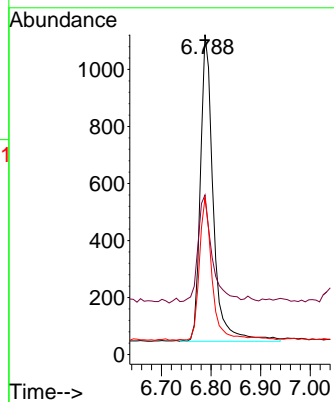


#5
 Phenol-d6
 Concen: 0.321 ng
 RT: 6.788 min Scan# 541
 Delta R.T. -0.007 min
 Lab File: BN037080.D
 Acq: 20 May 2025 18:47

Instrument :
 BNA_N
 ClientSampleId :

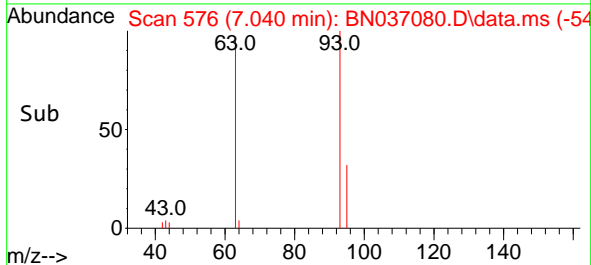
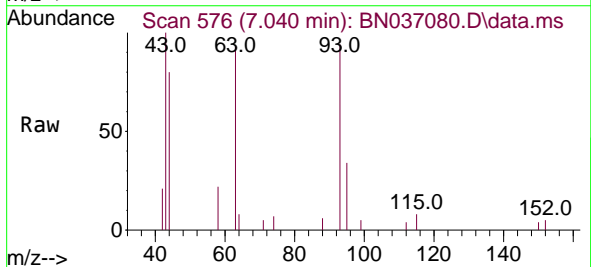
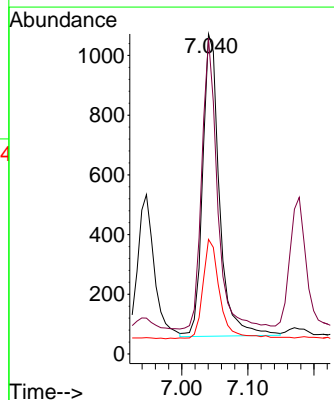


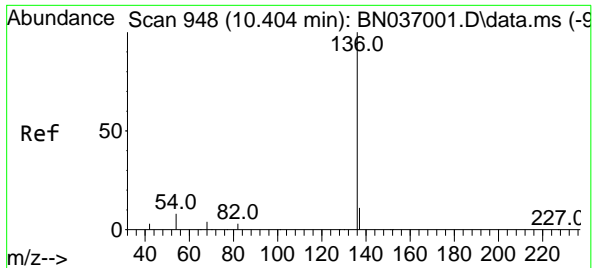
Tgt Ion: 99 Resp: 1941
 Ion Ratio Lower Upper
 99 100
 42 37.5 29.3 43.9
 71 45.0 35.7 53.5



#6
 bis(2-Chloroethyl)ether
 Concen: 0.322 ng
 RT: 7.040 min Scan# 576
 Delta R.T. -0.007 min
 Lab File: BN037080.D
 Acq: 20 May 2025 18:47

Tgt Ion: 93 Resp: 1788
 Ion Ratio Lower Upper
 93 100
 63 89.7 70.1 105.1
 95 33.8 26.2 39.2



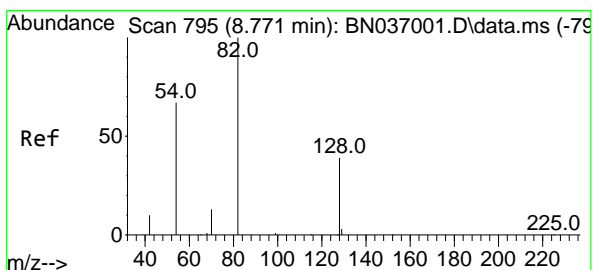
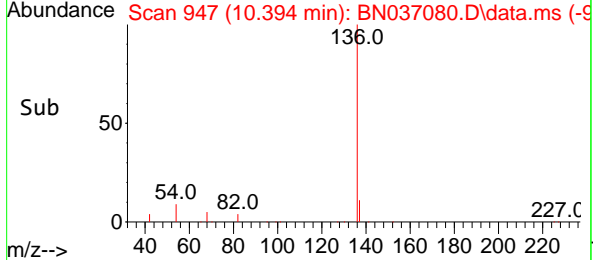
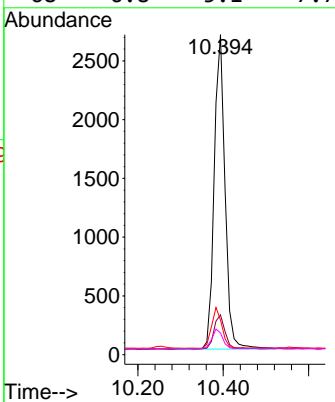
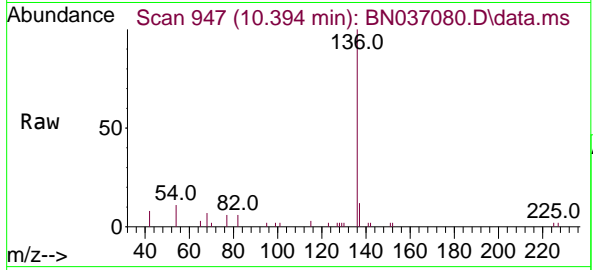


#7
 Naphthalene-d8
 Concen: 0.400 ng
 RT: 10.394 min Scan# 94
 Delta R.T. -0.011 min
 Lab File: BN037080.D
 Acq: 20 May 2025 18:47

Instrument :
 BNA_N
 ClientSampleId :

Tgt Ion:136 Resp: 4702

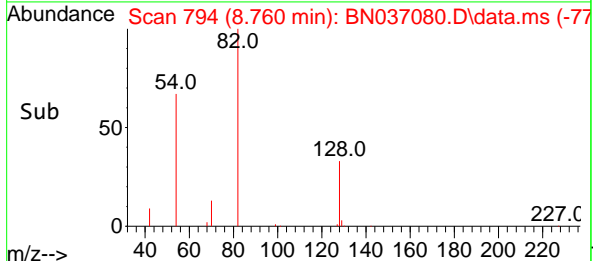
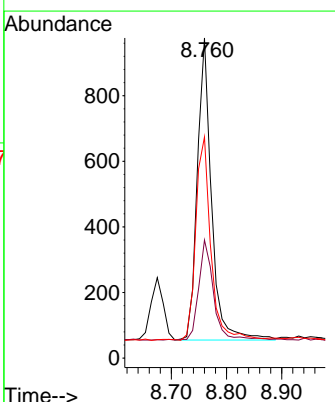
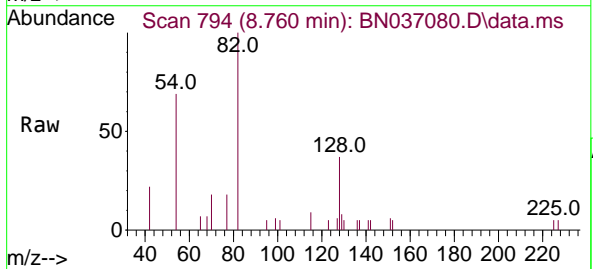
Ion	Ratio	Lower	Upper
136	100		
137	12.4	10.4	15.6
54	10.8	8.5	12.7
68	6.8	5.1	7.7

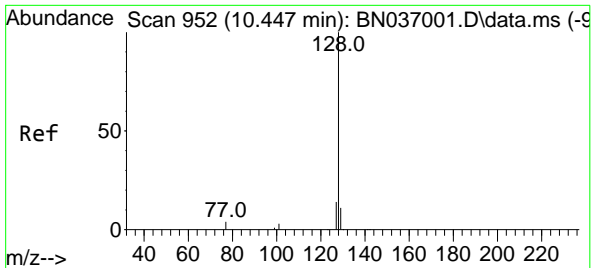


#8
 Nitrobenzene-d5
 Concen: 0.323 ng
 RT: 8.760 min Scan# 794
 Delta R.T. -0.011 min
 Lab File: BN037080.D
 Acq: 20 May 2025 18:47

Tgt Ion: 82 Resp: 1652

Ion	Ratio	Lower	Upper
82	100		
128	36.9	34.0	51.0
54	69.1	55.0	82.4



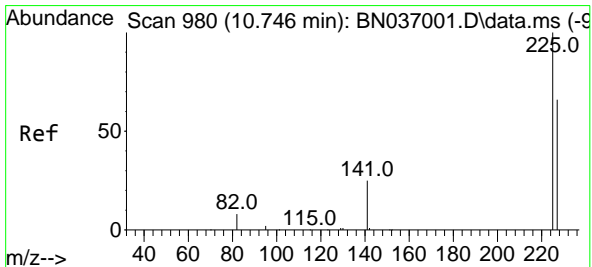
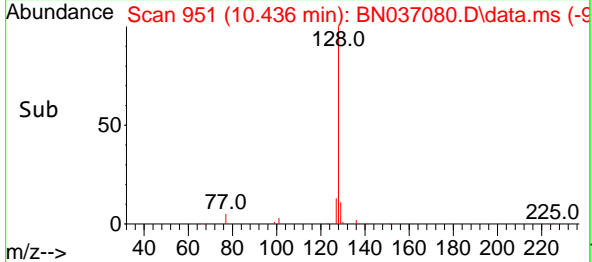
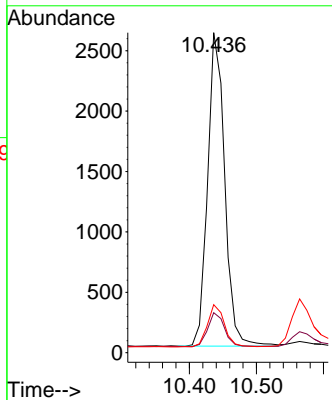
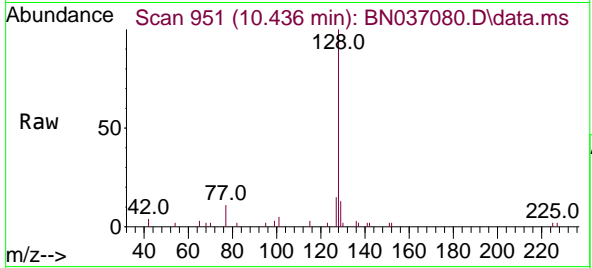


#9
 Naphthalene
 Concen: 0.330 ng
 RT: 10.436 min Scan# 911
 Delta R.T. -0.011 min
 Lab File: BN037080.D
 Acq: 20 May 2025 18:47

Instrument :
 BNA_N
 ClientSampleId :

Tgt Ion:128 Resp: 4588

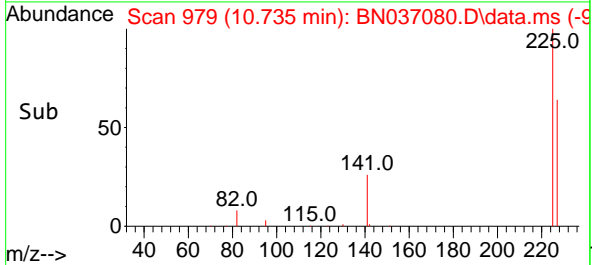
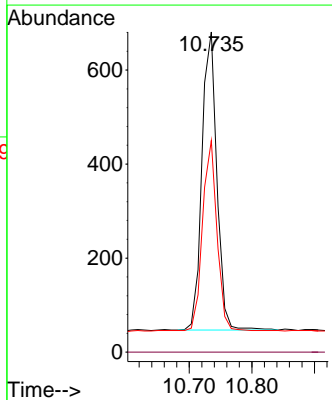
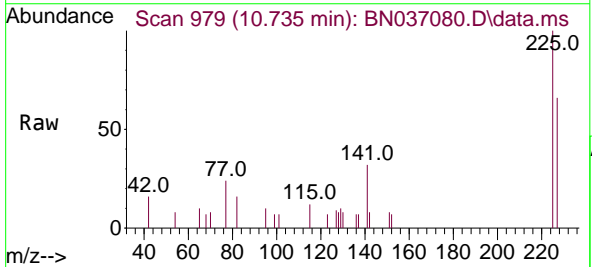
Ion	Ratio	Lower	Upper
128	100		
129	12.5	9.7	14.5
127	15.0	12.4	18.6

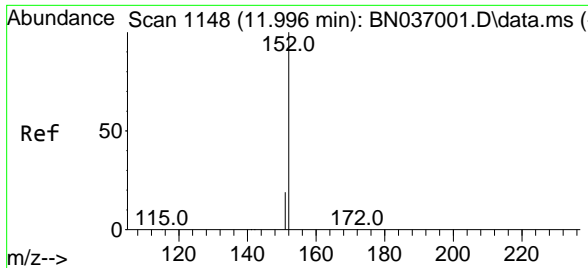


#10
 Hexachlorobutadiene
 Concen: 0.360 ng
 RT: 10.735 min Scan# 979
 Delta R.T. -0.011 min
 Lab File: BN037080.D
 Acq: 20 May 2025 18:47

Tgt Ion:225 Resp: 1049

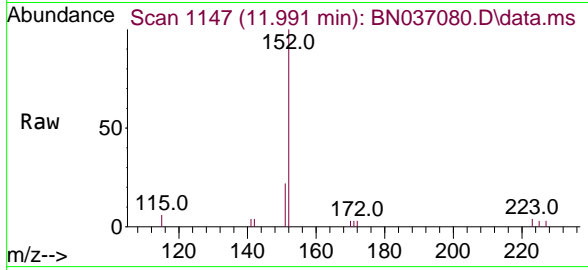
Ion	Ratio	Lower	Upper
225	100		
223	0.0	0.0	0.0
227	62.1	50.9	76.3



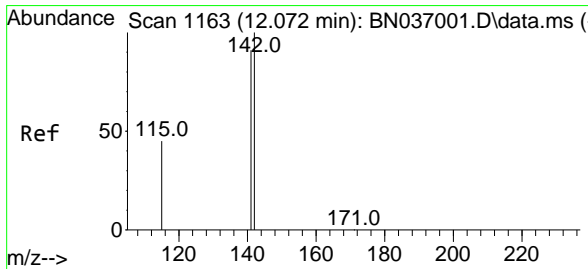
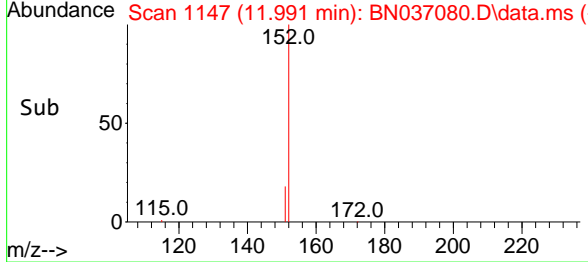
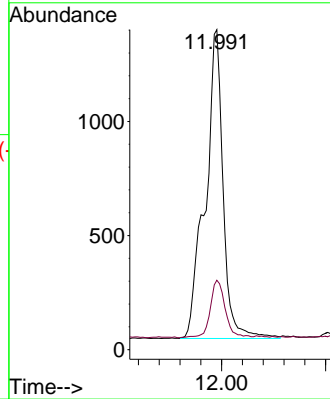


#11
 2-Methylnaphthalene-d10
 Concen: 0.486 ng
 RT: 11.991 min Scan# 1147
 Delta R.T. -0.005 min
 Lab File: BN037080.D
 Acq: 20 May 2025 18:47

Instrument :
 BNA_N
 ClientSampleId :

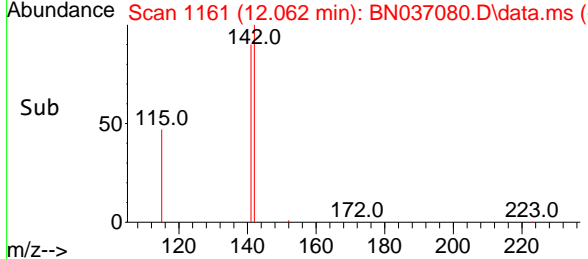
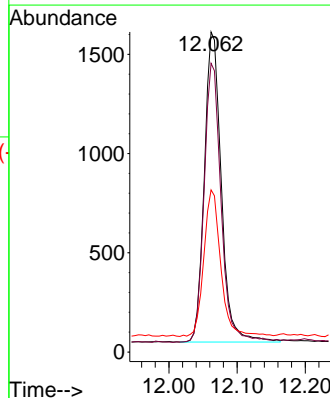
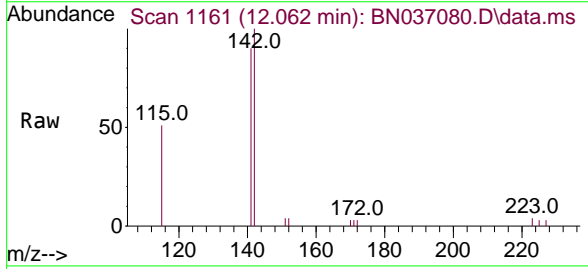


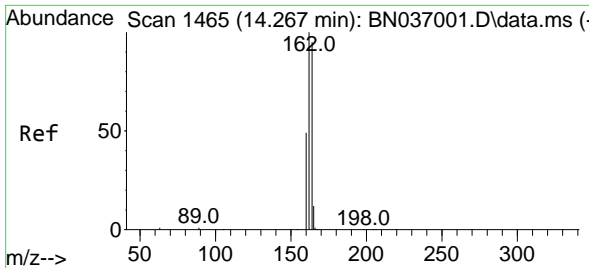
Tgt Ion:152 Resp: 3219
 Ion Ratio Lower Upper
 152 100
 151 15.5 17.5 26.3#



#12
 2-Methylnaphthalene
 Concen: 0.303 ng
 RT: 12.062 min Scan# 1161
 Delta R.T. -0.010 min
 Lab File: BN037080.D
 Acq: 20 May 2025 18:47

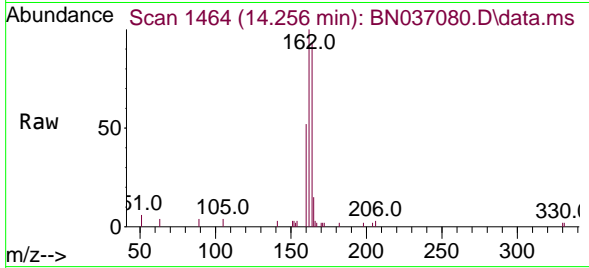
Tgt Ion:142 Resp: 2706
 Ion Ratio Lower Upper
 142 100
 141 90.2 73.3 109.9
 115 50.7 38.4 57.6



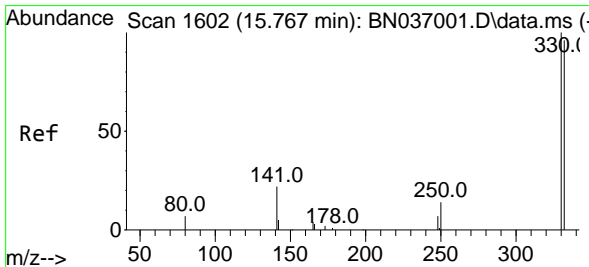
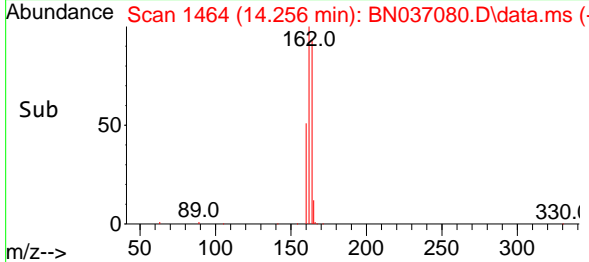
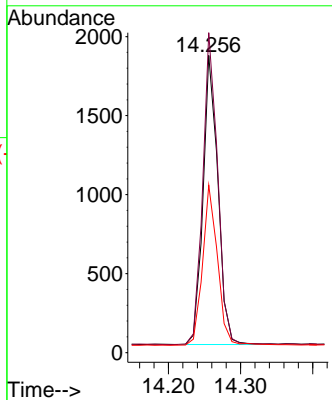


#13
 Acenaphthene-d10
 Concen: 0.400 ng
 RT: 14.256 min Scan# 14
 Delta R.T. -0.011 min
 Lab File: BN037080.D
 Acq: 20 May 2025 18:47

Instrument :
 BNA_N
 ClientSampleId :

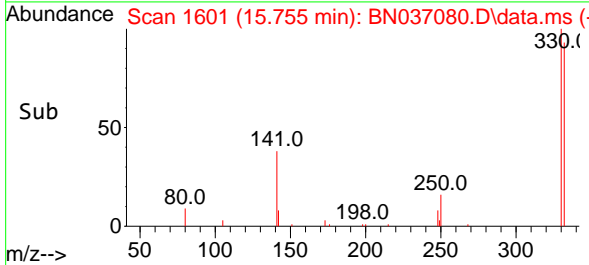
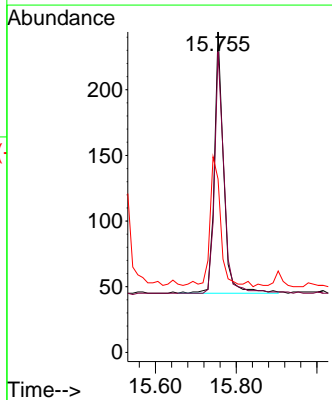
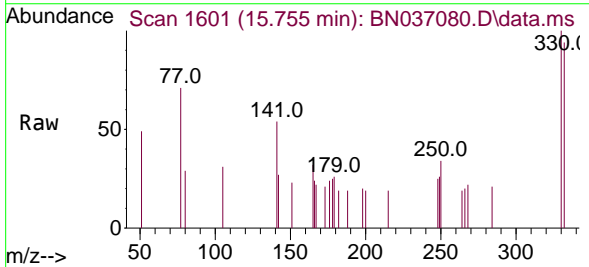


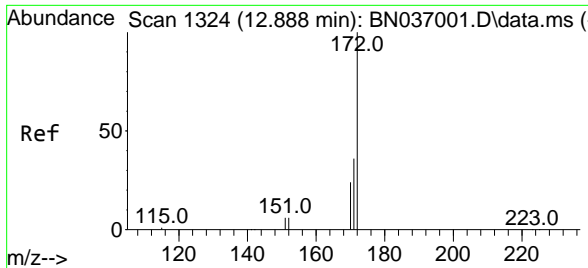
Tgt Ion:164 Resp: 2635
 Ion Ratio Lower Upper
 164 100
 162 107.7 84.2 126.4
 160 56.4 42.6 63.8



#14
 2,4,6-Tribromophenol
 Concen: 0.274 ng
 RT: 15.755 min Scan# 1601
 Delta R.T. -0.012 min
 Lab File: BN037080.D
 Acq: 20 May 2025 18:47

Tgt Ion:330 Resp: 317
 Ion Ratio Lower Upper
 330 100
 332 94.3 73.8 110.8
 141 55.8 43.9 65.9



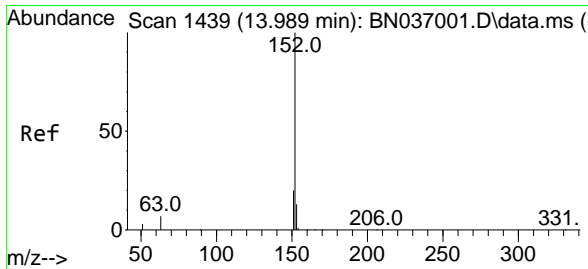
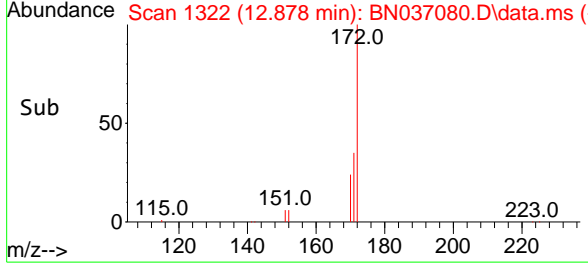
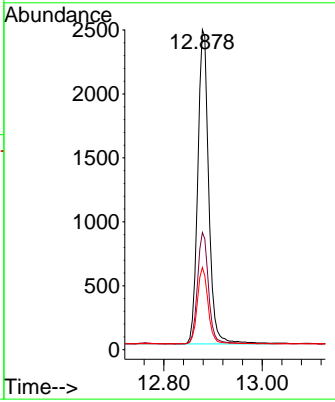
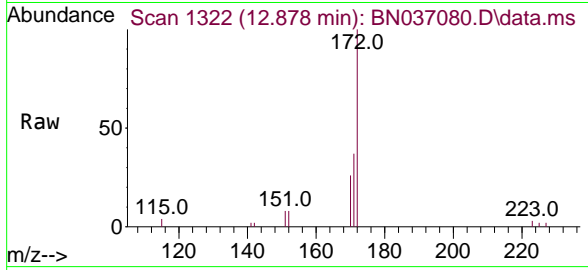


#15
 2-Fluorobiphenyl
 Concen: 0.333 ng
 RT: 12.878 min Scan# 11
 Delta R.T. -0.010 min
 Lab File: BN037080.D
 Acq: 20 May 2025 18:47

Instrument :
 BNA_N
 ClientSampleId :

Tgt Ion:172 Resp: 4016

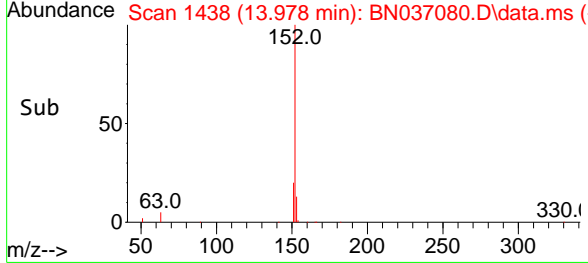
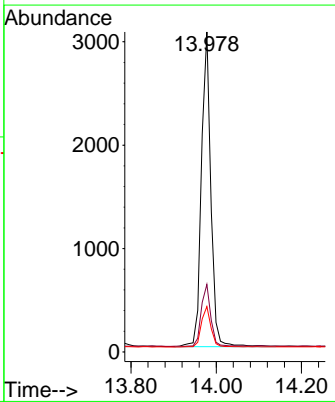
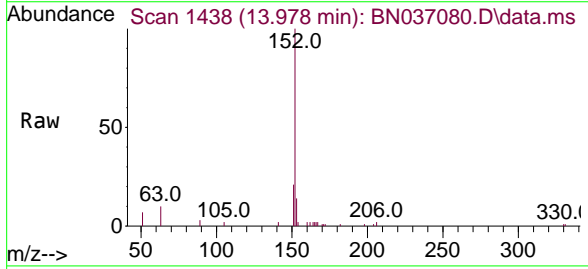
Ion	Ratio	Lower	Upper
172	100		
171	36.6	29.2	43.8
170	25.7	20.5	30.7

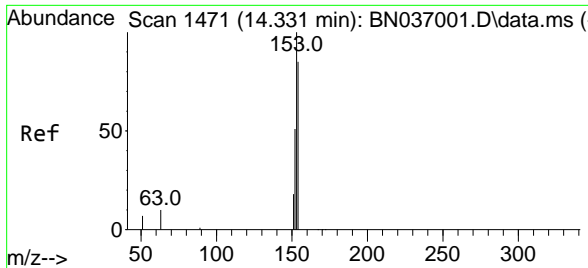


#16
 Acenaphthylene
 Concen: 0.365 ng
 RT: 13.978 min Scan# 1438
 Delta R.T. -0.011 min
 Lab File: BN037080.D
 Acq: 20 May 2025 18:47

Tgt Ion:152 Resp: 4675

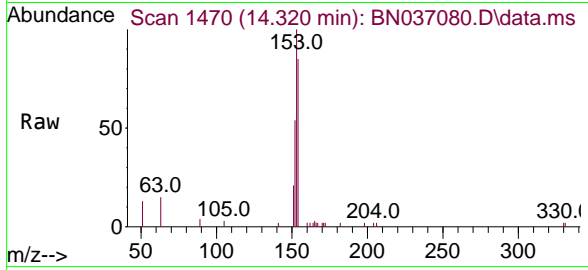
Ion	Ratio	Lower	Upper
152	100		
151	19.8	16.1	24.1
153	13.1	10.5	15.7





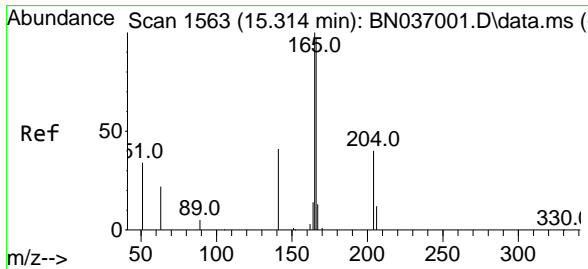
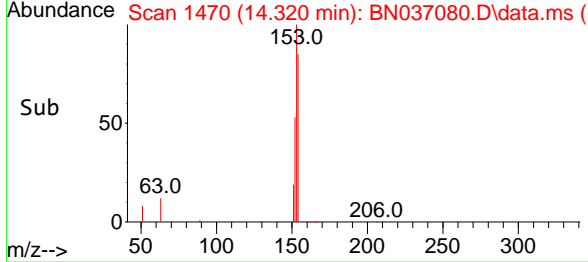
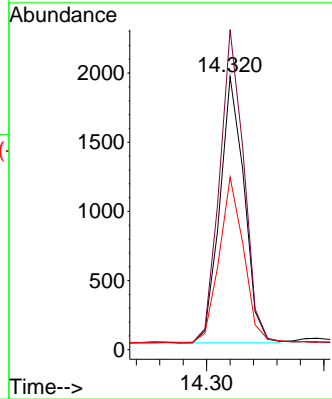
#17
 Acenaphthene
 Concen: 0.332 ng
 RT: 14.320 min Scan# 14
 Delta R.T. -0.011 min
 Lab File: BN037080.D
 Acq: 20 May 2025 18:47

Instrument :
 BNA_N
 ClientSampleId :



Tgt Ion:154 Resp: 2783

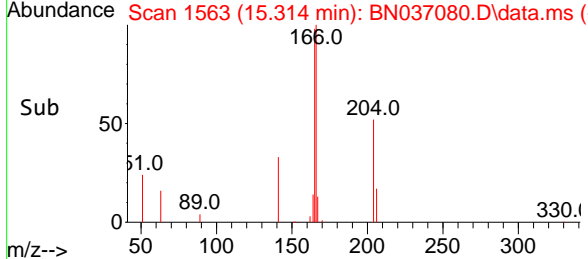
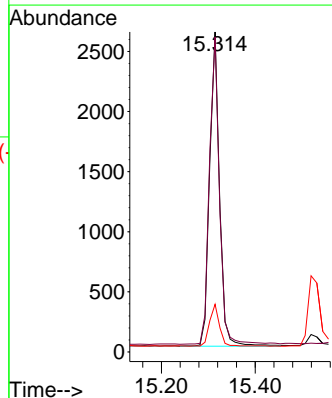
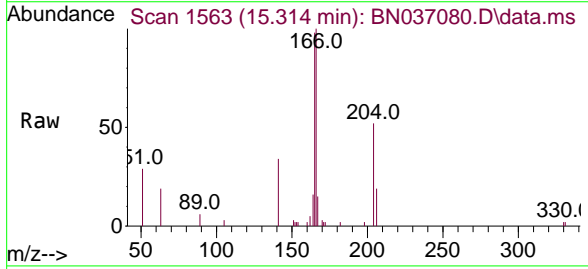
Ion	Ratio	Lower	Upper
154	100		
153	118.0	94.2	141.4
152	62.8	49.4	74.0

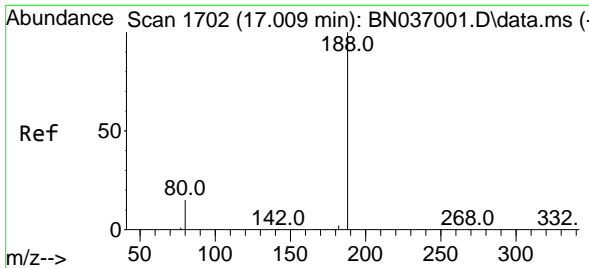


#18
 Fluorene
 Concen: 0.347 ng
 RT: 15.314 min Scan# 1563
 Delta R.T. 0.000 min
 Lab File: BN037080.D
 Acq: 20 May 2025 18:47

Tgt Ion:166 Resp: 3819

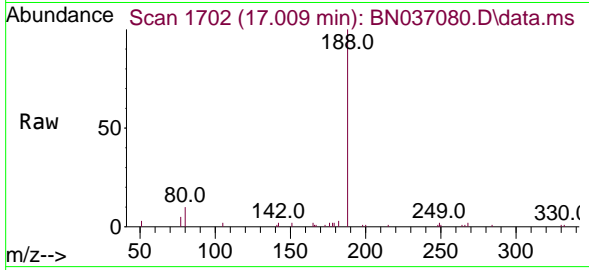
Ion	Ratio	Lower	Upper
166	100		
165	99.1	80.6	120.8
167	13.4	10.6	16.0





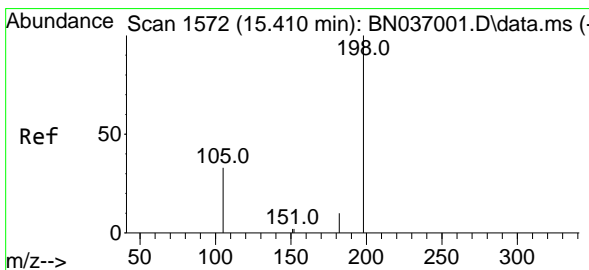
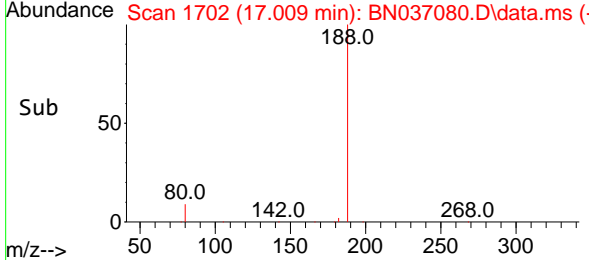
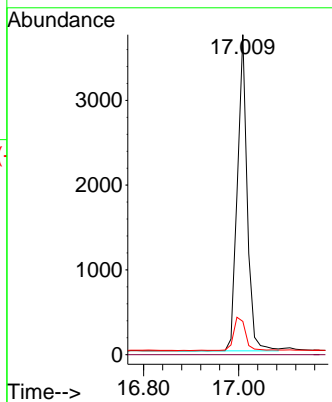
#19
 Phenanthrene-d10
 Concen: 0.400 ng
 RT: 17.009 min Scan# 11
 Delta R.T. 0.000 min
 Lab File: BN037080.D
 Acq: 20 May 2025 18:47

Instrument :
 BNA_N
 ClientSampleId :

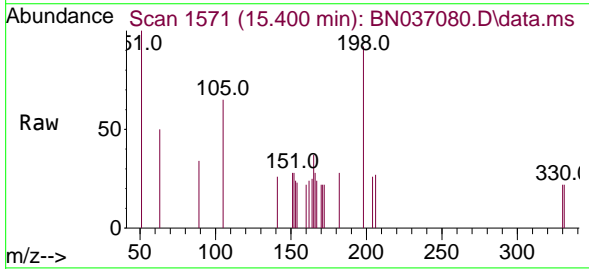


Tgt Ion:188 Resp: 5352

Ion	Ratio	Lower	Upper
188	100		
94	0.0	0.0	0.0
80	10.4	13.4	20.0

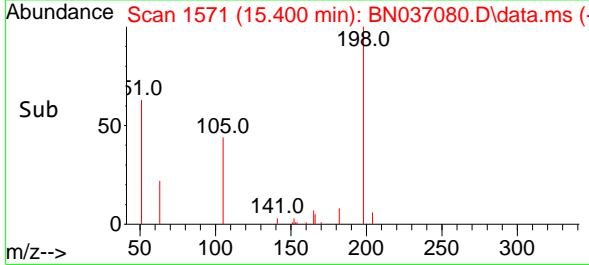
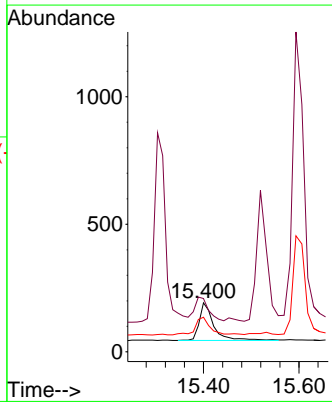


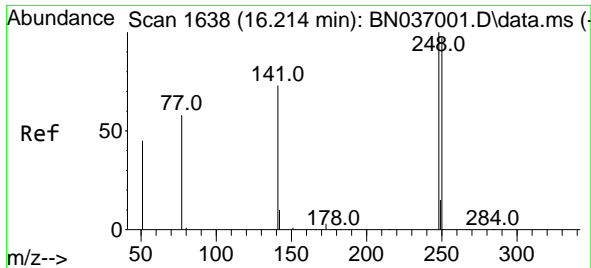
#20
 4,6-Dinitro-2-methylphenol
 Concen: 0.314 ng
 RT: 15.400 min Scan# 1571
 Delta R.T. -0.010 min
 Lab File: BN037080.D
 Acq: 20 May 2025 18:47



Tgt Ion:198 Resp: 316

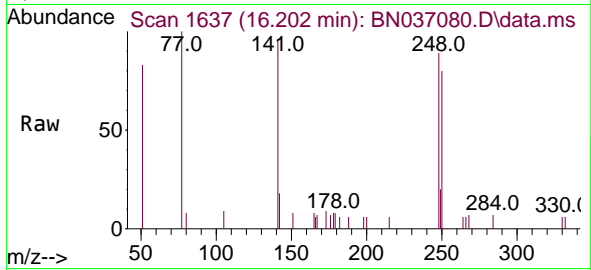
Ion	Ratio	Lower	Upper
198	100		
51	108.9	87.8	131.6
105	70.8	44.2	66.4



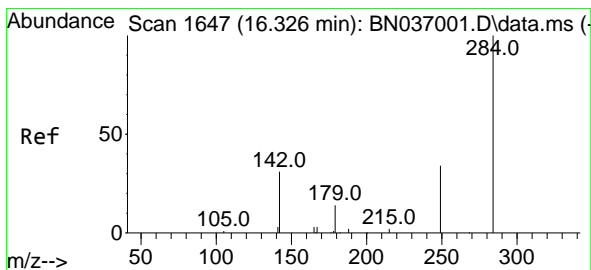
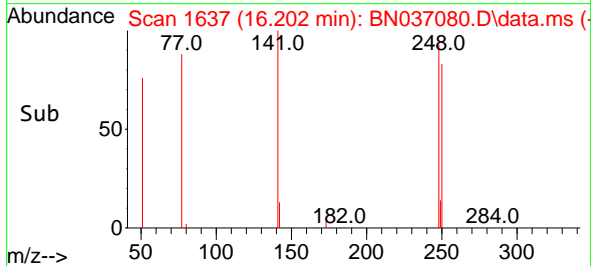
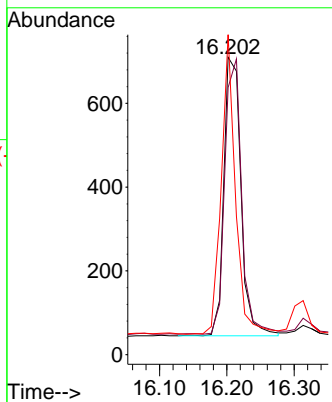


#21
 4-Bromophenyl-phenylether
 Concen: 0.348 ng
 RT: 16.202 min Scan# 1637
 Delta R.T. -0.012 min
 Lab File: BN037080.D
 Acq: 20 May 2025 18:47

Instrument :
 BNA_N
 ClientSampleId :

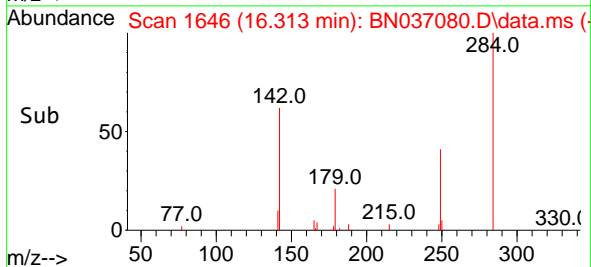
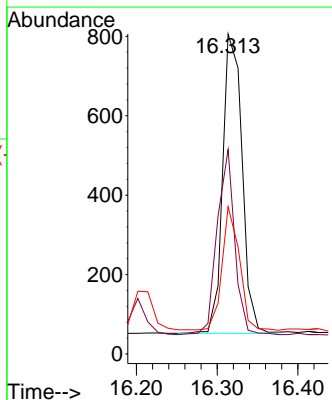
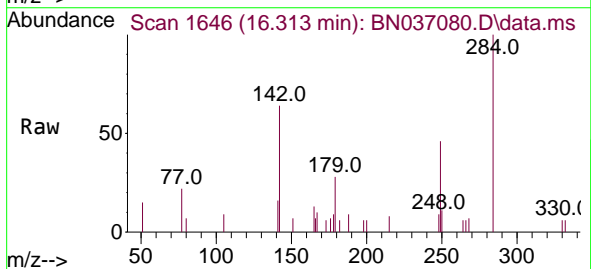


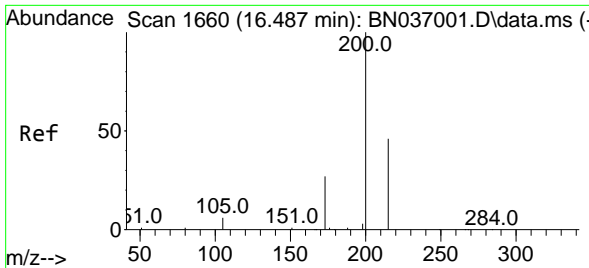
Tgt Ion:248 Resp: 1177
 Ion Ratio Lower Upper
 248 100
 250 89.9 78.1 117.1
 141 107.6 59.7 89.5#



#22
 Hexachlorobenzene
 Concen: 0.348 ng
 RT: 16.313 min Scan# 1646
 Delta R.T. -0.012 min
 Lab File: BN037080.D
 Acq: 20 May 2025 18:47

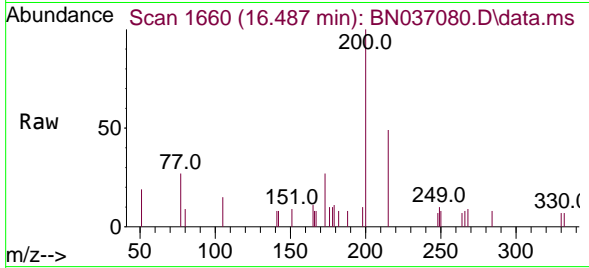
Tgt Ion:284 Resp: 1258
 Ion Ratio Lower Upper
 284 100
 142 56.0 41.2 61.8
 249 37.4 28.7 43.1



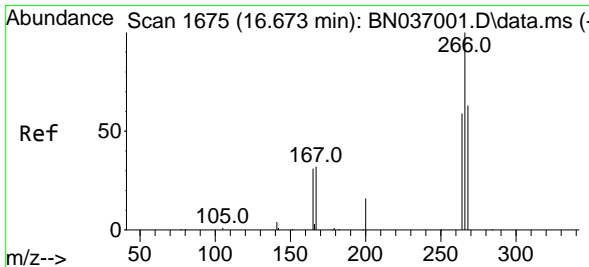
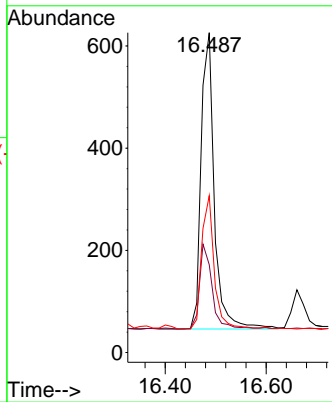
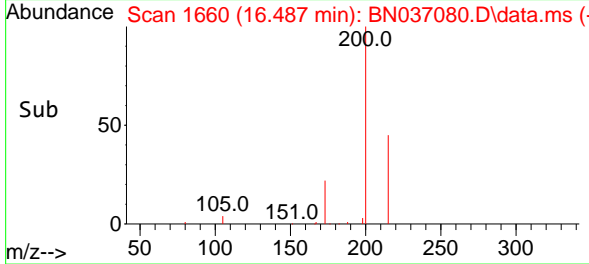


#23
 Atrazine
 Concen: 0.359 ng
 RT: 16.487 min Scan# 1660
 Delta R.T. 0.000 min
 Lab File: BN037080.D
 Acq: 20 May 2025 18:47

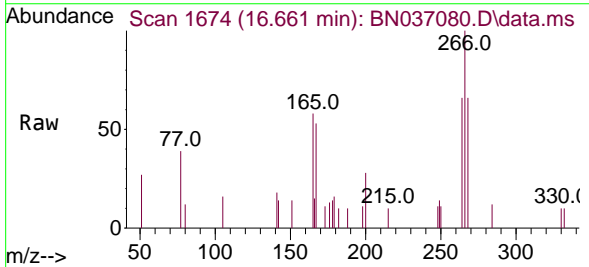
Instrument :
 BNA_N
 ClientSampleId :



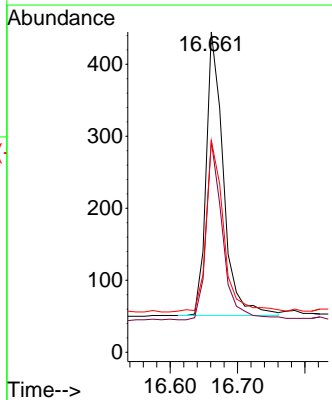
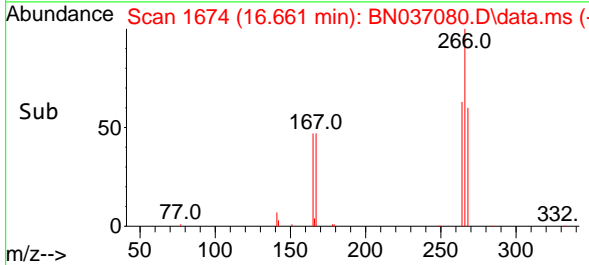
Tgt Ion:200 Resp: 1058
 Ion Ratio Lower Upper
 200 100
 173 27.5 25.2 37.8
 215 49.0 39.3 58.9

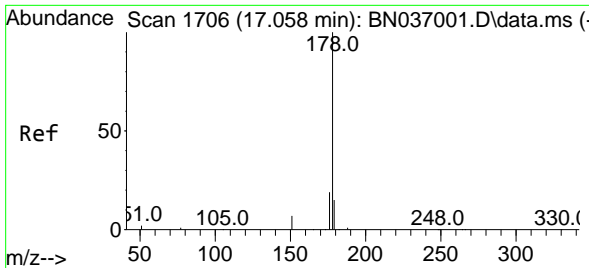


#24
 Pentachlorophenol
 Concen: 0.349 ng
 RT: 16.661 min Scan# 1674
 Delta R.T. -0.012 min
 Lab File: BN037080.D
 Acq: 20 May 2025 18:47



Tgt Ion:266 Resp: 697
 Ion Ratio Lower Upper
 266 100
 264 61.3 47.9 71.9
 268 61.3 50.0 75.0



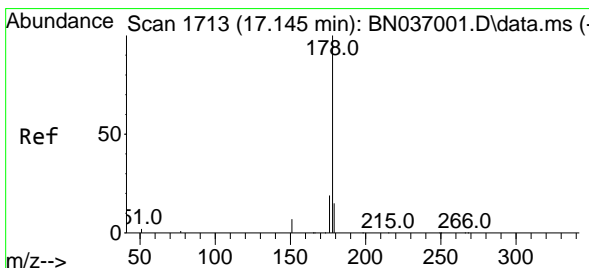
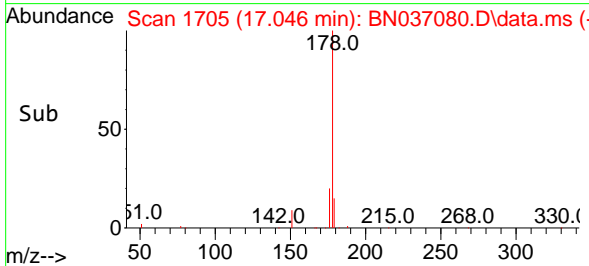
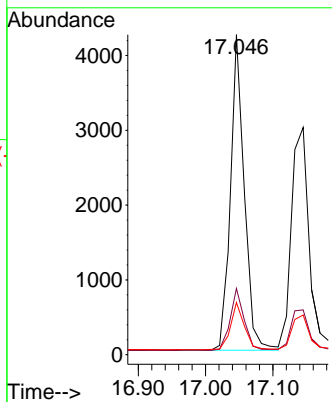
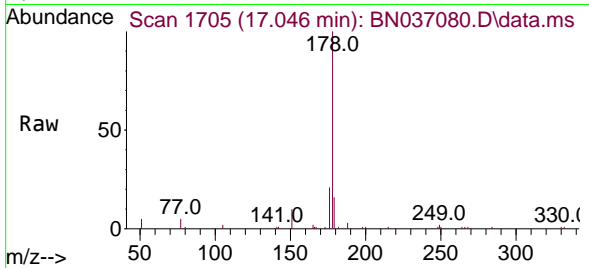


#25
 Phenanthrene
 Concen: 0.345 ng
 RT: 17.046 min Scan# 1705
 Delta R.T. -0.012 min
 Lab File: BN037080.D
 Acq: 20 May 2025 18:47

Instrument : BNA_N
 ClientSampleId :

Tgt Ion:178 Resp: 6039

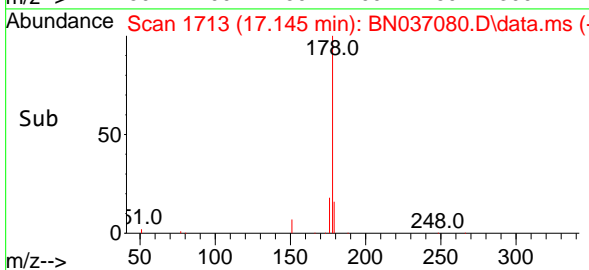
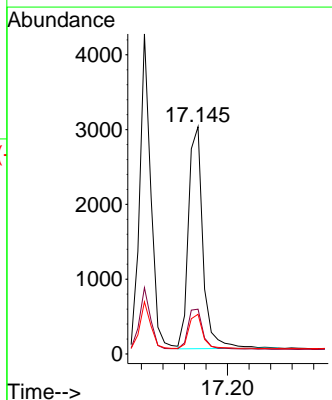
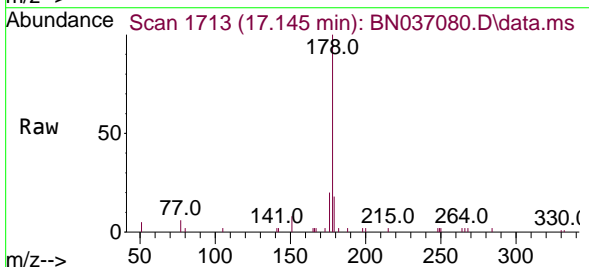
Ion	Ratio	Lower	Upper
178	100		
176	19.6	15.7	23.5
179	15.0	12.2	18.2

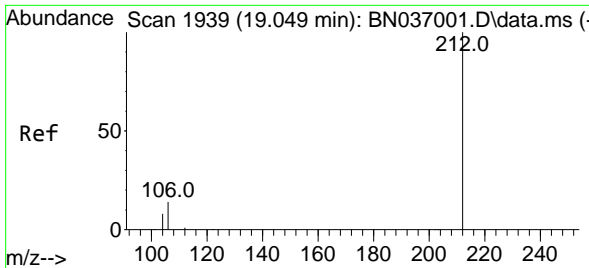


#26
 Anthracene
 Concen: 0.349 ng
 RT: 17.145 min Scan# 1713
 Delta R.T. 0.000 min
 Lab File: BN037080.D
 Acq: 20 May 2025 18:47

Tgt Ion:178 Resp: 5549

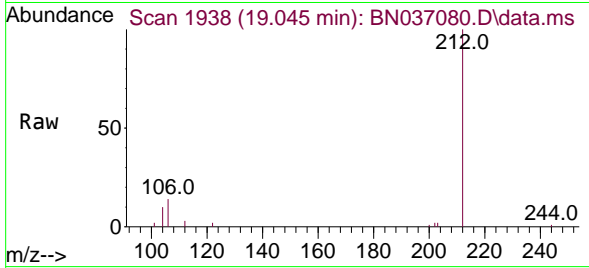
Ion	Ratio	Lower	Upper
178	100		
176	19.1	15.0	22.6
179	15.3	12.3	18.5



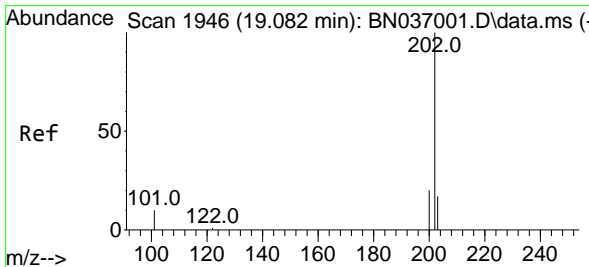
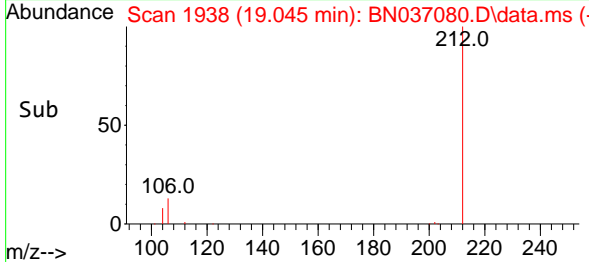
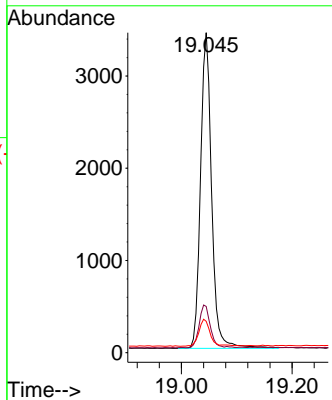


#27
 Fluoranthene-d10
 Concen: 0.325 ng
 RT: 19.045 min Scan# 1938
 Delta R.T. -0.005 min
 Lab File: BN037080.D
 Acq: 20 May 2025 18:47

Instrument :
 BNA_N
 ClientSampleId :

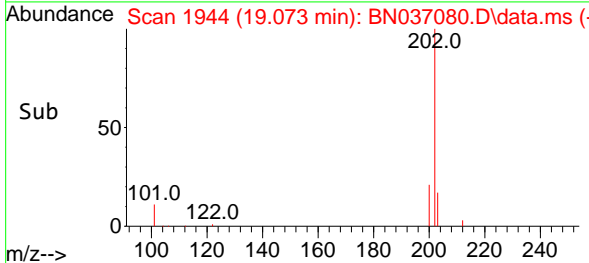
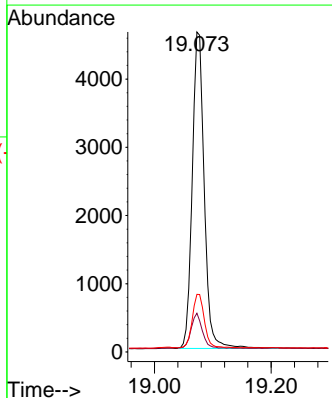
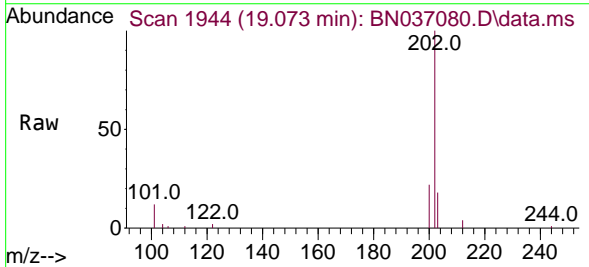


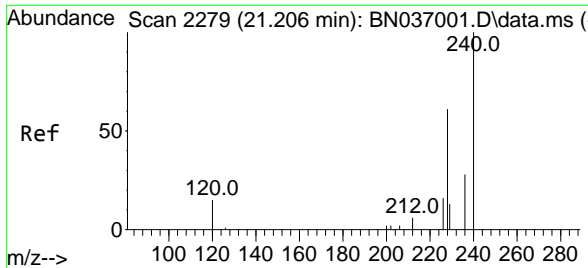
Tgt Ion:212 Resp: 4775
 Ion Ratio Lower Upper
 212 100
 106 13.6 11.3 16.9
 104 9.0 6.7 10.1



#28
 Fluoranthene
 Concen: 0.317 ng
 RT: 19.073 min Scan# 1944
 Delta R.T. -0.009 min
 Lab File: BN037080.D
 Acq: 20 May 2025 18:47

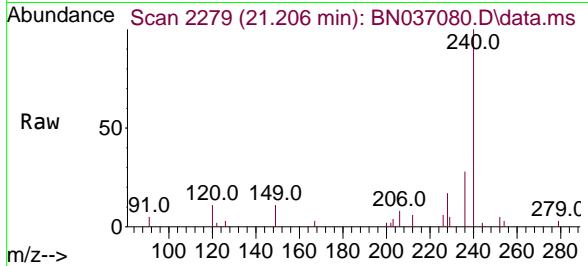
Tgt Ion:202 Resp: 6623
 Ion Ratio Lower Upper
 202 100
 101 10.8 8.9 13.3
 203 17.1 13.8 20.8



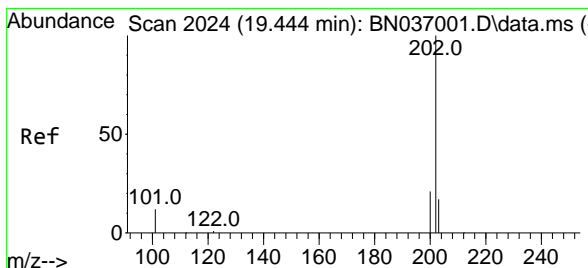
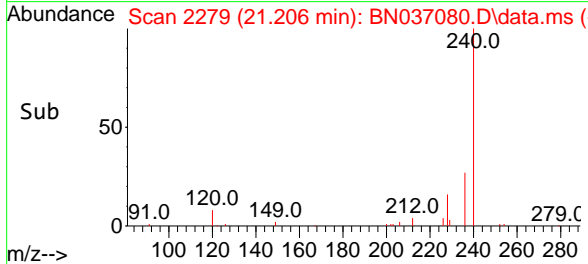
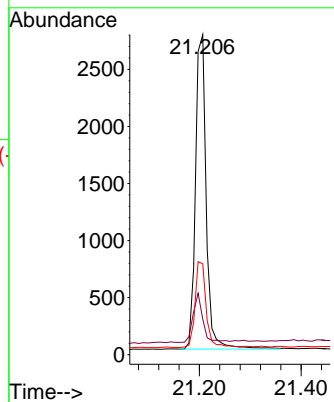


#29
 Chrysene-d12
 Concen: 0.400 ng
 RT: 21.206 min Scan# 21
 Delta R.T. 0.000 min
 Lab File: BN037080.D
 Acq: 20 May 2025 18:47

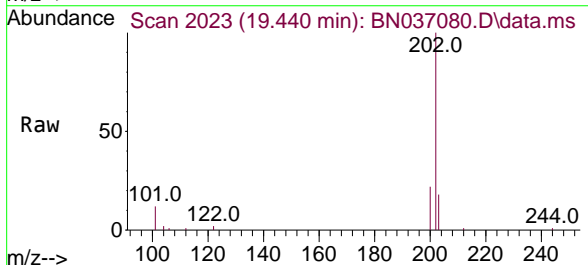
Instrument :
 BNA_N
 ClientSampleId :



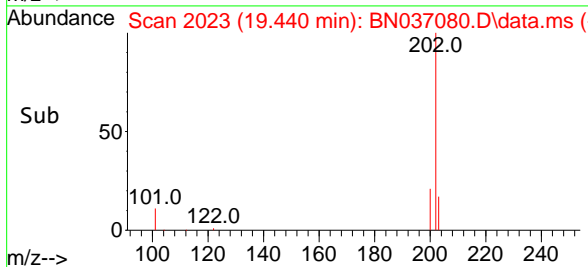
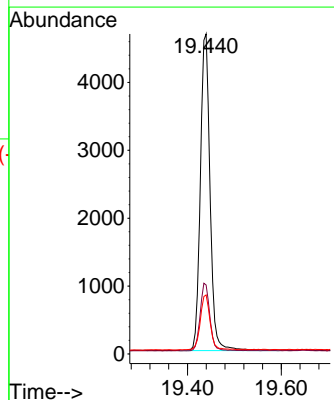
Tgt Ion:240 Resp: 4047
 Ion Ratio Lower Upper
 240 100
 120 11.1 15.1 22.7#
 236 28.4 24.0 36.0

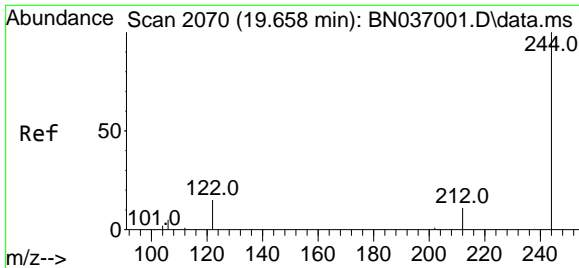


#30
 Pyrene
 Concen: 0.387 ng
 RT: 19.440 min Scan# 2023
 Delta R.T. -0.005 min
 Lab File: BN037080.D
 Acq: 20 May 2025 18:47



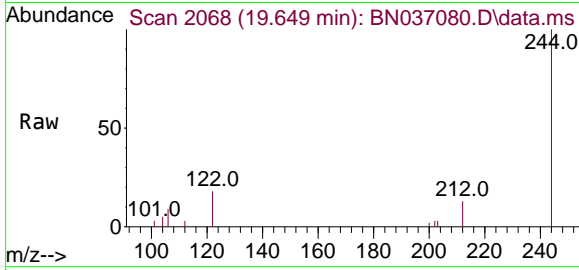
Tgt Ion:202 Resp: 6692
 Ion Ratio Lower Upper
 202 100
 200 21.2 17.1 25.7
 203 17.8 14.2 21.4



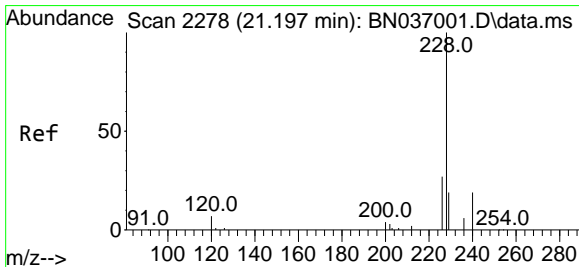
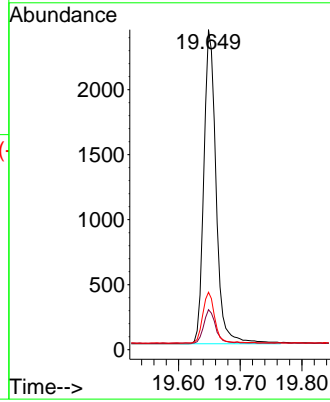
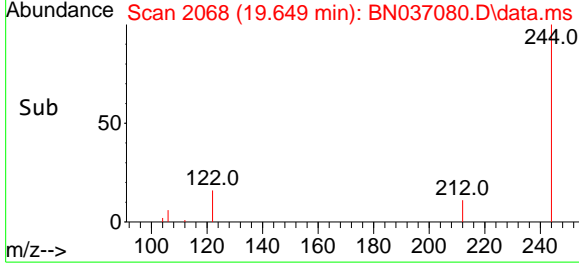


#31
 Terphenyl-d14
 Concen: 0.386 ng
 RT: 19.649 min Scan# 2070
 Delta R.T. -0.009 min
 Lab File: BN037080.D
 Acq: 20 May 2025 18:47

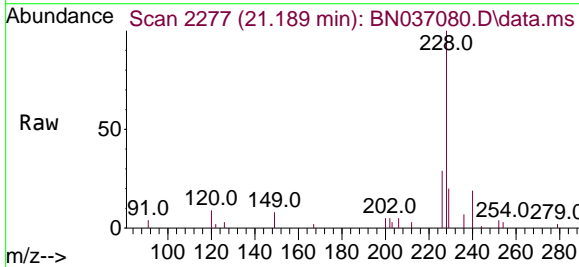
Instrument :
 BNA_N
 ClientSampleId :



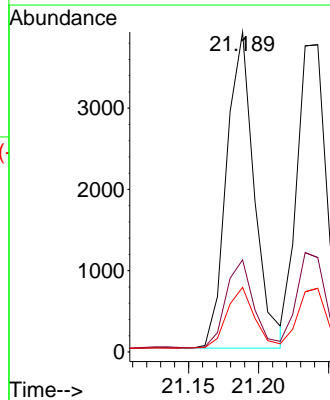
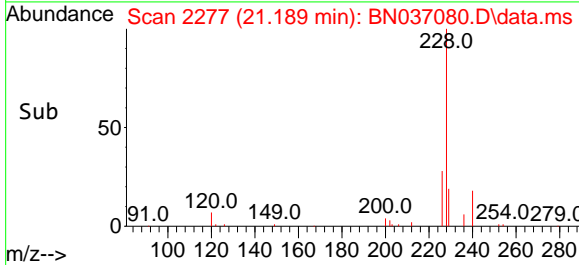
Tgt Ion:244 Resp: 3340
 Ion Ratio Lower Upper
 244 100
 212 12.5 9.7 14.5
 122 18.0 13.4 20.0

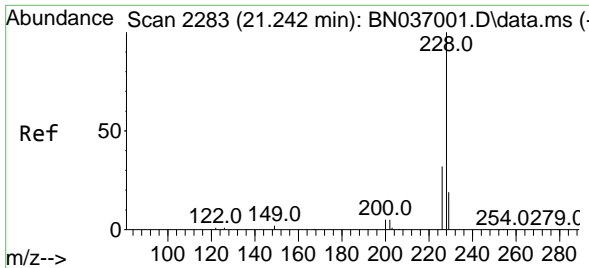


#32
 Benzo(a)anthracene
 Concen: 0.352 ng
 RT: 21.189 min Scan# 2277
 Delta R.T. -0.009 min
 Lab File: BN037080.D
 Acq: 20 May 2025 18:47



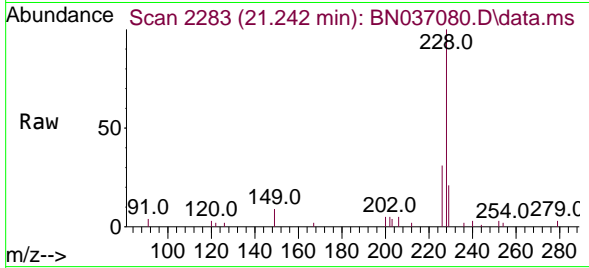
Tgt Ion:228 Resp: 5361
 Ion Ratio Lower Upper
 228 100
 226 28.8 22.2 33.4
 229 20.2 16.0 24.0





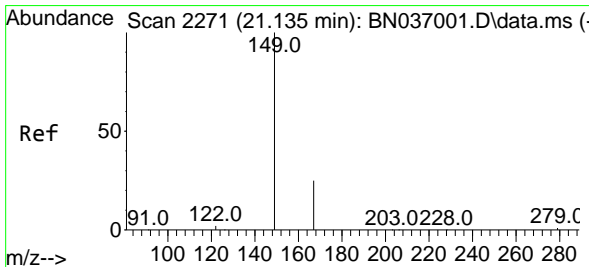
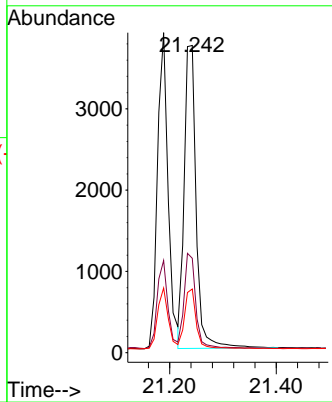
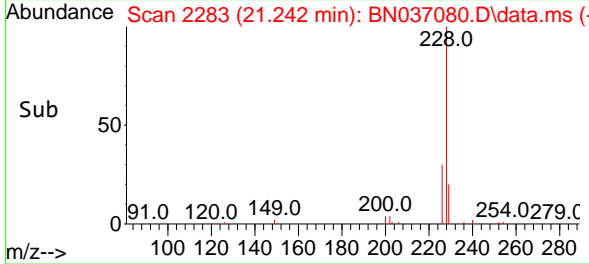
#33
 Chrysene
 Concen: 0.361 ng
 RT: 21.242 min Scan# 21
 Delta R.T. 0.000 min
 Lab File: BN037080.D
 Acq: 20 May 2025 18:47

Instrument :
 BNA_N
 ClientSampleId :

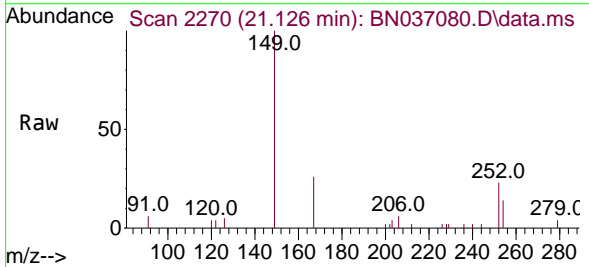


Tgt Ion: 228 Resp: 5814

Ion	Ratio	Lower	Upper
228	100		
226	30.7	26.3	39.5
229	20.7	16.2	24.2

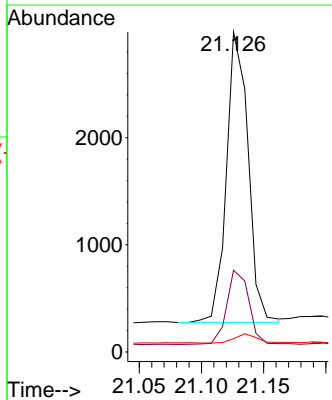
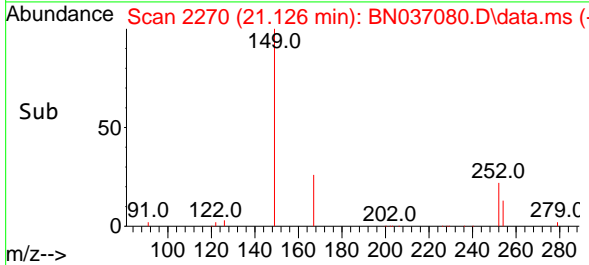


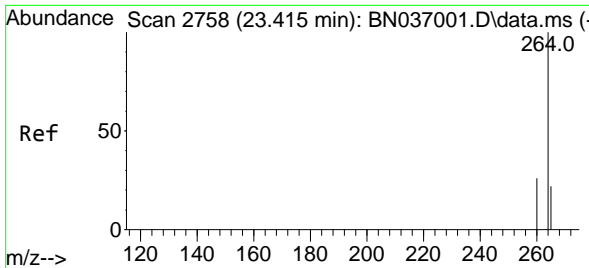
#34
 Bis(2-ethylhexyl)phthalate
 Concen: 0.350 ng
 RT: 21.126 min Scan# 2270
 Delta R.T. -0.009 min
 Lab File: BN037080.D
 Acq: 20 May 2025 18:47



Tgt Ion: 149 Resp: 3282

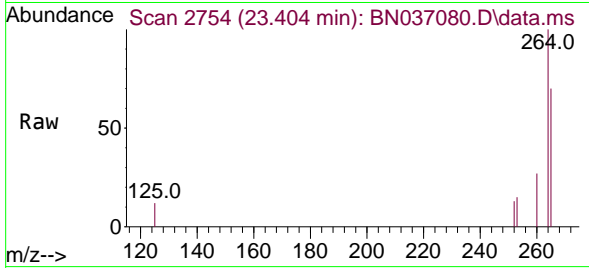
Ion	Ratio	Lower	Upper
149	100		
167	26.2	20.6	30.8
279	3.4	2.6	3.8



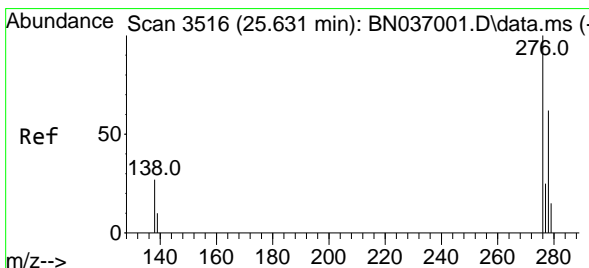
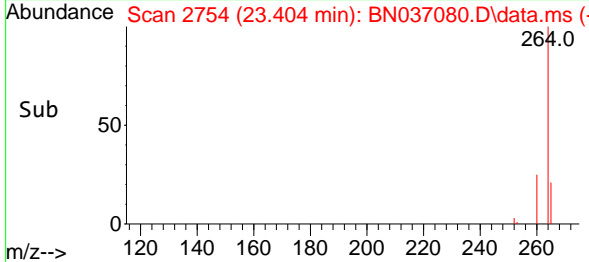
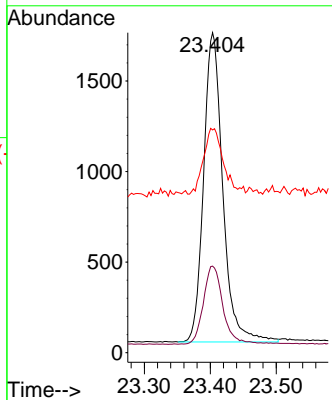


#35
 Perylene-d12
 Concen: 0.400 ng
 RT: 23.404 min Scan# 210
 Delta R.T. -0.012 min
 Lab File: BN037080.D
 Acq: 20 May 2025 18:47

Instrument :
 BNA_N
 ClientSampleId :

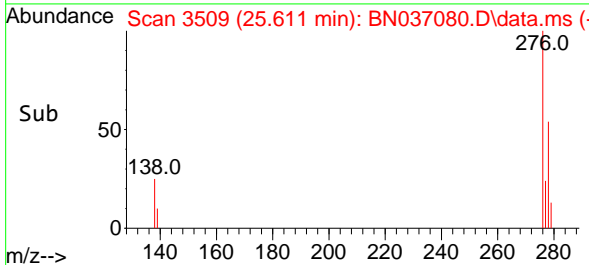
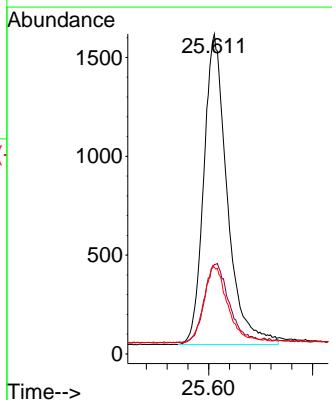
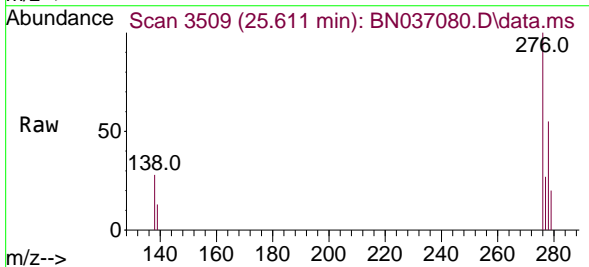


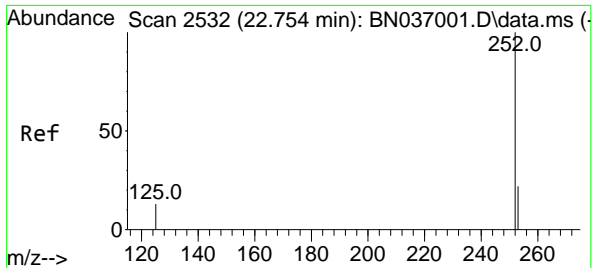
Tgt Ion:264 Resp: 3455
 Ion Ratio Lower Upper
 264 100
 260 27.1 21.9 32.9
 265 69.6 51.6 77.4



#36
 Indeno(1,2,3-cd)pyrene
 Concen: 0.349 ng
 RT: 25.611 min Scan# 3509
 Delta R.T. -0.020 min
 Lab File: BN037080.D
 Acq: 20 May 2025 18:47

Tgt Ion:276 Resp: 4926
 Ion Ratio Lower Upper
 276 100
 138 26.9 22.7 34.1
 277 24.8 20.0 30.0



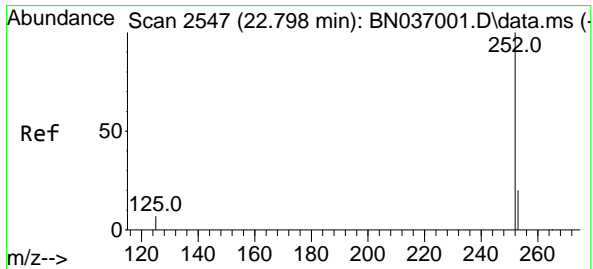
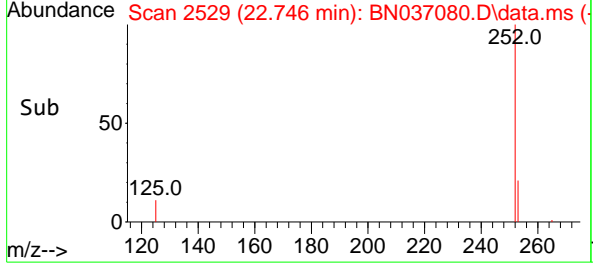
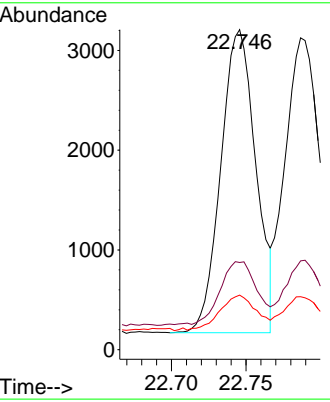
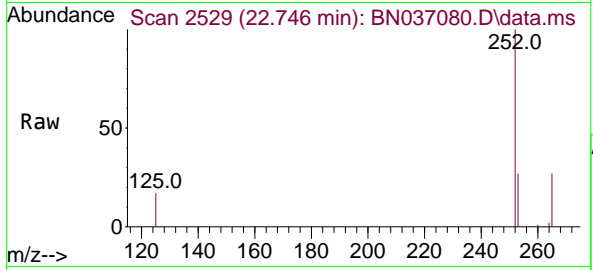


#37
 Benzo(b)fluoranthene
 Concen: 0.346 ng
 RT: 22.746 min Scan# 21
 Delta R.T. -0.009 min
 Lab File: BN037080.D
 Acq: 20 May 2025 18:47

Instrument :
 BNA_N
 ClientSampleId :

Tgt Ion:252 Resp: 4963

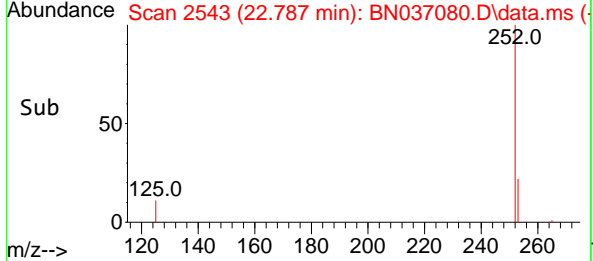
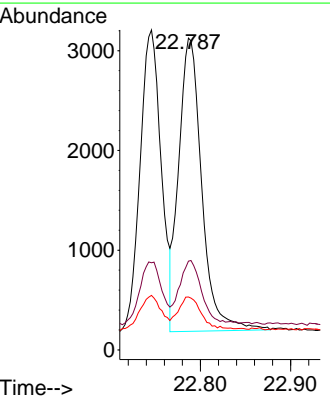
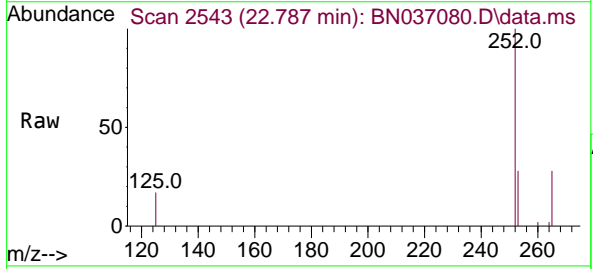
Ion	Ratio	Lower	Upper
252	100		
253	27.3	21.8	32.6
125	17.1	14.6	21.8

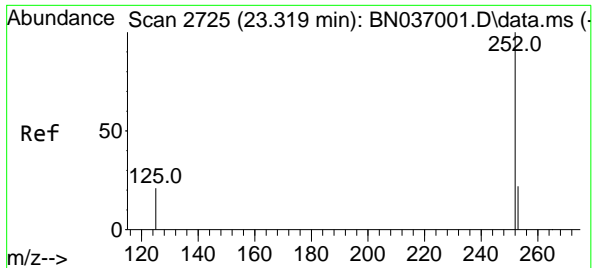


#38
 Benzo(k)fluoranthene
 Concen: 0.368 ng
 RT: 22.787 min Scan# 2543
 Delta R.T. -0.012 min
 Lab File: BN037080.D
 Acq: 20 May 2025 18:47

Tgt Ion:252 Resp: 5215

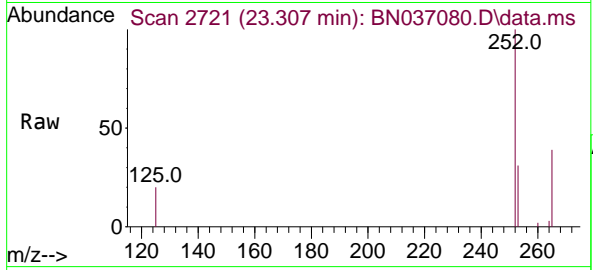
Ion	Ratio	Lower	Upper
252	100		
253	28.5	21.4	32.2
125	17.0	13.0	19.4



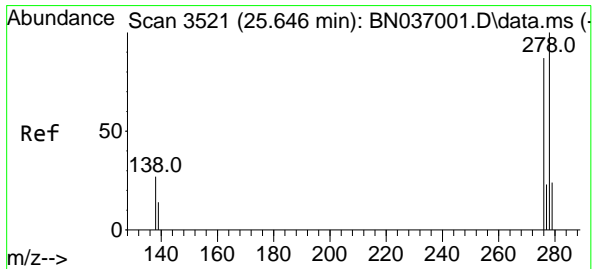
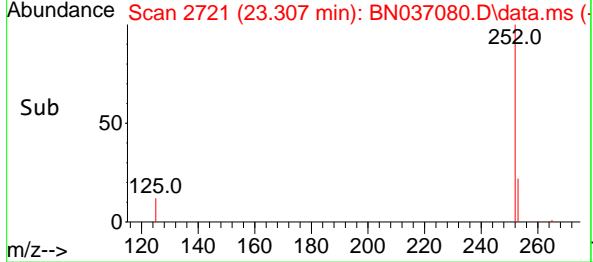
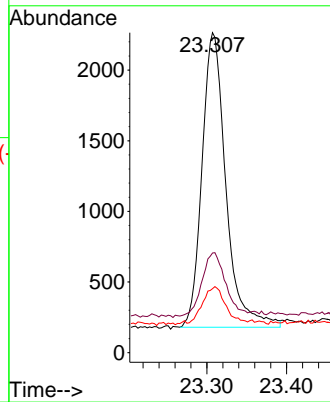


#39
 Benzo(a)pyrene
 Concen: 0.357 ng
 RT: 23.307 min Scan# 21
 Delta R.T. -0.012 min
 Lab File: BN037080.D
 Acq: 20 May 2025 18:47

Instrument :
 BNA_N
 ClientSampleId :

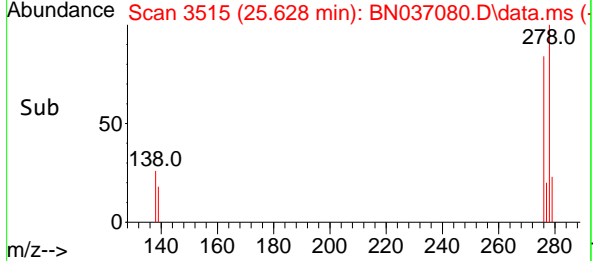
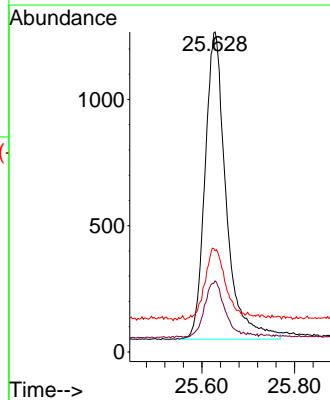
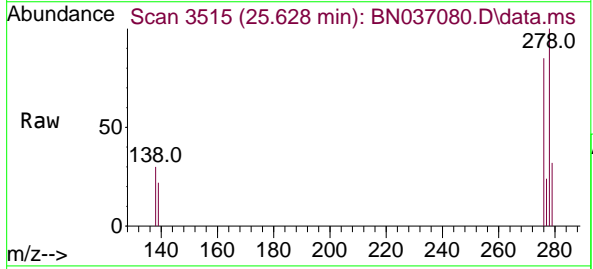


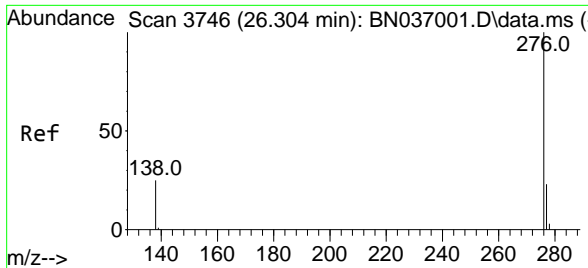
Tgt Ion:252 Resp: 4345
 Ion Ratio Lower Upper
 252 100
 253 31.2 23.8 35.6
 125 20.0 21.8 32.6#



#40
 Dibenzo(a,h)anthracene
 Concen: 0.350 ng
 RT: 25.628 min Scan# 3515
 Delta R.T. -0.018 min
 Lab File: BN037080.D
 Acq: 20 May 2025 18:47

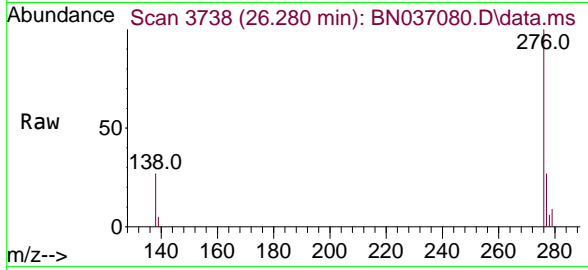
Tgt Ion:278 Resp: 3843
 Ion Ratio Lower Upper
 278 100
 139 22.2 17.4 26.0
 279 31.6 24.6 37.0





#41
 Benzo(g,h,i)perylene
 Concen: 0.350 ng
 RT: 26.280 min Scan# 31
 Delta R.T. -0.023 min
 Lab File: BN037080.D
 Acq: 20 May 2025 18:47

Instrument :
 BNA_N
 ClientSampleId :



Tgt Ion: 276 Resp: 4175

Ion	Ratio	Lower	Upper
276	100		
277	26.7	20.2	30.4
138	26.5	22.0	33.0

