

Data Path : Z:\svoasrv\HPCHEM1\BNA_N\Data\BN052722\
 Data File : BN019991.D
 Acq On : 27 May 2022 17:19
 Operator : CG/JU
 Sample : PB145157BS
 Misc :
 ALS Vial : 4 Sample Multiplier: 1

Instrument :
 BNA_N
 ClientSampleId :
 PB145157BS

Manual Integrations
 APPROVED

Reviewed By :Christian Giraldo 05/28/2022
 Supervised By :Jagrut Upadhyay 05/31/2022

Quant Time: May 28 04:37:49 2022
 Quant Method : Z:\svoasrv\HPCHEM1\BNA_N\Methods\8270-SIM-BN051322.M
 Quant Title : ASP BNA STANDARDS FOR 5 POINT CALIBRATION
 QLast Update : Wed May 18 07:42:52 2022
 Response via : Initial Calibration

Compound	R.T.	QIon	Response	Conc	Units	Dev(Min)	
Internal Standards							
1) 1,4-Dichlorobenzene-d4	7.854	152	4225	0.400	ng	0.00	
7) Naphthalene-d8	10.637	136	14225	0.400	ng	0.00	
13) Acenaphthene-d10	14.463	164	8387	0.400	ng	0.00	
19) Phenanthrene-d10	17.205	188	16401	0.400	ng	0.00	#
29) Chrysene-d12	21.395	240	10094	0.400	ng	0.00	
35) Perylene-d12	23.744	264	8027	0.400	ng	0.00	
System Monitoring Compounds							
4) 2-Fluorophenol	5.435	112	4821	0.456	ng	0.00	
5) Phenol-d6	7.017	99	5951	0.449	ng	0.00	
8) Nitrobenzene-d5	8.993	82	4460	0.415	ng	0.00	
11) 2-Methylnaphthalene-d10	12.227	152	10422	0.421	ng	0.00	
14) 2,4,6-Tribromophenol	15.964	330	922	0.278	ng	0.01	
15) 2-Fluorobiphenyl	13.095	172	15303	0.418	ng	0.00	
27) Fluoranthene-d10	19.240	212	17198	0.369	ng	0.00	
31) Terphenyl-d14	19.839	244	11932	0.501	ng	0.00	
Target Compounds							
2) 1,4-Dioxane	3.355	88	1870	0.373	ng	98	
3) n-Nitrosodimethylamine	3.673	42	2218	0.404	ng	99	#
6) bis(2-Chloroethyl)ether	7.277	93	5167	0.401	ng	99	
9) Naphthalene	10.690	128	17858	0.413	ng	99	
10) Hexachlorobutadiene	10.989	225	3247	0.413	ng	99	#
12) 2-Methylnaphthalene	12.299	142	12280	0.417	ng	99	
16) Acenaphthylene	14.185	152	16592m	0.422	ng		
17) Acenaphthene	14.527	154	11578	0.398	ng	96	
18) Fluorene	15.511	166	14526	0.395	ng	100	
20) 4,6-Dinitro-2-methylph...	15.607	198	226	0.096	ng	46	#
21) 4-Bromophenyl-phenylether	16.405	248	4389	0.438	ng	93	
22) Hexachlorobenzene	16.528	284	5083	0.458	ng	99	
23) Atrazine	16.672	200	2602	0.398	ng	98	
24) Pentachlorophenol	16.877	266	767	0.179	ng	96	
25) Phenanthrene	17.246	178	23435	0.413	ng	100	
26) Anthracene	17.338	178	19035	0.396	ng	100	
28) Fluoranthene	19.274	202	22007	0.362	ng	100	
30) Pyrene	19.632	202	21469	0.501	ng	100	
32) Benzo(a)anthracene	21.387	228	15003	0.408	ng	99	
33) Chrysene	21.431	228	16898	0.410	ng	98	
34) Bis(2-ethylhexyl)phtha...	21.315	149	7223	0.471	ng	99	
36) Indeno(1,2,3-cd)pyrene	26.147	276	14586	0.388	ng	99	
37) Benzo(b)fluoranthene	23.030	252	14130	0.403	ng	99	
38) Benzo(k)fluoranthene	23.077	252	15106m	0.406	ng		
39) Benzo(a)pyrene	23.638	252	11383	0.413	ng	99	
40) Dibenzo(a,h)anthracene	26.164	278	11376	0.375	ng	98	
41) Benzo(g,h,i)perylene	26.887	276	12758	0.409	ng	100	

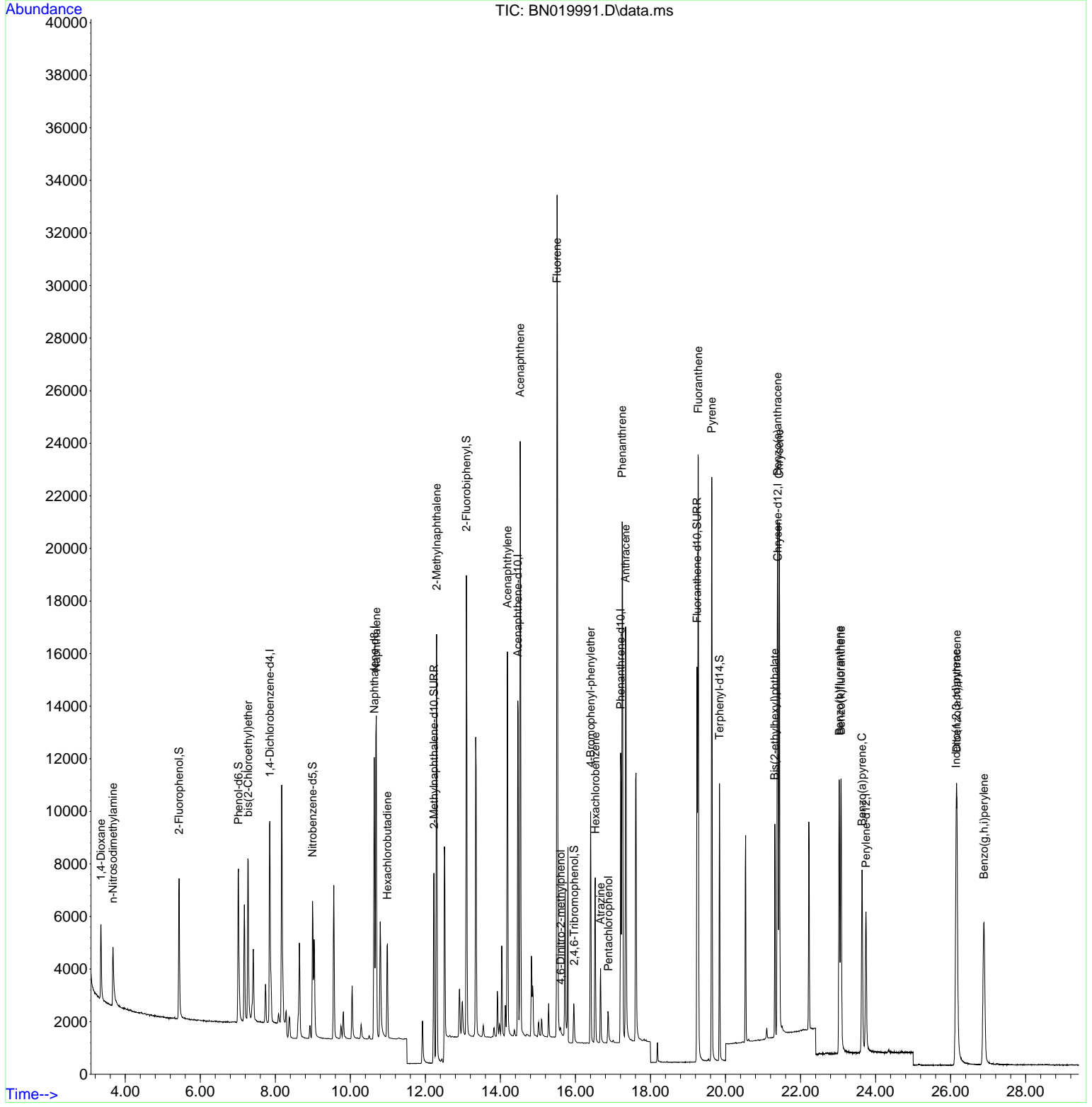
(#) = qualifier out of range (m) = manual integration (+) = signals summed

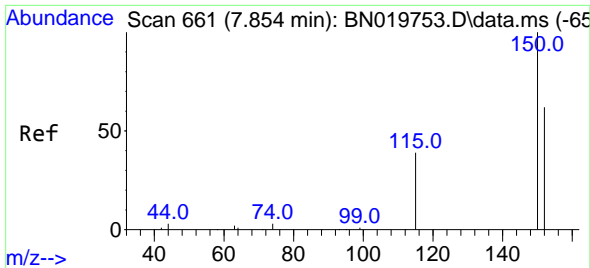
Data Path : Z:\svoasrv\HPCHEM1\BNA_N\Data\BN052722\
 Data File : BN019991.D
 Acq On : 27 May 2022 17:19
 Operator : CG/JU
 Sample : PB145157BS
 Misc :
 ALS Vial : 4 Sample Multiplier: 1

Instrument :
 BNA_N
ClientSampleId :
 PB145157BS

Quant Time: May 28 04:37:49 2022
 Quant Method : Z:\svoasrv\HPCHEM1\BNA_N\Methods\8270-SIM-BN051322.M
 Quant Title : ASP BNA STANDARDS FOR 5 POINT CALIBRATION
 QLast Update : Wed May 18 07:42:52 2022
 Response via : Initial Calibration

Manual Integrations
APPROVED
 Reviewed By :Christian Giraldo 05/28/2022
 Supervised By :Jagrut Upadhyay 05/31/2022





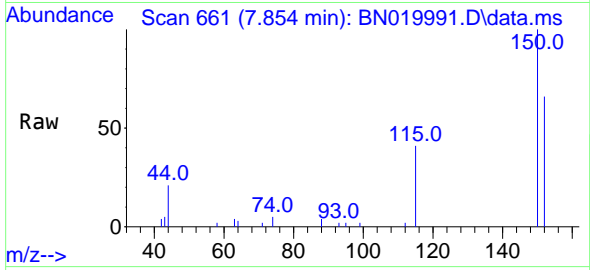
#1
 1,4-Dichlorobenzene-d4
 Concen: 0.400 ng
 RT: 7.854 min Scan# 60
 Delta R.T. 0.007 min
 Lab File: BN019991.D
 Acq: 27 May 2022 17:19

Instrument :

BNA_N

ClientSampleId :

PB145157BS

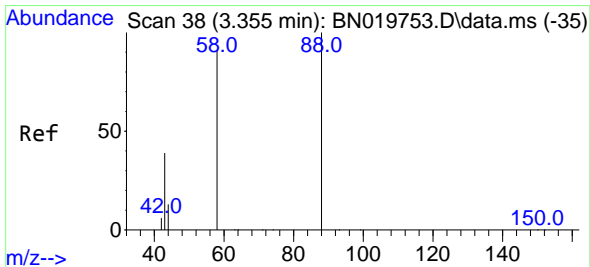
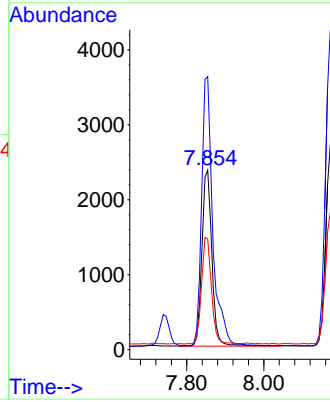
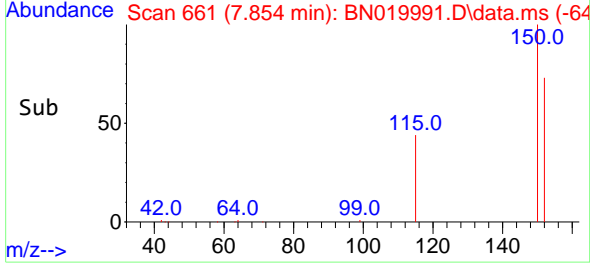


Tgt Ion: 152 Resp: 422
 Ion Ratio Lower Upper
 152 100
 150 152.1 127.9 191.9
 115 61.8 51.4 77.2

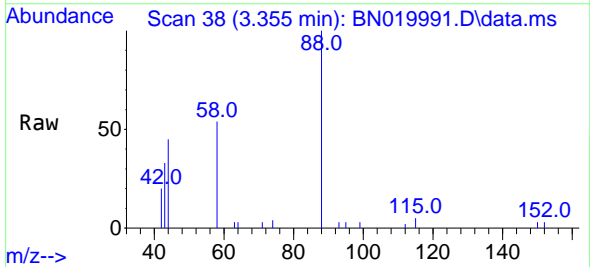
Manual Integrations

APPROVED

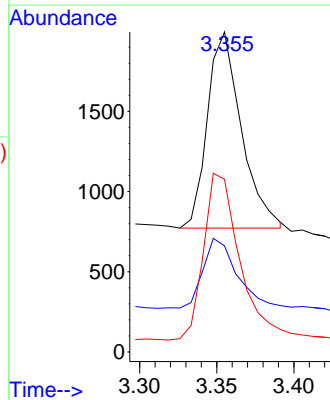
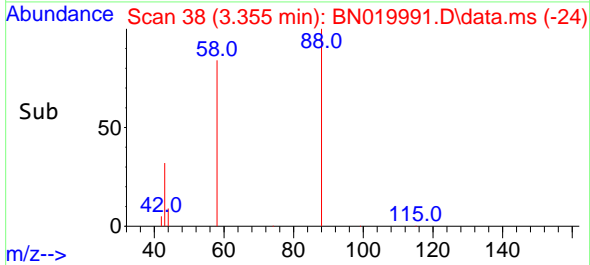
Reviewed By :Christian Giraldo 05/28/2022
 Supervised By :Jagrut Upadhyay 05/31/2022

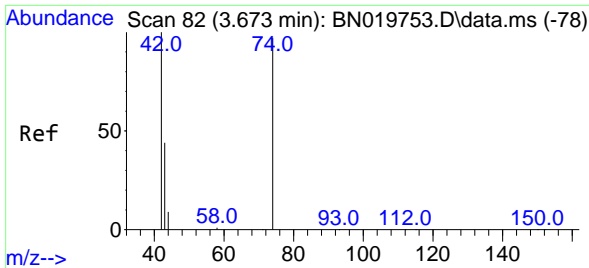


#2
 1,4-Dioxane
 Concen: 0.373 ng
 RT: 3.355 min Scan# 38
 Delta R.T. -0.000 min
 Lab File: BN019991.D
 Acq: 27 May 2022 17:19



Tgt Ion: 88 Resp: 1870
 Ion Ratio Lower Upper
 88 100
 43 35.9 30.2 45.2
 58 90.1 73.0 109.6





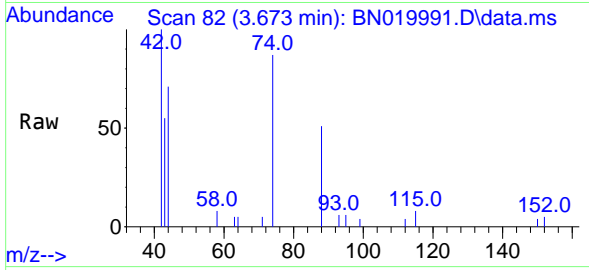
#3
 n-Nitrosodimethylamine
 Concen: 0.404 ng
 RT: 3.673 min Scan# 81
 Delta R.T. 0.007 min
 Lab File: BN019991.D
 Acq: 27 May 2022 17:19

Instrument :

BNA_N

ClientSampleId :

PB145157BS

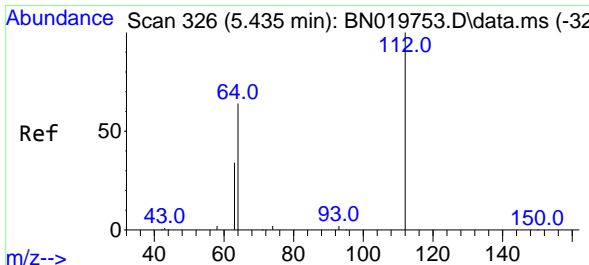
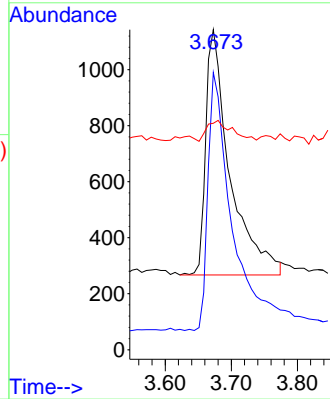
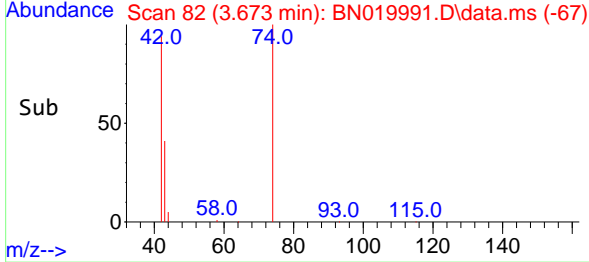


Tgt Ion: 42 Resp: 2218
 Ion Ratio Lower Upper
 42 100
 74 105.5 84.0 126.0
 44 8.9 9.8 14.8

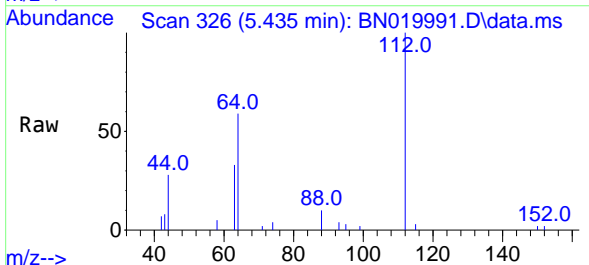
Manual Integrations

APPROVED

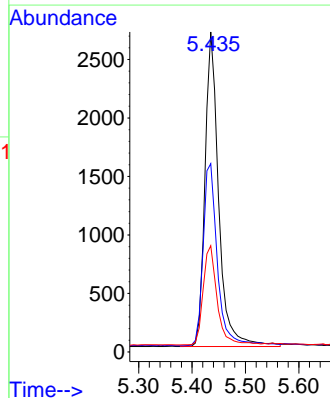
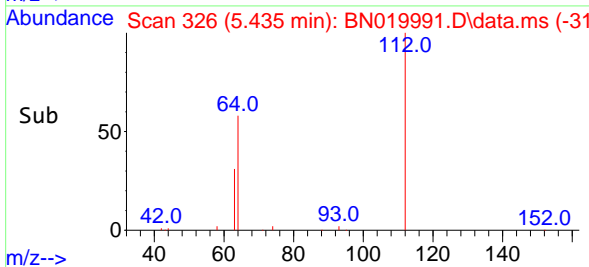
Reviewed By :Christian Giraldo 05/28/2022
 Supervised By :Jagrut Upadhyay 05/31/2022

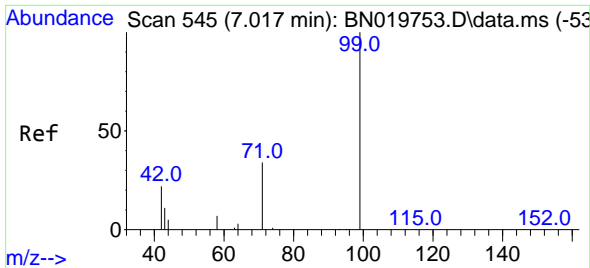


#4
 2-Fluorophenol
 Concen: 0.456 ng
 RT: 5.435 min Scan# 326
 Delta R.T. -0.000 min
 Lab File: BN019991.D
 Acq: 27 May 2022 17:19



Tgt Ion:112 Resp: 4821
 Ion Ratio Lower Upper
 112 100
 64 60.5 49.1 73.7
 63 32.1 26.3 39.5





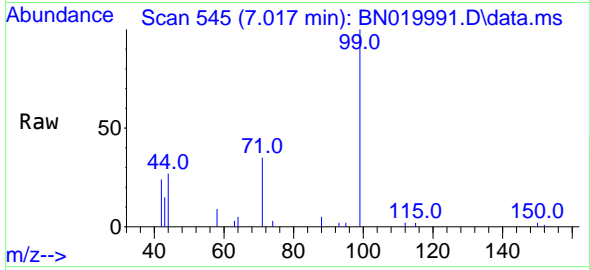
#5
Phenol-d6
Concen: 0.449 ng
RT: 7.017 min Scan# 545
Delta R.T. 0.007 min
Lab File: BN019991.D
Acq: 27 May 2022 17:19

Instrument :

BNA_N

Client Sample Id :

PB145157BS

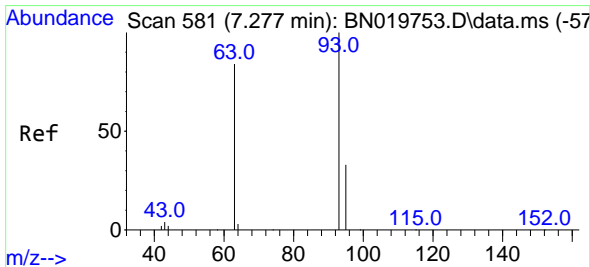
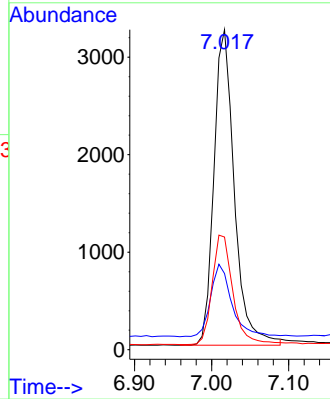
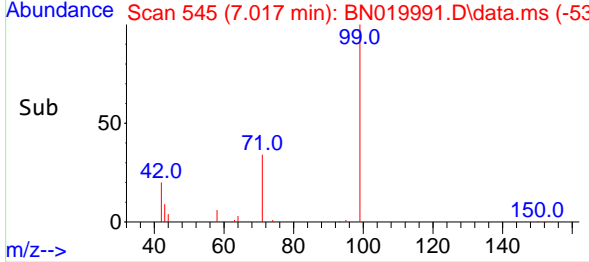


Tgt Ion: 99 Resp: 595
Ion Ratio Lower Upper
99 100
42 23.9 19.3 28.9
71 35.2 27.5 41.3

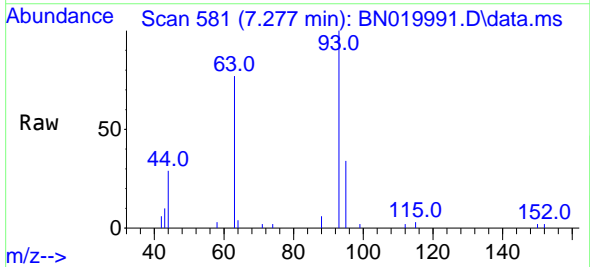
Manual Integrations

APPROVED

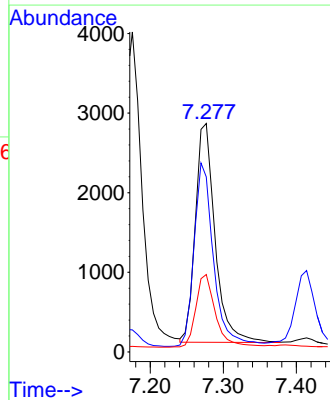
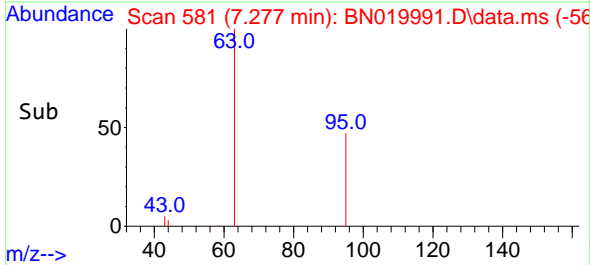
Reviewed By :Christian Giraldo 05/28/2022
Supervised By :Jagrut Upadhyay 05/31/2022

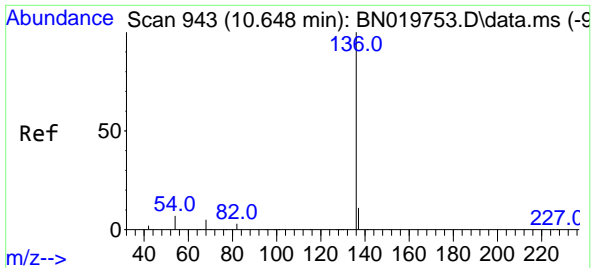


#6
bis(2-Chloroethyl)ether
Concen: 0.401 ng
RT: 7.277 min Scan# 581
Delta R.T. 0.007 min
Lab File: BN019991.D
Acq: 27 May 2022 17:19



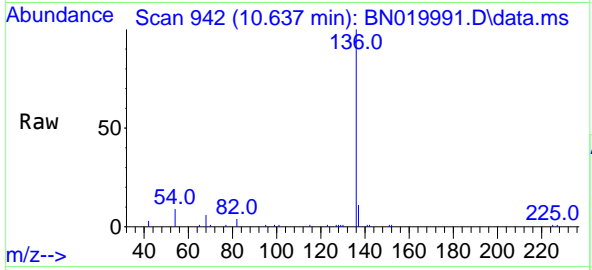
Tgt Ion: 93 Resp: 5167
Ion Ratio Lower Upper
93 100
63 82.9 67.4 101.0
95 33.3 26.5 39.7





#7
 Naphthalene-d8
 Concen: 0.400 ng
 RT: 10.637 min Scan# 94
 Delta R.T. -0.000 min
 Lab File: BN019991.D
 Acq: 27 May 2022 17:19

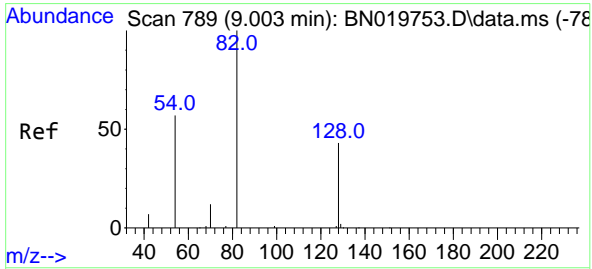
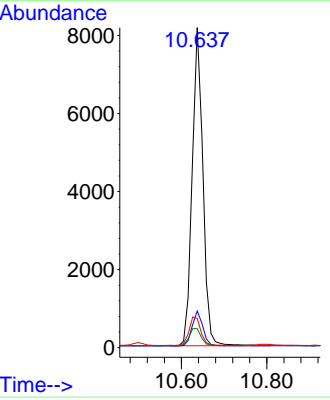
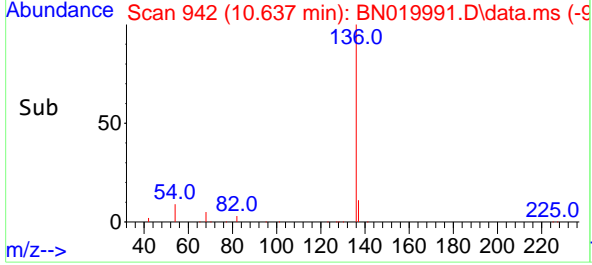
Instrument : BNA_N
 Client Sample Id : PB145157BS



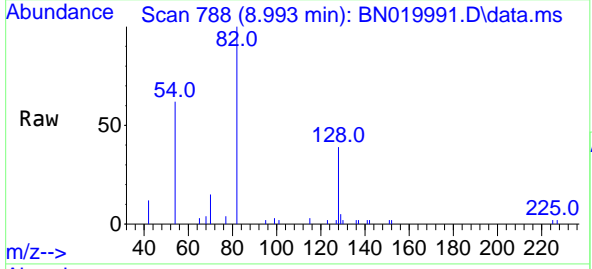
Tgt Ion: 136 Resp: 1422

Ion	Ratio	Lower	Upper
136	100		
137	11.4	9.0	13.6
54	9.2	6.2	9.2
68	6.0	4.4	6.6

Manual Integrations
APPROVED
 Reviewed By : Christian Giraldo 05/28/2022
 Supervised By : Jagrut Upadhyay 05/31/2022

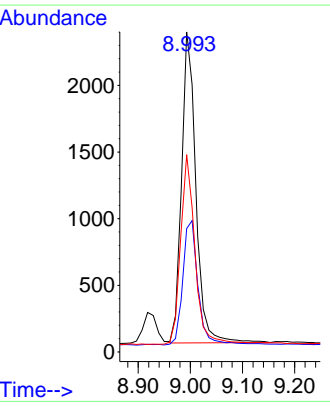
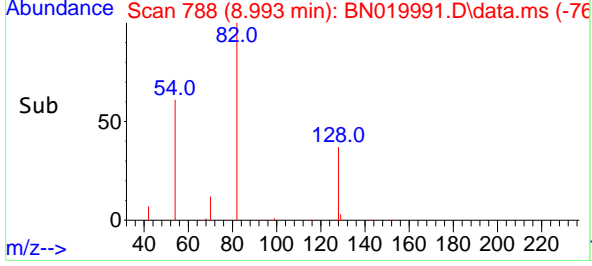


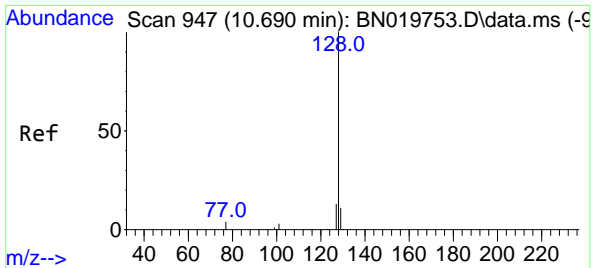
#8
 Nitrobenzene-d5
 Concen: 0.415 ng
 RT: 8.993 min Scan# 788
 Delta R.T. -0.000 min
 Lab File: BN019991.D
 Acq: 27 May 2022 17:19



Tgt Ion: 82 Resp: 4460

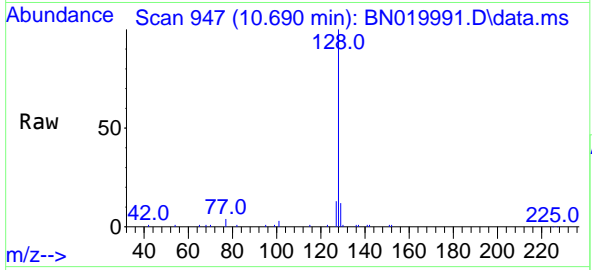
Ion	Ratio	Lower	Upper
82	100		
128	38.6	35.0	52.6
54	61.6	46.2	69.4





#9
 Naphthalene
 Concen: 0.413 ng
 RT: 10.690 min Scan# 947
 Delta R.T. -0.000 min
 Lab File: BN019991.D
 Acq: 27 May 2022 17:19

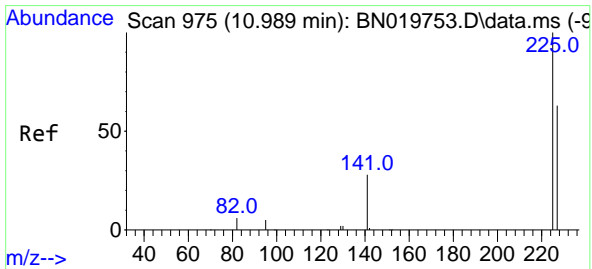
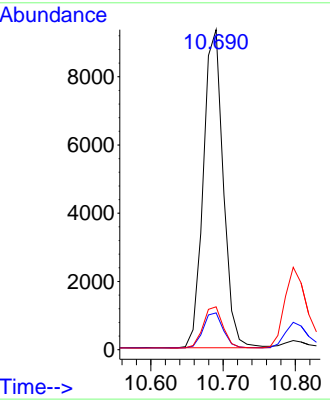
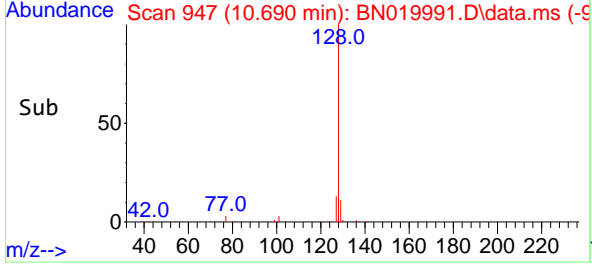
Instrument : BNA_N
 Client Sample Id : PB145157BS



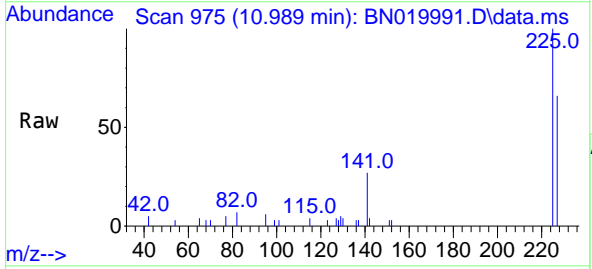
Tgt Ion: 128 Resp: 1785

Ion	Ratio	Lower	Upper
128	100		
129	11.5	8.9	13.3
127	13.4	10.8	16.2

Manual Integrations
APPROVED
 Reviewed By : Christian Giraldo 05/28/2022
 Supervised By : Jagrut Upadhyay 05/31/2022

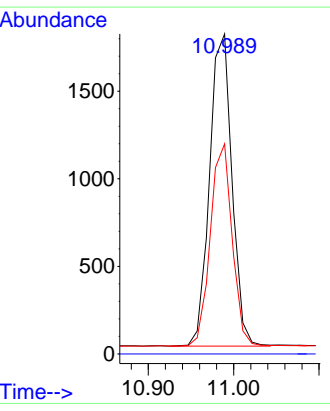
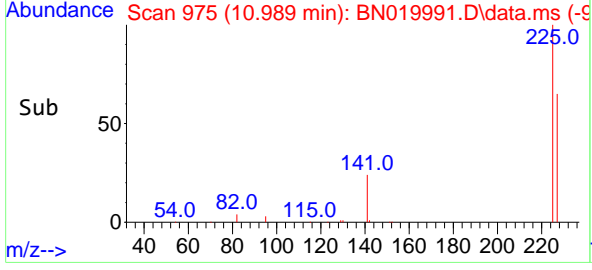


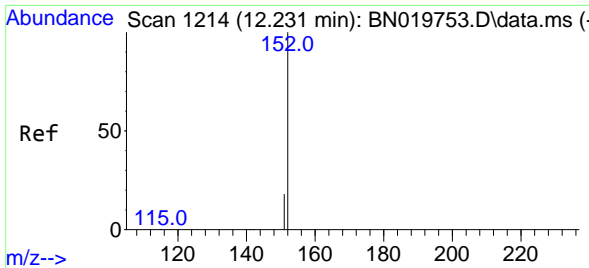
#10
 Hexachlorobutadiene
 Concen: 0.413 ng
 RT: 10.989 min Scan# 975
 Delta R.T. -0.000 min
 Lab File: BN019991.D
 Acq: 27 May 2022 17:19



Tgt Ion: 225 Resp: 3247

Ion	Ratio	Lower	Upper
225	100		
223	0.0	0.0	0.0
227	63.0	50.9	76.3





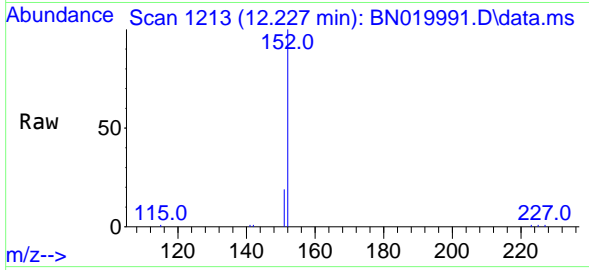
#11
2-Methylnaphthalene-d10
Concen: 0.421 ng
RT: 12.227 min Scan# 11
Delta R.T. -0.000 min
Lab File: BN019991.D
Acq: 27 May 2022 17:19

Instrument :

BNA_N

ClientSampleId :

PB145157BS

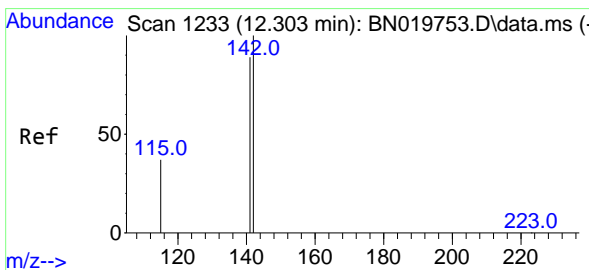
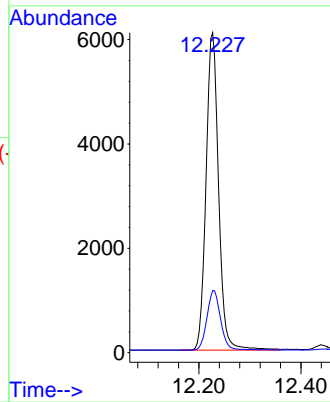
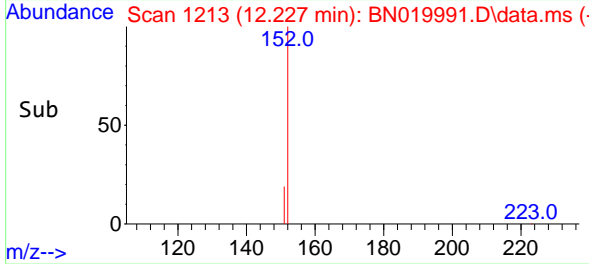


Tgt Ion:152 Resp: 1042
Ion Ratio Lower Upper
152 100
151 20.3 16.2 24.4

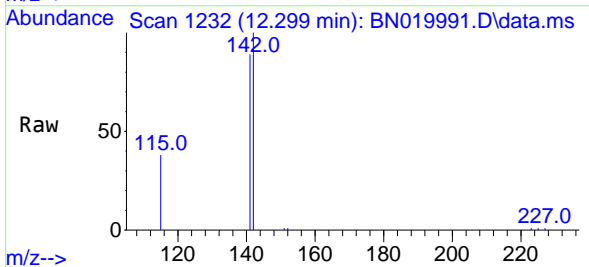
Manual Integrations

APPROVED

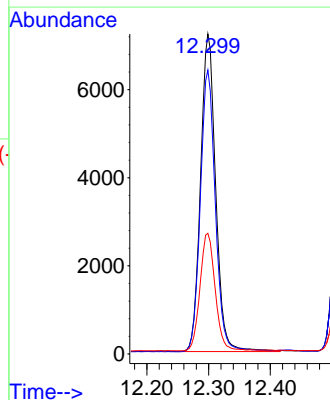
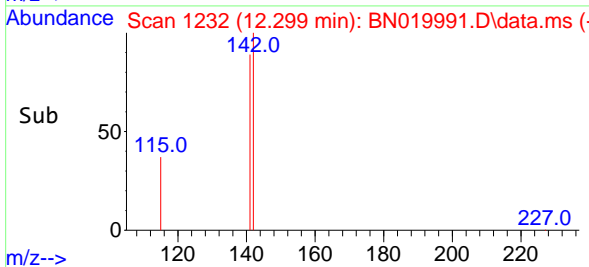
Reviewed By :Christian Giraldo 05/28/2022
Supervised By :Jagrut Upadhyay 05/31/2022

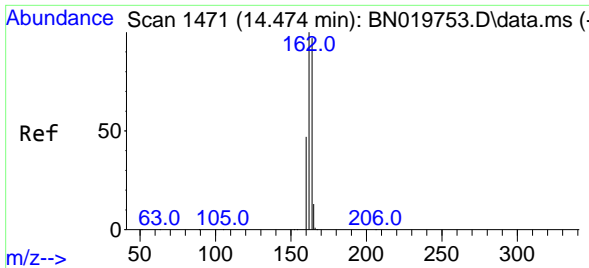


#12
2-Methylnaphthalene
Concen: 0.417 ng
RT: 12.299 min Scan# 1232
Delta R.T. -0.000 min
Lab File: BN019991.D
Acq: 27 May 2022 17:19



Tgt Ion:142 Resp: 12280
Ion Ratio Lower Upper
142 100
141 88.7 71.6 107.4
115 37.7 29.8 44.8





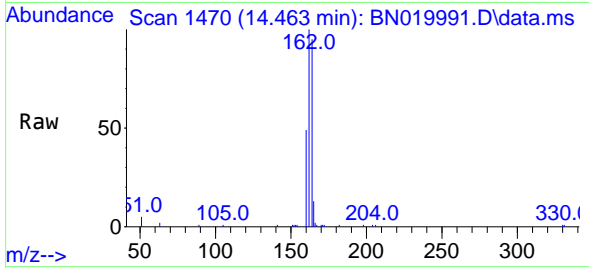
#13
 Acenaphthene-d10
 Concen: 0.400 ng
 RT: 14.463 min Scan# 14
 Delta R.T. -0.000 min
 Lab File: BN019991.D
 Acq: 27 May 2022 17:19

Instrument :

BNA_N

ClientSampleId :

PB145157BS

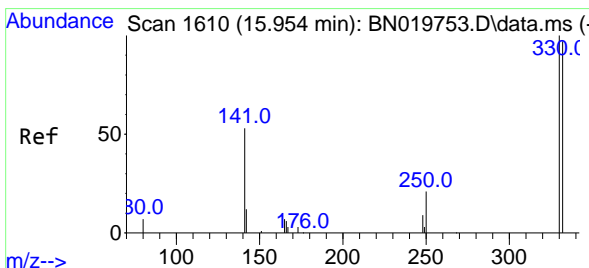
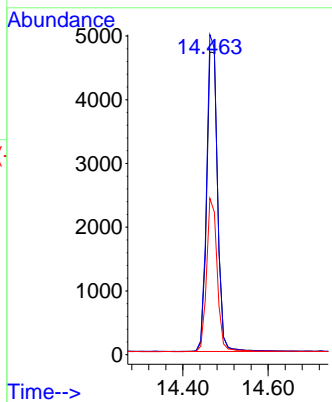
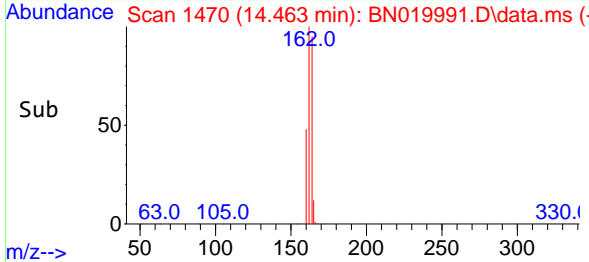


Tgt Ion:164 Resp: 838
 Ion Ratio Lower Upper
 164 100
 162 105.7 82.1 123.1
 160 51.6 38.6 58.0

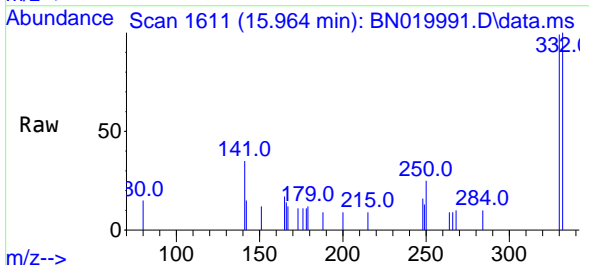
Manual Integrations

APPROVED

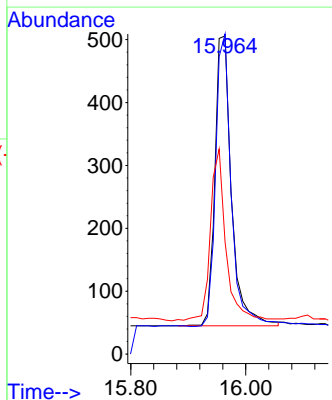
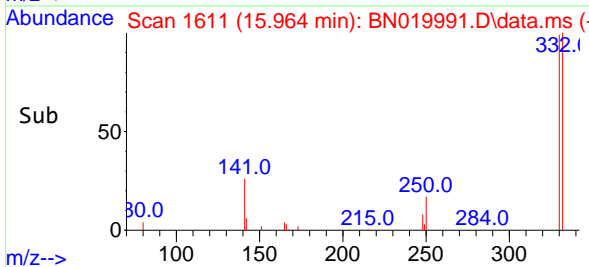
Reviewed By :Christian Giraldo 05/28/2022
 Supervised By :Jagrut Upadhyay 05/31/2022

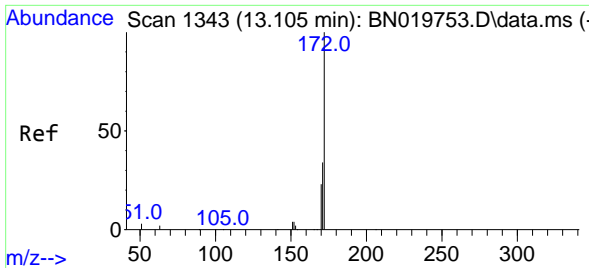


#14
 2,4,6-Tribromophenol
 Concen: 0.278 ng
 RT: 15.964 min Scan# 1611
 Delta R.T. 0.010 min
 Lab File: BN019991.D
 Acq: 27 May 2022 17:19



Tgt Ion:330 Resp: 922
 Ion Ratio Lower Upper
 330 100
 332 96.1 77.6 116.4
 141 55.4 41.0 61.4





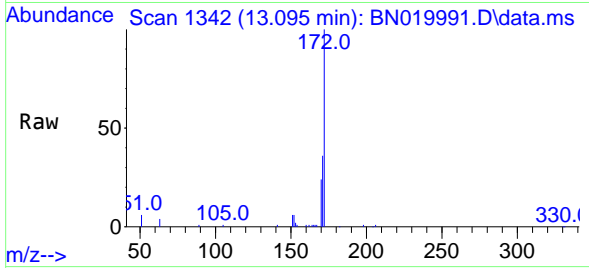
#15
 2-Fluorobiphenyl
 Concen: 0.418 ng
 RT: 13.095 min Scan# 11
 Delta R.T. -0.000 min
 Lab File: BN019991.D
 Acq: 27 May 2022 17:19

Instrument :

BNA_N

Client Sample Id :

PB145157BS



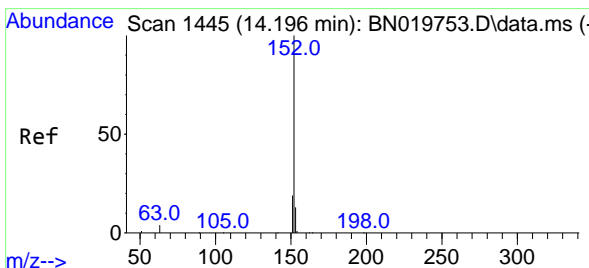
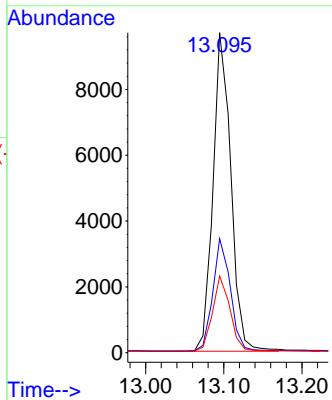
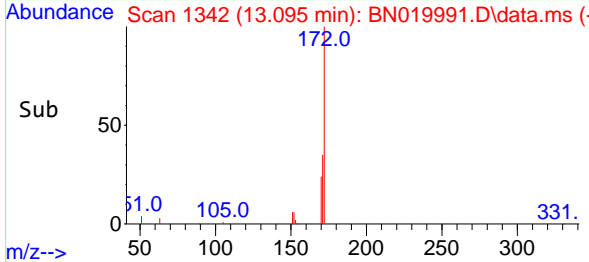
Tgt Ion: 172 Resp: 1530

Ion	Ratio	Lower	Upper
172	100		
171	35.6	27.2	40.8
170	23.9	18.2	27.4

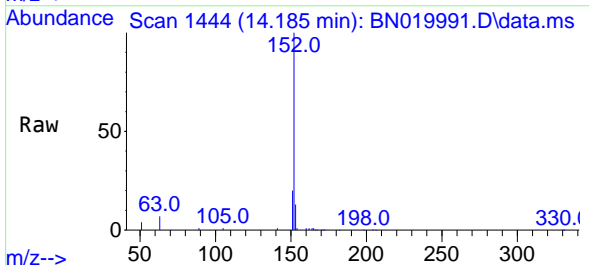
Manual Integrations

APPROVED

Reviewed By : Christian Giraldo 05/28/2022
 Supervised By : Jagrut Upadhyay 05/31/2022

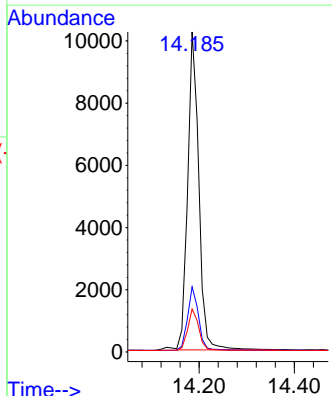
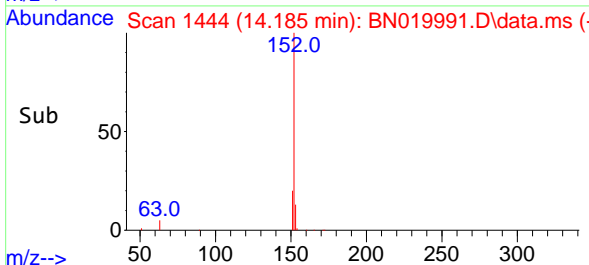


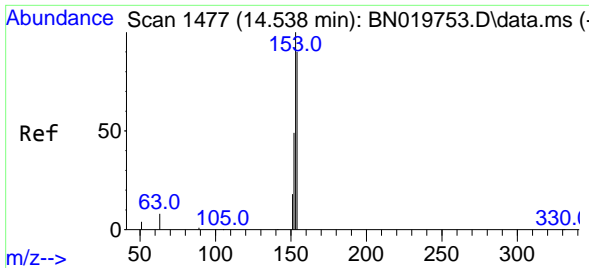
#16
 Acenaphthylene
 Concen: 0.422 ng m
 RT: 14.185 min Scan# 1444
 Delta R.T. -0.000 min
 Lab File: BN019991.D
 Acq: 27 May 2022 17:19



Tgt Ion: 152 Resp: 16592

Ion	Ratio	Lower	Upper
152	100		
151	19.8	16.2	24.4
153	13.4	10.7	16.1





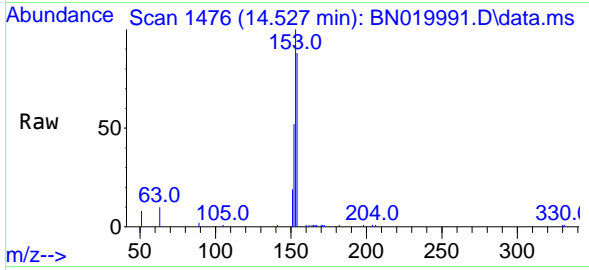
#17
 Acenaphthene
 Concen: 0.398 ng
 RT: 14.527 min Scan# 1477
 Delta R.T. -0.000 min
 Lab File: BN019991.D
 Acq: 27 May 2022 17:19

Instrument :

BNA_N

Client Sample Id :

PB145157BS

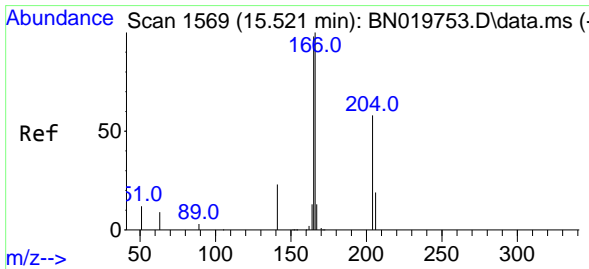
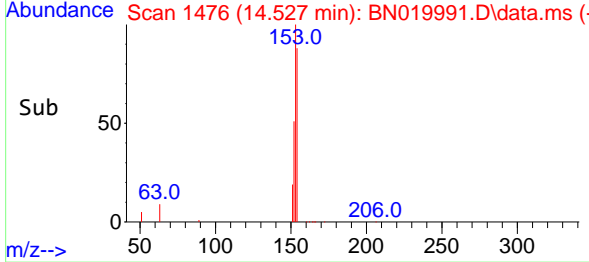
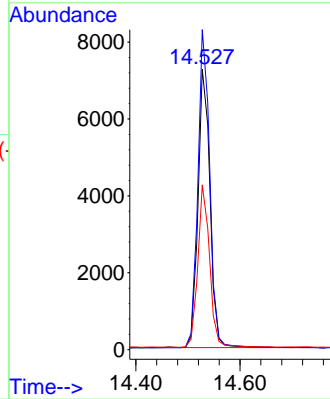


Tgt Ion:154 Resp: 11578
 Ion Ratio Lower Upper
 154 100
 153 113.7 87.5 131.3
 152 57.8 43.8 65.6

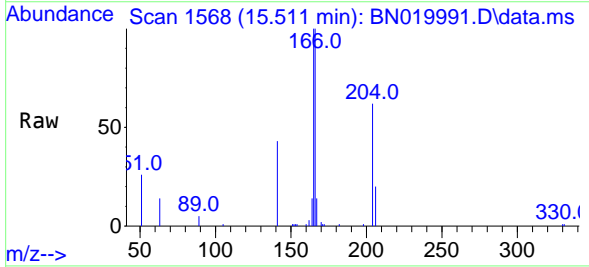
Manual Integrations

APPROVED

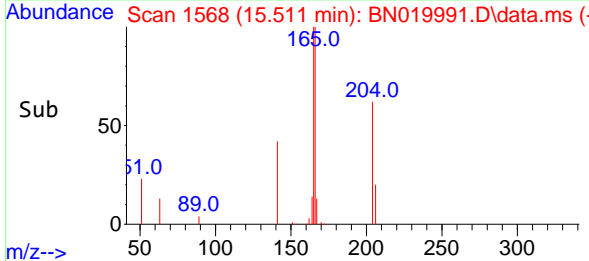
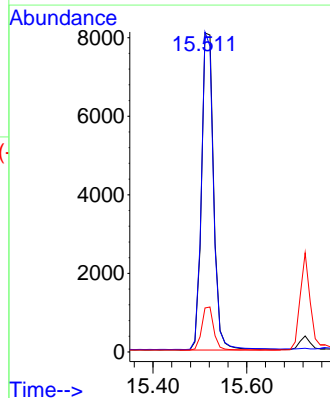
Reviewed By :Christian Giraldo 05/28/2022
 Supervised By :Jagrut Upadhyay 05/31/2022

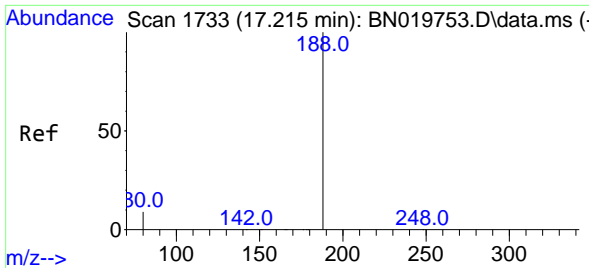


#18
 Fluorene
 Concen: 0.395 ng
 RT: 15.511 min Scan# 1568
 Delta R.T. -0.000 min
 Lab File: BN019991.D
 Acq: 27 May 2022 17:19



Tgt Ion:166 Resp: 14526
 Ion Ratio Lower Upper
 166 100
 165 98.6 78.6 118.0
 167 13.5 10.8 16.2





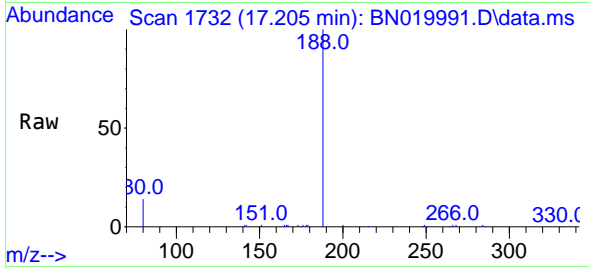
#19
 Phenanthrene-d10
 Concen: 0.400 ng
 RT: 17.205 min Scan# 11
 Delta R.T. -0.000 min
 Lab File: BN019991.D
 Acq: 27 May 2022 17:19

Instrument :

BNA_N

ClientSampleId :

PB145157BS

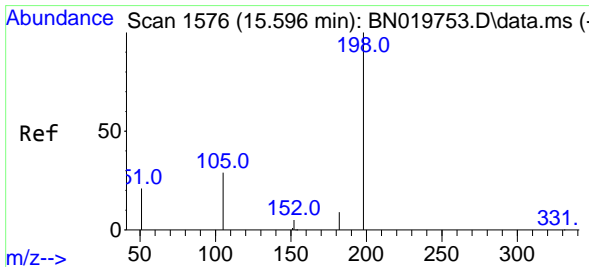
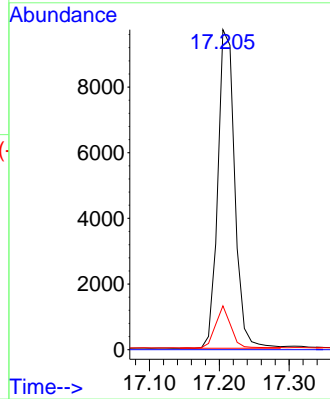
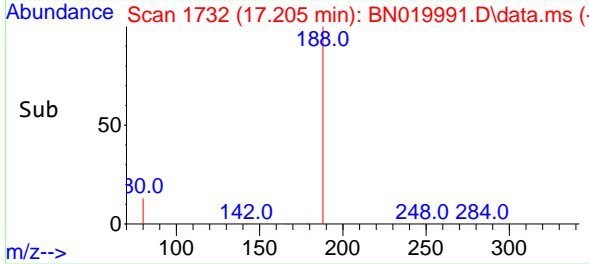


Tgt Ion:188 Resp: 1640
 Ion Ratio Lower Upper
 188 100
 94 0.0 0.0 0.0
 80 13.7 7.4 11.2

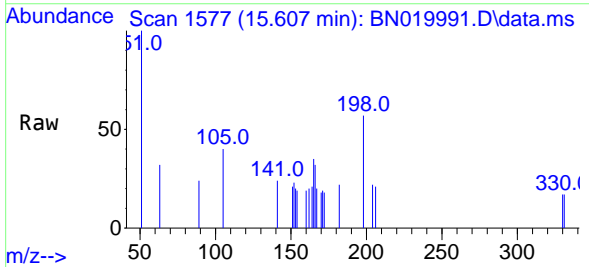
Manual Integrations

APPROVED

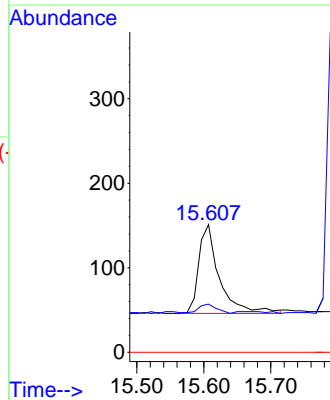
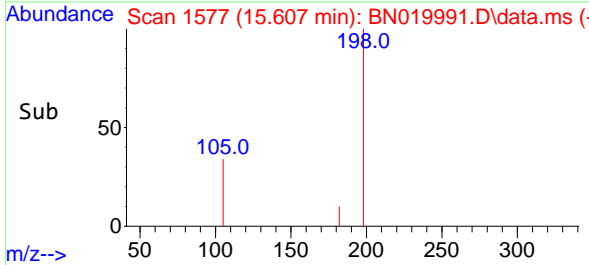
Reviewed By :Christian Giraldo 05/28/2022
 Supervised By :Jagrut Upadhyay 05/31/2022

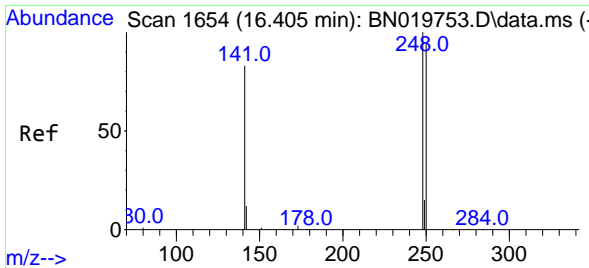


#20
 4,6-Dinitro-2-methylphenol
 Concen: 0.096 ng
 RT: 15.607 min Scan# 1577
 Delta R.T. 0.011 min
 Lab File: BN019991.D
 Acq: 27 May 2022 17:19



Tgt Ion:198 Resp: 226
 Ion Ratio Lower Upper
 198 100
 182 37.7 12.1 18.1#
 77 0.0 0.0 0.0





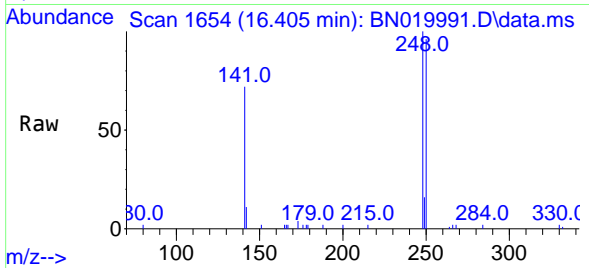
#21
 4-Bromophenyl-phenylether
 Concen: 0.438 ng
 RT: 16.405 min Scan# 1654
 Delta R.T. -0.000 min
 Lab File: BN019991.D
 Acq: 27 May 2022 17:19

Instrument :

BNA_N

ClientSampleId :

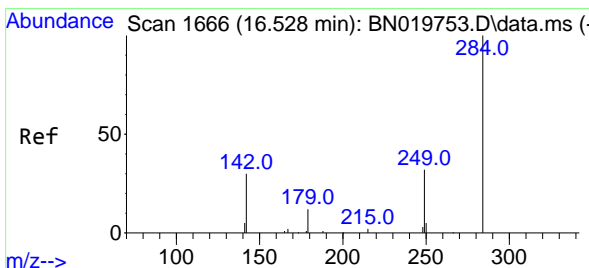
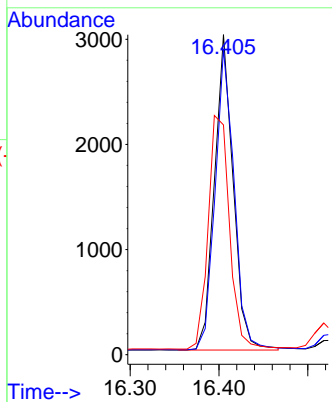
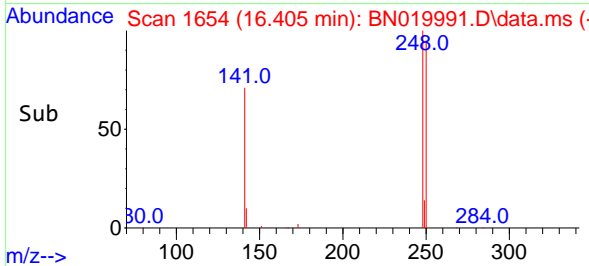
PB145157BS



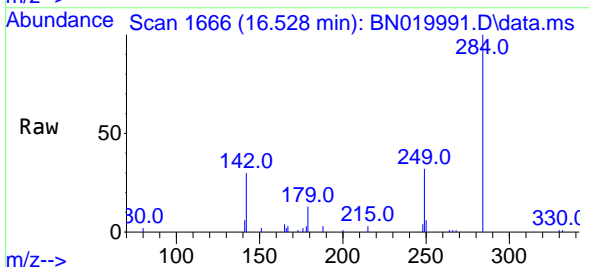
Tgt Ion:248 Resp: 4389
 Ion Ratio Lower Upper
 248 100
 250 95.5 75.3 112.9
 141 71.8 67.3 100.9

Manual Integrations
 APPROVED

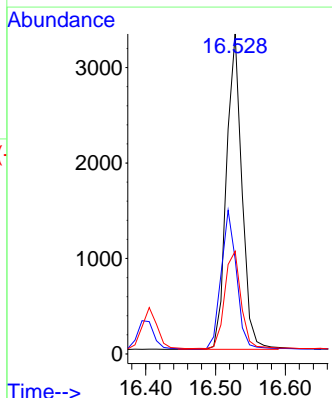
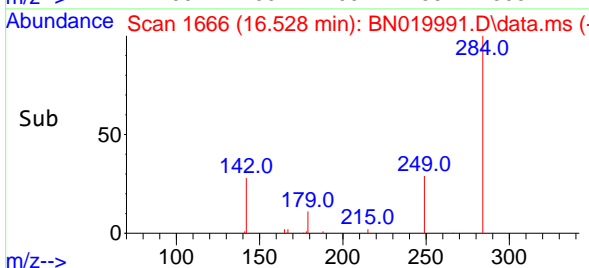
Reviewed By :Christian Giraldo 05/28/2022
 Supervised By :Jagrut Upadhyay 05/31/2022

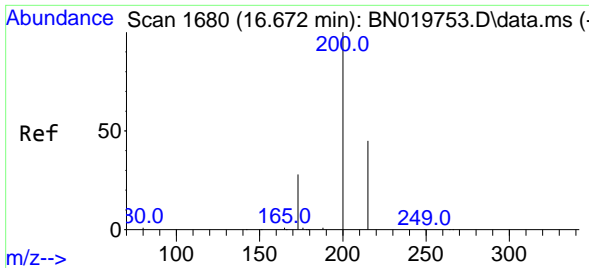


#22
 Hexachlorobenzene
 Concen: 0.458 ng
 RT: 16.528 min Scan# 1666
 Delta R.T. -0.000 min
 Lab File: BN019991.D
 Acq: 27 May 2022 17:19



Tgt Ion:284 Resp: 5083
 Ion Ratio Lower Upper
 284 100
 142 43.5 35.2 52.8
 249 32.7 26.6 40.0





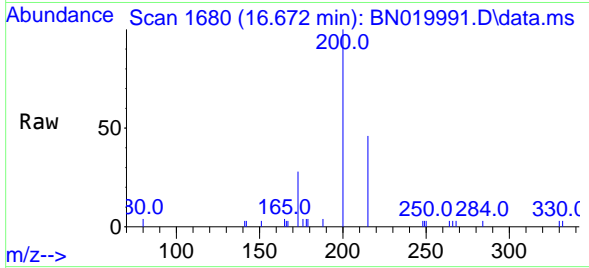
#23
Atrazine
 Concen: 0.398 ng
 RT: 16.672 min Scan# 1100
 Delta R.T. -0.000 min
 Lab File: BN019991.D
 Acq: 27 May 2022 17:19

Instrument :

BNA_N

Client Sample Id :

PB145157BS



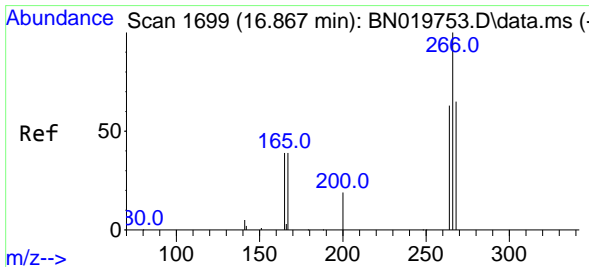
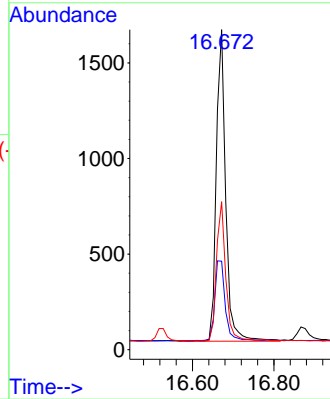
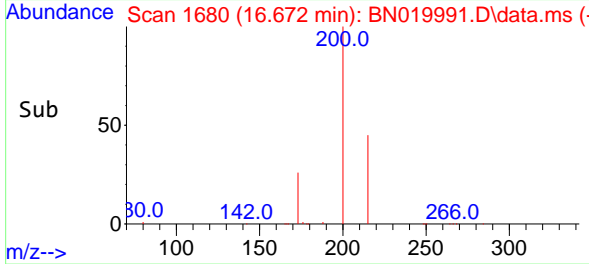
Tgt Ion: 200 Resp: 260

Ion	Ratio	Lower	Upper
200	100		
173	27.7	23.6	35.4
215	46.2	36.6	54.8

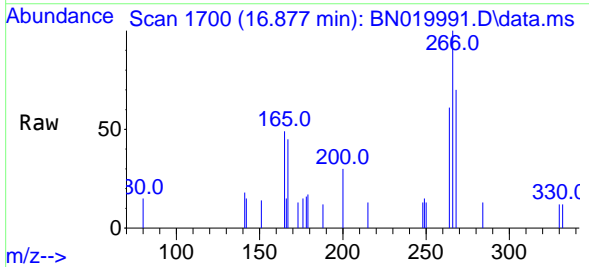
Manual Integrations

APPROVED

Reviewed By : Christian Giraldo 05/28/2022
 Supervised By : Jagrut Upadhyay 05/31/2022

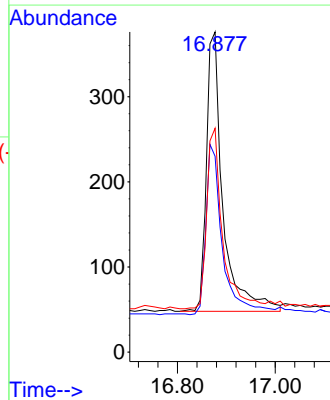
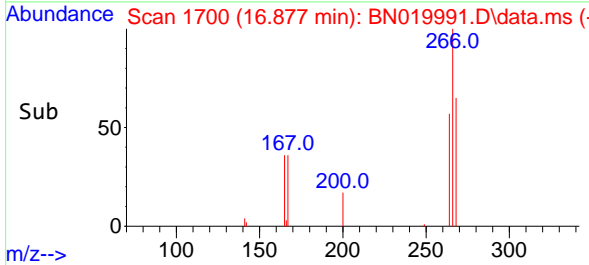


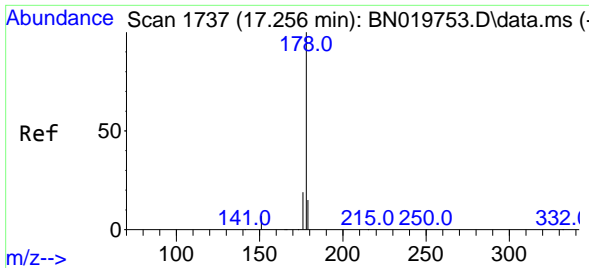
#24
Pentachlorophenol
 Concen: 0.179 ng
 RT: 16.877 min Scan# 1700
 Delta R.T. 0.010 min
 Lab File: BN019991.D
 Acq: 27 May 2022 17:19



Tgt Ion: 266 Resp: 767

Ion	Ratio	Lower	Upper
266	100		
264	61.9	51.3	76.9
268	62.1	52.6	79.0





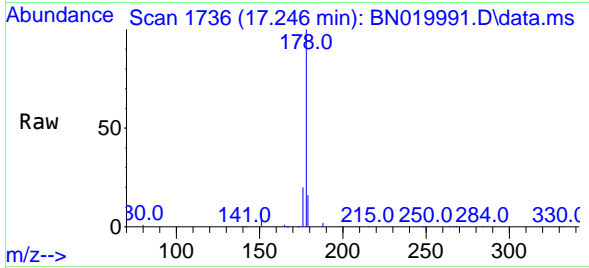
#25
 Phenanthrene
 Concen: 0.413 ng
 RT: 17.246 min Scan# 1736
 Delta R.T. -0.000 min
 Lab File: BN019991.D
 Acq: 27 May 2022 17:19

Instrument :

BNA_N

ClientSampleId :

PB145157BS

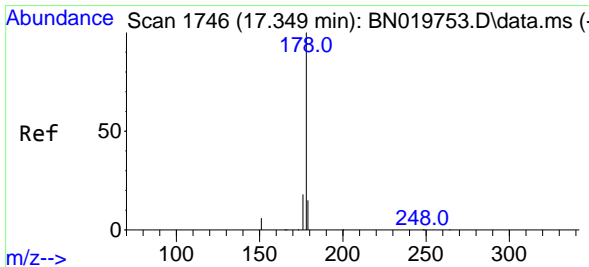
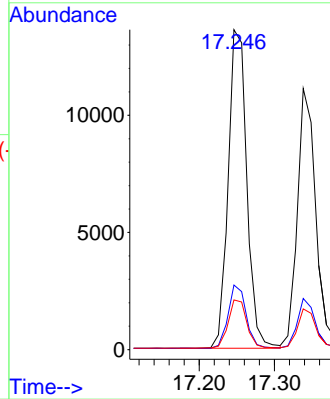
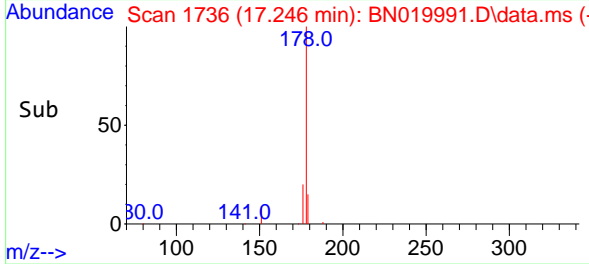


Tgt Ion:178 Resp: 23435
 Ion Ratio Lower Upper
 178 100
 176 19.3 15.3 22.9
 179 15.2 12.2 18.4

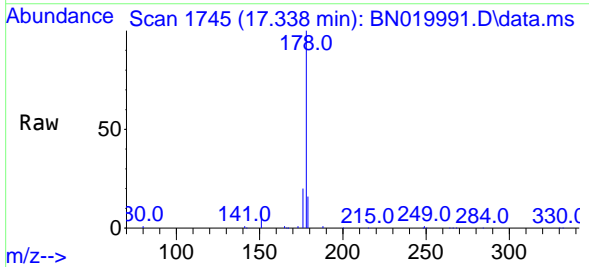
Manual Integrations

APPROVED

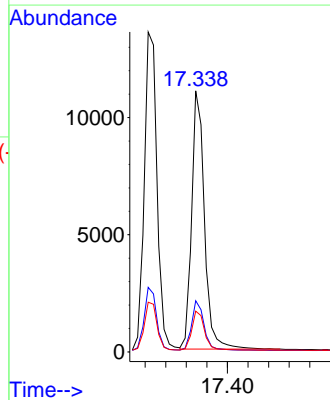
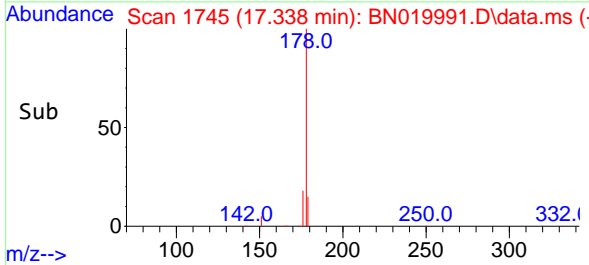
Reviewed By :Christian Giraldo 05/28/2022
 Supervised By :Jagrut Upadhyay 05/31/2022

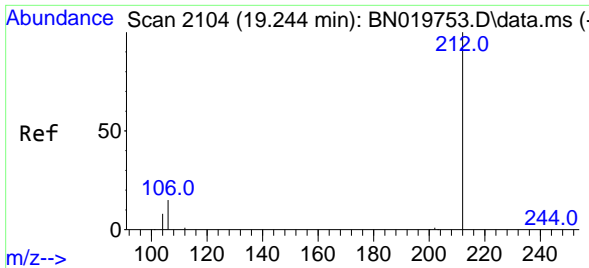


#26
 Anthracene
 Concen: 0.396 ng
 RT: 17.338 min Scan# 1745
 Delta R.T. -0.000 min
 Lab File: BN019991.D
 Acq: 27 May 2022 17:19



Tgt Ion:178 Resp: 19035
 Ion Ratio Lower Upper
 178 100
 176 18.8 14.9 22.3
 179 15.2 12.2 18.4





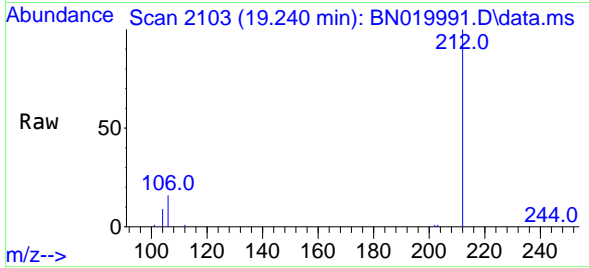
#27
 Fluoranthene-d10
 Concen: 0.369 ng
 RT: 19.240 min Scan# 2104
 Delta R.T. -0.000 min
 Lab File: BN019991.D
 Acq: 27 May 2022 17:19

Instrument :

BNA_N

ClientSampleId :

PB145157BS

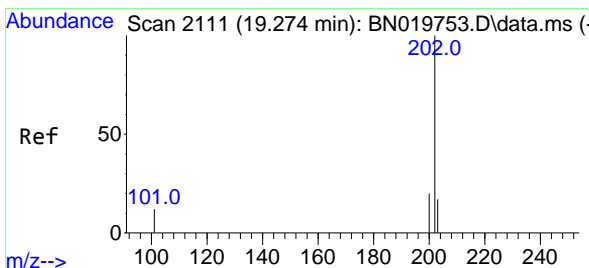
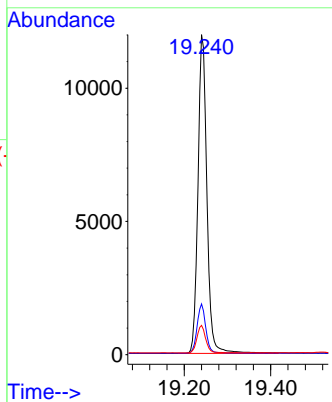
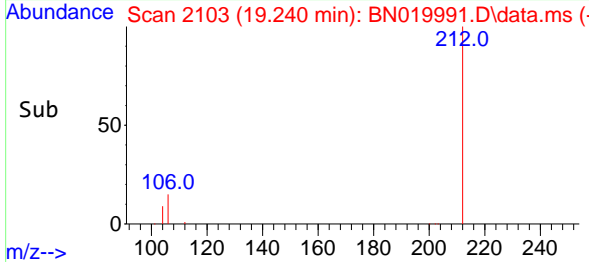


Tgt Ion:212 Resp: 17198
 Ion Ratio Lower Upper
 212 100
 106 15.2 12.6 19.0
 104 8.5 7.2 10.8

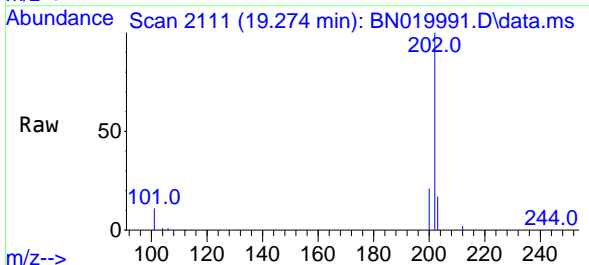
Manual Integrations

APPROVED

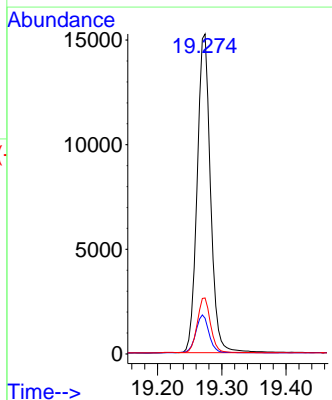
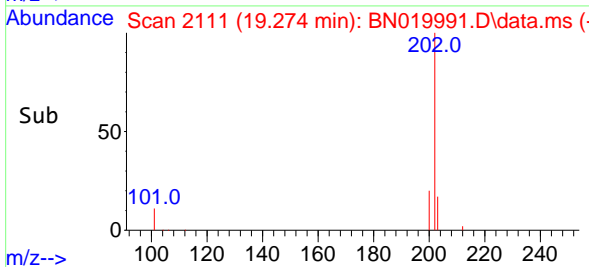
Reviewed By :Christian Giraldo 05/28/2022
 Supervised By :Jagrut Upadhyay 05/31/2022

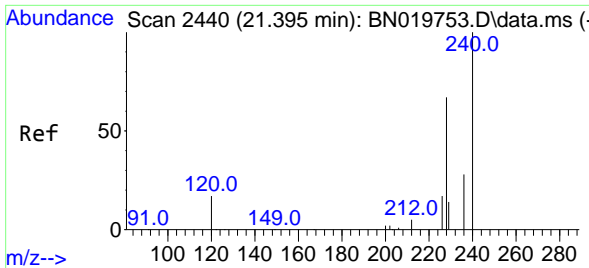


#28
 Fluoranthene
 Concen: 0.362 ng
 RT: 19.274 min Scan# 2111
 Delta R.T. 0.004 min
 Lab File: BN019991.D
 Acq: 27 May 2022 17:19



Tgt Ion:202 Resp: 22007
 Ion Ratio Lower Upper
 202 100
 101 12.0 9.6 14.4
 203 17.2 13.5 20.3





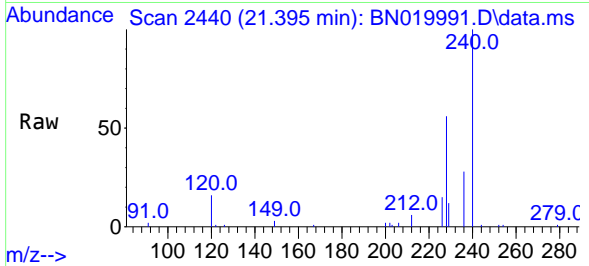
#29
 Chrysene-d12
 Concen: 0.400 ng
 RT: 21.395 min Scan# 24
 Delta R.T. -0.009 min
 Lab File: BN019991.D
 Acq: 27 May 2022 17:19

Instrument :

BNA_N

ClientSampleId :

PB145157BS

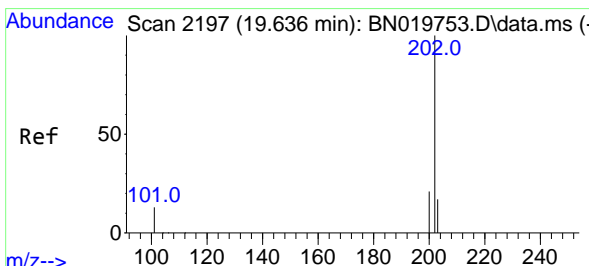
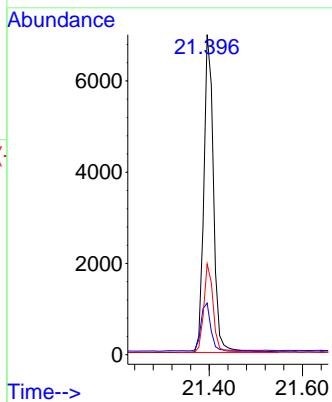
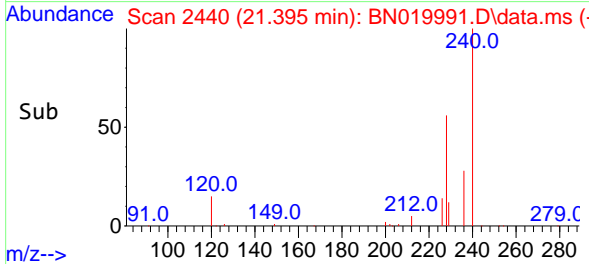


Tgt Ion:240 Resp: 10094
 Ion Ratio Lower Upper
 240 100
 120 16.1 14.6 21.8
 236 28.4 22.6 33.8

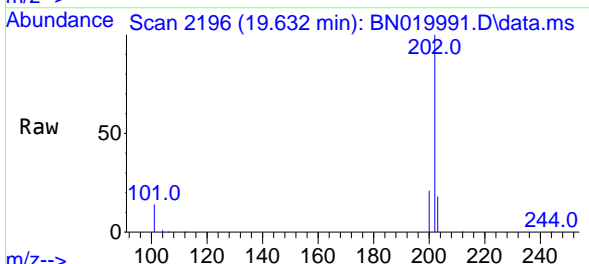
Manual Integrations

APPROVED

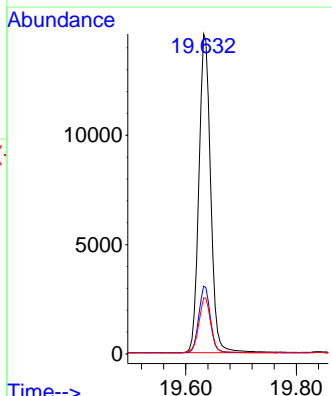
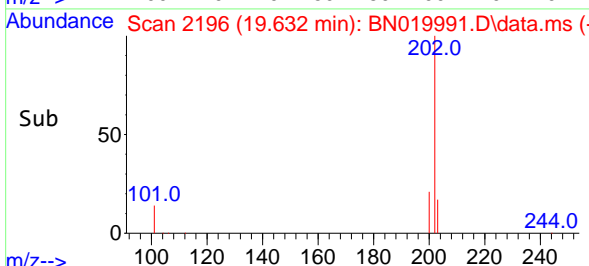
Reviewed By :Christian Giraldo 05/28/2022
 Supervised By :Jagrut Upadhyay 05/31/2022

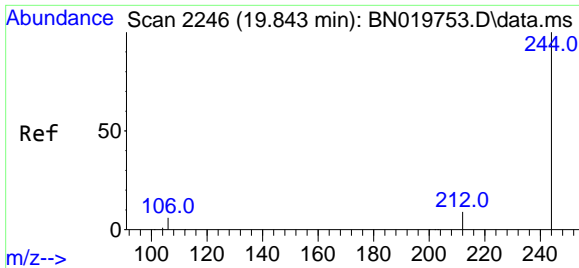


#30
 Pyrene
 Concen: 0.501 ng
 RT: 19.632 min Scan# 2196
 Delta R.T. -0.000 min
 Lab File: BN019991.D
 Acq: 27 May 2022 17:19



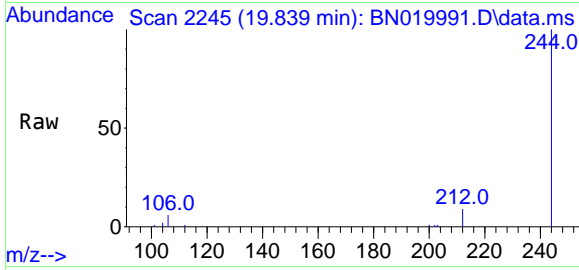
Tgt Ion:202 Resp: 21469
 Ion Ratio Lower Upper
 202 100
 200 20.8 16.6 25.0
 203 17.6 14.2 21.2





#31
 Terphenyl-d14
 Concen: 0.501 ng
 RT: 19.839 min Scan# 21
 Delta R.T. -0.004 min
 Lab File: BN019991.D
 Acq: 27 May 2022 17:19

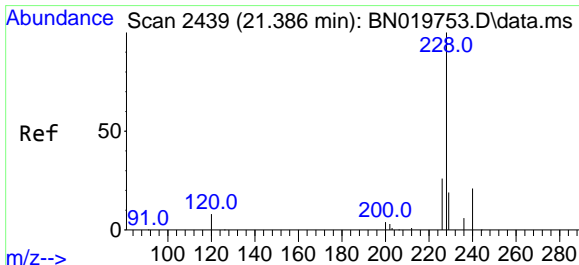
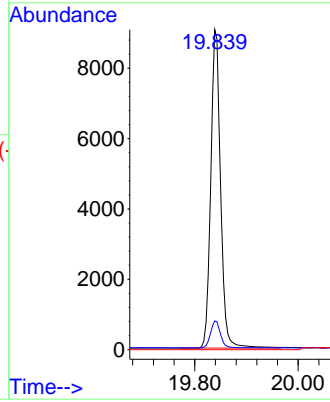
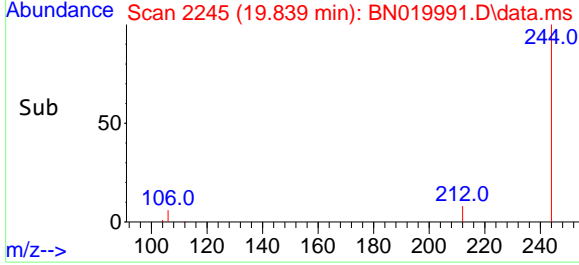
Instrument :
 BNA_N
 ClientSampleId :
 PB145157BS



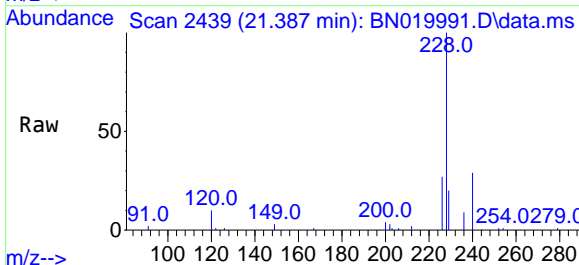
Tgt Ion:244 Resp: 1193

Ion	Ratio	Lower	Upper
244	100		
212	9.0	7.1	10.7
122	0.0	0.0	0.0

Manual Integrations
APPROVED
 Reviewed By :Christian Giraldo 05/28/2022
 Supervised By :Jagrut Upadhyay 05/31/2022

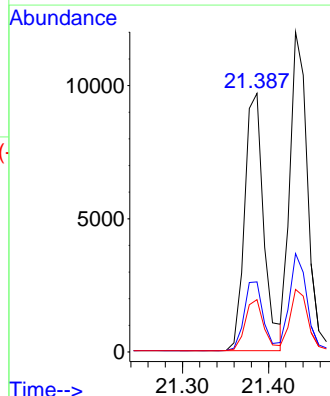
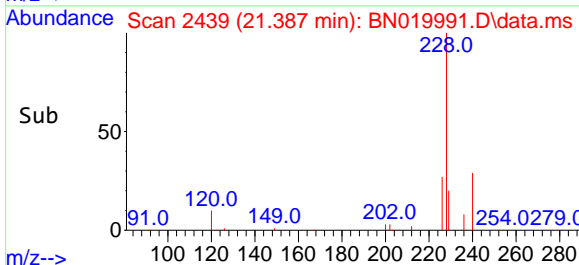


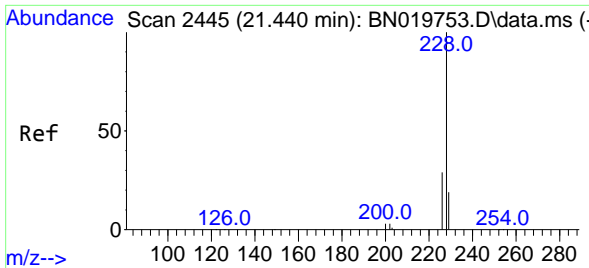
#32
 Benzo(a)anthracene
 Concen: 0.408 ng
 RT: 21.387 min Scan# 2439
 Delta R.T. -0.000 min
 Lab File: BN019991.D
 Acq: 27 May 2022 17:19



Tgt Ion:228 Resp: 15003

Ion	Ratio	Lower	Upper
228	100		
226	27.1	21.2	31.8
229	20.3	15.6	23.4





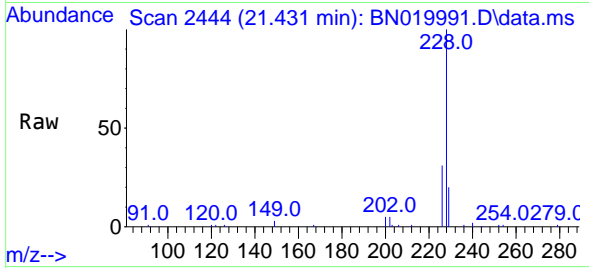
#33
 Chrysene
 Concen: 0.410 ng
 RT: 21.431 min Scan# 2444
 Delta R.T. -0.009 min
 Lab File: BN019991.D
 Acq: 27 May 2022 17:19

Instrument :

BNA_N

Client Sample Id :

PB145157BS

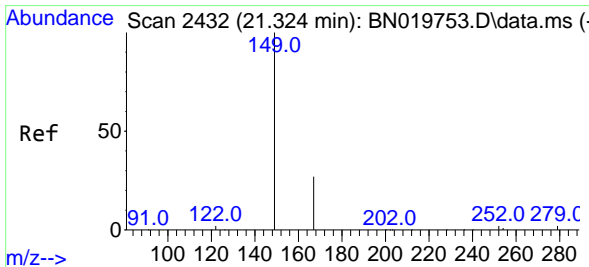
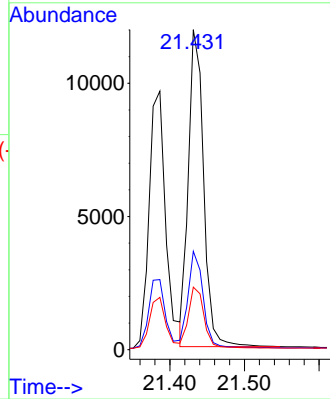
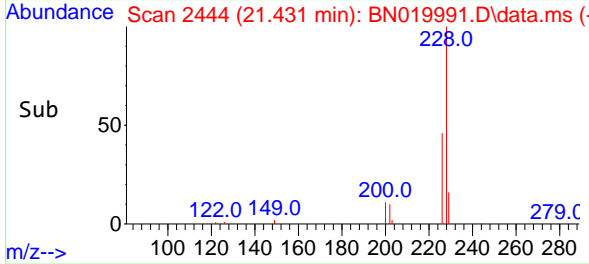


Tgt Ion: 228 Resp: 16898
 Ion Ratio Lower Upper
 228 100
 226 30.7 23.4 35.0
 229 19.5 15.7 23.5

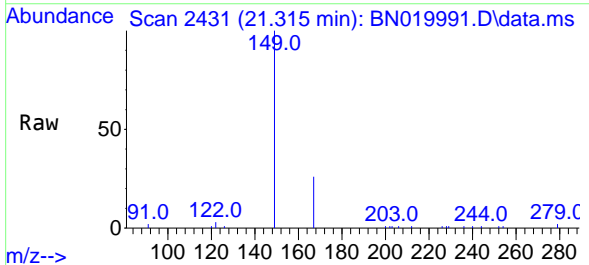
Manual Integrations

APPROVED

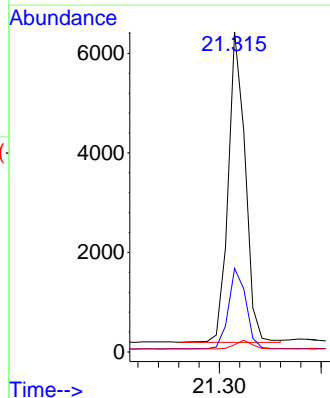
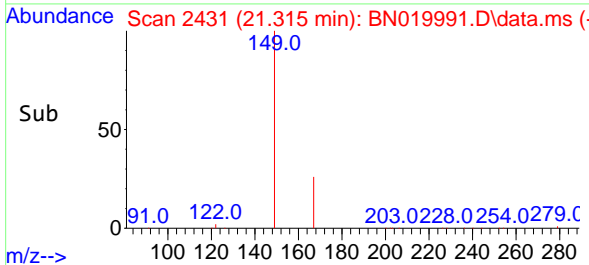
Reviewed By : Christian Giraldo 05/28/2022
 Supervised By : Jagrut Upadhyay 05/31/2022

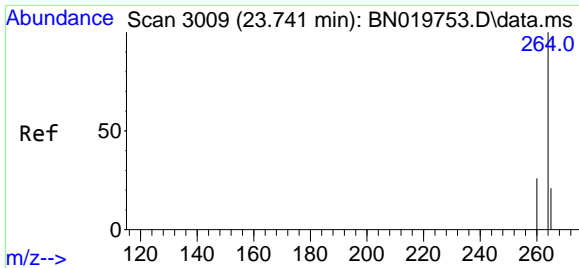


#34
 Bis(2-ethylhexyl)phthalate
 Concen: 0.471 ng
 RT: 21.315 min Scan# 2431
 Delta R.T. -0.009 min
 Lab File: BN019991.D
 Acq: 27 May 2022 17:19



Tgt Ion: 149 Resp: 7223
 Ion Ratio Lower Upper
 149 100
 167 26.6 21.7 32.5
 279 3.0 2.2 3.2





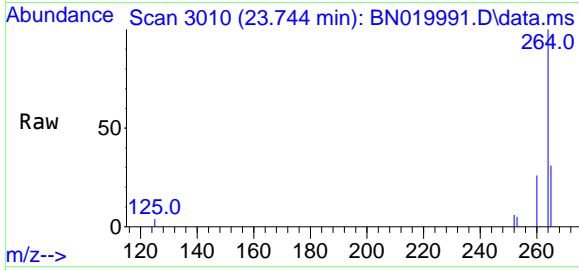
#35
 Perylene-d12
 Concen: 0.400 ng
 RT: 23.744 min Scan# 3009
 Delta R.T. 0.003 min
 Lab File: BN019991.D
 Acq: 27 May 2022 17:19

Instrument :

BNA_N

Client Sample ID :

PB145157BS



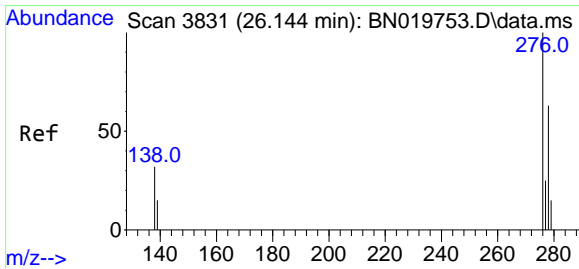
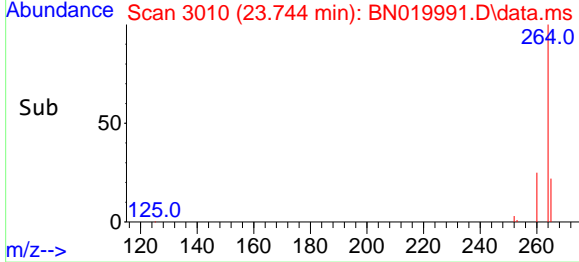
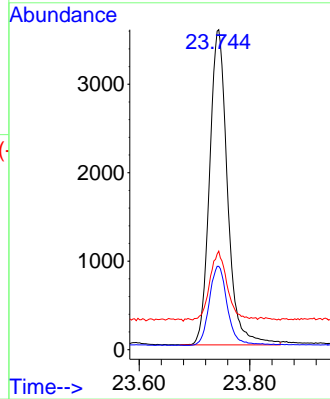
Tgt Ion: 264 Resp: 802

Ion	Ratio	Lower	Upper
264	100		
260	26.0	20.9	31.3
265	30.8	28.0	42.0

Manual Integrations

APPROVED

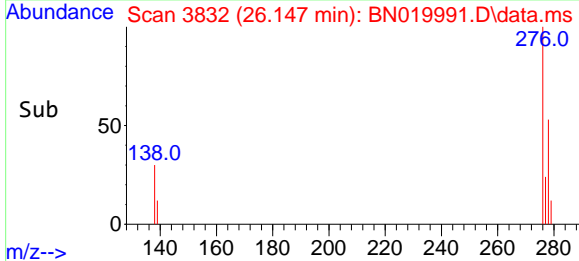
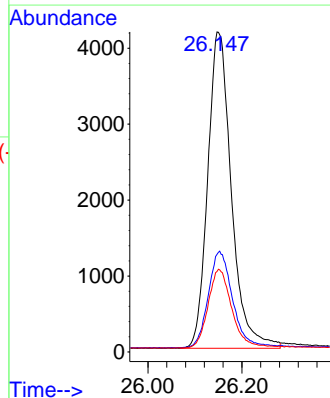
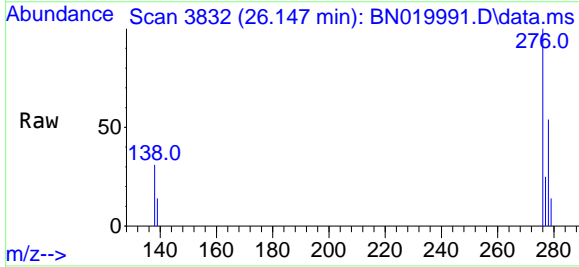
Reviewed By : Christian Giraldo 05/28/2022
 Supervised By : Jagrut Upadhyay 05/31/2022

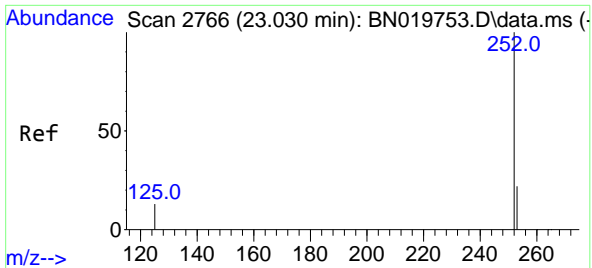


#36
 Indeno(1,2,3-cd)pyrene
 Concen: 0.388 ng
 RT: 26.147 min Scan# 3832
 Delta R.T. 0.003 min
 Lab File: BN019991.D
 Acq: 27 May 2022 17:19

Tgt Ion: 276 Resp: 14586

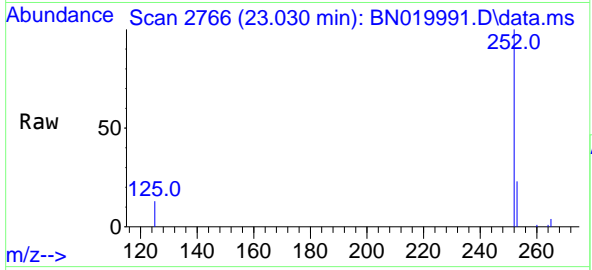
Ion	Ratio	Lower	Upper
276	100		
138	31.3	25.9	38.9
277	24.7	19.8	29.8





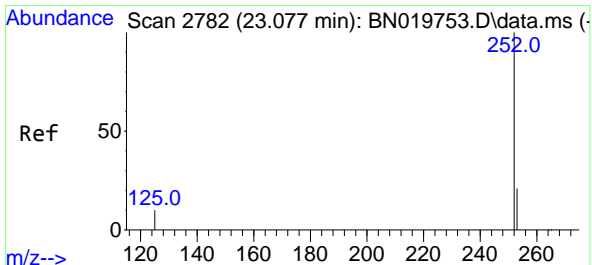
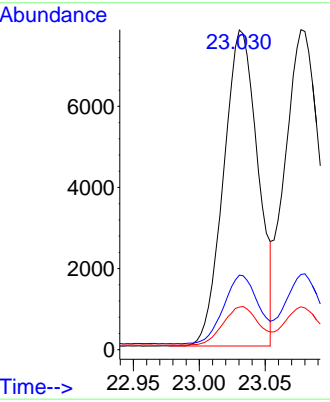
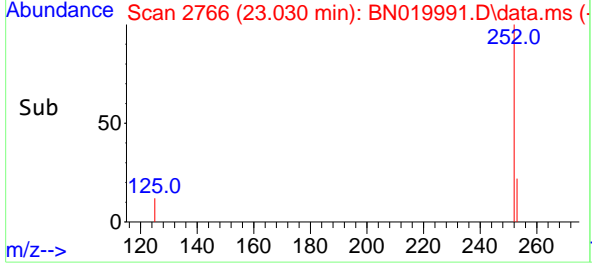
#37
 Benzo(b)fluoranthene
 Concen: 0.403 ng
 RT: 23.030 min Scan# 2766
 Delta R.T. -0.000 min
 Lab File: BN019991.D
 Acq: 27 May 2022 17:19

Instrument : BNA_N
 Client Sample ID : PB145157BS

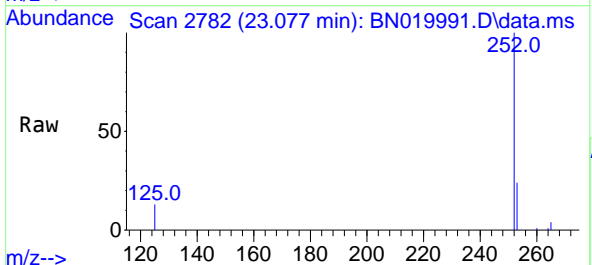


Tgt Ion: 252 Resp: 14130
 Ion Ratio Lower Upper
 252 100
 253 23.3 18.5 27.7
 125 13.3 11.4 17.0

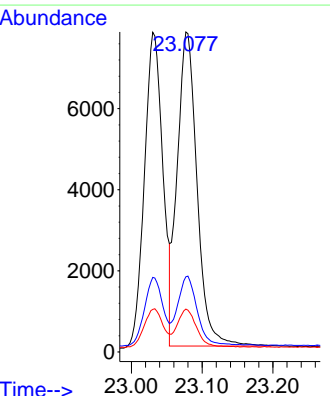
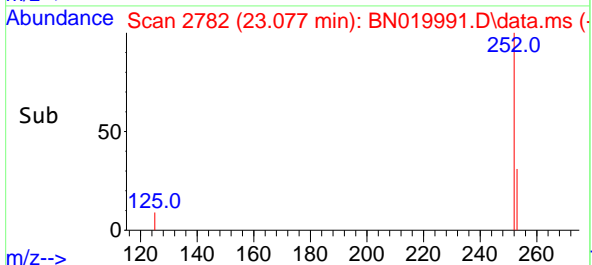
Manual Integrations
APPROVED
 Reviewed By : Christian Giraldo 05/28/2022
 Supervised By : Jagrut Upadhyay 05/31/2022

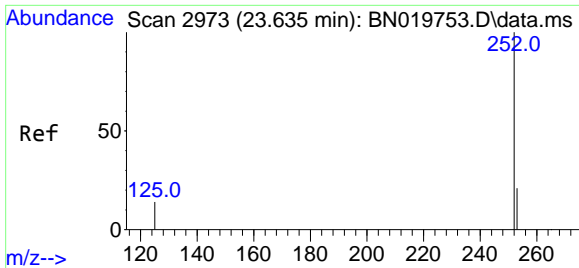


#38
 Benzo(k)fluoranthene
 Concen: 0.406 ng m
 RT: 23.077 min Scan# 2782
 Delta R.T. -0.000 min
 Lab File: BN019991.D
 Acq: 27 May 2022 17:19



Tgt Ion: 252 Resp: 15106
 Ion Ratio Lower Upper
 252 100
 253 23.5 18.0 27.0
 125 13.4 11.0 16.4





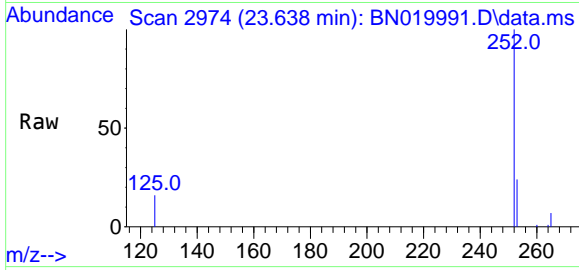
#39
 Benzo(a)pyrene
 Concen: 0.413 ng
 RT: 23.638 min Scan# 2973
 Delta R.T. -0.000 min
 Lab File: BN019991.D
 Acq: 27 May 2022 17:19

Instrument :

BNA_N

Client Sample Id :

PB145157BS

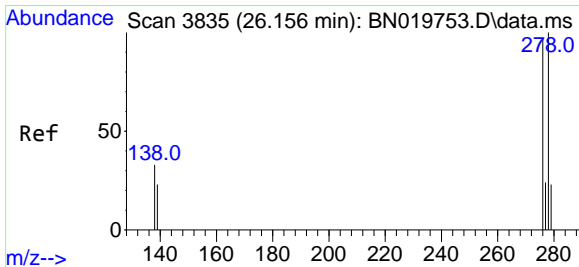
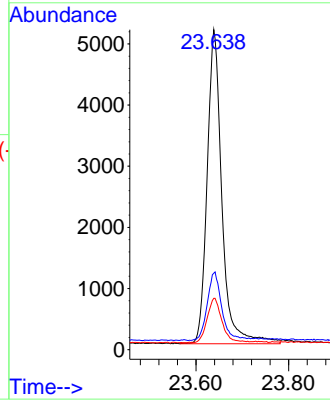
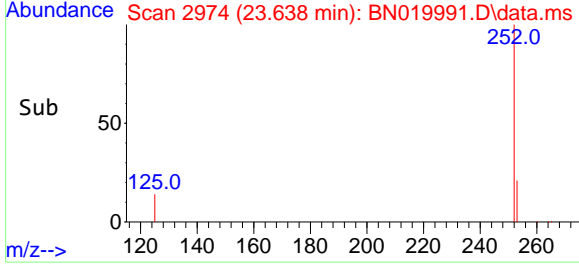


Tgt Ion: 252 Resp: 1138
 Ion Ratio Lower Upper
 252 100
 253 23.9 19.0 28.4
 125 16.1 13.8 20.8

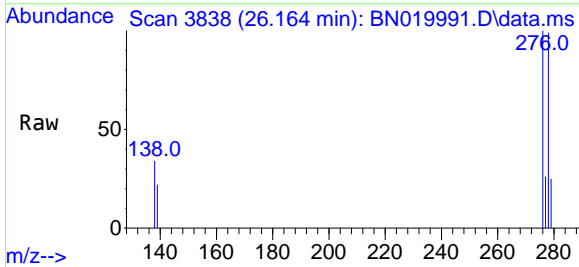
Manual Integrations

APPROVED

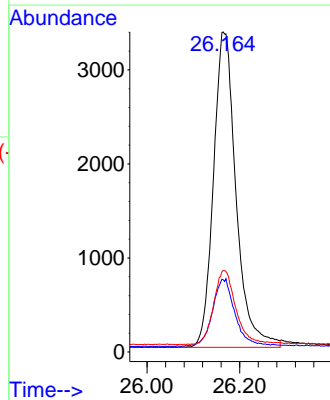
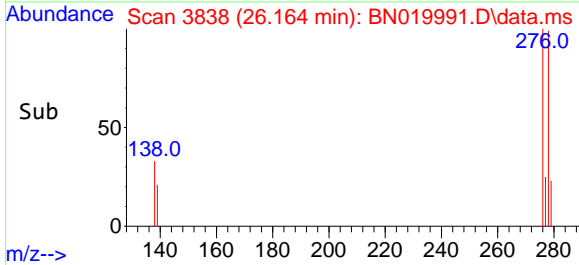
Reviewed By : Christian Giraldo 05/28/2022
 Supervised By : Jagrut Upadhyay 05/31/2022

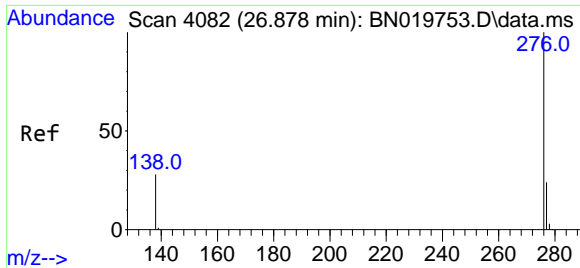


#40
 Dibenzo(a,h)anthracene
 Concen: 0.375 ng
 RT: 26.164 min Scan# 3838
 Delta R.T. 0.003 min
 Lab File: BN019991.D
 Acq: 27 May 2022 17:19



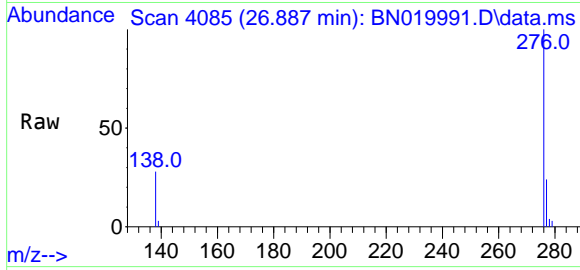
Tgt Ion: 278 Resp: 11376
 Ion Ratio Lower Upper
 278 100
 139 22.5 18.6 28.0
 279 25.4 19.7 29.5





#41
 Benzo(g,h,i)perylene
 Concen: 0.409 ng
 RT: 26.887 min Scan# 40
 Delta R.T. 0.009 min
 Lab File: BN019991.D
 Acq: 27 May 2022 17:19

Instrument :
 BNA_N
 ClientSampleId :
 PB145157BS



Tgt Ion: 276 Resp: 12758

Ion	Ratio	Lower	Upper
276	100		
277	24.1	19.5	29.3
138	28.5	22.6	34.0

Manual Integrations
APPROVED
 Reviewed By : Christian Giraldo 05/28/2022
 Supervised By : Jagrut Upadhyay 05/31/2022

