

Data Path : Z:\svoasrv\HPCHEM1\BNA_N\Data\BN052725\
 Data File : BN037100.D
 Acq On : 27 May 2025 23:00
 Operator : RC/JU
 Sample : SSTDCCC0.4
 Misc :
 ALS Vial : 18 Sample Multiplier: 1

Instrument :
 BNA_N
 ClientSampleId :
 SSTDCCC0.4EC

Quant Time: May 28 14:48:47 2025
 Quant Method : Z:\svoasrv\HPCHEM1\BNA_N\Methods\8270-SIM-BN051425.M
 Quant Title : ASP BNA STANDARDS FOR 5 POINT CALIBRATION
 QLast Update : Wed May 14 11:26:32 2025
 Response via : Initial Calibration

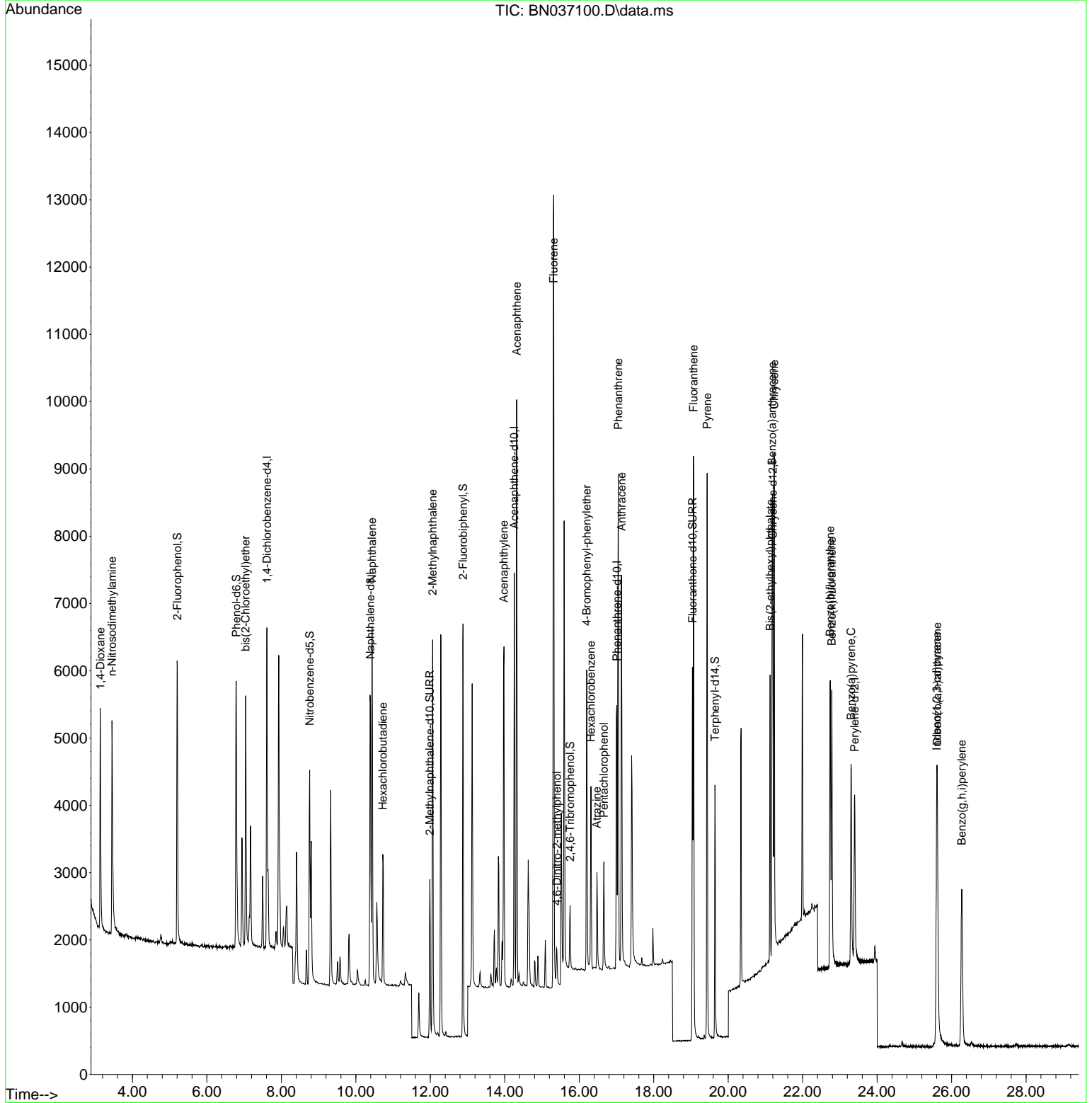
Compound	R.T.	QIon	Response	Conc Units	Dev(Min)	
Internal Standards						
1) 1,4-Dichlorobenzene-d4	7.611	152	2266	0.400 ng	0.00	
7) Naphthalene-d8	10.394	136	5831	0.400 ng	-0.01	
13) Acenaphthene-d10	14.256	164	3207	0.400 ng	-0.01	
19) Phenanthrene-d10	17.009	188	5974	0.400 ng	# 0.00	
29) Chrysene-d12	21.198	240	3925	0.400 ng	# 0.00	
35) Perylene-d12	23.395	264	3370	0.400 ng	-0.02	
System Monitoring Compounds						
4) 2-Fluorophenol	5.206	112	3126	0.527 ng	0.00	
5) Phenol-d6	6.788	99	3284	0.442 ng	0.00	
8) Nitrobenzene-d5	8.760	82	2579	0.406 ng	-0.01	
11) 2-Methylnaphthalene-d10	11.986	152	3319	0.404 ng	0.00	
14) 2,4,6-Tribromophenol	15.755	330	517	0.367 ng	-0.01	
15) 2-Fluorobiphenyl	12.878	172	5487	0.374 ng	0.00	
27) Fluoranthene-d10	19.040	212	5959	0.364 ng	0.00	
31) Terphenyl-d14	19.644	244	3905	0.465 ng	-0.01	
Target Compounds						
2) 1,4-Dioxane	3.141	88	1812	0.652 ng		92
3) n-Nitrosodimethylamine	3.451	42	2967	0.497 ng	#	88
6) bis(2-Chloroethyl)ether	7.041	93	2578	0.377 ng		99
9) Naphthalene	10.436	128	6591	0.383 ng		99
10) Hexachlorobutadiene	10.725	225	1543	0.427 ng	#	100
12) 2-Methylnaphthalene	12.062	142	4139	0.373 ng		99
16) Acenaphthylene	13.978	152	5868	0.376 ng		99
17) Acenaphthene	14.320	154	3891	0.381 ng		100
18) Fluorene	15.314	166	5046	0.377 ng		100
20) 4,6-Dinitro-2-methylph...	15.400	198	458	0.397 ng		83
21) 4-Bromophenyl-phenylether	16.202	248	1524	0.404 ng		97
22) Hexachlorobenzene	16.314	284	1692	0.419 ng		97
23) Atrazine	16.475	200	1224	0.372 ng		96
24) Pentachlorophenol	16.661	266	768	0.345 ng		98
25) Phenanthrene	17.046	178	7391	0.379 ng		100
26) Anthracene	17.133	178	6551	0.369 ng		99
28) Fluoranthene	19.068	202	7822	0.335 ng		99
30) Pyrene	19.435	202	7747	0.461 ng		100
32) Benzo(a)anthracene	21.180	228	5377	0.364 ng		99
33) Chrysene	21.233	228	6146	0.393 ng		98
34) Bis(2-ethylhexyl)phtha...	21.126	149	3636	0.400 ng		100
36) Indeno(1,2,3-cd)pyrene	25.599	276	5324	0.387 ng		97
37) Benzo(b)fluoranthene	22.740	252	5193	0.371 ng		98
38) Benzo(k)fluoranthene	22.784	252	5359	0.388 ng		97
39) Benzo(a)pyrene	23.301	252	4324	0.365 ng		96
40) Dibenzo(a,h)anthracene	25.617	278	4148	0.387 ng		99
41) Benzo(g,h,i)perylene	26.275	276	4737	0.407 ng		98

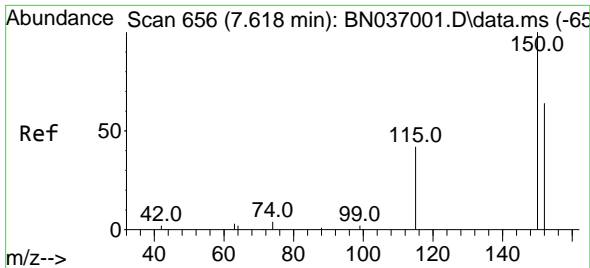
(#) = qualifier out of range (m) = manual integration (+) = signals summed

Data Path : Z:\svoasrv\HPCHEM1\BNA_N\Data\BN052725\
 Data File : BN037100.D
 Acq On : 27 May 2025 23:00
 Operator : RC/JU
 Sample : SSTDCCC0.4
 Misc :
 ALS Vial : 18 Sample Multiplier: 1

Instrument :
 BNA_N
 ClientSampleId :
 SSTDCCC0.4EC

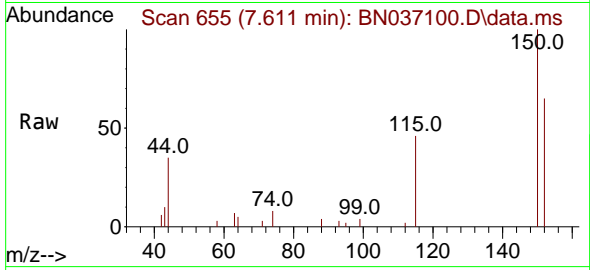
Quant Time: May 28 14:48:47 2025
 Quant Method : Z:\svoasrv\HPCHEM1\BNA_N\Methods\8270-SIM-BN051425.M
 Quant Title : ASP BNA STANDARDS FOR 5 POINT CALIBRATION
 QLast Update : Wed May 14 11:26:32 2025
 Response via : Initial Calibration



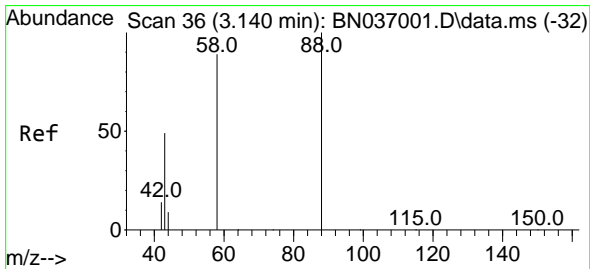
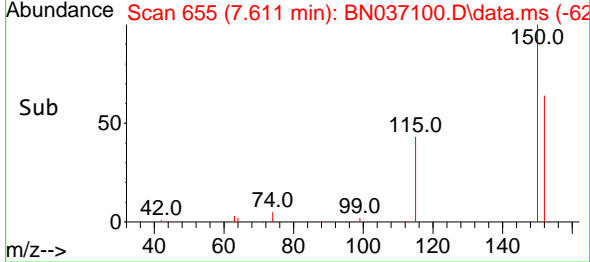
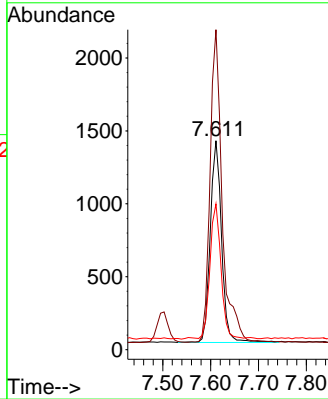


#1
 1,4-Dichlorobenzene-d4
 Concen: 0.400 ng
 RT: 7.611 min Scan# 61
 Delta R.T. -0.007 min
 Lab File: BN037100.D
 Acq: 27 May 2025 23:00

Instrument :
 BNA_N
 ClientSampleId :
 SSTDCCC0.4EC

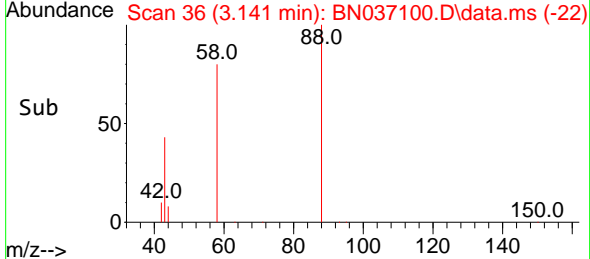
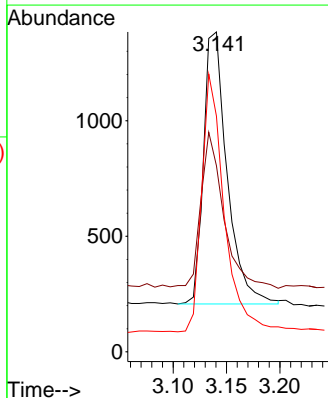
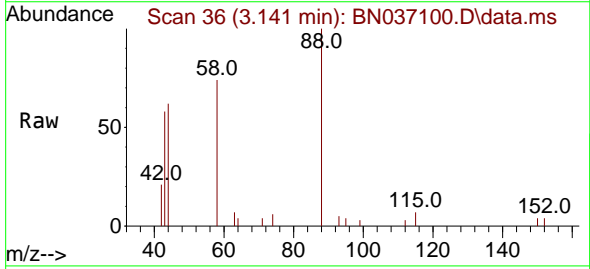


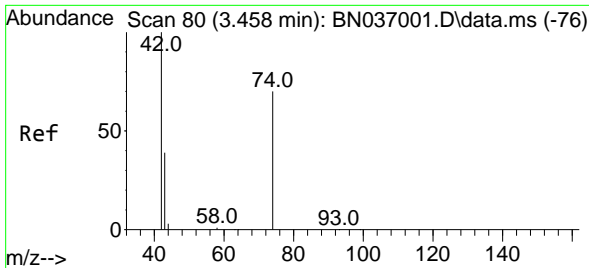
Tgt Ion:152 Resp: 2266
 Ion Ratio Lower Upper
 152 100
 150 153.1 123.9 185.9
 115 69.7 55.8 83.8



#2
 1,4-Dioxane
 Concen: 0.652 ng
 RT: 3.141 min Scan# 36
 Delta R.T. 0.001 min
 Lab File: BN037100.D
 Acq: 27 May 2025 23:00

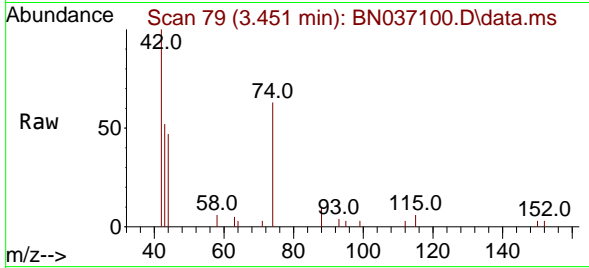
Tgt Ion: 88 Resp: 1812
 Ion Ratio Lower Upper
 88 100
 43 55.4 37.4 56.0
 58 90.7 68.8 103.2



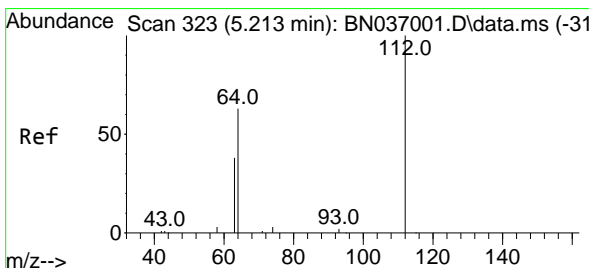
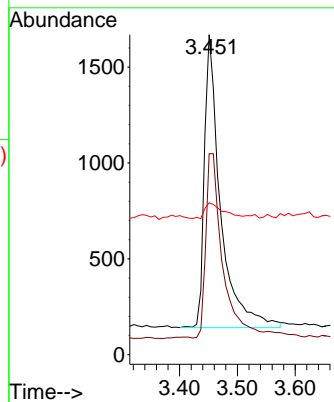
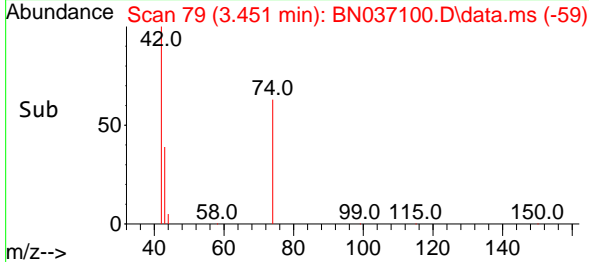


#3
 n-Nitrosodimethylamine
 Concen: 0.497 ng
 RT: 3.451 min Scan# 79
 Delta R.T. -0.007 min
 Lab File: BN037100.D
 Acq: 27 May 2025 23:00

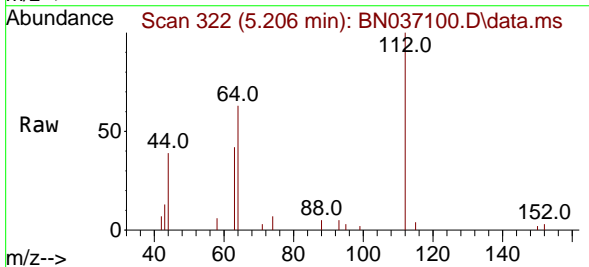
Instrument :
 BNA_N
 ClientSampleId :
 SSTDCCC0.4EC



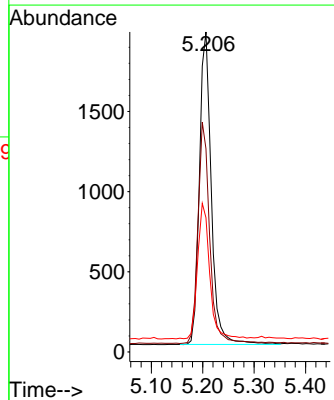
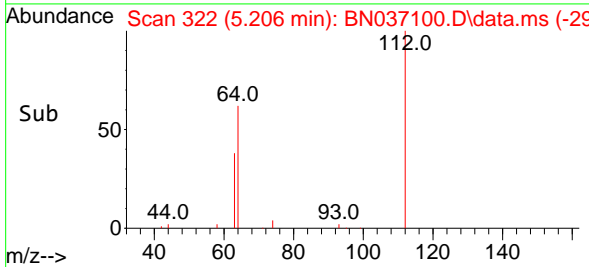
Tgt Ion: 42 Resp: 2967
 Ion Ratio Lower Upper
 42 100
 74 66.3 59.8 89.6
 44 6.3 11.9 17.9#

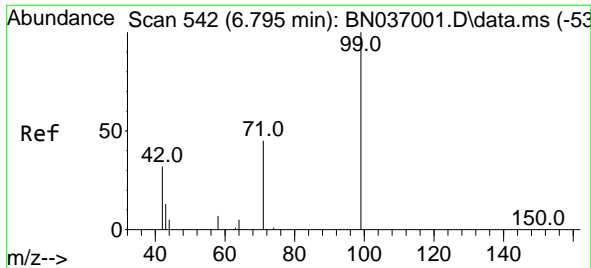


#4
 2-Fluorophenol
 Concen: 0.527 ng
 RT: 5.206 min Scan# 322
 Delta R.T. -0.007 min
 Lab File: BN037100.D
 Acq: 27 May 2025 23:00



Tgt Ion: 112 Resp: 3126
 Ion Ratio Lower Upper
 112 100
 64 69.9 55.7 83.5
 63 44.7 34.6 51.8

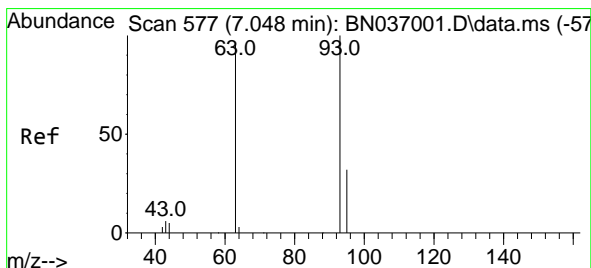
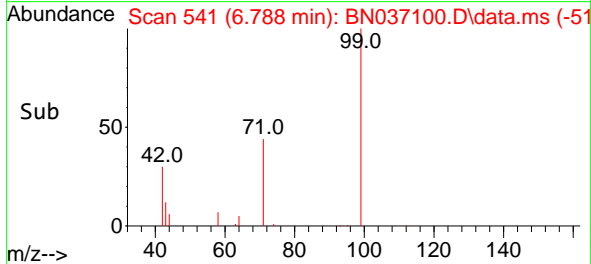
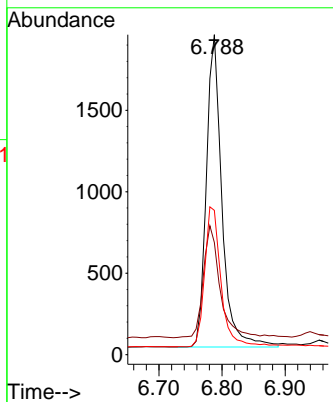
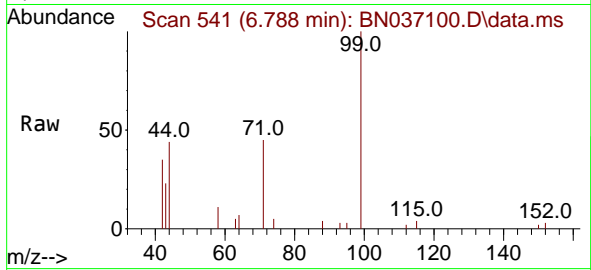




#5
 Phenol-d6
 Concen: 0.442 ng
 RT: 6.788 min Scan# 541
 Delta R.T. -0.007 min
 Lab File: BN037100.D
 Acq: 27 May 2025 23:00

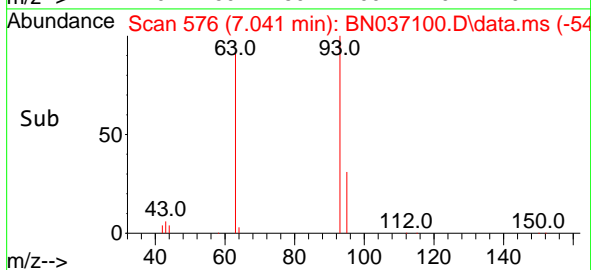
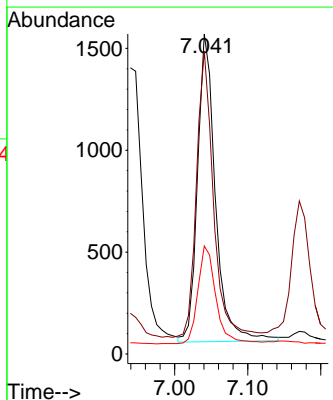
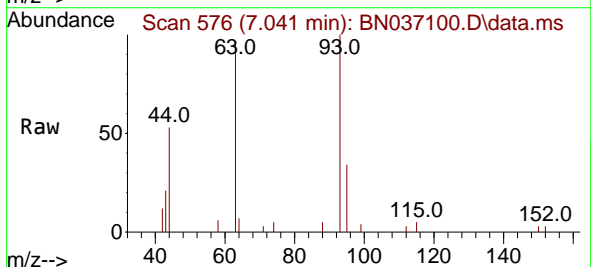
Instrument :
 BNA_N
 ClientSampleId :
 SSTDCCC0.4EC

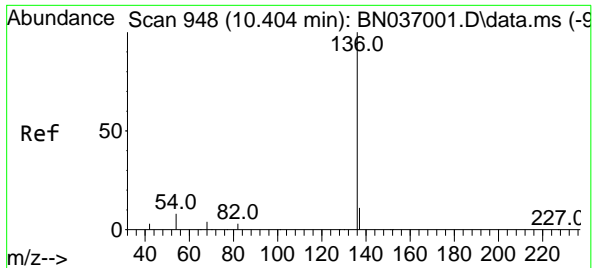
Tgt Ion	Resp	Ion Ratio	Lower	Upper
99	3284	100		
42		39.4	29.3	43.9
71		47.3	35.7	53.5



#6
 bis(2-Chloroethyl)ether
 Concen: 0.377 ng
 RT: 7.041 min Scan# 576
 Delta R.T. -0.007 min
 Lab File: BN037100.D
 Acq: 27 May 2025 23:00

Tgt Ion	Resp	Ion Ratio	Lower	Upper
93	2578	100		
63		88.1	70.1	105.1
95		32.1	26.2	39.2

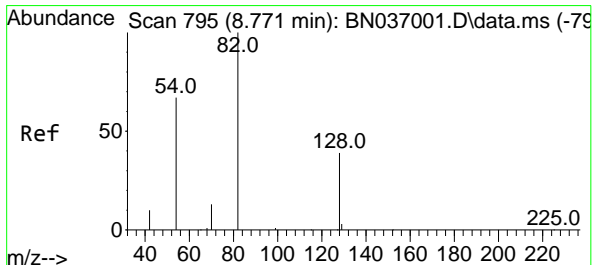
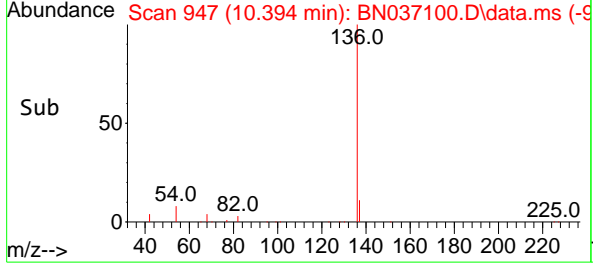
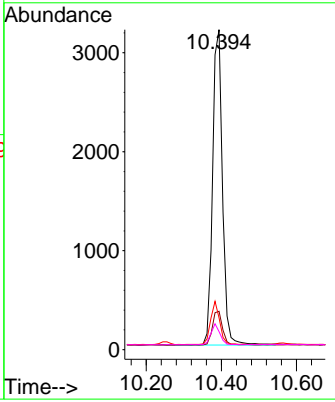
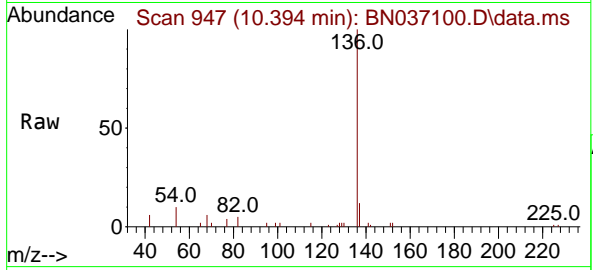




#7
 Naphthalene-d8
 Concen: 0.400 ng
 RT: 10.394 min Scan# 94
 Delta R.T. -0.011 min
 Lab File: BN037100.D
 Acq: 27 May 2025 23:00

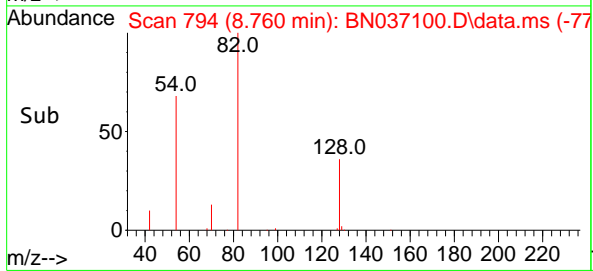
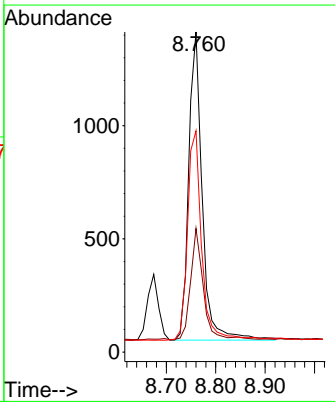
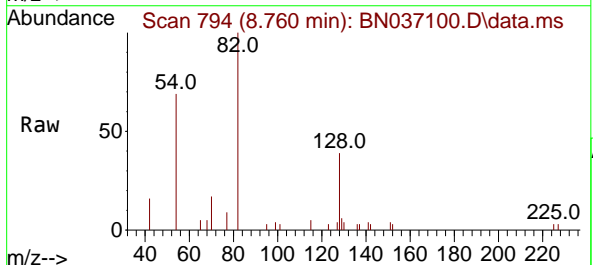
Instrument : BNA_N
 ClientSampleId : SSTDCCC0.4EC

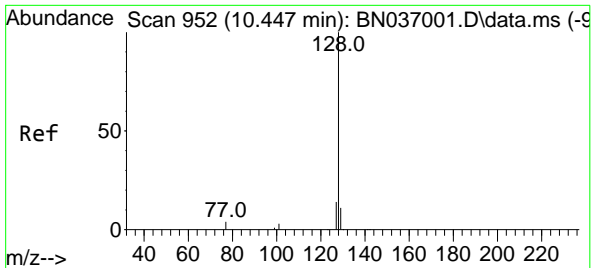
Tgt Ion	Resp	Lower	Upper
136	5831		
137	12.0	10.4	15.6
54	9.9	8.5	12.7
68	5.6	5.1	7.7



#8
 Nitrobenzene-d5
 Concen: 0.406 ng
 RT: 8.760 min Scan# 794
 Delta R.T. -0.011 min
 Lab File: BN037100.D
 Acq: 27 May 2025 23:00

Tgt Ion	Resp	Lower	Upper
82	2579		
128	38.6	34.0	51.0
54	69.1	55.0	82.4



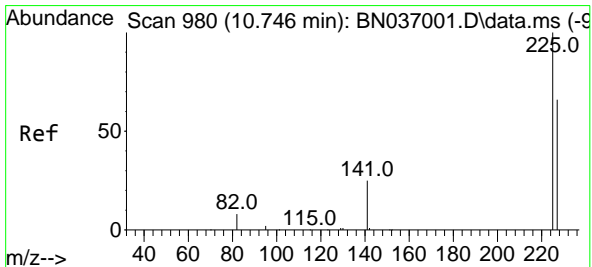
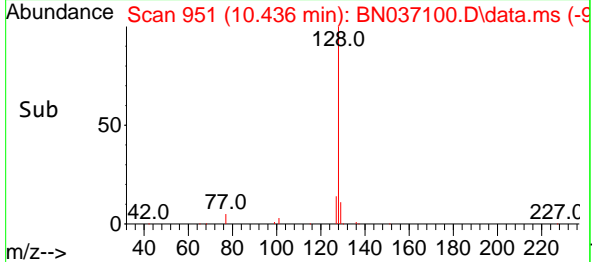
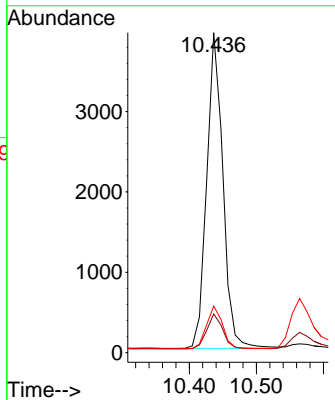
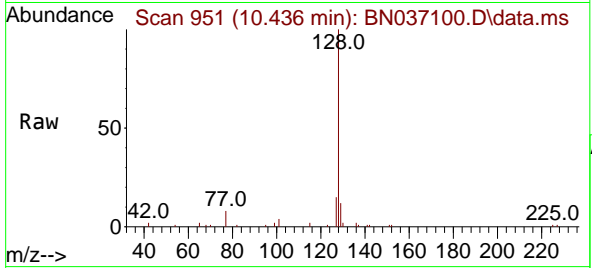


#9
 Naphthalene
 Concen: 0.383 ng
 RT: 10.436 min Scan# 91
 Delta R.T. -0.011 min
 Lab File: BN037100.D
 Acq: 27 May 2025 23:00

Instrument :
 BNA_N
 ClientSampleId :
 SSTDCCC0.4EC

Tgt Ion:128 Resp: 6591

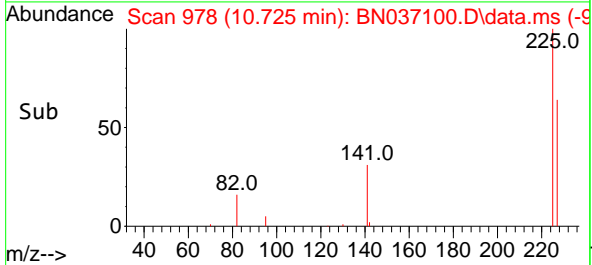
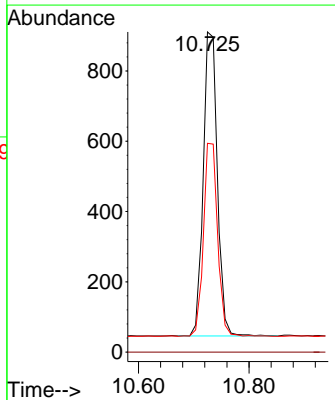
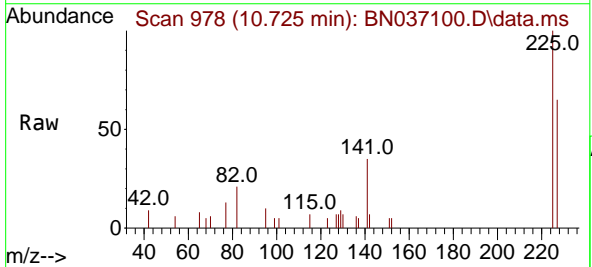
Ion	Ratio	Lower	Upper
128	100		
129	12.1	9.7	14.5
127	14.5	12.4	18.6

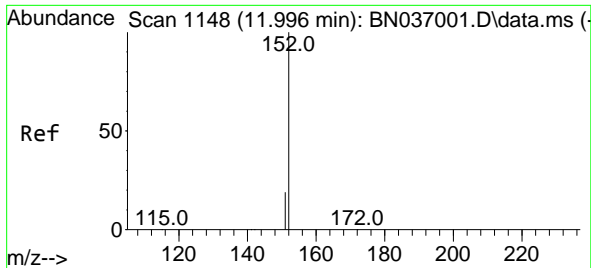


#10
 Hexachlorobutadiene
 Concen: 0.427 ng
 RT: 10.725 min Scan# 978
 Delta R.T. -0.021 min
 Lab File: BN037100.D
 Acq: 27 May 2025 23:00

Tgt Ion:225 Resp: 1543

Ion	Ratio	Lower	Upper
225	100		
223	0.0	0.0	0.0
227	63.6	50.9	76.3

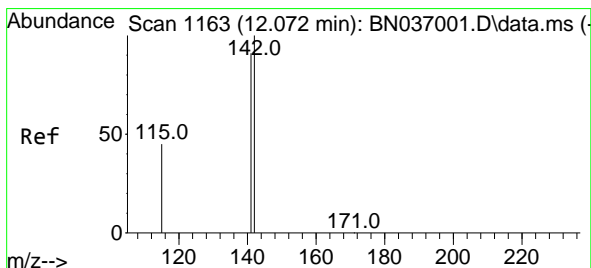
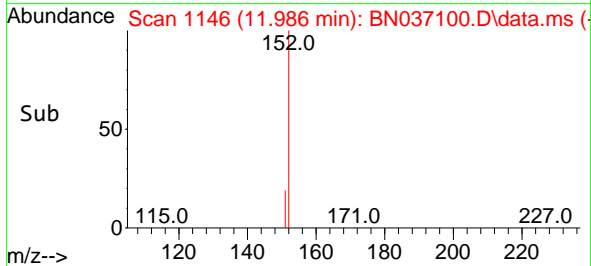
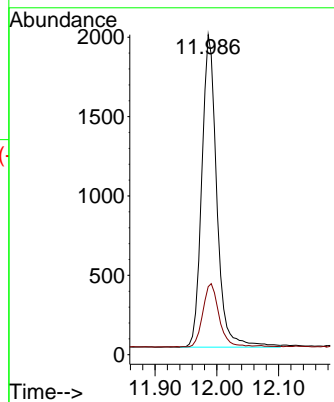
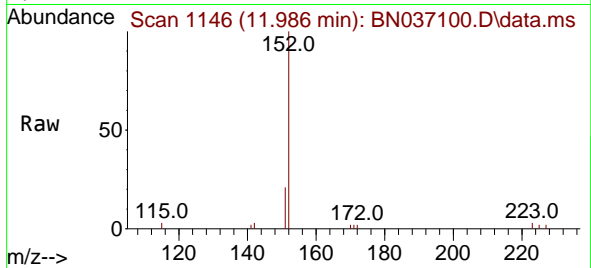




#11
 2-Methylnaphthalene-d10
 Concen: 0.404 ng
 RT: 11.986 min Scan# 1146
 Delta R.T. -0.010 min
 Lab File: BN037100.D
 Acq: 27 May 2025 23:00

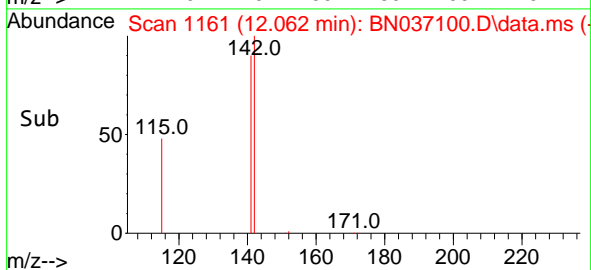
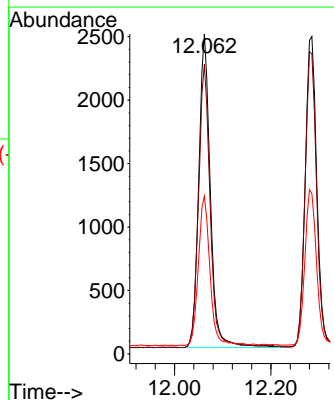
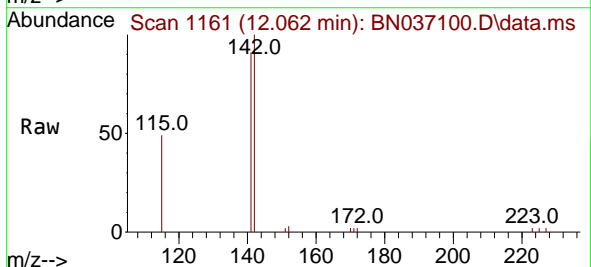
Instrument :
 BNA_N
 ClientSampleId :
 SSTDCCC0.4EC

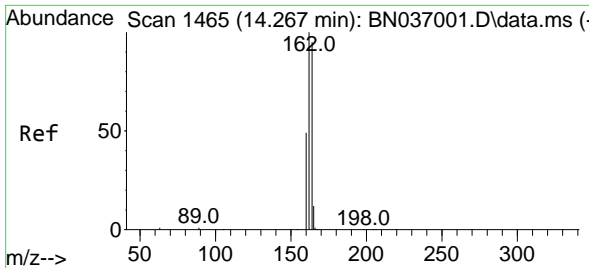
Tgt Ion:152 Resp: 3319
 Ion Ratio Lower Upper
 152 100
 151 21.7 17.5 26.3



#12
 2-Methylnaphthalene
 Concen: 0.373 ng
 RT: 12.062 min Scan# 1161
 Delta R.T. -0.010 min
 Lab File: BN037100.D
 Acq: 27 May 2025 23:00

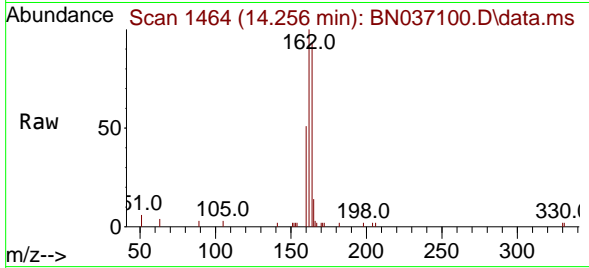
Tgt Ion:142 Resp: 4139
 Ion Ratio Lower Upper
 142 100
 141 90.5 73.3 109.9
 115 49.4 38.4 57.6



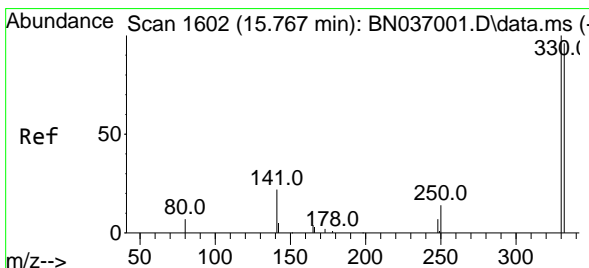
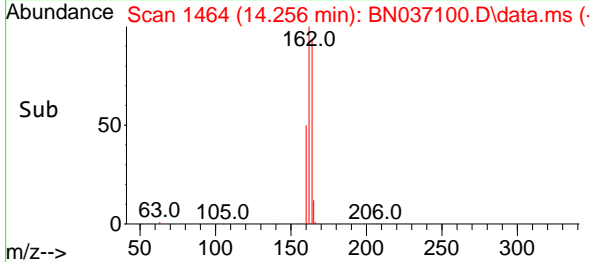
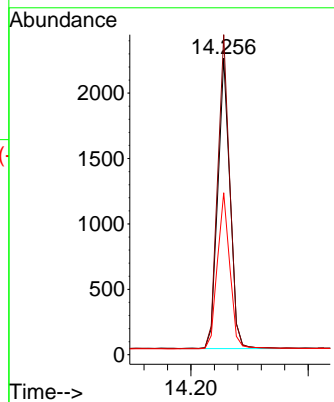


#13
 Acenaphthene-d10
 Concen: 0.400 ng
 RT: 14.256 min Scan# 14
 Delta R.T. -0.011 min
 Lab File: BN037100.D
 Acq: 27 May 2025 23:00

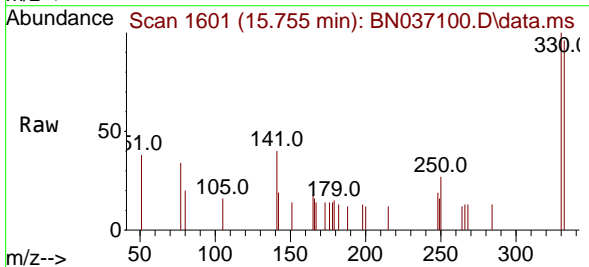
Instrument :
 BNA_N
 ClientSampleId :
 SSTDCCC0.4EC



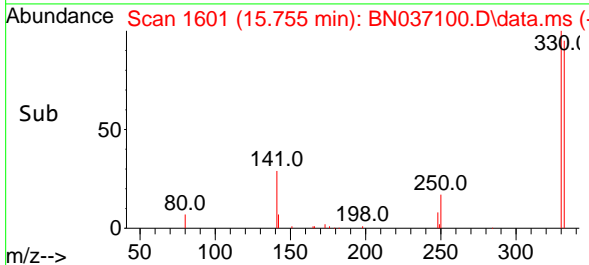
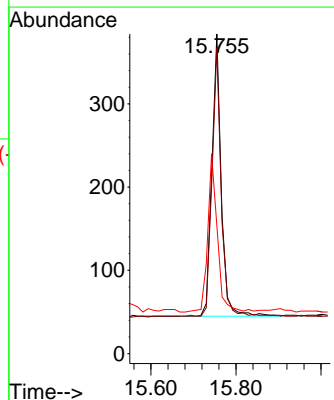
Tgt Ion:164 Resp: 3207
 Ion Ratio Lower Upper
 164 100
 162 107.8 84.2 126.4
 160 54.6 42.6 63.8

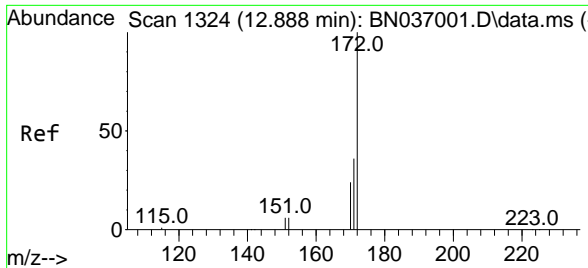


#14
 2,4,6-Tribromophenol
 Concen: 0.367 ng
 RT: 15.755 min Scan# 1601
 Delta R.T. -0.012 min
 Lab File: BN037100.D
 Acq: 27 May 2025 23:00



Tgt Ion:330 Resp: 517
 Ion Ratio Lower Upper
 330 100
 332 92.6 73.8 110.8
 141 56.7 43.9 65.9



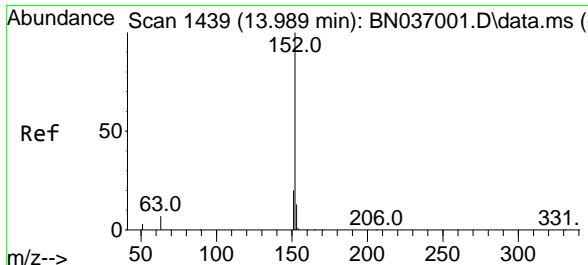
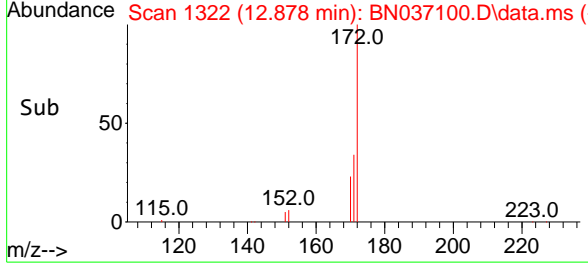
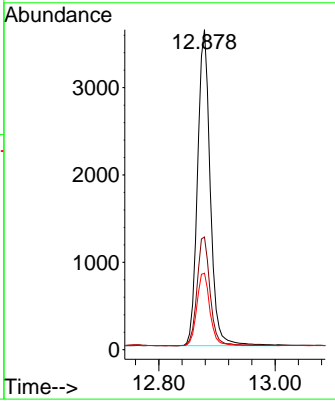
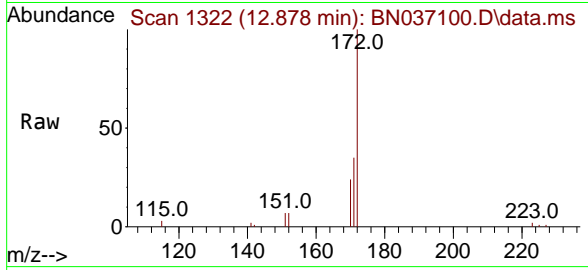


#15
 2-Fluorobiphenyl
 Concen: 0.374 ng
 RT: 12.878 min Scan# 11
 Delta R.T. -0.010 min
 Lab File: BN037100.D
 Acq: 27 May 2025 23:00

Instrument : BNA_N
 ClientSampleId : SSTDCCC0.4EC

Tgt Ion:172 Resp: 5487

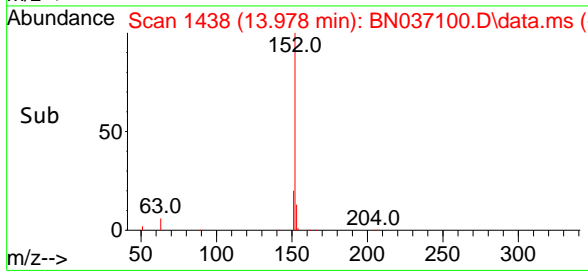
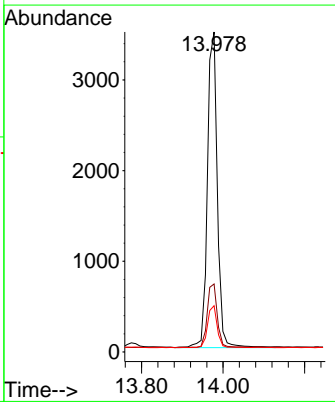
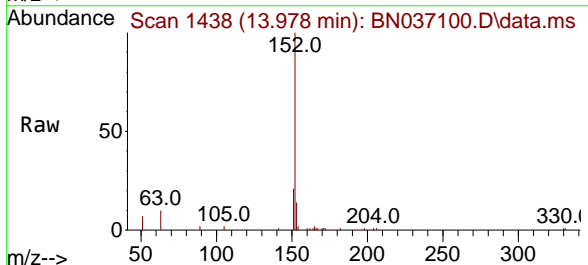
Ion	Ratio	Lower	Upper
172	100		
171	35.2	29.2	43.8
170	23.9	20.5	30.7

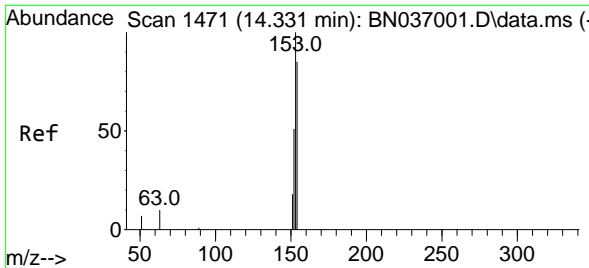


#16
 Acenaphthylene
 Concen: 0.376 ng
 RT: 13.978 min Scan# 1438
 Delta R.T. -0.011 min
 Lab File: BN037100.D
 Acq: 27 May 2025 23:00

Tgt Ion:152 Resp: 5868

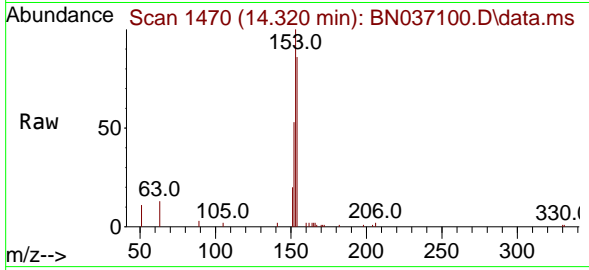
Ion	Ratio	Lower	Upper
152	100		
151	20.4	16.1	24.1
153	12.9	10.5	15.7





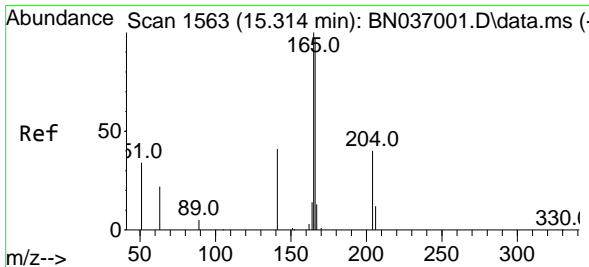
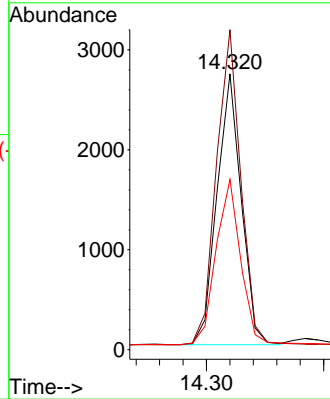
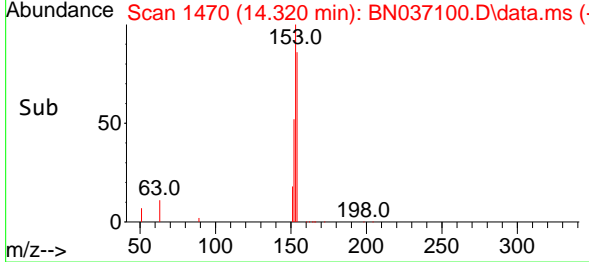
#17
 Acenaphthene
 Concen: 0.381 ng
 RT: 14.320 min Scan# 1470
 Delta R.T. -0.011 min
 Lab File: BN037100.D
 Acq: 27 May 2025 23:00

Instrument :
 BNA_N
 ClientSampleId :
 SSTDCCC0.4EC

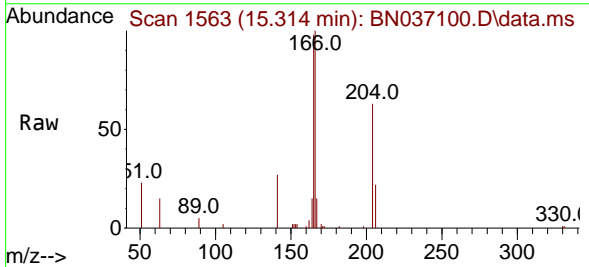


Tgt Ion:154 Resp: 3891

Ion	Ratio	Lower	Upper
154	100		
153	117.7	94.2	141.4
152	62.3	49.4	74.0

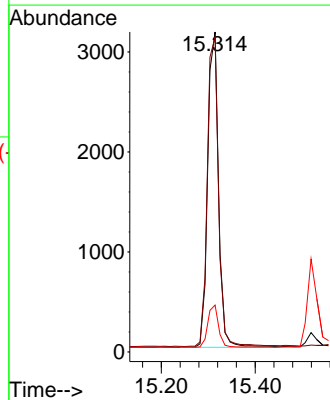
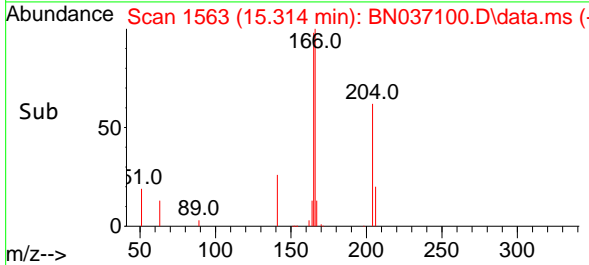


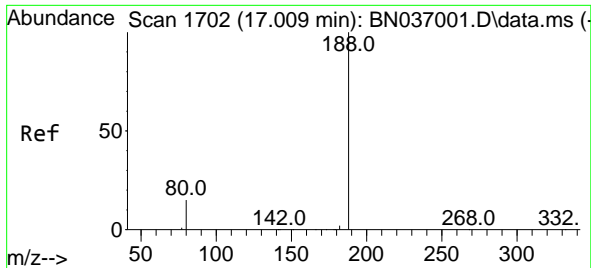
#18
 Fluorene
 Concen: 0.377 ng
 RT: 15.314 min Scan# 1563
 Delta R.T. 0.000 min
 Lab File: BN037100.D
 Acq: 27 May 2025 23:00



Tgt Ion:166 Resp: 5046

Ion	Ratio	Lower	Upper
166	100		
165	101.0	80.6	120.8
167	13.5	10.6	16.0

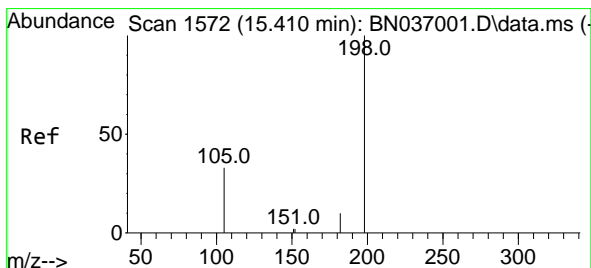
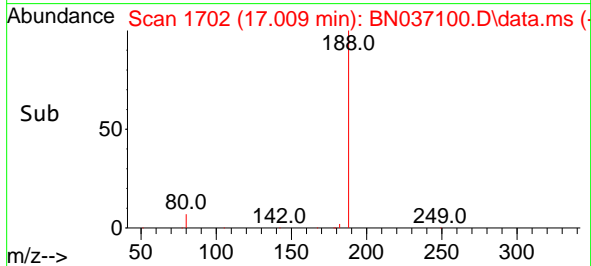
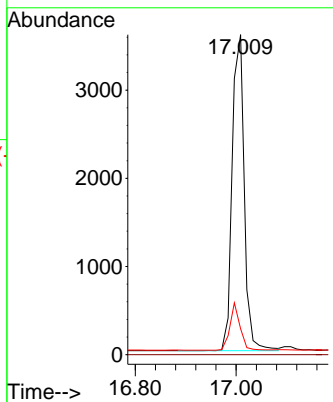
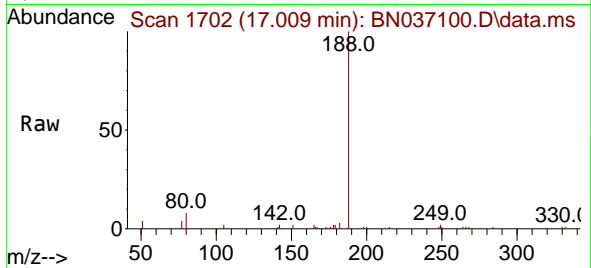




#19
 Phenanthrene-d10
 Concen: 0.400 ng
 RT: 17.009 min Scan# 11
 Delta R.T. 0.000 min
 Lab File: BN037100.D
 Acq: 27 May 2025 23:00

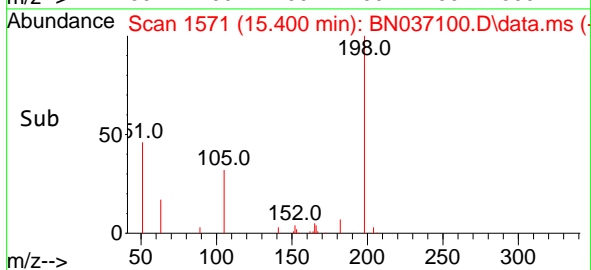
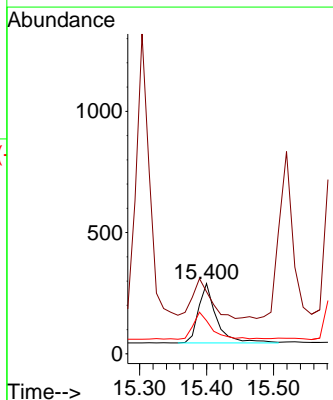
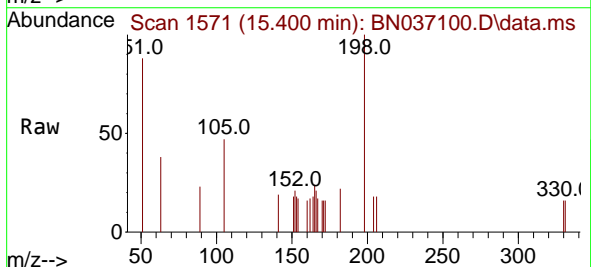
Instrument :
 BNA_N
 ClientSampleId :
 SSTDCCC0.4EC

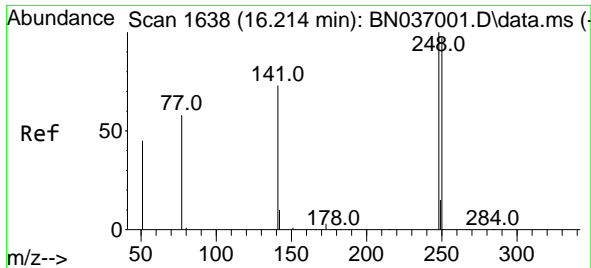
Tgt Ion	Resp	Ion Ratio	Lower	Upper
188	5974	100		
94		0.0	0.0	0.0
80		8.1	13.4	20.0



#20
 4,6-Dinitro-2-methylphenol
 Concen: 0.397 ng
 RT: 15.400 min Scan# 1571
 Delta R.T. -0.010 min
 Lab File: BN037100.D
 Acq: 27 May 2025 23:00

Tgt Ion	Resp	Ion Ratio	Lower	Upper
198	458	100		
51		88.3	87.8	131.6
105		47.2	44.2	66.4



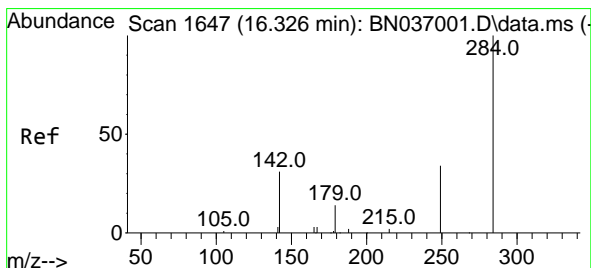
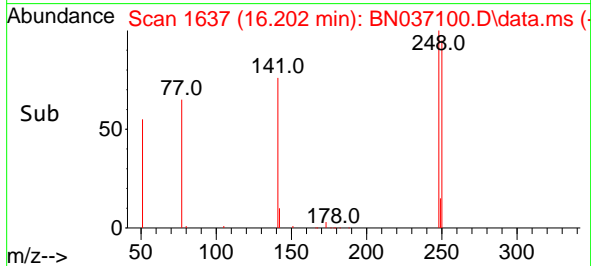
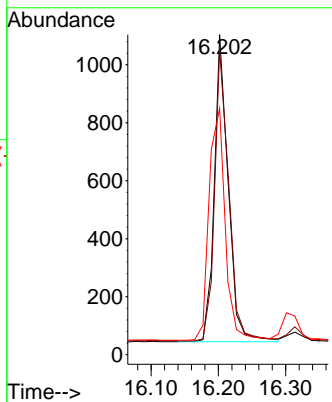
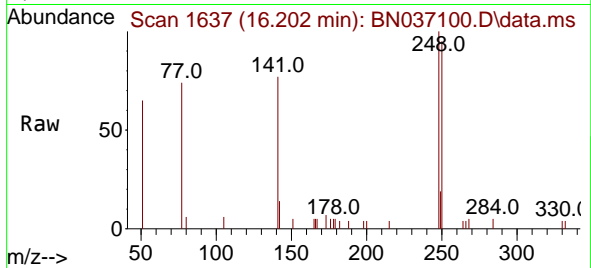


#21
 4-Bromophenyl-phenylether
 Concen: 0.404 ng
 RT: 16.202 min Scan# 1637
 Delta R.T. -0.012 min
 Lab File: BN037100.D
 Acq: 27 May 2025 23:00

Instrument :
 BNA_N
 ClientSampleId :
 SSTDCCC0.4EC

Tgt Ion:248 Resp: 1524

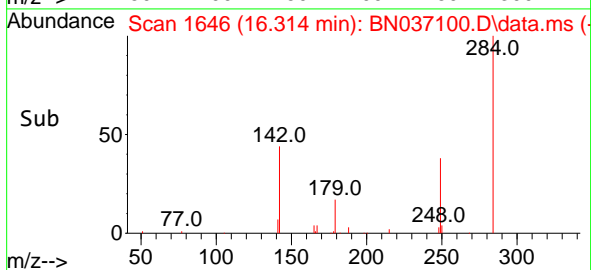
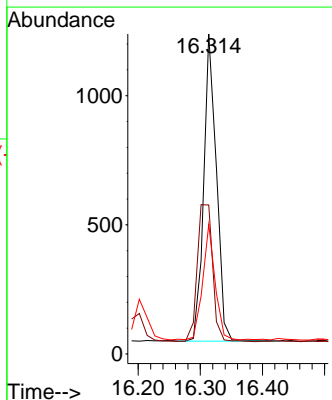
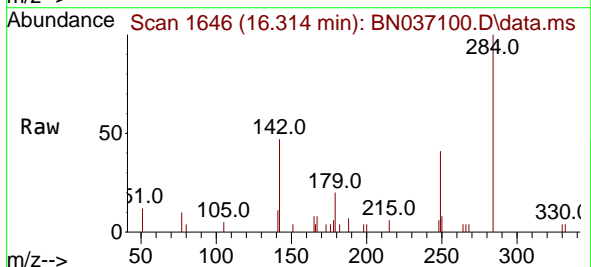
Ion	Ratio	Lower	Upper
248	100		
250	95.3	78.1	117.1
141	77.0	59.7	89.5

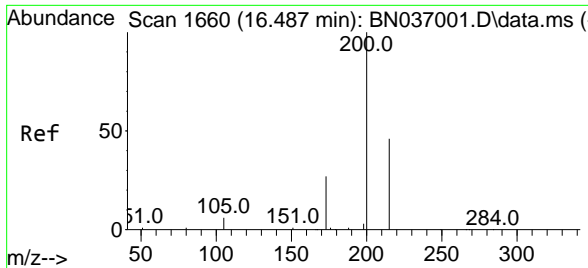


#22
 Hexachlorobenzene
 Concen: 0.419 ng
 RT: 16.314 min Scan# 1646
 Delta R.T. -0.012 min
 Lab File: BN037100.D
 Acq: 27 May 2025 23:00

Tgt Ion:284 Resp: 1692

Ion	Ratio	Lower	Upper
284	100		
142	54.2	41.2	61.8
249	36.9	28.7	43.1

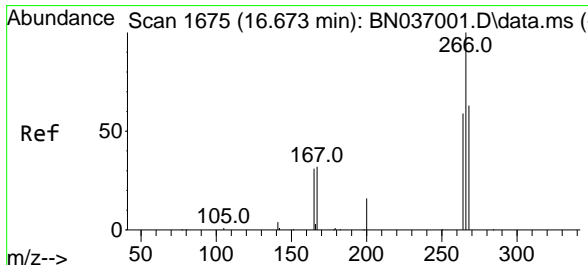
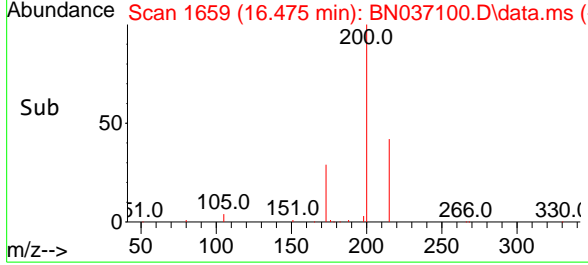
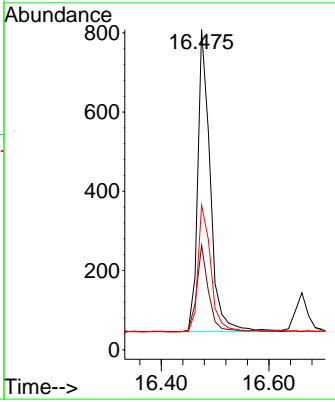
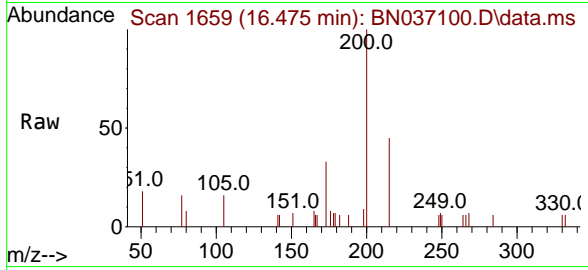




#23
 Atrazine
 Concen: 0.372 ng
 RT: 16.475 min Scan# 1659
 Delta R.T. -0.012 min
 Lab File: BN037100.D
 Acq: 27 May 2025 23:00

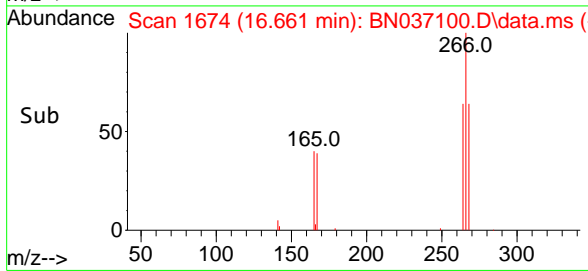
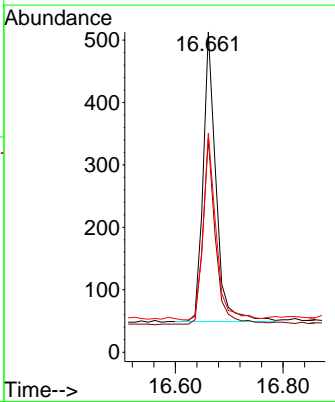
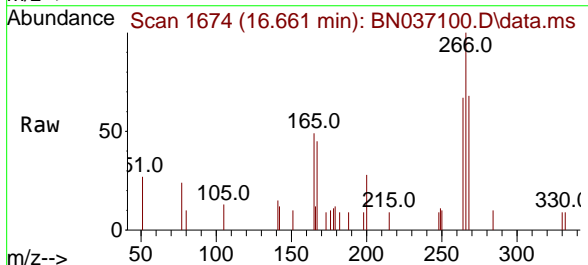
Instrument : BNA_N
 ClientSampleId : SSTDCCC0.4EC

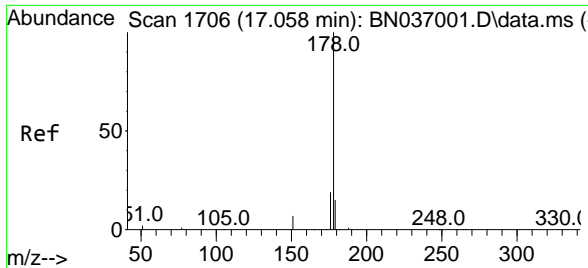
Tgt Ion	Resp	Lower	Upper
200	1224		
173	32.7	25.2	37.8
215	45.2	39.3	58.9



#24
 Pentachlorophenol
 Concen: 0.345 ng
 RT: 16.661 min Scan# 1674
 Delta R.T. -0.012 min
 Lab File: BN037100.D
 Acq: 27 May 2025 23:00

Tgt Ion	Resp	Lower	Upper
266	768		
264	62.1	47.9	71.9
268	63.7	50.0	75.0



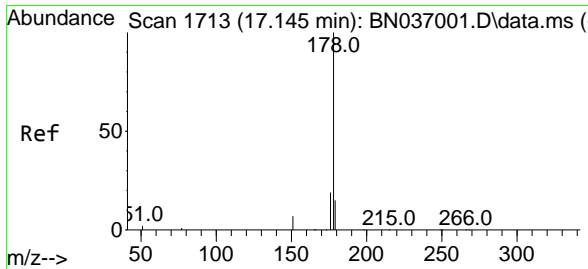
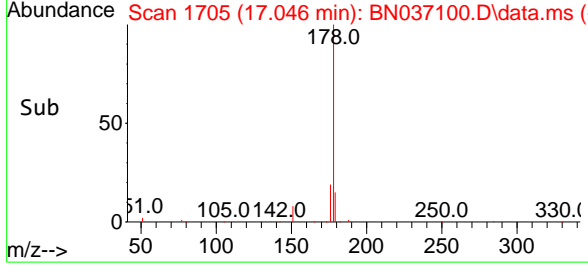
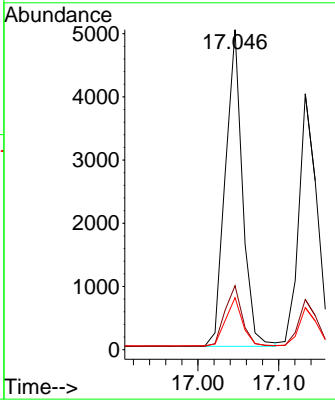
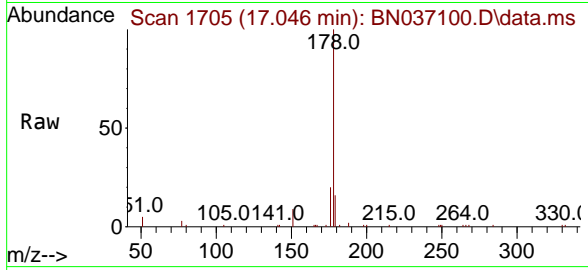


#25
 Phenanthrene
 Concen: 0.379 ng
 RT: 17.046 min Scan# 1712
 Delta R.T. -0.012 min
 Lab File: BN037100.D
 Acq: 27 May 2025 23:00

Instrument : BNA_N
 ClientSampleId : SSTDCCC0.4EC

Tgt Ion:178 Resp: 7391

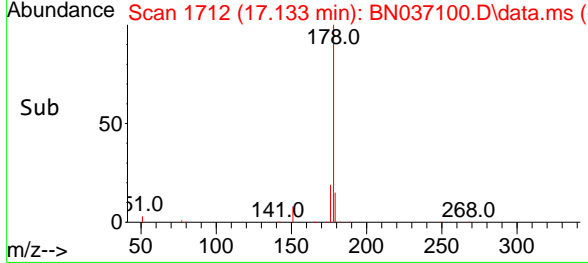
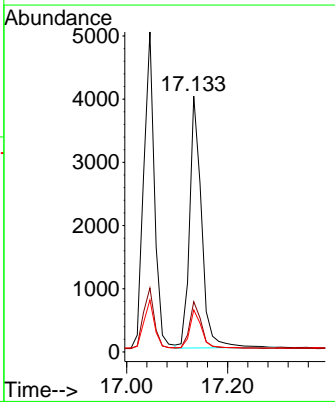
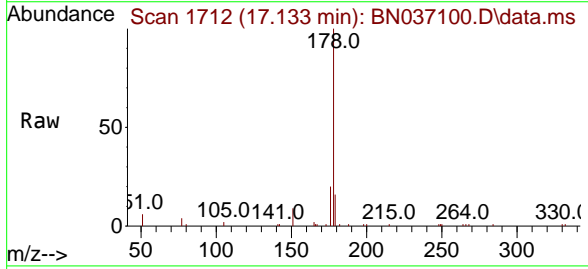
Ion	Ratio	Lower	Upper
178	100		
176	19.5	15.7	23.5
179	15.1	12.2	18.2

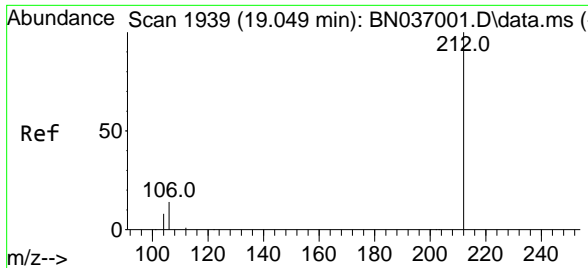


#26
 Anthracene
 Concen: 0.369 ng
 RT: 17.133 min Scan# 1712
 Delta R.T. -0.012 min
 Lab File: BN037100.D
 Acq: 27 May 2025 23:00

Tgt Ion:178 Resp: 6551

Ion	Ratio	Lower	Upper
178	100		
176	19.0	15.0	22.6
179	15.0	12.3	18.5



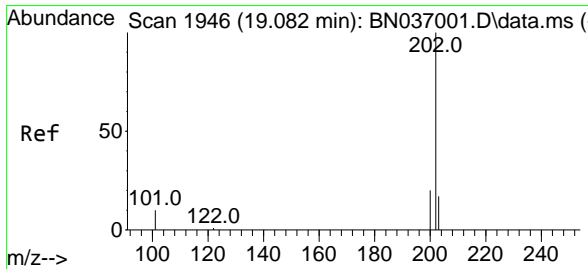
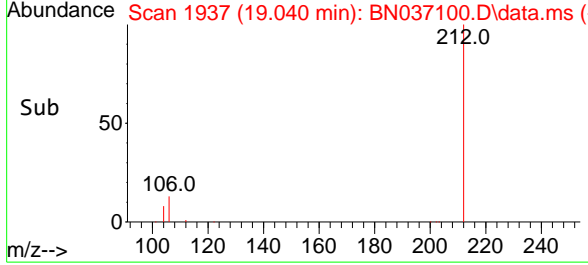
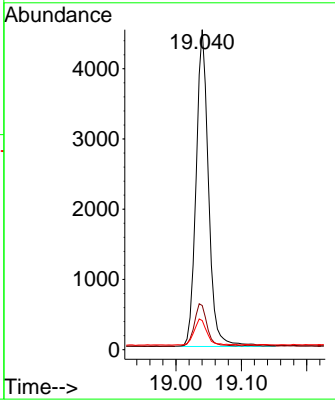
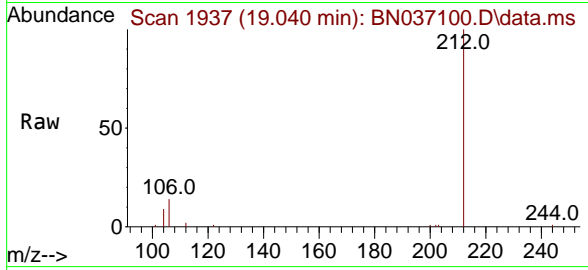


#27
 Fluoranthene-d10
 Concen: 0.364 ng
 RT: 19.040 min Scan# 1937
 Delta R.T. -0.009 min
 Lab File: BN037100.D
 Acq: 27 May 2025 23:00

Instrument : BNA_N
 ClientSampleId : SSTDCCC0.4EC

Tgt Ion:212 Resp: 5959

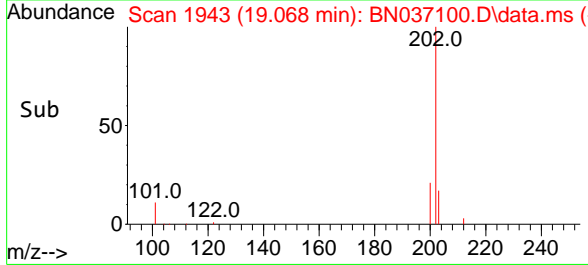
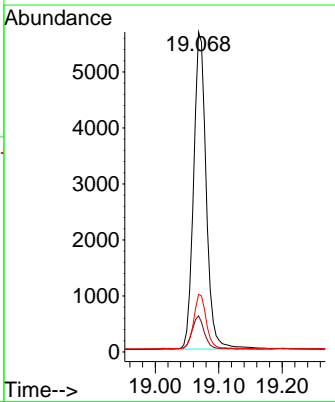
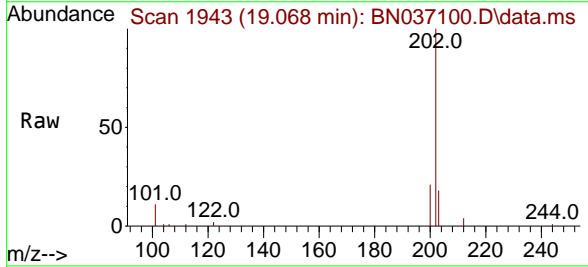
Ion	Ratio	Lower	Upper
212	100		
106	13.5	11.3	16.9
104	8.6	6.7	10.1

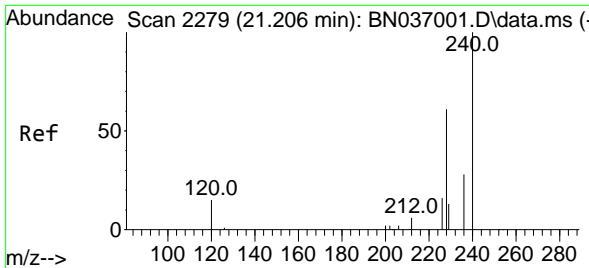


#28
 Fluoranthene
 Concen: 0.335 ng
 RT: 19.068 min Scan# 1943
 Delta R.T. -0.014 min
 Lab File: BN037100.D
 Acq: 27 May 2025 23:00

Tgt Ion:202 Resp: 7822

Ion	Ratio	Lower	Upper
202	100		
101	10.8	8.9	13.3
203	17.1	13.8	20.8



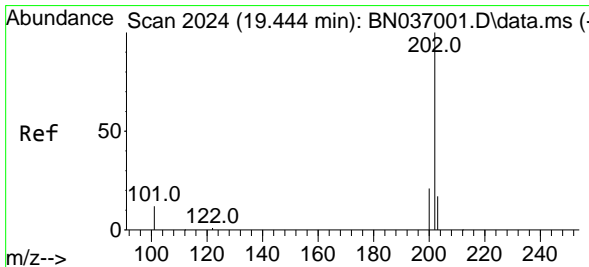
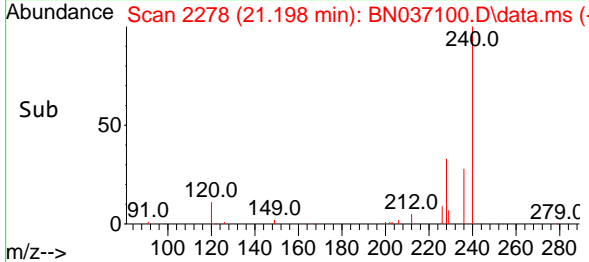
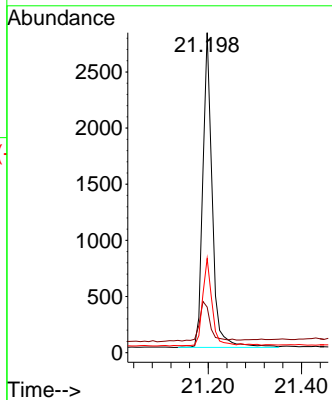
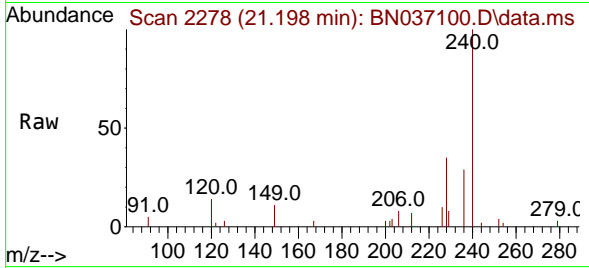


#29
 Chrysene-d12
 Concen: 0.400 ng
 RT: 21.198 min Scan# 21
 Delta R.T. -0.009 min
 Lab File: BN037100.D
 Acq: 27 May 2025 23:00

Instrument :
 BNA_N
 ClientSampleId :
 SSTDCCC0.4EC

Tgt Ion:240 Resp: 3925

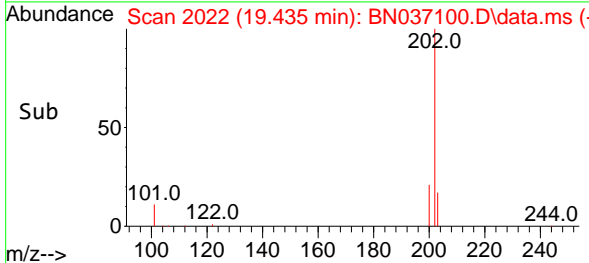
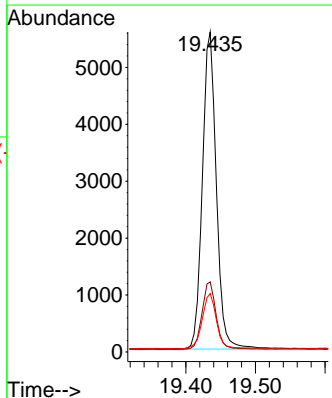
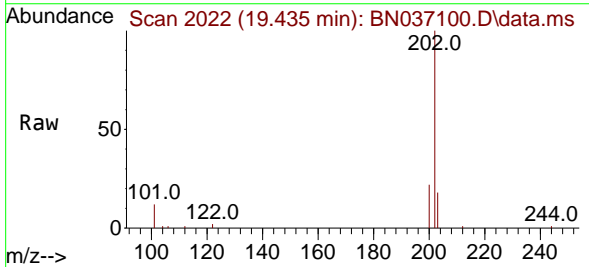
Ion	Ratio	Lower	Upper
240	100		
120	14.2	15.1	22.7#
236	29.4	24.0	36.0

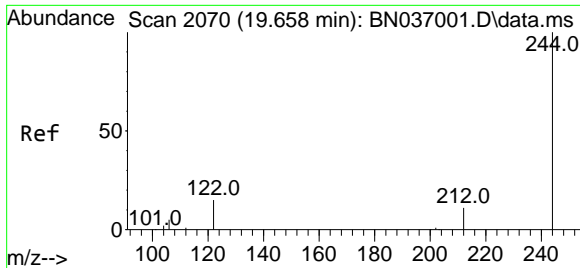


#30
 Pyrene
 Concen: 0.461 ng
 RT: 19.435 min Scan# 2022
 Delta R.T. -0.009 min
 Lab File: BN037100.D
 Acq: 27 May 2025 23:00

Tgt Ion:202 Resp: 7747

Ion	Ratio	Lower	Upper
202	100		
200	21.5	17.1	25.7
203	17.8	14.2	21.4

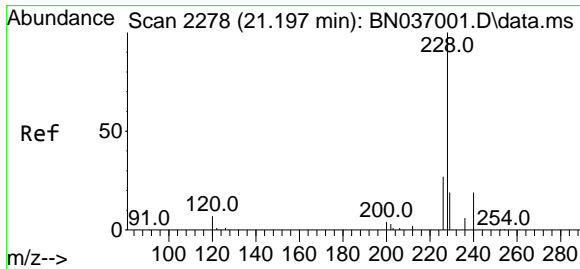
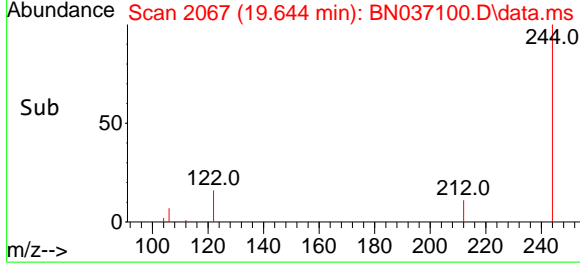
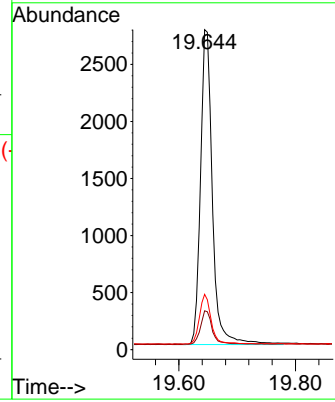
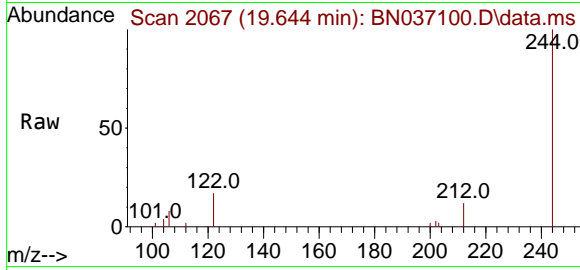




#31
 Terphenyl-d14
 Concen: 0.465 ng
 RT: 19.644 min Scan# 2070
 Delta R.T. -0.014 min
 Lab File: BN037100.D
 Acq: 27 May 2025 23:00

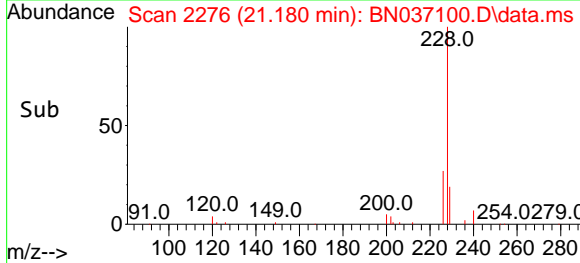
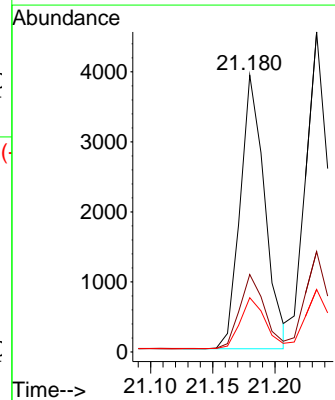
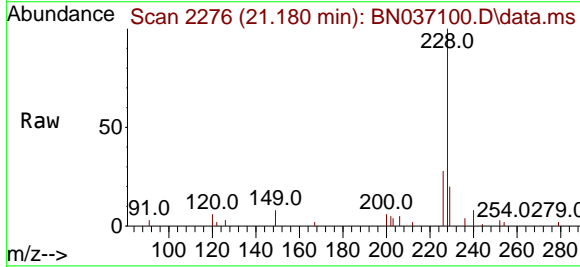
Instrument : BNA_N
 ClientSampleId : SSTDCCC0.4EC

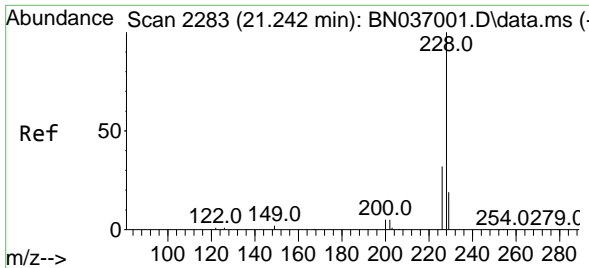
Tgt Ion	Resp	Ion Ratio	Lower	Upper
244	3905	100		
212		12.2	9.7	14.5
122		17.3	13.4	20.0



#32
 Benzo(a)anthracene
 Concen: 0.364 ng
 RT: 21.180 min Scan# 2276
 Delta R.T. -0.018 min
 Lab File: BN037100.D
 Acq: 27 May 2025 23:00

Tgt Ion	Resp	Ion Ratio	Lower	Upper
228	5377	100		
226		28.0	22.2	33.4
229		19.6	16.0	24.0

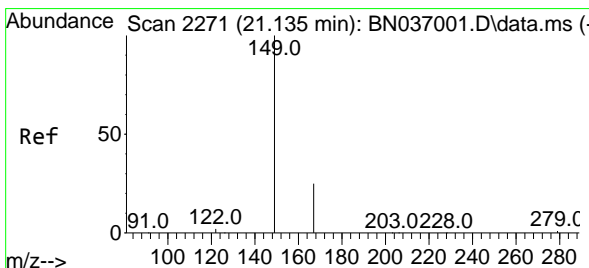
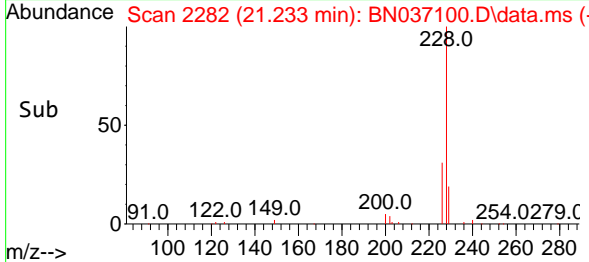
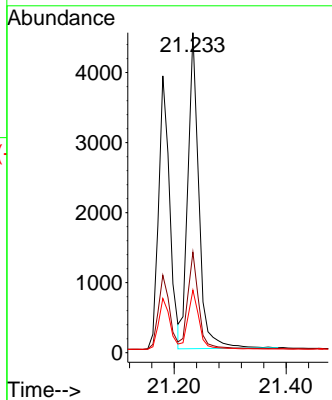
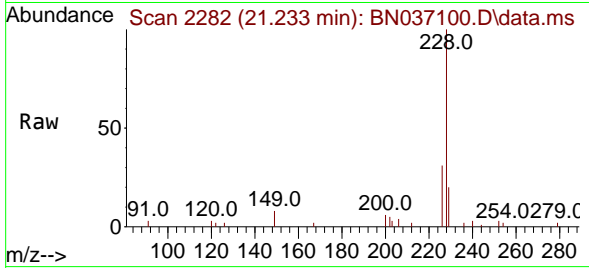




#33
 Chrysene
 Concen: 0.393 ng
 RT: 21.233 min Scan# 21
 Delta R.T. -0.009 min
 Lab File: BN037100.D
 Acq: 27 May 2025 23:00

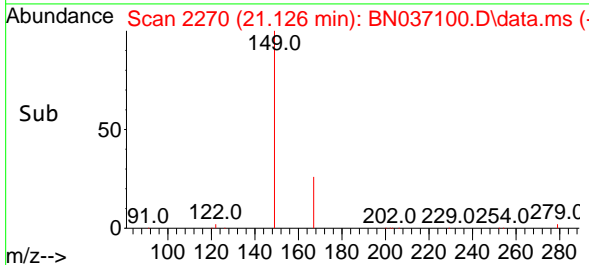
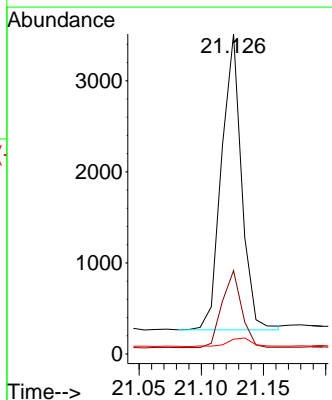
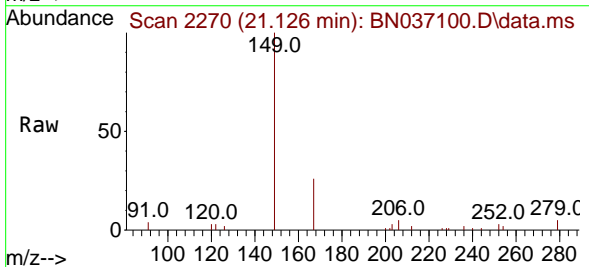
Instrument :
 BNA_N
 ClientSampleId :
 SSTDCCC0.4EC

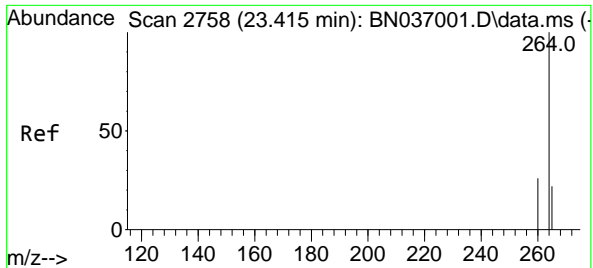
Tgt Ion	Resp	Lower	Upper
228	6146		
226	31.4	26.3	39.5
229	19.5	16.2	24.2



#34
 Bis(2-ethylhexyl)phthalate
 Concen: 0.400 ng
 RT: 21.126 min Scan# 2270
 Delta R.T. -0.009 min
 Lab File: BN037100.D
 Acq: 27 May 2025 23:00

Tgt Ion	Resp	Lower	Upper
149	3636		
167	25.6	20.6	30.8
279	3.5	2.6	3.8



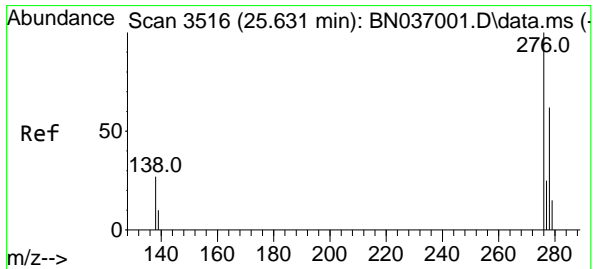
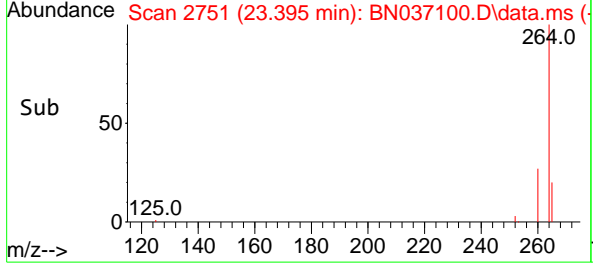
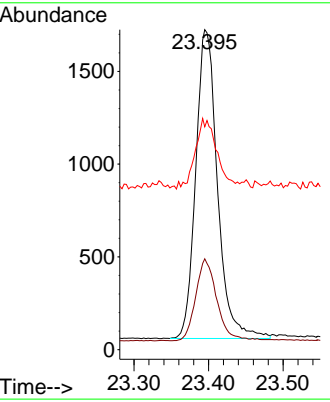
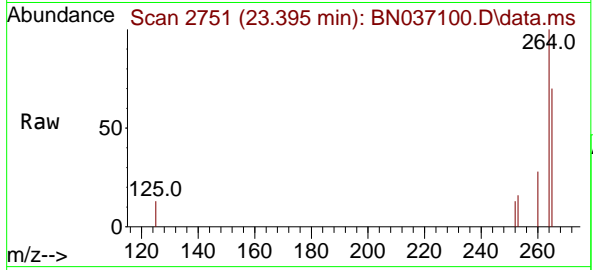


#35
 Perylene-d12
 Concen: 0.400 ng
 RT: 23.395 min Scan# 21
 Delta R.T. -0.020 min
 Lab File: BN037100.D
 Acq: 27 May 2025 23:00

Instrument : BNA_N
 ClientSampleId : SSTDCCC0.4EC

Tgt Ion:264 Resp: 3370

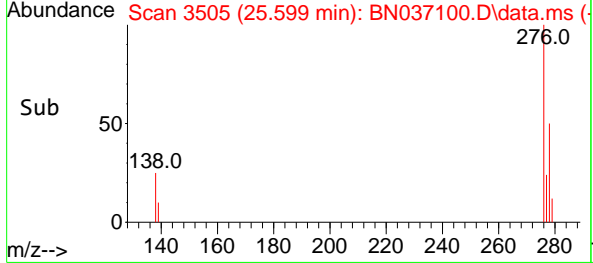
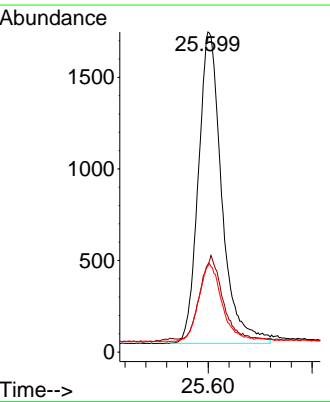
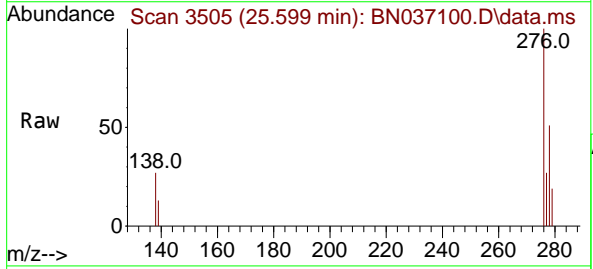
Ion	Ratio	Lower	Upper
264	100		
260	28.4	21.9	32.9
265	69.6	51.6	77.4

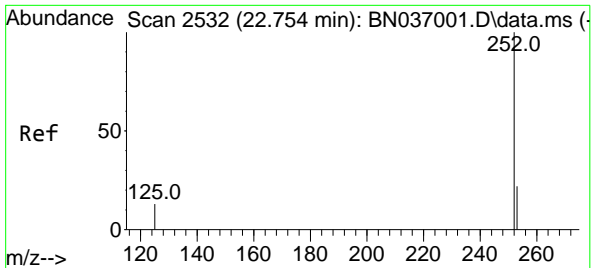


#36
 Indeno(1,2,3-cd)pyrene
 Concen: 0.387 ng
 RT: 25.599 min Scan# 3505
 Delta R.T. -0.032 min
 Lab File: BN037100.D
 Acq: 27 May 2025 23:00

Tgt Ion:276 Resp: 5324

Ion	Ratio	Lower	Upper
276	100		
138	25.9	22.7	34.1
277	24.9	20.0	30.0



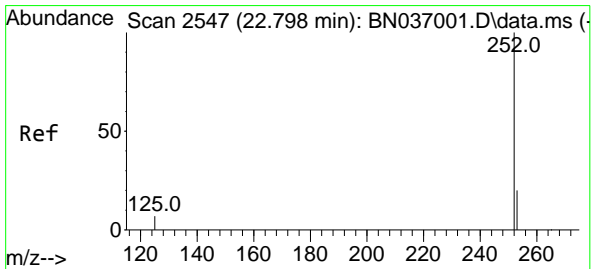
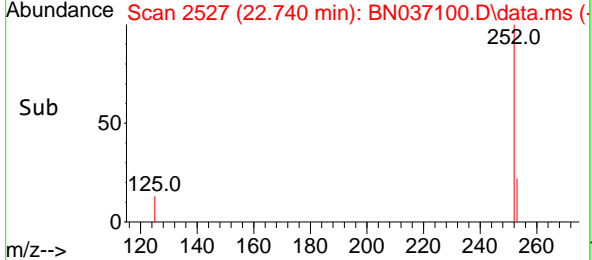
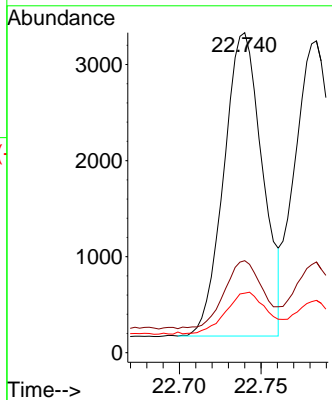
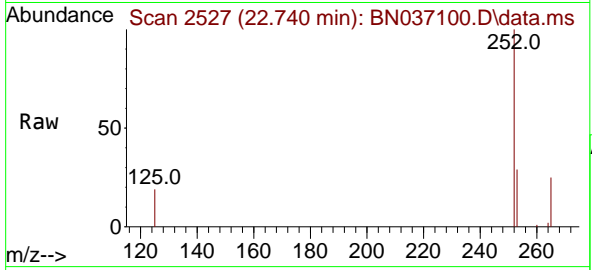


#37
 Benzo(b)fluoranthene
 Concen: 0.371 ng
 RT: 22.740 min Scan# 21
 Delta R.T. -0.014 min
 Lab File: BN037100.D
 Acq: 27 May 2025 23:00

Instrument : BNA_N
 ClientSampleId : SSTDCCC0.4EC

Tgt Ion:252 Resp: 5193

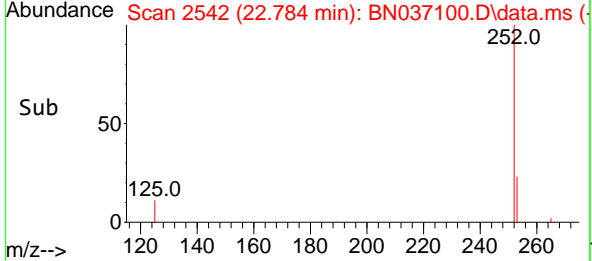
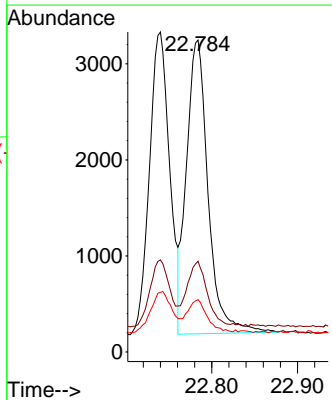
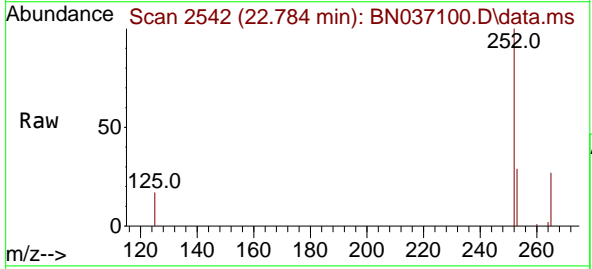
Ion	Ratio	Lower	Upper
252	100		
253	28.8	21.8	32.6
125	18.6	14.6	21.8

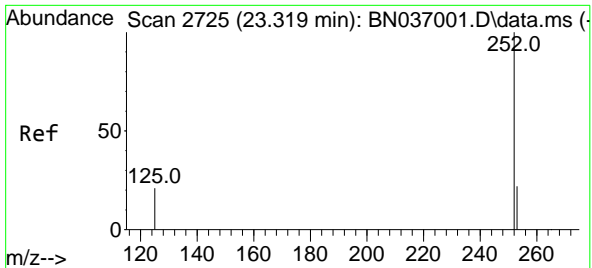


#38
 Benzo(k)fluoranthene
 Concen: 0.388 ng
 RT: 22.784 min Scan# 2542
 Delta R.T. -0.014 min
 Lab File: BN037100.D
 Acq: 27 May 2025 23:00

Tgt Ion:252 Resp: 5359

Ion	Ratio	Lower	Upper
252	100		
253	29.1	21.4	32.2
125	16.8	13.0	19.4



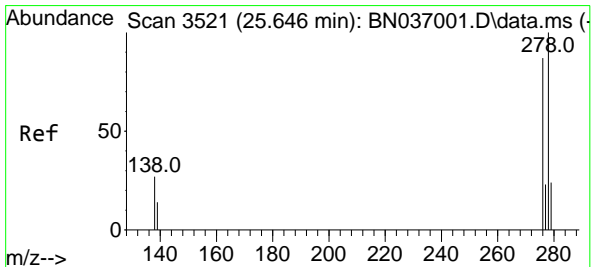
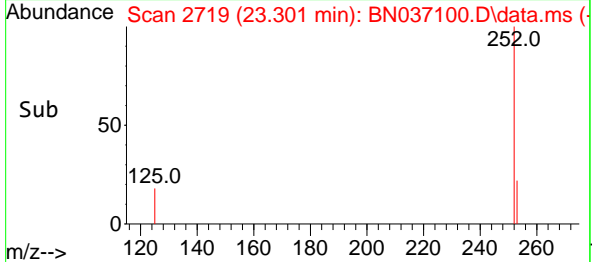
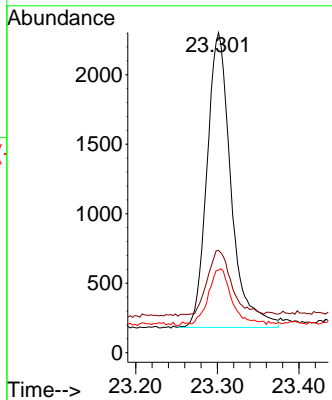
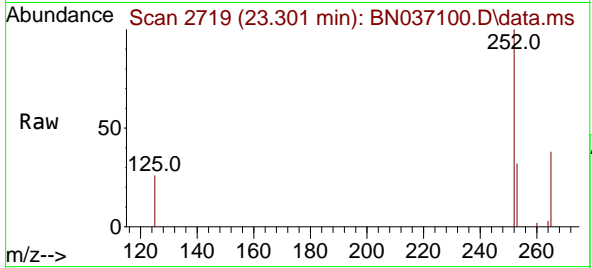


#39
 Benzo(a)pyrene
 Concen: 0.365 ng
 RT: 23.301 min Scan# 21
 Delta R.T. -0.017 min
 Lab File: BN037100.D
 Acq: 27 May 2025 23:00

Instrument : BNA_N
 ClientSampleId : SSTDCCC0.4EC

Tgt Ion: 252 Resp: 4324

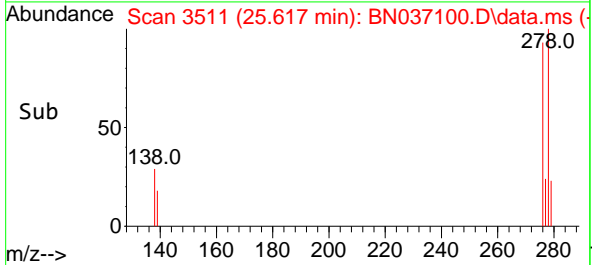
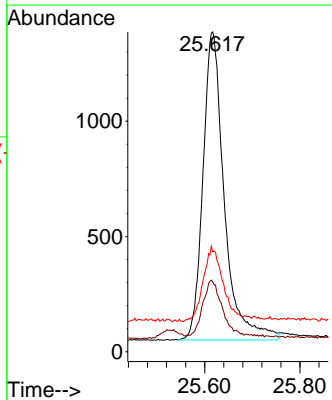
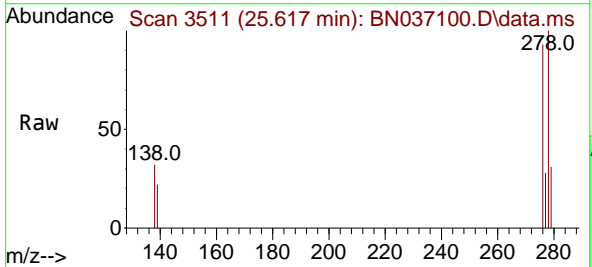
Ion	Ratio	Lower	Upper
252	100		
253	32.0	23.8	35.6
125	25.7	21.8	32.6

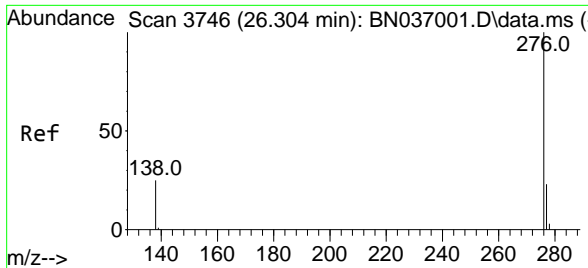


#40
 Dibenzo(a,h)anthracene
 Concen: 0.387 ng
 RT: 25.617 min Scan# 3511
 Delta R.T. -0.029 min
 Lab File: BN037100.D
 Acq: 27 May 2025 23:00

Tgt Ion: 278 Resp: 4148

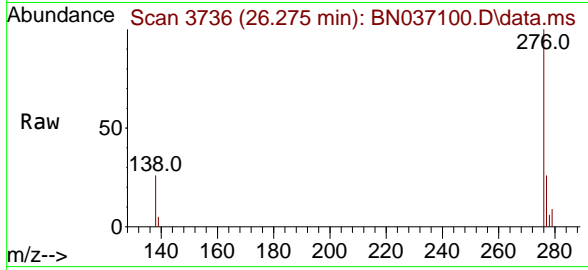
Ion	Ratio	Lower	Upper
278	100		
139	21.9	17.4	26.0
279	31.3	24.6	37.0





#41
 Benzo(g,h,i)perylene
 Concen: 0.407 ng
 RT: 26.275 min Scan# 31
 Delta R.T. -0.029 min
 Lab File: BN037100.D
 Acq: 27 May 2025 23:00

Instrument :
 BNA_N
 ClientSampleId :
 SSTDCCC0.4EC



Tgt Ion: 276 Resp: 4737

Ion	Ratio	Lower	Upper
276	100		
277	26.2	20.2	30.4
138	26.4	22.0	33.0

