

Data Path : Z:\svoasrv\HPCHEM1\BNA_N\Data\BN052924\
 Data File : BN031713.D
 Acq On : 30 May 2024 08:24
 Operator : MA/JU
 Sample : P2569-20
 Misc :
 ALS Vial : 24 Sample Multiplier: 1

Instrument :
 BNA_N
 ClientSampleId :
 BH6A6

Integration Parameters: LSCINT.P

Integrator: RTE
 Smoothing : OFF Filtering: 5
 Sampling : 1 Min Area: 0.1 % of largest Peak
 Start Thrs: 0.2 Max Peaks: 100
 Stop Thrs : 0 Peak Location: TOP

If leading or trailing edge < 100 prefer < Baseline drop else tangent >
 Peak separation: 5

Method : Z:\svoasrv\HPCHEM1\BNA_N\Methods\SFAM-EPA-BN052924.MA.M
 Title : SVOA CALIBRATION

Signal : TIC: BN031713.D\data.ms

peak #	R.T. min	first scan	max scan	last scan	PK TY	peak height	corr. area	corr. % max.	% of total
1	3.605	101	105	118	rBV	872643	1486151	7.17%	0.501%
2	3.711	118	123	131	rVV	452117	641787	3.09%	0.216%
3	6.857	648	658	666	rBV	1552529	2547045	12.28%	0.858%
4	7.028	681	687	699	rBV	1267828	1999458	9.64%	0.674%
5	7.222	712	720	728	rBV	1600453	2562456	12.36%	0.864%
6	7.693	792	800	807	rBV	2047041	3364083	16.22%	1.134%
7	8.393	912	919	926	rBV	1851990	3010737	14.52%	1.015%
8	8.846	989	996	1003	rBV	1458597	2426006	11.70%	0.818%
9	9.563	1110	1118	1125	rBV	1124358	1935225	9.33%	0.652%
10	10.093	1200	1208	1216	rVB	1977972	3274381	15.79%	1.104%
11	10.475	1265	1273	1278	rVV	3009480	5185868	25.01%	1.748%
12	10.522	1278	1281	1288	rVV	547157	862537	4.16%	0.291%
13	10.610	1288	1296	1315	rVB	332945	711926	3.43%	0.240%
14	12.140	1549	1556	1563	rVB	774848	1260404	6.08%	0.425%
15	12.357	1585	1593	1602	rVB	1256772	2061487	9.94%	0.695%
16	13.504	1777	1788	1795	rVB2	456904	1111482	5.36%	0.375%
17	13.651	1805	1813	1818	rBV	1203820	2144574	10.34%	0.723%
18	13.704	1818	1822	1824	rVV	627159	849930	4.10%	0.286%
19	13.745	1824	1829	1834	rVB	3233508	4396662	21.20%	1.482%
20	13.886	1846	1853	1856	rBV	648951	1035323	4.99%	0.349%
21	14.022	1870	1876	1889	rVB2	3697251	6656970	32.10%	2.244%
22	14.328	1917	1928	1934	rVV	4305361	6961437	33.57%	2.346%
23	14.392	1934	1939	1947	rVV	954157	1646048	7.94%	0.555%
24	14.534	1957	1963	1972	rVV2	1573263	2837296	13.68%	0.956%
25	14.628	1972	1979	1985	rVV2	293966	733139	3.54%	0.247%
26	14.728	1992	1996	2004	rVV	572438	983236	4.74%	0.331%
27	14.804	2004	2009	2014	rVB	497555	722715	3.49%	0.244%
28	14.951	2027	2034	2038	rBV	470824	836273	4.03%	0.282%
29	14.998	2038	2042	2047	rVB	358979	512221	2.47%	0.173%
30	15.122	2055	2063	2066	rBV	373460	889500	4.29%	0.300%
31	15.322	2091	2097	2102	rVV	4541600	6643056	32.03%	2.239%
32	15.375	2102	2106	2111	rVB2	902193	1324959	6.39%	0.447%
33	15.451	2115	2119	2124	rBV2	508706	841045	4.06%	0.283%
34	15.539	2131	2134	2139	rVB3	372690	538451	2.60%	0.181%
35	15.669	2152	2156	2167	rVB3	374051	768139	3.70%	0.259%
36	15.822	2178	2182	2190	rVB5	241759	563635	2.72%	0.190%

Data Path : Z:\svoasrv\HPCHEM1\BNA_N\Data\BN052924\
 Data File : BN031713.D
 Acq On : 30 May 2024 08:24
 Operator : MA/JU
 Sample : P2569-20
 Misc :
 ALS Vial : 24 Sample Multiplier: 1

Instrument :
 BNA_N
 ClientSampleId :
 BH6A6

Integration Parameters: LSCINT.P

Integrator: RTE
 Smoothing : OFF Filtering: 5
 Sampling : 1 Min Area: 0.1 % of largest Peak
 Start Thrs: 0.2 Max Peaks: 100
 Stop Thrs : 0 Peak Location: TOP

If leading or trailing edge < 100 prefer < Baseline drop else tangent >
 Peak separation: 5

Method : Z:\svoasrv\HPCHEM1\BNA_N\Methods\SFAM-EPA-BN052924.MA.M
 Title : SVOA CALIBRATION

37	16.051	2216	2221	2227	rVB2	613080	1025522	4.95%	0.346%
38	16.357	2267	2273	2275	rBV2	530573	801502	3.86%	0.270%
39	16.428	2282	2285	2291	rVB2	576816	843744	4.07%	0.284%
40	16.651	2319	2323	2327	rVV3	359682	574695	2.77%	0.194%
41	16.733	2331	2337	2344	rVB	1990812	3035802	14.64%	1.023%
42	16.810	2345	2350	2360	rBV7	200415	638042	3.08%	0.215%
43	16.892	2360	2364	2378	rVB	1201559	1971913	9.51%	0.665%
44	17.075	2390	2395	2399	rBV	4139030	6748282	32.54%	2.274%
45	17.122	2399	2403	2408	rVV	13905659	20737751	100.00%	6.990%
46	17.175	2408	2412	2416	rVV2	4464791	6472481	31.21%	2.182%
47	17.210	2416	2418	2423	rVB	1064869	1186457	5.72%	0.400%
48	17.269	2423	2428	2433	rBV3	248118	568529	2.74%	0.192%
49	17.386	2444	2448	2453	rVB2	673341	1030237	4.97%	0.347%
50	17.598	2480	2484	2488	rBV	694416	845500	4.08%	0.285%
51	17.657	2489	2494	2500	rVB	1478557	2122044	10.23%	0.715%
52	17.757	2507	2511	2514	rBV	459002	644321	3.11%	0.217%
53	17.798	2514	2518	2526	rVB	623235	1195216	5.76%	0.403%
54	17.875	2526	2531	2535	rBV	776551	1155635	5.57%	0.390%
55	17.951	2538	2544	2548	rBV	4219525	6863732	33.10%	2.313%
56	17.998	2548	2552	2558	rVB	5092238	7493816	36.14%	2.526%
57	18.080	2562	2566	2570	rBV	422747	550812	2.66%	0.186%
58	18.139	2570	2576	2580	rBV2	4505230	7575500	36.53%	2.553%
59	18.180	2580	2583	2590	rVB	3638014	5093543	24.56%	1.717%
60	18.269	2594	2598	2601	rBV3	371710	542213	2.61%	0.183%
61	18.345	2608	2611	2616	rVB2	485336	699135	3.37%	0.236%
62	18.457	2625	2630	2633	rBV	2404820	3320658	16.01%	1.119%
63	18.498	2633	2637	2647	rVB	4828264	7141811	34.44%	2.407%
64	18.580	2647	2651	2659	rBV3	423888	911781	4.40%	0.307%
65	18.669	2663	2666	2668	rBV	473506	570001	2.75%	0.192%
66	18.704	2668	2672	2676	rVV3	902145	1320758	6.37%	0.445%
67	18.751	2677	2680	2684	rVB	760473	894918	4.32%	0.302%
68	18.792	2684	2687	2692	rVB3	651468	831188	4.01%	0.280%
69	18.874	2696	2701	2706	rBV2	2877016	4773691	23.02%	1.609%
70	18.927	2706	2710	2714	rVV2	1015998	2002731	9.66%	0.675%
71	18.969	2714	2717	2720	rVB	711721	882892	4.26%	0.298%
72	19.016	2720	2725	2737	rBV	2094079	4246036	20.47%	1.431%
73	19.139	2741	2746	2752	rVB	8986421	12361831	59.61%	4.167%
74	19.204	2753	2757	2760	rBV	691903	989112	4.77%	0.333%
75	19.239	2760	2763	2770	rVB4	657772	1159069	5.59%	0.391%
76	19.339	2776	2780	2784	rBV2	1621362	2143946	10.34%	0.723%

Data Path : Z:\svoasrv\HPCHEM1\BNA_N\Data\BN052924\
 Data File : BN031713.D
 Acq On : 30 May 2024 08:24
 Operator : MA/JU
 Sample : P2569-20
 Misc :
 ALS Vial : 24 Sample Multiplier: 1

Instrument :
 BNA_N
 ClientSampleId :
 BH6A6

Integration Parameters: LSCINT.P

Integrator: RTE
 Smoothing : OFF Filtering: 5
 Sampling : 1 Min Area: 0.1 % of largest Peak
 Start Thrs: 0.2 Max Peaks: 100
 Stop Thrs : 0 Peak Location: TOP

If leading or trailing edge < 100 prefer < Baseline drop else tangent >
 Peak separation: 5

Method : Z:\svoasrv\HPCHEM1\BNA_N\Methods\SFAM-EPA-BN052924.MA.M
 Title : SVOA CALIBRATION

77	19.380	2784	2787	2790	rVV2	618612	740718	3.57%	0.250%
78	19.474	2798	2803	2805	rBV2	5293772	7647502	36.88%	2.578%
79	19.504	2805	2808	2815	rVV	11123056	15891211	76.63%	5.356%
80	19.580	2815	2821	2826	rVB3	805840	1508746	7.28%	0.509%
81	19.739	2844	2848	2853	rVB4	591534	996197	4.80%	0.336%
82	19.827	2858	2863	2873	rBV4	1629206	4146327	19.99%	1.398%
83	19.916	2875	2878	2881	rVV3	514389	728685	3.51%	0.246%
84	19.992	2882	2891	2896	rVB3	1572666	4914639	23.70%	1.656%
85	20.098	2906	2909	2914	rVB2	617878	705013	3.40%	0.238%
86	20.157	2914	2919	2923	rBV	2053163	2728020	13.15%	0.919%
87	20.298	2939	2943	2947	rBV	2404161	2955510	14.25%	0.996%
88	20.339	2947	2950	2955	rVB	1614444	2148548	10.36%	0.724%
89	20.745	3015	3019	3026	rVB	1947599	3119232	15.04%	1.051%
90	20.910	3042	3047	3052	rBV2	1060845	2355647	11.36%	0.794%
91	20.963	3053	3056	3059	rVV	1085844	1262769	6.09%	0.426%
92	20.998	3059	3062	3067	rVV	1241859	1741636	8.40%	0.587%
93	21.063	3069	3073	3079	rVB	1467029	2177849	10.50%	0.734%
94	21.304	3108	3114	3119	rBV3	4139698	10431049	50.30%	3.516%
95	21.357	3119	3123	3130	rVB	4451676	7189890	34.67%	2.423%
96	23.333	3453	3459	3466	rBV2	1936950	5576538	26.89%	1.880%
97	23.992	3565	3571	3577	rBV	2011307	4729610	22.81%	1.594%
98	24.062	3578	3583	3588	rVV2	1748237	4030802	19.44%	1.359%
99	24.121	3589	3593	3606	rVB	1922135	4401428	21.22%	1.483%
100	24.262	3611	3617	3624	rBV	1709839	4275691	20.62%	1.441%

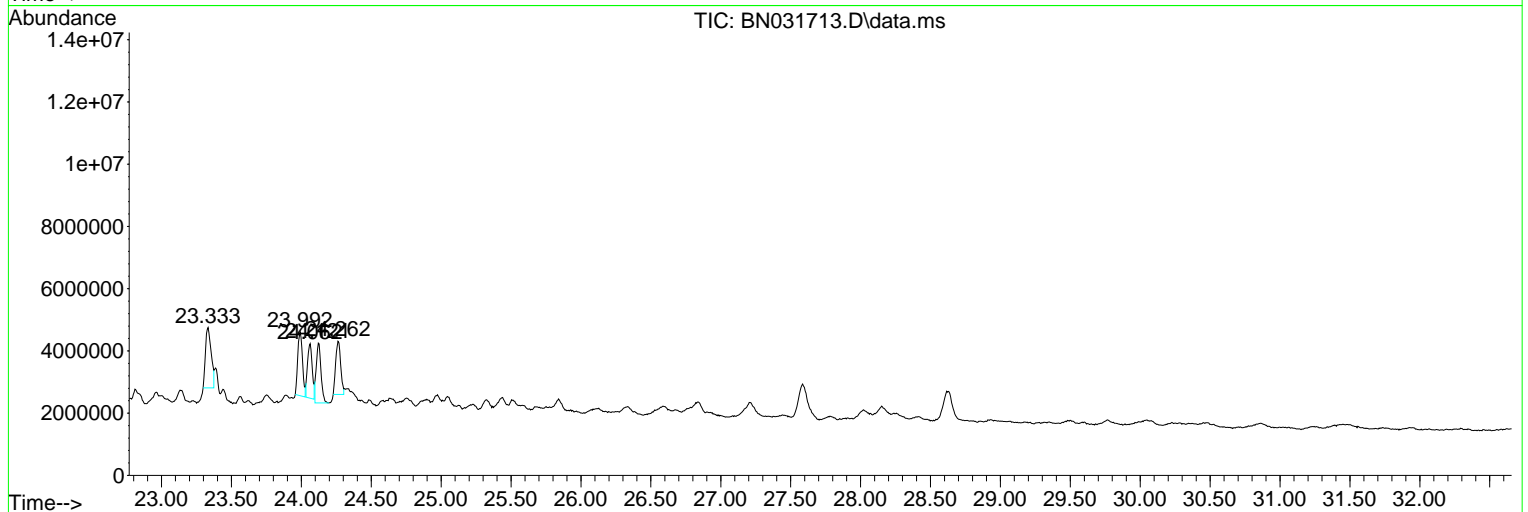
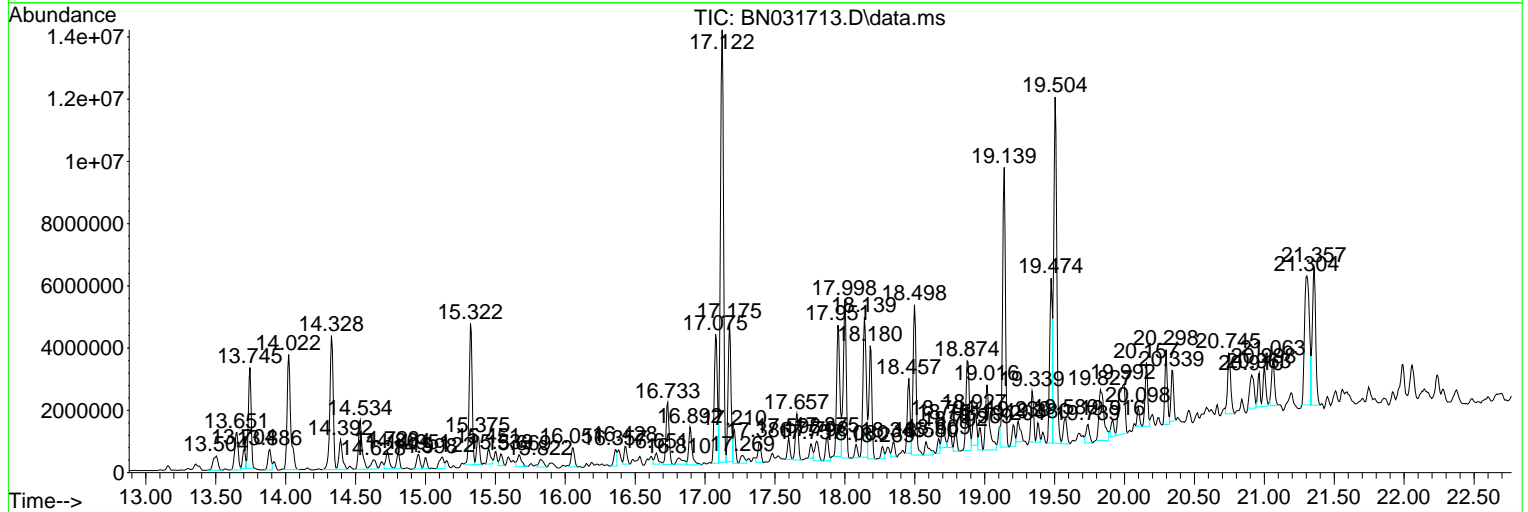
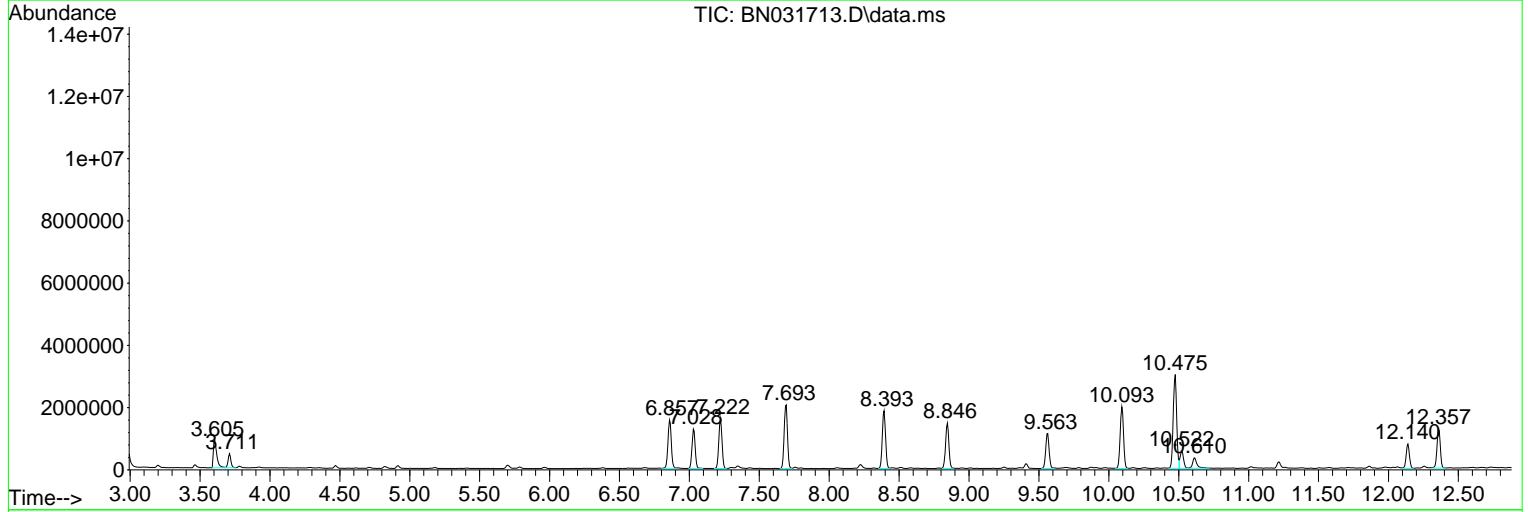
Sum of corrected areas: 296695746

Data Path : Z:\svoasrv\HPCHEM1\BNA_N\Data\BN052924\
 Data File : BN031713.D
 Acq On : 30 May 2024 08:24
 Operator : MA/JU
 Sample : P2569-20
 Misc :
 ALS Vial : 24 Sample Multiplier: 1

Instrument :
 BNA_N
 ClientSampleId :
 BH6A6

Quant Method : Z:\svoasrv\HPCHEM1\BNA_N\Methods\SFAM-EPA-BN052924.MA.M
 Quant Title : SVOA CALIBRATION

TIC Library : C:\Database\NIST20.L
 TIC Integration Parameters: LSCINT.P



Data Path : Z:\svoasrv\HPCHEM1\BNA_N\Data\BN052924\
 Data File : BN031713.D
 Acq On : 30 May 2024 08:24
 Operator : MA/JU
 Sample : P2569-20
 Misc :
 ALS Vial : 24 Sample Multiplier: 1

Instrument :
 BNA_N
 ClientSampleId :
 BH6A6

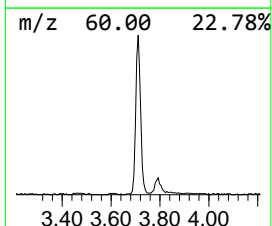
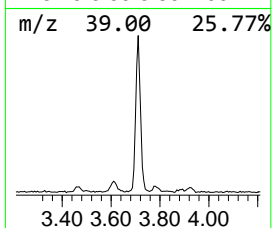
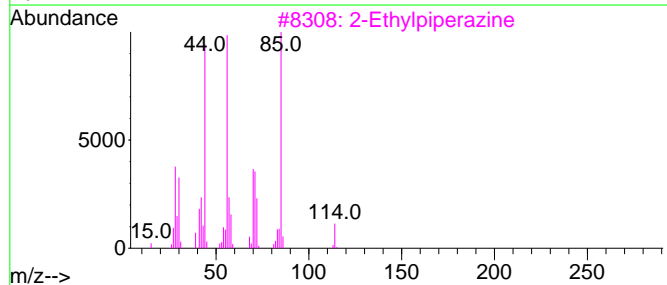
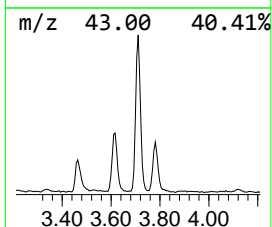
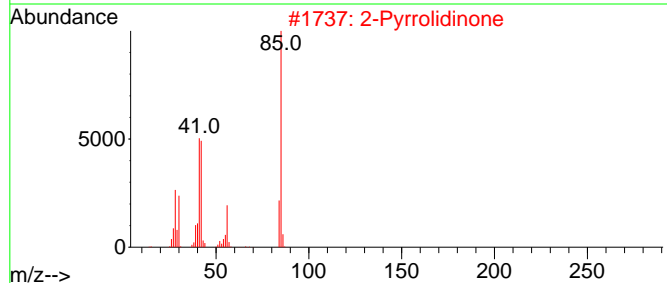
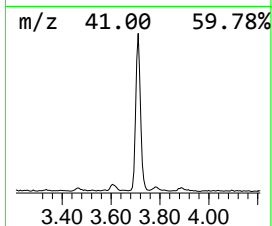
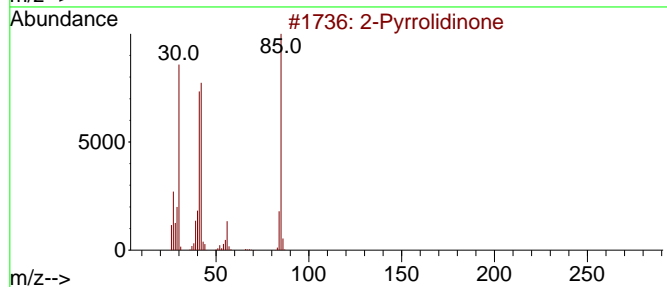
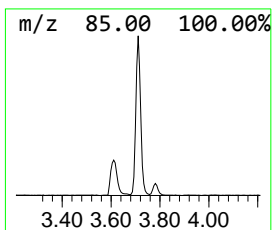
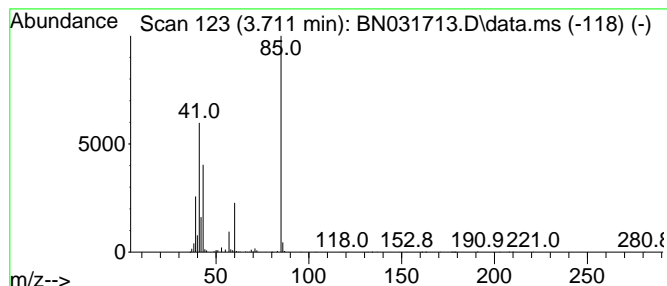
Quant Method : Z:\svoasrv\HPCHEM1\BNA_N\Methods\SFAM-EPA-BN052924.MA.M
 Quant Title : SVOA CALIBRATION

TIC Library : C:\Database\NIST20.L
 TIC Integration Parameters: LSCINT.P

 Peak Number 1 unknown-01 Concentration Rank 25

R.T.	EstConc	Area	Relative to ISTD	R.T.
3.711	3.82 ng/ul	641787	1,4-Dichlorobenzene-d4	7.693

Hit#	of 5	Tentative ID	MW	MolForm	CAS#	Qual
1		2-Pyrrolidinone	85	C4H7NO	000616-45-5	9
2		2-Pyrrolidinone	85	C4H7NO	000616-45-5	9
3		2-Ethylpiperazine	114	C6H14N2	013961-37-0	9
4		trans-4-Methoxy-3-buten-2-one	100	C5H8O2	051731-17-0	9
5		Butane, 1-isocyano-	83	C5H9N	002769-64-4	9



Data Path : Z:\svoasrv\HPCHEM1\BNA_N\Data\BN052924\
 Data File : BN031713.D
 Acq On : 30 May 2024 08:24
 Operator : MA/JU
 Sample : P2569-20
 Misc :
 ALS Vial : 24 Sample Multiplier: 1

Instrument :
 BNA_N
 ClientSampleId :
 BH6A6

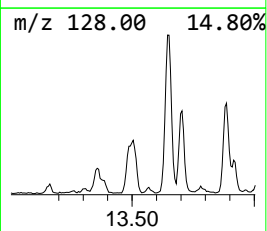
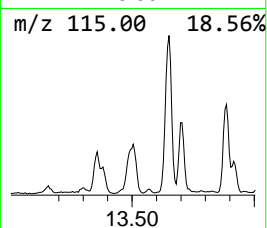
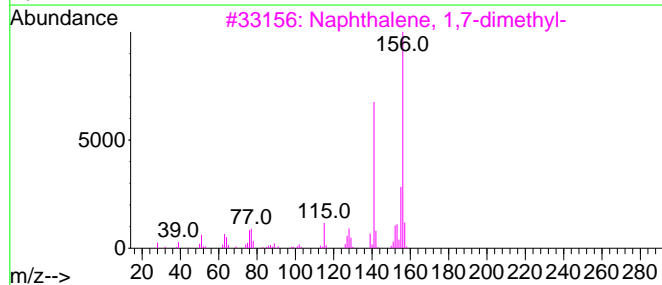
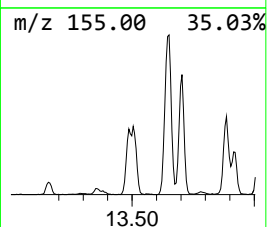
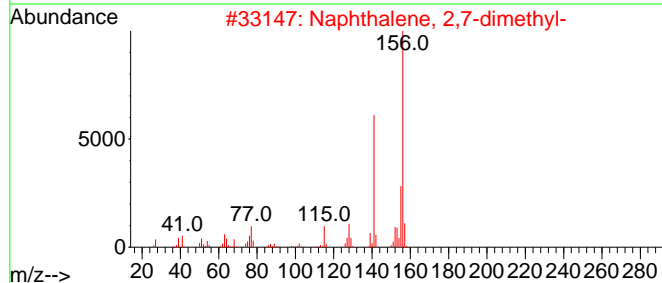
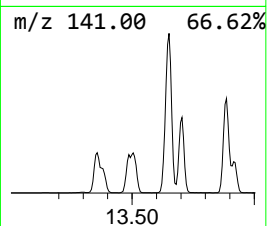
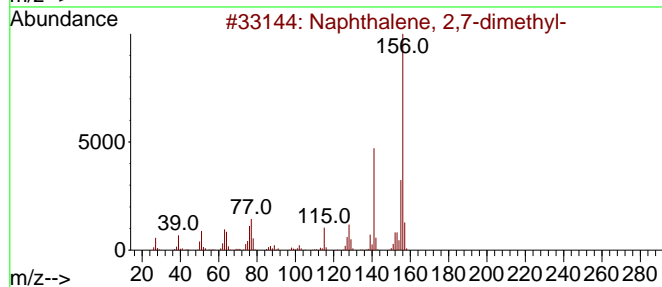
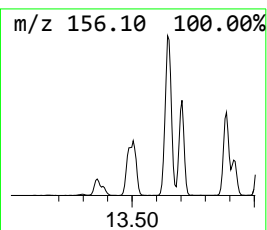
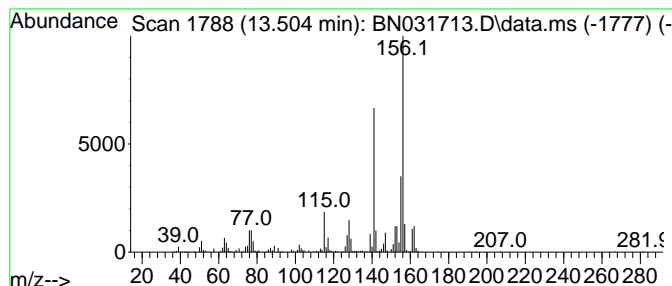
Quant Method : Z:\svoasrv\HPCHEM1\BNA_N\Methods\SFAM-EPA-BN052924.MA.M
 Quant Title : SVOA CALIBRATION

TIC Library : C:\Database\NIST20.L
 TIC Integration Parameters: LSCINT.P

 Peak Number 2 Naphthalene, 2,7-dimethyl- Concentration Rank 29

R.T.	EstConc	Area	Relative to ISTD	R.T.
13.504	3.19 ng/ul	1111480	Acenaphthene-d10	14.328

Hit#	of	5	Tentative ID	MW	MolForm	CAS#	Qual
1			Naphthalene, 2,7-dimethyl-	156	C12H12	000582-16-1	97
2			Naphthalene, 2,7-dimethyl-	156	C12H12	000582-16-1	96
3			Naphthalene, 1,7-dimethyl-	156	C12H12	000575-37-1	96
4			Naphthalene, 2,7-dimethyl-	156	C12H12	000582-16-1	96
5			Naphthalene, 1,6-dimethyl-	156	C12H12	000575-43-9	96



Data Path : Z:\svoasrv\HPCHEM1\BNA_N\Data\BN052924\
 Data File : BN031713.D
 Acq On : 30 May 2024 08:24
 Operator : MA/JU
 Sample : P2569-20
 Misc :
 ALS Vial : 24 Sample Multiplier: 1

Instrument :
 BNA_N
 ClientSampleId :
 BH6A6

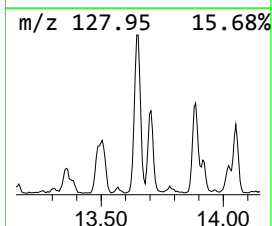
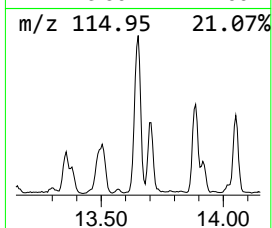
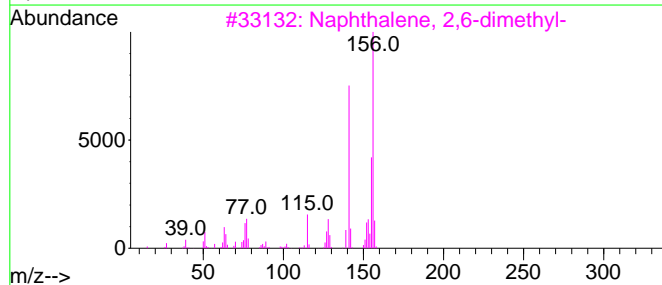
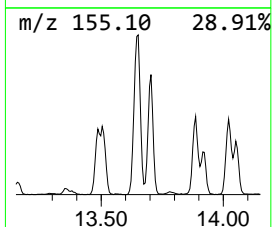
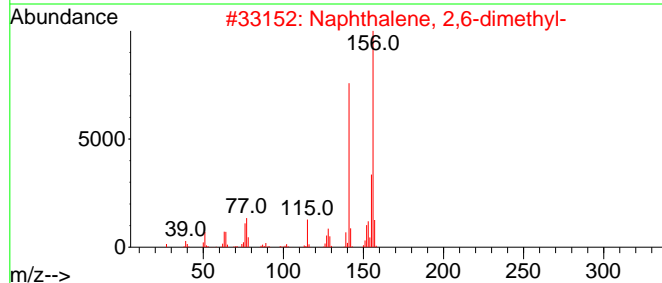
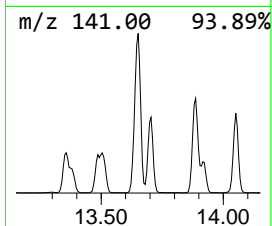
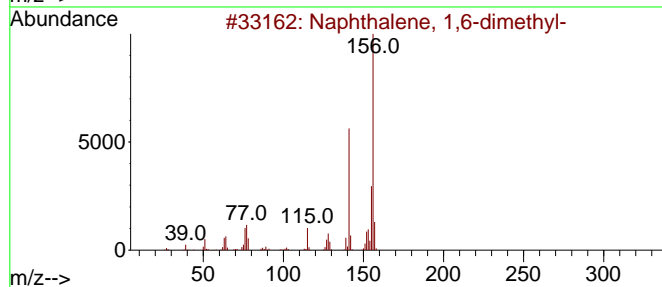
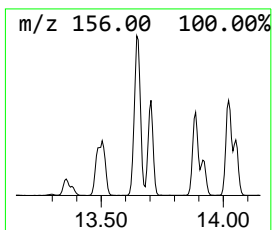
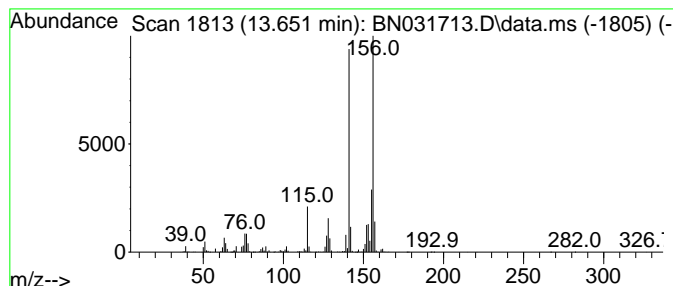
Quant Method : Z:\svoasrv\HPCHEM1\BNA_N\Methods\SFAM-EPA-BN052924.MA.M
 Quant Title : SVOA CALIBRATION

TIC Library : C:\Database\NIST20.L
 TIC Integration Parameters: LSCINT.P

 Peak Number 3 Naphthalene, 1,6-dimethyl- Concentration Rank 14

R.T.	EstConc	Area	Relative to ISTD	R.T.
13.651	6.16 ng/ul	2144570	Acenaphthene-d10	14.328

Hit#	of	5	Tentative ID	MW	MolForm	CAS#	Qual
1			Naphthalene, 1,6-dimethyl-	156	C12H12	000575-43-9	97
2			Naphthalene, 2,6-dimethyl-	156	C12H12	000581-42-0	97
3			Naphthalene, 2,6-dimethyl-	156	C12H12	000581-42-0	97
4			Naphthalene, 2,3-dimethyl-	156	C12H12	000581-40-8	97
5			Naphthalene, 1,5-dimethyl-	156	C12H12	000571-61-9	97



Data Path : Z:\svoasrv\HPCHEM1\BNA_N\Data\BN052924\
 Data File : BN031713.D
 Acq On : 30 May 2024 08:24
 Operator : MA/JU
 Sample : P2569-20
 Misc :
 ALS Vial : 24 Sample Multiplier: 1

Instrument :
 BNA_N
 ClientSampleId :
 BH6A6

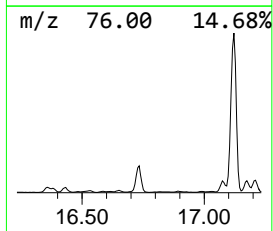
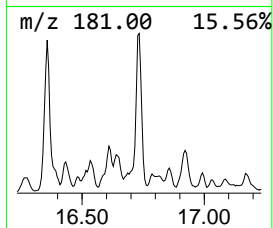
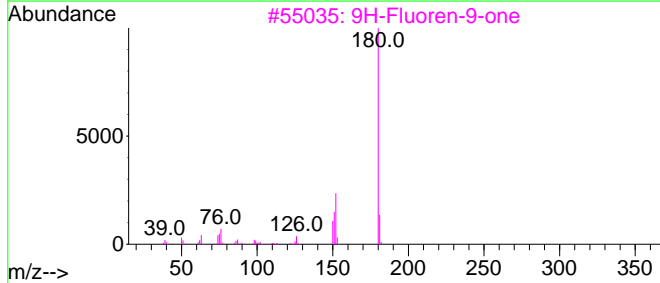
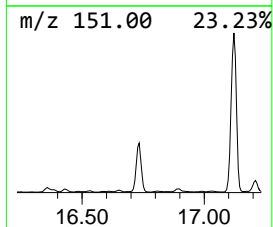
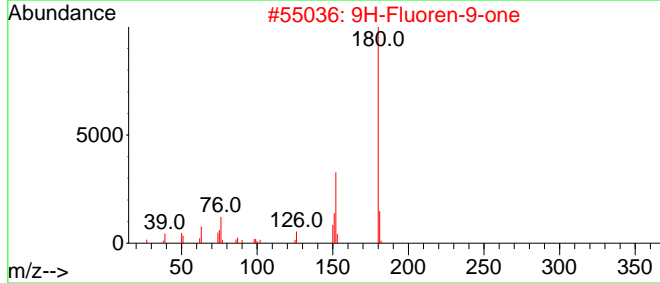
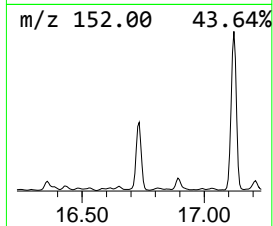
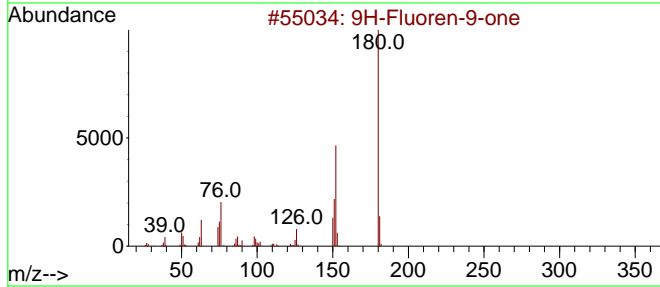
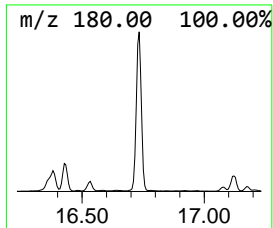
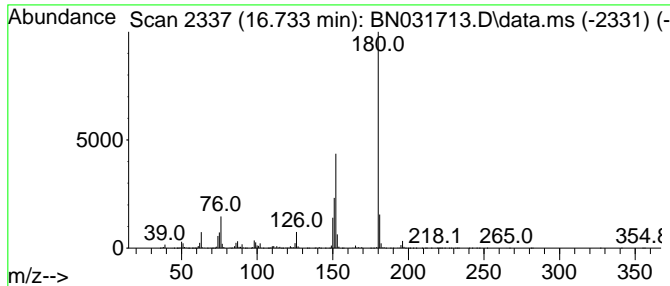
Quant Method : Z:\svoasrv\HPCHEM1\BNA_N\Methods\SFAM-EPA-BN052924.MA.M
 Quant Title : SVOA CALIBRATION

TIC Library : C:\Database\NIST20.L
 TIC Integration Parameters: LSCINT.P

 Peak Number 14 9H-Fluoren-9-one Concentration Rank 11

R.T.	EstConc	Area	Relative to ISTD	R.T.
16.733	9.00 ng/ul	3035800	Phenanthrene-d10	17.075

Hit#	of 5	Tentative ID	MW	MolForm	CAS#	Qual
1		9H-Fluoren-9-one	180	C13H8O	000486-25-9	96
2		9H-Fluoren-9-one	180	C13H8O	000486-25-9	95
3		9H-Fluoren-9-one	180	C13H8O	000486-25-9	93
4		9H-Fluoren-9-one	180	C13H8O	000486-25-9	91
5		Benzo[h]cinnoline	180	C12H8N2	000230-31-9	91



Data Path : Z:\svoasrv\HPCHEM1\BNA_N\Data\BN052924\
 Data File : BN031713.D
 Acq On : 30 May 2024 08:24
 Operator : MA/JU
 Sample : P2569-20
 Misc :
 ALS Vial : 24 Sample Multiplier: 1

Instrument :
 BNA_N
 ClientSampleId :
 BH6A6

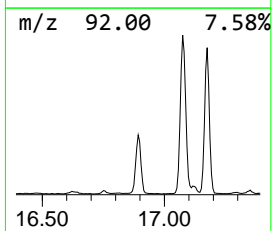
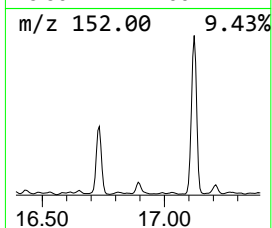
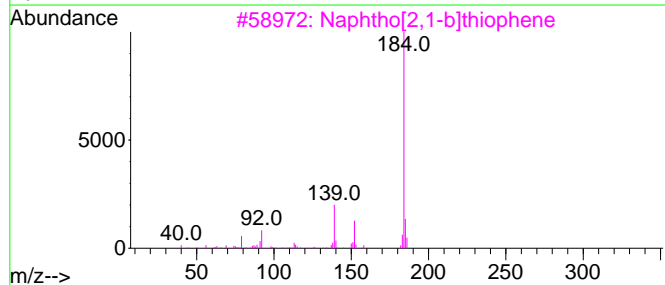
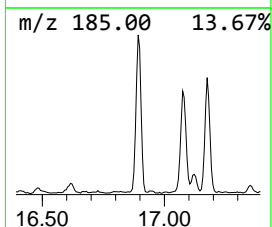
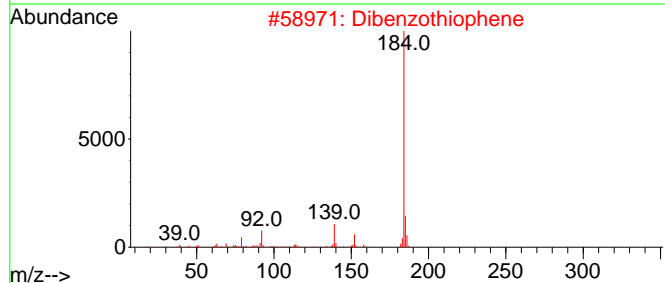
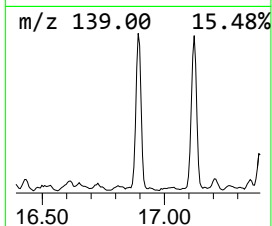
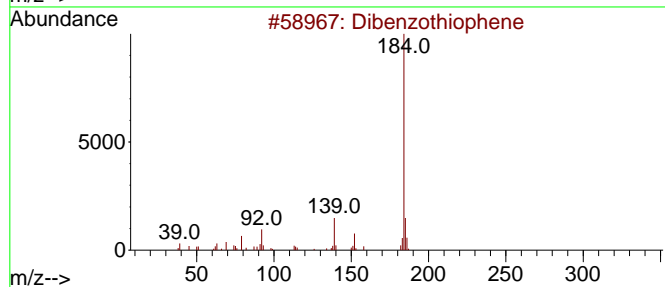
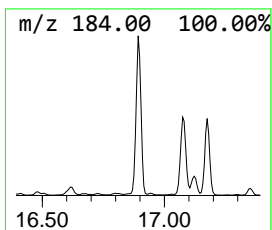
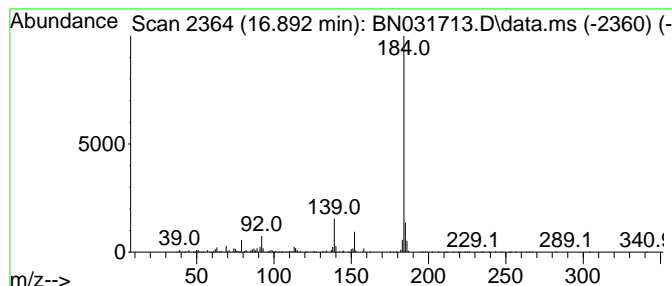
Quant Method : Z:\svoasrv\HPCHEM1\BNA_N\Methods\SFAM-EPA-BN052924.MA.M
 Quant Title : SVOA CALIBRATION

TIC Library : C:\Database\NIST20.L
 TIC Integration Parameters: LSCINT.P

 Peak Number 15 Dibenzothiophene Concentration Rank 17

R.T.	EstConc	Area	Relative to ISTD	R.T.
16.892	5.84 ng/ul	1971910	Phenanthrene-d10	17.075

Hit#	of 5	Tentative ID	MW	MolForm	CAS#	Qual
1		Dibenzothiophene	184	C12H8S	000132-65-0	96
2		Dibenzothiophene	184	C12H8S	000132-65-0	95
3		Naphtho[2,1-b]thiophene	184	C12H8S	000233-02-3	94
4		Dibenzothiophene	184	C12H8S	000132-65-0	94
5		Dibenzothiophene	184	C12H8S	000132-65-0	93



Data Path : Z:\svoasrv\HPCHEM1\BNA_N\Data\BN052924\
 Data File : BN031713.D
 Acq On : 30 May 2024 08:24
 Operator : MA/JU
 Sample : P2569-20
 Misc :
 ALS Vial : 24 Sample Multiplier: 1

Instrument :
 BNA_N
 ClientSampleId :
 BH6A6

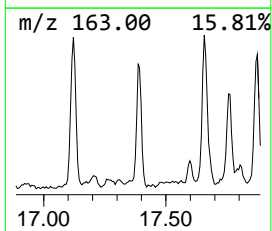
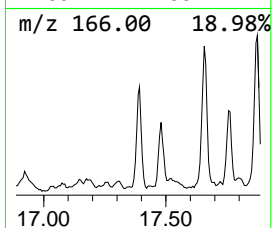
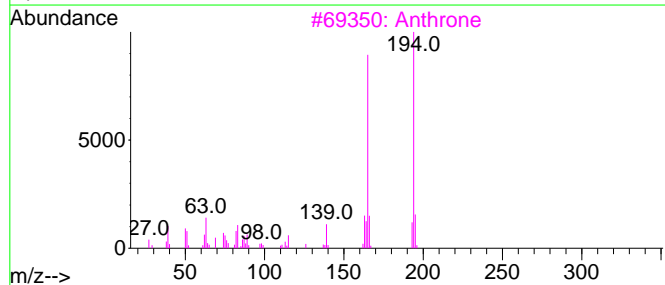
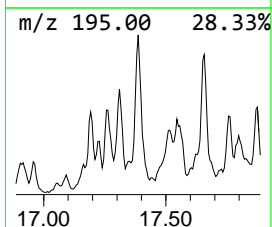
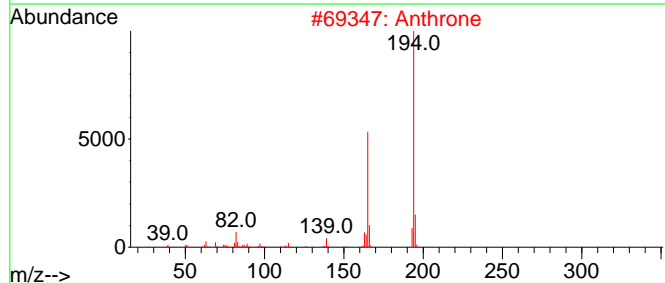
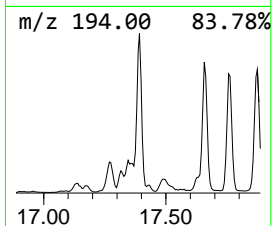
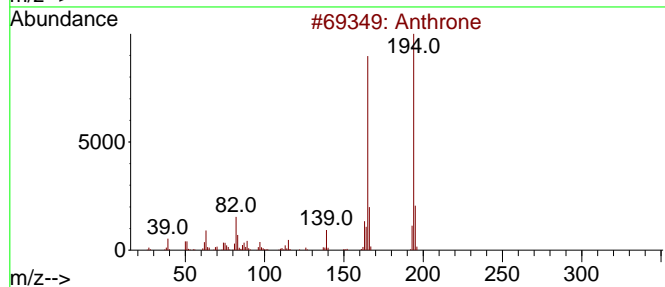
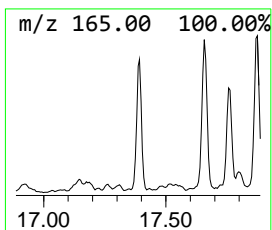
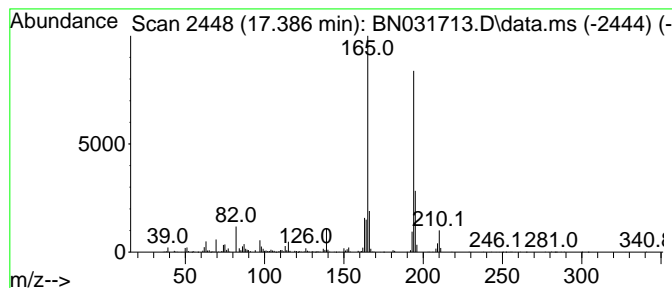
Quant Method : Z:\svoasrv\HPCHEM1\BNA_N\Methods\SFAM-EPA-BN052924.MA.M
 Quant Title : SVOA CALIBRATION

TIC Library : C:\Database\NIST20.L
 TIC Integration Parameters: LSCINT.P

 Peak Number 16 Anthrone Concentration Rank 30

R.T.	EstConc	Area	Relative to ISTD	R.T.
17.386	3.05 ng/ul	1030240	Phenanthrene-d10	17.075

Hit#	of	5	Tentative ID	MW	MolForm	CAS#	Qual
1			Anthrone	194	C14H100	000090-44-8	93
2			Anthrone	194	C14H100	000090-44-8	90
3			Anthrone	194	C14H100	000090-44-8	87
4			3-Phenanthrol	194	C14H100	000605-87-8	74
5			2,9b-Dihydrofurano[4,3,2-jk]flu...	194	C14H100	204396-15-6	74



Data Path : Z:\svoasrv\HPCHEM1\BNA_N\Data\BN052924\
 Data File : BN031713.D
 Acq On : 30 May 2024 08:24
 Operator : MA/JU
 Sample : P2569-20
 Misc :
 ALS Vial : 24 Sample Multiplier: 1

Instrument :
 BNA_N
 ClientSampleId :
 BH6A6

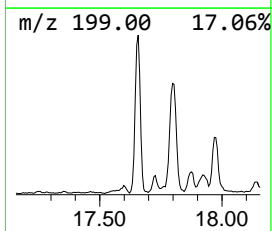
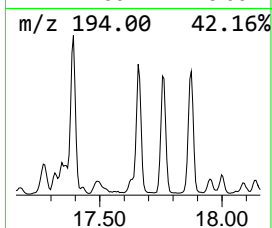
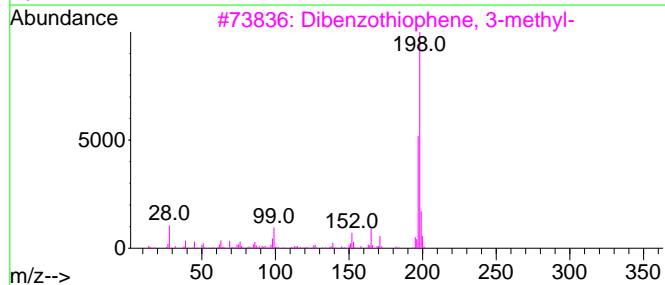
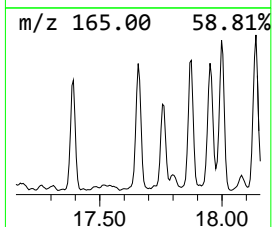
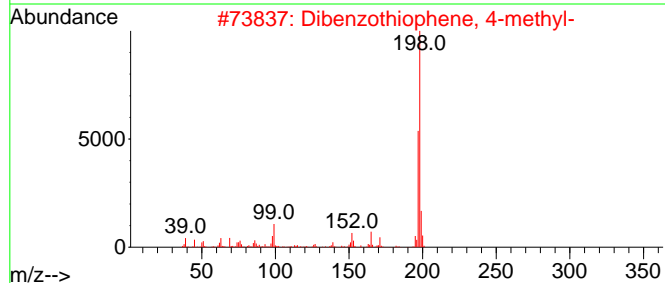
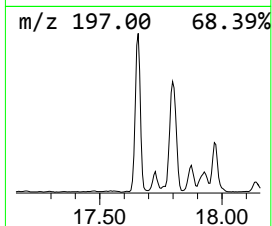
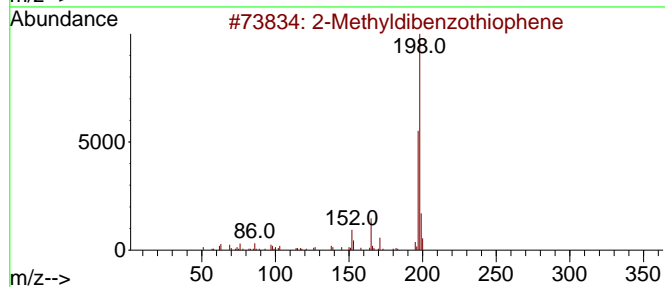
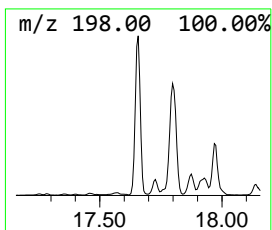
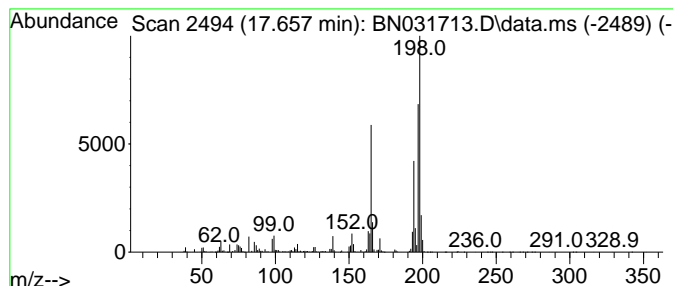
Quant Method : Z:\svoasrv\HPCHEM1\BNA_N\Methods\SFAM-EPA-BN052924.MA.M
 Quant Title : SVOA CALIBRATION

TIC Library : C:\Database\NIST20.L
 TIC Integration Parameters: LSCINT.P

 Peak Number 18 2-Methyldibenzothiophene Concentration Rank 13

R.T.	EstConc	Area	Relative to ISTD	R.T.
17.657	6.29 ng/ul	2122040	Phenanthrene-d10	17.075

Hit#	of 5	Tentative ID	MW	MolForm	CAS#	Qual
1		2-Methyldibenzothiophene	198	C13H10S	1000383-55-1	76
2		Dibenzothiophene, 4-methyl-	198	C13H10S	007372-88-5	55
3		Dibenzothiophene, 3-methyl-	198	C13H10S	016587-52-3	55
4		Tacrine	198	C13H14N2	000321-64-2	46
5		Thioxanthene	198	C13H10S	000261-31-4	43



Data Path : Z:\svoasrv\HPCHEM1\BNA_N\Data\BN052924\
 Data File : BN031713.D
 Acq On : 30 May 2024 08:24
 Operator : MA/JU
 Sample : P2569-20
 Misc :
 ALS Vial : 24 Sample Multiplier: 1

Instrument :
 BNA_N
 ClientSampleId :
 BH6A6

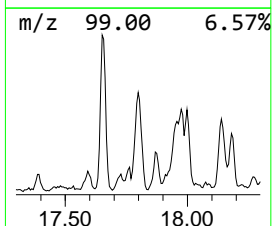
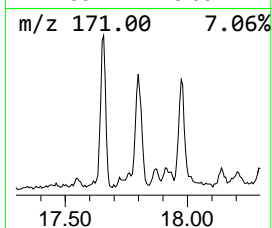
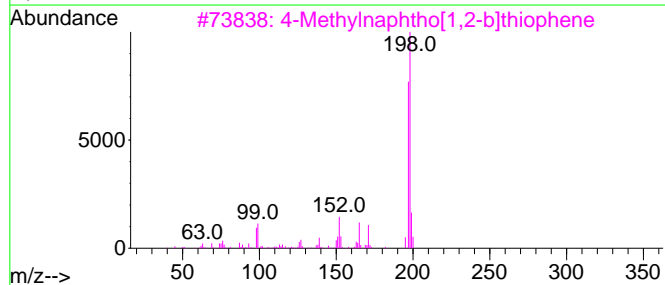
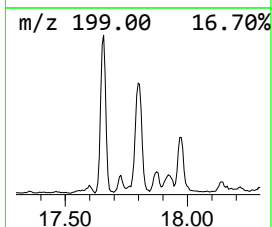
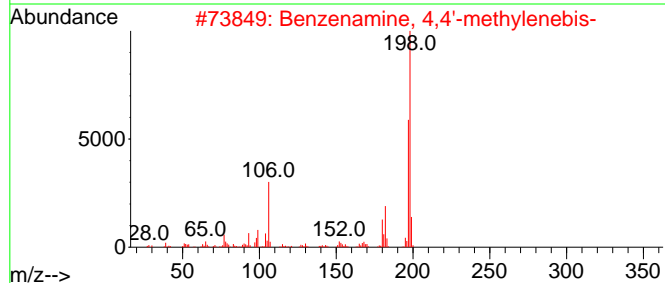
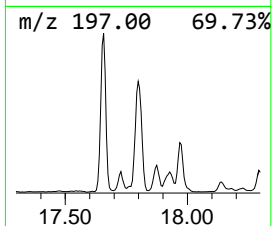
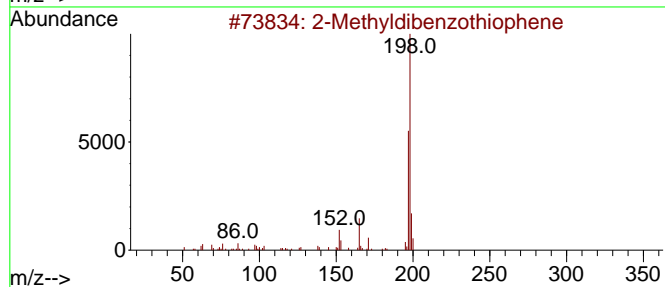
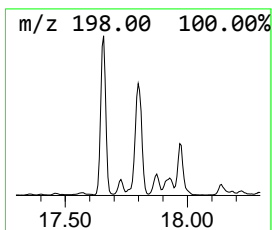
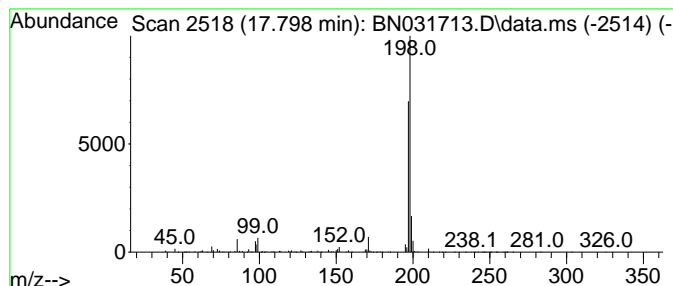
Quant Method : Z:\svoasrv\HPCHEM1\BNA_N\Methods\SFAM-EPA-BN052924.MA.M
 Quant Title : SVOA CALIBRATION

TIC Library : C:\Database\NIST20.L
 TIC Integration Parameters: LSCINT.P

 Peak Number 19 Benzenamine, 4,4'-methylene... Concentration Rank 26

R.T.	EstConc	Area	Relative to ISTD	R.T.
17.798	3.54 ng/ul	1195220	Phenanthrene-d10	17.075

Hit#	of 5	Tentative ID	MW	MolForm	CAS#	Qual
1		2-Methyldibenzothiophene	198	C13H10S	1000383-55-1	86
2		Benzenamine, 4,4'-methylenebis-	198	C13H14N2	000101-77-9	86
3		4-Methylnaphtho[1,2-b]thiophene	198	C13H10S	067388-11-8	86
4		1-Methyldibenzothiophene	198	C13H10S	031317-07-4	78
5		Pyridine, 4-(4-dimethylaminophen...	198	C13H14N2	001137-80-0	78



Data Path : Z:\svoasrv\HPCHEM1\BNA_N\Data\BN052924\
 Data File : BN031713.D
 Acq On : 30 May 2024 08:24
 Operator : MA/JU
 Sample : P2569-20
 Misc :
 ALS Vial : 24 Sample Multiplier: 1

Instrument :
 BNA_N
 ClientSampleId :
 BH6A6

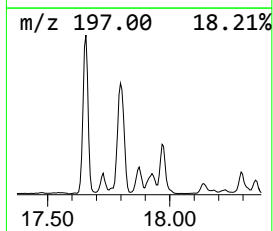
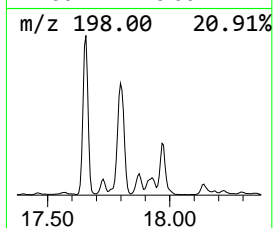
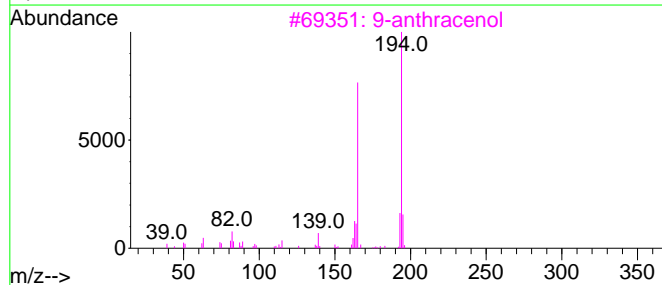
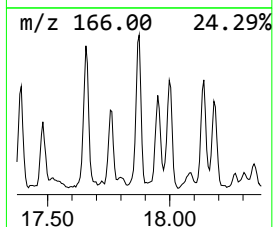
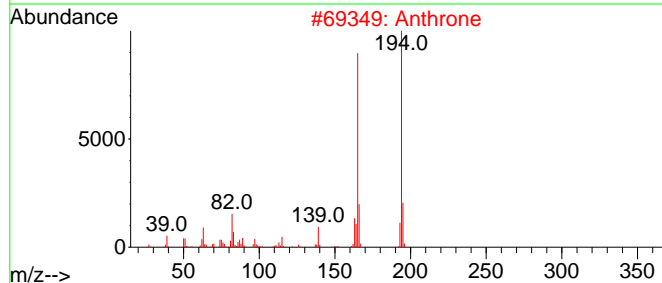
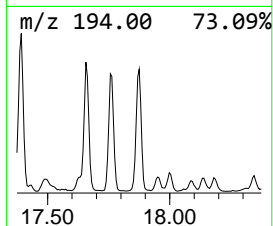
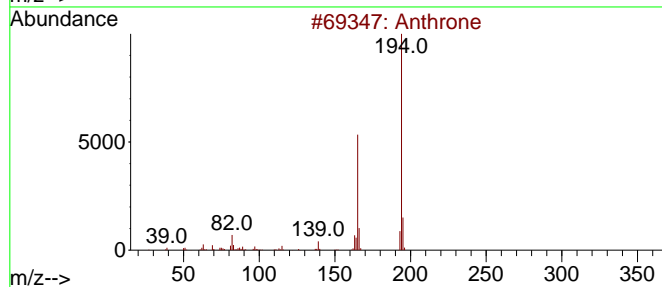
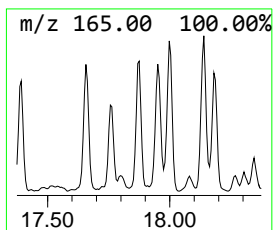
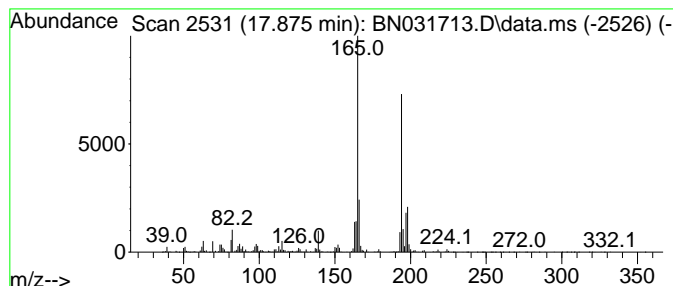
Quant Method : Z:\svoasrv\HPCHEM1\BNA_N\Methods\SFAM-EPA-BN052924.MA.M
 Quant Title : SVOA CALIBRATION

TIC Library : C:\Database\NIST20.L
 TIC Integration Parameters: LSCINT.P

 Peak Number 20 9-anthracenol Concentration Rank 27

R.T.	EstConc	Area	Relative to ISTD	R.T.
17.875	3.42 ng/ul	1155640	Phenanthrene-d10	17.075

Hit#	of 5	Tentative ID	MW	MolForm	CAS#	Qual
1		Anthrone	194	C14H100	000090-44-8	91
2		Anthrone	194	C14H100	000090-44-8	90
3		9-anthracenol	194	C14H100	1000400-30-3	89
4		Anthrone	194	C14H100	000090-44-8	87
5		1-Phenanthrenol	194	C14H100	002433-56-9	81



Data Path : Z:\svoasrv\HPCHEM1\BNA_N\Data\BN052924\
 Data File : BN031713.D
 Acq On : 30 May 2024 08:24
 Operator : MA/JU
 Sample : P2569-20
 Misc :
 ALS Vial : 24 Sample Multiplier: 1

Instrument :
 BNA_N
 ClientSampleId :
 BH6A6

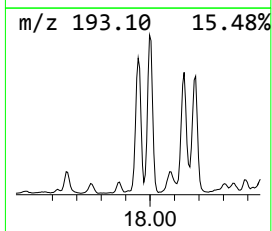
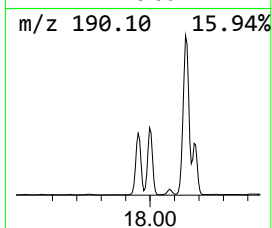
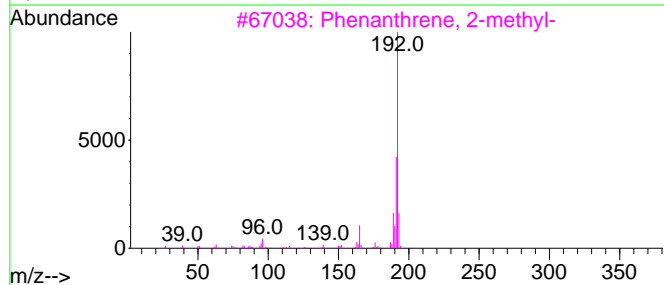
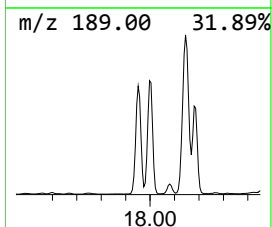
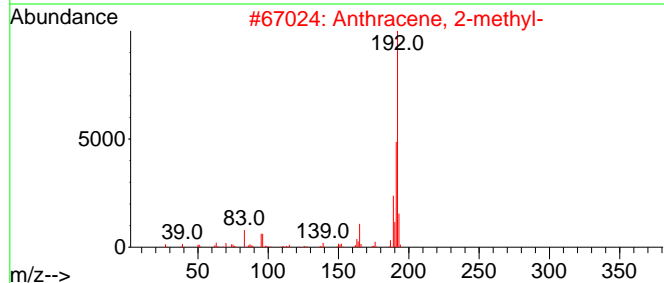
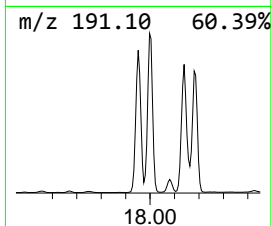
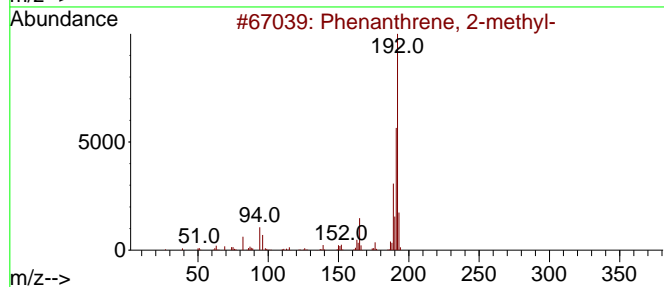
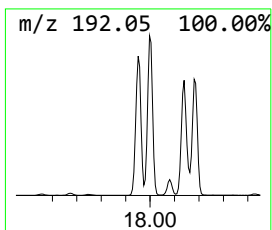
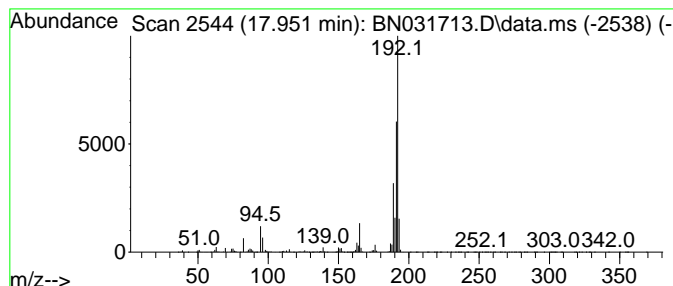
Quant Method : Z:\svoasrv\HPCHEM1\BNA_N\Methods\SFAM-EPA-BN052924.MA.M
 Quant Title : SVOA CALIBRATION

TIC Library : C:\Database\NIST20.L
 TIC Integration Parameters: LSCINT.P

 Peak Number 21 Phenanthrene, 2-methyl- Concentration Rank 5

R.T.	EstConc	Area	Relative to ISTD	R.T.
17.951	20.34 ng/ul	6863730	Phenanthrene-d10	17.075

Hit#	of	5	Tentative ID	MW	MolForm	CAS#	Qual
1			Phenanthrene, 2-methyl-	192	C15H12	002531-84-2	98
2			Anthracene, 2-methyl-	192	C15H12	000613-12-7	96
3			Phenanthrene, 2-methyl-	192	C15H12	002531-84-2	96
4			1H-Cyclopropa[1]phenanthrene,1a,...	192	C15H12	000949-41-7	95
5			Phenanthrene, 1-methyl-	192	C15H12	000832-69-9	95



Data Path : Z:\svoasrv\HPCHEM1\BNA_N\Data\BN052924\
 Data File : BN031713.D
 Acq On : 30 May 2024 08:24
 Operator : MA/JU
 Sample : P2569-20
 Misc :
 ALS Vial : 24 Sample Multiplier: 1

Instrument :
 BNA_N
 ClientSampleId :
 BH6A6

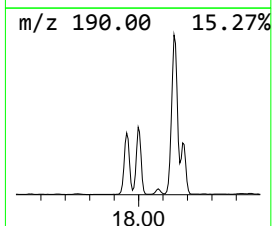
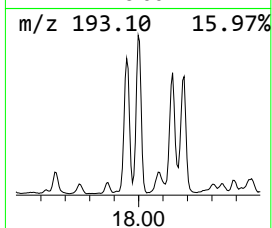
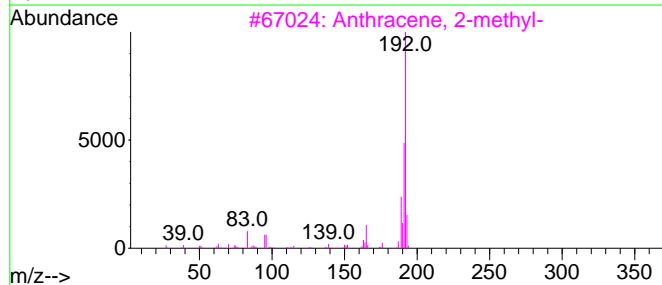
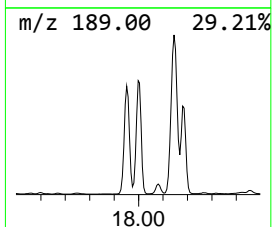
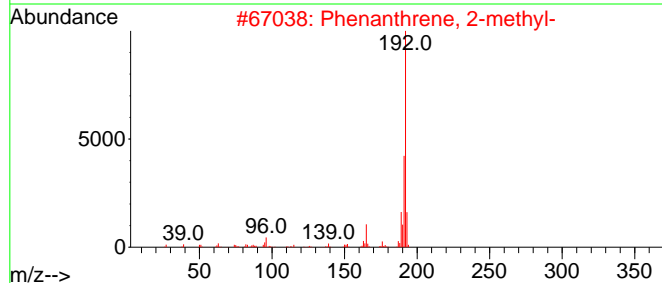
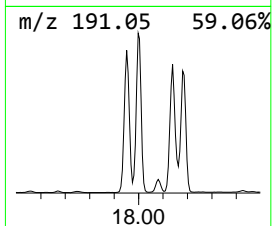
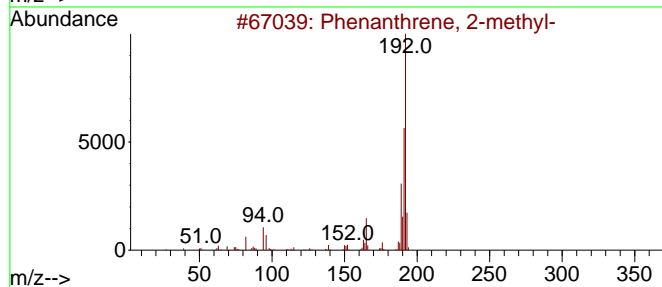
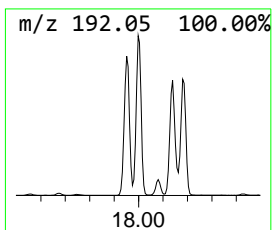
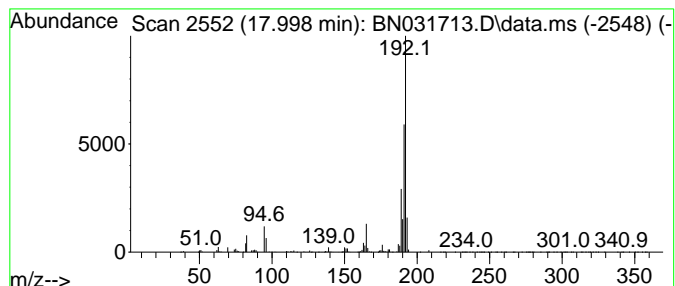
Quant Method : Z:\svoasrv\HPCHEM1\BNA_N\Methods\SFAM-EPA-BN052924.MA.M
 Quant Title : SVOA CALIBRATION

TIC Library : C:\Database\NIST20.L
 TIC Integration Parameters: LSCINT.P

 Peak Number 22 Anthracene, 2-methyl- Concentration Rank 2

R.T.	EstConc	Area	Relative to ISTD	R.T.
17.998	22.21 ng/ul	7493820	Phenanthrene-d10	17.075

Hit#	of 5	Tentative ID	MW	MolForm	CAS#	Qual
1		Phenanthrene, 2-methyl-	192	C15H12	002531-84-2	97
2		Phenanthrene, 2-methyl-	192	C15H12	002531-84-2	97
3		Anthracene, 2-methyl-	192	C15H12	000613-12-7	96
4		Phenanthrene, 1-methyl-	192	C15H12	000832-69-9	96
5		1H-Cyclopropa[1]phenanthrene,1a,...	192	C15H12	000949-41-7	95



Data Path : Z:\svoasrv\HPCHEM1\BNA_N\Data\BN052924\
 Data File : BN031713.D
 Acq On : 30 May 2024 08:24
 Operator : MA/JU
 Sample : P2569-20
 Misc :
 ALS Vial : 24 Sample Multiplier: 1

Instrument :
 BNA_N
 ClientSampleId :
 BH6A6

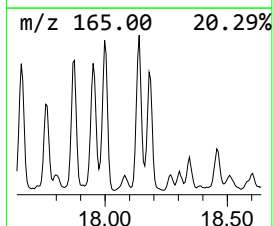
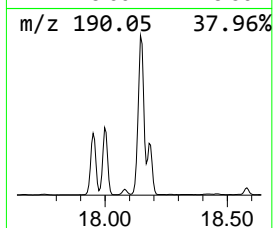
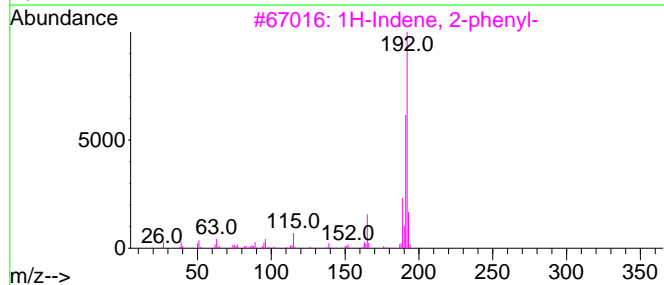
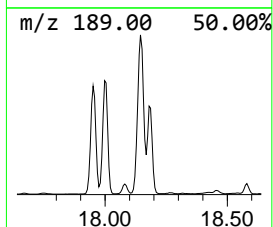
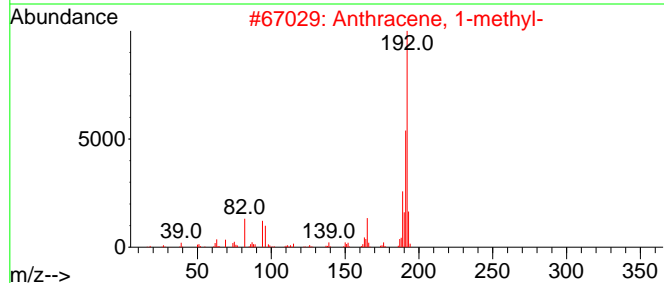
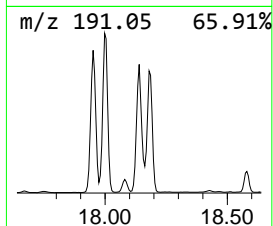
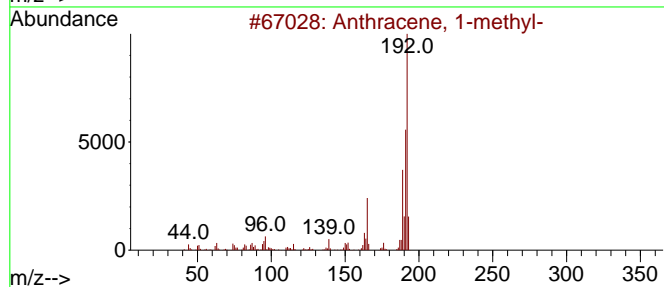
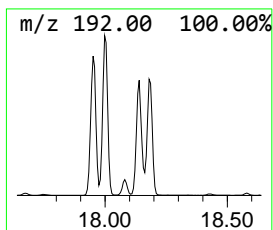
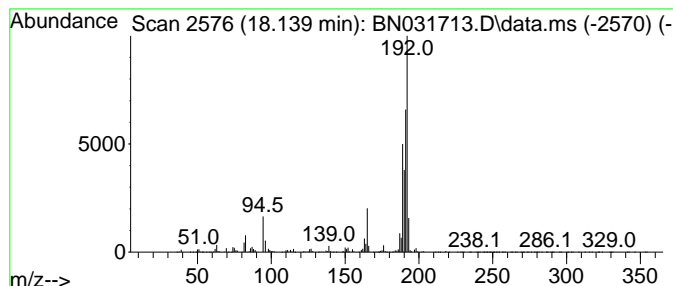
Quant Method : Z:\svoasrv\HPCHEM1\BNA_N\Methods\SFAM-EPA-BN052924.MA.M
 Quant Title : SVOA CALIBRATION

TIC Library : C:\Database\NIST20.L
 TIC Integration Parameters: LSCINT.P

 Peak Number 23 Anthracene, 1-methyl- Concentration Rank 1

R.T.	EstConc	Area	Relative to ISTD	R.T.
18.139	22.45 ng/ul	7575500	Phenanthrene-d10	17.075

Hit#	of 5	Tentative ID	MW	MolForm	CAS#	Qual
1		Anthracene, 1-methyl-	192	C15H12	000610-48-0	83
2		Anthracene, 1-methyl-	192	C15H12	000610-48-0	83
3		1H-Indene, 2-phenyl-	192	C15H12	004505-48-0	70
4		1H-Cyclopropa[1]phenanthrene,1a,...	192	C15H12	000949-41-7	70
5		Anthracene, 2-methyl-	192	C15H12	000613-12-7	64



Data Path : Z:\svoasrv\HPCHEM1\BNA_N\Data\BN052924\
 Data File : BN031713.D
 Acq On : 30 May 2024 08:24
 Operator : MA/JU
 Sample : P2569-20
 Misc :
 ALS Vial : 24 Sample Multiplier: 1

Instrument :
 BNA_N
 ClientSampleId :
 BH6A6

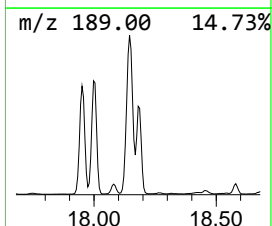
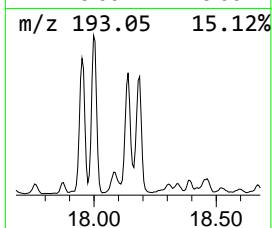
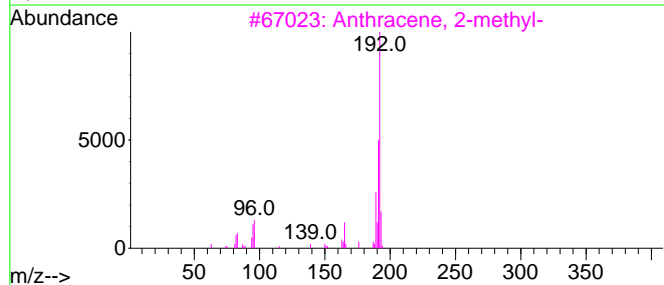
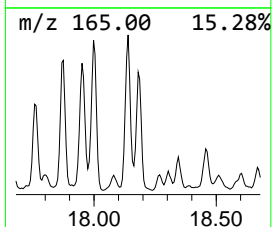
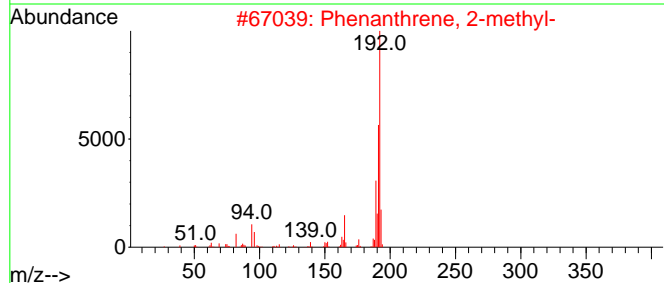
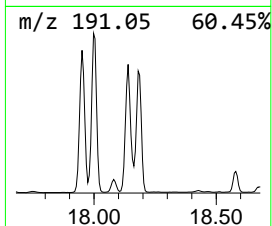
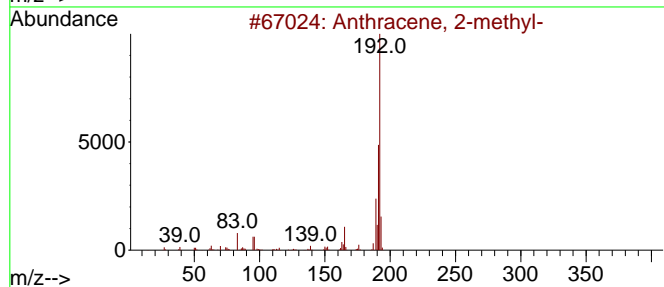
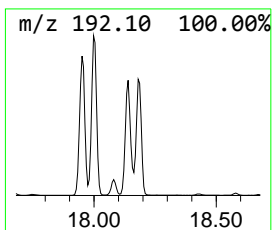
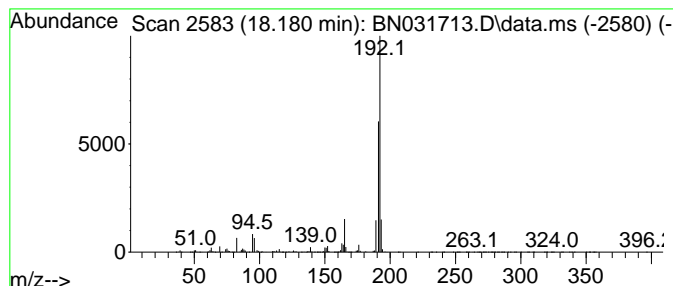
Quant Method : Z:\svoasrv\HPCHEM1\BNA_N\Methods\SFAM-EPA-BN052924.MA.M
 Quant Title : SVOA CALIBRATION

TIC Library : C:\Database\NIST20.L
 TIC Integration Parameters: LSCINT.P

 Peak Number 24 Phenanthrene, 1-methyl- Concentration Rank 6

R.T.	EstConc	Area	Relative to ISTD	R.T.
18.180	15.10 ng/ul	5093540	Phenanthrene-d10	17.075

Hit#	of 5	Tentative ID	MW	MolForm	CAS#	Qual
1		Anthracene, 2-methyl-	192	C15H12	000613-12-7	95
2		Phenanthrene, 2-methyl-	192	C15H12	002531-84-2	94
3		Anthracene, 2-methyl-	192	C15H12	000613-12-7	93
4		Phenanthrene, 1-methyl-	192	C15H12	000832-69-9	93
5		1H-Cyclopropa[1]phenanthrene,1a,...	192	C15H12	000949-41-7	93



Data Path : Z:\svoasrv\HPCHEM1\BNA_N\Data\BN052924\
 Data File : BN031713.D
 Acq On : 30 May 2024 08:24
 Operator : MA/JU
 Sample : P2569-20
 Misc :
 ALS Vial : 24 Sample Multiplier: 1

Instrument :
 BNA_N
 ClientSampleId :
 BH6A6

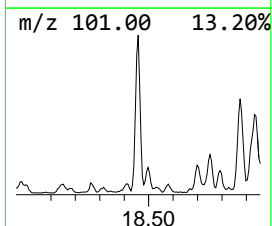
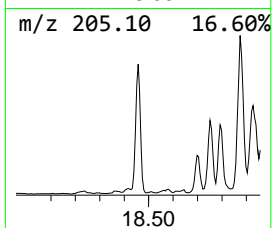
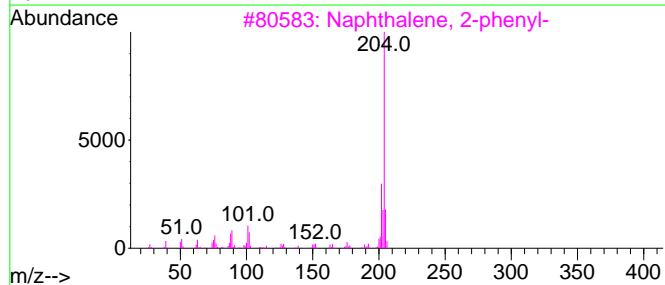
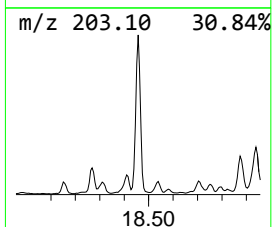
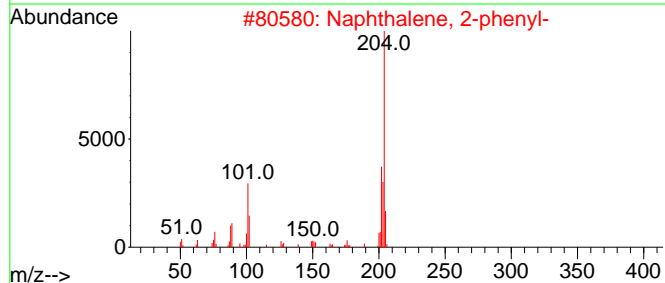
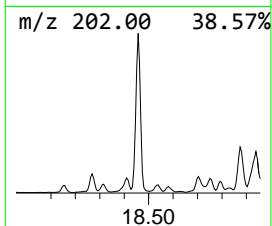
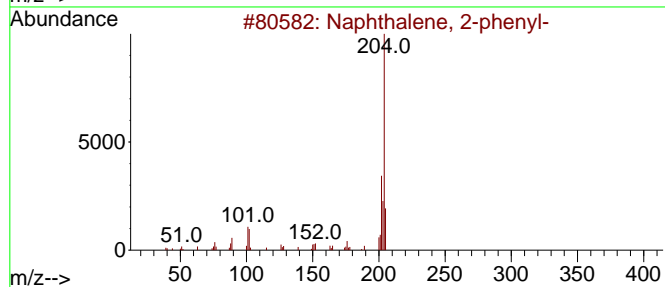
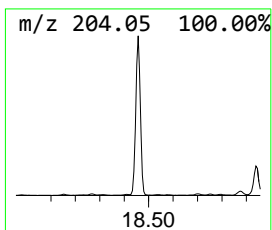
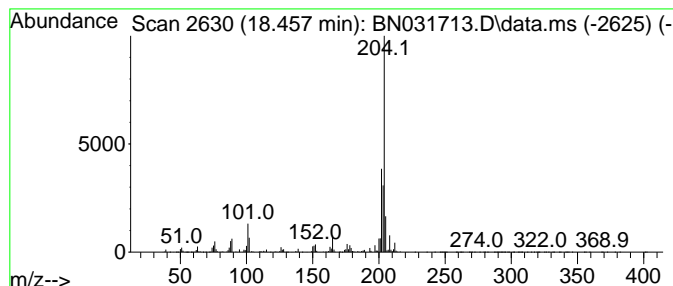
Quant Method : Z:\svoasrv\HPCHEM1\BNA_N\Methods\SFAM-EPA-BN052924.MA.M
 Quant Title : SVOA CALIBRATION

TIC Library : C:\Database\NIST20.L
 TIC Integration Parameters: LSCINT.P

 Peak Number 26 Naphthalene, 2-phenyl- Concentration Rank 9

R.T.	EstConc	Area	Relative to ISTD	R.T.
18.457	9.84 ng/ul	3320660	Phenanthrene-d10	17.075

Hit#	of 5	Tentative ID	MW	MolForm	CAS#	Qual
1		Naphthalene, 2-phenyl-	204	C16H12	000612-94-2	83
2		Naphthalene, 2-phenyl-	204	C16H12	000612-94-2	70
3		Naphthalene, 2-phenyl-	204	C16H12	000612-94-2	64
4		Naphthalene, 2-phenyl-	204	C16H12	000612-94-2	64
5		Naphthalene, 2-phenyl-	204	C16H12	000612-94-2	62



Data Path : Z:\svoasrv\HPCHEM1\BNA_N\Data\BN052924\
 Data File : BN031713.D
 Acq On : 30 May 2024 08:24
 Operator : MA/JU
 Sample : P2569-20
 Misc :
 ALS Vial : 24 Sample Multiplier: 1

Instrument :
 BNA_N
 ClientSampleId :
 BH6A6

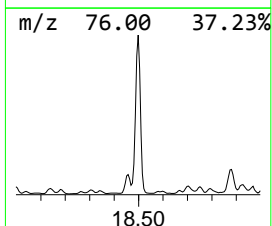
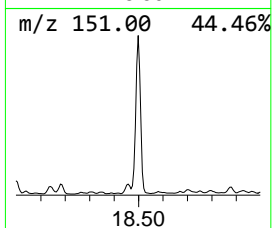
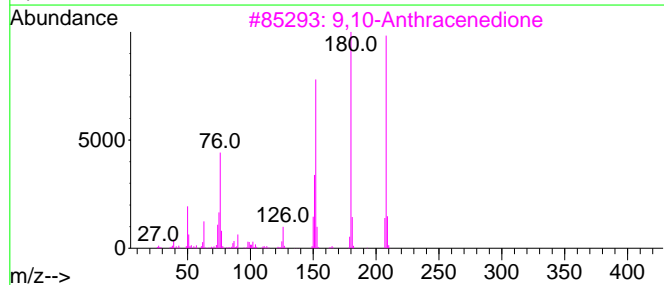
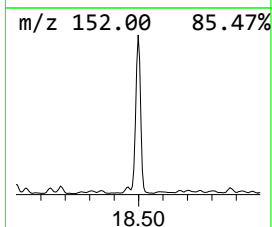
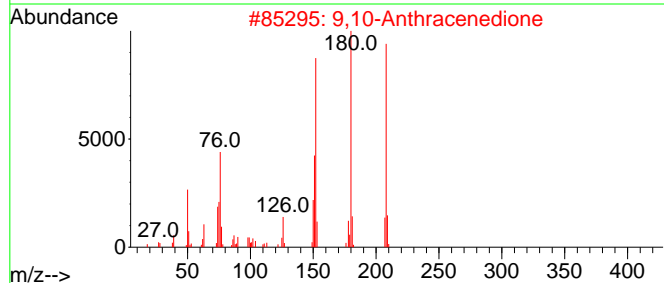
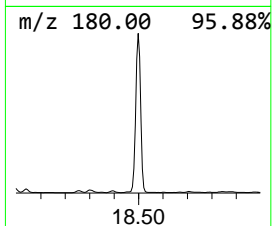
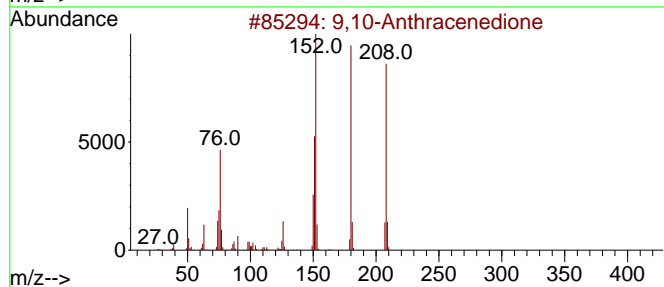
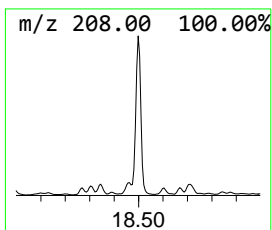
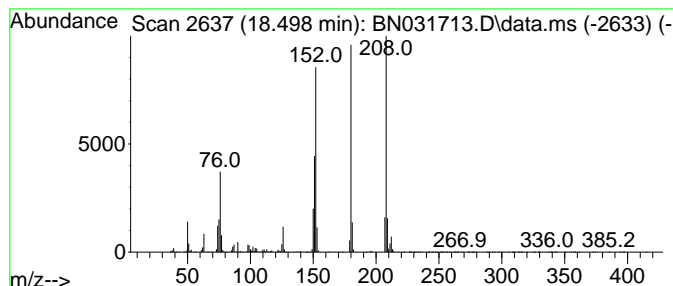
Quant Method : Z:\svoasrv\HPCHEM1\BNA_N\Methods\SFAM-EPA-BN052924.MA.M
 Quant Title : SVOA CALIBRATION

TIC Library : C:\Database\NIST20.L
 TIC Integration Parameters: LSCINT.P

 Peak Number 27 9,10-Anthracenedione Concentration Rank 4

R.T.	EstConc	Area	Relative to ISTD	R.T.
18.498	21.17 ng/ul	7141810	Phenanthrene-d10	17.075

Hit#	of 5	Tentative ID	MW	MolForm	CAS#	Qual
1		9,10-Anthracenedione	208	C14H8O2	000084-65-1	98
2		9,10-Anthracenedione	208	C14H8O2	000084-65-1	97
3		9,10-Anthracenedione	208	C14H8O2	000084-65-1	97
4		9,10-Anthracenedione	208	C14H8O2	000084-65-1	95
5		Benzo[c]cinoline	180	C12H8N2	000230-17-1	70



Data Path : Z:\svoasrv\HPCHEM1\BNA_N\Data\BN052924\
 Data File : BN031713.D
 Acq On : 30 May 2024 08:24
 Operator : MA/JU
 Sample : P2569-20
 Misc :
 ALS Vial : 24 Sample Multiplier: 1

Instrument :
 BNA_N
 ClientSampleId :
 BH6A6

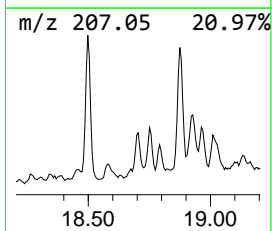
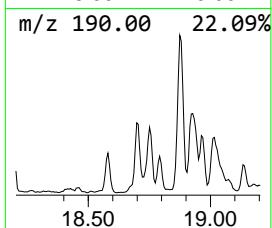
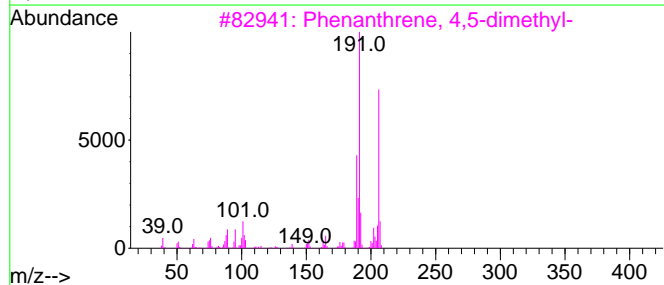
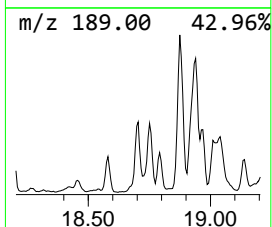
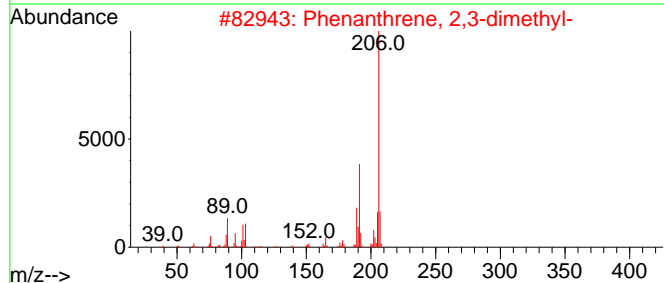
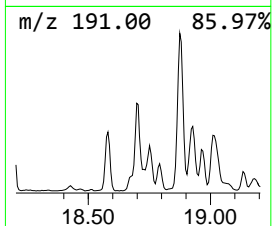
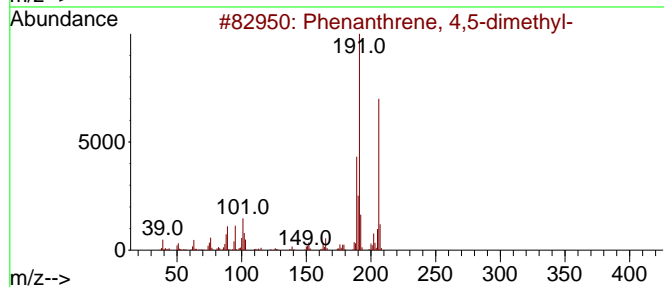
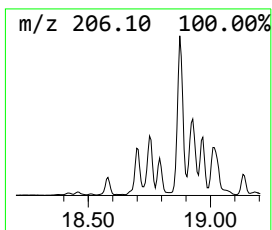
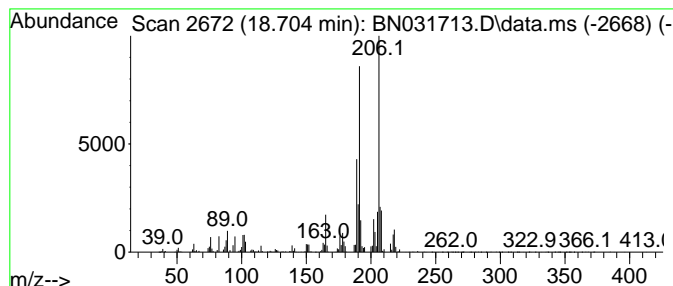
Quant Method : Z:\svoasrv\HPCHEM1\BNA_N\Methods\SFAM-EPA-BN052924.MA.M
 Quant Title : SVOA CALIBRATION

TIC Library : C:\Database\NIST20.L
 TIC Integration Parameters: LSCINT.P

 Peak Number 29 Phenanthrene, 4,5-dimethyl- Concentration Rank 24

R.T.	EstConc	Area	Relative to ISTD	R.T.
18.704	3.91 ng/ul	1320760	Phenanthrene-d10	17.075

Hit#	of 5	Tentative ID	MW	MolForm	CAS#	Qual
1		Phenanthrene, 4,5-dimethyl-	206	C16H14	003674-69-9	93
2		Phenanthrene, 2,3-dimethyl-	206	C16H14	003674-65-5	93
3		Phenanthrene, 4,5-dimethyl-	206	C16H14	003674-69-9	93
4		Anthracene, 2-ethyl-	206	C16H14	052251-71-5	90
5		Anthracene, 2-ethyl-	206	C16H14	052251-71-5	90



Data Path : Z:\svoasrv\HPCHEM1\BNA_N\Data\BN052924\
 Data File : BN031713.D
 Acq On : 30 May 2024 08:24
 Operator : MA/JU
 Sample : P2569-20
 Misc :
 ALS Vial : 24 Sample Multiplier: 1

Instrument :
 BNA_N
 ClientSampleId :
 BH6A6

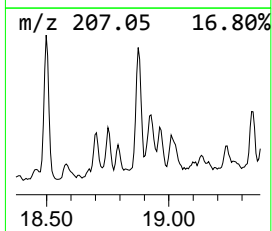
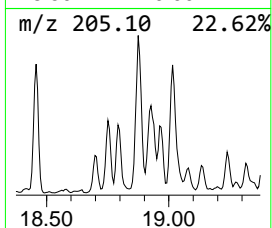
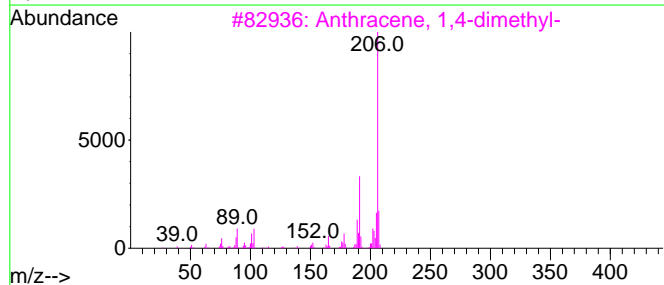
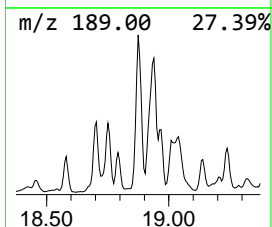
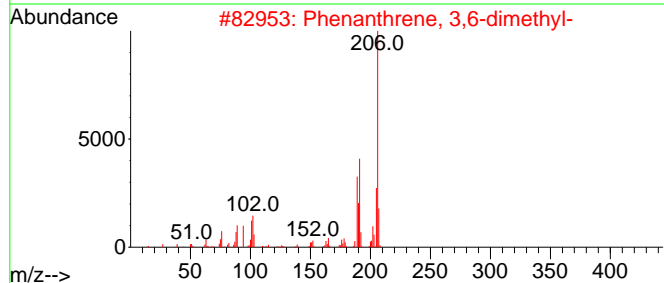
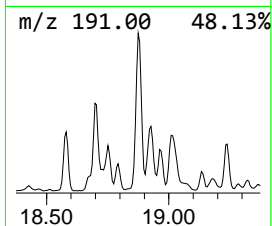
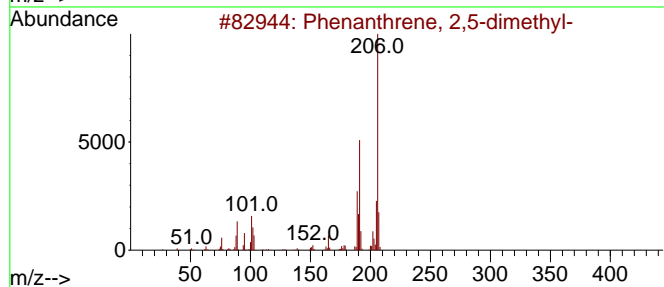
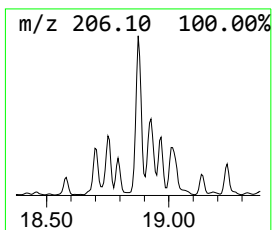
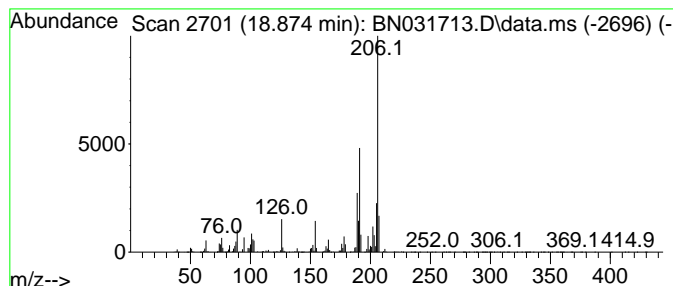
Quant Method : Z:\svoasrv\HPCHEM1\BNA_N\Methods\SFAM-EPA-BN052924.MA.M
 Quant Title : SVOA CALIBRATION

TIC Library : C:\Database\NIST20.L
 TIC Integration Parameters: LSCINT.P

 Peak Number 32 Phenanthrene, 2,5-dimethyl- Concentration Rank 7

R.T.	EstConc	Area	Relative to ISTD	R.T.
18.875	14.15 ng/ul	4773690	Phenanthrene-d10	17.075

Hit#	of 5	Tentative ID	MW	MolForm	CAS#	Qual
1		Phenanthrene, 2,5-dimethyl-	206	C16H14	003674-66-6	98
2		Phenanthrene, 3,6-dimethyl-	206	C16H14	001576-67-6	93
3		Anthracene, 1,4-dimethyl-	206	C16H14	000781-92-0	93
4		di-p-Tolylacetylene	206	C16H14	002789-88-0	90
5		9,10-Dimethylanthracene	206	C16H14	000781-43-1	90



Data Path : Z:\svoasrv\HPCHEM1\BNA_N\Data\BN052924\
 Data File : BN031713.D
 Acq On : 30 May 2024 08:24
 Operator : MA/JU
 Sample : P2569-20
 Misc :
 ALS Vial : 24 Sample Multiplier: 1

Instrument :
 BNA_N
 ClientSampleId :
 BH6A6

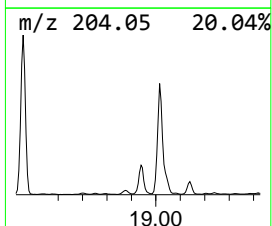
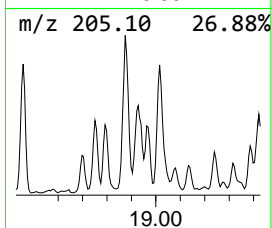
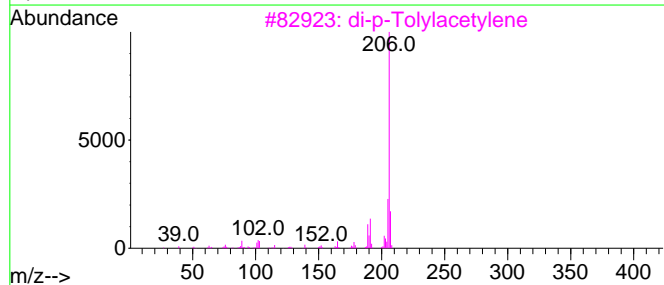
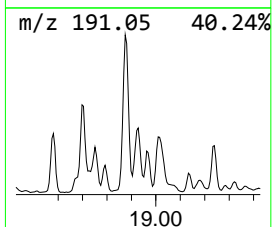
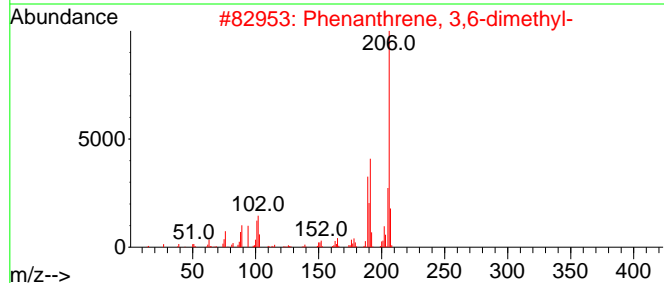
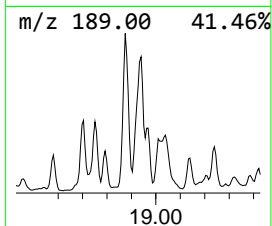
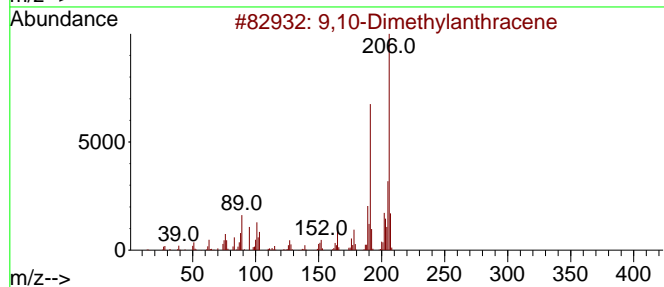
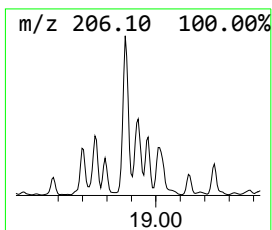
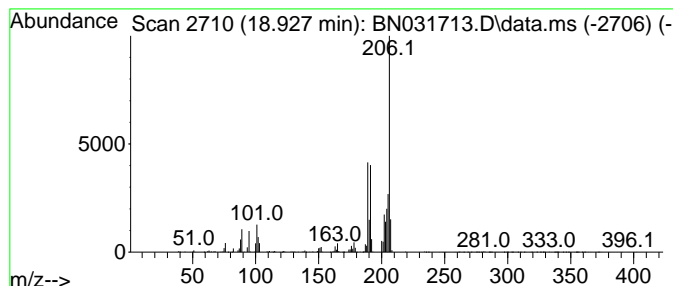
Quant Method : Z:\svoasrv\HPCHEM1\BNA_N\Methods\SFAM-EPA-BN052924.MA.M
 Quant Title : SVOA CALIBRATION

TIC Library : C:\Database\NIST20.L
 TIC Integration Parameters: LSCINT.P

 Peak Number 33 9,10-Dimethylantracene Concentration Rank 16

R.T.	EstConc	Area	Relative to ISTD	R.T.
18.927	5.94 ng/ul	2002730	Phenanthrene-d10	17.075

Hit#	of 5	Tentative ID	MW	MolForm	CAS#	Qual
1		9,10-Dimethylantracene	206	C16H14	000781-43-1	93
2		Phenanthrene, 3,6-dimethyl-	206	C16H14	001576-67-6	93
3		di-p-Tolylacetylene	206	C16H14	002789-88-0	87
4		Phenanthrene, 3,6-dimethyl-	206	C16H14	001576-67-6	87
5		Phenanthrene, 2,3-dimethyl-	206	C16H14	003674-65-5	86



Data Path : Z:\svoasrv\HPCHEM1\BNA_N\Data\BN052924\
 Data File : BN031713.D
 Acq On : 30 May 2024 08:24
 Operator : MA/JU
 Sample : P2569-20
 Misc :
 ALS Vial : 24 Sample Multiplier: 1

Instrument :
 BNA_N
 ClientSampleId :
 BH6A6

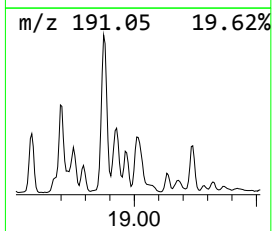
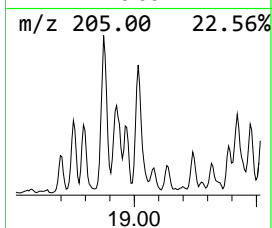
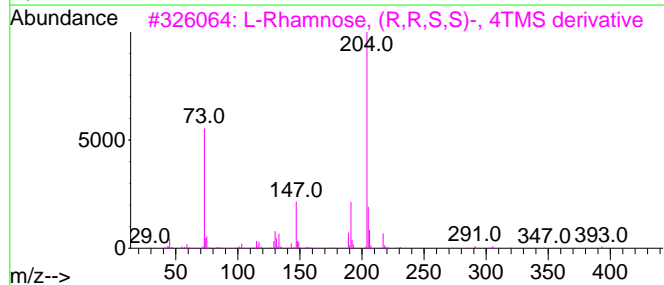
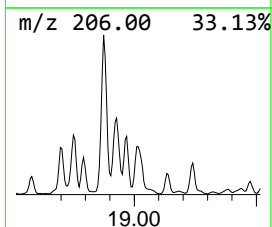
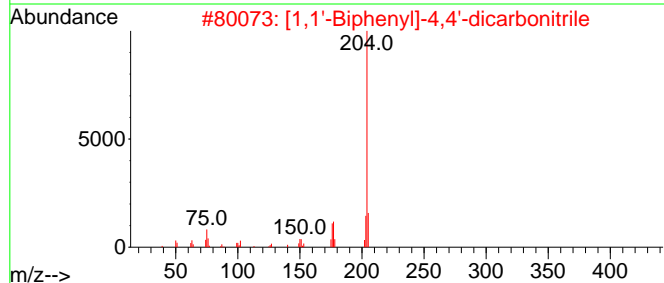
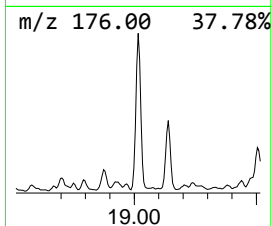
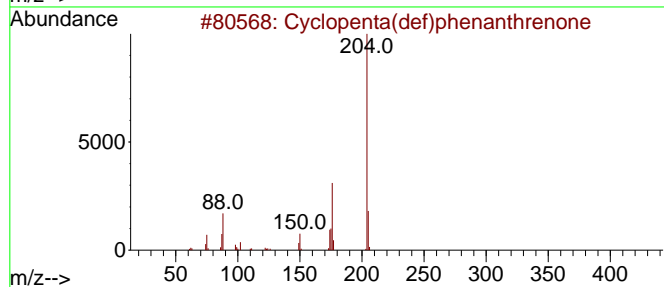
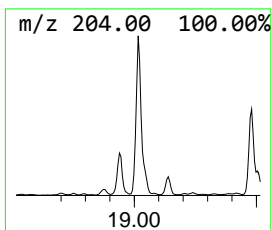
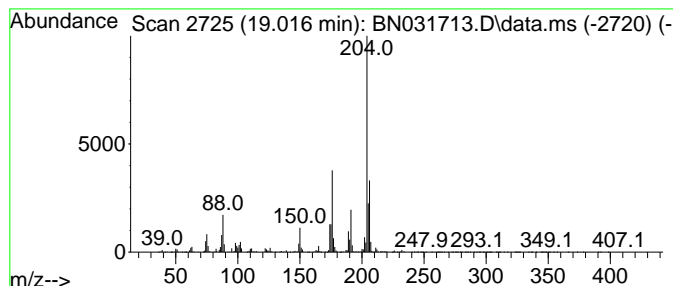
Quant Method : Z:\svoasrv\HPCHEM1\BNA_N\Methods\SFAM-EPA-BN052924.MA.M
 Quant Title : SVOA CALIBRATION

TIC Library : C:\Database\NIST20.L
 TIC Integration Parameters: LSCINT.P

 Peak Number 35 Cyclopenta(def)phenanthrene Concentration Rank 8

R.T.	EstConc	Area	Relative to ISTD	R.T.
19.016	12.58 ng/ul	4246040	Phenanthrene-d10	17.075

Hit#	of 5	Tentative ID	MW	MolForm	CAS#	Qual
1		Cyclopenta(def)phenanthrene	204	C15H8O	005737-13-3	98
2		[1,1'-Biphenyl]-4,4'-dicarbonitrile	204	C14H8N2	001591-30-6	52
3		L-Rhamnose, (R,R,S,S)-, 4TMS der...	452	C18H44O5Si4	108392-01-4	50
4		3-(4-Fluorophenyl)-1-methylpyraz...	204	C11H9FN2O	689250-53-1	47
5		Pyrimidine, 4-chloro-6-(4-methyl...	204	C11H9ClN2	1000380-55-8	43



Data Path : Z:\svoasrv\HPCHEM1\BNA_N\Data\BN052924\
 Data File : BN031713.D
 Acq On : 30 May 2024 08:24
 Operator : MA/JU
 Sample : P2569-20
 Misc :
 ALS Vial : 24 Sample Multiplier: 1

Instrument :
 BNA_N
 ClientSampleId :
 BH6A6

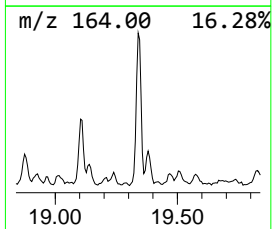
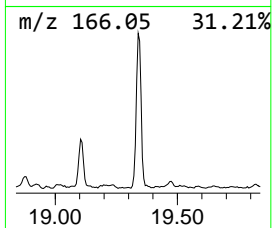
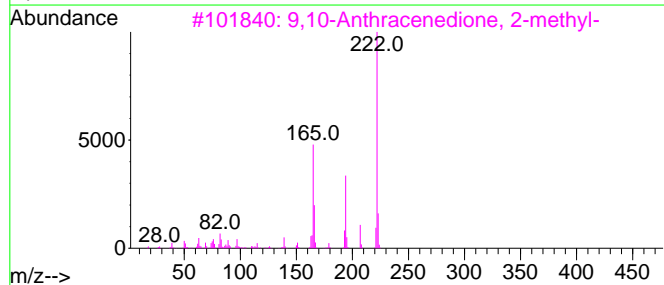
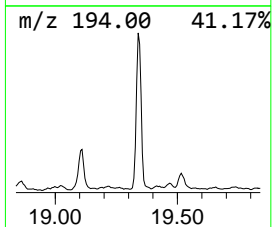
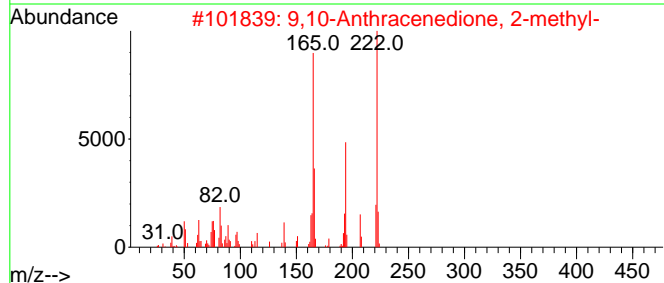
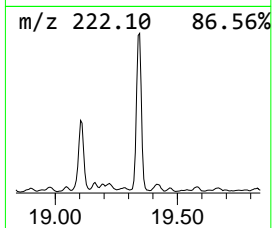
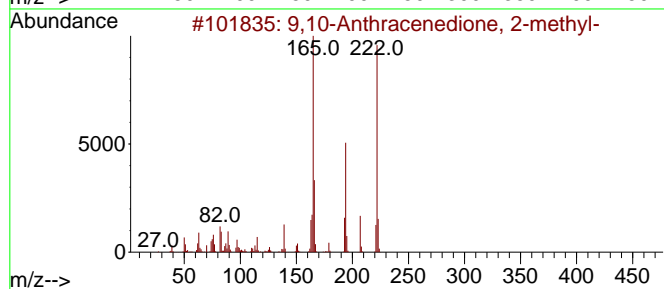
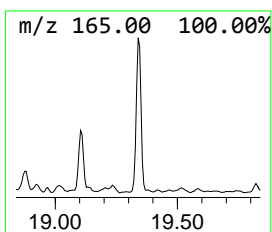
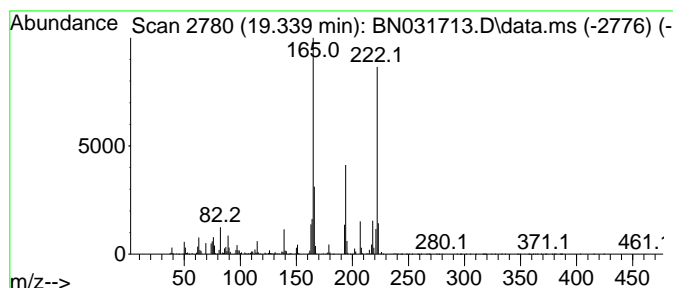
Quant Method : Z:\svoasrv\HPCHEM1\BNA_N\Methods\SFAM-EPA-BN052924.MA.M
 Quant Title : SVOA CALIBRATION

TIC Library : C:\Database\NIST20.L
 TIC Integration Parameters: LSCINT.P

 Peak Number 37 9,10-Anthracenedione, 2-met... Concentration Rank 23

R.T.	EstConc	Area	Relative to ISTD	R.T.
19.339	4.11 ng/ul	2143950	Chrysene-d12	21.310

Hit#	of 5	Tentative ID	MW	MolForm	CAS#	Qual
1		9,10-Anthracenedione, 2-methyl-	222	C15H10O2	000084-54-8	99
2		9,10-Anthracenedione, 2-methyl-	222	C15H10O2	000084-54-8	97
3		9,10-Anthracenedione, 2-methyl-	222	C15H10O2	000084-54-8	95
4		9,10-Anthracenedione, 1-methyl-	222	C15H10O2	000954-07-4	93
5		9,10-Anthracenedione, 1-methyl-	222	C15H10O2	000954-07-4	90



Data Path : Z:\svoasrv\HPCHEM1\BNA_N\Data\BN052924\
 Data File : BN031713.D
 Acq On : 30 May 2024 08:24
 Operator : MA/JU
 Sample : P2569-20
 Misc :
 ALS Vial : 24 Sample Multiplier: 1

Instrument :
 BNA_N
 ClientSampleId :
 BH6A6

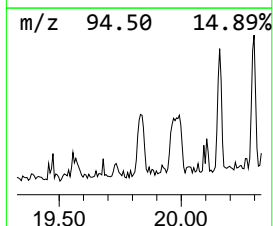
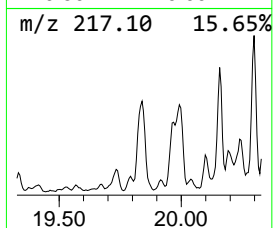
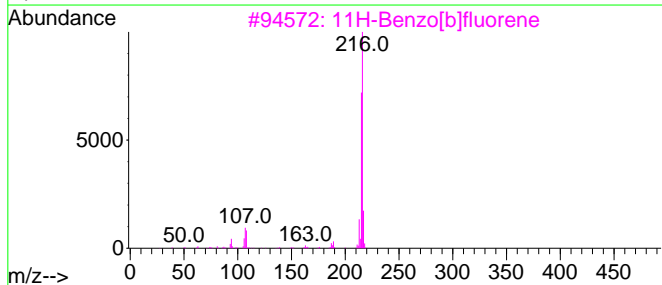
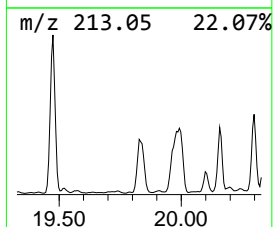
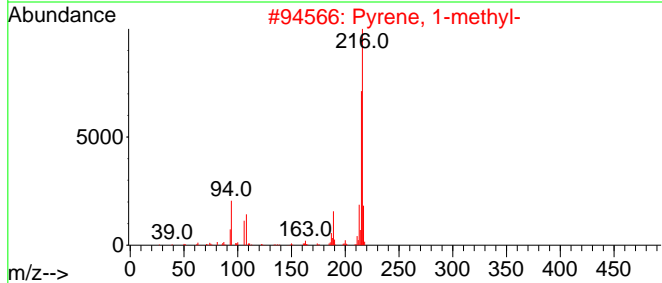
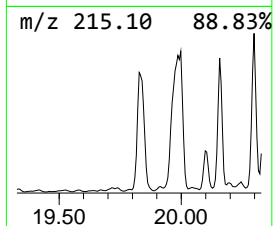
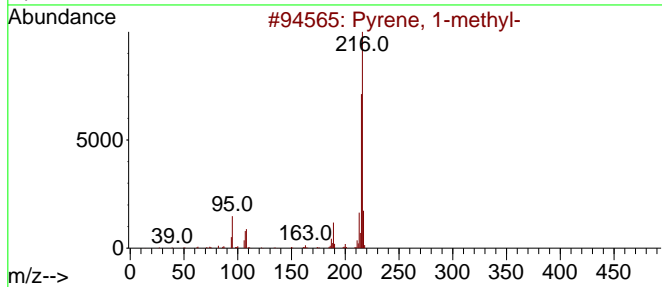
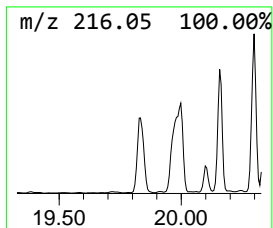
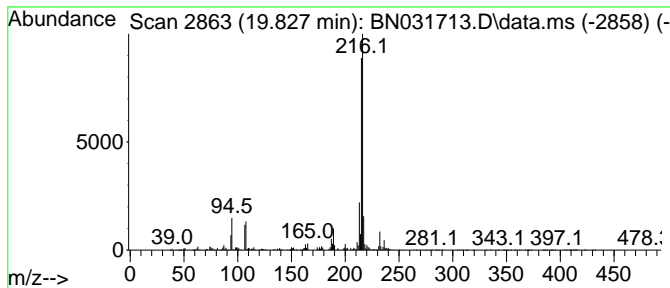
Quant Method : Z:\svoasrv\HPCHEM1\BNA_N\Methods\SFAM-EPA-BN052924.MA.M
 Quant Title : SVOA CALIBRATION

TIC Library : C:\Database\NIST20.L
 TIC Integration Parameters: LSCINT.P

 Peak Number 39 Pyrene, 1-methyl- Concentration Rank 12

R.T.	EstConc	Area	Relative to ISTD	R.T.
19.827	7.95 ng/ul	4146330	Chrysene-d12	21.310

Hit#	of 5	Tentative ID	MW	MolForm	CAS#	Qual
1		Pyrene, 1-methyl-	216	C17H12	002381-21-7	95
2		Pyrene, 1-methyl-	216	C17H12	002381-21-7	95
3		11H-Benzo[b]fluorene	216	C17H12	000243-17-4	94
4		Fluoranthene, 2-methyl-	216	C17H12	033543-31-6	93
5		Fluoranthene, 2-methyl-	216	C17H12	033543-31-6	91



Data Path : Z:\svoasrv\HPCHEM1\BNA_N\Data\BN052924\
 Data File : BN031713.D
 Acq On : 30 May 2024 08:24
 Operator : MA/JU
 Sample : P2569-20
 Misc :
 ALS Vial : 24 Sample Multiplier: 1

Instrument :
 BNA_N
 ClientSampleId :
 BH6A6

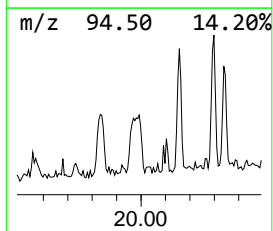
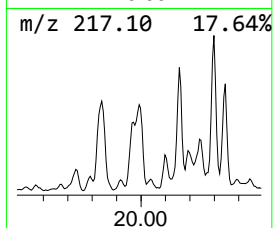
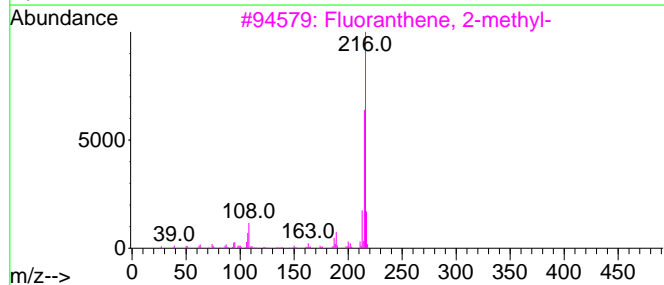
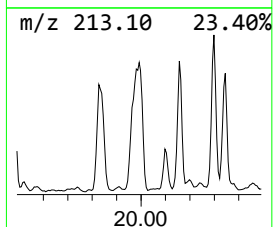
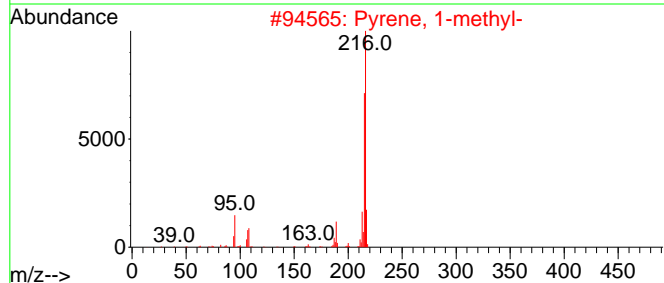
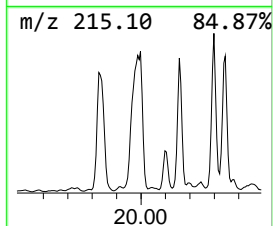
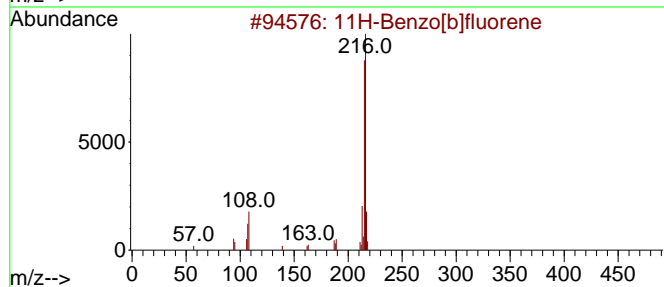
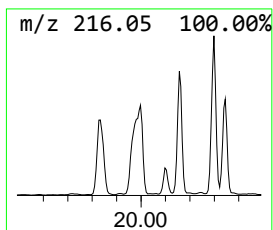
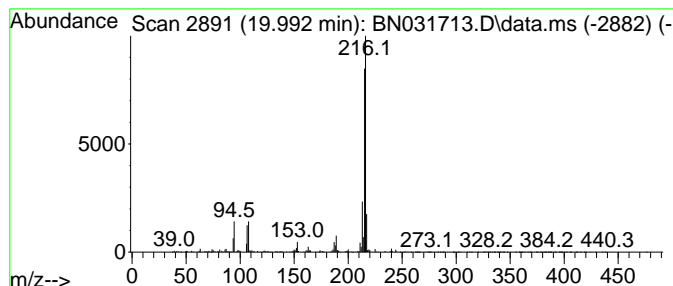
Quant Method : Z:\svoasrv\HPCHEM1\BNA_N\Methods\SFAM-EPA-BN052924.MA.M
 Quant Title : SVOA CALIBRATION

TIC Library : C:\Database\NIST20.L
 TIC Integration Parameters: LSCINT.P

 Peak Number 40 11H-Benzo[b]fluorene Concentration Rank 10

R.T.	EstConc	Area	Relative to ISTD	R.T.
19.992	9.42 ng/ul	4914640	Chrysene-d12	21.310

Hit#	of 5	Tentative ID	MW	MolForm	CAS#	Qual
1		11H-Benzo[b]fluorene	216	C17H12	000243-17-4	93
2		Pyrene, 1-methyl-	216	C17H12	002381-21-7	93
3		Fluoranthene, 2-methyl-	216	C17H12	033543-31-6	90
4		11H-Benzo[b]fluorene	216	C17H12	000243-17-4	87
5		11H-Benzo[a]fluorene	216	C17H12	000238-84-6	87



Data Path : Z:\svoasrv\HPCHEM1\BNA_N\Data\BN052924\
 Data File : BN031713.D
 Acq On : 30 May 2024 08:24
 Operator : MA/JU
 Sample : P2569-20
 Misc :
 ALS Vial : 24 Sample Multiplier: 1

Instrument :
 BNA_N
 ClientSampleId :
 BH6A6

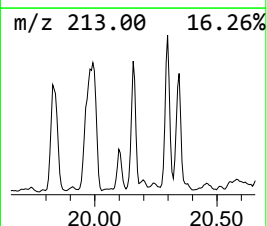
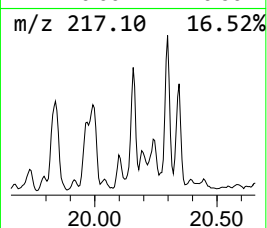
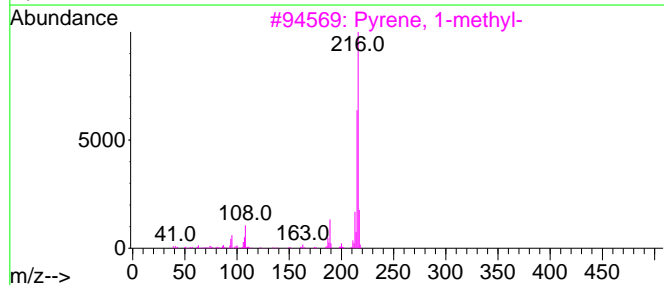
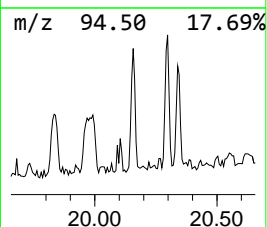
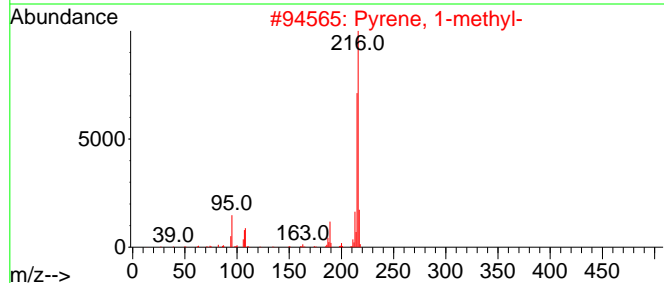
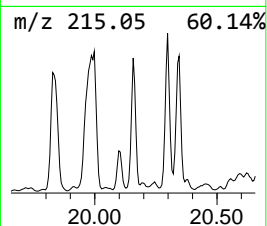
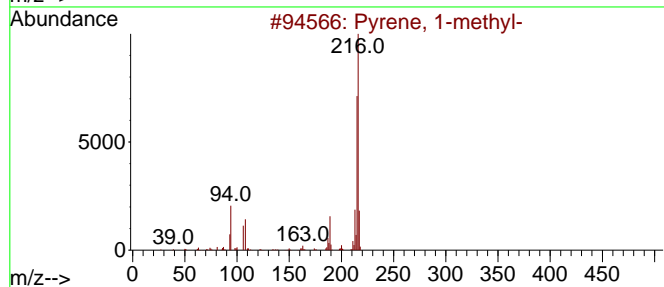
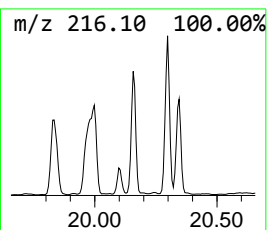
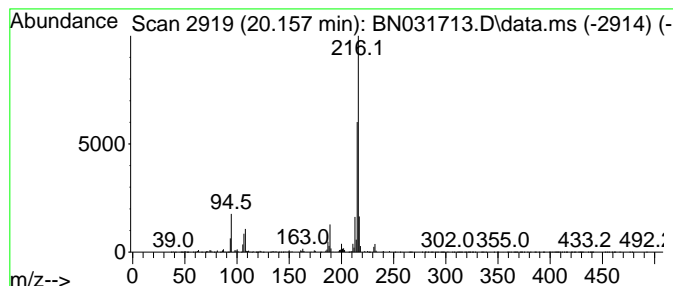
Quant Method : Z:\svoasrv\HPCHEM1\BNA_N\Methods\SFAM-EPA-BN052924.MA.M
 Quant Title : SVOA CALIBRATION

TIC Library : C:\Database\NIST20.L
 TIC Integration Parameters: LSCINT.P

 Peak Number 41 Pyrene, 4-methyl- Concentration Rank 19

R.T.	EstConc	Area	Relative to ISTD	R.T.
20.157	5.23 ng/ul	2728020	Chrysene-d12	21.310

Hit#	of	5	Tentative ID	MW	MolForm	CAS#	Qual
1			Pyrene, 1-methyl-	216	C17H12	002381-21-7	97
2			Pyrene, 1-methyl-	216	C17H12	002381-21-7	97
3			Pyrene, 1-methyl-	216	C17H12	002381-21-7	95
4			Pyrene, 4-methyl-	216	C17H12	003353-12-6	95
5			Fluoranthene, 2-methyl-	216	C17H12	033543-31-6	94



Data Path : Z:\svoasrv\HPCHEM1\BNA_N\Data\BN052924\
 Data File : BN031713.D
 Acq On : 30 May 2024 08:24
 Operator : MA/JU
 Sample : P2569-20
 Misc :
 ALS Vial : 24 Sample Multiplier: 1

Instrument :
 BNA_N
 ClientSampleId :
 BH6A6

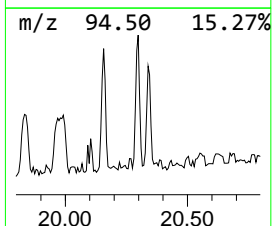
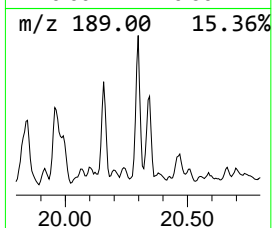
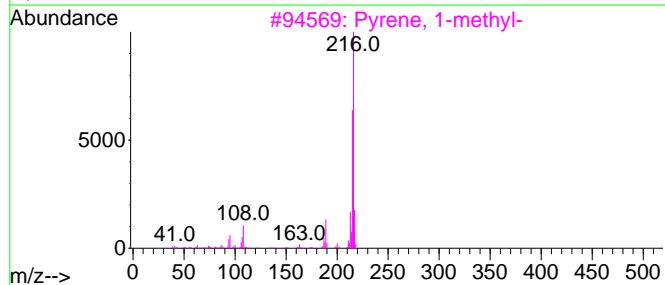
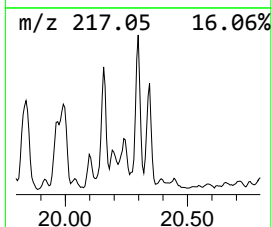
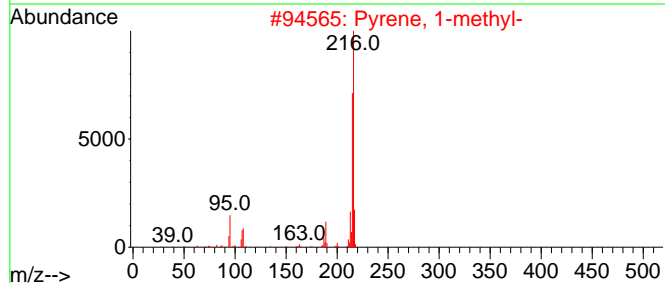
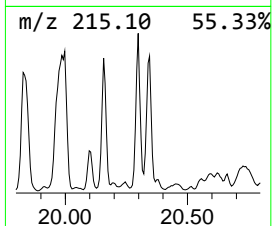
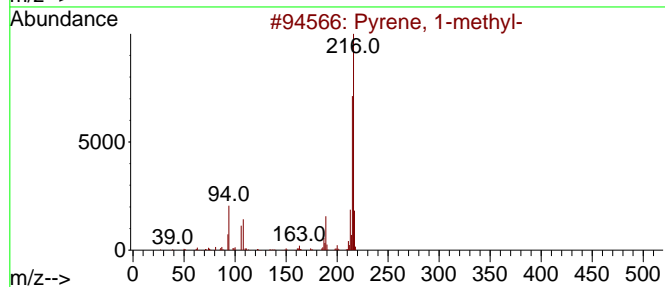
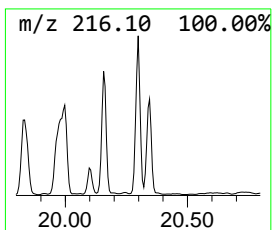
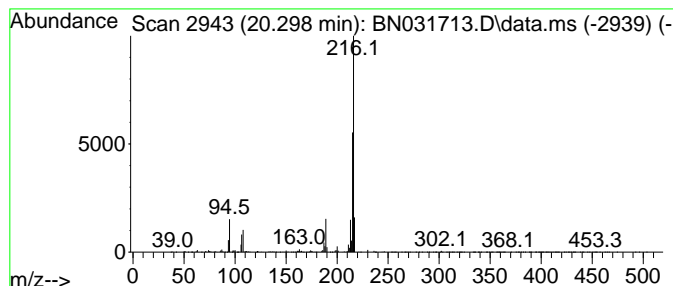
Quant Method : Z:\svoasrv\HPCHEM1\BNA_N\Methods\SFAM-EPA-BN052924.MA.M
 Quant Title : SVOA CALIBRATION

TIC Library : C:\Database\NIST20.L
 TIC Integration Parameters: LSCINT.P

 Peak Number 42 Fluoranthene, 2-methyl- Concentration Rank 18

R.T.	EstConc	Area	Relative to ISTD	R.T.
20.298	5.67 ng/ul	2955510	Chrysene-d12	21.310

Hit#	of	5	Tentative ID	MW	MolForm	CAS#	Qual
1			Pyrene, 1-methyl-	216	C17H12	002381-21-7	97
2			Pyrene, 1-methyl-	216	C17H12	002381-21-7	96
3			Pyrene, 1-methyl-	216	C17H12	002381-21-7	94
4			Pyrene, 4-methyl-	216	C17H12	003353-12-6	93
5			Fluoranthene, 2-methyl-	216	C17H12	033543-31-6	90



Data Path : Z:\svoasrv\HPCHEM1\BNA_N\Data\BN052924\
 Data File : BN031713.D
 Acq On : 30 May 2024 08:24
 Operator : MA/JU
 Sample : P2569-20
 Misc :
 ALS Vial : 24 Sample Multiplier: 1

Instrument :
 BNA_N
 ClientSampleId :
 BH6A6

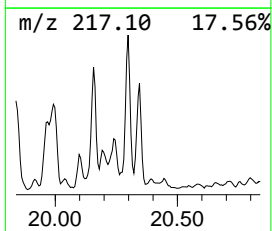
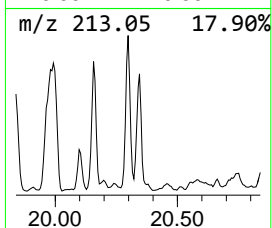
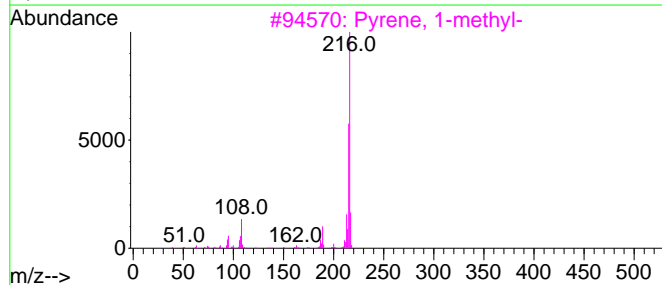
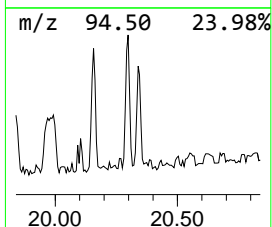
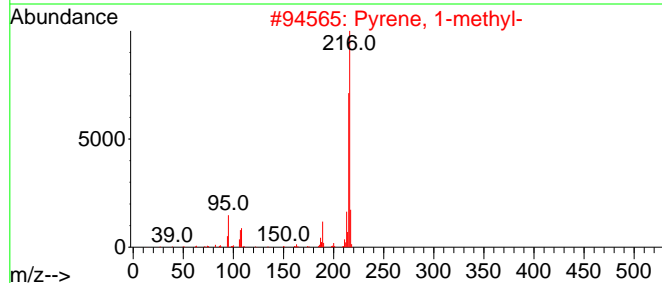
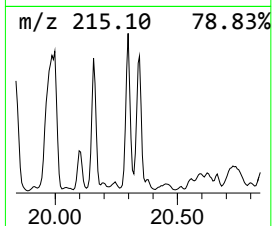
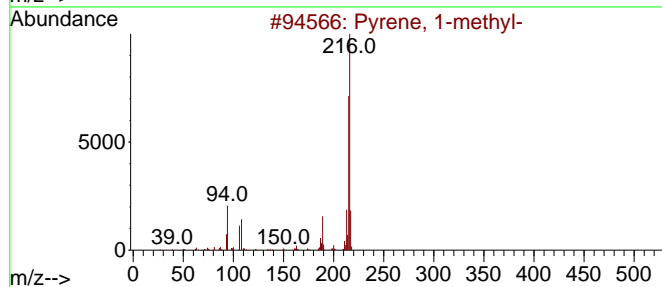
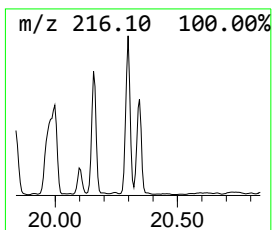
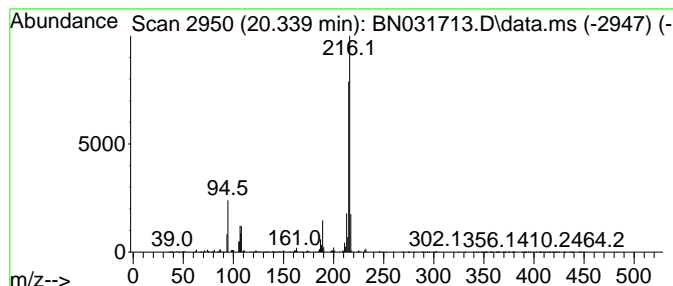
Quant Method : Z:\svoasrv\HPCHEM1\BNA_N\Methods\SFAM-EPA-BN052924.MA.M
 Quant Title : SVOA CALIBRATION

TIC Library : C:\Database\NIST20.L
 TIC Integration Parameters: LSCINT.P

 Peak Number 43 Pyrene, 2-methyl- Concentration Rank 22

R.T.	EstConc	Area	Relative to ISTD	R.T.
20.339	4.12 ng/ul	2148550	Chrysene-d12	21.310

Hit#	of	5	Tentative ID	MW	MolForm	CAS#	Qual
1			Pyrene, 1-methyl-	216	C17H12	002381-21-7	98
2			Pyrene, 1-methyl-	216	C17H12	002381-21-7	96
3			Pyrene, 1-methyl-	216	C17H12	002381-21-7	95
4			11H-Benzo[b]fluorene	216	C17H12	000243-17-4	93
5			Pyrene, 2-methyl-	216	C17H12	003442-78-2	93



Data Path : Z:\svoasrv\HPCHEM1\BNA_N\Data\BN052924\
 Data File : BN031713.D
 Acq On : 30 May 2024 08:24
 Operator : MA/JU
 Sample : P2569-20
 Misc :
 ALS Vial : 24 Sample Multiplier: 1

Instrument :
 BNA_N
 ClientSampleId :
 BH6A6

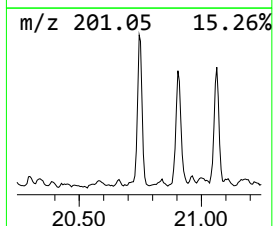
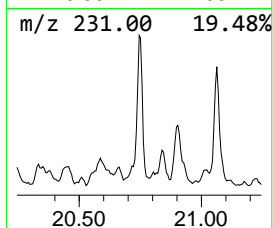
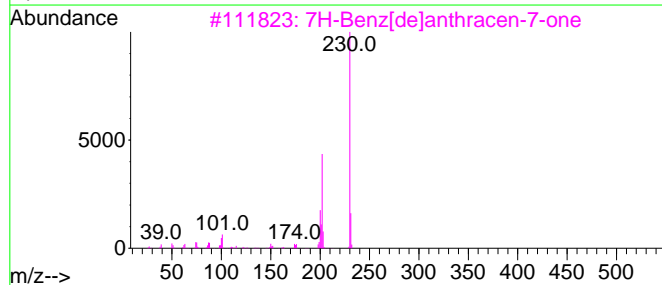
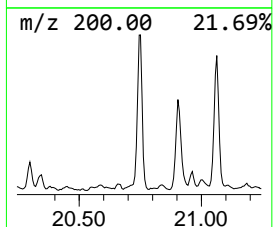
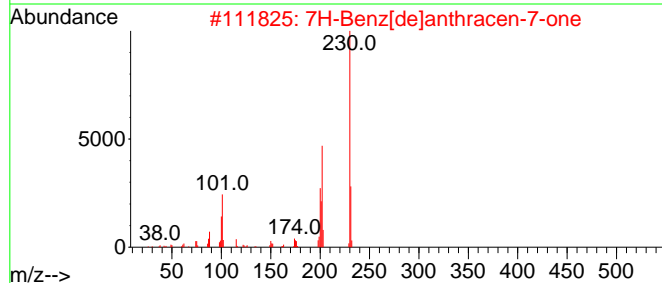
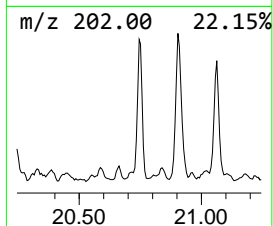
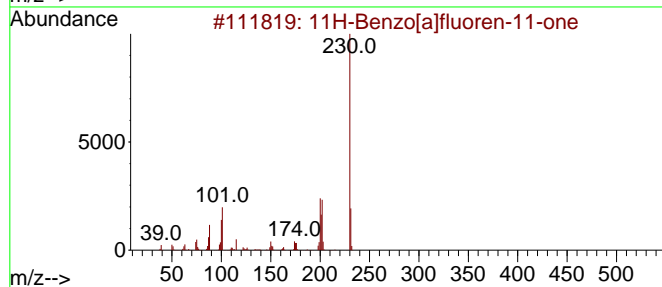
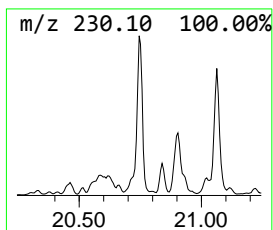
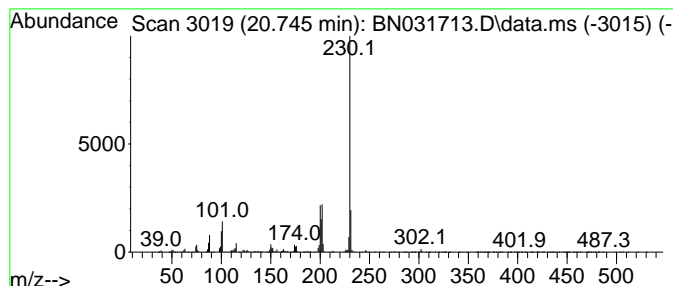
Quant Method : Z:\svoasrv\HPCHEM1\BNA_N\Methods\SFAM-EPA-BN052924.MA.M
 Quant Title : SVOA CALIBRATION

TIC Library : C:\Database\NIST20.L
 TIC Integration Parameters: LSCINT.P

 Peak Number 44 11H-Benzo[a]fluoren-11-one Concentration Rank 15

R.T.	EstConc	Area	Relative to ISTD	R.T.
20.745	5.98 ng/ul	3119230	Chrysene-d12	21.310

Hit#	of 5	Tentative ID	MW	MolForm	CAS#	Qual
1		11H-Benzo[a]fluoren-11-one	230	C17H10O	000479-79-8	95
2		7H-Benz[de]anthracen-7-one	230	C17H10O	000082-05-3	87
3		7H-Benz[de]anthracen-7-one	230	C17H10O	000082-05-3	81
4		7H-Benz[de]anthracen-7-one	230	C17H10O	000082-05-3	68
5		o-Terphenyl	230	C18H14	000084-15-1	59



Data Path : Z:\svoasrv\HPCHEM1\BNA_N\Data\BN052924\
 Data File : BN031713.D
 Acq On : 30 May 2024 08:24
 Operator : MA/JU
 Sample : P2569-20
 Misc :
 ALS Vial : 24 Sample Multiplier: 1

Instrument :
 BNA_N
 ClientSampleId :
 BH6A6

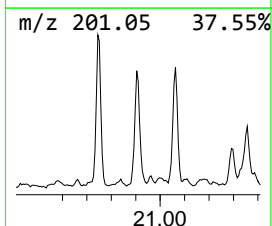
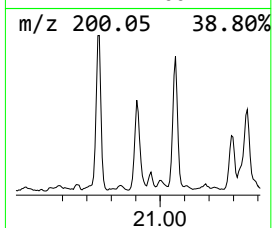
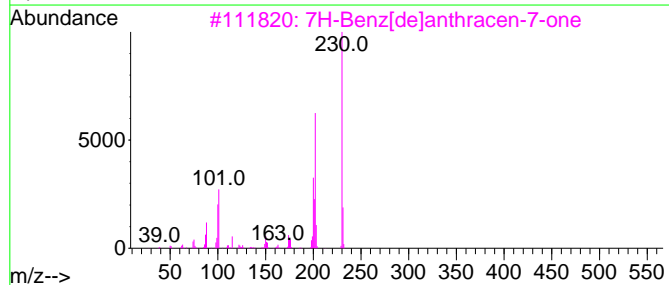
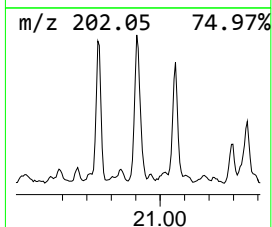
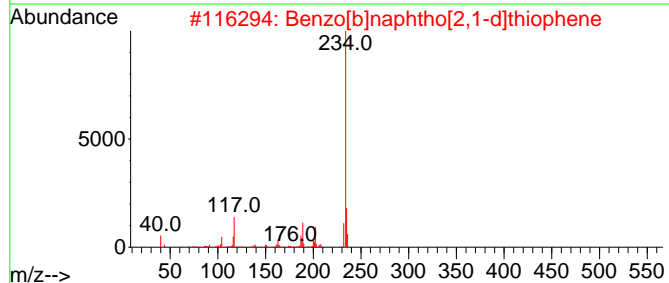
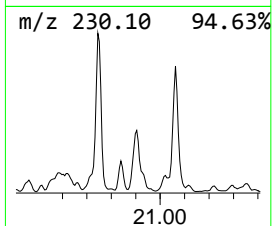
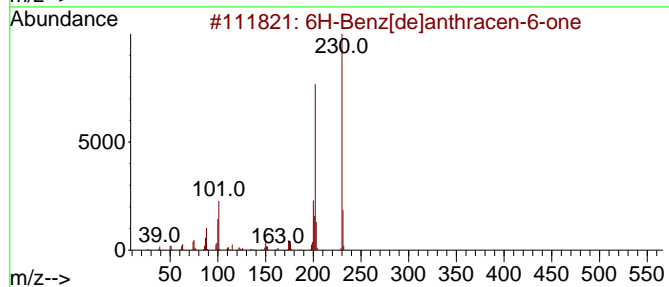
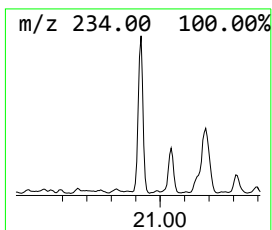
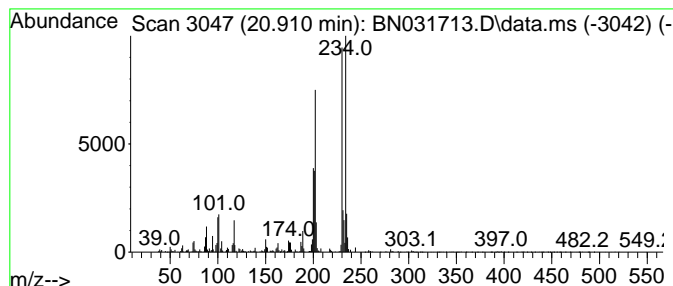
Quant Method : Z:\svoasrv\HPCHEM1\BNA_N\Methods\SFAM-EPA-BN052924.MA.M
 Quant Title : SVOA CALIBRATION

TIC Library : C:\Database\NIST20.L
 TIC Integration Parameters: LSCINT.P

 Peak Number 45 6H-Benz[de]anthracen-6-one Concentration Rank 20

R.T.	EstConc	Area	Relative to ISTD	R.T.
20.910	4.52 ng/ul	2355650	Chrysene-d12	21.310

Hit#	of 5	Tentative ID	MW	MolForm	CAS#	Qual
1		6H-Benz[de]anthracen-6-one	230	C17H10O	080252-14-8	96
2		Benzo[b]naphtho[2,1-d]thiophene	234	C16H10S	000239-35-0	91
3		7H-Benz[de]anthracen-7-one	230	C17H10O	000082-05-3	89
4		11H-Benzo[a]fluoren-11-one	230	C17H10O	000479-79-8	86
5		7H-Benz[de]anthracen-7-one	230	C17H10O	000082-05-3	86



Data Path : Z:\svoasrv\HPCHEM1\BNA_N\Data\BN052924\
 Data File : BN031713.D
 Acq On : 30 May 2024 08:24
 Operator : MA/JU
 Sample : P2569-20
 Misc :
 ALS Vial : 24 Sample Multiplier: 1

Instrument :
 BNA_N
 ClientSampleId :
 BH6A6

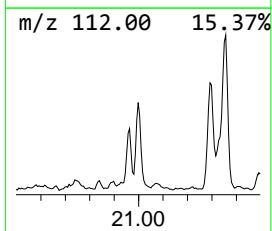
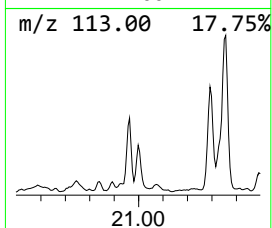
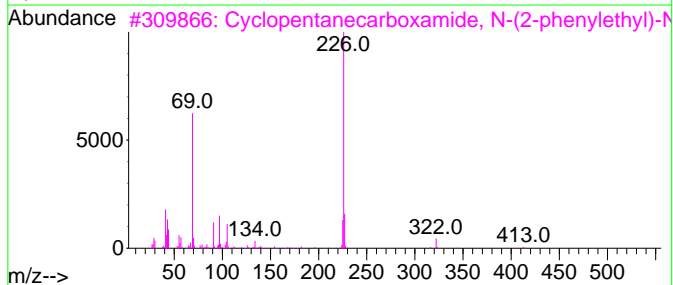
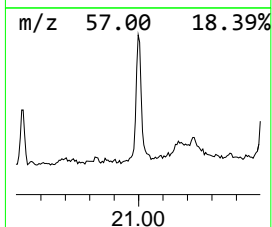
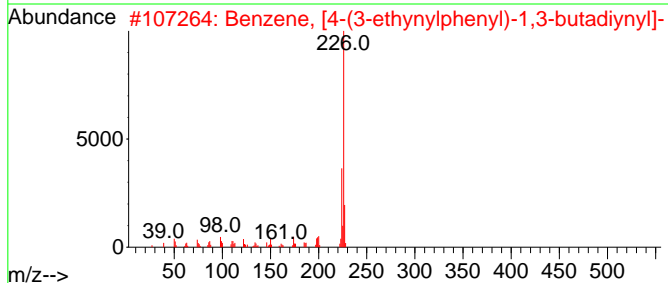
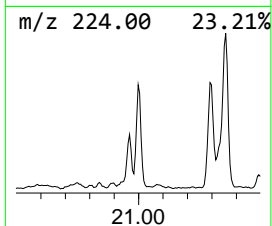
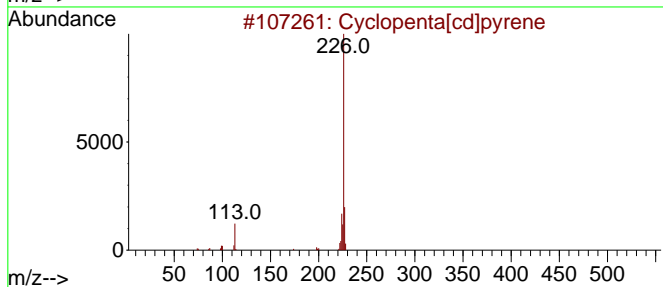
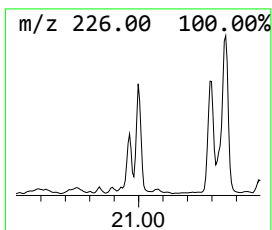
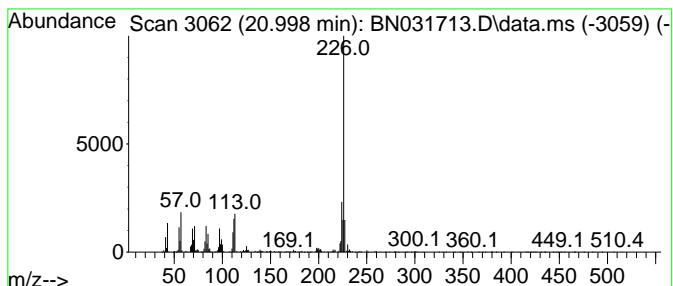
Quant Method : Z:\svoasrv\HPCHEM1\BNA_N\Methods\SFAM-EPA-BN052924.MA.M
 Quant Title : SVOA CALIBRATION

TIC Library : C:\Database\NIST20.L
 TIC Integration Parameters: LSCINT.P

 Peak Number 47 Cyclopenta[cd]pyrene Concentration Rank 28

R.T.	EstConc	Area	Relative to ISTD	R.T.
20.998	3.34 ng/ul	1741640	Chrysene-d12	21.310

Hit#	of 5	Tentative ID	MW	MolForm	CAS#	Qual
1		Cyclopenta[cd]pyrene	226	C18H10	027208-37-3	70
2		Benzene, [4-(3-ethynylphenyl)-1,...	226	C18H10	1000115-87-3	60
3		Cyclopentanecarboxamide, N-(2-ph...	413	C28H47NO	1000451-59-7	50
4		.beta.-Carboline, 7-methoxy-1,2-...	226	C14H14N2O	006519-18-2	40
5		4-Naphthalen-2-yl-thiazol-2-ylamine	226	C13H10N2S	1000300-53-4	40



Data Path : Z:\svoasrv\HPCHEM1\BNA_N\Data\BN052924\
 Data File : BN031713.D
 Acq On : 30 May 2024 08:24
 Operator : MA/JU
 Sample : P2569-20
 Misc :
 ALS Vial : 24 Sample Multiplier: 1

Instrument :
 BNA_N
 ClientSampleId :
 BH6A6

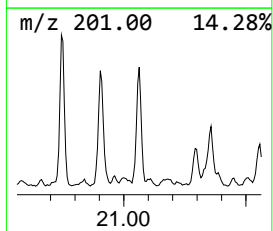
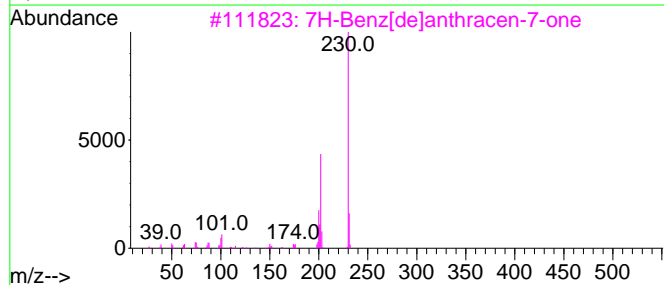
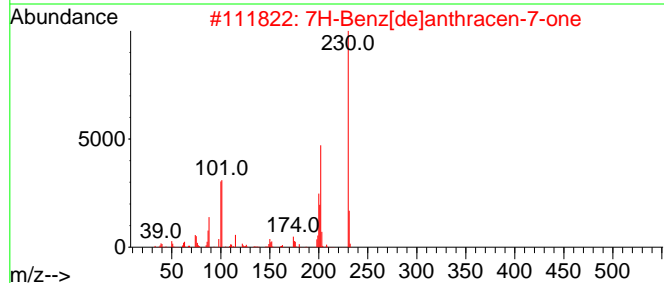
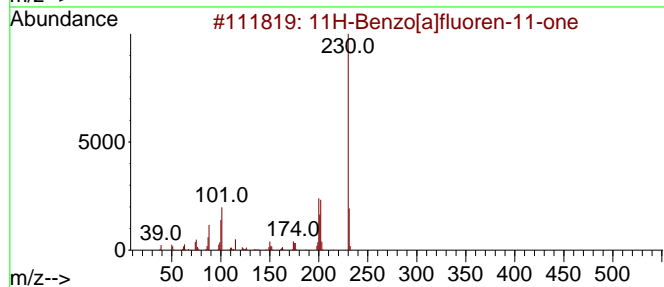
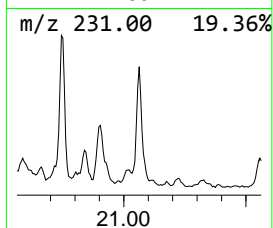
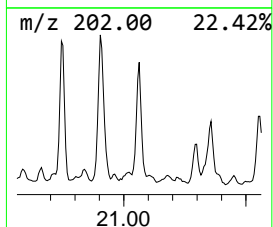
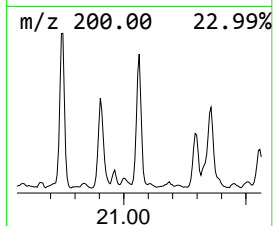
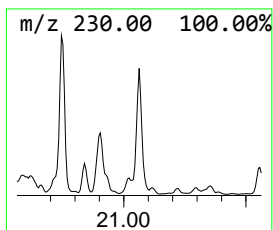
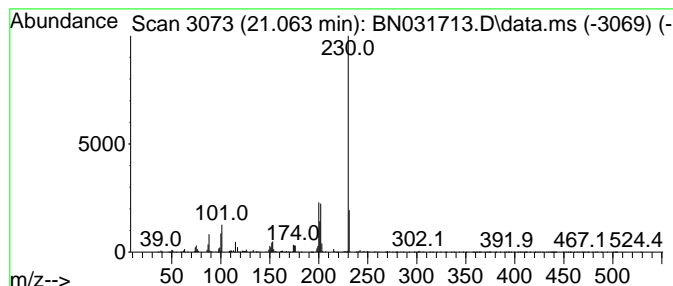
Quant Method : Z:\svoasrv\HPCHEM1\BNA_N\Methods\SFAM-EPA-BN052924.MA.M
 Quant Title : SVOA CALIBRATION

TIC Library : C:\Database\NIST20.L
 TIC Integration Parameters: LSCINT.P

 Peak Number 48 7H-Benz[de]anthracen-7-one Concentration Rank 21

R.T.	EstConc	Area	Relative to ISTD	R.T.
21.063	4.18 ng/ul	2177850	Chrysene-d12	21.310

Hit#	of	5	Tentative ID	MW	MolForm	CAS#	Qual
1			11H-Benzo[a]fluoren-11-one	230	C17H10O	000479-79-8	94
2			7H-Benz[de]anthracen-7-one	230	C17H10O	000082-05-3	90
3			7H-Benz[de]anthracen-7-one	230	C17H10O	000082-05-3	90
4			7H-Benz[de]anthracen-7-one	230	C17H10O	000082-05-3	87
5			6H-Benz[de]anthracen-6-one	230	C17H10O	080252-14-8	74



Data Path : Z:\svoasrv\HPCHEM1\BNA_N\Data\BN052924\
 Data File : BN031713.D
 Acq On : 30 May 2024 08:24
 Operator : MA/JU
 Sample : P2569-20
 Misc :
 ALS Vial : 24 Sample Multiplier: 1

Instrument :
 BNA_N
 ClientSampleId :
 BH6A6

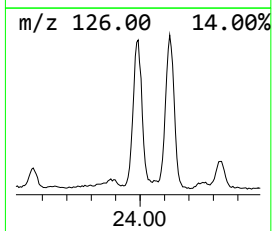
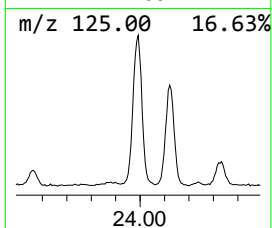
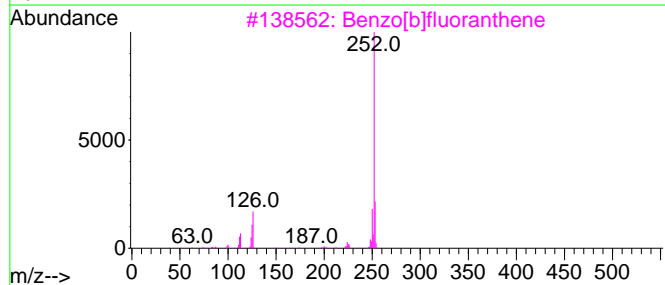
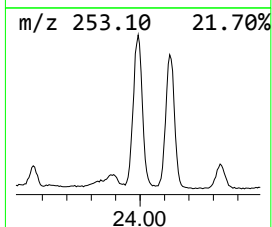
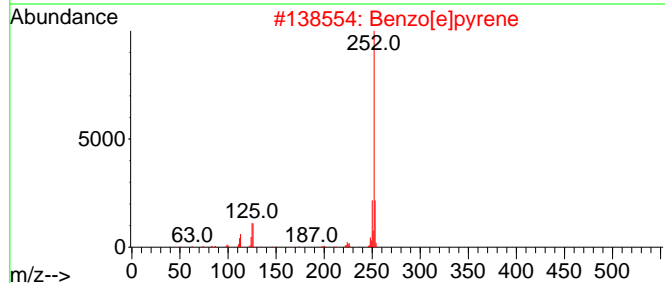
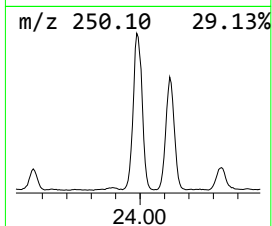
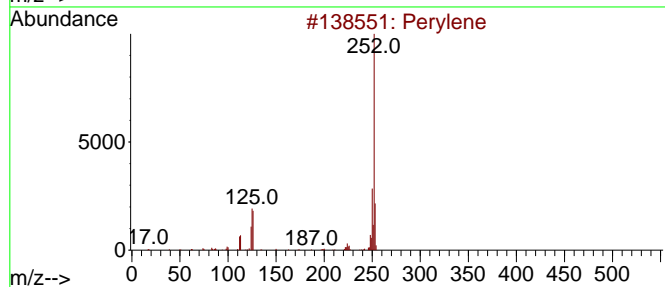
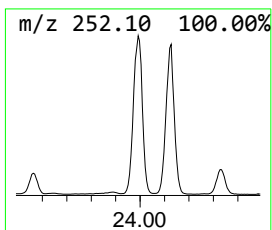
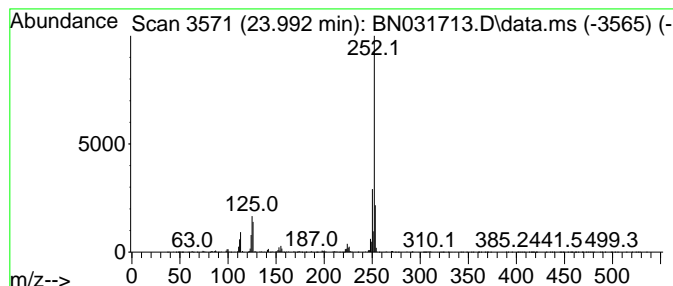
Quant Method : Z:\svoasrv\HPCHEM1\BNA_N\Methods\SFAM-EPA-BN052924.MA.M
 Quant Title : SVOA CALIBRATION

TIC Library : C:\Database\NIST20.L
 TIC Integration Parameters: LSCINT.P

 Peak Number 49 Perylene Concentration Rank 3

R.T.	EstConc	Area	Relative to ISTD	R.T.
23.992	22.12 ng/ul	4729610	Perylene-d12	24.262

Hit#	of 5	Tentative ID	MW	MolForm	CAS#	Qual
1		Perylene	252	C20H12	000198-55-0	99
2		Benzo[e]pyrene	252	C20H12	000192-97-2	99
3		Benzo[b]fluoranthene	252	C20H12	000205-99-2	98
4		Benzo[k]fluoranthene	252	C20H12	000207-08-9	95
5		Benzo[a]pyrene	252	C20H12	000050-32-8	95



Data Path : Z:\svoasrv\HPCHEM1\BNA_N\Data\BN052924\
 Data File : BN031713.D
 Acq On : 30 May 2024 08:24
 Operator : MA/JU
 Sample : P2569-20
 Misc :
 ALS Vial : 24 Sample Multiplier: 1

Instrument :
 BNA_N
 ClientSampleId :
 BH6A6

Quant Method : Z:\svoasrv\HPCHEM1\BNA_N\Methods\SFAM-EPA-BN052924.MA.M
 Quant Title : SVOA CALIBRATION

TIC Library : C:\Database\NIST20.L
 TIC Integration Parameters: LSCINT.P

TIC Top Hit name	RT	EstConc	Units	Response	--Internal Standard--			
					#	RT	Resp	Conc
unknown-01	3.711	3.8	ng/ul	641787	1	7.693	3364080	20.0
Naphthalene, 2,...	13.504	3.2	ng/ul	1111480	3	14.328	6961440	20.0
Naphthalene, 1,...	13.651	6.2	ng/ul	2144570	3	14.328	6961440	20.0
9H-Fluorene-9-one	16.733	9.0	ng/ul	3035800	4	17.075	6748280	20.0
Dibenzothiophene	16.892	5.8	ng/ul	1971910	4	17.075	6748280	20.0
Anthrone	17.386	3.0	ng/ul	1030240	4	17.075	6748280	20.0
2-Methyldibenzo...	17.657	6.3	ng/ul	2122040	4	17.075	6748280	20.0
Benzenamine, 4,...	17.798	3.5	ng/ul	1195220	4	17.075	6748280	20.0
9-anthracenol	17.875	3.4	ng/ul	1155640	4	17.075	6748280	20.0
Phenanthrene, 2...	17.951	20.3	ng/ul	6863730	4	17.075	6748280	20.0
Anthracene, 2-m...	17.998	22.2	ng/ul	7493820	4	17.075	6748280	20.0
Anthracene, 1-m...	18.139	22.4	ng/ul	7575500	4	17.075	6748280	20.0
Phenanthrene, 1...	18.180	15.1	ng/ul	5093540	4	17.075	6748280	20.0
Naphthalene, 2-...	18.457	9.8	ng/ul	3320660	4	17.075	6748280	20.0
9,10-Anthracene...	18.498	21.2	ng/ul	7141810	4	17.075	6748280	20.0
Phenanthrene, 4...	18.704	3.9	ng/ul	1320760	4	17.075	6748280	20.0
Phenanthrene, 2...	18.875	14.2	ng/ul	4773690	4	17.075	6748280	20.0
9,10-Dimethylan...	18.927	5.9	ng/ul	2002730	4	17.075	6748280	20.0
Cyclopenta(def)...	19.016	12.6	ng/ul	4246040	4	17.075	6748280	20.0
9,10-Anthracene...	19.339	4.1	ng/ul	2143950	5	21.310	10431000	20.0
Pyrene, 1-methyl-	19.827	8.0	ng/ul	4146330	5	21.310	10431000	20.0
11H-Benzo[b]flu...	19.992	9.4	ng/ul	4914640	5	21.310	10431000	20.0
Pyrene, 4-methyl-	20.157	5.2	ng/ul	2728020	5	21.310	10431000	20.0
Fluoranthene, 2...	20.298	5.7	ng/ul	2955510	5	21.310	10431000	20.0
Pyrene, 2-methyl-	20.339	4.1	ng/ul	2148550	5	21.310	10431000	20.0
11H-Benzo[a]flu...	20.745	6.0	ng/ul	3119230	5	21.310	10431000	20.0
6H-Benz[de]anth...	20.910	4.5	ng/ul	2355650	5	21.310	10431000	20.0
Cyclopenta[cd]p...	20.998	3.3	ng/ul	1741640	5	21.310	10431000	20.0
7H-Benz[de]anth...	21.063	4.2	ng/ul	2177850	5	21.310	10431000	20.0
Perylene	23.992	22.1	ng/ul	4729610	6	24.262	4275690	20.0