

Data Path : Z:\svoasrv\HPCHEM1\BNA_N\Data\BN052924\
 Data File : BN031716.D
 Acq On : 30 May 2024 10:22
 Operator : MA/JU
 Sample : P2569-11
 Misc :
 ALS Vial : 27 Sample Multiplier: 1

Instrument :
 BNA_N
 ClientSampleId :
 BH651

Integration Parameters: LSCINT.P

Integrator: RTE
 Smoothing : OFF Filtering: 5
 Sampling : 1 Min Area: 0.1 % of largest Peak
 Start Thrs: 0.2 Max Peaks: 100
 Stop Thrs : 0 Peak Location: TOP

If leading or trailing edge < 100 prefer < Baseline drop else tangent >
 Peak separation: 5

Method : Z:\svoasrv\HPCHEM1\BNA_N\Methods\SFAM-EPA-BN052924.MA.M
 Title : SVOA CALIBRATION

Signal : TIC: BN031716.D\data.ms

peak #	R.T. min	first scan	max scan	last scan	PK TY	peak height	corr. area	corr. % max.	% of total
1	3.199	33	36	44	rVB	83588	123499	1.67%	0.116%
2	3.464	77	81	91	rVB	142921	223362	3.02%	0.209%
3	3.605	102	105	118	rBV	1087896	1732156	23.44%	1.620%
4	3.923	155	159	164	rVB	33606	48170	0.65%	0.045%
5	4.822	308	312	316	rVB2	12301	18378	0.25%	0.017%
6	5.405	409	411	420	rBV9	4364	8388	0.11%	0.008%
7	5.787	471	476	483	rBV	59982	91038	1.23%	0.085%
8	6.687	625	629	637	rVB5	11631	26221	0.35%	0.025%
9	6.858	651	658	671	rVB	1658478	2705830	36.62%	2.531%
10	7.028	680	687	697	rVB	1379016	2180467	29.51%	2.039%
11	7.222	712	720	728	rBV	1719751	2740890	37.10%	2.564%
12	7.299	728	733	740	rVB	31961	59808	0.81%	0.056%
13	7.687	792	799	807	rBV	2226095	3689219	49.93%	3.451%
14	7.758	807	811	820	rVB2	59766	100403	1.36%	0.094%
15	8.063	857	863	866	rBV8	7308	10441	0.14%	0.010%
16	8.393	910	919	928	rBV	2095500	3404604	46.08%	3.184%
17	8.846	987	996	1003	rBV	1582548	2630643	35.61%	2.461%
18	9.005	1020	1023	1029	rVB6	9378	14532	0.20%	0.014%
19	9.252	1060	1065	1073	rVB	38707	67767	0.92%	0.063%
20	9.410	1085	1092	1098	rBV	198025	304732	4.12%	0.285%
21	9.563	1109	1118	1132	rBV	1230876	2103778	28.47%	1.968%
22	9.787	1150	1156	1160	rBV4	17463	28917	0.39%	0.027%
23	10.093	1199	1208	1219	rBV	2054045	3442949	46.60%	3.220%
24	10.257	1230	1236	1244	rVB2	19429	33469	0.45%	0.031%
25	10.387	1254	1258	1261	rBV6	4487	8458	0.11%	0.008%
26	10.475	1264	1273	1282	rVV	3186913	5515476	74.65%	5.159%
27	10.610	1286	1296	1313	rVV	2057399	3577097	48.42%	3.346%
28	10.969	1351	1357	1359	rBV7	4541	8009	0.11%	0.007%
29	11.016	1359	1365	1373	rVB2	59504	96510	1.31%	0.090%
30	11.216	1392	1399	1412	rBV	203469	380263	5.15%	0.356%
31	11.675	1469	1477	1481	rBV	4782	11444	0.15%	0.011%
32	11.746	1483	1489	1496	rVB9	7889	18951	0.26%	0.018%
33	11.899	1513	1515	1520	rVB6	7542	10600	0.14%	0.010%
34	11.975	1524	1528	1531	rBV5	8771	10146	0.14%	0.009%
35	12.063	1538	1543	1551	rVB2	44139	78938	1.07%	0.074%
36	12.499	1613	1617	1620	rVB6	5166	8169	0.11%	0.008%

Data Path : Z:\svoasrv\HPCHEM1\BNA_N\Data\BN052924\
 Data File : BN031716.D
 Acq On : 30 May 2024 10:22
 Operator : MA/JU
 Sample : P2569-11
 Misc :
 ALS Vial : 27 Sample Multiplier: 1

Instrument :
 BNA_N
 ClientSampleId :
 BH651

Integration Parameters: LSCINT.P

Integrator: RTE
 Smoothing : OFF Filtering: 5
 Sampling : 1 Min Area: 0.1 % of largest Peak
 Start Thrs: 0.2 Max Peaks: 100
 Stop Thrs : 0 Peak Location: TOP

If leading or trailing edge < 100 prefer < Baseline drop else tangent >
 Peak separation: 5

Method : Z:\svoasrv\HPCHEM1\BNA_N\Methods\SFAM-EPA-BN052924.MA.M
 Title : SVOA CALIBRATION

37	12.687	1645	1649	1651	rVV5	9993	14725	0.20%	0.014%
38	12.722	1654	1655	1662	rVB7	7509	8551	0.12%	0.008%
39	13.110	1710	1721	1724	rBV7	7886	19922	0.27%	0.019%
40	13.157	1724	1729	1735	rVB2	26456	44046	0.60%	0.041%
41	13.299	1747	1753	1756	rBV8	11899	22113	0.30%	0.021%
42	13.610	1801	1806	1810	rBV7	6774	11094	0.15%	0.010%
43	13.746	1822	1829	1838	rBV	3602353	5033711	68.13%	4.708%
44	13.851	1843	1847	1856	rVB	7209	16405	0.22%	0.015%
45	14.022	1864	1876	1888	rBV2	4168097	6235608	84.40%	5.832%
46	14.234	1908	1912	1916	rBV4	11205	14794	0.20%	0.014%
47	14.328	1919	1928	1937	rBV	4697628	7037058	95.25%	6.582%
48	14.534	1954	1963	1977	rBV	1534139	2501516	33.86%	2.340%
49	14.687	1985	1989	1995	rVB9	10549	21158	0.29%	0.020%
50	14.751	1995	2000	2005	rBV6	34689	59195	0.80%	0.055%
51	15.134	2059	2065	2067	rBV4	12465	18467	0.25%	0.017%
52	15.187	2071	2074	2078	rVB4	11540	16037	0.22%	0.015%
53	15.245	2081	2084	2086	rBV4	5366	7654	0.10%	0.007%
54	15.328	2089	2098	2105	rBV	4960597	7363424	99.66%	6.887%
55	15.451	2111	2119	2126	rBV	561915	844313	11.43%	0.790%
56	15.563	2133	2138	2146	rVB3	28777	57916	0.78%	0.054%
57	15.745	2164	2169	2174	rVB8	9627	17027	0.23%	0.016%
58	15.887	2188	2193	2196	rBV7	8407	14518	0.20%	0.014%
59	16.010	2211	2214	2216	rBV4	7711	10765	0.15%	0.010%
60	16.051	2217	2221	2225	rVB6	14352	21816	0.30%	0.020%
61	16.387	2276	2278	2284	rBV7	7041	9122	0.12%	0.009%
62	16.557	2303	2307	2312	rBV6	8228	13497	0.18%	0.013%
63	16.863	2351	2359	2368	rBV6	22099	80167	1.09%	0.075%
64	16.998	2380	2382	2387	rVB6	11237	12197	0.17%	0.011%
65	17.075	2388	2395	2402	rBV	4960558	7388370	100.00%	6.911%
66	17.175	2405	2412	2422	rBV2	5061380	7277568	98.50%	6.807%
67	17.275	2425	2429	2433	rVB5	37481	48830	0.66%	0.046%
68	17.322	2433	2437	2443	rBV	101156	164518	2.23%	0.154%
69	17.575	2478	2480	2483	rBV4	9031	10384	0.14%	0.010%
70	17.757	2506	2511	2514	rVB5	26490	41564	0.56%	0.039%
71	17.975	2543	2548	2558	rBV	372982	620976	8.40%	0.581%
72	18.304	2600	2604	2610	rVB2	56151	78979	1.07%	0.074%
73	19.034	2725	2728	2734	rVB3	67038	86718	1.17%	0.081%
74	19.104	2737	2740	2743	rBV	67673	90977	1.23%	0.085%
75	19.263	2763	2767	2774	rBV3	113766	190261	2.58%	0.178%
76	19.416	2790	2793	2796	rVB2	60684	64428	0.87%	0.060%

Data Path : Z:\svoasrv\HPCHEM1\BNA_N\Data\BN052924\
Data File : BN031716.D
Acq On : 30 May 2024 10:22
Operator : MA/JU
Sample : P2569-11
Misc :
ALS Vial : 27 Sample Multiplier: 1

Instrument :
BNA_N
ClientSampleId :
BH651

Integration Parameters: LSCINT.P
Integrator: RTE
Smoothing : OFF Filtering: 5
Sampling : 1 Min Area: 0.1 % of largest Peak
Start Thrs: 0.2 Max Peaks: 100
Stop Thrs : 0 Peak Location: TOP

If leading or trailing edge < 100 prefer < Baseline drop else tangent >
Peak separation: 5

Method : Z:\svoasrv\HPCHEM1\BNA_N\Methods\SFAM-EPA-BN052924.MA.M
Title : SVOA CALIBRATION

77	19.475	2797	2803	2810	rBV	5102783	7249598	98.12%	6.781%
78	20.998	3058	3062	3073	rBV	659403	985704	13.34%	0.922%
79	21.310	3110	3115	3122	rVB2	3619015	5362150	72.58%	5.015%
80	24.051	3574	3581	3594	rVB2	2419897	6042856	81.79%	5.652%
81	24.257	3608	3616	3629	rVB	2302345	6169226	83.50%	5.770%

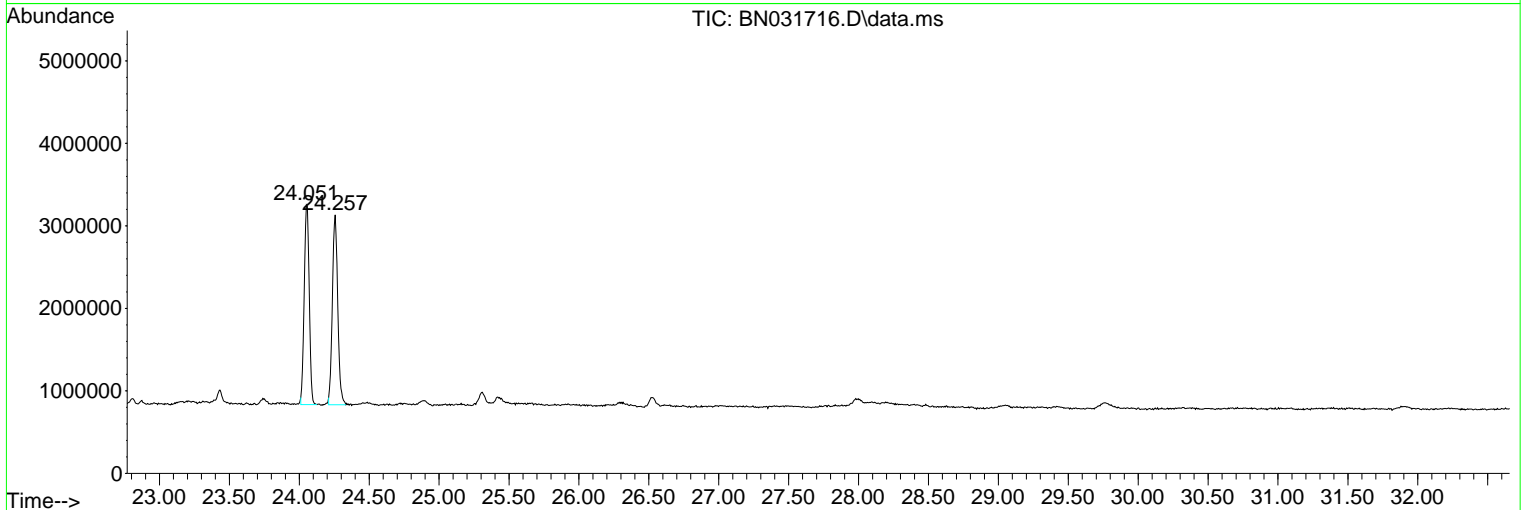
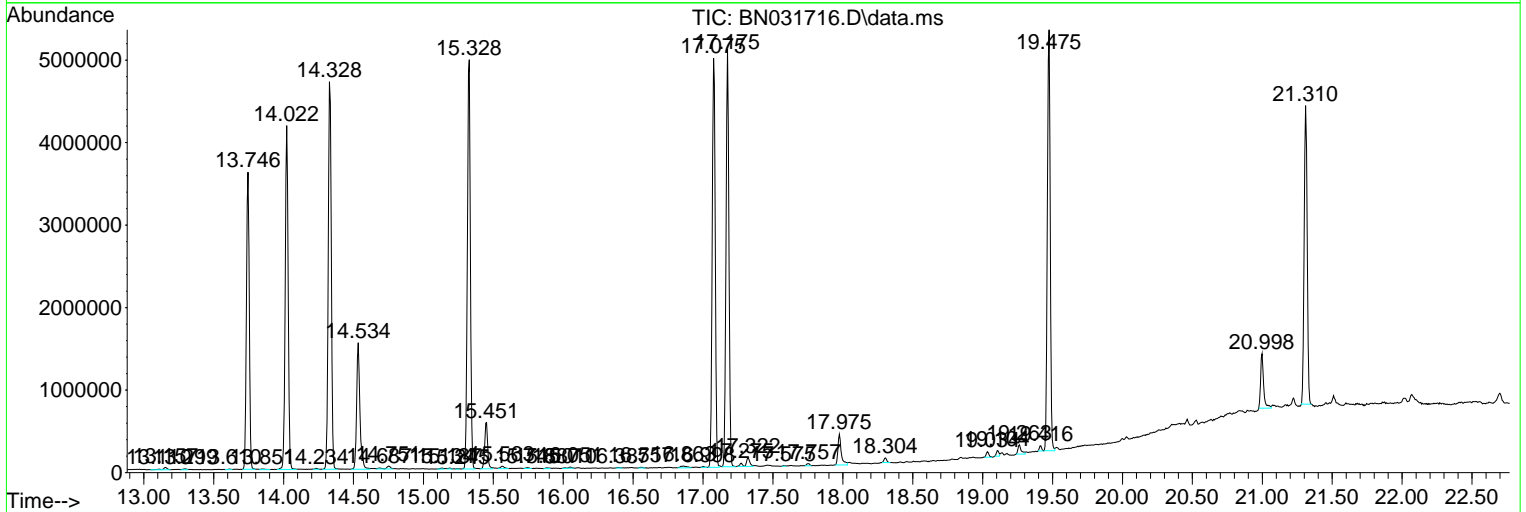
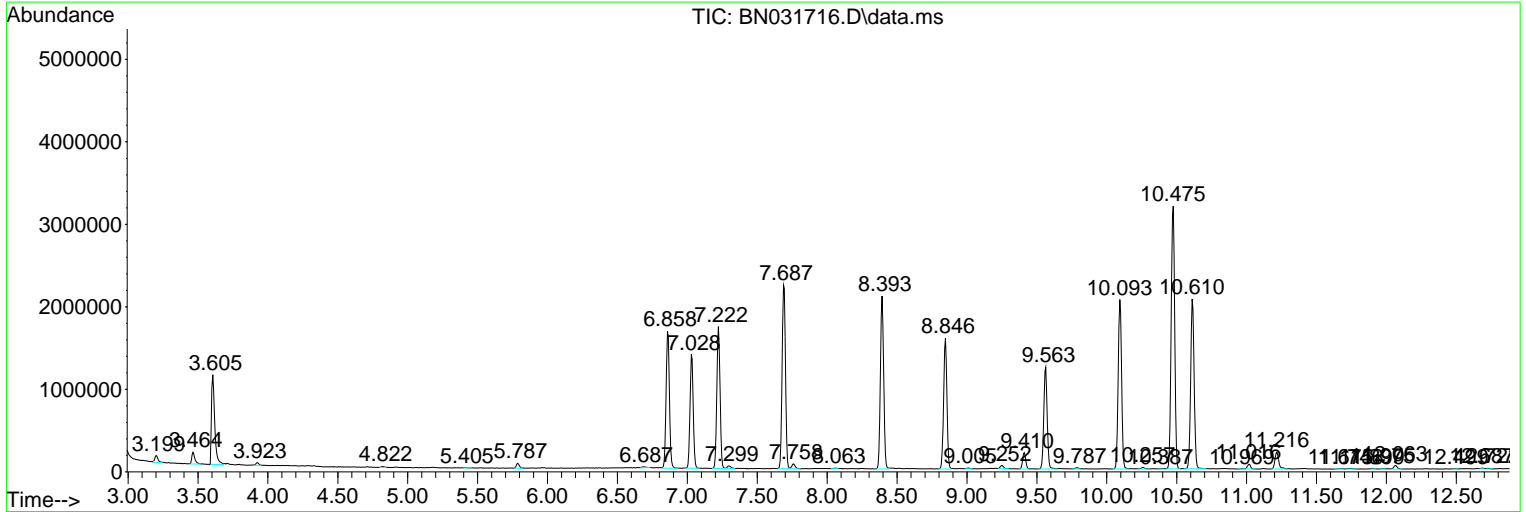
Sum of corrected areas: 106913645

Data Path : Z:\svoasrv\HPCHEM1\BNA_N\Data\BN052924\
 Data File : BN031716.D
 Acq On : 30 May 2024 10:22
 Operator : MA/JU
 Sample : P2569-11
 Misc :
 ALS Vial : 27 Sample Multiplier: 1

Instrument :
 BNA_N
 ClientSampleId :
 BH651

Quant Method : Z:\svoasrv\HPCHEM1\BNA_N\Methods\SFAM-EPA-BN052924.MA.M
 Quant Title : SVOA CALIBRATION

TIC Library : C:\Database\NIST20.L
 TIC Integration Parameters: LSCINT.P



Data Path : Z:\svoasrv\HPCHEM1\BNA_N\Data\BN052924\
 Data File : BN031716.D
 Acq On : 30 May 2024 10:22
 Operator : MA/JU
 Sample : P2569-11
 Misc :
 ALS Vial : 27 Sample Multiplier: 1

Instrument :
 BNA_N
 ClientSampleId :
 BH651

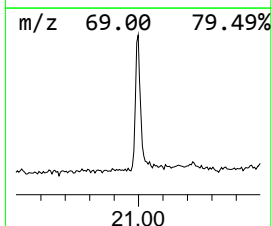
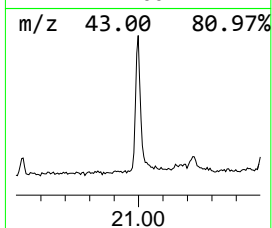
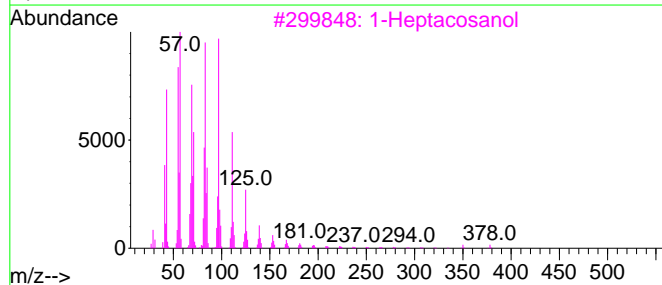
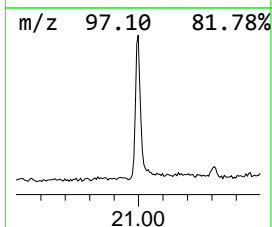
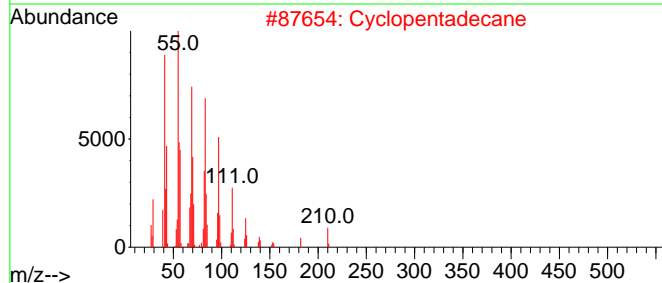
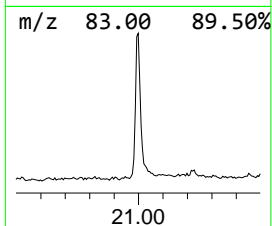
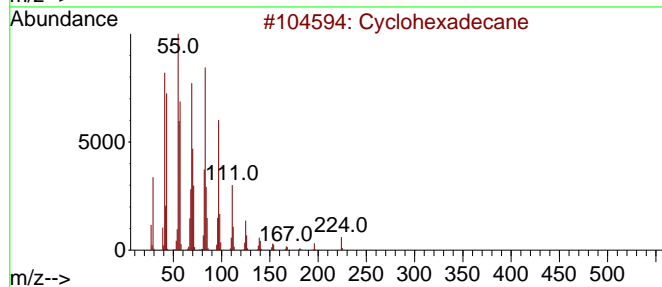
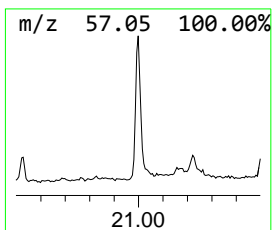
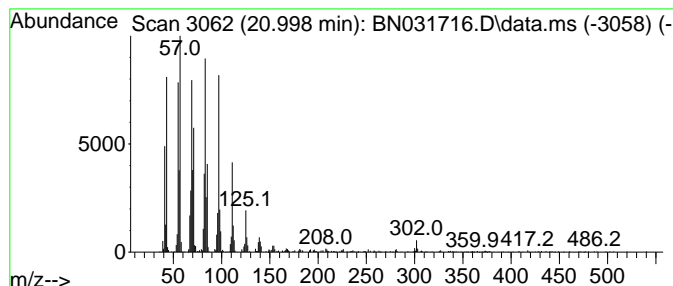
Quant Method : Z:\svoasrv\HPCHEM1\BNA_N\Methods\SFAM-EPA-BN052924.MA.M
 Quant Title : SVOA CALIBRATION

TIC Library : C:\Database\NIST20.L
 TIC Integration Parameters: LSCINT.P

 Peak Number 1 (DEL) Alkane: Cyclic20.998 Concentration Rank 1

R.T.	EstConc	Area	Relative to ISTD	R.T.
20.998	3.68 ng/ul	985704	Chrysene-d12	21.310

Hit#	of 5	Tentative ID	MW	MolForm	CAS#	Qual
1		Cyclohexadecane	224	C16H32	000295-65-8	94
2		Cyclopentadecane	210	C15H30	000295-48-7	94
3		1-Heptacosanol	396	C27H56O	002004-39-9	94
4		Dichloroacetic acid, heptadecyl ...	366	C19H36Cl2O2	1000282-98-2	94
5		2-Chloropropionic acid, octadec...	360	C21H41ClO2	088104-31-8	94



Data Path : Z:\svoasrv\HPCHEM1\BNA_N\Data\BN052924\
Data File : BN031716.D
Acq On : 30 May 2024 10:22
Operator : MA/JU
Sample : P2569-11
Misc :
ALS Vial : 27 Sample Multiplier: 1

Instrument :
BNA_N
ClientSampleId :
BH651

Quant Method : Z:\svoasrv\HPCHEM1\BNA_N\Methods\SFAM-EPA-BN052924.MA.M
Quant Title : SVOA CALIBRATION

TIC Library : C:\Database\NIST20.L
TIC Integration Parameters: LSCINT.P

TIC Top Hit name	RT	EstConc	Units	Response	--Internal Standard--			
					#	RT	Resp	Conc
(DEL) Alkane: C...	20.998	3.7	ng/u1	985704	5	21.310	5362150	20.0