

Data Path : Z:\SVOASRV\HPCHEM1\BNA N\DATA\BN060119\
 Data File : BN006010.D
 Acq On : 02 Jun 2019 00:56
 Operator : JU/SJ
 Sample : K2846-15
 Misc :
 ALS Vial : 12 Sample Multiplier: 1

Instrument :
 BNA_N
 ClientSampleId :
 BFHB8

Quant Time: Jun 03 01:06:54 2019
 Quant Method : Z:\SVOASRV\HPCHEM1\BNA_N\METHODS\SOM-EPA-BN052819MA.M
 Quant Title : SVOA CALIBRATION
 QLast Update : Sat Jun 01 01:49:29 2019
 Response via : Initial Calibration

Internal Standards	R.T.	QIon	Response	Conc	Units	Dev(Min)
1) 1,4-Dichlorobenzene-d4	7.72	152	357621	20.00	ng/ul	-0.02
18) Naphthalene-d8	10.52	136	1617332	20.00	ng/ul	-0.02
35) Acenaphthene-d10	14.38	164	991321	20.00	ng/ul	-0.02
61) Phenanthrene-d10	17.14	188	2271028	20.00	ng/ul	-0.02
77) Chrysene-d12	21.35	240	2168747	20.00	ng/ul	-0.02
85) Perylene-d12	23.64	264	2409417	20.00	ng/ul	-0.04

System Monitoring Compounds

3) 1,4-Dioxane-d8	3.25	96	55994	6.89	ng/uL	0.00
5) Phenol-d5	6.89	99	967340	30.52	ng/ul	-0.02
7) Bis-(2-Chloroethyl)ether-d	7.06	67	649367	35.91	ng/ul	-0.02
9) 2-Chlorophenol-d4	7.26	132	796706	33.00	ng/ul	-0.01
13) 4-Methylphenol-d8	8.43	113	813663	31.80	ng/ul	-0.02
19) Nitrobenzene-d5	8.88	128	433548	41.77	ng/ul	-0.01
22) 2-Nitrophenol-d4	9.60	143	480859	49.74	ng/ul	-0.02
26) 2,4-Dichlorophenol-d3	10.14	165	750318	32.87	ng/ul	-0.02
29) 4-Chloroaniline-d4	10.65	131	1157364	38.67	ng/ul	-0.02
43) Dimethylphthalate-d6	13.79	166	2939253	40.22	ng/ul	-0.01
46) Acenaphthylene-d8	14.08	160	3185722	34.85	ng/ul	-0.01
51) 4-Nitrophenol-d4	14.59	143	441981	33.23	ng/ul	-0.02
57) Fluorene-d10	15.38	176	2276089	37.14	ng/ul	-0.02
62) 4,6-Dinitro-2-methylphenol	15.51	200	403113	43.55	ng/ul	-0.02
70) Anthracene-d10	17.24	188	3451227	35.71	ng/ul	-0.02
78) Pyrene-d10	19.54	212	3673278	33.54	ng/ul	-0.02
89) Benzo(a)pyrene-d12	23.49	264	3606223	33.54	ng/ul	-0.03

Target Compounds

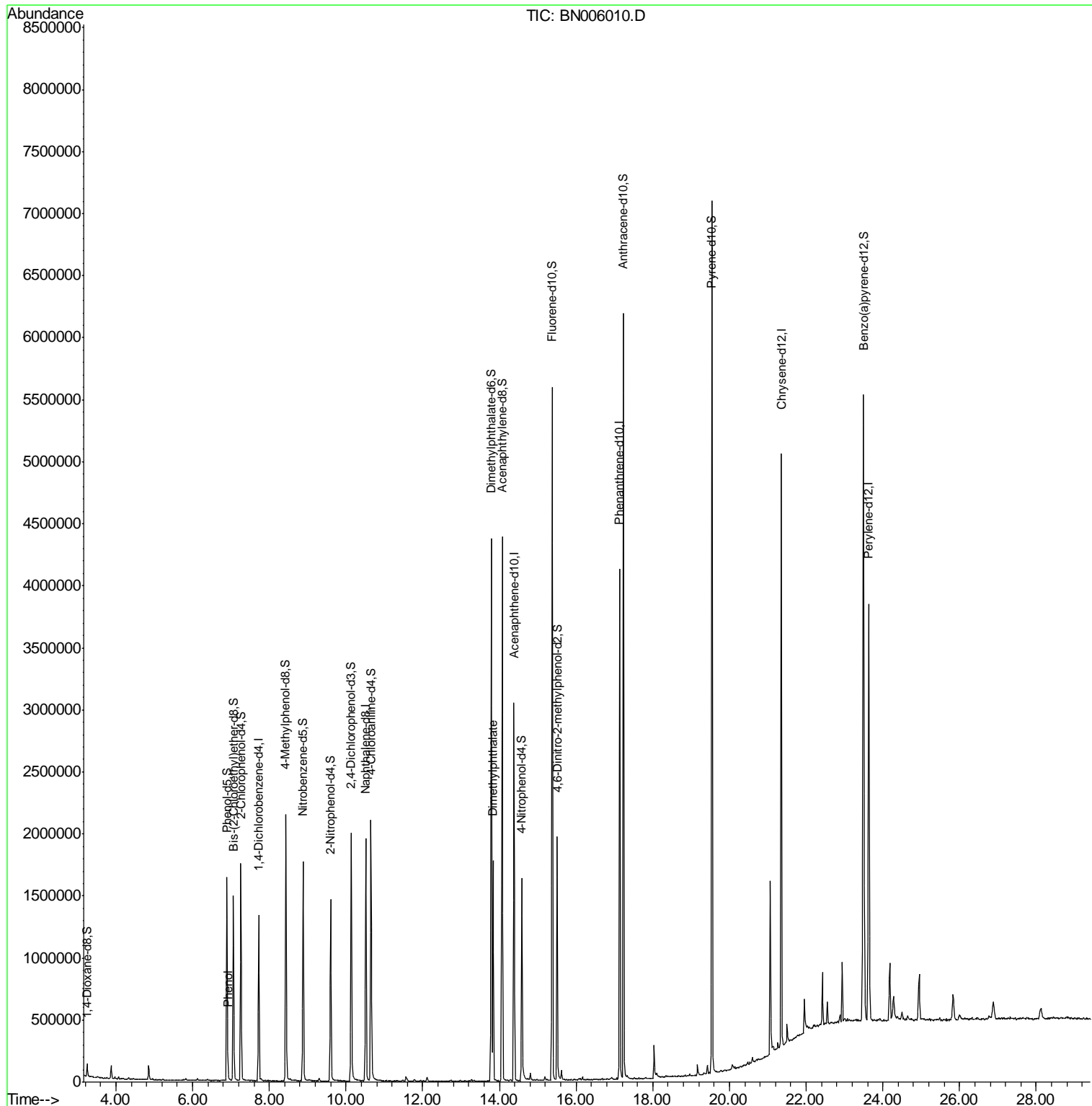
Target Compounds	R.T.	QIon	Response	Conc	Units	Ovalue
6) Phenol	6.92	94	33318	1.020	ng/ul	99
44) Dimethylphthalate	13.84	163	1111589	15.218	ng/ul	99

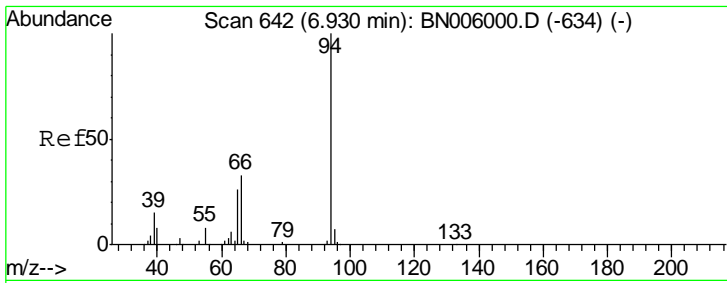
(#) = qualifier out of range (m) = manual integration (+) = signals summed

Data Path : Z:\SVOASRV\HPCHEM1\BNA N\DATA\BN060119\
 Data File : BN006010.D
 Acq On : 02 Jun 2019 00:56
 Operator : JU/SJ
 Sample : K2846-15
 Misc :
 ALS Vial : 12 Sample Multiplier: 1

Instrument :
 BNA_N
 ClientSampled :
 BFHB8

Quant Time: Jun 03 01:06:54 2019
 Quant Method : Z:\SVOASRV\HPCHEM1\BNA_N\METHODS\SOM-EPA-BN052819MA.M
 Quant Title : SVOA CALIBRATION
 QLast Update : Sat Jun 01 01:49:29 2019
 Response via : Initial Calibration

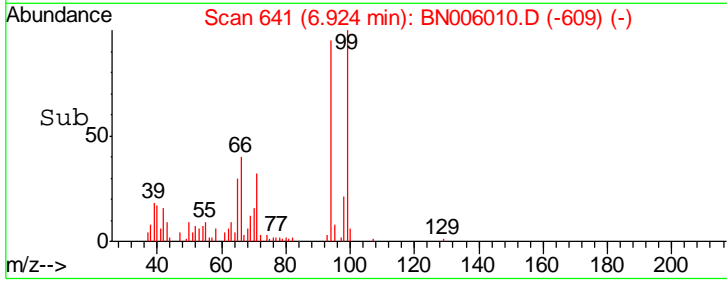
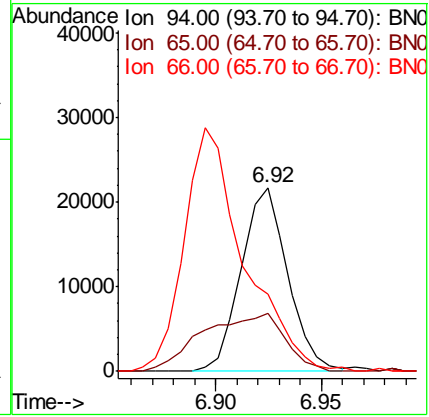
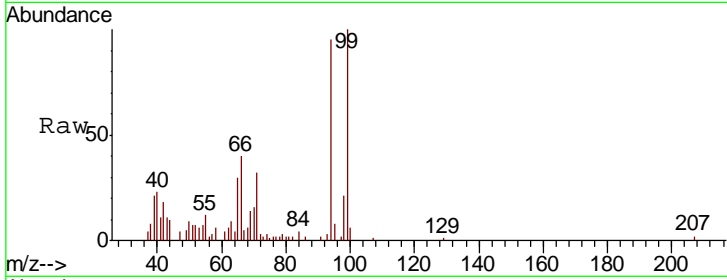




#6
 Phenol
 Concen: 1.020 ng/ul
 RT: 6.92 min Scan# 641
 Delta R.T. -0.01 min
 Lab File: BN006010.D
 Acq: 02 Jun 2019 00:56

Instrument :
 BNA_N
ClientSampled :
 BFHB8

Tgt Ion	Resp	Lower	Upper
94	33318		
65	31.2	24.2	36.4
66	41.8	33.8	50.6



#44
 Dimethylphthalate
 Concen: 15.218 ng/ul
 RT: 13.84 min Scan# 1817
 Delta R.T. -0.02 min
 Lab File: BN006010.D
 Acq: 02 Jun 2019 00:56

Tgt Ion	Resp	Lower	Upper
163	1111589		
194	4.4	3.4	5.0
164	9.9	8.1	12.1

