

Data Path : Z:\SVOASRV\HPCHEM1\BNA N\DATA\BN060119\  
 Data File : BN006031.D  
 Acq On : 02 Jun 2019 14:08  
 Operator : JU/SJ  
 Sample : K2846-23  
 Misc :  
 ALS Vial : 32 Sample Multiplier: 1

Instrument :  
 BNA\_N  
 ClientSampleId :  
 BFHA5

Quant Time: Jun 03 01:09:55 2019  
 Quant Method : Z:\SVOASRV\HPCHEM1\BNA\_N\METHODS\SOM-EPA-BN052819MA.M  
 Quant Title : SVOA CALIBRATION  
 QLast Update : Sat Jun 01 01:49:29 2019  
 Response via : Initial Calibration

Internal Standards	R.T.	QIon	Response	Conc	Units	Dev(Min)
1) 1,4-Dichlorobenzene-d4	7.72	152	504224	20.00	ng/ul	-0.02
18) Naphthalene-d8	10.52	136	2188917	20.00	ng/ul	-0.02
35) Acenaphthene-d10	14.38	164	1203558	20.00	ng/ul	-0.02
61) Phenanthrene-d10	17.14	188	2331517	20.00	ng/ul	-0.02
77) Chrysene-d12	21.36	240	1535937	20.00	ng/ul	-0.01
85) Perylene-d12	23.66	264	1633330	20.00	ng/ul	-0.01

## System Monitoring Compounds

3) 1,4-Dioxane-d8	3.25	96	64578	5.64	ng/uL	0.00
5) Phenol-d5	6.89	99	1254293	28.07	ng/ul	-0.02
7) Bis-(2-Chloroethyl)ether-d	7.06	67	808693	31.72	ng/ul	-0.02
9) 2-Chlorophenol-d4	7.26	132	1026397	30.15	ng/ul	-0.01
13) 4-Methylphenol-d8	8.43	113	1029017	28.52	ng/ul	-0.02
19) Nitrobenzene-d5	8.88	128	541641	38.55	ng/ul	-0.01
22) 2-Nitrophenol-d4	9.60	143	580626	44.38	ng/ul	-0.02
26) 2,4-Dichlorophenol-d3	10.14	165	976934	31.62	ng/ul	-0.02
29) 4-Chloroaniline-d4	10.65	131	1386127	34.22	ng/ul	-0.02
43) Dimethylphthalate-d6	13.79	166	3083173	34.75	ng/ul	-0.01
46) Acenaphthylene-d8	14.07	160	3546673	31.96	ng/ul	-0.02
51) 4-Nitrophenol-d4	14.59	143	400553	24.81	ng/ul	-0.02
57) Fluorene-d10	15.38	176	2385603	32.06	ng/ul	-0.02
62) 4,6-Dinitro-2-methylphenol	15.51	200	152695	16.07	ng/ul	-0.02
70) Anthracene-d10	17.24	188	3221366	32.46	ng/ul	-0.02
78) Pyrene-d10	19.55	212	2845510	36.68	ng/ul	-0.02
89) Benzo(a)pyrene-d12	23.51	264	2325250	31.90	ng/ul	-0.01

## Target Compounds

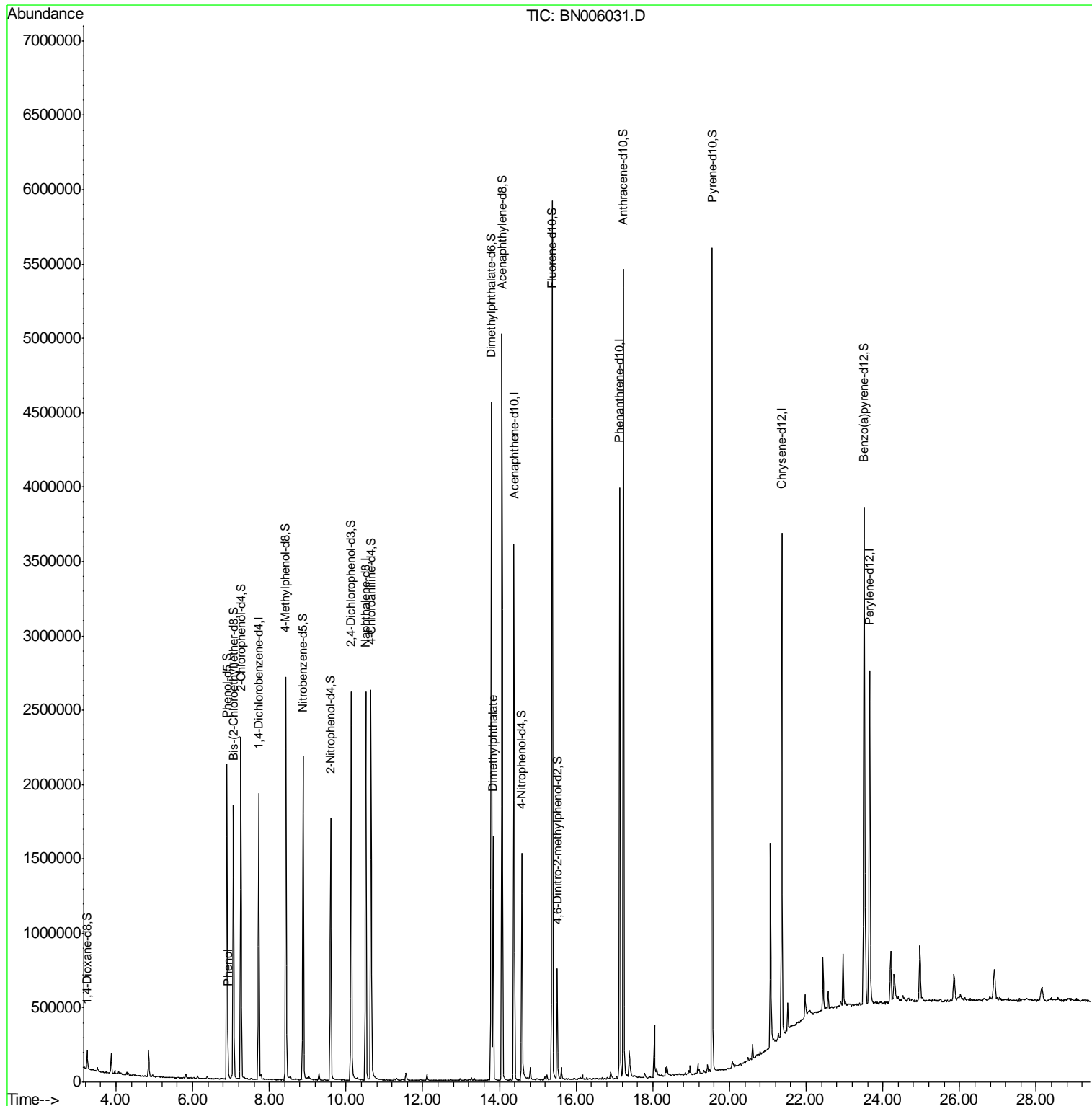
Target Compounds	R.T.	QIon	Response	Conc	Units	Ovalue
6) Phenol	6.92	94	51957	1.128	ng/ul	93
44) Dimethylphthalate	13.84	163	997489	11.248	ng/ul	99

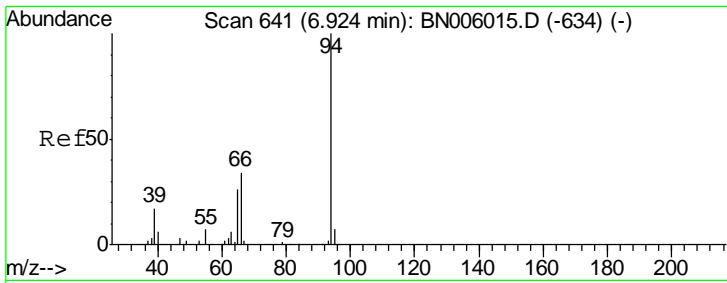
(#) = qualifier out of range (m) = manual integration (+) = signals summed

Data Path : Z:\SVOASRV\HPCHEM1\BNA N\DATA\BN060119\  
 Data File : BN006031.D  
 Acq On : 02 Jun 2019 14:08  
 Operator : JU/SJ  
 Sample : K2846-23  
 Misc :  
 ALS Vial : 32 Sample Multiplier: 1

Instrument :  
 BNA\_N  
 ClientSampled :  
 BFHA5

Quant Time: Jun 03 01:09:55 2019  
 Quant Method : Z:\SVOASRV\HPCHEM1\BNA\_N\METHODS\SOM-EPA-BN052819MA.M  
 Quant Title : SVOA CALIBRATION  
 QLast Update : Sat Jun 01 01:49:29 2019  
 Response via : Initial Calibration

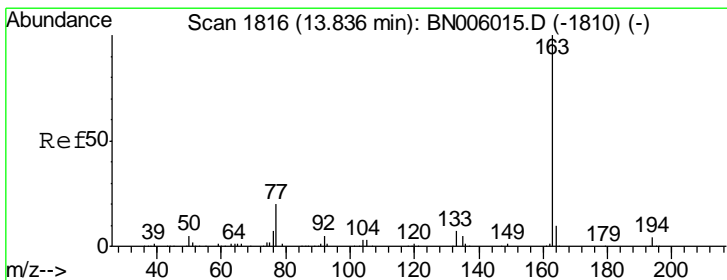
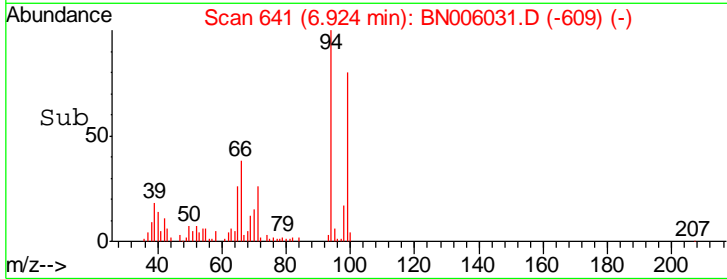
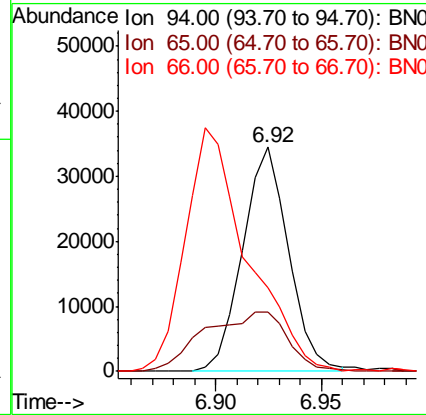
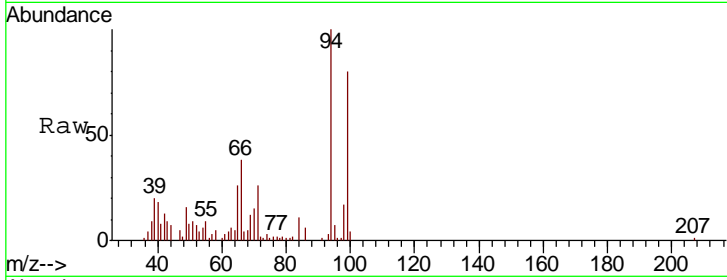




#6  
 Phenol  
 Concen: 1.128 ng/ul  
 RT: 6.92 min Scan# 641  
 Delta R.T. -0.01 min  
 Lab File: BN006031.D  
 Acq: 02 Jun 2019 14:08

**Instrument :**  
 BNA\_N  
**ClientSampled :**  
 BFHA5

Tgt Ion	Resp	Lower	Upper
94	51957		
65	26.5	24.2	36.4
66	37.5	33.8	50.6



#44  
 Dimethylphthalate  
 Concen: 11.248 ng/ul  
 RT: 13.84 min Scan# 1816  
 Delta R.T. -0.02 min  
 Lab File: BN006031.D  
 Acq: 02 Jun 2019 14:08

Tgt Ion	Resp	Lower	Upper
163	997489		
194	4.1	3.4	5.0
164	10.6	8.1	12.1

