

Data Path : Z:\svoasrv\HPCHEM1\BNA_N\Data\BN060325\
 Data File : BN037150.D
 Acq On : 03 Jun 2025 15:53
 Operator : RC/JU
 Sample : SSTDICV0.4
 Misc :
 ALS Vial : 9 Sample Multiplier: 1

Instrument :
 BNA_N
 ClientSampleId :
 ICVBN060325

Quant Time: Jun 04 01:54:08 2025
 Quant Method : Z:\svoasrv\HPCHEM1\BNA_N\Methods\8270-SIM-BN060325.M
 Quant Title : ASP BNA STANDARDS FOR 5 POINT CALIBRATION
 QLast Update : Wed Jun 04 01:52:03 2025
 Response via : Initial Calibration

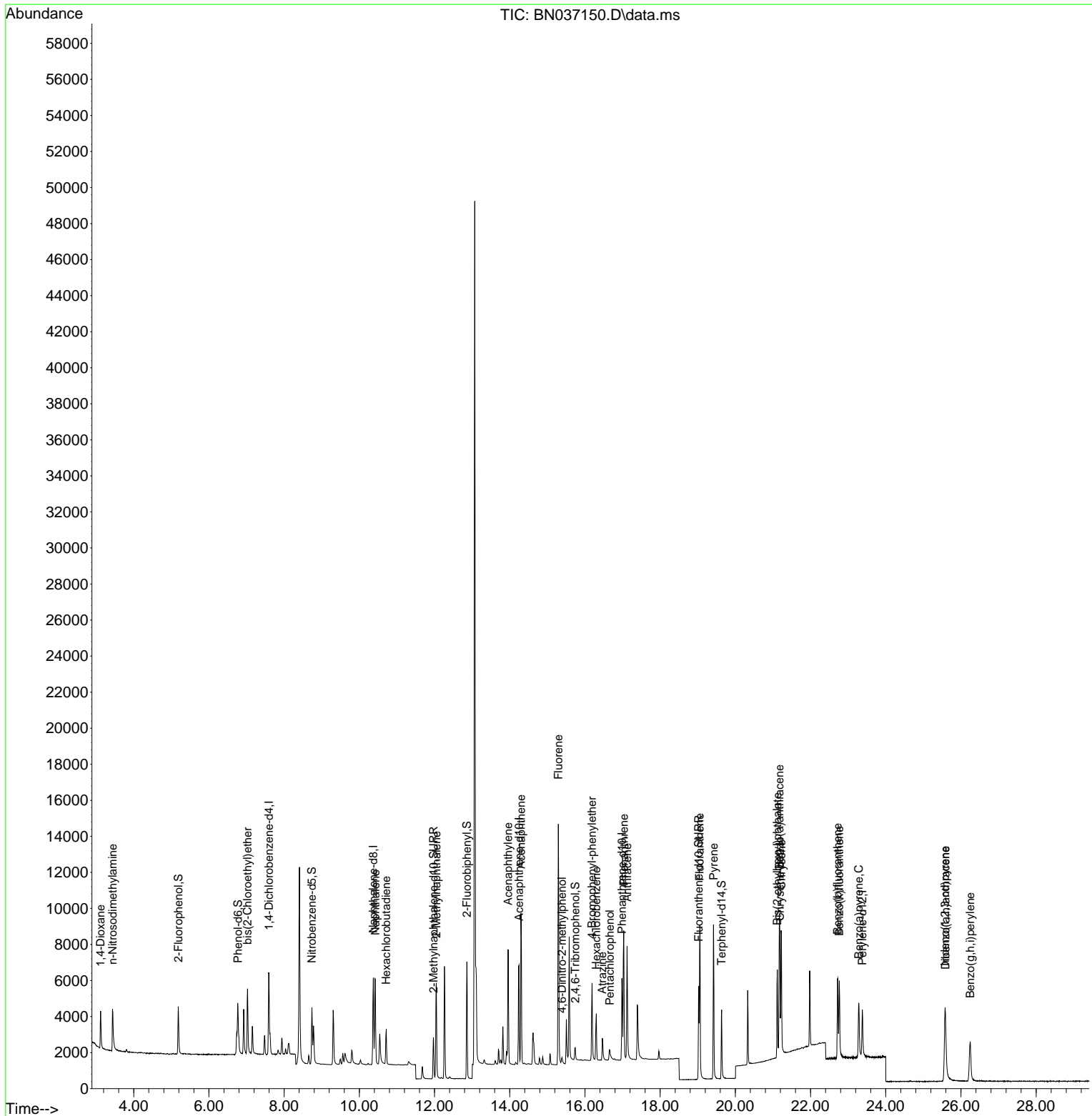
Compound	R.T.	QIon	Response	Conc	Units	Dev(Min)	
Internal Standards							
1) 1,4-Dichlorobenzene-d4	7.597	152	2254	0.400	ng	0.00	
7) Naphthalene-d8	10.372	136	5892	0.400	ng	0.00	
13) Acenaphthene-d10	14.245	164	3320	0.400	ng	0.01	
19) Phenanthrene-d10	16.984	188	6332	0.400	ng	0.00	
29) Chrysene-d12	21.189	240	4292	0.400	ng	0.00	
35) Perylene-d12	23.377	264	3564	0.400	ng	0.00	
System Monitoring Compounds							
4) 2-Fluorophenol	5.184	112	2014	0.361	ng	0.00	
5) Phenol-d6	6.773	99	2419	0.358	ng	0.00	
8) Nitrobenzene-d5	8.739	82	2473	0.398	ng	0.00	
11) 2-Methylnaphthalene-d10	11.971	152	3266	0.398	ng	0.00	
14) 2,4,6-Tribromophenol	15.743	330	440	0.329	ng	0.00	
15) 2-Fluorobiphenyl	12.858	172	5696	0.402	ng	0.00	
27) Fluoranthene-d10	19.026	212	6037	0.375	ng	0.00	
31) Terphenyl-d14	19.635	244	4196	0.415	ng	0.00	
Target Compounds							
2) 1,4-Dioxane	3.119	88	1242	0.413	ng	98	Qvalue
3) n-Nitrosodimethylamine	3.437	42	2355	0.390	ng	100	
6) bis(2-Chloroethyl)ether	7.026	93	2715	0.421	ng	100	
9) Naphthalene	10.426	128	6699	0.394	ng	98	
10) Hexachlorobutadiene	10.714	225	1489	0.402	ng	# 99	
12) 2-Methylnaphthalene	12.047	142	3839	0.352	ng	96	
16) Acenaphthylene	13.957	152	6575	0.404	ng	100	
17) Acenaphthene	14.299	154	3940	0.373	ng	100	
18) Fluorene	15.293	166	5182	0.373	ng	99	
20) 4,6-Dinitro-2-methylph...	15.389	198	348	0.462	ng	84	
21) 4-Bromophenyl-phenylether	16.189	248	1544	0.372	ng	98	
22) Hexachlorobenzene	16.301	284	1743	0.389	ng	99	
23) Atrazine	16.463	200	1282	0.374	ng	97	
24) Pentachlorophenol	16.661	266	591	0.436	ng	97	
25) Phenanthrene	17.033	178	7869	0.384	ng	100	
26) Anthracene	17.120	178	7105	0.380	ng	99	
28) Fluoranthene	19.054	202	8186	0.361	ng	99	
30) Pyrene	19.421	202	8148	0.389	ng	99	
32) Benzo(a)anthracene	21.171	228	5949	0.383	ng	99	
33) Chrysene	21.224	228	6661	0.385	ng	99	
34) Bis(2-ethylhexyl)phtha...	21.117	149	3635	0.371	ng	99	
36) Indeno(1,2,3-cd)pyrene	25.573	276	5461	0.385	ng	100	
37) Benzo(b)fluoranthene	22.720	252	5432	0.378	ng	100	
38) Benzo(k)fluoranthene	22.763	252	5859	0.399	ng	100	
39) Benzo(a)pyrene	23.281	252	4925	0.409	ng	99	
40) Dibenzo(a,h)anthracene	25.588	278	4227	0.387	ng	100	
41) Benzo(g,h,i)perylene	26.248	276	4620	0.368	ng	98	

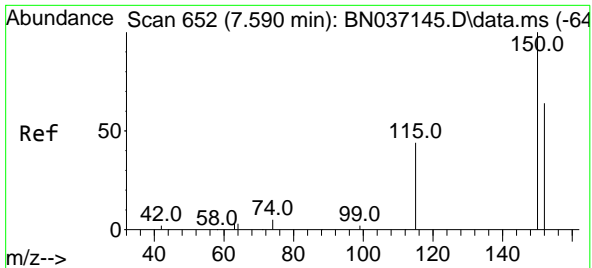
(#) = qualifier out of range (m) = manual integration (+) = signals summed

Data Path : Z:\svoasrv\HPCHEM1\BNA_N\Data\BN060325\
 Data File : BN037150.D
 Acq On : 03 Jun 2025 15:53
 Operator : RC/JU
 Sample : SSTDICV0.4
 Misc :
 ALS Vial : 9 Sample Multiplier: 1

Instrument :
 BNA_N
 ClientSampleId :
 ICVBN060325

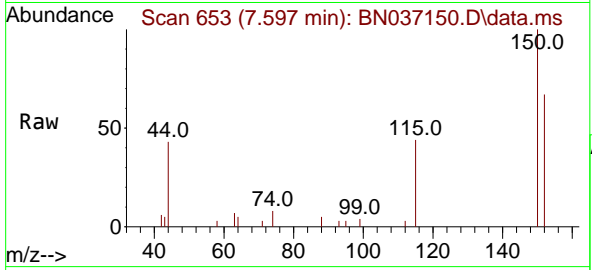
Quant Time: Jun 04 01:54:08 2025
 Quant Method : Z:\svoasrv\HPCHEM1\BNA_N\Methods\8270-SIM-BN060325.M
 Quant Title : ASP BNA STANDARDS FOR 5 POINT CALIBRATION
 QLast Update : Wed Jun 04 01:52:03 2025
 Response via : Initial Calibration



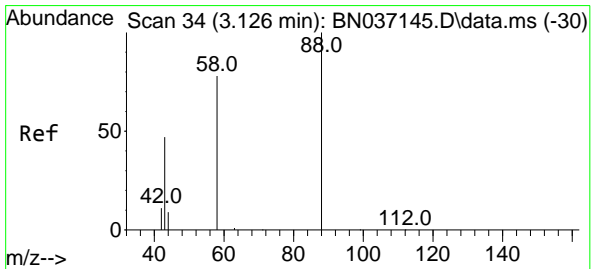
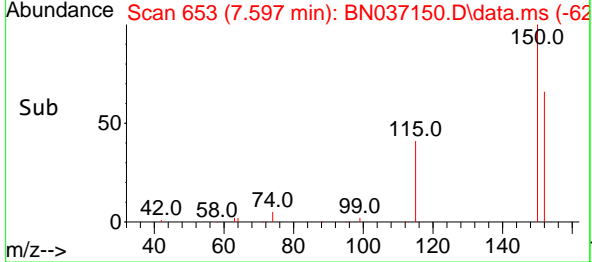
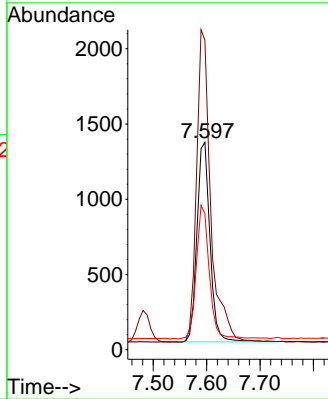


#1
 1,4-Dichlorobenzene-d4
 Concen: 0.400 ng
 RT: 7.597 min Scan# 61
 Delta R.T. 0.007 min
 Lab File: BN037150.D
 Acq: 03 Jun 2025 15:53

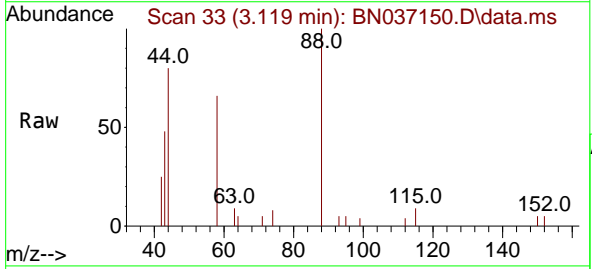
Instrument :
 BNA_N
 ClientSampleId :
 ICVBN060325



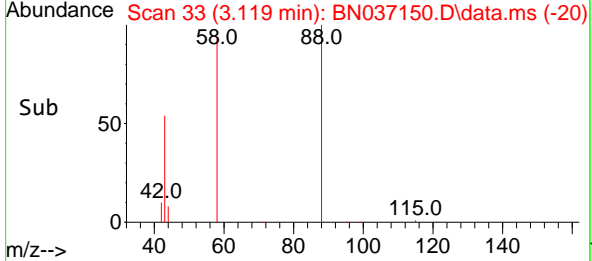
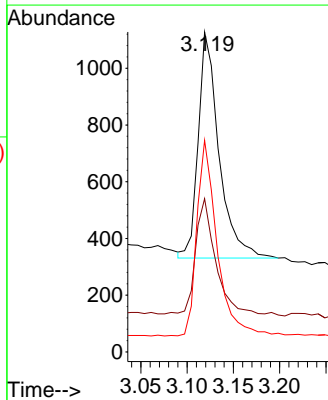
Tgt Ion:152 Resp: 2254
 Ion Ratio Lower Upper
 152 100
 150 149.2 123.2 184.8
 115 65.5 56.6 85.0

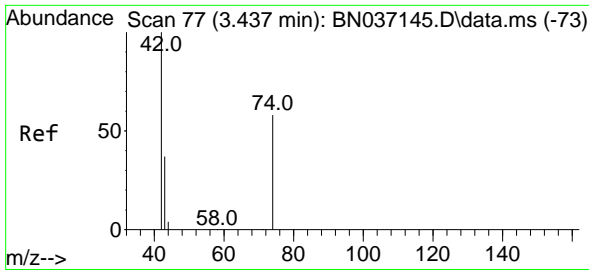


#2
 1,4-Dioxane
 Concen: 0.413 ng
 RT: 3.119 min Scan# 33
 Delta R.T. -0.007 min
 Lab File: BN037150.D
 Acq: 03 Jun 2025 15:53



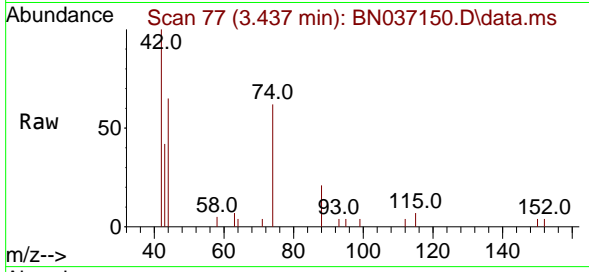
Tgt Ion: 88 Resp: 1242
 Ion Ratio Lower Upper
 88 100
 43 50.8 43.5 65.3
 58 84.5 67.7 101.5



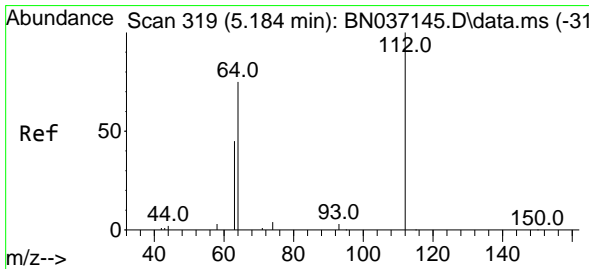
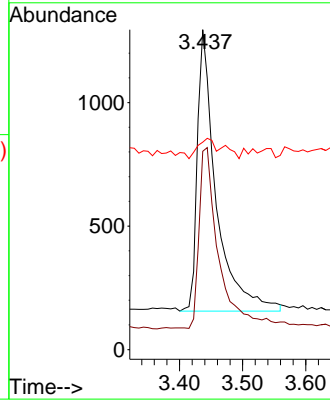
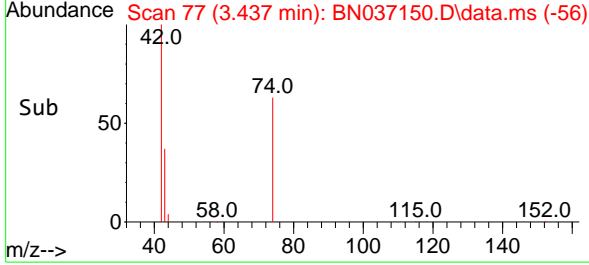


#3
 n-Nitrosodimethylamine
 Concen: 0.390 ng
 RT: 3.437 min Scan# 77
 Delta R.T. -0.000 min
 Lab File: BN037150.D
 Acq: 03 Jun 2025 15:53

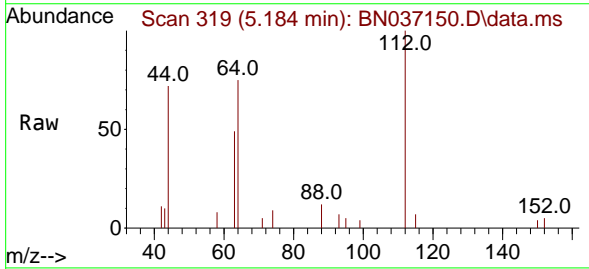
Instrument :
 BNA_N
 ClientSampleId :
 ICVBN060325



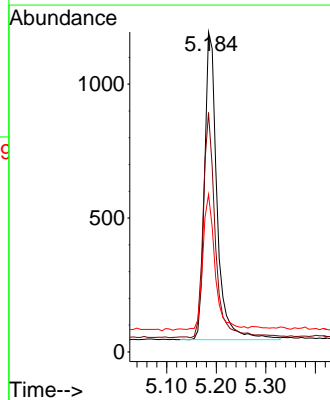
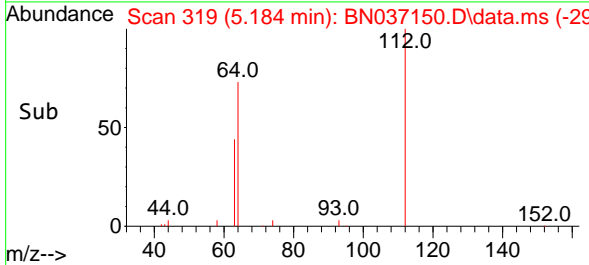
Tgt Ion: 42 Resp: 2355
 Ion Ratio Lower Upper
 42 100
 74 66.5 53.0 79.4
 44 6.9 5.9 8.9

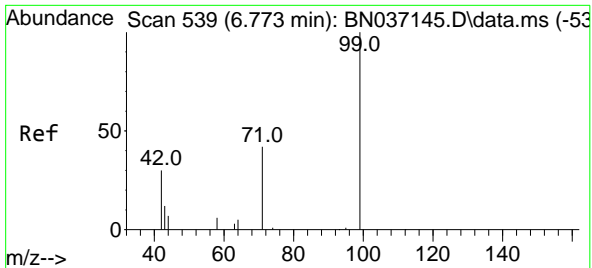


#4
 2-Fluorophenol
 Concen: 0.361 ng
 RT: 5.184 min Scan# 319
 Delta R.T. -0.000 min
 Lab File: BN037150.D
 Acq: 03 Jun 2025 15:53



Tgt Ion: 112 Resp: 2014
 Ion Ratio Lower Upper
 112 100
 64 72.0 56.3 84.5
 63 42.3 36.2 54.4

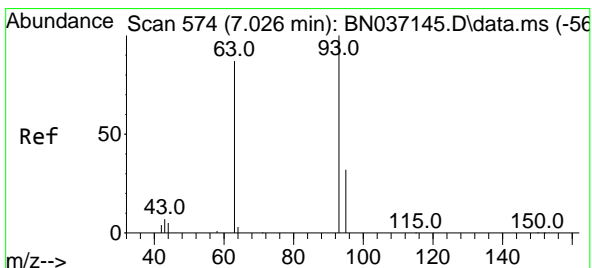
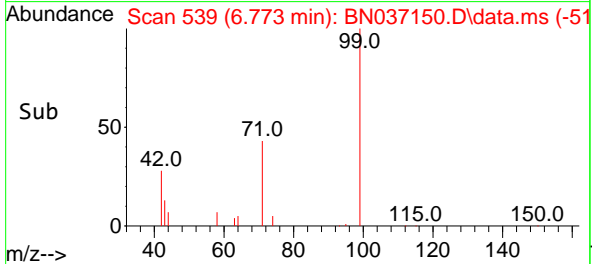
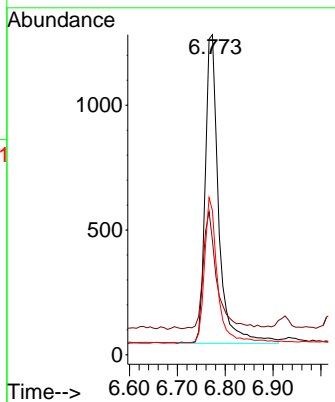
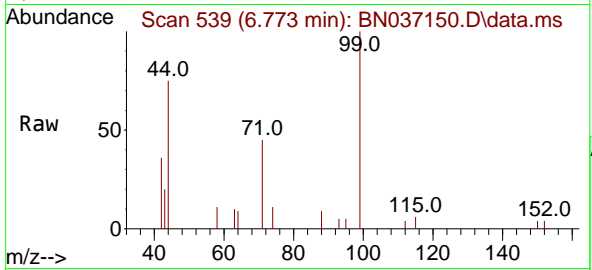




#5
 Phenol-d6
 Concen: 0.358 ng
 RT: 6.773 min Scan# 511
 Delta R.T. -0.000 min
 Lab File: BN037150.D
 Acq: 03 Jun 2025 15:53

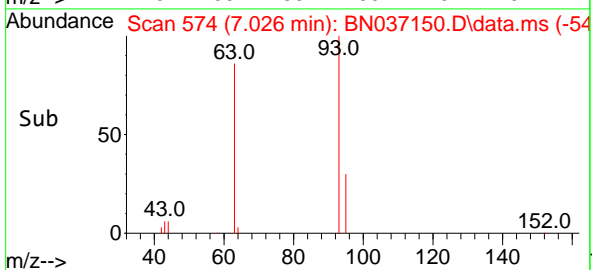
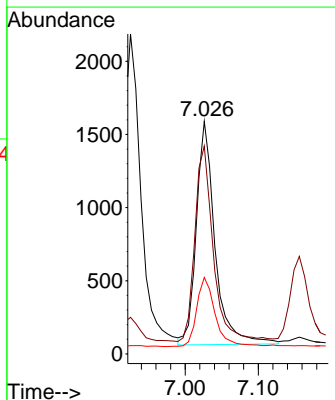
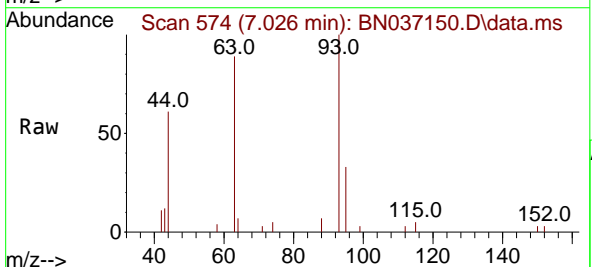
Instrument :
 BNA_N
 ClientSampleId :
 ICVBN060325

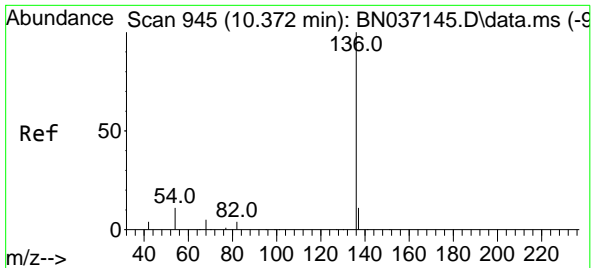
Tgt Ion	Resp	Lower	Upper
99	2419		
99	100		
42	38.5	31.3	46.9
71	45.7	38.2	57.2



#6
 bis(2-Chloroethyl)ether
 Concen: 0.421 ng
 RT: 7.026 min Scan# 574
 Delta R.T. -0.000 min
 Lab File: BN037150.D
 Acq: 03 Jun 2025 15:53

Tgt Ion	Resp	Lower	Upper
93	2715		
93	100		
63	85.3	68.6	103.0
95	30.5	24.3	36.5

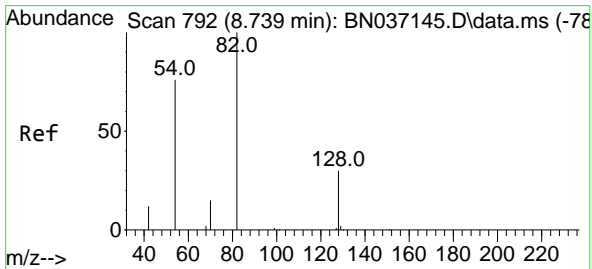
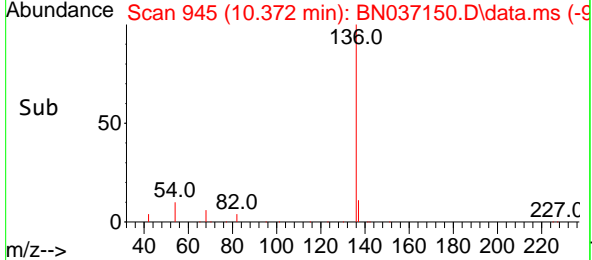
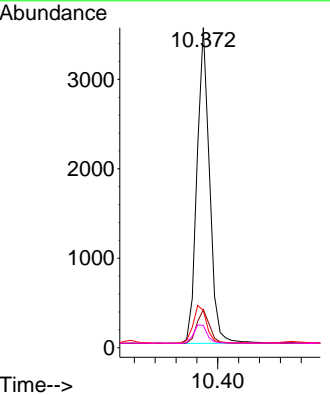
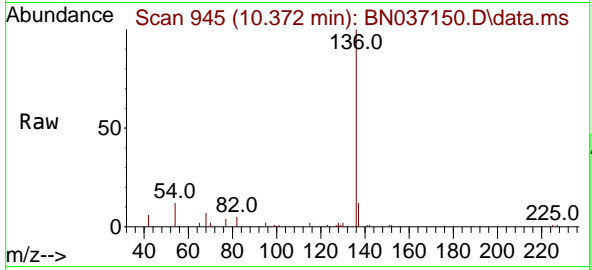




#7
 Naphthalene-d8
 Concen: 0.400 ng
 RT: 10.372 min Scan# 945
 Delta R.T. -0.000 min
 Lab File: BN037150.D
 Acq: 03 Jun 2025 15:53

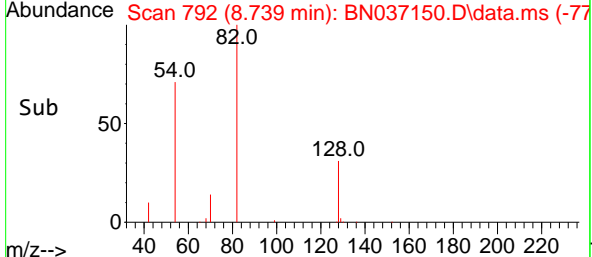
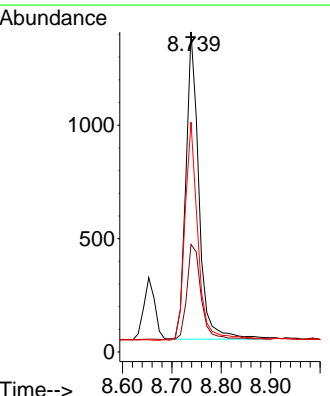
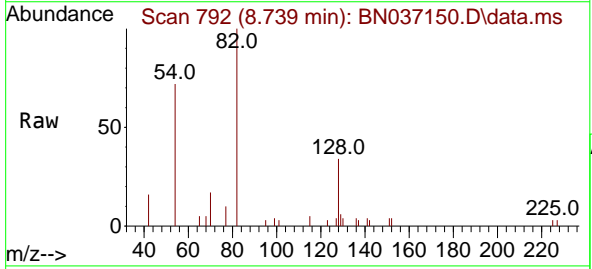
Instrument : BNA_N
 ClientSampleId : ICVBN060325

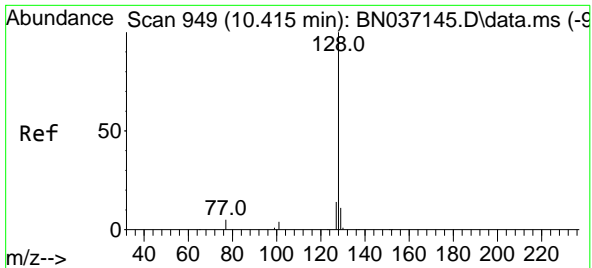
Tgt Ion	Resp	Lower	Upper
136	100		
137	11.9	9.7	14.5
54	11.7	9.7	14.5
68	7.0	5.4	8.2



#8
 Nitrobenzene-d5
 Concen: 0.398 ng
 RT: 8.739 min Scan# 792
 Delta R.T. -0.000 min
 Lab File: BN037150.D
 Acq: 03 Jun 2025 15:53

Tgt Ion	Resp	Lower	Upper
82	100		
128	33.6	26.9	40.3
54	71.8	61.4	92.2



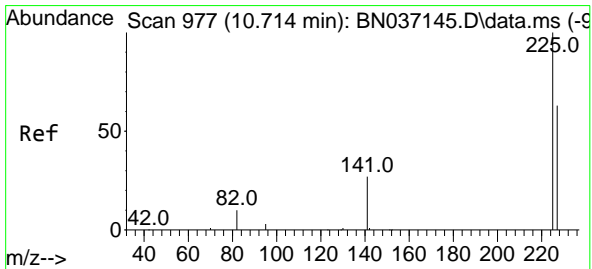
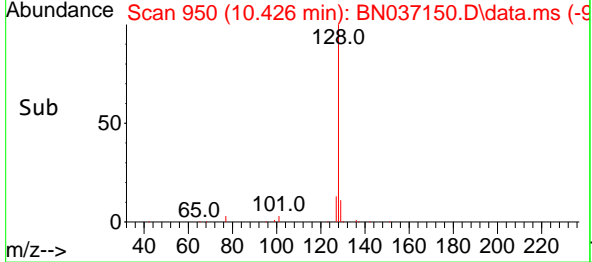
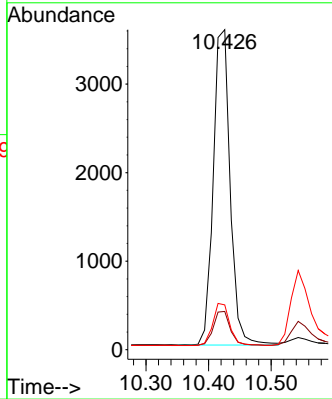
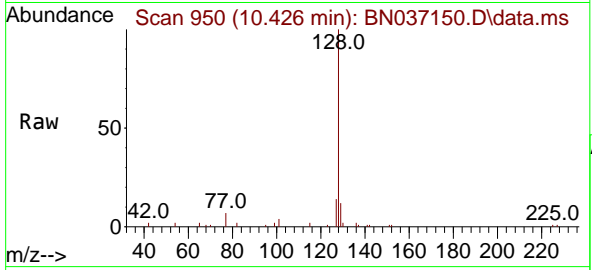


#9
 Naphthalene
 Concen: 0.394 ng
 RT: 10.426 min Scan# 911
 Delta R.T. 0.011 min
 Lab File: BN037150.D
 Acq: 03 Jun 2025 15:53

Instrument : BNA_N
 ClientSampleId : ICVBN060325

Tgt Ion:128 Resp: 6699

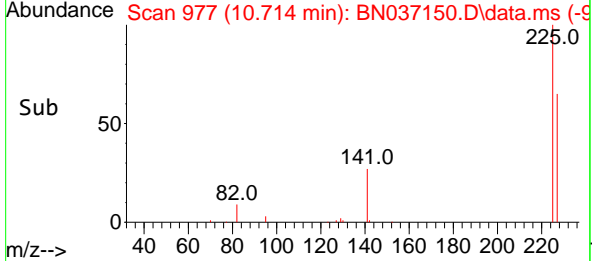
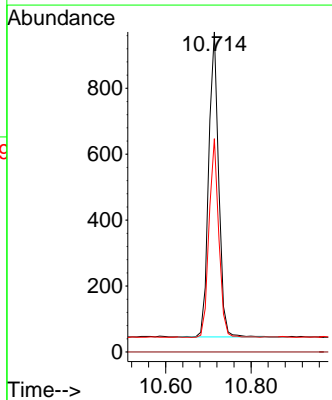
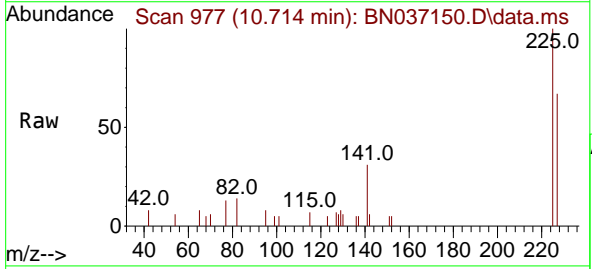
Ion	Ratio	Lower	Upper
128	100		
129	12.0	9.8	14.8
127	14.0	12.3	18.5

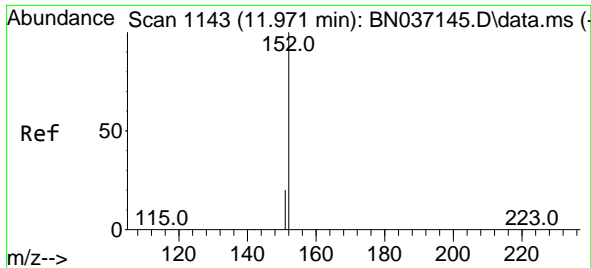


#10
 Hexachlorobutadiene
 Concen: 0.402 ng
 RT: 10.714 min Scan# 977
 Delta R.T. -0.000 min
 Lab File: BN037150.D
 Acq: 03 Jun 2025 15:53

Tgt Ion:225 Resp: 1489

Ion	Ratio	Lower	Upper
225	100		
223	0.0	0.0	0.0
227	63.7	50.3	75.5

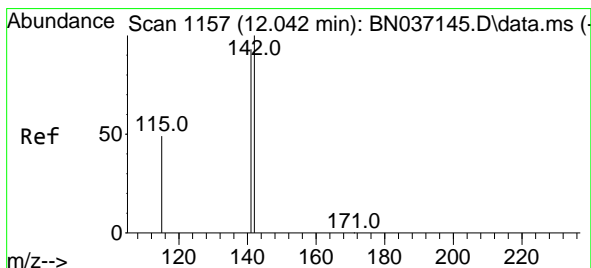
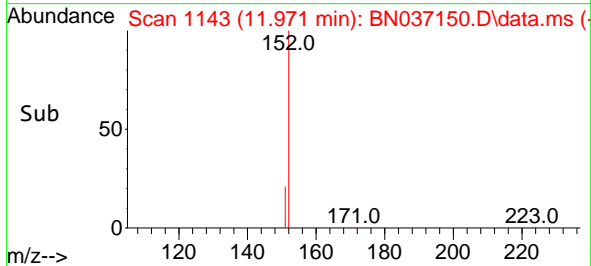
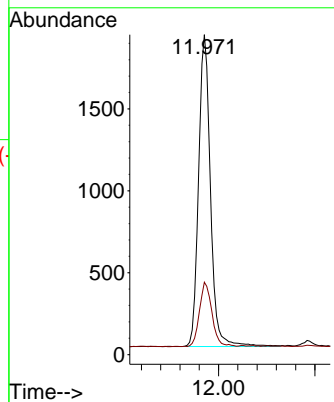
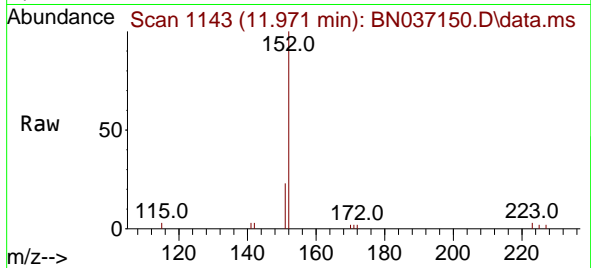




#11
 2-Methylnaphthalene-d10
 Concen: 0.398 ng
 RT: 11.971 min Scan# 1143
 Delta R.T. -0.000 min
 Lab File: BN037150.D
 Acq: 03 Jun 2025 15:53

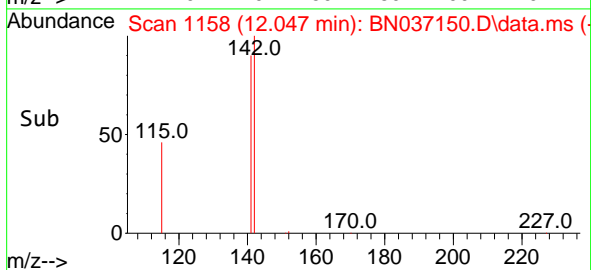
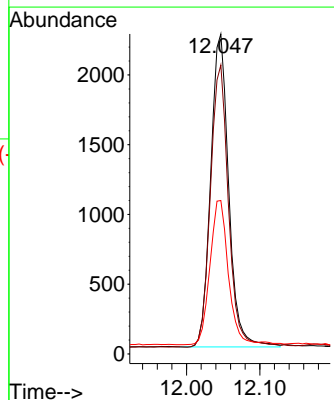
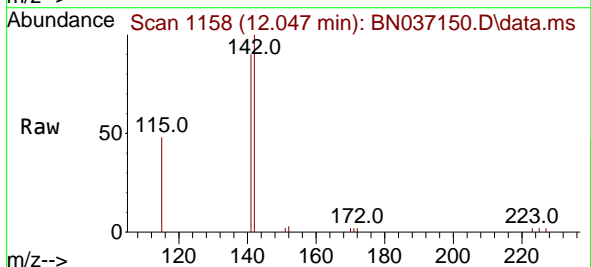
Instrument : BNA_N
 ClientSampleId : ICVBN060325

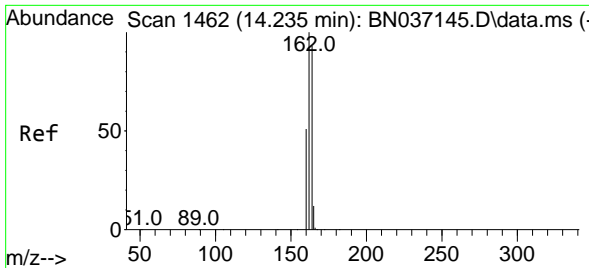
Tgt Ion:152 Resp: 3266
 Ion Ratio Lower Upper
 152 100
 151 21.7 17.1 25.7



#12
 2-Methylnaphthalene
 Concen: 0.352 ng
 RT: 12.047 min Scan# 1158
 Delta R.T. 0.005 min
 Lab File: BN037150.D
 Acq: 03 Jun 2025 15:53

Tgt Ion:142 Resp: 3839
 Ion Ratio Lower Upper
 142 100
 141 90.3 74.6 111.8
 115 48.0 41.0 61.4



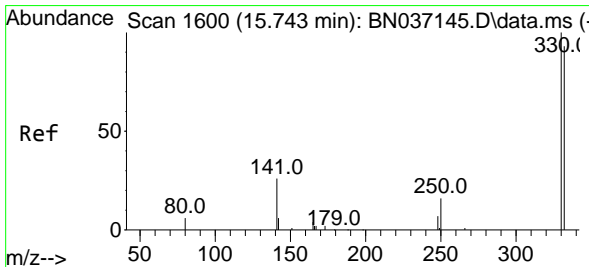
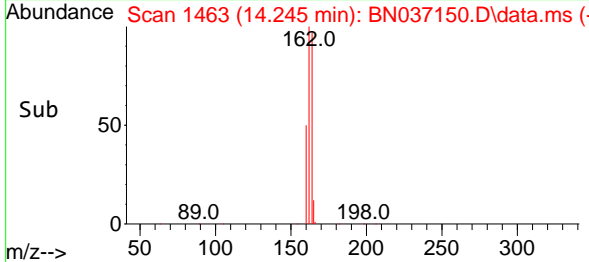
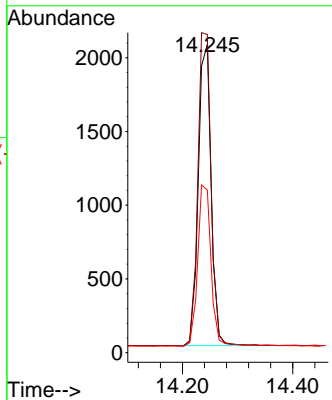
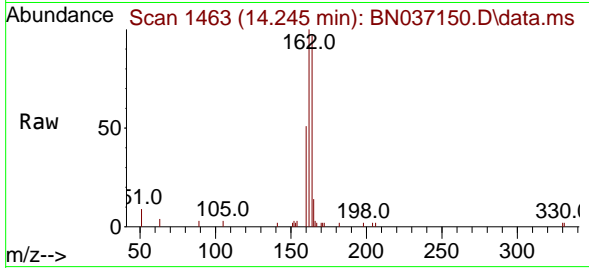


#13
 Acenaphthene-d10
 Concen: 0.400 ng
 RT: 14.245 min Scan# 14
 Delta R.T. 0.011 min
 Lab File: BN037150.D
 Acq: 03 Jun 2025 15:53

Instrument :
 BNA_N
 ClientSampleId :
 ICVBN060325

Tgt Ion:164 Resp: 3320

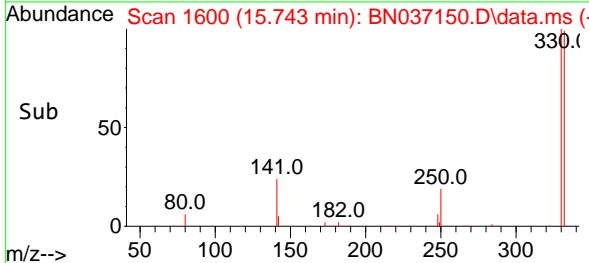
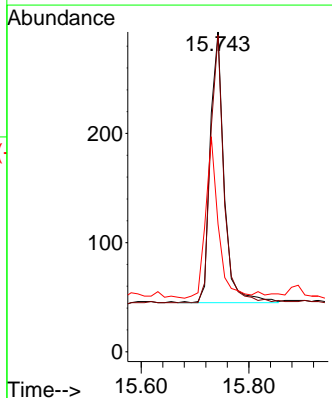
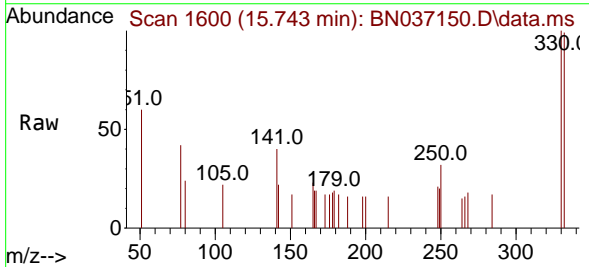
Ion	Ratio	Lower	Upper
164	100		
162	103.3	85.5	128.3
160	52.8	44.6	67.0

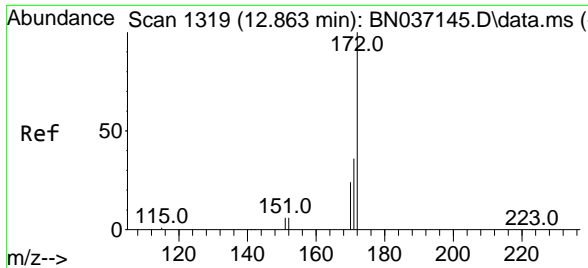


#14
 2,4,6-Tribromophenol
 Concen: 0.329 ng
 RT: 15.743 min Scan# 1600
 Delta R.T. -0.000 min
 Lab File: BN037150.D
 Acq: 03 Jun 2025 15:53

Tgt Ion:330 Resp: 440

Ion	Ratio	Lower	Upper
330	100		
332	96.1	77.1	115.7
141	55.9	46.4	69.6



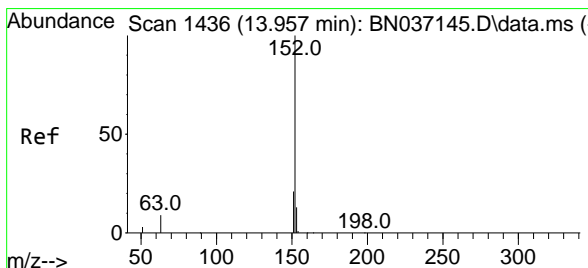
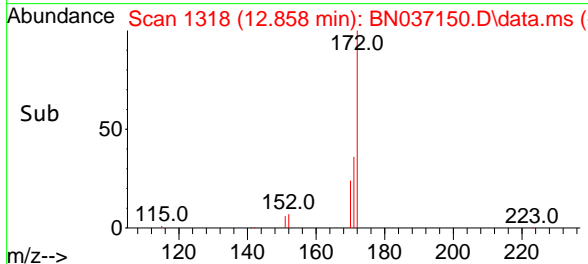
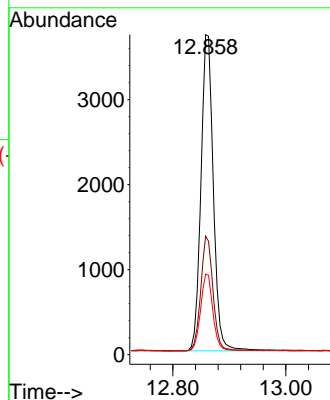
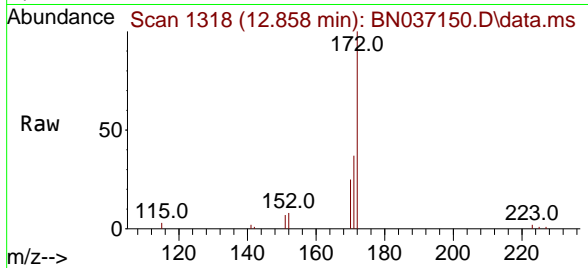


#15
 2-Fluorobiphenyl
 Concen: 0.402 ng
 RT: 12.858 min Scan# 11
 Delta R.T. -0.005 min
 Lab File: BN037150.D
 Acq: 03 Jun 2025 15:53

Instrument :
 BNA_N
 ClientSampleId :
 ICVBN060325

Tgt Ion:172 Resp: 5696

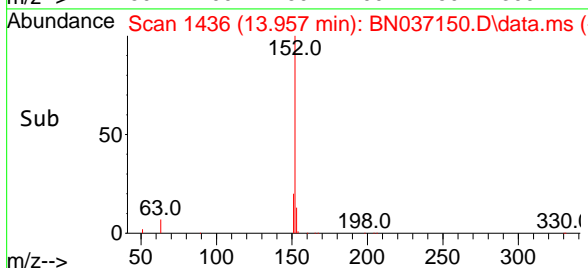
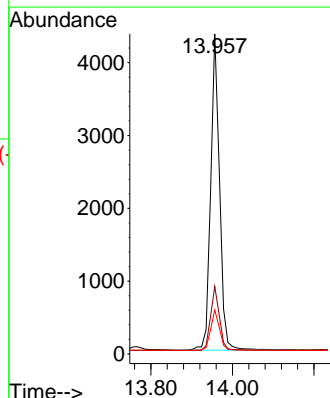
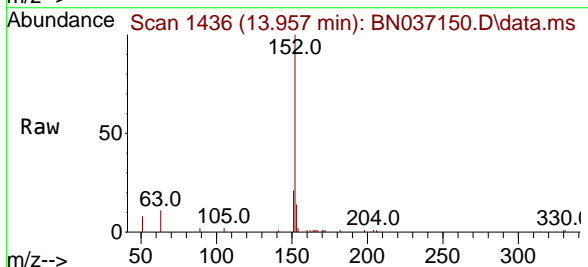
Ion	Ratio	Lower	Upper
172	100		
171	37.1	29.6	44.4
170	25.1	20.3	30.5

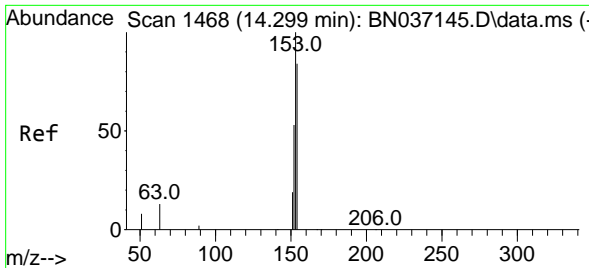


#16
 Acenaphthylene
 Concen: 0.404 ng
 RT: 13.957 min Scan# 1436
 Delta R.T. -0.000 min
 Lab File: BN037150.D
 Acq: 03 Jun 2025 15:53

Tgt Ion:152 Resp: 6575

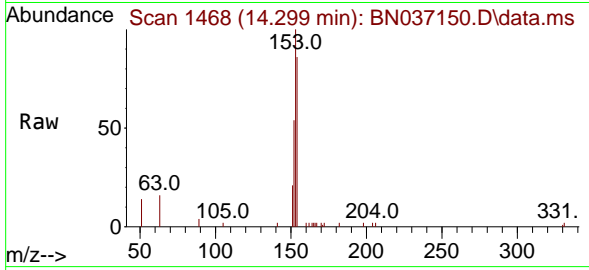
Ion	Ratio	Lower	Upper
152	100		
151	20.3	16.3	24.5
153	13.1	10.6	15.8





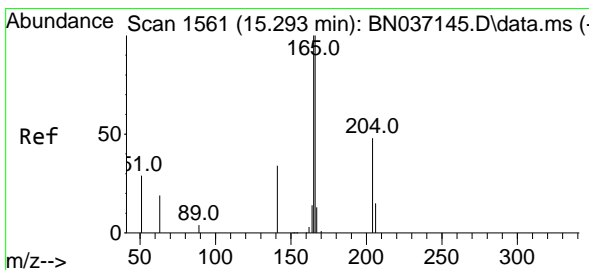
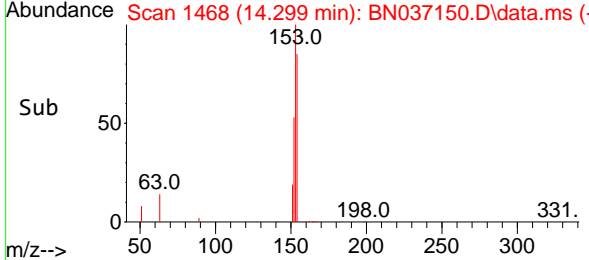
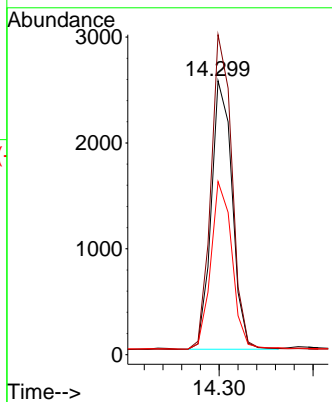
#17
 Acenaphthene
 Concen: 0.373 ng
 RT: 14.299 min Scan# 14
 Delta R.T. -0.000 min
 Lab File: BN037150.D
 Acq: 03 Jun 2025 15:53

Instrument : BNA_N
 ClientSampleId : ICVBN060325

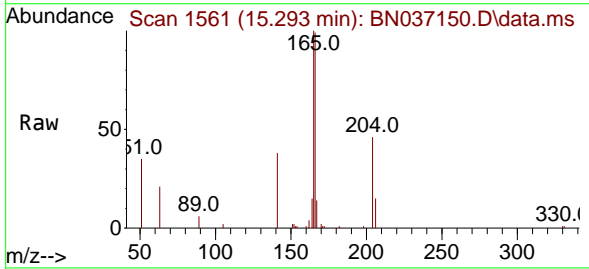


Tgt Ion:154 Resp: 3940

Ion	Ratio	Lower	Upper
154	100		
153	118.0	93.8	140.8
152	63.2	50.5	75.7

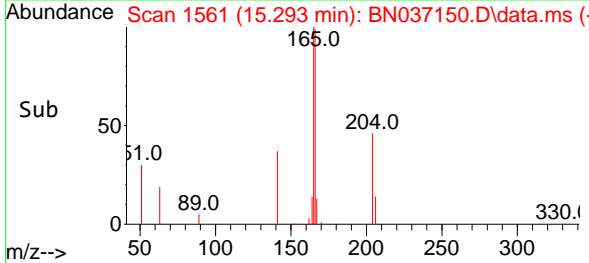
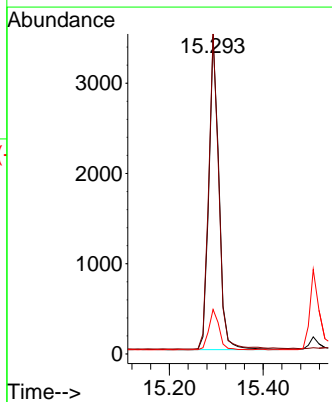


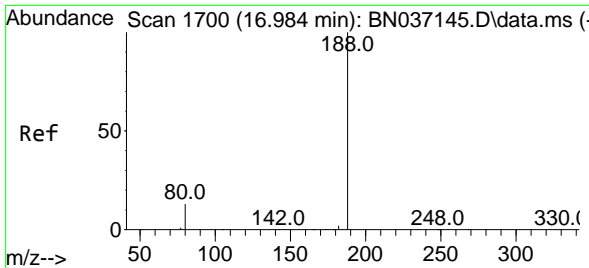
#18
 Fluorene
 Concen: 0.373 ng
 RT: 15.293 min Scan# 1561
 Delta R.T. -0.000 min
 Lab File: BN037150.D
 Acq: 03 Jun 2025 15:53



Tgt Ion:166 Resp: 5182

Ion	Ratio	Lower	Upper
166	100		
165	100.6	81.1	121.7
167	13.2	10.8	16.2

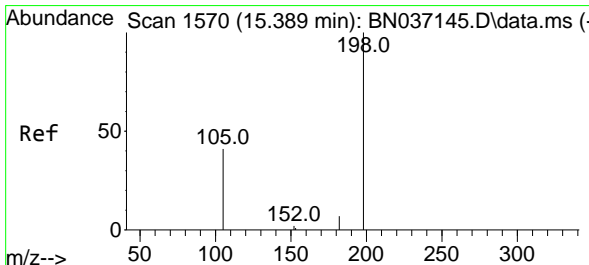
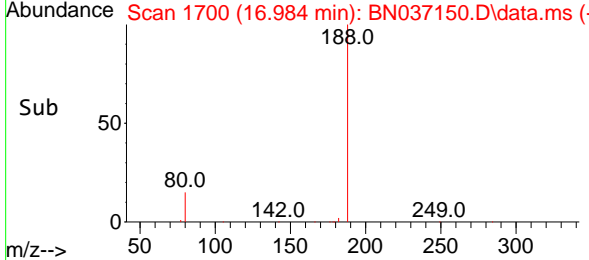
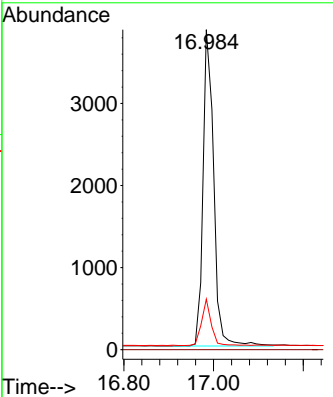
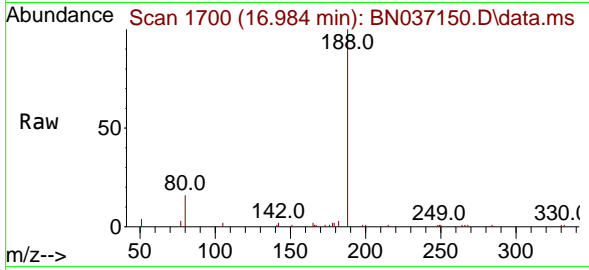




#19
 Phenanthrene-d10
 Concen: 0.400 ng
 RT: 16.984 min Scan# 11
 Delta R.T. -0.000 min
 Lab File: BN037150.D
 Acq: 03 Jun 2025 15:53

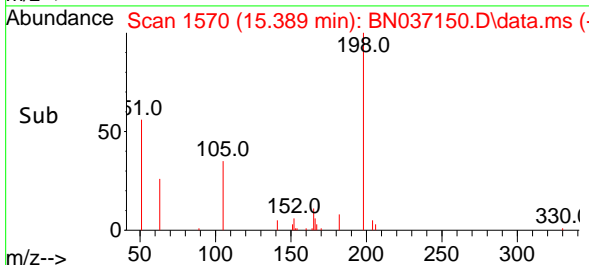
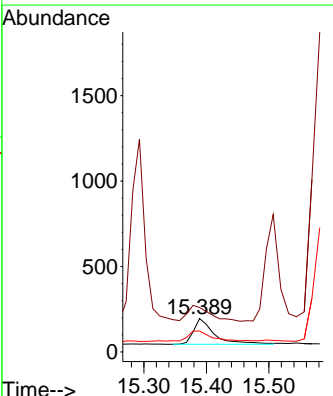
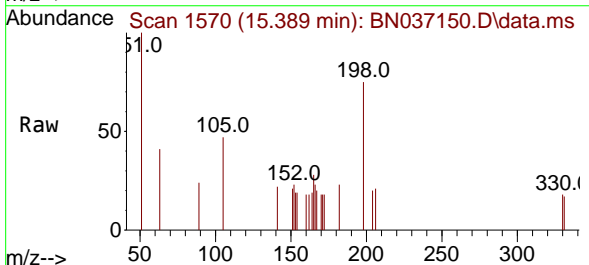
Instrument : BNA_N
 ClientSampleId : ICVBN060325

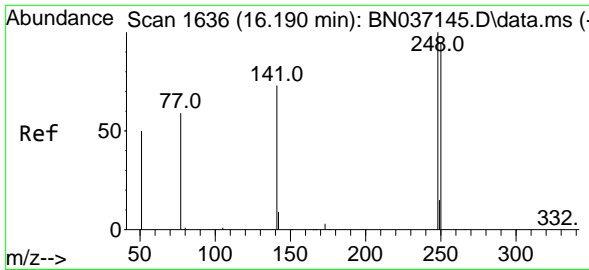
Tgt Ion	Resp	Lower	Upper
188	100		
94	0.0	0.0	0.0
80	15.8	11.3	16.9



#20
 4,6-Dinitro-2-methylphenol
 Concen: 0.462 ng
 RT: 15.389 min Scan# 1570
 Delta R.T. 0.000 min
 Lab File: BN037150.D
 Acq: 03 Jun 2025 15:53

Tgt Ion	Resp	Lower	Upper
198	100		
51	132.7	125.2	187.8
105	62.8	57.1	85.7



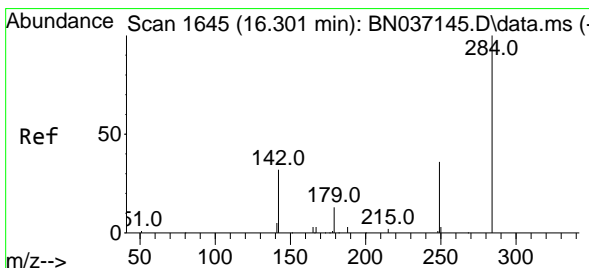
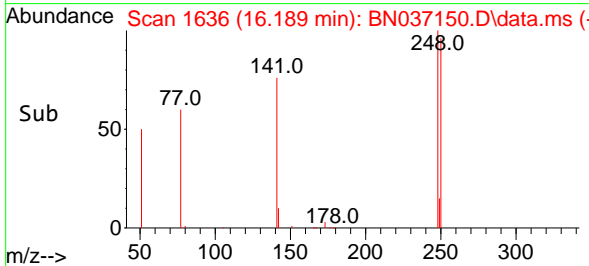
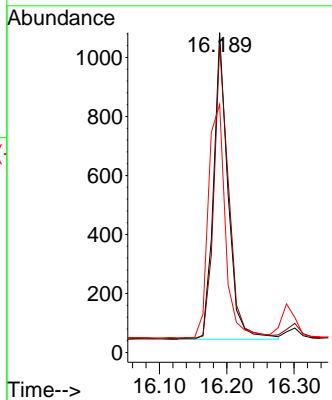
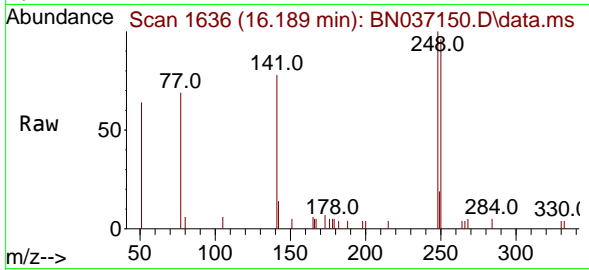


#21
 4-Bromophenyl-phenylether
 Concen: 0.372 ng
 RT: 16.189 min Scan# 1636
 Delta R.T. -0.000 min
 Lab File: BN037150.D
 Acq: 03 Jun 2025 15:53

Instrument :
 BNA_N
 ClientSampleId :
 ICVBN060325

Tgt Ion: 248 Resp: 1544

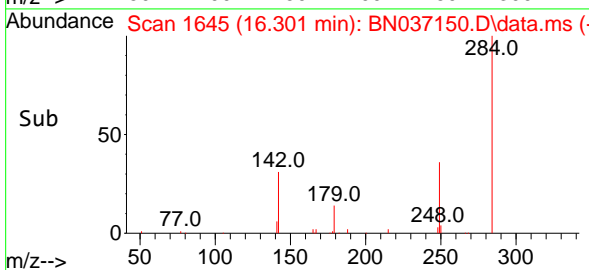
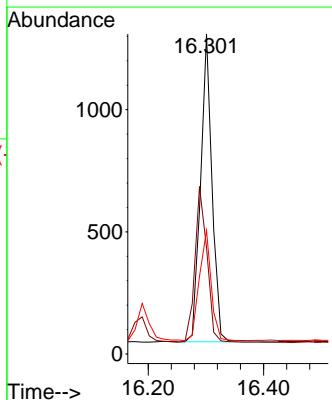
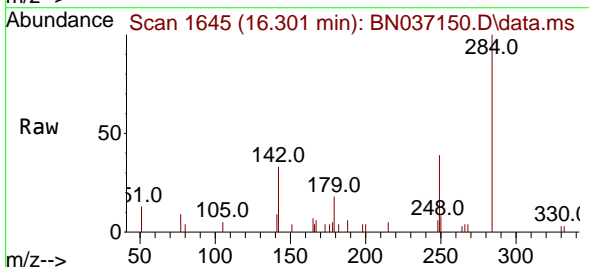
Ion	Ratio	Lower	Upper
248	100		
250	96.0	76.1	114.1
141	77.6	60.1	90.1

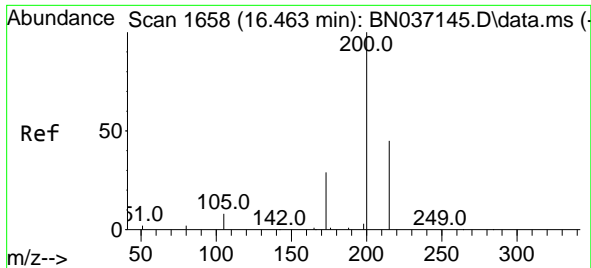


#22
 Hexachlorobenzene
 Concen: 0.389 ng
 RT: 16.301 min Scan# 1645
 Delta R.T. -0.000 min
 Lab File: BN037150.D
 Acq: 03 Jun 2025 15:53

Tgt Ion: 284 Resp: 1743

Ion	Ratio	Lower	Upper
284	100		
142	53.8	44.0	66.0
249	37.4	29.7	44.5

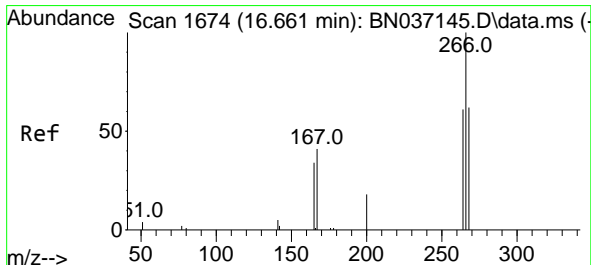
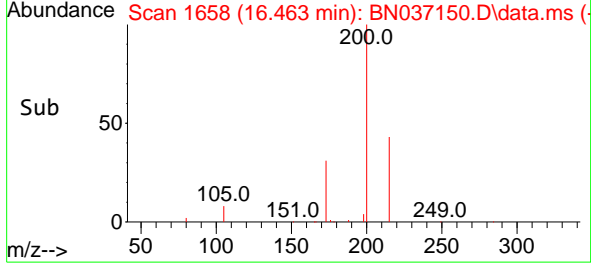
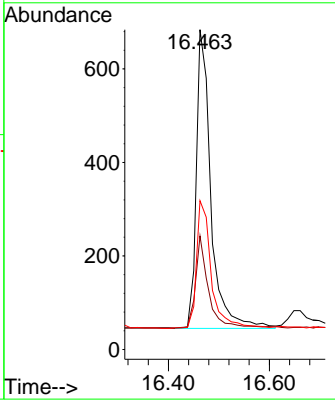
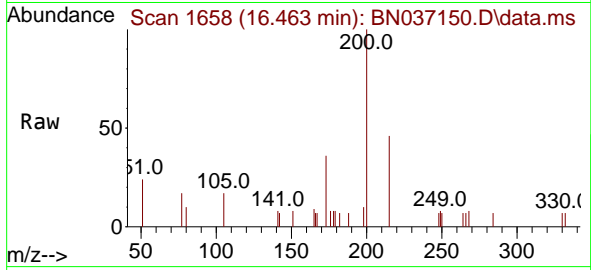




#23
 Atrazine
 Concen: 0.374 ng
 RT: 16.463 min Scan# 1658
 Delta R.T. -0.000 min
 Lab File: BN037150.D
 Acq: 03 Jun 2025 15:53

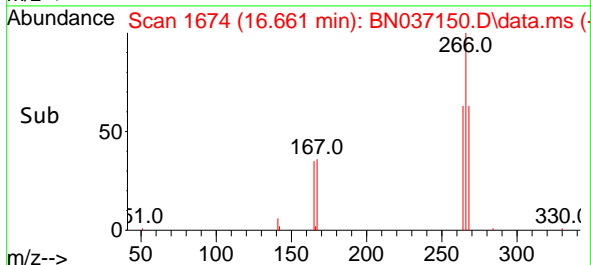
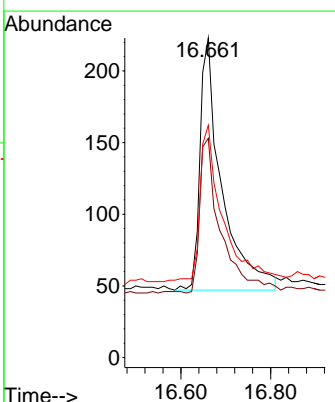
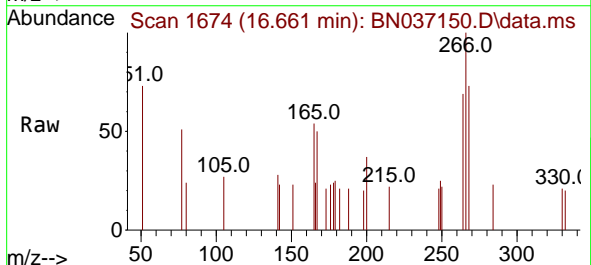
Instrument : BNA_N
 ClientSampleId : ICVBN060325

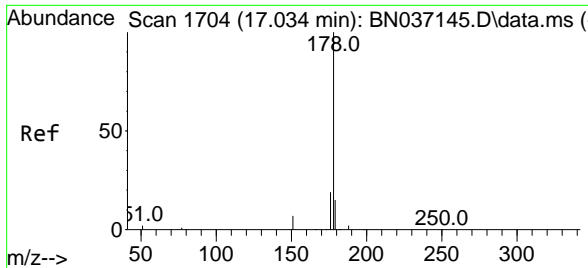
Tgt Ion	Resp	Lower	Upper
200	1282	100	100
173	35.5	28.1	42.1
215	46.5	39.3	58.9



#24
 Pentachlorophenol
 Concen: 0.436 ng
 RT: 16.661 min Scan# 1674
 Delta R.T. 0.000 min
 Lab File: BN037150.D
 Acq: 03 Jun 2025 15:53

Tgt Ion	Resp	Lower	Upper
266	591	100	100
264	60.2	49.3	73.9
268	64.0	49.0	73.4

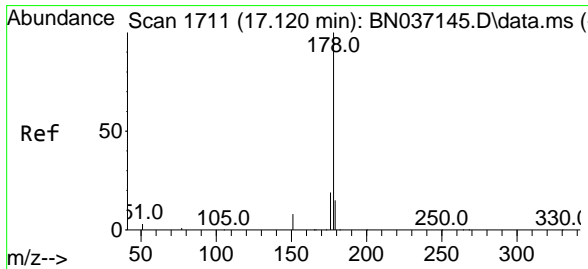
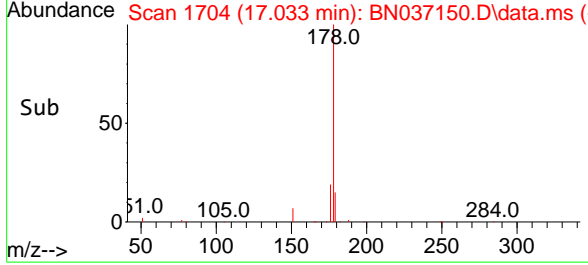
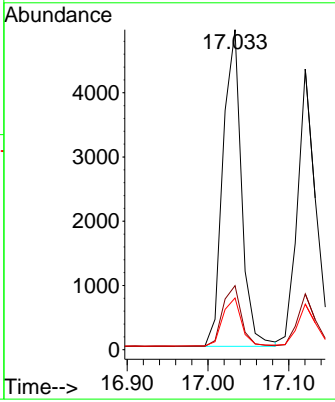
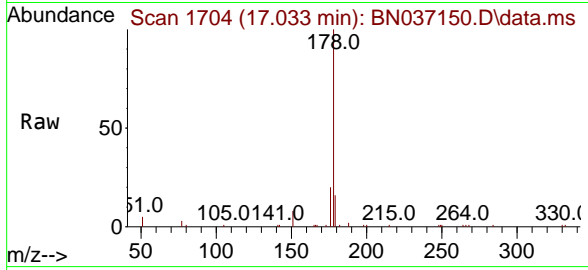




#25
 Phenanthrene
 Concen: 0.384 ng
 RT: 17.033 min Scan# 1704
 Delta R.T. -0.000 min
 Lab File: BN037150.D
 Acq: 03 Jun 2025 15:53

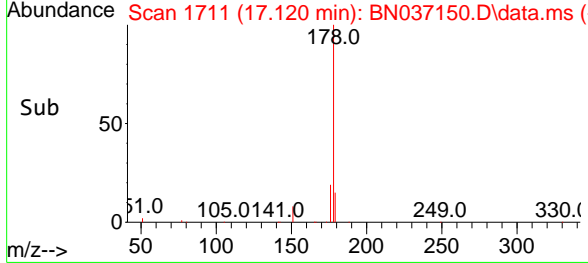
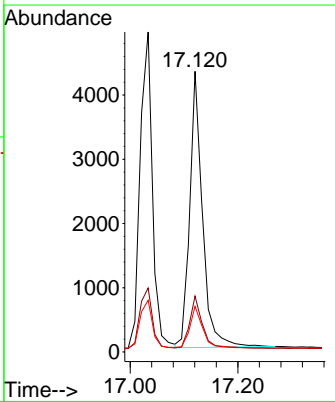
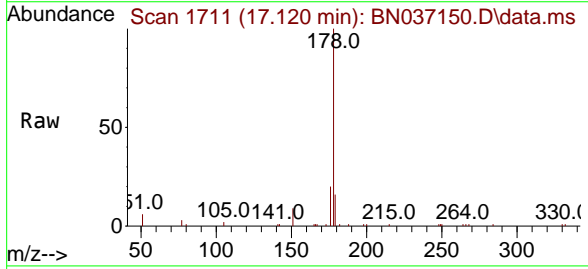
Instrument : BNA_N
 ClientSampleId : ICVBN060325

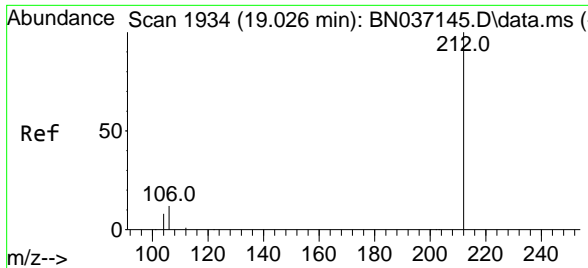
Tgt Ion	Resp	Lower	Upper
178	100		
176	19.5	15.7	23.5
179	15.7	12.3	18.5



#26
 Anthracene
 Concen: 0.380 ng
 RT: 17.120 min Scan# 1711
 Delta R.T. -0.000 min
 Lab File: BN037150.D
 Acq: 03 Jun 2025 15:53

Tgt Ion	Resp	Lower	Upper
178	100		
176	19.0	15.2	22.8
179	15.5	12.9	19.3



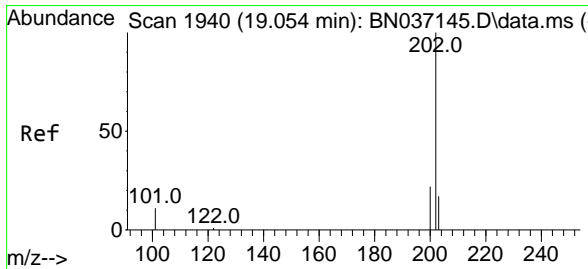
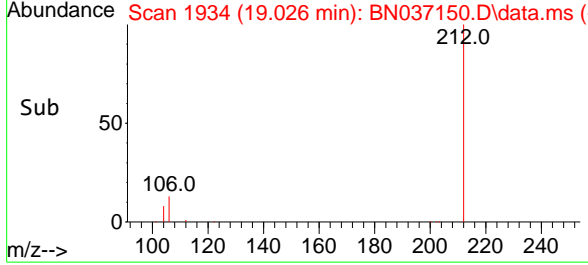
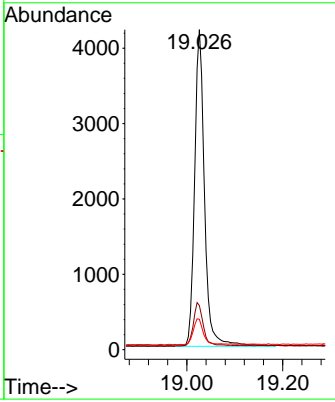
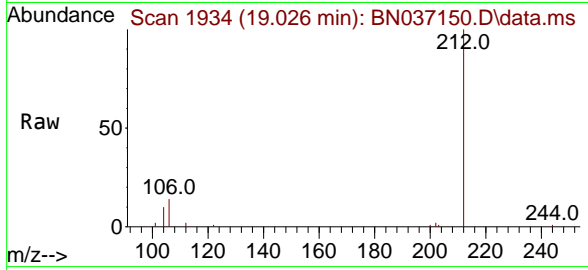


#27
 Fluoranthene-d10
 Concen: 0.375 ng
 RT: 19.026 min Scan# 1934
 Delta R.T. -0.000 min
 Lab File: BN037150.D
 Acq: 03 Jun 2025 15:53

Instrument : BNA_N
 ClientSampleId : ICVBN060325

Tgt Ion:212 Resp: 6037

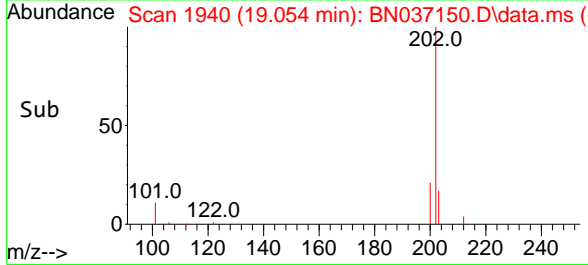
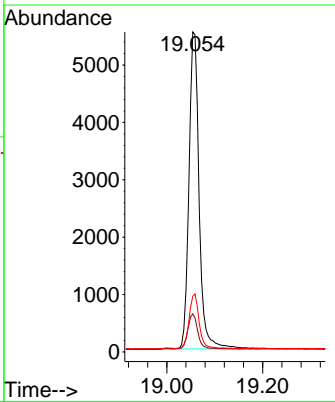
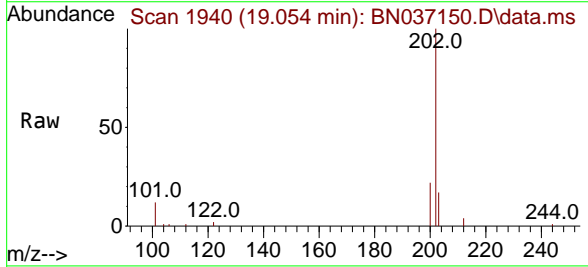
Ion	Ratio	Lower	Upper
212	100		
106	13.7	10.6	15.8
104	8.2	6.6	9.8

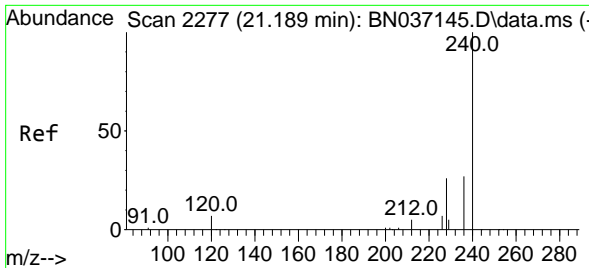


#28
 Fluoranthene
 Concen: 0.361 ng
 RT: 19.054 min Scan# 1940
 Delta R.T. -0.000 min
 Lab File: BN037150.D
 Acq: 03 Jun 2025 15:53

Tgt Ion:202 Resp: 8186

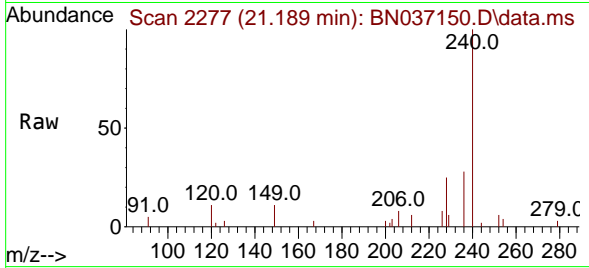
Ion	Ratio	Lower	Upper
202	100		
101	11.4	8.7	13.1
203	16.7	13.5	20.3



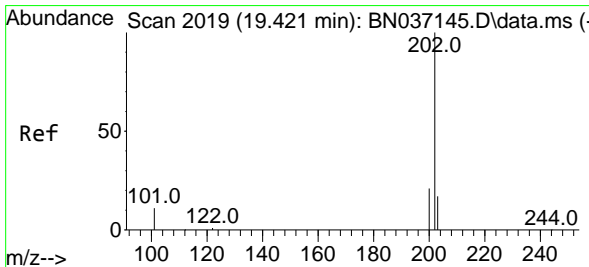
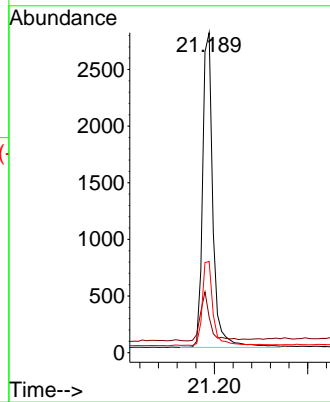
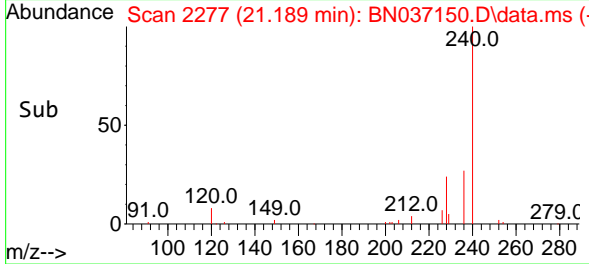


#29
 Chrysene-d12
 Concen: 0.400 ng
 RT: 21.189 min Scan# 21
 Delta R.T. -0.000 min
 Lab File: BN037150.D
 Acq: 03 Jun 2025 15:53

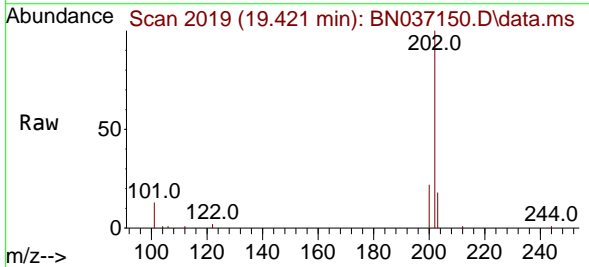
Instrument :
 BNA_N
 ClientSampleId :
 ICVBN060325



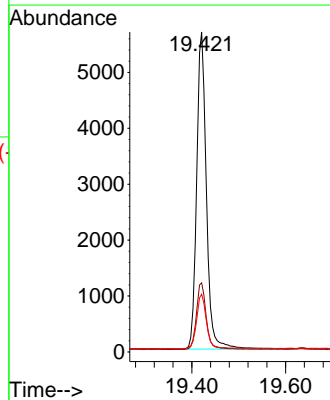
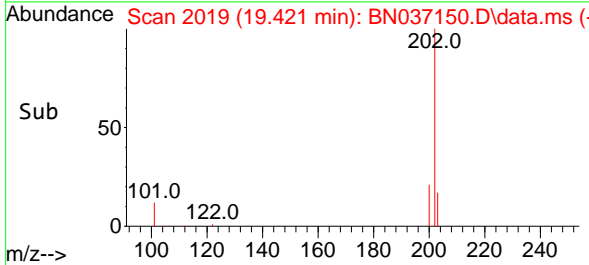
Tgt Ion:240 Resp: 4292
 Ion Ratio Lower Upper
 240 100
 120 11.1 9.0 13.4
 236 28.5 23.0 34.4

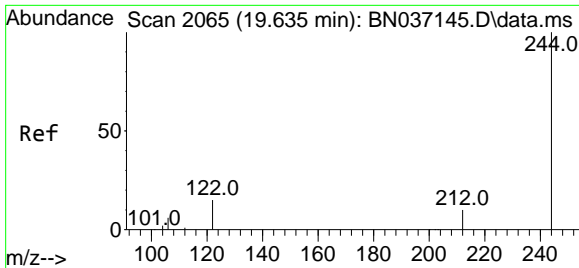


#30
 Pyrene
 Concen: 0.389 ng
 RT: 19.421 min Scan# 2019
 Delta R.T. -0.000 min
 Lab File: BN037150.D
 Acq: 03 Jun 2025 15:53



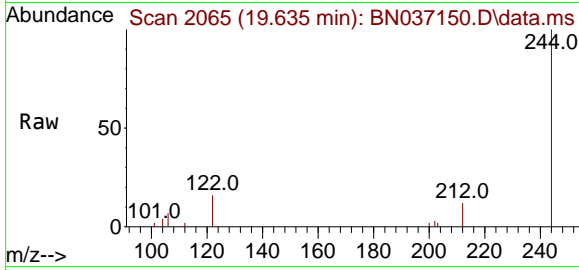
Tgt Ion:202 Resp: 8148
 Ion Ratio Lower Upper
 202 100
 200 21.0 17.0 25.6
 203 17.3 14.2 21.4





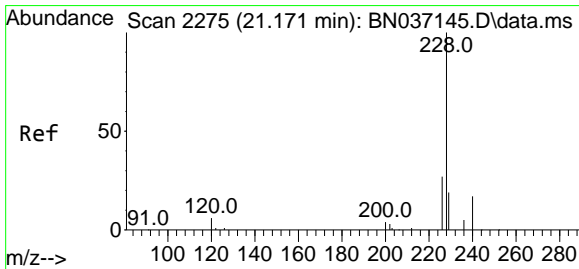
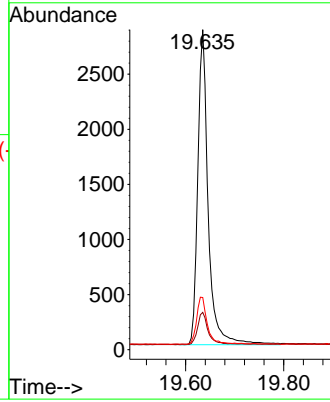
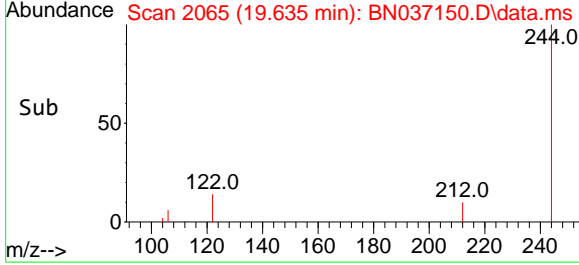
#31
 Terphenyl-d14
 Concen: 0.415 ng
 RT: 19.635 min Scan# 2065
 Delta R.T. -0.000 min
 Lab File: BN037150.D
 Acq: 03 Jun 2025 15:53

Instrument : BNA_N
 ClientSampleId : ICVBN060325

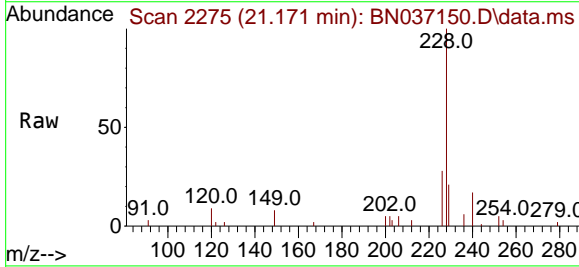


Tgt Ion: 244 Resp: 4196

Ion	Ratio	Lower	Upper
244	100		
212	11.6	10.0	15.0
122	16.3	13.2	19.8

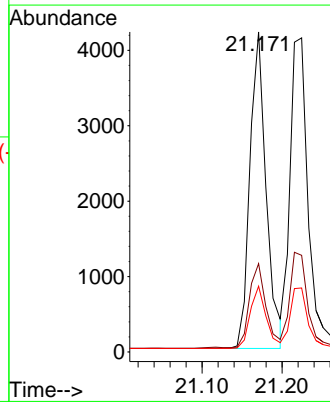
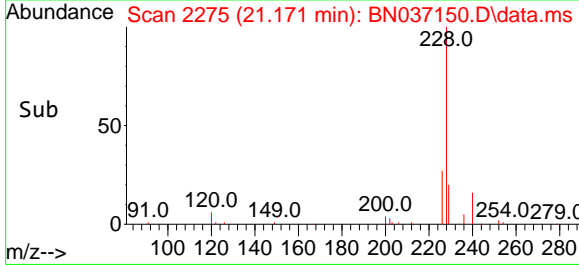


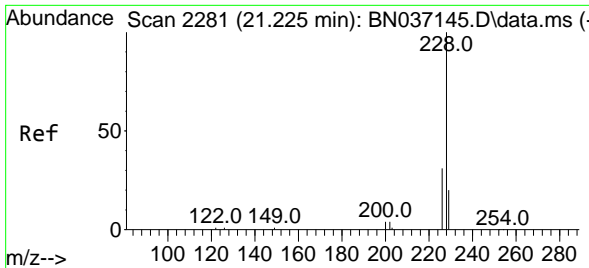
#32
 Benzo(a)anthracene
 Concen: 0.383 ng
 RT: 21.171 min Scan# 2275
 Delta R.T. -0.000 min
 Lab File: BN037150.D
 Acq: 03 Jun 2025 15:53



Tgt Ion: 228 Resp: 5949

Ion	Ratio	Lower	Upper
228	100		
226	27.6	22.6	33.8
229	20.5	16.2	24.2

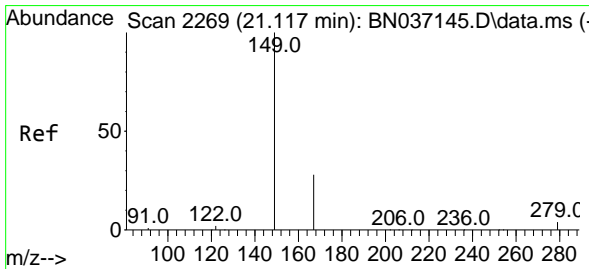
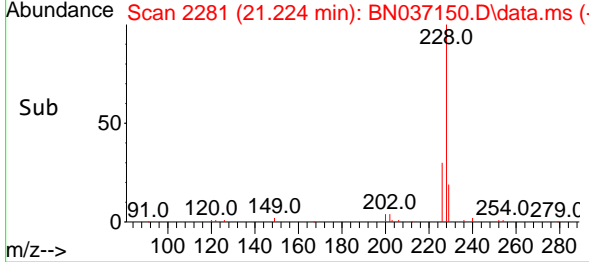
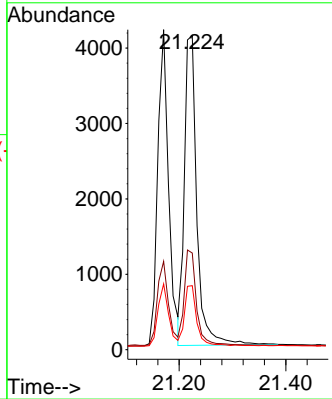
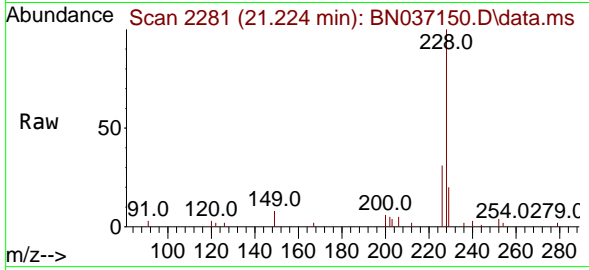




#33
 Chrysene
 Concen: 0.385 ng
 RT: 21.224 min Scan# 21
 Delta R.T. -0.000 min
 Lab File: BN037150.D
 Acq: 03 Jun 2025 15:53

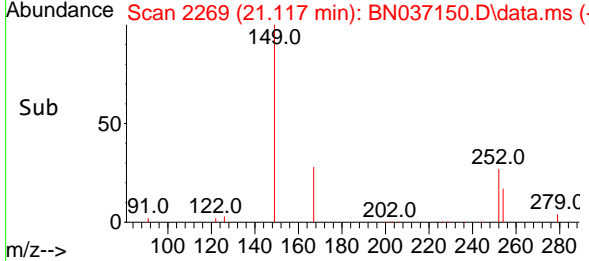
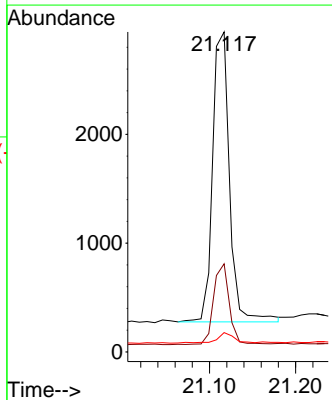
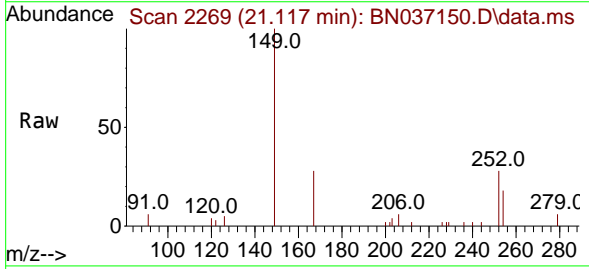
Instrument : BNA_N
 ClientSampleId : ICVBN060325

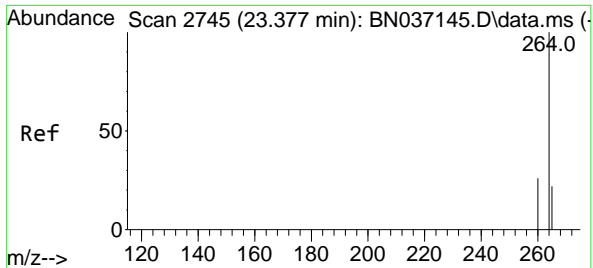
Tgt Ion	Resp	Lower	Upper
228	100		
226	30.8	25.2	37.8
229	20.4	16.8	25.2



#34
 Bis(2-ethylhexyl)phthalate
 Concen: 0.371 ng
 RT: 21.117 min Scan# 2269
 Delta R.T. -0.000 min
 Lab File: BN037150.D
 Acq: 03 Jun 2025 15:53

Tgt Ion	Resp	Lower	Upper
149	100		
167	25.6	21.0	31.4
279	3.4	2.9	4.3

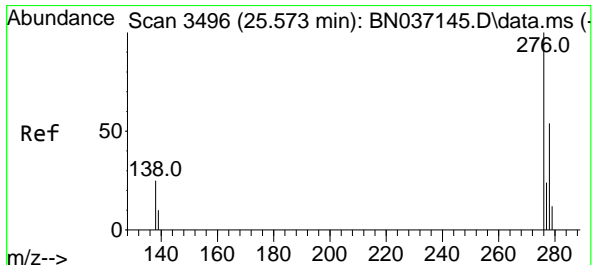
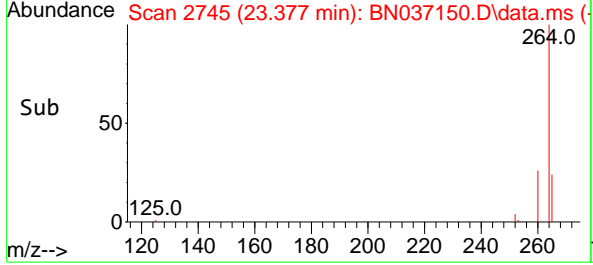
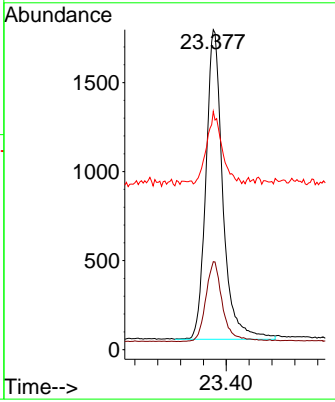
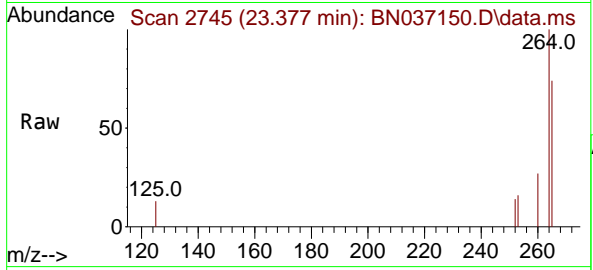




#35
 Perylene-d12
 Concen: 0.400 ng
 RT: 23.377 min Scan# 21
 Delta R.T. -0.000 min
 Lab File: BN037150.D
 Acq: 03 Jun 2025 15:53

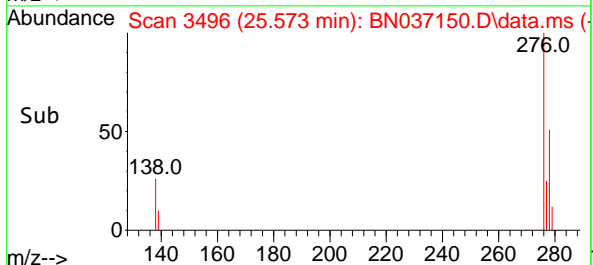
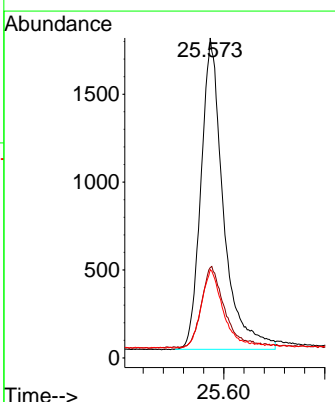
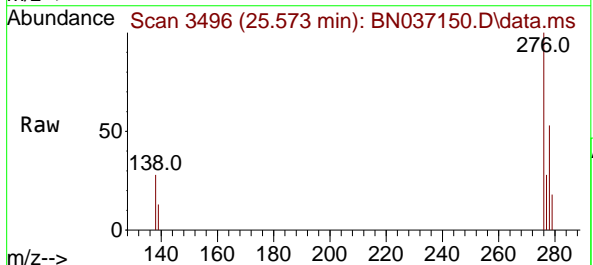
Instrument : BNA_N
 ClientSampleId : ICVBN060325

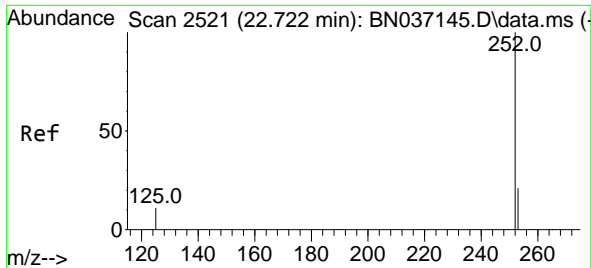
Tgt Ion	Resp	Lower	Upper
264	100		
260	27.5	22.1	33.1
265	74.5	55.8	83.8



#36
 Indeno(1,2,3-cd)pyrene
 Concen: 0.385 ng
 RT: 25.573 min Scan# 3496
 Delta R.T. -0.000 min
 Lab File: BN037150.D
 Acq: 03 Jun 2025 15:53

Tgt Ion	Resp	Lower	Upper
276	100		
138	26.2	21.0	31.6
277	24.3	19.4	29.2





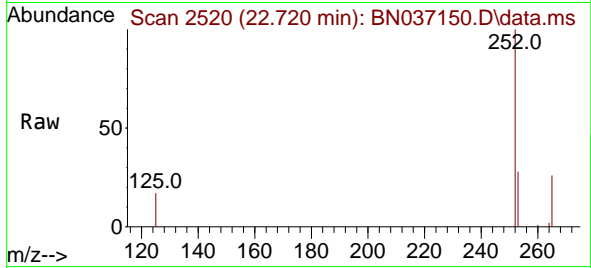
#37
 Benzo(b)fluoranthene
 Concen: 0.378 ng
 RT: 22.720 min Scan# 21
 Delta R.T. -0.003 min
 Lab File: BN037150.D
 Acq: 03 Jun 2025 15:53

Instrument :

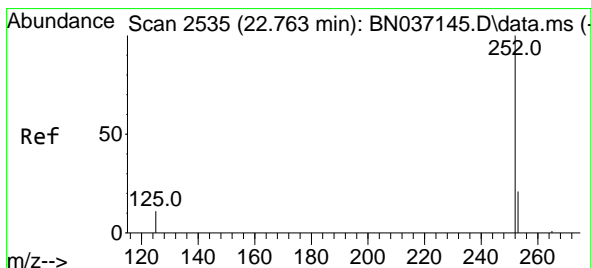
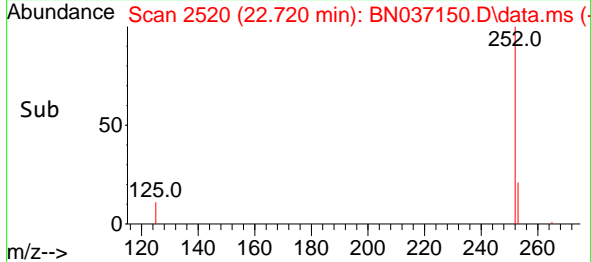
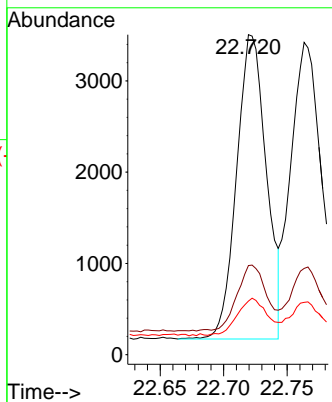
BNA_N

ClientSampleId :

ICVBN060325

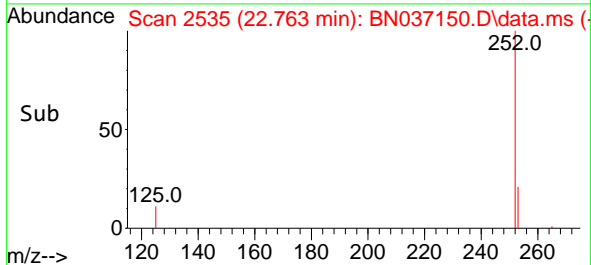
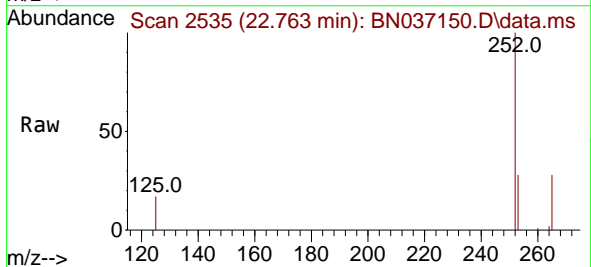
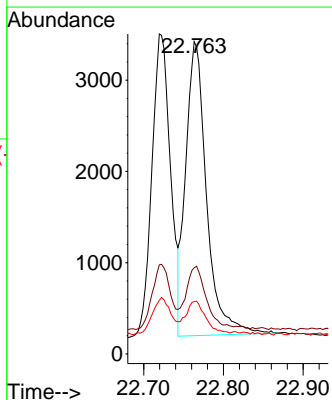


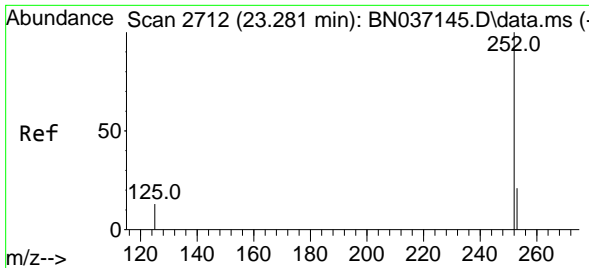
Tgt Ion:252 Resp: 5432
 Ion Ratio Lower Upper
 252 100
 253 27.8 22.3 33.5
 125 16.7 13.2 19.8



#38
 Benzo(k)fluoranthene
 Concen: 0.399 ng
 RT: 22.763 min Scan# 2535
 Delta R.T. -0.000 min
 Lab File: BN037150.D
 Acq: 03 Jun 2025 15:53

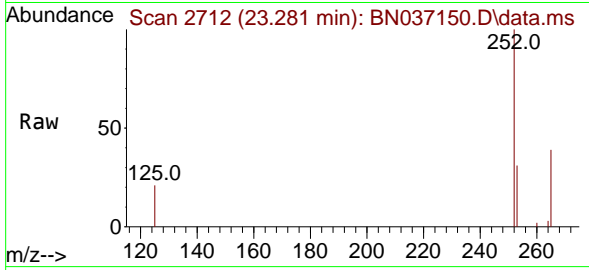
Tgt Ion:252 Resp: 5859
 Ion Ratio Lower Upper
 252 100
 253 27.6 22.2 33.4
 125 16.7 13.2 19.8





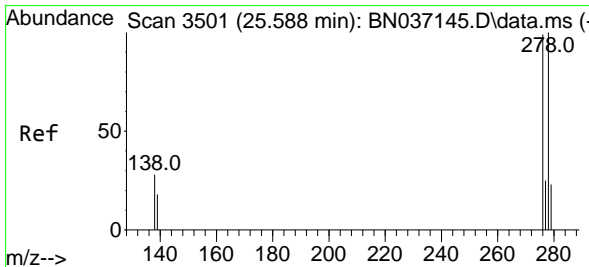
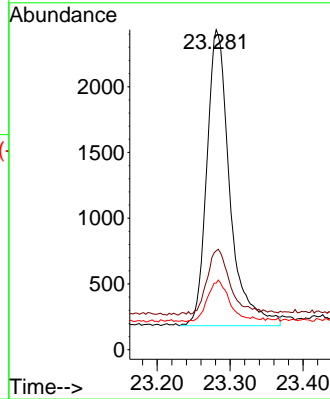
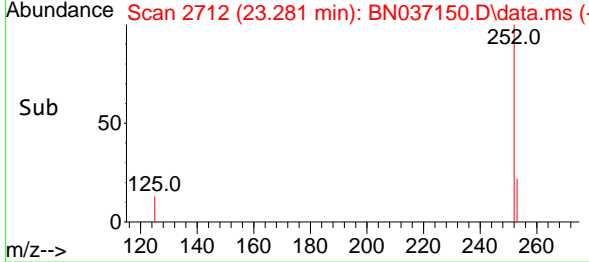
#39
 Benzo(a)pyrene
 Concen: 0.409 ng
 RT: 23.281 min Scan# 21
 Delta R.T. -0.000 min
 Lab File: BN037150.D
 Acq: 03 Jun 2025 15:53

Instrument :
 BNA_N
 ClientSampleId :
 ICVBN060325

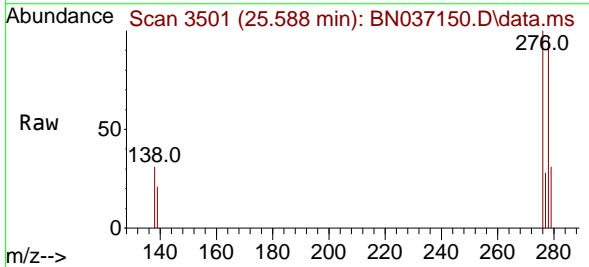


Tgt Ion:252 Resp: 4925

Ion	Ratio	Lower	Upper
252	100		
253	30.9	25.0	37.4
125	20.8	17.0	25.6

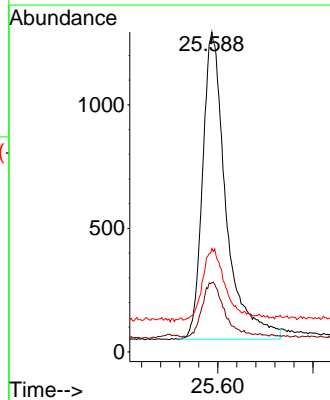
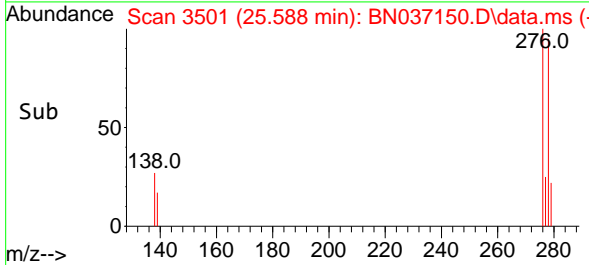


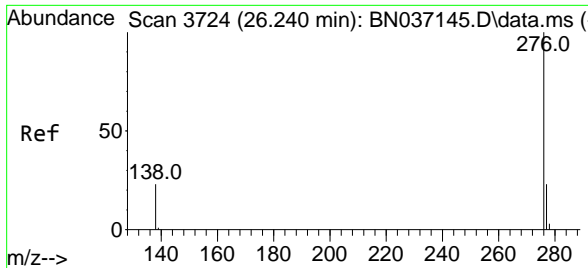
#40
 Dibenzo(a,h)anthracene
 Concen: 0.387 ng
 RT: 25.588 min Scan# 3501
 Delta R.T. -0.000 min
 Lab File: BN037150.D
 Acq: 03 Jun 2025 15:53



Tgt Ion:278 Resp: 4227

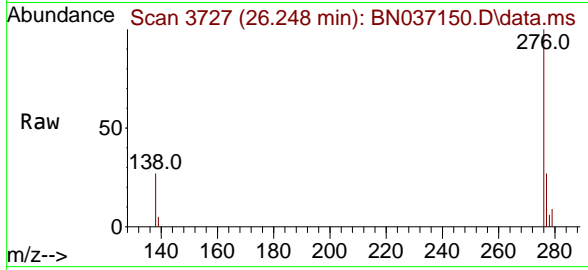
Ion	Ratio	Lower	Upper
278	100		
139	21.7	17.6	26.4
279	32.3	26.0	39.0





#41
 Benzo(g,h,i)perylene
 Concen: 0.368 ng
 RT: 26.248 min Scan# 31
 Delta R.T. 0.009 min
 Lab File: BN037150.D
 Acq: 03 Jun 2025 15:53

Instrument :
 BNA_N
 ClientSampleId :
 ICVBN060325



Tgt Ion: 276 Resp: 4620

Ion	Ratio	Lower	Upper
276	100		
277	27.0	20.9	31.3
138	26.8	20.8	31.2

