

Data Path : Z:\svoasrv\HPCHEM1\BNA\_N\Data\BN060325\  
 Data File : BN037151.D  
 Acq On : 03 Jun 2025 17:05  
 Operator : RC/JU  
 Sample : PB168238BL  
 Misc :  
 ALS Vial : 12 Sample Multiplier: 1

Instrument :  
 BNA\_N  
 ClientSampleId :  
 PB168238BL

Quant Time: Jun 04 01:54:31 2025  
 Quant Method : Z:\svoasrv\HPCHEM1\BNA\_N\Methods\8270-SIM-BN060325.M  
 Quant Title : ASP BNA STANDARDS FOR 5 POINT CALIBRATION  
 QLast Update : Wed Jun 04 01:52:03 2025  
 Response via : Initial Calibration

Compound	R.T.	QIon	Response	Conc Units	Dev(Min)
Internal Standards					
1) 1,4-Dichlorobenzene-d4	7.596	152	1842	0.400 ng	0.00
7) Naphthalene-d8	10.383	136	4284	0.400 ng	0.01
13) Acenaphthene-d10	14.245	164	2169	0.400 ng	0.01
19) Phenanthrene-d10	16.996	188	3808	0.400 ng	0.01
29) Chrysene-d12	21.188	240	2494	0.400 ng	# 0.00
35) Perylene-d12	23.377	264	2413	0.400 ng	# 0.00
System Monitoring Compounds					
4) 2-Fluorophenol	5.191	112	1596	0.350 ng	0.00
5) Phenol-d6	6.773	99	1685	0.305 ng	0.00
8) Nitrobenzene-d5	8.749	82	1429	0.316 ng	0.01
11) 2-Methylnaphthalene-d10	11.981	152	1907	0.320 ng	0.00
14) 2,4,6-Tribromophenol	15.755	330	218	0.250 ng	0.01
15) 2-Fluorobiphenyl	12.873	172	3232	0.349 ng	0.00
27) Fluoranthene-d10	19.031	212	3207	0.331 ng	0.00
31) Terphenyl-d14	19.635	244	2102	0.358 ng	0.00

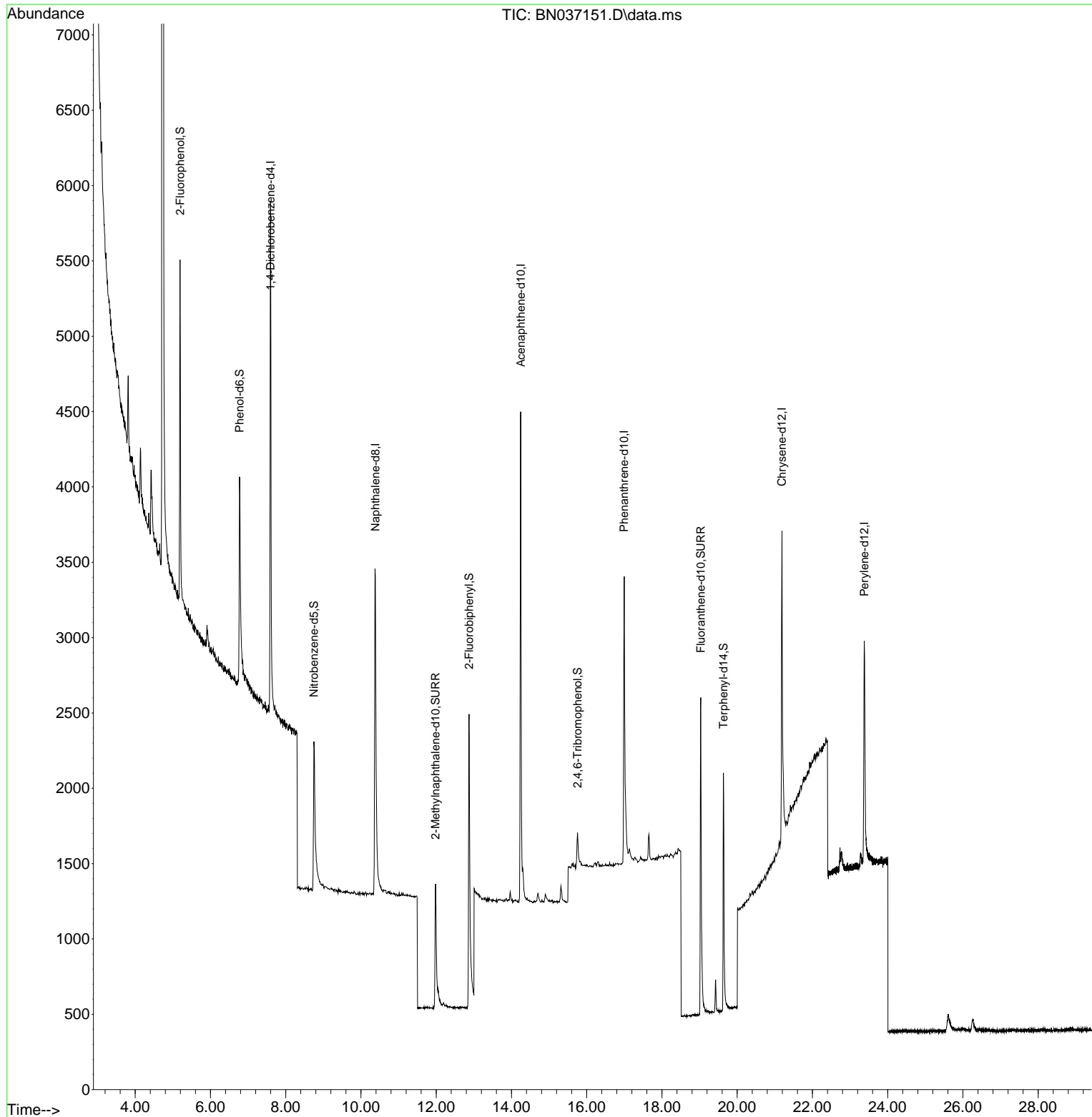
Target Compounds Qvalue

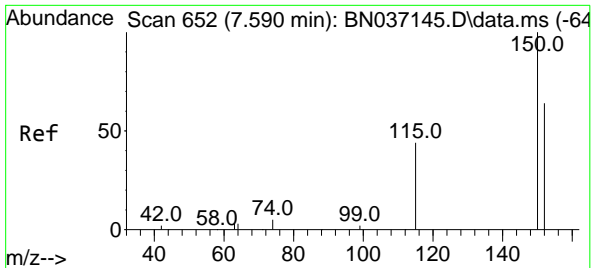
(#) = qualifier out of range (m) = manual integration (+) = signals summed

Data Path : Z:\svoasrv\HPCHEM1\BNA\_N\Data\BN060325\  
Data File : BN037151.D  
Acq On : 03 Jun 2025 17:05  
Operator : RC/JU  
Sample : PB168238BL  
Misc :  
ALS Vial : 12 Sample Multiplier: 1

Instrument :  
BNA\_N  
ClientSampleId :  
PB168238BL

Quant Time: Jun 04 01:54:31 2025  
Quant Method : Z:\svoasrv\HPCHEM1\BNA\_N\Methods\8270-SIM-BN060325.M  
Quant Title : ASP BNA STANDARDS FOR 5 POINT CALIBRATION  
QLast Update : Wed Jun 04 01:52:03 2025  
Response via : Initial Calibration

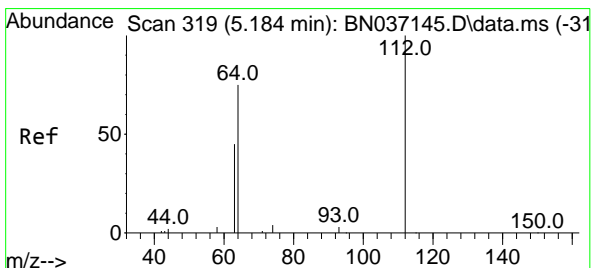
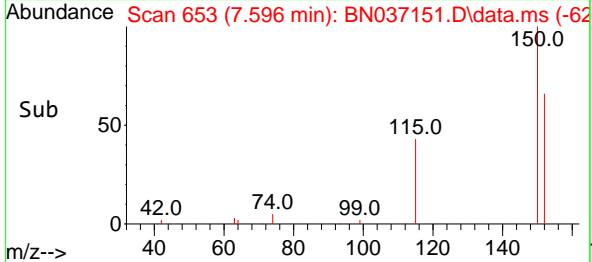
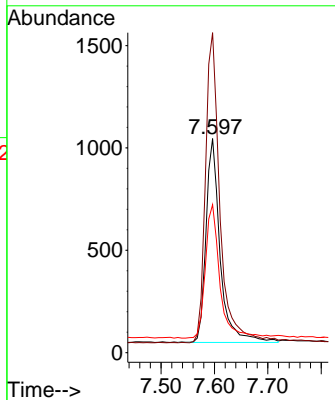
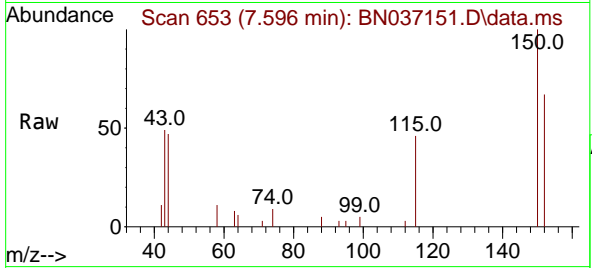




#1  
 1,4-Dichlorobenzene-d4  
 Concen: 0.400 ng  
 RT: 7.596 min Scan# 61  
 Delta R.T. 0.006 min  
 Lab File: BN037151.D  
 Acq: 03 Jun 2025 17:05

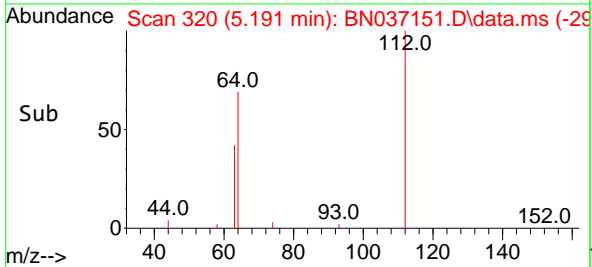
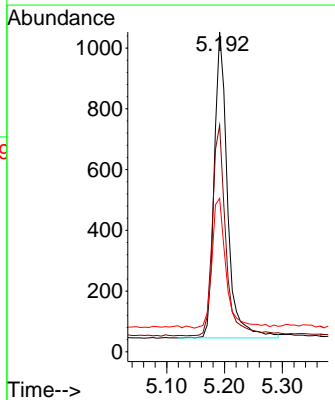
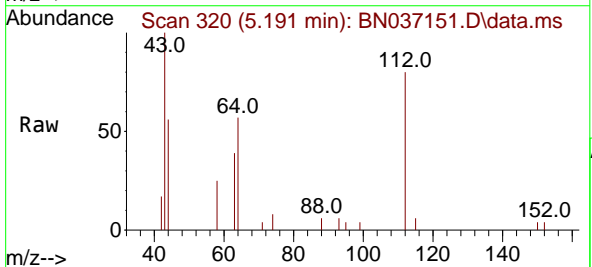
Instrument :  
 BNA\_N  
 ClientSampleId :  
 PB168238BL

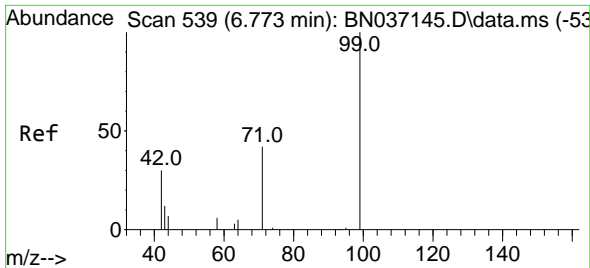
Tgt Ion:152 Resp: 1842  
 Ion Ratio Lower Upper  
 152 100  
 150 149.4 123.2 184.8  
 115 69.1 56.6 85.0



#4  
 2-Fluorophenol  
 Concen: 0.350 ng  
 RT: 5.191 min Scan# 320  
 Delta R.T. 0.007 min  
 Lab File: BN037151.D  
 Acq: 03 Jun 2025 17:05

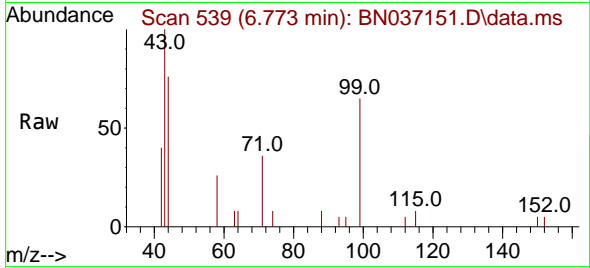
Tgt Ion:112 Resp: 1596  
 Ion Ratio Lower Upper  
 112 100  
 64 70.4 56.3 84.5  
 63 45.8 36.2 54.4





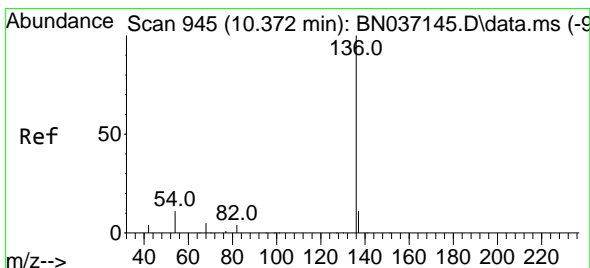
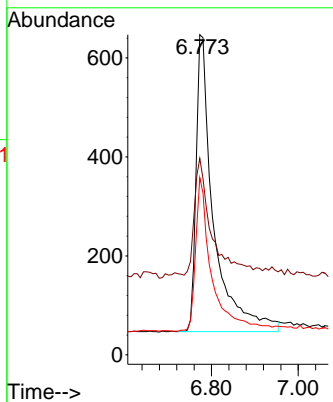
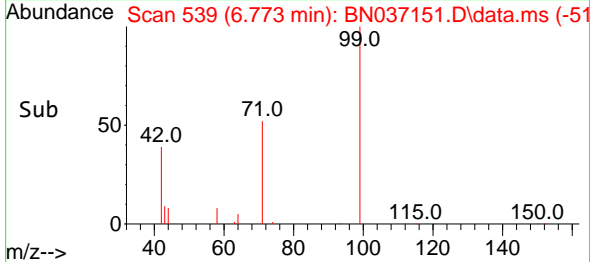
#5  
Phenol-d6  
Concen: 0.305 ng  
RT: 6.773 min Scan# 51  
Delta R.T. -0.000 min  
Lab File: BN037151.D  
Acq: 03 Jun 2025 17:05

Instrument :  
BNA\_N  
ClientSampleId :  
PB168238BL

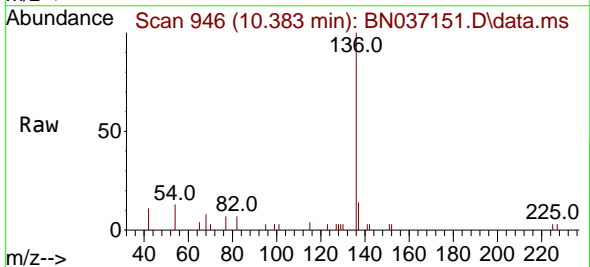


Tgt Ion: 99 Resp: 1685

Ion	Ratio	Lower	Upper
99	100		
42	38.6	31.3	46.9
71	47.6	38.2	57.2

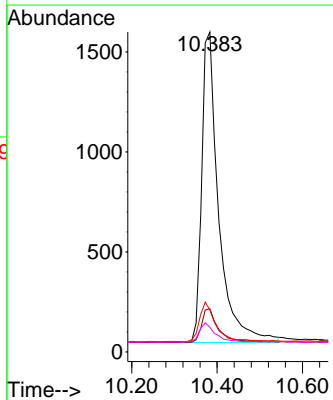
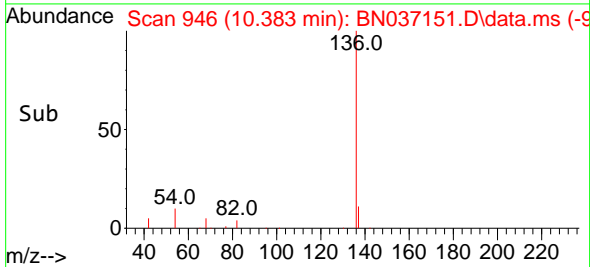


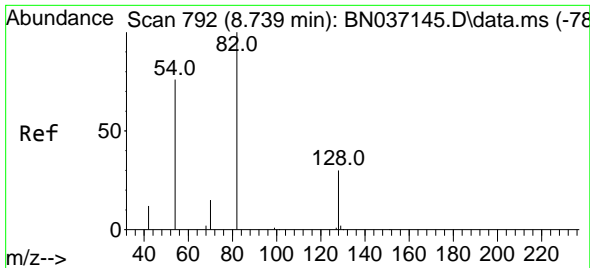
#7  
Naphthalene-d8  
Concen: 0.400 ng  
RT: 10.383 min Scan# 946  
Delta R.T. 0.010 min  
Lab File: BN037151.D  
Acq: 03 Jun 2025 17:05



Tgt Ion: 136 Resp: 4284

Ion	Ratio	Lower	Upper
136	100		
137	13.5	9.7	14.5
54	13.1	9.7	14.5
68	7.8	5.4	8.2



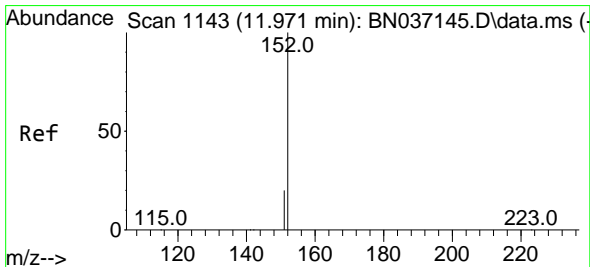
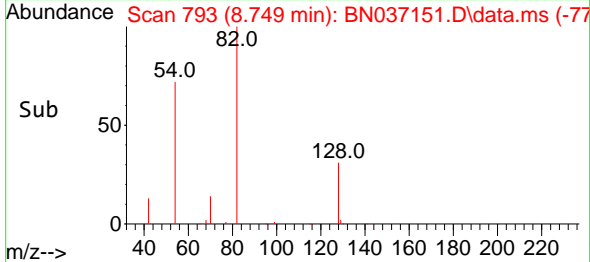
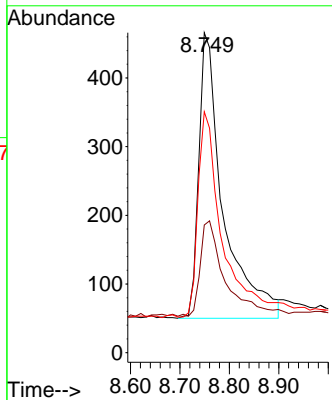
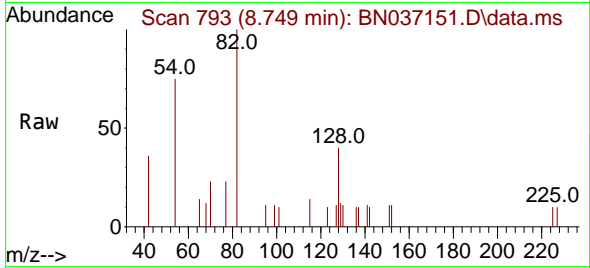


#8  
 Nitrobenzene-d5  
 Concen: 0.316 ng  
 RT: 8.749 min Scan# 792  
 Delta R.T. 0.010 min  
 Lab File: BN037151.D  
 Acq: 03 Jun 2025 17:05

Instrument : BNA\_N  
 ClientSampleId : PB168238BL

Tgt Ion: 82 Resp: 1429

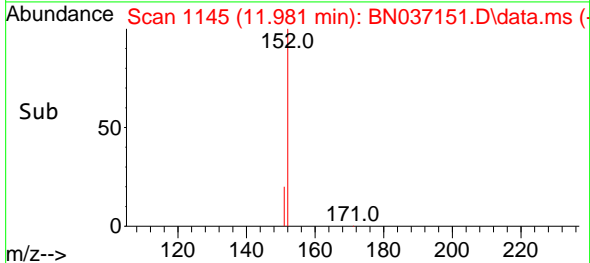
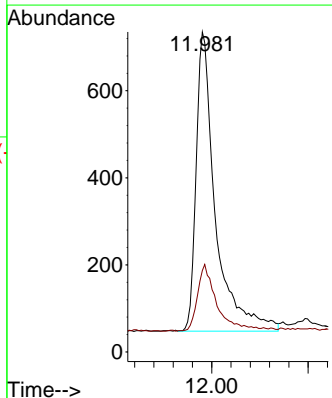
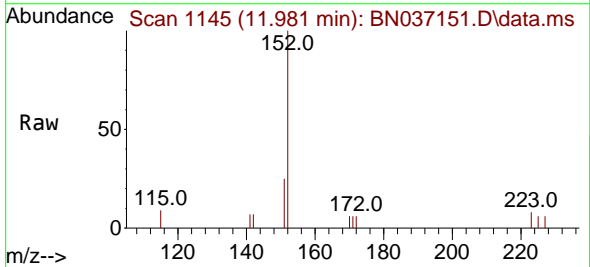
Ion	Ratio	Lower	Upper
82	100		
128	39.9	26.9	40.3
54	75.3	61.4	92.2

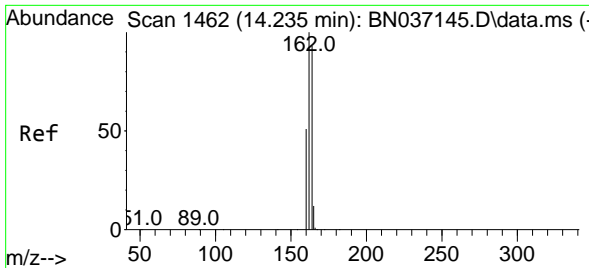


#11  
 2-Methylnaphthalene-d10  
 Concen: 0.320 ng  
 RT: 11.981 min Scan# 1145  
 Delta R.T. 0.010 min  
 Lab File: BN037151.D  
 Acq: 03 Jun 2025 17:05

Tgt Ion: 152 Resp: 1907

Ion	Ratio	Lower	Upper
152	100		
151	21.7	17.1	25.7



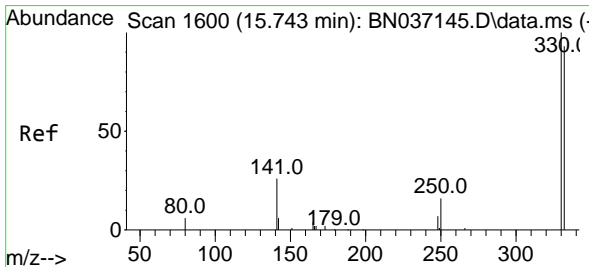
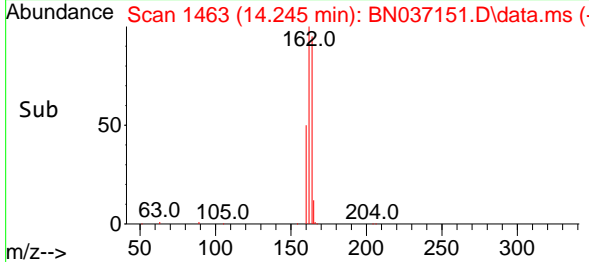
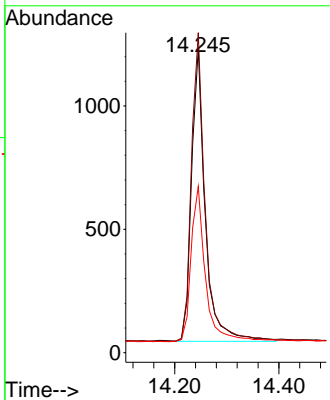
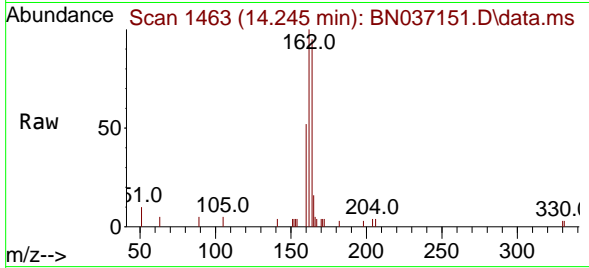


#13  
 Acenaphthene-d10  
 Concen: 0.400 ng  
 RT: 14.245 min Scan# 14  
 Delta R.T. 0.010 min  
 Lab File: BN037151.D  
 Acq: 03 Jun 2025 17:05

Instrument : BNA\_N  
 ClientSampleId : PB168238BL

Tgt Ion:164 Resp: 2169

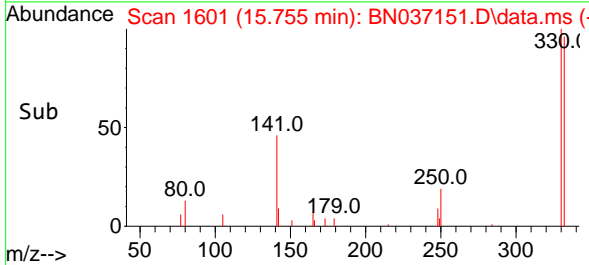
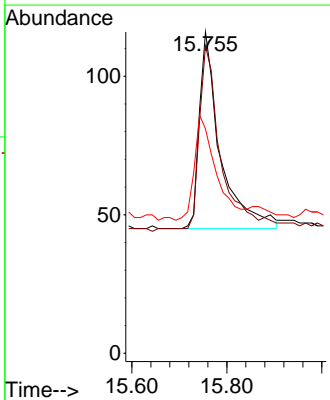
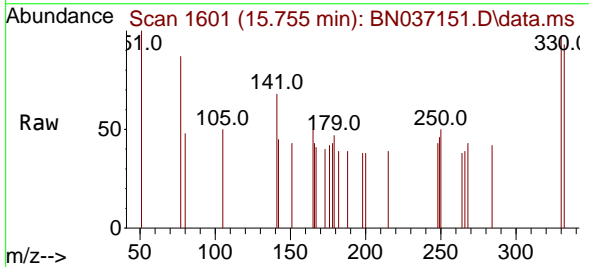
Ion	Ratio	Lower	Upper
164	100		
162	105.2	85.5	128.3
160	54.7	44.6	67.0

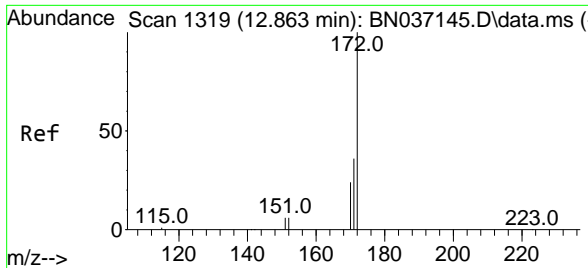


#14  
 2,4,6-Tribromophenol  
 Concen: 0.250 ng  
 RT: 15.755 min Scan# 1601  
 Delta R.T. 0.012 min  
 Lab File: BN037151.D  
 Acq: 03 Jun 2025 17:05

Tgt Ion:330 Resp: 218

Ion	Ratio	Lower	Upper
330	100		
332	93.6	77.1	115.7
141	54.1	46.4	69.6

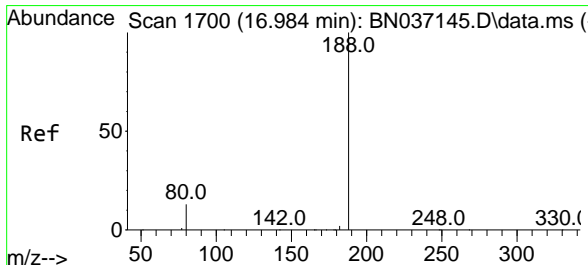
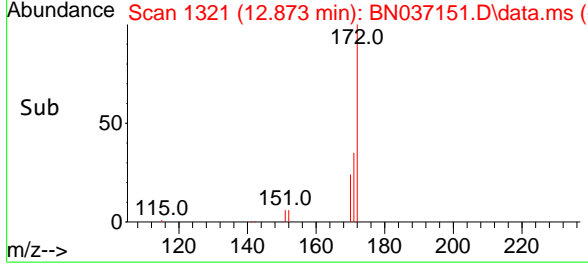
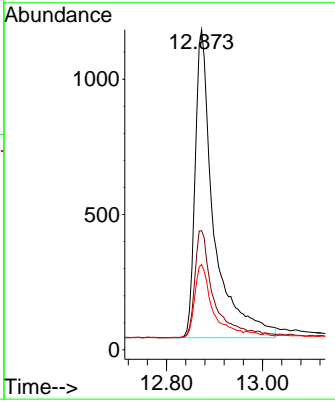
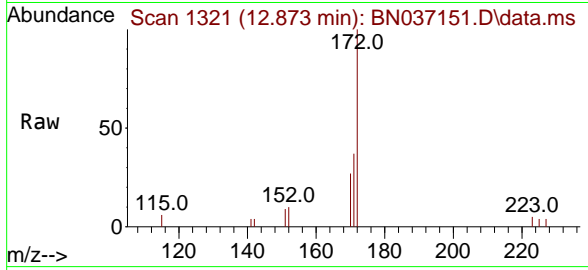




#15  
 2-Fluorobiphenyl  
 Concen: 0.349 ng  
 RT: 12.873 min Scan# 11  
 Delta R.T. 0.010 min  
 Lab File: BN037151.D  
 Acq: 03 Jun 2025 17:05

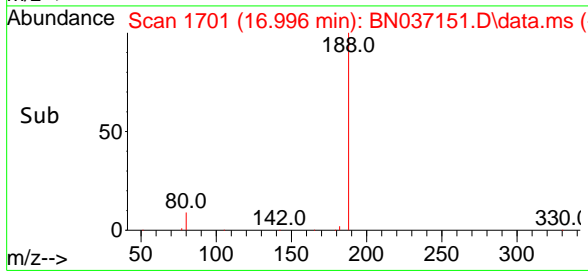
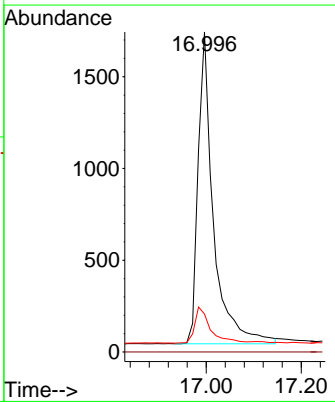
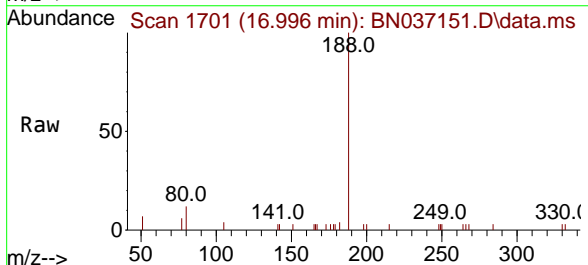
Instrument : BNA\_N  
 ClientSampleId : PB168238BL

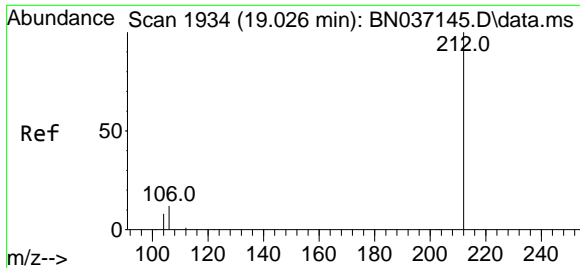
Tgt Ion	Resp	Lower	Upper
172	3232		
171	37.2	29.6	44.4
170	26.6	20.3	30.5



#19  
 Phenanthrene-d10  
 Concen: 0.400 ng  
 RT: 16.996 min Scan# 1701  
 Delta R.T. 0.012 min  
 Lab File: BN037151.D  
 Acq: 03 Jun 2025 17:05

Tgt Ion	Resp	Lower	Upper
188	3808		
94	0.0	0.0	0.0
80	11.9	11.3	16.9



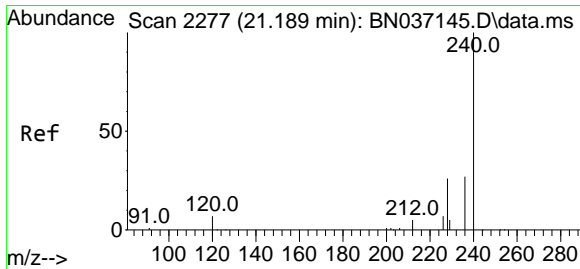
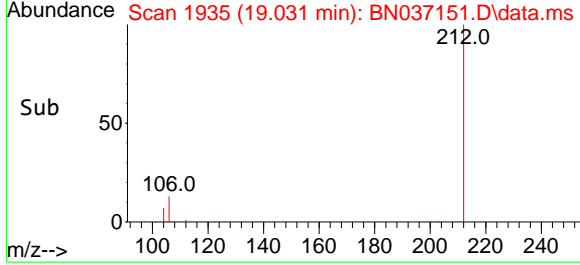
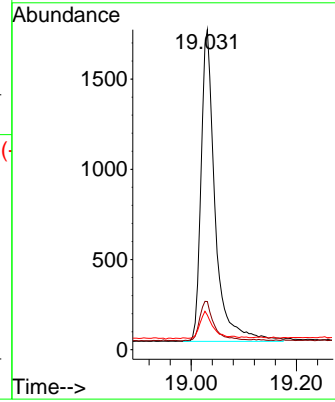
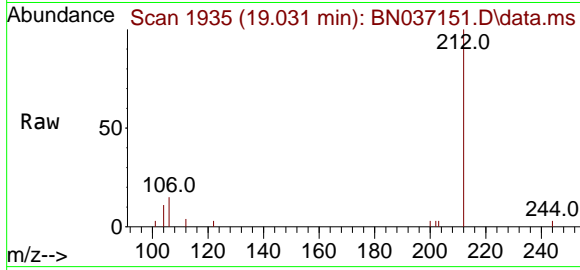


#27  
 Fluoranthene-d10  
 Concen: 0.331 ng  
 RT: 19.031 min Scan# 1935  
 Delta R.T. 0.004 min  
 Lab File: BN037151.D  
 Acq: 03 Jun 2025 17:05

Instrument : BNA\_N  
 ClientSampleId : PB168238BL

Tgt Ion:212 Resp: 3207

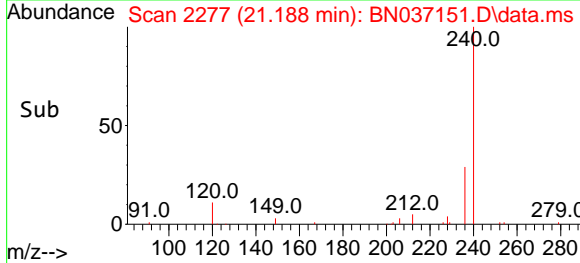
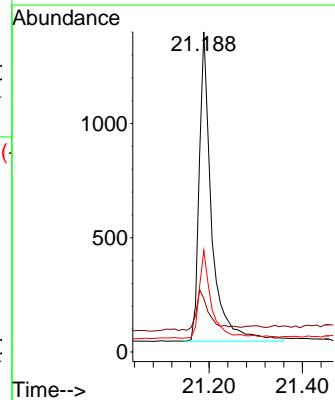
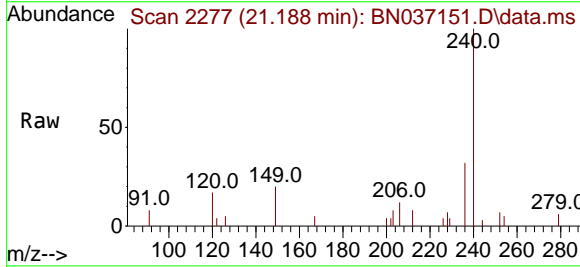
Ion	Ratio	Lower	Upper
212	100		
106	13.1	10.6	15.8
104	7.7	6.6	9.8



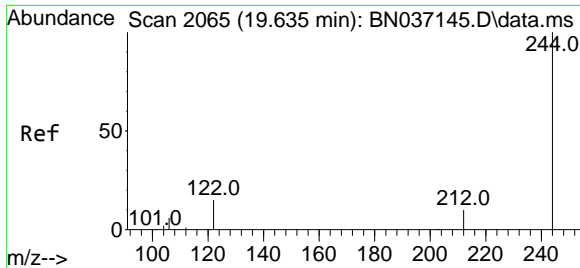
#29  
 Chrysene-d12  
 Concen: 0.400 ng  
 RT: 21.188 min Scan# 2277  
 Delta R.T. -0.000 min  
 Lab File: BN037151.D  
 Acq: 03 Jun 2025 17:05

Tgt Ion:240 Resp: 2494

Ion	Ratio	Lower	Upper
240	100		
120	16.7	9.0	13.4#
236	31.8	23.0	34.4





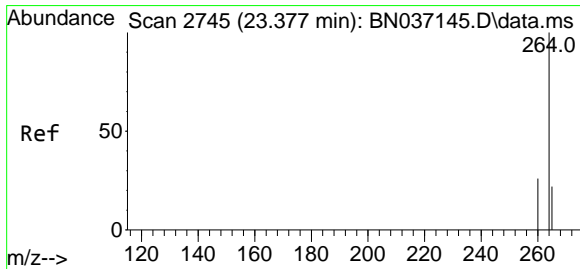
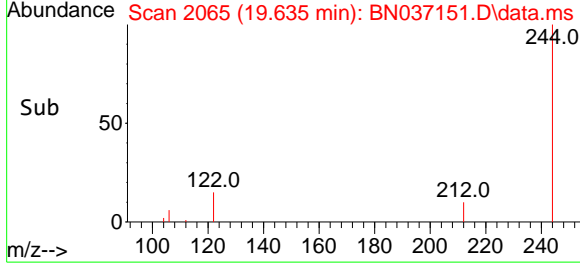
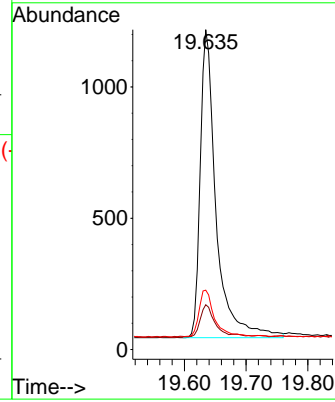
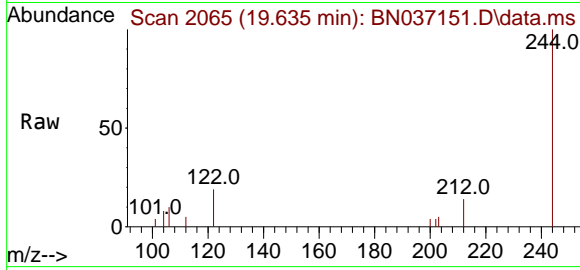


#31  
 Terphenyl-d14  
 Concen: 0.358 ng  
 RT: 19.635 min Scan# 2065  
 Delta R.T. -0.000 min  
 Lab File: BN037151.D  
 Acq: 03 Jun 2025 17:05

Instrument : BNA\_N  
 ClientSampleId : PB168238BL

Tgt Ion: 244 Resp: 2102

Ion	Ratio	Lower	Upper
244	100		
212	14.0	10.0	15.0
122	18.6	13.2	19.8



#35  
 Perylene-d12  
 Concen: 0.400 ng  
 RT: 23.377 min Scan# 2745  
 Delta R.T. -0.000 min  
 Lab File: BN037151.D  
 Acq: 03 Jun 2025 17:05

Tgt Ion: 264 Resp: 2413

Ion	Ratio	Lower	Upper
264	100		
260	28.5	22.1	33.1
265	93.6	55.8	83.8

