

Data Path : Z:\SVOASRV\HPCHEM1\BNA N\DATA\BN060519\
 Data File : BN006130.D
 Acq On : 06 Jun 2019 09:35
 Operator : JU/SJ
 Sample : K3016-11MS
 Misc :
 ALS Vial : 39 Sample Multiplier: 1

Instrument :
 BNA_N
 ClientSampleId :
 A51C9MS

Quant Time: Jun 06 11:13:06 2019
 Quant Method : Z:\SVOASRV\HPCHEM1\BNA_N\METHODS\SOM-EPA-BN060419MA.M
 Quant Title : SVOA CALIBRATION
 QLast Update : Thu Jun 06 07:51:51 2019
 Response via : Initial Calibration

| Internal Standards | R.T. | QIon | Response | Conc | Units | Dev(Min) |
|---------------------------|-------|------|----------|-------|-------|----------|
| 1) 1,4-Dichlorobenzene-d4 | 7.65 | 152 | 284672 | 20.00 | ng/ul | 0.00 |
| 18) Naphthalene-d8 | 10.43 | 136 | 1254206 | 20.00 | ng/ul | 0.00 |
| 35) Acenaphthene-d10 | 14.30 | 164 | 705569 | 20.00 | ng/ul | 0.00 |
| 61) Phenanthrene-d10 | 17.05 | 188 | 1451837 | 20.00 | ng/ul | 0.00 |
| 77) Chrysene-d12 | 21.28 | 240 | 1291969 | 20.00 | ng/ul | 0.01 |
| 85) Perylene-d12 | 23.53 | 264 | 1431089 | 20.00 | ng/ul | 0.02 |

System Monitoring Compounds

| | | | | | | |
|--------------------------------|-------|-----|---------|-------|-------|------|
| 3) 1,4-Dioxane-d8 | 3.15 | 96 | 34183 | 5.20 | ng/uL | 0.00 |
| 5) Phenol-d5 | 6.82 | 99 | 600736 | 26.41 | ng/ul | 0.00 |
| 7) Bis-(2-Chloroethyl)ether-d | 6.98 | 67 | 385432 | 29.63 | ng/ul | 0.00 |
| 9) 2-Chlorophenol-d4 | 7.18 | 132 | 487331 | 26.66 | ng/ul | 0.00 |
| 13) 4-Methylphenol-d8 | 8.35 | 113 | 450149 | 25.54 | ng/ul | 0.00 |
| 19) Nitrobenzene-d5 | 8.80 | 128 | 235537 | 26.31 | ng/ul | 0.00 |
| 22) 2-Nitrophenol-d4 | 9.52 | 143 | 256452 | 25.81 | ng/ul | 0.00 |
| 26) 2,4-Dichlorophenol-d3 | 10.05 | 165 | 443132 | 24.68 | ng/ul | 0.00 |
| 29) 4-Chloroaniline-d4 | 10.57 | 131 | 549355 | 25.62 | ng/ul | 0.00 |
| 43) Dimethylphthalate-d6 | 13.71 | 166 | 1388545 | 27.74 | ng/ul | 0.00 |
| 46) Acenaphthylene-d8 | 13.99 | 160 | 1714993 | 26.47 | ng/ul | 0.00 |
| 51) 4-Nitrophenol-d4 | 14.51 | 143 | 173321 | 19.61 | ng/ul | 0.00 |
| 57) Fluorene-d10 | 15.30 | 176 | 1160996 | 27.45 | ng/ul | 0.00 |
| 62) 4,6-Dinitro-2-methylphenol | 15.43 | 200 | 129040 | 15.88 | ng/ul | 0.00 |
| 70) Anthracene-d10 | 17.15 | 188 | 1743325 | 28.14 | ng/ul | 0.00 |
| 78) Pyrene-d10 | 19.46 | 212 | 1844988 | 29.55 | ng/ul | 0.00 |
| 89) Benzo(a)pyrene-d12 | 23.38 | 264 | 1721934 | 27.02 | ng/ul | 0.02 |

Target Compounds

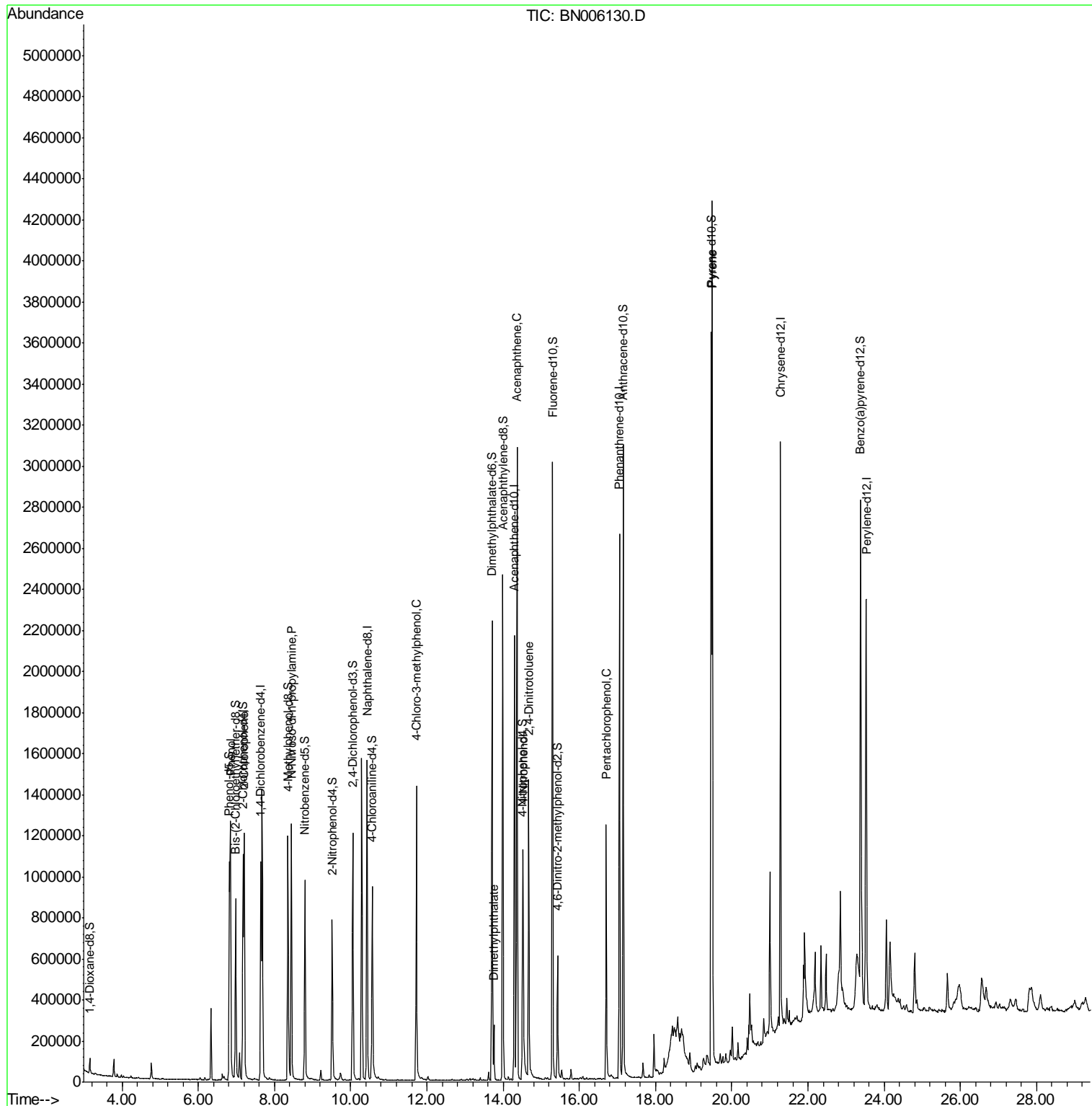
| Target Compounds | R.T. | QIon | Response | Conc | Units | Ovalue |
|--------------------------------|-------|------|----------|--------|-------|--------|
| 6) Phenol | 6.85 | 94 | 698222 | 30.035 | ng/ul | 98 |
| 10) 2-Chlorophenol | 7.21 | 128 | 518095 | 27.765 | ng/ul | 97 |
| 15) N-Nitroso-di-n-propylamine | 8.45 | 70 | 438330 | 31.024 | ng/ul | 99 |
| 33) 4-Chloro-3-methylphenol | 11.72 | 107 | 525683 | 27.609 | ng/ul | 97 |
| 44) Dimethylphthalate | 13.76 | 163 | 157114 | 3.165 | ng/ul | 99 |
| 49) Acenaphthene | 14.36 | 153 | 1218434 | 28.462 | ng/ul | 98 |
| 52) 4-Nitrophenol | 14.53 | 109 | 154893 | 23.112 | ng/ul | 98 |
| 54) 2,4-Dinitrotoluene | 14.67 | 165 | 394861 | 27.902 | ng/ul | 97 |
| 68) Pentachlorophenol | 16.70 | 266 | 216881 | 24.354 | ng/ul | 95 |
| 79) Pyrene | 19.49 | 202 | 2446609 | 30.803 | ng/ul | 98 |

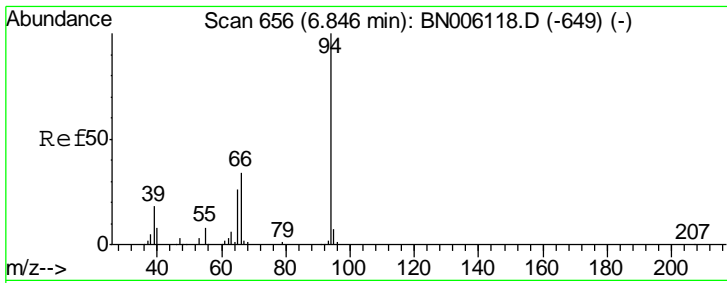
(#) = qualifier out of range (m) = manual integration (+) = signals summed

Data Path : Z:\SVOASRV\HPCHEM1\BNA N\DATA\BN060519\
 Data File : BN006130.D
 Acq On : 06 Jun 2019 09:35
 Operator : JU/SJ
 Sample : K3016-11MS
 Misc :
 ALS Vial : 39 Sample Multiplier: 1

Instrument :
 BNA_N
 Client Sampled :
 A51C9MS

Quant Time: Jun 06 11:13:06 2019
 Quant Method : Z:\SVOASRV\HPCHEM1\BNA_N\METHODS\SOM-EPA-BN060419MA.M
 Quant Title : SVOA CALIBRATION
 QLast Update : Thu Jun 06 07:51:51 2019
 Response via : Initial Calibration

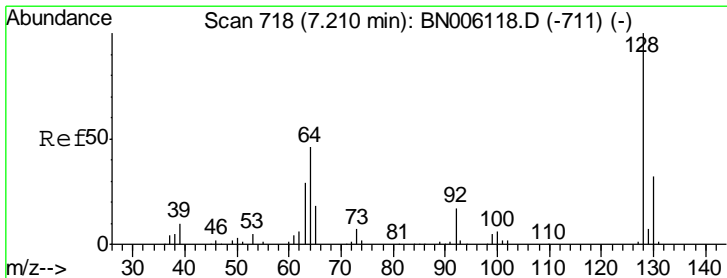
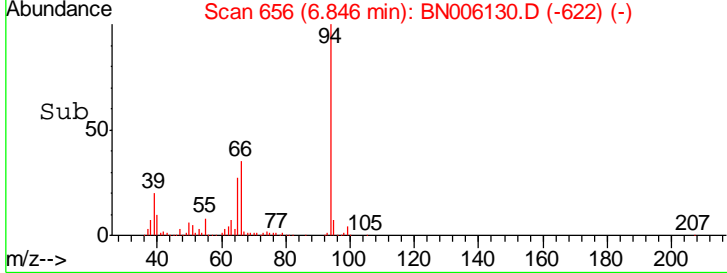
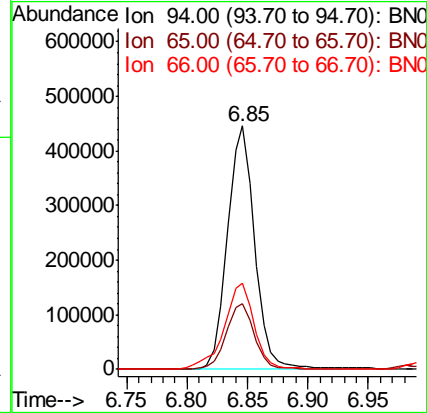
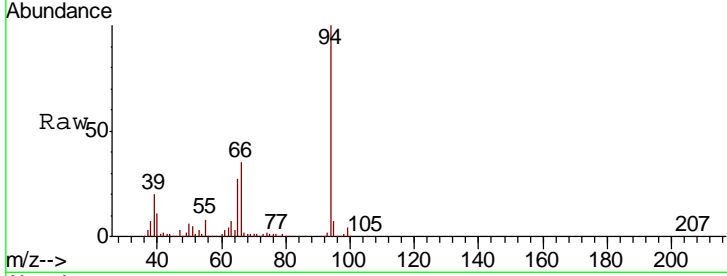




#6
 Phenol
 Concen: 30.035 ng/ul
 RT: 6.85 min Scan# 656
 Delta R.T. 0.00 min
 Lab File: BN006130.D
 Acq: 06 Jun 2019 09:35

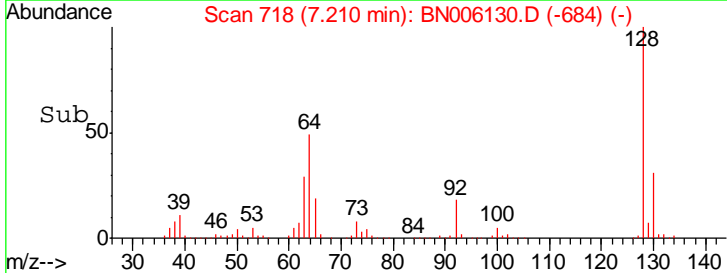
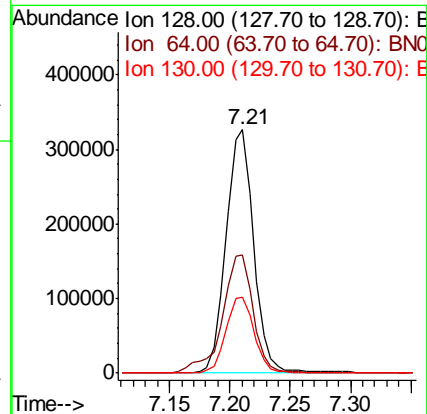
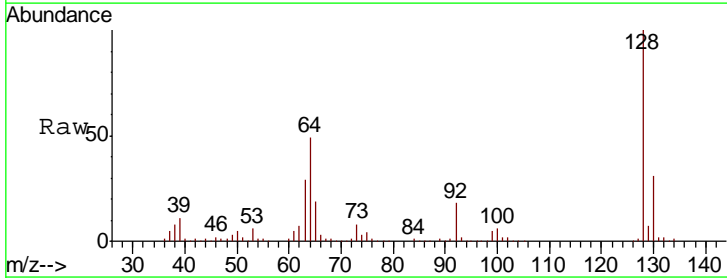
Instrument :
 BNA_N
ClientSampleId :
 A51C9MS

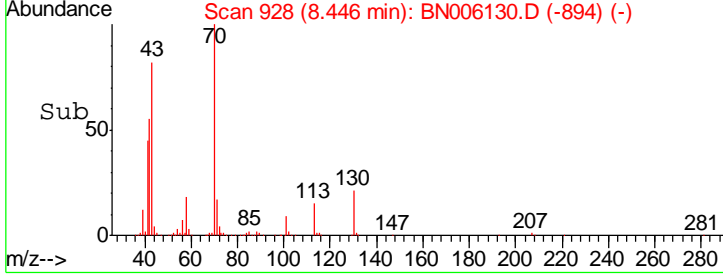
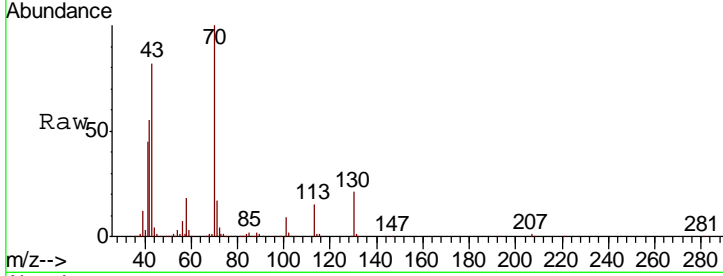
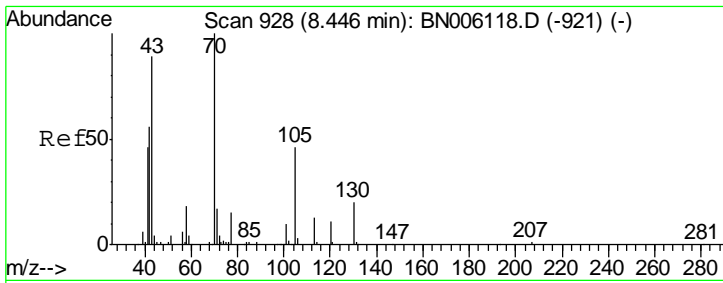
| Tgt Ion | Resp | Lower | Upper |
|---------|--------|-------|-------|
| 94 | 698222 | | |
| 65 | 27.0 | 21.8 | 32.6 |
| 66 | 35.2 | 29.5 | 44.3 |



#10
 2-Chlorophenol
 Concen: 27.765 ng/ul
 RT: 7.21 min Scan# 718
 Delta R.T. 0.00 min
 Lab File: BN006130.D
 Acq: 06 Jun 2019 09:35

| Tgt Ion | Resp | Lower | Upper |
|---------|--------|-------|-------|
| 128 | 518095 | | |
| 64 | 48.7 | 37.1 | 55.7 |
| 130 | 31.1 | 25.8 | 38.8 |

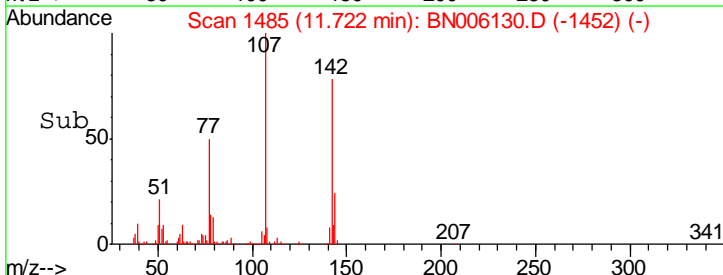
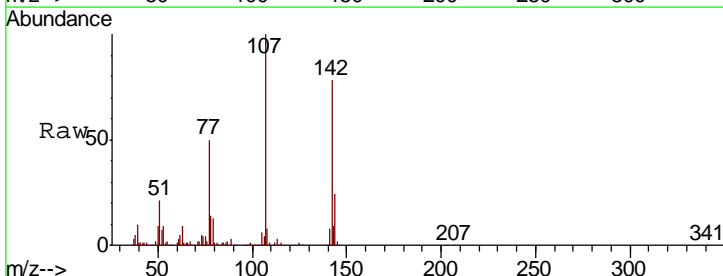
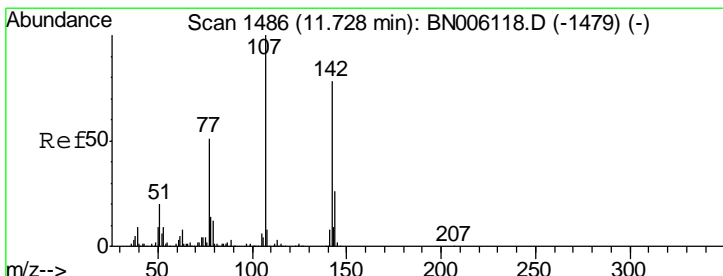
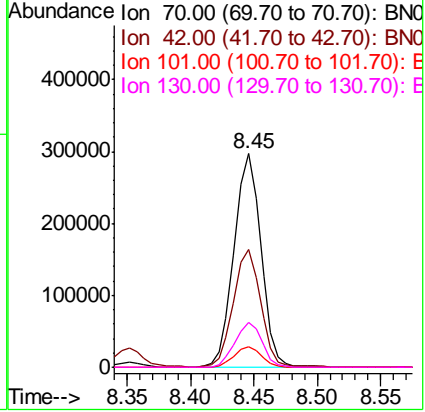




#15
 N-Nitroso-di-n-propylamine
 Concen: 31.024 ng/ul
 RT: 8.45 min Scan# 928
 Delta R.T. 0.00 min
 Lab File: BN006130.D
 Acq: 06 Jun 2019 09:35

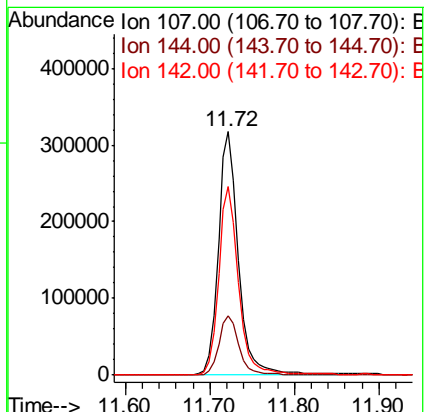
Instrument :
 BNA_N
ClientSampled :
 A51C9MS

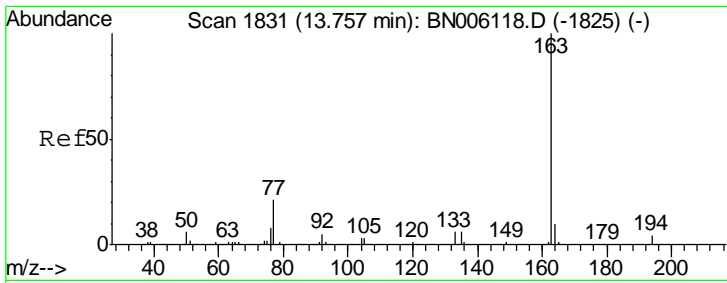
| Tgt Ion | Resp | Lower | Upper |
|---------|------|-------|-------|
| 70 | 100 | | |
| 42 | 54.9 | 44.2 | 66.4 |
| 101 | 9.3 | 7.9 | 11.9 |
| 130 | 21.0 | 17.6 | 26.4 |



#33
 4-Chloro-3-methylphenol
 Concen: 27.609 ng/ul
 RT: 11.72 min Scan# 1485
 Delta R.T. -0.01 min
 Lab File: BN006130.D
 Acq: 06 Jun 2019 09:35

| Tgt Ion | Resp | Lower | Upper |
|---------|------|-------|-------|
| 107 | 100 | | |
| 144 | 24.4 | 21.1 | 31.7 |
| 142 | 77.5 | 63.6 | 95.4 |

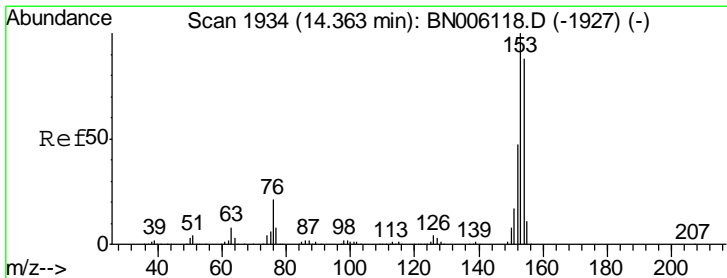
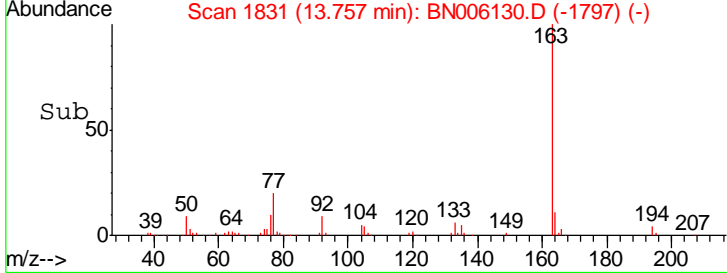
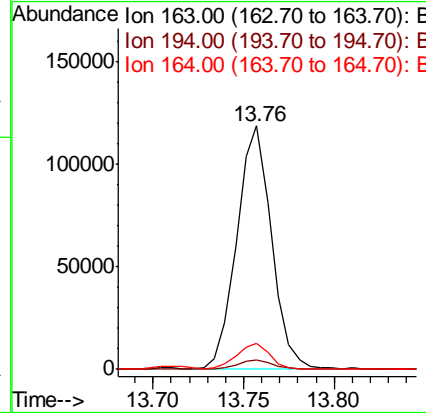
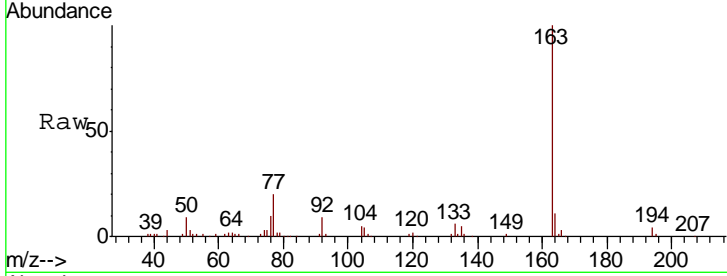




#44
 Dimethylphthalate
 Concen: 3.165 ng/ul
 RT: 13.76 min Scan# 1831
 Delta R.T. 0.00 min
 Lab File: BN006130.D
 Acq: 06 Jun 2019 09:35

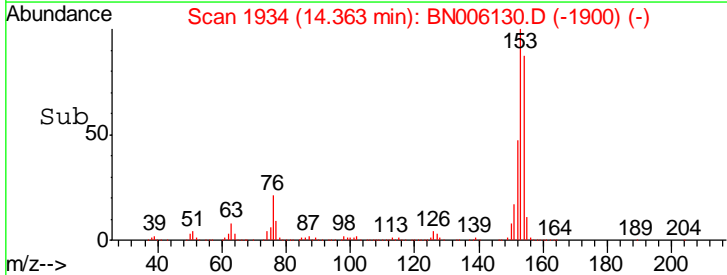
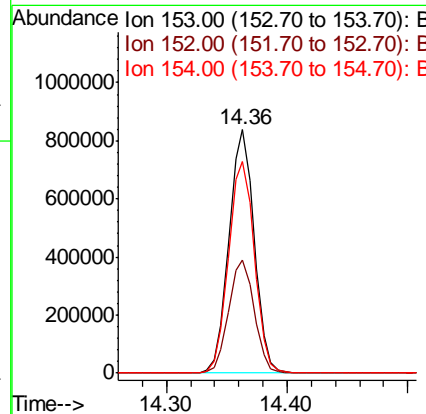
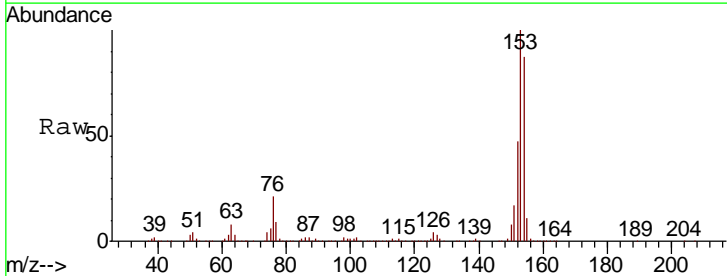
Instrument :
 BNA_N
 ClientSampleId :
 A51C9MS

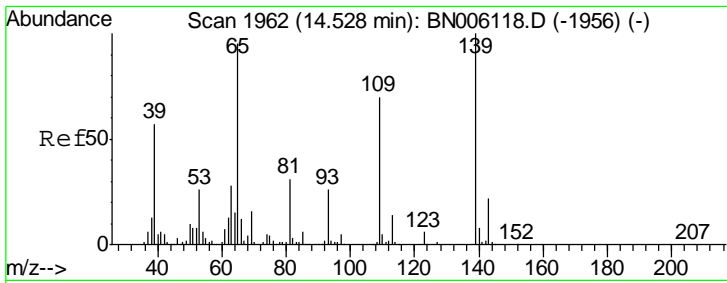
| Tgt Ion | Resp | Lower | Upper |
|---------|--------|-------|-------|
| 163 | 157114 | | |
| 194 | 4.0 | 3.4 | 5.2 |
| 164 | 10.5 | 8.2 | 12.2 |



#49
 Acenaphthene
 Concen: 28.462 ng/ul
 RT: 14.36 min Scan# 1934
 Delta R.T. 0.00 min
 Lab File: BN006130.D
 Acq: 06 Jun 2019 09:35

| Tgt Ion | Resp | Lower | Upper |
|---------|---------|-------|-------|
| 153 | 1218434 | | |
| 152 | 46.5 | 37.9 | 56.9 |
| 154 | 86.8 | 71.4 | 107.2 |

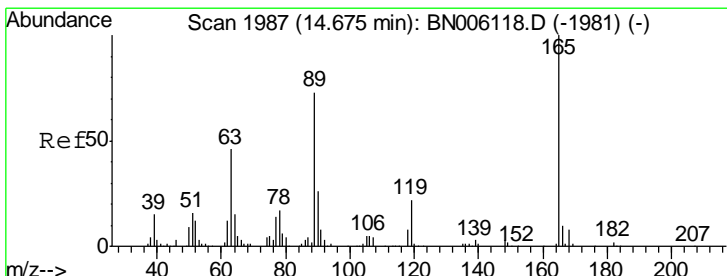
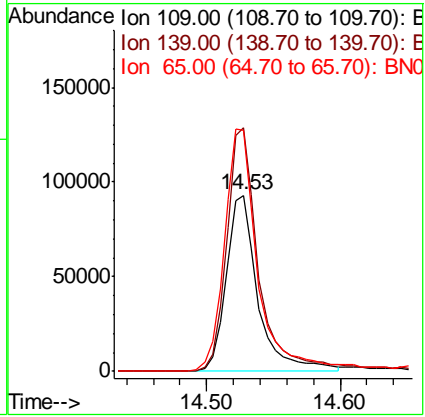
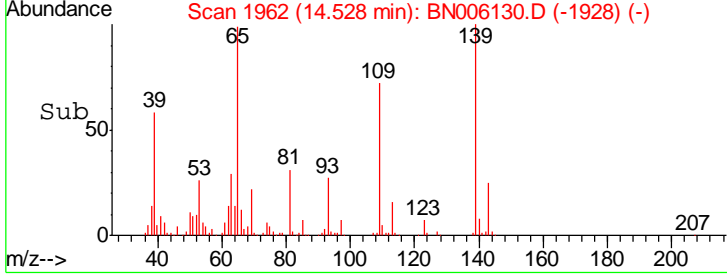
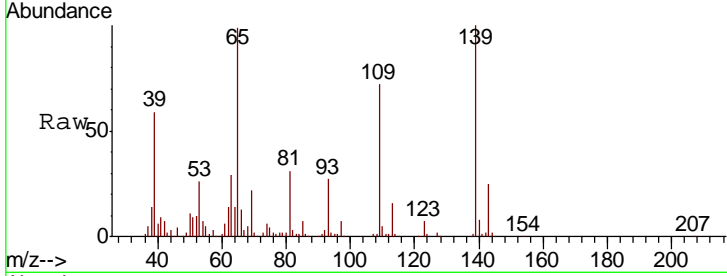




#52
 4-Nitrophenol
 Concen: 23.112 ng/ul
 RT: 14.53 min Scan# 1962
 Delta R.T. 0.00 min
 Lab File: BN006130.D
 Acq: 06 Jun 2019 09:35

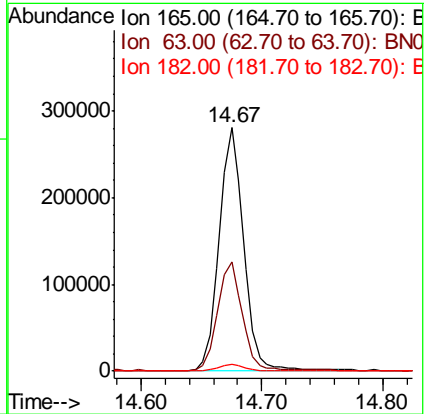
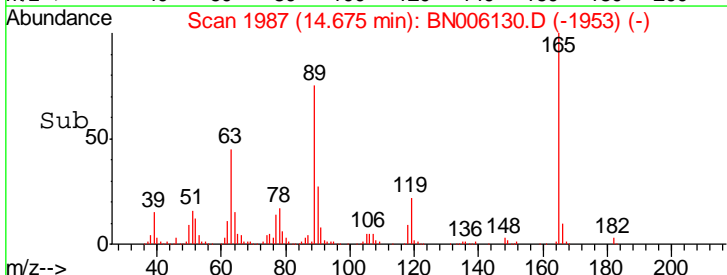
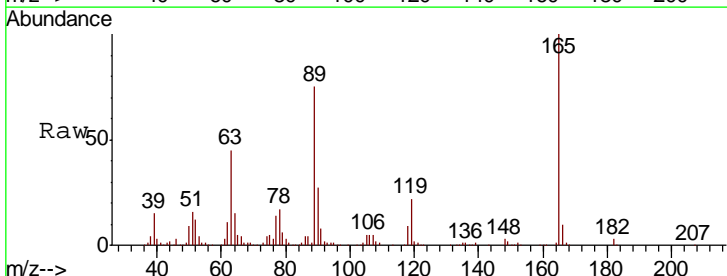
Instrument :
 BNA_N
 ClientSampled :
 A51C9MS

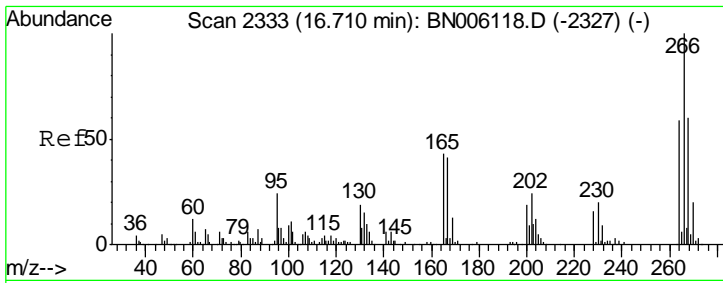
| Tgt Ion | Resp | Lower | Upper |
|---------|--------|-------|-------|
| 109 | 154893 | | |
| 139 | 138.5 | 114.5 | 171.7 |
| 65 | 136.8 | 109.8 | 164.8 |



#54
 2,4-Dinitrotoluene
 Concen: 27.902 ng/ul
 RT: 14.67 min Scan# 1987
 Delta R.T. 0.00 min
 Lab File: BN006130.D
 Acq: 06 Jun 2019 09:35

| Tgt Ion | Resp | Lower | Upper |
|---------|--------|-------|-------|
| 165 | 394861 | | |
| 63 | 44.6 | 33.8 | 50.8 |
| 182 | 2.9 | 2.2 | 3.2 |

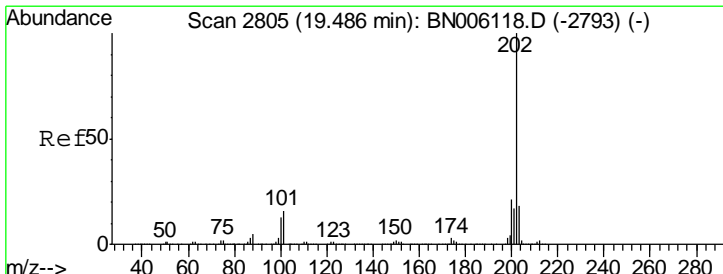
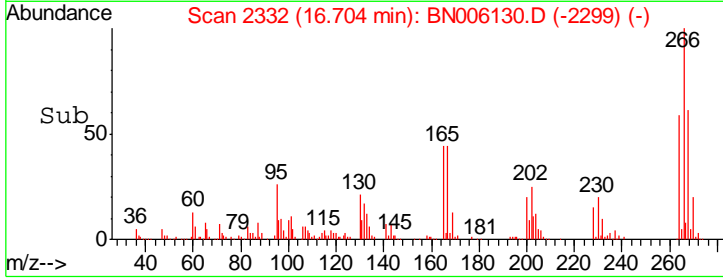
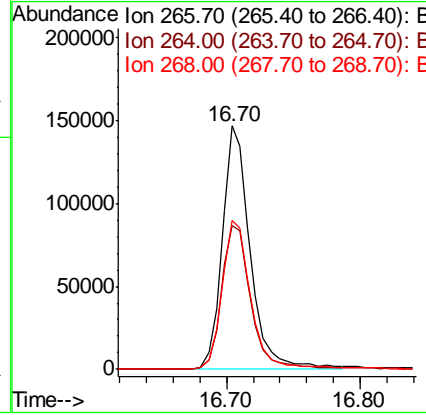
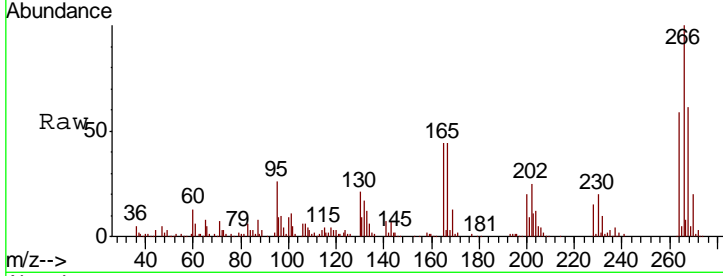




#68
 Pentachlorophenol
 Concen: 24.354 ng/ul
 RT: 16.70 min Scan# 2332
 Delta R.T. -0.01 min
 Lab File: BN006130.D
 Acq: 06 Jun 2019 09:35

Instrument :
 BNA_N
 ClientSampled :
 A51C9MS

| Tgt Ion | Resp | Lower | Upper |
|---------|------|-------|-------|
| 266 | 100 | | |
| 264 | 58.9 | 49.8 | 74.8 |
| 268 | 61.1 | 51.8 | 77.8 |



#79
 Pyrene
 Concen: 30.803 ng/ul
 RT: 19.49 min Scan# 2806
 Delta R.T. 0.01 min
 Lab File: BN006130.D
 Acq: 06 Jun 2019 09:35

| Tgt Ion | Resp | Lower | Upper |
|---------|------|-------|-------|
| 202 | 100 | | |
| 101 | 14.9 | 11.5 | 17.3 |
| 100 | 12.3 | 9.0 | 13.6 |

