

Data Path : Z:\SVOASRV\HPCHEM1\BNA\_N\DATA\BN060519\  
 Data File : BN006102.D  
 Acq On : 05 Jun 2019 16:45  
 Operator : JU/SJ  
 Sample : K3134-05  
 Misc :  
 ALS Vial : 12 Sample Multiplier: 1

Instrument :  
 BNA\_N  
 ClientSampleId :  
 SVOC-GPC-BLANK

## Integration Parameters: LSCINT.P

Integrator: RTE  
 Smoothing : OFF Filtering: 5  
 Sampling : 1 Min Area: 0.1 % of largest Peak  
 Start Thrs: 0.2 Max Peaks: 100  
 Stop Thrs : 0 Peak Location: TOP

If leading or trailing edge < 100 prefer < Baseline drop else tangent >  
 Peak separation: 5

Method : Z:\SVOASRV\HPCHEM1\BNA\_N\METHODS\SOM-EPA-BN060419MA.M  
 Title : SVOA CALIBRATION

Signal : TIC

peak #	R.T. min	first scan	max scan	last scan	PK TY	peak height	corr. area	corr. % max.	% of total
1	3.875	147	151	159	rBV	47566	64117	1.29%	0.262%
2	6.787	643	646	652	rBV6	2374	5058	0.10%	0.021%
3	7.646	783	792	817	rBV	1207028	2051793	41.21%	8.378%
4	10.428	1257	1265	1283	rBV	1766086	3066315	61.58%	12.521%
5	14.298	1917	1923	1936	rBV2	2605093	4025013	80.83%	16.436%
6	14.416	1941	1943	1952	rVB4	7987	15378	0.31%	0.063%
7	15.304	2088	2094	2097	rBV5	5201	6846	0.14%	0.028%
8	16.257	2251	2256	2260	rBV4	5258	6627	0.13%	0.027%
9	16.839	2352	2355	2360	rVB4	7547	11232	0.23%	0.046%
10	17.051	2385	2391	2407	rBV2	3022469	4615000	92.68%	18.845%
11	17.957	2543	2545	2548	rBV3	3995	5589	0.11%	0.023%
12	19.404	2788	2791	2796	rBV7	7310	10017	0.20%	0.041%
13	21.269	3103	3108	3127	rBV	3713871	4979469	100.00%	20.334%
14	22.327	3286	3288	3294	rVB3	80159	93185	1.87%	0.381%
15	22.833	3371	3374	3379	rVB2	111934	153982	3.09%	0.629%
16	23.392	3466	3469	3480	rVB2	130533	216077	4.34%	0.882%
17	23.504	3481	3488	3502	rVV2	2544230	4946197	99.33%	20.198%
18	24.033	3575	3578	3585	rVB2	121808	217077	4.36%	0.886%

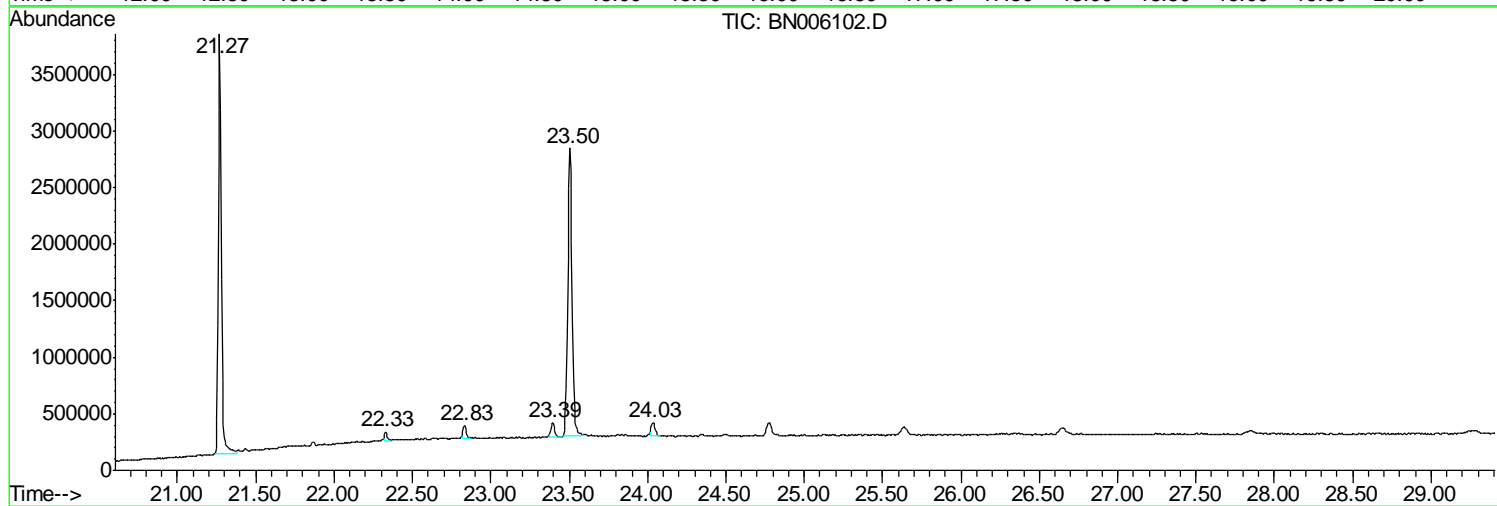
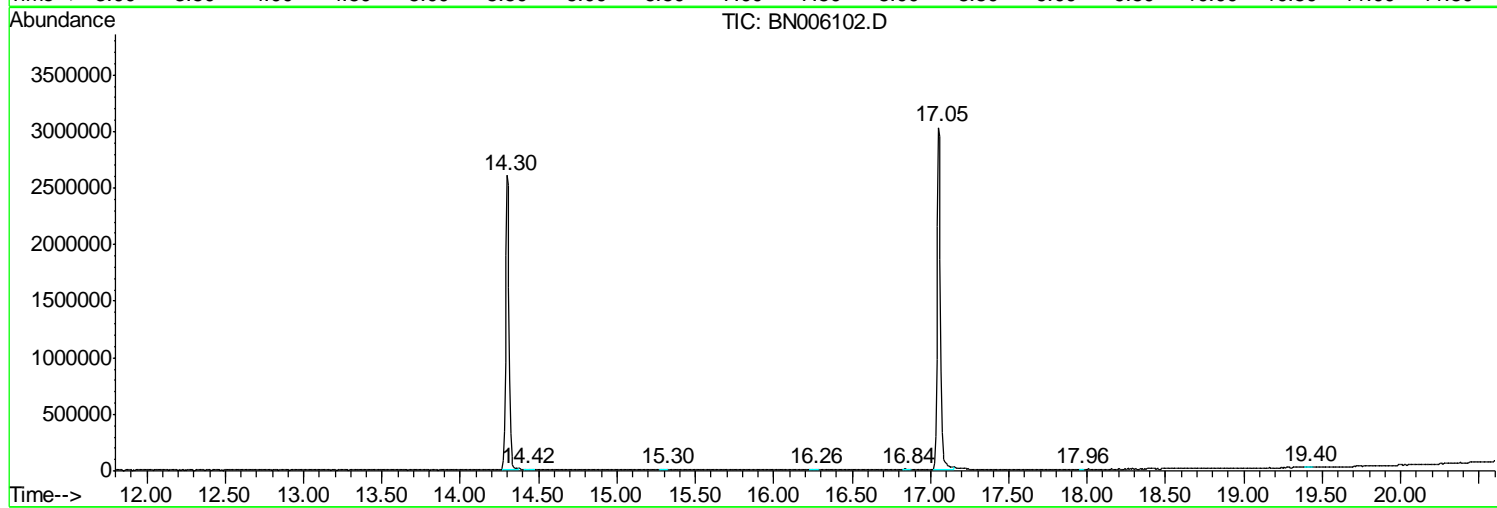
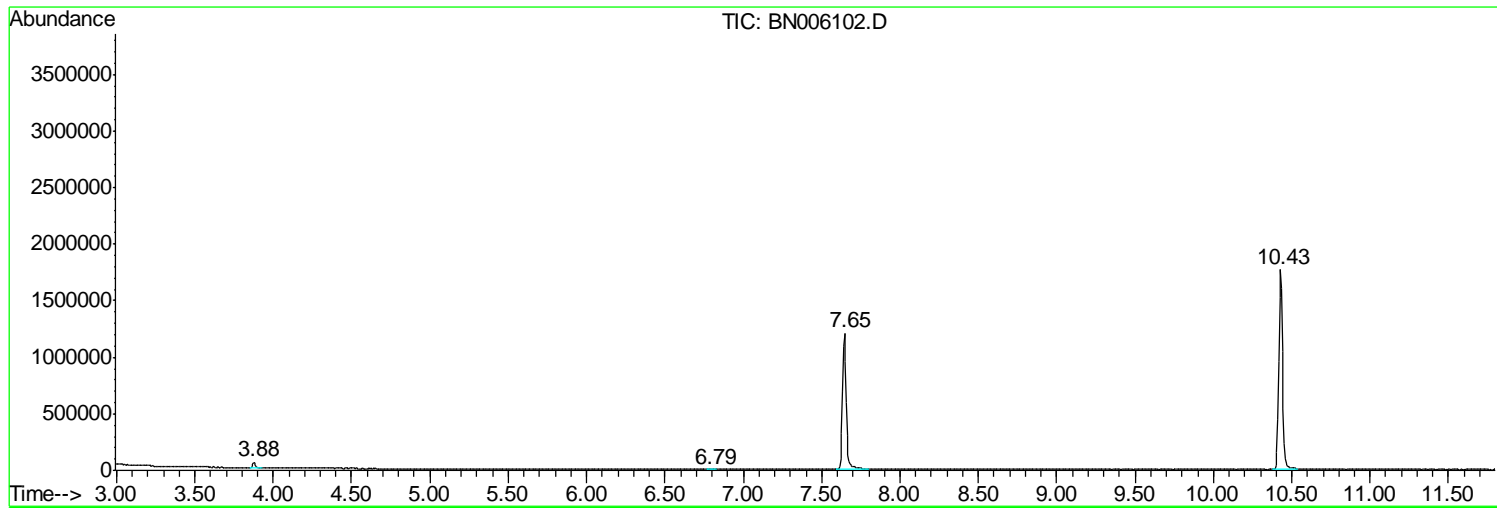
Sum of corrected areas: 24488972

Data Path : Z:\SVOASRV\HPCHEM1\BNA N\DATA\BN060519\  
 Data File : BN006102.D  
 Acq On : 05 Jun 2019 16:45  
 Operator : JU/SJ  
 Sample : K3134-05  
 Misc :  
 ALS Vial : 12 Sample Multiplier: 1

**Instrument :**  
 BNA\_N  
**ClientSampleId :**  
 SVOC-GPC-BLANK

Quant Method : Z:\SVOASRV\HPCHEM1\BNA\_N\METHODS\SOM-EPA-BN060419MA.M  
 Quant Title : SVOA CALIBRATION

TIC Library : C:\DATABASE\NIST11.L  
 TIC Integration Parameters: LSCINT.P



Data Path : Z:\SVOASRV\HPCHEM1\BNA\_N\DATA\BN060519\  
Data File : BN006102.D  
Acq On : 05 Jun 2019 16:45  
Operator : JU/SJ  
Sample : K3134-05  
Misc :  
ALS Vial : 12 Sample Multiplier: 1

**Instrument :**  
BNA\_N  
**ClientSampleId :**  
SVOC-GPC-BLANK

Quant Method : Z:\SVOASRV\HPCHEM1\BNA\_N\METHODS\SOM-EPA-BN060419MA.M  
Quant Title : SVOA CALIBRATION

TIC Library : C:\DATABASE\NIST11.L  
TIC Integration Parameters: LSCINT.P

No Library Search Compounds Detected

\*\*\*\*\*

Data Path : Z:\SVOASRV\HPCHEM1\BNA\_N\DATA\BN060519\  
Data File : BN006102.D  
Acq On : 05 Jun 2019 16:45  
Operator : JU/SJ  
Sample : K3134-05  
Misc :  
ALS Vial : 12 Sample Multiplier: 1

Instrument :  
BNA\_N  
ClientSampleId :  
SVOC-GPC-BLANK

Quant Method : Z:\SVOASRV\HPCHEM1\BNA\_N\METHODS\SOM-EPA-BN060419MA.M  
Quant Title : SVOA CALIBRATION

TIC Library : C:\DATABASE\NIST11.L  
TIC Integration Parameters: LSCINT.P

TIC Top Hit name	RT	EstConc	Units	Response	--Internal Standard--			
					#	RT	Resp	Conc

---