

Data Path : Z:\SVOASRV\HPCHEM1\BNA_N\DATA\BN060519\
 Data File : BN006104.D
 Acq On : 05 Jun 2019 17:54
 Operator : JU/SJ
 Sample : PB120074BL
 Misc :
 ALS Vial : 14 Sample Multiplier: 1

Instrument :
 BNA_N
 ClientSampleId :
 SBLK74

Integration Parameters: LSCINT.P

Integrator: RTE
 Smoothing : OFF
 Sampling : 1
 Start Thrs: 0.2
 Stop Thrs : 0

Filtering: 5
 Min Area: 0.1 % of largest Peak
 Max Peaks: 100
 Peak Location: TOP

If leading or trailing edge < 100 prefer < Baseline drop else tangent >
 Peak separation: 5

Method : Z:\SVOASRV\HPCHEM1\BNA_N\METHODS\SOM-EPA-BN060419MA.M
 Title : SVOA CALIBRATION

Signal : TIC

peak #	R.T. min	first scan	max scan	last scan	PK TY	peak height	corr. area	corr. % max.	% of total
1	3.152	24	28	38	rVB	136449	176564	2.30%	0.203%
2	3.875	148	151	156	rVB2	11115	14721	0.19%	0.017%
3	6.816	641	651	666	rBV	1718775	2805520	36.56%	3.232%
4	6.981	673	679	692	rBV	1389819	2214717	28.86%	2.551%
5	7.175	706	712	725	rBV	1767688	2840951	37.02%	3.273%
6	7.646	784	792	805	rBV	1033523	1719705	22.41%	1.981%
7	8.352	905	912	930	rBV	2113059	3513705	45.79%	4.047%
8	8.552	943	946	951	rVB5	4234	7776	0.10%	0.009%
9	8.799	980	988	1004	rBV	1672346	2779753	36.23%	3.202%
10	9.516	1102	1110	1123	rBV	1341943	2273354	29.63%	2.619%
11	10.052	1194	1201	1219	rBV	2025753	3503294	45.66%	4.035%
12	10.428	1256	1265	1280	rBV	1535804	2618039	34.12%	3.016%
13	10.569	1281	1289	1310	rBV	2047253	3695765	48.17%	4.257%
14	12.028	1530	1537	1542	rBV	22757	38595	0.50%	0.044%
15	13.710	1817	1823	1837	rBV	3530501	4806696	62.64%	5.537%
16	13.993	1864	1871	1887	rBV	4048565	6217236	81.03%	7.162%
17	14.298	1916	1923	1936	rBV2	2107964	3241365	42.24%	3.734%
18	14.510	1953	1959	1980	rBV	1124443	2003971	26.12%	2.308%
19	15.298	2086	2093	2109	rBV	4969315	7100873	92.54%	8.180%
20	15.428	2109	2115	2130	rVV	1182460	1689180	22.01%	1.946%
21	15.534	2130	2133	2144	rVB2	61009	107309	1.40%	0.124%
22	16.087	2223	2227	2235	rVB3	16705	25356	0.33%	0.029%
23	16.734	2333	2337	2341	rVB6	7314	9175	0.12%	0.011%
24	16.845	2352	2356	2359	rBV2	6946	8079	0.11%	0.009%
25	17.051	2385	2391	2402	rBV2	2295934	3437967	44.81%	3.960%
26	17.151	2402	2408	2432	rVB2	4721603	7082859	92.31%	8.159%
27	17.339	2438	2440	2445	rVB6	5924	9380	0.12%	0.011%
28	19.092	2734	2738	2746	rBV	42322	64307	0.84%	0.074%
29	19.351	2777	2782	2788	rBV2	35883	56830	0.74%	0.065%
30	19.463	2795	2801	2818	rBV2	5500136	7657667	99.80%	8.821%
31	21.280	3104	3110	3126	rBV	2403493	3464414	45.15%	3.991%
32	21.880	3210	3212	3216	rVB	43764	44840	0.58%	0.052%
33	22.345	3288	3291	3297	rBV2	82958	123483	1.61%	0.142%
34	22.851	3374	3377	3384	rVB2	117001	167239	2.18%	0.193%

Data Path : Z:\SVOASRV\HPCHEM1\BNA N\DATA\BN060519\
Data File : BN006104.D
Acq On : 05 Jun 2019 17:54
Operator : JU/SJ
Sample : PB120074BL
Misc :
ALS Vial : 14 Sample Multiplier: 1

Instrument :
BNA_N
ClientSampleId :
SBLK74

Integration Parameters: LSCINT.P
Integrator: RTE
Smoothing : OFF Filtering: 5
Sampling : 1 Min Area: 0.1 % of largest Peak
Start Thrs: 0.2 Max Peaks: 100
Stop Thrs : 0 Peak Location: TOP

If leading or trailing edge < 100 prefer < Baseline drop else tangent >
Peak separation: 5

Method : Z:\SVOASRV\HPCHEM1\BNA_N\METHODS\SOM-EPA-BN060419MA.M
Title : SVOA CALIBRATION

35	23.386	3460	3468	3483	rBV2	3910333	7673091	100.00%	8.839%
36	23.521	3485	3491	3509	rVB2	1827004	3618909	47.16%	4.169%

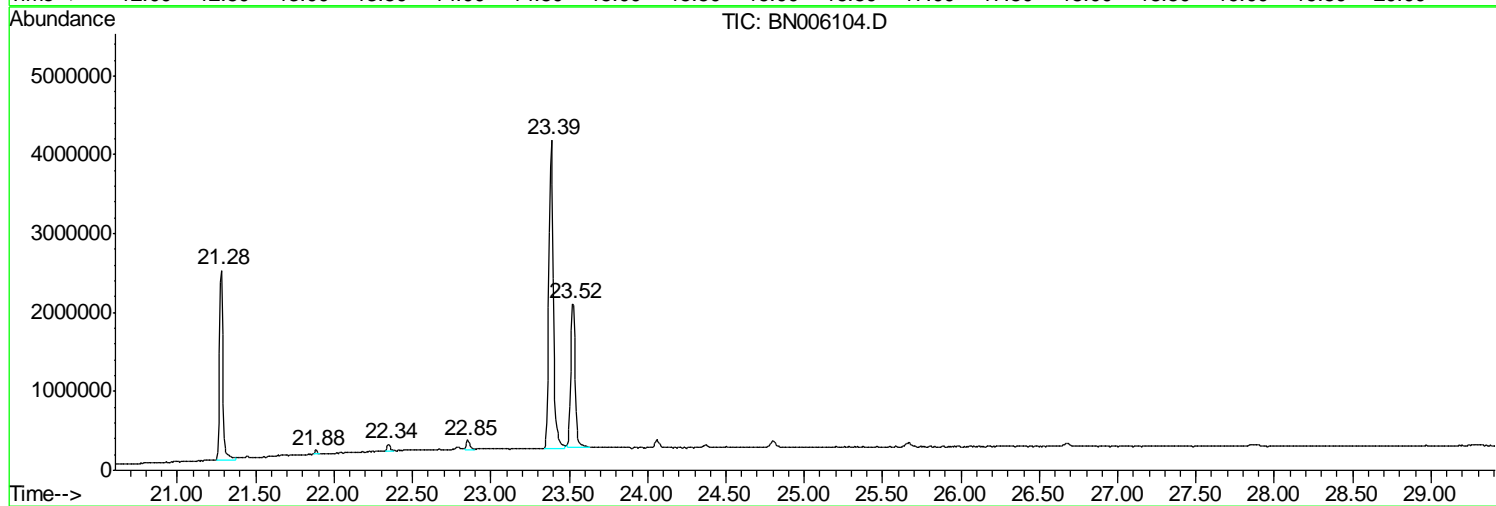
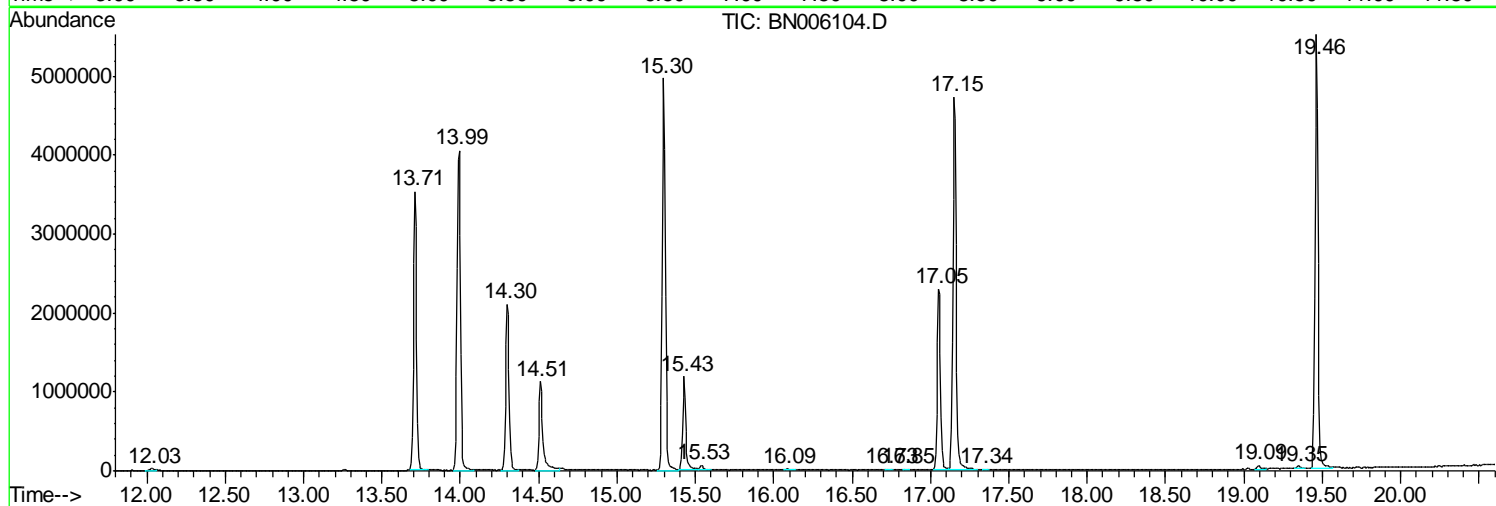
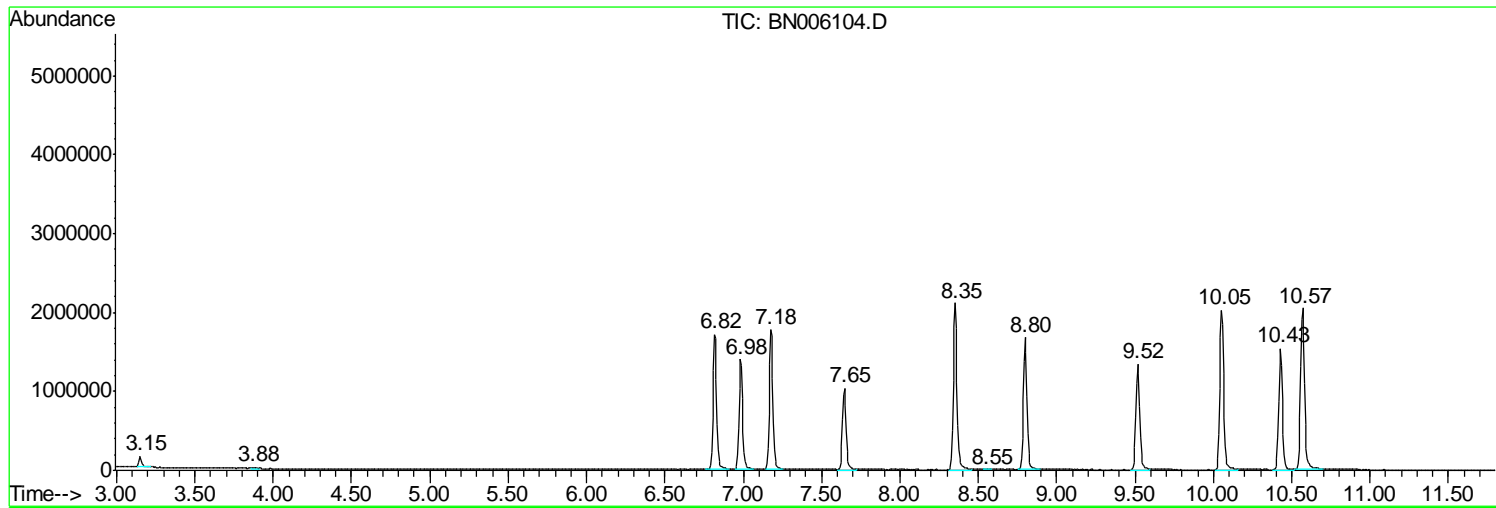
Sum of corrected areas: 86812685

Data Path : Z:\SVOASRV\HPCHEM1\BNA N\DATA\BN060519\
Data File : BN006104.D
Acq On : 05 Jun 2019 17:54
Operator : JU/SJ
Sample : PB120074BL
Misc :
ALS Vial : 14 Sample Multiplier: 1

Instrument :
BNA_N
ClientSampled :
SBLK74

Quant Method : Z:\SVOASRV\HPCHEM1\BNA_N\METHODS\SOM-EPA-BN060419MA.M
Quant Title : SVOA CALIBRATION

TIC Library : C:\DATABASE\NIST11.L
TIC Integration Parameters: LSCINT.P



Data Path : Z:\SVOASRV\HPCHEM1\BNA_N\DATA\BN060519\
Data File : BN006104.D
Acq On : 05 Jun 2019 17:54
Operator : JU/SJ
Sample : PB120074BL
Misc :
ALS Vial : 14 Sample Multiplier: 1

Instrument :
BNA_N
ClientSampleId :
SBLK74

Quant Method : Z:\SVOASRV\HPCHEM1\BNA_N\METHODS\SOM-EPA-BN060419MA.M
Quant Title : SVOA CALIBRATION

TIC Library : C:\DATABASE\NIST11.L
TIC Integration Parameters: LSCINT.P

No Library Search Compounds Detected

Data Path : Z:\SVOASRV\HPCHEM1\BNA_N\DATA\BN060519\
Data File : BN006104.D
Acq On : 05 Jun 2019 17:54
Operator : JU/SJ
Sample : PB120074BL
Misc :
ALS Vial : 14 Sample Multiplier: 1

Instrument :
BNA_N
ClientSampleId :
SBLK74

Quant Method : Z:\SVOASRV\HPCHEM1\BNA_N\METHODS\SOM-EPA-BN060419MA.M
Quant Title : SVOA CALIBRATION

TIC Library : C:\DATABASE\NIST11.L
TIC Integration Parameters: LSCINT.P

TIC Top Hit name	RT	EstConc	Units	Response	--Internal Standard--			
					#	RT	Resp	Conc
