

Data Path : Z:\svoasrv\HPCHEM1\BNA\_N\Data\BN060624\  
 Data File : BN031836.D  
 Acq On : 07 Jun 2024 02:28  
 Operator : MA/JU  
 Sample : P2647-05  
 Misc :  
 ALS Vial : 24 Sample Multiplier: 1

Instrument :  
 BNA\_N  
 ClientSampleId :  
 BH5T6

Quant Time: Jun 07 03:48:15 2024  
 Quant Method : Z:\svoasrv\HPCHEM1\BNA\_N\Methods\SFAM-EPA-BN052924.MA.M  
 Quant Title : SVOA CALIBRATION  
 QLast Update : Wed May 29 15:13:07 2024  
 Response via : Initial Calibration

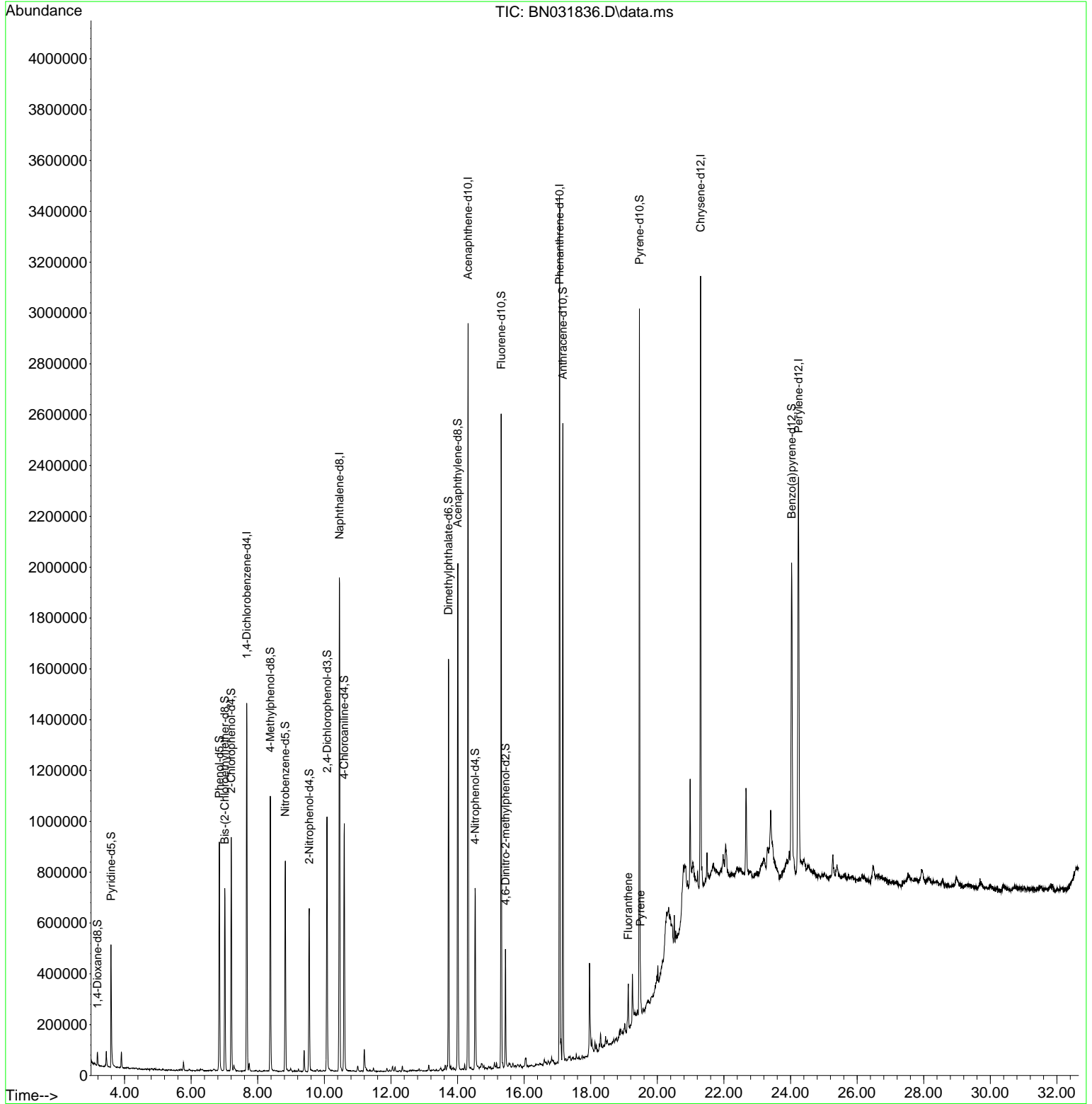
Compound	R.T.	QIon	Response	Conc	Units	Dev(Min)
-----						
Internal Standards						
1) 1,4-Dichlorobenzene-d4	7.669	152	406111	20.000	ng/u1	-0.02
20) Naphthalene-d8	10.457	136	1694124	20.000	ng/u1	-0.01
38) Acenaphthene-d10	14.316	164	1032444	20.000	ng/u1	-0.01
64) Phenanthrene-d10	17.063	188	2035700	20.000	ng/u1	0.00
79) Chrysene-d12	21.298	240	1219800	20.000	ng/u1	0.00
88) Perylene-d12	24.239	264	1391571	20.000	ng/u1	0.00
System Monitoring Compounds						
3) 1,4-Dioxane-d8	3.187	96	28127	2.865	ng/uL	0.00
4) Pyridine-d5	3.593	84	272521	9.862	ng/u1	0.00
7) Phenol-d5	6.846	99	571349	16.411	ng/u1	0.00
9) Bis-(2-Chloroethyl)eth...	7.010	67	312614	15.351	ng/u1	-0.02
11) 2-Chlorophenol-d4	7.204	132	449943	16.938	ng/u1	-0.01
15) 4-Methylphenol-d8	8.375	113	444272	15.655	ng/u1	-0.01
21) Nitrobenzene-d5	8.828	128	218001	16.830	ng/u1	-0.01
24) 2-Nitrophenol-d4	9.546	143	227573	17.008	ng/u1	-0.01
28) 2,4-Dichlorophenol-d3	10.081	165	395473	15.832	ng/u1	0.00
31) 4-Chloroaniline-d4	10.598	131	555269	14.971	ng/u1	-0.01
46) Dimethylphthalate-d6	13.728	166	1123255	15.617	ng/u1	-0.02
49) Acenaphthylene-d8	14.004	160	1357874	16.418	ng/u1	-0.01
54) 4-Nitrophenol-d4	14.528	143	195919	13.604	ng/u1	0.00
60) Fluorene-d10	15.310	176	984911	16.184	ng/u1	-0.01
65) 4,6-Dinitro-2-methylph...	15.439	200	93094	9.098	ng/u1	0.00
73) Anthracene-d10	17.163	188	1393301	15.987	ng/u1	0.00
81) Pyrene-d10	19.463	212	1401401	21.469	ng/u1	0.00
92) Benzo(a)pyrene-d12	24.033	264	1089001	16.389	ng/u1	0.00
Target Compounds						
80) Fluoranthene	19.127	202	95861	1.229	ng/u1	99
82) Pyrene	19.492	202	91483	1.143	ng/u1	99
-----						

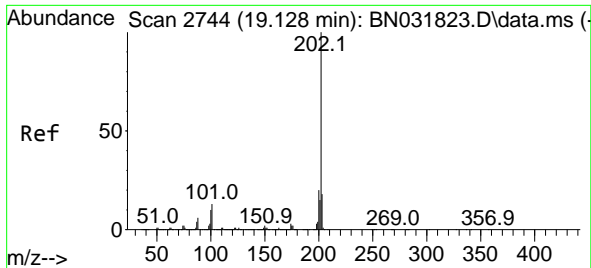
(#) = qualifier out of range (m) = manual integration (+) = signals summed

Data Path : Z:\svoasrv\HPCHEM1\BNA\_N\Data\BN060624\  
 Data File : BN031836.D  
 Acq On : 07 Jun 2024 02:28  
 Operator : MA/JU  
 Sample : P2647-05  
 Misc :  
 ALS Vial : 24 Sample Multiplier: 1

Instrument :  
 BNA\_N  
 ClientSampleId :  
 BH5T6

Quant Time: Jun 07 03:48:15 2024  
 Quant Method : Z:\svoasrv\HPCHEM1\BNA\_N\Methods\SFAM-EPA-BN052924.MA.M  
 Quant Title : SVOA CALIBRATION  
 QLast Update : Wed May 29 15:13:07 2024  
 Response via : Initial Calibration

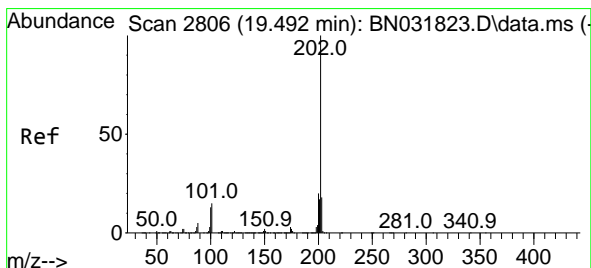
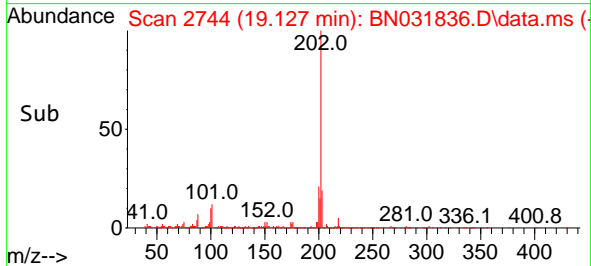
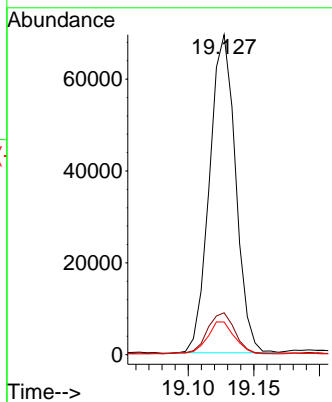
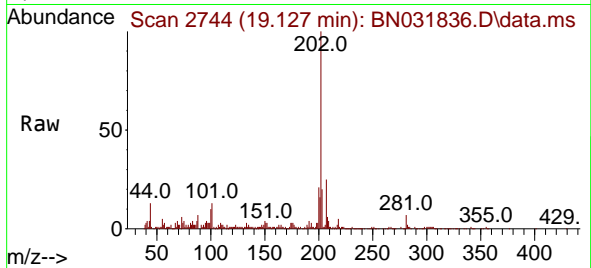




#80  
 Fluoranthene  
 Concen: 1.229 ng/u1  
 RT: 19.127 min Scan# 21  
 Delta R.T. -0.006 min  
 Lab File: BN031836.D  
 Acq: 07 Jun 2024 02:28

Instrument :  
 BNA\_N  
 ClientSampleId :  
 BH5T6

Tgt Ion	Resp	Lower	Upper
202	100		
101	13.1	10.3	15.5
100	10.2	8.0	12.0



#82  
 Pyrene  
 Concen: 1.143 ng/u1  
 RT: 19.492 min Scan# 2806  
 Delta R.T. -0.000 min  
 Lab File: BN031836.D  
 Acq: 07 Jun 2024 02:28

Tgt Ion	Resp	Lower	Upper
202	100		
101	15.3	12.6	18.8
100	12.0	10.2	15.2

