

Data Path : Z:\svoasrv\HPCHEM1\BNA\_N\Data\BN060624\  
 Data File : BN031829.D  
 Acq On : 06 Jun 2024 21:51  
 Operator : MA/JU  
 Sample : P2647-10  
 Misc :  
 ALS Vial : 17 Sample Multiplier: 1

Instrument :  
 BNA\_N  
 ClientSampleId :  
 BHBS4

Integration Parameters: LSCINT.P

Integrator: RTE  
 Smoothing : OFF Filtering: 5  
 Sampling : 1 Min Area: 0.1 % of largest Peak  
 Start Thrs: 0.2 Max Peaks: 100  
 Stop Thrs : 0 Peak Location: TOP

If leading or trailing edge < 100 prefer < Baseline drop else tangent >  
 Peak separation: 5

Method : Z:\svoasrv\HPCHEM1\BNA\_N\Methods\SFAM-EPA-BN052924.MA.M  
 Title : SVOA CALIBRATION

Signal : TIC: BN031829.D\data.ms

peak #	R.T. min	first scan	max scan	last scan	PK TY	peak height	corr. area	corr. % max.	% of total
1	3.187	30	34	40	rVB	85584	112372	1.96%	0.121%
2	3.452	72	79	95	rVB	354726	529511	9.22%	0.571%
3	3.593	101	103	117	rBV	494589	720853	12.56%	0.777%
4	3.699	117	121	128	rVB	126545	169228	2.95%	0.183%
5	3.905	151	156	166	rVB	200252	293136	5.11%	0.316%
6	4.805	301	309	313	rBV	42638	71846	1.25%	0.077%
7	4.899	319	325	332	rBV2	43677	80728	1.41%	0.087%
8	5.699	455	461	465	rVV2	42623	73044	1.27%	0.079%
9	5.769	467	473	482	rVB	54583	95658	1.67%	0.103%
10	5.881	488	492	498	rBV	56145	95397	1.66%	0.103%
11	6.669	615	626	631	rBV8	31227	80389	1.40%	0.087%
12	6.846	645	656	663	rBV	1317664	2179512	37.97%	2.351%
13	7.010	677	684	697	rVB	1093697	1797644	31.32%	1.939%
14	7.205	710	717	725	rBV	1383901	2207455	38.45%	2.381%
15	7.281	725	730	734	rBV2	114688	210087	3.66%	0.227%
16	7.669	787	796	804	rVV	1674096	2766035	48.19%	2.983%
17	8.375	910	916	923	rVV	1353569	2261947	39.40%	2.440%
18	8.828	985	993	1000	rVV	1225785	2057889	35.85%	2.220%
19	9.393	1082	1089	1096	rVB	211125	334640	5.83%	0.361%
20	9.546	1106	1115	1126	rBV	980812	1684975	29.35%	1.817%
21	10.081	1192	1206	1216	rVV	1470799	2557414	44.55%	2.758%
22	10.240	1226	1233	1242	rVB	83161	150186	2.62%	0.162%
23	10.451	1260	1269	1276	rBV	2189087	3901779	67.97%	4.208%
24	10.504	1276	1278	1284	rVB	74769	100814	1.76%	0.109%
25	10.599	1284	1294	1305	rBV	771903	1461991	25.47%	1.577%
26	10.998	1355	1362	1370	rVB2	91821	176037	3.07%	0.190%
27	11.198	1390	1396	1408	rBV	386450	702538	12.24%	0.758%
28	11.363	1415	1424	1430	rVB10	25881	66791	1.16%	0.072%
29	11.475	1438	1443	1450	rBV	66993	109135	1.90%	0.118%
30	11.881	1506	1512	1517	rVV	64848	100423	1.75%	0.108%
31	12.045	1533	1540	1546	rVV2	29578	71647	1.25%	0.077%
32	12.122	1546	1553	1561	rVB	111577	203131	3.54%	0.219%
33	12.340	1584	1590	1596	rBV	116797	192732	3.36%	0.208%
34	12.845	1671	1676	1681	rVB	43986	69459	1.21%	0.075%
35	13.140	1720	1726	1733	rVB2	97323	167751	2.92%	0.181%
36	13.492	1778	1786	1797	rBV4	56348	151474	2.64%	0.163%

Data Path : Z:\svoasrv\HPCHEM1\BNA\_N\Data\BN060624\  
 Data File : BN031829.D  
 Acq On : 06 Jun 2024 21:51  
 Operator : MA/JU  
 Sample : P2647-10  
 Misc :  
 ALS Vial : 17 Sample Multiplier: 1

Instrument :  
 BNA\_N  
 ClientSampleId :  
 BHBS4

Integration Parameters: LSCINT.P

Integrator: RTE  
 Smoothing : OFF Filtering: 5  
 Sampling : 1 Min Area: 0.1 % of largest Peak  
 Start Thrs: 0.2 Max Peaks: 100  
 Stop Thrs : 0 Peak Location: TOP

If leading or trailing edge < 100 prefer < Baseline drop else tangent >  
 Peak separation: 5

Method : Z:\svoasrv\HPCHEM1\BNA\_N\Methods\SFAM-EPA-BN052924.MA.M  
 Title : SVOA CALIBRATION

37	13.634	1805	1810	1815	rVV	132513	231301	4.03%	0.249%
38	13.687	1815	1819	1821	rVV	104546	142843	2.49%	0.154%
39	13.728	1821	1826	1834	rVV	2196828	3201893	55.78%	3.453%
40	13.798	1834	1838	1842	rVB	72481	96977	1.69%	0.105%
41	13.869	1847	1850	1854	rVV	67358	98306	1.71%	0.106%
42	14.010	1867	1874	1886	rVB	2648741	4282773	74.61%	4.619%
43	14.216	1905	1909	1915	rVB	94019	129738	2.26%	0.140%
44	14.316	1916	1926	1932	rBV	3014403	4539087	79.07%	4.896%
45	14.375	1932	1936	1945	rVB3	73105	162677	2.83%	0.175%
46	14.528	1956	1962	1969	rBV2	1058762	1845673	32.15%	1.991%
47	14.681	1984	1988	1990	rBV2	50479	69013	1.20%	0.074%
48	14.716	1990	1994	2002	rVB	131807	217917	3.80%	0.235%
49	14.792	2003	2007	2011	rVB2	61377	80734	1.41%	0.087%
50	14.934	2024	2031	2036	rBV3	66428	131125	2.28%	0.141%
51	14.987	2036	2040	2044	rVB	53099	68531	1.19%	0.074%
52	15.104	2055	2060	2065	rBV5	94831	176440	3.07%	0.190%
53	15.175	2068	2072	2077	rVB2	84666	113187	1.97%	0.122%
54	15.310	2088	2095	2100	rBV	3295099	4737588	82.53%	5.110%
55	15.363	2100	2104	2109	rVV3	122839	211021	3.68%	0.228%
56	15.439	2112	2117	2123	rVB	649183	886637	15.45%	0.956%
57	15.581	2137	2141	2145	rVB2	50230	76285	1.33%	0.082%
58	15.663	2149	2155	2161	rVB	87303	159470	2.78%	0.172%
59	15.810	2176	2180	2187	rVB2	66666	134885	2.35%	0.145%
60	16.039	2214	2219	2220	rBV	161854	210987	3.68%	0.228%
61	16.604	2310	2315	2318	rBV2	67701	113205	1.97%	0.122%
62	16.722	2330	2335	2342	rVB3	121365	195207	3.40%	0.211%
63	16.798	2343	2348	2349	rVV4	56708	86922	1.51%	0.094%
64	16.828	2350	2353	2358	rVV	122086	195905	3.41%	0.211%
65	16.881	2358	2362	2371	rVB	105281	186608	3.25%	0.201%
66	17.063	2387	2393	2397	rBV	3048128	4483587	78.11%	4.836%
67	17.104	2397	2400	2405	rVB	1229250	1606740	27.99%	1.733%
68	17.163	2405	2410	2415	rBV2	3247575	4660432	81.19%	5.027%
69	17.251	2421	2425	2430	rBV3	56037	98926	1.72%	0.107%
70	17.380	2444	2447	2452	rVB4	76056	106183	1.85%	0.115%
71	17.469	2459	2462	2466	rBV	73310	90838	1.58%	0.098%
72	17.563	2475	2478	2488	rBV2	95230	143609	2.50%	0.155%
73	17.645	2488	2492	2496	rVB2	76094	92955	1.62%	0.100%
74	17.745	2505	2509	2512	rBV2	80383	104939	1.83%	0.113%
75	17.939	2537	2542	2543	rBV	256088	318034	5.54%	0.343%
76	17.969	2543	2547	2548	rBV	310093	350606	6.11%	0.378%

Data Path : Z:\svoasrv\HPCHEM1\BNA\_N\Data\BN060624\  
 Data File : BN031829.D  
 Acq On : 06 Jun 2024 21:51  
 Operator : MA/JU  
 Sample : P2647-10  
 Misc :  
 ALS Vial : 17 Sample Multiplier: 1

Instrument :  
 BNA\_N  
 ClientSampleId :  
 BHBS4

Integration Parameters: LSCINT.P

Integrator: RTE  
 Smoothing : OFF Filtering: 5  
 Sampling : 1 Min Area: 0.1 % of largest Peak  
 Start Thrs: 0.2 Max Peaks: 100  
 Stop Thrs : 0 Peak Location: TOP

If leading or trailing edge < 100 prefer < Baseline drop else tangent >  
 Peak separation: 5

Method : Z:\svoasrv\HPCHEM1\BNA\_N\Methods\SFAM-EPA-BN052924.MA.M  
 Title : SVOA CALIBRATION

77	18.128	2569	2574	2578	rBV2	320757	548743	9.56%	0.592%
78	18.169	2578	2581	2587	rVB	204925	289967	5.05%	0.313%
79	18.257	2592	2596	2599	rBV2	135515	194704	3.39%	0.210%
80	18.445	2624	2628	2632	rBV	198965	279522	4.87%	0.301%
81	18.486	2632	2635	2645	rVB2	143766	233793	4.07%	0.252%
82	18.692	2667	2670	2674	rVB2	81671	100830	1.76%	0.109%
83	18.739	2675	2678	2682	rBV	79398	97003	1.69%	0.105%
84	18.863	2695	2699	2702	rBV	249948	352891	6.15%	0.381%
85	18.898	2703	2705	2712	rVV4	141819	255184	4.45%	0.275%
86	18.957	2712	2715	2718	rVB	95932	110108	1.92%	0.119%
87	19.004	2719	2723	2728	rBV3	141006	281291	4.90%	0.303%
88	19.127	2739	2744	2752	rVB	1749066	2401472	41.83%	2.590%
89	19.251	2762	2765	2772	rVB2	164809	267604	4.66%	0.289%
90	19.463	2795	2801	2804	rBV	3623148	5191519	90.44%	5.599%
91	19.492	2804	2806	2814	rVB	1338266	1604574	27.95%	1.731%
92	19.569	2815	2819	2823	rBV2	131599	195377	3.40%	0.211%
93	19.810	2857	2860	2869	rBV5	154773	370723	6.46%	0.400%
94	20.739	3015	3018	3022	rBV	222927	276053	4.81%	0.298%
95	20.986	3056	3060	3066	rVB2	669917	937083	16.32%	1.011%
96	21.298	3106	3113	3117	rBV3	3291533	5740416	100.00%	6.191%
97	21.339	3117	3120	3129	rVB	794440	1272614	22.17%	1.373%
98	23.310	3451	3455	3461	rBV	370619	728892	12.70%	0.786%
99	24.033	3572	3578	3585	rBV2	1371102	3119097	54.34%	3.364%
100	24.239	3606	3613	3622	rVB	2056653	5019715	87.45%	5.414%

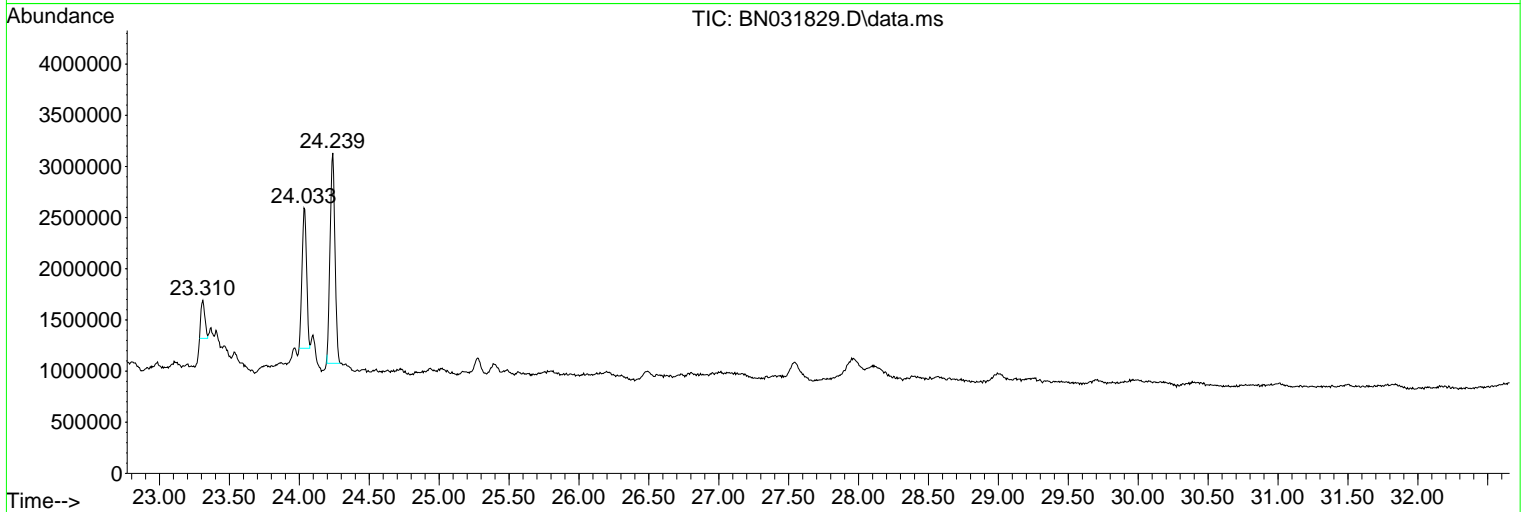
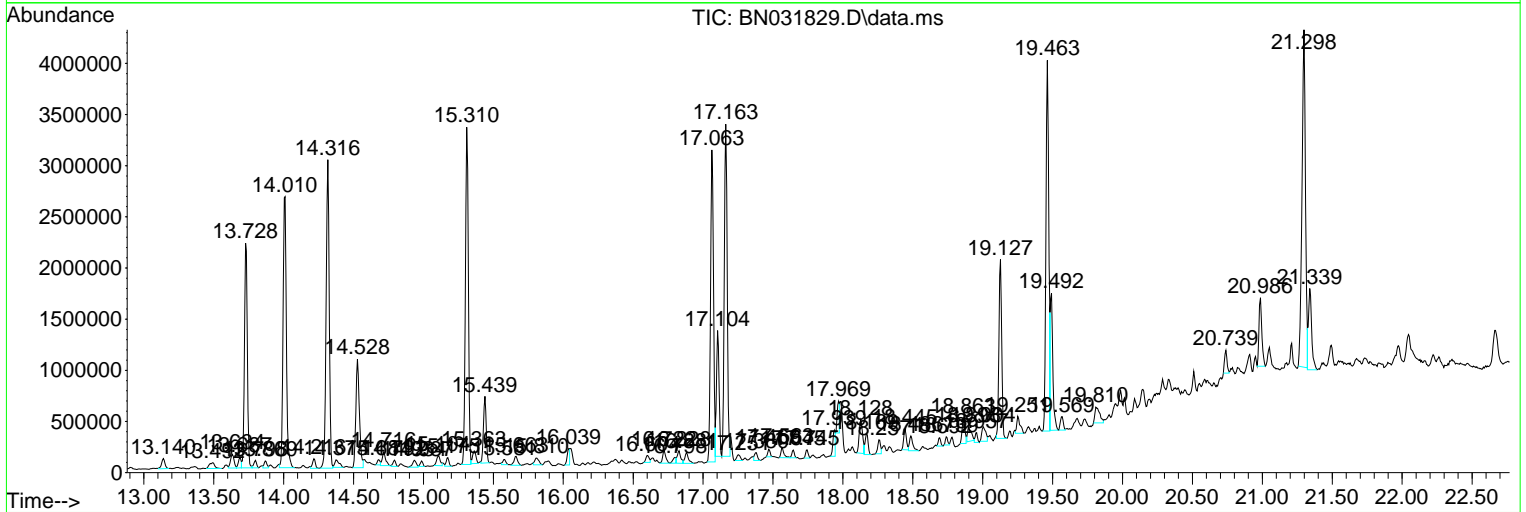
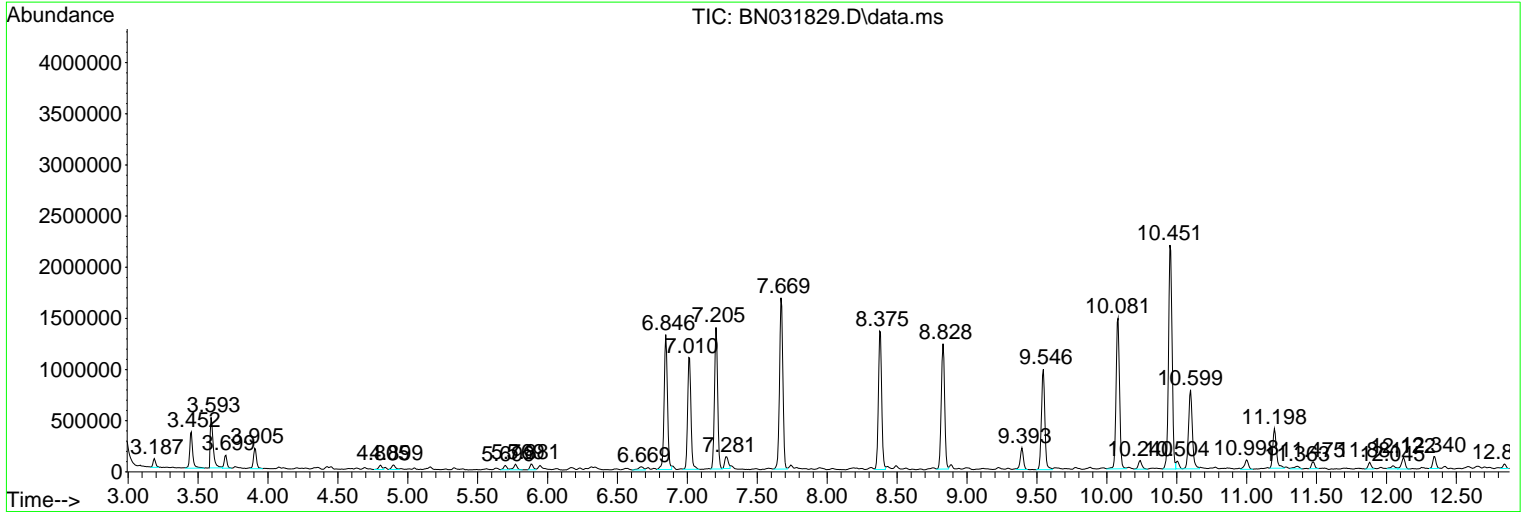
Sum of corrected areas: 92714607

Data Path : Z:\svoasrv\HPCHEM1\BNA\_N\Data\BN060624\  
 Data File : BN031829.D  
 Acq On : 06 Jun 2024 21:51  
 Operator : MA/JU  
 Sample : P2647-10  
 Misc :  
 ALS Vial : 17 Sample Multiplier: 1

**Instrument :**  
 BNA\_N  
**ClientSampleId :**  
 BHBS4

Quant Method : Z:\svoasrv\HPCHEM1\BNA\_N\Methods\SFAM-EPA-BN052924.MA.M  
 Quant Title : SVOA CALIBRATION

TIC Library : C:\Database\NIST20.L  
 TIC Integration Parameters: LSCINT.P



Data Path : Z:\svoasrv\HPCHEM1\BNA\_N\Data\BN060624\  
 Data File : BN031829.D  
 Acq On : 06 Jun 2024 21:51  
 Operator : MA/JU  
 Sample : P2647-10  
 Misc :  
 ALS Vial : 17 Sample Multiplier: 1

Instrument :  
 BNA\_N  
 ClientSampleId :  
 BHBS4

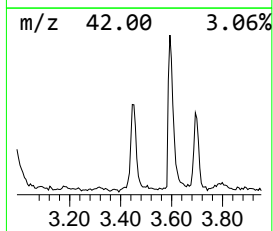
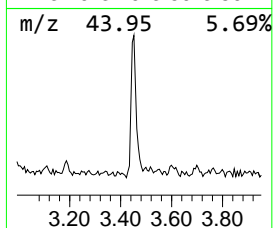
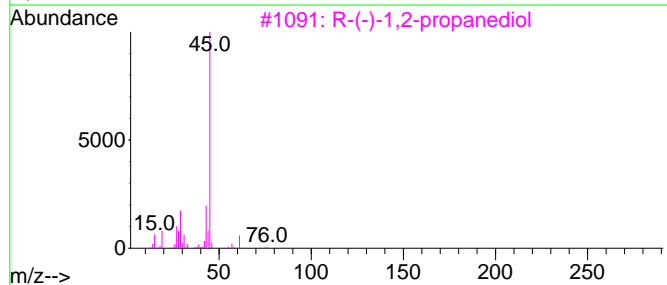
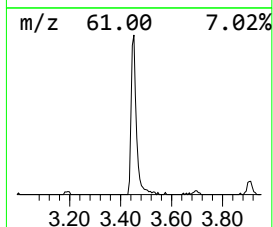
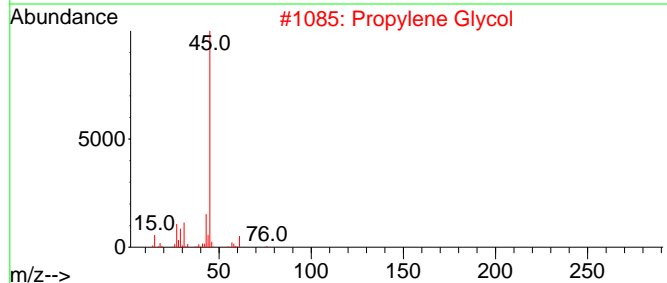
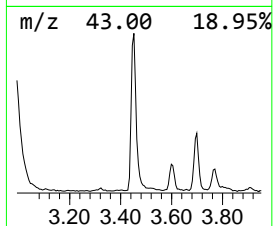
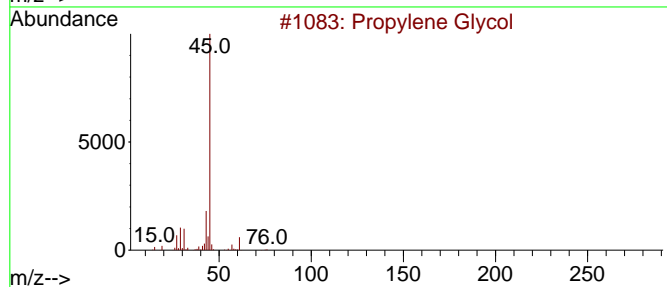
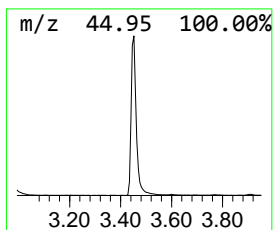
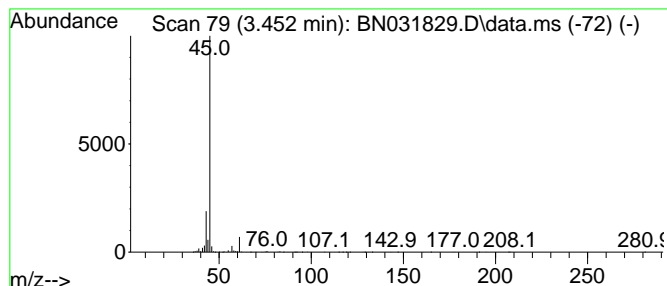
Quant Method : Z:\svoasrv\HPCHEM1\BNA\_N\Methods\SFAM-EPA-BN052924.MA.M  
 Quant Title : SVOA CALIBRATION

TIC Library : C:\Database\NIST20.L  
 TIC Integration Parameters: LSCINT.P

\*\*\*\*\*  
 Peak Number 1 Propylene Glycol Concentration Rank 1

R.T.	EstConc	Area	Relative to ISTD	R.T.
3.452	3.83 ng/ul	529511	1,4-Dichlorobenzene-d4	7.669

Hit#	of 5	Tentative ID	MW	MolForm	CAS#	Qual
1		Propylene Glycol	76	C3H8O2	000057-55-6	90
2		Propylene Glycol	76	C3H8O2	000057-55-6	78
3		R-(-)-1,2-propanediol	76	C3H8O2	004254-14-2	78
4		Isopropyl Alcohol	60	C3H8O	000067-63-0	50
5		(S)-(+)-1,2-Propanediol	76	C3H8O2	004254-15-3	40



Data Path : Z:\svoasrv\HPCHEM1\BNA\_N\Data\BN060624\  
 Data File : BN031829.D  
 Acq On : 06 Jun 2024 21:51  
 Operator : MA/JU  
 Sample : P2647-10  
 Misc :  
 ALS Vial : 17 Sample Multiplier: 1

Instrument :  
 BNA\_N  
 ClientSampleId :  
 BHBS4

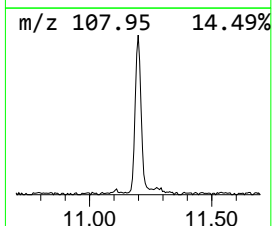
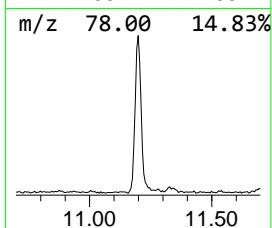
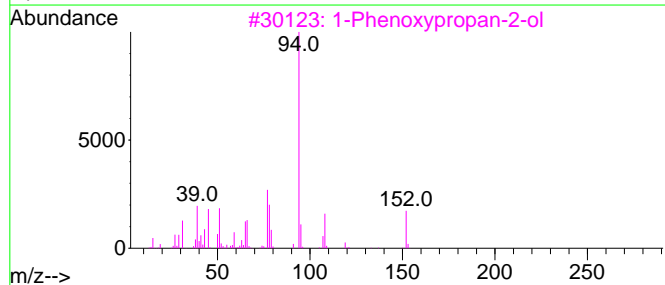
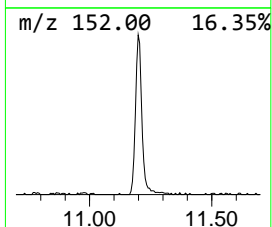
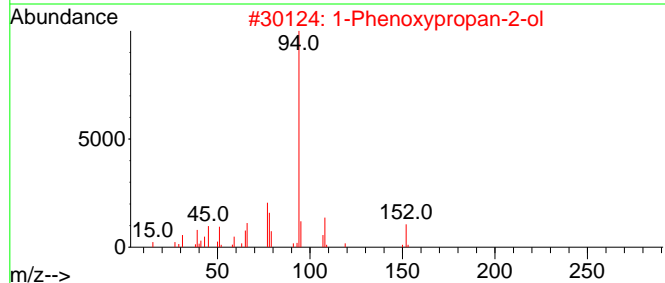
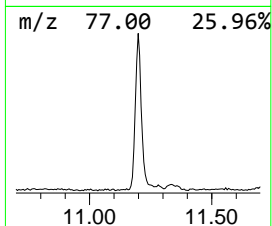
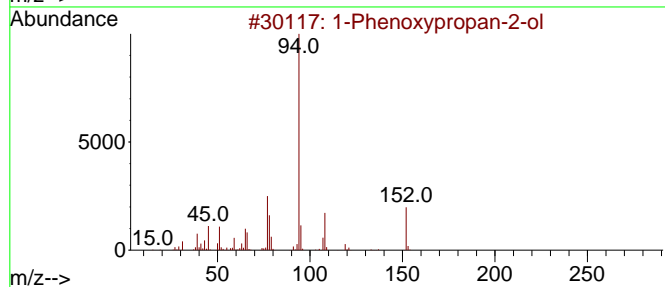
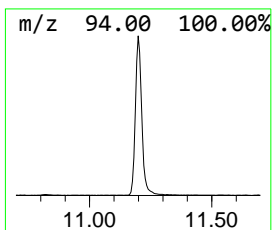
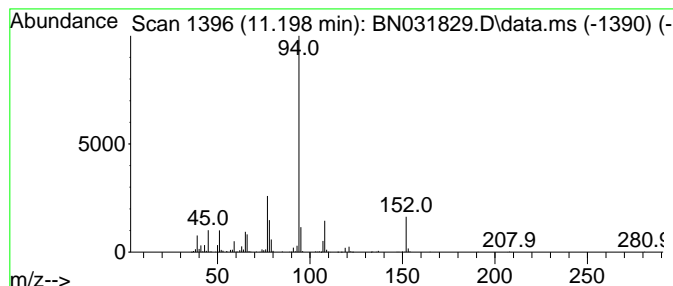
Quant Method : Z:\svoasrv\HPCHEM1\BNA\_N\Methods\SFAM-EPA-BN052924.MA.M  
 Quant Title : SVOA CALIBRATION

TIC Library : C:\Database\NIST20.L  
 TIC Integration Parameters: LSCINT.P

\*\*\*\*\*  
 Peak Number 3 1-Phenoxypropan-2-ol Concentration Rank 2

R.T.	EstConc	Area	Relative to ISTD	R.T.
11.198	3.60 ng/ul	702538	Naphthalene-d8	10.451

Hit#	of	5	Tentative ID	MW	MolForm	CAS#	Qual
1			1-Phenoxypropan-2-ol	152	C9H12O2	000770-35-4	96
2			1-Phenoxypropan-2-ol	152	C9H12O2	000770-35-4	94
3			1-Phenoxypropan-2-ol	152	C9H12O2	000770-35-4	94
4			1-Propanol, 3-phenoxy-	152	C9H12O2	006180-61-6	83
5			Carbonic acid, neopentyl phenyl ...	208	C12H16O3	013183-19-2	64



Data Path : Z:\svoasrv\HPCHEM1\BNA\_N\Data\BN060624\  
 Data File : BN031829.D  
 Acq On : 06 Jun 2024 21:51  
 Operator : MA/JU  
 Sample : P2647-10  
 Misc :  
 ALS Vial : 17 Sample Multiplier: 1

Instrument :  
 BNA\_N  
 ClientSampleId :  
 BHBS4

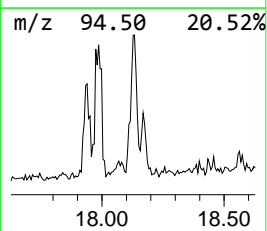
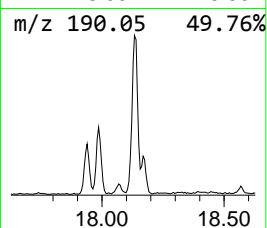
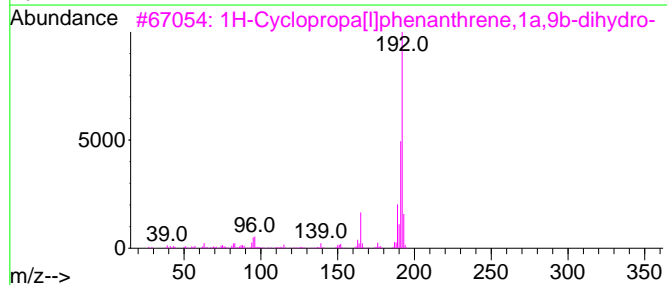
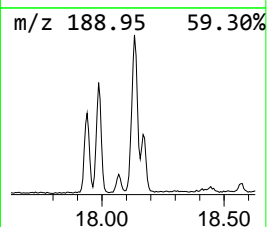
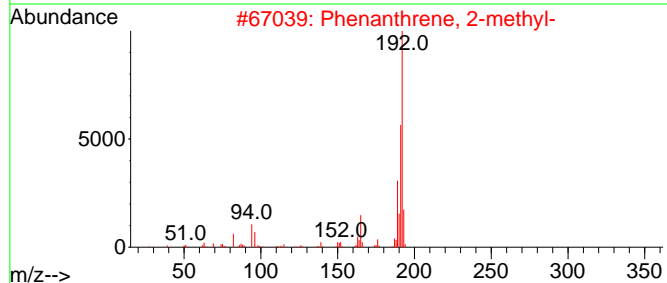
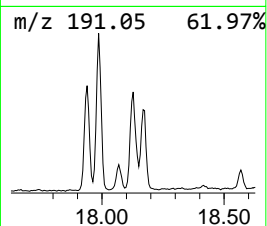
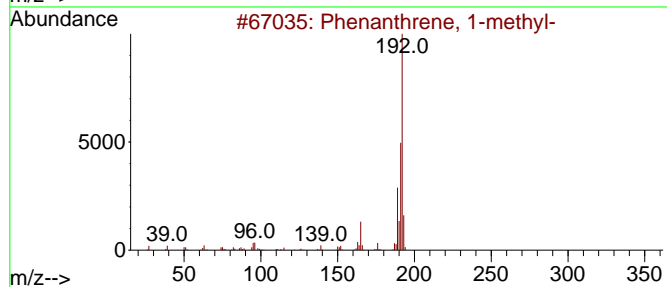
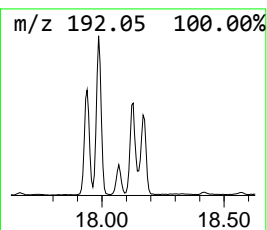
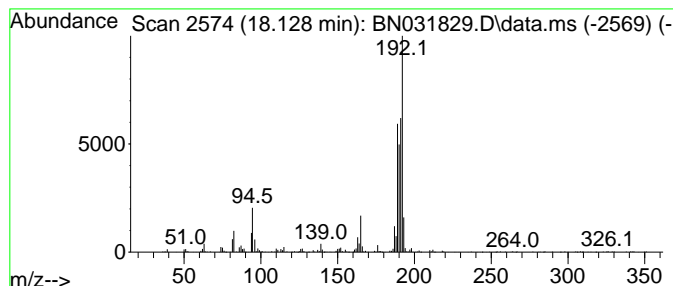
Quant Method : Z:\svoasrv\HPCHEM1\BNA\_N\Methods\SFAM-EPA-BN052924.MA.M  
 Quant Title : SVOA CALIBRATION

TIC Library : C:\Database\NIST20.L  
 TIC Integration Parameters: LSCINT.P

\*\*\*\*\*  
 Peak Number 4 Phenanthrene, 1-methyl- Concentration Rank 4

R.T.	EstConc	Area	Relative to ISTD	R.T.
18.128	2.45 ng/ul	548743	Phenanthrene-d10	17.063

Hit#	of 5	Tentative ID	MW	MolForm	CAS#	Qual
1		Phenanthrene, 1-methyl-	192	C15H12	000832-69-9	92
2		Phenanthrene, 2-methyl-	192	C15H12	002531-84-2	91
3		1H-Cyclopropa[1]phenanthrene,1a,...	192	C15H12	000949-41-7	91
4		Anthracene, 2-methyl-	192	C15H12	000613-12-7	90
5		Anthracene, 1-methyl-	192	C15H12	000610-48-0	89



Data Path : Z:\svoasrv\HPCHEM1\BNA\_N\Data\BN060624\  
 Data File : BN031829.D  
 Acq On : 06 Jun 2024 21:51  
 Operator : MA/JU  
 Sample : P2647-10  
 Misc :  
 ALS Vial : 17 Sample Multiplier: 1

Instrument :  
 BNA\_N  
 ClientSampleId :  
 BHBS4

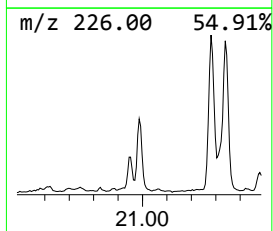
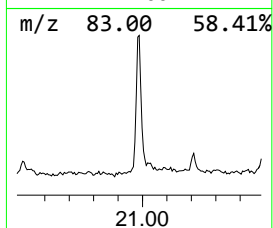
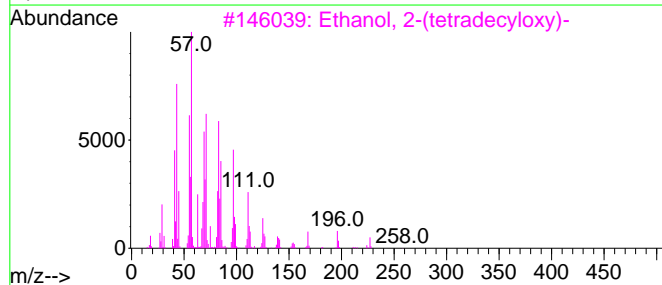
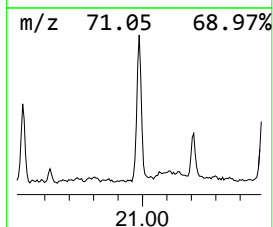
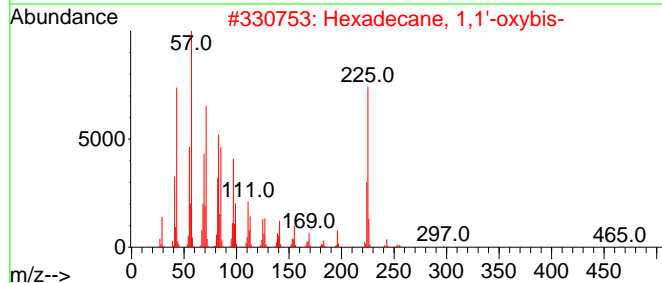
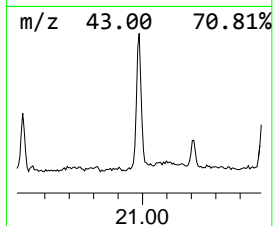
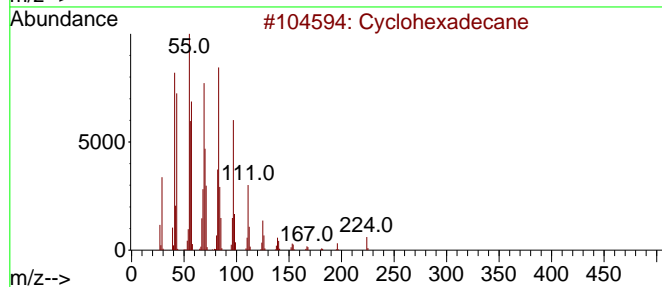
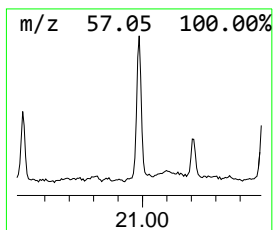
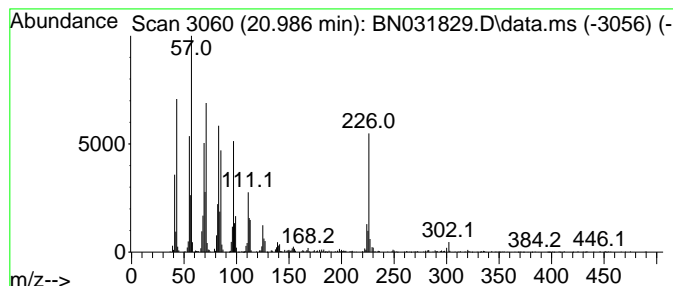
Quant Method : Z:\svoasrv\HPCHEM1\BNA\_N\Methods\SFAM-EPA-BN052924.MA.M  
 Quant Title : SVOA CALIBRATION

TIC Library : C:\Database\NIST20.L  
 TIC Integration Parameters: LSCINT.P

\*\*\*\*\*  
 Peak Number 5 (DEL) Alkane: Cyclic20.986 Concentration Rank 3

R.T.	EstConc	Area	Relative to ISTD	R.T.
20.986	3.26 ng/ul	937083	Chrysene-d12	21.298

Hit#	of 5	Tentative ID	MW	MolForm	CAS#	Qual
1		Cyclohexadecane	224	C16H32	000295-65-8	97
2		Hexadecane, 1,1'-oxybis-	467	C32H66O	004113-12-6	89
3		Ethanol, 2-(tetradecyloxy)-	258	C16H34O2	002136-70-1	76
4		Trihexadecyl borate	735	C48H99B03	002665-11-4	70
5		Pentadecafluorooctanoic acid, oc...	666	C26H37F15O2	1000406-04-8	64





Data Path : Z:\svoasrv\HPCHEM1\BNA\_N\Data\BN060624\  
 Data File : BN031829.D  
 Acq On : 06 Jun 2024 21:51  
 Operator : MA/JU  
 Sample : P2647-10  
 Misc :  
 ALS Vial : 17 Sample Multiplier: 1

Instrument :  
 BNA\_N  
 ClientSampleId :  
 BHBS4

Quant Method : Z:\svoasrv\HPCHEM1\BNA\_N\Methods\SFAM-EPA-BN052924.MA.M  
 Quant Title : SVOA CALIBRATION

TIC Library : C:\Database\NIST20.L  
 TIC Integration Parameters: LSCINT.P

TIC Top Hit name	RT	EstConc	Units	Response	--Internal Standard--			
					#	RT	Resp	Conc
Propylene Glycol	3.452	3.8	ng/u1	529511	1	7.669	2766040	20.0
1-Phenoxypropan...	11.198	3.6	ng/u1	702538	2	10.451	3901780	20.0
Phenanthrene, 1...	18.128	2.5	ng/u1	548743	4	17.063	4483590	20.0
(DEL) Alkane: C...	20.986	3.3	ng/u1	937083	5	21.298	5740420	20.0